

Datta, Sandip; Kingdon, Geeta G.

**Working Paper**

## Class Size and Learning: Has India Spent Too Much on Reducing Class Size?

IZA Discussion Papers, No. 14230

**Provided in Cooperation with:**

IZA – Institute of Labor Economics

*Suggested Citation:* Datta, Sandip; Kingdon, Geeta G. (2021) : Class Size and Learning: Has India Spent Too Much on Reducing Class Size?, IZA Discussion Papers, No. 14230, Institute of Labor Economics (IZA), Bonn

This Version is available at:

<https://hdl.handle.net/10419/236261>

**Standard-Nutzungsbedingungen:**

Die Dokumente auf EconStor dürfen zu eigenen wissenschaftlichen Zwecken und zum Privatgebrauch gespeichert und kopiert werden.

Sie dürfen die Dokumente nicht für öffentliche oder kommerzielle Zwecke vervielfältigen, öffentlich ausstellen, öffentlich zugänglich machen, vertreiben oder anderweitig nutzen.

Sofern die Verfasser die Dokumente unter Open-Content-Lizenzen (insbesondere CC-Lizenzen) zur Verfügung gestellt haben sollten, gelten abweichend von diesen Nutzungsbedingungen die in der dort genannten Lizenz gewährten Nutzungsrechte.

**Terms of use:**

*Documents in EconStor may be saved and copied for your personal and scholarly purposes.*

*You are not to copy documents for public or commercial purposes, to exhibit the documents publicly, to make them publicly available on the internet, or to distribute or otherwise use the documents in public.*

*If the documents have been made available under an Open Content Licence (especially Creative Commons Licences), you may exercise further usage rights as specified in the indicated licence.*

DISCUSSION PAPER SERIES

IZA DP No. 14230

**Class Size and Learning: Has India Spent  
Too Much on Reducing Class Size?**

Sandip Datta  
Geeta Gandhi Kingdon

MARCH 2021

## DISCUSSION PAPER SERIES

IZA DP No. 14230

# Class Size and Learning: Has India Spent Too Much on Reducing Class Size?

**Sandip Datta**

*Delhi School of Economics*

**Geeta Gandhi Kingdon**

*University College London, City Montessori School and IZA*

MARCH 2021

Any opinions expressed in this paper are those of the author(s) and not those of IZA. Research published in this series may include views on policy, but IZA takes no institutional policy positions. The IZA research network is committed to the IZA Guiding Principles of Research Integrity.

The IZA Institute of Labor Economics is an independent economic research institute that conducts research in labor economics and offers evidence-based policy advice on labor market issues. Supported by the Deutsche Post Foundation, IZA runs the world's largest network of economists, whose research aims to provide answers to the global labor market challenges of our time. Our key objective is to build bridges between academic research, policymakers and society.

IZA Discussion Papers often represent preliminary work and are circulated to encourage discussion. Citation of such a paper should account for its provisional character. A revised version may be available directly from the author.

ISSN: 2365-9793

**IZA – Institute of Labor Economics**

Schaumburg-Lippe-Straße 5–9  
53113 Bonn, Germany

Phone: +49-228-3894-0  
Email: [publications@iza.org](mailto:publications@iza.org)

[www.iza.org](http://www.iza.org)

## ABSTRACT

---

# Class Size and Learning: Has India Spent Too Much on Reducing Class Size?

This paper examines the efficacy of class-size reductions as a strategy to improve pupils' learning outcomes in India. It uses a credible identification strategy to address the endogeneity of class-size, by relating the difference in a student's achievement score across subjects to the difference in his/her class size across subjects. Pupil fixed effects estimation shows a relationship between class size and student achievement which is roughly flat or non-decreasing for a large range of class sizes from 27 to 51, with a negative effect on learning outcomes occurring only after class size increases beyond 51 pupils. The class-size effect varies by gender and by subject-stream. The fact that up to a class-size of roughly 40 in science subjects and roughly 50 in non-science subjects, there is no reduction in pupil learning as class size increases, implies that there is no learning gain from reducing class size below 40 in science and below 50 in non-science. This has important policy implications for pupil teacher ratios (PTRs) and thus for teacher appointments in India, based on considerations of cost-effectiveness. When generalised, our findings suggest that India experienced a value-subtraction from spending on reducing class-sizes, and that the US\$3.6 billion it spent in 2017-18 on the salaries of 0.4 million new teachers appointed between 2010 and 2017 was wasteful spending rather than an investment in improving learning. We show that India could save US\$ 19.4 billion (Rupees 1,45,000 crore in Indian currency) per annum by increasing PTR from its current 22.8 to 40, without any reduction in pupil learning.

**JEL Classification:** I20, I21

**Keywords:** class size, student achievement, India

**Corresponding author:**

Geeta Gandhi Kingdon  
Chair of Education Economics and International Development  
Institute of Education  
University College London (UCL)  
20 Bedford Way  
London, WC1H 0AL  
United Kingdom  
E-mail: g.kingdon@ucl.ac.uk

## I. Introduction

Reducing class size has been a popular reform across countries in their search for improved quality of education, and many countries have legislated an official maximum class size. In India, at the secondary school level, official policy supports a class size of 30<sup>i</sup> and the Right to Education (RTE) Act 2009 also stipulated a maximum class size of 30 in elementary schools, policies which necessitated the appointment of a large number of new teachers. Between 2010 and 2017, total number of elementary teachers rose from 4,047,070 to 4,451,953, with a corresponding increase in the total teacher salary bill of these 0.4 million extra teachers, an increase of approximately US \$3.6 billion per annum in 2017-18<sup>ii</sup>

As elsewhere, in India too class size is a vexed issue. Inadequate teachers and unfilled teacher vacancies are bemoaned by NGOs and in official documents, and frequently identified as the factor behind low student learning levels<sup>iii</sup>. India's draft New Education Policy (MHRD 2019, p.115) noted that "according to government data, the country faces over 10 lakh [one million] teacher vacancies". It resolved that "teacher vacancies will be urgently filled" (para P2.14, page 56) and recommended increasing the education budget for filling the vacancies (page 414, Appendix A1.4.4)<sup>iv</sup>. However, contrary to widely held belief of an acute teacher shortage, mean pupil teacher ratio (PTR) in public schools is much lower than the RTE-Act-mandated maximum of 30 in elementary schools (grades 1 – 8). In the seven year period between 2010-11 and 2017-18, PTR in public elementary schools fell from 31.2 to 22.8<sup>v</sup>. Even at the secondary school level, as per the official District Information System on Education (DISE) data, PTR in 2017-18 was 27.2.

Against this background of increased public expenditure to reduce class-size<sup>vi</sup>, it is important to ask whether class size reduction improves student learning outcomes, i.e. whether the expenditure to reduce class size was an investment in better quality education or merely unproductive spending of scarce taxpayer money. It is known from the Annual Status of Education Report (ASER) (various years) and also from the National Council of Educational Research and Training (NCERT, (2015) that between 2010 and 2015, pupils' learning achievement levels fell, and that over the same period, PTR and class-sizes were also reduced, suggesting simplistically a perverse positive temporal relationship between class-size and pupil achievement, rather than the expected negative one. However, to our knowledge, there is no study that estimates the causal effect of class size on student achievement in India using micro i.e. individual-pupil level data.

Whether reducing class size improves student outcomes remains a contentious question in the literature. Proponents argue that class-size reductions lead to more individual attention, higher quality instruction, a broader scope for student-centred innovation and teaching, increased teacher morale, less student misconduct and more ease of involvement of students in academic activities such as group work. An extensive literature has sought to measure the causal impact of class size on student learning using a variety of estimation methodologies.

While a meta-analysis by Hanushek (2003) collating findings from 376 educational production functions found no consistent relationship between class-size and student achievement, and Hattie's meta-analysis (2005) demonstrated a typical effect-size that was considered "tiny" or "small" relative to other educational interventions, meta-analyses are questioned on the ground that they mix the studies with credible identification strategies with those that are not capable of yielding a causal inference.

A number of individual studies have used techniques to examine the causal effect of class size in different contexts. Krueger (1999) used the Randomised Control Trial (RCT) method in the STAR experiment in Tennessee; Angrist and Lavy (1999) used the ‘Maimonides Rule’ to estimate the effect of class size on student achievement in Israel, finding an exogenous source of variation in class size that is uncorrelated with student unobservables; Case and Deaton (1999) used an instrumental variables approach on South African data; Woessmann and West (2006) used TIMSS data on student performance in 11 countries, combining school fixed effects and instrumental variables to identify random class-size variation between two adjacent grades within individual schools; Altinok and Kingdon (2012) used a pupil fixed effects approach to examine the impact of class size in 47 countries using TIMSS data; Shen and Konstantopoulos (2019) used predicted class size based on Maimonides’ Rule as an instrument, to measure the class size effect in four Eastern European countries. The typical finding in these studies is of a non-existent or small beneficial effect from reducing class size<sup>vii</sup>.

However, we would expect the impact of class size to be heterogeneous depending on grade level (e.g. primary versus secondary grades) and on the range of class-sizes. For example, in the Tennessee STAR experiment, reduction of class-size from 22-25 to a very low class-size of 14-17 students per class, and reduction in class size in early grades, and for disadvantaged students, produced short to medium run learning gains, but this says nothing about the impact of reducing class size from say 40 or 45 to 30 (the situation in most developing countries), or at higher (secondary) grades, or in the science and non-science subject streams.

Most of the studies on the impact of class size (that have a credible identification strategy) use data from developed countries where the range of class sizes is much smaller than the typical class sizes in most developing countries. There are only a few studies on developing countries, where low student achievement is a growing concern. Altinok and Kingdon’s (2012) study divided TIMSS data on 47 countries into three groups: developed countries, transition countries, and developing countries. They found a statistically significant negative relationship between class size and pupil achievement only in the developing country group, though the effect size was small: a 1 SD increase in class size in developing countries (by a large 10.9 pupils per class from a mean class size of 37.2) lowered student achievement by only 0.03 SD but this effect was fairly precisely estimated, with a t-value of 2.7. In a study on Bangladesh, Asadullah (2005) used instrumental variable (IV) estimation to find that class size in secondary grade had a perverse sign: the coefficient on class size was positive and statistically significant, i.e. reducing class size in secondary grades reduced pupil achievement, and would not be an efficient policy. Finally, a study by Banerjee et. al. (2006) in 175 government primary schools in two cities of India using RCT found that reducing class size had no impact on test scores, which they say is “consistent with the previous literature suggesting that inputs alone are ineffective”.

## **II. The shape of the relationship between class size and pupil learning**

It is useful to consider *a priori* the possible shape of the relationship between class-size and pupil learning, illustrated in Figure 1<sup>viii</sup>. It is generally accepted that very young children are mostly best cared for in near one-on-one to very-few-to-one-adult caregiver situations, and mostly not for ‘cognitive’ learning but for socio-emotional development and socialization that requires intimacy. This graph goes way negative as the experience of abusive situations (e.g. in some Romanian orphanages in the communist era) can lead to massive, lasting damage. Across

all ages, the willingness to pay for one-on-one tutoring suggests that it is regarded as giving the highest learning gain per unit of child time, leading to a downward slope in the relationship between class size and learning, as shown in Figure 1 near the low class sizes. This depicts that schooling as we know it, is a technologically inferior but cheaper option (compared to one-to-one or small-group tutoring), i.e. a pragmatic compromise. The large approximately 'flat spot' in class size in Figure 1 depicts the idea that once homogenous instruction becomes the dominant mode – with lectures, readings and student homework – then it may not be important whether there are 30 or 50 children in the class. The kind of "stair step" to the functional form then has another fall when the class size is so large that either class discipline can no longer be maintained or all feedback is effectively lost, e.g. the teacher can no longer assess and make corrections to student work. The debate then is around where that "flat spot" starts, how flat or inverted it is, how wide it is (e.g. 20 to 45, or 30 to 50 etc.) and whether where that flat spot is (and how wide it is) varies by grade. It can be expected that the flat spot is narrower (the upper end is lower) the lower the grade; for example, it could be in low 30s (or lower) for grade 1, and be low 40s (or higher) for grade 12.

Implicit in the stair step functional form depicted in Figure 1 is the tacit notion that learning is gained exclusively/primarily from a teacher, which may be more true for some subjects than others, for example, it may be more true for subjects where explanation of concepts is important for understanding, e.g. perhaps maths and science. It may be less true for languages and descriptive subjects where learning from peer-interactions may be helpful, and where consequently more students in a class (up to a point) may actually improve learning, leading to a functional form that is concave with respect to the horizontal axis – i.e. learning would first increase with class size and then fall. Indeed, such a concavity may be found in the teaching of any (including science) subject if teachers use the lecture method without explaining, and students take recourse to and benefit from peer-learning.

Figure 2 suggests that if most of the actual class-sizes are in the low range (near the first 'step'), the relationship between class size and pupil learning will be convex; if most of the actual class-sizes are in the high range (near the second kink or 'step'), the relationship will be concave; if most of the actual class-sizes are in the flat range, there will be no relationship between class size and pupil learning. We will test the hypotheses of Figures 1 and 2.

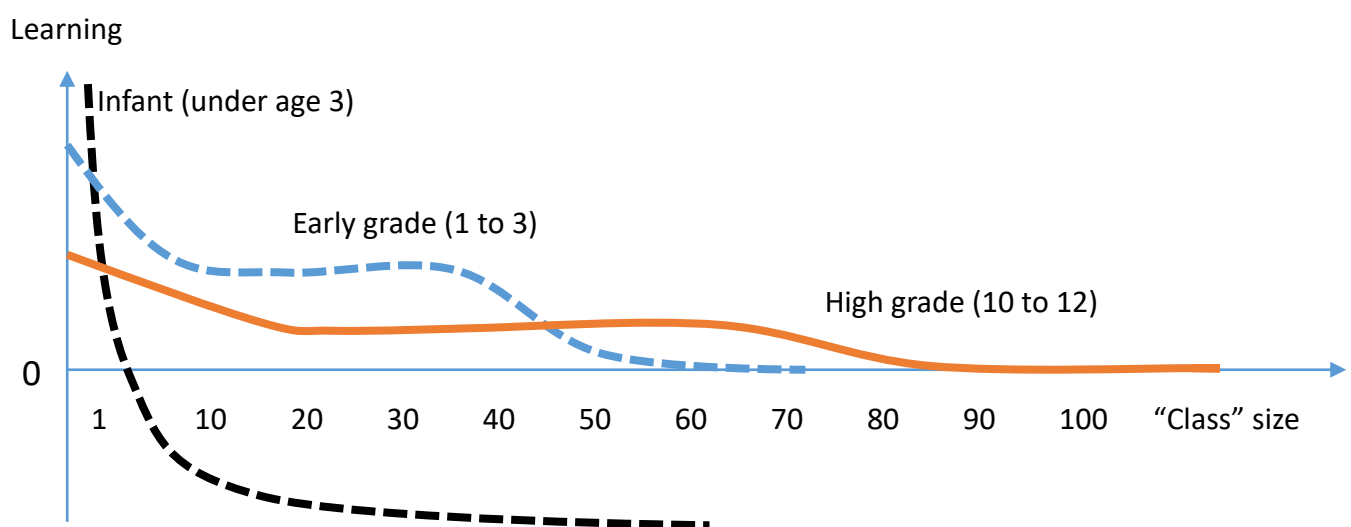
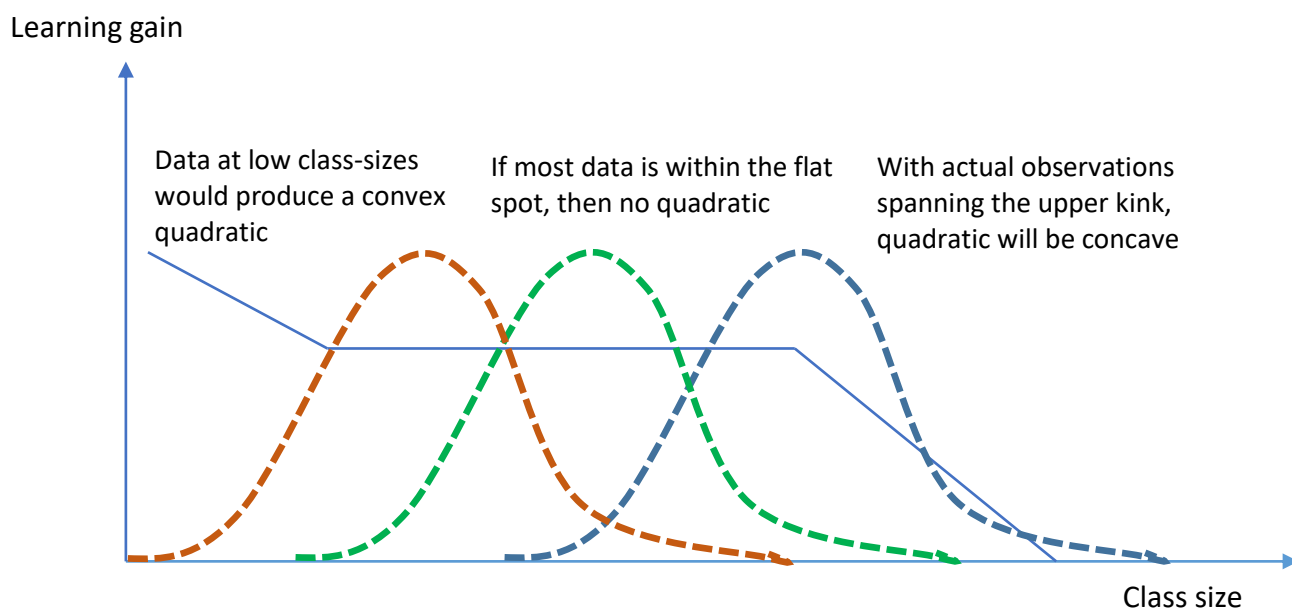


Figure 1  
Hypothetical relationship between class size and student learning



**Figure 2**  
Hypothesized functional form of learning gain with respect to class size

### III. Identifying the causal effect of class size on pupil learning

Identifying the causal effect of class size on student achievement is challenging because of the potential non-random matching of pupils to schools and, within schools, the non-random matching of students to particular classes. If more able or more motivated students manage to sort themselves into the smaller classes then any expected negative effect of class-size on student achievement will be under-estimated, i.e. there would be a smaller negative (or even a positive) coefficient on class-size than the true negative relationship. Conversely, if schools deliberately put less able children into smaller classes, then any expected negative effect of class size would be over-estimated (the negative coefficient on class size would be a bigger negative than the true relationship), since small class here contains the less than averagely abled children. Any systematic correlation of the unobservables in the error term with the included class-size variable undermines the simple production function's ability to produce causal estimates.

While randomized experiments can in principle be used to fix the problem of non-random matching, in practice there are many problems, as noticed about the STAR experiment study by Krueger (1999). Participants may behave differently if they know they are part of an experiment, especially if the outcomes of the study might have implications for future school funding (Hoxby, 2000). Attrition into and out of small and large class assignments over time in the STAR experiment may have undermined the random allocation: Hanushek (1997a, 1997b, 1999 and 2003) pointed out that only half the participants remained in the study until the end of the third grade (Year 4). Experiment-based studies are costly and other experimental studies are required to check the robustness of the findings of the STAR project (Todd and Wolpin, 2003). While findings from experiments are synthesised in Kremer (2003), the number of truly natural experiments are few (Rosenzweig and Wolpin, 2003).



Since true natural experiments are costly and rare, some researchers have addressed the endogeneity issue by using some valid instrumental variables for class-size, i.e. a class-size predicted by some exogenous variation. Angrist and Lavy (1999) used the hypothetical class-size predicted by (Maimonides') maximum class size rule<sup>ix</sup> as an instrument for class-size with Israeli schools data, and they obtained a significant effect of class size on student achievement. However, in developing countries including India, even though the maximum class-size rule (of 30 students per teacher) exists, it is not closely followed, so generating a valid instrument for the developing countries is difficult. In a similar kind of IV analysis, Woessmann and West (2006) estimated the effect of class size on student achievement in 11 countries by combining the school fixed effect and IV techniques. They found no effect of class-size in nine countries and a large and significant effect only in Greece and Iceland.

In the current paper, we follow a *pupil fixed effects* approach to estimate the causal effect of class size on student achievement, using data on students of secondary grade 12 from ten different schools of a private school chain in Uttar Pradesh. While using the traditional achievement production function, we allow for pupil fixed effects in cross-section data, as used in Altinok and Kingdon (2012), using across-subject differencing rather than across-time differencing. This methodology is possible as we have data on each student's marks (at one time point) in different subjects, and this enables us to control for all subject-invariant student unobservables. Thus cross-section data allows us to investigate whether the within-pupil variation in class size is associated with within-pupil variation in learning achievement. Students face different class-sizes for different subjects and this permits us to ask whether the class-size in different subjects is correlated with students' marks in the different subjects within the grade in the school. The idea is identical to the panel data estimate of the achievement production function: we estimate the within-pupil across-subject equation of achievement production function rather than within-pupil across-time. The estimation technique is explained in the next section. A similar estimation technique is used in Dee (2005); Ammermuller & Dolton (2006); Kingdon (2006); Holmlund and Sund (2008); Kingdon and Teal, (2010); Aslam & Kingdon (2011); and Altinok and Kingdon (2012).

#### IV. Estimation Approach

We have adopted the pupil fixed effects approach described in Altinok and Kingdon (2012). The standard achievement production function is specified as follows:

$$A_{ik} = \alpha + \beta X_{ik} + \delta S_k + \mu_i + \eta_k \quad (1)$$

where the achievement level ( $A_{ik}$ ) of student  $i$  of school  $k$  is determined by the vector of his/her personal characteristics ( $X$ ) and by school specific characteristics ( $S$ ).  $\mu_i$  and  $\eta_k$  capture the student and school specific unobservables.  $S_k$  captures the class size variable.

In such an OLS equation, the estimated coefficient of the class size variable will suffer from endogeneity bias if student ability is correlated with class size. Removing from our sample students who are deliberately placed in ability-setted classes would reduce the endogeneity problem but not necessarily eliminate it. In order to credibly address the issue, a pupil fixed effects approach is feasible where data exists on both achievement scores and class size by subject for each student, and where thus, for each student, there are as many rows of data as there are

number of subjects. In such a setup, students are allowed to face different class size for different subjects within the school. This subject-wise variation in class size ‘within a student’ is what allows us to incorporate class size (along with teacher characteristics that also vary across subjects) as an explanatory variable in a pupil fixed effects (PFE) equation. This is the approach we follow. We estimate the following simple PFE achievement equation.

$$A_{ijk} = \alpha + \beta X_{ik} + \gamma C_{jk} + \psi T_{jk} + (\delta S_k + \mu_{ij} + \eta_{jk} + \varepsilon_{jk}) \quad (2)$$

where  $A_{ijk}$  is the achievement of a student  $i$  in subject  $j$  and in school  $k$ .  $X$  is the vector of characteristics of students  $i$ .  $C$  is class size of subject  $j$ ,  $T$  is a vector of teacher characteristics of subject  $j$ , and  $S$  is the school specific characteristics of school  $k$ . The composite error terms are represented by  $\mu_{ij}$ ,  $\eta_{jk}$  and  $\varepsilon_{jk}$ . These error terms denote the unobserved characteristics of students, school and subject respectively. A simplified PFE model of two subjects’ cases (subject 1 and subject 2) looks like as follows:

$$(A_{i2k} - A_{i1k}) = \gamma(C_{2k} - C_{1k}) + \psi (T_{2k} - T_{1k}) + \{(\mu_{i2} - \mu_{i1}) + (\eta_{2k} - \eta_{1k}) + (\varepsilon_{2k} - \varepsilon_{1k})\} \quad (3)$$

PFE is self-evidently a within-school phenomenon since a student studies in a single school. If school unobservables are not subject specific (i.e.  $\eta$  does not have  $j$  subscript) and pupils’ unobservable are not subject specific (i.e.  $\mu$  does not have  $j$  subscript), then within school PFE model looks like as follows:

$$(A_{i2k} - A_{i1k}) = \gamma(C_{2k} - C_{1k}) + \psi (T_{2k} - T_{1k}) + (\varepsilon_{2k} - \varepsilon_{1k})$$

Or simply

$$(A_{i2} - A_{i1}) = \gamma(C_2 - C_1) + \psi (T_2 - T_1) + (\varepsilon_2 - \varepsilon_1) \quad (4)$$

Regressing difference in a pupil’s test score across subjects on the difference in class size across subjects nets out the effect of all student subject-invariant unobserved characteristics. However, if student ability varies by subject, that is not netted out but  $(\mu_{i2} - \mu_{i1})$  remains in the error term. Although it remains in the error term, it will not create a problem in our estimation unless it is correlated with the  $(C_2 - C_1)$ . For this correlation to exist, students should be able to match to specific classes of a subject within their grade in the school, e.g. pupils who are bright in a subject systematically match to the smaller – or the larger – classes of that subject (within their grade). To avoid this, we present achievement equations using that sub-sample of classes which are not ability setted, which we call the ‘reduced sample’. In these equations, subject-specific class size will not be systematically matched with students’ subject-specific ability. We present results using both the full sample of school classes and also the reduced sample of school classes that are not setted by ability. In the reduced sample estimations, it will not be the case that a student is put in a smaller (or bigger) class for the subject in which she is able, and in a bigger (or smaller) class in a subject in which she is less able. Thus, the presence of subject-varying pupil ability is not expected to be a source of bias in our approach. However, subject-specific *school* unobservables  $(\eta_{2k} - \eta_{1k})$  remain in the error term and may in principle be correlated with  $(C_2 - C_1)$ . While some subject-varying aspects of school should be captured in class-size (e.g. if a school emphasises a particular subject, it is often reflected in, or is because of, small class-size in that subject), not all subject-varying aspects will be captured in class-size, and they remain a potential source of endogeneity.

For consistent estimation of the effect of class-size, it is also required that *class* level (i.e. subject-specific) unobserved characteristics (such as class-resources, teacher quality etc.) be unrelated to the included class size variable:

$$E[(C_{2k} - C_{1k})(\varepsilon_{2k} - \varepsilon_{1k})] = 0. \quad (5)$$

For example, if more skilled teachers are assigned to teach larger classes, a class level unobservable (teacher skill level) will be correlated with both class-size and with pupil scores. Since omitted class-level variables in  $\varepsilon_1, \varepsilon_2$  may be correlated with both class-size ( $C_1, C_2$ ) and with pupil achievement  $A_1, A_2$ , we cannot say that PFE estimation permits us to interpret the class-size effect as causal. We do include a number of teacher quality characteristics in the PFE achievement equation (the subject teacher's qualifications, training and experience), which should reduce this source of endogeneity, but it may not necessarily eliminate it. While across-subject PFE estimation resolves one source of endogeneity (i.e. correlation between  $\mu$  and  $C$ ), it does not solve this potential source of endogeneity (the possible correlation between  $\varepsilon$  and  $C$ ). This is analogous to the standard panel data estimation where class unobservables remain in the error term.

## V. Data

The estimation strategy presented above requires a specific type of database. First, it is needed to have students' test score across different subjects. Second, there has to be enough variation in class size between subjects. We collected subject-wise test scores of each student of grade 12, from ten different schools of a private school chain in Uttar Pradesh. To pass grade 12, students take six subjects from a pool of 16 subjects, where the compulsory and optional subjects are specified within each of two major streams: science and commerce<sup>x</sup>. English is examined in two different papers, Language and Literature, and the score division is 50-50 for a 100 marks exam. The mark we obtain for English is the consolidated mark of English-Language and Literature. Therefore, in our analysis, we have given equal marks to both the subjects. For example, if a student scored 78 per cent mark in English, we have given 78 for English-Language and 78 for English-Literature, as the two subjects are taught by different teachers in most of the campuses. We have also restricted our sample by removing the scores of Physical-Education (PEd) from our analysis<sup>xi</sup>.

Grade 12 students are typically aged 17 years old at the start of the school-year, which begins generally around 1<sup>st</sup> April each year. In the sample school chain, a typical grade 12 student takes three compulsory internal examinations (before facing the external Board exam the following March): the First Comparative exam, the Second Comparative and the Pre-Board exam. The First Comparative exam happens in late June, by when only one-third of the syllabus is covered. The Second Comparative examination, also called the Half-yearly exam, takes place in September, by when two-thirds of the syllabus is covered. By the Pre-Board exam in mid-December, all of the syllabus is covered. From mid-December to February is revision/review time. Finally the class 12 external exam set by the exam board is typically spread over the month of March.

For the analysis, one should ideally use students' Board exam marks as the external exam answer sheets are anonymously evaluated by Board-appointed examiners, usually in another city. However, the distribution of marks

in the Board exam is highly non-Gaussian. On the other hand, the distribution of the school's internal Pre-board exam marks is more Normal. Figure 3 shows that the board exam marks' distribution is always to the right of the internal Pre-board exam marks' distribution, which need not in itself be a problem. What is problematic is that the marks distribution is distinctively (rightward) skewed rather than Normal: the most extreme case is illustrated in the Computer Science marks, where the 'moderation' policy adopted in the Board exam leads to a distribution where no candidate has received marks less than 46, and the vast bulk of students have marks between 85 and 100. The Maths and Economics marks distributions are bimodal, with a lot of students given grace marks that take them just above the pass mark of 35, and there are an unduly large number of students getting marks between 90 and 100 per cent. The board marks' distribution is also generally narrower than the internal exam marks' distribution, e.g. see the kernel density distributions for Computer Science and English.

Concern has been expressed about the 'grace marks' and moderation practices of the various exam boards in India (Sanghi, 2013; Bhattacharji, 2015; *Times of India*, 2018; Kingdon, 2019; see Appendix B for details). Board exam results in India are also not trusted for entrance to prestigious universities such as the Indian Institutes of Technology (IIT) and for medicine and engineering courses at other colleges. Thus, instead of using Board Exam results for our analysis, we have used marks in the school's internal 'Pre-board' exam since, by the time of the Pre-board, the entire syllabus is covered, and since students from all the schools in the sample school-chain appear for same exam, on the same date and with the (same) question papers prepared by an independent authority<sup>xii</sup>.

The distribution of pre-board exam marks in the different subjects is different, e.g., the distribution of internal pre-board marks in physics, chemistry and maths in the left panel of Figure 4 shows that marks in physics and chemistry are lower and less dispersed than marks in maths. In order to render them comparable and to use student achievement in different subjects as the dependent variable, it is thus necessary to standardize the marks. We standardize the score by the average score in the subject, that is, we use the z-scores of achievement. The z-score is the score of the pupil in a given subject minus the overall average score in that subject, divided by the standard deviation of the overall score in that subject. Therefore, by construction, z-score of each subject has a mean of 0 and a standard deviation of 1. The right panel of Figure 4 presents the z-scores of the three different subjects. As expected, the distribution of standardized score is much more similar across subjects than the distribution of the raw scores.

## VI. Results

This section presents the results of our regression analysis and also robustness checks. Results are presented in Tables 1-7. To prevent the analysis from being unduly affected by outliers, we removed the bottom and top two percent of observations of class-size, which led to removing class sizes below 18 and above 59. Mean class size is 43.64, though the whole-school pupil teacher ratio is lower, at 28.3 due to music, dance, sports, and art teachers, class-coordinators, librarians, lab-technicians, swimming coaches, psychologists, career counsellors, etc.

Since different teachers teach different subjects to the same pupil, it is possible to include teacher variables in not only the OLS but also in the pupil fixed effects equation of the achievement production function. The teacher

related variables are teacher's educational level (Bachelor's degree is the base category and two dummy variables for Master's degree and 'MPhil or more'); training (No training is the base category, and two dummy variables for B.Ed and M.Ed, i.e. Bachelors in Education and Masters in Education); gender (male=1; female=0); and teacher's experience, captured by age and age square. Student variables are pupil's gender (male=1, female=0) and religion (defined by Muslim=1 and others=0), though of course these drop out when we estimate pupil fixed effects equations. We have also added a dummy variable for each subject in all equations, including in the pupil fixed effects (PFE) equations.

Table 1 presents our simple achievement production function with teacher and pupil controls. We try linear, quadratic, cubic and quartic terms of class size and find that the relationship is quartic. Columns 1 to 4 are OLS regressions and columns 5 to 8 are school fixed effects regressions, where identification of effects is within the school. It is seen that moving to school fixed effects causes the significance of class size in the quartic equation to vanish, suggesting that any previous relationship was an artefact of across school differences in class size. The negative coefficient on the pupil's religion ('Muslim') variable falls greatly when we move from OLS to school fixed effects, suggesting less variation in achievement by religion within a school than across schools, i.e. showing that Muslim children are more likely to attend the lower-achieving schools.

While adding school fixed effects reduces the problem of the endogeneity of class size, it does not necessarily eliminate it since student ability may be correlated with class-size *within the school*, e.g. if more able or more motivated students systematically get selected into small or large classes (of their grade) within the school.<sup>xiii</sup>

We try several different ways of dealing with the within-school endogeneity bias. Firstly, we control for students' subject-specific ability, measured by the average mark of the student in the subject in the previous two internal i.e. within-school exams called the First and the Second Comparative exams (see para 2 of section V on data, above). We control for subject-specific ability by adding this variable in our school fixed effects achievement equation.

Secondly, we estimate a pupil fixed effects (PFE) equation. While this controls fully for students' subject-invariant ability, ability may differ across subjects and that would remain a source of endogeneity if students who are particularly able in a given subject are deliberately put into smaller or larger class sizes in that subject. To take this into account, we control for pupils' subject-specific ability even within the PFE achievement equation – allowed by the rich nature of the data available to us. In case this does not fully control for subject-specific ability, we go further and estimate a PFE equation with subject-specific ability separately for two subject-groups (the science-subjects group and non-science subjects group<sup>xiv</sup>), since subject-specific ability would be more similar for subjects within such a grouping than for subjects across groupings, and we continue to control for subject-specific ability too, within the subject group. Estimating the equation separately for the two subject groups also allows us to see whether the shape of the relationship between class size and pupil achievement varies by subject.

Table 2 controls for subject-specific ability. This has a large and statistically significant coefficient, and its inclusion strongly increases the adjusted R-square. Table 2 shows a statistically significant quartic relationship between class size and student achievement. However, it still relies on across-student differences in achievement, and does not control for pupils' subject-invariant ability.

This is a useful juncture at which to examine the coefficients on the control variables in the most stringent achievement production function estimated so far – the last column of Table 2 with school-fixed-effects and with subject-specific student ability. The results show perversely that teachers with a bachelor’s degree are more effective than those with higher qualifications (Masters, M. Phil). Teacher’s training has no relationship with pupils’ marks, as the coefficients on B.Ed and M.Ed qualifications are not significantly different from the base category (teachers with no professional training)<sup>xv</sup>. Male teachers are more effective than female ones, but this seems a selectivity effect since the sample (co-educational) secondary school has a preference for female teachers and only a few male teachers are recruited/retained who are judged to be exceptionally effective. Teacher experience is uncorrelated with student learning. Turning to child characteristics in the achievement equation, there is no significant difference in performance between male and female students, though there is a small and weakly significant coefficient on student’s religion.

Next we estimate the within-pupil relationship, i.e. a pupil fixed effects (PFE) equation in Table 3. This provides a stringent test for a class-size effect since it nets out the influence of all subject-invariant pupil and school unobservables. We have used the same specification as in Table 2 but student variables and school fixed effects drop out of the PFE estimator. As before, we allow flexibly for functional form by including linear, quadratic, cubic and quartic specifications, and present results with and without a subject-specific ability control. The PFE results suggest a statistically significant quartic relationship between class size and student achievement. This relationship is “horse-shaped”, as seen in the top panel of Figure 5. Two turning points are visible at class sizes of 27 and 51, with a saddle point at class size 35. While there is a non-expected positive relationship between class size and achievement up to a class size of 27, only 5.02% of all student observations<sup>xvi</sup> study in class sizes up to 27. For the remaining 95% of student observations, the shape is first flat (from a class size of 27 till about 35 – where about 10% of all observations lie) and then concave (for the remaining 85% of the total observations). i.e. achievement increases gently with class size from 35 up to 51 and then falls sharply.

At the very lowest end, the surprising positively sloped relationship is very sensitive to class-size. As class size increases from 18 to 23, the relationship is the steepest, with student achievement increasing by 0.18 SD, but only a tiny proportion (1.36%) of observations lie between class-sizes 18 and 23<sup>xvii</sup>. In the class-size range between 24 and 27, the relationship is gently positively sloped. But in total, only 5.02% of all observations lie in class-sizes from 12 up to 27, so this is not the dominant part of the relationship. As class size increases from 27 to 35, the relationship is roughly flat. Only 13.9% of all observations fall in class-sizes up to 35.

For the remaining more than 86% of all observations, the relationship is concave. As class size increases from 35 to 51, achievement mark increases (gently) by 0.10 SD, equivalent to a rise in absolute mark by 1.8 percentage points, which is a modest increase for a very large increase (of about 2 SD) in class size. Finally as class size increases further (by 1 SD) from 51 to 59, achievement declines by 0.18 SD, which is equivalent to a reduction in absolute mark by 3.2 percentage points.

So far, we imposed a quartic relationship between class size and student achievement. To explore the functional form in more detail, we introduce splines by creating dummy variables of class size. The results reported in column 9 of Table 3 suggest that as class size increases, student performance initially increases, then remains flat

for a significant range of class sizes (the coefficients of class size of ‘27 to 34’ to ‘53 to 56’ are not statistically different from each other) and starts declining as class size crosses the category of ‘53 to 56’. This substantiates our quartic results. The combination of quartic PFE estimates and estimates with splines suggests that the relationship between class size and student achievement is “*table-shaped/inverted U shaped*” as shown in the bottom panel of Figure 5. Beyond class-size 35, student performance is invariant with respect to class size till class-size reaches 51. The implications of this shape of relationship are discussed at the end of the current section.

Next we examine whether the class-size effect differs across boys and girls. To do this, we estimated our most stringent achievement production function (the pupil fixed effects equation with control for subject-specific ability) separately for girls and boys. The results in Table 4 suggest that among boys, the relationship between class size and student achievement is quartic, whereas among girls it is linearly positive. Figure 6, top panel shows the shape of the relationship. For boys, there is no large change in achievement as class size increases from 24 to 50<sup>xviii</sup>. After class size 51, boys’ achievement level declines rapidly. Thus, apart from the very low end (class-sizes 18 to 23, where only 1.36% of observations lie), the relationship of class-size and pupil achievement for boys conforms broadly to the shape described in Section 2 of the paper, based on *a priori* considerations, i.e. the relationship between class-size and student achievement is reasonably flat for the range of class-size between 24 and 50, but then declines sharply with an increase in class size beyond 50. For girls, the absence of a negatively sloped part suggests that there are no disciplinary issues with increased class sizes until the high 50s. We return to the positively sloped part later.

We also investigated whether the class-size effect differs between the science and non-science<sup>xix</sup> subject streams. Table 5 shows a concave relationship between class size and student achievement in the science-stream classes but a quartic relationship in the non-science stream. However, Figure 6 (bottom panel) shows graphically that even in the non-science stream, the dominant part of the relationship (where about 86 per cent of the observations lie, i.e. above class size of 34) is again concave, as for the science subjects. It is very clear that in non-science subjects, the optimal/maximum point i.e. the turning point after which the relationship becomes negative, occurs at a higher class-size than in the science subjects.

The optimal class size for the study of the sciences is 41 but in the non-science subjects, optimal class size is around 52. Whereas up to class-size 34, achievement in non-science stream subjects first modestly increases and then modestly falls with class size, beyond class size 34, the relationship is strongly concave, where achievement increases with class size till a class size around 52 and then falls with class size<sup>xx</sup> (see figure 6, bottom panel). The fact that in science subjects, achievement starts declining from a class size of 41 upwards, but that in the non-science subjects, for the bulk of the observations, achievement starts declining after a class size of 52, suggests that science students require more individual attention than non-science students.

In summary, when we do not bifurcate by gender or subject-stream, our analysis suggests a “*table shaped*” or “*inverted U shaped*” relationship between class size and student achievement. Student performance initially increases as class size increases till about 27, flattens between class-sizes of 27 and about 50<sup>xxi</sup>, and then declines as class size increases beyond 50. We also observe that the effect of class size on student performance differs between boys and girls, and between science and non-science subject streams. In general, girls’ learning flourishes in larger

classes, and performance in non-science subjects flourishes up to a larger class size i.e. only starts declining after a class size of roughly 50, compared to science performance which starts declining beyond a class size of roughly 40.

#### *Explanation of the shape of the relationship*

Contrary to our prior beliefs, the data show that as class-size increases from 18 to 27, children's learning level rises with class size, rather than falling. Moreover, from a class size of 35 to about 50, there is again a gentle increase in learning achievement with class-size (Figure 5). When we look separately by subject-stream, we find that in both science and non-science subjects, the dominant part of the relationship is again concave i.e. learning first rises and then falls with class size. While the negative slope beyond a class size of roughly 50 is understandable (beyond a certain class-size, it may be difficult to maintain discipline, though for girls the linear relationship suggests an absence of disciplinary issues), the positively sloped part of the relationship is intriguing and demands an explanation.

We explore some peer-group effects to examine whether the positively sloped part shows that children learn from each other, and we presume that larger class-sizes permit more learning from peers. We first constructed three peer-group variables:

1. "Mean achievement of class peers" (mean mark of all the class peers, i.e. all pupils in the class, excluding the index student);
2. "Mean achievement of ability peers" (mean mark of the peer group in the achievement decile of the student within the class, again excluding the index student);
3. "Variation in pupil ability within the class" (measured by the within-class standard deviation of achievement in the prior 'Comparative exam' in the subject, which captures the heterogeneity of the ability distribution in the class).

A student may learn not only from the teacher, but also from her/his peers – i.e. from students in the whole class group (class peers), or from others in her ability group within the class (ability peers), and weaker students may learn from bright students, i.e. the greater the ability distribution in a class, the greater may be such learning by the weak from the able. The extent to which such peer learning happens may differ by subject. For example, it is often said that maths and science require more explanation and attention by a teacher but that language learning can benefit from peer interaction as it is not so dependent on a teacher's explanations or personal attention. If this is so, we would expect less peer learning in science than in the non-science stream. Students may learn from class peers or ability peers either through watching their work (demonstration effect) or from getting direct help from them. Finally, if science subjects require the attention of a teacher rather than being self-learnt or learnable from peers, then a high variation in ability level across children in a class would deter science learning because some of the teacher's attention will be given to the weaker students. But by the same token, if non-science lends itself to learning from peers, then weaker students will benefit from interaction with smarter peers and the smarter peers may learn themselves too, by teaching their less able peers.

Our peer-group results in Table 6 show that the achievement level of both 'class peers' and of 'ability peers' statistically significantly benefits a student's attainment in non-science subjects, but not in the science subjects.



This gives credence to the maintained view that science is learnt mostly from a teacher, but that in the non-science subjects, one can learn from one's peers. The size of the peer-learning effect is also large: *ceteris paribus*, a one SD increase in 'class peer' mean achievement<sup>xxiii</sup> raises the index student's achievement by 0.17 SD, and additionally a one SD increase in the mean achievement level of 'ability peers' raises the index student's achievement by 0.07 SD. Since a student can learn from others in non-science subjects, instead of being a constraint to learning, larger class size are beneficial for learning as there are more peers to learn from, though the peer learning effect is increasingly tempered by the manageability of the class, as discipline becomes a bigger issue as class size increases, which may explain the diminishing returns to class-size which ultimately turn negative after the optimal class size of 41 in science and 52 in non-science.

Table 6 also shows that while in the non-science subjects, variation in class ability benefits learning, in the science subjects, it harms learning. This may be because in science, a teacher needs to give individual attention to each student: the greater the variability of ability in a class, the more the teacher's attention is divided as there is greater need for differentiated teaching for pupils of different levels of ability, and there is less individual attention.

## VII. Cost-Benefit Analysis

The fact that up to a class-size of roughly 40 in science subjects and roughly 50 in non-science subjects, there is no reduction in pupil learning as class size increases implies that there is no learning gain to be had from reducing class size below 40 in science and below 50 in non-science. This has important policy implications for optimal pupil teacher ratios (PTRs) and thus for teacher appointment decisions in India, based on considerations of cost-effectiveness and economic efficiency. In this section, we compare the fiscal cost of existing class-size policies with the cost of hypothetical policies based on the pedagogically optimal class-sizes suggested in our findings.

Recent education policies in India reflect the tacit belief that to improve student performance, class size must be reduced by recruiting more teachers. The Right to Education (RTE) Act mandates a maximum PTR of 30 for elementary schools, and the Ministry of Human Resource Development (MHRD) guidelines for the secondary education program RMSA (*Rashtriya Madhyamik Shiksha Abhiyan*) mandate a minimum of 5 teachers for up to 160 students (implying a PTR of 32) and then a further teacher for each 30 students thereafter. As mentioned in Section 1, the draft National Education Policy (NEP, 2019) also identifies pupil teacher ratios above 30 as a major cause of lack of learning (page 63, section 2.14). It states that the country faces over one million teacher vacancies (page 115), and suggests that the government's education budget should increase by 1.05 percentage points, for filling teacher vacancies and better teacher resourcing (page 417, Table A1.4). This additional recruitment of teachers would create a permanent fiscal liability for government.

In reality data show that public schools are operating at much lower levels of PTR than the mandated 30 pupils per teacher. Appendix Table A2 shows that in 2017-18, nationally, PTR at the elementary school level was 22.8 and that in 8 out of 20 major Indian states it was below 16. At the secondary and higher secondary levels the PTR was 27.9 in 2016-17<sup>xxiii</sup> (27.3 for 20 major states).

However, it is important to highlight that the elementary and secondary PTRs of 22.8 and 27.9 are *prima-facie* PTRs, being the total reported pupil enrolment divided by the total number of appointed teachers. These use uncritically what are known to be inflated enrolment numbers based on fake/ghost names entered by the school to show a higher than actual enrolment. This happens because grains for mid-day meals, bags, shoes, sweaters, cloth for school uniforms, other freebies and ultimately even teacher appointments are all based on the schools' self-reported enrolments. The Comptroller and Auditor General of India found 20% inflation in DISE pupil enrolment data at the elementary school level in Uttar Pradesh (CAG, 2017), and the Mid Day Meal Authority also reports overstated enrolment in public schools (*Times of India*, 2015). Given that real enrolment is lower than reported (inflated) numbers, the real PTR is even lower than the reported *prima facie* PTRs. High student absence rates of 31% (EdCil, 2008) and 28% (ASER, 2018) shown in Table A2, capture both fake enrolments as well as actual absence among genuine enrolees. Dutta and Kingdon (2021) show that the 'cost-conscious' PTR which adjusts for student absence rates was 15.8, and that the 'effective PTR' which adjusts for both student and teacher absence rates, was 20.8. However, for our cost-benefit analysis, we use the *prima facie* PTR of 22.8 (see Table A2)<sup>xxiv</sup> even though it is known to be higher than the true PTR.

Our analysis based on the impact of changes in class-size on learning levels, together with our analysis of the costs of teacher salaries presented in Tables 7(a, b) suggests that major cost-efficiencies can be achieved by maintaining larger than currently mandated class-sizes without compromising on student performance. Tables 7(a, b) show the actual public expenditure on teacher salaries and the potential for absolute financial savings at different (hypothetical) levels of PTR.

Tables 7(a, b) suggest that expenditure on public elementary school teachers' salary was around USD 37.25 billion (in 2017-18), and on public secondary school teacher salaries, USD 11.37 billion (in 2016-17). If government had maintained a PTR of 40<sup>xxv</sup>, it could save USD 19.4 billion (Rupees 145,000 crore in Indian currency) per annum taking the elementary and secondary savings together. These savings could be used for various alternative productive purposes. For example:

- a. Providing eight colourful story books, costing Rs. 50 each, free to all the below-poverty-line (BPL)<sup>xxvi</sup> pupils in public and private elementary schools each year, would cost only USD 0.22 billion per year. If these are provided to *all* the children rather than only poor children, that would still cost only USD 1.01 billion per year, i.e. only about 5% of the saved amount of USD 19.4 billion per annum.
- b. If all public elementary schools with more than 50 pupils (and there were 6,08,549 such in 2017-18) were provided an IT professional, a computer-with-internet-connection and a printer, it would cost USD 0.28 billion (Rs. 27,000 for a computer, Rs. 8000 for a printer), and a recurring cost of USD 2.01 billion per annum for the remuneration of the IT professionals (at Rs. 20,000 per month), and an internet connection rate of Rs 600 per month. The total bill being USD 2.29 billion, which is under 12% of the saved amount of USD 19.4 billion per annum.
- c. Providing a good smartphone for education costing Rs. 15,000 (USD 200) to every single Below Poverty Line (BPL) child enrolled in class 1 to 8 would cost Rs. 61,800 crore, or USD 8.2 billion, one off, which would be only 42.6% of the saved USD 19.4 billion in one year alone (non-recurring).

- d. There were 41.2 million BPL children enrolled in classes 1 to 8 in 2017-18 in India<sup>xxvii</sup>. With a total saved fund of USD 19.4 billion (obtained by maintaining a PTR of 40 rather than 22.8), the government could give a Direct Benefit Transfer for schooling, of USD 39 per month or USD 471 per annum (Rs. 2943 per month), to each and every elementary-school enrolled BPL child of the country. Currently, the Indian central government gives a ‘Child Education Allowance’ of Rs. 2250 per month to the children of all its employees for the education of their children.
- e. If the saved funds were to be used outside the education sector and the government decides to spend the entire USD 19.4 billion in the National Rural Employment Guarantee Scheme (NREGS), it can create additional employment for 100 days per year for 72.7 million workers at current wage rate<sup>xxviii</sup>.

## VIII. Conclusion

Our paper used a pupil fixed effects method to examine the causal effect of class-size on pupils’ learning outcomes. While earlier studies using pupil fixed effects (e.g. Altinok and Kingdon, 2012) could not control for subject-specific ability, the current study does so by including prior achievement of the student in various subjects. Our more refined estimates of the causal effect of class size on student achievement are thus an advance on previous studies.

We found a robust and statistically significant ‘table shaped’ relationship between class size and student achievement. We observed that over a wide range of class-sizes from 27 to about 51, student performance does not fall with class-size, suggesting that in the type of pedagogy that is practiced, children’s learning benefits from having a larger number of peers, i.e. children learn from peers too, and not only from the teacher, a hypothesis for which we found empirical support. It is likely that beyond 51, discipline issues are greater, leading to a decline in learning. The analysis by subject showed that in science subjects, there is no reduction in learning as class size increases up to 41 pupils per class, and in non-science subjects, there is no reduction in learning as class size increases up to 51 pupils per class. This suggests a scope for increasing class-sizes in India from the current 22.8 to 40 in science and 50 in non-science, without hurting student learning.

India spent an estimated US\$ 3.6 billion in 2017-18 on the salaries of just the 0.40 million extra teachers it appointed between 2010 and 2017, which (when combined with falling enrolment) reduced pupil teacher ratio in elementary public schools from 31.2 (in 2010) to 22.8 (in 2017-18) and in secondary education, to 27.9. This increase in salary expenditure is a permanent liability. The reason for the appointments was the requirement of the *Right to Education Act* 2009 and the guidelines for India’s secondary education program, which mandated a maximum pupil teacher ratio of 30. The National Education Policy (2019, 2020) states that there are one million teacher vacancies which must be urgently filled, and it reiterates the commitment to a maximum PTR of 30.

Our estimates suggest that in secondary education, reducing class-size to 30 or below cannot be good policy as it lowers learning and raises costs. When making the maximum PTR policy, the tacit assumption in policy makers’ minds about there being a negative relationship between class-size and learning gain, was not empirically grounded, and seems to have been based on an incorrect understanding about the causal relationship between inputs and outcomes in education. If our estimates are correct, India spent a very substantial amount of money on

reducing class size below the learning-maximizing level which was wasteful expenditure on rents to teachers, and not investment that would benefit children. It is important to make empirically grounded decisions to ensure that that any proposed public spending on education would represent an investment.

Our cost-benefit analysis results showed that if India increased the PTR from its current 22.8 in elementary and 27.9 in secondary schools, to 40 pupils per teacher in both, it would save USD 19.4 billion per annum in government's teacher salary expense, without any reduction in learning outcomes. We showed how this money would allow investment in other educational items, such as providing internet-enabled computers and computer teachers to all public elementary schools; providing a smartphone to all 41.2 million below-poverty-line (BPL) children of the country; or providing a school voucher or Direct Benefit Transfer (DBT) for schooling, equal to nearly Rs. 2943 per month per BPL child.

Fulfilling the resolve of the draft National Education Policy (2019) to urgently appoint 1 million new teachers, would further greatly reduce the already low PTR without any increase in learning outcomes. This suggests the need to recalibrate policy on teacher appointments and to re-evaluate the definition of 'teacher vacancy', since what is needed is substantial redeployment of teachers from urban (teacher surplus) areas to rural (teacher-deficit) areas, rather than the appointment of new teachers.

Since we used data on secondary age students, the question could arise whether the impact of class size could be different for a lower (e.g. elementary school) age group and, secondly, our analysis is based on data from private schools so the question arises whether individual attention by a teacher could matter more to children in public schools who have less learning support at home, with typically less educated parents. However, Banerjee et. al. (2007) in their RCT experiment study using data on 175 public primary schools of Mumbai and Vadodara found that reduction in class size<sup>xxix</sup> had no effect on learning in government elementary schools in India. While this finding supports our conclusions, more research would strengthen the evidence base for the implied class-size policy direction for India.

## References

- Altinok, Nadir, and Geeta Kingdon. "New evidence on class size effects: A pupil fixed effects approach." *Oxford Bulletin of Economics and Statistics* 74, no. 2 (2012): 203-234.
- Ammermüller, Andreas, and Peter Dolton. "Pupil-teacher gender interaction effects on scholastic outcomes in England and the USA." *ZEW-Centre for European Economic Research Discussion Paper* 06-060 (2006).
- Angrist, Joshua D., and Victor Lavy. "Using Maimonides' rule to estimate the effect of class size on scholastic achievement." *The Quarterly journal of economics* 114, no. 2 (1999): 533-575.
- Asadullah, M. Niaz. "The effect of class size on student achievement: Evidence from Bangladesh." *Applied Economics Letters* 12, no. 4 (2005): 217-221.
- ASER (various years) *Annual Status of Education Report*, ASER Centre, New Delhi.
- Aslam, Monazza, and Geeta Kingdon. "What can teachers do to raise pupil achievement?." *Economics of Education Review* 30, no. 3 (2011): 559-574.
- Abhijit Banerjee, Shawn Cole, Esther Duflo, Leigh Linden. "Remedying Education: Evidence from Two Randomized Experiments in India", *Quarterly Journal of Economics*, 122, No. 3, Aug 2007, Pages 1235–1264.
- Bhattacharji, P. (2020) The Shady Practice of 'Score Moderation', <https://www.thelearningpoint.net/home/examination-results-2015/exposing-cbse-and-icse-a-follow-up-after-2-years>
- Case, Anne, and Angus Deaton, 1999. "School Inputs and Educational Outcomes in South Africa", *The Quarterly Journal of Economics*, Volume 114, Issue 3, August 1999, Pages 1047–1084
- Datta, S. and G. Kingdon. 2021. "The Fiscal Cost of Surplus Teachers in Public Elementary Schools in India", Mimeo. University College London.
- Dee, Thomas S. "Teachers and the Gender Gaps in Student Achievement. NBER Working Paper No. 11660." *National Bureau of Economic Research* (2005).
- Glass, Gene V., and Mary Lee Smith. "Meta-analysis of research on class size and achievement." *Educational evaluation and policy analysis* 1, no. 1 (1979): 2-16.
- Hanushek, Eric A. "Assessing the effects of school resources on student performance: An update." *Educational evaluation and policy analysis* 19, no. 2 (1997a): 141-164.
- Hanushek, Eric A. "Outcomes, incentives, and beliefs: Reflections on analysis of the economics of schools." *Educational Evaluation and Policy Analysis* 19, no. 4 (1997b): 301-308.
- Hanushek, Eric A. "Some findings from an independent investigation of the Tennessee STAR experiment and from other investigations of class size effects." *Educational Evaluation and Policy Analysis* 21, no. 2 (1999): 143-163.
- Hanushek, Eric A. "The failure of input-based schooling policies." *The economic journal* 113, no. 485 (2003): F64-F98.
- Harker, R. "Class size and student attainments: Research and strategic implementation". Manuscript. College of Education, Massey University. (2004).
- Hattie, John. "The paradox of reducing class size and improving learning outcomes." *International journal of educational research* 43, no. 6 (2005): 387-425.
- Holmlund, Helena, and Krister Sund. "Is the gender gap in school performance affected by the sex of the teacher?." *Labour Economics* 15, no. 1 (2008): 37-53.
- Hoxby, Caroline M. "The effects of class size on student achievement: New evidence from population variation." *The Quarterly Journal of Economics* 115, no. 4 (2000): 1239-1285.
- Kingdon, Geeta Gandhi. "Teacher characteristics and student performance in India: A pupil fixed effects approach." Working Paper (2006).
- Kingdon, Geeta Gandhi. "Hoodwinking India's Children: Exam Boards Miscalculate Learning Levels by awarding children artificially inflated marks", Lead Opinion Editorial, *Times of India*, 22<sup>nd</sup> May, 2019.
- Kingdon, Geeta Gandhi. The Private schooling phenomenon in India: A review, *Journal of Development Studies*, forthcoming. DOI 10.1080/00220388.2020.1715943.
- Kingdon, Geeta, and Francis Teal. "Teacher unions, teacher pay and student performance in India: A pupil fixed effects approach." *Journal of Development Economics* 91, no. 2 (2010): 278-288.
- Kremer, Michael. "Randomized evaluations of educational programs in developing countries: Some lessons." *American Economic Review* 93, no. 2 (2003): 102-106.
- Krueger, Alan B. "Experimental estimates of education production functions." *The quarterly journal of economics* 114, no. 2 (1999): 497-532.
- MHRD (undated) "Frequently Asked Questions On Rashtriya Madhyamik Shiksha Abhiyan In Respect Of Quality", Ministry of Human Resource Development, [https://mhrd.gov.in/sites/upload\\_files/mhrd/files/upload\\_document/FAQ\\_0.pdf](https://mhrd.gov.in/sites/upload_files/mhrd/files/upload_document/FAQ_0.pdf) (accessed July 2020)

- Muralidharan, Karthik, Jishnu Das, Alaka Holla, and Aakash Mohpal. "The fiscal cost of weak governance: Evidence from teacher absence in India." *Journal of Public Economics* 145 (2017): 116-135.
- NCERT (2015) What Students of Class V know and can do: A Summary of India's National Achievement Survey, Class V (Cycle 4). National Council of Educational Research and Training. New Delhi.
- Ramachandran, V. (2015) "Teachers in the Indian education system: Synthesis of a nine-state study", National University of Educational Planning and Administration, NUEPA, New Delhi. March 2015.
- Rosenzweig, Mark R., and Kenneth I. Wolpin. "Natural" natural experiments" in economics." *Journal of Economic Literature* 38, no. 4 (2000): 827-874.
- Sanghi, D. (2013) "Musings of Dheeraj Sanghi", blog by IIT Professor of Computer Science, Indian Institute of Technology, Kanpur. <https://dsanghi.blogspot.com/2013/06/school-board-results-moderation-or.html>
- Times of India (2015b) "UP schools drawing funds for non-existing students: Classes lie vacant but bags, meals, uniforms for lakhs", page 4, 2nd Nov. 2015.  
<http://epaperbeta.timesofindia.com//Article.aspx?eid=31813&articlexml=UP-schoolsdrawing-funds-for-non-existing-students-02112015004030>
- Ting Shen & Spyros Konstantopoulos, 2020. Estimating causal effects of class size in secondary education: evidence from TIMSS, *Research Papers in Education*, forthcoming.
- Todd, Petra E., and Kenneth I. Wolpin. "On the specification and estimation of the production function for cognitive achievement." *The Economic Journal* 113, no. 485 (2003): F3-F33.
- Woessmann, Ludger, and Martin West. "Class-size effects in school systems around the world: Evidence from between-grade variation in TIMSS." *European Economic Review* 50, no. 3 (2006): 695-736.

**Table 1: OLS achievement equation**

VARIABLES	Without School Fixed Effect				With School Fixed Effect			
	Linear	Quadratic	Cubic	Quartic	Linear	Quadratic	Cubic	Quartic
	1	2	3	4	5	6	7	8
Class Size	0.000840 (0.001252)	0.063746*** (0.009228)	0.259489*** (0.043780)	-0.501411** (0.206834)	0.012561*** (0.001426)	0.056739*** (0.009664)	0.087744* (0.045027)	-0.059119 (0.210821)
Class Size Square		-0.000737*** (0.000107)	-0.005737*** (0.001100)	0.024991*** (0.008288)		-0.000530*** (0.000114)	-0.001323 (0.001130)	0.004622 (0.008441)
Class Size Cubic			0.000041*** (0.000009)	-0.000488*** (0.000142)			0.000006 (0.000009)	-0.000096 (0.000145)
Class Size Quartic				0.000003*** (0.000001)				0.000001 (0.000001)
<b>Teacher Characteristics*</b>								
<b>Pupil Characteristics</b>								
Pupil's Gender (Male=1)	-0.220986*** (0.018584)	-0.224023*** (0.018568)	-0.224153*** (0.018548)	-0.222018*** (0.018572)	-0.224960*** (0.018011)	-0.227579*** (0.018024)	-0.227584*** (0.018024)	-0.227176*** (0.018051)
Pupil's Religion (Muslim=1)	-0.284459*** (0.029344)	-0.282556*** (0.029281)	-0.283405*** (0.029288)	-0.281026*** (0.029238)	-0.149226*** (0.029549)	-0.153499*** (0.029563)	-0.153201*** (0.029577)	-0.152586*** (0.029610)
Constant	0.466831** (0.221195)	-1.022145*** (0.309511)	-3.404488*** (0.602487)	3.283035* (1.868570)	0.015977 (0.237937)	-0.931660*** (0.313766)	-1.318310** (0.635894)	-0.029685 (1.912859)
Observations	11,519	11,519	11,519	11,519	11,519	11,519	11,519	11,519
R-squared	0.028573	0.032623	0.034329	0.035460	0.091790	0.093569	0.093607	0.093646

Note: Robust standard errors in parentheses (\*\*\*)  $p < 0.01$ , \*\*  $p < 0.05$ , \*  $p < 0.1$ )

Note: Teacher characteristics included but not shown.

**Table 2: OLS achievement equation, with pupils' subject-specific ability**

VARIABLES	Full Sample			
	Linear	Quadratic	Cubic	Quartic
	5	5	5	5
Class Size	-0.000687 (0.000811)	0.046763*** (0.005593)	0.030513 (0.026864)	-0.370349*** (0.126070)
Class Size Square		-0.000569*** (0.000067)	-0.000153 (0.000676)	0.016076*** (0.005055)
Class Size Cubic			-0.000003 (0.000005)	-0.000283*** (0.000087)
Class Size Quartic				0.000002*** (0.000001)
<b>Teacher Characteristics</b>				
Teacher has Masters degree	-0.098519*** (0.023991)	-0.098746*** (0.023827)	-0.097841*** (0.023802)	-0.101050*** (0.023745)
Teacher has M. Phil or More	-0.200684*** (0.028322)	-0.179565*** (0.028297)	-0.178561*** (0.028345)	-0.182298*** (0.028332)
Teacher has B.Ed training	0.012963 (0.019603)	0.022058 (0.019691)	0.022346 (0.019716)	0.020733 (0.019705)
Teacher has M. Ed training	0.054662 (0.036183)	0.032652 (0.036330)	0.033915 (0.036431)	0.031494 (0.036661)
Teacher's Gender (Male=1)	0.093475*** (0.015242)	0.089029*** (0.015159)	0.089346*** (0.015163)	0.086883*** (0.015175)
Teacher's Age	-0.009916* (0.005691)	-0.006422 (0.005647)	-0.006587 (0.005660)	-0.006038 (0.005649)
Teacher's Age Square	0.000127** (0.000060)	0.000090 (0.000059)	0.000092 (0.000059)	0.000087 (0.000059)
<b>Pupil Characteristics</b>				
Pupil's Gender (Male=1)	-0.005835 (0.010443)	-0.008612 (0.010436)	-0.008598 (0.010436)	-0.007414 (0.010441)
Pupil's Religion (Muslim=1)	0.031175* (0.016759)	0.026536 (0.016652)	0.026391 (0.016657)	0.028097* (0.016687)
Subject-Specific Ability	0.055358*** (0.000365)	0.055370*** (0.000364)	0.055373*** (0.000364)	0.055390*** (0.000364)
Constant	-2.944965*** (0.142394)	-3.963771*** (0.184630)	-3.761302*** (0.379541)	-0.245067 (1.138996)
Observations	11,500	11,500	11,500	11,500
R-squared	0.697271	0.699325	0.699336	0.699627



**Table 3: Pupil Fixed Effects (PFE) achievement equation**

VARIABLES	Without Subject Specific Ability				With Subject Specific Ability				With Splines	
	Linear	Quadratic	Cubic	Quartic	Linear	Quadratic	Cubic	Quartic		
	1	2	3	4	5	6	7	8	9	
Class Size	0.004997*** (0.001519)	0.040843*** (0.010026)	0.054419 (0.062326)	1.011002*** (0.238715)	0.004749*** (0.001141)	0.024688*** (0.007552)	0.017571 (0.045054)	0.477687** (0.192883)	<b>Class Size</b> Below 27	Base
Class Size Square		-0.000476*** (0.000132)	-0.000837 (0.001634)	-0.041817*** (0.009962)		-0.000265*** (0.000098)	-0.000075 (0.001181)	-0.019787** (0.008095)	27 to 34	0.163441*** (0.042902)
Class Size Cubic			0.000003 (0.000014)	0.000747*** (0.000178)			-0.000002 (0.000010)	0.000356** (0.000146)	35 to 40	0.118741*** (0.044016)
Class Size Quartic				-0.000005*** (0.000001)				-0.000002** (0.000001)	41 to 43	0.205962*** (0.048532)
									44 to 46	0.175245*** (0.042285)
									47 to 48	0.216649*** (0.039954)
									49 to 52	0.175299*** (0.055970)
									53 to 56	0.179414** (0.082452)
									Above 56	0.114761* (0.064640)
<b>Teacher Characteristics</b>										
Teacher has Masters degree	0.015343 (0.030906)	0.018434 (0.030955)	0.018731 (0.031042)	0.023666 (0.030980)	-0.053959** (0.025034)	-0.052172** (0.025040)	-0.052329** (0.025126)	-0.049848** (0.025130)		-0.053834** (0.025828)
Teacher has M. Phil or More	-0.211606*** (0.036547)	-0.203322*** (0.036497)	-0.203471*** (0.036536)	-0.195430*** (0.036509)	-0.214972*** (0.028592)	-0.210378*** (0.028639)	-0.210299*** (0.028636)	-0.206384*** (0.028690)		-0.221269*** (0.029888)
Teacher has B.Ed training	-0.133755*** (0.025431)	-0.129982*** (0.025644)	-0.129489*** (0.025493)	-0.131580*** (0.025555)	-0.036689* (0.019477)	-0.034673* (0.019608)	-0.034931* (0.019511)	-0.036064* (0.019530)		-0.038952* (0.020339)
Teacher has M. Ed training	0.115946** (0.047765)	0.097099** (0.047417)	0.097177** (0.047386)	0.099521** (0.047092)	0.001891 (0.038145)	-0.008448 (0.037976)	-0.008491 (0.037967)	-0.007220 (0.037851)		-0.024994 (0.039066)
Teacher's Gender (Male=1)	0.253278*** (0.019343)	0.254878*** (0.019295)	0.254793*** (0.019284)	0.260448*** (0.019409)	0.144450*** (0.016096)	0.145448*** (0.016089)	0.145491*** (0.016089)	0.148383*** (0.016136)		0.141411*** (0.016384)
Teacher's Age	-0.017928** (0.008100)	-0.016345** (0.008132)	-0.016348** (0.008133)	-0.018288** (0.008136)	-0.013793** (0.006280)	-0.012918** (0.006317)	-0.012916** (0.006317)	-0.013851** (0.006330)		-0.013299** (0.006396)
Teacher's Age Square	0.000226*** (0.000085)	0.000211** (0.000086)	0.000211** (0.000086)	0.000230*** (0.000086)	0.000167** (0.000066)	0.000159** (0.000066)	0.000159** (0.000066)	0.000168** (0.000066)		0.000162** (0.000067)
<b>Subject-Specific Ability</b>					0.042874*** (0.000649)	0.042832*** (0.000651)	0.042832*** (0.000651)	0.042771*** (0.000651)		0.042480*** (0.000661)
Constant	0.152722 (0.204987)	-0.511864* (0.277996)	-0.670618 (0.768339)	-8.589416*** (2.056859)	-2.409740*** (0.160909)	-2.776863*** (0.218923)	-2.693661*** (0.563887)	-6.499127*** (1.652749)		-2.361427*** (0.158352)
Observations	11,519	11,519	11,519	11,519	11,500	11,500	11,500	11,500		11,401
R-squared	0.101323	0.102586	0.102592	0.104335	0.413740	0.414131	0.414132	0.414536		0.414763
Number of pupil_id	2,094	2,094	2,094	2,094	2,094	2,094	2,094	2,094		2,092

Note: Note: Robust standard errors in parentheses (\*\*\*) p<0.01, \*\* p<0.05, \* p<0.1)

**Table 4: Pupil Fixed Effects (PFE) achievement equation, by gender**

VARIABLES	Male				Female			
	Linear	Quadratic	Cubic	Quartic	Linear	Quadratic	Cubic	Quartic
	1	2	3	4	5	6	7	8
Class Size	0.002041 (0.001569)	0.028387** (0.011760)	-0.011379 (0.057803)	0.730986** (0.283748)	0.006951*** (0.001663)	0.019806* (0.010194)	0.000287 (0.070845)	0.160816 (0.274277)
Class Size Square		-0.000350** (0.000154)	0.000704 (0.001511)	-0.030595*** (0.011846)		-0.000170 (0.000132)	0.000351 (0.001858)	-0.006628 (0.011576)
Class Size Cubic			-0.000009 (0.000013)	0.000553*** (0.000212)			-0.000004 (0.000015)	0.000124 (0.000209)
Class Size Quartic				-0.000004*** (0.000001)				-0.000001 (0.000001)
Observations	6,278	6,278	6,278	6,278	5,222	5,222	5,222	5,222
R-squared	0.414551	0.415056	0.415104	0.415892	0.406275	0.406484	0.406497	0.406557
Number of pupil_id	1,137	1,137	1,137	1,137	957	957	957	957

Note: Robust standard errors in parentheses (\*\*\*)  $p < 0.01$ , \*\*  $p < 0.05$ , \*  $p < 0.1$ ). Teacher characteristics included, and student's subject-specific ability included, but not shown.

**Table 5: Pupil Fixed Effect (PFE) achievement equation, by subject stream (Science and Non-Science)**

VARIABLES	Science				Non-Science			
	Linear	Quadratic	Cubic	Quartic	Linear	Quadratic	Cubic	Quartic
	1	2	3	4	5	6	7	8
Class Size	0.002704* (0.001504)	0.029679*** (0.010547)	-0.014188 (0.064892)	0.185772 (0.261781)	0.005011** (0.002085)	0.019065 (0.014635)	-0.262559*** (0.084162)	0.768477** (0.347529)
Class Size Square		-0.000361*** (0.000136)	0.000824 (0.001692)	-0.007960 (0.011252)		-0.000184 (0.000190)	0.007210*** (0.002198)	-0.035504** (0.014173)
Class Size Cubic			-0.000010 (0.000014)	0.000153 (0.000206)			-0.000061*** (0.000018)	0.000694*** (0.000249)
Class Size Quartic				-0.000001 (0.000001)				-0.000005*** (0.000002)
Observations	7,581	7,581	7,581	7,581	3,820	3,820	3,820	3,820
R-squared	0.364710	0.365284	0.365339	0.365401	0.394162	0.394359	0.396303	0.398180
Number of pupil_id	1,370	1,370	1,370	1,370	722	722	722	722

Note: Robust standard errors in parentheses (\*\*\*)  $p < 0.01$ , \*\*  $p < 0.05$ , \*  $p < 0.1$ ). Teacher characteristics included, and student's subject-specific ability included, but not shown.

**Table 6 : Pupil Fixed Effects achievement equation, with peer group variables**

VARIABLES	Full Sample	Science	Non-Science
	1	2	3
Class Size	<b>0.493941**</b> (0.194611)	<b>0.033134***</b> (0.010749)	<b>0.930356***</b> (0.352629)
Class Size Square	<b>-0.020233**</b> (0.008155)	<b>-0.000412***</b> (0.000136)	<b>-0.041016***</b> (0.014376)
Class Size Cubic	<b>0.000358**</b> (0.000146)		<b>0.000770***</b> (0.000252)
Class Size Quartic	<b>-0.000002**</b> (0.000001)		<b>-0.000005***</b> (0.000002)
Subject Specific Ability	<b>0.040314***</b> (0.001527)	<b>0.045193***</b> (0.002080)	<b>0.034666***</b> (0.002354)
<b>Peer group variables</b>			
Class Peer Mean Achievement (Except Index Student)	<b>0.005297***</b> (0.001131)	0.000152 (0.001650)	<b>0.009323***</b> (0.001883)
Ability Peer Mean Achievement (Except Index Student)	0.001655 (0.001465)	0.000582 (0.002001)	<b>0.003965*</b> (0.002256)
Variation of class ability (SD of score in previous exam)	<b>-0.009408***</b> (0.003424)	<b>-0.022630***</b> (0.004524)	<b>0.017392***</b> (0.006550)
Constant	-6.770088*** (1.674836)	-3.461659*** (0.310062)	-9.020225*** (3.120063)
Observations	11,500	7,581	3,820
R-squared	0.416632	0.368069	0.405158
Number of pupil_id	2,094	1,370	722

**Note:** Teacher variables included but not shown.

**Table 7(a): Cost-Benefit analysis at different PTR levels in Primary and Upper primary level in 2017-18**

	Student Enrolment	Number of Teachers	Actual PTR (Enrolment/teachers)	Teacher salary rate per month (Rupees)	Total teacher salary cost (billion US\$)	Govt. Savings (billion US\$)
1	102321358	4486966	22.80	51,887	37.25*	
		<b>Number of teachers implied by the hypothetical PTR</b>	<b>Hypothetical PTR</b>			
2	102321358	3410712	<b>30.00</b>	51,887	28.32	8.93
3	102321358	2923467	<b>35.00</b>	51,887	24.27	12.98
4	102321358	2558034	<b>40.00</b>	51,887	21.24	16.01
5	102321358	2273808	<b>45.00</b>	51,887	18.88	18.37
6	102321358	2046427	<b>50.00</b>	51,887	16.99	20.26
7	102321358	1860388	<b>55.00</b>	51,887	15.44	21.81

Note: \*-Actual Cost. Row 1 represents actual data of 2017-18. Total yearly cost of teachers' salary is calculated based on an estimated average salary rate of an elementary teacher of Rs. 51,887 per month in 2017-18. From row 2 and onwards, we present estimates of the total salary cost and government savings at different supposed levels of PTR (in a hypothetical scenario). An exchange rate of 75 rupees to the dollar has been used. Monthly salary data are obtained from the note to Table 4 in Kingdon (2020) who estimates them as follows.

1. Monthly salary data at the India level is obtained by taking the simple average of state-wise salary of primary school teachers with 15 years' experience from Ramachandran (2015) at the National University of Educational Planning and Administration (NUEPA), who had salary data from six major states of India.

2. In the above calculation, the average salary of upper primary level teachers is ignored even though one-third of all public elementary schools are upper primary schools, whose teachers receive a significantly higher salary rate. If we were to include upper primary school teachers' salary, it would come to a weighted average monthly elementary school teacher salary of Rs. 53996, in which case the estimated actual cost would be USD 38.76 billion instead of USD 37.25 billion.

**Table 7(b): Cost-Benefit analysis at different PTR levels in Secondary & Higher secondary schools, 2016-17**

	Enrolment	Teacher	Actual PTR	Teacher's salary per month	Total teacher salary cost (billion US \$)	Govt. Savings (billion US\$)
1	26,276,072	941,725	27.90	Rs. 74,001	11.15*	
		<b>Number of teachers implied by the hypothetical PTR</b>	<b>Hypothetical PTR</b>			
2	26,276,072	875,869	<b>30.00</b>	Rs. 74,001	10.37	0.78
3	26,276,072	750,745	<b>35.00</b>	Rs. 74,001	8.89	2.26
4	26,276,072	656,902	<b>40.00</b>	Rs. 74,001	7.78	3.37
5	26,276,072	583,913	<b>45.00</b>	Rs. 74,001	6.91	4.24
6	26,276,072	525,521	<b>50.00</b>	Rs. 74,001	6.22	4.93
7	26,276,072	477,747	<b>55.00</b>	Rs. 74,001	5.66	5.49

Note: Similar as table 7. The data of row 1 is for 2016-17. Monthly salary data is obtained from Kingdon (2020) which is based on averaging of salary data of secondary school teachers (15 years' experience) from across six major Indian states in Ramachandran (2015), and this data for 2014 is extrapolated to 2016-17 using the Consumer Price Index. \*-Actual Cost.

### Figures:

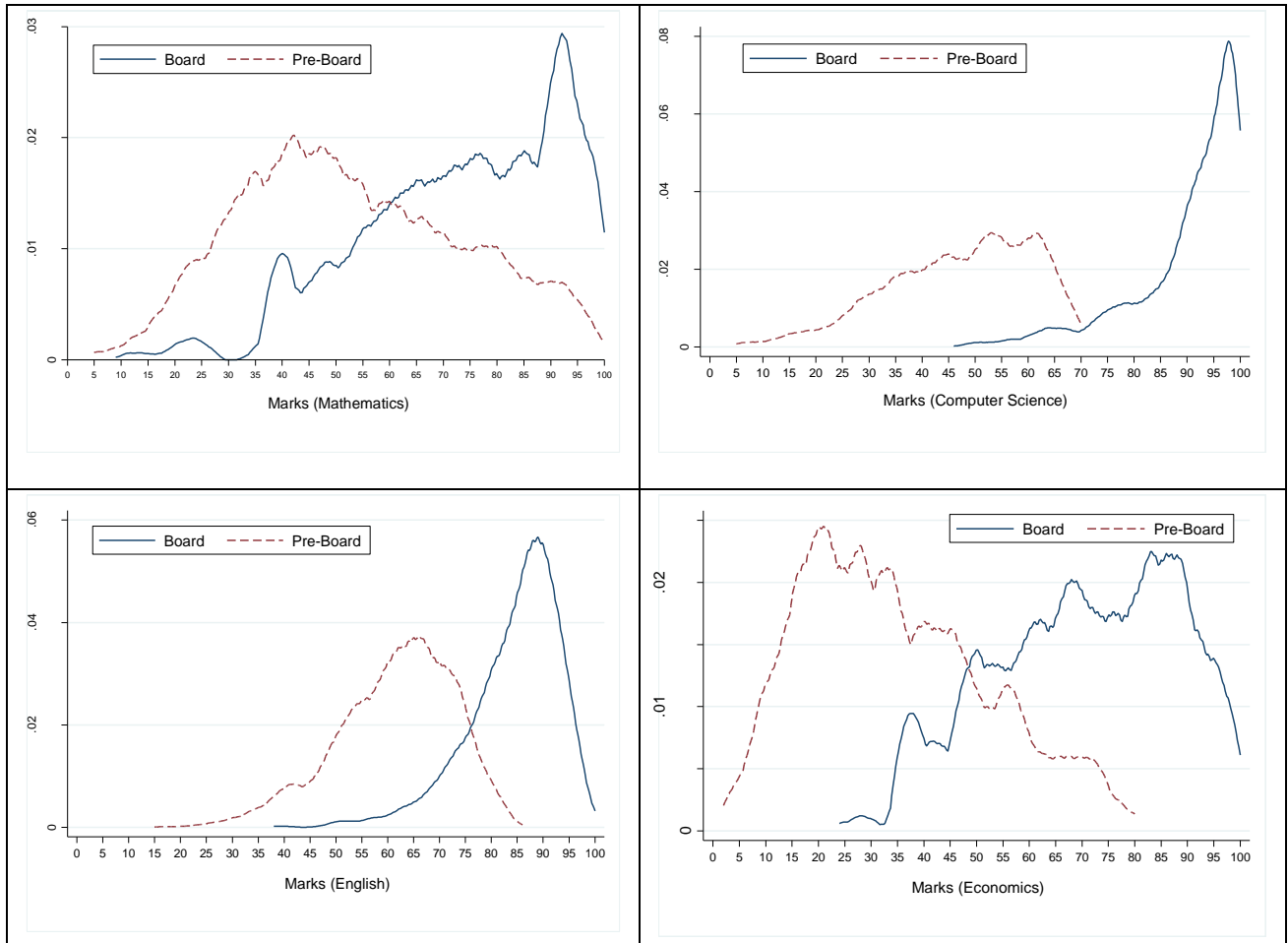


Figure 3: Kernel density of scores in Mathematics (Top-Left), Computer Science (Top-Right), English (Bottom-Left) and Economics (Bottom-Right) of Board Exam and Pre-Board Exam Results.

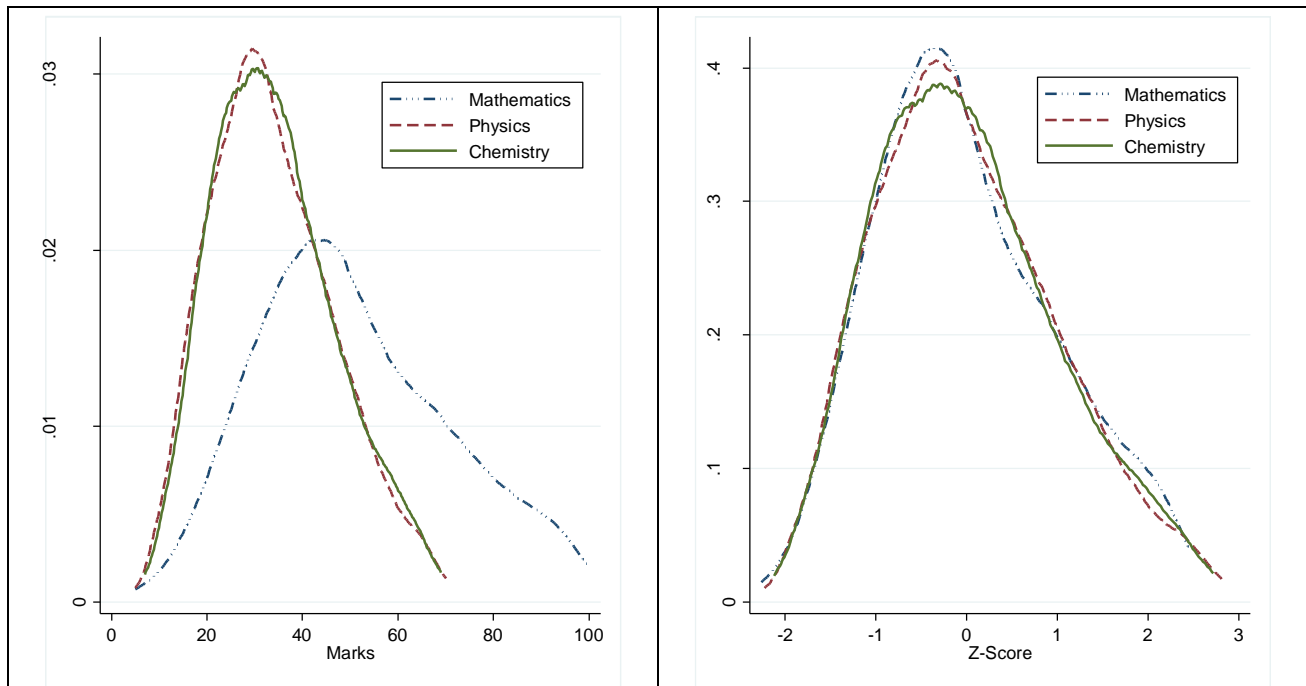
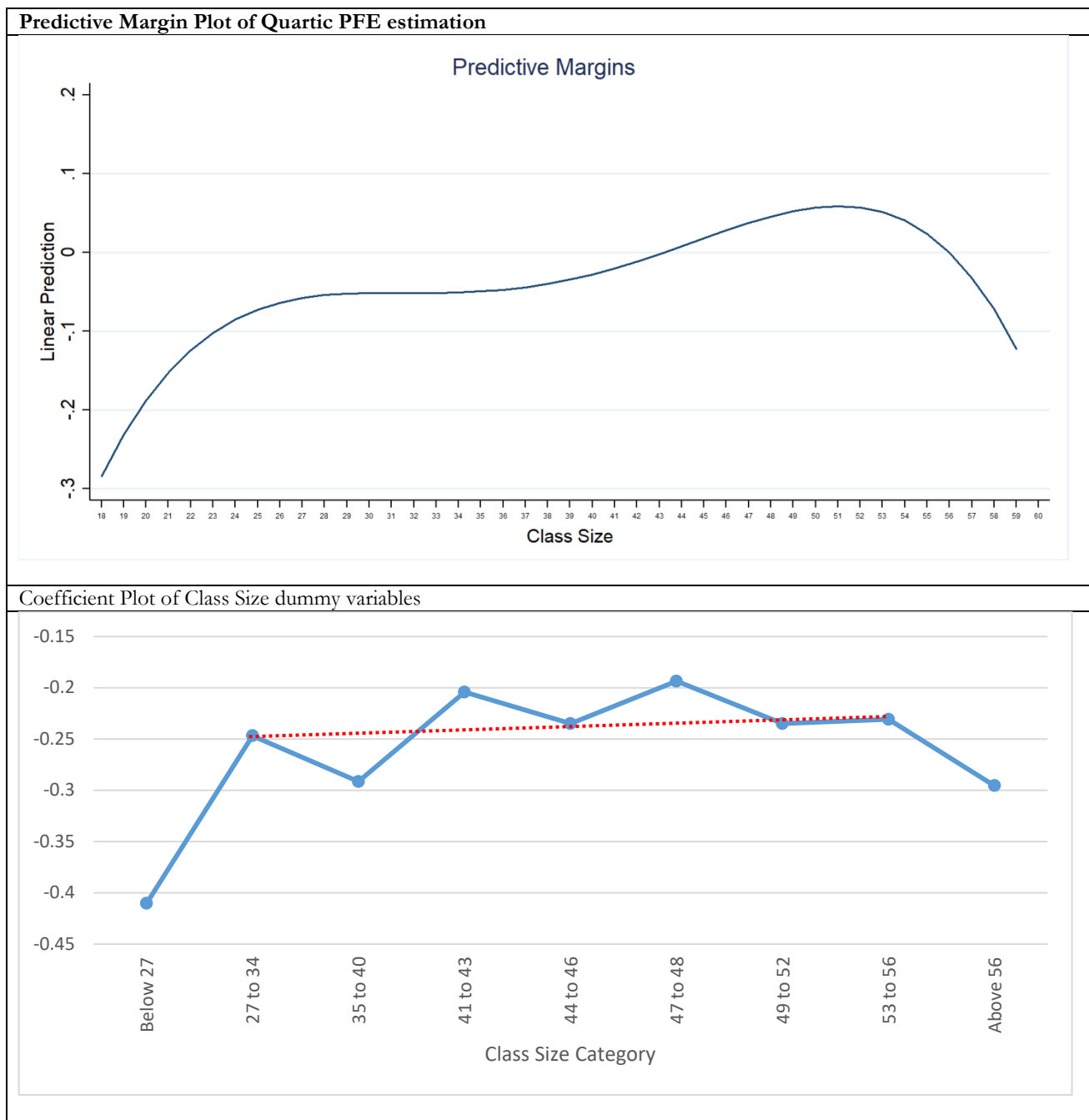
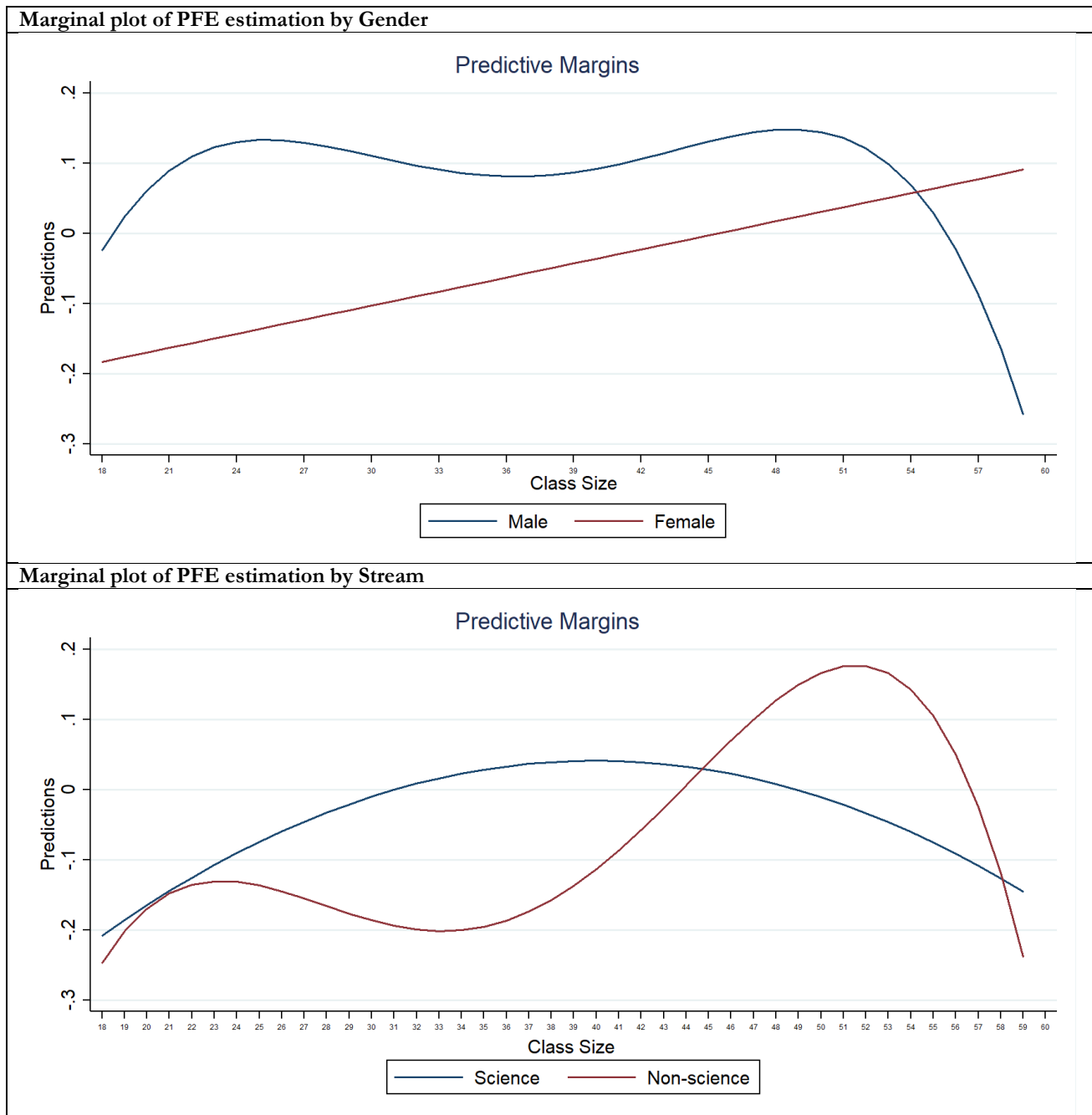


Figure 4: Kernel density of Pre-board Marks (Left) & Z-Score (Right) in Mathematics, Physics & Chemistry



**Figure 5: Predictive margin plot of class size of the quartic PFE estimation (top panel) and coefficient plot of the class size dummy variables (bottom panel)**

Note: Red-dashed line suggests that coefficients of class size dummy variables (except above 56) are not statistically significantly different from each other



**Figure 6: Marginal plot of PFE estimation by gender and stream**

## Appendix A

**Table A1: Descriptive Statistics**

Variable	Mean	Std. Dev.	Min	Max
<b>Marks and class size</b>				
Z-score (Full Sample)	0	0.9994	-4.50	2.85
Actual absolute score in Pre-board exam	46.61	18.38	0	100
Mean Score of previous 2 internal exams (1 <sup>st</sup> & 2 <sup>nd</sup> Comparative)	45.67	18.33	0	100
Class Size	44.21	8.06	18	59
<b>Teacher' Highest Education Level</b>				
Bachelor	0.10	0.31	0	1
Masters	0.78	0.41	0	1
M. Phil and More	0.12	0.32	0	1
<b>Teachers' Highest Professional Qualification</b>				
No-Training	0.11	0.31	0	1
B. Ed	0.79	0.41	0	1
M. Ed	0.10	0.30	0	1
Teacher's Gender (Male=1)	0.52	0.50	0	1
Teacher's Experience*	21.69	8.28	1	43
Student's Gender (Male=1)	0.58	0.49	0	1
Muslim	0.12	0.32	0	1

**Note:** Experience = (Actual Age – 24). We have assumed that everybody joined the job market at the age of 24.



**Table A2: Pupil teacher ratio and pupils per grade, in Government Elementary Schools, DISE data (sorted by column 'e'), 2017-18**

S. No.	State	Total Students (Reported)	Total Teachers (Regular)	Total Teachers (Contractual)	Total Teachers (Reported)	Pupil Teacher Ratio (Reported) ('prima-facie' PTR)	Student Attendance Rate <sup>\$</sup>	Teacher Attendance Rate <sup>\$</sup>	Effective Pupil Teacher Ratio (PTR)	Cost-Conscious Pupil-Teacher Ratio (CPTR)	PTR at Secondary + H. Secondary School level (Reported) <sup>#</sup>
		(a)	(b)	(c)	(d)	(e=a/d)	(f)	(g)	$h=(a*f)/(e*g)$	$i=(a*f)/d$	(j)
1	Himachal Pradesh	5,33,388	47,246	20,676	67,922	7.9	0.95	0.69	10.73	7.5	14.45
2	Jammu-Kashmir*	9,37,825	89,093	10,117	99,210	9.5	0.79	0.81	9.18	7.5	16.46
3	Uttaranchal	6,81,848	57,010	3,458	60,468	11.3	0.80	0.79	11.42	9.0	13.20
4	Kerala	8,44,947	62,500	2,225	64,725	13.1	0.91	0.84	14.17	11.9	19.60
5	Tamil Nadu	31,40,559	2,09,070	29,924	2,38,994	13.1	0.88	0.87	13.32	11.6	22.21
6	Punjab	16,52,599	82,727	34,753	1,17,480	14.1	0.82	0.63	18.14	11.5	19.11
7	Andhra Pradesh*	50,72,962	3,18,028	14,029	3,32,057	15.3	0.73	0.79	14.15	11.2	21.36
8	Haryana	15,42,191	83,471	13,759	97,230	15.9	0.82	0.82	15.85	13.0	14.68
9	Assam	38,28,109	1,89,614	32,992	2,22,606	17.2	0.81	0.74	18.96	13.9	16.37
10	Rajasthan	62,24,446	3,38,550	4,503	3,43,053	18.1	0.63	0.75	15.19	11.4	21.90
11	Chhattisgarh	30,82,746	1,50,035	835	1,50,870	20.4	0.68	0.86	16.12	13.9	32.51
12	Maharashtra	54,99,126	2,57,155	4,464	2,61,619	21.0	0.89	0.86	21.78	18.7	26.89
13	West Bengal	1,04,24,158	3,76,865	1,01,912	4,78,777	21.8	0.74	0.79	20.44	16.1	46.36
14	Karnataka	38,16,438	1,73,895	703	1,74,598	21.9	0.86	0.76	24.77	18.8	25.95
15	Odisha	46,90,160	1,18,796	94,299	2,13,095	22.0	0.67	0.86	17.14	14.7	24.00
16	Madhya Pradesh	72,17,655	2,79,654	1,115	2,80,769	25.7	0.72	0.74	25.16	18.5	37.01
17	Gujarat	54,56,424	2,04,309	1,223	2,05,532	26.5	0.75	0.84	23.74	19.9	26.58
18	Uttar Pradesh	1,57,23,078	5,04,125	73,395	5,77,520	27.2	0.57	0.69	22.72	15.5	43.43
19	Jharkhand	41,64,893	46,261	69,831	1,16,092	35.9	NA	0.54	NA	NA	63.69
20	Bihar	1,77,87,806	3,22,262	62,087	3,84,349	46.3	0.42	0.71	27.39	19.4	53.07
	<b>Major 21 States</b>	<b>10,23,20,384</b>	<b>39,05,678</b>	<b>5,76,300</b>	<b>44,81,978</b>	<b>22.8</b>	<b>0.69</b>	<b>0.77</b>	<b>20.40</b>	<b>15.8</b>	<b>27.33</b>

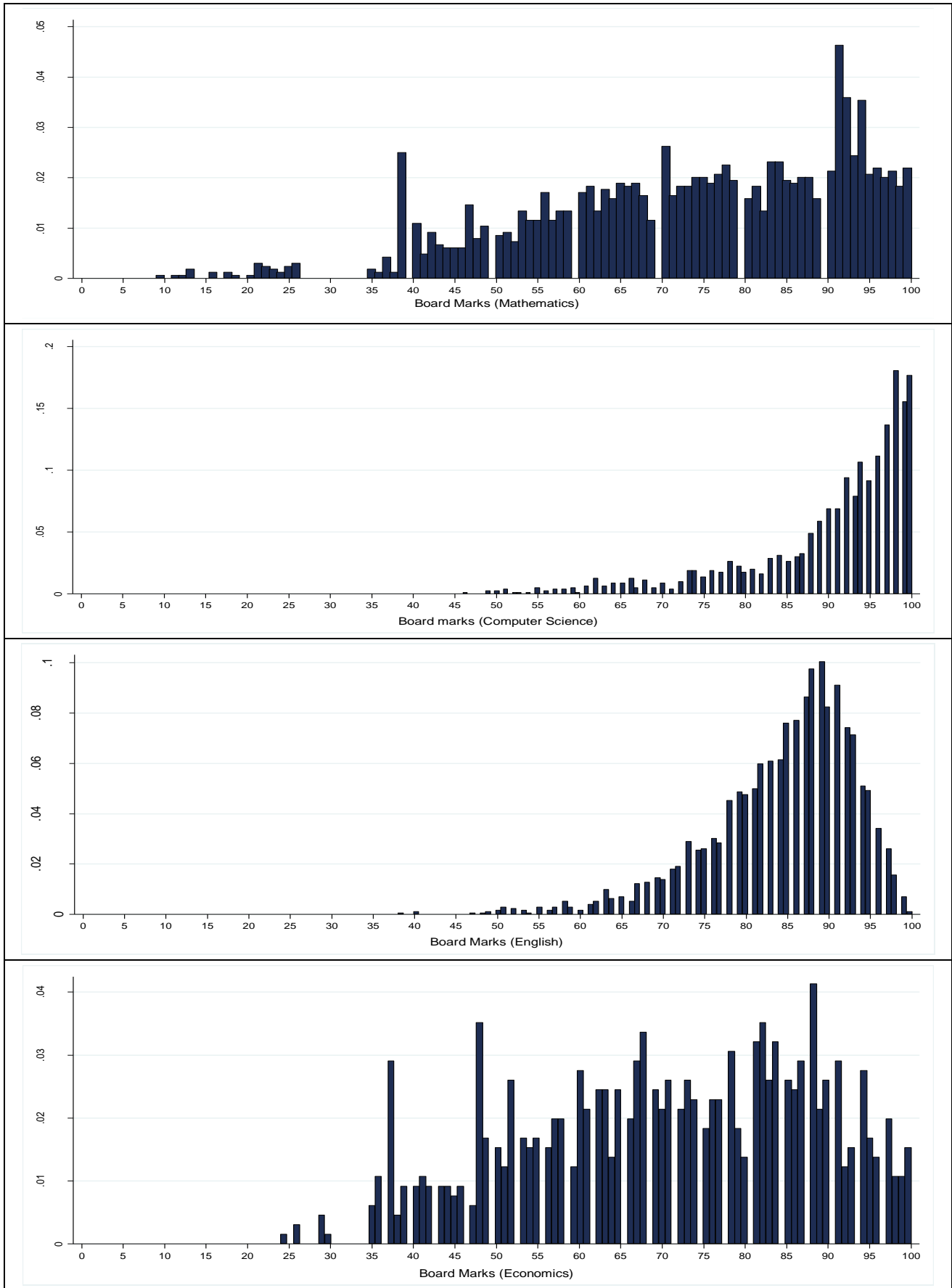
Note: The data for student and teacher attendance rate is for 2006.

\$ We have assumed that this proportion remains same over the years. There may be a slight change over time, but it is unlikely to have changed very substantially.

# The PTRs in Secondary and Higher Secondary schools are based on DISE data for the year 2016-17.

Source: For official student enrolment and teacher numbers, DISE ([www.dise.in](http://www.dise.in)), and for official data on Student and Teacher attendance rates, from the EdCil Survey, commissioned by Ministry of Human Resource Development (MHRD) <https://www.educationforallindia.com/study-on-students-attendance.pdf>. Recent data from (non-official) ASER survey of 2018 show a student attendance rate of 72% and a teacher attendance rate of 85% <http://img.asercentre.org/docs/ASER%202018/Release%20Material/schoolreportcardenglish.pdf>

## Appendix B



**Histogram of marks obtained in Mathematics (1<sup>st</sup> Row), Computer Science (2<sup>nd</sup> Row),  
English (3<sup>rd</sup> Row) and Economics (4<sup>th</sup> Row).**

Kingdon's (2019) opinion editorial on the 'moderation' practices of Indian exam boards states that in the class 10 (High School) CBSE board exam in maths, all students who actually got anywhere between 79 and 95 per cent mark on the exam script, got exactly 95% marks shown in their board mark-sheet and certificate.

A *Times of India* report on 4<sup>th</sup> July 2018 stated that "A student who passed Central Board of Secondary Education's class XII exam this year is likely to have got 30 marks over the total in their exam scripts. Yes, CBSE did moderate the marks this year, granting nine additional marks in physics, chemistry, mathematics and accounts, eight marks in business studies and three in English Core"

Bhattacharji (2020) says: "It is okay if the exam board makes slight changes to the raw score assigned by a script-marker to a candidate, in a particular subject. Slight upscaling or downscaling of marks is fine - to take into account the fact that a question paper might be significantly harder than the previous years, or the fact, that some script-markers might be more strict/liberal than the rest - which is why slight changes are permissible....But, what the scoring histograms suggest, is not minor or marginal changes, but gross distortions to the original scores - and a blatant misreporting of data, by inflation of pass-rates. Also, the score distributions are changing year to year, which reduces the reliability and repeatability of these examinations".

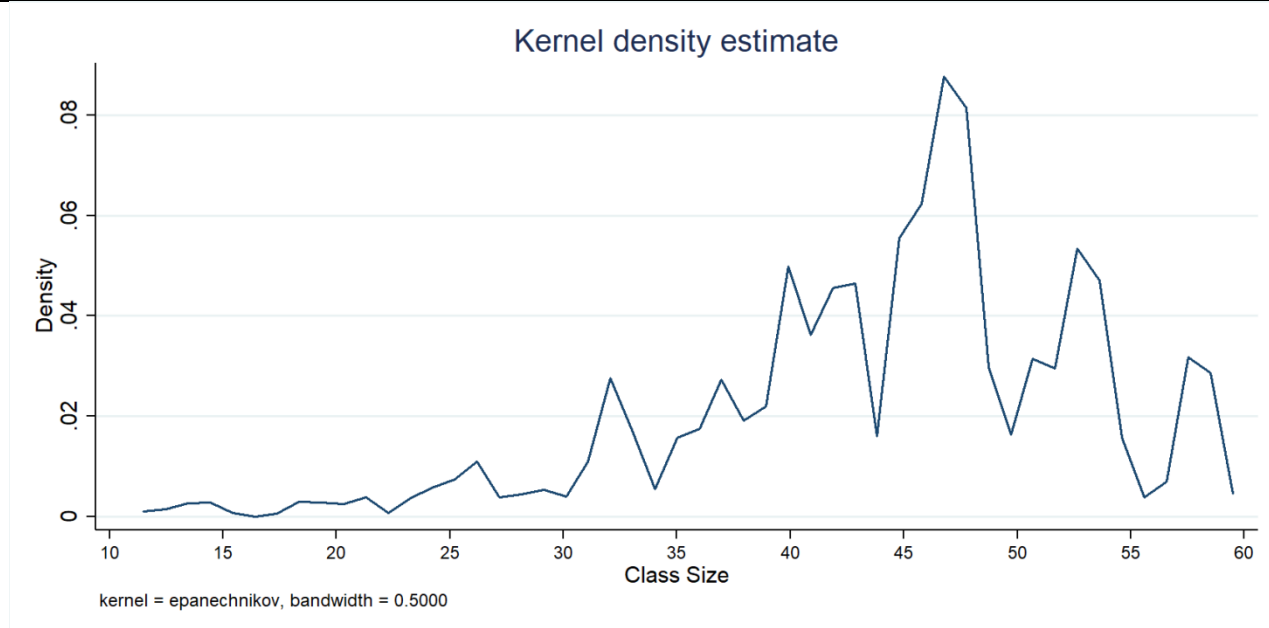
See <https://www.thelearningpoint.net/home/examination-results-2013/cbse-2004-to-2014-bulls-in-china-shops>

After observing that "the marks awarded to the students were not as one would expect in a public exam", Sanghi says: "what is clear is that unless boards come clean on their academic processes, they can't be trusted to the extent of using their mark sheets in the admission process for highly competitive colleges and universities.... There appears to be an extremely liberal policy on grace marks....are all boards trying to compete with each other in increasing the pass percentage (and making their political masters happy as a result of such a result)".

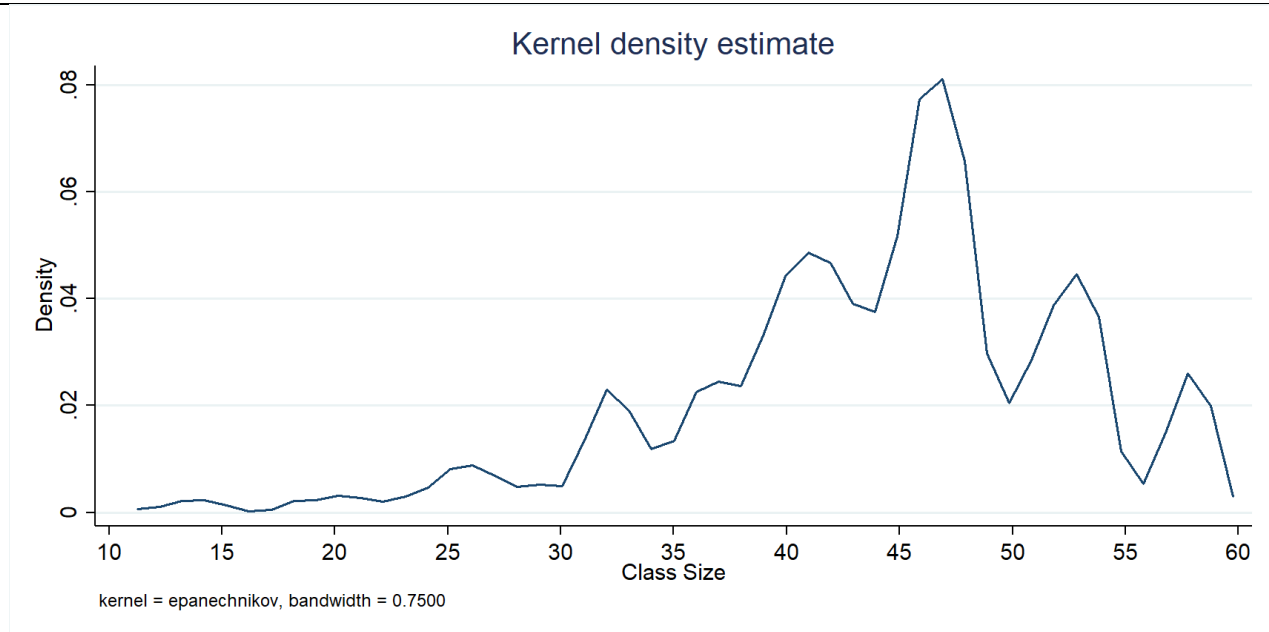
## Appendix C

### Distribution of class-sizes in Grade 12 in the sample schools

Bandwidth 0.50



Bandwidth 0.75



<sup>i</sup> A Ministry of Human Resource Development document (MHRD, undated) which lays down norms for the funding of secondary schools under the RMSA secondary education programme states that “for every incremental enrolment of 30 students, 1 additional teacher may be provided as per the RMSA norm of PTR of 30:1”. The RMSA programme came into being in 2009.

<sup>ii</sup> Data on govt. school teachers’ salary for 2014-15 is available from Ramachandran (2015) where mean govt. primary school teacher salary (averaged across new and experienced teachers) was 40,623 per month. For 2017-18, this has been inflated by 8.5% per year (based on salary escalation in Uttar Pradesh, see Annex Table 2 in Kingdon, 2017). Thus, mean primary teacher salary is taken as Rs. 51,887 per month (or Rs. 6,22,644 for 12 months) in 2017-18. Thus, the teacher salary bill of 404,883 extra teachers in 2017-18 is Rupees 252,097,970,652 or US \$ 3,601,399,581, i.e. \$3601 million or \$ 3.6 billion in 2017-18.

<sup>iii</sup> In December 2017, India’s education minister Prakash Javadekar informed parliament that at the elementary level, 17.5% and at secondary level 14.8% of government school teacher posts were vacant <https://www.ndtv.com/education/indias-teachers-crisis-country-falls-short-of-1-million-school-teachers-1778220> ; “Of the 6 million teaching positions in government schools nationwide...about 1 million—were vacant” (IndiaSpend, December 12, 2016); “No Funds, No Policy, Few Teachers: Former NCERT Director Says Budget Should Increase for Education”, Krishna Kumar ( 30-01-2018)

<http://www.indianews-today.com/news/no-funds-no-policy-few-teachers-former-ncert-director-says-budget-should-increase-for-education> ; “We have a shortage of teachers across the state and, over the years the number of vacancies has increased,” said Deepak Joshi, minister of state for school education”, *Times of India* (Jul 3, 2017)

<https://timesofindia.indiatimes.com/city/bhopal/teachers-shortage-hits-edu-in-govt-schools/articleshow/59415617.cms>; “74 countries face an acute teacher shortage...India is second in terms of teacher recruitment required to meet the current education demand. Talking in absolute terms, India needs close to 370 thousand new teachers to meet its demand for primary education”, UNESCO (October 2016) <http://unesdoc.unesco.org/images/0024/002461/246124e.pdf>

<sup>iv</sup> Appendix A1.4.4 of the draft New Education Policy 2019 recommends increasing the total (not just education) budget by 0.5 percentage points to fill teacher vacancies. The Indian central government’s budget in 2020-21 is Rupees 30,422 billion or USD 435 billion (Parliamentary Research Services, 2020), and 0.5% of that is Rs 152 billion or USD 2.2. However, based on the prevailing mean teacher salary of primary teachers (Rs. 61,083 per month or Rs. 7,33,000 in 2019-20), the actual cost of 1 million teachers in 2020 would be Rs. 733 billion (USD 10.5 billion), which is 2.4% of the central government budget, not 0.5%.

<sup>v</sup> Pupil teacher ratio (PTR) in public elementary schools fell dramatically over the 7 year period, partly due to a large number of fresh teacher appointments (of 0.40 million teachers), and partly due to falling student numbers (24 million fewer students) due to the abandonment of government schools (DISE, 2017-18). A decomposition of the temporal fall in PTR shows that if total enrolment in public schools had remained unchanged (i.e. had there been no abandonment of government schools), PTR would have fallen from 31.2 to 28.4 just on account of the increase in the total stock of teachers. Equally, if there had been no fresh teacher appointments, PTR would have fallen from 31.2 to 25.3 just on account of the fall in student enrolments in public schools. Part of the reason for the low PTR is the stipulation of the Right to Education Act that up to a total enrolment of 60 pupils, a school must have a minimum of two teachers, and a very high proportion of India’s public schools are tiny: in 2017-18, 41% of all public elementary schools had fewer than 50 students and about 16% schools had fewer than 20 students. Data on enrolment and teachers in 2010-11 are obtained from DISE Elementary State Report Card <http://udise.in/src.htm> accessed in April 2020.

<sup>vi</sup> Class-size and pupil teacher ratio (PTR) are not the same thing. In a school where there are teachers other than class-teachers – for example say art, dance, sports, etc. teachers in addition to class teachers – there, class size will be higher than the PTR. However, in public elementary schools in India, there are hardly any such teachers appointed. Mean public school size is 97 students per elementary school (DISE, 2017-18) but in 68% of schools total enrolment is less than 100 and mean enrolment per school is 45 students. Given that schools are mandated to have at least two teachers, the mean PTR in a school with an enrolment of 45 is 22.5 if the school has two teachers, or PTR is 15 if there are three teachers. If say three teachers teach 5 classes separately, then (given 5 classes and 45 students), mean class size is 9 students, i.e. lower than the PTR. But if 3 teachers means that two of the five classes run as multi-grade classes, then class size would be 15, i.e. still lower than the PTR.

<sup>vii</sup> For example, in Krueger (1999), the most well-known study and that used the RCT approach, a reduction of 8 students per class increased learning score statistically significantly but by only 0.2 SD and this only in the first year of school.

<sup>viii</sup> This was suggested to the authors by Professor Lant Pritchett of Harvard University.

<sup>ix</sup> In Israel, maximum class size is 40. Consequently, when student increases from 40 to 41, a new section has to be formed and average class size exogenously becomes 20.5, i.e. the change is class size is not because of the choice of pupil or school.

<sup>x</sup> All students take 6 subjects. English is a compulsory subject for all students. Science-stream students take English, Physics and Chemistry as compulsory subjects and must choose between Mathematics or Biology, and also choose two optional subjects from among Hindi, Biology, Bio-Technology, Computers, and Physical-Education. Commerce-stream students take English, Economics, Commerce and Accountancy as compulsory subjects, along with two optional subjects from among Hindi, Psychology, History, Geography, Computers and Physical-Education. The Humanities subject combination is taken by fewer students and students can combine compulsory English with a range of the above subjects, such as psychology, History, Geography, Hindi, etc.

<sup>xi</sup> Physical Education is a non-academic subject, an outlier (with all students obtaining a very high mark in PED) and scoring well in PED does not need much effort, special training or ability, nor is it a high stakes subject since performance in PED does not get counted for admission to university

<sup>xii</sup> For the Pre-board exam, the sample school chain centrally prepares a grade 12 internal examination paper in each subject, which is taken by the students at all ten schools in the chain. Scripts are marked by the teachers in each school, but on a pre-

agreed mark-scheme. The pre-board exam takes place in December when the syllabus is complete. Prior to that, grade 12 students take the First Comparative

<sup>xiii</sup> In each school, there are several sections (classes) of grade 12.

<sup>xiv</sup> The science subjects' group consists of physics, chemistry, biology, biotechnology and maths.

<sup>xv</sup> This is not surprising as the mandate that teachers must have a training certificate, and the fact that the trained teacher salary grade is very significantly higher than the untrained grade in private schools, has led to many low-quality teacher training colleges being established/accredited to provide such training certificates, colleges which sell such certificates with perfunctory courses, without genuinely taking teachers through a proper training course. This is much raved in the media and the accusations of corruption and low quality of training colleges has led the National Council for Teacher Education (NCTE) to suspend giving any further colleges accreditation from 2018 onwards.

<sup>xvi</sup> Including the 2% observations in the smallest classes that have been excluded in the regressions.

<sup>xvii</sup> If these few observations were disregarded, there is hardly a positively sloped portion: as class size rises from 24 to 27, pupil achievement increases minimally by 0.02 SD. Only 0.77% observations lie in class-sizes 12 - 17; and 2.91% lie between class-sizes of 24 to 27. Thus, 5.02% of observations lie in class sizes 12 to 27.

<sup>xviii</sup> (though achievement dips by 0.05 SD as class size increases from 24 to 37, it rises by 0.07 SD as class size increases from 37 to 50, i.e. the quartic form imposes an inflexion point)

<sup>xix</sup> We consider a student as studying in the science stream if his/her core subject combination has Physics, Chemistry and Mathematics (PCM) or Physics, Chemistry and Biology (PCB) out of 6 subjects. Students without PCM or PCB combinations are categorized as non-science students.

<sup>xx</sup> We checked the robustness of the results of non-science stream with splines. The results suggest that initial bump in achievement of non-science students as seen in figure 5, is actually flat as the coefficient of class size 27 to 39 and 40 are not statistically different from the base category.

<sup>xxi</sup> In the equation that imposes a quadratic, performance gently increases between class-sizes 35 to about 50. In the equation that allows splines (dummy variables) for different class-size categories, the relationship is roughly flat.

<sup>xxii</sup> 1 SD of achievement in the school's (pre-board) exam is 18.38 per cent mark. This is the mark used throughout the analysis.

<sup>xxiii</sup> Enrolment and total number of teachers at secondary and higher secondary level are 26276072 and 941725 respectively in 2016-17. Source: <http://udise.schooleduinfo.in/>

<sup>xxiv</sup> We are unable to compute the effective pupil teacher ratio (EPTR) at secondary and higher secondary school levels due to lack of any survey data on pupil and teacher absence rates for these levels.

<sup>xxv</sup> A PTR of 40 is roughly in the middle of the flat range of the relationship, i.e. 40 is roughly half way between class-sizes 27 and 51, where the relationship between class-size and achievement score is approximately flat/non-decreasing.

<sup>xxvi</sup> <https://web.archive.org/web/20140407102043/http://www.rbi.org.in/scripts/PublicationsView.aspx?id=15283> (The proportion of BPL population in India was 21.92% as per 2011-12 NSS survey)

<sup>xxvii</sup> The total number of children enrolled in classes 1 to 8 in all school types in India in 2017-18 was 187,826,622, as per UDISE 2017-18 data (<http://udise.schooleduinfo.in/dashboard/elementary#/>). Since 21.92% of the population were Below Poverty Line ([http://mospi.nic.in/sites/default/files/publication\\_reports/India\\_in\\_figures-2018\\_rev.pdf](http://mospi.nic.in/sites/default/files/publication_reports/India_in_figures-2018_rev.pdf)) as per the latest available NSS 2011-12 data estimates, and we presume this percentage remained the same in 2017-18, this means that 41,171,595 elementary school children were BPL in 2017-18.

<sup>xxviii</sup> Average MGNREGA wages was Rs. 201 in 2017-18. Source:

[https://nrega.nic.in/netnrega/writereaddata/Circulars/2058Notification\\_wage\\_rate\\_2017-2018.pdf](https://nrega.nic.in/netnrega/writereaddata/Circulars/2058Notification_wage_rate_2017-2018.pdf)

<sup>xxix</sup> For the non-remedial children who were left behind in the class when the academically weaker children were taken out for a remedial class by the teacher-aide (Balsakhi).