

Masiero, Giuliano; Mazzonna, Fabrizio; Santarossa, Michael

Working Paper

The Effect of Absolute versus Relative Temperature on Health and the Role of Social Care

IZA Discussion Papers, No. 14201

Provided in Cooperation with:

IZA – Institute of Labor Economics

Suggested Citation: Masiero, Giuliano; Mazzonna, Fabrizio; Santarossa, Michael (2021) : The Effect of Absolute versus Relative Temperature on Health and the Role of Social Care, IZA Discussion Papers, No. 14201, Institute of Labor Economics (IZA), Bonn

This Version is available at:

<https://hdl.handle.net/10419/236232>

Standard-Nutzungsbedingungen:

Die Dokumente auf EconStor dürfen zu eigenen wissenschaftlichen Zwecken und zum Privatgebrauch gespeichert und kopiert werden.

Sie dürfen die Dokumente nicht für öffentliche oder kommerzielle Zwecke vervielfältigen, öffentlich ausstellen, öffentlich zugänglich machen, vertreiben oder anderweitig nutzen.

Sofern die Verfasser die Dokumente unter Open-Content-Lizenzen (insbesondere CC-Lizenzen) zur Verfügung gestellt haben sollten, gelten abweichend von diesen Nutzungsbedingungen die in der dort genannten Lizenz gewährten Nutzungsrechte.

Terms of use:

Documents in EconStor may be saved and copied for your personal and scholarly purposes.

You are not to copy documents for public or commercial purposes, to exhibit the documents publicly, to make them publicly available on the internet, or to distribute or otherwise use the documents in public.

If the documents have been made available under an Open Content Licence (especially Creative Commons Licences), you may exercise further usage rights as specified in the indicated licence.

DISCUSSION PAPER SERIES

IZA DP No. 14201

**The Effect of Absolute versus Relative
Temperature on Health and the Role of
Social Care**

Giuliano Masiero
Fabrizio Mazzonna
Michael Santarossa

MARCH 2021

DISCUSSION PAPER SERIES

IZA DP No. 14201

The Effect of Absolute versus Relative Temperature on Health and the Role of Social Care

Giuliano Masiero

University of Bergamo and Università della Svizzera italiana

Fabrizio Mazzonna

Università della Svizzera italiana and IZA

Michael Santarossa

University of Pavia

MARCH 2021

Any opinions expressed in this paper are those of the author(s) and not those of IZA. Research published in this series may include views on policy, but IZA takes no institutional policy positions. The IZA research network is committed to the IZA Guiding Principles of Research Integrity.

The IZA Institute of Labor Economics is an independent economic research institute that conducts research in labor economics and offers evidence-based policy advice on labor market issues. Supported by the Deutsche Post Foundation, IZA runs the world's largest network of economists, whose research aims to provide answers to the global labor market challenges of our time. Our key objective is to build bridges between academic research, policymakers and society.

IZA Discussion Papers often represent preliminary work and are circulated to encourage discussion. Citation of such a paper should account for its provisional character. A revised version may be available directly from the author.

ISSN: 2365-9793

IZA – Institute of Labor Economics

Schaumburg-Lippe-Straße 5–9
53113 Bonn, Germany

Phone: +49-228-3894-0
Email: publications@iza.org

www.iza.org

ABSTRACT

The Effect of Absolute versus Relative Temperature on Health and the Role of Social Care

We investigate the effect of extreme temperatures on mortality and emergency hospital admissions, and whether local social care allows to mitigate their adverse effects. We merge monthly administrative data on mortality and hospital discharge from Italian municipalities for the period 2001-2015 with daily data on local weather conditions, and yearly data on disaggregated municipal expenditure. We compare two different measures of temperature shocks, the standard measure based on absolute levels and another measure based on deviations from local mean temperatures. We find that the former measure is more effective in capturing the adverse effects of shocks on health outcomes. In particular, extremely hot and cold days increase mortality rates and hospital admission rates for both cardiovascular and respiratory diseases. These effects are mostly driven by the oldest age group and partially by young children. Then, we report evidence of a mitigating effect of social expenditure on the impact of extremely hot and cold days on both emergency hospital admission and mortality rates. A back of the envelope calculation suggests that the additional social care expenditure is fully compensated by the benefits arising from the lower impact of temperature shocks.

JEL Classification: I18, Q51, Q54

Keywords: hospital admissions, mortality, social expenditure, temperature shocks

Corresponding author:

Fabrizio Mazzonna
Università della Svizzera Italiana
Institute of Economics
via Buffi 13
6900 Lugano
Switzerland
E-mail: fabrizio.mazzonna@usi.ch

1 Introduction

Global warming as a result of increasing greenhouse gas emissions is associated with a rise in the intensity and the frequency of extreme weather events (Stott, 2016) with harmful effects on human well-being, especially health and longevity. These effects are likely exacerbated by population aging that enlarges the share of the vulnerable population. The design of (costly) policy measures meant to reduce greenhouse gas emissions, and so the potential impact on population health, relies on precise estimates of the effects of extreme weather conditions that vary over time and across space. To this end, the recent literature has shown that a decline in the mortality effects of extreme temperature is moderated by human adaptation through the adoption of currently existing technologies (e.g., Barreca, Clay, Deschênes, Greenstone, & Shapiro, 2016). However, most of this literature assumes a constant relationship between temperature and population health across space, failing to account for the heterogeneity in local resilience (and adaptation) to extreme weather conditions. This might lead to a substantial underestimation of the population health cost of temperature shocks. Also, the optimal policy response might include the identification of other policy interventions, such as local social services, that can mitigate the adverse health consequences of extreme climate conditions and the utilization of expensive health care services.

In this paper we address these concerns investigating the effect of extreme temperatures on mortality and emergency hospital admission rates, and whether social care provided by local governments—targeted at the most vulnerable population—allows to mitigate their adverse effects. To this aim, we build up an extensive dataset that merges monthly administrative data on mortality from Italian provinces (which have an average size comparable to that of US counties) and hospital discharge data from Italian municipalities for the period 2001–2015, with daily data on local weather conditions and yearly data on disaggregated municipal expenditure. The fine geographical detail of our dataset and the relatively long observation window allow us to credibly and precisely estimate the non-linear relationship between extreme temperature events and population health, as well as the potential mediating role of municipal social expenditure.

Our empirical investigation follows two steps. In the first step, we identify the effect of temperature shocks on mortality and emergency hospital admission rates by comparing two different measures of temperature, one (as in the previous literature) based on

absolute levels and the other based on deviations from local mean temperatures. As standard in the literature (e.g., Barreca et al., 2016; Dell, Jones, & Olken, 2014), we use a flexible temperature-bin regression model that controls for personal income, precipitation, pollution, province-specific time trends, and municipality (or province) fixed effects, *year-by-month* and *province-by-month* fixed effects. Then, we investigate the mitigating effect of social care on temperature-related mortality and hospital admission surges. We do so by comparing the effect of extreme temperatures among groups of municipalities or provinces identified by quintiles of the year-specific distribution of per capita local government social expenditure (lagged by one year).

Our findings suggest that temperature measures based on deviations from local means are more effective in capturing the adverse effects of temperature shocks on health outcomes than measures based on temperature levels, because the former measures allow to account for heterogeneity in local resilience to climate and offsetting behaviors. Using our preferred temperature measure, we find that extremely hot and cold days increase mortality rates and hospital admission rates for both cardiovascular and respiratory diseases. For instance, one additional day with temperature above 1.5 (2) standard deviations from the local mean increases mortality rates by 0.61% (1.54%). Only cold shocks on admission rates for cardiovascular diseases do not show significant effects. These effects are mostly driven by the most vulnerable part of the population, the oldest age group (above 65 years) and, partially, young children (0–4). Then, we find evidence of a mitigating effect of social expenditure on the impact of extremely hot and cold days on both emergency hospital admission and mortality rates. This result is mainly driven by the beneficial effects of social expenditure for the elderly, who are among the main consumers of social care services and the most vulnerable when extreme temperatures hit a region.

Building on our results, we provide an assessment of the health costs associated to our measure of extreme temperature. We find that temperatures above or below 1.5 standard deviations (from their local mean) generate a yearly cost of about 860 Euros per capita in the 65+ population. We then calculate the potential savings generated by higher local social expenditure. Moving from the lowest to the highest quintile of municipal social expenditure allows to save up to 158 Euros per capita, which fully offsets the additional expenditure for older adults of the highest quintile (117 Euros).

Temperature peaks have relevant effects on the cardiovascular and the respiratory systems. Indeed, these systems are the most subject to stress during hot periods, leading

to diseases such as stroke, myocardial infarction, hypothermia and pneumonia (Basu & Samet, 2002). In particular, cold temperatures increase respiratory diseases due to the reduced resistance of the immune system to infections. Similarly, cold temperatures exacerbate cardiovascular diseases, such as ischemic heart and cerebrovascular illness, because of the higher risk of thrombosis and other cold-driven cardiovascular reflexes (The Eurowinter Group, 1997). The elderly and children, in particular those aged less than 5 years, are more vulnerable to extreme weather conditions because their body temperature regulation is less responsive as compared to other people, and they are more likely to depend on others for the regulation of environmental temperature levels (Basagaña et al., 2011; Basu & Ostro, 2008). While the literature provides evidence of heat-related surges in hospital admission and mortality rates, the effect of cold temperatures on these health outcomes is still inconclusive (Karlsson & Ziebarth, 2018).

The economic literature analyzes the impact of temperature shocks on a variety of aspects, including health.¹ Deschênes and Moretti (2009) and Deschênes and Greenstone (2011) find that average daily temperatures above 80°F or below 30°F increase mortality rates in the US. Similarly, Mullins and White (2019) find that higher temperatures increase suicides, visits to emergency departments for mental illness, and self-reported days of poor mental health. Other studies show that long-run exposure to high or cold temperatures makes the population resilient against weather conditions and reduces mortality rates. The effect of hot temperatures is mitigated by the adoption of air conditioning systems (Barreca, Clay, Deschênes, Greenstone, & Shapiro, 2015; Barreca et al., 2016), but outdoor workers are exposed to a higher risk of facing heat-related diseases (Dillender, 2019). Also, extreme temperatures may anticipate adverse health outcomes (harvesting effect), which would have occurred shortly afterwards (up to 30 days) even in the absence of temperature shocks (Deschênes & Moretti, 2009).

Conversely, evidence relating the supply of social services to health outcomes and health care services utilization is spurious. Of relevance is the recent study by Costa-Font, Jimenez-Martin, and Vilaplana (2018) who exploit a policy on the introduction of social care subsidies in Spain to show that hospital care utilization and costs decrease because they are replaced by cheaper social care services.²

¹See Dell et al. (2014) for a review of studies and applied methodologies on the impact of climate shocks on economic aspects.

²Other studies show that social expenditure has both a direct and an indirect effect on health. The former effect is due to an easier access to health care services and prevention (Bradley, Elkins, Herrin, & Elbel, 2011; Olsen & Dahl, 2007; Stuckler, Basu, & McKee, 2010; Vavken, Pagenstert, Grimm, & Dorotka,

We provide two main contributions to the literature. First, we show that our measure of temperature shocks based on local “anomalies”, that accounts for within-area mean and standard deviations, better capture the negative health consequences of shocks as compared to standard measures based on absolute temperature levels. Indeed, if people in places that are more often affected by high temperatures are more likely to follow offsetting behaviors and adapt, the specification of shocks in levels might over estimate adaptation. As a result, the estimates of future health cost might be largely underestimated.

Second, we shed light on the role of social expenditure in mitigating the adverse health outcomes and hospital care utilization in Italy. Although we do not leverage on a quasi-experimental variation in social expenditure, a set of additional results arguably show that our findings are not driven by other unobserved confounding municipal characteristics. In particular, using per capita municipal expenditure for the general administration, instead of municipal social expenditure, we do not find any evidence of mitigating effects. We can also exclude the possibility of reverse causality since temperature shocks are predictable only in the very short-run, while the local government expenditure to prevent surges in mortality and emergency hospital admissions is set at the beginning of the year. Moreover, the identification of temperature shocks based on local temperature anomalies, instead of levels, prevents the possibility that municipalities usually affected by extreme temperatures respond by constantly spending more on social care services. Related to this contribution, we also quantify the costs and benefits associated to higher local social expenditure.

The remainder of the paper is structured as follows. Section 2 describes the hospital care system and the role of social expenditure in Italy. Section 3 explains the data used in the study, how temperature shocks are measured and the identification strategy. Section 4 reports the results on the impact of temperature shocks on health outcomes, and analyzes the mitigating effect of social expenditure. At the end of this section, we also provide a back-of-the envelope calculation assessing the net benefits of social care. Section 5 concludes.

2012), while the latter effect originates from the positive association between spending and socioeconomic status (Dahl & van der Wel, 2013; Gesthuizen, Huijts, & Kraaykamp, 2012). However, these results are inconclusive and do not address endogeneity of social expenditure.

2 Institutional setting

2.1 Hospital care in Italy

The Italian National Health Service (NHS) was established in 1978 and builds on the principles of universal coverage, solidarity and human dignity (Italian law 833/1978). The NHS is subdivided into regional health services (RHSs) which are responsible for the local provision of health care services. The NHS, together with the central government, establishes the essential benefit package that RHSs deliver to the population, and provides the financial resources to fund the services. Both elective and emergency hospital care is included in the essential benefit package. Hospital care is generally provided at zero fee or against a limited out-of-pocket contribution in order to mitigate inefficient hospital utilization. Waiting lists serve as a tool to match scarce supply with the excess of demand for elective hospital admissions generated by free access, although the gatekeeping role exerted by general practitioners ensures, at least partially, that hospital referrals are based on medical needs.

Conversely, emergencies are treated in emergency wards that are organized across the country according to a hub-and-spoke model. Residents can access emergency wards across the entire country for free when in need.³ The order in which patients are treated in emergency wards is related to the severity of their illness, with the more severe cases having the highest priority over less urgent cases. If urgency does not allow the person in need to reach the emergency ward, an emergency call center can be contacted for free and an ambulance reaches the sick individual, provides first aid and carry him/her to the closest hospital.

2.2 Social care in Italy

The organization and the provision of social assistance is delegated to local public authorities, namely regions, provinces (whose size is on average comparable to the US counties) and municipalities. Municipalities are the main providers and funders of social care services and have administrative and organizational responsibilities on the provision of social assistance and charity.⁴

³Some regions, such as Trentino Alto Adige and Lombardia, adopt a co-payment system (*ticket*) for non urgent illnesses as a deterrent for over-utilization of emergency wards.

⁴Art. 118 of the Italian Constitution. An exception is the special-statute region of Valle d'Aosta where social care is provided by the province.

Since 2000, municipalities have to plan, achieve and organize the local network of social care, and to provide economic and non-economic services to the community.⁵ In practice, social care is often provided by consortia of municipalities (*Unioni di comuni*) or mountain communities (*Comunità montane*), especially for small municipalities, and is funded by transfers from member municipalities to achieve a more efficient provision of services. In addition, local health authorities (LHAs) can integrate the provision of social care with health care services, as it happens for instance in the Lombardy region.

In 2015, total social expenditure in Italy amounted to almost 7 billion Euro, which corresponds to about 112 Euro per individual. About 67% of total social expenditure is funded by local governments, consortia of municipalities and mountain communities. Social services provided by municipalities are mainly addressed to two groups: families with children and the elderly/disabled (mostly aged 65+), who absorb 38.5% and 44.3% of the social care budget, respectively. The remaining 17.2% of the resources is allocated to the poor (7%), immigrants (4.2%), the addicted (0.4%) and the administration (5.6%) (Istat, 2017).

The resources allocated to families with children are mainly used for subsidies (32.8%) and semi-residential services (32.0%). Among the resources allocated to the elderly/disabled, 44.2% are used to provide services at home (mainly home care) and 25.3% for residential services (mainly from nursing home providers). The remaining resources are devoted to subsidize income, to help families treating the elderly at home, and to reimburse nursing home and home care fees (15.5%), and to provide other professional services (7.4%).

3 Methods

3.1 Data

Mortality—We collect data on the monthly number of deaths by province and 5-year age groups for the period 2001–2015 from the Italian Institute for Statistics (ISTAT). We express mortality rates as the number of deaths per 10,000 individuals both for the total and the age-group-specific population.⁶

Hospital statistics—We collect data on the universe of hospital discharge records relative

⁵Law 328/2000.

⁶Since the number of provinces changed from 103 to 110 between 2001–2015, we replicate the 2015 structure of provinces and allocate deaths based on the age-group-specific population of municipalities that changed province.

to hospital admissions for cardiovascular and respiratory diseases for the period 2001–2015 provided by the Italian Ministry of Health. These data include personal information on patients (age, gender and municipality of residence) and on the hospitalization (day of admission, ICD9 code of the primary disease and type of admission, namely emergency or elective). In this study, we focus on emergency hospital admissions because temperature shocks likely have an immediate effect on health, while we use elective hospitalizations as a placebo. We aggregate hospital admissions by municipality and express them in rates per 10,000 individuals, both for the total and the age-group-specific population, using yearly population data from the Italian Institute for Statistics (ISTAT).⁷

Weather statistics—Data on daily weather conditions for the period 2001–2015 are provided by the National Climatic Data Center (NCDC). In particular, we use data from the Global Surface Summary of the Day (GSOD). These data include information on average daily temperature and precipitation rates by weather station. On average, the number of weather stations are 110 (about one per province), but the number varies over time. We describe how we measure temperatures at provincial and municipal level in the next section. Moreover, we obtain data on pollution for the period 2001–2015 from the European air quality database (AirBase). This database collects daily station-level data on a large number pollutants. Following Lagravinese, Moscone, Tosetti, and Lee (2014), the pollutants that we consider are ozone (O_3), nitrogen dioxide (NO_2), carbon monoxide (CO) and particulate matter with a diameter below $10 \mu m$ (PM10). See the next section for a description of pollution measurement at municipal level.

Municipal data—Ideally, we would measure social care by means of data on social services provided by each municipality. Unfortunately, precise data are not available and are missing for many municipalities and years. One alternative would be to exploit limited data on home care services (ADI) provided by local health authorities and aggregate them at province level. These data are available only for about 40% of provinces from 2011, and 70% of provinces from 2012. Moreover, data do not include social services provided at local (municipal) level. A valid alternative to measure social care at local level is therefore provided by municipality social expenditure. Yearly balance sheet data of Italian municipal governments are obtained from the Italian Ministry of the Interior for the period 2000–2015. The spending category of interest, *social expenditure*, aggregates expenditure for

⁷Since a small number of municipalities merged over the period 2001–2015 and some variables are available only for the 2016 municipality structure, we replicate the 2016 municipality structure to construct a balanced panel.

the universe of social services, which are classified into fixed and centrally defined sub-categories.⁸

Finally, we collect data on yearly personal income at municipal level for the period 2001–2015 from the Ministry of Economics and Finance. Note that both income and social expenditure are expressed in Euro per capita and deflated using the consumer price index to obtain real values at 2010 prices.

3.2 Measurement of temperature shocks

Starting from daily weather station data, we generate monthly temperature measures at municipal and province level. In what follows, the term *area* refers to both institutional levels. First, we calculate the average daily temperature in an area as the distance-weighted average daily temperature measured at weather stations located within a radius of 40 km and 100 km from area centroid. For areas where the distance between the centroid and the closest weather station exceeds the threshold (20% of the municipal sample, none of the provincial sample), we assign the average daily temperature of the closest weather station.⁹ The average temperature in area i on day d is given by the following equation:

$$T_{id} = \sum_k w_{ik} T_{kd} / \sum_k w_{ik} \quad (1)$$

with T_{kd} being the average temperature registered by the weather station k on day d , and w_{ik} being the inverse of the distance between the centroid of area i and the weather station k . Note that we use this approach also to measure monthly precipitation rates and pollution at municipality and provincial levels.

Figure 1 illustrates average temperatures for the period 2001–2015 by municipality. We clearly observe some spatial correlation in temperatures between neighboring municipalities, which is due to the construction of temperature measures based on data from a limited number of weather stations. Average temperatures vary remarkably across the country, from 37.6°F to 68°F. Temperatures tend to be higher in the South of Italy, especially on the sea side, and on the Islands (Sicily and Sardinia), while temperatures tend

⁸Generally, sub-categories do not reflect the actual services provided by the municipality. Indeed, a comparison between social expenditure reported in balance sheet sub-categories and expenditure reported in the surveys on local government social expenditure performed by ISTAT since 2013 highlights that balance sheet spending categories are not sufficiently detailed to allow an assessment of expenditure by type of service provided.

⁹We test the robustness of our results to the inclusion/exclusion of these municipalities in the later Section 4.

to be colder in the North and along the Apennine chain.

Following the previous economic literature (e.g., Barreca, 2012 and Barreca et al., 2016), we classify daily temperatures into temperature bins and collapse the data by month, so that each bin measures the number of days per month falling within the specified temperature range. We employ two approaches to define temperature ranges. First, as standard in the previous literature, we classify temperatures into 10°F bins, from 20°F to 90°F. Days with temperatures falling below 20°F or above 90°F are grouped into separate variables. This approach allows us to measure the objective exposure of population to temperature levels, but cannot take into account the heterogeneous effects of temperature on population health generated by the local resilience to weather conditions due to adaptation and offsetting behaviors.

In the second approach, we classify daily temperatures based on deviations from area-specific average temperatures for the period 2001–2015. More specifically, we create a set of variables measuring the number of days per month with temperature falling within 0.5 standard deviation (SD) bins relative to the area-specific temperature. Our temperature bins range from -2 SDs to +2 SDs. As for absolute temperatures above, days with temperature falling below and above these thresholds are grouped into separate variables. Note that a day with average temperature deviating by more (or less) than +2 SDs (or -2 SDs) from the area-specific mean implies that the daily temperature exceeds the percentile 97.7 (or falls below the percentile 2.3) of the local temperature distribution. This corresponds approximately to the definition of extremely hot (or cold) days provided in previous epidemiology studies (e.g. Gasparrini et al., 2015; Karlsson & Ziebarth, 2018). Moreover, average temperature levels in the most extreme bins (± 2 SD), which are equal to 26.5°F and 82.5°F for negative and positive deviations respectively (see Table 1), are close to the thresholds adopted in the economic literature to identify hot (above 80°F) and cold days (below 30°F), but show much more variability. Indeed, Table 1 shows that temperature level ranges largely overlap between temperature deviation bins. The minimum temperature in the highest-deviation bin (above 2 SDs) is 11°F below the maximum temperature in the lowest deviation bin (below -2 SDs). This confirms that different areas of the country are exposed to heterogeneous temperature levels (e.g., North vs. South, mountain vs. valley, rural vs. urban areas), and suggests that temperature deviations may be preferable to temperature levels to measure weather shocks at local level.

As a robustness check, we extend the temperature-deviation approach to account for

seasonal heterogeneity in temperatures across areas. To this aim, we generate negative temperature deviation bins relative to the area-specific mean temperature during Autumn/Winter months (October-March), and positive temperature deviation bins relative to the area-specific mean temperature during Spring/Summer months (April-September). Relative to the baseline temperature deviation approach, the use of seasonal deviations further accounts for the fact that season-specific temperatures may be heterogeneous across areas, but the variability in temperature deviations may be reduced.

3.3 Descriptive statistics

Since disaggregated data on mortality are available only at province level, we work with two datasets. The province-level dataset includes 19,800 *province* \times *year* \times *month* observations for the period 2001–2015, but we drop 180 observations from the province of Aosta in the region Valle d’Aosta for the reason described above. The municipality-level dataset is composed of 1,436,568 *municipality* \times *year* \times *month* observations for the period 2001–2015. We exclude observations from municipalities located in the region Valle d’Aosta, since in this region social care is provided at provincial level (see Section 2.2). We further drop municipalities with incomplete data on weather, pollution, personal income and municipal government social expenditure. This leaves us with a final sample composed of 1,304,928 observations.

Health outcomes—Panel A of Table 2 reports descriptive statistics of mortality rates and emergency hospital admission rates per 10,000 individuals.¹⁰ Emergency hospital admission rates show more variability than mortality rates. This is partly due to the fact that mortality rates are aggregated by province while hospital admission rates by municipality.

Figure 2 illustrates the trends in mortality and emergency hospital admission rates aggregated by year. It is worth noting that the mortality rate shows three clear spikes in 2003, 2012 and 2015, which corresponds to three hot waves in Italy. As expected, the mortality rate clearly drops after these spikes. Similar spikes are not observed in the hospital admission rates for cardiovascular and respiratory diseases. However, we observe a marked decreasing trend for cardiovascular diseases over the observation window, from almost 150 to 116 admissions per 10,000 individuals (blue solid line in Figure 2b).

Figure 3 illustrates average normalized yearly cycles (mean = 1) in mortality rates and

¹⁰Note that all statistics presented in Table 2 are weighted by the population.

emergency hospital admission rates. Both mortality and hospital admission rates show some evidence of seasonal cycle with peaks in winter months (December-February). This cycle is particularly pronounced for respiratory diseases with rates exceeding the mean by more than 30% in January.

There is also evidence of substantial geographical variation (Figure 4). Mortality rates are very heterogeneous across the country with the South and the Islands showing lower mortality rates as compared to the other regions, except for the regions Trentino Alto Adige and parts of Lombardia and Veneto (Figure 4a). For hospital admissions the North-South gradient is less clear, but overall there is large heterogeneity also within regions.

Temperatures—Panel B of Table 2 reports descriptive statistics for the number of days per month in each temperature level bin, while Panel C reports descriptive statistics of the number of days per month in each temperature deviation bin. More than 85% of days have average temperatures ranging between 40°F and 80°F, or between -1.5 SDs below the municipality-specific mean and 1.5 SDs above. Finally, it is worth noting that extreme bins for temperature below 20°F and above 90°F have lower temperature mean and higher maximum values than extreme bins for temperature deviations ($\pm 2SD$). This indicates a lower within-month variation in temperature level bins as compared to temperature deviation bins.

3.4 Identification strategy

To identify the causal impact of temperature shocks on health outcomes, we specify the following flexible temperature-bin OLS regression model:¹¹

$$H_{ipmy} = \sum_j \beta_j T_{jimy} + X'_{imiy} \gamma + \alpha_i + \theta_{my} + \rho_{pm} + \delta_p t_{pmy} + \varepsilon_{ipmy} \quad (2)$$

with H_{ipmy} being the emergency hospital admission rate per 10,000 individuals for cardiovascular or respiratory diseases in municipality i , province p and month m of year y . T_{jimy} is the number of days in month m of year y with average temperature falling into temperature bin j , and β_j is its parameter. This flexible specification of population exposure to temperature allows us to identify a non-linear relationship between weather conditions

¹¹Since the data-generation process has a count nature, count data models may be preferable to OLS models. However, count data models rely on maximum likelihood estimation (MLE) and, since the size of the dataset is very large and we need to control for a very large set of fixed effects for a valid identification of the effect of temperatures on health, the computational time is extremely high (e.g. 160 iterations in one week) and the MLE hardly converges.

and mortality rates. As described in Section 3.2, temperature bins are either 10°F bins or 0.5 SD bins relative to the municipality-specific mean temperature for the period 2001–2015. When we use bins based on temperature levels, the reference temperature effect is provided by the 50-60°F bin. When we use bins based on temperature deviations, the reference effect of temperature deviations is provided by the two bins from -0.5 to 0.5 SDs. In this way, the model controls for 8 temperature bins independently from the adopted measurement approach.

X'_{ipmy} is a vector of time-varying control variables, namely the average monthly precipitation rate, average monthly pollution (O₃, NO₂, CO and PM10) and the natural logarithm of the yearly average personal income. α_i are municipal fixed effects and capture time-invariant unobserved province-specific characteristics that determine heterogeneity in hospital admission rates. θ_{my} are *month* × *year* fixed effects and capture period-specific shocks common to all municipalities, including the yearly cycles in mortality described in Section 3.3, and in temperature levels and deviations. Moreover, we control for *province* × *month* fixed effects (ρ_{pm}) and province-specific time-trends ($\delta_{pt_{pmy}}$) to account for heterogeneity in yearly cycles and trends in mortality rates between provinces. Finally, ε_{ipmy} is an *iid* error term. In the case of mortality, we estimate an equivalent model at province level because of data restriction described before.

The parameters of main interest are the β_j s, which measure the causal effect of temperatures on health outcomes. In particular, they measure the effect of one additional day with average temperature in bin j on mortality and hospital admission rates. The validity of our identification strategy is ensured by the inclusion of temporal and spatial fixed effects, which account for unobservable differences characterizing heterogeneity in health outcomes and exposure to extreme temperatures between municipalities and over time. Clearly, cold shocks may be more frequent in mountain areas in Winter periods, while hot shocks in the South and in large urban centers during Summer. This issue justifies the inclusion of a large set of fixed effects. Indeed, municipality and province fixed effects account for fixed differences in both health outcomes and exposure to temperature levels between areas, and *month* × *year* fixed effects capture seasonal differences in mortality and hospital admission rates (e.g. January vs. June), and differences across months of various years (e.g. January 2001 vs. June 2003) common to all areas. Moreover, *province* × *month* fixed effects capture fixed heterogeneity in health outcomes and temperature variations within (e.g. January vs. June in the province of Bergamo) and between provinces (e.g.

June in the province of Bergamo vs. June in the province of Palermo). This includes offsetting behaviors such as migration to areas that allow to avoid extreme temperatures. Finally, province-specific time trends allow for heterogeneous tendency in mortality and hospital admission rates across provinces.¹²

By construction, weather shocks are spatially correlated because temperature measures are weighted sums of temperatures gathered at weather stations nearby (see Section 3.2). This concern is particularly relevant when the model is estimated at municipal level since number of weather stations is relatively low as compared to the number of municipalities. Conversely, all provinces have at least one weather station located within the specified radius of 100 km, and 80% of them within a radius of 40 km. Therefore, to account for spatial and serial correlation within provinces we use robust standard errors clustered by province. Moreover, since municipalities differ in size and, therefore, in the amount of people exposed to extreme temperatures, we follow previous studies (e.g. Barreca et al., 2015; Deschênes & Moretti, 2009) and weight our regressions by the population.

The effect of temperatures on health outcomes likely differs by the degree of vulnerability of the population. Hence, we repeat the estimation of Equation 2 by age group. In particular, we analyze the impact of temperatures on the age groups 0-4, 5-24, 25-44, 45-64, and over 65 years. We weight the regressions by the age-group-specific population. This strategy allows us to check also the robustness of our estimation strategy since less vulnerable age groups, such as the 25-44 age group, should face less adverse effects on health when temperature shocks occur.

To further ensure the validity of our identification strategy, we run several robustness checks. First, we check the sensitiveness of our results to short-term displacement (or harvesting) in health outcomes. Several studies show that health problems are anticipated by extreme weather shocks, and would have occurred shortly afterwards even in the absence of adverse weather events (e.g. Barreca, 2012; Deschênes & Moretti, 2009). Second, we estimate the impact of extreme temperatures on elective hospital admission rates for cardiovascular and respiratory diseases. Elective hospital admissions are not expected to be affected by temperature variations conditional on municipality (or province), $month \times year$ and $province \times month$ fixed effects, because these admissions are planned and regulated by waiting lists (see Section 2.1). Finally, note that the models specified in Equation 2 provide an intrinsic robustness check for the effect of temperatures on health outcomes.

¹²In a preliminary analysis, we also included the second-order terms of province-specific time trends. However, we did not find different results from those presented later in the paper.

The central temperature bins should not cause significant effects on health, and the effect should grow as days become hotter or colder. Therefore, the coefficients of temperature bins close to the reference bin should be lower in magnitude as compared to coefficients of bins more distant from the reference bin.

The mediating role of local social expenditure—The availability of (local) social services may allow to take care of the vulnerable population at home or in dedicated social care units (either called social, community or recreation centers), and hence to prevent the adverse effects of extreme weather conditions on health. To explore these effects, we analyze whether areas with higher social expenditure face lower mortality and emergency hospital admission rates when extreme temperature shocks occur. We first split our sample into 5 equal-sized groups based on quintiles of the year-specific distribution of per capita province or municipal government social expenditure lagged by one year (see Table A.1). Then, we re-estimate Equation 2 separately for the first, the central (second to fourth) and fifth groups of social expenditure quintiles, and for each age group and type of disease.¹³ Since we repeat the classification of municipalities in each year, we can create time-varying groups, and therefore account for social expenditure adjustment over time.¹⁴ Indeed, generating time-invariant groups would require to assume that municipalities do not adjust social expenditure levels over the 15-year period, which is very unlikely since policies and budget constraints have changed between 2001 and 2015. If the group composed by the lowest-spending municipalities shows higher effects of extreme temperatures on mortality and hospital admission rates as compared to groups composed by higher-spending municipalities, this would suggest that social expenditure has a mitigating effect on adverse health outcomes.

Since extreme temperature shocks are predictable only in the very short-run (about one week of prediction), municipal governments cannot adjust social expenditure to prevent surges in mortality and emergency hospital admission rates. Therefore, if social expenditure is able to mitigate the adverse impact of temperatures on health, this is an exogenous effect determined by local government decisions on the provision of social care

¹³We prefer to run separate regressions for each sub-sample rather than running a single regression with interaction terms between temperature bins and social expenditure quintile dummies, because the latter approach requires more parameter restrictions and would complicate the interpretation of our findings due to the large set of temperature bins.

¹⁴Per capita social expenditure at provincial level is measured as the population-weighted sum of per capita social expenditure of municipal governments belonging to the province.

services, which are established before the occurrence of, and therefore independently from, temperature shocks.

Considering that social expenditure targets mostly the oldest and the youngest population (see Section 2.2), we further investigate its mitigating effect on different age groups, which also provides a sort of placebo test of our hypothesis. Moreover, ensure that we are not confounding the effect of local social expenditure with other municipality characteristics, we repeat the heterogeneity analysis using the per capita municipal expenditure for the general administration instead of the social expenditure. Since the general administration does not provide services related to health or social care, it is not expected to affect health outcomes when extreme temperature shocks occur.

4 Results

4.1 Effect of temperatures on emergency hospital admissions and mortality

Figure 5 illustrate the estimated effects of temperature level and deviation bins on mortality (5a and 5b) and emergency hospital admission rates for cardiovascular (5c and 5d) and respiratory diseases (5e and 5f). In each graph, the dots represent the estimated coefficients of temperature bins while the vertical lines indicate their 95% confidence intervals. Each coefficient measures the impact of one additional day in a temperature bin on health outcomes relative to the impact of one day in the reference bin (50-60°F for temperature levels and -0.5 SDs to 0.5 SDs for temperature deviations). To facilitate the interpretation of the results and their comparability, the coefficients have been standardized (divided by the population-weighted mean), and so can be interpreted as percentage changes.¹⁵

Starting from the absolute temperature estimates, we find that mortality rates significantly increase when average temperature exceed 80°F (Figure 5a). One additional day with average temperature between 80°F and 90°F increases the mortality rate by 0.32%, and the effect increases to 1.38% (with very large standard errors) when temperatures exceed 90°F. The estimated effect of hot days are slightly larger than the effect estimated in the US (e.g., Barreca et al., 2016; Deschênes & Greenstone, 2011), and lower than the

¹⁵We avoid the log-transformation because of the substantial number of observations with zero hospitalizations, especially in the age-group analysis.

effect estimated in Germany (Karlsson & Ziebarth, 2018).¹⁶ Conversely, cold days do not show significant effects on mortality. Moreover, emergency hospital admission rates for cardiovascular (Figure 5c) and respiratory diseases (Figure 5e) do not show significant variations when temperature levels grow. If ever, the coefficients become negative and statistically significant when the average temperature falls below 20°F.

When using temperature deviation bins, we show that extreme temperatures (both hot and cold) have significant effects on all health outcomes. The effects of positive temperature deviations on mortality rates are significant when temperatures exceed the local mean by more than 1.5 SDs (Figures 5b). In particular, the effects of one additional day with temperature above 1.5 and 2 SDs are equal to 0.61% and 1.54%, respectively. Moreover, also negative deviations show significant and increasing effects on mortality as temperatures fall. The effects of one additional day with temperature below -1, -1.5 and -2 SDs are equal to 0.18%, 0.29% and 0.74%, respectively. Similar evidence is found for hospital admissions, though the estimated effects for hot days are lower in magnitude and, as expected, admissions for respiratory diseases are particularly sensitive to negative temperature deviations. It is also reassuring that temperature deviation bins close to the reference bin do not show any significant effect on hospital admission rates, and the magnitude and significance of this effect grow with deviations of temperature from the mean.

All in all, the comparison of the two methods clearly suggests that the estimates based on absolute temperatures are likely to be confounded by local adaptation and offsetting behavior that mitigate the impact of extreme weather conditions. Moreover, since Italy is a country with a very heterogeneous exposure to temperature levels, as the remarkable overlapping of temperature ranges across temperature deviation bins suggests (see Table 1), the deviation approach likely provides a more precise identification of the impact of weather variations on health outcomes.

4.2 Analysis by age group

The impact of extreme temperatures on health outcomes may differ across age groups because some of them, such as children and the elderly, are relatively more vulnerable to extreme weather conditions. This is due to the fact that their body is less responsive to

¹⁶These differences may be due to heterogeneity in the degree of diffusion of air conditioning systems, local climatic conditions or time periods under investigation.

temperature changes as compared to the body of adults, and they depend on other people for the regulation of environmental temperature. Therefore, we re-estimate Equation 2 for the age groups 0-4, 5-24, 25-44, 45-64, and over 65 years using the temperature deviation approach. The results are summarized in Table 3 for the most extreme deviation bins (+2 SDs and -2 SDs), i.e. those that cause the largest and the most significant effects on the entire population, according to our estimates (see Section 4.1).

Cold days significantly increase mortality rates only for the oldest age group. Conversely, extremely hot days affect mortality rates of the population aged 25 years or older. The result on mortality for the younger age groups is consistent with Dillender (2019), who shows that outdoor working conditions exposes them to weather shocks with limited possibility of prevention.

The impact of extreme temperatures on emergency hospital admission rates for cardiovascular and respiratory diseases shows significant effects only in the youngest and the oldest age groups. Children face significant surges in hospital admissions for respiratory diseases when both hot and cold days occur, while admissions for cardiovascular diseases occur only with hot days. The elderly face significant surges in hospital admission rates when extreme temperature shocks occur for both types of diseases, though the magnitude is lower as compared to children, except for the impact of cold days on cardiovascular diseases.

4.3 The role of local social expenditure

We now investigate whether (local) social expenditure allows to mitigate the negative health effect of extreme weather conditions. Following the strategy described in Section 3.4, we split the sample into 5 equal-sized groups based on quintiles of the year-specific distribution of the per capita local government social expenditure lagged by one year. Then we estimate Equation 2 separately for the first, the central (second to fourth), and the fifth quintiles using our preferred specification with temperature deviation bins. The results are reported in Table 4. The table shows clear evidence of a gradient in the effect of interest related to the level of expenditure, especially for hospital admission where we can fully exploit the municipal level variation in social expenditure. The estimated negative effect of extreme weather conditions is particularly large in the lowest expenditure quintile. This effect is below the average effect reported in Figure 5 and in the central expenditure quintiles group, while point estimates are very close to zero in the highest

spending quintile. In the case of mortality, where data are aggregated at province level, the expenditure gradient is less clear, but still the estimated effects of both extremely hot and cold temperatures in the high expenditure quintile are close to zero. We also test the difference across quantile groups. While the difference between the first and the last quintile is always statistically significant at conventional levels the difference between the first and the central quintile group is statistically different at 10% level only for the effect of hot days on hospital admissions for respiratory problems.

Since social expenditure mostly targets the elderly and the children (see Section 2.2), we further investigate whether there are heterogeneous mitigating effects on adverse health outcomes by age groups when extreme weather events occur (Table A.2). As expected, the mitigating effect of social expenditure on health outcomes estimated in Table 4 is driven entirely by the elderly group (65+), where differences across social expenditure groups are also more precisely estimated than those for the whole population. Although social expenditure also targets children, we are not surprised to find unclear evidence of a gradient for this age group. The services provided to this age group, mainly expenditure and subsidies for childcare services, should not affect children exposure to the negative effect of weather shocks.

Our results of the effect of social expenditure on hospital admission rates are in line with the findings of Costa-Font et al. (2018), who show that subsidizing social care decreases hospital admissions in favor of less expensive social services. Municipalities with higher spending levels for social care face lower emergency hospital admissions when extreme temperature shocks occur. This is because the population at risk, the elderly in particular, can have easier access to prevention and primary health care, at home or in semi-residential and community centers, which ensures improved assistance and monitoring and provides an alternative to emergency hospital care (Bradley et al., 2011; Vavken et al., 2012).

4.4 Robustness checks

As anticipated in Section 3.4 we run a large set of robustness checks. First, we re-estimate Equation 2 using alternative measures of temperature based on deviations from municipality- and season-specific mean temperatures. In particular, we generate 0.5 SD bins and consider positive deviations during Spring/Summer months (April–September) and negative deviations during Autumn/Winter months (October–March). Using seasonal means as a reference for temperature deviations differs from our baseline temperature

deviation approach since it takes into account that municipalities having the same average temperature may differ in the yearly temperature variations between hot and cold months.¹⁷ For both mortality and hospital admission rates, we find that the results using this alternative temperature measure are very similar to our preferred results from the temperature deviation approach (see Figure A.1 in the Appendix). This is likely due to the fact that the models in Equation 2 control for *province*×*month* fixed effects, which account for fixed heterogeneity in yearly cycles in temperatures across provinces.

Second, we run a placebo test where we estimate Equation 2 using the elective hospital admission rate per 10,000 individuals as the dependent variable. The results do not show significant coefficients, except for the positive effect of the 1-1.5 SDs bin and the negative effect of the above 2 SDs bin on respiratory diseases (see Figure A.2).¹⁸ The result of the placebo test provides strong support for our identification strategy since it confirms that the effect of extreme temperatures on emergency hospital admissions is causal and not determined by other unobserved factors correlated with temperatures.

Third, we account for the harvesting effect following the approach used by Barreca (2012) and express temperature bins as two-month moving averages.¹⁹ The results are very similar to our baseline estimates, which suggest that temporal displacement is a minor issue in our identification strategy (see Figure A.3).

We also test the robustness of our results to the the exclusion of municipalities where the distance between the centroid and the closest weather station exceeds 40 km (20% of the sample). We find that coefficients of temperature deviation bins are very similar to our baseline estimates both in magnitude and significance (see Figure A.4). Therefore, we argue that temperature measurement for municipalities far away from weather stations has a negligible effect on our estimates.

Finally, to ensure the validity of the strategy used to identify the mitigating effect of social expenditure on health outcomes, we run a placebo test where we classify municipalities based on quintiles of the year-specific distribution of the per capita local government expenditure for the general administration, which is not expected to affect health outcomes, and re-estimate Equation 2 separately for each quintile. Differently from the

¹⁷It may be the case that two municipalities (or provinces) have the same average temperature, but one municipality (or province) has hotter Summers and colder Winters as compared to the other.

¹⁸Note that, if we use temperature level bins instead of temperature deviation bins, none of the coefficients would be significant.

¹⁹We also try to use the approach proposed by Barreca et al. (2016) and to control for both current and lagged temperature bins. The results are very similar to those presented here.

analysis based on social expenditure groups, the results do not show a clear pattern that relates health outcomes to expenditure for the general administration (see Figure A.5 in the Appendix). Indeed, for several bins, we observe that the highest spending group faces the highest mortality or hospital admission rates, while the lowest spending group faces the lowest adverse health outcomes. This result is expected since services provided by the general administration are not related to the provision of health and social care, and suggests that the mitigating effect of social expenditure is not confounded by unobserved factors.

4.5 Net benefits of social care: a back-of-the-envelope calculation

We perform a back-of-the envelope calculation to monetize the health costs for the 65+ population generated by temperature shocks beyond $|2|$ SD or $|1.5|$ from municipality-specific average temperature. Then, we compare the benefits from higher social expenditure for 65+ (moving from municipalities in the first quintile to municipalities in the fifth quintile of social expenditure) with the costs associated to temperature shocks. Our calculation considers the cost for hospitalizations – direct health care costs plus costs due to days lost – and the cost due to life losses because of death. In Table 5 we report the summary of our calculation, while further details regarding the formulas applied are provided in the Appendix section *Back-of-the envelope calculation* and in Tables A.3 and A.4.

Direct health care cost per capita—we multiply per capita hospital admissions per year in hot/cold days by the cost per case (column 1 in Table 5). The case rate is derived from the average of all DRG tariffs applied to the universe of admissions in hot and cold days for cardiovascular and respiratory diseases for 65+ between 2001 and 2015 in our dataset, and is equal to €2700.

Cost for quality-adjusted days lost—it is calculated using per capita hospital admissions per year in hot/cold days as above \times the average hospital stay per case \times the yearly value of a statistical life $\times 1 \div 365$ (column 2 in Table 5). The average hospital stay in Italy for age 80-84 corresponds to 11 days and is derived from Eurostat tables (Eurostat, 2020).²⁰ We assume full quality of life for older adults, therefore each day spent in hospital has a value equal to $1 \div 365$ in terms of quality-adjusted life years. As for the cost of a statistical

²⁰In-patient average length of stay (days), age class 80-84, 2015. Retrieved from <http://appsso.eurostat.ec.europa.eu/nui/showdo?dataset=hlth.co.inpst&lang=en>.

life per year (VSLY), we consider the Italian-specific value of a statistical life calculated by Viscusi and Masterman (2017) divided by the average life expectancy in Italy (83 years): $VSLY = \text{€}62396$ (1€ \approx 1.09\$ at the end of 2015).^{21,22}

Cost of life losses– This represents the most substantial component of our calculation. We first consider the remaining life expectancy of 65+ individuals conditional on being alive at the age of 80-84: 9.12 years. This figure is derived from tables prepared by the Italian National Institute of Statistics (Istat, 2020).²³ Then, we multiply deaths in hot/cold days by the remaining life-years \times VSLY (see column 3 in Table 5).

The total cost per capita of temperature shocks is the sum of the three cost categories above (column 4 in Table 5). For our reference value of a statistical life, this cost amounts to $\text{€}128.80$ per capita, but substantially increases ($\text{€}860.45$) if we widen the range of temperature shocks to $T > |1.5|$ SD.

Then we calculate the same cost figures separately for municipalities in the first (Q1) and the fifth (Q5) quintiles of social expenditure. For each cost figure, we report the difference between Q1 and Q5 in the lower part of Table 5), which represents savings from higher social expenditure. Total cost savings per capita lay between $\text{€}71.75$ and $\text{€}158.15$, respectively for temperature shocks $T > |2|$ SD and $T > |1.5|$ SD. Since social expenditure per capita is $\text{€}24.13$ and $\text{€}289.37$, respectively for municipalities in the first (Q1) and the fifth (Q5) quintiles, the difference is $\text{€}265.24$. Approximately 44.3% of this expenditure ($\text{€}117.5$) is allocated to older adults and disabled (Istat, 2017). Consequently, all additional social expenditure for the 65+ is compensated by benefits arising from the lower impact of temperature shocks above $|1.5|$ SD (net benefits are approximately $\text{€}46$ per capita). Even in the most conservative case of temperature shocks above $T > |2|$ SD, gross benefits are significant since they represent more than 60% of the additional social expenditure.

²¹Note that the average life expectancy (83 years) is very close to the average age of death in hot/cold days in our population: 82.82 for $T > |2|$ SD and 82.66 for $T > |1.5|$ SD.

²²In the Appendix, we also consider an upper-bound value about 50% higher than our reference value, i.e. $VSLY = \text{€}100000$ (also adopted by Karlsson & Ziebarth, 2018), and a conservative lower-bound value about 30% lower than our reference value, i.e. $VSLY = \text{€}50000$.

²³Life tables, age class 80-84, 2015. Retrieved from <http://dati.istat.it/Index.aspx?lang=en&SubSessionId=8a12d711-cf8d-42f0-871b-7ef11a213510#>.

5 Conclusions

We estimate the causal impact of local extreme temperature shocks on health outcomes using monthly mortality data from Italian provinces and hospital discharge data for cardiovascular and respiratory diseases aggregated by municipality and month for the period 2001–2015. We merge these data with temperatures measured at weather stations across the Italian territory. Our identification strategy allows for non-linear temperature effects and accounts for pollution, province-specific time trends and municipality or province, *month*×*year* and *province*×*month* fixed effects. We also analyze the mitigating effect of local social expenditure on the adverse effects of temperature shocks using balance sheet data at municipality level.

We find that temperature levels do not capture the effects of temperature shocks precisely because they do not account for local resilience driven by offsetting behavior and adaptation. This also suggests that previous literature might have under-estimated the effect of temperature variations on health. This is particularly true for studies based on the US, where regional heterogeneity in climatic conditions is even more pronounced than in Italy.

Our preferred model based on deviations from municipality-specific mean temperatures shows that one additional extremely cold (below -2 SDs from the mean) and hot day (above 2 SDs from the mean) in a month increases mortality rates by 0.74% and 1.54%, respectively, and emergency hospital admission rates for respiratory diseases by 0.85% and 0.72%, respectively. Hospital admission rates for cardiovascular diseases are unaffected by cold shocks, but significantly increase by 0.52% when hot shocks occur. These effects are driven by the most vulnerable part of the population, namely the oldest age group and partially young children, although also the working-age group faces heat-related surges in mortality due to outdoor working (Dillender, 2019).

In line with Bradley et al. (2011) and Costa-Font et al. (2018), we show that municipalities in the lowest social expenditure group face higher mortality and emergency hospital admission rates as compared to municipalities with higher per capita expenditure on social services. Also in this case, the results are mainly driven by the effect of social expenditure on the elderly who benefit most from easier access to home and community care. Indeed, social expenditure allows to mitigate the effect of extreme temperatures because access to dedicated social care units, such as recreation centers, or subsidies for home care services

are effective in preventing or postponing the need for hospital care (Bradley et al., 2011; Vavken et al., 2012). Our back-of-the envelope calculation shows that the additional social expenditure of municipalities in the top quintile, relative to municipalities in the lowest quintile, is fully offset by the health benefits generated by the reduced impact of temperature shocks. Despite this expenditure is not specifically meant to mitigate the effects of temperature shocks, we testify significant spillovers arising from resources allocated to social care.

Our identification strategy does not allow to measure the direct effect of social expenditure on health outcomes, but still the results provide strong support for social expenditure as a tool to improve health outcomes and reduce costly hospital care utilization. Future research could try to quantify the degree of substitution between health and social care services, and investigate the efficient allocation of public resources to health and social care services with the aim to maximize health outcomes and minimize costs.

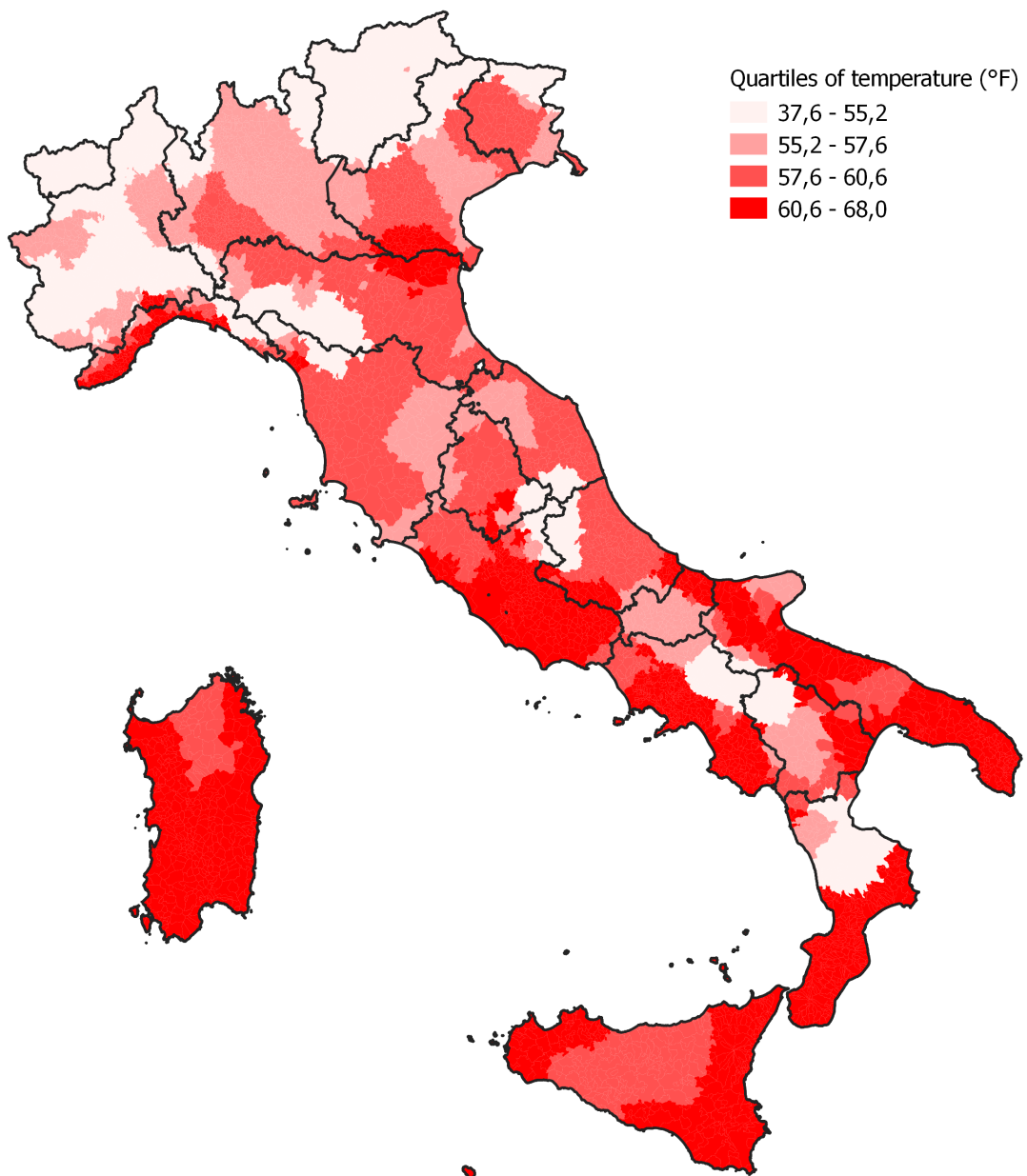
References

- Barreca, A. (2012). Climate change, humidity, and mortality in the United States. *Journal of Environmental Economics and Management*, 63(1), 19–34.
- Barreca, A., Clay, K., Deschênes, O., Greenstone, M., & Shapiro, J. S. (2015). Convergence in Adaptation to Climate Change: Evidence from High Temperatures and Mortality, 1900–2004. *American Economic Review*, 105(5), 247–251.
- Barreca, A., Clay, K., Deschênes, O., Greenstone, M., & Shapiro, J. S. (2016). Adapting to Climate Change: The Remarkable Decline in the US Temperature-Mortality Relationship over the Twentieth Century. *Journal of Political Economy*, 124(1), 105–159.
- Basagaña, X., Sartini, C., Barrera-Gómez, J., Dadvand, P., Cunillera, J., Ostro, B., ... Medina-Ramón, M. (2011). Heat waves and cause-specific mortality at all ages. *Epidemiology*, 22(6), 765–772.
- Basu, R., & Ostro, B. D. (2008). A multicounty analysis identifying the populations vulnerable to mortality associated with high ambient temperature in California. *American Journal of Epidemiology*, 168(6), 632–637.
- Basu, R., & Samet, J. M. (2002). Relation between elevated ambient temperature and mortality: A review of the epidemiologic evidence. *Epidemiologic Reviews*, 24(2), 190–202.
- Bradley, E. H., Elkins, B. R., Herrin, J., & Elbel, B. (2011). Health and social services expenditures: Associations with health outcomes. *BMJ Quality and Safety*, 20(10), 826–831.
- Costa-Font, J., Jimenez-Martin, S., & Vilaplana, C. (2018). Does long-term care subsidization reduce hospital admissions and utilization? *Journal of Health Economics*, 58, 43–66.
- Dahl, E., & van der Wel, K. A. (2013). Educational inequalities in health in European welfare states: A social expenditure approach. *Social Science and Medicine*, 81, 60–69.
- Dell, M., Jones, B. F., & Olken, B. A. (2014). What Do We Learn from the Weather? The New Climate – Economy Literature. *Journal of Economic Literature*, 52, 740–798.
- Deschênes, O., & Greenstone, M. (2011). Climate Change, Mortality, and Adaptation: Evidence from Annual Fluctuations in Weather in the US. *American Economic*

- Journal: Applied Economics*, 3(4), 152–185.
- Deschênes, O., & Moretti, E. (2009). Extreme Weather Events, Mortality, and Migration. *Review of Economics and Statistics*, 91(4), 659–681.
- Dillender, M. (2019). Climate Change and Occupational Health: Are There Limits to Our Ability to Adapt? *Journal of Human Resources*. doi: 10.3368/jhr.56.1.0718-9594R3
- Eurostat. (2020). In-patient average length of stay (days), age class 80-84, 2015 [Data file]. Retrieved from http://appsso.eurostat.ec.europa.eu/nui/-showdo?dataset=hlth_co_inpst&lang=en.
- Gasparri, A., Guo, Y., Hashizume, M., Lavigne, E., Zanobetti, A., Schwartz, J., ... Armstrong, B. (2015). Mortality risk attributable to high and low ambient temperature: a multicountry observational study. *The Lancet*, 386(9991), 369–375.
- Gesthuizen, M., Huijts, T., & Kraaykamp, G. (2012). Explaining health marginalisation of the lower educated: The role of cross-national variations in health expenditure and labour market conditions. *Sociology of Health and Illness*, 34(4), 591–607.
- Istat. (2017). *La spesa dei comuni per i servizi sociali: Anno 2015* (Report 2015). Rome, Italy.
- Istat. (2020). Life tables, age class 80-84, 2015 [Data file]. Retrieved from <http://dati.istat.it/Index.aspx?lang=en&SubSessionId=8a12d711-cf8d-42f0-871b-7ef11a213510#>.
- Karlsson, M., & Ziebarth, N. R. (2018). Population health effects and health-related costs of extreme temperatures: Comprehensive evidence from Germany. *Journal of Environmental Economics and Management*, 91, 93–117.
- Lagravinese, R., Moscone, F., Tosetti, E., & Lee, H. (2014). The impact of air pollution on hospital admissions: Evidence from Italy. *Regional Science and Urban Economics*, 49, 278–285.
- Mullins, J. T., & White, C. (2019). Temperature and mental health: Evidence from the spectrum of mental health outcomes. *Journal of Health Economics*, 68, 1–22.
- Olsen, K. M., & Dahl, S. Å. (2007). Health differences between European countries. *Social Science and Medicine*, 64(8), 1665–1678.
- Stott, P. (2016). How climate change affects extreme weather events. *Science*, 352(6293), 1517–1518.
- Stuckler, D., Basu, S., & McKee, M. (2010). Budget crises, health, and social welfare programmes. *BMJ*, 341(7763), 77–79.

- The Eurowinter Group. (1997). Cold exposure and winter mortality from ischaemic heart disease, cerebrovascular disease, respiratory disease, and all causes in warm and cold regions of Europe. *Lancet*, *349*(9062), 1341–1346.
- Vavken, P., Pagenstert, G., Grimm, C., & Dorotka, R. (2012). Does increased health care spending afford better health care outcomes? Evidence from Austrian health care expenditure since the initiation of DRGs. *Swiss Medical Weekly*, *142*, 1–8.
- Viscusi, K. W., & Masterman, C. J. (2017). Income elasticities and Global values of a Statistical Life. *Journal of Benefit-Cost Analysis*, *8*(2), 226–250.

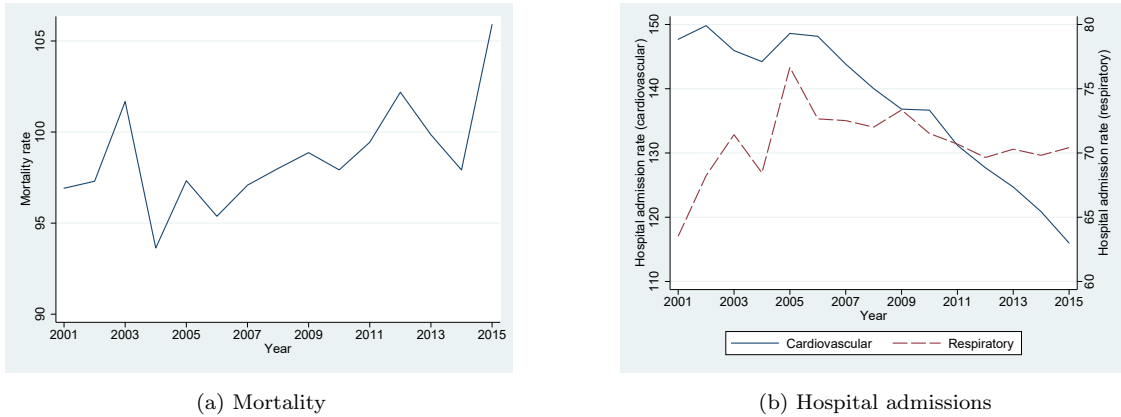
Figure 1: Average temperature by municipality (2001–2015).



Notes - The map shows the average temperature in °F by municipality for a 15-year period (2001–2015). The darker the color, the higher the temperature classified into quartiles.

Source: Our elaboration on GSOD weather data for the period 2001–2015 provided by the NCDC. The shapemap of the 2016 administrative borders is provided by ISTAT.

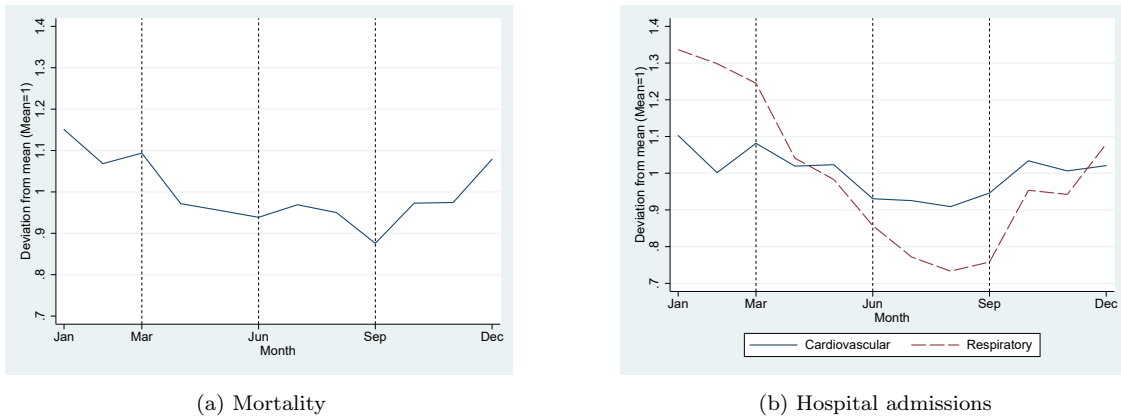
Figure 2: Trends in mortality and hospital admission rates.



Notes - The figures illustrate the trends in the yearly prevalence of mortality by province (Figure (a)) and of emergency hospital admissions by municipality (Figure (b)) per 10,000 individuals for the period 2001–2015. In Figure (b), the blue solid line and the red dashed line represent hospital admissions for cardiovascular and respiratory diseases, respectively. Mortality and hospital admission rates are weighted by the population.

Source: Our elaboration on mortality data aggregated by province for the period 2001–2015 provided by ISTAT and hospital discharge data for the period 2001–2015 provided by the Italian Ministry of Health.

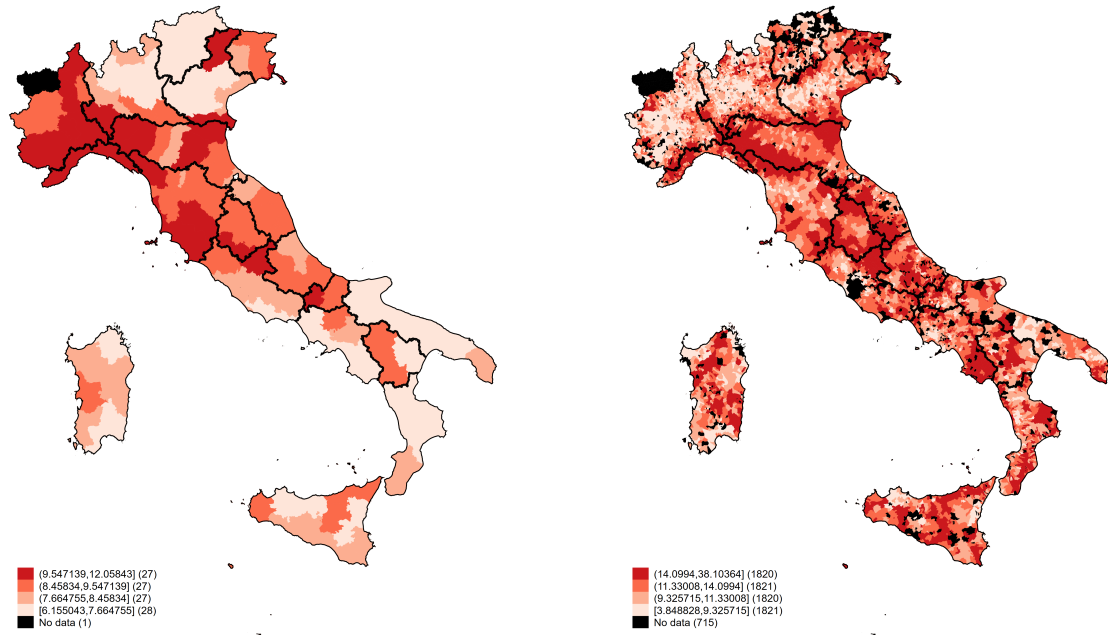
Figure 3: Yearly cycles in mortality and hospital admission rates.



Notes - The figures illustrate the normalized average yearly cycles (mean = 1) in the prevalence of mortality by province (Figure (a)) and of emergency hospital admissions by municipality (Figure (b)) by month of the year. In Figure (b), the blue solid line and the red dashed line represent hospital admissions for cardiovascular and respiratory diseases, respectively. Mortality and hospital admission rates are weighted by the population.

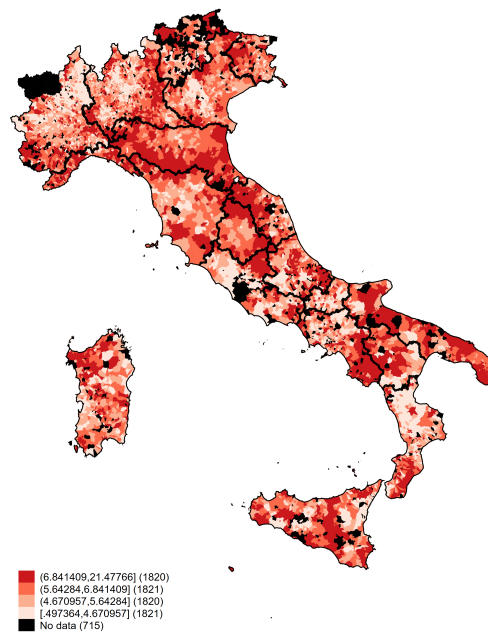
Source: Our elaboration on mortality data aggregated by province for the period 2001–2015 provided by ISTAT and hospital discharge data for the period 2001–2015 provided by the Italian Ministry of Health.

Figure 4: Monthly mortality and hospital admission rates by municipality.



(a) Mortality

(b) Hospital admissions - Cardiovascular

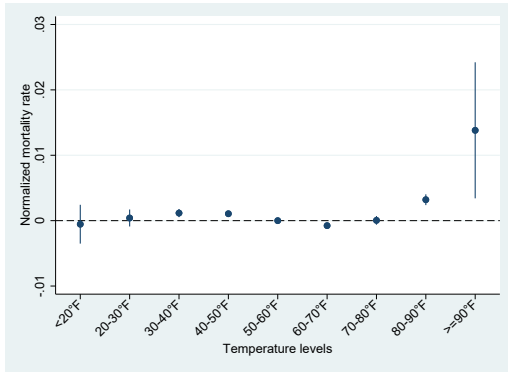


(c) Hospital admissions - Respiratory

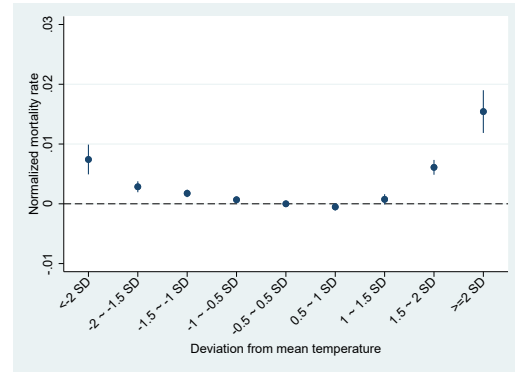
Notes - The figures show maps of average monthly mortality rates by province (Figure (a)), and emergency hospital admission rates per 10,000 individuals by municipality for the period 2001–2015, respectively for cardiovascular diseases (Figure (b)) and respiratory diseases (Figure (c)). The darker the color, the higher is the prevalence of mortality and hospital admissions. Black areas indicate excluded areas or areas with missing data. Mortality and hospital admission rates are weighted by the population.

Source: Our elaboration on mortality data aggregated by province for the period 2001–2015 provided by ISTAT and hospital discharge data for the period 2001–2015 provided by the Italian Ministry of Health. The shapemap of the 2016 administrative borders is provided by ISTAT.

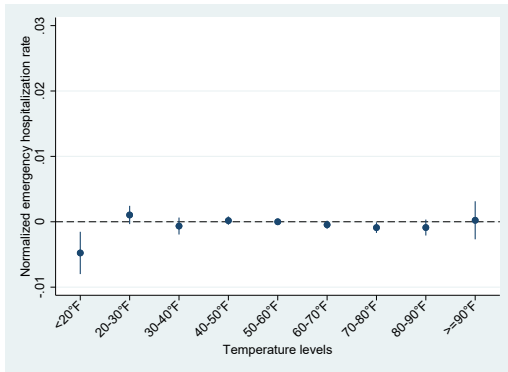
Figure 5: Regression results of temperature level and deviation bins on mortality and emergency hospital admission rates.



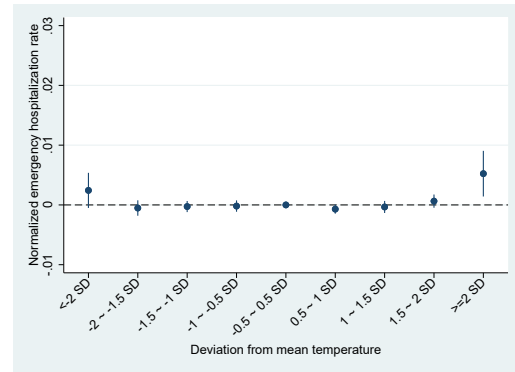
(a) Mortality - Levels



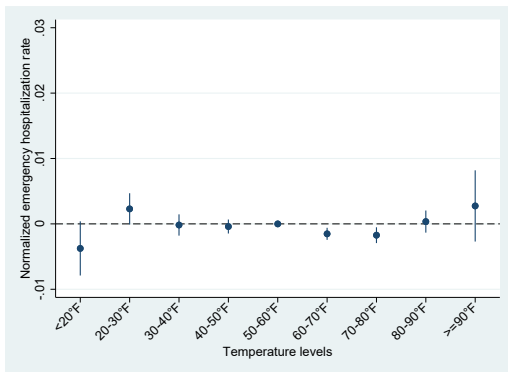
(b) Mortality - Deviations



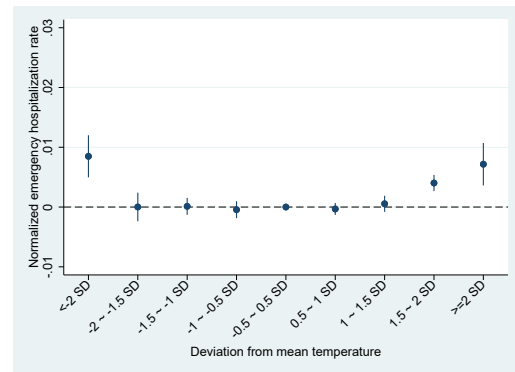
(c) Cardiovascular - Levels



(d) Cardiovascular - Deviations



(e) Respiratory - Levels



(f) Respiratory - Deviations

Notes - The figures illustrate regression results of temperature level and deviation bins on monthly mortality rates by province (Figures (a) and b)) and emergency hospital admission rates per 10,000 individuals by municipality, respectively for cardiovascular (Figures (c) and d)) and respiratory diseases (Figures (e) and f)), for the period 2001–2015. The dots represent the normalized coefficients of temperature bins, and the vertical lines represent the 95% confidence intervals. In Figures (a), (c) and (e), the temperature bins measure the number of days per month with average temperature falling within 10°F bins, with the baseline being the number of days with temperatures between 50°F and 60°F . In Figures (b), (d) and (f), the temperature bins measure the number of days per month with average temperature falling within 0.5 standard deviation (SD) bins relative to the municipality-specific average temperature for the period 2001–2015, with the baseline being the number of days with temperatures deviating from the mean between -0.5 SDs and $+0.5\text{ SDs}$. All models control for $\text{month} \times \text{year}$ and $\text{province} \times \text{month}$ fixed effects, province-specific time trends, monthly precipitation and pollution, population age structure and personal income. Models of hospital admission rates further control for municipality fixed effects. Standard errors are robust and clustered by province. All regressions are weighted by the population.

Source: Our elaboration on mortality data for the period 2001–2015 provided by ISTAT, hospital discharge data for the period 2001–2015 provided by the Italian Ministry of Health and GSOD weather data provided by NCDC.

Table 1: Descriptive statistics of temperature levels by temperature deviation bin.

	Mean	SD	Min	Max
$T < -2$ SD	26.52	10.26	-15.10	52.60
-2 SD $\leq T < -1.5$ SD	34.23	7.41	-3.40	57.70
-1.5 SD $\leq T < -1$ SD	40.70	6.90	3.20	60.20
-1 SD $\leq T < -0.5$ SD	47.44	6.92	9.00	65.20
-0.5 SD $\leq T < 0$ SD	53.70	6.85	15.10	70.80
0 SD $\leq T < 0.5$ SD	60.40	6.79	20.90	76.30
0.5 SD $\leq T < 1$ SD	67.24	6.45	25.69	83.30
1 SD $\leq T < 1.5$ SD	74.52	6.41	30.50	91.00
1.5 SD $\leq T < 2$ SD	79.83	6.85	35.50	99.30
$T \geq 2$ SD	82.48	8.34	41.60	105.9

Notes - The table reports descriptive statistics of temperature levels (in °F) by temperature deviation bin, with each bin representing deviation ranges from the municipality-specific average temperature for the period 2001–2015.

Table 2: Descriptive statistics.

	Obs	Mean	SD	Min	Max
Panel A: Health outcomes per 10,000 individuals					
Mortality	19620	8.220	1.518	1.36895	19
Hosp. adm. - Cardiovascular	1306487	11.457	5.477	0	444
Hosp. adm. - Respiratory	1306487	5.917	3.708	0	417
Panel B: Temperature level bins (no. of days per month)					
<20°F	1306487	0.055	0.771	0	31
20-30°F	1306487	0.375	1.802	0	29
30-40°F	1306487	2.674	5.788	0	30
40-50°F	1306487	5.358	7.265	0	31
50-60°F	1306487	6.931	8.180	0	31
60-70°F	1306487	7.120	8.171	0	31
70-80°F	1306487	5.978	8.642	0	31
80-90°F	1306487	1.894	4.866	0	31
≥90°F	1306487	0.049	0.562	0	21
Panel C: Temperature deviation bins (no. of days per month)					
T < -2 SD	1306487	0.169	0.822	0	17
-2 ≤ T < -1.5 SD	1306487	1.449	3.088	0	22
-1.5 ≤ T < -1 SD	1306487	4.370	6.492	0	29
-1 ≤ T < -0.5 SD	1306487	4.693	5.721	0	31
-0.5 ≤ T < 0 SD	1306487	4.651	5.835	0	29
0 ≤ T < 0.5 SD	1306487	4.524	5.908	0	30
0.5 ≤ T < 1 SD	1306487	4.379	5.919	0	31
1 ≤ T < 1.5 SD	1306487	4.449	7.022	0	30
1.5 ≤ T < 2 SD	1306487	1.673	3.706	0	27
T ≥ 2 SD	1306487	0.077	0.454	0	10

Notes - Panel A reports descriptive statistics of mortality rates at provincial level and emergency hospital admission rates by type of disease at municipal level per 10,000 individuals for the period 2001–2015. Panel B reports statistics on the number of days per month with average daily temperature falling into 10°F bins at municipal level. Panel C reports statistics on the number of days per month with average daily temperature falling into 0.5 standard deviation bins relative to the municipality-specific mean temperature at municipal level for the period 2001–2015. Statistics are weighted by the province- or municipality-specific population according to the level of aggregation of the data.

Table 3: Regression results of mortality and hospital admission rates by age group

	(1)	(2)	(3)	(4)	(5)
	0-4 years	5-24 years	25-44 years	45-64 years	over 65 years
Mortality					
Cold	0.0196 (0.0132)	-0.0191 (0.00992)	0.000817 (0.00719)	0.00497 (0.00256)	0.00684*** (0.00138)
Hot	0.000122 (0.0171)	0.00872 (0.0191)	0.0323*** (0.00741)	0.00974** (0.00361)	0.0149*** (0.00204)
Hospital admissions for cardiovascular diseases					
Cold	-0.00651 (0.0204)	-0.0120 (0.00773)	-0.00474 (0.00313)	0.000442 (0.00249)	0.00348* (0.00147)
Hot	0.0401* (0.0195)	-0.00373 (0.00926)	0.00808 (0.00611)	0.00270 (0.00302)	0.00655** (0.00206)
Hospital admissions for respiratory diseases					
Cold	0.00950* (0.00431)	-0.000200 (0.00523)	-0.00261 (0.00435)	0.0102** (0.00343)	0.00923*** (0.00191)
Hot	0.0115* (0.00499)	0.00438 (0.00520)	0.00686 (0.00686)	0.00387 (0.00334)	0.00715*** (0.00181)

Notes - The table summarizes regression results of mortality and hospital admission rates by age group. *Cold* and *Hot* measure the number of days per month with average temperature falling below -2 SDs or above 2 SDs, respectively, relative to the municipality-specific (or province-specific) mean temperature for the period 2001–2015. The coefficients and standard errors are normalized by the mean of the dependent variable. All models control for month×year and province×month fixed effects, province-specific time trends, monthly precipitation and pollution, and personal income. Models of hospital admission rates further control for municipality fixed effects. Significance levels: *** $p < .001$, ** $p < .01$, * $p < .05$. Standard errors (in parenthesis) are robust and clustered by province. All regressions are weighted by the age-group specific population.

Table 4: Regression results of mortality and hospital admission rates by quintiles of per capita social expenditure

	(1)	(2)	(3)
	Mortality		
	Q1	Q2-Q4	Q5
cold	0.00709 (0.00468)	0.00634*** (0.00189)	0.00191 (0.00527)
hot	0.0109* (0.00426)	0.0144*** (0.00234)	0.00581 (0.00459)

	Hosp. adm. cardiovascular		
	Q1	Q2-Q4	Q5
cold	0.00338 (0.00303)	0.00284* (0.00135)	-0.000951 (0.00239)
hot	0.0106** (0.00337)	0.00506* (0.00212)	0.000235 (0.00261)

	Hosp. adm. respiratory		
	Q1	Q2-Q4	Q5
cold	0.0131* (0.00552)	0.00839*** (0.00234)	0.00286 (0.00259)
hot	0.0126*** (0.00351)	0.00540* (0.00221)	0.00505 (0.00275)

Notes - The table summarizes the results of separate regressions by quintiles of per capita local government social expenditure. *Cold* and *Hot* measure the number of days per month with average temperature falling below -2 SDs or above 2 SDs, respectively, relative to the municipality-specific (or province-specific) mean temperature for the period 2001–2015. The coefficients and standard errors are normalized by the mean of the dependent variable. All models control for month×year and province×month fixed effects, province-specific time trends, monthly precipitation and pollution, population age structure and personal income. Models of hospital admission rates further control for for municipality fixed effects. Significance levels: *** $p < .001$, ** $p < .01$, * $p < .05$. Standard errors (in parenthesis) are robust and clustered by province.

Table 5: Back-of-the-envelope calculation: summary of costs and savings

Temperature variation	Health care costs (€ per capita)	Costs for quality-adjusted days lost (€ per capita)	Value of life losses (€ per capita)	Total costs (€ per capita)
	(1)	(2)	(3)	(4)
T> 2 SD	0.57	0.40	127.83	128.80
T> 1.5 SD	1.82	1.27	857.36	860.45
Cost savings from higher social expenditure: $\Delta(Q5-Q1)$				
T> 2 SD	0.74	0.51	70.50	71.75
T> 1.5 SD	2.62	1.82	153.71	158.15

Notes - In the upper part of the table, we summarize the costs per capita in the 65+ population generated by temperature variation beyond |2| SD and |1.5| SD from municipality-specific average temperature. In the lower part of the table, we report potential savings generated by social expenditure for older adults and the disabled that mitigates the effects of temperature variation, looking at the difference (Δ) between municipalities in the first (Q1) and the fifth (Q5) quintile of social expenditure. We apply a value for a statistical life (VSLY) equal to €62396. We report costs/savings associated to hospitalizations, separately for the two categories of direct health care costs (column 1) and the costs (quality-adjusted) due to days lost for hospital stay (column 2), and costs due to life losses because of extreme temperature variation (column 3). Figures for the three cost categories are summed up in column 4. Details on calculations are provided in Tables A.3 and A.4 in the Appendix. See also the Appendix section *Back-of-the envelope calculation* for further details about the procedure and formulas applied.

Appendix

Back-of-the-envelope calculation

Direct health care costs—To calculate direct health care costs per capita due to hospital admissions (column 3 in Table A.3), we multiply the number of hot+cold days per month $\times 12$ by the number of monthly hospital admissions per hot/cold day (per 10000 individuals) $\div 10000$ and by hospital cost per case (€2700). The number of hot+cold days per month (column 1 in Table A.3) is derived from Table 2, panel C. We sum up the number of monthly days above 2 SD and below -2 SD from the municipality-specific average temperature to obtain the aggregate figure for $T > |2|$ SD. For $T > |1.5|$ SD, we add up the number of monthly days between 1.5 SD and 2 SD and between -2 SD and -1.5 SD. The number of monthly hospital admissions for 65+ per hot/cold day (column 2 in Table A.3) is obtained from Table 3, column 5. We multiply our normalized effect of hot and cold day on cardiovascular and respiratory admissions (per 10000 individuals) by the 65+ specific mean (43.300 and 17.309, respectively for cardiovascular and respiratory admissions), and we sum up the results. For $T > |1.5|$) we apply the same procedure using information from additional regressions reported in Table A.5 the Appendix.

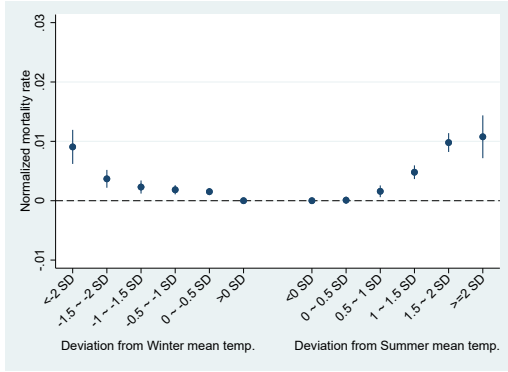
Indirect health care costs—The cost for quality-adjusted days lost because of hospital stay (column 4 in Table A.3) is calculated as follows: number of hot+cold days per month $\times 12 \times$ the number of monthly hospital admissions per hot/cold day (per 10000 individuals) $\div 10000 \times$ average hospital stay per case (11 days) \times cost of a statistical life per year (VSLY) $\times 1 \div 365$ (column 4 in Table A.3). For the cost per life year we consider three values: a reference value of €62396 derived from the Italian-specific value of a statistical life (\$5645000 from Viscusi & Masterman, 2017, assuming $1\text{€} \approx 1.09\text{\$}$ as for the exchange rate at the end of 2015) divided by the average life expectancy in Italy (83 years), an upper-bound value of €100000, and a lower-bound value of €50000.

Costs for life losses—The cost for life losses (column 6 in Table A.3) is obtained as the number of hot/cold monthly days $\times 12 \times$ the number of monthly deaths due to one hot/cold day (per 10000 individuals) $\div 10000 \times$ the remaining life-years (9.12) \times VSLY. Monthly deaths ($\times 10000$) for 65+ due to one hot/cold day are provided by the normalized coefficients in Table 3, column 5, and Table A.5 the Appendix, multiplied by the mean monthly deaths for the 65+ population (35.004).

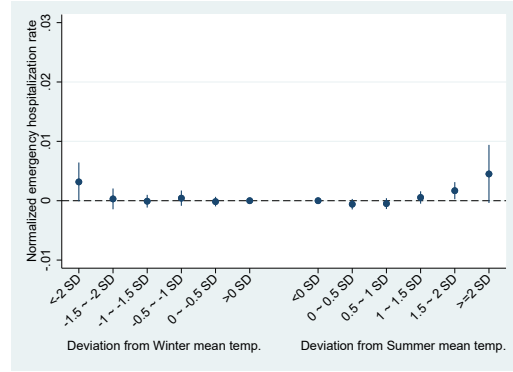
Cost savings—Cost savings from lower health care costs, fewer days lost for hospital

stay and fewer life losses (columns 2, 3 and 5 in Table A.4) are calculated using the same formulas described above to obtain cost figures for Table A.3, though using the difference in hospital admissions and life losses between municipalities in the fifth (Q5) and the first (Q1) quintiles of social expenditure (column 1 and 4 in Table A.4). Total per capita savings from higher social expenditure are then summarized in columns 6 of A.4. In particular, we use the number of hot+cold days per month from column 1 of Table A.3. The number of monthly hospital admissions for 65+ per hot/cold day in each quintile of social expenditure is obtained from Table A.2 and Table A.5 in the Appendix. In this case, we multiply the normalized effect of hot and cold day on cardiovascular and respiratory admissions (per 10000 individuals) by the 65+ specific mean in each quintile (44.4296 and 16.7371, respectively for cardiovascular and respiratory admissions in Q1, and 42.7253 and 17.6574, respectively for cardiovascular and respiratory admissions in Q5), and then sum up the results. We repeat the procedure to obtain monthly deaths rescaled by the quintile-specific mean (35.6827 and 33.9352, respectively for Q1 and Q5).

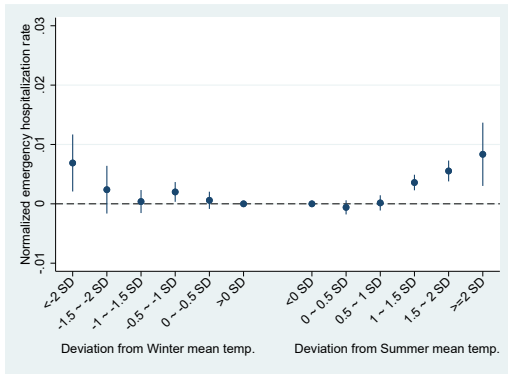
Figure A.1: Regression results of seasonal temperature deviation bins on mortality and emergency hospital admission rates.



(a) Mortality



(b) Cardiovascular diseases

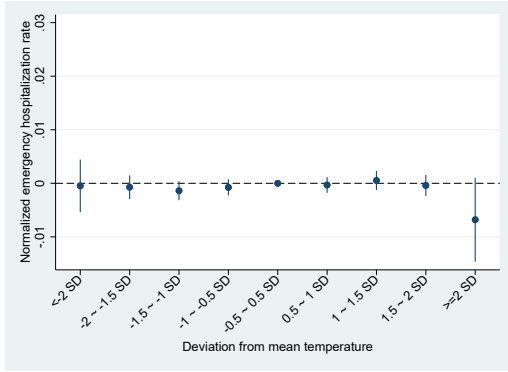


(c) Respiratory diseases

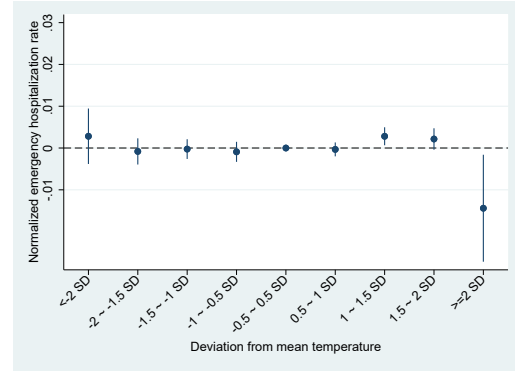
Notes - The figures illustrate regression results of monthly mortality rates by province (Figure (a)) and emergency hospital admission rates for cardiovascular (Figure (b)) and respiratory diseases (Figure (c)) by municipality per 10,000 individuals for the period 2001–2015. Dots represent normalized coefficients of temperature bins and vertical lines represent 95% confidence intervals. Temperature bins measure the number of days per month with average temperature falling within 0.5 standard deviation (SD) bins relative to the municipality-specific average seasonal temperature for the period 2001–2015. Negative deviation bins refer to the Autumn/Winter-specific mean temperature (October–March), and positive deviation bins refer to the Spring/Summer-specific mean temperature (April–September). All models control for the average monthly precipitation rate, the natural logarithm of the yearly personal income, month×year and province×month fixed effects, province-specific time trends and pollution. The models of hospital admission rates further control for municipality fixed effects. Standard errors are robust and clustered by province. All regressions are weighted by the the population.

Source: Our elaboration on mortality for the period 2001–2015 provided by ISTAT, hospital discharge data for the period 2001–2015 provided by the Italian Ministry of Health and GSOD weather data provided by NCDC.

Figure A.2: Regression results of temperature deviation bins on elective hospital admission rates.



(a) Cardiovascular diseases

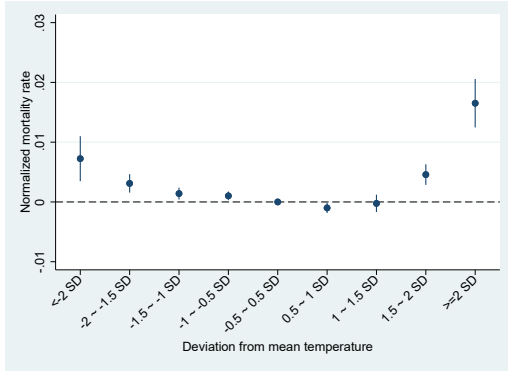


(b) Respiratory diseases

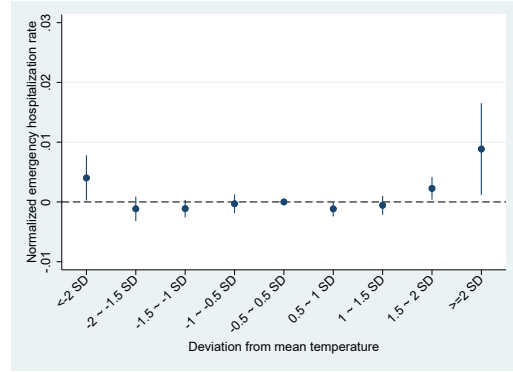
Notes - The figures illustrate regression results of monthly elective hospital admission rates for cardiovascular (Figure (a)) and respiratory diseases (Figure (b)) by municipality per 10,000 individuals for the period 2001–2015. Dots represent normalized coefficients of temperature bins and vertical lines represent 95% confidence intervals. Temperature bins measure the number of days per month with average temperature falling within 0.5 standard deviation (SD) bins relative to the municipality-specific average temperature for the period 2001–2015, with the baseline being the $-0.5/+0.5$ SD bin. All models control for the average monthly precipitation rate, the natural logarithm of the yearly personal income, month \times year, province \times month and municipality fixed effects, province-specific time trends and pollution. Standard errors are robust and clustered by province. All regressions are weighted by the population.

Source: Our elaboration on mortality for the period 2001–2015 provided by ISTAT, hospital discharge data for the period 2001–2015 provided by the Italian Ministry of Health and GSOD weather data provided by NCDC.

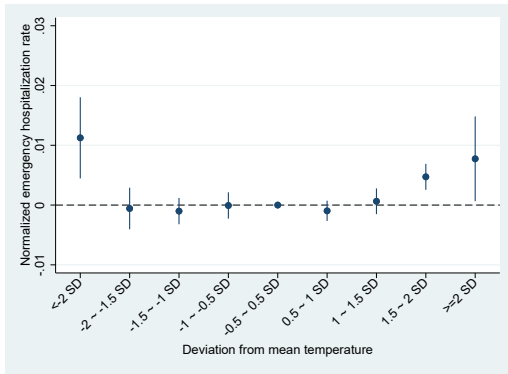
Figure A.3: Regression results of 2-month moving average deviation bins on mortality and emergency hospital admission rates.



(a) Mortality - Deviations



(b) Cardiovascular - Deviations

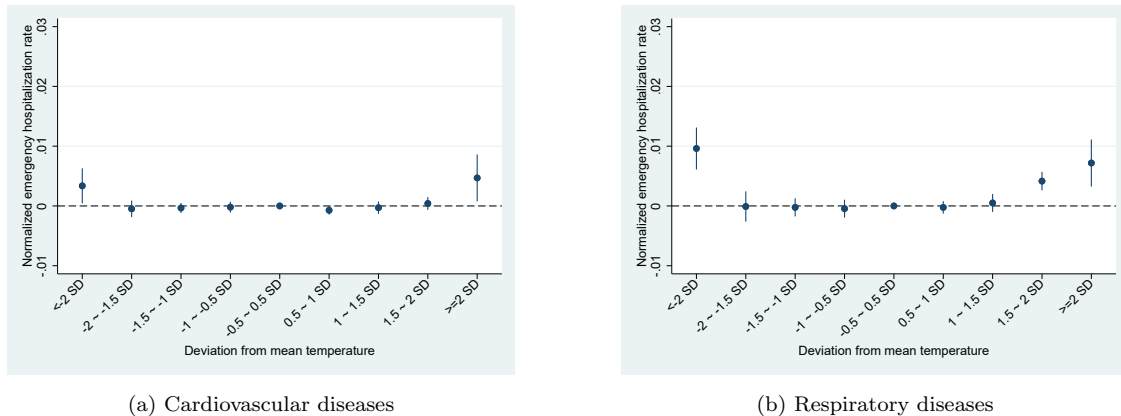


(c) Respiratory - Deviations

Notes - The figures illustrate regression results of monthly mortality rates by province (Figure (a)) and emergency hospital admission rates for cardiovascular (Figure (b)) and respiratory diseases (Figure (c)) by municipality per 10,000 individuals for the period 2001–2015. Dots represent normalized coefficients of temperature bins and vertical lines represent 95% confidence intervals. Temperature bins measure the 2-month moving average of the number of days per month with average temperature falling within 0.5 standard deviation (SD) bins relative to the municipality-specific average temperature for the period 2001–2015, with the baseline being the $-0.5/+0.5$ SD bin. All models control for the average monthly precipitation rate, the natural logarithm of the yearly personal income, $\text{month} \times \text{year}$ and $\text{province} \times \text{month}$ fixed effects, province-specific time trends and pollution. The models of hospital admission rates further control for municipality fixed effects. Standard errors are robust and clustered by province. All regressions are weighted by the population.

Source: Our elaboration on mortality for the period 2001–2015 provided by ISTAT, hospital discharge data for the period 2001–2015 provided by the Italian Ministry of Health and GSOD weather data provided by NCDC.

Figure A.4: Regression results of temperature deviation bins on emergency hospital admission rates excluding distant weather stations.



Notes - The figures illustrate regression results of monthly emergency hospital admission rates for cardiovascular (Figure (a)) and respiratory diseases (Figure (b)) by municipality per 10,000 individuals for the period 2001–2015 excluding municipalities with distance to the closest weather station above 40 km. Dots represent normalized coefficients of temperature bins and vertical lines represent 95% confidence intervals. Temperature bins measure the number of days per month with average temperature falling within 0.5 standard deviation (SD) bins relative to the municipality-specific average temperature for the period 2001–2015, with the baseline being the $-0.5/+0.5$ SD bin. All models control for the average monthly precipitation rate, the natural logarithm of the yearly personal income, $\text{month} \times \text{year}$, $\text{province} \times \text{month}$ and municipality fixed effects, province-specific time trends and pollution. Standard errors are robust and clustered by province. All regressions are weighted by the population.

Source: Our elaboration on mortality for the period 2001–2015 provided by ISTAT, hospital discharge data for the period 2001–2015 provided by the Italian Ministry of Health and GSOD weather data provided by NCDC.

Figure A.5: Regression results of temperature deviation bins on mortality and emergency hospital admission rates by quintiles of expenditure for the general administration.



Notes - The figures illustrate regression results of monthly mortality rates by province (Figure (a)) and emergency hospital admission rates for cardiovascular (Figure (b)) and respiratory diseases (Figure (c)) by municipality per 10,000 individuals for the period 2001–2015, by quintiles of per capita municipal expenditure for the general administration lagged one year. Dots represent normalized coefficients of temperature bins and vertical lines represent 95% confidence intervals. Temperature bins measure the number of days per month with average temperature falling within 0.5 standard deviation (SD) bins relative to the municipality-specific average temperature for the period 2001–2015, with the baseline being the \text{month} \times \text{year} and $\text{province} \times \text{month}$ fixed effects, province-specific time trends, monthly precipitation and pollution, and the natural logarithm personal income. Models of hospital admission rates further control for municipality fixed effects. Standard errors are robust and clustered by province. All regressions are weighted by the population.

Source: Our elaboration on mortality data for the period 2001–2015 provided by ISTAT, hospital discharge data for the period 2001–2015 provided by the Italian Ministry of Health, GSOD weather data provided by NCDC and local government balance data provided by the Ministry of the Interior.

Table A.1: Descriptive statistics of per capita municipal social expenditure by quintiles of the year-specific distribution.

	Mean	SD	Min	Max
Quintile 1	24.13	10.04	0.00	42.82
Quintile 2	50.35	7.92	31.52	69.47
Quintile 3	77.74	10.47	52.69	103.08
Quintile 4	117.87	17.41	81.58	165.40
Quintile 5	289.37	210.83	128.45	4694.29

Notes - The table reports descriptive statistics of the per capita municipal expenditure on social services lagged by on year by quintiles of the year-specific expenditure distribution.

Table A.2: Regression results of mortality and emergency hospital admission rates by quintiles of per capita social expenditure and age group

		(1)	(2)	(3)	(4)	(5)	(6)	(7)	(8)	(9)
		Mortality			Hosp. adm. cardiovascular			Hosp. adm. respiratory		
		Q1	Q2-Q4	Q5	Q1	Q2-Q4	Q5	Q1	Q2-Q4	Q5
0-4 years	Cold	0.0357 (0.0472)	0.0362 (0.0189)	0.00819 (0.0476)	0.114* (0.0550)	-0.00386 (0.0241)	-0.0398 (0.0336)	0.00336 (0.0117)	0.0108* (0.00543)	-0.00134 (0.00856)
	Hot	0.000293 (0.0293)	0.0160 (0.0218)	-0.0745 (0.0737)	0.0590 (0.0563)	0.0461 (0.0252)	-0.00278 (0.0425)	0.0144 (0.00749)	0.00941 (0.00558)	0.0107 (0.00692)
5-24 years	Cold	0.0369 (0.0248)	-0.0456** (0.0151)	0.00327 (0.0312)	-0.0471 (0.0256)	-0.00216 (0.00984)	-0.0292* (0.0143)	0.0285 (0.0149)	-0.00332 (0.00714)	0.00438 (0.00815)
	Hot	-0.0139 (0.0411)	0.0157 (0.0289)	-0.0242 (0.0619)	-0.0186 (0.0259)	0.00183 (0.0118)	-0.0139 (0.0211)	0.0333** (0.0118)	-0.00143 (0.00687)	0.00121 (0.00850)
25-44 years	Cold	0.0271 (0.0192)	0.00103 (0.00981)	-0.0242 (0.0169)	-0.00245 (0.0102)	-0.00278 (0.00471)	-0.0109 (0.00618)	-0.0175 (0.0127)	0.000391 (0.00551)	-0.00361 (0.00868)
	Hot	0.0361 (0.0213)	0.0331** (0.0102)	0.0507 (0.0296)	0.0259* (0.0124)	0.00608 (0.00723)	0.000545 (0.0118)	-0.0143 (0.0180)	0.00349 (0.00791)	0.0108 (0.0119)
45-64 years	Cold	-0.00545 (0.00935)	0.00814* (0.00358)	-0.00332 (0.00765)	-0.00270 (0.00429)	0.00194 (0.00290)	-0.00523 (0.00357)	0.0232** (0.00876)	0.0114** (0.00434)	0.0000491 (0.00562)
	Hot	-0.0124 (0.00739)	0.0152*** (0.00444)	0.00728 (0.00702)	0.00832 (0.00707)	0.00210 (0.00342)	-0.00147 (0.00436)	0.00314 (0.00852)	0.00422 (0.00413)	-0.00220 (0.00649)
over 65 years	Cold	0.00630 (0.00432)	0.00478** (0.00184)	0.00209 (0.00589)	0.00587 (0.00314)	0.00316* (0.00134)	0.000992 (0.00249)	0.0153* (0.00746)	0.00826*** (0.00243)	0.00475 (0.00246)
	Hot	0.0121** (0.00441)	0.0126*** (0.00262)	0.00489 (0.00471)	0.0101** (0.00372)	0.00616** (0.00222)	0.00137 (0.00278)	0.0135** (0.00468)	0.00566** (0.00205)	0.00477 (0.00303)

Notes - The table summarizes regression results of mortality and hospital admission rates by age group and quintiles of year-specific distribution of the per capita municipal social expenditure lagged by one year. In columns 1-3, the dependent variable is the provincial mortality rate, and in columns 4-6 and 7-9, the dependent variables are the municipal hospital admission rate for cardiovascular and respiratory diseases, respectively. Columns 1, 4 and 7 present regression results for the first quintile of the expenditure distribution (Q1). Columns 2, 5 and 8 present regression results for the second, third and fourth quintiles of the expenditure distribution (Q2-Q4). Columns 3, 6 and 9 present regression results for the fifth quintile of the expenditure distribution (Q5). *Cold* and *Hot* measure the number of days per month with average temperature falling below -2 SDs or above 2 SDs relative to the municipality-specific (or province-specific) mean temperature for the period 2001–2015. Coefficients and standard errors are normalized by the sample-specific mean of the dependent variable. All models control for month×year and province×month fixed effects, province-specific time trends, monthly precipitation and pollution, population age structure and personal income. Models of hospital admission rates further control for municipality fixed effects. Significance levels: *** $p < .001$, ** $p < .01$, * $p < .05$. Standard errors (in parenthesis) are robust and clustered by province. All regressions are weighted by the age-group specific population.

Table A.3: Back-of-the-envelope calculation: the cost of temperature shocks

Costs for:	Hospital admissions	Quality-adjusted days lost	Life losses	Total			
(1)	(2)	(3)	(4)	(5)	(6)	(7)	
Temperature variation and VSLY	Number of hot+cold days per month	Monthly hospital admissions ($\times 10000$) per hot/cold day	Cost per capita (€) $= (1) \times 12 \times (2) \div 10000 \times 2700$	Cost per capita (€) $= (1) \times 12 \times (2) \div 10000 \times 11 \times 1 \div 365 \times \text{VSLY}$	Monthly deaths ($\times 10000$) per hot/cold day	Cost per capita (€) $= (1) \times 12 \times (5) \div 10000 \times 9.67 \times \text{VSLY}$	Costs per capita (€) $= (3) + (4) + (6)$
Upper bound VSLY=€100000							
T> 2 SD	0.246	0.718	0.57	0.64	0.761	204.87	206.08
T> 1.5 SD	3.368	0.167	1.82	2.03	0.373	1374.06	1377.91
Mid value VSLY=€62396							
T> 2 SD	0.246	0.718	0.57	0.40	0.761	127.83	128.80
T> 1.5 SD	3.368	0.167	1.82	1.27	0.373	857.36	860.45
Lower bound VSLY=€50000							
T> 2 SD	0.246	0.718	0.57	0.32	0.761	102.44	103.33
T> 1.5 SD	3.368	0.167	1.82	1.02	0.373	687.03	689.87

Notes - The table summarizes the costs per capita in the 65+ population generated by temperature variation beyond |2| SD and |1.5| SD from municipality-specific average temperature. We report costs associated to hospitalizations, separately for the two categories of direct health care costs (column 3) and the costs (quality-adjusted) due to days lost for hospital stay (column 4), and costs due to life losses because of extreme temperature variation (column 6). Figures for the three cost categories are summed up in column 7. For each category, we apply three different values for the cost per life year: an upper-bound value of 100000, a lower-bound value of 50000, and a mid value of 62396. The number of hot+cold days per month (column 1) is calculated using data from Table 2, panel C. The number of monthly hospital admissions for 65+ due to one hot/cold day (column 2) and monthly deaths due to one hot/cold day (column 5) are calculated using data from Table 3, column 5, and Table A.5 the Appendix. See the Appendix section *Back-of-the envelope calculation* for details about the procedure and formulas applied.

Table A.4: Back-of-the-envelope calculation: the effect of social expenditure

	Cost savings from lower:	Health care costs	Quality-adjusted days lost	Life losses	Total	
	(1)	(2)	(3)	(4)	(5)	(6)
Temperature variation and VSLY	Monthly hospital admissions ($\times 10000$) per hot/cold day Δ (Q5-Q1)	Cost savings per capita (€) $= (1)[\text{Table A.3}] \times 12 \times (1) \div 10000 \times 2700$	Cost savings per capita (€) $= (1)[\text{Table A.3}] \times 12 \times (1) \div 10000 \times 11 \times 1 \div 365 \times \text{VSLY}$	Monthly deaths ($\times 10000$) per hot/cold day Δ (Q5-Q1)	Cost savings per capita (€) $= (1)[\text{Table A.3}] \times 12 \times (4) \div 10000 \times 9.67 \times \text{VSLY}$	Cost savings per capita (€) $= (2) + (3) + (5)$
Upper bound VSLY=€100000						
T> 2 SD	-0.9225	-0.74	-0.82	-0.4197	-112.99	-114.55
T> 1.5 SD	-0.2399	-2.62	-2.92	-0.0668	-246.34	-251.88
Mid value VSLY=€62396						
T> 2 SD	-0.9225	-0.74	-0.51	-0.4197	-70.50	-71.75
T> 1.5 SD	-0.2399	-2.62	-1.82	-0.0668	-153.71	-158.15
Lower bound VSLY=€50000						
T> 2 SD	-0.9225	-0.74	-0.41	-0.4197	-56.50	-57.64
T> 1.5 SD	-0.2399	-2.62	-1.46	-0.0668	-123.17	-127.25

Notes - The table summarizes cost savings per capita in the 65+ population generated by social expenditure for older adults and the disabled that mitigates the effects of temperature variation beyond |2| SD and |1.5| SD from municipality-specific average temperature. We report costs saving associated to higher social expenditure, i.e. when moving from municipalities in the first quintile (Q1) to municipalities in the fifth (Q5) quintile of social expenditure. Cost savings are calculated for fewer hospitalizations, separately for the two categories of direct health care costs (column 2) and the costs (quality-adjusted) of days lost for hospital stay (column 3), and fewer life losses because of death (column 5). Figures for the three cost saving categories are summed up in column 6. For each category, we apply three different values for the cost per life year: an upper-bound value of 100000, a lower-bound value of 50000, and a mid value of 62396. The number of monthly hospital admissions for 65+ due to one hot/cold day (column 1) and monthly deaths due to one hot/cold day (column 4) are first calculated for municipalities in the first (Q1) and the fifth (Q5) quintile of social expenditure, and then taking the difference (Δ) between the two quintiles, using data from Table A.2, columns 1, 3, 4, 6, 7, 9, and Table A.5 the Appendix. See the Appendix section *Back-of-the envelope calculation* for details about the procedure and formulas applied.

Table A.5: Regression results of mortality and emergency hospital admission rates for 65+ by quintiles of per capita social expenditure

	(1)	(2)	(3)	(4)	(5)	(6)	(7)	(8)	(9)
	Mortality			Hosp. amd. cardiovascular			Hosp. amd. respiratory		
	Full sample	Q1	Q5	Full sample	Q1	Q5	Full sample	Q1	Q5
over 65 years - Cold	0.00404*** (0.000638)	0.00229 (0.00164)	0.00270 (0.00155)	0.000400 (0.000574)	0.00176 (0.00147)	-0.0000108 (0.000887)	0.00217* (0.00110)	0.00319 (0.00241)	0.00150 (0.00121)
over 65 years - Hot	0.00661*** (0.000648)	0.00592*** (0.00130)	0.00395** (0.00134)	0.000918 (0.000621)	0.00217 (0.00127)	-0.0000881 (0.000678)	0.00418*** (0.000784)	0.00566*** (0.00162)	0.00344*** (0.000913)

Notes - The table summarizes regression results of mortality and hospital admission rates for older adults, and for quintiles of year-specific distribution of the per capita municipal social expenditure lagged by one year. In columns 1-3, the dependent variable is the provincial mortality rate, and in columns 4-6 and 7-9, the dependent variables are the municipal hospital admission rate for cardiovascular and respiratory diseases, respectively. Columns 1, 4 and 7 present regression results for the full sample. Columns 2, 5 and 8 present regression results for the first quintile of the expenditure distribution (Q1). Columns 3, 6 and 9 present regression results for the fifth quintile of the expenditure distribution (Q5). *Cold* and *Hot* measure the number of days per month with average temperature falling below -1.5 SDs and above 1.5 SDs, relative to the municipality-specific (or province-specific) mean temperature for the period 2001–2015. Coefficients and standard errors are normalized by the sample-specific mean of the dependent variable. All models control for month \times year and province \times month fixed effects, province-specific time trends, monthly precipitation and pollution, population age structure and personal income. Models of hospital admission rates further control for municipality fixed effects. Significance levels: *** $p < .001$, ** $p < .01$, * $p < .05$. Standard errors (in parenthesis) are robust and clustered by province. All regressions are weighted by the age-group specific population.