

Steinhübel, Linda; Wenzel, Arne; Hulamani, Prashant; von Cramon-Taubadel, Stephan; Mason, Nicole M.

Working Paper

The role of space and time in the interaction of farmers' management decisions and bee communities: Evidence from South India

Diskussionsbeitrag, No. 2103

Provided in Cooperation with:

Department for Agricultural Economics and Rural Development, University of Goettingen

Suggested Citation: Steinhübel, Linda; Wenzel, Arne; Hulamani, Prashant; von Cramon-Taubadel, Stephan; Mason, Nicole M. (2021) : The role of space and time in the interaction of farmers' management decisions and bee communities: Evidence from South India, Diskussionsbeitrag, No. 2103, Georg-August-Universität Göttingen, Department für Agrarökonomie und Rurale Entwicklung (DARE), Göttingen

This Version is available at:

<https://hdl.handle.net/10419/234549>

Standard-Nutzungsbedingungen:

Die Dokumente auf EconStor dürfen zu eigenen wissenschaftlichen Zwecken und zum Privatgebrauch gespeichert und kopiert werden.

Sie dürfen die Dokumente nicht für öffentliche oder kommerzielle Zwecke vervielfältigen, öffentlich ausstellen, öffentlich zugänglich machen, vertreiben oder anderweitig nutzen.

Sofern die Verfasser die Dokumente unter Open-Content-Lizenzen (insbesondere CC-Lizenzen) zur Verfügung gestellt haben sollten, gelten abweichend von diesen Nutzungsbedingungen die in der dort genannten Lizenz gewährten Nutzungsrechte.

Terms of use:

Documents in EconStor may be saved and copied for your personal and scholarly purposes.

You are not to copy documents for public or commercial purposes, to exhibit the documents publicly, to make them publicly available on the internet, or to distribute or otherwise use the documents in public.

If the documents have been made available under an Open Content Licence (especially Creative Commons Licences), you may exercise further usage rights as specified in the indicated licence.



Department für Agrarökonomie
und Rurale Entwicklung

2021

**The role of space and time in the interaction of farmers'
management decisions and bee communities:
Evidence from South India**

Linda Steinhübel, Arne Wenzel, Prashant Hulamani, Stephan von
Cramon-Taubadel, Nicole M. Mason

Department für Agrarökonomie und
Rurale Entwicklung
Universität Göttingen
D 37073 Göttingen
ISSN 1865-2697

Diskussionsbeitrag 2103

The role of space and time in the interaction of farmers' management decisions and bee communities: Evidence from South India

Linda Steinhübel^a, Arne Wenzel^b, Prashant Hulamani^c, Stephan von Cramon-Taubadel^d, Nicole M. Mason^e

^a Corresponding author: Chair of Agricultural Policy, Department of Agricultural Economics and Rural Development, Georg August University Göttingen, Platz der Göttinger Sieben 5, 37073 Göttingen, Germany, lsteinh2@gwdg.de

^b Functional Agrobiodiversity, Department of Crop Sciences, Georg August University Göttingen, Grisebachstr. 6, 37077 Göttingen, Germany, arne.wenzel@agr.uni-goettingen.de

^c Department of Entomology, University of Agricultural Sciences, GKVK, Bangalore 560 065, India, prashanthulamani2@gmail.com

^d Chair of Agricultural Policy, Department of Agricultural Economics and Rural Development, Georg August University Göttingen, Platz der Göttinger Sieben 5, 37073 Göttingen, Germany, scramon@gwdg.de

^e Department of Agricultural, Food, and Resource Economics, Michigan State University, 446 W. Circle Dr., Morrill Hall of Agriculture, Rm. 301D, East Lansing, MI 48824-1039, USA, masonn@msu.edu

Abstract

CONTEXT

Agricultural management systems of many smallholders in low and middle-income countries depend on services by pollinator populations. However, increased adoption of modern inputs and particularly the wide-spread use of agrochemicals threaten pollinators and smallholders' crop production. Understanding how farmers' use of modern inputs affects pollinator communities is, therefore, crucial for development efforts and the design and promotion of sustainable agricultural practices.

OBJECTIVE

We contribute to the still scarce literature on pollinator communities in low and middle-income countries by analyzing the link between the use of agrochemicals and wild bee populations in South India. Moreover, we capture temporal and spatial scaling in farm-pollinator relationships by explicitly analyzing effects of present, past, and neighboring agricultural management decisions on wild bee populations.

METHODS

Our empirical analysis is based on an interdisciplinary data set, combining information from pan trap experiments and a socio-economic survey of 127 agricultural plots in the rural-urban interface of Bangalore, India. We implemented a Poisson generalized linear model (GLM) to analyze factors influencing bee abundance and richness with a particular focus on the effects of farmers' management decisions. Present and past management were measured by the use of chemical fertilizers, pesticides, and irrigation in 2018 and during the previous years respectively. By setting up spatial weight matrices, we derived a proxy for neighboring management decisions and were able to estimate potential spillover effects.

RESULTS AND CONCLUSION

Our results suggest that agricultural intensification is associated with a decline of bee abundance and richness in our study area. Both time and space play important roles in explaining farm-bee interactions. We find statistically significant negative spillovers of pesticide use. With every addition percent of neighboring farmers using pesticides, bee abundance and richness decrease by up to 0.68 percent on the focal plot. Furthermore, smallholders' decisions to use chemical fertilizers and pesticides on their own plots significantly decrease the number of observed bees by about 20 percent. Also, every additional year of intensive past management reduces both bee abundance and richness by up to 8 percent.

SIGNIFICANCE

We provide new empirical evidence on farm-pollinator relationships in tropical low and middle-income countries. Based on our results, cooperative behavior among farmers and/or the regulation of agrochemical use seem to be crucial to moderate spatial spillovers of agricultural decision-making.

Also, a rotation of extensive and intensive management seems to be an appropriate way to mitigate negative effects of agricultural intensification on bee populations.

Keywords: Bee communities, India, pesticides, spillovers, temporal and spatial scales

1. Introduction

Pollinator communities make important contributions to agricultural production and food security (Kleijn et al., 2015; Tscharntke et al., 2012) and interest in this topic has increased with the so-called ‘pollinator crisis’, the fast decline of pollinator populations on a global scale (Tylianakis, 2013). While many staple crops do not rely on animal pollination, most fruit and vegetable crops do (Klein et al., 2007). These crops often figure prominently in efforts to improve the incomes and living standards of smallholders in low-income countries. The commercialization of high-value fruit and vegetable production systems allows for participation in national and international agricultural value chains and can therefore contribute to economic development (Maertens et al., 2012). As a consequence, agricultural policy strategies in many low-income countries focus on improving farmers’ access to modern inputs and technologies to achieve more commercialized agricultural systems (Jayne et al., 2018; Minten et al., 2013). Furthermore, improved infrastructure and better access to urban centers and markets are also amplifying the transformation from extensive to more intensified agricultural management systems in large parts of Africa and Asia (Steinhübel & Cramon-Taubadel, 2020; Vandecasteele et al., 2018).

Despite the economic benefits for smallholders in poorer regions, the flipside to the greater use of modern agricultural technologies such as agrochemicals is that they can harm pollinator populations, with negative implications for future economic performance (Brittain et al., 2010; Goulson et al., 2015). Evidence on farm-pollinator interactions in higher-income countries is vast but a study by Wenzel et al. (2020) shows that there are only a few studies from lower-income countries and tropical regions. Reasons are manifold, and include the often-patchy understanding of pollinator species in these countries. Furthermore, collecting pollinators in (sub-)tropical climates can be a challenging undertaking. Since farming systems can differ greatly between high and low-income countries, we cannot simply extrapolate from the existing literature to fully understand farm-pollinator interactions in low-income countries or tropical localities. For example, agricultural plots in low-income countries are often much smaller, and climate and crop choices differ. Most relevant for this study, smallholders normally depend exclusively on wild pollinator populations, which have been shown to substantially increase yields of pollination-dependent crops (Garibaldi et al., 2016). When wild populations are not able to provide sufficient pollination services, farmers in high-income countries often bring in managed bee populations as a substitute, but this option is often not available or not affordable for smallholders.

Another challenge to analyzing farm-pollinator interactions is that it requires a combination of ecological and economic concepts and approaches. While several studies have called for increased interdisciplinary analysis (Bennett et al., 2015; Collins et al., 2011; Vanbergen & Initiative, 2013; Zhang et al., 2007), this is often difficult because the two disciplines work on different temporal and spatial scales. Most studies to date have been published by ecologists. In this literature, management decisions are often considered at the landscape scale in an aggregate fashion, e.g., home gardens versus natural

forests (Blitzer et al., 2012; Motzke et al., 2016; Tschardtke et al., 2005; Tschardtke & Brandl, 2004). Aggregation at the landscape or habitat level is intuitive to ecologists because ecological and anthropogenic boundaries do not necessarily match – i.e., pollinators can move between agricultural plots. Thus, several articles demonstrate the importance of landscape scale in defining local pollination services to account for pollinator mobility and foraging ranges (Halinski et al., 2020; Kremen et al., 2007; Tschardtke et al., 2005). From an economic and policy perspective, in contrast, the landscape scale is of limited use because decision-making typically takes place at the household or farm level. Similarly, in the economic literature, agricultural decision-making is often associated with short-term seasons or growing cycles (Steinhübel et al., 2020), whereas ecological studies emphasize that pollinator communities are likely affected by the longer-term accumulation of management decisions that affect nesting and foraging possibilities or the exposure to pollutants and toxicants (Kremen et al., 2007; Schwarz et al., 2020).

The motivation of our study is, therefore, twofold. First, we aim to contribute new evidence to the literature on farm-pollinator interaction in topical, low-income countries by analyzing primary data on bee communities and farm management on 127 smallholder plots in South India. Second, in our empirical analysis, we address the spatial and temporal disconnect of ecological and economic perspectives. By specifically modeling the effect of present, past, and neighboring agricultural management choices on bee abundance and richness, we aim to answer the following research questions:

- 1) Which farmer management decisions affect bee communities, and to what extent?
- 2) How do management decisions taken by one farmer affect bee communities on other farmers' plots – i.e., to what extent do spillover effects of management decisions extend beyond the boundaries of management units?
- 3) How do past management decisions affect current bee communities?

By considering different scales and by looking into the use of different agricultural inputs, our results provide a detailed picture of farm-pollinator interactions. This can help to better target extension and policy measures to regulate the use of agricultural inputs that can harm bee communities, and ultimately support sustainable agricultural growth in low-income countries.

2. Methods

2.1 Study area and survey design

Our empirical analysis is based on data from two study areas that extend from urban Bangalore roughly 40 km into the surrounding rural-urban interface, one to the north and the other to the south and west. We refer to these areas as research transects (Fig. 1). The rural-urban interface is heavily influenced by the rapidly growing city of Bangalore; the last official census in 2011 recorded 9.6 million inhabitants

and average yearly growth rates of about 8 percent (Directorate of Census Operations Karnataka, 2011). Nevertheless, it is dominated by smallholder agriculture and agricultural land use is highly fragmented. Bangalore and several satellite towns offer a variety of marketing possibilities to farmers and connect them to local, national, and even international markets. Expanding infrastructure also improves farmers' access to input markets, especially for chemical fertilizers and pesticides. As a consequence, agricultural production is becoming increasingly commercial and many farmers are shifting from subsistence production of staple crops to intensive high-input fruit and vegetable production. The agricultural production systems in the rural-urban interface of Bangalore thus exemplify the dilemma that we discuss in the introduction: smallholders are shifting to more pollinator-dependent production systems and simultaneously increasing the use of potentially pollinator-harming inputs.

To capture potential spatial heterogeneity induced by the urban center of Bangalore, the selection of farm households and plots for data collection followed a two-step approach. Based on the *Survey Stratification Index* (SSI) introduced by Hoffmann et al. (2017), all villages in the two research transects were classified into three strata (rural, peri-urban, urban). In the first step, ten villages were randomly selected in each stratum in each transect (60 villages in total). Using household lists provided by preschool teachers in the selected villages, we randomly drew an average of 20 households per village (weighted by village size). The resulting 1,275 households were subjected to a detailed baseline socio-economic survey that was carried out between December 2016 and May 2017. About half of these households (638) were farm households, i.e., they managed at least one plot in 2016. For these households, the baseline survey included data on agricultural management in the agricultural year 2016/2017 and recall data for the years 2012 to 2015.

In the second, step we drew a random subsample of 24 of the 40 villages located in the peri-urban and rural strata, twelve in each transect.¹ In these randomly selected villages, all households that had been identified as farm households in the first step (N=127) were selected for pan trap experiments (described below) and a second survey, which was carried out in February and March 2018.² This second survey covered information on agricultural management decisions in the 2017/18 season. Combining data from both surveys provided us with a continuous record of the management history of each of the 127 farm households extending back to 2012.

¹ Because only few agricultural households are located in the urban stratum, we excluded the 20 villages in this stratum from the subsample.

² Robust inference on spatial spillovers among farm plots requires a sufficient number of observations (plots) within a potential interaction radius of one another. We therefore drew a random subsample of villages rather than households, to ensure that the individual observations (plots) are spatially clustered. See the zoomed-in areas in Fig. 1. Unfortunately, there were 4 villages in the peri-urban strata of the southern transect with only one farm household. These households were not considered in our empirical analysis.

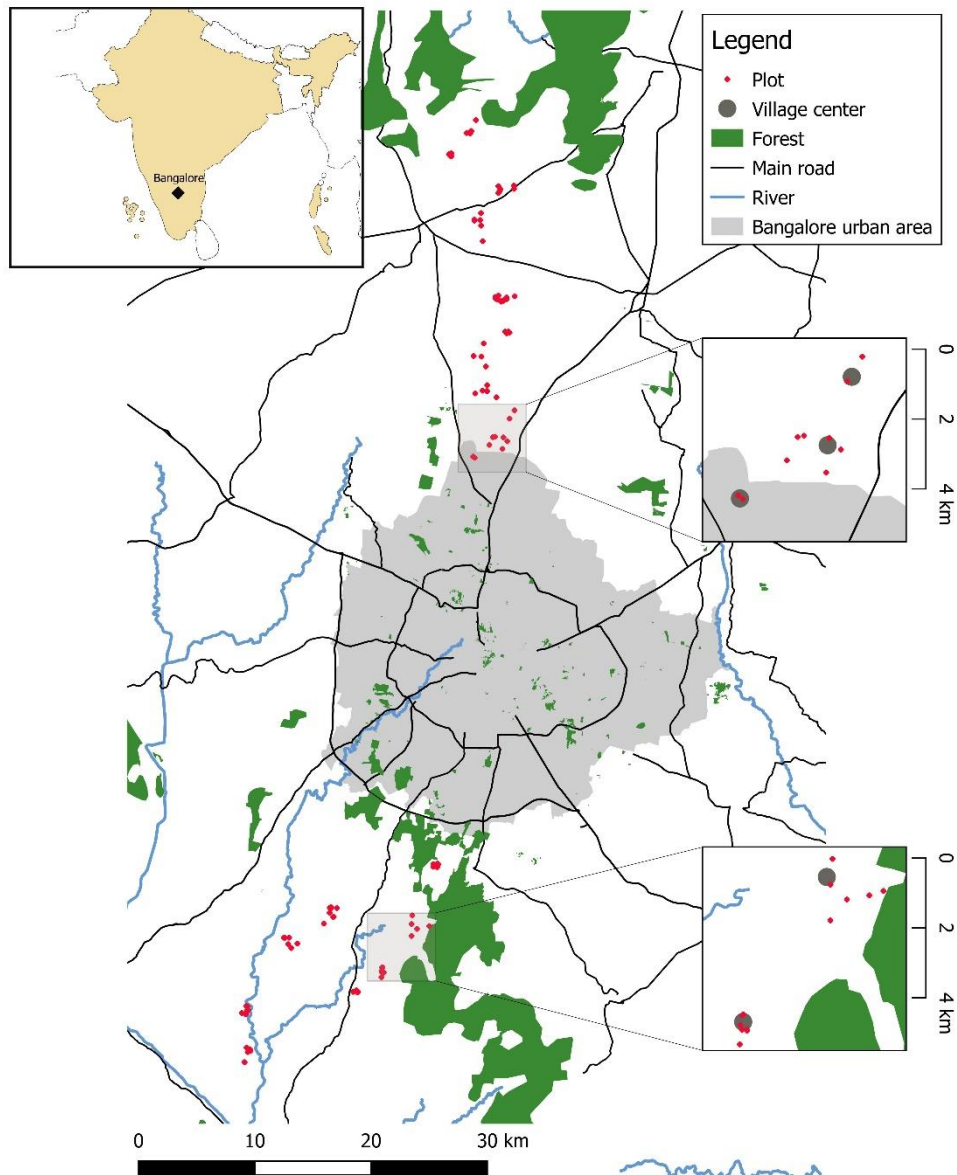


Fig. 1. Research area and location of sampled villages and plots along the rural-urban interface of Bangalore, South India ($N = 127$). Panels on the right show zoomed-in representations of the grey shaded squares in the large map. Village and plot coordinates were collected during the household survey in 2018. All other map features were downloaded from *OpenStreetMap* and visualized with *QGIS*.

To sample pollinators we applied pan trap experiments, a standard rapid sampling method to record pollinator communities (Meyer et al., 2015; Westphal et al., 2008). We randomly selected one plot from each of the 127 farm households in the subsample (Fig. 1). We collected information on the direct neighborhood of each selected plot, as well as the GPS-coordinates of its centroid. Four pan traps were placed on each of these plots. The pan traps were 500 ml bowls sprayed with yellow UV-bright color and filled with unscented soapy water to break surface tension. To ensure that we captured as many pollinators as possible, all four pan traps were placed near flower-rich patches, with a minimum distance of approximately 10 m between traps to minimize interactions between them. The traps were collected after 48 hours of exposure. Unfortunately, some traps failed; they spilled or were taken away by passers-by. As a consequence, some plots had fewer than four successful pan traps; we introduced dummy variables in our later analysis to control for the number of successful traps per plot (see Table A.1). Pan traps were placed in the field on dry, bright, and mostly calm days between the hours of 10 am and 2 pm. Collecting took place from January 9 to February 11, 2018.

After collection, all insects caught in the traps were treated with 70% ethanol, pinned, and identified to species or genus level. Most of the captured insects were bees along with a few other pollinating insect taxa (e.g., beetles, butterflies, flies, wasps). Since pollinator groups differ greatly in their ecological characteristics (Gagic et al., 2015), we decided to consider only bees in our analysis to avoid inconclusive results. In the remainder of this article ‘species’ refers to the lowest taxonomic rank identified. To the best of our knowledge, beekeeping is not common in the research transects. None of our sampled households reported keeping bees. Therefore, we assume that most of the bees caught in the pan traps originate from wild populations.

We used the number of bees caught per plot as a proxy for bee abundance and the number of different bee species as a proxy for bee richness. We are aware that these are only rough indicators for local bee diversity and that pan traps might oversample smaller species (see e.g. Baum & Wallen, 2011). Nevertheless, both are frequently used in the ecological literature (Holzschuh et al., 2007; Kremen et al., 2002, 2004) and hence our results can easily be compared with previous studies. Since bee abundance and richness are highly correlated in our sample ($\rho = 0.919$), we do not use both in the same model specification to avoid problems with multicollinearity.

2.2 Empirical analysis

We implemented a Poisson generalized linear model (GLM) with two dependent variables—counts of abundance and richness. Our main interest is how these counts are affected by the use of chemical fertilizers, irrigation, and pesticides. Chemical fertilizers and irrigation are commonly used to quantify the intensity of agricultural management in low and middle-income countries (see e.g. Asfaw et al., 2016; Vandecastelen et al., 2018), whereas pesticides not only signal intensification but can reduce foraging resources, i.e. in case of herbicide applications, or be even directly harmful to bees (Brittain et

al., 2010; Tuell & Isaacs, 2010). To incorporate the different temporal and spatial scales discussed before, we estimate the effects of current farm practices on the plot under observation, but also allow for the possible effects of past farm practices on the same plot as well as farm practices on plots in the neighborhood.³ Therefore, bee abundance or richness y on plot i is given by the predictor η_i :

$$y_i \sim Po(\lambda_i), \text{ with } \log(\lambda_i) = \eta_i = \mathbf{z}_i\boldsymbol{\alpha} + \mathbf{p}_i\boldsymbol{\gamma} + \mathbf{h}_i\boldsymbol{\theta} + \mathbf{x}_i\boldsymbol{\beta} \quad (1)$$

where \mathbf{z}_i is a row vector of dummies for irrigation, chemical fertilizer, and pesticide use on plot i in 2018 (*present management*)⁴; \mathbf{p}_i is the number of years either of the three inputs have been used on plot i since 2012 (*past management*); \mathbf{h}_i is the agricultural management of plots in the neighborhood of plot i in 2018 (*neighboring management*); and \mathbf{x}_i is a set of control variables including a constant. The parameter vectors $\boldsymbol{\alpha}$, $\boldsymbol{\gamma}$, $\boldsymbol{\theta}$, and $\boldsymbol{\beta}$ are to be estimated. The \mathbf{h}_i in equation (1) can be understood as spatial lags (SLX) of \mathbf{z}_i ($\mathbf{h}_i = \mathbf{w}_i\mathbf{Z}$), where \mathbf{W} is a spatial weight matrix of dimension $n \times n$ that defines interactions between plot i and any plot j in its neighborhood. The weight matrix was composed of known scalars that represent *a priori* assumptions about the spatial interdependence between observations i and j where $i, j \in \{1, \dots, N\}$ (Lee, 2004). First, the main diagonal of \mathbf{W} (when $i = j$) was set to zero. Second, we assume that spatial interdependence ends beyond a certain distance, i.e. the corresponding weights in \mathbf{W} also equal zero. In the present case, this cut-off distance was determined by the bee foraging distance, i.e. which other plots j could a bee have visited before it was caught on plot i . Previous studies indicate bee foraging distances up to several kilometers (Zurbuchen et al., 2010). Accordingly, we created two weight matrices; one with a two-kilometer cut-off,⁵ and one with a four-

³ We also tested for spatial autocorrelation using Moran I tests. Test statistics were not significant and we, thus, did not include an autoregressive parameter in our model.

⁴ For the years 2017 and 2018, we have data on quantities of fertilizer and pesticide applied on the sample plots. Nonetheless, we refrained from including input quantities as explanatory variables because we also wanted to include information on past plot management decisions in our analysis, and for earlier years (2012 to 2016) we only have data on the numbers of inputs used, not quantities. We did not collect data on the quantities of inputs used in past years because the surveyed producers rarely keep records and their recollection of the quantities of inputs used in past cropping seasons would be increasingly unreliable and possibly biased as the recall period grows. Furthermore, even if we had information on input quantities, it is not clear how to aggregate these without additional information on application concentrations and relative toxicities. Hence, we used dummies for consistency. We also did not differentiate between different types of pesticides (e.g. fungicides, herbicides) because pesticide use among farmers in our sample is still rare (Table 1).

⁵ Since we only have data from 127 plots, we do not have data of the complete neighborhood of every plot. In order to still be able to capture the neighborhood of each plot, the minimum cut-off distance must be chosen such that at least a few surveyed neighboring plots of each plot i are included. Two kilometers is the minimum for our data set, where we have, on average, information on seven neighboring plots (min: 2, max:14). For the four-kilometer cut-off we observe an average of 13 neighboring plots (min: 4, max: 24).

kilometer cut-off. To model the strength of interdependence (i.e. the weights in \mathbf{W}) between different plots we tested two approaches. One is the simple share of neighboring plots using chemical fertilizers, pesticides, or irrigation. A value of 1 in \mathbf{W} simply indicates that the respective agricultural input was used and that the plot is within the cut-off distance. \mathbf{W} was then normalized by the row sums of \mathbf{w}_i . In the second approach, we assumed that the strength of spatial interdependence between plots i and j is proportional to the inverse distance between them. The calculation of \mathbf{h}_i is the same as in the first approach only that the normalization is achieved by dividing by the maximum inverse distance. We estimated the model in equation (1) with both cut-off distances and both specifications of \mathbf{h}_i . Since all other parameter estimates were robust to the two different specifications, for reasons of simpler interpretation only the \mathbf{h}_i based on the first approach was included in the subsequent analysis. However, estimation results for the second approach are included in Table A.2. Descriptive statistics for the dependent variables and the present, past, and neighboring management variables are presented in Table 1.

Table 1

Descriptive statistics for the dependent variables and agricultural input use ($n = 127$)

Variable	Mean	Std. Dev.	Min	Max
Dependent variables				
Bee abundance (number of bees per plot)	4.68	4.44	0	22
Bee richness (number of bee species per plot)	2.78	2.35	0	11
Agricultural input use				
Chemical fertilizer – on plot	0.78			
Irrigation – on plot	0.39			
Pesticides – on plot	0.26			
Chemical fertilizer since 2012 (years)	3.87	2.02	0	5
Irrigation since 2012 (years)	1.63	2.28	0	5
Pesticide use since 2012 (years)	0.35	1.19	0	5
Chemical fertilizer – 2km neighborhood (share)	0.78	0.19	0.36	1
Irrigation – 2km neighborhood (share)	0.38	0.25	0	1
Pesticides – 2km neighborhood (share)	0.26	0.24	0	0.8
Chemical fertilizer – 4km neighborhood (share)	0.77	0.13	0.5	1
Irrigation – 4km neighborhood (share)	0.38	0.18	0	0.71
Pesticides – 4km neighborhood (share)	0.26	0.13	0	0.57

Besides agricultural input use, we consider 25 control variables at the landscape and local scale (for a list and descriptive statistics see Table A.1). At the landscape scale, we used the GPS-coordinates of each plot to calculate its distance from Bangalore city center. This variable allows us to control for exogenous spatial heterogeneity induced by the rural-urban gradient. In addition, we included a dummy for the Southern transect to control for any transect-specific effects. Based on satellite images, we estimated the build-up area of every village, i.e., the area covered by infrastructure and, thus, habitat availability within a 1 km radius of the village center (for details see Hoffmann et al., 2017).

At the plot level, we used information on the direct neighborhood of each plot to create several dummies that describe the patterns of land use surrounding it. Furthermore, we included several variables that are related to the pan traps and their placement and might, therefore, influence bee abundance. These variables are the number of successful pan traps per plot and meteorological variables such as cloud cover, temperature, and wind conditions when the pan traps were in place. Since the cropping systems in the Bangalore area are very diverse, we also controlled for different crops. On the 127 pan trap plots, 40 different crops were grown. This crop diversity gives rise to two main issues. First, different crops serve bee communities in different ways and certain management practices might be strongly correlated with certain crops. Second, different crops have different growing schedules. As a consequence, some plots had already been harvested when the pan traps were placed, while others were at various earlier stages of development. Cropping seasons have become even more fluid with the increasing availability of irrigation, and there is no time of year when all agricultural plots are in a comparable state. We used different variables to test and control for these issues. We introduced a dummy variable that indicates whether the plot was already harvested and thus has been fallow for several weeks. In addition, we controlled for functional groups of crops, namely flowers, fruits, staples, tree crops, and vegetables on the plots (see Table A.3 for detailed information). We restrained from adding crop-specific dummies because given 40 different crops this would have severely reduced the degrees of freedom for estimation. We also created a dummy variable indicating whether a crop classifies as a forage crop for bees (i.e. pollen or nectar source); this variable represents the forage quality of the plot in the current season. Furthermore, we used the recall data from the baseline survey to measure the number of years since 2012 in which a plot had been planted with bee forage crops. Finally, we estimated the number of flowers of the focal crop on the plot when the pan traps were in place and the number of flowers within a 2 m radius of the pan traps.

Since our sample comprises only 127 observations, including all explanatory variables will likely lead to over-parametrization of the model (equation (1)). Therefore, we applied an adaptive selection algorithm based on the improved Akaike information criterion (iAIC), which evaluates the contribution of every term to the model fit. Variables that do not improve the model were dropped (for details see Belitz & Lang, 2008; Umlauf et al., 2015).

3. Results

Overall, we caught 613 bee individuals and identified 31 species belonging to three different families (Apidae, Halictidae, and Megachile, Table A.4). The most abundant species were *Apis florea*, *Lasioglossum sp. 1*, and *Apis cerana* (160, 83, and 79 individuals respectively). *Chao 1* species richness estimators (Chao, 1984) indicate that we sampled 88 percent of the regional bee species pool, and the

species accumulation curve in Fig. A.1 confirms that our sampling effort was sufficient to detect most bee species in the study region.⁶

Table 2 presents the results based on the selection algorithm and the estimation of the model in equation (1). We do not present coefficient estimates but calculated effects as percentage changes at the mean rate of bee abundance and richness to facilitate interpretation.

3.1 Effects of agricultural input use on bee communities

Our results provide evidence of a negative association between agricultural intensification and bee communities in the rural-urban interface of Bangalore. If a farmer applies chemical fertilizers or pesticides on his/her plot, this decreases bee abundance by about 20 percent ($p = 0.086$). Also, the use of pesticides by other smallholders within 2-kilometers of a plot reduces bee abundance on that plot. With every additional percent of pesticide use in the neighborhood of a plot (=0.01 share), the number of bee individuals on that plot decreases by 0.68 percent ($p < 0.001$). Considering that on average 25 percent (maximum of 80 percent) of neighboring farmers apply pesticides (Table A.1), pesticide use by neighboring smallholders can affect bee abundance on a plot just as strongly as pesticide use on that plot itself. As for the past management, we find that with every additional year of irrigation of the same plot, bee abundance on that plot decreases by 8.1 percent ($p < 0.001$). Originally, the selection algorithm suggested to include both past irrigation and pesticide use. However, since these two variables are strongly correlated ($\rho = 0.405$ ($p < 0.001$)), we decided to drop one of them to avoid multicollinearity. Consequently, the effect of past irrigation should rather be interpreted as an effect of past intensity of agricultural management. The results for the relationship between agricultural management and bee richness, are similar to those for bee abundance (Table 2). However, the present use of chemical fertilizers and pesticides does not have any statistically significant effects on bee richness. In contrast, past and neighboring agricultural management have significant negative effects on bee richness that are of nearly the same magnitude as those for bee abundance.

3.2 Other factors influencing bee communities

The selection algorithm only indicates three control variables that are positively associated with both bee abundance and richness. These are the dummy controlling whether a plot was already harvested before the pan trap was installed (only statistically significant for bee richness), the presence of flowers in the focal crop, and the plot size. Among these, the presence of flowers appears to be most important with relatively large effect size and high statistical significance.

⁶ Since all pan trap catches from a given plot were combined in the field for easier logistics, we are unable to present a species accumulation curve at the pan trap level.

Table 2Estimation results ($n = 127$)

Variable	Effects of explanatory variable as percentage changes on...	
	(e.g. $(e^{\hat{\beta}} - 1) \times 100$)	
	Abundance	Richness
<i>Agricultural input use</i>		
Chemical fertilizer – on plot (dummy) ^a	-22.2 (0.026)	-4.9 (0.709)
Pesticides – on plot (dummy) ^a	-20.4 (0.087)	-12.9 (0.396)
Irrigation since 2012 (years)	-8.1 (<0.001)	-7.0 (0.011)
Pesticides – neighborhood (share)	-67.8 (<0.001)	-41.6 (0.043)
<i>Landscape scale</i>		
Distance to Bangalore (km)		2.4 (0.001)
Southern transect (dummy)	-29.7 (0.001)	
Village build-up area (percentage)	-4.7 (<0.001)	
<i>Local / Plot scale</i>		
Forest in direct neighborhood (dummy)	35.5 (0.037)	
Building in direct neighborhood (dummy)	-18.2 (0.086)	
Road in direct neighborhood (dummy)	-16.5 (0.046)	
Successful pan traps (number) – reference category is 4		
	1	-20.1 (0.522)
	2	39.2 (0.034)
	3	46.4 (<0.001)
Clouds at time of pan trap placement (Okta scale)		22.5 (0.071)
Plot fallow or harvested at time of pan trap placement (dummy)	16.3 (0.148)	22.6 (0.095)
Tree crop (dummy)	-40.3 (0.019)	
Vegetable crop (dummy)	-18.3 (0.031)	
Flowers present in focal crop 2018 (number, logarithmic scale)	29.4 (<0.001)	25.5 (<0.001)
Pollinator forage crops since 2012 (years)	-3.3 (0.065)	
Plot size (acre)	8.9 (0.003)	7.8 (0.028)
Intercept	668.8 (<0.001)	-56.5 (0.072)

Note: p-values given in parentheses, ^anot chosen by the selection algorithm in the *Richness* model.

Furthermore, the results in Table 2 show that a larger number of explanatory variables have a significant effect on bee abundance than on richness, particularly on the local scale. This includes statistically significant effects of the number of successful pan traps per plot implying that this is an important control variable in the model on bee abundance. Also, adjacent plot use appears to have a big influence on bee abundance. A road or building reduces bee abundance by 18.2 and 16.5 percent respectively, whereas a forest located next to an agricultural plot leads to an increase of more than 35 percent.

On the landscape scale, the distance to the urban center of Bangalore appears to be an important factor for the number of present bee species. With every additional kilometer distance from the city, bee

richness increases by 2.4 percent. In contrast, bee abundance is negatively associated with build-up area, which is also an indicator of urbanization.

4. Discussion

The levels of bee abundance and species richness that we found in the rural-urban landscape around Bangalore are comparable to those found in other studies conducted in tropical agricultural landscapes (Hass et al., 2018; Hoehn et al., 2008). Still, the number of captured bee individuals was relatively small at the plot level. This might be due to unusually dry and hot weather conditions in early 2018. For longer sampling periods covering multiple seasons, catches might be higher. Nonetheless, as our design was strictly standardized (Meyer et al., 2015), we are confident that our bee data are robust and show sufficient variation for our study.

Bee or pollinator abundance and richness are common indicators of pollination services (Holzschuh et al., 2007; Kremen et al., 2004) and the negative effects of fertilizer and pesticide use on bee abundance and richness that we find might be expected to also hold for biodiversity and ecosystem services such as pollination. Such a negative relationship has been highlighted in the literature (Matson, 1997; Tilman et al., 2002; Winfree et al., 2009). However, since we did not measure direct pollination outcomes such as fruit or seed set, we cannot draw direct conclusions but can only deduce from other studies. A sufficient number of pollinators (abundance) is necessary to guarantee full pollination services (Kremen et al., 2002). Other studies highlight specialized plant-pollinator relationships and the importance of bee richness for a complete fruit set (Klein et al., 2003). Thus, effects on both indicators have to be taken into consideration in evaluating the effects of farmers' decision-making on pollination services.

Furthermore, we also find that the abundance and richness of bee communities in our research area are suffering from negative spatial spillovers of neighboring smallholders' management decisions, particularly from pesticide use. Several studies have analyzed the effect of pesticides on bee communities, but the results are not consistent. Whereas Tuell and Isaacs (2010) find significant negative effects for insecticides, Kremen et al. (2004) and Shuler et al. (2005) do not find any interactions between insecticide and overall pesticide use on wild pollinator populations respectively. However, these studies do not consider spatial scaling, which seems important in the light of our estimation results. Studies that consider spatial dimensions normally only consider effects of aggregated farming systems on bee populations of surrounding plots or the influence of distance to natural habitats (Holzschuh et al., 2007; Motzke et al., 2016). Therefore, a key advantage of our modeling approach is that it can identify spatial spillovers of specific farming practices such as agricultural input use. This enables us to quantify the link between a farmer's decision to use pesticides and resulting externalities on other plots. Even if a farmer was to reduce pesticide use to protect pollinator populations and their services, he/she might still face decreased provision of pollination services due to pesticide use by neighbors. In the worst case, the farmer could end up with only pests and no pollinators on his/her plots.

At the other extreme, a free-riding problem might arise. If only one farmer applies pesticides while all others refrain in an effort to protect pollinators, then this farmer will face lower pest rates and also benefit from largely intact pollination services. Thus, our results suggest that cooperative behavior among smallholders or other approaches such as pesticide regulations may be necessary to guarantee pollination services for all farmers. This is in line with other ecological studies (Goldman et al., 2007; Stallman, 2011) that refer to the prisoners' dilemma affecting pollinator maintenance (Rapoport, 1989). Also, this might be even more relevant in low-income countries. While in the global north intensified agriculture often takes place on large fields, in the global south agriculture is still dominated by smallholders. In our study, the average plot size is about 1.33 acres (Table A.1). This means that bee populations in Bangalore are more likely to be affected by different individual agricultural management decisions than a bee population in Europe or North America, for example. Note that, in the literature, fragmented or diverse landscapes are normally associated with positive effects on pollinator population (e.g. Krishnan et al., 2012). This, however, often refers to the influence of forest patches or other natural habitats between agricultural plots (Halinski et al., 2020; Priess et al., 2007), a positive association also present in our estimation results. What we talk about here are the consequences of a fragmentation of agricultural land use. In landscapes dominated by small-scale agriculture pollinator presence on an individual farmer's plot depends to a great extent on management decisions of his/her neighbors.

Nevertheless, in contrast to our results for pesticides, the negative effects of chemical fertilizers and intensive past plot management are limited to the plot level and do not show any significant spillovers. Intensively managed plots likely offer less forage and nesting opportunities to bee populations than extensively managed plots, since they offer less natural vegetation. For instance, weeding is still often done through manual labor in the area, and its effects are as such not reflected by our pesticide variable. This explains the local negative effect of chemical fertilizer and past intensive plot management on bee populations. Furthermore, several authors have emphasized the importance of time in determining pollinators' access to species-specific forage and nesting resources (Kremen et al., 2007; Tuell & Isaacs, 2010). Note, however, that farmers applied chemical fertilizers on 78 percent of plots in our sample. Thus, we already observe a relatively high density of intensified agriculture and there might be insufficient spatial variation of chemical fertilizer use in our sample for detecting spillovers.

Regarding other factors influencing bee abundance and richness, our results suggest that the distance to the urban center of Bangalore is an important factor for the number of present bee species, whereas bee abundance is influenced by village build-up area. Urbanization does not follow a monotonic rural-urban gradient surrounding Bangalore; several smaller satellite towns influence urbanization patterns as well (Steinhübel & Cramon-Taubadel, 2020). In the vicinity of such towns build-up area and its negative effects can increase as one moves away from Bangalore center. These findings match previous literature on the linkage of urbanization and pollinator decline (Wenzel et al., 2020). Physical infrastructure can impede biodiversity and ecosystem services due to changes in physical parameters (e.g.,

temperature)reduction of habitat size and connectivity (Faeth et al., 2011; Pickett et al., 2011; Turrini & Knop, 2015), or light pollution (Altermatt & Ebert, 2016). Furthermore, Banaszak-Cibicka and Zmihorski (2012), for example, show that ground-nesting pollinators have bigger problems with urbanization than cavity-nesting species. This might be a sign that bee richness is rather affected by larger-scale patterns, whereas bee abundance is influenced by local factors. Further evidence of such local influence on bee abundance is provided by the statistically significant effects of adjacent plot use (e.g. road or building). Especially the positive relationship between forests and pollinator communities or benefits from agroforestry systems have been emphasized in the literature before and might be also useful insight for the Bangalore area (Motzke et al., 2016; Staton et al., 2019).

Finally, the other statistically significant control variables show that particularly bee abundance is subject to many influences. Among these, the presence of flowers and the number of successful pan traps appear to be most important with relatively large effect size and high statistical significance. This importance of flowers is plausible as bees feed on them and confirms results by Motzke et al. (2016). The loss of some pan traps due to passers-by or other influences is a good example of practical challenges in collecting pollinator data in tropical and low-income regions. Due to poor infrastructure and long ways, it is impossible to control traps while on the plots and other farmers or villagers might not be familiar with such experiments and think of the traps as trash. It makes sense that particular bee abundance depends on the number of successful traps and the significance of such a dummy should always be tested and if statistically significant included in future studies facing similar constraints.

5. Conclusions and policy implications

The goal of this study is to evaluate the effects of agricultural management practices on bee communities and to provide new evidence for low-income countries based on primary data from the rural-urban interface of Bangalore. In our empirical analysis, we considered both ecological factors at the landscape and local scale as well as farmers' decisions to use different agricultural inputs at the plot scale. To account for spatial and temporal scaling, we applied a model that allows for spatial spillovers and the effects of past plot management.

Overall, we find a statistically negative effect of agricultural intensification on the bee population in the Bangalore area. However, there are some differences between abundance and richness. While bee abundance is negatively affected by present, past, and neighboring farming decisions, bee richness only shows significant interactions with past and neighboring agricultural management. Thus, it seems that larger-scale patterns are more important in defining the pool of observed bee species. This also matches our results regarding urbanization effects on bee communities. For bee abundance, we find that local build-up area is an important factor decreasing the number of observed bee individuals, while for bee richness the overall rural-urban gradient of Bangalore is more relevant. This highlights the importance of considering spatial as well as temporal dimensions when analyzing farm-pollinator interactions.

Our results suggest that strategies to protect pollination services by wild bee communities could include the regulation of pesticide use, but also the provision of incentives for cooperative behavior among farmers to foster landscape-level improvements in pollinator habitats. This is particularly important in smallholder land-use systems, where plot sizes are relatively small and pollinator populations are affected by a multitude of interacting individual management decisions. In addition, extension services that increase farmers' understanding of the importance of pollinators and how to protect them could have positive effects. After all, we also show that an on-plot reduction of chemical fertilizer and pesticide use can benefit bee abundance. Since past plot management decisions affect current bee abundance and richness, rotation of intensive and extensive management practices might help to maintain sufficient forage and nesting opportunities to support healthy and diverse bee communities. In addition, protecting forest patches or agroforestry plots also holds the potential to promote bee populations.

Our study shows that increasing agricultural intensification has negative effects on wild bee communities in low-income countries. To increase the statistical validity and precision of these results as a basis for policy recommendations we need more and larger samples from different countries in the Global South. Data from other regions with fewer cultivated crops might reduce the correlation among variables and allow for more specific conclusions concerning the effects of different agricultural practices. Finally, to improve our understanding of economic implications and to inform the design of effective policies, we also require research on the relationships between bee abundance and richness on the one hand, and pollination outcomes such as fruit set on the other.

Funding: The data were collected under the auspices of Research Unit 2432 “Ecological and Social Systems at the Indian Rural-Urban Interface: Functions, Scales and Dynamics of Transition” funded by the German Research Foundation (DFG) and the Indian Department of Biotechnology (DBT). This research was also supported by the DFG Research Training Group 1644 "Scaling Problems in Statistics", grant no. 152112243. In addition, this work was partially supported by the U.S. Department of Agriculture National Institute of Food and Agriculture (USDA-NIFA) and Michigan AgBioResearch (project number MICL02501). The contents are the sole responsibility of the authors and do not necessarily reflect the views of any of the funding agencies mentioned above.

References

- Altermatt, F., & Ebert, D. (2016). Reduced flight-to-light behaviour of moth populations exposed to long-term urban light pollution. *Biology Letters*, *12*(4), 20160111. <https://doi.org/10.1098/rsbl.2016.0111>
- Asfaw, S., Di Battista, F., & Lipper, L. (2016). Agricultural Technology Adoption under Climate Change in the Sahel: Micro-evidence from Niger. *Journal of African Economies*, *25*(5), 637–669. <https://doi.org/10.1093/jae/ejw005>
- Banaszak-Cibicka, W., & Żmihorski, M. (2012). Wild bees along an urban gradient: Winners and losers. *Journal of Insect Conservation*, *16*(3), 331–343. <https://doi.org/10.1007/s10841-011-9419-2>
- Baum, K. A., & Wallen, K. E. (2011). Potential Bias in Pan Trapping as a Function of Floral Abundance. *Journal of the Kansas Entomological Society*, *84*(2), 155–159.
- Belitz, C., & Lang, S. (2008). Simultaneous selection of variables and smoothing parameters in structured additive regression models. *Computational Statistics & Data Analysis*, *53*(1), 61–81. <https://doi.org/10.1016/j.csda.2008.05.032>
- Bennett, E. M., Cramer, W., Begossi, A., Cundill, G., Díaz, S., Egoh, B. N., Geijzendorffer, I. R., Krug, C. B., Lavorel, S., Lazos, E., Lebel, L., Martín-López, B., Meyfroidt, P., Mooney, H. A., Nel, J. L., Pascual, U., Payet, K., Harguindeguy, N. P., Peterson, G. D., ... Woodward, G. (2015). Linking biodiversity, ecosystem services, and human well-being: Three challenges for designing research for sustainability. *Current Opinion in Environmental Sustainability*, *14*, 76–85. <https://doi.org/10.1016/j.cosust.2015.03.007>
- Blitzer, E. J., Dormann, C. F., Holzschuh, A., Klein, A.-M., Rand, T. A., & Tscharrntke, T. (2012). Spillover of functionally important organisms between managed and natural habitats. *Agriculture, Ecosystems & Environment*, *146*(1), 34–43. <https://doi.org/10.1016/j.agee.2011.09.005>
- Brittain, C. A., Vighi, M., Bommarco, R., Settele, J., & Potts, S. G. (2010). Impacts of a pesticide on pollinator species richness at different spatial scales. *Basic and Applied Ecology*, *11*(2), 106–115. <https://doi.org/10.1016/j.baae.2009.11.007>
- Chao, A. (1984). Nonparametric Estimation of the Number of Classes in a Population. *Scandinavian Journal of Statistics*, *11*(4), 265–270.
- Collins, S. L., Carpenter, S. R., Swinton, S. M., Orenstein, D. E., Childers, D. L., Gragson, T. L., Grimm, N. B., Grove, J. M., Harlan, S. L., Kaye, J. P., Knapp, A. K., Kofinas, G. P., Magnuson, J. J., McDowell, W. H., Melack, J. M., Ogden, L. A., Robertson, G. P., Smith, M. D., & Whitmer, A. C. (2011). An integrated conceptual framework for long-term social–ecological research. *Frontiers in Ecology and the Environment*, *9*(6), 351–357. <https://doi.org/10.1890/100068>
- Directorate of Census Operations Karnataka. (2011). *Census of India 2011: Karnataka, district census handbook, Bangalore rural (Series-30 No. Part XII-A), Bangalore, India.*

- Faeth, S. H., Bang, C., & Saari, S. (2011). Urban biodiversity: Patterns and mechanisms. *Annals of the New York Academy of Sciences*, 1223, 69–81. <https://doi.org/10.1111/j.1749-6632.2010.05925.x>
- Gagic, V., Bartomeus, I., Jonsson, T., Taylor, A., Winqvist, C., Fischer, C., Slade, E. M., Steffan-Dewenter, I., Emmerson, M., Potts, S. G., Tschardtke, T., Weisser, W., & Bommarco, R. (2015). Functional identity and diversity of animals predict ecosystem functioning better than species-based indices. *Proceedings. Biological Sciences*, 282(1801), 20142620. <https://doi.org/10.1098/rspb.2014.2620>
- Garibaldi, L. A., Carvalheiro, L. G., Vaissière, B. E., Gemmill-Herren, B., Hipólito, J., Freitas, B. M., Ngo, H. T., Azzu, N., Sáez, A., Åström, J., An, J., Blochtein, B., Buchori, D., Chamorro García, F. J., Oliveira da Silva, F., Devkota, K., Ribeiro, M. de F., Freitas, L., Gaglianone, M. C., ... Zhang, H. (2016). Mutually beneficial pollinator diversity and crop yield outcomes in small and large farms. *Science (New York, N.Y.)*, 351(6271), 388–391. <https://doi.org/10.1126/science.aac7287>
- Goldman, R. L., Thompson, B. H., & Daily, G. C. (2007). Institutional incentives for managing the landscape: Inducing cooperation for the production of ecosystem services. *Ecological Economics*, 64(2), 333–343. <https://doi.org/10.1016/j.ecolecon.2007.01.012>
- Goulson, D., Nicholls, E., Botías, C., & Rotheray, E. L. (2015). Bee declines driven by combined stress from parasites, pesticides, and lack of flowers. *Science (New York, N.Y.)*, 347(6229), 1255957. <https://doi.org/10.1126/science.1255957>
- Halinski, R., Garibaldi, L. A., dos Santos, C. F., Acosta, A. L., Guidi, D. D., & Blochtein, B. (2020). Forest fragments and natural vegetation patches within crop fields contribute to higher oilseed rape yields in Brazil. *Agricultural Systems*, 180, 102768. <https://doi.org/10.1016/j.agsy.2019.102768>
- Hass, A. L., Liese, B., Heong, K. L., Settele, J., Tschardtke, T., & Westphal, C. (2018). Plant-pollinator interactions and bee functional diversity are driven by agroforests in rice-dominated landscapes. *Agriculture, Ecosystems & Environment*, 253, 140–147. <https://doi.org/10.1016/j.agee.2017.10.019>
- Hoehn, P., Tschardtke, T., Tylianakis, J. M., & Steffan-Dewenter, I. (2008). Functional group diversity of bee pollinators increases crop yield. *Proceedings. Biological Sciences*, 275(1648), 2283–2291. <https://doi.org/10.1098/rspb.2008.0405>
- Hoffmann, E., Jose, M., Nölke, N., & Möckel, T. (2017). Construction and Use of a Simple Index of Urbanisation in the Rural–Urban Interface of Bangalore, India. *Sustainability*, 9(11), 2146. <https://doi.org/10.3390/su9112146>
- Holzschuh, A., Steffan-Dewenter, I., Kleijn, D., & Tschardtke, T. (2007). Diversity of flower-visiting bees in cereal fields: Effects of farming system, landscape composition and regional context. *Journal of Applied Ecology*, 44(1), 41–49. <https://doi.org/10.1111/j.1365-2664.2006.01259.x>

- Jayne, T. S., Mason, N. M., Burke, W. J., & Ariga, J. (2018). Review: Taking stock of Africa's second-generation agricultural input subsidy programs. *Food Policy*, *75*, 1–14. <https://doi.org/10.1016/j.foodpol.2018.01.003>
- Kleijn, D., Winfree, R., Bartomeus, I., Carvalheiro, L. G., Henry, M., Isaacs, R., Klein, A.-M., Kremen, C., M'Gonigle, L. K., Rader, R., Ricketts, T. H., Williams, N. M., Lee Adamson, N., Ascher, J. S., Báldi, A., Batáry, P., Benjamin, F., Biesmeijer, J. C., Blitzer, E. J., ... Potts, S. G. (2015). Delivery of crop pollination services is an insufficient argument for wild pollinator conservation. *Nature Communications*, *6*, 7414 EP-. <https://doi.org/10.1038/ncomms8414>
- Klein, A.-M., Steffan-Dewenter, I., & Tschardt, T. (2003). Fruit set of highland coffee increases with the diversity of pollinating bees. *Proceedings. Biological Sciences*, *270*(1518), 955–961. <https://doi.org/10.1098/rspb.2002.2306>
- Klein, A.-M., Vaissière, B. E., Cane, J. H., Steffan-Dewenter, I., Cunningham, S. A., Kremen, C., & Tschardt, T. (2007). Importance of pollinators in changing landscapes for world crops. *Proceedings. Biological Sciences*, *274*(1608), 303–313. <https://doi.org/10.1098/rspb.2006.3721>
- Kremen, C., Williams, N. M., Aizen, M. A., Gemmill-Herren, B., LeBuhn, G., Minckley, R., Packer, L., Potts, S. G., Roulston, T., Steffan-Dewenter, I., Vázquez, D. P., Winfree, R., Adams, L., Crone, E. E., Greenleaf, S. S., Keitt, T. H., Klein, A.-M., Regetz, J., & Ricketts, T. H. (2007). Pollination and other ecosystem services produced by mobile organisms: A conceptual framework for the effects of land-use change. *Ecology Letters*, *10*(4), 299–314. <https://doi.org/10.1111/j.1461-0248.2007.01018.x>
- Kremen, C., Williams, N. M., Bugg, R. L., Fay, J. P., & Thorp, R. W. (2004). The area requirements of an ecosystem service: Crop pollination by native bee communities in California. *Ecology Letters*, *7*(11), 1109–1119. <https://doi.org/10.1111/j.1461-0248.2004.00662.x>
- Kremen, C., Williams, N. M., & Thorp, R. W. (2002). Crop pollination from native bees at risk from agricultural intensification. *Proceedings of the National Academy of Sciences of the United States of America*, *99*(26), 16812–16816. <https://doi.org/10.1073/pnas.262413599>
- Krishnan, S., Kushalappa, Cheppudira. G., Shaanker, R. U., & Ghazoul, J. (2012). Status of pollinators and their efficiency in coffee fruit set in a fragmented landscape mosaic in South India. *Basic and Applied Ecology*, *13*(3), 277–285. <https://doi.org/10.1016/j.baae.2012.03.007>
- Lee, L.-F. (2004). Asymptotic Distributions of Quasi-Maximum Likelihood Estimators for Spatial Autoregressive Models. *Econometrica*, *72*(6), 1899–1925. <https://doi.org/10.1111/j.1468-0262.2004.00558.x>
- Maertens, M., Minten, B., & Swinnen, J. (2012). Modern Food Supply Chains and Development: Evidence from Horticulture Export Sectors in Sub-Saharan Africa. *Development Policy Review*, *30*(4), 473–497. <https://doi.org/10.1111/j.1467-7679.2012.00585.x>
- Matson, P. A. (1997). Agricultural Intensification and Ecosystem Properties. *Science*, *277*(5325), 504–509. <https://doi.org/10.1126/science.277.5325.504>

- Meyer, S. T., Koch, C., & Weisser, W. W. (2015). Towards a standardized Rapid Ecosystem Function Assessment (REFA). *Trends in Ecology & Evolution*, 30(7), 390–397. <https://doi.org/10.1016/j.tree.2015.04.006>
- Minten, B., Koru, B., & Stifel, D. (2013). The last mile(s) in modern input distribution: Pricing, profitability, and adoption. *Agricultural Economics*, 44(6), 629–646. <https://doi.org/10.1111/agec.12078>
- Motzke, I., Klein, A.-M., Saleh, S., Wanger, T. C., & Tschardtke, T. (2016). Habitat management on multiple spatial scales can enhance bee pollination and crop yield in tropical homegardens. *Agriculture, Ecosystems & Environment*, 223, 144–151. <https://doi.org/10.1016/j.agee.2016.03.001>
- Pickett, S. T. A., Cadenasso, M. L., Grove, J. M., Boone, C. G., Groffman, P. M., Irwin, E., Kaushal, S. S., Marshall, V., McGrath, B. P., Nilon, C. H., Pouyat, R. V., Szlavecz, K., Troy, A., & Warren, P. (2011). Urban ecological systems: Scientific foundations and a decade of progress. *Journal of Environmental Management*, 92(3), 331–362. <https://doi.org/10.1016/j.jenvman.2010.08.022>
- Priess, J. A., Mimler, M., Klein, A.-M., Schwarze, S., Tschardtke, T., & Steffan-Dewenter, I. (2007). LINKING DEFORESTATION SCENARIOS TO POLLINATION SERVICES AND ECONOMIC RETURNS IN COFFEE AGROFORESTRY SYSTEMS. *Ecological Applications*, 17(2), 407–417. <https://doi.org/10.1890/05-1795>
- Rapoport, A. (1989). Prisoner's Dilemma. In J. Eatwell (Ed.), *The new Palgrave: Game theory* (pp. 199–204). Macmillan Reference. https://doi.org/10.1007/978-1-349-20181-5_
- Schwarz, B., Vázquez, D. P., CaraDonna, P. J., Knight, T. M., Benadi, G., Dormann, C. F., Gauzens, B., Motivans, E., Resasco, J., Blüthgen, N., Burkle, L. A., Fang, Q., Kaiser-Bunbury, C. N., Alarcón, R., Bain, J. A., Chacoff, N. P., Huang, S.-Q., LeBuhn, G., MacLeod, M., ... Fründ, J. (2020). Temporal scale-dependence of plant–pollinator networks. *Oikos*, 129(9), 1289–1302. <https://doi.org/10.1111/oik.07303>
- Shuler, R. E., Roulston, T. H., & Farris, G. E. (2005). Farming practices influence wild pollinator populations on squash and pumpkin. *Journal of Economic Entomology*, 98(3), 790–795.
- Stallman, H. R. (2011). Ecosystem services in agriculture: Determining suitability for provision by collective management. *Ecological Economics*, 71, 131–139. <https://doi.org/10.1016/j.ecolecon.2011.08.016>
- Staton, T., Walters, R. J., Smith, J., & Girling, R. D. (2019). Evaluating the effects of integrating trees into temperate arable systems on pest control and pollination. *Agricultural Systems*, 176, 102676. <https://doi.org/10.1016/j.agsy.2019.102676>
- Steinhübel, L., & Cramon-Taubadel, S. von. (2020). Somewhere in between Towns, Markets and Jobs – Agricultural Intensification in the Rural–Urban Interface. *The Journal of Development Studies*, 0(0), 1–26. <https://doi.org/10.1080/00220388.2020.1806244>

- Steinhübel, L., Wegmann, J., & Mußhoff, O. (2020). Digging deep and running dry—The adoption of borewell technology in the face of climate change and urbanization. *Agricultural Economics*, *51*(5), 685–706. <https://doi.org/10.1111/agec.12586>
- Tilman, D., Cassman, K. G., Matson, P. A., Naylor, R., & Polasky, S. (2002). Agricultural sustainability and intensive production practices. *Nature*, *418*, 671 EP-. <https://doi.org/10.1038/nature01014>
- Tscharntke, T., & Brandl, R. (2004). Plant-insect interactions in fragmented landscapes. *Annual Review of Entomology*, *49*, 405–430. <https://doi.org/10.1146/annurev.ento.49.061802.123339>
- Tscharntke, T., Clough, Y., Wanger, T. C., Jackson, L., Motzke, I., Perfecto, I., Vandermeer, J., & Whitbread, A. (2012). Global food security, biodiversity conservation and the future of agricultural intensification. *Biological Conservation*, *151*(1), 53–59. <https://doi.org/10.1016/j.biocon.2012.01.068>
- Tscharntke, T., Klein, A. M., Kruess, A., Steffan-Dewenter, I., & Thies, C. (2005). Landscape perspectives on agricultural intensification and biodiversity—Ecosystem service management. *Ecology Letters*, *8*(8), 857–874. <https://doi.org/10.1111/j.1461-0248.2005.00782.x>
- Tuell, J. K., & Isaacs, R. (2010). Community and Species-Specific Responses of Wild Bees to Insect Pest Control Programs Applied to a Pollinator-Dependent Crop. *Journal of Economic Entomology*, *103*(3), 668–675. <https://doi.org/10.1603/EC09314>
- Turrini, T., & Knop, E. (2015). A landscape ecology approach identifies important drivers of urban biodiversity. *Global Change Biology*, *21*(4), 1652–1667. <https://doi.org/10.1111/gcb.12825>
- Tylianakis, J. M. (2013). The Global Plight of Pollinators. *Science*, *339*(6127), 1532–1533. <https://doi.org/10.1126/science.1235464>
- Umlauf, N., Adler, D., Kneib, T., Lang, S., & Zeileis, A. (2015). Structured Additive Regression Models: An R Interface to BayesX. *Journal of Statistical Software*, *63*(1), 1–46. <https://doi.org/10.18637/jss.v063.i21>
- Vanbergen, A. J., & Initiative, the I. P. (2013). Threats to an ecosystem service: Pressures on pollinators. *Frontiers in Ecology and the Environment*, *11*(5), 251–259. <https://doi.org/10.1890/120126>
- Vandecasteele, J., Beyene, S. T., Minten, B., & Swinnen, J. (2018). Cities and agricultural transformation in Africa: Evidence from Ethiopia. *World Development*, *105*, 383–399. <https://doi.org/10.1016/j.worlddev.2017.10.032>
- Wenzel, A., Grass, I., Belavadi, V. V., & Tscharntke, T. (2020). How urbanization is driving pollinator diversity and pollination – A systematic review. *Biological Conservation*, *241*, 108321. <https://doi.org/10.1016/j.biocon.2019.108321>
- Westphal, C., Bommarco, R., Carré, G., Lamborn, E., Morison, N., Petanidou, T., Potts, S. G., Roberts, S. P. M., Szentgyörgyi, H., Tscheulin, T., Vaissière, B. E., Woyciechowski, M., Biesmeijer, J. C., Kunin, W. E., Settele, J., & Steffan-Dewenter, I. (2008). MEASURING BEE DIVERSITY IN DIFFERENT EUROPEAN HABITATS AND BIOGEOGRAPHICAL REGIONS. *Ecological Monographs*, *78*(4), 653–671. <https://doi.org/10.1890/07-1292.1>

- Winfree, R., Aguilar, R., Vázquez, D. P., LeBuhn, G., & Aizen, M. A. (2009). A meta-analysis of bees' responses to anthropogenic disturbance. *Ecology*, *90*(8), 2068–2076. <https://doi.org/10.1890/08-1245.1>
- Zhang, W., Ricketts, T. H., Kremen, C., Carney, K., & Swinton, S. M. (2007). Ecosystem services and dis-services to agriculture. *Ecological Economics*, *64*(2), 253–260. <https://doi.org/10.1016/j.ecolecon.2007.02.024>
- Zurbuchen, A., Landert, L., Klaiber, J., Müller, A., Hein, S., & Dorn, S. (2010). Maximum foraging ranges in solitary bees: Only few individuals have the capability to cover long foraging distances. *Biological Conservation*, *143*(3), 669–676. <https://doi.org/10.1016/j.biocon.2009.12.003>

Appendix

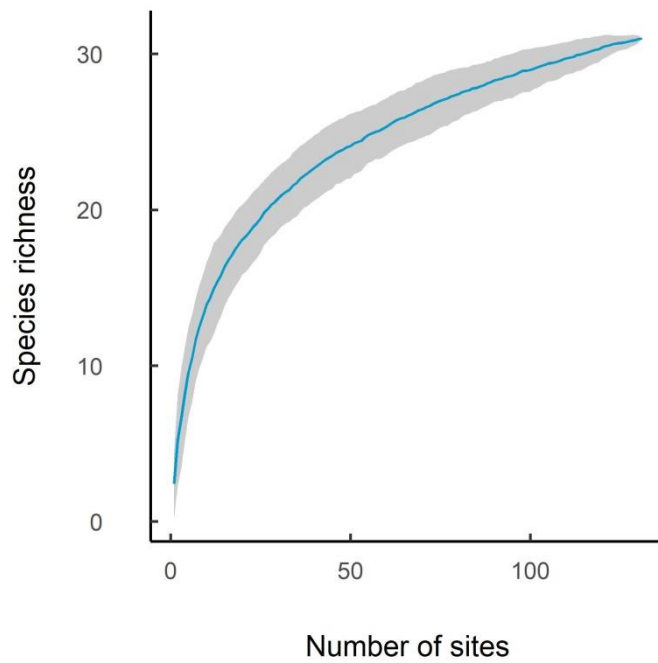


Fig. A.1. Species accumulation curve of bees: mean values (lines), and standard deviations (polygon) from 100 permutations of 127 sampled plots are shown.

Table A.1

Descriptive statistics for the control variables; for dummies and categorical variables shares, are presented, ($n = 127$)

Variable	Mean	Std. Dev.	Min	Max
<i>Landscape scale</i>				
Distance to Bangalore (km)	31.1	8.15	16.8	45.73
Southern transect (dummy)	0.45	0.5		
Village build-up area (percentage)	1.12	5.41	0.80	25.59
<i>Local / Plot scale</i>				
Agricultural plot in direct neighborhood (dummy)	0.85			
Fallow plot in direct neighborhood (dummy)	0.49			
Forest in direct neighborhood (dummy)	0.10			
Building in direct neighborhood (dummy)	0.28			
Road in direct neighborhood (dummy)	0.38			
Waterbody in direct neighborhood (dummy)	0.12			
Successful pan traps (number)				
	1	0.02		
	2	0.11		
	3	0.28		
	4	0.61		
Clouds at time of pan trap placement (Okta scale)	2.65	0.51	2	4
Temperature at time of pan trap placement (°C)	26.94	1.12	23	29
Wind at time of pan trap placement (Beaufort scale)	2.15	0.36	2	3
Plot fallow or harvested at time of pan trap placement (dummy)	0.47			
Flower crop (dummy) ^a	0.04			
Fruit crop (dummy) ^a	0.19			
Staple crop (dummy) ^a	0.77			
Tree crop (dummy) ^a	0.05			
Vegetable crop (dummy) ^a	0.50			
Pollinator forage crop (dummy)	0.81			
Flowers present in focal crop 2018 (number, logarithmic scale)	1.12	1.55	0	5
Flowers in 2m proximity of bowls (number, average all bowls per plot, logarithmic scale)	2.50	1.50	0	8
Pollinator forage crops since 2012 (years)	3.41	2.40	0	6
Plot size (acre)	1.33	1.37	0.001	10
Slope				
	1: Flat	0.23		
	2: Moderate	0.57		
	3: Steep	0.20		
Soil quality				
	1: Poor	0.05		
	2: Middle	0.46		
	3: Very good	0.49		

Note: The questionnaire of the socioeconomic survey can be found in the supplementary materials.

^aSee Table A.3 for corresponding crops.

Table A.2Estimation results, 2nd approach for neighborhood construction, ($n = 127$)

Variable	Effects as percentage changes	
	Abundance	Richness
<i>Agricultural input use</i>		
Chemical fertilizer – on plot ^a	-23.4 (0.019)	-4.4 (0.741)
Pesticides – on plot ^a	-24.4 (0.037)	-16.9 (0.250)
Irrigation since 2012 (years) ^b	-8.2 (<0.001)	-7.4 (0.008)
Pesticides – neighborhood (weighted by inverse distance)	-95.3 (0.191)	-39.6 (0.845)
<i>Landscape scale</i>		
Distance to Bangalore (km)		2.3 (0.002)
Southern transect (dummy)	-23.6 (0.013)	
Village build-up area (percentage)	-3.1 (0.005)	
<i>Local / Plot scale</i>		
Forest in direct neighborhood (dummy)	39.5 (0.019)	
Building in direct neighborhood (dummy)	-26.7 (0.006)	
Road in direct neighborhood (dummy)	-15.2 (0.067)	
Successful pan traps (number) – ref. 4		
	1	-18.7 (0.562)
	2	36.7 (0.044)
	3	48.7 (<0.001)
Clouds at time of pan trap placement (Okta scale)		20.9 (0.094)
Plot fallow or harvested at time of pan trap placement (dummy)	22.0 (0.069)	28.0 (0.051)
Tree crop (dummy)	-44.1 (0.009)	
Vegetable crop (dummy)	-9.8 (0.263)	
Flowers present in focal crop 2018 (number, logarithmic scale)	31.5 (<0.001)	26.4 (<0.001)
Pollinator forage crops since 2012 (years)	-3.4 (0.062)	
Plot size (acre)	8.2 (0.008)	7.2 (0.043)
Intercept	375.0 (<0.001)	-59.9 (0.053)

Note: p-values given in parentheses, ^anot chosen by the selection algorithm in the *Richness* model.

Table A.3

Observed crops sorted by functional groups.

Categories	Crops
Vegetable and pulses	Avare/Lablab, Beans, Brinjal/Eggplant, Capsicum, Castor, Chilli, Coriander, Cowpea, Cucumber, Groundnut, Horse Gram, Ladiesfingers/Okra, Mustard, Spinach, Tomato, Tur/Arhar
Fruits	Banana, Coconut, Grapes, Guava, Jackfruit, Lemon, Mango, Ridge gourd, Sapota, Tamarind
Flowers	Chrysanthemum, Jasmine, Marigold, Rose
Staples and grasses	Jowar, Maize, Maize (Baby Corn), Mulberry/silk, Napier grass, Paddy, Ragi, Turf/grass
Tress	Eucalyptus, Neem

Table A.4

Total number of individuals per bee species sorted by family.

Family	Species	Author	Abundance	Number of plots where present	
Apidae	Amegilla sp. 1		3	2	
	Amegilla sp. 2		3	2	
	Apis cerana	Fabricius	79	43	
	Apis dorsata	Fabricius	16	11	
	Apis florea	Fabricius	160	66	
		Cockerel			
	Ceratina binghami	1	58	30	
	Ceratina heiroglyphica	Smith	6	5	
	Ceratina heiroglyphica	Smith	34	18	
	Ceratina smaragdina	Smith	9	7	
	Ceratina unimaculata	Smith	11	9	
	Xylocopa latipes	Drury	1	1	
	Xylocopa sp. 1		1	1	
	Halictidae	Austronomia sp. 1		2	2
		Hoplonomia sp. 1		1	1
Lasioglossum sp.1			83	28	
Lasioglossum sp.2			39	20	
Lasioglossum sp.3			58	29	
Lasioglossum sp.4			22	14	
Lasioglossum sp.5			22	17	
Lasioglossum sp.6			15	9	
Lasioglossum sp.7			6	3	
Leuconomia sp. 1			1	1	
Nomia westwoodi		Gribodo	2	1	
Pachynomia sp. 1			2	2	
Seladonia sp. 1			29	18	
Seladonia sp. 2			17	11	
Sphecodes sp. 1			9	7	
Sphecodes sp. 2			3	2	
Megachilidae		Coelioxys confusa	Smith	1	1
		Megachile disjuncta	Fabricius	1	1
	Megachile lanata	Fabricius	2	2	



Diskussionspapiere

2000 bis 31. Mai 2006

Institut für Agrarökonomie

Georg-August-Universität, Göttingen

<u>2000</u>		
0001	Brandes, W.	Über Selbstorganisation in Planspielen: ein Erfahrungsbericht, 2000
0002	von Cramon-Taubadel, S. u. J. Meyer	Asymmetric Price Transmission: Factor Artefact?, 2000
<u>2001</u>		
0101	Leserer, M.	Zur Stochastik sequentieller Entscheidungen, 2001
0102	Molua, E.	The Economic Impacts of Global Climate Change on African Agriculture, 2001
0103	Birner, R. et al.	„Ich kaufe, also will ich?\": eine interdisziplinäre Analyse der Entscheidung für oder gegen den Kauf besonders tier- u. umweltfreundlich erzeugter Lebensmittel, 2001
0104	Wilkens, I.	Wertschöpfung von Großschutzgebieten: Befragung von Besuchern des Nationalparks Unteres Odertal als Baustein einer Kosten-Nutzen-Analyse, 2001
<u>2002</u>		
0201	Grethe, H.	Optionen für die Verlagerung von Haushaltsmitteln aus der ersten in die zweite Säule der EU-Agrarpolitik, 2002
0202	Spiller, A. u. M. Schramm	Farm Audit als Element des Midterm-Review : zugleich ein Beitrag zur Ökonomie von Qualitätssicherungssystemen, 2002
<u>2003</u>		
0301	Lüth, M. et al.	Qualitätssignaling in der Gastronomie, 2003
0302	Jahn, G., M. Peupert u. A. Spiller	Einstellungen deutscher Landwirte zum QS-System: Ergebnisse einer ersten Sondierungsstudie, 2003
0303	Theuvsen, L.	Kooperationen in der Landwirtschaft: Formen, Wirkungen und aktuelle Bedeutung, 2003

0304	Jahn, G.	Zur Glaubwürdigkeit von Zertifizierungssystemen: eine ökonomische Analyse der Kontrollvalidität, 2003
<u>2004</u>		
0401	Meyer, J. u. S. von Cramon-Taubadel	Asymmetric Price Transmission: a Survey, 2004
0402	Barkmann, J. u. R. Marggraf	The Long-Term Protection of Biological Diversity: Lessons from Market Ethics, 2004
0403	Bahrs, E.	VAT as an Impediment to Implementing Efficient Agricultural Marketing Structures in Transition Countries, 2004
0404	Spiller, A., T. Staack u. A. Zühlsdorf	Absatzwege für landwirtschaftliche Spezialitäten: Potenziale des Mehrkanalvertriebs, 2004
0405	Spiller, A. u. T. Staack	Brand Orientation in der deutschen Ernährungswirtschaft: Ergebnisse einer explorativen Online-Befragung, 2004
0406	Gerlach, S. u. B. Köhler	Supplier Relationship Management im Agribusiness: ein Konzept zur Messung der Geschäftsbeziehungsqualität, 2004
0407	Inderhees, P. et al.	Determinanten der Kundenzufriedenheit im Fleischerfachhandel
0408	Lüth, M. et al.	Köche als Kunden: Direktvermarktung landwirtschaftlicher Spezialitäten an die Gastronomie, 2004
<u>2005</u>		
0501	Spiller, A., J. Engelken u. S. Gerlach	Zur Zukunft des Bio-Fachhandels: eine Befragung von Bio-Intensivkäufern, 2005
0502	Groth, M.	Verpackungsabgaben und Verpackungslizenzen als Alternative für ökologisch nachteilige Einweggetränkeverpackungen? Eine umweltökonomische Diskussion, 2005
0503	Freese, J. u. H. Steinmann	Ergebnisse des Projektes 'Randstreifen als Strukturelemente in der intensiv genutzten Agrarlandschaft Wolfenbüttels', Nichtteilnehmerbefragung NAU 2003, 2005
0504	Jahn, G., M. Schramm u. A. Spiller	Institutional Change in Quality Assurance: the Case of Organic Farming in Germany, 2005
0505	Gerlach, S., R. Kennerknecht u. A. Spiller	Die Zukunft des Großhandels in der Bio-Wertschöpfungskette, 2005

<u>2006</u>		
0601	Heß, S., H. Bergmann u. L. Sudmann	Die Förderung alternativer Energien: eine kritische Bestandsaufnahme, 2006
0602	Gerlach, S. u. A. Spiller	Anwohnerkonflikte bei landwirtschaftlichen Stallbauten: Hintergründe und Einflussfaktoren; Ergebnisse einer empirischen Analyse, 2006
0603	Glenk, K.	Design and Application of Choice Experiment Surveys in So-Called Developing Countries: Issues and Challenges,
0604	Bolten, J., R. Kennerknecht u. A. Spiller	Erfolgsfaktoren im Naturkostfachhandel: Ergebnisse einer empirischen Analyse, 2006 (entfällt)
0605	Hasan, Y.	Einkaufsverhalten und Kundengruppen bei Direktvermarktern in Deutschland: Ergebnisse einer empirischen Analyse, 2006
0606	Lülfs, F. u. A. Spiller	Kunden(un-)zufriedenheit in der Schulverpflegung: Ergebnisse einer vergleichenden Schulbefragung, 2006
0607	Schulze, H., F. Albersmeier u. A. Spiller	Risikoorientierte Prüfung in Zertifizierungssystemen der Land- und Ernährungswirtschaft, 2006
<u>2007</u>		
0701	Buchs, A. K. u. J. Jasper	For whose Benefit? Benefit-Sharing within Contractual ABC-Agreements from an Economic Perspective: the Example of Pharmaceutical Bioprospection, 2007
0702	Böhm, J. et al.	Preis-Qualitäts-Relationen im Lebensmittelmarkt: eine Analyse auf Basis der Testergebnisse Stiftung Warentest, 2007
0703	Hurlin, J. u. H. Schulze	Möglichkeiten und Grenzen der Qualitäts-sicherung in der Wildfleischvermarktung, 2007
Ab Heft 4, 2007:		Diskussionspapiere (Discussion Papers), Department für Agrarökonomie und Rurale Entwicklung Georg-August-Universität, Göttingen (ISSN 1865-2697)
0704	Stockebrand, N. u. A. Spiller	Agrarstudium in Göttingen: Fakultätsimage und Studienwahlentscheidungen; Erstsemesterbefragung im WS 2006/2007
0705	Bahrs, E., J.-H. Held u. J. Thiering	Auswirkungen der Bioenergieproduktion auf die Agrarpolitik sowie auf Anreizstrukturen in der Landwirtschaft: eine partielle Analyse bedeutender

		Fragestellungen anhand der Beispielregion Niedersachsen
0706	Yan, J., J. Barkmann u. R. Marggraf	Chinese tourist preferences for nature based destinations – a choice experiment analysis
<u>2008</u>		
0801	Joswig, A. u. A. Zühlsdorf	Marketing für Reformhäuser: Senioren als Zielgruppe
0802	Schulze, H. u. A. Spiller	Qualitätssicherungssysteme in der europäischen Agri-Food Chain: Ein Rückblick auf das letzte Jahrzehnt
0803	Gille, C. u. A. Spiller	Kundenzufriedenheit in der Pensionspferdehaltung: eine empirische Studie
0804	Voss, J. u. A. Spiller	Die Wahl des richtigen Vertriebswegs in den Vorleistungsindustrien der Landwirtschaft – Konzeptionelle Überlegungen und empirische Ergebnisse
0805	Gille, C. u. A. Spiller	Agrarstudium in Göttingen. Erstsemester- und Studienverlaufsbefragung im WS 2007/2008
0806	Schulze, B., C. Wocken u. A. Spiller	(Dis)loyalty in the German dairy industry. A supplier relationship management view Empirical evidence and management implications
0807	Brümmer, B., U. Köster u. J.-P. Loy	Tendenzen auf dem Weltgetreidemarkt: Anhaltender Boom oder kurzfristige Spekulationsblase?
0808	Schlecht, S., F. Albersmeier u. A. Spiller	Konflikte bei landwirtschaftlichen Stallbauprojekten: Eine empirische Untersuchung zum Bedrohungspotential kritischer Stakeholder
0809	Lülfs-Baden, F. u. A. Spiller	Steuerungsmechanismen im deutschen Schulverpflegungsmarkt: eine institutionenökonomische Analyse
0810	Deimel, M., L. Theuvsen u. C. Ebbeskotte	Von der Wertschöpfungskette zum Netzwerk: Methodische Ansätze zur Analyse des Verbundsystems der Veredelungswirtschaft Nordwestdeutschlands
0811	Albersmeier, F. u. A. Spiller	Supply Chain Reputation in der Fleischwirtschaft
<u>2009</u>		
0901	Bahlmann, J., A. Spiller u. C.-H. Plumeyer	Status quo und Akzeptanz von Internet-basierten Informationssystemen: Ergebnisse einer empirischen Analyse in der deutschen Veredelungswirtschaft

0902	Gille, C. u. A. Spiller	Agrarstudium in Göttingen. Eine vergleichende Untersuchung der Erstsemester der Jahre 2006-2009
0903	Gawron, J.-C. u. L. Theuvsen	„Zertifizierungssysteme des Agribusiness im interkulturellen Kontext – Forschungsstand und Darstellung der kulturellen Unterschiede“
0904	Raupach, K. u. R. Marggraf	Verbraucherschutz vor dem Schimmelpilzgift Deoxynivalenol in Getreideprodukten Aktuelle Situation und Verbesserungsmöglichkeiten
0905	Busch, A. u. R. Marggraf	Analyse der deutschen globalen Waldpolitik im Kontext der Klimarahmenkonvention und des Übereinkommens über die Biologische Vielfalt
0906	Zschache, U., S. von Cramon-Taubadel u. L. Theuvsen	Die öffentliche Auseinandersetzung über Bioenergie in den Massenmedien - Diskursanalytische Grundlagen und erste Ergebnisse
0907	Onumah, E. E.,G. Hoerstgen-Schwark u. B. Brümmer	Productivity of hired and family labour and determinants of technical inefficiency in Ghana's fish farms
0908	Onumah, E. E., S. Wessels, N. Wildenhayn, G. Hoerstgen-Schwark u. B. Brümmer	Effects of stocking density and photoperiod manipulation in relation to estradiol profile to enhance spawning activity in female Nile tilapia
0909	Steffen, N., S. Schlecht u. A. Spiller	Ausgestaltung von Milchlieferverträgen nach der Quote
0910	Steffen, N., S. Schlecht u. A. Spiller	Das Preisfindungssystem von Genossenschaftsmolkereien
0911	Granoszewski, K.,C. Reise, A. Spiller u. O. Mußhoff	Entscheidungsverhalten landwirtschaftlicher Betriebsleiter bei Bioenergie-Investitionen - Erste Ergebnisse einer empirischen Untersuchung -
0912	Albersmeier, F., D. Mörlein u. A. Spiller	Zur Wahrnehmung der Qualität von Schweinefleisch beim Kunden
0913	Ihle, R., B. Brümmer u. S. R. Thompson	Spatial Market Integration in the EU Beef and Veal Sector: Policy Decoupling and Export Bans
<u>2010</u>		
1001	Heß, S., S. von Cramon-Taubadel u. S. Sperlich	Numbers for Pascal: Explaining differences in the estimated Benefits of the Doha Development Agenda
1002	Deimel, I., J. Böhm u. B. Schulze	Low Meat Consumption als Vorstufe zum Vegetarismus? Eine qualitative Studie zu den Motivstrukturen geringen Fleischkonsums

1003	Franz, A. u. B. Nowak	Functional food consumption in Germany: A lifestyle segmentation study
1004	Deimel, M. u. L. Theuvsen	Standortvorteil Nordwestdeutschland? Eine Untersuchung zum Einfluss von Netzwerk- und Clusterstrukturen in der Schweinefleischerzeugung
1005	Niens, C. u. R. Marggraf	Ökonomische Bewertung von Kindergesundheit in der Umweltpolitik - Aktuelle Ansätze und ihre Grenzen
1006	Hellberg-Bahr, A., M. Pfeuffer, N. Steffen, A. Spiller u. B. Brümmer	Preisbildungssysteme in der Milchwirtschaft -Ein Überblick über die Supply Chain Milch
1007	Steffen, N., S. Schlecht, H-C. Müller u. A. Spiller	Wie viel Vertrag braucht die deutsche Milchwirtschaft?- Erste Überlegungen zur Ausgestaltung des Contract Designs nach der Quote aus Sicht der Molkereien
1008	Prehn, S., B. Brümmer u. S. R. Thompson	Payment Decoupling and the Intra – European Calf Trade
1009	Maza, B., J. Barkmann, F. von Walter u. R. Marggraf	Modelling smallholders production and agricultural income in the area of the Biosphere reserve “Podocarpus - El Cóndor”, Ecuador
1010	Busse, S., B. Brümmer u. R. Ihle	Interdependencies between Fossil Fuel and Renewable Energy Markets: The German Biodiesel Market
<u>2011</u>		
1101	Mylius, D., S. Küest, C. Klapp u. L. Theuvsen	Der Großvieheinheitenschlüssel im Stallbaurecht - Überblick und vergleichende Analyse der Abstandsregelungen in der TA Luft und in den VDI-Richtlinien
1102	Klapp, C., L. Obermeyer u. F. Thoms	Der Vieheinheitenschlüssel im Steuerrecht - Rechtliche Aspekte und betriebswirtschaftliche Konsequenzen der Gewerblichkeit in der Tierhaltung
1103	Göser, T., L. Schroeder u. C. Klapp	Agrarumweltprogramme: (Wann) lohnt sich die Teilnahme für landwirtschaftliche Betriebe?
1104	Plumeyer, C.-H., F. Albersmeier, M. Freiherr von Oer, C. H. Emmann u. L. Theuvsen	Der niedersächsische Landpachtmarkt: Eine empirische Analyse aus Pächtersicht

1105	Voss, A. u. L. Theuvsen	Geschäftsmodelle im deutschen Viehhandel: Konzeptionelle Grundlagen und empirische Ergebnisse
1106	Wendler, C., S. von Cramon-Taubadel, H. de Haen, C. A. Padilla Bravo u. S. Jrad	Food security in Syria: Preliminary results based on the 2006/07 expenditure survey
1107	Prehn, S. u. B. Brümmer	Estimation Issues in Disaggregate Gravity Trade Models
1108	Recke, G., L. Theuvsen, N. Venhaus u. A. Voss	Der Viehhandel in den Wertschöpfungsketten der Fleischwirtschaft: Entwicklungstendenzen und Perspektiven
1109	Prehn, S. u. B. Brümmer	“Distorted Gravity: The Intensive and Extensive Margins of International Trade”, revisited: An Application to an Intermediate Melitz Model
<u>2012</u>		
1201	Kayser, M., C. Gille, K. Suttorp u. A. Spiller	Lack of pupils in German riding schools? – A causal-analytical consideration of customer satisfaction in children and adolescents
1202	Prehn, S. u. B. Brümmer	Bimodality & the Performance of PPML
1203	Tangermann, S.	Preisanstieg am EU-Zuckermarkt: Bestimmungsgründe und Handlungsmöglichkeiten der Marktpolitik
1204	Würriehausen, N., S. Lakner u. Rico Ihle	Market integration of conventional and organic wheat in Germany
1205	Heinrich, B.	Calculating the Greening Effect – a case study approach to predict the gross margin losses in different farm types in Germany due to the reform of the CAP
1206	Prehn, S. u. B. Brümmer	A Critical Judgement of the Applicability of ‘New New Trade Theory’ to Agricultural: Structural Change, Productivity, and Trade
1207	Marggraf, R., P. Masius u. C. Rumpf	Zur Integration von Tieren in wohlfahrtsökonomischen Analysen
1208	S. Lakner, B. Brümmer, S. von Cramon-Taubadel J. Heß, J. Isselstein, U. Liebe, R. Marggraf, O. Mußhoff, L. Theuvsen, T. Tschardtke, C. Westphal u. G. Wiese	Der Kommissionsvorschlag zur GAP-Reform 2013 - aus Sicht von Göttinger und Witzenhäuser Agrarwissenschaftler(inne)n

1209	Prehn, S., B. Brümmer u. T. Glauben	Structural Gravity Estimation & Agriculture
1210	Prehn, S., B. Brümmer u. T. Glauben	An Extended Viner Model: Trade Creation, Diversion & Reduction
1211	Salidas, R. u. S. von Cramon-Taubadel	Access to Credit and the Determinants of Technical Inefficiency among Specialized Small Farmers in Chile
1212	Steffen, N. u. A. Spiller	Effizienzsteigerung in der Wertschöpfungskette Milch ? -Potentiale in der Zusammenarbeit zwischen Milcherzeugern und Molkereien aus Landwirtssicht
1213	Mußhoff, O., A. Tegtmeier u. N. Hirschauer	Attraktivität einer landwirtschaftlichen Tätigkeit - Einflussfaktoren und Gestaltungsmöglichkeiten
<u>2013</u>		
1301	Lakner, S., C. Holst u. B. Heinrich	Reform der Gemeinsamen Agrarpolitik der EU 2014 - mögliche Folgen des Greenings für die niedersächsische Landwirtschaft
1302	Tangermann, S. u. S. von Cramon-Taubadel	Agricultural Policy in the European Union : An Overview
1303	Granoszewski, K. u. A. Spiller	Langfristige Rohstoffsicherung in der Supply Chain Biogas : Status Quo und Potenziale vertraglicher Zusammenarbeit
1304	Lakner, S., C. Holst, B. Brümmer, S. von Cramon-Taubadel, L. Theuvsen, O. Mußhoff u. T.Tscharntke	Zahlungen für Landwirte an gesellschaftliche Leistungen koppeln! - Ein Kommentar zum aktuellen Stand der EU-Agrarreform
1305	Prechtel, B., M. Kayser u. L. Theuvsen	Organisation von Wertschöpfungsketten in der Gemüseproduktion : das Beispiel Spargel
1306	Anastassiadis, F., J.-H. Feil, O. Musshoff u. P. Schilling	Analysing farmers' use of price hedging instruments : an experimental approach
1307	Holst, C. u. S. von Cramon-Taubadel	Trade, Market Integration and Spatial Price Transmission on EU Pork Markets following Eastern Enlargement
1308	Granoszewski, K., S. Sander, V. M. Aufmkolk u.	Die Erzeugung regenerativer Energien unter gesellschaftlicher Kritik : Akzeptanz von Anwohnern

	A. Spiller	gegenüber der Errichtung von Biogas- und Windenergieanlagen
<u>2014</u>		
1401	Lakner, S., C. Holst, J. Barkmann, J. Isselstein u. A. Spiller	Perspektiven der Niedersächsischen Agrarpolitik nach 2013 : Empfehlungen Göttinger Agrarwissenschaftler für die Landespolitik
1402	Müller, K., Mußhoff, O. u. R. Weber	The More the Better? How Collateral Levels Affect Credit Risk in Agricultural Microfinance
1403	März, A., N. Klein, T. Kneib u. O. Mußhoff	Analysing farmland rental rates using Bayesian geoaddivitive quantile regression
1404	Weber, R., O. Mußhoff u. M. Petrick	How flexible repayment schedules affect credit risk in agricultural microfinance
1405	Haverkamp, M., S. Henke, C., Kleinschmitt, B. Möhring, H., Müller, O. Mußhoff, L., Rosenkranz, B. Seintsch, K. Schlosser u. L. Theuvsen	Vergleichende Bewertung der Nutzung von Biomasse : Ergebnisse aus den Bioenergieregionen Göttingen und BERTA
1406	Wolbert-Haverkamp, M. u. O. Musshoff	Die Bewertung der Umstellung einer einjährigen Ackerkultur auf den Anbau von Miscanthus – Eine Anwendung des Realoptionsansatzes
1407	Wolbert-Haverkamp, M., J.-H. Feil u. O. Musshoff	The value chain of heat production from woody biomass under market competition and different incentive systems: An agent-based real options model
1408	Ikinger, C., A. Spiller u. K. Wiegand	Reiter und Pferdebesitzer in Deutschland (Facts and Figures on German Equestrians)
1409	Mußhoff, O., N. Hirschauer, S. Grüner u. S. Pielsticker	Der Einfluss begrenzter Rationalität auf die Verbreitung von Wetterindexversicherungen : Ergebnisse eines internetbasierten Experiments mit Landwirten
1410	Spiller, A. u. B. Goetzke	Zur Zukunft des Geschäftsmodells Markenartikel im Lebensmittelmarkt
1411	Wille, M.	„Manche haben es satt, andere werden nicht satt“ : Anmerkungen zur polarisierten Auseinandersetzung um Fragen des globalen Handels und der Welternährung
1412	Müller, J., J. Oehmen, I. Janssen u. L. Theuvsen	Sportlermarkt Galopprennsport : Zucht und Besitz des Englischen Vollbluts

2015

1501	Hartmann, L. u. A. Spiller	Luxusaffinität deutscher Reitsportler : Implikationen für das Marketing im Reitsportsegment
1502	Schneider, T., L. Hartmann u. A. Spiller	Luxusmarketing bei Lebensmitteln : eine empirische Studie zu Dimensionen des Luxuskonsums in der Bundesrepublik Deutschland
1503	Würriehausen, N. u. S. Lakner	Stand des ökologischen Strukturwandels in der ökologischen Landwirtschaft
1504	Emmann, C. H., D. Surmann u. L. Theuvsen	Charakterisierung und Bedeutung außerlandwirtschaftlicher Investoren : empirische Ergebnisse aus Sicht des landwirtschaftlichen Berufsstandes
1505	Buchholz, M., G. Host u. Oliver Mußhoff	Water and Irrigation Policy Impact Assessment Using Business Simulation Games : Evidence from Northern Germany
1506	Hermann, D., O. Mußhoff u. D. Rüter	Measuring farmers' time preference : A comparison of methods
1507	Riechers, M., J. Barkmann u. T. Tschardt	Bewertung kultureller Ökosystemleistungen von Berliner Stadtgrün entlang eines urbanen-periurbanen Gradienten
1508	Lakner, S., S. Kirchweber, D. Hopp, B. Brümmer u. J. Kantelhardt	Impact of Diversification on Technical Efficiency of Organic Farming in Switzerland, Austria and Southern Germany
1509	Sauthoff, S., F. Anastassiadis u. O. Mußhoff	Analyzing farmers' preferences for substrate supply contracts for sugar beets
1510	Feil, J.-H., F. Anastassiadis, O. Mußhoff u. P. Kasten	Analyzing farmers' preferences for collaborative arrangements : an experimental approach
1511	Weinrich, R., u. A. Spiller	Developing food labelling strategies with the help of extremeness aversion
1512	Weinrich, R., A. Franz u. A. Spiller	Multi-level labelling : too complex for consumers?
1513	Niens, C., R. Marggraf u. F. Hoffmeister	Ambulante Pflege im ländlichen Raum : Überlegungen zur effizienten Sicherstellung von Bedarfsgerechtigkeit
1514	Sauter, P., D. Hermann u. O. Mußhoff	Risk attitudes of foresters, farmers and students : An experimental multimethod comparison

2016

1601	Magrini, E., J. Balie u. C. Morales Opazo	Price signals and supply responses for stable food crops in SSAS countries
1602	Feil, J.-H.	Analyzing investment and disinvestment decisions under uncertainty, firm-heterogeneity and tradable output permits
1603	Sonntag, W. u. A. Spiller	Prozessqualitäten in der WTO : Ein Vorschlag für die reliable Messung von moralischen Bedenken
1604	Wiegand, K.	Marktorientierung von Reitschulen – zwischen Vereinsmanagement und Dienstleistungsmarketing
1605	Ikinger, C. M. u. A. Spiller	Tierwohlbewusstsein und –verhalten von Reitern : Die Entwicklung eines Modells für das Tierwohlbewusstsein und –verhalten im Reitsport
1606	Zinngrebe, Yves	Incorporating Biodiversity Conservation in Peruvian Development : A history with different episodes
1607	Balié, J., E. Magrini u. C. Morales Opazo	Cereal Price Shocks and Volatility in Sub-Saharan Africa : what does really matter for Farmers' Welfare?
1608	Spiller, A., M. von Meyer-Höfer u. W. Sonntag	Gibt es eine Zukunft für die moderne konventionelle Tierhaltung in Nordwesteuropa?
1609	Gollisch, S., B. Hedderich u. L. Theuvsen	Reference points and risky decision-making in agricultural trade firms : A case study in Germany
1610	Cárcamo, J. u. S. von Cramon-Taubadel	Assessing small-scale raspberry producers' risk and ambiguity preferences : evidence from field-experiment data in rural Chile
1611	García-Germán, S., A. Romeo, E. Magrini u. J. Balié	The impact of food price shocks on weight loss : Evidence from the adult population of Tanzania

2017

1701	Vollmer, E. u. D. Hermann, O. Mußhoff	The disposition effect in farmers' selling behavior – an experimental investigation
1702	Römer, U., O. Mußhoff, R. Weber u. C. G. Turvey	Truth and consequences : Bogus pipeline experiment in informal small business lending
1703	Römer, U. u. O. Mußhoff	Can agricultural credit scoring for microfinance institutions be implemented and improved by weather data?
1704	Gauly, S., S. Kühl u. A. Spiller	Uncovering strategies of hidden intention in multi-stakeholder initiatives : the case of pasture-raised milk

1705	Gauly, S., A. Müller u. A. Spiller	New methods of increasing transparency : Does viewing webcam pictures change peoples‘ opinions towards modern pig farming?
1706	Bauermeister, G.-F. u. O. Mußhoff	Multiple switching behavior in different display formats of multiple price lists
1707	Sauthoff, S., M. Danne u. O. Mußhoff	To switch or not to switch? – Understanding German consumers‘ willingness to pay for green electricity tariff attributes
1708	Bilal, M., J. Barkmann u. T. Jamali Jaghdani	To analyse the suitability of a set of social and economic indicators that assesses the impact on SI enhancing advanced technological inputs by farming households in Punjab Pakistan
1709	Heyking, C.-A. von u. T. Jamali Jaghdani	Expansion of photovoltaic technology (PV) as a solution for water energy nexus in rural areas of Iran; comparative case study between Germany and Iran
1710	Schueler, S. u. E. M. Noack	Naturschutz und Erholung im Stadtwald Göttingen: Darstellung von Interessenskonflikten anhand des Konzeptes der Ökosystemleistungen
<u>2018</u>		
1801	Danne, M. u. O. Mußhoff	Producers‘ valuation of animal welfare practices: Does herd size matter?
1802	Danne, M., O. Mußhoff u. M. Schulte	Analysing the importance of glyphosate as part of agricultural strategies – a discrete choice experiment
1803	Fecke, W., M. Danne u. O. Mußhoff	E-commerce in agriculture – The case of crop protection product purchases in a discrete choice experiment
1804	Viergutz, Tim u. B. Schulze-Ehlers	The use of hybrid scientometric clustering for systematic literature reviews in business and economics
1805	Schulze Schwering, D. u. A. Spiller	Das Online-Einkaufsverhalten von Landwirten im Bereich landwirtschaftlicher Betriebsmittel
1806	Hänke, H. et al.	Socio-economic, land use and value chain perspectives on vanilla farming in the SAVA Region (north-eastern Madagascar) : The Diversity Turn Baseline Study (DTBS)
1807	Wille, S. C., B. Barklage, A. Spiller u. M. von Meyer-Höfer	Challenging Factors of Farmer-to-Consumer Direct Marketing : An Empirical Analysis of German Livestock Owners
1808	Wille, S. C., A. Spiller u. M. von Meyer-Höfer	Lage, Lage, Lage? : Welche Rolle spielt der Standort für die landwirtschaftliche Direktvermarktung?

1809	Peth, D. u. O.. Mußhoff	Comparing Compliance Behaviour of Students and Farmers : Implications for Agricultural Policy Impact Analysis
1810	Lakner, S.	Integration von Ökosystemleistungen in die I. Säule der Gemeinsamen Agrarpolitik der EU (GAP) – die Wirkung der ökologischen Vorrangfläche als privates oder öffentliches Gut?
1811	Fecke, W.	Online-Einkauf von Pflanzenschutzmitteln: Ein Discrete Choice Experiment mit landwirtschaftlichen Unternehmern in Deutschland
1812	Schulze-Ehlers, B.	Schlussbericht des Projekts „TransKoll“ - „Transparenz und Transformation in der regionalen Ernährungswirtschaft. Kollaborative Ansätze für mehr Nachhaltigkeit vom Rohstoff bis zum Endkonsumenten
1813	Buchholz, M., D. Peth u. O. Mußhoff	Tax or Green Nudge? An Experimental Analysis of Pesticide Policies in Germany
<u>2019</u>		
1901	Schaak, H. u. O. Mußhoff	Public preferences for livestock presence in pasture landscapes – A Latent Class Analysis of a Discrete Choice Experiment in Germany
1902	Möllmann, J., M. Buchholz, W. Kölle u. O. Mußhoff	Do remotely-sensed vegetation health indices explain credit risk in agricultural microfinance?
1903	Schütz, A., W. Sonntag u. Achim Spiller	Environmental Enrichment in pig husbandry – Consumer comparative assessment of different housing elements based on a pictorial survey
1904	Vollmer, T. u. S. von Cramon-Taubadel	The influence of Brazilian exports on price transmission processes in the coffee sector: a Markov-switching approach
1905	Michels, M., V. Bonke u. O. Mußhoff	Understanding the adoption of crop protection smartphone apps - An application of the Unified Theory of Acceptance and Use of Technology
1906	Reithmayer, C., M. Danne u. O. Mußhoff	Societal attitudes towards in ovo gender determination as an alternative to chick culling
1907	Reithmayer,C., M. Danne u. O. Mußhoff	Look at that! – The effect pictures have on consumer preferences for in ovo gender determination as an alternative to culling male chicks

1908	Aragie, E., J. Balié u. E. Magrini	Does productivity level influence the economic impacts of price support policies in Ethiopia?
<u>2020</u>		
2001	Busch, G. u. A. Spiller	Warum wir eine Tierschutzsteuer brauchen - Die Bürger-Konsumenten-Lücke
2002	Huchtemann, J.-P.	Unternehmerische Neigung in der Landwirtschaft – Einstellungen von Studierenden der Agrarwissenschaften in Deutschland
2003	Busch, G., E. Bayer, A. Gunarathne et al.	Einkaufs- und Ernährungsverhalten sowie Resilienz des Ernährungssystems aus Sicht der Bevölkerung Ergebnisse einer Studie während der Corona-Pandemie im April 2020
2004	Busch, G., E. Bayer, S. Iweala, C. Mehlhose, C. Rubach, A. Schütz, K. Ullmann u. A. Spiller	Einkaufs- und Ernährungsverhalten sowie Resilienz des Ernährungssystems aus Sicht der Bevölkerung : Eine Studie während der Corona-Pandemie im Juni 2020 ; Ergebnisse der zweiten Befragung
2005	Lemken, D.	When do defaults stick and when are they ethical? – taxonomy, systematic review and design recommendations
<u>2021</u>		
2101	Graskemper, V., J.-H. Feil	Values of Farmers – Evidence from Germany
2102	Busch, G., E. Bayer, S. Iweala, C. Mehlhose, A. Risius, C. Rubach,, A. Schütz, K. Ullmann u. A. Spiller	Einkaufs- und Ernährungsverhalten sowie Resilienz des Ernährungssystems aus Sicht der Bevölkerung: Eine Studie während der Corona-Pandemie im November 2020. Ergebnisse der dritten Befragungswelle



Diskussionspapiere

2000 bis 31. Mai 2006:

Institut für RURALE ENTWICKLUNG

Georg-August-Universität, Göttingen)

Ed. Winfried Manig (ISSN 1433-2868)

32	Dirks, Jörg J.	Einflüsse auf die Beschäftigung in nahrungsmittelverarbeitenden ländlichen Kleinindustrien in West-Java/Indonesien, 2000
33	Keil, Alwin	Adoption of Leguminous Tree Fallows in Zambia, 2001
34	Schott, Johanna	Women's Savings and Credit Co-operatives in Madagascar, 2001
35	Seeberg-Elberfeldt, Christina	Production Systems and Livelihood Strategies in Southern Bolivia, 2002
36	Molua, Ernest L.	Rural Development and Agricultural Progress: Challenges, Strategies and the Cameroonian Experience, 2002
37	Demeke, Abera Birhanu	Factors Influencing the Adoption of Soil Conservation Practices in Northwestern Ethiopia, 2003
38	Zeller, Manfred u. Julia Johannsen	Entwicklungshemmnisse im afrikanischen Agrarsektor: Erklärungsansätze und empirische Ergebnisse, 2004
39	Yustika, Ahmad Erani	Institutional Arrangements of Sugar Cane Farmers in East Java – Indonesia: Preliminary Results, 2004
40	Manig, Winfried	Lehre und Forschung in der Sozialökonomie der Ruralen Entwicklung, 2004
41	Hebel, Jutta	Transformation des chinesischen Arbeitsmarktes: gesellschaftliche Herausforderungen des Beschäftigungswandels, 2004
42	Khan, Mohammad Asif	Patterns of Rural Non-Farm Activities and Household Access to Informal Economy in Northwest Pakistan, 2005

43	Yustika, Ahmad Erani	Transaction Costs and Corporate Governance of Sugar Mills in East Java, Indovesia, 2005
44	Feulefack, Joseph Florent, Manfred Zeller u. Stefan Schwarze	Accuracy Analysis of Participatory Wealth Ranking (PWR) in Socio-economic Poverty Comparisons, 2006



Die Wurzeln der **Fakultät für Agrarwissenschaften** reichen in das 19. Jahrhundert zurück. Mit Ausgang des Wintersemesters 1951/52 wurde sie als siebente Fakultät an der Georgia-Augusta-Universität durch Ausgliederung bereits existierender landwirtschaftlicher Disziplinen aus der Mathematisch-Naturwissenschaftlichen Fakultät etabliert.

1969/70 wurde durch Zusammenschluss mehrerer bis dahin selbständiger Institute das **Institut für Agrarökonomie** gegründet. Im Jahr 2006 wurden das Institut für Agrarökonomie und das Institut für RURale Entwicklung zum heutigen **Department für Agrarökonomie und RURale Entwicklung** zusammengeführt.

Das Department für Agrarökonomie und RURale Entwicklung besteht aus insgesamt neun Lehrstühlen zu den folgenden Themenschwerpunkten:

- Agrarpolitik
- Betriebswirtschaftslehre des Agribusiness
- Internationale Agrarökonomie
- Landwirtschaftliche Betriebslehre
- Landwirtschaftliche Marktlehre
- Marketing für Lebensmittel und Agrarprodukte
- Soziologie Ländlicher Räume
- Umwelt- und Ressourcenökonomik
- Welternährung und rurale Entwicklung

In der Lehre ist das Department für Agrarökonomie und RURale Entwicklung führend für die Studienrichtung Wirtschafts- und Sozialwissenschaften des Landbaus sowie maßgeblich eingebunden in die Studienrichtungen Agribusiness und Ressourcenmanagement. Das Forschungsspektrum des Departments ist breit gefächert. Schwerpunkte liegen sowohl in der Grundlagenforschung als auch in angewandten Forschungsbereichen. Das Department bildet heute eine schlagkräftige Einheit mit international beachteten Forschungsleistungen.

Georg-August-Universität Göttingen
Department für Agrarökonomie und RURale Entwicklung
Platz der Göttinger Sieben 5
37073 Göttingen
Tel. 0551-39-4819
Fax. 0551-39-12398
Mail: biblio1@gwdg.de
Homepage : <http://www.uni-goettingen.de/de/18500.html>