

Hennecke, Juliane; Hetschko, Clemens

**Working Paper**

## Do you really want to share everything? The wellbeing of work-linked couples

SOEPPapers on Multidisciplinary Panel Data Research, No. 1127

**Provided in Cooperation with:**

German Institute for Economic Research (DIW Berlin)

*Suggested Citation:* Hennecke, Juliane; Hetschko, Clemens (2021) : Do you really want to share everything? The wellbeing of work-linked couples, SOEPPapers on Multidisciplinary Panel Data Research, No. 1127, Deutsches Institut für Wirtschaftsforschung (DIW), Berlin

This Version is available at:

<https://hdl.handle.net/10419/234457>

**Standard-Nutzungsbedingungen:**

Die Dokumente auf EconStor dürfen zu eigenen wissenschaftlichen Zwecken und zum Privatgebrauch gespeichert und kopiert werden.

Sie dürfen die Dokumente nicht für öffentliche oder kommerzielle Zwecke vervielfältigen, öffentlich ausstellen, öffentlich zugänglich machen, vertreiben oder anderweitig nutzen.

Sofern die Verfasser die Dokumente unter Open-Content-Lizenzen (insbesondere CC-Lizenzen) zur Verfügung gestellt haben sollten, gelten abweichend von diesen Nutzungsbedingungen die in der dort genannten Lizenz gewährten Nutzungsrechte.

**Terms of use:**

*Documents in EconStor may be saved and copied for your personal and scholarly purposes.*

*You are not to copy documents for public or commercial purposes, to exhibit the documents publicly, to make them publicly available on the internet, or to distribute or otherwise use the documents in public.*

*If the documents have been made available under an Open Content Licence (especially Creative Commons Licences), you may exercise further usage rights as specified in the indicated licence.*

1127<sup>2021</sup>

**SOEP** papers  
on Multidisciplinary Panel Data Research

# Do You Really Want to Share Everything? The Wellbeing of Work-Linked Couples

Juliane Hennecke and Clemens Hetschko

## **SOEPPapers on Multidisciplinary Panel Data Research** at DIW Berlin

This series presents research findings based either directly on data from the German Socio-Economic Panel (SOEP) or using SOEP data as part of an internationally comparable data set (e.g. CNEF, ECHP, LIS, LWS, CHER/PACO). SOEP is a truly multidisciplinary household panel study covering a wide range of social and behavioral sciences: economics, sociology, psychology, survey methodology, econometrics and applied statistics, educational science, political science, public health, behavioral genetics, demography, geography, and sport science.

The decision to publish a submission in SOEPPapers is made by a board of editors chosen by the DIW Berlin to represent the wide range of disciplines covered by SOEP. There is no external referee process and papers are either accepted or rejected without revision. Papers appear in this series as works in progress and may also appear elsewhere. They often represent preliminary studies and are circulated to encourage discussion. Citation of such a paper should account for its provisional character. A revised version may be requested from the author directly.

Any opinions expressed in this series are those of the author(s) and not those of DIW Berlin. Research disseminated by DIW Berlin may include views on public policy issues, but the institute itself takes no institutional policy positions.

The SOEPPapers are available at <http://www.diw.de/soeppapers>

### **Editors:**

Jan **Goebel** (Spatial Economics)

Stefan **Liebig** (Sociology)

David **Richter** (Psychology)

Carsten **Schröder** (Public Economics)

Jürgen **Schupp** (Sociology)

Sabine **Zinn** (Statistics)

Conchita **D'Ambrosio** (Public Economics, DIW Research Fellow)

Denis **Gerstorff** (Psychology, DIW Research Fellow)

Katharina **Wrohlich** (Gender Economics)

Martin **Kroh** (Political Science, Survey Methodology)

Jörg-Peter **Schräpler** (Survey Methodology, DIW Research Fellow)

Thomas **Siedler** (Empirical Economics, DIW Research Fellow)

C. Katharina **Spieß** (Education and Family Economics)

Gert G. **Wagner** (Social Sciences)

ISSN: 1864-6689 (online)

German Socio-Economic Panel (SOEP)

DIW Berlin

Mohrenstrasse 58

10117 Berlin, Germany

Contact: [soeppapers@diw.de](mailto:soeppapers@diw.de)



# DO YOU REALLY WANT TO SHARE EVERYTHING? THE WELLBEING OF WORK-LINKED COUPLES \*

**Juliane Hennecke**<sup>†</sup>

(Auckland University of Technology, IZA)

**Clemens Hetschko**

(University of Leeds, CESifo)

March 30, 2021

## Abstract

Work as well as family life are crucial sources of human wellbeing, which however often interfere. This is especially so if partners work in the same occupation or industry. At the same time, being work-linked may benefit their career success. Still, surprisingly little is known about the wellbeing of work-linked couples. Our study fills this gap by examining the satisfaction differences between work-linked and non-work-linked partners. Using data from the German Socio-Economic Panel (SOEP, 2019), we estimate the effect of working in the same occupation and/or industry on life satisfaction as well as satisfaction with four areas of life: income, work, family and leisure. In the process, we employ pooled OLS estimations and instrumental variable strategies, for instance based on the gender disparity in industries and occupations. Our results suggest that being work-linked increases satisfaction with life as well as income and job satisfaction. These findings are consistent with positive assortative matching and mutual career support between work-linked partners. Our conclusions concern hiring couples as a means of recruiting exceptional talent.

**Keywords:** work-linked couples, wellbeing, assortative matching, relationship quality, work-life balance, copreneurs, occupational gender disparity, dual career support

**JEL codes:** I31, J12, J21, J44, M51

---

\* *Acknowledgements:* The authors are grateful for comments made by Adrian Chadi, Alan Piper, Andreas Knabe, Clément Bellet and Jordy Meekes as well as participants of the Wellbeing Seminar at LSE (2020), the GLO/EHERO Special Sessions (2020), and the 2020 EALE/SOLE/AASLE World Conference.

<sup>†</sup>Corresponding author, e-mail: [juliane.hennecke@aut.ac.nz](mailto:juliane.hennecke@aut.ac.nz), NZ Work Research Institute, Auckland University of Technology, 120 Mayoral Drive, Auckland 1010, New Zealand.

# 1 Introduction

Whether by meeting in college or at work, by founding a family business together, or by pure coincidence, many couples are work-linked. They have the same occupation, work in the same industry or even for the same employer. Individually, both a person's work life and relationship quality are crucial determinants of wellbeing. However, their interplay is also important. People need to reconcile family commitments and job demands on a daily basis. Having said that, surprisingly little is known about the wellbeing in couples where working life and partnership intersect. Our study fills this gap.

Understanding the determinants of individual wellbeing to improve societal welfare has become a major field of research (Weimann *et al.*, 2015). In the process, there has been a special focus on working life due to its high relevance for both labor market and personnel policies. Happiness through, at and with work reduces absenteeism (Diestel *et al.*, 2014) and job turnover (Clark, 2001) as well as increases performance (Oswald *et al.*, 2015; Bellet *et al.*, 2020).<sup>1</sup> To benefit wellbeing as much as possible, the workplace must not interfere with family life. (Ten Brummelhuis *et al.*, 2014; Michel *et al.*, 2011; Bertrand, 2013). Over the past years, the term work-life balance has become popular in the public arena and an important topic in personnel economics (e.g. Haar *et al.* (2014); Lauber and Storck (2019)). Employers advertise a flexible and balanced workplace to attract potential employees. The most common instruments in doing so are flexible working time, working from home as well as leave policies (Grzywacz and Carlson, 2007). Moreover, some employers support the employment prospects of the partners of highly demanded talents who need to relocate to the new workplace together with their families. If being work-linked increases wellbeing compared to a situation where both partners work in different environments, there may be a case for programs helping partners of highly demanded talents to find work in the same industry. On a more general note, positive effects of being work-linked on wellbeing may even imply an incentive for firms to hire spouses of staff members because of the many benefits of keeping workers happy. To start an evidence-based discussion of these considerations, we examine the wellbeing of partners who work in the same industry and/or occupation.

To the best of our knowledge, this study is the first that analyses the life satisfaction of work-linked partners. Economists have, so far, been more interested in the effects of different labor market states and characteristics of employment on life satisfaction, such as unemployment (Clark and Oswald, 1994), job insecurity (Luechinger *et al.*, 2010), part-time work (Booth and Van Ours, 2008), retirement (Bonsang and Klein, 2012), and self-employment (Binder and Coad, 2013).<sup>2</sup> However, there is some previous research on related outcomes in the area of management and occupational psychology, which relies on small non-representative samples (Halbesleben *et al.*, 2010, 2012). Ferguson *et al.* (2016) provide a relatively extensive study with 1,278 online survey participants in which they find that

---

<sup>1</sup>Similarly, unhappiness predicts family life events. If the wellbeing of spouses differs to a great extent and this is driven by the wife's unhappiness, the couple are likely to divorce in the near future (Güven *et al.*, 2012).

<sup>2</sup>Also, the wellbeing effects of partnership, family life and the interplay between the work and family domains have been analyzed (Lucas, 2007; Allen, 2012; Allen *et al.*, 2014; Iseke, 2014; Knabe *et al.*, 2016).

being work-linked appears to positively correlate with job and family satisfaction. But methodological issues of endogeneity and selection remain largely unconsidered in their study.

Our study estimates the effect of being work-linked on general life satisfaction and the wellbeing in four areas of life: income, job, family, and leisure. We regard these life-domain specific indicators of wellbeing as suited for identifying the mechanisms explaining why being work-linked affects overall happiness (for a similar analysis on job loss see, e.g., Powdthavee, 2012). Positive assortative matching implies that work-linked couples are complements that generate high income and career success and thus are comparatively happy with their jobs and incomes ('power-couple hypothesis'). However, earnings risks in a work-linked couple are diversified to a lesser extent than in a non-linked couple which could have a harmful impact on wellbeing. Mutual understanding and emotional support may benefit work-life balance and thus satisfaction with family life and leisure, too. At the same time, *inter alia*, blurred boundaries between working life and private life imply negative effects of being work-linked. As a result of the potential for both negative and positive effects of being work-linked in the domain satisfactions, we consider the overall wellbeing effect as obtained from an estimation of life satisfaction as, *a priori*, unclear.

Our analyses take advantage of the extensive information available from the Socio-Economic Panel (SOEP, 2019), a large representative longitudinal household survey of the German population. The SOEP allows us to link the individuals to their partners, and contains comprehensive data on a range of characteristics for both provided they live together in the same household. By doing so, we are able to identify couples that work in the same industry or occupation and compare them to working partners that differ in these regards. For our main analyses, we define work links as the combination of occupation and industry link. SOEP data cover individuals' overall life satisfaction as well as domain-specific satisfaction measures on a yearly basis. Also, the data allow us to take into account the socio-demographic background and job characteristics of individuals, including factors that could mediate some of the impacts of being work-linked on subjective wellbeing, such as income, occupational autonomy, job security and working hours.

To identify effects of being work-linked, we employ two estimation methodologies, a pooled OLS estimation with a large number of potentially relevant covariates and, based on this, a two-stage instrumental variable estimation with endogenous binary treatment. In the process, the gender disparity in the individual's occupation and sector of industry as well as the partner's father's occupation serve us as instruments for being work-linked. Various tests do not point to a violation of the exclusion restriction.

We find that people benefit from being work-linked to their partners. Both the OLS estimation and the instrumental variable approach indicate positive effects of being work-linked on life satisfaction, income satisfaction and, to some extent, job satisfaction. While there are no significant gender differences, people who have a college degree benefit more than those without a degree. In addition,

we obtain some evidence that income and occupational autonomy might mediate a positive impact of being work-linked. A negative effect on leisure satisfaction can only be found in the OLS estimation and is mediated by working hours. Analyses of self-employed workers and agricultural workers imply that the closest possible work link might not be the optimal, as the positive average effects do not appear in these groups.

We proceed as follows. Section 2 discusses the impact of being work-linked on wellbeing from a theoretical perspective. Section 3 describes the data, Section 4 presents our two estimation strategies. The results are documented in detail in Section 5, including the main findings, an investigation of potential mediators of being work-linked on wellbeing, subgroup analyses and sensitivity checks. Section 6 discusses our findings and concludes.

## 2 Theory, mechanisms and hypotheses

Economists have analyzed love relationships predominantly through the lens of matching on marriage markets. Work-linked partners may be seen as a form of positive assortative matching, i.e. mating of similar types, as they have chosen the same industry and/or occupation. In marriage markets, positive assortative matching occurs if partners are complements. Once the match is made, this complementarity allows couples to reach higher levels of utility, reaping a gain from marriage (Becker, 1973). Hence, a higher type individual does not only find a higher type partner, their complementarity leads to additional gains in wellbeing.

In our context, the question arises as to whether two partners who are similar, as they have the same occupation or work in the same industry, ought to be seen as complements. The work link may mean that they are better able to support each other's career, by sharing information and networks, or even through nepotism, compared to partners who have a similarly high level of skills but work in different industries and occupations. Given the complementarity, the work-linked couple may also be better able to work as copreneurs and run a business together (Blenkinsopp and Owens, 2010; Dahl *et al.*, 2015). In any case, they may end up at a higher hierarchical level enjoying greater earnings and nonpecuniary job quality, such as occupational autonomy than a working couple that is not linked. The work-linked power couple will enjoy higher wellbeing as a result, especially in the areas of income and work.

**Hypothesis (H1):** *Being work-linked increases income satisfaction.*

**Hypothesis (H2):** *Being work-linked increases job satisfaction.*

There are a number of reasons why these hypotheses might be rejected. The gains of being work-linked may be limited to settings where career ladders are long (high-skilled professions) and require networks and other support. What is more, being work-linked correlates the earnings risks of both partners, leading to higher household income volatility. This may affect couples more the closer their

work link, as in the case of copreneurs. In addition, nepotism might be regarded as unfair by coworkers and thus lead to worse relations with colleagues and superiors (Padgett and Morris, 2005). This would explain a negative effect in job satisfaction.

There may also be gender differences. A wage difference between work-linked partners could actually be perceived as unfair by the low-wage earner. Non-linked partners can attribute wage differences to occupation or industry effects, rather than unfair treatment. In contrast, working in the same occupation or industry as their partners enables, for instance, women to observe a gender pay gap that cannot be explained away so easily. This would result in less satisfaction with income for work-linked women. We therefore estimate the effects of being work-linked separately for men and women.

As argued by Voydanoff (2005), an understanding family environment that accommodates an individual's work demands is as important as a work environment that appreciates family demands. Being well-informed about the demands of a specific job may help workers to be more understanding towards the sacrifices their partners make for their careers when it comes to partnership and family (Ferguson *et al.*, 2016; Halbesleben *et al.*, 2010, 2012). Hence, the emotional support work-linked partners receive at home may lead to a better work-life balance and leave them more satisfied with their family life than non-linked partners. Also, to the extent that mutual understanding and emotional support lead to a more pleasurable time spent at home, leisure satisfaction could benefit from being work-linked to one's partner (in line with recent findings on relaxation, see Walter and Haun, 2020).

**Hypothesis (H3):** *Being work-linked increases family life satisfaction.*

**Hypothesis (H4):** *Being work-linked increases leisure satisfaction.*

Pitfalls of being work-linked in family life need to be considered, too. Partners doing similar jobs have similar working times and similar working time flexibility. As a result, not being linked might make it easier to share childcare and other family responsibilities. Partnership quality may also reduce where a close working relationship of the partners blurs the boundaries between working life and private life. In these cases, conflicts at work can all too easily spill into marital quality (Foley and Powell, 1997; Huffman *et al.*, 2018). Occupational health literature even mentions insomnia spillovers as a particular problem of work-linked couples (Fritz *et al.*, 2019), which can lead to low wellbeing (Piper, 2016). In this sense, not being work-linked diversifies the different risks of emotional detriment in life. It therefore remains for the empirical analysis to support or reject Hypotheses 3 and 4.

Similarly, given the possible advantages and disadvantages of being work-linked in different areas of life, the effect on overall wellbeing as measured by life satisfaction might go both ways. We therefore do not formulate a clear hypothesis with regard to our main outcome variable and test in what follows whether positive or negative consequences prevail.



### 3 Data

**Sampling** The empirical analysis makes use of 34 waves of data from the Socio-Economic Panel (SOEP, 2019) between 1985 and 2018.<sup>3</sup> The SOEP is an annual representative household panel study of the German population. The most recent waves cover more than 30,000 individuals in over 15,000 households (see Goebel *et al.*, 2019, for further information). The SOEP data have included individuals' self-reported wellbeing from the beginning as well as detailed information on their working life and partnership status. In addition, the data allow for merging partner information if couples live together in the same household which is hence a first requirement observations need to meet to be part of our sample. Some individual-year observations that fulfill this condition are still coded as one-person or single-parent households. Given this inconsistency, they are dropped from the sample. Furthermore, all couples living in stem households or other constellations with further adults are not included.

Based on this and motivated by the intended analysis, the sample is further reduced to dual-earner couples. We only keep observations if the individuals as well as their partners are employed or self-employed, and of working age (25-64 years). As part of the sensitivity analyses, we include non-employed partners at a later stage (Section 5.4).

As we will explain later, our main instrumental variable works for heterosexual couples only. Therefore, we do not include same-sex partnerships. Due to the very small share of same sex couples in the full dataset (536 individuals, 0.44% of the sample), the estimation results are not sensitive to this restriction. The results of the sensitivity check can be found in Table S.1 in the Online Appendix<sup>4</sup>. In a last step we exclude all individuals with missing information needed for the analysis (see below). This applies also to missing information on the characteristics of the partner. The final dataset consists of 122,456 observations for 24,013 individuals (i.e. 12,245 couples and households).

**Occupation and industry links** Our main explanatory variable is an indicator for whether an individual works in both the same occupational group as well as the same industry as their partner. We refer to these as 'combined work links' in what follows (abbreviated as WL in tables). It is assumed that, given the existence of both links, there is some overlap in the working lives or work environments of the two partners.

Occupations are categorized according to the 1992 classification by the German Federal Statistical Office (in German *Klassifikation der Berufe 1992, KldB92*), see Statistisches Bundesamt (2010).<sup>5</sup> KldB92 consists of 33 major occupations (*Berufsabschnitt*) which comprise 88 sub-major occupations (2-digit level, *Berufsgruppe*). The latter cover 369 more narrowly defined occupational groups (3-digit level, *Berufsordnung*). Couples who are in the same occupation at that level are considered as

---

<sup>3</sup>The SOEP started one year before in 1984. However, information about the type of employment contract (fixed-term or permanent) which we later use was not elicited in that year.

<sup>4</sup>The small number of same-sex couples in the data does not allow for a separate analysis.

<sup>5</sup>See Hartmann and Schütz (2017) for information on implementation in the SOEP.

Table 1: Descriptive statistics - Work links

	Combined link		Occupation link		Industry link	
	No	Yes	No	Yes	No	Yes
Observations	116,040	6,416	114,762	7,694	99,380	23,076
%		5.24		6.28		18.84
Individuals		1,877		2,283		5,858

Source: SOEP (2019). Own calculations.

Note: Occupation links are defined at three-digit KldB92 level (369 occupations), industry-links are defined at two-digit NACE level (88 industries).

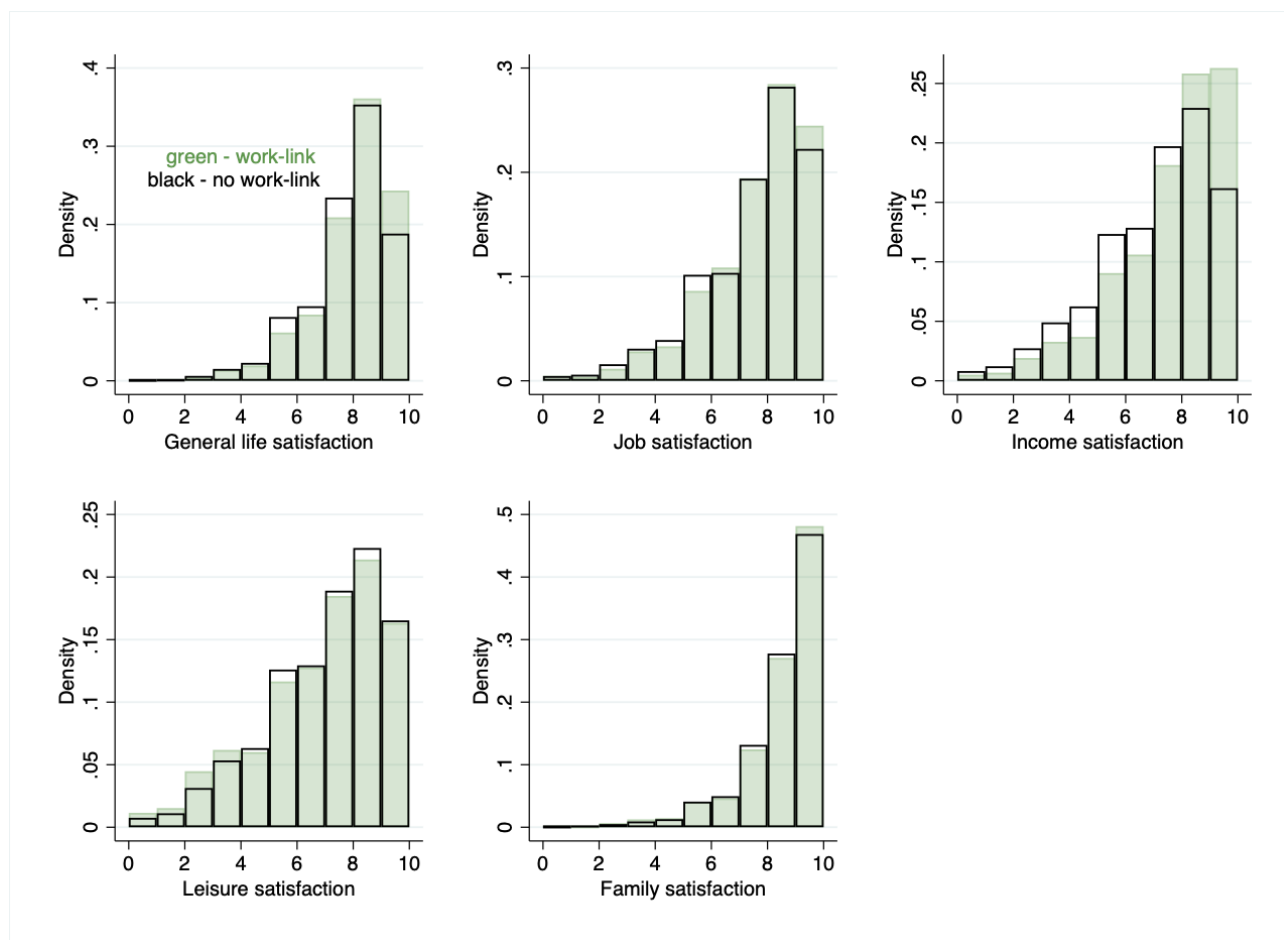
occupation-linked. At the four-digit level, three-digit occupations breakdown into 2,287 occupational classes (*Berufsklassen*). The four-digit level, however, produces only very few observed individuals per class. Hence, the three-digit level is the closest link we are able to analyze. To give an example, an economist who is married to a psychologist (both three-digit level occupations) is not considered work-linked although both partners are part of the same major occupation (social and teaching occupations) and the same sub-major occupation (arts and natural science professions). However, a graduate economist who is married to a graduate business economist (both four-digit level occupations) are considered occupation-linked, as both are economists (see also Table A.1 in the Appendix). If a couple also work in the same industry we consider them work-linked.

Industry sectors are compartmentalized based on the statistical classification of economic activities in the European Community (NACE). The SOEP provides these data at two levels. 21 major one-digit industries cover 88 two-digit level divisions, 58 of which are observed in the data. Cohabiting partners are considered industry-linked if their two-digit level industry matches.

Table 1 gives an overview of the numbers of observations of combined links, occupation links and industry links. 5.24% of individuals in our dataset are work-linked, as they are in the same three-digit occupational group and belong to the same two-digit industry as their partners. If we focused on separate links instead we would rely on 6.28% three-digit occupation links and 18.84% industry links. These alternative identifications of work links will be used for robustness checks later on (Section 5.4).

Table A.2 (Appendix) shows which of the major occupations (one-digit level) produce relatively many work links, such as agricultural occupations and bank/building society/insurance specialists. In contrast, work links are rare in manufacturing, building and technical professions. Similarly, Table A.3 shows for one-digit level industries that relatively many workers in the agricultural and the financial/private services sectors are work-linked, unlike in construction and manufacturing. As we will describe in greater detail below, these differences are related to gender disparities within occupations and sectors of industry (Section 4.2). In addition, Figure A.1 in the Appendix depicts all work links by major occupations and industries. Here, agriculture no longer ranks high, as only a small fraction of the workforce is employed in this industry and related occupations. Hence, for our sample, social welfare and teaching professions play a significant role, as well as the public sector, as they employ many workers and work links a relatively prevalent.

Figure 1: Distribution of satisfaction



Source: SOEP (2019). Own calculations and illustration.

**Subjective wellbeing** To measure subjective wellbeing, SOEP respondents are asked the following question every year:

*We would like to ask you about your satisfaction with your life in general. Please answer according to the following scale: 0 means ‘completely dissatisfied’, 10 means ‘completely satisfied’. How satisfied are you with your life, all things considered?*

The resulting variable is assumed to be continuous and its distribution is shown in Figure 1 and in Table A.4 in the Appendix for combined work-linked and non-linked individuals. The combined distribution is left-skewed with a mean of 7.35, a median of 8 and a standard deviation of 1.53. As is shown in Table A.4, work-linked individuals, on average, score significantly higher on life satisfaction than non-linked individuals.

In addition to overall life satisfaction as the general wellbeing measure, individuals are required to indicate their satisfaction with a number of life domains on the same 11-point scale following the question:

*How satisfied are you today with the following areas of your life?*

Our analyses consider satisfaction with job, personal income, family life and leisure, as they are most likely to reveal effects of being work-linked from a theoretical point of view (see Section 2). While job satisfaction is available for the whole time span, satisfaction with personal income (2004-2018), with family life (2006-2018) and with leisure (with gaps<sup>6</sup>) are covered in sub-periods only. The distributions of the four domain satisfactions are shown in Figure 1, too. Work-linked individuals enjoy significantly higher wellbeing than non-linked workers with respect to job and income satisfaction and lower wellbeing with respect to leisure satisfaction.

**Individual, household and regional characteristics** Our analyses also take into account several individual characteristics. Some of them are considered potential impacts of being work-linked, and in doing so mediators of wellbeing effects, such as monthly net individual labor income, net household equivalent income<sup>7</sup>, contractually agreed weekly working hours, subjective job security as well as occupational autonomy.

Apart from that, we make use of data on household characteristics including marital status (married or not), number of children in the household, and the partnership length in years.<sup>8</sup> Information about the federal state the individual lives in, as well as an indicator for whether the individual lives in a rural or urban area, allow for considering regional differences. Further individual characteristics used are age, gender and years of education as well as job characteristics. Job characteristics include several binary indicators, which capture whether the individual is working in the occupation they trained for, is self-employed, in fulltime employment or in a fixed-term contract. Also, we consider their tenure (in years) the size of the firm (categories small, medium and large).

Table A.5 in the Appendix gives an overview of the main characteristics of people who (do not) have a work-linked partner (Columns 2 and 3) based on the combined indicator. Work-linked individuals are on average significantly older and more highly educated, have shorter partnership lengths, are more likely to be self-employed, work in larger firms, are more likely to still work in their trained occupation, have longer tenure, work longer hours, have higher levels of occupational autonomy, and earn higher labor income as well as equivalent income.

## 4 Methods

To identify the effects of being work-linked on wellbeing, we employ two related empirical strategies. First, we pool the data over various waves and start with an OLS estimation relying on control variables to tackle endogeneity and selection issues. Second, we use the same dataset and employ a two-stage

---

<sup>6</sup>Leisure satisfaction was not surveyed in 1990 and 1995 and not at all for the individuals from the “Families in Germany” (FiD) related subsamples (L1-L3) in the years 2011-2013.

<sup>7</sup>Equivalent income is computed using the new OECD scale, i.e. 1 for the first adult in the household and 0.5 (0.3) times the number of additional household members that are at least 14 years old (younger than that).

<sup>8</sup>As the partnership length is not captured in the biographical information of first-time respondents, the information is left-censored for many of the individuals in the sample (as it just captures the time during which individuals were SOEP respondents). An indicator for whether the variable is left-censored or not is also included as a control.

instrumental variable estimation to approach selection issues in a comprehensive manner. However, this also means that we estimate a local average treatment effect which does not necessarily reflect the average treatment effect of a work link. Hence, the OLS results are preferred in terms of external validity. Our interpretations will rely only on results that appear robust across both approaches.

#### 4.1 Ordinary least square estimation

We estimate the effects of being work-linked on the different satisfaction outcomes using the following empirical model,

$$WB_{it} = \beta_1 + \beta_2 WL_{it} + \beta_3 HHC_{it} + \beta_4 IC_{it} + \beta_9 RC_{it} + \beta_5 PIC_{it} + \beta_6 O_{it} + \beta_7 I_{it} + \beta_8 T_t + \epsilon_{it} \quad (1)$$

where  $WB_{it}$  is the general or domain-specific satisfaction level of individual  $i$  at time  $t$  and  $WL_{it}$  is the indicator for whether the individual is work-linked based on the definitions above. Thus,  $\beta_2$  is our parameter of interest.

We consider a detailed set of control variables to eliminate distortion from unobserved selection into work links (for a detailed list, see Table S.5 in the Online Appendix). The model includes the individual ( $IC_{it}$ ), household ( $HHC_{it}$ ) and regional characteristics ( $RC_{it}$ ) introduced in the previous section. In addition, we control for a number of individual characteristics of the partner ( $PIC_{it}$ ), namely years of education, tenure, whether they are working in their trained occupation, fixed-term contract and fulltime employment. As can be seen in the previous section, the probability of being work-linked varies across one-digit level industries and occupations, which may affect wellbeing for other reasons, too. Therefore, we also consider industry-fixed effects  $I_{it}$  and occupation-fixed effects  $O_{it}$  (at one-digit level<sup>9</sup>), alongside time-fixed effects  $T_t$  (wave dummies). In the following, we refer to the full set of the controls mentioned up to here as vector  $\mathbf{X}'_{it}$  (e.g. in tables). Standard errors are clustered at the household level.

We deliberately do not control for equivalent income, personal labour income, subjective job security, occupational autonomy and working hours in the main specification, since we regard these variables as endogenous (see the discussion in Section 5.2). Accordingly, they will be analyzed separately as channels of wellbeing effects from being work-linked.

In principle, our data would allow us to conduct an individual-fixed effects estimation, too, which is fairly standard in research on wellbeing (Clark *et al.*, 2016; Van der Zwan *et al.*, 2018). However, we consider this type of analysis particularly susceptible to omitted variable bias in the context of our study. If being work-linked varies within the same person over time this will originate from other changes that affect wellbeing beyond the work link, such as changes in partnership, in one's own

---

<sup>9</sup>To avoid multicollinearity, we do not control for occupations and industries at the same more detailed level that we use to define the work link. This might not necessarily be a problem. The one-digit level occupation-fixed effects and industry-fixed effects hardly change the coefficients of being work-linked anymore if all other control variables are considered, implying that occupation and industry affect the work link wellbeing relationship indirectly through other factors which have been taken into account.

working life or the partner’s working life (Clark and Georgellis, 2013; Chadi and Hetschko, 2018; Nikolova and Ayhan, 2019). Controlling for all of these changes would also capture any variation in being work-linked, preventing us from estimating the effect of interest. Hence, in our context, a fixed-effects approach is of no value beyond the cross-sectional analysis described above.

## 4.2 Instrumental variables

The simple OLS framework might not capture all characteristics correlating with being work-linked and wellbeing and it does not account for reversed causality, i.e. happier people might be more likely to find a partner at work. We address the problems with exogenous instrumental variables ( $z_{it}$ ).

**Gender disparities (IV 1)** The first instrument  $z_{it}$  denotes the average of the gender disparities in the individual’s three-digit occupation and two-digit industry (recall that we focus on the combined link). Our results also hold if we use occupational gender disparity only to instrument the combined work link. The notion here is that heterosexual couples are more likely to form in occupations and industries in which the gender disparity is low. In a group of 50 male and 50 female teachers (no gender disparity) we can expect a maximum of 50 pairs whereas in a group of 99 male and one female miner, we can expect a maximum of one such pair. Obviously, this notion only applies to heterosexual couples which is why we excluded same-sex relationships from our sample. Also, this means that we approximate the probability of being work-linked for each individual at the level of their industry and occupation only. Alternatively, we could have assigned the individual probability of being work-linked based on the worker’s gender in combination with the gender disparity in their industry and occupation, i.e. the female miner having a high chance of marrying a male miner but the male miner having a low chance of marrying a female miner. However, we expect an issue with the exclusion restriction here, as people might choose occupations / industries depending on the number of potential partners. People behaving in this way could be special in other respects, too.

We merge our dataset with administrative data from the German Federal Employment Agency (Bundesagentur für Arbeit) about the gender shares in industries and occupations as of 31 March 2016 for the universe of the German workforce (Bundeagentur für Arbeit, 2016a,b).<sup>10</sup> This instrument arguably rules out reversed causality, as individual wellbeing does not affect these shares. The gender disparity ( $GD$ ) of industry  $sec$  or occupation  $occ$  is then calculated as

$$GD_{sec/occ} = |50 - (\frac{females_{sec/occ}}{workforce_{sec/occ}} \times 100)| \quad GD_{sec/occ} = [0, 50] \quad (2)$$

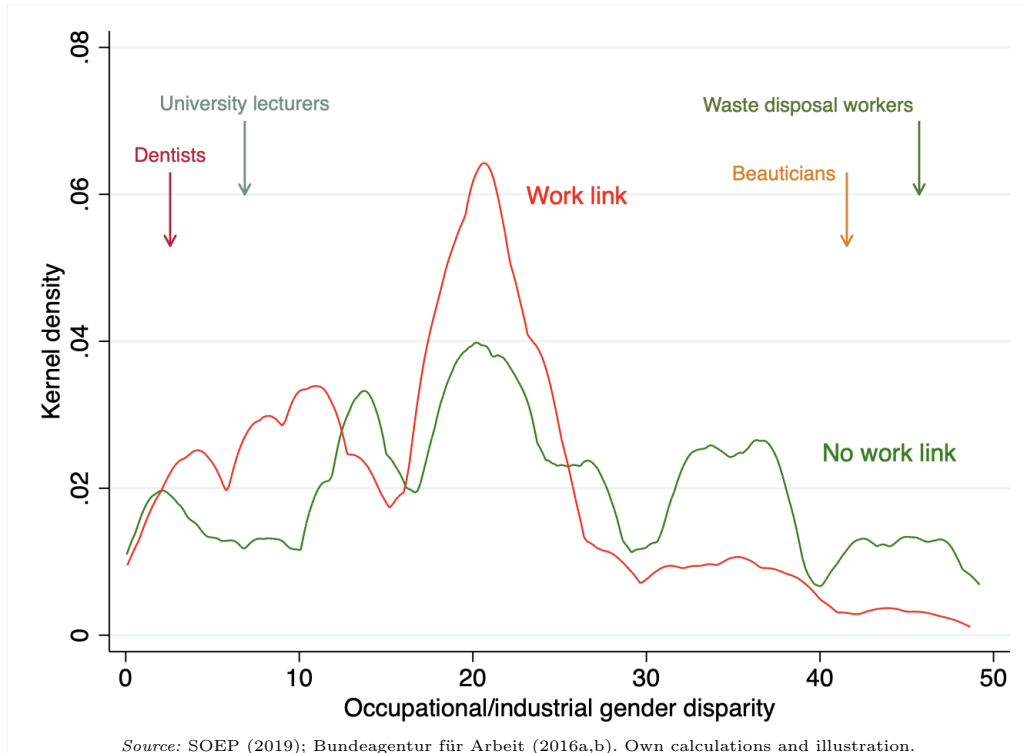
$$z_{it} = (GD_{sec} + GD_{occ})/2 \quad (3)$$

---

<sup>10</sup>Ideally, we would calculate the gender disparity at when partners meet. However, this is not possible due to a lack of information. But, as the relative shares of females and males barely changed within occupations over time, the disparity as of 2016 is indicative of the disparity at each other point in time. This is shown by Figure S.2 in the Online Appendix for female shares in 2-digit KldB occupations between 1999 and 2016 based on administrative records of the Federal Employment Agency.

Figure 2 illustrates the relationship between the occupational/industrial gender disparity and the probability of being work-linked.

Figure 2: Kernel densities of occupational/industrial gender disparity



**Intergenerational transmission of occupational choice (IV2)** The second instrument  $z_{it}$  is the current overall work link probability in the occupation the partner’s father pursued when the partner was 15 years old (retrieved from the biographical information). We use paternal occupation only due to a very high number of missing occupations for mothers (> 60%). The instrument is based on the idea of intergenerational transmission of occupational choice (Kelly *et al.*, 2014). The fact that occupational choice often depends on parents’ occupation also implies that being work-linked does not only depend on one’s own parents’ occupation, but also on that of the partner’s parents. Arguably, this is independent of one’s own wellbeing in a reversed causality sense and unlikely to impact wellbeing beyond the probability of being work-linked. We further discuss the exclusion restriction for both instruments below.

The work link probability of the partner’s paternal occupation is the current share of work links in the partner’s father’s occupation (in %). The share is estimated based on the mean of the work link indicator per occupation in the current SOEP wave. We cannot identify this probability for 20% of the sample, as, for instance, some observations are missing information on the partner’s father’s professional status or because the father was not working when the partner was 15 years old. The estimation sample thus reduces to individuals for whom we are able to identify the partner’s father’s

Table 2: First stage estimation results - Full sample

	All	Men	Women
Occupational/industrial gender disparity	-0.011*** (0.003)	-0.015*** (0.003)	-0.006 (0.004)
F-statistic	10.13	17.16	1.99
N	122,456	61,228	61,228
P(WL) in partner's paternal occupation in %	0.010*** (0.002)	0.008*** (0.003)	0.011*** (0.003)
F-statistic	16.01	5.95	11.20
N	98,153	49,406	48,747
$\mathbf{X}_{it}$	✓	✓	✓

Source: SOEP (2019); Bundeagentur für Arbeit (2016a,b). Own calculations.

Notes: Clustered standard errors in parentheses. \*  $p < 0.1$ , \*\*  $p < 0.05$ , \*\*\*  $p < 0.01$ .

First stage estimation results for the reduced sample sizes corresponding to family, leisure and income satisfaction can be found in Table S.2 in the Online Appendix.

occupation.<sup>11</sup>

**Estimation model** We separately estimate a linear regression model with endogenous binary treatment for both instruments using the Maximum Likelihood Estimator (STATA command `etregress`).<sup>12</sup>

$$WB_{it} = \beta_1 WL_{it} + \mathbf{X}'_{it}\beta_2 + \epsilon_{it} \quad (4)$$

$$WL_{it}^* = \mathbf{X}'_{it}\pi_1 + \pi_2 z_{it} + v_{it} \quad (5)$$

$$WL_{it} = \begin{cases} 1 & \text{if } WL_{it}^* > 0 \\ 0 & \text{otherwise} \end{cases} \quad (6)$$

$\mathbf{X}'_{it}$  comprises the same control variables as the simple OLS estimation from before (Section 4.1). Standard errors are clustered at the grouped occupation and industry level for IV1 and at the household level for IV2.

Table 2 presents the results of the first-stage estimations for both instruments, the full sample and gender subsamples.<sup>13</sup> The instruments correlate with being work-linked as expected. For men, gender disparity is the stronger instrument than the work link probability in partner's paternal occupation. This is probably because of the weaker link between a father's occupation and his daughter's (the man's partner) occupational choice. As mentioned above, mother's occupation is not a sufficient replacement due to many missing values. As opposed to this, for women the work link probability in partner's paternal occupation is observed to be the better instrument.

<sup>11</sup>In order to enable comparability, we check the sensitivity of the OLS and the IV 1 estimations to this sample restriction, too. The results are robust and are presented in Table S.1 in the Online Appendix.

<sup>12</sup>In the present model, `etregress` is preferred to a two-stage least squares (2SLS) approach as the binary and rare nature of our treatment leads to inflated estimators in 2SLS due to a violation of the linearity assumption in the first stage. Additionally, as opposed to `etregress`, 2SLS does not allow us to include different sets of control variables for first and second stage, which is crucial in our case as the variation in our first instrument comes from the variation in occupations/ industries and controlling for them in the first stage strips the instrument of its explanatory power. Nevertheless, the qualitative findings of 2SLS and `etregress` are the same, with `etregress` yielding the more conservative estimates.

<sup>13</sup>First stage estimation results for the reduced sample sizes corresponding to family, leisure and income satisfaction can be found in Table S.2 in the Online Appendix.



Table S.3 in the Online Appendix presents results for the tF test procedures for weak instrument based on Lee *et al.* (2020). Except for family satisfaction as well as for life satisfaction in the subsample of women, all results presented in the following hold also if tF corrected standard errors are computed.

**Exclusion restriction** For the exclusion restriction to hold, the gender disparity in the individual’s occupation and industry must not directly impact wellbeing i.e.  $Cov(z_{it}, \epsilon_{it}) = 0$ . Although this assumption cannot be formally tested, we perform a number of ancillary analysis in order to support the assumption. Indeed, we find no statistically significant association (i.e., at  $p < 0.05$ ) between the gender disparity and our indicators of satisfaction in the reduced-form OLS regression where we control for the work link indicator (see Table S.4, Online Appendix). Moreover, we control for all variables from before which may capture other channels from the gender disparity to wellbeing. In the process, controlling for the industry and the occupation at a more aggregate level (first-digit) eliminates bias from the fact that occupations and industries with a relatively high or low gender disparity may differ in other respects, too. Controlling for the major industry and occupation also addresses the potential problem that comparatively happy or unhappy individuals select into more gender-equal or gender-unequal occupations and industries. Again, this should lead to a correlation between wellbeing and the gender disparity which we do not find. In addition, we analyze a subsample of individuals that we observe at age 17 and test whether their life satisfaction correlates with the gender disparity in their first occupation or industry. This is not the case (see Figure S.1 in the Online Appendix). In this regard, we should keep in mind that the gender disparity is only low if there are equal shares of both genders.

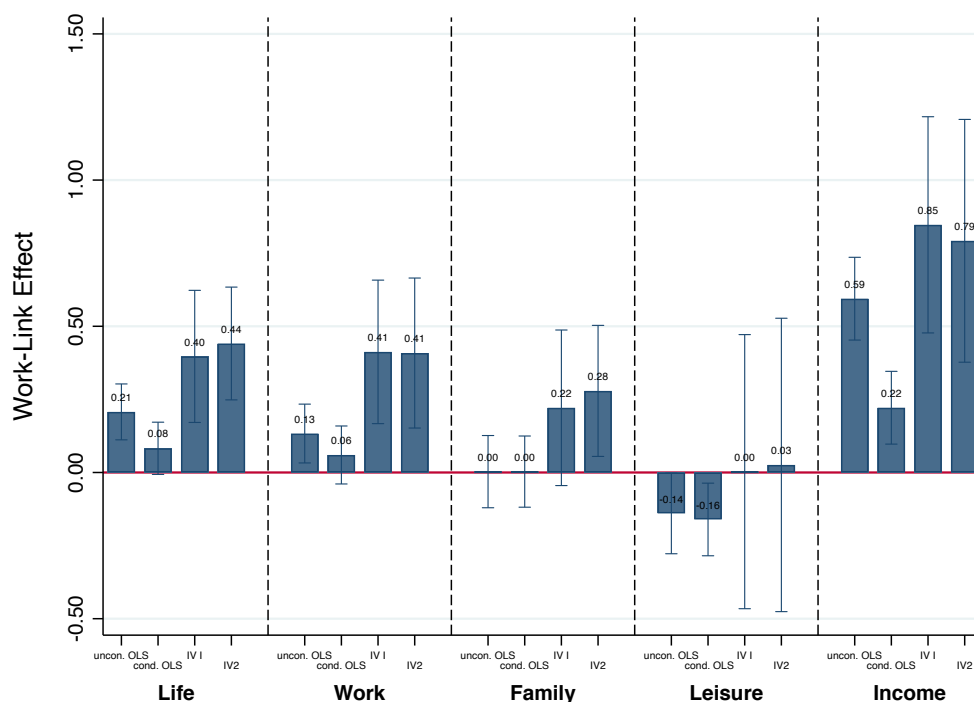
When it comes to the occupation of the individual’s partner’s father the same arguments apply. The probability of being work-linked of the partner’s father is not correlated with individual wellbeing in the reduced form equation (at least not at  $p < 0.05$ , see Table S.4, Online Appendix). The many control variables included, particularly those for occupation and industry, should further alleviate such concerns. Finally, having two instruments that are at least notionally independent of each other but nevertheless produce similar second-stage results is also reassuring (see Section 5.1).

## 5 Results

### 5.1 Main results

In the first step, we present the findings for the whole sample as well as the two gender subsamples. The estimates of being work-linked are presented in Figures 3 and 4 as well as in Table A.6 (Appendix). Full estimation results, which include the coefficients for all control variables, are presented in Table S.5 and Table S.6 in the Online Appendix. We distinguish between unconditional (excludes control variables) OLS estimates, conditional OLS estimates and the second-stage IV estimates for the two instruments.

Figure 3: Estimation results

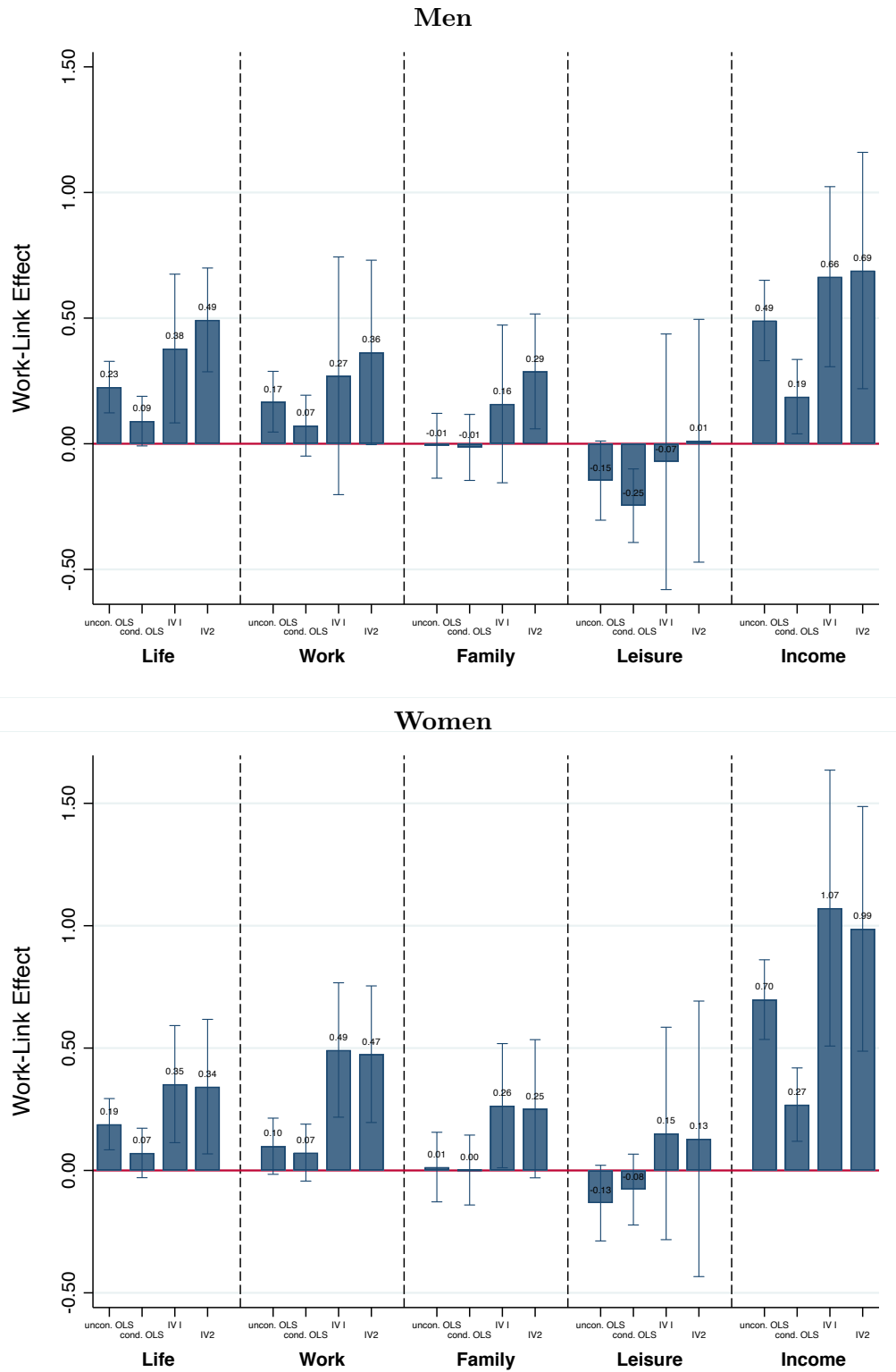


Source: SOEP (2019); Bundeagentur für Arbeit (2016a,b). Own calculations and illustration. Note: Confidence intervals are based on standard errors clustered at the occupation/industry or household level and refer to the 95 percentile. Corresponding estimation coefficients can be found in Table A.6 (Appendix). Conditional results and IV estimates are based on the full set of controls (vector  $\mathbf{X}'_{it}$ ). Specifications for estimations using IV 2 without federal state indicators due to non-convergence.

It turns out that both genders benefit from being work-linked to their partners in terms of life satisfaction and income satisfaction (i.e., in support of Hypothesis 1). When it comes to the OLS estimations, controlling for the characteristics as described in equation 4.1 reduces the effect size. The IV estimates of being work-linked on life satisfaction and income satisfaction are generally larger than the OLS coefficients and are fairly similar despite the use of two independent instruments.

The income satisfaction effects appear particularly strong (ranging from 10 to 40 % of a standard deviation), pointing to a positive impact of being work-linked on career success. There is also weak evidence for a positive effect of being work-linked on job satisfaction (IV only), lending some support to Hypothesis 2. The effect seems to be stronger for women but the gender difference is not statistically significant. Life satisfaction is often regarded as a summary measure of the domain satisfactions (Van Praag *et al.*, 2003; Chadi and Hetschko, 2020). This idea is compatible with our results that entail large positive effects of being work-linked in some life domains (e.g. income), but much lower effects in others (e.g. leisure), and a life satisfaction effect ranging somewhere in-between (ranging from 6 to 27 % of a standard deviation). The fact that income satisfaction seems to be a relatively responsive wellbeing outcome is also in line with previous literature (Powdthavee, 2012; Chadi and Hetschko, 2017). Our estimations do not consistently reveal positive effects of being work-linked in satisfaction with family life (i.e., there is no clear support of Hypothesis 3). There is a negative correlation between

Figure 4: Estimation results - Gender differences



Source: SOEP (2019); Bundesagentur für Arbeit (2016a,b). Own calculations and illustration. Note: Confidence intervals are based on standard errors clustered at the occupation/industry or household level and refer to the 95 percentile. Corresponding estimation coefficients can be found in Table A.6 (Appendix). Conditional results and IV estimates are based on the full set of controls (vector  $X_{it}$ ). Specifications for estimations using IV 2 without federal state indicators due to non-convergence.

being work-linked and leisure satisfaction according to the OLS results, which is significantly stronger in men than in women. However, the IV also do not show positive effects when it comes to wellbeing in the leisure domain, which means that, overall, Hypothesis 4 is rejected.

Statistically significant gender differences are rare. Women and men both benefit from being work-linked. Given the different issues with the two methodologies (generalizability of IV, potential for endogeneity problems in OLS), we would not want to place much emphasis on the relatively small differences in effect sizes between genders. We analyze effect heterogeneity further below (Section 5.3).

## 5.2 Autonomy, job security, income and hours as mediators

In order to identify important channels of the identified relationships, we separately include a number of endogenous variables into the main specification, namely occupational autonomy, subjective job security, equivalent income and labor income, as well as working hours. According to our results, positive effects of being work-linked dominate in satisfaction with life and income and female’s job satisfaction. These results support the power-couple hypothesis (Section 2) which posits that work-linked partners help each other climb the career ladder and therefore gain satisfaction. Therefore, occupational autonomy which reflects success on the career ladder may mediate the impact of being work-linked on wellbeing. As illustrated in the first column of Table 3 a work link increases occupational autonomy according to a conditional OLS estimations that replace satisfaction by autonomy as outcome variable. Including autonomy as additional control variable in the OLS estimation as well as the second stage of the IV estimations of satisfaction outcomes (Table A.7 in the Appendix) however hardly reduces the wellbeing effects of being work-linked.

If being work-linked fostered career success we should also observe positive income effects on the household level (equivalent income) and in individual earnings (labor income). This view is supported by the results in Table 3 (Columns 3 and 4). As for occupational autonomy, we find that the wellbeing effects of being work-linked reduce slightly once we control for equivalent income and labor income (Table A.7 in the Appendix).

Table 3: Effect of work link on endogenous variables (conditional OLS)

$Y_{it}$	Occ. auton. High (dum)	Log(net HH eq. inc.)	Log(income)	Working hours	Secure job
WL	0.074*** (0.012)	0.040*** (0.014)	0.072*** (0.014)	0.991*** (0.231)	0.027* (0.016)
N	122456	122276	122456	119582	120192
$X_{it}$	✓	✓	✓	✓	✓

Source: SOEP (2019). Own calculation.

Notes: Clustered standard Errors in parentheses. \*  $p < 0.1$ , \*\*  $p < 0.05$ , \*\*\*  $p < 0.01$ .

Career success manifests itself in non-pecuniary ways as well. Work-linked partners may be better able than others to land a fulltime job and thus not end up underemployed. Moreover, working many hours could be particularly enjoyable for work-linked partners in cases of close links where time spent

at work is to some extent spent with the partner (running a business together, farming, being employed by the same company). For these reasons, we repeat the two kinds of mediator analysis (mediator as outcome in Table 3, mediator as control variable in Table A.7) for the contractually agreed weekly working hours. Being work-linked increases hours significantly. Still, the positive effects of being work-linked found in satisfaction with life, income and work do not shrink if we control for hours of work. Having said that, the negative effect of the work link on satisfaction with leisure that appears only in the OLS estimation vanishes when controlling for hours.

Lastly, we consider job security as a potential benefit of work-linked couples. It is measured using the item "How worried are you about losing your job" on a three-point scale (with a higher rating implying higher security, i.e. fewer worries). What worries people may be either the probability of losing their current job, or the consequences of job loss (Geishecker, 2012). A work link could potentially alleviate both reasons for concern. Nepotism could limit the probability of job loss, while networks and information provision may reduce the time spent unemployed and the effort necessary to find a new job in the actual event of a job loss. As shown in the final column of Table 3, being work-linked indeed reduces concerns about job security. Its explanatory power for the work link wellbeing relationship is, however, small (Table A.7).

### **5.3 Heterogeneity, closeness of the work link, gender norms and a tunnel effect**

As a next step, we examine whether certain groups of couples are driving our results. This has to rely on the OLS approach only, as the IV estimations fail to converge with many of the much smaller samples in the fully-separated models. In line with the power-couple hypothesis mutual support in working life should play a role especially in occupations with relatively long career ladders, i.e. those that require an academic degree. In panel 1 of Table A.8 (Appendix) we therefore interact the work link indicator with an indicator for whether the individual had a college degree. It turns out that all positive satisfaction effects of being work-linked are significantly higher in the former group.

Closely related to this finding, we analyze our power couple hypothesis more closely by separating high earners (net labor income greater than the 75th percentile of the distribution) and all other earners. Based on this, we differentiate between couples with two non-high-earners, couples with one high-earner (either self or the partner) and couples with two high-earners. The results of the heterogeneity analysis are presented in panel 2 of Table A.8. In line with expectations, we find a much stronger positive effect on life and job satisfaction for power couples as well as a slightly positive effect on family satisfaction, too.

We also investigate the wellbeing effects of being work-linked dependent on how the individual's income compares to their partner's income. To some extent, partners are reference points for people's own career success (Clark *et al.*, 2003; Goerke and Pannenberg, 2015). This should especially be true for work-linked couples, as people choose reference groups by similarity. In line with the 'tunnel effect',

higher earnings of a partner who works, for instance, in the same industry signal future increases of one's own personal income (Clark *et al.*, 2009). Hence, in a work-linked couple, someone who earns less than their partner may have higher income satisfaction than someone in the same position in a non-linked couple. Panel 7 of Table A.8 distinguishes between people that earn at least 500 euros per month less than their partners (after taxes), roughly the same as their partners (maximum deviation = 500 euros) or at least 500 euros more than their partners. While most satisfaction effects of a work link are similar across these three groups, the positive income satisfaction effect indeed turns out to be most pronounced in those who earn less than their partners, even if household income is controlled for.

Moreover, we consider the possibility that the closest possible work link is not the optimal work link despite the positive effects found up to here. Couples may enjoy many of the advantages just by working in the same occupation or industry (spousal support, networks, information sharing), whereas some risks of being work-linked may grow if they even work for the same employer (blurred boundaries, highly correlated earnings risk). To shed some light on this possibility, we analyse work-linked couples who are self-employed, as we expect many of them to share a place of work (e.g. copreneurs). Note that our definition of self-employed workers also includes family members working in the family business. In line with the idea of links being 'too' close in some cases, self-employed workers display no positive effects of being work-linked on the satisfaction outcomes under consideration.

One sector where we expect small family businesses to be particularly prevalent is farming (Fitzgerald and Muske, 2002). We approach the issue of very close work links again through a separate estimation based on the agricultural sector, and allow for a comparison with other sectors in panel 4 of Table A.8. In line with our findings for the self-employed, the effects of being work-linked on several satisfaction outcomes are significantly smaller in this industry where partners often actually work together.

In a very traditional environment working women and their partners might suffer from deviating from the male breadwinner model. Being work-linked makes this norm deviation potentially more salient to one's own social group (such as colleagues) and thus more harmful for wellbeing. This could lead to a difference between East German and West German couples in the effects of being work-linked on wellbeing, as female labor supply was enforced in the GDR such that the male breadwinner model ceased to be a norm. Moreover, we might see increasingly positive wellbeing effects of being work-linked over time, as female labor supply has risen in general and the male breadwinner model has gone out of style (Wyrwich, 2019). But, as further subsample estimations presented in panels 5 and 6 of Table A.8 show, we cannot detect clear differences in the satisfaction effects of a work link between East and West Germans or between the pre-2000 and the post-2000 samples.

Next, we shed light on the notion that work-linked partners suffer from correlated earnings risks (see also Section 2). If true, risk-averse work-linked individuals should demonstrate comparatively low

wellbeing, as they dislike being exposed to risks in life more than others. Individual willingness to take risks has been elicited in the SOEP in 2004, 2006 and annually since 2008, with a question asking respondents to rate whether they are "generally a person who is willing to take risks" on a scale from 0 to 10. We calculate the average of all individual observations of risk attitude during participation in the panel survey and classify respondents as either risk-averse or risk-seeking depending on whether they rank below or above the median. Panel 8 of Table A.8 reports the results of the heterogeneity analysis. Although risk seekers enjoy higher levels of wellbeing, we cannot detect any significant heterogeneity in the wellbeing effects of being work-linked between risk-seeking and risk-averse individuals.

Lastly, the effect of a work link might differ over the life course, as both partners progress on their careers and may become increasingly able to support each other. Age is usually u-shaped in wellbeing, which is why we interact the work link variable with age bands that split the sample into four ten-year brackets. The results can be found in panel 9 of Table A.8. No clear patterns emerge when it comes to satisfaction with life, leisure or income. The youngest group of adults (25-34 years) experience a statistically significant loss of family satisfaction when being work-linked. The older workers get, however, the more they benefit from a work link in this domain of life. Somewhat similar to that, the effect of the work link in job satisfaction is indistinct (insignificantly negative) in the youngest group but becomes more positive over the life course.

## 5.4 Sensitivity analyses

**Link type** As our first robustness check, we examine the sensitivity of our results to the definition of the work link between partners. We rerun our analyses separately for solely industry-based links (at the two-digit level) and solely occupation-based links (at the three-digit level). As can be seen in Table S.7 in the Online Appendix, these estimations closely resemble our analyses for the combined link, including both the OLS approach as well as the IV estimates. This is not surprising given the large overlap between occupation links and industry links seen in Table 1.

**Traits** Secondly, we address selection issues in both the pooled OLS and the IV setting further by controlling for personality and various other traits. Personality strongly determines baseline levels of wellbeing (Lucas and Diener, 1999) and might also explain occupational choice and partner choice. A similar argument may be made with regard to risk aversion, time preference or subjective beliefs (optimism). Hence, controlling for these traits takes away an important source of heterogeneity that could explain high levels of wellbeing in work-linked couples. In the process, we consider the Big Five personality traits openness, conscientiousness, extraversion, agreeableness and neuroticism as well as locus of control, risk attitude, impatience and optimism/pessimism. The sample shrinks considerably as these traits are not elicited every year (for a more detailed account, see Online Appendix). As Table S.8 shows, our OLS and IV results barely change if we control for traits in addition to the

variables considered in our main specification.

**Correlated earnings risk** Finally, we address the issue that our sampling might to some extent eliminate an important channel from being work-linked to wellbeing, the correlated earnings risk. In our main analyses, we do not consider non-employed workers who may currently suffer from income losses due to joblessness. As another check presented in Table S.1 in the Online Appendix, the sample is extended to couples where one or both partners are currently unemployed or non-working for other reasons. To still be able to identify work links, we impute occupation and industry of the non-working partners from previous waves of data. The sample comprises 122,456 individuals from dual-earner couples (original sample), 4,856 individuals from double non-working couples and 30,464 individuals from single-earner couples. The results based on the extended sample are largely in line with our previous findings, so the impact of the non-working partners is negligible (panel 1a). Then, work-linked couples with at least one non-working partner are examined only. Here, we find fewer positive effects across the different indicators of wellbeing, which could point to the problem of correlated earnings risks or simply to the fact that those who are unemployed currently do not enjoy the benefits of being work-linked (panel 1b).

## 6 Concluding remarks

Our investigation suggests that there are positive effects of being work-linked on subjective wellbeing. Most importantly, an occupation and/or industry link increases workers' satisfaction with their lives. We also find positive effects of being work-linked on income satisfaction and job satisfaction, in line with Hypotheses 1 and 2. Taken together with the benefits of a work link that we identify in income and occupational autonomy, these results point to the idea of power couples working in the same occupation or industry which enables them to greatly benefit each others' careers. In line with that, the positive role of being work-linked is most pronounced in people with a college degree where career ladders are relatively long and earnings growth is potentially steep.

Our analyses indicate that these positive effects of being work-linked are not driven by men, as increased salience of a gender pay gap in work-linked couples would have implied (see Section 2). In fact, the job satisfaction effects are even more pronounced in women. Rather, our heterogeneity analysis points to a tunnel effect benefiting the low-income earner in the couple who may perceive the higher income of the partner as a signal of future pay rises.

While we cannot rule out that women in work-linked couples are more likely to feel unfairly treated than women in non-linked couples, the positive implications of being work-linked prevail. The same applies to other potentially negative effects of a work link in the work domain, such as highly correlated earnings risks. They might reduce wellbeing to some extent or not, but in any event their impact is more than offset by the benefits the power couple enjoys. This does not apply to all work-linked



couples, though. Copreneurs, for instance, here defined as self-employed work-linked couples, are not more satisfied with their lives, incomes or jobs than non-linked self-employed workers. This is an important finding in itself, as much of the previous literature focuses on this special kind of work link.

Our results are less conclusive regarding family life satisfaction (Hypothesis 3). Dependent on the methodological approach, we are sometimes able to report positive effects of being work-linked (IV) and sometimes not (OLS). According to our heterogeneity analysis, this might be because the work link effect on family life satisfaction is age-dependent. The suspected disadvantage of blurred boundaries between working life and family life no longer seems to dominate the advantages in terms of mutual understanding and emotional support in middle-age and older workers.

Also, the in some specifications observed positive effect of a link on family life satisfaction might merely be a spillover from wellbeing obtained in the work domain (Ilies *et al.*, 2009). In general, the possibility of these spillovers is a limitation of our approach of revealing reasons for wellbeing effects of being work-linked through the domain satisfaction measures. However, we also have to reject Hypothesis 4, as none of our empirical approaches reveals an increase of leisure satisfaction as a result of the work link. Therefore, the positive impacts of a work link in other areas of life seem to be domain-specific. In a nutshell, all findings taken together imply that the positive impact of being work-linked on life satisfaction originates from working-life related benefits.

Our findings bear implications for hiring practice. The demand for high-skilled workers has led to transregional, or even international, markets for talents in many sectors. Here, an individual accepting a job means the whole household relocating, as commuting is often considered the less preferred option. In these instances, firms and other organizations are confronted with the challenge to offer dual career support for the partners of highly demanded talent, a topic research has touched on from different angles (Padgett and Morris, 2005; Schiebinger *et al.*, 2008; Kojima *et al.*, 2013; Sarpong, 2018). Job search support (same industry and beyond) and hiring couples are solutions to the problem with the result that work links between partners become closer than before, or are just being created.

Our results shed light on the potential consequences of these kinds of recruitment policies. Given the positive effects of being work-linked on wellbeing, supporting partners in the attempt to find a similar job might be conducive to worker wellbeing. It remains for future research to explore if the improvement of wellbeing translates into benefits for the firm, too, through higher commitment and job performance. Another direction for future research is to test if the closest possible link, i.e., working on the same team, is actually the optimal work link, or whether the gains of being work-linked are fully reaped through industry and occupation links. This would also provide more insight as to the optimal placement of the partner of a highly demanded talent.

## Declaration

**Funding** not applicable

**Conflicts of interest/Competing interests** non

**Availability of data and material** publicly available data

**Code availability** replication code available from authors upon request

## References

- ALLEN, T. D. (2012). The Work-Family Role Interface: A Synthesis of the Research from Industrial and Organizational Psychology. In I. B. Weiner (ed.), *Handbook of Psychology, Second Edition*, 26, John Wiley & Sons, Inc.
- , CHO, E. and MEIER, L. L. (2014). Work-Family Boundary Dynamics. *Annual Review of Organizational Psychology and Organizational Behavior*, **1** (1), 99–121.
- BECKER, G. S. (1973). A Theory of Marriage: Part I. *Journal of Political Economy*, **81** (4), 813–846.
- BELLET, C. S., DE NEVE, J.-E. and WARD, G. (2020). *Does Employee Happiness Have an Impact on Productivity?* CEP Discussion Paper No. 1655.
- BERTRAND, M. (2013). Career, family, and the well-being of college-educated women. *American Economic Review*, **103** (3), 244–250.
- BINDER, M. and COAD, A. (2013). Life satisfaction and self-employment: A matching approach. *Small Business Economics*, **40** (4), 1009–1033.
- BLENKINSOPP, J. and OWENS, G. (2010). At the heart of things: The role of the “married” couple in entrepreneurship and family business. *International Journal of Entrepreneurial Behaviour & Research*, **16** (5), 357–369.
- BONSANG, E. and KLEIN, T. J. (2012). Retirement and subjective well-being. *Journal of Economic Behavior & Organization*, **83** (3), 311–329.
- BOOTH, A. L. and VAN OURS, J. C. (2008). Job satisfaction and family happiness: The part-time work puzzle. *Economic Journal*, **118** (526), F77–F99.
- BUNDEAGENTUR FÜR ARBEIT (2016a). Beschäftigte nach Berufen (KldB 2010) (Quartalszahlen) Deutschland. <https://statistik.arbeitsagentur.de/DE/Navigation/Statistiken/Themen-im-Fokus/Berufe/Berufe-Nav.html>, as of March 31, 2016.
- BUNDEAGENTUR FÜR ARBEIT (2016b). Beschäftigte nach Wirtschaftszweigen (WZ 2008) (Quartalszahlen) Deutschland. <https://statistik.arbeitsagentur.de/DE/Navigation/Statistiken/Themen-im-Fokus/Wirtschaftszweige/Wirtschaftszweige-Nav.html>, as of March 31, 2016.
- CHADI, A. and HETSCHKO, C. (2017). *Income or leisure? On the hidden benefits of (un-)employment*. IAAEU Discussion Paper 06/2017.
- and — (2018). The magic of the new: How job changes affect job satisfaction. *Journal of Economics and Management Strategy*, **27** (1), 23–39.
- and — (2020). How Job Changes Affect People’s Lives – Evidence from Subjective Well-being Data. *British Journal of Industrial Relations*, **in press**.
- CLARK, A. E. (2001). What really matters in a job? Hedonic measurement using quit data. *Labour Economics*, **8** (2), 223–242.
- , D’AMBROSIO, C. and GHISLANDI, S. (2016). Adaptation to Poverty in Long-Run Panel Data. *Review of Economics and Statistics*, **98** (3), 591–600.
- and GEORGELLIS, Y. (2013). Back to baseline in Britain: adaptation in the British household panel survey. *Economica*, **80** (319), 496–512.
- , KRISTENSEN, N. and WESTERGARD-NIELSEN, N. (2009). Job satisfaction and co-worker wages: Status or signal? *Economic Journal*, **119** (536), 430–447.
- and OSWALD, A. J. (1994). Unhappiness and unemployment. *The Economic Journal*, **104** (424), 648–659.
- CLARK, W. A. V., HUANG, Y. and WITHERS, S. (2003). Does commuting distance matter? Commuting tolerance and residential change. *Regional Science and Urban Economics*, **33** (2), 199–221.
- DAHL, M. S., VAN PRAAG, M. and THOMPSON, P. (2015). Entrepreneurial couples. In *75th Annual Meeting of the Academy of Management, AOM 2015*, pp. 795–800.

- DIESTEL, S., WEGGE, J. and SCHMIDT, K. H. (2014). The impact of social context on the relationship between individual job satisfaction and absenteeism: The roles of different foci of job satisfaction and work-unit absenteeism. *Academy of Management Journal*, **57** (2), 353–382.
- FERGUSON, M., CARLSON, D., KACMAR, K. M. and HALBESLEBEN, J. R. B. (2016). The Supportive Spouse at Work : Does Being Work-Linked Help ? *Journal of Occupational Health Psychology*, **21** (1), 37–50.
- FITZGERALD, M. A. and MUSKE, G. (2002). Copreneurs: An Exploration and Comparison to Other Family Businesses. *Family Business Review*, **15** (1), 1–16.
- FOLEY, S. and POWELL, G. N. (1997). Reconceptualizing work-family conflict for business / marriage partners: a theoretical model. *Journal of Small Business Management*, **35** (4), 36–47.
- FRITZ, C., PARK, Y. and SHEPHERD, B. R. (2019). Workplace Incivility Ruins my Sleep and Yours: the Costs of Being in a Work-Linked Relationship. *Occupational Health Science*, **3** (1), 1–21.
- GEISHECKER, I. (2012). Simultaneity bias in the analysis of perceived job insecurity and subjective well-being. *Economics Letters*, **116** (3), 319–321.
- GOEBEL, J., GRABKA, M. M., LIEBIG, S., KROH, M., RICHTER, D., SCHRÖDER, C. and SCHUPP, J. (2019). The German Socio-Economic Panel (SOEP). *Jahrbücher für Nationalökonomie und Statistik*, **239** (2), 345–360.
- GOERKE, L. and PANNENBERG, M. (2015). Direct evidence for income comparisons and subjective well-being across reference groups. *Economics Letters*, **137**, 95–101.
- GRZYWACZ, J. G. and CARLSON, D. S. (2007). Conceptualizing Work—Family Balance: Implications for Practice and Research. *Advances in Developing Human Resources*, **9** (4), 455–471.
- GUVEN, C., SENIK, C. and STICHNOTH, H. (2012). You can't be happier than your wife. Happiness gaps and divorce. *Journal of Economic Behavior & Organization*, **82** (1), 110–130.
- HAAR, J. M., RUSSO, M., SUÑE, A. and OLLIER-MALATERRE, A. (2014). Outcomes of work-life balance on job satisfaction, life satisfaction and mental health: A study across seven cultures. *Journal of Vocational Behavior*, **85** (3), 361–373.
- HALBESLEBEN, J. R., WHEELER, A. R. and ROSSI, A. M. (2012). The costs and benefits of working with one's spouse: A two-sample examination of spousal support, work-family conflict, and emotional exhaustion in work-linked relationships. *Journal of Organizational Behavior*, **33**, 597–615.
- , ZELLARS, K. L., CARLSON, D. S., PERREWÉ, P. L. and ROTONDO, D. (2010). The moderating effect of work-linked couple relationships and work-family integration on the spouse instrumental support-emotional exhaustion relationship. *Journal of Occupational Health Psychology*, **15** (4), 371–387.
- HARTMANN, J. and SCHÜTZ, G. (2017). *Die Klassifizierung der Berufe und der Wirtschaftszweige im Sozio-oekonomischen Panel - Neuvercodung der Daten 1984-2001*. SOEP Survey Papers 468 (Reprint).
- HUFFMAN, A. H., DUNBAR, N., KLINEFELTER, Z. P. and HOWES, S. S. (2018). Sharing Experiences and Stressors at Work and at Home: A Model of Work-Linked Couples. *Occupational Health Science*, **2** (2), 157–180.
- ILIES, R., WILSON, K. S. and WAGNER, D. T. (2009). The spillover of daily job satisfaction onto employees' family lives: The facilitating role of work-family integration. *Academy of Management Journal*, **52** (1), 87–102.
- ISEKE, A. (2014). The Part-Time Job Satisfaction Puzzle: Different Types of Job Discrepancies and the Moderating Effect of Family Importance. *British Journal of Industrial Relations*, **52** (3), 445–469.
- KELLY, I. R., DAVE, D. M., SINDELAR, J. L. and GALLO, W. T. (2014). The impact of early occupational choice on health behaviors. *Review of Economics of the Household*, **12** (4), 737–770.
- KNABE, A., SCHÖB, R. and WEIMANN, J. (2016). Partnership , Gender Roles and the Well-Being Cost of Unemployment. *Social Indicators Research*, **129** (3), 1255–1275.

- KOJIMA, F., PATHAK, P. A. and ROTH, A. E. (2013). Matching with couples: Stability and incentives in large markets. *The Quarterly Journal of Economics*, **128** (4), 1585–1632.
- LAUBER, V. and STORCK, J. (2019). Helping with the kids? How family-friendly workplaces affect parental well-being and behaviour. *Oxford Economic Papers*, **71** (1), 95–118.
- LEE, D. L., MCCRARY, J., MOREIRA, M. J. and PORTER, J. (2020). Valid t-ratio Inference for IV.
- LUCAS, R. E. (2007). Adaptation and the Set-Point Model of Subjective Well-Being Does Happiness Change After Major Life Events? *Current Directions in Psychological Science*, **16** (2), 75–79.
- and DIENER, E. (1999). Personality and Subjective Well-Being. In D. Kahneman, E. Diener and N. Schwarz (eds.), *Foundations of Hedonic Psychology*, New York: Russell Sage, pp. 213–229.
- LUECHINGER, S., MEIER, S. and STUTZER, A. (2010). Why does unemployment hurt the employed?: Evidence from the life satisfaction gap between the public and the private sector. *Journal of Human Resources*, **45** (4), 998–1045.
- MICHEL, J. S., KOTRBA, L. M., MITCHELSON, J. K., CLARK, M. A. and BALTES, B. B. (2011). Antecedents of work-family conflict: A meta-analytic review. *Journal of Organizational Behavior*, **32** (5), 689–725.
- NIKOLOVA, M. and AYHAN, S. H. (2019). Your spouse is fired! How much do you care? *Journal of Population Economics*, **32** (3), 799–844.
- OSWALD, A. J., PROTO, E. and SGROI, D. (2015). Happiness and productivity. *Journal of Labor Economics*, **33** (4), 789–822.
- PADGETT, M. Y. and MORRIS, K. A. (2005). Keeping it "All in the Family:" Does Nepotism in the Hiring Process Really Benefit the Beneficiary? *Journal of Leadership & Organizational Studies*, **11** (2), 34–45.
- PIPER, A. T. (2016). Sleep duration and life satisfaction. *International Review of Economics*, **63** (4), 305–325.
- POWDTHAVEE, N. (2012). Jobless, Friendless and Broke: What Happens to Different Areas of Life Before and After Unemployment? *Economica*, **79** (315), 557–575.
- SARPONG, S. (2018). Spouses at work: Opportunity ahead. *Global Business and Organizational Excellence*, **37** (5), 21–28.
- SCHIEBINGER, L., DAVIES HENDERSON, A. and GILMARTIN, S. (2008). *Dual career couples: What universities need to know*. Stanford, CA: Michelle R. Clayman Institute for Gender Research, Stanford University.
- SOEP (2019). *Socio Economic Panel Data: Data for years 1984-2018, version 35, Doi: 10.5684/soep-core.v35*.
- STATISTISCHES BUNDESAMT (2010). *Klassifikation der Berufe 1992 (KldB 92) - Gliederungsstruktur bis zur 4 Steller-Ebene*. Wiesbaden: Statistisches Bundesamt.
- TEN BRUMMELHUIS, L. L., HAAR, J. M. and ROCHE, M. (2014). Does Family Life Help to be a Better Leader? A Closer Look at Crossover Processes From Leaders to Followers. *Personnel Psychology*, **67** (4), 917–949.
- VAN DER ZWAN, P., HESSELS, J. and RIETVELD, C. A. (2018). Self-employment and satisfaction with life, work, and leisure. *Journal of Economic Psychology*, **64**, 73–88.
- VAN PRAAG, B. M. S., FRIJTERS, P. and FERRER-I CARBONELL, A. (2003). The anatomy of subjective well-being. *Journal of Economic Behavior & Organization*, **51**, 29–49.
- VOYDANOFF, P. (2005). Toward a Conceptualization of Perceived Work-Family Fit and Balance: A Demands and Resources Approach. *Journal of Marriage and Family*, **67** (4), 822–836.
- WALTER, J. and HAUN, V. C. (2020). Work-Related Spousal Support and Recovery Experiences among Dual-Earner Couples - Work-Linkage as Moderator. *Occupational Health Science*, **4** (3), 333–355.

- WEIMANN, J., KNABE, A. and SCHÖB, R. (2015). *Measuring happiness: The economics of well-being*. MIT Press.
- WYRWICH, M. (2019). Historical and current spatial differences in female labour force participation: Evidence from Germany. *Papers in Regional Science*, **98** (1), 211–239.

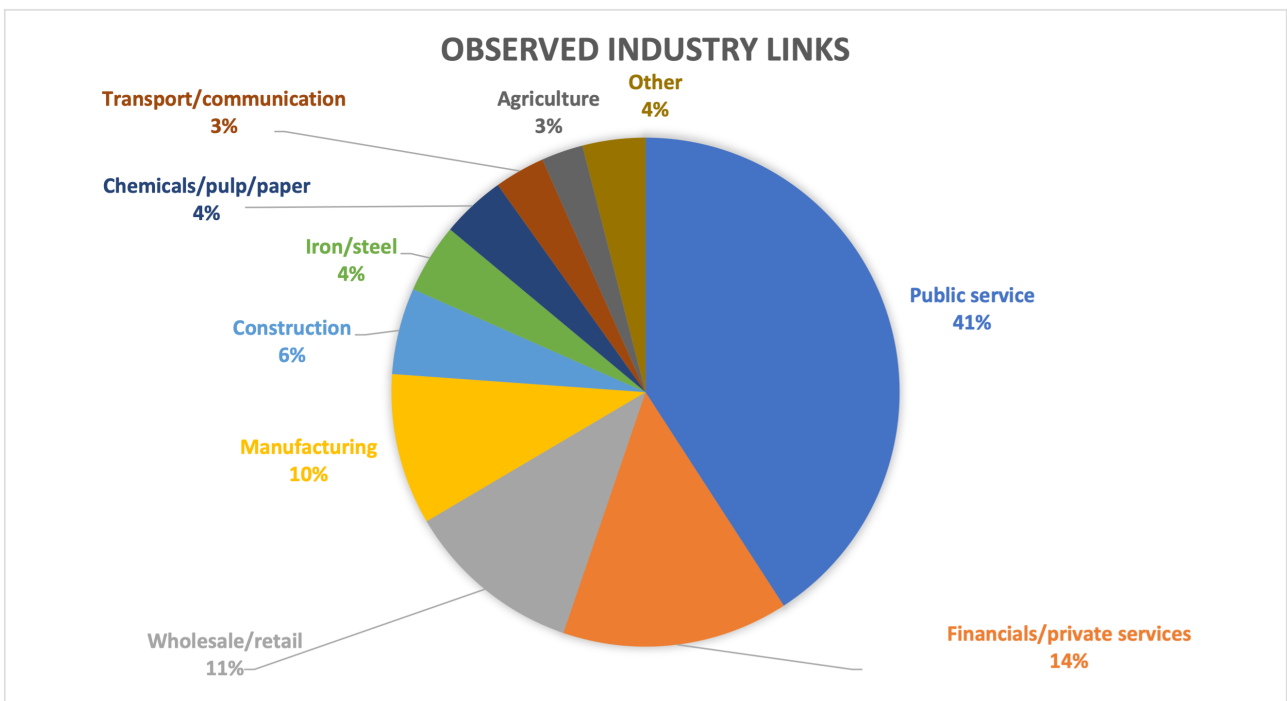
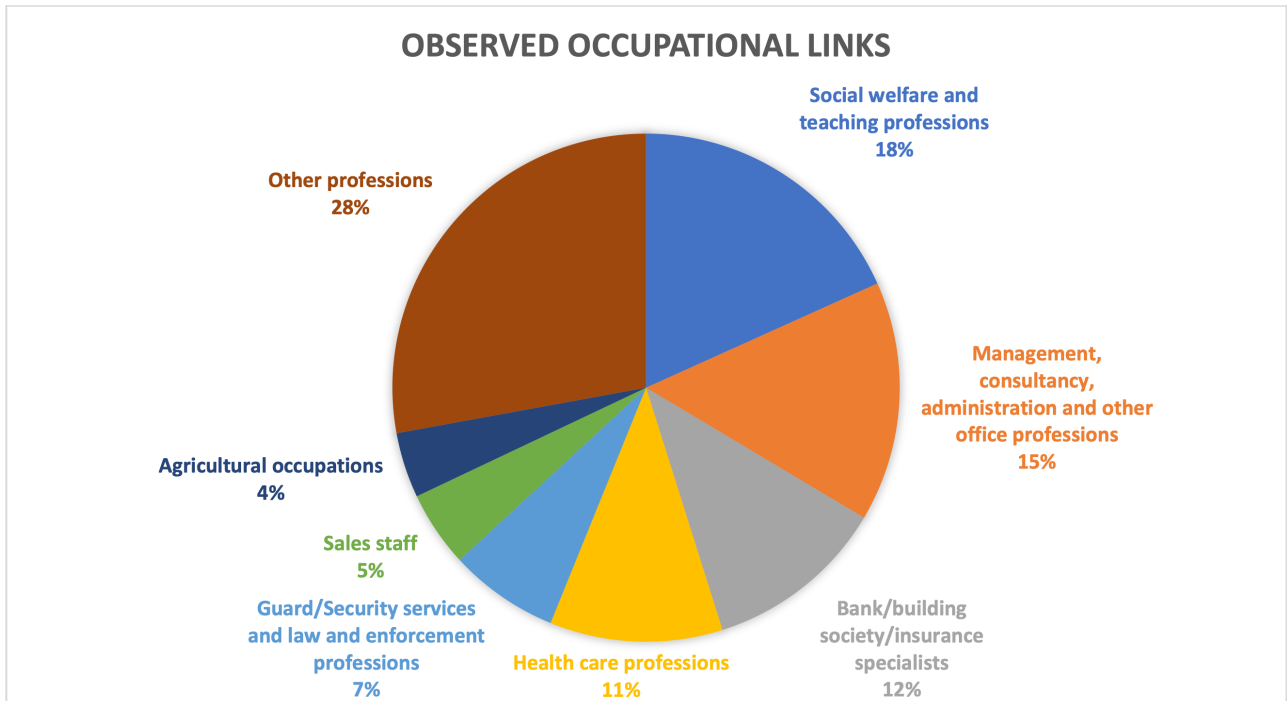
## Tables and figures

Table A.1: Occupational classification in the KldB92 example

Digit	Code	Description
1	Vh	Social and teaching occupations and other not classified arts and natural science professions
2	<b>86</b>	<b>Social welfare professions</b>
3	861	Social workers, social education workers
3	862	Remedial teachers
3	863	Early childhood teachers
3	864	Geriatric nurses
3	...	...
2	<b>87</b>	<b>Teachers</b>
3	870	Teachers without designation
3	871	University lecturers
3	872	Grammar school teachers
3	873	Primary, junior high, secondary, special school teachers
3	874	Vocational school teachers
3	875	Music teachers
3	876	Sports teachers
3	878	Driving, traffic instructors
3	879	Other teachers
2	<b>88</b>	<b>Arts and natural sciences professions</b>
3	880	Academics without designation
3	881	Economic scientists
4	8810	Economists without further specification
4	8812	Graduate economists without further specification
4	8814	Graduate business economist without further specification
4	8815	Business economists without further specification
4	...	...
3	882	Arts and humanities academics
3	883	Natural scientists
3	884	Social scientists
3	885	Educational scientists
3	886	Psychologists
3	887	Statisticians, market researchers and related professions
2	<b>89</b>	<b>Counselling professions</b>
3	891	Priests
3	894	Monks, nuns - spiritual/pastoral care

Source: SOEP (2019).

Figure A.1: Shares of overall work links by occupation and industry



Source: SOEP (2019). Own calculations and illustration.



Table A.2: Occupation-specific work link shares

Kldb92 - 2 digit level	Freq.	Occupational WL		Combined WL	
		Freq.	%	Freq.	%
Management, consultancy, administration and other office professions	26,409	1,176	4.45	758	2.87
Social welfare and teaching professions	13,040	1,406	10.78	1,264	9.69
Sales staff	10,058	372	3.7	328	3.26
Health care professions	8,924	848	9.5	826	9.26
Other service professions	7,586	366	6.32	322	4.47
Transport professions	6,611	238	3.6	150	2.27
Metal and plant engineering and related professions	6,189	90	1.45	70	1.13
Bank/building society/insurance specialists	5,708	890	15.59	838	14.68
Guard/security services and law and enforcement professions	4,926	538	10.92	496	10.07
Engineers, chemists, physicists, mathematicians	4,900	304	6.2	194	3.96
Technicians and technical specialists	4,449	98	2.2	76	1.71
Food manufacturing and processing professions	2,377	150	6.31	124	5.22
Electrical professions	2,361	54	2.29	52	2.2
Journalism, translation, librarian, artistic and related professions	2,012	170	8.45	118	5.86
Agricultural occupations	1,990	320	16.08	270	13.57
Structural and civil engineering professions	1,699	12	0.71	8	0.47
Metal manufacturing and processing professions	1,542	32	2.08	24	1.56
Goods inspectors, dispatch workers	1,442	70	4.85	44	3.05
Installation and other metal professions	1,323	138	10.43	122	9.22
Extension building professions and interior decorators, upholsterers	1,208	6	0.5	6	0.5
Machine, plant operators and machine setters	1,165	16	1.37	6	0.52
Chemistry and synthetic materials professions	1,160	58	5	58	5
Arts and natural science professions	1,072	86	5.69	58	5.41
Wood and synthetic materials processing professions	1,036	60	5.79	48	4.63
Unskilled workers	886	130	14.67	92	10.38
Paper manufacturing/processing and print (processing) professions	743	22	2.96	22	2.96
Painters, varnishers and related professions	716	14	1.96	14	1.96
Textil manufacturing and processing professions	581	18	3.1	18	3.1
Ceramists and glass manufacturing/processing professions	201	4	1.99	4	1.99
Leather manufacturing, leather/fur processing professions	170	2	1.18	0	0
Wood processing, wood/woven goods manufacturing professions	142	6	4.23	6	4.23
Mining occupations	106	0	0	0	0
Stone processors and construction material manufacturers	105	0	0	0	0
<b>Total</b>	<b>122,456</b>	<b>7,694</b>	<b>6.28</b>	<b>6,416</b>	<b>5.24</b>

Source: SOEP (2019). Own calculations.

Table A.3: Industry-specific work link shares

Industries	Freq.	Industrial WL		Combined WL	
		Freq.	%	Freq.	%
Agriculture	1,962	612	31.19	254	12.95
Mining, quarrying, energy	1,758	130	7.39	6	0.34
Manufacturing	15,450	2,218	14.36	300	1.94
Chemicals/pulp/paper	6,312	944	14.96	180	2.85
Construction	8,411	1,268	15.08	118	1.4
Iron/steel	6,024	1,018	16.9	184	3.05
Textile/apparel	1,312	210	16.01	68	5.18
Wholesale/retail	14,698	2,602	17.7	432	2.94
Transport/communication	6,304	742	11.77	186	2.95
Public service	38,671	9,424	24.37	3,048	7.88
Financial/private services	16,288	3,324	20.41	1,428	8.77
Not categorized	5,266	584	11.09	212	4.03
<b>Total</b>	<b>122,456</b>	<b>23,076</b>	<b>18.84</b>	<b>6,416</b>	<b>5.24</b>

Source: SOEP (2019). Own calculations.

*Table A.4: Descriptive statistics outcome variables by work link*

	<b>All</b>			<b>No WL</b>	<b>WL</b>	<b>t-test</b>
	N	mean	SD	mean	mean	p-value
Life satisfaction	122,456	7.35	1.53	7.34	7.54	0.00
Work satisfaction	122,456	7.12	1.93	7.11	7.25	0.00
Family satisfaction	68,782	8.16	1.61	8.16	8.17	0.91
Leisure satisfaction	111,288	6.55	2.16	6.55	6.41	0.00
Income satisfaction	78,016	6.61	2.11	6.58	7.17	0.00

*Source:* SOEP (2019). Own calculations.

Table A.5: Summary statistics by work link

	All mean	No WL mean	WL mean	t-test p-value
<b>Individual characteristics</b>				
Female	0.50	0.50	0.50	1.00
Age				
25-34 years	0.18	0.18	0.20	0.00
35-44 years	0.37	0.37	0.35	0.00
45-54 years	0.33	0.33	0.30	0.00
55-64 years	0.12	0.11	0.15	0.00
Years of education	12.57	12.51	13.65	0.00
Self-employed	0.09	0.09	0.16	0.00
Tenure (in years)	11.58	11.46	13.82	0.00
Firm size (number of employees)				
small (under 20)	0.29	0.30	0.26	0.00
medium (20-199)	0.26	0.27	0.21	0.00
large (200 and more)	0.44	0.44	0.53	0.00
In trained occupation	0.59	0.59	0.69	0.00
Fixed-term contract	0.06	0.06	0.06	0.41
Full-time employed	0.64	0.64	0.64	0.28
Net Labor income	1644.91	1625.26	2000.17	0.00
Equivalent income	2022.11	2000.73	2408.63	0.00
Occupational autonomy				
Untrained	0.14	0.14	0.11	0.00
Low level	0.27	0.28	0.15	0.00
Executive level	0.31	0.31	0.27	0.00
Middle level	0.24	0.23	0.37	0.00
Upper level	0.05	0.04	0.09	0.00
Working hours	37.37	37.22	40.09	0.00
<b>Household characteristics</b>				
Married	0.88	0.88	0.83	0.00
Number of children in HH	0.89	0.89	0.90	0.44
Partnership length	7.75	7.81	6.68	0.00
Censored partnership length	0.73	0.73	0.72	0.17
<b>Partner characteristics</b>				
Years of education	12.57	12.51	13.65	0.00
Tenure	11.58	11.46	13.82	0.00
In trained occupation	0.59	0.59	0.69	0.00
Fixed-term contract	0.06	0.06	0.06	0.41
Full-time employed	0.64	0.64	0.64	0.28
<b>Regional characteristics</b>				
Schleswig-Holstein	0.03	0.03	0.03	0.26
Hamburg	0.01	0.01	0.01	0.87
Lower Saxony	0.09	0.09	0.07	0.00
Bremen	0.01	0.01	0.01	0.03
North Rhine-Westphalia	0.20	0.20	0.20	0.32
Hesse	0.08	0.08	0.07	0.00
Rhineland-Palatinate	0.05	0.05	0.04	0.26
Baden-Wuerttemberg	0.13	0.13	0.13	0.06
Bavaria	0.15	0.15	0.19	0.00
Saarland	0.01	0.01	0.00	0.00
Berlin	0.03	0.03	0.04	0.00
Brandenburg	0.04	0.04	0.03	0.01
Mecklenburg-Western Pomerania	0.02	0.02	0.03	0.01
Saxony	0.07	0.07	0.05	0.00
Saxony-Anhalt	0.04	0.04	0.03	0.01
Thuringia	0.04	0.04	0.05	0.00

Source: SOEP (2019). Own calculations.

Table A.6: Main estimation results

$Y_{it}$ :	Life b / se	Work b / se	Family b / se	Leisure b / se	Income b / se
<b>All</b>					
Unconditional OLS	0.207*** (0.049) 122456	0.133*** (0.051) 122456	0.003 (0.063) 68782	-0.140** (0.070) 111288	0.594*** (0.072) 78016
$X_{it}$	✗	✗	✗	✗	✗
Conditional OLS	0.083* (0.046) 122456	0.060 (0.051) 122456	0.003 (0.062) 68782	-0.161** (0.063) 111288	0.221*** (0.063) 78016
$X_{it}$	✓	✓	✓	✓	✓
IV I - Occ./ind. gender disparity	0.397*** (0.115) 122456	0.412*** (0.125) 122456	0.221 (0.136) 68782	0.003 (0.239) 111288	0.847*** (0.189) 78016
$X_{it}$	✓	✓	✓	✓	✓
IV 2 - P(WL   PPO)	0.441*** (0.098)	0.408*** (0.131)	0.279** (0.114)	0.026 (0.256)	0.792*** (0.212)
N	98153	98153	58711	89357	66279
$X_{it}$	✓ <sup>1</sup>	✓ <sup>1</sup>	✓ <sup>1</sup>	✓ <sup>1</sup>	✓ <sup>1</sup>
<b>Men</b>					
Unconditional OLS	0.225*** (0.052) 61228	0.167*** (0.062) 61228	-0.008 (0.066) 34378	-0.147* (0.080) 55648	0.491*** (0.082) 39012
$X_{it}$	✗	✗	✗	✗	✗
Conditional OLS	0.090* (0.050) 61228	0.072 (0.062) 61228	-0.015 (0.067) 34378	-0.247*** (0.075) 55648	0.187** (0.075) 39012
$X_{it}$	✓	✓	✓	✓	✓
IV I - Occ./ind. gender disparity	0.379** (0.151) 61228	0.271 (0.241) 61228	0.158 (0.160) 34378	-0.072 (0.259) 55648	0.665*** (0.183) 39012
$X_{it}$	✓	✓	✓	✓	✓
IV 2 - P(WL   PPO)	0.493*** (0.105)	0.363* (0.187)	0.288** (0.117)	0.012 (0.247)	0.689*** (0.240)
N	49406	49406	29281	44972	33104
$X_{it}$	✓ <sup>1</sup>	✓ <sup>1</sup>	✓ <sup>1</sup>	✓ <sup>1</sup>	✓ <sup>1</sup>
<b>Women</b>					
Unconditional OLS	0.189*** (0.053) 61228	0.099* (0.059) 61228	0.014 (0.073) 34404	-0.133* (0.079) 55640	0.698*** (0.083) 39004
$X_{it}$	✗	✗	✗	✗	✗
Prob > chi <sup>2</sup>	0.3711	0.2751	0.7038	0.8599	0.0087
Conditional OLS	0.071 (0.052) 61228	0.073 (0.059) 61228	0.002 (0.073) 34404	-0.078 (0.074) 55640	0.269*** (0.076) 39004
$X_{it}$	✓	✓	✓	✓	✓
Prob > chi <sup>2</sup>	0.6763	0.9892	0.7935	0.0280	0.3117
IV I - Occ./ind. gender disparity	0.353*** (0.122) 61228	0.492*** (0.140) 61228	0.265** (0.129) 34404	0.151 (0.221) 55640	1.072*** (0.288) 39004
$X_{it}$	✓	✓	✓	✓	✓
Prob > chi <sup>2</sup>	0.8353	0.3460	0.4561	0.3419	0.1006
IV 2 - P(WL   PPO)	0.342** (0.140) 48747	0.475*** (0.142) 48747	0.252* (0.144) 29430	0.129 (0.287) 44385	0.987*** (0.255) 33175
$X_{it}$	✓ <sup>1</sup>	✓ <sup>1</sup>	✓ <sup>1</sup>	✓ <sup>1</sup>	✓ <sup>1</sup>
Prob > chi <sup>2</sup>	0.2675	0.5638	0.7775	0.7360	0.3150

Source: SOEP (2019); Bundeagentur für Arbeit (2016a,b). Own calculations.

Note: Clustered standard errors in parentheses. \*  $p < 0.1$ , \*\*  $p < 0.05$ , \*\*\*  $p < 0.01$ . <sup>1</sup> Specifications without federal state indicators due to non-convergence. <sup>2</sup> P-values refer to the test for equality of the coefficients between the equations for men and women.

Table A.7: Ancillary analysis - Endogenous variables

$Y_{it}$ :	Life			Work			Family			Leisure			Income		
	OLS	IV1	IV2	OLS	IV1	IV2	OLS	IV1	IV2	OLS	IV1	IV2	OLS	IV1	IV2
<b>Occupational autonomy</b>															
WL	0.067 (0.046)	0.437*** (0.105)	0.427*** (0.081)	0.051 (0.051)	0.387*** (0.110)	0.306** (0.144)	0.001 (0.063)	0.213* (0.126)	0.260** (0.101)	-0.181*** (0.065)	0.156 (0.262)	0.090 (0.264)	0.179*** (0.063)	0.896*** (0.193)	0.750*** (0.159)
Occupational Autonomy (Ref.: Untrained)															
Apprentice	0.004 (0.091)	0.005 (0.100)	0.044 (0.097)	0.568*** (0.109)	0.570*** (0.124)	0.604*** (0.117)	-0.133 (0.142)	-0.132 (0.144)	-0.022 (0.130)	-0.399*** (0.142)	-0.398*** (0.140)	-0.275* (0.160)	-1.277*** (0.163)	-1.273*** (0.199)	-1.137*** (0.179)
Low	0.024 (0.032)	0.025 (0.030)	0.066* (0.037)	0.266*** (0.038)	0.267*** (0.035)	0.307*** (0.044)	-0.035 (0.040)	-0.033 (0.039)	0.004 (0.046)	-0.115*** (0.044)	-0.115** (0.056)	-0.048 (0.048)	0.272*** (0.051)	0.276*** (0.047)	0.273*** (0.056)
Execut.	0.114*** (0.036)	0.114*** (0.037)	0.148*** (0.042)	0.403*** (0.043)	0.404*** (0.040)	0.443*** (0.049)	-0.031 (0.045)	-0.030 (0.042)	0.012 (0.051)	-0.191*** (0.051)	-0.191*** (0.068)	-0.047 (0.053)	0.591*** (0.058)	0.595*** (0.054)	0.583*** (0.063)
Middle	0.226*** (0.041)	0.226*** (0.040)	0.266*** (0.046)	0.591*** (0.048)	0.591*** (0.046)	0.639*** (0.054)	-0.081 (0.052)	-0.080* (0.047)	-0.040 (0.057)	-0.568*** (0.060)	-0.568*** (0.089)	-0.402*** (0.062)	1.085*** (0.065)	1.087*** (0.062)	1.086*** (0.071)
Manag.	0.496*** (0.054)	0.496*** (0.055)	0.509*** (0.060)	1.037*** (0.065)	1.037*** (0.069)	1.055*** (0.073)	0.022 (0.069)	0.021 (0.060)	0.054 (0.075)	-0.588*** (0.082)	-0.589*** (0.100)	-0.432*** (0.088)	1.819*** (0.082)	1.817*** (0.086)	1.801*** (0.088)
N	122456	122456	98153	122456	122456	98153	68782	68782	58711	111288	111288	89357	78016	78016	66279
<b>Labor income</b>															
WL	0.058 (0.045)	0.438*** (0.105)	0.416*** (0.088)	0.029 (0.050)	0.371*** (0.111)	0.317** (0.144)	0.001 (0.063)	0.214* (0.129)	0.253** (0.111)	-0.172*** (0.065)	0.139 (0.247)	0.024 (0.312)	0.114** (0.057)	1.025*** (0.218)	1.024*** (0.172)
Log(LII)	0.228*** (0.016)	0.228*** (0.017)	0.230*** (0.017)	0.391*** (0.020)	0.390*** (0.021)	0.401*** (0.022)	-0.008 (0.020)	-0.009 (0.018)	-0.007 (0.021)	-0.389*** (0.027)	-0.389*** (0.029)	-0.211*** (0.028)	1.202*** (0.026)	1.203*** (0.032)	1.221*** (0.028)
N	122456	122456	98153	122456	122456	98153	68782	68782	58711	111288	111288	89357	78016	78016	66279
<b>Net equivalent HH income</b>															
WL	0.050 (0.044)	0.417*** (0.102)	0.405*** (0.085)	0.044 (0.049)	0.383*** (0.112)	0.331** (0.143)	-0.009 (0.063)	0.198 (0.135)	0.242** (0.110)	-0.216*** (0.065)	0.055 (0.286)	-0.006 (0.320)	0.158*** (0.057)	0.932*** (0.197)	0.923*** (0.161)
Log(HHEI)	0.629*** (0.029)	0.629*** (0.020)	0.623*** (0.032)	0.525*** (0.032)	0.524*** (0.027)	0.533*** (0.035)	0.181*** (0.039)	0.180*** (0.029)	0.179*** (0.042)	0.063 (0.046)	0.063* (0.038)	0.178*** (0.046)	1.563*** (0.042)	1.562*** (0.035)	1.579*** (0.044)
N	122276	122276	98020	122276	122276	98020	68782	68782	58711	111128	111128	89234	78016	78016	66279
<b>Weekly working hours</b>															
WL	0.103** (0.046)	0.490*** (0.095)	0.448*** (0.082)	0.076 (0.051)	0.429*** (0.109)	0.304** (0.154)	0.003 (0.063)	0.196 (0.132)	0.251** (0.102)	-0.070 (0.060)	0.158 (0.248)	-0.001 (2.245)	0.213*** (0.065)	1.025*** (0.178)	0.809*** (0.156)
Hours	-0.006*** (0.001)	-0.006*** (0.001)	-0.006*** (0.001)	0.002 (0.001)	0.002 (0.001)	0.002** (0.001)	-0.010*** (0.001)	-0.010*** (0.001)	-0.010*** (0.001)	-0.054*** (0.001)	-0.054*** (0.001)	-0.051*** (0.002)	0.010*** (0.002)	0.010*** (0.002)	0.010*** (0.002)
N	119582	119582	96028	119582	119582	96028	67705	67705	57787	108660	108660	87404	76734	76734	65193
<b>Subjective job security</b>															
WL	0.073 (0.045)	0.407*** (0.100)	0.427*** (0.081)	0.053 (0.049)	0.265** (0.128)	0.252 (0.177)	-0.003 (0.063)	0.216* (0.118)	0.245** (0.102)	-0.215*** (0.065)	-0.005 (0.299)	0.026 (0.279)	0.217*** (0.062)	0.770*** (0.151)	0.760*** (0.159)
Job loss worries (Ref.: Very worried)															
A little worried	0.563*** (0.026)	0.563*** (0.020)	0.573*** (0.029)	0.852*** (0.032)	0.852*** (0.029)	0.884*** (0.037)	0.139*** (0.036)	0.139*** (0.031)	0.140*** (0.039)	0.332*** (0.036)	0.332*** (0.029)	0.357*** (0.041)	0.765*** (0.041)	0.765*** (0.033)	0.796*** (0.044)
Not worried	1.036*** (0.030)	1.035*** (0.023)	1.041*** (0.032)	1.486*** (0.035)	1.486*** (0.033)	1.524*** (0.040)	0.390*** (0.039)	0.390*** (0.033)	0.394*** (0.042)	0.702*** (0.041)	0.702*** (0.034)	0.749*** (0.046)	1.406*** (0.045)	1.405*** (0.039)	1.433*** (0.048)
N	120192	120192	96318	120192	120192	96318	67741	67741	57811	109146	109146	87616	76799	76799	65234
$X_{it}$	✓	✓	✓	✓	✓	✓	✓	✓	✓	✓	✓	✓ <sup>1</sup>	✓	✓	✓

Source: SOEP (2019); Bundesagentur für Arbeit (2016a,b). Own calculations.

Note: Clustered standard errors in parentheses. \*  $p < 0.1$ , \*\*  $p < 0.05$ , \*\*\*  $p < 0.01$ . To circumvent non-convergence, specifications in this table do not include federal state and self-employment indicators. <sup>1</sup> Estimation additionally estimated without occupation FE due to non-convergence.

Table A.8: Heterogeneity analysis

$Y_{it}$ :	Life	Work	Family	Leisure	Income
<b>1) Education</b>					
WL	0.016 (0.059)	-0.015 (0.065)	-0.123 (0.087)	-0.204** (0.081)	0.094 (0.084)
College	0.064* (0.036)	-0.037 (0.042)	0.071 (0.045)	-0.217*** (0.052)	0.096* (0.056)
WL × College	0.152* (0.087)	0.179* (0.097)	0.238** (0.117)	0.116 (0.123)	0.243** (0.118)
<b>2) High income - Power couples</b>					
WL	0.024 (0.063)	-0.028 (0.068)	-0.115 (0.097)	-0.236*** (0.086)	0.088 (0.101)
One high earner - Self	0.248*** (0.026)	0.321*** (0.030)	-0.025 (0.033)	-0.197*** (0.038)	1.171*** (0.038)
One high earner - Partner	0.218*** (0.026)	0.080*** (0.030)	-0.005 (0.033)	0.107*** (0.037)	0.166*** (0.040)
Two high earners	0.297*** (0.046)	0.362*** (0.053)	-0.016 (0.059)	-0.137** (0.069)	1.239*** (0.059)
WL × One high earner - Self	0.080 (0.087)	0.112 (0.105)	0.100 (0.127)	0.116 (0.128)	-0.003 (0.133)
WL × One high earner - Partner	-0.008 (0.085)	0.106 (0.107)	0.120 (0.121)	0.164 (0.123)	0.194 (0.146)
WL × Two high earners	0.235** (0.115)	0.219* (0.131)	0.279* (0.151)	0.203 (0.162)	0.141 (0.141)
<b>3) Labor force status</b>					
WL	0.019 (0.113)	0.013 (0.118)	0.012 (0.161)	-0.593*** (0.173)	0.077 (0.176)
Employed	0.040 (0.036)	-0.273*** (0.044)	0.166*** (0.047)	1.055*** (0.061)	-0.346*** (0.065)
WL × Employed	0.075 (0.119)	0.055 (0.127)	-0.010 (0.169)	0.514*** (0.182)	0.168 (0.182)
<b>4) Industry / sector</b>					
WL	0.146** (0.058)	0.066 (0.063)	0.050 (0.072)	-0.128 (0.079)	0.281*** (0.069)
Industry / sector (Ref.: Services)					
Agriculture	0.041 (0.090)	0.215** (0.104)	0.145 (0.101)	-0.032 (0.136)	-0.223 (0.161)
Secondary sector	0.213** (0.105)	0.306*** (0.106)	-0.004 (0.163)	0.289** (0.141)	0.240 (0.172)
Wholesale, retail, transport, communication	-0.072 (0.048)	-0.080 (0.061)	0.025 (0.063)	-0.006 (0.072)	0.124* (0.073)
Other	0.069 (0.050)	0.272*** (0.059)	0.105* (0.063)	0.272*** (0.073)	0.069 (0.084)
WL × Agriculture	-0.452** (0.218)	-0.348* (0.194)	-0.909*** (0.349)	-0.839** (0.359)	-1.026** (0.404)
WL × Secondary sector	-0.120 (0.112)	0.085 (0.135)	0.128 (0.159)	0.324** (0.157)	0.051 (0.228)
WL × Wholesale, retail, transport, communication	-0.245* (0.130)	-0.016 (0.165)	-0.251 (0.244)	-0.371** (0.180)	-0.325 (0.248)
WL × Other	-0.144 (0.156)	-0.093 (0.179)	-0.409 (0.263)	-0.229 (0.289)	-0.275 (0.349)
<b>5) Region</b>					
WL	0.063 (0.052)	0.081 (0.055)	0.024 (0.071)	-0.159** (0.072)	0.185*** (0.070)
East	-0.679*** (0.084)	-0.532*** (0.102)	-0.335*** (0.098)	-0.812*** (0.130)	-0.691*** (0.131)
WL × East	0.096 (0.106)	-0.105 (0.131)	-0.087 (0.145)	-0.007 (0.154)	0.162 (0.154)
<b>6) Time Period</b>					
WL	0.052	-0.025		-0.416***	

Continued on next page

Table A.8: Heterogeneity Analysis (ctd.)

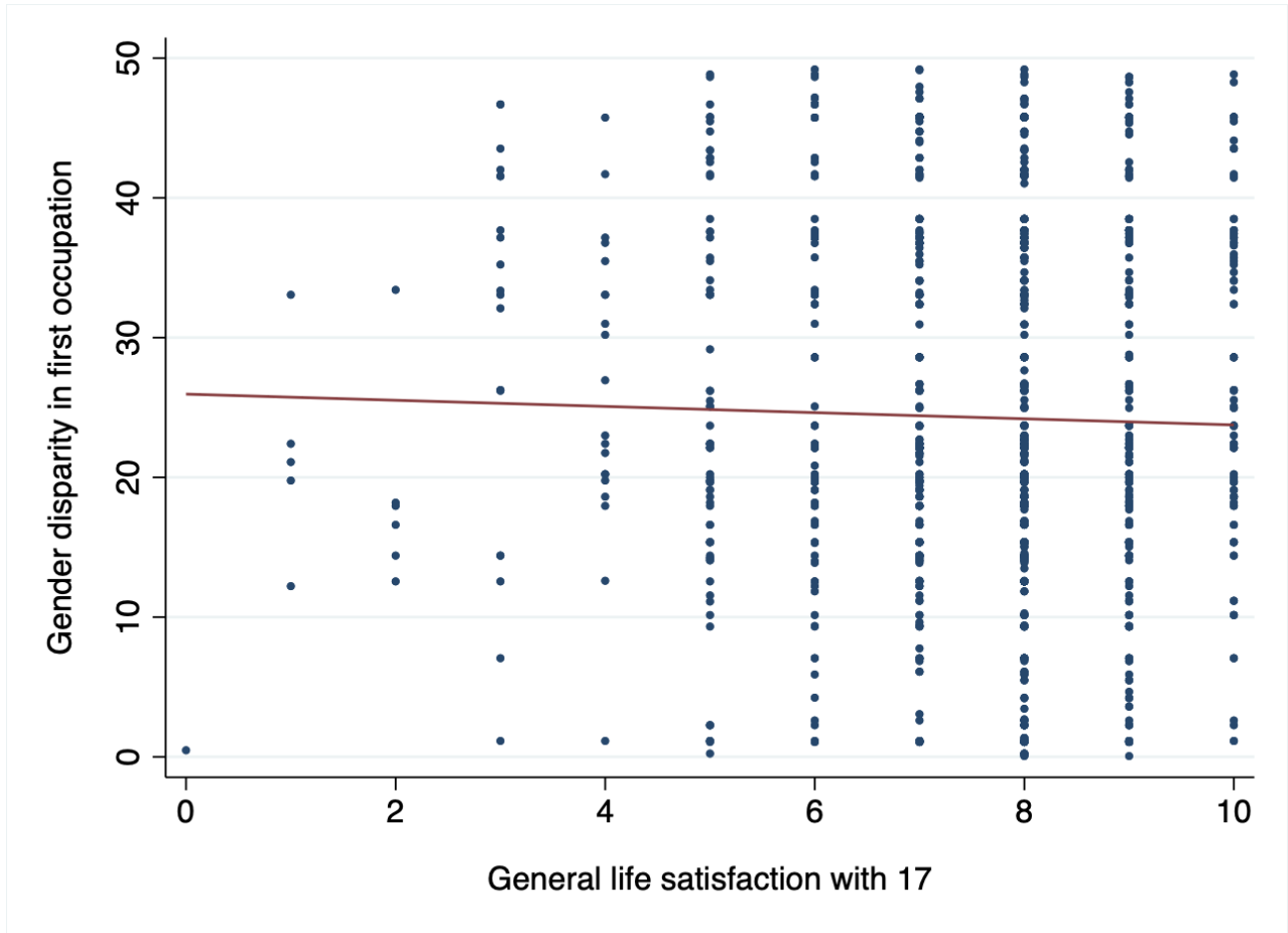
$Y_{it}$ :	Life	Work	Family	Leisure	Income
	(0.088)	(0.095)		(0.143)	
Post 2000	0.456***	0.116**		0.429***	
	(0.047)	(0.054)		(0.064)	
WL × Post 2000	0.040	0.111		0.329**	
	(0.097)	(0.105)		(0.155)	
<b>7) Relative income</b>					
WL	0.005	0.071	-0.046	-0.128	0.323***
	(0.059)	(0.076)	(0.077)	(0.084)	(0.084)
Relative Income (Ref.: Income < Partner income)					
Inc. = Partner inc.	-0.030	0.164***	0.007	-0.133***	0.692***
	(0.025)	(0.030)	(0.034)	(0.036)	(0.039)
Inc. > Partner inc.	0.092***	0.408***	-0.030	-0.209***	1.343***
	(0.020)	(0.031)	(0.026)	(0.034)	(0.039)
WL × Inc. = Partner inc.	0.130	-0.045	0.057	-0.026	-0.179
	(0.079)	(0.093)	(0.116)	(0.112)	(0.110)
WL × Inc. > Partner inc.	0.029	-0.003	0.053	-0.082	-0.300***
	(0.047)	(0.082)	(0.062)	(0.092)	(0.090)
Log(NHHI)	0.581***	0.504***	0.197***	0.070	1.589***
	(0.029)	(0.032)	(0.040)	(0.044)	(0.042)
<b>8) Risk aversion</b>					
WL	0.096	0.007	-0.008	-0.157*	0.232***
	(0.061)	(0.070)	(0.083)	(0.083)	(0.085)
Risk seeker	0.153***	0.149***	0.049**	0.079***	0.193***
	(0.021)	(0.024)	(0.025)	(0.030)	(0.031)
WL × Risk seeker	-0.022	0.096	0.021	-0.005	-0.020
	(0.074)	(0.084)	(0.100)	(0.108)	(0.107)
<b>9) Age</b>					
WL	0.051	-0.112	-0.336***	-0.199*	0.188
	(0.064)	(0.083)	(0.127)	(0.114)	(0.141)
Age group (Ref.: 25-34 years)					
35 - 44 years	-0.128***	-0.020	-0.215***	-0.051	0.005
	(0.021)	(0.025)	(0.031)	(0.032)	(0.036)
45 - 54 years	-0.242***	-0.086**	-0.355***	-0.082*	-0.151***
	(0.030)	(0.034)	(0.040)	(0.043)	(0.046)
55 - 64 years	-0.231***	-0.038	-0.291***	-0.044	-0.151**
	(0.042)	(0.049)	(0.056)	(0.058)	(0.063)
WL × 35 - 44 years	0.035	0.174*	0.320**	0.083	-0.015
	(0.072)	(0.093)	(0.137)	(0.118)	(0.155)
WL × 45 - 54 years	0.042	0.235**	0.429***	0.050	0.067
	(0.096)	(0.115)	(0.158)	(0.144)	(0.169)
WL × 55 - 64 years	0.045	0.269*	0.504***	-0.032	0.101
	(0.111)	(0.140)	(0.174)	(0.175)	(0.196)
N	122,456	122,456	68,782	111,288	78,016
$X_{it}$	✓	✓	✓	✓	✓

Source: SOEP (2019). Own calculations.

Note: Clustered standard errors in parentheses. \*  $p < 0.1$ , \*\*  $p < 0.05$ , \*\*\*  $p < 0.01$ .

# Supplementary online material

Figure S.1: Life satisfaction at age 17 and gender disparity of first occupation

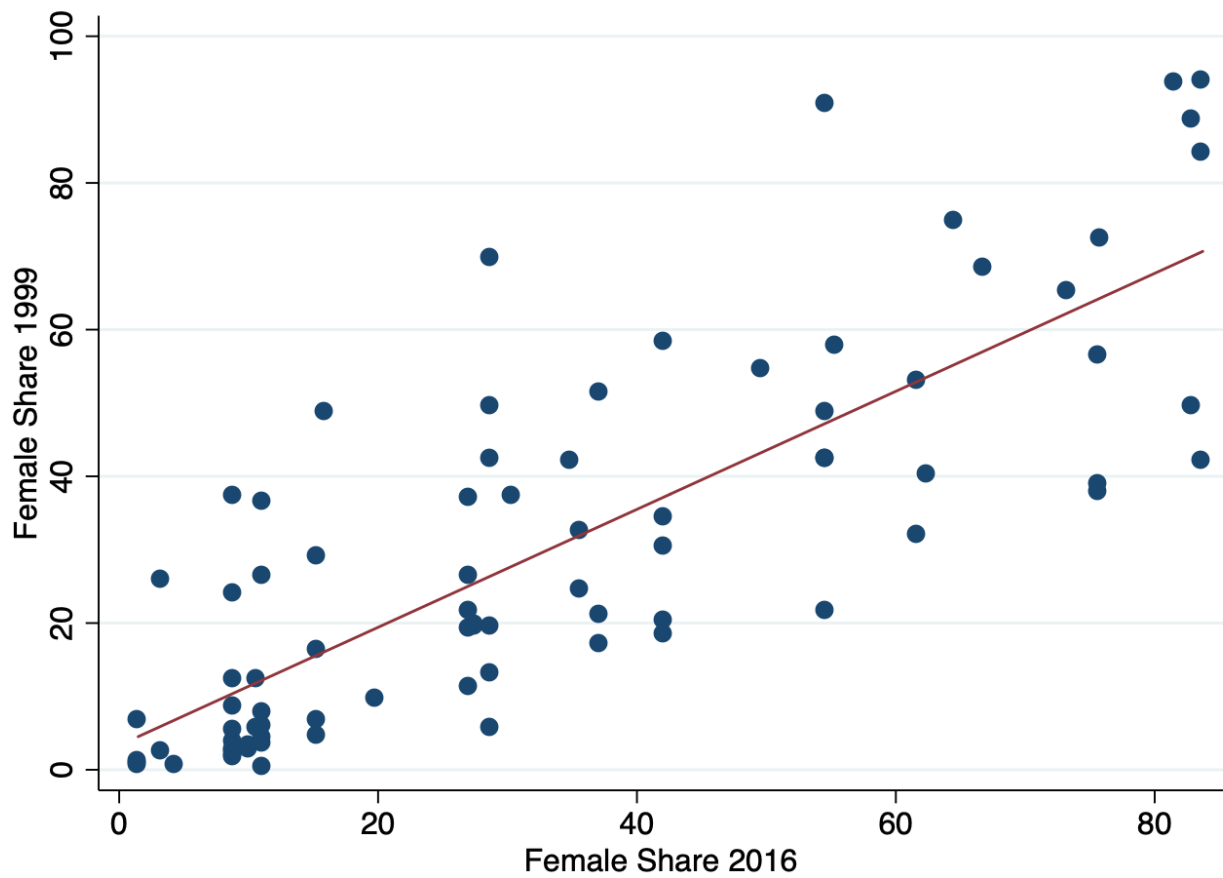


Source: SOEP (2019); Bundeagentur für Arbeit (2016a,b). Own calculations and illustration.

Notes: Sample of 1178 adolescence with no own income at age 17 (2008-2018).



Figure S.2: Share of female employees in occupations 1999 and 2016



Source: Bundeagentur für Arbeit (2016a,b). Own illustration.

Notes: Data points refer to 82 occupations classified using the KldB88 classification for the year 1999. Due to a change in the occupational classification around the year 2010 (from KldB988 to KldB10), occupations in 2016 (classified using KldB10) cannot be matched directly to the occupations in 1999 but have to be grouped using a translation table available from the German Federal Employment Agency. If multiple KldB10-occupations refer to a single KldB88 occupation, the occupation with the largest overlap is merged. In some cases this can lead to an inaccurate match such that observed changes in the female shares are driven by the new classification.

Table S.1: Robustness checks - Sample selection

	Life			Work			Family			Leisure			Income		
	OLS	IV1	IV2	OLS	IV1	IV2	OLS	IV1	IV2	OLS	IV1	IV2	OLS	IV1	IV2
	(1)	(2)	(3)	(4)	(5)	(6)	(7)	(8)	(9)	(10)	(11)	(12)	(13)	(14)	(15)
<b>Baseline</b>															
WL	0.082*	0.482***	0.441***	0.070	0.476***	0.408***	-0.000	0.252**	0.279**	-0.213***	0.139	0.026	0.229***	0.964***	0.792***
	(0.046)	(0.105)	(0.098)	(0.051)	(0.101)	(0.131)	(0.063)	(0.126)	(0.114)	(0.065)	(0.269)	(0.256)	(0.065)	(0.164)	(0.212)
N	122456	122456	98153	122456	122456	98153	68782	68782	58711	111288	111288	89357	78016	78016	66279
<b>1a) Incl. non dual-earner couples</b>															
WL	0.054	0.482***	0.477***	0.046	0.444***	0.370***	-0.020	0.275**	0.289***	-0.214***	0.207	0.212	0.211***	0.932***	0.789***
	(0.048)	(0.127)	(0.106)	(0.051)	(0.102)	(0.134)	(0.061)	(0.118)	(0.106)	(0.065)	(0.258)	(0.185)	(0.064)	(0.154)	(0.206)
N	158190	158190	124670	137916	137916	109737	85350	85350	72142	144808	144808	114286	86633	86633	73142
<b>1b) Only non dual-earner couples</b>															
WL	-0.178	0.273	0.475**	-0.367***	0.011	0.176	-0.161	0.259	0.217	-0.167	-0.185	0.422	-0.196	0.726**	0.422
	(0.122)	(0.281)	(0.220)	(0.138)	(0.254)	(0.231)	(0.148)	(0.217)	(0.192)	(0.157)	(0.906)	(0.314)	(0.195)	(0.301)	(0.368)
N	35734	35734	26517	15460	15460	11584	16568	16568	13431	33520	33520	24929	8617	8617	6863
<b>2) Incl. same sex couples</b>															
WL	0.080*	0.481***	0.448***	0.065	0.473***	0.390***	0.003	0.249**	0.284**	-0.219***	0.140	0.120	0.233***	0.972***	0.866***
	(0.046)	(0.105)	(0.096)	(0.051)	(0.101)	(0.132)	(0.062)	(0.125)	(0.113)	(0.065)	(0.263)	(0.225)	(0.065)	(0.164)	(0.205)
N	122992	122992	98599	122992	122992	98599	69207	69207	59065	111810	111810	89794	78477	78477	66665
<b>3) Excl. missing paternal occupation</b>															
WL	0.084*	0.467***		0.064	0.471***		-0.008	0.254**		-0.152**	0.176			0.232***	0.925***
	(0.051)	(0.098)		(0.058)	(0.103)		(0.066)	(0.127)		(0.070)	(0.265)			(0.068)	(0.185)
N	98153	98153		98153	98153		58711	58711		89357	89357			66279	66279
$X_{it}$	✓	✓	✓	✓	✓	✓	✓	✓	✓	✓	✓	✓	✓	✓	✓

Source: SOEP (2019); Bundeagentur für Arbeit (2016a,b). Own calculations.

Note: Clustered standard errors in parentheses. \*  $p < 0.1$ , \*\*  $p < 0.05$ , \*\*\*  $p < 0.01$ . To circumvent non-convergence, specifications in this table do not include federal state and self-employment indicators. The baseline results thus slightly differ from the main estimation results. Estimations in panel 1b), columns (11) and (12) do not include occupation FE due to non-convergence.

Table S.2: First stage estimation results - Reduced samples

	All	Men	Women
<b>Sample: Family satisfaction (2006-2018)</b>			
Occ./Ind. gender disparity	-0.013*** (0.003)	-0.015*** (0.003)	-0.009** (0.004)
F-statistic	9.07	13.51	3.21
N	68782	34378	34404
P( WL   PPO)	0.009*** (0.003)	0.006* (0.004)	0.010*** (0.004)
F-statistic	9.31	2.65	6.16
N	58711	29281	29430
<b>Sample: Leisure satisfaction (with gaps)</b>			
Occ./Ind. gender disparity	-0.011*** (0.003)	-0.015*** (0.003)	-0.006 (0.004)
F-statistic	9.88	16.28	2.19
N	111288	55648	55640
P( WL   PPO)	0.010*** (0.002)	0.008*** (0.003)	0.011*** (0.003)
F-statistic	16.29	6.07	11.45
N	89357	44972	44385
<b>Sample: Income satisfaction (2004-2018)</b>			
Occ./Ind. gender disparity	-0.013*** (0.003)	-0.015*** (0.003)	-0.009** (0.004)
F-statistic	9.10	13.34	3.35
N	78016	39012	39004
P( WL   PPO)	0.009*** (0.003)	0.007* (0.004)	0.009*** (0.004)
F-statistic	10.59	3.66	6.68
N	66279	33104	33175

Source: SOEP (2019); Bundeagentur für Arbeit (2016a,b). Own calculations.  
 Note: Clustered standard errors in parentheses. \*  $p < 0.1$ , \*\*  $p < 0.05$ , \*\*\*  $p < 0.01$ .

Table S.3: Robustness checks - tF test procedure for weak instrument

	Life		Work		Family		Leisure		Income	
	IV 1 (1)	IV 2 (2)	IV 1 (3)	IV 2 (4)	IV 1 (5)	IV 2 (6)	IV 1 (7)	IV 2 (8)	IV 1 (9)	IV 2 (10)
<b>All</b>										
First stage F-statistic	10.13	16.01	10.13	16.01	9.07	9.31	9.88	16.29	9.1	10.59
SQRT(F)	3.2	4.0	3.2	4.0	3.0	3.1	3.1	4.0	3.0	3.3
Critical t	3.39	2.8	3.39	2.8	3.65	3.51	3.51	2.8	3.65	3.29
b	0.397	0.441	0.412	0.408	0.221	0.279	0.003	0.026	0.847	0.792
tF 0.05 SE	0.199	0.140	0.216	0.187	0.253	0.204	0.428	0.366	0.352	0.356
tF corrected t	1.996	3.150	1.906	2.180	0.873	1.367	0.007	0.071	2.406	2.226
<b>Men</b>										
First stage F-statistic	17.16	5.95	17.16	5.95	13.51	2.65	16.28	6.07	13.34	3.66
Critical t	1.96	5.43	1.96	5.43	2.04	18.66	1.96	5.43	2.03	18.66
b	0.379	0.493	0.271	0.363	0.158	0.288	-0.072	0.012	0.665	0.689
tF 0.05 SE	0.151	0.291	0.241	0.518	0.167	1.114	0.259	0.684	0.190	2.285
tF corrected t	2.510	1.695	1.124	0.701	0.949	0.259	-0.278	0.018	3.509	0.302
<b>Women</b>										
First stage F-statistic	1.99	11.2	1.99	11.2	3.21	6.16	2.19	11.45	3.35	6.68
Critical t	3.19	3.11	3.19	3.11	2.71	4.92	3.11	3.11	2.63	4.25
b	0.353	0.342	0.492	0.475	0.265	0.252	0.151	0.129	1.072	0.987
tF 0.05 SE	0.199	0.222	0.228	0.225	0.178	0.361	0.351	0.455	0.386	0.553
tF corrected t	1.778	1.540	2.159	2.108	1.486	0.697	0.431	0.283	2.774	1.785

Source: SOEP (2019); Bundeagentur für Arbeit (2016a,b) and Lee *et al.* (2020). Own calculations.  
 Note: Clustered standard errors in parentheses. \*  $p < 0.1$ , \*\*  $p < 0.05$ , \*\*\*  $p < 0.01$ .

Table S.4: Reduced form estimation - All individuals

$\mathbf{Y}_{it}$ :	Life b / se	Work b / se	Family b / se	Leisure b / se	Income b / se
Occ./ ind. gender disparity	-0.001 (0.001)	-0.001 (0.001)	-0.000 (0.001)	0.000 (0.002)	-0.003 (0.002)
N	122456	122456	68782	111288	78016
P( WL   PPO)	0.002 (0.001)	-0.001 (0.002)	0.003* (0.002)	-0.001 (0.002)	0.002 (0.002)
N	98154	98154	58710	89359	66278
WL	✓	✓	✓	✓	✓
$\mathbf{X}_{it}$	✓	✓	✓	✓	✓

Source: SOEP (2019); Bundeagentur für Arbeit (2016a,b). Own calculations.  
 Note: Clustered standard errors in parentheses. \*  $p < 0.1$ , \*\*  $p < 0.05$ , \*\*\*  $p < 0.01$ .

Table S.5: Full estimation results - Conditional OLS

	Life	Work	Family	Leisure	Income
Work-Linked	0.083* (0.046)	0.060 (0.051)	0.003 (0.062)	-0.161** (0.063)	0.221*** (0.063)
<b>Individual characteristics</b>					
Female	0.011 (0.018)	0.022 (0.025)	-0.135*** (0.023)	-0.283*** (0.029)	-0.087*** (0.033)
Age (Ref.: 25-34 years)					
35-44 years	-0.126*** (0.021)	-0.011 (0.025)	-0.199*** (0.031)	-0.047 (0.031)	0.004 (0.036)
45-54 years	-0.240*** (0.029)	-0.074** (0.033)	-0.334*** (0.040)	-0.080* (0.043)	-0.148*** (0.046)
55-64 years	-0.228*** (0.041)	-0.023 (0.048)	-0.263*** (0.055)	-0.046 (0.058)	-0.145** (0.063)
Years of education	0.018*** (0.004)	0.003 (0.005)	-0.017*** (0.005)	-0.014** (0.006)	0.077*** (0.006)
Self-employed	-0.046 (0.035)	0.269*** (0.043)	-0.165*** (0.047)	-1.094*** (0.060)	0.335*** (0.063)
Tenure (in years)	0.005*** (0.001)	-0.008*** (0.001)	0.002 (0.001)	0.012*** (0.002)	0.017*** (0.002)
Firm size (Ref.: small, under 20 employees)					
medium (20-199)	0.030 (0.023)	-0.067** (0.028)	-0.051* (0.031)	0.028 (0.035)	0.219*** (0.038)
large (200 and more)	0.050** (0.024)	-0.032 (0.029)	-0.051* (0.030)	0.009 (0.035)	0.500*** (0.039)
In trained occupation	0.102*** (0.018)	0.194*** (0.023)	0.038 (0.024)	0.004 (0.027)	0.268*** (0.030)
Fixed-term contract	-0.140*** (0.025)	-0.122*** (0.031)	-0.071** (0.031)	-0.166*** (0.036)	-0.428*** (0.042)
Full-time employed	-0.077*** (0.022)	-0.008 (0.027)	-0.099*** (0.029)	-0.562*** (0.032)	0.341*** (0.036)
<b>Household characteristics</b>					
Married	0.122*** (0.032)	0.098*** (0.035)	0.298*** (0.044)	-0.025 (0.044)	0.063 (0.046)
Number of children in HH	0.008 (0.011)	0.046*** (0.012)	-0.036** (0.016)	-0.207*** (0.016)	-0.032** (0.016)
Partnership length	-0.027*** (0.002)	-0.015*** (0.002)	-0.021*** (0.002)	-0.009*** (0.003)	-0.012*** (0.003)
Censored partnership length	0.001 (0.029)	0.058* (0.032)	0.043 (0.036)	0.013 (0.039)	0.080** (0.040)
<b>Partner characteristics</b>					
Years of education	0.014*** (0.003)	-0.014*** (0.005)	-0.007* (0.004)	0.022*** (0.005)	0.022*** (0.006)
Tenure	0.005*** (0.001)	-0.001 (0.001)	0.003** (0.001)	0.009*** (0.001)	0.002 (0.002)
In trained occupation	0.075*** (0.017)	0.011 (0.021)	0.070*** (0.023)	0.015 (0.026)	0.021 (0.028)
Fixed-term contract	-0.068*** (0.025)	-0.041 (0.030)	-0.050 (0.032)	-0.038 (0.035)	-0.035 (0.038)
Full-time employed	-0.030 (0.019)	-0.080*** (0.023)	-0.047* (0.025)	0.020 (0.029)	-0.192*** (0.031)
<b>Regional characteristics</b>					
Rural area	-0.009 (0.031)	0.002 (0.034)	0.014 (0.037)	-0.002 (0.043)	-0.017 (0.044)
Federal state (Ref.: Schleswig-Holstein)					
Hamburg	-0.173* (0.092)	-0.176 (0.120)	-0.009 (0.113)	-0.055 (0.144)	-0.049 (0.142)
Lower Saxony	-0.295*** (0.070)	-0.127 (0.087)	-0.314*** (0.080)	-0.290*** (0.110)	-0.100 (0.106)
Bremen	-0.337** (0.171)	-0.199 (0.177)	0.385*** (0.145)	-0.405** (0.175)	0.036 (0.219)
North Rhine-Westphalia	-0.337*** (0.067)	-0.213** (0.083)	-0.252*** (0.077)	-0.384*** (0.106)	-0.160 (0.102)
Hesse	-0.379*** (0.073)	-0.287*** (0.089)	-0.431*** (0.086)	-0.493*** (0.114)	-0.306*** (0.110)
Rhineland-Palatinate	-0.159** (0.081)	0.090 (0.093)	-0.192** (0.096)	-0.393*** (0.124)	0.125 (0.117)
Baden-Wuerttemberg	-0.301*** (0.070)	-0.210** (0.085)	-0.342*** (0.079)	-0.568*** (0.110)	-0.195* (0.106)
Bavaria	-0.340*** (0.068)	-0.175** (0.083)	-0.321*** (0.075)	-0.253** (0.106)	-0.120 (0.101)
Saarland	-0.388** (0.156)	-0.325* (0.184)	-0.381* (0.208)	-0.397* (0.210)	-0.303 (0.243)
Berlin	-0.597*** (0.094)	-0.552*** (0.108)	-0.533*** (0.121)	-0.474*** (0.135)	-0.593*** (0.135)
Brandenburg	-0.750*** (0.087)	-0.451*** (0.097)	-0.397*** (0.099)	-0.676*** (0.125)	-0.518*** (0.124)
Mecklenburg-Western Pomerania	-0.519*** (0.093)	-0.226* (0.116)	-0.143 (0.106)	-0.406*** (0.141)	-0.165 (0.150)
Saxony	-0.593*** (0.076)	-0.174** (0.088)	-0.323*** (0.086)	-0.581*** (0.117)	-0.467*** (0.112)
Saxony-Anhalt	-0.759*** (0.088)	-0.388*** (0.103)	-0.330*** (0.108)	-0.776*** (0.132)	-0.542*** (0.131)
Thuringia	-0.673*** (0.084)	-0.539*** (0.101)	-0.342*** (0.098)	-0.812*** (0.130)	-0.679*** (0.130)

Continued on next page

Table S.5: Full Estimation Results - Conditional OLS (ctd.)

	Life	Work	Family	Leisure	Income
<b>Kldb92 occupation (Ref.: Agricultural occupations)</b>					
Mining occupations	-0.150 (0.319)	-0.761** (0.340)	-0.012 (0.385)	0.465 (0.354)	-0.387 (0.750)
Stone processors and construction material manufacturers	0.215 (0.219)	0.062 (0.440)	0.277 (0.227)	0.252 (0.298)	0.359 (0.448)
Ceramists and glass manufacturing/processing	0.398** (0.200)	0.023 (0.251)	0.554** (0.258)	0.521* (0.292)	-0.037 (0.420)
Chemistry and synthetic materials	0.148 (0.132)	-0.063 (0.152)	0.373** (0.172)	0.252 (0.179)	0.054 (0.210)
Paper manufacturing/processing and print	0.036 (0.130)	-0.308* (0.168)	0.217 (0.191)	0.189 (0.201)	-0.414* (0.220)
Wood processing, wood/woven goods manufacturing	0.292 (0.220)	-0.175 (0.382)	0.298 (0.239)	0.649** (0.316)	-1.065*** (0.401)
Metal manufacturing and processing	0.191 (0.119)	0.041 (0.140)	0.299* (0.159)	0.257 (0.164)	-0.113 (0.212)
Metal and plant engineering and related	0.050 (0.096)	-0.111 (0.109)	0.156 (0.122)	-0.015 (0.146)	-0.206 (0.159)
Electrical prof.	0.149 (0.109)	0.006 (0.123)	0.163 (0.141)	0.087 (0.167)	-0.238 (0.179)
Installation and other metal prof.	0.224* (0.116)	0.143 (0.128)	0.180 (0.185)	0.149 (0.180)	-0.224 (0.204)
Textil manufacturing and processing	0.045 (0.161)	-0.450** (0.196)	0.246 (0.246)	-0.011 (0.234)	-0.495 (0.316)
Leather manufacturing/ processing	0.251 (0.201)	0.363* (0.186)	0.070 (0.248)	0.212 (0.439)	0.092 (0.276)
Food manufacturing and processing	0.021 (0.102)	-0.196 (0.121)	0.227* (0.134)	-0.196 (0.163)	-0.122 (0.167)
Structural and civil engineering	-0.081 (0.113)	-0.181 (0.127)	-0.038 (0.156)	-0.177 (0.169)	-0.286 (0.195)
Extension building professions and interior decorators	0.019 (0.127)	-0.058 (0.145)	0.156 (0.167)	0.033 (0.193)	-0.114 (0.217)
Wood and synthetic materials processing	0.078 (0.126)	-0.122 (0.146)	0.220 (0.169)	0.044 (0.192)	-0.469** (0.215)
Painters, varnishers and related	0.124 (0.174)	-0.062 (0.225)	0.088 (0.226)	-0.217 (0.256)	-0.442 (0.307)
Goods inspectors, dispatch workers	0.209* (0.114)	-0.076 (0.135)	0.226 (0.141)	0.047 (0.167)	-0.217 (0.203)
Unskilled workers	0.047 (0.129)	-0.283* (0.148)	-0.014 (0.176)	-0.186 (0.169)	-0.594*** (0.219)
Machine, plant operators and machine setters	0.186 (0.113)	-0.024 (0.142)	0.323** (0.144)	-0.068 (0.173)	0.046 (0.181)
Engineers, chemists, physicists, mathematicians	0.228** (0.097)	0.095 (0.109)	0.124 (0.123)	-0.029 (0.147)	0.297* (0.158)
Technicians and technical specialists	0.221** (0.096)	0.083 (0.110)	0.196 (0.121)	0.160 (0.145)	0.137 (0.160)
Sales staff	0.153* (0.093)	0.053 (0.104)	0.177 (0.118)	-0.055 (0.144)	0.087 (0.155)
Bank/building society/insurance specialists	0.246** (0.097)	0.112 (0.108)	0.226* (0.123)	0.187 (0.148)	0.368** (0.161)
Transport prof.	0.103 (0.096)	-0.037 (0.108)	0.164 (0.122)	-0.071 (0.144)	-0.253 (0.157)
Management, consultancy, administration, other office prof.	0.243*** (0.089)	0.192* (0.098)	0.159 (0.113)	0.077 (0.137)	0.487*** (0.147)
Guard/Security services and law and enforcement	0.261*** (0.098)	0.221** (0.111)	0.254** (0.126)	0.149 (0.150)	0.343** (0.155)
Journalism, translation, artistic and related	0.274** (0.107)	0.058 (0.119)	0.195 (0.137)	0.299* (0.159)	-0.054 (0.180)
Health care professions	0.201** (0.096)	0.093 (0.106)	0.183 (0.120)	-0.053 (0.145)	0.214 (0.157)
Social welfare and teaching	0.264*** (0.094)	0.231** (0.104)	0.244** (0.119)	0.041 (0.141)	0.358** (0.152)
Arts and natural science	0.334*** (0.114)	0.275** (0.125)	0.372*** (0.143)	0.224 (0.170)	0.464*** (0.178)
Other service prof.	0.127 (0.094)	-0.156 (0.106)	0.221* (0.120)	-0.176 (0.144)	-0.069 (0.158)
<b>Industry (Ref.: Agriculture)</b>					
Mining, quarrying, energy, water	0.039 (0.108)	-0.082 (0.129)	-0.139 (0.123)	0.389** (0.156)	0.654*** (0.180)
Manufacturing	0.059 (0.088)	-0.081 (0.102)	-0.018 (0.099)	0.226* (0.132)	0.578*** (0.160)
Chemicals/pulp/paper	0.090 (0.094)	-0.027 (0.110)	-0.062 (0.110)	0.214 (0.143)	0.642*** (0.171)
Construction	0.073 (0.092)	-0.176 (0.107)	-0.043 (0.106)	0.214 (0.140)	0.526*** (0.167)
Iron/steel	-0.011 (0.094)	-0.241** (0.112)	-0.031 (0.108)	0.225 (0.140)	0.531*** (0.171)
Textile/apparel	0.203 (0.130)	0.123 (0.141)	-0.099 (0.185)	0.403** (0.185)	0.526** (0.224)
Wholesale/retail	-0.033 (0.088)	-0.241** (0.103)	-0.068 (0.099)	0.096 (0.135)	0.168 (0.160)
Transport/communication	-0.088 (0.094)	-0.268** (0.111)	-0.078 (0.109)	0.081 (0.141)	0.400** (0.167)
Public service	0.004 (0.087)	-0.046 (0.101)	-0.081 (0.098)	0.276** (0.130)	0.356** (0.158)
Financial/private services	-0.005 (0.087)	-0.187* (0.101)	-0.093 (0.098)	0.099 (0.133)	0.288* (0.159)

Continued on next page

Table S.5: Full Estimation Results - Conditional OLS (ctd.)

	Life	Work	Family	Leisure	Income
Not categorized	0.057 (0.094)	0.082 (0.109)	-0.003 (0.109)	0.363*** (0.140)	0.347** (0.170)
Constant	7.575*** (0.138)	7.599*** (0.148)	8.947*** (0.166)	7.572*** (0.211)	4.598*** (0.211)
N	122456	122456	68782	111288	78016
Year FE	✓	✓	✓	✓	✓

Source: SOEP (2019); Bundeagentur für Arbeit (2016a,b). Own calculations.  
 Note: Clustered standard errors in parentheses. \*  $p < 0.1$ , \*\*  $p < 0.05$ , \*\*\*  $p < 0.01$ .

Table S.6: Full estimation results - Instrumental variables

	Life		Work		Family		Leisure		Income	
	IV1	IV2	IV1	IV2	IV1	IV2	IV1	IV2	IV1	IV2
Work-linked	0.397*** (0.115)	0.441*** (0.098)	0.412*** (0.125)	0.408*** (0.131)	0.221 (0.136)	0.279** (0.114)	0.003 (0.239)	0.026 (0.256)	0.847*** (0.189)	0.792*** (0.212)
<b>Individual characteristics</b>										
Female	0.010 (0.023)	0.013 (0.022)	0.021 (0.028)	0.033 (0.029)	-0.136*** (0.031)	-0.137*** (0.027)	-0.284*** (0.036)	-0.255*** (0.034)	-0.089** (0.039)	-0.105*** (0.037)
Age (Ref.: 25-34 years)										
35-44 years	-0.123*** (0.017)	-0.131*** (0.023)	-0.007 (0.021)	-0.007 (0.028)	-0.199*** (0.025)	-0.192*** (0.033)	-0.045* (0.025)	-0.043 (0.035)	0.006 (0.035)	-0.001 (0.039)
45-54 years	-0.234*** (0.022)	-0.249*** (0.032)	-0.068** (0.028)	-0.071* (0.037)	-0.331*** (0.032)	-0.342*** (0.042)	-0.077** (0.029)	-0.078* (0.047)	-0.141*** (0.045)	-0.137*** (0.050)
55-64 years	-0.226*** (0.034)	-0.238*** (0.046)	-0.021 (0.041)	-0.008 (0.054)	-0.262*** (0.046)	-0.265*** (0.059)	-0.045 (0.044)	-0.069 (0.064)	-0.142** (0.058)	-0.121* (0.069)
<b>Regional characteristics</b>										
Rural Area	-0.011 (0.020)	-0.116*** (0.027)	0.000 (0.026)	-0.030 (0.030)	0.012 (0.024)	0.010 (0.033)	-0.003 (0.028)	-0.099** (0.039)	-0.020 (0.032)	-0.096** (0.038)
Federal state (Ref.: Schleswig-Holstein)										
Hamburg	-0.169** (0.071)		-0.171* (0.098)		-0.002 (0.082)		-0.052 (0.114)		-0.032 (0.117)	
Lower Saxony	-0.292*** (0.051)		-0.122* (0.064)		-0.311*** (0.064)		-0.288*** (0.079)		-0.092 (0.076)	
Bremen	-0.342*** (0.112)		-0.205 (0.134)		0.385*** (0.110)		-0.407*** (0.137)		0.030 (0.164)	
North Rhine-Westphalia	-0.336*** (0.045)		-0.212*** (0.062)		-0.248*** (0.058)		-0.384*** (0.077)		-0.151** (0.074)	
Hesse	-0.375*** (0.053)		-0.282*** (0.071)		-0.426*** (0.069)		-0.491*** (0.089)		-0.291*** (0.080)	
Rhinel.-Palatinate	-0.159*** (0.057)		0.090 (0.066)		-0.190*** (0.069)		-0.393*** (0.086)		0.131 (0.083)	
Baden-Wuerttemberg	-0.302*** (0.046)		-0.210*** (0.066)		-0.339*** (0.061)		-0.568*** (0.082)		-0.187** (0.076)	
Bavaria	-0.344*** (0.049)		-0.179*** (0.066)		-0.320*** (0.057)		-0.255*** (0.084)		-0.119 (0.074)	
Saarland	-0.382*** (0.098)		-0.318** (0.140)		-0.373** (0.156)		-0.393** (0.159)		-0.283* (0.153)	
Berlin	-0.601*** (0.060)		-0.557*** (0.078)		-0.533*** (0.083)		-0.476*** (0.099)		-0.597*** (0.097)	
Brandenburg	-0.745*** (0.053)		-0.444*** (0.074)		-0.393*** (0.066)		-0.673*** (0.095)		-0.508*** (0.091)	
Mecklenburg-Western Pomerania	-0.521*** (0.070)		-0.228** (0.090)		-0.145 (0.089)		-0.408*** (0.090)		-0.171 (0.107)	
Saxony	-0.588*** (0.052)		-0.168** (0.069)		-0.320*** (0.066)		-0.578*** (0.095)		-0.457*** (0.079)	
Saxony-Anhalt	-0.754*** (0.061)		-0.383*** (0.076)		-0.327*** (0.084)		-0.774*** (0.090)		-0.532*** (0.092)	
Thuringia	-0.678*** (0.051)		-0.544*** (0.071)		-0.346*** (0.065)		-0.815*** (0.095)		-0.691*** (0.090)	
Years of education	0.017*** (0.005)	0.010** (0.004)	0.002 (0.006)	-0.004 (0.006)	-0.018*** (0.005)	-0.016*** (0.006)	-0.015** (0.006)	-0.019*** (0.007)	0.074*** (0.009)	0.066*** (0.007)
<b>Household characteristics</b>										
Married	0.126*** (0.024)	0.155*** (0.035)	0.103*** (0.025)	0.117*** (0.038)	0.302*** (0.029)	0.332*** (0.045)	-0.023 (0.036)	-0.034 (0.046)	0.072** (0.036)	0.102** (0.049)
Number of children in HH	0.007 (0.009)	0.006 (0.012)	0.045*** (0.009)	0.043*** (0.013)	-0.037*** (0.011)	-0.043** (0.017)	-0.208*** (0.012)	-0.203*** (0.017)	-0.034** (0.015)	-0.028 (0.017)
Partnership length	-0.026*** (0.001)	-0.029*** (0.002)	-0.014*** (0.002)	-0.015*** (0.002)	-0.021*** (0.002)	-0.023*** (0.003)	-0.008*** (0.002)	-0.008*** (0.003)	-0.011*** (0.002)	-0.014*** (0.003)
Censored partnership length	0.002 (0.018)	-0.030 (0.031)	0.059*** (0.022)	0.032 (0.035)	0.044* (0.024)	0.029 (0.039)	0.014 (0.029)	-0.002 (0.043)	0.084*** (0.030)	0.069 (0.044)
Self-employed	-0.063* (0.036)	-0.078** (0.039)	0.250*** (0.043)	0.245*** (0.049)	-0.172*** (0.049)	-0.188*** (0.053)	-1.104*** (0.090)	-1.083*** (0.067)	0.315*** (0.066)	0.261*** (0.070)
Tenure (in years)	0.005*** (0.001)	0.005*** (0.001)	-0.008*** (0.001)	-0.007*** (0.002)	0.002 (0.001)	0.002 (0.002)	0.011*** (0.001)	0.012*** (0.002)	0.017*** (0.002)	0.017*** (0.002)
Firm size (Ref.: small, under 20 employees)										
medium (20-199)	0.028 (0.020)	0.018 (0.026)	-0.069*** (0.026)	-0.096*** (0.032)	-0.053* (0.030)	-0.054 (0.033)	0.027 (0.037)	0.017 (0.038)	0.213*** (0.036)	0.180*** (0.042)
large (200 and more)	0.044** (0.022)	0.063** (0.027)	-0.038 (0.028)	-0.046 (0.033)	-0.055* (0.029)	-0.065* (0.033)	0.006 (0.037)	0.009 (0.039)	0.487*** (0.038)	0.490*** (0.042)
In trained occupation	0.100*** (0.018)	0.098*** (0.021)	0.192*** (0.022)	0.193*** (0.026)	0.035 (0.022)	0.038 (0.026)	0.004 (0.026)	0.002 (0.030)	0.259*** (0.034)	0.260*** (0.033)
Fixed-term contract	-0.144*** (0.018)	-0.153*** (0.021)	-0.126*** (0.022)	-0.096*** (0.026)	-0.074*** (0.022)	-0.082** (0.026)	-0.167*** (0.026)	-0.169*** (0.030)	-0.436*** (0.034)	-0.450*** (0.033)

Continued on next page

Table S.6: Full Estimation Results - Instrumental Variables (ctd.)

	Life		Work		Family		Leisure		Income	
	IV1	IV2	IV1	IV2	IV1	IV2	IV1	IV2	IV1	IV2
Full-time employed	(0.025)	(0.027)	(0.032)	(0.035)	(0.028)	(0.034)	(0.036)	(0.040)	(0.053)	(0.046)
	-0.083***	-0.119***	-0.014	-0.034	-0.101***	-0.102***	-0.565***	-0.593***	0.334***	0.295***
	(0.020)	(0.025)	(0.024)	(0.030)	(0.026)	(0.032)	(0.039)	(0.036)	(0.036)	(0.038)
<b>Partner characteristics</b>										
Years of Education	0.013***	0.007*	-0.016***	-0.017***	-0.009*	-0.011**	0.021***	0.011*	0.019***	0.014**
	(0.003)	(0.004)	(0.004)	(0.005)	(0.004)	(0.005)	(0.006)	(0.006)	(0.006)	(0.006)
Tenure	0.004***	0.005***	-0.001	-0.001	0.003**	0.003**	0.009***	0.010***	0.001	0.002
	(0.001)	(0.001)	(0.001)	(0.001)	(0.001)	(0.001)	(0.001)	(0.002)	(0.002)	(0.002)
In trained occupation	0.074***	0.089***	0.010	0.029	0.068***	0.071***	0.015	-0.007	0.015	0.011
	(0.014)	(0.019)	(0.017)	(0.024)	(0.021)	(0.025)	(0.020)	(0.029)	(0.024)	(0.031)
Fixed-term contract	-0.071***	-0.046*	-0.044	-0.036	-0.053*	-0.039	-0.040	-0.042	-0.042	-0.030
	(0.023)	(0.026)	(0.030)	(0.034)	(0.029)	(0.035)	(0.033)	(0.038)	(0.036)	(0.042)
Full-time employed	-0.031*	-0.091***	-0.081***	-0.125***	-0.048**	-0.058**	0.019	-0.051	-0.194***	-0.231***
	(0.017)	(0.021)	(0.020)	(0.026)	(0.023)	(0.027)	(0.028)	(0.032)	(0.027)	(0.033)
<b>Kldb92 occupation (Ref.: Agricultural occupations)</b>										
Mining occupations	-0.148	-0.029	-0.759***	-0.921*	-0.010	0.048	0.467	-0.086	-0.383	-1.258*
	(0.261)	(0.291)	(0.211)	(0.560)	(0.307)	(0.521)	(0.309)	(0.460)	(0.528)	(0.708)
Stone proc. and construction material manuf.	0.215	-0.121	0.063	-0.392	0.279	0.348	0.252	0.017	0.362	0.149
	(0.184)	(0.183)	(0.605)	(0.511)	(0.265)	(0.250)	(0.167)	(0.349)	(0.235)	(0.464)
Ceramists and glass manufacturing/processing	0.397**	0.399**	0.022	0.031	0.556***	0.661**	0.520***	0.623*	-0.037	-0.062
	(0.171)	(0.203)	(0.314)	(0.313)	(0.137)	(0.299)	(0.172)	(0.372)	(0.421)	(0.589)
Chemistry and synthetic materials	0.147	0.179	-0.064	0.094	0.372***	0.538***	0.251	0.400*	0.053	0.213
	(0.122)	(0.160)	(0.127)	(0.176)	(0.121)	(0.179)	(0.174)	(0.220)	(0.207)	(0.237)
Paper manufacturing/processing and print	0.034	-0.032	-0.311	-0.249	0.215	0.165	0.187	0.233	-0.421**	-0.331
	(0.139)	(0.149)	(0.198)	(0.189)	(0.156)	(0.214)	(0.193)	(0.234)	(0.210)	(0.259)
Wood processing, wood/woven goods manufacturing	0.295***	-0.036	-0.172	-0.809**	0.298**	0.398	0.651***	0.452	-1.065***	-1.377***
	(0.108)	(0.206)	(0.282)	(0.328)	(0.133)	(0.243)	(0.157)	(0.322)	(0.290)	(0.419)
Metal manufacturing and processing	0.194*	0.061	0.043	-0.113	0.298**	0.330*	0.258*	0.221	-0.114	-0.007
	(0.114)	(0.143)	(0.128)	(0.172)	(0.132)	(0.179)	(0.154)	(0.194)	(0.190)	(0.227)
Metal and plant engineering and related	0.053	-0.059	-0.107	-0.228*	0.158*	0.154	-0.014	-0.129	-0.202	-0.237
	(0.100)	(0.108)	(0.109)	(0.121)	(0.092)	(0.134)	(0.134)	(0.174)	(0.151)	(0.179)
Electrical prof.	0.153	-0.016	0.011	-0.153	0.166	0.131	0.090	-0.049	-0.231	-0.281
	(0.107)	(0.123)	(0.119)	(0.138)	(0.104)	(0.155)	(0.151)	(0.199)	(0.157)	(0.200)
Installation and other metal prof.	0.231*	0.130	0.150	-0.078	0.182	0.239	0.153	0.198	-0.217	-0.185
	(0.134)	(0.142)	(0.114)	(0.161)	(0.136)	(0.220)	(0.211)	(0.219)	(0.183)	(0.238)
Textil manufacturing and processing	0.042	0.044	-0.453**	-0.297	0.245	0.237	-0.013	0.134	-0.500	-0.544
	(0.142)	(0.195)	(0.196)	(0.210)	(0.182)	(0.275)	(0.216)	(0.285)	(0.322)	(0.343)
Leather manufacturing/ processing	0.245	0.171	0.357**	0.251	0.066	-0.195	0.209	-0.084	0.079	-0.070
	(0.173)	(0.221)	(0.180)	(0.220)	(0.125)	(0.282)	(0.431)	(0.545)	(0.215)	(0.285)
Food manufacturing and processing	0.016	-0.075	-0.202*	-0.302**	0.223*	0.237	-0.199	-0.144	-0.134	-0.130
	(0.104)	(0.117)	(0.111)	(0.145)	(0.114)	(0.148)	(0.156)	(0.191)	(0.165)	(0.190)
Structural and civil engineering	-0.080	-0.213*	-0.180	-0.280*	-0.038	-0.004	-0.177	-0.271	-0.287	-0.361
	(0.110)	(0.129)	(0.122)	(0.146)	(0.117)	(0.171)	(0.142)	(0.202)	(0.186)	(0.222)
Extension building professions and interior decorators	0.022	-0.107	-0.056	-0.176	0.157	0.208	0.035	-0.022	-0.112	-0.205
	(0.112)	(0.146)	(0.121)	(0.165)	(0.155)	(0.181)	(0.155)	(0.230)	(0.229)	(0.243)
Wood and synthetic materials processing	0.084	-0.011	-0.115	-0.277*	0.223	0.311*	0.047	-0.074	-0.460**	-0.480**
	(0.108)	(0.144)	(0.131)	(0.160)	(0.139)	(0.177)	(0.144)	(0.220)	(0.208)	(0.241)
Painters, varnishers and related	0.125	0.074	-0.061	-0.170	0.090	0.037	-0.216	-0.290	-0.441*	-0.605*
	(0.130)	(0.212)	(0.155)	(0.273)	(0.103)	(0.268)	(0.196)	(0.328)	(0.248)	(0.351)
Goods inspectors, dispatch workers	0.208*	0.143	-0.077	-0.110	0.225**	0.266*	0.046	0.248	-0.221	-0.281
	(0.115)	(0.135)	(0.137)	(0.164)	(0.106)	(0.160)	(0.153)	(0.198)	(0.194)	(0.233)
Unskilled workers	0.047	-0.318**	-0.283**	-0.484***	-0.016	-0.082	-0.186	-0.392*	-0.599**	-0.494**
	(0.123)	(0.152)	(0.135)	(0.172)	(0.171)	(0.203)	(0.158)	(0.208)	(0.249)	(0.244)
Machine, plant operators and machine setters	0.188	0.032	-0.022	-0.097	0.323***	0.335**	-0.067	-0.071	0.046	0.120
	(0.124)	(0.133)	(0.153)	(0.167)	(0.112)	(0.163)	(0.199)	(0.210)	(0.173)	(0.200)
Engineers, Chemists, physicists, mathematicians	0.232**	0.160	0.100	-0.000	0.128	0.109	-0.027	-0.060	0.306**	0.307*
	(0.101)	(0.107)	(0.112)	(0.119)	(0.091)	(0.135)	(0.130)	(0.173)	(0.154)	(0.176)
Technicians and technical specialists	0.222**	0.139	0.084	-0.006	0.197**	0.225*	0.161	0.103	0.138	0.129
	(0.100)	(0.107)	(0.111)	(0.120)	(0.092)	(0.133)	(0.130)	(0.172)	(0.152)	(0.178)
Sales staff	0.151	0.062	0.051	-0.012	0.176**	0.226*	-0.057	-0.048	0.082	0.100
	(0.102)	(0.104)	(0.108)	(0.115)	(0.087)	(0.129)	(0.134)	(0.172)	(0.152)	(0.173)
Bank/building society/insurance specialists	0.240**	0.172	0.104	0.044	0.221**	0.261*	0.184	0.163	0.353**	0.412**
	(0.101)	(0.107)	(0.114)	(0.119)	(0.095)	(0.134)	(0.136)	(0.175)	(0.159)	(0.179)
Transport prof.	0.102	0.007	-0.039	-0.152	0.162*	0.178	-0.072	-0.099	-0.259*	-0.245
	(0.102)	(0.108)	(0.114)	(0.120)	(0.093)	(0.135)	(0.140)	(0.172)	(0.157)	(0.176)
Management, administration, other office prof.	0.241**	0.180*	0.190*	0.119	0.157*	0.194	0.076	0.059	0.482***	0.521***
	(0.096)	(0.099)	(0.103)	(0.108)	(0.084)	(0.124)	(0.121)	(0.163)	(0.143)	(0.165)
Guard/Security services and Law and enforcement	0.255**	0.214**	0.214*	0.192	0.248**	0.322**	0.146	0.129	0.327**	0.350**
	(0.103)	(0.109)	(0.113)	(0.122)	(0.100)	(0.138)	(0.150)	(0.176)	(0.153)	(0.174)
Journalism, translation, artistic and related	0.266**	0.221*	0.048	-0.028	0.188	0.264*	0.294**	0.273	-0.073	-0.045
	(0.111)	(0.118)	(0.120)	(0.132)	(0.117)	(0.150)	(0.145)	(0.186)	(0.172)	(0.196)
Health care professions	0.205*	0.107	0.097	0.000	0.186**	0.198	-0.052	-0.124	0.223	0.146
	(0.112)	(0.108)	(0.118)	(0.117)	(0.092)	(0.132)	(0.147)	(0.172)	(0.188)	(0.175)
Social welfare and teaching	0.265**	0.201*	0.232*	0.163	0.245***	0.304**	0.042	0.036	0.360**	0.376**
	(0.107)	(0.105)	(0.119)	(0.114)	(0.092)	(0.131)	(0.137)	(0.168)	(0.166)	(0.170)
Arts and natural science	0.330***	0.282**	0.270**	0.193	0.369***	0.396**	0.222	0.198	0.454**	0.528***
	(0.122)	(0.126)	(0.129)	(0.138)	(0.129)	(0.155)	(0.161)	(0.195)	(0.180)	(0.197)
Other service prof.	0.128	0.068	-0.156	-0.145	0.221**	0.238*	-0.176	-0.126	-0.069	-0.054
	(0.101)	(0.104)	(0.115)	(0.117)	(0.095)	(0.132)	(0.174)	(0.171)	(0.160)	(0.177)
<b>Industry (Ref.: Agriculture)</b>										
Mining, quarrying, energy, water	0.040	0.024	-0.081	-0.066	-0.139	-0.183	0.389***	0.479***	0.654***	0.526***
	(0.102)	(0.121)	(0.125)	(0.138)	(0.103)	(0.133)	(0.145)	(0.178)	(0.175)	(0.191)
Manufacturing	0.060	0.138	-0.079	0.005	-0.017	0.027	0.227*	0.378**	0.578***	0.570***
	(0.090)	(0.099)	(0.108)	(0.111)	(0.085)	(0.106)	(0.126)	(0.152)	(0.164)	(0.169)
Chemicals/pulp/paper	0.090	0.167	-0.028	0.028	-0.064	0.012	0.213	0.320*	0.638***	0.623***

Continued on next page



Table S.6: Full Estimation Results - Instrumental Variables (ctd.)

	Life		Work		Family		Leisure		Income	
	IV1	IV2	IV1	IV2	IV1	IV2	IV1	IV2	IV1	IV2
Construction	(0.096)	(0.106)	(0.116)	(0.120)	(0.093)	(0.118)	(0.138)	(0.165)	(0.172)	(0.181)
	0.074	0.100	-0.174	-0.120	-0.043	-0.024	0.215	0.303*	0.527***	0.497***
Iron/steel	(0.093)	(0.104)	(0.112)	(0.117)	(0.095)	(0.114)	(0.134)	(0.160)	(0.171)	(0.176)
	-0.009	0.032	-0.239**	-0.148	-0.031	0.028	0.226*	0.360**	0.531***	0.462**
Textile/apparel	(0.095)	(0.107)	(0.114)	(0.123)	(0.098)	(0.117)	(0.134)	(0.161)	(0.172)	(0.183)
	0.201	0.316**	0.122	0.243	-0.101	-0.092	0.403**	0.511**	0.518**	0.640***
Wholesale/retail	(0.125)	(0.160)	(0.139)	(0.157)	(0.148)	(0.210)	(0.177)	(0.222)	(0.219)	(0.245)
	-0.034	0.033	-0.242**	-0.183*	-0.070	-0.016	0.096	0.197	0.164	0.143
Transport/communication	(0.095)	(0.099)	(0.112)	(0.111)	(0.085)	(0.106)	(0.129)	(0.156)	(0.167)	(0.169)
	-0.087	-0.045	-0.267**	-0.259**	-0.078	-0.065	0.082	0.181	0.400**	0.297*
Public service	(0.095)	(0.106)	(0.115)	(0.120)	(0.089)	(0.118)	(0.150)	(0.161)	(0.172)	(0.176)
	0.003	0.073	-0.048	0.018	-0.083	-0.043	0.275**	0.425***	0.351**	0.346**
Financials/private services	(0.089)	(0.098)	(0.108)	(0.110)	(0.085)	(0.105)	(0.124)	(0.150)	(0.163)	(0.166)
	-0.008	0.075	-0.191*	-0.122	-0.097	-0.039	0.098	0.268*	0.279*	0.247
Not Categorized	(0.091)	(0.098)	(0.110)	(0.110)	(0.088)	(0.105)	(0.136)	(0.153)	(0.167)	(0.168)
	0.056	0.074	0.080	0.103	-0.005	0.028	0.362***	0.457***	0.339*	0.259
Constant	(0.094)	(0.107)	(0.118)	(0.119)	(0.095)	(0.117)	(0.134)	(0.161)	(0.182)	(0.180)
	7.600***	7.455***	7.627***	7.564***	8.976***	8.651***	7.586***	7.338***	4.678***	4.703***
	(0.102)	(0.137)	(0.148)	(0.143)	(0.119)	(0.165)	(0.204)	(0.212)	(0.201)	(0.197)
<b>First Stage (<math>Y_{it}</math>: Work-linked)</b>										
Occ./ind. gender disparity	-0.011***		-0.011***		-0.013***		-0.011***		-0.013***	
	(0.003)		(0.003)		(0.003)		(0.003)		(0.003)	
P( WL  PPO)		0.010***		0.010***		0.009***		0.010***		0.009***
		(0.002)		(0.002)		(0.003)		(0.002)		(0.003)
<b>Individual characteristics</b>										
Female	0.022	0.068***	0.021	0.067***	0.006	0.077***	0.026	0.071***	0.004	0.074***
	(0.054)	(0.018)	(0.054)	(0.018)	(0.052)	(0.021)	(0.054)	(0.019)	(0.053)	(0.021)
Age (Ref.: 25-34 years)										
35-44 years	-0.108**	-0.118***	-0.108**	-0.119***	-0.027	-0.029	-0.111**	-0.121***	-0.032	-0.038
	(0.046)	(0.043)	(0.046)	(0.043)	(0.068)	(0.056)	(0.047)	(0.046)	(0.062)	(0.054)
45-54 years	-0.191***	-0.230***	-0.191***	-0.230***	-0.117	-0.124	-0.197***	-0.237***	-0.126	-0.138*
	(0.070)	(0.066)	(0.070)	(0.066)	(0.096)	(0.077)	(0.071)	(0.069)	(0.094)	(0.076)
55-64 years	-0.098	-0.159*	-0.099	-0.162*	-0.058	-0.090	-0.111	-0.173*	-0.074	-0.104
	(0.099)	(0.087)	(0.099)	(0.087)	(0.135)	(0.099)	(0.100)	(0.090)	(0.132)	(0.098)
<b>Regional characteristics</b>										
Rural Area	0.047	0.068	0.044	0.065	0.076	0.136**	0.041	0.067	0.056	0.108*
	(0.050)	(0.049)	(0.050)	(0.049)	(0.061)	(0.056)	(0.051)	(0.051)	(0.060)	(0.055)
Federal state (Ref.: Schleswig-Holstein)										
Hamburg	-0.137		-0.133		-0.323		-0.136		-0.283	
	(0.216)		(0.217)		(0.260)		(0.225)		(0.267)	
Lower Saxony	-0.116		-0.116		-0.158		-0.131		-0.121	
	(0.148)		(0.149)		(0.148)		(0.153)		(0.145)	
Bremen	0.101		0.097		-0.097		0.068		-0.004	
	(0.254)		(0.255)		(0.334)		(0.253)		(0.300)	
North Rhine-Westphalia	-0.000		0.001		-0.164		-0.018		-0.133	
	(0.162)		(0.163)		(0.173)		(0.163)		(0.161)	
Hesse	-0.108		-0.107		-0.217		-0.110		-0.195	
	(0.167)		(0.168)		(0.167)		(0.176)		(0.161)	
Rhinel.-Palatinate	0.045		0.048		-0.048		0.017		-0.037	
	(0.160)		(0.160)		(0.165)		(0.166)		(0.160)	
Baden-Wuerttemberg	0.029		0.030		-0.141		0.020		-0.120	
	(0.154)		(0.155)		(0.172)		(0.156)		(0.163)	
Bavaria	0.121		0.123		-0.032		0.109		0.005	
	(0.143)		(0.144)		(0.159)		(0.143)		(0.148)	
Saarland	-0.265		-0.274		-0.616*		-0.306		-0.500*	
	(0.217)		(0.218)		(0.350)		(0.215)		(0.268)	
Berlin	0.108		0.110		-0.020		0.099		0.029	
	(0.163)		(0.164)		(0.194)		(0.167)		(0.185)	
Brandenburg	-0.123		-0.122		-0.089		-0.137		-0.077	
	(0.165)		(0.165)		(0.170)		(0.171)		(0.165)	
Mecklenburg-Western Pomerania	0.109		0.106		0.138		0.136		0.161	
	(0.227)		(0.227)		(0.233)		(0.230)		(0.230)	
Saxony	-0.121		-0.122		-0.135		-0.156		-0.115	
	(0.152)		(0.153)		(0.160)		(0.162)		(0.154)	
Saxony-Anhalt	-0.090		-0.087		-0.084		-0.094		-0.097	
	(0.175)		(0.176)		(0.197)		(0.175)		(0.200)	
Thuringia	0.172		0.172		0.161		0.174		0.192	
	(0.150)		(0.150)		(0.156)		(0.152)		(0.150)	
Years of education	0.021**	0.037***	0.021**	0.037***	0.035***	0.045***	0.021**	0.038***	0.033***	0.043***
	(0.009)	(0.006)	(0.009)	(0.006)	(0.010)	(0.007)	(0.009)	(0.006)	(0.010)	(0.006)
<b>Household characteristics</b>										
Married	-0.115**	-0.145**	-0.115**	-0.146**	-0.139***	-0.164**	-0.113**	-0.140**	-0.130***	-0.156**
	(0.051)	(0.062)	(0.051)	(0.062)	(0.052)	(0.071)	(0.052)	(0.063)	(0.049)	(0.069)
Number of children in HH	0.039*	0.029	0.040*	0.030	0.016	0.016	0.048**	0.034	0.027	0.025
	(0.021)	(0.022)	(0.021)	(0.022)	(0.026)	(0.026)	(0.024)	(0.024)	(0.024)	(0.027)
Partnership length	-0.016***	-0.016***	-0.016***	-0.016***	-0.016***	-0.016***	-0.017***	-0.016***	-0.016***	-0.016***
	(0.003)	(0.004)	(0.003)	(0.004)	(0.004)	(0.004)	(0.003)	(0.004)	(0.004)	(0.004)
Censored partnership length	-0.040	-0.084	-0.039	-0.083	-0.047	-0.073	-0.036	-0.079	-0.080	-0.103
	(0.051)	(0.059)	(0.052)	(0.059)	(0.070)	(0.067)	(0.054)	(0.060)	(0.067)	(0.065)
Self-employed	0.536***	0.540***	0.537***	0.540***	0.364***	0.473***	0.552***	0.561***	0.373***	0.482***
	(0.097)	(0.065)	(0.097)	(0.065)	(0.071)	(0.072)	(0.098)	(0.067)	(0.077)	(0.072)
Tenure (in years)	0.011***	0.012***	0.011***	0.013***	0.011***	0.013***	0.011***	0.013***	0.012***	0.014***
	(0.002)	(0.002)	(0.002)	(0.002)	(0.003)	(0.002)	(0.002)	(0.002)	(0.003)	(0.002)

Continued on next page

Table S.6: Full Estimation Results - Instrumental Variables (ctd.)

	Life		Work		Family		Leisure		Income	
	IV1	IV2	IV1	IV2	IV1	IV2	IV1	IV2	IV1	IV2
Firm size (Ref.: small, under 20 employees)										
medium (20-199)	0.065 (0.059)	0.104** (0.049)	0.064 (0.060)	0.104** (0.049)	0.120* (0.071)	0.144** (0.059)	0.044 (0.060)	0.086* (0.051)	0.144** (0.069)	0.173*** (0.057)
large (200 and more)	0.191*** (0.067)	0.273*** (0.048)	0.189*** (0.067)	0.272*** (0.048)	0.221*** (0.065)	0.293*** (0.055)	0.175** (0.068)	0.263*** (0.050)	0.236*** (0.066)	0.318*** (0.054)
In trained occupation	0.043 (0.043)	0.089*** (0.034)	0.043 (0.043)	0.089*** (0.034)	0.125*** (0.046)	0.113*** (0.041)	0.048 (0.044)	0.085** (0.034)	0.130*** (0.044)	0.119*** (0.040)
Fixed-term contract	0.085 (0.099)	0.067 (0.047)	0.086 (0.099)	0.068 (0.047)	0.102 (0.103)	0.105* (0.058)	0.096 (0.104)	0.076 (0.050)	0.104 (0.104)	0.104* (0.057)
Full-time employed	0.174*** (0.050)	0.121*** (0.042)	0.174*** (0.050)	0.120*** (0.042)	0.098** (0.046)	0.110** (0.050)	0.189*** (0.051)	0.138*** (0.044)	0.101** (0.047)	0.107** (0.049)
<b>Partner characteristics</b>										
Years of Education	0.035** (0.014)	0.043*** (0.005)	0.035** (0.014)	0.043*** (0.005)	0.050*** (0.015)	0.052*** (0.006)	0.036*** (0.014)	0.043*** (0.006)	0.048*** (0.014)	0.050*** (0.006)
Tenure	0.013*** (0.003)	0.014*** (0.002)	0.013*** (0.003)	0.014*** (0.002)	0.014*** (0.004)	0.015*** (0.002)	0.013*** (0.003)	0.014*** (0.002)	0.014*** (0.004)	0.015*** (0.002)
In trained occupation	0.018 (0.059)	0.096*** (0.034)	0.018 (0.059)	0.095*** (0.034)	0.101 (0.063)	0.117*** (0.041)	0.024 (0.059)	0.097*** (0.035)	0.100* (0.061)	0.123*** (0.040)
Fixed-term contract	0.068 (0.106)	0.066 (0.046)	0.067 (0.106)	0.064 (0.046)	0.110 (0.112)	0.100* (0.059)	0.074 (0.109)	0.073 (0.049)	0.106 (0.113)	0.095* (0.056)
Full-time employed	0.033 (0.063)	0.012 (0.038)	0.034 (0.063)	0.012 (0.038)	0.025 (0.058)	0.038 (0.045)	0.037 (0.064)	0.016 (0.039)	0.025 (0.060)	0.031 (0.045)
Constant	-2.373*** (0.432)	-3.155*** (0.165)	-2.376*** (0.433)	-3.153*** (0.165)	-2.755*** (0.502)	-3.551*** (0.198)	-2.398*** (0.432)	-3.194*** (0.170)	-2.746*** (0.489)	-3.508*** (0.193)
athrho	-0.103*** (0.031)	-0.118*** (0.024)	-0.090*** (0.028)	-0.091*** (0.028)	-0.068** (0.032)	-0.087*** (0.024)	-0.038 (0.046)	-0.029 (0.054)	-0.158*** (0.042)	-0.144*** (0.048)
lnsigma	0.394*** (0.006)	0.380*** (0.006)	0.644*** (0.006)	0.639*** (0.005)	0.458*** (0.006)	0.457*** (0.008)	0.739*** (0.006)	0.728*** (0.005)	0.677*** (0.008)	0.674*** (0.006)
N	122456	98152	122456	98152	68782	58713	111288	89355	78016	66281
Year FE	✓	✓	✓	✓	✓	✓	✓	✓	✓	✓

Source: SOEP (2019); Bundeagentur für Arbeit (2016a,b). Own calculations.

Note: Clustered standard errors in parentheses. \*  $p < 0.1$ , \*\*  $p < 0.05$ , \*\*\*  $p < 0.01$ .

Table S.7: Robustness checks - Link type

	Life	Work	Family	Leisure	Income
<b>Explanatory variable - Occupational work link</b>					
Conditional OLS	0.055 (0.042)	0.042 (0.046)	-0.008 (0.058)	-0.146** (0.058)	0.154*** (0.057)
N	122456	122456	68782	111288	78016
$\mathbf{X}_{it}$	✓	✓	✓	✓	✓
IV 1 - Occ./ind. gender disparity	0.373*** (0.103)	0.369*** (0.116)	0.209* (0.112)	0.112 (0.208)	0.812*** (0.166)
N	122456	122456	68782	111288	78016
FS F-stat	15.2	15.2	14.37	14.25	13.15
$\mathbf{X}_{it}$	✓	✓	✓	✓	✓
IV2 - P(WL   PPO)	0.431*** (0.091)	0.383*** (0.126)	0.259** (0.105)	-0.113 (0.553)	0.785*** (0.176)
N	98153	98153	58711	89357	66279
FS F-stat	14.76	14.76	15.16	7.4	9.49
$\mathbf{X}_{it}$	✓ <sup>1</sup>	✓ <sup>1</sup>	✓ <sup>1</sup>	✓ <sup>2</sup>	✓ <sup>1</sup>
<b>Explanatory variable - Industrial work link</b>					
Conditional OLS	0.083*** (0.028)	0.083*** (0.031)	0.075** (0.036)	-0.078* (0.040)	0.193*** (0.041)
N	122456	122456	68782	111288	78016
$\mathbf{X}_{it}$	✓	✓	✓	✓	✓
IV 1 - Occ./ind. gender disparity	0.204** (0.102)	0.319*** (0.101)	0.187** (0.085)	-0.053 (0.813)	0.652*** (0.117)
N	122456	122456	68782	111288	78016
FS F-stat	31.83	31.83	31.56	38.29	39.68
$\mathbf{X}_{it}$	✓	✓	✓	✓ <sup>2</sup>	✓
IV2 - P(WL — PPO)	0.247*** (0.085)	0.343*** (0.101)	0.245*** (0.082)	-0.089 (0.307)	0.582*** (0.141)
N	98153	98153	58711	89357	66279
FS F-stat	8.34	8.34	8.49	8.04	6.34
$\mathbf{X}_{it}$	✓ <sup>1</sup>	✓ <sup>1</sup>	✓ <sup>1</sup>	✓ <sup>2</sup>	✓ <sup>1</sup>

Source: SOEP (2019); Bundeagentur für Arbeit (2016a,b). Own calculations.

Note: Clustered standard errors in parentheses. \*  $p < 0.1$ , \*\*  $p < 0.05$ , \*\*\*  $p < 0.01$ .

<sup>1</sup> Specifications without federal state indicators due to non-convergence.

<sup>2</sup> Specifications without federal state and self-employment indicators due to non-convergence.

## Controlling for personality traits

In the SOEP, the big five personality traits are surveyed using self-reported assessments of a list of 15 items Gerlitz and Schupp (2005). The resulting factors are constructed using a simple average over the corresponding three items for each factor. Controlling for personality, however, comes at the cost of a loss of observations, as the Big Five traits were elicited in three SOEP waves only (2005, 2009, 2013). To keep a reasonably sized sample, the missing values (other waves) are imputed by the within-individual average over all available observations of the traits. In the same way, we control for people's risk preference (single item on people's risk attitude, measured in 2004, 2006 and annually since 2008), time preference (single item on people's patience, measured in 2008, 2013, 2018), and optimism (single item measured in 1999, 2005, 2010, 2014). For the locus of control eight items measured in 1999, 2005, 2010, 2015 are used to construct a unidimensional factor following Hennecke (2020). The following table displays the results for the reduced sample with and without controlling for traits.

Table S.8: Robustness checks - Controls for personality traits

	OLS	1) Reduced Sample		2) Including Personality and Preferences		
		Instrumental Variable		OLS	Instrumental Variable	
		Gender disp.	P(WL   PPO)		Gender disp.	P(WL   PPO)
<b>Life</b>						
WL	0.082 (0.056)	0.439*** (0.133)	0.525*** (0.146)	0.071 (0.044)	0.413*** (0.120)	0.504*** (0.108)
N	89532	89532	74461	89532	89532	74461
<b>Work</b>						
WL	0.118* (0.063)	0.519*** (0.153)	0.372 (0.309)	0.105** (0.051)	0.495*** (0.133)	0.361 (0.265)
N	89532	89532	74461	89532	89532	74461
<b>Family</b>						
WL	0.009 (0.071)	0.291** (0.132)	0.355** (0.160)	-0.009 (0.064)	0.210 (0.142)	0.289* (0.152)
N	56566	56566	48453	56566	56566	48453
<b>Leisure</b>						
WL	-0.100 (0.072)	0.150 (0.229)	0.240 (0.340)	-0.106 (0.069)	0.105 (0.246)	0.213 (0.301)
N	84111	84111	69981	84111	84111	69981
<b>Income</b>						
WL	0.215*** (0.073)	0.726** (0.290)	0.852*** (0.286)	0.202*** (0.067)	0.622* (0.334)	0.666* (0.383)
N	63987	63987	54589	63987	63987	54589
Big five (avg)	✗	✗	✗	✓	✓	✓
Risk aversion (avg)	✗	✗	✗	✓	✓	✓
Time preferences (avg)	✗	✗	✗	✓	✓	✓
Locus of control (avg)	✗	✗	✗	✓	✓	✓
Optimism (avg)	✗	✗	✗	✓	✓	✓

Source: SOEP (2019); Bundeagentur für Arbeit (2016a,b). Own calculations.  
Note: Clustered standard errors in parentheses. \*  $p < 0.1$ , \*\*  $p < 0.05$ , \*\*\*  $p < 0.01$ .

## References

- BUNDEAGENTUR FÜR ARBEIT (2016a). Beschäftigte nach Berufen (KldB 2010) (Quartalszahlen) Deutschland. <https://statistik.arbeitsagentur.de/DE/Navigation/Statistiken/Themen-im-Fokus/Berufe/Berufe-Nav.html>, as of March 31, 2016.
- BUNDEAGENTUR FÜR ARBEIT (2016b). Beschäftigte nach Wirtschaftszweigen (WZ 2008) (Quartalszahlen) Deutschland. <https://statistik.arbeitsagentur.de/DE/Navigation/Statistiken/Themen-im-Fokus/Wirtschaftszweige/Wirtschaftszweige-Nav.html>, as of March 31, 2016.
- GERLITZ, J.-Y. and SCHUPP, J. (2005). *Zur Erhebung der Big-Five-basierten Persönlichkeitsmerkmale im SOEP*. DIW Berlin Research Notes 2005(4).
- HENNECKE, J. (2020). *The Independent Woman - Locus of Control and Female Labor Force Participation The Independent Woman - Locus of Control and Female Labor Force Participation*. AUT Economics Working Paper Series 2020/03.

LEE, D. L., MCCRARY, J., MOREIRA, M. J. and PORTER, J. (2020). Valid t-ratio Inference for IV.

SOEP (2019). *Socio Economic Panel Data: Data for years 1984-2018, version 35*, Doi: 10.5684/soep-core.v35.