

Kawaguchi, Daiji; Mori, Yuko

**Working Paper**

## Estimating the Effects of the Minimum Wage Using the Introduction of Indexation

IZA Discussion Papers, No. 14086

**Provided in Cooperation with:**

IZA – Institute of Labor Economics

*Suggested Citation:* Kawaguchi, Daiji; Mori, Yuko (2021) : Estimating the Effects of the Minimum Wage Using the Introduction of Indexation, IZA Discussion Papers, No. 14086, Institute of Labor Economics (IZA), Bonn

This Version is available at:

<https://hdl.handle.net/10419/232838>

**Standard-Nutzungsbedingungen:**

Die Dokumente auf EconStor dürfen zu eigenen wissenschaftlichen Zwecken und zum Privatgebrauch gespeichert und kopiert werden.

Sie dürfen die Dokumente nicht für öffentliche oder kommerzielle Zwecke vervielfältigen, öffentlich ausstellen, öffentlich zugänglich machen, vertreiben oder anderweitig nutzen.

Sofern die Verfasser die Dokumente unter Open-Content-Lizenzen (insbesondere CC-Lizenzen) zur Verfügung gestellt haben sollten, gelten abweichend von diesen Nutzungsbedingungen die in der dort genannten Lizenz gewährten Nutzungsrechte.

**Terms of use:**

*Documents in EconStor may be saved and copied for your personal and scholarly purposes.*

*You are not to copy documents for public or commercial purposes, to exhibit the documents publicly, to make them publicly available on the internet, or to distribute or otherwise use the documents in public.*

*If the documents have been made available under an Open Content Licence (especially Creative Commons Licences), you may exercise further usage rights as specified in the indicated licence.*

DISCUSSION PAPER SERIES

IZA DP No. 14086

**Estimating the Effects of the Minimum  
Wage Using the Introduction of  
Indexation**

Daiji Kawaguchi  
Yuko Mori

JANUARY 2021

## DISCUSSION PAPER SERIES

IZA DP No. 14086

# Estimating the Effects of the Minimum Wage Using the Introduction of Indexation

**Daiji Kawaguchi**

*University of Tokyo, RIETI and IZA*

**Yuko Mori**

*Tsuda University*

JANUARY 2021

Any opinions expressed in this paper are those of the author(s) and not those of IZA. Research published in this series may include views on policy, but IZA takes no institutional policy positions. The IZA research network is committed to the IZA Guiding Principles of Research Integrity.

The IZA Institute of Labor Economics is an independent economic research institute that conducts research in labor economics and offers evidence-based policy advice on labor market issues. Supported by the Deutsche Post Foundation, IZA runs the world's largest network of economists, whose research aims to provide answers to the global labor market challenges of our time. Our key objective is to build bridges between academic research, policymakers and society.

IZA Discussion Papers often represent preliminary work and are circulated to encourage discussion. Citation of such a paper should account for its provisional character. A revised version may be available directly from the author.

ISSN: 2365-9793

**IZA – Institute of Labor Economics**

Schaumburg-Lippe-Straße 5–9  
53113 Bonn, Germany

Phone: +49-228-3894-0  
Email: [publications@iza.org](mailto:publications@iza.org)

[www.iza.org](http://www.iza.org)

## ABSTRACT

---

# Estimating the Effects of the Minimum Wage Using the Introduction of Indexation\*

We examine the impacts of the minimum wage on employment using the minimum-wage hike induced by the introduction of indexation of the local minimum wage to the local cost of living. The revision of the Minimum Wage Act in 2007 of Japan essentially required the government to set the minimum wage indexed to the local cost of living, with a five-year moratorium period. The government subsequently increased the minimum wage in areas where the cost of living was high relative to the local minimum wage. Allowing for different trends in labor-market outcomes across regions in the pre-treatment period, we find that the minimum-wage hike raised the wages of low-wage workers, but reduced the employment of less-educated young men. A panel analysis based on matched Labor Force Survey data indicates that the minimum-wage hike decreased the job flows of prime-age men and women.

**JEL Classification:** J23, J38, J42, J64, J81

**Keywords:** minimum wage, low skill workers, employment, Japan

**Corresponding author:**

Daiji Kawaguchi  
Graduate School of Economics  
University of Tokyo  
7-3-1 Hongo  
Bunkyo-ku, Tokyo 113-0033  
Japan  
E-mail: kawaguchi@e.u-tokyo.ac.jp

---

\* This study is conducted as a part of the Project “Empirical Analysis on Japanese Labor Market” undertaken at the Research Institute of Economy, Trade and Industry (RIETI). We are grateful for comments from David Card, Koichi Fujii, Dean Hyslop, Johnathan Meer, David Neumark, Fumio Ohtake, and seminar participants at the Asian Development Bank Institute, National Chengchi University, Motu Economic and Public Policy Research, the Victoria University of Wellington, Aoyamagakuin University, the University of Tokyo, and the annual meeting of the Asian and Australasian Society of Labor Economists. This study utilizes micro data of the Labor Force Survey conducted by the Ministry of Internal Affairs and Communications and the Basic Survey of Wage Structure conducted by the Ministry of Labor, Health and Welfare. This project has been financially supported by the Japan Society of Promotion of Science (JSPS), grant number 19H00589.

# 1 Introduction

Numerous studies have assessed the effects of minimum wage on employment using the regional variation of the minimum wage, as reviewed by Card and Krueger (1995), Neumark and Wascher (2008), Meer (2018) and Clemens (2019). Key to the research is how to handle the endogeneity of the local minimum wage, because policymakers set the minimum wage by looking at local labor-market conditions. In the absence of an exogenous source of minimum-wage variation across states, US studies have struggled to control for the region- and time-specific unobserved shocks that could be correlated with minimum wages. One group of researchers controlled for region- and time-specific shocks by using the geographically proximate area as a control group (Dube et al., 2010), while another group of researchers claimed that a traditional region- and time- fixed effects model performs better (Neumark et al., 2015; Meer and West, 2016; Clemens and Wither, 2019). The estimated impact of minimum wage on employment differs substantially depending on how the counterfactual situation is constructed. In contrast with existing studies that attempt to construct counterfactual local labor-market conditions, we exploit the plausibly exogenous minimum-wage hike across regions.

The natural experiment we exploit is the change in the institutional setting of minimum-wage determination in Japan. The minimum wage in Japan is statutory, and local minimum wages are set for each of the 47 prefectures. Central and local minimum wage commissions are involved in determining the local minimum wage; in the process, the central minimum wage commission suggests the amount of minimum wage increase for each prefecture. Historically, the commission’s suggestions have been linked to the average wage increase of micro-scale establishments based on a survey for this specific purpose. The revision of the Minimum Wage Act in 2007 additionally required the government to set the minimum wage, referring to the amount of welfare benefits that is indexed to the local cost of living. Specifically, the revised Act aimed to close the gap between the amount of welfare benefit and the earnings of full-time minimum wage workers, which are more substantial in urban prefectures and

prefectures located in the northern area, where the cost of living is higher. Accordingly, to fill the gap, the minimum wage had been increased more significantly in prefectures where the welfare benefit exceeded the full-time minimum wage earnings in 2006. We leverage this heterogeneous growth of minimum wages across prefectures to estimate the impact of minimum-wage hikes on wages, employment, hours, and one-year transition of employment status. In the estimation, we allow for heterogeneous labor market trends before 2007.

We first confirm that the minimum wage bites the wage distribution based on the Basic Survey of Wage Structure (BSWS), which allows us to precisely calculate the hourly wage based on the wage bill of establishments. We also confirm that the minimum-wage hike increased the fraction of workers whose wage is below  $1.05 \times$  the local minimum wage. Only about 3% of workers are minimum-wage workers, and they are concentrated among the less educated, as well as younger and older workers of both sexes. We then analyze the effect of the minimum wage on employment, labor-force participation, and hours worked, using the monthly Labor Force Survey (LFS). Our analysis sample includes people with a high-school education or less to focus on less-skilled workers, but it includes a wide age range (between 19 and 64 years old), dividing workers into three age groups: 19-24, 25-59, and 60-64.

The first stage of the IV estimation shows that the gap between the welfare benefit and minimum-wage earnings in 2006 significantly predicts subsequent minimum wage growth of the region. We find, however, that the gap is associated with the trends of the employment rate before 2007. To address the potential violation of the exclusion restriction, we allow for flexible heterogeneous trends across prefectures before 2007. The second stage of the IV estimation shows that the minimum-wage hike reduces employment among less-educated young men between 19 and 24 years old. On the other hand, we find no precise estimates of the impact of minimum-wage hikes on employment among demographic groups other than less educated young men. We further find no significant impact of minimum-wage hikes on hours worked, conditional on being employed, on any of the demographic groups.

For less-educated young men, the estimated elasticity is -1.2, which is larger than the

estimates in the literature. We point to two reasons for this discrepancy. First, the IV estimator estimates the treatment effect of the minimum wage on employment leveraging the increase of the minimum wage due to the introduction of the indexation of the minimum wage; employers can expect a future increase of the minimum wage according to the newly introduced rule and can substitute capital for labor, as found by Brummund and Strain (2020) from the evidence of state minimum-wage indexation. Second and more importantly, we argue that the OLS estimates in the literature suffer from an upward bias due to policy endogeneity, because policy makers are hesitant to increase the minimum wage under adverse labor-market conditions, as suggested by Baskaya and Rubinstein (2012) in the US context. This suggests the importance of seeking the exogenous source of variation of local minimum-wage hikes in a difference-in-difference framework to address the policy endogeneity issue.

We further analyze the effect of the minimum-wage hike on the transition of employment status over a one-year period by constructing short panels. We do this by matching the outgoing rotation groups of adjacent years of the LFS to examine the impact of the minimum wage on the transition of employment status over a one-year period. We find that a minimum-wage hike reduces the transition probability from non-employment to employment among prime-age men, while it increases the probability that employed prime-age women stay employed. Thus, the minimum-wage hike lowers the transition between not being employed and being employed among prime-age men and women. This finding is consistent with theoretical predictions and empirical findings in previous studies indicating that a minimum-wage hike reduces job flow in the labor market (Portugal and Cardoso, 2006; Gittings and Schmutte, 2016; Dube et al., 2016; Brochu and Green, 2019).

## 1.1 Literature

This work contributes to the literature in two ways. First, it identifies the effects of the minimum wage on employment, drawing on a credible, exogenous source of minimum-wage variation. All recent US studies concur on the importance of controlling for region-specific

shocks that can be correlated with the minimum wage. They disagree, however, on the proper construction of a counterfactual situation in terms of selecting control areas or modeling underlying region-specific time trends (Dube et al., 2010; Allegretto et al., 2011; Neumark et al., 2015; Meer and West, 2016; Cengiz et al., 2019; Clemens and Wither, 2019). Compared to the situation in the US, where state legislators vote for state minimum-wage hikes, which potentially creates policy endogeneity according to local labor-market conditions, the determination of the Japanese regional minimum wage is arguably more centralized and mechanical. Notably, the introduction of the indexation of the minimum wage to the local cost of living, due to the revision of the Minimum Wage Act in 2007, provides a credible exogenous source of variation of local minimum wages to identify the effect of the minimum wage cleanly. To the best of our knowledge, Baskaya and Rubinstein (2012) is the only recent study that instruments the state minimum wage by the interaction term of the federal minimum wage and states' tendency to let the federal minimum wage bind.

Second, we contribute to the Japanese policy debate. Political liberals traditionally support the minimum-wage hike as a policy tool to alleviate poverty in Japan. The political scene has changed dramatically in recent years; the minimum wage has also gained support from political conservatives as an income policy to boost wages to initiate wage-price dynamics in Japan, where wages have stagnated despite a very tight labor market since the early 2010s. At the Council on Economic and Fiscal Policy on November 24, 2015, Prime Minister Shinzo Abe committed to increasing the minimum wage by 3% annually until the average regional minimum wage reaches 1,000 yen. The International Monetary Fund (IMF) backs this policy stance,<sup>1</sup> and IMF staff economists Aoyagi et al. (2017) reported that minimum-wage hikes have a significant impact on wage increases. Some business owners and economists, however, express concern about job loss among unskilled workers due to minimum-wage hikes.

Numerous studies have examined the impact of minimum wage on employment in Japan.

---

<sup>1</sup>The Conclusion of the Mission for the 2018 Article IV Consultation with Japan published on October 4, 2018.



Early studies exploit the cross-sectional variation of the minimum wage to estimate the impact of minimum wage on employment, using cross-sectional data or panel data without prefecture fixed effects (Tachibanaki and Urakawa, 2006; Yugami, 2005; Ariga, 2007). Controlling for prefecture fixed effects is crucial, however, because the level of the minimum wage is systematically correlated with unobserved local labor-market conditions. Several studies have allowed for individual or prefecture fixed effects when estimating the minimum-wage impact on employment. Kawaguchi and Mori (2009) calculated the fraction affected by minimum wages, following Card (1992), using the Employment Status Survey from 1982 to 2002, and found that the stronger bite of the minimum wage reduces the employment of teens and married, middle-aged women. Kambayashi et al. (2013) reported that higher minimum wages reduce the female employment rate, based on data up to 2003. Using the 1993-1999 panel surveys on women, Kawaguchi and Yamada (2007) showed that a worker who is prone to be affected by a minimum-wage hike is more likely to lose her job. Overall, minimum-wage studies that control for policy endogeneity and cover the sample period before the 2007 revision of the Minimum Wage Act point to employment loss among less-skilled workers due to minimum-wage hikes.

Only a few studies have exploited minimum-wage hikes after the revision of the Minimum Wage Act in 2007. Higuchi (2013) examined the impact on the employment of non-regular workers based on the Keio Household Panel Survey and concluded that minimum-wage hikes did not affect the employment of non-regular workers. A careful reading of the estimation results, however, reveals that the minimum-wage hikes indeed decreased the employment of non-regular workers, but the impact was not precisely estimated because of the small sample size, around 2,000 observations. Since the number of minimum-wage workers is as limited as 3% of all workers, a large sample is needed. Akesaka et al. (2018) estimated the impact of the recent minimum-wage hike on employment using the Employment Status Survey, which is a large government survey that takes place every five years. They found that a minimum-wage hike reduces the employment of teenage men and reduces the hours worked of all workers.

Our study improves the granularity of that analysis by exploiting the large sample of monthly or annual frequency. Okudaira et al. (2019) reported the impact of minimum-wage hikes after the 2007 revision negatively affected employment, with an estimated elasticity around -0.5 among all workers, relying on the annual Census of Manufacturers. They also examined the heterogeneous impacts depending on the degree of labor-market monopsony. They first identified the degree of monopsony by determining the gap between the observed labor share and the predicted labor share in a perfectly competitive labor market from the estimated production function. Then, they found a more substantial adverse impact in the region where the labor market was estimated to be competitive. In addition, they implemented the instrumental variable estimation by using the gap between the welfare benefit and minimum-wage earnings as of 2006 as the instrumental variable. Our study complements their study by covering all industries.

## **2 Minimum-wage indexation to the local cost of living: Revision of the Minimum Wage Act in 2007**

This section describes the institutional background of minimum-wage setting in Japan for introducing the identification strategy; more details are provided in Appendix A. Regional minimum wages, set for each of the 47 prefectures, were essentially indexed to the local average wage before 2007, because the increase in the local minimum wage was tightly linked to the average annual wage growth of workers in establishments with less than 30 workers, as documented by Tamada (2009). The partial revision of the Minimum Wage Act in 2007, which took effect on July 1, 2008, changed the policy process by adding a new requirement that the monthly earnings of full-time minimum-wage workers should not be lower than public assistance benefits. There was a gap between the monthly earnings of minimum-wage workers and the public assistance benefits in 12 prefectures as of fiscal

year 2006.<sup>2</sup> The revised Act aimed to close the gap between the amount of welfare benefits and the earnings of full-time minimum-wage workers, which was more substantial in urban prefectures or prefectures with cold weather in the winter, where the cost of living is higher. Accordingly, to fill the gap, the minimum wage had been increased more significantly in urban prefectures than in rural prefectures. Between 2007 and 2016, for example, the increase of the minimum wage was 26% in Tokyo and Kanagawa prefectures, urban prefectures, and 12% in Tokushima prefecture, a rural prefecture, as indicated in Figure 1.

We use the gap between the amount of welfare benefits and the earnings of full-time minimum-wage workers as of 2006 as the instrumental variable to predict the amount of the minimum-wage hike in each prefecture. The left panel of Figure 2 shows the relationship between the gap ( $\ln(WB/MWE)_{j2006}$ ) and the minimum-wage growth between 2007 and 2016. There were 12 prefectures where the welfare benefit exceeded the minimum-wage earnings in 2006 ( $\ln(WB/MWE)_{j2006} > 0$ ) and the initial gap and the subsequent minimum-wage growth was positively correlated. This positive correlation assures the validity of the instrumental variable. In contrast, the right panel of Figure 2 shows that the gap in 2006 is not correlated with the minimum-wage growth between 1998 and 2007. The absence of a correlation negates a concern that the correlation between the gap and the subsequent minimum-wage growth is due to the minimum-wage growth's long-term trend.

We attempt to estimate the causal impact of the minimum-wage hike on the change of labor-market outcomes using the gap between the welfare benefit and minimum-wage earnings as of 2006 as the instrumental variable. In this identification strategy, a probable threat to identification is that the initial gap between the minimum wage and welfare benefits is correlated with the underlying trends of labor-market outcomes. To address this concern,

---

<sup>2</sup>A letter submitted to the Minister of Health, Labor and Welfare from the Central Minimum Wage Commission in 2008 reported that the monthly earnings of minimum-wage workers were lower than public assistance benefits in 12 prefectures, including Hokkaido, Aomori, Miyagi, Akita, Saitama, Chiba, Tokyo, Kanagawa, Kyoto, Osaka, Hyogo, and Hiroshima prefectures. The gap amount as of 2006 was 63 yen for Hokkaido, 20 yen for Aomori, 31 yen for Miyagi, 17 yen for Akita, 56 yen for Saitama, 35 yen for Chiba, 100 yen for Tokyo, 108 yen for Kanagawa, 47 yen for Kyoto, 53 yen for Osaka, 36 yen for Hyogo, and 37 yen for Hiroshima.

we estimate the relationship between the gap and the pre-trend of employment; we estimate the following one-year-interval first-difference model:

$$\Delta Emp_{jt} = \beta \ln(WB/MWE)_{j2006} + \tau_t + e_{jt}, \quad (1)$$

where  $\Delta Emp_{jt}$  is the annual change in the employment rate in prefecture  $j$  in year  $t$ , using the period between 2002 and 2007; and  $\ln(WB/MWE)_{j2006}$  is the gap between the welfare benefit and minimum-wage earnings in 2006. The estimation results using all the years are reported in Table 1. The regression coefficient is 0.10 (SE=0.03) for 19 to 24 year-old men and -0.20 (SE=0.05) for 19 to 24 year-old women. We do not find any systematic trends for other gender and age groups.

Both the graphical and regression analyses indicate that the employment growth of the youth of both genders before the revision of the Minimum Wage Act is systematically correlated with the gap between welfare benefits and minimum-wage earnings. This heterogeneous pre-trend may bias the estimate of the effect of the minimum wage on employment; thus in the instrumental variable estimation, introduced in Section 5, we allow for a flexible form of heterogeneous trends across prefectures before 2007 to mitigate the effects of the pre-trends.

### 3 Data

This study uses the Labor Force Survey (LFS) to capture labor-market outcomes, including employment status and hours worked. The drawback of the LFS is its lack of accurate measurement of the hourly wage rate. To compensate for this drawback, we also use the Basic Survey on Wage Structure (BSWS). We briefly describe these two data sets below. Some additional details of these two data sets are presented in Appendix B.

The LFS, the source of the main data set used in this study, is a monthly survey that corresponds to the Current Population Survey in the US. The LFS generates repeated cross-section data, but its rotation sampling structure allows us to construct a short panel data

set covering two years. We use the LFS as a source of repeated cross-section data, but we exploit the panel structure for the transition analysis of employment status. We restrict the analysis sample to non-college graduates between the ages of 19 and 64, because, as we will see below, the minimum wage is relevant to non-college-graduate workers.<sup>3</sup> We divide the analysis sample into three age groups: 19-24, 25-59, and 60-64. We pick the ages between 19 and 24 as indicating youth to avoid those who are still in high school, as almost all high-school graduates turn age 19 before graduation. The prime-age people are those between 25 and 59 years old, and the older people are those between 60 and 64 years old. The majority of employers in Japan set the mandatory retirement age at 60, and those workers who experience a mandatory retirement change their employers or transition to a temporary position with the same employer. The analysis sample covers the period between January 2002 and December 2016. A shortfall of the LFS is that it lacks an accurate measurement of the hourly wage rate.

To compensate for the lack of an accurate measurement of hourly wage in the LFS, we use worker-level micro data from the Basic Survey on Wage Structure (BSWS). The BSWS is an annual establishment survey that adopts a two-step random sampling procedure. In the first step, establishments are randomly selected from the population of all establishments that hire 5 or more employees. In the second step, the human resource department of each establishment randomly selects the workers from its payroll records. The BSWS is an ideal data set for analyzing the impact of the minimum wage on wages because of its accurate measurements of individual workers' monthly earnings and monthly hours worked transcribed from payroll records. The BSWS covers both full- and part-time workers, but it does not ask for part-time workers' educational background. Since part-time workers are likely to be low-wage workers and more relevant to minimum wages, we basically do not restrict the analysis sample to less-educated workers. The sampling process of the BSWS

---

<sup>3</sup>The LFS asks respondents to identify their educational background by their enrollment status in school. We restrict the sample to those who are not enrolled, and highest education attainment that we use is high school or less. Thus, the analysis sample does not include high-school graduates who are currently enrolled in higher educational institutions, such as a university or a professional training college.

uses prefecture  $\times$  industry  $\times$  establishment size as the strata. To keep the sampling error within a stratum below a certain level, larger establishments and establishments belonging to a rare industry are oversampled. To reflect the survey’s peculiar sampling structure, we use the sampling weight in the regression analysis to recover the population distribution throughout the analysis based on the BSWs. We also use the sampling weight, so that the regression coefficients recover the population average treatment effects (Solon et al., 2015). Our analysis sample covers the years between 2002 and 2017.

The regional minimum wage set for each of the 47 prefectures is taken from the *Saitei Chingin Kettei Yoran* (Overview of Minimum Wage Determination) for each fiscal year published by the *Rodo Chosakai*. Because regional minimum wages are revised around October every year, we use the minimum wage that came into effect in October in year  $t$  to explain employment in October-December in year  $t$  and in January-September in year  $t + 1$ .

## 4 Analysis based on payroll records

### 4.1 Effect on wages

As a preparatory analysis, this section examines how minimum wages affect wages overall, using the BSWs. Figure 3 shows the relationship between the wage distributions of all workers ages 19-64 and the minimum wage by prefecture in 2002 and 2017 for two representative prefectures: Tokyo, as an example of major urban agglomerations, and Tokushima, as an example of rural areas. In Tokushima prefecture, the wage distributions for men and women for both 2002 and 2017 are dented at the minimum wage, indicated by the vertical line. The figure thus illustrates that the minimum wage played an essential role in determining the shape of the wage distribution even before the partial revision of the Minimum Wage Act in 2007. In contrast, in Tokyo, only a tiny share of workers worked for the minimum wage in 2002, and the minimum-wage level hardly affected the shape of the wage distribution. In 2017, however, the shares of workers working for the minimum wage increased, and the

shape of the wage distribution began to become dented at the minimum-wage level. This result is in contrast with the finding of Kambayashi et al. (2013), who, using data up to 2003, showed that minimum wages acted as a constraint only in rural areas and implied that as a result of the minimum-wage hike since 2007, minimum wages had started to act as a practical constraint in urban areas as well.

As a way to systematically examine the impact of the minimum wage on the lower end of the wage distribution, we first consider if the minimum-wage hike increases the fraction of workers who work near the minimum wage. To do so, we define minimum-wage workers as workers whose hourly wage is below  $1.05 \times$  minimum wage. We should note that in the analysis sample covering the years between 2002 and 2017, only 3.7% of workers had earnings in this range of hourly wage. This small fraction suggests that we need to narrowly restrict the analysis sample to those who were likely to have been affected by minimum-wage hikes. Figure 4 shows that the increase of the minimum wage between 2002 and 2017 and the increase in the fraction of workers who earned less than  $1.05 \times$  MW in the corresponding period are positively associated.

We next examine the impact of the minimum wage on the wage distribution, using the wage bins defined relative to the minimum wage. The wage bins are:

$$(0, MW), [MW, 1.05MW), [1.05MW, 1.10MW), \dots, [1.25MW, 1.30MW].$$

We then define dummy variables for each bin that take 1 if the individual worker's wage falls in the bin. We then estimate the following linear probability model. For example, we estimate the following model for the wage bin  $(0, MW)$ :

$$1(W_{ijt} < MW_{jt}) = \beta \ln MW_{jt} + X_{ijt}\gamma + \theta_j + \tau_t + u_{ijt}, \quad (2)$$

where  $i$  is the index for individual,  $j$  is prefecture, and  $t$  is year. The indicator  $1(W_{ijt} < MW_{jt})$  takes 1 if the wage is below MW, and takes 0 otherwise,  $MW_{jt}$  is the MW in

prefecture  $j$  in year  $t$ ,  $X_{ijt}$  is a set of dummy variables defined by age  $\times$  gender. We estimate the models by weighted least squares using the sampling weight. Standard errors are robust against the within-prefecture error correlation.

Table 2 reports the estimation results of the linear probability models, where the dependent variables are the dummy variables that take one if the wage falls within a specific range relative to the minimum wage. Column 1 shows that minimum-wage hikes increase the fraction of non-compliers. On average, 1% of workers work below the minimum wage, and a 10% increase in the minimum wage increases non-compliers by 0.9%. In contrast, Column 2 indicates that a 10% minimum-wage hike increases the fraction of workers whose wage belongs to the range  $[MW, 1.05MW)$  by 1.7 %, whereas about 2% of workers belong to this category. Similarly, Column 3 indicates that minimum-wage hikes increase the fraction of workers whose wage belongs to the range  $[1.05MW, 1.10MW)$ , suggesting that minimum-wage hikes affect the wage of workers who earn above the minimum wage, which is called the spillover effect or ripple effect. This spillover reaches up to 15% above the minimum wage.

Minimum wages substantially affect the lower end of the wage distribution, but only 3.7% of workers earn below  $1.05 \times$  minimum wage. Thus, to assess the impact of minimum-wage hikes on employment, we need to focus on very low-skilled workers and identify the characteristics of minimum-wage workers. The caveat is that the BSWS does not record the educational background of part-time workers, who make up about 20% of the analysis sample and are more likely to work as minimum-wage workers; only around 1% of full-time workers are minimum-wage workers, compared to about 10% of part-time workers. With this drawback in mind, Figure 5 plots the fraction of workers that earn below  $1.05 \times MW$  by the educational background and age of full-time workers. The fraction of minimum-wage workers is substantially higher among low-educated (high school or less) younger and older workers. Thus, to identify the impact of the minimum wage on employment, we need to focus on low-educated younger and older workers. Indeed, Clemens et al. (2020) demonstrate the need to focus on less-educated workers in minimum wage research in the US context.



To help depict the composition of minimum-wage workers, Appendix Tables C1 and C2 tabulate the industry and occupation distributions among minimum-wage workers as of 2017. A large fraction of minimum-wage workers worked in the manufacturing sector (23%), wholesale and retail trade (17%), and the hotel and restaurant industry (14%). In terms of occupation, a large fraction of minimum-wage workers worked as sales (35%), service (28%), and manufacturing process (25%) workers.

## 5 Analysis based on the Labor Force Survey

### 5.1 Econometric model

We have seen that minimum-wage hikes raise the wages of low-wage workers and that low-wage workers are concentrated among less educated and younger and older workers. We now ask whether these wage increases are associated with a decrease in their employment. Since the number of workers who are affected by minimum-wage hikes is limited, we focus on the employment of less-educated workers, namely those with a high-school education or less. Note that the LFS records the educational background of all individuals, regardless of employment status, different from the BSWS.

The data we use are from the LFS, 2007 to 2016. Figure 6 shows the change in the natural log of the minimum wage between 2007 and 2016 on the horizontal axis and the change in the employment rate of males and females by age groups 19-24, 25-59, and 60-64 in the same period on the vertical axis. For young males, the increase in the minimum wage is associated with a decrease in employment; the negative association is particularly notable in two large prefectures that experienced a significant increase in the minimum wage, namely Tokyo and Kanagawa. For prime-age and older men, we find a slight negative association. In contrast, for women, an increase in the minimum wage is positively associated with a change in the employment of those who were young and prime-age. The association of minimum-wage change and employment rate change between 2007 and 2016, however, does

not imply that the minimum wage has a causal on employment, because of potential policy endogeneity.

We now lay out the instrumental variable estimation method to attack the policy endogeneity issue exploiting the introduction of the indexation of the minimum wage to the local cost of living. As explained before, a part of the minimum-wage hike after the 2007 revision of the Minimum Wage Act was motivated to increase the earnings of minimum-wage workers so that earnings could catch up with the welfare benefit amount of a single-person household. At the revision of the Act, the government gave a five-year grace period for the earnings of full-time minimum wage workers to catch up with the amount of welfare benefit. We demonstrated that the gap between the welfare benefit and minimum-wage earnings calculated by the Ministry of Health, Labor and Welfare in 2006 indeed explains the level of the minimum wage after 2007. In the estimation, we need to take care of the fact that the trends of employment rates were systematically correlated with the gap between the welfare benefit and minimum wage earnings in 2006, as reported in Table 1.

We set up and estimate the following model by the two-stage least squares:

$$Y_{ijt} = \beta \ln MW_{jt} + X_{ijt}\gamma + \iota_j + \tau_t + \zeta_j \cdot Year + u_{ijt}, \quad (3)$$

$$\ln MW_{jt} = \sum_{y=2002}^{2016} \delta_y \ln(WB/MWE)_{j2006} \cdot 1(Year = y) + X_{ijt}\theta + \nu_j + \mu_t + \xi_j \cdot Year + v_{ijt}, \quad (4)$$

where  $Y_{ijt}$  is labor-market outcome of individual  $i$  living in prefecture  $j$  in year-month  $t$ ,  $MW_{jt}$  is the minimum wage of prefecture  $j$  in year-month  $t$ ,  $WB$  is the monthly welfare benefit amount of a single-headed household,  $MWE$  is the monthly earnings of minimum-wage workers, and thus  $\ln(WB/MWE)_{j2006}$  is the log point difference between the welfare benefit and MW earnings in prefecture  $j$  in 2006. When the welfare benefit is lower than the earnings of MW workers  $(WB/MWE)_{j2006}$  is defined as 1, thus  $\ln(WB/MWE)_{j2006} = 0$ . The vector  $X_{ijt}$  includes a set of dummy variables indicating each age; the population

shares of males 19-24, 25-59, 60-64 and females 19-24, 25-59, and 60-64; and the prime-age unemployment rate of college graduates. The variables  $\iota_j$  and  $\nu_j$  are prefecture fixed effects and  $\tau_t$  and  $\mu_t$  are year $\times$ month fixed effects;  $\zeta_j$  and  $\xi_j$  are prefecture-specific linear time trends.

The gap between the amount of welfare benefit and the earnings of minimum-wage workers,  $\ln(WB/MWE)_{j2006}$ , motivates central and local minimum-wage commissions to increase the minimum wage in prefecture  $j$ , particularly during the grace period between 2008 and 2012. To allow for the differential impact of the gap in 2006 on the minimum wage, we allow for different coefficients between 2002 and 2016. We would expect stable coefficients in the pre-period, between 2002 and 2007, an increase in coefficients between 2008 and 2012, and stable coefficients in 2013 and afterward. We impose restrictions  $\delta_{2002} = \delta_{2007} = 0$  to identify the prefecture-specific linear time trends  $\xi_j$ , as articulated by Borusyak and Jaravel (2017); thus, the prefecture-specific linear trend is estimated using the pre-treatment period. Borusyak and Jaravel (2017) show that two time periods should be set to zero to identify the location-specific time trends, and we choose  $\delta_{2002} = \delta_{2007} = 0$  so that the longest time span is used to identify the trends. Allowing for heterogeneous pre-trends across prefectures is essential, given that the trend of the employment rate was systematically correlated with the gap in 2006, as discussed in Section 2.

This instrumental variable estimation allows for policy endogeneity in the form of a correlation between  $u_{ijt}$  and  $v_{ijt}$  that would arise if minimum-wage commissions consider local labor-market conditions in their determination of minimum wages. The identification of the coefficients, however, requires that the error term of the structural equation  $u_{ijt}$  and the gap in 2006,  $\ln(WB/MWE)_{j2006}$ , not be correlated, conditional on prefecture and time fixed effects and the prefecture-specific linear time trend. As explained in Section 2, the level of the welfare benefit amount is determined by the region's cost of living, and the gap between the welfare benefit amount and minimum-wage earnings is less likely to be correlated with subsequent temporary labor-market shocks, conditional on prefecture and year-month

fixed effects and the prefecture-specific linear time trend. A caveat is that the instrumental variable estimation would estimate the impact of minimum wages on labor-market outcomes during the period between 2008 and 2012, because the variation of the minimum wage used is generated for the purpose of filling the gap between the welfare benefit and minimum-wage earnings.

We estimate the model separately by gender and age group (19-24, 25-59, 60-64) to allow for different fixed effects and prefecture-specific time trends, because both the baseline labor-market outcomes and the effect of the minimum wage on outcomes presumably differ across groups. The sample period includes the period when the Act on the Employment of Elderly Persons, which promoted the employment of older people between the ages of 60 and 64, was revised (Kondo and Shigeoka, 2017). The impact of this Act is presumably absorbed by time fixed effects, because it was a national policy without regional variation.

## 5.2 The first stage

We first report the estimation results of the first-stage equation, Equation (4). Figure 7 reports the estimated coefficients,  $\gamma_y$ , and their 95% confidence intervals. The coefficients had hovered around 0 by 2007 and started to creep up from 2008 to 2013, reaching 0.6; they then hovered around 0.6.<sup>4</sup> This result is consistent with the notion that minimum wage councils had increased regional minimum wages to fill the gap between WB and MWE in 2006 during the period between 2008 and 2013. A reason why the difference of the estimated coefficients before and after the grace period is about 0.6, instead of 1.0, is that a significant part of the initial gap was resolved by uniform percentage increases in regional minimum wages that are captured by the year-month fixed effects. F-statistics for the null hypothesis that all the coefficients for the interaction terms between the gap in 2006 and year dummy variables between 2003 and 2006 equal zero is 1.60. The F-statistic for the null hypothesis that all the coefficients for the interaction terms between the gap in 2006 and year dummy

---

<sup>4</sup>The estimation results are unchanged when the prefecture-specific linear time trend and the restriction  $\delta_{2002} = 0$  are dropped.

variables between 2008 and 2016 equal zero is 203.40, however, and thus we do not face the weak instrumental variable problem.

### 5.3 Employment

Next, we report the estimation results of the following reduced-form equation:

$$Emp_{ijt} = \sum_{y=2002}^{2016} \theta_y^E \ln(WB/MWE)_{j2006} \cdot 1(Year = y) + X_{ijt} \pi^E + \omega_j^E + \psi_t^E + \lambda_j^E \cdot Year + e_{ijt}^E, \quad (5)$$

where  $Emp_{ijt}$  is the dummy variable indicating employment status;  $\ln(WB/MWE)_{j2006}$  is the gap between the welfare benefit and the monthly earnings of minimum-wage workers as of 2006; and the vector  $X_{ijt}$  includes the set of age dummy variables, the fraction of each age and sex group in the population, and the unemployment rate of college graduates. As mentioned before, when the welfare benefit is lower than the earnings of minimum-wage workers,  $\ln(WB/MWE)_{j2006} = 0$ . To identify the prefecture-specific linear time trend  $\lambda_j$ , we impose the assumptions that  $\theta_{2002} = \theta_{2007} = 0$ . Figure 8 reports the estimated  $\theta_y$  and its 95% confidence intervals. The gap between the welfare benefit and minimum-wage earnings as of 2006 is negatively associated with the subsequent employment rate among men in general, and it is statistically significant among those between the ages of 19 and 24. In contrast, among all age groups of women, the gap in 2006 and subsequent employment are not systematically correlated. This result implies that the minimum-wage hike induced by the initial gap between the welfare benefit and minimum-wage earnings reduced the employment of young men between 19 and 24 years old.

Table 3 Panel A reports the OLS and IV estimates for men and women by age groups. The OLS estimate for men ages 19-24 is -0.78, where the average employment rate of this group is 0.80; thus, the implied elasticity is -0.98. The IV estimate is -0.93, implying the elasticity -1.2. Both OLS and IV estimates are precisely estimated and statistically significant. These negative estimates indicate that minimum-wage hikes significantly reduce the employment

of high-school-graduate youth, presumably the least-skilled group.

We need an explanation for this large negative impact of minimum wage on employment. As a baseline, Okudaira et al. (2019) reported an estimated elasticity around -0.5 among all workers based on OLS, using the minimum-wage hikes after the 2007 revision for identification. First, our estimated elasticity based on OLS estimate, -0.98, is larger than the baseline estimate, but the difference is not odd, given that the estimate was obtained for high-school graduates between 19 and 24 years old, a group of low-skilled workers. Second, the larger negative impact of the minimum wage on employment based on the IV estimate than the OLS estimate is consistent with policy endogeneity: When the local economy booms, the government imposes a minimum-wage hike, and thus the OLS estimate is upward biased. Third, our IV estimator exploits the variation of the minimum wage induced by the introduction of indexation to the local cost of living. Since the government aimed to eliminate the gap between the minimum wage and the local cost of living in the five-year period, employers foresaw the future increase of the minimum wage in 2007. Employers could have adjusted their capital investment with a long-term perspective, and that may well make the estimate larger than the usual estimate. Indeed, Brummund and Strain (2020) report that the disemployment effect of the minimum-wage hike in a state that indexes its minimum wages to inflation is around 3 times larger than the disemployment effect in a state without indexation. They argue that their finding is due to employers' forward-looking capital investment behaviors. Compared with the indexation to the inflation rate, Japan's situation makes the future increase in the minimum wage even more foreseeable, because the government announced its intent to eliminate the gap between the minimum wage and the welfare benefit in 5 years from 2007, and the gap was public information as of 2007.

For prime-age men between 25 and 59 years old, neither the OLS estimate nor the IV estimate is statistically significant. The OLS and IV estimates for those who are ages 60-64 are negative but imprecisely estimated. These results are consistent with the reduced-form estimates reported in Figure 8. We find some suggestive evidence that minimum-wage hikes

reduced the employment of older men, but the estimate is not precise enough to conclude anything definitive.

For women, minimum-wage hikes did not affect the employment of any age group in a statistically significant way. The absence of an impact of minimum wage on women's employment rate across all age groups is consistent with the findings from Figure 8. In sum, we cannot conclude anything definitive about the effect of minimum-wage hikes on employment among women.

Overall, we find that the minimum wage reduces employment among less-educated men between 19 and 24 years old. The estimated elasticity based on the IV estimate is -1.2, which is larger than other estimates in the literature. We argue, however, that the upward bias of the OLS estimate due to policy endogeneity and the predictable increase of the minimum wage in our context makes our estimate larger than the previous estimates. We find no precise estimates, however, of the impact of minimum-wage hikes on other demographic groups.

## 5.4 Labor-force participation

We next examine the impact of the minimum wage on labor-force participation. A higher minimum wage could reduce employment, but it could simultaneously encourage labor-force participation (LFP) because of high offered wages under search friction in the labor market. At the same time, however, a high unemployment rate potentially induced by minimum-wage hikes may discourage LFP. Thus, the impact of a minimum-wage hike on LFP cannot be signed *a priori*. To analyze the impact of the minimum wage on LFP, we estimate the following reduced-form equation:

$$LFP_{ijt} = \sum_{y=2002}^{2016} \theta_y^L \ln(WB/MWE)_{j2006} \cdot 1(Year = y) + X_{ijt} \pi^L + \omega_j^L + \psi_t^L + \lambda_j^L \cdot Year + e_{ijt}^L, \quad (6)$$

where  $LFP_{ijt}$  is the dummy variable indicating LFP, including being unemployed. Other variables are the same as in the employment equation, and the same identification assumption is imposed.

Figure 9 shows the estimated  $\theta_y$  in the above equation. We find negative impacts of the initial gap on LFP among younger and older men, though these are imprecisely estimated. For other demographic groups, we do not find significant impacts. Table 3 Panel B tabulates both OLS and IV estimates by demographic groups. Focusing on IV estimates, the estimated negative impact on LFP attenuates from the estimated negative impact on employment for younger and older men. Due to the decrease in the negative impact, the estimated impact becomes statistically insignificant for younger men between 19 and 24 years old. For example, for younger men, the IV estimate for employment is -0.93, but the IV estimate for LFP is -0.56. The smaller negative impact implies that some young men are discouraged from participating in the labor force because of deteriorated job prospects due to the minimum-wage hike. While not precisely estimated and only suggestive, the same discussion may apply to older men. As we would expect from the reduced-form estimates, we do not find that the minimum wage has a significant impact on LFP among women.

## 5.5 Hours worked

The analysis heretofore has focused on the effect of the minimum wage on the extensive margin of employment status. The LFS asks for the hours worked in the last week of the previous month for those who were in employment. Using this variable, we estimate the impact of the minimum wage on hours worked, conditional on being employed, to shed light on the intensive margin of the potential adjustment. The estimated model is:

$$\ln(hour)_{ijt} = \sum_{y=2002}^{2016} \theta_y^H \ln(WB/MWE)_{j2006} \cdot 1(Year = y) + X_{ijt} \pi^H + \omega_j^H + \psi_t^H + \lambda_j^H \cdot Year + e_{ijt}^H, \quad (7)$$



where  $\ln(hours)_{ijt}$  is the natural logarithm of hours worked in the last week of the previous month. Other variables are the same as those in the employment equation, and the same identification assumption is imposed.

Figure 10 reports the estimated  $\theta_y$  of the reduced-form model. The estimates show that the initial gap does not systematically affect the weekly hours worked for all demographic groups and that most of the estimated coefficients are statistically insignificant. Table 3 Panel C reports the OLS and IV regression results of the natural logarithm of hours worked based on the same specification as before, using high-school graduate (or less) men and women as the analysis sample. OLS estimates indicate that the minimum-wage hike reduces the hours worked of younger and older men and women. Consistent with the reduced-form results, however, the IV estimates show that the minimum-wage hike does not affect the hours worked of any demographic group except for 25-59 year old males. For 25-59 year old males, a 103% increase in the minimum wage increases hours worked by 1.43%, which is quantitatively limited. Considering the policy endogeneity of minimum-wage hikes, it is fair to conclude that minimum-wage hikes do not affect the hours worked. Thus, minimum-wage hikes do not affect the intensive margin of employment.

## 5.6 Event study method

Recent studies on the minimum wage, such as Meer and West (2016) and Cengiz et al. (2019), adopt an event study approach that includes lags and leads of  $\ln MW_{jt}$  to validate the common trend assumption. This approach works well when the minimum wages in some regions increase significantly at different times, as in the case of the US state minimum wage, because such a discrete change in the minimum wage creates a significant variation of minimum wages across time in the same region. In contrast, as explained in the previous section, the 2007 revision of the Minimum Wage Act sets a background for the trend heterogeneity of minimum-wage hikes across prefectures and creates a strong serial correlation of minimum-wage hikes. To give a concrete image, suppose that we observe a decline of

employment in a particular region where the minimum wage continuously rises; in this case, attributing an observation to current, past, or future minimum-wage increases is fundamentally difficult. Thus our study does not adopt an event study approach; instead, we address the policy endogeneity issue by estimating the model with an instrumental variable method that exploits the gap between the full-time monthly earnings of minimum wage workers and the amount of public assistance in 2006 as the instrumental variable in this section.

## 6 Impacts on transitions of employment status

Most existing studies on minimum wage have analyzed the effect of minimum-wage hikes on the level of employment, as in this study so far, yet relatively few studies have examined the impact of minimum wage on job turnover. Portugal and Cardoso (2006), arguably the first influential study to examine the impact of minimum-wage hikes on job flow, used Portuguese data and found that higher minimum wages reduce labor-market turnover. Gittings and Schmutte (2016) found a similar pattern using US data. Also using US data, Dube et al. (2016) found that a higher minimum wage reduces job flow but does not affect the level of employment. To explain their findings, they set up a search model allowing for on-the-job search. In a version of the theoretical model, they showed that having a higher minimum wage makes the distribution of outside offers less attractive and reduces job to job transitions. Brochu and Green (2019) also set up a search theoretic model, in which employers learn their match quality with workers after the probation period. In their model, having a higher minimum wage increases the cost of employment during the probation period and makes employers reluctant to fire existing workers. Thus, they predicted that having a higher minimum wage reduces the employment to unemployment transition, and using Canadian job flow data, they found consistent evidence of this phenomenon.

In light of the development of literature regarding the minimum-wage effect on job flow, we now examine the effect of the minimum wage on the transition between non-employment and employment over a one-year period, using short panel data constructed by matching the

second- and fourth-month surveys of the LFS, as explained in Appendix B. Here we note a caveat that our matched panel data are not as rich as the job flow data used in previous studies, because we can measure the employment status only in  $t - 1$  and  $t$  and cannot distinguish between those who stay on a job and those who change jobs in between. Thus the analysis here is not free from time-aggregation bias (Shimer, 2005; Nordmeier, 2014).

We examine the level of the minimum wage faced by an individual between year  $t - 1$  and  $t$  on the employment status in year  $t$ , conditional on the employment status in year  $t - 1$ . Since the minimum wage is revised every year, the effective minimum wages an individual faces between  $t - 1$  and  $t$  are  $MW_{t-1}$  and  $MW_t$ . Given that LFS is a monthly survey and the minimum wage is generally revised in October, the weight given to  $MW_{t-1}$  or  $MW_t$  should depend on the month of the survey.

For example, individuals in October surveys that ask about their employment status for the last week of September face  $MW_{t-1}$  for 12 months. Similarly, individuals in November surveys face  $MW_{t-1}$  for 11 months and  $MW_t$  for 1 month. In this fashion, we define the weighted average of minimum wages faced by an individual between year  $t - 1$  and  $t$  as  $\widetilde{MW}_{jt}$  for the purpose of the panel transition analysis. We examine if this effective minimum wage  $\widetilde{MW}_{jt}$  affects the transition between non-employment and employment in the duration between the previous year and the current year by estimating the following linear probability model:

$$E_{ijt} = \gamma_0 + \gamma_1 \ln \widetilde{MW}_{jt} + X_{ijt}\gamma_2 + \theta_j + \tau_t + u_{ijt}, \quad (8)$$

conditional on  $E_{ijt-1} = \{0, 1\}$ .

The dependent variable  $E_{ijt}$  is the dummy variable indicating if individual  $i$  in prefecture  $j$  is employed in year  $t$ . The vector  $X_{ijt}$  includes the set of age dummy variables, the fraction of each age and sex group in the population, and the unemployment rate of college graduates. We divide the sample by the employment status of the previous year, denoted

as  $E_{ijt-1}$ , to allow for the asymmetric effect of the minimum wage on the transitions from non-employment to employment or employment to non-employment. Because this is fundamentally a transition analysis, we did not include the prefecture-specific time-trend term,  $\xi_j \cdot Year$ . Instead, the prefecture fixed effects,  $\theta_j$ , capture the prefecture-level unobserved heterogeneity in the transition. As in the level equation estimation, we are concerned with the endogeneity of  $\widetilde{MW}_{jt}$ , because the unobserved shock to the labor market absorbed in  $u_{ijt}$  may determine the MW. To address this potential endogeneity, we use the interaction terms of the gap between the welfare benefit and minimum-wage earnings in prefecture  $j$  in 2006,  $\ln(WB/MWE)_{j2006}$ , and year dummy variables as the instrumental variable.

The Panel A of Table 4 tabulates the estimation results for men by employment status in the previous year and age groups. The first three columns report the regression results of current employment status on the effective minimum wage, conditional on being not employed in the previous year. All the estimated coefficients of OLS and IV are negative, suggesting that the higher minimum wage reduces the transition probability from non-employed to employed, but the estimate is not statistically significant for youth. Among prime-age men, a 10% increase of the effective minimum wage reduces the transition probability by about 3.3% according to the IV estimate, whereas the average transition probability is 28%. The negative impact is not statistically significant for older workers, according to the IV estimate. In contrast, both the OLS and IV estimates reported in columns 4 to 6 in Table 4 show that a higher minimum wage does not affect the probability of staying employed in statistically significant ways among those who were employed in the previous year.

Panel B of Table 4 reports the estimation results of the transition analysis for women. The IV estimates of Column 1 show that the minimum-wage hike increases the transition probability from non-employment to employment in a statistically significant way among young women. This result contrasts with the results for young men, for whom the minimum-wage hike reduces the transition from non-employment to employment. The minimum-wage hike does not affect the transition probability from non-employment to employment among

prime-age and older people. In contrast, a minimum-wage hike increases  $P(E_t|E_{t-1})$  for prime-age women, by 0.08 in a statistically significant way, according to the IV estimate. A 10% increase in the minimum wage increases the probability of staying employed by 0.8 percentage point relative to its mean 92%. In contrast, an increase of the minimum wage reduces  $P(E_t|E_{t-1})$  significantly among older women. A 10 percentage-point increase reduces the current employment probability by 1.9 percentage points according to the IV estimate.

Overall, the transition analysis based on short-panel data implies that a minimum-wage hike reduces the transition between non-employment status and employment status among prime-age men and women. Thus, behind the insignificant impact of a minimum-wage hike on the stock of employment among prime age men and women, it reduces the job flow among them.

## 7 Conclusion

This paper examined the impact of minimum wages on the labor-market outcomes of various demographic groups, exploiting the heterogeneous increase in regional minimum wages in Japan from 2007 that essentially required minimum-wage commissions to index local minimum wages to the local cost of living.

An analysis of payroll records showed that the minimum wage indeed increased the probability that a worker worked near the minimum wage, suggesting that minimum wages formed the wage floor of low-wage workers in Japan between 2002 and 2017. The estimated impacts of minimum wages on labor-market outcomes were heterogeneous across demographic groups. The increase of the minimum wage reduced the employment of young, less-educated men (19 - 24 years old), with an elasticity around -1.2. In contrast, minimum-wage hikes did not affect the employment of other demographic groups in a statistically significant way. An increase of the minimum wage did not significantly affect the hours worked of any of the demographic groups that we examined.

The estimated elasticity of the minimum wage on employment among less-educated young

men, -1.2, is larger than the US estimates for teenagers in the literature, which ranges roughly from 0 to -0.3. This estimate, however, is not far from the estimate, -0.5, using all workers in the manufacturing sector in Japan by Okudaira et al. (2019). Furthermore, even in the US context, Baskaya and Rubinstein (2012) report that the short-run implicit elasticity of teenage employment to the minimum wage ranges between -0.75 and -1.20, using the plausibly exogenous minimum-wage increase for identification. Clemens and Wither (2019) also found the implied elasticity of low-wage workers' employment to the minimum wage to be -1, using the federal minimum-wage hike around 2008 in the middle of the Great Recession. Both studies suggest that using the minimum-wage hike independent of local labor-market conditions for identification tends to render significant negative estimates. Furthermore, Brummund and Strain (2020) reports that the disemployment effect of the minimum wage is three times larger when the state minimum wage is indexed to the cost of living than when it is not indexed. Thus, the relatively large estimate of this study is attributed to the exogenous variation of the local minimum wage caused by the introduction of the indexation of the minimum wage in Japan induced by the 2007 revision of the Minimum Wage Act. This result suggests the importance of seeking the exogeneous source of variation of local minimum wages in the research design to exploit the heterogeneous timing of minimum-wage hikes across geographic areas to address the issue of policy endogeneity of minimum-wage hikes.

Overall, the negative impacts of minimum-wage hikes on employment are found to be limited to less-educated young men. Thus, we do not claim that minimum-wage hikes have a detrimental impact on overall employment. Instead, we point out that minimum-wage hikes increase the wage of low-wage workers at the cost of the employment of less-educated young men. Policymakers should pay particular attention to the negative impacts within this demographic group when designing minimum-wage policies, because research has indicated that the employment status of youth has persistent impacts on subsequent labor-market outcomes, and the impact is particularly large in Japan (Genda et al., 2010).

## References

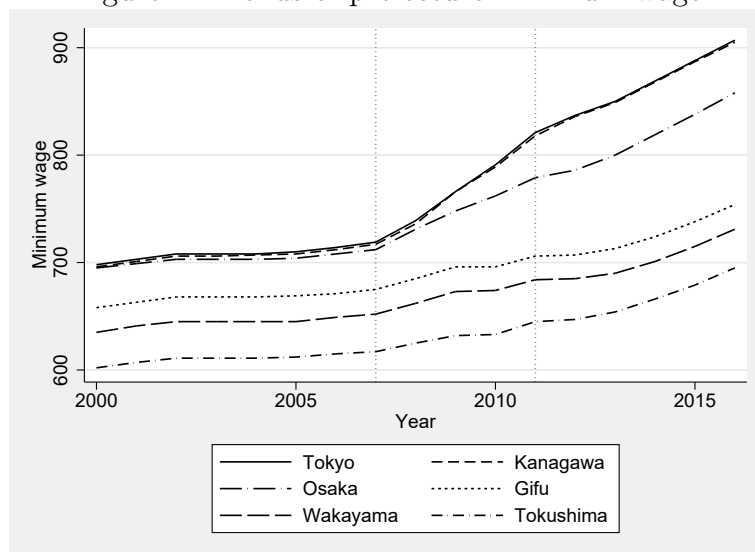
- Akesaka, Mika, Yukiko Ito, and Fumio Ohtake**, “Impact of Change in Minimum Wage on Employment and Poverty in Japan,” *SSRN Electronic Journal*, 2018.
- Allegretto, Sylvia A, Arindrajit Dube, and Michael Reich**, “Do Minimum Wages Really Reduce Teen Employment?,” *Industrial Relations*, 2011, 50 (2), 205–240.
- Aoyagi, Chie, Giovanni Ganelli, and Nour Tawk**, “Minimum Wage as a Wage Policy Tool in Japan,” *IMF Working Papers*, 2017, 16 (232), 1.
- Ariga, Kenn**, “Labor Market of Fresh High School Graduates (in Japanese),” in Fumio Hayashi, ed., *Causes and Institutions of Economic Stagnation*, 2007.
- Baskaya, Soner Yusuf and Yona Rubinstein**, “Using Federal Minimum Wages to Identify the Impact of Minimum Wages on Employment and Earnings across the U.S. States,” 2012. mimeograph.
- Borusyak, Kirill and Xavier Jaravel**, “Revisiting Event Study Designs, with an Application to the Estimation of the Marginal Propensity to Consume,” 2017.
- Brochu, Pierre and David A Green**, “The impact of minimum wages on labor market transitions,” *The Economic Journal*, 2019, 123 (573), 1203–1235.
- Brummund, Peter and Michael R Strain**, “Does Employment Respond Differently to Minimum Wage Increases in the Presence of Inflation Indexing?,” *Journal of Human Resources*, 2020, 55 (3), 999–1024.
- Card, David**, “Using Regional Variation in Wages to Measure the Effects of the Federal Minimum Wage,” *Industrial and Labor Relations Review*, 1992, 46 (1), 22–37.
- and **Alan B. Krueger**, *Myth and Measurement: The New Economics of the Minimum Wage* 1995.
- Cengiz, Doruk, Arindrajit Dube, Attila Lindner, and Ben Zipperer**, “The Effect of Minimum Wages on Low-Wage Jobs,” *The Quarterly Journal of Economics*, 2019, 134 (3), 1405–1454.
- Clemens, Jeffrey**, “Making Sense of the Minimum Wage: A Roadmap for Navigating Recent Research,” Technical Report 867, Cato Institute Policy Analysis 2019.
- and **Michael Wither**, “The minimum wage and the Great Recession: Evidence of effects on the employment and income trajectories of low-skilled workers,” *Journal of Public Economics*, 2019, 170, 53–67.
- , **Lisa B Kahn, and Jonathan Meer**, “Dropouts Need Not Apply? The Minimum Wage and Skill Upgrading,” Working Paper 27090, National Bureau of Economic Research May 2020.

- Dube, Arindrajit, T. William Lester, and Michael Reich**, “Minimum Wage Effects Across State Borders: Estimates Using Contiguous Counties,” *Review of Economics and Statistics*, 2010, *92* (4), 945–964.
- , —, and —, “Minimum Wage Shocks, Employment Flows, and Labor Market Frictions,” *Journal of Labor Economics*, 2016, *34* (3), 663–704.
- Genda, Yuji, Ayako Kondo, and Souichi Ohta**, “Long-Term Effects of a Recession at Labor Market Entry in Japan and the United States,” *Journal of Human Resources*, 2010, *45* (1), 157–196.
- Gittings, R. Kaj and Ian M. Schmutte**, “Getting handcuffs on an octopus: Minimum wages, employment, and turnover,” *Industrial and Labor Relations Review*, 2016, *69* (5), 1133–1170.
- Higuchi, Yoshio**, “The dynamics of poverty and the promotion of transition from non-regular to regular employment in Japan: Economic effects of minimum wage revision and job training support,” *Japanese Economic Review*, 2013, *64* (2), 147–200.
- Kambayashi, Ryo, Daiji Kawaguchi, and Ken Yamada**, “Minimum wage in a deflationary economy: The Japanese experience, 1994-2003,” *Labour Economics*, 2013, *24*, 264–276.
- Kawaguchi, Daiji and Ken Yamada**, “The impact of the minimum wage on female employment in Japan,” *Contemporary Economic Policy*, 2007, *25* (1), 107–118.
- and **Yuko Mori**, “Is minimum wage an effective anti-poverty policy in Japan?,” *Pacific Economic Review*, 2009, *14* (4), 531–554.
- Kondo, Ayako and Hitoshi Shigeoka**, “The Effectiveness of Demand-Side Government Intervention to Promote Elderly Employment: Evidence from Japan,” *Industrial and Labor Relations Review*, 2017, *70* (4), 1008–1036.
- Meer, Jonathan**, “Recent Research on the Minimum Wage: Implications for Missouri,” *Missouri Policy Journal*, 2018, *7*, 1–11.
- and **Jeremy West**, “Effects of the Minimum Wage on Employment Dynamics,” *Journal of Human Resources*, 2016, *51* (2), 500–522.
- Nakakubo, Hiroya**, “A New Departure in the Japanese Minimum Wage Legislation,” *Japan Labor Review*, 2009, *62* (2), 22–38.
- Neumark, David and William L Wascher**, *Minimum Wages*, MIT Press, 2008.
- , **J. M. Ian Salas, and William Wascher**, “Revisiting the Minimum Wage—Employment Debate: Throwing Out the Baby with the Bathwater?,” *Industrial and Labor Relations Review*, 2015, *67* (Supplement), 608–648.
- Nordmeier, Daniela**, “Worker flows in Germany: Inspecting the time aggregation bias,” *Labour Economics*, 2014, *28*, 70 – 83.



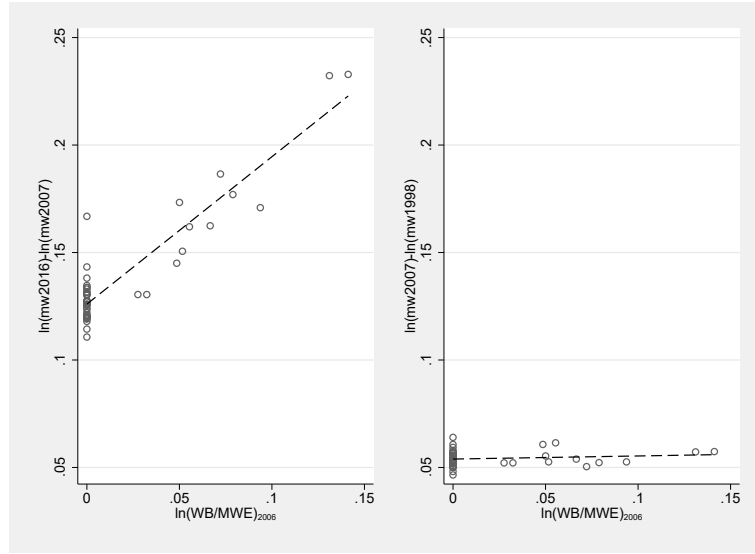
- Okudaira, Hiroko, Miho Takizawa, and Kenta Yamanouchi**, “Minimum Wage Effects Across Heterogeneous Markets,” *Labour Economics*, 2019, 59, 110–122.
- Portugal, Pedro and Ana Rute Cardoso**, “Disentangling the minimum wage puzzle: An analysis of worker accessions and separations,” *Journal of the European Economic Association*, 2006, 4 (5), 988–1013.
- Shimer, R.**, “The Cyclicalities of Hires, Separations, and Job-to-Job Transitions,” *Federal Reserve Bank of St. Louis Review*, July 2005, 87, 493–507.
- Solon, Gary, Steven J. Haider, and Jeffrey M. Wooldridge**, “What Are We Weighting For?,” *Journal of Human Resources*, 2015, 50 (2), 301–316.
- Tachibanaki, Toshiaki and Kunio Urakawa**, *Poverty Study in Japan*, University of Tokyo Press, 2006.
- Tamada, Keiko**, “How is minimum wage determined? (in Japanese),” *Japanese Journal of Labor Studies*, 2009, 593, 16–28.
- Yugami, Kazufumi**, “Analysis of local labor markets using prefecture-level data - On the regional differences of unemployment and non-employment (in Japanese),” *Japanese Journal of Labor Studies*, 2005, 539, 4–16.

Figure 1: Trends of prefecture minimum wage



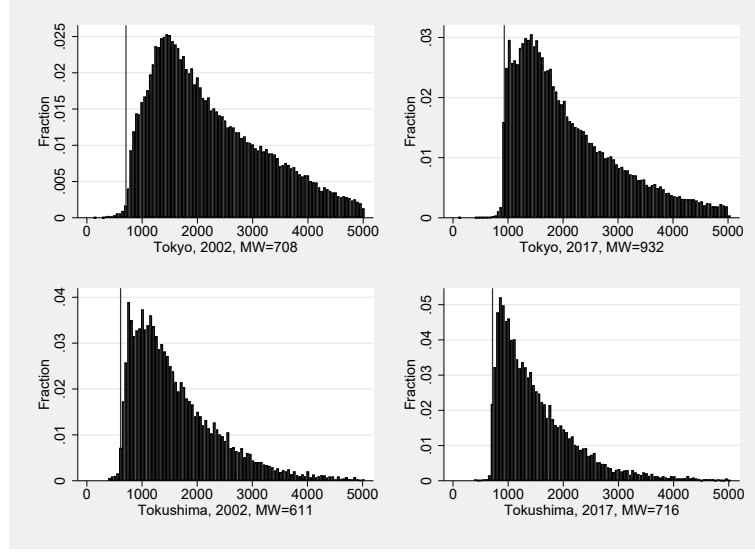
Note: The local minimum wage is taken from the Overview of Minimum Wage Determination (*Saitei Chingin Kettei Yoran*). Tokyo, Kanagawa, and Osaka are prefectures where the welfare benefit amount exceeded the monthly earnings of minimum wage workers as of 2006. Gifu, Wakayama, and Tokushima are prefectures where the reversal did not occur.

Figure 2: Gap between MW and welfare benefit in 2006 vs. MW growth



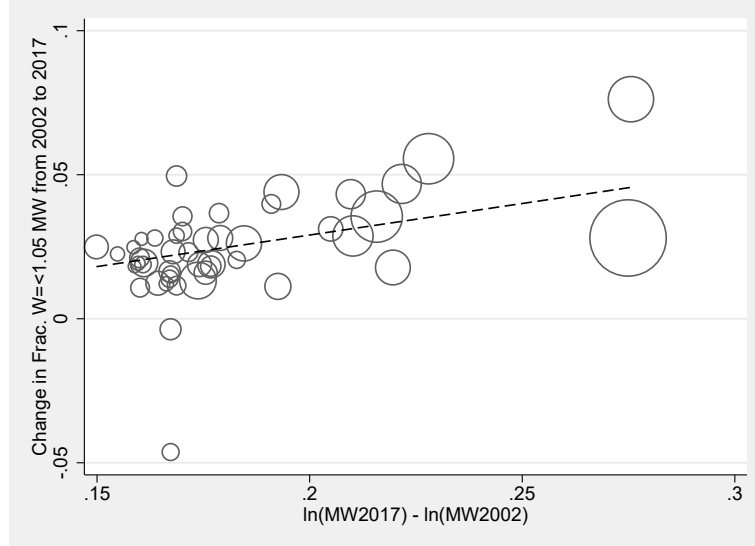
Note: Each dot corresponds to one of 47 prefectures. The horizontal axis is the natural log of the monthly welfare benefit divided by the monthly earnings of full-time minimum wage workers in 2006, as reported in the letter submitted to the Minister of Health, Labor and Welfare from the Central Minimum Wage Commission in 2008. The vertical axis of the left panel is the log point difference of the minimum wage between 2007 and 2017. The vertical axis of the right panel is the log point difference of the minimum wage between 1998 and 2007. Local minimum wages are taken from the Overview of Minimum Wage Determination (*Saitei Chingin Kettei Yoran*).

Figure 3: Distribution of hourly wages for all workers ages 19-64



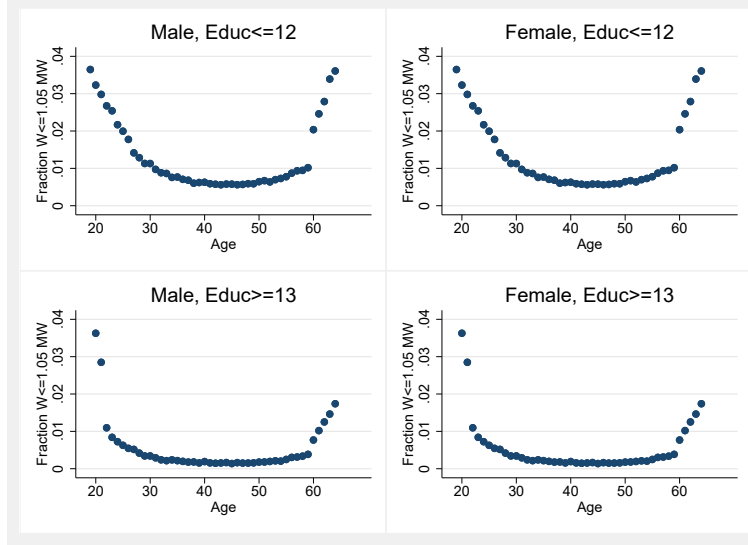
Note: Based on workers' survey of the Basic Survey of Wage Structure. Hourly wage is defined as (Contracted Monthly Salary - Commuter Allowance - Regular Attendance Allowance - Family Allowance)/Contracted Hour in June. The vertical line indicates the minimum wage in a specific prefecture in a specific year.

Figure 4: MW impact on the bottom end of the wage distribution



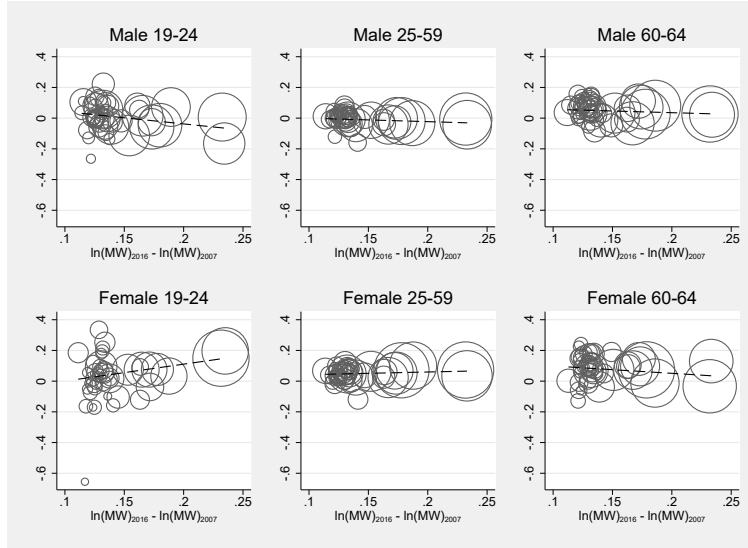
Note: Minimum wage workers are defined as the workers whose hourly wage is below  $1.05 \times \text{MW}$ . The change in the fraction of MW workers from 2002 to 2017 calculated based on Basic Survey of Wage Structure is on the vertical axis. The horizontal axis is the log point change in MW from 2002 to 2017. The size of the bubble corresponds to the amount of employment in each prefecture in 2002.

Figure 5: Fraction of workers with  $W \leq 1.05 \times MW$ , Ages 19-64



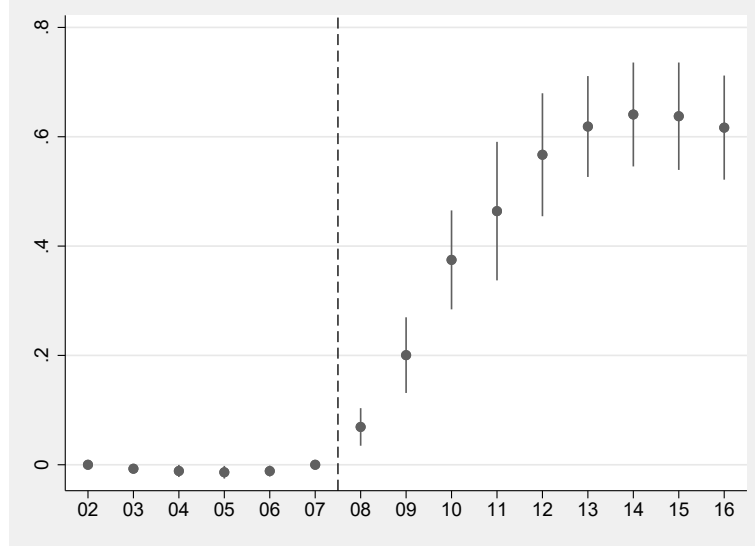
Note: Based on the Basic Survey of Wage Structure, 2002-2017 waves are all pooled. Minimum-wage workers are defined as the workers whose hourly wage is below  $1.05 \times MW$ . The sample is restricted to full-time workers, because educational background is not available for part-time workers.

Figure 6: Change in minimum wage 2007-2016 and change in employment rate 2007-2016



Note: The horizontal axis is the log point change in MW between 2007 and 2016. The vertical axis is the change in employment rate between 2007 and 2016, based on the Labor Force Survey. The size of the circle corresponds to the number of employments in each prefecture in 2007.

Figure 7: The gap between the welfare benefit and MW earnings in 2006 and MW

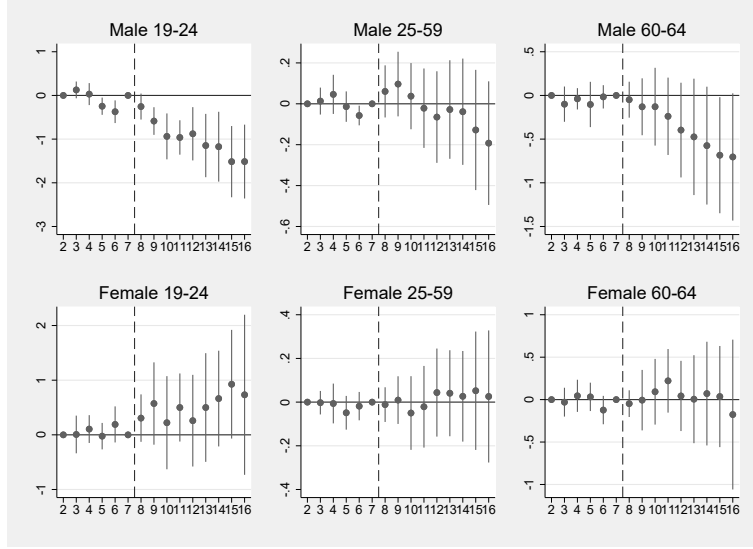


Regression coefficients and 95% confidence intervals of  $\hat{\delta}_y$  of the estimated model:

$$\ln MW_{jt} = \sum_{y=2002}^{2016} \delta_y \ln(WB/MWE)_{j2006} \cdot 1(Year = y) + X_{ijt}\zeta + \nu_j + \mu_t + \xi_j \cdot Year + v_{jt},$$

where  $(WB/MWE)_{j2006}$  is the ratio of welfare benefit and minimum-wage earnings in prefecture  $j$  in 2006. The model is estimated with the microdata of individuals from the Labor Force Survey. The vector  $X_{ijt}$  includes dummy variables for each age, the fraction of each demographic group (men 19-24, 25-59, 60-64 and women 19-24, 25-59, and 60-64) within the population, and the unemployment rate of college graduates of 25-59 years old. When the welfare benefit amount exceeds the minimum-wage earnings,  $(WB/MWE)_{j2006}$  is defined to be 1. The restrictions  $\delta_{2002} = \delta_{2007} = 0$  are imposed to identify the prefecture-specific linear time trends  $\xi_j$ . The 95% confidence intervals are calculated based on the standard errors robust against clustering within prefectures denoted by  $j$ .

Figure 8: The gap between the welfare benefit and minimum-wage earnings in 2006 and employment among the less educated ( $Educ \leq 12$ )

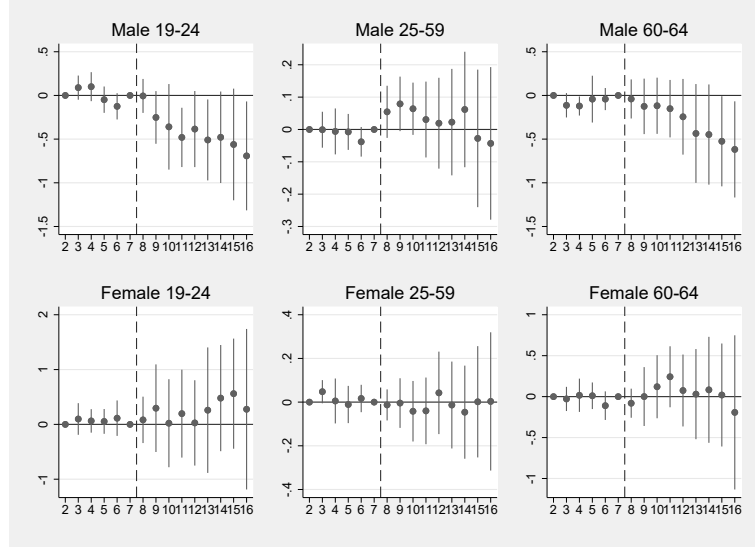


Note: Regression coefficients and 95% confidence intervals of  $\hat{\theta}_y^E$  of the estimated model:

$$Emp_{ijt} = \sum_{y=2002}^{2016} \theta_y^E \ln(WB/MWE)_{j2006} \cdot 1(Year = y) + X_{ijt}\pi^E + \omega_j^E + \psi_t^E + \lambda_j^E \cdot Year + e_{ijt}^E,$$

where  $(WB/MWE)_{j2006}$  is the ratio of the welfare benefit and minimum-wage earnings in prefecture  $j$  in 2006. The model is estimated with the microdata of individuals from the Labor Force Survey. The vector  $X_{ijt}$  includes dummy variables for each age, the fraction of each demographic group (men 19-24, 25-59, 60-64 and women 19-24, 25-59, and 60-64) within the population, and the unemployment rate of college graduates of 25-59 years old. When the welfare benefit amount exceeds the minimum-wage earnings,  $(WB/MWE)_{j2006}$  is defined to be 1. The restrictions  $\theta_{2002}^E = \theta_{2007}^E = 0$  are imposed to identify the prefecture-specific linear time trends  $\lambda_j^E$ . The 95% confidence intervals are calculated based on the standard errors robust against clustering within prefectures, denoted by  $j$ .

Figure 9: The gap between welfare benefits and minimum-wage earnings in 2006 and LFP among the less educated ( $Educ \leq 12$ )



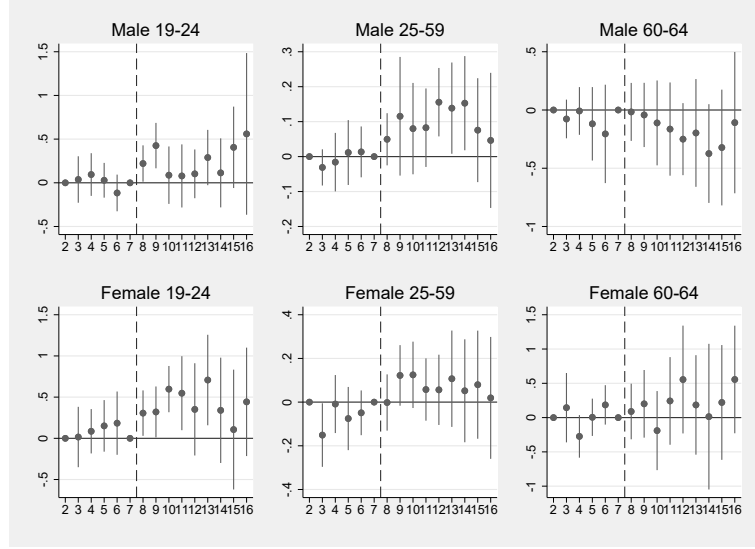
Note: Regression coefficients and 95% confidence intervals of  $\hat{\theta}_y^L$  of the estimated model:

$$LFP_{ijt} = \sum_{y=2002}^{2016} \theta_y^L \ln(WB/MWE)_{j2006} \cdot 1(Year = y) + X_{ijt}\pi^L + \omega_j^L + \psi_t^L + \lambda_j^L \cdot Year + e_{ijt}^L,$$

where  $(WB/MWE)_{j2006}$  is the ratio of the welfare benefit and minimum-wage earnings in prefecture  $j$  in 2006. The model is estimated with the microdata of individuals from the Labor Force Survey. The vector  $X_{ijt}$  includes dummy variables for each age, the fraction of each demographic group (men 19-24, 25-59, 60-64 and women 19-24, 25-59, and 60-64) within the population, and the unemployment rate of college graduates of 25-59 years old. When the welfare benefit amount exceeds the minimum-wage earnings,  $(WB/MWE)_{j2006}$  is defined to be 1. The restrictions  $\theta_{2002}^L = \theta_{2007}^L = 0$  are imposed to identify the prefecture-specific linear time trends  $\lambda_j^L$ . The 95% confidence intervals are calculated based on the standard errors robust against clustering within prefectures, denoted by  $j$ .



Figure 10: The gap between the welfare benefit and minimum-wage earnings in 2006 and ln hours worked among the less educated ( $Educ \leq 12$ )



Note: Regression coefficients and 95% confidence intervals of  $\hat{\theta}_y^H$  of the estimated model:

$$\ln(hour)_{ijt} = \sum_{y=2002}^{2016} \theta_y^H \ln(WB/MWE)_{j2006} \cdot 1(Year = y) + X_{ijt} \pi^H + \omega_j^H + \psi_t^H + \lambda_j^H \cdot Year + e_{ijt}^H,$$

where  $(WB/MWE)_{j2006}$  is the ratio of welfare benefit and MW earnings in prefecture  $j$  in 2006. The model is estimated with the microdata of individuals from the Labor Force Survey. The vector  $X_{ijt}$  includes dummy variables for each age, the fraction of each demographic group (men 19-24, 25-59, 60-64 and women 19-24, 25-59, and 60-64) within the population, and the unemployment rate of college graduates of 25-59 years old. When the welfare benefit amount exceeds the minimum-wage earnings,  $(WB/MWE)_{j2006}$  is defined to be 1. The restrictions  $\theta_{2002}^H = \theta_{2007}^H = 0$  are imposed to identify the prefecture-specific linear time trends  $\lambda_j^H$ . The 95% confidence intervals are calculated based on the standard errors robust against clustering within prefectures, denoted by  $j$ .

Table 1: Annual change of the employment rate between 2002 and 2007

	(1)	(2)	(3)	(4)	(5)	(6)
Sex	Male	Male	Male	Female	Female	Female
Age	19-24	25-59	60-64	19-24	25-59	60-64
$\ln(WB/MWE)_{j2006}$	0.10 (0.03)	-0.01 (0.01)	0.01 (0.02)	-0.20 (0.05)	-0.01 (0.01)	0.00 (0.02)
Observations	235	235	235	235	235	235

Note: Employment rate is calculated based on Labor Force Survey. The model is estimated by weighted least squares using the prefecture-level sum of sampling weight in 2002 as the weight. Prefecture-level clustering robust standard errors in parentheses. Year fixed effects are included.

Table 2: Regression of the wage bin indicator on  $\ln(MW)$ 

	(1)	(2)	(3)	(4)	(5)	(6)	(7)
$W_{ijt} \in$	(0, MW)	[MW, 1.05MW)	[1.05MW, 1.10MW)	[1.10MW, 1.15MW)	[1.15MW, 1.20MW)	[1.20MW, 1.25MW)	[1.25MW, 1.30MW]
$\ln(MW)_{jt}$	0.09 (0.03)	0.17 (0.09)	0.12 (0.04)	0.04 (0.01)	0.03 (0.02)	0.01 (0.02)	-0.03 (0.02)
Frequency	0.01	0.02	0.03	0.03	0.03	0.03	0.03

Note: Hourly wage is calculated based on the Basic Survey of Wage Structure. The bin indicator takes a value of 1 if the hourly wage falls in the interval. For example, the indicator of  $(0, MW)$  indicates the worker who received wages below the minimum wage. Prefecture-level clustering robust standard errors are in parentheses. Weighted least squares use sampling weights. Prefecture and year fixed effects are included. N=18,979,132

Table 3: Effect of MW on labor-market outcomes among high-school graduates or less

Demographic group	(1)	(2)	(3)	(4)	(5)	(6)
	M19-24	M25-59	M60-64	F19-24	F25-59	F60-64
Panel A: Employment						
OLS	-0.78 (0.32)	-0.06 (0.08)	-0.53 (0.31)	0.02 (0.38)	0.02 (0.12)	0.13 (0.25)
IV	-0.93 (0.43)	-0.08 (0.13)	-0.63 (0.39)	0.07 (0.41)	0.08 (0.16)	0.37 (0.37)
Mean	0.80	0.89	0.67	0.70	0.65	0.42
Observations	152484	1810572	403582	133423	1907371	482288
P-value of Hausman-Wu	0.77	0.34	0.66	0.74	0.27	0.58
Panel B: LFP						
OLS	-0.77 (0.23)	0.00 (0.07)	-0.24 (0.25)	-0.07 (0.38)	0.04 (0.11)	0.23 (0.25)
IV	-0.56 (0.32)	0.02 (0.08)	-0.46 (0.29)	0.09 (0.46)	0.02 (0.13)	0.47 (0.37)
Mean	0.91	0.95	0.74	0.79	0.69	0.44
Observations	152484	1810572	403582	133423	1907371	482288
P-value of Hausman-Wu	0.59	0.21	0.57	0.87	0.25	0.66
Panel C: $\ln(Hours)$						
OLS	-0.43 (0.30)	-0.16 (0.13)	-0.18 (0.22)	0.45 (0.27)	-0.11 (0.13)	0.07 (0.56)
IV	-0.06 (0.26)	0.14 (0.07)	-0.31 (0.30)	0.31 (0.31)	0.09 (0.16)	0.15 (0.53)
Mean of Hours	44.14	47.24	41.39	38.62	34.36	32.20
Observations	120857	1604541	268544	92613	1236848	201236
P-value of Hausman-Wu	0.59	0.21	0.57	0.87	0.25	0.66

Note: The analysis sample consists of individuals in the Labor Force Survey. The OLS and IV estimated coefficients for  $MW$  are reported. Prefecture-level clustering robust standard errors are in parentheses. Prefecture and year fixed effects and the prefecture-specific year trend are included. P-value of Hausman-Wu test is against the null hypothesis that  $MW$  is exogenous.

Table 4: Effect of effective MW on current employment among men by employment status of the previous year among high-school graduate or less

	(1)	(2)	(3)	(4)	(5)	(6)
	NE19-24	NE25-59	NE60-64	E19-24	E25-59	E60-64
Panel A: Men						
OLS	-0.53 (0.47)	-0.24 (0.10)	-0.41 (0.19)	-0.08 (0.16)	-0.03 (0.03)	-0.09 (0.10)
IV	-0.86 (0.65)	-0.33 (0.11)	-0.32 (0.27)	0.07 (0.20)	0.00 (0.02)	0.03 (0.12)
Mean	0.41	0.28	0.14	0.94	0.97	0.89
Observations	5785	42371	26294	20761	358100	66816
P-value for Hausman-Wu	0.256	0.184	0.401	0.288	0.194	0.394
Panel B: Women						
OLS	0.56 (0.40)	-0.08 (0.05)	-0.05 (0.08)	0.19 (0.24)	0.05 (0.03)	-0.24 (0.09)
IV	0.80 (0.35)	0.00 (0.08)	-0.01 (0.08)	0.09 (0.30)	0.08 (0.04)	-0.19 (0.10)
Mean	0.37	0.17	0.07	0.90	0.92	0.86
Observations	7129	144944	60516	16008	277031	50382
P-value for Hausman-Wu	0.151	0.184	0.407	0.240	0.193	0.368

Note: The analysis sample consists of individuals in the Labor Force Survey. The OLS and IV estimated coefficients for  $\ln \widetilde{MW}$  are reported.  $\ln \widetilde{MW}$  is the effective minimum wage between  $t - 1$  and  $t$ . Prefecture-level clustering robust standard errors are in parentheses. Prefecture and year fixed effects are included. P-value of Hausman-Wu test is against the null hypothesis that MW is exogenous.

## A Minimum-wage determination in Japan and the revision of the Minimum Wage Act in 2007

This section introduces the policy process of how regional minimum wages, set for each of the 47 prefectures, are determined. The Ministry of Health, Labor and Welfare assembles the Central Minimum Wage Council, consisting of the representatives of labor, management, and public welfare, based on the tripartite principle. The Council divides all 47 prefectures into four regional groups, based primarily on regional income level, and provides a recommendation for the amount of the hourly rate of the minimum-wage hike, called a “Criterion (*Meyasu*),” for each of the four regional groups, based primarily on the average annual wage growth of workers in establishments with less than 30 workers, captured by the Fact-finding Survey on Minimum Wages (*Saitei Chingin ni Kansuru Jittai Chosa*). The Central Minimum Wage Council generally starts in June and determines the Criterion by the end of July. Upon receiving its Criterion, the Regional Minimum Wage Council, assembled in each of the 47 prefectures based on the tripartite principle, decides the amount of the minimum-wage hike for that prefecture in August, and the new minimum wage comes into effect from October 1. This two-step process using the Criteria has taken place every year since 1978, and local minimum wages have increased every year, with just a few exceptions.

The partial revision of the Minimum Wage Act in 2007, which took effect on July 1, 2008, did not principally change the policy process, but the revision added a new requirement that must be considered when determining regional minimum wages. The new requirement is manifested in Article 9, Paragraph 3, which governs regional minimum wages: “When considering [the] living expenses [mentioned in the previous Paragraph of the Act], consistency with policies concerning public assistance benefits shall be considered, so that workers can lead a life with a minimum standard of health and culture” (authors’ translation). This provision aims to resolve the so-called reversal phenomenon (*gyakuten gensho*), which refers to the fact that the total amount of benefits one can receive while being on public assistance has come to exceed the monthly income one can earn when working full-time on minimum wages. The reversal occurred in 12 prefectures as of fiscal year 2006, according to a letter submitted to the Minister of Health, Labor and Welfare from the Central Minimum Wage Commission in 2008.<sup>5</sup> In practice, the aim was to close the gap between the amount of welfare benefits and the earnings of full-time minimum-wage workers in the subsequent two years, and up to five years at maximum in prefectures where significant adverse impacts were expected, by raising minimum wages (Nakakubo, 2009).

Public assistance is a national income transfer program for the poor. Those who pass asset and income tests are eligible to receive the benefit; the tests are intrusive, such that the caseworker investigates all the applicant’s assets and the family members’ ability to support the welfare applicant. Because of this rigorous approval process, the government estimated that the take-up rate among those eligible is 32.1% as of 2007, based on Comprehensive Survey of Living Conditions.<sup>6</sup> The benefit amount is the difference between the standard

---

<sup>5</sup>The 12 prefectures include Hokkaido, Aomori, Miyagi, Akita, Saitama, Chiba, Tokyo, Kanagawa, Kyoto, Osaka, Hyogo, and Hiroshima. The gap amount as of 2006 was 63 yen for Hokkaido, 20 yen for Aomori, 31 yen for Miyagi, 17 yen for Akita, 56 yen for Saitama, 35 yen for Chiba, 100 yen for Tokyo, 108 yen for Kanagawa, 47 yen for Kyoto, 53 yen for Osaka, 36 yen for Hyogo, and 37 yen for Hiroshima.

<sup>6</sup>Estimation of the number of low-income households below the welfare standard amount by the public

welfare amount (*Seikatsu Hogo Gaku*) and total income, including labor earnings and other social security transfers, such as pension benefits. The standard welfare amount depends on the number of family members, the earnings capacity of each member, and the local cost of living. As examples, Ministry of Health, Labor, and Welfare documents that the standard welfare amount for a 68-year-old single-person household is 80,820 yen (about US\$800) in metropolitan districts, whereas it is 62,640 yen (about US\$620) in rural districts.<sup>7</sup> The difference in welfare benefits largely reflects the difference in housing costs. The regional difference in the standard welfare amount became the source of heterogeneous growth of minimum wages when the revision of the Minimum Wage Act required the indexation of the minimum wage to the standard welfare amount.

## B Data sets

This study uses the Labor Force Survey (LFS) to capture such labor-market outcomes as employment status and hours worked. The drawback of the LFS is the lack of an accurate measurement of the hourly wage rate. To supplement this drawback, we also use the Basic Survey on Wage Structure (BSWS).

The LFS is a household survey that randomly selects about 40,000 households by using a geographically stratified sampling structure; we use data from 2002 to 2016 for our analysis, as the sampling structure was substantially revised from 2002. The survey was not conducted in the area severely affected by the natural disaster. This case includes Iwate, Miyagi, and Fukushima prefectures between March and August 2011 and Kumamoto prefecture during May and June 2016. Since the geographic stratum is the region, a collection of prefectures, no survey district may be sampled from a small prefecture. This case includes Wakayama prefecture for July 2009 and June 2014 and Tottori prefecture for July 2015.

The survey has a rotating sample structure; a selected household responds to the first 2 months of the surveys, followed by a 10-month break, and then responds to the last 2 months of the surveys. The surveys of different months can be matched using survey district ID, birth year, birth month, and sex. The fourth-month survey is called the special survey and records educational background, as well as annual income, in addition to the labor-force status recorded in other months. To obtain the educational background of individuals, we used only the households that could be matched to its fourth-month surveys. Given that the fourth month is available, 98% is matched for the third month, 86% is matched for the second month, and 85% is matched for the first month. The labor-force status of each household member selected for the survey is classified as belonging to one of the following nine categories: (1) Mainly working, (2) In school but also working, (3) Homemaker but also working, (4) Working but temporarily out of work, (5) Unemployed, (6) In full-time education, (7) Homemaker, (8) Other (the elderly, etc.), and (9) Unspecified. We define categories 1-3 as working and 4-8 as not working. The analysis sample is restricted mainly

---

assistance section of the social and assistance bureau of the Ministry of Health, Labor and Welfare released on April 9th, 2010. <https://www.mhlw.go.jp/stf/houdou/2r985200000050lm-img/2r985200000050of.pdf> (Accessed on November 9, 2020)

<sup>7</sup>The document titled Public Assistance System by the Ministry of Health, Labor, and Welfare summarizes the program. [https://www.mhlw.go.jp/english/topics/social\\_welfare/dl/outline\\_of\\_the\\_public\\_assistance\\_system\\_20101004.pdf](https://www.mhlw.go.jp/english/topics/social_welfare/dl/outline_of_the_public_assistance_system_20101004.pdf) (Accessed on November 9, 2020).

to non-college graduates between the ages of 19 and 64, because the minimum wage is relevant to non-college-graduate workers.

A shortfall of the LFS is that it lacks an accurate measurement of the hourly wage rate. The only individual earnings information available in the survey is the range of annual income, which is asked for in the last month of the survey (the second month in the second year). From this annual earnings information and the hours worked in the last week of the previous month, we can construct hourly wage by imposing assumptions. The constructed hourly wage, however, is not precise enough to define those who are treated by the minimum-wage hike and those who are not, as was done by Cengiz et al. (2019) and Clemens and Wither (2019). Thus to analyze the impact of the minimum wage on hourly wages, we rely on the BSWs instead. Also, we do not restrict the analysis sample to “low wage” workers in the employment analysis using the LFS, as Cengiz et al. (2019) did using the Current Population Survey in the US.

The BSWs are an ideal data set for analyzing the impact of the minimum wage on wages because of its accurate measurements of individual workers’ monthly earnings and monthly hours worked, transcribed from payroll records, and the large sample size, in that it contains around 1.2 million workers annually. This annual survey chooses establishments based on stratified sampling by prefecture, industry, and size of the establishment; it focuses on private establishments with 5-9 employees that belong to firms that hire 9 or fewer employees, and all private and public corporations’ establishments with 10 or more employees. According to the Economic Census conducted in 2014, private establishments with 5 or more employees hire 88% of total employees. The survey asks establishments to randomly sample its employees from payroll records and provide information on their employees’ scheduled cash earnings and scheduled work hours in June. The survey contains information on about 1.2 million employees at approximately 45,000 establishments each year. Using the information from this survey, we calculate the hourly wage rate for our analysis as  $[(\text{Scheduled cash earnings} - \text{Commuting allowance} - \text{Perfect attendance allowance} - \text{Family allowance}) / \text{Scheduled work hours}]$ , following the definition of hourly wage in the Minimum Wage Act. We used 2002-2017 surveys to construct the analysis sample, which includes all individuals between ages 19 and 64. The BSWs are designed to calculate the wages by the cell of prefecture  $\times$  industry  $\times$  establishment size with substantial precision. To keep the sampling error below a certain level, larger establishments, which are relatively rare and more heterogeneous in the population, are oversampled. To reflect this peculiar sampling structure of the survey, we use the sampling weight in the regression analysis to recover the population distribution throughout the analysis based on the BSWs. We also use the sampling weight so that the regression coefficients recover the population average treatment effects (Solon et al., 2015).

## C Industrial and occupational composition of minimum-wage workers

Table C1: Industry composition of MW workers in 2007

	(1)
	pct
Mining	0.07
Construction	0.70
Manufacturing	22.74
Electricity gas and water	0.24
Information and communications	0.93
Transport and postal services	4.12
Wholesale and retail Trade	16.69
Finance and insurance	2.91
Real estate	6.94
Scientific research and technics	1.07
Hotel and restaurant	13.94
Life and amusement services	9.96
Education	3.96
Medical and health care	3.50
Compound services	1.14
Other services	11.09
Total	100.00



Table C2: Occupation composition of MW workers in 2007

	(1)
	pct
Administrative workers	0.18
Specialist professionals	6.98
Clerical workers	0.46
Sales workers	34.90
Service workers	27.60
Security workers	2.09
Transport operation workers	2.72
Manufacturing process workers	25.07
Total	100.00