

Ahammer, Alexander; Grübl, Dominik; Winter-Ebmer, Rudolf

Working Paper

The Health Externalities of Downsizing

IZA Discussion Papers, No. 13984

Provided in Cooperation with:

IZA – Institute of Labor Economics

Suggested Citation: Ahammer, Alexander; Grübl, Dominik; Winter-Ebmer, Rudolf (2020) : The Health Externalities of Downsizing, IZA Discussion Papers, No. 13984, Institute of Labor Economics (IZA), Bonn

This Version is available at:

<https://hdl.handle.net/10419/232736>

Standard-Nutzungsbedingungen:

Die Dokumente auf EconStor dürfen zu eigenen wissenschaftlichen Zwecken und zum Privatgebrauch gespeichert und kopiert werden.

Sie dürfen die Dokumente nicht für öffentliche oder kommerzielle Zwecke vervielfältigen, öffentlich ausstellen, öffentlich zugänglich machen, vertreiben oder anderweitig nutzen.

Sofern die Verfasser die Dokumente unter Open-Content-Lizenzen (insbesondere CC-Lizenzen) zur Verfügung gestellt haben sollten, gelten abweichend von diesen Nutzungsbedingungen die in der dort genannten Lizenz gewährten Nutzungsrechte.

Terms of use:

Documents in EconStor may be saved and copied for your personal and scholarly purposes.

You are not to copy documents for public or commercial purposes, to exhibit the documents publicly, to make them publicly available on the internet, or to distribute or otherwise use the documents in public.

If the documents have been made available under an Open Content Licence (especially Creative Commons Licences), you may exercise further usage rights as specified in the indicated licence.

DISCUSSION PAPER SERIES

IZA DP No. 13984

The Health Externalities of Downsizing

Alexander Ahammer
Dominik Grübl
Rudolf Winter-Ebmer

DECEMBER 2020

DISCUSSION PAPER SERIES

IZA DP No. 13984

The Health Externalities of Downsizing

Alexander Ahammer

Johannes Kepler University Linz and Christian Doppler Laboratory on Aging, Health, and the Labor Market

Rudolf Winter-Ebmer

Johannes Kepler University Linz, Christian Doppler Laboratory on Aging, Health, and the Labor Market and IHS, CEPR and IZA

Dominik Grübl

Johannes Kepler University Linz and Christian Doppler Laboratory on Aging, Health, and the Labor Market

DECEMBER 2020

Any opinions expressed in this paper are those of the author(s) and not those of IZA. Research published in this series may include views on policy, but IZA takes no institutional policy positions. The IZA research network is committed to the IZA Guiding Principles of Research Integrity.

The IZA Institute of Labor Economics is an independent economic research institute that conducts research in labor economics and offers evidence-based policy advice on labor market issues. Supported by the Deutsche Post Foundation, IZA runs the world's largest network of economists, whose research aims to provide answers to the global labor market challenges of our time. Our key objective is to build bridges between academic research, policymakers and society.

IZA Discussion Papers often represent preliminary work and are circulated to encourage discussion. Citation of such a paper should account for its provisional character. A revised version may be available directly from the author.

ISSN: 2365-9793

IZA – Institute of Labor Economics

Schaumburg-Lippe-Straße 5–9
53113 Bonn, Germany

Phone: +49-228-3894-0
Email: publications@iza.org

www.iza.org

ABSTRACT

The Health Externalities of Downsizing*

We show that downsizing has substantial externalities on the health of workers who remain in the firm. To this end, we study mass layoff (ML) survivors in Austria, using workers who survive a ML themselves, but a few years in the future, as a control group. Based on high-quality administrative data, we find evidence that downsizing has persistent effects on mental and physical health, and that these effects can be explained by workers fearing for their own jobs. We also show that health externalities due to downsizing imply non-negligible cost for firms, and that wage cuts may have similar effects.

JEL Classification: J63, I12, J23

Keywords: downsizing, mass layoffs, health, job insecurity

Corresponding author:

Alexander Ahammer
Department of Economics
Johannes Kepler University Linz
Altenbergerstraße 69
4040 Linz
Austria
E-mail: alexander.ahammer@jku.at

* For helpful discussions and comments we would like to thank Michèle Belot, Sonia Bhalotra, Matthias Fahn, Osea Giuntella, Martin Halla, Felix Koenig, Maarten Lindeboom, Sarah Miller, Analisa Packham, Nicolas Ziebarth, and seminar participants at the University of Pittsburgh, the University of Linz, and at the 2020 virtual SOLE/EALE/AASLE. Michal Lapinski provided invaluable help with the data. The usual disclaimer applies. Financial support from the Christian Doppler Laboratory on Aging, Health and the Labor Market and the Austrian Science Fund, Project 33307, is gratefully acknowledged.

I. INTRODUCTION

The global economy is in crisis. With consumption and investment plunging, Europe and the United States have witnessed a wave of massive layoffs in 2020.¹ Job loss often leads to mental and physical health problems in affected workers.² This is particularly concerning in pandemic times, because unemployment may exacerbate problems in the already struggling healthcare sector. While most of the literature has focused on laid-off workers, we show that even those who *remain* in downsizing firms suffer from persistent health problems. Such spillovers may arise if layoffs trigger psychological stress in the remaining workforce, especially when survivors fear for their own jobs or are being pushed into new tasks and responsibilities. This is particularly relevant for firms in distress that have to decide between layoffs and wage cuts (see the discussion in [Bewley 1999](#)). If there are significant health externalities, the price of dismissing workers may be higher than previously thought.

Job stress is believed to be the most common source of work-related illness, plaguing roughly 40 million workers across the European Union ([Eurofound 2017](#)). From the medical literature we know that physical health often worsens after periods of stress. The literature finds strong correlations with a variety of adverse outcomes, especially cardiovascular, musculoskeletal, and infectious disease ([Cohen et al. 2012](#), [Dimsdale 2008](#), [Lang et al. 2012](#), [Step toe & Kivimäki 2012](#)). Females are particularly prone to stress-induced ischemia, which are episodes of reduced blood flow to the heart ([Bacon 2018](#), [Vaccarino et al. 2018](#)). Ischemia is associated with increased risk of heart attack. In addition, stress may affect physical health also indirectly through promoting poor nutrition (e.g., [Klatzkin et al. 2018](#)), less exercise (e.g., [Stults-Kolehmainen & Sinha 2014](#)), and risky behaviors (e.g., [Porcelli & Delgado 2009](#)).

To test for the health externalities of downsizing, we study workers who remain in firms that

¹In the US, Disney has recently laid off 28,000 workers, Ralph Lauren 3,600; Allstate 3,800; and American Airlines and United Airlines a combined 31,000. Source: Time (2020), <https://time.com/5895669/pandemic-layoffs/> (last accessed December 5, 2020).

²See, e.g., [Browning & Heinesen \(2012\)](#), [Cygan-Rehm, Kuehnle & Oberfichtner \(2017\)](#), [Kuhn, Lalive & Zweimüller \(2009\)](#), [Schaller & Stevens \(2015\)](#), [Schiele & Schmitz \(2016\)](#), [Sullivan & von Wachter \(2009\)](#).

underwent a mass layoff (ML) between 1998 and 2014 in Upper Austria. We have access to high-quality administrative records from the main public health insurance provider, covering the universe of inpatient and outpatient claims of all Upper Austrian workers. To avoid selection problems, we construct counterfactuals by using workers who survive a ML a few years in the future as a control group, observing them before they experience a ML themselves.³ This gives rise to a difference-in-differences (DD) framework. On average, workers in the control group should be similar in unobserved characteristics to those in the treatment group and only differ in the timing of the MLs they are exposed to.

We find that surviving a ML leads to persistent health issues. Our DD estimates suggest that drug prescriptions and hospital admissions increase substantially after MLs. Within one and a half years, prescriptions increase by 2.4 percent and hospital days by 12.4 percent in the remaining workforce. Downsizing triggers a variety of health problems. Our estimates indicate upticks in mental, cardiovascular, and to a lesser degree also musculoskeletal disease. Workers with preexisting conditions are more strongly affected, and female workers face particularly fierce consequences. Their probability of having a cardiac event temporarily increases by up to 0.05 percentage points, or 58 percent, due to the ML. This is consistent with the recent medical literature suggesting that women are more likely to experience stress-related cardiac events than men (Vaccarino et al. 2018). Several robustness checks confirm these results. Most importantly, we can show that using an alternative control group composed of workers who are not affected by MLs themselves does not affect our conclusions.

We find that workers from poor socioeconomic background are particularly susceptible to adverse health consequences, and that effects are strongest in large firms where turnover had been low prior to the ML. Moreover, we show that job insecurity, and not changes in income or workload, is an important mechanism that may explain our findings. This is supported by the fact that our estimates are stronger in areas with high unemployment and for workers with low-income spouses, where the potential cost of unemployment are likely to be higher. Finally, we find that changes in

³This is in the spirit of Fadlon & Nielsen (2019), who compare health behaviors in families that experience similar health shocks but a few years apart.

worker health impose non-negligible costs for firms, as sick days in the retained workforce increase by up to 18 percent per quarter. For a firm of 500, this translates to additional direct labor cost of about € 150,000 per year. We then compare this to changes in sick leave takeup in a separate sample of workers in firms that cut wages of at least one coworker by more than 10 percent. We find some evidence that downsizing and wage cuts lead to similar health spillovers.

This paper builds on the existing literature studying the health status of victims of mass layoffs and plant closures, showing that job loss has negative effects on workers (e.g., [Browning & Heinesen 2012](#), [Cygan-Rehm, Kuehnle & Oberfichtner 2017](#), [Kuhn, Lalive & Zweimüller 2009](#), [Schaller & Stevens 2015](#), [Schiele & Schmitz 2016](#), [Sullivan & von Wachter 2009](#)), their spouses ([Marcus 2013](#)), and their children ([Schaller & Zerpa 2017](#)). However, these papers focus on workers that actually lost their jobs, while we study effects on those who remain employed with the downsizing firm. This offers a new angle on the overall welfare effects of downsizing and allows us to estimate firm-level health externalities for the first time.⁴

While other studies have considered survivor health, these papers are mostly descriptive in nature, using survey data to study correlations with sick days and mental conditions. [Østhus \(2012\)](#) use survey data and panel data models to estimate changes in self-reported psychological distress among workers in downsizing firms, [Le Clainche & Lengagne \(2019\)](#) compare antidepressant use between French workers who report working in firms that underwent a ML in the last year with other workers not reporting firm MLs, and [Østhus & Mastekaasa \(2010\)](#), [Sigursteinsdóttir & Rafnsdóttir \(2015\)](#), and [Vahtera et al. \(2004\)](#) study correlations of firm turnover rates with sick days. Although these papers provide valuable insights, there are reasonable concerns that impede a causal interpretation of their findings. In particular, they cannot properly account for the selection into surviving a downsizing period. Moreover, while the existing literature has focused on few select outcomes, our rich administrative data allow us to study different health responses in a comprehensive manner. We are also the first to provide evidence on mechanisms governing these effects, and to study implications for firm decision making more broadly.

⁴A related paper is also [Gathmann et al. \(2020\)](#), who show that MLs can have local multiplier effects that cause entire regions to suffer employment losses.

Our paper also speaks to the literature on the health effects of job stress. It consists mostly of epidemiological studies, which tend to find strong correlations between job stress and health (for meta-analyses, see, e.g., [Jamison et al. 2004](#), [Nixon et al. 2011](#)). However, these papers are typically cross-sectional and based on surveys with few observations and self-reported health measures. Especially the former raises questions about endogeneity, and in particular reverse causality, in the sense that ill health may cause stress as well. Design-based studies are comparably scarce. Often they focus on different types of stress, in particular shocks during childhood, such as famines ([Lindeboom, Portrait & van den Berg 2010](#), [van den Berg, Pinger & Schoch 2016](#)) or the death of a family member ([Persson & Rossin-Slater 2018](#), [Schmidpeter 2019](#)). Another strand of the literature interprets bad economic conditions as stress and estimates effects on health, both during childhood ([van den Berg, Lindeboom & Portrait 2006](#)) and adulthood (e.g., [Pierce & Schott 2020](#), [Ruhm 2000, 2016](#)). We also speak to literature showing that unemployment leads to increases in ‘deaths of despair’ (i.e., deaths due to drug and alcohol abuse and suicides) using aggregate data for the US (e.g., [Case & Deaton 2017](#), [Hollingsworth et al. 2017](#)). Our results suggest that these aggregate effects may partly arise because even workers who are only indirectly affected by job loss suffer from serious health problems too.

Our paper is also related to the personnel and management literature that studies whether a firm in distress should cut wages across the board or downsize its workforce ([Lazear & Gibbs 2014](#)). Early theoretical work by [Weiss \(1980\)](#) argues that general wage cuts will lead to adverse selection, because the most productive workers leave the firm. In line with this, a variety of studies show that wage cuts hurt worker morale, lead to productivity losses, increase absenteeism, and lead to premature job terminations ([Cohn et al. 2014](#), [Coviello et al. 2018](#), [Kube et al. 2013](#)). We extend this literature by showing that there are considerable side effects from downsizing too, and that they are comparable to health spillovers associated with wage cuts.

Our findings have several implications for management and policy. We document that MLs emit substantial externalities on the remaining workforce, and this additional burden cannot be internalized by firms alone. Thus, there is scope for government to provide more help for stress-

plagued workers. In particular, health counseling or targeted prevention measures after downsizing periods may be helpful to circumvent unintended externalities for the retained workforce. It is important to note that the adverse health effects we document appear in spite of Austria's universal healthcare system. In countries with less generous safety net programs, such effects may be even more pronounced. Also, since our results suggest that job insecurity is the main reason workers experience increased stress during downsizing periods, management may consider providing reassurance or, in extreme cases, even short-term job guarantees to help cushion these effects.

The paper proceeds as follows. In section II we discuss the institutional setting. In section III we present our data and empirical methodology in more depth. In section IV we discuss our main results on health and stress-related outcomes and provide several robustness checks. In section V we test for different mechanisms. In section VI we discuss the consequences of our findings for firms and management. Finally, in section VII we conclude.

II. SETTING

II.1. Social security

Austria has a *Bismarckian* social security system with universal access to healthcare, pension, disability, and unemployment benefits. Enrollment into the system is automatic and linked to employment, but insurance is also extended to spouses and children, unemployed people, pensioners, and individuals with disabilities. In fact, 99.9% of the population is covered by health insurance (Hofmarcher-Holzhacker & Quentin 2013). It covers a wide range of services, including visits to outpatient GPs and specialists, inpatient care, and prescription drugs with no or only minor copayments. Although there is no mandatory gatekeeping system, general practitioners are traditionally the first point of access to the healthcare system. In this paper we focus on Upper Austria, which is one of the nine Austrian federal states and has 1.5 million residents, which is around one-fifth of

the Austrian population.⁵

II.2. Labor market

Austria's labor market is characterized by strong industrial relations and a system of centralized bargaining for wages and working conditions. Per capita GDP is among the highest worldwide; unemployment is low but has been increasing steadily in recent years. Female labor market participation has traditionally been low, and almost 50 percent of females that participate in the labor market work part-time (StatAUT 2020), which is significantly higher than the OECD average. The labor market is flexible, with relatively weak protection against dismissal and high turnover rates compared to other European countries (Böheim 2017). The law distinguishes whether labor contracts are terminated unilaterally or in mutual agreement. Unilateral terminations generally do not require a reason to be specified, but a statutory notice period has to be observed.⁶

The Austrian unemployment office mandates a system of advance layoff reporting. Firms have to consult the unemployment office at least 30 days in advance prior to laying off a large share of their workforce. The law defines a ML as a layoff of 5 or more employees in firms with 10 to 99 employees, at least 5 percent of employees in firms with 100 to 599 employees, and at least 30 in firms with 600 or more employees. Notification is also required for layoffs of at least 5 employees who are older than 50 years of age. We use these thresholds to identify mass layoff events. In firms with a works council, management has to consult the works council prior to the notification as well.

In Austria, workers are automatically enrolled into the public unemployment insurance (UI) system, which is financed through a 6 percent payroll tax. UI benefit length depends on work experience and age, and varies between 20 weeks and one year.⁷ A necessary condition to receive

⁵We focus on Upper Austria because this is the only Austrian federal state we have health insurance data for. The Austrian population is generally quite homogeneous. For example, the difference in average dispensable income between the top and bottom 20 percent of the regional income distribution is only € 1,909 (OECD 2015). Hence, we have no reason to believe that Upper Austria is not representative for the entire country.

⁶An exception are fixed-term contracts, which can only end by expiration, unless the employee agrees to terminate the contract. Pregnant women before and after childbirth and workers on parental leave are generally protected from dismissal.

⁷Longer UI duration in Austria has been shown affect reemployment wages (Nekoei & Weber 2017) and health for those laid-off (Ahammer & Packham 2020).

UI benefits is that claimants are willing to accept reasonable employment or undergo retraining. The replacement rate is 55 percent of pre-unemployment earnings. After benefit exhaustion, workers are eligible for means-tested income support. Due to the short benefit period, the Austrian UI system is more comparable to the US and the United Kingdom than other European countries (Halla et al. 2020).

III. EMPIRICAL STRATEGY

Estimating the effect of surviving a ML on health presents us with an important empirical challenge. Workers do not survive MLs exogenously, hence simple pre-post analyses would most likely lead to biased estimates. Furthermore, we cannot compare survivors with non-survivors or the general population, as survivors are positively selected. We therefore use workers who survive a ML sufficiently far in the future as a control group. These workers should, on average, have similar characteristics to the treated workers, and only differ in the timing they experience their ML. This is similar in spirit to Fadlon & Nielsen (2019), who compare health behaviors in families that experience the same health shocks a few years apart.

Figure A.1 sketches how we select the treatment and the control group. For a ML in quarter t , we observe worker health between $t - 6$ and $t + 6$. The control group is comprised of all MLs occurring between $t + 7$ and $t + 13$, but we observe survivor health in these firms also between $t - 6$ and $t + 6$, with the ‘placebo’ ML occurring in $t = 0$. This means that workers in the control group have to be continuously employed for at least 20 quarters with the same firm to qualify as survivors ($t - 6$ until at least $t + 13$). We impose the same tenure requirement to the treatment group to obtain a consistent sample definition.

Note that, in principal, it is possible that the pre-treatment period for control MLs coincides with the post-treatment period of the treatment MLs, although never for the same ML. This is similar to the treatment and control group definition in Fadlon & Nielsen (2019). We adopt this strategy to maximize the set of possible control MLs to draw from. It means, however, that we would overestimate the effect of MLs if health in the control group systematically became worse

prior to their ML. However, this is not what we see in the raw data (see Figure A.2). In fact, health status seems to be remarkably stable prior to MLs, both in the treatment and the control group. Nevertheless, we show a robustness check below which indicates that our results replicate if we draw the control group from a different set of workers who never experience a ML.

Based on this sample definition, we estimate the effect of surviving a ML on health using a difference-in-differences (DD) model,

$$y_{it} = \theta_i + \theta_t + \gamma X_{it} + \beta S_{it} + \varepsilon_{it}, \quad (1)$$

where y_{it} is health of worker i in quarter t , θ_i are worker \times ML fixed effects that control for systematic time-invariant heterogeneity between workers and MLs, θ_t are calendar quarter fixed effects that account for shocks common to all workers in a specific quarter, X_{it} contains flexible sets of worker age and tenure dummies, S_{it} is an indicator variable equal to one for all workers who survive a ML in t , and zero for the group of future survivors who experience a ML between $t + 7$ and $t + 13$. Our coefficient of interest is $\hat{\beta}$, which is the average treatment effect of downsizing on survivor health. Because health status may be correlated among workers in the same firm, we cluster our standard errors on the firm level.

To explore dynamic treatment effects, we additionally estimate a generalized DD model where we extend equation (1) to allow for the effect of downsizing on survivor health to vary non-parametrically in a period spanning 6 quarters before and after the ML,

$$y_{it} = \theta_i + \theta_t + \gamma X_{it} + \sum_{k=-6|k \neq 0}^6 \beta_k (\tau_k \times S_{it}) + \varepsilon_{it}, \quad (2)$$

where $\tau_k = \mathbf{1}\{t = k\}$, $k = -6, \dots, -1, 1, \dots, 6$ indicates quarters relative to the ML in $t = 0$, and the post-ML coefficients $(\beta_1, \dots, \beta_6)$ is the series of period-specific treatment effects on health.

The crucial assumption for identification is that the difference in health between the treatment and control group would continue along the same trend absent the ML. We present evidence in support of this assumption in a number of ways. First, we show that the estimated leading coefficients

$(\hat{\beta}_{-6}, \dots, \hat{\beta}_{-1})$ are insignificantly different from zero across all our outcomes. Second, we use workers drawn from the general population as an alternative control group. Third, we show that our results are stable when we reweight the sample so that the treatment and control group have the same covariate distribution, and, alternatively, when we give more weight to larger MLs. Fourth, we perform a placebo test using cancer as an outcome that cannot be affected by MLs in the short-run.

III.1. Data

We use high-quality administrative data from the *Austrian Social Security Database* (ASSD, [Zweimüller et al. 2009](#)) linked with health records from the *Upper Austrian Sickness Fund* (UASF). The ASSD is structured as a linked employer-employee panel and covers the universe of Austrian workers from the 1970s onward. It contains detailed administrative records originally used to verify pension claims. We use the ASSD to obtain information on MLs and employment histories, wages, and certain demographics for affected workers. The limitations of the ASSD data are top-coded wages and the lack of information on working hours.

The UASF database comprises individual-level information on healthcare service utilization in both the inpatient and outpatient sector for members of the sickness fund. We have data on drug prescriptions, sick leaves, hospital stays, and physician visits. Diagnoses are recorded as *International Classification of Diseases, 2010 revision* (ICD-10) codes, and drugs using the *Anatomical Therapeutic Chemical* (ATC) classification system. The UASF covers around one million members representing roughly 75% of the population in Upper Austria. Except for workers in the railway and mining industries, all private-sector employees in Upper Austria are insured with the UASF. Farmers, self-employed persons, and civil servants are covered by other institutions.

For our empirical analysis we consider the universe of all MLs between 1998 and 2014 in Upper Austria. To identify MLs we use the so-called *worker flow* approach as outlined in [Fink et al. \(2010\)](#). In short, we use the ASSD to build a quarterly panel measuring the number of employees in each plant. Drops in firm sizes between two quarters are considered as MLs whenever they exceed the thresholds inspired by the system of advance layoff reporting described in section II.2. Events in

which a larger group of employees moves to the same plant identifier are excluded (this indicates a change in plant identifiers or a corporate spinoff instead of a true ML). Similar to other papers in the literature (e.g., [Ichino et al. 2017](#)) we drop seasonal industries, such as farming, construction, mining, and hospitality from the sample. In total, we have 2,203,214 observations in our sample, which is composed of 42,703 worker-ML dyads observed over 13 quarters in the treatment group, and 126,775 worker-ML dyads observed over 13 quarters in the control group, which we drew with replacement.

Descriptive statistics can be found in [Table 1](#). Columns (1) and (2) are means and standard deviations for the full sample. In columns (3) and (4) we show means for all variables for the treatment and control group, respectively. It is reassuring that the means between the two groups are fairly similar for most variables, which suggests that our sample is well-balanced.⁸ Workers who survive a ML are on average 40.7 years old, have 10 years of tenure, are more likely to be male and blue collar workers, work in firms with around 300 employees, and experience MLs where roughly 8 percent of the workforce is laid off. The turnover rate one year prior to the ML, measured by the number of worker exits relative to the firm size, is around 4 percent, on average, and the local unemployment rate in the firms' zip code area is 11 percent.

It is worthwhile to point out two statistics here. First, average tenure in our sample is 10 years, which is rather long. The reason is that we require both the treatment and the control group to be employed 13 quarters prior to the ML. This has implications for external validity, as our design speaks mainly to workers in stable employment. Second, the relative ML size appears low at first sight. However, compared to the average firm size, an 8 percent reduction corresponds to 25 workers being laid off, the standard deviation amounts to another 15 workers. While we are confident that seeing 25 colleagues fired at once can indeed trigger stress in most people, we note that effects may be even bigger if we focused on larger MLs. Moreover, we show below that our estimates are not affected if we weight the data by ML size prior to running our DD regressions.

⁸In section 5, we additionally show that reweighting the data so that the treatment and control group have the same covariate distribution does not affect our estimates. To generate these unit weights we use the entropy balancing approach suggested by [Hainmueller \(2012\)](#).

III.2. Health measures

We use several proxies for worker health. Our primary measures are physician visits, drug prescriptions, and inpatient stays. Physician visits comprise all consultations with general practitioners and specialists which are paid at least in part by the UASF.⁹ We measure both the number of visits as well as the log sum of expenditure billed to the UASF for these visits (these are essentially doctors' fees). For both we include also observations with no expenditures. This gives an average 5.2 physician visits with € 56 in fees (see Table 1). For the latter we take the log to give less weight to extreme outliers,¹⁰ and we add € 1 prior to taking the log in order not to lose observations with zero expenditures.

Prescription data include the names and ATC codes of every medication that requires a prescription in Austria. We have no information on over-the-counter drugs. As outcomes we use the total number of drug packages prescribed and the sum of log expenditure for these drugs. On average, workers have 1.17 prescriptions per quarter worth € 25. Hospital data are only available for inpatient stays, we do not observe ambulance visits. Again, we consider both the number of days spent in hospital (on average 0.2 days) as well as the sum of log expenditures for these hospital stays (with a mean before taking logs of € 29). Here the means are rather low, again because we include also observations with zero hospital days and expenditures.

In a second step we consider three specific medical conditions that are proposed as potential consequences of job stress in the literature: mental or psychological conditions, cardiovascular disease, and musculoskeletal disease. For mental conditions we consider anxiety (ICD-10 codes F40 and F41), depression and persistent mood disorders (F32, F33, F34, F38, and F39), and burnout (F43 and Z73). We construct binary variables indicating whether any of these conditions

⁹This may exclude visits to private physicians if patients do not claim those expenses from the insurance. Every treatment provided by a private physician is eligible for a refund by the UASF up to the amount the health insurance would have reimbursed a contracted physician for the same treatment. We are therefore confident that a vast majority of such visits will be in fact claimed.

¹⁰Extreme outliers are usually observed in health data, because severe illness can trigger exorbitant healthcare spending. Also in our sample maximum outpatient expenditures are more than 112 times larger than the mean. However, only few observations have such large values. The 99th percentile of the expenditure distribution is € 439, which is only about 4 standard deviations larger than the sample mean of € 56 (see Table 1).

is diagnosed in a quarter. Additionally, we observe psychotherapies, which are covered by public health insurance in Austria. We also consider log expenditures for antidepressants (N06A), which are the most important drugs used to treat mental conditions.

Cardiovascular disease we define as having either a stroke or a heart attack, but we also consider expenditures for cardiovascular system drugs (ATC category C), which primarily include antihypertensives, diuretics, beta blockers, and anti-cholesterol drugs. Moreover, any condition in ICD-10 chapter M is considered a musculoskeletal disease. For related drugs, we aggregate log expenses for both opioid (ATC codes N01AH and N02A) and non-opioid painkillers (M01, M02, and N02B). Finally, we consider drugs approved for addiction treatment in ATC categories N07BB (alcohol) and N07BC (opioids) to test for effects on risky health behaviors. Sample means for these outcomes can also be found in Table 1.

IV. RESULTS

IV.1. Effects on worker health

The main results are in Table 2. We present both the average DD effects from the model in equation (1) in panel (a) and the dynamic DD effects from equation (2) in panel (b). We test the pre-ML coefficients for joint significance instead of reporting them individually, but full event studies can be found in Figure 1. Indeed, we find no evidence for significant pretrends in any of our health outcomes.

A consistent finding is that downsizing leads to increases in healthcare utilization for the remaining workforce, and that this effect becomes stronger over time. First, however, we find that workers see physicians after the ML at the same rate as before the ML. The estimate for physician visits is small and insignificant. This is an important finding, because it suggests that any negative health effects do not arise owing to failures to seek medical help. We do find, however, a sizable impact on drug prescriptions and inpatient days. The average number of drug prescriptions increases by 0.03 or 2.4 percent of the sample mean (column 3), and inpatient days increase by 0.014 or 12.4

percent of the sample mean (column 5). These effects increase up to the sixth quarter after the ML, where the increase in drug prescriptions amounts to 6.8 percent and the increase in hospital days amounts to 47 percent. Hence, even though we find that outpatient physician visits remain constant, we find that more drugs are prescribed per visit and hospital days increase too.

We also consider log expenditures for both drugs and inpatient stays to get a sense of how effects compare at the intensive and extensive margin of healthcare utilization. We find that drug expenditures increase, on average, by 1.2 percent, and inpatient expenditures increase by 1.4 percent. Again, these estimates are largest in the 6th quarter after the ML. At this stage the estimated effects are remarkably similar; we find that expenditures for physician visits, drugs, and hospital days increase by around 4–5 percent. For hospital expenditures, this would amount to an increase from €28.9 to €30.3, which is relatively small. This suggests that effects are stronger at the extensive than at the intensive margin.

A recurring pattern is that coefficient magnitudes increase over time, and effects are strongest towards the end of the observation period. This is perhaps unsurprising, as a negative health shock likely takes time to burgeon its full impact on the body. Also, workers may develop comorbidities after an initial health shock, for example if cardiac conditions lead to other physical or mental problems. Together with the fact that health status is state-dependent at least to some degree (Contoyannis et al. 2004, Finkelstein et al. 2009, Halliday 2008), we expect healthcare spending to remain high or even increase after a large enough health shock. Recent medical studies show that even minor stress events can lead to rather severe health problems that linger for 10 years or more (Korkeila et al. 2010, Leger et al. 2018).

IV.2. Effects on stress

Next, we ask whether these effects can be explained by increases in psychological stress levels. While we cannot measure stress directly, we consider a set of outcomes that have been suggested as potential consequences of job stress in the literature. In particular, we estimate effects on mental, cardiovascular, and musculoskeletal health (Dimsdale 2008, Lang et al. 2012, Steptoe & Kivimäki

2012). These estimates are summarized in Table 3. In short, we find some evidence for all three mechanisms, but the major drivers seem to be upticks in mental and cardiovascular disease.

We first consider mental conditions. While we do not see effects on new mental diagnoses, workers are more likely to be in psychotherapy and have higher expenses on antidepressants. In particular, MLs increase the probability of psychotherapy on average by about 20 percent, and this effect sets in soon after the layoff. The effect on antidepressants is more modest; two quarters after the layoff, we estimate that expenditures increase by 0.5 percent.¹¹ Since new diagnoses remain unaffected at first, we interpret our results as evidence that workers with preexisting mental conditions are more strongly affected by MLs.

We do not find effects on cardiac conditions in the form of heart attacks and strokes. We note, however, that these are rare events, hence we may not have enough power to detect meaningful effects here. In contrast, expenses for cardiovascular system drugs, such as beta blockers or cholesterol drugs, increase by up to 0.7 percent. This effect accumulates over time; in the 6th quarter it amounts to as much as 2 percent. Musculoskeletal conditions and pain killer prescriptions increase too, but these effects kick in relatively late as well. The increase in both new diagnoses and expenditures for pain killers amounts to roughly 10 percent.

Finally, we test for effects on risky behaviors. This is important, as job stress may drive workers into alcohol or drug abuse. These behaviors are difficult to measure in administrative data, but we can leverage information on medication-assisted alcohol and opioid addiction treatments. Since these treatments are usually considered to be an *ultima ratio*, we can only identify severe cases of addiction. Estimates are provided in Table 4. We find no effects of MLs on alcohol treatment, and the point estimates on opioid treatment are imprecisely estimated despite being relatively large compared to the sample mean. However, severe addiction may take too long to develop for us to find meaningful effects in a 1.5-year window after the ML. Furthermore, the sample means in Table 4 suggest that addiction treatment is a very rare outcome, hence our design may simply be too

¹¹We note that, for antidepressant expenditure, the joint F -test for pretrends is 2.2, which is significant at the 5 percent level. In Figure A.3 (web appendix), we plot each pre- and post-ML coefficient graphically. We can show that the F -test fails because of a single significant coefficient for $t = -2$. The flat trend prior to the ML makes us confident, however, that there is no systematic pattern we have to worry about.

underpowered to detect any effects. We therefore find that job loss affects the health of workers who remain in the company primarily through mental and cardiac conditions, and that this contributes to an increase in inpatient days and drug prescriptions. There is some evidence that stress affects workers with preexisting conditions more strongly, but we also find an impact on new diagnoses.

IV.3. Robustness

An important empirical challenge for our paper is the choice of an appropriate control group. We think that future survivors are the optimal fit, because we can reasonably assume that they share similar unobserved characteristics with current survivors. We can show, however, that other control group choices lead to similar conclusions. In particular, we present results using a control group that is drawn from the general population of workers in Upper Austria. To make this a fair comparison, however, we first estimate a propensity score that measures the probability of surviving a ML conditional on certain predetermined variables for every worker in the population, and then select only those workers who have the largest propensities but are not already in our main sample. To this end, we first estimate a logit model that regresses the probability a worker survives a ML on age, tenure, and year fixed effects, all fully interacted with gender. We then predict conditional ML survival probabilities for each worker based on this logit model, and select only the 75,000 workers with the highest predicted probabilities (which yields a reasonable sample size). This ensures that the new control group has similar balancing properties with regard to age, tenure, and sex as our main control group.

We present estimates for this alternative control group in Table 5, panel (a). For comparison, we report the baseline results from Table 2 in panel (b). We can see that the control group choice does not affect our estimates. Coefficients are slightly smaller, but generally well within the range of our baseline specification. This is perhaps to be expected, given that our propensity score balancing procedure ensures that the two control groups we compare here share a similar age and tenure composition. However, it is reassuring that using a completely different set of workers, notably ones that are not struck by a ML themselves in the future, does not affect our conclusions whatsoever.

Despite our preferred treatment and control group being very similar in terms of observables (see Table 1), in a next step we show that, even if the groups were perfectly balanced, our results would remain unchanged. We use the entropy balancing approach proposed by Hainmueller (2012), which generates unit weights that ensure that the reweighted treatment and control group have the same covariate distribution.¹² We present our DD estimates based on these reweighted samples in Figure A.4. For reference, we also plot the baseline estimates from Table 2 and their 95 percent confidence intervals. The reweighted estimates, indicated by the green line, are close to the baseline across outcomes, we therefore conclude that differences in observables are unlikely to explain our treatment effects.

Moreover, we test whether there are effects on health outcomes that cannot possibly be affected by job stress due to surviving a ML. An obvious candidate for such a placebo test is cancer. Even though stress may increase the risk of certain cancers in the longer run, there should not be any effects within six quarters after the ML, in particular if workers are not more likely to seek medical help in the first place due to the ML (as we have shown above). We therefore match information on malignant neoplasms (ICD category C) to our data, using a binary indicator for whether a neoplasm is diagnosed as the outcome variable in our DD model. We report the results of this test in Figure 4. The estimated coefficients are close to zero and statistically insignificant in all periods.

Another potential concern is that we pool MLs regardless of size in our regressions, and these MLs can be relatively small (the Austrian UI office stipulates that a 5 percent reduction in the workforce constitutes a ML). If small MLs drove our results, we would potentially estimate only a lower bound of the true effect of downsizing on survivor health. In Figure A.5, we therefore present our DD estimations where observations are weighted by the relative ML size (i.e., the number of laid-off workers relative to the pre-ML firm size). The green lines represent the point estimates from these weighted regressions, and these lie well within the confidence interval of our baseline estimates (the black line). This suggests that our results are practically unchanged if we attach more

¹²We calibrate the entropy weights such that the age, tenure, gender, and occupation distribution is the same in the treatment and control group. An advantage of this approach is that it not only balances the means across groups but also the second and third moments.

weight to workers exposed to larger MLs.

Lastly, an important question is whether we in fact capture job stress by looking at ML survivors. If, for example, workers retaliated against their employers by obtaining bogus sick leave certificates, the interpretation of our findings would be different. In such a case, we would expect health effects only to be present in the outpatient sector, and for typical shirking diagnoses such as low back pain. This is not what we find. In fact, our results are mostly driven by hospital stays, which are almost impossible to fake. Moreover, shirking cannot explain the fact that cardiac conditions go up by more than 50 percent for women in response to the ML.

V. EFFECT HETEROGENEITY AND MECHANISMS

V.1. Which workers are most affected?

For management and policy to effectively counteract the negative health effects of downsizing, it is vital to understand the mechanisms governing these effects. In a first step, we therefore split our sample by several baseline socioeconomic characteristics to determine which workers suffer most from downsizing. This will help us to think about potential channels in the sections below. We present these results in Table 6. We report average treatment effects from equation (1) for each subsample, where age is split at 40 years and tenure and wages are split at their sample medians. We consider only count outcomes (columns 1, 3, and 5 from Table 2), but results for log expenditures are similar.

A consistent finding is that our results are entirely driven by older, blue collar, and especially low-wage workers. This is perhaps unsurprising, as these groups are generally more susceptible to adverse health shocks. While old age is related to ill-health, poor socioeconomic background is also correlated with risky behavior and morbidity (Case & Deaton 2017). For gender, the pattern is less clear. While drug prescriptions react stronger for males, effects on inpatient days are more pronounced for females. Hospitalizations are typically necessary to treat more severe conditions, a naïve interpretation of these estimates would therefore be that females face fiercer consequences of

stress than men. To validate this, we investigate cardiac events by gender.¹³

These estimates are in Figure 2. They suggest that females indeed face a higher risk of cardiac events (panel a), and higher expenditure for cardiovascular drugs (panel b) due to the ML. Although the estimated coefficients appear small at face value (4 quarters after the ML, the effect on cardiac events is 0.05 percentage points), compared to the sample mean this corresponds to an increase of 58 percent. This partly explains why females have more hospital days after the ML, and is consistent with the recent medical literature suggesting that women are more susceptible to heart problems following stressful events than men (Bacon 2018). In fact, women's risk to develop stress-induced myocardial ischemia is twice as high than men's, and this difference cannot be explained by psychosocial or clinical risk factors (Vaccarino et al. 2018).¹⁴ We conclude that vulnerable workers deserve special attention during downsizing periods, while younger, high-wage, white collar workers are hardly affected.

V.2. The role of wages

Above we have shown that low-wage workers are particularly susceptible to adverse health effects after downsizing periods. While the literature is divided as to whether income in itself can cause health to decline,¹⁵ it may be correlated with other variables that make it more difficult for the worker to cope with negative health shocks, such as poor education, nutrition, or housing. A natural exercise is therefore to check whether wage levels have changed for survivors before and after the downsizing period. It is possible that managers see wage cuts as a complement to downsizing, rather than a substitute. If this were the case, we would perhaps not measure stress but a mechanical income effect, in the sense that workers have less money to invest in their health stock after the ML.

In Figure 3, we plot wage trends relative to the ML over all survivors. The graph depicts average

¹³We also estimated the effects of stress on mental and musculoskeletal health by gender, but found no significant heterogeneity in these outcomes.

¹⁴Stress-induced ischemia is found to result mostly from constriction of tiny arteries. This results in greater resistance which requires the heart to use more force in pumping blood.

¹⁵Lindahl (2005), for example, documents positive effects of lottery earnings on health, while Ahammer et al. (2017) show that there is no causal relationship between labor income and mortality. Snyder & Evans (2006) even find that higher social security payments lead to higher mortality.

daily wages that are regression-adjusted for age, gender, tenure, occupation, and quarter-year fixed effects. We see pretty much a flat profile before and after a ML. This confirms that income effects cannot explain our findings. Also, if we assume that workers would bargain for higher wages if their workload increased substantially after a ML, it is unlikely that our effects can be explained by systematic changes in job requirements given the wage pattern we observe. We will explore this mechanism further below.

V.3. The role of the firm

Next we test whether our results mask important heterogeneity by firm characteristics. In Table 7, we split the sample by firm size (more or less than 200 workers, which is one of the UI office ML thresholds), relative ML size (number of laid-off workers relative to the pre-ML firm size, split at the median), and the pre-ML turnover rate (number of exiting workers one year prior to the ML over the firm size one year prior to the ML, also split at the median). We again report average treatment effects from equation (1) for each subsample.

We find that effects tend to be stronger in larger firms with low turnover rates. This suggests that workers with little previous exposure to coworker fluctuation are driving our results, which is consistent with the idea that stress is most intense when workers did not expect a large layoff and perhaps considered their job to be secure prior to the layoff. For ML size, the pattern is ambiguous. While severe conditions that require hospitalization increase by the same margin regardless of ML size, mild conditions proxied by drug prescriptions go up more for smaller MLs. This suggests that, for the latter, exposure to a ML itself is more important than the actual number of colleagues laid off. This also explains why our estimates are practically unchanged if we weight each observation by the fraction of workers laid off (Figure A.5). Moreover, since it is less likely that workload is redistributed among remaining workers to a significant extent if the company is large and only few colleagues are laid off, changes in job requirements are unlikely to drive our results.

V.4. The role of job insecurity

The management literature identifies the fear of losing one's own job as the main source of stress in workers during downsizing periods (e.g., Klehe et al. 2011). Isolating this mechanism can be difficult absent survey data, but we believe that singling out workers with characteristics that are correlated with higher potential cost of unemployment helps us to assess the relative importance of job insecurity versus other mechanisms (e.g., an increased workload) in explaining our results.¹⁶

Many of the characteristics that make workers more vulnerable to adverse health shocks also raise the cost of unemployment. In particular, the 'scarring' effect of unemployment—i.e., persistent long-term losses in wage and employment opportunities following unemployment—is particularly pronounced for low-wage workers (Jarosch 2015, Pinheiro & Visschers 2015) and to some degree also older workers (Ichino et al. 2017). Moreover, low-wage blue collar jobs may be perceived as bad signals on the job market, making job search more difficult (McCormick 1990). In section IV.1 we have seen that these groups are driving our results, which is consistent with fear of job loss being an important mechanism.

In columns (7) and (8) of Table 7, we additionally compare health responses in regions with low and high unemployment. When outside options are scarce, and when the chances of finding employment again are perceived as being small because of high competition among job seekers, we would naturally expect fear of job loss to be more prevalent in the working population. If we split the zip code-level unemployment rate at the sample median, we find that our results are indeed driven exclusively by MLs in areas with high unemployment. We consider this as strong evidence that fear of job loss is the main mechanism behind our findings.

In a similar vein, we can check how our estimates differ by spousal wage. The idea is that workers with high-earning spouses are less likely to experience job insecurity, because the relative potential drop in household income following job loss would be smaller. We therefore draw a subsample of workers we know are married in a given year and reestimate our DD model from equation (1).¹⁷ We

¹⁶We note that these mechanisms are not mutually exclusive and may, in fact, correlate with each other. This makes it more difficult to give a definitive answer as to what mechanism dominates.

¹⁷We do not have a perfect measure of marital status, but we can infer marriages from different tax deductions and

present these estimates for both sexes separately in Table A.1. Indeed, we find that point estimates are larger for workers with low-wage spouses. This is especially the case for drug prescriptions in females and hospital days in males. This supports the notion that job insecurity is the main driver behind our health effects.

VI. THE COST FOR FIRMS

For firms, perhaps the most relevant parameter when it comes to internalizing possible health externalities is productivity. Since productivity is difficult for us to observe, the second-best measure we have to analyze the impact on firms is sick leaves. Sick leaves are costly (Ziebarth & Karlsson 2010), even in economies without universal sick pay mandates, such as the United States. In Figure 5, we therefore regress our dynamic DD model on worker sick days. The pattern we find is similar to the outcomes we have studied before. There is an immediate uptick in sick days immediately after the ML, and the effect increases in magnitude over time. If we estimate a single post-ML coefficient, we obtain an average effect of 0.14 sick days per quarter. Compared to the sample mean of 2.25 days per quarter, this corresponds to a 6.5 percent increase. This is well within the range of our other estimates. After six quarters, sick days already increase by 18 percent, which is substantial.

To get a sense of how important this effect is, it is useful to translate the increase in sick days into monetary cost. The average daily wage in our sample is € 94; the total labor cost, including social security contributions, are approximately double that, namely € 188 per worker and day. Workers take on average 9 days of sick leave per year, which yields total yearly labor cost of € 1,692. In a firm with 500 workers, the direct expenditures for sick leaves are therefore € 846,000 per year, a 6.5% increase of which equals € 54,990. These expenditures become increasingly large over time. After six quarters, the additional sick pay cost are already up to roughly € 150,000 per year. This is likely a lower bound of the true economic impact of ML-induced job stress, because it does not capture

(child care) subsidies that only apply to married people, and from the birth register, given that parents were married at the time of birth. Hence, we only observe a subset of all marriages.

productivity losses that go beyond sick days or the potential cost of losing workers altogether due to severe illness. We can therefore assume that the true effect is likely an order of magnitude larger.

Given these results, a central question for managers is whether to cut workers or wages if their firm is in distress. We cannot give a definitive answer to that. To get at least some idea of how the externalities of wage cuts and dismissals compare, however, we can look at sick leave takeup in firms with workers who experienced significant wage cuts. We therefore draw a separate sample of firms where the daily wage of at least one employee is reduced by more than 10 percent from one year to another, provided that they did not switch from full-time to part-time status.¹⁸ We then calculate, for a period of three years around this wage cut, the average number of sick days of coworkers in the same firm that did *not* also experience a wage cut.¹⁹

In Figure 6 we plot event study estimates for changes in coworker sick days, controlling for calendar year fixed effects. Sick days appear to remain stable before the wage cut and increase significantly afterwards. If we estimate a model with a single post-treatment dummy, we obtain a coefficient of 1.02 ($p < 0.001$), suggesting that coworkers increase sick days by roughly 1 day per year due to the wage cut. Compared to average pre-treatment yearly sick days, this amounts to an increase of 8.4 percent. Albeit being slightly larger, this coefficient is not economically different from the downsizing effect we have found above. This supports the idea that downsizing and wage cuts appear to emit similar negative health externalities. We note that, while this may seem at odds with the narrative in [Bewley \(1999\)](#), this comparison is not nearly nuanced enough to take a definitive stance on that. Even if sick days increase to a similar degree, other responses to either measure, such as motivation or commitment, are difficult to tease out in our setting.

A factor we leave out of this discussion—but one that is indeed also important when it comes to the potential impact on firms—is presenteeism. While some workers may have to take sick leaves due to severe illness, others with more minor conditions may refrain to take leave and go

¹⁸Part-time status is defined as working 30 hours or less. Unfortunately we do not observe smaller reductions in working hours in our data.

¹⁹This gives us a sample of 316,728 wage cut events. Importantly, this is a different sample of workers compared to the one we use for our main analysis. The average number of coworker sick days per year is calculated for all workers that are employed in the same firm but did not also experience a wage cut. We do not impose a tenure requirement for coworkers; for every year we calculate average sick days for all workers who were employed in the firm.

to work instead. This may be true especially in times where workers fear for their own job. This has wide-ranging effects that are well-documented in the literature, for example through fostering infectious disease transmission (Pichler & Ziebarth 2017).

VII. CONCLUSION

We show that downsizing leads to ill health in the firm's retained workforce. Using high-quality administrative data from Austria, we find that drug prescriptions and hospital stays increase significantly after MLs, and that this is partly driven by upticks in mental and cardiac disease. Older, low-wage, and blue collar workers respond particularly strongly to MLs. The main mechanism we have in mind to explain these findings is stress, which likely arises because workers fear for their own job after downsizing periods. In contrast, there is little evidence that income effects or changes in workload can explain our results. Finally, we find that health externalities imply significant costs for firms, as sick leave takeup increases significantly after MLs. Wage cuts, as another potential cost reduction measure for firms in financial distress, appear to have similar spillover effects as downsizing.

Our results suggest that there are important health externalities of MLs that have not previously been considered in the literature. We think that this has important implications for policy and management. Measures such as targeted health counseling or prevention may be helpful to avoid health spillovers to retained workers. Furthermore, management may consider offering short-term employment protection in order to reassure workers and potentially dampen these effects.

REFERENCES

- Ahammer, A., Horvath, G. T. & Winter-Ebmer, R. (2017), 'The effect of income on mortality—new evidence for the absence of a causal link', *Journal of the Royal Statistical Society: Series A (Statistics in Society)* **180**(3), 793–816.
- Ahammer, A. & Packham, A. (2020), Dying to Work: Effects of Unemployment Insurance on Health, Technical Report w27267, National Bureau of Economic Research.
- Bacon, S. L. (2018), 'The Importance of Sex in the Stress–Heart Disease Relationship and the Potential Contribution of Gender to Future Research', *Arteriosclerosis, Thrombosis, and Vascular Biology* **38**(2), 290–291.
- Bewley, T. F. (1999), *Why Wages Don't Fall During a Recession*, Harvard University Press, Cambridge, MA.
- Böheim, R. (2017), 'The labor market in Austria, 2000–2016', *IZA World of Labor* .
- Browning, M. & Heinesen, E. (2012), 'Effect of job loss due to plant closure on mortality and hospitalization', *Journal of Health Economics* **31**(4), 599–616.
- Case, A. & Deaton, A. (2017), 'Mortality and Morbidity in the 21st Century', *Brookings Papers on Economic Activity* **2017**(1), 397–476.
- Cohen, S., Janicki-Deverts, D., Doyle, W. J., Miller, G. E., Frank, E., Rabin, B. S. & Turner, R. B. (2012), 'Chronic stress, glucocorticoid receptor resistance, inflammation, and disease risk', *Proceedings of the National Academy of Sciences* **109**(16), 5995–5999.
- Cohn, A., Fehr, E., Herrmann, B. & Schneider, F. (2014), 'Social Comparison and Effort Provision: Evidence from a Field Experiment', *Journal of the European Economic Association* **12**(4), 877–898.
- Contoyannis, P., Jones, A. M. & Rice, N. (2004), 'The dynamics of health in the British Household Panel Survey', *Journal of Applied Econometrics* **19**(4), 473–503.
- Coviello, D., Deserranno, E. & Persico, N. (2018), Exit, Voice, and Loyalty After a Pay Cut. Kellogg School of Management, WP.
- Cygan-Rehm, K., Kuehnle, D. & Oberfichtner, M. (2017), 'Bounding the causal effect of unemployment on mental health: Nonparametric evidence from four countries', *Health Economics* **26**(12), 1844–1861.
- Dimsdale, J. E. (2008), 'Psychological Stress and Cardiovascular Disease', *Journal of the American College of Cardiology* **51**(13), 1237–1246.
- Eurofound (2017), *Sixth European Working Conditions Survey*, two thousand, seventeenth edn, Publications Office of the European Union, Luxembourg.
- Fadlon, I. & Nielsen, T. H. (2019), 'Family Health Behaviors', *American Economic Review* **109**(9), 3162–3191.

- Fink, M., Segalla, E., Weber, A. & Zulehner, C. (2010), Extracting Firm Information from Administrative Records: The ASSD Firm Panel, NRN working papers 2010-04, The Austrian Center for Labor Economics and the Analysis of the Welfare State, Johannes Kepler University Linz, Austria.
- Finkelstein, A., Luttmer, E. F. P. & Notowidigdo, M. J. (2009), 'Approaches to Estimating the Health State Dependence of the Utility Function', *American Economic Review* **99**(2), 116–121.
- Gathmann, C., Helm, I. & Schönberg, U. (2020), 'Spillover Effects of Mass Layoffs', *Journal of the European Economic Association* **18**(1), 427–468.
- Hainmueller, J. (2012), 'Entropy Balancing for Causal Effects: A Multivariate Reweighting Method to Produce Balanced Samples in Observational Studies', *Political Analysis* **20**(1), 25–46.
- Halla, M., Schmieder, J. & Weber, A. (2020), 'Job Displacement, Family Dynamics, and Spousal Labor Supply', *American Economic Journal: Applied Economics* **12**(4), 253–287.
- Halliday, T. J. (2008), 'Heterogeneity, state dependence and health', *Econometrics Journal* **11**(3), 499–516.
- Hofmarcher-Holzhacker, M. M. & Quentin, W. (2013), 'Austria: Health System Review', *Health Systems in Transition* **15**(7), 1–292.
- Hollingsworth, A., Ruhm, C. J. & Simon, K. (2017), 'Macroeconomic conditions and opioid abuse', *Journal of Health Economics* **56**, 222–233.
- Ichino, A., Schwerdt, G., Winter-Ebmer, R. & Zweimüller, J. (2017), 'Too old to work, too young to retire?', *Journal of the Economics of Ageing* **9**, 14–29.
- Jamison, C. S., Wallace, M. & Jamison, P. L. (2004), 'Contemporary work characteristics, stress, and ill health', *American Journal of Human Biology* **16**(1), 43–56.
- Jarosch, G. (2015), Searching for Job Security and the Consequences of Job Loss, Technical report, Princeton.
- Klatzkin, R. R., Baldassaro, A. & Hayden, E. (2018), 'The impact of chronic stress on the predictors of acute stress-induced eating in women', *Appetite* **123**, 343–351.
- Klehe, U.-C., Zikic, J., Van Vianen, A. E. M. & De Pater, I. E. (2011), 'Career adaptability, turnover and loyalty during organizational downsizing', *Journal of Vocational Behavior* **79**(1), 217–229.
- Korkeila, J., Vahtera, J., Korkeila, K., Kivimäki, M., Sumanen, M., Koskenvuo, K. & Koskenvuo, M. (2010), 'Childhood adversities as predictors of incident coronary heart disease and cerebrovascular disease', *Heart (British Cardiac Society)* **96**(4), 298–303.
- Kube, S., Maréchal, M. A. & Puppe, C. (2013), 'Do wage cuts damage work morale? Evidence from a natural field experiment', *Journal of the European Economic Association* **11**(4), 853–870.
- Kuhn, A., Lalive, R. & Zweimüller, J. (2009), 'The public health costs of job loss', *Journal of Health Economics* **28**(6), 1099–1115.

- Lang, J., Ochsmann, E., Kraus, T. & Lang, J. W. B. (2012), 'Psychosocial work stressors as antecedents of musculoskeletal problems: A systematic review and meta-analysis of stability-adjusted longitudinal studies', *Social Science & Medicine* **75**(7), 1163–1174.
- Lazear, E. P. & Gibbs, M. (2014), *Personnel economics in practice*, John Wiley & Sons.
- Le Clainche, C. & Lengagne, P. (2019), The Effects of Mass Layoffs on Mental Health, Working Paper 78, IRDES.
- Leger, K. A., Charles, S. T. & Almeida, D. M. (2018), 'Let It Go: Lingering Negative Affect in Response to Daily Stressors Is Associated With Physical Health Years Later', *Psychological Science* **29**(8), 1283–1290.
- Lindahl, M. (2005), 'Estimating the Effect of Income on Health and Mortality Using Lottery Prizes as an Exogenous Source of Variation in Income', *Journal of Human Resources* **40**(1), 144–168.
- Lindeboom, M., Portrait, F. & van den Berg, G. J. (2010), 'Long-run effects on longevity of a nutritional shock early in life: The Dutch Potato famine of 1846–1847', *Journal of Health Economics* **29**(5), 617–629.
- Marcus, J. (2013), 'The effect of unemployment on the mental health of spouses – Evidence from plant closures in Germany', *Journal of Health Economics* **32**(3), 546–558.
- McCormick, B. (1990), 'A Theory of Signalling During Job Search, Employment Efficiency, and "Stigmatised" Jobs', *Review of Economic Studies* **57**(2), 299–313.
- Nekoei, A. & Weber, A. (2017), 'Does Extending Unemployment Benefits Improve Job Quality?', *American Economic Review* **107**(2), 527–561.
- Nixon, A. E., Mazzola, J. J., Bauer, J., Krueger, J. R. & Spector, P. E. (2011), 'Can work make you sick? A meta-analysis of the relationships between job stressors and physical symptoms', *Work & Stress* **25**(1), 1–22.
- OECD (2015), *Fit Mind, Fit Job, Mental Health and Work*, OECD Publishing, Paris.
- Østhus, S. (2012), 'Health Effects of Downsizing Survival and Job Loss in Norway', *Social Science & Medicine* **75**(5), 946 – 953.
- Østhus, S. & Mastekaasa, A. (2010), 'The Impact of Downsizing on Remaining Workers Sickness Absence', *Social Science & Medicine* **71**(8), 1455–1462.
- Persson, P. & Rossin-Slater, M. (2018), 'Family Ruptures, Stress, and the Mental Health of the Next Generation', *American Economic Review* **108**(4-5), 1214–1252.
- Pichler, S. & Ziebarth, N. R. (2017), 'The pros and cons of sick pay schemes: Testing for contagious presenteeism and noncontagious absenteeism behavior', *Journal of Public Economics* **156**, 14–33.
- Pierce, J. R. & Schott, P. K. (2020), 'Trade Liberalization and Mortality: Evidence from US Counties', *American Economic Review: Insights* **2**(1), 47–64.

- Pinheiro, R. & Visschers, L. (2015), 'Unemployment risk and wage differentials', *Journal of Economic Theory* **157**, 397–424.
- Porcelli, A. J. & Delgado, M. R. (2009), 'Acute Stress Modulates Risk Taking in Financial Decision Making', *Psychological Science* **20**(3), 278–283.
- Ruhm, C. J. (2000), 'Are Recessions Good for Your Health?', *Quarterly Journal of Economics* **115**(2), 617–650.
- Ruhm, C. J. (2016), 'Health Effects of Economic Crises', *Health Economics* **25**(S2), 6–24.
- Schaller, J. & Stevens, A. H. (2015), 'Short-run effects of job loss on health conditions, health insurance, and health care utilization', *Journal of Health Economics* **43**, 190–203.
- Schaller, J. & Zerpa, M. (2017), 'Short-Run Effects of Parental Job Loss on Child Health', *American Journal of Health Economics* **5**(1), 8–41.
- Schiele, V. & Schmitz, H. (2016), 'Quantile treatment effects of job loss on health', *Journal of Health Economics* **49**, 59–69.
- Schmidpeter, B. (2019), Does Stress Shorten Your Life? Evidence from Parental Bereavement. RWI Essen Working Paper.
- Sigursteinsdóttir, H. & Rafnsdóttir, G. L. (2015), 'Sickness and Sickness Absence of Remaining Employees in a Time of Economic Crisis: A study among employees of municipalities in Iceland', *Social Science & Medicine* **132**(Supplement C), 95 – 102.
- Snyder, S. E. & Evans, W. N. (2006), 'The Effect of Income on Mortality: Evidence from the Social Security Notch', *Review of Economics and Statistics* **88**(3), 482–495.
- StatAUT (2020), Persons in employment and employees by full-time/part-time and sex since 1994, Statistical Fact Sheet, Statistics Austria.
- Stephoe, A. & Kivimäki, M. (2012), 'Stress and cardiovascular disease', *Nature Reviews Cardiology* **9**(6), 360–370.
- Stults-Kolehmainen, M. A. & Sinha, R. (2014), 'The Effects of Stress on Physical Activity and Exercise', *Sports Medicine* **44**(1), 81–121.
- Sullivan, D. & von Wachter, T. (2009), 'Job Displacement and Mortality: An Analysis Using Administrative Data', *Quarterly Journal of Economics* **124**(3), 1265–1306.
- Vaccarino, V., Sullivan, S., Hammadah, M., Wilmot, K., Al Mheid, I., Ramadan, R., Elon, L., Pimple, P. M., Garcia, E. V., Nye, J., Shah, A. J., Alkhoder, A., Levantsevych, O., Gay, H., Obideen, M., Huang, M., Lewis, T. T., Bremner, J. D., Quyyumi, A. A. & Raggi, P. (2018), 'Mental Stress-Induced-Myocardial Ischemia in Young Patients With Recent Myocardial Infarction: Sex Differences and Mechanisms', *Circulation* **137**(8), 794–805.

- Vahtera, J., Kivimäki, M., Pentti, J., Linna, A., Virtanen, M., Virtanen, P. & Ferrie, J. E. (2004), 'Organisational Downsizing, Sickness Absence, and Mortality: 10-town prospective cohort study', *BMJ* **328**(7439), 555.
- van den Berg, G. J., Lindeboom, M. & Portrait, F. (2006), 'Economic Conditions Early in Life and Individual Mortality', *American Economic Review* **96**(1), 290–302.
- van den Berg, G. J., Pinger, P. R. & Schoch, J. (2016), 'Instrumental Variable Estimation of the Causal Effect of Hunger Early in Life on Health Later in Life', *Economic Journal* **126**(591), 465–506.
- Weiss, A. (1980), 'Job queues and layoffs in labor markets with flexible wages', *Journal of Political Economy* (88), 526–538.
- Ziebarth, N. R. & Karlsson, M. (2010), 'A natural experiment on sick pay cuts, sickness absence, and labor costs', *Journal of Public Economics* **94**(11), 1108–1122.
- Zweimüller, J., Winter-Ebmer, R., Lalive, R., Kuhn, A., Wuellrich, J., Ruf, O. & Büchi, S. (2009), The Austrian Social Security Database (ASSD), Working Paper 0901, The Austrian Center for Labor Economics and the Analysis of the Welfare State, University of Linz.

A. TABLES AND FIGURES

TABLE 1 — Descriptive statistics

	Mean	Std. dev.	Treatment	Control
			(1)	(2)
			(3)	(4)
<i>(a) Covariates and sample split variables</i>				
Age (years)	40.7	9.2	40.3	41.8
Tenure (years)	9.9	7.6	9.6	11.1
Female	0.33	0.47	0.33	0.33
Blue collar	0.39	0.49	0.38	0.40
Wage p. a. (1,000 €)	28.6	11.0	28.4	29.4
Firm size	308.0	338.5	305.2	316.2
Relative ML size ^a	0.08	0.05	0.08	0.08
Turnover prev. year	0.04	0.04	0.03	0.04
Local unemployment	0.11	0.03	0.11	0.11
<i>(b) Main outcomes</i>				
Physician fees				
Count	5.20	14.25	5.07	5.59
Expenditure (€)	55.9	109.3	54.7	59.5
Drug prescriptions				
Count	1.17	2.51	1.13	1.26
Expenditure (€)	25.0	182.0	24.3	26.9
Inpatient days				
Count	0.17	1.48	0.17	0.20
Expenditure (€)	28.9	249.1	27.2	34.1
Mental conditions				
Diagnosed	0.002	0.043	0.002	0.002
Psychotherapy	0.002	0.048	0.002	0.003
Drug expenditure (€) ^b	0.9	8.1	0.9	1.0
Cardiac conditions				
Event ^c	0.001	0.030	0.001	0.001
Drug expenditure (€) ^d	3.7	18.5	3.5	4.3
Musculoskeletal conditions				
Diagnosed	0.032	0.176	0.031	0.034
Drug expenditure (€) ^e	1.0	6.0	1.0	1.1
<i>(d) Other outcomes</i>				
Addiction outcomes				
Opioids	0.00035	0.01861	0.00035	0.00034
Alcohol	0.00005	0.00729	0.00005	0.00005
Sick days	2.3	7.4	2.2	2.4

Notes: Quarterly means, $N = 2,203,214$; ^a laid-off workers relative to pre-ML firm size, ^b antidepressants (ATC code N06A), ^c heart attacks and strokes, ^d cardiovascular system drugs (ATC category C), e.g., beta blockers, ^e opioid (ATC codes N01AH and N02A) and non-opioid (M01, M02, and N02B) painkillers,

TABLE 2 — Effects of job stress on health

	Physician visits		Drug prescriptions		Inpatient days	
	Count (1)	Log exp. (2)	Count (3)	Log exp. (4)	Count (5)	Log exp. (6)
<i>(a) Average effects</i>						
Average effect	0.015 (0.053)	0.005 (0.008)	0.028*** (0.008)	0.012** (0.006)	0.021*** (0.007)	0.014*** (0.005)
<i>(b) Dynamic effects</i>						
$t = 1$	-0.005 (0.094)	0.006 (0.013)	0.014 (0.011)	0.004 (0.008)	0.027** (0.011)	0.015* (0.008)
$t = 2$	0.039 (0.121)	0.020 (0.013)	0.032*** (0.012)	0.010 (0.009)	0.025** (0.012)	0.018** (0.008)
$t = 3$	-0.018 (0.094)	0.014 (0.014)	0.030** (0.012)	0.014 (0.009)	0.019 (0.012)	0.008 (0.009)
$t = 4$	0.051 (0.104)	0.024* (0.013)	0.039*** (0.013)	0.024*** (0.009)	0.010 (0.012)	0.014 (0.009)
$t = 5$	-0.002 (0.109)	0.018 (0.014)	0.050*** (0.014)	0.030*** (0.010)	0.044*** (0.011)	0.024*** (0.008)
$t = 6$	0.134 (0.114)	0.044*** (0.015)	0.079*** (0.014)	0.037*** (0.010)	0.080*** (0.014)	0.048*** (0.009)
Sample mean	5.20	2.49	1.17	1.22	0.17	0.20
F -test for pretrends [†]	0.1 (0.996)	0.8 (0.541)	1.0 (0.447)	0.9 (0.483)	0.7 (0.620)	0.5 (0.781)

Notes: This table displays DD estimates for the effect of surviving a ML on health. The sample is based on 169,478 worker \times ML dyads observed over 13 quarters, which gives a total number of observations in each column of 2,203,214. Panel (a) is a static DD model based on equation (1), where the coefficients can be interpreted as average treatment effects on the respective outcome. Panel (b) is a dynamic DD model based on equation (2); the 6 pre-ML time dummies are not reported explicitly but we test for their joint significance below. In columns (1) and (2) the outcome is outpatient physician visits, in columns (3) and (4) drug prescriptions, and in columns (5) and (6) days spent in hospital. We measure the number of physician visits (1), drug packages prescribed (3), and days spent in hospital (5) along with log expenditure arising from each outcome. Each regression controls for worker age, tenure, and a set of worker \times ML fixed effects. Standard errors are clustered at the firm level, stars indicate significance levels: * $p < 0.10$, ** $p < 0.05$, *** $p < 0.01$.

[†] We test for pretrends using the (non-reported) pre-ML time dummies from the models in panel (b); $(\hat{\beta}_6, \dots, \hat{\beta}_{-1})$. The F -test is against the null of *no* pretrend in the respective outcome. Corresponding p -values are reported in parentheses.

TABLE 3 — Mechanisms for the effects of job stress on health

	Mental conditions			Cardiac conditions		Musculoskeletal conditions	
	Diagnosed (1)	Psychotherapy (2)	Drug exp. (3)	Event (4)	Drug exp. (5)	Diagnosed (6)	Drug exp. (7)
<i>(a) Average effects</i>							
Average effect	0.0003 (0.0002)	0.0004* (0.0003)	0.003 (0.002)	0.0001 (0.0001)	0.007** (0.003)	0.0009 (0.0009)	0.002 (0.003)
<i>(b) Dynamic effects</i>							
$t = 1$	0.0001 (0.0003)	0.0001 (0.0003)	0.003 (0.002)	0.0002 (0.0002)	0.006** (0.003)	0.0009 (0.001)	0.001 (0.004)
$t = 2$	0.0002 (0.0003)	0.0006** (0.0003)	0.005** (0.002)	0.0003 (0.0002)	0.002 (0.003)	0.0003 (0.001)	0.006 (0.004)
$t = 3$	0.0003 (0.0003)	0.0007** (0.0003)	0.005** (0.002)	0.0002 (0.0002)	0.007* (0.004)	0.0004 (0.001)	0.004 (0.005)
$t = 4$	0.0002 (0.0004)	0.0004 (0.0003)	0.003 (0.003)	0.0003 (0.0002)	0.01** (0.004)	0.0006 (0.001)	0.006 (0.004)
$t = 5$	0.0004 (0.0004)	0.0007* (0.0004)	0.004 (0.003)	0.0002 (0.0002)	0.01*** (0.004)	0.003** (0.002)	0.01*** (0.005)
$t = 6$	0.001*** (0.0004)	0.0009** (0.0004)	0.007** (0.003)	0.0002 (0.0002)	0.02*** (0.005)	0.003** (0.002)	0.009* (0.005)
Sample mean	0.002	0.002	0.08	0.0009	0.3	0.03	0.2
F -test for pretrends [†]	1.6 (0.150)	0.9 (0.458)	2.2 (0.044)	0.9 (0.469)	0.5 (0.836)	0.3 (0.935)	1.6 (0.148)

Notes: This table displays DD estimates for the effect of surviving a ML on additional health outcomes. The sample is based on 169,478 worker \times ML dyads observed over 13 quarters, which gives a total number of observations in each column of 2,203,214. Panel (a) is a static DD model based on equation (1), where the coefficients can be interpreted as average treatment effects on the respective outcome. Panel (b) is a dynamic DD model based on equation (2); the 6 pre-ML time dummies are not reported explicitly but we test for their joint significance below. In column (1) the outcome is an indicator for whether anxiety, burnout, or depression is diagnosed in a worker; (2) is whether the worker is in psychotherapy, (3) is log expenditure for antidepressants and benzodiazepines; (3) is whether a stroke or a heart attack occurs, (4) is log expenditure for cardiovascular system drugs, (5) is whether a musculoskeletal condition is diagnosed, and (6) is log expenditure for both opioid and non-opioid painkillers. Each regression controls for worker age, tenure, and a set of worker \times ML fixed effects. Standard errors are clustered at the firm level, stars indicate significance levels: * $p < 0.10$, ** $p < 0.05$, *** $p < 0.01$.

[†] We test for pretrends using the (non-reported) pre-ML time dummies from the models in panel (b); $(\hat{\beta}_6, \dots, \hat{\beta}_{-1})$. The F -test is against the null of no pretrend in the respective outcome. Corresponding p -values are reported in parentheses.

TABLE 4 — Effects of job stress on addiction treatments

	Alcohol (1)	Opioids (2)
<i>(a) Average effects</i>		
Average effect	-0.0001 (0.0001)	0.00003 (0.00003)
<i>(b) Dynamic effects</i>		
$t = 1$	-0.00007 (0.00009)	0.00002 (0.00003)
$t = 2$	-0.00008 (0.0001)	0.00004 (0.00003)
$t = 3$	0.00003 (0.0001)	0.00001 (0.00003)
$t = 4$	-0.000008 (0.0001)	0.00002 (0.00003)
$t = 5$	-0.00008 (0.0001)	0.00002 (0.00004)
$t = 6$	0.0001 (0.0001)	0.00001 (0.00004)
Sample mean	0.00035	0.00005
F -test for pretrends [†]	0.8 (0.607)	0.6 (0.755)

Notes: This table displays DD estimates for the effect of surviving a ML on additional health outcomes. The sample is based on 169,478 worker \times ML dyads observed over 13 quarters, which gives a total number of observations in each column of 2,203,214. Panel (a) is a static DD model based on equation (1), where the coefficients can be interpreted as average treatment effects on the respective outcome. Panel (b) is a dynamic DD model based on equation (2); the 6 pre-ML time dummies are not reported explicitly but we test for their joint significance below. In column (1) the outcome is a binary variable indicating whether the worker is treated for alcohol addiction, in column (2) the outcome is whether the worker is treated for opioid addiction. Each regression controls for worker age, tenure, and a set of worker \times ML fixed effects. Standard errors are clustered at the firm level, stars indicate significance levels: * $p < 0.10$, ** $p < 0.05$, *** $p < 0.01$.

[†] We test for pretrends using the (non-reported) pre-ML time dummies from the models in panel (b); $(\hat{\beta}_6, \dots, \hat{\beta}_{-1})$. The F -test is against the null of *no* pretrend in the respective outcome. Corresponding p -values are reported in parentheses.

TABLE 5 — Robustness to choosing a different control group

	Physician visits (1)	Drug prescriptions (2)	Inpatient days (3)
<i>(a) Alternative control group</i>			
$t = 1$	0.012 (0.097)	0.024** (0.011)	0.010 (0.011)
$t = 2$	0.054 (0.120)	0.020* (0.012)	0.025** (0.012)
$t = 3$	-0.016 (0.093)	0.012 (0.012)	0.019 (0.012)
$t = 4$	0.066 (0.108)	0.001 (0.012)	0.025** (0.013)
$t = 5$	0.015 (0.113)	0.032*** (0.012)	0.036*** (0.014)
$t = 6$	0.141 (0.116)	0.066*** (0.014)	0.059*** (0.013)
Observations	1,503,567	1,503,567	1,503,567
Sample mean	4.76	0.19	1.12
F -test for pretrends [†]	0.1 (0.999)	1.8 (0.097)	1.4 (0.205)
<i>(b) Baseline</i>			
$t = 1$	-0.005 (0.094)	0.014 (0.011)	0.027** (0.011)
$t = 2$	0.039 (0.121)	0.032*** (0.012)	0.025** (0.012)
$t = 3$	-0.018 (0.094)	0.030** (0.012)	0.019 (0.012)
$t = 4$	0.051 (0.104)	0.039*** (0.013)	0.010 (0.012)
$t = 5$	-0.002 (0.109)	0.050*** (0.014)	0.044*** (0.011)
$t = 6$	0.134 (0.114)	0.079*** (0.014)	0.080*** (0.014)
Observations	2,203,214	2,203,214	2,203,214
Sample mean	5.20	1.17	0.17
F -test for pretrends [†]	0.1 (0.996)	1.0 (0.447)	0.7 (0.620)

Notes: This table displays DD estimates for the effect of surviving a ML on additional health outcomes for a control group matched from firms that do not experience a ML, see the notes of Table 2. We use only the count measures from Table 2 as outcomes. Each regression controls for worker age, tenure, and a set of worker \times ML fixed effects. Standard errors are clustered at the firm level, stars indicate significance levels: * $p < 0.10$, ** $p < 0.05$, *** $p < 0.01$.

[†] We test for pretrends using the (non-reported) pre-ML time dummies from the models in panel (b); $(\hat{\beta}_6, \dots, \hat{\beta}_{-1})$. The F -test is against the null of *no* pretrend in the respective outcome. Corresponding p -values are reported in parentheses.

TABLE 6 — Worker-level heterogeneity in the effects of job stress on health

	Gender		Age		Tenure		Collar		Wage	
	Female (1)	Male (2)	< 40 (3)	≥ 40 (4)	Short (5)	Long (6)	Blue (7)	White (8)	Low (9)	High (10)
Physician visits	-0.100 (0.100)	0.063 (0.062)	0.003 (0.071)	0.004 (0.075)	0.030 (0.081)	0.003 (0.071)	0.096 (0.077)	-0.027 (0.069)	0.155** (0.071)	-0.113 (0.079)
Sample mean	7.18	4.22	4.11	6.03	4.96	5.44	5.03	5.31	5.49	4.92
Pretrends [†]	0.392	0.897	0.720	0.800	0.548	0.555	0.600	0.713	0.655	0.991
Drug prescriptions	0.019 (0.016)	0.030*** (0.009)	0.012 (0.010)	0.030** (0.012)	0.022* (0.012)	0.026** (0.012)	0.035** (0.014)	0.027** (0.011)	0.046*** (0.013)	0.010 (0.011)
Sample mean	1.38	1.06	0.75	1.49	1.03	1.31	1.24	1.12	1.23	1.10
Pretrends [†]	0.100	0.990	0.843	0.305	0.121	0.531	0.432	0.065	0.204	0.393
Inpatient days	0.027*** (0.010)	0.018** (0.009)	-0.001 (0.008)	0.034*** (0.011)	0.013* (0.008)	0.024** (0.011)	0.029*** (0.011)	0.016* (0.009)	0.020* (0.010)	0.017* (0.010)
Sample mean	0.18	0.17	0.12	0.22	0.15	0.20	0.18	0.17	0.18	0.17
Pretrends [†]	0.705	0.420	0.990	0.413	0.530	0.310	0.662	0.972	0.753	0.493

Notes: This table displays subgroup DD estimates for the effect of surviving a ML on health by worker socioeconomic characteristics. Gender, tenure, and wage are split at the sample median. We report average treatment effects from the static DD model in equation (1). For details on the outcome variables, please consult the notes of Table 2. Each regression controls for worker age, tenure, and a set of worker × ML fixed effects. Standard errors are clustered at the firm level, stars indicate significance levels: * $p < 0.10$, ** $p < 0.05$, *** $p < 0.01$.

[†] To test for pretrends we run an auxiliary regression similar to the dynamic DD model in equation (2) and perform an F -test for the joint significance of the estimated pre-ML coefficients $(\hat{\beta}_6, \dots, \hat{\beta}_{-1})$. Here we only report the corresponding p -value of this test.

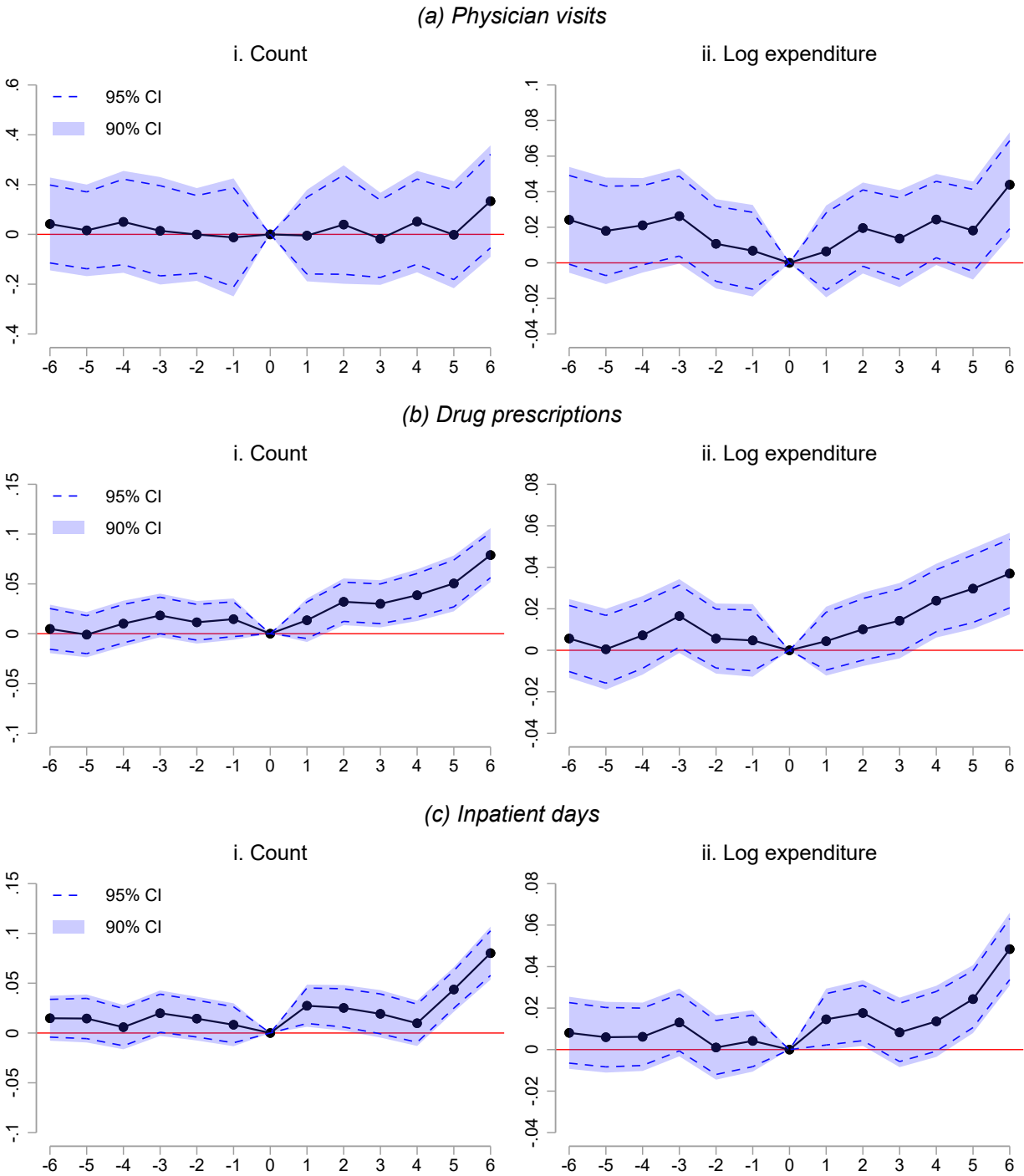
TABLE 7 — Heterogeneity by firm characteristics and local unemployment rate in the effects of job stress on health

	Firm characteristics						Local unemployment	
	Firm size		Relative ML size		Turnover rate		Low (7)	High (8)
	< 200 (1)	≥ 200 (2)	Low (3)	High (4)	Low (5)	High (6)		
Physician visits	0.059 (0.074)	−0.027 (0.073)	0.002 (0.075)	0.019 (0.076)	−0.017 (0.122)	0.002 (0.074)	0.065 (0.214)	0.046 (0.058)
Sample mean	5.27	5.12	5.42	4.98	5.17	5.23	4.10	5.26
Pretrends [†]	0.974	0.998	0.665	0.573	0.992	0.820	0.532	0.998
Drug prescriptions	0.024** (0.012)	0.037*** (0.013)	0.038*** (0.013)	0.017 (0.012)	0.056*** (0.016)	0.026** (0.011)	0.008 (0.040)	0.029*** (0.009)
Sample mean	1.14	1.20	1.22	1.11	1.16	1.17	1.10	1.17
Pretrends [†]	0.686	0.525	0.155	0.791	0.830	0.631	0.300	0.553
Inpatient days	0.007 (0.008)	0.034*** (0.011)	0.021* (0.011)	0.020** (0.009)	0.060*** (0.012)	0.007 (0.009)	0.007 (0.033)	0.020*** (0.007)
Sample mean	0.17	0.18	0.19	0.16	0.18	0.17	0.16	0.18
Pretrends [†]	0.676	0.142	0.258	0.621	0.561	0.752	0.210	0.547

Notes: This table displays subgroup DD estimates for the effect of surviving a ML on health by firm and local economy characteristics. We report average treatment effects from the static DD model in equation (1). Relative ML size, turnover, and unemployment rate are split at the sample median. For details on the outcome variables please consult the notes of Table 2. Each regression controls for worker age, tenure, and a set of worker \times ML fixed effects. Standard errors are clustered at the firm level, stars indicate significance levels: * $p < 0.10$, ** $p < 0.05$, *** $p < 0.01$.

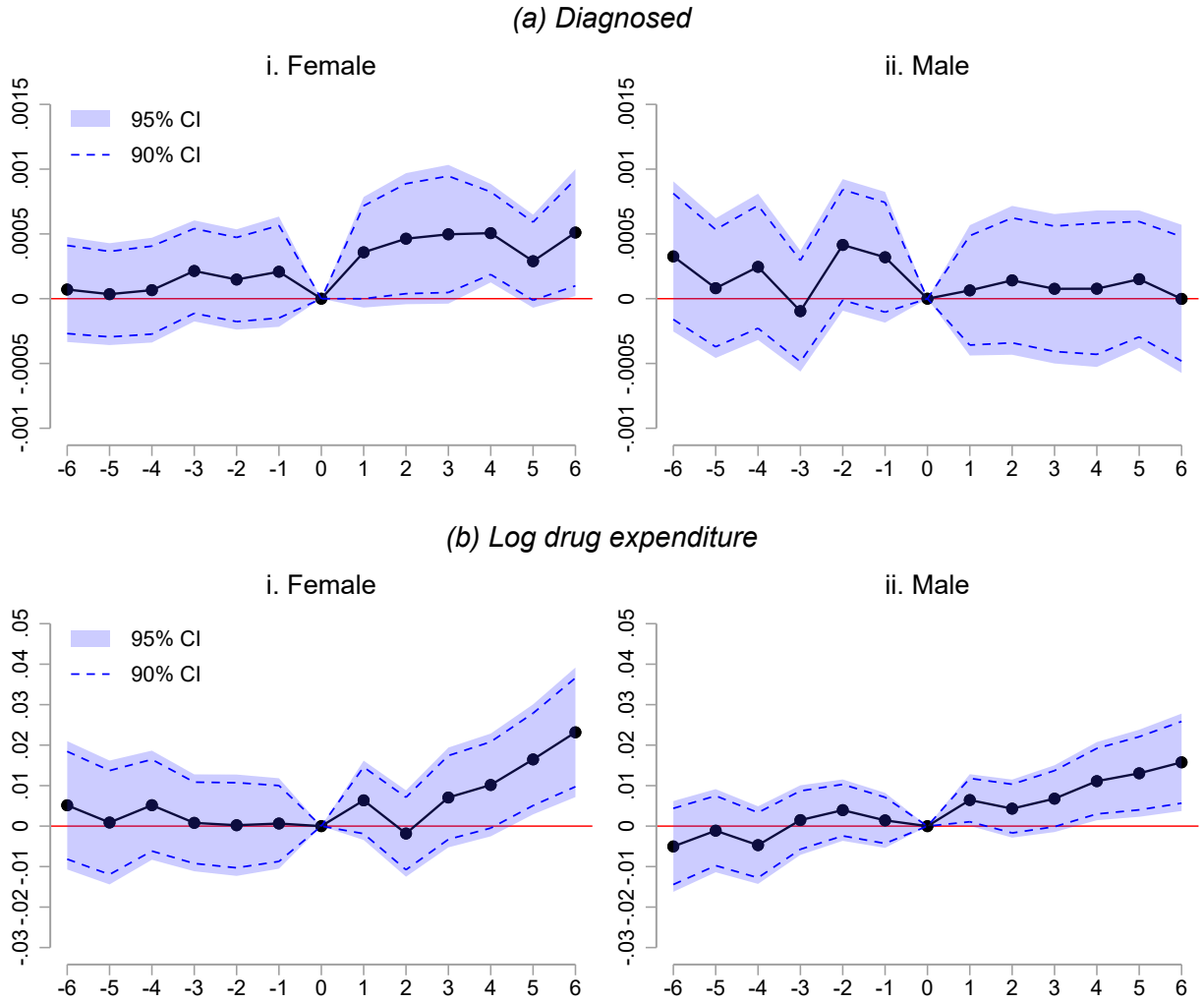
[†] To test for pretrends we run an auxiliary regression similar to the dynamic DD model in equation (2) and perform an F -test for the joint significance of the estimated pre-ML coefficients ($\hat{\beta}_6, \dots, \hat{\beta}_{-1}$). Here we only report the corresponding p -value of this test.

FIGURE 1 — Dynamic treatment effects



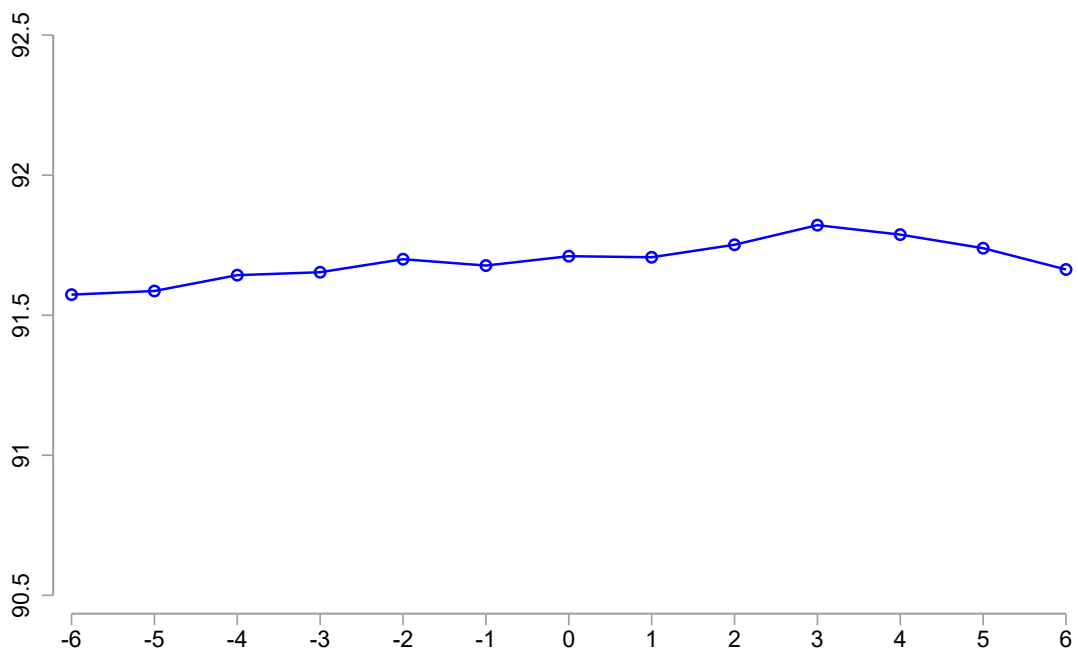
Notes: These graphs depict dynamic DD estimates for effects of surviving a ML on health, 6 quarters before until 6 quarters after the mass layoff. The post-ML coefficients are taken from Table 2. Scatters represent point estimates. The blue-shaded area is a 90% confidence band, the dashed line a 95% confidence band, both based on firm-level clustered standard errors. In each regression we control for worker age, tenure, and a set of worker \times ML fixed effects.

FIGURE 2 — Gender heterogeneity in the effects of job stress on cardiovascular health



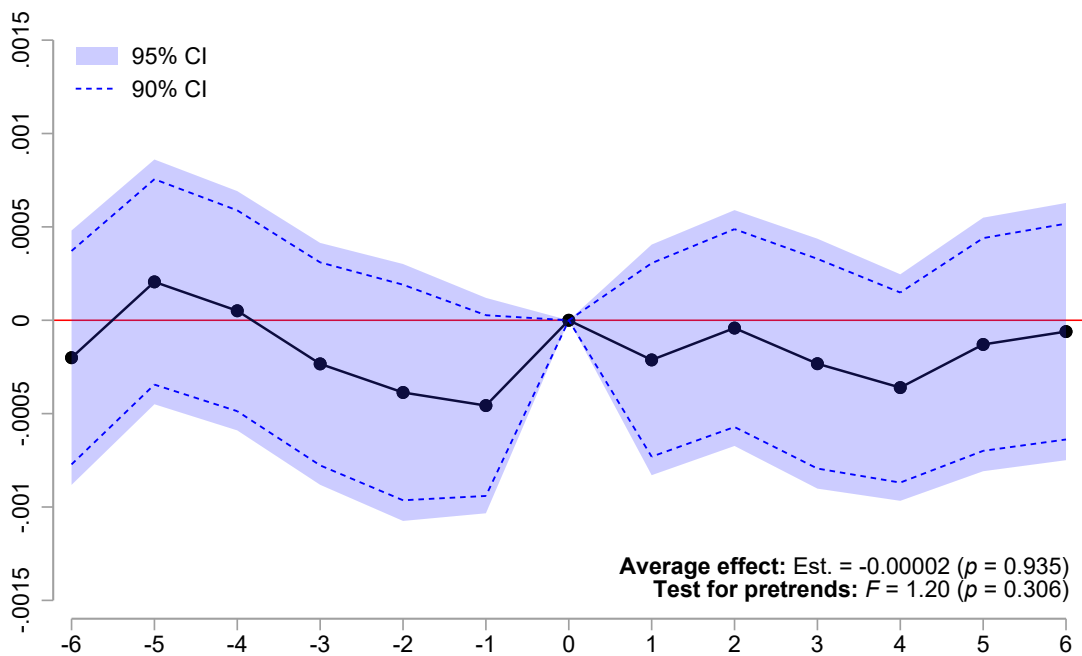
Notes: These graphs depict dynamic DD estimates for effects of surviving a ML on the probability of having a stroke or a heart attack (panel a) and log expenditure for cardiovascular drugs (panel b), 6 quarters before until 6 quarters after the mass layoff. Scatters represent point estimates. The blue-shaded area is a 90% confidence band, the dashed line a 95% confidence band, both based on firm-level clustered standard errors. In each regression we control for worker age, tenure, and a set of worker-level fixed effects.

FIGURE 3 — Evolution of survivor wages



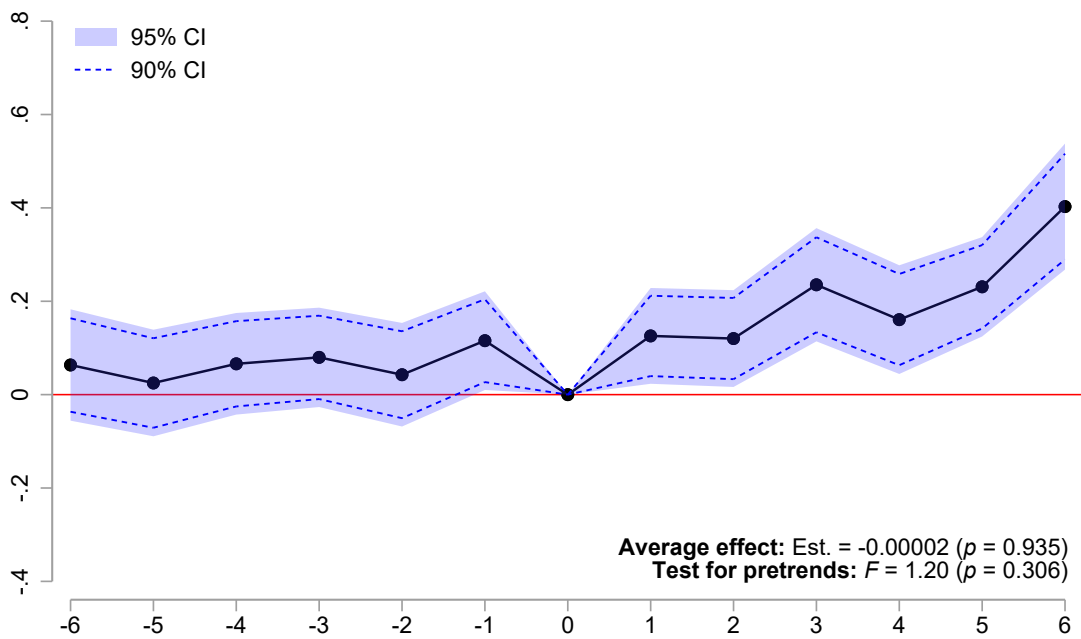
Notes: This graph plots average daily wages for ML survivors relative to their ML quarter, with wages being regression-adjusted for age, gender, tenure, occupation, and calendar quarter fixed effects (we regress wages on these covariates, recover the residuals from this regression, and add those to the sample mean of daily wages).

FIGURE 4 — Effects on neoplasms



Notes: This graph depicts dynamic DD estimates for the effect of surviving a ML on the probability of being diagnosed with a malign neoplasm, 6 quarters before until 6 quarters after the mass layoff. Scatters represent point estimates. The blue-shaded area is a 95% confidence band, the dashed line a 90% confidence band, both based on firm-level clustered standard errors. In each regression we control for worker age, tenure, and a set of worker \times ML fixed effects..

FIGURE 5 — Treatment effects on sick days



Notes: This graph depicts dynamic DD estimates for the effect of surviving a ML on the number of sick days, 6 quarters before until 6 quarters after the mass layoff. Scatters represent point estimates. The blue-shaded area is a 95% confidence band, the dashed line a 90% confidence band, both based on firm-level clustered standard errors. In each regression we control for worker age, tenure, and a set of worker \times ML fixed effects.

FIGURE 6 — Change in average sick days of coworkers around wage cuts



Notes: For this graph, we identify a sample of workers who experience at least a 10 percent annual wage cut between 1998 and 2014 in Upper Austria, provided that the worker did not switch from full-time to part-time status. In total, we have 411,925 such events (note that this is a different sample of workers compared to our main analysis). We then calculate the average number of sick days per year for all coworkers in the same firm that did not also experience a wage cut. We then plot the change in the average number of these coworker sick days three years before and three years after the wage cut. If a worker experiences multiple wage cuts, we only include the first. If we estimate this model with a single post wage cut dummy, we obtain an increase in average sick days of $\hat{\beta} = 1.02$ ($p < 0.001$) relative to year -1 , the pre-treatment sample mean is 12.1 days.

A. WEB APPENDIX

This web appendix contains additional tables and figures for the paper “*The health externalities of downsizing*” by Alexander Ahammer, Dominik Gröbl, and Rudolf Winter-Ebmer.

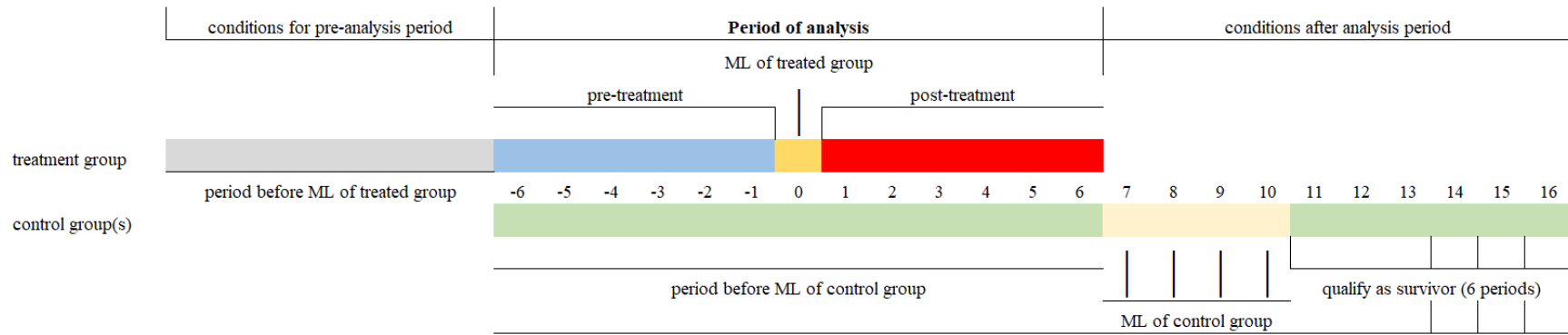
A.1. Additional tables and figures

TABLE A.1 — Effects by spousal wage

	Females		Males	
	Spouse wage low (1)	Spouse wage high (2)	Spouse wage low (3)	Spouse wage high (4)
Physician fees	−0.045 (0.171)	0.207 (0.146)	0.051 (0.110)	−0.089 (0.149)
Sample mean	7.37	6.67	4.33	4.12
Observations	71,032	95,056	221,195	406,328
Drug prescriptions	0.089*** (0.030)	−0.014 (0.025)	0.013 (0.015)	0.008 (0.010)
Sample mean	1.56	1.47	1.14	1.00
Observations	71,032	95,056	221,195	406,328
Inpatient days	0.029 (0.023)	0.027 (0.017)	0.035*** (0.014)	0.008 (0.010)
Sample mean	0.19	0.17	0.17	0.16
Observations	71,032	95,056	221,195	406,328

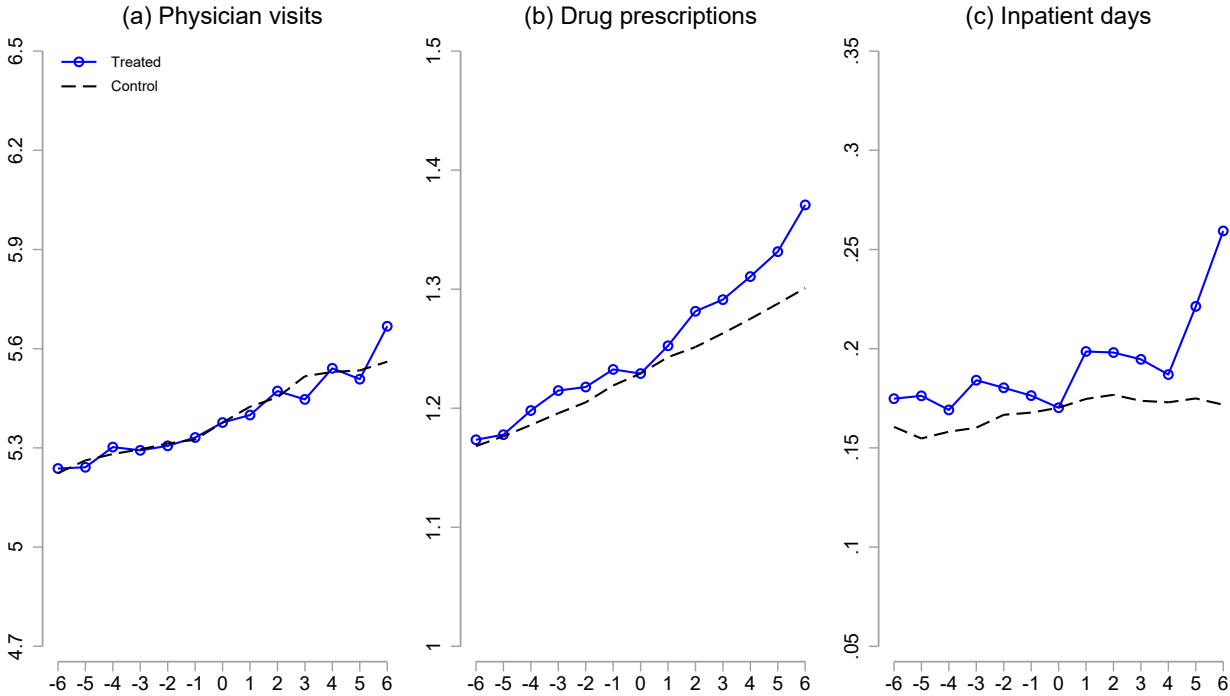
Notes: This table compares the average treatment effect estimates for our three count outcomes from Table 2 (columns 1, 3, and 5) by spousal wage, split at the median wage distribution across all spouses. Since we do not observe marital status directly, this is based on a subset of married workers we can identify based on a specific set of tax deductions and (child care) subsidies. We can confirm marriage status for 61,047 worker-ML dyads in our data; this would correspond to a marriage rate of 36 percent. The overall number of observations is 793,611. Each regression controls for worker age, tenure, and a set of worker \times ML fixed effects. Stars indicate significance levels: * $p < 0.10$, ** $p < 0.05$, *** $p < 0.01$.

FIGURE A.1 — Treatment and control group definition



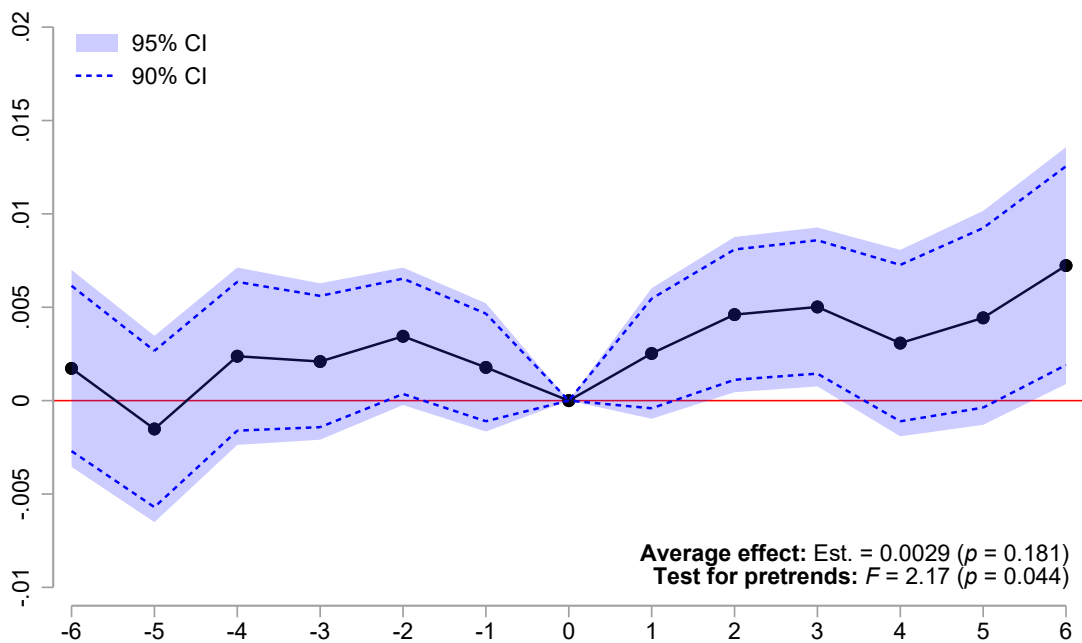
Notes: This sketch shows how we define the treatment and control group for our baseline regressions. Importantly, the control group is chosen from the set of firms that have their MLs 7 to 10 quarters after the treatment group ML in $t = 0$. We then compare health status in both the treatment and control group between $t = -6$ and $t = 6$. Because we require the control group to be employed with the same firm already 13 quarters prior to their ML, we impose a similar tenure condition to the treatment group.

FIGURE A.2 — Trends in raw health outcomes



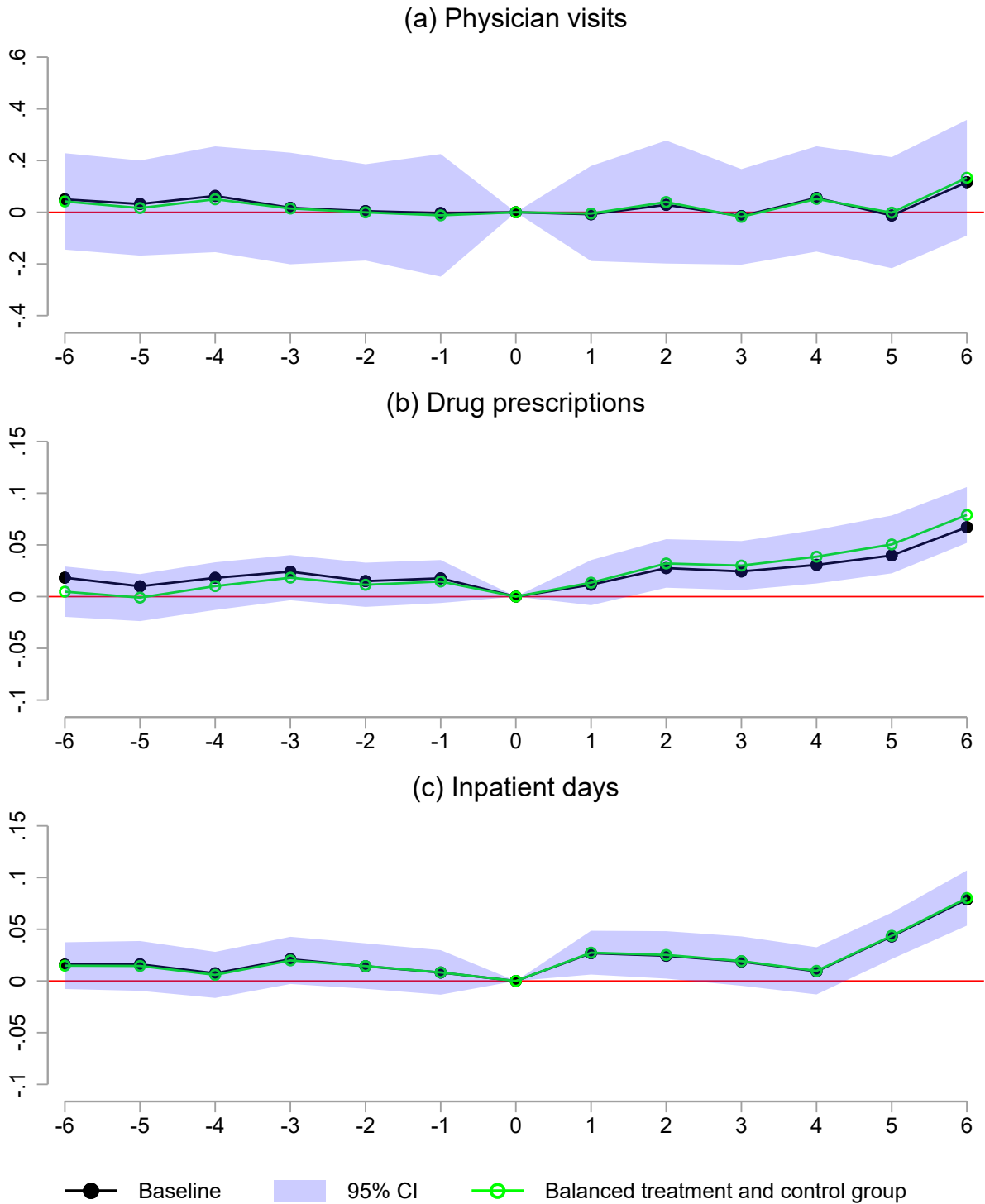
Notes: This figure plots raw data means for the number of physician visits, drug prescriptions, and inpatient days, relative to the ML quarter in both the treatment group and the control group. For the treatment group, $t = 0$ is the period of the actual ML, for the control group, $t = 0$ is when a ‘placebo’ shock occurs, with their actual shock occurring between $t = 7$ and $t = 10$. Similar to Fadlon & Nielsen (2019), we normalize the level of the control group’s outcome to the treatment group’s level at $t = 0$.

FIGURE A.3 — Effect of job stress on log antidepressant expenditure



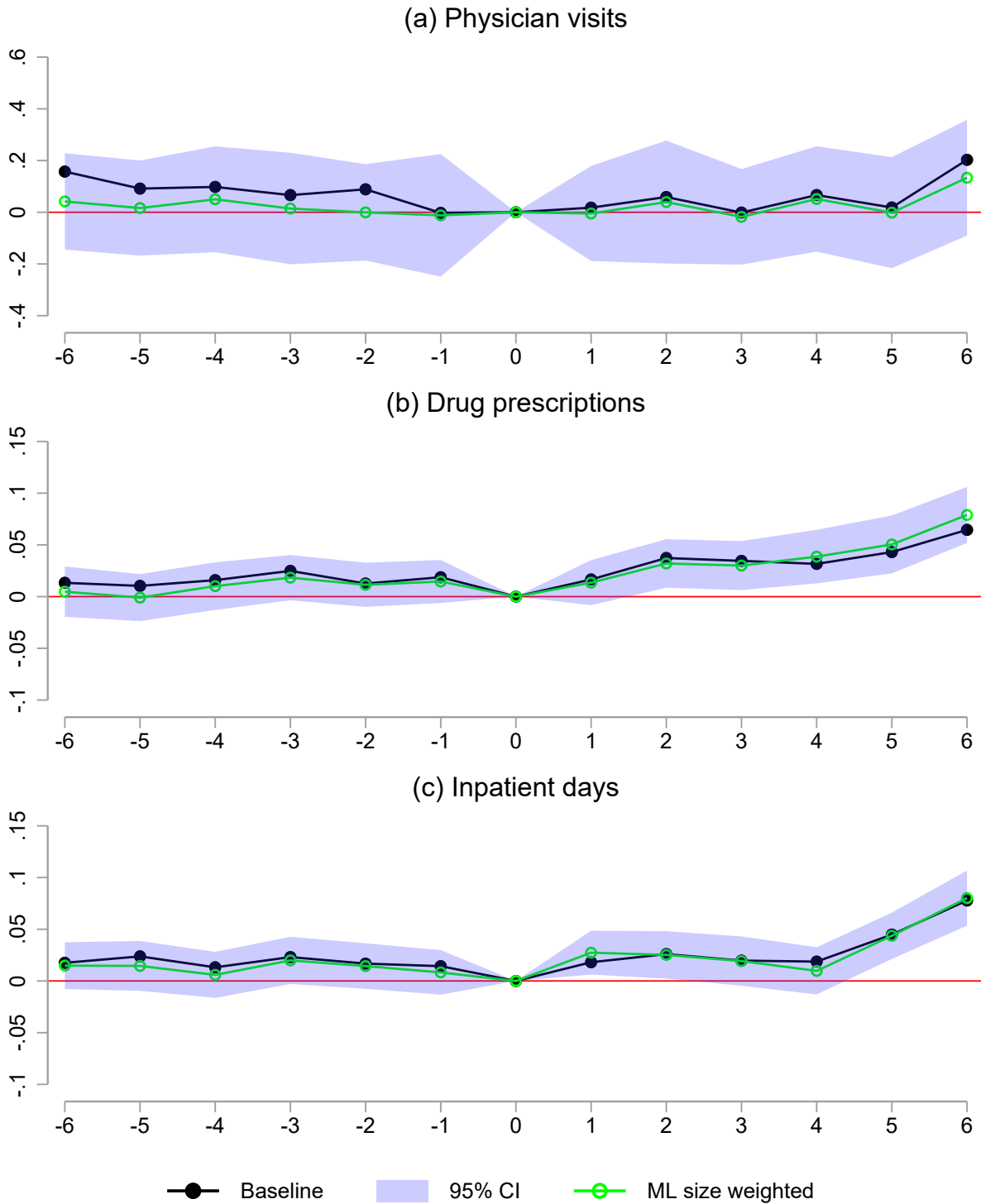
Notes: These graphs depict dynamic DD estimates for effects of surviving a ML on log antidepressant expenditure, 6 quarters before until 6 quarters after the ML. Scatters represent estimates which can be interpreted as the change in log expenditure compared to the quarter of the ML between present and future survivors. The blue-shaded area represents a 90% confidence band, the dashed line represents a 95% confidence band.

FIGURE A.4 — DD regressions with balanced treatment and control groups



Notes: These graphs depict dynamic DD estimates for effects of surviving a ML on health, 6 quarters before until 6 quarters after the mass layoff. In each regression we control for worker age, tenure, and a set of worker \times ML fixed effects.

FIGURE A.5 — DD regressions weighted by relative ML size



Notes: These graphs depict dynamic DD estimates for effects of surviving a ML on health, 6 quarters before until 6 quarters after the mass layoff. In each regression we control for worker age, tenure, and a set of worker \times ML fixed effects.