

Di Casola, Paola; Sichlimiris, Spyridon

Working Paper

TFP news, stock market booms and the business cycle: Revisiting the evidence with VEC models

Sveriges Riksbank Working Paper Series, No. 388

Provided in Cooperation with:

Central Bank of Sweden, Stockholm

Suggested Citation: Di Casola, Paola; Sichlimiris, Spyridon (2020) : TFP news, stock market booms and the business cycle: Revisiting the evidence with VEC models, Sveriges Riksbank Working Paper Series, No. 388, Sveriges Riksbank, Stockholm

This Version is available at:

<https://hdl.handle.net/10419/232591>

Standard-Nutzungsbedingungen:

Die Dokumente auf EconStor dürfen zu eigenen wissenschaftlichen Zwecken und zum Privatgebrauch gespeichert und kopiert werden.

Sie dürfen die Dokumente nicht für öffentliche oder kommerzielle Zwecke vervielfältigen, öffentlich ausstellen, öffentlich zugänglich machen, vertreiben oder anderweitig nutzen.

Sofern die Verfasser die Dokumente unter Open-Content-Lizenzen (insbesondere CC-Lizenzen) zur Verfügung gestellt haben sollten, gelten abweichend von diesen Nutzungsbedingungen die in der dort genannten Lizenz gewährten Nutzungsrechte.

Terms of use:

Documents in EconStor may be saved and copied for your personal and scholarly purposes.

You are not to copy documents for public or commercial purposes, to exhibit the documents publicly, to make them publicly available on the internet, or to distribute or otherwise use the documents in public.

If the documents have been made available under an Open Content Licence (especially Creative Commons Licences), you may exercise further usage rights as specified in the indicated licence.

SVERIGES RIKSBANK
WORKING PAPER SERIES

388



TFP news, stock market booms and the business cycle: Revisiting the evidence with VEC models

Paola Di Casola and Spyridon Sichlimiris

March 2020

WORKING PAPERS ARE OBTAINABLE FROM

www.riksbank.se/en/research

Sveriges Riksbank • SE-103 37 Stockholm

Fax international: +46 8 21 05 31

Telephone international: +46 8 787 00 00

The Working Paper series presents reports on matters in the sphere of activities of the Riksbank that are considered to be of interest to a wider public.

The papers are to be regarded as reports on ongoing studies and the authors will be pleased to receive comments.

The opinions expressed in this article are the sole responsibility of the author(s) and should not be interpreted as reflecting the views of Sveriges Riksbank.

TFP news, stock market booms and the business cycle: Revisiting the evidence with VEC models

Paola Di Casola and Spyridon Sichlimiris *

Sveriges Riksbank Working Paper Series

No. 388

March 2020

Abstract

Beaudry and Portier (2006) provide support for the "news view" of the business cycle, using a vector error correction model. We show that this result hinges on a cointegrating relationship between TFP and stock prices that is not stationary, thus making the estimates not reliable. If we alter the TFP measure and change the model specification, we can recover the news shock through their identification. However, the news shock leads to a stock market boom with a negligible impact on economic activity. Our findings are in line with studies that identify news shocks without relying on VEC models.

JEL Codes: C32, G12, E32, E44.

Key words: cointegration, technology news shocks, stock prices, TFP, VEC model.

1 Introduction

Can the anticipation of the Artificial Intelligence revolution generate a boom in the economy before the effective technological change takes place? Questions related to whether and to which extent the anticipation of technological changes can affect macroeconomic fluctuations have been at the forefront of business cycle research during the last decades. However, there is no agreement in the economic literature on how much these expectations matter for the business cycle (Beaudry and Portier (2014), Ramey (2016)). A seminal paper that addresses this question empirically is Beaudry and Portier (2006) - BP hereafter. The paper provides support for the "news view" of the business cycle, since positive expectations of future technological changes are found to generate economic booms and account for the majority of the business cycle fluctuations. However, subsequent studies that use different methodologies, starting with Barsky and Sims (2011), challenge this conclusion,

*The opinions expressed in this article are the sole responsibility of the authors and should not be interpreted as reflecting the views of Sveriges Riksbank. All remaining errors are our own. Di Casola (corresponding author): Sveriges Riksbank, Brunkebergstorg 11, SE-103 37 Stockholm Sweden (email: paola.dicasola@riksbank.se), 0046-721854355. Sichlimiris: Sveriges Riksbank, Brunkebergstorg 11, SE-103 37 Stockholm Sweden (email: spyridon.sichlimiris@gmail.com).

providing evidence that positive news about future technological changes can actually generate recessions.

Our paper contributes to the literature on news shocks in three ways. First, we improve the identification of news shocks in VEC models. By replicating BP's analysis, we find that their bivariate VEC model with TFP and stock prices (that is not subject to Kurmann and Mertens (2014)'s critique) features a non-stationary long-run relationship, as can be seen in Figure 1.¹ This observation is reinforced by the Johansen test, that does not support the presence of cointegration within the VEC model, making the estimates unreliable. However, this does not mean that one cannot rely on BP's identification strategy for news shocks in a VEC model. We demonstrate that BP's identification of news shocks works well under two conditions: 1) change of the TFP measure, using the one provided by Fernald (2014), and 2) change of model specification.^{2 3}

[Figure 1 here]

Our second contribution is to show that the news shock recovered in this way features the same dynamics as the one identified in Barsky and Sims (2011) and Kurmann and Sims (forthcoming), who use alternative methodologies to identify news shocks. A technology-news-driven stock market boom is associated with a delayed, but positive and sustained, response in TFP, but generates limited economic fluctuations. Consequently, our findings with VEC models are in line with studies that do not rely on VEC models to identify news shocks.

Third, we show that the data support the existence of different types of news shocks within the VEC methodology. Our identified news shock explains less than 10 percent of the variability of output, consumption and investment at business cycle frequencies. Instead, the literature that relies on VEC models to identify news shocks usually assigns them a leading role for the business cycle (e.g. Beaudry and Lucke (2010), Beaudry and Portier (2014), Fève and Guay (2018), Di Casola and Sichlimeris (2018)). For this reason, we compute the correlation of our news shock, identified through stock prices, with the one identified through consumption in Di Casola and Sichlimeris (2018). The two news shocks are uncorrelated, hence different news shocks may be identified in VEC models.

The paper is structured as follows. Section 2 replicates BP's analysis for the bivariate model and discusses the problems with their cointegration assumption and the identification of the news shock. Section 3 shows that by changing the TFP measure and the model specification, the results do not support the news view of the business cycle. Finally, section 4 concludes.

¹Kurmann and Mertens (2014) highlight issues related to the identification of news shock in the trivariate and quadri-variate VEC models proposed by BP. We focus on the cointegration assumption between TFP and stock prices and the implications for the identification of news shocks in VEC models.

²Our results are robust to the different vintage measure of TFP computed by Fernald (2014).

³Had we only changed the model specification to correct for non-stationarity in the bivariate VEC model, we would not have been able to recover the news shock, based on BP's criterion. We elaborate more on this issue in section 2.2.

2 BP's bivariate model: a non-stationary long-run relationship

We begin our analysis by replicating the seminal paper by BP.⁴ The time series of TFP and stock prices used for the analysis are the ones made available on the AER website by the authors.⁵ The data are quarterly and cover the period 1948 - 2000 (Figure B.1 in Appendix B). BP focus on two measures of TFP: one is derived as Solow residuals, and the other one is adjusted for capacity utilization (adjustment carried out by BP, hence we call it BPadjusted-TFP). The key idea of the paper is that stock prices contain information about future changes in TFP - a measure of technology.

From the univariate analysis of the series one cannot reject the hypothesis that they contain a unit root in levels, but are stationary in first difference (Table A.1, A.2 and A.3 in Appendix). BP estimate a bivariate VEC model of the following form, with TFP and stock prices and assuming one cointegrating relationship:

$$\Delta X_t = \Pi X_{t-1}^* + \Gamma_1 \Delta X_{t-1} + \dots + \Gamma_p \Delta X_{t-p} + \Theta D_t + u_t, \quad (1)$$

where X_t is the vector containing the endogenous variables, X_{t-1}^* is the vector containing the lagged endogenous variables and the deterministic terms that are in a cointegrating relationship, p is the number of lags, D_t is the vector of deterministic terms outside the cointegrating relationship and u_t is the vector of residuals.⁶ They use 6 lags and no deterministic terms in the cointegrating relationship.⁷ With one cointegrating relationship, as in our case, the matrix Π has reduced rank, equal to one, and can be decomposed as $\Pi = \alpha\beta'$. The vector β is the cointegrating vector and it defines the cointegrating relations, $\beta'X_{t-1}^*$. The vector α contains the loading coefficients, defining how the system adjusts to the long-term relationship among the variables.

Figure 1 shows the long-run equilibrium relationship between stock prices and TFP estimated with the VEC model with 6 lags. The figure raises doubts about the validity of the VEC model. The relationship is clearly not stationary, it is trending up until the 80's, making the estimates of the model spurious. A linear trend seems to be unaccounted for in the long-run relationship, at least for the sample up until the 80's. To verify the result of the visual inspection, we rely on the Johansen test, that is a test for cointegration based on the estimation of a VEC model. Note that the critical values for cointegration tests depend on the choice of the deterministic terms allowed in the relationship among the variables of interest. The best strategy to choose the deterministic components and the cointegration rank is to identify them jointly (see Hendry and Juselius (2000)

⁴The following econometric analysis has been carried out with Winrats 10 and its additional component CATS.

⁵A detailed description of the data used and their construction is provided in BP. In this comment, we focus on the quarterly series. BP use also a series for the technology measure that is annual and should represent a better measure of TFP, because it can control for different rates of factor utilization. The drawback is the limited sample period (1948 - 1989), providing only 41 observations.

⁶If D_t contains a constant term, it means that we have a linear trend in the level of the variables outside the cointegrating relationship.

⁷The authors do not mention the deterministic terms included in the model. In section 2.1 we can replicate exactly their result without any deterministic terms in the long-run relationship. Hence, we conclude that BP did not include any.

Table 1: Cointegration between TFP and stock prices

r	P-value of cointegration test			
	4 lags	6 lags	4 lags and linear trend	6 lags and linear trend
0	0.58	0.33	0.26	0.09
1	0.45	0.41	0.43	0.24

Johansen cointegration test corrected for small sample bias (Bartlett correction) for stock prices and TFP series. The sample period is 1948-2000, quarterly data. The null hypothesis is the presence of "r" cointegration rank, versus the alternative hypothesis of a cointegration rank higher than "r".

and Lütkepohl (2005)). We provide results for 4 lags and 6 lags (Table 1).⁸ If we allow for a trend only outside the cointegrating relationship, as in BP, the test rejects the hypothesis of cointegration between the two series, either with 4 or 6 lags. Hence, there is no statistical support for estimating the VEC model with TFP and stock prices with linear trend only outside the long-run relationship.

BP provide evidence of cointegration between TFP and stock prices using the Nyblom and Harvey (2000) test. The Nyblom-Harvey test of cointegration has the benefit of not relying on the assumption of a multivariate model. However, when the analysis is based on estimating a VEC model, it is crucial to have evidence of cointegration as implied by the Johansen test, since this test is built on a VEC model. Even if the Nyblom-Harvey test supports the presence of the cointegration without linear trend, the correct estimation of a VEC model requires it.

Figure 2 reports the cointegrating relationship between TFP and stock prices with 6 lags and a linear trend. Comparing Figure 1 and Figure 2, one can conclude that the latter looks more stationary. Indeed, allowing for a linear trend in the cointegrating relationship we find support at 10% level for cointegration between TFP and stock prices with 6 lags (Table 1). The linear trend is significant at 5% level (Table A.5 in Appendix).

The VEC model with BPadjusted-TFP series is not subject to non-stationarity problems. For BPadjusted-TFP series the Johansen test supports the presence of cointegration without a linear trend in the cointegrating relationship only with 6 lags (see Table A.6). Indeed, Figure B.5 in Appendix shows that the cointegrating relationship without linear trend is stationary, in case BPadjusted-TFP measure is used. The VEC model used by BP with BPadjusted-TFP series is based on a stationary cointegrating relationship. Therefore, we can proceed with the estimation of the model and verify how the news shock looks like in the next section.

[Figure 2 here]

Before proceeding with the identification of the news shock, it is worth studying the estimated coefficients of the VEC models. The existence of a long-run relationship between two variables requires that at least one of the variables adjusts in the short run to converge to it. The VEC model estimated in BP features a significant short-run adjustment only for TFP (Table A.4 in Appendix A).

⁸The information criteria suggest the inclusion of 2 lags in level, but there is evidence of autocorrelation in the residuals for such low number of lags.

The variable of stock prices does not adjust to the long-run relationship, hence it is defined weakly exogenous to it. In the better specified model, the cointegrating relationship with linear trend is significant only for the stock price equation, while TFP is weakly exogenous (Table A.5 in Appendix A). Finally, in the case of BPadjusted-TFP, the variable of stock prices is weakly exogenous (Table A.8 in Appendix A). This highlights how sensitive are the results to the modelling choice for the deterministic terms. In the next section, we will discuss the implications for the identification of news shocks in the bivariate VEC model when one variable turns out to be weakly exogenous.

2.1 Identification of technology news shocks in BP's bivariate VEC model

BP apply identifying restrictions to their VEC model to derive the structural shocks of interest. When using short-run restrictions, the relationship between the structural shocks ϵ_t and the reduced-form shocks u_t is given by the impact matrix, B , through $u_t = B\epsilon_t$. The shocks can be also identified through long-run restrictions and therefore depend on the long-run impact matrix, ΞB , through $u_t = \Xi B\tilde{\epsilon}_t$.

In a bivariate system only one restriction is necessary to just-identify the VEC model.⁹ BP propose two different, not simultaneous, identification strategies for the VEC model. The first identification is based on a zero restriction on the impact matrix, B . The shock to stock prices is assumed to have no immediate effect on TFP, so the shock is orthogonal to technology. The shocks identified with the short-run restriction are denominated ϵ_1 and ϵ_2 . The second identification is based on a zero restriction on the long-run impact matrix, ΞB .¹⁰ The shock to TFP is assumed to be the only one affecting TFP in the long-run, hence it is the permanent (surprise) technology shock. The shocks identified with the long-run restriction are denominated $\tilde{\epsilon}_1$ and $\tilde{\epsilon}_2$. Due to the cointegrating relationship, if one shock has no long-run impact on one variable, it also has no long-run impact on the other variable in the system. Thus, the shock to stock prices $\tilde{\epsilon}_2$ cannot have a long-run impact on TFP and stock prices.

Figure 3 reports the impulse response functions, that coincide with the ones reported in Figure 1 in BP. The impulse responses of both variables to the two different shocks are very similar and the correlation between the two shocks is 0.99. Even if ϵ_2 has no impact effect on TFP by construction, it does have an impact after the first quarter and the effect is as long-lasting as the one of the surprise technology shock. Both shocks have a strong significant impact on stock prices. The similarity between the permanent surprise TFP shock and ϵ_2 is key for BP's work, since it allows the authors to define ϵ_2 as a technology news shock. The impulse responses are consistent with the idea that market participants anticipate the effects of technological improvements before they actually take place.

Figure 3 also reveals that the surprise technology shock has a negative effect on TFP on impact.

⁹Given that our model contains two variables and one cointegrating relationship, there can be at most one transitory shock and at least one permanent shock in the model.

¹⁰This type of identification strategy to disentangle temporary from permanent shocks was first proposed by Blanchard and Quah (1989) and applied to VEC models by King et al. (1991).

We argue that the surprise technology shock is poorly identified, after inspecting its companion shock, $\tilde{\epsilon}_2$, that is identified as a temporary shock. This shock is orthogonal to the surprise technology shock and its impulse responses are not reported in BP, because the shock is not of interest for the study of TFP news. Nevertheless, the impulse responses to this shock become of interest to verify that the restriction on the long-run matrix works well.¹¹ As reported in Figure B.2 in Appendix, the response of stock prices becomes zero after few quarters, but the response of TFP stays positive for more than 100 quarters, that means 25 years. The magnitude of the impact for the first 100 quarters is not very different from the impact of the surprise technology shock reported in Figure 3. Given that the sample period covers 50 years, this behaviour raises doubts on the effectiveness of the identification with the long-run restriction both for $\tilde{\epsilon}_1$ and $\tilde{\epsilon}_2$. These identification problems can be related to the size of the model and the specification of the deterministic component. This motivates the analysis we carry out in the rest of the paper, where we show how the identification problems disappear with better specified VEC models.

[Figure 3 here]

BP consider the robustness of their analysis to the use of a different TFP measure, adjusted for capacity utilization. They argue that measurement issues in their original variable may explain why the TFP responds so quickly to the technology news shock. When the adjusted measure of TFP is used, the impulse responses of TFP to $\tilde{\epsilon}_1$ do not lie within the confidence bands of the responses to ϵ_2 , as shown in Figure B.6.¹² Therefore, the similarity between the two shocks, visible in Figure 3 for the original TFP measure, is weaker with the adjusted measure of TFP.

[Figure 4 here]

Figure B.4 in Appendix reports the impulse response to the temporary shock, $\tilde{\epsilon}_2$, for this model. The responses of TFP and stock prices become zero within 75 quarters following the shock. The long-run restriction seems more reliable when the adjusted-TFP measure is used with respect to the original measure. However, the long time needed for the effects of the temporary shock to die out raises doubts about the effectiveness of the long-run restriction. Overall, the results in BP are sensitive to the series of TFP measure used. In the next section, we investigate the role of the model specification for the identification of news shocks, using the original TFP measure.

2.2 The role of deterministic terms for VEC models

Can we recover the news shock with the original TFP measure, once we have made the cointegrating relationship stationary? Figure 4 shows the impulse responses to the news shock, ϵ_2 , and the

¹¹In order to improve the performance of the long-run identification strategy, Blanchard and Quah (1989) remove the deterministic terms before the identification of the model takes place and do a sensitivity analysis to consider different possible breaks in the deterministic components.

¹²BP report only the impulse responses to ϵ_2 in Figure 7, because they compare them with the ones obtained with the original measure of TFP.

surprise technology shock, $\tilde{\epsilon}_1$, when a linear trend is included in the cointegrating relationship, which is a specification that makes the cointegrating relationship stationary within the VEC model.¹³ The impulse responses look very different, and the correlation between the shocks is equal to -0.29. In particular, the surprise technology shock does not seem well identified, because it has a negative effect on stock prices.¹⁴ The negative correlation between the two shocks is related to the estimated coefficients of the VEC model.

An important aspect of the structural identification in bivariate VEC models is related to the weak exogeneity of the variables to the long-term relationship. Ribba (1997) and Fisher and Huh (1999) have proved that if the first variable of a bivariate VEC model is weakly exogenous, the zero short-run restriction we used to identify the news shock is equivalent to the zero long-run restriction we used to identify the surprise technology shock. In our case, this means that if TFP is weakly exogenous, the shocks ϵ_1 and ϵ_2 (identified with short-run restriction) are equivalent to $\tilde{\epsilon}_1$ and $\tilde{\epsilon}_2$ (identified with long-run restriction), respectively. As a consequence, ϵ_1 and $\tilde{\epsilon}_2$ are orthogonal and the same holds for $\tilde{\epsilon}_1$ and ϵ_2 . In section 2 we have shown that the TFP is weakly exogenous to the long-term relationship when the linear trend is allowed in the cointegrating relationship (Table A.5 in Appendix A). BP's criterion for the identification of the news shock is to find high correlation between $\tilde{\epsilon}_1$ and ϵ_2 . However, these shocks are orthogonal due to the estimated coefficients that imply weak exogeneity. This means that the technology news shock is not well identified in the bivariate VEC model with the original TFP measure and a stationary cointegrating relationship.

Overall, the results in BP are sensitive to the series of TFP measure used and rely on a VEC model specification with non-stationary long-run relationship between TFP and stock prices. In the next section, we provide results from a new approach, that takes into account these two weaknesses.

3 Changing data and model specification

Up to now we have shown that the measure of TFP and the model specification are equally important for the identification of news shocks in VEC models. Here we consider the real-time measure of TFP, computed by Fernald (2014). We re-estimate the VEC model over a longer sample period, going from the first quarter of 1948 to the third quarter of 2017. Furthermore, we consider a trivariate VEC model, where we add output, consumption or investment in order to study the role of news shocks for economic fluctuations.

¹³Figure B.3 in Appendix reports the impulse response to the temporary shock, $\tilde{\epsilon}_2$, for this model. Also in this case, as with the adjusted-TFP series, the long-run restriction seems to be working well.

¹⁴A similar result is obtained if we detrend our variables before estimating the VEC model and do not include a linear trend. The results with detrended variables are not reported here, but are available upon request.

3.1 Bivariate VEC model

We estimate a bivariate VEC model with the measure of TFP adjusted for capital utilization, by Fernald (2014), and the same stock price series as above, but for a longer sample period.¹⁵ The information criteria suggest 2 or 4 lags. We choose 4 lags to eliminate residual autocorrelation. The cointegration test suggests the presence of 1 cointegrating relationship at 5% level with or without the linear trend in the cointegrating vector (Table A.10 in Appendix). Moreover, the trend is significant and we proceed with this specification (Table A.9 in Appendix).

The responses of TFP and stock prices to the surprise technology shock and the shock identified with short-run restrictions look extremely similar (Figure B.7 in Appendix B). Given this similarity and following BP's criterion, we can argue that ϵ_2 is the technology news shock. Therefore, we can recover the news shock when using Fernald (2014)'s measure of adjusted TFP. This result, though, requires the introduction of a linear trend in the cointegrating relationship.

3.2 News shocks and the business cycle revisited

Once identified the news shock, we can evaluate its effect on the main macroeconomic aggregates. In fact, the literature on news shocks has not reached an agreement on its role for the economic fluctuations. Following BP's findings in support of the news view, Kurmann and Mertens (2014) have shown that their identification scheme for systems with more than two variables does not provide unique identification, therefore raising doubts about their results. Using a different methodology, Barsky and Sims (2011) are the first to argue that the news shock generates a recession, followed more recently by Kurmann and Sims (forthcoming).

We consider per-capita measures of output, consumption and investment. The Johansen cointegration test for the trivariate system, including TFP, stock prices and one macroeconomic variable at a time, finds a cointegration rank equal to one with or without the linear trend (Table A.11 in Appendix) and 4 lags. Since the trend in the cointegrating relationship is not significant, we argue that the trend included in the bivariate system was actually used to capture a missing variable in the long-run relationship between stock prices and TFP. Our specification is a VEC model with one cointegrating relationship, hence two common stochastic trends among three variables.¹⁶ In order to obtain full identification of the underlying system, we impose three restrictions. We assume that the technology news shock has no instantaneous effect on TFP. The third shock, related to the macroe-

¹⁵The estimation of TFP provided by Fernald featured an important revision in March 2014, due to the change in the utilization measurement. This revision turns out to affect the estimation of news shocks with the methodology proposed in Barsky and Sims (2011), as discussed in Sims (2016) and Kurmann and Sims (forthcoming). Our results, instead, hold also with Fernald's TFP data prior to the revision of 2014.

¹⁶BP consider two cointegrating relationships among three variables, hence allowing for at least one permanent shock and at most two temporary shocks. The three identifying restrictions proposed actually amount to two, due to the cointegration rank equal to two. Therefore, their identification strategy is not unique, as pointed out in Kurmann and Mertens (2014). Beaudry and Portier (2014) reconsider the trivariate VEC model first used in BP as a reply to Kurmann and Mertens (2014)'s comment and propose a different identification of the shocks. They restrict the shock identified through the macroeconomic variable to be a temporary shock. Since this restriction is not enough to identify the system fully, they further assume that the temporary shock does not affect TFP in the short run as well, hence it is a temporary non-TFP shock. Here we can proceed with BP's original identifying restrictions because of the lower cointegration rank.

conomic variable, has no long-run effect on TFP and the macroeconomic variable, but can affect TFP on impact. Hence, we allow for at least two permanent shocks and at most one temporary shock.

We find that positive news are associated with a small drop in output, nearly unchanged consumption and a drop in investment (Figure 5).¹⁷ Differently from the bivariate VEC model, the response of TFP to the surprise TFP shock is now always positive. This points to a better identification of the surprise TFP shock. Moreover, the news shock is not the main source of business cycle fluctuations. It explains less than 10 percent of variation in output, consumption and investment at business cycle frequencies. We contribute to the literature on technology news shocks by showing that the news shock identified in a VEC model through stock prices does not provide support for the news view of the business cycle, once the improved TFP measure is used and the model specification is adjusted accordingly. Our results are closer in spirit to Barsky and Sims (2011) and Kurmann and Sims (forthcoming). Therefore, our paper demonstrates that different methodologies used to identify news shocks lead to similar conclusions.

Most of the studies that use VEC models to identify news shocks do assign them a leading role for the business cycle (e.g. Beaudry and Lucke (2010), Beaudry and Portier (2014), Fève and Guay (2018), Di Casola and Sichlimiris (2018)). In particular, Di Casola and Sichlimiris (2018) use consumption, instead of stock prices, to identify TFP news shocks in VEC models that contain TFP with real and nominal variables. A TFP news shock is found to account for the majority of business cycle fluctuations, whereas positive news generate a boom in the economy. Hence, we analyse the correlation between our and Di Casola and Sichlimiris (2018)'s TFP news shock. The two shocks are found to be roughly uncorrelated (correlation equal to 0.1). Hence, the data favour the existence of different types of news shocks within the same methodological framework.

[Figure 5 here]

4 Conclusion

The specification of the bivariate VEC model adopted by Beaudry and Portier (2006) in their analysis of technology news shocks relies on a non-stationary long-run relationship between TFP and stock prices. Therefore, the estimates are subject to spuriousness. Motivated by this finding, we investigate alternative model specifications that lead to a stationary long-run relationship. One such specification entails the introduction of a linear trend in the long-run relationship between TFP and stock prices. In this case, though, we cannot recover the technology news shock. If we change the TFP measure and the model specification, we can recover the news shock. However, a technology-news-driven stock market boom that is accompanied by a delayed, but positive and sustained, increase in TFP is found to generate limited economic fluctuations. The identified news shock is not the main source of business cycle fluctuations, similarly to what is found with different methodologies in Barsky and Sims (2011) and Kurmann and Sims (forthcoming). Finally, we provide evidence for the existence of more than one type of news shocks within the VEC framework.

¹⁷In Appendix B we report the impulse response to all the shocks in all the trivariate systems we have considered.

References

- Barsky, R. B. and E. R. Sims**, “News shocks and business cycles,” *Journal of Monetary Economics*, 2011, 58 (3), 273–289.
- Beaudry, P. and F. Portier**, “Stock Prices, News, and Economic Fluctuations,” *American Economic Review*, September 2006, 96 (4), 1293–1307.
- Beaudry, Paul and Bernd Lucke**, “Letting Different Views about Business Cycles Compete,” in “NBER Macroeconomics Annual 2009, Volume 24” NBER Chapters, National Bureau of Economic Research, Inc, October 2010, pp. 413–455.
- **and Franck Portier**, “News-Driven Business Cycles: Insights and Challenges,” *Journal of Economic Literature*, 2014, 52 (4), 993–1074.
- Blanchard, O. J. and D. Quah**, “The Dynamic Effects of Aggregate Demand and Supply Disturbances,” *American Economic Review*, September 1989, 79 (4), 655–73.
- Di Casola, Paola and Spyridon Sichlimiris**, “Towards Technology-News-Driven Business Cycles,” Working Paper Series 360, Sveriges Riksbank November 2018.
- Fernald, J.**, “A quarterly, utilization-adjusted series on total factor productivity,” Working Paper Series 2012-19, Federal Reserve Bank of San Francisco 2014.
- Fève, Patrick and Alain Guay**, “Sentiments in SVARs,” *The Economic Journal*, 2018.
- Fisher, Lance A and Hyeon seung Huh**, “Weak exogeneity and long-run and contemporaneous identifying restrictions in VEC models,” *Economics Letters*, 1999, 63 (2), 159–165.
- Hendry, D. F. and K. Juselius**, “Explaining Cointegration Analysis: Part II,” Discussion Papers 00-20, University of Copenhagen. Department of Economics December 2000.
- King, Robert G., Charles I. Plosser, James H. Stock, and Mark W. Watson**, “Stochastic Trends and Economic Fluctuations,” *American Economic Review*, September 1991, 81 (4), 819–40.
- Kurmann, A. and E. Mertens**, “Stock Prices, News, and Economic Fluctuations: Comment,” *American Economic Review*, April 2014, 104 (4), 1439–45.
- **and E. Sims**, “Revisions in Utilization-Adjusted TFP and Robust Identification of News Shocks,” *Review of Economics and Statistics*, forthcoming.
- Lütkepohl, Helmut**, *New introduction to multiple time series analysis*, Springer Science & Business Media, 2005.
- Nyblom, J. and A. Harvey**, “Tests Of Common Stochastic Trends,” *Econometric Theory*, April 2000, 16 (02), 176–199.

Ramey, V. A., *Macroeconomic Shocks and Their Propagation*, Vol. 2 of *Handbook of Macroeconomics*, Elsevier,

Ribba, Antonio, "A note on the equivalence of long-run and short-run identifying restrictions in cointegration systems," *Economics Letters*, 1997, 56 (3), 273–276.

Sims, Eric R., "Differences in Quarterly Utilization-Adjusted TFP by Vintage, with an Application to News Shocks," NBER Working Papers, National Bureau of Economic Research, Inc April 2016.

Figures

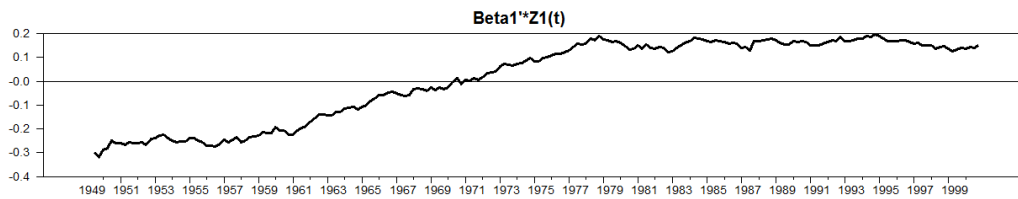


Figure 1: Cointegrating relation between stock prices and TFP with linear trend outside the cointegrating relationship, with 6 lags in levels. The sample period is 1948-2000, quarterly data.

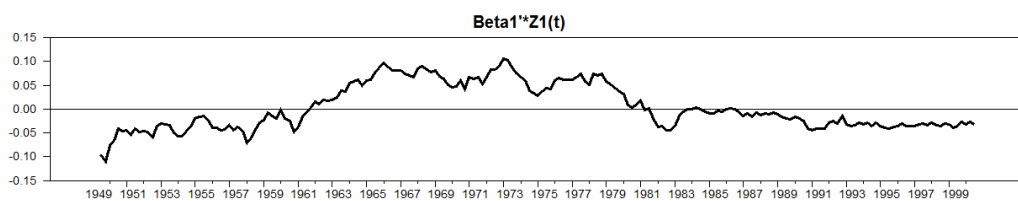


Figure 2: Cointegrating relations for stock prices and TFP with linear trend inside the cointegrating relationship, with 6 lags in levels. The sample period is 1948-2000, quarterly data.

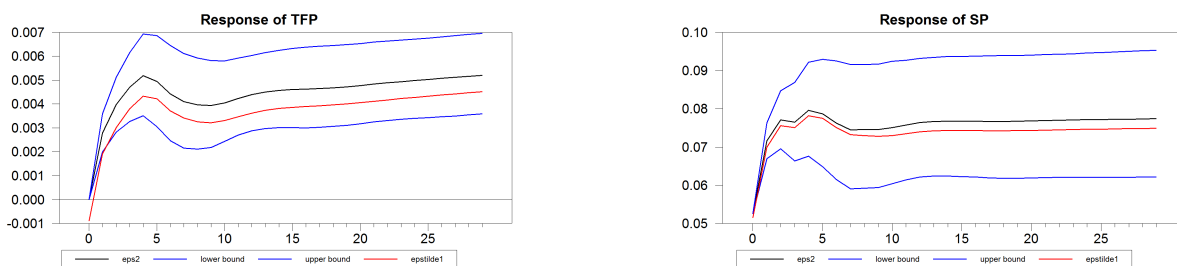


Figure 3: Impulse responses for TFP and stock prices to $\tilde{\epsilon}_1$ (red lines) and ϵ_2 (black lines). The VEC model allows for a linear trend only outside the cointegrating relationship, with 6 lags in levels. The sample period is 1948-2000, quarterly data. Blue lines represent the 10% and 90% quantiles of distribution of IRFs for short-run identification. The distribution is the Bayesian simulated distribution obtained by Monte-Carlo integration with 2500 replications.

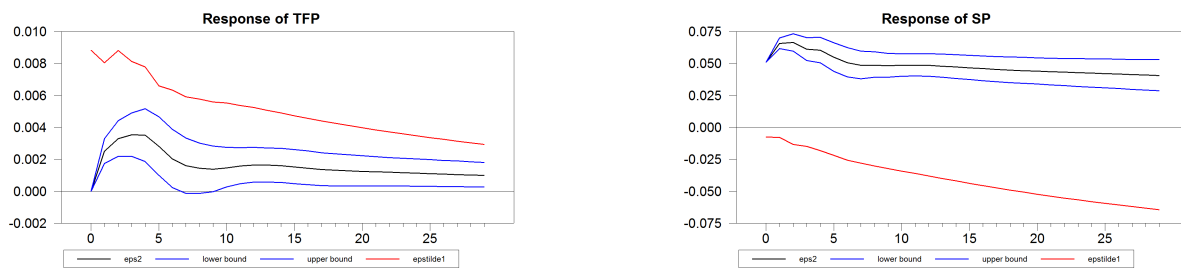


Figure 4: Impulse responses for TFP and stock prices to $\tilde{\epsilon}_1$ (red lines) and ϵ_2 (black lines). The VEC model allows for a linear trend in the cointegrating relationship, with 6 lags in levels. The sample period is 1948-2000, quarterly data. Blue lines represent the 10% and 90% quantiles of distribution of IRFs for short-run identification. The distribution is the Bayesian simulated distribution obtained by Monte-Carlo integration with 2500 replications.

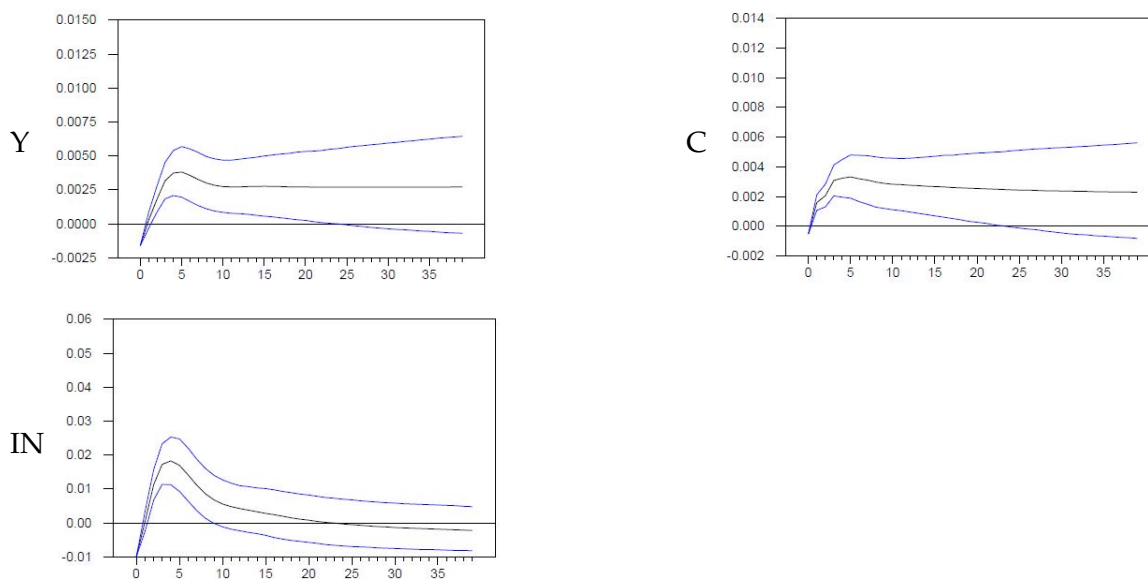


Figure 5: Impulse responses of output, consumption and investment to the news shock from the trivariate VEC model with Fernald's adjusted-TFP and stock prices, with one cointegrating relationship and 4 lags in levels. The sample period is 1948-2017q3, quarterly data. Blue lines represent the 10% and 90% quantiles of distribution of IRFs. The distribution is the Bayesian simulated distribution obtained by Monte-Carlo integration with 2500 replications.

Acknowledgements

We are grateful to Tore Ellingsen, Jesper Lindé, Lars Ljungqvist, Franck Portier, Karl Walentin and seminar participants at Stockholm School of Economics, Sveriges Riksbank and Greater Stockholm Macro Group for useful discussions and comments. Financial support from the Jan Wallander and Tom Hedelius Foundation is gratefully acknowledged.

Conflict of interest

None.

APPENDIX

A Additional tables

Table A.1: Unit root test for stock prices

	With intercept and trend	With intercept
	1 lag chosen by AIC	1 lag chosen by AIC
Sig Level	Crit Value	Crit Value
1%	-4.00445	-3.46259
5%	-3.43214	-2.87526
10%	-3.13953	-2.57402
T-Statistic	-1.12041	-0.71177

Dickey-Fuller unit root test for the series of stock prices, in log terms, with intercept only (right column) or intercept and linear trend (left column). The sample period is 1948-2000, quarterly data. The null hypothesis is the presence of a unit root. Bold numbers report the value of T-statistic.

Table A.2: Unit root test for TFP

	With intercept and trend	With intercept
	2 lags chosen by AIC	5 lags chosen by AIC
Sig Level	Crit Value	Crit Value
1%	-4.00465	-3.46316
5%	-3.43224	-2.87552
10%	-3.13959	-2.57415
T-Statistic	-2.35543	-2.54317

Dickey-Fuller unit root test for TFP series, in log terms, with intercept only (right column) or intercept and linear trend (left column). The sample period is 1948-2000, quarterly data. The null hypothesis is the presence of a unit root. Bold numbers report the value of T-statistic.

Table A.3: Unit root test for BPadjusted-TFP

	With intercept and trend	With intercept
	1 lag chosen by AIC	1 lag chosen by AIC
Sig Level	Crit Value	Crit Value
1%	-4.00445	-3.46259
5%	-3.43214	-2.87526
10%	-3.13953	-2.57402
T-Statistic	-2.13785	-2.69417

Dickey-Fuller unit root test for BPadjusted-TFP series, in log terms, with intercept only (right column) or intercept and linear trend (left column). The sample period is 1948-2000, quarterly data. The null hypothesis is the presence of a unit root. Bold numbers report the value of T-statistic.

Table A.4: Estimates of VEC model with stock prices and TFP

β'			α	
	TFP	SP		
Beta	1.000	-0.127	DTFP	-0.012
	[NA]	[-0.967]		[-2.985]
			DSP	-0.017
				[-0.768]

Cointegrating vector, β , and vector of loading coefficients, α , for the model with stock prices and TFP series, with linear trend only outside the cointegrating relationship, with 6 lags in levels. The sample period is 1948-2000, quarterly data. The numbers in bracket report the T-statistic.

Table A.5: Estimates of VEC model with stock prices and TFP, including trend

β'				α	
	TFP	SP	TREND		
Beta	1.000	-0.002	-0.003	DTFP	-0.018
	[NA]	[-0.076]	[-14.532]		[-1.188]
				DSP	-0.335
					[-3.984]

Cointegrating vector, β , and vector of loading coefficients, α , for the model with stock prices and TFP series, with linear trend in the cointegrating relationship, with 6 lags in levels. The sample period is 1948-2000, quarterly data. The numbers in bracket report the T-statistic.

Table A.6: Cointegration between stock prices and BPadjusted-TFP

P-value of cointegration test				
r	4 lags	6 lags	4 lags and linear trend	6 lags and linear trend
0	0.21	0.06	0.10	0.01
1	0.48	0.50	0.14	0.03

Johansen cointegration test corrected for small sample bias (Bartlett correction) for stock prices and BPadjusted-TFP series. The sample period is 1948-2000, quarterly data. The null hypothesis is the presence of "r" cointegration rank, versus the alternative hypothesis of a cointegration rank higher than "r".

Table A.7: Additional estimates from VEC model with stock prices and TFP

Estimated long-run matrix	
-0.0101 [-0.1096]	0.0000 [0.0000]
-0.0810 [-0.1096]	0.0000 [0.0232]

Long-run matrix for the VEC model containing TFP and stock prices and linear trend only outside the cointegrating relationship, with 6 lags in levels. The sample period is 1948-2000, quarterly data. The VEC is identified with long-run identification á la Blanchard and Quah (1989). Bootstrapped values with 2500 replications are used. The numbers in bracket report the T-statistic.

Table A.8: Estimates of VEC model with stock prices and BPadjusted-TFP

β'			α	
	TFP-adj	SP	DTFP-adj	
Beta	1.000 [NA]	-0.321 [-3.251]	DSP	-0.011 [-3.337] 0.024 [1.062]

Cointegrating vector, β , and vector of loading coefficients, α , for the model with stock prices and BPadjusted TFP series, with linear trend only outside the cointegrating relationship, with 6 lags in levels. The sample period is 1948-2000, quarterly data. The numbers in bracket report the T-statistic.

Table A.9: Estimates of VEC model with stock prices and TFP, new data

β'				α	
	TFP	SP	TREND	DTFP	
Beta	1.000 [NA]	-0.131 [-2.525]	-0.002 [-5.134]	DSP	-0.027 [-4.451] 0.002 [0.045]

Cointegrating vector, β , and vector of loading coefficients, α , for the model with stock prices and Fernald's adjusted-TFP series, with linear trend in the cointegrating relationship, with 4 lags in levels. The sample period is 1948q1-2017q3, quarterly data. The numbers in bracket report the T-statistic.

Table A.10: Cointegration between stock prices and TFP, new data

P-value of cointegration test		
r	4 lags	4 lags and linear trend
0	0.01	0.01
1	0.19	0.27

Johansen cointegration test corrected for small sample bias (Bartlett correction) for stock prices and TFP series. The sample period is 1948q1-2017q3, quarterly data. The null hypothesis is the presence of "r" cointegration rank, versus the alternative hypothesis of a cointegration rank higher than "r".

Table A.11: Cointegration among TFP, stock prices and macroeconomic quantity

P-value of cointegration test							
with output			with consumption			with investment	
r	4 lags	4 lags and linear trend	4 lags	4 lags and linear trend	4 lags	4 lags and linear trend	
0	0.01	0.04	0.01	0.01	0.01	0.02	
1	0.28	0.40	0.28	0.17	0.15	0.11	
2	0.15	0.56	0.30	0.68	0.30	0.17	

Johansen cointegration test corrected for small sample bias (Bartlett correction) for stock prices, Fernald's adjusted-TFP series and output, consumption or investment, alternatively. The sample period is 1948q1-2017q3, quarterly data. The null hypothesis is the presence of "r" cointegration rank, versus the alternative hypothesis of a cointegration rank higher than "r".

B Additional figures

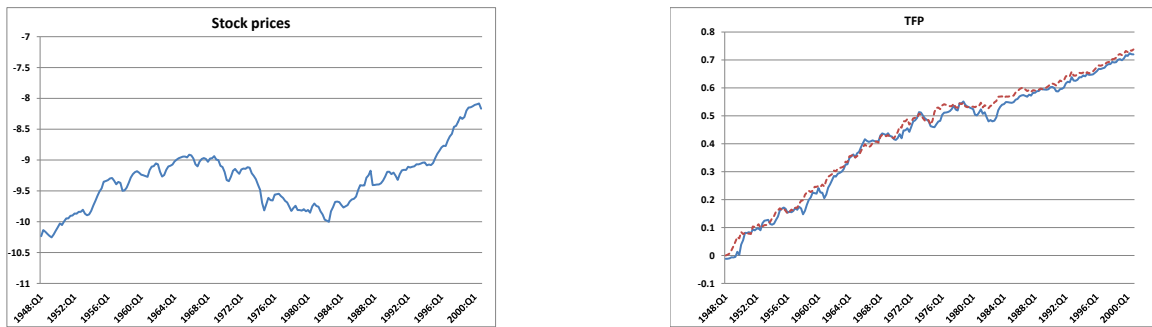


Figure B.1: Series of stock prices (left side) and Total Factor Productivity (right side), in real per-capita terms and logarithmic form. The solid blue line is the original TFP measure, the red dotted line is BPadjusted-TFP. The sample period is 1948-2000, quarterly data.



Figure B.2: Impulse responses for TFP and stock prices to $\tilde{\epsilon}_2$ (black lines). The VEC model allows for a linear trend only outside the cointegrating relationship, with 6 lags in levels. The sample period is 1948-2000, quarterly data. Blue lines represent the 10% and 90% quantiles of distribution of IRFs for short-run identification. The distribution is the Bayesian simulated distribution obtained by Monte-Carlo integration with 2500 replications.

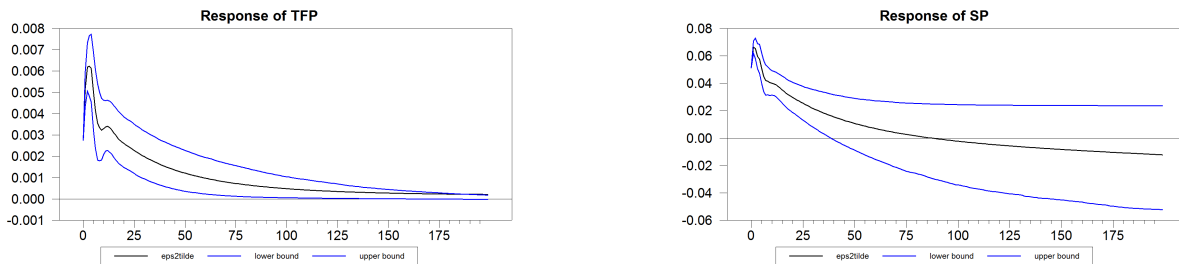


Figure B.3: Impulse responses for TFP and stock prices to $\tilde{\epsilon}_2$ (black lines). The VEC model allows for a linear trend inside the cointegrating relationship, with 6 lags in levels. The sample period is 1948-2000, quarterly data. Blue lines represent the 10% and 90% quantiles of distribution of IRFs for short-run identification. The distribution is the Bayesian simulated distribution obtained by Monte-Carlo integration with 2500 replications.

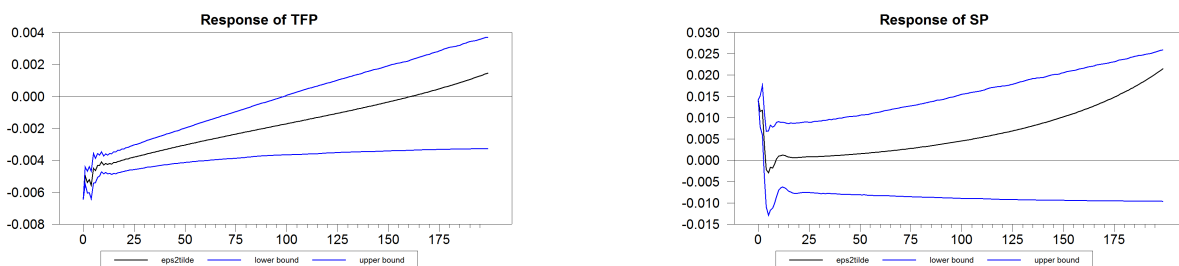


Figure B.4: Impulse responses for BPadjusted-TFP and stock prices to $\tilde{\epsilon}_2$ (black lines). The VEC model allows for a linear trend only outside the cointegrating relationship, with 6 lags in levels. The sample period is 1948-2000, quarterly data. Blue lines represent the 10% and 90% quantiles of distribution of IRFs for short-run identification. The distribution is the Bayesian simulated distribution obtained by Monte-Carlo integration with 2500 replications.

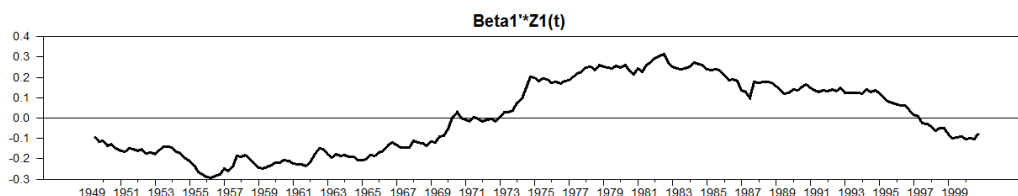


Figure B.5: Cointegrating relation between stock prices and BPadjusted-TFP with linear trend outside the cointegrating relationship, with 6 lags in levels. The sample period is 1948-2000, quarterly data.

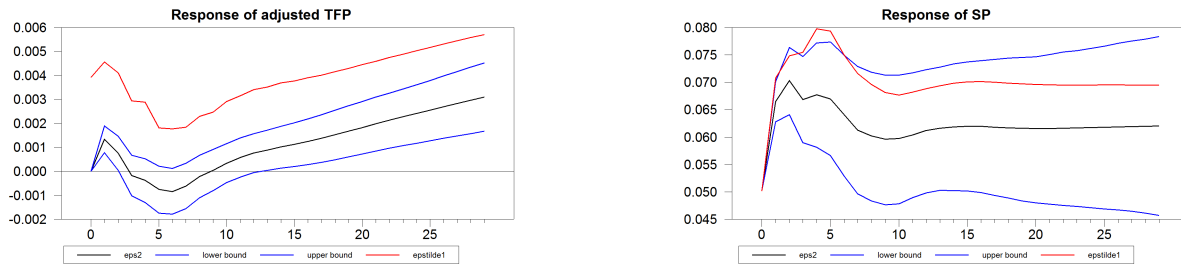


Figure B.6: Impulse responses for BPadjusted-TFP and stock prices to $\tilde{\epsilon}_1$ (red lines) and ϵ_2 (black lines). The VEC model allows for a linear trend only outside the cointegrating relationship, with 6 lags in levels. The sample period is 1948-2000, quarterly data. Blue lines represent the 10% and 90% quantiles of distribution of IRFs for short-run identification. The distribution is the Bayesian simulated distribution obtained by Monte-Carlo integration with 2500 replications.

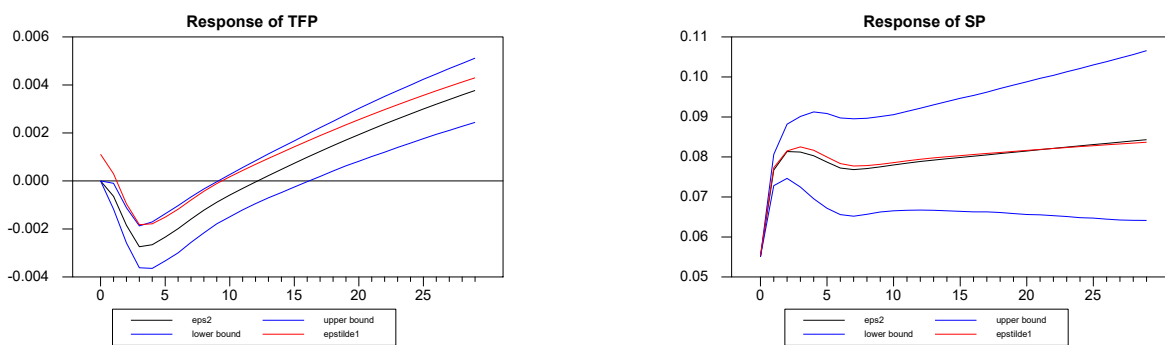


Figure B.7: Impulse responses for Fernald's adjusted-TFP and stock prices to $\tilde{\epsilon}_1$ (red lines) and ϵ_2 (black lines). The VEC model allows for a linear trend inside the cointegrating relationship, with 4 lags in levels. The sample period is 1948-2017q3, quarterly data. Blue lines represent the 10% and 90% quantiles of distribution of IRFs for short-run identification. The distribution is the Bayesian simulated distribution obtained by Monte-Carlo integration with 2500 replications.

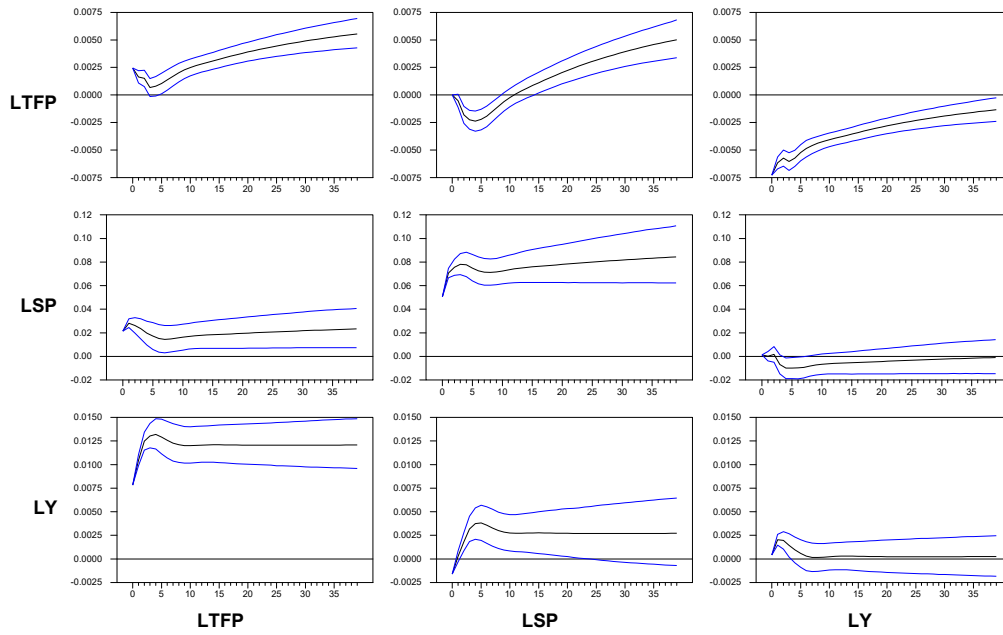


Figure B.8: Impulse responses of trivariate VEC model with Fernald's adjusted-TFP, stock prices and output, with one cointegrating relationship and 4 lags in levels. The sample period is 1948-2017q3, quarterly data. Blue lines represent the 10% and 90% quantiles of distribution of IRFs. The distribution is the Bayesian simulated distribution obtained by Monte-Carlo integration with 2500 replications.

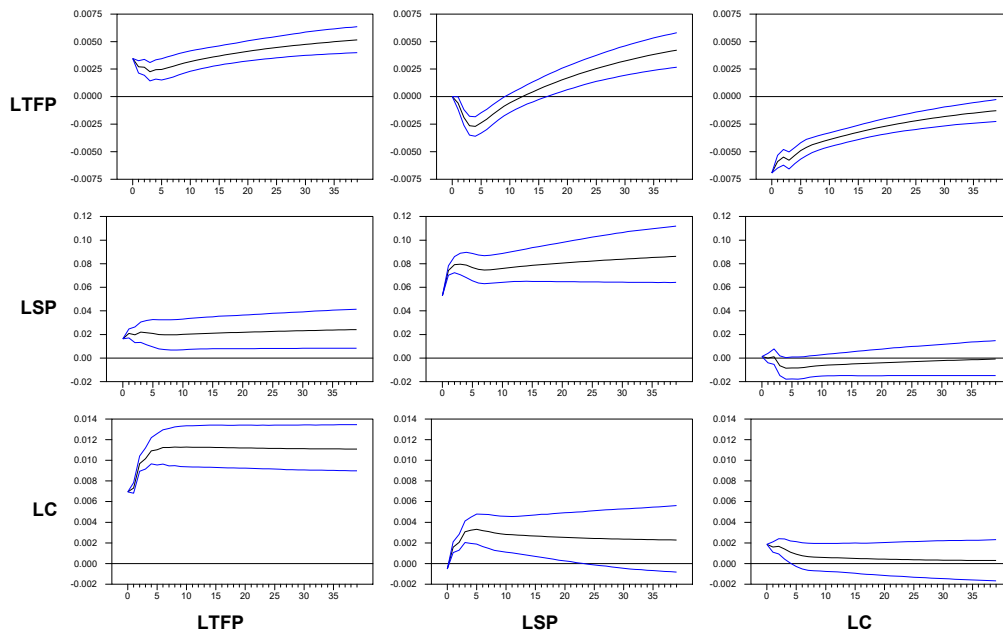


Figure B.9: Impulse responses of trivariate VEC model with Fernald's adjusted-TFP, stock prices and consumption, with one cointegrating relationship and 4 lags in levels. The sample period is 1948-2017q3, quarterly data. Blue lines represent the 10% and 90% quantiles of distribution of IRFs. The distribution is the Bayesian simulated distribution obtained by Monte-Carlo integration with 2500 replications.

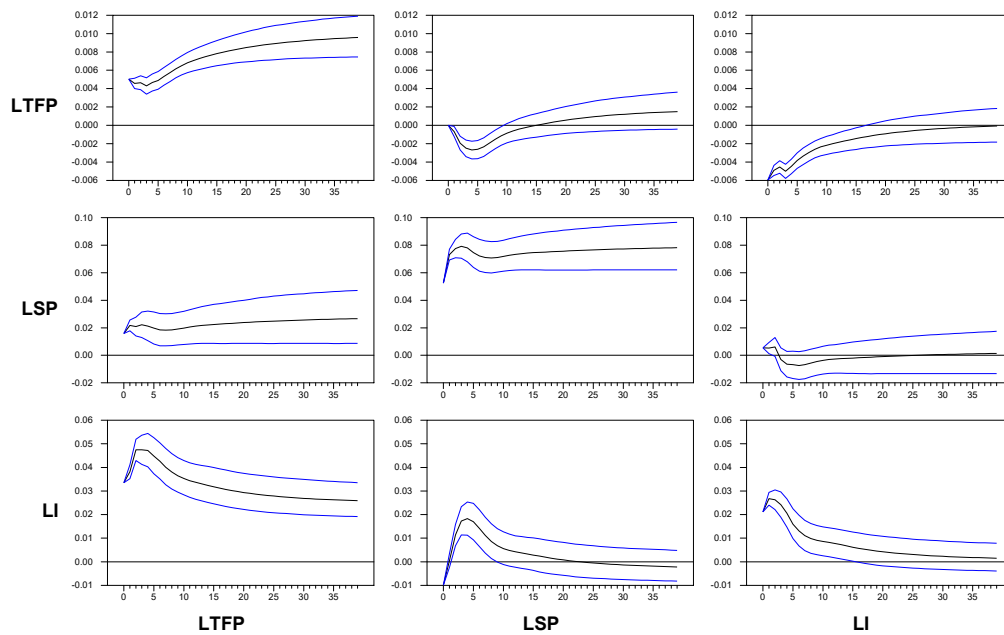


Figure B.10: Impulse responses of trivariate VEC model with Fernald's adjusted-TFP, stock prices and investment, with one cointegrating relationship and 4 lags in levels. The sample period is 1948-2017q3, quarterly data. Blue lines represent the 10% and 90% quantiles of distribution of IRFs. The distribution is the Bayesian simulated distribution obtained by Monte-Carlo integration with 2500 replications.

Earlier Working Papers:

For a complete list of Working Papers published by Sveriges Riksbank, see www.riksbank.se

Estimation of an Adaptive Stock Market Model with Heterogeneous Agents <i>by Henrik Amilon</i>	2005:177
Some Further Evidence on Interest-Rate Smoothing: The Role of Measurement Errors in the Output Gap <i>by Mikael Apel and Per Jansson</i>	2005:178
Bayesian Estimation of an Open Economy DSGE Model with Incomplete Pass-Through <i>by Malin Adolfson, Stefan Laséen, Jesper Lindé and Mattias Villani</i>	2005:179
Are Constant Interest Rate Forecasts Modest Interventions? Evidence from an Estimated Open Economy DSGE Model of the Euro Area <i>by Malin Adolfson, Stefan Laséen, Jesper Lindé and Mattias Villani</i>	2005:180
Inference in Vector Autoregressive Models with an Informative Prior on the Steady State <i>by Mattias Villani</i>	2005:181
Bank Mergers, Competition and Liquidity <i>by Elena Carletti, Philipp Hartmann and Giancarlo Spagnolo</i>	2005:182
Testing Near-Rationality using Detailed Survey Data <i>by Michael F. Bryan and Stefan Palmqvist</i>	2005:183
Exploring Interactions between Real Activity and the Financial Stance <i>by Tor Jacobson, Jesper Lindé and Kasper Roszbach</i>	2005:184
Two-Sided Network Effects, Bank Interchange Fees, and the Allocation of Fixed Costs <i>by Mats A. Bergman</i>	2005:185
Trade Deficits in the Baltic States: How Long Will the Party Last? <i>by Rudolfs Bems and Kristian Jönsson</i>	2005:186
Real Exchange Rate and Consumption Fluctuations following Trade Liberalization <i>by Kristian Jönsson</i>	2005:187
Modern Forecasting Models in Action: Improving Macroeconomic Analyses at Central Banks <i>by Malin Adolfson, Michael K. Andersson, Jesper Lindé, Mattias Villani and Anders Vredin</i>	2005:188
Bayesian Inference of General Linear Restrictions on the Cointegration Space <i>by Mattias Villani</i>	2005:189
Forecasting Performance of an Open Economy Dynamic Stochastic General Equilibrium Model <i>by Malin Adolfson, Stefan Laséen, Jesper Lindé and Mattias Villani</i>	2005:190
Forecast Combination and Model Averaging using Predictive Measures <i>by Jana Eklund and Sune Karlsson</i>	2005:191
Swedish Intervention and the Krona Float, 1993-2002 <i>by Owen F. Humpage and Javiera Ragnartz</i>	2006:192
A Simultaneous Model of the Swedish Krona, the US Dollar and the Euro <i>by Hans Lindblad and Peter Sellin</i>	2006:193
Testing Theories of Job Creation: Does Supply Create Its Own Demand? <i>by Mikael Carlsson, Stefan Eriksson and Nils Gottfries</i>	2006:194
Down or Out: Assessing The Welfare Costs of Household Investment Mistakes <i>by Laurent E. Calvet, John Y. Campbell and Paolo Sodini</i>	2006:195
Efficient Bayesian Inference for Multiple Change-Point and Mixture Innovation Models <i>by Paolo Giordani and Robert Kohn</i>	2006:196
Derivation and Estimation of a New Keynesian Phillips Curve in a Small Open Economy <i>by Karolina Holmberg</i>	2006:197
Technology Shocks and the Labour-Input Response: Evidence from Firm-Level Data <i>by Mikael Carlsson and Jon Smedsaas</i>	2006:198
Monetary Policy and Staggered Wage Bargaining when Prices are Sticky <i>by Mikael Carlsson and Andreas Westermark</i>	2006:199
The Swedish External Position and the Krona <i>by Philip R. Lane</i>	2006:200

Price Setting Transactions and the Role of Denominating Currency in FX Markets <i>by Richard Friberg and Fredrik Wilander</i>	2007:201
The geography of asset holdings: Evidence from Sweden <i>by Nicolas Coeurdacier and Philippe Martin</i>	2007:202
Evaluating An Estimated New Keynesian Small Open Economy Model <i>by Malin Adolfson, Stefan Laséen, Jesper Lindé and Mattias Villani</i>	2007:203
The Use of Cash and the Size of the Shadow Economy in Sweden <i>by Gabriela Guibourg and Björn Segendorf</i>	2007:204
Bank supervision Russian style: Evidence of conflicts between micro- and macro-prudential concerns <i>by Sophie Claeys and Koen Schoors</i>	2007:205
Optimal Monetary Policy under Downward Nominal Wage Rigidity <i>by Mikael Carlsson and Andreas Westermark</i>	2007:206
Financial Structure, Managerial Compensation and Monitoring <i>by Vittoria Cerasi and Sonja Daltung</i>	2007:207
Financial Frictions, Investment and Tobin's q <i>by Guido Lorenzoni and Karl Walentin</i>	2007:208
Sticky Information vs Sticky Prices: A Horse Race in a DSGE Framework <i>by Mathias Trabandt</i>	2007:209
Acquisition versus greenfield: The impact of the mode of foreign bank entry on information and bank lending rates <i>by Sophie Claeys and Christa Hainz</i>	2007:210
Nonparametric Regression Density Estimation Using Smoothly Varying Normal Mixtures <i>by Mattias Villani, Robert Kohn and Paolo Giordani</i>	2007:211
The Costs of Paying – Private and Social Costs of Cash and Card <i>by Mats Bergman, Gabriella Guibourg and Björn Segendorf</i>	2007:212
Using a New Open Economy Macroeconomics model to make real nominal exchange rate forecasts <i>by Peter Sellin</i>	2007:213
Introducing Financial Frictions and Unemployment into a Small Open Economy Model <i>by Lawrence J. Christiano, Mathias Trabandt and Karl Walentin</i>	2007:214
Earnings Inequality and the Equity Premium <i>by Karl Walentin</i>	2007:215
Bayesian forecast combination for VAR models <i>by Michael K. Andersson and Sune Karlsson</i>	2007:216
Do Central Banks React to House Prices? <i>by Daria Finocchiaro and Virginia Queijo von Heideken</i>	2007:217
The Riksbank's Forecasting Performance <i>by Michael K. Andersson, Gustav Karlsson and Josef Svensson</i>	2007:218
Macroeconomic Impact on Expected Default Frequency <i>by Per Åsberg and Hovick Shahnazarian</i>	2008:219
Monetary Policy Regimes and the Volatility of Long-Term Interest Rates <i>by Virginia Queijo von Heideken</i>	2008:220
Governing the Governors: A Clinical Study of Central Banks <i>by Lars Frisell, Kasper Roszbach and Giancarlo Spagnolo</i>	2008:221
The Monetary Policy Decision-Making Process and the Term Structure of Interest Rates <i>by Hans Dillén</i>	2008:222
How Important are Financial Frictions in the U S and the Euro Area <i>by Virginia Queijo von Heideken</i>	2008:223
Block Kalman filtering for large-scale DSGE models <i>by Ingvar Strid and Karl Walentin</i>	2008:224
Optimal Monetary Policy in an Operational Medium-Sized DSGE Model <i>by Malin Adolfson, Stefan Laséen, Jesper Lindé and Lars E. O. Svensson</i>	2008:225
Firm Default and Aggregate Fluctuations <i>by Tor Jacobson, Rikard Kindell, Jesper Lindé and Kasper Roszbach</i>	2008:226
Re-Evaluating Swedish Membership in EMU: Evidence from an Estimated Model <i>by Ulf Söderström</i>	2008:227

The Effect of Cash Flow on Investment: An Empirical Test of the Balance Sheet Channel <i>by Ola Melander</i>	2009:228
Expectation Driven Business Cycles with Limited Enforcement <i>by Karl Walentin</i>	2009:229
Effects of Organizational Change on Firm Productivity <i>by Christina Håkanson</i>	2009:230
Evaluating Microfoundations for Aggregate Price Rigidities: Evidence from Matched Firm-Level Data on Product Prices and Unit Labor Cost <i>by Mikael Carlsson and Oskar Nordström Skans</i>	2009:231
Monetary Policy Trade-Offs in an Estimated Open-Economy DSGE Model <i>by Malin Adolfson, Stefan Laséen, Jesper Lindé and Lars E. O. Svensson</i>	2009:232
Flexible Modeling of Conditional Distributions Using Smooth Mixtures of Asymmetric Student T Densities <i>by Feng Li, Mattias Villani and Robert Kohn</i>	2009:233
Forecasting Macroeconomic Time Series with Locally Adaptive Signal Extraction <i>by Paolo Giordani and Mattias Villani</i>	2009:234
Evaluating Monetary Policy <i>by Lars E. O. Svensson</i>	2009:235
Risk Premiums and Macroeconomic Dynamics in a Heterogeneous Agent Model <i>by Ferre De Graeve, Maarten Dossche, Marina Emiris, Henri Sneessens and Raf Wouters</i>	2010:236
Picking the Brains of MPC Members <i>by Mikael Apel, Carl Andreas Claussen and Petra Lennartsdotter</i>	2010:237
Involuntary Unemployment and the Business Cycle <i>by Lawrence J. Christiano, Mathias Trabandt and Karl Walentin</i>	2010:238
Housing collateral and the monetary transmission mechanism <i>by Karl Walentin and Peter Sellin</i>	2010:239
The Discursive Dilemma in Monetary Policy <i>by Carl Andreas Claussen and Øistein Røisland</i>	2010:240
Monetary Regime Change and Business Cycles <i>by Vasco Cúrdia and Daria Finocchiaro</i>	2010:241
Bayesian Inference in Structural Second-Price common Value Auctions <i>by Bertil Wegmann and Mattias Villani</i>	2010:242
Equilibrium asset prices and the wealth distribution with inattentive consumers <i>by Daria Finocchiaro</i>	2010:243
Identifying VARs through Heterogeneity: An Application to Bank Runs <i>by Ferre De Graeve and Alexei Karas</i>	2010:244
Modeling Conditional Densities Using Finite Smooth Mixtures <i>by Feng Li, Mattias Villani and Robert Kohn</i>	2010:245
The Output Gap, the Labor Wedge, and the Dynamic Behavior of Hours <i>by Luca Sala, Ulf Söderström and Antonella Trigari</i>	2010:246
Density-Conditional Forecasts in Dynamic Multivariate Models <i>by Michael K. Andersson, Stefan Palmqvist and Daniel F. Waggoner</i>	2010:247
Anticipated Alternative Policy-Rate Paths in Policy Simulations <i>by Stefan Laséen and Lars E. O. Svensson</i>	2010:248
MOSES: Model of Swedish Economic Studies <i>by Gunnar Bårdsen, Ard den Reijer, Patrik Jonasson and Ragnar Nymoén</i>	2011:249
The Effects of Endogenous Firm Exit on Business Cycle Dynamics and Optimal Fiscal Policy <i>by Lauri Vilmi</i>	2011:250
Parameter Identification in a Estimated New Keynesian Open Economy Model <i>by Malin Adolfson and Jesper Lindé</i>	2011:251
Up for count? Central bank words and financial stress <i>by Marianna Blix Grimaldi</i>	2011:252
Wage Adjustment and Productivity Shocks <i>by Mikael Carlsson, Julián Messina and Oskar Nordström Skans</i>	2011:253

Stylized (Arte) Facts on Sectoral Inflation <i>by Ferre De Graeve and Karl Walentin</i>	2011:254
Hedging Labor Income Risk <i>by Sebastien Betermier, Thomas Jansson, Christine A. Parlour and Johan Walden</i>	2011:255
Taking the Twists into Account: Predicting Firm Bankruptcy Risk with Splines of Financial Ratios <i>by Paolo Giordani, Tor Jacobson, Erik von Schedvin and Mattias Villani</i>	2011:256
Collateralization, Bank Loan Rates and Monitoring: Evidence from a Natural Experiment <i>by Geraldo Cerqueiro, Steven Ongena and Kasper Roszbach</i>	2012:257
On the Non-Exclusivity of Loan Contracts: An Empirical Investigation <i>by Hans Degryse, Vasso Ioannidou and Erik von Schedvin</i>	2012:258
Labor-Market Frictions and Optimal Inflation <i>by Mikael Carlsson and Andreas Westermark</i>	2012:259
Output Gaps and Robust Monetary Policy Rules <i>by Roberto M. Billi</i>	2012:260
The Information Content of Central Bank Minutes <i>by Mikael Apel and Marianna Blix Grimaldi</i>	2012:261
The Cost of Consumer Payments in Sweden <i>by Björn Segendorf and Thomas Jansson</i>	2012:262
Trade Credit and the Propagation of Corporate Failure: An Empirical Analysis <i>by Tor Jacobson and Erik von Schedvin</i>	2012:263
Structural and Cyclical Forces in the Labor Market During the Great Recession: Cross-Country Evidence <i>by Luca Sala, Ulf Söderström and Antonella Trigari</i>	2012:264
Pension Wealth and Household Savings in Europe: Evidence from SHARELIFE <i>by Rob Alessie, Viola Angelini and Peter van Santen</i>	2013:265
Long-Term Relationship Bargaining <i>by Andreas Westermark</i>	2013:266
Using Financial Markets To Estimate the Macro Effects of Monetary Policy: An Impact-Identified FAVAR* <i>by Stefan Pitschner</i>	2013:267
DYNAMIC MIXTURE-OF-EXPERTS MODELS FOR LONGITUDINAL AND DISCRETE-TIME SURVIVAL DATA <i>by Matias Quiroz and Mattias Villani</i>	2013:268
Conditional euro area sovereign default risk <i>by André Lucas, Bernd Schwaab and Xin Zhang</i>	2013:269
Nominal GDP Targeting and the Zero Lower Bound: Should We Abandon Inflation Targeting?*	2013:270
<i>by Roberto M. Billi</i>	
Un-truncating VARs* <i>by Ferre De Graeve and Andreas Westermark</i>	2013:271
Housing Choices and Labor Income Risk <i>by Thomas Jansson</i>	2013:272
Identifying Fiscal Inflation* <i>by Ferre De Graeve and Virginia Queijo von Heideken</i>	2013:273
On the Redistributive Effects of Inflation: an International Perspective* <i>by Paola Boel</i>	2013:274
Business Cycle Implications of Mortgage Spreads* <i>by Karl Walentin</i>	2013:275
Approximate dynamic programming with post-decision states as a solution method for dynamic economic models <i>by Isaiah Hull</i>	2013:276
A detrimental feedback loop: deleveraging and adverse selection <i>by Christoph Bertsch</i>	2013:277
Distortionary Fiscal Policy and Monetary Policy Goals <i>by Klaus Adam and Roberto M. Billi</i>	2013:278
Predicting the Spread of Financial Innovations: An Epidemiological Approach <i>by Isaiah Hull</i>	2013:279
Firm-Level Evidence of Shifts in the Supply of Credit <i>by Karolina Holmberg</i>	2013:280

Lines of Credit and Investment: Firm-Level Evidence of Real Effects of the Financial Crisis <i>by Karolina Holmberg</i>	2013:281
A wake-up call: information contagion and strategic uncertainty <i>by Toni Ahnert and Christoph Bertsch</i>	2013:282
Debt Dynamics and Monetary Policy: A Note <i>by Stefan Laséen and Ingvar Strid</i>	2013:283
Optimal taxation with home production <i>by Conny Olovsson</i>	2014:284
Incompatible European Partners? Cultural Predispositions and Household Financial Behavior <i>by Michael Haliassos, Thomas Jansson and Yigitcan Karabulut</i>	2014:285
How Subprime Borrowers and Mortgage Brokers Shared the Piecial Behavior <i>by Antje Berndt, Burton Hollifield and Patrik Sandås</i>	2014:286
The Macro-Financial Implications of House Price-Indexed Mortgage Contracts <i>by Isaiah Hull</i>	2014:287
Does Trading Anonymously Enhance Liquidity? <i>by Patrick J. Dennis and Patrik Sandås</i>	2014:288
Systematic bailout guarantees and tacit coordination <i>by Christoph Bertsch, Claudio Calcagno and Mark Le Quement</i>	2014:289
Selection Effects in Producer-Price Setting <i>by Mikael Carlsson</i>	2014:290
Dynamic Demand Adjustment and Exchange Rate Volatility <i>by Vesna Corbo</i>	2014:291
Forward Guidance and Long Term Interest Rates: Inspecting the Mechanism <i>by Ferre De Graeve, Pelin Ilbas & Raf Wouters</i>	2014:292
Firm-Level Shocks and Labor Adjustments <i>by Mikael Carlsson, Julián Messina and Oskar Nordström Skans</i>	2014:293
A wake-up call theory of contagion <i>by Toni Ahnert and Christoph Bertsch</i>	2015:294
Risks in macroeconomic fundamentals and excess bond returns predictability <i>by Rafael B. De Rezende</i>	2015:295
The Importance of Reallocation for Productivity Growth: Evidence from European and US Banking <i>by Jaap W.B. Bos and Peter C. van Santen</i>	2015:296
SPEEDING UP MCMC BY EFFICIENT DATA SUBSAMPLING <i>by Matias Quiroz, Mattias Villani and Robert Kohn</i>	2015:297
Amortization Requirements and Household Indebtedness: An Application to Swedish-Style Mortgages <i>by Isaiah Hull</i>	2015:298
Fuel for Economic Growth? <i>by Johan Gars and Conny Olovsson</i>	2015:299
Searching for Information <i>by Jungsuk Han and Francesco Sangiorgi</i>	2015:300
What Broke First? Characterizing Sources of Structural Change Prior to the Great Recession <i>by Isaiah Hull</i>	2015:301
Price Level Targeting and Risk Management <i>by Roberto Billi</i>	2015:302
Central bank policy paths and market forward rates: A simple model <i>by Ferre De Graeve and Jens Iversen</i>	2015:303
Jump-Starting the Euro Area Recovery: Would a Rise in Core Fiscal Spending Help the Periphery? <i>by Olivier Blanchard, Christopher J. Erceg and Jesper Lindé</i>	2015:304
Bringing Financial Stability into Monetary Policy* <i>by Eric M. Leeper and James M. Nason</i>	2015:305
SCALABLE MCMC FOR LARGE DATA PROBLEMS USING DATA SUBSAMPLING AND THE DIFFERENCE ESTIMATOR <i>by MATIAS QUIROZ, MATTIAS VILLANI AND ROBERT KOHN</i>	2015:306

SPEEDING UP MCMC BY DELAYED ACCEPTANCE AND DATA SUBSAMPLING <i>by MATIAS QUIROZ</i>	2015:307
Modeling financial sector joint tail risk in the euro area <i>by André Lucas, Bernd Schwaab and Xin Zhang</i>	2015:308
Score Driven Exponentially Weighted Moving Averages and Value-at-Risk Forecasting <i>by André Lucas and Xin Zhang</i>	2015:309
On the Theoretical Efficacy of Quantitative Easing at the Zero Lower Bound <i>by Paola Boel and Christopher J. Waller</i>	2015:310
Optimal Inflation with Corporate Taxation and Financial Constraints <i>by Daria Finocchiaro, Giovanni Lombardo, Caterina Mendicino and Philippe Weil</i>	2015:311
Fire Sale Bank Recapitalizations <i>by Christoph Bertsch and Mike Mariathasan</i>	2015:312
Since you're so rich, you must be really smart: Talent and the Finance Wage Premium <i>by Michael Böhm, Daniel Metzger and Per Strömberg</i>	2015:313
Debt, equity and the equity price puzzle <i>by Daria Finocchiaro and Caterina Mendicino</i>	2015:314
Trade Credit: Contract-Level Evidence Contradicts Current Theories <i>by Tore Ellingsen, Tor Jacobson and Erik von Schedvin</i>	2016:315
Double Liability in a Branch Banking System: Historical Evidence from Canada <i>by Anna Grodecka and Antonis Kotidis</i>	2016:316
Subprime Borrowers, Securitization and the Transmission of Business Cycles <i>by Anna Grodecka</i>	2016:317
Real-Time Forecasting for Monetary Policy Analysis: The Case of Sveriges Riksbank <i>by Jens Iversen, Stefan Laséen, Henrik Lundvall and Ulf Söderström</i>	2016:318
Fed Liftoff and Subprime Loan Interest Rates: Evidence from the Peer-to-Peer Lending <i>by Christoph Bertsch, Isaiah Hull and Xin Zhang</i>	2016:319
Curbing Shocks to Corporate Liquidity: The Role of Trade Credit <i>by Niklas Amberg, Tor Jacobson, Erik von Schedvin and Robert Townsend</i>	2016:320
Firms' Strategic Choice of Loan Delinquencies <i>by Paola Morales-Acevedo</i>	2016:321
Fiscal Consolidation Under Imperfect Credibility <i>by Matthieu Lemoine and Jesper Lindé</i>	2016:322
Challenges for Central Banks' Macro Models <i>by Jesper Lindé, Frank Smets and Rafael Wouters</i>	2016:323
The interest rate effects of government bond purchases away from the lower bound <i>by Rafael B. De Rezende</i>	2016:324
COVENANT-LIGHT CONTRACTS AND CREDITOR COORDINATION <i>by Bo Becker and Victoria Ivashina</i>	2016:325
Endogenous Separations, Wage Rigidities and Employment Volatility <i>by Mikael Carlsson and Andreas Westermark</i>	2016:326
Renovatio Monetae: Gesell Taxes in Practice <i>by Roger Svensson and Andreas Westermark</i>	2016:327
Adjusting for Information Content when Comparing Forecast Performance <i>by Michael K. Andersson, Ted Aranki and André Reslow</i>	2016:328
Economic Scarcity and Consumers' Credit Choice <i>by Marieke Bos, Chloé Le Coq and Peter van Santen</i>	2016:329
Uncertain pension income and household saving <i>by Peter van Santen</i>	2016:330
Money, Credit and Banking and the Cost of Financial Activity <i>by Paola Boel and Gabriele Camera</i>	2016:331
Oil prices in a real-business-cycle model with precautionary demand for oil <i>by Conny Olovsson</i>	2016:332
Financial Literacy Externalities <i>by Michael Haliasso, Thomas Jansson and Yigitcan Karabulut</i>	2016:333

The timing of uncertainty shocks in a small open economy <i>by Hanna Armelius, Isaiah Hull and Hanna Stenbacka Köhler</i>	2016:334
Quantitative easing and the price-liquidity trade-off <i>by Marien Ferdinandusse, Maximilian Freier and Annukka Ristiniemi</i>	2017:335
What Broker Charges Reveal about Mortgage Credit Risk <i>by Antje Berndt, Burton Hollifield and Patrik Sandås</i>	2017:336
Asymmetric Macro-Financial Spillovers <i>by Kristina Bluwstein</i>	2017:337
Latency Arbitrage When Markets Become Faster <i>by Burton Hollifield, Patrik Sandås and Andrew Todd</i>	2017:338
How big is the toolbox of a central banker? Managing expectations with policy-rate forecasts: Evidence from Sweden <i>by Magnus Åhl</i>	2017:339
International business cycles: quantifying the effects of a world market for oil <i>by Johan Gars and Conny Olovsson I</i>	2017:340
Systemic Risk: A New Trade-Off for Monetary Policy? <i>by Stefan Laséen, Andrea Pescatori and Jarkko Turunen</i>	2017:341
Household Debt and Monetary Policy: Revealing the Cash-Flow Channel <i>by Martin Flodén, Matilda Kilström, Jósef Sigurdsson and Roine Vestman</i>	2017:342
House Prices, Home Equity, and Personal Debt Composition <i>by Jieying Li and Xin Zhang</i>	2017:343
Identification and Estimation issues in Exponential Smooth Transition Autoregressive Models <i>by Daniel Buncic</i>	2017:344
Domestic and External Sovereign Debt <i>by Paola Di Casola and Spyridon Sichelmiris</i>	2017:345
The Role of Trust in Online Lending <i>by Christoph Bertsch, Isaiah Hull, Yingjie Qi and Xin Zhang</i>	2017:346
On the effectiveness of loan-to-value regulation in a multiconstraint framework <i>by Anna Grodecka</i>	2017:347
Shock Propagation and Banking Structure <i>by Mariassunta Giannetti and Farzad Saidi</i>	2017:348
The Granular Origins of House Price Volatility <i>by Isaiah Hull, Conny Olovsson, Karl Walentin and Andreas Westermark</i>	2017:349
Should We Use Linearized Models To Calculate Fiscal Multipliers? <i>by Jesper Lindé and Mathias Trabandt</i>	2017:350
The impact of monetary policy on household borrowing – a high-frequency IV identification <i>by Maria Sandström</i>	2018:351
Conditional exchange rate pass-through: evidence from Sweden <i>by Vesna Corbo and Paola Di Casola</i>	2018:352
Learning on the Job and the Cost of Business Cycles <i>by Karl Walentin and Andreas Westermark</i>	2018:353
Trade Credit and Pricing: An Empirical Evaluation <i>by Niklas Amberg, Tor Jacobson and Erik von Schedvin</i>	2018:354
A shadow rate without a lower bound constraint <i>by Rafael B. De Rezende and Annukka Ristiniemi</i>	2018:355
Reduced "Border Effects", FTAs and International Trade <i>by Sebastian Franco and Erik Frohm</i>	2018:356
Spread the Word: International Spillovers from Central Bank Communication <i>by Hanna Armelius, Christoph Bertsch, Isaiah Hull and Xin Zhang</i>	2018:357
Predictors of Bank Distress: The 1907 Crisis in Sweden <i>by Anna Grodecka, Seán Kenny and Anders Ögren</i>	2018:358

Diversification Advantages During the Global Financial Crisis <i>by Mats Levander</i>	2018:359
Towards Technology-News-Driven Business Cycles <i>by Paola Di Casola and Spyridon Sichliridis</i>	2018:360
The Housing Wealth Effect: Quasi-Experimental Evidence <i>by Dany Kessel, Björn Tyrefors and Roine</i>	2018:361
Identification Versus Misspecification in New Keynesian Monetary Policy Models <i>by Malin Adolfson, Stefan Laseén, Jesper Lindé and Marco Ratto</i>	2018:362
The Macroeconomic Effects of Trade Tariffs: Revisiting the Lerner Symmetry Result <i>by Jesper Lindé and Andrea Pescatori</i>	2019:363
Biased Forecasts to Affect Voting Decisions? The Brexit Case <i>by Davide Cipullo and André Reslow</i>	2019:364
The Interaction Between Fiscal and Monetary Policies: Evidence from Sweden <i>by Sebastian Ankargren and Hovick Shahnazarian</i>	2019:365
Designing a Simple Loss Function for Central Banks: Does a Dual Mandate Make Sense? <i>by Davide Debortoli, Jinill Kim and Jesper Lindé</i>	2019:366
Gains from Wage Flexibility and the Zero Lower Bound <i>by Roberto M. Billi and Jordi Galí</i>	2019:367
Fixed Wage Contracts and Monetary Non-Neutrality <i>by Maria Björklund, Mikael Carlsson and Oskar Nordström Skans</i>	2019:368
The Consequences of Uncertainty: Climate Sensitivity and Economic Sensitivity to the Climate <i>by John Hassler, Per Krusell and Conny Olovsson</i>	2019:369
Does Inflation Targeting Reduce the Dispersion of Price Setters' Inflation Expectations? <i>by Charlotte Paulie</i>	2019:370
Subsampling Sequential Monte Carlo for Static Bayesian Models <i>by David Gunawan, Khue-Dung Dang, Matias Quiroz, Robert Kohn and Minh-Ngoc Tran</i>	2019:371
Hamiltonian Monte Carlo with Energy Conserving Subsampling <i>by Khue-Dung Dang, Matias Quiroz, Robert Kohn, Minh-Ngoc Tran and Mattias Villani</i>	2019:372
Institutional Investors and Corporate Investment <i>by Cristina Cella</i>	2019:373
The Impact of Local Taxes and Public Services on Property Values <i>by Anna Grodecka and Isaiah Hull</i>	2019:374
Directed technical change as a response to natural-resource scarcity <i>by John Hassler, Per Krusell and Conny Olovsson</i>	2019:375
A Tale of Two Countries: Cash Demand in Canada and Sweden <i>by Walter Engert, Ben Fung and Björn Segendorf</i>	2019:376
Tax and spending shocks in the open economy: are the deficits twins? <i>by Mathias Klein and Ludger Linnemann</i>	2019:377
Mind the gap! Stylized dynamic facts and structural models <i>by Fabio Canova and Filippo Ferroni</i>	2019:378
Financial Buffers, Unemployment Duration and Replacement Labor Income <i>by Mats Levander</i>	2019:379
Inefficient Use of Competitors' Forecasts? <i>by André Reslow</i>	2019:380
How Much Information Do Monetary Policy Committees Disclose? Evidence from the FOMC's Minutes and Transcripts <i>by Mikael Apel, Marianna Blix Grimaldi and Isaiah Hull</i>	2019:381
Risk endogeneity at the lender/investor-of-last-resort <i>by Diego Caballero, André Lucas, Bernd Schwaab and Xin Zhang</i>	2019:382
Heterogeneity in Households' Expectations of Housing Prices – Evidence from Micro Data <i>by Erik Hjalmarsson and Pär Österholm</i>	2019:383
Big Broad Banks: How Does Cross-Selling A Affect Lending? <i>by Yingjie Qi</i>	2020:384
Unemployment Fluctuations and Nominal GDP Targeting <i>by Roberto Billi</i>	2020:385

FAQ: How do I extract the output gap? <i>by Fabio Canova</i>	2020:386
Drivers of consumer prices and exchange rates in small open economies <i>by Vesna Corbo and Paola Di Casola</i>	2020:387



Sveriges Riksbank
Visiting address: Brunkebergs torg 11
Mail address: se-103 37 Stockholm

Website: www.riksbank.se
Telephone: +46 8 787 00 00, Fax: +46 8 21 05 31
E-mail: registratorn@riksbank.se