

Bown, Chad P.; Conconi, Paola; Erbahar, Aksel; Trimarchi, Lorenzo

Working Paper

Trade Protection along Supply Chains

CESifo Working Paper, No. 8812

Provided in Cooperation with:

Ifo Institute – Leibniz Institute for Economic Research at the University of Munich

Suggested Citation: Bown, Chad P.; Conconi, Paola; Erbahar, Aksel; Trimarchi, Lorenzo (2020) : Trade Protection along Supply Chains, CESifo Working Paper, No. 8812, Center for Economic Studies and Ifo Institute (CESifo), Munich

This Version is available at:

<https://hdl.handle.net/10419/232409>

Standard-Nutzungsbedingungen:

Die Dokumente auf EconStor dürfen zu eigenen wissenschaftlichen Zwecken und zum Privatgebrauch gespeichert und kopiert werden.

Sie dürfen die Dokumente nicht für öffentliche oder kommerzielle Zwecke vervielfältigen, öffentlich ausstellen, öffentlich zugänglich machen, vertreiben oder anderweitig nutzen.

Sofern die Verfasser die Dokumente unter Open-Content-Lizenzen (insbesondere CC-Lizenzen) zur Verfügung gestellt haben sollten, gelten abweichend von diesen Nutzungsbedingungen die in der dort genannten Lizenz gewährten Nutzungsrechte.

Terms of use:

Documents in EconStor may be saved and copied for your personal and scholarly purposes.

You are not to copy documents for public or commercial purposes, to exhibit the documents publicly, to make them publicly available on the internet, or to distribute or otherwise use the documents in public.

If the documents have been made available under an Open Content Licence (especially Creative Commons Licences), you may exercise further usage rights as specified in the indicated licence.

Trade Protection along Supply Chains

Chad Bown, Paola Conconi, Aksel Erbahar, Lorenzo Trimarchi

Impressum:

CESifo Working Papers

ISSN 2364-1428 (electronic version)

Publisher and distributor: Munich Society for the Promotion of Economic Research - CESifo GmbH

The international platform of Ludwigs-Maximilians University's Center for Economic Studies and the ifo Institute

Poschingerstr. 5, 81679 Munich, Germany

Telephone +49 (0)89 2180-2740, Telefax +49 (0)89 2180-17845, email office@cesifo.de

Editor: Clemens Fuest

<https://www.cesifo.org/en/wp>

An electronic version of the paper may be downloaded

- from the SSRN website: www.SSRN.com
- from the RePEc website: www.RePEc.org
- from the CESifo website: <https://www.cesifo.org/en/wp>

Trade Protection along Supply Chains

Abstract

During the last decades, the United States has applied increasingly high trade protection against China. We combine detailed information on US antidumping (AD) duties — the most widely used trade barrier — with US input-output data to study the effects of trade protection along supply chains. To deal with endogeneity concerns, we propose a new instrument for AD protection, which combines exogenous variation in the political importance of industries with their historical experience in AD proceedings. We find that tariffs have large negative effects on downstream industries, decreasing employment, wages, sales, and investment. Our baseline estimates for 1988-2016 indicate that, due to AD protection against China, around 1.8 million US jobs were lost in downstream industries, with no significant job gains in protected sectors. When we extend the analysis to measures introduced under President Trump, we find that around 500,000 jobs were lost during the first two years of his term. We also provide evidence of the mechanisms behind the negative effects of protection along supply chains: AD duties decrease imports and raise production costs for downstream industries.

JEL-Codes: F130, D570.

Keywords: trade protection, supply chains, input-output linkages.

Chad Bown
Peterson Institute
Washington DC / USA
chad.p.bown@gmail.com

Aksel Erbahar
Erasmus University Rotterdam
Rotterdam / The Netherlands
erbahar@ese.eur.nl

*Paola Conconi**
Université Libre de Bruxelles
Belgium – 1050 Brussels
pconconi@ulb.ac.be

Lorenzo Trimarchi
Université de Namur
Namur / Belgium
lorenzo.trimarchi@unamur.be

*corresponding author

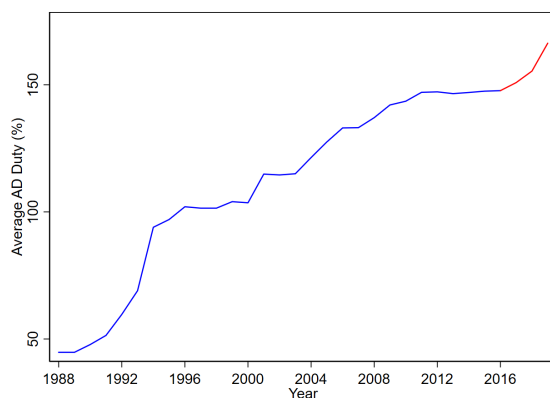
December 2020

Part of this paper builds on the earlier project circulated under the title “Trade Policy and the China Syndrome.” We are grateful to Pol Antrás, Tommaso Aquilante, Andy Bernard, Emily Blanchard, Davin Chor, Italo Colantone, Arnaud Costinot, Mathias Dewatripont, Ruben Durante, Sacha Kapoor, Josef Konings, Brian Kovak, Andrei Levchenko, Emanuel Ornelas, Justin Pierce, Vincent Rebeyrol, André Sapir, Peter Schott, Bob Staiger, Otto Swank, Denni Tommasi, Hylke Vandenbussche, Maurizio Zanardi, participants at the ETSG and CEBLF conferences, the FREIT SETC conference, the CESifo conference on the Global Economy, the Fifth Conference of CEPR Research Network on Global Value Chains, Trade and Development, the Workshop on International Economic Networks (WIEN), and seminar participants at Trinity College Dublin, ECARES, Lancaster University, Erasmus University Rotterdam, Syracuse University, Nottingham University, and the Empirical Trade Online Seminar (ETOS) for their helpful comments and suggestions, and Elisa Navarra for excellent research assistance. Paola Conconi gratefully acknowledges funding from the FNRS, the European Research Council (Advanced ERC Grant No. 834253) and the European Union's Horizon 2020 research and innovation programme (Agreement Grant No. 770680), while Lorenzo Trimarchi acknowledges funding from the FNRS (Excellence of Science Research No. 0020918F).

1 Introduction

The last few decades have witnessed the rise of China as a world trading power. Thanks to China’s deep economic reforms in the 1980s and 1990s and its membership in the World Trade Organization (WTO) since 2001, between 1990 and 2011, the share of global manufacturing exports originating from China surged from 2% to 16% (Acemoglu *et al.*, 2016). To curb this rise in import competition, in 2018, the Trump administration introduced a series of tariff measures to limit trade with China, triggering retaliation. The trade war between the United States and China has stimulated several studies on the effects of this “return to protection” (e.g. Amiti *et al.*, 2019; Flaaen and Pierce, 2019; Fajgelbaum *et al.*, 2020; Flaaen *et al.*, 2020). However, well before President Donald Trump took office, the US had already been targeting China through its most frequently used trade barrier antidumping (AD) duties. As shown in Figure 1, between the start of the presidency of George H. W. Bush in 1988 and the end of Barack Obama’s second term in 2016, the average US AD duty against China more than tripled (from 45% to 148%). Under President Trump, they further increased to 166%.

Figure 1
Average AD duty against China (1988-2019)



The figure plots the average AD duty applied by the United States on imports from China during 1988-2016 (in blue) and during Trump’s presidency in 2017-2019 (in red). Source: Authors’ calculations based on an extended version of the Temporary Trade Barriers Database of Bown (2014).

Over the same period, the share of Chinese imports covered by US AD duties has also dramatically increased (from 3.4% to 10.1%), as shown in Figure A-1 in the Appendix. During Trump’s presidency, this share reached 12.9%.

The last decades have also witnessed the emergence of global supply chains and the rise of trade in intermediate goods (e.g. Yi, 2003; Johnson and Noguera, 2012; Antràs, 2020).

In a world in which production processes are fragmented across countries, the effects of tariffs propagate along supply chains, with firms in downstream industries suffering from protection upstream.¹ Such concerns are exacerbated by the fact that protection is often targeted towards intermediate inputs.²

In this paper, we examine the effects of trade protection along supply chains. We focus on AD duties, the most common trade barrier used by the United States and other WTO members (Blonigen and Prusa, 2016).³ In our main analysis, we study the effects of US AD duties applied against China during 1988-2016. China has been by far the biggest target of US AD protection: since its accession to the WTO, more than 70% of US AD measures have been against China.⁴ We collect detailed information on AD duties and other protectionist measures applied by the United States during the last decades and combine it with disaggregated US input-output data to identify vertical linkages between industries.

As pointed out by Treffer (1993), a key challenge to identify the effects of tariff changes is the endogeneity of trade policy. When studying the impact of tariffs along supply chains, a major concern is that the results might be confounded by omitted variables correlated with both the level of protection in upstream industries and the performance of downstream industries. For example, productivity shocks experienced by foreign input suppliers can benefit US firms in downstream sectors (e.g. allowing them to purchase inputs at lower prices) and also increase input protection (e.g. making it easier for an industry that petitions for AD to provide evidence of injury). Omitting these productivity shocks would thus work against finding negative effects of tariffs along supply chains. Other potential omitted variables, such as lobbying by downstream producers, can have similar effects. Higher tariffs on some inputs (e.g. steel or car parts) can hurt firms in vertically-related industries (e.g. construction companies, car manufacturers). These firms will then try to lobby against high tariffs on

¹For example, it has been argued that Trump’s tariffs “on bike components have raised the costs of Bicycle Corporation of America [BCA]” ... “tariffs on steel and aluminium have so disrupted markets that plans to expand BCA are on hold, costing American jobs” (“The Trouble with Putting Tariffs on Chinese Goods,” *The Economist*, May 16, 2019).

²Bown (2018) shows that during the last few decades AD duties applied by the United States against China are increasingly skewed towards intermediate goods. He documents similar patterns when looking at measures applied by the United States against other countries, as well as measures applied by other advanced economies. In the recent trade war with China, US tariffs were also skewed towards intermediate inputs, such as primary metals and electrical equipment (Fajgelbaum *et al.*, 2020).

³GATT/WTO rules allow three forms of temporary trade barriers (TTBs): AD duties to defend against imports sold at “less than fair value,” countervailing duties to protect against subsidized imports, and safeguard tariffs in response to import surges. AD duties are the most common TTBs used by the United States against China during our sample period (see Figure A-2).

⁴During 2001-2016, China was the target of 73% of the new AD measures introduced by the United States; over the entire 1988-2016 period, 50% of the new measures were against China.

their inputs, particularly if they stand to lose a lot from protection (e.g. Gawande *et al.*, 2012; Mayda *et al.*, 2018). If successful, these lobbying efforts would make it harder to identify the negative effects of protection along supply chains.⁵

Our paper makes two important contributions to the literature on the effects of trade protection. First, we propose a new instrumental variable for AD duties, the most widely used protectionist measure. Second, using this instrument, we identify the causal impact of trade barriers along supply chains. We show that tariffs have large negative effects on downstream industries, increasing production costs, and decreasing employment, wages, sales, and investment.

Our instrument is the interaction between an industry’s historical experience at filing for AD petitions and its importance in political battleground states. The logic of our identification strategy is that AD protection should be skewed in favor of industries that are important in swing states, but only if they can exploit this political advantage thanks to their prior knowledge of the complex procedures to petition for AD duties.

The first component of the instrument builds on previous studies emphasizing the legal and institutional complexity of the AD process. The petitioning party must present substantial information to support the case, as well as legal analysis and arguments. As a result, industries with prior experience at filing AD cases face lower petitioning costs and a higher probability of success in new cases (Blonigen and Park, 2004; Blonigen, 2006). In line with these studies, we find that the number of petitions filed by an industry during our sample period is strongly correlated with its prior AD experience.

The second component builds on the literature on the political economy of trade policy. Several studies show that US trade policies are biased towards the interests of swing states (e.g. Muûls and Petropoulou, 2013; Conconi *et al.*, 2017; Ma and McLaren, 2018; Fajgelbaum *et al.*, 2020).⁶ Our paper provides novel evidence that swing-state politics shapes US AD duties. We show that congressmen from swing states are overrepresented in the two key committees that deal with trade policy in the US Congress. These committees can influence decisions of the International Trade Commission (ITC) – one of the two key institutions in charge of AD in the United States – through various channels (e.g. appointment confirma-

⁵For example, in 2006 “[t]he steel antidumping duties in the United States were brought down partly by a coalition of otherwise rival firms. The case against the steel duties brought together rival U.S. and Japanese auto makers – General Motors Corp., Ford, and Daimler-Chrysler AG joined forces with Toyota Motor Corp., Honda Motor Co., and Nissan Motor Co.” (*Wall Street Journal*, December 16, 2006).

⁶These studies examine the effects of swing-state politics on non-tariff barriers under President Reagan (Muûls and Petropoulou, 2013), trade disputes initiated by the United States (Conconi *et al.*, 2017), US MFN tariffs (Ma and McLaren, 2018), and Trump’s 2018 tariffs (Fajgelbaum *et al.*, 2020).

tions, budget allocation, oversight hearings).⁷ One would then expect swing-state politics to affect ITC votes. Indeed, we find that ITC commissioners are more likely to vote in favor of AD when the petitioning industry is important in swing states.

We show that our instrument strongly predicts AD protection and is highly robust (e.g. to using different measures of AD protection, employing alternative definitions of swing states, extending the analysis to all TTBs and all targeted countries). To verify the logic behind our identification strategy, we carry out placebo tests, using randomized distributions of swing states. The results of these tests show that keeping track of changes in the identity of swing states across electoral terms is key to predicting AD protection.

Our analysis emphasizes the importance of dealing with the endogeneity of trade policy. If we ignore this concern, we find no systematic effect of tariffs along supply chains. When we instrument for trade policy, we find that higher tariffs have large negative effects on downstream industries, leading to a significant decline in the growth rate of employment, wages, sales, and investment.

In terms of magnitude, our baseline estimates indicate that a one percentage point increase in the average input tariff faced by a downstream industry leads to a 0.32 percentage point decrease in the annual growth rate of employment in that industry. Our estimates imply that during 1988-2016 more than 1.8 million US jobs were lost across all downstream industries due to AD protection against China, with no evidence of significant job gains in the protected industries.⁸ This figure corresponds to 4.8% of the 38 million jobs the US economy added during 1988-2016. The most negatively affected sectors were large non-manufacturing industries (e.g. construction), which use inputs that were highly protected (e.g. steel). When we extend the analysis to protectionist measures introduced since Trump took office, we find that around 500,000 jobs were lost across all industries during the first two years of his presidency.

We show that our baseline results hold in a battery of robustness checks (e.g. using alternative AD measures, accounting for other protectionist measures, extending the analysis to all targeted countries, using different ways to capture input-output linkages, and different econometric methodologies).

We also provide evidence of the mechanisms behind the negative effects of tariffs along supply chains. We show that AD duties against China decrease US imports of targeted

⁷Previous studies (e.g. Moore, 1992; Hansen and Prusa, 1997; Aquilante, 2018) show that the composition of the Finance and Ways and Means committees affects the votes of ITC commissioners.

⁸Between 1988 and 2016, US employment declined in 70% of the 4-digit Standard Industrial Classification (SIC4) industries. Our counterfactual estimates imply that, without AD protection, fewer jobs would have been destroyed in declining industries, and more jobs would have been created in expanding industries.

products and raise production costs for downstream industries.

The rest of the paper is structured as follows. In Section 2, we briefly review the related literature. Section 3 provides information on the institutional procedures for the introduction of AD duties in the United States. Section 4 describes the data and variables used in our empirical analysis. Section 5 introduces our new instrument for AD protection. Section 6 presents our empirical results on the effects of protection along supply chains. Section 7 concludes, discussing the implications of our analysis for the ongoing debate about the use of protectionist measures in the multilateral trading system.

2 Related Literature

Our paper is related to three main streams of literature. First, it contributes to the literature on trade policy and global sourcing. Various studies have emphasized the productivity-enhancing effects of input trade and input liberalization (e.g. Amiti and Konings, 2007; Goldberg *et al.*, 2010; Halpern *et al.*, 2015; Antràs *et al.*, 2017; Blaum *et al.*, 2018). Others have examined the effects of trade policy along value chains (e.g. Yi, 2003; Blanchard *et al.*, 2016; Erbahar and Zi, 2017; Conconi *et al.*, 2018; Vandenbussche and Viegelaahn, 2018; Barattieri and Cacciatore, 2020; Bown *et al.*, 2020; Grossman and Helpman, 2020). We contribute to this literature by exploiting a rich dataset covering all trade barriers introduced by the United States since the 1980s and employing an instrumental variable approach to address concerns about the endogeneity of trade policy.

Second, our analysis is related to the literature on AD protection (see Blonigen and Prusa (2016) for comprehensive review). Some studies have examined the direct effects of AD duties on imports from targeted countries.⁹ Other studies have considered the indirect effects on third countries.¹⁰ To deal with the endogeneity of AD protection, some authors have combined a difference-in-differences methodology with propensity score matching (Konings

⁹For example, Prusa (2001) provides evidence for the trade destruction effect of AD protection, showing that US AD measures decreased imports of targeted products by between 30% and 50%. On the extensive margin, Besedes and Prusa (2017) find that US AD increases the probability of foreign firms exiting the US market by more than 50%. Lu *et al.* (2013) use detailed transaction data on Chinese firms and find that an increase in US AD duties leads to a significant drop in Chinese exports to the United States.

¹⁰Prusa (1997) and Konings *et al.* (2001) focus on trade diversion, showing that AD duties targeting one country can lead to an increase in imports from non-targeted countries. Bown and Crowley (2007) show that AD measures can give rise to trade deflection (i.e. an increase in exports from targeted countries to third countries) and trade depression (i.e. a decrease in exports from the targeted country to third countries). Antidumping can also have negative effects on aggregate trade, deterring imports from foreign firms that are not actually targeted. Vandenbussche and Zanardi (2010) estimate that these “chilling effects” account for about a 6% decrease in aggregate imports.

and Vandebussche, 2008; Pierce, 2011). Ours is the first paper to propose an instrumental variable for AD duties. As mentioned before, our instrument builds on the literature on the determinants of AD protection (e.g. Finger *et al.*, 1982; Bown and Crowley, 2013), and in particular on those studies that emphasize the role of AD experience (e.g. Blonigen and Park, 2004; Blonigen, 2006) and domestic political factors (e.g. Moore, 1992; Hansen and Prusa, 1997; Aquilante, 2018).

Finally, our paper is related to the literature on US-China trade relations. Several influential studies have examined the effects of import competition from China on US employment (e.g. Autor *et al.*, 2013; Acemoglu *et al.*, 2016; Pierce and Schott, 2016).¹¹ We study instead the effects of US trade protection against China. A recent stream of the literature studies the effects of the US-China trade war. Amiti *et al.* (2019) examine the impact on prices and welfare. They show that tariff changes had little-to-no impact on the prices received by foreign exporters, indicating that the incidence of Trump’s tariffs has fallen entirely on domestic consumers and importers.¹² Flaaen and Pierce (2019) find that the tariffs introduced by the Trump administration in 2018-2019 drove up the cost of inputs for American manufacturers and, combined with retaliation by trading partners, destroyed manufacturing jobs. Similarly, Flaaen *et al.* (2020) find significant price effects due to US import restrictions on washing machines. Our analysis differs from recent studies of the US-China trade war along two main dimensions. First, rather than restricting the analysis to the Trump era, we study the effects of protection over several decades, exploiting variation in AD duties against China over time and across products. Second, we employ an instrumental variable approach to deal with the endogeneity of trade policy.

3 Antidumping in the United States

Antidumping measures are meant to protect domestic producers against unfair trade practices by foreign firms. Under Article VI of the General Agreement on Tariffs and Trade (GATT) and US trade laws, dumping occurs when goods are exported at a price “less than fair value” (LTFV), i.e. for less than they are sold in the domestic market or at less than production cost. Multilateral trade rules allow unilateral measures against dumped imports causing material injury to domestic producers.

¹¹Other studies have considered the effects of the “China Syndrome” on other outcomes, such as marriage and fertility patterns (Autor *et al.*, 2019), innovation (Autor *et al.*, 2020b), the polarization of US politics (Autor *et al.*, 2020a), and mortality (Pierce and Schott, 2020).

¹²This complete pass-through result is also supported by other studies (e.g. Cavallo *et al.*, 2019; Fajgelbaum *et al.*, 2020).

In the United States, AD is administrated by two agencies, each with different competences: the US Department of Commerce (DOC),¹³ which is in charge of the dumping investigation, and the US International Trade Commission (ITC), which is in charge of the injury investigation. The DOC is an integral part of the US Administration, while the ITC is a bipartisan agency composed of six commissioners nominated by the President and confirmed by the Senate (with no more than three commissioners from the same political party).

An AD case starts with a petition filed to the ITC and the DOC, claiming injury caused by unfairly priced products imported from a specific country.¹⁴ US manufacturers or wholesalers, trade unions, and trade or business associations are all entitled to be petitioners, to the extent that they represent their industries. The petitioning process is extremely complex and requires petitioners to provide extremely detailed information about the case.¹⁵

Once a petition has been filed, the DOC decides whether a product is “dumped”, i.e. imported at LTFV. The calculation of the dumping margin involves a complex procedure. According to the law, the DOC defines fair value as the foreign firm’s price of the same good in its home country. However, this price is not always available, either because the foreign firm’s sales in its home market are negligible or because the home country is a non-market economy. If this is the case, the DOC can base the calculation of the fair value on the exporting firm’s price in third countries or on a constructed value based on the foreign firm’s costs, when this information is provided.¹⁶ A product is declared to be dumped if the dumping margin is above a threshold established by the DOC.

¹³Before 1980, the US Department of Treasury was in charge of dumping investigations. The US Congress decided to move this responsibility from the Treasury to the Department of Commerce, which was seen as more inclined to protect US firms and workers than the Treasury (Irwin, 2005).

¹⁴An AD case may concern multiple AD petitions involving different countries exporting the same product. For instance, in 2008, the AD case (USITC investigations 731-TA-1118 – 731-TA-1121) regarding “Light-Walled Rectangular Pipe and Tube” targeted imports from China, Korea, Mexico, and Turkey.

¹⁵Among others, petitioners must provide: the identity of all producers in the industry and their position regarding the petition; detailed description of the imported merchandise, including technical characteristics and uses; the volume and value of each firm’s exports of the merchandise to the United States during the last 12 months; the home market price in the country of exportation (or the price from the country of exportation to a third country); evidence that sales in the home market are being made at a price which does not reflect the cost of production and the circumstances under which such sales are made; the petitioner’s capacity, production, domestic sales, export sales, and end-of-period inventories of U.S.-produced merchandise like or most similar to the allegedly dumped imports in the three most recent calendar years and in the most recent partial-year periods for which data are available; detail description and supporting documentation of the material injury to the industry due to the increased level of imports (e.g. lost sales, decreased capacity utilization, or company closures) (see Guidelines for Antidumping Duty Petitions).

¹⁶Article 15 of China’s Protocol of Accession to the WTO allowed other WTO members to treat China as a non-market economy (NME) until December 2016. To this day, the United States has refused to grant the status of a market economy to China. Given its NME status, the DOC relies on third surrogate countries to determine the dumping margin. This results in the imposition of larger duties on Chinese products.

In the administration of antidumping, the ITC is in charge of the injury investigation. Under Section 201 of the Trade Act of 1974, the ITC “determines whether an article is being imported into the United States in such increased quantities as to be a substantial cause of serious injury, or the threat thereof, to the domestic industry producing an article like or directly competitive with the imported article.” If the ITC finds that the relevant US industry has been materially injured, or threatened with material injury, as a result of the unfairly traded imports, an AD duty equal to the dumping margin established by the DOC is introduced.

During 1981-2018, the DOC ruled in favor of dumping in 81% of the cases, with significant variation in the proposed duty rates (the mean and maximum rates are respectively 65% and 493%, and the standard deviation is 79%). During the same period, the ITC ruled in favor of injury in 68% of the cases.¹⁷ Note also that AD measures are supposed to be temporary and can only be extended after the initial five-year period through an expiry review. However, Bown *et al.* (2020) show that US AD duties lasted on average for 12 years, with some measures imposed in the 1980s still in effect as of 2020.

4 Data and Variables

In this section, we describe the data used in our empirical analysis and the variables we construct to study the effects of trade protection along supply chains.

4.1 Data on Input-Output Linkages

The first source of data used in our empirical analysis is the US input-output tables from the US Bureau of Economic Analysis (BEA), which we use to identify vertical linkages between industries. Following Acemoglu *et al.* (2016), we employ the 1992 Use of Commodities by Industries After Redefinitions (Producers’ Prices) tables. We use their concordance guide to convert 6-digit BEA industry codes into 4-digit Standard Industry Classification (SIC4) codes to be able to combine input-output tables with industry-level data. This allows us to identify linkages between 479 industries, including both manufacturing and non-manufacturing (e.g. construction, services). The disaggregated nature of the US input-output tables is one of the reasons why they have been used to capture technological linkages between sectors even in cross-country studies (e.g. Acemoglu *et al.*, 2009; Alfaro *et al.*, 2016 and 2019).

¹⁷These statistics concern the final dumping and injury investigations. The DOC and the ITC also conduct preliminary investigations (see Antidumping and Countervailing Duty Handbook for more details).

For every pair of industries, ij , the input-output accounts provide the dollar value of i required to produce a dollar’s worth of j . We denote with $\omega_{i,j}$ the direct requirement coefficient for the sector pair ij , i.e. the dollar value of i used as an input in the production of one dollar of j . In our baseline regressions, we use this variable to capture direct vertical linkages between industries. In robustness checks, we use total requirements coefficients, denoted with $\theta_{i,j}$, which take into account indirect linkages.¹⁸

Panels (a) and (b) of Figure A-3 in the Appendix illustrate the average $\omega_{i,j}$ across all SIC4 j industries, focusing respectively on the top-10 and top-50 most important inputs (i.e. with the highest $\omega_{i,j}$). Notice that the distribution of input-output linkages is highly skewed, with the most important input accounting for a much larger cost share.

4.2 Data on Tariffs

Antidumping Duties and Other Temporary Trade Barriers

Our main source for the tariff data is the World Bank’s Temporary Trade Barriers Database (TTBD) of Bown (2014), which we have updated to include all measures introduced by the United States to the present.

The TTBD contains detailed information on three forms of contingent protection (antidumping duties, countervailing duties, and safeguards) for more than thirty countries since 1980. For each case, it provides the identity of the country initiating it, the identity of the country subject to the investigation, the date of initiation of the investigation, the date of imposition of the measure (if the case is approved), as well as detailed information on the products under investigation. For the US, product data are extremely detailed with petitions identified at the 10-digit Harmonized Tariff Schedule (HTS) level (or at the 5-digit Tariff Schedule of the United States Annotated for years before 1989). Thanks to this granularity, it is possible to link each investigation with the corresponding 4-digit SIC code.

We first harmonize HS codes over time to the HS 1992 nomenclature, using the concordance tables provided by the United Nations Statistics Division. Then, we match the HS to the SIC classification using the following procedure:¹⁹

1. Each 10-digit HTS code is first aggregated up to the universal 6-digit Harmonized System (HS6) level. Then, each HS6 code is matched with one or more 4-digit SIC code

¹⁸Total requirements coefficients show the sum of direct and indirect purchases required to produce a dollar of output. Indirect purchases necessary to produce a car, for example, include the aluminum used in the frame and engine, as well as the electricity necessary to produce the aluminum.

¹⁹Throughout, when we refer to SIC industries, we use the “sic87dd” scheme used by Autor *et al.* (2013). These codes are slightly coarser than the 1987 SIC codes.

using the crosswalk provided by Autor *et al.* (2013). Around 99% of the observations are mapped using this correspondence table.²⁰ In order to map each HS6 product to only one industry, we assign an HS6 code to the industry which accounts for the largest share of that product’s US imports. This means that each HS6 product is mapped to only one 4-digit SIC industry. However, each AD case may involve multiple HS6 products and thus be linked to more than one SIC4 code.

2. The remaining unmatched HS6 products are mapped to a SIC code by aggregating up the information in the crosswalk to the HS4 level. In this case, a product is matched to an industry if its correspondent HS4 family maps to only one SIC4 industry. All the unmatched HS6 products are manually matched to a corresponding SIC4 industry by directly retrieving information about the corresponding AD case from the ITC case descriptions.

In our empirical analysis, we focus on AD duties introduced by the United States against China. As mentioned before (see footnote 4), China was the most frequent target of US AD protection in our sample period. During the seven presidential terms covering 1988-2016, the US initiated 185 cases in which China was accused of dumping. In 74% of those cases, the US imposed measures on Chinese products. In robustness checks, we consider other protectionist measures and other countries targeted by the United States.

Our main measure of AD protection is $Tariff_{i,t}$, which is the average AD duty on imports from China in SIC4 industry i in year t .²¹ Table A-2 panel (a) reports descriptive statistics of this variable during 1988-2016. The average level of the AD duty is 15%, with a standard deviation of 53% and a maximum of 430%. Table A-5 lists the 10 sectors that have the highest average AD duty in 1988-2016. To deal with outliers, in the empirical analysis, we winsorize the $Tariff_{i,t}$ variable at the 5th and 95th percentiles.

The variable $Tariff_{i,t}$ captures mostly variation in the intensive margin of AD protection. In robustness checks, we use the following alternative measures, which better capture variation in the extensive margin of AD protection: $Product\ Coverage_{i,t}$ is the share of HS6 goods

²⁰For the years up to 1988, descriptions of products were provided according to the Tariff Schedule of the United States Annotated (TSUSA) classification. Therefore, for AD cases before 1988, we match each TSUSA code with a corresponding HS code using the correspondence table provided by Feenstra (1996), available at <http://cid.econ.ucdavis.edu/usix.html>.

²¹To construct this measure, we average across all duties in force against China in industry i in year t . Note that the level of the AD duty might differ across targeted firms within an AD investigation. We use the “all others” AD rate which is applied to all firms that are not specifically named in the investigation, and is usually higher than the ones applied to specific firms. Our results continue to hold if we use the average AD rate across firms. This is not surprising given the high correlation between the two rates (0.85).

in sector i covered by AD duties against China in year t ; and $Import\ Coverage_{i,t}$ is the share of imports in sector i covered by AD duties against China in year t .²²

Since the start of Trump’s presidency in January 2017 and until 2019, the United States has continued to target imports from China, initiating 31 new AD cases, and imposing 32 measures.²³ Figure 1 shows this recent increase in average AD duties against China, as highlighted by the red solid line. When extending our analysis to the measures introduced under President Trump, we cover the first two years of his term, since the industry-level employment data is only available until the end of 2018. Table A-2 panel (c) reports descriptive statistics on AD duties during 2017-2018, which reveal that AD protection has further increased under Trump with the average AD duty reaching 36%, with a standard deviation of 81%.

Combining data on input-output linkages from the BEA with data on tariffs, we can construct different variables capturing the degree of input protection faced by downstream industries. Our main measure captures the average level of input protection:

$$Average\ Input\ Tariff_{j,t} = \sum_{i=1}^N \omega_{i,j} Tariff_{i,t}, \quad (1)$$

where $\omega_{i,j}$ is the cost share of input i in the production of SIC4 good j , and $Tariff_{i,t}$ is the AD duty applied on Chinese imports in industry i in year t . Thus, $\sum_{i=1}^N \omega_{i,j} Tariff_{i,t}$ is the average AD duty on inputs faced by downstream industry j . Notice that the set N includes all 405 tradable sectors in the economy, to which import tariffs can apply.²⁴

As mentioned in Section 4.1, the distribution of vertical linkages is highly skewed (see Figure A-3). For example, when looking at tradable inputs, steel (SIC 3312) is the most important input for 17% of the industries (see Table A-6). Our second measure of input tariff captures the level of protection on key inputs:

$$Tariff\ on\ Key\ Input_{j,t} = Tariff_{1,i,t}, \quad (2)$$

where $Tariff_{1,i,t}$ is the AD duty applied in year t on Chinese imports of sector j ’s most important input (with highest $\omega_{i,j}$).

As mentioned before, in line with Acemoglu *et al.* (2016), we rely on the BEA’s 1992

²²This variable is constructed using import data of the year prior to the filing of the AD petition. We use lagged import values to deal with the endogeneity of contemporaneous import values to trade protection.

²³Of the new measures, nine were due to investigations that started before Trump took office.

²⁴These include all manufacturing industries, agriculture, and mining.

input-output tables to identify vertically-related industries. If technology changes over time, this can lead to measurement error in input protection. Notice, however, that concerns about measurement only apply to the average input tariff (1), since our alternative measure (2) relies on IO coefficients solely to identify the key input, which is unlikely to change over time. Moreover, data from the BEA’s 1997-2018 aggregate IO tables show little variation in the $\omega_{i,j}$ weights. This can be seen in Figure A-4, which plots the direct requirement coefficients for 1997 and 2018. The correlation between them is 0.93.

Table A-2 panel(a) reports descriptive statistics of our two main measures of input tariffs. The average input tariff in 1988-2016 was 14% (with a standard deviation of 15%), while the average tariff on the key input was 36% (with a standard deviation of 63%). Table A-7 lists the ten SIC4 industries with the highest level of input protection. These include a variety of manufacturing industries such as SIC 3449 (“Miscellaneous metal work”), 2821 (“Plastics materials and resins”) and 3465 (“Automotive stampings”). Among the key inputs subject to high AD duties are SIC 3312 (“Blast furnaces and steel mills”) and 2621 (“Paper mills”) for which the average AD duty against China during 1988-2016 was respectively 82% and 77%.

MFN Tariffs

Even though this paper’s focus is on antidumping, we have also collected data on the US’ most-favored-nation (MFN) tariffs that are applied to imports from other GATT/WTO members. The source for MFN tariffs is the World Integrated Trade Solution (WITS) database.

MFN tariffs emerge from long rounds of multilateral trade negotiations: at the end of each round, governments commit not to exceed certain tariff rates, and tariff bindings can only be altered in a new round of negotiations. Unlike AD duties, they must be applied in a non-discriminatory manner to imports from all countries (Article I of the GATT).

Table A-2 panel (b) reports descriptive statistics of the MFN tariffs applied by the United States since the beginning of our sample period. Comparing these with the corresponding statistics in Table A-2 panel (a), notice that MFN tariffs are on average much lower than the AD duties applied against China and vary little over time.²⁵

²⁵For the 1988-2016 period, the mean applied MFN tariff is 5% (instead of 15% for AD duties), though there is considerable cross-product variation (the standard deviation is 21% and the maximum rate is 350%). Within SIC4 industries, there is little variation in US MFN tariffs over time: during most of our sample period, the rates applied by the United States coincide with the tariff bindings agreed at the end of the Uruguay Round of multilateral trade negotiations (1986-1994). For this reason, in our benchmark results, we abstract from MFN tariffs, which we include in robustness checks.

Additional Tariffs Under President Trump

In 2018, the Trump administration introduced tariffs on hundreds of goods under three rarely used US trade laws (Sections 201 and 301 of the Trade Act of 1974, Section 232 of the Trade Expansion Act of 1962).²⁶ These were stacked on top of AD duties already applying to Chinese imports. Some of Trump’s tariffs have hit China exclusively, while others have hit China along with other countries. We have collected information on these additional tariffs, which covered \$303.7 billion, or 12.6% of US imports in 2017 (Bown, 2019).

Relative to AD duties, the special tariffs introduced by Trump vary much less across SIC4 industries. This can be seen by comparing the statistics reported in panels (c) and (d) of Table A-2: the average special tariff against China in 2018 was 11% (with a standard deviation of 7%), while the average AD duty against China in 2017-2018 was 36% (with a standard deviation of 81%).

4.3 Other Data

In our empirical analysis, we make use of four other datasets:

- US Census County Business Patterns (CBP): we use this dataset to study the effects of input protection on employment. The CBP provides information on industry-level employment up to 2018. The variable $Employment_{i,t}$ measures total employment in SIC4 industry i in year t .
- United Nations (UN) Comtrade database: we use this dataset to measure imports. Comtrade provides information on bilateral trade flows at the HS6 level. The variable $Imports_{i,t}$ is the value of imports (expressed in real 2007 dollars). To map trade flows in HS to a SIC4 industry, we use the crosswalk provided by Autor *et al.* (2013). When an HS6 product is matched to multiple SIC4 industries, the associated value of imports is included in the imports of the matched industry weighted by the product’s share of US imports in that specific SIC industry.

²⁶On February 7, the United States introduced safeguard measures on solar panels and washing machines (at duty rates of 30% and 20%, respectively) under Section 201 of the Trade Act of 1974, which permits the President to grant temporary import relief, by raising tariffs on goods entering the United States that injure or threaten to injure domestic industries. On March 23, it implemented 25% tariffs on steel and 10% tariffs on aluminum under Section 232 of the Trade Expansion Act of 1962, which gives the President authority to restrict imports in the interest of national security. On July 6, August 23, and September 24, the US implemented tariffs of 25%, 25%, and 10%, respectively, on different sets of products from China under Section 301 of the Trade Act of 1974, which gives the President authority to impose tariffs against countries that make unjustified, unreasonable, or discriminatory trade actions.

- US Bureau of Labor Statistics (BLS): we use this dataset to measure domestic prices. The variable $Domestic\ Price_{i,t}$ is the producer price index (PPI) in SIC4 industry i in year t .²⁷
- NBER-CES Manufacturing Industry Database: we use this dataset to study the effects of tariffs on various industry outcomes. The CES database allows us to construct the variables $Blue\ Collar\ Workers_{i,t}$ and $White\ Collar\ Workers_{i,t}$ (number of blue-collar and white-collar jobs, in thousands), as well as real $Wages_{i,t}$ (in dollars), $Sales_{i,t}$ and $Investment_{i,t}$ (in millions of dollars). Using the NBER-CES database, we also construct the variable $Input\ Price_{i,t}$ by dividing the nominal cost of materials by the real cost of materials.

To deal with outliers, in our analysis of the effects of protection along supply chains, we winsorize all outcome variables (e.g. the growth rate of employment, wages, sales, investment, imports, and prices) at the 5th and 95th percentiles.

5 Identification Strategy

5.1 Endogeneity Concerns

The goal of our paper is to study the effects of protection along value chains, using detailed information on input-output linkages and exploiting variation in US tariffs across industries and over time. As pointed out by Trefler (1993), the endogeneity of trade policy poses a major challenge to examining the effects of tariff changes. In particular, when studying the impact of tariffs along supply chains, a major concern is that the results might be confounded by unobservables that are correlated both with the level of protection in upstream industries and the performance of downstream industries

One example is productivity shocks, which can be positively correlated with both the growth of downstream industries and the degree of input protection. For instance, a positive productivity shock experienced by foreign input suppliers, which allows them to lower their prices, should benefit US firms in downstream sectors. The same shock can also lead to an increase in input protection: in the case of AD investigations, a surge in the volume of imports makes it more likely that the industry petitioning for protection passes the injury test, which largely determines whether the duties are implemented. Omitting foreign input

²⁷We normalize both import and domestic prices of each industry to 100 for the year 2000 to create a harmonized price index.

productivity shocks would thus work against finding negative effects of tariffs along supply chains.

Similar concerns are raised by other potential omitted variables, including lobbying. Higher tariffs in upstream industries can increase production costs for downstream industries. Final good producers (e.g. construction companies, car manufacturers) will thus lobby against high tariffs on their inputs (e.g. steel, car parts), particularly if they stand to lose a lot from input protection.²⁸ If downstream firms successfully lobby against input protection, simple ordinary least squares (OLS) coefficients will be biased upwards, making it harder to identify the negative effects of protection along supply chains.

5.2 A New Instrument for Trade Protection

To deal with these endogeneity concerns, we follow an instrumental variable (IV) approach. The logic of our identification strategy is that the level of AD protection granted to an industry should depend on its ability to petition for AD protection and on politicians' incentives to favor key industries in swing states. Our instrument is defined as follows:

$$IV_{i,T} = Experience_i \times Swing_{i,T}. \quad (3)$$

The first component of the instrument, $Experience_i$, captures exogenous variation in the ability of different industries to petition for AD protection. It exploits the fact that, due to the legal and institutional complexity of the AD process, industries with prior experience in AD cases face lower costs of filing and a higher probability of success in new cases (Blonigen and Park, 2004; Blonigen, 2006). The variable $Experience_i$ measures the historical experience of industry i at filing petitions for AD duties. In Section 5.2.1, we provide more details about the construction of this variable and show that it is strongly correlated with the number of petitions filed by an industry during our sample period.

The second component of the instrument, $Swing_{i,T}$, captures exogenous variation in the political importance of industries driven by swing-state politics. It builds on the idea that politicians have incentives to use trade policy to favor important industries in swing states (e.g. Muûls and Petropoulou, 2013; Conconi *et al.*, 2017; Ma and McLaren, 2018; Fajgelbaum *et al.*, 2020). The variable $Swing_{i,T}$ measures the importance of industry i in states classified as swing during presidential term T . In Section 5.2.2, we describe the construction of this

²⁸The literature on political economy of trade policy shows that this type of lobbying is at work (e.g. Gawande *et al.*, 2012; Mayda *et al.*, 2018).

variable, which exploits changes in the identity of swing states across presidential terms and differences in the (pre-sample) importance of industries across states. We also provide evidence that swing state politics affects decisions of AD authorities: ITC commissioners are more likely to vote in favor of a petitioning industry when this industry is more important in swing states.

As discussed in Section 5.3, combining the two components of the instrument is key to predicting AD protection: by themselves, $Experience_i$ and $Swing_{i,T}$ cannot explain the observed variation (within and across industries) in AD duties.²⁹

5.2.1 *Experience_i*

As explained in Section 3, AD investigations in the United States begin with a petition by a domestic party, usually a group of producers competing with the imported product that is allegedly dumped. The DOC and the ITC then conduct investigations to determine whether there is indeed dumping and whether this “unfair trade” practice is injuring the domestic industry represented by the petitioners. If these criteria are satisfied, an AD duty equal to the dumping margin calculated by the DOC is applied to the imported product.

As pointed out by Blonigen (2006), the process to petition for AD duties is extremely complex (see also footnote 15): “the petitioning party must present the AD authorities with a reasonable petition that presents their case for the investigation and then provide substantial information, as well as legal analysis and arguments, during the course of the investigation. The legal details, as well as the practical issues of how government agencies apply the law, are substantial” (p. 716). As a result of this complexity, prior experience by petitioning parties plays an important role in AD filings and outcomes. Blonigen shows that previous experience lowers future filing costs and increases petitioners’ effectiveness in arguing their case, generating higher probabilities of favorable outcomes.

Following this idea, we use information on AD petitions filed by US industries during

²⁹Combining the two components also allows us to address concerns about the exclusion restriction. To obtain a consistent estimate of the causal impact of antidumping, our proposed instrumental variable should be uncorrelated with any other determinant of the dependent variable (Angrist and Pischke, 2009). If we were to rely only on the variable $Swing_{i,T}$ when studying the effects of trade protection on employment and other industry outcomes, one may be concerned that this variable could be picking up the effects of other federal policies (e.g. subsidies) aimed at favoring important industries in swing states. Given that our instrument is the interaction between $Experience_i$ and $Swing_{i,T}$, it only exploits variation in the political importance of an industry to the extent that this is relevant for AD protection: our instrument predicts no AD protection for industries that are important in swing states (high $Swing_{i,T}$) but cannot exploit this political advantage due to their lack of AD experience ($Experience_i = 0$). This allows us to isolate the effects of the political importance of an industry on AD protection from the effects of other policies that may be used to favor key industries in swing states.

our pre-sample period to construct a measure of an industry’s ability to obtain protection. During the 1980s, legal and institutional changes in AD proceedings made it easier to file for AD protection, which led to a steep increase in the number of AD petitions (see Irwin 2005 and 2017). Our experience variable is the count of AD petitions filed by industry i in 1980-1987:

$$Experience_i = \sum_{t=1980}^{1987} AD\ Petitions_{i,t}. \quad (4)$$

This variable is meant to capture exogenous variation in industries’ ability to petition for AD protection, coming from their historical (pre-sample) knowledge of AD procedures. To ensure exogeneity of the instrument, we exclude petitions targeting China and leading to measures in force after 1987.

The variable $Experience_i$ is positive for 40% of all tradable industries. There is significant cross-sectoral variation in the number of AD cases initiated during this period (the variable $Experience_i$ has a mean of 0.73 and a standard deviation of 2.83), possibly due to the fact that some industries did not need to file for AD, since they were already protected by other policies (e.g. voluntary export restraints, Multi-Fibre Arrangement).³⁰ Descriptive statistics of the variable $Experience_{i,t}$ are reported in Table A-3. The top panel of Table A-4 lists the top-10 SIC4 sectors with the highest value of $Experience_i$ during 1980-1987.³¹

In line with Blonigen (2006), we find that the number of petitions filed by an industry depends crucially on its previous experience: the correlation between the number of petitions filed by SIC4 industry i in 1980-1987 and $Experience_i$ is 0.86.

5.2.2 *Swing_{i,T}*

The second component of our instrument exploits variation in the supply side of AD protection driven by swing-state politics in the United States. In US presidential elections, voters do not directly choose the executive, they vote for their state’s representatives in the Electoral College, who then vote for the president. The winner-take-all nature of the Electoral

³⁰One could be concerned that the cross-sectoral variation in the experience variable may be driven by differences in industry concentration: firms in more concentrated industries may find it easier to cooperate when filing AD petitions. If this is the case, higher $Experience_i$ may capture the ability of more concentrated industries to coordinate (e.g. Olson, 1965; Bergstrom *et al.*, 1986; Bombardini and Trebbi, 2012), rather than their knowledge of AD procedures. We have verified that this is not the case: the Herfindahl index of sales concentration and the Ellison-Gleaser index of geographical concentration have low and insignificant correlations with $Experience_i$ (-0.003 and 0.025, respectively).

³¹The highest number of petitions (57) was filed by the steel industry (SIC 3312). In robustness checks, we verify that our results are robust to winsorizing the experience variable and excluding steel from our sample.

College implies that candidates can count some states as “safe,” comfortably in the hands of their party. The states that really matter are the “swing” or “battleground” states, in which a few thousand or even a few hundred votes can shift the entire pot of electors from one candidate to the other.

Several studies show that US trade policies are biased towards the interests of swing states.³² Muûls and Petropoulou (2013) show that states classified as swing in President Reagan’s first term benefited from higher protection. Conconi *et al.* (2017) find that trade disputes initiated by the United States are more likely to involve important industries in swing states. Ma and McLaren (2018) show that swing-state politics affects US MFN tariffs. Fajgelbaum *et al.* (2020) find that the tariffs introduced by Trump in 2018 were targeted toward sectors concentrated in politically competitive counties. In this paper, we show that swing-state politics can also shape AD duties, the protectionist measure most widely used by the United States.

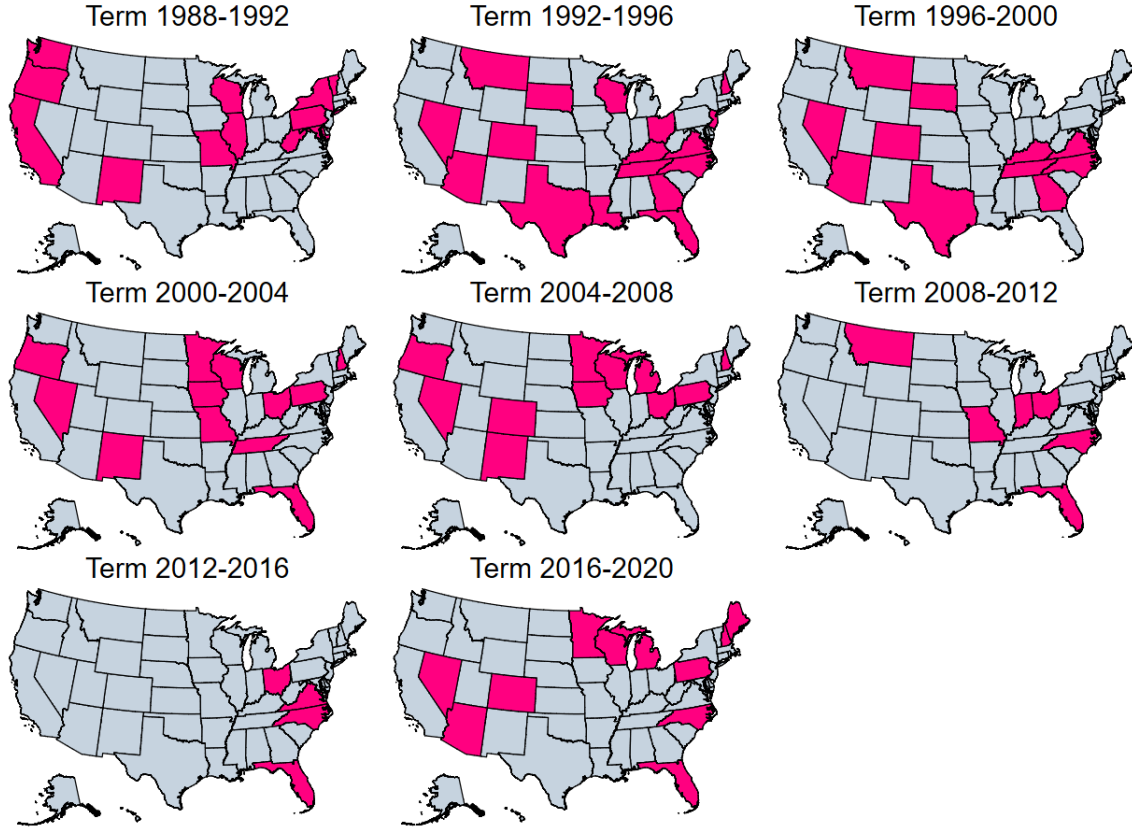
To define swing states, we use information on the difference in vote shares of Democratic and Republican candidates in the previous presidential election, in line with the literature. In particular, the dummy variable $Swing_{s,T}$ classifies a state s to be swing during a presidential term T if the difference in the vote shares of the candidates of the two main parties in the previous presidential election was less than 5%. In robustness checks, we use alternative definitions of swing states.

Figure 2 illustrates the states classified as swing during the last eight presidential terms, based on the difference in vote shares in the previous presidential elections. Notice that both the number and identity of swing states vary significantly across terms.³³

³²The argument that US politicians use trade policy to favor the interests of swing states is also often heard in the media. For example, an article in the *Guardian* pointed out that in a letter to Pascal Lamy (Europe’s former top trade negotiator), Stephen Byers (former UK secretary of state for trade and industry) wrote that the 2002 US steel tariffs were introduced by President George W. Bush “to gain votes in key states like West Virginia, Ohio, Pennsylvania and Michigan where the steel industry is a major employer” (“Blair ally in poll threat to Bush,” *The Guardian*, November 17, 2003).

³³The swing states are: in 1988, California, Illinois, Maryland, Missouri, New Mexico, New York, Oregon, Pennsylvania, Vermont, Washington, West Virginia, and Wisconsin; in 1992, Arizona, Colorado, Florida, Georgia, Kentucky, Louisiana, Montana, Nevada, New Hampshire, New Jersey, North Carolina, Ohio, South Dakota, Tennessee, Texas, Virginia, and Wisconsin; in 1996, Arizona, Colorado, Georgia, Kentucky, Montana, Nevada, North Carolina, South Dakota, Tennessee, Texas, and Virginia; in 2000, Florida, Iowa, Minnesota, Missouri, Nevada, New Hampshire, New Mexico, Ohio, Oregon, Pennsylvania, Tennessee, and Wisconsin; in 2004, Colorado, Iowa, Michigan, Minnesota, Nevada, New Hampshire, New Mexico, Ohio, Oregon, Pennsylvania, and Wisconsin; in 2008, Florida, Indiana, Missouri, Montana, North Carolina, and Ohio; in 2012, Florida, North Carolina, Ohio, and Virginia; in 2016, Arizona, Colorado, Florida, Maine, Michigan, Minnesota, Nevada, New Hampshire, North Carolina, Pennsylvania, and Wisconsin. Elections data are retrieved from Dave Leip’s Atlas of U.S. Presidential Elections.

Figure 2
Swing states during the last eight presidential terms



The maps indicate in pink the states classified as swing (less than 5% difference in the vote shares of Democratic and Republican candidates) during the last eight presidential terms, based on the previous presidential elections.

Our identification strategy relies on the assumption that the identity of swing states is exogenous to trade policy, i.e. AD duties do not affect whether or not the difference in vote shares between the Democratic and Republican candidates is below a certain threshold. In line with this assumption, we have verified that an increase in state-level AD protection during a presidential term has no significant effect on the identity of swing states at the end of that term.³⁴ Using the standard retrospective definition of swing states, which is based on vote shares in the previous presidential elections, further dismisses concerns about the validity of our assumption.

To capture heterogeneity in the geographical distribution of industries, we use CBP data

³⁴To this purpose, we have constructed a measure of AD protection at the state level: $Tariff_{s,T} = \sum_i \alpha_{i,s} Tariff_{i,T}$, where $Tariff_{i,T}$ is the AD duty applied on Chinese imports in industry i in the last year of term T and $\alpha_{i,s}$ is the 1988 share of employment in industry i in state s . We have then examined whether changes in state-level AD protection during a term (captured by $\Delta AD_{s,T}$) affect the probability that a state is classified as swing at the end of that term (captured by $Swing State_{s,T}$). The coefficient of $\Delta Tariff_{s,T}$ was insignificant, confirming that AD duties do not affect the identity of swing states.

on state-level employment shares. To dispel the concern that these shares might be affected by trade protection, we use data from 1988, the first year of our sample period.³⁵ To measure the importance of an industry i in states classified as swing during a presidential term T , we construct the following variable:

$$Swing_{i,T} = \frac{\sum_s L_{s,i}^{1988} \times Swing_{s,T}}{\sum_s \sum_i L_{s,i}^{1988} \times Swing_{s,T}}. \quad (5)$$

This is the ratio of the total number of workers employed in industry i in states that are classified as swing during electoral term T , over total employment in swing states.³⁶

The variable $Swing_{i,T}$ captures exogenous variation in the political importance of an industry. It exploits changes in the importance of states across electoral terms driven by swing-state politics ($Swing_{s,T}$) and differences in the importance of industries across states, driven by the initial employment shares ($L_{s,i}^{1988}$).³⁷ Descriptive statistics of the variable $Swing_{i,t}$ are reported in Table A-3. The bottom panel of Table A-4 lists the top-10 SIC4 sectors with the highest average value of $Swing_{i,t}$ during 1988-2016.

Using data on state-level employment shares also allows us to compare the location of industries based on their position in the supply chain. This reveals that final good industries are more geographically dispersed than input industries.³⁸ This pattern is illustrated by Figure A-6 in the Appendix, which illustrates the geographical distribution across US states of two industries: SIC 3312 (“Blast furnaces and steel mills”) and SIC 1510 (“Construction”). The map on the left shows that steel is highly geographically concentrated: three states in the Rust Belt (Indiana, Ohio, and Pennsylvania) account for more than 56% of US employment in steel, though their share of overall US employment is only 13%; the other states have little or no employment in steel.³⁹ The map on the right is for construction, a large non-manufacturing sector that relies heavily on steel as an input (SIC 3312 is the most important input for SIC 1510). Notice that this industry is much more geographically dis-

³⁵Using data from later years would yield very similar results, given that the geographical distribution of industries across states is stable over time. This can be seen in Figure A-5, which plots state-level employment shares by SIC4 industry in 1988 and 2011, using data from Acemoglu *et al.* (2016). The correlation between the shares in these two years is 0.96.

³⁶We construct $Swing_{i,T}$ based on employment in all tradable sectors (the only ones that can receive AD protection). In robustness checks, we define the variable over the total number of workers in all sectors

³⁷We have also constructed the variable $Downstream\ Swing_{i,T} = \sum_j \omega_{i,j} Swing_{j,T}$. This captures the political importance of downstream industries (i.e. industries j that use i as an input). As discussed below, this variable was never significant when included in our regressions.

³⁸ The correlation between the measure of industry “upstreamness” developed by Antràs *et al.* (2012) and the index of industry spatial concentration of Ellison and Glaeser (1997) is 0.24 (significant at the 1% level).

³⁹The mean ratio of state-level shares of US employment in steel over state-level shares of total US employment is 0.697. For Indiana, Ohio, and Pennsylvania, this ratio is respectively 6.54, 4.69 and 3.16.

persed: construction is present in all US states, and state-level employment in construction is generally proportional to the total number of workers in the state.⁴⁰

Swing-state politics can shape AD protection by affecting the decisions of the DOC and the ITC, the two key institutions involved in AD policy in the United States. As explained in Section 3, the DOC determines whether a product has been sold at “less than the fair value” and computes the “dumping margin,” while the ITC determines whether this “unfair practice” has caused material injury to the US industry.

Political considerations can directly affect decisions of the DOC, which is part of the executive branch. The President nominates the top positions in this department (Secretary, Deputy Secretary), as well as the key positions in charge of AD (e.g. Under Secretary for International Trade, Assistant Secretary for Market Access and Compliance).⁴¹ Through these political appointments, the White House can shape AD decisions of the DOC. In some cases, the executive directly intervenes in these decisions.⁴²

Previous studies show that politics can also affect AD decisions of the ITC commissioners, who are not independent “bureaucrats” simply following technical rules. In particular, these studies show that ITC votes reflect the interests of the members of the two most powerful committees dealing with trade policy in Congress (the Finance committee in the Senate and the Ways and Means committee in the House). Moore (1992) finds that ITC commissioners are more likely to favor AD petitions involving the constituencies of Finance committee members. Hansen and Prusa (1997) show that the ITC is more likely to support petitions filed by industries with representatives in the Ways and Means committee. Aquilante (2018) emphasizes the role of party politics, showing that ITC commissioners appointed by the Democratic (Republican) party are more likely to vote in favor of AD when the petitioning industry is key (in terms of employment) in the states represented by Democratic (Republican) senators in the Finance committee.

In Section A-1 of the Appendix, we provide additional evidence that politics – and in particular swing-state politics – influences AD decisions by the ITC. First, we find that congressmen from swing states are overrepresented in the Finance and Ways and Means

⁴⁰The mean ratio of state-level shares of US employment in construction over state-level shares of total US employment is 0.998. The maximum ratio is 1.69 (for Maryland).

⁴¹These appointees must be confirmed by the Senate. Several other lower-ranked positions involved in AD decisions (e.g. Deputy Assistant Secretary for Enforcement and Compliance) are usually politically appointed, but do not require confirmation by the Senate.

⁴²For example, in 2017 the DOC reversed its prior negative position on an AD case involving imports from Korea of oil country tubular goods, a type of steel product used in oil fields, after Peter Navarro, Director of the National Trade Council under Trump, sent a “Recommendation for Action” letter requesting a minimum 36% import duty (see US Court of International Trade, Consol. Court No. 17-00091).

congressional committees, which can put pressure on ITC commissioners through various channels (e.g. appointment confirmations, budget allocation, oversight hearings). More importantly, using detailed data on ITC votes from Aquilante (2018), we show that ITC commissioners are more likely to vote in favor of AD when the petitioning industry is important in swing states (as proxied by the variable $Swing_{i,T}$). These results indicate that, when looking at industries that have experience at filing for AD protection, protection is skewed towards those that are more politically important.

5.3 Predicting AD Protection

In what follows, we show that our IV strategy allows us to predict AD protection. Since our instrument varies at the presidential-term level, we consider four-year terms as the time dimension of the panel and estimate the following regression by ordinary least squares (OLS):

$$Tariff_{i,T} = \beta_0 + \beta_1 + IV_{i,T} + \delta_i + \delta_T + \varepsilon_{i,T}, \quad (6)$$

where $Tariff_{i,T}$ measures AD duties on imports from China in SIC4 industry i in force at the end of term T . We include sector fixed effects (δ_i) defined at the SIC4 level to account for any time-invariant sector characteristic that may affect the level of protection, as well as term fixed effects (δ_T) to control for general macroeconomic and political conditions. In line with earlier studies (e.g. Acemoglu *et al.*, 2016; Pierce and Schott, 2016), we weight regression estimates by start-of-period (1988) industry employment.⁴³ We cluster standard errors at the SIC3 level (221 industries) to allow for correlated industry shocks.

The results of estimating (6) are reported in column 1 of Table 1. The dependent variable is our baseline measure of AD protection against China ($Tariff_{i,T}$). The coefficient of $IV_{i,T}$ is positive and significant at the 1 percent level, indicating that our instrument is a good predictor of the level of AD protection granted to a SIC4 industry during an electoral term.

Combining the two components of the instrument is key to predicting AD protection. To verify this, notice that $Experience_i$ is time invariant, and thus cannot explain within-industry variation in $Tariff_{i,T}$ across electoral terms. Similarly, the variable $Swing_{i,T}$ cannot by itself explain changes in AD protection. This can be seen looking at the results in columns 2 and 3 of Table (6), in which we regress $Tariff_{i,T}$ on $Swing_{i,T}$, first by itself and then with

⁴³This accounts for the heterogeneity in the size of SIC4 industries. The results are unaffected if we estimate unweighted linear regressions.

$IV_{i,T}$.⁴⁴ The coefficients of $Swing_{i,T}$ are not statistically significant, while the coefficient of $IV_{i,T}$ remains significant at the 1% level (and is not statistically different from the coefficient reported in column 1). These results confirm that politically important industries benefit from a higher level of protection, but only if they have long-term knowledge of the complex procedures to petition for AD duties.

Table 1
Predicting AD protection

	(1)	(2)	(3)
$IV_{i,T}$	1.398*** (0.268)		1.362*** (0.191)
$Swing_{i,T}$		8.006 (5.644)	1.199 (4.228)
SIC4 FE	Yes	Yes	Yes
Term FE	Yes	Yes	Yes
Adjusted R^2	0.57	0.54	0.57
Observations	2,835	2,835	2,835

The table reports OLS estimates. The dependent variable is $Tariff_{i,T}$, the average AD duty on imports from China in SIC4 industry i in force at the end of term T . The sample covers 1988-2016. Observations are weighted by 1988 employment. Standard errors are clustered at the SIC3 industry level; ***, **, and * denote significance at the 1%, 5%, and 10% levels respectively.

In line with this idea, sectors such as “Motor vehicle parts and accessories” (SIC 3714) and “Blast furnaces and steel mills” (SIC 3312), which are often politically important (high average $Swing_{i,T}$) and are experienced in filing for AD in the 1980s (high $Experience_i$), receive high levels of protection (the average AD duties on these industries are respectively 143% and 82%). By contrast, industries with high average $Swing_{i,T}$ but no prior experience in AD filings receive little or no AD protection. This is the case, for example, of “Search and navigation equipment” (SIC 3812).

We carry out a series of additional estimations to verify the robustness of our IV strategy. In columns 1-2 of Table 2, we estimate (6) using the alternative measures of AD protection defined in Section 4.2 ($Product\ Coverage_{i,T}$ and $Import\ Coverage_{i,T}$). The coefficient of $IV_{i,T}$ remains positive and significant at the 1% level. Columns 3 and 4 show that our results continue to hold if we include all TTBs (AD, countervailing duties, safeguards) applied

⁴⁴ $Experience_i$ cannot be included in these specifications since it is absorbed by the SIC4 fixed effects.

against China and if we consider AD measures against all countries.⁴⁵ As already pointed out in previous studies (e.g. Blonigen, 2006), steel is the industry that files the highest number of AD petitions. It is also the industry featuring the highest average $IV_{i,T}$ during our sample period. In column 5, we show that our instrument continues to work if we exclude this industry.

Table 2
Predicting AD protection

	Product coverage	Import coverage	All TTBs	All countries	No steel
	(1)	(2)	(3)	(4)	(5)
$IV_{i,T}$	0.110*** (0.022)	0.017*** (0.003)	1.333*** (0.278)	0.623*** (0.195)	3.314*** (1.227)
SIC4 FE	Yes	Yes	Yes	Yes	Yes
Term FE	Yes	Yes	Yes	Yes	Yes
Adjusted R^2	0.69	0.44	0.57	0.62	0.55
Observations	2,835	2,835	2,835	2,835	2,835

The table reports OLS estimates. In columns 1-2, the dependent variable is one of the alternative AD measures (*Product Coverage* $_{i,T}$ and *Import Coverage* $_{i,T}$). In column 3, we include all TTBs (AD duties, countervailing duties, and safeguards) applied by the United States against China to construct *Tariff* $_{i,T}$. In column 4, we consider AD duties applied by the United States against all countries. In column 5, we exclude the steel industry (SIC 3312). The sample covers 1988-2016. Observations are weighted by 1988 employment. Standard errors are clustered at the SIC3 industry level; ***, **, and * denote significance at the 1%, 5%, and 10% levels respectively.

A second set of robustness checks is reported in Table 3. In columns 1-3, we consider alternative definitions of swing states to construct $IV_{i,T}$. The variable $Swing_{i,T}$ defined in equation (5) already takes into account differences in the size of swing states with respect to their workforce. In column 1, we further account for heterogeneity across swing states, weighting the dummy variable $Swing State_{s,T}$ by the number of electoral votes assigned to each swing state s in term T .⁴⁶ In our baseline estimations, we follow the literature in classifying a state to be swing if the difference in vote shares of the candidates from two

⁴⁵When including all countries, we first compute AD duties at the country-industry-term level. We then define $Tariff_{i,T}$ as the maximum duty among all targeted countries. We take the maximum to make sure that the high duties often imposed on the largest exporters of a product are not dampened by the much lower duties imposed on smaller targets.

⁴⁶The Electoral College is a body of electors established by the US Constitution, which forms every four years to elect the president and vice president of the United States. It consists of 538 electors, and an absolute majority of electoral votes (270 or more) is required to win the election. Data on the number of electors come from Dave Leip's Atlas of U.S. Presidential Elections.

main political parties in the previous presidential elections is less than 5%. In column 2, we increase the threshold to 10%. This definition leads us to classify many more states as swing (22 on average), decreasing the accuracy of our instrument.⁴⁷

Table 3
Predicting AD protection

	Electoral votes (1)	10% threshold (2)	Next elections (3)	Alternative <i>Experience_i</i> (4)	Alternative <i>Swing_{i,T}</i> (5)
$IV_{i,T}$	1.137*** (0.203)	2.112** (1.038)	0.758*** (0.220)	1.240*** (0.246)	5.532*** (1.072)
SIC4 FE	Yes	Yes	Yes	Yes	Yes
Term FE	Yes	Yes	Yes	Yes	Yes
Adjusted R^2	0.57	0.54	0.55	0.57	0.57
Observations	2,835	2,835	2,835	2,835	2,835

The table reports OLS estimates. The dependent variable is $Tariff_{i,T}$, the average AD duty on imports from China in SIC4 industry i in force at the end of term T . In column 1, the variable $Swing_{i,T}$ used to construct $IV_{i,T}$ is constructed weighting each swing state by its number of electors. In column 2, swing states are defined based on the outcome of the previous presidential elections (10% difference in vote shares between the Democratic and Republican candidates), while in column 3 they are defined on the outcome of the next presidential elections (5% difference in vote shares). In column 4, we use an alternative definition of $Experience_i$ (which accounts for all petitions in 1980-1987) to construct $IV_{i,T}$. In column 5, we use an alternative definition of the variable $Swing_{i,T}$ (based on total employment in swing states). The sample covers 1988-2016. Observations are weighted by 1988 employment. Standard errors are clustered at the SIC3 industry level; ***, **, and * denote significance at the 1%, 5%, and 10% levels respectively.

Our retrospective definition ensures that the identity of swing states is not affected by trade policy, but does not take into account new information that politicians may acquire during a term on the identity of battleground states in the next elections. In column 3, we keep the standard 5% threshold, but define swing states based on the outcome of the next presidential elections. Recall that the variable $Experience_i$ used to construct $IV_{i,T}$ excludes all AD petitions targeting China and leading to measures in force during our sample period. In column 4, we use a different definition of $Experience_i$, which is the number of all AD petitions filed by SIC4 industry i during 1980-1987, including those leading to measures in force after 1987 (but still excluding petitions targeting China). Finally, our baseline definition of $Swing_{i,T}$ is the ratio of total employment in industry i in states classified as swing during

⁴⁷For example, using this definition, California is classified as swing in the 2004 presidential elections, given that the difference in vote shares in the state was 9.9%. We have also tried to use a threshold of 2.5%, which produced an insignificant coefficient. This is not surprising given that this lower threshold can lead us to mistakenly classify several states as “safe.” For example, in the 2008 presidential elections, the differences in vote shares in battleground Ohio and Florida were respectively 4.6% and 2.8%, and they are excluded from the set of swing states when one uses the restrictive 2.5% threshold.

term T , over total employment in those states in tradable industries. In column 5, we construct our instrument using a different definition of $Swing_{i,T}$ based on employment in all industries.⁴⁸ Across all specifications, the coefficient of $IV_{i,T}$ is positive and significant, confirming that our instrument is a strong predictor of AD protection.⁴⁹

5.4 Placebo Tests

Our instrument $IV_{i,T}$ combines pre-sample variation in the ability of industries to petition for AD protection with variation in the political importance of industries across electoral terms. The logic of the instrument is that AD duties should be skewed in favor of important industries in swing states (high $Swing_{i,T}$), but only if they have experience at petitioning for AD (i.e. positive $Experience_i$). Notice that the time variation in our instrument comes from changes in the identity of swing states, which are captured by the dummy variable $Swing_{s,T}$ as illustrated in Figure 2.

To verify the logic behind our identification strategy, we perform some placebo tests using randomized distributions of swing states to construct the variable $Swing_{s,T}$ and our instrument $IV_{i,T}$. First, we examine whether the identity of swing states is key for predicting AD protection. Within each presidential term, we randomly choose the swing states across all 50 US states.⁵⁰ We perform 5,000 randomizations. Each randomization consists of independent random draws of swing states, one per presidential term. From each randomization, we obtain a variable $Placebo\ Swing_{s,T}$, which we use to construct our placebo instrument and estimate the following:⁵¹

$$Tariff_{i,T} = \beta_0 + \beta_1 Placebo\ IV_{i,T} + \delta_i + \delta_T + \varepsilon_{i,T}, \quad (7)$$

Panel (a) of Figure 3 shows the distribution of the 5,000 estimated β_1 coefficients with their 99% confidence intervals. Notice that randomizing the identity of swing states produces a wide range of coefficients (from -4.27 to 2.21), and the mean of the distribution is negative (-

⁴⁸We have also tried to include in equation (6) the variable $Downstream\ Swing_{i,T}$ defined in footnote 37. The coefficient of this variable was never significant.

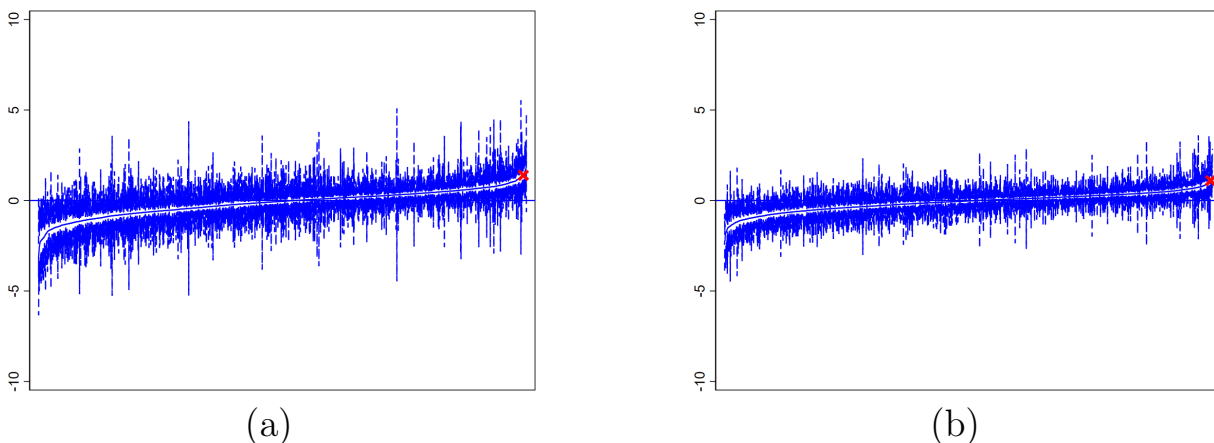
⁴⁹Unlike other trade policies (e.g. safeguards or the initiation of trade disputes), AD is not directly controlled by the executive. Still, whether the president can be re-elected or is a “lame duck” may affect the power of our instrument. In all our regressions, we include term fixed effects to control for re-election motives. If we estimate (6) separately to predict AD measures during first and second terms, the coefficients of $IV_{i,T}$ are positive and significant in both samples (results available upon request).

⁵⁰The number of swing states in a given term is kept as in Figure 2. For example, we randomly choose six states for the presidential term 2008-2012 and four states for 2012-2016.

⁵¹The variable $Placebo\ IV_{i,T}$ is constructed by replacing the dummy variable $Swing\ State_{s,T}$ in equation (5) with $Placebo\ Swing_{s,T}$.

0.14). The red cross corresponds to the estimated coefficient (1.398) in our baseline regression in column 1 of Table 1. It is significant at the 1% level, and is out of the 99% confidence interval of the placebo estimates $[-2.08 - 1.30]$. This exercise shows that using the actual identity of swing states is key for predicting AD protection.

Figure 3
Estimated coefficients of $Placebo IV_{i,T}$



The figure plots the coefficients of $Placebo IV_{i,T}$ (with 99% confidence intervals) obtained from performing 5,000 randomizations of the swing states and estimating (7). In panel (a), the swing states in a presidential term are randomly chosen out of the 50 states, while in panel (b) they are chosen across those states that were classified as swing at least once during the last eight presidential terms. The red cross corresponds to the estimated coefficient in our baseline first-stage regression (column 1 of Table 1).

In a second placebo test, we investigate whether the time-varying nature of swing states matters. We perform 5,000 randomizations across those states that were classified as swing at least once during the last eight presidential terms. Panel (b) of Figure 3 plots the distribution of the 5,000 estimated β_1 coefficients based on this alternative randomization. These coefficients vary widely (from -3.06 to 2.11) and have a negative mean (-0.11). Again, our benchmark estimate as indicated by the red cross is out of the 99% confidence interval of the placebo estimates $[-1.83 - 1.17]$. This exercise shows that predicting AD protection requires a time-varying instrument, which keeps track of changes in the identity of swing states across electoral terms.

6 Effects of Protection Along Supply Chains

6.1 The Effects on Employment in Downstream Industries

The goal of our analysis is to identify the impact of protection along supply chains. To this purpose, we exploit time-series and cross-sectional variation in AD protection against China during the seven presidential terms covering 1988-2016. In line with previous studies on the “China Syndrome” (e.g. Autor *et al.*, 2013; Acemoglu *et al.*, 2016; Pierce and Schott, 2016), our main focus is on employment.

We first construct instruments for input duties in force against China at the end of each term T :

$$IV \text{ Average Input Tariff}_{j,T} = \sum_{i=1}^N \omega_{i,j} \text{ Experience}_i \times \text{Swing}_{i,T}, \quad (8)$$

$$IV \text{ Tariff on Key Input}_{j,T} = \text{Experience}_{1,j} \times \text{Swing}_{1,j,T}, \quad (9)$$

where $\omega_{i,j}$ denotes the direct requirement coefficient for the sector pair ij and $1, j$ denotes the most important input in the production of j (with highest $\omega_{i,j}$).

We then estimate two-stage least squares (2SLS) regressions in differences:

$$\Delta L_{j,T} = \beta_0 + \beta_1 \Delta \text{Input Tariff}_{j,T} + \delta_j + \delta_T + \varepsilon_{j,T}. \quad (10)$$

The dependent variable $\Delta L_{j,T}$ is the annualized growth rate in employment in SIC4 industry j during term T .⁵² $\Delta \text{Input Tariff}_{j,t}$ is the change in the average input tariff faced by industry j (or in the tariff on the key input of industry j) during term T , instrumented using $\Delta IV \text{ Average Input Tariff}_{j,T}$ (or using $\Delta IV \text{ Tariff on Key Input}_{j,T}$). We include industry fixed effects at the SIC4 level (δ_j) to control for sectoral trends and term fixed effects (δ_T) to control for differences in macroeconomic and political conditions across terms. We weight observations by start-of-period industry employment, and cluster the standard errors at the SIC3 level to allow for correlated industry shocks.

Estimating regressions in differences rather than levels allows us to control for sectoral trends and account for other determinants of employment growth. As discussed below, this estimation strategy also allows us to carry out a counterfactual exercise similar to that of

⁵²For term T ending in year t , $\Delta L_{j,T} = (\ln(\text{Employment}_{j,t}) - \ln(\text{Employment}_{j,t-4}))/4$.

Acemoglu *et al.* (2016) to compute the number of jobs lost due to trade protection.⁵³

It should be stressed that our 2SLS estimates capture local average treatment effects, i.e. the effect of the treatment ($IV_{i,T}$) for the “compliers,” the subset of the sample that takes the treatment if and only if they were assigned to it (Imbens and Angrist, 1994). We are thus capturing the effects of protectionist measures that are driven by the joint effect of AD experience and swing-state politics.

Table 4 reports the results of estimating (10). In columns 1 and 2, we consider all industries, while in columns 3 and 4 we restrict the analysis to manufacturing industries. In all specifications, the estimated coefficient of $\Delta Input\ Tariff_{j,T}$ is negative and significant, indicating that higher tariffs in upstream industries hamper employment growth in downstream industries. Comparing across the specifications of Table 4, notice that the estimated coefficients of $\Delta Input\ Tariff_{j,T}$ are larger when including non-manufacturing industries.

Table 4
The impact of tariffs on employment in downstream industries

	All sectors		Manufacturing sectors only	
	Average input tariff (1)	Tariff on key input (2)	Average input tariff (3)	Tariff on key input (4)
$\Delta Input\ Tariff_{j,T}$	-0.319*** (0.087)	-0.042*** (0.008)	-0.151*** (0.053)	-0.019*** (0.007)
SIC4 FE	Yes	Yes	Yes	Yes
Year FE	Yes	Yes	Yes	Yes
Observations	3,351	3,351	2,742	2,742
KP F-statistic	229.1	1,349.8	163.6	715.5

The table reports 2SLS estimates. The dependent variable $\Delta L_{j,T}$ is the annualized log change in employment in SIC4 industry j during term T . $\Delta Input\ Tariff_{j,T}$ is the change in the average input tariff of industry j (in columns 1 and 3) or in the tariff on the key input of industry j (in columns 2 and 4) during term T . The sample covers 1988-2016. In columns 1 and 2 (3 and 4), it comprises all sectors (only manufacturing sectors). Observations are weighted by 1988 employment. Standard errors are clustered at the SIC3 industry level; ***, **, and * denote significance at the 1%, 5%, and 10% levels respectively.

The last row of Table 4 reports the Kleibergen-Paap (KP) F-statistics, which indicate that we can reject the hypothesis that our instrument is weak.⁵⁴ In the top panel of Table

⁵³In robustness checks, we report the results of 2SLS regressions in which we estimate the effect of AD protection on the level of employment in downstream industries. These specifications do not control for sectoral trends and do not allow us to compute counterfactual employment changes.

⁵⁴The KP statistic is a version of the Cragg-Donald statistic adjusted for clustered robust standard errors. The statistics in Table 4 are all above the critical value of 16.4 (9.0) based on a 10% (15%) maximal IV size.

A-8 of the Appendix, we show the first-stage results of the 2SLS regressions in Table 4. The coefficient of our instrument is positive and significant at the 1% level in all specifications. In the bottom panel of the same table, we report the reduced-form results. As expected, the coefficient of $\Delta IV_{j,T}$ is always negative and significant.

We can compare the results of the 2SLS regressions in Table 4 with the corresponding results of OLS regressions. As shown in Table A-9, if we ignore the endogeneity of trade policy, the estimated coefficient for input protection is negative but not significant in most specifications. The negative β_1 coefficient becomes larger in magnitude (and statistically significant) when instrumenting for input tariffs. In line with the discussion in Section 5.1, these results suggest that omitted variables generate a positive bias in the OLS estimates, which makes it harder to identify negative effects of upstream protection on employment growth in downstream industries.

In terms of magnitude, the baseline estimate reported in column 1 of Table 4 implies that a one percentage point increase in the average input tariff leads to a 0.32 percentage point decrease in the annual growth rate of employment in downstream industries. Alternatively, a one standard deviation (0.022) increase in the predicted average input tariff decreases the yearly employment growth by 0.71 percentage points, which explains 16.3% of the standard deviation of employment growth during 1988-2016.

To quantify the number of jobs lost due to input protection, we apply the methodology proposed by Acemoglu *et al.* (2016) and perform the following counterfactual exercise:

$$Employment\ Losses = \sum_{j,T} L_{j,T} (1 - e^{-\hat{\beta}_1 \Delta \tilde{\tau}_{j,T}}), \quad (11)$$

where $L_{j,T}$ is the employment level in industry j at the end of term T , $\hat{\beta}_1$ is the estimated coefficient of $\Delta Input\ Tariff_{j,T}$ in the second stage, and $\Delta \tilde{\tau}_{j,T}$ is the actual change in the average input tariff, weighted by the partial R^2 in the first stage. To carry out this counterfactual exercise, we use the baseline estimates in column 1 of Table 4.⁵⁵

The results of this exercise imply that around 1,850,000 US jobs were lost across all industries due to input protection. This figure corresponds to 4.8% of the 38 million jobs the US economy added during 1988-2016. The effects are smaller (around 280,000 jobs lost) if we use the estimates in column 3 of Table 4, which restricts the analysis to manufacturing downstream industries.

⁵⁵In this specification, the partial R^2 in the first stage is 0.139. Notice that Acemoglu *et al.* (2016) apply this counterfactual exercise to their baseline specification, which does not control for SIC4 sectoral trends. Our counterfactual estimates are very similar if we de-trend industry employment.

6.2 Robustness Checks

The main result of our analysis is that increases in input tariffs lead to significant declines in employment growth in downstream sectors. We have carried out a series of additional estimations to verify the robustness of this finding. The results can be found in Section A-4 of the Appendix. In the interest of space, we focus on the baseline specifications corresponding to column 1 of Table 4.

In Table A-12, we verify that the results are robust to using alternative AD measures. In columns 1 and 2, we use the variables $Product\ Coverage_{i,T}$ and $Import\ Coverage_{i,T}$ to estimate (10). The coefficient of $\Delta Input\ Tariff_{j,T}$ remains positive and significant at the 1%, confirming that AD protection reduces employment growth in downstream sectors. In columns 3 and 4, we show that our results continue to hold if we take into account other TTBs (countervailing duties and safeguards) applied by the US against China⁵⁶ and consider the effects of US AD duties against all countries.

In Table A-13, we show that our results are robust to controlling for additional tariffs. In column 1, we control for AD duties in the downstream industry j . Note that in this specification the number of observations is reduced from 3,351 to 2,833, since the sample includes tradable industries only. The coefficient of $\Delta Input\ Tariff_{j,T}$ remains positive and significant, while the coefficient of $\Delta Tariff_{j,T}$ is not significant.⁵⁷ In column 2, we include the variable $\Delta Input\ Tariff\ MFN_{j,T}$, which captures changes in US MFN tariffs on the inputs of industry j . The coefficient of $\Delta Input\ Tariff_{j,T}$ remains positive and significant at the 1% level, while the coefficient of the MFN variable is insignificant.⁵⁸ This is not surprising, since US MFN rates vary little over time, as mentioned in Section 4. In column 2, we control for Chinese AD duties on US goods. Several studies (e.g. Blonigen and Bown, 2003; Feinberg and Reynolds, 2006, 2008) emphasize retaliatory motives in AD filings. To account for possible retaliation effects, we include changes in AD duties applied by China on US input sectors ($\Delta Input\ Retaliation_{j,T}$, constructed similarly to $\Delta Input\ Tariff_{j,T}$) and on US output sectors ($\Delta Retaliation_{j,T}$). The coefficient of $\Delta Input\ Tariff_{j,T}$ is unaffected. We find some evidence of negative effects of retaliation in input sectors.

In Table A-14 we show that our baseline results are robust to using alternative methods

⁵⁶Countervailing duties on China are almost always applied in combination with antidumping duties. When the measures are combined, we compute the average input tariff using the duty determined jointly from the antidumping and countervailing investigations.

⁵⁷In this specification, which includes two endogenous regressors, the critical value for the KP statistic based on a 10% maximal IV size 7.0.

⁵⁸Our results do not change if instead of MFN tariffs, we use effectively applied tariffs that take into account US preferential tariffs.

to identify vertically-related industries. In our benchmark regressions, we use direct requirement coefficients to construct the input protection variables and focus on the effects of AD duties on vertically-related industries. In columns 1 and 2, we use total requirement coefficients to construct our measures of input tariffs, thus allowing for both direct and indirect vertical linkages. In columns 3 and 4, we include the diagonal of the input-output matrix (i.e. $\omega_{j,j}$) when constructing $\Delta Input\ Tariff_{j,T}$.

In Table A-15 we report robustness checks related to the political importance of industries. The variable $Swing_{i,T}$ used to construct our instrument for input tariffs is defined as the ratio of the total number of workers employed in industry i in states classified as swing during term T , over the total number of workers in tradable sectors in those states. In column 1 of Table A-15, we show that our results are unaffected if we include non-tradable industries when constructing $Swing_{i,T}$. The estimates reported in columns 2-4 show that the results continue to hold if we control for changes in the political importance of input industries ($\Delta Input\ Swing_{j,T}$) and of the downstream industry ($\Delta Swing_{j,T}$).

Finally, in Table A-16, we consider alternative econometric methodologies. Column 1 reports the results of 2SLS regressions in which we estimate the effect of AD protection on the level of employment in downstream industries. The estimates confirm that AD duties have negative effects on employment in downstream industries. The results continue to hold if we change the dependent variable to yearly differences instead of term differences (column 2). In our baseline regressions, we weight regression estimates by start-of-period (1988) industry employment, in line with earlier studies (e.g. Acemoglu *et al.*, 2016; Pierce and Schott, 2016). In column 3, we show that our results are unaffected if we estimate unweighted linear regressions. Finally, in column 4 we cluster standard errors using broader (58) industry clusters at the SIC2 level.

6.3 Heterogeneous Effects Across Industries

The effects of input tariffs should vary across downstream sectors: industries that rely more on protected inputs should face higher $Average\ Input\ Tariff_{j,T}$ and $Tariff\ on\ Key\ Input_{j,T}$ and suffer larger job losses.

Table A-10 in the Appendix lists the ten downstream industries most negatively affected by input protection.⁵⁹ This includes large non-manufacturing industries, which have faced high tariffs on some of their key inputs. For example, our estimates imply that during 1988-

⁵⁹The number of estimated job losses reported in this table is obtained by carrying out the counterfactual exercise in (11) by SIC4 industry.

2016 more than 210,000 additional jobs would have been created in the restaurant industry (SIC 5812) absent AD protection. The average input duty faced by this industry was 13.44%, with duties of 201.6% and 112.8% on crawfish and shrimps, respectively.⁶⁰ Another example is construction (SIC 1510), which during our sample period faced an average input tariff of 10.20%, and a tariff on its key input steel of 81.61%. Our estimates imply that average input protection accounts for around 170,000 US jobs lost in the construction industry during this period.

The effects of protection should also depend on the extent to which downstream producers rely on foreign suppliers for their inputs. To verify this, we use data on trade flows and production at the start of our sample period to construct a measure of the proportion of domestic consumption of industry i accounted for by imports from China: $Import\ Penetration_i = (Imports\ from\ China_{i,1991}) / (US\ Production_{i,1991} + US\ Imports_{i,1991} - US\ Exports_{i,1991})$. Using the cost shares $\omega_{i,j}$ to capture vertical linkages, we then construct measures of the average import dependence of a downstream industry j :

$$Import\ Dependence_j = \sum_{i=1}^N \omega_{i,j} Import\ Penetration_i. \quad (12)$$

This is a conservative measure of the extent to which producers in our sample rely on imports from China, since it is based on trade flows in 1991, before China became a major sourcing country for the United States.

To study the role of import dependence, we estimate the following regression by 2SLS:

$$\Delta L_{j,T} = \beta_0 + \beta_1 \Delta Input\ Tariff_{j,T} + \beta_2 \Delta Input\ Tariff_{j,T} \times High\ Import\ Dependence_j + \delta_j + \delta_T + \varepsilon_{j,T},$$

in which $High\ Import\ Dependence_j$ is a dummy variable equal to 1 if $Import\ Dependence_j$ is above the mean level (0.13%) or the median level (0.09%). The β_1 coefficient captures the effect of input protection on employment in downstream industries that have low dependence on imported inputs, while the sum of the β_1 and β_2 coefficients captures the effect on industries that rely more on imported inputs.

The results of these regressions are reported in Table A-11. They confirm that AD

⁶⁰Debaere (2009) studies an AD case filed by the Southern Shrimp Alliance (SSA), which in 2004 led to duties being imposed on shrimp imports from several countries (China, Thailand, Vietnam, India, Brazil, and Ecuador). He notes that eight SSA states were expected to be “political battlegrounds” in the elections, which helps explain why the duties were introduced, notwithstanding strong opposition by US seafood distributors, retailers, restaurateurs, and other businesses involved in shrimp processing and marketing.

protection reduces the growth rate of employment in downstream industries and that this negative effect is stronger for industries that rely more on imported inputs (the F-tests reported at the bottom of the table show that the sum of β_1 and β_2 is significantly different from 0 at the 1% level).

6.4 Extending the Analysis to Measures Introduced under Trump

In our analysis so far, we have focused on the effects of US AD duties against China during the seven complete presidential terms covering the 1988-2016 period. As mentioned in Section 4, since President Trump took office in January 2017, China has been the target of even higher AD protection. Moreover, Trump introduced additional tariffs, which were stacked on top of existing AD duties.

Since the CBP data on industry-level employment is only available until 2018, in Table 5, we extend our analysis to protectionist measures introduced during the first two years of Trump’s presidency. In columns 1-2, we reproduce the specifications of columns 1 and 2 of Table 4, including the AD duties introduced during 2017-2018, while in columns 3-4 we further include all TTBs (AD, CVDs, safeguards) applied against China since 1988, as well as the additional tariffs introduced during Trump’s presidency.

Table 5
The impact of tariffs on employment in downstream industries
(including measures introduced during Trump’s presidency)

	AD only		All TTBs + Trump’s tariffs	
	Average input tariff (1)	Tariff on key input (2)	Average input tariff (3)	Tariff on key input (4)
$\Delta Input\ Tariff_{j,T}$	-0.380*** (0.105)	-0.048*** (0.009)	-0.485*** (0.145)	-0.055*** (0.010)
SIC4 FE	Yes	Yes	Yes	Yes
Year FE	Yes	Yes	Yes	Yes
Observations	3,829	3,829	3,829	3,829
KP F-statistic	162.7	979.2	100.4	624.1

The table reports 2SLS estimates. The dependent variable $\Delta L_{j,T}$ is the annualized log change in employment in SIC4 industry j during term T . $\Delta Input\ Tariff_{j,T}$ is the change in the average input tariff of industry j (in columns 1 and 3) or in the tariff on the key input of industry j (in columns 2 and 4) during term T . In columns 1-2, this variable is constructed based on US AD duties against China, while in columns 3-4 it includes all TTBs (AD, CVDs, safeguards) applied against China and the additional tariffs introduced during Trump’s presidency. Observations are weighted by 1988 employment. The sample covers 1988-2018. Standard errors are clustered at the SIC3 industry level; ***, **, and * denote significance at the 1%, 5%, and 10% levels respectively.

The coefficient of $\Delta Input\ Tariff_{j,T}$ in column 3 implies that a one percentage point increase in the average input tariff leads to a 0.6 percentage point decrease in the annual growth rate of employment in downstream industries. Using this estimate to carry out the counterfactual exercise in equation (11), we find that around 500,000 US jobs were lost across downstream industries due to protectionist measures introduced during the first two years of Trump’s presidency.

Recall that the baseline estimates of Table 4 imply that around 1.8 million US jobs were lost across all industries due to input protection, i.e. an average of around 260,000 jobs lost in each of the seven complete presidential terms. The results of Table 5 indicate that the AD duties and other protectionist measures introduced during the first two years of Trump’s presidency caused much larger losses along supply chains. Notice that several countries, most notably China, retaliated against Trump’s tariffs by raising tariffs on US goods. In unreported results, we find that controlling for these tariffs does not affect the coefficients of $\Delta Input\ Tariff_{j,T}$ in Table 5.

6.5 Other Outcome Variables

We next estimate 2SLS regressions to study the effects of protection on other industry outcomes, using data from the NBER-CES Manufacturing Industry Database. In these regressions, we focus on the effects of average input tariffs, as in our baseline specifications of Table 4. A drawback of using the NBER-CES dataset is that it only provides information for manufacturing industries, and only until 2011. This significantly reduces the sample size and does not allow us to study the effects of AD duties on non-manufacturing industries.

We first examine the impact of input protection on blue- and white-collar jobs. The results are reported in column 1 and 2 of Table 6. Notice that the number of observations in Table 6 is much smaller than in our baseline specification in column 3 of Table 4 (2,320 instead of 3,351) due to the restricted sector and time coverage of the NBER-CES dataset. The coefficient of $\Delta Input\ Tariff_{j,T}$ is negative and significant only in column 1, indicating that AD duties reduce the growth rate of blue-collar jobs in downstream manufacturing sectors, but have no effect on white-collar jobs. In column 3-5, we examine the impact of input protection on wages, sales, and investment. The coefficient of $\Delta Input\ Tariff_{j,T}$ is negative and significant in all specifications, indicating that AD duties reduce the growth rate of all these outcome variables.

Table 6

The impact of tariffs on other outcomes in downstream industries

	Blue Collar	White Collar	Wages	Sales	Investment
	(1)	(2)	(3)	(4)	(5)
$\Delta Input\ Tariff_{j,T}$	-0.143** (0.065)	0.001 (0.040)	-0.031** (0.013)	-0.176*** (0.054)	-0.302** (0.117)
SIC4 FE	Yes	Yes	Yes	Yes	Yes
Year FE	Yes	Yes	Yes	Yes	Yes
Observations	2,320	2,320	2,320	2,320	2,320
KP F-statistic	170.9	170.9	170.9	170.9	170.9

The table reports 2SLS estimates. The dependent variable is the annualized log change in the number of blue-collar jobs (column 1), white-collar jobs (column 2), wages (column 3), sales (column 4), and investment (column 5) in SIC4 industry j during term T . $\Delta Input\ Tariff_{j,T}$ is the change in the average input tariff of industry j during term T . The sample covers 1988-2011 and includes only manufacturing downstream sectors. Observations are weighted by 1988 employment. Standard errors are clustered at the SIC3 industry level; ***, **, and * denote significance at the 1%, 5%, and 10% levels respectively.

Note that in Table 6 we use the same instrument to study the effects of trade protection on different outcome variables. As explained by Heath *et al.* (2019), this may lead researchers to over-reject the null (an increase in the number of Type I errors), resulting in biased causal inferences. To account for this, we use the procedure developed by Romano and Wolf (2005, 2016) that controls for the family-wise error rate (probability of making at least one false rejection among the hypotheses) and the dependence across tests. By considering the five outcome variables jointly, and applying the Romano-Wolf correction with 1,000 bootstrapped replications, we find that even though the p -values of our benchmark coefficients rise slightly, the coefficients in columns 1, 3, 4, and 5 of Table 6 are significant at the 5% level.

6.6 Mechanisms

In Tables 4-6 above, we have shown that AD duties have negative effects along supply chains, reducing their growth rate of employment, wages, sales, and investment in downstream industries. In what follows, we provide evidence for the mechanism behind these results: higher tariffs decrease imports of targeted products and raise the cost of production in downstream industries.

The Impact of Tariffs on Imports

We first examine the impact of AD on US imports of targeted products by estimating the following 2SLS regression:⁶¹

$$\Delta Imports\ from\ China_{j,T} = \beta_0 + \beta_1 \Delta Tariff_{j,T} + \delta_j + \delta_T + \varepsilon_{j,T}. \quad (13)$$

The dependent variable is the annualized log change in US imports from China in SIC4 industry j during term T . If AD protection is effective in reducing imports from China, the estimated β_1 coefficient should be negative and significant.

Table 7
The impact of tariffs on imports and prices

	Imports		Prices	
	China (1)	top 50 exporters (2)	Domestic goods (3)	All inputs (4)
$\Delta Tariff_{j,T}$	-0.134*** (0.048)	0.024 (0.026)	0.056*** (0.015)	
$\Delta Tariff_{j,T} \times China_c$		-0.213*** (0.079)		
$\Delta Input\ Tariff_{j,T}$				0.059*** (0.019)
SIC4 FE	Yes	No	Yes	Yes
Term FE	Yes	No	Yes	Yes
SIC4 \times Country FE	No	Yes	No	No
Term \times Country FE	No	Yes	No	No
Observations	2,687	100,696	2,058	2,320
KP F-statistic	16.2	8.11	16.6	170.9

The table reports 2SLS estimates. In column 1, the dependent variable is $\Delta Imports\ from\ China_{j,T}$, the annualized log change in US imports from China in SIC4 industry i during term T , while in column 2 is $\Delta Imports_{j,c,T}$, the annualized log change in US imports from country c in industry j during term T . In column 3, the dependent variable is $\Delta Domestic\ Price_{j,T}$, the annualized log change in the price of domestic goods in SIC4 industry j during term T , constructed using US PPI data, while in column 4 is $\Delta Input\ Price_{j,T}$, the annualized log change in the price of material inputs used in SIC4 industry j during term T constructed from the NBER-CES database. $\Delta Tariff_{j,T}$ is the change in the average input tariff of industry j applied by the US on imports from China (columns 1, 2, and 3). $\Delta Input\ Tariff_{j,T}$ is the change in the average input tariff of industry j during term T . In columns 1 and 2, and the sample covers all tradable industries in 1991-2016; in column 3, the sample covers all industries in 1988-2011; in column 4, the sample covers all manufacturing industries in 1991-2011. Observations are weighted by 1988 employment. Standard errors are clustered at the SIC3 industry level; ***, **, and * denote significance at the 1%, 5%, and 10% levels respectively.

⁶¹Notice that this regression is based on tradable goods only. For the first presidential term in our sample period (1988-1992 term), we use data for 1991-1992 due to unavailability of import data prior to 1991.

The results of estimating (13) are reported in column 1 of Table 7. The coefficient of $\Delta Tariff_{j,T}$ is negative and significant at the 1% level, and indicates that a one percentage point increase in predicted AD duties leads to a 0.13 percentage point decrease in the annual growth rate of imports.

As mentioned in Section 2, several studies have shown that AD duties targeting one country can lead to an increase in imports from non-targeted countries (e.g. Prusa, 1997; Konings *et al.*, 2001). In column 2 of Table 7, examine whether AD protection against China led not only to a decrease in imports from China (trade destruction), but also to an increase in US imports from non-targeted countries (trade diversion). To this purpose, we estimate the following:

$$\Delta Imports_{j,c,T} = \beta_0 + \beta_1 \Delta Tariff_{j,T} + \beta_2 \Delta Tariff \times China_c + \delta_{j,c} + \delta_{c,T} + \varepsilon_{j,c,T}, \quad (14)$$

where $\delta_{j,c}$ and $\delta_{c,T}$ denote industry-country and country-term fixed effects. The sample includes the top-50 largest exporters to the United States, ranked by their average share in US imports during 1988-2016. We find no evidence that AD protection against China increased US imports from other countries (the estimated β_1 coefficient is insignificant). The trade destruction effect of AD protection on China is captured by the sum of the coefficients β_1 and β_2 , which is negative and significant at the 1% level.⁶²

The Impact of Tariffs on Prices

In this subsection, we run 2SLS regressions similar to equation (10), examining the impact of AD duties on the prices of protected goods and on input prices. The results are reported in columns 3 and 4 of Table 7.

In column 3, we examine the effects of AD duties against China on domestic prices using PPI data. The coefficient of $\Delta Tariff_{j,T}$ is positive and significant, indicating that AD duties raise the price charged by domestic import-competing producers. In terms of magnitude, our estimates imply that a one standard deviation (0.057) increase in AD duties increases the annual growth rate of domestic prices by 0.6 percentage points, which explains 28.4% of the standard deviation in the average growth rate of domestic prices during 1988-2016.

In column 4, we examine the effects of tariffs on the input prices faced by downstream industry j proxied by the variable $Input Price_{j,T}$ constructed from the NBER-CES database. The coefficient of $\Delta Input Tariff_{j,T}$ is positive and significant, indicating that higher input

⁶²In this specification with two endogenous regressors, the KP statistic is 8.11, which is still above the critical value for the KP statistic based on a 10% maximal IV size (7.0).

tariffs raise input costs. In terms of magnitude, one standard deviation (0.029) increase in the average input tariff increases the annual growth rate of input prices by 0.2 percentage points, which explains 7.1% of the standard deviation of the average growth rate of input prices during our sample period.⁶³

Overall, the results of Table 7 indicate that AD duties increase the price of the protected products, increasing production costs for firms in downstream industries, independently of whether they source the protected inputs from foreign or domestic suppliers.⁶⁴

6.7 The Effects on Protected Industries

Our baseline results (Table 4 and all the corresponding robustness checks) show that AD duties reduce employment growth in downstream industries. Is there any evidence that these measures foster employment growth in the protected industries? To answer this question, we estimate the following 2SLS specification:

$$\Delta L_{j,T} = \beta_0 + \beta_1 \Delta \text{Tariff}_{j,T} + \delta_j + \delta_T + \varepsilon_{j,T}, \quad (15)$$

where $\Delta L_{j,T}$ is the annualized log change in employment in SIC4 industry j during term T , and $\Delta \text{Tariff}_{j,T}$ is the change in the AD duty on imports from China in industry j during term T . In this regression, the sample is restricted to tradable industries only.

The results of estimating (15) are reported in column 1 of Table A-17 in the Appendix. We find no evidence of employment gains in protected industries: the coefficient of $\Delta \text{Tariff}_{j,T}$ is not significant. This may partly be due to measurement error, due to the fact that a SIC4 industry can include both producers of protected HS6, as well as producers that use those HS6 as inputs. Moreover, given the importance of the diagonal of the I-O matrix at the SIC4 level, the coefficient of the variable $\Delta \text{Tariff}_{j,T}$ may confound the effect of final good protection and input protection.

We thus find no evidence that AD duties stimulate employment growth in protected industries, notwithstanding the fact that these duties do reduce import competition and increase domestic prices (see Table 7). Using data from the NBER-CES Manufacturing Industry Database, we can also study the effects on other outcome variables. The results

⁶³Previous studies (e.g. Blonigen and Park, 2004; Blonigen and Haynes, 2002 and 2010; Lu *et al.*, 2013) show that AD duties also increase the price of imported goods. We have examined the effects of AD protection on the prices of goods imported from China, using data from Comtrade on unit values of US imports. We find a positive but insignificant coefficient, possibly due to missing data on imported quantities (we lose around six hundreds of observations when using this variable).

⁶⁴Consistent with this reasoning, De Loecker *et al.* (2016) find substantial declines in domestic good prices due to trade liberalization in India.

reported in columns 2-6 of Table A-17 show that AD duties have no significant effect on blue/collar jobs, wages, and sales in protected industries, but have a positive impact on investment.

7 Conclusion

The US-China trade war triggered by President Trump’s 2018 tariffs has stimulated a flourishing literature on the costs of protection. In this paper, we have shown that, well before President Trump took office, the US had been applying increasingly high tariffs on imports from China, in the form of AD duties. Combining detailed information on these measures with US input-output data, we have examined the effects of protection along supply chains.

Our analysis emphasizes the importance of addressing the endogeneity of trade policy for identifying the impact of tariffs along supply chains. We show that, if we ignore these concerns and estimate simple OLS regressions, we find no systematic evidence that higher tariffs in upstream industries affect downstream industries. If instead we instrument for AD tariffs – exploiting exogenous variation in the political importance of different industries and in their historical experience at dealing with the complex AD proceedings – we find that they lead to a significant decrease in employment, wages, sales, and investment in downstream industries.

We also provide evidence of the mechanisms behind the negative effects of tariffs along supply chains: AD duties against China decrease US imports of targeted products and raise the prices charged by both foreign and domestic producers of these products, increasing production costs for firms in downstream industries.

Our baseline estimates imply that, between the start of the presidency of George H. W. Bush in 1988 and the end of Barack Obama’s second term in 2016, around 1.8 million US jobs were lost in downstream industries due to AD protection. This figure is sizable, as it is about 4.8% of the 38 million jobs the US economy added during 1988-2016. We find no evidence that AD duties saved jobs in the protected industries. When extending the analysis to measures introduced under President Trump, we find that around 500,000 US jobs were lost across all industries during the first two years of his term.

Our results resonate with concerns often heard in the media about the costs of protection along supply chains. For example, in a joint statement in March 2018, the National Tooling and Machining Association and the Precision Metalforming Association protested against President Trump’s tariffs on steel, which they argued “will cost manufacturing jobs across

the country,” emphasizing that 6.5 million workers are employed in steel-and aluminum-using industries in the US, compared to only 80,000 employed in the steel industry.⁶⁵ Our study supports these concerns, showing that tariffs may not be effective at saving jobs in the protected industries, and destroy many jobs in the rest of the economy.

Previous studies provide an economic rationale for allowing flexible protectionist measures such as AD duties in trade agreements: the ability to protect industries in the face of import surges can act as a “safety valve,” allowing countries to sustain trade policy cooperation (Bagwell and Staiger, 1990). Our paper emphasizes the political economy motives for flexible trade barriers (in the spirit of Bagwell and Staiger, 2005): being able to protect certain industries can help politicians to gain votes. These motives are particularly important in the United States, where swing-state politics creates incentives to favor key industries in battleground states.

In this respect, our paper contributes to the ongoing debate about the use of protectionist measures in the multilateral trading system and the sustainability of the WTO dispute settlement process. For years, the WTO had a reliable mechanism to resolve disputes between its members. Since December 2019, this mechanism is deadlocked, due to the refusal of the Trump administration to appoint new members to the Appellate Body, which is in charge of appeals. This follows strong criticism of the Appellate Body by the United States, for overreaching in its handling of trade disputes, in particular those related to US AD duties. In fact, in virtually all disputes concerning US AD duties, the Appellate Body ruled against the United States because of the methodology used to determine dumping margins.⁶⁶ In a report published in February 2020, the Trump administration argued that the Appellate Body has “diminished U.S. rights by failing to comply with WTO rules, addressing issues it has no authority to address, taking actions it has no authority to take, and interpreting WTO agreements in ways not envisioned by the WTO Members who entered into those agreements” (USTR, 2020). As pointed out by Stephen Vaughn, former General Counsel of the United States Trade Representative, AD protection in United States is “very sensitive here in a way that they may not be in other countries. The Appellate Body obviously hasn’t been sensitive to any of that, and they’ve simply trampled those laws every chance they’ve gotten.”⁶⁷

⁶⁵“Thousands of jobs at risk over tariffs, US manufacturers warn” (*Financial Times*, March 1, 2018).

⁶⁶The methodology in question is “zeroing,” which makes it more likely that dumping will be found and inflates the size of the remedying tariff. Between 2002 and 2017, America faced nearly 20 disputes over its use of zeroing in dozens of antidumping cases (see Bown, 2020).

⁶⁷See *Trade Talks* Episode 111, “Trade Policy Under Trump.”

References

- Acemoglu, D., D. H. Autor, D. Dorn, G. H. Hanson, and B. Price (2016). “Import Competition and the Great US Employment Sag of the 2000s,” *Journal of Labor Economics* 34, 141-198.
- Acemoglu, D., S. Johnson, and T. Mitton (2009). “Determinants of Vertical Integration: Financial Development and Contracting Costs,” *Journal of Finance* 63, 1251-1290.
- Alfaro, L., P. Antràs, D. Chor, and P. Conconi (2019). “Internalizing Global Value Chains: A Firm-Level Analysis,” *Journal of Political Economy* 127, 508-559.
- Alfaro, L., P. Conconi, H. Fadinger, and A. F. Newman (2016). “Do Prices Determine Vertical Integration?” *Review of Economic Studies* 83, 855-888.
- Amiti, M., and J. Konings (2007). “Trade Liberalization, Intermediate Inputs, and Productivity: Evidence from Indonesia,” *American Economic Review* 97, 1611-1638.
- Amiti, M., S. J. Redding, and D. E. Weinstein (2019). “The Impact of the 2018 Trade War on U.S. Prices and Welfare,” *Journal of Economic Perspectives* 33, 187-210.
- Angrist, J. D., and J. S. Pischke (2009). *Mostly Harmless Econometrics: An Empiricist’s Companion*. Princeton University Press.
- Antràs, P. (2020). “Conceptual Aspects of Global Value Chains,” forthcoming *World Bank Economic Review*.
- Antràs, P., D. Chor, T. Fally, and R. Hillberry (2012). “Measuring the Upstreamness of Production and Trade Flows,” *American Economic Review Papers & Proceedings* 102, 412-416.
- Antràs, P., T. Fort, and F. Tintelnot (2017). “The Margins of Global Sourcing: Theory and Evidence from US,” *American Economic Review* 107, 2514-2564.
- Aquilante, T. (2018). “Undeflected Pressure? The Protectionist Effect of Political Partisanship on US Antidumping Policy,” *European Journal of Political Economy* 55, 455-470.
- Autor, D. H., D. Dorn, and G. H. Hanson (2013). “The China Syndrome: Local Labor Market Effects of Import Competition in the United States,” *American Economic Review* 103, 2121-2168.
- Autor, D. H., D. Dorn, and G. H. Hanson (2019). “When Work Disappears: Manufacturing Decline and the Falling Marriage-Market Value of Young Men,” *American Economic Review: Insights* 1, 161-178.
- Autor, D. H., D. Dorn, G. H. Hanson, and K. Majlesi (2020a). “Importing Political Polarization? The Electoral Consequences of Rising Trade Exposure,” *American Economic Review* 110, 3139-3183.
- Autor, D. H., D. Dorn, G. H. Hanson, G. Pisano, and P. Shu (2020b). “Foreign Competition and Domestic Innovation: Evidence from U.S. Patents,” *American Economic Review: Insights* 2, 357-374.

- Bagwell, K., and R. W. Staiger (1990). "A Theory of Managed Trade," *American Economic Review* 80, 779-795.
- Bagwell, K., and R. W. Staiger (2005). "Enforcement, Private Political Pressure and the GATT/WTO Escape Clause," *The Journal of Legal Studies* 34, 471-513.
- Barattieri, A., and M. Cacciatore (2020). "Self-Harming Trade Policy? Protectionism and Production Networks," NBER Working Paper No. 27630.
- Bergstrom, T., L. Blume, and H. Varian (1986). "On the Private Provision of Public Goods," *Journal of Public Economics* 29, 25-49.
- Besedes, T., and T. J. Prusa (2017). "The Hazardous Effect of Antidumping," *Economic Inquiry* 55, 9-30.
- Blanchard, E. J., C. P. Bown, and R. C. Johnson (2016). "Global Supply Chains and Trade Policy," NBER Working Paper No. 21883.
- Blaum, J., C. Lelarge, and M. Peters (2018). "The Gains from Input Trade with Heterogeneous Importers," *American Economic Journal: Macroeconomics* 10, 77-127.
- Blonigen, B. A. (2006). "Working the System: Firm Learning and the Antidumping Process," *European Journal of Political Economy* 22, 715-731.
- Blonigen, B. A., and C. P. Bown (2003). "Antidumping and Retaliation Threats," *Journal of International Economics* 60, 249-273.
- Blonigen, B. A., and S. E. Haynes (2002). "Antidumping Investigations and the Pass-through of Antidumping Duties and Exchange Rates," *American Economic Review* 92, 1044-1061.
- Blonigen, B. A., and S. E. Haynes (2010). "Antidumping Investigations and the Pass-Through of Antidumping Duties and Exchange Rates: Reply," *American Economic Review* 100, 1283-1284.
- Blonigen, B. A., and J. H. Park (2004). "Dynamic Pricing in the Presence of Antidumping Policy: Theory and Evidence," *American Economic Review* 94, 134-154.
- Blonigen, B. A., and T. J. Prusa (2016). "Dumping and Antidumping Duties," in K. Bagwell, and R. W. Staiger (eds), *Handbook of Commercial Policy* Volume 1B, 107-159. Elsevier.
- Bombardini, M., and F. Trebbi (2012). "Competition and Political Organization: Together or Alone in Lobbying for Trade Policy?" *Journal of International Economics* 87, 18-26.
- Bown, C. P. (2014). Temporary Trade Barriers Database.
- Bown, C. P. (2018). "Trade Policy Toward Supply Chains After the Great Recession," *IMF Economic Review* 66, 602-616.
- Bown, C. P. (2019). "US Special Protection in Historical Perspective: 1974-2018," Working paper 20/4, Peterson Institute for International Economics.

- Bown, C. P. (2020). “Why Trump Shot the Sheriffs: The End of WTO Dispute Settlement 1.0,” Working paper 19/7, Peterson Institute for International Economics.
- Bown, C. P., and M. A. Crowley (2007). “Trade Deflection and Trade Depression,” *Journal of International Economics* 72, 176-201.
- Bown, C. P., and M. A. Crowley (2013). “Self-Enforcing Trade Agreements: Evidence from Time-Varying Trade Policy,” *American Economic Review* 103, 1071-1090.
- Bown, C. P., A. Erbahar, and M. Zanardi (2020). “Global Value Chains and the Removal of Trade Protection,” CEPR Discussion Paper 14451.
- Cavallo, A., G. Gopinath, B. Neiman, and J. Tang (2019). “Tariff Passthrough at the Border and at the Store: Evidence from US Trade Policy,” forthcoming *American Economic Review: Insights*.
- Conconi, P., D. DeRemer, G. Kirchsteiger, L. Trimarchi, and M. Zanardi (2017). “Suspiciously Timed Trade Disputes,” *Journal of International Economics* 105, 57-76.
- Conconi, P., M. García-Santana, L. Puccio, and R. Venturini (2018). “From Final Goods to Inputs: The Protectionist Effect of Rules of Origin,” *American Economic Review* 108, 2335-2365.
- Debaere, P. M. (2009). “Fishy Issues: The U.S. Shrimp Antidumping Case,” Darden Case No. UVA-G-0600.
- De Loecker, J., P. Goldberg, A. Khandelwal, and N. Pavcnik (2016). “Prices, Markups and Trade Reform,” *Econometrica* 84, 445-510.
- Ellison, G., and E. L. Glaeser (1997). “Geographic Concentration in U.S. Manufacturing Industries: A Dartboard Approach,” *Journal of Political Economy* 105, 889-927.
- Erbahar, A., and Y. Zi (2017). “Cascading Trade Protection: Evidence from the US,” *Journal of International Economics* 108, 274-299.
- Fajgelbaum, P. D., P. K. Goldberg, P. J. Kennedy, and A. K. Khandelwal (2020). “The Return to Protectionism,” *Quarterly Journal of Economics* 135, 1-55.
- Feenstra, R. C. (1996). “US Imports, 1972-1994: Data and Concordances,” NBER Working Paper No. 5515.
- Feinberg, R. M., and K. M. Reynolds (2006). “The Spread of Antidumping Regimes and the Role of Retaliation in Filings,” *Southern Economic Journal* 72, 877-890.
- Feinberg, R. M., and K. M. Reynolds (2008). “Friendly Fire? The Impact of US Antidumping Enforcement on US Exporters,” *Review of World Economics/Weltwirtschaftliches Archiv* 144, 366-378.
- Finger, J. M., Blonigen, B. A., and Flynn, J. E. (1982). “The Political Economy of Administered Protection,” *American Economic Review* 72, 452-466.

- Flaaen, A., A. Hortaçsu, and F. Tintelnot (2020). “The Production Relocation and Price Effects of U.S. Trade Policy: The Case of Washing Machines,” *American Economic Review* 110(7), 2103-27.
- Flaaen, A., and J. Pierce (2019). “Disentangling the Effects of the 2018-2019 Tariffs on a Globally Connected U.S. Manufacturing Sector,” FEDS Working Paper 2019-086.
- Gawande, K., P. Krishna, and M. Olarreaga (2012). “Lobbying Competition Over Trade Policy,” *International Economic Review* 53, 115-132.
- Goldberg, P. K., A. K. Khandelwal, N. Pavcnik, and P. Topalova (2010). “Imported Intermediate Inputs and Domestic Product Growth: Evidence from India,” *Quarterly Journal of Economics* 125, 1727-1767.
- Grossman, G. M., and E. Helpman (2020). “When Tariffs Disturb Global Supply Chains,” NBER Working Paper 27722.
- Halpern, L., M. Koren, and A. Szeidl (2015). “Imported Inputs and Productivity,” *American Economic Review* 105, 3660-3703.
- Hansen, W. L., and T. J. Prusa (1997). “The Economics and Politics of Trade Policy: An Empirical Analysis of ITC Decision Making,” *Review of International Economics* 5, 230-245.
- Harmon, N., R. Fisman, and E. Kamenica (2019). “Peer Effects in Legislative Voting,” *American Economic Journal: Applied Economics* 11, 156-180.
- Heath, D., M. C. Ringgenberg, M. Samadi, and I. M. Werner (2019). “Reusing Natural Experiments,” Working Paper Series 2019-21, Ohio State University, Charles A. Dice Center for Research in Financial Economics.
- Imbens, G. W., and J. D. Angrist (1994). “Identification and Estimation of Local Average Treatment Effects,” *Econometrica* 62, 467-475.
- Irwin, D. A. (2005). “The Rise of US Anti-dumping Activity in Historical Perspective,” *The World Economy* 28, 651-668.
- Irwin, D. A. (2017). “Clashing over Commerce: A History of US Trade Policy,” *Markets and Governments in Economic History*, University of Chicago Press.
- Johnson, R. C., and G. Noguera (2012). “Accounting for Intermediates: Production Sharing and Trade in Value Added,” *Journal of International Economics* 86, 224-236.
- Konings, J., and H. Vandenbussche (2008). “Heterogeneous Responses of Firms to Trade Protection,” *Journal of International Economics* 76, 371-383.
- Konings, J., H. Vandenbussche, and L. Springael (2001). “Import Diversion under European Antidumping Policy,” *Journal of Industry, Competition and Trade* 1, 283-299.
- Lu, Y., Z. Tao, and Y. Zhang (2013). “How do Exporters Respond to Antidumping Investigations?,” *Journal of International Economics* 9, 290.

- Ma, X., and J. McLaren (2018). “A Swing-State Theorem, with Evidence,” NBER Working Paper No. 24425.
- Mayda, A., R. Ludema, and P. Mishra (2018). “Information and Legislative Bargaining: The Political Economy of U.S. Tariff Suspensions,” *Review of Economics and Statistics* 100, 303-318.
- Moore, M. (1992). “Rules or Politics? An Empirical Analysis of Antidumping Decisions,” *Economic Inquiry* 30, 449-466.
- Muûls, M., and D. Petropoulou (2013). “A Swing State Theory of Trade Protection in the Electoral College,” *Canadian Journal of Economics* 46, 705-724.
- Olson, M. (1965). “The Logic of Collective Action: Public Goods and the Theory of Groups,” *Harvard Economic Studies* 124. Harvard University Press, Cambridge, Mass.
- Pierce, J. R. (2011). “Plant-Level Responses to Antidumping Duties: Evidence from U.S. Manufacturers,” *Journal of International Economics* 85, 222-233.
- Pierce, J. R., and P. K. Schott (2016). “The Surprisingly Swift Decline of US Manufacturing Employment,” *American Economic Review* 106, 1632-1662.
- Pierce, J. R., and P. K. Schott (2020). “Trade Liberalization and Mortality: Evidence from U.S. Counties,” *American Economic Review: Insights* 2, 47-64.
- Prusa, T. J. (1997). “The Trade Effects of U.S. Antidumping Actions,” in R. C. Feenstra (ed.), *Effects of U.S. Trade Protection and Promotion Policies*. Chicago: University of Chicago Press.
- Prusa, T. J. (2001). “On the Spread and Impact of Antidumping,” *Canadian Journal of Economics*, 34, 591-611.
- Romano, J. P., and M. Wolf (2005). “Stepwise Multiple Testing as Formalized Data Snooping,” *Econometrica* 73 (4), 1237-1282.
- Romano, J. P., and M. Wolf (2016). “Efficient Computation of Adjusted p -values for Resampling-based Stepdown Multiple Testing,” *Statistics and Probability Letters* 113, 38-40.
- Trefler, D. (1993). “Trade Liberalization and the Theory of Endogenous Protection: An Econometric Study of U.S. Import Policy,” *Journal of Political Economy* 101, 138-160.
- United States Trade Representative (USTR) (2020). “Report on the Appellate Body of the World Trade Organization.”
- Vandenbussche, H., and C. Viegelaahn (2018). “Input Reallocation Within Multi-Product Firms,” *Journal of International Economics* 114, 63-79.
- Vandenbussche, H., and M. Zanardi (2010). “The Chilling Trade Effects of Antidumping Proliferation,” *European Economic Review* 54 760-777.
- Yi, K-M. (2003). “Can Vertical Specialization Explain the Growth of World Trade?,” *Journal of Political Economy* 111, 52-102.

Appendix

A-1 Antidumping and Swing-State Politics

In this section, we provide novel evidence emphasizing the importance of politics – and in particular swing-state politics – for AD policy in the United States.

The literature on the political economy of US AD policy shows that votes by ITC commissioners reflect the interests of the members of two most powerful committees dealing with trade policy in Congress: the Finance committee in the Senate and the Ways and Means committee in the House. These powerful legislators can put pressure on the ITC through appointment confirmations, budget allocation, oversight hearings, and other channels. Moore (1992) shows that ITC commissioners are more likely to favor AD petitions involving the constituencies of Finance committee members. Hansen and Prusa (1997) show that the ITC is more likely to support petitions filed by industries with representatives in the Ways and Means committee. Aquilante (2018) emphasizes the role of party politics, showing that ITC commissioners appointed by the Democratic (Republican) party are more likely to vote in favor of AD when the petitioning industry is key (in terms of employment) in the states represented by Democratic (Republican) senators in the Finance committee.

These studies suggest that the composition of the Finance and Ways and Means committees affects AD votes by ITC commissioners. Combining data on membership of congressional committees,⁶⁸ with our variable $Swing_{s,T}$, we find that congressmen from swing states are overrepresented in these committees: during the eight presidential elections in 1988-2016, swing states accounted for around 21% of US states on average (see Figure 2). However, around 33% (36%) of the new members of the Senate Finance (House Ways and Means) committee in a presidential term represented states classified as swing. This composition bias in the key trade committees may lead ITC decisions to be skewed in favor of key industries in swing states.

Next, using detailed data from Aquilante (2018), we directly examine whether swing-state politics affects ITC commissioners' votes on material injury, focusing on AD cases involving China as a target country.⁶⁹ The ITC is composed of six commissioners who are appointed for nine non-renewable years.⁷⁰ During each year of his or her tenure, each commissioner

⁶⁸These data are available from Charles Stewart III and Jonathan Woon, Congressional Committee Assignments, 103rd to 114th Congresses, 1993-2017.

⁶⁹Similar results are obtained looking at AD cases involving all countries.

⁷⁰In reality, the tenure of ITC commissioners is often shorter and (in a few cases) longer than 9 years (see

casts many votes involving different industries.⁷¹ To study the role of swing-state politics, we estimate the following:

$$Vote_{i,t,c} = \beta_0 + \beta_1 Swing_{i,T} + \delta_i + \delta_t + \delta_c + \varepsilon_{i,t,c}. \quad (16)$$

The dependent variable is $Vote_{i,t,c}$, a dummy variable which is equal to 1 if ITC commissioner c votes in favor of AD duties against China in year t , in a case involving SIC4 industry i . The variable $Swing_{i,T}$ defined in equation (5) captures the importance of industry i in states classified as swing during term T , and δ_i , δ_t and δ_c denote respectively industry, year, and commissioner fixed effects.

Table A-1
ITC votes and swing-state politics

	(1)	(2)	(3)
$Swing_{i,T}$	19.391*** (4.372)	16.280*** (4.278)	0.464*** (0.109)
$Swing_{i,T} \times Same\ Party\ as\ President_{c,T}$		7.285*** (2.394)	
$Same\ Party\ as\ President_{c,T}$		0.054 (0.039)	
Commissioner FE	Yes	Yes	No
Year FE	Yes	Yes	Yes
SIC4 FE	Yes	Yes	Yes
Adjusted R^2	0.50	0.51	0.30
Observations	856	856	113

The table reports OLS estimates. In columns 1 and 2, the dependent variable is $Vote_{i,t,c}$, a dummy variable which is equal to 1 if ITC commissioner c votes in favor of AD duties against China in year t , in a case involving SIC4 industry i . In column 3, the dependent variable is $Vote\ Share_{i,t}$, the share of ITC commissioners voting in favor of AD duties against China in year t , in a case involving SIC4 industry i . $Swing_{i,T}$ defined in equation (5) captures the importance of industry i in states classified as swing during term T . $Same\ Party\ as\ the\ President_{t,c}$ is a dummy variable equal to 1 if ITC commissioner c belongs to the same party as the incumbent executive in year t . The sample covers 1985-2008. Standard errors in parentheses are clustered at the SIC3 industry level. ***, **, and * denote significance at the 1%, 5%, and 10% levels respectively.

The results of estimating (16) are reported in column 1 of Table A-1. The coefficient of $Swing_{i,T}$ is positive and significant at the 1% level, indicating that ITC commissioners are more likely to vote in favor of AD protection when the petitioning industry is more

Aquilante, 2018).

⁷¹Focusing on AD cases against China, during 1985-2008 (the sample period covered by Aquilante, 2018), ITC commissioners have cast on average 48 votes (8 per year).

important in swing states. One might expect that granting AD protection to key industries in swing states would boost the electoral chances of the incumbent president’s party in the next elections, possibly because voters are motivated by reciprocity, as in Conconi *et al.* (2017). If this is the case, we might expect ITC commissioners who belong to the same party as the president to be particularly sensitive to the interests of swing states. To verify this, we include in (16) the interaction between $Swing_{i,T}$ and $Same\ Party\ as\ the\ President_{c,T}$, a dummy variable equal to 1 if ITC commissioner c belongs to the same party as the incumbent executive during term T . The results reported in column 2 of Table A-1 show that belonging to the same party as the president increases commissioners’ propensity to vote in favor of key industries in swing states.

Previous studies emphasize the importance of peer effects in legislative voting (e.g. Harmon *et al.*, 2019), suggesting that ITC commissioners may be affected by their colleagues when voting on AD. To allow for these interdependences, we examine the role of swing-state politics at a more aggregate level, estimating the effects of $Swing_{i,T}$ on the share of politicians that vote in favor of AD:

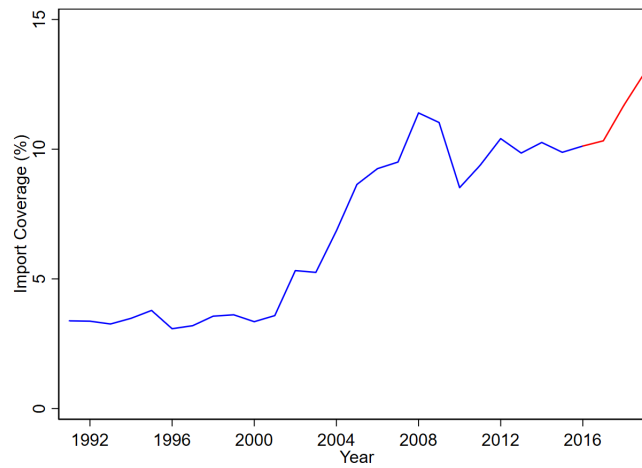
$$Vote\ Share_{i,t} = \beta_0 + \beta_1 Swing_{i,T} + \delta_i + \delta_t + \varepsilon_{i,t}. \quad (17)$$

The results of this estimation are reported in column 3 of Table A-1. The coefficient of $Swing_{i,T}$ remains positive and significant, confirming that ITC commissioners are more likely to vote in favor of AD when the petitioning industry is more important in battleground states.

A-2 Figures

Figure A-1

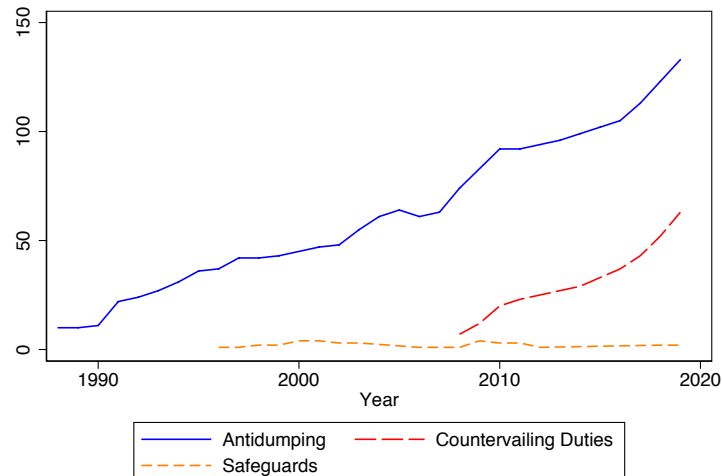
Share of US imports from China covered by AD duties



The figure plots the share of US imports from China covered by US antidumping duties in 1991-2016 (in blue) and during Trump's presidency in 2017-2019 (in red). Source: Authors' calculations based on an extended version of the Temporary Trade Barriers Database.

Figure A-2

Number of US AD duties, countervailing duties, and safeguards against China (1988-2019)

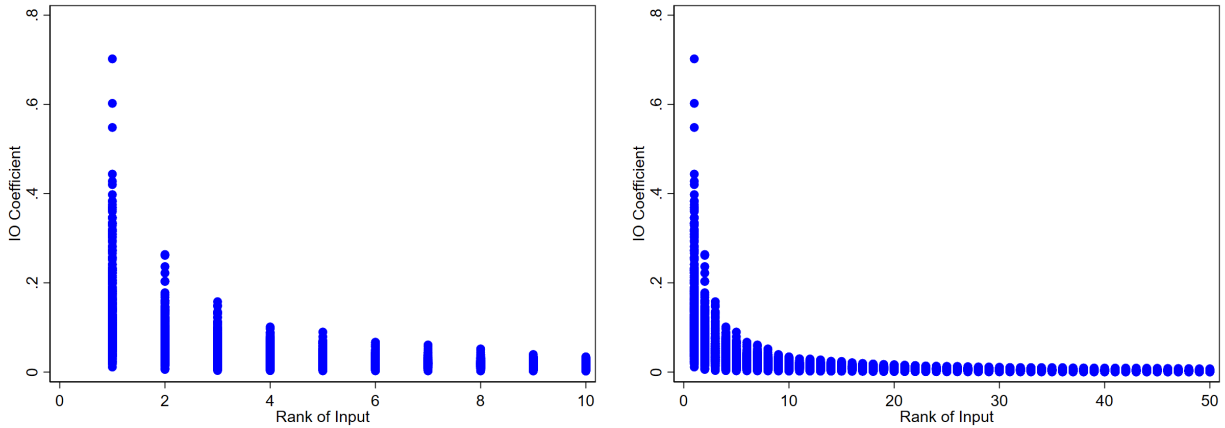


The figure plots the number of AD duties, countervailing duties, and safeguards applied by the US on imports from China. Source: Authors' calculations based on an extended version of the Temporary Trade Barriers Database.

Figure A-3
Average IO coefficients of the most important inputs

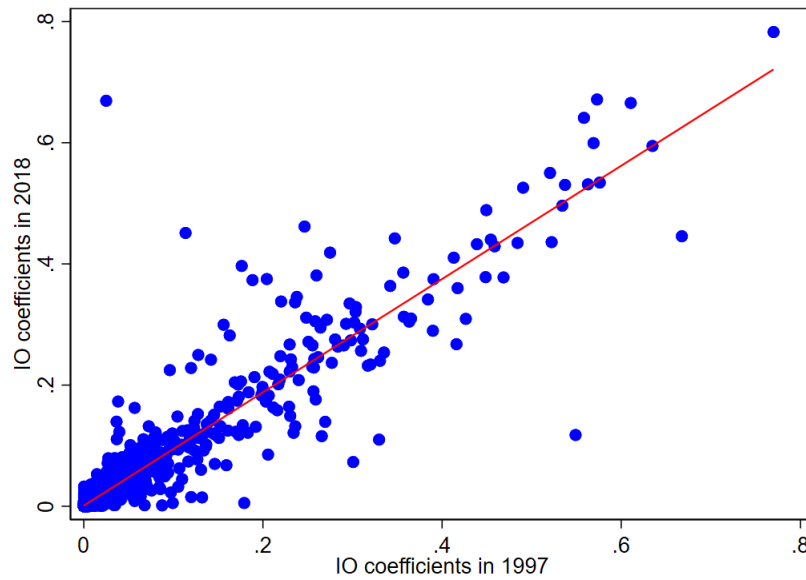
(a) Top-10

(b) Top-50



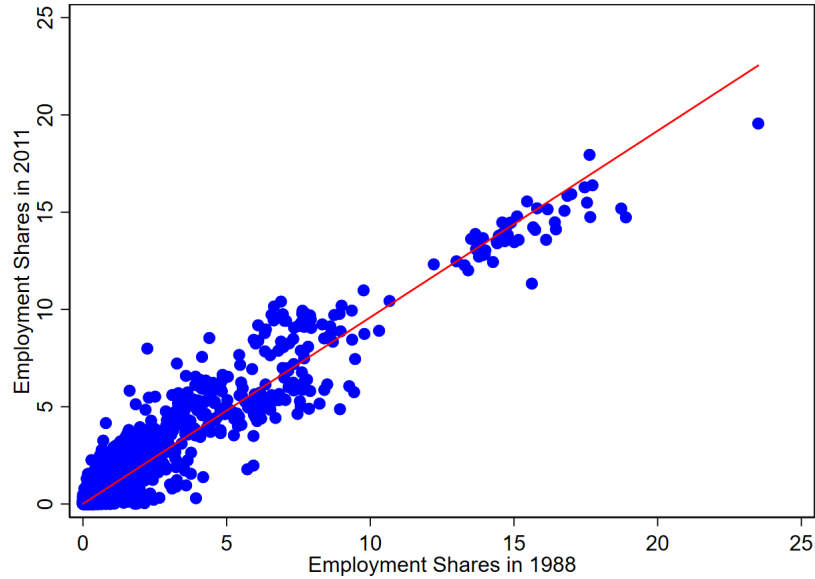
The figures plot the average direct requirement coefficients $\omega_{i,j}$ across all 479 SIC4 j industries, focusing on the top-10 and top-50 most important inputs $i(\neq j)$ for each industry j (i.e. highest $\omega_{i,j}$) in panels (a) and (b) respectively.

Figure A-4
IO coefficients



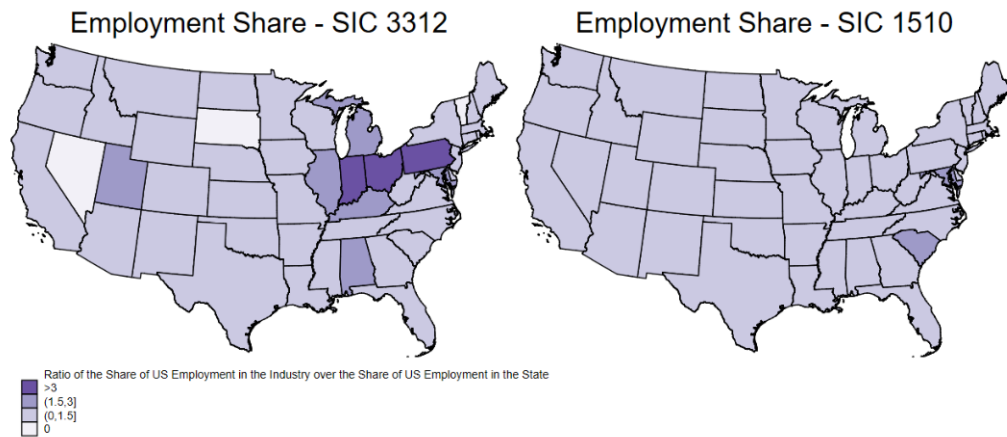
The figure plots direct requirement coefficients from the BEA 1997-2018 tables. Industry classifications are concorded over time and aggregated to 71 industries.

Figure A-5
SIC4 employment shares by state



The figure plots state-level industry employment shares in 1988 and 2011, based on data from Acemoglu *et al.* (2016).

Figure A-6
Geographical distribution of steel and construction (based on 1988 employment shares)



The maps indicate state-level shares of US employment in industries SIC 3312 (“Blast furnaces and steel mills”) and SIC 1510 (“Construction”) in 1988 over state-level shares of overall US employment in the same year.

A-3 Descriptive Statistics

Table A-2
Descriptive statistics on tariffs applied by the United States against China

(a) AD duties, 1988-2016				
Variable	Mean	Std. Dev.	Min	Max
$Tariff_{j,t}$	0.15	0.53	0.00	4.30
<i>Average Input Tariff</i> $_{j,t}$	0.14	0.15	0.00	1.07
<i>Tariff on Key Input</i> $_{1,j,t}$	0.36	0.63	0.00	3.77
(b) MFN tariffs, 1988-2016				
Variable	Mean	Std. Dev.	Min	Max
$Tariff_{j,t}$	0.05	0.21	0.00	3.50
<i>Average Input Tariff</i> $_{j,t}$	0.02	0.03	0.00	0.43
<i>Tariff on Key Input</i> $_{1,j,t}$	0.05	0.23	0.00	3.50
(c) AD duties, 2017-2018				
Variable	Mean	Std. Dev.	Min	Max
$Tariff_{j,t}$	0.36	0.81	0.00	4.93
<i>Average Input Tariff</i> $_{j,t}$	0.34	0.21	0.02	1.01
<i>Tariff on Key Input</i> $_{1,j,t}$	0.88	0.88	0.00	3.73
(d) Section 201, 232, and 301 tariffs, 2018				
Variable	Mean	Std. Dev.	Min	Max
$Tariff_{j,t}$	0.11	0.07	0.00	0.25
<i>Average Input Tariff</i> $_{j,t}$	0.05	0.03	0.00	0.15
<i>Tariff on Key Input</i> $_{1,j,t}$	0.13	0.05	0.00	0.25

The rates reported are ad valorem. The variable $Tariff_{j,t}$ is constructed for the 405 tradable industries, while the variables *Average Input Tariff* $_{j,t}$ and *Tariff on Key Input* $_{1,j,t}$ are constructed for all 479 industries.

Table A-3
Descriptive statistics on $Experience_i$, $Swing_{i,T}$ and $IV_{i,T}$

Variable	Mean	Std. Dev.	Min	Max
$IV_{i,T}$	0.005	0.054	0	1.497
$Experience_i$	0.815	3.005	0	57
$Swing_{i,T}$	0.002	0.004	0	0.045

The table reports the descriptive statistics of our instrument for AD protection, $IV_{i,T}$, and of its components, $Experience_i$ and $Swing_{i,T}$.

Table A-4
Top-10 Sectors by $Experience_i$ and $Swing_{i,T}$
 $Experience_i$

Sector	Description	$Tariff_{i,t}$ (%)
3312	Blast furnaces and steel mills	81.61
3714	Motor vehicle parts and accessories	142.9
3496	Misc. fabricated wire products	114.7
2869	Industrial organic chemicals, n.e.c.	125.1
2819	Industrial inorganic chemicals, n.e.c.	68.95
2241	Narrow fabric mills	59.78
3537	Industrial trucks and tractors	0
2399	Fabricated textile products, n.e.c.	59.78
3991	Brooms and brushes	189.6
3069	Fabricated rubber products, n.e.c.	0

$Swing_{i,T}$

Sector	Description	$Tariff_{i,t}$ (%)
2752	Commercial printing, lithographic	35.78
3089	Plastics products, n.e.c.	1.461
2599	Furniture and fixtures, n.e.c.	71.06
3714	Motor vehicle parts and accessories	142.9
2711	Newspapers	0
3711	Motor vehicles and car bodies	0
3312	Blast furnaces and steel mills	81.61
3812	Search and navigation equipment	0
3499	Fabricated metal products, n.e.c.	36.33
3599	Industrial machinery, n.e.c.	106.6

The table lists the top-10 SIC4 sectors with the highest value of $Experience_i$ defined between 1980-1987 (top panel) and the highest average value of $Swing_{i,T}$ during 1988-2016 (bottom panel), with the corresponding average AD duty.

Table A-5
Top-10 protected sectors

SIC4	SIC4 description	Average tariff
0710	Agriculture	245.5%
2033	Canned fruits and vegetables	243.5%
2037	Frozen fruits and vegetables	237.1%
2035	Pickles, sauces, and salad dressings	234.9%
3792	Travel trailers and campers	172.0%
3399	Primary metal products, n.e.c.	134.6%
3339	Primary nonferrous metals, n.e.c.	125.9%
2869	Industrial organic chemicals, n.e.c.	125.1%
0900	Fishing, hunting, and trapping	120.7%
3494	Valves and pipe fittings, n.e.c.	117.7%

Column 1 shows the top-10 SIC4 protected sectors with the highest average tariffs, based on US AD duties against China, and column 2 indicates the SIC4 description. Column 3 shows the average tariff over 1988-2016.

Table A-6
Top 10 key inputs

SIC4	Input industry	Share of downstream industries	Average cost share of key input
3312	Blast furnaces and steel mills	0.17	0.11
1221	Coal and petroleum	0.10	0.09
2221	Broadwoven fabric mills, manmade	0.06	0.10
2752	Commercial printing, lithographic	0.06	0.04
2621	Paper mills	0.05	0.20
3679	Electronic components, n.e.c.	0.05	0.06
2869	Industrial organic chemicals, n.e.c.	0.04	0.11
2821	Plastics materials and resins	0.03	0.12
2911	Petroleum refining	0.03	0.10
3674	Semiconductors and related devices	0.03	0.04

The table list the 10 most important tradable input industries i . Column 1 reports the share of industries j for which input i is the key input (i.e. highest cost share $\omega_{i,j}$). Column 2 reports the average cost shares of industry i (across all industries j for which i is the key input).

Table A-7
Top-10 affected sectors, by average input tariff

SIC4	SIC4 description	Average input tariff	Average tariff on key input	Key input SIC4	Key input description
0800	Forestry	61.78%	245.53%	0710	Agriculture
3449	Miscellaneous metal work	50.17%	81.61%	3312	Blast furnaces and steel mills
2653	Corrugated and solid fiber boxes	44.30%	76.93%	2621	Paper mills
3412	Metal barrels, drums, and pails	43.78%	81.61%	3312	Blast furnaces and steel mills
3448	Prefabricated metal buildings	43.12%	81.61%	3312	Blast furnaces and steel mills
2821	Plastics materials and resins	42.24%	125.09%	2869	Industrial organic chemicals, n.e.c.
2674	Bags: uncoated paper and multiwall	40.81%	76.93%	2621	Paper mills
3084	Plastics pipe	40.62%	53.04%	2821	Plastics materials and resins
2655	Fiber cans, drums and similar products	40.04%	76.93%	2621	Paper mills
3465	Automotive stampings	39.18%	81.61%	3312	Blast furnaces and steel mills

Column 1 shows the top-10 SIC4 downstream sectors that face the highest average input tariffs, based on US AD duties, and column 2 indicates the SIC4 description. Column 3 (column 4) shows the average input tariff (average tariff on the key input sector) over 1988-2016. The SIC code and description of the key input are identified in columns 5 and 6, respectively.

A-4 Additional Results and Robustness Checks

Table A-8
First-stage and reduced-form results for Table 4

	First-stage results			
	All sectors		Manufacturing sectors only	
	Average input tariff	Tariff on key input	Average input tariff	Tariff on key input
	(1)	(2)	(3)	(4)
$\Delta IV_{j,T}$	0.001*** (0.000)	0.682*** (0.019)	0.001*** (0.000)	0.714*** (0.027)
SIC4 FE	Yes	Yes	Yes	Yes
Year FE	Yes	Yes	Yes	Yes
Observations	3,351	3,351	2,742	2,742
Adjusted R^2	0.29	0.31	0.29	0.28
	Reduced-form results			
	All sectors		Manufacturing sectors only	
	Average input tariff	Tariff on key input	Average input tariff	Tariff on key input
	(5)	(6)	(7)	(8)
$\Delta IV_{j,T}$	-0.000*** (0.000)	-0.029*** (0.006)	-0.000*** (0.000)	-0.014*** (0.004)
SIC4 FE	Yes	Yes	Yes	Yes
Year FE	Yes	Yes	Yes	Yes
Observations	3,351	3,351	2,742	2,742
Adjusted R^2	0.29	0.30	0.30	0.30

The top (bottom) panel of the table reports the first-stage (reduced-form) results of the 2SLS estimates in Table 4. In columns 1 and 3 (2 and 4), the dependent variable is $\Delta Input\ Tariff_{j,T}$, the change in the average input tariff faced by industry j (in the tariff on the key input of industry j) during term T . In columns 5-8, the dependent variable is $\Delta L_{j,T}$, the annualized log change in employment in SIC4 industry j during term T . The sample covers 1988-2016. In columns 1, 2, 5, and 6 (3, 4, 7, and 8), it comprises all sectors (only manufacturing sectors). Observations are weighted by 1988 employment. Standard errors are clustered at the SIC3 industry level; ***, **, and * denote significance at the 1%, 5%, and 10% levels respectively.

Table A-9
Tariffs and employment in downstream industries (OLS)

	All sectors		Manufacturing sectors only	
	Average input tariff	Tariff on key input	Average input tariff	Tariff on key input
	(1)	(2)	(3)	(4)
$\Delta Input\ Tariff_{j,T}$	-0.077** (0.034)	-0.001 (0.002)	-0.007 (0.015)	-0.001 (0.003)
SIC4 FE	Yes	Yes	Yes	Yes
Year FE	Yes	Yes	Yes	Yes
Observations	3,351	3,351	2,742	2,742
Adjusted R^2	0.50	0.50	0.42	0.42

The table reports OLS estimates. The dependent variable $\Delta L_{j,T}$ is the annualized log change in employment in SIC4 industry j during term T . $\Delta Input\ Tariff_{j,T}$ is the change in the average input tariff of industry j (in columns 1 and 3) or in the tariff on the key input of industry j (in columns 2 and 4) during term T . The sample covers 1988-2016. In columns 1 and 2 (3 and 4), it comprises all sectors (only manufacturing sectors). Observations are weighted by 1988 employment. Standard errors are clustered at the SIC3 industry level; ***, **, and * denote significance at the 1%, 5%, and 10% levels respectively.

Table A-10
Top-10 affected sectors, by number of jobs lost due to input protection

SIC4	SIC4 description	Share of total US employment	Average input tariff	Employment loss due to average input tariffs
5812	Eating and drinking places	7.94%	13.4%	-213,795
1510	Construction	5.47%	10.2%	-167,094
5210	Retail trade	13.25%	3.2%	-149,527
5012	Wholesale trade	6.11%	4.1%	-88,037
8060	Hospitals	4.90%	6.1%	-64,784
7532	Auto repair	0.67%	20.2%	-44,648
8320	Social services	1.14%	6.7%	-34,557
2752	Commercial printing, lithographic	0.49%	21.9%	-30,695
7371	Computer services	1.60%	3.4%	-26,903
4210	Trucking	1.71%	4.6%	-26,547

The table lists the ten SIC4 sectors that suffered the largest predicted job losses due to input protection during 1988-2016. Columns 1 and 2 list the SIC codes of these sectors and the corresponding description. Column 3 reports the sector's average share in total US employment, and column 4 indicates the average input tariff faced by the sector. Column 5 reports the predicted number of job losses, derived by using the estimates of our baseline specification (column 1 of Table 4) in equation (11).

Table A-11
The impact of tariffs on employment in downstream industries
(heterogeneous effects by import dependence)

	Mean (1)	Median (2)
$\Delta Input\ Tariff_{j,T}$	-0.239*** (0.077)	-0.120 (0.092)
$\Delta Input\ Tariff_{j,T} \times High\ Import\ Dependence_j$	-0.404* (0.230)	-0.350** (0.151)
SIC4 FE	Yes	Yes
Term FE	Yes	Yes
Observations	3,351	3,351
KP F-statistic	91.5	55.5
F-statistic for the sum	7.98***	12.72***

The table reports 2SLS estimates. The dependent variable $\Delta L_{j,T}$ is the annualized log change in employment in SIC4 industry j during term T . $\Delta Input\ Tariff_{j,T}$ is the change in the average input tariff of industry j during term T . In column 1 (column 2) the variable $High\ Import\ Dependence_j$ is a dummy variable equal to 1 if $Import\ Dependence_j$ is higher than the mean (median) level. The last row of the table reports the F-test that the sum of $\Delta Input\ Tariff_{j,T}$ and $\Delta Input\ Tariff_{j,T} \times High\ Import\ Dependence_j$ is different from zero. Observations are weighted by 1988 employment. The sample covers all industries for 1988-2016. Standard errors are clustered at the SIC3 industry level; ***, **, and * denote significance at the 1%, 5%, and 10% levels respectively.

Table A-12
The impact of tariffs on employment in downstream industries
(alternative AD measures)

	Product coverage (1)	Import coverage (2)	All TTBs (3)	All countries (4)
$\Delta Input\ Tariff_{j,T}$	-4.235*** (1.205)	-2.896*** (0.565)	-0.379*** (0.101)	-0.696*** (0.213)
SIC4 FE	Yes	Yes	Yes	Yes
Year FE	Yes	Yes	Yes	Yes
Observations	3,351	3,351	3,351	3,351
KP F-statistic	140.4	2,669.6	230.8	65.1

The table reports 2SLS estimates. The dependent variable $\Delta L_{j,T}$ is the annualized log change in employment in SIC4 industry j during term T . $\Delta Input\ Tariff_{j,T}$ is the change in the average input tariff of industry j during term T . In columns 1 and 2, the variable $\Delta Input\ Tariff_{j,T}$ using these alternative measures of AD protection: $Product\ Coverage_{i,T}$ and $Import\ Coverage_{i,T}$. In column 3, the variable is constructed using information on all US TTBs (AD duties, countervailing duties, and safeguards) against China, while in column 4 it is based on all US AD duties (against all targeted countries). Observations are weighted by 1988 employment. The sample covers all industries for 1988-2016. Standard errors are clustered at the SIC3 industry level; ***, **, and * denote significance at the 1%, 5%, and 10% levels respectively.

Table A-13
The impact of tariffs on employment in downstream industries
(additional tariffs)

	AD duties (1)	US MFN tariffs (2)	Chinese AD duties
$\Delta Input\ Tariff_{j,T}$	-0.144** (0.057)	-0.305*** (0.081)	-0.306*** (0.084)
$\Delta Tariff_{j,T}$	-0.032 (0.030)		
$\Delta Input\ Tariff\ MFN_{j,T}$		-0.353 (0.245)	
$\Delta Input\ Retaliation_{j,T}$			-0.109** (0.047)
$\Delta Retaliation_{j,T}$			-0.007 (0.014)
SIC4 FE	Yes	Yes	Yes
Year FE	Yes	Yes	Yes
Observations	2,833	3,351	3,351
KP F-statistic	7.97	212.7	231.6

The table reports 2SLS estimates. The dependent variable $\Delta L_{j,T}$ is the annualized log change in employment in SIC4 industry j during term T . $\Delta Input\ Tariff_{j,T}$ is the change in the average input tariff of industry j during term T . $\Delta Tariff_{j,T}$ is the change in the the average AD duty in SIC4 industry j during term T . $\Delta Input\ Tariff\ MFN_{j,T}$ is the change in the average US MFN tariff applied on inputs of industry j . $\Delta Input\ Retaliation_{j,T}$ is the change in the average AD duty applied by China on inputs of industry j . $\Delta Retaliation_{j,T}$ is the change in the AD duty applied by China on industry j . Observations are weighted by 1988 employment. The sample covers all industries for 1988-2016. Standard errors are clustered at the SIC3 industry level; ***, **, and * denote significance at the 1%, 5%, and 10% levels respectively.

Table A-14
The impact of tariffs on employment in downstream industries
(alternative IO linkages)

	Total requirements		Diagonal	
	Average input tariff (1)	Tariff on key input (2)	Average input tariff (3)	Tariff on key input (4)
$\Delta Input\ Tariff_{j,T}$	-0.362*** (0.095)	-0.025* (0.014)	-0.327*** (0.078)	-0.047*** (0.005)
SIC4 FE	Yes	Yes	Yes	Yes
Year FE	Yes	Yes	Yes	Yes
Observations	3,351	3,351	3,351	3,351
KP F-statistic	170.0	578.6	375.9	1,093.3

The table reports 2SLS estimates. The dependent variable $\Delta L_{j,T}$ is the annualized log change in employment in SIC4 industry j during term T . $\Delta Input\ Tariff_{j,T}$ is the change in the average input tariff of industry j (in columns 1 and 3) or in the tariff on the key input of industry j (in columns 2 and 4) during term T . In columns 1 and 2, we use the total requirement coefficients $\theta_{i,j}$ to construct $\Delta Input\ Tariff_{j,T}$ (excluding $\theta_{j,j}$), while in columns 3 and 4 we use the direct requirement coefficients $\omega_{i,j}$ (including $\omega_{j,j}$). Observations are weighted by 1988 employment. The sample covers all industries for 1988-2016. Standard errors are clustered at the SIC3 industry level; ***, **, and * denote significance at the 1%, 5%, and 10% levels respectively.

Table A-15
The impact of tariffs on employment in downstream industries
(political importance of industries)

	Alternative $Swing_{i,T}$		Political controls	
	(1)	(2)	(3)	(4)
$\Delta Input\ Tariff_{j,T}$	-0.311*** (0.092)	-0.359*** (0.103)	-0.313*** (0.095)	-0.368*** (0.107)
$\Delta Input\ Swing_{j,T}$		0.007 (0.007)		0.008 (0.006)
$\Delta Swing_{j,T}$			-0.548 (0.461)	-0.566 (0.452)
SIC4 FE	Yes	Yes	Yes	Yes
Year FE	Yes	Yes	Yes	Yes
Observations	3,351	3,351	3,351	3,351
KP F-statistic	192.7	143.9	194.5	148.6

The table reports 2SLS estimates. The dependent variable $\Delta L_{j,T}$ is the annualized log change in employment in SIC4 industry j during term T . $\Delta Input\ Tariff_{j,T}$ is the change in the average input tariff of industry j during term T . $\Delta Swing_{j,T}$ captures the change in the political importance of industry j , while $\Delta Input\ Swing_{j,T}$ measures the change in the average political importance of its input industries. All control variables are constructed based on employment in all industries in states classified as swing in term T . Observations are weighted by 1988 employment. The sample covers all industries for 1988-2016. Standard errors are clustered at the SIC3 industry level; ***, **, and * denote significance at the 1%, 5%, and 10% levels respectively.

Table A-16
The impact of tariffs on downstream industries
(alternative econometric methodologies)

	Level	Year	Unweighted	SIC2
	regressions	differences	regressions	clusters
	(1)	(2)	(3)	(4)
$Input\ Tariff_{j,T}$	-1.154*** (0.413)			
$\Delta Input\ Tariff_{j,T}$		-1.235*** (0.341)	-0.152*** (0.046)	-0.319*** (0.104)
SIC4 FE	Yes	Yes	Yes	Yes
Year FE	Yes	Yes	Yes	Yes
Observations	3,351	13,407	3,351	3,351
KP F-statistic	142.4	229.0	156.7	168.7

The table reports 2SLS estimates. In columns 1, the dependent variable is the level of employment in SIC4 industry j at the end of term T ; in column 2, it is the log change in employment in SIC4 industry j between years t and $t - 1$; in column 3 and 4, it is the annualized log change in employment in SIC4 industry j during term T . $Input\ Tariff_{j,T}$ is the average input tariff of industry j , while $\Delta Input\ Tariff_{j,T}$ is the change in the average input tariff of industry j . Observations are weighted by 1988 employment (in columns 1, 2 and 4) and not weighted (column 3). The sample covers all industries for 1988-2016. Standard errors are clustered at the SIC3 level in columns 1-2, and SIC2 level in columns 3-4. ***, **, and * denote significance at the 1%, 5%, and 10% levels respectively.

Table A-17
The effects of tariffs in the protected industries

	Employment	Blue Collar	White Collar	Wages	Sales	Investment
	(1)	(2)	(3)	(4)	(5)	(6)
$\Delta \text{Tariff}_{j,T}$	-0.024 (0.025)	-0.024 (0.031)	-0.014 (0.016)	0.006 (0.007)	-0.018 (0.066)	0.110*** (0.034)
SIC4 FE	Yes	Yes	Yes	Yes	Yes	Yes
Term FE	Yes	Yes	Yes	Yes	Yes	Yes
Observations	2,833	2,320	2,320	2,320	2,320	2,320
KP F-statistic	16.3	10.5	10.5	10.5	10.5	10.5

The table reports 2SLS estimates. The dependent variable is the annualized log change in employment (column 1), the number of blue-collar jobs (column 2), white-collar jobs (column 3), wages (column 4), sales (column 5), and investment (column 6) in SIC4 industry j during term T . $\Delta \text{Tariff}_{j,T}$ is the change in the the average AD duty in SIC4 industry j during term T . In column 1, and the sample covers all tradable industries in 1991-2016; in columns 2-6, the sample covers all manufacturing industries in 1991-2011. Observations are weighted by 1988 employment. Standard errors are clustered at the SIC3 industry level; ***, **, and * denote significance at the 1%, 5%, and 10% levels respectively.