

Gao, Can; Martin, Ian

Working Paper

Volatility, valuation ratios, and bubbles: An empirical measure of market sentiment

SAFE Working Paper, No. 312

Provided in Cooperation with:

Leibniz Institute for Financial Research SAFE

Suggested Citation: Gao, Can; Martin, Ian (2021) : Volatility, valuation ratios, and bubbles: An empirical measure of market sentiment, SAFE Working Paper, No. 312, Leibniz Institute for Financial Research SAFE, Frankfurt a. M.

This Version is available at:

<https://hdl.handle.net/10419/232025>

Standard-Nutzungsbedingungen:

Die Dokumente auf EconStor dürfen zu eigenen wissenschaftlichen Zwecken und zum Privatgebrauch gespeichert und kopiert werden.

Sie dürfen die Dokumente nicht für öffentliche oder kommerzielle Zwecke vervielfältigen, öffentlich ausstellen, öffentlich zugänglich machen, vertreiben oder anderweitig nutzen.

Sofern die Verfasser die Dokumente unter Open-Content-Lizenzen (insbesondere CC-Lizenzen) zur Verfügung gestellt haben sollten, gelten abweichend von diesen Nutzungsbedingungen die in der dort genannten Lizenz gewährten Nutzungsrechte.

Terms of use:

Documents in EconStor may be saved and copied for your personal and scholarly purposes.

You are not to copy documents for public or commercial purposes, to exhibit the documents publicly, to make them publicly available on the internet, or to distribute or otherwise use the documents in public.

If the documents have been made available under an Open Content Licence (especially Creative Commons Licences), you may exercise further usage rights as specified in the indicated licence.

Can Gao | Ian Martin

Volatility, Valuation Ratios, and Bubbles: An Empirical Measure of Market Sentiment

SAFE Working Paper No. 312

Leibniz Institute for Financial Research SAFE
Sustainable Architecture for Finance in Europe

info@safe-frankfurt.de | www.safe-frankfurt.de

Volatility, Valuation Ratios, and Bubbles: An Empirical Measure of Market Sentiment

Can Gao Ian Martin*

January, 2021

Abstract

We define a sentiment indicator based on option prices, valuation ratios and interest rates. The indicator can be interpreted as a lower bound on the expected growth in fundamentals that a rational investor would have to perceive in order to be happy to hold the market. The lower bound was unusually high in the late 1990s, reflecting dividend growth expectations that in our view were unreasonably optimistic. We show that our measure is a leading indicator of detrended volume and of analysts' long-term earnings growth expectations. Our approach depends on two key ingredients. First, we derive a new valuation-ratio decomposition that is related to the [Campbell and Shiller \(1988\)](#) loglinearization, but which resembles the Gordon growth model more closely and has certain other advantages. Second, we introduce a volatility index that provides a lower bound on the market's expected log return.

*Can Gao: Leibniz Institute for Financial Research SAFE, Frankfurt and Imperial College, London, <http://www.imperial.ac.uk/people/can.gao14>. Ian Martin: London School of Economics, <http://personal.lse.ac.uk/martiniw>. We thank John Campbell, Stefan Nagel, Patrick Bolton, Ander Perez-Orive, Alan Moreira, Paul Schneider, Sarah Mouabbi, Sean Myers, Wei Xiong, the referees, and seminar participants at Duke University, the NBER Behavioral Finance workshop, the Federal Reserve Bank of New York, the Sveriges Riksbank, the Bank of England, and the European Central Bank for their comments. Ian Martin is grateful to the ERC for support under Starting Grant 639744.

In this paper, we introduce a market sentiment indicator that exploits two contrasting views of market predictability. One of our aims is to find a useful way of measuring the “bubbliness” of the market. If valuation ratios—think P/D —are high, then one starts to worry. But valuation ratios can be high for good reasons if interest rates are low, or if risk premia are low (and are widely understood to be low), or both.

A vast literature has studied the extent to which signals based on valuation ratios are able to forecast market returns and/or measures of dividend growth; early papers include [Keim and Stambaugh \(1986\)](#), [Campbell and Shiller \(1988\)](#), and [Fama and French \(1988\)](#). More recently, [Martin \(2017\)](#) argued that indexes of implied volatility based on option prices can serve as forecasts of expected excess returns; and noted that the two classes of predictor variables made opposing forecasts in the late 1990s, with valuation ratios pointing to low long-run returns and option prices pointing to high short-run returns.

We play off the two views of the world against one other. Consider the classic Gordon growth model, which relates the market’s dividend yield to its expected return minus expected dividend growth: $D/P = \mathbb{E}(R - G)$. Roughly speaking, the idea behind the paper is to use option prices to measure $\mathbb{E}R$, and then to calculate the expected growth in fundamentals implicit in market valuations—our sentiment measure—as the difference between the option price index and dividend yield, $\mathbb{E}G = \mathbb{E}R - \mathbb{E}(R - G)$.

Putting this thought into practice is not as easy as it might seem, however. The Gordon growth model relies on assumptions that expected returns and expected dividend growth are constant over time. The loglinearized identity of [Campbell and Shiller \(1988\)](#) generalizes the Gordon growth model to the empirically relevant case in which these quantities are time-varying. Their identity relates the price-dividend ratio of an asset to its expected future log dividend growth and expected log returns. It is often characterized as saying that high valuation ratios signal high expected dividend growth or low expected returns (or both).

But expected returns are not the same as expected log returns. We show that high valuations—and low expected log returns—may be consistent with *high* expected simple returns if log returns are highly volatile, right-skewed, or fat-tailed. Plausibly, all of these conditions were satisfied in the late 1990s. As they are all potential explanations for the rise in valuation ratios at that time, we will

need to be careful about the distinction between log returns and simple returns.

Furthermore, we show that while the Campbell–Shiller identity is highly accurate on average, the linearization is most problematic at times when the price-dividend ratio is far above its long-run mean. At such times—the late 1990s being a leading example—a researcher who uses the Campbell–Shiller loglinearization will conclude that long-run expected returns are even lower, and/or long-run expected dividend growth is even higher, than is actually the case. Thus the linearization may “cry bubble” too soon.

We therefore propose a new linearization that does not have this feature, but which also relates a measure of dividend yield to expected log returns and dividend growth. Our approach exploits a measure of dividend yield $y_t = \log(1 + D_t/P_t)$ that has the advantage of being in “natural” units, unlike the quantity $dp_t = \log D_t/P_t$ that features in the Campbell–Shiller approach. As a further bonus, the resulting identity bears an even closer resemblance to the traditional Gordon growth model—which it generalizes to allow for time-varying expected returns and dividend growth—than does the Campbell–Shiller loglinearization.

The second ingredient of our paper is a lower bound on expected log returns that plays the role of $\mathbb{E}R$ in the loose description above. The lower bound relies on an assumption on the form of the stochastic discount factor (SDF). This assumption, the *modified negative correlation condition* (mNCC), is satisfied, for example, if one takes the perspective of an unconstrained agent who maximizes expected utility over next-period wealth, who chooses to invest his or her wealth fully in the market, and whose relative risk aversion is at least one. An attractive feature of this approach is that it allows the investor in question to coexist with other agents who may or may not be rational. Under the mNCC, our lower bound on expected log returns can be computed directly from index option prices so is, broadly speaking, a measure of implied volatility.

The paper is organized as follows. Section 2 discusses the link between valuation ratios, returns, and dividend growth; it analyzes the properties of the Campbell–Shiller loglinearization, introduces our alternative loglinearization, and studies the predictive relationship between dividend yields and future log returns and log dividend growth. Section 3 derives the lower bound on expected returns. Section 4 combines the preceding sections to introduce the sentiment indicator. Section 5 documents the fact that our measure is a leading indicator of detrended

volume, and of a long-term earnings growth forecast index that has been constructed by [Nagel and Xu \(2019\)](#); and explores its relationship with various other measures of financial conditions. Section 6 concludes.

1 Framework

Our approach has two ingredients. The first is the predictive relationship between valuation ratios, returns, and fundamentals that has been explored in the vast predictability literature that started from [Keim and Stambaugh \(1986\)](#), [Campbell and Shiller \(1988\)](#), and [Fama and French \(1988\)](#), among others. We introduce a novel loglinearization

$$\mathbb{E}_t(r_{t+1} - g_{t+1}) = \frac{1}{1 - \rho} y_t - \frac{\rho}{1 - \rho} \mathbb{E}_t y_{t+1}, \quad (1)$$

where r_{t+1} is the log return on the market, g_{t+1} is log dividend growth, y_t is the market dividend yield, and $\rho \approx 0.97$ is a loglinearization constant. If, say, the dividend yield follows an AR(1) process,¹ then equation (1) implies that

$$\mathbb{E}_t(r_{t+1} - g_{t+1}) = a_0 + a_1 y_t \quad (2)$$

for some constants a_0 and a_1 . (We derive these and related results in Section 2.)

The second exploits the information in option prices via a strategy introduced by [Martin \(2017\)](#). We assume that the inequality

$$\text{cov}_t(M_{t+1}R_{t+1}, \log R_{t+1}) \leq 0 \quad (3)$$

holds; as this is closely related to the negative correlation condition (NCC) of [Martin \(2017\)](#), we refer to it as the *modified negative correlation condition* (mNCC). Here M_{t+1} denotes a stochastic discount factor (SDF) which prices payoffs delivered at time $t + 1$ from the perspective of time t , and R_{t+1} is the gross return on the market.

¹Our approach could easily accommodate, say, a vector autoregression for y_t ; the key is that one has an empirical procedure that generates a sensible measure of $\mathbb{E}_t y_{t+1}$ to be used in (1). Below, we also consider the case in which y_t follows an AR(2) or AR(3).

If one thinks from the perspective of an investor whose beliefs and risk preferences are consistent with (2) (or with the alternatives mentioned in footnote 1) and (3), then the mNCC holds if this investor—whom we refer to as a *representative investor*—maximizes utility $\mathbb{E}_t u(W_{t+1})$, with relative risk aversion $-Wu''(W)/u'(W)$ (which need not be constant) at least one, and chooses to invest his or her wealth fully in the market. This setup allows for the possibility that other investors are irrational and/or face trading constraints; but we emphasize that our representative investor is assumed to be unconstrained, and, in particular, to be able to trade in option markets, so that he or she is marginal for option prices. Thus we are ruling out extreme forms of market segmentation by assumption. (A representative investor in this sense is sufficient, but not necessary, for the mNCC to hold. We discuss more general conditions under which the mNCC holds in Section 3.)

We show, in Section 3, that this representative investor's beliefs must then respect the following lower bound on the expected log return on the market, which can be computed directly from option prices:

$$\mathbb{E}_t r_{t+1} - r_{f,t+1} \geq \frac{1}{P_t} \left\{ \int_0^{F_t} \frac{\text{put}_t(K)}{K} dK + \int_{F_t}^{\infty} \frac{\text{call}_t(K)}{K} dK \right\}. \quad (4)$$

Starting from the decomposition

$$\mathbb{E}_t g_{t+1} = r_{f,t+1} - \mathbb{E}_t (r_{t+1} - g_{t+1}) + \mathbb{E}_t (r_{t+1} - r_{f,t+1}), \quad (5)$$

we have a lower bound on the representative investor's expected dividend growth,

$$\mathbb{E}_t g_{t+1} \geq r_{f,t+1} - (a_0 + a_1 y_t) + \frac{1}{P_t} \left\{ \int_0^{F_t} \frac{\text{put}_t(K)}{K} dK + \int_{F_t}^{\infty} \frac{\text{call}_t(K)}{K} dK \right\},$$

from (2), (4), and (5).

To implement this, we replace the population coefficients a_0 and a_1 by their sample counterparts \hat{a}_0 and \hat{a}_1 , which we estimate by OLS.² We end up with the

²We discuss the issue of estimation uncertainty in Section 4.2.1.

sentiment indicator

$$B_t = r_{f,t+1} - (\widehat{a}_0 + \widehat{a}_1 y_t) + \frac{1}{P_t} \left[\int_0^{F_t} \frac{\text{put}_t(K)}{K} dK + \int_{F_t}^{\infty} \frac{\text{call}_t(K)}{K} dK \right].$$

2 Fundamentals

We seek to exploit the information in valuation ratios, following [Campbell and Shiller \(1988\)](#). We write P_{t+1} , D_{t+1} and R_{t+1} for the level, dividend, and gross return of the market, respectively: thus

$$R_{t+1} = \frac{D_{t+1} + P_{t+1}}{P_t}. \quad (6)$$

It follows from (6) that

$$r_{t+1} - g_{t+1} = pd_{t+1} - pd_t + \log(1 + e^{dp_{t+1}}), \quad (7)$$

where we write $dp_{t+1} = d_{t+1} - p_{t+1} = \log D_{t+1} - \log P_{t+1}$, $pd_{t+1} = p_{t+1} - d_{t+1}$, and $g_{t+1} = d_{t+1} - d_t$. [Campbell and Shiller \(1988\)](#) linearized the final term in (7) to derive a decomposition of the (log) price-dividend ratio,

$$pd_t = \frac{k}{1 - \rho} + \sum_{i=0}^{\infty} \rho^i \mathbb{E}_t(g_{t+1+i} - r_{t+1+i}), \quad (8)$$

where the constants k and ρ are determined by

$$\rho = \frac{\mu}{1 + \mu} \quad \text{and} \quad \frac{k}{1 - \rho} = (1 + \mu) \log(1 + \mu) - \mu \log \mu, \quad \text{where } \mu = e^{\overline{pd}}.$$

We follow the convention in the literature in writing approximations such as (8) with equals signs. (A number of our results below are in fact exact. We emphasize these as they occur.) We also assume throughout the paper that there are no rational bubbles, as is standard in the literature. Thus, for example, in deriving (8) we are assuming that $\lim_{T \rightarrow \infty} \rho^T pd_T = 0$.

The approximation (8) is often loosely summarized by saying that high valuation ratios signal high expected dividend growth or low expected returns (or

both). But expected log returns are not the same as expected returns:³ we have

$$\mathbb{E}_t r_{t+1+i} = \log \mathbb{E}_t R_{t+1+i} - \frac{1}{2} \text{var}_t r_{t+1+i} - \sum_{n=3}^{\infty} \frac{\kappa_t^{(n)}(r_{t+1+i})}{n!},$$

where $\kappa_t^{(n)}(r_{t+1+i})$ is the n th conditional cumulant of the log return. (If returns are conditionally lognormal, then the higher cumulants $\kappa_t^{(n)}(r_{t+1+i})$ are zero for $n \geq 3$.) Thus high valuations—and low expected log returns—may be consistent with *high* expected arithmetic returns if log returns are highly volatile, right-skewed, or fat-tailed. Plausibly, all of these conditions were satisfied in the late 1990s. As they are all potential explanations for the rise in valuation ratios at that time,⁴ we will need to be careful about the distinction between log returns and simple returns.

Furthermore, the Campbell–Shiller first-order approximation is least accurate when the valuation ratio is far from its mean, as we now show.

Result 1 (Campbell–Shiller revisited). *The log price-dividend ratio pd_t obeys the following exact decomposition:*

$$pd_t = \frac{k}{1-\rho} + \sum_{i=0}^{\infty} \rho^i (g_{t+1+i} - r_{t+1+i}) + \frac{1}{2} \sum_{i=0}^{\infty} \rho^i \psi_{t+1+i} (1 - \psi_{t+1+i}) (pd_{t+1+i} - \overline{pd})^2, \quad (9)$$

where the constants k and ρ are defined as above, and the quantities ψ_{t+1+i} lie between ρ and $1/(1 + e^{dp_{t+1+i}})$.

Equation (9) becomes a second-order Taylor approximation if ψ_t is assumed equal to ρ for all t ,

$$pd_t = \frac{k}{1-\rho} + \sum_{i=0}^{\infty} \rho^i (g_{t+1+i} - r_{t+1+i}) + \frac{\rho(1-\rho)}{2} \sum_{i=0}^{\infty} \rho^i (pd_{t+1+i} - \overline{pd})^2, \quad (10)$$

and reduces to the Campbell–Shiller loglinearization (8) if the final term on the right-hand side of (9) is neglected entirely.

³And expected log dividend growth is not the same as expected dividend growth. This distinction is less important, however, as the log dividend growth series is less volatile than the log return series.

⁴See, for example, [Pástor and Veronesi \(2003, 2006\)](#).

Proof. Taylor’s theorem, with the Lagrange form of the remainder, states that (for any sufficiently well-behaved function f , and for $x \in \mathbb{R}$ and $a \in \mathbb{R}$)

$$f(x) = f(a) + (x - a)f'(a) + \frac{1}{2}(x - a)^2 f''(\xi), \text{ for some } \xi \text{ between } a \text{ and } x. \quad (11)$$

We apply this result with $f(x) = \log(1 + e^x)$, $x = dp_{t+1}$, and $a = \overline{dp} = \mathbb{E} dp_t$ equal to the mean log dividend yield. Equation (11) becomes

$$\log(1 + e^{dp_{t+1}}) = k + (1 - \rho)dp_{t+1} + \frac{1}{2}\psi_{t+1}(1 - \psi_{t+1})(dp_{t+1} - \overline{dp})^2,$$

where $\psi_{t+1} = 1/(1 + e^\xi)$ must lie between $1/(1 + e^{\overline{dp}}) = \rho$ and $1/(1 + e^{dp_{t+1}})$.

Substituting into expression (7), we have the exact relationship

$$r_{t+1} - g_{t+1} = k - pd_t + \rho pd_{t+1} + \frac{1}{2}\psi_{t+1}(1 - \psi_{t+1})(pd_{t+1} - \overline{pd})^2$$

which can be solved forward to give (9). The approximation (10) follows. \square

Result 1 expresses the price-dividend ratio in terms of future log dividend growth and future log returns—as in the Campbell–Shiller approximation—plus a convexity correction.

This convexity correction is small on average. Take the unconditional expectation of second-order approximation (10):

$$\mathbb{E} pd_t = \frac{k}{1 - \rho} + \frac{\mathbb{E}(g_t - r_t)}{1 - \rho} + \frac{\rho}{2} \text{var } pd_t,$$

assuming that pd_t , r_t , and g_t are stationary so that their unconditional means and variances are well defined. Using CRSP data from 1947 to 2019, the sample average of pd_t is 3.469 (so that ρ is 0.969) and the sample standard deviation is 0.434. Thus the unconditional average convexity correction $\frac{\rho}{2} \text{var } pd_t$ is about 0.0913, that is, about 2.63% of the size of $\mathbb{E} pd_t$.

The convexity correction can sometimes be large, however. We have

$$pd_t = \frac{k}{1 - \rho} + \sum_{i=0}^{\infty} \rho^i \mathbb{E}_t (g_{t+1+i} - r_{t+1+i}) + \frac{\rho(1 - \rho)}{2} \sum_{i=0}^{\infty} \rho^i \mathbb{E}_t (pd_{t+1+i} - \overline{pd})^2,$$

and the final term may be quantitatively important if the valuation ratio is far from its mean and persistent, so that it is expected to remain far from its mean for a significant length of time.

For the sake of argument, suppose the log price-dividend ratio follows an AR(1), $pd_{t+1} - \bar{pd} = \phi(pd_t - \bar{pd}) + \varepsilon_{t+1}$, where $\text{var}_t \varepsilon_{t+1} = \sigma^2$ so that $\text{var} pd_t = \sigma^2/(1 - \phi^2)$; and set $\sigma = 0.167$ and $\phi = 0.923$ to match the sample standard deviation and autocorrelation in CRSP data from 1947–2019. The above expression becomes

$$pd_t = \frac{k}{1 - \rho} + \underbrace{\sum_{i=0}^{\infty} \rho^i \mathbb{E}_t (g_{t+1+i} - r_{t+1+i}) + \frac{\rho(1 - \rho)\phi^2}{2(1 - \rho\phi^2)} \left[(pd_t - \bar{pd})^2 + \frac{\sigma^2}{(1 - \rho)\phi^2} \right]}_{\text{convexity correction}}.$$

At its peak during the boom of the late 1990s, pd_t was 2.2 standard deviations above its mean. The convexity term then equals 0.145: this is the amount by which a researcher using the Campbell–Shiller approximation would overstate $\sum_{i=0}^{\infty} \rho^i \mathbb{E}_t (g_{t+1+i} - r_{t+1+i})$. With $\rho = 0.969$, this is equivalent to overstating $\mathbb{E}_t g_{t+1+i} - r_{t+1+i}$ by 14.5 percentage points for one year, 3.1 percentage points for five years, or 1.0 percentage points for 20 years.⁵

The Campbell–Shiller approximation does not apply if dp_t follows a random walk (i.e., $\mathbb{E}_t dp_{t+1} = dp_t$). But in that case we can linearize (7) around the conditional mean $\mathbb{E}_t dp_{t+1}$ to find⁶

$$\mathbb{E}_t (r_{t+1} - g_{t+1}) = \log (1 + e^{dp_t}) = \log \left(1 + \frac{D_t}{P_t} \right). \quad (12)$$

Motivated by this fact,⁷ we define $y_t = \log (1 + D_t/P_t)$. An appealing property

⁵The numbers are more dramatic if we use the long sample from 1871–2015 available on Robert Shiller’s website. We find $\rho = 0.960$, $\sigma = 0.136$, and $\phi = 0.942$ in the long sample, so that the convexity correction is 0.0596 when pd_t is at its mean, and 0.253 at the peak (which was 3.2 standard deviations above the mean). This last number corresponds to overstating $\mathbb{E}_t g_{t+1+i} - r_{t+1+i}$ by 25.3 percentage points for one year, 5.5 percentage points for five years, 1.8 percentage points for 20 years, or 1.0 percentage points for ever.

⁶Campbell (2008, 2018) derives the same result via a different route, but makes further assumptions (that the driving shocks are homoskedastic and conditionally Normal) that we do not require.

⁷Further motivation is provided in Martin (2013), where it is shown that this measure of

of this definition—and one that dp_t does not possess—is that $y_t = \log(1 + D_t/P_t) \approx D_t/P_t$. We can then rewrite the definition of the log return (7) as the (exact) relationship

$$r_{t+1} - g_{t+1} = y_t + \log(1 - e^{-y_t}) - \log(1 - e^{-y_{t+1}}). \quad (13)$$

In these terms, equation (12) states that

$$y_t = \mathbb{E}_t(r_{t+1} - g_{t+1}), \quad (14)$$

which is valid, as a first-order approximation, if dp_t (or y_t) follows a random walk.

Alternatively, if y_t is stationary (as is almost always assumed in the literature) we have the following result. We write unconditional means as $\bar{y} = \mathbb{E} y_t$, $\bar{r} = \mathbb{E} r_t$ and $\bar{g} = \mathbb{E} g_t$.

Result 2 (A variant of the Gordon growth model). *Suppose y_t is stationary. Then we have the loglinearization*

$$y_t = (1 - \rho) \sum_{i=0}^{\infty} \rho^i (r_{t+1+i} - g_{t+1+i}), \quad (15)$$

where⁸ $\rho = e^{-\bar{y}}$. As there is no constant in (15), and as $(1 - \rho) \sum_{i=0}^{\infty} \rho^i = 1$, this is a variant of the Gordon growth model: y is a weighted average of future $r - g$.

To second order, we have the approximation

$$y_t = (1 - \rho) \sum_{i=0}^{\infty} \rho^i (r_{t+1+i} - g_{t+1+i}) - \frac{1}{2} \frac{\rho}{1 - \rho} \sum_{i=0}^{\infty} \rho^i [(y_{t+1+i} - \bar{y})^2 - (y_{t+i} - \bar{y})^2]. \quad (16)$$

We also have the exact relationship

$$\bar{y} = \bar{r} - \bar{g}, \quad (17)$$

which does not rely on any approximation.

dividend yield emerges naturally in i.i.d. models with power utility or Epstein–Zin preferences.

⁸This differs slightly from the definition of ρ in Result 1, though they are extremely close in practice.

Proof. Using Taylor’s theorem to second order in equation (13), we have the second-order approximation

$$r_{t+1} - g_{t+1} = \frac{1}{1 - \rho} y_t - \frac{\rho}{1 - \rho} y_{t+1} + \frac{1}{2} \frac{\rho}{(1 - \rho)^2} [(y_{t+1} - \bar{y})^2 - (y_t - \bar{y})^2]$$

which can be rewritten

$$y_t = (1 - \rho)(r_{t+1} - g_{t+1}) + \rho y_{t+1} - \frac{1}{2} \frac{\rho}{1 - \rho} [(y_{t+1} - \bar{y})^2 - (y_t - \bar{y})^2],$$

and then solved forward, giving (15) and (16). Equation (17) follows by taking expectations of the identity (13) and noting that $\mathbb{E} \log(1 - e^{-y_t}) = \mathbb{E} \log(1 - e^{-y_{t+1}})$ by stationarity of y_t . \square

We note in passing that equation (17) implies that the inequality $\bar{r} > \bar{g}$, which is discussed extensively by [Piketty \(2014\)](#), holds in any model in which $\bar{y} > 0$. [Piketty \(2015\)](#) writes that “the inequality $r > g$ holds true in the steady-state equilibrium of the most common economic models, including representative-agent models where each individual owns an equal share of the capital stock.” Our result shows that the inequality applies much more generally. It does not rely on equilibrium logic and is not in itself particularly interesting or significant.

Given our focus on bubbles, we are particularly interested in the accuracy of these loglinearizations⁹ at times when valuation ratios are unusually high or, equivalently, when dp_t and y_t are unusually low. This motivates the following definition and result.

Definition 1. We say that y_t is *far from its mean* (at time t) if

$$\mathbb{E}_t [(y_{t+1+i} - \bar{y})^2] \leq (y_t - \bar{y})^2 \quad \text{for all } i \geq 0. \quad (18)$$

Example.—If y_t follows an AR(1), then a direct calculation shows that y_t is far from its mean if and only if it is at least one standard deviation from its mean.

⁹In a different direction, motivation for doing so is provided by [Pohl, Schmedders and Wilms \(2018\)](#), who show that loglinearizations can induce quantitatively important approximation errors in long-run risk models.

Result 3 (Signing the approximation errors). *We can sign the approximation error in the Campbell–Shiller loglinearization (8):*

$$dp_t < -\frac{k}{1-\rho} + \sum_{i=0}^{\infty} \rho^i \mathbb{E}_t (r_{t+1+i} - g_{t+1+i}). \quad (19)$$

The first-order approximation (15) is exact on average. That is,

$$\mathbb{E} y_t = (1-\rho) \sum_{i=0}^{\infty} \rho^i \mathbb{E} (r_{t+1+i} - g_{t+1+i}) \quad (20)$$

holds exactly, without any approximation. But if y_t is far from its mean then (up to a second-order approximation)

$$y_t \geq (1-\rho) \sum_{i=0}^{\infty} \rho^i \mathbb{E}_t (r_{t+1+i} - g_{t+1+i}). \quad (21)$$

Proof. The inequality (19) follows immediately from (9) and equation (20) follows directly from equation (17). To establish the inequality (21), rewrite

$$\begin{aligned} \sum_{i=0}^{\infty} \rho^i [(y_{t+1+i} - \bar{y})^2 - (y_{t+i} - \bar{y})^2] &= -(y_t - \bar{y})^2 + (1-\rho) \sum_{i=0}^{\infty} \rho^i (y_{t+1+i} - \bar{y})^2 \\ &= (1-\rho) \sum_{i=0}^{\infty} \rho^i [(y_{t+1+i} - \bar{y})^2 - (y_t - \bar{y})^2]. \end{aligned} \quad (22)$$

The inequality then follows from (16), (18), and (22). \square

Dividend yields, whether measured by dp_t or by y_t , were unusually low around the turn of the millennium, indicating some combination of low future returns and high future dividend growth. Result 3 shows that an econometrician who uses the Campbell–Shiller approximation (8) at such a time—that is, who treats the inequality (19) as an equality—will overstate how low future returns, or how high future dividend growth, must be: and therefore may be too quick to conclude that the market is “bubbly.” In contrast, an econometrician who uses the approximation (15) will understate how low future returns, or how high future

dividend growth, must be. Thus y_t is a conservative diagnostic for bubbles.

To place more structure on the relationship between valuation ratios and r and g , we will make an assumption about the evolution of dp_t and y_t over time. For now we will rely on an AR(1) assumption to keep things simple; in Section 4.1, we report the corresponding results assuming AR(2) or AR(3) processes.

The Campbell–Shiller approximation over one period states that $r_{t+1} - g_{t+1} = k + dp_t - \rho dp_{t+1}$. If dp_t follows an AR(1) with autocorrelation ϕ then $\mathbb{E}_t dp_{t+1} - \overline{dp} = \phi (dp_t - \overline{dp})$, so

$$\mathbb{E}_t (r_{t+1} - g_{t+1}) = c + (1 - \rho\phi)dp_t, \quad (23)$$

where we have absorbed constant terms into c .

Conversely, the first-order approximation underlying Result 2 implies that

$$\mathbb{E}_t (r_{t+1} - g_{t+1}) = \frac{1}{1 - \rho} y_t - \frac{\rho}{1 - \rho} \mathbb{E}_t y_{t+1}. \quad (24)$$

If y_t follows an AR(1) with autocorrelation ϕ_y then this reduces to

$$\mathbb{E}_t (r_{t+1} - g_{t+1}) = c + \frac{1 - \rho\phi_y}{1 - \rho} y_t, \quad (25)$$

where again we absorb constants into the intercept c . In view of (17), this can also be written without an intercept as

$$\mathbb{E}_t (r_{t+1} - g_{t+1}) - (\bar{r} - \bar{g}) = \frac{1 - \rho\phi_y}{1 - \rho} (y_t - \bar{y}),$$

so that the deviation of y_t from its long-run mean is proportional to the deviation of conditionally expected $r_{t+1} - g_{t+1}$ from its long-run mean. A further advantage of y_t over dp_t is that the expression (25) is also meaningful if y_t follows a random walk: in this case, the coefficient on y_t equals one and the intercept is zero, by equation (14).

Equations (23) and (25) motivate regressions of realized $r_{t+1} - g_{t+1}$ onto dp_t and a constant, or onto y_t and a constant. The results are shown in Table 1, where we also report the results of regressing r_{t+1} and $-g_{t+1}$ separately onto y_t and onto dp_t . We use end-of-year observations of the price level and accumulated dividends

RHS _t	LHS _{t+1}	\hat{a}_0	<i>s.e.</i>	\hat{a}_1	<i>s.e.</i>	R^2
y_t	$r_{t+1} - g_{t+1}$	-0.073	[0.048]	3.541	[1.302]	8.33%
	r_{t+1}	-0.023	[0.048]	3.82	[1.194]	11.13%
	$-g_{t+1}$	-0.05	[0.027]	-0.279	[0.802]	0.29%
dp_t	$r_{t+1} - g_{t+1}$	0.43	[0.144]	0.111	[0.041]	8.23%
	r_{t+1}	0.511	[0.136]	0.117	[0.04]	10.58%
	$-g_{t+1}$	-0.081	[0.084]	-0.006	[0.024]	0.16%

Table 1: Full-sample regressions for S&P 500, annual data, cash reinvestment, 1947–2019.

of the S&P 500 index from CRSP.¹⁰ The table reports regression results in the form¹¹

$$\text{LHS}_{t+1} = a_0 + a_1 \times \text{RHS}_t + \varepsilon_{t+1},$$

with Hansen–Hodrick standard errors shown in brackets. (Under the AR(1) assumption, we could also use (23) or (25) as estimates of $\mathbb{E}_t(r_{t+1} - g_{t+1})$. This approach turns out to give very similar results, as we show in Table 9 of the appendix.)

The variables y_t and dp_t have similar predictive performance and, consistent with the prior literature, we find, in the post-1947 sample, that valuation ratios help to forecast returns but have limited forecasting power for dividend growth. Table 2 reports results using cash reinvested dividends in the full CRSP post-1926 sample. Tables 3 and 4 report results using market reinvested dividends in the

¹⁰We calculate the monthly dividend by multiplying the difference between monthly cum-dividend and ex-dividend returns by the lagged ex-dividend price: $D_t = (R_{cum,t} - R_{ex,t})P_{t-1}$. As we aggregate the dividends paid out over the year, to address seasonality issues, we reinvest dividends month-by-month until the end of the year, using the CRSP 30-day T-bill rate as our risk-free rate. In the appendix, we report similar results with dividends reinvested at the cum-dividend market return rather than at a risk-free rate; if anything, these results are somewhat more favorable to our y_t variable than to dp_t .

¹¹Stambaugh bias has little effect on these numbers. In our main sample, implementing the correction given in equation (18) of Stambaugh (1999) changes the predictive coefficient from 3.54 to 3.35 in the data since 1947, or from 5.12 to 5.11 in the data since 1926. We therefore report simple OLS coefficients for simplicity. The analysis of Section 4.2.2 can also be interpreted as a conservative response to the possibility of Stambaugh bias.

post-1926 period. Tables 5–7 use the price and dividend data of Goyal and Welch (2008) (updated to 2018 and taken from Amit Goyal’s webpage): this gives us a longer sample, as it incorporates Robert Shiller’s data which goes back as far as 1871. The predictability of r relative to g is to some extent a feature of the post-war period. In the long sample, returns are substantially less predictable and dividends substantially more predictable, perhaps because of the post-war tendency of corporations to smooth dividends (Lintner, 1956). Encouragingly, though, we find that the predictive relationship between y_t (or dp_t) and the difference $r_{t+1} - g_{t+1}$ is fairly stable across sample periods and data sources.

3 A lower bound on expected log returns

High valuation ratios are sometimes cited as direct evidence of a bubble. But valuation ratios can be high for good reasons if interest rates or rationally expected risk premia are low. In other words, if we use y_t to measure $\mathbb{E}_t(r_{t+1} - g_{t+1})$ as suggested above, we may find that y_t is low simply because $\mathbb{E}_t r_{t+1}$ is very low, which could reflect low interest rates $r_{f,t+1}$, low (log) risk premia $\mathbb{E}_t r_{t+1} - r_{f,t+1}$, or both.

While interest rates are directly observable, risk premia are harder to measure. We start from the following identity, which generalizes an identity introduced by Martin (2017) in the case $X_{t+1} = R_{t+1}$:

$$\mathbb{E}_t X_{t+1} = \frac{1}{R_{f,t+1}} \mathbb{E}_t^* (R_{t+1} X_{t+1}) - \text{cov}_t (M_{t+1} R_{t+1}, X_{t+1}) .$$

We have written \mathbb{E}_t^* for the time- t conditional risk-neutral expectation operator, defined by the property that $\frac{1}{R_{f,t+1}} \mathbb{E}_t^* X_{t+1} = \mathbb{E}_t (M_{t+1} X_{t+1})$, where M_{t+1} denotes a stochastic discount factor that prices any tradable payoff X_{t+1} received at time $t+1$. Assuming the absence of arbitrage, such an SDF must exist, and the identity above holds for any gross return R_{t+1} such that the payoff $R_{t+1} X_{t+1}$ is tradable. Henceforth, however, R_{t+1} will always denote the gross return on the market.

We are interested in expected log returns, $X_{t+1} = \log R_{t+1}$, in which case the

identity becomes

$$\mathbb{E}_t \log R_{t+1} = \frac{1}{R_{f,t+1}} \mathbb{E}_t^* (R_{t+1} \log R_{t+1}) - \text{cov}_t (M_{t+1} R_{t+1}, \log R_{t+1}). \quad (26)$$

The first of the two terms on the right-hand side, as a risk-neutral expectation, is directly observable from asset prices, as it represents the price of a contract that pays $R_{t+1} \log R_{t+1}$ at time $t + 1$. (Neuberger (2012) has studied this contract in a different context.) The second term can be controlled: we will argue below that it is reasonable to impose an assumption that it is negative. Thus (26) implies a lower bound on expected log returns in terms of a quantity that is directly observable from asset prices.

To make further progress, we make two assumptions throughout the paper. As we will see below, we will use option prices to bound the first term on the right-hand side of the identity (26). Our first assumption addresses the minor¹² technical issue that we observe options on the ex-dividend value of the index, P_{t+1} , rather than on $P_{t+1} + D_{t+1}$.

Assumption 1. If we define the dispersion measure $\Psi(X_{t+1}) \equiv \mathbb{E}_t^* f(X_{t+1}) - f(\mathbb{E}_t^* X_{t+1})$, where $f(x) = x \log x$ is a convex function, then the dispersion of R_{t+1} is at least as large as that of P_{t+1}/P_t :

$$\Psi(R_{t+1}) \geq \Psi(P_{t+1}/P_t). \quad (27)$$

This condition is very mild. Expanding $f(x) = x \log x$ as a Taylor series to second order around $x = 1$, $f(x) \approx (x^2 - 1)/2$. Thus, to second order, Assumption 1 is equivalent to $\text{var}_t^* R_{t+1} \geq \text{var}_t^*(P_{t+1}/P_t)$, or equivalently $\text{var}_t^*(P_{t+1} + D_{t+1}) \geq \text{var}_t^* P_{t+1}$. A sufficient, though not necessary, condition for this to hold is that the price P_{t+1} and dividend D_{t+1} are weakly positively correlated under the risk-neutral measure.

Our second assumption is more substantive.

¹²In fact, it is so minor that the distinction between options on P_{t+1} and options on $P_{t+1} + D_{t+1}$ is often neglected entirely in the literature. For example, Neuberger (2012) “avoid[s] irrelevant complications with interest rates and dividends” by treating options on forward prices as observable, as do Schneider and Trojani (2018), and (essentially equivalently) Carr and Wu (2009) use options on stocks as proxies for options on stock futures. These authors effectively assume that our inequality (27) holds with equality.

Assumption 2. The *modified negative correlation condition* (mNCC) holds:

$$\text{cov}_t(M_{t+1}R_{t+1}, \log R_{t+1}) \leq 0. \quad (28)$$

Martin (2017) imposed the closely related negative correlation condition (NCC) that $\text{cov}_t(M_{t+1}R_{t+1}, R_{t+1}) \leq 0$. The two conditions are plausible for similar reasons: in any reasonable model, M_{t+1} will be negatively correlated with the return on the market, R_{t+1} , and we know from the bound of Hansen and Jagannathan (1991), coupled with the empirical fact that high Sharpe ratios are available, that M_{t+1} is highly volatile.

In fact, the two conditions are equivalent in the lognormal case. Suppose that the SDF M_{t+1} and return R_{t+1} are conditionally jointly lognormal and write $r_{f,t+1} = \log R_{f,t+1}$, $\mu_t = \log \mathbb{E}_t R_{t+1}$, and $\sigma_t^2 = \text{var}_t \log R_{t+1}$. Then the mNCC and NCC are both equivalent to the assumption that the conditional Sharpe ratio of the asset, $\lambda_t \equiv (\mu_t - r_{f,t+1})/\sigma_t$, exceeds its conditional volatility, σ_t .¹³

The Sharpe ratio of the market is typically thought of as being on the order of 30–50%, while the volatility of the market is on the order of 16–20%. Thus the mNCC holds in the calibrated models of Campbell and Cochrane (1999), Bansal and Yaron (2004), Bansal et al. (2014) and Campbell et al. (2016), among many others. But Martin (2017) argues that option prices are inconsistent with the lognormality assumption. This motivates the following result, which provides a sufficient condition for the mNCC to hold without requiring lognormality.

Result 4. *Suppose that an investor's SDF takes the form*

$$M_{t+1} = \beta \frac{V_W(W_{t+1}, z_{t+1})}{V_W(W_t, z_t)},$$

where V_W is the investor's marginal value of wealth, and z_t is a vector of state variables, with signs chosen so that V_W is weakly decreasing in each (just as it is decreasing in W_{t+1}). We allow time $t + 1$ wealth, W_{t+1} , to be invested in the

¹³By Stein's lemma, $\text{cov}_t(M_{t+1}R_{t+1}, \log R_{t+1}) = \text{cov}_t(\log M_{t+1} + \log R_{t+1}, \log R_{t+1})$. By lognormality of M_{t+1} and R_{t+1} , the fact that $\mathbb{E}_t(M_{t+1}R_{t+1}) = 1$ is equivalent to $\log \mathbb{E}_t M_{t+1} + \log \mathbb{E}_t R_{t+1} = -\text{cov}_t(\log M_{t+1}, \log R_{t+1})$. It follows from these two facts that $\text{cov}_t(M_{t+1}R_{t+1}, \log R_{t+1}) \leq 0$ if and only if $\text{var}_t \log R_{t+1} \leq \log \mathbb{E}_t R_{t+1} - r_{f,t+1}$: that is, if and only if $\lambda_t \geq \sigma_t$. Under lognormality, this condition is equivalent to $\text{cov}_t(M_{t+1}R_{t+1}, R_{t+1}) \leq 0$, as shown by Martin (2017).

market and in some other asset or portfolio of assets with gross return \tilde{R}_{t+1} :

$$W_{t+1} = \underbrace{\alpha_t(W_t - C_t)R_{t+1}}_{\text{market wealth, } W_{m,t+1}} + \underbrace{(1 - \alpha_t)(W_t - C_t)\tilde{R}_{t+1}}_{\text{non-market wealth}}, \quad \text{where } \alpha_t \in (0, 1].$$

If (i) R_{t+1} , \tilde{R}_{t+1} and the elements of z_{t+1} are associated random variables,¹⁴ (ii) the investor ensures that the share of wealth in the market, $W_{m,t+1}/W_{t+1}$, is at least $\theta \in (0, 1]$, some fixed constant, and (iii) the investor's relative risk aversion $-WV_{WW}/V_W$ (which need not be constant) is at least $1/\theta$, then the mNCC holds.

Proof. We must show that $\text{cov}_t(-R_{t+1}V_W(W_{t+1}, z_{t+1}), \log R_{t+1}) \geq 0$. That is, we must prove that the covariance of two functions of R_{t+1} , \tilde{R}_{t+1} , and z_{t+1} is positive. The two functions are

$$f(R_{t+1}, \tilde{R}_{t+1}, z_{t+1}) = -R_{t+1}V_W \left(\alpha_t(W_t - C_t)R_{t+1} + (1 - \alpha_t)(W_t - C_t)\tilde{R}_{t+1}, z_{t+1} \right)$$

and

$$g(R_{t+1}, \tilde{R}_{t+1}, z_{t+1}) = \log R_{t+1}.$$

(As the covariance is conditional on time t information, we can treat α_t and $W_t - C_t$ as known constants.) As the random variables are associated, the result follows if f and g are each weakly increasing functions of their arguments. The assumptions above ensure that this is the case. For example, differentiating f with respect to R_{t+1} , we need $-V_W(W_{t+1}, z_{t+1}) - \alpha_t(W_t - C_t)R_{t+1}V_{WW}(W_{t+1}, z_{t+1}) \geq 0$ or, rearranging,

$$-\frac{W_{t+1}V_{WW}(W_{t+1}, z_{t+1})}{V_W(W_{t+1}, z_{t+1})} \geq \frac{W_{t+1}}{W_{m,t+1}}.$$

But this holds, by assumptions (ii) and (iii):

$$-\frac{W_{t+1}V_{WW}(W_{t+1}, z_{t+1})}{V_W(W_{t+1}, z_{t+1})} \stackrel{\text{(iii)}}{\geq} \frac{1}{\theta} \stackrel{\text{(ii)}}{\geq} \frac{W_{t+1}}{W_{m,t+1}}.$$

It is immediate that f and g are weakly increasing in their other arguments. \square

¹⁴The concept of *associated* random variables (Esary, Proschan and Walkup, 1967) extends the concept of nonnegative correlation in a manner that can be extended to the multivariate setting. Jointly Normal random variables are associated if and only if they are nonnegatively correlated (Pitt, 1982), and increasing functions of associated random variables are associated.

Result 4 provides a flexible set of conditions under which the mNCC holds.

Example 1. Suppose that there is a representative investor who maximizes utility over next-period wealth and who chooses to invest her wealth fully in the stock market. Then by Result 4, the mNCC holds so long as her relative risk aversion (which need not be constant) is at least one at all levels of wealth. Furthermore, if the representative investor has log utility then the mNCC is tight—that is, the inequality holds with equality—because $M_{t+1}R_{t+1} = 1$ is a constant.

Example 2. Alternatively, if the investor keeps at least (say) a third of her wealth in the market, then her relative risk aversion must be at least three. We also require that the market and non-market returns are associated; in the lognormal case, this holds if they are nonnegatively correlated.¹⁵

These examples make no assumption about the beliefs of other investors in the economy. We can therefore think from the perspective of a rational investor surrounded by other investors, some of whom are potentially irrational. We think that the assumption that the investor chooses to invest fully in the stock market represents a natural benchmark in such cases; but the possibility arises that the lower bound might be violated—say in the late 1990s—because no rational investor would want to hold the market. We discuss this possibility after introducing the sentiment measure in Section 4. We also provide further examples of situations in which the mNCC holds in Appendix E.

We can now state our lower bound on expected log returns.

Result 5. *Suppose Assumptions 1 and 2 hold. Write $\text{call}_t(K)$ and $\text{put}_t(K)$ for the time t prices of call and put options on P_{t+1} with strike K , and F_t for the time t forward price of the index for settlement at time $t + 1$. Then we have*

$$\mathbb{E}_t r_{t+1} - r_{f,t+1} \geq \frac{1}{P_t} \underbrace{\left\{ \int_0^{F_t} \frac{\text{put}_t(K)}{K} dK + \int_{F_t}^{\infty} \frac{\text{call}_t(K)}{K} dK \right\}}_{LVIX_t}. \quad (29)$$

¹⁵This follows from Footnote 14, after noting that lognormal random variables are nonnegatively correlated if and only if their logs are nonnegatively correlated.

Proof. As $\mathbb{E}_t^* R_{t+1} = R_{f,t+1}$ and $\mathbb{E}_t^* P_{t+1} = F_t$, the inequality (27) can be rearranged as

$$\frac{1}{R_{f,t+1}} \mathbb{E}_t^* R_{t+1} \log R_{t+1} - \log R_{f,t+1} \geq \frac{1}{R_{f,t+1}} \left[\mathbb{E}_t^* \left(\frac{P_{t+1}}{P_t} \log \frac{P_{t+1}}{P_t} \right) - \frac{F_t}{P_t} \log \frac{F_t}{P_t} \right]. \quad (30)$$

The right-hand side of this inequality can be measured directly from option prices using a result of [Breedon and Litzenberger \(1978\)](#) that can be rewritten, following [Carr and Madan \(2001\)](#), to give, for any sufficiently well behaved function $g(\cdot)$,

$$\frac{1}{R_{f,t+1}} [\mathbb{E}_t^* g(P_{t+1}) - g(\mathbb{E}_t^* P_{t+1})] = \int_0^{F_t} g''(K) \text{put}_t(K) dK + \int_{F_t}^{\infty} g''(K) \text{call}_t(K) dK.$$

Setting $g(x) = \frac{x}{P_t} \log \frac{x}{P_t}$, we have $g''(x) = 1/(P_t x)$. Thus

$$\frac{1}{R_{f,t+1}} \left[\mathbb{E}_t^* \left(\frac{P_{t+1}}{P_t} \log \frac{P_{t+1}}{P_t} \right) - \frac{F_t}{P_t} \log \frac{F_t}{P_t} \right] = \frac{1}{P_t} \left\{ \int_0^{F_t} \frac{\text{put}_t(K)}{K} dK + \int_{F_t}^{\infty} \frac{\text{call}_t(K)}{K} dK \right\}. \quad (31)$$

The result follows on combining the identity (26), the inequalities (28) and (30), and equation (31). \square

We refer to the right-hand side of equation (29) as LVIX because it is reminiscent of the definition of the VIX index which, in our notation, is

$$\text{VIX}_t^2 = 2R_{f,t+1} \left\{ \int_0^{F_t} \frac{\text{put}_t(K)}{K^2} dK + \int_{F_t}^{\infty} \frac{\text{call}_t(K)}{K^2} dK \right\},$$

and of the SVIX index introduced by [Martin \(2017\)](#),

$$\text{SVIX}_t^2 = \frac{2}{R_{f,t+1} P_t^2} \left\{ \int_0^{F_t} \text{put}_t(K) dK + \int_{F_t}^{\infty} \text{call}_t(K) dK \right\}.$$

We do not annualize our definition (29), so to avoid unnecessary clutter we have also not annualized the definitions of VIX and SVIX above. We will typically choose the period length from t to $t+1$ to be 12 months. The forecasting horizon dictates the maturity of the options, so we use options expiring in 12 months to measure expectations of 12-month log returns.

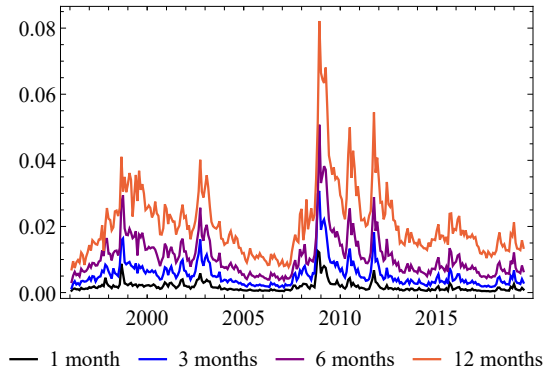


Figure 1: The LVIX index, which provides a lower bound on the market’s expected excess log return $\mathbb{E}_t r_{t+1} - r_{f,t+1}$, by Result 5.

VIX, SVIX, and LVIX place differing weights on option prices. VIX has a weighting function $1/K^2$ on the prices of options with strike K ; LVIX has weighting function $1/K$; and SVIX has a constant weighting function. In this sense we can think of LVIX as lying half way between VIX and SVIX. (We could also introduce a factor of two into the definition of LVIX to make the indices look even more similar to one another, but have chosen not to.)

We calculate LVIX using end-of-month interest rates and S&P 500 index option (mid) prices from OptionMetrics. In practice, we do not observe option prices at all strikes between zero and infinity, so we have to truncate the integral on the right-hand side of (29) (as does the CBOE in its calculation of the VIX index). In doing so, we understate the idealized value of the integral. That is, our lower bound would be *even higher* if given perfect data: it is therefore conservative.

Figure 1 plots $LVIX_t$, at the end of each month, over our sample period from January 1996 to June 2019. Under our maintained assumptions, the large spikes visible during in 2008–9, for example, indicate that expected excess log returns were very high in the depths of the subprime crisis, consistent with the results of Martin (2017). Of greater relevance for this paper, expected excess log returns were also relatively high around the turn of the millennium, despite the high valuation ratios that prevailed at the time.

One might worry that option markets were illiquid, or segmented from the broader stock market, during the late 1990s. Lamont and Thaler (2003) present

evidence that this was indeed the case for certain individual stocks (most famously for options on Palm), and ascribe the anomalous behavior of prices of these stocks, and of options on the stocks, to the difficulty or impossibility of shorting the stocks. As short-selling the broader stock market was possible at low cost throughout this period (for example via the futures market) we do not expect this to be an issue for our approach. But to address the more general concern that option markets may have exhibited extreme bid-ask spreads at the time, we recompute the LVIX index using bid prices as opposed to mid prices. (We use bid rather than ask prices to be conservative, as this will drive our sentiment indicator down.) As shown in Figure 11 of the appendix, doing so has very little effect on our results.

3.1 Empirical evidence on the modified NCC

We motivated the inequality of Result 5 via a theoretical argument that the mNCC should hold. We can also assess the inequality empirically by examining the realized forecast errors $r_{t+1} - r_{f,t+1} - LVIX_t$. To do so, we carry out a one-sided t -test of the hypothesis that the inequality (29) *fails*. Using a block bootstrap,¹⁶ we find a p -value of 0.097. Thus despite our relatively short sample period—which is imposed on us by the availability of option price data—we can reject the hypothesis with moderate confidence. This supports our approach.

More optimistically, it is natural to wonder whether the inequality (29) might approximately hold with equality (though we emphasize that this does not need to be the case for our approach to make sense). For this to be the case, we would need both (27) and (28) to hold with approximate equality. As the conditional volatility of dividends is substantially lower than that of prices, it is reasonable to think that this is indeed the case for (27), and as noted in footnote 12, much of the literature implicitly makes that assumption. Meanwhile the mNCC (28) would hold with equality if (but not only if) one thinks from the perspective of an investor with log utility who chooses to hold the market, as is clear from the proof provided in Example 2 above. The perspective of such an investor has been shown to provide a useful benchmark for forecasting returns on the stock

¹⁶As our sample is 276 months long, we use a block length of seven months, following the $T^{1/3}$ rule of thumb for block length for a sample of length T . For comparison, the corresponding p -value using naive OLS standard errors would be 0.001.

market (Martin, 2017), on individual stocks (Martin and Wagner, 2019), and on currencies (Kremens and Martin, 2019).

Table 8 in the Appendix reports the results of running the regression

$$r_{t+1} - r_{f,t+1} = \alpha + \beta \times \text{LVIX}_t + \varepsilon_{t+1} \quad (32)$$

at horizons of 3, 6, 9, and 12 months. Returns are computed by compounding the CRSP monthly gross return of the S&P 500. We report Hansen–Hodrick standard errors to allow for heteroskedasticity and for autocorrelation that arises due to overlapping observations. If the inequality (29) holds with equality, we should find $\alpha = 0$ and $\beta = 1$. We do not reject this hypothesis at any horizon; and at the six- and nine-month horizons we can reject the hypothesis that $\beta = 0$ at conventional significance levels.

4 A sentiment indicator

We now adopt the perspective of a hypothetical investor whose expectations and stochastic discount factor satisfy the mNCC so that the lower bound (29) of Section 3 applies. We will also assume that this hypothetical investor’s beliefs are consistent with the predictive relationship (25) between valuation ratios, returns, and dividend growth, as studied in Section 2. We do so to force the investor’s beliefs to be consistent with the historical evidence, in order to prevent him or her from “explaining” asset prices simply by concluding that “this time is different” (in the words of Reinhart and Rogoff, 2009).

We can derive a lower bound on such an investor’s subjective expectations about fundamentals by subtracting $\mathbb{E}_t(r_{t+1} - g_{t+1})$, as revealed by valuation ratios, from $\mathbb{E}_t r_{t+1}$, as revealed by interest rates and option prices:

$$\begin{aligned} \mathbb{E}_t g_{t+1} &= r_{f,t+1} + \mathbb{E}_t(r_{t+1} - r_{f,t+1}) - \mathbb{E}_t(r_{t+1} - g_{t+1}) \\ &\geq r_{f,t+1} + \text{LVIX}_t - \mathbb{E}_t(r_{t+1} - g_{t+1}). \end{aligned} \quad (33)$$

The inequality follows (under our maintained Assumptions 1 and 2) because $\mathbb{E}_t r_{t+1} - r_{f,t+1} \geq \text{LVIX}_t$, as shown in Result 5.

We use y_t to measure $\mathbb{E}_t(r_{t+1} - g_{t+1})$ via the fitted value $\hat{a}_0 + \hat{a}_1 y_t$, as in

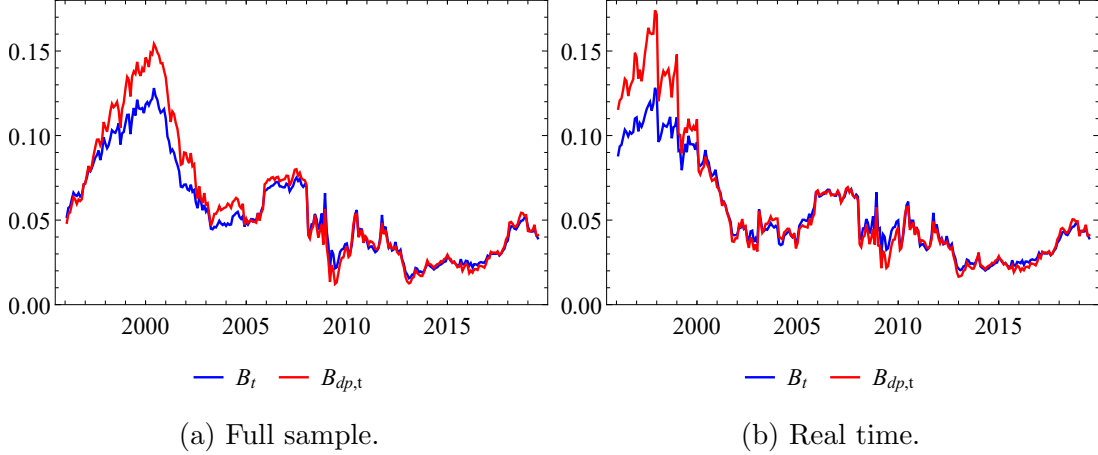


Figure 2: The sentiment indicator, computed using the full sample to estimate the relationship between y_t and $r_{t+1} - g_{t+1}$ (left) or using an expanding window (right).

Table 1, giving the sentiment indicator B_t , which is a lower bound on the investor's expected log dividend growth:

$$B_t = r_{f,t+1} + \frac{1}{P_t} \left[\int_0^{F_t} \frac{\text{put}_t(K)}{K} dK + \int_{F_t}^{\infty} \frac{\text{call}_t(K)}{K} dK \right] - (\hat{a}_0 + \hat{a}_1 y_t) .$$

We estimate the coefficients \hat{a}_0 and \hat{a}_1 using an expanding window: at time t they are estimated using data from 1947 until time t . Thus B_t is observable at time t .

As we have discussed, B_t can be interpreted as a lower bound on expected dividend growth, $\mathbb{E}_t g_{t+1}$. If $\mathbb{E}_t g_{t+1}$ itself follows an AR(1)—as in the work of [Bansal and Yaron \(2004\)](#) and many others—then B_t can also be interpreted, after rescaling, as a lower bound on *long-run* dividend expectations. For if $\mathbb{E}_{t+1} g_{t+2} - \bar{g} = \phi_g (\mathbb{E}_t g_{t+1} - \bar{g}) + \varepsilon_{g,t+1}$ then we can define a measure of expected long-run dividend growth, at time t , as

$$(1 - \rho) \sum_{i \geq 0} \rho^i (\mathbb{E}_t g_{t+1+i} - \bar{g}) = \frac{1 - \rho}{1 - \rho \phi_g} (\mathbb{E}_t g_{t+1} - \bar{g}) .$$

(We have introduced a factor $1 - \rho$ so that long-run expected dividend growth can be interpreted as a weighted average of all future periods' expected growth, as the weights $(1 - \rho)\rho^i$ sum to 1.)

Figure 2a plots B_t over our sample period using the full sample from 1947 to 2019 to estimate the relationship between y_t (or dp_t) and $r_{t+1} - g_{t+1}$. We work at an annual horizon,¹⁷ so that the value of B_t at a given point in time is (subject to our maintained assumptions) a lower bound on the expected dividend growth over the subsequent year. Figure 2b shows the corresponding results using using an expanding window to estimate the relationship, so that the resulting series is observable in real time. Encouragingly, the indicator behaves stably as we move from full-sample information to real-time information. Unless otherwise indicated, we will henceforth work with the series that is observable in real time.

The figures also show modified indicators, $B_{dp,t}$, that use dp_t rather than y_t to measure $\mathbb{E}_t(r_{t+1} - g_{t+1})$, as in (23). These have the advantage of familiarity— dp_t has been widely used in the literature—but the disadvantage that they may err on the side of signalling a bubble too soon, as shown in Result 3. Consistent with this prediction, the two series line up fairly closely, but the $B_{dp,t}$ series are less conservative—in that they suggest even higher $\mathbb{E}_t g_{t+1}$ —during the period in the late 1990s when valuation ratios were far from their mean.

Note, moreover, that net dividend growth satisfies $\mathbb{E}_t \frac{D_{t+1}}{D_t} - 1 > \mathbb{E}_t g_{t+1}$, because $e^{g_{t+1}} - 1 > g_{t+1}$. Thus our lower bound on expected log dividend growth implies still higher expected arithmetic dividend growth. If dividend growth were conditionally lognormal, for example, we would have $\log \mathbb{E}_t \frac{D_{t+1}}{D_t} = \mathbb{E}_t g_{t+1} + \frac{1}{2} \text{var}_t g_{t+1}$. The variance term is small unconditionally—in our sample period, $\text{var } g_{t+1} \approx 0.005$ —but it is plausible that during the late 1990s there was unusually high uncertainty about log dividend growth.

Figure 3 plots the three components of the sentiment indicator B_t from 1996 to 2019. LVIX and $\mathbb{E}_t(g_{t+1} - r_{t+1})$ moved in opposite directions for most of our sample period, with high valuation ratios occurring at times of low risk premia. But all three components were above their sample means during the late 1990s.

In particular, our approach implies that the expected annual log dividend growth perceived by our hypothetical representative investor rose above 12% around the turn of the millennium, a degree of optimism that we do not think was reasonable. If we reject this conclusion, we must reject at least one of the

¹⁷We find very similar results at the two-year horizon, as can be seen from Figures IA.1 and IA.2 of the Internet Appendix.

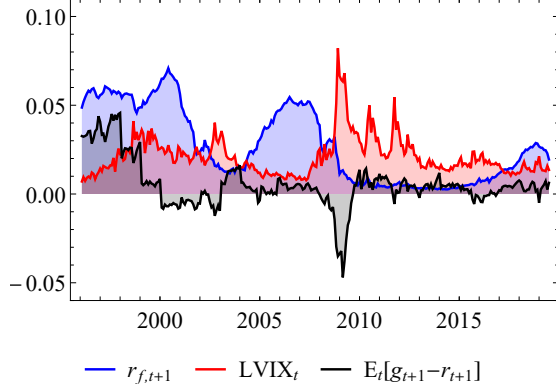


Figure 3: The three components of the sentiment indicator.

assumptions that delivered it.

The first possibility is that there is no investor whose preferences and beliefs are such that the mNCC is satisfied. In particular, this would be a violation of the equilibrium models and of the various examples discussed in Section 3.

Alternatively, if the mNCC did hold then—for the hypothetical investor to perceive high expected log returns and, simultaneously, low expected log dividend growth during the bubble period—he or she must have believed that the historical forecasting relationship between dividend yield and $\mathbb{E}_t(r_{t+1} - g_{t+1})$ had broken down, perhaps because of a “paradigm shift” or because the predictive coefficients estimated using historical data failed to reflect the true population values. (“This time is different!”) To see this, write $\widehat{\mathbb{E}}_t(r_{t+1} - g_{t+1})$ for the regression-implied time- t forecast of $r_{t+1} - g_{t+1}$, which we now allow to differ from the agent’s forecast $\mathbb{E}_t(r_{t+1} - g_{t+1})$. Then, from inequality (33), we have

$$\begin{aligned} \mathbb{E}_t g_{t+1} &= r_{f,t+1} + \mathbb{E}_t(r_{t+1} - r_{f,t+1}) - \widehat{\mathbb{E}}_t(r_{t+1} - g_{t+1}) + \left[\widehat{\mathbb{E}}_t(r_{t+1} - g_{t+1}) - \mathbb{E}_t(r_{t+1} - g_{t+1}) \right] \\ &\geq \underbrace{r_{f,t+1} + LVIX_t - \widehat{a}_0 - \widehat{a}_1 y_t}_{B_t} + \left[\widehat{\mathbb{E}}_t(r_{t+1} - g_{t+1}) - \mathbb{E}_t(r_{t+1} - g_{t+1}) \right]. \end{aligned}$$

An agent who believed, in the late 1990s, that $\mathbb{E}_t g_{t+1}$ was lower than B_t must therefore have concluded that $\widehat{\mathbb{E}}_t(r_{t+1} - g_{t+1}) < \mathbb{E}_t(r_{t+1} - g_{t+1})$. By the loglinearization (24), this is equivalent to $\mathbb{E}_t y_{t+1} < \widehat{\mathbb{E}}_t y_{t+1}$. On this interpretation, our hypothetical investor’s beliefs were consistent only because she expected y_{t+1} to

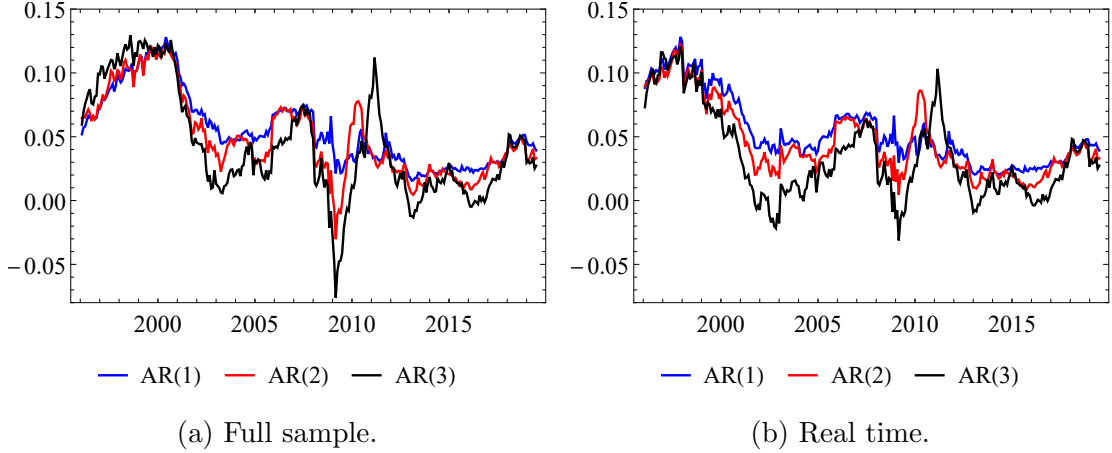


Figure 4: Sentiment indicators calculated on a full-sample or real-time basis, assuming y_t follows an AR(1), AR(2) or AR(3) process.

remain, in the short run, lower—and valuations higher—than suggested by the historical evidence. We discuss this possibility further in Section 4.2.1, below.

4.1 Alternative stochastic processes for y_t

We have modelled y_t as following an AR(1) to avoid overfitting. Aside from the obvious advantages of parsimony, the partial autocorrelations of y_t , shown in Figure 14 of Appendix C, support this choice: the partial autocorrelations of y_t at lags greater than one are close to zero.

The question of how to model y_t is not central to the point of this paper, however, so we also consider the possibility that y_t follows an AR(2) or AR(3). If y_t follows an AR(2) process, then from the linearization (24) we have

$$r_{t+1} - g_{t+1} = \alpha + \beta y_t + \gamma y_{t-1} + \varepsilon_{t+1},$$

while if y_t follows an AR(3) process, then

$$r_{t+1} - g_{t+1} = \alpha + \beta y_t + \gamma y_{t-1} + \delta y_{t-2} + \varepsilon_{t+1}.$$

The results of these regressions are reported in Table 10 of Appendix C.

The corresponding lower bounds on $\mathbb{E}_t g_{t+1}$ are shown in Figure 4. They are

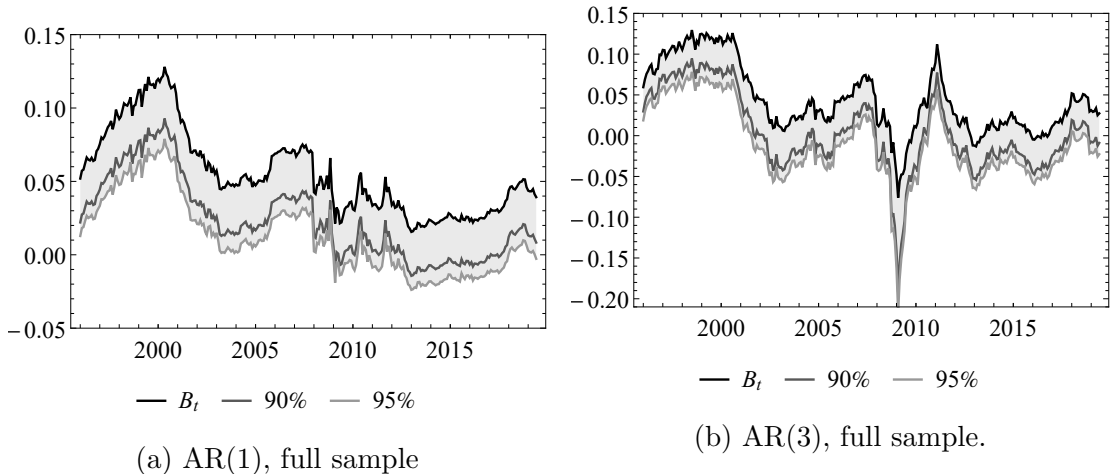


Figure 5: B_t with one-sided confidence interval.

very similar to our baseline measure during the late 1990s, but they are lower during the crisis of 2008–9 and higher in its aftermath. Once again, we note that the indicator behaves fairly stably as we move from full-sample information to real-time information. Figure IA.3, in the Internet Appendix, plots the minimum of the three series computed under AR(1), AR(2) and AR(3) assumptions; this serves as a conservative lower bound.

4.2 Variations

4.2.1 Estimation uncertainty

The coefficients in the regression of $r_{t+1} - g_{t+1}$ onto y_t (and its lags, in the AR(2) and AR(3) cases) are estimated with statistical uncertainty. To illustrate, Figure 5 plots block-bootstrapped one-sided 90% and 95% confidence intervals for our baseline measure B_t .¹⁸ At the edge of the 90% (95%) confidence intervals, the

¹⁸We compute the confidence intervals, at each point in time t , by adding $r_{f,t} + LVIX_t$ to the bottom 5% (or 10%) quantile of the bootstrapped sample of $\mathbb{E}_t[g_{t+1} - r_{t+1}]$. In the case of the AR(1) model, for example, the bootstrapped sample is created by repeating the following procedure 10,000 times (i.e., for $k = 1, \dots, 10,000$): (i) Estimate \hat{a}_k and \hat{b}_k via OLS from the equation $r_{k,t+1} - g_{k,t+1} = a_k + b_k y_{k,t} + \varepsilon_{k,t+1}$, where the sample of $(r_{k,t+1}, g_{k,t+1}, y_{k,t})$ is drawn in blocks of length $T^{1/3}$, with replacement, from the annual data of (r_{t+1}, g_{t+1}, y_t) between 1947 and 2019; and (ii) compute $-\hat{a}_k - \hat{b}_k y_t$ where y_t is the monthly series between 1996:01 and

lower bounds on expected dividend growth peak at 9.3% (7.9%) for the AR(1) model and at 9.5% (7.8%) for the AR(3) model.

While we think these numbers remain implausibly high, one might perhaps argue that they *were* reasonable forecasts of expected dividend growth. We emphasize, however, that when using the 90% or 95% percentile as the estimate of expected dividend growth, the implicit position taken is that the historical relationship between valuation ratios and $r_t - g_t$ —as embodied in the point estimates, the correct central measure—is misleading. Furthermore, a prudent policymaker should also entertain the symmetric possibility that in the presence of estimation uncertainty, the true B_t is substantially *higher* than implied by the central point estimates of the predictive coefficients.

4.2.2 What if the valuation ratio follows a random walk?

A true believer in the New Economy might have argued that our measure of $\mathbb{E}_t(r_{t+1} - g_{t+1})$, which is based on an assumption that y_t follows an AR(1)—or AR(2) or AR(3)—had broken down during the late 1990s. Perhaps the most aggressive possibility our hypothetical investor could reasonably entertain is the “random walk” view that the price-dividend ratio had entirely ceased to mean-revert, as considered by [Campbell \(2008, 2018\)](#). Such a perspective might also be adopted by a cautious central banker to justify inaction on the basis that valuation ratios could remain very high indefinitely.¹⁹

We now show how to accommodate this possibility. If y_t follows a random walk then, from equation (14),

$$\mathbb{E}_t g_{t+1} \stackrel{(14)}{=} \mathbb{E}_t r_{t+1} - y_t \geq \underbrace{\text{LVIX}_t + r_{f,t} - y_t}_{\tilde{B}_t},$$

where we define a variant on our previous indicator,

$$\tilde{B}_t = \text{LVIX}_t + r_{f,t} - y_t, \tag{34}$$

that has the further benefit of not requiring estimation of any free parameters.

2019:06.

¹⁹It can also be interpreted as a conservative approach to dealing with Stambaugh bias.

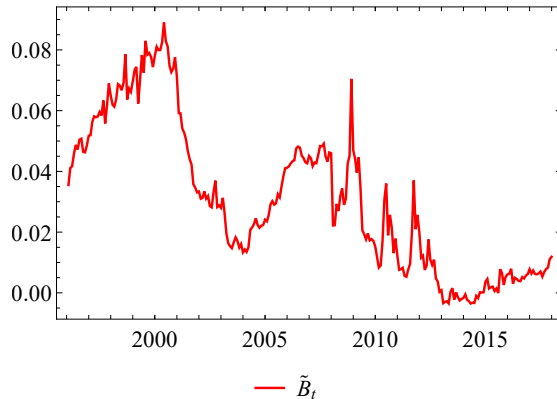


Figure 6: The alternative sentiment indicator, \tilde{B}_t .

More generally, if all one knows is that $\mathbb{E}_t y_{t+1} \geq y_t$ —irrespective of the details of the evolution of y_t —then equation (24) implies that we have

$$\mathbb{E}_t g_{t+1} \geq \tilde{B}_t.$$

Figure 6 shows the time series of \tilde{B}_t . Even if valuation ratios were expected to follow a random walk in the late 1990s—a dubious proposition in any case—the implied expectations about cashflow growth appear implausibly high.

Unlike our preferred indicator, B_t , the random walk version \tilde{B}_t spiked almost as high during the subprime crisis as it did around the turn of the millennium. This reflects the fact that implied volatility, and hence the LVIX index, rose dramatically during the last months of 2008, indicating that log returns were expected to be very high over the subsequent year (by Result 5). From the perspective of our notional policymaker who believed that valuation ratios follow a random walk, these high expected log returns could only have reflected high expected log dividend growth. This prediction is unreasonable, in our view, because the random walk assumption is unreasonable. The point is that *even* a policymaker who believed valuation ratios followed a random walk would have had to perceive unusually high expected dividend growth in the late 1990s.

4.2.3 What if dividend growth is unforecastable?

If dividend growth is unforecastable (in the sense that $\mathbb{E}_t g_{t+k} = \bar{g}$ for all $k \geq 1$, as in the work of [Campbell and Cochrane \(1999\)](#) and many others) then valuation ratios reveal long-run expectations of log returns while LVIX reveals the corresponding short-run expectations.

Specifically, if dividend growth is unforecastable and y_t is stationary, then from equation (15)

$$y_t = (1-\rho) \sum_{i=0}^{\infty} \rho^i \mathbb{E}_t [r_{t+1+i} - g_{t+1+i}] = (1-\rho) \mathbb{E}_t [r_{t+1}] + (1-\rho)\rho \sum_{i=0}^{\infty} \rho^i \mathbb{E}_t [r_{t+2+i}] - \bar{g}.$$

This equation can be rearranged to give

$$\mathbb{E}_t r_{t+1} - (1-\rho) \sum_{i \geq 0} \rho^i \mathbb{E}_t r_{t+2+i} = \frac{\mathbb{E}_t r_{t+1} - y_t - \bar{g}}{\rho}.$$

Exploiting the inequality $\mathbb{E}_t r_{t+1} - r_{f,t} \geq \text{LVIX}_t$ of [Result 5](#), we can conclude that

$$\underbrace{\mathbb{E}_t r_{t+1}}_{\text{short-run returns}} - \underbrace{(1-\rho) \sum_{i \geq 0} \rho^i \mathbb{E}_t r_{t+2+i}}_{\text{long-run returns}} \geq \frac{\text{LVIX}_t + r_{f,t} - y_t - \bar{g}}{\rho} = \frac{\tilde{B}_t - \bar{g}}{\rho}.$$

This inequality provides an alternative interpretation of the indicator $\tilde{B}_t = \text{LVIX}_t + r_{f,t} - y_t$ that we defined in equation (34) above, and which is plotted in [Figure 6](#). If dividend growth is unforecastable, unusually high levels of \tilde{B}_t indicate that short-run expected log returns are unusually high relative to subsequent long-run expected log returns.

4.2.4 Are valuation ratios alone enough?

Valuation ratios alone would make for an even simpler sentiment indicator. Are they enough? In theory, no: as we have argued, valuation ratios can be high for good reasons if interest rates are low or if risk premia are low (and are widely understood to be low) or both, and our measure embraces this fact by incorporating $r_{f,t}$ and LVIX_t .

Nonetheless, theory aside, we do know, of course, that valuation ratios were very high during the late 1990s, so it is interesting from a purely empirical perspective to see how they compare with B_t . We plot the valuation ratio measures $-y_t$ and pd_t on the same axes as B_t over our sample period in Figure 12 in the appendix. For ease of comparison, we standardize all three series to have zero mean and unit standard deviation and use the full-sample version of B_t so that the predictive coefficients do not vary over the time series. The sentiment index B_t gives a clearer indication of bubblieness in the market at the start of our sample, from 1996 to 2000, in the sense that it is generally around 0.5 to 1 standard deviations further above its mean than are the valuation ratio series.

In the opposite direction, valuation ratios have been very high in recent years. But our measure suggests that this does *not* represent a bubble, as the high valuation ratios have reflected unusually low interest rates (and also, for much of this period, low volatility).

4.2.5 Can the methodology be applied in other markets?

Our approach can be applied to other assets if their returns obey the mNCC. It is reasonable to expect that this is the case for stock market indices, for example. Figure 13 illustrates by constructing a sentiment index for the NASDAQ-100. To do so, we calculate LVIX using the mid prices of NASDAQ-100 options from OptionMetrics and estimate the predictive regression (25) over the period 1983–2019 using NASDAQ-100 dividend yield and price level data from Datastream. (As the predictive regression is estimated over a shorter time series, we present results using the full sample rather than using an expanding window.) The sentiment index for the NASDAQ-100 was substantially higher than that for the S&P 500 around and before the turn of the millennium, consistent with the conventional view that sentiment was particularly elevated in tech stocks at the time.

For “hedge” assets, such as gold, one would expect the direction of the inequality (28) to be reversed. This rules out using our approach to detect bubbles in such assets. The situation is more promising in the case of individual stocks: it may be possible to argue that the mNCC holds for stocks with betas sufficiently close to, or greater than, one, along the lines of [Martin and Wagner \(2019\)](#) and [Kadan and Tang \(2019\)](#), but we leave this extension for future research.

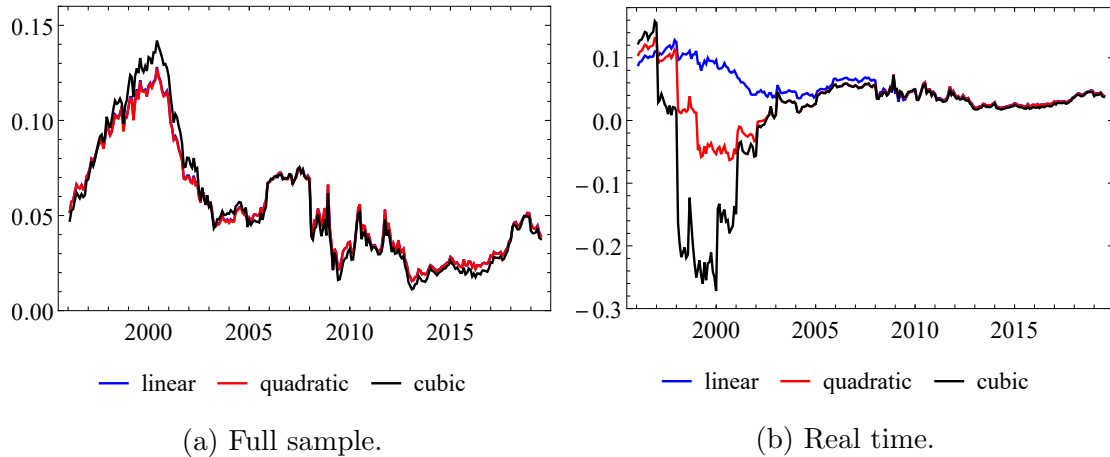


Figure 7: Sentiment indicators calculated with linear, quadratic, and cubic specifications for the relationship between expected $r_{t+1} - g_{t+1}$ and y_t .

4.2.6 Nonlinearity in the functional form

We can also allow for a nonlinear relationship between $r_{t+1} - g_{t+1}$ and y_t . In Appendix D, we report the results of running regressions of the form

$$r_{t+1} - g_{t+1} = a_0 + a_1 y_t + a_2 y_t^2 + \varepsilon_{t+1}$$

and

$$r_{t+1} - g_{t+1} = a_0 + a_1 y_t + a_2 y_t^2 + a_3 y_t^3 + \varepsilon_{t+1}.$$

Figure 7a shows that these regressions deliver very similar results to the linear specification reported above when we use the full sample period to estimate the coefficients a_i . But the coefficient estimates in the higher order specifications are strikingly unstable when we estimate the regressions in real time using expanding windows (Figure 7b), even though the regressions are estimated on almost 50 years of data at the start of our sample period, that is, on data from 1947 to 1996.

In the late 1990s, for example, the estimated cubic specification implies a *negative* relationship between y_t and forecast $r_{t+1} - g_{t+1}$ around the then prevailing value of y_t . That is, given the then recent association of unusually low dividend yield with high realized returns, the cubic specification predicts extremely high returns going forward, as shown in Figure 15a, Appendix D. (It is important that the low dividend yields at the time were unusual, because the cubic specification

makes it possible to associate high returns with extremely low yields without materially altering the long established relationship between low returns and low yields that prevails over the usual range of yields.)

We view this exercise as a cautionary tale. Given that bubbles occur fairly rarely, it is particularly important to avoid the possibility that an (over-)elaborate model achieves superior performance in-sample by overfitting the historical data. The ingredients of a bubble indicator should behave stably during historically unusual periods, as our simple linear specification does (Figure 15b, Appendix D).

5 Other indicators of market conditions

We now compare the sentiment indicator to some other indicators of financial conditions that have been proposed in the literature. We standardize all time series to have zero mean and unit standard deviation throughout this section, for ease of comparability and so that correlations can equivalently be interpreted as betas (noting that $\text{corr}(X, Y) = \frac{\text{cov}(X, Y)}{\text{var } X}$ if X and Y have unit standard deviation).

5.1 Volume

We start by exploring the relationship with volume, which has been widely proposed as a signature of bubbles (see, for example, Harrison and Kreps, 1978; Duffie, Gârleanu and Pedersen, 2002; Cochrane, 2003; Lamont and Thaler, 2003; Ofek and Richardson, 2003; Scheinkman and Xiong, 2003; Hong, Scheinkman and Xiong, 2006; Barberis et al., 2018). We construct a daily measure of volume using Compustat data from January 1983 to December 2017, by summing the product of shares traded and daily low price over all S&P 500 stocks on each day. (We find essentially identical results if we use daily high prices to construct the measure.) As volume trended strongly upward during our sample period, we subtract a linear trend from log volume. We do so on using an expanding window, so that our detrended log volume measure, which we call v_t , is (like B_t) observable at time t .

The left panel of Figure 8 plots detrended log volume, v_t , and B_t over the sample period, with both series standardized to zero mean and unit variance. There is a remarkable similarity between the two series, so it is worth emphasizing that they are each based on entirely different input data. The sentiment index

is a leading indicator of volume: the right panel shows the correlation between B_{t+k} and v_t , where k is measured in months. The shaded area indicates a block bootstrapped²⁰ 95% confidence interval. The correlation between the two is higher than 0.9 when k is around -10 months. Thus Figure 8 shows that B_{t-10} is highly statistically significant as a forecaster of v_t (and, to a lesser extent, that v_t is a statistically significant forecaster of B_{t+10}).

5.2 Survey expectations of long-term earnings growth

We next compare B_t to a quarterly time series of financial analysts' long-term earnings growth forecasts (LTG) that has been constructed by Nagel and Xu (2019). Figure 9 shows the LTG series against B_t , with the latter computed as in our baseline measure (i.e., using an AR(1) and with an expanding window to compute predictive coefficients) and with an AR(3) using full sample data. There is a striking similarity between the two series—particularly when the sentiment indicator is computed using an AR(3) and full sample estimation of the predictive regression—but we note that B_t rose more rapidly during the late 1990s.

5.3 The probability of a crash

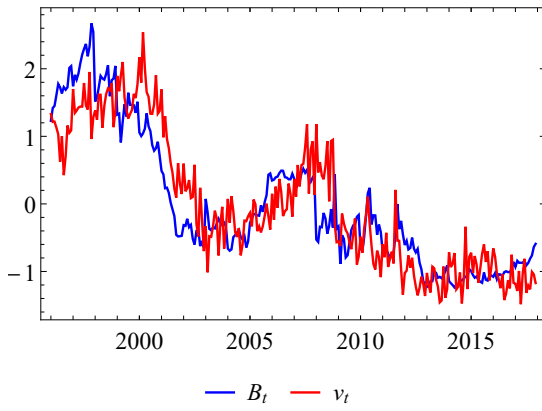
One expects that the probability of a crash should be higher during a bubble episode; if not, the episode is perhaps not actually a bubble.²¹ We use a measure of the (time t conditional) probability of a crash derived by Martin (2017, Result 2) that can be computed in terms of option prices:

$$\mathbb{P}_t(R_{t+1} < \alpha) = \alpha \left[\text{put}'_t(\alpha P_t) - \frac{\text{put}_t(\alpha P_t)}{\alpha P_t} \right] \quad (35)$$

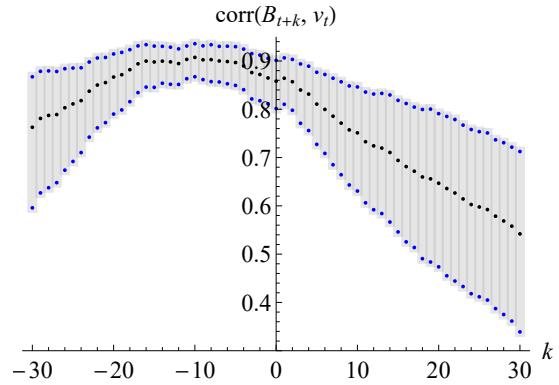
where $\text{put}'_t(K)$ is the first derivative of put price as a function of strike, evaluated at K . This represents the probability of a market decline perceived by an unconstrained log investor who chooses to hold the market; we also require that the

²⁰As before, we draw 10,000 bootstrap samples, using block length of $T^{1/3}$. We use the same procedure in the correlation plots shown in Figures 9, 10, 16, 17, and IA.4–IA.10.

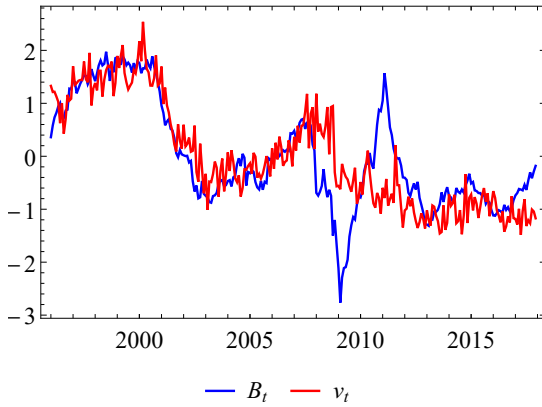
²¹Greenwood, Shleifer and You (2018) document, at the industry level, that sharp increases in stock prices do indeed signal a heightened probability of a crash.



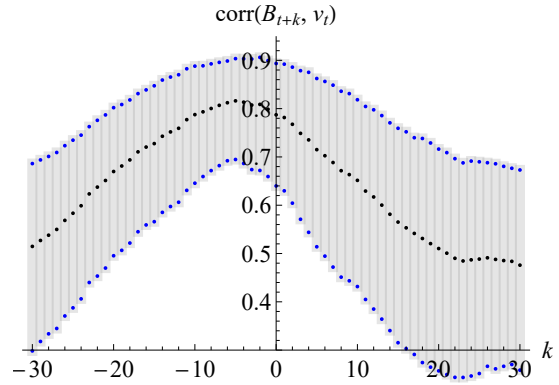
(a) B_t and v_t .



(b) Correlation between B_{t+k} and v_t .

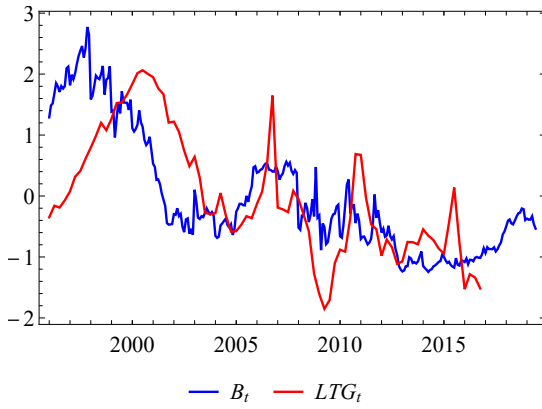


(c) B_t ($AR(3)$, full-sample) and v_t .

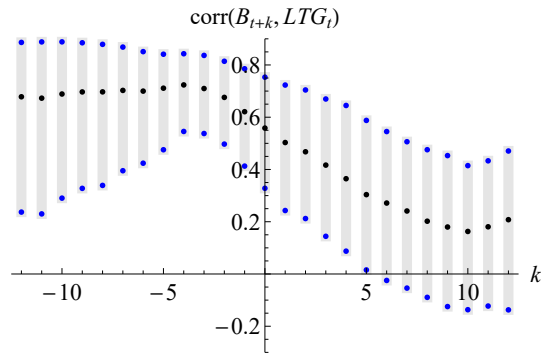


(d) Correlation between B_{t+k} ($AR(3)$, full-sample) and v_t .

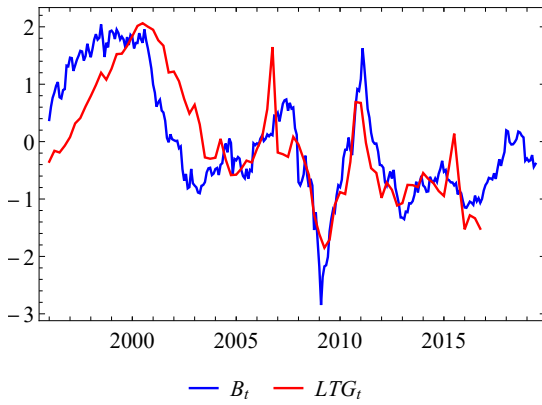
Figure 8: The sentiment indicator and detrended log volume (standardized). Shaded areas in the right panel indicate bootstrapped 95% confidence intervals. k is measured in months.



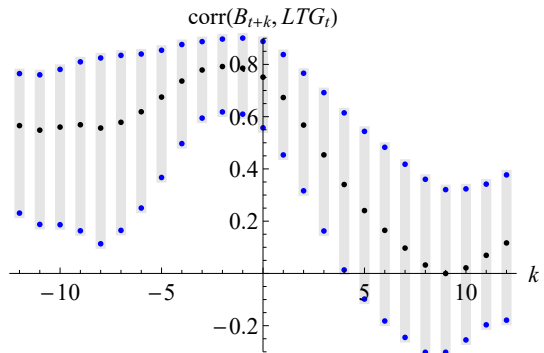
(a) B_t and LTG.



(b) $\text{corr}(B_{t+k}, \text{LTG}_t)$.



(c) B_t (AR(3), full-sample) and LTG.



(d) $\text{corr}(B_{t+k}, \text{LTG}_t)$ (AR(3), full sample).

Figure 9: B_t plotted against the LTG measure of Nagel and Xu (2019). All series are standardized. As LTG is quarterly, k is measured in quarters.

investor is marginal in option markets, so that we are ruling out the possibility that these markets are segmented from the stock market. (In other words, the above calculation relies on a stronger assumption than the rest of the paper, namely that the SDF M_{t+1} satisfies $M_{t+1} = 1/R_{t+1}$; this implies that the mNCC holds with equality.) The probability of a crash (35) is high when out-of-the-money put prices are highly convex, as a function of strike, at strikes at and below αP_t . By contrast, the measure of volatility (29) that is relevant for our sentiment indicator is a function of option prices across the full range of strikes of out-of-the-money puts and calls.

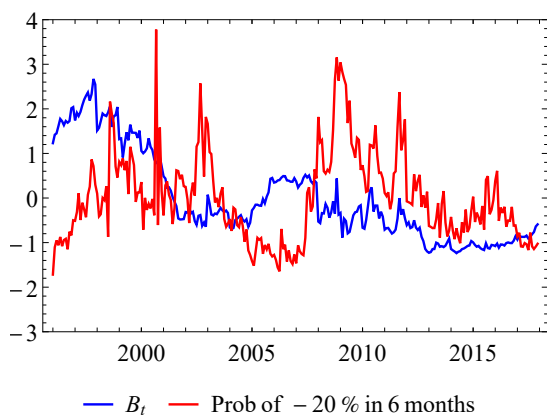
The left panel of Figure 10 plots the crash probability over time. The probability of a crash was elevated during the late 1990s, consistent with standard intuition about bubbles. But it was also high in the aftermath of the subprime crisis, an episode that we would certainly not identify as bubbly. The right panel shows the correlation between the two series at different leads and lags. The sentiment measure is a leading indicator of crash probability at horizons of about two years.

The possibility that high valuation ratios, expected log returns, and expected log dividend growth can coexist with with a high crash probability (in the mind of our representative investor) is reminiscent of the view of the world colorfully articulated by former Citigroup chief executive Chuck Prince in a July, 2007, interview with the *Financial Times*: “When the music stops, in terms of liquidity, things will be complicated. But as long as the music is playing, you’ve got to get up and dance. We’re still dancing.”

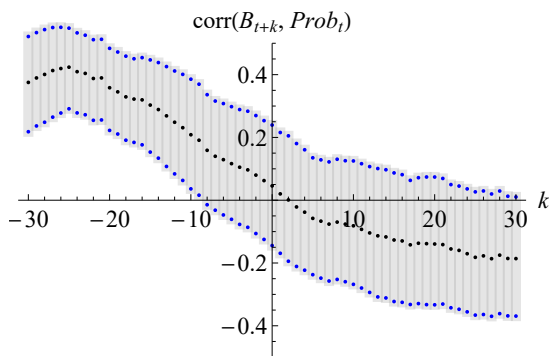
5.4 Other measures

The panels of Figures 16 and 17 compare the sentiment index to various other measures of financial conditions: the excess bond premium (EBP) of Gilchrist and Zakrajšek (2012), the National Financial Conditions Index (NFCI), and the Adjusted National Financial Conditions Index (ANFCI), all of which are generated on a weekly basis by the Federal Reserve Bank of Chicago. We convert them to monthly series by taking the last week’s observation in each calendar month.

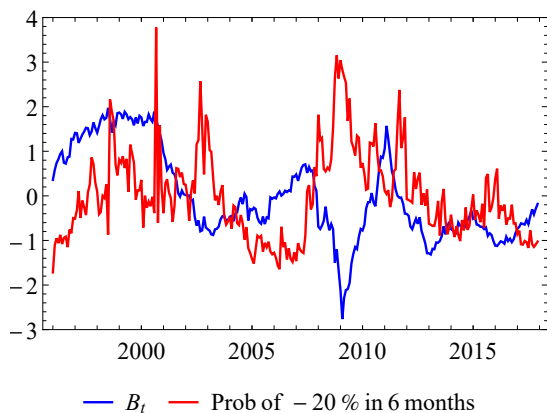
Lastly, Figures IA.4 through IA.9 (in the Internet Appendix) compare B_t with various series drawn from quarterly surveys studied by Ben-David, Graham and



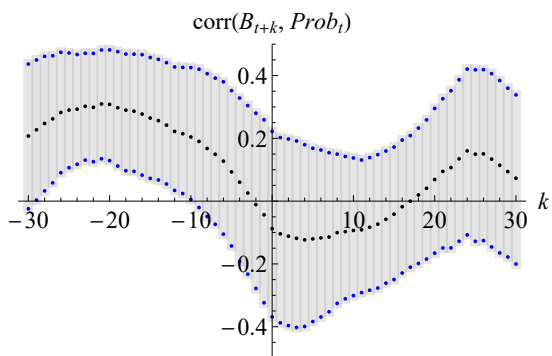
(a) B_t and crash probability.



(b) Correlation between B_{t+k} and crash probability.



(c) B_t ($AR(3)$, full-sample) and crash probability.



(d) Correlation between B_{t+k} ($AR(3)$, full-sample) and crash probability.

Figure 10: The sentiment indicator, volume and crash probability. Shaded areas in the right-hand panels indicate bootstrapped 95% confidence intervals. k is measured in months.

Harvey (2013). ER_{1yr} and ER_{10yr} are, respectively, the cross-sectional average subjective expectations stock market returns over 1- and 10-year horizons, as reported by survey respondents; EER_{1yr} and EER_{10yr} are the corresponding average subjective expected *excess* returns; and $ERstd_{1yr}$ and $ERstd_{10yr}$ are disagreement measures at the same horizons (that is, are the cross-sectional standard deviations of reported subjective expected returns). Figure IA.10 compares B_t with a quarterly time series of average subjective expectations of dividend growth that has been constructed by De la O and Myers (2018). The measures of mean subjective expected returns, and of mean subjective expected dividend growth, are positively correlated with B_t , while the measures of mean subjective expected excess returns, and of disagreement, are negatively correlated with B_t . We are hesitant to draw firm conclusions from this evidence, however, as the comparison series do not include the period of greatest interest from 1996 to 2000.

6 Conclusion

We have presented a sentiment indicator based on interest rates, index option prices, and the market valuation ratio. The indicator can be interpreted as a lower bound on the expected dividend growth that must be perceived by an unconstrained, rational investor with risk aversion at least one who is happy to invest his or her wealth fully in the stock market, and whose beliefs are consistent with the historical evidence on the relationship between valuation ratios, returns, and dividend growth.

The bound was very high during the late 1990s, reflecting dividend growth expectations that in our view were unreasonably optimistic—hence our description of it as a sentiment indicator—and that were not realized *ex post*. We also show that it is a leading indicator of detrended volume, of long-term earnings growth expectations, and of various measures of stress in the financial system.

In simple terms, we characterize the late 1990s as a bubble because valuation ratios and short-run expected returns—as revealed by interest rates and our LVIX measure—were *simultaneously* high. Both aspects are important. We would not view high valuation ratios at a time of low expected returns, or low valuation ratios at a time of high expected returns, as indicative of a bubble: on the contrary, the

latter scenario occurs in the aftermath of the market crash in 2008.

Our measure does not point to an unreasonable level of market sentiment in recent years, as it interprets high valuation ratios as being justified by the low levels of interest rates and of implied volatility.

Volatility and valuation ratios have, of course, long been linked to bubbles. A novel feature of our approach is that we use some theory to motivate our definitions of volatility and of valuation ratios, and to make the link quantitative. There are various choices to be made regarding the details of the construction of the indicator; we have tried to make these choices in a conservative way to avoid “crying bubble” prematurely, in the hope that the indicator might be useful to cautious policymakers in practice. Our approach does ultimately require an appeal to the good judgment of policymakers, as we do not address the hard question of how to identify whether a given level of expected dividend growth is reasonable. We do not see a way to avoid some degree of expert judgment in identifying market-wide bubbles; but we believe that the approach proposed in this paper would make it easier for such judgment to be applied in a focussed and disciplined manner.

References

- Bansal, Ravi, and Amir Yaron.** 2004. “Risks for the Long Run: A Potential Resolution of Asset Pricing Puzzles.” *Journal of Finance*, 59(4): 1481–1509.
- Bansal, Ravi, Dana Kiku, Ivan Shaliastovich, and Amir Yaron.** 2014. “Volatility, the Macroeconomy, and Asset Prices.” *Journal of Finance*, 69(6): 2471–2511.
- Barberis, Nicholas, Robin Greenwood, Lawrence Jin, and Andrei Shleifer.** 2018. “Extrapolation and Bubbles.” *Journal of Financial Economics*, 129: 203–227.
- Ben-David, Itzhak, John R. Graham, and Campbell R. Harvey.** 2013. “Managerial Miscalibration.” *Quarterly Journal of Economics*, 128(4): 1547–1584.

- Breeden, Douglas T., and Robert H. Litzenberger.** 1978. “Prices of State-Contingent Claims Implicit in Option Prices.” *Journal of Business*, 51(4): 621–651.
- Campbell, John Y.** 2008. “Viewpoint: Estimating the Equity Premium.” *Canadian Journal of Economics*, 41(1): 1–21.
- Campbell, John Y.** 2018. *Financial Decisions and Markets: A Course in Asset Pricing*. Princeton University Press.
- Campbell, John Y., and John H. Cochrane.** 1999. “By Force of Habit: A Consumption-Based Explanation of Aggregate Stock Market Behavior.” *Journal of Political Economy*, 107(2): 205–251.
- Campbell, John Y., and Robert J. Shiller.** 1988. “The Dividend-Price Ratio and Expectations of Future Dividends and Discount Factors.” *Review of Financial Studies*, 1: 195–228.
- Campbell, John Y., Stefano Giglio, Christopher Polk, and Robert Turley.** 2016. “An Intertemporal CAPM with Stochastic Volatility.” Working Paper.
- Carr, Peter, and Dilip Madan.** 2001. “Towards a Theory of Volatility Trading.” In *Option Pricing, Interest Rates and Risk Management. Handbooks in Mathematical Finance*, , ed. E. Jouini, J. Cvitanic and Marek Musiela, 458–476. Cambridge University Press.
- Carr, Peter, and Liuren Wu.** 2009. “Variance Risk Premiums.” *Review of Financial Studies*, 22(3): 1311–1341.
- Cochrane, John H.** 2003. “Stocks as Money: Convenience Yield and the Tech-Stock Bubble.” In *Asset Price Bubbles*. , ed. William C. Hunter, George G. Kaufman and Michael Pomerleano. Cambridge:MIT Press.
- De la O, Ricardo, and Sean Myers.** 2018. “Subjective Cash Flow and Discount Rate Expectations.” Working paper, Stanford University.
- Duffie, Darrell, Nicolae Gârleanu, and Lasse H. Pedersen.** 2002. “Securities Lending, Shorting, and Pricing.” *Journal of Financial Economics*, 66: 307–339.
- Esary, J. D., F. Proschan, and D. W. Walkup.** 1967. “Association of Random Variables, with Applications.” *Annals of Mathematical Statistics*, 38(5): 1466–1474.

- Fama, Eugene F., and Kenneth R. French.** 1988. “Dividend Yields and Expected Stock Returns.” *Journal of Financial Economics*, 22(1): 3–25.
- Gilchrist, Simon, and Egon Zakrajšek.** 2012. “Credit Spreads and Business Cycle Fluctuations.” *American Economic Review*, 102(4): 1692–1720.
- Goyal, Amit, and Ivo Welch.** 2008. “A Comprehensive Look at the Empirical Performance of Equity Premium Prediction.” *Review of Financial Studies*, 21: 1455–1508.
- Greenwood, Robin, Andrei Shleifer, and Yang You.** 2018. “Bubbles for Fama.” *Journal of Financial Economics*. forthcoming.
- Hansen, Lars Peter, and Ravi Jagannathan.** 1991. “Implications of Security Market Data for Models of Dynamic Economies.” *Journal of Political Economy*, 99(2): 225–262.
- Harrison, J. Michael, and David M. Kreps.** 1978. “Speculative Investor Behavior in a Stock Market with Heterogeneous Expectations.” *Quarterly Journal of Economics*, 92(2): 323–336.
- Hong, Harrison, José Scheinkman, and Wei Xiong.** 2006. “Asset Float and Speculative Bubbles.” *Journal of Finance*, 61(3): 1073–1117.
- Kadan, Ohad, and Xiaoxiao Tang.** 2019. “A Bound on Expected Stock Returns.” *The Review of Financial Studies*, 33(4): 1565–1617.
- Keim, Donald B., and Robert F. Stambaugh.** 1986. “Predicting Returns in the Stock and Bond Markets.” *Journal of Financial Economics*, 17: 357–390.
- Kremens, Lukas, and Ian Martin.** 2019. “The Quanto Theory of Exchange Rates.” *American Economic Review*, 109(3): 810–843.
- Lamont, Owen A., and Richard H. Thaler.** 2003. “Can the Market Add and Subtract? Mispricing in Tech Stock Carve-Outs.” *Journal of Political Economy*, 111(2): 227–268.
- Lintner, John.** 1956. “Distribution of Incomes of Corporations Among Dividends, Retained Earnings, and Taxes.” *American Economic Review Papers & Proceedings*, 46: 97–113.
- Longstaff, Francis A., and Jiang Wang.** 2012. “Asset Pricing and the Credit Market.” *Review of Financial Studies*, 25(11): 3169–3215.

- Martin, Ian.** 2013. “Consumption-Based Asset Pricing with Higher Cumulants.” *Review of Economic Studies*, 80(2): 745–773.
- Martin, Ian.** 2017. “What is the Expected Return on the Market?” *Quarterly Journal of Economics*, 132(1): 367–433.
- Martin, Ian, and Dimitris Papadimitriou.** 2020. “Sentiment and Speculation in a Market with Heterogeneous Beliefs.” Working paper.
- Martin, Ian W. R., and Christian Wagner.** 2019. “What is the Expected Return on a Stock?” *Journal of Finance*, 74(4): 1887–1929.
- Nagel, Stefan, and Zhengyang Xu.** 2019. “Asset Pricing with Fading Memory.” Working paper.
- Neuberger, Anthony.** 2012. “Realized Skewness.” *Review of Financial Studies*, 25(11): 3423–3455.
- Ofek, Eli, and Matthew Richardson.** 2003. “DotCom Mania: The Rise and Fall of Internet Stock Prices.” *Journal of Finance*, 58(3): 1113–1137.
- Pástor, Ľuboš, and Pietro Veronesi.** 2003. “Stock Valuation and Learning about Profitability.” *Journal of Finance*, 58(5): 1749–1789.
- Pástor, Ľuboš, and Pietro Veronesi.** 2006. “Was there a Nasdaq bubble in the late 1990s?” *Journal of Financial Economics*, 81: 61–100.
- Piketty, Thomas.** 2014. *Capital in the Twenty-First Century*. Cambridge, MA:Harvard University Press.
- Piketty, Thomas.** 2015. “About *Capital in the Twenty-First Century*.” *American Economic Review: Papers & Proceedings*, 105(5): 48–53.
- Pitt, Loren D.** 1982. “Positively Correlated Normal Variables are Associated.” *Annals of Probability*, 10(2): 496–499.
- Pohl, Walter, Karl Schmedders, and Ole Wilms.** 2018. “Higher Order Effects in Asset Pricing Models with Long-Run Risks.” *Journal of Finance*, 73(3): 1061–1111.
- Reinhart, Carmen M., and Kenneth S. Rogoff.** 2009. *This Time is Different: Eight Centuries of Financial Folly*. Princeton, NJ:Princeton University Press.
- Scheinkman, José A., and Wei Xiong.** 2003. “Overconfidence and Speculative Bubbles.” *Journal of Political Economy*, 111(6): 1183–1219.

Schneider, Paul, and Fabio Trojani. 2018. “(Almost) Model-Free Recovery.” *Journal of Finance*. forthcoming.

Stambaugh, Robert F. 1999. “Predictive Regressions.” *Journal of Financial Economics*, 54: 375–421.

A Tables and figures

RHS _t	LHS _{t+1}	\hat{a}_0	s.e.	\hat{a}_1	s.e.	R ²
y_t	$r_{t+1} - g_{t+1}$	-0.145	[0.053]	5.12	[1.492]	13.4%
	r_{t+1}	0.028	[0.051]	1.775	[1.361]	2.26%
	$-g_{t+1}$	-0.173	[0.05]	3.345	[1.49]	16.29%
dp_t	$r_{t+1} - g_{t+1}$	0.557	[0.185]	0.152	[0.052]	9.54%
	r_{t+1}	0.33	[0.154]	0.07	[0.045]	2.86%
	$-g_{t+1}$	0.227	[0.161]	0.082	[0.046]	7.85%

Table 2: Predictive regressions for S&P 500, annual data, cash reinvestment, 1926-2019.

RHS _t	LHS _{t+1}	\hat{a}_0	s.e.	\hat{a}_1	s.e.	R ²
y_t	$r_{t+1} - g_{t+1}$	-0.031	[0.04]	2.29	[1.073]	6.91%
	r_{t+1}	-0.018	[0.049]	3.554	[1.154]	10.43%
	$-g_{t+1}$	-0.013	[0.045]	-1.264	[1.228]	2.3%
dp_t	$r_{t+1} - g_{t+1}$	0.311	[0.123]	0.076	[0.036]	6.92%
	r_{t+1}	0.519	[0.137]	0.12	[0.041]	10.76%
	$-g_{t+1}$	-0.208	[0.135]	-0.044	[0.039]	2.51%

Table 3: Predictive regressions for S&P 500, annual data, market reinvestment, 1947-2019.

RHS _t	LHS _{t+1}	\hat{a}_0	<i>s.e.</i>	\hat{a}_1	<i>s.e.</i>	R^2
y_t	$r_{t+1} - g_{t+1}$	-0.063	[0.041]	2.921	[1.123]	8.38%
	r_{t+1}	-0.015	[0.048]	2.875	[1.138]	5.16%
	$-g_{t+1}$	-0.048	[0.04]	0.046	[1.003]	0.0%
dp_t	$r_{t+1} - g_{t+1}$	0.347	[0.13]	0.089	[0.038]	6.52%
	r_{t+1}	0.411	[0.142]	0.095	[0.042]	4.66%
	$-g_{t+1}$	-0.064	[0.12]	-0.005	[0.035]	0.03%

Table 4: Predictive regressions for S&P 500, annual data, market reinvestment, 1926-2019.

RHS _t	LHS _{t+1}	\hat{a}_0	<i>s.e.</i>	\hat{a}_1	<i>s.e.</i>	R^2
y_t	$r_{t+1} - g_{t+1}$	-0.07	[0.048]	3.549	[1.289]	8.26%
	r_{t+1}	-0.02	[0.047]	3.807	[1.182]	10.84%
	$-g_{t+1}$	-0.05	[0.023]	-0.257	[0.734]	0.31%
dp_t	$r_{t+1} - g_{t+1}$	0.435	[0.141]	0.111	[0.04]	8.46%
	r_{t+1}	0.511	[0.134]	0.116	[0.039]	10.54%
	$-g_{t+1}$	-0.076	[0.072]	-0.005	[0.02]	0.12%

Table 5: Predictive regressions for S&P500, annual data from Goyal's website, 1947-2018.

RHS _t	LHS _{t+1}	\hat{a}_0	s.e.	\hat{a}_1	s.e.	R^2
y_t	$r_{t+1} - g_{t+1}$	-0.12	[0.049]	4.47	[1.369]	12.05%
	r_{t+1}	0.033	[0.049]	1.628	[1.343]	2.04%
	$-g_{t+1}$	-0.153	[0.04]	2.842	[1.213]	17.07%
dp_t	$r_{t+1} - g_{t+1}$	0.5	[0.169]	0.135	[0.048]	8.84%
	r_{t+1}	0.315	[0.153]	0.065	[0.044]	2.67%
	$-g_{t+1}$	0.186	[0.133]	0.069	[0.037]	8.17%

Table 6: Predictive regressions for S&P500, annual data from Goyal's website, 1926-2018.

RHS _t	LHS _{t+1}	\hat{a}_0	s.e.	\hat{a}_1	s.e.	R^2
y_t	$r_{t+1} - g_{t+1}$	-0.143	[0.041]	4.5	[0.968]	13.03%
	r_{t+1}	0.043	[0.038]	0.992	[0.872]	0.89%
	$-g_{t+1}$	-0.185	[0.03]	3.507	[0.769]	22.91%
dp_t	$r_{t+1} - g_{t+1}$	0.501	[0.125]	0.14	[0.037]	9.0%
	r_{t+1}	0.217	[0.108]	0.041	[0.033]	1.07%
	$-g_{t+1}$	0.284	[0.093]	0.099	[0.028]	13.09%

Table 7: Predictive regressions for S&P500, annual data from Goyal's website, 1871-2018.

Horizon	$\hat{\alpha}$	s.e.	$\hat{\beta}$	s.e.	R^2
3m	0.009	[0.018]	1.381	[3.629]	0.54%
6m	-0.004	[0.021]	3.128	[1.514]	3.67%
9m	-0.002	[0.041]	2.948	[1.439]	3.70%
12m	0.006	[0.063]	2.493	[1.613]	2.86%

Table 8: Coefficient estimates for regression (32), 96:01-17:12.

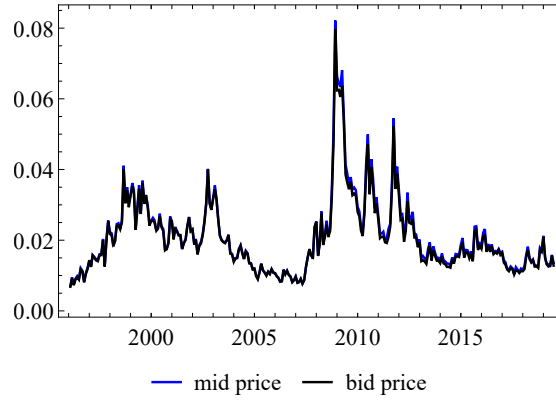
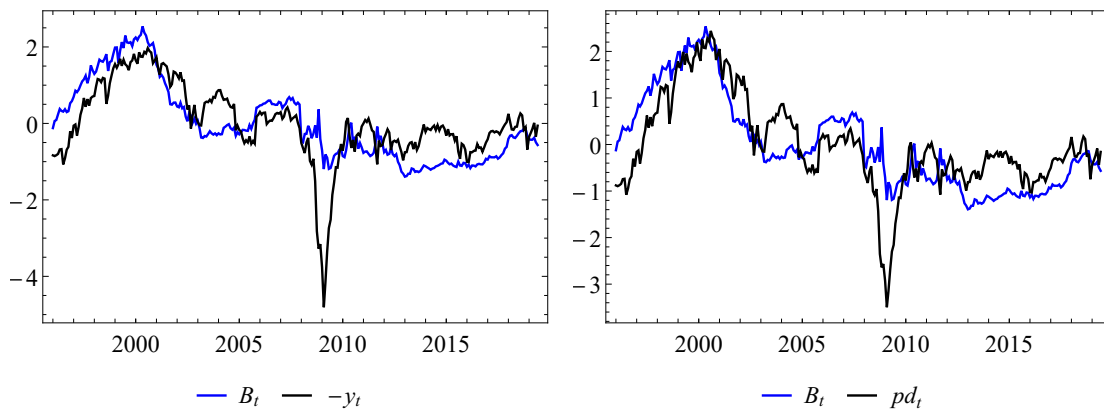


Figure 11: $LVIX_t$, S&P 500 index, annual horizon, computed using mid prices or bid prices.



(a) $-y_t$ and B_t , standardized.

(b) pd_t and B_t , standardized.

Figure 12: Standardized series of $-y_t$, pd_t and B_t (with B_t calculated using predictive coefficients from the full sample predictive regression).

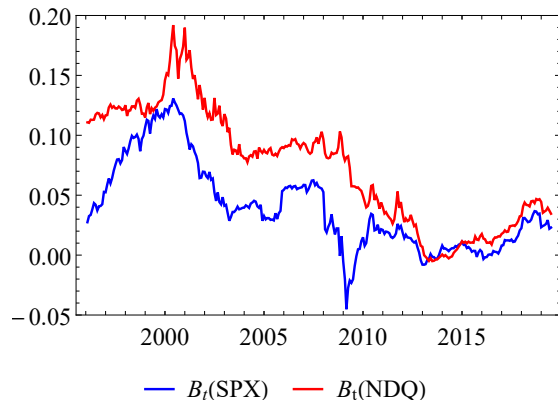


Figure 13: The sentiment index computed for the NASDAQ-100 index (and, for comparison, the baseline sentiment index for the S&P 500).

B $AR(1)$ vs. linear regression

If y_t follows an $AR(1)$ with autocorrelation ϕ , then the linear approximation (24) reduces to

$$\mathbb{E}_t(r_{t+1} - g_{t+1}) = \underbrace{\frac{\rho(\phi - 1)}{1 - \rho}}_{\alpha} \bar{y} + \underbrace{\frac{1 - \rho\phi}{1 - \rho}}_{\beta} y_t. \quad (36)$$

In the body of the paper, we estimate the predictive relationship between $r_{t+1} - g_{t+1}$ and the predictor variable y_t (and dp_t) via linear regression. Under our $AR(1)$ assumption, we could also estimate the constant term and the coefficient on y_t directly, as in (36), by estimating ρ and the autocorrelation ϕ . Table 9 shows that both approaches give similar results.

Method	α	β	R^2
OLS	-0.07	3.54	8.33%
$AR(1)$	-0.08	3.81	8.51%

Table 9: Comparison of $AR(1)$ parametrization and linear regression. Annual price and dividend data, 1947–2019, from CRSP (cash reinvestment), as in Table 1.

C AR(2) and AR(3) specifications

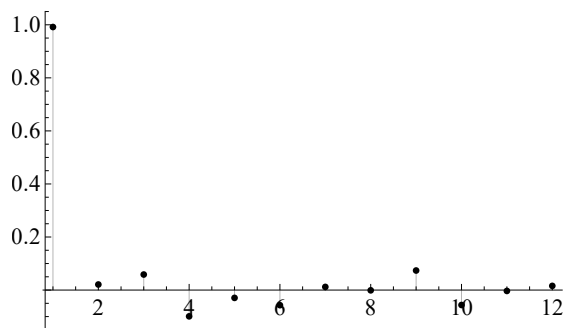


Figure 14: Partial autocorrelations of y_t . Annual data, 1947–2017, cash-reinvestment method.

Recall that if y_t follows an AR(2) process, then from the linearization (24) we have

$$r_{t+1} - g_{t+1} = \alpha + \beta y_t + \gamma y_{t-1} + \varepsilon_{t+1},$$

while if y_t follows an AR(3) process, then

$$r_{t+1} - g_{t+1} = \alpha + \beta y_t + \gamma y_{t-1} + \delta y_{t-2} + \varepsilon_{t+1}.$$

Table 10 reports the results of these regressions.

	\hat{a}	<i>s.e.</i>	$\hat{\beta}$	<i>s.e.</i>	$\hat{\gamma}$	<i>s.e.</i>	$\hat{\delta}$	<i>s.e.</i>	R^2
AR(1)	-0.067	[0.049]	3.415	[1.317]					7.73%
AR(2)	-0.056	[0.053]	6.098	[3.378]	-2.991	[3.339]			8.84%
AR(3)	-0.040	[0.055]	6.473	[3.313]	0.651	[3.231]	-4.457	[2.373]	11.32%

Table 10: Predictive regressions for S&P 500, annual data, cash reinvestment, 1947–2017.

D Nonlinear specifications

In this section we consider the effect of allowing for quadratic or cubic functional relationships between $r_{t+1} - g_{t+1}$ and y_t . We run the regressions

$$r_{t+1} - g_{t+1} = a_0 + a_1 y_t + a_2 y_t^2 + \varepsilon_{t+1}$$

and

$$r_{t+1} - g_{t+1} = a_0 + a_1 y_t + a_2 y_t^2 + a_3 y_t^3 + \varepsilon_{t+1}.$$

	\hat{a}_0	<i>s.e.</i>	\hat{a}_1	<i>s.e.</i>	\hat{a}_2	<i>s.e.</i>	\hat{a}_3	<i>s.e.</i>	R^2
linear	-0.067	[0.049]	3.415	[1.317]					7.73%
quadratic	-0.072	[0.111]	3.740	[6.348]	-4.390	[81.25]			7.73%
cubic	-0.12	[0.23]	9.35	[20.96]	-166.4	[576.0]	1402.8	[4821.3]	7.81%

Table 11: Predictive regressions for S&P 500, annual data, cash reinvestment, 1947–2017.

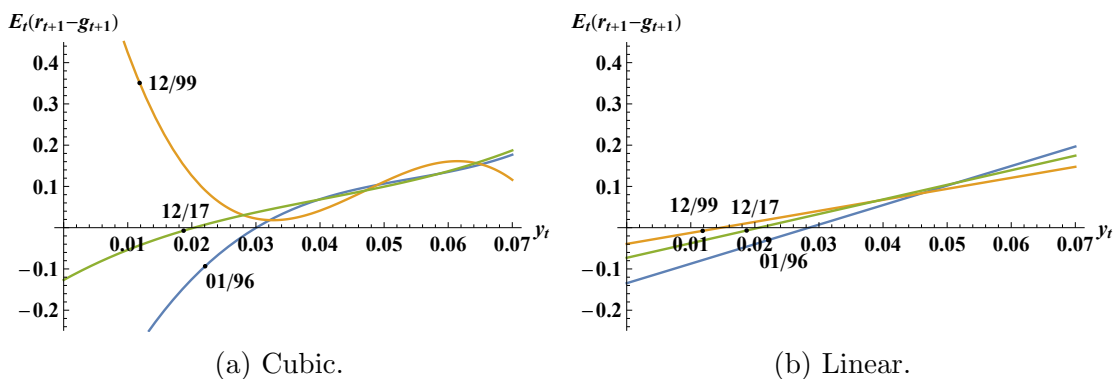
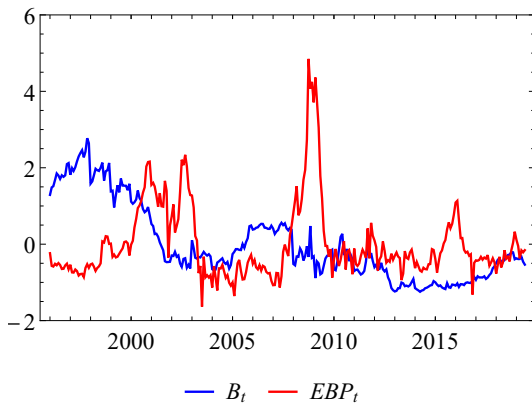
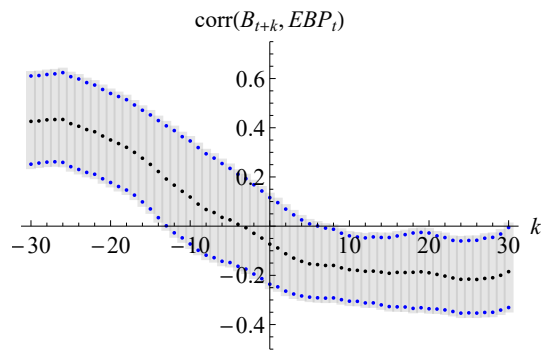


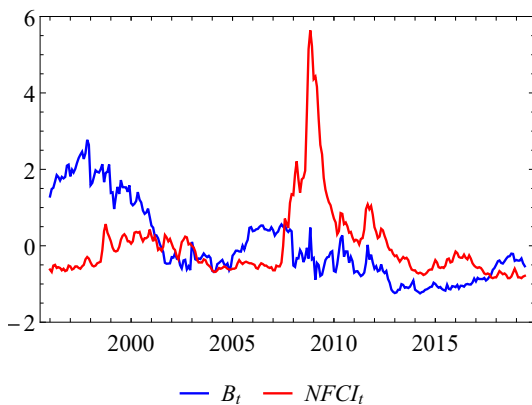
Figure 15: Forecasting with cubic and linear specifications at the beginning (01/96) and end (12/17) of our sample, and around the market highs in 12/99. Lines indicate the estimated functional relationship between $\mathbb{E}_t(r_{t+1} - g_{t+1})$ and y_t , and dots indicate the specific values of y_t and $\mathbb{E}_t(r_{t+1} - g_{t+1})$ that happened to prevail on the relevant dates.



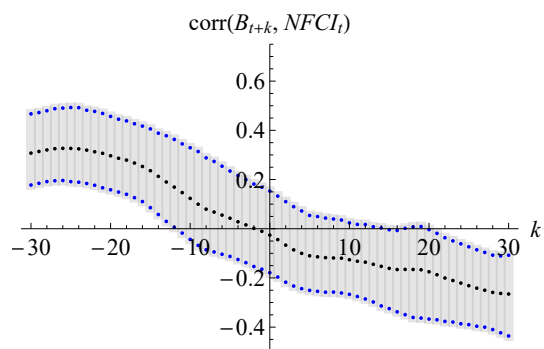
(a) B_t and EBP.



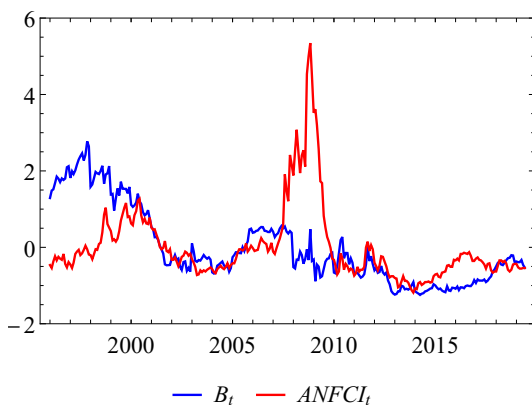
(b) $\text{corr}(B_{t+k}, EBP_t)$.



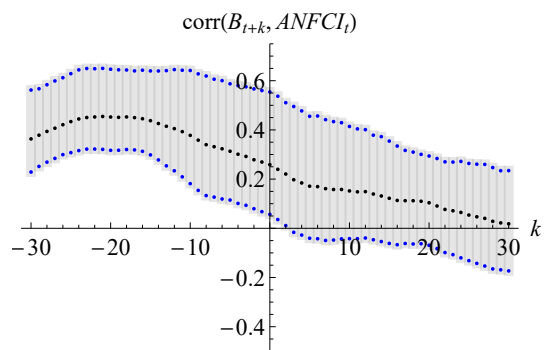
(c) B_t and NFCI.



(d) $\text{corr}(B_{t+k}, NFCI_t)$.

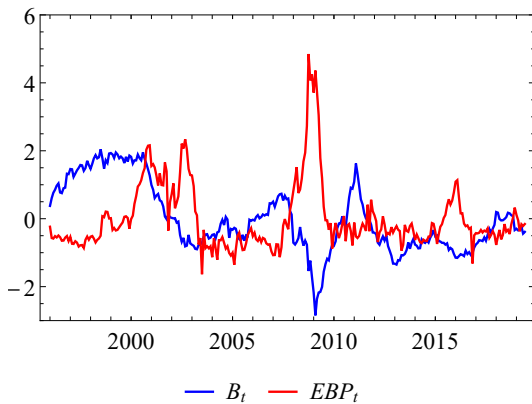


(e) B_t and ANFCI.

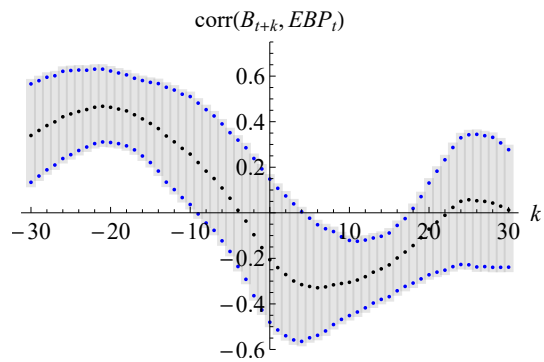


(f) $\text{corr}(B_{t+k}, ANFCI_t)$.

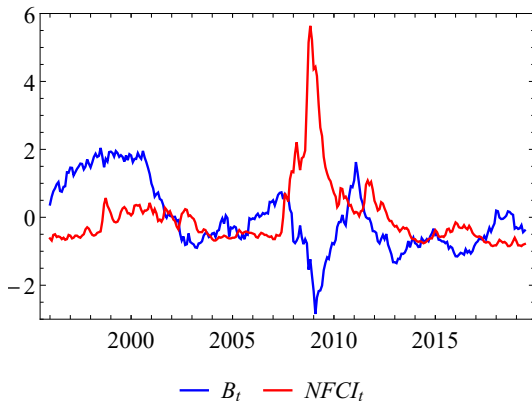
Figure 16: The relationship between B_t and various measures of financial conditions. Shaded areas in the right panels indicate bootstrapped 95% confidence intervals. k is measured in months.



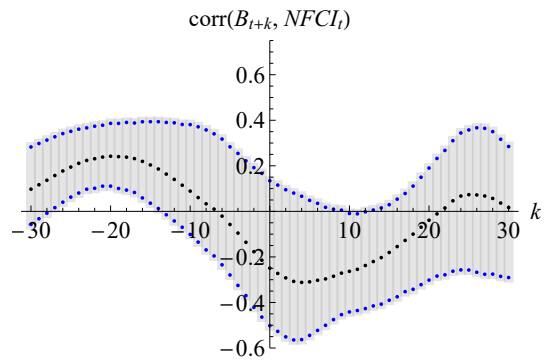
(a) B_t and EBP ($AR(3)$, full-sample).



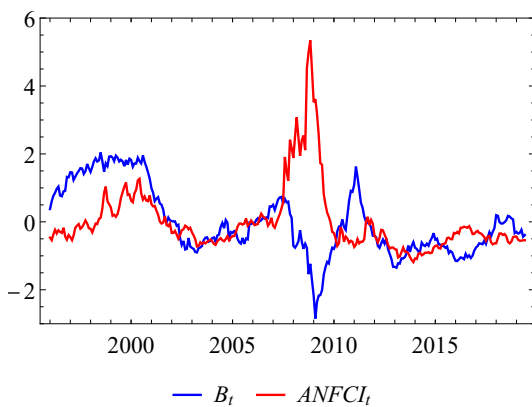
(b) $\text{corr}(B_{t+k}, EBP_t)$ ($AR(3)$, full-sample).



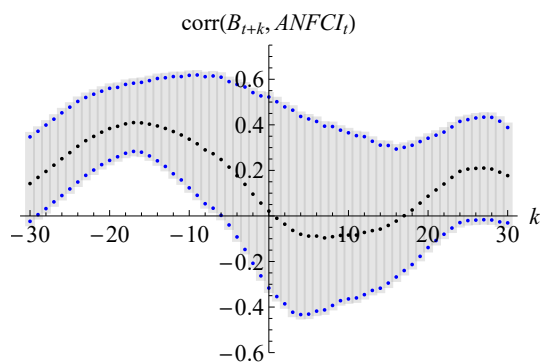
(c) B_t ($AR(3)$, full-sample) and NFCI.



(d) $\text{corr}(B_{t+k}, NFCI_t)$ ($AR(3)$, full-sample).



(e) B_t ($AR(3)$, full-sample) and ANFCI.



(f) $\text{corr}(B_{t+k}, ANFCI_t)$ ($AR(3)$, full-sample).

Figure 17: The relationship between B_t ($AR(3)$, full-sample) and various measures of financial conditions. Shaded areas in the right panels indicate bootstrapped 95% confidence intervals. k is measured in months.

E Further examples

We provide some other illustrations of situations in which the mNCC holds. These illustrations are intended as proof-of-concept rather than as fully fleshed out models, so we have simplified them as far as possible.

Example 3 (Heterogeneous preferences). This example is a simplification of Longstaff and Wang (2012), except that we will not need to make any assumptions on the distribution of aggregate consumption growth. Consider a two-period economy with complete markets and two agents with homogeneous beliefs and power utility, but with differing coefficients of risk aversion, $\gamma_2 > \gamma_1 \geq 1$. Agent i 's problem is therefore

$$\max \frac{C_{i,t}^{1-\gamma_i}}{1-\gamma_i} + \beta \mathbb{E}_t \frac{C_{i,t+1}^{1-\gamma_i}}{1-\gamma_i}.$$

As markets are complete and beliefs are homogeneous, the stochastic discount factor is unique, so that $\beta (C_{1,t+1}/C_{1,t})^{-\gamma_1} = \beta (C_{2,t+1}/C_{2,t})^{-\gamma_2}$. Following Longstaff and Wang (2012) by assuming that $\gamma_1 = \gamma$ and $\gamma_2 = 2\gamma$ to ensure a closed form solution, we therefore have

$$\frac{C_{1,t+1}}{C_{1,t}} = \left(\frac{C_{2,t+1}}{C_{2,t}} \right)^2. \quad (37)$$

Writing $Y_t = C_{1,t} + C_{2,t}$ for aggregate consumption, this implies that

$$C_{2,t+1} = \frac{2}{a} \left(\sqrt{1 + aY_{t+1}} - 1 \right),$$

where the constant $a = 4C_{1,t}/C_{2,t}^2$ reflects the relative wealth of the two agents.

We wish to check whether the mNCC holds for the return on the market, i.e., the aggregate consumption claim. To do so, we construct a representative agent for whom the mNCC holds. (Although agents 1 and 2 are not representative—neither invests only in the market—they have the same beliefs and SDF as the representative agent, so it will then follow that the mNCC holds for them too.) In the usual way, the representative agent consumes Y_{t+1} and has marginal utility $v'(Y_{t+1})$ that is proportional to $C_{2,t+1}^{-2\gamma}$. Integrating, the representative agent's

utility function is

$$v(Y_{t+1}) = \frac{(\sqrt{1 + aY_{t+1}} - 1)^{2(1-\gamma)}}{2(1-\gamma)} + \frac{(\sqrt{1 + aY_{t+1}} - 1)^{1-2\gamma}}{1-2\gamma}.$$

The representative agent's relative risk aversion is therefore low in good times and high in bad times, and it lies between γ and 2γ :

$$-\frac{Y_{t+1}v''(Y_{t+1})}{v'(Y_{t+1})} = \gamma + \frac{\gamma}{\sqrt{1 + aY_{t+1}}} \rightarrow \begin{cases} \gamma & \text{as } Y_{t+1} \rightarrow \infty \\ 2\gamma & \text{as } Y_{t+1} \rightarrow 0 \end{cases}.$$

As $\gamma \geq 1$, the mNCC holds.

Example 4 (Heterogeneous beliefs). This example is based on [Martin and Papadimitriou \(2020\)](#). A continuum of investors with log utility over terminal wealth trade a risky asset in unit supply (“the market”) and a riskless asset in zero net supply. The net riskless rate is zero. Uncertainty evolves on a binomial tree, so the risky asset's return, R , equals R_u at the up-node and R_d at the down-node; we choose labels so that $R_u > R_d$. Investors, indexed by $h \in (0, 1)$, have heterogeneous beliefs: investor h believes that the probability of an up-move is h . On wealth-weighted average, the investors must hold one unit of the asset to clear the market. At any node, we can define a representative agent $H \in (0, 1)$ who invests fully in the risky asset with no borrowing or lending. We also define the risk-neutral probability of an up-move (on which all investors agree) as $p^* \in (0, 1)$. Optimists ($h > H$) lever up, while sufficiently pessimistic investors ($h < p^*$) go short, as they perceive that the market earns a negative risk premium.

These assumptions imply that the representative agent perceives the market as growth-optimal, and hence that $\frac{H}{R_u} + \frac{1-H}{R_d} = 1$ (as the gross riskless rate is 1). On the other hand—using the fact that the gross riskless rate equals 1 once again—we must also have $p^*R_u + (1-p^*)R_d = 1$ by the defining property of the risk-neutral probability. Combining these two equations,

$$p^*R_u = H \quad \text{and} \quad (1-p^*)R_d = 1-H. \tag{38}$$

We can now find the covariance $\text{cov}^{(h)}(MR, \log R)$ from the perspective of an

arbitrary investor $h \in (0, 1)$. We have

$$\begin{aligned}
\text{cov}^{(h)}(MR, \log R) &= \mathbb{E}^*(R \log R) - \mathbb{E}^{(h)} \log R \\
&= p^* R_u \log R_u + (1 - p^*) R_d \log R_d - h \log R_u - (1 - h) \log R_d \\
&= (H - h) \log \frac{R_u}{R_d},
\end{aligned}$$

where we use (38) in the third line. The mNCC therefore holds when $h \geq H$: that is, for the representative investor and for all more optimistic investors.

Example 5 (Heterogeneous preferences and beliefs). Consider a collection of investors who maximize next-period utility. Investor i allocates a fraction θ_i of wealth to the risky asset, and $1 - \theta_i$ to the riskless asset, so $\mathbb{E}^{(i)} W_{i,t+1}^{1-\gamma_i} / (1 - \gamma_i)$ where $W_{i,t+1} = W_{i,t} R_f + \theta_i W_{i,t} (R - R_f)$. Risk aversion $\gamma_i \geq 1$ may be heterogeneous across investors. Beliefs are also heterogeneous: we suppose that every investor i perceives the return on the market as lognormal, $\log R \sim N(\mu_i, \sigma_i^2)$, and that $\mu_i - r_f + \frac{1}{2} \sigma_i^2 = \gamma_i \sigma_i^2$ where $r_f = \log R_f$ is the log riskless rate. This last assumption implies (together with the first order condition for optimal θ_i) that every investor will set $\theta_i = 1$, which clears the market. *Every* investor is therefore representative, and as $\gamma_i \geq 1$, the mNCC holds for them all.

Internet Appendix for
Volatility, Valuation Ratios, and Bubbles: An Empirical
Measure of Market Sentiment

RHS _t	LHS _{t+1}	\hat{a}_0	<i>s.e.</i>	\hat{a}_1	<i>s.e.</i>	R^2
y_t	$r_{t+1} - g_{t+1}$	-0.145	0.091	5.12	2.583	13.4%
	r_{t+1}	0.028	0.088	1.775	2.358	2.26%
	$-g_{t+1}$	-0.173	0.087	3.345	2.581	16.29%
dp_t	$r_{t+1} - g_{t+1}$	0.557	0.32	0.152	0.09	9.54%
	r_{t+1}	0.33	0.267	0.07	0.077	2.86%
	$-g_{t+1}$	0.227	0.28	0.082	0.079	7.85%

Table IA.1: CRSP data, 24 mo dividends, cash reinvestment, annual data, 1926-2019

RHS _t	LHS _{t+1}	\hat{a}_0	<i>s.e.</i>	\hat{a}_1	<i>s.e.</i>	R^2
y_t	$r_{t+1} - g_{t+1}$	-0.073	0.084	3.541	2.256	8.33%
	r_{t+1}	-0.023	0.084	3.82	2.069	11.13%
	$-g_{t+1}$	-0.05	0.047	-0.279	1.389	0.29%
dp_t	$r_{t+1} - g_{t+1}$	0.43	0.25	0.111	0.072	8.23%
	r_{t+1}	0.511	0.235	0.117	0.069	10.58%
	$-g_{t+1}$	-0.081	0.146	-0.006	0.042	0.16%

Table IA.2: CRSP data, 24 mo dividends, cash reinvestment, annual data, 1947-2019

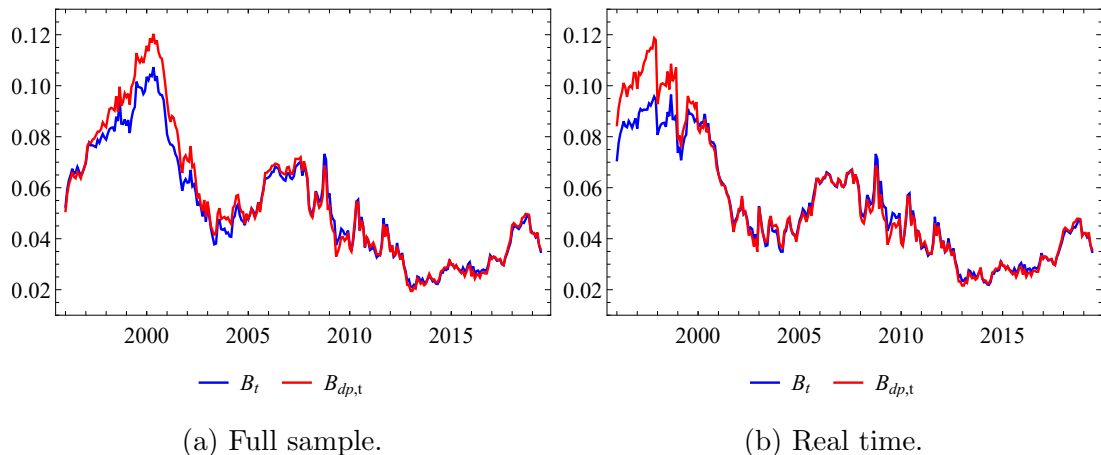


Figure IA.1: The sentiment indicator, computed at the two-year horizon using the full sample to estimate the relationship between y_t and $r_{t+1} - g_{t+1}$ (left) or using an expanding window (right), AR(1) model. Note that t and $t + 1$ represent periods rather than years: the time interval between them is two years in this figure. We report the index in annualized terms (LVIX and the riskless rate are annualized by construction, and we calculate $\mathbb{E}_t(g_{t+1} - r_{t+1})$ using un-annualized quantities throughout the estimation, then divide the end result by 2).

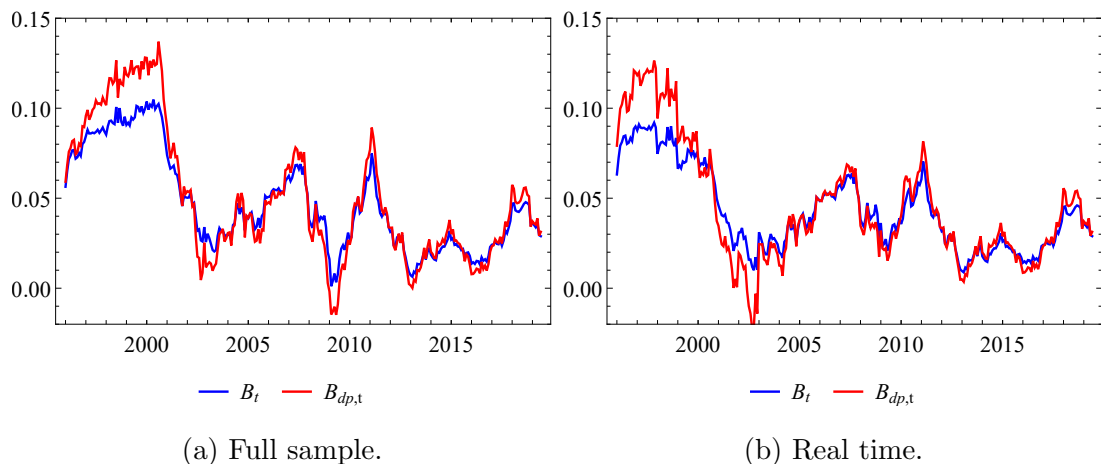


Figure IA.2: The sentiment indicator, computed at the two-year horizon using the full sample to estimate the relationship between y_t and $r_{t+1} - g_{t+1}$ (left) or using an expanding window (right), AR(3) model. Note that t and $t + 1$ represent periods rather than years: the time interval between them is two years in this figure. We report the index in annualized terms (LVIX and the riskless rate are annualized by construction, and we calculate $\mathbb{E}_t(g_{t+1} - r_{t+1})$ using un-annualized quantities throughout the estimation, then divide the end result by 2).

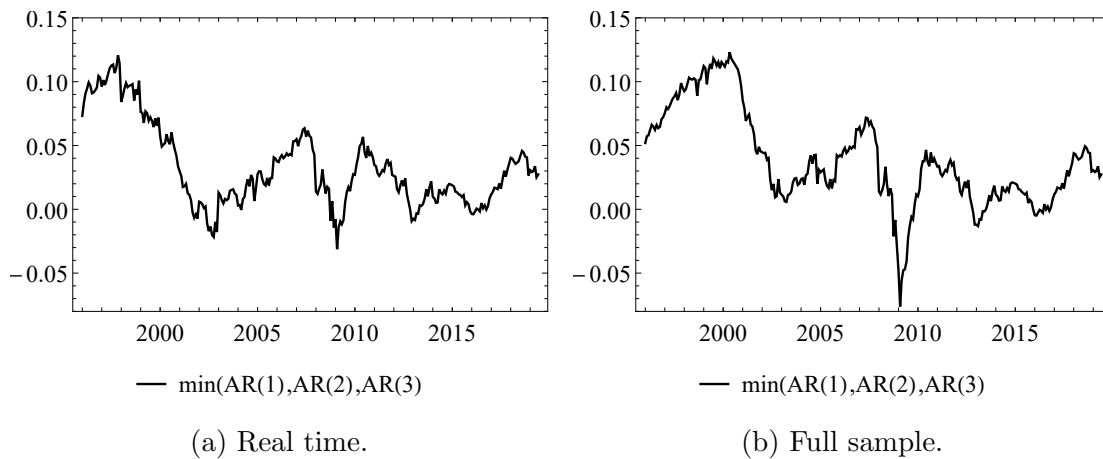
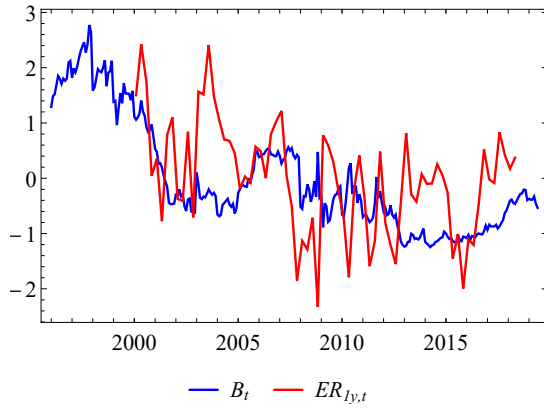
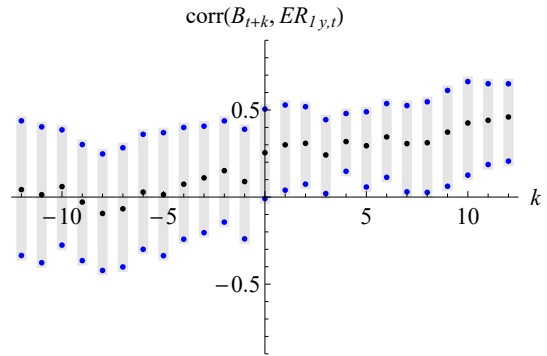


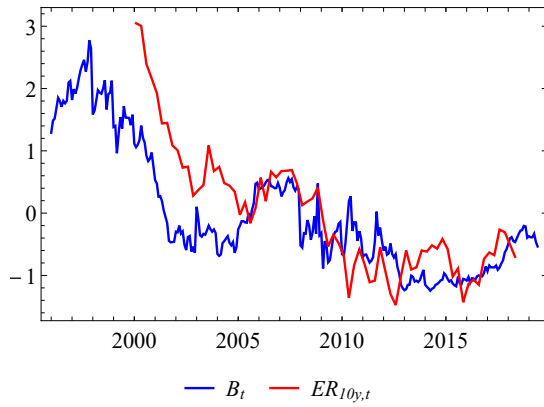
Figure IA.3: ‘Minimum’ sentiment indicators calculated on a full-sample or real-time basis, assuming y_t follows an AR(1), AR(2) or AR(3) process.



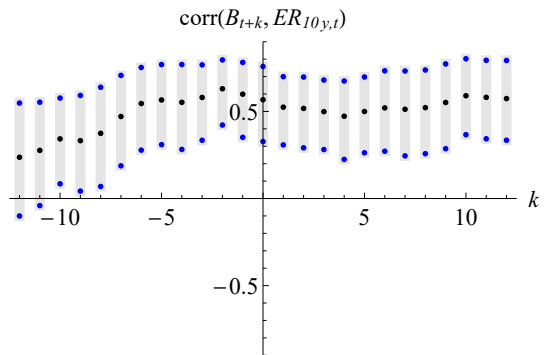
(a) B_t and $ER_{1y,t}$.



(b) $\text{corr}(B_{t+k}, ER_{1y,t})$.

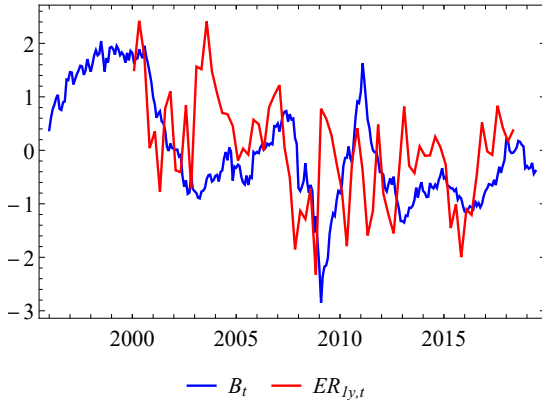


(c) B_t and $ER_{10y,t}$.

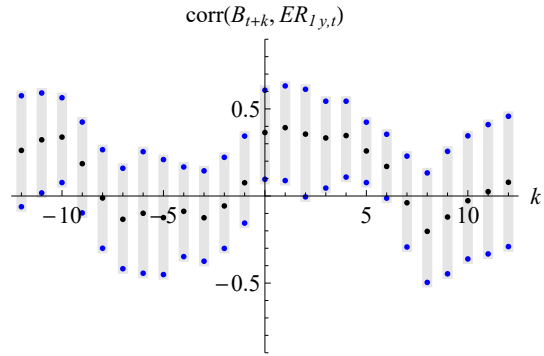


(d) $\text{corr}(B_{t+k}, ER_{10y,t})$.

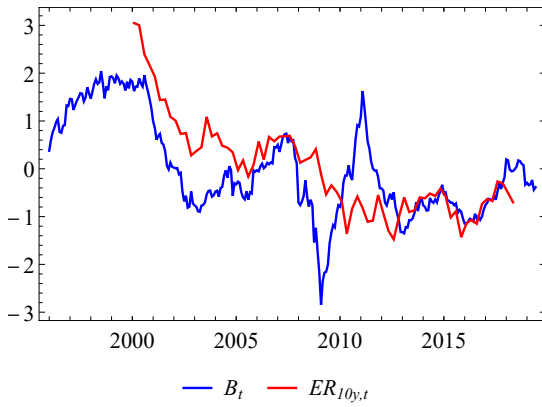
Figure IA.4: B_t plotted against the expected total return from GH survey. All series are standardized. k is measured in quarters.



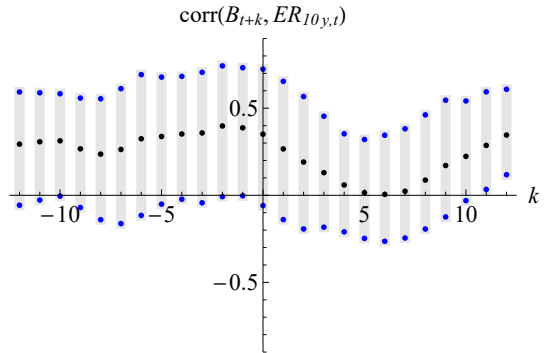
(a) B_t (AR(3), full-sample) and $ER_{1y,t}$.



(b) $\text{corr}(B_{t+k}, ER_{1y,t})$ (AR(3), full-sample).

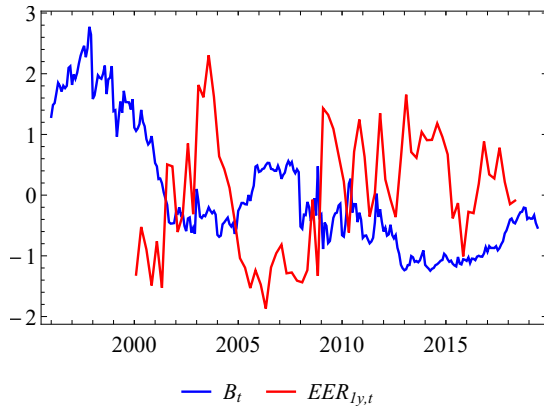


(c) B_t (AR(3), full-sample) and $ER_{10y,t}$.

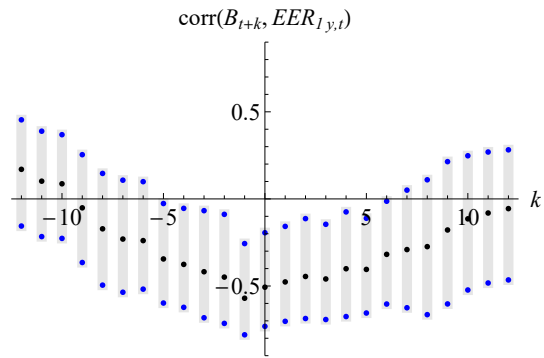


(d) $\text{corr}(B_{t+k}, ER_{10y,t})$ (AR(3), full sample).

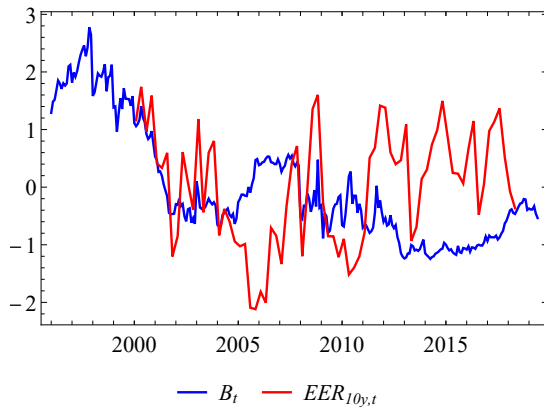
Figure IA.5: B_t (AR(3), full sample) plotted against the expected total return from GH survey. All series are standardized. k is measured in quarters.



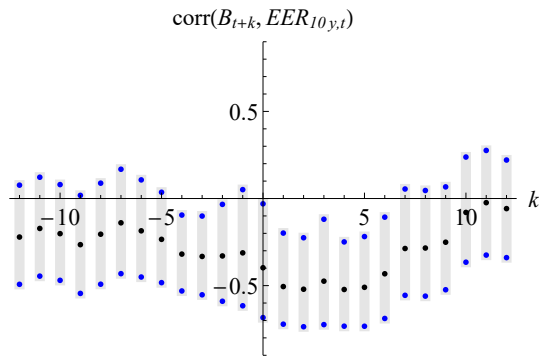
(a) B_t and $EER_{1y,t}$.



(b) $\text{corr}(B_{t+k}, EER_{1y,t})$.

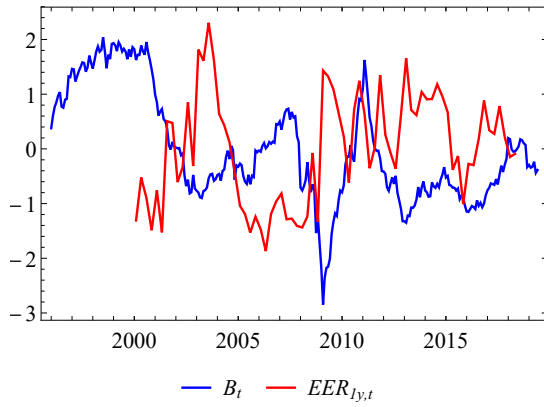


(c) B_t and $EER_{10y,t}$.

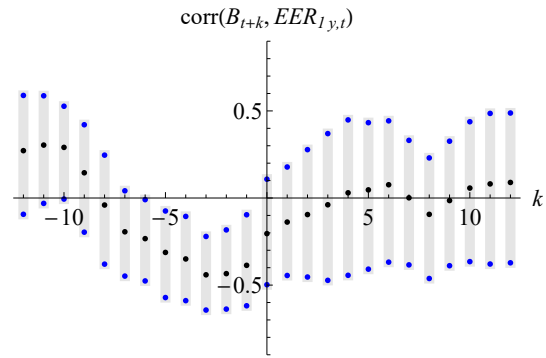


(d) $\text{corr}(B_{t+k}, EER_{10y,t})$.

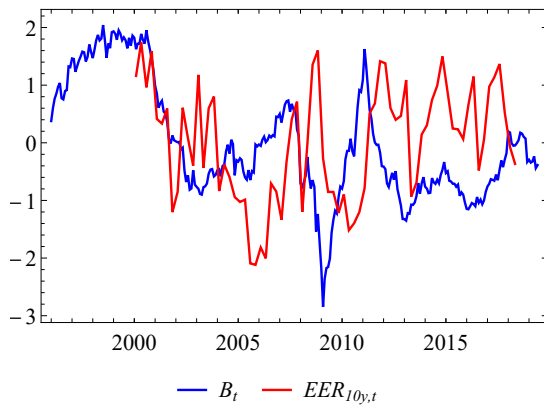
Figure IA.6: B_t plotted against the average expected excess return from GH survey. All series are standardized. k is measured in quarters.



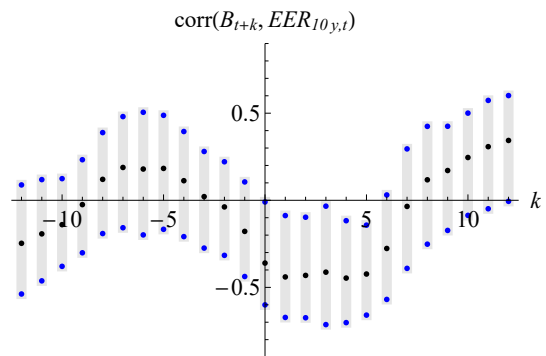
(a) B_t (AR(3), full-sample) and $EER_{1y,t}$.



(b) $\text{corr}(B_{t+k}, EER_{1y,t})$ (AR(3), full-sample).

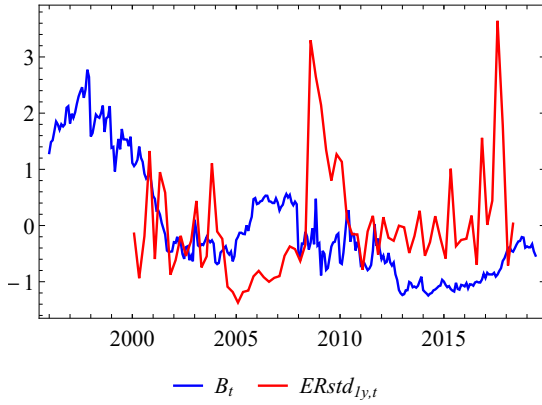


(c) B_t (AR(3), full-sample) and $EER_{10y,t}$.

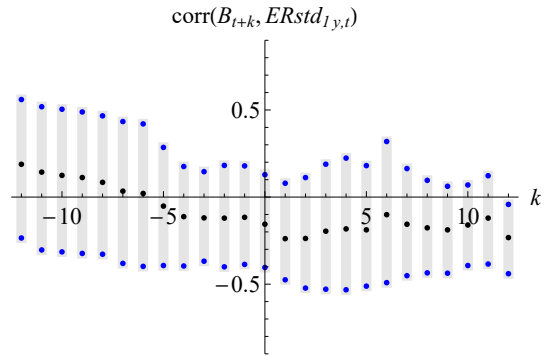


(d) $\text{corr}(B_{t+k}, EER_{10y,t})$ (AR(3), full sample).

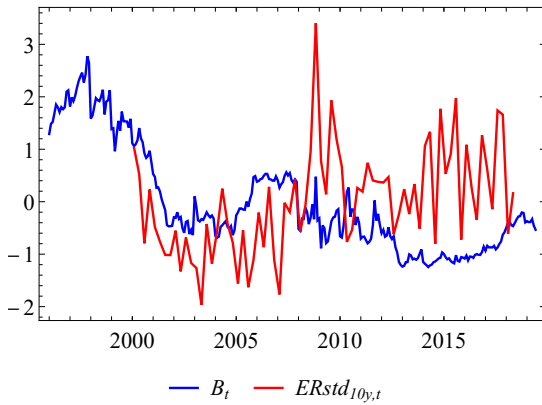
Figure IA.7: B_t (AR(3), full sample) plotted against the average expected excess return from GH survey. All series are standardized. k is measured in quarters.



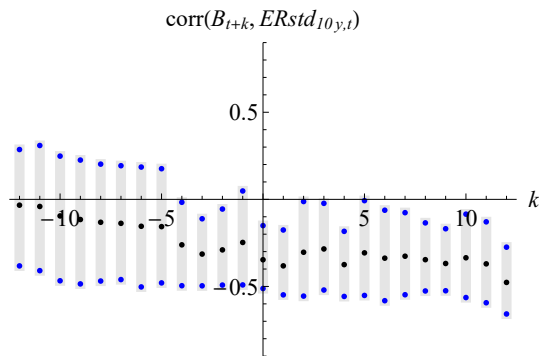
(a) B_t and $ERstd_{1y,t}$.



(b) $\text{corr}(B_{t+k}, ERstd_{1y,t})$.

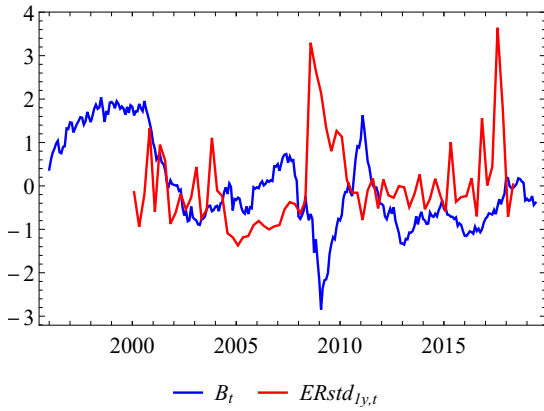


(c) B_t and $ERstd_{10y,t}$.

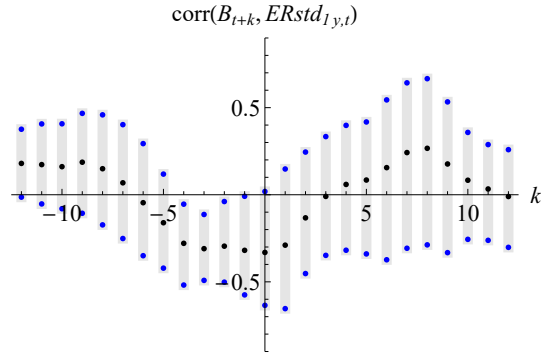


(d) $\text{corr}(B_{t+k}, ERstd_{10y,t})$.

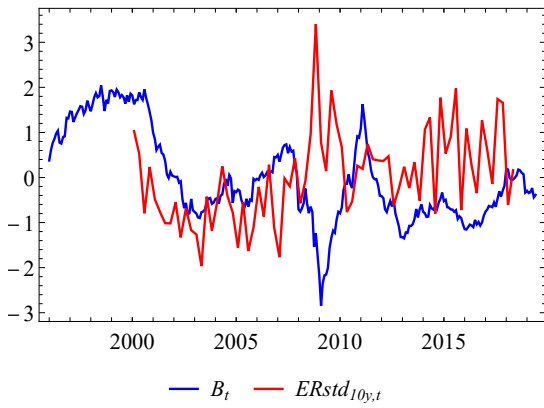
Figure IA.8: B_t plotted against the disagreement of expected total return from GH survey. All series are standardized. k is measured in quarters.



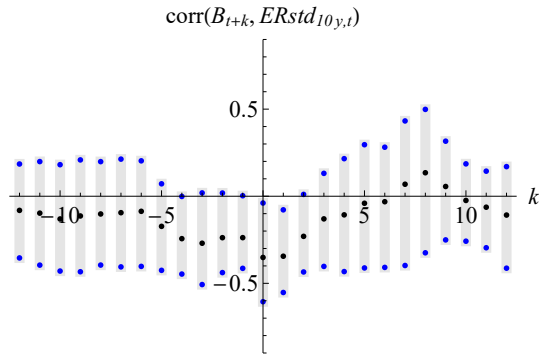
(a) B_t (AR(3), full-sample) and $ERstd_{1y,t}$.



(b) $\text{corr}(B_{t+k}, ERstd_{1y,t})$ (AR(3), full-sample).

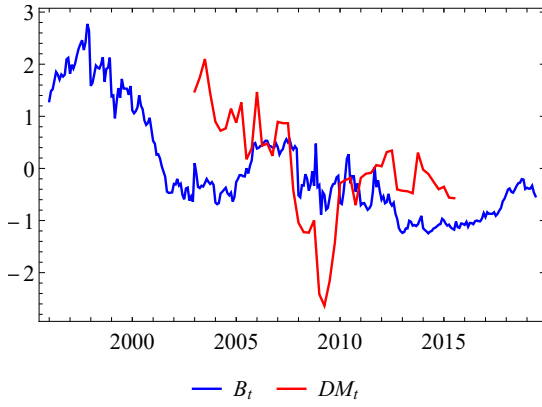


(c) B_t (AR(3), full-sample) and $ERstd_{10y,t}$.

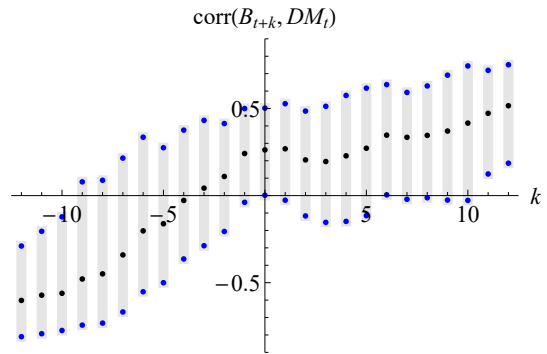


(d) $\text{corr}(B_{t+k}, ERstd_{10y,t})$ (AR(3), full sample).

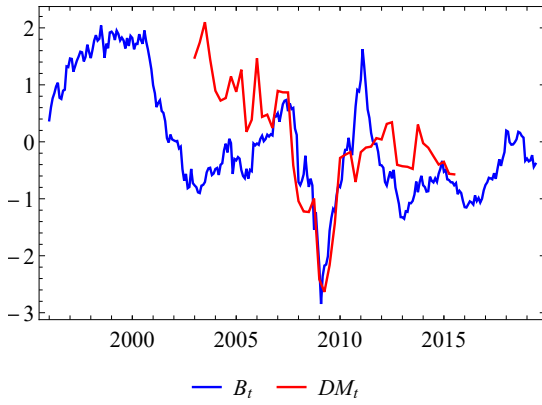
Figure IA.9: B_t (AR(3), full sample) plotted against disagreement of the expected total return from GH survey. All series are standardized. k is measured in quarters.



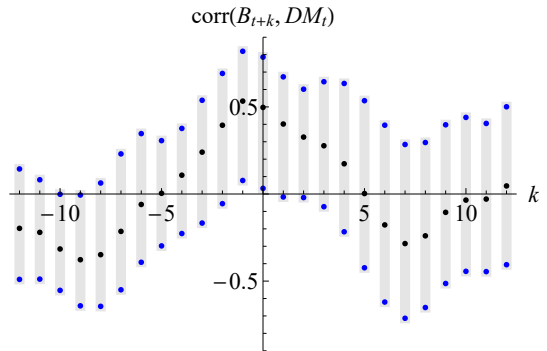
(a) B_t and DM survey.



(b) $\text{corr}(B_{t+k}, DM_t)$.



(c) B_t (AR(3), full-sample) and DM survey.



(d) $\text{corr}(B_{t+k}, DM_t)$ (AR(3), full sample).

Figure IA.10: B_t plotted against the expected dividend growth measure of DM survey. All series are standardized. k is measured in quarters.

Recent Issues

No. 311	Wenhui Li, Christian Wilde	Separating the Effects of Beliefs and Attitudes on Pricing under Ambiguity
No. 310	Carmelo Latino, Loriana Pelizzon, Aleksandra Rzeźnik	The Power of ESG Ratings on Stock Markets
No. 309	Tabea Bucher-Koenen, Andreas Hackethal, Johannes Koenen, Christine Laudénbach	Gender Differences in Financial Advice
No. 308	Thomas Pauls	The Impact of Temporal Framing on the Marginal Propensity to Consume
No. 307	Ester Faia, Andreas Fuster, Vincenzo Pezone, Basit Zafar	Biases in Information Selection and Processing: Survey Evidence from the Pandemic
No. 306	Aljoscha Janssen, Johannes Kasinger	Obfuscation and Rational Inattention in Digitalized Markets
No. 305	Sabine Bernard, Benjamin Loos, Martin Weber	The Disposition Effect in Boom and Bust Markets
No. 304	Monica Billio, Andrew W. Lo, Loriana Pelizzon, Mila Getmansky Sherman, Abalfazl Zareei	Global Realignment in Financial Market Dynamics: Evidence from ETF Networks
No. 303	Ankit Kalda, Benjamin Loos, Alessandro Previtero, Andreas Hackethal	Smart (Phone) Investing? A Within Investor-Time Analysis of New Technologies and Trading Behavior
No. 302	Tim A. Kroencke, Maik Schmeling, Andreas Schrimpf	The FOMC Risk Shift
No. 301	Di Bu, Tobin Hanspal, Yin Liao, Yong Liu	Risk Taking, Preferences, and Beliefs: Evidence from Wuhan
No. 300	Dennis Gram, Pantelis Karapanagiotis, Jan Krzyzanowski, Marius Liebald, Uwe Walz	An Extensible Model for Historical Financial Data with an Application to German Company and Stock Market Data
No. 299	Ferdinand A. von Siemen	Motivated Beliefs and the Elderly's Compliance with COVID-19 Measures