

Abbott, Brant; Brace, Robin

Working Paper

Does consumption inequality mirror wealth inequality in the survey of consumer finances?

Queen's Economics Department Working Paper, No. 1427

Provided in Cooperation with:

Queen's University, Department of Economics (QED)

Suggested Citation: Abbott, Brant; Brace, Robin (2020) : Does consumption inequality mirror wealth inequality in the survey of consumer finances?, Queen's Economics Department Working Paper, No. 1427, Queen's University, Department of Economics, Kingston (Ontario)

This Version is available at:

<https://hdl.handle.net/10419/230580>

Standard-Nutzungsbedingungen:

Die Dokumente auf EconStor dürfen zu eigenen wissenschaftlichen Zwecken und zum Privatgebrauch gespeichert und kopiert werden.

Sie dürfen die Dokumente nicht für öffentliche oder kommerzielle Zwecke vervielfältigen, öffentlich ausstellen, öffentlich zugänglich machen, vertreiben oder anderweitig nutzen.

Sofern die Verfasser die Dokumente unter Open-Content-Lizenzen (insbesondere CC-Lizenzen) zur Verfügung gestellt haben sollten, gelten abweichend von diesen Nutzungsbedingungen die in der dort genannten Lizenz gewährten Nutzungsrechte.

Terms of use:

Documents in EconStor may be saved and copied for your personal and scholarly purposes.

You are not to copy documents for public or commercial purposes, to exhibit the documents publicly, to make them publicly available on the internet, or to distribute or otherwise use the documents in public.

If the documents have been made available under an Open Content Licence (especially Creative Commons Licences), you may exercise further usage rights as specified in the indicated licence.

Does Consumption Inequality Mirror Wealth Inequality in the Survey of Consumer Finances?

Brant Abbott

Queen's University
abbottbrant@gmail.com

Robin Brace

Queen's University
robin.e.brace@gmail.com

THIS DRAFT: MARCH 16, 2020

Abstract. A method to impute consumption expenditure inequality between wealth groups in the Survey of Consumer Finances is provided, allowing for measurement error that is correlated with income and wealth. Identification is derived from observing food at home and food away from home, which are relative necessities and luxuries, respectively. The gap in expenditure between top and bottom wealth quintiles is estimated to have increased by 50% between 2004 and 2013, indicating that observed increases in wealth inequality have passed through to consumption. Repeating this exercise in the Panel Study of Income Dynamics would lead to a much different conclusion, which is a result of that data not capturing the top of the wealth distribution well.

JEL Classification: D31, E21

Keywords: Inequality, Wealth, Income, Consumption

1 Introduction

Increasing inequality in wealth, income and other measures of resources is an important and ongoing topic of research.¹ A related question concerns the extent to which rising income disparities have been transmitted to consumption.² Earlier work on this question concluded that consumption inequality had not been increasing as rapidly as income inequality. However, research indicating that consumption micro data are inconsistent with aggregate patterns (see [Parker, Vissing-Jorgensen, and Ziebarth \(2009\)](#)) led to new approaches that account for non-classical measurement error. After allowing measurement error to be correlated with income, [Aguiar and Bils \(2015\)](#) find that consumption inequality has closely tracked income inequality over time.

The relationship between rising *wealth* inequality and consumption has received less attention. One reason is the lack of micro data with good measures of both wealth and expenditure. While the Panel Study of Income Dynamics (PSID) has information on both expenditure and net worth, the wealth data are less representative than the Survey of Consumer Finances (SCF). The SCF captures the upper tail of the wealth distribution well, but only measures expenditure on various categories of food. [Fisher, Johnson, Smeeding *et al.* \(2018\)](#) compare trends in consumption and wealth inequality in the SCF, but use an imputation approach that does not allow for systematic measurement error. [Aguiar and Bils \(2015\)](#) find that higher income households have a greater tendency to underreport expenditure, and the same is likely to be true of wealthier households.

This paper provides an imputation method for total expenditure inequality in the SCF, allowing for measurement error that depends on income and wealth. The method is based closely on the demand system approach developed by [Aguiar and Bils \(2015\)](#), where ratios between expenditure on luxuries and necessities identify true total expenditure. The key assumption is that underreporting of expenditure by affluent households is similar across goods. Because restaurant meals are luxuries relative to food at home, the ratio of these two categories of expenditure can be used to identify total expenditure in the SCF.

The results of this paper indicate that the consumption expenditure gap, defined as the difference in mean log expenditure between households in the top and bottom wealth quintiles, increased by about 50% between 2004 and 2013, then fell somewhat in 2016. Estimated gaps in total expenditure in the SCF are about 2.5 times as large as observed gaps in food expenditure. If the estimates were based on non-representative PSID data, the conclusion would have been that the expenditure gap fell. We show that a similar conclusion to that in the PSID would be attained in the SCF if only the bottom 90% of the wealth distribution were used. Thus, it is important to both use representative wealth data, and account for systematic measurement error.

¹See [Saez and Kopczuk \(2004\)](#), [Piketty and Saez \(2006\)](#), [Saez and Zucman \(2014\)](#), [Bricker, Henriques, Krimmel *et al.* \(2016\)](#) and [Kuhn, Schularick, and Steins \(2018\)](#), among many others in this large literature.

²See [Blundell, Pistaferri, and Preston \(2008\)](#), [Krueger and Perri \(2006\)](#), [Heathcote, Perri, and Violante \(2010\)](#), [Attanasio and Pistaferri \(2014\)](#), [Aguiar and Bils \(2015\)](#), [Attanasio and Pistaferri \(2016\)](#), and [Meyer and Sullivan \(2017\)](#), among many others.

2 Methodology

Let x_{hjt} be observed expenditure by household h , on good j , in year t . Total expenditure in a year is $X_{ht} = \sum_j x_{hjt}$. Observed expenditure differs from true expenditure, x_{hjt}^* , due to measurement error, ζ_{hjt} , according to $x_{hjt} = x_{hjt}^* e^{\zeta_{hjt}}$. Measurement error has four components: (1) good-specific error ψ_t^j , (2) income-specific error ϕ_t^i , where i denotes income quintile, (3) wealth-specific error ϕ_t^w , where w denotes wealth quintile, (4) general error ν_{hjt} . The first three components are systematic, while the fourth is assumed to be classical random error. The measurement error components are additive, such that $\zeta_{hjt} = \psi_t^j + \phi_t^i + \phi_t^w + \nu_{hjt}$.

The first step is the same as in [Aguiar and Bills \(2015\)](#), and additional details, beyond those that follow, can be found there. This step involves estimating log-linear Engel curve approximations. Specifically, for each expenditure category the following demand approximation is estimated:

$$\ln x_{hjt}^* - \ln \bar{x}_{jt}^* = \alpha_{jt}^* + \beta_j \ln X_{ht}^* + \mathbf{\Gamma}_j \mathbf{Z}_{ht} + \varphi_{hjt}. \quad (1)$$

\bar{x}_{jt}^* is cross-sectional average spending on a particular good, \mathbf{Z}_{ht} is a set of demographic control variables, and φ_{hjt} is an error term. Any changes in demand or prices over time are captured by the good-time intercept terms α_{jt}^* . The coefficients of interest from equation 1 are the expenditure elasticities, β_j , for each good j . [Aguiar and Bills](#) assume these elasticities are stable over time.

Several issues arise in estimating equation 1, the most important of which is that when $\ln x_{hjt}^*$ is replaced by observed $\ln x_{hjt}$, measurement error that is correlated with $\ln X_{ht}$ is added to the error term. Income quintile and log after-tax income are used as instruments, allowing for consistent estimation of the β_j coefficients. A second issue is that x_{hjt} can be zero if a household does not purchase a particular good. To keep the right-hand side finite in these cases, the log-differences in 1 are replaced by percentage deviations $\tilde{x}_{hjt} = \frac{x_{hjt} - \bar{x}_{jt}}{\bar{x}_{jt}}$.

In the second step, the β_j estimates from step one are taken as given and the demand system is inverted. Firstly, a left-hand-side variable is constructed as $\hat{x}_{hjt} = \tilde{x}_{hjt} - \mathbf{\Gamma}_j \mathbf{Z}_{ht}$. Secondly, a new regression equation is formed by adding and subtracting $\ln X_{it}^*$ in the right-hand side of 1, where $\ln X_{it}^*$ is average log expenditure of income quintile i . The resulting regression equation is

$$\hat{x}_{hjt} = \alpha_{jt}^* + \phi_t^i + \phi_t^w + \beta_j \ln X_{it}^* + \epsilon_{hjt}, \quad (2)$$

where $\epsilon_{hjt} = \beta_j (\ln X_{ht}^* - \ln X_{it}^*) + \nu_{hjt} + \varphi_{hjt}$. $\ln X_{it}^*$ is estimated by including β_j as a regressor, interacted with dummies for income quintile and year. In the current paper, versions with expenditure by wealth quintile,

$\ln X_{wt}^*$, in place of income quintile, are also be estimated. Good, income-quintile, and wealth-quintile dummy variables, all interacted with year dummies, are included in order to capture α_{jt}^* , ϕ_t^i and ϕ_t^w , respectively.

Identification of $\ln X_{it}^*$ or $\ln X_{wt}^*$ in the second step requires variation across goods in the total expenditure elasticities, i.e. β_j . Given estimates of these elasticities, the regression in equation 2 could be run on a different data set than the one used to produce the elasticity estimates. One requirement for the alternative data is that expenditure measures on a subset of the categories in the original data are observed, and there is variation in the total expenditure elasticities across these goods. The strategy for measuring consumption inequality in the SCF data is to run regressions based on equation 2, using the difference in elasticities between food at home and away from home to identify differences in expenditure between wealth and/or income groups.

3 Data

The sample periods are 2005-2017 for the PSID (SRC sample) and 2004-2016 for the SCF (full sample). The two data sets have similar information on net worth, income, demographic variables, and measures of food expenditure. The PSID also has many additional measures of expenditure. The first step requires after-tax income, which we calculate in the PSID using the NBER’s TAXSIM program. We confirm that measures of expenditure on food at home, away from home, and delivered, are very similar between the two data sets. Because delivered food is zero for more than 3/4 of observations, we use at home, away from home, and total food as the three measures of food expenditure. Additional details about the data are available on request.

4 Results

4.1 Step One: Estimate β_j ’s

The first step estimates the total expenditure elasticities in equation 1 using PSID data. Column (I) of Table 1 reports selected elasticities estimated in the baseline specification using income quintile dummies and log after-tax income as instruments. Column (II) shows that these estimates are robust to also using wealth quintile dummies as instruments. Column (III) reproduces corresponding estimates from [Aguiar and Bils \(2015\)](#) to assess comparability. The most pertinent elasticities are those for food at home and away from home, which are 0.51 and 1.10, respectively. This indicates that food away is a relative luxury and food at home is a relative necessity, as our imputation approach requires. Estimates are robust to the additional instrument and are comparable to those in [Aguiar and Bils](#).

Category	(I)		(II)		(III)	
	β_j	s.e.	β_j	s.e.	β_j	s.e.
Food at Home	0.51	(0.02)	0.52	(0.01)	0.37	(0.02)
Food Away from Home	1.10	(0.03)	1.05	(0.03)	1.33	(0.06)
Food Delivered	1.01	(0.13)	0.96	(0.12)	–	–
Food Total	0.68	(0.01)	0.65	(0.02)	–	–
Housing	1.10	(0.03)	1.00	(0.03)	0.92	(0.02)
Transportation	0.77	(0.03)	0.76	(0.02)	0.89	(0.03)
Clothing	1.77	(0.13)	1.45	(0.11)	1.35	(0.05)
Home Repairs	2.22	(0.24)	1.63	(0.20)	–	–
Furnishings	1.90	(0.15)	1.60	(0.13)	1.39	(0.10)
Education	1.56	(0.10)	0.97	(0.10)	1.63	(0.18)
Childcare	1.41	(0.11)	1.54	(0.10)	1.6	(0.13)
Health Care	1.07	(0.04)	0.91	(0.04)	0.91	(0.06)
Trips	2.11	(0.05)	1.79	(0.05)	–	–
Recreation	1.74	(0.10)	1.53	(0.08)	1.74	(0.06)

Table 1: Selected total expenditure elasticities. (I) uses income quintile and log after-tax income as instruments. (II) includes wealth quintile as an additional instrument. (III) reproduces estimates from Table 2 of [Aguiar and Bils](#).

4.2 Step Two: Estimate $\ln X_{it}^*$ and $\ln X_{wt}^*$

PSID Estimates: Table 2 reports estimated trends in consumption inequality by both income and wealth. The table specifically reports the differences in log consumption between the fifth and first quintiles of income or wealth. The notation $\ln X_{5(g),t}^*$ refers to the consumption difference between the fifth and first quintile of variable g at time t . The first two columns report estimates using all spending categories, while the third and fourth columns report estimates based on food expenditure only. Overall, inequality between income/wealth quintiles is estimated to have fallen; however, the initial level of inequality is very high. The estimates of $\ln X_{5,2005}^*$ and $\ln X_{5,2007}^*$ for income are similar to the estimate for the 2005-07 period reported by [Aguiar and Bils \(2015\)](#). [Aguiar and Bils](#) report a decline in consumption inequality from that period to the 2008-2010 period, consistent with the persistent decline we estimate from 2005 to 2017. For expenditure inequality between wealth groups, we find that $\ln X_{5,t}^*$ is relatively stable over time, with perhaps a slight decline that is not statistically significant. To compare estimates using all expenditure categories versus food only, Figure 1 plots the estimated trends and their bootstrapped 95% confidence intervals. Although there are some differences in the point estimates, there is substantial overlap in the 95% confidence intervals. We would not reject the hypothesis that all estimates are jointly equal at the 90% significance level. Thus, we conclude that relying on food expenditure measures alone does not change the conclusions of step two relative to using all expenditure measures.

PSID Results	(I)		(II)		(III)		(IV)	
Group Variable (g)	Income		Wealth		Income		Wealth	
Elasticities Used	All		All		Food		Food	
$\ln X_{5(g),2005}^*$	1.417	(0.159)	0.832	(0.148)	1.238	(0.200)	0.688	(0.213)
$\ln X_{5(g),2007}^*$	1.160	(0.133)	0.810	(0.129)	1.194	(0.193)	0.666	(0.168)
$\ln X_{5(g),2009}^*$	1.149	(0.152)	0.695	(0.163)	1.173	(0.175)	0.618	(0.189)
$\ln X_{5(g),2011}^*$	1.256	(0.137)	0.891	(0.155)	1.294	(0.142)	0.688	(0.187)
$\ln X_{5(g),2013}^*$	1.050	(0.120)	0.597	(0.137)	1.392	(0.151)	0.711	(0.186)
$\ln X_{5(g),2015}^*$	1.016	(0.137)	0.738	(0.157)	1.273	(0.172)	0.616	(0.199)
$\ln X_{5(g),2017}^*$	0.956	(0.133)	0.641	(0.149)	1.257	(0.198)	0.720	(0.193)

Table 2: PSID Results: Each coefficient is an estimate of the difference in log expenditure between the fifth and first quintile of variable g . Bootstrapped standard errors that adjust for the first stage are in parentheses.

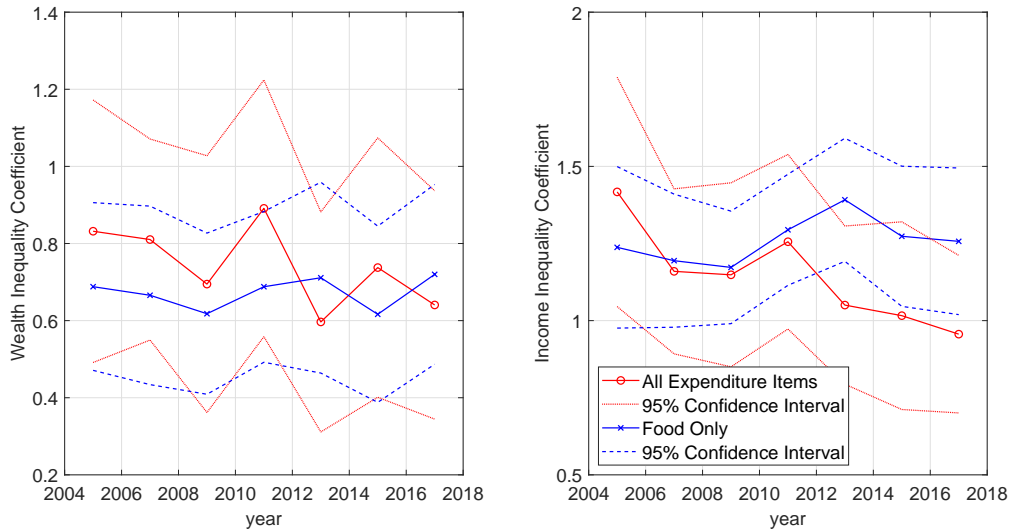


Figure 1: Comparison of estimated inequality trends in PSID data using all expenditure items versus food only. After considering the bootstrapped 95% confidence intervals, we conclude that using the smaller number of expenditure measures does not change the estimates in statistically meaningful way.

SCF Results	(I)		(II)		(III)		(IV)	
Group Variable (g)	Income		Wealth		Income		Wealth	
Sub-sample Used	Full Sample		Full Sample		Bottom 90%		Bottom 90%	
$\ln X_{5(g),2004}^*$	1.529	(0.045)	1.200	(0.045)	1.161	(0.049)	0.512	(0.051)
$\ln X_{5(g),2007}^*$	1.857	(0.060)	1.489	(0.058)	1.328	(0.063)	0.824	(0.050)
$\ln X_{5(g),2010}^*$	1.952	(0.046)	1.436	(0.052)	1.210	(0.059)	0.690	(0.046)
$\ln X_{5(g),2013}^*$	2.050	(0.039)	1.706	(0.039)	1.448	(0.046)	0.887	(0.061)
$\ln X_{5(g),2016}^*$	1.827	(0.043)	1.477	(0.047)	1.331	(0.052)	0.708	(0.055)

Table 3: SCF Results: Each coefficient is an estimate of the difference in log expenditure between the fifth and first quintile of the variable g . Bootstrapped standard errors that adjust for the first stage are in parentheses.

SCF Estimates: Columns I and II of Table 3 report estimated trends in consumption inequality between income and wealth groups in the SCF. For both wealth and income, the estimated difference in consumption between the top and bottom quintiles rises substantially from 2004 to 2013, and then falls somewhat in the final sample period 2016. The level of consumption inequality between top and bottom quintiles of both wealth and income is much higher in the SCF estimates than the PSID. Based on the SCF, we conclude that recent increases in wealth and income inequality have led to substantially larger disparities in the standard of living across the population. However, we must understand why the SCF results are so different to be comfortable making such a conclusion. As it turns out, the differences between the SCF and PSID results are explained by the superior measurement of the top of the wealth distribution on the SCF. We show this by re-estimating the $\ln X_{5(g)t}^*$ coefficients excluding households in the top 10% of the SCF wealth distribution. In this case, the magnitude of the estimates is very similar to the PSID, confirming the importance of using data that captures the top of the wealth distribution.

5 Conclusion

We find that expenditure differences between households at the top and bottom of the wealth distribution are large and have increased over time. In 2013 the consumption gap was 50% larger than in 2004. Consumption gaps between top and bottom income groups are also large and increased over the sample period. Capturing those in the upper tail of the wealth distribution is very important for this finding: excluding the wealthiest 10% of households would lead to different conclusions. The PSID data suggest that the wealthiest households have not increased their share of consumption relative to the poorest, but this is attributed to the fact that those data do not capture the upper tail of the wealth distribution.

References

- Aguiar, M. and Bils, M. (2015). ‘Has consumption inequality mirrored income inequality?’ *American Economic Review*, vol. 105(9):pages 2725–56.
- Attanasio, O. and Pistaferri, L. (2014). ‘Consumption Inequality over the Last Half Century: Some Evidence Using the New PSID Consumption Measure.’ *The American Economic Review P&P*, vol. 104:pages 122–126.
- Attanasio, O. P. and Pistaferri, L. (2016). ‘Consumption inequality.’ *Journal of Economic Perspectives*, vol. 30(2):pages 3–28.
- Blundell, R., Pistaferri, L., and Preston, I. (2008). ‘Consumption Inequality and Partial Insurance.’ vol. 98(5):pages 1887–1921.
- Bricker, J., Henriques, A., Krimmel, J., and Sabelhaus, J. (2016). ‘Measuring Income and Wealth at the Top using Administrative and Survey Data.’ *Brookings Papers on economic Activity*.
- Fisher, J., Johnson, D., Smeeding, T. M., and Thompson, J. P. (2018). ‘Inequality in 3-D: Income, Consumption, and Wealth.’
- Heathcote, J., Perri, F., and Violante, G. L. (2010). ‘Unequal We Stand: An Empirical Analysis of Economic Inequality in the United States, 1967-2006.’ *Review of Economic Dynamics*, vol. 13(1):pages 15–51.
- Krueger, D. and Perri, F. (2006). ‘Does income inequality lead to consumption inequality? Evidence and theory.’ *The Review of Economic Studies*, vol. 73(1):pages 163–193.
- Kuhn, M., Schularick, M., and Steins, U. (2018). ‘Income and Wealth Inequality in America, 1949-2016.’ Tech. rep., CEPR. Discussion Paper 12218.
- Meyer, B. D. and Sullivan, J. X. (2017). ‘Consumption and Income Inequality in the US Since the 1960s.’ Tech. rep., National Bureau of Economic Research.
- Parker, J., Vissing-Jorgensen, A., and Ziebarth, N. (2009). ‘Inequality in Expenditure in the Twentieth Century.’ *presentation slides, NBER Summer Institute*.
- Piketty, T. and Saez, E. (2006). ‘The evolution of top incomes: a historical and international perspectives.’ In *American Economic Review Papers and Proceedings*, pages 200–205. Volume 96, number 2.
- Saez, E. and Kopczuk, W. (2004). ‘Top Wealth Shares in the United States: 1916-2000: Evidence from Estate Tax Returns.’ NBER Working Paper 10399.
- Saez, E. and Zucman, G. (2014). ‘Wealth Inequality in the United States since 1913: Evidence from Capitalized Income Tax Data.’ NBER working paper 20625.