

Blum, Johannes; Dorn, Florian; Heuer, Axel

**Working Paper**

## Political institutions and health expenditure

ifo Working Paper, No. 345

**Provided in Cooperation with:**

Ifo Institute – Leibniz Institute for Economic Research at the University of Munich

*Suggested Citation:* Blum, Johannes; Dorn, Florian; Heuer, Axel (2021) : Political institutions and health expenditure, ifo Working Paper, No. 345, ifo Institute - Leibniz Institute for Economic Research at the University of Munich, Munich

This Version is available at:

<https://hdl.handle.net/10419/229892>

**Standard-Nutzungsbedingungen:**

Die Dokumente auf EconStor dürfen zu eigenen wissenschaftlichen Zwecken und zum Privatgebrauch gespeichert und kopiert werden.

Sie dürfen die Dokumente nicht für öffentliche oder kommerzielle Zwecke vervielfältigen, öffentlich ausstellen, öffentlich zugänglich machen, vertreiben oder anderweitig nutzen.

Sofern die Verfasser die Dokumente unter Open-Content-Lizenzen (insbesondere CC-Lizenzen) zur Verfügung gestellt haben sollten, gelten abweichend von diesen Nutzungsbedingungen die in der dort genannten Lizenz gewährten Nutzungsrechte.

**Terms of use:**

*Documents in EconStor may be saved and copied for your personal and scholarly purposes.*

*You are not to copy documents for public or commercial purposes, to exhibit the documents publicly, to make them publicly available on the internet, or to distribute or otherwise use the documents in public.*

*If the documents have been made available under an Open Content Licence (especially Creative Commons Licences), you may exercise further usage rights as specified in the indicated licence.*

# Political Institutions and Health Expenditure

*Johannes Blum, Florian Dorn, Axel Heuer*

Imprint:

ifo Working Papers

Publisher and distributor: ifo Institute – Leibniz Institute for Economic Research at the University of Munich

Poschingerstr. 5, 81679 Munich, Germany

Telephone +49(0)89 9224 0, Telefax +49(0)89 985369, email [ifo@ifo.de](mailto:ifo@ifo.de)

[www.ifo.de](http://www.ifo.de)

An electronic version of the paper may be downloaded from the ifo website:

[www.ifo.de](http://www.ifo.de)

## Political Institutions and Health Expenditure\*

### Abstract

We examine how political institutions influence health expenditure by using a panel of 151 developing and developed countries for the years 2000 to 2015 and four measures of democracy. Our pooled OLS analysis shows that democracies have 20–30% higher government health expenditure relative to GDP than their autocratic counterparts. An instrumental variable approach which exploits the regional diffusion of democracy confirms the positive effect of democracy on government health expenditure. Panel fixed effects and event study models also suggest a positive within-country effect of democratization on government health expenditure within a short period after regime transition. Democratic rule, however, does not turn out to significantly influence private health expenditure compared to autocracies. We conclude that democracies may care more for their citizens and strive to decrease inequalities in the access to health care.

JEL Code: I15, I18, H51, P50, C23, C26

Keywords: Democracy, health expenditure, development, instrumental variable, panel data

Johannes Blum  
ifo Institute – Leibniz Institute for  
Economic Research  
at the University of Munich,  
University of Munich  
Poschingerstr. 5  
81679 Munich, Germany  
blum@ifo.de

Florian Dorn\*\*  
ifo Institute – Leibniz Institute for  
Economic Research  
at the University of Munich,  
University of Munich  
Poschingerstr. 5  
81679 Munich, Germany  
dorn@ifo.de

Axel Heuer  
KfW Group  
Frankfurt, Germany

*This paper has been accepted for publication in International Tax and Public Finance.*

\* We thank Klaus Gründler, Niklas Potrafke, Gérard Roland, two anonymous referees, as well as the participants of the annual meeting of the European Public Choice Society (EPCS) 2019, of the annual congress of the International Institute for Public Finance (IIPF) 2019, and the 2020 workshop on the Political Economy of Democracy and Dictatorship (PEDD) for valuable comments. Florian Dorn is grateful for support from the Hanns-Seidel-Foundation.

\*\* Corresponding author.

## 1. Introduction

Democracies are supposed to promote human well-being while autocracies rather care about the well-being of the societal group which has political power and other elites whose loyalty needs to be ensured (Acemoglu and Robinson 2006). Theoretical models on the democracy-welfare-nexus suggest that democracies provide more public goods and services, and generate more income redistribution than autocratic regimes (Meltzer and Richard 1981, McGuire and Olson 1996, Acemoglu and Robinson 2006). The median-voter theorem, for example, predicts larger public spending and an expansion of the welfare state in democracies to satisfy the needs of the electorate if economic inequality is large and the poor and middle class are the majority (Meltzer and Richard 1981).

Health care is a basic human need. Health infrastructure and access to health care are, however, costly. A national government therefore plays an important role in providing an adequate public health care system, especially for the poor and middle class. We expect that health expenditures of governments are higher in democracies than in autocracies as decision makers in democracies intend to satisfy the demand of the electorate for public health care. Figure 1 provides descriptive evidence for this hypothesis for high-income countries comparing democracies and autocracies which are at the same stage of economic development. We do, however, not expect that private health expenditures are larger in democracies than in autocracies because out-of-pocket health expenditures are primarily based on individuals' private health investment decisions and increased government health expenditures in democracies might even substitute private out-of-pocket health expenditures.

We examine how political institutions influence government and private health expenditure by using pooled OLS, panel data, and event study models. Our panel consists of 151 developing and developed countries for the years 2000 to 2015. We employ health expenditure data from the World Health Organization and use four democracy measures. We find that health expenditures of governments are indeed higher in democracies than in autocracies while private health expenditures do not turn out to be significantly affected by the strength of democratic institutions. Our findings corroborate previous empirical studies which exploit cross-country variation and show that government health expenditure is larger in democracies than in autocracies (Avelino et al. 2005, Besley and Kudamatsu 2006, Gregorio and Gregorio 2013, Profeta et al. 2013).

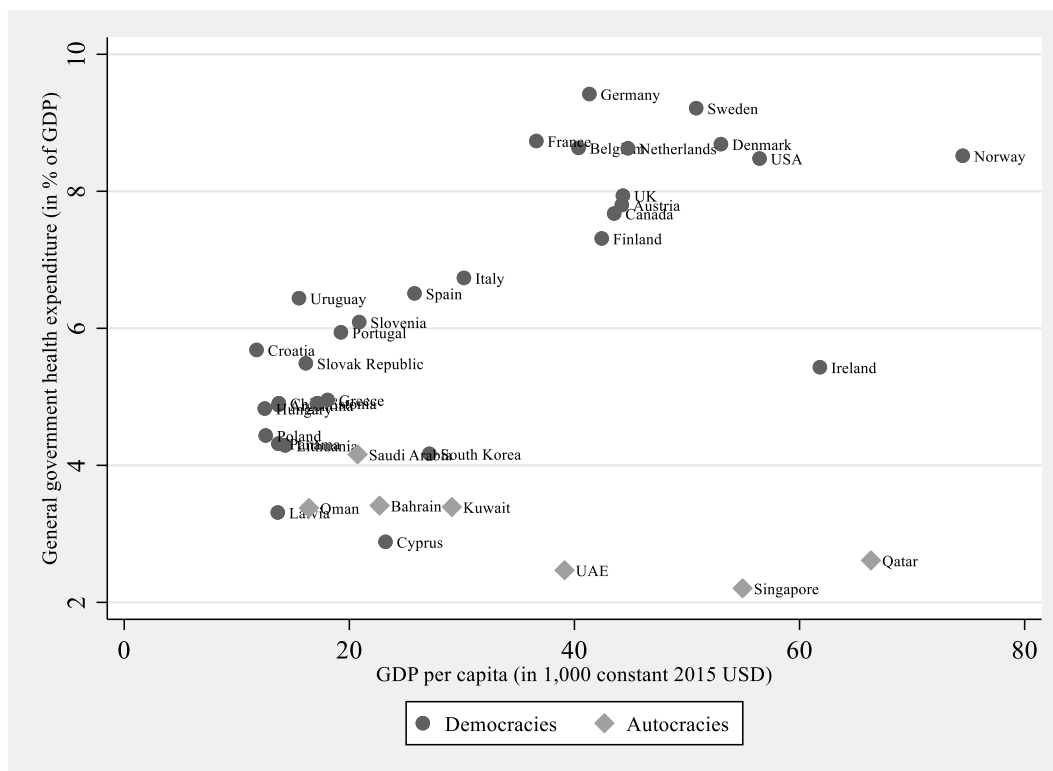


FIGURE 1: GOVERNMENT HEALTH EXPENDITURE IN DEMOCRACIES AND AUTOCRACIES IN 2015 (HIGH-INCOME COUNTRIES ONLY)<sup>1</sup>

Empirical literature on the relationship between political institutions and health expenditure is, however, scarce and not unambiguous.<sup>2</sup> Scholars show a positive relationship in cross-section studies, whereas panel fixed effects studies with small samples lack statistical significance. Besley and Kudamatsu (2006) show a positive conditional relationship between established democracies and government health expenditure per capita for a cross-section of 145 countries in the year 2000. Gregorio and Gregorio (2013) employ a cross-country approach for 159 countries in the year 2008 and confirm a positive conditional relationship between democracy and total and government health expenditure (per capita and relative to GDP). Profeta et al. (2013) examine the relationship between the strength of democratic institutions and indicators for public spending and taxation in a sample of 33 developing and low-income countries that have experienced a democratic transition during the period 1990-2005. The pooled OLS approach yields a U-shaped relationship between the strength of political institutions and public health expenditure (relative to GDP). This relationship, however, lacks

<sup>1</sup> Luxembourg and Switzerland excluded as outlier. Note that the high-income autocracies in Figure 1 are particularly oil exporting countries.

<sup>2</sup> Empirical studies also examine how political institutions affect the size of government in general or government expenditure for other items of public spending. Results are, however, mixed (e.g. Habibi 1994, Lake and Baum 2001, Plümper and Martin 2003, Mulligan et al. 2004, Hausken et al. 2004, Avelino et al. 2005, Deacon 2009, Profeta et al. 2013).

statistical significance in a linear pooled OLS model and a panel model with country fixed effects. In a similar vein, Avelino et al. (2005) show a positive correlation between democracies and health spending which lacks significance in a fixed effects panel model for 19 Latin American countries between 1980 and 1999.

Our empirical approach has some novel contributions compared to previous studies examining the effect of political institutions on health expenditure. Previous studies mainly use the composite index of the Polity IV dataset or even choose an arbitrary threshold score of this index to classify countries above as being democratic (see Besley and Kudamatsu 2006, Gregorio and Gregorio 2013, Profeta et al. 2013). The index is, however, highly controversial (see Cheibub et al. 2010, Plümper and Neumayer 2010). Moreover, definition and classification on the strength of democratic institutions may vary in different concepts. We therefore use four measures of democracy. Democracy measures may differ in whether a country is described to be a democracy or an autocracy and may therefore give rise to different empirical results. We moreover employ a large balanced panel of 151 developing and developed countries during the period from 2000 to 2015 and distinguish between the effect of democracy on both general government health expenditure and private (“out-of-pocket”) health expenditure. Because of the rather short period of available health expenditure data from 2000 to 2015, we observe only little variation in democracy within countries during the observation period. We therefore follow related studies and estimate cross-country and panel data models which allow to estimate both between- and within-country effects of democracy. In addition, we employ event study approaches to examine how health expenditures evolve before and after transition to democracies and vice versa.

Estimating the effect of democracy on health expenditures is likely to involve endogeneity problems, particularly because of unobserved characteristics (omitted variable bias), reverse causality and measurement error in democracy measures. Previous empirical studies do not deal with the endogeneity problem and only provide conditional correlations between democracy and health expenditures. We overcome endogeneity concerns by using an instrumental variable (IV) approach which exploits geographical patterns and the diffusion of democratic regimes across countries. Similar to the approach of Acemoglu et al. (2019), we employ the average of the democracy scores of countries within the same region as an instrumental variable for the home country’s democracy score. Our instrumental variable approach allows estimating an effect of democracy in the cross-country OLS approach.

Our cross-country estimation results show a positive effect of democracy on general government health expenditure (relative to GDP) according to pooled OLS and IV estimates.

Democratic governments spend relative to GDP about 20-30% more on health than their autocratic counterparts, according to dichotomous democracy measures. The findings also suggest positive within-country effects in a panel fixed effects model. Panel fixed effect and event study results indicate that the difference in government health expenditure becomes visible within a rather short time period after regime transition. Our findings suggest a positive within-country effect of democratization of about 15-20% according to dichotomous democracy measures. Private health expenditures are positively related with democracy, but do not turn out to be significantly affected by the political regime. Our results suggest that democracies seem to care for their people by using government health expenditures to increase public health.

## 2. Data and descriptive evidence

Political institutions are difficult to measure: the type of measure (e.g. dichotomous or continuous), the institutions regarded as critical for a democracy and the aggregation of information to one single measure heavily influence whether a country is described to be a democracy or an autocracy. Using individual democracy measures can therefore give rise to different empirical results. Scholars suggest employing individual measures of democracy when institutional determinants of government spending are examined (Blum 2019).<sup>3</sup> We therefore use four measures of democracy: first, the dichotomous democracy measure by Bjørnskov and Rode (2019), which is an update of the Democracy-Dictatorship dataset by Cheibub et al. (2010). Second, the Polity IV index by Marshall et al. (2018), which is an update of the Polity III dataset by Jagers and Gurr (1995). Third, the Dichotomous Support Vector Machines Democracy Index (DSVMDI) and, fourth, the Continuous Support Vector Machines Democracy Index (CSVMDI) by Gründler and Krieger (2016, 2018), which are both based on machine learning techniques to classify the strength of democratic institutions. Previous studies examining the relationship between political institutions and health expenditure primarily used the Polity IV index.<sup>4</sup> Table A1 in Appendix I shows which countries experience regime transitions according to the four measures.

The dichotomous democracy measure by Bjørnskov and Rode (2019) provides a clear-cut classification of democracy and autocracy. Countries are specified as a democracy if chief

---

<sup>3</sup> See Potrafke (2012, 2013) on how using different democracy measures can change established results.

<sup>4</sup> Gregorio and Gregorio (2013) and Profeta et al (2013) employed the composite Polity IV index. Besley and Kudamatsu (2006) used a dichotomous democracy measure and specified a country as democratic if the Polity IV score is positive. As an exception, Avelino et al. (2005) use the Polity IV index for robustness tests. Their main indicator is a dichotomous measure based on Alvarez et al (1996), which Cheibub et al. (2010) and Bjørnskov and Rode (2019) have further developed.



executive and legislature are both popularly elected, more than one party competes in the elections and the power has alternated under the identical electoral rules as when the predecessor assumed office (Cheibub et al. 2010: 69-71). Bjørnskov and Rode (2019) label regime changes to democracy or autocracy for the respective year in case the change occurred in the first half of the year, and for the subsequent year otherwise. The Polity IV index by Marshall et al. (2018) is a composite index measuring autocracy and democracy on a scale ranging from -10 to +10. The Polity IV measure consists of two composite indices for autocracy and democracy—each ranging between 0 and 10. Both indices account for the competitiveness and openness of executive recruiting, the constraints on the chief executive and the competitiveness and regulation of political participation. The scores all describe political institutions as of the end of the year. We introduce the Polity IV index into the regression with a time lag; the variable thus describes the Polity IV index as of the beginning of each year and allows for at least one calendar year for budgetary adjustments to arise after a change in the Polity IV score.<sup>5</sup> The Polity IV score describes political institutions rather than democracy as such because no clear-cut threshold Polity IV score exists above which a country can be regarded as a democracy. The two democracy measures developed by Gründler and Krieger (2016, 2018) are both based on machine learning techniques. The *Dichotomous Support Vector Machines Democracy Index (DSVMDI)<sub>it</sub>* assumes a value of one for a democracy and zero otherwise; the *Continuous Support Vector Machines Democracy Index (CSVMDI)<sub>it</sub>* classifies countries along a continuum between zero and one.<sup>6</sup> These two democracy measures are lagged by one year, too.

Data on both government and private health expenditure are provided by the World Bank. The World Bank is, however, not the primary source as the data are collected by the World Health Organization in the WHO Global Health Expenditure database. We use general government health expenditure and private (“out-of-pocket”) health expenditure, both relative to a country’s GDP, as dependent variables. The availability of data on health expenditure allows us to assemble a panel with 151 developing and developed countries for the years 2000 to 2015.

---

<sup>5</sup> We apply the variable “Polity2” from the Polity IV dataset which indicates intermediate values instead of missing values during transition.

<sup>6</sup> Even though the dichotomous democracy measure by Gründler and Krieger (2016, 2018) and the democracy measure by Bjørnskov and Rode (2019) are both dummy variables, these two democracy measures show considerable differences in whether they classify a country as a democracy (particularly for African and Asian-Pacific countries). Table A1 in Appendix I shows a list of the 151 countries included in the panel and indicates whether countries experienced variation in the four democracy measures during the observation period.

Since our sample includes both developing and developed countries, both descriptive findings and estimation results might be biased if we ignore differences in the level of economic development. We therefore consider GDP per capita in all figures and empirical models. Most high-income countries have been democracies during the observation period, while democracies are few in the group of low-income countries. Given the rather short observation period from 2000 to 2015, variation in democracy is much more pronounced between countries than within countries.

Figure 2 shows general government health expenditure (relative to GDP) in the year 2015 for all countries which have been permanent democracies or autocracies throughout the observation period. The fitted lines for democracies and autocracies indicate that for a given level of economic development, democracies have higher government health expenditure than their autocratic counterparts. The slopes of the fitted lines indicate that higher GDP per capita is related to increasing government health expenditure (relative to GDP). Countries thus experience an income effect on government health expenditure (relative to GDP) which is, however, much more pronounced for democracies than for autocracies.

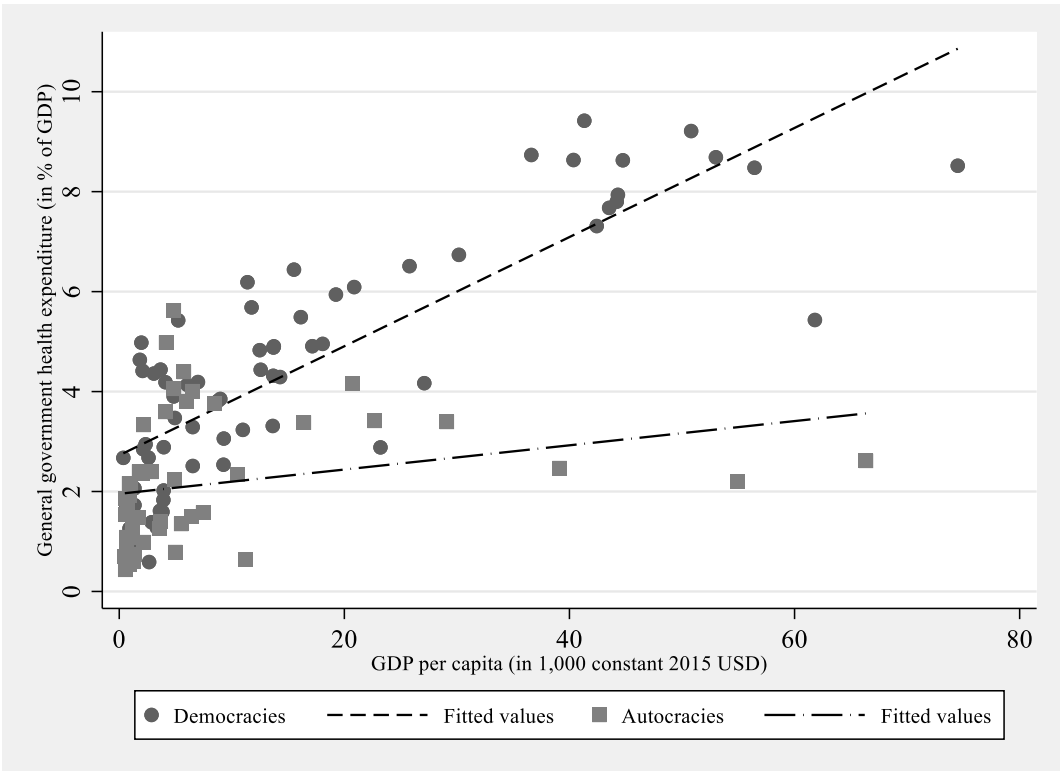


FIGURE 2: GOVERNMENT HEALTH EXPENDITURE IN DEMOCRACIES AND AUTOCRACIES IN 2015 (ALL COUNTRIES)<sup>7</sup>

<sup>7</sup> Luxembourg and Switzerland excluded as outlier.

We expect the differences between democracies and autocracies to be smaller or non-existent for private health expenditure. Figure 3 shows private health expenditure (relative to GDP) for permanent democracies and autocracies for the year 2015. The fitted lines for both regime types do not indicate that differences in private health expenditure are large between democracies and autocracies at the same level of economic development. Both fitted lines, however, exhibit a negative slope which suggests that the out-of-pocket expenditure share of private households for health purposes decreases when income per capita increases, in democracies and autocracies notwithstanding.

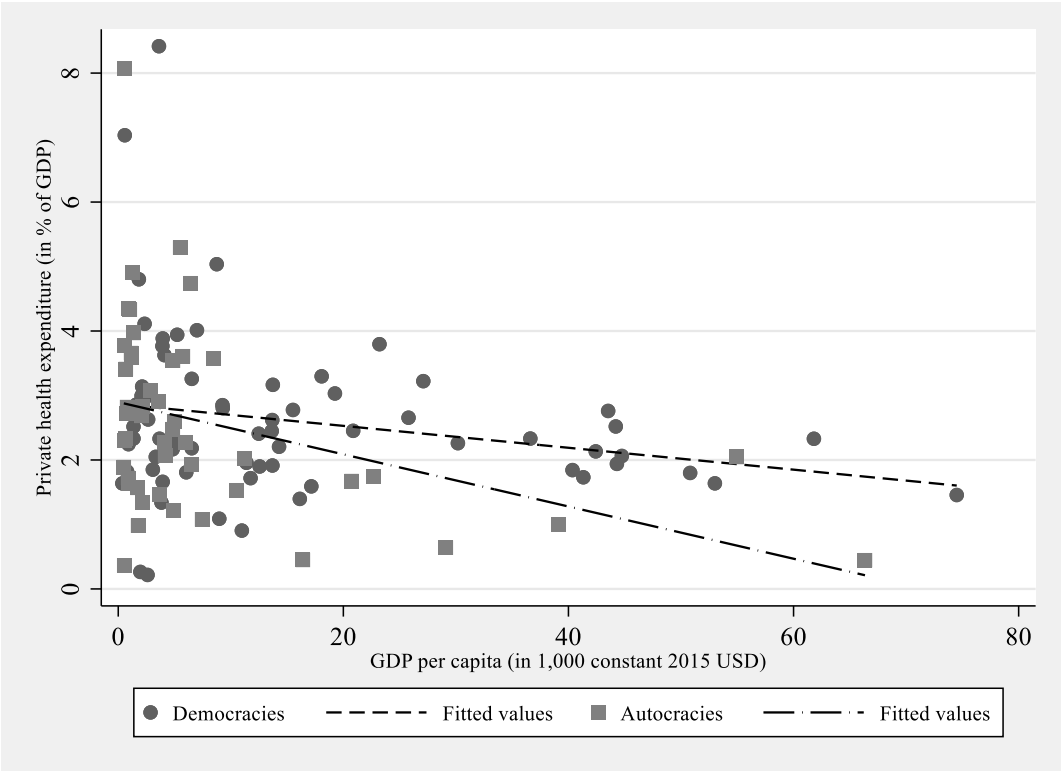


FIGURE 3: PRIVATE HEALTH EXPENDITURE IN DEMOCRACIES AND AUTOCRACIES IN 2015 (ALL COUNTRIES)<sup>8</sup>

Differences in health expenditure between democratic and autocratic regimes also exist within countries. These differences can, however, only be observed for the limited number of countries which experienced regime transitions during the observation period. Georgia, for example, increased government health expenditure relative to GDP after becoming a democracy in 2004 from 1.2% to 3.1% in 2015; private health expenditure relative to GDP dropped from 6.7% to 4.7% within the same time. Tunisia, an example of the Arab spring, increased government health expenditure relative to GDP from around 2.9% in the years before

<sup>8</sup> Luxembourg and United States excluded as outliers.

democratic transition in 2011 to around 3.9% in the years after; private health expenditure relative to GDP only slightly increased from around 2.5% to around 2.8% after democratic transition.

Table A2 in Appendix I shows summary statistics for the entire sample as well as for the subsets of permanent democracies and permanent autocracies during the period 2000-2015 according to the dichotomous democracy measure by Bjørnskov and Rode (2019). Summary statistics support the findings of Figures 2 and 3. The mean values for government health expenditure (relative to GDP) are 4.2% for democracies and 2.0% for autocracies—a difference of 2.2 percentage points; the difference in mean values for private health expenditure (relative to GDP) is much less pronounced (2.5% vs. 2.4%). The summary statistics also indicate strong differences in GDP per capita as well as in the demographic control variables old age population (population share of individuals age 65 and older) and young age population (population share of individuals between age 0 and 14), and the globalization level between democracies and autocracies: democracies are economically more developed, more globalized, and consist of older societies on average.<sup>9</sup> Unconditional correlations of these variables are shown in Table A3 in Appendix I.

### 3. Pooled OLS and IV strategy

#### 3.1 Pooled OLS and instrumental variable (IV) models

We first estimate a pooled cross-country OLS model for the years 2000-2015:

$$y_{it} = \beta \text{Democracy measure}_{it-1} + \mathbf{x}_{it-1}\boldsymbol{\delta} + \varepsilon_{it} \quad (1)$$

*with t = 2000, ..., 2015*

The dependent variable  $y_{it}$  describes the natural logarithm of either government health expenditure (relative to GDP) or private health expenditure (relative to GDP) in country  $i$  in year  $t$ . The variable  $\text{Democracy measure}_{it-1}$  describes one of the four democracy measures applied in the empirical analysis in year  $t-1$ . The coefficient  $\beta$  describes the effect of democracy on government or private health expenditure. The one-year time lag of the democracy measure

---

<sup>9</sup> Though columns (2) and (3) of Table A2 in Appendix I distinguish between countries which have been labeled as democracies and autocracies according to the democracy measure by Bjørnskov and Rode (2019), the summary statistics for the lag of this democracy measure indicate variation within the group of democratic and autocratic countries. This is based on the lagged value ( $t-1$ ) of the democracy variable: Indonesia and Senegal have been labeled as autocracies in 1999 and as democracies from 2000 until 2015; Fiji has been labeled as a democracy in 1999 and as an autocracy from 2000 until 2015.

allows for a reaction time until effects of budgetary decisions become effective and mitigates concerns of reverse causation. Standard errors are robust to heteroskedasticity.

The  $1 \times K$  vector  $\mathbf{x}_{it-1}$  contains control variables. The parameters of the control variables are included in the  $K \times 1$  vector  $\delta$ . We include five control variables in our baseline models: GDP per capita in constant (2015) US dollars, population, the population share of the old (individuals with age 65 or older), the population share of the young (individuals between age 0 and 14), and an index for the level of globalization. Omitting GDP per capita would likely give rise to biased estimates for the effect of democracy on health expenditure: on the one hand, GDP per capita is expected to directly affect budget compositions of governments and thus health expenditure shares (relative to GDP). On the other hand, economic development may affect democratic transition and political stability (Lipset 1959). Stable democracies and democratization are, moreover, likely to increase economic development (Acemoglu et al. 2019; Papaioannou and Siourounis 2008). Scholars have frequently shown that demographic indicators are relevant determinants of health expenditure (e.g. Gerdtham 1992, Barros 1998, Roberts 1999). We control for young and old age population shares because these age groups are expected to need more health care than the working age population and are likely to influence the size and patterns of health expenditure. Globalization is included as a control variable as the level of economic, social and political openness likely influences both, social spending and political institutions.<sup>10</sup> Previous studies have shown that GDP, globalization and the composition of the population are relevant control variables (see Avelino et al. 2005, Besley and Kudamatsu 2006, Profeta et al. 2013). All control variables are lagged by one year. Data for GDP and for the demographic variables are provided by the World Bank and enter the regression in their natural logarithms.<sup>11</sup> The level of globalization is measured by the KOF index of overall globalization, which is a composite index including the dimensions of economic, social and political openness of countries (Gygli et al. 2019).<sup>12</sup>

Endogeneity issues are likely to arise in an empirical setup which estimates health expenditure as a function of democracy. There are three reasons for potential endogeneity of the democracy variable in our model: measurement errors in the democracy measure, omitted

---

<sup>10</sup> Globalization is discussed as a possible determinant of income inequality and of the budgetary composition of governmental policies (see Avelino et al. 2005, Dreher et al. 2008, Dorn et al. 2018, Dorn and Schinke 2018). The global diffusion of knowledge—facilitated by political, economic and educational conditions—may well differently influence health outcomes in democracies and autocracies (see Deaton 2004, Bergh and Nilsson 2010, Welander et al. 2015).

<sup>11</sup> As for the health expenditure data, the World Bank may, however, not be the primary source of the data: population data, for example, are collected by the United Nations.

<sup>12</sup> The KOF index has been used in numerous empirical studies (see Potrafke 2015 for a survey).

variable bias and reverse causality. We have included several relevant control variables, but other unobserved characteristics might simultaneously determine both political institutions and health expenditure and thus give rise to biased estimates. Reverse causality might occur, for example, if poor average health status of the population and low public health provision give rise to regime changes. Moreover, errors in the measurement of democracy scores might bias the estimator towards zero and thus would underestimate the effect of democracy on health expenditure.

To deal with the endogeneity problems, we exploit the regional diffusion of democracy as an instrumental variable and, thus, follow the instrumental variable approach by Acemoglu et al. (2019). This instrument exploits geographical patterns of political institutions and “the diffusion of political regimes across countries in the same region and with common political histories” (Acemoglu et al. 2019: 51). We construct jackknifed democracy scores for the four democracy measures to describe democracy’s regional diffusion. Countries are allocated to geopolitical regions  $R$  according their geographic proximity, similar cultures and histories. The jackknifed democracy instrument  $JDI_{it}$  for country  $j$  in year  $t$  is calculated as the average democracy score of all  $n$  countries in country  $j$ ’s region  $R_j$  except of the democracy score of country  $j$  itself:

$$JDI_{i=j,t} = \frac{1}{n-1} \sum_{\substack{i \neq j, \\ i \in R_j}}^n Democracy Measure_{it} \quad (2)$$

The jackknifed democracy measures are an arguably excludable instrument. The exclusion restriction requires that the instrument does not influence health expenditure directly or through other unobserved variables. Political developments and budget decisions in a country may well influence preferences of the population and budget decisions of the political regime in other countries within the same geopolitical region. It is reasonable to assume that health expenditure shares (relative to GDP) are affected by the political institutions of countries within the same region only via effects on own country’s political institutions. One may argue that the exclusion restriction is not fulfilled if increased economic growth in a democracy has a spillover effect on the quality, price and expenditure for healthcare in countries within the same geopolitical region. Spillover effects are, however, mitigated for two reasons: First, we include globalization as a control and thus capture increased trade, capital flows, migration, and information flows between countries, which might be the main channels for spillover effects apart from political

adaptation. Second, we use health expenditure normalized by GDP as outcome variables and scholars have shown that the regional diffusion of the demand for democracy also occurs conditioned on GDP (Bonhomme and Manresa 2015).

Spatial diffusion of democratization might be, for example, more likely across countries in regions with similar cultures and histories and larger informational exchange (Acemoglu 2019). Closer informational ties between countries increase the likelihood of the spread of political protests and regime changes (Ellis and Fender 2011, Aidt and Jensen 2014). Our first-stage regression results confirm these findings. The relevance of the IV depends on its conditional correlation with the respective democracy measure. The first-stage regression has the following form:

$$Democracy_{it} = \gamma JDI_{it-1} + \mathbf{x}_{i,t-1}\theta + e_{it} \quad (3)$$

*with t = 2000, ..., 2015*

The model includes the same set of control variables  $\mathbf{x}_{i,t-1}$  as in equation (1). The predicted values of the democracy measures from the first-stage regressions can be regarded as exogenous indices for whether a country is described as a democracy or an autocracy and replace the presumably endogenous democracy measure in equation (1). The second-stage regression of this two-stage least squares (2SLS) approach for the cross-country model has the following form:

$$y_{it} = \beta \widehat{Democracy}_{it-1} + \mathbf{x}_{i,t-1}\delta + \varepsilon_{it} \quad (4)$$

*with t = 2000, ..., 2015*

### 3.2 Pooled OLS and IV results

Tables 1 and 2 show pooled OLS and IV results for general government and private health expenditure (relative to GDP). We show OLS results of democracy conditioned on GDP per capita in Panel A and including the entire set of control variables as described by equation (1) in Panel B of Tables 1 and 2. Panel C of Tables 1 and 2 shows 2SLS estimation results and Panel D shows first-stage results of the jackknifed democracy instrument for each of the four democracy measures (results for the control variables in Panels C and D are not reported).

Democracy shows a positive and significant effect on general government health expenditure (relative to GDP) at the 1% level according to all four democracy measures in Panel A of Table 1. The estimates are slightly reduced in size once the model includes the full set of control variables in Panel B. The dichotomous democracy measures *Democracy* by Bjørnskov

and Rode (2019) and the *Dichotomous Support Vector Machines Democracy Index (DSVMDI)* indicate that government health expenditure (relative to GDP) in democracies is 21% and 19% higher than in their autocratic counterparts.<sup>13</sup> According to the *Continuous Support Vector Machines Democracy Index (CSVMDI)* democracies have 29% higher government health expenditure (relative to GDP) than their autocratic counterparts (comparing hypothetical “perfect” democracies with a score of 1 with “perfect” autocracies with a score of 0). An additional score of one in the Polity IV index is associated with 2.1% more government health expenditure (relative to GDP).

The IV results in Panel C of Table 1 confirm the findings of a positive effect of democracy on government health expenditure. The estimates are statistically significant except for the Polity IV variable.<sup>14</sup> The other democracy measures are statistically significant and larger than the OLS estimates. OLS results thus are likely to underestimate the effect of democracy on government health expenditure because of endogeneity issues as discussed in section 3.1. As Acemoglu et al. (2019: 83) also state it, the larger IV estimates “may reflect a downward bias introduced by [...] unobservables or the possibility of attenuation in our previous estimates due to measurement error in the index of democracy.” Using IV estimates, the effect of democratic rule on government health expenditure is 5.2 percentage points larger than pooled OLS estimates for the democracy measure (*Democracy*) by Bjørnskov and Rode (2019), and 0.5-1.3 percentage points larger for the machine learning based democracy measures (*DSVMDI*, *CSVMDI*) by Gründler and Krieger (2016, 2018).<sup>15</sup> The influence of democracies within the same region might, moreover, slightly initiate a democratization of political institutions in the home country which also gives rise to positive effects on government health expenditure far before the country is described as a pure democracy in our dichotomous democracy scores (see section 5). OLS estimates for democracy—particularly the dichotomous ones—thus underestimate the favorable effects of the process of democratization and arising political institutions on government health expenditure which precede the final transition to a democracy.

---

<sup>13</sup> Note that the percentage impact of democracy, i.e. when the dummy switches to one, is calculated as  $100[\exp(0.192)-1]=21.2$ .

<sup>14</sup> This is in line with the results by Profeta et al. (2013), who do not find significant linear relationships by using the Polity IV scores as democracy measure.

<sup>15</sup> That is, the IV estimates are 22% larger than OLS estimates for the democracy measure (*Democracy*) by Bjørnskov and Rode (2019), and 2-4% larger for the machine learning based democracy measures (*DSVMDI*, *CSVMDI*) by Gründler and Krieger (2016, 2018).



**TABLE 1: POOLED OLS AND IV RESULTS FOR GOVERNMENT HEALTH EXPENDITURE**

Gov. health exp. (% of GDP) <sup>a</sup>	(1)	(2)	(3)	(4)
<b>Panel A</b>				
Democracy (t-1)	0.423*** (0.028)			
Polity IV (t-1)		0.041*** (0.002)		
DSVMDI (t-1)			0.418*** (0.031)	
CSVMDI (t-1)				0.651*** (0.042)
GDP per capita (t-1) <sup>a</sup>	0.266*** (0.008)	0.261*** (0.008)	0.281*** (0.008)	0.270*** (0.008)
Constant	-1.567*** (0.065)	-1.434*** (0.065)	-1.737*** (0.066)	-1.789*** (0.066)
Observations	2,223	2,217	2,223	2,223
Countries	150	150	150	150
R <sup>2</sup>	0.478	0.512	0.472	0.489
<b>Panel B: Full set of control variables</b>				
Democracy (t-1)	0.192*** (0.030)			
Polity IV (t-1)		0.021*** (0.003)		
DSVMDI (t-1)			0.170*** (0.034)	
CSVMDI (t-1)				0.252*** (0.052)
GDP per capita (t-1) <sup>a</sup>	0.082*** (0.018)	0.099*** (0.018)	0.084*** (0.018)	0.089*** (0.018)
Population (t-1) <sup>a</sup>	-0.075*** (0.009)	-0.068*** (0.009)	-0.075*** (0.009)	-0.074*** (0.009)
Population ages 65 and above (% of total) (t-1) <sup>a</sup>	0.279*** (0.025)	0.218*** (0.028)	0.288*** (0.026)	0.266*** (0.028)
Population ages 0-14 (% of total) (t-1) <sup>a</sup>	0.047 (0.062)	-0.076 (0.063)	0.019 (0.062)	0.004 (0.063)
Globalization (t-1)	0.017*** (0.002)	0.013*** (0.002)	0.017*** (0.002)	0.016*** (0.002)
Constant	-0.330 (0.311)	0.160 (0.315)	-0.279 (0.311)	-0.252 (0.312)
Observations (=Countries)	2,219	2,213	2,219	2,219
Countries	150	150	150	150
R <sup>2</sup>	0.558	0.564	0.555	0.555
<b>Panel C: Two-stage-least-squares estimates (controls not shown)</b>				
Democracy (t-1)	0.234*** (0.079)			
Polity IV (t-1)		0.009 (0.006)		
DSVMDI (t-1)			0.174* (0.090)	
CSVMDI (t-1)				0.262** (0.116)
<b>Panel D: First-stage estimates (excluded instruments only)</b>				
Jackknifed democracy measure	0.594*** (0.043)	0.588*** (0.038)	0.556*** (0.045)	0.538*** (0.035)
Baseline controls included	yes	yes	yes	yes
Observations	2,219	2,213	2,219	2,219
Countries	150	150	150	150
R <sup>2</sup> (second-stage regression)	0.557	0.559	0.555	0.555
Kleibergen-Paap F-Statistic	190.38	234.76	156.09	231.72
Stock-Yogo (10% rel. bias)	16.38	16.38	16.38	16.38

Notes: Pooled OLS model. Standard errors in parentheses. \*, \*\*, and \*\*\* indicate significance at the 10, 5, and 1% significance levels. All regressions apply standard errors robust to heteroskedasticity. <sup>a</sup> denotes variables which are expressed in their natural logarithm.

The first stage estimation results show a highly significant correlation between the jackknifed democracy measures and the democracy score of the country itself—an evidence for the high relevance of the instrument. The F-statistics on the excluded instrument are all well above the 10%-critical value suggested by Stock and Yogo (2005).

Pooled OLS and IV results in Table 2 suggest that democratic institutions do hardly affect private health expenditure. All democracy measures are positive and statistically significant at the 1%-level in Panel A of Table 2, but drop in size and lack statistical significance once the full set of control variables is included in Panel B of Table 2. The finding is largely supported once democracy measures are instrumented in Panel C of Table 2. The instrumented *Democracy* variable by Bjørnskov and Rode (2019) turns out to be an exception and has a positive and significant effect on private health expenditure.

The empirical results for the control variables in Panel B of Table 1 reveal further patterns of health expenditure in democracies and autocracies: GDP per capita and old age population share are positive and statistically significant at the 1% level. The significant estimates for GDP and old age population are likely to capture higher government health expenditure (relative to GDP) for high-income countries and their ageing societies. The positive coefficient of GDP per capita may show an income effect as previously implied by Figure 2 because richer countries exhibit higher government health expenditure (relative to GDP). Population, however, is negatively related to government health expenditure (relative to GDP) and the coefficient for the young age population share lacks statistical significance. Different from the results for general government health expenditure (relative to GDP), GDP per capita is negatively and significantly related to private health expenditure (relative to GDP) (see Table 2, Panel B). Contrary to the income effect on government health expenditure, private health expenditure may thus be subject to a substitution effect as previously suggested by Figure 3. Population and the old age population share are positively and significantly correlated with private health expenditure (relative to GDP). The R-squared in both the OLS and the IV models is considerably lower when private health expenditure instead of government health expenditure is the dependent variable (see Tables 1 and 2). The share of variation explained by the model is thus higher for government than for private health expenditure as dependent variable.

**TABLE 2: POOLED OLS AND IV RESULTS FOR PRIVATE HEALTH EXPENDITURE**

Priv. health exp. (% of GDP) <sup>a</sup>	(1)	(2)	(3)	(4)
<b>Panel A</b>				
Democracy (t-1)	0.218*** (0.029)			
Polity IV (t-1)		0.024*** (0.002)		
DSVMDI (t-1)			0.251*** (0.029)	
CSVMDI (t-1)				0.427*** (0.040)
GDP per capita (t-1) <sup>a</sup>	-0.096*** (0.008)	-0.102*** (0.008)	-0.090*** (0.008)	-0.099*** (0.008)
Constant	1.427*** (0.064)	1.514*** (0.064)	1.332*** (0.061)	1.294*** (0.059)
Observations	2,223	2,217	2,223	2,223
Countries	150	150	150	150
R <sup>2</sup>	0.070	0.099	0.077	0.096
<b>Panel B: Full set of control variables</b>				
Democracy (t-1)	0.018 (0.112)			
Polity IV (t-1)		-0.000 (0.010)		
DSVMDI (t-1)			-0.004 (0.122)	
CSVMDI (t-1)				0.078 (0.184)
GDP per capita (t-1) <sup>a</sup>	-0.193*** (0.017)	-0.188*** (0.017)	-0.192*** (0.017)	-0.191*** (0.017)
Population (t-1) <sup>a</sup>	0.047*** (0.009)	0.046*** (0.009)	0.047*** (0.009)	0.047*** (0.009)
Population ages 65 and above (% of total) (t-1) <sup>a</sup>	0.374*** (0.030)	0.364*** (0.031)	0.368*** (0.030)	0.365*** (0.031)
Population ages 0-14 (% of total) (t-1) <sup>a</sup>	0.443*** (0.064)	0.433*** (0.064)	0.441*** (0.064)	0.436*** (0.064)
Globalization (t-1)	0.013*** (0.002)	0.013*** (0.002)	0.013*** (0.002)	0.013*** (0.002)
Constant	-1.309*** (0.354)	-1.253*** (0.362)	-1.292*** (0.355)	-1.276*** (0.355)
Observations	2,219	2,213	2,219	2,219
Countries	150	150	150	150
R <sup>2</sup>	0.195	0.195	0.195	0.195
<b>Panel C: Two-stage-least-squares estimates (controls not shown)</b>				
Democracy (t-1)	0.272*** (0.090)			
Polity IV (t-1)		0.000 (0.007)		
DSVMDI (t-1)			0.114 (0.092)	
CSVMDI (t-1)				0.176 (0.124)
<b>Panel D: First-stage estimates (excluded instruments only)</b>				
Jackknifed democracy measure	0.594*** (0.043)	0.588*** (0.038)	0.556*** (0.045)	0.538*** (0.035)
Baseline controls included	yes	yes	yes	yes
Observations	2,219	2,213	2,219	2,219
Countries	150	150	150	150
R <sup>2</sup> (second-stage regression)	0.154	0.195	0.189	0.189
Kleibergen-Paap F-Statistic	190.38	234.76	156.09	231.72
Stock-Yogo (10% rel. bias)	16.38	16.38	16.38	16.38

Notes: Pooled OLS model. Standard errors in parentheses. \*, \*\*, and \*\*\* indicate significance at the 10, 5, and 1% significance levels. All regressions apply standard errors robust to heteroskedasticity. <sup>a</sup> denotes variables which are expressed in their natural logarithm.

## 4. Panel fixed effects strategy

### 4.1 Panel fixed effects model

Given the rather short observation period from 2000 to 2015, variation in democracy within countries is rather low. It is, however, a worthwhile endeavor to estimate a panel fixed effects model and examine within-country effects of democracy for the countries which experienced regime transition during the period 2000 to 2015 (see Table A1):

$$y_{it} = \beta Democracy_{it-1} + \mathbf{x}_{it-1}\boldsymbol{\delta} + \alpha_i + \gamma_t + \varepsilon_{it} \quad (5)$$

*with  $t = 2000, \dots, 2015$*

Time-invariant country fixed effects  $\alpha_i$  account for country-specific unobserved characteristics and allow a within-interpretation of the estimated regression parameters. Year fixed effects  $\gamma_t$  absorb common shocks to health expenditure during the observation period. The coefficient  $\beta$  thus describes the within-country effect of democracy on government and private health expenditure.<sup>16</sup> Error terms  $\varepsilon_{it}$  are clustered at the country level and robust to serial correlation and heteroskedasticity.<sup>17</sup>

The IV strategy applied in the cross-country OLS model is not feasible for the panel fixed effects model. First stage regression results do not show that within-country variation in the spatial democracy score is a relevant instrument for democracy in the period 2000-2015. The jackknifed democracy instrument by Acemoglu et al. (2019) follows the assumption that democracy in one country is influenced by democracy in countries of the same region. In a panel setup, which includes the period of the third wave of democratization as defined by Huntington (1991a, 1991b), this relationship is reasonable to assume: the third wave of democracy reached different regions at different times and gave rise to democratizations within entire regions like Latin America and Eastern Europe. The countries in our sample which experienced regime transitions during the period 2000-2015 do not describe cohesive democratizations within a specific region and at a specific time. The IV strategy using an average democracy score of countries in the same geopolitical region can therefore not be applied to a panel fixed effects setup of our observation period.

---

<sup>16</sup> The transition countries in our panel experienced regime transitions in both directions, i.e. from autocracy to democracy and from democracy to autocracy, or even experienced multiple transitions. We consider both for estimating the within-country effect of democracy.

<sup>17</sup> According to the results of a Hausman test, which rejects the null hypothesis at all conventional significance levels, the fixed effects model is more appropriate compared to a random effects model in this empirical setup (not reported).

## 4.2 Panel fixed effects results

Tables 3 and 4 show panel fixed effects results for the effect of democracy on general government and private health expenditure (relative to GDP). Different from the cross-country approach, the panel fixed effects model yields within-country estimates for the effect of democracy on government and private health expenditure and describes the transition effect of political regime changes within countries.<sup>18</sup> Panel A of Tables 3 and 4 shows fixed effects results which are conditioned on GDP per capita only and Panel B of Tables 3 and 4 includes the full set of control variables as described by equation (5).<sup>19</sup>

The coefficient estimates of the dichotomous democracy measures *Democracy* by Bjørnskov and Rode (2019) and the *DSVMDI* on general government health expenditure in Table 3 are statistically significant at the 1% and 10% level in Panel A of Table 3, while the democracy measures of *Polity IV* and *CSVMDI* do not turn out to be statistically significant. After including the full set of control variables in Panel B, both dichotomous democracy measures are statistically significant at the 5% level and indicate that countries increase government health expenditure (relative to GDP) by 14% and 19% according to columns (1) and (3). The continuous *CSVMDI* democracy measure also turns out to be statistically significant at the 10% level and suggests that government health expenditure (relative to GDP) increase by 28% for a hypothetical transition to democracy from 0 to 1 (see Table 3, Panel B, column 4). The results indicate that the difference in government health expenditure becomes visible in a rather short time period after transition between political regimes. The size of the effect is smaller compared to the pooled OLS results because it only accounts for countries which experienced a transition during the observation period and thus only covers short- and medium-term budgetary adjustments after regime transitions. The low within-R-squared in Panel B compared to the rather high between-R-squared indicates that the variation in the data predominantly applies across countries rather than within countries and further explains the reduced significance of the within estimates compared to the between estimates for democracy.

The panel fixed effects results in Table 4 show that democracy does not turn out to be statistically significant when private health expenditure (relative to GDP) is the dependent variable. Democratic transitions thus do not seem to influence out-of-pocket health expenditure in a significant manner.

---

<sup>18</sup> Note that countries in our panel experienced regime transitions in both directions, i.e. from autocracy to democracy and from democracy to autocracy, or even experienced multiple transitions.

<sup>19</sup> The number of observations is slightly smaller in column (2) because of missing values for the Polity IV index.

The results for our control variables in our Panel fixed effects model (Tables 3 and 4, Panel B) show that the young age population share is negatively related to government health expenditure (relative to GDP), whereas population is negatively related to private health expenditure (relative to GDP).

**TABLE 3: PANEL FIXED-EFFECTS RESULTS FOR GOVERNMENT HEALTH EXPENDITURE**

Gov. health exp. (% of GDP) <sup>a</sup>	(1)	(2)	(3)	(4)
<b>Panel A</b>				
Democracy (t-1)	0.138*** (0.051)			
Polity IV (t-1)		0.007 (0.008)		
DSVMDI (t-1)			0.148* (0.077)	
CSVMDI (t-1)				0.202 (0.124)
GDP per capita (t-1) <sup>a</sup>	-0.024 (0.064)	-0.016 (0.064)	-0.011 (0.063)	-0.017 (0.063)
Country Fixed Effects	yes	yes	yes	yes
Year Fixed Effects	yes	yes	yes	yes
Observations	2,223	2,217	2,223	2,223
Countries	151	151	151	151
R <sup>2</sup> Overall	0.015	0.019	0.046	0.042
R <sup>2</sup> Within	0.046	0.039	0.052	0.046
R <sup>2</sup> Between	0.014	0.016	0.050	0.048
<b>Panel B: Full set of control variables</b>				
Democracy (t-1)	0.134** (0.052)			
Polity IV (t-1)		0.010 (0.008)		
DSVMDI (t-1)			0.176** (0.076)	
CSVMDI (t-1)				0.247* (0.126)
GDP per capita (t-1) <sup>a</sup>	-0.034 (0.064)	-0.026 (0.063)	-0.019 (0.062)	-0.027 (0.063)
Population (t-1) <sup>a</sup>	-0.228 (0.229)	-0.246 (0.229)	-0.258 (0.221)	-0.270 (0.222)
Population ages 65 and above (% of total) (t-1) <sup>a</sup>	0.235 (0.245)	0.242 (0.250)	0.276 (0.246)	0.242 (0.249)
Population ages 0-14 (% of total) (t-1) <sup>a</sup>	-0.690* (0.360)	-0.732** (0.361)	-0.768** (0.341)	-0.769** (0.344)
Globalization (t-1)	0.001 (0.007)	-0.000 (0.007)	-0.000 (0.007)	-0.000 (0.007)
Country Fixed Effects	yes	yes	yes	yes
Year Fixed Effects	yes	yes	yes	yes
Observations	2,219	2,213	2,219	2,219
Countries	150	150	150	150
R <sup>2</sup> Overall	0.355	0.349	0.360	0.339
R <sup>2</sup> Within	0.072	0.068	0.084	0.077
R <sup>2</sup> Between	0.420	0.414	0.423	0.400

Notes: Panel fixed effects model. Standard errors in parentheses. \*, \*\*, and \*\*\* indicate significance at the 10, 5, and 1% significance levels. All regressions apply standard errors clustered at the country level. <sup>a</sup> denotes variables which are expressed in their natural logarithm.

**TABLE 4: PANEL FIXED-EFFECTS RESULTS FOR PRIVATE HEALTH EXPENDITURE**

Priv. health exp. (% of GDP) <sup>a</sup>	(1)	(2)	(3)	(4)
<b>Panel A</b>				
Democracy (t-1)	0.042 (0.042)			
Polity IV (t-1)		-0.002 (0.006)		
DSVMDI (t-1)			0.026 (0.046)	
CSVMDI (t-1)				0.044 (0.075)
GDP per capita (t-1) <sup>a</sup>	-0.041 (0.045)	-0.041 (0.045)	-0.038 (0.045)	-0.039 (0.045)
Country Fixed Effects	yes	yes	yes	yes
Year Fixed Effects	yes	yes	yes	yes
Observations	2,223	2,217	2,223	2,223
Countries	151	151	151	151
R <sup>2</sup> Overall	0.063	0.031	0.057	0.066
R <sup>2</sup> Within	0.016	0.015	0.015	0.015
R <sup>2</sup> Between	0.067	0.033	0.063	0.073
<b>Panel B: Full set of control variables</b>				
Democracy (t-1)	0.040 (0.039)			
Polity IV (t-1)		0.000 (0.006)		
DSVMDI (t-1)			0.042 (0.043)	
CSVMDI (t-1)				0.074 (0.071)
GDP per capita (t-1) <sup>a</sup>	-0.050 (0.045)	-0.050 (0.045)	-0.046 (0.045)	-0.048 (0.045)
Population (t-1) <sup>a</sup>	-0.438** (0.184)	-0.439** (0.186)	-0.446** (0.185)	-0.450** (0.185)
Population ages 65 and above (% of total) (t-1) <sup>a</sup>	0.063 (0.254)	0.066 (0.251)	0.071 (0.254)	0.065 (0.255)
Population ages 0-14 (% of total) (t-1) <sup>a</sup>	-0.121 (0.238)	-0.129 (0.236)	-0.142 (0.235)	-0.145 (0.234)
Globalization (t-1)	-0.001 (0.005)	-0.001 (0.005)	-0.002 (0.005)	-0.002 (0.005)
Country Fixed Effects	yes	yes	yes	yes
Year Fixed Effects	yes	yes	yes	yes
Observations	2,219	2,213	2,219	2,219
Countries	150	150	150	150
R <sup>2</sup> Overall	0.029	0.029	0.030	0.029
R <sup>2</sup> Within	0.050	0.049	0.051	0.051
R <sup>2</sup> Between	0.033	0.034	0.032	0.032

Notes: Panel fixed effects model. Standard errors in parentheses. \*, \*\*, and \*\*\* indicate significance at the 10, 5, and 1% significance levels. All regressions apply standard errors clustered at the country level. <sup>a</sup> denotes variables which are expressed in their natural logarithm.

## 5. Event study strategy

### 5.1 Event study model

We use the time series variation of regime transitions in an event study design to examine the dynamics of the effect of regime transitions on health expenditures. The event study is based on a panel difference-in-difference approach and shows whether health expenditures evolve differently in years before and after regime transition. Moreover, the event study shows whether transition effects are persistent in the years thereafter.

Countries experience regime transitions at different times. The flexible design of our event study model allows to employ all regime transitions in a parallel structure, irrespective of when they have experienced a regime transition in the period 2000-2015. Event studies employ year-specific dummy variables for years before and after regime transition for countries which experienced transitions from autocracies to democracies or vice versa. The flexible event study model augments the panel fixed effects model by year-specific dummy variables and looks as follows:

$$y_t = \sum_{T=t-8}^{T=t+8} \beta_T (\text{Regime Transition}_{i,t}^T) + \mathbf{x}_{it}\boldsymbol{\delta} + \alpha_i + \gamma_t + \varepsilon_t \quad (6)$$

*with t = 2000, ..., 2015*

Equation (6) estimates the impact of regime transitions for individual years before and after transition. We estimate both, the effect of transitions from autocracy to democracy as well as the effect of transitions from democracy to autocracy separately by employing equation (6). The event study design considers regime transitions as treatments. We therefore employ dichotomous democracy measures to classify when a country experienced a regime transition.<sup>20</sup> We use the dichotomous democracy measure *DSMVDI* by Gründler and Krieger (2016, 2018) as main indicator to classify countries as a democracy or autocracy in the event study design. Compared to the dichotomous measure *Democracy* by Bjørnskov and Rode (2019) the *DSMVDI* captures more regime transitions (see Table A1 in Appendix I), and provides less biased OLS estimates (see section 3.2).<sup>21</sup>

In equation (6), the column vector *Regime Transition*<sub>*i,t*</sub><sup>*T*</sup> describes whether country *i* is under democratic or autocratic rule in year *t*. When we examine the effect of transitions towards democracies the vector takes the value of one if a country is classified as a democracy; when we examine transitions from democratic rule to autocracies, it takes the values of one for years if the country is classified as an autocracy and zero for democracies. Regime transitions take place in the year *t*, and *T* describes years *t* prior and after the regime transition. *T* ranges from *t* − 8 (*and years before*), to *t* + 8 (*and years after*). The year prior to the regime transition, *t* − 1, serves as the reference year. The coefficients  $\beta_T$  thus estimate the effect from *t* − 8 years

---

<sup>20</sup> The event study applies the dichotomous democracy measures only because—different from *CSVMVDI* and the *Polity IV* index—a treatment-like effect can be estimated with a dichotomous democracy measure only.

<sup>21</sup> However, we have repeated the approach by using the *Democracy* score by Bjørnskov and Rode (2019). Inferences do not change. Results available upon request.



before transition to  $t+\delta$  years after transition. We include all control variables in vector  $\mathbf{x}_{it}$  as described in our baseline model;  $\gamma_t$  and  $\alpha_i$  capture year and country fixed effects. Standard errors  $\varepsilon_t$  are clustered at the country level and robust to serial correlation and heteroskedasticity.

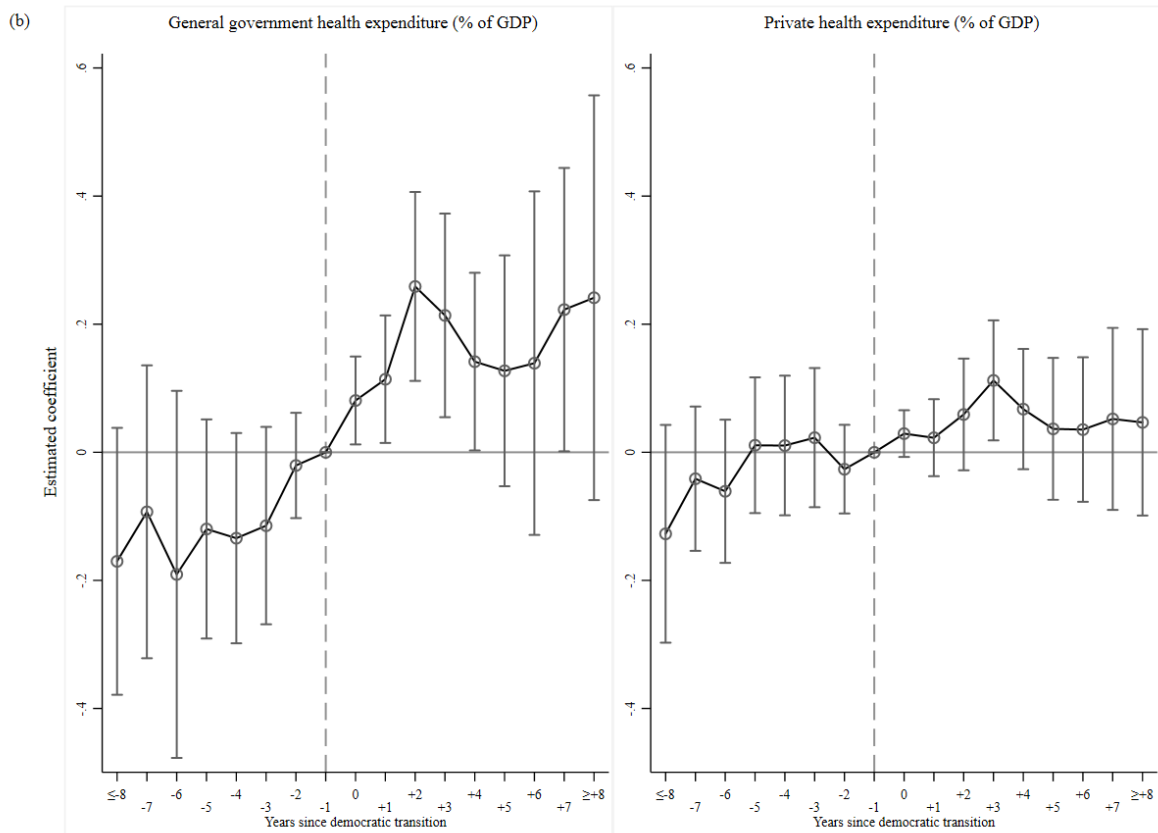
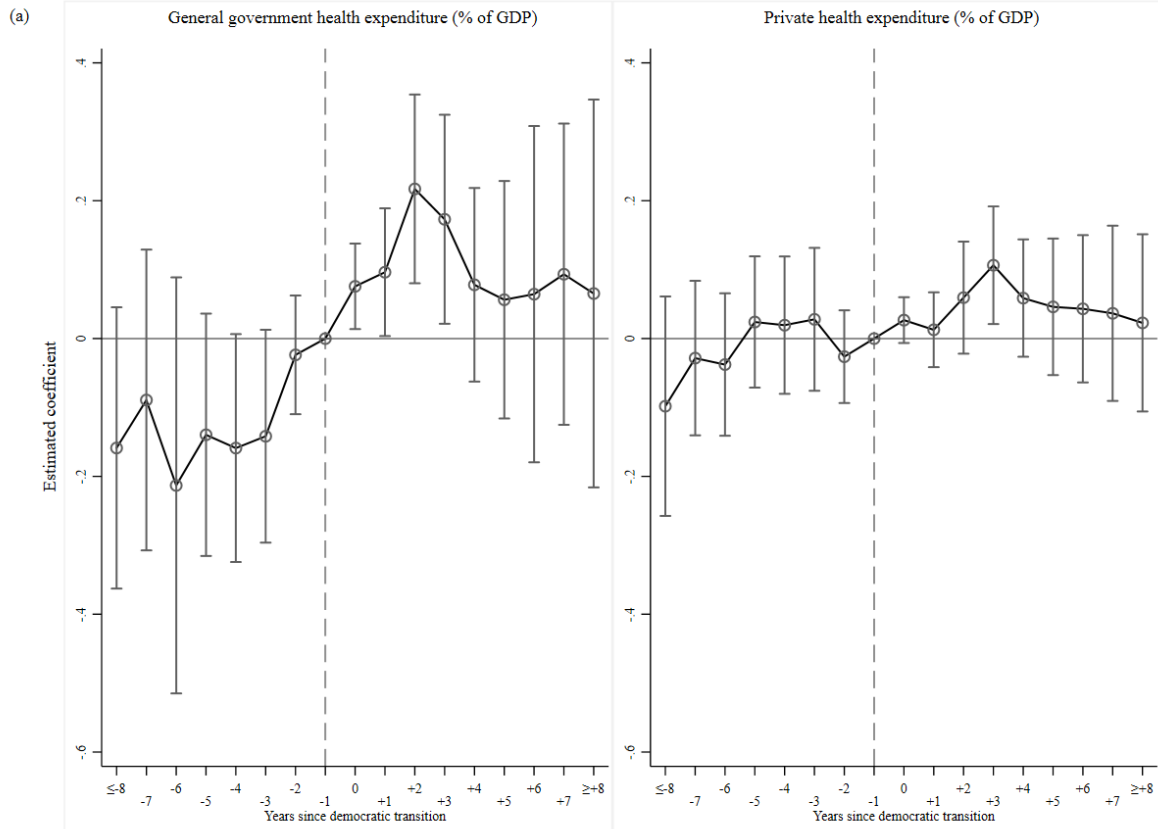
## 5.2 Event study results

Figures 4 and 5 show the coefficient estimates of the event study model following equation (6) by using the dichotomous democracy measure *DSVMDI* by Gründler and Krieger (2016, 2018).<sup>22</sup> The event study figures describe how health expenditure evolve in the years before and after the regime transition. Each dot in the figure presents a point estimate, the vertical lines are 90 % confidence intervals. Figure 4 illustrates the effect of the transition from an autocratic system to democratic rule, whereas Figure 5 shows how the effect on health expenditure evolves around the transition from a democratic regime to an autocracy. In both figures, panel (a) refers to estimates including the full country sample, and panel (b) presents results of the sample excluding permanent democracies from the regression sample.

The event study results in Figure 4 confirm that a transition to democracy gives rise to significantly higher government health expenditure. The effect on government health expenditure is positive and statistical significant in the transition year ( $T=0$ ) and up to seven years after the regime transition. The point estimates remain positive in the following years indicating that the positive effect of democratization on government health expenditure is persistent. It lacks, however, statistical significance in some later years, since the number of observations for transition countries is reduced for later years due to the rather short observation period, and thus gives rise to larger standard errors. The reference for the estimates is one year before transition ( $t-1$ ). The estimates for years prior to the reference year indicate that government health expenditure already increased to some extent before the dichotomous democracy measure classifies the political system as democracy. An arguable reason is that the process of democratization already started in some transition countries before the threshold year (see arguments why IV results are larger than pooled OLS estimates in section 3). The positive effect of the democratic transition on government health expenditure is therefore likely to be underestimated when we compare the years after transition with the reference year.

---

<sup>22</sup> The numerical results are presented in Tables A4-A7 in Appendix II.



**FIGURE 4: EVENT STUDY – DEMOCRATIC TRANSITION**

*Notes:* Event study model using the dichotomous DSMVDI democracy measure. Panel model includes country and year fixed effects, baseline controls and clustered standard errors at the country level. Panel (a) includes all countries, panel (b) excludes permanent democracies. Figure refers to Tables A4-A5, columns (4) and (6) in Appendix II.

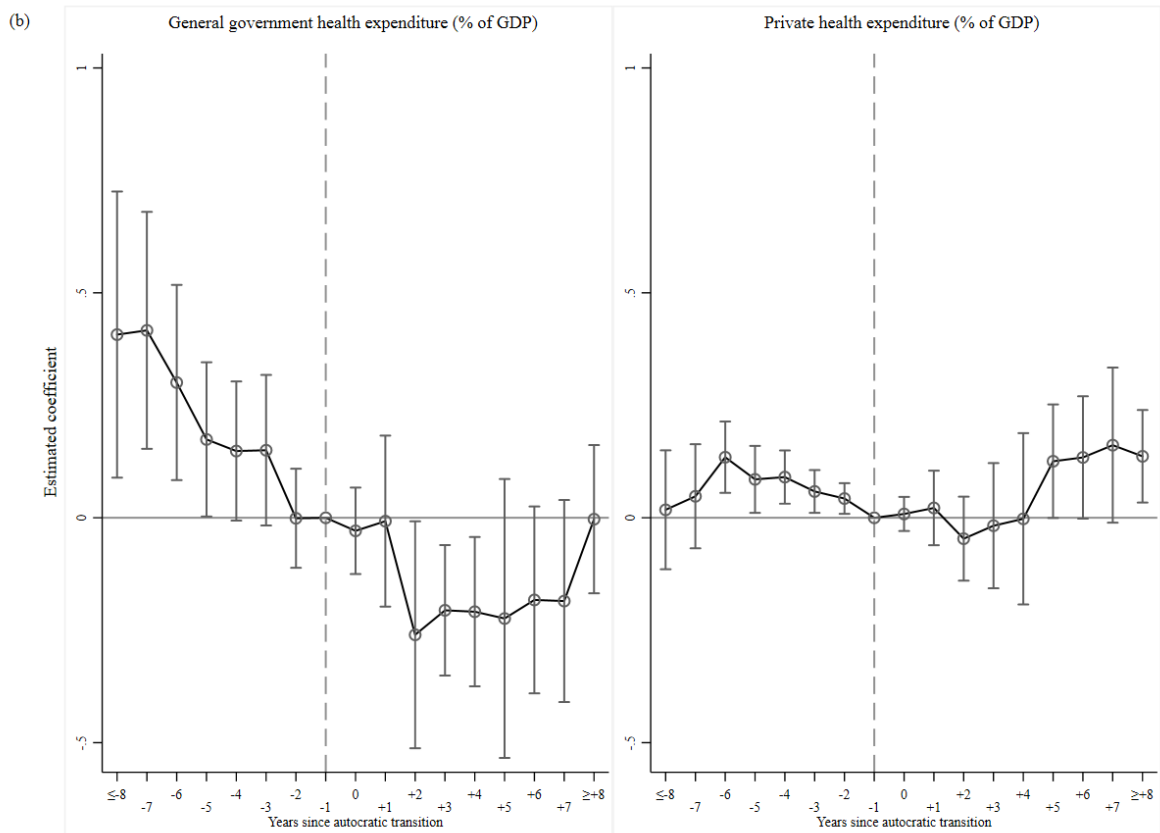
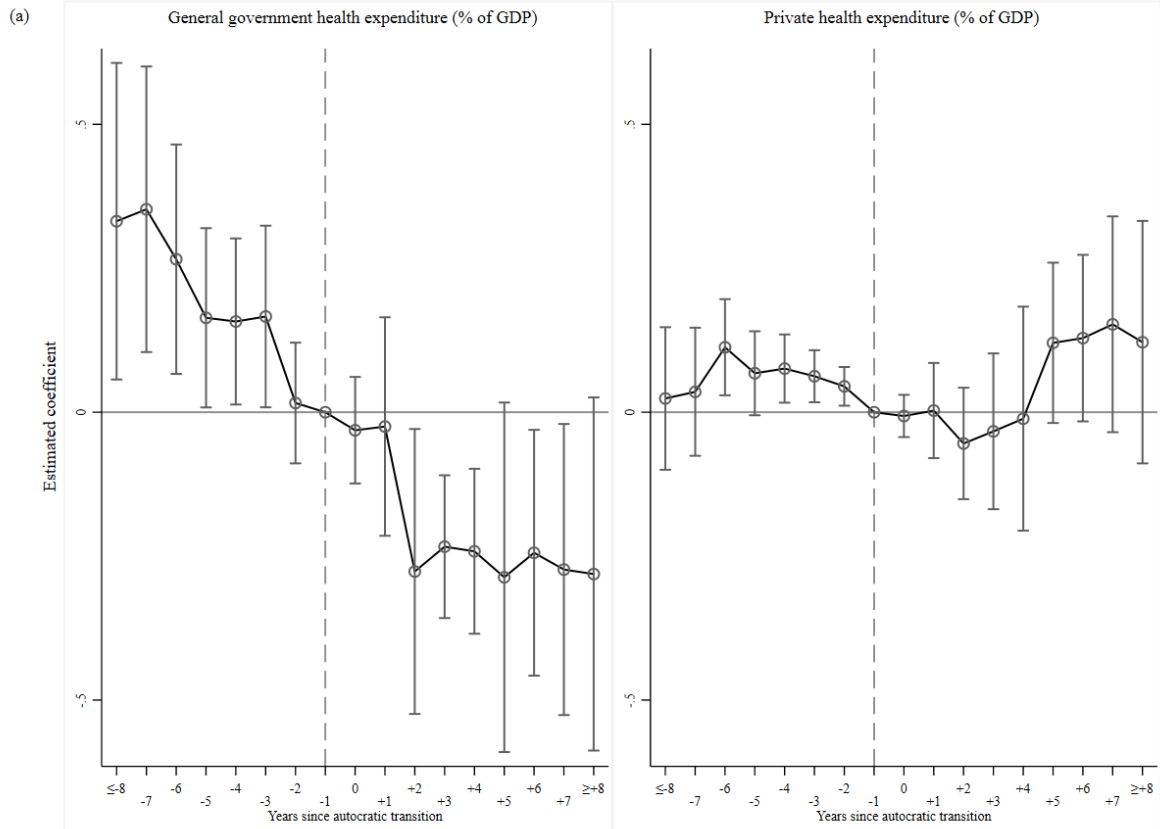


FIGURE 5: EVENT STUDY - AUTOCRATIC TRANSITION

Notes: Event study model using the dichotomous DSMVDI democracy measure. Panel model includes country and year fixed effects, baseline controls and clustered standard errors at the country level. Panel (a) includes all countries, panel (b) excludes permanent democracies. Figure refers to Tables A6-A7, columns (4) and (6) in Appendix II.

The positive effect of democratic rule on government health expenditure is also confirmed in Figure 5. The figure shows how estimates evolve before and after a regime transition from a democracy to an autocratic system. The transition to an autocratic system has a negative and statistically significant effect on government health expenditure three years after transition and up to seven years later. The negative effect remains persistent according to the full sample in panel (a). By contrast, democratic years three years before transition to autocracy and earlier show a positive and significant effect of democratic rule on government health expenditure. Again, the decline in government health expenditure already started two years before the dichotomous democracy measure classifies the country as an autocracy. This refers to a process of decline in democratic institutions in some transition countries which started before transition and proceeded in the years thereafter. This event study pattern again suggests that the point estimates underestimate the positive effect of democratic (and the negative effect of autocratic) transition on government health expenditure.

By contrast, Figure 4 do not show that private health expenditure evolves differently before and after democratic transition. The figure shows only one significant point estimate in year  $t+3$  after transition, but the effects are not persistent. However, Figure 5 shows that private health expenditures follow a U-shape around transitions to autocracy. Private health expenditures are first significantly larger in years prior to the autocratic transition. Then, private health expenditures drop in the years around the transition to an autocratic regime, but finally increase five years after the regime transition. This suggests that previous findings of a positive relationship between democratic rule and private health expenditure is mainly driven by the drop in “out-of-pocket” health expenditures in the initial years of autocratic rule. Overall, event study results do not suggest that regime transitions have persistent effects on private health expenditures, while effects of regime transitions on government health expenditures are significant and persistent.

## **6. Robustness tests**

We test the robustness of our empirical results in several ways. First, we estimate the empirical models for a sample excluding high-income countries to confirm that the empirical results are not driven by the pronounced differences in government health expenditure between democracies and autocracies in the group of high-income countries (see Figure 1). The pooled OLS, IV and panel fixed effects estimation results in Tables A8 to A11 in Appendix II show that the positive effect of democratization on government health expenditure do hardly change once we exclude high income countries. The results support previous findings of Avelino et al.

(2005) and Profeta et al. (2013). Both report positive coefficient estimates in samples of developing and low-income countries. However, their results are based on rather smaller samples and observations and do not show significant (linear) effects of regime transitions on health expenditure within countries. Avelino et al. (2005) and Profeta et al. (2013) both do not report estimates for the relationship between democracy and private health expenditure. Our pooled OLS and IV estimation results suggest that regime transitions towards stronger democratic institutions decrease private health expenditures once we exclude high-income countries. The findings may indicate a substitution effect between government health expenditure and private health expenditure in developing and low-income countries.

Second, the estimation results refer to a pooled OLS and IV regression for the years 2000 to 2015. To rule out that our estimation results depend on the pooled sample selection, Figures A1 to A4 in Appendix II illustrate OLS and IV coefficient cross country estimates and their 90% confidence intervals for the four democracy measures in all years from 2000 to 2015. We estimate equations (1) and (4) for each single year between 2000 and 2015 separately. The findings confirm that democracy has a positive effect on general government health expenditure (relative to GDP) for all democracy measures. The results confirm that our inferences from the pooled approach are also valid for most of the individual years during the observation period. OLS and IV estimates for the relationship between democracy and government health expenditure are positive with quite homogeneous point estimates across all years. They, however, lack statistical significance in some years, likely because of the small size of observations in single years. Naturally, the less precise IV results more often lack significance than OLS estimates due to larger standard errors. Both OLS and IV estimates do not suggest that democracy has a positive effect on private health expenditure (relative to GDP), estimating the cross-country model for all democracy measures across all single years notwithstanding (see Figures A1 to A4 in Appendix II).

Third, the effect of democracy on health expenditure may well depend on the age of democracy (see Besley and Kudamatsu 2006). Our pooled OLS and panel fixed effects baseline results suggest that the quality of political institutions may differ between established democracies and countries which recently experienced democratic transition. We therefore include a dummy variable for established democracies in the pooled OLS and IV models according to the two dichotomous democracy measures. The dummy takes the value of one if our dichotomous democracy measures (*Democracy*, *DSVMDI*) classify a country as democracy in all years of the sample period. The findings in the pooled OLS and IV analysis show that established democracies indeed spend more on government health expenditure (relative to

GDP).<sup>23</sup> However, democracy also turns out to be positive in the remaining sample of countries which corroborates the findings of the panel fixed effects and event study models. (Figures A5-A6 in Appendix II). When we control for established democracies, democratization seems to increase private health expenditure. This is, however, probably due to the U-shape effect during autocratic transitions as discussed in the event study section 5.

Finally, we include further control variables in our empirical models: population share in geographical tropics<sup>24</sup>, urban population share, Gini index of market income inequality, and military expenditure (relative to GDP).<sup>25</sup> The population in geographical tropics has an increased likelihood of exposure to severe diseases and epidemics (e.g. the spread of Malaria or the Ebola epidemic in West Africa in the mid-2010s), which might influence health expenditure.<sup>26</sup> We include urban population share as higher population density might be related to the spread of diseases and epidemics, as well as to the diffusion of political ideas and the spread of potential political protest of the electorate (e.g. protest movements). In addition, income inequality may well increase the demand of the electorate for higher taxation, redistribution and social spending such as government health expenditures (see Meltzer and Richard 1981, Gründler and Köllner 2017). Following the discussion of the “butter vs. guns” trade-off, the relative share of military expenditures, moreover, might be negatively related to social spending (see Bove et al. 2017). Inferences for the effect of political institutions on health expenditure do not change once we include additional controls which justifies the selection of our baseline controls. Point estimates are reported in Figures A5 and A6 in Appendix II.<sup>27</sup> In a last step, we employ error terms  $\varepsilon$  clustered at the country level and robust to serial correlation and heteroskedasticity in the pooled OLS and IV models. Point estimates and inferences do not change, whereas standard errors increase and IV estimates lack statistical significance (see Figures A5 and A6 in Appendix II).

---

<sup>23</sup> Estimation results for additional control variables upon request.

<sup>24</sup> We cannot apply the population share in geographical tropics in our panel data models because the data are not available over time.

<sup>25</sup> Data on population density are taken from the World Bank. Data on income inequality (before taxes and transfers) are Gini measures from the Standardized World Income Inequality Database (SWIID) (Solt 2016). Data on military expenditure are provided by the Stockholm International Peace Research Institute (SIPRI).

<sup>26</sup> The population share in geographical tropics is provided by the Country-Geography-Dataset of the College of Urban and Public Affairs at the Portland State University (Gallup et al. 1999). Data for the population share in geographical tropics are as of 1995 and available across countries but not over time. The population share in geographical tropics is not used in its natural logarithm because of the high number of zero values for many countries. The variable is not available for all countries and therefore can only be tested for 139 of the 151 countries in the sample.

<sup>27</sup> The point estimate of the democracy measures slightly decreases once including Gini market inequality. Including Gini market, however, decreases the number of observations in the estimation model. Once including the tropical population share and the military expenditure (as % of GDP) as additional control variables, 2SLS coefficients of the democracy effect on both, government and private health expenditure, increase in size.

## 7. Conclusion

We examined the effect of political institutions on health expenditure. Our empirical approach included some novel contributions: first, we employed a large balanced panel of 151 developing and developed countries during the period 2000 to 2015 and estimated cross-country and panel data models which allow to estimate both between- and within-country effects of democracy. Second, we distinguished between the effect of democracy on both general government health expenditure and private (“out-of-pocket”) health expenditure to examine whether democratic regimes differently affect government and private health expenditure. Third, we used four measures of democracy to account for differences in the quantification of democracy. Fourth, we used instrumental variable approaches to deal with endogeneity problems. We exploited the regional diffusion of political institutions as an instrumental variable for democracy in our cross-country analysis.

The cross-country estimation results confirm previous cross-section studies (Besley and Kudamatsu 2006; Gregorio and Gregorio 2013, Profeta et al. 2013) suggesting that democracy has a positive and statistically significant effect on government health expenditure (relative to GDP). Our findings suggest that according to dichotomous democracy measures, democratic governments spend about 20-30% more on health relative to GDP than their autocratic counterparts. While previous studies do not find significant effects in panel fixed effect approaches (Avelino et al 2005; Profeta et al. 2013), our results indicate a positive within-country effect of democratization on government health expenditure (relative to GDP), which become visible within a rather short time period after regime transition. Our findings suggest a positive within-country effect of democratization of about 10-20% according to dichotomous democracy measures. Event study results corroborate that regime transitions from autocracies to democracies and vice versa give rise to significant changes in government health expenditure within a short time period after transition. Regime transitions, however, do not turn out to significantly influence private health expenditure.

The short observation period from 2000 to 2015 includes only little variation in democracy within countries and limits the time window in which budget adjustments after regime changes can be observed. Once longer time series are available for government and private health expenditure, future research should further investigate within-country effects of regime transition on health expenditure.

Higher government health expenditure may well give rise to health infrastructure improvements such as better access to physicians and hospitals. Empirical evidence has shown that democracies – compared to autocratic regimes at the same stage of economic development

– are indeed associated with a higher quality of the health care sector, improved sanitation and clean water supply, higher immunization rates and coverage of medical treatment of diseases, as well as improvements in health indicators such as life expectancy and child or infant mortality rates (e.g. Lake and Baum 2001, Besley and Kudamatsu 2006, Deacon 2009, Klomp and de Haan 2009, Justesen 2012, Kudamatsu 2012, Welander et al. 2015). We conclude that governments in democracies care more for their people and increase public health by decreasing inequalities in the access to costly health services.

## References

- Acemoglu, D., and J. A. Robinson. 2006. “Economic Origins of Dictatorship and Democracy.” Cambridge University Press.
- Acemoglu, D., S. Naidu, P. Restrepo, and J. A. Robinson. 2019. “Democracy Does Cause Growth.” *Journal of Political Economy* 127 (1): 47-100.
- Aidt, T., and P. Jensen. 2014. “Workers of the World, Unite! Franchise Extensions and the Threat of Revolution in Europe, 1820–1938.” *European Economic Review* 72: 52-75.
- Alvarez, M., J. A. Cheibub, F. Limongi, and A. Przeworski. 1996. “Classifying political regimes.” *Studies in Comparative International Development* 31(2): 3-36.
- Avelino, G., D. S. Brown, and W. Hunter. 2005. “The Effects of Capital Mobility, Trade Openness, and Democracy on Social Spending in Latin America, 1980-1999.” *American Journal of Political Science* 49 (3): 625-641.
- Barros, P. 1998. “The Black-Box of Health Care Expenditure Growth Determinants.” *Health Economics* 7: 533-544.
- Bergh, A., and T. Nilsson. 2010. “Good for Living? On the Relationship between Globalization and Life Expectancy.” *World Development* 38 (9): 1191-1203.
- Besley, T., and M. Kudamatsu. 2006. “Health and Democracy.” *American Economic Review* 96 (2): 313-318.
- Bjørnskov, C., and M. Rode. 2019. “Regime Types and Regime Change: A New Dataset on Democracy, Coups, and Political Institutions.” *The Review of International Organizations*, forthcoming.
- Blum, J. 2019. “Democracy’s Third Wave and National Defense Spending.” Unpublished Manuscript.
- Bonhomme, S., and E. Manresa. 2015. “Grouped Patterns of Heterogeneity in Panel Data”. *Econometrica* 83 (3): 1147-1184.
- Bove, V., G. Efthyvoulou, and A. Navas (2017). “Political Cycles in Public Expenditure: Butter vs Guns.” *Journal of Comparative Economics* 45 (3): 582-604.
- Cheibub, J. A., J. Gandhi, and J. R. Vreeland. 2010. “Democracy and Dictatorship Revisited.” *Public Choice* 143: 67-101.
- Deacon, R. T. 2009. “Public Good Provision under Dictatorship and Democracy.” *Public Choice* 139: 241-262.



- Deaton, A. S. 2004. "Health in an Age of Globalization." In S. M. Collins, and C. Graham, eds., *Brookings Trade Forum*. Washington D. C. Brookings Institution Press: 83-130.
- Dorn, F., C. Fuest, and N. Potrafke. 2018. "Globalization and Income Inequality Revisited." CESifo Working Paper No. 6859.
- Dorn, F., and C. Schinke. 2018. "Top Income Shares in OECD Countries: The Role of Government Ideology and Globalization." *The World Economy* 41 (9): 2491–2527.
- Dreher, A., J.-E. Sturm, H. W. Ursprung. 2008. "The Impact of Globalization on the Composition of Government Expenditures: Evidence from Panel Data." *Public Choice* 134 (3-4): 263-292.
- Ellis, C. J., and J. Fender. 2011. "Information Cascades and Revolutionary Regime Transitions." *The Economic Journal* 121 (553): 763–92
- Gallup, J. L., J. D. Sachs, and A. D. Mellinger. 1999. "Geography and Economic Development", in Pleskovic, Boris, and Joseph E. Stiglitz, eds., *World Bank Annual Conference on Development Economics 1998*. Washington, D. C. The World Bank: 127-178.
- Gerdtham, U.-G. 1992. "Pooling International Health Care Expenditure Data." *Health Economics* 1 (4): 217-231.
- Gregorio, L., and D. Gregorio. 2013. "Polity and Health Care Expenditures: The Association among 159 Nations." *Journal of Epidemiology and Global Health* 3 (1): 49-57.
- Gründler, K., and T. Krieger. 2016. "Democracy and Growth: Evidence from a Machine Learning Indicator." *European Journal of Political Economy* 45: 85-107.
- Gründler, K., and S. Köllner. 2017. "Determinants of Governmental Redistribution: Income Distribution, Development Levels, and the Role of Perceptions." *Journal of Comparative Economics* 45 (4): 930-962.
- Gründler, K., and T. Krieger. 2018. „Machine Learning Indices, Political Institutions, and Economic Development." CESifo Working Paper No. 6930.
- Gygli, S., F. Haelg, N. Potrafke, and J.-E. Sturm. 2019. "The KOF Globalization Index – Revisited." *Review of International Organizations* 14 (3): 543-574.
- Habibi, N. 1994. "Budgetary Policy and Political Liberty: A Cross-Sectional Analysis." *World Development* 22 (4): 579-586.
- Hausken, K., C. W. Martin, and T. Plümper. 2004. "Government Spending and Taxation in Democracies and Autocracies." *Constitutional Political Economy* 15 (3): 239-259.
- Huntington, S. P. 1991a. "The Third Wave: Democratization in the Late 20th Century." Norman: University of Oklahoma Press.
- Huntington, S. P. 1991b. "Democracy's Third Wave." *Journal of Democracy* 2 (2): 12-34.
- Justesen, M. K. 2012. "Democracy, Dictatorship, and Disease: Political Regimes and HIV/AIDS." *European Journal of Political Economy* 28 (3): 373-389.
- Klomp, J., and J. de Haan. 2009. "Is the Political System really related to Health?" *Social Science & Medicine* 69 (1): 36-46.
- Kudamatsu, M. 2012. "Has Democratization Reduced Infant Mortality in Sub-Saharan Africa? Evidence from Micro Data." *Journal of the European Economic Association* 10 (6): 1294-1317.
- Lake, D. A., and M. A. Baum. 2001. "The Invisible Hand of Democracy: Political Control and the Provision of Public Services." *Comparative Political Studies* 34 (6): 587-621.

- Lipset, S. M. 1959. "Some Social Prerequisites for Democracy: Economic Development and Political Legitimacy." *American Political Science Review* 53: 69-105.
- Marshall, M. G., T. R. Gurr, and K. Jaggers. 2018. "Polity IV Project. Political Regime Characteristics and Transitions, 1800-2017. Dataset Users' Manual." Center for Systemic Peace.
- McGuire, M. C., and M. Olson. 1996. "The Economics of Autocracy and Majority Rule: The Invisible Hand and the Use of Force." *Journal of Economic Literature* 34 (1): 72-96.
- Meltzer, A., and S. Richard. 1981. "A Rational Theory of the Size of Government." *Journal of Political Economy* 89 (5): 914-927.
- Mulligan, C., R. Gil, and X. Sala-i-Martin. 2004. "Do Democracies have Different Public Policies than Nondemocracies?" *Journal of Economic Perspectives* 18 (1): 51-74.
- Papaioannou, E., and G. Siourounis. 2008. "Democratization and Growth." *The Economic Journal* 118: 1520-1551.
- Plümpert, T., and C. W. Martin. 2003. "Democracy, Government Spending, and Economic Growth: A Political-Economic Explanation of the Barro-Effect." *Public Choice* 117 (1/2): 27-50.
- Plümpert, T., and E. Neumayer. 2010. "The Level of Democracy during Interregnum Periods: Recoding the Polity2 Score." *Political Analysis* 18: 206-226.
- Potrafke, N. 2012. "Islam and Democracy." *Public Choice* 151: 185-192.
- Potrafke, N. 2013. "Democracy and Countries with Muslim Majorities: A Reply and Update." *Public Choice* 154: 323-332.
- Potrafke, N. 2015. "The Evidence on Globalisation." *The World Economy* 38 (3): 509-552.
- Profeta, P., R. Puglisi and S. Scabrosetti. 2013. "Does Democracy Affect Taxation and Government Spending? Evidence from Developing Countries." *Journal of Comparative Economics* 41: 684-718.
- Roberts, J. 1999. "Sensitivity of Elasticity Estimates for OECD Health Care Spending: Analysis of a Dynamic Heterogeneous Data Field." *Health Economics* 8 (5): 459-472.
- Solt, F. 2016. "The Standardized World Income Inequality Database." *Social Science Quarterly* 97 (5): 1267-1281.
- Stock, J., and M. Yogo. 2005. "Testing for Weak Instruments in Linear IV Regression." In D. Andrews, and J. Stock, eds., *Identification and Inference for Econometric Models: Essays in Honour of Thomas Rothenberg*. Cambridge, Cambridge University Press: 80-108.
- Welander, A., C. H. Lyttkens, and T. Nilsson. 2015. "Globalization, Democracy, and Child Health in Developing Countries." *Social Science & Medicine* 136-137: 52-63.

## Appendix I

TABLE A1: LIST OF COUNTRIES

ID	Country	Variation in democracy measures			
		Democracy	Polity IV	DSVMDI	CSVMDI
1	Afghanistan	no	yes	no	yes
2	Albania	no	yes	no	yes
3	Algeria	no	yes	yes	yes
4	Angola	no	yes	no	yes
5	Argentina	no	no	no	yes
6	Armenia	no	no	no	yes
7	Australia	no	no	no	yes
8	Austria	no	no	no	yes
9	Azerbaijan	no	no	no	yes
10	Bahrain	no	yes	no	yes
11	Bangladesh	yes	yes	yes	yes
12	Belarus	no	no	yes	yes
13	Belgium	no	yes	no	yes
14	Benin	no	yes	no	yes
15	Bhutan	yes	yes	yes	yes
16	Bolivia	no	yes	no	yes
17	Botswana	no	no	no	yes
18	Brazil	no	no	no	yes
19	Bulgaria	no	yes	no	yes
20	Burkina Faso	no	yes	yes	yes
21	Burundi	yes	yes	yes	yes
22	Cambodia	no	no	no	yes
23	Cameroon	no	no	no	yes
24	Canada	no	no	no	yes
25	Central African Republic	yes	yes	yes	yes
26	Chad	no	no	yes	yes
27	Chile	no	yes	no	yes
28	Colombia	no	no	no	yes
29	Comoros	yes	yes	yes	yes
30	Congo	no	yes	no	yes
31	Congo, Dem. Rep.	no	yes	yes	yes
32	Costa Rica	no	no	no	yes
33	Croatia	no	yes	no	yes
34	Cyprus	no	no	no	yes
35	Denmark	no	no	no	yes
36	Djibouti	no	yes	no	yes
37	Dominican Republic	no	no	no	yes
38	Ecuador	yes	yes	yes	yes
39	Egypt	no	yes	yes	yes
40	El Salvador	no	yes	no	yes
41	Equatorial Guinea	no	no	no	yes
42	Eritrea	no	yes	no	yes
43	Estonia	no	no	no	yes
44	Ethiopia	no	yes	yes	yes
45	Fiji	yes	yes	yes	yes
46	Finland	no	no	no	yes
47	France	no	no	no	yes
48	Gabon	no	yes	yes	yes
49	Georgia	yes	yes	yes	yes
50	Germany	no	no	no	yes
51	Ghana	no	yes	no	yes
52	Greece	no	no	no	yes
53	Guatemala	no	no	no	yes
54	Guinea	yes	yes	yes	yes
55	Guinea-Bissau	yes	yes	yes	yes

TABLE A1 CONTINUED: LIST OF COUNTRIES

Country	Variation in democracy measures			
	Democracy	Polity IV	DSVMDI	CSVMDI
56 Guyana	yes	no	no	yes
57 Haiti	no	yes	yes	yes
58 Honduras	no	no	yes	yes
59 Hungary	no	no	no	yes
60 India	no	no	no	yes
61 Indonesia	yes	yes	no	yes
62 Iran	no	yes	yes	yes
63 Iraq	no	yes	no	yes
64 Ireland	no	no	no	yes
65 Israel	no	no	no	yes
66 Italy	no	no	no	yes
67 Jamaica	no	no	no	yes
68 Japan	no	no	no	yes
69 Jordan	no	yes	no	yes
70 Kazakhstan	no	yes	yes	yes
71 Kenya	no	yes	no	yes
72 Kuwait	no	no	no	yes
73 Kyrgyzstan	yes	yes	yes	yes
74 Laos	no	no	no	yes
75 Latvia	no	no	no	yes
76 Lebanon	no	yes	yes	yes
77 Lesotho	yes	yes	no	yes
78 Liberia	yes	yes	yes	yes
79 Libya	no	no	no	no
80 Lithuania	no	no	no	yes
81 Luxembourg	no	no	no	yes
82 Macedonia	no	yes	no	yes
83 Madagascar	yes	yes	yes	yes
84 Malawi	no	yes	no	yes
85 Malaysia	yes	yes	no	yes
86 Mali	yes	yes	yes	yes
87 Mauritania	yes	yes	yes	yes
88 Mauritius	no	no	no	yes
89 Mexico	no	no	no	yes
90 Moldova	no	yes	no	yes
91 Mongolia	no	no	no	yes
92 Montenegro	no	yes	no	yes
93 Morocco	no	yes	no	yes
94 Mozambique	no	no	yes	yes
95 Myanmar	no	yes	yes	yes
96 Namibia	no	no	no	yes
97 Nepal	yes	yes	yes	yes
98 Netherlands	no	no	no	yes
99 New Zealand	no	no	no	yes
100 Nicaragua	no	yes	no	yes
101 Niger	yes	yes	yes	yes
102 Nigeria	no	no	no	yes
103 Norway	no	no	no	yes
104 Oman	no	yes	no	no
105 Pakistan	yes	yes	yes	yes
106 Panama	no	no	no	yes
107 Papua New Guinea	no	yes	no	yes
108 Paraguay	no	yes	no	yes
109 Peru	yes	yes	yes	yes
110 Philippines	no	no	no	yes

TABLE A1 CONTINUED: LIST OF COUNTRIES

Country	Variation in democracy measures			
	Democracy	Polity IV	DSVMDI	CSVMDI
111 Poland	no	no	no	yes
112 Portugal	no	no	no	yes
113 Qatar	no	no	no	no
114 Romania	no	yes	no	yes
115 Rwanda	no	yes	no	yes
116 Saudi Arabia	no	no	no	yes
117 Senegal	yes	yes	no	yes
118 Serbia	no	yes	no	yes
119 Sierra Leone	no	yes	yes	yes
120 Singapore	no	no	no	yes
121 Slovak Republic	no	yes	no	yes
122 Slovenia	no	no	no	yes
123 Solomon Islands	no	yes	yes	yes
124 South Africa	no	no	no	yes
125 South Korea	no	no	no	yes
126 South Sudan	no	no	no	yes
127 Spain	no	no	no	yes
128 Sri Lanka	no	yes	no	yes
129 Sudan	no	yes	no	yes
130 Sweden	no	no	no	yes
131 Switzerland	no	no	no	yes
132 Syria	no	yes	no	yes
133 Tajikistan	no	yes	no	yes
134 Tanzania	no	no	no	yes
135 Thailand	yes	yes	yes	yes
136 Togo	no	yes	yes	yes
137 Tunisia	yes	yes	yes	yes
138 Turkey	no	yes	no	yes
139 Turkmenistan	no	yes	no	yes
140 UAE	no	no	no	no
141 UK	no	no	no	yes
142 USA	no	no	no	yes
143 Uganda	no	yes	yes	yes
144 Ukraine	no	yes	no	yes
145 Uruguay	no	no	no	yes
146 Uzbekistan	no	no	no	yes
147 Venezuela	yes	yes	no	yes
148 Vietnam	no	no	no	yes
149 Yemen	no	yes	no	yes
150 Zambia	yes	yes	no	yes
151 Zimbabwe	no	yes	yes	yes

TABLE A2: SUMMARY STATISTICS

		(1)	(2)	(3)
		All countries	Democracies	Autocracies
Government health expenditure (% of GDP)	Mean	3.04526	4.233226	1.963151
	Std. Dev.	2.094596	2.225664	1.195672
	Min	.0377395	.126284	.0377395
	Max	9.419748	9.419748	7.120775
Private health expenditure (% of GDP)	Mean	2.530737	2.539681	2.373877
	Std. Dev.	1.386315	1.309485	1.363227
	Min	.1929458	.1929458	.3212117
	Max	10.07044	8.447127	8.14499
GDP per capita (constant 2015 USD) (t-1)	Mean	11785.3	18197.89	7728.91
	Std. Dev.	19032.25	22718.84	14260.05
	Min	141.0371	187.1638	141.0371
	Max	126692.3	126692.3	92603.72
Population (t-1)	Mean	3.47e+07	4.87e+07	2.01e+07
	Std. Dev.	1.07e+08	1.48e+08	2.31e+07
	Min	401538	401538	569447
	Max	1.29e+09	1.29e+09	9.74e+07
Population ages 65 and above (% of total) (t-1)	Mean	7.260747	10.39315	4.164699
	Std. Dev.	5.275388	5.665244	2.408049
	Min	.75047	2.353978	.75047
	Max	24.62983	24.62983	14.73545
Population ages 0-14 (% of total) (t-1)	Mean	30.73051	25.43843	34.93673
	Std. Dev.	10.75519	9.941269	9.265873
	Min	13.08418	13.14759	13.08418
	Max	50.22332	46.97504	49.8676
Globalization (t-1)	Mean	58.62118	67.70784	50.5335
	Std. Dev.	15.53496	13.42397	12.15156
	Min	23.2923	28.88015	23.29238
	Max	90.6673	90.6673	83.1516
Democracy (t-1)	Mean	.5793972	.9981464	.0013441
	Std. Dev.	.4937669	.0430331	.0366618
	Min	0	0	0
	Max	1	1	1
Polity IV (t-1)	Mean	3.719441	8.412256	-2.995946
	Std. Dev.	6.236519	1.863102	4.854721
	Min	-10	-2	-10
	Max	10	10	9
DSVMDI (t-1)	Mean	.6963563	.9953661	.2446237
	Std. Dev.	.4599341	.0679465	.430153
	Min	0	0	0
	Max	1	1	1
CSVMDI (t-1)	Mean	.6698222	.9171713	.3165593
	Std. Dev.	.3402615	.0796217	.2759263
	Min	.0256248	.0561707	.0256248
	Max	.9736552	.9736552	.9318528

TABLE A3: CORRELATIONS

	Government health expenditure (% of GDP) <sup>a</sup>	Private health expenditure (% of GDP) <sup>a</sup>	GDP per capita (constant 2015 USD) (t-1) <sup>a</sup>	Population (t-1) <sup>a</sup>	Population ages 65 and above (% of total) (t-1) <sup>a</sup>	Population ages 0-14 (% of total) (t-1) <sup>a</sup>	Globalization (t-1)	Democracy (t-1)	Polity IV (t-1)	DSVMDI (t-1)	CSVMDI (t-1)
Government health expenditure (% of GDP) <sup>a</sup>	1.000										
Private health expenditure (% of GDP) <sup>a</sup>	-0.047	1.000									
GDP per capita (constant 2015 USD) (t-1) <sup>a</sup>	0.643	-0.203	1.000								
Population (t-1) <sup>a</sup>	-0.106	0.203	-0.066	1.000							
Population ages 65 and above (% of total) (t-1) <sup>a</sup>	0.633	0.125	0.611	0.064	1.000						
Population ages 0-14 (% of total) (t-1) <sup>a</sup>	-0.643	0.074	-0.794	0.013	-0.824	1.000					
Globalization (t-1)	0.695	-0.023	0.857	0.067	0.722	-0.807	1.000				
Democracy (t-1)	0.446	0.098	0.316	0.089	0.516	-0.399	0.475	1.000			
Polity IV (t-1)	0.487	0.170	0.292	0.058	0.564	-0.363	0.524	0.805	1.000		
DSVMDI (t-1)	0.374	0.141	0.215	0.099	0.437	-0.279	0.411	0.724	0.817	1.000	
CSVMDI (t-1)	0.438	0.170	0.270	0.100	0.551	-0.362	0.493	0.781	0.886	0.935	1.000

<sup>a</sup> denotes variables which are expressed in their natural logarithms.

## Appendix II<sup>30</sup>

### Results for the Bjornskov and Rode (2019) democracy measure

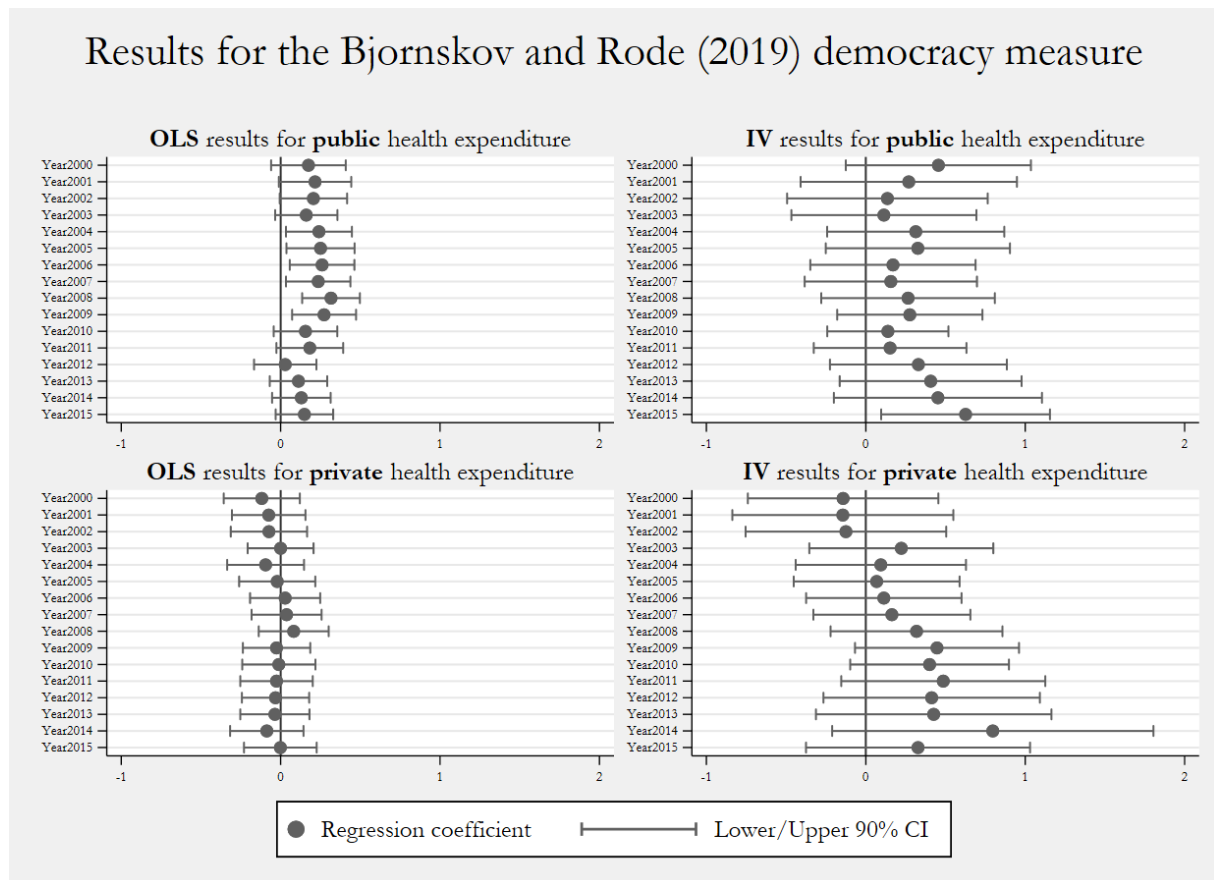


FIGURE A1: POOLED OLS AND IV ESTIMATES 2000-2015 (1/4)

<sup>30</sup> Recommended as an online appendix.



## Results for the Polity IV index

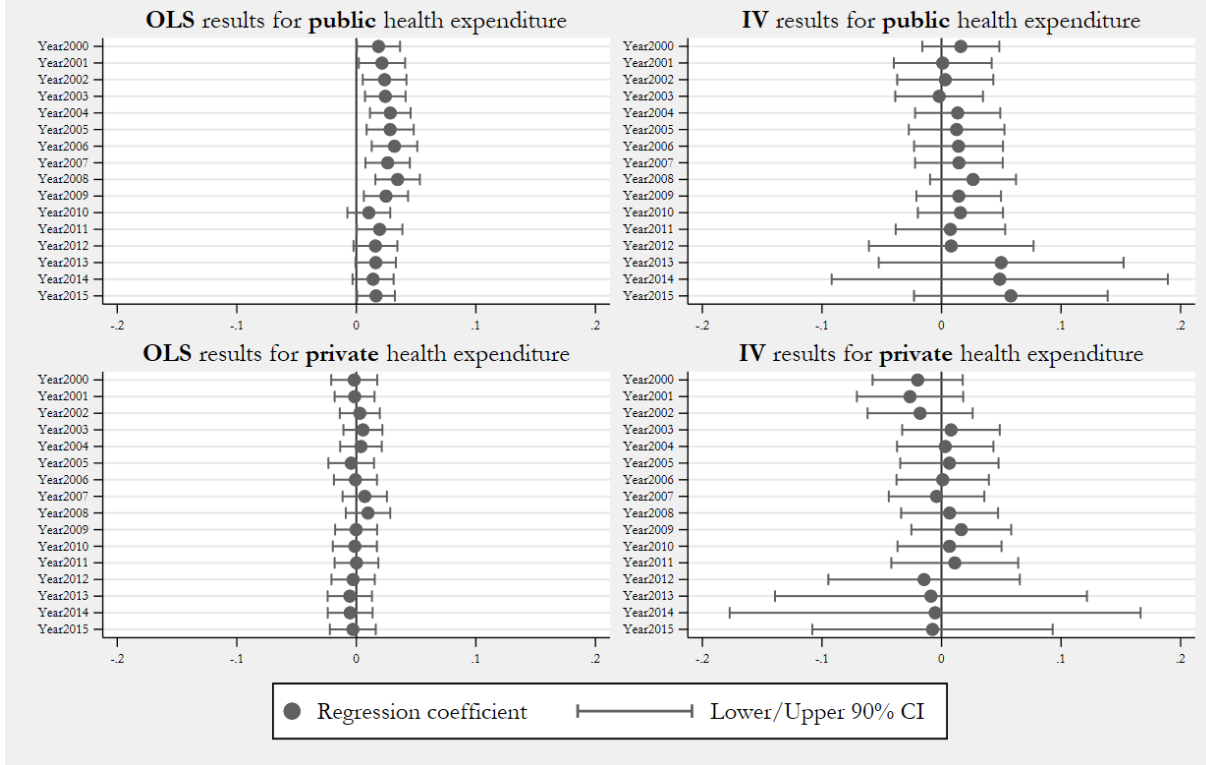


FIGURE A2: POOLED OLS AND IV ESTIMATES 2000-2015 (2/4)

## Results for the Dichotomous Machine Learning Index (DSVMDI)

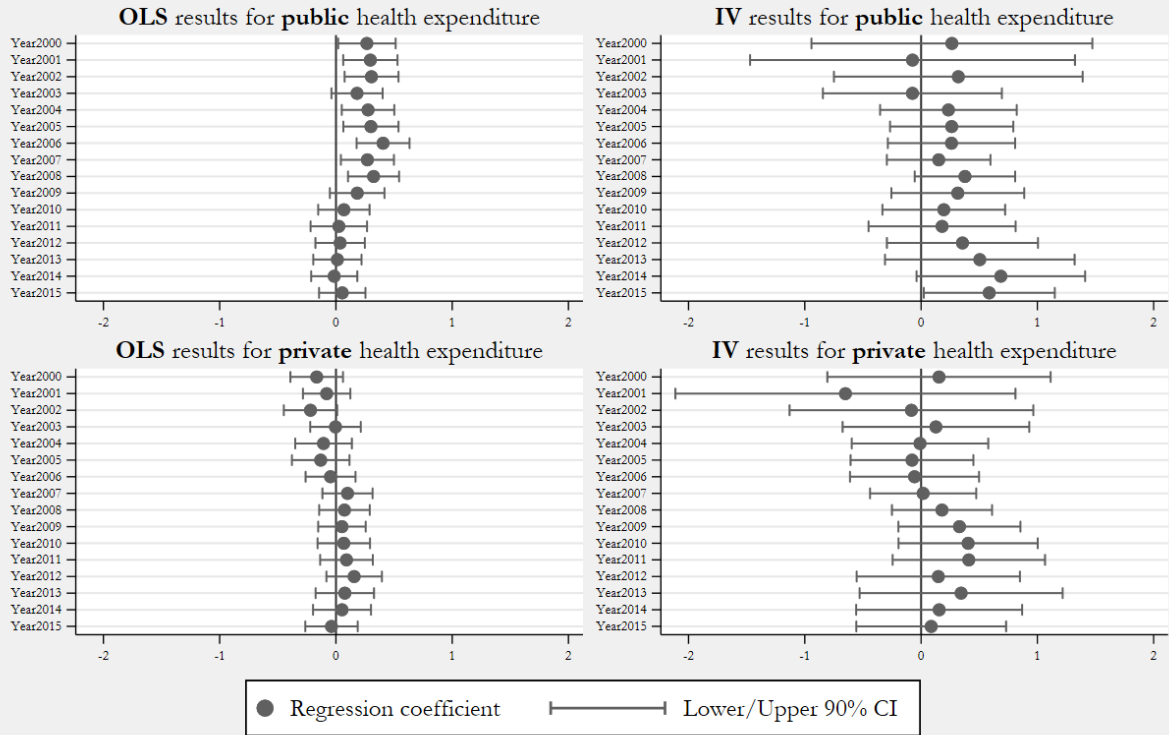


FIGURE A3: POOLED OLS AND IV ESTIMATES 2000-2015 (3/4)

## Results for the Continuous Machine Learning Index (CSVMDI)

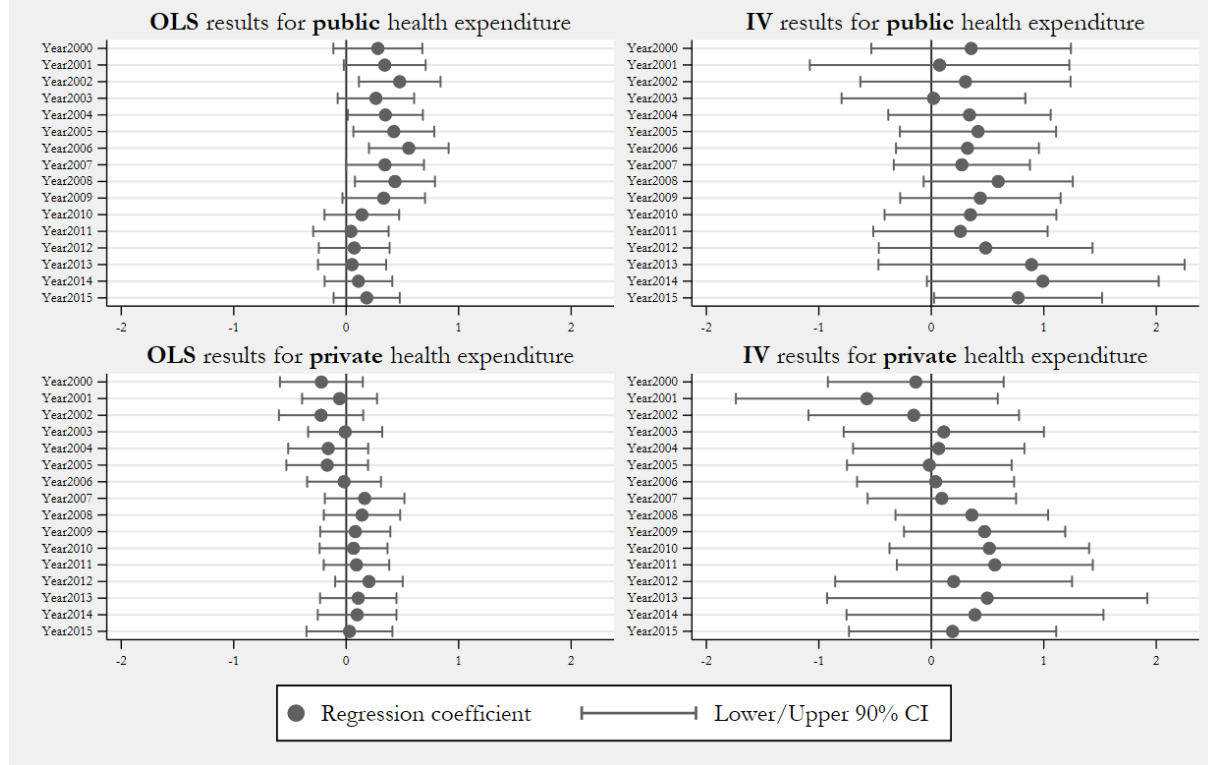


FIGURE A4: POOLED OLS AND IV ESTIMATES 2000-2015 (4/4)

Notes: All models of figures A1-A4 include country and year fixed effects, baseline controls and standard errors robust to heteroskedasticity.

## Results for the Bjornskov and Rode (2019) democracy measure

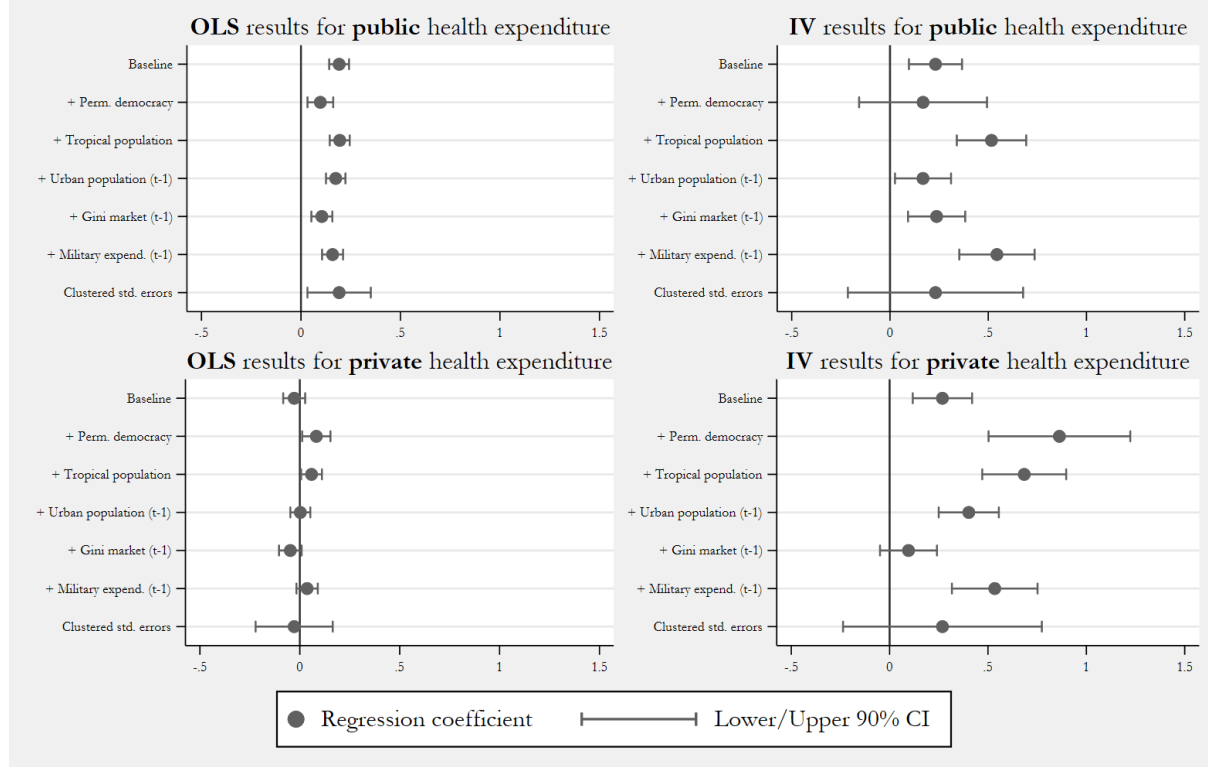


FIGURE A5: POOLED OLS AND IV ESTIMATES 2000-2015: ADDITIONAL CONTROLS (1/2)

Notes: Urban population share and military expenditure (as % of GDP) are expressed in their natural logarithm.

## Results for the Dichotomous Machine Learning Index (DSVMDI)

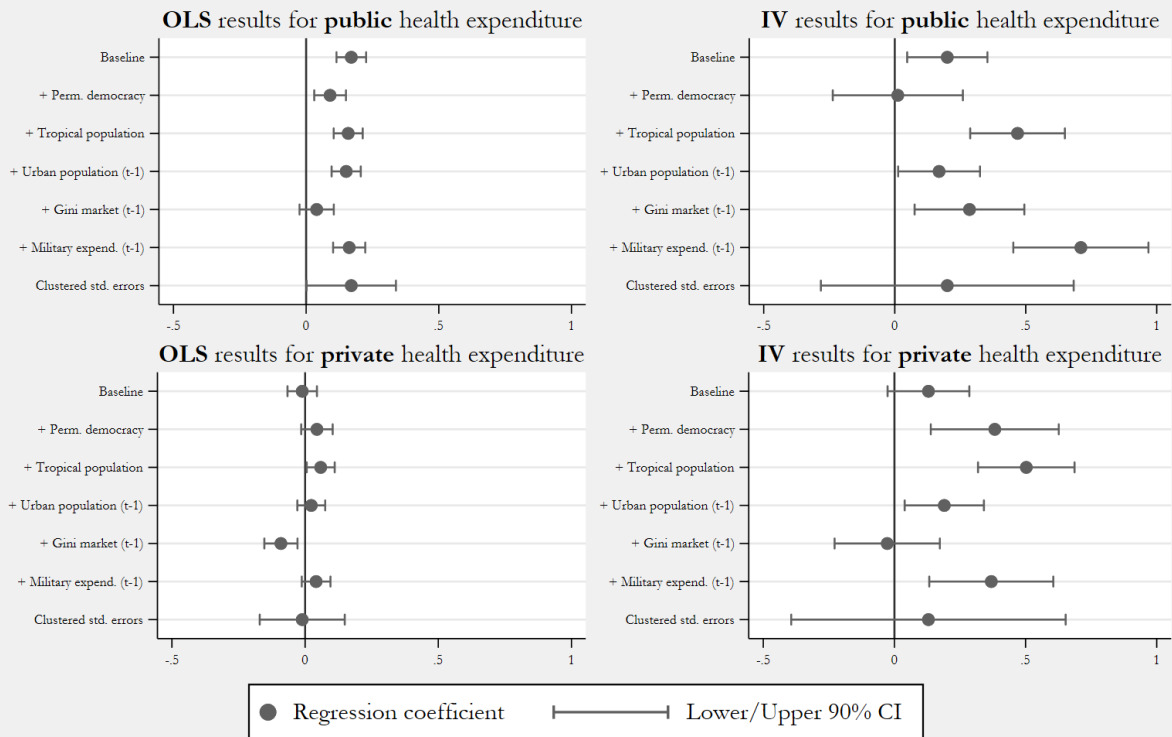


FIGURE A6: POOLED OLS AND IV ESTIMATES 2000-2015: ADDITIONAL CONTROLS (2/2)

Notes: Urban population share and military expenditure (as % of GDP) are expressed in their natural logarithm.

TABLE A4: DEMOCRATIC TRANSITION (DSVMDI) – EVENT STUDY RESULTS FOR GOVERNMENT HEALTH EXPENDITURE

Gov. health exp. (% of GDP) <sup>a</sup>	(1)	(2)	(3)	(4)	(5)	(6)
Year: $\leq t-8$	-0.154 (0.10)	-0.168 (0.12)	-0.101 (0.11)	-0.159 (0.12)	-0.170 (0.13)	-0.228* (0.14)
Year: $t-7$	-0.086 (0.12)	-0.100 (0.13)	-0.052 (0.12)	-0.089 (0.13)	-0.093 (0.14)	-0.117 (0.14)
Year: $t-6$	-0.214 (0.18)	-0.229 (0.18)	-0.167 (0.18)	-0.213 (0.18)	-0.191 (0.17)	-0.205 (0.18)
Year: $t-5$	-0.134 (0.10)	-0.145 (0.10)	-0.101 (0.10)	-0.140 (0.11)	-0.120 (0.10)	-0.132 (0.10)
Year: $t-4$	-0.155* (0.09)	-0.163 (0.10)	-0.136 (0.10)	-0.159 (0.10)	-0.134 (0.10)	-0.140 (0.10)
Year: $t-3$	-0.134 (0.09)	-0.142 (0.09)	-0.125 (0.09)	-0.142 (0.09)	-0.115 (0.09)	-0.118 (0.09)
Year: $t-2$	-0.009 (0.05)	-0.023 (0.05)	-0.004 (0.05)	-0.024 (0.05)	-0.021 (0.05)	-0.031 (0.05)
Year: $t-1$	0.000	0.000	0.000	0.000	0.000	0.000
Year: $t$	0.078** (0.04)	0.076* (0.04)	0.069* (0.04)	0.076** (0.04)	0.081* (0.04)	0.088** (0.04)
Year: $t+1$	0.108* (0.06)	0.102* (0.06)	0.085 (0.06)	0.096* (0.06)	0.114* (0.06)	0.115* (0.06)
Year: $t+2$	0.225*** (0.08)	0.221*** (0.08)	0.203** (0.08)	0.217*** (0.08)	0.259*** (0.09)	0.266*** (0.09)
Year: $t+3$	0.186** (0.09)	0.175* (0.09)	0.161* (0.09)	0.173* (0.09)	0.214** (0.10)	0.224** (0.10)
Year: $t+4$	0.096 (0.08)	0.084 (0.08)	0.058 (0.09)	0.078 (0.08)	0.142* (0.08)	0.151* (0.09)
Year: $t+5$	0.077 (0.10)	0.056 (0.10)	0.038 (0.10)	0.056 (0.10)	0.127 (0.11)	0.145 (0.11)
Year: $t+6$	0.090 (0.15)	0.065 (0.15)	0.044 (0.15)	0.064 (0.15)	0.139 (0.16)	0.145 (0.16)
Year: $t+7$	0.149 (0.13)	0.117 (0.13)	0.066 (0.13)	0.093 (0.13)	0.223* (0.13)	0.195 (0.13)
Year: $\geq t+8$	0.099 (0.17)	0.085 (0.17)	0.001 (0.18)	0.065 (0.17)	0.241 (0.19)	0.228 (0.20)
Controls	no	yes	no	yes	yes	yes
Country FE	yes	yes	yes	yes	yes	yes
Year FE	no	no	yes	yes	no	yes
Observations	2223	2216	2223	2216	1137	1137
R <sup>2</sup> (within)	0.034	0.085	0.060	0.094	0.088	0.166

Notes: Standard errors in parentheses. \*, \*\*, and \*\*\* indicate significance at the 10, 5, and 1% significance levels. All regressions apply standard errors clustered at the country level. Columns (5) and (6) use a reduced sample without permanent democracies. Controls refer to the baseline controls following equation (6).

TABLE A5: DEMOCRATIC TRANSITION (DSVMDI) – EVENT STUDY RESULTS FOR PRIVATE HEALTH EXPENDITURE

Priv. health exp. (% of GDP) <sup>a</sup>	(1)	(2)	(3)	(4)	(5)	(6)
Year: ≤ t-8	-0.054 (0.09)	-0.126 (0.10)	-0.063 (0.09)	-0.098 (0.10)	-0.127 (0.10)	-0.096 (0.11)
Year: t-7	0.012 (0.07)	-0.039 (0.07)	0.000 (0.07)	-0.028 (0.07)	-0.041 (0.07)	-0.027 (0.07)
Year: t-6	-0.018 (0.07)	-0.056 (0.06)	-0.013 (0.06)	-0.038 (0.06)	-0.061 (0.07)	-0.045 (0.07)
Year: t-5	0.054 (0.06)	0.015 (0.06)	0.051 (0.06)	0.024 (0.06)	0.011 (0.06)	0.014 (0.06)
Year: t-4	0.037 (0.06)	0.011 (0.06)	0.036 (0.06)	0.019 (0.06)	0.011 (0.07)	0.017 (0.06)
Year: t-3	0.044 (0.07)	0.024 (0.06)	0.041 (0.07)	0.028 (0.06)	0.023 (0.07)	0.025 (0.06)
Year: t-2	-0.009 (0.04)	-0.027 (0.04)	-0.012 (0.04)	-0.026 (0.04)	-0.026 (0.04)	-0.031 (0.04)
Year: t-1	0.000	0.000	0.000	0.000	0.000	0.000
Year: t	0.020 (0.02)	0.025 (0.02)	0.023 (0.02)	0.027 (0.02)	0.029 (0.02)	0.027 (0.02)
Year: t+1	0.009 (0.03)	0.017 (0.03)	0.007 (0.03)	0.013 (0.03)	0.023 (0.04)	0.009 (0.04)
Year: t+2	0.048 (0.05)	0.064 (0.05)	0.051 (0.05)	0.059 (0.05)	0.059 (0.05)	0.051 (0.06)
Year: t+3	0.096* (0.05)	0.111** (0.05)	0.099* (0.05)	0.106** (0.05)	0.112** (0.06)	0.103* (0.06)
Year: t+4	0.049 (0.05)	0.067 (0.05)	0.047 (0.05)	0.059 (0.05)	0.067 (0.06)	0.047 (0.06)
Year: t+5	0.024 (0.06)	0.043 (0.06)	0.037 (0.06)	0.046 (0.06)	0.037 (0.07)	0.035 (0.07)
Year: t+6	0.017 (0.06)	0.038 (0.06)	0.035 (0.07)	0.043 (0.06)	0.036 (0.07)	0.030 (0.07)
Year: t+7	0.037 (0.07)	0.055 (0.07)	0.023 (0.08)	0.037 (0.08)	0.052 (0.09)	0.016 (0.09)
Year: ≥ t+8	-0.016 (0.07)	0.030 (0.07)	-0.014 (0.08)	0.023 (0.08)	0.047 (0.09)	0.013 (0.10)
Controls	no	yes	no	yes	yes	yes
Country FE	yes	yes	yes	yes	yes	yes
Year FE	no	no	yes	yes	no	yes
Observations	2223	2216	2223	2216	1137	1137
R <sup>2</sup> (within)	0.006	0.055	0.019	0.068	0.083	0.103

Notes: Standard errors in parentheses. \*, \*\*, and \*\*\* indicate significance at the 10, 5, and 1% significance levels. All regressions apply standard errors clustered at the country level. Columns (5) and (6) use a reduced sample without permanent democracies. Controls refer to the baseline controls following equation (6).

TABLE A6: AUTOCRATIC TRANSITION (DSVMDI) – EVENT STUDY RESULTS FOR GOVERNMENT HEALTH EXPENDITURE

Gov. health exp. (% of GDP) <sup>a</sup>	(1)	(2)	(3)	(4)	(5)	(6)
Year: $\leq t-8$	0.272 (0.17)	0.307* (0.16)	0.385** (0.17)	0.332** (0.17)	0.407** (0.19)	0.394** (0.19)
Year: $t-7$	0.279* (0.15)	0.334** (0.15)	0.362** (0.15)	0.352** (0.15)	0.417** (0.16)	0.434*** (0.16)
Year: $t-6$	0.197 (0.13)	0.251** (0.12)	0.267** (0.13)	0.266** (0.12)	0.301** (0.13)	0.320** (0.13)
Year: $t-5$	0.111 (0.10)	0.152 (0.10)	0.163* (0.10)	0.164* (0.09)	0.174* (0.10)	0.199** (0.10)
Year: $t-4$	0.100 (0.09)	0.137 (0.09)	0.150* (0.09)	0.158* (0.09)	0.148 (0.09)	0.189** (0.09)
Year: $t-3$	0.126 (0.10)	0.142 (0.10)	0.171* (0.10)	0.166* (0.10)	0.150 (0.10)	0.181* (0.10)
Year: $t-2$	-0.009 (0.07)	0.001 (0.06)	0.017 (0.07)	0.016 (0.06)	-0.001 (0.07)	0.014 (0.07)
Year: $t-1$	0.000	0.000	0.000	0.000	0.000	0.000
Year: $t$	-0.015 (0.06)	-0.021 (0.06)	-0.036 (0.06)	-0.031 (0.06)	-0.029 (0.06)	-0.040 (0.06)
Year: $t+1$	-0.001 (0.11)	-0.010 (0.11)	-0.033 (0.12)	-0.025 (0.11)	-0.007 (0.11)	-0.020 (0.12)
Year: $t+2$	-0.231 (0.15)	-0.256* (0.15)	-0.279* (0.15)	-0.277* (0.15)	-0.260* (0.15)	-0.273* (0.15)
Year: $t+3$	-0.165** (0.08)	-0.199** (0.08)	-0.241*** (0.08)	-0.234*** (0.07)	-0.206** (0.09)	-0.246*** (0.08)
Year: $t+4$	-0.164* (0.09)	-0.207** (0.09)	-0.253*** (0.09)	-0.242*** (0.09)	-0.209** (0.10)	-0.245** (0.10)
Year: $t+5$	-0.193 (0.18)	-0.245 (0.18)	-0.296 (0.19)	-0.287 (0.18)	-0.224 (0.19)	-0.257 (0.19)
Year: $t+6$	-0.140 (0.12)	-0.195* (0.12)	-0.261* (0.14)	-0.244* (0.13)	-0.183 (0.12)	-0.233* (0.14)
Year: $t+7$	-0.135 (0.13)	-0.200 (0.13)	-0.292* (0.16)	-0.273* (0.15)	-0.185 (0.13)	-0.268 (0.16)
Year: $\geq t+8$	0.071 (0.09)	0.003 (0.09)	-0.330 (0.20)	-0.281 (0.19)	-0.003 (0.10)	-0.312 (0.19)
Controls	no	yes	no	yes	yes	yes
Country FE	yes	yes	yes	yes	yes	yes
Year FE	no	no	yes	yes	no	yes
Observations	2223	2216	2223	2216	1137	1137
R <sup>2</sup> (within)	0.030	0.084	0.079	0.102	0.088	0.122

Notes: Standard errors in parentheses. \*, \*\*, and \*\*\* indicate significance at the 10, 5, and 1% significance levels. All regressions apply standard errors clustered at the country level. Columns (5) and (6) use a reduced sample without permanent democracies. Controls refer to the baseline controls following equation (6).



TABLE A7: AUTOCRATIC TRANSITION (DSVMDI) – EVENT STUDY RESULTS FOR PRIVATE HEALTH EXPENDITURE

Priv. health exp. (% of GDP) <sup>a</sup>	(1)	(2)	(3)	(4)	(5)	(6)
Year: ≤ t-8	0.060 (0.07)	0.007 (0.07)	0.059 (0.07)	0.024 (0.07)	0.018 (0.08)	0.038 (0.08)
Year: t-7	0.050 (0.07)	0.031 (0.07)	0.043 (0.07)	0.035 (0.07)	0.048 (0.07)	0.056 (0.07)
Year: t-6	0.124** (0.05)	0.115** (0.05)	0.115** (0.05)	0.113** (0.05)	0.135*** (0.05)	0.141*** (0.05)
Year: t-5	0.080 (0.05)	0.077* (0.05)	0.069 (0.05)	0.068 (0.04)	0.085* (0.04)	0.079* (0.04)
Year: t-4	0.075* (0.04)	0.079** (0.04)	0.072* (0.04)	0.076** (0.04)	0.090** (0.04)	0.089** (0.04)
Year: t-3	0.060* (0.03)	0.055* (0.03)	0.063** (0.03)	0.062** (0.03)	0.058** (0.03)	0.069** (0.03)
Year: t-2	0.042* (0.02)	0.040** (0.02)	0.044* (0.02)	0.045** (0.02)	0.043** (0.02)	0.051** (0.02)
Year: t-1	0.000	0.000	0.000	0.000	0.000	0.000
Year: t	-0.001 (0.02)	0.003 (0.02)	-0.009 (0.02)	-0.007 (0.02)	0.008 (0.02)	-0.004 (0.02)
Year: t+1	0.004 (0.05)	0.011 (0.05)	-0.001 (0.05)	0.003 (0.05)	0.022 (0.05)	0.010 (0.05)
Year: t+2	-0.057 (0.06)	-0.053 (0.06)	-0.052 (0.06)	-0.054 (0.06)	-0.047 (0.06)	-0.049 (0.06)
Year: t+3	-0.033 (0.09)	-0.025 (0.08)	-0.040 (0.09)	-0.033 (0.08)	-0.018 (0.08)	-0.031 (0.08)
Year: t+4	-0.025 (0.12)	-0.011 (0.11)	-0.026 (0.13)	-0.011 (0.12)	-0.002 (0.11)	-0.004 (0.12)
Year: t+5	0.103 (0.08)	0.116 (0.07)	0.114 (0.09)	0.120 (0.08)	0.126 (0.08)	0.123 (0.09)
Year: t+6	0.105 (0.09)	0.121 (0.08)	0.112 (0.10)	0.129 (0.09)	0.134 (0.08)	0.137 (0.09)
Year: t+7	0.125 (0.12)	0.145 (0.10)	0.133 (0.13)	0.153 (0.11)	0.161 (0.10)	0.167 (0.11)
Year: ≥ t+8	0.094 (0.06)	0.107* (0.06)	0.085 (0.15)	0.122 (0.13)	0.137** (0.06)	0.138 (0.13)
Controls	no	yes	no	yes	yes	yes
Country FE	yes	yes	yes	yes	yes	yes
Year FE	no	no	yes	yes	no	yes
Observations	2223	2216	2223	2216	1137	1137
R <sup>2</sup> (within)	0.011	0.056	0.022	0.070	0.089	0.108

Notes: Standard errors in parentheses. \*, \*\*, and \*\*\* indicate significance at the 10, 5, and 1% significance levels. All regressions apply standard errors clustered at the country level. Columns (5) and (6) use a reduced sample without permanent democracies. Controls refer to the baseline controls following equation (6).

**TABLE A8: ROBUSTNESS TEST – POOLED OLS AND IV RESULTS FOR GOVERNMENT HEALTH EXPENDITURE, EXCLUDING HIGH-INCOME COUNTRIES**

Gov. health exp. (% of GDP) <sup>a</sup>	(1)	(2)	(3)	(4)
<b>Panel A</b>				
Democracy (t-1)	0.150*** (0.029)			
Polity IV (t-1)		0.017*** (0.003)		
DSVMDI (t-1)			0.126*** (0.032)	
CSVMDI (t-1)				0.189*** (0.051)
GDP per capita (t-1) <sup>a</sup>	0.036 (0.024)	0.047** (0.023)	0.034 (0.024)	0.038 (0.024)
Population (t-1) <sup>a</sup>	-0.127*** (0.010)	-0.118*** (0.011)	-0.126*** (0.010)	-0.125*** (0.010)
Population ages 65 and above (% of total) (t-1) <sup>a</sup>	-0.214*** (0.076)	-0.234*** (0.076)	-0.210*** (0.076)	-0.228*** (0.078)
Population ages 0-14 (% of total) (t-1) <sup>a</sup>	-0.700*** (0.123)	-0.778*** (0.124)	-0.727*** (0.124)	-0.745*** (0.126)
Globalization (t-1)	0.020*** (0.002)	0.017*** (0.002)	0.020*** (0.002)	0.020*** (0.002)
Constant	4.045*** (0.583)	4.307*** (0.587)	4.136*** (0.591)	4.182*** (0.599)
Observations	1,606	1,600	1,606	1,606
Countries	106	106	106	106
R <sup>2</sup>	0.344	0.348	0.340	0.340
<b>Panel B: Two-stage-least-squares estimates (controls not shown)</b>				
Democracy (t-1)	0.151** (0.075)			
Polity IV (t-1)		-0.000 (0.007)		
DSVMDI (t-1)			0.170* (0.095)	
CSVMDI (t-1)				0.247** (0.122)
<b>Panel C: First-stage estimates (excluded instruments only)</b>				
Jackknifed democracy measure	0.754*** (0.051)	0.643*** (0.047)	0.565*** (0.050)	0.569*** (0.040)
Control variables included	yes	yes	yes	yes
Observations	1,606	1,600	1,606	1,606
Countries	106	106	106	106
R <sup>2</sup> (second-stage regression)	0.344	0.333	0.340	0.339
Kleibergen-Paap F-Statistic	220.56	184.13	127.98	203.51
Stock-Yogo (10% rel. bias)	16.38	16.38	16.38	16.38

Notes: Pooled OLS model. Standard errors in parentheses. \*, \*\*, and \*\*\* indicate significance at the 10, 5, and 1% significance levels. All regressions apply standard errors robust to heteroskedasticity. <sup>a</sup> denotes variables which are expressed in their natural logarithm.

**TABLE A9: ROBUSTNESS TEST – POOLED OLS AND IV RESULTS FOR PRIVATE HEALTH EXPENDITURE, EXCLUDING HIGH-INCOME COUNTRIES**

Priv. health exp. (% of GDP) <sup>a</sup>	(1)	(2)	(3)	(4)
<b>Panel A</b>				
Democracy (t-1)	-0.072** (0.035)			
Polity IV (t-1)		-0.008*** (0.003)		
DSVMDI (t-1)			-0.071* (0.036)	
CSVMDI (t-1)				-0.127** (0.056)
GDP per capita (t-1) <sup>a</sup>	-0.183*** (0.019)	-0.187*** (0.019)	-0.183*** (0.019)	-0.186*** (0.019)
Population (t-1) <sup>a</sup>	0.026** (0.011)	0.021** (0.010)	0.025** (0.011)	0.024** (0.011)
Population ages 65 and above (% of total) (t-1) <sup>a</sup>	0.325*** (0.089)	0.326*** (0.088)	0.325*** (0.089)	0.341*** (0.091)
Population ages 0-14 (% of total) (t-1) <sup>a</sup>	0.396*** (0.149)	0.422*** (0.149)	0.414*** (0.151)	0.432*** (0.153)
Globalization (t-1)	0.016*** (0.002)	0.017*** (0.002)	0.016*** (0.002)	0.017*** (0.002)
Constant	-0.905 (0.746)	-0.970 (0.747)	-0.967 (0.753)	-1.021 (0.759)
Observations	1,606	1,600	1,606	1,606
Countries	106	106	106	106
R <sup>2</sup>	0.083	0.082	0.083	0.084
<b>Panel B: Two-stage-least-squares estimates (controls not shown)</b>				
Democracy (t-1)	0.080 (0.078)			
Polity IV (t-1)		-0.016** (0.007)		
DSVMDI (t-1)			-0.107 (0.095)	
CSVMDI (t-1)				-0.105 (0.125)
<b>Panel C: First-stage estimates (excluded instruments only)</b>				
Jackknifed democracy measure	0.754*** (0.051)	0.643*** (0.047)	0.565*** (0.050)	0.569*** (0.040)
Control variables included	yes	yes	yes	yes
Observations	1,606	1,600	1,606	1,606
Countries	106	106	106	106
R <sup>2</sup> (second-stage regression)	0.070	0.078	0.082	0.084
Kleibergen-Paap F-Statistic	220.56	184.13	127.98	203.51
Stock-Yogo (10% rel. bias)	16.38	16.38	16.38	16.38

Notes: Pooled OLS model. Standard errors in parentheses. \*, \*\*, and \*\*\* indicate significance at the 10, 5, and 1% significance levels. All regressions apply standard errors robust to heteroskedasticity. <sup>a</sup> denotes variables which are expressed in their natural logarithm.

**TABLE A10: ROBUSTNESS TEST – PANEL FIXED-EFFECTS RESULTS FOR GOVERNMENT HEALTH EXPENDITURE, EXCLUDING HIGH-INCOME COUNTRIES**

Gov. health exp. (% of GDP) <sup>a</sup>	(1)	(2)	(3)	(4)
Democracy (t-1)	0.144*** (0.050)			
Polity IV (t-1)		0.012 (0.008)		
DSVMDI (t-1)			0.188** (0.076)	
CSVMDI (t-1)				0.264** (0.127)
GDP per capita (t-1) <sup>a</sup>	0.025 (0.076)	0.035 (0.076)	0.046 (0.074)	0.033 (0.074)
Population (t-1) <sup>a</sup>	-0.190 (0.385)	-0.239 (0.390)	-0.267 (0.381)	-0.260 (0.384)
Population ages 65 and above (% of total) (t-1) <sup>a</sup>	0.345 (0.320)	0.364 (0.327)	0.413 (0.323)	0.354 (0.328)
Population ages 0-14 (% of total) (t-1) <sup>a</sup>	-0.662 (0.596)	-0.688 (0.603)	-0.690 (0.586)	-0.738 (0.593)
Globalization (t-1)	0.009 (0.008)	0.008 (0.008)	0.008 (0.008)	0.008 (0.008)
Country Fixed Effects	yes	yes	yes	yes
Year Fixed Effects	yes	yes	yes	yes
Observations	1,606	1,600	1,606	1,606
Countries	106	106	106	106
R <sup>2</sup> Overall	0.293	0.285	0.279	0.279
R <sup>2</sup> Within	0.065	0.062	0.081	0.072
R <sup>2</sup> Between	0.360	0.354	0.341	0.341

*Notes:* Standard errors in parentheses. \*, \*\*, and \*\*\* indicate significance at the 10, 5, and 1% significance level, respectively. All regressions apply standard errors clustered at the country level. <sup>a</sup> denotes variables which are expressed in their natural logarithm.

**TABLE A11: ROBUSTNESS TEST – PANEL FIXED-EFFECTS RESULTS FOR PRIVATE HEALTH EXPENDITURE, EXCLUDING HIGH-INCOME COUNTRIES**

Priv. health exp. (% of GDP) <sup>a</sup>	(1)	(2)	(3)	(4)
Democracy (t-1)	0.040 (0.038)			
Polity IV (t-1)		0.002 (0.006)		
DSVMDI (t-1)			0.049 (0.043)	
CSVMDI (t-1)				0.079 (0.072)
GDP per capita (t-1) <sup>a</sup>	-0.013 (0.057)	-0.013 (0.057)	-0.008 (0.057)	-0.011 (0.057)
Population (t-1) <sup>a</sup>	-0.741** (0.326)	-0.745** (0.329)	-0.761** (0.327)	-0.762** (0.328)
Population ages 65 and above (% of total) (t-1) <sup>a</sup>	0.074 (0.316)	0.083 (0.313)	0.091 (0.317)	0.078 (0.317)
Population ages 0-14 (% of total) (t-1) <sup>a</sup>	0.237 (0.403)	0.225 (0.402)	0.229 (0.397)	0.217 (0.396)
Globalization (t-1)	-0.003 (0.006)	-0.003 (0.006)	-0.003 (0.006)	-0.003 (0.006)
Country Fixed Effects	yes	yes	yes	yes
Year Fixed Effects	yes	yes	yes	yes
Observations	1,606	1,600	1,606	1,606
Countries	106	106	106	106
R <sup>2</sup> Overall	0.013	0.013	0.014	0.013
R <sup>2</sup> Within	0.046	0.045	0.048	0.048
R <sup>2</sup> Between	0.016	0.017	0.016	0.016

*Notes:* Standard errors in parentheses. \*, \*\*, and \*\*\* indicate significance at the 10, 5, and 1% significance level, respectively. All regressions apply standard errors clustered at the country level. <sup>a</sup> denotes variables which are expressed in their natural logarithm.