

Heinrich, Torsten; Yang, Jangho; Dai, Shuanping

**Working Paper**

## Growth, development, and structural change at the firm level: The example of the PR China

Working Papers on East Asian Studies, No. 128/2021

**Provided in Cooperation with:**

University of Duisburg-Essen, Institute of East Asian Studies IN-EAST

*Suggested Citation:* Heinrich, Torsten; Yang, Jangho; Dai, Shuanping (2021) : Growth, development, and structural change at the firm level: The example of the PR China, Working Papers on East Asian Studies, No. 128/2021, University of Duisburg-Essen, Institute of East Asian Studies (IN-EAST), Duisburg

This Version is available at:

<https://hdl.handle.net/10419/229627>

**Standard-Nutzungsbedingungen:**

Die Dokumente auf EconStor dürfen zu eigenen wissenschaftlichen Zwecken und zum Privatgebrauch gespeichert und kopiert werden.

Sie dürfen die Dokumente nicht für öffentliche oder kommerzielle Zwecke vervielfältigen, öffentlich ausstellen, öffentlich zugänglich machen, vertreiben oder anderweitig nutzen.

Sofern die Verfasser die Dokumente unter Open-Content-Lizenzen (insbesondere CC-Lizenzen) zur Verfügung gestellt haben sollten, gelten abweichend von diesen Nutzungsbedingungen die in der dort genannten Lizenz gewährten Nutzungsrechte.

**Terms of use:**

*Documents in EconStor may be saved and copied for your personal and scholarly purposes.*

*You are not to copy documents for public or commercial purposes, to exhibit the documents publicly, to make them publicly available on the internet, or to distribute or otherwise use the documents in public.*

*If the documents have been made available under an Open Content Licence (especially Creative Commons Licences), you may exercise further usage rights as specified in the indicated licence.*



**IN-EAST**

INSTITUTE OF  
EAST ASIAN STUDIES

**TORSTEN HEINRICH  
JANGHO YANG  
SHUANPING DAI**

---

**Growth, Development, and  
Structural Change at the Firm Level:  
The Example of the PR China**

**NO. 128**

**WORKING PAPERS**

**WORKING PAPERS  
ON EAST ASIAN STUDIES**

---

**JANUARY 2021**

UNIVERSITÄT  
**DUISBURG  
ESSEN**

*Offen im Denken*

## **TORSTEN HEINRICH**

Faculty for Economics and Business Administration, Chemnitz University of Technology;  
Oxford Martin Programme on Technological and Economic Change (OMPTEC), Institute for New Economic Thinking at the Oxford Martin School, University of Oxford

**W** <https://www.tu-chemnitz.de/wirtschaft/vwl2/personal/heinrich.php>

**E** [torsten.heinrich@uni-bremen.de](mailto:torsten.heinrich@uni-bremen.de)

## **JANGHO YANG**

Oxford Martin Programme on Technological and Economic Change (OMPTEC), Institute for New Economic Thinking at the Oxford Martin School, University of Oxford;

Department of Management Sciences, Faculty of Engineering, University of Waterloo, ON

**W** <https://uwaterloo.ca/management-sciences/about/people/j634yang>

**E** [j634yang@uwaterloo.ca](mailto:j634yang@uwaterloo.ca)

## **SHUANPING DAI**

Center for China Public Sector Economy Research, School of Economics, Jilin University, Changchun;  
IN-EAST Institute of East Asian Studies at the University of Duisburg-Essen

**W** <http://ccpser.jlu.edu.cn/English/INTRODUCTION.htm>

**E** [shuanping.dai@uni-due.de](mailto:shuanping.dai@uni-due.de)

## **Institute of East Asian Studies / Institut für Ostasienwissenschaften**

University of Duisburg-Essen

Duisburg Campus, Forsthausweg

47057 Duisburg, Germany

**T** +49(0) 203 37-94191

**F** +49(0) 203 37-94157

**E** [in-east@uni-due.de](mailto:in-east@uni-due.de)

ISSN: 1865-8571 (Printed version) / 1865-858X (Internet version)

Download: [https://www.uni-due.de/in-east/news/green\\_series.php](https://www.uni-due.de/in-east/news/green_series.php)

© by the authors, January 2021

# CONTENT

---

<b>1</b>	Introduction	5
<b>2</b>	Literature	7
2.1	Distributional Models of Firm-Level Data	7
2.2	Economic Development and Firm-Level Productivity	7
2.3	Firm-Level Productivity and Growth in the PR China	8
<b>3</b>	Data	10
3.1	Sources	10
3.2	Data Processing	10
3.3	Variables	11
<b>4</b>	Methods	12
4.1	Distributional Models	12
4.2	Fitting	14
4.3	Goodness of Fit	15
<b>5</b>	Results	16
5.1	Fitting Productivity Distributions	16
5.2	Economic Development and Systematic Changes to Productivity Distributions	17
5.3	Regional Variation	21
5.4	Relation of Productivity Distributions and Their Parameters to other Economic Measures	25
<b>6</b>	Conclusion	28
	References	30
	Appendix A: Technical Explanation of Aggregation, Maximum Entropy, and Distributional Models	34
A.1	Aggregation and Maximum Entropy Distributions	34
A.2	The Classical Central Limit Theorem	34
A.3	Fourier Domain Representations of Random Variable Distributions	35
A.4	Lévy alpha-stable Distributions	36
A.5	Asymmetric Exponential Power (AEP) Distributions	36
A.6	Tail Behavior	38
	Appendix B: Prior Specification of the Regression Model	38
	Appendix C: Historical Note on Productivity Growth in the PR China	39
	Appendix D: Additional Results	40

**TORSTEN HEINRICH / JANGHO YANG / SHUANPING DAI**

## **Growth, Development, and Structural Change at the Firm Level: The Example of the PR China**

**WORKING PAPERS ON EAST ASIAN STUDIES, NO. 128, DUISBURG 2021**

### **Abstract**

Understanding the microeconomic details of technological catch-up processes offers great potential for informing both innovation economics and development policy. We study the economic transition of the PR China from an agrarian country to a high-tech economy as one example for such a case. It is clear from past literature that rapidly rising productivity levels played a crucial role. However, the distribution of labor productivity in Chinese firms has not been comprehensively investigated and it remains an open question if this can be used to guide economic development. We analyze labor productivity and the dynamic change of labor productivity in firm-level data for the years 1998–2013 from the Chinese Industrial Enterprise Database. We demonstrate that both variables are conveniently modeled as Lévy alpha-stable distributions, provide parameter estimates and analyze dynamic changes to this distribution. We find that the productivity gains were not due to super-star firms, but due to a systematic shift of the entire distribution with otherwise mostly unchanged characteristics. We also found an emerging right-skew in the distribution of labor productivity change. While there are significant differences between the 31 provinces and autonomous regions of the PR China, we also show that there are systematic relations between micro-level and province-level variables. We conclude with some implications of these findings for development policy.

# 1 INTRODUCTION

For almost three decades, the PR China has been one of the fastest-growing economies. During this time, it made the transition from a largely agricultural developing country to the world's second-largest industrial economy. Where state-owned enterprises (SOEs) ran the show in the 1980s, the country today is home to a multitude of private corporations of international importance. The PR China used to be a poor country and years behind in technological terms, but today, its development trajectory is of growing importance for the world in science and innovation, in CO<sub>2</sub> emissions, and in technological impact on privacy, surveillance, and personal freedom. While the development is moderately well-understood in macro-economic terms, many open questions remain with regard to the development of the microstructure of the Chinese economy over the last decades. Which firms were the most productive ones, which were central to the transition process? How was productivity distributed among firms? How did this change over time? Can these processes be observed in all regions? In all sectors? Is it mirrored in profitability and investment rates? Can other developing economies achieve the same level of growth and development?

For developed countries, the distributions of firm-level data have been widely investigated and discussed in the literature. Many stylized facts are known although some questions remain contested. Ijiri and Simon (1964, 1977) proposed that firm sizes are highly skewed and follow Pareto distributions, essentially with a process following Gibrat's law<sup>1</sup> as the root cause of this. The observation was later confirmed with more detailed data sets (Axtell 2001; Gaffeo et al. 2003), although some of the literature prefers to model the distribution as a lognormal (Cabral and Mata 2003) and other generating algorithms

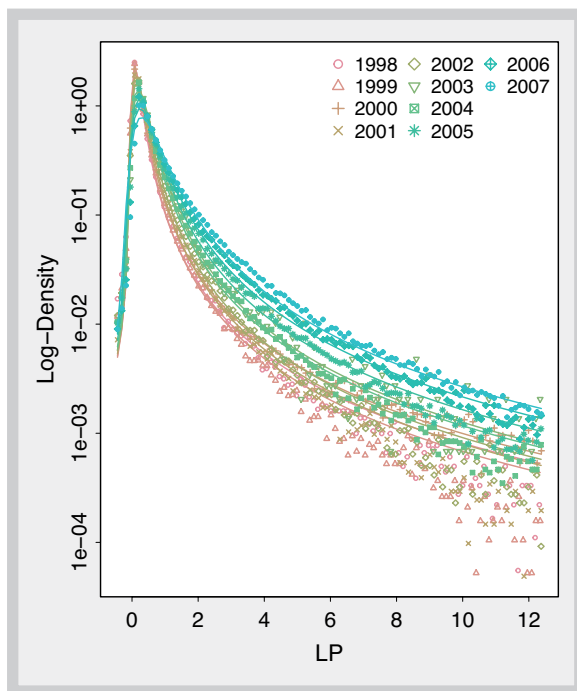
have been proposed (Heinrich and Dai (2016) offer an overview). It is clear that this has important policy implications for competition law, innovation policy, labor market governance, and the effectiveness of policy interventions in industrial organization. Connections to firm growth, innovation, and technological change (Yu et al. 2015; Li and Rama 2015) further add to the importance of this distributional approach, as do the later, but equally important investigations of the distributions of firm growth rates (Bottazzi and Secchi 2006) and productivities (Yang et al. 2019).

An important characteristic of firm-level distributions in developed countries is that no significant changes are observed with either time (Yang et al. 2019) or firm age (Cabral and Mata 2003). Developing countries, however, may be very different. They are subject to substantial and rapid changes in sectoral structure, technology, economic policy, and social organization. Investigating such distributional changes for developing economies may shed light on the mechanisms driving that development, the effectiveness of policy measures, the microstructural impact of technological change, as well as potentially the history of developed countries. Studying similar historical processes for developed countries would require older data that is almost certainly not available in high resolution.

For the PR China a look at the data immediately suggests that a systematic shift is underway: Figure 1 shows the distribution (density) function of the labor productivity at the firm level by year in a semi-log plot (horizontal axis linear, vertical axis logarithmic); the shape of the distribution remains constant, but the right side (positive tail) moves outward and the peak becomes less pronounced. We will discuss other systematic shifts, interpretations, and implications below (see Section 5); for now, we emphasize that there are systematic changes in the distributional model during this development phase of the Chinese economy.

1 Gibrat's law with lower bound produces Pareto distributions; without such bound, it generates lognormal distributions (Mitzenmacher 2004).

**Figure 1: Density of the Labor Productivity (LP) distribution (full sample) by year in semi-log (vertical axis logarithmic) – Solid lines indicate Lévy alpha-stable distribution fits as reported in Table 2**



We use a firm-level data set for the PR China for the years 1998–2013 to investigate changes in the economic microstructure during the years of China’s most rapid growth from a distributional model perspective. We will focus on the distribution of labor productivity and of labor productivity change; these are arguably the quantities that are most closely related to economic development. While other distributional models have been suggested for labor productivity (Yu et al. (2015) consider Asymmetric Exponential Power (AEP) distributions and Gaussian normal distributions), the mounting evidence for heavy tails in both labor productivity and labor productivity change (Yang et al. 2019) suggests the Lévy alpha-stable distribution (Nolan 1998, 2019) as a distributional model. Lévy alpha-stable distributions generalize Gaussian normal distributions,<sup>2</sup> but have heavy tails for almost all parameter values.

2 For one particular parameter setting, the Lévy alpha-stable converges to a Gaussian normal distribution.

Important consequences include that the apparent dispersion of labor productivity (Berlingieri et al. 2017) depends on how dispersion is measured. If such dispersion exists, it may be an indicator for misallocation of labor, capital, or other resources, a question of considerable relevance for the economy of the PR China (Hsieh and Klenow 2009). It also relates to the debate on granular origins of aggregate fluctuations (Gabaix 2011; Schwarzkopf et al. 2010) and the question of how characteristics of labor productivity distributions in firm populations should be quantified and interpreted. The characteristics of labor productivity dispersion measures and the consequences for these economic questions are studied comprehensively in Yang et al. (2019).

We demonstrate that labor productivity as well as labor productivity change and various other firm-level characteristics in the PR China are indeed fat-tailed with infinite variance. Further, we show that the Lévy alpha-stable distribution is an excellent fit and discuss how the characteristics of the distribution can be specified and tracked using the parameters of the Lévy alpha-stable fit. We discuss the emerging temporal and regional patterns as well as the behavior in other subsamples. Finally, we demonstrate connections between the distributions of labor productivity, labor productivity change, profitability, investment rate at the firm level, as well as between these firm-level patterns and aggregated level data.

The paper is organized as follows: The literature on the development of productivity in the PR China during its period of rapid growth is reviewed in Section 2. Section 3 describes the data and the variables of interest. Section 4 discusses the distributional models that are tested, the Lévy alpha-stable and the Asymmetric Exponential Power, as well as the fitting procedure, and goodness of fit measures employed. Section 5 presents the findings and corresponding interpretations. Section 6 concludes.

## 2 LITERATURE

The present paper aims to contribute to the study of distributional models of firm-level data, the investigation of the role of firm productivity in economic development, and, more specifically, the analysis of the rapid growth and development of the PR China in recent decades. We, therefore, give brief overviews of the literature in these three fields.

### 2.1 DISTRIBUTIONAL MODELS OF FIRM-LEVEL DATA

For developed countries, it has been established that the distributions of firm sizes, sales, etc. are heavily skewed (Ijiri and Simon 1964; Axtell 2001), with the Pareto (Axtell 2001) and the lognormal distribution being proposed as distributional models (Cabral and Mata 2003). The two-sided distributions of growth rates and productivities equally have much heavier tails than normal distributions; proposed distributional models include Asymmetric Exponential Power distributions for growth rates (Bottazzi and Secchi 2006; Bottazzi et al. 2007; Bottazzi and Secchi 2011) and Lévy alpha-stable distributions for productivities (Yang et al. 2019).

However, developed economies are relatively static. Very little change has been observed in these distributions over the recent decades for which good data is available (see e.g. Yang et al. 2019), and little change would be expected. To understand the development of firm-level distributions, scholars have instead focussed on firms of different age groups, their survival, and their shifts over time (Cabral and Mata 2003). Important findings include that the form of the distribution does not change over time (Yang et al. 2019) or with age (Cabral and Mata 2003; Angelini and Generale 2008), that surviving firms are slightly larger (Cabral and Mata 2003), and that they increase their productivity (making within-firm productivity gains important at the aggregate level) (Bartelsman et al. 2013; Li and

Rama 2015). Cabral and Mata (2003) report that surviving firms in a Portuguese data set have less long tails and lower skew; however, if the statistical process which the firm size follows in reality is heavy-tailed with low exponents<sup>3</sup>, these moments may not exist and Cabral and Mata's findings may be statistical artifacts (Yang et al. 2019). The hypothesis that small firms are more dynamic and account for significant shares of productivity gains and newly created jobs has frequently been proposed, but remains controversial (Li and Rama 2015).

### 2.2 ECONOMIC DEVELOPMENT AND FIRM-LEVEL PRODUCTIVITY

Comprehensive firm-level data is often not available for developing countries. In turn, many studies have to work with small and potentially biased sample sizes. Notable exceptions are studies of firms in the PR China – using the Chinese Industrial Enterprise Database that we also work with – and in India – using government census data. While the general distributional forms found for developed countries are confirmed (Hsieh and Klenow 2009; Ma et al. 2008; Zhang et al. 2009; Coad and Tamvada 2012; Sun and Zhang 2012; Yu et al. 2015; Ding et al. 2016; Heinrich and Dai 2016), wider dispersions for productivities are reported for India and China specifically (Hsieh and Klenow 2009).

In a general equilibrium interpretation, productivities should equalize, as investors should prefer high productivities while low productivity firms should be frozen out. This should be especially true for firms in the same sector and region, since portfolio diversification should not constitute a reason to invest in low productivity

---

3 This is indeed indicated by empirical studies (Gaffeo et al. 2003; Fujimoto et al. 2011; Heinrich and Dai 2016) that find tail exponents around 1.0 or between 1.0 and 3.0 for firm size depending on how firm size is measured.



establishments. Of course, there may be structural reasons why investment in low productivity firms persists; and it might not be easily observable to investors. However, implications could still be drawn in comparative analyses, if different dispersions are observed. Hsieh and Klenow (2009) choose to follow this equilibrium interpretation; their contribution has led to the influential interpretation that resources are more misallocated in developing countries (Hsieh and Klenow 2009; Song et al. 2011; Bartelsman et al. 2013; Li and Rama 2015; Goyette and Gallipoli 2015) as well as occasionally strongly worded policy recommendations (Adamopoulos and Restuccia 2014; Poschke 2018). This has been explained with both structural factors, such as constraints on credit availability (Bloom et al. 2010; Cabral and Mata 2003), and also internal factors of the firm population of developing countries, such as bad management and reluctance to delegate decision-making (Bloom et al. 2010; Chaffai et al. 2012). More recently, it has been found that productivities (both labor productivity and total factor productivity, TFP) are heavy-tailed with tail exponents below 2.0 such that most dispersion measures, including the ones used in this line of research, are not meaningful (Yang et al. 2019).

The source of productivity gains is an important question in the study of economic development. Three main causes are (1) within-firm improvements, (2) selection pressure (unproductive firms do not survive), and (3) changes from distributional differences between entrants and exiting firms. Within-firm improvements were particularly important in developing countries (Li and Rama 2015) and in successful developing economies such as China (Yu et al. 2015, 2017). While developed countries show some component from selection (2) and entry/exit (3) (Fariñas and Ruano 2004; Li and Rama 2015)<sup>4</sup>, in

some developing countries (Sub-Saharan Africa specifically) the entry-exit process may come down to churning without any improvements, and firms may survive because they are born larger, not because they learn or improve (Van Biesebroeck 2005; Li and Rama 2015; Goyette and Gallipoli 2015), resulting in heteroskedastic "missing middle" distributions (Van Biesebroeck 2005).

Success and growth at the firm level has been linked to innovation for Argentina (Chudnovsky et al. 2006), to innovation and technological competence for Indian firms (Coad and Tamvada 2012), and export participation for Chilean, Chinese, and European firms (Volpe Martincus and Carballo 2010; di Giovanni et al. 2011; Sun and Zhang 2012).

Finally, systematic shifts in distributions have been shown for those developing countries that undergo rapid growth: Both Yu et al. (2015, 2017) and Ding et al. (2016) find a location shift in the productivity distributions (labor productivity and TFP respectively) for China in the 1990s and 2000s, indicating higher productivities across the entire firm population, while the functional form did not change. Nguyen (2019) finds a similar location shift in firm-level distributions for Vietnam. Heinrich and Dai (2016), studying the firm size distribution in Chinese provinces, find higher tail exponents in regions with high GDP per capita or high growth.

## 2.3 FIRM-LEVEL PRODUCTIVITY AND GROWTH IN THE PR CHINA

Chinese firm-level distributions follow the same general patterns found elsewhere (Ma et al. 2008; Yu et al. 2015; Heinrich and Dai 2016; Heinrich et al. 2020). While firm sizes seem to follow power laws (Ma et al. 2008; Heinrich and Dai 2016), for labor productivities and growth rates, two distributions have been suggested: Asymmetric Exponential Power distributions from the exponential distribution family (Yu et al. 2015) were found to be a much better

4 Studies also found a counter-cyclical contribution of entry and exit in developed economies (Spain): In phases of economic growth, when credit is readily available, less productive firms enter, resulting in a negative contribution to productivity growth (Fariñas and Ruano 2004).

fit than Gaussians. Lévy alpha-stable distributions, which have power-law tails on both sides, have been suggested as an alternative since the data seems to be heavy-tailed (Heinrich et al. 2020). The distinction has important consequences.

The impressive economic growth of the PR China is reflected in the distributions as a location shift in productivity levels (Yu et al. 2015, 2017; Ding et al. 2016); the shift remains present in the gross industrial output per worker (labor productivity per wage), indicating that productivity has grown at a faster pace than labor inputs (Zhang and Liu 2013). It is important to note that this is not a changing average, but a shift of the entire distribution which otherwise remains intact in spite of continuing entry and exit processes. The changes in the distribution's parameters have so far not been comprehensively studied.

We give a brief overview over the contributing factors to China's rapid growth from a historical perspective in Appendix C.

It is worthwhile to note that state-owned enterprises (SOEs) have been found to be in general less productive than privately owned firms, both in terms of average labor productivity and average TFP (Song et al. 2011; Yu et al. 2015; Hsieh and Song 2015). While productivities of firms of all types vary widely and follow similar distributional forms as the economy as a whole (see Section 5), the mean difference is significant. SOE productivity did improve and has converged towards the productivity levels of private firms until at least 2007, but a gap in average productivity remains (Song et al. 2011; Yu et al. 2015). Boeing et al. (2016) find that compared to private firms, SOEs are less successful in converting patents into productivity improvements, although a generally positive relationship of productivity and R&D efforts does exist (Hu and Jefferson 2004; Boeing et al. 2016). SOEs are often seen as a source of misallocation, thereby explaining their lower average productivity

and tying the finding to the misallocation hypothesis (Hsieh and Klenow 2009; Song et al. 2011). However, on the one hand, a closer look at the distributions reveals that the variation is still present within ownership type groups. On the other, firm-level dispersion may not be larger in China than in other countries if the measures employed in achieving these results were misleading for heavy-tailed data (Yang et al. 2019). The reason why SOEs are catching up and the mean difference between private firms and SOEs is converging is typically seen in the structural transformation of the state sector (Hsieh and Song 2015; Jefferson et al. 2000). Greater flexibility of managers and delegation of decision-making capabilities as well as the effects of rising incomes and autonomy on employee motivation have also been linked to the productivity improvements in SOEs (Groves et al. 1994).

Finally, regional disparities in productivity and other variables are well-known and expected for a country of the size of the PR China. Coastal provinces like Shanghai and Guangdong have a better TFP comparing with central and western provinces (Ding et al. 2016; Chen et al. 2009). High productivity firms prefer to concentrate their activities on regions with developed infrastructure, good universities, and related industrial clusters; Zhu et al. (2019) find evidence for both sorting and adverse sorting effects. Meanwhile, officials in undeveloped regions are eager to attract investment by providing subsidies. However, government subsidies may attract low-productivity firms, since they have low opportunity costs (Zhu et al. 2019). Marshall and Jacobs externalities of spatial industrial agglomerations (Beaudry and Schiffauerova 2009) likely also play a role in creating and maintaining regional disparities, as may the openness of regions towards outside influences, foreign trade, and flexible economic policy (Jiang 2011).

### 3 DATA

#### 3.1 SOURCES

We use firm-level data from the *Chinese Industrial Enterprise Database* (CIEDB), which records several hundreds of thousands of firms each year for the time period between 1998 and 2013 and is commonly used by researchers working on firm-level data in China (Brandt et al. 2012; Hsieh and Song 2015; Ding et al. 2016; Yu et al. 2015, 2017). The data ultimately derive from data recorded by the PR China's National Bureau of Statistics. Similar to data provided by the Bureau van Dijk for Europe (ORBIS Europe), the CIEDB records data at the firm level, not at the level of physical entities (plants). This facilitates investigating structural characteristics such as productivity and profitability at the firm level, the level at which decision making and management take place. Different from other databases like COMPUSTAT or Bloomberg, but similar to ORBIS Europe, the CIEDB also includes small and medium-sized firms and thus provides better coverage of different types of enterprises. The data set also records the ownership type (state-owned, foreign-owned, private, etc.)<sup>5</sup>.

There are some notable difficulties with the data, especially for the period after 2008. These difficulties are well-known and recognized in the literature (Brandt et al. 2014). Brandt et al. (2014) qualify the samples after 2008 as unreliable and recommend working with the more reliable data up to 2008 only. We largely follow this strategy. We complement this with later data from the period 2009–2013, where possible, to shed light on some developments after 2008.

Up to 2008, the database includes industrial firms with revenues above 5 million Yuan. From

2009, only firms with revenues beyond 20 million Yuan are present in the data set. The set of recorded variables also changes significantly over this time period. For instance, we are unable to compute value-added and productivities for the time period after 2008, as the measures required for their computation are only reported up until 2007.

In addition, we use industry level deflators from and macroeconomic data at province level from China Compendium of Statistics (1949–2008).

#### 3.2 DATA PROCESSING

We extract variables on identity<sup>6</sup> (ID, phone number, ZIP code), characteristics (founding year, primary sector, ownership type), and structural and financial condition (output, assets, profits, wages, employment, intermediate input). These variables are present in the database throughout the years 1998–2007.<sup>7</sup> Progressively more variables are either missing or reported in substantially different form starting in 2008 (see Table 1). The monetary variables are deflated using industry level deflators.

We remove duplicates in terms of ID and Year before commencing with the data analysis.

In order to observe productivity changes, we attempt to identify firms that are present over multiple years both directly (using the unique ID) and indirectly, using phone numbers and address details as suggested in Brandt et al. (2014).

5 The database does not include firms from Hong Kong, Macao, and Taiwan, we, therefore, will not cover these three regions in the analysis.

6 Ownership reforms led to continuous legal and structural changes, making it difficult to consistently identify the same firm (Jefferson et al. 2000). Using not just the firm ID but also phone number and ZIP code for identification is a typical way to address this (Brandt et al. 2014).

7 For 2003, the number of complete observations is very small.

**Table 1: Number of observations per variable and year after cleaning**

Year	Labor productivity	Labor productivity change	Labor productivity growth	Labor productivity (imputed)	Profitability	Investment rate
1998	141,790	-	-	141,787	149,270	-
1999	148,982	113,684	112,996	148,973	147,636	121,091
2000	147,196	121,977	120,882	147,188	148,088	123,492
2001	158,671	116,674	116,001	158,664	157,453	119,211
2002	169,419	139,020	138,351	169,417	168,072	137,724
2003	11,404	9,503	9,490	11,404	11,369	9,461
2004	267,898	120,595	120,174	267,898	263,060	118,202
2005	262,830	227,569	227,032	262,830	261,369	223,671
2006	290,762	244,918	244,406	290,762	289,566	243,448
2007	324,638	268,614	268,376	324,638	323,131	267,151
2008	-	-	-	-	198,945	158,114
2009	-	-	-	-	-	130,155
2010	-	-	-	-	-	152,979
2011	-	-	-	-	-	-
2012	-	-	-	42,301	-	36,139
2013	-	-	-	41,625	216,817	180,634

For the analysis of regional variation, the firms are assigned to the region of their postal address. As the region name is not typically part of the postal address, the ZIP codes were used to identify those regions.

### 3.3 VARIABLES

In order to investigate structural change at the firm level, we analyze labor productivity and its dispersion and dynamical change. Labor productivity has been conjectured to hold information about the firm's capabilities, economic potential, and growth prospects. Its dynamical change facilitates investigating to what extent this potential is persistent in time. The dispersion of both variables holds information on the structural composition of the firm population of the country, the region, or the industry.

Labor productivity is defined as *value-added* per employee.

$$LP_{i,t} = VA_{i,t} / L_{i,t}$$

where  $i$  indicates the firms and  $t$  is the time. As the value-added is not part of the database, it

has to be computed as the difference between output and intermediate input.

$$VA_{i,t} = Q_{i,t} - II_{i,t}$$

where  $Q_{i,t}$  is output and  $II_{i,t}$  stands for intermediate input of firm  $i$  at time  $t$ . Alternatively,  $VA$  can be imputed as the sum of paid wages  $W_{i,t}$  and profits  $\Pi_{i,t}$

$$\widetilde{VA}_{i,t} = W_{i,t} + \Pi_{i,t}.$$

Imputed value-added differs from the direct computation in that reinvestments cannot be distinguished from negative profits and remain part of the resulting quantity. Reinvestments can be substantial and may occur in systematic patterns across the firm population.

To observe the dynamic development of labor productivities, we compute the labor productivity change by firm

$$\Delta LP_{i,t} = LP_{i,t} - LP_{i,t-1}.$$

An alternative choice would be labor productivity growth

$$\dot{LP}_{i,t} = \frac{LP_{i,t} - LP_{i,t-1}}{LP_{i,t-1}}.$$

However, as this is a growth rate, it has a singularity at  $LP_{i,t-1} = 0$ . Changes in labor productivity in the vicinity of the singularity get grotesquely exaggerated. What is more,  $LP_{i,t}$  may be zero (in 1 % of the observations) or negative (3 % of the observations) since stocks and price changes are allowed.<sup>8</sup> For this reason, we refrain from using the growth rate and rely on the absolute change  $\Delta LP_{i,t}$  as our main indicator of the dynamical change of labor productivities.

The distributional models for these variables will be investigated in Section 5.1. It will be shown that this has important consequences for the selection and interpretation of quantitative measures for productivity dispersion. We complement the analysis of labor productivity with the study of the behavior of and dispersion of

two more variables: *Return on capital* will serve as an indicator for the firms' *profitability* from the perspective of investors. The *investment rate* is studied to assess investment patterns and growth. These variables are computed as

$$ROC_{i,t} = \frac{\Pi_{i,t}}{K_{i,t}}$$

$$IR_{i,t} = \frac{K_{i,t} - K_{i,t-1}}{K_{i,t-1}}$$

where  $\Pi_{i,t}$  are the profits and  $K_{i,t}$  is the capital stock (fixed assets) of firm  $i$  at time  $t$ .

The number of observations for all variables by year is given in Table 1. Additional analyses also use capital intensity, defined as:

$$CI_{i,t} = K_{i,t} / L_{i,t}$$

## 4 METHODS

### 4.1 DISTRIBUTIONAL MODELS

Most studies of labor productivity and of firm-level data, in general, are based on generative models. They define, which effects on the measure under investigation are considered under the model; they fix their functional forms; and they establish the resulting distribution. Typically, the approximate form of the distribution to be explained is known, which constrains the variety of candidate models.

The advantages of the generative approach include that it is illustrative and verifiable by considering other quantities represented in the model. However, specific distributions can frequently be generated by large numbers of different generative models, and matching the correct

distribution reveals little information about the correct generating process.

Instead, and in line with much of the modern literature (Frank 2009; Bottazzi and Secchi 2006; Yang 2018; Yang et al. 2019), we consider a different approach: The attractor distribution to which the result of aggregations of (identical, independent) distributions converges. We remain agnostic with regard to the interpretation of the component distributions being aggregated, though temporal aggregation of shocks or aggregation across jobs, processes, or tasks within a firm are natural component separations that suggest themselves. If it is indeed the correct representation of the data, the distribution could be expected to remain stable under a number of changes to the system, as the aggregation continues to converge to this functional form.

In particular, following Yang et al. (2019), we use the Lévy alpha-stable distribution (Nolan 2019, 1998) as our main distributional model, although

8 Typically, output should be larger than intermediate inputs,  $Q_{i,t} > I_{i,t}$ . However, both are measured in monetary units, so whether  $Q_{i,t} > I_{i,t}$  is subject to price changes. Further, the firm may maintain, built up, or reduce stocks intertemporarily.

we provide fits to the 4-parameter Asymmetric Exponential Power distribution suggested elsewhere in the literature (Bottazzi and Secchi 2006; Bottazzi et al. 2007; Bottazzi and Secchi 2011; Yu et al. 2015) as a point of comparison. In the following, we provide a non-technical explanation and some intuition why the Lévy alpha-stable distribution may be a good distributional model. A technical description is given in Appendix A.

Random variables distributions can be aggregated in convolutions (i.e. summation of the variables), which yields a different distribution of the results (for technical details, see Appendix A.1). Aggregation leads to a loss of information; it washes out less strong signals and only a dominant pattern remains. As the convoluted distributions are independent, this pattern is the one that carries the least information (highest entropy), the one that is the most likely one without additional information, the one that constitutes the maximum entropy distribution under constraints that depend on the component distributions  $X$ .

The maximum entropy perspective may be helpful in that it allows computing the resulting distribution and understanding the type of its constraints in a concise way. The resulting distributional form is determined by the constraints in the maximum entropy perspective, or equivalently by the type of convolution and the characteristics of the component distributions in the convolution perspective. For instance, a single constraint on the mean of the distribution will yield an exponential or Laplacian (two-sided exponential) maximum entropy distribution. The Asymmetric Exponential Power distributions that are often used for the distributional models for firm growth (Bottazzi and Secchi 2006; Bottazzi et al. 2007; Bottazzi and Secchi 2011) or productivity (Yu et al. 2015), belong to this family, albeit with a modification that allows for asymmetry<sup>9</sup> (for technical details, see Appendix A.5). A single constraint on the mean of the distribution under logarithmic transformation will yield

a Pareto maximum entropy distribution, typically considered for distributional models of firm size distributions. A constraint on the variance of a distribution (implying a second constraint on the mean) will yield a Gaussian normal maximum entropy distribution.

Almost all maximum entropy distributions do not constitute attractors under further aggregation. If the resulting distribution is further convoluted, it continues to change. Those that do constitute attractors, i.e. those that yield an identical distribution under convolution are known as Lévy alpha-stable distributions (for technical details, see Appendix A.4). The Lévy alpha-stable is a generalization of several families of distributions, including Gaussian normal distributions, Cauchy distributions and Lévy distributions. The generalized central limit theorem (GCLT) states that any sum of independent, identical distributions will converge to a Lévy alpha-stable distribution. Specifically, if the convoluted distributions have a finite variance, the sum will converge to a Gaussian normal, a member of the family of Lévy alpha-stable distributions (for technical details, see Appendix A.2). If not, it will yield a different member of this family with a heavy tail and a tail parameter  $< 2$ .

Lévy alpha-stable distributions do not have a closed-form representation as a function in the frequency domain, except for special parameter sets.<sup>10</sup> The functional form in the Fourier domain (the *characteristic function*, for technical details, see Appendix A.3) is

$$\varphi(s) = E[e^{isx}] = \begin{cases} e^{(-\gamma^\alpha |s|^\alpha [1 + i\beta \tan(\frac{\pi\alpha}{2}) \text{sgn}(s) ((\gamma|s|)^{1-\alpha} - 1)] + i\delta s)} & \alpha \neq 1 \\ e^{(-\gamma |s| [1 + i\beta \frac{2}{\pi} \text{sgn}(s) \log(\gamma|s|)] + i\delta s)} & \alpha = 1 \end{cases} \quad (1)$$

<sup>9</sup> The maximum entropy constraint includes a sign function under this modification to distinguish the two tails and account for different shapes of both sides.

<sup>10</sup> For  $\alpha = 2$  it yields a Gaussian normal distribution, for  $\alpha = 1$ , it yields a Cauchy distribution, and for  $\alpha = 0.5$  it yields a Lévy distribution.



**Figure 2: Density of the Lévy alpha-stable distribution for different parameter settings.**

**From top: Variation of tail parameter  $\alpha$  – Variation of skew parameter  $\beta$  – Variation of scale parameter  $\gamma$  – Variation of location parameter  $\delta$**

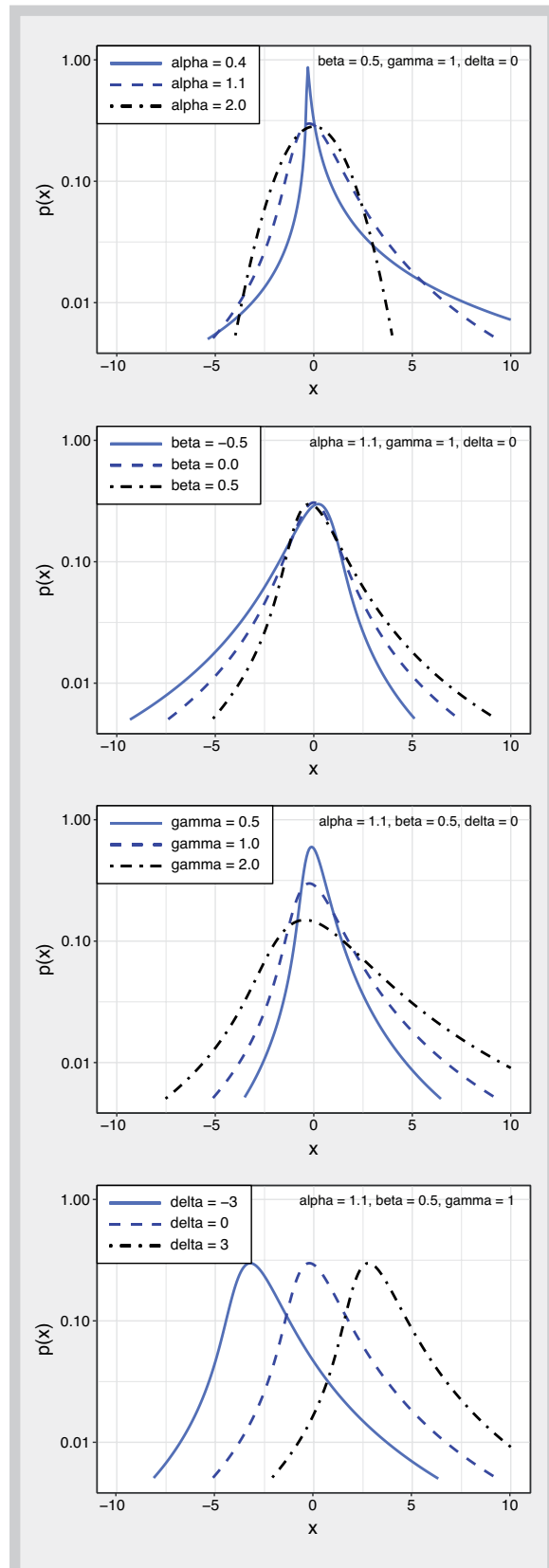


Figure 2 shows the behaviour of the four parameters of the Lévy alpha-stable distribution in semi-log scale (y-axis logarithmic). The upper left panel contrasts the Gaussian case (black curve) with skewed fat-tailed cases for different tail indices  $\alpha$ . Note that the curve bends outward for the two fat-tailed cases, indicating that the tails are heavier than in an exponential distribution, which would be linear in a semi-log scale. This is a tell-tale sign of fat-tailedness. The lower left panel shows variations of the scale or width of the distribution. The scale,  $\gamma$  is another measure of dispersion besides the tail index and is independent from it. In the Gaussian case ( $\alpha = 2$ ), the scale is simply the standard deviation. For fat-tailed variants ( $\alpha < 2$ ) such as the ones depicted in this panel, this is not the case, as the standard deviation is infinite. The right panels demonstrate different skew values and a location shift respectively.

More technical details on Lévy alpha-stable distributions can be found in Nolan (1998, 2019); a comprehensive discussion of maximum entropy, aggregation of distributions, and characteristic equations in the Fourier domain is offered in Frank (2009).

## 4.2 FITTING

### 4.2.1 LÉVY ALPHA-STABLE DISTRIBUTIONS

We use Nolan's (Nolan 1998, 2019) parametrization 0 for the Lévy alpha-stable distribution as given in equation 1. Common methods to fit the distribution include maximum likelihood, the general method of moments (GMM), and McCulloch's (McCulloch 1986) quantile-based estimation. Maximum likelihood is generally considered the most reliable, but requires much more computation power than the alternatives and is, for the data sizes considered here, not practical. A direct comparison of McCulloch's method with GMM<sup>11</sup> showed that for the relevant data sizes

11 For this comparison, we used Hansen's (1982) two-step algorithm with Carrasco et al.'s (2007) spectral cut-off regularization.

of at least 1000, 5000, and 10000 (depending on the type of the subsample, see Section 3) observations each as considered here, McCulloch's quantile-based estimation is more accurate and gives generally better Soofi ID scores (see Section 4.3.1).

We use the R package **StableEstim** (Kharrat and Boshnakov 2016).

#### 4.2.2 ASYMMETRIC EXPONENTIAL POWER (AEP) DISTRIBUTIONS

Contrasting our distributional model to AEP distributions is expedient not only because it has been suggested as a distributional model in the literature (Bottazzi and Secchi 2006; Bottazzi et al. 2007; Bottazzi and Secchi 2011; Yu et al. 2015), but also because AEP distributions show radically different tail behavior compared to Lévy alpha-stable distributions, which are heavy-tailed and have infinite variance for  $\alpha < 2$ . While finite samples always have a finite variance, it will diverge in the sample size if the underlying distribution of the sample is heavy-tailed. As a result, measuring the variance of a sample from a heavy-tailed distribution will yield misleading results (Nolan 2019; Embrechts et al. 1997; Yang et al. 2019), as they are tainted by other quantities such as the sample size. Similar problems exist for other dispersion measures (Yang et al. 2019). Performing OLS correlations on variables with heavy tails will likely also fail, since the error distribution will likely inherit the heavy tails and OLS requires errors with finite variance. For technical details, see Appendix A.6.

We use a 4-parameter AEP distribution with the functional form given in equation 22 as an alternative distributional model for comparison. Fitting relies on the L-moments method as discussed in Asquith (2014) and implemented in the R package **lmomco** (Asquith 2018).

### 4.3 GOODNESS OF FIT

Two measures for model selection and validation are used, both based on information theory

considerations. Additional techniques, such as the Kolmogorov-Smirnov test<sup>12</sup> or cross-validation are possible, but were not applied in the present study.

#### 4.3.1 SOOFI ID INDEX

Our main goodness-of-fit metric is based on Soofi et al.'s (Soofi et al. 1995) information distinguishability (*ID*) concept, which gives the distinguishability of two distributions based on their information content. We can use this measure to assess to what extent a fitted model  $p(\theta|x)$  with parameters  $\theta$  is distinguishable from the entropy maximizing distribution  $q(\theta|x)$  given a set of observations  $x$ .

Formally, *ID* is based on the Kullback-Leibler divergence between the two distributions

$$D_{KL}(p||q) = \sum_i p(x_i) \log \frac{p(x_i)}{q(x_i)},$$

where  $||$  is the divergence operator.<sup>13</sup> Information distinguishability is defined as

$$ID(p||q|\theta) = \exp[-D_{KL}(p||q|\theta)], \quad (2)$$

and has support  $ID \in [0, 1]$ .  $ID = 0$  indicates that the distributions are indistinguishable, while the differences are more pronounced the higher *ID*. For convenience, we construct a Soofi ID score *SIDS* as previously used by Yang (2018); Yang et al. (2019) by rescaling *ID*

$$SIDS = 100 \times (1 - ID), \quad (3)$$

with support  $SIDS \in [0, 100]$  such that  $SIDS = 100$  indicates a perfect match while low values indicate that the distributional model under investigation is probably not correct for the sample in question.

<sup>12</sup> The KS test is known to have low precision and to lead to many false negatives.

<sup>13</sup> I.e., for any concept of divergence,  $p||q$  is the divergence of  $p$  and  $q$ ;  $p||q|\theta$  is the divergence of  $p$  and  $q$  given  $\theta$ .



### 4.3.2 AKAIKE INFORMATION CRITERION (AIC)

Akaike's (Akaike 1973) information criterion (AIC) is based on the likelihood of a distributional model fit while accounting for the number of parameters. Formally,

$$\text{AIC} = 2k - 2 \log L(\theta|x) \quad (4)$$

where  $L(\theta|x)$  is the likelihood function of parameters  $\theta$  given data  $x$  and  $k$  is the number of estimated parameters  $\theta$ .

The AIC relies on the same concepts as the SIDS, namely minimizing Kullback-Leibler divergence, but rescales differently and applies a correction for  $k$ . It offers a measure for model comparison, but is difficult to interpret in illustrative terms. *SIDS*, on the other hand, has a straight forward interpretation as the extent of similarity with an entropy maximizing model given the data.

## 5 RESULTS

In this section, we investigate questions that are of importance for understanding developing economies in general and the Chinese case during the decade of rapid catch-up (1999–2013, the period for which we have data) in particular.

- 1 What distributional model should be used for productivity microdata for developing countries (here, the PR China)? Do they differ from developed countries? (Section 5.1)
- 2 Do the parameters of these distributions change with advancing development level? (Section 5.2)
- 3 Are there persistent differences between regions (or countries)? (Section 5.3)
- 4 If there are any systematic differences or developments, how do they relate to other characteristics at the micro- or macro-level (firm age, GDP growth, capital intensity, employment)? (Section 5.4)

Although our analysis is limited to the PR China, we can draw comparisons to the distributions of firm-level productivity data for developed economies (Yang et al. 2019) and conjecture that other developing economies may show similar

patterns in phases of rapid economic catch-up. We also leverage the considerable diversity between Chinese provinces to assess regional differences, which may be an indicator of how different developing countries should be expected to be from one another in this regard.

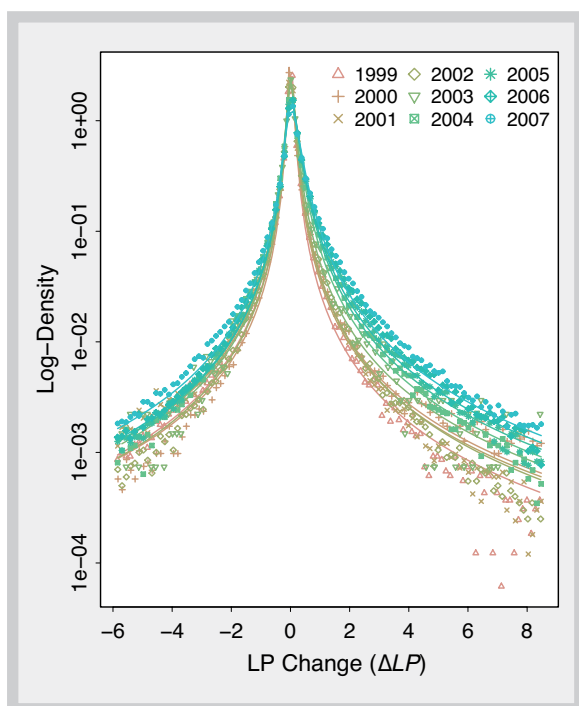
### 5.1 FITTING PRODUCTIVITY DISTRIBUTIONS

We performed parameter fits with the Lévy alpha-stable model and, as a point of comparison, for the AEP model for all variables listed in Section 3.3. However, we concentrate our analysis on the labor productivity  $LP$ , and the labor productivity change  $\Delta LP$ , while the other variables ( $ROC$ ,  $IR$ ) serve as a point of comparison and to show that the functional forms of the distributions are connected. Lévy alpha-stable fit lines as well as empirical density by year are shown in Figures 1 ( $LP$ ) and 3 ( $\Delta LP$ ). The parameter values for the fits are given in the upper two sections of Table 2, while the goodness of fit measures are listed in Table 3.

The distributions of both variables ( $LP$ ,  $\Delta LP$ ) have striking and regular characteristics. They are (i) unimodal (one pronounced peak), (ii) heavy-tailed (bent outwards in semi-log), (iii) have wide

support over both negative and positive numbers, and (iv) are highly stable over time. The Lévy alpha-stable model is an excellent fit of the distribution and the data, better than the alternative AEP in all cases.<sup>14</sup> This is confirmed both in the goodness of fit measures in Table 3 and in the fit lines in Figures 1 and 3.

**Figure 3: Density of the labor productivity change ( $\Delta LP$ ) distribution (full sample) by year in semi-log (vertical axis logarithmic) – Solid lines indicate Lévy alpha-stable distribution fits as reported in Table 2**



## 5.2 ECONOMIC DEVELOPMENT AND SYSTEMATIC CHANGES TO PRODUCTIVITY DISTRIBUTIONS

The findings in Section 5.1 show that the productivity distribution found for the PR China is consistent with those identified for a wide range of developed economies (Yang et al. 2019). However, while Yang et al. (2019) find that there is no systematic change for developed economies over a period of 10 years (2006–2015), there is a persistent shift in several parameters in the case of China. This is evidenced by the densities and fit lines in Figures 1 ( $LP$ ) and 3 ( $\Delta LP$ ) not overlaying each other but being neatly aligned next to one another in the exact order of years. The parameter values for the complete sample are given in Table 2; further, the black line in Figures 4 and 5 illustrate the development of the average of these parameter fits for each of the PR China's 31 provinces and autonomous regions.<sup>15</sup>

For both distributions, the modal value became less pronounced, while the wings (not necessarily the tails) were pushed out, especially the one to the positive side (higher labor productivity, higher intertemporal gains in labor productivity). For both  $LP$  and  $\Delta LP$ , the location parameter  $\delta$  increases substantially from 1998 to 2008 and the scale parameter  $\gamma$  increases in concert. This reflects the increase in labor productivity over the period of study with yearly changes and variation growing proportionally. While tail index  $\alpha$  and the skew  $\beta$  remain almost unchanged for  $LP$ , they increase systematically for  $\Delta LP$ . This has several implications:

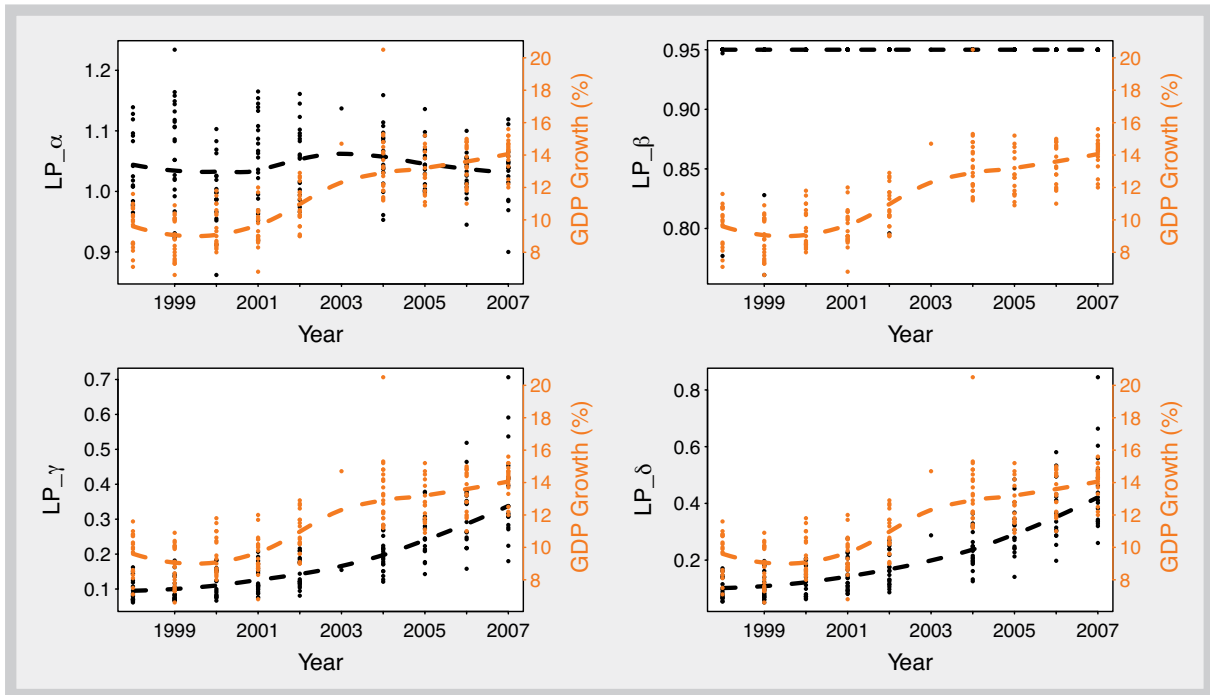
- Super-star firms do not become more prevalent with China's development push. The tail index of  $LP$  remains approximately the same. Not even the skew of the  $LP$  distribution changes. Instead the entire distribution shifts.

<sup>14</sup> This is confirmed by both goodness of fit measures employed here, the Soofi ID score ( $SIDS$ ) and the Akaike information criterion ( $AIC$ ). Table 3 explicitly lists which model provides a better fit for which sample in either criterion ( $SIDS$  or  $AIC$ ). AEP performs systematically worse than Lévy alpha-stable in the labor productivity, the labor productivity change, and the investment rate. Both models appear to be good fits for the profitability ( $ROC$ ). Only in the case of the labor productivity change in 1999, both models resulted in a Soofi ID score  $SIDS < 95$  which indicates a less perfect fit. It is, however, a marginal case with  $SIDS > 94$  for both Lévy alpha-stable and AEP.

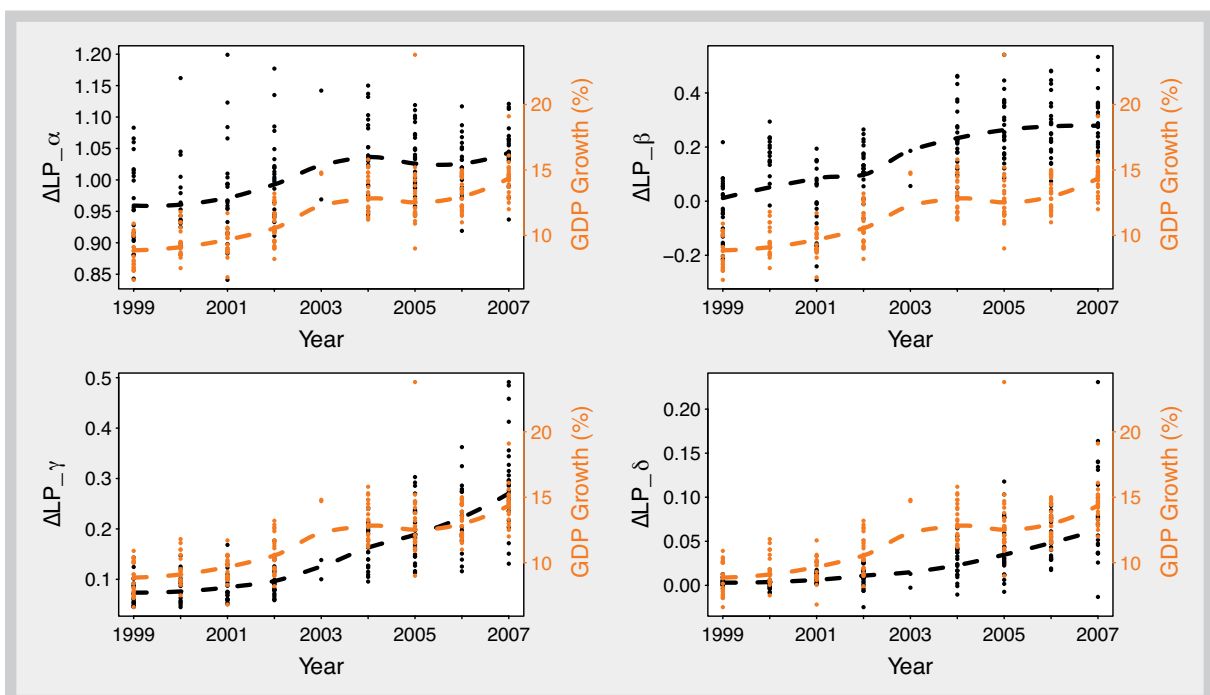
<sup>15</sup> This does not include the Special Administrative Regions Hong Kong and Macao, which are not represented in the database.

- The tails of the labor productivity change ( $\Delta LP$ ) distribution grow shorter (higher  $\alpha$ , indicating that large productivity changes in one and the same firm become less common. Instead, the productivity change remains in the body of the distribution, therefore becoming more uniform across the economy.
- A right-skew emerges in the labor productivity change ( $\Delta LP$ ) distribution. The body of the distribution stretches to the right (higher positive, but not excessively large productivity gains).

**Figure 4: LP (labor productivity) by region and year (black) in comparison to GDP growth (orange)**



**Figure 5:  $\Delta LP$  (labor productivity change) by region and year (black) in comparison to GDP growth (orange)**



**Table 2: Lévy alpha-stable and AEP parameter fits for labor productivity LP, labor productivity change  $\Delta LP$ , profitability ROC, and investment rate IR by year.**

	Year	#Obs.	Lévy alpha-stable fit				AEP fit			
			$\alpha$	$\beta$	$\gamma$	$\delta$	$\kappa$	$h$	$\sigma$	$\zeta$
LP	1998	140,372	<b>1.00</b>	<b>0.95</b>	<b>0.11</b>	<b>0.11</b>	0.47	0.40	0.01	0.06
	1999	147,492	<b>1.06</b>	<b>0.95</b>	<b>0.12</b>	<b>0.13</b>	0.45	0.46	0.02	0.07
	2000	145,724	<b>0.97</b>	<b>0.95</b>	<b>0.14</b>	<b>0.14</b>	0.42	0.27	0.00	0.10
	2001	157,083	<b>1.08</b>	<b>0.95</b>	<b>0.15</b>	<b>0.18</b>	0.42	0.48	0.02	0.10
	2002	167,723	<b>1.08</b>	<b>0.95</b>	<b>0.17</b>	<b>0.20</b>	0.44	0.48	0.03	0.12
	2003	11,288	<b>1.04</b>	<b>0.95</b>	<b>0.21</b>	<b>0.28</b>	0.43	0.40	0.02	0.18
	2004	265,218	<b>1.06</b>	<b>0.95</b>	<b>0.20</b>	<b>0.25</b>	0.42	0.45	0.03	0.15
	2005	260,200	<b>1.03</b>	<b>0.95</b>	<b>0.25</b>	<b>0.30</b>	0.40	0.45	0.03	0.17
	2006	287,854	<b>1.00</b>	<b>0.95</b>	<b>0.30</b>	<b>0.36</b>	0.37	0.43	0.03	0.21
	2007	321,390	<b>0.99</b>	<b>0.95</b>	<b>0.36</b>	<b>0.43</b>	0.36	0.43	0.03	0.24
$\Delta LP$	1999	112,546	<b>0.96</b>	<b>-0.05</b>	<b>0.08</b>	<b>0.01</b>	1.07	0.34	0.00	0.02
	2000	120,757	0.90	0.25	0.09	-0.00	0.72	0.22	0.00	-0.04
	2001	115,506	<b>0.93</b>	<b>-0.11</b>	<b>0.10</b>	<b>0.01</b>	1.28	0.24	0.00	0.07
	2002	137,628	<b>0.99</b>	<b>0.12</b>	<b>0.11</b>	<b>0.01</b>	0.92	0.41	0.02	0.01
	2003	9,407	<b>0.97</b>	<b>0.14</b>	<b>0.13</b>	<b>0.01</b>	0.90	0.38	0.01	0.00
	2004	119,389	<b>1.03</b>	<b>0.20</b>	<b>0.18</b>	<b>0.02</b>	0.86	0.42	0.03	0.00
	2005	225,293	<b>1.01</b>	<b>0.26</b>	<b>0.19</b>	<b>0.04</b>	0.84	0.42	0.03	0.02
	2006	242,468	<b>0.99</b>	<b>0.29</b>	<b>0.20</b>	<b>0.05</b>	0.81	0.40	0.03	0.02
	2007	265,926	<b>0.99</b>	<b>0.25</b>	<b>0.25</b>	<b>0.06</b>	0.84	0.40	0.03	0.04
ROC	1998	136,435	0.91	0.37	0.08	0.00	<b>0.73</b>	<b>0.34</b>	<b>0.00</b>	<b>-0.01</b>
	1999	145,513	<b>0.91</b>	<b>0.44</b>	<b>0.07</b>	<b>0.00</b>	0.69	0.34	0.00	-0.01
	2000	141,570	<b>0.93</b>	<b>0.51</b>	<b>0.08</b>	<b>0.01</b>	<b>0.67</b>	<b>0.34</b>	<b>0.00</b>	<b>-0.00</b>
	2001	155,527	<b>0.93</b>	<b>0.55</b>	<b>0.09</b>	<b>0.02</b>	0.65	0.32	0.00	0.00
	2002	166,246	<b>0.98</b>	<b>0.61</b>	<b>0.10</b>	<b>0.03</b>	<b>0.64</b>	<b>0.34</b>	<b>0.00</b>	<b>0.01</b>
	2003	11,250	<b>1.01</b>	<b>0.59</b>	<b>0.11</b>	<b>0.05</b>	0.65	0.36	0.01	0.03
	2004	260,311	<b>0.96</b>	<b>0.61</b>	<b>0.12</b>	<b>0.05</b>	0.63	0.31	0.00	0.02
	2005	258,741	<b>1.00</b>	<b>0.69</b>	<b>0.14</b>	<b>0.06</b>	<b>0.59</b>	<b>0.35</b>	<b>0.01</b>	<b>0.02</b>
	2006	286,602	<b>1.01</b>	<b>0.78</b>	<b>0.14</b>	<b>0.06</b>	<b>0.56</b>	<b>0.35</b>	<b>0.01</b>	<b>0.03</b>
	2007	319,847	<b>1.02</b>	<b>0.92</b>	<b>0.15</b>	<b>0.07</b>	<b>0.52</b>	<b>0.35</b>	<b>0.01</b>	<b>0.03</b>
	2012	40,840	<b>1.00</b>	<b>0.75</b>	<b>0.18</b>	<b>0.09</b>	<b>0.55</b>	<b>0.36</b>	<b>0.01</b>	<b>0.03</b>
	2013	40,090	<b>0.96</b>	<b>0.74</b>	<b>0.18</b>	<b>0.09</b>	0.55	0.33	0.01	0.04
IR	1999	119,401	<b>0.86</b>	<b>0.40</b>	<b>0.09</b>	<b>-0.04</b>	0.61	0.24	0.00	-0.09
	2000	118,108	<b>0.86</b>	<b>0.40</b>	<b>0.09</b>	<b>-0.06</b>	0.61	0.25	0.00	-0.12
	2001	117,732	<b>0.86</b>	<b>0.41</b>	<b>0.10</b>	<b>-0.02</b>	0.60	0.25	0.00	-0.09
	2002	136,224	<b>0.84</b>	<b>0.46</b>	<b>0.11</b>	<b>-0.02</b>	0.57	0.24	0.00	-0.08
	2003	9,362	<b>0.93</b>	<b>0.58</b>	<b>0.13</b>	<b>-0.05</b>	0.53	0.23	0.00	-0.10
	2004	116,966	<b>0.92</b>	<b>0.66</b>	<b>0.24</b>	<b>-0.12</b>	0.49	0.26	0.00	-0.22
	2005	221,420	0.82	0.60	0.15	-0.02	0.49	0.23	0.00	-0.09
	2006	240,962	<b>0.87</b>	<b>0.58</b>	<b>0.14</b>	<b>-0.03</b>	0.53	0.25	0.00	-0.09
	2007	264,428	<b>0.86</b>	<b>0.59</b>	<b>0.14</b>	<b>-0.04</b>	0.52	0.25	0.00	-0.11
	2008	156,516	<b>0.78</b>	<b>0.59</b>	<b>0.15</b>	<b>-0.07</b>	0.48	0.22	0.00	-0.16
	2009	128,846	<b>0.87</b>	<b>0.56</b>	<b>0.18</b>	<b>0.02</b>	0.53	0.25	0.00	-0.07
	2010	151,441	0.63	0.20	0.03	-0.03	0.51	0.10	0.00	-0.10
	2012	8,746	<b>0.88</b>	<b>0.95</b>	<b>0.58</b>	<b>-0.03</b>	0.36	0.25	0.00	-0.22
	2013	35,452	<b>0.86</b>	<b>0.55</b>	<b>0.11</b>	<b>-0.05</b>	0.54	0.22	0.00	-0.10

Fits with comparatively better goodness in either *SIDS* or *AIC* in **bold**, provided *SIDS* > 95. Details of the associated goodness of the fits are given in Table 3.

**Table 3: Goodness of fit measures for Lévy alpha-stable and AEP parameter fits for labor productivity LP, labor productivity change  $\Delta LP$ , profitability ROC, and investment rate IR by year as reported in Table 2**

	Year	Lévy alpha-stable		AEP		$\Delta SIDS$	$\Delta AIC$	Preferred model
		<i>SIDS</i>	<i>AIC</i>	<i>SIDS</i>	<i>AIC</i>			
<i>LP</i>	1998	98.78	880.11	88.71	913.49	10.07	-33.38	Lévy $\alpha$ -s.
	1999	98.10	803.04	93.86	845.21	4.24	-42.17	Lévy $\alpha$ -s.
	2000	99.76	1,249.25	99.14	1,320.87	0.62	-71.61	Lévy $\alpha$ -s.
	2001	98.26	797.22	94.86	843.04	3.40	-45.82	Lévy $\alpha$ -s.
	2002	98.43	826.50	94.88	859.14	3.55	-32.64	Lévy $\alpha$ -s.
	2003	98.78	979.66	83.90	1,023.38	14.88	-43.72	Lévy $\alpha$ -s.
	2004	98.45	884.45	95.01	927.27	3.44	-42.82	Lévy $\alpha$ -s.
	2005	97.88	923.83	94.10	975.49	3.78	-51.66	Lévy $\alpha$ -s.
	2006	97.49	972.51	93.41	1,025.50	4.08	-52.99	Lévy $\alpha$ -s.
	2007	96.75	1,012.76	95.21	1,071.37	1.54	-58.61	Lévy $\alpha$ -s.
<i><math>\Delta LP</math></i>	1999	99.35	914.08	95.89	937.44	3.46	-23.36	Lévy $\alpha$ -s.
	2000	94.48	1,322.04	94.48	1,357.34	0.00	-35.30	-
	2001	97.92	1,301.04	84.58	1,337.90	13.34	-36.87	Lévy $\alpha$ -s.
	2002	99.22	824.87	98.95	852.95	0.27	-28.09	Lévy $\alpha$ -s.
	2003	98.96	901.36	98.85	931.11	0.11	-29.75	Lévy $\alpha$ -s.
	2004	99.12	908.20	96.55	929.40	2.57	-21.20	Lévy $\alpha$ -s.
	2005	99.22	925.94	99.56	948.58	-0.34	-22.64	Lévy $\alpha$ -s.
	2006	99.14	965.16	99.53	989.38	-0.39	-24.22	Lévy $\alpha$ -s.
	2007	99.24	1,003.31	99.33	1,024.51	-0.09	-21.20	Lévy $\alpha$ -s.
<i>ROC</i>	1998	92.99	919.04	96.53	960.82	-3.54	-41.78	AEP
	1999	98.53	899.66	91.12	934.49	7.41	-34.83	Lévy $\alpha$ -s.
	2000	98.86	920.60	99.79	961.19	-0.93	-40.60	even
	2001	98.38	978.17	96.66	1,018.65	1.72	-40.48	Lévy $\alpha$ -s.
	2002	99.06	973.09	99.11	1,017.00	-0.05	-43.92	even
	2003	98.85	911.05	96.70	939.00	2.15	-27.95	Lévy $\alpha$ -s.
	2004	99.55	1,067.32	97.29	1,110.23	2.26	-42.91	Lévy $\alpha$ -s.
	2005	98.16	1,003.81	99.50	1,038.32	-1.34	-34.52	even
	2006	97.26	1,016.92	99.15	1,047.34	-1.89	-30.41	even
	2007	95.28	1,062.73	97.86	1,072.13	-2.58	-9.41	even
	2012	95.20	1,031.04	97.74	1,060.46	-2.54	-29.43	even
	2013	96.63	1,063.87	94.74	1,095.59	1.89	-31.72	Lévy $\alpha$ -s.
<i>IR</i>	1999	98.54	1,230.72	94.70	1,277.72	3.84	-47.00	Lévy $\alpha$ -s.
	2000	98.27	1,221.62	94.69	1,283.48	3.58	-61.86	Lévy $\alpha$ -s.
	2001	95.30	1,243.37	90.81	1,293.24	4.49	-49.88	Lévy $\alpha$ -s.
	2002	96.57	1,243.78	96.28	1,296.99	0.29	-53.21	Lévy $\alpha$ -s.
	2003	96.10	1,419.75	96.05	1,481.73	0.05	-61.98	Lévy $\alpha$ -s.
	2004	95.63	1,408.22	93.21	1,475.98	2.42	-67.76	Lévy $\alpha$ -s.
	2005	94.48	1,350.69	85.73	1,408.57	8.75	-57.88	-
	2006	97.43	1,263.57	90.15	1,308.09	7.28	-44.52	Lévy $\alpha$ -s.
	2007	97.06	1,239.16	79.77	1,283.18	17.29	-44.02	Lévy $\alpha$ -s.
	2008	96.17	1,373.84	92.12	1,428.20	4.05	-54.35	Lévy $\alpha$ -s.
	2009	97.73	1,302.20	94.31	1,351.16	3.42	-48.96	Lévy $\alpha$ -s.
	2010	88.00	1,786.06	77.35	1,810.14	10.65	-24.09	-
	2012	98.39	1,508.08	81.76	1,565.72	16.63	-57.64	Lévy $\alpha$ -s.
	2013	95.42	1,297.17	90.06	1,342.75	5.36	-45.57	Lévy $\alpha$ -s.

The last column notes the fit with comparatively better goodness in either *SIDS* or *AIC* in **bold**, provided *SIDS* > 95.

### 5.3 REGIONAL VARIATION

While we only have data for one country, the PR China, we can investigate regional variation by considering subsamples of the data set for the 31 Chinese provinces and autonomous regions. In cross-country studies, where the cases are not subject to the same policy decision and idiosyncratic influences, any systematic differences should be more pronounced.

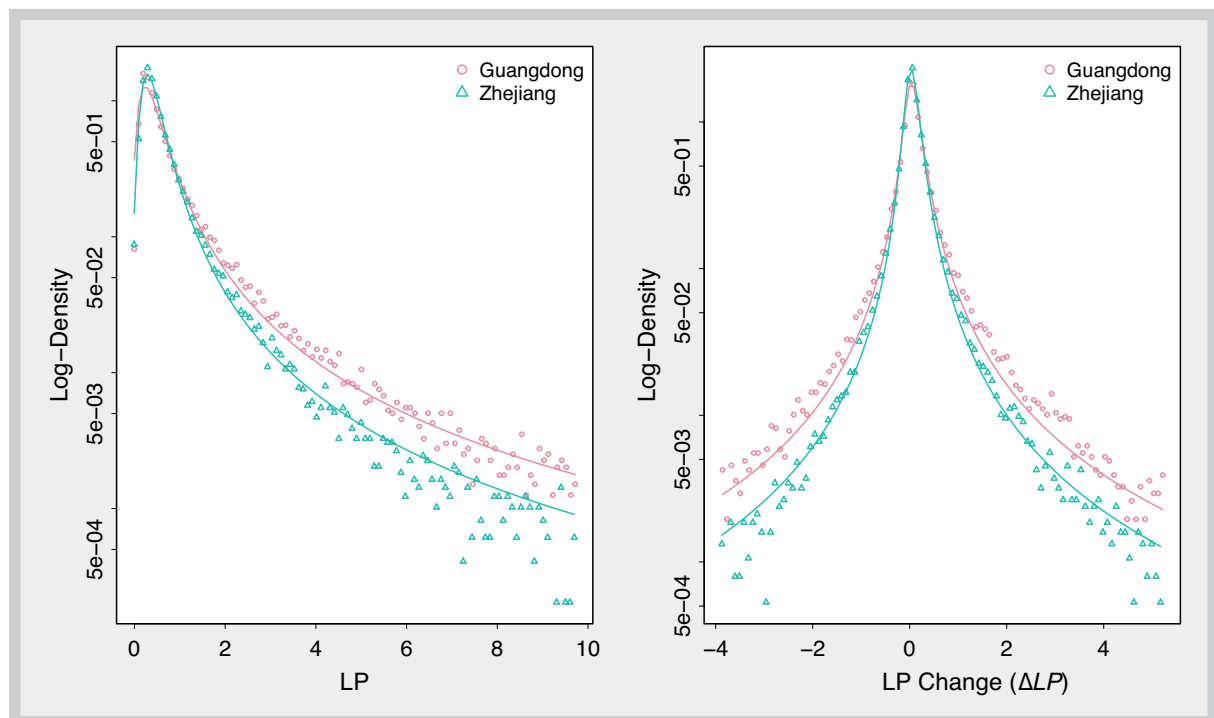
Two of the most dynamic and economically strongest regions of the PR China are Guangdong and Zhejiang. While Zhejiang is one of the most active regions supporting private economic sectors, and has benefited from the early economic boom in Yangtze River Delta, Guangdong is in South China, north of Hong Kong, and driven significantly by the opening-up endeavors. Both are coastal provinces and have the potential to develop the same industries. Yet, the regional distributions of  $LP$  and  $\Delta LP$  differ sharply and persistently. Guangdong maintains one of the lowest tail indices among all provinces, i.e. a very high probability weight in the tails ( $\alpha_{\Delta LP} = 0.93$  to  $\alpha_{\Delta LP} = 1.03$ ). Zhejiang is at the other end of the

provincial dispersion, with a moderately high tail index between  $\alpha_{\Delta LP} = 1.05$  and  $\alpha_{\Delta LP} = 1.18$ . Figure 6 shows the density of labor productivity  $LP$  and labor productivity change  $\Delta LP$  in both regions.

Figures 7 and 8 show the development of the tail index parameter  $\alpha$  of the Lévy alpha-stable fit of labor productivity  $LP$  and labor productivity change  $\Delta LP$  at the region level. Indeed it can be seen that Guangdong and neighboring regions (Guangxi, Jiangxi) and Zhejiang and its neighbors (Shanghai, Anhui) persistently find themselves at opposing ends of the variation. The Guangdong area tends to have longer tails (lower exponents) than the Shanghai/Zhejiang area.

Other regions with longer tails include the Northeast (Heilongjiang), the Beijing region, Inner Mongolia and, in the earlier years of the period of study, the central region. As pointed out in Heinrich and Dai (2016), this subtle change over time may reflect the transition of various regions to a standard market economy system that occurred at different time periods (see details in Heinrich and Dai (2016)). Some regions, such as Inner Mongolia, likely stand out be-

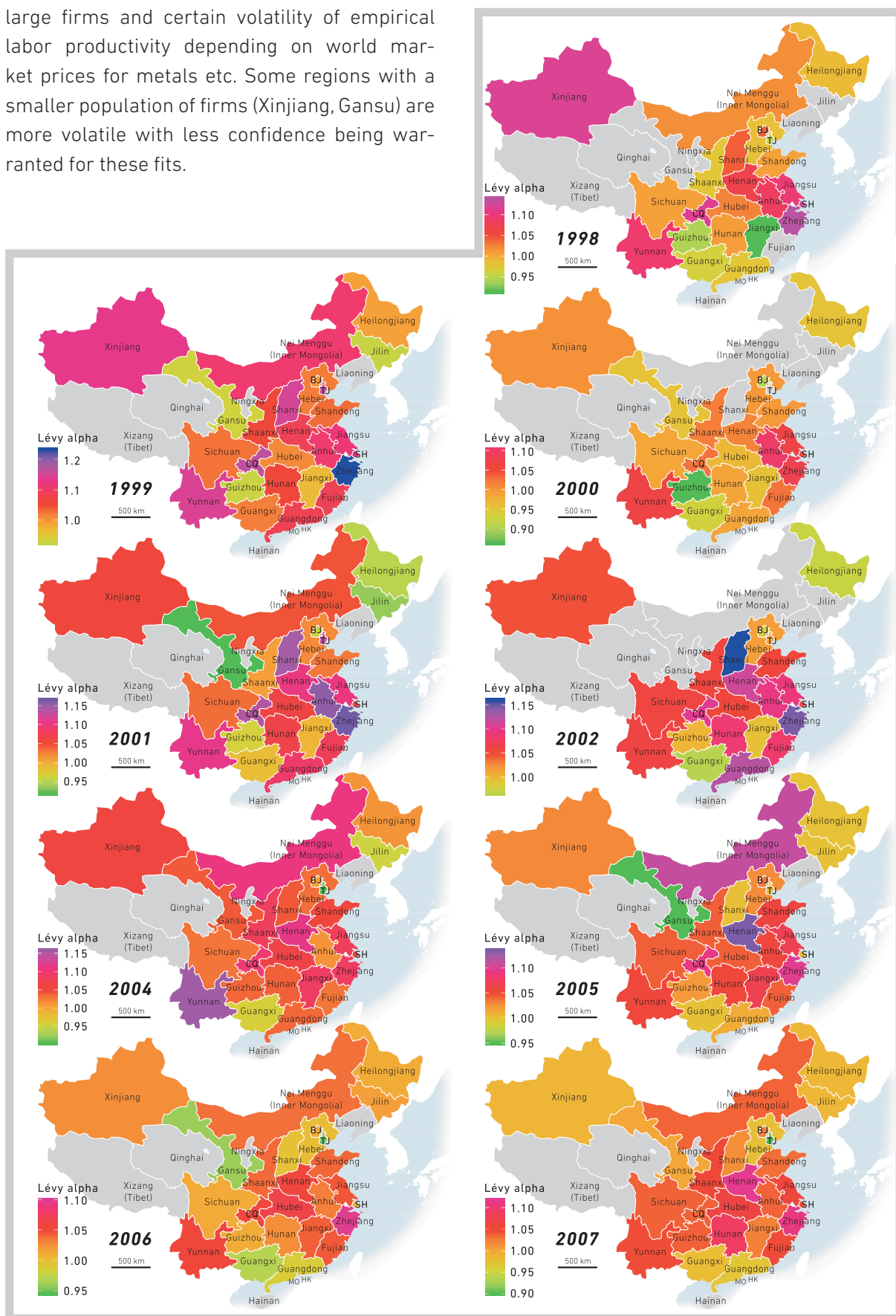
**Figure 6: Density of  $LP$  and  $\Delta LP$  for regions Guangdong and Zhejiang in 2007**





cause of regional specificities; in Inner Mongolia a domination of the mining sector with rather large firms and certain volatility of empirical labor productivity depending on world market prices for metals etc. Some regions with a smaller population of firms (Xinjiang, Gansu) are more volatile with less confidence being warranted for these fits.

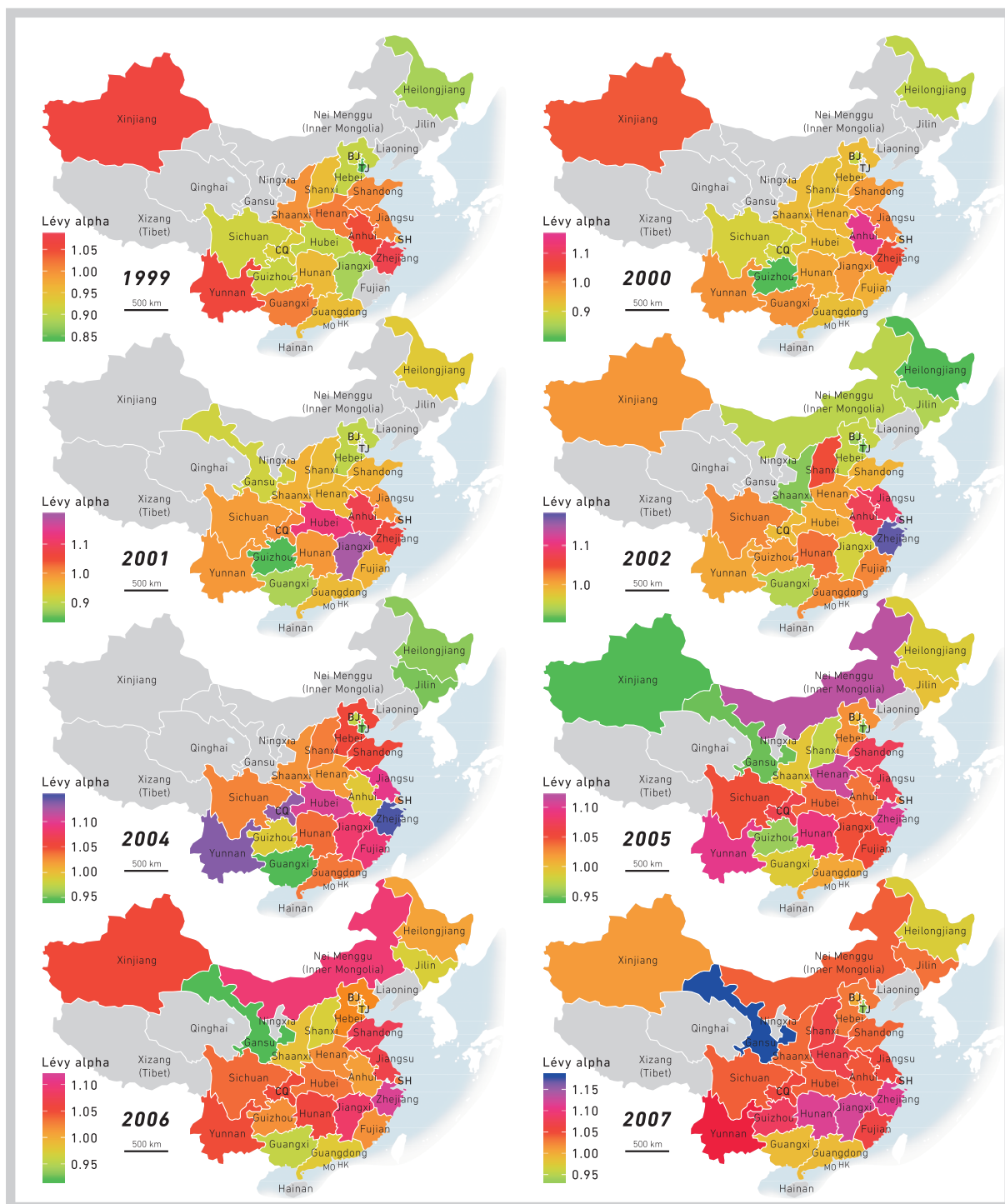
**Figure 7: Lévy  $\alpha$  parameter fits for LP (labor productivity) by region**



So far, we have shown that there are strong and persistent differences in the characteristics of the productivity distributions among the regions of China. This indicates that this would very likely also hold between countries. Beyond that, we can show in the Chinese case that micro-level variables are strongly interconnected: For instance, there is a cluster of regions with a short-

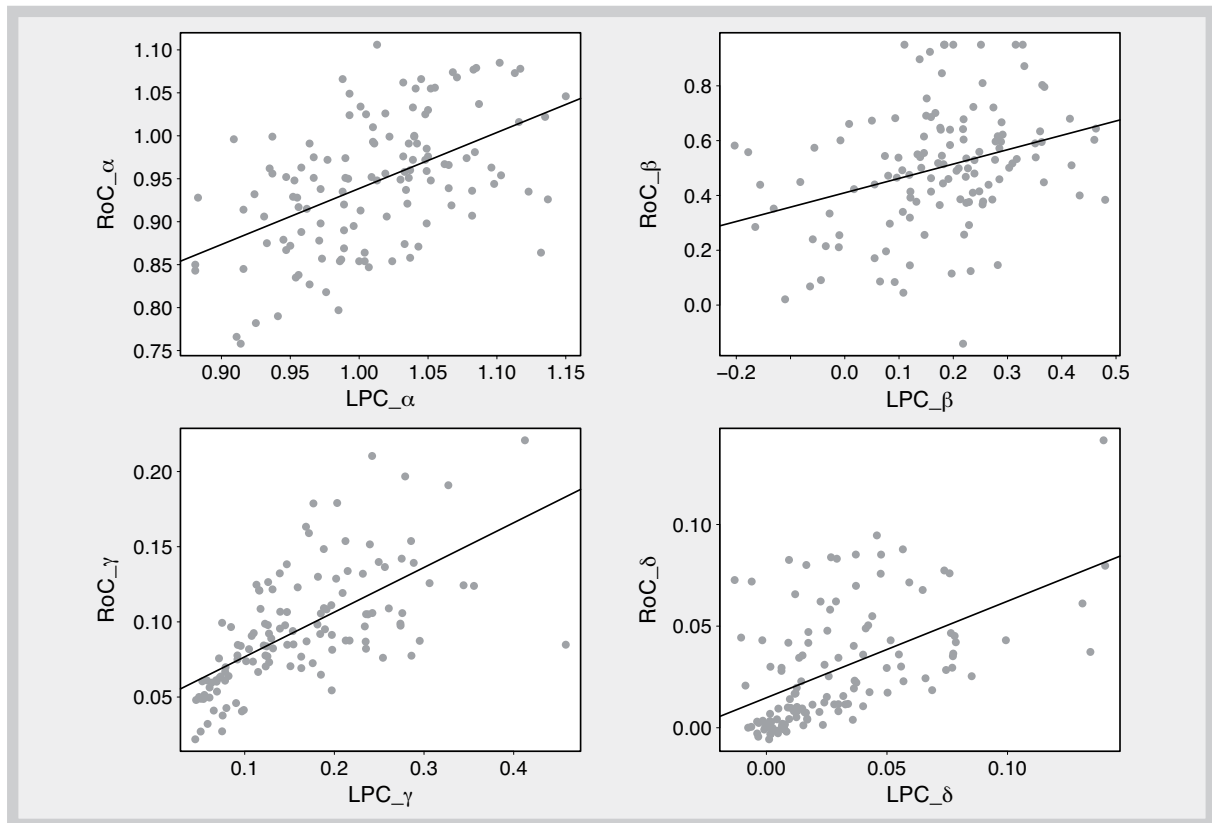
er tail (higher tail index  $\alpha$ ) around Shanghai and Zhejiang in both  $LP$  (Figure 7) and  $\Delta LP$  (Figure 8). This regional pattern is also present in the figures for profitability and the investment rate shown in Appendix D (Figures 21 and 22). Indeed, it can be shown that at the regional level, the distributions of the key firm-level variables are interconnected. The correlations of parameters

**Figure 8: Lévy  $\alpha$  parameter fits for  $\Delta LP$  (labor productivity change) by region**

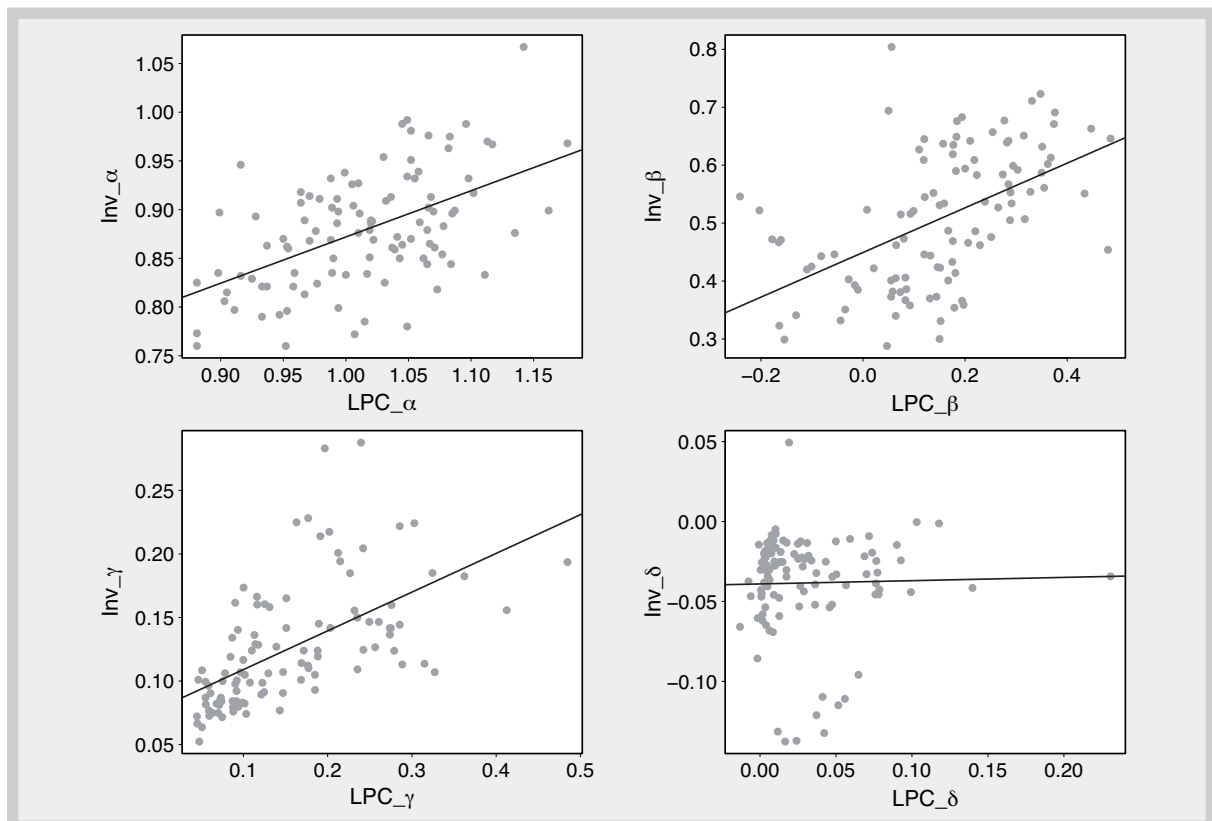




**Figure 9: Scatter plot of Lévy parameters of Returns on Capital (ROC) and Labor Productivity Change ( $\Delta LP$ ) –**  
*All four parameters tend to be positively correlated*



**Figure 10: Scatter plot of Lévy parameters of Investment Rate (IR) and Labor Productivity Change ( $\Delta LP$ ) –**  
*α, β, γ tend to be positively correlated, while δ has no relationship*



fitted for the labor productivity change ( $\Delta LP$ ) distribution and investment rate ( $IR$ ) distribution are shown in Figure 9; those of the parameters for  $\Delta LP$  and the profitability ( $ROC$ ) are plotted in Figure 10. For each pair of distributions, the same parameters are highly correlated. I.e. a high tail index  $\alpha$  for the labor productivity change distribution is associated with a high tail index for the distributions of profitability and investment rate. The same is true for the skew ( $\beta$ ) and the scale ( $\gamma$ ) of all distributions and the location of the modal value ( $\delta$ ) of  $\Delta LP$  and  $ROC$  distributions.<sup>16</sup>

These systematic regional differences evident in concert in a number of variables in the Chinese case indicate that such patterns should also be expected in cross-country comparisons. The following section will furthermore investigate relations between productivity distributions and various other macro- and micro-level variables using a Bayesian multi-level regression approach.

#### 5.4 RELATION OF PRODUCTIVITY DISTRIBUTIONS AND THEIR PARAMETERS TO OTHER ECONOMIC MEASURES

To understand how Lévy parameters of each variable are associated with the geographical predictors (in this case, Chinese regions), we run a simple mixed linear regression model. We use a Bayesian multi-level approach to properly account for group-level similarities and differences through a partial pooling. The likelihood function is written as follows:

Parameter<sub>*i*</sub>  $\sim$  Normal ( $\mu_i, \sigma$ )

$$\begin{aligned} \mu_i = & \alpha + \alpha_{t[i]} + \alpha_{j[i]} + \beta_1 \text{GDP\_r} \\ & + \beta_2 \text{Firm\_Age} + \beta_3 \text{Emp} \\ & + \beta_4 \text{Cap\_Intensity} \end{aligned} \quad (5)$$

where the subscript  $t[i]$  and  $j[i]$  indicate the year and province index which will be used as the main group effect variable. See Appendix B for a detailed discussion on prior specification. We assume that the outcome variable Parameter<sub>*i*</sub> is distributed according to the Gaussian likelihood function around a mean  $\mu_i$  and the standard deviation  $\sigma$ . The independent variables (predictors) include GDP growth (GDP\_r), firm age, employment (Emp), as well as capital intensity (Cap\_Intensity) at the regional level. The firm-level variables among these (not the GDP growth) are computed using the regional averages in the data set. The intercept has two varying components by year and province along with the overall intercept.

- $\alpha$ : The overall intercept. The expected value of Parameter<sub>*i*</sub> when all other explanatory variables are zero.
- $\alpha_{t[i]}$ : The varying intercept effect coming from the year index. The deviation in the intercept for year  $t$  from the overall intercept  $\alpha$ .
- $\alpha_{j[i]}$ : The varying intercept effect coming from the province index. The deviation in the intercept for province  $j$  from the overall intercept  $\alpha$ .
- $\beta_1$ : The coefficient of GDP Growth. The expected change in GDP Growth across all  $t$  and  $j$ .
- $\beta_2$ : The coefficient of Firm Age. The expected change in Firm Age across all  $t$  and  $j$ .
- $\beta_3$ : The coefficient of Employment. The expected change in Employment across all  $t$  and  $j$ .
- $\beta_4$ : The coefficient of Capital Intensity. The expected change in Capital Intensity across all  $t$  and  $j$ .

We use the *Hamiltonian Monte Carlo* (HMC) to obtain a sequence of random samples from a posterior probability distribution. We use the Bayesian programming language Stan and the R pack-

<sup>16</sup> The only exception is the  $\delta$  parameter of the distribution of the investment rate, which is not associated with any of the other fits and appears to fall into clusters. The reason is that there is a strong time signal in this variable (Lévy parameter  $\delta$  of  $IR$ ) with left shifts in the investment rate distribution in 2004 and in 2008, which may be caused by idiosyncratic shocks (such as the financial crisis hitting in 2008), by tax policy or by accounting intricacies.

age **brms** that operationalize the HMC algorithm to efficiently compute posterior distributions (Stan Development Team 2015; Bürkner 2017). For a more detailed discussion on HMC and Stan, see Gelman et al. (2014), Carpenter et al. (2017).

Table 4 summarizes the estimation results for each variable and parameter. We only report the mean and standard deviation (in parenthesis) of the posterior distribution of each parameter. A full summary table can be found in Appendix D.

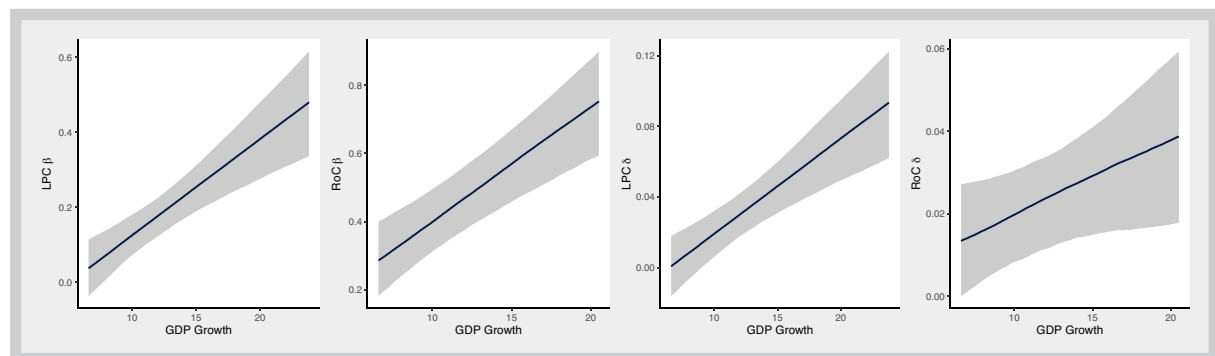
**Table 4: Summary statistics of a mixed linear regression model of Lévy parameters with four predictors: GDP Growth, Firm Age, Employment, and Capital Intensity.**

Variable	Parameters	Intercept	GDP Growth	Firm Age	Employment	Capital Intensity
LP Change	$\alpha$	0.9841 (0.0462)	0.0083 (0.0027)	-0.0012 (0.0006)	-0.0001 (0.0001)	-0.0001 (0.0001)
	$\beta$	-0.0564 (0.1025)	0.0256 (0.0065)	-0.0035 (0.0014)	0 (0.0001)	-0.0001 (0.0002)
	$\gamma$	0.0555 (0.0466)	0.0094 (0.0026)	0 (0.0005)	-0.0002 (0.0001)	0.0004 (0.0001)
	$\delta$	-0.0105 (0.024)	0.0054 (0.0014)	-0.0001 (0.0003)	-0.0001 (0)	0 (0)
LP	$\alpha$	1.0823 (0.0509)	0.0007 (0.0031)	-0.0001 (0.0002)	-0.0001 (0.0001)	-0.0001 (0.0001)
	$\beta$	0.2304 (0.063)	0.0054 (0.0032)	0 (0.0002)	-0.0005 (0.0001)	0.0004 (0.0001)
	$\gamma$	0.2574 (0.0681)	0.009 (0.0035)	0 (0.0002)	-0.0005 (0.0001)	0.0003 (0.0001)
ROC	$\alpha$	1.1235 (0.0564)	-0.0033 (0.0033)	-0.0008 (0.0002)	-0.0003 (0.0001)	-0.0001 (0.0001)
	$\beta$	0.167 (0.1337)	0.0333 (0.0081)	0 (0.0004)	-0.0003 (0.0002)	-0.0001 (0.0002)
	$\gamma$	0.0713 (0.0208)	0.0034 (0.0012)	-0.0001 (0.0001)	0 (0)	-0.0001 (0)
	$\delta$	0.0341 (0.0181)	0.0018 (0.0011)	0 (0.0001)	-0.0001 (0)	-0.0001 (0)
Inv Rate	$\alpha$	0.7954 (0.0486)	0.0004 (0.0025)	-0.0014 (0.0008)	0.0002 (0.0001)	0.0002 (0.0001)
	$\beta$	0.4201 (0.0955)	0.0047 (0.0044)	0.0005 (0.0015)	-0.0001 (0.0001)	0.0001 (0.0002)
	$\gamma$	0.122 (0.0286)	0.0028 (0.0016)	-0.0007 (0.0005)	0 (0)	0 (0.0001)
	$\delta$	-0.0687 (0.0191)	-0.0001 (0.0009)	-0.0001 (0.0003)	0.0001 (0)	0 (0)

For each variable, we show the regression results for Lévy parameters. Note that we do not report on the regression of  $\beta$  in the labor pro-

ductivity variable since it is always very close to 1 (maximal skewness) and doesn't have much variation.

**Figure 11: Marginal effects of GDP Growth on  $\beta$  and  $\delta$  of labor productivity change ( $\Delta LP$ ) and profitability (ROC)**  
– The blue line is the mean estimate and the grey shade area is the 90 % uncertainty interval



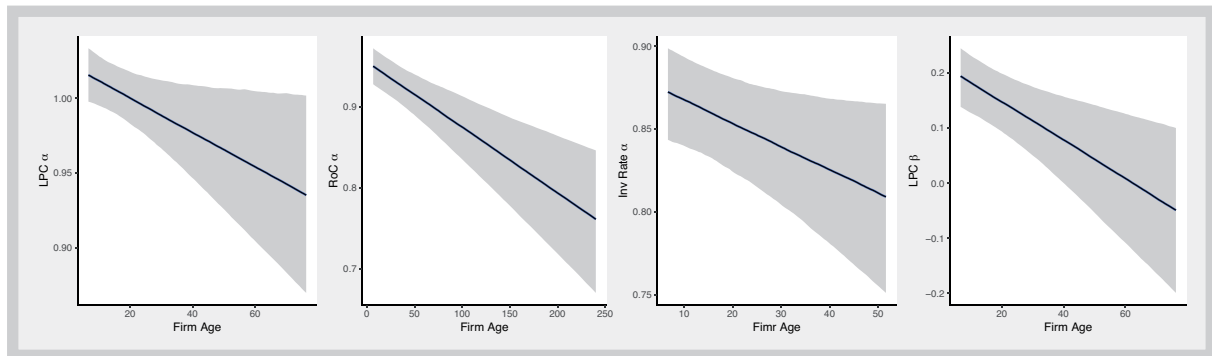
**GDP Growth:** A higher regional economic growth tends to be associated with a higher  $\beta$ ,  $\gamma$ , and  $\delta$  in  $\Delta LP$  and profitability. The GDP coefficients in labor productivity and investment rate tend to be rather noisy except for  $\gamma$ .  $\alpha$  parameter is only informa-

tive in the  $\Delta LP$  case: the higher the provincial GDP growth the higher  $\alpha$  and thus the thinner the tails.  $\alpha$  in other variables has neither enough variation nor a clear pattern in relation to regional GDP growth. Figure 11 shows the marginal effects of

GDP Growth on key parameters. From this, we can infer that the economic growth in China is characterized by four distinctive patterns. As the economy grows in China, 1) firms become more technologically dynamic and more profitable (a high  $\delta$  in  $\Delta LP$  and profitability), 2) the economy has an

increasing number of highly innovative and profitable firms (a high  $\beta$  in  $\Delta LP$  and profitability), 3) firms become more diverse in their performance (a high  $\gamma$  in  $\Delta LP$ ,  $LP$ , profitability and investment rate), and 4) the technological competition among firms gets more fierce over time (a high  $\alpha$  in  $\Delta LP$ ).

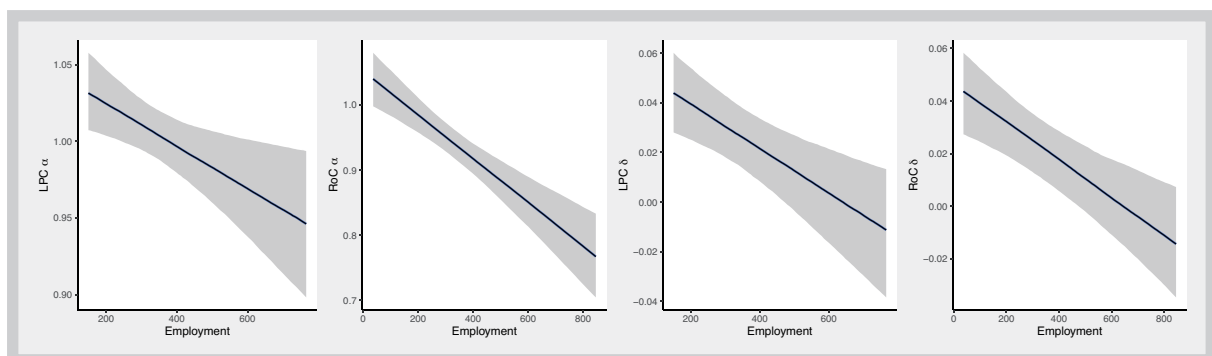
**Figure 12: Marginal effects of Firm Age on  $\alpha$  of labor productivity change ( $\Delta LP$ ), profitability ( $ROC$ ), and investment rate  $IR$ , and  $\beta$  of  $\Delta LP$**  – The blue line is the mean estimate and the grey shade area is the 90 % uncertainty interval



**Firm Age:** The higher the average firm age, the lower  $\alpha$  and thus heavier tails in  $\Delta LP$ , profitability, and Investment rate, and the lower  $\beta$  in  $\Delta LP$ .  $\gamma$  and  $\delta$  are very noisy in all parameters except for  $\gamma$  in profitability and investment rate. Figure 12 shows the marginal effects of firm age on key parameters. From this, we can infer that, when the province has a higher average firm age,

1) the market tends to be less competitive for technological change, profitability, and firm growth (a low  $\alpha$  in  $\Delta LP$ , profitability, and investment rate), 2) the economy has an increasing number of less innovative firms (a low  $\beta$  in  $\Delta LP$ ), and 3) the firm performance in terms of profitability and investment tends to be diverse but with a relatively high degree of uncertainty.

**Figure 13: Marginal effects of Employment on  $\alpha$  and  $\delta$  of labor productivity change ( $\Delta LP$ ) and profitability ( $ROC$ )** – The blue line is the mean estimate and the grey shade area is the 90 % uncertainty interval



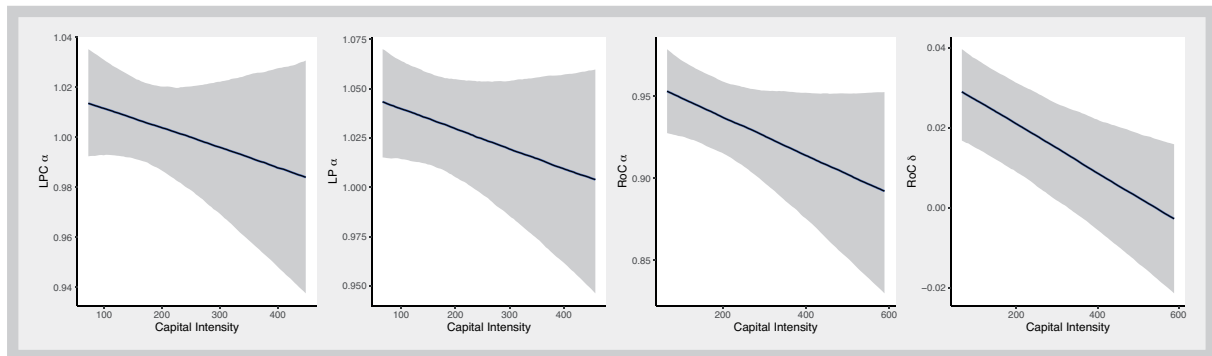
**Employment:** A larger average employment size is associated with a lower  $\alpha$  in  $\Delta LP$ ,  $LP$ , profitability, a lower  $\beta$  in profitability, a lower  $\gamma$  in  $\Delta LP$ ,  $LP$ , and a lower  $\delta$  in  $\Delta LP$  and profitability. Investment Rate has a somewhat different pattern and has a positive relationship between employment size

and  $\alpha$  and  $\delta$ . Figure 13 shows the marginal effects of employment on key parameters. From this, we can infer that, when the province has larger-size firms with a high number of employees, 1) the market tends to become less competitive overall (a low  $\alpha$  in  $\Delta LP$ ,  $LP$ , profitability), 2) firms become

less technologically dynamic and more profitable (a low  $\delta$  in  $\Delta LP$  and profitability), and 3) firms be-

come less diverse in their performance in technological change (a low  $\gamma$  in  $\Delta LP$  and  $LP$ ).

**Figure 14: Marginal effects of Capital Intensity on  $\alpha$  of labor productivity change ( $\Delta LP$ ),  $LP$ , Returns on Capital, and  $\delta$  of Returns on Capital** – The blue line is the mean estimate and the grey shade area is the 90 % uncertainty interval



**Capital Intensity:** Higher average capital intensity is associated with a lower  $\alpha$  in  $\Delta LP$ ,  $LP$ , and profitability but a higher  $\alpha$  in the Investment rate, a higher  $\gamma$  in  $\Delta LP$  and  $LP$ , and a lower  $\delta$  in profitability. Figure 14 shows the marginal effects of capital intensity on key parameters. From this, we can infer that, as the province has more firms

with a higher capital intensity (a higher degree of mechanization), 1) the market tends to become less competitive overall (a low  $\alpha$  in  $\Delta LP$ ,  $LP$ , profitability), 2) firms become more diverse in their performance in technological change (a high  $\gamma$  in  $\Delta LP$  and  $LP$ ), and 3) the firms tend to be less profitable overall (a low  $\delta$  in profitability).

## 6 CONCLUSION

The distribution of productivity at the firm level has, like other economic quantities, been thoroughly investigated in recent years. For the developed economies, many stylized facts are known now: The distribution is unimodal, strongly right-skewed, has heavy tails, and is persistent in time. Yang et al. (2019), who also summarize the state of the art, report no systematic changes in their study covering millions of observations for European developed countries over a period of 10 years.

It is a fair question to ask if we might have systematic changes in developing countries, since these countries experience more rapid structural, demographic, and technological changes. Is the distribution the same? Do the parameter estimates show any trends? If so, what does that tell us about the development process and about

development policy? Can and should productivity distributions be managed?

While we cannot provide direct evidence for the entire developing world, we did offer evidence for one country, the PR China as an example in this paper. Our study covers a crucial period of Chinese history, 1998–2007 (and further to 2013 with less reliable data), a period in which the country experienced the highest growth rates; when the economy and the technology sector took off; when the Chinese converged to the consumption and lifestyle habits of the developed world.

We demonstrated that the distributions of a wide range of quantities at the firm level are heavy-tailed with a Lévy alpha-stable distribution being an excellent distributional model and clearly

superior to the alternative AEP distribution that was also tested. This includes labor productivity ( $LP$ ) and labor productivity change ( $\Delta LP$ ). Consistent with the developed economies, both the shape of the distribution and the parameter values were remarkably consistent over time.

However, we did find a systematic shift: The location parameter of both productivity and productivity change were steadily increasing over the period of the study. The scale parameter  $\gamma$  followed suit. Tail index ( $\alpha$ ) and skew ( $\beta$ ) were stable for the productivity level, but for the productivity change, the tail grew shorter ( $\alpha$  increasing) and the distribution developed a right skew ( $\beta$  increasing). What this means is that the productivity gains China experienced in the period of study do not come from super-star firms of exceptionally high productivity: The tail weight of  $LP$  remained unchanged and that of  $\Delta LP$  decreased. Instead, labor productivity increases became more consistent, concentrated, and uniform across the economy (decreasing tail weight of  $\Delta LP$ ) and the body of labor productivity change extended to the right (emerging right-skew).

Further, we showed that there are significant and systematic differences across the regions of China that persist in time over the period of the study. This is even the case for differences for superficially similar regions such as the technology centers of Guangdong and Zhejiang/Shanghai. If this can be shown for the regions of China, that are subject to similar policies, environmental factors, and idiosyncratic shocks, differences in cross-country studies with multiple developing countries would be expected to be more pronounced.

Nevertheless, there were systematic relations between the parameters of the productivity distribution, a range of other distributions of micro-level variables (profitability, capital intensity, firm age), as well as macro-level characteristics (GDP growth, employment) of the respective regions, as shown in our Bayesian multi-level regression in Section 5.4.

The tail indices of the distributions were found to be between  $\alpha = 0.9$  and  $\alpha = 1.2$  in most cases, implying infinite variance (since  $\alpha < 2$ ) and very slow convergence to the theoretical mean, if the mean even exists (only for  $\alpha \geq 1$ ). As a consequence, characteristics of the labor productivity distribution in the form of moments would be avoided. Such characteristics are, however, commonly given as variants of direct moments, the mean for the location, the variance, standard deviation, or Olley-Pakes gap for the dispersion. Hsieh and Klenow (2009) for instance, in his otherwise exemplary study of misallocation in China and India, uses sample variances.

What does this mean for development policy? First, concentration on super-star firms – be that domestic ones or branches of foreign groups – might be the wrong approach for successful technological catch-up. It would certainly be a different approach from that taken in China. Second, it instead seems important to ensure that productivity gains can also be realized by other firms. The most direct approach for this is encouraging technology transfer and providing incentives for sourcing intermediate products locally (which would also lead to cooperation and technology transfer). Technologies are arguably the most important factor in determining productivity at the firm level. Third, other factors such as instrumental institutions and a comprehensive education system could support this process. Fourth, significant differences would be expected between different countries. Direct comparisons of the parameters of productivity distributions in isolation are likely of only limited value. Instead, such comparisons should be done with a range of measures for the economic micro-structure at the firm level (productivity, age, capital intensity, etc.) while also taking the intertemporal development of these variables into account. Fifth, particular skepticism is advised with respect to measures that rely on moments of the productivity distribution (or similar quantities), as these may not exist. An example is the use of variance as a dispersion indicator, which will certainly fail.

While our findings are encouraging, more research is needed to confirm our findings for other developing countries. Do firm-level data in India, Vietnam, Nigeria, and other rapidly developing countries have the same characteristics? Can catch-up processes like the one showcased here be repeated in still other developing economies in the future? What impact might the Covid-19 pandemic have, that changed the face of the world economy by hitting many developed economies, but also some individual developing countries (like Tanzania) very hard?

Finally, can our example teach us something about the development history of European and other developed countries, the USA, Japan, South Korea? These countries' catch-up phases were much longer ago in history, at a time, when economic microdata were not collected to the same extent as today. We may be unable to reconstruct the microdata, but it may still be possible to infer how the development process unfolded.

## REFERENCES

- Adamopoulos, T. and Restuccia, D. (2014): The size distribution of farms and international productivity differences. In: *American Economic Review*, 104(6): 1667–1697.
- Akaike, H. (1973): Maximum likelihood identification of Gaussian autoregressive moving average models. In: *Biometrika*, 60(2): 255–265.
- Angelini, P. and Generale, A. (2008): On the evolution of firm size distributions. In: *American Economic Review*, 98(1): 426–438.
- Asquith, W. (2018): lmomco – L-moments, censored L-moments, trimmed L-moments, L-comoments, and many distributions. R package version 2.3.1.
- Asquith, W.H. (2014): Parameter estimation for the 4-parameter asymmetric exponential power distribution by the method of l-moments using r. In: *Computational Statistics & Data Analysis*, 71: 955–970.
- Au, C.-C. and Henderson, J.V. (2006): How migration restrictions limit agglomeration and productivity in China. In: *Journal of Development Economics*, 80(2): 350–388.
- Axtell, R.L. (2001): Zipf distribution of U.S. firm sizes. In: *Science*, 293(5536): 1818–1820.
- Bartelsman, E., Haltiwanger, J., and Scarpetta, S. (2013): Cross-country differences in productivity: The role of allocation and selection. In: *American Economic Review*, 103(1): 305–334.
- Beaudry, C. and Schifffauerova, A. (2009): Who's right, Marshall or Jacobs? The localization versus urbanization debate. In: *Research Policy*, 38(2): 318–337.
- Berlingieri, G., Blanchenay, P., and Criscuolo, C. (2017): The great divergence(s). OECD Science, Technology and Industry Policy Papers, 39.
- Bloom, N., Mahajan, A., McKenzie, D., and Roberts, J. (2010): Why do firms in developing countries have low productivity? In: *American Economic Review*, 100(2): 619–623.
- Boeing, P., Mueller, E., and Sandner, P. (2016): China's R&D explosion – analyzing productivity effects across ownership types and over time. In: *Research Policy*, 45(1): 159–176.
- Borensztein, E. and Ostry, J.D. (1996): Accounting for China's growth performance. In: *The American Economic Review*, 86(2): 224–228.
- Bosworth, B. and Collins, S.M. (2008): Accounting for growth: Comparing China and India. In: *Journal of Economic Perspectives*, 22(1): 45–66.
- Bottazzi, G., Cefis, E., Dosi, G., and Secchi, A. (2007): Invariances and diversities in the patterns of industrial evolution: Some evidence from Italian manufacturing industries. In: *Small Business Economics*, 29(1–2): 137–159.
- Bottazzi, G. and Secchi, A. (2006): Explaining the distribution of firm growth rates. In: *The RAND Journal of Economics*, 37(2): 235–256.
- Bottazzi, G. and Secchi, A. (2011): A new class of asymmetric exponential power densities with applications to economics and finance. In: *Industrial and Corporate Change*, 20(4): 991–1030.



- Brandt, L., Hsieh, C.-T., and Zhu, X. (2008): Growth and structural transformation in China. In: Brandt, L. and Rawski, T.G. (eds.): *China's Great Economic Transformation*. Cambridge University Press, 683–728.
- Brandt, L., Van Biesebroeck, J., Wang, L., and Zhang, Y. (2017): WTO accession and performance of Chinese manufacturing firms. In: *American Economic Review*, 107(9): 2784–2820.
- Brandt, L., Van Biesebroeck, J., and Zhang, Y. (2012): Creative accounting or creative destruction? Firm-level productivity growth in Chinese manufacturing. In: *Journal of Development Economics*, 97(2): 339–351.
- Brandt, L., Van Biesebroeck, J., and Zhang, Y. (2014): Challenges of working with the Chinese firms' firm-level data. In: *China Economic Review*, 30: 339–352.
- Bürkner, P.-C. (2017): brms: An R package for Bayesian multilevel models using Stan. In: *Journal of Statistical Software*, 80(1): 1–28.
- Cabral, L.M.B. and Mata, J. (2003): On the evolution of the firm size distribution: Facts and theory. In: *American Economic Review*, 93(4): 1075–1090.
- Cao, K.H. and Birchenall, J.A. (2013): Agricultural productivity, structural change, and economic growth in post-reform China. In: *Journal of Development Economics*, 104: 165–180.
- Carpenter, B., Gelman, A., Hoffman, M.D., Lee, D., Goodrich, B., Betancourt, M., Brubaker, M., Guo, J., Li, P., and Riddell, A. (2017): Stan: A probabilistic programming language. In: *Journal of Statistical Software*, 76(1).
- Carrasco, M., Florens, J.-P., and Renault, E. (2007): Linear inverse problems in structural econometrics estimation based on spectral decomposition and regularization. In: *Handbook of Econometrics*, 6: 5633–5751.
- Chaffai, M., Kinda, T., and Plane, P. (2012): Textile manufacturing in eight developing countries: Does business environment matter for firm technical efficiency? In: *The Journal of Development Studies*, 48(10): 1470–1488.
- Chen, K.-H., Huang, Y.-J., and Yang, C.-H. (2009): Analysis of regional productivity growth in China: A generalized metafrontier MPI approach. In: *China Economic Review*, 20(4): 777–792.
- Chow, G.C. and Li, K.-W. (2002): China's economic growth: 1952–2010. In: *Economic Development and Cultural Change*, 51(1): 247–256.
- Chudnovsky, D., López, A., and Pupato, G. (2006): Innovation and productivity in developing countries: A study of Argentine manufacturing firms' behavior (1992–2001). In: *Research Policy*, 35(2): 266–288.
- Coad, A. and Tamvada, J.P. (2012): Firm growth and barriers to growth among small firms in India. In: *Small Business Economics*, 39(2): 383–400.
- Ding, S., Guariglia, A., and Harris, R. (2016): The determinants of productivity in Chinese large and medium-sized industrial firms, 1998–2007. In: *Journal of Productivity Analysis*, 45(2): 131–155.
- Emberchts, P., Kluppelberg, C., and Mikosch, T. (1997): Time series analysis for heavy-tailed processes. In: Emberchts, P., Kluppelberg, C., and Mikosch, T. (eds.): *Modelling Extremal Events*. Springer, Berlin, Heidelberg, 371–412.
- Fariñas, J.C. and Ruano, S. (2004): The dynamics of productivity: A decomposition approach using distribution functions. In: *Small Business Economics*, 22(3–4): 237–251.
- Frank, S.A. (2009): The common patterns of nature. In: *Journal of Evolutionary Biology*, 22(8): 1563–1585.
- Fujimoto, S., Ishikawa, A., Mizuno, T., and Watanabe, T. (2011): A new method for measuring tail exponents of firm size distributions. In: *Economics: The Open-Access, Open-Assessment E-Journal*, 5(1–20).
- Gabaix, X. (2011): The granular origins of aggregate fluctuations. In: *Econometrica*, 79(3): 733–772.
- Gaffeo, E., Gallegati, M., and Palestini, A. (2003): On the size distribution of firms: Additional evidence from the G7 countries. In: *Physica A: Statistical Mechanics and its Applications*, 324(1–2): 117–123.
- Gelman, A., Carlin, J.B., Stern, H.S., Dunson, D.B., Vehtari, A., and Rubin, D.B. (2014): *Bayesian data analysis*, Volume 2. CRC press Boca Raton, FL.
- Gelman, A., Simpson, D., and Betancourt, M. (2017): The prior can often only be understood in the context of the likelihood. In: *Entropy*, 19(10): 555.
- di Giovanni, J., Levchenko, A.A., and Rancière, R. (2011): Power laws in firm size and openness to trade: Measurement and implications. In: *Journal of International Economics*, 85(1): 42–52.
- Gong, B. (2018): Agricultural reforms and production in China: Changes in provincial production function and productivity in 1978–2015. In: *Journal of Development Economics*, 132: 18–31.



- Goodhart, C. and Xu, C. (1996): The rise of China as an economic power. In: *National Institute Economic Review*, 155(1): 56–80.
- Gordon, R.H. and Li, W. (1995): The change in productivity of Chinese state enterprises, 1983–1987. In: *Journal of Productivity Analysis*, 6(1): 5–26.
- Goyette, J. and Gallipoli, G. (2015): Distortions, efficiency and the size distribution of firms. In: *Journal of Macroeconomics*, 45: 202–221.
- Groves, T., Hong, Y., McMillan, J., and Naughton, B. (1994): Autonomy and incentives in Chinese state enterprises. In: *The Quarterly Journal of Economics*, 109(1): 183–209.
- Hansen, L.P. (1982): Large sample properties of generalized method of moments estimators. In: *Econometrica*, 50(4): 1029–1054.
- Heinrich, T. and Dai, S. (2016): Diversity of firm sizes, complexity, and industry structure in the Chinese economy. In: *Structural Change and Economic Dynamics*, 37: 90–106.
- Heinrich, T., Yang, J., and Dai, S. (2020): Levels of structural change: An analysis of China's development push 1998–2014. OMPTEC Working Paper No. 2020-4, Oxford Martin School, University of Oxford. arXiv preprint arXiv:2005.01882. <https://www.oxfordmartin.ox.ac.uk/publications/levels-of-structural-change-an-analysis-of-chinas-development-push-1998-2014/>.
- Hsieh, C.-T. and Klenow, P.J. (2009): Misallocation and manufacturing TFP in China and India. In: *The Quarterly Journal of Economics*, 124(4): 1403–1448.
- Hsieh, C.-T. and Song, Z.M. (2015): Grasp the large, let go of the small: The transformation of the state sector in China. In: *Brookings Papers on Economic Activity*, (1): 295–346.
- Hu, A.G. and Jefferson, G.H. (2004): Returns to research and development in Chinese industry: Evidence from state-owned enterprises in Beijing. In: *China Economic Review*, 15(1): 86–107.
- Hu, A.G., Jefferson, G.H., and Jinchang, Q. (2005): R&D and technology transfer: Firm-level evidence from Chinese industry. In: *Review of Economics and Statistics*, 87(4): 780–786.
- Ijiri, Y. and Simon, H.A. (1964): Business firm growth and size. In: *The American Economic Review*, 54(2): 77–89.
- Ijiri, Y. and Simon, H.A. (1977): *Skew distributions and the sizes of business firms*, Volume 24. North Holland, Amsterdam.
- Ito, J. (2006): Economic and institutional reform packages and their impact on productivity: A case study of Chinese township and village enterprises. In: *Journal of Comparative Economics*, 34(1): 167–190.
- Jefferson, G.H. and Rawski, T.G. (1994): Enterprise reform in Chinese industry. In: *Journal of Economic Perspectives*, 8(2): 47–70.
- Jefferson, G.H., Rawski, T.G., Li, W., and Yuxin, Z. (2000): Ownership, productivity change, and financial performance in Chinese industry. In: *Journal of Comparative Economics*, 28(4): 786–813.
- Jiang, Y. (2011): Understanding openness and productivity growth in China: An empirical study of the Chinese provinces. In: *China Economic Review*, 22(3): 290–298.
- Kharrat, T. and Boshnakov, G.N. (2016): *StableEstim: Estimate the Four Parameters of Stable Laws Using Different Methods*. R package version 2.1.
- Li, Y. and Rama, M. (2015): Firm Dynamics, Productivity Growth, and Job Creation in Developing Countries: The Role of Micro- and Small Enterprises. In: *The World Bank Research Observer*, 30(1): 3–38.
- Lin, J.Y. (1992): Rural reforms and agricultural growth in China. In: *The American Economic Review*, 82(1): 34–51.
- Ma, Q., Chen, Y., Tong, H., and Di, Z. (2008): Production, depreciation and the size distribution of firms. In: *Physica A: Statistical Mechanics and its Applications*, 387(13): 3209–3217.
- McCulloch, J.H. (1986): Simple consistent estimators of stable distribution parameters. In: *Communications in Statistics-Simulation and Computation*, 15(4): 1109–1136.
- McMillan, J., Whalley, J., and Zhu, L. (1989): The impact of China's economic reforms on agricultural productivity growth. In: *Journal of Political Economy*, 97(4): 781–807.
- Mitzenmacher, M. (2004): A brief history of generative models for power law and lognormal distributions. In: *Internet Mathematics*, 1(2): 226–251.
- Nguyen, D.X. (2019): Minimum wages and firm productivity: Evidence from Vietnamese manufacturing firms. In: *International Economic Journal*, 33(3): 560–572.

- Nolan, J.P.** (1998): Parameterizations and modes of stable distributions. In: *Statistics & Probability Letters*, 38(2): 187–195.
- Nolan, J.P.** (2019): Stable distributions – models for heavy-tailed data. Boston. Unfinished manuscript.
- Poschke, M.** (2018): The firm size distribution across countries and skill-biased change in entrepreneurial technology. In: *American Economic Journal: Macroeconomics*, 10(3): 1–41.
- Schwarzkopf, Y., Axtell, R., and Farmer, J.D.** (2010): An explanation of universality in growth fluctuations. Available at SSRN: <https://ssrn.com/abstract=1597504>.
- Song, Z., Storesletten, K., and Zilibotti, F.** (2011): Growing like China. In: *American Economic Review*, 101(1): 196–233.
- Soofi, E.S., Ebrahimi, N., and Habibullah, M.** (1995): Information distinguishability with application to analysis of failure data. In: *Journal of the American Statistical Association*, 90(430): 657–668.
- Stan Development Team** (2015): Rstan: the r interface to stan, version 2.8.0.
- Sun, C. and Zhang, T.** (2012): Export, productivity pattern, and firm size distribution. MPRA paper 36742, Munich.
- Van Biesebroeck, J.** (2005): Firm size matters: Growth and productivity growth in African manufacturing. In: *Economic Development and Cultural Change*, 53(3): 545–583.
- Volpe Martincus, C. and Carballo, J.** (2010): Beyond the average effects: The distributional impacts of export promotion programs in developing countries. In: *Journal of Development Economics*, 92(2): 201–214.
- Wu, Y.** (2011): Total factor productivity growth in China: A review. In: *Journal of Chinese Economic and Business Studies*, 9(2): 111–126.
- Yang, J.** (2018): A quantal response statistical equilibrium model of induced technical change in an interactive factor market: Firm-level evidence in the EU economies. In: *Entropy*, 20(3).
- Yang, J., Heinrich, T., Winkler, J., Lafond, F., Koutroumpis, P., and Farmer, J.D.** (2019): Measuring productivity dispersion: A parametric approach using the Lévy alpha-stable distribution. Working Paper No. 2019-14, Oxford Martin School, University of Oxford, arXiv preprint arXiv:1910.05219. <https://www.oxfordmartin.ox.ac.uk/publications/measuring-productivity-dispersion-a-parametric-approach-using-the-l%C3%A9vy-alpha-stable-distribution/>.
- Yu, X., Dosi, G., Grazzi, M., and Lei, J.** (2017): Inside the virtuous circle between productivity, profitability, investment and corporate growth: An anatomy of Chinese industrialization. In: *Research Policy*, 46(5): 1020–1038.
- Yu, X., Dosi, G., Lei, J., and Nuvolari, A.** (2015): Institutional change and productivity growth in China's manufacturing: the microeconomics of knowledge accumulation and 'creative restructuring'. In: *Industrial and Corporate Change*. forthcoming.
- Zhang, J., Chen, Q., and Wang, Y.** (2009): Zipf distribution in top Chinese firms and an economic explanation. In: *Physica A: Statistical Mechanics and its Applications*, 388(10): 2020–2024.
- Zhang, J. and Liu, X.** (2013): The evolving pattern of the wage-labor productivity nexus in China: Evidence from manufacturing firm-level data. In: *Economic Systems*, 37(3): 354–368.
- Zhu, S., He, C., and Xia, X.** (2019): Geography of productivity: evidence from China's manufacturing industries. In: *The Annals of Regional Science*, 62(1): 141–168.

## APPENDIX A: TECHNICAL EXPLANATION OF AGGREGATION, MAXIMUM ENTROPY, AND DISTRIBUTIONAL MODELS

### A.1 AGGREGATION AND MAXIMUM ENTROPY DISTRIBUTIONS

The form of aggregation of random variable distributions that is typically considered is convolution, i.e. the summation of random processes.<sup>17</sup> For a defense why convolution is a suitable form of aggregation, see Frank (2009).

The sum of  $n$  independent and identically distributed (i.i.d.) random variables  $X_1 + X_2 + \dots + X_n$ . The distribution of (all)  $X$  is an attractor distribution, if the aggregation converges to a distribution of the same form  $X$ . Formally (Nolan 1998, 2019; Frank 2009),

$$X_1 + X_2 + \dots + X_n \sim c_n X + d_n \quad (6)$$

where  $c_n$  and  $d_n$  are scalars dependent on the number of convoluted distributions  $n$ . Such a distribution is called a *stable distribution*. The general form of stable distributions, *Lévy alpha-stable distributions*, are a generalization of Gaussian, Cauchy, and other specific distributions. We will consequently work with Lévy alpha-stable distributions as our distributional model for labor productivities and other firm-level variables in this paper.

Before we discuss the form, properties, and parametrizations of the Lévy alpha-stable distribution, we will give some background on aggregation and convergence to the entropy maximizing distribution under aggregation. Intuitively, aggregation leads to a loss of information; it washes out less strong signals and only a dominant pattern remains. As the convoluted distributions are independent, this pattern is the one that carries the least information (highest entro-

py), the one that is the most likely one without additional information, the one that constitutes the maximum entropy distribution under constraints that depend on the component distributions  $X$ .

For instance, constraints requiring a constant mean  $\int_{-\infty}^{\infty} p(x)x dx = \mu$  and variance  $\int_{-\infty}^{\infty} p(x)(x - \mu)^2 dx = \sigma^2$  lead to a Gaussian as the entropy maximizing distribution. A constraint imposing a constant first moment (e.g., the mean) without constraints on the variance yields an exponential (one sided<sup>18</sup>, constraint on mean,  $\int_0^{\infty} p(x)x dx = \mu$  or Laplace distribution (two-sided with discontinuity, constraint on absolute deviation,  $\int_{-\infty}^{\infty} p(x)(x - \mu) dx = a$ ). We will return to the constraint corresponding to the more general Lévy alpha-stable distribution in Section A.4.

It should be noted that not every maximum entropy distribution is a stable distribution, since the convolution of distributions  $X$  may have an entropy maximizing distribution with a different functional form, which, in turn, may again aggregate to a distribution with another, different functional form.

### A.2 THE CLASSICAL CENTRAL LIMIT THEOREM

The most well-known stable distribution is the Gaussian. This is known as the classical central limit theorem: Any sum over  $n$  i.i.d. random variables with fixed mean and variance will converge to a Gaussian. The Gaussian is the solution to the entropy maximizing problem under this constraint<sup>19</sup> (fixed variance,  $(x - \mu)^2 = \sigma^2$ ):

<sup>17</sup> Summation of random processes is different from summation of scalars, since the resulting densities and probabilities have to be obtained through convolution.

<sup>18</sup> Note that support for the exponential distribution is  $(0, \infty)$ , while it is  $(-\infty, \infty)$  for the Laplacian.

$$\Lambda = -\int_{-\infty}^{\infty} p(x) \log\left(\frac{p(x)}{m(x)}\right) dx - \lambda_1 \left(\int_{-\infty}^{\infty} p(x) dx - 1\right) - \lambda_2 (p(x)(x - \mu)^2 - \sigma^2) \quad (7)$$

where the first term  $-\int_{-\infty}^{\infty} p(x) \log\left(\frac{p(x)}{m(x)}\right) dx$

is the entropy ( $m(x)$  being the invariance measure), the second term the normalization constraint (probability must sum to 1) and the last term the maximum entropy constraint.<sup>20</sup> We obtain first-order conditions

$$\frac{\partial \Lambda}{\partial p(x)} = 0 = -\log\left(\frac{p(x)}{m(x)}\right) - 1 - \lambda_1 - \lambda_2 (x - \mu)^2$$

$$\frac{\partial \Lambda}{\partial \lambda_1} = 0 = \int_{-\infty}^{\infty} p(x) dx - 1$$

$$\frac{\partial \Lambda}{\partial \lambda_2} = 0 = \int_{-\infty}^{\infty} p(x)(x - \mu)^2 dx - \sigma^2$$

the first one of which directly yields the functional form of the density function  $p(x)$  as

$$p(x) = m e^{-\lambda_1} e^{-\lambda_2 (x - \mu)^2} = k e^{-\lambda_2 (x - \mu)^2} \quad (8)$$

where  $k = m e^{-\lambda_1}$  and  $\lambda_2$  are constants. The values of these constants can be determined by substituting the function of  $p(x)$  into the other two first-order conditions and solving.<sup>21</sup>

We then obtain  $k = \frac{1}{\sigma \sqrt{2\pi}}$  and  $\lambda_2 = \frac{1}{2\sigma^2}$

and finally the Gaussian

$$p(x) = \sqrt{\frac{1}{2\pi\sigma^2}} e^{-\frac{1}{2\sigma^2}(x - \mu)^2}. \quad (9)$$

19 It has been shown that the Gaussian can be obtained with different component variables that do not have to be i.i.d. (Lindeberg condition). However, the condition of fixed variance remains as does the fact that the Gaussian is the stable distribution to which aggregates of i.i.d. random variable distributions with fixed variance converge. Cf. Frank (2009).

20 Fixed variance is not included as a separate constraint as it is implied by the constraints in equation 7.

21 Note that the function contains an exponent with a quadratic function of the variable of integration  $x$ , so the solution can be expressed in terms of the Gaussian error function and  $\pi$ . The normalization to 1 in the second first-order condition forces us to use this form.

### A.3 FOURIER DOMAIN REPRESENTATIONS OF RANDOM VARIABLE DISTRIBUTIONS

Distributions can also be represented as characteristic functions  $\varphi(t)$  in the Fourier domain. While density  $p(x)$  in the direct domain  $x$  gives probabilities of realizations of values  $x$ ,  $\varphi(s)$  gives the intensity of fluctuations of frequencies  $s$  in frequency space. If both functions,  $p(x)$  and  $\varphi(s)$ , exist in functional form, there is a bijective mapping (a unique, invertible, one-to-one mapping) between the two, the Fourier transform

$$\varphi(s) = E[e^{(isx)}] = \int_{-\infty}^{\infty} e^{(isx)} p(x) dx \quad (10)$$

where  $E$  represents the expectation. The inverse operation (inverse Fourier transform) is

$$p(x) = \frac{1}{2\pi} \int_{-\infty}^{\infty} e^{(-isx)} \varphi(s) ds. \quad (11)$$

However, in some cases, as for Lévy alpha-stable distributions, there is no functional representation of the density in the direct domain  $p(x)$  and only the characteristic function  $\varphi(s)$  in the Fourier domain exists.

Since the two representations are absolutely equivalent, the maximum entropy distribution can equivalently be obtained in Fourier domain.

Let  $\varphi'(s)$  be the normalized characteristic function.<sup>22</sup> We apply entropy  $S$  and entropy constraints  $f_i(s)$  just like in the direct domain and maximize<sup>23</sup>

$$\begin{aligned} \Lambda &= S - \sum_i \lambda_i \int_{-\infty}^{\infty} f_i(s) \varphi'(s) ds \\ &= -\int_{-\infty}^{\infty} \varphi'(s) \log\left(\frac{\varphi'(s)}{M(s)}\right) ds - \sum_i \lambda_i \int_{-\infty}^{\infty} f_i(s) \varphi'(s) ds \quad (12) \end{aligned}$$

22 That is,  $\varphi(s)$  is normalized as  $\varphi'(s) = \frac{\varphi(s)}{\int_{-\infty}^{\infty} \varphi(s) ds}$

so that the area sums to one,  $\int_{-\infty}^{\infty} \varphi'(s) ds = 1$  and  $\varphi'(s)$  thus constitutes a probability distribution.

23 The normalization constraint is unnecessary since the function is already normalized with the transformation to  $\varphi'(s)$ .

with first-order conditions

$$\frac{\partial \Lambda}{\partial \varphi(s)} = 0 = -\log\left(\frac{\varphi'(s)}{M(s)}\right) - 1 - \sum_i \lambda_i f_i(s)$$

$$\frac{\partial \Lambda}{\partial \lambda_i} = 0 = \int_{-\infty}^{\infty} f_i(s) \varphi'(s) ds.$$

From the first condition, we obtain the general functional form of the maximum entropy distribution in the Fourier domain

$$\varphi'(s) = M(s) e^{-1} e^{-\sum_i \lambda_i f_i(s)} = k e^{-\sum_i \lambda_i f_i(s)}. \quad (13)$$

where  $k$  and  $\lambda_1$  are factors that must be fixed by solving the other first-order conditions.

Returning to the example of the Gaussian above, we obtain the characteristic function of the same distribution (that we would also get by taking the Fourier transform of the density function in the direct domain) if we set the same constraint. Recall that for the Gaussian, this constraint is to fix the variance. In the Fourier domain, this is  $s^2 = \chi$ . Hence, we substitute  $f = s^2 - \chi$  in equation 12 and after  $\chi$  drops out in the derivative we obtain

$$\varphi'(s) = k e^{-\lambda s^2}, \quad (14)$$

or, more generally,

$$\varphi'(s) = k e^{-\lambda(s^\alpha - \chi)} \quad \text{with } \alpha = 2. \quad (15)$$

#### A.4 LÉVY ALPHA-STABLE DISTRIBUTIONS

Instead of fixing the second moment, the variance,  $\alpha = 2$ , as  $\chi = s^\alpha = s^2$ , the constraint can fix lower-order moments as the highest finite moments of the distribution. These moments do not need to be integer moments (fractional lower-order moments). They will, in fact, not be integers, except in case  $\alpha = 1$  (the Cauchy distribution). The computation of the maximum entropy distribution is equivalent, as long as we impose that the distribution is symmetric,  $\beta = 0$ , and centered around zero,  $\delta = 0$ . Analogous to equation 14, the distribution is now

$$\varphi'(s) = k e^{-\lambda s^\alpha}. \quad (16)$$

For  $\alpha < 2$ ,  $\varphi'(s)$  does not have a functional representation in the direct domain any longer (except again for the Cauchy distribution,  $\alpha = 1$ ). The tails of the distribution do, however, asymptotically approach the power law

$$p_{\text{Tail}}(x) = C |x|^{-(\alpha+1)}. \quad (17)$$

and the distribution consequently has fat tails instead of quickly dropping to zero as in the Gaussian case with  $\alpha = 2$ .

For the general case, without imposing symmetry and central location at zero, the characteristic equation becomes more complex and has four parameters, interpreted as the tail index ( $\alpha$ ), the skew ( $\beta$ ), the scale ( $\gamma$ ), and the location ( $\delta$ ). The functional form is<sup>24</sup>

$$\varphi(s) = E[e^{(isx)}] = \begin{cases} e^{(-\gamma^\alpha |s|^\alpha [1 + i\beta \tan(\frac{\pi\alpha}{2}) \text{sgn}(s) ((\gamma|s|)^{1-\alpha} - 1)] + i\delta s} & \alpha \neq 1 \\ e^{(-\gamma|s| [1 + i\beta \frac{2}{\pi} \text{sgn}(s) \log(\gamma|s|)] + i\delta s)} & \alpha = 1 \end{cases} \quad (18)$$

More technical details on Lévy alpha-stable distributions can be found in Nolan (1998, 2019); a comprehensive discussion of maximum entropy, aggregation of distributions, and characteristic equations in the Fourier domain is offered in Frank (2009).

#### A.5 ASYMMETRIC EXPONENTIAL POWER (AEP) DISTRIBUTIONS

For the distribution of the growth rates at the firm level, the model advanced by Bottazzi and Secchi (2006); Bottazzi et al. (2007); Bottazzi and Secchi (2011) is considered a strong candidate, the asymmetric exponential power (AEP) or Subbotin distribution. This model is of particular interest here as an alternative model for comparison, since growth rates must be expected to be related to productivities in general, and to the labor productivity in particular. Firms with high labor productivity will generally have good prospects for future growth, while firms with low labor productivity will likely write losses and be

24 Observe that for  $\beta = 0$ ,  $\delta = 0$ , the function reduces to  $\varphi(s) = E[e^{(isx)}] = e^{(-\gamma^\alpha |s|^\alpha)}$ , the solution obtained above (with  $k = 1$ ,  $\lambda = \gamma^\alpha$ ).

unable to grow or even sustain their present operations unless supported by an inflow of additional resources.

The AEP is a generalization of the symmetric Laplace distribution, the two-sided exponential distribution. Bottazzi and Secchi (2006) take a very similar approach to the one taken in this paper: They characterize the distribution of growth as constant in mean absolute differences, use this as entropy constraint  $|x - \xi| = \sigma$  and compute the maximum entropy distribution.

$$\Lambda = - \int_{-\infty}^{\infty} p(x) \log\left(\frac{p(x)}{m(x)}\right) dx - \lambda_1 \left( \int_{-\infty}^{\infty} p(x) dx - 1 \right) - \lambda_2 (p(x)|x - \xi| - \sigma) \quad (19)$$

The first-order condition with respect to  $p(x)$

$$\frac{\partial \Lambda}{\partial p(x)} = 0 = -\log\left(\frac{p(x)}{m(x)}\right) - 1 - \lambda_1 - \lambda_2 |x - \xi|$$

yields the functional form

$$p(x) = m e^{-\lambda_1} e^{-\lambda_2 |x - \xi|} = k e^{-\lambda_2 |x - \mu|}. \quad (20)$$

Solving the remaining first-order conditions (not given here) fixes parameters  $k$  and  $\lambda_2$  and results in the canonical form of the standard Laplace distribution,

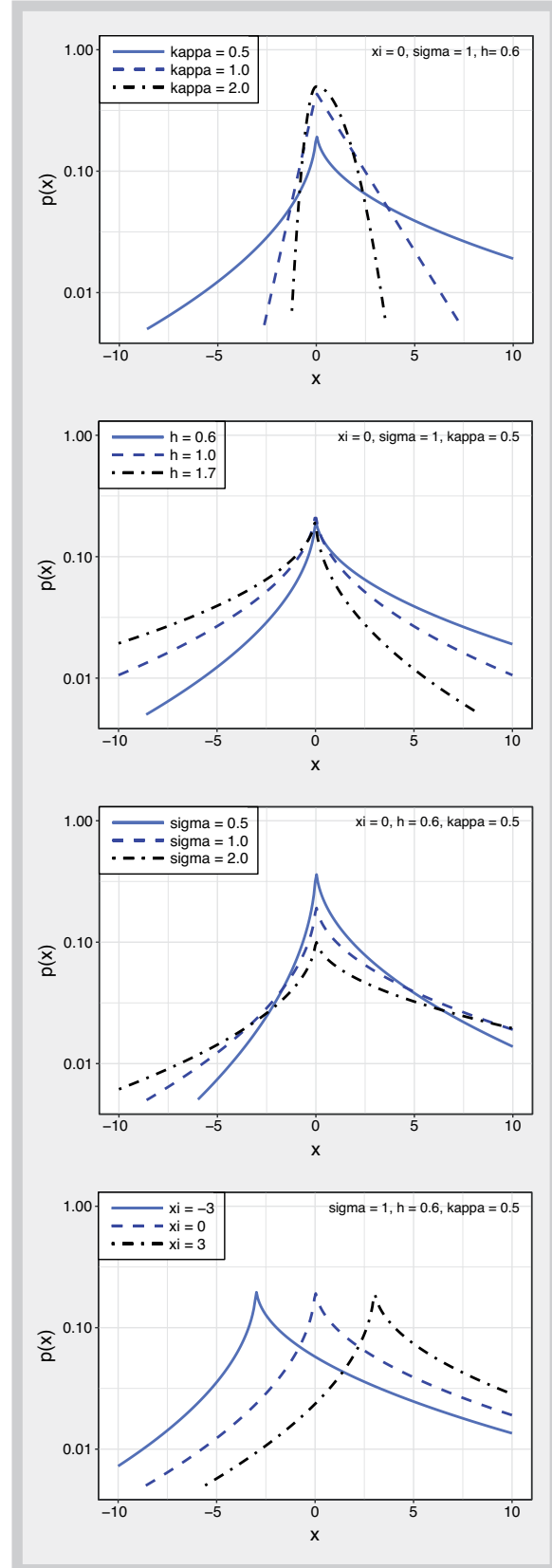
$$p(x) = \frac{1}{2\sigma} e^{-\frac{|x - \xi|}{\sigma}} \quad (21)$$

Relaxing the assumptions on symmetry<sup>25</sup> and tail behavior yields the more general functional form of the AEP,<sup>26</sup>

$$p(x) = \frac{\kappa h}{\sigma(1 + \kappa^2) \Gamma(1/h)} e^{-[\kappa^{\text{sgn}(x - \xi)} (|x - \xi|/\sigma)]^h} \quad (22)$$

where  $\Gamma$  is the Gamma function. The given parametrization is for the 4-parameter AEP that we will use as an alternative model and point of comparison in Section 5. The four parameters again stand for the tail behavior ( $\kappa$ ), the skew ( $h$ ), the scale ( $\sigma$ ), and the location ( $\xi$ ) and are visualized in the four panels of Figure 15 in direct

**Figure 15: Density of the Asymmetric Exponential Power (AEP) distribution for different parameter settings. From top: Variation of tail parameter  $\kappa$  – Variation of skew parameter  $h$  – Variation of scale parameter  $\sigma$  – Variation of location parameter  $\xi$**



<sup>25</sup> Bottazzi and Secchi (2006) find an empirical symmetry very close to  $h = 1$ , the symmetric Laplace case.

<sup>26</sup> Note that this reduces to a Laplace distribution for  $\kappa = 1$ ,  $h = 1$ .



comparison to the Lévy alpha-stable distribution in Figure 2. Again, the diagrams are in semi-log scale with the vertical axis being logarithmic. As expected, all AEP variants approach a linear shape towards both tails in the semi-log form, indicating that they belong to the family of exponential distribution forms (which are linear in semi-log). In contrast, the Lévy alpha-stable functions above bend in outward direction and clearly have tails that are heavier than exponential.

As an alternative to the 4-parameter AEP, there is a 5-parameter variant, which assigns two different tail parameters for positive and negative tails. We choose to work with the 4-parameter version to allow a more direct comparison with the 4-parameter Lévy alpha-stable function under consideration here.

## A.6 TAIL BEHAVIOR

While the AEP results as the maximum entropy distribution for specific conditions, it is not a stable distribution: Summing AEPs will yield a Gaussian aggregate. While the difference may seem academic when considering the very simi-

lar body part of the distributions in Figures 2 and 15, the difference becomes important with the tail behavior and the finiteness of moments: In the case of Lévy alpha-stable distributions with  $\alpha < 2$ , the variance is infinite. That is, each sample will have a specific variance, but the sample variance will diverge in sample size  $N$  (Nolan 2019; Embrechts et al. 1997; Yang et al. 2019) with

$$\text{Var}(x) \sim N^{\frac{2-\alpha}{2\alpha}}. \quad (23)$$

The mean of the distribution may or may not (if  $\alpha < 1$ ) be finite. But as the expected deviation from the mean is infinite, the information carried by each observation about the true mean is practically zero. The mean, albeit existent, may be difficult or impossible to infer from a sample.

This is not to say that nothing can be known for sure about Lévy alpha-stable distributed samples. On the contrary, both the quantiles of the distribution and its fitted parameters will converge and convey everything there is to know about the distribution. It is merely a matter of choosing the correct interpretation of the data and using adequate measures to characterize it.

## APPENDIX B: PRIOR SPECIFICATION OF THE REGRESSION MODEL

The likelihood function and the priors of a Bayesian multi-level model in Section 5.4 are written as follows:

Parameter <sub>i</sub>	~	Normal ( $\mu, \sigma$ )
$\mu_i$	~	$\alpha + \alpha_{j i } + \alpha_{t i } + \beta_1 \text{GDP\_Growth} + \beta_2 \text{Firm\_Age} + \beta_3 \text{Emp} + \beta_4 \text{Cap\_Intensity}$
$\alpha$	~	Student-t (3, 1, 10)
$\beta_1, \beta_2, \beta_3, \beta_4$	~	Normal (0, 1)
$\sigma$	~	Student-t* (3, 0, 10)
$\alpha_j$	~	Normal ( $\mu_j, \sigma_j$ )
$\alpha_t$	~	Normal ( $\mu_t, \sigma_t$ )
$\mu_j, \mu_t$	~	Normal (0, 1)
$\sigma_j, \sigma_t$	~	HalfCauchy (0, 1)

From line 3, we define the prior distribution for each parameter of the model. The overall intercept (the grand mean),  $\alpha$  is given a weakly informative prior in the form of the Student's-t distribution centered on 1 with 3 degrees of freedom and 10 standard deviation. The population effect coefficients,  $\beta_1, \beta_2, \beta_3, \beta_4$ , are given a Gaussian prior centered on 0 with 1 standard deviation. The standard deviation of the Gaussian likelihood function,  $\sigma$ , is given a weak prior in the form of the half Student's-t distribution centered on 0 with 3 degrees of freedom and 10 standard deviation.

The varying intercepts,  $\alpha_{j|i|}$  and  $\alpha_{t|i|}$  are given a Gaussian prior with a hierarchical structure. The

hyperpriors on the mean,  $\mu_j$  and  $\mu_t$  are given a Gaussian prior centered on 0 with 1 standard deviation. The hyperpriors on the standard deviation,  $\sigma_j$  and  $\sigma_t$  are given a Half-Cauchy prior centered on 0 with scale parameter 1. Note that

$\sigma_{\alpha_t}$  and  $\sigma_{\alpha_j}$  represent the estimated between-year variance and the between-province variance, respectively. For a detailed discussion on the choice of prior in Bayesian statistics, see Gelman et al. (2017).

## APPENDIX C: HISTORICAL NOTE ON PRODUCTIVITY GROWTH IN THE PR CHINA

What caused the period of rapid economic growth in the PR China? Since the economic reform was initiated in 1978, the PR China has undergone significant structural change (Brandt et al. 2008; Wu 2011; Bosworth and Collins 2008; Chow and Li 2002) – going from an agricultural to an industrial economy with growing importance of the service sector – and achieving many important milestones. The early period was dominated by productivity improvements in agriculture (notably with the transformation from the *production-team system* to *household responsibility system (HRS)* (Lin 1992; McMillan et al. 1989). The rapid productivity growth in the agricultural sector – 6.5 % annually on average while labor input in the primary sector declines 4.5–5.5 % annually (Cao and Birchenall 2013; Borensztein and Ostry 1996) – came to an end around 1984, because the slowing new labor participation and technology adoption after 1984, and the institutional change exhausted its catch-up potential (Lin 1992).<sup>27</sup> In turn, the industrial and service sectors absorbed the labor freed in the primary sector, while also being boosted by an increasing work participation rate (Lin 1992) and improved education and human capital accumulation (Au and Henderson 2006; Gordon and Li 1995). The 1980s saw a fundamental reform of the economic organi-

zation (enterprise reform) followed by increasing international investment in the PR China in the 1990s, which probably boosted economic growth through technology transfer and spillovers (Hu et al. 2005). In 2001, the PR China was admitted to the WTO, allowing better integration in the global economy with again a significant effect on economic growth (Brandt et al. 2017). By then, manufacturing was the workhorse of the Chinese economy, with productivity growth in manufacturing between 1998 and 2007 being estimated as 7.7 % annually (Brandt et al. 2012), of which two-thirds came from the productivity differences between entering and existing firms.

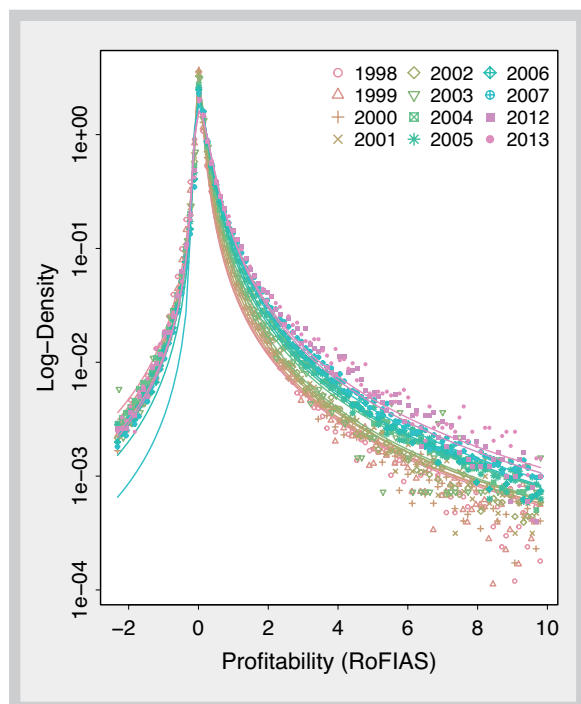
Firms in the PR China are typically categorized into seven types (Yu et al. 2015): (1) Traditional state-owned enterprises (SOE), (2) collective-owned enterprises, in particular *Township and village enterprises (TVE)*, (3) shareholding firms, (4) private firms, (5) Hong Kong, Macao, and Taiwan-owned companies, (6) foreign-owned companies, and (7) other domestic firms. Up to the enterprise reform, the economy was dominated by the first two categories (SOEs and TVEs) with the first phase of growth and rising productivity in the 1980s being carried to a significant part by TVEs, before private ownership became legal with the enterprise reform (Goodhart and Xu 1996; Ito 2006; Jefferson and Rawski 1994), which introduced categories (3) and (4). Categories (5) and (6) would only become important with the increasing international integration of the economy of the PR China in the 1990s and 2000s.

27 Gong (2018) applies a varying coefficient production function to capture the structural change in different agricultural segments. He finds that the agricultural TFP growth rate fluctuated cyclically in the past forty years, which is typical for policy-driven sectors and demands more intensive technological investment.

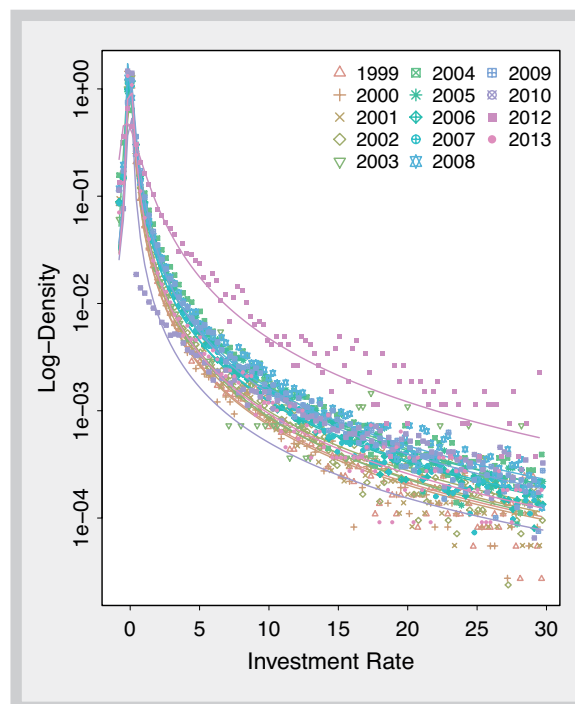


## APPENDIX D: ADDITIONAL RESULTS

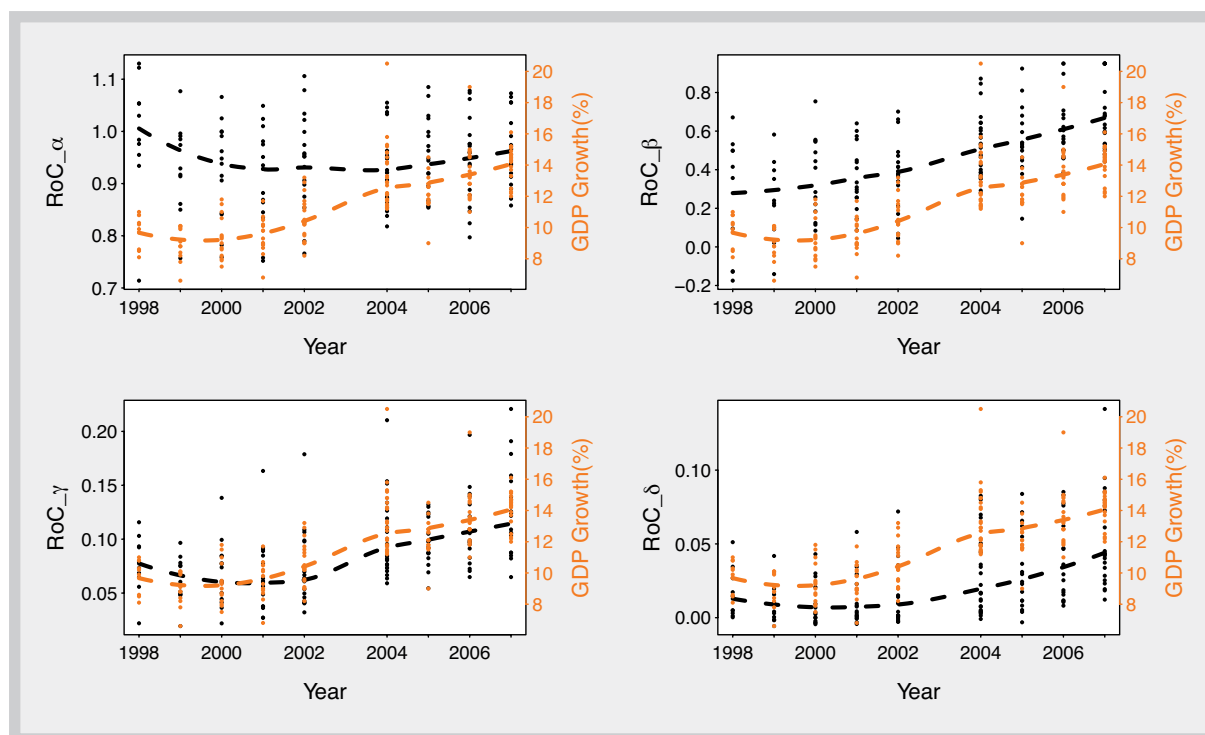
**Figure 16: Density of the profitability (return on capital, ROC) distribution (full sample) by year in semi-log (vertical axis logarithmic) – Solid lines indicate Lévy alpha-stable distribution fits as reported in Table 2**



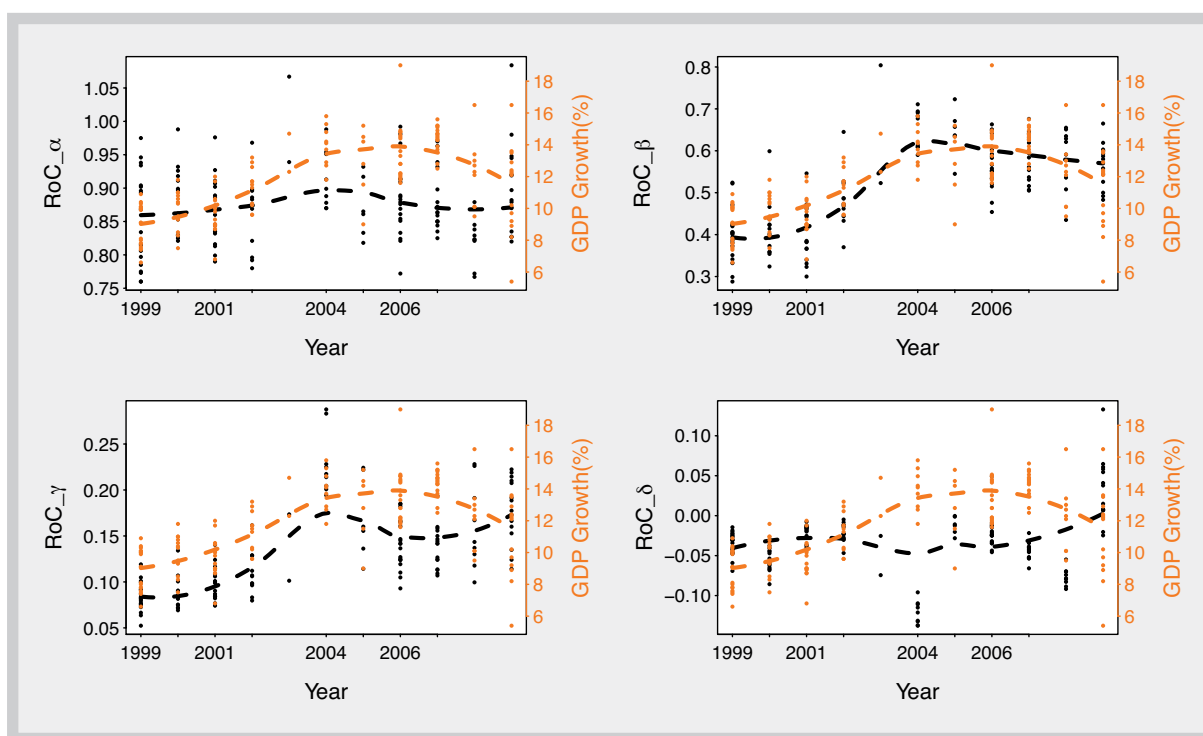
**Figure 17: Density of the investment rate (IR) distribution (full sample) by year in semi-log (vertical axis logarithmic) – Solid lines indicate Lévy alpha-stable distribution fits as reported in Table 2**



**Figure 18: Return on capital by region and year (black) in comparison to GDP growth (orange)**



**Figure 19: Investment rate by region and year (black) in comparison to GDP growth (orange)**



**Figure 20: Density of ROC and IR for regions Guangdong and Zhejiang in 2007**

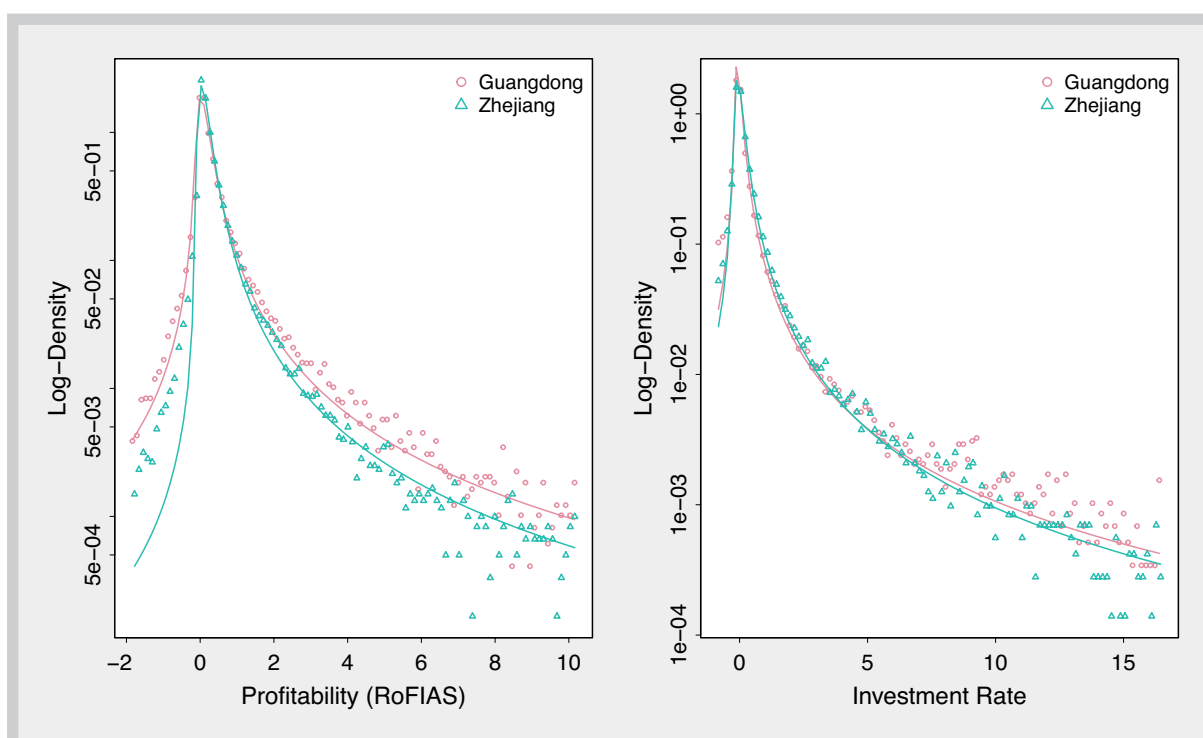
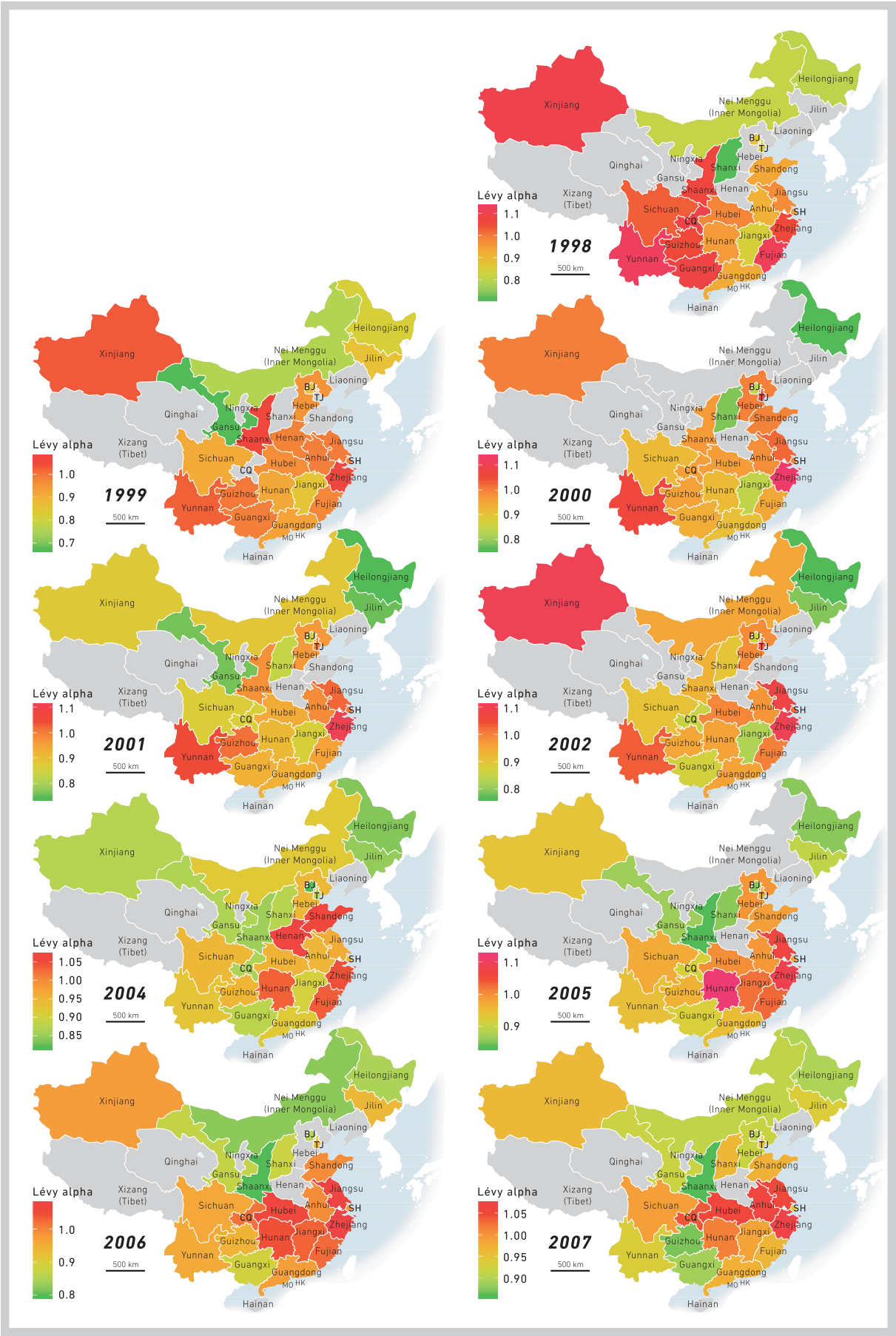
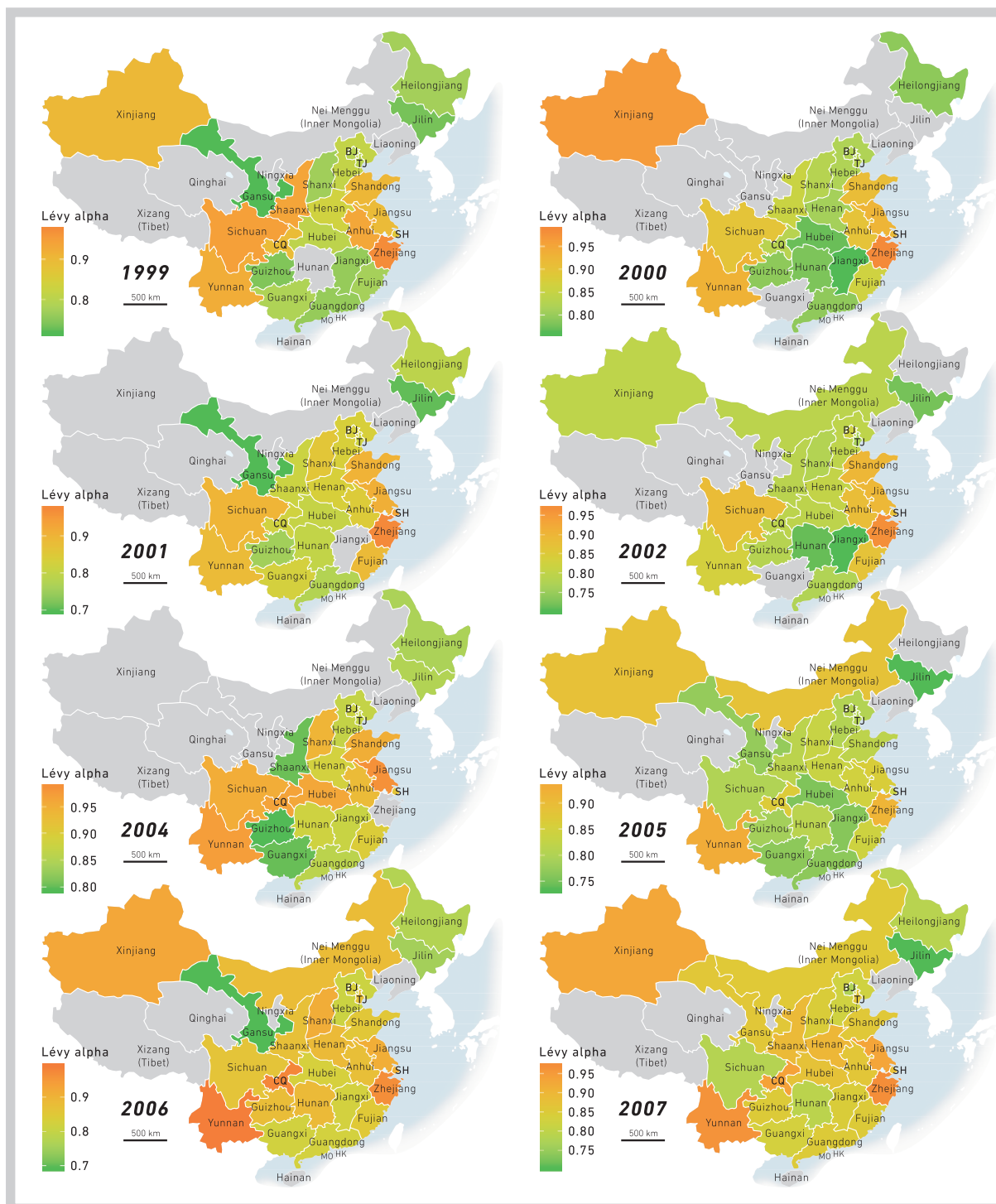


Figure 21: Lévy  $\alpha$  parameter fits for ROC (profitability) by region



**Figure 22: Lévy  $\alpha$  parameter fits for IR (investment return) by region**



**Table 5: Detailed regression results**

Variable	Coefficient	$\alpha$				$\beta$			
		Est.	SE	CI 5 %	CI 95 %	Est.	SE	CI 5 %	CI 95 %
LP Change	Intercept	0.984	0.046	0.894	1.075	-0.056	0.102	-0.26	0.151
	GDP Growth	0.008	0.003	0.003	0.013	0.026	0.007	0.013	0.038
	Firm Age	-0.001	0.001	-0.002	0	-0.003	0.001	-0.006	-0.001
	Employment	0	0	0	0	0	0	0	0
	Cap Intensity	0	0	0	0	0	0	0	0
	sd (Class)	0.043	0.008	0.029	0.06	0.065	0.017	0.037	0.1
	sd (Year)	0.009	0.007	0	0.027	0.08	0.031	0.039	0.156
	WAIC	-586.565	30.229			-314.187	19.377		
LP	Intercept	1.082	0.051	0.981	1.178	0.917	0.017	0.883	0.948
	GDP Growth	0.001	0.003	-0.005	0.007	0.002	0.001	-0.001	0.004
	Firm Age	0	0	0	0	0	0	0	0
	Employment	0	0	0	0	0	0	0	0
	Cap Intensity	0	0	0	0	0	0	0	0
	sd (Class)	0.051	0.009	0.036	0.07	0.008	0.004	0.001	0.016
	sd (Year)	0.029	0.011	0.014	0.057	0.003	0.003	0	0.01
	WAIC	-577.335	20.28			-763.403	92.099		
ROC	Intercept	1.124	0.056	1.009	1.227	0.167	0.134	-0.103	0.431
	GDP Growth	-0.003	0.003	-0.01	0.003	0.033	0.008	0.017	0.049
	Firm Age	-0.001	0	-0.001	0	0	0	-0.001	0.001
	Employment	0	0	0	0	0	0	-0.001	0
	Cap Intensity	0	0	0	0	0	0	0	0
	sd (Class)	0.046	0.009	0.031	0.066	0.164	0.028	0.118	0.232
	sd (Year)	0.024	0.011	0.009	0.053	0.127	0.046	0.063	0.24
	WAIC	-439.61	18.542			-275.578	20.391		
Inv Rate	Intercept	0.795	0.049	0.703	0.89	0.42	0.096	0.234	0.604
	GDP Growth	0	0.003	-0.005	0.006	0.005	0.004	-0.004	0.013
	Firm Age	-0.001	0.001	-0.003	0	0.001	0.002	-0.002	0.004
	Employment	0	0	0	0	0	0	0	0
	Cap Intensity	0	0	0	0	0	0	0	0
	sd (Class)	0.058	0.011	0.04	0.083	0.06	0.016	0.034	0.094
	sd (Year)	0.032	0.01	0.018	0.057	0.193	0.052	0.117	0.322
	WAIC	-486.833	20.609			-326.147	37.232		

	$\gamma$				$\delta$			
	Est.	SE	CI 5 %	CI 95 %	Est.	SE	CI 5 %	CI 95 %
	0.055	0.047	-0.033	0.143	-0.011	0.024	-0.056	0.037
	0.009	0.003	0.004	0.014	0.005	0.001	0.003	0.008
	0	0	-0.001	0.001	0	0	-0.001	0.001
	0	0	0	0	0	0	0	0
	0	0	0	0.001	0	0	0	0
	0.038	0.007	0.027	0.054	0.019	0.004	0.012	0.028
	0.041	0.014	0.021	0.076	0.017	0.006	0.009	0.033
	-681.084	30.577			-872.515	54.299		
	0.23	0.063	0.112	0.355	0.257	0.068	0.123	0.396
	0.005	0.003	-0.001	0.012	0.009	0.004	0.002	0.016
	0	0	0	0	0	0	0	0
	0	0	-0.001	0	0	0	-0.001	0
	0	0	0	0.001	0	0	0	0
	0.08	0.014	0.057	0.112	0.086	0.014	0.062	0.117
	0.057	0.02	0.032	0.102	0.083	0.027	0.048	0.156
	-626.065	39.083			-581.903	39.123		
	0.071	0.021	0.031	0.114	0.034	0.018	-0.002	0.068
	0.003	0.001	0.001	0.006	0.002	0.001	0	0.004
	0	0	0	0	0	0	0	0
	0	0	0	0	0	0	0	0
	0	0	0	0	0	0	0	0
	0.029	0.005	0.022	0.04	0.017	0.003	0.012	0.024
	0.02	0.007	0.01	0.038	0.016	0.006	0.008	0.031
	-861.659	23.479			-869.361	32.042		
	0.122	0.029	0.066	0.179	-0.069	0.019	-0.107	-0.031
	0.003	0.002	0	0.006	0	0.001	-0.002	0.002
	-0.001	0	-0.002	0	0	0	-0.001	0
	0	0	0	0	0	0	0	0
	0	0	0	0	0	0	0	0
	0.02	0.004	0.013	0.029	0.011	0.002	0.007	0.016
	0.046	0.013	0.029	0.078	0.04	0.01	0.026	0.065
	-617.939	20.353			-754.725	31.133		





## WORKING PAPERS ON EAST ASIAN STUDIES BACK ISSUES

---

**No. 127 / 2021** Torsten Heinrich, Jangho Yang, Shuanping Dai: Growth, Development, and Structural Change at the Firm-level: The Example of the PR China

**No. 126 / 2020** Werner Pascha: Silk Subway: Japan's Strategy for an Age of International Connectivity Activism

**No. 125 / 2019** İbrahim Öztürk: The Belt and Road Initiative as a Hybrid International Public Good

**No. 124 / 2019** Thomas Heberer: Decoding the Chinese Puzzle: Rapid Economic Growth and Social Development Despite a High Level of Corruption

**No. 123 / 2018** Martin Hemmert, Jae-Jin Kim: Informal Social Ties and Relationship Orientation in Korean Business Exchanges: A Content Analysis of Ten Inter-Organizational Research Collaborations

**No. 122 / 2018** Andreas Grimm, Yuan Li: The Belt and Road Initiative: A Hybrid Model of Regionalism

**No. 121 / 2018** Charmaine Misalucha-Willoughby: How to Change the Game of Security Cooperation: The Case of the ASEAN-China Strategic Partnership

**No. 120 / 2017** Armin Müller: Cooperation of Vocational Colleges and Enterprises in China. Institutional Foundations of Vocational Education and Skill Formation in Nursing and Mechanical Engineering – Preliminary Findings

**No. 119 / 2017** Thomas Heberer, Anna Shpakovskaya: The Digital Turn in Political Representation in China

**No. 118 / 2017** Dongya Huang, Minglu Chen, Thomas Heberer: From 'State Control' to 'Business Lobbying': The Institutional Origin of Private Entrepreneurs' Policy Influence in China

**No. 117 / 2017** Mario Esteban, Yuan Li: Demystifying the Belt and Road Initiative: Scope, Actors and Repercussion for Europe

**No. 116 / 2017** Chih-Chieh Wang: Building Transnational Labor Markets – the Case of Taiwan

**No. 115 / 2017** Alessandra Cappelletti: The "Construction" of Chinese Culture in a Globalized World and Its Importance for Beijing's Smart Power. Notes and concepts on a narrative shift

**No. 114 / 2017** Jan Siebert, Guanzhong Yang: Discoordination and Miscoordination Caused by Sunspots in the Laboratory

**No. 113 / 2017** Guanzhong Yang: The Impact of Incentives on Prosocial Behavior – An Experimental Investigation with German and Chinese Subjects

**No. 112 / 2017** Shuanping Dai, Guanzhong Yang: Does Social Inducement Lead to Higher Open Innovation Investment? An Experimental Study

**No. 111 / 2017** Shuanping Dai: China's Idiosyncratic Economics: An Emerging Unknown Monism Driven by Pluralism

**No. 110 / 2016** Thomas Heberer: Reflections on the Concept of Representation and Its Application to China

**No. 109 / 2016** Yuan Li, Kierstin Bolton, Theo Westphal: The Effect of the New Silk Road Railways on Aggregate Trade Volumes between China and Europe

**No. 108 / 2016** Thomas Heberer: Strategic Behavior of Private Entrepreneurs in China – Collective Action, Representative Claims, and Connective Action

**No. 107 / 2016** Torsten Heinrich, Shuanping Dai: Diversity of Firm Sizes, Complexity, and Industry Structure in the Chinese Economy

**No. 106 / 2015** Ralf Bebenroth, Kai Oliver Thiele: Identification to Oneself and to the Others: Employees' Perceptions after a Merger

**No. 105 / 2015** Jun Gu, Annika Mueller, Ingrid Nielsen, Jason Shachat, Russell Smyth: Reducing Prejudice through Actual and Imagined Contact: A Field Experiment with Malawian Shopkeepers and Chinese Immigrants

**No. 104 / 2015** Marcus Conlé: Architectural Innovation in China. The Concept and its Implications for Institutional Analysis

**No. 103 / 2015** Kai Dutt, Tatsuhiro Shichijo: Default or Reactance? Identity Priming Effects on Overconfidence in Germany and Japan

**No. 102 / 2015** Martin Hemmert: The Relevance of Interpersonal and Inter-organizational Ties for Interaction Quality and Outcomes of Research Collaborations in South Korea

**No. 101 / 2015** Shuanping Dai, Wolfram Elsner: Declining Trust in Growing China. A Dilemma between Growth and Socio-Economic Damage

**No. 99 / 2014** Anna L. Ahlers, Thomas Heberer, Gunter Schubert: 'Authoritarian Resilience' and Effective Policy Implementation in Contemporary China – A Local State Perspective

**No. 98 / 2014** Werner Pascha: The Potential of Deeper Economic Integration between the Republic of Korea and the EU, Exemplified with Respect to E-Mobility

**No. 97 / 2014** Anja Senz, Dieter Reinhardt (Eds.): Task Force: Connecting India, China and Southeast Asia – New Socio-Economic Developments

**No. 96 / 2014** Markus Taube: Grundzüge der wirtschaftlichen Entwicklung und ihre ordnungspolitischen Leitbilder in der VR China seit 1949

**No. 95 / 2013** Yasuo Saeki, Sven Horak: The Role of Trust in Cultivating Relation-specific Skills – The Case of a Multi-national Automotive Supplier in Japan and Germany

**No. 94 / 2013** Heather Xiaoquan Zhang, Nicholas Loubere: Rural Finance, Development and Livelihoods in China

**No. 93 / 2013** Thomas Heberer, Anja Senz (Hg.): Task Force: Wie lässt sich die Zusammenarbeit des Landes Nordrhein-Westfalen mit China und den NRW-Partnerprovinzen vertiefen?

**No. 92 / 2013** Sven Horak: Cross-Cultural Experimental Economics and Indigenous Management Research – Issues and Contributions

**No. 91 / 2013** Jann Christoph von der Pütten, Christian Göbel (Hg.): Task Force: Gewerkschaften, Arbeitsmarktregulierung und Migration in China

**No. 90 / 2012** Thomas Heberer: Some Reflections on the Current Situation in China

**No. 89 / 2011** Susanne Löhr, René Trappel (Hg.): Task Force: Nahrungsmittel in China – Food-Security- und Food-Safety-Problematik in China

**No. 88 / 2011** Peter Thomas in der Heiden: Chinese Sectoral Industrial Policy Shaping International Trade and Investment Patterns – Evidence from the Iron and Steel Industry

**No. 87 / 2010** Marcus Conlé: Health Biotechnology in China: National, Regional, and Sectoral Dimensions

**No. 86 / 2010** Anja Senz, Dieter Reinhardt (eds.): Green Governance – One Solution for Two Problems? Climate Change and Economic Shocks: Risk Perceptions and Coping Strategies in China, India and Bangladesh

**No. 85 / 2010** Heather Xiaoquan Zhang: Migration, Risk and Livelihoods: A Chinese Case

**No. 84 / 2010** Marcus Conlé, Markus Taube: Anatomy of Cluster Development in China: The case of health biotech clusters

**No. 83 / 2010** Sven Horak: Aspects of Inner-Korean Relations Examined from a German Viewpoint

**No. 82 / 2010** Thomas Heberer, Anja-D. Senz (Hg.): Chinas Rolle in den internationalen Beziehungen – globale Herausforderungen und die chinesische Außenpolitik

**No. 81 / 2009** Flemming Christiansen, Heather Xiaoquan Zhang: The Political Economy of Rural Development in China: Reflections on Current Rural Policy

**No. 80 / 2009** Chan-Mi Strüber: Germany's Role in the Foreign Direct Investment Configuration of Korean Multi-national Enterprises in Europe

**No. 79 / 2009** Thomas Heberer, Anja-D. Senz (Hg.): Task Force: Entwicklungspolitik und -strategien in Ostasien am Beispiel der chinesischen Umweltpolitik

**No. 78 / 2008** Werner Pascha, Cornelia Storz: How are Markets Created? The Case of Japan's Silver Market

**No. 77 / 2008** Werner Pascha, Uwe Holtschneider (Hg.): Task Force: Corporate Social Responsibility in Japan und Österreich

**No. 76 / 2008** Yu Keping: China's Governance Reform from 1978 to 2008

**No. 75 / 2008** Thomas Heberer: Task Force: Entwicklungspolitik in China: Herausforderungen, Lösungsstrategien und deutsch-chinesische Entwicklungszusammenarbeit

**No. 74 / 2008** Markus Taube: Ökonomische Entwicklung in der VR China. Nachholendes Wachstum im Zeichen der Globalisierung

**No. 73 / 2007** Norifumi Kawai, Manja Jonas: Ownership Strategies in Post-Financial Crisis South-East Asia: The Case of Japanese Firms

**No. 72 / 2007** Werner Pascha, Cornelia Storz, Markus Taube (Eds.): Workshop Series on the Role of Institutions in East Asian Development – Institutional Foundations of Innovation and Competitiveness in East Asia

**No. 71 / 2006** Norifumi Kawai: Spatial Determinants of Japanese Manufacturing Firms in the Czech Republic

**No. 70 / 2006** Werner Pascha, Cornelia Storz (Hg.): Workshop Institutionen in der Entwicklung Ostasiens I – Offenheit und Geschlossenheit asiatischer Wirtschaftssysteme

**No. 69 / 2006** Christian Göbel: The Peasant's Rescue from the Cadre? An Institutional Analysis of China's Rural Tax and Fee Reform

**No. 68 / 2006** Thomas Heberer: Institutional Change and Legitimacy via Urban Elections? People's Awareness of Elections and Participation in Urban Neighbourhoods (*Shequ*)

**No. 67 / 2006** Momoyo Hüstebeck: Tanaka Makiko: Scharfzüngige Populistin oder populäre Reformerin?

**No. 66 / 2006** Momoyo Hüstebeck: Park Geun-hye: Als Präsidententochter zur ersten Staatspräsidentin Südkoreas?

**No. 65 / 2006** Werner Pascha, Cornelia Storz (Hg.): Workshop Organisation und Ordnung der japanischen Wirtschaft V. Themenschwerpunkt: Deutschlandjahr in Japan – eine Zwischenbilanz

**No. 64 / 2004** Christian Göbel, Thomas Heberer (Hg.): Task Force: Zivilgesellschaftliche Entwicklungen in China / Task Force: Civil Societal Developments in China

**No. 63 / 2005** Thorsten Nilges: Zunehmende Verschuldung durch Mikrokredite. Auswertung eines Experiments in Südindien

**No. 62 / 2004** Jun Imai: The Rise of Temporary Employment in Japan. Legalisation and Expansion of a Non-Regular Employment Form

**No. 61 / 2004** Thomas Heberer, Nora Sausmikat: Bilden sich in China Strukturen einer Zivilgesellschaft heraus?

**No. 60 / 2004** Thomas Heberer, Anja Senz (Hg.): Feldforschung in Asien: Erlebnisse und Ergebnisse aus der Sicht politikwissenschaftlicher Ostasienforschung

**No. 59 / 2004** Li Fan: Come by the Wind. Li Fan's Story in Buyun Election

**No. 58 / 2004** Li Minghuan: Labour Brokerage in China Today: Formal and Informal Dimensions

**No. 57 / 2004** Dorit Lehrack: NGO im heutigen China – Aufgaben, Rolle und Selbstverständnis

**No. 56 / 2004** Anja Senz: Wählen zwischen Recht und Pflicht – Ergebnisse einer Exkursion der Ostasienwissenschaften in die Provinz Sichuan / VR China

**No. 55 / 2004** Werner Pascha, Cornelia Storz: Workshop Organisation und Ordnung der japanischen Wirtschaft IV. Themenschwerpunkt: Wahrnehmung, Institutionenökonomik und Japanstudien

**No. 54 / 2004** Thomas Heberer: Ethnic Entrepreneurs as Agents of Social Change. Entrepreneurs, clans, social obligations and ethnic resources: the case of the Liangshan Yi in Sichuan

**No. 53 / 2003** Hermann Halbeisen: Taiwan's Domestic Politics since the Presidential Elections 2000

**No. 52 / 2003** Claudia Derichs, Wolfram Schaffar (Hg.): Task Force: Interessen, Machtstrukturen und internationale Regime. Die WTO-Verhandlungen zum GATS (Dienstleistungsabkommen) und sein Einfluss auf Asien

**No. 51 / 2003** Markus Taube: Chinas Rückkehr in die Weltgemeinschaft. Triebkräfte und Widerstände auf dem Weg zu einem „Global Player“

**No. 50 / 2003** Kotaro Oshige: Arbeitsmarktstruktur und industrielle Beziehungen in Japan. Eine Bestandsaufnahme mit Thesen zur Zukunftsentwicklung

**No. 49 / 2003** Werner Pascha, Cornelia Storz (Hg.): Workshop Organisation und Ordnung der japanischen Wirtschaft III. Themenschwerpunkt: Institutionenökonomik und Japanstudien

**No. 48 / 2003** Institute of East Asian Studies (Ed.), Frank Robaschik (compilation), with contributions from Winfried Flüchter, Thomas Heberer, Werner Pascha, Frank Robaschik, Markus Taube: Overview of East Asian Studies in Central and Eastern Europe

**No. 47 / 2002** Ulrich Zur-Lienen: Singapurs Strategie zur Integration seiner multi-ethnischen Bevölkerung: Was sich begegnet gleicht sich an

**No. 46 / 2002** Thomas Heberer: Strategische Gruppen und Staatskapazität: Das Beispiel der Privatunternehmer in China

**No. 45 / 2002** Thomas Heberer, Markus Taube: China, the European Union and the United States of America: Partners or Competitors?

**No. 44 / 2002** Werner Pascha: Wirtschaftspolitische Reformen in Japan – Kultur als Hemmschuh?

**No. 43 / 2002** Werner Pascha, Klaus Ruth, Cornelia Storz (Hg.): Themenschwerpunkt: Einfluss von IT-Technologien auf Strukturen und Prozesse in Unternehmen

**No. 42 / 2002** Karin Adelsberger, Claudia Derichs, Thomas Heberer, Patrick Raszelenberg: Der 11. September und die Folgen in Asien. Politische Reaktionen in der VR China, Japan, Malaysia und Vietnam

**No. 41 / 2001** Claudia Derichs, Thomas Heberer (Hg.): Task Force: Ein Gutachten zu Beschäftigungspolitik, Altersvorsorge und Sozialstandards in Ostasien

**No. 40 / 2001** Werner Pascha, Frank Robaschik: The Role of Japanese Local Governments in Stabilisation Policy

**No. 39 / 2001** Anja Senz, Zhu Yi: Von Ashima zu Yi-Rap: Die Darstellung nationaler Minderheiten in den chinesischen Medien am Beispiel der Yi-Nationalität

**No. 38 / 2001** Claudia Derichs: Interneteinsatz in den Duisburger Ostasienwissenschaften: Ein Erfahrungsbericht am Beispiel des deutsch-japanischen Seminars „DJ50“

**No. 37 / 2001** Zhang Luocheng: The particularities and major problems of minority regions in the middle and western parts of China and their developmental strategy

**No. 36 / 2001** Thomas Heberer: Falungong – Religion, Sekte oder Kult? Eine Heilsgemeinschaft als Manifestation von Modernisierungsproblemen und sozialen Entfremdungsprozessen

**No. 35 / 2001** Claudia Derichs, Thomas Heberer, Patrick Raszelenberg (Hg.): Task Force: Ein Gutachten zu den politischen und wirtschaftlichen Beziehungen Ostasien–NRW

**No. 34 / 2000** Ulrich Jürgens, Werner Pascha, Cornelia Storz (Hg.): Workshop Organisation und Ordnung der japanischen Wirtschaft I. Themenschwerpunkt: „New Economy“ – Neue Formen der Arbeitsorganisation in Japan

**No. 33 / 2000** Winfried Flüchter: German Geographical Research on Japan

**No. 32 / 2000** Thomas Heberer, Sabine Jakobi: Henan – The Model: From Hegemonism to Fragmentism. Portrait of the Political Culture of China's Most Populated Province

**No. 31 / 2000** Thomas Heberer: Some Considerations on China's Minorities in the 21st Century: Conflict or Conciliation?

**No. 30 / 2000** Jun Imai, Karen Shire: Flexible Equality: Men and Women in Employment in Japan

**No. 29 / 2000** Karl Lichtblau, Werner Pascha, Cornelia Storz (Hg.): Workshop Klein- und Mittelunternehmen in Japan V. Themenschwerpunkt: M & A in Japan – ein neues Instrument der Unternehmenspolitik?

- No. 28 / 1999** Rainer Dormels: Regionaler Antagonismus in Südkorea
- No. 27 / 1999** Claudia Derichs, Tim Goydke, Werner Pascha (Hg.): Task Force: Ein Gutachten zu den deutschen/europäischen Außen- und Außenwirtschaftsbeziehungen mit Japan
- No. 26 / 1999** Susanne Steffen: Der Einsatz der Umweltpolitik in der japanischen Elektrizitätswirtschaft
- No. 25 / 1999** Claudia Derichs: Nationbuilding in Malaysia under Conditions of Globalization
- No. 24 / 1999** Thomas Heberer, Arno Kohl, Tuong Lai, Nguyen Duc Vinh: Aspects of Privat Sector Development in Vietnam
- No. 23 / 1999** Werner Pascha: Corruption in Japan – An Economist's Perspective
- No. 22 / 1999** Nicole Bastian: Wettbewerb im japanischen Fernsehmarkt. Neue Strukturen durch Kabel- und Satellitenfernsehen? Eine wettbewerbstheoretische Analyse
- No. 21 / 1999** Thomas Heberer: Entrepreneurs as Social Actors: Privatization and Social Change in China and Vietnam
- No. 20 / 1999** Vereinigung für sozialwissenschaftliche Japan-Forschung (Hg.): Quo vadis sozialwissenschaftliche Japan-Forschung? Methoden und Zukunftsfragen
- No. 19 / 1999** Bong-Ki Kim: Das Problem der interkulturellen Kommunikation am Beispiel der Rezeption Deweys in China
- No. 18 / 1998** Werner Pascha, Cornelia Storz (Hg.): Workshop Klein- und Mittelunternehmen in Japan IV. Themenschwerpunkt Netzwerke
- No. 17 / 1998** Andreas Bollmann, Claudia Derichs, Daniel Konow, Ulrike Rebele, Christian Schulz, Kerstin Seemann, Stefanie Teggemann, Stephan Wieland: Interkulturelle Kompetenz als Lernziel
- No. 16 / 1997** Werner Pascha, Cornelia Storz (Hg.): Workshop Klein- und Mittelunternehmen in Japan III. Themenschwerpunkt Innovation
- No. 15 / 1997** Winfried Flüchter: Tokyo quo vadis? Chancen und Grenzen (?) metropolitanen Wachstums
- No. 14 / 1997** Claudia Derichs: Der westliche Universalitätsanspruch aus nicht-westlicher Perspektive
- No. 13 / 1997** Werner Pascha: Economic Globalization and Social Stabilization: A Dual Challenge for Korea
- No. 12 / 1996** Claudia Derichs: Kleine Einführung in die Politik und das politische System Japans
- No. 11 / 1996** Mikiko Eswein: Die Rolle der Berufsbildung beim sozialen Wandel in Japan
- No. 10 / 1996** Mikiko Eswein: Erziehung zwischen Konfuzianismus und Bismarck. Schule und Erziehungssystem in Japan
- No. 9 / 1996** Werner Pascha: On the Relevance of the German Concept of "Social Market Economy" for Korea
- No. 8 / 1996** Carsten Herrmann-Pillath: Strange Notes on Modern Statistics and Traditional Popular Religion in China: Further Reflections on the Importance of Sinology for Social Science as applied on China
- No. 7 / 1996** Ralph Lützel: Die japanische Familie der Gegenwart – Wandel und Beharrung aus demographischer Sicht
- No. 6 / 1995** Werner Pascha (Hg.): Klein- und Mittelunternehmen in Japan – Dokumentation eines Workshops
- No. 5 / 1995** Chen Lai: Die Kultur des Volkskonfuzianismus: Eine Untersuchung der Literatur zur kindlichen Erziehung (*Meng xue*)
- No. 4 / 1995** Carsten Herrmann-Pillath: Die Volksrepublik und die Republik China: Die Gratwanderung zweier chinesischer Staaten zwischen Politik und Wirtschaft
- No. 3 / 1995** Carsten Herrmann-Pillath: On the Importance of Studying Late Qing Economic and Social History for the Analysis of Contemporary China or: Protecting Sinology Against Social Science
- No. 2 / 1995** H. J. Beckmann, K. Haaf, H. Kranz, W. Pascha, B. Slominski, T. Yamada: „Japan im Netz“. Eine Materialsammlung zur Nutzung des Internet
- No. 1 / 1995** Claudia Derichs, Winfried Flüchter, Carsten Herrmann-Pillath, Regine Mathias, Werner Pascha: Ostasiatische Regionalstudien: Warum?