

Bruckmeier, Kerstin; Peichl, Andreas; Popp, Martin; Wiemers, Jürgen;
Wollmershäuser, Timo

Working Paper

Distributional Effects of Macroeconomic Shocks in Real-Time: A Novel Method Applied to the Covid-19 Crisis in Germany

CESifo Working Paper, No. 8748

Provided in Cooperation with:

Ifo Institute – Leibniz Institute for Economic Research at the University of Munich

Suggested Citation: Bruckmeier, Kerstin; Peichl, Andreas; Popp, Martin; Wiemers, Jürgen; Wollmershäuser, Timo (2020) : Distributional Effects of Macroeconomic Shocks in Real-Time: A Novel Method Applied to the Covid-19 Crisis in Germany, CESifo Working Paper, No. 8748, Center for Economic Studies and Ifo Institute (CESifo), Munich

This Version is available at:

<https://hdl.handle.net/10419/229566>

Standard-Nutzungsbedingungen:

Die Dokumente auf EconStor dürfen zu eigenen wissenschaftlichen Zwecken und zum Privatgebrauch gespeichert und kopiert werden.

Sie dürfen die Dokumente nicht für öffentliche oder kommerzielle Zwecke vervielfältigen, öffentlich ausstellen, öffentlich zugänglich machen, vertreiben oder anderweitig nutzen.

Sofern die Verfasser die Dokumente unter Open-Content-Lizenzen (insbesondere CC-Lizenzen) zur Verfügung gestellt haben sollten, gelten abweichend von diesen Nutzungsbedingungen die in der dort genannten Lizenz gewährten Nutzungsrechte.

Terms of use:

Documents in EconStor may be saved and copied for your personal and scholarly purposes.

You are not to copy documents for public or commercial purposes, to exhibit the documents publicly, to make them publicly available on the internet, or to distribute or otherwise use the documents in public.

If the documents have been made available under an Open Content Licence (especially Creative Commons Licences), you may exercise further usage rights as specified in the indicated licence.

Distributional Effects of Macroeconomic Shocks in Real-Time: A Novel Method Applied to the Covid-19 Crisis in Germany

*Kerstin Bruckmeier, Andreas Peichl, Martin Popp, Jürgen Wiemers,
Timo Wollmershäuser*

Impressum:

CESifo Working Papers

ISSN 2364-1428 (electronic version)

Publisher and distributor: Munich Society for the Promotion of Economic Research - CESifo GmbH

The international platform of Ludwigs-Maximilians University's Center for Economic Studies and the ifo Institute

Poschingerstr. 5, 81679 Munich, Germany

Telephone +49 (0)89 2180-2740, Telefax +49 (0)89 2180-17845, email office@cesifo.de

Editor: Clemens Fuest

<https://www.cesifo.org/en/wp>

An electronic version of the paper may be downloaded

- from the SSRN website: www.SSRN.com
- from the RePEc website: www.RePEc.org
- from the CESifo website: <https://www.cesifo.org/en/wp>

Distributional Effects of Macroeconomic Shocks in Real-Time: A Novel Method Applied to the Covid-19 Crisis in Germany

Abstract

The highly dynamic nature of the COVID-19 crisis poses an unprecedented challenge to policy makers around the world to take appropriate income-stabilizing countermeasures. To properly design such policy measures, it is important to quantify their effects in real-time. However, data on the relevant outcomes at the micro level is usually only available with considerable time lags. In this paper, we propose a novel method to assess the distributional consequences of macroeconomic shocks and policy responses in real-time and provide the first application to Germany in the context of the COVID-19 pandemic. Specifically, our approach combines different economic models estimated on firm- and household-level data: a VAR-model for output expectations, a structural labor demand model, and a tax-benefit microsimulation model. Our findings show that as of September 2020 the COVID-19 shock translates into a noticeable reduction in gross labor income across the entire income distribution. However, the tax benefit system and discretionary policy responses to the crisis act as important income stabilizers, since the effect on the distribution of disposable household incomes turns progressive: the bottom two deciles actually gain income, the middle deciles are hardly affected, and only the upper deciles lose income.

JEL-Codes: D310, E240, E370, H240, J230.

Keywords: income distribution, inequality, recession, Covid-19, tax-benefit policies, short-time work, business survey, labor demand, microsimulation.

Kerstin Bruckmeier
IAB / Nürnberg / Germany
kerstin.bruckmeier@iab.de

Martin Popp
IAB / Nürnberg / Germany
martin.popp@iab.de

Andreas Peichl
ifo Institute – Leibniz Institute for Economic
Research at the LMU Munich / Germany
peichl@econ.lmu.de

Jürgen Wiemers
IAB / Nürnberg / Germany
juergen.wiemers@iab.de

Timo Wollmershäuser
ifo Institute – Leibniz Institute for Economic Research
at the LMU Munich / Germany
wollmershaeuser@ifo.de

1 Introduction

The SARS-CoV-2 virus pandemic confronts the world with a rapid spread of infections associated with COVID-19. Most governments around the world use interventions such as social distancing measures, school closures, curfews, and restrictions of business activity to slow down and contain the pandemic. While evidence suggests that these measures indeed reduce the number of infections, they also give rise to substantial economic costs with potential distributional consequences (Dorn et al., 2020). For policymakers it is important to assess these costs in real-time in order to design potential counteracting policy measures. However, data on the relevant outcomes is usually not available in real-time but only with considerable time lags.

In this paper, we propose a novel method to assess the short-term effects of macroeconomic shocks on the income distribution in real-time. We apply our method in the context of the COVID-19 pandemic in Germany and provide the first distributional analysis for this setting. To be precise, we investigate the short-term effects of a negative output shock on labor demand and on distributional outcomes accounting for policy responses to counteract the crisis. Germany is an interesting case study of a large, internationally integrated economy that was confronted with a sharp increase in SARS-CoV-2 infection numbers at the beginning of 2020 and responded with strong countermeasures. The lockdown measures taken at the end of March led to a sudden and severe collapse in economic activity. Since then, Germany has been fighting against an impending recession with massive short-time work programs for employees and financial aid for companies.

Our approach uses different data sources and economic models and can be updated regularly. In terms of methods, we develop and combine five ingredients in a novel way. First, we exploit information from a monthly panel survey of German firms to estimate output shocks at the industry-level in real-time using vector autoregressive (VAR) models. Second, we use a structural labor demand model estimated on linked employer-employee data to measure the impact of output changes on employment (both at the extensive and intensive margin) of heterogeneous worker types. Third, we interact the estimated industry-level output shocks with output elasticities from the labor demand model to obtain fine-grained information on employment changes by industry and worker type due to the COVID-19 crisis. Fourth, this is the first paper to use the maximum entropy principle to feed these predicted shocks to household micro data. Crucially, the maximum entropy principle allows us to relax extreme (and likely inadequate) assumptions on the distribution of hours reductions for workers. Fifth, we use a microsimulation model to assess the distributional consequences of both the containment measures as well as the policy responses in terms of income support for

households. We analyze the distributional effects with respect to four different income concepts: gross labor income, net income of the working population, net income of the total population and disposable income of the total population accounting for discretionary non-employment responses to the pandemic. In order to show the dynamics of the crisis and its impact on our findings, we report results that are based on information collected at three different points in time: April, June and September 2020.

Our main findings can be summarized as follows. Based on the information from the monthly business survey, the pandemic is expected to lead to a significant decline in output in most industries in 2020. This output shock translates into a noticeable reduction in both labor demand and gross labor income. All working households across the income distribution suffer from income losses, with the highest income losses experienced in the first decile. In contrast to the 2008/09 recession, which primarily affected the manufacturing sector (Bargain et al., 2012), the shutdown of economic activities in 2020 also severely impacted the service sector, in particular the hotel and restaurant industries and the travel industry. The tax benefit system acts as an important automatic stabilizer as expected losses in disposable income are significantly reduced for affected working households. It also changes the structure of income losses across the income distribution. Lowest net income losses are experienced in the middle part of the income distribution and highest in the first, eighth, ninth and tenth decile groups. As a disproportionately large number of inactive people, e.g., recipients of means-tested benefits, are represented in lower deciles, the average relative income losses in the lower decile groups become smaller when including non-employed households in the analysis. Finally, accounting for the discretionary non-employment policy measures enacted as a response to the recession, the effect on the total disposable income distribution turns progressive. Specifically, the first two decile groups actually gain income. In contrast, the middle part of the distribution is hardly affected while the upper deciles still lose income. This strong redistributive effect of the discretionary non-employment measures is mainly driven by the child bonus, a progressive benefit paid to support families during the crisis.

Our results are broadly consistent with other studies on the distributional effects of the pandemic, e.g., Brewer and Tasseva (2020) and Bronka et al. (2020) for the UK and O'Donoghue et al. (2020) for Ireland. These papers suggest similar basic patterns and mechanisms behind the distributional effects, which are a) a decline of the overall negative effects on the income distribution during the crisis, b) the importance of short-time work schemes as the main insurance mechanism, and c) a progressive total income effect with income gains in the lower tail of the income distribution and a reduction in the Gini coefficient and the poverty rate due to non-employment policy measures. Our results also emphasize the importance of (access to) unemployment insurance and the

short-time work program as an automatic stabilizer (Bargain et al., 2012; Dolls et al., 2012).¹

The tools and methods developed here are also applicable to many other countries in which labor market and distributional microdata is not available in real-time. For example, comparable business surveys exist in a large number of economies, including the US and EU (e.g., through the EU Economic Sentiment Indicator (ESI) surveys). Linked employer-employee data to estimate labor demand elasticities are also widely available (Abowd and Kramarz, 1999). Alternatively, results from meta-studies could be used (Lichter et al., 2015). Finally, microsimulation models (such as TAXSIM for the US or EUROMOD in the EU) exist in many countries.

2 Methodology and Data

In this paper, we develop and integrate different models to assess the distributional consequences of the COVID-19 pandemic in real-time. In the following section, we describe these ingredients, their underlying data and intermediate results used for the distributional analysis: the monthly business survey to estimate output shocks at the industry-level in real-time (Section 2.1), the labor demand model to obtain fine-grained information on employment changes by industry and worker groups (Section 2.2), and the microsimulation model to evaluate the distributional consequences (Section 2.3) of both the containment measures as well as the implemented policy responses (Section 2.4).

2.1 Estimating Output Shocks

Output of firms is typically measured as gross value added at constant prices (GVA). For our analysis of the distributional consequences of the COVID-19 crisis, output data at the 2-digit NACE industry level is required. However, at this level only annual data is published by the Federal Statistical Office of Germany, and only with a considerable lag of about 20 months. Thus, at the beginning of September 2020, data for the year 2018 was released. To obtain real-time estimates of the impact of the COVID-19 crisis on firm-level output in 2020, we make use of information from the monthly Ifo Business Survey (iBS), which collects firm-level perceptions of business activity.

Data. The iBS is a monthly survey covering roughly 9,000 responses of German firms in manufacturing, construction, trade and services (Becker and Wohlrabe, 2008;

¹Further studies show that although political interventions in all European countries have helped cushioning the income losses caused by the crisis, the extent of the cushioning effect varies greatly (Almeida et al., 2020; Figari and Fiori, 2020).

Sauer and Wohlrabe, 2020). The firms included in the survey represent roughly 74 percent of the total German economic output and cover industries that were more than proportionally affected by the COVID-19 crisis.² In April 2020, around 87 percent of all short-time workers were employed in these sectors.³

Each month firms are asked to give their assessments of the current business situation, which they can characterize as “good”, “satisfactorily” or “poor”. The replies are weighted with the size of the firms, aggregated to industry levels, and released at the end of the month in which the survey was conducted as a balance statistic. For each industry level, this balance statistic is defined as the difference of the percentages of the responses “good” and “poor”. For the aggregate economy and most industries, changes in the business situation are highly correlated with changes in GVA.⁴ To show this, we run the following regressions for each industry i

$$\Delta \ln(Y_{i,t}) = c_0 + c_1 \Delta BS_{i,t} + \varepsilon_{i,t}, \quad (1)$$

where $BS_{i,t}$ denotes the business situation and $Y_{i,t}$ GVA in quarter t . Industries are aggregated to the level of economic sections (i.e., the 1-digit industry level), for which the Federal Statistical Office of Germany publishes quarterly data shortly after the end of the quarter. The results of the regressions are summarized in Table 1. Most of the elasticities of GVA with respect to the ifo business situation (c_1) are positive and statistically significant, implying that changes in the business situation are sufficiently precise and timely indicators for current output changes.

Output Shocks. We define output shocks as unexpected changes in output forecasts for the year 2020. For the estimation of these shocks, we are additionally exploiting the firms’ expectations with regard to the business development in the next six months. In the iBS, survey participants can characterize these expectations as “more favorable”, “unchanged” or “more unfavorable”. As with the business situation, the replies are summarized to a balance statistic. At the firm level, these business expectations are forecasts of a firm’s future business situation. At the industry level, they are a natural

²The survey excludes public services summarized by NACE sections O, P and Q (public administration, defence, compulsory social security, education, human health and social work activities), as well as some small industries which play virtually no role for economic fluctuations (A: Agriculture, forestry and fishing; B: Mining and quarrying; D: Electricity, gas, steam and air conditioning supply; E: Water supply, sewerage, waste management and remediation activities; K: Financial and insurance activities; T: Activities of households as employers, undifferentiated goods- and services-producing activities of private households for own use; U: Activities of extraterritorial organizations and bodies). Public services account for 18.2 percent of 2017 total gross value added, the other excluded industries for 8.1 percent.

³See statistics from the Federal Employment Agency.

⁴The ifo Institute use this aggregated data to construct the “ifo Business Climate Index for Germany” which is the most important early indicator for the German economy (Lehmann, 2020).

Table 1: Elasticity of GVA with Respect to ifo Business Situation

i	C	F	G	H	I	J	L	M,N	R,S,T
c_0	0.16	-0.13	0.39**	0.25	-0.50	1.14***	0.26**	0.22	-0.24
c_1	0.26***	0.14***	0.12***	0.13***	0.69***	0.11***	0.01	0.25***	0.30
Obs.	117	117	117	61	61	61	61	61	61
R^2	0.59	0.05	0.16	0.42	0.74	0.18	0.00	0.59	0.36

NOTE. — For NACE sections C, F, and G the sample period runs from Q1 1991 to Q2 2020. Since the ifo Institute only started in 2005 to integrate firms from the service sector to the iBS, all regressions using the business situation in section H and the following have a lower number of observations. For section R,S,T quarterly GVA is only available for the aggregate and not for each NACE section individually. Since industry T is not covered by the iBS, GVA in industry R,S,T is regressed on the business situation in industry R,S only. C = Manufacturing. F = Construction. G = Wholesale and Retail Trade, Repair of Motor Vehicles and Motorcycles. H = Transportation and Storage. GVA = Gross Value Added at Constant Prices. I = Accommodation and Food Service Activities. iBS = ifo Business Survey. J = Information and Communication. L = Real Estate Activities. M = Professional, Scientific and Technical Activities. N = Administrative and Support Service Activities. NACE = Statistical Classification of Economic Activities in the European Community. Obs. = Observations. R = Arts, Entertainment and Recreation. S = Other Service Activities. T = Activities of Households as Employers, Undifferentiated Goods- and Services-Producing Activities of Households for Own Use. * = $p < 0.10$. ** = $p < 0.05$. *** = $p < 0.01$. Sources: iBS + Federal Statistical Office of Germany, 1991-2020.

candidate for a leading indicator of the business situation. To show this, we calculate cross-correlation coefficients r for the two series, which are defined as the correlation between the ifo business situation BS in industry i at time t and the ifo business expectations BE in the same industry at time $t - h$. Table 2 shows that for most industries (for simplicity aggregated again to the 1-digit level) business expectations are leading the business situation by several months. Moreover, the respective correlation is high enough such that expectations can be used to predict future business situations.

Table 2: Cross-Correlation between ifo Business Situation and Expectations

i	C	F	G	H	I	J	L	M,N	R,S
h	6	1	3	6	3	8	3	7	0
$r_{BS,BE}(h)$	0.69	0.87	0.74	0.70	0.59	0.42	0.65	0.55	0.28

NOTE. — Cross-correlations are calculated using monthly data from 1991 (or 2005 when iBS data from sections H and the following is used) to 2019. The second row shows the lead h of the ifo business expectations that maximizes the correlation between BS and BE . The third row shows the related correlation coefficient. BE = ifo Business Expectations. BS = ifo Business Situation. C = Manufacturing. F = Construction. G = Wholesale and Retail Trade, Repair of Motor Vehicles and Motorcycles. H = Transportation and Storage. I = Accommodation and Food Service Activities. iBS = ifo Business Survey. J = Information and Communication. L = Real Estate Activities. M = Professional, Scientific and Technical Activities. N = Administrative and Support Service Activities. R = Arts, Entertainment and Recreation. S = Other Service Activities. Source: iBS, 1991-2019.

The most straightforward approach to exploit the information contained in the business expectations for forecasting the business situation is to set up a bivariate vector autoregressive (VAR) model. For each industry i at the 2-digit level, we estimate the following VAR models

$$y_{i,t} = c_i + \sum_{h=1}^p A_h y_{i,t-h} + \varepsilon_{i,t}, \quad (2)$$

over the period ranging from T_0 (which is January 2005 for industries in the service sector and January 1991 for all other industries) to $T_1 \in \{\text{February 2020, April 2020, June 2020, September 2020}\}$, where $y_{i,t}$ is a 2×1 vector containing the business situation $BS_{i,t}$ and the business expectations $BE_{i,t}$, c_i is a 2×1 vector of constants, A_h is for each lag h a 2×2 matrix of estimated coefficients, and $\varepsilon_{i,t}$ are the white-noise innovation processes. All models are estimated with the same lag length $p = 12$.

The predictions are made for the months $T_1 + 1$ until the end of 2020, such that for each industry i an expected average business situation for 2020 conditional on the information from the iBS at time T_1 can be calculated. In a next step for each T_1 the expected change of the business situation is transformed into expected percent changes of GVA in industry i using the estimated elasticities c_1 shown in Table 1.⁵

The forecasts made conditional on the information available up to February 2020 serve as reference for the calculation of the output shock as this month featured the last survey round prior to the outbreak of the COVID-19 crisis in Germany. In March and April, the assessments of the current business situation and the expectations with regard to the business development in the next six months dropped significantly. Given the information available at the peak of the crisis in April 2020 we predict the level of output in the surveyed part of the economy for 2020 to decline by 8.8 percent compared to the February forecast. In the following months business expectations improved much more quickly than predicted by the VAR model that was estimated using data up to April. Thus, it became more and more evident that the recovery of the German economy follows a V-shape instead of a more persistent U-shape, which was common in previous recessions. Accordingly, when iBS data of June and September were included into the VAR model, GVA forecasts for most industries were revised upwards, and the output shock for the total economy in 2020 was reduced to 6.5 percent in June and to 5.3 percent in September. The largest output shock between February and September 2020 was estimated for accommodation (-43.7 percent) and food and beverage service activities (-49.9 percent), the smallest for real estate and IT service activities (-0.1 and -0.7 percent, respectively).

2.2 Estimating Labor Demand Effects

Next, we seek to identify the effect of macroeconomic shocks on employment of heterogeneous groups of workers. To this end, we link our estimated output shocks with empirical estimates of the impact of output changes on the demand for labor. To do so, we first estimate output elasticities using a structural labor demand model.

⁵As the elasticities are only available for economic sections (i.e., the 1-digit industry level), we applied the same section-specific elasticity to all 2-digit industries of the corresponding section.

Labor Demand Model. We apply the dual approach and derive output elasticities of labor demand from a cost-minimization model (Hamermesh, 1993). Accordingly, we assume establishments to select factor demands as to minimize cost given an exogenous level of production. We estimate parameters of a Translog cost function from Christensen et al. (1973), which is a logarithmic second-order Taylor approximation to an arbitrary twice-differentiable cost function. Importantly, the Translog cost function, unlike a Cobb-Douglas or CES cost function, does not impose any structure on the substitution possibilities between different input factors. We make use of the non-homothetic version of the Translog cost function from Berndt and Khaled (1979) and thereby allow cost-minimizing input ratios to vary with the level of production. As our goal is to model short-term demand responses to an unanticipated output shock, we assume that the capital stock is fixed and, hence, separable from the M remaining labor inputs H^m (measured in terms of hours). We follow Diewert and Wales (1987) and model technological progress as a quasi-fixed input factor for time t .

Our short-term, non-homothetic and multi-factor Translog cost function reads

$$\begin{aligned} \ln C_{j,t} = & \beta_0 + \sum_{m=1}^M \beta_m \cdot \ln w_{j,t}^m + \frac{1}{2} \cdot \sum_{m=1}^M \sum_{n=1}^M \beta_{mn} \cdot \ln w_{j,t}^m \cdot \ln w_{j,t}^n \\ & + \beta_Y \cdot \ln Y_{j,t} + \frac{1}{2} \cdot \beta_{YY} \cdot \ln Y_{j,t}^2 + \sum_{m=1}^M \beta_{mY} \cdot \ln w_{j,t}^m \cdot \ln Y_{j,t} \\ & + \gamma \cdot t + \frac{1}{2} \cdot \gamma_t \cdot t^2 + \sum_{m=0}^M \gamma_m \cdot \ln w_{j,t}^m \cdot t + \sum_{m=0}^M \gamma_{mY} \cdot \ln Y_{j,t} \cdot t \end{aligned} \quad (3)$$

where C and Y denote establishment-specific cost and revenues and w^m is the hourly wage rate for input factor m .⁶ We use panel subscripts j and t to label establishments and years. By default, we impose the symmetry condition, $\beta_{mn} = \beta_{nm}$, on the parameters and assume that the cost function reflects linear homogeneity in input prices: $\sum_{m=1}^M \beta_m = 1$ and $\sum_{m=1}^M \beta_{mn} = \sum_{n=1}^M \beta_{mn} = \sum_{m=1}^M \beta_{mY} = \sum_{m=1}^M \gamma_m = 0$. We apply Shephard's (1953) Lemma to equation (3) and thus derive a system of M cost share equations s^m , $m = 1, \dots, M$:

$$s_{j,t}^m = \frac{\partial \ln C_{j,t}}{\partial \ln w_{j,t}^m} = \beta_m + \sum_{n=1}^M \beta_{mn} \cdot \ln w_{j,t}^n + \beta_{mY} \cdot \ln Y_{j,t} + \gamma_m \cdot t \quad (4)$$

To counteract bias from unobserved time-constant heterogeneity, we account for establishment fixed effects by within-transforming equations (3) and (4). In addition, we implement year fixed effects and add a vector of random error terms with zero mean and a constant covariance matrix. However, the fact that all cost shares always sum

⁶Homotheticity implies that input ratios are independent of the level of output (Berndt, 1991). The Translog cost function is homothetic in case $\beta_{mY} = 0$ applies for each input m . As a special case of homotheticity, the cost function is homogeneous of a constant degree in inputs for $\beta_{YY} = 0$. In such a case, the degree of homogeneity is $\frac{1}{\beta_Y}$. If further holds that $\beta_Y = 1$, the cost function reflects constant returns to scale.

up to one renders our error term covariance matrix singular and non-diagonal. We therefore follow standard practice and drop the last cost share equation s^M while normalizing all input prices by w^M .⁷ We estimate our resulting system of a cost equation and $M - 1$ cost share equations using Zellner’s (1962) Seemingly Unrelated Regression (SUR).⁸

To arrive at output elasticities of labor demand, we plug our SUR estimates, realized values, as well as fitted cost (shares) into the formula for output elasticities of labor demand derived from the Translog cost function (Bellmann et al., 1999):

$$\hat{\eta}_{j,t}^m = \left[\hat{\beta}_{mY} \cdot \frac{\hat{C}_{j,t}}{w_{j,t}^m} + \hat{C}_{jt} \cdot \frac{\hat{s}_{j,t}^m}{w_{j,t}^m} \cdot \left(\hat{\beta}_Y + \hat{\beta}_{YY} \cdot \ln Y_{j,t} + \sum_{n=1}^M \hat{\beta}_{nY} \cdot \ln w_{j,t}^n \right) \right] / H_{j,t}^m \quad (5)$$

As values vary across observations, we evaluate our elasticities $\hat{\eta}^m$ at sample means of reported and fitted values.

Data. We estimate our cost-minimization model on the Linked Employer-Employee Dataset (LIAB) from the German Institute for Employment Research (IAB) for the years 1999-2016. The LIAB dataset combines survey information on employers from the IAB Establishment Panel with administrative data on their respective workers from the Integrated Employment Biographies (IEB).

Among other sources, the IEB collects all employment notifications from workers obliged to pay social security contributions in Germany (Müller and Wolter, 2020).⁹ The IEB includes a large set of worker and job characteristics, such as information on contract type, skill, age, industry or daily gross wages. We use the two-step imputation technique from Card et al. (2013) to impute right-censored wages above the upper-earnings limit on social security contributions.^{10 11} We multiply imputed gross wages

⁷Specifically, we apply an iterative SUR estimation to ensure that our estimates are invariant to the choice of cost share equation to be eliminated. Iterative SUR repeats FGLS estimation until changes in estimates become sufficiently small and thus corresponds to a maximum likelihood estimator fitted to SUR. Under iterative SUR, results are robust to the choice of which equation is dropped.

⁸In case cost shares correlate within establishments, there are efficiency gains with SUR compared to equation-wise ordinary least squares (OLS).

⁹The data cover about 80 percent of the German workforce. Self-employed persons, civil servants and family workers are exempt from social security contributions.

¹⁰Industry codes refer to the German Classification of Economic Activities 2008 (WZ 2008) whose first four digits coincide with the NACE Rev. 2 definition. For the years 1999-2007, we impute industry affiliations by applying the heuristic from Eberle et al. (2011) to industry codes for the Classifications of Economic Activities 1993 and 2003.

¹¹Card et al. (2013) propose a two-step procedure for the imputation of wages. In a first step, fitted wages from a Tobit regression are used to calculate mean wages per establishment (excluding the observation at hand). In a second step, a further Tobit regression with this variable as an additional regressor delivers final imputations. Specifically, we regress log daily wages of full-time workers on age, (square of) log establishment size, share of low-skilled and high-skilled workers within the establishment, share of censored observations excluding the observation at hand as well as dummies for German nationality, location in East Germany, one-person establishments, and establishments

with the social security contribution rates of employers to obtain a holistic measure of daily labor cost per employment spell. For the years 2010-2014, we are able to merge the IEB with hours information from the German Statutory Accident Insurance.¹² We impute the hours information for the remaining years and divide daily labor cost by daily contractual hours (incl. overtime) to arrive at our final measure of hourly labor cost.¹³ For each establishment-year combination and input factor, we compute the sum of daily contractual hours and average hourly gross wages on 30 June of the respective year and link both variables to the IAB Establishment Panel. In doing so, our cost-minimization model captures variation along both the extensive margin (workers) and the intensive margin (hours).

The IAB Establishment Panel is an annual survey of about 15,000 German establishments (Ellguth et al., 2014). The term “establishment” describes a separate production unit with at least one worker subject to social security payments. The random sample includes strata for 10 size classes, 16 industries, and 16 federal states. In particular, we harness information on revenues from the IAB Establishment Panel.¹⁴ To ensure sufficient substitution possibilities, we drop establishments with less than 10 workers. Moreover, we exclude establishments operating in industries that are not covered by the IBS survey, including the public service sector (see Section 2.1).¹⁵ As output shocks may translate into employment effects in unequal fashion, we run our cost-minimization model on four distinct sectors. Our final sample refers to 94,334 establishment-year observations from the following sectors: 40,811 in manufacturing (NACE: C), 10,223 in construction (NACE: F), 27,551 in trade and traffic (NACE: G-J), and 15,749 in private services (NACE: L-N, R, S).

Worker Heterogeneity. We are interested in the impact of output shocks on the demand for fine-grained groups of workers. The rich set of variables in our administrative data enables us to differentiate between $M = 12$ labor inputs per sector. We distinguish between two contract types, two skill levels and three age groups.¹⁶ We divide workers

with more than ten full-time employees. Separate Tobit models are estimated for each interaction of year (18 waves), gender (2 groups) and education (3 groups).

¹²Unfortunately, an indicator whether firms report actual hours (hours worked) or contractual hours (hours paid) is not available. We therefore apply the heuristic from Dustmann et al. (2020) and harmonize the hours information to depict contractual hours plus overtime.

¹³Specifically, for each combination of contract type (7 groups), gender (2 groups) and education (3 groups), we regress daily hours on a set of individual- and establishment-level covariates and use the fitted models to impute missing information on hours for the years 1999-2009 and 2015-2016.

¹⁴As revenue information is asked for 30 June of the previous year, we use the waves from 2000 to 2017 and move the revenue variable one year into the past.

¹⁵In addition, our assumption of cost-minimizing firms is unlikely to hold for public agents who may act in a budget-maximizing manner. In fact, contrary to production theory, estimated output elasticities of labor demand turn out to be negative for public services.

¹⁶In the standard implementation of a cost-minimization model, establishment-year observations with zero employment in at least one of the input categories would drop out of the estimation sample

into two groups based on their employment contract: a standard group of regular full-time workers and non-standard worker category comprising regular part-time workers, marginal employment, apprentices, workers in partial retirement and other employment types. In contrast to unskilled workers, skilled workers have passed vocational training and/or hold a university degree. Regarding age, we differentiate between young (15-34 years), middle-age (35-49 years) and old workers (at least 50 years).

Output Elasticities. Table 3 depicts the matrix of estimated output elasticities of labor demand. Production theory implies that a higher (lower) level of production leads to a higher (lower) demand for labor. In line with theory, our estimated output elasticities of labor demand uniformly show a positive sign across all input-sector pairs. The majority of estimates lies in the range from 0.4 to 1.0 which is well in line with the previous literature.¹⁷ In most cases, non-standard unskilled workers feature higher elasticities than standard unskilled workers. Moreover, output elasticities generally decrease with age, i.e., older workers are exposed to a lower risk of being dismissed when production declines. Furthermore, elasticities turn out to be especially high in the manufacturing sector. Apart from few exceptions in the construction sector, the elasticities are significantly different from zero at 1 percent levels.^{18 19}

Labor Demand Effects. In a next step, we quantify the short-term decline in labor demand by input factor and industry due to COVID-19. Specifically, we are interested in the relative change in demanded hours for 2020 expected in either April, June or September 2020 over demanded hours expected in February 2020 when the pandemic had not yet materialized in Germany. To this end, we interact output shocks for 2020 by 2-digit NACE industries (see Section 2.1) with our matrix of estimated output elasticities of labor demand (see Table 3). As a result, we are able to provide a fine-grained picture on COVID-19 labor demand responses for 648 different input-by-industry cells (12 inputs \times 54 industries).²⁰

for lack of observed wage information. To avoid losing a large number of observations, we impute missing wage information by yearly average wages for the relevant input-sector pair. To ensure sufficient statistical power for the identification of output elasticities per worker group, we do not go beyond using 12 labor inputs although our later distributional analysis would benefit from an even higher disaggregation (such as for gender, occupation or nationality).

¹⁷Bellmann et al. (1999) differentiate between white- and blue-collar workers and three skill groups and find output elasticities between 0.6 and 0.8 for Germany. Using a similar input scheme, Bargain et al. (2012) find an average output elasticity of 0.69.

¹⁸We use Bootstrapped standard errors based on 25 replications.

¹⁹The only exceptions are old and unskilled construction workers with a standard employment contract ($p=0.07$) as well as unskilled middle-age ($p=0.06$) and unskilled old construction workers in non-standard employment ($p=0.31$).

²⁰Our differentiation goes far beyond that of Bargain et al. (2012) who model labor demand responses to the financial crisis in 2008/09 for 60 cells (12 inputs \times 5 industries).

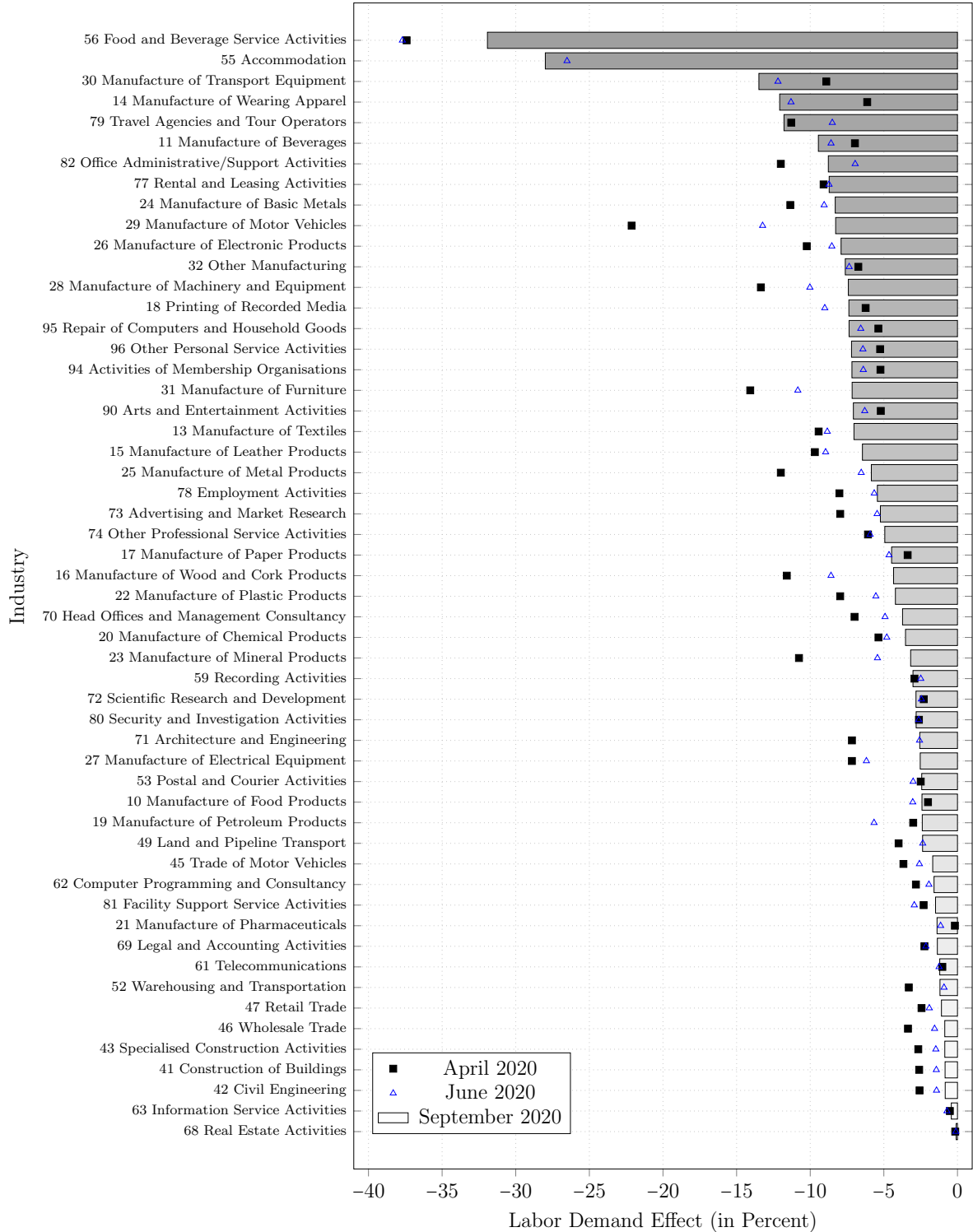
Table 3: Output Elasticities of Labor Demand

Sector			Manu- facturing	Con- struction	Trade and Traffic	Private Services
Input						
Standard	Unskilled	Young	0.93	0.86	0.57	0.75
		Middle-Age	0.58	0.36	0.34	0.58
		Old	0.50	0.24	0.27	0.53
	Skilled	Young	1.08	0.71	0.68	0.70
		Middle-Age	0.87	0.57	0.54	0.63
		Old	0.97	0.51	0.47	0.60
Non-Standard	Unskilled	Young	1.10	0.83	0.91	0.74
		Middle-Age	0.72	1.71	0.78	0.45
		Old	0.46	0.33	0.45	0.54
	Skilled	Young	0.90	0.54	0.78	0.64
		Middle-Age	0.74	0.72	0.72	0.71
		Old	0.48	0.50	0.59	0.57
Observations			40,811	10,223	27,511	15,749

NOTE. — The table illustrates estimated output elasticities of labor demand by input factor and sector. We derive the elasticities from a non-homothetic Translog cost function using Shephard's Lemma and evaluate the formulas at estimated SUR coefficients, sample means and fitted values. Standard employment refers to full-time workers with a regular contract whereas non-standard employment includes regular part-time workers, marginal employment, apprentices, workers in partial retirement and other employment categories. Skilled workers have completed vocational training and/or hold a university degree. Workers are divided into three age groups: young (15-34 years), middle-age (35-49 years) and old (at least 50 years). We run our cost-minimization model on four different sectors: manufacturing (NACE: C), construction (NACE: F), trade and traffic (NACE: G-J) as well as private services (NACE: L-N, R, S). LIAB = Linked Employer-Employer Dataset from IAB. SUR = Seemingly Unrelated Regression. NACE = Statistical Classification of Economic Activities in the European Community. Source: LIAB, 1999-2016.

Given the information available in April 2020, labor demand in the overall economy is predicted to decrease by 4.9 percent due to the pandemic. When instead using the more recent output information from June and September 2020, we arrive at an overall reduction by 4.0 and 3.5 percent. Figure 1 illustrates the labor demand effects for 2-digit industries (in terms of weighted averages of the 12 underlying labor inputs), separately by information as of April, June and September 2020. We observe a reduction in labor demand throughout the German economy. The magnitude of these negative effects shows unseen levels since World War II, thus pointing to the possibility of considerable fiscal and distributional consequences from the COVID-19 pandemic. As of the latest available information from September 2020, the food and beverage serving activities (-31.9 percent) as well as the accommodation sector (-28.0 percent) are most severely affected. We further report substantial labor demand reductions for manufacturing of transport equipment (-13.5 percent), manufacturing of wearing apparel (-12.1 percent), travel agencies and tour operators (-11.8 percent) and manufacturing of beverages (-9.4 percent). Among others, we find comparably small contractions of around 1 percent for manufacturing of pharmaceuticals, telecommunications, retail trade, wholesale trade,

Figure 1: Labor Demand Effects by 2-Digit Industry



NOTE. — The figure displays the estimated impact of the COVID-19 pandemic on labor demand by 2-digit NACE industries. Specifically, for information as of April, June and September 2020, we interact predicted output shocks for 2020 by 54 2-digit NACE industries with our matrix of estimated output elasticities of labor demand (Table 3) to obtain relative labor demand effects for 648 input-by-industry cells. For each industry, we report an employment-weighted average of labor demand shocks over the twelve underlying labor inputs. The bars refer to the most recent information as of September 2020. In contrast, black squares and blue triangles describe labor demand effects based on information from April 2020 and June 2020, respectively. For reasons of space, the figure does not capture the year-on-year reduction in labor demand in the accommodation sector of -57.1 percent as of April 2020. NACE = Statistical Classification of Economic Activities in the European Community. Sources: LIAB, 1999-2016 + iBS, 1991-2020.

the construction sector and information service activities. Real estate activities constitute the least affected industry (-0.1 percent).

2.3 Simulating Distributional Effects

In the next step of our analysis, we translate our estimated labor demand responses into distributional effects using a microsimulation model and household level data.

The IAB Microsimulation Model. Specifically, we make use of the IAB microsimulation model (IAB-MSM). The IAB-MSM contains a detailed implementation of the German tax and benefit system. It is based on data from the Socio-Economic Panel (SOEP), a representative yearly household panel study.²¹ The IAB-MSM simulates the disposable income for each household under varying tax and transfer rules.²²

We analyze the first-round distributional and fiscal effects of the COVID-19 pandemic on income changes at the household level. The effects are measured as the difference in simulated equivalized gross and net household incomes before and after the COVID-19 labor demand effects, where we denote the pre-crisis scenario as *Baseline*.²³ For the baseline simulation we use the legal status as of January 2020. Deductions from gross wage income and means-tested benefits are simulated. Other income variables, e.g., capital income and pensions, are taken from the survey information. For the tax-benefit simulation, the statutory regulations are implemented as far as possible, whereby information on socio-demographic and regional variables, the income of individuals and households, and current and past worked hours provided in the SOEP are used. Because the tax-transfer module of the IAB-MSM also employs retrospective information to compute the net household income, we require two consecutive waves of the SOEP. For this paper, we employ the SOEP waves 2016 (baseline period t) and 2017 ($t + 1$, used to obtain retrospective information for period t). The data are uprated to the year 2020 through the adjustment of wage and price indicators with the respective growth rates for the period 2016 to 2020.

After sample selection, approximately 15,800 individuals aged 17 and older in 9,300 households remain for use with the IAB-MSM. The most important reasons for excluding households from the simulation sample are missing interviews of persons living in the household (approximately 3,400 households), refugee households (approximately 2,300 households), and missing interviews in wave $t + 1$, which represent approximately

²¹See Goebel et al. (2018) for a documentation on the SOEP.

²²A detailed description of the calculation of a household's needs and income in the IAB-MSM is provided by Bruckmeier and Wiemers (2011).

²³We employ the modified OECD scale to equalize household incomes.

1,800 additionally excluded households.²⁴ To account for the exclusion of households, we adjust the population weights supplied with the SOEP data using reweighting techniques such that the final sample is representative for the full population.

We perform the distributional analysis by linking the estimated labor demand effects from Section 2.2 with SOEP data at the household level. To achieve this, we assign individuals in the SOEP – both employees and self-employed persons – to the 648 input-by-industry cells used in the prediction of the labor demand effects. Approximately 5,000 persons with income from either dependent employment or self-employment can be assigned to the cells in this way.²⁵ Thus, we assume that for all persons in a given cell, the expected relative decline in working hours corresponds to the estimated average labor demand effect in that cell. We also make the assumption that the labor demand shock will have no effect on gross hourly wages, which implies that gross monthly wages will fall in proportion to the reduction in working hours. We simulate distributional effects on both gross and net incomes to capture the dampening effect of the policy responses to the crisis and other features of the tax-benefit system.

Individual Working Hour Losses. To simulate the effects of the COVID-19 pandemic on the income distribution, we translate the cell-specific average relative working time reductions predicted by our labor demand model (Section 2.2) into person-specific realizations of working hour losses. We carry out this translation by having all potentially affected persons²⁶ repeatedly play a three-stage “COVID-19 lottery” (see Figure B1 in the Appendix).

In the first stage of this lottery, individuals draw from a uniform distribution to establish whether they experience a loss in working hours or whether they continue working at their pre-crisis observed working hours (outcome “Unaffected”, see Figure B1). Based on data from the Federal Employment Agency, we calibrate the probability of being unaffected to 67.7 percent. This probability reflects the proportion of people who neither suffered a reduction in working hours nor became unemployed out of all

²⁴As the IAB-MSM is not a dynamic model, the inclusion of refugees recently immigrated to Germany would lead to an underestimation of the labor market participation of this group. Brücker et al. (2018) estimate that 28 percent of the refugees who moved to Germany from war and conflict areas after 2014 have taken up employment subject to social insurance contributions by June 2018.

²⁵We calibrate the survey weights of these individuals so that they correspond to 28.8 million individuals, which is the number of people working in the 2-digit NACE industries covered by the IBS according to statistics of the Federal Employment Agency in April 2020. This figure includes approximately 22.9 million regular workers, 3.1 million marginally employed and 2.8 million self-employed persons.

²⁶This group includes all regular workers, marginally employed, and self-employed persons that can be linked to one of the 648 labor demand cells.

people working in one of the 648 labor demand cells covered by the iBS in April 2020, i.e., at the current peak of the pandemic in Germany.²⁷

If individuals reach the second stage of the lottery, they draw again from a uniform distribution to establish whether they become unemployed (outcome “Unemployed”) or whether they work a reduced number of hours with short-time work compensation (outcome “Hours Reduction”).²⁸ For each input-by-industry cell, we calibrate the probability of becoming unemployed such that two conditions are fulfilled: On the one hand, the probabilities of becoming unemployed are proportional to the expected average loss of working hours in a given input-by-industry cell. On the other hand, they are calibrated in such a way that the aggregated increase in expected unemployment amounts to approximately 144,000 individuals. The latter is an estimate of the Federal Employment Agency (2020) for the effect of the COVID-19 pandemic on the average flow from employment into registered unemployment between April 2020 and September 2020.²⁹ The average conditional probability across all input-by-industry cells to become unemployed is 1.56 percent.³⁰

If individuals reach the third stage of the lottery, they randomly draw realizations for a) the relative monthly average decrease in working hours and b) the number of months they will be affected by this decrease in 2020. To implement these realizations for the post-crisis situation, we consider two extreme scenarios and an intermediate scenario, which differ in their assumptions for translating the labor demand effect into hours losses (and therefore gross wage losses) at the household level.

The extreme post-crisis scenarios follow the approach of Bargain et al. (2012). In the extensive scenario (*Extensive*), individuals stochastically suffer a reduction in working hours of either 0 percent or 100 percent.³¹ In contrast, the intensive scenario (*Intensive*) implies a deterministic adjustment of working hours. Here, all individuals from the same input-by-industry group suffer the same relative hours reduction. Crucially, in both extreme scenarios, we ensure that the expected relative loss in working hours (calculated over all three stages of the game) for each individual belonging to a specific input-by-industry cell corresponds to the cell-specific labor demand effect from Section

²⁷The April 2020 data of the Federal Employment Agency are the latest available definitive data on the receipt of short-time work compensation.

²⁸We take into account that marginally employed and self-employed are not entitled to short-time work compensation.

²⁹See Federal Employment Agency (2020).

³⁰The probability is conditional on reaching the second stage. The unconditional probability is $1.56\% \times 32.3\% = 0.5\%$. Accordingly, an affected individual reaches the third stage of the game with the unconditional probability $(100\% - 1.56\%) \times 32.3\% = 31.8\%$

³¹Note that the *Extensive* scenario is a special case in that it allows for the possibility of not being affected by a loss in working hours, despite having reached the third stage of our lottery.

2.2.³² Additionally, both extreme scenarios assume that the decrease in working time (if it occurs) will last for 10 months, which is the maximum possible duration of a loss of working time in 2020 related to COVID-19, given that the effects of the crisis are felt since March 2020.

While these polar cases are useful for estimating the range of effects on the income distribution, neither of them is realistic. Statistics of the Federal Employment Agency from April 2020 show that the loss of working hours caused by the COVID-19 pandemic varies greatly among those affected by short-time work (see Table 4). Thus, there is no empirical justification for the assumption that the reduction in working time applies only at the extensive or the intensive margin.

Table 4: Working Hours Reduction for Employees on Short-Time Work

Relative Change in Hours (in Percent)	≤ 25	26-50	51-75	76-100	100
Share of Short-Time Workers (in Percent)	21.3	31.3	15.4	8.0	24.1

NOTE. — The table shows results from a survey conducted by the Institute of Employment Research (IAB) in May 2020. Source: Kruppe and Osiander (2020).

Due to the non-linearity of the German tax-benefit system, both extreme scenarios might deliver biased results for the distributional analysis. For example, as the German income tax schedule is progressive, the more the reduction in working hours is concentrated on employees, the smaller the decline in income tax revenues will be. As a consequence, it is important to adequately capture individual heterogeneity both in terms of working hours reductions and months of being affected. While we have estimates of the average relative reductions in working hours in each of our 648 input-by-industry cells in 2020, we do not observe for any of our cells the joint distribution of relative working time losses and of the number of months in which people are affected by working time losses. To tackle this problem and to arrive at a more realistic estimate of the distributional consequences, we propose a more appropriate approach described next.

Maximum Entropy Method. In our third scenario (*MaxEntropy*), we use the principle of maximum entropy (Jaynes, 1957a; Jaynes, 1957b) to derive bivariate discrete distributions of relative working hours reductions and the months of being affected by the labor demand shock for each input-by-industry cell. The entropy of a random variable is defined as the average level of information in the variable’s possible outcomes

³²We do so by determining the probabilities of a 100 percent reduction of working hours (extensive scenario) or the deterministic relative reductions in working hours (intensive scenario) accordingly in the third stage of the lottery.

(Shannon, 1948).³³ The principle of maximum entropy states that given precisely specified prior data, the probability distribution that best reflects our limited knowledge is the one with largest entropy.

More specifically, for each individual³⁴ who reaches the third stage of the game, we take R ³⁵ draws $(\tilde{H}, M)_r \in \mathcal{S}$, $r = 1, \dots, R$ of relative working hour reductions, $\tilde{H} \in \mathcal{H}$, and months of being affected by the shock, $M \in \mathcal{M}$, from a discrete bivariate probability distribution $f(\tilde{H}, M)$ with support $\mathcal{S} = \mathcal{H} \times \mathcal{M}$ where $\mathcal{H} = \{0.1, 0.2, \dots, 1\}$ ³⁶ and $\mathcal{M} = \{1, 2, \dots, 10\}$.³⁷ Following the principle of maximum entropy, we determine the probability distribution $\mathbf{p} := \{p_s | s \in \mathcal{S}\}$ of $f(\tilde{H}, M)$ by maximizing the entropy function $\mathcal{H}(\mathbf{p}) = -\sum_{s \in \mathcal{S}} p_s \ln(p_s)$ subject to the constraints $\sum_{s \in \mathcal{S}} p_s = 1$, i.e., the probabilities for each input-by-industry distribution need to sum to one, and $\sum_{s \in \mathcal{S}} \frac{p_s \cdot \tilde{H} \cdot M}{12} = \mu$, i.e., the expected value of the distribution has to equal the predicted mean average reduction in working hours μ of the specific input-by-industry cell in 2020. We proceed by numerically solving the first-order conditions of the corresponding Lagrangian

$$\mathcal{L}(\mathbf{p}, \lambda_0, \lambda_1) = -\sum_{s \in \mathcal{S}} p_s \ln(p_s) - \lambda_0 \left(\sum_{s \in \mathcal{S}} p_s - 1 \right) - \lambda_1 \left(\sum_{s \in \mathcal{S}} p_s \frac{\tilde{H} \cdot M}{12} - \mu \right) \quad (6)$$

for the probabilities p_s and the Lagrangian multipliers λ_0 and λ_1 .

We implement the MaxEntropy scenario, which – to the best of our knowledge – has not been applied in this context before, as our baseline for the translation of predicted labor demand responses from input-by-industry cells to individual declines in working hours. However, in Section 3, we report the distributional and fiscal effects of the COVID-19

³³The basic insight of information theory is that different probability distributions of a random variable contain different amounts of “uncertainty” or, equivalently, “information”. For example, if we observe the outcome of tossing a fair coin, our uncertainty about that outcome is reduced “very much”, i.e., the outcome contains “a lot” of information. If, on the contrary, we know that the result of a coin toss is always “heads”, then the probability distribution of this random variable contains no uncertainty, and observing an outcome of tossing that coin contains no information. To operationalize this idea, a measure for “uncertainty” or “information” is needed. Of all conceivable ways of measuring uncertainty, entropy is the only measure that satisfies three intuitive properties that such a measure should have: i) The measure should be continuous, i.e., a small change in a probability should not result in a massive change of uncertainty; ii) the measure of uncertainty should increase as the number of possible events increases; and iii) the measure should be additive, i.e., if we measure the uncertainty about two possible events A and B and then the uncertainty about two other events C and D, the sum over the four combinations A/C, A/D, B/C, B/D should be the sum of the separate uncertainties. For a non-formal, intuitive introduction to information theory and its ties to Bayesian statistics, see, e.g., McElreath (2020).

³⁴To simplify the notation, we omit indices for individuals and their respective input-by-industry cell.

³⁵We set the number of draws for both the MaxEntropy and the Extensive scenario to $R = 100$. Increasing the number of draws does not substantially alter the results.

³⁶We considered smaller step sizes for the relative working hours reductions, e.g., 5 percent instead of 10 percent steps, but this had no substantial impact on the results.

³⁷Since the impact of the pandemic only started to occur in March 2020, we consider a maximum period of 10 months to be affected by the labor demand shock in 2020.

pandemic for all three scenarios in order to show the range of effects to be expected under extreme assumptions regarding the reduction of working time.

Non-Take-Up. In all three scenarios, non-take-up of means-tested benefits is accounted for along the lines of Pudney et al. (2006) and Wiemers (2015). For this purpose, we estimate a binary probit model with random effects, where the dependent variable indicates whether the household has claimed any means-tested benefit, i.e., basic income, housing benefits, or child benefit supplement. The estimation sample is conditional on the simulated eligibility for at least one means-tested benefit, where the eligibility simulation is based on the IAB-MSM. The estimation uses the SOEP waves 2014 to 2016. We employ a stochastic simulation approach (Pudney et al., 2006) for the out-of-sample prediction of take-up in 2020, where the predictions of take-up are conditional on the observed take-up behavior in 2016.

2.4 Modeling Policy Responses to the Crisis

Short-Time Work. Short-time work has arguably been the most important policy instrument to prevent layoffs in the current COVID-19 pandemic. The government supports the companies financially a) by paying employees short-time work compensation (SWC) for the hours they have not worked and b) by reimbursing the company for social security contributions (except for unemployment insurance) provided that certain minimum requirements are met: First, only companies in which at least one employee subject to social insurance contributions is employed are eligible for SWC. Second, since March 2020, the loss of working hours must affect at least 10 percent (previously at least 33 percent) of the employees with a loss of earnings of more than 10 percent each. Third, since SWC is a benefit paid by the social insurance system, only employees who are subject to social insurance contributions can receive it. Since March 2020, temporary workers who were previously excluded from receiving SWC have also been entitled to SWC. In contrast to the financial crisis in 2008/09, many other sectors besides manufacturing are massively affected by the economic consequences of the pandemic. As a consequence, the German government has simplified access to short-time work compensation - limited until 31 December 2021. SWC can be drawn for up to 12 months, and under certain circumstances for up to 24 months.

The SOEP contains only limited information about the companies in which individuals work. In particular, we do not know whether the companies meet the minimum requirements to be entitled to SWC. In our simulations, we assume that these minimum requirements are always met. Especially during the months March to May 2020, i.e., at the peak of the pandemic, this assumption is highly plausible.

The latest preliminary statistics from the statistics of the Federal Employment Agency forecast 2.6 million short-time workers in August 2020, a significant decrease compared to the 6.0 million short-time workers in April 2020, the peak of the COVID 19 crisis so far. The pre-crisis number of short-time workers in February 2020 was only 134,000.

The amount of SWC is similar to the unemployment benefit, i.e., 60 percent of the last net wage (67 percent if children are present in the household). In addition, the amount of SWC has been staggered over time. SWC can increase to 70 (77) percent after three months and 80 (87) percent after six months of receiving SWC. In our modelling of SWC, we take these increases into account. Moreover, we also consider that a proportion of people whose working hours fall to zero due to the pandemic do not receive SWC, but unemployment benefits.

Since employees in Germany have to accept considerable losses of income during short-time work, the trade unions have long been trying to increase the governmental SWC by means of collectively agreed supplementary SWC (SSWC). Therefore, there are currently a large number of collective bargaining agreements in place that reduce or even completely compensate employees' loss of income in the event of short-time work through SSWC. These agreements differ with regard to, e.g., the amount of the collectively agreed SSWC, the question of whether the supplement is based on net or gross pay, and the question of who finances the supplement (Schulten and Müller, 2020). Additionally, a recent survey from Hans-Böckler-Stiftung (2020) shows that people who work in a company with a collective bargaining agreement are significantly more likely (54 percent) to receive SSWC than people who are not paid under a collective agreement (31 percent). Therefore, in our simulations, we randomly assign SSWC to individuals affected by the COVID-19 shock according to these probabilities. With the combination of SWC and SSWC, short-time workers typically reach between 80 and 100 percent of their regular net income. Since we have no information on the individual net replacement rate of SSWC, we assume that it will increase the net income of all SSWC recipients to 90 percent of their original net wages.

Discretionary Non-Employment Policy Measures. In addition to strengthening the SWC, the government has adopted a number of discretionary non-employment measures to relieve households at least partially from the financial impact of the COVID-19 pandemic. These measures, which we also consider in our simulations, are:³⁸

³⁸We cannot consider several minor measures in our simulations due to a lack of information in our data. Those measures include a continued payment of wages due to school and kindergarten closures and an adjustment of the parental allowance. However, compared to the measures considered in the simulations, especially the SWC, fiscal expenditures for these minor measures are so low that they are unlikely to affect the results of our distribution analyses.

- Child bonus: Families receive a one-off child bonus of 300 Euros for each child that is entitled to the regular not means-tested child benefit in at least one month in 2020. While the bonus is not credited against means-tested benefits such as basic income support, it is offset against the income tax benefit resulting from the child allowance.
- Support for single parents: In order to provide targeted support for single parents, the special income tax allowance for single parents is increased from 1,908 Euros to 4,008 Euros for the years 2020 and 2021.
- Emergency child benefit supplement (“Notfall-KiZ”): For families with children who lose earnings due to the COVID-19 pandemic, an “emergency child benefit supplement” came into force on 1 April 2020. In addition to some changes to make it easier to apply for the child benefit supplement, parents no longer have to provide information on assets if they do not have substantial assets.³⁹ This regulation is valid until 30 September 2020.
- Simplified access to basic income support: Anyone who submits an application for basic income support benefits between 1 March and 30 September 2020 and declares that they do not have substantial assets may keep any savings. In addition, expenditure on housing and heating during the first six months of receiving benefits is recognized at the actual amount.⁴⁰

3 Effects on the Income Distribution

For the distribution analysis, we compute relative changes in equivalized household incomes between the pre-crisis baseline scenario and the alternative post-crisis scenarios focusing on different income distributions: gross labor income, disposable income of the working population, disposable income of the total population, and disposable income of the total population accounting for discretionary non-employment responses to the pandemic. The simulated income changes relate to the entire year 2020, whereby the predicted labor demand changes are based on employers’ output expectations for 2020 measured in April, June or September 2020. The use of different reference dates for the demand projection gives an impression of the dynamics of the crisis.⁴¹ In the following,

³⁹We interpret “substantial assets” in the sense of the housing benefit regulations, i.e., considerable assets do not exist if they do not exceed a value of 80,000 Euros for the head of household plus 30,000 Euros for each additional person in the household.

⁴⁰Normally, costs for housing and heating are only reimbursed up to a “reasonable” level, which is determined by the size of the household and local costs of housing.

⁴¹In addition, we present the simulated fiscal effect on the government budget. To this end, Table A1 in the Appendix shows the difference in simulated expenditure on social benefits and the income tax and social security contributions in 2020 between the pre-crisis and post-crisis scenarios.

we interpret the results for our preferred scenario (*MaxEntropy*). At the end of this section, we briefly discuss the differences in the results between the three scenarios.

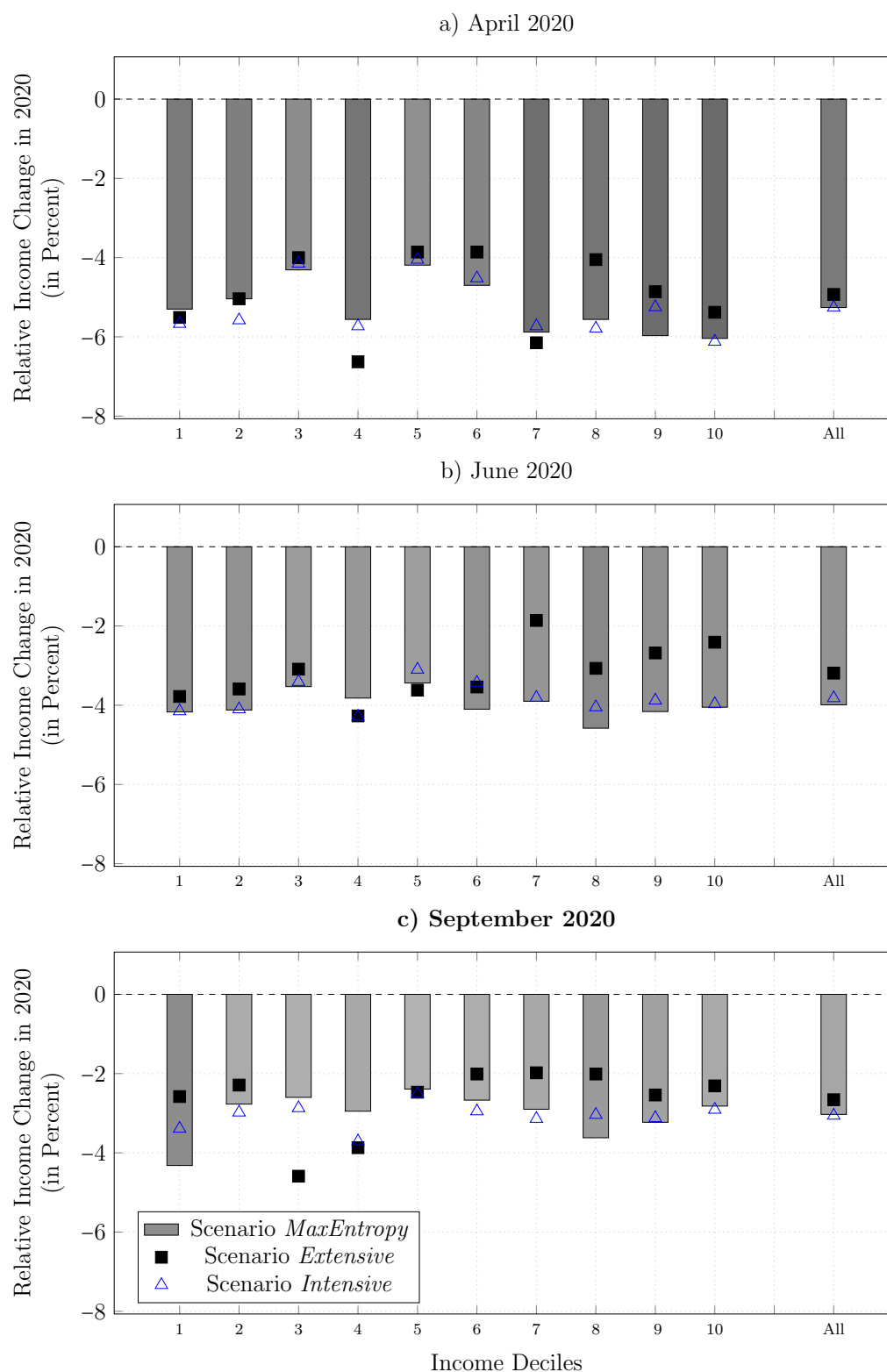
Gross Labor Income. First, we examine the effect on the gross labor income of households with at least one employee or self-employed working in sectors negatively affected by the crisis. Figure 2 presents the relative changes by (pre-crisis) gross labor income decile groups. Based on the output information as of September 2020, the most recent month for which survey data is available, we find an average decline in gross income by -3 percent. All households across the entire distribution suffer from income losses. We see the largest relative negative effects in the first (-4.3 percent) and eighth decile group (-3.6 percent) and the lowest income losses in the fifth (-2.4 percent) and third decile (-2.6 percent). Overall, gross wage inequality slightly increases.⁴² The impact on all income groups is also consistent with the projected employment effects, which affect well-paid jobs in the manufacturing sector as well as low-paid jobs in the service sector.

Figure 2 reflects that the companies' output prospects for 2020 improved in the months after April 2020. Based on output growth expectations measured in April 2020, the peak of the crisis so far, we simulate an average decline in gross income by -5.3 percent. Based on information gathered in June we simulate an average income loss of -4 percent. This reflects the dynamic development of the crisis and the associated policy measures. Bauer and Weber (2020) estimate that about 60 percent of the increased inflows into unemployment in April 2020 in Germany could be explained by the containment measures to stop the spread of the virus. The results are therefore extremely dependent on the short-term development of the pandemic, and forecasts based on the first months of the pandemic could deviate significantly from the actual development.

Net Income of the Working Population. Figure 3 shows the relative net income change for the households with individuals working in the affected sectors. Net income includes not only net labor income but also social benefits with the exception of the discretionary non-employment measures taken by the federal government in reaction to the crisis. Thus, the comparison between Figure 2 and 3 shows the stabilizing effect of the tax and benefit system (that was in place at the beginning of 2020) on household incomes.

⁴²The Gini coefficient with respect to gross labor income increases by approximately 0.3 percentage points based on September data. For example, Palomino et al. (2020) also find an increase in gross wage inequality in Germany.

Figure 2: COVID-19 Effects on Gross Income by Income Deciles, Affected Population



NOTE. — Relative change in mean household equivalent gross income by gross income decile compared to the baseline for the subpopulation of households that are potentially affected by the crisis. The equivalent income is calculated based on the modified OECD scale. All = Mean change over deciles. Source: IAB-MSM.

Overall, the loss of income is reduced significantly by 1.9 percentage points to an average reduction in net income to only -1.1 percent (September).⁴³ Moreover, the tax and transfer system is effective in changing the structure of income losses across the income distribution. Lowest net income losses are experienced in the middle parts of the distribution, the highest income losses are in the first, eighth, ninth and tenth decile groups (-1.5 percent). The buffering effect of the tax-benefit-system is mainly driven by the SWC (which was already in place before the crisis).

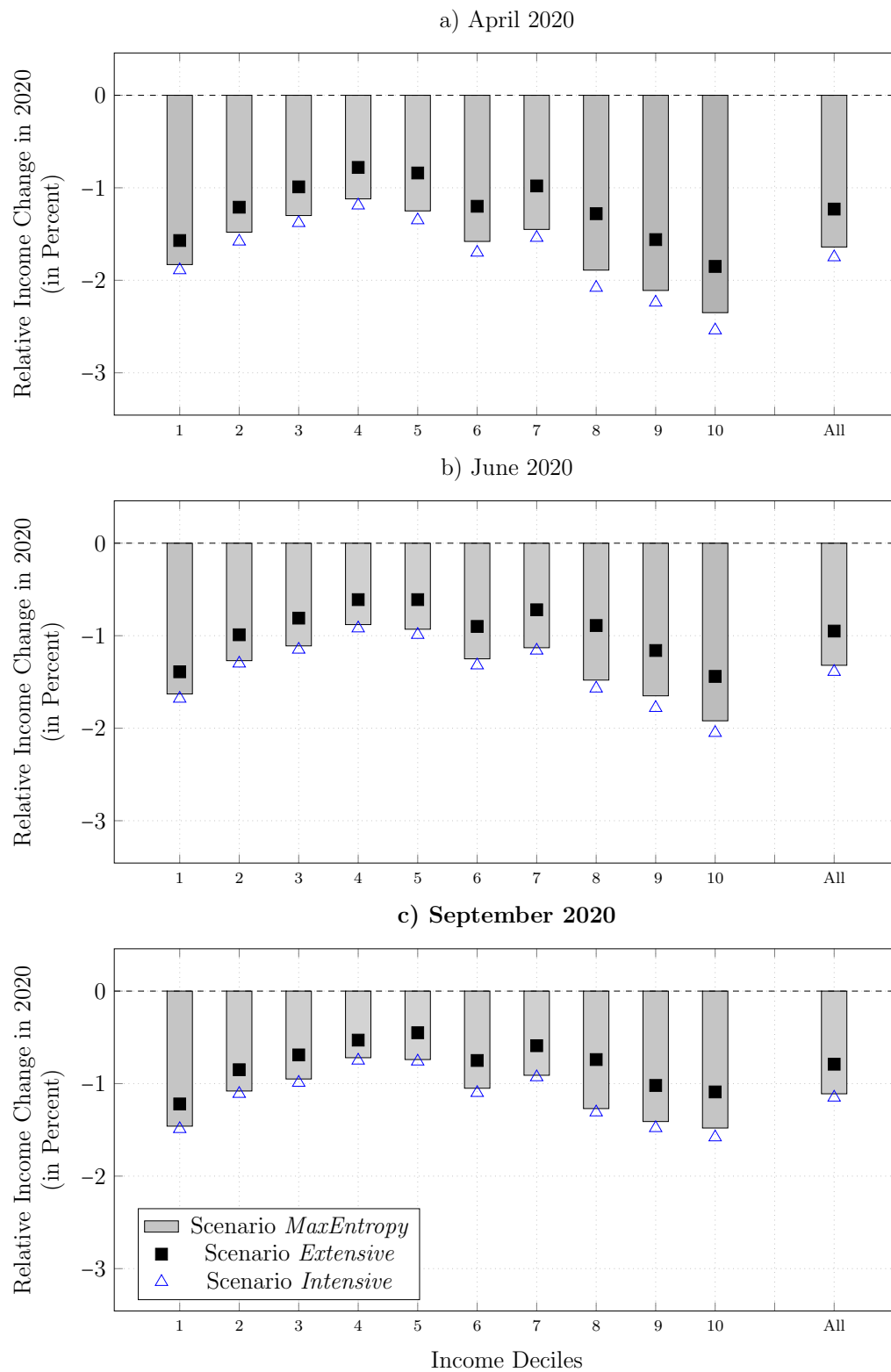
Since SWC is not means-tested, all employees generally benefit regardless of their income level. However, the amount of SWC is limited to the income threshold up to which social security contributions are assessed. As a result, high income groups benefit less from SWC than groups whose income is below this threshold. At the same time, there are groups that are excluded from SWC, mainly self-employed individuals or employees with monthly earnings up to 450 Euro (so called “minijobbers”). These two characteristics of the SWC together imply that the middle income groups benefit most from SWC in relative terms, which is indicated by Figure 3.

Net Income of All Households. To examine the effect of the employment shocks on the overall income distribution, we extend the analysis to the entire population. Figure 4 presents the net income changes for the decile groups based on the equivalent household net incomes of all households, including those exclusively consisting of non-working individuals. In relation to the income of the total population, the negative income effect is further reduced to -0.6 (September forecast), -0.7 (June forecast) and -0.9 (April forecast) percent, respectively. Because a disproportionately large number of inactive people, e.g., recipients of means-tested benefits, are represented in the lower deciles, the average relative income losses in the lower decile groups fall significantly compared to Figure 2. Based on the September forecast, we simulate very small effects on net income of the first and second decile (-0.24 percent each).

Discretionary Non-Employment Policy Measures. In the last step, we include the discretionary non-employment policy measures described in Section 2.3 in the calculation of disposable incomes (see Figure 5). Once these measures are taken into account, the overall effect on household disposable income is reduced to only -0.06 percent (September forecast), -0.18 (June forecast) and -0.34 percent (April forecast). The income effect even turns positive for all forecasts for the first and second decile groups in the June and September forecast, while the effect is almost zero for the middle income groups and remains negative in the decile groups above.

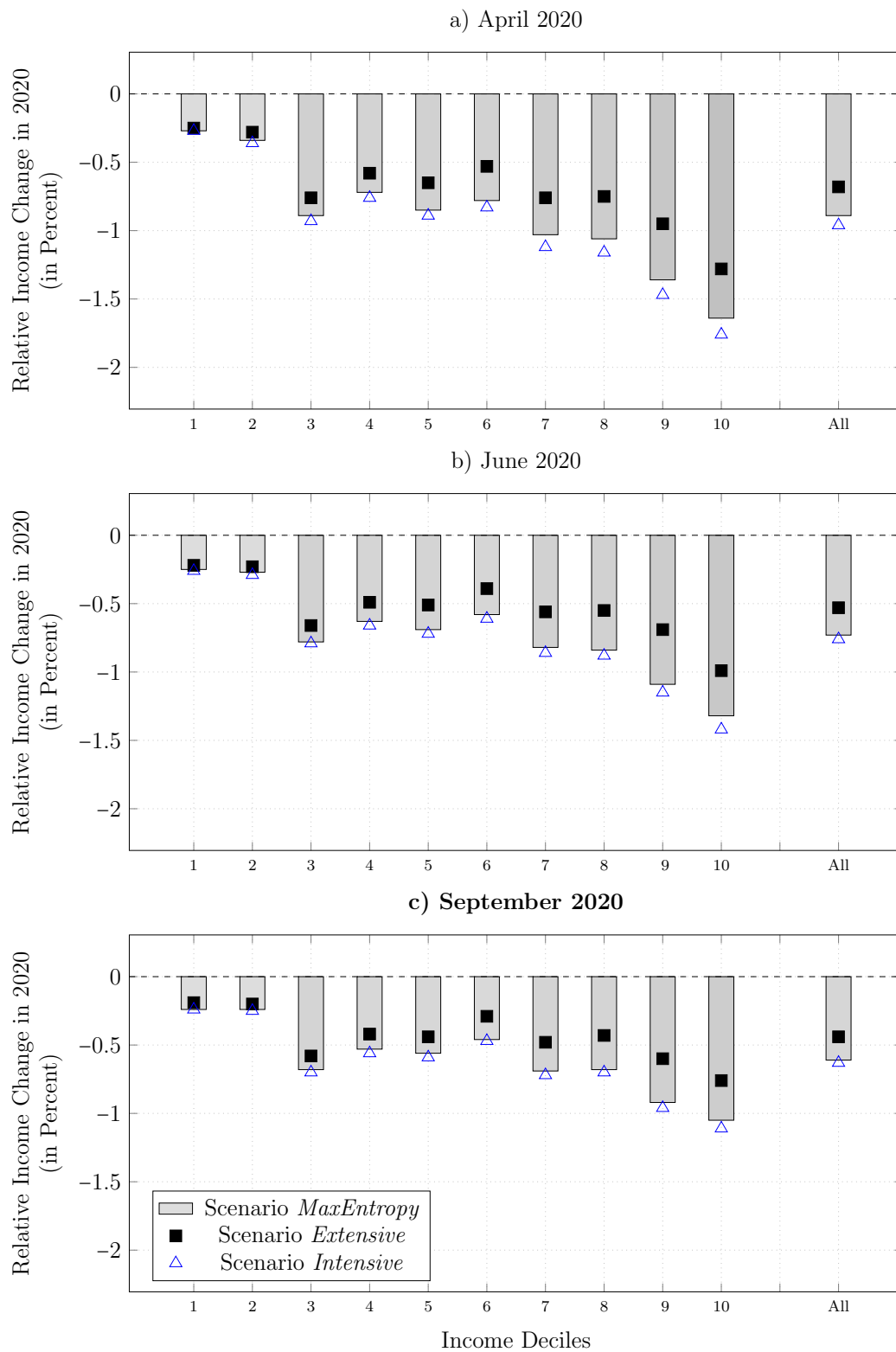
⁴³Based on the April and June forecasts, we simulate an average decline in net income of -1.6 and -1.3 percent, respectively.

Figure 3: COVID-19 Effects on Net Income by Income Deciles Excluding Discretionary Non-Employment Policies, Affected Population



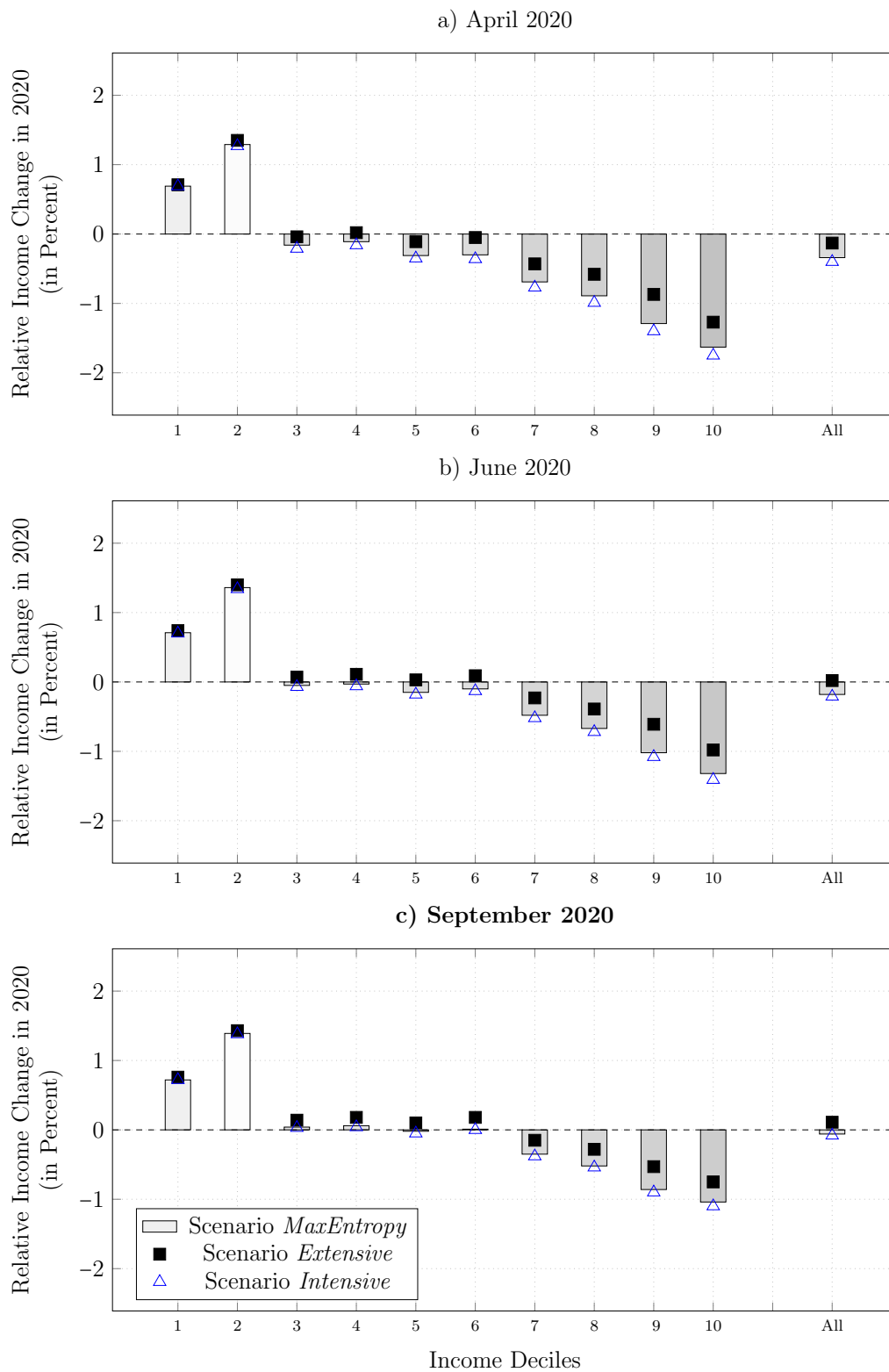
NOTE. — Relative change in mean household equivalent net income by net income decile compared to the baseline for the subpopulation of households that are potentially affected by the crisis. The equivalent income is calculated based on the modified OECD scale. Discretionary non-employment policy measures (child bonus, support for single parents, emergency child benefit supplement, simplified access to basic income support) are excluded in the simulation. All = Mean change over deciles. Source: IAB-MSM.

Figure 4: COVID-19 Effects on Net Income by Income Deciles Excluding Discretionary Non-Employment Policies, Overall Population



NOTE. — Relative change in mean household equivalent net income by net income decile compared to the baseline for the overall income distribution. The equivalent income is calculated based on the modified OECD scale. Discretionary non-employment policy measures (child bonus, support for single parents, emergency child benefit supplement, simplified access to basic income support) are excluded in the simulation. All = Mean change over deciles. Source: IAB-MSM.

Figure 5: COVID-19 Effects on Net Income by Income Deciles Including Discretionary Non-Employment Policies, Overall Population



NOTE. — Relative change in mean household equivalent net income by net income decile compared to the baseline for the overall income distribution. The equivalent income is calculated based on the modified OECD scale. Discretionary non-employment policy measures (child bonus, support for single parents, emergency child benefit supplement, simplified access to basic income support) are included in the simulation. All = Mean change over deciles. Source: IAB-MSM.

Figure 5 indicates that the negative effect increases with income and the total effect on the income distribution turns progressive. This strong redistributive effect of the discretionary non-employment measures is mainly driven by the child bonus. In quantitative terms, the child bonus is the most important of the non-employment policy measures described in Section 2.3. We simulate additional spending of 5.1 billion euros for the child bonus in 2020. In comparison, the additional expenditure on short-term work due to the crisis (excluding social security contributions) amount to 10.3 billion euros based on the September forecast (see Table A1 in the Appendix). The child bonus is targeted at low and middle income households. Firstly, because unlike the regular child bonus, it is not considered in the means test for social benefits. Secondly, high income earners do not benefit from it because the bonus is offset against the income tax benefit resulting from the child allowance.

The distribution of the income changes across the decile groups is consistent with our findings for the impact on income inequality, although the effect is almost negligible. Based on a constant (pre-crisis) poverty line and the September forecast, we simulate a decrease in the poverty rate by -0.45 percent (-0.09 percentage points) and in the Gini coefficient by -0.95 percent (-0.29 percentage points) (see Table A2 in the Appendix).

Although the evidence on the distributional effects of the COVID-19 crisis is less developed so far, our results are consistent with the few other studies that suggest similar basic mechanisms behind the distributional effects. First, the overall negative effects on income distribution decrease significantly during the crisis. For example, Brewer and Tasseva (2020) simulate a strong negative initial effect on the net income of all UK households for April 2020 of (-8 percentage points). In contrast, based on conservative assumptions about the recovery phase, Bronka et al. (2020) find a decline of only 1 percentage point for 2020. Second, short-time work schemes or wage subsidies for employees are the main insurance mechanism in many countries (Konle-Seidl, 2020). Germany relies on a well-functioning system of short-time work implemented in the unemployment insurance. At the same time, the benefits that workers can receive are relatively high in an international comparison and therefore, and contrary to other countries, a large part of the income shock is offset through the welfare system (Almeida et al., 2020; Figari and Fiori, 2020). As the SWC schemes are usually not means-tested, but paid up to a maximum ceiling, households from the middle income groups benefit particularly from these benefits. Third, while the employment related income shock affects all households along the (labor) income distribution, the total income effect seems to be progressive, with income gains in the lower tail of the income distribution and a reduction in the Gini-coefficient and the poverty rate. This is mainly driven by non-employment benefits, e.g., the child bonus in Germany or the

increased generosity of the Universal Credit in the UK (Bronka et al., 2020), or by reduced housing and work related expenses (O’Donoghue et al., 2020).

Our simulation results show the following findings with regard to the three implemented post-crisis scenarios. For most of the results, scenario *Extensive* is the upper bound and scenario *Intensive* the lower bound for the simulated negative income effect on the decile groups. However, differences are small in most cases, indicating that the differently implemented income shocks are averaged out within deciles to some extent. Furthermore, moving from Figure 2 to Figure 3, the difference for these two extreme scenarios decreases for lower income groups and increase for higher income groups. This feature stems from the increasing non-linearity of the tax and transfer system for higher incomes. For a high monthly gross wage, for example, the (progressive) income tax decreases significantly more for a 100 percent income shock than for a low loss of income. Accordingly, the differences between the scenarios are more pronounced for the fiscal effects, for example, if one considers the effects on the income tax or expenditure on short-time work benefits, which both depend on the individual level of income loss.

4 Conclusion

Governments around the world use drastic interventions to slow down and control the COVID-19 pandemic. Both the pandemic itself as well as the containment measures affect economic activities in almost all sectors and have a dramatic economic impact. The high dynamics of the crisis and the high level of uncertainty in the economy pose an unprecedented challenge for policy makers to take the appropriate countermeasures to reduce the economic damage. The assessment of the consequences of the crisis and the effects of the countermeasures based on the latest economic developments is therefore central to overcoming the crisis.

In this paper, we propose a novel method to quantify the short-term effects of a macroeconomic shock on labor demand and on the income distribution in real-time. We provide an application to Germany in the context of the COVID-19 pandemic. As such, this study is also the first to estimate the distributional effects of the COVID-19 crisis for Germany. Our approach combines different data sources and economic models in a novel way and can be updated regularly: an output forecast building on VAR models estimated on monthly firm-level survey data, a structural labor demand model based on cost minimization and a microsimulation model. In order to show the dynamics of the crisis and its impact on the results obtained, we report results that are based on information collected at three different times: April, June and September 2020. As a novelty, the estimated macro and labor demand effects are linked to household micro data based on the principle of maximum entropy. This principle, which has not yet

been applied in previous studies in this context, offers the necessary flexibility to take into account sector-specific distributions of relative working hours changes as well as the months of being affected by the crisis. This feature is particularly important during the first phase of the crisis when employment responses takes place predominantly via the intensive rather than the extensive margin. The tools and methods developed in this paper are also applicable to many other countries in which labor market and distributional microdata is not available in real-time.

Our findings show a significant decline in output in almost all industries in 2020. This output shock translates into a noticeable reduction in both, labor demand and gross labor income. All working households across the income distribution suffer from income losses. The tax benefit system and especially the short-time work program act as an important automatic stabilizer as expected losses in disposable income are significantly reduced. As a disproportionately large number of inactive people, e.g., recipients of means-tested benefits, are represented in lower deciles, the average relative income losses in the lower decile groups become smaller when including non-employed households in the analysis. Finally, when accounting for the discretionary non-employment policy measures enacted as a response to the recession, the average effect on the income distribution turns progressive as the first two decile groups actually gain income, while the middle income groups are almost not affected and the upper parts still lose income.

A comparison of our results based on information collected in April, June and September 2020 shows that business expectations improved quickly after April 2020 and hence, estimated negative effects on the income distribution declined significantly by September 2020. While our results presented up to September still suggest that the recovery of the German economy is following a V-shape, the strong increase in infections in October 2020 in Germany and Europe already challenges this finding. Hence, the analysis of the economic impacts of the crisis and a continual evaluation of policy responses remains highly topical.

References

- Abowd, J. M. and Kramarz, F. (1999). The Analysis of Labor Markets Using Matched Employer-Employee Data. In: *Handbook of Labor Economics: Vol. 3B*, ed. by Ashenfelter, O. and Card, D., Amsterdam: North Holland, pp. 2629–2710.
- Almeida, V., Barrios, S., Christl, M., De Poli, S., Tumino, A., and van der Wielen, W. (2020). *Households' Income and the Cushioning Effect of Fiscal Policy Measures During Great Lockdown*. European Commission, Joint Research Center (JRC) Working Papers on Taxation and Structural Reforms 06/2020.
- Bargain, O., Immervoll, H., Peichl, A., and Siegloch, S. (2012). Distributional Consequences of Labor-Demand Shocks: The 2008-2009 Recession in Germany. *International Tax and Public Finance* 19, pp. 118–138.
- Bauer, A. and Weber, E. (2020). COVID-19: How Much Unemployment Was Caused by the Shutdown in Germany? *Applied Economics Letters*, Online First.
- Becker, S. O. and Wohlrabe, K. (2008). European Data Watch: Micro Data at the Ifo Institute for Economic Research – The “Ifo Business Survey”, Usage and Access. *Schmollers Jahrbuch: Journal of Applied Social Science Studies / Zeitschrift für Wirtschafts- und Sozialwissenschaften* 128 (2), pp. 307–319.
- Bellmann, L., Bender, S., and Schank, T. (1999). Flexibilität der Qualifikationsstruktur aus betrieblicher Sicht: Substitutionalität oder Komplementarität. *Journal of Economics and Statistics* 219 (1-2), pp. 109–126.
- Berndt, E. R. (1991). *The Practice of Econometrics: Classic and Contemporary*. Reading: Addison-Wesley.
- Berndt, E. R. and Khaled, M. S. (1979). Parametric Productivity Measurement and Choice Among Flexible Functional Forms. *Journal of Political Economy* 87 (6), pp. 1220–1245.
- Brewer, M. and Tasseva, I. V. (2020). *Did the UK Policy Response to COVID-19 Protect Household Incomes?* EUROMOD Working Paper Series EM 12/20.
- Bronka, P., Collado, D., and Richiardi, M. (2020). *The Covid-19 Crisis Response Helps the Poor: The Distributional and Budgetary Consequences of the UK Lock-Down*. EUROMOD Working Paper Series EM 11/20.
- Bruckmeier, K. and Wiemers, J. (2011). *A New Targeting – A New Take-Up? Non-Take-Up of Social Assistance in Germany after Social Policy Reforms*. Institute for Employment Research, IAB Discussion Paper 10/2011.
- Brücker, H., Haas, A., Hauptmann, A., and Vallizadeh, E. (2018). *Zur Steuerung der Erwerbsmigration und zur Arbeitsmarktintegration Geflüchteter*. Institute for Employment Research, IAB-Stellungnahme 11/2018.

- Card, D., Heining, J., and Kline, P. (2013). Workplace Heterogeneity and the Rise of West German Wage Inequality. *Quarterly Journal of Economics* 128 (3), pp. 967–1015.
- Christensen, L. R., Jorgenson, D. W., and Lau, L. J. (1973). Transcendental Logarithmic Production Frontiers. *Review of Economics and Statistics* 55 (1), pp. 28–45.
- Diewert, W. E. and Wales, T. J. (1987). Flexible Functional Forms and Global Curvature Conditions. *Econometrica* 55 (1), pp. 43–68.
- Dolls, M., Fuest, C., and Peichl, A. (2012). Automatic Stabilizers and Economic Crisis: US vs. Europe. *Journal of Public Economics* 96 (3), pp. 279–294.
- Dorn, F., Khailaie, S., Stoeckli, M., Binder, S. C., Lange, B., Lautenbacher, S., Peichl, A., Vanella, P., Wollmershäuser, T., Fuest, C., and Meyer-Hermann, M. (2020). *The Common Interests of Health Protection and the Economy: Evidence from Scenario Calculations of COVID-19 Containment Policies*. MedRxiv.
- Dustmann, C., Lindner, A., Schönberg, U., Umkehrer, M., and vom Berge, P. (2020). *Reallocation Effects of the Minimum Wage*. Centre for Research & Analysis of Migration, CReAM Discussion Paper Series 07/20.
- Eberle, J., Jacobebbinghaus, P., Ludsteck, J., and Witter, J. (2011). *Generation of Time-Consistent Industry Codes in the Face of Classification Changes: Simple Heuristic Based on the Establishment History Panel (BHP)*. Institute for Employment Research, FDZ Method Report Series 05/2011.
- Ellguth, P., Kohaut, S., and Möller, I. (2014). The IAB Establishment Panel: Methodological Essentials and Data Quality. *Journal of Labor Market Research* 47 (1-2), pp. 27–41.
- Federal Employment Agency (2020). ANBA (Monatszahlen), ausgewählte Regionen, Oktober 2020.
- Figari, F. and Fiori, C. V. (2020). *Welfare Resilience in the Immediate Aftermath of the COVID-19 Outbreak in Italy*. EUROMOD Working Paper Series EM 6/20.
- Goebel, J., Grabka, M. M., Liebig, S., Kroh, M., Richter, D., Schroeder, C., and Schupp, J. (2018). The German Socio-Economic Panel (SOEP). *Journal of Economics and Statistics* 239 (2), pp. 345–360.
- Hamermesh, D. S. (1993). *Labor Demand*. Princeton: Princeton University Press.
- Hans-Böckler-Stiftung (2020). *Pressedienst 10.07.2020*.
- Jaynes, E. T. (1957a). Information Theory and Statistical Mechanics. *Physical Review, Series II*. 106 (4), pp. 620–630.
- Jaynes, E. T. (1957b). Information Theory and Statistical Mechanics II. *Physical Review, Series II*. 108 (2), pp. 171–190.
- Konle-Seidl, R. (2020). *Short-Time Work in Europe: Rescue in the Current COVID-19 Crisis*. Institute for Employment Research, IAB-Forschungsbericht 4/2020.

- Kruppe, T. and Osiander, C. (2020). *Kurzarbeit in der Corona-Krise: Wer ist wie stark betroffen?* Institute for Employment Research, IAB-Forum, 30 June 2020.
- Lehmann, R. (2020). *The Forecasting Power of the ifo Business Survey*. Center for Economic Studies, CESifo Working Paper Series 8291.
- Lichter, A., Peichl, A., and Siegloch, S. (2015). The Own-Wage Elasticity of Labor Demand: A Meta-Regression Analysis. *European Economic Review* 80, pp. 94–119.
- McElreath, R. (2020). *Statistical Rethinking: A Bayesian Course with Examples in R and Stan*. 2nd Edition. Boca Raton: CRC Press.
- Müller, D. and Wolter, S. (2020). German Labour Market Data: Data Provision and Access for the International Scientific Community. *German Economic Review* 21 (3), pp. 313–333.
- O’Donoghue, C., Sologon, D. M., Kyzyma, I., and McHale, J. (2020). Modelling the Distributional Impact of the COVID-19 Crisis. *Fiscal Studies* 41 (2), pp. 321–336.
- Palomino, J. C., Rodriguez, J. G., and Sebastian, R. (2020). Wage Inequality and Poverty Effects of Lockdown and Social Distancing in Europe. *European Economic Review*, Online First.
- Pudney, S., Hancock, R., and Sutherland, H. (2006). Simulating the Reform of Means-Tested Benefits with Endogenous Take-Up and Claim Costs. *Oxford Bulletin of Economics and Statistics* 68 (2), pp. 135–166.
- Sauer, S. and Wohlrabe, K. (2020). *ifo Handbuch der Konjunkturmfragen*. ifo Beiträge zur Wirtschaftsforschung 88. Munich: ifo Institute - Leibniz Institute for Economic Research at the University of Munich.
- Schulten, T. and Müller, T. (2020). *Kurzarbeitergeld in der Corona-Krise: Aktuelle Regelungen in Deutschland und Europa*. Wirtschafts- und Sozialwissenschaftliches Institut, Policy Brief WSI Nr. 38, 04/2020.
- Shannon, C. E. (1948). A Mathematical Theory of Communication. *Bell System Technical Journal* 27 (4), pp. 623–656.
- Shephard, R. (1953). *Cost and Production Functions*. Princeton: Princeton University Press.
- Wiemers, J. (2015). Endogenizing Take-Up of Social Assistance in a Microsimulation Model – A Case Study for Germany. *The International Journal of Microsimulation* 8 (2), pp. 4–27.
- Zellner, A. (1962). An Efficient Method of Estimating Seemingly Unrelated Regressions and Tests for Aggregation Bias. *Journal of the American Statistical Association* 57 (298), pp. 348–368.

A Appendix: Tables

Table A1: Fiscal Effect (in Million Euro)

Scenario	MaxEntropy			Extensive			Intensive		
	4/2020	6/2020	9/2020	4/2020	6/2020	9/2020	4/2020	6/2020	9/2020
<i>Forecast Period</i>									
UB II (Standard Requirements)	176	160	138	201	183	167	182	168	142
UB II (Accommodation Costs)	383	358	339	427	392	375	387	363	343
Housing Benefits	12	12	11	21	20	18	12	12	12
Supplementary Child Allowance	2	4	5	6	6	6	1	3	4
Bonus Child Benefit	5,081	5,080	5,080	5,079	5,078	5,078	5,081	5,080	5,080
Short-Time Work Compensation	18,266	13,121	10,280	23,396	17,704	14,365	17,069	12,150	9,883
SSC on Short-Time Work Compensation	14,611	10,907	8,626	15,184	11,432	9,243	14,501	10,666	8,523
Unemployment Benefit I	1,103	799	646	1,103	799	646	1,103	799	646
Income Taxes	-14,532	-11,122	-8,752	-12,726	-9,388	-7,388	-15,020	-11,365	-8,991
SSC Employees	-9,338	-6,899	-5,509	-10,137	-7,662	-6,212	-9,171	-6,772	-5,487
SSC Employers	-9,182	-6,787	-5,397	-9,879	-7,455	-6,036	-9,015	-6,645	-5,364
<i>Fiscal Balance</i>	72,686	55,248	44,783	78,158	60,119	49,535	71,541	54,023	44,475

NOTE. — Differences in fiscal revenues/expenditures (in million Euro) compared to the baseline. Discretionary non-employment policy measures (child bonus, support for single parents, emergency child benefit supplement, simplified access to basic income support) are included in the simulation. SSC = Social Security Contributions. UB II = Unemployment Benefit II.
Source: IAB-MSM.

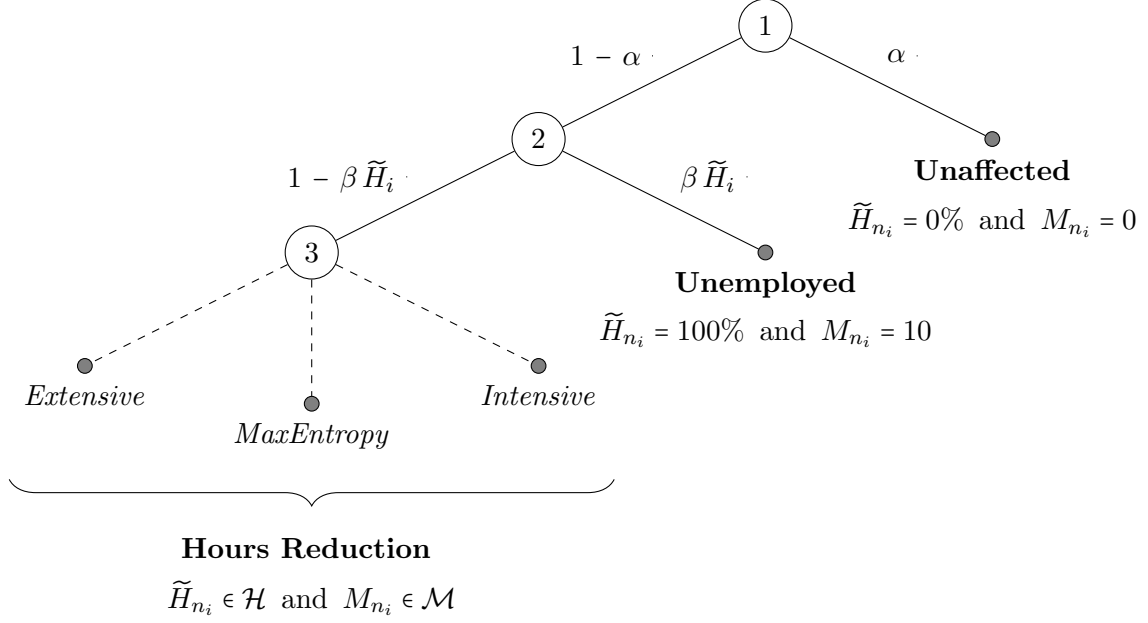
Table A2: Changes in Gini Coefficient and Poverty Rate

Scenario	MaxEntropy			Extensive			Intensive		
	4/2020	6/2020	9/2020	4/2020	6/2020	9/2020	4/2020	6/2020	9/2020
<i>Forecast Period</i>									
Gini Coefficient: Absolute Difference to Baseline (in Percentage Points)	-0.37	-0.33	-0.29	-0.32	-0.28	-0.25	-0.39	-0.34	-0.30
Gini Coefficient: Relative Difference to Baseline (in Percent)	-1.21	-1.07	-0.95	-1.03	-0.90	-0.81	-1.26	-1.12	-0.98
Poverty Rate: Absolute Difference to Baseline (in Percentage Points)	-0.08	-0.07	-0.09	-0.07	-0.09	-0.10	-0.07	-0.08	-0.09
Poverty Rate: Relative Difference to Baseline (in Percent)	-0.37	-0.35	-0.45	-0.35	-0.43	-0.46	-0.33	-0.40	-0.42

NOTE. — Absolute and relative differences in Gini coefficient and poverty rate compared to the baseline for the overall income distribution. The net equivalent income is calculated based on the modified OECD scale. Discretionary non-employment policy measures (child bonus, support for single parents, emergency child benefit supplement, simplified access to basic income support) are included in the simulation. Source: IAB-MSM.

B Appendix: Figures

Figure B1: Three-Stage COVID-19 Lottery



NOTE. — The figure displays the three stages of our “COVID-19 lottery”. In the first stage, persons who are potentially affected by the COVID-19 induced output shock draw from a uniform distribution. A person with index n_i in industry-by-input cell i continues working at their pre-crisis working hours with probability α . In this case, their realized relative hours reduction, \tilde{H}_{n_i} , is zero and the number of months they are affected by the crisis, M_{n_i} , is also zero, and the lottery ends (outcome “Unaffected”). Otherwise, the person reaches the second stage of the lottery and takes another draw from a uniform distribution. With probability $\beta \cdot \tilde{H}_i$ the person loses their job, where \tilde{H}_i is the average relative loss in working hours in cell i predicted by our labor demand model. With the complementary probability $1 - \beta \cdot \tilde{H}_i$ the person stays employed or self-employed, but suffers a relative loss in working hours (outcome “Hours reduction”). If a person reaches the third stage of the lottery, this relative loss is determined using one of three different scenarios (*MaxEntropy*, *Extensive*, *Intensive*; see Section 2.3) for translating the average cell-specific relative hours loss \tilde{H}_i to realizations for the individual relative losses \tilde{H}_{n_i} and a realization for the number of months in which the person is affected by this relative hours loss. Depending on the scenario, the realizations of the relative hours loss take one of the values $\tilde{H}_{n_i} \in \mathcal{H} := \{0.1, 0.2, \dots, 1\}$ and the realizations for the number of months in which this loss occurs takes one of the values $M_{n_i} \in \mathcal{M} := \{1, 2, \dots, 10\}$. For all three scenarios, we ensure that $E[\tilde{H}_{n_i}] = (1 - \alpha) \cdot [(1 - \beta \tilde{H}_i) \cdot E[\tilde{H}_{n_i}|s] + \beta \tilde{H}_i \cdot 10/12] = \tilde{H}_i$ holds, where $s \in \{\text{MaxEntropy}, \text{Extensive}, \text{Intensive}\}$, i.e., for each individual belonging to a cell $i = 1, \dots, 648$ the expected relative loss in hours over all three stages of the lottery equals the average relative hours reduction in cell i predicted by our labor demand model. Source: Own illustration.