

Delaporte, Isaure; Escobar, Julia; Peña, Werner

Working Paper

The Distributional Consequences of Social Distancing on Poverty and Labour Income Inequality in Latin America and the Caribbean

GLO Discussion Paper, No. 682

Provided in Cooperation with:
Global Labor Organization (GLO)

Suggested Citation: Delaporte, Isaure; Escobar, Julia; Peña, Werner (2020) : The Distributional Consequences of Social Distancing on Poverty and Labour Income Inequality in Latin America and the Caribbean, GLO Discussion Paper, No. 682, Global Labor Organization (GLO), Essen

This Version is available at:
<http://hdl.handle.net/10419/225006>

Standard-Nutzungsbedingungen:

Die Dokumente auf EconStor dürfen zu eigenen wissenschaftlichen Zwecken und zum Privatgebrauch gespeichert und kopiert werden.

Sie dürfen die Dokumente nicht für öffentliche oder kommerzielle Zwecke vervielfältigen, öffentlich ausstellen, öffentlich zugänglich machen, vertreiben oder anderweitig nutzen.

Sofern die Verfasser die Dokumente unter Open-Content-Lizenzen (insbesondere CC-Lizenzen) zur Verfügung gestellt haben sollten, gelten abweichend von diesen Nutzungsbedingungen die in der dort genannten Lizenz gewährten Nutzungsrechte.

Terms of use:

Documents in EconStor may be saved and copied for your personal and scholarly purposes.

You are not to copy documents for public or commercial purposes, to exhibit the documents publicly, to make them publicly available on the internet, or to distribute or otherwise use the documents in public.

If the documents have been made available under an Open Content Licence (especially Creative Commons Licences), you may exercise further usage rights as specified in the indicated licence.

The Distributional Consequences of Social Distancing on Poverty and Labour Income Inequality in Latin America and the Caribbean*

Isaure Delaporte[†]

Julia Escobar[‡]

Werner Peña[§]

Abstract

This paper evaluates the distributional consequences of social distancing due to the COVID-19 pandemic on poverty and labour income inequality in 20 Latin American and Caribbean (LAC) countries. We gather detailed information from national laws and decrees on the strictness and the duration of the lockdown in each country and use rich harmonised household surveys from the IADB. We estimate the share of individuals that are potentially able to remain active under the first phase of the lockdown by constructing the Lockdown Working Ability (LWA) index which takes into account individuals' ability to work from home but also whether their occupation is affected by workplace closures or mobility restrictions. We find that, on average, 1 worker out of 2 is able to work under the lockdown in the LAC region. We document considerable variation in the share of individuals able to work under the lockdown across countries and within countries across occupations, economic activities and specific population groups. Based on the LWA index, we then estimate individual's potential labour income losses and examine changes in poverty and labour income inequality. We find an increase in poverty and labour income inequality in the majority of the LAC countries due to social distancing. At the national level, the highest increase in the headcount poverty index is 1.4 pp and the highest increase in the Gini coefficient is 2 pp. Decomposing overall labour income inequality in the LAC region, we find that social distancing has led to a small decrease (-0.1 pp) in inequality between countries but to an increase (2 pp) in inequality within countries. Finally, we document that 63% of the dispersion in the labour income loss across countries is explained by the sectoral/occupational structure of the economies, while the rest is explained by the type of lockdown policy that was implemented.

JEL codes: D33, E24, I14, J31, J21.

Keywords: COVID-19, Social Distancing, Teleworking, Employment, Labour Income Inequality, Poverty.

*We thank the Inter-American Development Bank for giving us a limited and strictly academic access to the Harmonized Household Surveys of Latin America and the Caribbean. We also thank Juan Barrios for his comments on an earlier draft. All possible errors remain ours.

[†]University of St Andrews, St Andrews, KY16 9AL, Fife, Scotland, United Kingdom. E-mail: icmd1@st-andrews.ac.uk. ORCID ID: 0000-0003-0279-2032.

[‡]Inter-American Development Bank. Email: juliae@iadb.org.

[§]School of Economics, University of Kent, Canterbury, Kent, CT2 7FS, United Kingdom. E-mail: wp62@kent.ac.uk.

1 Introduction

To prevent the spread of the COVID-19 pandemic, governments around the world have imposed social distancing measures which have had an asymmetric effect on the labour market. While some sectors have been considered essential and thus essential workers have continued to go to work and to receive their wages, other sectors have had to close because of the high risk of transmission of the virus that these activities entail. As a result, the workers in closed economic activities have been unable to work and to keep their earnings. The remaining activities have been affected by mobility restrictions. Millions of individuals have been asked to stay at home for a period that varies across countries from one to six months. Among these individuals, some have been able to remain active due to the task content of their occupations (Dingel and Neiman 2020; Delaporte and Peña 2020; Gottlieb et al. 2020; Hatayama, Viollaz and Winkler 2020) while others have not been able to work from home and have experienced wage losses. Therefore, the implications of social distancing could be significant in terms of labour income inequality and poverty rates.

This paper evaluates the potential distributional consequences of social distancing on poverty and labour income inequality in 20 Latin American and Caribbean (LAC) countries. To do so, this study relies on two data sources. First, we gather detailed information from national laws and decrees on the strictness and the duration of the first phase¹ of the lockdown in each LAC country.² The strictness of the lockdown measures is defined both in terms of workplace closures and mobility restrictions. This is important since countries in the LAC region have implemented very different lockdown policies. Second, we use rich household surveys harmonised by the Inter-American Development Bank (IADB). The surveys used for this study cover 20 countries, including one North American country, ten South American countries, five Central American countries and four Caribbean countries.³ The surveys contain harmonised individual-level data on demographic, educational, labour, income and housing conditions. More specifically, we have information on workers' occupations, economic activities and annual labour income. This allows us to conduct an evaluation of the potential implications of social distancing on poverty and inequality.

To carry out the analysis, we construct the Lockdown Working Ability (LWA) index which represents the capacity of individuals to remain active under the first phase of the lockdown given their teleworkability index, i.e. the feasibility to work from home but also whether their economic activity/occupation is affected by legal workplace closures or mobility restrictions. In particular, we assume that individuals who work in open sectors remain active while those who work in closed sectors do not. The remaining activities

¹The first phase of the lockdown refers to the day national lockdown policies have been implemented up to the day the economy started to reopen.

²This constitutes a novel compilation for the LAC region. Indeed, the laws and decrees contain detailed information on: i) economic activities that are considered essential, ii) economic activities that must cease to operate, and iii) activities for which mobility restrictions should apply. Furthermore, the laws and decrees provide a duration for these measures.

³The list of countries is as follows: Argentina, the Bahamas, Belize, Bolivia, Brazil, Barbados, Chile, Colombia, Costa Rica, the Dominican Republic, Ecuador, Guatemala, Jamaica, Mexico, Nicaragua, Paraguay, Peru, El Salvador, Uruguay and Venezuela.

which are neither open nor closed are affected by mobility restrictions. As a result, the workers in these sectors are considered as active depending on their capacity to perform their job from home. After computing the national shares for all the countries in our sample, we find considerable variation across countries in the share of individuals able to remain active. For instance, while all the workers were able to remain active in Nicaragua (due to the fact that there was no lockdown), only 37% of the workers were potentially able to work in Argentina. We also document significant variation within countries across occupations, economic activities and specific population groups. Lastly, the shares based on the teleworkability index and the lockdown working ability index differ remarkably. This highlights the need to take into account workplace closures and mobility restrictions when examining the feasibility to work during the pandemic.

Once individuals that are able to work have been identified, the next step is to calculate individuals' potential labour income losses due to social distancing given that the duration of the first phase of the lockdown varies across countries. We examine how the mean loss labour income rate varies across occupations, economic activities and specific population groups within countries. Then, by comparing the pre-lockdown situation with the situation at the end of the initial phase of the lockdown, we measure the changes in poverty and labour income inequality across countries. We use a series of measures to illustrate these changes. First, for our analysis on poverty, we compute for each country the Lockdown Incidence Curve (LIC) which represents the relative change in the labour income distribution. Besides, we compute the Foster-Greer-Thorbecke indices to estimate changes in the share of workers living with a labour income below the international poverty line as well as changes in the median poverty gap and in the severity of poverty. Second, to calculate the changes in labour income inequality, we use the Gini coefficient and the Mean Logarithmic Deviation (MLD) index. While the first measure is traditionally used to study inequality, the second measure allows us to decompose overall inequality into a between-group and a within-group component (Bourguignon 1970).

We find that although the mean labour income loss rate is rather constant over the labour income distribution for the entire LAC region, this picture differs across countries. For instance, in Argentina, the Bahamas, Bolivia, Brazil, Chile, Colombia and El Salvador, the bottom percentiles are the most affected whereas in Barbados, Costa Rica, Ecuador, Jamaica, Mexico, Paraguay and Uruguay, all parts of the labour income distribution suffer relatively similar losses. There is however an increase in the labour income polarisation in Ecuador, Jamaica, Mexico, Paraguay and Peru. Across occupations, service workers and non-agricultural workers and machinery drivers suffer the largest losses. In the LAC region on average, their potential labour income loss amounts to 14-15% of their pre-lockdown labour income. Across economic activities, workers in the construction sector, in manufacturing industries and in the wholesale and retail trade experience significant labour income losses as well (on average 22%, 14% and 13% respectively). Further analysis suggests that the potential losses do not differ significantly by gender, age and level of education. However, informal workers have higher potential labour income losses than

formal workers (12% compared to 9% for the full sample).

We find an increase in the share of workers living in poverty in almost all countries.⁴ While the average increase in the headcount poverty index is of 0.6 percentage points (pp) for the LAC region, larger changes are observed in specific countries. At the national level, the highest increase in the headcount poverty index is observed in Peru and Guatemala (1.4 and 1.1 pp increase respectively). When the sample is restricted to urban areas, the highest increase in poverty is registered in Argentina with a 3 pp. We also find that labour income inequality increases for the Gini coefficient and the MLD in almost all countries. While the average increase in labour income inequality is rather modest at the level of the entire region (1 pp increase for the Gini coefficient and 2 pp for the MLD index), the changes for some countries are large. At the national level, the highest increase in the Gini coefficient is observed in Bolivia, Chile, Peru and El Salvador with a 2 pp increase. The highest increase in the MLD index is in Chile with a 4 pp increase. For urban areas only, Argentina experiences the highest increase in labour income inequality with a 9 pp increase in the Gini coefficient and a 16 pp increase in the MLD index. Lastly, we decompose overall inequality for the LAC region into a between-countries and a within-countries component and find that social distancing has led to a small decrease (-0.1 pp) in inequality between countries but to an increase (2 pp) in inequality within countries.

We conduct a counterfactual exercise to disentangle two reasons for the dispersion in the labour income loss across countries, namely: i) the lockdown policy (strictness and duration) and ii) the sectoral/occupational structure of the economy. Indeed, countries in the LAC region have implemented social distancing policies that differ in their duration and their strictness.⁵ This is likely to explain the obtained changes, since the longer and the stricter the lockdown, the more likely the country will experience an increase in poverty and labour income inequality. Moreover, countries in Latin America and the Caribbean differ in their occupational structure. The countries that are characterised by a higher share of jobs that cannot be performed from home are likely to experience a higher increase in poverty and labour income inequality due to closures or mobility restrictions. By applying to all countries a common lockdown policy - the duration and the strictness of the lockdown policy implemented in Argentina - and by computing a measure of the inter-percentile differential, we document that 63% of the cross country labour income loss dispersion is explained by the sectoral/occupational structure of the economy, while the rest is explained by the type of lockdown policy that was implemented.

This study contributes to a number of strands of literature examining the negative employment impacts arising from COVID-19. First, a growing number of studies investigate the feasibility to work from home ([Dingel and Neiman 2020](#); [Delaporte and Peña 2020](#); [Gottlieb et al. 2020](#); [Hatayama, Viollaz and Winkler 2020](#)). Overall, these stud-

⁴Our measure of poverty is based on individual labour income. Therefore, individuals having a labour income below the international poverty line of \$1.90 (2011 PPP) are considered poor.

⁵Nicaragua is the only LAC country in our sample that did not implement a lockdown. The other countries in Latin America and the Caribbean have implemented a lockdown that differs in duration (from a few days to 6 months) and in strictness.

ies have found that only a limited share of individuals are able to work from home. In the Latin American and Caribbean context, [Delaporte and Peña \(2020\)](#) estimate that this share varies from 7% in Guatemala and Honduras to 16% in Costa Rica and the Bahamas. There is also significant variation in the potential to work from home across occupations, industries, regions and workers' socioeconomic characteristics ([Mongey and Weinberg 2020](#)). While previous studies have estimated occupational teleworking, this paper takes into account workplace closures and mobility restrictions to analyse the working ability of individuals during the lockdown. So far, this exercise has only been done for Europe ([Palomino, Rodriguez and Sebastian 2020](#)). This is informative since it allows us to compare the two notions - teleworkability and working ability - and to understand how the two shares differ.

This paper also contributes to the discussion on how the pandemic accentuates inequalities ([Adams-Prassl et al. 2020](#)). In particular, our study fits in with a number of recent papers which examine the distributive effects of the lockdown policies on poverty and inequality. Among these studies, some explore how teleworking is related to changes in labour income levels and inequality. Others examine the distributional effect of the capacity to work under the lockdown. Our paper is in this respect closer to the second group. [Palomino, Rodriguez and Sebastian \(2020\)](#) and [Perugini and Vladislavjevic \(2020\)](#) look at European countries. Other studies focus on specific countries such as Italy ([Brunori et al. 2020](#); [Bonacini, Gallo and Scicchitano 2020](#)), Turkey ([Duman 2020](#)) as well as a few LAC countries ([Bonavida, Foschiatti and Gasparini 2020](#); [Lustig et al. 2020](#); [Leone 2020](#)). These studies examine the changes under different scenarios of lockdown and document an increase in both poverty and inequality. We contribute to this growing area of research by examining changes in poverty and labour income inequality in 20 Latin American and Caribbean countries using harmonised data. This means that we are covering more than 80% of the LAC population. Furthermore, this study departs from simulating changes in poverty and labour income inequality under different scenarios of lockdown and aims to estimate the potential changes under the lockdown policies implemented in each country. In this sense, our paper conducts a novel ex-post assessment of the potential impact of the initial phase of the lockdown on poverty and inequality in the LAC region. In addition, we have compiled a novel dataset that documents the strictness and the duration of the first round of lockdowns in each LAC country by reviewing the laws and decrees issued during the pandemic.

This paper proceeds as follows. Section 2 explains how the LWA index was constructed. Section 3 explains the methodology applied to calculate the changes in poverty and labour income inequality and presents the results for the LAC countries. Lastly, Section 4 concludes.

2 The Capacity to Work Under COVID-19

To estimate individuals' ability to work during the lockdown, we construct the Lockdown Working Ability (LWA) index which takes into account teleworking capacity but also whether individuals' occupation is affected by workplace closures and mobility restrictions. We first estimate the feasibility to work from home before presenting the LWA index.

2.1 The Teleworkability Index

We construct our measure of teleworkability capturing the feasibility for each occupation to be performed from home by using information about the task content of occupations from the World Bank's Skills Toward Employability and Productivity (STEP) surveys. More specifically, since there are two LAC countries sampled in the STEP surveys - Bolivia and Colombia - and the task content of occupations in these two countries is likely to be representative of the task content of occupations in the entire LAC region⁶, we use the information provided by these two countries for the 20 countries included in our sample. Following the methodology of [Gottlieb et al. \(2020\)](#), we classify workers as unable to work from home if they either do not use a computer at work, lift heavy objects, repair electronic equipment, operate heavy machinery or report that customer interaction is very important. Once workers have been classified accordingly, we can obtain the share of individuals that can work from home by country and occupation. We take the average of the share of individuals that are able to work from home in Colombia and Bolivia at the 1-digit ISCO level. We can then merge this information to our individual-level data.

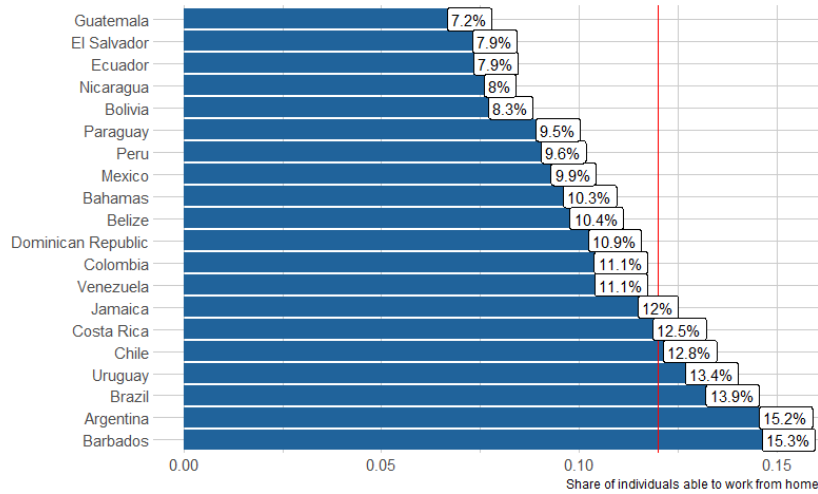
We use rich household surveys from the IADB covering 20 LAC countries: Argentina, the Bahamas, Belize, Bolivia, Brazil, Barbados, Chile, Colombia, Costa Rica, the Dominican Republic, Ecuador, Guatemala, Jamaica, Mexico, Nicaragua, Paraguay, Peru, El Salvador, Uruguay and Venezuela. Besides, for each country, we use the most recent harmonised survey that is available. Table 1 provides the survey, the year and the number of individuals in the sample for each country. The surveys contain harmonised individual-level data on demographic, educational, labour, income and housing conditions. More specifically, we have information on workers' occupations, economic activity and annual labour income. Therefore, we can merge the average share obtained for all 1-digit ISCOs from Bolivia and Colombia using our own 1-digit ISCO variable. The next step is to apply weights using the country-specific ISCO's employment shares.

By proceeding this way, we obtain a share of individuals able to work from home that varies across countries. This is due to the fact that countries have different occupational structures. Figure 1 presents the shares of individuals able to work from home by country. While the average share of individuals able to work from home is 12% for the entire LAC region, the proportion of individuals able to work from home varies across countries from 7 to 15%. The country with the lowest share of teleworkability in our sample is Guatemala

⁶The STEP surveys for Colombia and Bolivia were collected in 2012 and contain information only on urban areas.

while the country with the highest share is Barbados. Our findings are in line with previous studies using real-time shares of people in homeworking. For instance, Leone (2020) find the same share for Brazil and Gottlieb et al. (2020) present evidence for Costa Rica, where 10.8% of urban workers worked remotely in the second quarter of 2020.

Figure 1. Share of Individuals Able to Work From Home, by Country



Source: *Harmonized Household Surveys of Latin America and the Caribbean*, authors' own calculations. Notes: Figure 1 shows the proportion of individuals able to work from home by country. This proportion varies across countries, from 7% in Guatemala to 15% in Barbados. The average share of individuals able to work from home is 12% for the entire LAC region. The LAC share was calculated as a weighted average of the population in all countries.

The share of individuals able to work from home varies as well within countries across occupations. The results, reported in Table 2 Panel A, show that a larger proportion of workers are able to work from home among higher skilled occupations. For instance, the share of teleworkability is higher among administrative staff (46% for the full sample), professionals and technicians (27% for the full sample) and executives and senior staff (23% for the full sample). It is much lower for individuals who work in agricultural jobs, as well as for service workers and non-agricultural workers. The largest variation across countries is found among executives and senior staff.

Across economic activities (Table 2 Panel B), the highest share of teleworkability is found in finance, insurance and the real estate sector (24% for the full sample). It varies however considerably across countries, from 11% in the Bahamas to 35% in Peru. Teleworking is also possible for a significant share of individuals in social and community services as well as in the electricity, gas and water sector (18% and 17% respectively for the full sample). However, as expected, individuals are much less likely to be able to work from home when they work in agriculture (0.006% for the full sample).

Lastly, we examine how the share of teleworkability differs across population groups. The results for the all sample indicate that men are less likely to be able to work from home compared to women (9% compared to 15%). A larger teleworkability share is found as well among individuals that have a higher level of education and that live in an urban

area. Informal workers are more affected: only 7% of them are able to work from home compared to 17% of the formal workers. Lastly, individuals in the top of the labour income distribution have higher capacity to work from home compared to those in the bottom part (19% compared to only 7% of the individuals in the bottom quintile).

Our results are largely consistent with previous research examining the feasibility to work from home across occupations, sectors and population groups (Dingel and Neiman 2020; Delaporte and Peña 2020; Gottlieb et al. 2020; Hatayama, Viollaz and Winkler 2020; Mongey and Weinberg 2020).

2.2 The Lockdown Working Ability Index

The stay-at-home orders do not apply to all economic activities. Certain activities have remained open, either because they are considered as essential or because some LAC countries have implemented a partial lockdown. On the opposite, other activities have ceased completely to operate. Lastly, some activities that are not explicitly stated as essential or closed have been affected by mobility restrictions. This needs to be taken into account when estimating the share of individuals able to remain active under the lockdown. Therefore, we construct the LWA index which can be expressed as follows:

$$LWA_i = \begin{cases} 1 & \text{if } a_i = O \\ T & \text{if } a_i \neq O, C \\ 0 & \text{if } a_i = C \end{cases} \quad (1)$$

where O refers to open economic activities and C to closed economic activities in country i . T refers to the teleworkability index. In other words, when a certain economic activity is open, we assume that the workers are not affected by the lockdown regardless of their capacity to work from home. On the opposite, when a certain economic activity is closed, we assume that working is not possible, regardless of the fact that the job can be performed at home. The feasibility to work from home matters only for the remaining economic activities.

Our LWA measure might have some limitations which should be underlined. First, we assume that all individuals working in sectors that are open are able to remain active. This might not be the case if the jobs in sectors that are open are affected by a drop in demand or by distancing measures at work (some workers could have been fired or furloughed). Besides, we assume that the workers in these sectors retain their pre-lockdown level of hours worked per week. We also acknowledge the possibility that some workers in the sectors that are open might perform their job from home. This, however, does not affect our conclusions since, no matter where they decide to work, the number of hours worked should remain the same, as their labour income.

Second, for individuals who work in sectors that are closed, we assume that they can no longer work and therefore do not receive their salary. This might not be the case for

all individuals. Some workers might have continued to receive their salary, regardless of the fact that their occupation is affected by legal workplace closures, either because of the rigidity of their contracts or because they are able to perform certain tasks from home. In this case, they would have received the totality or part of their salary. Finally, in the case of the remaining sectors that are affected by mobility restrictions, we assume that all the workers that are able to work from home do so. Yet, some workers might have been fired or furloughed irrespective of their ability to work from home.

To proceed with the estimation of the LWA index, we need to classify the economic activities into three categories: i) the activities that are explicitly stated as closed, ii) the activities that are explicitly stated as open and iii) the remaining activities affected by mobility restrictions. We gather detailed information from national laws and decrees for each country in our sample. The decision to close down or leave open specific economic activities have been taken at the sectoral level. Therefore, we conduct this classification at the sectoral level. The only available variable for sectors that has been harmonised by the IADB in the household surveys is at the 1-digit level. This gives us nine different sectors.⁷ Having such a general definition of the economic activities does not allow us to identify precisely which sectors were closed or open. Therefore, we use the non-harmonised version of the sectoral classification available in each survey which is more detailed and employ a crosswalk between the national classifications (often at the 4-digit level) and the harmonised classification ISIC revision 4. For some countries, we use a crosswalk from the national classification to ISIC Rev 3.1 and then to ISIC Rev 4. This is explained in more details in Appendix A. By following this procedure, we obtain a more detailed and harmonised definition of economic activities (at the 2-digit or division level).

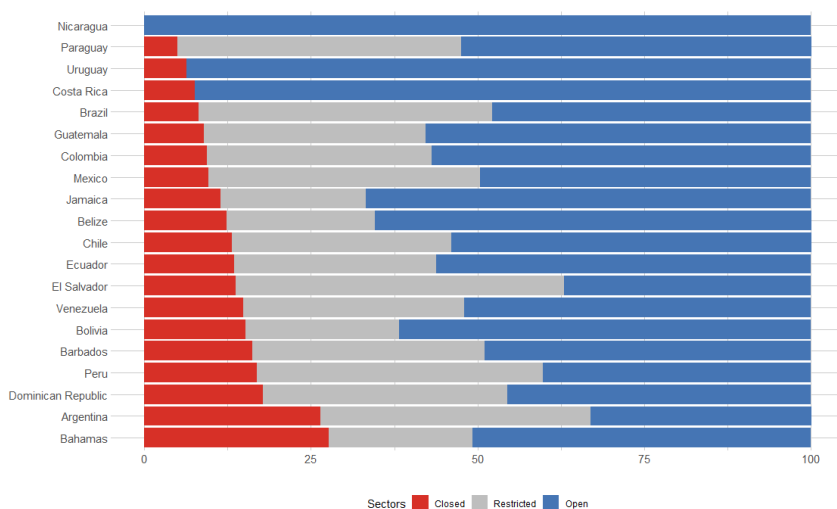
We now proceed with the classification of the sectors into open and closed activities. Since countries in the LAC region have implemented different lockdown policies, it is important to identify in each country which sectors are open and which are closed, as well as the duration of the first phase of the lockdown. The list of laws and decrees reviewed as well as the estimated duration of the lockdown and the classification of the sectors are reported specifically for each country in Appendix B.⁸ In the case of Brazil, since the lockdown measures differ across states, we report the classification at the state level. Figure 2 reports for each country the proportion of workers in: i) sectors that are closed,

⁷The nine sectors are the following: “Agriculture, hunting, forestry, and fishing”; “Mining and quarrying”; “Manufacturing industries”; “Electricity, gas, and water”; “Construction”; “Wholesale and retail trade, restaurants, and hotels”; “Transport and storage”; “Financial services, insurance, and real estate” and “Social, community and personal services”.

⁸The duration of the first phase of the lockdown in each LAC country is an estimation based on laws and decrees. However, our results are in general consistent with the Oxford COVID-19 Government Response Tracker (OxCGRT) in terms of the approximate duration of the lockdowns. Concerning our definition of economic sectors at the 2-digit level, for some sectors, the definition is too general to identify some of the activities mentioned in the laws and decrees. A paramount example of this is ‘public transportation’ which, in some countries, was closed during the lockdown. This activity appears in the ISIC Rev 4 under “Urban and suburban passenger land transport” at the 4-digit level and is part of the 2-digit category 49 “Land transport and transport via pipelines”. However, the division 49 also comprises other activities that were not closed. Since our definition is at the 2-digit level, we apply the following rule: if the proportion of workers in the class “Urban and suburban passenger land transport” was the highest compared to the other classes and ‘public transportation’ was closed, then we assume the division 49 to be closed entirely.

ii) sectors affected by mobility restrictions and iii) sectors that are open.⁹

Figure 2. Share of Workers in Closed, Restricted and Open Sectors, by Country



Source: National Laws and Decrees compiled and reported in “Appendix B”, authors’ own calculations.
 Notes: Figure 2 reports for each country the proportion of workers in: i) sectors that are closed, ii) sectors affected by mobility restrictions and iii) sectors that are open.

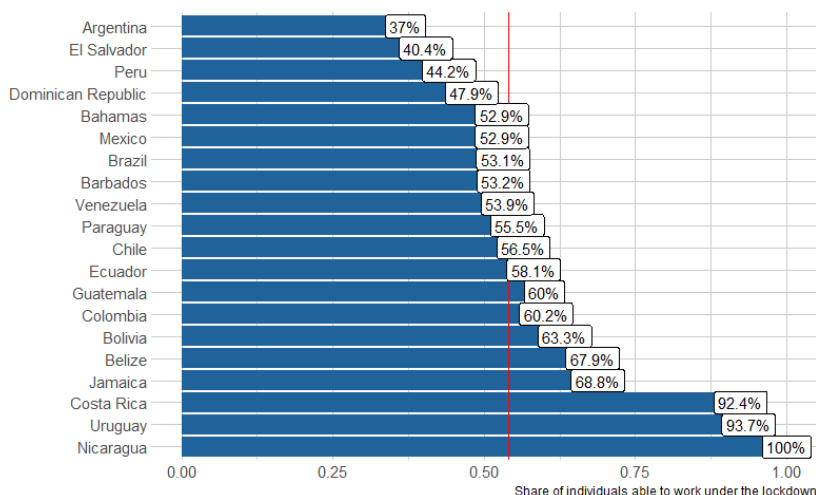
We find strong differences across countries in the type of lockdown that was implemented. Nicaragua is the only country in our sample that did not implement a lockdown. Therefore, all the workers in Nicaragua are potentially able to remain active. Paraguay and Uruguay have the lowest proportion of workers in sectors that are closed. Yet, Paraguay has imposed a stricter lockdown than Uruguay. As a result, almost all the workers in Uruguay are able to remain active under the lockdown whereas in Paraguay, it depends additionally on the capacity of individuals to work from home. On the other extreme of the spectrum, the Bahamas and Argentina have the highest proportion of individuals that are working in closed sectors (28% and 26% respectively). Countries such as the Dominican Republic or Peru also have a high proportion of workers that are unable to work (18% and 17% respectively). Lastly, the highest proportion of workers in sectors that are affected by mobility restrictions is found in El Salvador with 49% of the workers required to work from home. Therefore, the ability to remain active for these workers rests essentially on their capacity to perform their job from home.

Based on the sectoral classifications and on individuals’ teleworkability index, we can now construct the LWA index. Figure 3 reports the share of individuals able to remain active under the lockdown in each country. On average, 1 worker out of 2 is potentially able to work under the lockdown in the entire LAC region. This proportion varies from 37% in Argentina to 100% in Nicaragua. We examine further how this share varies within countries across occupations, economic activities and specific population groups.

The share of individuals able to work under the lockdown differs across occupations

⁹Additionally, Figure B.1 in Appendix B reports the proportion of workers in: i) sectors that are closed, ii) sectors affected by mobility restrictions and iii) sectors that are open at the state level for Brazil.

Figure 3. Share of Individuals Able to Work Under the Lockdown, by Country



Source: *Harmonized Household Surveys of Latin America and the Caribbean*, authors' own calculations.

Notes: Figure 3 provides for each country the share of individuals able to remain active under the lockdown given their teleworkability index but also workplace closures. This share varies from 37% in Argentina to 100% in Nicaragua. The average share of individuals able to work from home is 54% for the entire LAC region. The LAC share was calculated as a weighted average of the population in all countries.

(Table 3 Panel A). There is not a clear positive correlation with occupation-level labour income, as it is the case with the feasibility to work from home. The highest share of workers able to remain active is found in agricultural jobs (98% for the full sample). A high share is found as well among administrative staff (75% for the full sample) and professionals and technicians (72% for the full sample). On the opposite, individuals who work as salesmen and merchants as well as machinery drivers are less likely to be able to work under the lockdown (39% and 32% respectively for the full sample). Unsurprisingly, there are important differences across countries since it depends on the strictness of the lockdown. For instance, only 60% of the workers in agriculture are able to remain active in the Bahamas, compared to 100% of their peers in Nicaragua.

The proportion of individuals able to work during the lockdown also varies across economic activities (Table 3 Panel B). The highest share is found in agriculture as well as in the electricity and gas sector (100% for the full sample). This result does not differ much across countries. A significant share of individuals are able to work as well in mining and quarrying (88% for the full sample) and in the transport and storage sector (64% for the full sample). These two shares differ however substantially depending on the country that is examined. The lowest share of individuals able to work during the lockdown is found in the construction sector (9% for the full sample).

The capacity to work under the lockdown differs across individuals (Table 3 Panel C). A larger proportion of men are able to work during the lockdown compared to women (55% compared to 53% for the full sample). Besides, a higher proportion of highly educated individuals are able to remain active compared to individuals with lower educational attainment (56% compared to 51% for the full sample). Individuals living in rural areas

are more likely to be able to remain active compared to workers in urban areas (73% compared to 50% for the full sample). A higher proportion of workers in the formal sector are able to remain active as well compared to workers in the informal sector (59% compared to 49% for the full sample). Lastly, a larger share of individuals in the top of the labour income distribution are able to remain active under the lockdown compared to those in the bottom part (61% compared to 54% of the individuals in the bottom quintile for the full sample).

3 Poverty and Inequality Changes Under COVID-19

The asymmetry of the shock implies that the economic implications of social distancing could be significant in terms of labour income inequality and poverty rates. In this section, we analyse the potential effects of social distancing on poverty and labour income inequality in Latin America and the Caribbean. Before presenting our analysis, it should be noted that we focus on the potential impact of the first phase of the lockdown and did not take into account the potential effect of the subsequent phases that have for objective to organise the reopening of the economies, neither the possibility of a second lockdown. In addition, our analysis is framed in a partial equilibrium setting, since we are not taking into account other effects that might have impacted the labour income distribution.

3.1 Potential Labour Income Losses and Inequality Measures

To examine the potential impact of enforced social distancing on poverty and labour income inequality, the first step is to calculate the potential labour income loss due to the lockdown for all individuals. The labour income loss is calculated as follows:

$$wl_{i,j,t} = w_{i,j,t-1} \cdot D_{j,t} (1 - LWA_{i,j,t}) \quad (2)$$

where $wl_{i,j,t}$ is the labour income loss of individual i in country j in period t . $w_{i,j,t-1}$ is the annual labour income¹⁰ of individual i in country j in period $t - 1$ (before the lockdown) and $D_{j,t}$ represents the duration of the lockdown in annual terms, i.e. $D_{j,t} = \frac{30}{365}$ for thirty days, $D_{j,t} = \frac{60}{365}$ for sixty days, etc. The duration of the lockdown differs across countries (see Appendix B for an approximation of the duration of the lockdowns). Lastly, $LWA_{i,j,t}$ represents the capacity for individual i in country j to remain active and to receive his salary during the period of the lockdown.¹¹ The estimated labour income losses allow us to evaluate the potential changes in poverty and labour income inequality under the lockdown in each LAC country. Since we focus our attention on labour income, we do not capture the effects of government transfers and subsidies put in place to help

¹⁰We use the harmonised monetary total labour income available in our surveys.

¹¹We assume that all the workers that are able to remain active receive their entire labour income. In other words, the workers do not experience any wage cuts or reduction in the number of working hours. Besides, we exclude the possibility that individuals switch to another occupation.

households and individuals. Such effects would be captured at the household income level. In addition, we are not capturing the support of some governments to pay a share of the payroll of some formal employees.

To examine the changes in poverty and inequality, we calculate a series of measures which we define, before presenting the results.¹² First, we calculate the loss rate in the labour income of every worker caused by the lockdown, i.e. $l_{i,j,t} = \frac{w_{i,j,t} - w_{i,j,t-1}}{w_{i,j,t-1}} = \frac{-wl_{i,j,t}}{w_{i,j,t-1}}$ with $w_{i,j,t} = w_{i,j,t-1} - wl_{i,j,t}$. We order individuals by their pre-lockdown labour income and group them into percentiles, obtaining the mean loss rate at each percentile. This gives us the Lockdown Incidence Curve (LIC), which allows to examine which part of the labour income distribution suffers the largest loss. We also examine how the mean loss labour income rate varies across occupations, economic activities and population groups. Then, we calculate the Foster-Greer-Thorbecke indices which are a family of poverty metrics. These indices are derived by substituting different values of the parameter α into the following equation:

$$FGT_{\alpha} = \frac{1}{N} \sum_{i=1}^H \left(\frac{z - w_i}{z} \right)^{\alpha} \quad (3)$$

where z is the poverty threshold, N is the number of people in the economy, H is the number of poor (those with labour incomes at or below z), w_i is the labour income of each individual i . If α is low, the FGT metric weights all the individuals with incomes below z roughly the same. The higher the value of α , the greater the weight place on the poorest individuals. We calculate FGT_0 , FGT_1 and FGT_2 . FGT_0 is the headcount ratio. It is the fraction of workers that live below the international poverty line of \$1.90 (PPP) per person per day. With $\alpha = 1$, FGT_1 is the poverty gap index. Lastly, FGT_2 measures the intensity/severity of poverty. We compute these measures for the pre-lockdown period as well as for the period at the end of the first phase of the lockdown. In addition, we also calculate the absolute changes denoted as: $\Delta^A FGT_0$, $\Delta^A FGT_1$ and $\Delta^A FGT_2$.

With respect to changes in labour income inequality, we calculate the Gini coefficient (G) and the Mean Logarithmic Deviation (MLD) index for the pre-lockdown period as well as for the period at the end of the first phase of the lockdown. The Gini coefficient can be expressed as follows:

$$G(w) = \frac{1}{2n^2\mu} \sum_{i=1}^n \sum_{k=1}^n |w_i - w_k| \quad (4)$$

where w represents the labour income distribution, w_i is the labour income of individual i and μ is the mean labour income of the economy. The absolute changes in labour income inequality are measured as the difference between the pre-lockdown labour income distribution and the labour income distribution at the end of the first phase of the lockdown: $\Delta^A G = G(w_t) - G(w_{t-1})$ while the relative changes in labour income inequality

¹²We mostly follow [Palomino, Rodriguez and Sebastian \(2020\)](#) in the choice of the measures.

are measured as percentages of pre-lockdown inequality, i.e. $\Delta^R G = \frac{G(w_t) - G(w_{t-1})}{G(w_{t-1})} \times 100$. Second, we use the MLD index which can be expressed as follows:

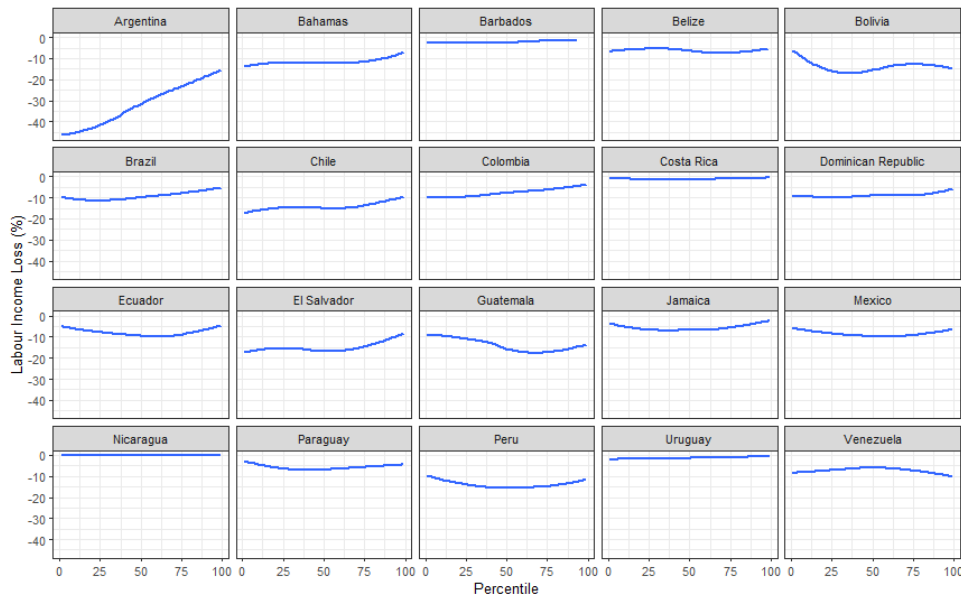
$$MLD(w) = \frac{1}{n} \sum_{i=1}^n \ln\left(\frac{\mu}{w_i}\right) \quad (5)$$

We compute the absolute and relative changes in labour income inequality measured by the MLD index which will be denoted by $\Delta^A MLD = MLD(w_t) - MLD(w_{t-1})$ and $\Delta^R MLD = \frac{MLD(w_t) - MLD(w_{t-1})}{MLD(w_{t-1})} \times 100$, respectively. Lastly, the MLD index can be decomposed into a between-group and a within-group component. While the between-group component is the level of labour income inequality that would arise if each worker in a country enjoys the mean labour income of the country, the within-group component is the weighted sum of labour income inequalities within different countries. We conduct the decomposition in order to estimate the relative contribution in overall inequality.

3.2 Poverty and Inequality Changes

We first examine the Lockdown Incidence (LIC) curves for each LAC country of our sample (Figure 4). The picture differs across countries. For instance, in Argentina, the Bahamas, Brazil, Chile, Colombia and El Salvador, the bottom percentiles are the most affected whereas in Barbados, Costa Rica, Ecuador, Jamaica, Mexico, Paraguay and Uruguay, all parts of the labour income distribution suffer relatively similar losses. Yet, in Ecuador, Jamaica, Mexico, Paraguay and Peru, there is an increase in the labour income polarisation.

Figure 4. Lockdown Incidence Curves, by Country



Source: *Harmonized Household Surveys of Latin America and the Caribbean*, authors' own calculations.

Notes: Figure 4 shows the lockdown incidence curves, by country. The curves represent the relative change in the labour income distribution. They allow to examine which part of the labour income distribution suffers the largest relative labour income losses. A smoother has been applied to the curves.

We estimate the mean loss labour income rate across occupations, economic activities and population groups (Table 4). Among all occupations, salesmen, merchants and service workers as well as non-agricultural workers and machinery drivers suffer the largest losses. In the LAC region on average, their potential labour income loss amounts to 14% and 15% of their pre-lockdown labour incomes, respectively. Across the different economic activities, workers in the construction sector, in manufacturing industries and in the wholesale and retail trade sector experience important labour income losses, amounting to respectively 22%, 14% and 13% of their labour incomes on average. We also examine how the relative labour income losses vary across different population groups. The potential labour income losses do not differ significantly by gender as well as by age and level of education. However, informal workers have higher potential labour income losses than formal workers (11% compared to 9% for the full sample). Besides, workers in urban areas experiment higher potential labour income losses.

Our results for the analysis on poverty and labour income inequality are reported in Table 5. We find an increase in the proportion of workers with a labour income below the international poverty line in almost all the LAC countries. While the average increase in the headcount poverty index is of 0.6 pp for the LAC region, larger changes are observed in specific countries. Indeed, at the national level, the highest increase in the headcount poverty index is observed in Peru and Guatemala (1.4 and 1.1 pp increase respectively). When the sample is restricted to urban areas, the highest increase in poverty is registered in Argentina with a 3 pp. We also find that labour income inequality increases for the Gini coefficient and the MLD in almost all the LAC countries. While the average increase in labour income inequality is rather modest at the level of the entire region (1 pp increase for the Gini coefficient and 2 pp for the MLD index), the changes for some countries are large. At the national level, the highest increase in the Gini coefficient is observed in Bolivia, Chile, Peru and El Salvador with a 2 pp increase. The highest increase in the MLD index is in Chile with a 4 pp increase. For urban areas only, Argentina experiences the highest increase in labour income inequality with a 9 pp increase in the Gini coefficient and a 16 pp increase in the MLD index.

We now decompose overall inequality into a between-countries and a within-countries component and examine the changes. The results reported in Table 6 show that social distancing has led to a small decrease (-0.1 pp) in inequality between countries but to an increase (2 pp) in inequality within countries. Besides, inequality in Latin America and the Caribbean is still largely explained by the within-countries component. Our between-countries and within-countries components for the pre-lockdown period are consistent with what has been found previously in the literature.¹³

¹³See for example Ravallion and Chen (2012): <https://blogs.worldbank.org/developmenttalk/monitoring-inequality>.

3.3 Sources of Labour Income Losses

The impact of the enforced social distancing measures on poverty and labour income inequality differs across LAC countries for a number of reasons. First, LAC countries have implemented different lockdown policies. Not all countries have implemented a lockdown. Among the countries that have implemented a lockdown, the social distancing policies differ in their duration and their strictness. This is likely to matter to explain changes in poverty and inequality. Furthermore, the observed changes in poverty and labour income inequality depend on the structure of the economy that is observed. Since LAC countries differ in their sectoral/occupational structure, they do not experience similar changes. The countries that are characterised by a higher share of jobs that cannot be performed from home are likely to experience a higher increase in poverty and labour income inequality.

We conduct a counterfactual exercise in order to disentangle two reasons for these observed changes in labour income losses, namely: i) the lockdown policy and ii) the sectoral/occupational structure of the economy. More specifically, we calculate a measure of the inter-percentile differential which can be expressed as follows:

$$\frac{wl_{ARG}^{99}/wl_{ARG}^1}{wl^{99}/wl^1} \quad (6)$$

where our benchmark lockdown policy is the one implemented in Argentina.¹⁴ This measure compares what the 99th - to - 1st percentile ratio would be in the counterfactual world with common lockdown policy, to the actual value. In other words, it calculates the dispersion of the labour income loss in all the countries under the same social distancing measures. After computing the percentile ratio, we find that the cross-country labour income loss dispersion can be explained by 63% by the sectoral/occupational structure of the economies, while the rest can be explained by the lockdown policies (duration and strictness).

4 Conclusion

To prevent the spread of COVID-19, countries around the world have put in place broad social distancing policies. One of the implications is that many individuals have been unable to work during the lockdown. To evaluate the distributional consequences of social distancing on poverty and labour income inequality, we gather detailed information from national laws and decrees on the duration and the strictness of the lockdown in each LAC country of our sample and use rich harmonised household surveys covering 20 LAC countries. We construct the Lockdown Working Ability (LWA) index which captures the feasibility to remain active under a lockdown given individuals' teleworkability index but also workplace closures and mobility restrictions. We find that the share of individuals

¹⁴We choose Argentina's lockdown policy as our benchmark since it is one of the strictest and the longest lockdown among the policies implemented in LAC countries.

able to work during the lockdown varies potentially from 37% in Argentina to 100% in Nicaragua. This share varies as well within countries across occupations, economic activities and specific population groups.

Based on the LWA index, we estimate individuals' potential labour income losses under the lockdown and examine changes in poverty and labour income inequality in Latin America and the Caribbean. We estimate the mean loss labour income rate across occupations, economic activities and population groups. Among all occupations, salesmen, merchants and service workers as well as non-agricultural workers and machinery drivers suffer the largest losses. Across the different economic activities, workers in manufacturing industries, in the construction sector and the wholesale and retail trade sector experience important labour income losses as well. Among individuals, informal workers have higher labour income losses than formal workers. Besides, workers in urban areas experience higher potential labour income losses.

Our results in terms of poverty changes show an increase in poverty in almost all LAC countries. At the national level, the highest increase in the headcount poverty index is observed in Peru and Guatemala (1.4 and 1.1 pp increase respectively). When the sample is restricted to urban areas, the highest increase in poverty is registered in Argentina with a 3 pp. We also find that labour income inequality increases for the Gini coefficient and the MLD in almost all countries. At the national level, the highest increase in the Gini coefficient is observed in Bolivia, Chile, Peru and El Salvador with a 2 pp increase. The highest increase in the MLD index is in Chile with a 4 pp increase. For urban areas only, Argentina experiences the highest increase in labour income inequality with a 9 pp increase in the Gini coefficient and a 16 pp increase in the MLD index. When decomposing overall inequality in the LAC region, we find a small decrease (-0.1 pp) in inequality between countries but an increase (2 pp) in inequality within countries due to social distancing.

Our paper contributes to the existing knowledge on the potential negative employment impacts arising from COVID-19 in a number of ways. First, we construct a rich database based on national laws and decrees which provides information about the first phase of the lockdown in each LAC country. We believe this data source can be helpful in other research settings. Second, we conduct a comparative analysis across LAC countries using harmonised survey data. Our findings provide important insights about the potential negative impacts due to the enforced social distancing measures and highlight the need to assist the most vulnerable workers in the context of the global pandemic.

Yet, our analysis has several shortcomings. First, we measure the potential impact on labour income inequality and poverty of enforced social distancing but we do not incorporate further the potential indirect effects in supply and demand on labour income losses and inequality, nor the spillover effects due to the interconnectedness of the LAC economies. Nevertheless, if these effects were taken into account, we would expect the labour income loss risks to be magnified and the distribution of earnings to be impacted further. Second, since we focus on the impact of social distancing on labour income inequality, we do not take into consideration the series of emergency social assistance

programs that have been put in place in various LAC countries. The coverage of the proposed emergency measures varies across countries but overall, it is fairly high among the poorest households ([Busso et al. 2020](#)). These measures are likely to attenuate some of the distributive effects of the lockdown policies. Lastly, this analysis focuses on the potential impact of the first phase of the lockdown and does not take into account the potential effect of the subsequent phases that have for objective to organise the reopening of the economies, neither the possibility of a second lockdown. Future research could examine further these impacts once more information is available.

References

- Adams-Prassl, Abi, et al. 2020. "Inequality in the Impact of the Coronavirus Shock: Evidence from Real Time Surveys".
- Bonacini, Luca, Giovanni Gallo, and Sergio Scicchitano. 2020. "Working from home and income inequality: risks of a 'new normal' with COVID-19." *Journal of Population Economics* 1-58.
- Bonavida Foschiatti, Cristian, and Leonardo Gasparini. 2020. "El impacto asimétrico de la cuarentena." Documentos de Trabajo del CEDLAS.
- Bourguignon, Francois. 1970. "Decomposable income inequality measures." *Econometrica: Journal of the Econometric Society*: 901-920.
- Brunori, Paolo, Maria Luisa Maitino, Letizia Ravagli, and Nicola Sciclone. 2020. "Distant and unequal. Lockdown and inequalities in Italy." mimeo.
- Busso, Matías et al. 2020. "The Challenge of Protecting Informal Households during the COVID-19 Pandemic: Evidence from Latin America."
- Dingel, Jonathan I., and Brent Neiman. 2020. "How many jobs can be done at home?," *Journal of Public Economics*, 189, issue C.
- Delaporte, Isaure, and Werner Peña. 2020. "Working from Home Under COVID-19: Who Is Affected? Evidence from Latin American and Caribbean Countries." CEPR Covid Economics 14.
- Duman, Anil. 2020. "Wage Losses and Inequality in Developing Countries: labor market and distributional consequences of Covid-19 lockdowns in Turkey." No. 602. GLO Discussion Paper, 2020.
- Gottlieb, Charles, Jan Grobovšek, Markus Poschke, and Fernando Saltiel. 2020. "Working from Home in Developing Countries." (No. 13737). Institute of Labor Economics (IZA).
- Hatayama, Maho, Mariana Viollaz, and Hernan Winkler. 2020. "Jobs' Amenability to Working from Home: Evidence from Skills Surveys for 53 Countries."
- Leone, Tharcisio. 2020. "COVID-19 sends the bill: Socially disadvantaged workers suffer the severest losses in earnings." No. 018291. The Latin American and Caribbean Economic Association-LACEA.
- Lustig, Nora, Valentina Martinez Pabon, Federico Sanz, and Stephen D. Younger. 2020. "The Impact of COVID-19 Lockdowns and Expanded Social Assistance on Inequality, Poverty and Mobility in Argentina, Brazil."
- Mongey, Simon, and Alex Weinberg. 2020. "Characteristics of Workers in Low Work-From-Home and High Personal-Proximity Occupations." Becker Friedman Institute for Economic White Paper.
- Palomino, Juan C., Juan Gabriel Rodriguez, and Raquel Sebastian. 2020. "Wage inequality and poverty effects of lockdown and social distancing in Europe." *European Economic Review* 103564.

Perugini, Cristiano, and Marko Vladislavljevic. 2020. "Social Stability Challenged: Pandemics, Inequality and Policy Responses."

United Nations. Statistical Division. International Standard Industrial Classification of all Economic Activities (ISIC). No. 4. United Nations Publications, 2008.

Tables

Table 1. Individual-Level Data Sources

Country	Country code	Survey Year	Survey Name	Sample size
Argentina	ARG	2019	Encuesta Permanente de Hogares - Continua (EPHC)	115,748
Bahamas	BHS	2014	Labour Force Survey (LFS)	6,705
Belize	BLZ	2007	Labour Force Survey (LFS)	8,940
Bolivia	BOL	2018	Encuesta Permanente de Hogares (ECH)	37,517
Brazil	BRA	2015	Pesquisa Nacional por Amostra de Domicilio (PNAD)	355,935
Barbados	BRB	2015	Continuous Labour Force Sample Survey (CLFSS)	13,579
Chile	CHL	2017	Encuesta de Caracterización Socioeconómica Nacional (CASEN)	216,439
Colombia	COL	2018	Gran Encuesta Integrada de Hogares (GEIH)	191,041
Costa Rica	CRI	2013	Encuesta Nacional de Hogares (ENAHO)	38,779
Dominican Republic	DOM	2019	Encuesta Nacional de Fuerza de Trabajo (ENFT)	20,965
Ecuador	ECU	2019	Encuesta Nacional de Fuerza de Trabajo (ENFT)	59,208
Guatemala	GTM	2019	Encuesta Nacional de Empleo e Ingresos (ENEI)	22,097
Jamaica	JAM	2014	Labour Force Survey (LFS)	20,444
Mexico	MEX	2018	Encuesta Nacional de Ingresos y Gastos de los Hogares (ENIGH)	269,206
Nicaragua	NIC	2014	Encuesta de Hogares sobre medición de Niveles de Vida (EMNV)	29,381
Peru	PER	2019	Encuesta de Hogares sobre medición de Niveles de Vida (EMNV)	124,979
Paraguay	PRY	2017	Encuesta Permanente de Hogares (EPH)	35,215
El Salvador	SLV	2019	Encuesta de Hogares de Propósitos Múltiples (EHPM)	74,448
Uruguay	URY	2019	Encuesta Continua de Hogares (ECH)	107,871
Venezuela	VEN	2015	Encuesta de Hogares por Muestreo (EHM)	117,919

Source: Harmonized Household Surveys of Latin America and the Caribbean, authors' own calculations.

Notes: Table 1 provides for each country the year of the survey, the name of the survey and the sample size. For each country, we selected the latest harmonised survey available, with the exception of Costa Rica for which we selected the year 2013. The reason for this is that this survey provides a variable at the 4-digit level needed to construct our standardized 2-digit ISIC classification. From 2014 onwards, this variable does not appear in the survey. In addition, for Argentina and the Bahamas, the sample is restricted to urban areas. The other countries have national representativeness.

Table 2. Share of Individuals Able to Work From Home, by Country

	All	ARG ^a	BHS ^a	BLZ	BOL	BRA	BRB	CHL	COL	CRI	DOM	ECU	GTM	JAM	MEX	NIC	PER	PRY	SLV	URY	VEN
	(1)	(2)	(3)	(4)	(5)	(6)	(7)	(8)	(9)	(10)	(11)	(12)	(13)	(14)	(15)	(16)	(17)	(18)	(19)	(20)	(21)
Panel A: by 1-digit ISCO																					
Professionals and technicians	0.27	0.27	0.34	0.28	0.26	0.27	0.30	0.27	0.26	0.28	0.28	0.26	0.27	0.35	0.26	0.28	0.26	0.28	0.27	0.25	0.26
Executives and senior staff	0.23	0.23	0.19	0.21	0.28	0.21	0.21	0.20	0.20	0.23	0.27	0.26	0.23	0.33	0.24	0.39	0.37	0.23	0.26	0.24	0.26
Administrative staff and intermediate	0.46	0.40	0.31	0.38	0.40	0.48	0.44	0.46	0.47	0.48	0.46	0.44	0.46	0.43	0.45	0.42	0.41	0.44	0.49	0.45	0.39
Salesmen and merchants, service workers	0.05	0.05	0.05	0.04	0.05	0.04	0.05	0.05	0.05	0.05	0.05	0.05	0.05	0.06	0.05	0.05	0.05	0.05	0.05	0.04	0.05
Agricultural and related jobs	0	0	0	0	0	0	0	0	0	0	0	0	0	0	0	0	0	0	0	0	0
Non-agricultural workers, machinery drivers	0.007	0.006	0.02	0.006	0.006	0.01	0.006	0.007	0.008	0.01	0.009	0.006	0.006	0.009	0.006	0.007	0.006	0.008	0.007	0.008	0.006
Panel B: by economic activity																					
Agriculture, hunting, forestry and fishing	0.006	0.12	0.11	0.01	0.003	0.004		0.03	0.007	0.02	0.004	0.006	0.005	0.002	0.006	0.02	0.003	0.005	0.006	0.03	0.008
Mining and quarrying	0.10	0.16	0.09	0.06	0.12	0.12		0.10	0.06	0.01	0.11	0.12	0.08	0.10	0.10	0.07	0.09	0.03	0.08	0.09	0.12
Manufacturing industries	0.08	0.09	0.08	0.07	0.06	0.10		0.08	0.08	0.10	0.06	0.06	0.06	0.08	0.06	0.06	0.08	0.05	0.05	0.08	0.07
Electricity, gas and water	0.17	0.16	0.06	0.11	0.13	0.17		0.13	0.16	0.21	0.14	0.14	0.11	0.14	0.22	0.12	0.17	0.20	0.11	0.15	0.16
Construction	0.05	0.05	0.06	0.05	0.04	0.12		0.06	0.10	0.07	0.03	0.03	0.03	0.04	0.05	0.04	0.05	0.04	0.04	0.04	0.04
Wholesale and retail trade	0.11	0.11	0.11	0.12	0.08	0.13		0.13	0.09	0.11	0.08	0.07	0.08	0.12	0.10	0.09	0.09	0.09	0.08	0.11	0.10
Transport and storage	0.08	0.19	0.08	0.13	0.03	0.09		0.11	0.10	0.10	0.07	0.05	0.07	0.16	0.07	0.11	0.06	0.11	0.08	0.13	0.06
Financial, insurance and real estate	0.24	0.23	0.11	0.21	0.29	0.27		0.24	0.18	0.28	0.31	0.19	0.29	0.18	0.22	0.31	0.35	0.29	0.20	0.22	0.20
Social and community services	0.18	0.20	0.11	0.16	0.20	0.20		0.18	0.19	0.18	0.18	0.17	0.16	0.19	0.16	0.23	0.20	0.16	0.14	0.19	0.17
Panel C: by individual characteristics																					
Male	0.09	0.13	0.08	0.07	0.07	0.11	0.11	0.10	0.09	0.11	0.08	0.06	0.05	0.09	0.09	0.08	0.08	0.08	0.07	0.10	0.08
Female	0.15	0.17	0.14	0.17	0.11	0.17	0.20	0.16	0.14	0.16	0.15	0.11	0.11	0.15	0.12	0.14	0.11	0.12	0.10	0.17	0.17
Aged 16-40	0.13	0.15	0.11	0.11	0.10	0.15	0.16	0.14	0.13	0.14	0.12	0.09	0.08	0.12	0.11	0.11	0.11	0.11	0.08	0.14	0.12
Aged 41 and above	0.10	0.16	0.10	0.09	0.07	0.12	0.15	0.11	0.09	0.11	0.10	0.07	0.06	0.11	0.09	0.09	0.08	0.08	0.07	0.13	0.10
Below 9 years of education	0.05	0.06		0.05	0.03	0.06	0.06	0.05	0.04	0.05	0.05	0.03	0.04	0.05	0.05	0.04	0.03	0.04	0.04	0.06	0.05
Above 9 years of education	0.17	0.18		0.18	0.12	0.19	0.16	0.15	0.15	0.20	0.15	0.12	0.17	0.14	0.16	0.17	0.13	0.15	0.13	0.20	0.15
Rural	0.05			0.07	0.03	0.05		0.07	0.04	0.08	0.07	0.03	0.06	0.08	0.04	0.05	0.02	0.05	0.05	0.07	
Urban	0.13	0.15	0.10	0.14	0.11	0.15		0.14	0.13	0.15	0.12	0.10	0.09	0.15	0.12	0.13	0.11	0.12	0.10	0.14	
Informal	0.07	0.11	0.11		0.05	0.08		0.09	0.07	0.07	0.06	0.04	0.05		0.07	0.06	0.06	0.07	0.05	0.05	0.06
Formal	0.17	0.20	0.10		0.20	0.17		0.15	0.18	0.15	0.17	0.14	0.18		0.16	0.19	0.21	0.18	0.14	0.16	0.17
Size firm - Small	0.07	0.11	0.08		0.05	0.11		0.08	0.06	0.07	0.08	0.05	0.04	0.07	0.07		0.05	0.06	0.04	0.08	0.06
Size firm - Medium	0.14	0.18	0		0.18	0.16		0.11	0.15	0.14	0.14	0.10	0.12	0.17	0.13		0.13	0.16	0.09	0.13	0.11
Size firm - Large	0.17	0.21	0		0.19	0.17		0.14	0.20	0.18	0.16	0.17	0.13	0.17	0.14		0.21	0.17	0.15	0.19	0.18
Quintile total labour income - First	0.07	0.08	0.08	0.10	0.02	0.09	0.10	0.08	0.05	0.05	0.08	0.03	0.03	0.10	0.05	0.04	0.04	0.04	0.05	0.07	0.08
Quintile total labour income - Second	0.09	0.11	0.08	0.11	0.06	0.13	0.12	0.09	0.06	0.07	0.10	0.04	0.03	0.07	0.07	0.07	0.06	0.06	0.04	0.09	0.12
Quintile total labour income - Third	0.11	0.15	0.09	0.10	0.08	0.14	0.15	0.12	0.11	0.10	0.09	0.06	0.05	0.14	0.08	0.10	0.10	0.09	0.07	0.13	0.12
Quintile total labour income - Fourth	0.14	0.19	0.11	0.11	0.11	0.15	0.21	0.15	0.14	0.18	0.11	0.09	0.09	0.17	0.12	0.14	0.11	0.12	0.10	0.17	0.13
Quintile total labour income - Fifth	0.19	0.24	0.14	0.09	0.15	0.21	0.24	0.21	0.20	0.23	0.18	0.17	0.16	0.24	0.18	0.15	0.18	0.16	0.17	0.22	0.12

Source: Harmonized Household Surveys of Latin America and the Caribbean, authors' own calculations.

Notes: Table 2 reports: i) in Panel A, the share of individuals able to work from home by 1-digit ISCO occupation and by country; ii) in Panel B, the share of individuals able to work from home by economic activity and by country and iii) in Panel C, the share of individuals able to work from home by individual characteristics and by country. The shares for the entire LAC region (Column 1) have been calculated as a weighted average of the population in each country. When the information was not available, we leave the cells as empty.

^a Sample restricted to urban areas.

Table 3. Share of Individuals Able to Work Under the Lockdown, by Country

	All	ARG ^a	BHS ^a	BLZ	BOL	BRA	BRB	CHL	COL	CRI	DOM	ECU	GTM	JAM	MEX	NIC	PER	PRY	SLV	URY	VEN
	(1)	(2)	(3)	(4)	(5)	(6)	(7)	(8)	(9)	(10)	(11)	(12)	(13)	(14)	(15)	(16)	(17)	(18)	(19)	(20)	(21)
Panel A: by 1-digit ISCO																					
Professionals and technicians	0.72	0.62	0.57	0.77	0.77	0.75	0.70	0.76	0.69	0.96	0.76	0.79	0.76	0.76	0.63	1	0.65	0.72	0.70	0.94	0.79
Executives and senior staff	0.49	1	0.81	0.72	0.52	0.38	0.50	0.64	0.58	0.91	0.55	0.61	0.79	0.79	0.57	1	0.68	0.57	0.52	0.89	0.59
Administrative staff and intermediate	0.75	0.65	0.49	0.60	0.73	0.76	0.78	0.74	0.80	0.93	0.53	0.76	0.68	0.72	0.76	1	0.72	0.70	0.70	0.94	0.79
Salesmen and merchants, service workers	0.39	0.21	0.46	0.41	0.61	0.28	0.46	0.52	0.46	0.85	0.50	0.53	0.55	0.62	0.47	1	0.14	0.50	0.19	0.90	0.61
Agricultural and related jobs	0.98	0.84	0.60	0.92	0.85	0.99	0.63	0.90	0.98	0.98	0.97	0.99	0.96	0.95	0.99	1	1	0.95	0.96	0.99	0.96
Non-agricultural workers, machinery drivers	0.32	0.14	0.53	0.77	0.43	0.42	0.33	0.28	0.50	0.96	0.17	0.17	0.18	0.17	0.29	1	0.15	0.26	0.22	0.97	0.16
Panel B: by economic activity																					
Agriculture, hunting, forestry and fishing	1	1	1	1	0.86	1		1	1	1	1	1	1	1	1	1	1	1	1	1	1
Mining and quarrying	0.88	1	0	1	1	1		1	1	1	1	1	0.03	1	0.20	1	1	1	0	1	1
Manufacturing industries	0.34	0.35	0.31	1	0.33	0.32		0.40	0.44	1	0.31	0.33	0.38	0.29	0.30	1	0.34	0.31	0.41	1	0.31
Electricity, gas and water	0.99	1	1	1	1	0.98		1	1	1	1	1	1	1	1	1	1	1	1	1	1
Construction	0.09	0.03	0.46	1	1	0.03		0.03	0.06	1	0.01	0.01	0.008	0.007	0.02	1	0.03	0.02	0.01	1	0.01
Wholesale and retail trade	0.44	0.06	0.35	0.46	0.57	0.24		0.63	0.46	0.79	0.70	0.59	0.64	0.53	0.81	1	0.07	0.59	0.10	0.82	0.75
Transport and storage	0.64	0.06	0	0.83	0.007	0.89		0.16	0.99	0.96	0.08	0.11	0.12	0.94	0.99	1	0.07	0.99	0.15	0.99	0.06
Financial, insurance and real estate	0.57	0.38	0.80	0.53	0.81	0.59		0.68	0.49	1	0.93	0.41	0.76	0.74	1	1	0.85	0.38	0.64	1	0.34
Social and community services	0.54	0.62	0.74	0.42	0.65	0.60		0.63	0.54	0.93	0.50	0.62	0.44	0.67	0.35	1	0.60	0.48	0.47	0.93	0.66
Panel C: by individual characteristics																					
Male	0.55	0.32	0.51	0.74	0.63	0.57	0.48	0.51	0.65	0.94	0.46	0.56	0.62	0.69	0.52	1	0.47	0.55	0.48	0.94	0.46
Female	0.53	0.43	0.55	0.55	0.63	0.49	0.59	0.64	0.54	0.90	0.51	0.62	0.56	0.69	0.55	1	0.40	0.56	0.29	0.93	0.66
Aged 16-40	0.52	0.35	0.51	0.66	0.61	0.52	0.54	0.59	0.60	0.92	0.45	0.56	0.57	0.64	0.51	1	0.40	0.51	0.38	0.92	0.54
Aged 41 and above	0.55	0.39	0.54	0.70	0.66	0.55	0.53	0.54	0.60	0.93	0.51	0.60	0.64	0.74	0.55	1	0.48	0.62	0.43	0.95	0.53
Below 9 years of education	0.51	0.19		0.69	0.66	0.48	0.41	0.51	0.59	0.92	0.42	0.59	0.56	0.75	0.50	1	0.51	0.54	0.39	0.94	0.45
Above 9 years of education	0.56	0.43		0.65	0.61	0.56	0.54	0.58	0.61	0.93	0.51	0.57	0.59	0.66	0.57	1	0.40	0.56	0.42	0.93	0.59
Rural	0.73			0.75	0.80	0.77		0.70	0.80	0.93	0.57	0.78	0.64	0.76	0.67	1	0.78	0.69	0.51	0.95	
Urban	0.50	0.37	0.53	0.61	0.57	0.50		0.55	0.56	0.92	0.46	0.50	0.56	0.63	0.49	1	0.36	0.49	0.34	0.93	
Informal	0.49	0.21	0.48		0.59	0.46		0.49	0.56	0.91	0.37	0.53	0.59		0.53	1	0.38	0.51	0.36	0.92	0.42
Formal	0.59	0.55	0.54		0.79	0.56		0.60	0.67	0.93	0.62	0.67	0.63		0.53	1	0.65	0.70	0.51	0.94	0.70
Size firm - Small	0.47	0.19	0.55		0.60	0.39		0.38	0.56	0.92	0.40	0.52	0.59	0.68	0.53		0.35	0.58	0.38	0.94	0.41
Size firm - Medium	0.51	0.44			0.73	0.35		0.49	0.50	0.87	0.57	0.56	0.63	0.67	0.54		0.42	0.58	0.42	0.90	0.51
Size firm - Large	0.60	0.67			0.83	0.52		0.60	0.76	0.95	0.66	0.79	0.59	0.75	0.49		0.75	0.74	0.61	0.95	0.77
Quintile total labour income - First	0.54	0.19	0.49	0.68	0.74	0.49	0.46	0.52	0.56	0.92	0.42	0.65	0.70	0.59	0.61	1	0.52	0.65	0.31	0.92	0.58
Quintile total labour income - Second	0.50	0.28	0.57	0.68	0.57	0.46	0.47	0.55	0.56	0.91	0.43	0.53	0.67	0.47	0.50	1	0.41	0.48	0.36	0.92	0.57
Quintile total labour income - Third	0.50	0.39	0.48	0.66	0.58	0.52	0.50	0.55	0.59	0.91	0.48	0.50	0.54	0.69	0.45	1	0.38	0.49	0.30	0.94	0.53
Quintile total labour income - Fourth	0.52	0.48	0.54	0.62	0.65	0.54	0.66	0.55	0.61	0.92	0.44	0.51	0.50	0.72	0.48	1	0.40	0.53	0.33	0.95	0.55
Quintile total labour income - Fifth	0.61	0.59	0.66	0.68	0.63	0.64	0.66	0.66	0.70	0.95	0.55	0.69	0.58	0.81	0.58	1	0.49	0.62	0.54	0.96	0.48

Source: Harmonized Household Surveys of Latin America and the Caribbean, authors' own calculations.

Notes: Table 3 reports: i) in Panel A, the share of individuals able to remain active under the lockdown by 1-digit ISCO occupation and by country; ii) in Panel B, the share of individuals able to remain active under the lockdown by economic activity and by country and iii) in Panel C, the share of individuals able to remain active under the lockdown by individual characteristics and by country. The shares for the entire LAC region (Column 1) have been calculated as a weighted average of the population in each country. When the information was not available, we leave the cells as empty.

^a Sample restricted to urban areas.

Table 4. Mean Loss Labour Income Rate, by Country

	All	ARG ^a	BHS ^a	BLZ	BOL	BRA	BRB	CHL	COL	CRI	DOM	ECU	GTM	JAM	MEX	NIC	PER	PRY	SLV	URY	VEN
	(1)	(2)	(3)	(4)	(5)	(6)	(7)	(8)	(9)	(10)	(11)	(12)	(13)	(14)	(15)	(16)	(17)	(18)	(19)	(20)	(21)
Panel A: by 1-digit ISCO																					
Professionals and technicians	0,07	0,16	0,09	0,03	0,08	0,05	0,01	0,09	0,06	0,006	0,04	0,04	0,09	0,004	0,07	0	0,10	0,04	0,07	0,01	0,04
Executives and senior staff	0,10	0	0,05	0,04	0,18	0,12	0,02	0,13	0,08	0,01	0,07	0,08	0,08	0,007	0,08	0	0,09	0,06	0,11	0,02	0,07
Administrative staff and intermediate	0,06	0,16	0,09	0,07	0,10	0,05	0,01	0,09	0,04	0,008	0,08	0,05	0,12	0,01	0,04	0	0,08	0,04	0,07	0,01	0,04
Salesmen and merchants, service workers	0,14	0,36	0,12	0,10	0,14	0,15	0,03	0,17	0,10	0,02	0,08	0,10	0,16	0,02	0,10	0	0,25	0,07	0,19	0,02	0,07
Agricultural and related jobs	0,005	0,07	0,05	0,01	0,05	0,001	0,02	0,03	0,003	0,003	0,006	0,003	0,02	0,003	0,002	0	0,0003	0,006	0,01	0,002	0,007
Non-agricultural workers, machinery drivers	0,15	0,38	0,10	0,04	0,21	0,12	0,03	0,26	0,09	0,005	0,14	0,17	0,30	0,02	0,13	0	0,25	0,10	0,19	0,006	0,15
Panel B: by economic activity																					
Agriculture, hunting, forestry and fishing	0,002	0	0	0	0,05	0		0	0	0	0	0	0	0	0	0	0,001	0	0	0	0
Mining and quarrying	0,02	0	0,17	0	0	0		0	0	0	0	0	0,35	0	0,14	0	0	0	0,24	0	0
Manufacturing industries	0,14	0,28	0,16	0	0,25	0,13		0,22	0,10	0	0,11	0,14	0,22	0,02	0,13	0	0,19	0,10	0,14	0	0,12
Electricity, gas and water	0,002	0	0	0	0	0,004		0	0	0	0	0	0	0	0	0	0	0	0	0	0
Construction	0,22	0,42	0,10	0	0	0,16		0,35	0,17	0	0,17	0,21	0,36	0,03	0,18	0	0,28	0,14	0,23	0	0,18
Wholesale and retail trade	0,13	0,41	0,14	0,09	0,16	0,16		0,13	0,10	0,03	0,05	0,09	0,13	0,02	0,03	0	0,27	0,06	0,21	0,04	0,05
Transport and storage	0,09	0,41	0,19	0,02	0,37	0,02		0,30	0,002	0,005	0,16	0,19	0,32	0,003	0,003	0	0,27	0,002	0,20	0,001	0,17
Financial, insurance and real estate	0,11	0,27	0,02	0,07	0,07	0,08		0,12	0,09	0	0,01	0,12	0,09	0,009	0	0	0,04	0,09	0,09	0	0,12
Social and community services	0,10	0,18	0,05	0,10	0,13	0,08		0,13	0,08	0,009	0,08	0,08	0,20	0,01	0,12	0	0,12	0,07	0,13	0,01	0,06
Panel C: by individual characteristics																					
Male	0,10	0,29	0,09	0,04	0,14	0,09	0,03	0,18	0,06	0,008	0,09	0,09	0,14	0,01	0,09	0	0,15	0,06	0,12	0,01	0,10
Female	0,11	0,26	0,10	0,08	0,14	0,10	0,02	0,13	0,08	0,01	0,08	0,08	0,16	0,01	0,08	0	0,17	0,06	0,17	0,01	0,06
Aged 16-40	0,11	0,30	0,10	0,05	0,15	0,10	0,02	0,15	0,07	0,01	0,09	0,09	0,16	0,02	0,09	0	0,17	0,07	0,15	0,02	0,08
Aged 41 and above	0,10	0,26	0,09	0,05	0,13	0,09	0,02	0,17	0,07	0,009	0,08	0,08	0,13	0,008	0,08	0	0,15	0,05	0,14	0,01	0,08
Below 9 years of education	0,11	0,36		0,05	0,12	0,11	0,03	0,18	0,08	0,01	0,10	0,09	0,16	0,009	0,09	0	0,14	0,06	0,14	0,01	0,10
Above 9 years of education	0,10	0,25		0,05	0,14	0,09	0,02	0,15	0,07	0,009	0,08	0,09	0,15	0,01	0,08	0	0,17	0,06	0,14	0,01	0,07
Rural	0,06			0,04	0,07	0,05		0,11	0,04	0,009	0,07	0,05	0,13	0,01	0,06	0	0,06	0,04	0,12	0,009	
Urban	0,11	0,28	0,10	0,06	0,16	0,10		0,16	0,08	0,01	0,09	0,10	0,16	0,01	0,09	0	0,19	0,07	0,16	0,01	
Informal	0,12	0,34	0,10		0,15	0,11		0,18	0,08	0,01	0,11	0,10	0,15		0,08	0	0,18	0,07	0,15	0,02	0,10
Formal	0,09	0,21	0,09		0,08	0,09		0,14	0,06	0,009	0,06	0,07	0,14		0,08	0	0,10	0,04	0,12	0,01	0,06
Size firm - Small	0,12	0,35	0,11		0,15	0,12		0,22	0,08	0,01	0,10	0,10	0,15	0,008	0,08		0,19	0,06	0,15	0,01	0,10
Size firm - Medium	0,11	0,26			0,10	0,13		0,18	0,09	0,02	0,07	0,09	0,13	0,02	0,08		0,17	0,06	0,14	0,02	0,09
Size firm - Large	0,09	0,16			0,06	0,09		0,15	0,05	0,006	0,06	0,04	0,15	0,02	0,09		0,07	0,04	0,09	0,01	0,04
Quintile total labour income - First	0,11	0,45	0,12	0,06	0,10	0,11	0,03	0,18	0,08	0,01	0,10	0,08	0,11	0,06	0,07	0	0,14	0,05	0,17	0,02	0,09
Quintile total labour income - Second	0,12	0,41	0,10	0,06	0,16	0,11	0,03	0,17	0,08	0,01	0,10	0,10	0,12	0,07	0,09	0	0,17	0,07	0,15	0,02	0,09
Quintile total labour income - Third	0,12	0,35	0,12	0,07	0,15	0,10	0,02	0,17	0,08	0,01	0,09	0,11	0,17	0,04	0,10	0	0,18	0,07	0,17	0,01	0,10
Quintile total labour income - Fourth	0,11	0,29	0,11	0,07	0,13	0,09	0,02	0,16	0,07	0,01	0,10	0,10	0,18	0,04	0,09	0	0,18	0,07	0,16	0,01	0,09
Quintile total labour income - Fifth	0,09	0,23	0,08	0,06	0,14	0,07	0,02	0,12	0,06	0,006	0,08	0,07	0,15	0,03	0,08	0	0,15	0,05	0,11	0,008	0,11

Source: Harmonized Household Surveys of Latin America and the Caribbean, authors' own calculations.

Notes: Table 4 reports: i) in Panel A, the average loss labour income rate by 1-digit ISCO occupation and by country; ii) in Panel B, the average loss labour income rate by economic activity and by country and iii) in Panel C, the average loss labour income rate by individual characteristics and by country. For instance, men have lost 29% of their labour incomes during the lockdown in Argentina. The figures for the entire LAC region (Column 1) have been calculated as a weighted average of the population in each country. When the information was not available, we leave the cells as empty.

^a Sample restricted to urban areas.

Table 5. Poverty and Labour Income Inequality Changes, by Country

	All	ARG ^a	BHS ^a	BLZ	BOL	BRA	BRB	CHL	COL	CRI	DOM	ECU	GTM	JAM	MEX	NIC	PER	PRY	SLV	URY	VEN
	(1)	(2)	(3)	(4)	(5)	(6)	(7)	(8)	(9)	(10)	(11)	(12)	(13)	(14)	(15)	(16)	(17)	(18)	(19)	(20)	(21)
Panel A: Pre-lockdown																					
<i>FGT</i> ₀	0.042 (0.0003)	0.015 (0.001)	0.009 (0.004)	0.016 (0.003)	0.052 (0.002)	0.017 (0.0004)	0	0.008 (0.0004)	0.044 (0.001)	0.036 (0.002)	0.005 (0.0008)	0.032 (0.002)	0.062 (0.003)	0.058 (0.005)	0.087 (0.001)	0.068 (0.005)	0.087 (0.001)	0.030 (0.001)	0.012 (0.0008)	0.015 (0.0006)	0.003 (0.0004)
<i>FGT</i> ₁	0.020 (0.0002)	0.005 (0.0004)	0.004 (0.003)	0.007 (0.002)	0.025 (0.001)	0.006 (0.0001)	0	0.003 (0.0002)	0.017 (0.0006)	0.014 (0.0008)	0.001 (0.0003)	0.013 (0.0008)	0.027 (0.002)	0.014 (0.002)	0.046 (0.0006)	0.034 (0.003)	0.043 (0.0008)	0.014 (0.0008)	0.003 (0.0003)	0.006 (0.0003)	0.001 (0.0002)
<i>FGT</i> ₂	0.013 (0.0001)	0.003 (0.0003)	0.003 (0.002)	0.005 (0.001)	0.015 (0.001)	0.003 (0.0001)	0	0.002 (0.0001)	0.009 (0.0004)	0.008 (0.0006)	0.0006 (0.0001)	0.007 (0.0005)	0.016 (0.001)	0.006 (0.002)	0.031 (0.0005)	0.023 (0.003)	0.029 (0.0007)	0.008 (0.0006)	0.001 (0.0002)	0.003 (0.0002)	0.0007 (0.0001)
Gini	0.49 (0.001)	0.42 (0.003)	0.51 (0.061)	0.66 (0.008)	0.40 (0.003)	0.49 (0.002)	0.30 (0.002)	0.47 (0.003)	0.50 (0.004)	0.50 (0.008)	0.43 (0.006)	0.45 (0.004)	0.49 (0.006)	0.52 (0.016)	0.50 (0.004)	0.54 (0.015)	0.49 (0.002)	0.49 (0.013)	0.37 (0.003)	0.43 (0.002)	0.33 (0.002)
MLD	0.48 (0.002)	0.35 (0.005)	0.53 (0.123)	0.90 (0.031)	0.38 (0.006)	0.44 (0.004)	0.16 (0.003)	0.40 (0.006)	0.50 (0.007)	0.50 (0.014)	0.32 (0.010)	0.41 (0.007)	0.47 (0.012)	0.53 (0.035)	0.56 (0.008)	0.62 (0.034)	0.55 (0.005)	0.49 (0.025)	0.26 (0.004)	0.36 (0.003)	0.19 (0.003)
Panel B: At the end of the first phase of the lockdown																					
<i>FGT</i> ₀	0.048 (0.0004)	0.044 (0.002)	0.014 (0.005)	0.016 (0.003)	0.059 (0.003)	0.020 (0.0004)	0	0.012 (0.0005)	0.053 (0.001)	0.036 (0.002)	0.006 (0.0009)	0.036 (0.002)	0.073 (0.003)	0.059 (0.005)	0.092 (0.001)	0.068 (0.005)	0.101 (0.002)	0.031 (0.001)	0.018 (0.001)	0.016 (0.0006)	0.005 (0.0005)
<i>FGT</i> ₁	0.023 (0.0002)	0.017 (0.0008)	0.004 (0.003)	0.007 (0.002)	0.027 (0.002)	0.007 (0.0002)	0	0.004 (0.0002)	0.020 (0.0007)	0.014 (0.0009)	0.002 (0.0003)	0.015 (0.0008)	0.032 (0.002)	0.016 (0.002)	0.049 (0.0007)	0.034 (0.003)	0.051 (0.0009)	0.014 (0.0007)	0.005 (0.0003)	0.006 (0.0003)	0.002 (0.0002)
<i>FGT</i> ₂	0.014 (0.0001)	0.009 (0.0005)	0.003 (0.002)	0.005 (0.001)	0.017 (0.001)	0.004 (0.0001)	0	0.002 (0.0001)	0.011 (0.0004)	0.008 (0.0006)	0.0008 (0.0002)	0.008 (0.0005)	0.019 (0.001)	0.007 (0.002)	0.034 (0.0005)	0.023 (0.003)	0.034 (0.0007)	0.009 (0.0005)	0.003 (0.0002)	0.003 (0.0002)	0.008 (0.0001)
Gini	0.50 (0.001)	0.51 (0.003)	0.51 (0.054)	0.66 (0.008)	0.42 (0.003)	0.50 (0.002)	0.30 (0.002)	0.49 (0.003)	0.51 (0.004)	0.50 (0.007)	0.44 (0.007)	0.46 (0.004)	0.50 (0.007)	0.53 (0.016)	0.51 (0.004)	0.54 (0.015)	0.51 (0.002)	0.49 (0.013)	0.39 (0.003)	0.43 (0.002)	0.33 (0.002)
MLD	0.50 (0.002)	0.51 (0.006)	0.52 (0.115)	0.91 (0.029)	0.40 (0.007)	0.46 (0.004)	0.16 (0.003)	0.44 (0.006)	0.51 (0.006)	0.50 (0.012)	0.34 (0.010)	0.42 (0.007)	0.49 (0.013)	0.54 (0.030)	0.57 (0.008)	0.62 (0.031)	0.57 (0.006)	0.49 (0.021)	0.28 (0.004)	0.37 (0.004)	0.20 (0.003)
Panel C: Changes																					
$\Delta^A FGT_0$	0.006	0.029	0.005	0	0.007	0.003	0	0.004	0.009	0	0.001	0.004	0.011	0.001	0.005	0	0.014	0.001	0.006	0.001	0.002
$\Delta^A FGT_1$	0.003	0.012	0	0	0.002	0.001	0	0.001	0.003	0	0.001	0.002	0.005	0.002	0.003	0	0.008	0	0.002	0	0.001
$\Delta^A FGT_2$	0.001	0.006	0	0	0.002	0.001	0	0	0.002	0	0.0002	0.001	0.003	0.001	0.003	0	0.005	0.001	0.002	0	0.0001
$\Delta^A G$	0.01	0.09	0	0	0.02	0.01	0	0.02	0.01	0	0.01	0.01	0.01	0.01	0.01	0	0.02	0	0.02	0	0
$\Delta^R G$ (%)	2	21.4	0	0	5	2	0	4.3	2	0	2.3	2.2	2	2	2	0	4.1	0	5.4	0	0
$\Delta^A MLD$	0.02	0.16	-0.01	0.01	0.02	0.02	0	0.04	0.01	0	0.02	0.01	0.02	0.01	0.01	0	0.02	0	0.02	0.01	0.01
$\Delta^R MLD$ (%)	4.2	46	-2	1.1	5.3	4.5	0	10	2	0	6.3	2.4	4.3	2	2	0	3.6	0	8	3	5.3

Source: Harmonized Household Surveys of Latin America and the Caribbean, authors' own calculations.

Notes: Table 5 presents the results for the analysis on poverty and labour income inequality. Panel A reports the measures for the pre-lockdown period, Panel B for the period at the end of the first phase of the lockdown and Panel C the changes between the pre-lockdown situation and the current one. *FGT*₀ is the headcount ratio. It is the fraction of workers with a labour income below the international poverty line of 1.90 USD (PPP). *FGT*₁ is the average poverty gap and *FGT*₂ measures the intensity/severity of poverty. G is the Gini coefficient and MLD is the mean logarithmic deviation index. Δ^A is the absolute change in each measure while Δ^R is the relative change in each measure (%). Bootstrapped standard errors are reported in parenthesis. The sample for Argentina and the Bahamas is restricted only to urban areas. Therefore, the results for these two countries are not representative of the changes at the national level

^a Sample restricted to urban areas.

Table 6. The Between- and Within-Countries Inequality Components in Latin America and the Caribbean

	Gini	MLD	MLD^{BT}	%	MLD^{WT}	%
Baseline	0.49 (0.001)	0.48 (0.002)	0.02 (0.0005)	4.8	0.46 (0.003)	95.2
Lockdown	0.50 (0.001)	0.50 (0.002)	0.02 (0.0005)	4.4	0.48 (0.002)	96.1
Δ^A	0.008	0.018	-0.001		0.022	
Δ^R (%)	1.7	3.7	-6.3		4.7	

Source: Harmonized Household Surveys of Latin America and the Caribbean, authors' own calculations.

Notes: Table 6 presents the between- and within-countries inequality components for the whole LAC region. We apply the PPP conversion to the total labour income in each country. Δ^A is the absolute change in labour income inequality while Δ^R is the relative change in labour income inequality (%).

Appendix A: From national industrial classifications to ISIC revision 4

To estimate the impact of the lockdown across the different economic sectors, we need to adjust the industrial classifications used in each country to the international reference classification of productive activities named International Standard Industrial Classification of all Economic Activities (ISIC) revision fourth, framed by the Department of Economic and Social Affairs of the United Nations Secretariat.

The fourth revision of ISIC provides substantially more details at all levels than the previous versions of the classification. The tabulation categories identified by letters are called “sections”, the 2-digit categories “divisions”, the 3-digit categories “groups” and the 4-digit categories “classes” (United Nations 2008). For the purpose of this study, we base our classification on the 2-digit categories of the ISIC rev.4. This exercise is feasible for the 20 countries in our sample.

The United Nations Statistical Commission recommended that countries adapt their national classification of economic activities in a way that allows them to report data at least at the 2-digit level of ISIC rev.4. For this reason, an increasing number of LAC countries started to adapt the national industrial classification according to ISIC rev.4. This is the case for the surveys for the Bahamas, Barbados, Colombia, Costa Rica¹⁵, the Dominican Republic, Ecuador, Guatemala, Peru, El Salvador and Uruguay. For these countries, the construction of the 2-digit variable was straightforward.

For other countries, the national classification in the surveys is based on the ISIC rev. 3.1. This is the case for the surveys for Belize, Brazil, Chile, Colombia, Jamaica, Nicaragua and Paraguay. With the aim of uniformizing the analysis, we employ a crosswalk between the industrial classification used by these countries with ISIC rev.4. In order to make the match, we follow the correspondence table between the ISIC rev.3.1 and the ISIC rev.4, maintained by UNSTAT. Many of the industries match one to one with ISIC rev.4 or are close to make a match, but the definition of various other industries has changed, and some new industries have been introduced. For these industries, it is impossible to make a perfect match given the level of detail of ISIC rev.3.1 and ISIC rev.4. We follow a similar procedure for Venezuela as their classification of economics activities follows ISIC rev.2.

Lastly, there are some countries such as Argentina and Mexico which have their own national classifications based on the classification of regional economic blocks. For instance, Argentina’s classification relies on Classification of Economic Activities for Sociodemographic Surveys MERCOSUR 1.0. and Mexico’s classification, on North American Industry Classification System. For these countries, the match with ISIC rev.4 was more challenging but it was possible to do it for most industries following the relevant crosswalks. Table A.1 reports the national industrial classification used in each country.

¹⁵In the case of Costa Rica, the 2-digit disaggregation of ISIC rev.4 was available until the Household Survey 2013. For the following years, the industrial classification is only found by “sections”.

Table A.1. National Industrial Classifications

Country	Country code	National Industrial Classification
Argentina	ARG	Classification of Economic Activities for Sociodemographic Surveys MERCOSUR 1.0
Bahamas	BHS	National Classification of Economic Activities
Belize	BLZ	Belize Classification of Economic Activities (BCEA)
Bolivia	BOL	Classification of Economic Activities (CAEB)
Brazil	BRA	National Classification of Economic Activities (CNAE)
Barbados	BRB	Barbados Standard Industrial Classification
Chile	CHL	Chilean Classifier Economic Activities
Colombia	COL	Classification of all Economic Activities adapted for Colombia
Costa Rica	CRI	Classification of Economic Activities (CAECR)
Dominican Republic	DOM	International Standard Industrial Classification D.R.
Ecuador	ECU	National Classification of Economic Activities
Guatemala	GTM	Classification of Economic Activities
Jamaica	JAM	Jamaica Industrial Classification
Mexico	MEX	North American Industry Classification System
Nicaragua	NIC	Classification of Economic Activities (CNIC A)
Peru	PER	Peru National Classification of Economic Activities (CNAE)
Paraguay	PRY	Classification of Economic Activities (CAEP)
El Salvador	SLV	Classification of Economic Activities (CLAEES)
Uruguay	URY	Classification of Economic Activities
Venezuela	VEN	Survey Economic Activity Classifier by Sample

Notes: Table A.1 provides the national industrial classification used in each country.

Appendix B: Lockdown Policies in LAC Countries

Countries in the LAC region have implemented very different lockdown policies. We gather information from national laws and decrees in each country of our sample on the duration and the strictness of the lockdown in terms of workplace closures and mobility restrictions.

Table B.1 reports the list of national laws and decrees that have been reviewed in each country. Brazil is a special case since the lockdown policies differ at the state level. Therefore, we report the list of laws and decrees that have been reviewed for each state for Brazil. Table B.2 presents the estimated duration of the lockdown (in days) in each country along with the dates when the first phase of the lockdown started and when it ended. Table B.3 provides the list of sectors at the division level (2-digit) with their codes and their descriptions. Table B.4 presents the classification of the sectors separately for each country. The sectors have been classified into three categories: i) the sectors that were open (O), ii) the sectors that were closed (C) and iii) the remaining sectors (R) that were affected by mobility restrictions. Table B.5 presents as well the classification of the sectors at the state level in Brazil. Lastly, Table B.6 presents the percentage of: i) open sectors, ii) closed sectors, and iii) remaining sectors and the percentage of workers in each type of sectors for all the countries of our sample.

Table B.1. List of National Laws and Decrees Reviewed, by Country

Country	Country code	Laws and Decrees
Argentina	ARG	DECNU 297/2020, DECNU 260/2020, DECNU 287/2020, DECNU 325/2020, DECNU 355/2020, DECNU 408/2020, DECNU 459/2020, DECNU 493/2020, DECNU 520/2020, DECNU 605/2020, DECNU 576/2020, DECNU 677/2020, DECNU-2020-714, DECNU-2020-754
Bahamas	BHS	Emergency Powers (Covid 19, No.1), Emergency Orders (Covid-19, No.2), Emergency Powers (Covid 19, Regulations, 2020), Quarantine (Novel coronavirus “2019-NCOV”), Exempted Businesses and Undertakings, Exempted Businesses and Undertakings (No. 2 Order, 2020), Quarantine Act, Emergency Powers (Covid-19, No.2, Order, 2020), Emergency Powers (Covid-19, No.2, Amendment, No.3, Order, 2020), Emergency Powers (Covid-19, No.2, Amendment, No.3 Regulations, 2020), Emergency Powers (Covid-19, Lockdown Order, 2020), Exempted Businesses and Undertakings No.5, Emergency Powers (Covid 19 No.2, Amendment No.4 Order, 2020), Exempted Business and Undertakings No. 4, Emergency Powers (Covid-19, Special Provisions Order, 2020), Emergency Powers (Covid 19 No.2, Amendment No.7, Order, 2020), Emergency Powers (Covid 19 No.2, Amendment No.8, Order 2020), Emergency Powers (Covid 19, Lockdown No.2, Order 2020), Amended and Consolidated Exempted Businesses and Undertakings, Emergency Powers (Covid 19 No.2, Amendment No.5, Order 2020), Emergency Powers (Covid 19, Amendment No.5, Regulations 2020), Emergency Powers (Covid 19 No.2, Amendment No.9, Order 2020), Emergency Powers (Covid 19, Amendment No.5, Order 2020), Emergency Powers (Covid 19 Lockdown No.3, Order 2020), Emergency Powers (Covid 19 No.2, Amendment No.6, Order 2020), Emergency Powers (Covid 19 No.2, Amendment No.12, Order 2020), Emergency Powers (Covid 19 Special Provisions, Amendment No.3, Order 2020), Emergency Powers (Covid 19, Amendment No.6, Regulations 2020), Exempted Businesses and Undertakings - 24 April, Emergency Powers (Covid 19, Amendment No.10, order 23 April 2020), Emergency Powers (Covid 19, Lockdown, No.7, Order 2020), Emergency Powers (Covid 19, Bimini Lockdown Order 2020), Emergency Powers (Covid 19 Regulations 2020 Chapter 34), Exempted Businesses and Undertakings (2 May 2020), Emergency Powers (Covid 19, No.2 Amendment No.11, Order 2020), Emergency Powers (Covid 19 Bimini Lockdown Amendment No.2 Order 2020), Emergency Powers (Covid 19 Lockdown No.8 Order 2020), Emergency Powers (Covid 19 No.3 Amendment No.2 order 2020), Emergency Powers (Covid 19 No.3 Amendment, No.2 Order 2020), Emergency Powers (Covid 19, Special Provisions, Amendment No.4 Order 2020), Emergency Powers (Covid 19 No.3 Amendment, Order 2020), Emergency Powers No.4 Amendment No.2, Emergency Powers (Covid 19 Amendment Lockdown No.10 Order 2020), Emergency Powers (Covid 19 Lockdown No.9 Order 2020), Emergency Powers (Covid 19 No.4 Amendment Order 2020), Emergency Powers (Covid 19 No.4 Order 2020)
Belize	BLZ	Statutory Instrument No.65 2020, Statutory Instrument No.62 2020, Statutory Instrument No.72 2020, Statutory Instrument No.75 2020
Bolivia	BOL	Decreto Supremo No.4196, Decreto Supremo No.4199, Decreto Supremo No.4200, Ley No.1293, Ley del 1/04/2020, Decreto Supremo No.4203, Decreto Supremo No.4210, Decreto Supremo 4211, Decreto Supremo 4212, Decreto Supremo 4224, Decreto Supremo 4225, Decreto Supremo 4227, Decreto Supremo 4229
Brazil Rondônia Acre Amazonas	BRA	Decreto No.24,871, Decreto No.24.887, Decreto No.24999, Decreto No.25049, Decreto No.25138, Decreto No.24919 Decreto No.5.812, Decreto No.5.628, Decreto No.5.460, Portaria No.33 de 17 de Marzo de 2020, Decreto No.5.465, Decreto No.5495, Decreto No.5.880, Decreto No.5.966, Decreto No.6.206 Decreto No.42101, Decreto No.42061, Decreto No.42063, Decreto No.42098, Decreto No.42106, Decreto No.42.164, Decreto No.42.185, Decreto No.42.216, Decreto No.42.330

Table B.1. List of National Laws and Decrees Reviewed, by Country (Continued)

Country	Country code	Laws and Decrees
Roraima		Decreto No.28662-E, Decreto No.28.635-E, Decreto No.28.691-E, Decreto No.28.712-E
Pará		Decreto No.687, Decreto No.800
Amapá		Decreto No.2027, Decreto No.1497, Decreto No.1539, Decreto No.1616, Decreto No.1782, Decreto No.1809, Decreto No.1878
Tocantins		Decreto No.6083, Decreto No.6.071, Decreto No.6095
Maranhão		Decreto No.35736, Decreto No.35731, Decreto No.35746, Decreto No.35897
Piauí		Decreto 18.884, Decreto No.18.895, Decreto No.19.044
Ceará		Decreto No.33.510, Decreto No.33.519, Decreto No.33.536, Decreto No.33.544
Rio Grande do Norte		Decreto No.29.742, Decreto No.29.583, Decreto No.29.794, Decreto No.29513, Decreto No.29.556
Paraíba		Decreto No.40.122, Decreto No.40.129, Decreto No.40.128, Decreto No.40.193, Decreto No.40.242
Pernambuco		Decreto No.48809, Decreto No.48837
Alagoas		Decreto No.70145, Decreto No.69.527, Decreto No.69.529, Decreto No.69.624, Decreto No.69.722, Decreto No.69.844, Decreto No.69.935
Sergipe		Decreto No.40.567, Decreto No.40.576, Decreto No.40.588
Bahia		Decreto No.19.586, Decreto No.19.529
Minas Gerais		Decreto No.47.886, Decreto No.47.889, Decreto No.47.890, Decreto No.47.895, Decreto No.47.911, Decreto No.10.282
Espírito Santo		Decreto No.4593-R, Portaria SESA No.068-R, Decreto No.4604-R, Decreto No.4600-R
Rio de Janeiro		Decreto No.46.966, Decreto No.46.970, Decreto No.46.973, Decreto No.46.982, Decreto No.47.052, Decreto No.47.068, Decreto No.47.101, Decreto No.47.152
São Paulo		Decreto No.64.881, Decreto No.64.946, Decreto No.65.143
Paraná		Decreto No.4942, Decreto No.4230
Santa Catarina		Decreto No.525, Decreto No.554
Rio Grande do Sul		Decreto No.55154, Decreto No.55240, Decreto No.55.128, Decreto No.55220
Mato Grosso do Sul		Decreto No.15391, Decreto No.15393, Decreto No.15410, Decreto No.15420
Mato Grosso		Decreto No.432, Decreto No.462, Decreto No.425
Goiás		Decreto 9.653, Decreto 9.685, Decreto 9.638, Decreto 9.645, Decreto No.9.685
Distrito Federal		Decreto No.40.539, Decreto No.40.583, Decreto No.40.774, Decreto No.40.694
Barbados	BRB	Caribbean Public Health Agency portal
Chile	CHL	Comunicado del Ministerio de Salud de Chile del 20/03/2020, Comunicado del Ministerio de Economía, Fomento y Turismo del 20/03/2020, Comunicado del Ministerio de Salud de Chile del 21/06/2020, Comunicado del Ministerio de Salud de Chile del 19/06/2020, Comunicado del Ministerio de Salud de Chile del 06/05/2020
Colombia	COL	Decreto numero 457 del 20/03/2020 de la Presidencia de la Republica de Colombia, Decreto numero 637 del 06/05/2020 de la Presidencia de la Republica de Colombia, Decreto 749 del 28 de Mayo de 2020 de la Presidencia de la Republica de Colombia
Costa Rica	CRI	Acuerdo Ejecutivo 15/03/2020, Acuerdo Ejecutivo 24/03/2020, Comunicado Casa Presidencial del Costa Rica del 11/04/2020, Acuerdo Ejecutivo 27/04/2020
Dominican Republic	DOM	Resolucion 058-2020, Resolucion 007-2020, Decreto 160-20, Decreto 148-20, Decreto 134-20, Decreto 135-20
Ecuador	ECU	Decreto No.1017 Presidencia de la Republica de Ecuador, Decreto No.1052 Presidencia de la Republica de Ecuador, Decreto No.1074 Presidencia de la Republica de Ecuador

Table B.1. List of National Laws and Decrees Reviewed, by Country

Country	Country code	Laws and Decrees
Guatemala	GTM	Decreto Gubernativo 05-2020, Decreto Presidencial 17-03-2020, Decreto Gubernativo numero 6-2020, Decreto Gubernativo numero 8-2020, Decreto Presidencial 29-03-2020, Decreto Gubernativo 12-2020, Decreto Gubernativo numero 9-2020, Decreto 13-2020 del Congreso de la Republica, Decreto numero 21-2020 del Congreso de la Republica, Decreto numero 15-2020 del Congreso de la Republica, Acuerdo Gubernativo numero 74-2020 de la Presidencia, Decreto Gubernativo numero 65-2020, Acuerdo Ministerial numero 14-2020 y 146-2020, Disposicion presidencial 019-12-07
Jamaica	JAM	Caribbean Public Health Agency portal
Mexico	MEX	DOF-14-05-2020, DOF-15-05-2020, DOF-29-05-2020
Nicaragua	NIC	
Peru	PER	D.U. No.026-2020, D.S. No.044-2020-PCM, Decreto Supremo No.044-2020-PCM, Decreto Supremo No. 046-2020-P, Decreto de Urgencia No.033-2020, Decreto Supremo No.061-2020-PCM, Decreto Supremo No.064-2020-PCM, Decreto de Urgencia No.037-2020, Decreto Supremo No.083-2020-PCM, Decreto Supremo No.094-2020-PCM, Decreto Supremo No.080-2020-PCM
Paraguay	PRY	Decreto No.3478, Decreto No.3490, Decreto No.3525, Decreto No.3537, Decreto No.3564, Decreto No.3576
El Salvador	SLV	Decretos Ejecutivos No.4, No.12 y No.13, Decreto Ejecutivo No.14, Decreto Legislativo No.593, Decreto Legislativos No.592 y No.593, Decreto Ejecutivo No.5, Decreto Legislativo No.587, Decretos Ejecutivos No.6, No.7, No.8, Decreto Ejecutivo No.9, Decreto Ejecutivo No.10, Decreto Ejecutivo No.11, Decreto Legislativo No.598, Decreto Legislativo No.599, Decreto Legislativo No.601, Decreto Ejecutivo No.12, Decreto Legislativo No.606, Decreto Ejecutivo No.17, Decreto Legislativo No.622, Decreto Legislativo No.631, Decreto Legislativo No.634, Decreto Ejecutivo No.22, Decreto Ejecutivo No.24, Decreto Ejecutivo No.18, Decreto Ejecutivo No.29, Decreto Ejecutivo No.25, Decreto Ejecutivo No.26, Decreto Ejecutivo No.27, Decreto Ejecutivo No.28, Decreto Ejecutivo No.31
Uruguay	URY	Decreto No.94/020, Decreto No.112/020, Decreto No.93/020
Venezuela	VEN	Gaceta Oficial Extraordinaria No.6.535: Decreto mediante el cual se declara el Estado de Alarma para atender la Emergencia Sanitaria del COVID-19, Gaceta Oficial Extraordinaria No. 6519, de fecha 13 de Marzo, Gaceta Extraordinaria No.6.535: Decreto mediante el cual se declara el Estado de Alarma para atender la Emergencia Sanitaria del COVID-19

Notes: Table B.1 presents the list of national laws and decrees that have been reviewed to gather information about the type of lockdown in each country.

Table B.2. Estimated Lockdown Duration (in days), by Country

Country	Country code	Estimated Start Date	Estimated End Date	Estimated Lockdown Duration
Argentina	ARG	20/03/2020	11/10/2020	205 days
Bahamas	BHS	20/03/2020	15/06/2020	87 days
Belize	BLZ	20/03/2020	31/05/2020	72 days
Bolivia	BOL	18/03/2020	31/07/2020	135 days
Brazil - Rondônia	BRA	20/03/2020	16/05/2020	57 days
Brazil - Acre	BRA	20/03/2020	22/07/2020	124 days
Brazil - Amazonas	BRA	21/03/2020	01/06/2020	72 days
Brazil - Roraima	BRA	23/03/2020	16/07/2020	115 days
Brazil - Pará	BRA	16/03/2020	01/06/2020	77 days
Brazil - Amapá	BRA	21/03/2020	15/07/2020	116 days
Brazil - Tocantins	BRA	15/05/2020	22/05/2020	7 days
Brazil - Maranhão	BRA	21/03/2020	25/05/2020	65 days
Brazil - Piauí	BRA	20/03/2020	06/07/2020	108 days
Brazil - Ceará	BRA	19/03/2020	01/06/2020	74 days
Brazil - Rio Grande do Norte	BRA	21/03/2020	01/07/2020	102 days
Brazil - Paraíba	BRA	22/03/2020	15/06/2020	85 days
Brazil - Pernambuco	BRA	21/03/2020	01/06/2020	72 days
Brazil - Alagoas	BRA	21/03/2020	30/06/2020	101 days
Brazil - Sergipe	BRA	17/03/2020	23/06/2020	98 days
Brazil - Bahia	BRA	21/03/2020	24/07/2020	125 days
Brazil - Minas Gerais	BRA	22/03/2020	23/04/2020	32 days
Brazil - Espírito Santo	BRA	16/03/2020	11/05/2020	56 days
Brazil - Rio de Janeiro	BRA	19/03/2020	02/06/2020	75 days
Brazil - São Paulo	BRA	18/03/2020	01/06/2020	75 days
Brazil - Paraná	BRA	19/03/2020	14/07/2020	117 days
Brazil - Santa Catarina	BRA	17/03/2020	13/04/2020	27 days
Brazil - Rio Grande do Sul	BRA	19/03/2020	19/05/2020	61 days
Brazil - Mato Grosso do Sul	BRA			0 days
Brazil - Mato Grosso	BRA	31/03/2020	09/07/2020	100 days
Brazil - Goiás	BRA	17/03/2020	14/07/2020	119 days
Brazil - Distrito Federal	BRA	18/03/2020	22/05/2020	65 days
Barbados	BRB	28/03/2020	15/04/2020	18 days
Chile	CHL	16/03/2020	28/07/2020	134 days
Colombia	COL	25/03/2020	01/06/2020	68 days
Costa Rica	CRI	15/03/2020	01/05/2020	47 days
Dominican Republic	DOM	19/03/2020	20/05/2020	62 days
Ecuador	ECU	17/03/2020	03/06/2020	78 days
Guatemala	GTM	17/03/2020	27/07/2020	132 days
Jamaica	JAM	25/03/2020	13/05/2020	49 days
Mexico	MEX	26/03/2020	31/05/2020	66 days
Nicaragua	NIC			0 days
Peru	PER	16/03/2020	30/06/2020	106 days
Paraguay	PRY	13/03/2020	03/05/2020	51 days
El Salvador	SLV	21/03/2020	16/06/2020	87 days
Uruguay	URY	23/03/2020	09/06/2020	78 days
Venezuela	VEN	16/03/2020	31/05/2020	76 days

Notes: Table B.2 presents for each country the estimated start date and the estimated end date of the lockdown, along with the duration (in days) of the lockdown. The end date refers more specifically to the end of phase 1 in all countries. Countries and states in blank did not apply a lockdown.

Table B.3. List of Economic Activities According to ISIC rev.4.

Code	Division name
01	Crop and animal production, hunting and related service activities
02	Forestry and logging
03	Fishing and aquaculture
05	Mining of coal and lignite
06	Extraction of crude petroleum and natural gas
07	Mining of metal ores
08	Other mining and quarrying
09	Mining support service activities
10	Manufacture of food products
11	Manufacture of beverages
12	Manufacture of tobacco products
13	Manufacture of textiles
14	Manufacture of wearing apparel
15	Manufacture of leather and related products
16	Manufacture of wood and of products of wood and cork, except furniture
17	Manufacture of paper and paper products
18	Printing and reproduction of recorded media
19	Manufacture of coke and refined petroleum products
20	Manufacture of chemicals and chemical products
21	Manufacture of pharmaceuticals, medicinal chemical and botanical products
22	Manufacture of rubber and plastic products
23	Manufacture of other non-metallic mineral products
24	Manufacture of basic metals
25	Manufacture of fabricated metal products, except machinery and equipment
26	Manufacture of computer, electronic and optical products
27	Manufacture of electrical equipment
28	Manufacture of machinery and equipment n.e.c.
29	Manufacture of motor vehicles, trailers and semi-trailers
30	Manufacture of other transport equipment
31	Manufacture of furniture
32	Other manufacturing
33	Repair and installation of machinery and equipment
35	Electricity, gas, steam and air conditioning supply
36	Water collection, treatment and supply
37	Sewerage
38	Waste collection, treatment and disposal activities; materials recovery
39	Remediation activities and other waste management services
41	Construction of buildings
42	Civil engineering
43	Specialized construction activities
45	Wholesale and retail trade and repair of motor vehicles and motorcycles
46	Wholesale trade, except of motor vehicles and motorcycles
47	Retail trade, except of motor vehicles and motorcycles
49	Land transport and transport via pipelines
50	Water transport
51	Air transport
52	Warehousing and support activities for transportation
53	Postal and courier activities
55	Accommodation
56	Food and beverage service activities
58	Publishing activities
59	Motion picture, video and television programme production, sound recording and music

Table B.3. List of Economic Activities According to ISIC rev.4. (Continued)

Code	Division name
60	Programming and broadcasting activities
61	Telecommunications
62	Computer programming, consultancy and related activities
63	Information service activities
64	Financial service activities, except insurance and pension funding
65	Insurance, reinsurance and pension funding, except compulsory social security
66	Activities auxiliary to financial service and insurance activities
68	Real estate activities
69	Legal and accounting activities
70	Activities of head offices; management consultancy activities
71	Architectural and engineering activities; technical testing and analysis
72	Scientific research and development
73	Advertising and market research
74	Other professional, scientific and technical activities
75	Veterinary activities
77	Rental and leasing activities
78	Employment activities
79	Travel agency, tour operator, reservation service and related activities
80	Security and investigation activities
81	Services to buildings and landscape activities
82	Office administrative, office support and other business support activities
84	Public administration and defence; compulsory social security
85	Education
86	Human health activities
87	Residential care activities
88	Social work activities without accomodation
90	Creative, arts and entertainment activities
91	Libraries, archives, museums and other cultural activities
92	Gambling and betting activities
93	Sports activities and amusement and recreation activities
94	Activities of membership organizations
95	Repair of computers and personal and household goods
96	Other personal service activities
97	Activities of households as employers of domestic personnel
98	Undifferentiated goods- and services-producing activities of private households
99	Activities of extraterritorial organizations and bodies

Notes: Table B.3 presents the list of sectors with their codes and their descriptions following ISIC rev.4. at the division level (2-digit).

Table B.4. Classification of Economic Activities, by Country

Code	ARG	BHS	BLZ	BOL	BRB	CHL	COL	CRI	DOM	ECU	GTM	JAM	MEX	NIC	PER	PRY	SLV	URY	VEN
1	O	O	O	O	O	O	O	O	O	O	O	O	O	O	O	O	O	O	O
2	O	O	O	O	O	O	O	O	O	O	O	O	O	O	O	O	O	O	O
3	O	O	O	O	O	O	O	O	O	O	O	O	O	O	O	O	O	O	O
5	O	R	O	O	O	O	O	O	O	O	R	O	R	O	O	O	C	O	O
6	O	R	O	O	O	O	O	O	O	O	R	O	O	O	O	O	C	O	O
7	O	R	O	O	O	O	O	O	O	O	R	O	R	O	O	O	C	O	O
8	O	R	O	O	O	O	O	O	O	O	R	O	R	O	O	R	C	O	O
9	O	R	O	O	O	O	O	O	O	O	R	O	R	O	O	R	C	O	O
10	O	O	O	O	O	O	O	O	O	O	O	O	O	O	O	O	O	O	O
11	O	O	O	O	O	O	O	O	O	O	O	O	O	O	O	O	O	O	O
12	R	R	O	R	R	R	R	O	R	R	R	R	R	O	R	R	R	O	R
13	R	R	O	R	R	R	R	O	R	R	R	R	R	O	R	R	R	O	R
14	R	R	O	R	R	R	R	O	R	R	R	R	R	O	R	R	R	O	R
15	R	R	O	R	R	R	R	O	R	R	R	R	R	O	R	R	R	O	R
16	R	R	O	R	R	R	R	O	R	R	R	R	R	O	R	R	R	O	R
17	R	R	O	R	R	R	R	O	R	R	R	R	R	O	R	R	R	O	R
18	R	R	O	R	R	R	R	O	R	R	R	R	R	O	R	R	R	O	R
19	R	R	O	R	R	R	R	O	R	R	R	R	R	O	R	R	R	O	R
20	R	R	O	R	R	R	R	O	R	R	R	R	R	O	R	R	R	O	R
21	O	O	O	O	O	O	O	O	R	O	O	O	O	O	O	O	O	O	O
22	R	R	O	R	R	R	R	O	R	R	R	R	R	O	R	R	R	O	R
23	R	R	O	R	R	R	R	O	R	R	R	R	R	O	R	R	R	O	R
24	R	R	O	R	R	R	R	O	R	R	R	R	R	O	R	R	R	O	R
25	R	R	O	R	R	R	R	O	R	R	R	R	R	O	R	R	R	O	R
26	R	R	O	R	R	R	R	O	R	R	R	R	R	O	R	R	R	O	R
27	R	R	O	R	R	R	R	O	R	R	R	R	R	O	R	R	R	O	R
28	R	R	O	R	R	R	R	O	R	R	R	R	R	O	R	R	R	O	R
29	R	R	O	R	R	R	R	O	R	R	R	R	R	O	R	R	R	O	R
30	R	R	O	R	R	R	R	O	R	R	R	R	R	O	R	R	R	O	R
31	R	R	O	R	R	R	R	O	R	R	R	R	R	O	R	R	R	O	R
32	R	R	O	R	R	R	R	O	R	R	R	R	R	O	R	R	R	O	R
33	R	R	O	R	R	R	R	O	O	R	R	R	R	O	R	R	R	O	R
35	O	O	O	O	O	O	O	O	O	O	O	O	O	O	O	O	O	O	O
36	O	O	O	O	O	O	O	O	O	O	O	O	O	O	O	O	O	O	O
37	O	O	O	O	O	O	O	O	O	O	O	O	O	O	O	O	O	O	O
38	O	O	O	O	O	O	O	O	O	O	O	O	O	O	O	O	O	O	O

Table B.4. Classification of Economic Activities, by Country (Continued)

Code	ARG	BHS	BLZ	BOL	BRB	CHL	COL	CRI	DOM	ECU	GTM	JAM	MEX	NIC	PER	PRY	SLV	URY	VEN
39	O	O	O	O	O	O	O	O	O	O	O	O	O	O	O	O	O	O	O
41	R	R	O	O	R	R	R	O	O	R	R	R	R	O	R	R	R	O	R
42	R	R	O	O	R	R	R	O	O	R	R	R	R	O	R	R	R	O	R
43	R	R	O	O	R	R	R	O	O	R	R	R	R	O	R	R	R	O	R
45	C	R	R	R	R	R	R	O	R	R	O	R	R	O	R	R	R	O	R
46	C	R	R	R	R	R	R	O	R	R	R	R	R	O	R	R	O	O	R
47	O	O	O	O	O	O	O	O	O	O	R	O	O	O	R	O	R	O	O
49	C	C	O	C	O	C	O	O	C	C	C	O	O	O	C	O	C	O	C
50	C	C	O	C	O	C	O	R	C	C	C	C	O	O	C	O	C	O	C
51	C	C	C	C	C	C	C	R	C	C	C	C	O	O	C	C	C	C	C
52	C	C	O	C	O	C	O	O	C	C	C	O	O	O	C	O	C	O	C
53	O	C	O	O	O	O	O	O	O	O	O	O	O	O	O	O	O	O	O
55	R	C	C	C	C	C	C	R	C	C	C	C	C	O	C	C	C	C	C
56	C	C	C	C	C	C	C	R	C	C	C	C	C	O	C	C	C	C	C
58	O	O	O	O	O	O	O	O	O	O	O	O	O	O	O	O	O	O	O
59	O	O	O	O	O	O	O	O	O	O	O	O	O	O	O	O	O	O	O
60	O	O	O	O	O	O	O	O	O	O	O	O	O	O	O	O	O	O	O
61	O	O	O	O	O	O	O	O	O	O	O	O	O	O	O	O	O	O	O
62	R	R	O	O	O	R	R	O	O	R	R	O	R	O	R	R	R	O	O
63	R	R	O	O	O	O	O	O	O	O	O	O	O	O	O	R	R	O	O
64	O	O	O	O	O	O	O	O	O	O	O	O	O	O	O	R	O	O	O
65	R	O	R	O	R	O	O	O	O	R	R	O	R	O	O	R	R	O	O
66	R	O	R	O	R	O	O	O	O	R	R	O	R	O	O	R	R	O	R
68	R	R	R	R	R	R	R	O	R	R	R	R	R	O	R	R	R	O	R
69	R	R	R	R	R	O	R	O	R	O	R	O	R	O	R	R	R	O	R
70	R	R	R	R	R	R	R	O	R	R	R	R	R	O	R	R	R	O	R
71	R	R	R	R	R	R	R	O	R	R	R	R	R	O	R	R	R	O	R
72	R	R	R	R	R	R	R	O	R	R	R	R	R	O	R	R	R	O	R
73	R	R	R	R	R	R	R	O	R	R	R	R	R	O	R	R	R	O	R
74	R	R	R	R	R	R	R	O	R	R	R	R	R	O	R	R	R	O	R
75	R	R	R	R	R	R	R	O	R	R	R	R	R	O	R	R	R	O	R
77	R	R	R	R	R	R	R	O	R	R	R	R	R	O	R	R	R	O	R
78	R	R	R	R	R	R	R	O	R	R	R	R	R	O	R	R	R	O	R
79	R	R	R	R	R	R	R	R	R	R	R	R	R	O	R	C	R	O	R

Table B.4. Classification of Economic Activities, by Country (Continued)

Code	ARG	BHS	BLZ	BOL	BRB	CHL	COL	CRI	DOM	ECU	GTM	JAM	MEX	NIC	PER	PRY	SLV	URY	VEN
80	O	O	O	O	O	O	O	O	O	R	O	O	O	O	O	O	O	O	O
81	R	R	R	R	R	R	R	O	R	R	R	R	R	O	R	R	R	O	R
82	R	R	R	R	R	R	R	O	R	R	R	R	R	O	R	R	R	O	O
84	O	O	R	O	O	O	O	O	O	O	R	O	O	O	O	O	O	O	O
85	O	O	O	O	O	O	O	O	O	O	O	O	O	O	O	O	O	O	O
86	O	O	O	O	O	O	O	O	O	O	O	O	O	O	O	O	O	O	O
87	O	O	O	O	O	O	O	O	O	O	O	O	O	O	O	O	O	O	O
88	O	O	O	O	O	O	O	O	O	O	O	O	O	O	O	O	O	O	C
90	O	C	C	C	C	C	C	R	C	C	C	C	C	O	C	C	C	C	C
91	C	C	C	C	C	C	C	R	C	C	C	C	C	O	C	C	C	C	C
92	C	C	C	C	C	C	C	R	C	C	C	C	C	O	C	C	C	C	C
93	C	C	C	C	C	C	C	R	C	C	C	C	C	O	C	C	C	C	C
94	C	C	C	C	C	C	C	R	C	C	C	C	C	O	C	C	C	C	R
95	R	R	R	R	R	R	R	O	R	R	R	R	R	O	R	R	R	O	R
96	R	R	R	R	R	R	R	O	R	R	R	R	R	O	R	R	R	O	R
97	R	R	R	R	R	R	R	O	R	R	R	R	R	O	R	R	R	O	R
98	R	R	R	R	R	R	R	O	R	R	R	R	R	O	R	R	R	O	R
99	O	O	O	O	O	O	O	O	O	O	O	O	O	O	O	O	O	O	O

Notes: Table B.4 presents the classifications, separately for each country, of the economic sectors into three categories: i) open (O), ii) closed (C) and iii) the remaining sectors (R). “Open sectors” are comprised of two categories: i) sectors that are considered essential according to the authorities and ii) sectors that are open because there is a partial lockdown in the country. In addition, we consider the sectors “Public administration and defence; comp” and “Education” as open because, despite the fact that in some countries schools were closed and that workers in these sectors were required to work from home, the vast majority of the workers continued to work and to receive their salary. “Closed sectors” are sectors that are explicitly stated as sectors that should remain closed during the lockdown. Usually, because of the task content of the jobs, the workers in these sectors cannot work from home (Example: waitresses in restaurants). Lastly, the “remaining sectors” are sectors that were affected by mobility restrictions and were not explicitly stated as closed. We assume that the workers in these sectors were required to work from home. These classifications are based on the national laws and decrees listed in Table B.1. For the name of the sectors associated to each code, see Table B.3.

Table B.5. Classification of Economic Activities at the State Level for Brazil

Code	S1	S2	S3	S4	S5	S6	S7	S8	S9	S10	S11	S12	S13	S14	S15	S16	S17	S18	S19	S20	S21	S22	S23	S24	S25	S26	S27	
1	O	O	O	O	O	O	O	O	O	O	O	O	O	O	O	O	O	O	O	O	O	O	O	O	O	O	O	
2	O	O	O	O	O	O	O	O	O	O	O	O	O	O	O	O	O	O	O	O	O	O	O	O	O	O	O	O
3	O	O	O	O	O	O	O	O	O	O	O	O	O	O	O	O	O	O	O	O	O	O	O	O	O	O	O	O
5	O	O	O	O	O	O	O	O	O	O	O	O	O	O	O	O	O	O	O	O	O	O	O	O	O	O	O	O
6	O	O	O	O	O	O	O	O	O	O	O	O	O	O	O	O	O	O	O	O	O	O	O	O	O	O	O	O
7	O	O	O	O	O	O	O	O	O	O	O	O	O	O	O	O	O	O	O	O	O	O	O	O	O	O	O	O
8	O	O	O	O	O	O	O	O	O	O	O	O	O	O	O	O	O	O	O	O	O	O	O	O	O	O	O	O
9	O	O	O	O	O	O	O	O	O	O	O	O	O	O	O	O	O	O	O	O	O	O	O	O	O	O	O	O
10	O	O	O	O	O	O	O	O	O	O	O	O	O	O	O	O	O	O	O	O	O	O	O	O	O	O	O	O
11	O	O	O	O	O	O	O	O	O	O	O	O	O	O	O	O	O	O	O	O	O	O	O	O	O	O	O	O
12	O	O	O	R	O	R	R	R	R	R	O	R	R	O	R	R	R	O	R	R	R	R	R	O	R	R	R	R
13	O	O	R	R	O	R	R	R	R	R	O	R	R	O	R	R	R	O	R	R	R	R	R	O	R	R	R	R
14	O	O	R	R	O	R	R	R	R	R	O	R	R	O	R	R	R	O	R	R	R	R	R	O	R	R	R	R
15	O	O	R	R	O	R	R	R	R	R	O	R	R	O	R	R	R	O	R	R	R	R	R	O	R	R	R	R
16	O	O	R	R	O	R	R	R	R	R	O	R	R	O	R	R	R	O	R	R	R	R	R	O	R	R	R	R
17	O	O	R	R	O	R	R	R	R	R	O	R	R	O	R	R	R	O	R	R	R	R	R	O	R	R	R	R
18	O	O	R	R	O	R	R	R	R	R	O	R	R	O	R	R	R	O	R	R	R	R	R	O	R	R	R	R
19	O	O	R	R	O	R	R	R	R	R	O	R	R	O	R	R	R	O	R	R	R	R	R	O	R	R	R	R
20	O	O	R	R	O	R	R	R	R	R	O	R	R	O	R	R	R	O	R	R	R	R	R	O	O	R	R	R
21	O	O	R	O	O	O	O	O	O	O	O	O	O	O	O	O	O	O	O	O	O	O	O	O	R	O	O	O
22	O	O	R	R	O	R	R	R	R	R	O	R	R	O	R	R	R	O	R	R	R	R	R	O	R	R	R	R
23	O	O	R	R	O	R	R	R	R	R	O	R	R	O	R	R	R	O	R	R	R	R	R	O	R	R	R	R
24	O	O	R	R	O	R	R	R	R	R	O	R	R	O	R	R	R	O	R	R	R	R	R	O	R	R	R	R
25	O	O	R	R	O	R	R	R	R	R	O	R	R	O	R	R	R	O	R	R	R	R	R	O	R	R	R	R
26	O	O	R	R	O	R	R	R	R	R	O	R	R	O	R	R	R	O	R	R	R	R	R	O	R	R	R	R
27	O	O	R	R	O	R	R	R	R	R	O	R	R	O	R	R	R	O	R	R	R	R	R	O	R	R	R	R
28	O	O	R	R	O	R	R	R	R	R	O	R	R	O	R	R	R	O	R	R	R	R	R	O	R	R	R	R
29	O	O	R	R	O	R	R	R	R	R	O	R	R	O	R	R	R	O	R	R	R	R	R	O	R	R	R	R
30	O	O	R	R	O	R	R	R	R	R	O	R	R	O	R	R	R	O	R	R	R	R	R	O	R	R	R	R
31	O	O	R	R	O	R	R	R	R	R	O	R	R	O	R	R	R	O	R	R	R	R	R	O	R	R	R	R
32	O	O	R	R	O	R	R	R	R	R	O	R	R	O	R	R	R	O	R	R	R	R	R	O	R	R	R	R
33	O	O	R	R	O	R	R	R	R	R	O	R	R	O	R	R	R	O	R	R	R	R	R	O	R	R	R	R
35	O	O	O	O	O	O	O	O	O	O	O	O	R	O	O	O	O	O	O	O	O	O	O	O	O	O	O	O
36	O	O	O	O	O	O	O	O	O	O	O	O	O	O	O	O	O	O	O	O	O	O	O	O	O	O	O	O
37	O	O	O	O	O	O	O	O	O	O	O	O	O	O	O	O	O	O	O	O	O	O	O	O	O	O	O	O
38	O	O	O	O	O	O	O	O	O	O	O	O	O	O	O	O	O	O	O	O	O	O	O	O	O	O	O	O
39	O	O	O	O	O	O	O	O	O	O	O	O	O	O	O	R	O	O	O	O	O	O	O	O	O	O	O	O

Table B.5. Classification of Economic Activities at the State Level for Brazil (Continued)

Code	S1	S2	S3	S4	S5	S6	S7	S8	S9	S10	S11	S12	S13	S14	S15	S16	S17	S18	S19	S20	S21	S22	S23	S24	S25	S26	S27	
41	O	O	R	R	O	R	R	R	R	R	O	R	R	O	R	R	R	O	R	R	R	R	R	O	R	R	R	
42	O	O	R	R	O	R	R	R	R	R	O	R	R	O	R	R	R	O	R	R	R	R	R	R	O	R	R	R
43	O	O	R	R	O	R	R	R	R	R	O	R	R	O	R	R	R	O	R	R	R	R	R	R	O	R	R	R
45	R	R	R	R	R	R	R	R	R	R	R	O	R	O	R	R	R	C	R	R	R	R	R	R	O	R	R	O
46	R	R	R	R	R	R	R	R	R	R	R	O	R	O	R	R	R	C	R	R	R	R	R	R	O	R	R	R
47	O	O	R	O	O	O	O	O	O	O	O	O	O	O	O	O	O	O	O	O	O	O	O	O	O	O	O	O
49	O	O	O	O	O	O	O	O	O	C	O	O	C	O	O	O	O	O	O	O	O	C	O	O	O	O	O	O
50	O	O	O	C	O	O	C	O	O	C	C	O	C	C	C	C	C	O	C	O	C	C	C	C	O	O	C	C
51	O	O	C	C	C	O	C	C	O	C	C	C	C	C	C	C	C	O	C	C	C	C	C	C	O	O	C	C
52	O	O	O	O	O	O	O	O	O	C	O	O	C	O	O	O	O	O	O	O	O	C	O	O	O	O	O	O
53	O	O	O	O	O	O	O	O	O	O	R	R	O	O	O	O	O	O	O	O	O	C	O	O	O	O	O	O
55	C	R	C	C	C	C	C	R	C	C	O	C	O	C	C	C	C	C	C	C	C	C	C	C	O	C	C	C
56	C	C	C	C	C	C	C	R	C	C	C	C	C	C	C	C	C	C	C	C	C	C	C	C	O	C	C	C
58	O	O	O	O	O	O	O	O	O	O	O	O	O	O	O	O	O	O	O	O	O	O	O	O	O	O	O	O
59	O	O	O	O	O	O	O	O	O	O	O	O	O	O	O	O	O	O	O	O	O	O	O	O	O	O	O	O
60	O	O	O	O	O	O	O	O	O	O	O	O	O	O	O	O	O	O	O	O	O	O	O	O	O	O	O	O
61	O	O	O	O	O	O	O	O	O	O	O	O	O	O	O	O	O	O	O	O	O	O	O	O	O	O	O	O
62	O	R	R	R	R	R	R	R	R	R	R	R	R	O	O	R	R	O	O	R	R	R	R	R	O	R	R	O
63	O	O	O	R	O	O	O	O	O	O	O	O	O	O	O	O	O	O	O	O	O	O	O	O	O	O	O	O
64	O	O	O	O	O	O	O	O	O	O	O	O	O	O	O	O	O	O	O	O	O	O	O	O	O	O	O	O
65	O	O	O	R	O	O	O	O	O	O	O	O	O	O	O	O	O	C	O	O	O	O	C	O	O	O	O	C
66	O	O	O	R	O	R	R	R	O	O	R	O	O	O	O	O	O	C	R	R	O	O	C	O	O	O	O	C
68	R	R	R	R	R	R	R	R	R	R	R	R	R	O	R	R	R	O	R	R	R	R	R	C	O	O	R	R
69	O	R	O	O	O	R	R	R	R	R	R	O	R	O	O	R	O	O	O	R	O	R	R	R	O	O	O	R
70	R	R	R	R	R	R	R	R	R	R	R	R	R	O	R	R	R	O	R	R	R	R	R	R	O	R	R	R
71	R	R	R	R	R	R	R	R	R	R	R	R	R	O	R	R	R	O	R	R	R	R	R	R	O	R	R	R
72	R	R	R	R	R	O	R	R	R	R	R	R	R	O	R	R	R	O	R	R	R	R	R	R	O	R	R	R
73	R	R	R	R	R	R	R	R	R	R	R	R	R	O	R	R	R	O	R	R	R	R	R	R	O	R	R	R
74	R	R	R	R	R	R	R	R	R	R	R	R	R	O	R	R	R	O	R	R	R	R	R	R	O	R	R	R
75	R	R	R	R	R	R	R	R	R	R	R	R	R	O	R	R	R	O	R	R	R	R	R	R	O	R	R	R
77	R	R	R	R	R	R	R	R	R	R	R	R	R	O	R	R	R	O	R	R	R	R	R	R	O	R	R	R
78	R	R	R	R	R	R	R	R	R	R	R	R	R	O	R	R	R	O	R	R	R	R	R	R	O	R	R	R
79	R	R	R	R	R	R	R	R	R	R	R	R	R	O	R	R	C	O	R	R	R	C	R	R	O	R	R	R

Table B.5. Classification of Economic Activities at the State Level for Brazil (Continued)

Code	S1	S2	S3	S4	S5	S6	S7	S8	S9	S10	S11	S12	S13	S14	S15	S16	S17	S18	S19	S20	S21	S22	S23	S24	S25	S26	S27	
80	O	O	O	O	O	O	R	O	O	O	O	O	R	O	O	O	O	O	O	O	O	O	R	O	O	O	O	
81	R	R	R	R	R	R	R	R	R	R	R	R	R	O	R	R	R	O	R	R	R	R	R	O	R	R	R	R
82	R	R	R	R	R	R	R	R	R	R	R	R	R	O	R	R	R	O	R	R	R	R	R	O	R	R	R	R
84	O	O	R	O	O	O	O	O	O	O	O	O	O	O	O	O	O	O	O	O	O	O	O	O	O	O	O	O
85	O	O	O	O	O	O	O	O	O	O	O	O	O	O	O	O	O	O	O	O	O	O	O	O	O	O	O	O
86	O	O	O	O	O	O	O	O	O	O	O	O	O	O	O	O	O	O	O	O	O	O	O	O	O	O	O	O
87	O	O	O	O	O	O	O	O	O	O	O	O	O	O	O	O	O	O	O	O	O	O	O	O	O	O	O	O
88	O	O	O	O	O	O	O	O	O	O	O	O	O	O	O	O	O	O	O	O	O	O	O	O	O	O	O	O
90	C	C	C	C	C	C	C	C	C	C	C	C	C	C	C	C	C	C	C	C	C	C	C	C	O	C	C	C
91	C	C	C	C	C	C	C	C	C	C	C	C	C	C	C	C	C	C	C	C	C	C	C	C	O	C	C	C
92	C	C	C	C	C	C	C	C	C	C	C	C	C	C	C	C	C	C	C	C	C	C	C	C	O	C	C	C
93	C	C	C	C	C	C	C	C	C	C	C	C	C	C	C	C	C	C	C	C	C	C	C	C	O	C	C	C
94	C	C	C	C	C	C	C	C	C	C	C	C	C	C	C	C	C	C	C	C	C	C	C	C	O	C	C	C
95	R	R	R	R	R	R	R	R	R	R	R	R	R	O	R	R	R	O	R	R	R	R	R	O	R	R	R	R
96	R	R	R	R	R	R	R	R	R	R	R	R	R	O	R	R	R	O	R	R	R	R	R	O	R	R	R	R
97	R	R	R	R	R	R	R	R	R	R	R	R	R	O	R	R	R	O	R	R	R	R	R	O	R	R	R	R
98	R	R	R	R	R	R	R	R	R	R	R	R	R	O	R	R	R	O	R	R	R	R	R	O	R	R	R	R
99	O	O	O	O	O	O	O	O	O	O	O	O	O	O	O	O	O	O	O	O	O	O	O	O	O	O	O	O

Notes: Table B.5 presents the classifications, separately for each state in Brazil, of the economic sectors into three categories: i) open (O), ii) closed (C) and iii) the remaining sectors (R). “Open sectors” are comprised of two categories: i) sectors that are considered essential according to the authorities and ii) sectors that are open because there is a partial lockdown in the state. In addition, we consider the sectors “Public administration and defence; comp” and “Education” as open because, despite the fact that in some states schools were closed and that workers in these sectors were required to work from home, all of the workers continued to work and to receive their salary. “Closed sectors” are sectors that are explicitly stated as sectors that should remain closed during the lockdown. Usually, because of the task content of the jobs, the vast majority of the workers in these sectors cannot work from home (Example: waitresses in restaurants). Lastly, the “remaining sectors” are sectors that were affected by mobility restrictions and were not explicitly stated as closed. We assume that the workers in these sectors were required to work from home. These classifications are based on the national laws and decrees listed in Table B.1. For the name of the sectors associated to each code, see Table B.3. For the states, S1 refers to Rondônia, S2 to Acre, S3 to Amazonas, S4 to Roraima, S5 to Pará, S6 to Amapá, S7 to Tocantins, S8 to Maranhão, S9 to Piauí, S10 to Ceará, S11 to Rio Grande do Norte, S12 to Paraíba, S13 to Pernambuco, S14 to Alagoas, S15 to Sergipe, S16 to Bahia, S17 to Minas Gerais, S18 to Espírito Santo, S19 to Rio de Janeiro, S20 to São Paulo, S21 to Paraná, S22 to Santa Catarina, S23 to Rio Grande do Sul, S24 to Mato Grosso do Sul, S25 to Mato Grosso, S26 to Goiás and S27 to Distrito Federal.

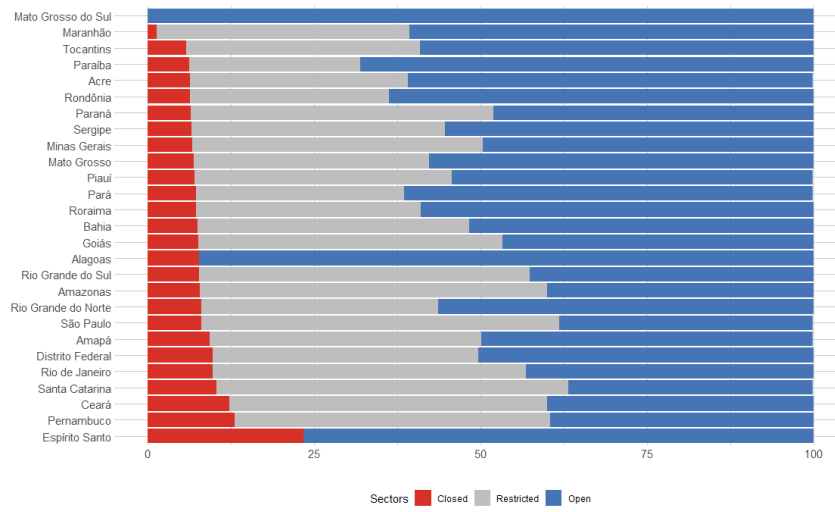
Table B.6. Proportion of Closed, Restricted and Open Sectors, by Country

Country	Country code	% of Sectors			% of Individuals		
		Closed	Restricted	Open	Closed	Restricted	Open
Argentina	ARG	13	52	35	26	41	33
Bahamas	BHS	14	57	30	28	21	51
Belize	BLZ	9	25	66	12	22	65
Bolivia	BOL	13	45	42	15	23	62
Brazil	BRA				8	44	48
Brazil - Rondônia	BRA	8	20	72	6	30	64
Brazil - Acre	BRA	7	34	69	6	33	61
Brazil - Amazonas	BRA	9	51	40	8	52	40
Brazil - Roraima	BRA	10	52	38	7	34	59
Brazil - Pará	BRA	9	22	69	7	31	62
Brazil - Amapá	BRA	8	50	42	9	41	50
Brazil - Tocantins	BRA	10	52	38	6	35	59
Brazil - Maranhão	BRA	7	53	40	1	38	61
Brazil - Piauí	BRA	8	50	42	7	39	54
Brazil - Ceará	BRA	13	50	38	12	48	40
Brazil - Rio Grande do Norte	BRA	9	25	66	8	36	56
Brazil - Paraíba	BRA	9	48	43	6	26	68
Brazil - Pernambuco	BRA	11	52	36	13	47	40
Brazil - Alagoas	BRA	10	0	90	8	0	92
Brazil - Sergipe	BRA	10	48	42	7	38	55
Brazil - Bahia	BRA	10	51	39	8	41	52
Brazil - Minas Gerais	BRA	11	48	41	7	44	50
Brazil - Espírito Santo	BRA	12.5	0	87.5	23	0	77
Brazil - Rio de Janeiro	BRA	10	49	41	10	47	43
Brazil - São Paulo	BRA	9	51	40	8	54	38
Brazil - Paraná	BRA	11	48	41	7	46	48
Brazil - Santa Catarina	BRA	14	50	36	10	53	37
Brazil - Rio Grande do Sul	BRA	14	50	36	8	50	43
Brazil - Mato Grosso do Sul	BRA	0	0	100	0	0	100
Brazil - Mato Grosso	BRA	8	48	44	7	35	58
Brazil - Goiás	BRA	10	49	41	8	46	47
Brazil - Distrito Federal	BRA	13	48	40	10	40	50
Barbados	BRB	9	51	40	16	35	49
Chile	CHL	13	49	39	13	33	54
Colombia	COL	9	50	41	9	34	57
Costa Rica	CRI	11	0	89	8	0	92
Dominican Republic	DOM	13	45	42	18	37	46
Ecuador	ECU	13	52	35	14	30	56
Guatemala	GTM	13	59	28	9	33	58
Jamaica	JAM	10	48	42	12	22	67
Mexico	MEX	8	57	35	10	41	50
Nicaragua	NIC	0	0	100	0	0	100
Peru	PER	13	51	36	17	43	40
Paraguay	PRY	10	56	34	5	42	53
El Salvador	SLV	18	53	28	14	49	37
Uruguay	URY	9	0	91	6	0	94
Venezuela	VEN	13	50	38	15	33	52

Source: National Laws and Decrees compiled and reported in “Appendix B”, authors’ own calculations.

Notes: Table B.6 presents for each country the proportion of sectors and the proportion of workers in sectors that are closed, that are affected by mobility restrictions and that are open.

Figure B.1. Share of Workers in Closed, Restricted and Open Sectors, by State in Brazil



Source: National Laws and Decrees compiled and reported in “Appendix B”, authors’ own calculations.
 Notes: Figure B.1 reports for each state in Brazil the proportion of workers in: i) sectors that are closed, ii) sectors affected by mobility restrictions and iii) sectors that are open.