

Dahl, Gordon B.; Rooth, Dan-Olof; Stenberg, Anders

**Working Paper**

## Long-Run Returns to Field of Study in Secondary School

IZA Discussion Papers, No. 13508

**Provided in Cooperation with:**

IZA – Institute of Labor Economics

*Suggested Citation:* Dahl, Gordon B.; Rooth, Dan-Olof; Stenberg, Anders (2020) : Long-Run Returns to Field of Study in Secondary School, IZA Discussion Papers, No. 13508, Institute of Labor Economics (IZA), Bonn

This Version is available at:

<https://hdl.handle.net/10419/223950>

**Standard-Nutzungsbedingungen:**

Die Dokumente auf EconStor dürfen zu eigenen wissenschaftlichen Zwecken und zum Privatgebrauch gespeichert und kopiert werden.

Sie dürfen die Dokumente nicht für öffentliche oder kommerzielle Zwecke vervielfältigen, öffentlich ausstellen, öffentlich zugänglich machen, vertreiben oder anderweitig nutzen.

Sofern die Verfasser die Dokumente unter Open-Content-Lizenzen (insbesondere CC-Lizenzen) zur Verfügung gestellt haben sollten, gelten abweichend von diesen Nutzungsbedingungen die in der dort genannten Lizenz gewährten Nutzungsrechte.

**Terms of use:**

*Documents in EconStor may be saved and copied for your personal and scholarly purposes.*

*You are not to copy documents for public or commercial purposes, to exhibit the documents publicly, to make them publicly available on the internet, or to distribute or otherwise use the documents in public.*

*If the documents have been made available under an Open Content Licence (especially Creative Commons Licences), you may exercise further usage rights as specified in the indicated licence.*

DISCUSSION PAPER SERIES

IZA DP No. 13508

**Long-Run Returns to Field of Study in  
Secondary School**

Gordon B. Dahl  
Dan-Olof Rooth  
Anders Stenberg

JULY 2020

## DISCUSSION PAPER SERIES

IZA DP No. 13508

# Long-Run Returns to Field of Study in Secondary School

**Gordon B. Dahl**

*UC San Diego, Norwegian School of Economics, NBER, CESifo and IZA*

**Dan-Olof Rooth**

*Institute for Social Research, Stockholm University and IZA*

**Anders Stenberg**

*Institute for Social Research, Stockholm University and IZA*

JULY 2020

Any opinions expressed in this paper are those of the author(s) and not those of IZA. Research published in this series may include views on policy, but IZA takes no institutional policy positions. The IZA research network is committed to the IZA Guiding Principles of Research Integrity.

The IZA Institute of Labor Economics is an independent economic research institute that conducts research in labor economics and offers evidence-based policy advice on labor market issues. Supported by the Deutsche Post Foundation, IZA runs the world's largest network of economists, whose research aims to provide answers to the global labor market challenges of our time. Our key objective is to build bridges between academic research, policymakers and society.

IZA Discussion Papers often represent preliminary work and are circulated to encourage discussion. Citation of such a paper should account for its provisional character. A revised version may be available directly from the author.

ISSN: 2365-9793

**IZA – Institute of Labor Economics**

Schaumburg-Lippe-Straße 5–9  
53113 Bonn, Germany

Phone: +49-228-3894-0  
Email: [publications@iza.org](mailto:publications@iza.org)

[www.iza.org](http://www.iza.org)

## ABSTRACT

---

# Long-Run Returns to Field of Study in Secondary School

This paper studies whether specialized academic fields of study in secondary school, which are common in many countries, affect earnings as an adult. Identification is challenging, because it requires not just quasi-random variation into fields of study, but also an accounting of individuals' next-best alternatives. Our setting is Sweden, where at the end of ninth grade students rank fields of study and admissions to oversubscribed fields is determined based on a student's GPA. We use a regression discontinuity design which allows for different labor market returns for each combination of preferred versus next-best choice, together with nationwide register data for school cohorts from 1977-1991 linked to their earnings as adults. Our analysis yields four main findings. First, Engineering, Natural Science, and Business yield higher earnings relative to most second-best choices, while Social Science and Humanities result in sizable drops, even relative to non-academic vocational programs. Second, the return to completing a field varies substantially as a function of a student's next-best alternative. The magnitudes are often as large as estimates of the return to two years of additional education. Third, the pattern of returns for individuals with different first and second best choices is consistent with comparative advantage for many field choice combinations, while others exhibit either random sorting or comparative disadvantage. Fourth, most of the differences in adult earnings can be attributed to differences in college major and occupation. Taken together, these results highlight that the field choices students make at age 16, when they may have limited information about their skills and the labor market, have effects which last into adulthood.

**JEL Classification:** I26, J24, J31

**Keywords:** field of study, secondary education, comparative advantage

**Corresponding author:**

Gordon B. Dahl  
Department of Economics  
University of California, San Diego  
9500 Gilman Drive  
La Jolla, CA 92093-0508  
USA

E-mail: gdahl@ucsd.edu

# 1 Introduction

Many countries throughout the world, including much of Europe, require specialization in secondary school, with students choosing fields of study which prepare them for college or provide vocational training (for an overview, see OECD 2019). Understanding the long-run labor market returns to early field specializations (i.e., “high school majors”) is of central importance for models of human capital accumulation and for education policy. On the supply side, returns are useful inputs in determining whether more resources and slots should be devoted to certain fields of study. On the demand side, students may be making field decisions with little information, and providing guidance on long-run field-specific wage premiums could help youth better plan for their future. A related question is whether students recognize their own comparative advantage when choosing one field over another.

Despite its importance, evidence on the returns to different academic fields in secondary school remains scarce.<sup>1,2</sup> One challenge is that students endogeneously sort into fields of study. The problem is compounded by the fact that students have different next-best alternatives, which makes the counterfactual outcome different for individuals completing the same program. In such a setting, identification of meaningful parameters requires not just quasi-random variation into fields of study, but also an accounting of individuals’ next-best choices (Kirkeboen, Leuven, and Mogstad 2016). On top of these identification challenges, the data requirements are formidable. One needs information on each individual’s completed field of study, which academic program they were admitted to, and their preferred and next-best alternative choices. To examine long-run labor market impacts, one also needs to follow individuals several decades later and observe their occupation and earnings.

We overcome these challenges in the context of Sweden’s secondary school system. We use a regression discontinuity design (RD) to compare individuals just above versus just below GPA admission cutoffs for different fields of study. We can account for different preferred and next-best alternatives because we were able to gain access to the field rankings, admission decisions, and completed fields of study for all students between the years 1977-1991. Using personal identification numbers, we are able to link this data to labor market outcomes

---

<sup>1</sup>Throughout the paper, we use the terms field of study, program, and major interchangeably.

<sup>2</sup>For a summary of the literature, see Altonji, Blom, and Meghir (2012) and Altonji, Arcidiacono, and Maurel (2016). Recent progress has been made on estimating the causal returns to different college majors, but as far as we know, no causal studies exist on the returns to different secondary school majors.

decades later, when individuals are in the prime of their working careers.

During the time period of our study, students choose between five academic fields of study which take at least three years to complete: Engineering, Natural Science, Business, Social Science, and Humanities. In addition to these fields, which comprise the focus of our paper and 50% of applicants, there are also non-academic two year programs. We focus on academic fields since admission into non-academic programs was most often not limited, so we cannot use our research design for them, apart from including them as possible second-best choices.

At the end of ninth grade, students rank their preferred fields of study, and admission to oversubscribed fields is determined by the student's cumulative ninth grade GPA.<sup>3</sup> Admission decisions are decided centrally, and the allocation mechanism is both Pareto efficient and strategy proof. Importantly, individuals just above and below the GPA cutoff should be roughly similar on all observable dimensions, allowing us to use a regression discontinuity (RD) design to estimate effects for students on the margin of admission. We allow for separate jumps at the field-specific GPA cutoffs for each combination of preferred and next-best fields. For example, the payoff to Engineering is estimated separately for those with a second-best choice of Natural Science versus Business. We use the sharp jumps in admission at the GPA cutoffs as instruments for field completion in a fuzzy RD design. We also estimate sharp RDs for the policy-relevant question of the return to being admitted to a specific field.

Our first empirical finding is that the earnings returns to completing different academic fields are often sizable, and can be both negative and positive. For example, the returns to Engineering range from 1.9% to 8.6%, depending on an individual's next-best alternative field of study, while the returns to Social Science range from -10.3% to 0.5%. Earnings payoffs are generally positive or zero for Engineering, Natural Science, and Business. In contrast, the returns to Social Science and Humanities are mostly negative, even when compared to next-best non-academic programs where the earnings losses exceed 8%.

Second, earnings payoffs vary substantially based on next-best alternatives. For example, there is a 9.3% return to completing Business relative to a second-best choice of Natural Science, but essentially no return to completing Business (0.4%) for those who have Humanities

---

<sup>3</sup>Business and Engineering top the list for the most oversubscribed academic fields for admission, while Natural Science and Humanities are the least likely to be competitive. There is not a simple correspondence between competitiveness, average GPA, and future earnings in the population. Students completing Natural Science have the highest GPAs and those pursuing Business the lowest, while earnings are highest for Engineering and lowest for Humanities.

as their next-best alternative. This pattern reveals that individuals choosing Natural Science as their next-best field are a selected sample which are not directly comparable to those with Humanities as their next-best field. Formal tests reject the null hypothesis that second-best choices do not matter for each of the field-specific returns. The estimates are robust to alternative RD parameterizations and earnings measures which include zeros.

Third, the pattern of returns is consistent with individuals pursuing comparative advantage in expected earnings for many field choice combinations, but not all. For example, individuals who complete Natural Science with a second-best choice of Business earn a 5.7% premium, while those who complete Business with a second-best choice of Natural Science earn a 9.3% premium. Random sorting would have predicted the two estimates were equal in magnitude, but opposite in sign. Five field combinations show evidence for comparative advantage, two for comparative disadvantage, and three for random sorting.<sup>4</sup> Comparative advantage is more common when first and second best choices include Engineering, Business, or Natural Science, while comparative disadvantage occurs with Humanities.

Fourth, most of the differences in adult earnings across academic programs can be explained by differences in college majors and occupation. For example, our evidence indicates that individuals who complete Business instead of Social Studies in secondary school earn more as adults because they pursue higher-paying college majors (e.g., a finance or marketing major) and because they end up in higher paying occupations (e.g., a banker or sales manager). These two mechanisms appear to be in play simultaneously. In contrast, years of schooling is not an explanation once these other two mechanisms are accounted for.

Taken together, our results highlight that early schooling choices have long-lasting labor market consequences. They also speak to the question of whether secondary school majors capture sheepskin effects (Spence 1973) versus human capital accumulation (Becker 1964; Mincer 1974). Our results are inconsistent with degree-signaling effects as the dominant explanation, as individuals with the same major but different second-best choices experience different earnings returns. Moreover, comparative advantage and disadvantage argue against a common ranking of fields, and in favor of a generalized Roy model (which includes non-monetary gains) and specific human capital accumulation. In contrast, such patterns are not

---

<sup>4</sup>Comparative disadvantage can be explained by students either having poor information or taking into account non-monetary returns.

consistent with commonly used models such as the Ben Porath model which rely on efficiency units (Heckman and Guilherme, 1985).

The magnitude and variability of our estimates are substantively important. The absolute value of the estimates often exceed the return to an additional two years of education, which has been estimated to be in the neighborhood of 3 to 5% per year in Sweden (Meghir and Palme 2005; Black, Devereux, Lundborg, and Majlesi 2018). While we cannot directly evaluate whether the benefits associated with this type of secondary education system exceed the costs, the long-lasting labor market effects we estimate are an important consideration. Individuals make these field choices at the relatively young age of 16, when preferences are in flux and they are still learning about their abilities. These early field choices are linked to future earnings and occupations in a way which could limit future economic mobility. From a purely fiscal policy standpoint, our results argue for an expansion of the Engineering, Natural Science, and Business fields, and a contraction of Social Science and Humanities, although we recognize that non-pecuniary factors are also an important consideration.<sup>5</sup>

Our study is most closely related to the literature on the returns to college major choice which uses admissions thresholds as instruments. Hastings, Neilson, and Zimmerman (2013) takes advantage of score-based thresholds in Chile for different degree programs (defined by the combination of a given university and major) and an RD design. They estimate the intention-to-treat effects of being admitted to a program on long-term labor market outcomes. Subsequent work by Kirkeboen et al. (2016) makes the important point that with multiple unordered choices, instruments for each program are not enough to identify a meaningful parameter without accounting for next-best alternatives. Using administrative data for Norway, which has a centralized system with admissions thresholds for different programs (again defined by a given university and major), they study the effect of program completion on earnings 8 years after application using IV. Finally, Andrews, Imberman, and Lovenheim (2017) studies the impact of switching to a business major in college. They take advantage of GPA cutoffs and an RD design with data from Texas.<sup>6</sup>

Our paper makes several novel contributions. As far as we know, we provide the first

---

<sup>5</sup>Our design estimates returns to field of study for students on the margin of admission, rather than the general population. Fortunately, this is a relevant group from a policy perspective, as reforms which expand or contract different fields target exactly these individuals.

<sup>6</sup>See also Arcidiacono (2004) and Rodriguez, Urzúa, and Reyes (2016), which adopt a more structural approach to study college majors.



causal estimates of the returns to academic fields of study in secondary school. This primary contribution is important for understanding human capital accumulation and designing education policy. Related to this, we make progress on understanding the role of next-best choices, comparative advantage, and possible mechanisms. Our data and empirical design also have several advantages. A key advance is that we are able to estimate returns for each first-second best choice combination using a convincing RD design. In their seminal paper, Kirkeboen et al. (2016) motivate their insights with a flexible RD, but in the end need to use a more restrictive IV approach because of small sample sizes.<sup>7</sup> In addition, our data allow us to (i) estimate returns to single academic fields of study, without having to combine them and without the confounding factor of institution choice,<sup>8</sup> (ii) link fields of study to long-term labor market outcomes over two decades later, when individuals are in the prime of their working careers, and (iii) estimate returns for both admission as well as field completion.

More broadly, our paper is related to work which looks at the effects of school curricula or the completion of specific classes (Altonji 1995; Altonji et al. 2012; Deming and Noray 2018; Joensen and Nielsen 2009; Joensen and Nielsen 2016; Levine and Zimmerman 1995; Rose and Betts 2004), tracking in elementary and secondary school (Argys, Rees, and Brewer 1996; Card and Giuliano 2016; Dustmann, Puhani, and Schönberg 2017; Pekkarinen, Uusitalo, and Kerr 2009), and general versus vocational training (Bertrand, Mogstad, and Mountjoy 2019; Brunello and Rocco 2017; Golsteyn and Stenberg 2017; Hall 2012; Hanushek, Schwerdt, Woessmann, and Zhang 2017; Malamud and Pop-Eleches 2010).

The remainder of the paper proceeds as follows. The next section describes Sweden’s system of secondary education, the admission process into fields of study, and our unique data. Section 3 discusses identification using preferred and next-best alternative choices in an RD design. Section 4 presents our main findings and performs several robustness checks. Section 5 tests for comparative advantage and Section 6 explores possible mechanisms for our findings. The final section concludes.

---

<sup>7</sup>To control for selection, Kirkeboen et al. use instruments for each field (but not instruments for each preferred×next-best field combination) and the application score as a control variable in an IV rather than an RD framework.

<sup>8</sup>During the time period of our study, students were only allowed to apply for fields in their own region of residence unless the field was not offered in their home region. Moreover, the returns are easy to interpret since fields all follow the same centrally-decided curriculum.

## 2 Setting and Data

### 2.1 *Fields of Study in Sweden*

The Swedish educational system requires nine years of compulsory schooling, after which individuals can drop out or apply to a field of study in secondary school (i.e., high school).<sup>9</sup> During the years we study (1977-1991), there were five academic fields of study to choose from: Engineering, Natural Science, Business, Social Science, and Humanities. These academic programs took three years to complete, with the exception of Engineering, which had the option of a fourth year of more technology-oriented courses. The five academic fields are preparatory for future studies at the university level.

As shown in Table 1, there are substantial curriculum differences across the academic fields. The two STEM fields (Engineering and Natural Science) require more math and natural science classes, and the math courses are taught at an advanced level. Engineering additionally requires a series of technology-related courses, at the cost of fewer art, language, and social science classes. The optional fourth year of Engineering further adds technical courses in a chosen specialty (machinery, chemistry, construction, or electronics). Natural Science adds more science classes and some general social studies and language classes. In contrast, Business only requires a single three hour class in the natural sciences, and instead has 25% of the curriculum devoted to business-related courses such as law and accounting. Both Social Science and Humanities devote time to extra social studies and liberal arts classes. Languages comprise 35% of the curriculum for Social Studies, and 43% for Humanities.<sup>10</sup>

In addition to these five academic fields, which comprise the focus of our paper, there were between 17-21 non-academic programs offered. These non-academic programs took two years to complete. There were 14-18 vocational programs aimed at preparing students for a career, and 3 general programs which provided additional general education, but not at the level needed to qualify for university studies.<sup>11</sup> Appendix Figure A1 displays the number of

---

<sup>9</sup>During the nine years of compulsory schooling there is little specialization. There are two tracks for math, two tracks for English, and the choice of one elective. All other courses are common across students during our time period.

<sup>10</sup>While we focus on differences in curriculum, it is also possible that different fields expose individuals to a different set of peers or a different set of teachers, both of which could also influence future earnings (e.g., Sacerdote 2011; Chetty, Friedman, and Rockoff 2014).

<sup>11</sup>The two-year non-academic general programs were introduced in the 1960s as a middle ground between the academic and non-academic vocational programs. Completing a two-year non-academic program enabled a student to enroll in short education programs classified as tertiary school, such as pre-school teaching or

students admitted to each of the five academic fields plus the two aggregated non-academic programs. Roughly half of students are admitted to an academic field, with Engineering and Business being the most popular. The focus of this paper is on the academic fields; the reason is that admission into most of the non-academic programs was not limited, and so we cannot use the research design we describe in Section 3 for non-academic preferred choices.

Figure 1 provides an initial look at how GPAs and earnings vary by completed program for all individuals. There is not a simple correspondence between fields with higher average GPAs and higher average earnings. Students completing Natural Science have the highest GPAs, while those pursuing non-academic vocational programs have the lowest. Earnings are highest for Engineering and lowest for Humanities.

We focus on the period 1977-1991 because the academic fields of study and non-academic programs did not experience major changes over this time frame. After our sample period, there were two sets of reforms. In 1992, Business, Social Sciences, and Humanities were merged into one field, non-academic vocational fields were lengthened to three years, and non-academic general programs were abolished.<sup>12</sup> The 1992 education reform also provided funding to private schools at a similar level to public schools; the resulting expansion of private schools made it possible to apply to the same program offered by several schools, or in other municipalities, and substantially reduced the number of oversubscribed programs. In 2011, Business, Social Sciences, and Humanities re-emerged as separate fields in some, but not all, regions.

## 2.2 Admission Process

Students apply to be admitted to a field of study. During our sample period (1977-1991), individuals were only allowed to apply for fields in their region of residence unless a field was not offered in their home region. Depending on the year, there are between 115 and 137 secondary school regions, with a median number of 927 applicants per year and school region.

Students compete for slots based on their application GPA. This GPA is the average grade across 10-12 school subjects as of ninth grade. Grades range from a low of 1 to a high of 5 and are supposed to be normally distributed with a mean of roughly 3 in the entire

---

nursing. All municipalities offer adult education, which allows students to complete a three-year secondary school degree and qualify for university education. For further details, see Stenberg (2011).

<sup>12</sup>A few three-year non-academic pilot programs were tested between 1987-1991.

population (including those who drop out of school, pursue a non-academic field, and pursue an academic field). Applicants received a bonus of 0.2 to their GPA for being a minority gender applicant, defined as applying to a field which in the prior year had accepted less than 30% of their gender nationally (e.g., females applying to Engineering). Unless otherwise specified, when we refer to GPA in the remainder of the paper, we are referring to adjusted GPA. Admission decisions only distinguish between GPAs to the first decimal.

The admission process works as follows. During the final semester of ninth grade, students rank their preferences on a standardized one-page application form. They can specify up to 6 fields. The forms are sent to a central administration office which then allocates students to classes based on their preference rankings and GPA. Admission decisions are made sequentially, with the highest-GPA applicant being admitted to their first-choice field, the second-highest GPA applicant being admitted to their highest-ranked field among the set of fields which still have space in them, and so forth. This mechanism of allocating slots is known as “serial dictatorship” and has been shown to be both Pareto efficient and strategy proof (Svensson 1999). In other words, with this allocation mechanism, there is no incentive for students to misreport their true ranking of preferences.<sup>13</sup>

After admission decisions are sent out in July, there can be reallocations of students to different fields of study. This can happen for a variety of reasons. For example, a student admitted to Engineering may change their mind and transfer to another field, such as Humanities, that still has open slots. This move will also open up a slot in Engineering, which another student can take. While changes can happen at any time, it becomes more difficult to switch after the fall of the first year given curriculum differences.

These reallocations are not necessarily random, as they depend on individuals changing their minds and potentially discretion on the part of the local secondary school principal. Luckily, we observe the actual admission decision, which is a mechanical and binary function of the GPA cutoff. We can use the admission decision cutoff in an RD design to instrument for program completion. We can also use the sharp cutoff in admission decisions to estimate

---

<sup>13</sup>In theory, it is possible that only allowing 6 fields causes individuals to put a safe option down as their 6th choice, so as to make sure they get into at least one field. This seems unlikely in our setting, as only 0.2% of all applicants are admitted to their 6th choice (and only 1.57% even list a sixth choice). During the years 1982-84, individuals were given bonus GPA points for the first and second choices on their ranking lists. So for these years, individuals may have not revealed their true preferences in their rankings. In a robustness check we exclude these years, and the estimates hardly change (see Section 4.3).

the policy-relevant effect of admission itself.

### 2.3 Data

Our analysis uses several different data sources that we link together using unique identifiers for each individual. The most novel data for this study is the ranking list applicants make when they apply for admission to secondary school fields. We observe all of the field choices submitted by a student. This is important, because it allows us not only to observe which field an applicant is admitted to, but also what their next-best alternative choice is. As discussed in Section 3.1, this information is vital for identifying an interpretable causal effect. This data had been reported as lost by the Swedish National Archives, but was miraculously saved by Hans Eric Ohlson at Statistics Sweden in response to a request we made.<sup>14</sup>

During our sample period, the number of applications to secondary school increased. In 1977 only 60% of the ninth-grade cohort applied to secondary school, but by 1991 this had risen to 80%. Summed over all years, the population of first-time applicants between 1977-1991 is 1,330,453. Our sample is limited to individuals who are still observed in the administrative registers at age 38. We drop all observations which have a non-academic program as the preferred choice, because most of these programs are not space constrained and are therefore not useful given our empirical design. We also drop observations where GPA is missing or outside the range of 2.0 to 5.0. Our estimation sample is further limited to (i) applications to fields which are competitive (i.e., oversubscribed), (ii) individuals who list a next-best alternative, and (iii) a sample window of -1.0 to +1.5 GPA points around the cutoff, leaving us with a sample of 250,970 observations.<sup>15</sup> Our baseline sample is comprised of the 233,437 observations where we are able to use our preferred earnings variable, which is measured in logs.

For our purposes, we need to define an individual's preferred choice and their next-best alternative. For 96% of individuals, the preferred choice is their first choice on their ranking

---

<sup>14</sup>Summary statistics relating to the ranking lists appeared in a 1992 government report, so we knew the data existed at one time. But when we contacted the Swedish National Archives, they reported it as lost. In an unrelated conversation about a different dataset, we let Ohlson know our frustration that the data had been lost. It turns out that Ohlson was the person responsible for delivering the data over 25 years ago to the archives, and that he kept meticulous records. With his help and intervention, we were able to secure the data. Ohlson retired only weeks after the data was delivered.

<sup>15</sup>We further exclude individuals with GPAs at the cutoff where this is a mix of accepted and non-accepted individuals at the cutoff (see the next section for details). We also exclude a small number of applications which involved school regions and years where the Engineering and Natural Sciences fields were combined.

list and their next-best alternative is their second choice. For the 4% of individuals who are admitted to a third or lower ranked choice, the preferred choice is defined as the choice ranked immediately above their accepted choice, and the next-best alternative as their accepted choice. This gives us information on both preferred and next-best fields, and a quasi random source of variation for each combination of fields for individuals near the admission thresholds. For ease of exposition, we will refer to the preferred field as the first-best choice, even if it turns out that it was not the first choice on their list. Likewise, we will refer to the next-best alternative field as the second-best choice. In other words, we will refer to first- and second-best choices as the relevant preferred and next-best choices.

The number of individuals with each combination of first- and second-best choices in our baseline sample can be found in Table 2. Some combinations have many observations, such as a first choice of Engineering and a second choice of Natural Sciences (N=31,877) or a first choice of Business and a second choice of Social Science (N=29,849). The most sparsely populated combinations are those which include a STEM field and Humanities, with just a few hundred individuals. As Appendix Table A1 documents, the observations are spread across almost 3,500 competitive programs in different years and school regions. That same appendix table also details how many individuals list a non-competitive academic program (i.e., a program which admitted all applicants) as their first choice. Forty-five percent of individuals have a first choice academic field which is non-competitive.

Using personal identification numbers, we link individual’s field choice rankings and GPAs to population register data. The Swedish register data is known for its high coverage and reliability. It contains information on long-term labor market outcomes, including annual earnings and occupation. We measure annual earnings between the ages of 37 to 39, taking the average over years with positive earnings.<sup>16</sup> Our main earnings measure takes the natural log of earnings, limiting the sample to individuals earning more than a minimal amount (roughly \$12,000), as suggested by Antelius and Björklund (2000).<sup>17</sup> This restriction excludes only 7 percent of observations, since our estimation sample is composed of relatively high earners with strong labor force attachment. The motivation for this approach is that Antelius

<sup>16</sup>We use the ages 37 to 39 because this is the latest set of ages with consistent occupation codings for everyone in our sample. Earnings include income from self-employment, sick leave, and parental leave benefits since these are partly included in employer earnings via collective bargaining agreements.

<sup>17</sup>Antelius and Björklund use a SEK 100,000 threshold, which translates into roughly \$12,000. We apply their threshold, accounting for wage growth and inflation, to other other years in our sample.

and Björklund found it makes estimates of log annual earnings similar to estimates of log hourly wages in Sweden. To probe robustness, we also use earnings in levels (including zeros and low earnings) and earnings rank (including zeros and low earnings) as alternative outcome measures and find similar results.

The register data also includes information on socioeconomic background characteristics. We have information on several pre-determined variables which are observed before the admission decision: each parent’s education, each parent’s earnings, whether at least one parent is foreign born, and parent’s age at the time of their child’s birth. Summary statistics for these variables are found in Appendix Table A2. In the first column, we present means for our estimation sample. This sample is limited to fields of study in years and school regions where demand exceeded supply, so that there was a competition for slots. The third column shows means for the sample of individuals with a non-competitive program as their first choice. The means from the two samples are fairly similar. The table also reports on the characteristics of the students. If anything, average GPA is higher for the non-competitive sample. This is due to the fact that programs like Natural Science have applicants with relatively high GPAs, even though they are less likely to be oversubscribed and subject to a competition.

#### *2.4 Determining GPA cutoffs*

While we observe the choice rankings for each individual and the admission decision, the GPA cutoff is not recorded in the dataset. Instead, we must infer the GPA cutoff from the data ourselves. Fortunately, in most cases this is simple and transparent, as the rules appear to have been followed.

Each combination of year, region, and field has the potential to be a competition for slots. We refer to these as “cells.” Our empirical design only applies to competitive cells. If there are more applicants than slots, the admission GPA cutoff is inferred from the data. We limit our sample to cells where there is evidence for a sharp discontinuity, that is, where everybody above the GPA cutoff is admitted to the program and everybody below the cutoff is not.<sup>18</sup>

---

<sup>18</sup>We allow for a small amount of noise in the data due to measurement error, which is likely during this time period since most variables were transcribed and entered by hand. For example, if one observation with a GPA of 3.8 is recorded as not admitted while all of the remaining observations higher than 3.3 are recorded as admitted, it is likely that either GPA or field was erroneously recorded. Our rule is to retain the cell if the “miscoded” observations represent less than ten percent of the observations at the given side of the cutoff. If

One wrinkle is that there can be a mix of accepted and non-accepted individuals at a cutoff GPA. For example, if the cutoff is 3.2 in a cell, there may only be slots for 3 out of the 5 applicants with a GPA of 3.2.<sup>19</sup> In this case, it is important to know how people at the cutoff with the same GPA were admitted. We found some documentation which indicated admission was random, but also documentation which said that sometimes secondary criteria such as math grades were used to break ties. Since we do not know the criteria used to break ties, we discard the observations at the cutoff GPA. This should not create a problem, as we are still able to identify a sharp discontinuity above and below this mixed-cutoff GPA. Continuing with the example of a mixed cutoff at 3.2, we would drop all individuals with a GPA exactly equal to 3.2 in the cell, but define the cutoff as 3.2 for the remaining observations in the cell.

When there is not a mix of accepted and non-accepted individuals at a cutoff, we simply define the cutoff GPA as the average between the two adjacent GPAs. So for example, if everyone with a GPA below 3.3 is not admitted and everyone with a GPA above 3.4 is admitted, we define the GPA cutoff as 3.35.

To allow us to pool the data across regions and years, we normalize the cutoff GPA to 0. The distribution of cutoff GPA values is plotted in the top panel of Figure 2 (white columns), with a comparison to the GPA distribution for our baseline sample (gray columns). This graph provides an indication of where individuals on the borderline of acceptance into a program are found in the skill distribution. The modal cutoff GPA of 3.2 corresponds to roughly the 15th percentile of GPAs in our baseline sample of applicants to competitive academic programs. To put this in perspective, the modal cutoff GPA also corresponds roughly to the median GPA of all ninth graders (including those applicants not in our sample which have a preferred non-academic choice and also those who don't apply to secondary school at all).<sup>20</sup> While the cutoffs vary substantially, they generally are only binding for applicants with GPAs in the bottom half of our estimation sample. Both of these comparisons will be important to keep in mind when interpreting the estimates, which will capture local average treatment effects for applicants around the cutoff.

---

the condition is met, we retain the cell, but drop the "miscoded" observations. This procedure drops just 0.34 percent of the data. We also require there be at least 25 applicants and 3 observations to the left of the cutoff.

<sup>19</sup>As a reminder, GPA is only recorded to the first decimal.

<sup>20</sup>The median unadjusted GPA is 3.2 for the sample of all ninth graders in the years 1988-1991. This is the first set of years when registers of (unadjusted) GPA for the full population, including those not applying to secondary school, was first collected.



One thing to note about the admission cutoffs is that programs which attract the highest GPA individuals do not necessarily have the highest cutoffs, or even a cutoff at all. This is because the cutoff is determined by supply versus demand for a field. For example, average GPAs are highest in Natural Science, but in many cases all students are admitted because there are fewer applicants than slots. The fields most likely to be oversubscribed in our data are Engineering, Business, and Social Science (see Appendix Table A1).

### 3 Identification

#### *3.1 Using Preferred and Next-Best Choices in an RD Design*

Our goal is to estimate the economic returns from being admitted to one field of study versus another. As pointed out by Kirkeboen et al. (2016), with multiple unordered alternatives, identification of returns requires more than just quasi-random variation into fields of study. One also needs to account for the fact that individuals have different second-best choices. OLS (which does not have any information on preferred and next-best fields) is biased both because individuals self-select into field choices and because individuals choosing the same preferred field can differ in their next-best fields. Even with no selection bias, OLS is difficult to interpret, because it is a weighted average of returns across individuals with different second-best choices, where the weights are unobserved.

Kirkeboen et al. go on to discuss what IV can and cannot identify when next-best alternatives are not observed. While their discussion and estimation approach center around traditional IV, the ideas are equally applicable to a fuzzy RD design. A randomly assigned cutoff for each field in a fuzzy RD design will eliminate selection bias, but without further assumptions, fuzzy RD will not estimate the return to any individual or group who choose one field over another.<sup>21</sup> One possibility is to impose “constant effects,” where the returns to completing a field are the same for all individuals. This assumption is unpalatable because it rules out the possibility of comparative advantage. Another possibility is to impose “restrictive preferences” à la Behaghel et al. (2013). This assumption is also unattractive in the current setting. It implies that an individual who completes Social Science when they are just above

---

<sup>21</sup>The example Kirkeboen et al. give in their study of college major choice is that “IV estimation would not tell us whether the gains in earnings to persons choosing engineering instead of business are larger or smaller than the gains in earnings to those choosing law instead of business. It is possible that persons choosing engineering gain while those choosing law lose.”

the Business GPA cutoff would also have completed Social Science if they were just above the Engineering GPA cutoff.<sup>22</sup>

When next-best alternatives are available, however, RD can estimate LATEs for every preferred versus next-best field. The weak assumption needed in this case is what Kirkeboen et al. call an “irrelevance condition”. This condition is best explained with an example. Consider an individual with a first choice of Engineering and a second choice of Business. The irrelevance condition says that if crossing the GPA threshold for admission to Engineering does not cause them to complete Engineering, then it does not cause them to complete another field like Social Science either.

In our paper, we allow for separate first stage and reduced form jumps at the cutoff for each combination of preferred and next-best fields. Our design deals with both selection and heterogeneity in next-best alternatives, under the standard assumptions needed for RD plus the relatively benign irrelevance condition. Our RD design is more flexible than Kirkeboen et al.’s IV approach, which controls for selection using instruments for each field (but not instruments for each preferred  $\times$  next-best field combination) and the application score as a control variable. They use their more restrictive approach due to sample size considerations.

### 3.2 Regression Discontinuity Model

To estimate the returns to different fields, we exploit the discontinuity in admission decisions to different fields based on ninth grade cumulative GPA. Define dummy variables  $a_{jk}$  for  $j = 1, \dots, J$  and  $k = 1, \dots, K$  which equal 1 if an individual’s preferred choice is  $j$  and next-best choice is  $k$ . The reduced form effect of the admission decision on log earnings for an individual with preferred field  $j$  and next-best alternative  $k$ ,  $y_{jk}$ , can be modeled in an RD framework as follows:

$$y_{jk} = \sum_{jk} a_{jk} 1[x < c_j] g_{jk}^l(c_j - x) + \sum_{jk} a_{jk} 1[x > c_j] g_{jk}^r(x - c_j) + \sum_{jk} a_{jk} 1[x > c_j] \theta_{jk} + \alpha_{jk} + w' \gamma + e_{jk} \quad (1)$$

where we have omitted the individual subscript for convenience. The running variable  $x$  is an individual’s GPA,  $c_j$  is the cutoff GPA for admission to program  $j$ ,  $g_{jk}^l$  are unknown

---

<sup>22</sup>For this example, it is easiest to think of Social Science as being a field with unrestricted admission, but Business and Engineering as having binding cutoffs.

functions to the left of the cutoffs,  $g_{jk}^r$  are unknown functions to the right of the cutoffs,  $\alpha_{jk}$  are dummy variables for each first-second best combination,  $w$  is a set of pre-determined controls (including parental background variables, year fixed effects, and school region fixed effects), and  $e_{jk}$  is an error term. The  $\theta_{jk}$  coefficients capture the returns to individuals who are admitted to field  $j$  instead of their next-best alternative  $k$ . Since our dependent variable is measured in logs, these coefficients have the convenient interpretation of a percent increase in earnings.

In practice, admission cutoffs for a field vary by year and school region. To combine the data, we therefore normalize each cutoff to be 0, and adjust the GPA running variable accordingly. Note that in its most general form, equation (1) has separate functions to the left and right of the cutoffs for each combination of preferred and next-best alternatives. In our empirical analysis, we have a total of 5 preferred choices and 7 next-best alternatives, which means there are a potentially 30 functions to the left of the cutoff and 30 functions to the right of the cutoff. Estimating 60 unknown functions is very data demanding, so for efficiency, we impose some parametric functional forms.

For our baseline specification, we first impose that the functions  $g_{jk}^l$  and  $g_{jk}^r$  are linear. We also gain efficiency by imposing restrictions on the slopes to the left and the right of the cutoff. Our baseline, and most parsimonious, RD parameterization allows just 2 slopes: a common slope to the left and a common slope to the right. Another possibility is to impose common slopes to the right of the cutoff for each of the 5 preferred choices (regardless of the next-best choice), and common slopes to the left of the cutoff for each of the 7 next-best choices (regardless of the preferred choice). This parameterization links the normalized GPA slopes to the field an applicant was admitted to. We show the results for the 2 slope model are virtually identical compared to the 12 slope model (5+7 slopes), and similar to the 60 slope model (which has much larger standard errors). Our baseline model also parameterizes  $\alpha_{jk} = \delta_j + \tau_k$ , so that instead of 30 different intercept terms, we allow for 5 different intercepts based on first choices and 7 based on second choices. We remove this parametric assumption in a robustness check and find similar results, but with slightly larger standard errors.

Importantly, we always allow the jumps at the cutoffs, captured by  $\theta_{jk}$ , to be both  $j$  and  $k$  specific, no matter what restrictions we impose on the functions  $g_{jk}^l$  and  $g_{jk}^r$  and the intercepts  $\alpha_{jk}$ . Note that this differs from, and is more general than, the analysis done by

Kirkeboen et al. in their study of college majors. They use IV, rather than fuzzy RD, and estimate coefficients for each first choice  $j$  and coefficients for each second choice  $k$ , but not separate coefficients for each first-second choice combination  $jk$ .

While the reduced form coefficients are interesting in their own right (the returns to *field admission*), we are also interested in the returns to *field completion*. Let  $d_{jk}$  denote a dummy variable for an individual with a next-best alternative field  $k$  who completes their preferred field  $j$ . The first stage for this fuzzy RD design is:

$$d_{jk} = \sum_{jk} a_{jk} 1[x < c_j] h_{jk}^l(c_j - x) + \sum_{jk} a_{jk} 1[x > c_j] h_{jk}^r(x - c_j) + \sum_{jk} a_{jk} 1[x > c_j] \lambda_{jk} + \tau_{jk} + w' \gamma + u_{jk} \quad (2)$$

where  $h_{jk}^l$  are unknown functions to the left of the cutoffs,  $h_{jk}^r$  are unknown functions to the right of the cutoffs,  $\tau_{jk}$  are dummy variables for each first-second best combination,  $w$  is the same set of pre-determined controls appearing in the reduced form equation, and  $u_{jk}$  is an error term. Whatever parametric functional form we impose in the reduced form we also impose in the first stage. This first stage RD identifies the jumps in completion probabilities,  $\lambda_{jk}$ , induced by the admission cutoffs. These jumps in completion probabilities can be used to scale the reduced form effects of equation 1. Importantly, we always allow the completion jumps at the cutoffs, captured by  $\lambda_{jk}$ , to be both  $j$  and  $k$  specific, no matter what parametric restrictions we impose.

If each  $jk$  margin were estimated as a separate regression and there were no control variables, the IV estimates would equal  $\hat{\pi}_{jk} = \hat{\theta}_{jk} / \hat{\lambda}_{jk}$ . We estimate all of the margins in a single regression to increase precision.

### 3.3 Threats to Validity

*Manipulation.* An important condition for a valid RD design is that the running variable cannot be perfectly manipulated. In our setting, the assumption is that students cannot adjust their GPA to be just to the right of the cutoff for their preferred program. While it is possible to study harder and get higher grades, there is little chance of a student being able to manipulate their GPA to be just over the cutoff. One reason is that the required GPA to get accepted into a program is not known in advance, and varies from year to year. The actual cutoff depends on the number of applicants to a program, since there are a fixed

number of slots for each program. Panel B in Figure 2 illustrates the year-to-year variation in admission thresholds. It plots the distribution of first differences in admission cutoffs for fields in a school region. While the distribution is centered at 0, there is substantial variation. Indeed, for programs with a cutoff in successive years, the threshold differs over 80% of the time.

One way to test for manipulation is to check whether pre-determined characteristics are balanced around the admission cutoff. Appendix Figure A2 illustrates how various pre-determined characteristics of parents and children vary by distance to the cutoff. In these graphs, we combine all individuals, regardless of their preferred versus next-best alternative. There are no discernible jumps at any of the cutoffs. We test for discontinuities more formally using RD regressions using the 2 slope model in Appendix Table A3. All of the estimates are close to zero and not statistically significant.

Another common test for manipulation is to look at the distribution of observations around the cutoff. Unfortunately, it is not possible to do a standard McCrary (2008) test or the newer density test proposed by Cattaneo, Jansson, and Ma (2018). The reason is that pooling the data to a normalized cutoff of 0 creates a spurious density discontinuity when the cutoff is based on an order statistic. In ongoing research, Cattaneo, Dahl, and Ma are working on a proof for the spurious density discontinuity and ways to modify a density test to account for this.<sup>23</sup>

*Exclusion, Monotonicity, and Irrelevance.* With no manipulation, the RD design identifies the causal effects of admission to a program (i.e., the reduced form effect). To identify the causal effects of completing a program, we additionally need exclusion restrictions, monotonicity, and irrelevance.

The exclusion restrictions require that crossing the admissions threshold for a program only affects outcomes through field completion. It is possible that being admitted to a program could have a direct impact on earnings if a person takes several specialized field classes before switching to another major. This not a major concern in our setting since most switching takes place in the early fall of the first year of upper secondary school. Later switching is rare because the curriculum is specialized and most courses are taught once

---

<sup>23</sup>We thank our econometrician colleagues Kaspar Wuthrich, Xinwei Ma, and Matias Cattaneo for helping us to think through these issues.

a year. And for individuals who are able to switch, it would have to be within fields that have very similar first year course requirements. For this reason, we do not think individuals granted admission obtain much in the way of specialized training if they do not complete a program. There is also the possibility that admission to a field alters the chances an individual drops out of school entirely. Since we are looking at individuals applying to the academic track, which is preparatory to further studies, this is not a common occurrence. We conclude that the exclusions restrictions do not pose major issues for our estimates.

The monotonicity assumption requires that crossing an admissions threshold does not make an individual less likely to complete that program. This assumption of no defiers seems likely to hold in our setting. Finally, we require the irrelevance condition previously discussed in Section 3.1. This condition also seems reasonable in our setting.

## 4 Results

This section presents our main empirical findings. We begin by reporting first stage estimates for how admission translates into program completion. We then present results for how field of study impacts future earnings. The section ends with a variety of robustness checks.

### 4.1 First Stage

We begin by documenting the relationship between admission to a program and program completion. To illustrate the idea of the first stage, consider individuals with a preferred choice of Engineering and a second choice of Natural Science. The top panel of Figure 3 plots the probability of completing the Engineering program in normalized GPA bins. Everyone to the right of the vertical line is (initially) admitted to the program, while everyone to the left is not (initially) admitted.

Completion of the program is not 100% to the right of the cutoff, because some people switch and complete other programs. This happens more often the closer an individual is to the right of the cutoff. This could be because those who barely gain admission have second thoughts about pursuing a field where they are the lowest-GPA students.

When an individual transfers out of Engineering, it opens up a slot for a student who was not initially admitted. This explains why individuals to the left of the admissions cutoff can complete the Engineering program as well. There is a positive slope to the left of the

cutoff, which could be due to local schools offering any newly opened slots to the next-highest GPA student who preferred Engineering but did not get admitted. For example, suppose there are 65 applicants for 60 slots (corresponding to 2 classes of size 30). If 60 students are accepted, but then 2 individuals switch out of Engineering, it will open up 2 slots which can be filled by 2 of the 5 initially denied applicants. If these 2 individuals complete the program, the completion rate to the left of the cutoff will be 40%. These transfers into Engineering are not necessarily random, however, because who chooses to accept the offer is endogenous. Moreover, it is possible that local school principals use other criteria to allocate these newly opened slots which will induce selection bias. This is the reason we need to instrument for program completion (which is not random) with program admission (which is quasi-random near the cutoff).

The first stage regression for all first-second field combinations is modeled by equation 2. To begin, we use the baseline parameterization, which allows for one slope to the left and one slope to the right of the cutoff, but 30 jumps at the cutoffs (one for each first-second best margin) as explained in Section 3.2. Table 3 reports the jumps for each first-second choice margin. The estimated jumps are sizable, but there is some heterogeneity across different margins. For example, while the jump for the Engineering first-choice and Natural Science second-choice margin is 36%, it is only 25% for those with Engineering first-choice and Social Science second-choice. This makes some sense, as individuals who have a second-best choice of Social Science may not be as committed to a STEM field. The differential jumps based on next-best alternatives is a first hint that second-best choices are consequential, and need to be accounted for in estimation.

Similar estimates, while not shown, are found using the 12 slope model and the 60 slope model. No matter what parameterization we choose, the estimates are highly significant, indicating there will not be a weak instrument problem with our fuzzy RD. The reason to use the more parsimonious 2 slope model is for precision in the reduced form and second stage.

#### *4.2 Effect of Field of Study on Earnings*

We now turn to estimates of the earnings return to different fields of study, which are allowed to be relative to each second-best choice. We first illustrate the idea graphically with an example, and then turn to our regression based estimates for all possible first-second best

combinations.

The bottom panel of Figure 3 considers the margin where Engineering is the first choice and Natural Science is the second choice. The graph plots the average of the natural log of earnings in 0.1 GPA bins, where earnings are measured between the ages of 37-39, as explained in Section 2.3. There are increasing slopes both to the right and the left of the cutoff, indicating that higher GPAs relative to the cutoff result in higher earnings. There is also a large jump at the cutoff of roughly .07 log points.

We chose to illustrate identification using the Engineering first-choice and Natural Science second-choice margin because there are many applicants with this combination. Other choice margins are more sparsely populated, so we turn to our more parsimonious RD parameterization to gain precision. We start with the 2 slope model with 30 different returns (one for each first-second best margin) as described in Section 3.2. The sharp RD reduced form estimates for field admission can be found in Table 4. The fuzzy RD estimates for field completion, which are estimated via IV regression, are reported in Table 5.

Since the reduced form and IV estimates show similar patterns, we focus on the latter. All of the estimates appearing in Table 5 are estimated at the same time in a single regression. The rows indicate an individual’s first-best choice, while the columns indicate their second-best choice. Consider the entry Engineering first-choice and Natural Science second-choice, which is the IV estimate for the same margin shown in Figure 3. The estimate of 0.068 says that individuals who are admitted to their first-best choice of Engineering instead of their second-best choice of Natural Science experience an earnings premium of 6.8% as an adult. This is a sizable return. To put the magnitude into perspective, the return to an extra year of schooling in Sweden has been estimated to be around 3 to 5% per year in Sweden (Meghir and Palme 2005; Black, Devereux, Lundborg, and Majlesi 2018).<sup>24</sup>

There are two initial takeaways from this table. First, the returns to different fields, while heterogeneous across second-best choices, are generally positive or zero for Engineering, Natural Science, and Business, whereas Social Science and Humanities mostly have negative returns. For example, the return to Engineering is positive relative to every second-best choice and ranges from 1.9% to 8.6%. In contrast, 10 out of 12 estimates for the returns to Social Science and Humanities are negative. This decrease shows up even when the next-best

---

<sup>24</sup>Both of these studies use a schooling reform in Sweden to arrive at causal estimates.



choice is non-academic: the return to completing Social Science or Humanities when the next-best alternative is a non-academic program exceeds -8%.

Second, returns to different fields depend on next-best choices. For example, there is a 9.3% return to Business relative to a second-best choice of Natural Science, but no return to Business for those who choose Humanities as their second choice. This illustrates the importance of accounting for selection as a function of second best choices, and indicates that returns are not uniform across student types. It also provides evidence against sheepskin effects being the dominant force, as future employers are likely to observe an individual's completed degree, but not their second-best choice.

We examine whether second-best choices matter more formally by testing whether the IV estimates for each first-choice field (i.e., each row in the table) are jointly equal to each other. For example, for Engineering the test is  $\hat{\pi}_{EN} = \hat{\pi}_{EB} = \hat{\pi}_{ES} = \hat{\pi}_{EH} = \hat{\pi}_{EG} = \hat{\pi}_{EV}$ , where the subscripts indicate the first-second best margin using the starting initial for each program. The resulting F-statistics and p-values are reported in the last column of Table 5. We can easily reject that next-best alternatives do not matter for each of the fields.

Appendix Table A4 reports results by gender and parental education. The first column repeats our baseline results for comparison. In the second and third columns, we show results for males and females. We use our baseline specification, using a single regression which combines both genders, but which allows for separate cutoff jumps and separate slopes as a function of the running variable for each gender. The returns to completing one field over another are broadly similar for males and females, with a strong positive correlation in the estimates. One interesting pattern is that the earnings penalty for completing Social Science or Humanities is larger for men compared to women relative to every possible second-best choice. Turning to separate estimates for children with high versus low educated parents (defined as at least one parent completing 12 years of education), we find that these are similar to each other as well.

### 4.3 *Specification Checks*

In this section we provide a variety of robustness checks. To enable easier comparisons of coefficients, and to fit many results into a single table, we present estimates for the different specifications in tabular form. These robustness checks appear in Table 6, with the first

column presenting our baseline estimates for comparison. The last row of each column reports the correlation of the estimates using the different specifications with the baseline estimates.<sup>25</sup>

We begin by exploring different parametric models for the RD regression. We first add in quadratic terms in the running variable to our baseline model. As column 2 shows, this pushes the estimates up slightly, mostly due to somewhat smaller first stage estimates. We next reduce the bandwidth on each side of the cutoff in half, which has little effect on most estimates. We then try adding in first-second choice specific intercept terms (i.e., 30 intercepts) to the baseline model. This likewise does not appreciably change the estimates, although the standard errors increase, especially for sparsely populated choice margins. All three sets of alternative estimates have a high correlation with the baseline estimates.

Our next set of specification checks relax the parametric assumption of a two slope model. We first allow for common slopes to the right of the cutoff for each of the 5 preferred choices (regardless of the next-best choice), and common slopes to the left of the cutoff for each of the 7 next-best choices (regardless of the preferred choice). Before turning to these estimates, we present the raw data in graphical form in Figure 4. The top figure plots averages of log annual earnings in 0.1 bins, allowing for separate slopes for each of the five first-best choices to the right of the cutoff. While the graph makes clear the intercepts for the various first-best choices differ, the slopes are remarkably similar to one another. The bottom figure conducts a similar exercise, plotting the averages separately for each of the 7 next-best choices.<sup>26</sup> Again, the intercepts for the various second-best choices differ, but not as much as they did for first-best choices in the top graph. And while the data are noisier to the left of the cutoff due to smaller sample sizes, the slopes are again similar to each other.

For comparison, we have also plotted the averages within a bin for a common slope to the left of the cutoff in the top graph and for a common slope to the right of the cutoff in the bottom graph. Comparing the top and bottom graphs, it becomes apparent that the 2 slope model is a reasonable parameterization relative to the 12 slope model.<sup>27</sup> This is confirmed

---

<sup>25</sup>We weight the correlation by the inverse of the sum of the squared standard errors of the two estimates. While the baseline estimates and the alternative specification estimates are all consistently estimated, they are measured with standard errors, and so the correlation coefficient could be biased.

<sup>26</sup>As a reminder, there are only five first-best choices, because we do not study non-academic first-best choices. This is because the non-academic two year programs are not oversubscribed very often.

<sup>27</sup>As a reminder, both models allow for different jumps at the cutoff for each first-second best combination, i.e., 30 different jumps at the cutoff.

in the estimates for the 12 slope model, in column 5 of Table 6. Note that Figure 4 is for illustrative purposes only; we never mix the 2 slope and 12 slope models in estimation.

We also estimate the 60 slope model, which allows for unrestricted slopes for each first-second best combination to the left and the right of the cutoffs. These estimates are found in column 6. The sets of estimates from both the 12 and 60 slope RD models yield similar results compared to our baseline. To see this visually, we plot the estimates for each of the first-second best combinations for the 12 and 60 slope models against the 2 slope model in Figure 5. Most of the dots are clustered around the 45 degree line in the figure. If anything, the 60 slope model estimates are slightly larger. The correlation of the 12 slope model with the 2 slope model is 0.97, while the correlation of the 60 slope model with the 2 slope model is lower at 0.79. The advantage of the 2 slope model, particularly relative to the 60 slope model, is that the estimates are substantially more precise for many of the combinations.

We next estimate our baseline model, but exclude the years 1982-84. During these three years, individuals were given a 0.5 GPA bonus for the first field on their ranking list and a 0.2 GPA bonus for the second field on their ranking list. This means that for these two years, the allocation mechanism was not strategy-proof. Instead, individuals could have been strategic about not putting their most preferred field first if they thought they wouldn't get in even with the GPA bonus. This could change the interpretation of our estimates. However, it turns out that excluding 1982-84 does not appreciably change the coefficient estimates, as shown in column 7.

Our next set of specification checks examine alternative definitions for the earnings variable. Our baseline model uses log earnings, as described earlier, and excludes roughly 7 percent of the sample who have zero or low earnings between the ages of 37 and 39. A first way to see whether excluding individuals with zero or low earnings matters is to estimate whether the probability of being in this restricted sample jumps at the GPA cutoff in a reduced form RD regression. Appendix Table A5 presents these estimates. Out of 30 estimates, four are significant at the 5% level and one is significant at the 10% level. This is slightly more than would be expected by chance, and could be indicative of a small extensive labor market response to field of study. While any bias is likely to be small, we probe the robustness of our log earnings variable by using two alternative earnings measures which do not exclude any observations.

Our first alternative earnings measure uses earnings in levels as the outcome, including low earnings and zeros. These results appear in column 8 of Table 6. Earnings are measured in real terms relative to 2016, and are converted to U.S. dollars using an exchange rate of 8.50 Swedish crowns per dollar. The pattern of estimates is similar to the baseline estimates appearing in the first column. The magnitudes are also roughly comparable. For example, individuals choosing Engineering over Natural Science experience an earnings increase of \$4,806 per year. Since the average earnings for this group is \$51,973, this translates into a 9.2% increase in average earnings. This compares to the estimate of a 6.8% increase in earnings for the baseline log specification column 1.

As another alternative earnings variable, we use earnings rank as the outcome. We calculate each individual's rank in the year-specific population earnings distribution for all individuals in Sweden between the ages of 16 to 64. The results using this as the outcome measure appear in the last column of Table 6. Roughly the same number of estimates are statistically significant using this measure compared to our log earnings measure.<sup>28</sup>

The conclusion from the battery of tests in Table 6 is that our results are robust to a variety of alternative specifications, both in terms of the parametric form of the RD regression and for how we measure earnings.

## 5 Tests for Comparative Advantage

Given the pattern of estimates in Table 5, a natural question is whether the findings are consistent with a model of comparative advantage in field choice. Consider a case with just two individuals,  $A$  and  $B$ , and two fields,  $j$  and  $k$ . A standard definition (Sattinger 1993) is that individual  $A$  has a comparative advantage in field  $j$  over  $k$  if the ratio of their earnings in field  $j$  versus  $k$  is larger than the corresponding ratio for individual  $B$ . Taking natural logs of the ratios implies that individual  $A$  has a comparative advantage in field  $j$  over  $k$  if the difference in log earnings between  $j$  versus  $k$  for individual  $A$  is larger than the corresponding difference for individual  $B$ . In other words, individual  $A$  has a comparative advantage in field  $j$  over  $k$  if the percent increase in earnings for field  $j$  relative to  $k$  is larger for individual  $A$

---

<sup>28</sup>While not shown in the table, we also explored 3 other modifications of our log earnings measure: (i) we excluded publicly provided parental leave and sickness benefits from our earnings measure, (ii) we adjusted the earnings threshold to account for inflation, but not wage growth, and (iii) we used earnings between the ages of 39-41 instead of 37-39 (the oldest ages for which we observe occupation). All three of these modifications result in estimates which are similar to the baseline estimates.

compared to individual  $B$ .

This standard definition of comparative advantage has implications for first- and second-best choices. Comparative advantage in field choice preferences, ignoring costs, implies the expected earnings gain in percent terms for field  $j$  for individuals who rank  $j$  over  $k$  should exceed the negative of the expected earnings gain in percent terms for field  $k$  for individuals who rank  $k$  over  $j$ . Stated in terms of our model parameters, there are three possible cases:

Case (a):  $\pi_{jk} + \pi_{kj} > 0$  *comparative advantage*

Case (b):  $\pi_{jk} + \pi_{kj} = 0$  *random sorting*

Case (c):  $\pi_{jk} + \pi_{kj} < 0$  *comparative disadvantage*

where as a reminder,  $\pi_{jk}$  is the percent return to completing first choice  $j$  for individuals with second choice  $k$ . These parameters correspond to the IV estimates appearing in Table 5.

Case (a) is consistent with comparative advantage in field choice, as individuals are choosing the field within a pair of choices that results in higher earnings for them. Case (b) occurs when there is random sorting into fields for individuals on the margin of choosing  $j$  versus  $k$ . In this case, the return to completing field  $j$  with second choice  $k$  is equal but opposite in sign to the return to completing field  $k$  with second choice  $j$ . Finally, case (c) is consistent with individuals choosing based on comparative disadvantage. This could happen if individuals value non-pecuniary factors associated with different fields of study, where the non-pecuniary factors are negatively correlated with their potential earnings. Comparative disadvantage can occur with full information, but it can also be the result of imperfect knowledge about relative payoffs across fields.

In Table 7 we present estimates of  $\pi_{jk} + \pi_{kj}$  for each pair of field choices. Consider first the example of individuals on the margin of Natural Science or Business. Students who complete their first-best choice of Business when their second-best choice was Natural Science earn a 9.3% premium (see Table 5). Looking at the reverse ordering of preferences, the return is 5.7% for those completing Natural Science when their second-best choice was Business. Random sorting would have predicted the two returns had opposite signs and were equal in absolute value. As the first row of Table 7 shows, the sum of the two estimates is 15.0, a number which is statistically different from zero. So this example is consistent with individuals pursuing comparative advantage in field choice.

The other rows in Table 7 display  $\hat{\pi}_{jk} + \hat{\pi}_{kj}$  for the other nine margins, ordered from high to low. The field combinations which show statistically significant evidence of comparative advantage are Business/Natural Science, Engineering/Natural Science, Natural Science/Social Science, and Engineering/Business. Some field combinations have relatively small sums, and random sorting cannot be rejected: Natural Science/Humanities, Business/Social Science, and Engineering/Social Science. Two field combinations show strong evidence for comparative disadvantage: Social Science/Humanities and Business/Humanities. One field combination, Engineering/Humanities, occurs so rarely that although the estimated sum is large, it is not statistically different from zero.

In summary, 5 field combinations show evidence of comparative advantage, 3 of random sorting, and 2 of comparative disadvantage. Many of these sums are large, indicating an important role for comparative advantage and disadvantage in field choice. Field combinations involving Business, Engineering, or Natural Science have the most evidence for comparative advantage, whereas the combinations showing comparative disadvantage include Humanities. These findings provide further evidence against sheepskin effects being the dominant mechanism behind earnings differences. The results also argue against models relying on efficiency units (e.g., the Ben Porath model) and in favor of a generalized Roy model.

## 6 Mechanisms

Section 4 provides clear evidence of highly variable, and often sizable, returns to field of study in secondary school. A natural question is what drives these results. In this section, we explore three possible mechanisms: years of schooling, college major, and occupation.<sup>29</sup>

First, if completing a field of study (for a given next-best alternative) induces individuals to get more or fewer years of schooling, this could have an effect on future earnings. For example, since the Engineering degree has an optional fourth year of studies, that could result in more years of education for individuals who complete the Engineering field. It is also possible that fields of study impact the probability of college attendance.

Second, since the fields of study in secondary school are preparatory for college, the pattern of earnings we observe in Table 5 could also be explained by individuals choosing

---

<sup>29</sup>Lemieux (2015) asks the related question of how occupation, field of study and the returns to education are connected using correlational data from Canada.

different college majors. For example, if a student completes Business in secondary school, it could affect whether they pursue a Business-related major in college. In this case, earnings could increase if there is a positive return to a college Business-related major.

Third, if entry into different occupations requires, or is eased by, having a specific secondary school degree, then differences in earnings across different occupations could explain our findings. For example, it may be easier to get a job as an accountant for individuals who complete Business versus Humanities in secondary school. The differential earnings of accountants versus other occupations could therefore be a third possible mechanism.

To perform this analysis we use total population data and create variables which reflect expected earnings for each of the three possible mechanisms. For example, for expected earnings due to occupation, we assign each individual in our sample the mean log earnings of all individuals in the population with the same occupation as of age 38 from the same school cohort. There are 319 different occupations. We construct similar expected earnings measures based on 205 different college majors and the 10 categories that make up the years of schooling variable (from 9 to 18 years of schooling).<sup>30</sup> We use each of these measures as the outcome variable in an RD model which parallels our baseline specification. This yields 30 different estimates, one for each first-second field choice combination, of the expected returns associated with each of the three mechanisms. To assess the importance of the different mechanisms, we next compare each set of estimates against our baseline estimates.

In Figure 6, we plot the 30 different baseline estimates against the 30 different years of schooling estimates (top panel), the 30 different college major estimates (middle panel), and the 30 different occupation estimates (bottom panel). There are labels for each first-second choice margin to aid in interpretation. There is a positive slope in all three panels, suggesting a contribution from each of these mechanisms. The steepness of the slope in the top panel implies that when the expected return due to extra years of schooling rises by 1%, the return to earnings we estimated in Table 5 rises by 0.5%. Likewise, when the expected returns due to college major or occupation rises by 1%, the returns rise by 0.9% and 1.4%, respectively.

---

<sup>30</sup>For occupation and college major we use 4 digit codes, but collapse to 3 digits if the number of observations is less than 100 for a given cohort. For the college major measure, we create a single “no-college” category for all individuals without at least a three year college education (the standard length of a bachelor’s program in Sweden). We impute years of schooling based on highest education level, including any specialized education courses individuals take as adults. By using cohort-specific means, we do not need to assume anything about how the returns to schooling, college field of study, or occupation have changed over time.

Appendix Table A6 reports these regression results.

The three mechanisms are not necessarily independent or mutually exclusive. In the final column of Appendix Table A6, we regress the baseline estimates on the three measures simultaneously. The coefficient on the years of schooling estimates shrinks to zero. The college major coefficient falls by two-thirds, but remains statistically significant. Likewise, the occupation coefficient falls by roughly 20%, but also remains significant. The  $R^2$  from this combined regression is 0.95. We caution, however, that the slope estimates and hence also the  $R^2$  could be biased, since both the baseline estimates and the other estimates have standard errors associated with them. With this caveat in mind, the general conclusion is that both college major and occupation play a sizable role in explaining the pattern of returns we observe for individuals on the margin of completing a field of study in secondary school.

## 7 Conclusion

There is emerging evidence that the return to different college majors can rival that of the return to going to college. An equally important question is whether the returns to different academic secondary school majors have long-run effects on labor market outcomes. Using unique data from Sweden, our analysis yields four main results. First, the returns to completing different academic fields are often sizable, and can be both negative and positive. Second, earnings payoffs to different fields depend on next-best alternatives. Third, the pattern of returns is consistent with individuals pursuing comparative advantage for many field combinations. Fourth, most of the differences in adult earnings can be attributed to differences in college majors and adult occupations.

These findings are useful for students making field decisions, as well as for school counselors and parents who could use this information to help students make a more informed choice. They are also valuable for policymakers choosing how to structure and reshape secondary education, including whether to relax enrollment limits on oversubscribed fields or to provide incentives to study one field over another. The results also argue against models relying on efficiency units (e.g., the Ben Porath model) and sheepskin effects being the dominant force, and in favor of a generalized Roy model and specific human capital accumulation.

While this paper makes important progress on estimating long-term payoffs to secondary field choices, several questions remain unanswered. The parameters we estimate are ex-post



payoffs to fields of study. An interesting question for future research is whether these ex-post payoffs line up with ex-ante predicted payoffs.<sup>31</sup> If they do, it suggests that students understand the monetary tradeoffs associated with different fields of study, and that some students are willing to trade off higher earnings for non-pecuniary returns. However, it is also possible that at age 16, students do not yet know what occupation will be the best fit for them and they may not be knowledgeable about earnings differences across fields. The parameters we estimate are also for compliers on the margin of gaining entry into a field. For these marginal individuals, the effects can be as large in absolute value as the returns to 2 years of additional schooling. It would be interesting to know if similar patterns hold for other individuals.

---

<sup>31</sup>This question has been studied for college by, for example, Wiswall and Zafar (2015) and Zafar (2011).

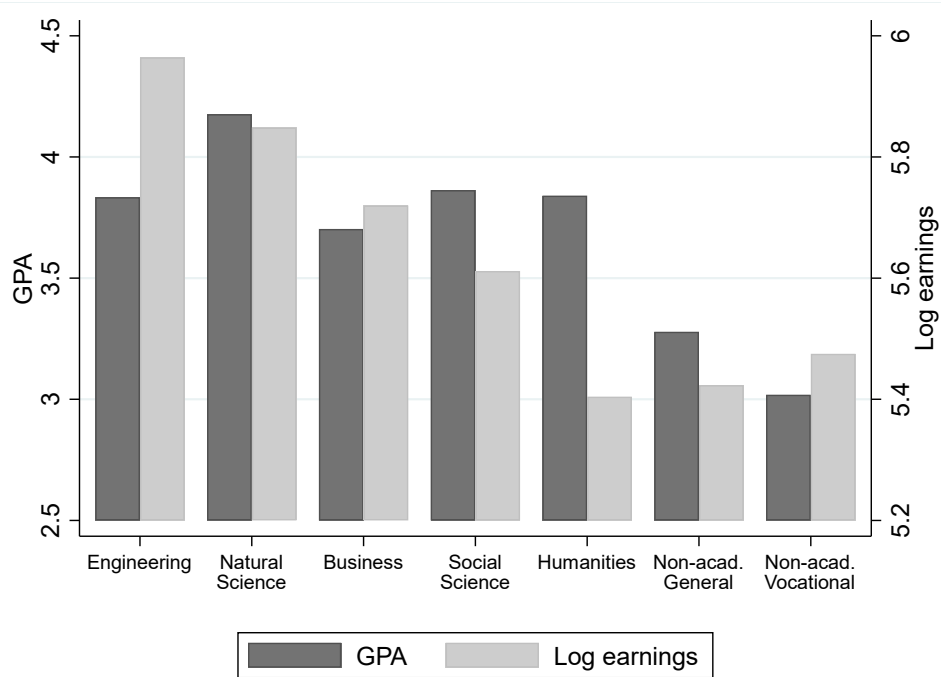
## References

- ALTONJI, J. G. (1995): “The effects of high school curriculum on education and labor market outcomes,” *Journal of Human Resources*, 30, 409–438.
- ALTONJI, J. G., P. ARCIDIACONO, AND A. MAUREL (2016): “The analysis of field choice in college and graduate school: Determinants and wage effects,” in *Handbook of the Economics of Education*, Elsevier, vol. 5, 305–396.
- ALTONJI, J. G., E. BLOM, AND C. MEGHIR (2012): “Heterogeneity in human capital investments: High school curriculum, college major, and careers,” *Annual Review of Economics*, 4, 185–223.
- ANDREWS, R. J., S. A. IMBERMAN, AND M. F. LOVENHEIM (2017): “Risky business? The effect of majoring in business on earnings and educational attainment,” NBER Working Paper No. 23575.
- ANTELIUS, J. AND A. BJÖRKLUND (2000): “How reliable are register data for studies of the return on schooling? An examination of Swedish data,” *Scandinavian Journal of Educational Research*, 44, 341–355.
- ARCIDIACONO, P. (2004): “Ability sorting and the returns to college major,” *Journal of Econometrics*, 121, 343–375.
- ARGYS, L. M., D. REES, AND D. J. BREWER (1996): “Detracking America’s schools: Equity at zero cost?” *Journal of Policy Analysis and Management*, 15, 623–645.
- BECKER, G. (1964): *Human Capital*, New York: Columbia University Press.
- BEHAGHEL, L., B. CRÉPON, AND M. GURGAND (2013): “Robustness of the encouragement design in a two-treatment randomized control trial,” IZA Discussion paper No. 7447.
- BERTRAND, M., M. MOGSTAD, AND J. MOUNTJOY (2019): “Improving educational pathways to social mobility: Evidence from Norway’s “Reform 94,”” NBER Working Paper No. 25679.
- BLACK, S. E., P. J. DEVEREUX, P. LUNDBORG, AND K. MAJLESI (2018): “Learning to take risks? The effect of education on risk-taking in financial markets,” *Review of Finance*, 22, 951–975.
- BRUNELLO, G. AND L. ROCCO (2017): “The labor market effects of academic and vocational education over the life cycle: Evidence based on a British cohort,” *Journal of Human Capital*, 11, 106–166.
- CARD, D. AND L. GIULIANO (2016): “Can tracking raise the test scores of high-ability minority students?” *American Economic Review*, 106, 2783–2816.
- CATTANEO, M. D., M. JANSSON, AND X. MA (2018): “Manipulation testing based on density discontinuity,” *The Stata Journal*, 18, 234–261.
- CHETTY, R., J. FRIEDMAN, AND J. ROCKOFF (2014): “Measuring the impacts of teachers II: Teacher value-added and student outcomes in adulthood,” *American Economic Review*, 104, 2633–2679.
- DEMING, D. J. AND K. L. NORAY (2018): “STEM careers and technological change,” NBER Working Paper No. 25065.
- DUSTMANN, C., P. A. PUHANI, AND U. SCHÖNBERG (2017): “The Long-term Effects of Early Track Choice,” *The Economic Journal*, 127, 1348–1380.
- GOLSTEYN, B. H. AND A. STENBERG (2017): “Earnings over the life course: General versus vocational education,” *Journal of Human Capital*, 11, 167–212.

- HALL, C. (2012): “The effects of reducing tracking in upper secondary school evidence from a large-scale pilot scheme,” *Journal of Human Resources*, 47, 237–269.
- HANUSHEK, E. A., G. SCHWERDT, L. WOESSMANN, AND L. ZHANG (2017): “General education, vocational education, and labor-market outcomes over the lifecycle,” *Journal of Human Resources*, 52, 48–87.
- HASTINGS, J. S., C. A. NEILSON, AND S. D. ZIMMERMAN (2013): “Are some degrees worth more than others? Evidence from college admission cutoffs in Chile,” NBER Working Paper No. 19241.
- HECKMAN, J. J. AND S. GUILHERME (1985): “Heterogeneity, aggregation, and market wage functions: an empirical model of self-selection in the labor market,” *Journal of Political Economy*, 93, 1077–1125.
- JOENSEN, J. S. AND H. S. NIELSEN (2009): “Is there a causal effect of high school math on labor market outcomes?” *Journal of Human Resources*, 44, 171–198.
- (2016): “Mathematics and gender: Heterogeneity in causes and consequences,” *Economic Journal*, 126, 1129–1163.
- KIRKEBOEN, L. J., E. LEUVEN, AND M. MOGSTAD (2016): “Field of study, earnings, and self-selection,” *The Quarterly Journal of Economics*, 131, 1057–1111.
- LEMIEUX, T. (2015): “Occupations, fields of study and returns to education,” *Canadian Journal of Economics*, 47, 1047–1077.
- LEVINE, P. B. AND D. J. ZIMMERMAN (1995): “The benefit of additional high-school math and science classes for young men and women,” *Journal of Business & Economic Statistics*, 13, 137–149.
- MALAMUD, O. AND C. POP-ELECHES (2010): “General education versus vocational training: Evidence from an economy in transition,” *The Review of Economics and Statistics*, 92, 43–60.
- MCCRARY, J. (2008): “Manipulation of the running variable in the regression discontinuity design: A density test,” *Journal of econometrics*, 142, 698–714.
- MEGHIR, C. AND M. PALME (2005): “Educational reform, ability, and family background,” *American Economic Review*, 95, 414–424.
- MINCER, J. (1974): *Schooling, Experience, and Earnings*, New York: Columbia University Press.
- OECD (2019): *Education at a Glance 2019: OECD Indicators*, Paris: OECD Publishing.
- PEKKARINEN, T., R. UUSITALO, AND S. KERR (2009): “School tracking and intergenerational income mobility: Evidence from the Finnish comprehensive school reform,” *Journal of Public Economics*, 93, 965–973.
- RODRÍGUEZ, J., S. URZÚA, AND L. REYES (2016): “Heterogeneous economic returns to post-secondary degrees: Evidence from Chile,” *Journal of Human Resources*, 51, 416–460.
- ROSE, H. AND J. R. BETTS (2004): “The effect of high school courses on earnings,” *Review of Economics and Statistics*, 86, 497–513.
- SACERDOTE, B. (2011): *Peer effects in education: How might they work, how big are they and how much do we know thus far?*, Amsterdam: North Holland, vol. 3 of *Handbook of the economics of education*, 249–277.
- SATTINGER, M. (1993): “Assignment models of the distribution of earnings,” *Journal of Economic Literature*, 31, 831–880.

- SPENCE, M. (1973): “Job Market Signaling,” *Quarterly Journal of Economics*, 87, 355–374.
- STENBERG, A. (2011): “Using longitudinal data to evaluate publicly provided formal education for low skilled,” *Economics of Education Review*, 30, 1262–1280.
- SVENSSON, L.-G. (1999): “Strategy-proof allocation of indivisible goods,” *Social Choice and Welfare*, 16, 557–567.
- WISWALL, M. AND B. ZAFAR (2015): “Determinants of college major choice: Identification using an information experiment,” *Review of Economic Studies*, 82, 791–824.
- ZAFAR, B. (2011): “How do college students form expectations?” *Journal of Labor Economics*, 29, 301–348.

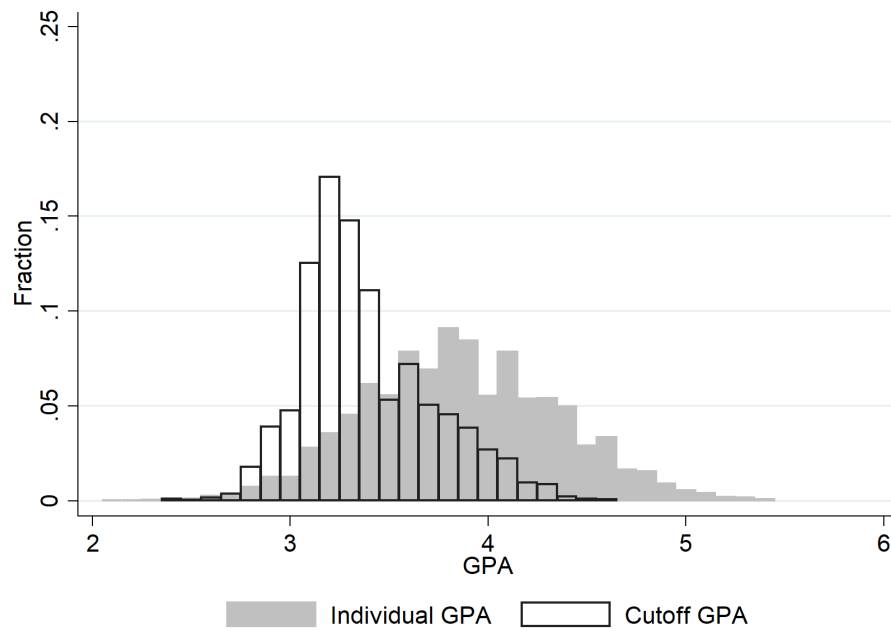
**Figure 1. Ninth grade unadjusted GPA and adult earnings for program completers.**



*Notes: Sample of program completers who applied between 1977-1991. Adult earnings measured between the ages of 37-39. N=1,208,269 for GPA, N= 1,132,945 for log earnings.*

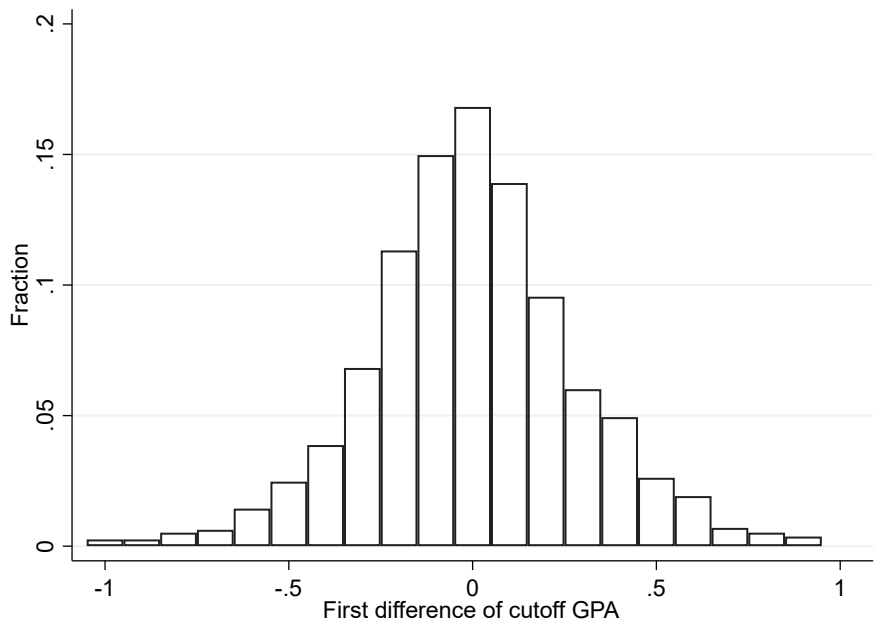
**Figure 2: GPA, cutoff GPA, and first-differenced cutoff GPA distributions.**

**Panel A: Cutoff GPA and individual GPA**



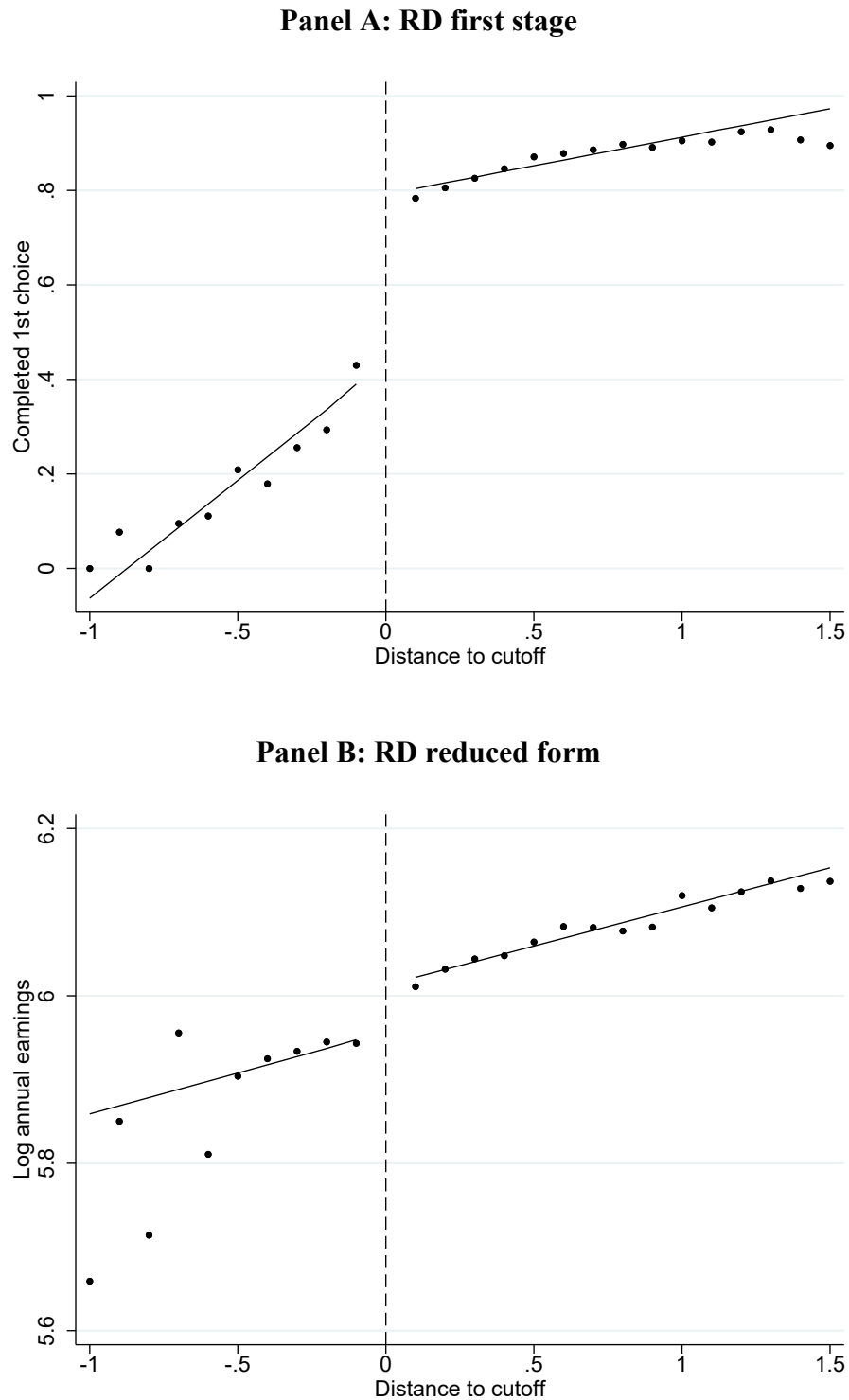
*Notes: The white bars plot the distribution of cutoff GPAs for competitive programs, which vary by field of study, year, and school region. There are 3,487 competitive programs in our estimation sample. The grey bars plot the distribution of GPA for individuals in our estimation sample of 233,437 observations.*

**Panel B: Current minus lagged cutoff GPA**



*Notes: Sample limited to fields of study which are competitive two years in a row in a school region.*

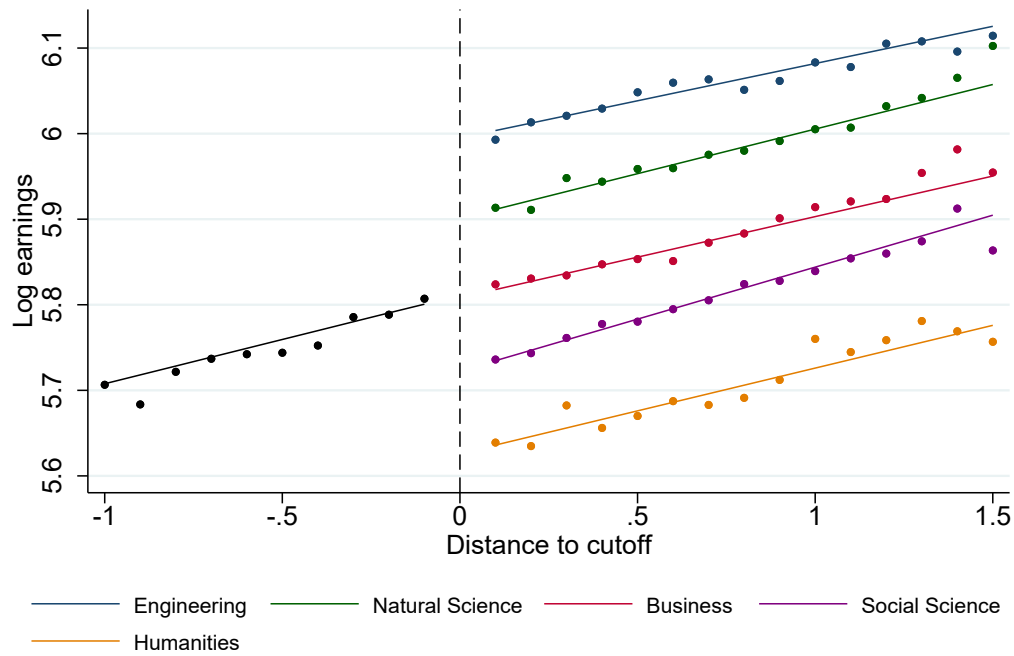
**Figure 3. Example of Engineering first choice vs. Natural Science second choice.**



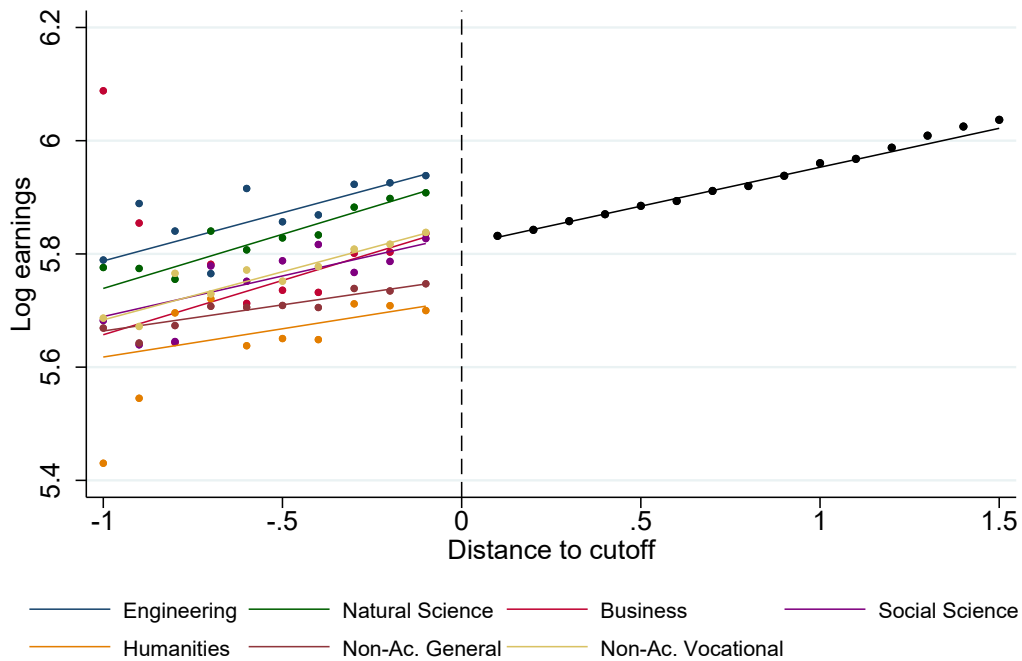
*Notes: Each dot is the average completion rate in a 0.1 GPA bin, where GPA is measured relative to a normalized cutoff of 0. The trend lines are RD estimates using the underlying data, no covariates, and triangular weights.  $N = 31,877$ .*

**Figure 4. Comparison of 2 versus 12 slope models.**

**Panel A: Single slope below the cutoff, 5 separate slopes above the cutoff**



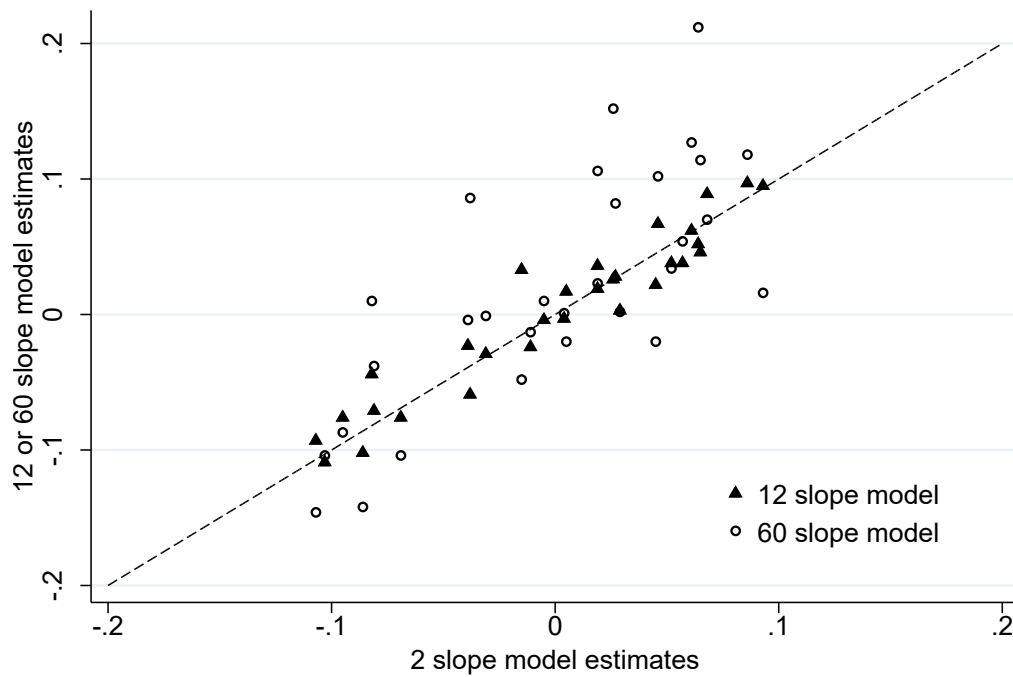
**Panel B: 7 separate slopes below the cutoff, single slope above the cutoff**



*Notes: These graphs are for illustrative purposes; we never mix the 2 slope and 12 slope models in estimation. Each marker is the average of log earnings in a 0.1 GPA bin, where GPA is measured relative to a normalized cutoff of 0. The trend lines are RD estimates using the underlying data, no covariates, and triangular weights.*

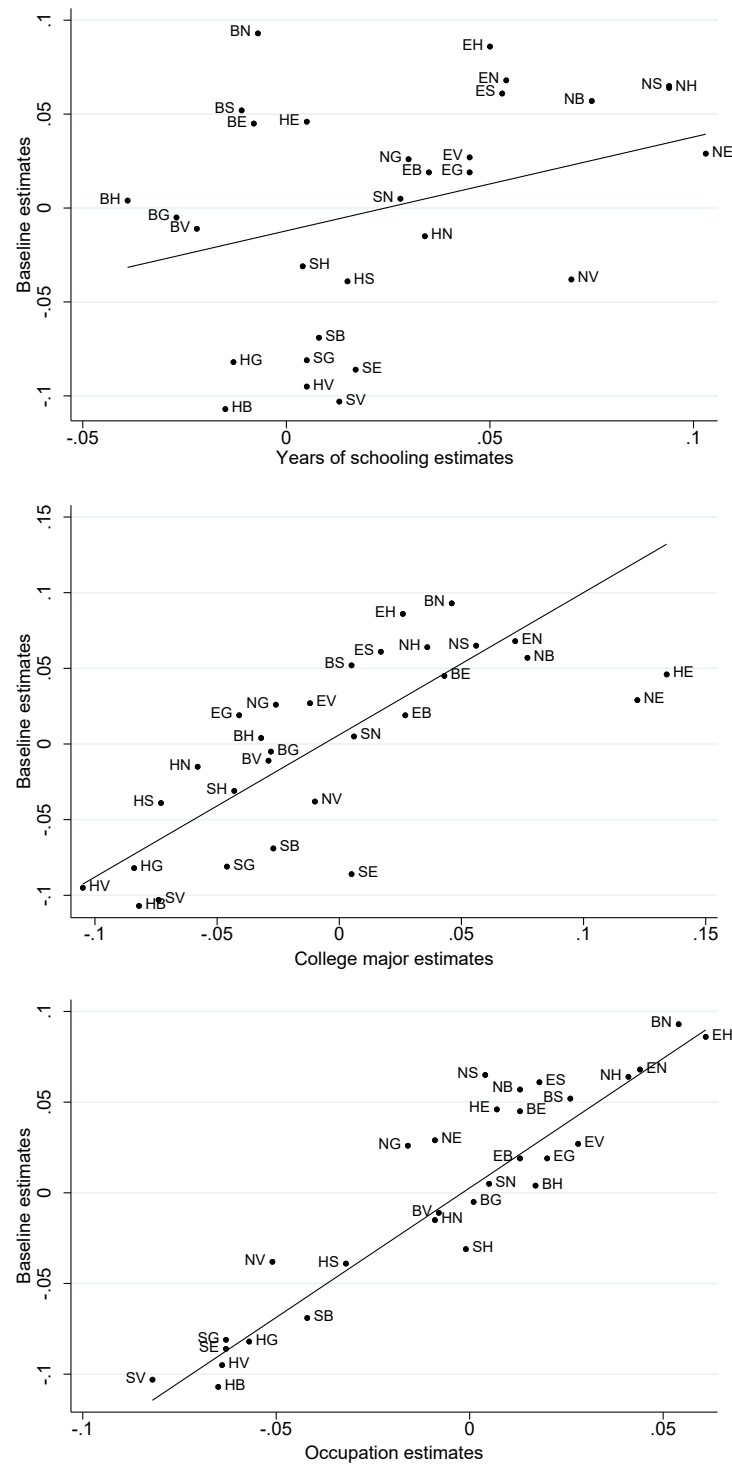


**Figure 5. Comparison of IV estimates using the 60 slope, 12 slope, and 2 slope models.**



*Notes: There are 30 estimates for each model, one for each first–second best choice combination (see Table 5). The dashed line is the 45° line.*

**Figure 6. Mechanisms: Years of schooling, college major, and occupation.**



*Notes: Estimates for each margin are labeled by first–second best choice combination. E, N, B, S, H, G, V stand for Engineering, Natural Science, Business, Social Science, Humanities, General non-academic, and Vocational non-academic, respectively. The solid line is the regression slope, using the inverse of the squared standard errors of the baseline estimates as weights. See Appendix Table 6 and the text for details.*

**Table 1. Course requirements for each of the five academic programs.**

Classes	Engineering	Weekly hours of course instruction			
		Natural Science	Business	Social Science	Humanities
Math	15 <sup>adv</sup>	15 <sup>adv</sup>	11	11	5
Natural science	17	22.5	3	9	7
Social science	11	16	16.5	25.5	25.5
Swedish	8	9	9	10	10
English	6	7	7	8	9
Additional languages	6	11	14	17	24
Art and music	-	4	-	4	4
Physical education	7	8	7	8	8
Technology related	22.5	-	-	-	-
Business related	-	-	25	-	-
Other	3.5	3.5	3.5	3.5	3.5
Total hours	96	96	96	96	96

Notes: The total amount of 96 hours consists of 34, 32, and 30 hours per week during the first, second, and third years, respectively. Engineering has an optional fourth year of 35 hours per week of mostly technology related courses. The superscript “adv” indicates that advanced math is required for Engineering and Natural Science. Business allows the possibility to exchange 3 hours of math with business-related courses. Natural science classes include physics, chemistry, and biology, while Social science classes include history, religion, philosophy, psychology, and social studies. These curricula are mandated by law and laid out in Lgy70 (Läroplan för gymnasieskolan); they remained unchanged during our sample period (1977-1991) but were modified in 1994.

**Table 2. Number of observations by first-second choice combination.**

First choice	Engineering	Second choice					
		Natural Science	Business	Social Science	Humanities	Non-acad. General	Non-acad. Vocational
Engineering	--	31,877	11,997	3,374	550	4,481	11,187
Natural Science	8,844	--	2,379	5,631	681	493	954
Business	7,624	6,694	--	29,849	8,123	18,127	13,462
Social Science	1,763	8,437	15,732	--	15,322	8,294	3,591
Humanities	412	582	2,316	7,206	--	2,191	1,264

Notes: Baseline sample of 233,437 individuals.

**Table 3. First stage RD estimates for program completion.**

First choice	Second choice						
	Engineering	Natural Science	Business	Social Science	Humanities	Non-acad. General	Non-acad. Vocational
Engineering	--	.362*** (.010)	.406*** (.011)	.249*** (.015)	.260*** (.029)	.398*** (.011)	.409*** (.009)
Natural Science	.423*** (.015)	--	.444*** (.017)	.355*** (.017)	.339*** (.025)	.319*** (.032)	.338*** (.024)
Business	.484*** (.014)	.480*** (.011)	--	.473*** (.011)	.442*** (.012)	.546*** (.007)	.530*** (.008)
Social Science	.398*** (.017)	.428*** (.012)	.519*** (.010)	--	.396*** (.011)	.472*** (.009)	.452*** (.012)
Humanities	-.065** (.027)	.255*** (.025)	.464*** (.015)	.396*** (.014)	--	.324*** (.016)	.308*** (.019)

Notes:  $N=233,437$ . The RD specification uses the 2 slope model; linear functions of the running variable of normalized GPA; a window of -1.0 to 1.5; triangular weights; fixed effects for year, school region, preferred field, and next-best alternative field; and controls for the parent and child characteristics listed in Table A2 (except for GPA, which, when normalized is the running variable). Standard errors in parentheses.

\*  $p < 0.10$ , \*\*  $p < 0.05$ , \*\*\*  $p < 0.01$

**Table 4. Reduced form sharp RD estimates of program admission on log earnings.**

First choice	Second choice						
	Engineering	Natural Science	Business	Social Science	Humanities	Non-acad. General	Non-acad. Vocational
Engineering	--	.036** (.008)	.011 (.010)	.026** (.012)	.040* (.020)	.009 (.009)	.017** (.007)
Natural Science	.017 (.014)	--	.044*** (.016)	.037*** (.014)	.041* (.021)	.012 (.025)	-.023 (.019)
Business	.033*** (.013)	.068*** (.011)	--	.035*** (.009)	.000 (.010)	-.004 (.006)	-.008 (.007)
Social Science	-.066*** (.015)	.001 (.010)	-.046*** (.009)	--	-.016* (.009)	-.050*** (.007)	-.064*** (.009)
Humanities	.009 (.024)	-.014 (.022)	-.071*** (.012)	-.028*** (.011)	--	-.033*** (.012)	-.039*** (.014)

Notes:  $N = 233,437$ . The RD specification uses the 2 slope model; linear functions of the running variable of normalized GPA; a window of -1.0 to 1.5; triangular weights; fixed effects for year, school region, preferred field, and next-best alternative field; and controls for the parent and child characteristics listed in Table A2 (except for GPA, which, when normalized is the running variable). Earnings are the average between ages 37-39 above a minimum threshold, and include income from self-employment, sick-leave, and parental leave benefits (see Section 2.3 for details). Standard errors in parentheses.

\*  $p < 0.10$ , \*\*  $p < 0.05$ , \*\*\*  $p < 0.01$

**Table 5. Returns to different fields of study: Fuzzy RD estimates of program completion on log earnings.**

<b>First choice</b>	<b>Second choice</b>							F-test for 2 <sup>nd</sup> choice does not matter
	Engineering	Natural Science	Business	Social Science	Humanities	Non-Acad. General	Non-Acad. Vocational	
Engineering	--	.068*** (.016)	.019 (.018)	.061** (.025)	.086** (.038)	.019 (.017)	.027* (.014)	14.42 [.013]
Natural Science	.029 (.024)	--	.057** (.026)	.065** (.026)	.064* (.035)	.026 (.050)	-.038 (.038)	12.25 [.032]
Business	.045** (.020)	.093*** (.017)	--	.052*** (.016)	.004 (.017)	-.005 (.010)	-.011 (.011)	62.02 [.000]
Social Science	-.086*** (.025)	.005 (.017)	-.069*** (.014)	--	-.031* (.017)	-.081*** (.013)	-.103*** (.016)	48.01 [.000]
Humanities	.046 (.135)	-.015 (.037)	-.107*** (.020)	-.039* (.020)	--	-.082*** (.026)	-.095*** (.030)	14.65 [.012]

Notes:  $N = 233,437$ . See notes to Table 4. Standard errors in parentheses. The F-test in the last column tests whether the estimates in each row are equal to each other. Standard errors in parentheses, p-values in brackets.

\*  $p < 0.10$ , \*\*  $p < 0.05$ , \*\*\*  $p < 0.01$

**Table 6. Robustness checks.**

Margin	Baseline	Quadratic	Smaller bandwidth	1 <sup>st</sup> -2 <sup>nd</sup> intercepts	12 slopes	60 slopes	Excluding 1982-84	Earnings in levels	Earnings rank
E vs. N	.068*** (.016)	.075*** (.023)	.068*** (.021)	.077*** (.019)	.089*** (.031)	.070** (.035)	.066*** (.019)	4.806*** (1.070)	.035*** (.012)
E vs. B	.019 (.018)	.026 (.023)	.022 (.022)	.029 (.032)	.019 (.027)	.023 (.038)	.015 (.019)	.925 (1.244)	.013 (.012)
E vs. S	.061** (.025)	.069** (.031)	.077** (.032)	.042 (.056)	.062 (.040)	.127** (.058)	.049* (.028)	3.685** (1.603)	.033* (.017)
E vs. H	.086** (.038)	.094** (.042)	.077 (.051)	.186 (.222)	.097** (.049)	.118 (.080)	.082* (.045)	5.380** (2.381)	.054* (.028)
E vs. G	.019 (.017)	.026 (.023)	.035 (.022)	-.015 (.025)	.036* (.020)	.106*** (.036)	.029 (.019)	-.709 (1.071)	.013 (.012)
E vs. V	.027* (.014)	.034 (.021)	.039** (.019)	.035** (.016)	.028 (.018)	.082*** (.029)	.024 (.016)	.845 (.997)	.033*** (.010)
N vs. E	.029 (.024)	.035 (.028)	.020 (.031)	.021 (.033)	.003 (.045)	.002 (.056)	.039 (.026)	2.912* (1.614)	.012 (.016)
N vs. B	.057** (.026)	.063** (.030)	.060* (.034)	.030 (.053)	.038 (.037)	.054 (.062)	.045 (.028)	2.948 (1.934)	.038** (.018)
N vs. S	.065** (.026)	.072** (.031)	.078** (.034)	.104** (.048)	.046 (.045)	.114* (.065)	.051* (.029)	4.417*** (1.705)	.049*** (.019)
N vs. H	.064* (.035)	.070* (.039)	.110** (.055)	.164* (.087)	.052 (.048)	.212** (.102)	.063* (.038)	2.311 (2.121)	.059** (.025)
N vs. G	.026 (.050)	.033 (.053)	.056 (.066)	.046 (.080)	.026 (.056)	.152 (.121)	-.012 (.055)	-.367 (2.949)	.021 (.036)
N vs. V	-.038 (.038)	-.031 (.041)	-.000 (.056)	-.057 (.052)	-.059 (.045)	.086 (.114)	-.050 (.040)	-3.385 (2.339)	-.012 (.027)
B vs. E	.045** (.020)	.051** (.025)	.033 (.024)	.065** (.029)	.022 (.035)	-.020 (.042)	.050** (.022)	5.370*** (1.502)	.021 (.013)
B vs. N	.093*** (.017)	.099*** (.022)	.069*** (.021)	.102*** (.027)	.095*** (.028)	.016 (.036)	.088*** (.019)	7.730*** (1.171)	.046*** (.011)
B vs. S	.052*** (.016)	.059*** (.021)	.047** (.019)	.060*** (.019)	.038 (.030)	.034 (.034)	.044** (.018)	4.059*** (1.058)	.043*** (.011)
B vs. H	.004 (.017)	.010 (.022)	.003 (.021)	-.017 (.028)	-.003 (.028)	.001 (.035)	.004 (.019)	1.190 (.998)	.027** (.012)
B vs. G	-.005 (.010)	-.001 (.016)	-.003 (.013)	-.010 (.011)	-.004 (.012)	.010 (.017)	-.004 (.011)	-.506 (.669)	.001 (.007)
B vs. V	-.011 (.011)	-.006 (.017)	-.010 (.014)	-.009 (.012)	-.024* (.014)	-.013 (.020)	-.014 (.012)	-.409 (.822)	.007 (.008)

**Table 6. Robustness checks, continued.**

Margin	Baseline	Quadratic	Smaller bandwidth	1 <sup>st</sup> -2 <sup>nd</sup> intercepts	12 slopes	60 slopes	Excluding 1982-84	Earnings in levels	Earnings rank
S vs. E	-.086*** (.025)	-.079*** (.030)	-.098*** (.031)	-.108*** (.037)	-.102** (.040)	-.142*** (.054)	-.081*** (.028)	-2.871* (1.698)	-.037** (.017)
S vs. N	.005 (.017)	.011 (.023)	.000 (.022)	-.025 (.031)	.017 (.030)	-.020 (.038)	-.003 (.020)	.446 (1.144)	-.002 (.012)
S vs. B	-.069*** (.014)	-.063*** (.019)	-.074*** (.017)	-.071*** (.016)	-.076*** (.023)	-.104*** (.026)	-.078*** (.015)	-4.674*** (1.061)	-.031*** (.009)
S vs. H	-.031* (.017)	-.024 (.023)	-.022 (.021)	-.028 (.019)	-.029 (.029)	-.001 (.033)	-.028 (.018)	-1.200 (.973)	.006 (.012)
S vs. G	-.081*** (.013)	-.075*** (.019)	-.072*** (.016)	-.070*** (.014)	-.071*** (.015)	-.038 (.023)	-.081*** (.014)	-5.256*** (.787)	-.051*** (.009)
S vs. V	-.103*** (.016)	-.097*** (.021)	-.104*** (.020)	-.114*** (.020)	-.109*** (.019)	-.104*** (.031)	-.106*** (.017)	-5.508*** (1.033)	-.050*** (.011)
H vs. E	.046 (.135)	.069 (.145)	.117 (.203)	-1.346 (4.788)	.067 (.188)	.102 (.384)	.060 (.152)	1.620 (8.143)	.089 (.093)
H vs. N	-.015 (.037)	-.008 (.042)	-.009 (.053)	-.058 (.062)	.033 (.050)	-.048 (.087)	-.026 (.043)	-.273 (2.392)	.003 (.027)
H vs. B	-.107*** (.020)	-.101*** (.024)	-.114*** (.024)	-.098*** (.029)	-.093*** (.029)	-.146*** (.042)	-.106*** (.022)	-7.452*** (1.203)	-.048*** (.015)
H vs. S	-.039* (.020)	-.032 (.026)	-.027 (.025)	-.077** (.034)	-.023 (.036)	-.004 (.045)	-.046** (.023)	-2.784** (1.225)	-.007 (.015)
H vs. G	-.082*** (.026)	-.075** (.032)	-.060* (.032)	-.040 (.044)	-.044 (.031)	.010 (.059)	-.076** (.030)	-6.159*** (1.485)	-.057*** (.020)
H vs. V	-.095*** (.030)	-.088** (.035)	-.087** (.038)	-.110** (.049)	-.076** (.035)	-.087 (.067)	-.087*** (.032)	-5.874*** (1.652)	-.047** (.022)
Correlation w/ baseline	1.00	0.99	0.98	0.96	0.97	0.79	0.99	0.97	0.96
Obs.	233,437	233,437	167,777	233,437	233,437	233,437	187,143	250,970	250,970

Notes: See notes to Table 4. Each row presents estimates for a specific first versus second choice combination using different RD specifications. E, N, B, S, H, G, N stand for Engineering, Natural Science, Business, Social Science, Humanities, General non-academic, and Vocational non-academic, respectively. The baseline estimates correspond to those reported in Table 5. Column 2 adds in quadratic terms in the running variable, column 3 reduces the bandwidth in half, and column 4 includes first–second choice specific intercept terms. The next two columns use the 12 slope model (one slope for each of the 5 first choices and the 7 second choices) and the 60 slope model (separate slopes to the left and right of the cutoff for each first–second choice combination). Column 6 excludes the years 1982–84; these years added GPA bonuses for the first and second choices on an individual’s ranking list. The remaining two columns use earnings in levels and earnings rank instead of log earnings; both of these alternatives include zero and below-threshold earnings. Standard errors in parentheses.

\*  $p < 0.10$ , \*\*  $p < 0.05$ , \*\*\*  $p < 0.01$

**Table 7. Tests for comparative advantage.**

<b>Choice combinations</b>	<b>Sum of returns</b>
Natural Science 1 <sup>st</sup> – Business 2 <sup>nd</sup> and Business 1 <sup>st</sup> – Natural Science 2 <sup>nd</sup>	.150*** (.034)
Engineering 1 <sup>st</sup> - Humanities 2 <sup>nd</sup> and Humanities 1 <sup>st</sup> – Engineering 2 <sup>nd</sup>	.132 (.143)
Engineering 1 <sup>st</sup> – Natural Science 2 <sup>nd</sup> and Natural Science 1 <sup>st</sup> – Engineering 2 <sup>nd</sup>	.097*** (.032)
Natural Science 1 <sup>st</sup> – Social Science 2 <sup>nd</sup> and Social Science 1 <sup>st</sup> – Natural Science 2 <sup>nd</sup>	.070** (.035)
Engineering 1 <sup>st</sup> – Business 2 <sup>nd</sup> and Business 1 <sup>st</sup> – Engineering 2 <sup>nd</sup>	.064** (.029)
Natural Science 1 <sup>st</sup> – Humanities 2 <sup>nd</sup> and Humanities 1 <sup>st</sup> – Natural Science 2 <sup>nd</sup>	.049 (.054)
Business 1 <sup>st</sup> – Social Science 2 <sup>nd</sup> and Social Science 1 <sup>st</sup> – Business 2 <sup>nd</sup>	-.017 (.024)
Engineering 1 <sup>st</sup> – Social Science 2 <sup>nd</sup> and Social Science 1 <sup>st</sup> – Engineering 2 <sup>nd</sup>	-.025 (.038)
Social Science 1 <sup>st</sup> – Humanities 2 <sup>nd</sup> and Humanities 1 <sup>st</sup> – Social Science 2 <sup>nd</sup>	-.070** (.029)
Business 1 <sup>st</sup> – Humanities 2 <sup>nd</sup> and Humanities 1 <sup>st</sup> – Business 2 <sup>nd</sup>	-.103*** (.029)

*Notes: N = 233,437. See text for details on the tests. A positive sum is consistent with comparative advantage, a zero with random sorting, and a negative with comparative disadvantage. Standard errors in parentheses.*

*\*  $p < 0.10$ , \*\*  $p < 0.05$ , \*\*\*  $p < 0.01$*

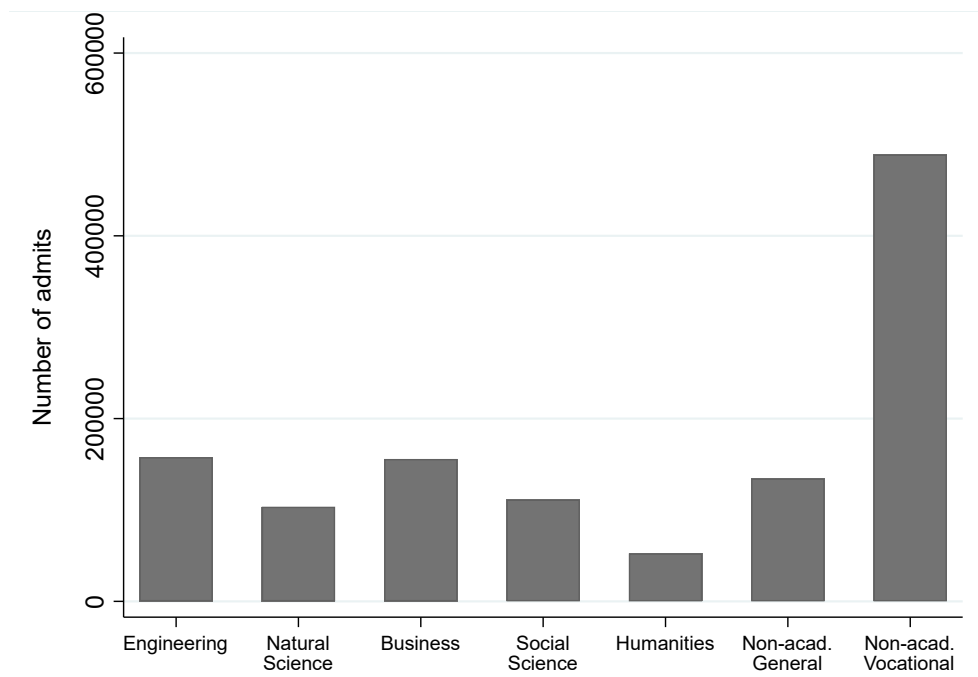


# **APPENDIX FIGURES AND TABLES**

“Long-Run Returns to Field of Study in Secondary School”

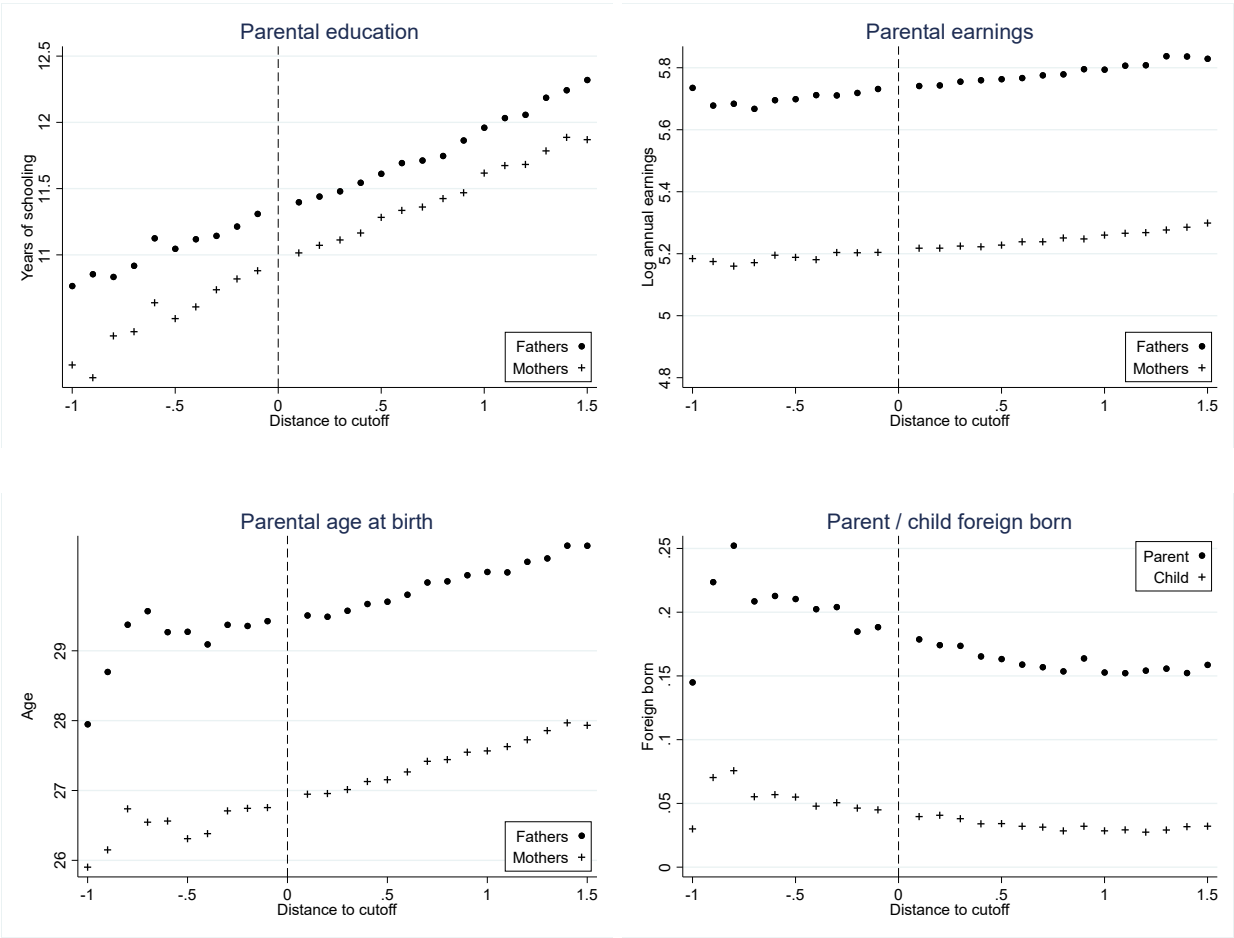
Gordon B. Dahl, Dan-Olof Rooth, and Anders Stenberg

**Figure A1. Number of students admitted to each program.**



*Notes: Admission to secondary school programs between 1977-1991. N=1,208,269.*

**Figure A2: Smoothness of predetermined variables at the cutoff.**



Notes: Each dot is the average for the relevant outcome in a 0.1 GPA bin, where GPA is measured relative to a normalized cutoff of 0. Parent foreign born is a dummy for whether at least one parent is foreign born. See Appendix Table A3.

**Table A1. Competitive and noncompetitive program sample sizes.**

<b>First choice</b>	<b>Baseline Sample:</b>			
	Competitive programs		Non-competitive programs	
	Individuals	Programs	Individuals	Programs
Engineering	63,466	793	52,171	1,079
Natural Science	18,982	395	50,583	1,457
Business	83,879	1,030	35,469	815
Social Science	53,139	873	32,120	970
Humanities	13,971	396	23,681	1,467
Total	233,437	3,487	194,024	5,788

Notes: Programs are defined by field of study, year, and school region. Non-competitive programs do not have an excess supply of applicants, and so have unrestricted entry.

**Table A2: Summary statistics for applicants with a first-choice academic program.**

<b>Variables</b>	Competitive programs	Share missing	Non-competitive programs	Share missing
Parent characteristics:				
Father age	29.74	0.05	29.99	0.07
Mother age	27.20	0.02	27.33	0.02
Father schooling	11.60	0.05	11.29	0.06
Mother schooling	11.23	0.02	10.82	0.02
Father earnings	5.76	0.18	5.75	0.20
Mother earnings	5.23	0.25	5.20	0.29
Foreign born parent	0.16	0	0.16	0
Child characteristics:				
Foreign born	0.03	0	0.03	0
Female	0.51	0	0.50	0
Age at application	15.99	0	15.99	0
GPA	3.86	0	3.94	0
Unadjusted GPA	3.74	0.02	3.81	0.03
Child outcomes:				
Log earnings	5.84	0	5.81	0
Observations	233,437		194,024	

Note: Years span 1977-1991. Parent and child characteristics are measured in the year of application (when the child is roughly 16 years old). Parent age refers to age at the time of the child's birth. Years of schooling inferred from highest education level. Earnings are measured between the ages of 37-39 and are converted to year 2016 US dollars using an exchange rate of 8.5 SEK to 1 USD. GPA is standardized to be mean 0 and variance 1 in the entire population, including those who do not apply to secondary school. Unadjusted GPA does not include any bonuses.

**Table A3. Balancing tests for pre-determined characteristics.**

Years schooling Father	Years schooling mother	Log earnings father	Log earnings mother	Age at birth father	Age at birth mother	Foreign born parent	Child foreign born
-.016	-.002	-.001	-.003	-.115	.013	-.005	-.003
(.058)	(.053)	(.010)	(.008)	(.133)	(.115)	(.008)	(.005)
249,860	259,892	214,708	197,345	249,613	259,336	264,324	264,324

*Notes: Each column is an estimate from a separate RD regression which uses the 2 slope model; linear functions of the running variable of normalized GPA; a window of -1.0 to 1.5; triangular weights; fixed effects for year, school region, and program. There is a common jump for all first-second best choice combinations. Standard errors in parentheses.*

*\*  $p < 0.10$ , \*\*  $p < 0.05$ , \*\*\*  $p < 0.01$*

**Table A4. Heterogeneity by gender and parental education.**

	Baseline	Males	Females	Low parental education	High parental education
E vs. N	.068*** (.016)	.053*** (.018)	.023 (.022)	.074*** (.019)	.060*** (.019)
E vs. B	.019 (.018)	.009 (.020)	-.015 (.023)	.020 (.020)	.015 (.020)
E vs. S	.061** (.025)	.051* (.026)	.036 (.032)	.081*** (.029)	.044 (.028)
E vs. H	.086** (.038)	.072 (.044)	.054 (.054)	.096* (.056)	.077* (.043)
E vs. G	.019 (.017)	.006 (.019)	.002 (.038)	.026 (.020)	.013 (.022)
E vs. V	.027* (.014)	.011 (.017)	.005 (.029)	.039** (.017)	.015 (.018)
N vs. E	.029 (.024)	.002 (.026)	.039 (.027)	.013 (.028)	.031 (.026)
N vs. B	.057** (.026)	.056* (.032)	.042 (.029)	.040 (.036)	.059** (.029)
N vs. S	.065** (.026)	.035 (.031)	.073** (.029)	.056* (.031)	.065** (.028)
N vs. H	.064* (.035)	-.016 (.062)	.081** (.036)	.123*** (.045)	.029 (.041)
N vs. G	.026 (.050)	.093 (.072)	-.060 (.059)	.105* (.061)	-.083 (.073)
N vs. V	-.038 (.038)	-.085 (.053)	-.020 (.042)	-.002 (.049)	-.058 (.044)
B vs. E	.045** (.020)	.041* (.023)	.026 (.023)	.027 (.022)	.055** (.023)
B vs. N	.093*** (.017)	.099*** (.020)	.073*** (.018)	.079*** (.019)	.098*** (.019)
B vs. S	.052*** (.016)	.071*** (.019)	.040** (.017)	.048*** (.018)	.052*** (.018)
B vs. H	.004 (.017)	.009 (.025)	.002 (.018)	.014 (.019)	-.004 (.020)
B vs. G	-.005 (.010)	.022 (.015)	-.022* (.012)	-.003 (.012)	-.006 (.014)
B vs. V	-.011 (.011)	-.008 (.015)	-.016 (.013)	-.007 (.014)	-.012 (.015)
S vs. E	-.086*** (.025)	-.113*** (.031)	-.075*** (.028)	-.058* (.031)	-.101*** (.028)
S vs. N	.005 (.017)	-.015 (.023)	.008 (.018)	.014 (.021)	-.002 (.020)
S vs. B	-.069*** (.014)	-.092*** (.019)	-.057*** (.015)	-.065*** (.017)	-.074*** (.016)
S vs. H	-.031* (.017)	-.093*** (.023)	-.020 (.018)	-.012 (.019)	-.045** (.019)
S vs. G	-.081*** (.013)	-.110*** (.020)	-.068*** (.014)	-.065*** (.016)	-.095*** (.017)
S vs. V	-.103*** (.016)	-.219*** (.029)	-.075*** (.017)	-.069*** (.021)	-.130*** (.019)
H vs. E	.046 (.135)	-.073 (.536)	.050 (.111)	.061 (.164)	.032 (.178)
H vs. N	-.015 (.037)	-.256** (.102)	.039 (.036)	.004 (.055)	-.030 (.044)
H vs. B	-.107*** (.020)	-.184*** (.042)	-.091*** (.021)	-.097*** (.023)	-.117*** (.023)
H vs. S	-.039* (.020)	-.160*** (.030)	-.019 (.021)	-.017 (.022)	-.058*** (.022)
H vs. G	-.082*** (.026)	-.137* (.075)	-.065** (.027)	-.016 (.037)	-.143*** (.031)
H vs. V	-.095*** (.030)	-.390*** (.147)	-.067** (.030)	-.105*** (.039)	-.082** (.037)
Corr. btwn. groups		0.79		0.91	
Obs.	233,437	233,437		232,882	

Notes: See notes to Table 5 and text for details. Standard errors in parentheses. Notes: N males = 114,036, females = 119,401, low-skilled parents = 95,995 and high-skilled parents = 136,887. \*  $p < 0.10$ , \*\*  $p < 0.05$ , \*\*\*  $p < 0.01$

**Table A5. Probability of being included in the log earnings sample.**

	Engineering	Natural Science	Business	Social Science	Humanities	Non-acad. General	Non-acad. Vocational
Engineering	--	.021* (.012)	.021 (.013)	.027 (.019)	-.018 (.030)	.024** (.012)	.011 (.010)
Natural Science	.009 (.018)	--	.002 (.020)	-.014 (.021)	-.024 (.030)	.002 (.038)	.023 (.031)
Business	.000 (.014)	-.005 (.012)	--	-.015 (.013)	-.038** (.015)	.005 (.008)	-.008 (.008)
Social Science	-.009 (.017)	.015 (.013)	.003 (.010)	--	-.031** (.015)	.023** (.011)	.006 (.013)
Humanities	-.059 (.096)	-.015 (.031)	.007 (.018)	.005 (.019)	--	.034 (.026)	.022 (.028)

Notes:  $N = 250,656$ . Sample includes all individuals with earnings, including zeros and low values. The dependent variable is equal to 1 if an observation is included in the log earnings sample. These are reduced form estimates. Standard errors in parentheses.

\*  $p < 0.10$ , \*\*  $p < 0.05$ , \*\*\*  $p < 0.01$

**Table A6. Mechanisms: Years of schooling, postsecondary program, and occupation.**

	Dependent variable: Baseline estimates			
<b>Expected return due to:</b>				
Years of schooling	.511* (.290)	-	-	0.060 (.086)
Postsecondary program	-	.930*** (.144)	-	.304*** (.082)
Occupation	-	-	1.427*** (.088)	1.173*** (.088)
R <sup>2</sup>	0.100	0.599	0.904	0.951

Notes: We regress the thirty baseline estimates from Table 5 on thirty estimates of the expected returns due to three different mechanisms, which are also estimated using our baseline RD model. See text for details. The regression is weighted by the inverse of the squared standard error for the baseline model estimates. Standard errors in parentheses.

\*  $p < 0.10$ , \*\*  $p < 0.05$ , \*\*\*  $p < 0.01$