

Coibion, Olivier; Gorodnichenko, Yuriy; Weber, Michael

Working Paper

Does Policy Communication During Covid Work?

CESifo Working Paper, No. 8369

Provided in Cooperation with:

Ifo Institute – Leibniz Institute for Economic Research at the University of Munich

Suggested Citation: Coibion, Olivier; Gorodnichenko, Yuriy; Weber, Michael (2020) : Does Policy Communication During Covid Work?, CESifo Working Paper, No. 8369, Center for Economic Studies and Ifo Institute (CESifo), Munich

This Version is available at:

<https://hdl.handle.net/10419/223441>

Standard-Nutzungsbedingungen:

Die Dokumente auf EconStor dürfen zu eigenen wissenschaftlichen Zwecken und zum Privatgebrauch gespeichert und kopiert werden.

Sie dürfen die Dokumente nicht für öffentliche oder kommerzielle Zwecke vervielfältigen, öffentlich ausstellen, öffentlich zugänglich machen, vertreiben oder anderweitig nutzen.

Sofern die Verfasser die Dokumente unter Open-Content-Lizenzen (insbesondere CC-Lizenzen) zur Verfügung gestellt haben sollten, gelten abweichend von diesen Nutzungsbedingungen die in der dort genannten Lizenz gewährten Nutzungsrechte.

Terms of use:

Documents in EconStor may be saved and copied for your personal and scholarly purposes.

You are not to copy documents for public or commercial purposes, to exhibit the documents publicly, to make them publicly available on the internet, or to distribute or otherwise use the documents in public.

If the documents have been made available under an Open Content Licence (especially Creative Commons Licences), you may exercise further usage rights as specified in the indicated licence.

Does Policy Communication During COVID Work?

Olivier Coibion, Yuriy Gorodnichenko, Michael Weber

Impressum:

CESifo Working Papers

ISSN 2364-1428 (electronic version)

Publisher and distributor: Munich Society for the Promotion of Economic Research - CESifo GmbH

The international platform of Ludwigs-Maximilians University's Center for Economic Studies and the ifo Institute

Poschingerstr. 5, 81679 Munich, Germany

Telephone +49 (0)89 2180-2740, Telefax +49 (0)89 2180-17845, email office@cesifo.de

Editor: Clemens Fuest

<https://www.cesifo.org/en/wp>

An electronic version of the paper may be downloaded

- from the SSRN website: www.SSRN.com
- from the RePEc website: www.RePEc.org
- from the CESifo website: <https://www.cesifo.org/en/wp>

Does Policy Communication during COVID Work?

Abstract

Using a large-scale survey of U.S. households during the Covid-19 pandemic, we study how new information about fiscal and monetary policy responses to the crisis affects households' expectations. We provide random subsets of participants in the Nielsen Homescan panel with different combinations of information about the severity of the pandemic, recent actions by the Federal Reserve, stimulus measures, as well as recommendations from health officials. This experiment allows us to assess to what extent these policy announcements alter the beliefs and spending plans of households. In short, they do not, contrary to the powerful effects they have in standard macroeconomic models.

JEL-Codes: E310, C830, D840, J260.

Keywords: subjective expectations, fiscal policy, monetary policy, COVID-19, surveys.

Olivier Coibion
University of Texas at Austin / USA
ocoibion@gmail.com

Yuriy Gorodnichenko
University of California at Berkeley / USA
ygorodni@econ.berkeley.edu

Michael Weber
Booth School of Business
University of Chicago / IL / USA

First Draft: May 29, 2020

This Draft: June 9, 2020

We thank the National Science Foundation for financial support in conducting the surveys. We also thank Shannon Hazlett and Victoria Stevens at Nielsen for their assistance with the collection of the Panel Views Survey. Results in this article are calculated based on data from The Nielsen Company (US), LLC and marketing databases provided by the Kilts Center for Marketing Data Center at The University of Chicago Booth School of Business. Information on availability and access to the data is available at <http://research.chicagobooth.edu/nielsen>.

“The single biggest problem in communication is the illusion that it has taken place.” – George Bernard Shaw.

“[for monetary policy to be most effective] not only do expectations about policy matter, but, at least under current conditions, very little else matters.” Woodford (2005)

I. Introduction

Monetary and fiscal policies affect the economy (Romer and Romer 2004, 2009) but how they operate remains a point of contention. A common thread across many macroeconomic models is the role of expectations: policies have powerful effects in modern mainstream models in large part because firms and households incorporate these announcements into their decision plans. In real business cycle models, for example, an announcement of higher government spending should make households feel poorer (since they will have to pay for this spending via higher taxes now or in the future) which induces them to work more. Forward guidance on the part of monetary policy-makers is predicted to have large effects in New Keynesian models because the promise of future lower interest rates by the central bank should induce households to anticipate higher inflation in the future which in turn should lead them to consume more today before those price increases materialize.

How powerful are these mechanisms in practice? Recent research should give one pause: there is a growing body of evidence documenting that, in advanced economies, inattention to macroeconomic policy and the broader economic environment is pervasive among households and firms. Announcements by monetary and fiscal policy-makers are rarely found to have large effects on the expectations of economic agents other than those participating directly in financial markets, suggesting that these expectational forces may in fact be quite weak. Still, one might expect a strengthening of these forces in a crisis, as a worried population turns its attention to its leaders for guidance and support.

Using a large-scale survey of U.S. households during the COVID-19 pandemic, we study how new information about policy responses affects the expectations and decisions of respondents. Specifically, we provide random subsets of participants with different combinations of information about the severity of the pandemic, recent actions by the Federal Reserve, stimulus measures implemented by Congress, as well as recommendations from the U.S. Center for Disease Control (CDC). We then characterize how their economic expectations and spending plans respond to these information treatments. This allows us to assess to what extent these policy announcements alter the beliefs and plans of economic agents.

By and large, we find very little effect of these information treatments on the economic expectations of agents for income, mortgage rates, inflation or the unemployment rate nor do we find an effect on their planned decisions, contrary to the powerful effects they have in standard macroeconomic models. Why might agents’ economic beliefs not respond to this information? One possible explanation is that they were already aware of the information provided in the treatments. While we do not have the prior beliefs of

agents for all information treatments, those for which we do suggest that this is not a likely explanation. For example, households' prior beliefs about the transmission rate of COVID-19 or its recovery rate were wildly misinformed prior to the information treatments. Furthermore, previous work has documented how uninformed households tend to be about most monetary and fiscal policies and how even large policy announcements do not make their way into households' aggregate expectations, even in the midst of a crisis (e.g., Coibion et al. 2020). Furthermore, Binder (2020) documents that even after the historic policy actions of the Federal Reserve in response to the COVID-19 crisis, only a third of U.S. households had heard about these policy actions. A second possible explanation is if households are skeptical of the information that we provide. Again, we view this as very unlikely because other information treatments in identical settings have previously been found to lead to dramatic revisions in households' views about the economy (e.g., Coibion, Gorodnichenko and Weber 2019). A third possible explanation rests on the idea that, because of cognitive constraints, many households might not directly understand the implications of complex policies for their optimal savings and consumption decisions (e.g., D'Acunto et al. 2020a,b). The fourth, and in our view most likely, explanation is that households do not believe that the policy responses described in the treatments are effective: i.e., the multipliers they associate with the described policy responses are close to zero. Note that zero multipliers may be observed because so-called information effects (i.e., policy actions reveal a bad state of the economy) offset any positive effects of a policy action.

Our paper builds on a recent but growing literature in macroeconomics that relies on surveys to measure expectations and randomized information treatments to establish causality (e.g., Cavallo et al. 2017, Coibion, Gorodnichenko and Kumar 2018, Armona et al. 2019). We depart from previous work along several dimensions. First, we use a large-scale survey of U.S. households participating in the Nielsen Homescan panel, providing us with a sample size that is an order of magnitude larger than in commonly available surveys. Second, our survey was run in April 2020 in the midst of the COVID epidemic, so we are able to study the dramatic policy actions taken specifically in response to the outbreak. In addition, we are able to provide new insight about how informed households were about both the deadliness of the disease and how it spreads across the population. There has been a surge of research on the corona virus in recent months, much of it relying on surveys. We build on this growing body of work by utilizing randomized control trials (RCT) to study the effects of economic policy responses to the crisis. Third, we combine treatments about the severity of the disease with treatments not only about economic policy responses (e.g. fiscal and monetary) but also about health policies (recommendations from the CDC). This allows us to speak about the relative benefits of very different types of policy responses within a common framework.

Previous work has documented extensively how inattentive households (and firms) tend to be to macroeconomic conditions (Bachmann, Berg, and Sims (2015), Coibion, Gorodnichenko, and Kumar (2018), Coibion et al. (2019), D'Acunto et al. (2019)). We find the same qualitative patterns hold during

the COVID crisis but also document that this lack of understanding extends to information about the coronavirus. For example, when we ask households what they think the recovery rate is once infected with COVID, they report an average answer of 73%, far lower than the 97% reported by the World Health Organization (WHO). Similarly, when we ask them how many people tend to be infected by someone carrying the COVID virus, their average answer is 21, far higher than the actual rate of around 2 estimated by the WHO. This suggests that information treatments that provide factual information about transmission and recovery rates could potentially have important effects on households' expectations about the economy.

Despite this, we find very small effects of providing information about the deadliness and ease of spread of the disease on households' expectations. When respondents are treated with information that, on average, the disease is harder to spread and less deadly than they had original thought, their views about future inflation, mortgage rates and unemployment are effectively unchanged. They reduce their reported expected future income on average but the change is economically insignificant. Their perceptions about whether now is a good or bad time to buy durables are also effectively unchanged. The one exception is for unemployed workers who are asked about the likelihood of finding a job: those who are treated with information about the disease raise their likelihood of finding a job by about twenty percentage points. These results suggest that the large changes in expectations during the COVID-19 pandemic for income, the stock market, or mortgage rates are less likely driven by direct concerns about the virus but more likely a response to the lockdowns imposed by local authorities in line with findings in Coibion, Gorodnichenko, and Weber (2020).

Information treatments about fiscal, monetary or health policies similarly do very little to the expectations of households, both about the aggregate economy or about their own income. And when they do, those effects are not necessarily positive. For example, among the unemployed who become more optimistic about their future job prospects when they are told that COVID-19 spreads less easily and is less deadly than they thought, providing additional information about the responses of policy-makers fully offsets the effect of the information about the disease. This is consistent with the presence of an information effect to policies: finding out that fiscal, monetary or health policy-makers are implementing large policy changes makes the unemployed less optimistic about their job prospects, but only when done in conjunction with information about the disease. Information treatments that are only about policy changes have effectively no effect on most agents' macroeconomic or individual expectations. These results are consistent with recent findings documenting an information effects of monetary policy which suggest that large policy moves might reveal information about the state of the economy which is called Delphic in the context of forward guidance (see, e.g., Campbell et al. 2012)

By studying the effect of policy actions on households' macroeconomic expectations through RCTs, our paper is closest to Andre et al. (2019). They present specific scenarios of both fiscal and monetary shocks to households (as well as experts) to assess how they believe these shocks will affect the economy. They find

that households' views about fiscal shocks are similar to those of experts, but their perceptions of how monetary shocks affect the economy differ significantly from those in standard models or those perceived by experts. One important difference is that Andre et al. (2019) present respondents with hypothetical exogenous shocks to either fiscal or monetary policy whereas we present households with information about clearly endogenous policy responses. Our results therefore speak directly to the effects of *systematic* policy changes whereas theirs are focused on exogenous policy. Our findings suggest that these systematic policy responses have little effect on households' expectations, either because they believe they are ineffective or because policy responses induce an information effect (in which households interpret the sheer fact of a policy response as indicative of a weaker economy) that effectively offsets the effect of the policy change.

Our work is also closely related to Binder (2020) and Fetzer et al. (2020) that assess how randomized provision of COVID19 health facts influences concerns (about personal financial situation and about aggregate economy) of households participating in online surveys.¹ Apart from the fact that we are using a survey that is an order-of-magnitude larger in size (and hence more precise estimates of treatment effects), we also study how the provision of health facts and/or policy responses shapes expectations.

Our research also relates to a broader literature on the effect of monetary policy on household expectations. That literature has documented that monetary policy decisions and announcements have little to no effect on household inflation expectations (e.g., Lamla and Vinogradov 2019, Coibion et al. 2020). This result is generally interpreted as indicating that households are unaware of the policy actions. Our results suggest an additional possible mechanism underlying these results: even when households are made aware of these policy decisions, they do not view them as having meaningful effects on the aggregate economy. Hence, it is not only important to reach households with communication but also to design and implement policies that are easy and simple to grasp for non-expert households and to explain the implications of policies for optimal consumption, savings, and investment decisions (D'Acunto, Hoang, and Weber, 2020a).

II. Survey Description

In this section, we describe the implementation of the survey as well as the information treatments. We build on our earlier work (Coibion, Gorodnichenko, and Weber 2019, Coibion, Gorodnichenko, Georgarakos, and Weber 2020, and D'Acunto et al. 2020c,d) using the Nielsen Homescan panel to study expectations and spending decisions.

A The Survey

¹ Binder (2020) also uses a difference-in-difference approach to study how informing households about the Fed's policy rate cut changes expectations.

Our survey was run in April 2020 on the Nielsen Homescan panel of households. This panel consists of 80-90,000 households who track their spending daily for A.C. Nielsen. Following Coibion, Gorodnichenko and Weber (2019) and Coibion et al. (2020), we ran a survey on these households that included various information treatments that we provided in a randomized fashion. The survey consisted of an initial set of questions designed to measure the prior beliefs and plans of households, followed by a randomized information treatment, and concluding with a final set of questions meant to assess how/whether treatments affected the expectations and plans of participants. 13,771 individuals responded to the survey, yielding a response rate of 27%. The response rate compares favorably to the average response rates of surveys on Qualtrics which is the most commonly used survey platform for online surveys that estimates a response rate between 5% to 10%. Survey questions are provided in the Appendix.

Nielsen attempts to balance the panel on nine dimensions: household size, income, age of household head, education of female household head, education of male household head, presence of children, race/ethnicity, and occupation of the household head. Panelists are recruited online, but the panel is balanced using Nielsen's traditional mailing methodology. Nielsen checks the sample characteristics on a weekly basis and performs adjustments when necessary. Nielsen provides sampling weights to correct for possible imbalances in the composition of respondents in our survey. All of our reported results use sampling weights.

Nielsen provides households with various incentives to guarantee the accuracy and completeness of the information households report. They organize monthly prize drawings, provide points for each instance of data submission, and engage in ongoing communication with households. Panelists can use points to purchase gifts from a Nielsen-specific award catalog. Nielsen structures the incentives to not bias the shopping behavior of their panelists. The KNCP has a retention rate of more than 80% at the annual frequency. Nielsen validates the reported consumer spending with the scanner data of retailers on a quarterly frequency to ensure high data quality. The KNCP filters households that do not report a minimum amount of spending over the previous 12 months. Information on scanned consumer spending is available only with a pronounced lag however, so we are not yet able to combine information from our survey responses with underlying spending decisions on the part of households.

Table 1 reports moments of initial beliefs and expectations reported by households. We present both raw moments as well as "robust" moments controlling for outliers using Huber (1964) robust methods, and we focus on the latter in our discussions. On average, households in April 2020 perceived an inflation rate of 2.6% and expected a lower inflation rate of 1.7% over the next twelve months, significantly lower than in other comparable survey waves of Nielsen panelists (e.g., Coibion, Gorodnichenko and Weber 2019, Coibion et al., 2020). Inflation expectations and perceptions exhibit significant cross-sectional dispersion, with a standard deviation of close to 3%. This dispersion can also be seen in Figure 1, which plots the distribution of answers as well as the current value of the variable at the time of the survey (red, vertical line). Unlike in

previous waves, households believed that the unemployment rate was nearly 10% in April and expected an even higher rate of unemployment twelve months later (nearly 11%). Disagreement about both current and future unemployment was also pervasive, as illustrated in Panels C and D of Figure 1. Table 1 also reports households' perceptions of the current mortgage interest rate as well as their expectations for this interest rate at the end of 2020, 2021 as well as over longer horizon of 3-5 years. The average belief about the current mortgage rate was 3.6%, close to the average value of 3.3% on March 26 2020, with households anticipating a very gradual increase in mortgage rates over the next 3-5 years.² As illustrated in Panels E-F of Figure 1, however, there is significant disagreement across households about the path of future interest rates.

Respondents were also asked questions about COVID-19. First, we asked them about the infection rate, i.e. how many uninfected people might be expected to be infected by one person carrying the virus. As Panel A of Figure 2 documents, households reported a wide range of answers with many answering 100 or more. Very few gave answers close to the WHO's estimate of an infection rate of 2, suggesting that most households significantly over-estimated how contagious the virus actually is. Second, they were asked about how lethal the virus is. Specifically, we asked them how likely a person was to survive after having been infected with the virus, i.e. the recovery rate. We plot responses to this question in Panel B of Figure 2. Again, the range of answers provided by households is enormous, with a recovery rate of 50% being the most commonly provided answer, nowhere near the answer of 96-97% provided by the WHO. We conclude that, consistent with Binder (2020) and Fetzer et al. (2020), households were very uninformed about the actual contagiousness and danger of the disease, with most households being far more pessimistic about the disease than health authorities.

Finally, respondents were also asked about expectations about their own economic situation. For example, we asked them to report how they expected their income to change over the next twelve months. As reported in Table 1, the raw average was -2.4%, again masking significant variation (cross-sectional standard deviation of 14 percentage points). In addition, we asked respondents to tell us whether they were currently employed. Those reporting being employed were then asked about the probability of losing their jobs over the next 12 months. Panel B of Figure 3 plots the resulting distribution of answers. Most respondents report a probability very close to or equal to 0%, indicating limited concerns about losing their jobs. For those reporting that they were not currently employed but are looking for a job (approximately 7% of respondents), we asked them about the probability of finding a job over the next 12 months. As illustrated in Panel A of Figure 3, answers were extremely dispersed. While some report probabilities of finding a job close to 100%, almost as many report a probability of just 50% and 32% report a probability of 10% or less.

² The survey is conducted over mortgage lenders originating loans in the U.S. See FRED, Federal Reserve Bank of St. Louis; <https://fred.stlouisfed.org/series/MORTGAGE30US>

B Treatments

After being asked this initial set of questions, respondents were then randomly assigned to one of multiple treatments groups. The first group is the control group, which gets no information provided to them. However, they still receive the same set of follow-up questions which allow us to measure any change in their expectations for comparison to treatment groups. Even though they are not provided with information, we may still observe changes in expectations because the wording of questions pre- and post-treatment is generally different, a strategy we employ to avoid respondents leaving the survey if they are being asked the same questions twice. For example, inflation expectations are initially measured using a distributional question while posterior beliefs are measured by respondents being asked to provide a point estimate. Because the wording of questions can lead to some differences in answers, having the control group answering both sets of questions allows us to control for any effect that different wording may induce.

Respondents not assigned to the control group were randomly placed in one of nine groups, as summarized in Table 2. These nine groups differ first in terms of whether they received information about the COVID-19 virus, and second in terms of whether they were provided with additional information about fiscal, monetary or health policies of the government. With respect to the information about the virus, approximately half of non-control group participants received the information about the virus (treatment groups 6-10), while the other half did not (treatment groups 2-5). The specific wording used in providing the WHO information about the virus to treatment groups 6-10 was:

“According to official estimates of the World Health Organization for these rates: The recovery rate from the corona virus is approximately 96-97 percent (that is, there is 96-97 in 100 chance to recover). Approximately 2 non-infected people will catch the coronavirus from a person who has the coronavirus.”

In addition to the possibility of being treated with information about the severity of the COVID epidemic, households could also randomly be treated with information about the fiscal policy response (treatment groups T3 and T8), the monetary policy response (treatment groups T2 and T7), both (treatment groups T4 and T9), neither (control group T1 and treatment group T6), or the recommendations from health officials (treatment groups T5 and T10). For each type of policy treatment, we therefore have two treatment groups: one that also received the information treatment vis-a-vis the severity of the disease and one that only received the policy treatment. The objective of this exercise is to measure the effectiveness of policy communication when background information is also provided. This feature of our survey is a key innovation relative to previous research that studies the effects of information provision on expectations such as Coibion et al. (2020) that treat households with forward guidance by the Federal Reserve. Treatments about the path of future interest rates as in Coibion et al. (2020) allows clean identification of

treatments on revisions of expectations but possibly does not provide all necessary information to policy-makers that are interested in the response of households to *endogenous* policy actions. In the context of forward guidance for example, one might want to study the effect of providing information on future interest rates with conditional statements typically used by the Federal Reserve such as ‘until the unemployment rate falls below x%’. We build on this work by providing real-world information treatments that explicitly identify endogenous policy actions.

The specific, truthful policy treatments that we consider are as follows. The monetary policy treatment is given by the following quote:

“In response to the COVID-19 crisis, the Federal Reserve reduced short-term interest rates to zero and implemented additional measures similar to what it did during the last recession.”

The fiscal policy treatment is given by:

“In response to the COVID-19 crisis, the Congress approved a \$2 trillion package to stimulate the economy, including one-time \$1,200 check per person (plus another \$500 per child) to persons with annual income less than \$75,000. Couples who filed jointly and made less than \$150,000 will get a one-time \$2,400 check (plus another \$500 per child).”

The joint monetary and fiscal treatment is:

“In response to the COVID-19 crisis, the Federal Reserve reduced short-term interest rates to zero and implemented additional measures similar to what it did during the last recession. In addition, the Congress approved a \$2 trillion package to stimulate the economy, including one-time \$1,200 check per person (plus another \$500 per child) to persons households with annual income less than \$75,000. Couples who filed jointly and made less than \$150,000 will get a one-time \$2,400 check (plus another \$500 per child).

While the health recommendation treatment is:

“The U.S. government health officials encourage social distancing, avoiding discretionary travel, and working remotely. Three in four Americans are in areas with local governments declaring “shelter in place” (lockdown).”

If provided, these information bits about policy responses appear immediately after the WHO health facts. Note that both the fiscal and monetary treatments (as well as the joint monetary-fiscal treatments) explicitly tie the policy response to the COVID-19 crisis, indicating that these are *endogenous* policy responses unlike the *exogenous* shocks proposed to households in Andre et al. (2019). Consistent with random assignment

of treatments, we find (Appendix Table 1) that treatment status is not predicted by personal/household characteristics.

III. Econometric framework

To measure the effect of policy communications on households' beliefs and plans, we use the following specification as a baseline:

$$E_i^{post}(X) - E_i^{prior}(X) = \sum_{s=1}^S \beta_s \times Treatment_{s,i} + error, \quad (1)$$

where i indexes respondents, X is an outcome variable, $E_i^{post}(\cdot)$ and $E_i^{prior}(\cdot)$ are post-treatment (“posterior”) and pre-treatment (“prior”) beliefs of respondent i about variable X , $Treatment_{s,i}$ is an indicator variable equal to one if respondent i received treatment s and zero otherwise. The β_s coefficients provide an estimate of the average effect of each treatment on the revision in beliefs. Although one may expect that β for the control group is equal to zero, differences in the wording of the pre- and post-treatment questions, mean reversion in the responses, and the like can generate non-zero belief revision for the control group. We will therefore report $\hat{\beta}$ for a treatment group relative to $\hat{\beta}$ for the control group.

While specification (1) provides a useful summary of information treatments on the beliefs, it may give an incomplete picture of how treatments influence beliefs if the provided signals happen to be in the middle of the distribution for prior beliefs. For example, if households believe on average that inflation will be 2 percent, treating households with a 2-percent inflation projection prepared by professional forecasters will not move the average belief in the treatment group but it should make the posterior distribution more concentrated on 2 percent by moving beliefs of those who initially predicted inflation other than 2 percent closer to 2 percent after the treatment. While our treatments do not have a numeric forecast and so it is hard to assess whether provided information is in the middle or tail of prior distributions, we can nonetheless utilize an alternative specification to measure this more subtle adjustment of beliefs:

$$E_i^{post}(X) = \sum_{s=1}^S \beta_s \times Treatment_{s,i} + \sum_{s=1}^S \gamma_s \times Treatment_{s,i} \times E_i^{prior}(X) + error. \quad (2)$$

In this specification, β_s and γ_s measure “level” and “slope” effects of treatments respectively. If a signal happens to be above (below) the average pre-treatment belief, β should be positive (negative). As discussed in e.g. Coibion et al. (2020), estimated slopes should be smaller for treated groups relative to the control group if respondents are Bayesian learners. If there is no difference in slopes between control and treatment groups, then the provided message is not informative for households. We will report $\hat{\beta}$ and $\hat{\gamma}$ for a treatment group relative to $\hat{\beta}$ and $\hat{\gamma}$ for the control group.

Specifications (1) and (2) utilize pre-treatment and post-treatment beliefs but some survey responses are available only at the post-treatment stage. For these responses, we employ the following specification:

$$E_i^{post}(X) = \sum_{s=1}^S \beta_s \times Treatment_{s,i} + error. \quad (3)$$

Given that treatment assignment is random, specifications (1)-(3) do not require controls to account for respondents' heterogeneity to estimate treatment effects. Including controls only reduces standard errors and does not make material impact on our estimates (results are available upon request). To keep our analysis simple, we thus do not include controls in the reported results. To attenuate the adverse effects of extreme survey responses and, more generally, influential observations on our estimates, we winsorize data at the bottom and top 1 percent, drop implausible values (e.g., mortgage rates greater than 40 percent), and estimate specifications (1)-(3) using Huber (1964) robust regressions. Huber-robust regressions differ from using winsorized data in standard regressions because they also take correlations across variables into account.

IV. Results

Using these empirical specifications, we now turn to how treatments affect households' beliefs and plans. We discuss each of these in turn.

A. Macroeconomic expectations

Modern macroeconomic theory emphasizes the central role of expectations and the power of communicating policy actions to economic agents. Indeed, credible announcements about current or future policy are predicted to have large effects on perceptions and expectations about macroeconomic variables and thus influence firms' and households' choices. We now examine whether informing households about COVID-19 facts as well as policy actions taken in response by various government bodies can move households' expectations.

Table 3 reports results for specification (1). We generally find that the average size of belief revisions in the control group is economically small with the only exception being inflation expectations (column 1). The large revision for inflation expectations reflects the fact that the pre-treatment expectations are elicited via a distribution question with pre-set upper and lower bounds at +/-12% similar to the wording in the New York Fed Survey of Consumer Expectations, while post-treatment expectations are collected as point predictions.

We find that informing households about COVID-19 recovery (opposite of fatality) and contagion rates (treatment T6) generally has no material effect on expectations for inflation (column 1), the unemployment rate (columns 2 and 3), mortgage rates (columns 4-7) or households' expected income

growth. Note that the vast majority of households is overly skeptical about the COVID-19 recovery and contagion rates and therefore this treatment presents a clear, one-sided surprise for households. While the estimated coefficients are statistically significant for the current mortgage rate and expected household income growth, the economic significance of these effects is very small. For example, this information treatment lowers households' expected income growth by 0.094 percentage point, which is small relative to the standard deviation of the belief revision in the control group (0.906 percent point; column 8, bottom row, Table 3) by an order of magnitude. Our results are line with the findings in Binder (2020) and Fetzer et al. (2020) who also document that randomized provision of COVID-19 health facts has at most a very modest (if any) effect on economic (personal or aggregate) expectations. These results are consistent with two views. One is that households are unable to interpret health facts in a macroeconomic context, that is, they cannot draw a connection between the severity of COVID-19 and macroeconomic outcomes. The second viewpoint is that households believe that COVID-19 does not influence economic outcomes. This alternative view is unlikely to be empirically relevant. For example, Coibion, Gorodnichenko and Weber (2020) document that households attribute pervasive, large losses in their income and wealth to the COVID-19 outbreak and that they are highly concerned about their financial situation because of the COVID-19 pandemic. Thus, we interpret this result as implying that households are unable to quickly draw connections between the severity of the disease and macroeconomic outcomes. One implication of this is that policy responses which focus on communicating about the disease and its health consequences cannot be expected to significantly affect households' economic expectations. Health communications cannot be a substitute for economic communications unless it is clearly communicated how these health facts are relevant for individuals and the broader economy.

Appraising households of the Federal Reserve's actions (treatment T2) *lowers* inflation expectations by 0.7 percentage point. While one might have expected to see an increase in households' inflation expectations in response to this policy, our finding is consistent with Coibion et al. (2020) documenting a positive comovement of inflation and interest rate expectations unconditionally and in response to treatments with numeric inflation/interest rate information. Specifically, when the Fed lowers interest rates, households lower their inflation expectations, which could capture an "information effect" of policy announcements. Also in agreement with Coibion et al. (2020), our estimates suggest that households do not believe in the ability of the Fed to influence the unemployment rate: treatment T2 has no discernable effect on the expected unemployment rate in either the short- or long-run (columns 2 and 3 in Table 3 respectively). Nor do we find any economic effect on the mortgage rate expectations: the estimated coefficients are close to zero. This result suggests that, given how low mortgage rates were by historical standards before the COVID-19 crisis, households may view the Fed's power to lower mortgage rate even further as limited. Finally, households do not observe a connection between monetary policy and their income growth. This latter results suggests that

indirect effects of monetary policy on income expectations are weak in household surveys contrary to theoretical predictions in Heterogeneous Agent New Keynesian (HANK) models.

In contrast, informing households about the fiscal policy response (“Congress actions”; treatment T3) raises inflation expectations modestly by 0.3 percentage points. Interestingly, this treatment also raises short-run expectations for the unemployment rate (column 2) by a similar magnitude. This positive comovement of inflation and unemployment (“stagflation”) is consistent with Kamdar (2018): households tend to view high inflation as positively associated with high unemployment. It is also in line with the simple affective heuristic proposed in Andre et al. (2019). However, this fiscal policy action does not move households’ longer-run expectations for the unemployment rate (column 3) or mortgage rate expectations (columns 4-7). Strikingly, although the fiscal policy involves a direct transfer to households (which we provide in the treatment) and the vast majority of households participating in the survey qualify for these transfers, households do not view this policy as having a materially important effect on their expected income growth. In fact, the estimated coefficient is negative (column 8), again suggesting a potential information effect.

When we tell households about the fiscal *and* monetary policy response (treatment T4), the estimated responses are roughly a mix of responses to treatments T2 and T3. We do not observe any evidence suggesting that the policies reinforce each other. Similar to T2 and T3, treatment T4 does not generate economically large responses of macroeconomic expectations. This finding is particularly remarkable given that policy responses are enormous by historical standards and yet the American public treats these as largely irrelevant for the economy.

Treating people with information about good practices and the share of people under shelter-in-place orders (treatment T5) similarly has no noticeable effect on macroeconomic expectations. One might expect this treatment to have a pronounced effect on macroeconomic expectations if a) households were not fully aware of how nationally pervasive lockdown orders were at the time and b) if households believed that lockdowns significantly affected economic activity. While we do not observe individuals’ prior beliefs about the share of the U.S. population under lockdown at the time and therefore cannot test a) directly, the fact that households were so uninformed about the recovery rates and transmission rates of the disease suggests that they were unlikely to be significantly more informed about lockdown policies. Thus, we interpret our finding of no effect from the health policy information treatment on households’ macroeconomic expectations as indicative that they did not perceive lockdowns as very costly in economic terms.

One might anticipate that combining information on policy responses with health information on the severity of COVID-19 (treatments T7-T10) could alter how households translate policy responses into macroeconomic expectations. While we fail to find any marked difference in the responses of expectations

for unemployment, mortgage rates, and income growth, we do observe several interesting facts for inflation expectations. First, the effect of the Fed’s actions is considerably mitigated: when households were informed about the Fed policy response, they lowered their inflation expectations but when households are also informed that COVID-19 is not as bad as they thought, the deflationary effect of the Fed policy response is largely gone (and is similar to the effect in response to information about only the recovery and contagion rates of COVID-19). Second, while the fiscal policy response (“Congress actions”) raised inflation expectations, combining this response with health information lowers inflation expectations (although the effect is not statistically significant). Finally, providing information about COVID-19 recovery/contagion rate and information about CDC recommendations and the share of people under lockdown orders *lowers* inflation expectations. These results suggest that the broader context is important for inflation but other macroeconomic expectations are largely insensitive to information about health facts or policy responses.

To further explore the effect of treatments on macroeconomic expectations, we report estimated effects for specification (2) in Table 4 and visualize the distribution of post- and pre-treatment beliefs in Appendix Figures 1-7. Column (1) of the table shows the results for inflation expectations. Note that the slope for the control group is 0.3 (rather than approximately 1) and the average revision (intercept) is 3.9 (rather than 0) because of the differences in the pre-treatment and post-treatment questions eliciting inflation expectations (distribution vs. point prediction). Relative to this benchmark, we find that the estimated “level” effects (i.e., coefficients β in specification (2)) tend to be negative. These results suggest that the received signals are interpreted by households as providing information that is below the average initial beliefs of households. At the same time, the slope effects tend to be close to zero in economic terms although some coefficients are statistically different from zero. Therefore, the treatments generally shift the distribution of inflation expectations to the left without a discernable change in the cross-sectional variation in expectations. Interestingly, while some information treatment may be conceived as disinflationary, the monetary and fiscal policies that employed a wide arsenal of tools to fight the COVID-19 crisis are hardly disinflationary by themselves. This reaction to treatments thus appears to be consistent with significant information effects, that is, households could interpret strong policy responses as signaling a confirmation of an economic catastrophe.

Short-term unemployment rate expectations (column (2) of Table 4) show little “level” or “slope” reaction to the treatments. In contrast, longer-term expectations (column (3)) have some variation in the “level” effect ranging from 0.762 percentage point increase for treatment T10 (COVID facts and health information) to -0.364 percentage point decrease for treatment T5 (COVID facts only). The slope effects are generally negative suggesting some compression in the post-treatment disagreement across respondents. Consistent with the results in Table 3, we find no material “level” or “slope” response in expectations for mortgage rates (columns (4)-(7) of Table 4). Similarly, there is generally little variation in response to treatments for households’ income growth (column (8) of Table 4).

In summary, our results suggest that while inflation expectations have some limited sensitivity to information treatments, other macroeconomic expectations (especially, expectations for mortgage rates) do not exhibit any discernable reaction to the provided information. Given that households are (on average) poorly informed about macroeconomic policies or health facts and that the benefits of having access to information about the enormous policy responses as well as health facts are predicted to be high by mainstream macroeconomic theory, this weak (if any) reaction to the information treatments is indeed striking.

B. Labor market expectations

We now consider how these treatments affect households' expectations for their labor market outcomes, specifically the probability of keeping their job if employed and the probability of finding a job if unemployed. Because we do not have pre-treatment measures of these subjective probabilities, we use specification (3) to estimate the effect of information treatments on perceived labor market outcomes. We find (Table 5) that information treatments do not have a materially important effect on the subjective probability of losing a job (column (1)): the estimated coefficients are small (fractions of a percentage point) and generally not significant statistically. In contrast, when it comes to how the unemployed perceive the probability of finding a job, the provision of COVID-19 facts (treatment T6) raises this perceived probability by 20 percentage points, a large effect. Interestingly, any other treatment, including treatments where information about COVID-19 facts is combined with information on policy responses, generate no statistically significant effect on the perceived probability of finding a job. This pattern appears to suggest two conclusions. First, households do not view policy responses as having an important effect on their labor market outcome. Second, providing basic COVID-19 facts appears to be helpful in making unemployed households less pessimistic about their labor market prospects—thus suggesting some role for information campaigns highlighting public health implications of the COVID-19 outbreak—but the information effect in the policy response seems to offset this positive effect.

C. Planned consumer spending

Coibion, Gorodnichenko and Weber (2020) and Dietrich et al. (2020) document that, during the COVID-19 crisis, households significantly downgraded their plans to buy durable goods such as houses/apartments, cars, and large appliances. In part, the policy response to the crisis was aimed to make households more enthusiastic about purchases of durable goods. For example, policy interest rates were cut down to zero and new rounds of quantitative easing reduced mortgage rates thus making the financial cost of durable purchases more enticing. However, it remains unclear to what extent these policies turned the tide of pessimism and

encouraged purchases of new goods.³ To gauge the influence of these policies on consumer spending, we asked respondents at the post-treatment stage to report whether it is a good time to buy a durable good. Specifically, respondents can report their beliefs on a 1 (very good time) to 5 (very bad time) scale.

Using specification (3), we find (Table 6) that information treatments generally make households more positive about buying a house (the coefficients are negative) but the magnitude of the response is quite small. The largest responses are approximately -0.1 to -0.15 while the scale varies from 1 to 5 and the standard deviation of scores in the control group is approximately one. The views for car or appliance purchases in response to the treatments are more mixed with some treatments resulting in less positive views and some treatment resulting in more positive views. However, the economic magnitudes remain rather small. These results suggest that although informing households about policies or health facts is somewhat helpful in improving consumer sentiment, the effects are modest at best, thus again pointing to limited effectiveness of information provision on economic outcomes.

D. Policy approval

While consumers seem to not understand the economic implications of the policy responses, they may still appreciate the reaction of various government bodies to the crisis. To measure this potential effect, we ask respondents to rate the actions of the President, the Congress, the Federal Reserve, and U.S. health officials by answering the following question on a scale running from 0 (not helpful at all) to 10 (extremely helpful): “How much do you trust the actions taken by [GOVERNMENT BODY] will be helpful for you? And the overall American population?” Note that we ask households to assess the value of the actions for them personally and for the country as a whole so that we can get a metric—however imperfect—about the ability of households to grasp partial equilibrium and general equilibrium effects.

For the control group, U.S. health officials have the highest scores (the averages are 6.3 for the country and 6.1 for the respondent) followed by the Fed (5.6 for the country and 5.0 for the respondent), the President (4.9 for the country and 4.6 for the respondent), and then Congress (4.5 for the country and 4.3 for the respondent). Households consistently perceive policy institutions as being better for the country than for them personally. At the same time, we observe a high correlation (ranging from 0.7 for the Fed to 0.9 for the President) between responses for personal and country-level implications and much weaker correlation between assessment for various government bodies (e.g., the correlation between personal effect from the President’s actions and the Fed’s actions is 0.3), thus suggesting that households differentiate actions of various government branches during the crisis.

³ At the same time, historically low rates did generate a wave of mortgage refinances. According to information from the Mortgage Bankers Association, refinances increased to \$1.5 trillion as of early May, a 51% jump compared to 2019.

Information treatments have highly heterogeneous effects on these scores. Using specification (3), we find (columns (1) and (2) of Table 7) that information about actual policies does not improve approval of the President’s actions. If anything, treatments T2 (monetary policy) and T4 (monetary and fiscal policy) reduce the approval of the President’s actions. These results are consistent with the view that respondents generally have strong priors about the President. In contrast, *every* treatment raises the appreciation of Congress. This includes treating households with information about monetary policy which is not controlled (at least directly) by the Congress. The Federal Reserve is viewed less positively when households are informed about monetary policy (treatment T2) but the Fed gets some credit for fiscal policy. The views on the actions of U.S. health officials are weakly improved by the treatments when respondents are informed about basic COVID-19 facts. The latter observation suggests that when households are told that COVID-19 is not as contagious and fatal as they think initially, they tend to credit U.S. health officials.

While treatment effects are statistically significant, the economic significance of the effects varies. For example, treatments can materially improve the image of Congress while views on the President’s actions appear to be rather unresponsive to the provided information. Thus, similar to the responses of macroeconomic expectations, consumer expenditure plans, and labor market expectations, the perceptions of policy effectiveness show some reaction to information treatments but the effects range from zero to modest. This is again consistent with the notion that the general public is rather confused about the responsibilities of various government bodies as well as implications of the bodies’ actions. Specifically, fiscal and monetary policies get fairly little credit.

V. Discussion and Concluding Remarks

Understanding the way in which policy actions affect the economy has long been a challenge for macroeconomists. Standard models imply that households’ expectations play a large role in driving these effects, as households incorporate the announcements into their expectations and their decisions. Our results challenge this key mechanism: we find little evidence that even large policy decisions have much of an effect on households’ economic expectations or their planned actions. This result obtains for both monetary and fiscal policies during the COVID-19 crisis, and extends to some of the health recommendations made by the federal government as well.

This result is in the same spirit as recent work documenting pervasive inattention on the part of households and firms to monetary policy actions and announcements. However, it goes beyond inattention because we directly inform participants about recent and dramatic policy decisions, yet even this directly provided information has essentially no effect on household beliefs. Perhaps, cognitive constraints as modeled in Gabaix (2019), Woodford (2018), Farhi and Werning (2019), and Angeletos and Lian (2018) and the singular nature of COVID-19 limit the ability of households to reason through the implications of

the pandemic and policy responses (see e.g. Iovino and Sergeyev (2020) for an application of this notion to quantitative easing) and, as a result, inattention and cognitive constraints reinforce each other in dampening the response of beliefs and hence economic outcomes to policy announcements.

Our results are also distinct from and complementary to Andre et al. (2019) who study how households respond to *exogenous* fiscal and monetary policy actions: we explicitly describe the policy treatments as an *endogenous* response to the COVID19 crisis. Taken together, these results point toward a world in which policy shocks have non-trivial effects on household expectations and actions while systematic policy decisions have much smaller (if any) effects, which is the complete opposite of what we tend to observe in standard macroeconomic models in which systematic policy is close to all-powerful while policy shocks have much smaller effects. We view this as a fundamental challenge to workhorse models used by macroeconomists in which the rapid and endogenous adjustment of household expectations is a key driver of macroeconomic outcomes.

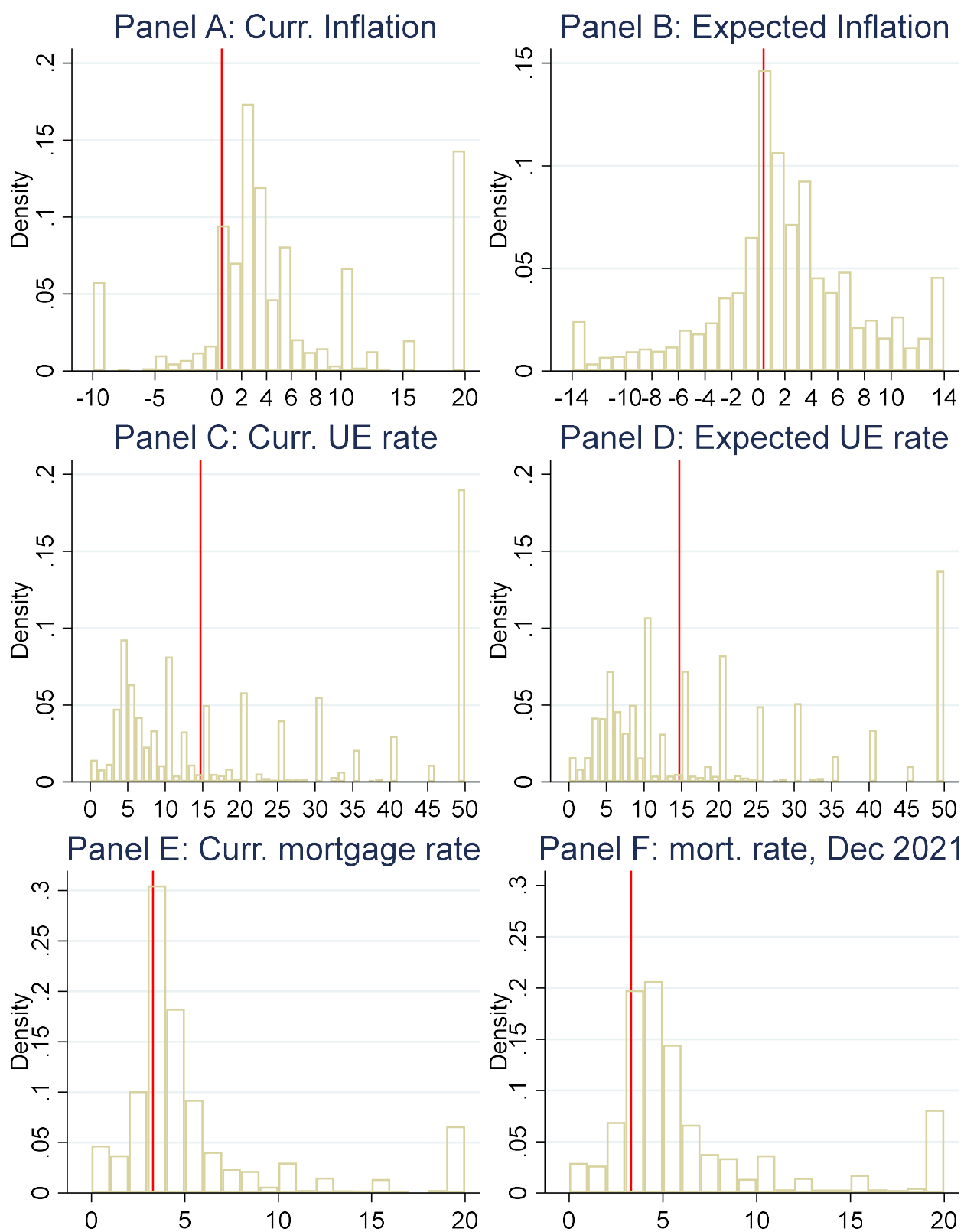
References

- Andre, Petr, Carlo Pizzinelli, Christopher Roth and Johannes Wohlfart, 2019. "Subjective Models of the Macroeconomy: Evidence from Experts and a Representative Sample," Manuscript.
- Angeletos, George-Marios, and Chen Lian. 2018. "Forward Guidance without Common Knowledge," *American Economic Review* 108 (9): 2477-2512.
- Armona, Luis, Andreas Fuster, and Basit Zafar, 2019. "Home Price Expectations and Behavior: Evidence from a Randomized Information Treatment," *Review of Economic Studies* 86(4): 1371-1410.
- Bachmann, Rudi, Tim Berg, and Eric Sims, 2015. "Inflation Expectations and Readiness to Spend: Cross-Sectional Evidence," *American Economic Journal: Macroeconomics* 7(1): 1-35.
- Binder, Carola. 2020. "Coronavirus Fears and Macroeconomic Expectations," forthcoming in *Review of Economics and Statistics*.
- Cavallo, Alberto, Guillermo Cruces, and Ricardo Perez-Truglia, 2017. "Inflation Expectations, Learning, and Supermarket Prices: Evidence from Survey Experiments," *American Economic Journal: Macroeconomics* 9(3): 1-35.
- Campbell, Jeff, Charles Evans, Jonas Fisher and Alejandro Justiniano, 2012. "Macroeconomic Effects of Federal Reserve Forward Guidance," *Brookings Papers on Economic Activity* 44(1): 1-80.
- Coibion, Olivier, Yuriy Gorodnichenko, and Saten Kumar, 2018. "How Do Firms Form Their Expectations? New Survey Evidence," *American Economic Review* 108(2018), 2671-2713.
- Coibion, Olivier, Yuriy Gorodnichenko, and Michael Weber, 2019. "Monetary Policy Communications and their Effects on Household Inflation Expectations," NBER Working Paper 25482.

- Coibion, Olivier, Dimitris Georgarakos, Yuriy Gorodnichenko, and Maarten van Rooij, 2019. “How Does Consumption Respond to News about Inflation? Field Evidence from a Randomized Control Trial,” NBER Working Paper 26106.
- Coibion, Olivier, Dimitris Georgarakos, Yuriy Gorodnichenko, and Michael Weber, 2020. “Forward Guidance and Household Expectations,” NBER Working Paper 26778.
- Coibion, Olivier, Yuriy Gorodnichenko, and Michael Weber, 2020. “The Cost of the Covid-19 Crisis: Lockdowns, Macroeconomic Expectations, and Consumer Spending,” NBER Working Paper 27141.
- Coibion, Olivier, Yuriy Gorodnichenko, Saten Kumar, and Mathieu Pedemonte, 2020. “Inflation Expectations as a Policy Tool” *Journal of International Economics* 124(May): Article 103297.
- D’Acunto, Francesco, Daniel Hoang, and Michael Weber, 2020a. “Managing Households’ Expectations with Unconventional Policies,” Manuscript.
- D’Acunto, Francesco, Daniel Hoang, Maritta Paloviita and Michael Weber, 2020b. “Human Frictions in the Transmission of Economic Policy,” Manuscript.
- D’Acunto, Francesco, Ulrike Malmendier, and Michael Weber, 2020c. “Traditional Gender Norms Distort Women’s Economic Expectations,” Manuscript.
- D’Acunto, Francesco, Ulrike Malmendier, Juan Ospina, and Michael Weber, 2020d. “Exposure to Grocery Prices and Inflation Expectations,” Manuscript.
- D’Acunto, Francesco, Daniel Hoang, Maritta Paloviita, and Michael Weber, 2019. “Cognitive Abilities and Inflation Expectations,” *AEA Papers and Proceedings* 109, 562-66.
- Dietrich, Alexander M., Keith Kuester, Gernot J. Muller, and Raphael S. Schoenle, 2020. “News and uncertainty about COVID-19: Survey evidence and short-run economic impact,” manuscript.
- Farhi, Emmanuel, and Iván Werning, 2019. “Monetary Policy, Bounded Rationality, and Incomplete Markets.” *American Economic Review* 109 (11): 3887-3928.
- Fetzer, Thiemo, Lukas Hensel, Johannes Hermle, Christopher Roth, 2020. “Perceptions of Contagiousness and Mortality of COVID-19 Shape Economic Sentiment,” manuscript.
- Gabaix, Xavier. 2019. “A Behavioral New Keynesian Model,” manuscript.
- Huber, Peter J., 1964. “Robust estimation of a location parameter,” *Annals of Mathematical Statistics* 35: 73–101.
- Iovino, Luigi, and Dmitriy Sergeyev, 2018. “Central Bank Balance Sheet Policies Without Rational Expectations,” CEPR Discussion Paper 13100.
- Kamdar, Rupal, 2018. “The Inattentive Consumer: Sentiment and Expectations” Manuscript.
- Lamla, Michael, and Dmitri Vinogradov, 2019. “Central bank announcements: big news for little people?” *Journal of Monetary Economics* 108(C), 21-38.

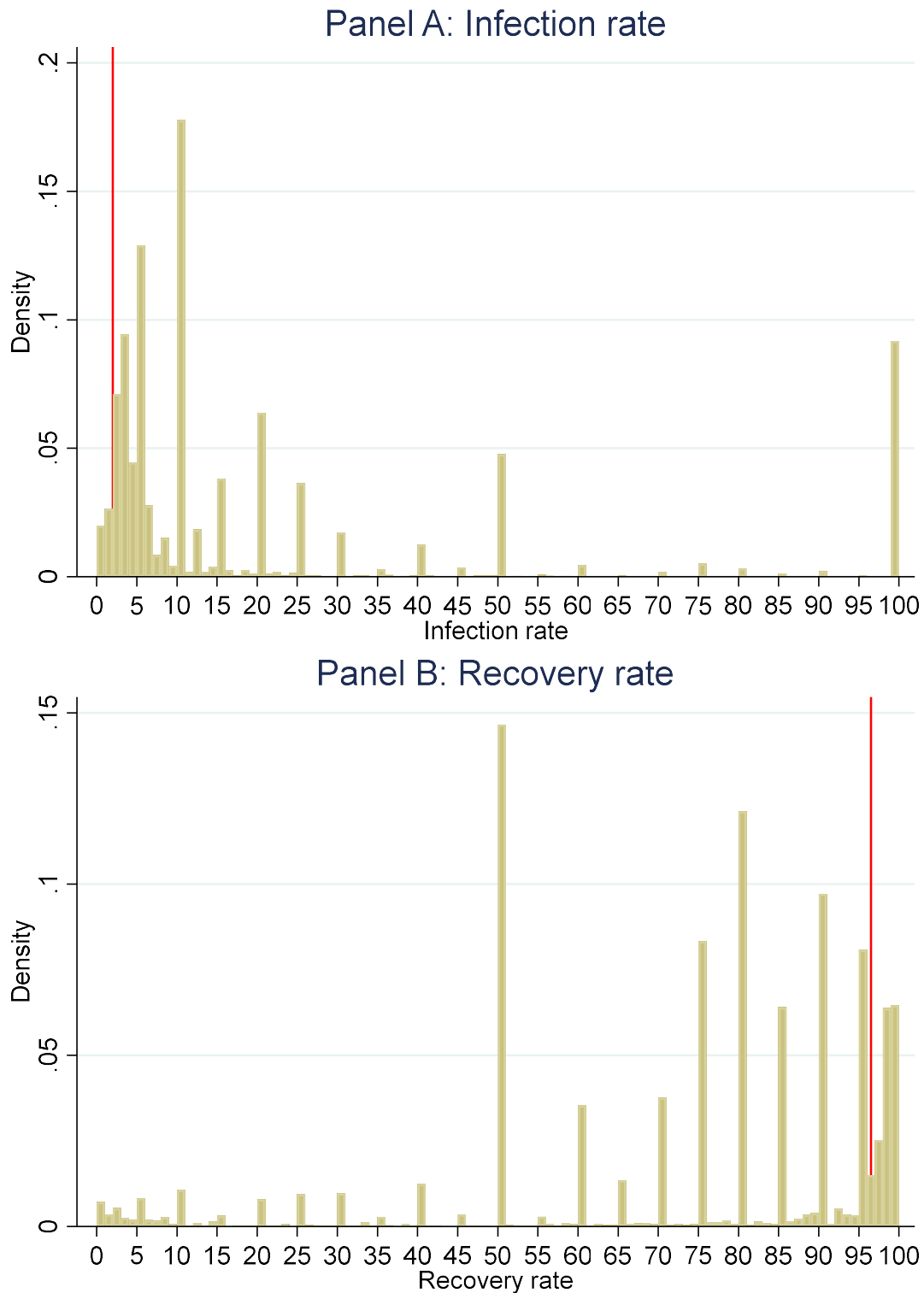
- Woodford, Michael, 2005. "Central bank communication and policy effectiveness," Proceedings - Economic Policy Symposium - Jackson Hole, Federal Reserve Bank of Kansas City, issue Aug, pages 399-474.
- Woodford, Michael, 2018. "Monetary Policy Analysis When Planning Horizons Are Finite," *NBER Macroeconomics Annual* 2018(33): 1-50.

Figure 1. Perceptions and expectations



Notes: Each panel plots the distribution of pre-treatment beliefs in the Nielsen household panel. The red, vertical line shows the current value of the corresponding variable at the time of the survey. Panels A, C, and E report perceptions of current values. Panels B, D, and F report one-year ahead forecasts.

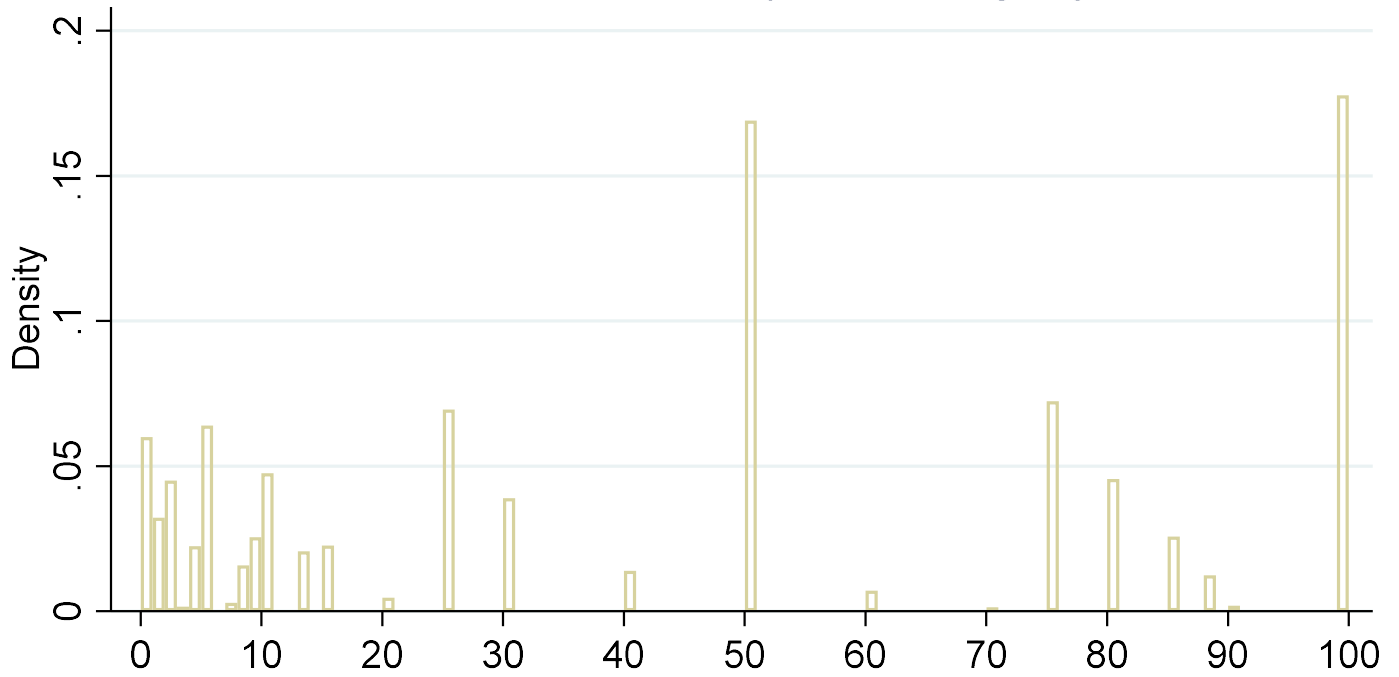
Figure 2. Distribution of beliefs about how contagious and fatal the COVID19 virus is.



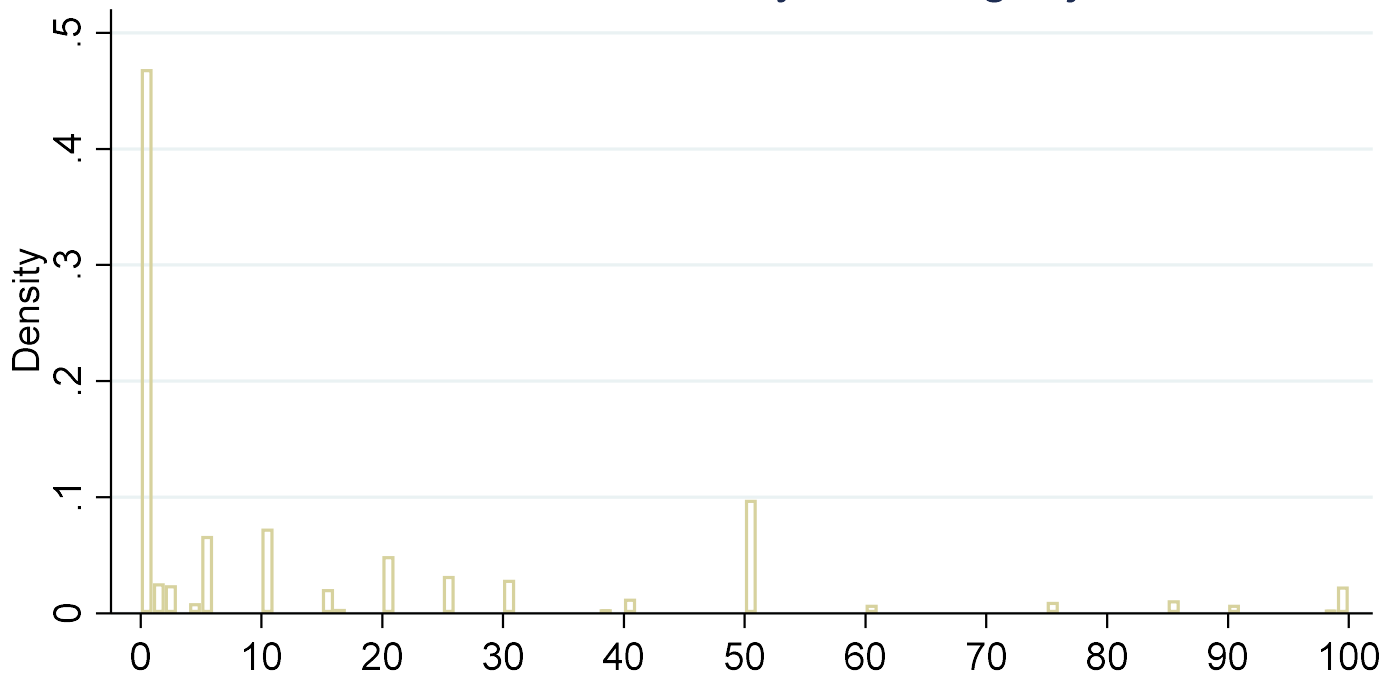
Notes: Panel A: Infection rate is measured as the response to the following question, “Think of a person who has the coronavirus. How many non-infected people do you think will catch the virus from this person?”. The response is winsorized at 100. Panel B: the recovery rate is measured as the response to the following question, “If a person contracts coronavirus, what do you think is the probability that this person recovers from the virus? Please enter a number between 0 (Do not recover) and 100 (Recover for sure)”. In each panel, the red, vertical line shows the estimates provided by the World Health Organization.

Figure 3. Subjective probabilities for labor market transitions.

Panel A: Probability of finding a job



Panel B: Probability of losing a job



Notes: The histograms plot distribution of perceived probabilities to find a job (Panel A) and to lose a job (Panel B). Both panels report data for the control group only. Panel A is only for people who are unemployed (don't have a job and look for a job). Panel B is only for people who have a job.

Table 1. Descriptive statistics.

	Huber robust moments		Raw moments		
	Mean	St. Dev	Mean	Median	St. Dev
	(1)	(2)	(3)	(4)	(5)
Pre-treatment data					
Perceived inflation, previous 12 months	2.61	2.47	4.67	3.00	10.00
Expected inflation, implied mean, 12-month ahead	1.66	3.26	1.70	1.29	5.81
Perceived unemployment rate, current	9.79	6.77	12.66	10.00	9.58
Expected unemployment rate, 12-month ahead	10.64	6.53	13.10	10.00	9.04
Expected unemployment rate, in 3-5 years	6.08	3.54	9.50	6.00	7.93
Expected household income growth, 12-month ahead	-	-	-2.36	0.00	14.39
Perceived and expected mortgage rate for a “person like you”					
Current	3.57	1.08	5.46	3.80	5.64
End of 2020	3.55	1.38	5.79	4.00	6.11
End of 2021	4.09	1.42	6.24	4.00	6.00
Next 5-10 years	4.61	1.56	7.25	5.00	7.98
Post-treatment data					
Expected inflation, point prediction, 12-month ahead	3.93	3.68	6.64	4.00	9.57
Expected unemployment rate, end of 2020	10.61	6.54	13.20	10.00	9.18
Expected unemployment rate, next 3-5 years	5.32	2.88	8.93	5.00	7.93
Expected household income growth, 12-month ahead	0.52	1.71	1.04	0.00	17.77
Perceived and expected mortgage rate for a “person with excellent credit”					
Current	3.63	1.21	5.62	4.00	5.97
End of 2020	3.72	1.47	5.96	4.00	6.16
End of 2021	4.16	1.41	6.32	4.00	6.10
Next 5-10 years	4.57	1.53	6.57	5.00	5.93

Notes: pre-treatment expected inflation (12 months ahead) is computed as mean implied from the reported probability distribution over a range of bins. All other measures of inflation are reported as point predictions. Perceived and expected mortgage rates are elicited for “a person like you” at the pre-treatment stage and for “someone with excellent credit” at the post-treatment stage. Moments in columns (1) and (2) are computed using the Huber-robust method. Because many households report zero changes in household income, the Huber method to compute moments robust to outliers does not converge and hence robust moments are not available for pre-treatment expectations for household income growth.

Table 2. Summary of treatments

Treatment	Health information is provided (basic COVID-19 facts about recovery and contagion rates)	Policy response is provided
T1 (control)	No	No
T2	No	Fed actions
T3	No	Congress actions
T4	No	Fed and Congress actions
T5	No	Health officials (CDC recommendations and the prevalence of shelter-in-place orders)
T6	Yes	No
T7	Yes	Fed actions
T8	Yes	Congress actions
T9	Yes	Fed and Congress actions
T10	Yes	Health officials (CDC recommendations and the prevalence of shelter-in-place orders)

Table 3. Macroeconomic and household-level expectations.

Treatment	Health info is provided	Policy response is provided	Inflation	Unemployment rate		Mortgage rate			Household income growth	
				Short-run	Long-run	Current	End of 2020	End of 2021		In 3-5 years
			(1)	(2)	(3)	(4)	(5)	(6)	(7)	(8)
T1	No	No (Control group)	2.442*** (0.138)	-0.024 (0.101)	-0.300*** (0.044)	0.003* (0.002)	0.131*** (0.017)	0.064*** (0.020)	-0.007 (0.017)	0.124*** (0.023)
		<i>Relative to control group</i>								
T2	No	Fed actions	-0.691*** (0.190)	0.166 (0.140)	-0.034 (0.064)	-0.003 (0.002)	-0.084*** (0.025)	0.032 (0.029)	0.019 (0.024)	0.011 (0.033)
T3	No	Congress actions	0.360* (0.194)	0.348** (0.141)	0.089 (0.063)	-0.003 (0.002)	-0.032 (0.024)	0.025 (0.028)	-0.002 (0.023)	-0.076** (0.031)
T4	No	Fed and Congress actions	-0.291 (0.191)	0.396*** (0.140)	-0.064 (0.062)	-0.005** (0.002)	-0.074*** (0.024)	0.023 (0.029)	-0.003 (0.024)	-0.006 (0.033)
T5	No	Health officials	0.179 (0.195)	0.280** (0.138)	0.016 (0.063)	-0.005** (0.002)	-0.008 (0.025)	0.013 (0.029)	0.008 (0.023)	-0.043 (0.033)
T6	Yes	No	-0.183 (0.190)	-0.056 (0.138)	0.061 (0.060)	-0.006*** (0.002)	-0.004 (0.024)	0.032 (0.028)	-0.004 (0.023)	-0.094*** (0.030)
T7	Yes	Fed actions	-0.137 (0.196)	0.250* (0.142)	-0.081 (0.063)	-0.002 (0.002)	-0.062** (0.025)	-0.056* (0.029)	-0.031 (0.025)	0.020 (0.034)
T8	Yes	Congress actions	-0.253 (0.190)	-0.021 (0.139)	-0.060 (0.065)	-0.006*** (0.002)	0.042* (0.025)	0.053* (0.029)	0.020 (0.023)	-0.106*** (0.032)
T9	Yes	Fed and Congress actions	-0.000 (0.192)	0.050 (0.142)	-0.182*** (0.063)	-0.004* (0.002)	-0.068*** (0.024)	-0.016 (0.029)	-0.038 (0.024)	0.033 (0.034)
T10	Yes	Health officials	-0.371** (0.186)	-0.035 (0.142)	-0.022 (0.063)	-0.001 (0.002)	-0.027 (0.024)	-0.002 (0.029)	-0.010 (0.024)	-0.014 (0.033)
Observations			12,248	11,716	11,412	8,433	11,389	11,639	11,302	9,351
R-squared			0.003	0.002	0.002	0.001	0.003	0.002	0.001	0.003
St.Dev. of dep. variable in control group			4.912	3.869	1.687	0.0720	0.645	0.743	0.640	0.906

Notes: The table reports Huber-robust estimation of specification (1) for macroeconomic expectations. All dependent variables are measured in percent. Revisions in inflation expectations are measured as post-treatment inflation forecast prediction minus pre-treatment implied-mean inflation forecast. Inflation expectations is at the one-year horizon. Revisions in short-run unemployment expectations are measured as post-treatment unemployment rate expected at the end of 2020 minus pre-treatment one-year-ahead forecast of the unemployment rate. Revisions in long-run unemployment expectations are measured as post-treatment unemployment rate expected at the next 3-5 years minus pre-treatment unemployment rate expected in the 3-5 years. Revisions in mortgage rate expectations (perceptions) are measured as post-treatment expected mortgage rate for “a person with excellent credit” minus pre-treatment expected mortgage rate for “a person like you”. Revision in household expected income is measured as post-treatment expectations (one year ahead; “How much higher or lower do you think your household’s total net income will be over the next twelve months compared to the last twelve months? Please provide an answer in percentage terms.”) minus pre-treatment expectations (one year ahead; “How much higher or lower do you think your household’s total after-tax (i.e., ‘take home’) income will be over the next twelve months compared to the last twelve months? Please provide an answer in percentage terms.”). Robust standard errors are in parentheses. ***, **, * denote statistical significance at 1, 5, and 10 percent levels.

Table 4. Macroeconomic and household-level expectations (slope specification).

	Health info is provided	Policy response is provided	Inflation	Unemployment rate		Mortgage rate				Household inc. growth
			(1)	Short-run	Long-run	Current	End of 2020	End of 2021	In 3-5 years	
Intercept	No	No (Control group); T1	3.944*** (0.122)	1.496*** (0.157)	0.372*** (0.074)	0.002 (0.001)	0.252*** (0.028)	0.176*** (0.034)	0.104*** (0.032)	0.144*** (0.027)
	<i>Relative to control group</i>									
	No	Fed actions; T2	-0.668*** (0.165)	-0.311 (0.207)	0.173* (0.102)	-0.003 (0.002)	-0.083** (0.040)	-0.005 (0.045)	-0.021 (0.041)	0.020 (0.038)
	No	Congress actions; T3	-0.018 (0.173)	-0.375* (0.211)	-0.217** (0.102)	-0.002 (0.002)	-0.069* (0.038)	0.010 (0.045)	-0.046 (0.040)	0.112*** (0.043)
	No	Fed and Congress actions; T4	-0.445*** (0.168)	-0.265 (0.213)	0.445*** (0.101)	-0.003 (0.002)	-0.145*** (0.037)	0.017 (0.047)	-0.059 (0.041)	-0.007 (0.038)
	No	Health officials; T5	-0.104 (0.174)	-0.246 (0.213)	0.549*** (0.103)	-0.004** (0.002)	-0.046 (0.039)	-0.008 (0.046)	0.015 (0.044)	-0.051 (0.038)
	Yes	No; T6	-0.483*** (0.167)	-0.363* (0.208)	-0.364*** (0.096)	-0.005** (0.002)	-0.098*** (0.036)	-0.038 (0.043)	-0.068* (0.039)	-0.110*** (0.036)
	Yes	Fed actions; T7	-0.300* (0.172)	0.005 (0.215)	0.642*** (0.102)	0.000 (0.002)	-0.097** (0.039)	-0.095** (0.045)	-0.054 (0.044)	0.105** (0.044)
	Yes	Congress actions; T8	-0.640*** (0.166)	-0.209 (0.214)	0.496*** (0.106)	-0.005*** (0.002)	-0.005 (0.038)	0.033 (0.045)	-0.008 (0.041)	-0.127*** (0.038)
	Yes	Fed and Congress actions; T9	-0.652*** (0.168)	-0.156 (0.219)	-0.183* (0.104)	-0.003 (0.002)	-0.103*** (0.038)	-0.059 (0.044)	-0.054 (0.042)	0.031 (0.039)
	Yes	Health officials; T10	-0.617*** (0.171)	0.046 (0.223)	0.762*** (0.096)	-0.000 (0.002)	-0.068* (0.037)	0.058 (0.051)	-0.043 (0.043)	-0.015 (0.039)
Slope	No	No (Control group); T1	0.300*** (0.024)	0.849*** (0.013)	0.887*** (0.011)	1.000*** (0.000)	0.970*** (0.005)	0.975*** (0.006)	0.977*** (0.006)	1.000*** (0.002)
	<i>Relative to control group</i>									
	No	Fed actions; T2	-0.124*** (0.032)	0.043** (0.017)	-0.042*** (0.015)	0.000 (0.000)	0.001 (0.008)	0.009 (0.008)	0.010 (0.007)	-0.003 (0.003)
	No	Congress actions; T3	0.033 (0.034)	0.073*** (0.018)	0.058*** (0.014)	0.000 (0.000)	0.008 (0.008)	0.003 (0.008)	0.010 (0.007)	-0.484*** (0.008)
	No	Fed and Congress actions; T4	-0.046 (0.033)	0.062*** (0.017)	-0.095*** (0.014)	0.000 (0.000)	0.018*** (0.006)	0.001 (0.009)	0.013** (0.007)	-0.001 (0.003)
	No	Health officials; T5	0.016 (0.036)	0.051*** (0.018)	-0.116*** (0.015)	0.000* (0.000)	0.008 (0.008)	0.005 (0.008)	-0.000 (0.008)	-0.003 (0.003)
	Yes	No; T6	-0.007 (0.033)	0.030* (0.018)	0.075*** (0.013)	0.000 (0.000)	0.023*** (0.006)	0.017** (0.007)	0.014** (0.006)	-0.003 (0.003)
	Yes	Fed actions; T7	-0.102*** (0.033)	0.020 (0.018)	-0.149*** (0.015)	0.000 (0.000)	0.009 (0.007)	0.009 (0.008)	0.005 (0.008)	-0.369*** (0.008)
	Yes	Congress actions; T8	0.077** (0.033)	0.038** (0.018)	-0.114*** (0.015)	0.000* (0.000)	0.013* (0.007)	0.005 (0.008)	0.008 (0.007)	-0.004 (0.003)
	Yes	Fed and Congress actions; T9	0.009 (0.034)	0.016 (0.018)	0.005 (0.015)	0.000 (0.000)	0.008 (0.007)	0.011 (0.008)	0.005 (0.007)	-0.006* (0.003)
	Yes	Health officials; T10	0.085** (0.034)	-0.024 (0.019)	-0.165*** (0.013)	0.000 (0.000)	0.012* (0.006)	-0.012 (0.009)	0.008 (0.007)	-0.002 (0.003)
Observations			12,048	10,012	11,186	7,977	11,314	11,504	11,173	9,598
R-squared			0.147	0.866	0.913	1.000	0.976	0.969	0.977	0.982
St.Dev. of dep. variable in control group			4.344	8.554	5.739	4.102	3.619	3.856	3.264	9.185

Notes: The table reports Huber-robust estimation of specification (2) for macroeconomic expectations. All dependent variables are measured in percent. See notes to Table 3 for definitions of variables. Robust standard errors are in parentheses. ***, **, * denote statistical significance at 1, 5, and 10 percent levels.

Table 5. Probability of losing a job or finding a job.

Treatment	Health info is provided	Policy response is provided	Probability to lose a job	Probability to find a job
			(1)	(2)
T1	No	No (Control group)	0.961*** (0.088)	45.853*** (3.909)
		<i>Relative to control group</i>		
T2	No	Fed actions	0.245* (0.135)	2.638 (5.575)
T3	No	Congress actions	0.086 (0.130)	-2.978 (5.791)
T4	No	Fed and Congress actions	-0.188 (0.115)	6.957 (5.444)
T5	No	Health officials	-0.071 (0.121)	-2.930 (5.934)
T6	Yes	No	0.015 (0.125)	20.138*** (6.125)
T7	Yes	Fed actions	0.011 (0.126)	-1.574 (5.678)
T8	Yes	Congress actions	-0.030 (0.125)	2.962 (5.691)
T9	Yes	Fed and Congress actions	0.149 (0.132)	6.608 (5.971)
T10	Yes	Health officials	0.129 (0.131)	7.017 (5.943)
	Observations		5,084	894
	R-squared		0.002	0.031
	St.Dev. of dep. variable in control group		2.414	34.98

Notes: The table reports Huber-robust estimation of specification (3) for expected labor market outcomes. All dependent variables are measured in percent ranging from 0 to 100. The sample for column (3) includes only employed (at the time of the survey) people. The sample for column (2) includes only unemployed (don't have a job and look for a job at the time of the survey) people. Robust standard errors are in parentheses. ***, **, * denote statistical significance at 1, 5, and 10 percent levels.

Table 6. Good time to buy a durable good

Treatment	Health info is provided	Policy response is provided	House	Car	Appliance
			(1)	(2)	(3)
T1	No	No (Control group)	3.023*** (0.029)	3.019*** (0.028)	3.031*** (0.016)
		<i>Relative to control group</i>			
T2	No	Fed actions	-0.003 (0.040)	0.074* (0.040)	-0.023 (0.024)
T3	No	Congress actions	0.076* (0.040)	0.138*** (0.040)	0.041* (0.024)
T4	No	Fed and Congress actions	-0.106*** (0.040)	0.076* (0.040)	-0.008 (0.024)
T5	No	Health officials	-0.112*** (0.040)	-0.119*** (0.040)	-0.096*** (0.024)
T6	Yes	No	0.016 (0.040)	0.014 (0.040)	-0.063*** (0.023)
T7	Yes	Fed actions	0.002 (0.040)	0.047 (0.040)	-0.019 (0.023)
T8	Yes	Congress actions	-0.144*** (0.040)	0.016 (0.040)	-0.006 (0.024)
T9	Yes	Fed and Congress actions	0.053 (0.040)	0.081** (0.040)	0.018 (0.023)
T10	Yes	Health officials	-0.054 (0.040)	0.088** (0.040)	0.005 (0.023)
Observations			13,761	13,761	13,210
R-squared			0.005	0.004	0.003
St.Dev. of dep. variable in control group			1.021	1.022	0.664

Notes: The table reports Huber-robust estimation of specification (3) for whether it is a good time to buy a durable. All dependent variables are measured on the scale ranging from 1 (very good time) to 5 (very bad time). Robust standard errors are in parentheses. ***, **, * denote statistical significance at 1, 5, and 10 percent levels.

Table 7. Policy evaluation.

Treatment	Health info	Policy info	How much do you trust the actions taken by the [Government Bank] will be helpful for {you, U.S.}?							
			President		Congress		Federal Reserve		Health officials	
			you	U.S.	you	U.S.	you	U.S.	you	U.S.
			(1)	(2)	(3)	(4)	(5)	(6)	(7)	(8)
T1	No	No (Control group)	4.522*** (0.103)	4.875*** (0.100)	4.241*** (0.059)	4.641*** (0.055)	5.184*** (0.049)	5.798*** (0.048)	6.390*** (0.056)	6.645*** (0.053)
		<i>Relative to control group</i>								
T2	No	Fed actions	-0.263* (0.146)	-0.294** (0.143)	0.179** (0.082)	0.258*** (0.076)	-0.212*** (0.069)	-0.004 (0.068)	0.001 (0.081)	-0.070 (0.077)
T3	No	Congress actions	0.059 (0.147)	-0.016 (0.142)	0.216*** (0.083)	0.165** (0.078)	0.160** (0.069)	0.066 (0.069)	0.035 (0.081)	-0.001 (0.077)
T4	No	Fed and Congress actions	-0.311** (0.147)	-0.417*** (0.143)	0.279*** (0.083)	0.274*** (0.077)	-0.127* (0.070)	0.084 (0.069)	-0.047 (0.080)	0.059 (0.076)
T5	No	Health officials	-0.169 (0.147)	-0.229 (0.143)	0.172** (0.082)	0.168** (0.077)	-0.044 (0.069)	-0.203*** (0.066)	0.073 (0.080)	0.041 (0.076)
T6	Yes	No	-0.038 (0.147)	-0.069 (0.143)	0.180** (0.081)	0.075 (0.076)	0.007 (0.068)	-0.006 (0.068)	0.100 (0.079)	0.118 (0.075)
T7	Yes	Fed actions	0.184 (0.145)	0.173 (0.142)	0.200** (0.083)	0.336*** (0.078)	-0.071 (0.069)	0.167** (0.069)	0.106 (0.080)	0.127* (0.076)
T8	Yes	Congress actions	-0.064 (0.147)	-0.097 (0.143)	0.495*** (0.082)	0.405*** (0.076)	0.209*** (0.069)	0.191*** (0.068)	0.361*** (0.080)	0.279*** (0.076)
T9	Yes	Fed and Congress actions	0.003 (0.145)	-0.003 (0.141)	0.570*** (0.082)	0.570*** (0.078)	0.213*** (0.068)	0.293*** (0.069)	0.115 (0.080)	0.073 (0.076)
T10	Yes	Health officials	-0.045 (0.147)	-0.088 (0.143)	0.050 (0.083)	0.130* (0.078)	-0.000 (0.070)	0.050 (0.068)	0.175** (0.080)	0.164** (0.076)
	Observations		13,521	13,521	13,473	13,467	13,346	13,299	13,423	13,376
	R-squared		0.002	0.002	0.006	0.006	0.005	0.005	0.003	0.002
	St.Dev. of dep. variable in control group		3.391	3.336	2.152	2.069	1.882	1.767	1.986	1.872

Notes: The table reports Huber-robust estimation of specification (3) for political approval of policies implemented by various government bodies. All dependent variables are measured on the scale ranging from 0 (not helpful at all) to 10 (extremely helpful). Robust standard errors are in parentheses. ***, **, * denote statistical significance at 1, 5, and 10 percent levels.

Online Appendix

Appendix 1: Survey Questions

1. What is your date of birth? (Please select the month, day, and year in a dropdown menu)
2. What is your gender?
 - Male
 - Female
3. What is your first name? (Please type it in)
4. Which of the following goods and services have you spent money on over the last three months? (Select all that apply)
 - Debt payments (mortgages, auto loans, student loans, etc.)
 - Housing (including rent, maintenance and home owner/renter insurance, housekeeping and cleaning service, but not including mortgage payments)
 - Utilities (including water, sewer, electricity, gas, heating oil, phone, cable, internet)
 - Food (including groceries, dining out, take-out food, and beverages)
 - Clothing, footwear, and personal care
 - Gasoline
 - Other regular transportation costs (including public transportation fares and car maintenance)
 - Medical care (including health insurance, out-of-pocket medical bills and prescription drugs)
 - Travel, recreation, and entertainment
 - Education and child care
 - Furniture, jewelry, small appliances and other small durable goods
 - Other (including gifts, child support or alimony, charitable giving, and other miscellaneous)
5. Over the last three months on average, how much did your household spend (per month) on goods and services in total and for each of the individual components listed below?
Please enter a number between 1 and 10,000 for each category. The sum of the expenditures for the individual categories should add up to the total amount.

Total monthly spending

Debt payments (mortgages, auto loans, student loans, etc.)	\$ _____
Housing (including rent, maintenance and home owner/renter insurance, housekeeping and cleaning service, but not including mortgage payments)	\$ _____
Utilities (including water, sewer, electricity, gas, heating oil, phone, cable, internet)	\$ _____
Food (including groceries, dining out, take-out food, and beverages)	\$ _____
Clothing, footwear, and personal care	\$ _____
Gasoline	\$ _____
Other regular transportation costs (including public transportation fares and car maintenance)	\$ _____
Medical care (including health insurance, out-of-pocket medical bills and prescription drugs)	\$ _____
Travel, recreation, and entertainment	\$ _____
Education and child care	\$ _____
Furniture, jewelry, small appliances and other small durable goods	\$ _____
Other (including gifts, child support or alimony, charitable giving, and other miscellaneous)	\$ _____
	\$ Total _____

[TOTAL ANSWERS FROM
ABOVE]

6. Suppose that you had to make an unexpected payment equal to one month of your after-tax income, would you have sufficient financial resources (access to credit, savings, loans from relatives or friends, etc.) to pay for the entire amount?
- Yes
 - No
 - Don't know/prefer not to answer
7. Which of the following best characterizes your household:
- Own our house/apartment without a mortgage
 - Own our house/apartment and have a fixed-rate mortgage
 - Own our house/apartment and have a variable-rate mortgage
 - Rent our house/apartment
 - Other
8. Does your household have total financial investments (excluding housing) worth more than one month of combined household income?
- Yes
 - No

ASK IF: Q8=YES

9. What percent of your financial wealth (excluding housing) do you invest in the following categories? Put "0" if you do not invest in a given category.

Wealth Investment Allotment

- | | |
|---|--------------|
| ▪ Checking and Savings Account, Certificate of deposits | _____percent |
| ▪ Cash | _____percent |
| ▪ US Bonds | _____percent |
| ▪ US Stocks | _____percent |
| ▪ Foreign Stocks and Bonds | _____percent |
| ▪ Gold and precious metals | _____percent |
| ▪ Bitcoin and other cryptocurrencies | _____percent |
| ▪ Other | _____percent |
| ▪ % Total [TOTAL ANSWERS FROM ABOVE – MUST SUM TO 100%] | _____ |

10. Over the last 6 months, did you buy a new home, car, or other major big-ticket item (fridge, TV, furniture, etc.)?
- Yes
 - No

ASK IF: Q10=YES

11. Which of the following did you purchase in the last 6 months? Please select all that apply.
- A house/apartment
 - A car or other vehicle
 - A large home appliance or electronics
 - None of the above

ASK IF: Q11=YES

12. How much did you spend on the following?

- A house/apartment _____
- A car or other vehicle _____
- A large home appliance or electronics _____

13. Do you currently plan to buy a new home, car, or other major big-ticket item (fridge, TV, furniture, etc.) in the next 12 months?

- Yes
- No

ASK IF: Q13=YES

14. Which of the following do you plan to purchase in the next 12 months? Please select all that apply.

- A house/apartment
- A car or other vehicle
- A large home appliance or electronics
- None of the above

ASK IF: Q10=YES

15. How much do you plan to spend on the following?

- A house/apartment _____
- A car or other vehicle _____
- A large home appliance or electronics _____

We would like to ask you some questions about the overall economy and in particular about the rate of inflation/deflation (Note: inflation is the percentage rise in overall prices in the economy, most commonly measured by the Consumer Price Index and deflation corresponds to when prices are falling).

16. In THIS question, you will be asked about the probability (PERCENT CHANCE) of something happening. The percent chance must be a number between 0 and 100 and the sum of your answers must add up to 100.

What do you think is the percent chance that, over the next 12 months...

Percentage Chance

- | | |
|--|-------|
| ▪ the rate of inflation will be 12% or more | _____ |
| ▪ the rate of inflation will be between 8% and 12% | _____ |
| ▪ the rate of inflation will be between 4% and 8% | _____ |
| ▪ the rate of inflation will be between 2% and 4% | _____ |
| ▪ the rate of inflation will be between 0% and 2% | _____ |
| ▪ the rate of deflation (opposite of inflation) will be between 0% and 2% | _____ |
| ▪ the rate of deflation (opposite of inflation) will be between 2% and 4% | _____ |
| ▪ the rate of deflation (opposite of inflation) will be between 4% and 8% | _____ |
| ▪ the rate of deflation (opposite of inflation) will be between 8% and 12% | _____ |
| ▪ the rate of deflation (opposite of inflation) will be 12% or more | _____ |
| ▪ % Total | _____ |

17. Do you have a paid job?

- Yes

- No

18. In your current job, do you...

Please select all that apply.

- Supervise 1 to 10 other people
- Supervise 11 to 50 other people
- Supervise more than 50 other people
- Make decisions about hiring/firing workers
- Make decisions about what prices to set
- Make decisions about capital expenditures
- Make decisions about wages/salaries
- Make decisions about marketing or sales
- None of the above >EXCLUSIVE

ASK IF: Q19=YES

19. How much do you make before taxes and other deductions at your [main/current] job, on an annual basis? Please include any bonuses, overtime pay, tips or commissions.

_____ dollars per year

- Prefer not to answer

ASK IF: Q19=YES

20. How many total hours per week do you work in a typical week?

_____ Hours/week [RANGE: 0-168, ONE DECIMAL]

ASK IF Q19=YES

RANDOMIZE

21. Please check relevant options that characterize your job:

- I have to come to an office, factory, etc. to perform my work duties
- I can work remotely from home
- I travel to meet my clients
- My job has fixed hours.
- My hours vary depending on business intensity but the expectation is that I work 20 or 40 hours per week on average.
- I can work as few or as many hours as I want.
- My hours are determined by my supervisor.

ASK IF: Q17=NO

22. Are you actively looking for a job? (Select one)

- Yes
- No

ASK IF: Q17=NO

23. Here are a number of possible reasons why people who are not working choose not to look for work. Please select all that apply to you.

- Homemaker
- Raising children
- Student

- Retiree
- Disabled, health issues
- Couldn't find a job
- On break
- No financial need
- Other

24. How much higher or lower do you think your household's total after-tax (i.e., 'take home') income will be over the next twelve months compared to the last twelve months? Please provide an answer in percentage terms.

- My after-tax income will rise by _____% [RANGE: 0-300, ONE DECIMAL]
- My after-tax income will stay the same
- My after-tax income will fall by _____% [RANGE: 0-300, ONE DECIMAL]

25. What is your best guess about what the current unemployment rate in the US is, what it will be in 12 months and over the next 3-5 years?

- Current unemployment rate: _____% [RANGE: 0-100, ONE DECIMAL]
- Unemployment rate in 12 months: _____% [RANGE: 0-100, ONE DECIMAL]
- Over the next 3-5 years? _____% [RANGE: 0-100, ONE DECIMAL]

26. What do you think is the current interest rate on a fixed-rate 30-year mortgage for someone with excellent credit and what do you think it will be in the future?

- Current rate? _____% per year [RANGE: 0-100, ONE DECIMAL]
- At the end of 2020? _____% per year [RANGE: 0-100, ONE DECIMAL]
- At the end of 2021? _____% per year [RANGE: 0-100, ONE DECIMAL]
- In the next 5-10 years? _____% per year [RANGE: 0-100, ONE DECIMAL]

27. Have you seen or heard anything in the news about COVID-19 or the Coronavirus?

- Yes
- No
- Don't know

28. How concerned are you about the effects that the coronavirus might have on the financial situation of your household? Slider from 0 (Not at all concerned) to 10 (Extremely concerned)

ASK IF: 17=YES

29. Have you lost earnings due to coronavirus concerns?

- Yes
- No

ASK IF: 29=YES

30. Could you provide an estimate of lost income? (Please round to the nearest dollar)

\$ _____

ASK IF: Q8=YES

31. Have you lost any financial wealth due to coronavirus concerns?

- Yes
- No

ASK IF: Q31=YES

32. Could you provide an estimate of lost wealth? (Please round to the nearest dollar)

\$ _____

33. Are you currently under lockdown in your location?

- Yes
- No

ASK IF Q26=YES

34. How long do you think the lockdown in your location will last?

Months: _____

Days: _____

35. How long do you think it will be before conditions return to normal in your location?

Months: _____

Days: _____

36. If a person contracts coronavirus, what do you think is the probability that this person recovers from the virus?

Please enter a number between 0 (Do not recover) and 100 (Recover for sure)

Please enter a number: _____

37. Think of a person who has the coronavirus. How many non-infected people do you think will catch the virus from this person?

Please enter a number: _____

38. How would you rate the following government bodies in handling the current situation? Please assign a score ranging from 1 (Poor job) to 10 (Excellent job)

- | | |
|---------------------------------------|------------------------------|
| ▪ President | _____ score [Don't know box] |
| ▪ Congress | _____ score [Don't know box] |
| ▪ US Treasury | _____ score [Don't know box] |
| ▪ US Federal Reserve | _____ score [Don't know box] |
| ▪ US Center for Disease Control (CDC) | _____ score [Don't know box] |

Now we come to the final part of this survey but before you proceed, we would like you to know the following.

Option 1: No information (control group)

Option 2: You indicated that you believe that a person infected with the coronavirus has a [RESPONSE IN QXX]% chance of recovering from the virus.

According to official estimates of the World Health Organization for these rates:

- The recovery rate from the corona virus is approximately 96-97 percent (that is, there is 96-97 in 100 chance to recover).
- Approximately 2 non-infected people will catch the coronavirus from a person who has the coronavirus.

COMBINE OPTIONS A OR B OR C OR D OR E WITH THE OPTION CHOSEN ABOVE. SO PEOPLE SHOULD SEE ONE OF THESE OPTIONS AT RANDOM BEFORE GOING TO Q46; #1.A, #1.B, #1.C, #1.D, #1E, #2.A, #2B, #2C, #2D, #2E.

OPTION 1A SHOULD HAVE QUOTA 10% OF THE TIME, THE REMAINING OPTIONS ARE EQUALLY RANDOMLY DISTRIBUTED OVER THE REMAINING 90% OF RESPONDENTS

Option A. No information is provided.

Option B. In response to the COVID-19 crisis, the Federal Reserve reduced short-term interest rates to zero and implemented additional measures similar to what it did during the last recession.

Option C. In Response to the COVID-19 crisis, the Congress approved a \$2 trillion package to stimulate the economy, including one-time \$1,200 check per person (plus another \$500 per child) to persons households with annual income less than \$75,000. Couples who filed jointly and made less than \$150,000 will get a one-time \$2,400 check (plus another \$500 per child).

Option D. In response to the COVID-19 crisis, the Federal Reserve reduced short-term interest rates to zero and Implemented additional measures similar to what it did during the last recession. In addition, the Congress approved a \$2 trillion package to stimulate the economy, including one-time \$1,200 check per person (plus another \$500 per child) to persons households with annual income less than \$75,000. Couples who filed jointly and made less than \$150,000 will get a one-time \$2,400 check (plus another \$500 per child).

Option E: The U.S. government health officials encourage social distancing, avoiding discretionary travel, and working remotely. At least one in Three in four Americans are in areas with local governments declaring “shelter in place” (lockdown). [<https://www.nytimes.com/interactive/2020/us/coronavirus-stay-at-home-order.html>]

39. What do you think the inflation rate (as measured by the Consumer Price Index) is going to be over the next 12 months? Please provide an answer as a percentage change from current prices.

..... % [RANGE: -100-100, ONE DECIMAL]

If you think there was inflation, please enter a positive number. If you think there was deflation, please enter a negative number. If you think there was neither inflation nor deflation, please enter zero.

40. How much higher or lower do you think **your household’s total net income** will be over the next twelve months compared to the last twelve months? Please provide an answer in percentage terms.

Please provide an answer in percentage terms. If you think that your household’s total net income will decrease, please fill in a negative percentage (insert a minus sign for the number). If you think that your household’s total net income will increase, please fill in a positive percentage. If you think that your household’s total net income will not change, please fill in 0 (zero).

..... % [RANGE: -100-100, ONE DECIMAL]

41. What is your best guess about what the current unemployment rate in the US is, what it will be in 12 months and over the next 3-5 years?

- Current unemployment rate: _____ % [RANGE: 0-100, ONE DECIMAL]

- Unemployment rate in 12 months: _____ % [RANGE: 0-100, ONE DECIMAL]
- Over the next 3-5 years? _____ % [RANGE: 0-100, ONE DECIMAL]

ASK IF: QXX=YES

42. What do you think is the percent chance that you will lose your job during the next 12 months?

_____ % [RANGE: -100-100, ONE DECIMAL]

ASK IF: XX=YES

43. What do you think is the percent chance that you will find a job during the next 12 months?

_____ % [RANGE: -100-100, ONE DECIMAL]

44. What do you think is the current interest rate on a fixed-rate 30-year mortgage for someone with excellent credit and what do you think it will be in the future?

- Current rate? _____ % per year [RANGE: 0-100, ONE DECIMAL]
- At the end of 2020? _____ % per year [RANGE: 0-100, ONE DECIMAL]
- At the end of 2021? _____ % per year [RANGE: 0-100, ONE DECIMAL]
- In the next 5-10 years? _____ % per year [RANGE: 0-100, ONE DECIMAL]

RANDOMIZE ORDER

45. Generally speaking, do you think that now is a good time or a bad time **to buy**...

A house or apartment	<input type="radio"/> Very good
A car or other vehicle	<input type="radio"/> Good
Large appliances, furniture, electronics (incl. gadgets)	<input type="radio"/> Neither good nor bad
	<input type="radio"/> Bad
	<input type="radio"/> Very bad

ASK IF: Q43AA=YES

46. How much do you trust the actions taken by the Federal Reserve will be helpful for you? And the overall American population? Please choose from 0 (Not helpful at all) to 10 (Extremely helpful)
Two sliders from 1 to 10

ASK IF: Q43AA=YES

47. How much do you trust the actions taken by the public health officials will be helpful for you? And the overall American population? Please choose from 0 (Not helpful at all) to 10 (Extremely helpful)
Two sliders from 1 to 10

ASK IF: Q43AA=YES

48. How much do you trust the actions taken by President Trump will be helpful for you? And the overall American population? Please choose from 0 (Not helpful at all) to 10 (Extremely helpful)
Two sliders from 1 to 10

ASK IF: Q43AA=YES

49. How much do you trust the actions taken by the Congress will be helpful for you? And the overall American population? Please choose from 0 (Not helpful at all) to 10 (Extremely helpful)

Two sliders from 1 to 10

This is the last question.

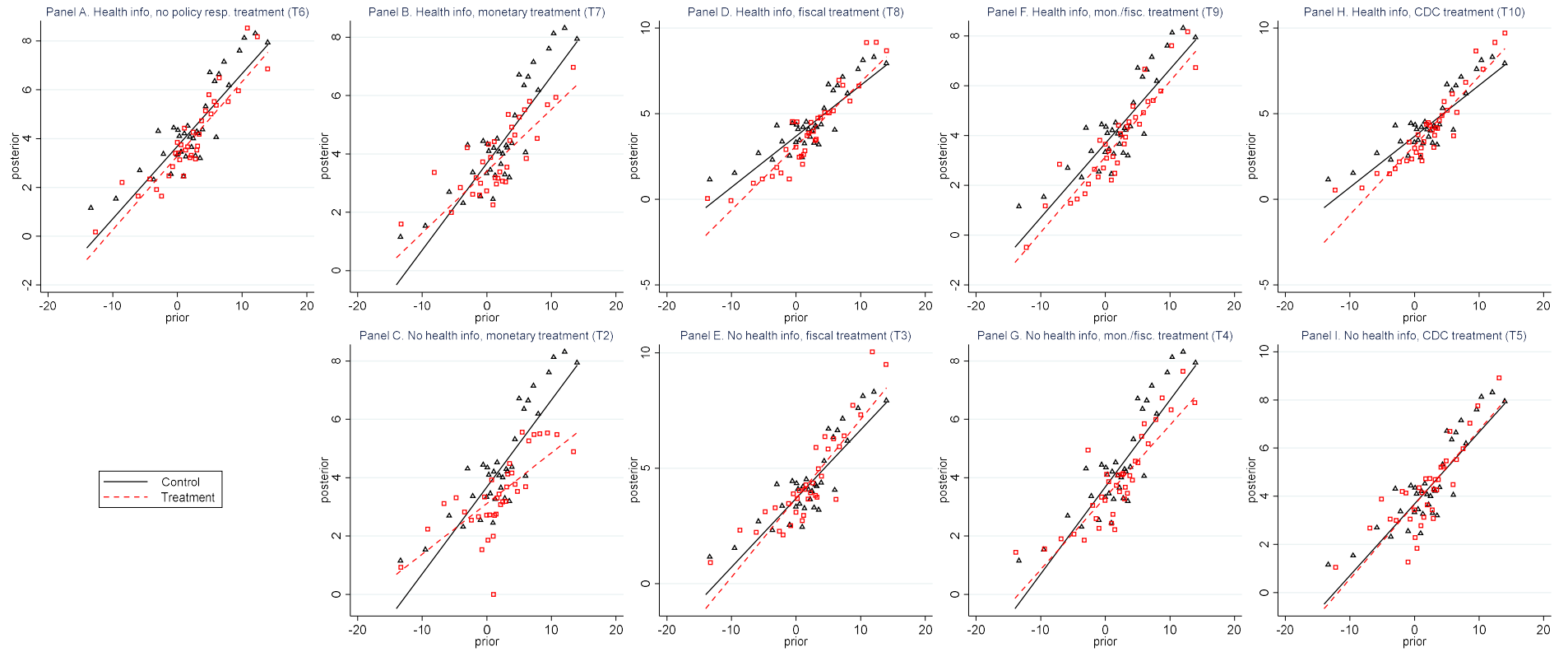
50. If the chance of winning a lottery is 10 percent, how many people out of 1,000 would be expected to win the lottery? Enter a number here _____.

Appendix Table 1. Predictability of treatment status.

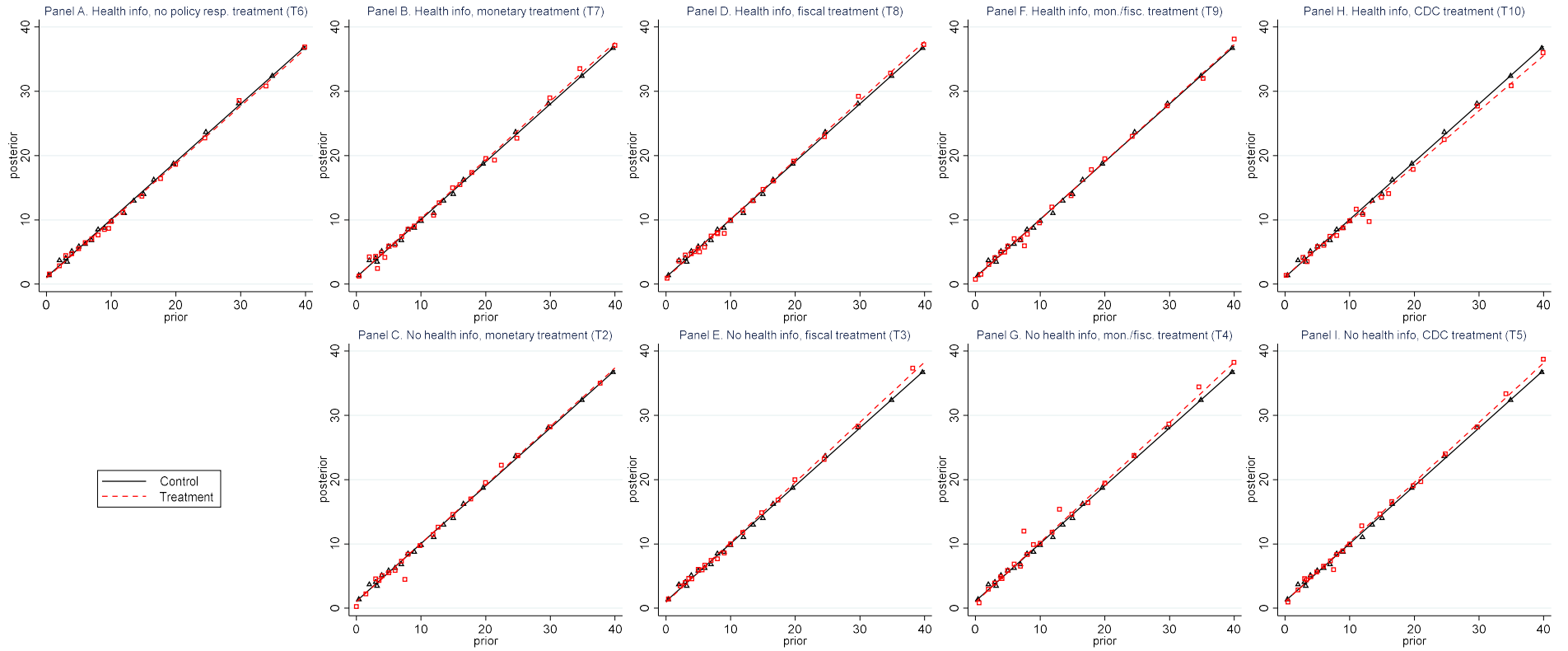
Treatment	F-statistic	p-value
T1 (control)	1.11	0.29
T2	1.08	0.33
T3	1.13	0.26
T4	0.57	0.99
T5	1.51	0.02
T6	1.13	0.26
T7	1.19	0.19
T8	0.81	0.81
T9	0.83	0.76
T10	0.79	0.83

Notes: The table reports results for estimating the following linear-probability regression for each treatment k separately: $Treatment_i^{(k)} = X_i b^{(k)} + error$ where i indexes respondents, $Treatment_i^{(k)}$ is a dummy variable equal to one if household i is provided with treatment k and zero otherwise, X is a vector of household/individual characteristics. Individual characteristics are gender, age, age squared, employed indicator, unemployment indicator, and race. Household characteristics are household income (binned; indicator variable for each bin), household size (indicator variable for each size), census region (indicator variable for each region), male head education (indicator variable for each group), female head education (indicator variable for each group). The table reports F-statistic for the joint statistical significance of b .

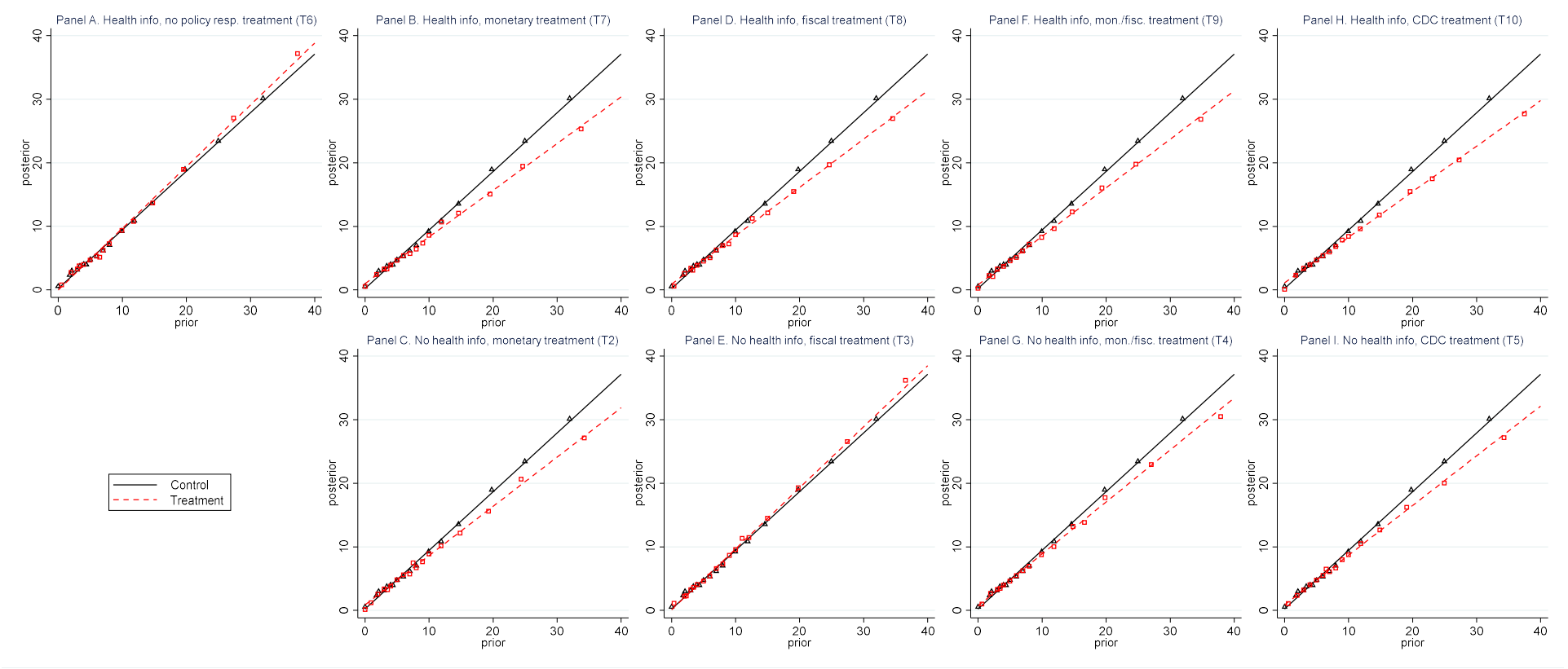
Appendix Figure 1. Treatment effect on inflation expectations by treatment, restrict the sample to have responses $[-40,40]$.



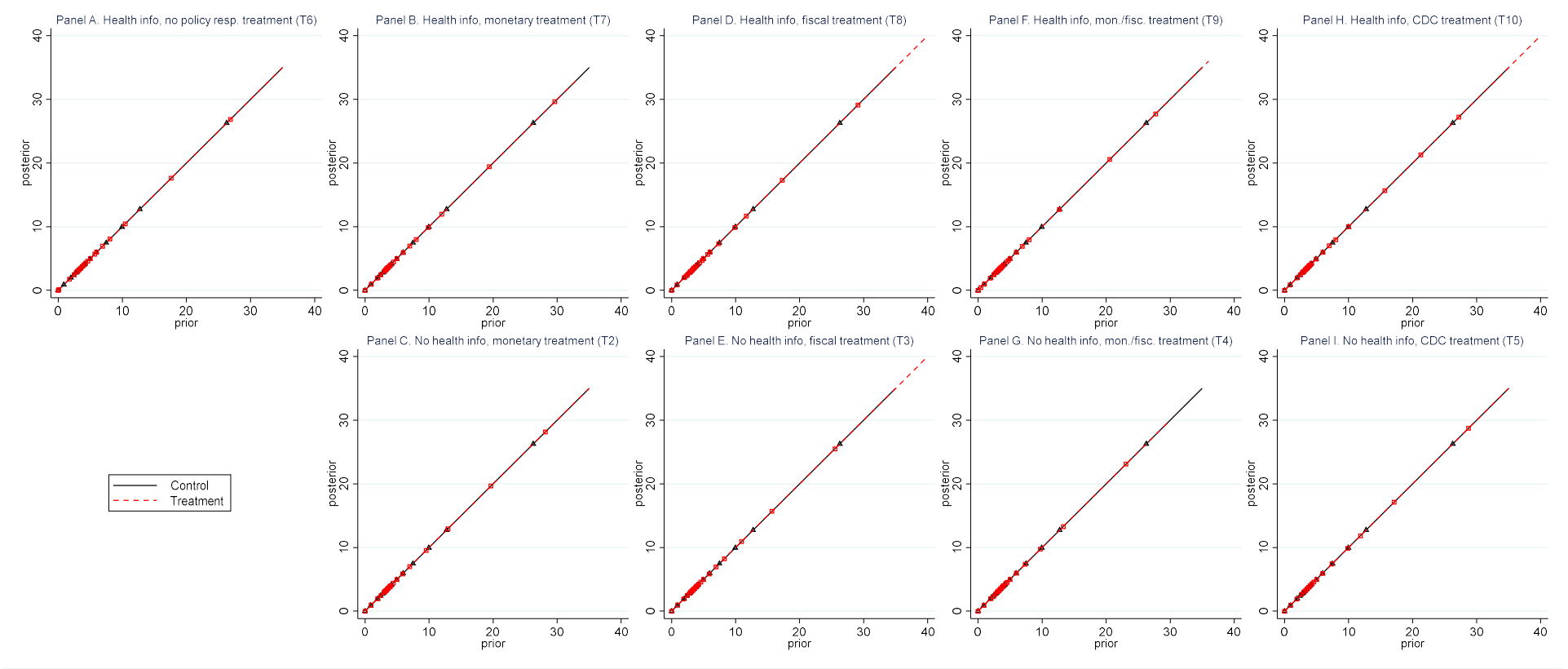
Appendix Figure 2. Treatment effect on unemployment expectations (1-year ahead) by treatment, restrict the sample to have responses $[0, 40]$.



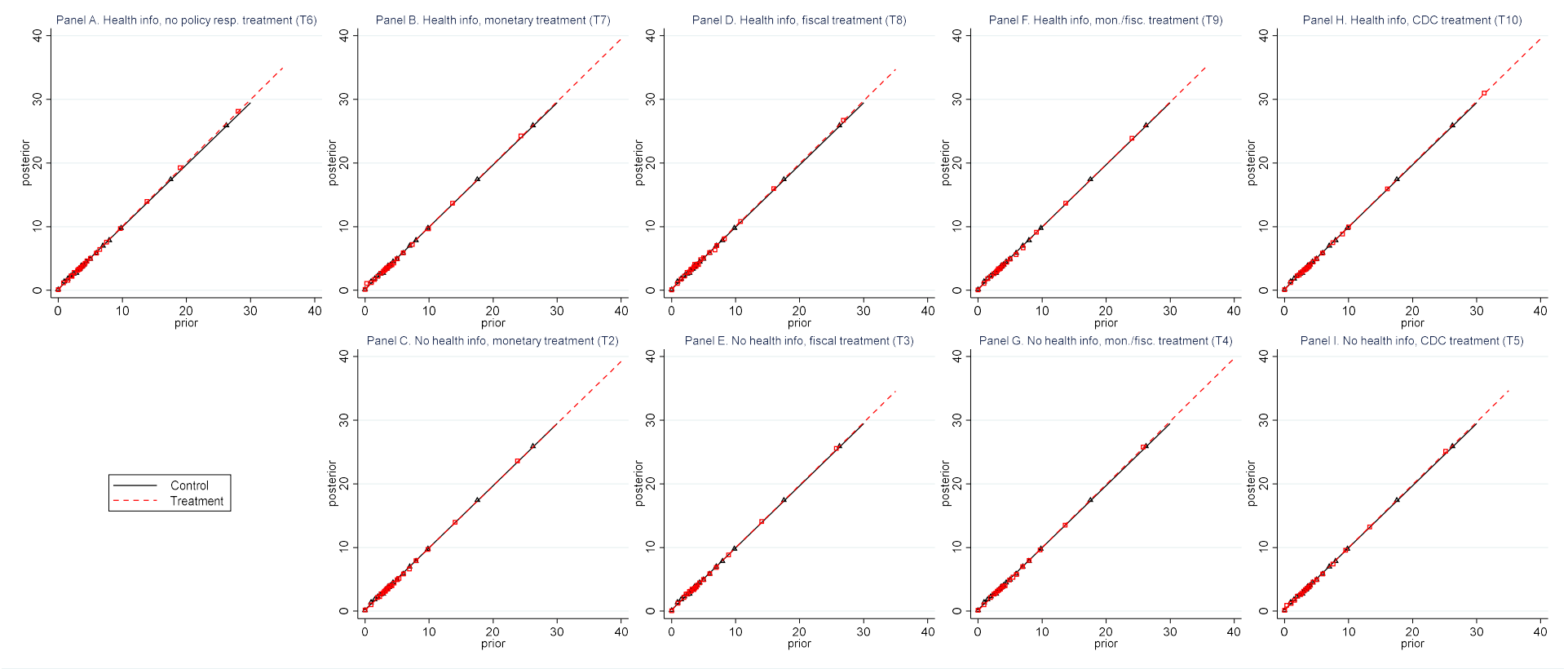
Appendix Figure 3. Treatment effect on unemployment expectations (in 3-5 years) by treatment, restrict the sample to have responses [0,40].



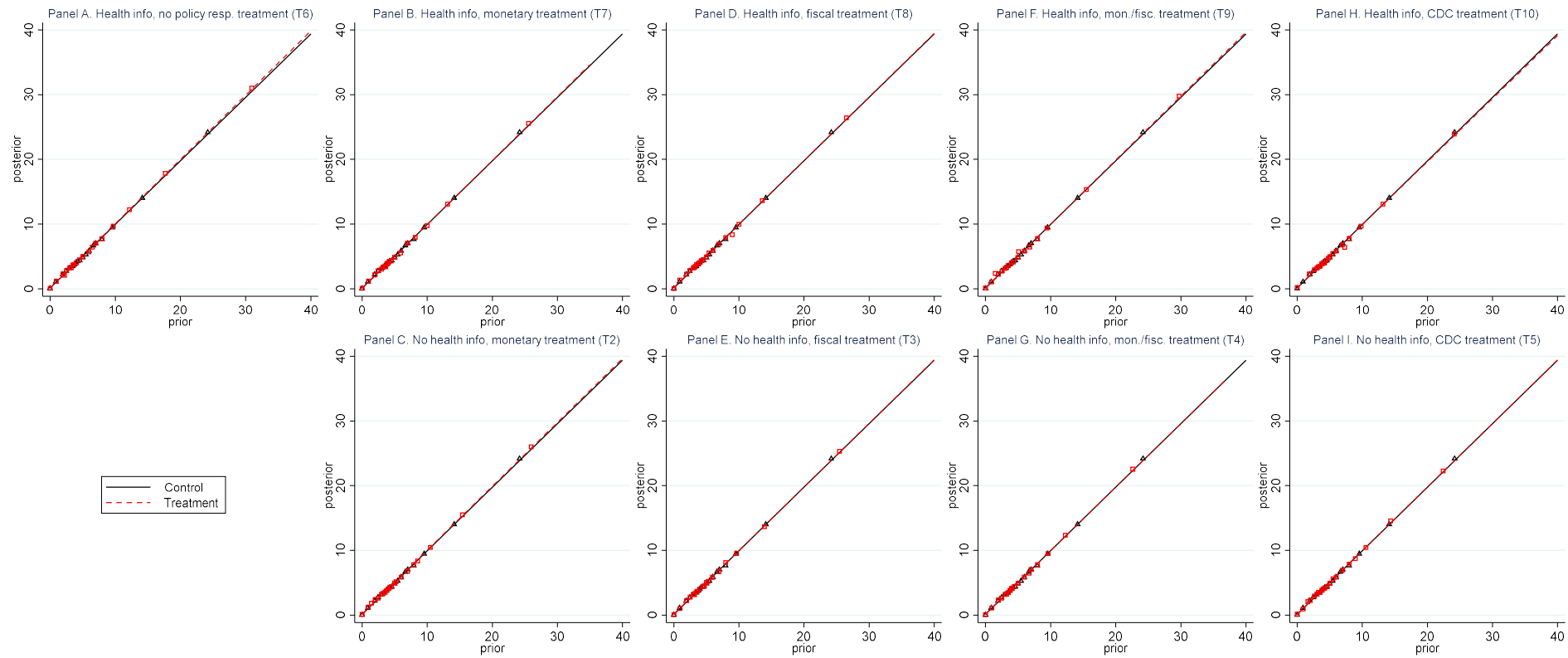
Appendix Figure 4. Treatment effect on current mortgage rate perceptions by treatment, restrict the sample to have responses [0,40].



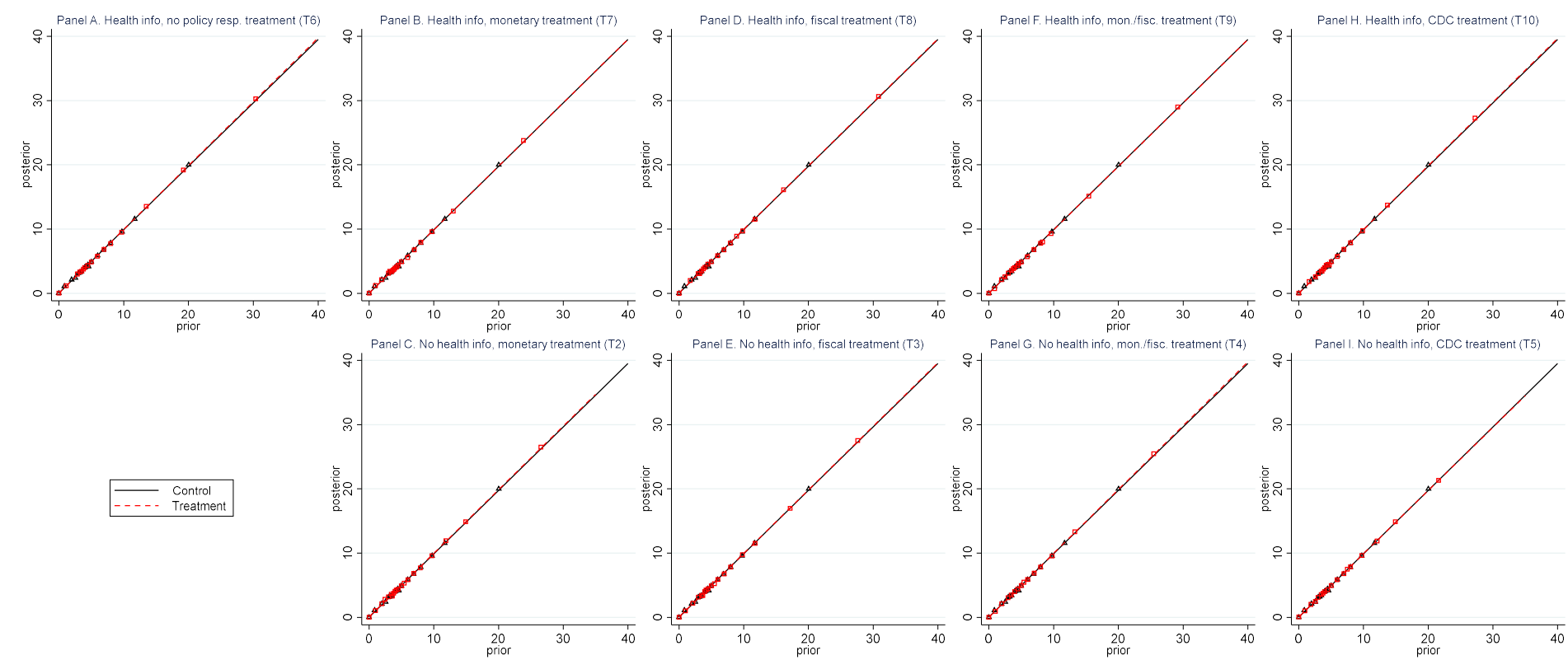
Appendix Figure 5. Treatment effect on mortgage rate expectations (end of 2020) by treatment, restrict the sample to have responses [0,40].



Appendix Figure 6. Treatment effect on mortgage rate expectations (end of 2021) by treatment, restrict the sample to have responses $[0,40]$.



Appendix Figure 7. Treatment effect on mortgage rate expectations (in 5-10 years) by treatment, restrict the sample to have responses [0,40].



Appendix Figure 8. Treatment effect on expectations about household income growth (1 year ahead) by treatment.

