

Rao, Lakshman Nagraj; Gentile, Elisabetta; Pipon, Dave; Roque, Jude David; Thuy, Vu Thi Thu

Working Paper

The impact of computer-assisted personal interviewing on survey duration, quality, and cost: Evidence from the Viet Nam Labor Force Survey

GLO Discussion Paper, No. 605

Provided in Cooperation with:

Global Labor Organization (GLO)

Suggested Citation: Rao, Lakshman Nagraj; Gentile, Elisabetta; Pipon, Dave; Roque, Jude David; Thuy, Vu Thi Thu (2020) : The impact of computer-assisted personal interviewing on survey duration, quality, and cost: Evidence from the Viet Nam Labor Force Survey, GLO Discussion Paper, No. 605, Global Labor Organization (GLO), Essen

This Version is available at:

<https://hdl.handle.net/10419/222414>

Standard-Nutzungsbedingungen:

Die Dokumente auf EconStor dürfen zu eigenen wissenschaftlichen Zwecken und zum Privatgebrauch gespeichert und kopiert werden.

Sie dürfen die Dokumente nicht für öffentliche oder kommerzielle Zwecke vervielfältigen, öffentlich ausstellen, öffentlich zugänglich machen, vertreiben oder anderweitig nutzen.

Sofern die Verfasser die Dokumente unter Open-Content-Lizenzen (insbesondere CC-Lizenzen) zur Verfügung gestellt haben sollten, gelten abweichend von diesen Nutzungsbedingungen die in der dort genannten Lizenz gewährten Nutzungsrechte.

Terms of use:

Documents in EconStor may be saved and copied for your personal and scholarly purposes.

You are not to copy documents for public or commercial purposes, to exhibit the documents publicly, to make them publicly available on the internet, or to distribute or otherwise use the documents in public.

If the documents have been made available under an Open Content Licence (especially Creative Commons Licences), you may exercise further usage rights as specified in the indicated licence.

The impact of computer-assisted personal interviewing on survey duration, quality, and cost: Evidence from the Viet Nam Labor Force Survey*

Lakshman Nagraj Rao,^a Elisabetta Gentile,^{ab} Dave Pison,^a Jude David Roque,^a and Vu Thi Thu Thuy^c

^a *Economic Research and Regional Cooperation Department, Asian Development Bank (ADB);* ^b *Global Labor Organization;* ^c *Population and Labor Statistics Department, General Statistics Office of Viet Nam*

Abstract

We use a randomized field experiment to estimate the effect of computer-assisted personal interviewing (CAPI) on interview duration, number of errors, respondent perceptions, and cost. During Quarter 3 of the 2017 Labor Force Survey data collection for Ho Chi Minh City, Viet Nam, 15 households were randomly selected and interviewed using pencil-and-paper interviewing (PAPI), while another 15 households were randomly selected and interviewed using CAPI within each of a total of 180 sample enumeration areas. On average, CAPI interviews lasted 9.4 minutes less and had 0.8 less errors per questionnaire relative to PAPI. Respondents were more likely to perceive interview duration as long or very long when the enumerator was female or educated to college level or above, which is contrary to our experimental findings. Finally, the break-even number of interviews that make CAPI cost-effective is 1,769, which is lower than prior estimates and reflects the rapidly decreasing cost of technology.

Keywords: computer-assisted personal interviewing; data quality; randomized experiment; survey; labor statistics

JEL codes: C81, J21

* We thank the General Statistics Office, Ministry of Planning and Investment, Viet Nam for their close collaboration in this project and implementing the fieldwork. Anna Christine Durante and Rea Jean Tabaco provided excellent research assistance. This paper benefited greatly from helpful comments received from Elaine Tan. We are grateful to all colleagues who offered help and advice, including Rana Hasan, Matteo Lanzafame, Pamela Lapitan, Yasuyuki Sawada, and Joseph E. Zveglic. Finally, we thank seminar attendees at ADB and conference participants at the 2018 Asian and Australasian Society of Labour Economics (AASLE) Conference and the 62nd ISI World Statistics Congress. The views expressed in this paper are those of the authors and do not necessarily reflect the views and policies of the Asian Development Bank (ADB) or its Board of Governors or the governments they represent. The standard disclaimer applies.

1. Introduction

Labor force surveys (LFS) are used to calculate the official measures of employment and unemployment in a country; they are the basis for labor market policy analysis and planning and provide essential data required for economic and social research. Yet, most LFS users do not concern themselves with the underlying data collection process, associated data errors, and potential implications for economic analysis.

In many developing economies, data collection continues to rely on the Pen-and-Paper Personal Interviewing (PAPI) technique, which involves a printed survey questionnaire coupled with a survey manual as means of gathering information in the field by an enumerator. Once questionnaires have been filled up and compiled, they would still need to be verified by a field supervisor before being manually entered into a data entry application. The best practice for data entry protocol involves two independent inputs of data and then a field by field comparison of the two entries by the data entry software. Inconsistent values between the two data entries are subsequently resolved either by pulling out the questionnaire and revisiting the field, or in the worst-case scenario, making a callback to the household. This is followed by a final set of data cleaning activities to produce a freshly minted dataset. It is only after a successful completion of these back-end processes that analysis is possible. Therefore, not only does PAPI require the printing and transportation of paper-based questionnaires to the field and then back to headquarters, but the process of data coding is extremely time-consuming and error-prone if the data ought to be entered manually.

The types of errors that can potentially affect PAPI surveys are grouped into four categories. *Skip errors* arise when the enumerator fails to skip the next question, or a series of questions based on the interviewee's response. For example, if the respondent answers 'No' when asked if they have children, then the following question(s) on the number, age, and sex of the children should be skipped. *Data validation errors* happen when an input to a question is restricted to a range (or list) of choices, but the response is outside that range. For example, if the respondent answers a question on total hours worked per week with a number that is higher than the total hours available in a week. *Logic errors* are identified through the implementation of cross/logical checks across modules of a questionnaire; for example, the same respondent answered 'Male' in one section of the questionnaire and 'Currently pregnant' in another section of the questionnaire. Finally, *missing errors* refer to unanswered items that are required to be filled based on the condition from the previous item. For example, if the respondent answers 'Yes' when asked if they have children, then the following questions on the number, age, and sex of children should not be blank.

Computer-Assisted Personal Interviewing (CAPI) involves transforming a paper-based questionnaire into an electronic questionnaire using one of the many platforms available¹. The electronic questionnaire is then downloaded to handheld devices like tablets and smartphones, allowing enumerators to record and store the responses directly into the devices. Algorithms alerting the enumerator of any of the

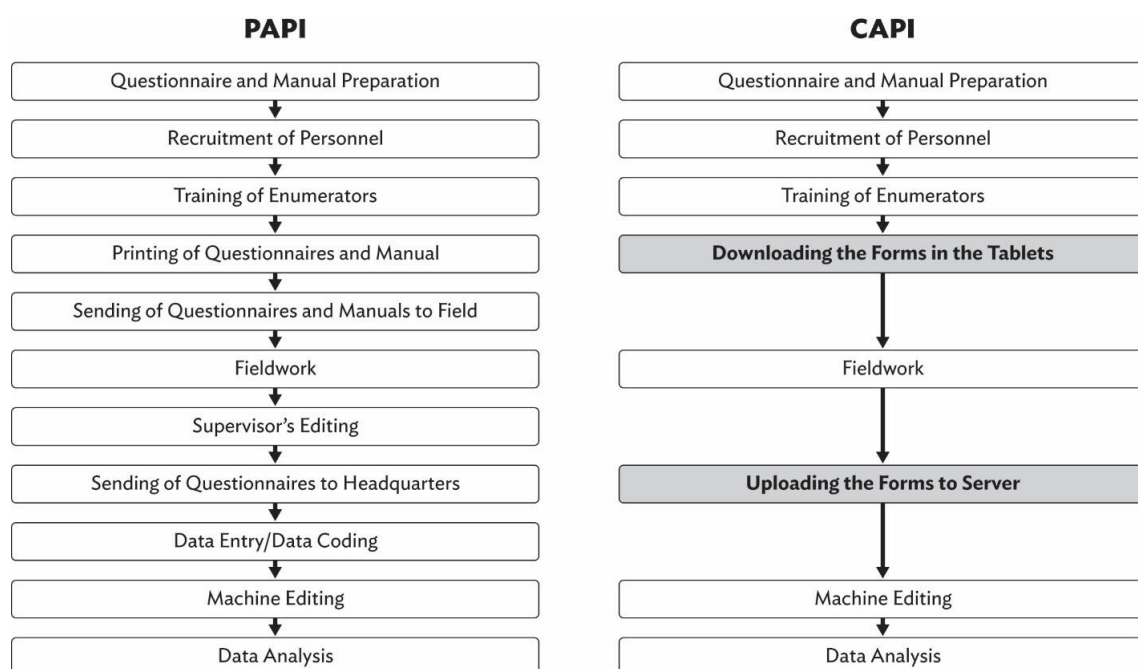
¹ For an overview of available CAPI platforms, see ADB (2019).

four types of aforementioned errors can be built into the questionnaire. The prompts provide the enumerators with the chance to confirm in real time whether responses are indeed valid. The data collected from CAPI surveys is then uploaded to either a physical or cloud server and is immediately ready for analysis. Figure 1 provides a comparison of the PAPI and CAPI workflow.

Far from being a new development, CAPI emerged three decades ago as a result of rapid advances in computing technology. However, it has remained the prerogative of developed economies (see, for example, Sebestik et al. 1988, Baker 1992, Banks and Laurie 2000), while in most developing countries major nationally representative surveys are still PAPI-based. Personal data assistants (PDAs) and rudimentary survey software were first used for implementing face-to-face surveys in developing economies only in the late 2000s (Byass et al. 2008; Caeyers et. al 2012). Lately, the emergence of low-cost smartphones, tablets, and other handheld devices, accompanied by a growth in the number of off-the-shelf survey software options, have made CAPI a more viable option. These new software support multi-language implementation, GPS, audio, video, barcode, and other forms of multimedia data, among other novel features. However, the relative benefits of each of these novel sources of data and the cost of collecting them remain at the forefront of concerns for National Statistics Offices (NSOs).

From an NSO perspective, a transition from PAPI to CAPI makes operational sense if it delivers improved data quality and faster data availability, even though acquiring the necessary equipment may increase costs during the initial implementation stage, and respondents may need time to adjust to the new survey mode. Tablet-based surveys allow for built-in validation checks to reduce the occurrence of errors and improve data accuracy (Sebestik et al. 1988; Nicholls et al. 1997). For example, imposing a range of acceptable values for a question would lead the survey to reject input values outside that range. In addition, CAPI supports functionalities such as GPS tracking and the collection of photos and other multimedia files which can be used as paradata to further validate the quality of data (Choumert-Nkolo et al. 2019). Second, it does not require second data entry, which means that data is available for analysis much faster (de Leeuw 2008). Next, CAPI surveys require far less or no paper printouts, thus reducing transportation and enumerator costs, and making it possible to increase sample sizes. Finally, it is likely that in today's day and age, with technology becoming ubiquitous, survey respondents would be comfortable with being interviewed using modern technology. Limited evidence on respondent perceptions from developed economies points in favor of CAPI on this domain. However, there are likely to be differences in perception of technology between rural and urban households (Sun et al. 2020; ADB 2019). The earlier literature considered CAPI a viable option only for large surveys, due to the fixed front-end cost of hardware and software development, as opposed to the variable back-end cost of logistics, data entry and data cleaning (Weeks 1992). However, with the cost of technology decreasing at a relatively fast pace and the availability of a variety of CAPI platforms that are low-cost and easy to use, CAPI has become a cost-effective option with smaller and smaller sample sizes (Rahija 2016; ADB 2019). An important point to note is that the cost advantage of CAPI materializes as the relevant knowledge capital is accumulated and economies of scale are achieved, so that each subsequent survey becomes less and less expensive.

Figure 1. PAPI versus CAPI workflow



Source: ADB 2019.

In this paper, we use a randomized rollout of CAPI and PAPI surveys during the LFS data collection for Ho Chi Minh City, Viet Nam, in Quarter 3 of 2017 to determine the effect of CAPI surveys on interview time, number of errors, respondent perceptions, and cost implications. We find that CAPI reduced interview duration by 9.4 minutes per questionnaire and reduced the average number of errors per questionnaire by 0.8 errors, which amounts to roughly 46,000 errors for Quarter 3 of the 2017 LFS for Viet Nam. We also find that respondents are more likely to perceive interview duration as long or very long rather than just right when the enumerator is female or educated to college level or above, which is contrary to our experimental findings. Finally, the break-even number of interviews that make CAPI cost-effective is 1,769, which is lower than prior estimates, consistent with the fact that the cost of technology keeps decreasing at a relatively fast pace.

Previous studies in developing countries have focused on surveys that are not conducted regularly by NSOs, with only one study conducted by Caeyers et al. (2012) attempting to implement a randomized experiment in Tanzania. This study was conducted in 2009, when the landscape for CAPI was drastically different. Furthermore, the same enumerators were used for both CAPI and PAPI, which could lead to contamination, a potential threat to the identification strategy. That is because CAPI interviewers, having learned how the checks work on this new technology, may change the way they conduct PAPI surveys. Our study contributes to the literature by providing experimental evidence for a mainstream survey conducted regularly in a developing Asian economy. Furthermore, it accounts for contamination more rigorously by randomly assigning enumerators to CAPI or PAPI. Finally, it provides updated cost estimates factoring in the availability of newer tablets and free CAPI software and attempts to explain factors that affect respondent perception on interview duration.

The rest of the paper is organized as follows: Section 2 provides a brief overview of the existing literature; Section 3 introduces the setting and experimental design. Section 4 dives into the results from the empirical analysis, and Section 5 concludes with some policy implications and directions for future research.

2. Evidence from the Literature

The earlier literature on CAPI has largely been conceptual, calling for more evidence-based and systematic studies, especially in a developing country context. For ease of exposition, we present the findings from the literature across four dimensions: interview duration and timeliness, survey cost, improved data quality, and respondent perceptions.

Interview length has implications for questionnaire completion rates, as well as response burden. The evidence on the impact of CAPI in this area is mixed: Caeyers et al (2012) conducted a randomized control trial of households in Tanzania and found that interview times were reduced by 10% with CAPI relative to PAPI, mainly attributable to CAPI's automated routing and skipping features. Some of the earlier research corroborates this and finds that interview lengths would be 16 to 20 percent shorter with CAPI (Lynn 1998; Baker et al. 1995). Zhang et al. (2012), on the other hand, compare smartphones and PAPI in data collection of infant feeding practices in rural China and find that the average duration for the smartphone method is almost a minute shorter than pen-and-paper, but the difference is not statistically significant. Similarly, examining over 12,000 households in Ethiopia to compare Android-based electronic data collection and the traditional paper method, King et al. (2013) do not find a significant difference in interview durations between methods.

There is also evidence that CAPI interviews might take longer than PAPI ones (Martin et al. 1993; Fuchs et al. 2000; Watson and Wilkins 2011). Nonetheless, this may be attributable to the adjustment to new technology, as well as the comparison with experienced interviewers already proficient in administering PAPI surveys. In his study of household surveys in Africa, Leisher (2014) finds that the average interview duration for CAPI only drops after three full days of using tablets. This might reflect the time it takes for interviewers to familiarize themselves with the technology and suggests a lag before the benefits of CAPI versus PAPI materialize in terms of interview duration.

Next, we analyze the evidence on CAPI's ability to generate and deliver data in a timely and more efficient manner. Martin et al. (1993) acknowledge CAPI's ability to reduce the time interval between fieldwork and the availability of data, and King et al. (2013), studying Android-based data collection in Ethiopia, find that electronic data collection saves time by providing results immediately. In practice, because CAPI software has faster back-end processing, much of the data processing and cleaning is done by the end of an interview. This also implies the elimination of data entry, and therefore a reduction in data delivery time. Therefore, whether time is

gained or lost with CAPI interviews, substantial time savings are still realized through more timely and efficient data delivery.

A similar argument can be made for cost. CAPI requires a sizable investment in hardware, more front-end design and development work, and more training on how to use the software and devices than PAPI (Schrapler et al. 2010). However, the front-end fixed costs must be balanced against the potential savings from the elimination of back-end costs related to producing and dealing with paper forms, data entry, and data cleaning (Martin et al. 1993).

Caeyers et al. (2012) find that CAPI would be most cost-effective for samples larger than 4,000, since in this case the reduction of variable costs associated with PAPI would exceed the fixed costs related to CAPI. Leisher (2014) finds that the cost per interview of tablet-based surveys was 74% lower than the paper-based average and that the savings originate from the reduced need for data cleaning and processing, as well as lower enumerator fees. This is further corroborated by King et al. (2013) and Zhang et al. (2012), who find that savings from CAPI are greater than the initial front-end expenses, such as hardware and software.

As discussed in Section 1, the earlier literature established that CAPI has tremendous potential for improving data quality. However, few studies have attempted to systematically and empirically study the effect of CAPI on data quality and analysis. Caeyers et al. (2012) conducted a randomized control trial on three groups of households from Pemba Island in Tanzania. The first group had a PAPI survey administered to them. The second group had a 'restricted CAPI' survey, i.e. a CAPI survey without consistency checks. The third group had the 'full CAPI' survey, i.e. with consistency checks. The purpose of comparing restricted CAPI to full CAPI was to isolate the effect of consistency checks, which are believed to be important for data quality. They found the share of questionnaires with at least one missing or illogical value to be 83% with PAPI, 40% with restricted CAPI, and only 2% with full CAPI. They also found that the CAPI study groups resulted in more refined consumption estimates. For instance, had the authors done the survey using PAPI, they would have concluded that 21% of households were malnourished, i.e. living on less than 1,500 kcals a day. The full CAPI survey, on the other hand, would have concluded that only 8% of households were malnourished. The difference in estimates was found to be statistically significant at 1%. The study attributed the 13% difference between full CAPI and PAPI as 6% due to CAPI's consistency checks mechanism, and 7% due to CAPI's other features, such as the automated routing mechanism. The study noted that 94% of the errors in PAPI that were because of routing or skip errors were avoided with the CAPI software.

Fafchamps et al. (2012) sought to measure sales and profits in microenterprises in Ghana through four rounds of quarterly data collection from 2008 to 2009. Such data tend to be noisy, with high standard deviations and low autocorrelation over time of sales and profits for a given firm. The authors implemented two types of consistency checks in their survey: first, a cross-sectional comparison of profits and sales for a given firm, which was implemented in all rounds; and second, a panel check that alerted for large differences in sales and profits compared to the earlier round. The panel checks occurred in round 2 onwards for sales, and in round 3

onwards for profits. The results showed that the checks minimized variations in responses and increased the autocorrelation of sales and profits for given firms through data collection rounds. However, only about 3 to 13% of the observations in a survey round were revised, amounting to a modest effect. The study concluded that more than mismeasurement, it was the intrinsic volatility and variation of the microenterprise sector that played a bigger part in the noisiness of the data. The study then flagged this as a limitation of CAPI's consistency checks in improving data quality for firm profit and sales.

The difference in findings between the two studies suggests that there is room for further research to investigate the impact of CAPI on different types of data and different contexts. In particular, as both studies took place in Africa, it would be interesting to study the transition to CAPI in different regions of the world.

In the early days of CAPI, there was concern that respondents would be reluctant to be interviewed using modern technology due to unfamiliarity with the technology or privacy concerns. However, studies mostly found no significant differences in nonresponse or refusal rates between PAPI and CAPI (see, for example, Nicholls et al. 1997; Baker et al. 1995; Tourangeau et al. 1997). With the turn of the 21st century, mobile phone ownership and internet usage have been climbing steadily in the developing world, especially in emerging economies. In Viet Nam, for example, 97 percent of adults own a mobile phone, 67 percent of which are smartphones; and 64 percent of adults use at least one social media platform or messaging app (Silver et al. 2019). Therefore, distrust of digital technologies is less likely to be an issue today than 30 years ago.

Enumerator characteristics, on the other hand, may have an impact on nonresponse rates as well as response accuracy. Di Maio and Fiala (2019) conducted a large-scale experiment in Uganda in which enumerators and respondents were randomly paired to study the 'enumerator effect.' They found that the experience and capacity of enumerators to elicit the correct answers from respondents have a large bearing on survey results. Case study evidence from four African countries as presented by Randall et al. (2013) corroborates these findings. The study shows that enumerator persuasion skills and the ability to follow precise wordings in interview manuals are crucial for a successful interview, especially in Africa, where survey jargon varies throughout regions and territories, and oftentimes interviewers are socio-economically distant from respondents.

Di Maio and Fiala (2019) also found a strong and robust effect of enumerator gender on responses: respondents were less likely to report strong voting preferences when the enumerator was male. The authors hypothesized that female enumerators may be perceived as less frightening or intimidating. Axinn (1989) used data from a study in Nepal that randomly assigned enumerators to households to test the influence of enumerator gender (among other things) on data accuracy and found that gender affects responses to sensitive questions, observing under-reporting in male-led interviews relative to female-led ones.

The enumerator effect could be a factor in the transition from PAPI to CAPI as well. Schrapler et al. (2010), for example, used a multivariate logit model to determine

the factors surrounding nonresponse within the context of the transition from PAPI to CAPI in the German Socioeconomic Panel. They found that the first three survey waves exhibited significantly higher probability of refusals than PAPI, specifically in questions that had to do with gross and net income. While privacy and confidentiality concerns related to new technology cannot be excluded, the authors suggested that the enumerator's lack of confidence in CAPI, given its novelty, was conveyed to the respondents.

In sum, the literature on the effect of CAPI has been mostly focused on advanced economies, where front-end costs and skill requirements were less of a barrier to adoption in the early stages. That resulted in a lack of rigorous studies set in developing countries, and the little evidence available is overwhelmingly from Sub-Saharan Africa. Nonetheless, a key finding emerges that the effects of CAPI in areas such as data quality or respondent perceptions may depend on the type of survey. A second consideration is that enumerators play a key role in the successful rollout of CAPI. Finally, the declining cost of handheld devices and the availability of CAPI platforms that are free of charge and easy to learn is further shifting costs in favor of CAPI, requiring updated estimates of the threshold for cost effectiveness.

This paper makes several contributions to the literature. We focus on CAPI implementation on the actual LFS of Viet Nam, a major nationally representative survey in a developing economy. We estimate the effect of CAPI on survey duration, data quality, and respondent perceptions. Finally, we provide updated calculations of the break-even point for CAPI to become viable.

3. Setting and Experimental Design

The Labor Force Survey (LFS) is a major household survey conducted on a quarterly basis by the General Statistics Office (GSO) of Viet Nam. The survey instrument comprises 71 questions grouped into three sections, as shown in appendix table A1.²

The sampling frame for the LFS is based on the 2014 Intercensal Population and Housing Survey. The sample was drawn from a two-stage stratified sample, while the enumeration areas (EAs) were selected by probability proportional to the size of the two independent sub-sample frames (urban and rural). This is to ensure that the sample is representative nationally and annually for 63 provinces/cities. Further, the nationally representative sample can be disaggregated quarterly down to 6 economic regions, the cities of Hanoi and Ho Chi Minh City, and rural and urban areas. A total of 3,828 EAs were selected for the 2017 round of LFS, as shown in appendix table A2.

The randomized experiment was conducted by the GSO with technical assistance

² The full questionnaire is available in the online Appendix.

from the Asian Development Bank³ and targeted Quarter 3 of the data collection in Ho Chi Minh City. Field operations were implemented during the first 15 days of July, August, and September 2017, respectively. Within each EA, 30 households were randomly selected, 15 randomly assigned to CAPI, and the remainder assigned to PAPI as part of the regular GSO LFS data collection efforts. Data collection within each EA was implemented such that CAPI and PAPI households were surveyed simultaneously. This ensured that households in the treated group did not learn of the differences in survey conduct for the control group (and vice versa), which could have led them to change their behavior.

Enumerators were separate for CAPI and PAPI surveys, but they all came from a general pool of enumerators in the GSO that have been contracted to conduct the LFS for several years. Both sets of enumerators were trained on the technical concepts of the questionnaire and the checks that were required of them to verify alongside field practice. In the case of the CAPI enumerators, an additional day of training was provided on how to use the tablets to navigate through the questionnaire and send the data file to their supervisors.

The difference in the total number of households interviewed is due to a small number of CAPI households refusing to participate in the survey, whereas there were no such refusals for PAPI households.⁴ Household weights were appropriately adjusted for the CAPI sample to account for attrition, since the sample design did not permit random replacement of households. This was done to adjust for minor changes in selection probabilities for the EAs with less than 15 CAPI households.

[Insert Table 1 about here]

The difference in the total number of household members interviewed between CAPI and PAPI is due to the difference in household composition, in particular the number of adult members of the household. While the main respondent for the LFS is the household head, when other members of the household are present, they are requested to provide feedback on targeted questions.

The CAPI survey was based on a CSPro⁵ Android platform. For an effective comparison of the number of errors in CAPI surveys with respect to PAPI, the same checks that PAPI enumerators were trained to perform on the paper questionnaire were programmed into the CAPI questionnaire. In total, we implemented 28 checks for skip errors, 76 checks for data validation errors, 26 checks for logic errors, and 69 checks for missing errors.⁶

[Insert Table 2 about here]

³ Regional Capacity Development Technical Assistance (R CDTA) 9018 “Implementing Information and Communication Technology (ICT) Tools to Improve Data Collection and Management of National Surveys supporting the Sustainable Development Goals.”

⁴ Dropping from our sample the enumerator areas where there were refusals to participate in CAPI surveys does not change the results of or analysis.

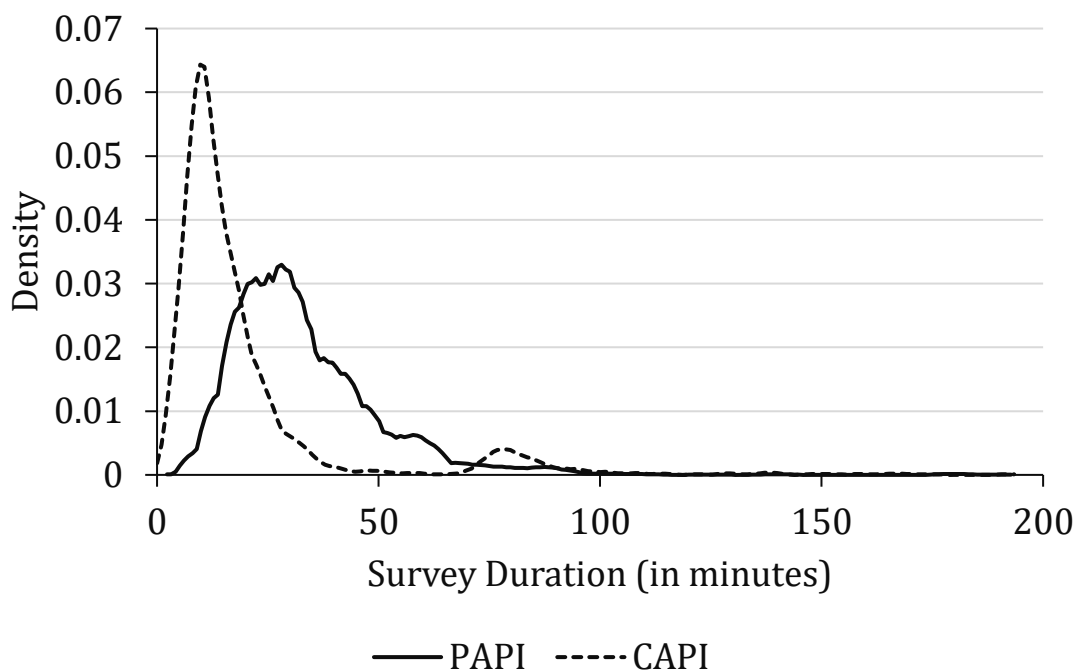
⁵ CSPro is a free software package developed by the US Census Bureau, primarily for the editing, processing, and dissemination of census and survey data, most widely used by National Statistics Offices (NSOs) in Asia and the Pacific.

⁶ The full list of implemented checks by type of error is available in the online Appendix.

Table 2 presents weighted summary statistics for both independent and dependent variables in our analysis: first, a series of household characteristics (panel A), followed by enumerator characteristics (panel B), and outcomes of interest (panel C). In the last column, we report a paired t-test for the null hypothesis that the group means are different for CAPI and PAPI surveys⁷.

Panel A in table 2 suggests that CAPI and PAPI households have comparable characteristics overall, indicating that the randomization was well implemented. Considering that the randomization took place within the context of a major nationally representative survey, the achievement of balanced samples is nontrivial. That said, CAPI households appear to have a slightly higher monthly wage, but the standard deviation is also higher than PAPI households.

Figure 2. Density plot of survey duration



Source: Authors

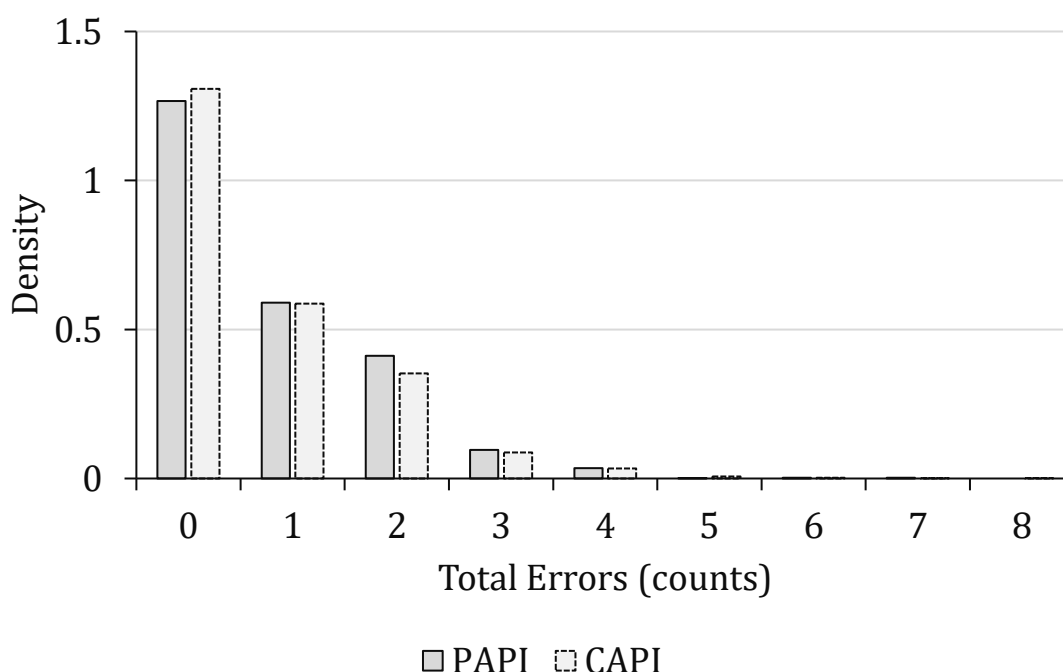
Panel B in table 2 shows that although the enumerators were randomly assigned to either CAPI or PAPI households, a larger proportion of enumerators were assigned to PAPI relative to CAPI. This was done to ensure that there would be no delays on PAPI households, which form part of the national estimates for labor force statistics. A slightly higher percentage of CAPI enumerators (73.77%) were female relative to PAPI enumerators (69.47%), while the average age, experience, and proportion with college degrees are close for both cohorts. Although there is a statistically significant difference in the number of adults in the household between CAPI and PAPI households, the mean values are close in magnitude (2.80 for PAPI versus 2.86 for

⁷ Note that enumerator characteristics remain unweighted in the analysis, since the weights being employed are at the household level.

CAPI). Overall, we fail to reject the null hypothesis that the group means are equal for CAPI and PAPI enumerators.

Finally, Panel C in table 2 shows that average interview duration is significantly higher for PAPI than CAPI surveys. Interestingly, the average number of errors is slightly higher for CAPI surveys, but the difference in means is statistically insignificant. Figures 2 and 3 display the density plots of our outcomes of interest. The distribution of survey duration for both CAPI and PAPI is skewed to the right, but skewness for CAPI is larger. Furthermore, the distribution for CAPI is smoother than PAPI. The distribution of survey errors is also skewed to the right and remarkably similar for CAPI and PAPI.

Figure 3. Density plot of total errors



Source: Authors

4. Results

A. Effect of CAPI on Total Survey Duration and Total Survey Errors

We define total survey duration as the number of minutes it took for a questionnaire to be finished by the household. In the case of a PAPI survey, enumerators accurately recorded the start and end time on the questionnaire, whereas a CAPI survey automatically recorded each interview's start time, end time, and duration by question, which could be added up to get a total survey duration per household.

The following simple OLS model computes the difference between the mean duration of CAPI versus PAPI interviews:

$$Y_{ijc} = \alpha + \beta \cdot CAPI_i + HH_i\Gamma + ENUM_j\Delta + \zeta_c + \eta_j + \epsilon_{ijc} \quad (1)$$

Y_{ijc} represents total survey duration (in minutes) for household i surveyed by enumerator j in cluster (i.e. enumeration area) c . $CAPI_i$ is the binary variable indicating treatment status (=1 for being randomized into the CAPI households, =0 otherwise), HH_i is a set of household head characteristics, and $ENUM_j$ is a set of enumerator characteristics. The coefficient α is the mean duration for PAPI interviews, and the coefficient β gives the difference between the mean duration of CAPI and PAPI interviews. Γ and Δ are vectors of coefficients for household head characteristics and enumerator characteristics, respectively. ζ_c represents cluster fixed effects, η_j enumerator fixed effects, and ϵ_{ijc} is the error term. Finally, we apply household weights to address survey design.

Column (1) in table 3 displays the results from the specification in equation (1). It shows that CAPI reduces interview duration by 9.5 minutes, and the coefficient is significant at the 1 percent level. The number of adults in the household increases interview duration by roughly 3 minutes. That may be because the enumerator needs to determine whether other members of the household have to provide feedback on targeted questions.

[Insert Table 3 about here]

Enumerator characteristics are significant determinants of interview duration: on average, interviews conducted by female enumerators last 7 minutes less than male enumerators, and the coefficient is significant at the 1 percent level. Interviews are one minute shorter for every additional year of experience of the enumerator. Finally, interviews conducted by college-educated enumerators, on average, are shorter by 5.7 minutes with respect to enumerators with education below college level, and the coefficient is significant at the 5 percent level.

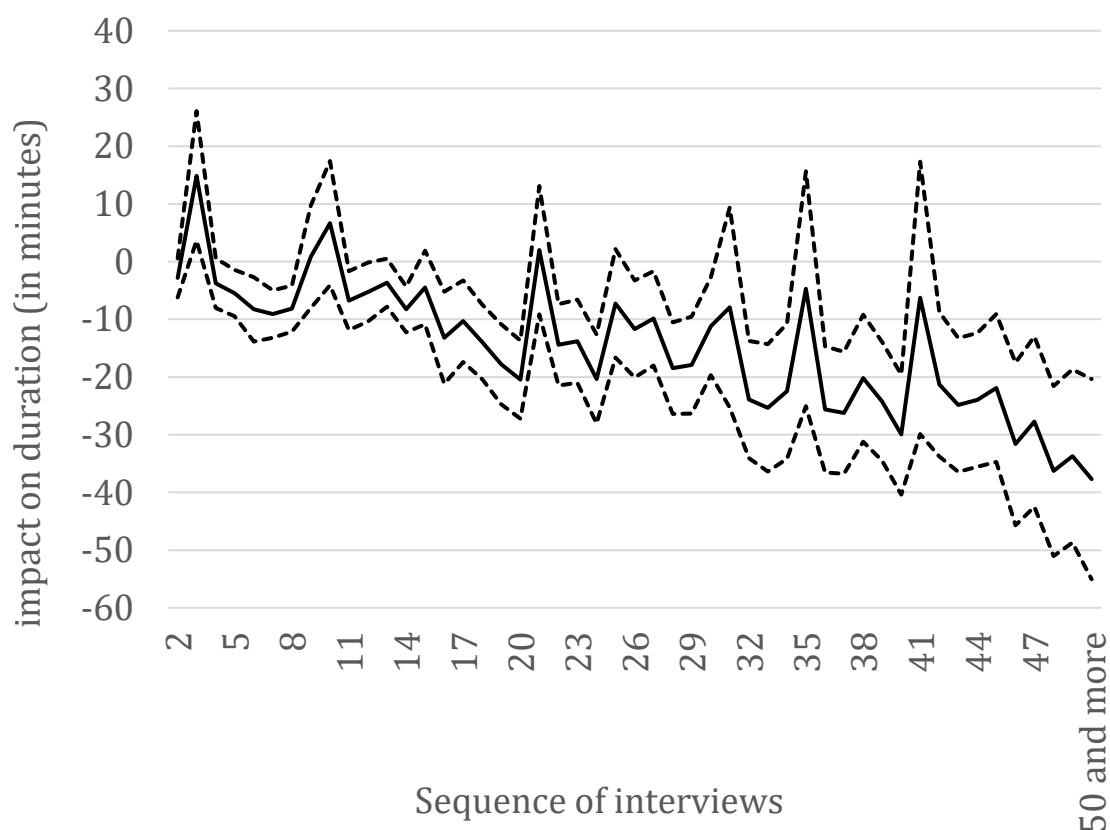
In figure 4, we plot the coefficients with their standard error bands from a simple regression of the total duration of a CAPI interview on its place in the full sequence of interviews carried out by each CAPI enumerator. In other words, the explanatory variables of interest are whether the survey is the n^{th} conducted by each enumerator, where $n = \{2, 3, \dots, 50 \text{ or more}\}$ and $n = 1$ is the excluded category. We end the sequence with '50 or more' because from roughly 50 interviews onward there are fewer and fewer observations. The controls in the regression include the full set of household characteristics in table 3 (i.e. sex, age, and wage of household head, and number of adults in the household), enumerator fixed effects, and enumeration area fixed effects.

Figure 4 shows evidence of a learning curve for CAPI enumerators. Despite some noise in the data, the overall trend is that the more interviews they conduct, the shorter the duration compared to their first interview.

We now turn our attention to total survey errors, which we define as the sum of all

types of errors (i.e. skip errors, data validation errors, logical errors, and missing errors) found within the questionnaire. We use the model in equation (1) once again, where the outcome of interest is now total survey errors. The results are in Column (2) of table 3.

Figure 4. Impact of enumerator learning on CAPI interview duration



Source: Authors

We find that CAPI decreased the average number of errors per questionnaire by roughly 0.8 errors. In order to properly assess the magnitude of this effect, we must consider that the questionnaire comprised only 71 questions, making it short relative to, for example, enterprise surveys, which can have more than three times that number of questions. If we multiply 0.8 errors per questionnaire by 15 households per EA by 3,828 EAs for Quarter 3 of 2017 LFS, it amounts to a total number of errors just shy of 46,000. As mentioned in Section 3, both PAPI and CAPI surveys were conducted by well-trained enumerators who had no statistically significant differences in observable characteristics such as age, years of experience, gender breakdown, and education. Furthermore, the two sets of enumerators were randomly assigned to each group, further bolstering the validity of the statistically significant difference in average number of errors per questionnaire.

Household characteristics also affect the total number of errors. Older household heads are associated with a small but highly significant reduction in the average number of errors. Wage of household head and number of adults in the households

are associated with significant increases in the number of errors at the 5 percent and 1 percent level, respectively. Interestingly, enumerator characteristics do not have a significant effect on the incidence of errors in the questionnaires.

B. Respondent perceptions

The survey had a module at the end to assess household heads' perceptions of different aspects of the interview process. Appendix table A3 compares the responses to this module between CAPI and PAPI households. The first question is about perceptions of interview duration. Roughly a quarter of household heads found the interview long or very long regardless of survey method. Interestingly, household heads that were interviewed with the PAPI method were more likely to rate interview duration as short or very short than those interviewed with CAPI⁸.

We use a multinomial logistic regression model to investigate what factors affect household heads' perceptions of interview duration. We grouped the five possible ratings in appendix table A3 into three categories: "long or very long," "length is just right," and "short or very short." "Length is just right" (*just right*) is the reference category against which we compare the other two alternatives—"long or very long" (*long*) and "short or very short" (*short*)—as follows:

$$\ln \frac{\Pr(Z_{ijc} = \text{long})}{\Pr(Z_{ijc} = \text{just right})} = \alpha_1 + \beta_1 \cdot \text{CAPI}_i + \text{PERC}_i \Theta_1 + \text{HH}_i \Gamma_1 + \text{ENUM}_j \Delta_1 \quad (2)$$

$$\ln \frac{\Pr(Z_{ijc} = \text{short})}{\Pr(Z_{ijc} = \text{just right})} = \alpha_2 + \beta_2 \cdot \text{CAPI}_i + \text{PERC}_i \Theta_2 + \text{HH}_i \Gamma_2 + \text{ENUM}_j \Delta_2 \quad (3)$$

Z_{ijc} represents household heads' perceptions of interview duration for household i surveyed by enumerator j in enumeration area c . It is a categorical variable that can take the values of 'long,' 'just right,' or 'short' as explained above. PERC_i is a set of two variables related to household heads' perceptions (questions 2 and 4 in appendix table A3). The first is a binary indicator of whether the respondent enjoyed the interview process. The second is a categorical variable that takes the value of 0 if the respondent found the interview process easy, 1 if neither difficult nor easy, and 2 if difficult. Finally, Θ represents the vector of coefficients for PERC_i .

[Insert Table 4 about here]

Column (1) in table 4 displays the results from the specification in equation (2). The estimated coefficients represent the relative log odds of rating survey duration as

⁸ This is likely due to a learning curve for enumerators when it comes to navigating a CAPI survey, as shown in figure 4. In other words, the first few households take longer, but over time, CAPI enumerators catch up with their PAPI counterparts. Hence the number of cases falling in the 'just right' category is close between CAPI and PAPI. As mentioned in Section 1, the cost advantage of CAPI materializes as the relevant knowledge capital is accumulated.

long with respect to *just right* associated with each variable. For example, the relative log odds decrease by 0.19 for CAPI households compared to PAPI households, and the coefficient is significant at the 10 percent level. Similarly, the relative log odds decrease by 0.92 for household heads who enjoyed the interview process with respect to those who did not. The relative log odds of rating survey duration as *long* with respect to *just right* increase by 1.97 if moving from the lowest level of difficulty in answering questions (i.e. 'easy') to the highest (i.e. 'difficult'). The coefficients for household characteristics are all insignificant, except for the number of adults in the household, which is positive and significant. That is, again, because the survey contains questions such as employment status or sources of income for all adults in the household, thus increasing the perceived length of the interview process.

Perhaps the most interesting finding from Column (1) in table 4 is that enumerator characteristics have significant associations with household heads' perceptions of survey duration. The multinomial logit for female relative to male enumerators is 0.28 unit higher for rating survey duration as *long* with respect to *just right*, and the coefficient is significant at the 1 percent level. A one-year increase in enumerator age is associated with a 0.02 decrease in the relative log odds of rating survey duration as *long* with respect to *just right*. A one-year increase in enumerator experience is associated with a 0.05 decrease in the relative log odds of rating survey duration as *long* with respect to *just right*. Finally, the relative log odds increase by 0.36 for enumerators with education at college level or above, with the coefficient significant at the 1 percent level. While the results in table 3 show that interviews conducted by female enumerators or enumerators with college education and above lasted roughly 7 and 6 minutes less, respectively, table 4 suggests that household heads associated these same enumerator characteristics with a perception of longer interview duration. This is likely due to heterogeneity in frames of reference for household heads in terms of average survey durations from past experiences with participating in a survey, which may lead to differences in subjective perception of survey duration at any given level of objectively measured survey duration.⁹ Furthermore, this could also be due to the socio-economic distance between interviewers and respondents discussed in Randall et al. (2013), despite the fact that the Ho Chi Minh City households were prevalently urban.¹⁰

Column (2) in table 4 is mostly the mirror image of column (1), with a few exceptions. First, the relative log odds of rating survey duration as *short* with respect to *just right* decrease by 0.90 for CAPI households compared to PAPI households, and the coefficient is significant at the 1 percent level. A one dollar increase in the wage of the household head is associated with a 0.001 decrease in the relative log odds of rating survey duration as *short* with respect to *just right*. While the coefficient is relatively small, it is highly significant at the 1 percent level. The

⁹ While formally testing this hypothesis may be difficult due to data limitations, comparisons across subjective and objective measures for other variables such as welfare have been explored in depth in the economics literature and highlighted the role of frame-of-reference-bias (Beegle, Himelein, Ravallion 2016).

¹⁰ We explored this possibility further by adding an interaction of household head sex and enumerator sex to the models in equations (1), (2), and (3). The interaction is negative for total survey duration and positive for total survey errors, but statistically insignificant.

relative log odds associated with enumerator sex, age, and education are statistically insignificant.

C. Cost comparison

As mentioned in Section 1, both CAPI and PAPI surveys have fixed and variable costs, but they differ in terms of where the costs are concentrated. The cost comparison in table 5 shows that while CAPI has higher fixed costs related to front-end design and development work, PAPI has higher variable costs related to logistics of producing and dealing with paper forms, data entry, and data cleaning.

[Insert Table 5 about here]

The information in table 5 allows us to calculate the break-even sample size at which CAPI becomes more cost-effective than PAPI (N_{BE}):

$$N_{BE} = -\frac{FC_{CAPI} - FC_{PAPI}}{VC_{CAPI} - VC_{PAPI}} \quad (4)$$

where FC is fixed cost and VC is variable cost. We find that $N_{BE} = 1,769$. This is substantially lower than the threshold of 4,000 calculated by Caeyers et al. (2012), demonstrating that CAPI is becoming cost-effective for increasingly small sample sizes.

5. Conclusion

In this paper, we use the randomized rollout of CAPI and PAPI surveys during the LFS data collection for Ho Chi Minh City, Viet Nam, in Quarter 3 of 2017 to determine the effect of CAPI surveys on interview time, number of errors, cost implications, and respondent perceptions. Our findings confirm the benefits of CAPI in terms of interview duration and data quality: CAPI reduced interview duration by 9.4 minutes per questionnaire and reduced the average number of errors per questionnaire by 0.8 errors, which when scaled up amounts to a total number of errors just shy of 46,000 for the whole LFS data collection of Quarter 3 of 2017.

While our experimental results found that interviews conducted by female enumerators and enumerators with college education and above were roughly 7 and 6 minutes shorter, respectively, household heads' perception of interview duration went in the opposite direction. Household heads were more likely to rate interview duration as long or very long rather than just right when the enumerator was female or educated to college level or above. These findings suggest that socio-economic dynamics might be at play between enumerators and responders, even though the Ho Chi Minh City households were prevalently urban.

One key feature distinguishing CAPI from PAPI is the distribution of survey costs. PAPI has higher variable costs associated with data entry, printing, storage, logistics,

etc. CAPI, on the other hand, is traditionally associated with higher fixed costs of software development and hardware such as tablets and power banks. These costs, however, have been steadily decreasing over time. Consequently, the break-even sample size at which CAPI becomes more cost-effective than PAPI has been decreasing, too, and we calculate it at 1,769 interviews.

While our findings are encouraging, it is worth noting that, in order to reap the full benefits of CAPI, enough time must be allocated for programming and piloting the questionnaire and for enumerator training. Handheld devices now come in a wide range of prices and features, which calls for careful consideration of the performance-price ratio, especially for surveys with specific requirements such as GPS location or sound recording. While power banks have eased concerns over intermittent access to electricity in the field, poor data connectivity can be crippling in developing countries and may require alternative ‘off-line’ arrangements for data collection. Also, as of 2020, 107 countries in the world (of which 66 are developing or transition economies) have put in place legislation to secure the protection of data and privacy (UNCTAD 2020) and more countries have draft legislations in the works. Understanding how these laws may impact the implementation of CAPI surveys—e.g. those that rely on cloud-based servers to store the data uploaded by the enumerators—and securing compliance could be a challenge, especially in the early stages of implementation.

Our paper contributes to the growing literature on the impact of survey design choices and methods on survey measurement (see, for example, McKenzie and Rosenwig 2012; Godlonton et al. 2017; Dillon and Rao 2018) by focusing on one kind of digital technology, namely CAPI. The findings from our randomized experiment led the General Statistics Office (GSO) in Viet Nam to scale up CAPI operations for LFS data collection to the national level starting in 2018, showing that this kind of methodological research has significant policy implications.

With technology permeating the survey world in developing economies in the form of web surveys, SMS surveys, and interactive voice responses (Lau et al. 2019; Dabalen et al. 2016), particularly in light of global pandemics such as COVID-19, our results provide useful insights on the careful adoption of new technologies. There is still much to be learned about the impact of survey technology on measurement errors in labor force surveys, particularly in developing economies. Further exploration of the sources and determinants of these biases will improve causal estimates of these relationships by researchers and data-driven policy making.

References

- Asian Development Bank (ADB). 2019. *The CAPI Effect: Boosting Survey Data Through Mobile Technology. A Special Supplement of the Key Indicators for Asia and the Pacific 2019*. Manila: Asian Development Bank, April 2019.
- Axinn, William G. 1989. "Interviewer and data quality in less developed setting." *Journal of Official Statistics* 5: 265-280
- Baker, Reginald P. 1992. "New Technology in Survey Research: Computer-assisted Personal Interviewing (CAPI)". *Social Science Computer Review* 10: 145-157.
- Baker, Reginald P. and Norman N. Bradburn and Robert A. Johnson. 1995. "Computer-assisted Personal Interviewing: An Experimental Evaluation of Data Quality and Costs." *Journal of Official Statistics* 11(4). pp. 413-431.
- Banks, Randy and Heather Laurie. 2000. "From PAPI to CAPI: The Case of the British Household Panel Survey." *Social Science Computer Review* 18(4): 397-406.
- Byass, Peter and Sennen Hounton and Ouédraogo Mactar and Henri Somé and Ibrahima Diallo and Edward Fottrell and Axel Emmelin and Nicolas Meda. 2008. "Direct data capture using hand-held computers in rural Burkina Faso: Experiences, benefits and lessons learnt." *Tropical Medicine & International Health* 13: 25-30.
- Caeyers, Bet and Neil Chalmers and Joachim De Weerd. 2012. "Improving Consumption Measurement and Other Survey Data Through CAPI: Evidence from a Randomized Experiment." *Journal of Development Economics* 98(2): 19-33.
- Choumert-Nkolo, Johanna and Henry Cust and Callum Taylor. 2019. "Using paradata to collect better survey data: Evidence from a household survey in Tanzania." *Review of Development Economics* 23(2): 598-618.
- Couper, Mick P. 2005. "Technology Trends in Survey Data Collection." *Social Science Computer Review* 23: 486-501.
- Dabalen, Andrew and Alvin Etang and Johannes Hoogeveen and Elvis Mushi and Youdi Schipper and Johannes von Engelhardt. 2016. *Mobile Phone Panel Surveys in Developing Countries: A Practical Guide for Microdata Collection*. Washington D.C.: World Bank.
- De Leeuw, Edith D. and Joop J. Hox and Ger Snijders. 1995. "The Effect of Computer-Assisted Interviewing on Data Quality. A Review." *International Journal of Market Research* 37: 325-344.
- De Leeuw, Edith D. 2008. "The Effect of Computer-Assisted Interviewing on Data Quality: A Review of the Evidence." MethodikA: Utrecht University.
- Dillon, Andrew and Lakshman Nagraj Rao. 2018. "Land Measurement Bias: Comparisons from Global Positioning System, Self-Reports, and Satellite Data." ADB Economics Working Paper No. 540. Manila: Asian Development Bank.
- Di Maio, Michele and Nathan Fiala. 2019. "Be Wary of Those Who Ask: A Randomized Experiment on the Size and Determinants of the Enumerator

- Effect." *The World Bank Economic Review* 1hy024.
- Fafchamps, Marcel and David McKenzie and Simon Quinn and Christopher Woodruff. 2012. "Using PDA Consistency Checks to Increase the Precision of Profits and Sales Measurement in Panels." *Journal of Development Economics* 98. pp. 51-57.
- Fuchs, Marek and Mick P. Couper and Sue Ellen Hansen. 2000. "Technology Effects: Do CAPI or PAPI Interviews Take Longer?" *Journal of Official Statistics* 16(3):273-286.
- Godlonton, Susan and Manuel A. Hernandez and Mike Murphy. 2018. "Anchoring Bias in Recall Data: Evidence from Central America." *American Journal of Agricultural Economics* 100(2): 479-501.
- King, Jonathan D. and Joy Buolamwini and Elizabeth A. Cromwell and Andrew Panfel and Tesfaye Teferi and Mulat Zerihun and Berhanu Melak and Jessica Watson and Zerihun Tadesse and Danielle Vienneau and Jeremiah Ngondi and Jürg Utzinger and Peter Odermatt and Paul M. Emerson. "A Novel Electronic Data Collection System for Large-Scale Surveys of Neglected Tropical Diseases." *PLoS ONE* 8(9).
- Lau, Charles Q. and Ansie Lombaard and Melissa Baker and Joe Eyerman and Lisa Thalji. 2018. "How Representative Are SMS Surveys in Africa? Experimental Evidence from Four Countries." *International Journal of Public Opinion Research* 31(2): 309-330.
- Leisher, Craig. 2014. "A Comparison of Tablet-Based and Paper-Based Survey Data Collection in Conservation Projects." *Social Sciences* 3(2): 264-271.
- Lynn, Peter. 1998. "Data Collection Mode Effects on Responses to Attitudinal Questions." *Journal of Official Statistics* 14(2): 1-14.
- McKenzie, David and Mark Rosenzweig. 2012. "Preface for symposium on measurement and survey design." *Journal of Development Economics* 98(1): 1-2.
- Martin, Jean and Colm O'Muircheartaigh and John Curtice. 1993. "The Use of CAPI for Attitude Surveys: An Experimental Comparison with Traditional Methods." *Journal of Official Statistics* 9(3): 641-661.
- Nicholls, William L. and Edith D. de Leeuw. 1996. "Factors in Acceptance of Computer-Assisted Interviewing methods: A Conceptual and Historical Review." *Proceedings of the Section of Survey Research Methods*, American Statistical Association 758-763.
- Nicholls, William L. and Reginald P. Baker and Jean Martin. 1997. "The Effect of New Data Collection Technologies on Survey Data Quality," in *Survey Measurement and Process Quality*, edited by Lars Lyberg and Paul Biemer and Martin Collins and Edith De Leeuw and Cathryn Dippo and Norbert Schwarz and Dennis Trewin, 221-248. New York: Wiley, February 10, 1997.
- Olsen, Randy. 1992. "The Effects of Computer Assisted Interviewing on Data Quality." In 4th Social Science Methodology Conference. Trento, Italy.
- Rahija, Michael and Titus Mwisomba and Mlemba Abassy Kamwe and James Muwonge and Ugo Pica-Ciamarra. 2016. "Are CAPI Based Surveys a Cost-

- effective and Viable Alternative to PAPI Surveys? Evidence from Agricultural Surveys in Tanzania and Uganda." Proceedings of the ICAS VII Seventh International Conference on Agricultural Statistics, Rome, October 24-26, 2016.
- Randall, Sara and Ernestina Coast and Natacha Compaore and Philippe Antoine. 2013. "The power of the interviewer: a qualitative perspective on African survey data collection." *Demographic research* 28 (27): 763-792.
- Ravallion, Martin and Kristen Himelein and Kathleen Beegle, "Can Subjective Questions on Economic Welfare Be Trusted?" *Economic Development and Cultural Change* 64(4): 697-726.
- Schrapler, Jörg-Peter and Jürgen Schupp and Gert G. Wagner. 2010. "Changing from PAPI to CAPI: Introducing CAPI in a Longitudinal Study." *Journal of Official Statistics* 26(2): 239-269.
- Silver, Laura and Aaron Smith and Courtney Johnson and Kyle Taylor and Jingjing Jiang and Monica Anderson and Lee Rainie. 2019. *Mobile Connectivity in Emerging Economies*. Washington D.C.: Pew Research Center.
- Sun, Hanyu and Frederick G Conrad and Frauke Kreuter. 2020. "The Relationship between Interviewer-Respondent Rapport and Data Quality." *Journal of Survey Statistics and Methodology* smz043.
- Tourangeau, Roger and Kenneth Rasinski and Jared B. Jobe and Tom W. Smith and William F. Pratt. 1997. "Sources of Error in a Survey of Sexual Behavior." *Journal of Official Statistics* 13: 341-365.
- Watson, Nicole and Roger Wilkins. 2012. "Experimental Change from Paper-Based Interviewing to Computer-Assisted Interviewing in the HILDA Survey." Melbourne Institute Working Paper No. 6/12. The Melbourne Institute of Applied Economic and Social Research.
- Weeks, Michael F. 1992. "Computer-Assisted Survey Information Collection: A Review of CASIC Methods and their Implications for Survey Operations." *Journal of Official Statistics* 8(4): 445-466.
- Sebestik, Jutta and Harvey Zelon and Dale Dewitt and Jim O. O'Reilly and Kevin McGowan. 1988. "Initial Experiences with CAPI." Proceedings of the Bureau of the Census Fourth Annual Research Conference, Washington, D.C.: U.S. Department of Commerce, Bureau of the Census, 357-365.
- United Nations Conference on Trade and Development (UNCTAD). 2020. "Data Protection and Privacy Legislation Worldwide." [https://unctad.org/en/Pages/DTL/STI and ICTs/ICT4D-Legislation/eCom-Data-Protection-Laws.aspx](https://unctad.org/en/Pages/DTL/STI%20and%20ICTs/ICT4D-Legislation/eCom-Data-Protection-Laws.aspx), accessed on February 11, 2020.
- Zhang, Shuyi and Qiong Wu and Michelle HMMT van Velthoven and Li Chen and Josip Car and Igor Rudan and Yanfeng Zhang and Ye Li and Robert W Scherpbier. 2012. "Smartphone Versus Pen-and-Paper Data Collection of Infant Feeding Practices in Rural China." *Journal of Medical Internet Research* 14(5).

Table 1. Sampling characteristics

	CAPI	PAPI
Total number of enumeration areas	180	180
Total number of households interviewed	2,633	2,700
Average number of households per enumeration area	15	15
Total number of household members interviewed	9,502	9,533
Total number of household heads interviewed	2,633	2,700

Source : Authors

Table 2. Summary statistics

	CAPI	PAPI	Total	t-statistic
A. Household characteristics				
Fraction of female household heads	41.72 (49.05)	41.07 (49.47)	41.40 (49.26)	-0.48
Age of household head	49.64 (14.68)	49.41 (15.09)	49.53 (14.89)	-0.67
Monthly wage (USD) of household head	249.09 (471.26)	245.74 (314.58)	247.41 (401.37)	-0.26
Number of adults in the household	2.86 (1.30)	2.80 (1.27)	2.83 (1.29)	-1.77*
<i>Number of observations</i>	2,633	2,700	5,333	
B. Enumerator Characteristics				
Fraction of female enumerators	73.77 (44.35)	69.47 (46.30)	71.15 (45.45)	-0.58
Age	34.52 (12.54)	35.91 (12.67)	35.37 (12.59)	0.67
Experience	4.02 (4.46)	4.46 (5.60)	4.29 (5.17)	0.53
Fraction with college education and above	75.41 (43.42)	73.68 (44.27)	74.36 (43.81)	-0.24
<i>Number of observations</i>	61	95	156	
C. Outcomes of interest				
Total interview duration	21.71 (41.69)	34.53 (30.03)	28.13 (36.94)	9.28***
Number of errors per household	0.85 (1.91)	0.78 (1.01)	0.81 (1.53)	-1.56
<i>Number of observations</i>	2,633	2,700	5,333	

Notes: Standard deviations in parentheses. The t-statistics represent a paired samples statistic with standard errors clustered by country for the null hypothesis that the group means are equal for CAPI and PAPI questionnaires. *, **, and *** denote statistical significance at the 10%, 5%, and 1% levels, respectively.

Source: Authors

Table 3. The effect of CAPI on total survey duration and total survey errors

	Total Survey Duration (1)	Total Survey Errors (2)
Method of data collection		
CAPI (base = PAPI)	-9.463*** (2.690)	-0.797** (0.337)
Household characteristics		
Sex of household head (1 if female)	0.634 (1.224)	-0.030 (0.044)
Age of household head	-0.072** (0.032)	-0.008*** (0.001)
Wage (per month in USD)	1.44e-05 (0.00137)	0.000247** (0.000101)
Number of adults in the household	2.917*** (0.371)	0.266*** (0.020)
Enumerator characteristics		
Sex (1 if female)	-7.022*** (2.474)	0.063 (0.312)
Age	-0.194** (0.092)	0.015* (0.008)
Experience (in years)	-0.987** (0.380)	0.0333 (0.036)
Squared Experience (in years)	0.023** (0.010)	-0.002** (0.001)
Education (base = below college level)	-5.745** (2.313)	0.060 (0.102)
Constant	53.44*** (6.189)	0.526 (0.535)
Observations	5,333	5,333
R-squared	0.190	0.153
Enumeration Area Fixed Effects	Yes	Yes
Enumerator Fixed Effects	Yes	Yes
Sampling weights	Yes	Yes

Note: Standard errors of the means in parentheses. *, **, and *** denote statistical significance at the 10%, 5%, 1% levels, respectively.

Source: Authors

Table 4. Multinomial logit model of household heads' perceptions of survey duration

	Long (1)	Short (2)
Method of data collection		
CAPI (1 if CAPI)	-0.1917** (0.0942)	-0.9046*** (0.1367)
Respondents perception		
Enjoyment (1 if Yes)	-0.9181*** (0.0958)	0.7561*** (0.1899)
Difficulty to answer (0 if easy)		
Neither difficult nor easy	0.5546*** (0.1173)	-1.1674*** (0.1411)
Difficult	1.9717*** (0.1751)	-1.2481*** (0.4696)
Household characteristics		
Sex of household head (1 if female)	0.0882 (0.0954)	0.1397 (0.1342)
Age of household head	-0.0033 (0.0034)	0.0059 (0.0048)
Wage (per month in USD)	-0.00004 (0.00014)	-0.00116*** (0.00032)
Number of adults in the household	0.4044*** (0.0406)	-0.5675*** (0.0758)
Enumerator characteristics		
Sex (1 if female)	0.2750*** (0.1028)	0.2132 (0.1607)
Age	-0.0239*** (0.0046)	0.0029 (0.0051)
Experience (in years)	0.0512*** (0.0090)	-0.0094 (0.0093)
Education (1 if college level or above)	0.3576*** (0.1150)	-0.1089 (0.1361)
Constant	-1.8140*** (0.3011)	-0.5630 (0.4398)
Observations	3,393	3,393
Pseudo R-squared	0.159	0.159
Enumeration area fixed effects	No	No
Enumerator fixed effects	No	No
Sampling weights	Yes	Yes

Note: The reference category for the multinomial logistic regression is "Length is just right." Standard errors of the means in parentheses. *, **, and *** denote statistical significance at the 10%, 5%, 1% levels, respectively.

Source: Authors

Table 5. PAPI-CAPI cost comparison

	CAPI	PAPI
A. Fixed costs		
Software	-	-
Programming	USD 400 × 29 days = = USD 11,500	USD 400 × 15 days = = USD 6,000
<i>Total fixed costs (FC_i)</i>	<i>USD 11,500</i>	<i>USD 6,000</i>
B. Variable costs		
	USD 195 ÷ 912 days in the field ÷ 5 interviews per day = = USD 0.04 per interview	
Tablets (including data and power bank)		-
Enumerators	-	-
Data entry	-	USD 0.65 per interview
Printing	-	USD 1.50 per interview
Miscellanea (storage, bags, logistics, etc.)	USD 0.50 per interview	USD 1.50 per interview
<i>Total variable costs (VC_i)</i>	<i>USD 0.54 per interview</i>	<i>USD 3.65 per interview</i>

Note: Enumerator costs are the same regardless of survey mode; therefore they are not included in the cost analysis.

Source: Authors.

Table A1. Components of survey instrument

Section and subsection	Count
Part 1: Information on Usual Residents of Household	8
Part 2: Some Basic Characteristics of Respondents	7
Part 3: Questions for Classifying the Economically Active Status	
A: Information on Employment	8
I. The Main Job	15
II. Income and Working Hours	4
III. Underemployment	3
IV. Self-Evaluation	6
Item B: Information on the Unemployment of Outside the Labor Force	16
C: Specific Information About Field of Study/Training	4
Total	71

Source: Authors based on the 2017 Labor Force Survey Questionnaire of Viet Nam

Table A2. Total number of sampled enumeration
areas per quarter, LFS 2017

Administrative Uni	Urban	Rural	Total
Entire Country	1,668	2,160	3,828
Ha Noi	126	90	216
Ho Chi Minh	150	30	180
Other Provinces	-	-	54-60

Source : General Statistics Office, Viet Nam

Table A3. Respondent perceptions of interview process by method

	CAPI (%)	PAPI (%)
Q1: What did you think of the duration of the interview?		
Very long	3.55	3.72
Long	21.17	20.82
Length is just right	69.58	62.01
Short	5.53	12.84
Very short	0.17	0.60
Q2: Did you enjoy participating in the interview?		
Yes	66.30	66.70
No	33.70	33.30
Q3: How satisfied or dissatisfied are you with the interview based on the flow of questions?		
Very dissatisfied	1.03	0.43
Dissatisfied	5.78	4.97
Neither dissatisfied nor satisfied	60.42	54.67
Satisfied	27.68	33.29
Very satisfied	5.10	6.64
Q4: Did you find the questions easy or difficult to answer?		
Very difficult	0.13	1.22
Difficult	6.95	9.09
Neither difficult nor easy	60.92	48.34
Easy	30.05	37.04
Very easy	1.95	4.30
Q5: If we went through the survey again, do you think any answers would change?		
Yes	2.03	7.07
No	97.97	92.93
Q6: Did you feel comfortable talking to the interviewer?		
Not comfortable	1.66	0.85
A little comfortable	10.42	10.34
Comfortable	29.12	33.46
Very comfortable	58.80	55.34
Q7: If we're not recording the answers (just talking to you), how much would your answer have changed?		
Totally different	0.39	2.05
A bit different	12.19	12.56
No change	87.42	85.38

Source: Authors.

ONLINE APPENDIX

The impact of computer-assisted personal interviewing on survey duration, quality, and cost: Evidence from the Viet Nam Labor Force Survey

Lakshman Nagraj Rao, Elisabetta Gentile, Dave Pilon, Jude David Roque, and Vu Thi Thu Thuy

28 April 2020

THE 2017 LABOR FORCE SURVEY
QUESTIONNAIRE ON LABOR AND EMPLOYMENT INFORMATION
(The information collected from the Labor Force Survey will be used and kept confidentially in accordance with Statistical Law)

<p>SAMPLE DIGITS USED TO FILL IN LARGE BOX</p> <table style="border: 1px solid black; text-align: center; width: 100%;"> <tr> <td style="width: 20px; height: 20px;">0</td> <td style="width: 20px; height: 20px;">1</td> <td style="width: 20px; height: 20px;">2</td> <td style="width: 20px; height: 20px;">3</td> <td style="width: 20px; height: 20px;">4</td> <td style="width: 20px; height: 20px;">5</td> <td style="width: 20px; height: 20px;">6</td> <td style="width: 20px; height: 20px;">7</td> <td style="width: 20px; height: 20px;">8</td> <td style="width: 20px; height: 20px;">9</td> </tr> </table> <p>CROSS "X" INTO SMALL BOX TO INDICATE THE CORESSPONDING ANSWER X</p> <p>PROVINCE/CITY: _____ </p> <p>DISTRICT/QUARTER/TOWN/PROVINCIAL GOVERNED CITY: _____ </p> <p>COMMUNE/WARD/DISTRICT TOWN: _____</p> <p>ENUMERATION AREA NUMBER: _____ </p> <p>ENUMERATION AREA'S NAME: _____</p> <p>HOUSEHOLD NUMBER: _____ </p> <p>FULL NAME OF HOUSEHOLD HEAD: _____</p> <p>ADDRESS OF HOUSEHOLD: _____</p> <p>PERMANENT TELEPHONE/MOBILE NUMBER: _____</p>	0	1	2	3	4	5	6	7	8	9	<p>1. NUMBER OF ACCTUALLY USUAL RESIDENTS OF HOUSEHOLD:..... </p> <p>OF WHICH, FEMALES: </p> <p>2. NUMBER OF RESPONDENTS AGED 15+: </p> <p>OF WHICH, FEMALE RESPONDENTS AGED 15+: </p>
0	1	2	3	4	5	6	7	8	9		
SIGNATURE AND VERIFICATION											
	FULL NAME	SIGNATURE									
INFORMATION PROVIDER											
INTERVIEWER											
TEAM LEADER											

THIS IS THE SET OF TOTAL SETS

PART 1: INFORMATION ON USUAL RESIDENTS OF HOUSEHOLD

<div style="background-color: #cccccc; padding: 5px;"> SERIAL NUMBER CÂU HỎI </div>	<div style="border: 1px solid black; padding: 2px;"> <div style="display: flex; justify-content: space-between;"> SERIAL N°..... <div style="border: 1px solid black; width: 20px; height: 20px;"></div> </div> </div>	<div style="border: 1px solid black; padding: 2px;"> <div style="display: flex; justify-content: space-between;"> SERIAL N°..... <div style="border: 1px solid black; width: 20px; height: 20px;"></div> </div> </div>	<div style="border: 1px solid black; padding: 2px;"> <div style="display: flex; justify-content: space-between;"> SERIAL N°..... <div style="border: 1px solid black; width: 20px; height: 20px;"></div> </div> </div>	<div style="border: 1px solid black; padding: 2px;"> <div style="display: flex; justify-content: space-between;"> SERIAL N°..... <div style="border: 1px solid black; width: 20px; height: 20px;"></div> </div> </div>	<div style="border: 1px solid black; padding: 2px;"> <div style="display: flex; justify-content: space-between;"> SERIAL N°..... <div style="border: 1px solid black; width: 20px; height: 20px;"></div> </div> </div>	<div style="border: 1px solid black; padding: 2px;"> <div style="display: flex; justify-content: space-between;"> SERIAL N°..... <div style="border: 1px solid black; width: 20px; height: 20px;"></div> </div> </div>	
<p>1. Pls, let me know the full name of each person usually residing in the household, starting with the household head?</p> <p>(USE THE INTERVIEW PROCEDURE TO DEFINE ACTUALLY USUAL RESIDENT)</p>							
<p>2. What is [NAME]'s relationship to the household head?</p>	HH. HEAD 1 <input type="checkbox"/> SPOUSE 2 <input type="checkbox"/> NATURAL CHILD 3 <input type="checkbox"/> PARENTS 4 <input type="checkbox"/> OTHER RELATIVES..... 5 <input type="checkbox"/> NON RELATIVES..... 6 <input type="checkbox"/>	HH. HEAD 1 <input type="checkbox"/> SPOUSE 2 <input type="checkbox"/> NATURAL CHILD 3 <input type="checkbox"/> PARENTS 4 <input type="checkbox"/> OTHER RELATIVES..... 5 <input type="checkbox"/> NON RELATIVES..... 6 <input type="checkbox"/>	HH. HEAD 1 <input type="checkbox"/> SPOUSE 2 <input type="checkbox"/> NATURAL CHILD 3 <input type="checkbox"/> PARENTS 4 <input type="checkbox"/> OTHER RELATIVES..... 5 <input type="checkbox"/> NON RELATIVES..... 6 <input type="checkbox"/>	HH. HEAD 1 <input type="checkbox"/> SPOUSE 2 <input type="checkbox"/> NATURAL CHILD 3 <input type="checkbox"/> PARENTS 4 <input type="checkbox"/> OTHER RELATIVES..... 5 <input type="checkbox"/> NON RELATIVES..... 6 <input type="checkbox"/>	HH. HEAD 1 <input type="checkbox"/> SPOUSE 2 <input type="checkbox"/> NATURAL CHILD 3 <input type="checkbox"/> PARENTS 4 <input type="checkbox"/> OTHER RELATIVES..... 5 <input type="checkbox"/> NON RELATIVES..... 6 <input type="checkbox"/>	HH. HEAD 1 <input type="checkbox"/> SPOUSE 2 <input type="checkbox"/> NATURAL CHILD 3 <input type="checkbox"/> PARENTS 4 <input type="checkbox"/> OTHER RELATIVES..... 5 <input type="checkbox"/> NON RELATIVES..... 6 <input type="checkbox"/>	
<p>3. Is [NAME] male or female?</p>	MALE...1 <input type="checkbox"/> FEMALE..2 <input type="checkbox"/>	MALE...1 <input type="checkbox"/> FEMALE..2 <input type="checkbox"/>	MALE...1 <input type="checkbox"/> FEMALE..2 <input type="checkbox"/>	MALE...1 <input type="checkbox"/> FEMALE..2 <input type="checkbox"/>	MALE...1 <input type="checkbox"/> FEMALE..2 <input type="checkbox"/>	MALE...1 <input type="checkbox"/> FEMALE..2 <input type="checkbox"/>	
<p>4. In what solar month and year was [NAME] born?</p>	<div style="display: flex; justify-content: space-between;"> <div>MONTH <div style="border: 1px solid black; width: 20px; height: 20px;"></div></div> <div>YEAR <div style="border: 1px solid black; width: 40px; height: 20px;"></div></div> </div> <div style="text-align: center; margin-top: 5px;"> Q6 ← </div> NOT STATED 9998 <input type="checkbox"/>	<div style="display: flex; justify-content: space-between;"> <div>MONTH <div style="border: 1px solid black; width: 20px; height: 20px;"></div></div> <div>YEAR <div style="border: 1px solid black; width: 40px; height: 20px;"></div></div> </div> <div style="text-align: center; margin-top: 5px;"> Q6 ← </div> NOT STATED 9998 <input type="checkbox"/>	<div style="display: flex; justify-content: space-between;"> <div>MONTH <div style="border: 1px solid black; width: 20px; height: 20px;"></div></div> <div>YEAR <div style="border: 1px solid black; width: 40px; height: 20px;"></div></div> </div> <div style="text-align: center; margin-top: 5px;"> Q6 ← </div> NOT STATED 9998 <input type="checkbox"/>	<div style="display: flex; justify-content: space-between;"> <div>MONTH <div style="border: 1px solid black; width: 20px; height: 20px;"></div></div> <div>YEAR <div style="border: 1px solid black; width: 40px; height: 20px;"></div></div> </div> <div style="text-align: center; margin-top: 5px;"> Q6 ← </div> NOT STATED 9998 <input type="checkbox"/>	<div style="display: flex; justify-content: space-between;"> <div>MONTH <div style="border: 1px solid black; width: 20px; height: 20px;"></div></div> <div>YEAR <div style="border: 1px solid black; width: 40px; height: 20px;"></div></div> </div> <div style="text-align: center; margin-top: 5px;"> Q6 ← </div> NOT STATED 9998 <input type="checkbox"/>	<div style="display: flex; justify-content: space-between;"> <div>MONTH <div style="border: 1px solid black; width: 20px; height: 20px;"></div></div> <div>YEAR <div style="border: 1px solid black; width: 40px; height: 20px;"></div></div> </div> <div style="text-align: center; margin-top: 5px;"> Q6 ← </div> NOT STATED 9998 <input type="checkbox"/>	<div style="display: flex; justify-content: space-between;"> <div>MONTH <div style="border: 1px solid black; width: 20px; height: 20px;"></div></div> <div>YEAR <div style="border: 1px solid black; width: 40px; height: 20px;"></div></div> </div> <div style="text-align: center; margin-top: 5px;"> Q6 ← </div> NOT STATED 9998 <input type="checkbox"/>
<p>5. At present, what is [NAME]'s age as of last birthday?</p> <p>WRITE '95' IF AGE IS 95 AND ABOVE</p>	COMPLETED AGE. <div style="border: 1px solid black; width: 20px; height: 20px;"></div>	COMPLETED AGE. <div style="border: 1px solid black; width: 20px; height: 20px;"></div>	COMPLETED AGE. <div style="border: 1px solid black; width: 20px; height: 20px;"></div>	COMPLETED AGE. <div style="border: 1px solid black; width: 20px; height: 20px;"></div>	COMPLETED AGE. <div style="border: 1px solid black; width: 20px; height: 20px;"></div>	COMPLETED AGE. <div style="border: 1px solid black; width: 20px; height: 20px;"></div>	

CHECK: Q.4 or Q.5: ASK PERSONS AGED 15+.

HOUSEHOLD:.....

7

SERIAL NUMBER QUESTION	SERIAL NO.....	SERIAL NO.....	SERIAL NO.....	SERIAL NO.....	SERIAL NO.....	SERIAL NO.....
6. At present, is [NAME] residing in Vietnam or abroad?	VIET NAM..... 1 <input type="checkbox"/> PART 2 ← ABROAD 2 <input type="checkbox"/> _____ NAME OF COUNTRY <input type="text"/> <input type="text"/> <input type="text"/>	VIET NAM..... 1 <input type="checkbox"/> PART 2 ← ABROAD 2 <input type="checkbox"/> _____ NAME OF COUNTRY <input type="text"/> <input type="text"/> <input type="text"/>	VIET NAM..... 1 <input type="checkbox"/> PART 2 ← ABROAD 2 <input type="checkbox"/> _____ NAME OF COUNTRY <input type="text"/> <input type="text"/> <input type="text"/>	VIET NAM 1 <input type="checkbox"/> PART 2 ← ABROAD 2 <input type="checkbox"/> _____ NAME OF COUNTRY <input type="text"/> <input type="text"/> <input type="text"/>	VIET NAM 1 <input type="checkbox"/> PART 2 ← ABROAD 2 <input type="checkbox"/> _____ NAME OF COUNTRY <input type="text"/> <input type="text"/> <input type="text"/>	VIET NAM 1 <input type="checkbox"/> PART 2 ← ABROAD 2 <input type="checkbox"/> _____ NAME OF COUNTRY <input type="text"/> <input type="text"/> <input type="text"/>
7. What was the main reason why [NAME] moved abroad?	WORK 1 <input type="checkbox"/> STUDY 2 <input type="checkbox"/> LOOK FOR JOB 3 <input type="checkbox"/> MARRIAGE 4 <input type="checkbox"/> NATURALISATION.. 5 <input type="checkbox"/> OTHER 6 <input type="checkbox"/> (SPECIFY)	WORK..... 1 <input type="checkbox"/> STUDY..... 2 <input type="checkbox"/> LOOK FOR JOB..... 3 <input type="checkbox"/> MARRIAGE..... 4 <input type="checkbox"/> NATURALISATION . 5 <input type="checkbox"/> OTHER 6 <input type="checkbox"/> (SPECIFY)	WORK..... 1 <input type="checkbox"/> STUDY 2 <input type="checkbox"/> LOOK FOR JOB..... 3 <input type="checkbox"/> MARRIAGE..... 4 <input type="checkbox"/> NATURALISATION . 5 <input type="checkbox"/> OTHER 6 <input type="checkbox"/> (SPECIFY)	WORK 1 <input type="checkbox"/> STUDY 2 <input type="checkbox"/> LOOK FOR JOB..... 3 <input type="checkbox"/> MARRIAGE 4 <input type="checkbox"/> NATURALISATION.. 5 <input type="checkbox"/> OTHER 6 <input type="checkbox"/> (SPECIFY)	WORK 1 <input type="checkbox"/> STUDY 2 <input type="checkbox"/> LOOK FOR JOB 3 <input type="checkbox"/> MARRIAGE 4 <input type="checkbox"/> NATURALISATION.. 5 <input type="checkbox"/> OTHER 6 <input type="checkbox"/> (SPECIFY)	WORK 1 <input type="checkbox"/> STUDY 2 <input type="checkbox"/> LOOK FOR JOB 3 <input type="checkbox"/> MARRIAGE 4 <input type="checkbox"/> NATURALISATION.. 5 <input type="checkbox"/> OTHER 6 <input type="checkbox"/> (SPECIFY)
8. How long has [NAME] been resident in that country?	MONTH <input type="text"/> <input type="text"/> YEAR..... <input type="text"/> <input type="text"/>	MONTH..... <input type="text"/> <input type="text"/> YEAR..... <input type="text"/> <input type="text"/>	MONTH..... <input type="text"/> <input type="text"/> YEAR..... <input type="text"/> <input type="text"/>	MONTH..... <input type="text"/> <input type="text"/> YEAR <input type="text"/> <input type="text"/>	MONTH <input type="text"/> <input type="text"/> YEAR <input type="text"/> <input type="text"/>	MONTH <input type="text"/> <input type="text"/> YEAR <input type="text"/> <input type="text"/>
IF THERE ARE OTHER RESPONDENTS, ASK THE NEXT; OTHERWISE MOVE TO PART 2.						

└

└

└

PART 2: SOME BASIC CHARACTERISTICS OF RESPONDENT
(Only asking those persons aged 15+ and currently residing in Vietnam – If Q.6 = 1)

NAME AND SERIAL NO QUESTION				
9. What is your current marital status?	NEVER MARRIED 1 <input type="checkbox"/> MARRIED 2 <input type="checkbox"/> WIDOWED 3 <input type="checkbox"/> DIVORCED 4 <input type="checkbox"/> SEPARATED 5 <input type="checkbox"/>	NEVER MARRIED 1 <input type="checkbox"/> MARRIED 2 <input type="checkbox"/> WIDOWED 3 <input type="checkbox"/> DIVORCED 4 <input type="checkbox"/> SEPARATED 5 <input type="checkbox"/>	NEVER MARRIED 1 <input type="checkbox"/> MARRIED 2 <input type="checkbox"/> WIDOWED 3 <input type="checkbox"/> DIVORCED 4 <input type="checkbox"/> SEPARATED 5 <input type="checkbox"/>	NEVER MARRIED 1 <input type="checkbox"/> MARRIED 2 <input type="checkbox"/> WIDOWED 3 <input type="checkbox"/> DIVORCED 4 <input type="checkbox"/> SEPARATED 5 <input type="checkbox"/>
10. For how long have you been usually residing in the current ward, town or commune?	UNDER 1 MONTH 1 <input type="checkbox"/> 1 TO UNDER 6 MONTHS 2 <input type="checkbox"/> 6 TO UNDER 12 MONTHS 3 <input type="checkbox"/> 12 MONTHS TO UNDER 5 YEARS. 4 <input type="checkbox"/> 5 YEARS AND MORE 5 <input type="checkbox"/> <div style="text-align: right;">Q14 ←</div>	UNDER 1 MONTH 1 <input type="checkbox"/> 1 TO UNDER 6 MONTHS 2 <input type="checkbox"/> 6 TO UNDER 12 MONTHS 3 <input type="checkbox"/> 12 MONTHS TO UNDER 5 YEARS. 4 <input type="checkbox"/> 5 YEARS AND MORE 5 <input type="checkbox"/> <div style="text-align: right;">Q14 ←</div>	UNDER 1 MONTH 1 <input type="checkbox"/> 1 TO UNDER 6 MONTHS 2 <input type="checkbox"/> 6 TO UNDER 12 MONTHS 3 <input type="checkbox"/> 12 MONTHS TO UNDER 5 YEARS. 4 <input type="checkbox"/> 5 YEARS AND MORE 5 <input type="checkbox"/> <div style="text-align: right;">Q14 ←</div>	UNDER 1 MONTH 1 <input type="checkbox"/> 1 TO UNDER 6 MONTHS 2 <input type="checkbox"/> 6 TO UNDER 12 MONTHS 3 <input type="checkbox"/> 12 MONTHS TO UNDER 5 YEARS. 4 <input type="checkbox"/> 5 YEARS AND MORE 5 <input type="checkbox"/> <div style="text-align: right;">Q14 ←</div>
11. Is your previous place of usual residence a ward, town or commune?	WARD/TOWN 1 <input type="checkbox"/> COMMUNE 2 <input type="checkbox"/>	WARD/TOWN 1 <input type="checkbox"/> COMMUNE 2 <input type="checkbox"/>	WARD/TOWN 1 <input type="checkbox"/> COMMUNE 2 <input type="checkbox"/>	WARD/TOWN 1 <input type="checkbox"/> COMMUNE 2 <input type="checkbox"/>
12. From which province/city did you move?	IN VIET NAM 1 <input type="checkbox"/> <div style="text-align: right;">Q14 ←</div> <div style="border: 1px solid black; width: 100px; height: 20px; margin: 5px auto;"></div> (PROVINCE/CITY) OVERSEAS 2 <input type="checkbox"/> <div style="border: 1px solid black; width: 100px; height: 20px; margin: 5px auto;"></div> (NAME OF COUNTRY)	IN VIET NAM 1 <input type="checkbox"/> <div style="text-align: right;">Q14 ←</div> <div style="border: 1px solid black; width: 100px; height: 20px; margin: 5px auto;"></div> (PROVINCE/CITY) OVERSEAS 2 <input type="checkbox"/> <div style="border: 1px solid black; width: 100px; height: 20px; margin: 5px auto;"></div> (NAME OF COUNTRY)	IN VIET NAM 1 <input type="checkbox"/> <div style="text-align: right;">Q14 ←</div> <div style="border: 1px solid black; width: 100px; height: 20px; margin: 5px auto;"></div> (PROVINCE/CITY) OVERSEAS 2 <input type="checkbox"/> <div style="border: 1px solid black; width: 100px; height: 20px; margin: 5px auto;"></div> (NAME OF COUNTRY)	IN VIET NAM 1 <input type="checkbox"/> <div style="text-align: right;">Q14 ←</div> <div style="border: 1px solid black; width: 100px; height: 20px; margin: 5px auto;"></div> (PROVINCE/CITY) OVERSEAS 2 <input type="checkbox"/> <div style="border: 1px solid black; width: 100px; height: 20px; margin: 5px auto;"></div> (NAME OF COUNTRY)

HOUSEHOLD:

--	--	--

J

NAME AND SERIAL NO QUESTION				
13. What was the main reason that you moved to this household? L	TO FIND JOB..... 1 <input type="checkbox"/> TO START NEW JOB 2 <input type="checkbox"/> JOB LOST/UNABLE TO FIND JOB 3 <input type="checkbox"/> TO ACCOMPANY WITH FAMILY/RETIRED 4 <input type="checkbox"/> TO GET MARRIED 5 <input type="checkbox"/> TO RESETTLE..... 6 <input type="checkbox"/> TO IMPROVE LIVING CONDITIONS . 7 <input type="checkbox"/> FOR SCHOOLINGS..... 8 <input type="checkbox"/> DUE TO ENVIRONMENT 9 <input type="checkbox"/> OTHERS 10 <input type="checkbox"/> (SPECIFY)	TO FIND JOB..... 1 <input type="checkbox"/> TO START NEW JOB 2 <input type="checkbox"/> JOB LOST/UNABLE TO FIND JOB 3 <input type="checkbox"/> TO ACCOMPANY WITH FAMILY/RETIRED 4 <input type="checkbox"/> TO GET MARRIED 5 <input type="checkbox"/> TO RESETTLE..... 6 <input type="checkbox"/> TO IMPROVE LIVING CONDITIONS . 7 <input type="checkbox"/> FOR SCHOOLINGS..... 8 <input type="checkbox"/> DUE TO ENVIRONMENT 9 <input type="checkbox"/> OTHERS 10 <input type="checkbox"/> (SPECIFY)	TO FIND JOB 1 <input type="checkbox"/> TO START NEW JOB 2 <input type="checkbox"/> JOB LOST/UNABLE TO FIND JOB .3 <input type="checkbox"/> TO ACCOMPANY WITH FAMILY/RETIRED 4 <input type="checkbox"/> TO GET MARRIED 5 <input type="checkbox"/> TO RESETTLE 6 <input type="checkbox"/> TO IMPROVE LIVING CONDITIONS .. 7 <input type="checkbox"/> FOR SCHOOLINGS 8 <input type="checkbox"/> DUE TO ENVIRONMENT 9 <input type="checkbox"/> OTHERS 10 <input type="checkbox"/> (SPECIFY)	TO FIND JOB 1 <input type="checkbox"/> TO START NEW JOB 2 <input type="checkbox"/> JOB LOST/UNABLE TO FIND JOB 3 <input type="checkbox"/> TO ACCOMPANY WITH FAMILY/RETIRED 4 <input type="checkbox"/> TO GET MARRIED 5 <input type="checkbox"/> TO RESETTLE 6 <input type="checkbox"/> TO IMPROVE LIVING CONDITIONS . 7 <input type="checkbox"/> FOR SCHOOLINGS 8 <input type="checkbox"/> DUE TO ENVIRONMENT 9 <input type="checkbox"/> OTHERS 10 <input type="checkbox"/> (SPECIFY)
14. What is the highest educational level that you have attained? ABBREVIATION: PRI – PRIMARY PROF. – PROFESSIONAL	NEVER ATTENDED SCHOOL 1 <input type="checkbox"/> NOT COMPLETED PR. SCHOOL ... 2 <input type="checkbox"/> PRIMARY SCHOOL 3 <input type="checkbox"/> LOWER SECONDARY SCHOOL 4 <input type="checkbox"/> UPPER SECONDARY SCHOOL 5 <input type="checkbox"/> MID-TERM PROF. SCHOOL 6 <input type="checkbox"/> PROFESSIONAL COLLEGE 7 <input type="checkbox"/> UNIVERSITY 8 <input type="checkbox"/> ABOVE UNIVERSITY 9 <input type="checkbox"/>	NEVER ATTENDED SCHOOL 1 <input type="checkbox"/> NOT COMPLETED PR. SCHOOL .. 2 <input type="checkbox"/> PRIMARY SCHOOL 3 <input type="checkbox"/> LOWER SECONDARY SCHOOL ... 4 <input type="checkbox"/> UPPER SECONDARY SCHOOL 5 <input type="checkbox"/> MID-TERM PROF. SCHOOL 6 <input type="checkbox"/> PROFESSIONAL COLLEGE 7 <input type="checkbox"/> UNIVERSITY 8 <input type="checkbox"/> ABOVE UNIVERSITY 9 <input type="checkbox"/>	NEVER ATTENDED SCHOOL 1 <input type="checkbox"/> NOT COMPLETED PR. SCHOOL .. 2 <input type="checkbox"/> PRIMARY SCHOOL 3 <input type="checkbox"/> LOWER SECONDARY SCHOOL ... 4 <input type="checkbox"/> UPPER SECONDARY SCHOOL 5 <input type="checkbox"/> MID-TERM PROF. SCHOOL 6 <input type="checkbox"/> PROFESSIONAL COLLEGE 7 <input type="checkbox"/> UNIVERSITY 8 <input type="checkbox"/> ABOVE UNIVERSITY 9 <input type="checkbox"/>	NEVER ATTENDED SCHOOL 1 <input type="checkbox"/> NOT COMPLETED PR. SCHOOL ... 2 <input type="checkbox"/> PRIMARY SCHOOL 3 <input type="checkbox"/> LOWER SECONDARY SCHOOL 4 <input type="checkbox"/> UPPER SECONDARY SCHOOL 5 <input type="checkbox"/> MID-TERM PROF. SCHOOL 6 <input type="checkbox"/> PROFESSIONAL COLLEGE 7 <input type="checkbox"/> UNIVERSITY 8 <input type="checkbox"/> ABOVE UNIVERSITY 9 <input type="checkbox"/>
15. What is the highest vocational skill/ certificate/ diploma that you have attained? ABBREVIATION: CERT. - CERTIFICATE TECH. - TECHNICAL DIPL. - DIPLOMA	NO TECH. QUALIFICATION OR NO VOCATIONAL SKILL 1 <input type="checkbox"/> TECH. WORKER WITHOUT DIPL./CERT..... 2 <input type="checkbox"/> UNDER 3 MONTH VOCATIONAL SKILL 3 <input type="checkbox"/> UNDER 3 MONTH VOCATIONAL CERT. 4 <input type="checkbox"/> PRIMARY VOCATIONAL CERT. .. 5 <input type="checkbox"/> MID-TERM VOCATIONAL CERT. .. 6 <input type="checkbox"/> VOCATIONAL COLLEGE DIPL..... 7 <input type="checkbox"/>	NO TECH. QUALIFICATION OR NO VOCATIONAL SKILL 1 <input type="checkbox"/> TECH. WORKER WITHOUT DIPL./CERT. 2 <input type="checkbox"/> UNDER 3 MONTH VOCATIONAL SKILL 3 <input type="checkbox"/> UNDER 3 MONTH VOCATIONAL CERT. 4 <input type="checkbox"/> PRIMARY VOCATIONAL CERT. .. 5 <input type="checkbox"/> MID-TERM VOCATIONAL CERT. .. 6 <input type="checkbox"/> VOCATIONAL COLLEGE DIPL..... 7 <input type="checkbox"/>	NO TECH. QUALIFICATION OR NO VOCATIONAL SKILL 1 <input type="checkbox"/> TECH. WORKER WITHOUT DIPL./CERT. 2 <input type="checkbox"/> UNDER 3 MONTH VOCATIONAL SKILL 3 <input type="checkbox"/> UNDER 3 MONTH VOCATIONAL CERT. 4 <input type="checkbox"/> PRIMARY VOCATIONAL CERT. ... 5 <input type="checkbox"/> MID-TERM VOCATIONAL CERT. .. 6 <input type="checkbox"/> VOCATIONAL COLLEGE DIPL. ... 7 <input type="checkbox"/>	NO TECH. QUALIFICATION OR NO VOCATIONAL SKILL 1 <input type="checkbox"/> TECH. WORKER WITHOUT DIPL./CERT. 2 <input type="checkbox"/> UNDER 3 MONTH VOCATIONAL SKILL 3 <input type="checkbox"/> UNDER 3 MONTH VOCATIONAL CERT. 4 <input type="checkbox"/> PRIMARY VOCATIONAL CERT. 5 <input type="checkbox"/> MID-TERM VOCATIONAL CERT. .. 6 <input type="checkbox"/> VOCATIONAL COLLEGE DIPL..... 7 <input type="checkbox"/>

PART 3: QUESTIONS FOR CLASIFYING THE ECONOMICALLY ACTIVE STATUS

NAME AND SERIAL NO QUESTION	_____ <input type="text"/> <input type="text"/>	_____ <input type="text"/> <input type="text"/>	_____ <input type="text"/> <input type="text"/>	_____ <input type="text"/> <input type="text"/>
16. In the last 7 days, did you do any work for at least 1 hour to get salary/wage? <div style="text-align: right;">L</div>	YES.....1 <input type="checkbox"/> → ITEM A NO.....2 <input type="checkbox"/>	YES.....1 <input type="checkbox"/> → ITEM A NO.....2 <input type="checkbox"/>	YES.....1 <input type="checkbox"/> → ITEM A NO.....2 <input type="checkbox"/>	YES.....1 <input type="checkbox"/> → ITEM A NO.....2 <input type="checkbox"/>
17. In the last 7 days, did you engage into or do any productive or business activities for at least 1 hour to generate income?	YES.....1 <input type="checkbox"/> → ITEM A NO.....2 <input type="checkbox"/>	YES.....1 <input type="checkbox"/> → ITEM A NO.....2 <input type="checkbox"/>	YES.....1 <input type="checkbox"/> → ITEM A NO.....2 <input type="checkbox"/>	YES.....1 <input type="checkbox"/> → ITEM A NO.....2 <input type="checkbox"/>
18. In the last 7 days, did you do any unpaid work for at least 1 hour to generate your family income?	YES.....1 <input type="checkbox"/> → ITEM A NO.....2 <input type="checkbox"/>	YES.....1 <input type="checkbox"/> → ITEM A NO.....2 <input type="checkbox"/>	YES.....1 <input type="checkbox"/> → ITEM A NO.....2 <input type="checkbox"/>	YES.....1 <input type="checkbox"/> → ITEM A NO.....2 <input type="checkbox"/>
19. What was the reason that you did not work in the last 7 days?	TEMPORARILY ABSENT 1 <input type="checkbox"/> PUPIL/STUDENT/APPRENTICE 2 <input type="checkbox"/> DISABLED 3 <input type="checkbox"/> TOO YOUNG/TOO OLD 4 <input type="checkbox"/> TAKING DOMESTIC WORKS..... 5 <input type="checkbox"/> WAITING FOR JOB APPLICATION/ NO JOB YET/DISMISSED 6 <input type="checkbox"/> OTHERS 7 <input type="checkbox"/> <div style="text-align: right;">ITEM B ←</div>	TEMPORARILY ABSENT 1 <input type="checkbox"/> PUPIL/STUDENT/APPRENTICE 2 <input type="checkbox"/> DISABLED 3 <input type="checkbox"/> TOO YOUNG/TOO OLD 4 <input type="checkbox"/> TAKING DOMESTIC WORKS..... 5 <input type="checkbox"/> WAITING FOR JOB APPLICATION/ NO JOB YET/DISMISSED 6 <input type="checkbox"/> OTHERS 7 <input type="checkbox"/> <div style="text-align: right;">ITEM B ←</div>	TEMPORARILY ABSENT 1 <input type="checkbox"/> PUPIL/STUDENT/APPRENTICE 2 <input type="checkbox"/> DISABLED 3 <input type="checkbox"/> TOO YOUNG/TOO OLD 4 <input type="checkbox"/> TAKING DOMESTIC WORKS..... 5 <input type="checkbox"/> WAITING FOR JOB APPLICATION/ NO JOB YET/DISMISSED 6 <input type="checkbox"/> OTHERS 7 <input type="checkbox"/> <div style="text-align: right;">ITEM B ←</div>	TEMPORARILY ABSENT 1 <input type="checkbox"/> PUPIL/STUDENT/APPRENTICE 2 <input type="checkbox"/> DISABLED 3 <input type="checkbox"/> TOO YOUNG/TOO OLD 4 <input type="checkbox"/> TAKING DOMESTIC WORKS..... 5 <input type="checkbox"/> WAITING FOR JOB APPLICATION/ NO JOB YET/DISMISSED 6 <input type="checkbox"/> OTHERS 7 <input type="checkbox"/> <div style="text-align: right;">ITEM B ←</div>

HOUSEHOLD ...

L

L

NAME AND SERIAL NO QUESTION	<input type="text"/> <input type="text"/>	<input type="text"/> <input type="text"/>	<input type="text"/> <input type="text"/>	<input type="text"/> <input type="text"/>
20. You are on the temporary absence from work, so what was your main reason of absence? ABBREVIATION: PROD. – PRODUCTION	WORK BY SHIFT.....01 <input type="checkbox"/> HOLIDAYS/LEAVES/VACATION....02 <input type="checkbox"/> TEMPORARY ILLNESS/INJURY 03 <input type="checkbox"/> MATERNAL LEAVES.....04 <input type="checkbox"/> SCHOOLING/TRAINING.....05 <input type="checkbox"/> PERSONAL MATTERS.....06 <input type="checkbox"/> LAID OFF.....07 <input type="checkbox"/> PROD. TEMPORARILY STOPPED ...08 <input type="checkbox"/> BAD WEATHER.....09 <input type="checkbox"/> OFF SEASON.....10 <input type="checkbox"/> TO START/ UPGRADE ESTABLISHMENT11 <input type="checkbox"/> OTHERS12 <input type="checkbox"/> (SPECIFY)	WORK BY SHIFT.....01 <input type="checkbox"/> HOLIDAYS/LEAVES/VACATION....02 <input type="checkbox"/> TEMPORARY ILLNESS/INJURY 03 <input type="checkbox"/> MATERNAL LEAVES.....04 <input type="checkbox"/> SCHOOLING/TRAINING.....05 <input type="checkbox"/> PERSONAL MATTERS.....06 <input type="checkbox"/> LAID OFF.....07 <input type="checkbox"/> PROD. TEMPORARILY STOPPED ...08 <input type="checkbox"/> BAD WEATHER.....09 <input type="checkbox"/> OFF SEASON.....10 <input type="checkbox"/> TO START/ UPGRADE ESTABLISHMENT11 <input type="checkbox"/> OTHERS12 <input type="checkbox"/> (SPECIFY)	WORK BY SHIFT.....01 <input type="checkbox"/> HOLIDAYS/LEAVES/VACATION....02 <input type="checkbox"/> TEMPORARY ILLNESS/INJURY 03 <input type="checkbox"/> MATERNAL LEAVES.....04 <input type="checkbox"/> SCHOOLING/TRAINING.....05 <input type="checkbox"/> PERSONAL MATTERS.....06 <input type="checkbox"/> LAID OFF.....07 <input type="checkbox"/> PROD. TEMPORARILY STOPPED ...08 <input type="checkbox"/> BAD WEATHER.....09 <input type="checkbox"/> OFF SEASON.....10 <input type="checkbox"/> TO START/ UPGRADE ESTABLISHMENT11 <input type="checkbox"/> OTHERS12 <input type="checkbox"/> (SPECIFY)	WORK BY SHIFT.....01 <input type="checkbox"/> HOLIDAYS/LEAVES/VACATION....02 <input type="checkbox"/> TEMPORARY ILLNESS/INJURY 03 <input type="checkbox"/> MATERNAL LEAVES.....04 <input type="checkbox"/> SCHOOLING/TRAINING.....05 <input type="checkbox"/> PERSONAL MATTERS.....06 <input type="checkbox"/> LAID OFF.....07 <input type="checkbox"/> PROD. TEMPORARILY STOPPED ...08 <input type="checkbox"/> BAD WEATHER.....09 <input type="checkbox"/> OFF SEASON.....10 <input type="checkbox"/> TO START/ UPGRADE ESTABLISHMENT11 <input type="checkbox"/> OTHERS12 <input type="checkbox"/> (SPECIFY)
21. During the temporary absence, did you receive salary/wage or get profit from any productive or business activities?	YES.....1 <input type="checkbox"/> → ITEM A NO2 <input type="checkbox"/>	YES.....1 <input type="checkbox"/> → ITEM A NO2 <input type="checkbox"/>	YES.....1 <input type="checkbox"/> → ITEM A NO2 <input type="checkbox"/>	YES.....1 <input type="checkbox"/> → ITEM A NO2 <input type="checkbox"/>
22. After the temporary absence, are you going to be recalled for that work?	YES.....1 <input type="checkbox"/> NO2 <input type="checkbox"/> → ITEM B	YES.....1 <input type="checkbox"/> NO2 <input type="checkbox"/> → ITEM B	YES.....1 <input type="checkbox"/> NO2 <input type="checkbox"/> → ITEM B	YES.....1 <input type="checkbox"/> NO2 <input type="checkbox"/> → ITEM B
23. Hence, how long will you return work?	UNDER 1 MONTH1 <input type="checkbox"/> ITEM A ← 1 TO UNDER 3 MONTHS.....2 <input type="checkbox"/> 3 MONTHS AND MORE3 <input type="checkbox"/> NOT STATED4 <input type="checkbox"/> ITEM B ←	UNDER 1 MONTH1 <input type="checkbox"/> ITEM A ← 1 TO UNDER 3 MONTHS.....2 <input type="checkbox"/> 3 MONTHS AND MORE3 <input type="checkbox"/> NOT STATED4 <input type="checkbox"/> ITEM B ←	UNDER 1 MONTH1 <input type="checkbox"/> ITEM A ← 1 TO UNDER 3 MONTHS.....2 <input type="checkbox"/> 3 MONTHS AND MORE3 <input type="checkbox"/> NOT STATED4 <input type="checkbox"/> ITEM B ←	UNDER 1 MONTH.....1 <input type="checkbox"/> ITEM A ← 1 TO UNDER 3 MONTHS2 <input type="checkbox"/> 3 MONTHS AND MORE3 <input type="checkbox"/> NOT STATED.....4 <input type="checkbox"/> ITEM B ←

Check: Q16 = 1 or Q17 = 1 or Q18 = 1 or Q21 = 1 or Q23 = 1 skip to Item A to ask for information on employment;
 Q19 = (2/3/4/5/6/7) or Q22 = 2 or Q23 = (2/3/4) skip to Item B to ask for information on the unemployment and outside the labour force.

ITEM A: INFORMATION ON EMPLOYMENT

(Asking for the job worked in the last 7 days/or the job worked before the temporary absence)

NAME AND SERIAL NO QUESTION	[] []	[] []	[] []	[] []
I. THE MAIN JOB				
<p>24. In your main job/business, what kind of work do you usually do in last 7 days or temporarily absent?</p> <p>WRITE CLEARLY:</p> <p>- MAIN TASKS AND DUTIES</p> <p>- OCCUPATION TITLE (IF ANY)</p> <p><i>Example:</i></p> <p><i>Cattle farmer: breed, raise and sell cattle.</i></p> <p><i>Policeman: patrol the streets</i></p> <p><i>Cook: plan and prepare meal</i></p> <p><i>Primary school teacher: teach children how to write and write</i></p>	<p>_____</p> <p>_____</p> <p style="text-align: center;">OCCUPATION TITLE, IF ANY</p> <p>_____</p> <p>_____</p> <p style="text-align: center;">MAIN TASKS AND DUTIES</p> <div style="display: flex; justify-content: center; gap: 5px;"> <div style="border: 1px solid black; width: 20px; height: 20px;"></div> <div style="border: 1px solid black; width: 20px; height: 20px;"></div> <div style="border: 1px solid black; width: 20px; height: 20px;"></div> <div style="border: 1px solid black; width: 20px; height: 20px;"></div> </div> <p style="text-align: center;">(ISCO CODE)</p>	<p>_____</p> <p>_____</p> <p style="text-align: center;">OCCUPATION TITLE, IF ANY</p> <p>_____</p> <p>_____</p> <p style="text-align: center;">MAIN TASKS AND DUTIES</p> <div style="display: flex; justify-content: center; gap: 5px;"> <div style="border: 1px solid black; width: 20px; height: 20px;"></div> <div style="border: 1px solid black; width: 20px; height: 20px;"></div> <div style="border: 1px solid black; width: 20px; height: 20px;"></div> <div style="border: 1px solid black; width: 20px; height: 20px;"></div> </div> <p style="text-align: center;">(ISCO CODE)</p>	<p>_____</p> <p>_____</p> <p style="text-align: center;">OCCUPATION TITLE, IF ANY</p> <p>_____</p> <p>_____</p> <p style="text-align: center;">MAIN TASKS AND DUTIES</p> <div style="display: flex; justify-content: center; gap: 5px;"> <div style="border: 1px solid black; width: 20px; height: 20px;"></div> <div style="border: 1px solid black; width: 20px; height: 20px;"></div> <div style="border: 1px solid black; width: 20px; height: 20px;"></div> <div style="border: 1px solid black; width: 20px; height: 20px;"></div> </div> <p style="text-align: center;">(ISCO CODE)</p>	<p>_____</p> <p>_____</p> <p style="text-align: center;">OCCUPATION TITLE, IF ANY</p> <p>_____</p> <p>_____</p> <p style="text-align: center;">MAIN TASKS AND DUTIES</p> <div style="display: flex; justify-content: center; gap: 5px;"> <div style="border: 1px solid black; width: 20px; height: 20px;"></div> <div style="border: 1px solid black; width: 20px; height: 20px;"></div> <div style="border: 1px solid black; width: 20px; height: 20px;"></div> <div style="border: 1px solid black; width: 20px; height: 20px;"></div> </div> <p style="text-align: center;">(ISCO CODE)</p>
<p>25. What is the main activity of the business or establishment where you work?</p> <p>WRITE CLEARLY:</p> <p>- NAME (IF ANY)</p> <p>- MAIN ACTIVITY, GOODS OR SERVICES</p> <p><i>Example:</i></p> <p><i>Cong Vi ward police: ensure security and order of the ward.</i></p> <p><i>Hoa Lan Restaurant: food and drink business.</i></p> <p><i>Bien Dong Shipping Company: long-distance transport of goods</i></p>	<p>_____</p> <p>_____</p> <p style="text-align: center;">NAME OF ESTABLISHMENT (IF ANY)</p> <p>_____</p> <p>_____</p> <p style="text-align: center;">MAIN ACTIVITY, GOODS OR SERVICES</p> <div style="display: flex; justify-content: center; gap: 5px;"> <div style="border: 1px solid black; width: 20px; height: 20px;"></div> <div style="border: 1px solid black; width: 20px; height: 20px;"></div> <div style="border: 1px solid black; width: 20px; height: 20px;"></div> <div style="border: 1px solid black; width: 20px; height: 20px;"></div> </div> <p style="text-align: center;">(ISIC CODE)</p>	<p>_____</p> <p>_____</p> <p style="text-align: center;">NAME OF ESTABLISHMENT (IF ANY)</p> <p>_____</p> <p>_____</p> <p style="text-align: center;">MAIN ACTIVITY, GOODS OR SERVICES</p> <div style="display: flex; justify-content: center; gap: 5px;"> <div style="border: 1px solid black; width: 20px; height: 20px;"></div> <div style="border: 1px solid black; width: 20px; height: 20px;"></div> <div style="border: 1px solid black; width: 20px; height: 20px;"></div> <div style="border: 1px solid black; width: 20px; height: 20px;"></div> </div> <p style="text-align: center;">(ISIC CODE)</p>	<p>_____</p> <p>_____</p> <p style="text-align: center;">NAME OF ESTABLISHMENT (IF ANY)</p> <p>_____</p> <p>_____</p> <p style="text-align: center;">MAIN ACTIVITY, GOODS OR SERVICES</p> <div style="display: flex; justify-content: center; gap: 5px;"> <div style="border: 1px solid black; width: 20px; height: 20px;"></div> <div style="border: 1px solid black; width: 20px; height: 20px;"></div> <div style="border: 1px solid black; width: 20px; height: 20px;"></div> <div style="border: 1px solid black; width: 20px; height: 20px;"></div> </div> <p style="text-align: center;">(ISIC CODE)</p>	<p>_____</p> <p>_____</p> <p style="text-align: center;">NAME OF ESTABLISHMENT (IF ANY)</p> <p>_____</p> <p>_____</p> <p style="text-align: center;">MAIN ACTIVITY, GOODS OR SERVICES</p> <div style="display: flex; justify-content: center; gap: 5px;"> <div style="border: 1px solid black; width: 20px; height: 20px;"></div> <div style="border: 1px solid black; width: 20px; height: 20px;"></div> <div style="border: 1px solid black; width: 20px; height: 20px;"></div> <div style="border: 1px solid black; width: 20px; height: 20px;"></div> </div> <p style="text-align: center;">(ISIC CODE)</p>

HOUSEHOLD ...

L

NAME AND SERIAL NO QUESTION	<input type="text"/>	<input type="text"/>	<input type="text"/>	<input type="text"/>
26. Does the establishment that you worked belong to one kind of economic unit as follows? <u>(Read out answer choices)</u> ABBREVIATION: BUS. – BUSINESS ORG. – ORGANIZATION ASS. – ASSOCIATION IN. - INDIVIDUAL	FARM HOUSEHOLD01 <input type="checkbox"/> OWN ACCOUNT INDIVIDUAL.02 <input type="checkbox"/> IN. BUS. ESTABLISHMENT.....03 <input type="checkbox"/> COLLECTIVE.....04 <input type="checkbox"/> NON-STATE ENTERPRISE05 <input type="checkbox"/> NON-STATE SERVICE UNIT ..06 <input type="checkbox"/> STATE: + LEGISLATIVE, EXECUTIVE, JUDICAL AGENCY07 <input type="checkbox"/> + OGRANIZATION08 <input type="checkbox"/> + SERVICE UNIT09 <input type="checkbox"/> + ENTERPRISE10 <input type="checkbox"/> FOREIGN INVESTMENT11 <input type="checkbox"/> OTHER ORG./ASS.12 <input type="checkbox"/> Q28 ←	FARM HOUSEHOLD 01 <input type="checkbox"/> OWN ACCOUNT INDIVIDUAL 02 <input type="checkbox"/> IN. BUS. ESTABLISHMENT.... 03 <input type="checkbox"/> COLLECTIVE..... 04 <input type="checkbox"/> NON-STATE ENTERPRISE 05 <input type="checkbox"/> NON-STATE SERVICE UNIT ..06 <input type="checkbox"/> STATE: + LEGISLATIVE, EXECUTIVE, JUDICAL AGENCY 07 <input type="checkbox"/> + OGRANIZATION 08 <input type="checkbox"/> + SERVICE UNIT 09 <input type="checkbox"/> + ENTERPRISE 10 <input type="checkbox"/> FOREIGN INVESTMENT 11 <input type="checkbox"/> OTHER ORG./ASS. 12 <input type="checkbox"/> Q28 ←	FARM HOUSEHOLD01 <input type="checkbox"/> OWN ACCOUNT INDIVIDUAL.02 <input type="checkbox"/> IN. BUS. ESTABLISHMENT03 <input type="checkbox"/> COLLECTIVE.....04 <input type="checkbox"/> NON-STATE ENTERPRISE05 <input type="checkbox"/> NON-STATE SERVICE UNIT ..06 <input type="checkbox"/> STATE: + LEGISLATIVE, EXECUTIVE, JUDICAL AGENCY07 <input type="checkbox"/> + OGRANIZATION08 <input type="checkbox"/> + SERVICE UNIT09 <input type="checkbox"/> + ENTERPRISE10 <input type="checkbox"/> FOREIGN INVESTMENT11 <input type="checkbox"/> OTHER ORG./ASS.12 <input type="checkbox"/> Q28 ←	FARM HOUSEHOLD01 <input type="checkbox"/> OWN ACCOUNT INDIVIDUAL.02 <input type="checkbox"/> IN. BUS. ESTABLISHMENT03 <input type="checkbox"/> COLLECTIVE04 <input type="checkbox"/> NON-STATE ENTERPRISE05 <input type="checkbox"/> NON-STATE SERVICE UNIT...06 <input type="checkbox"/> STATE: + LEGISLATIVE, EXECUTIVE, JUDICAL AGENCY07 <input type="checkbox"/> + OGRANIZATION08 <input type="checkbox"/> + SERVICE UNIT09 <input type="checkbox"/> + ENTERPRISE10 <input type="checkbox"/> FOREIGN INVESTMENT11 <input type="checkbox"/> OTHER ORG./ASS.12 <input type="checkbox"/> Q28 ←
27. Are the main products or services that you produced or provided for sales/trade or for own use of household?	ONLY FOR SALE/TRADE 1 <input type="checkbox"/> MAINLY FOR SALE/TRADE 2 <input type="checkbox"/> MAINLY FOR OWN USE 3 <input type="checkbox"/> ONLY FOR OWN USE 4 <input type="checkbox"/> Q30 ←	ONLY FOR SALE/TRADE 1 <input type="checkbox"/> MAINLY FOR SALE/TRADE 2 <input type="checkbox"/> MAINLY FOR OWN USE 3 <input type="checkbox"/> ONLY FOR OWN USE 4 <input type="checkbox"/> Q30 ←	ONLY FOR SALE/TRADE1 <input type="checkbox"/> MAINLY FOR SALE/TRADE2 <input type="checkbox"/> MAINLY FOR OWN USE3 <input type="checkbox"/> ONLY FOR OWN USE4 <input type="checkbox"/> Q30 ←	ONLY FOR SALE/TRADE1 <input type="checkbox"/> MAINLY FOR SALE/TRADE2 <input type="checkbox"/> MAINLY FOR OWN USE3 <input type="checkbox"/> ONLY FOR OWN USE4 <input type="checkbox"/> Q30 ←
28. Did the establishment that you worked have the business registration?	YES.....1 <input type="checkbox"/> NO.....2 <input type="checkbox"/>	YES.....1 <input type="checkbox"/> NO.....2 <input type="checkbox"/>	YES.....1 <input type="checkbox"/> NO.....2 <input type="checkbox"/>	YES.....1 <input type="checkbox"/> NO.....2 <input type="checkbox"/>
29. Did the establishment that you worked have the trade union?	YES.....1 <input type="checkbox"/> NO.....2 <input type="checkbox"/>	YES.....1 <input type="checkbox"/> NO.....2 <input type="checkbox"/>	YES.....1 <input type="checkbox"/> NO.....2 <input type="checkbox"/>	YES.....1 <input type="checkbox"/> NO.....2 <input type="checkbox"/>

NAME AND SERIAL NO				
QUESTION				
<p>30. With the above job, are you?</p> <p><i>(Read out answer choices)</i></p> <p>ABBREVIATION: CONTR. – CONTRIBUTING</p>	<p>EMPLOYER(USUALY HIRE LABORS) 1 <input type="checkbox"/></p> <p>OWN ACCOUNT WORKER..... 2 <input type="checkbox"/></p> <p>FAMILY CONTR. WORKER..... 3 <input type="checkbox"/></p> <p>Q34 ←</p> <p>MEMBER OF COOPERATIVE .. 4 <input type="checkbox"/></p> <p>EMPLOYEE 5 <input type="checkbox"/></p>	<p>EMPLOYER (USUALY HIRE LABORS).... 1 <input type="checkbox"/></p> <p>OWN ACCOUNT WORKER..... 2 <input type="checkbox"/></p> <p>FAMILY CONTR. WORKER..... 3 <input type="checkbox"/></p> <p>Q34 ←</p> <p>MEMBER OF COOPERATIVE .. 4 <input type="checkbox"/></p> <p>EMPLOYEE 5 <input type="checkbox"/></p>	<p>EMPLOYER (USUALY HIRE LABORS) 1 <input type="checkbox"/></p> <p>OWN ACCOUNT WORKER..... 2 <input type="checkbox"/></p> <p>FAMILY CONTR. WORKER..... 3 <input type="checkbox"/></p> <p>Q34 ←</p> <p>MEMBER OF COOPERATIVE ... 4 <input type="checkbox"/></p> <p>EMPLOYEE 5 <input type="checkbox"/></p>	<p>EMPLOYER (USUALY HIRE LABORS) 1 <input type="checkbox"/></p> <p>OWN ACCOUNT WORKER 2 <input type="checkbox"/></p> <p>FAMILY CONTR. WORKER 3 <input type="checkbox"/></p> <p>Q34 ←</p> <p>MEMBER OF COOPERATIVE .. 4 <input type="checkbox"/></p> <p>EMPLOYEE..... 5 <input type="checkbox"/></p>
<p>31. What type of labor contract did you hold, with the above job?</p> <p><i>(Read out answer choices)</i></p> <p>ABBREVIATION: CONT. – LABOR CONTRACT</p>	<p>INDEFINITE TERM CONT..... 1 <input type="checkbox"/></p> <p>Q33 ←</p> <p>1 TO <3 YEAR CONT. 2 <input type="checkbox"/></p> <p>3 MONTH TO < 1 YEAR CONT... 3 <input type="checkbox"/></p> <p>UNDER 3 MONTH CONT 4 <input type="checkbox"/></p> <p>LUMP SUM CONT 5 <input type="checkbox"/></p> <p>VERBAL AGREEMENT..... 6 <input type="checkbox"/></p> <p>NO LABOR CONTRACT 7 <input type="checkbox"/></p>	<p>INDEFINITE TERM CONT..... 1 <input type="checkbox"/></p> <p>Q33 ←</p> <p>1 TO <3 YEAR CONT. 2 <input type="checkbox"/></p> <p>3 MONTH TO < 1 YEAR CONT... 3 <input type="checkbox"/></p> <p>UNDER 3 MONTH CONT..... 4 <input type="checkbox"/></p> <p>LUMP SUM CONT 5 <input type="checkbox"/></p> <p>VERBAL AGREEMENT..... 6 <input type="checkbox"/></p> <p>NO LABOR CONTRACT 7 <input type="checkbox"/></p>	<p>INDEFINITE TERM CONT..... 1 <input type="checkbox"/></p> <p>Q33 ←</p> <p>1 TO <3 YEAR CONT. 2 <input type="checkbox"/></p> <p>3 MONTH TO < 1 YEAR CONT ... 3 <input type="checkbox"/></p> <p>UNDER 3 MONTH CONT 4 <input type="checkbox"/></p> <p>LUMP SUM CONT 5 <input type="checkbox"/></p> <p>VERBAL AGREEMENT 6 <input type="checkbox"/></p> <p>NO LABOR CONTRACT 7 <input type="checkbox"/></p>	<p>INDEFINITE TERM CONT..... 1 <input type="checkbox"/></p> <p>Q33 ←</p> <p>1 TO <3 YEAR CONT..... 2 <input type="checkbox"/></p> <p>3 MONTH TO < 1 YEAR CONT ... 3 <input type="checkbox"/></p> <p>UNDER 3 MONTH CONT..... 4 <input type="checkbox"/></p> <p>LUMP SUM CONT..... 5 <input type="checkbox"/></p> <p>VERBAL AGREEMENT..... 6 <input type="checkbox"/></p> <p>NO LABOR CONTRACT 7 <input type="checkbox"/></p>
<p>32. What was the reason that you held such kind of labor contract above or no labor contract?</p>	<p>ON JOB TRAINING/APPRENTICE. 1 <input type="checkbox"/></p> <p>ON PROBATION..... 2 <input type="checkbox"/></p> <p>SEASONAL JOB..... 3 <input type="checkbox"/></p> <p>DAILY/CASUAL JOB..... 4 <input type="checkbox"/></p> <p>DO A FAVOUR 5 <input type="checkbox"/></p> <p>AS REGULATED BY THE ESTABLISHMENT 6 <input type="checkbox"/></p> <p>OTHERS 7 <input type="checkbox"/></p> <p>(SPECIFY)</p>	<p>ON JOB TRAINING/APPRENTICE. 1 <input type="checkbox"/></p> <p>ON PROBATION..... 2 <input type="checkbox"/></p> <p>SEASONAL JOB..... 3 <input type="checkbox"/></p> <p>DAILY/CASUAL JOB..... 4 <input type="checkbox"/></p> <p>DO A FAVOUR..... 5 <input type="checkbox"/></p> <p>AS REGULATED BY THE ESTABLISHMENT 6 <input type="checkbox"/></p> <p>OTHERS 7 <input type="checkbox"/></p> <p>(SPECIFY)</p>	<p>ON JOB TRAINING/APPRENTICE.. 1 <input type="checkbox"/></p> <p>ON PROBATION..... 2 <input type="checkbox"/></p> <p>SEASONAL JOB..... 3 <input type="checkbox"/></p> <p>DAILY/CASUAL JOB 4 <input type="checkbox"/></p> <p>DO A FAVOUR 5 <input type="checkbox"/></p> <p>AS REGULATED BY THE ESTABLISHMENT 6 <input type="checkbox"/></p> <p>OTHERS 7 <input type="checkbox"/></p> <p>(SPECIFY)</p>	<p>ON JOB TRAINING/APPRENTICE . 1 <input type="checkbox"/></p> <p>ON PROBATION..... 2 <input type="checkbox"/></p> <p>SEASONAL JOB 3 <input type="checkbox"/></p> <p>DAILY/CASUAL JOB 4 <input type="checkbox"/></p> <p>DO A FAVOUR..... 5 <input type="checkbox"/></p> <p>AS REGULATED BY THE ESTABLISHMENT..... 6 <input type="checkbox"/></p> <p>OTHERS 7 <input type="checkbox"/></p> <p>(SPECIFY)</p>

HOUSEHOLD: . ┘

NAME AND SERIAL NO QUESTION	<input type="text"/> <input type="text"/>	<input type="text"/> <input type="text"/>	<input type="text"/> <input type="text"/>	<input type="text"/> <input type="text"/>
33. By what manner is for the payment that you received, with the above job? ┐	FIXED SALARY 1 <input type="checkbox"/> PER WORKING DAY/HOUR..... 2 <input type="checkbox"/> PER PRODUCT/PIECE 3 <input type="checkbox"/> PER REVENUE 4 <input type="checkbox"/> FIXED SALARY AND REVENUE..... 5 <input type="checkbox"/> REVENUE AND COST 6 <input type="checkbox"/> OTHERS 7 <input type="checkbox"/> (SPECIFY)	FIXED SALARY 1 <input type="checkbox"/> PER WORKING DAY/HOUR..... 2 <input type="checkbox"/> PER PRODUCT/PIECE 3 <input type="checkbox"/> PER REVENUE 4 <input type="checkbox"/> FIXED SALARY AND REVENUE..... 5 <input type="checkbox"/> REVENUE AND COST 6 <input type="checkbox"/> OTHERS 7 <input type="checkbox"/> (SPECIFY)	FIXED SALARY 1 <input type="checkbox"/> PER WORKING DAY/HOUR..... 2 <input type="checkbox"/> PER PRODUCT/PIECE 3 <input type="checkbox"/> PER REVENUE 4 <input type="checkbox"/> FIXED SALARY AND REVENUE..... 5 <input type="checkbox"/> REVENUE AND COST 6 <input type="checkbox"/> OTHERS 7 <input type="checkbox"/> (SPECIFY)	FIXED SALARY..... 1 <input type="checkbox"/> PER WORKING DAY/HOUR..... 2 <input type="checkbox"/> PER PRODUCT/PIECE..... 3 <input type="checkbox"/> PER REVENUE..... 4 <input type="checkbox"/> FIXED SALARY AND REVENUE..... 5 <input type="checkbox"/> REVENUE AND COST..... 6 <input type="checkbox"/> OTHERS 7 <input type="checkbox"/> (SPECIFY)
34. Have you paid for social insurance, with the above job?	YES..... 1 <input type="checkbox"/> NO..... 2 <input type="checkbox"/> Q36 ←	YES..... 1 <input type="checkbox"/> NO..... 2 <input type="checkbox"/> Q36 ←	YES..... 1 <input type="checkbox"/> NO..... 2 <input type="checkbox"/> Q36 ←	YES..... 1 <input type="checkbox"/> NO..... 2 <input type="checkbox"/> Q36 ←
35. What kind of social insurance have you paid for?	MANDATORY 1 <input type="checkbox"/> VOLUNTARY 2 <input type="checkbox"/>	MANDATORY 1 <input type="checkbox"/> VOLUNTARY 2 <input type="checkbox"/>	MANDATORY 1 <input type="checkbox"/> VOLUNTARY 2 <input type="checkbox"/>	MANDATORY 1 <input type="checkbox"/> VOLUNTARY 2 <input type="checkbox"/>
36. For how long have you worked, with the above job? └	UNDER 6 MONTHS..... 1 <input type="checkbox"/> 6 TO UNDER 12 MONTHS 2 <input type="checkbox"/> 1 TO UNDER 5 YEARS 3 <input type="checkbox"/> 5 TO UNDER 10 YEARS 4 <input type="checkbox"/> 10 YEARS AND MORE..... 5 <input type="checkbox"/> Q39 ←	UNDER 6 MONTHS..... 1 <input type="checkbox"/> 6 TO UNDER 12 MONTHS 2 <input type="checkbox"/> 1 TO UNDER 5 YEARS 3 <input type="checkbox"/> 5 TO UNDER 10 YEARS 4 <input type="checkbox"/> 10 YEARS AND MORE..... 5 <input type="checkbox"/> Q39 ←	UNDER 6 MONTHS..... 1 <input type="checkbox"/> 6 TO UNDER 12 MONTHS 2 <input type="checkbox"/> 1 TO UNDER 5 YEARS 3 <input type="checkbox"/> 5 TO UNDER 10 YEARS 4 <input type="checkbox"/> 10 YEARS AND MORE 5 <input type="checkbox"/> Q39 ←	UNDER 6 MONTHS 1 <input type="checkbox"/> 6 TO UNDER 12 MONTHS..... 2 <input type="checkbox"/> 1 TO UNDER 5 YEARS..... 3 <input type="checkbox"/> 5 TO UNDER 10 YEARS..... 4 <input type="checkbox"/> 10 YEARS AND MORE 5 <input type="checkbox"/> Q39 ←
37. Before taking in the above job, what did you do? <u>(Read out answer choices)</u> └	IN ANOTHER JOB..... 1 <input type="checkbox"/> WAITING for JOB/OFF SEASON. 2 <input type="checkbox"/> LOOKING FOR JOB 3 <input type="checkbox"/> OTHERS 4 <input type="checkbox"/> (SPECIFY) Q39 ←	IN ANOTHER JOB..... 1 <input type="checkbox"/> WAITING for JOB/OFF SEASON. 2 <input type="checkbox"/> LOOKING FOR JOB 3 <input type="checkbox"/> OTHERS 4 <input type="checkbox"/> (SPECIFY) Q39 ←	IN ANOTHER JOB..... 1 <input type="checkbox"/> WAITING for JOB/OFF SEASON. 2 <input type="checkbox"/> LOOKING FOR JOB 3 <input type="checkbox"/> OTHERS 4 <input type="checkbox"/> (SPECIFY) Q39 ←	IN ANOTHER JOB..... 1 <input type="checkbox"/> WAITING for JOB/OFF SEASON. 2 <input type="checkbox"/> LOOKING FOR JOB..... 3 <input type="checkbox"/> OTHERS 4 <input type="checkbox"/> (SPECIFY) Q39 ←

NAME AND SERIAL NO QUESTION				
38. What was the reason that you left from the previous job?	WORKFORCE CUT DOWN/ ORGAN. RESTRUCTURED..... 01 <input type="checkbox"/> DISSOLVED/IN RUIN 02 <input type="checkbox"/> PRODUCTION STOPPED 03 <input type="checkbox"/> DISMISSED 04 <input type="checkbox"/> CONTRACT ENDED..... 05 <input type="checkbox"/> LOW INCOME 06 <input type="checkbox"/> FARMING LAND LOST 07 <input type="checkbox"/> UNSUITABLE JOB 08 <input type="checkbox"/> RESETTLEMENT 09 <input type="checkbox"/> EFFECT OF ENVIRONMENT ... 10 <input type="checkbox"/> OTHERS 11 <input type="checkbox"/> (SPECIFY)	WORKFORCE CUT DOWN/ ORGAN. RESTRUCTURED01 <input type="checkbox"/> DISSOLVED/IN RUIN02 <input type="checkbox"/> PRODUCTION STOPPED03 <input type="checkbox"/> DISMISSED04 <input type="checkbox"/> CONTRACT ENDED.....05 <input type="checkbox"/> LOW INCOME06 <input type="checkbox"/> FARMING LAND LOST07 <input type="checkbox"/> UNSUITABLE JOB08 <input type="checkbox"/> RESETTLEMENT09 <input type="checkbox"/> EFFECT OF ENVIRONMENT10 <input type="checkbox"/> OTHERS 11 <input type="checkbox"/> (SPECIFY)	WORKFORCE CUT DOWN/ ORGAN. RESTRUCTURED01 <input type="checkbox"/> DISSOLVED/IN RUIN02 <input type="checkbox"/> PRODUCTION STOPPED03 <input type="checkbox"/> DISMISSED04 <input type="checkbox"/> CONTRACT ENDED05 <input type="checkbox"/> LOW INCOME06 <input type="checkbox"/> FARMING LAND LOST07 <input type="checkbox"/> UNSUITABLE JOB08 <input type="checkbox"/> RESETTLEMENT09 <input type="checkbox"/> EFFECT OF ENVIRONMENT ...10 <input type="checkbox"/> OTHERS 11 <input type="checkbox"/> (SPECIFY)	WORKFORCE CUT DOWN/ ORGAN. RESTRUCTURED01 <input type="checkbox"/> DISSOLVED/IN RUIN02 <input type="checkbox"/> PRODUCTION STOPPED03 <input type="checkbox"/> DISMISSED04 <input type="checkbox"/> CONTRACT ENDED05 <input type="checkbox"/> LOW INCOME06 <input type="checkbox"/> FARMING LAND LOST07 <input type="checkbox"/> UNSUITABLE JOB08 <input type="checkbox"/> RESETTLEMENT09 <input type="checkbox"/> EFFECT OF ENVIRONMENT10 <input type="checkbox"/> OTHERS 11 <input type="checkbox"/> (SPECIFY)

II. QUESTIONS RELATING TO INCOME AND NUMBER OF WORKING HOURS THAT THE RESPONDENT SPENT IN THE MAIN JOB IN THE LAST 7 DAYS/BEFORE THE TEMPORARY ABSENCE

39. Last month, how much money did you receive, including overtime remuneration, bonus, occupational allowances and other welfare payments for all jobs? In which: A. Main job B. Other jobs CHECK: IF THE TOTAL AMOUNT OF ALL JOBS = THE AMOUNT OF MAIN JOB + THE AMOUNT OF OTHER JOBS. IF NOT, ASK THE RESPONDENT AGAIN.	TOTAL AMOUNT <div></div> (THOUSAND VND) IN WHICH: A. MAIN JOB <div></div> (THOUSAND VND) B. OTHER JOBS <div></div> (THOUSAND VND)	TOTAL AMOUNT <div></div> (THOUSAND VND) IN WHICH: A. MAIN JOB <div></div> (THOUSAND VND) B. OTHER JOBS <div></div> (THOUSAND VND)	TOTAL AMOUNT <div></div> (THOUSAND VND) IN WHICH: A. MAIN JOB <div></div> (THOUSAND VND) B. OTHER JOBS <div></div> (THOUSAND VND)
---	--	--	--

HOUSEHOLD:

--	--	--

 ┘

QUESTION	NAME AND SERIAL NO			
40. Actually , how many hours did you spend in all jobs in the last 7 days (including the main job and other jobs)? <i>In which:</i> A. Main job B. Other jobs <small>CHECK: IF ACTUALLY HOURS OF ALL JOBS = HOURS OF MAIN JOB + HOURS OF OTHER JOBS. IF NOT, ASK QUESTION AGAIN.</small>	TOTAL OF ACTUAL HOURS	<table border="1" style="width: 40px; height: 20px;"></table>	TOTAL OF ACTUAL HOURS	<table border="1" style="width: 40px; height: 20px;"></table>
	A. MAIN JOB	<table border="1" style="width: 40px; height: 20px;"></table>	A. MAIN JOB	<table border="1" style="width: 40px; height: 20px;"></table>
	B. OTHER JOBS	<table border="1" style="width: 40px; height: 20px;"></table>	B. OTHER JOBS	<table border="1" style="width: 40px; height: 20px;"></table>
41. Usually , how many hours did you spend in all jobs in the last 7 days (including the main job and other jobs)? <i>In which:</i> A. Main job B. Other jobs	TOTAL OF USUAL HOURS	<table border="1" style="width: 40px; height: 20px;"></table>	TOTAL OF USUAL HOURS	<table border="1" style="width: 40px; height: 20px;"></table>
	A. MAIN JOB	<table border="1" style="width: 40px; height: 20px;"></table>	A. MAIN JOB	<table border="1" style="width: 40px; height: 20px;"></table>
	B. OTHER JOBS	<table border="1" style="width: 40px; height: 20px;"></table>	B. OTHER JOBS	<table border="1" style="width: 40px; height: 20px;"></table>
CHECK: TOTAL OF ACTUAL HOURS IN Q.40 DIFFER WITH TOTAL OF USUAL HOURS IN Q.41 ASK Q.42; OTHERWISE ASK Q.43				
42. Last 7 days, why did you actually work for less/more hours than usual?	INJURED/ILL	01 <table border="1" style="width: 20px; height: 15px;"></table>	INJURED/ILL	01 <table border="1" style="width: 20px; height: 15px;"></table>
	ON HOLIDAYS/LEAVES	02 <table border="1" style="width: 20px; height: 15px;"></table>	ON HOLIDAYS/LEAVES	02 <table border="1" style="width: 20px; height: 15px;"></table>
	JUST STARTING WORK	03 <table border="1" style="width: 20px; height: 15px;"></table>	JUST STARTING WORK	03 <table border="1" style="width: 20px; height: 15px;"></table>
	JOB LOST/QUITTING JOB	04 <table border="1" style="width: 20px; height: 15px;"></table>	JOB LOST/QUITTING JOB	04 <table border="1" style="width: 20px; height: 15px;"></table>
	BAD WEATHER/OFF SEASON ..	05 <table border="1" style="width: 20px; height: 15px;"></table>	BAD WEATHER/OFF SEASON ..	05 <table border="1" style="width: 20px; height: 15px;"></table>
	WORK BY SHIFT	06 <table border="1" style="width: 20px; height: 15px;"></table>	WORK BY SHIFT	06 <table border="1" style="width: 20px; height: 15px;"></table>
	PERSONAL OBLIGATIONS	07 <table border="1" style="width: 20px; height: 15px;"></table>	PERSONAL OBLIGATIONS	07 <table border="1" style="width: 20px; height: 15px;"></table>
	LACK OF CLIENTS/ORDERS	<table border="1" style="width: 20px; height: 15px;"></table>	LACK OF CLIENTS/ORDERS	<table border="1" style="width: 20px; height: 15px;"></table>
	IN BUSINESS	08 <table border="1" style="width: 20px; height: 15px;"></table>	IN BUSINESS	08 <table border="1" style="width: 20px; height: 15px;"></table>
	INCREASE WORKS	09 <table border="1" style="width: 20px; height: 15px;"></table>	INCREASE WORKS	09 <table border="1" style="width: 20px; height: 15px;"></table>
	RUSH SEASON	10 <table border="1" style="width: 20px; height: 15px;"></table>	RUSH SEASON	10 <table border="1" style="width: 20px; height: 15px;"></table>
	STARTING/ENDING/ CHANGING JOB	11 <table border="1" style="width: 20px; height: 15px;"></table>	STARTING/ENDING/ CHANGING JOB	11 <table border="1" style="width: 20px; height: 15px;"></table>
	OTHERS	12 <table border="1" style="width: 20px; height: 15px;"></table>	OTHERS	12 <table border="1" style="width: 20px; height: 15px;"></table>
	(SPECIFY)		(SPECIFY)	

QUESTION	NAME AND SERIAL NO				
III. QUESTIONS RELATING TO THE UNDER-EMPLOYMENT					
43. For such total number of hours worked above, would you like to work more time?	YES1 <input type="checkbox"/> NO2 <input type="checkbox"/> → Q.46	YES1 <input type="checkbox"/> NO2 <input type="checkbox"/> → Q.46	YES.....1 <input type="checkbox"/> NO.....2 <input type="checkbox"/> → Q.46	YES1 <input type="checkbox"/> NO2 <input type="checkbox"/> → Q.46	
44. You would like to work more time but are you available to work immediately?	YES1 <input type="checkbox"/> NO2 <input type="checkbox"/> → Q.46	YES1 <input type="checkbox"/> NO2 <input type="checkbox"/> → Q.46	YES.....1 <input type="checkbox"/> NO.....2 <input type="checkbox"/> → Q.46	YES1 <input type="checkbox"/> NO2 <input type="checkbox"/> → Q.46	
45. How many additional hours would you like to work per week?	HOURS/WEEK <input type="text"/>	HOURS/WEEK <input type="text"/>	HOURS/WEEK <input type="text"/>	HOURS/WEEK <input type="text"/>	
IV. QUESTION THAT RESPONDENTS SELF EVALUATE					
46. Do you think that your job is suitable with your training?	YES1 <input type="checkbox"/> NO2 <input type="checkbox"/> NO TRAINING3 <input type="checkbox"/> DON'T KNOW4 <input type="checkbox"/>	YES1 <input type="checkbox"/> NO2 <input type="checkbox"/> NO TRAINING3 <input type="checkbox"/> DON'T KNOW4 <input type="checkbox"/>	YES.....1 <input type="checkbox"/> NO.....2 <input type="checkbox"/> NO TRAINING.....3 <input type="checkbox"/> DON'T KNOW4 <input type="checkbox"/>	YES1 <input type="checkbox"/> NO2 <input type="checkbox"/> NO TRAINING3 <input type="checkbox"/> DON'T KNOW4 <input type="checkbox"/>	
47. The job that you are taking is a temporary one to wait for or seek another job, isn't it?	YES1 <input type="checkbox"/> NO.....2 <input type="checkbox"/> Q50 ←	YES1 <input type="checkbox"/> NO.....2 <input type="checkbox"/> Q50 ←	YES1 <input type="checkbox"/> NO.....2 <input type="checkbox"/> Q50 ←	YES1 <input type="checkbox"/> NO.....2 <input type="checkbox"/> Q50 ←	
48. In the last 30 days, did you intent to look for another job?	YES1 <input type="checkbox"/> NO.....2 <input type="checkbox"/>	YES1 <input type="checkbox"/> NO.....2 <input type="checkbox"/>	YES1 <input type="checkbox"/> NO.....2 <input type="checkbox"/>	YES1 <input type="checkbox"/> NO.....2 <input type="checkbox"/>	
49. For the next 2 weeks, if other job is available, will you ready to work?	YES1 <input type="checkbox"/> NO.....2 <input type="checkbox"/>	YES1 <input type="checkbox"/> NO.....2 <input type="checkbox"/>	YES1 <input type="checkbox"/> NO.....2 <input type="checkbox"/>	YES1 <input type="checkbox"/> NO.....2 <input type="checkbox"/>	

HOUSEHOLD: .

QUESTION	NAME AND SERIAL NO <input type="text"/> <input type="text"/>	<input type="text"/> <input type="text"/>	<input type="text"/> <input type="text"/>	<input type="text"/> <input type="text"/>
<p>50. Even you are working, which of the following best describes your main activity or situation at present?</p> <p><i>(Read out answer choices)</i></p> <p><i>(MAIN ACTIVITY BY SELF RESPONDENT MAY BE ACTIVITY WHICH IS THE MOST TIME OR IMPORTANT)</i></p>	<p>STUDYING OR TRAINING1 <input type="checkbox"/></p> <p>WORKING FOR PAY OR PROFIT ...2 <input type="checkbox"/></p> <p>FARMING OR FISHING MAINLY FOR FAMILY CÔNUMPTION3 <input type="checkbox"/></p> <p>LOOKING FOR A JOB4 <input type="checkbox"/></p> <p>HOUSEHOLD RESPONSIBILITIES5 <input type="checkbox"/></p> <p>DISABILITY, INJURY, LONG-TERM ILLNESS6 <input type="checkbox"/></p> <p>RETIRED OR PENSIONER7 <input type="checkbox"/></p> <p>OTHER _____ 8 <input type="checkbox"/></p> <p>(SPECIFY)</p>	<p>STUDYING OR TRAINING1 <input type="checkbox"/></p> <p>WORKING FOR PAY OR PROFIT ...2 <input type="checkbox"/></p> <p>FARMING OR FISHING MAINLY FOR FAMILY CÔNUMPTION3 <input type="checkbox"/></p> <p>LOOKING FOR A JOB4 <input type="checkbox"/></p> <p>HOUSEHOLD RESPONSIBILITIES5 <input type="checkbox"/></p> <p>DISABILITY, INJURY, LONG-TERM ILLNESS6 <input type="checkbox"/></p> <p>RETIRED OR PENSIONER7 <input type="checkbox"/></p> <p>OTHER _____ 8 <input type="checkbox"/></p> <p>(SPECIFY)</p>	<p>STUDYING OR TRAINING.....1 <input type="checkbox"/></p> <p>WORKING FOR PAY OR PROFIT....2 <input type="checkbox"/></p> <p>FARMING OR FISHING MAINLY FOR FAMILY CÔNUMPTION.....3 <input type="checkbox"/></p> <p>LOOKING FOR A JOB4 <input type="checkbox"/></p> <p>HOUSEHOLD RESPONSIBILITIES.....5 <input type="checkbox"/></p> <p>DISABILITY, INJURY, LONG-TERM ILLNESS6 <input type="checkbox"/></p> <p>RETIRED OR PENSIONER.....7 <input type="checkbox"/></p> <p>OTHER _____ 8 <input type="checkbox"/></p> <p>(SPECIFY)</p>	<p>STUDYING OR TRAINING1 <input type="checkbox"/></p> <p>WORKING FOR PAY OR PROFIT ...2 <input type="checkbox"/></p> <p>FARMING OR FISHING MAINLY FOR FAMILY CÔNUMPTION3 <input type="checkbox"/></p> <p>LOOKING FOR A JOB4 <input type="checkbox"/></p> <p>HOUSEHOLD RESPONSIBILITIES5 <input type="checkbox"/></p> <p>DISABILITY, INJURY, LONG-TERM ILLNESS6 <input type="checkbox"/></p> <p>RETIRED OR PENSIONER7 <input type="checkbox"/></p> <p>OTHER _____ 8 <input type="checkbox"/></p> <p>(SPECIFY)</p>
<p>51. Even you are working/absence from work, which of the following best describes your main activity or situation in the last 12 months?</p> <p><i>(Read out answer choices)</i></p> <p><i>(MAIN ACTIVITY BY SELF RESPONDENT MAY BE ACTIVITY WHICH IS THE MOST TIME OR IMPORTANT)</i></p>	<p>STUDYING OR TRAINING1 <input type="checkbox"/></p> <p>WORKING FOR PAY OR PROFIT ...2 <input type="checkbox"/></p> <p>FARMING OR FISHING MAINLY FOR FAMILY CÔNUMPTION3 <input type="checkbox"/></p> <p>LOOKING FOR A JOB4 <input type="checkbox"/></p> <p>HOUSEHOLD RESPONSIBILITIES5 <input type="checkbox"/></p> <p>DISABILITY, INJURY, LONG-TERM ILLNESS6 <input type="checkbox"/></p> <p>RETIRED OR PENSIONER7 <input type="checkbox"/></p> <p>OTHER _____ 8 <input type="checkbox"/></p> <p>(SPECIFY)</p>	<p>STUDYING OR TRAINING1 <input type="checkbox"/></p> <p>WORKING FOR PAY OR PROFIT ...2 <input type="checkbox"/></p> <p>FARMING OR FISHING MAINLY FOR FAMILY CÔNUMPTION3 <input type="checkbox"/></p> <p>LOOKING FOR A JOB4 <input type="checkbox"/></p> <p>HOUSEHOLD RESPONSIBILITIES5 <input type="checkbox"/></p> <p>DISABILITY, INJURY, LONG-TERM ILLNESS6 <input type="checkbox"/></p> <p>RETIRED OR PENSIONER7 <input type="checkbox"/></p> <p>OTHER _____ 8 <input type="checkbox"/></p> <p>(SPECIFY)</p>	<p>STUDYING OR TRAINING.....1 <input type="checkbox"/></p> <p>WORKING FOR PAY OR PROFIT....2 <input type="checkbox"/></p> <p>FARMING OR FISHING MAINLY FOR FAMILY CÔNUMPTION.....3 <input type="checkbox"/></p> <p>LOOKING FOR A JOB4 <input type="checkbox"/></p> <p>HOUSEHOLD RESPONSIBILITIES.....5 <input type="checkbox"/></p> <p>DISABILITY, INJURY, LONG-TERM ILLNESS6 <input type="checkbox"/></p> <p>RETIRED OR PENSIONER.....7 <input type="checkbox"/></p> <p>OTHER _____ 8 <input type="checkbox"/></p> <p>(SPECIFY)</p>	<p>STUDYING OR TRAINING1 <input type="checkbox"/></p> <p>WORKING FOR PAY OR PROFIT ...2 <input type="checkbox"/></p> <p>FARMING OR FISHING MAINLY FOR FAMILY CÔNUMPTION3 <input type="checkbox"/></p> <p>LOOKING FOR A JOB4 <input type="checkbox"/></p> <p>HOUSEHOLD RESPONSIBILITIES5 <input type="checkbox"/></p> <p>DISABILITY, INJURY, LONG-TERM ILLNESS6 <input type="checkbox"/></p> <p>RETIRED OR PENSIONER7 <input type="checkbox"/></p> <p>OTHER _____ 8 <input type="checkbox"/></p> <p>(SPECIFY)</p>
<p>CHECK Q.4 OR Q.5: IF RESPONDENT AGE 15 TO 59 AND Q14=6/7/8/9 OR Q15=5/6/7 AND Q47 = 1; GO TO ITEM C. OTHERS, ASK THE NEXT RESPONDENT.</p>				

ITEM B: INFORMATION ON THE UNEMPLOYMENT OR OUTSIDE THE LABOUR FORCE

L

QUESTION	NAME AND SERIAL NO				
52. In the last 30 days, did you intent to look for job or prepare to start any productive or business activites?		YES.....1 <input type="checkbox"/>	NO2 <input type="checkbox"/> → Q.55	YES.....1 <input type="checkbox"/>	NO2 <input type="checkbox"/> → Q.55
53. How did you look for job or start any productive or business activities?		JOB APPLYING1 <input type="checkbox"/>	CONTACTING TO/GETTING INFORMATION FROM JOB SUPPORTING UNIT2 <input type="checkbox"/>	VIA FRIENDS/RELATIVES3 <input type="checkbox"/>	PLACING JOB ADVER4 <input type="checkbox"/>
ABBREVIATION: PRO./BUS.- PRODUCTIVE/BUSINESS ADVER. - ADVERTISEMENT INTERV. – INTERVIEW		VIA RECRUITMENT NOTICE5 <input type="checkbox"/>	ALREADY ATTENDING INTERV.6 <input type="checkbox"/>	SELF SEEKING7 <input type="checkbox"/>	PREPARING TO START PRO./BUS ACTIVITIES.....8 <input type="checkbox"/>
		OTHERS9 <input type="checkbox"/>	(SPECIFY)	(SPECIFY)	(SPECIFY)
		JOB APPLYING1 <input type="checkbox"/>	CONTACTING TO/GETTING INFORMATION FROM JOB SUPPORTING UNIT2 <input type="checkbox"/>	VIA FRIENDS/RELATIVES3 <input type="checkbox"/>	PLACING JOB ADVER4 <input type="checkbox"/>
		VIA RECRUITMENT NOTICE5 <input type="checkbox"/>	ALREADY ATTENDING INTERV.6 <input type="checkbox"/>	SELF SEEKING7 <input type="checkbox"/>	PREPARING TO START PRO./BUS ACTIVITIES.....8 <input type="checkbox"/>
		OTHERS9 <input type="checkbox"/>	(SPECIFY)	(SPECIFY)	(SPECIFY)
		UNDER 1 MONTH1 <input type="checkbox"/>	1 TO UNDER 3 MONTHS2 <input type="checkbox"/>	3 MONTHS TO 1 YEAR3 <input type="checkbox"/>	MORE THAN 1 YEAR4 <input type="checkbox"/>
		Q.56 ←	Q.56 ←	Q.56 ←	Q.56 ←

HOUSEHOLD:

--	--	--

┘┘

NAME AND SERIAL NO QUESTION	<table border="1" style="width: 100%;"><tr><td style="width: 50%; height: 20px;"></td><td style="width: 50%; height: 20px;"></td></tr></table>			<table border="1" style="width: 100%;"><tr><td style="width: 50%; height: 20px;"></td><td style="width: 50%; height: 20px;"></td></tr></table>			<table border="1" style="width: 100%;"><tr><td style="width: 50%; height: 20px;"></td><td style="width: 50%; height: 20px;"></td></tr></table>			<table border="1" style="width: 100%;"><tr><td style="width: 50%; height: 20px;"></td><td style="width: 50%; height: 20px;"></td></tr></table>		
<p>55. What was the reason that you did not look for job in the last 30 days?</p> <p>ABBREVIATION:</p> <p>PRO./BUS –PRODUCTIVE/BUSINESS</p> <p>ST - STUDENT</p> <p>PU - PUPIL</p> <p>AP – APPENTICE</p>	<p>TOO OLD/YOUNG, DISABLED...01 <input type="checkbox"/></p> <p>TAKING DOMESTIC WORKS.....02 <input type="checkbox"/></p> <p>SCHOOLING (ST/PU/AP)03 <input type="checkbox"/></p> <p>NO DEMAND OF WORK/ NO NEED TO WORK.....04 <input type="checkbox"/></p> <p>BELIEVING NO JOB AVAILABLE/ NO JOB SUITABLE.....05 <input type="checkbox"/></p> <p>DID NOT KNOW WHERE/HOW TO FIND JOB.....06 <input type="checkbox"/></p> <p>TEMPORARILY LAID OFF..... 07 <input type="checkbox"/></p> <p>WAITING JOB APPLICATION/TO START PRO/BUS ACTIVITIES ...08 <input type="checkbox"/></p> <p>OFF SEASON.....09 <input type="checkbox"/></p> <p>BAD WEATHER..... 10 <input type="checkbox"/></p> <p>EFFECT OF ENVIRONEMNT ... 11 <input type="checkbox"/></p> <p>FAMILY OBLIGATIONS/ RELAXING.....12 <input type="checkbox"/></p> <p>TEMPORARY ILLNESS/INJURY 13 <input type="checkbox"/></p> <p>OTHERS _____14 <input type="checkbox"/></p> <p style="text-align: center;">(SPECIFY)</p>	<p>TOO OLD/YOUNG, DISABLED...01 <input type="checkbox"/></p> <p>TAKING DOMESTIC WORKS.....02 <input type="checkbox"/></p> <p>SCHOOLING (ST/PU/AP)03 <input type="checkbox"/></p> <p>NO DEMAND OF WORK/ NO NEED TO WORK.....04 <input type="checkbox"/></p> <p>BELIEVING NO JOB AVAILABLE/ NO JOB SUITABLE.....05 <input type="checkbox"/></p> <p>DID NOT KNOW WHERE/HOW TO FIND JOB.....06 <input type="checkbox"/></p> <p>TEMPORARILY LAID OFF.....07 <input type="checkbox"/></p> <p>WAITING JOB APPLICATION/TO START PRO/BUS ACTIVITIES ...08 <input type="checkbox"/></p> <p>OFF SEASON.....09 <input type="checkbox"/></p> <p>BAD WEATHER..... 10 <input type="checkbox"/></p> <p>EFFECT OF ENVIRONEMNT11 <input type="checkbox"/></p> <p>FAMILY OBLIGATIONS/ RELAXING.....12 <input type="checkbox"/></p> <p>TEMPORARY ILLNESS/INJURY 13 <input type="checkbox"/></p> <p>OTHERS _____14 <input type="checkbox"/></p> <p style="text-align: center;">(SPECIFY)</p>	<p>TOO OLD/YOUNG, DISABLED .. 01 <input type="checkbox"/></p> <p>TAKING DOMESTIC WORKS..... 02 <input type="checkbox"/></p> <p>SCHOOLING (ST/PU/AP)..... 03 <input type="checkbox"/></p> <p>NO DEMAND OF WORK/ NO NEED TO WORK..... 04 <input type="checkbox"/></p> <p>BELIEVING NO JOB AVAILABLE/ NO JOB SUITABLE 05 <input type="checkbox"/></p> <p>DID NOT KNOW WHERE/HOW TO FIND JOB 06 <input type="checkbox"/></p> <p>TEMPORARILY LAID OFF07 <input type="checkbox"/></p> <p>WAITING JOB APPLICATION/TO START PRO/BUS ACTIVITIES ... 08 <input type="checkbox"/></p> <p>OFF SEASON..... 09 <input type="checkbox"/></p> <p>BAD WEATHER..... 10 <input type="checkbox"/></p> <p>EFFECT OF ENVIRONEMNT11 <input type="checkbox"/></p> <p>FAMILY OBLIGATIONS/ RELAXING..... 12 <input type="checkbox"/></p> <p>TEMPORARY ILLNESS/INJURY 13 <input type="checkbox"/></p> <p>OTHERS _____14 <input type="checkbox"/></p> <p style="text-align: center;">(SPECIFY)</p>	<p>TOO OLD/YOUNG, DISABLED...01 <input type="checkbox"/></p> <p>TAKING DOMESTIC WORKS02 <input type="checkbox"/></p> <p>SCHOOLING (ST/PU/AP)03 <input type="checkbox"/></p> <p>NO DEMAND OF WORK/ NO NEED TO WORK04 <input type="checkbox"/></p> <p>BELIEVING NO JOB AVAILABLE/ NO JOB SUITABLE05 <input type="checkbox"/></p> <p>DID NOT KNOW WHERE/HOW TO FIND JOB06 <input type="checkbox"/></p> <p>TEMPORARILY LAID OFF 07 <input type="checkbox"/></p> <p>WAITING JOB APPLICATION/TO START PRO/BUS ACTIVITIES ...08 <input type="checkbox"/></p> <p>OFF SEASON09 <input type="checkbox"/></p> <p>BAD WEATHER10 <input type="checkbox"/></p> <p>EFFECT OF ENVIRONEMNT ... 11 <input type="checkbox"/></p> <p>FAMILY OBLIGATIONS/ RELAXING12 <input type="checkbox"/></p> <p>TEMPORARY ILLNESS/INJURY.13 <input type="checkbox"/></p> <p>OTHERS _____14 <input type="checkbox"/></p> <p style="text-align: center;">(SPECIFY)</p>								
<p>56. For the next 2 weeks, if it is available for a job or a productive/business activity, will you be ready to work immediately?</p>	<p>YES.....1 <input type="checkbox"/> → Q.58</p> <p>NO2 <input type="checkbox"/></p>	<p>YES.....1 <input type="checkbox"/> → Q.58</p> <p>NO2 <input type="checkbox"/></p>	<p>YES 1 <input type="checkbox"/> → Q.58</p> <p>NO2 <input type="checkbox"/></p>	<p>YES..... 1 <input type="checkbox"/> → Q.58</p> <p>NO..... 2 <input type="checkbox"/></p>								
<p>57. What is the main reason that you are unavailable for work immediately?</p>	<p>SCHOOLING/TRAINING.....1 <input type="checkbox"/></p> <p>HOUSEWIFE 2 <input type="checkbox"/></p> <p>FAMILY OBLIGATIONS 3 <input type="checkbox"/></p> <p>BAD WEATHER..... 4 <input type="checkbox"/></p> <p>TEMPORARY ILLNESS/INJURY 5 <input type="checkbox"/></p> <p>TOO OLD/YOUNG, DISABLED... 6 <input type="checkbox"/></p> <p>OTHERS _____ 7 <input type="checkbox"/></p> <p style="text-align: center;">(SPECIFY)</p>	<p>SCHOOLING/TRAINING.....1 <input type="checkbox"/></p> <p>HOUSEWIFE 2 <input type="checkbox"/></p> <p>FAMILY OBLIGATIONS 3 <input type="checkbox"/></p> <p>BAD WEATHER..... 4 <input type="checkbox"/></p> <p>TEMPORARY ILLNESS/INJURY 5 <input type="checkbox"/></p> <p>TOO OLD/YOUNG, DISABLED... 6 <input type="checkbox"/></p> <p>OTHERS _____ 7 <input type="checkbox"/></p> <p style="text-align: center;">(SPECIFY)</p>	<p>SCHOOLING/TRAINING..... 1 <input type="checkbox"/></p> <p>HOUSEWIFE2 <input type="checkbox"/></p> <p>FAMILY OBLIGATIONS3 <input type="checkbox"/></p> <p>BAD WEATHER.....4 <input type="checkbox"/></p> <p>TEMPORARY ILLNESS/INJURY .5 <input type="checkbox"/></p> <p>TOO OLD/YOUNG, DISABLED ...6 <input type="checkbox"/></p> <p>OTHERS _____ 7 <input type="checkbox"/></p> <p style="text-align: center;">(SPECIFY)</p>	<p>SCHOOLING/TRAINING 1 <input type="checkbox"/></p> <p>HOUSEWIFE..... 2 <input type="checkbox"/></p> <p>FAMILY OBLIGATIONS 3 <input type="checkbox"/></p> <p>BAD WEATHER 4 <input type="checkbox"/></p> <p>TEMPORARY ILLNESS/INJURY. 5 <input type="checkbox"/></p> <p>TOO OLD/YOUNG, DISABLED... 6 <input type="checkbox"/></p> <p>OTHERS _____ 7 <input type="checkbox"/></p> <p style="text-align: center;">(SPECIFY)</p>								

NAME AND SERIAL NO QUESTION				
58. Have you ever worked before?	YES.....1 <input type="checkbox"/> NOT YET.....2 <input type="checkbox"/> → Q.65	YES.....1 <input type="checkbox"/> NOT YET.....2 <input type="checkbox"/> → Q.65	YES.....1 <input type="checkbox"/> NOT YET.....2 <input type="checkbox"/> → Q.65	YES.....1 <input type="checkbox"/> NOT YET.....2 <input type="checkbox"/> → Q.65
59. For how long have you left the last job?	UNDER 1 MONTH1 <input type="checkbox"/> 1 TO < 3 MONTHS.....2 <input type="checkbox"/> 3 MONTHS TO < 1 YEAR3 <input type="checkbox"/> 1 TO < 5 YEARS.....4 <input type="checkbox"/> 5 YEARS AND MORE5 <input type="checkbox"/> <div style="text-align: right;">Q.65 ←</div>	UNDER 1 MONTH1 <input type="checkbox"/> 1 TO < 3 MONTHS.....2 <input type="checkbox"/> 3 MONTHS TO < 1 YEAR3 <input type="checkbox"/> 1 TO < 5 YEARS.....4 <input type="checkbox"/> 5 YEARS AND MORE5 <input type="checkbox"/> <div style="text-align: right;">Q.65 ←</div>	UNDER 1 MONTH1 <input type="checkbox"/> 1 TO < 3 MONTHS2 <input type="checkbox"/> 3 MONTHS TO < 1 YEAR3 <input type="checkbox"/> 1 TO < 5 YEARS.....4 <input type="checkbox"/> 5 YEARS AND MORE5 <input type="checkbox"/> <div style="text-align: right;">Q.65 ←</div>	UNDER 1 MONTH.....1 <input type="checkbox"/> 1 TO < 3 MONTHS.....2 <input type="checkbox"/> 3 MONTHS TO < 1 YEAR3 <input type="checkbox"/> 1 TO < 5 YEARS.....4 <input type="checkbox"/> 5 YEARS AND MORE5 <input type="checkbox"/> <div style="text-align: right;">Q.65 ←</div>
60. What reason did you quit/leave from the last job? ABBREVIATION: ORG. –ORGANIZATION	WORKFORCE CUT DOWN/ ORG. RESTRUCTURED.....01 <input type="checkbox"/> DISSOLVED/IN RUIN 02 <input type="checkbox"/> PRODUCTION STOPPED 03 <input type="checkbox"/> DISMISSED 04 <input type="checkbox"/> CONTRACT ENDED..... 05 <input type="checkbox"/> LOW INCOME..... 06 <input type="checkbox"/> FARMING-LAND LOST..... 07 <input type="checkbox"/> EFFECT OF ENVIRONMENT ... 08 <input type="checkbox"/> UNSUITABLE JOB..... 09 <input type="checkbox"/> RESETTLEMENT..... 10 <input type="checkbox"/> RETIRED/DUE TO DISABILITY 11 <input type="checkbox"/> OTHERS 12 <input type="checkbox"/> <div style="text-align: right;">(SPECIFY)</div>	WORKFORCE CUT DOWN/ ORG. RESTRUCTURED.....01 <input type="checkbox"/> DISSOLVED/IN RUIN 02 <input type="checkbox"/> PRODUCTION STOPPED 03 <input type="checkbox"/> DISMISSED 04 <input type="checkbox"/> CONTRACT ENDED..... 05 <input type="checkbox"/> LOW INCOME..... 06 <input type="checkbox"/> FARMING-LAND LOST..... 07 <input type="checkbox"/> EFFECT OF ENVIRONMENT ... 08 <input type="checkbox"/> UNSUITABLE JOB..... 09 <input type="checkbox"/> RESETTLEMENT 10 <input type="checkbox"/> RETIRED/DUE TO DISABILITY 11 <input type="checkbox"/> OTHERS 12 <input type="checkbox"/> <div style="text-align: right;">(SPECIFY)</div>	WORKFORCE CUT DOWN/ ORG. RESTRUCTURED.....01 <input type="checkbox"/> DISSOLVED/IN RUIN 02 <input type="checkbox"/> PRODUCTION STOPPED 03 <input type="checkbox"/> DISMISSED 04 <input type="checkbox"/> CONTRACT ENDED..... 05 <input type="checkbox"/> LOW INCOME 06 <input type="checkbox"/> FARMING-LAND LOST 07 <input type="checkbox"/> EFFECT OF ENVIRONMENT 08 <input type="checkbox"/> UNSUITABLE JOB 09 <input type="checkbox"/> RESETTLEMENT 10 <input type="checkbox"/> RETIRED/DUE TO DISABILITY.11 <input type="checkbox"/> OTHERS 12 <input type="checkbox"/> <div style="text-align: right;">(SPECIFY)</div>	WORKFORCE CUT DOWN/ ORG. RESTRUCTURED.....01 <input type="checkbox"/> DISSOLVED/IN RUIN 02 <input type="checkbox"/> PRODUCTION STOPPED..... 03 <input type="checkbox"/> DISMISSED..... 04 <input type="checkbox"/> CONTRACT ENDED 05 <input type="checkbox"/> LOW INCOME 06 <input type="checkbox"/> FARMING-LAND LOST 07 <input type="checkbox"/> EFFECT OF ENVIRONMENT ... 08 <input type="checkbox"/> UNSUITABLE JOB 09 <input type="checkbox"/> RESETTLEMENT 10 <input type="checkbox"/> RETIRED/DUE TO DISABILITY 11 <input type="checkbox"/> OTHERS 12 <input type="checkbox"/> <div style="text-align: right;">(SPECIFY)</div>

HOUSEHOLD:

L

NAME AND SERIAL NO QUESTION	<input type="text"/> <input type="text"/>	<input type="text"/> <input type="text"/>	<input type="text"/> <input type="text"/>	<input type="text"/> <input type="text"/>
<p>61. In your main job/business, what kind of work did you do before leave the last job?</p> <p>WRITE CLEARLY:</p> <p>- MAIN TASKS AND DUTIES</p> <p>- OCCUPATION TITLE (IF ANY)</p> <p><i>Example:</i></p> <p><i>Cattle farmer: breed, raise and sell cattle.</i></p> <p><i>Policeman: patrol the streets</i></p> <p><i>Cook: plan and prepare meal</i></p> <p><i>Primary school teacher: teach children how to read, writ and calculate</i></p>	<p><input type="text"/></p> <p><input type="text"/></p> <p>OCCUPATION TITLE, IF ANY</p> <p><input type="text"/></p> <p>MAIN TASKS AND DUTIES</p> <p><input type="text"/> <input type="text"/> <input type="text"/> <input type="text"/></p> <p>(ISCO CODE)</p>	<p><input type="text"/></p> <p><input type="text"/></p> <p>OCCUPATION TITLE, IF ANY</p> <p><input type="text"/></p> <p>MAIN TASKS AND DUTIES</p> <p><input type="text"/> <input type="text"/> <input type="text"/> <input type="text"/></p> <p>(ISCO CODE)</p>	<p><input type="text"/></p> <p><input type="text"/></p> <p>OCCUPATION TITLE, IF ANY</p> <p><input type="text"/></p> <p>MAIN TASKS AND DUTIES</p> <p><input type="text"/> <input type="text"/> <input type="text"/> <input type="text"/></p> <p>(ISCO CODE)</p>	<p><input type="text"/></p> <p><input type="text"/></p> <p>OCCUPATION TITLE, IF ANY</p> <p><input type="text"/></p> <p>MAIN TASKS AND DUTIES</p> <p><input type="text"/> <input type="text"/> <input type="text"/> <input type="text"/></p> <p>(ISCO CODE)</p>
<p>62. What is the main activity of the business or establishment where did you work in the last job?</p> <p>WRITE CLEARLY:</p> <p>- NAME (IF ANY)</p> <p>- MAIN ACTIVITY, GOODS OR SERVICES</p> <p><i>Example:</i></p> <p><i>Cong Vi ward police: ensure security and order of the ward.</i></p> <p><i>Hoa Lan Restaurant: food and drink business.</i></p> <p><i>Bien Dong Shipping Company: long-distance transport of goods</i></p>	<p><input type="text"/></p> <p><input type="text"/></p> <p>NAME OF ESTABLISHMENT (IF ANY)</p> <p><input type="text"/></p> <p>MAIN ACTIVITY, GOODS OR SERIVES</p> <p><input type="text"/> <input type="text"/> <input type="text"/> <input type="text"/></p> <p>(ISIC CODE)</p>	<p><input type="text"/></p> <p><input type="text"/></p> <p>NAME OF ESTABLISHMENT (IF ANY)</p> <p><input type="text"/></p> <p>MAIN ACTIVITY, GOODS OR SERIVES</p> <p><input type="text"/> <input type="text"/> <input type="text"/> <input type="text"/></p> <p>(ISIC CODE)</p>	<p><input type="text"/></p> <p><input type="text"/></p> <p>NAME OF ESTABLISHMENT (IF ANY)</p> <p><input type="text"/></p> <p>MAIN ACTIVITY, GOODS OR SERIVES</p> <p><input type="text"/> <input type="text"/> <input type="text"/> <input type="text"/></p> <p>(ISIC CODE)</p>	<p><input type="text"/></p> <p><input type="text"/></p> <p>NAME OF ESTABLISHMENT (IF ANY)</p> <p><input type="text"/></p> <p>MAIN ACTIVITY, GOODS OR SERIVES</p> <p><input type="text"/> <input type="text"/> <input type="text"/> <input type="text"/></p> <p>(ISIC CODE)</p>

NAME AND SERIAL NO QUESTION				
63. With the above-mentioned job, were you? <u>(Read out answer choices)</u> ABBREVIATION: CONTR. – CONTRIBUTING	EMPLOYER.....1 <input type="checkbox"/> OWN ACCOUNT WORKER.....2 <input type="checkbox"/> FAMILY CONTRI. WORKER.....3 <input type="checkbox"/> MEMBER OF COOPERATIVE..4 <input type="checkbox"/> EMPLOYEE5 <input type="checkbox"/>	EMPLOYER.....1 <input type="checkbox"/> OWN ACCOUNT WORKER.....2 <input type="checkbox"/> FAMILY CONTRI. WORKER3 <input type="checkbox"/> MEMBER OF COOPERATIVE..4 <input type="checkbox"/> EMPLOYEE5 <input type="checkbox"/>	EMPLOYER.....1 <input type="checkbox"/> OWN ACCOUNT WORKER.....2 <input type="checkbox"/> FAMILY CONTRI. WORKER3 <input type="checkbox"/> MEMBER OF COOPERATIVE..4 <input type="checkbox"/> EMPLOYEE5 <input type="checkbox"/>	EMPLOYER.....1 <input type="checkbox"/> OWN ACCOUNT WORKER.....2 <input type="checkbox"/> FAMILY CONTRI. WORKER3 <input type="checkbox"/> MEMBER OF COOPERATIVE..4 <input type="checkbox"/> EMPLOYEE5 <input type="checkbox"/>
64. Does the last establishment that you worked belong to one kind of economic unit as follows? <u>(Read out answer choices)</u> ABBREVIATION: BUS. – BUSINESS ORG. – ORGANIZATION ASS. – ASSOCIATION IN. - INDIVIDUAL	FARM HOUSEHOLD01 <input type="checkbox"/> OWN ACCOUNT INDIVIDUAL.02 <input type="checkbox"/> IN. BUS. ESTABLISHMENT03 <input type="checkbox"/> COLLECTIVE.....04 <input type="checkbox"/> NON-STATE ENTERPRISE.....05 <input type="checkbox"/> NON-STATE SERVICE UNIT...06 <input type="checkbox"/> STATE: + LEGISLATIVE, EXECUTIVE, JUDICAL AGENCY07 <input type="checkbox"/> + OGRANIZATION.....08 <input type="checkbox"/> + SERVICE UNIT.....09 <input type="checkbox"/> + ENTERPRISE10 <input type="checkbox"/> FOREIGN INVESTMENT11 <input type="checkbox"/> OTHER ORG./ASS.....12 <input type="checkbox"/>	FARM HOUSEHOLD01 <input type="checkbox"/> OWN ACCOUNT INDIVIDUAL.02 <input type="checkbox"/> IN. BUS. ESTABLISHMENT03 <input type="checkbox"/> COLLECTIVE04 <input type="checkbox"/> NON-STATE ENTERPRISE.....05 <input type="checkbox"/> NON-STATE SERVICE UNIT ..06 <input type="checkbox"/> STATE: + LEGISLATIVE, EXECUTIVE, JUDICAL AGENCY07 <input type="checkbox"/> + OGRANIZATION.....08 <input type="checkbox"/> + SERVICE UNIT.....09 <input type="checkbox"/> + ENTERPRISE10 <input type="checkbox"/> FOREIGN INVESTMENT11 <input type="checkbox"/> OTHER ORG./ASS.....12 <input type="checkbox"/>	FARM HOUSEHOLD01 <input type="checkbox"/> OWN ACCOUNT INDIVIDUAL.02 <input type="checkbox"/> IN. BUS. ESTABLISHMENT03 <input type="checkbox"/> COLLECTIVE04 <input type="checkbox"/> NON-STATE ENTERPRISE.....05 <input type="checkbox"/> NON-STATE SERVICE UNIT ..06 <input type="checkbox"/> STATE: + LEGISLATIVE, EXECUTIVE, JUDICAL AGENCY07 <input type="checkbox"/> + OGRANIZATION.....08 <input type="checkbox"/> + SERVICE UNIT.....09 <input type="checkbox"/> + ENTERPRISE10 <input type="checkbox"/> FOREIGN INVESTMENT11 <input type="checkbox"/> OTHER ORG./ASS.....12 <input type="checkbox"/>	FARM HOUSEHOLD01 <input type="checkbox"/> OWN ACCOUNT INDIVIDUAL.02 <input type="checkbox"/> IN. BUS. ESTABLISHMENT03 <input type="checkbox"/> COLLECTIVE04 <input type="checkbox"/> NON-STATE ENTERPRISE.....05 <input type="checkbox"/> NON-STATE SERVICE UNIT ..06 <input type="checkbox"/> STATE: + LEGISLATIVE, EXECUTIVE, JUDICAL AGENCY07 <input type="checkbox"/> + OGRANIZATION.....08 <input type="checkbox"/> + SERVICE UNIT.....09 <input type="checkbox"/> + ENTERPRISE10 <input type="checkbox"/> FOREIGN INVESTMENT11 <input type="checkbox"/> OTHER ORG./ASS.....12 <input type="checkbox"/>

HOUSEHOLD:

NAME AND SERIAL NO QUESTION	<input type="text"/> <input type="text"/>	<input type="text"/> <input type="text"/>	<input type="text"/> <input type="text"/>	<input type="text"/> <input type="text"/>
<p>65. Even you are not working, which of the following best describes your main activity or situation at present?</p> <p><i>(Read out answer choices)</i></p> <p><i>(MAIN ACTIVITY BY SELF RESPONDENT MAY BE ACTIVITY WHICH IS THE MOST TIME OR IMPORTANT)</i></p>	<p>STUDYING OR TRAINING1 <input type="checkbox"/></p> <p>WORKING FOR PAY OR PROFIT ...2 <input type="checkbox"/></p> <p>FARMING OR FISHING MAINLY FOR FAMILY CÓNUMPTION.....3 <input type="checkbox"/></p> <p>LOOKING FOR A JOB4 <input type="checkbox"/></p> <p>HOUSEHOLD RESPONSIBILITIES5 <input type="checkbox"/></p> <p>DISABILITY, INJURY, LONG-TERM ILLNESS6 <input type="checkbox"/></p> <p>RETIRED OR PENSIONER7 <input type="checkbox"/></p> <p>OTHER8 <input type="checkbox"/></p> <p>(SPECIFY)</p>	<p>ĐI HỌC/ĐÀO TẠO1 <input type="checkbox"/></p> <p>LÀM VIỆC TẠO THU NHẬP2 <input type="checkbox"/></p> <p>LÀM NÔNG NGHIỆP/THỦY SẢN CHO GIA ĐÌNH SỬ DỤNG3 <input type="checkbox"/></p> <p>TÌM VIỆC4 <input type="checkbox"/></p> <p>LÀM VIỆC NHÀ, VIỆC GIA ĐÌNH ...5 <input type="checkbox"/></p> <p>ÓM ĐAU LÂU DÀI/THƯƠNG TẬT TÀN TẬT6 <input type="checkbox"/></p> <p>NGHỈ HƯU/NHẬN TRỢ CẤP7 <input type="checkbox"/></p> <p>KHÁC8 <input type="checkbox"/></p> <p>(GHI CỤ THỂ)</p>	<p>ĐI HỌC/ĐÀO TẠO1 <input type="checkbox"/></p> <p>LÀM VIỆC TẠO THU NHẬP2 <input type="checkbox"/></p> <p>LÀM NÔNG NGHIỆP/THỦY SẢN CHO GIA ĐÌNH SỬ DỤNG3 <input type="checkbox"/></p> <p>TÌM VIỆC4 <input type="checkbox"/></p> <p>LÀM VIỆC NHÀ, VIỆC GIA ĐÌNH ...5 <input type="checkbox"/></p> <p>ÓM ĐAU LÂU DÀI/THƯƠNG TẬT TÀN TẬT6 <input type="checkbox"/></p> <p>NGHỈ HƯU/NHẬN TRỢ CẤP7 <input type="checkbox"/></p> <p>KHÁC8 <input type="checkbox"/></p> <p>(GHI CỤ THỂ)</p>	<p>ĐI HỌC/ĐÀO TẠO1 <input type="checkbox"/></p> <p>LÀM VIỆC TẠO THU NHẬP2 <input type="checkbox"/></p> <p>LÀM NÔNG NGHIỆP/THỦY SẢN CHO GIA ĐÌNH SỬ DỤNG3 <input type="checkbox"/></p> <p>TÌM VIỆC4 <input type="checkbox"/></p> <p>LÀM VIỆC NHÀ, VIỆC GIA ĐÌNH ...5 <input type="checkbox"/></p> <p>ÓM ĐAU LÂU DÀI/THƯƠNG TẬT TÀN TẬT6 <input type="checkbox"/></p> <p>NGHỈ HƯU/NHẬN TRỢ CẤP7 <input type="checkbox"/></p> <p>KHÁC8 <input type="checkbox"/></p> <p>(GHI CỤ THỂ)</p>
<p>66. Even you are not working, which of the following best describes your main activity or situation in the last 12 months?</p> <p><i>(Read out answer choices)</i></p> <p><i>(MAIN ACTIVITY BY SELF RESPONDENT MAY BE ACTIVITY WHICH IS THE MOST TIME OR IMPORTANT)</i></p>	<p>STUDYING OR TRAINING1 <input type="checkbox"/></p> <p>WORKING FOR PAY OR PROFIT ...2 <input type="checkbox"/></p> <p>FARMING OR FISHING MAINLY FOR FAMILY CÓNUMPTION.....3 <input type="checkbox"/></p> <p>LOOKING FOR A JOB4 <input type="checkbox"/></p> <p>HOUSEHOLD RESPONSIBILITIES5 <input type="checkbox"/></p> <p>DISABILITY, INJURY, LONG-TERM ILLNESS6 <input type="checkbox"/></p> <p>RETIRED OR PENSIONER7 <input type="checkbox"/></p> <p>OTHER8 <input type="checkbox"/></p> <p>(SPECIFY)</p>	<p>ĐI HỌC/ĐÀO TẠO1 <input type="checkbox"/></p> <p>LÀM VIỆC TẠO THU NHẬP2 <input type="checkbox"/></p> <p>LÀM NÔNG NGHIỆP/THỦY SẢN CHO GIA ĐÌNH SỬ DỤNG3 <input type="checkbox"/></p> <p>TÌM VIỆC4 <input type="checkbox"/></p> <p>LÀM VIỆC NHÀ, VIỆC GIA ĐÌNH ...5 <input type="checkbox"/></p> <p>ÓM ĐAU LÂU DÀI/THƯƠNG TẬT TÀN TẬT6 <input type="checkbox"/></p> <p>NGHỈ HƯU/NHẬN TRỢ CẤP7 <input type="checkbox"/></p> <p>KHÁC8 <input type="checkbox"/></p> <p>(GHI CỤ THỂ)</p>	<p>ĐI HỌC/ĐÀO TẠO1 <input type="checkbox"/></p> <p>LÀM VIỆC TẠO THU NHẬP2 <input type="checkbox"/></p> <p>LÀM NÔNG NGHIỆP/THỦY SẢN CHO GIA ĐÌNH SỬ DỤNG3 <input type="checkbox"/></p> <p>TÌM VIỆC4 <input type="checkbox"/></p> <p>LÀM VIỆC NHÀ, VIỆC GIA ĐÌNH ...5 <input type="checkbox"/></p> <p>ÓM ĐAU LÂU DÀI/THƯƠNG TẬT TÀN TẬT6 <input type="checkbox"/></p> <p>NGHỈ HƯU/NHẬN TRỢ CẤP7 <input type="checkbox"/></p> <p>KHÁC8 <input type="checkbox"/></p> <p>(GHI CỤ THỂ)</p>	<p>ĐI HỌC/ĐÀO TẠO1 <input type="checkbox"/></p> <p>LÀM VIỆC TẠO THU NHẬP2 <input type="checkbox"/></p> <p>LÀM NÔNG NGHIỆP/THỦY SẢN CHO GIA ĐÌNH SỬ DỤNG3 <input type="checkbox"/></p> <p>TÌM VIỆC4 <input type="checkbox"/></p> <p>LÀM VIỆC NHÀ, VIỆC GIA ĐÌNH ...5 <input type="checkbox"/></p> <p>ÓM ĐAU LÂU DÀI/THƯƠNG TẬT TÀN TẬT6 <input type="checkbox"/></p> <p>NGHỈ HƯU/NHẬN TRỢ CẤP7 <input type="checkbox"/></p> <p>KHÁC8 <input type="checkbox"/></p> <p>(GHI CỤ THỂ)</p>
<p>67. CHECK Q 4 OR Q 5, AGED FROM 15 TO 59 AND Q14=6/7/8/9 OR Q15=5/6/7; ASK ITEM C. OTHERWISE ASK NEXT RESPONDENT.</p>				

ITEM C. SPECIFY INFORMATION ABOUT FIELD OF STUDY/TRAINING
(Ask qualified persons aged 15 to 59 who are currently do not having job or having temporary job)

NAME AND SERIAL NO QUESTION	[] []	[] []	[] []	[] []
The next questions, I would like to ask you some more information about the type of highest degree you have achieved.				
<p>68. What is field of the highest level of training you have been trained, and the year you graduated from that level?</p> <p>SPECIFIED:</p> <ul style="list-style-type: none"> - DEGREE TRAINING - TRAINING FIELDS - GRADUATION YEAR. <p><i>Example:</i></p> <ul style="list-style-type: none"> - Bachelor of Business Administration. - Vocational training: operating excavator. 	<p>_____</p> <p>_____</p> <p>[] [] [] []</p> <p>(EDUCATION AND TRAINING CODE)</p> <p>[] [] [] []</p> <p>(GRADUATION YEAR)</p>	<p>_____</p> <p>_____</p> <p>[] [] [] []</p> <p>(EDUCATION AND TRAINING CODE)</p> <p>[] [] [] []</p> <p>(GRADUATION YEAR)</p>	<p>_____</p> <p>_____</p> <p>[] [] [] []</p> <p>(EDUCATION AND TRAINING CODE)</p> <p>[] [] [] []</p> <p>(GRADUATION YEAR)</p>	<p>_____</p> <p>_____</p> <p>[] [] [] []</p> <p>(EDUCATION AND TRAINING CODE)</p> <p>[] [] [] []</p> <p>(GRADUATION YEAR)</p>
<p>69. In addition to the highest degree you mentioned, do you have any other qualification from vocational training?</p>	<p>YES.....1 <input type="checkbox"/></p> <p>NO.....2 <input type="checkbox"/> → Q72</p>	<p>YES.....1 <input type="checkbox"/></p> <p>NO.....2 <input type="checkbox"/> → Q72</p>	<p>YES.....1 <input type="checkbox"/></p> <p>NO.....2 <input type="checkbox"/> → Q72</p>	<p>YES.....1 <input type="checkbox"/></p> <p>NO.....2 <input type="checkbox"/> → Q72</p>
<p>70. What are the degree?</p> <p>(MARK ALL ANSWER CODES)</p> <p>ABBREVIATION:</p> <p>CERT. - CERTIFICATE</p> <p>PROF. - PROFESSIONAL</p> <p>DIPL. - DIPLOMA</p>	<p>PRIMARY VOCATIONAL CERT..A <input type="checkbox"/></p> <p>MID-TERM VOCATIONAL CER..B <input type="checkbox"/></p> <p>MID-TERM PROF.SCHOOL.....C <input type="checkbox"/></p> <p>VOCATIONAL COLLEGE DIPL...D <input type="checkbox"/></p> <p>PROFESSIONAL COLLEGE.....E <input type="checkbox"/></p> <p>UNIVERSITY.....F <input type="checkbox"/></p> <p>ABOVE UNIVERSITY.....G <input type="checkbox"/></p>	<p>PRIMARY VOCATIONAL CERT. A <input type="checkbox"/></p> <p>MID-TERM VOCATIONAL CER. B <input type="checkbox"/></p> <p>MID-TERM PROF.SCHOOL..... C <input type="checkbox"/></p> <p>VOCATIONAL COLLEGE DIPL.. D <input type="checkbox"/></p> <p>PROFESSIONAL COLLEGE..... E <input type="checkbox"/></p> <p>UNIVERSITY..... F <input type="checkbox"/></p> <p>ABOVE UNIVERSITY..... G <input type="checkbox"/></p>	<p>PRIMARY VOCATIONAL CERT. A <input type="checkbox"/></p> <p>MID-TERM VOCATIONAL CER.. B <input type="checkbox"/></p> <p>MID-TERM PROF.SCHOOL..... C <input type="checkbox"/></p> <p>VOCATIONAL COLLEGE DIPL.. D <input type="checkbox"/></p> <p>PROFESSIONAL COLLEGE..... E <input type="checkbox"/></p> <p>UNIVERSITY..... F <input type="checkbox"/></p> <p>ABOVE UNIVERSITY..... G <input type="checkbox"/></p>	<p>PRIMARY VOCATIONAL CERT..A <input type="checkbox"/></p> <p>MID-TERM VOCATIONAL CER..B <input type="checkbox"/></p> <p>MID-TERM PROF.SCHOOL.....C <input type="checkbox"/></p> <p>VOCATIONAL COLLEGE DIPL...D <input type="checkbox"/></p> <p>PROFESSIONAL COLLEGE.....E <input type="checkbox"/></p> <p>UNIVERSITY.....F <input type="checkbox"/></p> <p>ABOVE UNIVERSITY.....G <input type="checkbox"/></p>

HOUSEHOLD:

NAME AND SERIAL NO QUESTION	<input type="text"/> <input type="text"/>	<input type="text"/> <input type="text"/>	<input type="text"/> <input type="text"/>	<input type="text"/> <input type="text"/>
<p>71. With the second and third degree (if any), what kind of training have you been trained and which graduation year (s) did you graduate from?</p> <p>SPECIFIED:</p> <p>-DEGREE TRAINING</p> <p>- TRAINING FIELDS</p> <p>- GRADUATION YEAR</p> <p><i>Example:</i></p> <p>- <i>Bachelor of economics: finance and banking.</i></p> <p>- <i>Primary vocational training: archives.</i></p>	<p>A. SECOND DEGREE</p> <p>_____</p> <p>_____</p> <p>_____</p> <p><input type="text"/> <input type="text"/> <input type="text"/> <input type="text"/> <input type="text"/></p> <p>(EDUCATION AND TRAINING CODE)</p> <p><input type="text"/> <input type="text"/> <input type="text"/> <input type="text"/> <input type="text"/></p> <p>(GRADUATION YEAR)</p> <p>B. THIRD DEGREE (IF ANY)</p> <p>_____</p> <p>_____</p> <p>_____</p> <p><input type="text"/> <input type="text"/> <input type="text"/> <input type="text"/> <input type="text"/></p> <p>(EDUCATION AND TRAINING CODE)</p> <p><input type="text"/> <input type="text"/> <input type="text"/> <input type="text"/> <input type="text"/></p> <p>(GRADUATION YEAR)</p>	<p>A. SECOND DEGREE</p> <p>_____</p> <p>_____</p> <p>_____</p> <p><input type="text"/> <input type="text"/> <input type="text"/> <input type="text"/> <input type="text"/></p> <p>(EDUCATION AND TRAINING CODE)</p> <p><input type="text"/> <input type="text"/> <input type="text"/> <input type="text"/> <input type="text"/></p> <p>(GRADUATION YEAR)</p> <p>B. THIRD DEGREE (IF ANY)</p> <p>_____</p> <p>_____</p> <p>_____</p> <p><input type="text"/> <input type="text"/> <input type="text"/> <input type="text"/> <input type="text"/></p> <p>(EDUCATION AND TRAINING CODE)</p> <p><input type="text"/> <input type="text"/> <input type="text"/> <input type="text"/> <input type="text"/></p> <p>(GRADUATION YEAR)</p>	<p>A. SECOND DEGREE</p> <p>_____</p> <p>_____</p> <p>_____</p> <p><input type="text"/> <input type="text"/> <input type="text"/> <input type="text"/> <input type="text"/></p> <p>(EDUCATION AND TRAINING CODE)</p> <p><input type="text"/> <input type="text"/> <input type="text"/> <input type="text"/> <input type="text"/></p> <p>(GRADUATION YEAR)</p> <p>B. THIRD DEGREE (IF ANY)</p> <p>_____</p> <p>_____</p> <p>_____</p> <p><input type="text"/> <input type="text"/> <input type="text"/> <input type="text"/> <input type="text"/></p> <p>(EDUCATION AND TRAINING CODE)</p> <p><input type="text"/> <input type="text"/> <input type="text"/> <input type="text"/> <input type="text"/></p> <p>(GRADUATION YEAR)</p>	<p>A. SECOND DEGREE</p> <p>_____</p> <p>_____</p> <p>_____</p> <p><input type="text"/> <input type="text"/> <input type="text"/> <input type="text"/> <input type="text"/></p> <p>(EDUCATION AND TRAINING CODE)</p> <p><input type="text"/> <input type="text"/> <input type="text"/> <input type="text"/> <input type="text"/></p> <p>(GRADUATION YEAR)</p> <p>B. THIRD DEGREE (IF ANY)</p> <p>_____</p> <p>_____</p> <p>_____</p> <p><input type="text"/> <input type="text"/> <input type="text"/> <input type="text"/> <input type="text"/></p> <p>(EDUCATION AND TRAINING CODE)</p> <p><input type="text"/> <input type="text"/> <input type="text"/> <input type="text"/> <input type="text"/></p> <p>(GRADUATION YEAR)</p>

72. CHECK Q6: ASK THE NEXT RESPONDENT IF AVAILABLE; OTHERWISE, END OF THE INTERVIEW.

SOME ISSUES NEED TO BE CONSIDERED

- **Part 1:** Interviewer collects information from all members who are currently usual resident in the household, including those who are studying, working or traveling abroad within the time allowed by the agency authorization.
- **Part 3:** Interviewer collects information to classify the status of economic activity of household members aged 15 and over and current living in Vietnam. This section is designed to be divided into three major categories:
 - Item A: For employed people.
 - Item B: For those who do not have a job.
 - Item C: For those aged 15-59 who are technically professionally qualified, currently not having job or temporarily employed.

Items A and B of Part 3 have additional questions designed to determine what the main activity that the respondent is currently doing / in the last 12 months (questions 50, 51, 65, 66) to support the construction of classify the main activities on the basis of self-awareness / declaration of the respondent. It could be the activity that the respondent spent most of the time

or activity that the respondent felt most important but was generally required to be declared as self-aware by the respondent. The answers in this section may differ from the answers in determining the state of economic activity.

Online Appendix Table 1: Skip error conditions

Variable Name	Condition
skip_q6	if Q04_1 == 98 & Q05 is not missing
skip_q10	if Q10 == 5 & at least one from Q11 to Q13 are not missing
skip_q12_1_a	if Q12_1 == 1 & Q12_2b is missing
skip_q12_1_b	if Q12_1 == 2 & Q12_3b is missing
skip_q16	if Q16 == 1 & at least one from Q17 to 23 are not missing
skip_q17	if Q17 == 1 & at least one from Q18 to Q23 are not missing
skip_q18	if Q18 == 1 & at least one from Q19 to Q23 are not missing
skip_q19	if Q19 != 1 & at least one from Q20 to Q51 are not missing
skip_q21	if Q21 == 1 & at least one from Q22 to Q23 are not missing
skip_q22	if Q22 == 2 & at least one from Q23 to Q51 are not missing
skip_q23	if Q23 != 1 & at least one from Q24_1 to Q51 are not missing
skip_q26	if not inlist(Q26,1,2) & Q27 is not missing
skip_q27	if inlist(Q27,3,4) & at least one from Q28 to Q29 are not missing
skip_q30	if inlist(Q30,1,2,3) & at least one from Q31 to 33 are not missing
skip_q31	if Q31 == 1 & Q32 is not missing
skip_q34	if Q34 == 2 & Q35 is not missing
skip_q36	if inlist(Q36,3,4,5) & at least one from Q37 to Q38 are not missing
skip_q37	if inlist(Q37,2,3,4) & Q38 is not missing
skip_q39_3	if Q39_1 is not missing but Q39_2 or Q39_3 is missing
skip_q40_3	if Q40_1 is not missing but Q40_2 or Q40_3 is missing
skip_q41_1	if Q41_1 is not missing but Q41_2 or Q41_3 is missing
skip_beforeq52	if inrange(Q05,15,59) & inlist(Q14,6,7,8,9) or inlist(Q15,5,6,7) & Q47 == 1 & at least one from Q52 to Q66 are not missing
skip_q52	if Q52 == 2 & at least one from Q53 to Q54 are not missing
skip_q54	if inlist(Q54,1,2,3,4) & Q55 is not missing
skip_q56	if Q56 == 1 & Q57 is not missing
skip_q58	if Q58 == 2 & at least one from Q59 to Q64 are not missing
skip_beforeq67	if inrange(Q05,15,59) & inlist(Q14,6,7,8,9) or inlist(Q15,5,6,7) & at least one from Q68_1 to Q71b_3 are not missing
skip_q69	if Q69 == 2 & at least one from Q70 to Q71b_3

Source : Authors

Online Appendix Table 2: Validation error conditions

Variable Name	Condition
val_female	if total number of member of hh <= 0
val_hh_15above	if total number of female in hh <= 0
val_15abovefemale	if total number of female above 15 in hh <= 0
val_q02	if Q02 is not 1,2,3,4,5 or 6
val_q03	if Q03 is not 1 or 2
val_q04_1	if Q04_1 < 1 or Q04_1 > 12 & Q04_1 == 98
val_q04_2	if Q04_2 < 1900 or Q04_2 > 2018 & Q04_2 != 9998
val_q05	if Q05 < 0 & Q05 > 95
val_q06_1	if Q06_1 is not 1 or 2
val_q07	if Q07 is not 1,2,3,4,5,6 or 9
val_q08_1	if Q08_1 < 0 & Q08_1 > 12 & Q08_1 != 98
val_q08_2	if Q08_2 < 0 & Q08_2 > 12 & Q08_2 != 98
val_q09	if Q09 is not 1,2,3,4,5 or 9
val_q10	if Q10 is not 1,2,3,4,5 or 9
val_q11	if Q11 is not 1,2 or 9
val_q12_1	if Q12 is not 1 or 2
val_q13	if Q13 is not 1,2,3,4,5,6,7,8,9,10 or 98
val_q14	if Q14 is not 1,2,3,4,5,6,7,8,9 or 98
val_q15	if Q15 is not 1,2,3,4,5,6,7 or 98
val_q16	if Q16 is not 1,2 or 9
val_q17	if Q17 is not 1,2 or 9
val_q18	if Q18 is not 1,2 or 9
val_q19	if Q19 is not 1,2,3,4,5,6,7,8,9 or 98
val_q20	if Q20 is not 1,2,3,4,5,6,7,8,9,10,11,12 or 98
val_q21	if Q21 is not 1,2 or 9
val_q22	if Q22 is not 1,2 or 9
val_q23	if Q23 is not 1,2,3,4 or 9
val_q26	if Q26 is not 1,2,3,4,5,6,7,8,9,10,11,12 or 98
val_q27	if Q27 is not 1,2,3,4 or 9
val_q28	if Q28 is not 1,2 or 9
val_q29	if Q29 is not 1,2 or 9
val_q30	if Q30 is not 1,2,3,4,5 or 9
val_q31	if Q31 is not 1,2,3,4,5,6,7 or 9
val_q32	if Q32 is not 1,2,3,4,5,6,7 or 9
val_q33	if Q33 is not 1,2,3,4,5,6,7 or 9
val_q34	if Q34 is not 1,2 or 9
val_q35	if Q35 is not 1,2 or 9
val_q36	if Q36 is not 1,2,3,4,5 or 9
val_q37	if Q37 is not 1,2,3,4 or 9
val_q38	if Q38 is not 1,2,3,4,5,6,7,8,9,10,11 or 98
val_39_1	if Q39_1 < 0 or Q39_1 > 900,000
val_39_3	if Q39_3 < 0 or Q39_3 > 900,000
val_q40_1	if Q40_1 < 0 or Q40_1 > 99 & Q40_1 != -1
val_q40_2	if Q40_2 < 0 or Q40_2 > 99 & Q40_2 != -1
val_q40_3	if Q40_3 < 0 or Q40_3 > 99 & Q40_3 != -1
val_q41_1	if Q41_1 < 0 or Q40_1 > 99 & Q40_1 != -1

Online Appendix Table 2: Validation error conditions

Variable Name	Condition
val_q41_2	if Q41_2 < 0 or Q40_2 > 99 & Q40_2 != -1
val_q41_3	if Q41_3 < 0 or Q40_3 > 99 & Q40_3 != -1
val_q42	if Q42 is not 1,2,3,4,5,6,7,8,9,10,11,12 or 98
val_q43	if Q43 is not 1 or 2
val_q44	if Q44 is not 1 or 2
val_q45	if Q45 < 0 & Q45 > 99
val_q46	if Q46 is not 1,2,3 or 4
val_q47	if Q47 is not 1,2 or 9
val_q48	if Q48 is not 1,2 or 9
val_q49	if Q49 is not 1 or 2
val_q50	if Q50 is not 1,2,3,4,5,6,7,8 or 9
val_q51	if Q51 is not 1,2,3,4,5,6,7,8 or 9
val_q52	if Q52 is not 1,2 or 9
val_q53	if Q53 is not 1,2,3,4,5,6,7,8,9 or 98
val_q54	if Q54 is not 1,2,3,4,5,6,7,8,9 or 98
val_q55	if Q55 is not 1,2,3,4,5,6,7,8,9,11,12,13,14 or 98
val_q56	if Q56 is not 1 or 2
val_q57	if Q57 is not 1,2,3,4,5,6,7,8 or 9
val_q58	if Q58 is not 1 or 2
val_q59	if Q59 is not 1,2,3,4,5 or 9
val_q60	if Q60 is not 1,2,3,4,5,6,7,8,9,10,11,12 or 98
val_q63	if Q63 is not 1,2,3,4,5 or 9
val_q64	if Q64 is not 1,2,3,4,5,6,7,8,9,10,11,12 or 98
val_q65	if Q65 is not 1,2,3,4,5,6,7,8 or 9
val_q66	if Q66 is not 1,2,3,4,5,6,7,8 or 9
val_q68_3	if Q68_3 <= 1973 or Q68_3 >= 2018
val_q69	if Q69 is not 1,2 or 9
val_q70	if Q70 is not A,B,C,D,E,F,G or -1
val_q71a_3	if Q71a_3 < 1973 or Q71a_3 > 2017
val_q71b_3	if Q71b_3 < 1973 or Q71b_3 > 2017

Source : Authors

Online Appendix Table 3: Logic error conditions

Variable Name	Condition
logic_q02	if head of hh is more than 2
logic_q05_a	if hh head and spouse age difference is greater than 30
logic_q05_b	if hh head and childrens age difference is greater than 60
logic_q05_c	if spouse and childrens age difference is greater than 50
logic_q09_a	if Q02 == 2 & Q04 is 1,2,3,4 or 5
logic_q09_b	if Q05 <= 18 & Q09 is 2,3,4 or 5
logic_q13	if Q05 <= 18 & Q13 == 5
logic_q14	if Q05 <= 18 & Q14 >=6
logic_q15	if Q05 <= 18 & Q15 is 6 or 7
logic_q26	if Q25_3 > 325 & Q26 == 1
logic_q28	if Q26 is 5,6,7,8,9,10 & 11 & Q28 == 2 or Q26 is 1 or 2 & Q28 == 1
logic_q29	if Q27 is 3 or 4 & Q29 is 1 or 2
logic_q30	if (Q26 is 1 or 2 & Q30 is 1,4, or 5) or (Q26 is 7,8,9 or 10 & Q30 is 2 or 3) or (Q26 == 4 & Q30 != 4) or (Q30 == 4 & Q26 != 4) or (Q26 is 11 or 12 & Q30 == 4) or (Q30 == 3 & Q25_3 <= 325 & Q26 != 1)
logic_q39	if (Q30 == 3 & Q39_1 != 0) or (!inrange(Q39_1,0,100000) or !inrange(Q39_2,0,100000) or !inrange(Q39_3,0,100000)) or (Q39_2 < Q39_1 & Q39_3 < Q39_1) or (the sum of Q39_2 and Q39_3 != Q39_1)
logic_q40	if (Q40_1 >= 84 or Q40_2 >= 84 or Q40_3 >= 84) or (Q40_2 > Q41_1 or Q40_3 > Q40_1) or (the sum of Q40_2 and Q40_3 != Q40_1) or (Q19 == 1 & Q40_2 > 0)
logic_q41	if (Q41_1 >= 84 or Q41_2 >= 84 or Q41_3 >= 84) or (Q41_2 > Q41_1 or Q41_3 > Q41_1) or (the sum of Q41_2 and Q41_3 != Q41_1)
logic_q45	if Q45 >= 84
logic_q46	if (Q14 >= 6 & Q45 == 3) or (Q15 >= 4 & Q46 == 3)
logic_q48	if Q47 == 9 & (Q48 == 1 or Q48 == 2)
logic_q49	if Q47 == 9 & (Q49 == 1 or Q49 == 2)
logic_q53	if Q52 == 9 & Q54 is 1,2,3,4,5,6,7,8 or 9
logic_q54	if Q52 == 9 & Q54 is 1,2,3 or 4
logic_q55	if Q52 == 9 & Q55 is 1,2,3,4,5,6,7,8,9,10,11,12,13 or 14
logic_q64	if (Q64 is 1 or 2 & Q63 is 1,4 or 5) or (Q64 is 7,8,9 or 10 & Q63 is 2 or 3) or (Q64 == 4 & Q63 != 4) or (Q63 == 4 & Q64 != 4) or (Q64 is 11 or 12 & Q63 == 4) or (Q63 == 3 & Q62 <= 325 & Q64 != 1)
logic_q68	if Q68_3 is not missing & Q14 is 7,8 or 9 & Q05 <= 18
logic_q70	if (Q70 == G & Q14 <= 8) or (Q70 == F & Q14 <= 7) or (Q70 == E & Q14 <= 6) or (Q70 == D & Q15 <= 5) or (Q70 == C & Q15 <= 5) or (Q70 == B & Q15 <= 4) or (Q70 == A & Q15 <= 3)

Source : Authors

Online Appendix Table 4: Missing Error Conditions

Variable Name	Condition
miss_q02	if Q02 is missing & Q03 is not missing
miss_q03	if Q03 is missing & Q02 or Q04 is not missing
miss_q04_1	if Q04 is missing & Q03 or Q06 is not missing
miss_q05	if Q05 is missing & Q04_1 != 98 & Q04_2 != 9998 & Q04 is not missing
miss_q06_1	if Q06 is missing & Q05 >= 15 & Q07 or Q04 is not missing
miss_q07	if Q07 is missing & Q06_1 == 2 & Q08 is not missing
miss_q08	if Q08 is missing & Q07 is not missing
miss_q09	if Q09 is missing & Q05 < 15 & Q06_1 != 1 & Q10 is not missing
miss_q10	if Q10 is missing & Q05 < 15 & Q06_1 != 1 & Q11 or Q09 is not missing
miss_q11	if Q11 is missing & Q10 != 5 & Q05 < 15 & Q06_1 != 1 & Q10 or Q12 is not missing
miss_q12_1	if Q12 is missing & Q10 != 5 & Q05 < 15 & Q06_1 != 1 & Q13 or Q11 is not missing
miss_q13	if Q13 is missing & Q10 != 5 & Q05 < 15 & Q06_1 != 1 & Q12 or Q14 is not missing
miss_q14	if Q14 is missing & Q13 or Q15 is not missing
miss_q15	if Q15 is missing & Q14 or Q16 is not missing
miss_q16	if Q16 is missing & Q15 is not missing
miss_q17	if Q17 is missing & Q16 != 1 & Q05 < 15 & Q06_1 != 1 & Q16 or Q18 is not missing
miss_q18	if Q18 is missing & Q16 != 1 & Q05 < 15 & Q06_1 != 1 & Q17 or Q19 is not missing
miss_q19	if Q19 is not missing & Q05 < 15 & Q06_1 != 1 & Q18 or Q20 is not missing
miss_q20	if Q20 is missing & Q19 == 1 & Q05 < 15 & Q06_1 != 1 & Q19 or Q21 is not missing
miss_q21	if Q21 is missing & Q19 == 1 & Q05 < 15 & Q06_1 != 1 & Q20 or Q22 is not missing
miss_q22	if Q22 is missing & Q21 != 1 & Q19 == 1 & Q05 < 15 & Q06_1 != 1 & Q21 or Q23 is not missing
miss_q23	if Q23 is missing & Q22 == 1
miss_q24	if Q24 is missing & Q25 is not missing
miss_q25	if Q25 is missing & Q24 or Q26 is not missing
miss_q26	if Q26 is missing & Q25 or Q27 is not missing
miss_q27	if Q27 is missing & inlist(Q26,1,2)
miss_q28	if Q28 is missing & inlist(Q27,1,2) & Q29 is not missing
miss_q29	if Q29 is missing & inlist(Q27,1,2) & Q30 is not missing
miss_q30	if Q30 is missing & inlist(Q27,3,4) & Q31 is not missing
miss_q31	if Q31 is missing & inlist(Q30,4,5)

Online Appendix Table 4: Missing Error Conditions

Variable Name	Condition
miss_q32	if Q32 is missing & inlist(Q31,2,3,4,5,6,7)
miss_q33	if Q33 is missing & (Q32 is not missing or Q31 == 1)
miss_q34	if Q34 is missing & (inlist(Q30,1,2,3) or Q33 or Q35 is not missing)
miss_q35	if Q35 is missing & Q34 == 1 & Q36 is not missing
miss_q36	if Q36 is missing & Q35 or Q37 is not missing
miss_q37	if Q37 is missing & inlist(Q36,1,2) & Q38 is not missing
miss_q38	if Q38 is missing & inlist(Q36,1,2) & Q37 == 1 & Q39 is not missing
miss_q39	if Q39 is missing & Q40 is missing
miss_q40	if Q40 is missing & Q41 is not missing
miss_q41	if Q41 is missing & Q40 or Q42 is not missing
miss_q42	if Q42 is missing & Q40_1 != Q41_1 & Q42 is not missing
miss_q43	if Q43 is missing & (Q41_1 > 0 & Q41 is not missing) or Q44 is not missing))
miss_q44	if Q44 is missing & Q43 == 1 & Q45 is not missing
miss_q45	if Q45 is missing & Q43 == 1 & Q44 == 1 & Q46 is not missing
miss_q46	if Q46 is missing & Q43, Q44 or Q47 is not missing
miss_q47	if Q47 is missing & Q46 or Q48 is not missing
miss_q48	if Q48 is missing & Q47 == 1 & Q49 is not missing
miss_q49	if Q49 is missing & Q47 == 1 & Q48 or Q50 is missing
miss_q50	if Q50 is missing & Q49 or Q51 is not missing
miss_q51	if Q51 is missing & Q50 is not missing
miss_q52	if Q52 is missing & (inlist(Q19,2,3,4,5,6,7) or Q22 == 2 or inlist(Q23,2,3,4))
miss_q53	if Q53 is missing & Q52 == 1 & Q54 is not missing
miss_q54	if Q54 is missing & Q52 == 1 & Q53 or Q56 is not missing
miss_q55	if Q55 is missing & Q52 == 2 & Q56 is not missing or Q52 == 2
miss_q56	if Q56 is missing & Q55, Q54 or 57 is not missing
miss_q57	if Q57 is missing & Q56 == 2 & Q58 is not missing
miss_q58	if Q58 is missing & Q57 or Q59 is not missing
miss_q59	if Q59 is missing & Q58 == 1 or Q60 not missing
miss_q60	if Q60 is missing & (inlist(q59,1,2,3,4) or Q61 is not missing)
miss_q61	if Q61 is missing & Q60, Q62 is not missing

Online Appendix Table 4: Missing Error Conditions

Variable Name	Condition
miss_q62	if Q62 is missing & Q61 or Q63 is not missing
miss_q63	if Q63 is missing & Q62 or Q64 is not missing
miss_q64	if Q64 is missing & Q63 is not missing
miss_q65	if Q65 is missing & Q59 == 5 or Q66 is not missing
miss_q66	if Q66 is missing & Q65 is not missing
miss_q68	if Q68 is missing & inrange(Q05,15,59) & (inlist(Q14,6,7,8,9) inlist(Q15,5,6,7)) & Q66 is not missing
miss_q69	if Q69 is missing & Q68 or Q70 is not missing
miss_q70	if Q70 is missing & Q69 == 1 & inrange(Q05,15,59) & (inlist(Q14,6,7,8,9) inlist(Q15,5,6,7)) & Q71 is not missing
miss_q71	if Q71 is missing & Q70 is not missing

Source : Authors