

Crețu, Diana

**Conference Paper**

## Dimensional structure of dairy farms in 2018

**Provided in Cooperation with:**

The Research Institute for Agriculture Economy and Rural Development (ICEADR), Bucharest

*Suggested Citation:* Crețu, Diana (2019) : Dimensional structure of dairy farms in 2018, In: Agrarian Economy and Rural Development - Realities and Perspectives for Romania. International Symposium. 10th Edition, The Research Institute for Agricultural Economy and Rural Development (ICEADR), Bucharest, pp. 216-219

This Version is available at:

<https://hdl.handle.net/10419/221863>

**Standard-Nutzungsbedingungen:**

Die Dokumente auf EconStor dürfen zu eigenen wissenschaftlichen Zwecken und zum Privatgebrauch gespeichert und kopiert werden.

Sie dürfen die Dokumente nicht für öffentliche oder kommerzielle Zwecke vervielfältigen, öffentlich ausstellen, öffentlich zugänglich machen, vertreiben oder anderweitig nutzen.

Sofern die Verfasser die Dokumente unter Open-Content-Lizenzen (insbesondere CC-Lizenzen) zur Verfügung gestellt haben sollten, gelten abweichend von diesen Nutzungsbedingungen die in der dort genannten Lizenz gewährten Nutzungsrechte.

**Terms of use:**

*Documents in EconStor may be saved and copied for your personal and scholarly purposes.*

*You are not to copy documents for public or commercial purposes, to exhibit the documents publicly, to make them publicly available on the internet, or to distribute or otherwise use the documents in public.*

*If the documents have been made available under an Open Content Licence (especially Creative Commons Licences), you may exercise further usage rights as specified in the indicated licence.*

# DIMENSIONAL STRUCTURE OF DAIRY FARMS IN 2018

DIANA CREȚU<sup>1</sup>

**Abstract:** *Romania's agriculture is of great diversity in terms of farm structure of production methods and technologies used. In this article, will be presented the dimensional structure of dairy farms in 2018, highlighting issues such as the number of farms, the number of cattle, the number of farms and the number of cows depending on the type of farm, and the average size of cows' farms.*

**Keywords:** *dimensional structure, milking cows, weight.*

**JEL Classification:** *Q11;Q13;L11*

## INTRODUCTION

The breeding of animals as a science was born in 1946, with the establishment of the first specialized department within the National Agricultural Institute of Versailles. In 1884 the term zootechnics was introduced by GASPRN, which comes from the Greek language from the combination of the words: zoon = animal and technos = technique.

In the current acceptance, zootechnics is the science that deals with studying and establishing the principles and methods underlying the technologies of production, breeding of domestic animals, in order to obtain high quality, high quality products at the lowest prices.

The main purpose of animal husbandry is to obtain food products of high biological and nutritional value, such as: milk, meat, eggs, honey, bees, products consumed as such or are raw materials for the food industry.

Cattle farming is a traditional activity of the population in the rural area and especially in the mountain area. The dimensional structure of dairy farms is of major importance for Romania's agriculture.

Due to the diversity and value of the producers and the products that result from this activity, namely the breeding of cattle, it is a branch of primary importance. The diversity of the productions they make, the low energy consumption and the nature of the feeds they use, give the cattle breeding and exploitation the character of a sustainable and prospective activity. In 2018, in Romania there were 531.851 farms, with a total of 1,46 million cows. Most farms and the largest number of cows are in small farms, 1-2 heads.

The average size of the cattle farm in the whole country is 2,74 cows. The highest share of the number of cows is found in the category 3-5 heads (81,58%), followed by the category 3-5 heads, (12,97 %), and the smallest share belongs to the category "over 100 heads" with a percentage of only 0,09 % of the total number.

## MATERIAL AND METHODS

The research method used in the study is the statistical processing and the economic analysis of the data. In this paper, the dimensional structure of the dairy farms from April 30, 2018 was analyzed, namely the number of dairy farms and the number of cows depending on the type of farm but also average size of cattle farms using data provided by MADR (Ministry of Agriculture and Rural Development).

---

<sup>1</sup> ASC CRETU DIANA ICEADR Bucharest, e-mail:cretu.diana@iceadr.ro

## RESULTS AND DISCUSSIONS

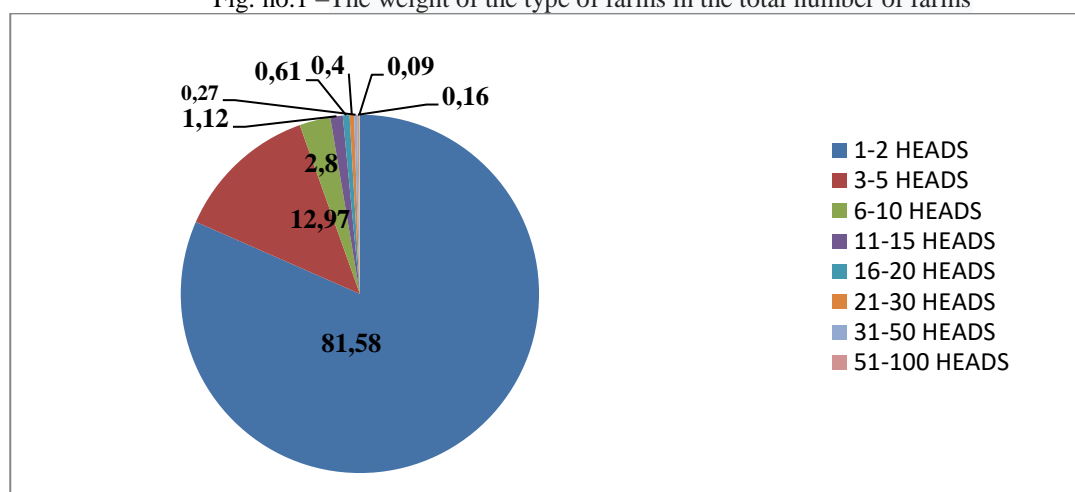
In Romania, according to the data provided by MADR (table 1), we observe the size classes, the number of farms, the number of cows, their weight, but also the average number of cows per farm. As of April 30, 2018, in Romania there were **531,851** farms, with a total of approximately **1.46** million cows. Most farms and the largest number of cows are in small farms of **1-2** heads. The average size of the cows farm in the country is **2.74** cows.

Table no.1 Dimensional structure of dairy farms

Size class	TOTAL SECTORS				
	Number of holdings	% of total	Heads	% of total	Average size (heads)
<b>TOTAL</b>	<b>531851</b>	<b>100.00</b>	<b>1459540</b>	<b>100.00</b>	<b>2.74</b>
1-2 heads	433893	81.58	661852	45.35	1.53
3-5 heads	68994	12.97	269906	18.49	3.91
6-10 heads	14868	2.80	114427	7.84	7.70
11-15 heads	5973	1.12	76965	5.27	12.89
16-20 heads	3245	0.61	56861	3.90	17.52
21-30 heads	2121	0.40	52848	3.62	24.92
31-50 heads	1438	0.27	544902	3.73	37.89
51-100 heads	860	0.16	58123	3.98	67.58
over 100 heads	459	0.09	114068	7.82	248.51

Source:MADR

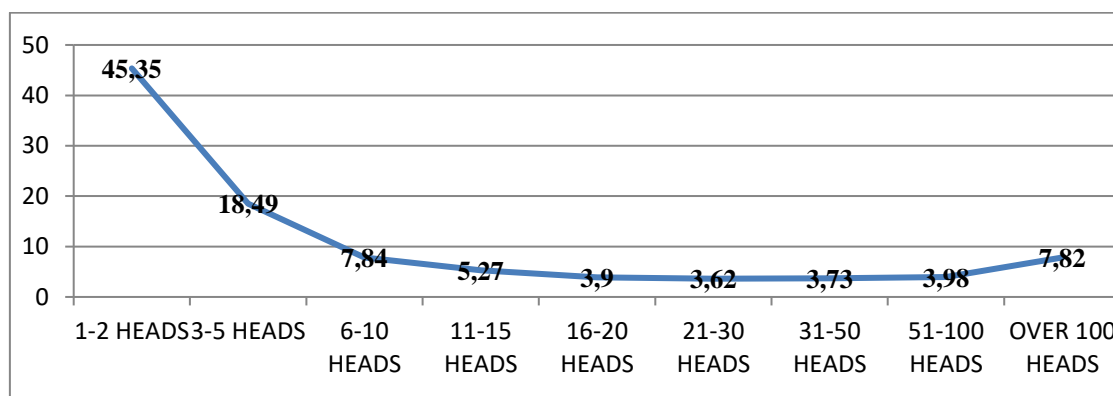
Fig. no.1 –The weight of the type of farms in the total number of farms



Source:MADR

In Fig. no. 1 it is observed that the highest weight is found in holdings in the category 1-2 heads (81.58%), followed by the category 3-5 heads, (12.97%), and the smallest weight belongs to the category " over 100 heads "with only 0.09% of the total number.

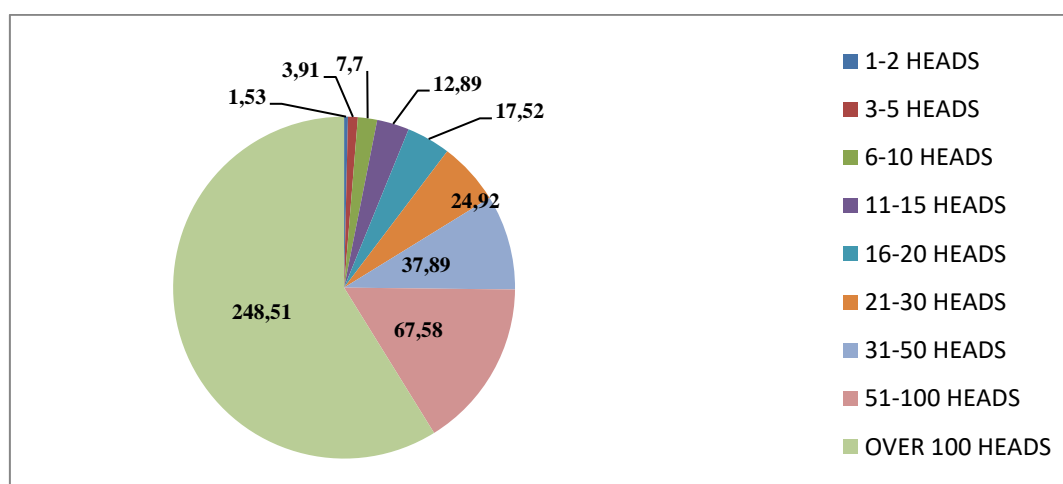
Fig. no. 2 – Share of cows according to the type of farm



In chart no.2 the highest weight in terms of number of cows is found in the category 1-2 heads (45.35%), followed by the category 3-5 heads (18.49%) and the lowest weight is found in the category 31-50 heads.

In large farms, with over 100 heads, it is 7.82% of the total cows in Romania.

Fig. no. 3 – Distribution of the number of cows by farm type



In the chart no.3 the smallest cattle farms in Romania have an average size of 1.53 heads, and at the opposite pole are the large farms (category over 100 heads), which have an average size of 248.51 heads.

## CONCLUSIONS

The agriculture of Romania is of great diversity in terms of the structure of the farms, the production methods and the technologies used. This diversity reflects the climatic conditions, the topography and the evolution of the socio-economic environment.

On April 30, 2018, in Romania there were 531,851 farms, with a total of 1.46 million cows. Most farms and the largest number of cows are located in small holding, with 1-2 heads.

The average size of the cattle farm in the country is 2,74 cows.

The highest weight of the number of cows is found in the category 1-2 heads (81.58%), followed by the category 3-5 heads, (12.97%), and the smallest share belongs to the category " over 100 heads "with only 0.09% of the total number.

The highest weight in terms of the number of cows is found in the category 1-2 heads (45.35%), followed by the category 3-5 heads (18.49%) and the lowest weight is found in category 31 -50 heads.

In large farms with over 100 heads, are found 7,82% from the total number of cows from Romania.

The smallest cattle farms in Romania have an average size of 1.53 heads, and at the opposite pole are the large farms (over 100 heads category), which have an average size of 248.51 heads.

### **BIBLIOGRAPHY**

1. [www.madr.ro](http://www.madr.ro)
2. [www.insse.ro](http://www.insse.ro)
3. [www.eurostat.ro](http://www.eurostat.ro)
4. [www.euromonitor.com](http://www.euromonitor.com)