

Reis, Eustáquio José

**Working Paper**

## Challenges and opportunities for the sustainable development of cattle raising in Brazil

Discussion Paper, No. 221

**Provided in Cooperation with:**

Institute of Applied Economic Research (ipea), Brasília

*Suggested Citation:* Reis, Eustáquio José (2016) : Challenges and opportunities for the sustainable development of cattle raising in Brazil, Discussion Paper, No. 221, Institute for Applied Economic Research (ipea), Brasília

This Version is available at:

<https://hdl.handle.net/10419/220309>

**Standard-Nutzungsbedingungen:**

Die Dokumente auf EconStor dürfen zu eigenen wissenschaftlichen Zwecken und zum Privatgebrauch gespeichert und kopiert werden.

Sie dürfen die Dokumente nicht für öffentliche oder kommerzielle Zwecke vervielfältigen, öffentlich ausstellen, öffentlich zugänglich machen, vertreiben oder anderweitig nutzen.

Sofern die Verfasser die Dokumente unter Open-Content-Lizenzen (insbesondere CC-Lizenzen) zur Verfügung gestellt haben sollten, gelten abweichend von diesen Nutzungsbedingungen die in der dort genannten Lizenz gewährten Nutzungsrechte.

**Terms of use:**

*Documents in EconStor may be saved and copied for your personal and scholarly purposes.*

*You are not to copy documents for public or commercial purposes, to exhibit the documents publicly, to make them publicly available on the internet, or to distribute or otherwise use the documents in public.*

*If the documents have been made available under an Open Content Licence (especially Creative Commons Licences), you may exercise further usage rights as specified in the indicated licence.*

## CHALLENGES AND OPPORTUNITIES FOR THE SUSTAINABLE DEVELOPMENT OF CATTLE RAISING IN BRAZIL

Eustaquio Reis



## CHALLENGES AND OPPORTUNITIES FOR THE SUSTAINABLE DEVELOPMENT OF CATTLE RAISING IN BRAZIL

Eustaquio Reis<sup>1</sup>

---

1. Economist. At Ipea, Rio de Janeiro.

## Federal Government of Brazil

**Ministry of Planning, Development and Management**  
**Minister, Interim** Dyogo Henrique de Oliveira

**ipea** **Institute for Applied  
Economic Research**

A public foundation affiliated to the Ministry of Planning, Development and Management, Ipea provides technical and institutional support to government actions – enabling the formulation of numerous public policies and programs for Brazilian development – and makes research and studies conducted by its staff available to society.

**President**

Ernesto Lozardo

**Director of Institutional Development, Deputy**

Carlos Roberto Paiva da Silva

**Director of Studies and Policies of the State,  
Institutions and Democracy**

João Alberto De Negri

**Director of Macroeconomic Studies  
and Policies**

Claudio Hamilton Matos dos Santos

**Director of Regional, Urban and Environmental  
Studies and Policies**

Alexandre Xavier Ywata de Carvalho

**Director of Sectoral Studies and Policies,  
Innovation, Regulation and Infrastructure**

Fernanda De Negri

**Director of Social Studies and Policies**

Lenita Maria Turchi

**Director of International Studies, Political  
and Economic Relations**

Sérgio Augusto de Abreu e Lima Florêncio Sobrinho

**Chief of Staff**

Márcio Simão

**Chief Press and Communications Officer**

Regina Alvarez

URL: <http://www.ipea.gov.br>

Ombudsman: <http://www.ipea.gov.br/ouvidoria>

## DISCUSSION PAPER

A publication to disseminate the findings of research directly or indirectly conducted by the Institute for Applied Economic Research (Ipea). Due to their relevance, they provide information to specialists and encourage contributions.

© Institute for Applied Economic Research – **ipea** 2016

Discussion paper / Institute for Applied Economic  
Research.- Brasília : Rio de Janeiro : Ipea, 1990-

ISSN 1415-4765

1. Brazil. 2. Economic Aspects. 3. Social Aspects.  
I. Institute for Applied Economic Research.

CDD 330.908

The opinions expressed in this publication are of exclusive responsibility of the authors, not necessarily expressing the official views of the Institute for Applied Economic Research and the Ministry of Planning, Development and Management.

Reproduction of this text and the data contained within is allowed as long as the source is cited. Reproduction for commercial purposes is prohibited.

JEL: Q150; Q23; C330.

# CONTENTS

---

ABSTRACT

1 INTRODUCTION .....7

2 POSING THE PROBLEM.....7

3 HISTORICAL PERSPECTIVES .....9

4 PATTERNS OF CATTLE RAISING GROWTH, 1975-2005.....13

5 SIMPLE GROWTH CONVERGENCE, 1975-2005.....16

6 CONDITIONAL SPATIAL CONVERGENCE, 1970-2005.....20

7 POLICY OPTIONS FOR SUSTAINABLE DEVELOPMENT.....31

REFERENCES.....35

APPENDIX .....38



## SINOPSE

O trabalho propõe perspectivas histórica e analítica para uma avaliação de desafios e oportunidades da pecuária no processo de transição para uma agricultura de baixo carbono no Brasil. Após a introdução, a segunda seção apresenta perspectivas históricas sobre o desenvolvimento secular da pecuária brasileira. A terceira seção analisa os padrões de crescimento da pecuária no Brasil, com base em dados municipais dos censos agropecuários de 1975 a 1996. A quarta seção utiliza um esquema analítico análogo ao modelo de Hayami e Ruttan (1985), para estimar equações de convergência de crescimento das principais dimensões das atividades pecuárias; quais sejam, a intensificação das pastagens, o grau de especialização na pecuária e a expansão da atividade agrícola. O trabalho conclui com uma discussão das opções políticas na transição para pecuária sustentável no Brasil.

**Palavras-chave:** análise de dados de painel; Arellano-Bond; economia agrícola; uso da terra; pecuária; desflorestamento.

## ABSTRACT

The paper provides historical and analytical perspectives for the assessment of the challenges and opportunities of cattle raising activities in the transition towards a low-carbon agriculture in Brazil. It is organized as follows. The next section presents long run historical perspectives on the development of cattle raising in Brazil. The third section analyzes the patterns of growth of cattle raising in Brazil based upon municipal panel data of Agricultural Census from 1975 to 2006. The fourth section uses a framework analogous to Hayami and Ruttan (1985) to estimate growth convergence equations for major aspects of cattle raising activities, namely the stocking ratio, the specialization in cattle and farm expansion. The report concludes with a discussion of policy options for a transition towards sustainable cattle raising in Brazil.

**Keywords:** panel data; Arellano-Bond; agricultural economics; land use; cattle ranching; deforestation.





## **1 INTRODUCTION**

This paper presents historical and analytical perspectives on the challenges and opportunities of cattle raising activities in the transition towards a low-carbon agriculture in Brazil. It is organized as follows. The first section poses the problem. The second presents historical perspectives on the development of cattle raising in Brazil. The third section uses an analytical framework analogous to Hayami and Ruttan (1985) to decompose cattle herd in three multiplicative components: the stocking ratio, the cattle specialization ratio, and the farm area. This decomposition is then used to describe the municipal patterns of growth of cattle raising activities in Brazil from 1975 to 2005. The fourth section estimates simple equations of municipal growth convergence for each of the components of the identity. Finally, to identify the main factors behind the patterns of municipal growth convergence, the fifth section specifies and estimates conditional convergence models for each of the identity components. The paper concludes with a discussion of policy options for a transition towards sustainable cattle raising in Brazil.

## **2 POSING THE PROBLEM**

Historically, cattle raising in Brazil has been extremely land intensive when compared both to other agricultural activities and to other countries. As late as 2006 – last Agro Census available – average stocking ratio in Brazil was less than one head per hectare. Therefore, cattle ranching is, by far, the most extensive use of land in Brazilian agriculture. In 2006, it responded for 48% of the farm area in Brazil and 19% of the value of agricultural output. In that same year, agricultural crops represented 10.6% of farm area and 66% of the value of output (IBGE, 2013).

Land abundance – defined both in terms of relative factor availability and open access to land property – and high transport costs were major historical drivers of the extensive land use patterns of cattle raising. This is currently true in the Brazilian Amazon where land is still abundant and property rights remains largely undefined. As consequence, cattle raising in Brazilian Amazon became the main source of deforestation and carbon emission (Reis and Margullis, 1990; Chomitz and Thomas, 2000; Andersen et al., 2002; Chomitz and Thomas, 2003; Moreira and Reis, 2003).

According to Census figures, from 1970 to 2006, agro-pastoral uses of land in Brazilian Amazon – where it can be roughly equated to deforestation – increased

42 million ha or 8.4% of the geographic area of the region.<sup>1</sup> Pasture areas contributed with approximately 70% of the deforested area in the period, crop areas with 24% and fallow areas with the remaining 6%. The significance of cattle raising as a source of carbon emission can be assessed taking account that carbon per hectare in pasture areas is, approximately, 5 ton/ha compared to 150 ton/hectare in pristine forest areas (Fearnside and Guimaraes, 1996; Reis, 1996; Funcate, 2010; Houghton, 2012).

Other environmental damages caused by cattle raising in the Brazilian Amazon include soil compacting which makes the recovery of secondary vegetation much slower in former pasture areas than in the other traditional agricultural uses of land (Uhl, Buschbacher e Serrao, 1988; Weinhold, 1996; Andersen et al., 2002). The consequences are increased water run off and soil degradation, reduced agricultural productivity and thus further stimulus to shifts in the agricultural frontier and to deforestation.

The arguments above clearly suggest a win-win situation where there is ample scope of increased efficiency in Brazilian cattle raising activities with substantial environmental benefits from reduced clearing of native vegetation. The policy solution is just to bring inefficient cattle raisers to the technological frontier (Schneider et al., 2000; Cohn et al., 2011; Assunção et al., 2013; Strassbourg, [s.d.]a; [s.d.]b).

The problem, however, is made more complex given the equity and incentive issues involved.

Since primeval times, cattle raising has been one of the most traditional channels of economic and social mobility in agrarian economies. This is particular true for poor and small farmers to whom wealth or capital accumulation is practically synonym to increase in cattle herd. No wonder cattle and capital have the same semantic root (Rebello, 2004; Pacheco, 2009; Pacheco and Pocard-Chapuis, 2012).

More important, small farmers usually tend to adopt technologies of cattle raising which are land intensive and inefficient. The main reasons behind are restricted access to finance education, technology and the very high inter-temporal discount rates which are intrinsically related to poverty. From the individual perspective, extensive ranching becomes a rational choice in the attempt to maximize the mining of (unpaid) natural resources.

---

1. Based upon Landsat images, estimates of deforestation from 1978 to 2006 are close 54 million ha. Estimates of deforestation based upon Census data differ from those based upon satellite images because the latter started only in 1978 and, by that time, they underestimated the extent of deforestation. Thus, deforestation in 1977 was, approximately, 47.5 million ha according to Census figures and 15 million ha according to Landsat.

Furthermore, cattle is a fungible asset performing a multiplicity of valuable functions and services in the generation and storage of wealth. Chiefly among them are its self reproduction and accumulation capacity, resilience to unfavorable climate and geographic conditions, productive uses in the generation of force in agricultural, industrial and transportation activities (in particular the capacity to transport itself to the market place), hedge functions against inflation and financial uncertainties, reassurance of property rights on land, and last but not least, the capacity to produce milk, meat, leather and all kinds of derived products for both subsistence or commercial purposes. The problem is that most of these functions and services, are hardly reflected in market prices, thus giving rise to the misallocation of resources, inefficiencies, depletion of natural resources and environment degradation associated with extensive cattle ranching.

From a policy perspective, therefore, the crucial issues are, firstly, to identify the structural factors conditioning the choice of output, technologies, and land intensity made by farmers, with special focus on the poor small farmers. Secondly, to identify the best strategies to foster the increase of land productivity within the cattle raising sector, as well as the shift of inefficient cattle raising to other agricultural activities with less intensive uses of land. Thirdly, how best to impose quantitative regulations and taxes as well as other price based incentives to make cattle ranchers account for the environmental costs caused by their productive activities (Assunção et al., 2013; Assunção, 2014).

### 3 HISTORICAL PERSPECTIVES

A brief analytical digression supports the proposition that, since Colonial times, land abundance has been the fundamental factor explaining the roles played by both slavery and extensive cultivation – cattle ranching, in particular – in shaping the traditional agrarian system which persisted in Brazil well into the 20<sup>th</sup> century.

Indeed, concerning institutions, land abundance creates incentives to restrict the mobility of labor. Technological choices are also conditioned by the relative scarcity of factors. Thus, land abundant economies will tend to specialize in land intensive activities as proposed by the Hecksher-Ohlin theory. The dynamic corollary is the induced innovation hypothesis (Kennedy, 1964, Hayami and Ruttan, 1985, Acemoglu, 2014) which poses that patterns of agricultural modernization are largely conditioned by changes in the relative scarcity of primary factors of production. Thus, as land becomes scarce, technological change tends to be biased towards biochemical innovations which

save land, while as land becomes abundant it tends to be biased towards mechanical innovations which save labor.

In the pure competitive model, the rate and bias of technological innovations are induced by the factor scarcity as reflected in price signals. However, market imperfections associated with transactions costs and incomplete markets make asset ownership an important determinant of the rate and bias of technological innovation. In addition, to the extent that technology is a public good generated by government research institutions, collective action and political power affects both the rate and bias of technological change (Saudoulet and Janvry, 1995).

Three centuries of the institutional predominance of *sesmarias cum slavery* consolidated a traditional agrarian system in the Brazilian economy. The elastic supply of slave imports fostered the geographic expansion of a shifting cultivation system based upon squatter settlements, slash-and-burn agriculture and extensive farming with practically no incentives to investments in technology or human capital. Land granting through *sesmarias*, on its turn, led to the extreme degrees of landownership and wealth concentration which persists in the Brazilian economy even today. Other long run consequence of this traditional agricultural system was to keep labor productivity close to subsistence levels, despite the extensive pattern of growth and the continuous incorporation of new lands.

The geographic outcome of the extensive pattern of growth was the agricultural settlement of most of the Northeast and Center-South regions of the country by the end of the 19th century. High transport costs secured the Center-West and North regions region as truly open frontiers. Extensive cattle raising was, since early colonial times, one of the main drivers of the territorial settlement. The economic rationale was, first, the natural ability of cattle to circumvent the lack of transport infrastructure. Furthermore, in the legal framework of *semarias* property rights were based upon the effective use of land, and thus extensive ranching acted as an entitlement to landowners (Abreu, 1960; Goulart, 1965).

In the Northeast Region, cattle raising started in the late 16th century as a complementary activity to sugar plantations stretching in the southern direction by the São Francisco River Valley and in the northwest direction towards the State of Piauí. At the beginning of the 18th century cattle herd in the region are estimated to have reached more than one million animals (Alencastre, 1857; Abreu, 1954; Simonsen, 1957; Abreu, 1960; Furtado, 1968; Andrade, 1973).

In the extreme South, cattle was first introduced by the Jesuit Missions in the early 17th century. As Portuguese Indian slave raids besieged the Missions pushing them beyond the Uruguay River, cattle herds escaped to the highlands of Vacarias where, according to estimates, approximately 100,000 wild animals grazed by the mid-18th century (Santos, 1984; Weech, 1992; Bell, 1998).

The third wave of cattle ranching took place in the southern and western areas of the State of Minas Gerais which complemented the São Francisco Rivers ranches to feed the mining areas in the 18th century and later on the city of Rio de Janeiro as the Colonial and Imperial capital of Brazil (Restitutti, 2006; Carrara, 2007).

Finally, in the mid-20th century, a new wave of cattle ranching unfolded towards the Northwest regions of the country, reaching the Amazon frontier in the 1970s (Hecht and Cockburn, 1990; Bergamasco, 1995; Faminow, 1998; Dias, 2016).

After the late sixties, Brazilian agriculture underwent a strong modernization process driven by the expansion of roads and transportation infrastructure, public investments in agricultural research and development, and a plethora of credit and fiscal incentives to agricultural activities. Agricultural modernization definitely changed the patterns of agricultural growth towards intensification of land use notwithstanding the substantial expansion of the agricultural frontier.

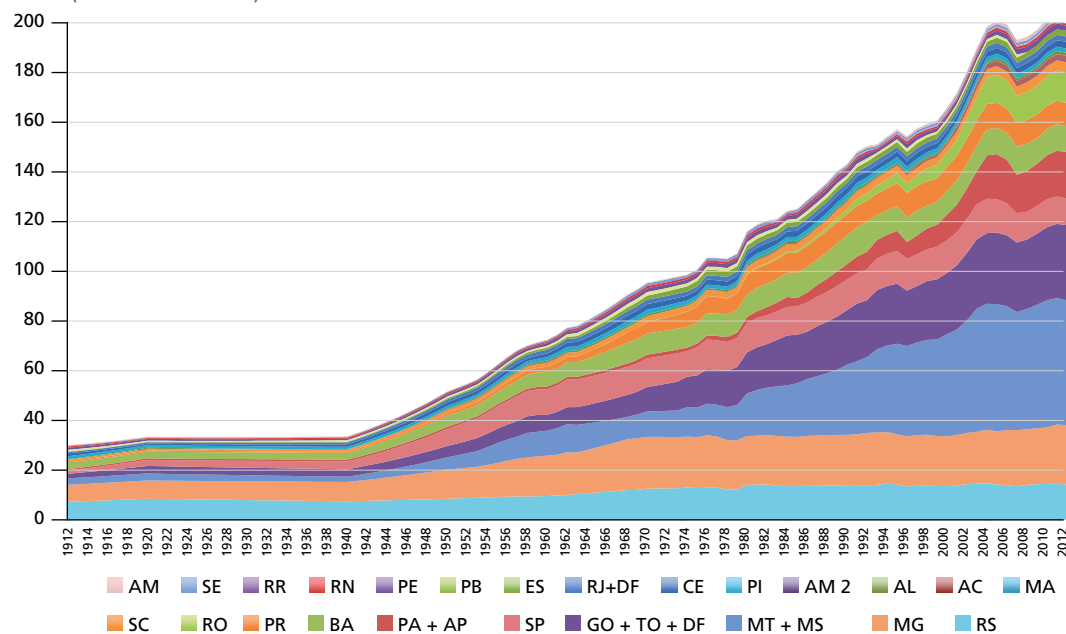
Agricultural modernization in Brazil was coupled to a decline in the rates of growth of cattle herd which dropped from 2.3% p.a. in 1975-85 to 1.3% in 1995-2005. For the same periods, the growth of pasture areas growth inflected from positive (0.8% p.a.) to negative rates (-0.9%), respectively. Thus, rates of growth of the stocking ratio accelerated from 1.5% p.a. to 2.3% p.a. in the respective periods. Compared to farm area, however, the share of pastures in farm showed relatively small changes, growing from 45%, in 1940, to 52%, in 1970, and back to 49%, in 2006.

The trends are welcome from both efficiency and environmental perspectives. Higher stocking ratios require smaller area for pastures, decreasing the pressures on clearing both in the forest and the cerrado areas. Demographic factors, including the delayed effects of urbanization as well as the decline of fertility rates in rural areas, played important roles. Not captured by the Census data, in recent years government policies to control deforestation started to play an important role (Assunção, Gandur and Rocha, 2012; 2013; Assunção et al., 2013).

Figure 1 summarizes the evolution of cattle herds according to Brazilian states during the whole 20th century. The picture shows that, up to 1940, the Brazilian herd was practically stagnated (annual growth in the range 0%-1% p.a.). Strong growth took place after 1940 (3-4% p.a.), with oscillations around a declining trend which was briefly interrupted during the last decade.

Regionally, Minas Gerais (MG), Rio Grande do Sul (RS) were the leading cattle raising states up to 1970 when they were outpaced by the states of Mato Grosso + Mato Grosso do Sul (MT+MS) and Goiás + Tocantins (GO+TO). At present, cattle herds are mainly concentrated in the Cerrado areas of MG, GO+TO, and MT+MS.

FIGURE 1  
Brazilian cattle herd size by State (1912-2012)  
(In millions of heads)



Source: IBGE Census, AEB and PPM.

Obs.: Geometric interpolation for some years up to 1975.

#### 4 PATTERNS OF CATTLE RAISING GROWTH, 1975-2005

This section analyzes the patterns of growth of cattle raising based upon municipal panel data of Brazilian Agricultural Census from 1975 to 2006. The choice of period is justified both by the timing of the modernization and the dislocation of agricultural frontier towards the northwest regions of the country (Reis and Blanco, 2000).

The analysis uses a decomposition analogous to the Hayami-Ruttan (Hayami and Ruttan, 1985) derived from the identity:

$$C = (P/F) * (C/P) * F, \quad (1)$$

where  $C$  is cattle herd size,  $P$  is pasture area, and  $F$  is farm area. Thus,

$$gc = gpf + gcp + gf, \quad (2)$$

where the growth of cattle herd ( $gc$ ) is additively decomposed in three major components, namely, the growth of the share of pasture in farm area ( $gpf$ ) as a measure of the specialization in cattle raising activities; the growth of the stocking ratio or of the number cattle heads per hectare of pasture ( $gcp$ ) as a measure of the increases in the productivity of pastures; and the growth of farm area ( $gf$ ) as a measure of the extensive growth of agricultural activities in general.<sup>2</sup>

Figure 2 presents the breakdown of the municipal patterns of growth for the inter-census periods from 1975 to 2005. For the whole period, patterns of growth were characterized by a small expansion of cattle ranching with a significant intensification of pastures and a small reduction of cattle specialization. However, most of the action was concentrated in the nineties where both area under farm and herds contracted while pasture showed a significant increase in productivity and cattle specialization a significant reduction.

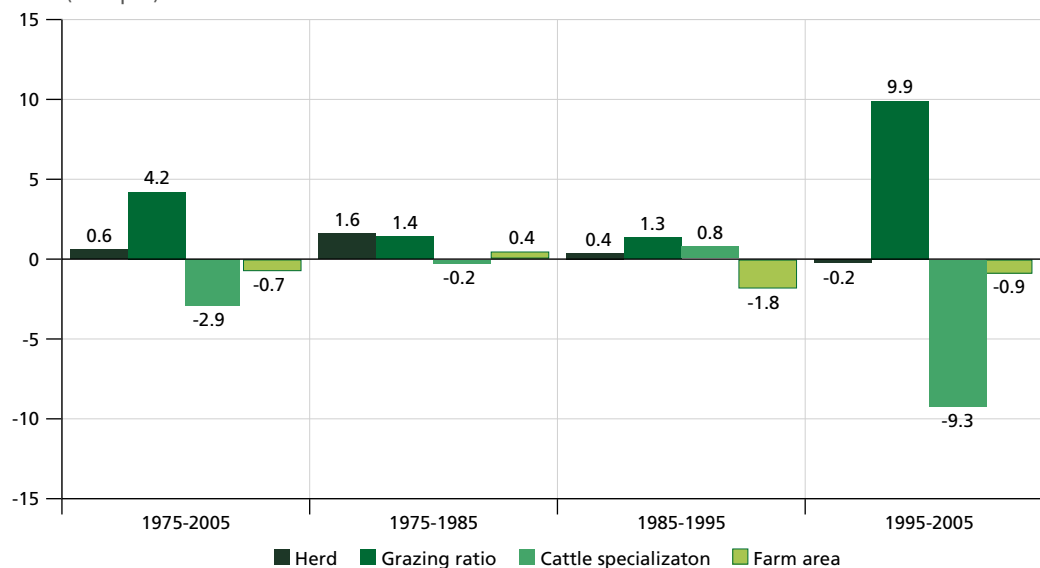
2. An alternative specification would be  $C = (C/P) * (P/A) * (A/F) * F$  where  $A$  is agricultural area, including crops, pasture, planted forest, and fallow areas. The advantage would be to single out the contribution of agricultural areas to the growth of cattle herds. Since in Brazilian Amazon agricultural area is almost identical to deforestation, this specification would allow to bring the deforestation process into the analysis.



FIGURE 2

**Average growth rates of municipal herd, grazing ratio, cattle specialization, and farm area for inter-census periods – Brazil (1975-2005)**

(ln % p.a.)



Source: IBGE.

Obs.: Geometric interpolations for the values of 2005.

The immediate factors behind intensification of pastures were shifts from natural to planted pastures and the increased productivity of planted pastures with the application of biochemical inputs and improved forage cultivars created by Embrapa. Closely related, investments in transport infrastructure pushed the agricultural frontier towards the flatlands of the Cerrado ecosystem which allowed agricultural mechanization in a scale unseen before in Brazil.

In a macroeconomic perspective, the strong reduction of specialization in the 1995-2005 period is perhaps best explained by the combination of the end of hyperinflation which drastically reduced the incentives to cattle raising associated with land speculation and the commodity price boom driven by the rise of China in the nineties.<sup>3</sup>

3. From 1985 to 1995, the reduction of farm area is partly explained by methodological changes introduced in the 1995 Census which moved the survey collection dates from peak season to off-season period thus losing track of small temporary establishments like squatters and renters. But part of it reflected the abandonment and eviction due to the creation of reserves and protection areas in the Amazon region.

Figure 3 shows the diverse regional patterns of growth of cattle raising activities from 1970 to 2005. The expansion of cattle herds took place mainly in the cerrado areas of the Center-West, North and Northeast Regions. The main factor behind was the low price of highly productive land which more than compensated the long distance and very high transport costs to domestic markets and international ports. Before 1995, however, extensive use of land in pastures as a hedge against hyperinflation and regional fiscal incentives were also important factors in the expansion of low productivity cattle ranching.

The North Region, practically coinciding with the Amazon rain forest, displays the typical dynamics of an agricultural frontier: substantial herd growth (7.5% p.a.) with a significant increase in grazing ratio (9.5 p.a.) and some reduction of specialization in cattle raising (-2.1% p.a.).

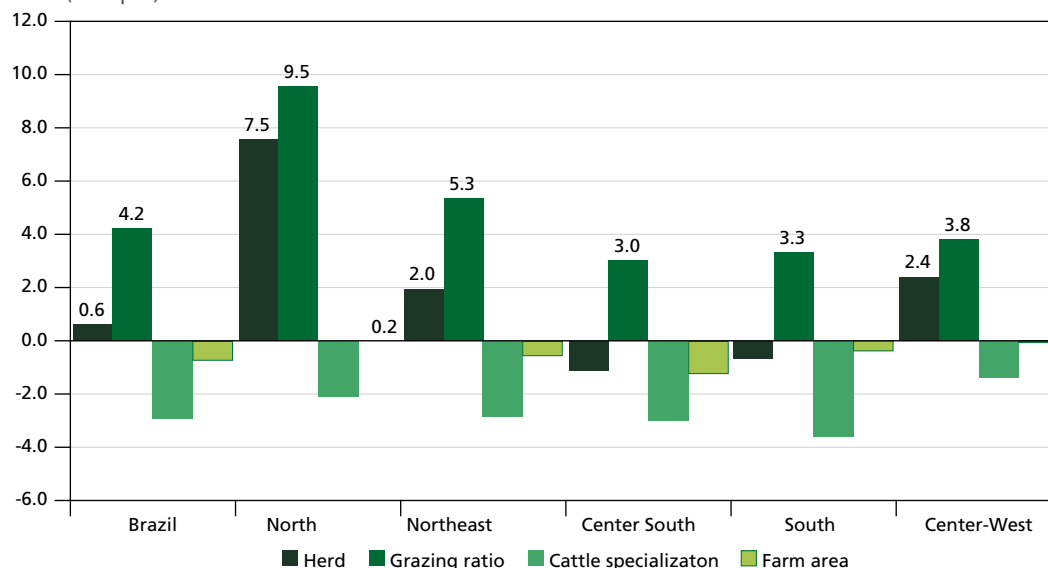
The performance of the Northeast Region is somewhat of a surprise given the soil and water constraints of the semi-arid areas. Rural credit together with investments in technical assistance and infrastructure, particularly in irrigation and soil correction, were probably the main factors behind the significant intensification of cattle raising activities in the region.

Finally, traditional cattle areas in the Center-South and South Regions display small decreases in the size of herds and the farm areas coupled with significant reduction in specialization ratio. The expansion of area under farms is practically nihil in all regions except in the Center-South where the observed reduction is perhaps explained by urban encroachments.

FIGURE 3

Average growth rates of municipal (MCA 1970-2005) of herd, grazing ratio, cattle specialization, and farm area by regions – Brazil (1975-2005)

(ln % p.a.)



Source: IBGE.

Obs.: Geometric interpolations for the values of 2005.

## 5 SIMPLE GROWTH CONVERGENCE, 1975-2005

This section presents econometric estimations of the municipal growth convergence of farm area, pasture intensification and specialization in cattle raising activities in Brazil from 1975 to 2006. Estimation are made for a panel of approximately 3,650 minima comparable areas (AMC 1970-2005) of Brazilian municipalities in the 4 Census years (3 inter-census periods) from 1975 to 2006.

Specifications are restricted to the simplest spatial dynamic model where, for each dependent variable – geographic density of herds, stocking ratio, specialization ratio, and geographic density of farm area – growth in a given inter-census period is solely determined by the logarithm of the ratio or geographic density in the initial period Census year.

In all cases, the estimated equation is thus:

$$\log (y_{i,t}/y_{i,t-n})^{1/n} = \alpha + \beta \cdot \log (y_{i,t-n}),$$

where  $y_{i,t}$  is, alternatively, herd density, grazing ratio, specialization ratio, or farm area density in municipality  $i$  ( $i = 1, \dots, 3,650$ ), Census year  $t$  ( $t = 1975, 1985, 1995$ , and  $2006$ ).

$\beta$  is a estimated coefficient that measures the speed of convergence of the dependent variable in case: when the value of  $\beta$  is negative the municipal distribution of variable in case converges; conversely, when the value  $\beta$  is positive, the municipal distribution of the variable in case diverges.

Table 1 presents the results of ordinary least square (OLS), seemingly unrelated (SURE) and fixed effects (FE) estimations of the municipal panel data for the four Census years from 1975 to 2005. In addition to the respective lagged values of the dependent, equations include dummies for Census years.

Figures in columns 2 show OLS estimated values of  $\beta$  close to  $-0.02$  for herd density.<sup>4</sup> Thus, each additional percentage point of the geographic density of municipal herd in the initial Census year implies, approximately, 0.02% less in the average annual growth rate of the municipal herd in the Census periods from 1975 to 2005.

Columns 3, 4, and 5 of table 1 show that convergence of stocking ratio are much faster, farm area growth shows a slower convergence while specialization ratio shows a divergent process, that is, it grows faster the higher the initial specialization ratio. Moreover, the estimated values for the constant and period dummies show that most of the action was concentrated in the 1995-2005 period when there was strong growth in the stocking ratios and a strong decline in specialization ratio.

Summing up, the results show that farm area is declining and converging at slow rates. Pasture intensification showed strong growth in the last decade and converged at faster rates. Finally, cattle specialization showed a strong decline in the last decade coupled to a diverging process, thus leading to concentration of cattle raising in the municipal distribution.

4. Curiously, the estimated speed of convergence of cattle density are very close to the 1.8 Barro constant.

TABLE 1  
**OLS, SURE and FE panel estimates of simple growth convergence of herd density, stocking ratio, specialization ratio, and farm area density for Brazilian municipalities (AMC 7005) in inter-census periods (1975-2005)**

(1) Variable	OLS				Seemingly related estimation SURE				FE		
	(2) gherd	(3) gstock	(4) gspecial	(5) gfarma	(6) gstock	(7) gspecial	(8) gfarma	(9) gherd	(10) gstock	(11) gspecial	(12) gfarma
constant	-0.013 (0.001)***	0.006 (0.001)***	0.003 (0.001)***	-0.001 (0.001)***	0.007 (0.001)***	-0.007 (0.001)***	-0.001 (0.001)***	-0.10 -0.003***	-0.005 -0.001***	-0.07 -0.002***	-0.03 -0.001***
L.lgherd	-0.019 (0.000)***							-0.078 -0.002***			
L.lstock		-0.040 (0.001)***			-0.036 (0.001)***				-0.088 -0.002***		
L.lspecial			0.006 (0.001)***			-0.004 (0.001)***				-0.075 -0.002***	
L.lfarma				-0.015 (0.001)***			-0.016 (0.001)***				-0.10 -0.001***
FE. 1995	-0.009 (0.001)***	0.005 (0.001)***	0.011 (0.001)***	-0.022 (0.001)***	0.004 (0.001)**	0.010 (0.001)***	-0.021 (0.001)***	7.50E-05 -0.001	0.012 -0.001***	0.009 -0.001***	-0.018 -0.001***
FE. 2005	-0.014 (0.001)***	0.096 (0.001)***	-0.091 (0.001)***	-0.015 (0.001)***	0.095 (0.001)***	-0.090 (0.001)***	-0.015 (0.001)***	-0.0029 -0.001**	0.11 -0.001***	-0.086 -0.001***	-0.027 -0.001***
N. Obs.	10,852	10,846	10,864	10,899	10,837	10,837	10,852	10,846	10,864	10,899	10,899
R-Sq							0.26	0.50	0.62	0.52	0.52
N. of AMC							3,637	3,638	3,642	3,647	3,647
Fixed effects	No	No	No	No	No	No	No	Yes	Yes	Yes	Yes

Author's estimates.

Notes: \* p < 0.05; \*\* p < 0.1; \*\*\* p < 0.01.

Obs.: For all explanatory variables values refer to the initial year of the respective intercensus period. L. refers to lagged values, l to the neperian logarithm, and shares in absolute values.

OLS estimations assume that the growth of stocking ratio, specialization ratio, and farm area density are independent process and therefore the estimation errors are uncorrelated across equations. This an untenable assumption because, on the one hand, farm area density will tend to increase more in areas more prone to specialization in cattle and were the growth of pasture areas is smaller. On the other hand, spatial inertia and externalities suggest that the diffusion of technological changes and growth of productivity as well as organization innovations leading to less specialization are more likely to take place where farm density is already high and therefore grows less. By neglecting these possibilities of interactions in the growth processes, OLS estimations will tend to be biased and inefficient.

To circumvent the problems raised above, a SURE model assuming that estimation errors are correlated across equations is proposed. Table 2 presents basic statistics of the Sure estimation model while columns 6 to 8 of table 1 present the values of the convergence parameters estimated. Notice that the equation for the growth of cattle herd itself is not included in this system specification because it is, by definition identical to the sum of the three other components. Table 2 shows that correlation of residuals are significant only in the growth equations for stocking ratio and specialization ratio were the correlation coefficient is -0.53. That is, a significant negative association between abnormal growth in the intensification of pastures – that is, much higher or lower than predicted by the convergence model – and abnormal growth in the specialization in cattle raising activities. Deviant growth of cattle herds is more likely to be coupled to exceptional growth of the specialization cattle raising activities. In the same tandem, exceptional growth in pasture intensification is usually associated with cattle specialization exceptionally slow. When these interactions are taken in account, the main difference in estimation is a slow convergent instead of a divergent process of cattle specialization. The other estimates are practically the same.

TABLE 2

**Basic statistics of the seemingly unrelated regression and the correlation matrix of residuals**

Equation	Obs	Parms	RMSE	R-sq	chi2	Prob	gstock	gspecial	gfarma	gherd
gstock	10837	3	0.060	0.38	7121	0	1			0.31
gspecial	10837	3	0.055	0.40	7614	0	-0.53	1		0.30
gfarma	10837	3	0.036	0.11	1656	0	-0.17	-0.17	1	0.35
gherd										1

Accordingly, results in table 1 show that only in the equation for growth of the specialization ratio there is significant differences between the OLS and Sure estimates. Indeed, estimate of beta-convergence in the growth of the specialization equation is now one of significant slow convergence and not of significant slow divergence as in the OLS results.<sup>5</sup>

Closing the section, columns 9 to 12 of table 1 present two-way FE convergence estimates for the Brazilian municipalities from 1975 to 2005. Two-way fixed effects

5. An alternative specification of the model would be to include the equation for herd growth in the system of equations to be estimated by Sure. Results not presented in the paper show that when this is done the beta-convergence estimated become very close to each other since all of the variables are highly correlated with the growth of herd. Indeed, statistics in table 2 show that there are relatively strong correlation of residual of the growth of herd with all other variables.

models are equivalent to specify “dummy” variables for each period as well as for each municipality to capture the effects of variables that are constant in time such as geographic and accessibility conditions including soil, hypsometry, climate, vegetation, and other characteristics of the ecological system, distance to the sea and to main cities and capitals which are proxies for regional and national markets, and, finally, the “structural” socio-economic conditions which were relatively stable during the period under analysis (1975-2005).

The purpose is to “filter” the estimates of the speed of convergence from spurious effects introduced by the association of cattle raising growth with the geographic variables and other structural characteristics of municipalities above mentioned. Naturally, fixed effect models will not be able to eliminate bias introduced by endogenous and omitted variable problems.

As we should expect, fixed effects estimation of the equations show that the municipal characteristics that are invariant in time are very important for growth convergence of cattle raising activities. The speed of convergence among similar municipalities is twice or three times as fast than those observed for the OLS and Sure estimation models.

The absolute value increases in the speed of convergence were particularly strong for the growth of farm area and specialization ratio which before displayed a divergence process.

## **6 CONDITIONAL SPATIAL CONVERGENCE, 1970-2005**

To explain the spatial patterns of growth of cattle raising in Brazil, this section enlarges the specifications of the simple growth convergence equations to incorporate the main factors conditioning the growth of herd size ( $G_{herd}$ ), stocking ratio ( $G_{stock}$ ), cattle specialization ( $G_{special}$ ), and the area under farms ( $G_{farma}$ ) of Brazilian municipalities (AMC 1970-2005) in Census years from 1975 to 2005.

In addition to the lagged values of level of the respective dependent variables, the conditioning factors considered include the municipal conditions of accessibility and transport costs, credit availability and interest rates, the shares of wages and rents in total costs, the land/labor ratio, poverty and average years of schooling as a proxy of human

capital, and finally, as a summary description of the agrarian structure of the municipality given by distribution of farms in three size classes: small, medium and big. To minimize problems of endogeneity in the estimations, all the explanatory variables are specified as lagged values, that is, they describe the conditions prevailing in the municipalities at the initial Census year of the respective growth period, namely, 1975, 1985 and 1995.

Models were at first estimated by OLS method. In addition, to take account of the possible interactions between the growth process of different components or dimensions of cattle raising activities, an alternative specification assumes a Sure model where the growth of stocking ratio, specialization ratio, and farm area density are independent across time, but may have cross-equation contemporaneous correlations. Therefore they characterize dependent stochastic process where estimation errors are correlated across equations. Notice that the equation for the growth of cattle herd itself is not included in this system specification because it is, by definition, identical to the sum of the three other components.

Finally, to take account of the effects of municipal variables that are constant in time such as climate, vegetation, soil and hypsometric attributes, altitude, geographic distance to the sea, ports, as well as to other reference points, additional estimations are made with a two-way FE. Otherwise, the exclusion of these municipal characteristics could generate bias in the values of estimated coefficients.

Model specification is always a problem. Omitted variables in particular pervade OLS and Sure models leading to violation of the strict exogeneity assumption and, therefore, to biases of estimation. Obvious candidates for omitted variables are, among other, access to technical assistance, use of fertilizers and herbicides. The only hope is that model specifications allowing fixed effects for municipalities will, at least, take care of the effects of omitted variables that are relatively constant in time (soil, climate, hypsometry, as well as other infrastructure characteristics of the municipalities, etc.) thus minimizing the specification problem. In fact, fixed effects model use each municipality as her own control. By doing so, they actually control for all the stable, unobserved variables, just as if these variables had been measured and included in the regression model. In that sense, these statistical models perform neatly the same function as random assignment in a designed experiment (Allison, 2009, p. 9).



It should be noted, however that in the presence of lagged values of the dependent variables fixed effect models also violates the strict exogeneity assumption which states that  $x_{it}$  it is statistically independent of  $\varepsilon_{it}$ , for different time periods. This happens because one component of  $x_{it}$  is  $y$  itself at an earlier point in time. (Allison, 2009). The proposed solution to this problem is to use the Arellano-Bond (1991) estimation method (denote by AB) which are presented below. For the reasons above, in the analyses that follow attention will be paid, preferentially, to the results of FE and AB estimation methods.

The explanatory variables specified in the models are the following.

- 1) Diesp – The economic distance or the effective road distance from the municipality to the city of São Paulo normalized by the quality of road modalities (paved, unpaved, etc.) in the years of 1970, 1985, and 1995 (geometric interpolation). It is as proxy of accessibility to national and international markets (ports of Santos and Paranaguá) as well as to major urban center.
- 2) Diece – *Idem, ibidem* for the distance to the nearest State capital as proxy of regional market and urban center.
- 3) Shtrnsp – The share of transport costs in total costs of production of agricultural establishment. Measure the relative importance of transportation costs for the acquisition of production inputs or output sales in local markets. Here, as in the other cost variables, the variable is normalized by the value of total costs to avoid the distortions across time and space introduced by the hyperinflation context of the Brazilian economy during the period analyzed.
- 4) Loan – The value of total loans to agricultural establishments is introduced as a proxy of credit availability. The Census dictionary it is not clear if it is a measure of the value of outstanding loans at end of the Census year or of the value of loans granted during the Census year. The vast majority of credit lines go to agricultural crops.
- 5) Interest – The cost of credit as measured by the ratio between interest payment of agricultural establishments during the Census period and the value of loans (Loan) as defined before. Needless to say, the variable is not immune to inflationary as well as other kind of distortions.
- 6) Shrent – is the ratio between payments of rent to total cost expenditure in each municipality. It is included as a proxy of the cost of land and thus of land availability. It should be kept in mind, however, that rented parcels are usually land of higher quality. In addition, the share of farm area rented differs across municipalities. It is expected, that both problems does not severely bias the results.

- 7) Shwage – is simply the ratio of monetary wage bill in relation to total cost expenditure. It is an imperfect measure of the true relative importance of labor costs, to the extent that it does not take account of family labor as well as of other forms of labor paid in kind (sharecropper, for instance). Nonetheless, it can be used as proxy of the labor skills or abundance.
- 8) Popden – the density of population as measured by the geographic area of the municipality. Together with rural population it is a proxy of the abundance of labor in relation to land or geographic area of the municipality.
- 9) Poprur – the share of rural population. It measures the importance of agriculture in the municipality as well as the relative abundance of rural labor.
- 10) School25 – The average years of schooling of the population older than 25 years in the municipality. It is a proxy of level of education or human capital in the municipality. Unfortunately, it was not possible to get the equivalent measure for the rural population of the municipality which would be a more relevant variable for the analysis.
- 11) Poverty – Measures the share of poverty or the percentage of total municipal population living under the poverty line defined by a per capita household income smaller than the prevailing minimum wage in the Census reference period. Is a proxy of cheap labor as well as of the lack of human capital, income and employment opportunities. Again, the distinction between rural and urban contexts would be relevant for the purposes of the analysis.
- 12) Shsmaf and Shmedf – The two variables describe the size distribution of farms by the number of farms in the size categories small (less than 100 ha) and medium (between 100 and 500), respectively. Naturally, the big farms are a residual category.
- 13) Lagged dependent – For each growth equation we introduce the logarithm of lagged value of the dependent variable, that is, the value of the dependent variable in initial Census year of the growth period in case. Namely, Ldherd for the herd, Ldstock for the stocking ratio, Ldspecial for the cattle specialization, and finally, Ldfarma for the area under far equation.
- 14) Time fixed effects – Finally, we introduce dummies for time periods 1995-2005 (FE.1995) and 1995-2005 (FE.2005) as well municipalities (AMC7005) to capture the fixed effects of time periods and municipalities, respectively.

The generic specification of the model is:

$$\log(y_{i,t}/y_{i,t-n})^{1/n} = \alpha + \beta \cdot \log(y_{i,t-n}) + \gamma \cdot X_{i,t-n} + \text{fe.time} + \text{fe.amc7005} + \varepsilon_{it}$$

where:

$y_{i,t}$  is the dependent variable in case for município  $i$  in year  $t$ . The dependent variables considered are, alternatively, the rates of growth of herd size, grazing ratio, cattle specialization ratio, and of the farm area of Brazilian municipalities in the inter-Census periods from 1975-1985, 1985-1995, and 1995-2005.

$X_{i,t-n}$  is the set of explanatory variables referring to the demographic, economic, social, and transport conditions in Brazilian municipalities the initial Census year of the respective growth period, namely, 1975, 1985 and 1995.

$fe.amc7005$  are the dummy variables capturing the fixed effects for each of the minimum comparable area of municipalities in Census years from 1970 to 2005 (AMC7005).

$fe.time$  – Dummy variables capturing the fixed effects for the previous growth previous to the Census 1985 and 1995.

Table 3 presents the estimation results of the OLS, Sure, FE and Arrellano Bond (AB) models, respectively, listing the dependent variables as well as the estimation method in the top rows and the explanatory variables in the first left column. Results are summarized by indicating the insignificant, positive or negative effect of the variable in the rows by a zero (o), plus (+) or minus (-) signal, respectively, and the significance level of the estimated coefficient by the number of plus or minus signals according to the following rule: a zero signal when the estimated coefficient is not significant at 0.05, that is  $p > 0.05$ ; one minus or plus signal when  $p < 0.05$ ; two minus or plus signals when  $p < 0.01$ ; and three signals if  $p < 0.001$ .

## 6.1 Cattle herd

Estimates of the OLS, FE, and AB models of rates of growth of cattle herd appear, respectively, in columns 2 to 4 of table 3. Results show that, except for transport costs (Shtrn) and the proxies of the agrarian structure Shsmf and Shmedf), all other variables are significant explaining factors in the AB specification.

Herd tend to grow more the farther away the municipality is from São Paulo and from State capitals indicating that the expansion of cattle herds go hand in hand with the expansion of the frontier where land is the relative abundant factor. That argument is reinforced by the findings that higher population density (Popden) and higher land rent (Shrent) also significantly reduces herd growth, and to some extent as well by the non-significance of transport costs (Shtrnsp). The suggested policy prescription is the introduction of measures creating disincentives to cattle raising, including land and pasture taxation in particular, credit constraints, as well as straightforward environmental zoning with prohibition of settlements or pastures in areas beyond certain geographical limits.

The previous results, however, are to some extent contradicted by the fact that rural labor scarcity as measured by higher wages (Shwage) and a smaller share of rural population (Shpoprur) have significant negative effects the growth of herds (though there is some disagreement among models with regards the signal of the latter variable). Thus, the negative effect of population density takes place mainly through urban population.

The incidence of poverty (Poverty) has a positive significant effect on the growth of herd. A possible interpretation is the classical role played by cattle as a channel of upward mobility to poor farms but it should be kept in mind that the measures of poverty used is not restricted to rural population. Other possibility would be through the labor market but the insignificance of the wage costs casts some doubt on the likelihood of this hypothesis.

The genuinely puzzling result, however, is the strongly significant and positive effect of average schooling (School25) on the growth of cattle herd. The result becomes even more puzzling given the fact that the schooling measure refers to municipal population as a whole and not to rural population. A possible explanation is simply that, everything else constant, more human capital implies more capacity of accumulation and growth. But the puzzling aspect is that not necessarily accumulation would be directed towards cattle. On the contrary, it seems reasonable to expect that more educated population would have broader and better economic opportunities than cattle raising thus shifting away to other agricultural or urban activities.

Availability of credit (Loan) and cost of credit (Interest) show very significant negative effects on the growth of cattle herds. The direction of the effect of loan is

counter-intuitive and probably related to the fact that availability of credit refers to total loans, not loans specifically purported to finance cattle raising activities. Agricultural credit lines in Brazil, however, are almost exclusively oriented towards agricultural crops with a very small portion of going to cattle raising activities. Most of the growth in cattle herd are therefore self-financed by farmers, particularly in the case of small ones. More credit is therefore expected to be associated with the growth of crops and thus it is reasonable to expect that it would appear as having a negative effect on the growth of cattle herd.

The lagged dependent variable (Ldherd) show that there is significant convergence of the herd size, which given the constancy of the geographic areas of municipalities (AMC7005) is equivalent to the geographic density of municipalities. Figures in table A.1 show much higher coefficients that are five times bigger than the equivalent ones in columns 2 to 5 of table 1. It should be kept in mind, however, that controlling for fixed effects of municipalities as is the case of FE and AB models is equivalent as specify are specified as “structurally” different municipalities and therefore they converge to different (steady state) equilibria levels of herd density.

Finally, the figures for the coefficients of time fixed effects (FE.1995 and FE.2005) show exogenous effect that brought significant reductions of the growth of herds in the periods 1985-95 and 1995-2005 for all municipalities. The magnitude of the effect was particularly strong in the latter period when municipal rates of growth of cattle herds reduced 1.3%. Macroeconomic developments and stabilization in particular could have caused the decline in the relative profitability of cattle herd. Moreover, the growth of China shifted the patterns of Brazilian exports towards agricultural exports.

## 6.2 Stocking ratio

The growth and convergence of the stocking ratio are especially important process to reconcile the conflicting objectives of production and environmental preservation. To that extent their determinant are crucial for the elaboration of both agricultural and environmental policies.

Estimates of the models of the determinants of the rates of growth of the stocking ratio (or the productivity of pasture as measured by the ratio cattle heads/ha of pasture) are presented in columns 5 to 8 of table 3. The AB estimates show that both the distance

to São Paulo (Diesp) and the nearest State capital (Diece) have significant negative effects on the growth of stocking ratio. Thus, the proximity to major markets or urban center comes out as a significant advantage suggesting that pasture intensification is mainly driven by accessibility to regional and international markets as well as to other kind of economic or institutional infrastructure like R&D, technological diffusion, technical support etc. captured by the distance to São Paulo and state capitals. However, in light of this argument, we get a counter-intuitive positive and significant effect of transport cost (Shtrn).

As we would expect, the effect of credit availability (Loan) is positive and significant, while the cost of credit (Interest) has a negative and significant effect on the growth of pasture intensification. Thus, bot availability and the cost of credit are important factors for the growth of pasture productivity. The obvious policy implication would be to create or to expand subsidized credit lines specifically oriented towards pasture intensification.

Though in disagreement with other models The AB model shows that both land rents (Shrent) and the wage bill share (Shwage) have no significant effect the growth of pasture productivity. The velocity of the intensification of pasture is not driven by market signals but by other channels of transmission of technologies. Note, however, that in the other models cheap land and high wages, typical of frontier areas, tend to slow down the speed of pasture intensification.

The above argument is complemented by the significant positive effect of population density (Popden) which echoes the (Boserup, 1965) hypothesis on the conditions of agricultural growth. It is important to note that rural population (Shpoprur) has negative significant effect (at least in the AB estimation). That would mean that technological improvements are induced by urban population. Qualifying Boserup, urban agglomeration, not population density per se, is the determinant factor of technological improvement.

The significant positive effect of schooling (School25) on the growth of pasture productivity confirm the intuitive association of technological improvement with higher levels of education of the population, no matter if we refer to rural, urban or total population. The obvious policy implication is that more education will bring a faster pasture intensification. Once again, the effect of poverty (Poverty) is counter-intuitive.

Estimations of the effects of the agrarian structure show that the share of small (Shsmaf) and medium (Shmedf) farms have no significant effect on productivity growth (though the signal for medium farms is not confirmed by the OLS and Sure models). The conclusion is that nothing significant in terms of pasture productivity is to be expected by any kind of property fragmentation or agrarian reform.

The time fixed effects (FE.1995 and FE.2005) show significant positive effects on the rates of growth of pasture productivity for both periods, 1985-95 and 1999-2005. The magnitude of the effect was particularly strong in the period 1995-2005 when it reaches amazing rates in the order of 10% p.a. Once again, likely explanations are the across the board developments related to macroeconomic stabilization, the growth of China as well as the diffusion of new technologies.

Finally, the speed of convergence in the rates of growth of the productivity of pastures (Lstock) are much higher in the simple regression models of table 3. Indeed, figures are now 0.09 in the FE model, compared to 0.045 in the OLS model and 0.033 in the Sure model. The reason behind is that estimation of convergence is now restricted to “clubs” of municipalities which display very similar conditions in what concerns factor availability and relative prices; human capital; accessibility and transport costs to both regional, national and domestic markets; agrarian structure; and in another fixed attributes in the case of the FE model. Thus, convergence is very fast inside each “club” but the different clubs are converging to quite different values of cattle herd density, grazing ratio, cattle herd specialization, and farm area density. This is specially true in the case of FE estimations.

### 6.3 Specialization in cattle

Table 3 shows that the processes of growth of cattle specialization (Gspecial, columns 9-12) and of productivity of pastures (Gstock, columns 4-8) are to some extent mirror images of each other in the sense that the same variables have opposite effects in each of these processes. This is no surprise given the high negative correlation between these processes shown in Section 4.

AB estimation shows that the growth of cattle specialization is not significantly affected by locational advantages such as the proximity of large national or regional markets or urban centers. Both the effects of the distance to São Paulo (Diesp) and the

distance to the nearest State capital (Diece) have no significant effect. Note, en passant, that in the models of productivity growth both effects were significant and negative.

The effects of both availability and the cost of credit (Loan and Interest) are both negative. This puzzling result is, once again, probably explained by the fact that agricultural credit lines are almost exclusively directed towards agricultural crops. Thus, differently from pasture productivity availability will induce the expansion of crop areas in detriment of pasture growth. However, cheap credit induces higher growth of both cattle specialization and productivity of pasture.

Cheap land (Shrent) and labor (Shwage) increase the growth of specialization in cattle raising indicating that market incentives play a significant role in this case. Recall that for the growth of the productivity of pasture both effects were not significant.

Population density (Popden) induces lower growth of cattle specialization. But again this is mainly an effect of urban population, since the share of rural population (Shrur) has positive significant effect on the growth of specialization. Again effects, are distinct from the ones obtained in the models of the growth of pasture productivity.

Schooling (School25) and poverty (Poverty) have no significant effect on the growth of specialization in cattle. This effect confirms that human capital and knowledge are not essential factors for the growth of specialization in cattle.

The agrarian structure effects are such that the share of both small (Shsmaf) and median (Shmedf) farms have no significant effect on cattle specialization. A tentative explanation would be that the expansion of specialized comes through green field investment in big farms and not through process of consolidation of small and medium farms. Conversely, fragmentation will not affect significantly the growth of specialization.

The time fixed effects (FE.1995 and FE.2005) are not estimated by AB models because they tend to be “washed” out by the double differentiation. The other models show that, independent of the conditions prevailing in the municipalities, there was a significant acceleration of cattle specialization from 1970 to 1985, and a significant deceleration from 1995 to 2005. The magnitude of the effect was much bigger in the latter period, that is, -5.7% p.a. compared to +1.6% in 1985-95, in the FE model. Apart from the effects associated with the growth of international trade, in particular



with China, which acted in favor of soybean, other possible explanations are credit and environmental policies concerning the Amazon frontier which became more increasingly restrictive during this period, particularly for cattle raising.

Finally, the lagged value of the specialization ratio ( $L_{special}$ ) shows a mildly significant and positive effect indicating a divergence process of the growth of specialization, that is, municipalities would tend to specialize completely or not at all in cattle raising activities. The other models show mixed results some times with negative and other times with positive estimates. The strange aspect of the results is that divergence is not necessarily coupled with a spacial specialization, at least as far as the distances to city of São Paulo and to other State capitals are concerned.

#### 6.4 Farm area expansion

Closing the section, estimations of the model of growth of the farm area show a spatial pattern of growth with significant positive effect for the distance to the city of São Paulo ( $Diesp$ ) and a significant negative effect for the distance to the nearest State capital ( $Diece$ ), thus indicating the regional specialization in towards the northwest regions which is the remotest region to São Paulo. Reinforcing the patterns of spatial and regional specialization, the population density ( $Popden$ ) is negative and significant while the share of rural population ( $Shrurn$ ) and the share of transport costs ( $Shtrn$ ) are positive and significant. The credit availability ( $Loan$ ) is negative and significant, suggesting that credit goes to already settled areas and that new farms together with frontier expansions are self-financed. The cost of credit ( $Interest$ ), as well as of the price of land ( $Shrent$ ) has no significant effect on the growth of farm area. Curiously, the cost of labor ( $Shwage$ ) has a mildly negative and significant effect. Market prices have negligible effects, anyway. Schooling ( $School25$ ) has a significant negative effect, and poverty ( $Poverty$ ) has a positive significant effect on the growth of farming. Farms grow faster in municipalities with less education and more poverty. Finally, the variables describing the agrarian structure ( $Shsmaf$  and  $Shmedf$ ) are not significant for the growth of farm. This result sound a bit surprising because farm expansion and fragmentation of property could be thought as somewhat antithetical processes.

TABLE 3

**Estimation results: qualitative effects of explanatory variables for models of the rates of growth of herd, stocking ratio, specialization ratio, and farm area according to OLS, SURE, FE and AB estimates**

Variable	gherd			gstock				gspecial				gfarm			
	OLS	FE	AB	OLS	SURE	FE	AB	OLS	SURE	FE	AB	OLS	SURE	FE	AB
DIESP	---	---	---	+++	+++	---	---	0	---	+++	0	---	---	0	+++
DIECE	0	---	---	0	-	---	---	0	0	0	0	0	++	---	---
SHTRN	--	0	0	+++	+++	0	++	---	---	-	---	0	0	+	+++
LOAN	---	---	---	+++	+++	0	+++	---	---	---	---	+++	+++	+++	---
INTEREST	0	0	---	---	---	--	---	0	0	--	---	++	++		0
SHRENT	---	---	---	+++	++	+++	0	0	-	---	---	++	+	0	0
SHWAGE	---	0	---	---	---	--	0	0	0	0	---	0	0	0	-
POPDEN	---	0	---	+++	+	+++	+++	--	---	---	---	0	0	---	---
POPRUR	--	0	+++	+++	++	0	---	0	+	0	+++	0	+	--	+++
SCHL25	++	---	++	+	++	---	+++	+	+	0	0	--	---	0	---
POVERTY	+++	+++	+++	-	0	+	+++	+++	+++	++	0	+++	+++	0	+++
SHSMAF	---	0	0	0	0	+	0	0	-	---	---	0	0	0	0
SHMEDF	---	0	0	-	--	++	0	0	0	--	---	0	0	0	0
LDHERD	---	---	---												
LSTOCK				---	---	---									
LSPECIAL								+++	---	---	+				
LDFARM												---	---	---	0
FE.1995	+	0		+++	+++	+++		+++	+++	+++		---	---	---	
FE.2005	---	---		+++	+++	+++		---	---	---		---	---	---	
FE.AM197005	no	yes	yes	no	no	yes	yes	no	no	yes	yes	no	no	yes	yes
N.OBS.	10.234	10.234	6620	10.239	10.229	10.229	6.617	10.238	10.229	10.238	6.622	10.251	10.229	10.251	6.630

Author's estimates.

Notes: 0 = not significant at 5%; +++ = positive and significant at 0.1%; ++ = positive and significant at 1%; + = positive and significant at 5%; --- = negative and significant at 0.01%; -- = negative and significant at 1%; - = negative and significant at 5%.

## 7 POLICY OPTIONS FOR SUSTAINABLE DEVELOPMENT

This section discusses policy options for a sustainable development of cattle ranching in Brazil. The first lesson to be drawn is that the extensive land use pattern as well as other inefficiencies of cattle raising in Brazil have deep and persistent economic and institutional roots. Land abundance – defined both in terms of relative factor availability and open access to land property – and high transport costs were major historical drivers of the extensive land use patterns of cattle raising in Brazil. These conditions are still pervasive in the Brazilian Amazon and to that extent the expansion of cattle ranching remains, by far, the most important source of deforestation in the region (Reis and Margullis, 1990; Chomitz and Thomas, 2000; Andersen et al., 2002; Chomitz and Thomas, 2003).

The structure of incentives provided by the Brazilian institutional context impairs simple policy proposals to bring inefficient cattle raisers to the technological frontier (Schneider et al., 2000; Cohn et al., 2011; Assunção et al., 2013; Strassbourg, [s.d.]a; [s.d.]b). The problem becomes even more complex once we recognize the social and equity issues derived from the fact that cattle raising has always been and still is as one of the most traditional channels of economic and social mobility in agrarian economies, particularly for poor and small farmers. For those social segments, wealth or capital accumulation is practically synonym to increase in cattle herd. Furthermore, from an individual perspective, extensive cattle ranching is amply justified by the price incentives provided by cheap land and by the mining of unpaid natural resources (Rebello, 2004; Pacheco, 2009; Pacheco and Pocard-Chapuis, 2012).

From a policy perspective the crucial issues are: first, to identify the structural factors conditioning the choice of output, technologies, and land intensity made by farmers, with special focus on poor small farmers. Second, to identify the best strategies to foster the increase of land productivity within the cattle raising sector, as well as the shift of inefficient cattle raising to other agricultural activities with less intensive uses of land. Third, how to best impose quantitative regulations and taxes as well as other price based incentives to make cattle ranchers account for the environmental costs caused by their productive activities (Assunção et al., 2013; Assunção, 2014).

The empirical analysis of the paper provided a few preliminary steps in this direction. Thus, estimation results show first that projected changes in transport costs – to both regional, national and international markets – will bring forth challenges and opportunities for cattle raising and agriculture, in general. Reductions of transport cost to all market levels will tend to increase the rates of growth of Brazilian cattle herd. Decomposing this effect, it is possible to see that it will be associated with a less extensive pattern of cattle ranching, with higher growth of pasture productivity, and reduced growth in cattle specialization. The effect on farm area depends on the strategy of transport investments to be implemented. Transport cost reduction to domestic and national markets will tend to increase the growth of farm areas while the increased density of the local and regional network will tend to decrease the growth of farm area. A more thorough assessment of the regional implications of transport costs would require the regional disaggregation of result that is outside the scope to this paper.

The second important result is fundamental role played by education and human capital. More education will create alternatives inside and outside agriculture thus reducing the rates of growth of farm area, cattle specialization and increasing the growth of pasture intensification, all such factors leading to a decreased rate of growth of herd. Thus education is perhaps the best policy option to halt the expansion of extensive cattle ranching. The big question mark is how fast educational policies, particularly in rural environments, can be implemented.

The estimation of the effects of credit policies are also of interest to policy implementation. Credit availability hardly affects the growth of herd size. Though it tends to increase the growth of farm area, this is associated with a significant reduction of the growth of cattle specialization as well as a significant increase of the growth of pasture productivity. Thus, the net result of credit constraints will probably be an increased growth of pasture areas.

Differently, interest rates have a negative impact on the growth of herd size with hardly any effect on pasture productivity. Thus, higher interest rates will tend to decrease of pasture.

When we put both results together, credit crunch situations, combining both quantitative constraints and interest rates, rise will probably tend to have no effects on herd size and pasture areas close to null.

Poverty alleviation, be it by means of government social policies or market mechanism, is undoubtedly a top policy priority in Brazil. From an environmental perspective, however, it will bring some policy trade-offs which are related to the arguments mentioned before that extensive and inefficient cattle ranching is a traditional channel for the upward mobility of poor people in rural areas. Thus, tough poverty reduction has no significant implication for the growth of farm area and it tends to reduce the growth of cattle specialization, it will significantly increase the growth of herd with negative effects on the productivity of pasture. Thus, pasture area will tend to show a faster increase as poverty goes down.

Urbanization and the growth of population density show contradictory effects. On the one hand, population density has hardly any effect on the growth of cattle herd.

It affects negatively the growth of farms and cattle specialization and positively the intensification of pastures. As a consequence it tends to reduce pasture areas. Urbanization, on the other hand, has some effect on the growth of cattle herd but no effects on pasture productivity and, therefore, it will tend to increase pasture areas. Perhaps it should be qualified that urbanization is practically coming to a halt in the Brazilian case and therefore not much can be expected from their effects when compared to those of the growth of population density per se.

A policy issue which deserves a more thorough scrutiny is the size distribution of farms. The estimation result shows that they have practically no effects on all the relevant variables. Once again, further assessment would require a better treatment of regional disaggregation as well as of cross-effects with other relevant explanatory variables.

Finally, extensions of the research will attempt to isolate the effects of cattle raising on three major dimensions of development: efficiency measured by the average productivity of labor in agricultural activities; welfare measured by the average household income per capita of the municipality; and equity measured by the Theil index of income per capita of the municipality. For each of those dimensions the basic idea is to estimate an auto-regressive model with the lagged value of the dependent variable and changes in cattle raising activity as explanatory variables.

Thus, cheaper land leads to slower intensification of pastures and faster specialization in cattle with no significant effect on the expansion of farming.

Intuitively one would expect that more human capital diverts entrepreneurial abilities as well as employment capabilities to secondary and urban activities. Furthermore, human capital tends to shift agricultural activities toward crops as well as to increase the productivity of pastures. For all these reasons, more human capital tends to reduce the growth of herd size. However, results are confusing. Estimates show that the effects of this variable are significantly affected by the introduction of fixed effects. OS and Sure show positive effects on the growth of herds, productivity of pasture and specialization in cattle and a slowing effect on the expansion of farms. FE, on the other hand, shows a reduction of the growth of farms and productivity.

## REFERENCES

- ABREU, J. C. D. **Capítulos de história colonial (1500-1800)**. Rio de Janeiro: Livraria Briguiet, 1954.
- \_\_\_\_\_. **Caminhos antigos e povoamento do Brasil**. Rio de Janeiro: Sociedade Capistrano de Abreu, 1960.
- ACEMOGLU, D. **Localized and biased technologies**: atkinson and Stiglitz's new view, induced innovations, and directed technological change. Cambridge, MA: MIT, 2014. (MIT Department of Economics Working Paper, n.14-13).
- ALENCASTRE, J. M. P. D. Memoria chronologica, historica e chorografica da Provincia do Piaui. **RIHGB XX** (primeiro trimestre), p. 48-64, 1857.
- ALLISON, P. D. **Fixed effects regression models**. Philadelphia: University of Pennsylvania, 2009.
- ANDERSEN, L. E., C. W. J. et al. **The dynamics of deforestation and economic growth in the Brazilian Amazon**. Cambridge: Cambridge University Press, 2002.
- ANDRADE, M. C. D. **A terra e o homem no Nordeste**. São Paulo: Brasiliense, 1973.
- ASSUNÇÃO, J. **Towards efficient land use in Brazil**: a research proposal. Rio de Janeiro: Department of Economics/PUC-Rio, 2014.
- ASSUNÇÃO, J.; BRAGANÇA, A.; HEMSLEY, P. **High productivity agricultural techniques in Brazil**: adoption barriers and potential solutions. Rio de Janeiro: Climate Policy Initiative, 2013.
- ASSUNÇÃO, J.; GANDUR, C.; ROCHA, R. **Deforestation slowdown in the legal Amazon**: prices or policies? Rio de Janeiro: Climate Policy Initiative; Núcleo de Avaliação de Políticas Climáticas/PUC-Rio, 6 Feb. 2012. (CPI working paper).
- \_\_\_\_\_. **Detering deforestation in the Brazilian Amazon**: lenvironmental monitoring and law enforcement. Rio de Janeiro: Climate Policy Initiative; Núcleo de Avaliação de Políticas Climáticas/PUC-Rio, May 2013. (CPI report).
- ASSUNÇÃO, J. et al. **Production and protecion**: a first look at key challenges in Brazil. Rio de Janeiro: Climate Policy Initiative; Núcleo de Avaliação de Políticas Climáticas/PUC-Rio, Dec. 2013. (CPI report).
- BELL, S. **Campanha gaúcha**: a Brazilian ranching system. Stanford: Stanford University Press, 1998.
- BERGAMASCO, S. Caracterização e evolução agropecuária da Amazônia brasileira, 1970-1990. **Revista de Economia e Sociologia Rural**, v. 34, n. 2, p. 61-79, nov./dez.1995.
- BOSERUP, E. **The conditions of agricultural growth**: the economics of agrarian change under population pressure. Chicago: Aldine Publishing Co, 1965.

CARRARA, A. A. **Minas e currais**: produção rural e mercado interno de Minas Gerais, 1674-1807. Juiz de Fora: Editora da UFJF, 2007.

CHOMITZ, K. M.; THOMAS, T. S. **Geographic patterns of land use and land intensity in the Brazilian Amazon**. Washington: Development Research Group/ World Bank, 2000.

\_\_\_\_\_. Determinants of land use in Amazonia: a fine-scale spatial analysis. **American Journal of Agricultural Economics**, v. 85, n. 4, p. 1016-1028, 2003.

COHN, A., M. et al. **The viability of cattle ranching intensification in Brazil as a strategy to spare land and mitigate greenhouse gas emissions**. Copenhagen: CCAFS, 2011. (CCAFS working paper).

DIAS, L. C. P. P. et al. **Patterns of land use, extensification, and intensification of Brazilian agriculture**. New Jersey: John Wiley & Sons, Mar. 2016. (Global Change Biology).

FAMINOW, M. D. **Cattle, deforestation and development in the Amazon**: an economic, agronomic and environmental perspective. Oxfordshire: CAB International, 1998.

FEARNSIDE, P. M.; GUIMARAES, W. M. Carbon uptake by secondary forests in Brazilian Amazônia. **Forest Ecology and Management**, v. 80, n. 1-3, p. 35-46, 1996.

FUNCATE – FUNDAÇÃO DE CIÊNCIA, APLICAÇÕES E TECNOLOGIA ESPACIAIS. **Emissões de dióxido de carbono no setor uso da terra, mudança do uso da terra e florestas**. Segundo inventário brasileiro de emissões e remoções antrópicas de gases de efeito estufa. São José dos Campos: Funcate, 2010. (Relatórios de referencia).

FURTADO, C. **Formação econômica do Brasil**. São Paulo: Companhia Editora Nacional, 1968.

GOULART, J. A. **Brasil do boi e do couro**. Rio de Janeiro: Edições GRD, 1965.

HAYAMI, Y.; RUTTAN, V. W. **Agricultural development**: an international perspective. Baltimore: Johns Hopkins University Press, 1985.

HECHT, S.; COCKBURN, A. **The fate of the forest**. New York: Harper Perennial, 1990.

HOUGHTON, R. A. et al. Carbon emissions from land use and land-coverbchange. **Bio-geosciences**, v. 9, n. 1, p. 5125-5142, Jan. 2012.

IBGE – INSTITUTO BRASILEIRO DE GEOGRAFIA E ESTATÍSTICA. **Brasil agrário retratado pelo Censo de 2006**. Rio de Janeiro: IBGE, 2013.

KENNEDY, C. Induced bias in innovatin and the theory of distribution. **The Economic Journal**, v. 74, n. 295, p. 541-547, Sept. 1964.

MOREIRA, A. B.; REIS, E. **Determinantes e tendências da ocupação da Amazônia**. Rio de Janeiro: Ipea, 2003.

PACHECO, P. Agrarian change, cattle ranching and deforestation: assessing their linkages in southern Pará. **Environment and History**, v. 15, n. 4, p. 493-520, 2009.

PACHECO, P.; POCCARD-CHAPUIS, R. The complex evolution of cattle ranching development amid market integration and policy shifts in the Brazilian Amazon. **Annals of the Association of American Geographers**, v. 102, n. 6, p. 1366-1390, 2012.

REBELLO, F. K. **Fronteira agrícola, uso da terra, tecnologia e margem intensiva: o caso do estado do Pará**. 2004. Dissertação (Mestrado) – Universidade Federal do Pará, Belém, 2004.

REIS, E. J. Carbon emission scenarios for Brazilian Amazon. Rio de Janeiro: Ipea, 1996.

REIS, E. J.; BLANCO, F. A. Causes of Brazilian Amazon deforestation. *In*: PALO, M.; VAN-HANEN, H. (Eds.) **World forests: from deforestation to transition**. London: Kluwer Academic Publishers, 2000. p. 143-165.

REIS, E. J.; MARGULLIS, S. Options for slowing Amazon jungle-clearing. *In*: DORNBUSCH, R.; POTERBA, J. M. (Eds.). **Global warming: economic policy responses**. Cambridge, MA: The MIT Press, 1990. p. 335-380.

RESTITUTTI, C. C. **As fronteiras da província: rotas do comércio interprovincial – Minas Gerais 1839-1884**. São Paulo: Unesp, 2006.

SANTOS, C. M. D. **Economia e sociedade do Rio Grande do Sul: século XVIII**. São Paulo: Companhia Editora Nacional, 1984.

SAUDOULET, E.; JANVRY, A. D. **Quantitative development policy analysis**. London: The Johns Hopkins University Press, 1995.

SCHNEIDER, R. et al. **Sustainable Amazon: limitation and opportunities for rural development**. Washington: World Bank, 2000. (World Bank Technical Paper, n. 515).

SIMONSEN, R. C. **História econômica do Brasil (1500/1820)**. São Paulo: Companhia Editora Nacional, 1957.

STRASSBOURG, B. **Sustainable landscapes: cattle ranching intensification and ecological restoration in the Atlantic rainforest**. Rio de Janeiro: Gaea, [(s.d.)a].

\_\_\_\_\_. **Increasing agricultural output while avoiding deforestation: a case study of Mato Grosso, Brazil**. Rio de Janeiro: International Institute for Sustainability; Instituto Centro de Vida, [(s.d.)b].

UHL, C.; BUSCHBACHER, R.; SERRAO, E. A. S. Abandoned pastures in eastern Amazonia [Brazil]: I. Patterns of plant succession. **Journal of Ecology**, v. 76, n. 3, p. 663-681, 1988.

WEECH, F. V. **A agricultura e o comércio do Brasil no sistema colonial**. São Paulo: Martins Fontes, 1992.

WEINHOLD, D. **An estimation of land degradation in the Amazon**. Nashville: Department of Economics and Business Administration/Vanderbilt University, 1996.



## APPENDIX

### DATABASE: SOURCES AND VARIABLES

The Brazilian Statistical Office (IBGE) undertook Agricultural Census in 1970, 1975, 1980, 1985, 1995/1996, and 2006/2007. From the Agricultural Census is possible to obtain municipal data on land use in agriculture (annual crops, permanent crops, pastures, fallow lands, plantations and natural forests), rural employment, value of land, value and size of cattle herds, and other main assets, quantity and value of major agricultural outputs, destination of shipments, among other variables. For the 1985, 1995/1996 and 2006/2007 Censuses information is disaggregated according to fourteen classes of size of agricultural establishments and the legal arrangements concerning property of land or work relations (proprietor, sharecropper, squatter and other conditions). In addition, annual municipal surveys from 1973 to 2010 provide data on the quantity, value, and crop area of agricultural products, as well as on the quantity and value of output of cattle raising activities (meat, dairy products, eggs, etc.), cattle herds size and value.

IBGE Demographic Census provide decennial data on municipal population from 1970 to 2010. For Census years 1970, 1980, 1991 and 1996 (Contagem da População) 2000, 2007 and 2010, it is possible to get detailed data for urban and rural population; average years of schooling, mortality, life expectation, and income. Based upon the Demographic Census data Ipea/FJP (Fundação João Pinheiro) provide estimates of household income per capita and size distribution of income (Gini and Theil indices) and HDI (Human Development Index) as well as poverty ratios for both rural and urban households at municipal level for the Census years 1970, 1980, 1991, 2000 and 2010. Variables like income per capita, inequality indices, poverty incidence ratio, and average years of schooling for the Agricultural Census years were obtained by interpolation of the values estimated for Minimum Comparable Area by population weighted average of the municipal values observed in Demographic Census years.

The changes in number and area of municipalities require that municípios are lumped together in Minimum Comparable Geographic Area (MCA) to allow consistent geographic comparisons in time from 1970 to 2006.

TABLE 1  
OLS estimates of simple growth convergence of herd density, grazing ratio, cattle specialization, and farm area

Explanatory variables	Dependent: rate of growth (% p.a.) in the intercensus periods for			
	gherd	gstock	gspecial	gfarma
L.diesp	-2,890E-06	6,920E-06	7,120E-07	-4,630E-06
	(6.32e-07)***	(6.41e-07)***	-6,600E-07	(4.04e-07)***
L.diece	-2,300E-06	-1,070E-06	5,980E-07	1,180E-06
	-1,660E-06	-1,880E-06	-1,770E-06	-1,120E-06
L.shtrnsp	-0,0755	0,1493	-0,1190	-0,0034
	(0.0161)***	(0.0178)***	(0.0172)***	-0,0106
L.lnloan	-0,0005	0,0017	-0,0028	0,0026
	-0,0003	(3.38e-04)***	(3.21e-04)**	(2.10e-04)***
L.lninterest	-0,0040	-0,0043	0,0004	0,0008
	(4.34e-04)***	(4.87e-04)***	-0,0005	(2.91e-04)**
L.shrent	-0,0022	0,0367	-0,0151	0,0145
	-0,0078	(0.0088)***	-0,0083	(0.0052)**
L.shwage	-0,0319	-0,0457	-0,0048	-0,0029
	(0.0045)***	(0.0051)***	-0,0048	-0,0030
L.lnpopden	-0,0070	0,0038	-0,0019	-0,0003
	(0.0007)***	(0.0008)***	(0.0007)**	-0,0005
L.shpoprur	-0,0098	0,0135	0,0000	0,0045
	(0.0036)**	(0.0041)***	-0,0039	-0,0024
L.schl25	0,0027	0,0022	0,0023	-0,0017
	(0.0010)**	(0.0011)*	(0.0010)*	(0.0007)**
L.poverty	0,0009	-0,0001	0,0003	0,0003
	(0.0001)***	(0.0001)*	(0.0001)***	(0.0000)***
L.shfarsma	-0,0467	-0,0013	-0,0155	-0,0095
	(0.0100)***	-0,0112	-0,0106	-0,0066
L.shfarmmed	-0,0436	-0,0304	-0,0189	-0,0073
	(0.0117)***	(0.0131)*	-0,0125	-0,0078
L.lidherd	-0,0161			
	(0.0006)***			
L.lstock		-0,0450		
		(0.0011)***		

(Continues)

(Continued)

Explanatory variables	Dependent: rate of growth (% p.a.) in the intercensus periods for			
	gherd	gstock	gspecial	gfarma
L.lspecial			0,0075 (0.0008)***	
L.farmarea				-0,0196 (0.0008)***
1995.time	0,0009 -0,0013	0,0099 (0.0015)***	0,0109 (0.0014)***	-0,0160 (0.0009)***
2005.time	-0,0076 (0.0020)***	0,0861 (0.0023)***	-0,0750 (0.0022)***	-0,0198 (0.0014)***
_cons	-0,0232 (0.0118)*	-0,0162 -0,0132	0,0204 -0,0126	-0,0225 (0.0078)**
R2	0,25	0,42	0,44	0,15
N	10234	10229	10238	10251

Author's estimates.

Notes: \* p &lt; 0.05; \*\* p &lt; 0.1; \*\*\* p &lt; 0.01.

Obs.: For all explanatory variables values refer to the initial year of respective intercensus period. L. refers to lagged value g to growth 1 to the neperian log and sh to shares in absolute values.

TABLE 2

**SURE estimates of conditional growth convergence (std.er.) of herd density, grazing ratio, cattle specialization, farm area density for Brazilian municipalities (AMC7005) for inter-census periods (1975-2005)**

Explanatory variables	Gstock	Ggspecial	Ggfarma
L.diesp	6.97e-06*** -6,41E-07	-2.83e-06*** -6,43E-07	-4.34e-06*** -3,90E-07
L.diece	-3.81e-06** -1,88E-06	1,08E-06 -1,77E-06	3.25e-06*** -1,09E-06
L.shtrnsp	0.145*** -0,02	-0.166*** -0,02	-0,0113 -0,01
L.lnloan	0.00131*** -0,0003	-0.00315*** -0,0003	0.00247*** -0,0002
L.lninterest	-0.00465*** -0,0005	0,000371 -0,0005	0.000892*** -0,0003
L.shrent	0.0238*** -0,009	-0.0165** -0,008	0.0123** -0,005

(Continues)

(Continued)

Explanatory variables	Gstock	Ggspecial	Ggfarma
L.shwage	-0.0369***	-0,00482	-0,00345
	-0,005	-0,005	-0,003
L.schl25	0.00222**	0.00201*	-0.00249***
	-0,001	-0,001	-0,001
L.poverty	-3,84E-05	0.000419***	0.000188***
	-6,25E-05	-5,99E-05	-3,60E-05
L.lnpopden	0.00133*	-0.00278***	-0,000108
	-0,0008	-0,0007	-0,0005
L.shpoprur	0.00892**	-0.00798**	0.00389*
	-0,004	-0,004	-0,002
L.shfarsma	-0,00688	-0.0219**	-0,00935
	-0,011	-0,011	-0,006
L.shfarmmed	-0.0294**	-0,0144	-0,00774
	-0,013	-0,013	-0,008
L.lstock	-0.0331***		
	-0,0009		
L.lspecial		-0.00433***	
		-0,0007	
L.ldfarma			-0.0208***
			-0,001
1995.time	0.00887***	0.0105***	-0.0158***
	-0,0015	-0,0014	-0,0008
2005.time	0.0845***	-0.0729***	-0.0185***
	-0,002	-0,002	-0,001
Constant	-0,0146	0,0164	-0.0160**
	-0,013	-0,013	-0,008
R-squared	0,418	0,431	0,17
Observations	10.229	10.229	10.229

Author's estimates.

Notes: \* p &lt; 0.05; \*\* p &lt; 0.01.

Obs.: 1. For all explanatory variables values refer to the initial year of respective intercensus period. Ln refers to the logarithm of the variable. Shares in absolute values.

2. Dependent variable: rate of growth in the intercensus periods for.

(% p.a.)

TABLE 3

Estimation Results: Qualitative Effects of Exploratory Variables for Models of the Rates of Growth of Herd, Stocking Ratio, Specialization Ratio, and Farm Area according to Ordinary Least Square (OLS), Seemingly Unrelated (SURE), Fixed Effects (FE), and Arellano Bond Panel Data (AB) estimates

Variable	gherd			gstock			gspecial			gfarm		
	OLS	FE	AB	OLS	SURE	FE	AB	OLS	SURE	FE	AB	AB
DIESP	---	---	---	+++	+++	---	---	0	---	---	0	+++
DIECE	0	---	---	0	-	---	---	0	0	++	---	---
SHTRN	---	0	0	+++	+++	0	++	---	---	0	+	+++
LOAN	---	---	---	+++	+++	0	+++	---	---	+++	+++	---
INTEREST	0	0	---	---	---	---	---	0	0	++	+	0
SHRENT	---	---	---	+++	++	+++	0	0	-	---	---	0
SHWAGE	---	0	---	---	---	---	0	0	0	0	0	-
POPDEN	---	0	---	+++	+	+++	+++	---	---	0	---	---
POPRUR	---	0	+++	+++	++	0	---	0	+	+	+	+++
SCHL25	++	---	++	+	++	---	+++	+	+	---	0	---
POVERTY	+++	+++	+++	-	0	+	+++	+++	+++	+++	0	+++
SHSWAF	---	0	0	0	0	+	---	0	-	---	---	0
SHMEDF	---	0	0	-	-	++	---	0	0	0	0	0
LDHERD	---	---	---	---	---	---	---	0	0	0	0	0
LSTOCK	---	---	---	---	---	---	+	+++	---	---	---	0
LSPECIAL	---	---	---	---	---	---	---	---	---	---	---	0
LDFAIR	---	---	---	---	---	---	---	---	---	---	---	---
FE.1995	+	0	---	+++	+++	+++	+++	+++	+++	---	---	---
FE.2005	---	---	---	+++	+++	+++	---	---	---	---	---	---
FE-AM197005	no	yes	yes	no	no	yes	yes	no	no	yes	yes	yes
N.OBS.	10,234	10,234	6620	10,239	10,229	10,229	6,617	10,238	10,229	10,251	6,630	6,630

Source: Author's estimates.

Obs.: Signals in the table mean: 0 = not significant at 5%; +++ = positive and significant at 0.1%; ++ = positive and significant at 1%; + = positive and significant at 5%; --- = negative and significant at 0.01%; -- = negative and significant at 1%; - = negative and significant at 5%.

TABLE 4

**Arellano-Bond dynamic panel data estimation of conditional growth convergence herd density, grazing ratio, cattle specialization, farm area density for Brazilian municipalities (AMC7005) for inter-census periods – (1975-2005)**

Explanatory variables	gherd	Gstock	gspecial	gfarma
L.diesp	-0.00057	-0.00054	0.00001	0.00006
	0.00002	0.00003	0.00002	0.00001
L.diece	-0.00084	-0.00048	-0.00016	-0.00044
	0.00008	0.0001	0.00009	0.00005
L.shtrnsp	-0.03385	0.44131	-0.65901	0.46901
	0.23211	0.26852	0.24438	0.13177
L.lnloan	-0.02692	0.13762	-0.16579	-0.00511
	0.00297	0.00344	0.00313	0.00171
L.lninterest	-0.04489	-0.01754	-0.0276	-0.00464
	0.00516	0.00597	0.00544	0.00294
L.shrent	-0.00998	0.24642	-0.37106	-0.07055
	0.12426	0.1437	0.13146	0.07074
L.shwage	-0.422	-0.07012	-0.24283	-0.07858
	0.06937	0.08023	0.07315	0.0395
L.lnpopden	0.04677	0.1194	0.03259	-0.05712
	0.06937	0.02185	0.01991	0.01076
L.shpoprur	0.01354	0.00813	0.00023	0.0054
	0.00094	0.00109	0.001	0.00054
L.schl25	-0.08643	0.47275	-0.38532	-0.25437
	0.03054	0.03591	0.0324	0.01737
L.poverty	0.36164	-0.38447	0.51669	0.33806
	0.09859	0.11391	0.10381	0.05622
L.shfarsma	-0.33289	0.1762	-1.00466	-0.21813
	0.27982	0.32248	0.29406	0.15938
L.shfarmmed	-0.14868	0.19069	-0.9956	-0.09168
	0.32406	0.3739	0.34103	0.18432
L.lidherd	-0.10914			
	0.01744			
N of obs	6620	6617	6622	6630
N of amc7005	3503	3503	3504	3508
N of instruments	31	31	31	31
Wald chi2(14)	1635.30	10745.35	8924.67	23597.92
Inst. differ. Eq. GMM-type	L(2/.)lidherd	L(2/.)lstock	L(2/.)lspecial	L(2/.)ldfarma
Standard:	D.lidherd	D.lstock	D.lspecial	D.lidfarma
Standard:	D.Ldiesp D.Ldiece D.Lshtrnsp D.Llnloan D.Llninterest D.Lshrent D.Lshwage D.Lschl25 D.Lpoverty D.Llnpopden D.Lshpoprur D.Lshfarsma D.Lshfarmmed Lldherd Ldiesp Ldiece Lshtrnsp Llnloan Llninterest Lshrent Lshwage Lschl25 Lpoverty Llnpopden Lshpoprur Lshfarsma Lshfarmmed			
Inst. Level eq.	cons	cons	cons	cons

Author's estimates.

Notes: \* p < 0.05; \*\* p < 0.01.

Obs.: Dependent variable = rate of growth in inter-censi periods (% p.a.).

---

**PUBLISHING DEPARTMENT**

**Coordination**

Cláudio Passos de Oliveira

**Supervision**

Everson da Silva Moura

Reginaldo da Silva Domingos

**Typesetting**

Bernar José Vieira

Cristiano Ferreira de Araújo

Daniella Silva Nogueira

Danilo Leite de Macedo Tavares

Jeovah Herculano Szervinsk Junior

Leonardo Hideki Higa

**Cover design**

Luís Cláudio Cardoso da Silva

**Graphic design**

Renato Rodrigues Buenos

*The manuscripts in languages other than Portuguese  
published herein have not been proofread.*

---

**Ipea Bookstore**

SBS – Quadra 1 – Bloco J – Ed. BNDES, Térreo  
70076-900 – Brasília – DF  
Brazil  
Tel.: + 55 (61) 2026 5336  
E-mail: [livraria@ipea.gov.br](mailto:livraria@ipea.gov.br)









**Ipea's mission**

Enhance public policies that are essential to Brazilian development by producing and disseminating knowledge and by advising the state in its strategic decisions.



**ipea** Institute for Applied  
Economic Research

MINISTRY OF  
**PLANNING, DEVELOPMENT  
AND MANAGEMENT**

