

Alvarez-Pereira, Brais et al.

Working Paper

Social institutions and economic inequality: Modeling the onset of the Kuznets curve

Discussion Paper, No. 204

Provided in Cooperation with:

Institute of Applied Economic Research (ipea), Brasília

Suggested Citation: Alvarez-Pereira, Brais et al. (2015) : Social institutions and economic inequality: Modeling the onset of the Kuznets curve, Discussion Paper, No. 204, Institute for Applied Economic Research (ipea), Brasília

This Version is available at:

<https://hdl.handle.net/10419/220292>

Standard-Nutzungsbedingungen:

Die Dokumente auf EconStor dürfen zu eigenen wissenschaftlichen Zwecken und zum Privatgebrauch gespeichert und kopiert werden.

Sie dürfen die Dokumente nicht für öffentliche oder kommerzielle Zwecke vervielfältigen, öffentlich ausstellen, öffentlich zugänglich machen, vertreiben oder anderweitig nutzen.

Sofern die Verfasser die Dokumente unter Open-Content-Lizenzen (insbesondere CC-Lizenzen) zur Verfügung gestellt haben sollten, gelten abweichend von diesen Nutzungsbedingungen die in der dort genannten Lizenz gewährten Nutzungsrechte.

Terms of use:

Documents in EconStor may be saved and copied for your personal and scholarly purposes.

You are not to copy documents for public or commercial purposes, to exhibit the documents publicly, to make them publicly available on the internet, or to distribute or otherwise use the documents in public.

If the documents have been made available under an Open Content Licence (especially Creative Commons Licences), you may exercise further usage rights as specified in the indicated licence.

204

DISCUSSION PAPER

SOCIAL INSTITUTIONS AND ECONOMIC INEQUALITY: MODELING THE ONSET OF THE KUZNETS CURVE

Brais Alvarez-Pereira
Catherine S. E. Bale
Bernardo Alves Furtado
James E. Gentile
Claudius Gräbner
Heath Henderson
Francesca Lipari

The logo for the Institute of Applied Economic Research (ipea) features the lowercase letters 'ipea' in a white, sans-serif font. A yellow swoosh underline is positioned beneath the letters, starting under the 'i' and ending under the 'a'. A thin green line arches over the top of the letters.

SOCIAL INSTITUTIONS AND ECONOMIC INEQUALITY: MODELING THE ONSET OF THE KUZNETS CURVE

Brais Alvarez-Pereira¹
Catherine S. E. Bale²
Bernardo Alves Furtado³
James E. Gentile⁴
Claudius Gräbner⁵
Heath Henderson⁶
Francesca Lipari⁷

1. European University Institute.

2. Centre for Integrated Energy Research, University of Leeds.

3. Deputy Director, Department of Regional, Urban and Environmental Studies, Ipea; Researcher at CNPq.

4. The MITRE Corporation. The author's affiliation with The MITRE Corporation is provided for identification purposes only, and is not intended to convey or imply MITRE's concurrence with, or support for, the positions, opinions or viewpoints expressed by the author. Approved for Public Release; Distribution Unlimited. Case Number 14-3055.

5. Institute of Institutional and Innovation Economics.

6. Iowa State University, Department of Economics.

7. University of Tor Vergata; Philosophy, Politics and Economics Program, at University of Pennsylvania.

Federal Government of Brazil

**Secretariat of Strategic Affairs of the
Presidency of the Republic**
Minister Roberto Mangabeira Unger

ipea Institute for Applied
Economic Research

A public foundation affiliated to the Secretariat of Strategic Affairs of the Presidency of the Republic, Ipea provides technical and institutional support to government actions – enabling the formulation of numerous public policies and programs for Brazilian development – and makes research and studies conducted by its staff available to society.

President

Sergei Suarez Dillon Soares

Director of Institutional Development

Luiz Cezar Loureiro de Azeredo

Director of Studies and Policies of the State, Institutions and Democracy

Daniel Ricardo de Castro Cerqueira

Director of Macroeconomic Studies and Policies

Cláudio Hamilton Matos dos Santos

Director of Regional, Urban and Environmental Studies and Policies

Rogério Boueri Miranda

Director of Sectoral Studies and Policies, Innovation, Regulation and Infrastructure

Fernanda De Negri

Director of Social Studies and Policies, Deputy

Carlos Henrique Leite Corseuil

Director of International Studies, Political and Economic Relations

Renato Coelho Baumann das Neves

Chief of Staff

Ruy Silva Pessoa

Chief Press and Communications Officer

João Cláudio Garcia Rodrigues Lima

URL: <http://www.ipea.gov.br>

Ombudsman: <http://www.ipea.gov.br/ouvidoria>

DISCUSSION PAPER

A publication to disseminate the findings of research directly or indirectly conducted by the Institute for Applied Economic Research (Ipea). Due to their relevance, they provide information to specialists and encourage contributions.

© Institute for Applied Economic Research – **ipea** 2015

Discussion paper / Institute for Applied Economic

Research.- Brasília : Rio de Janeiro : Ipea, 1990-

ISSN 1415-4765

1. Brazil. 2. Economic Aspects. 3. Social Aspects.
I. Institute for Applied Economic Research.

CDD 330.908

The authors are exclusively and entirely responsible for the opinions expressed in this volume. These do not necessarily reflect the views of the Institute for Applied Economic Research or of the Secretariat of Strategic Affairs of the Presidency of the Republic.

Reproduction of this text and the data it contains is allowed as long as the source is cited. Reproductions for commercial purposes are prohibited.

JEL: B25, C63, D63, D70

CONTENTS

ABSTRACT	
1 INTRODUCTION	7
2 LITERATURE SURVEY	8
3 THE THEORETICAL MODEL	11
4 ANALYSIS	16
5 MODEL IMPLEMENTATION	20
6 RESULTS AND DISCUSSION	22
7 CONCLUSION	25
REFERENCES.....	26

ABSTRACT

Theoretical models of the Kuznets Curve have been purely analytical with little contribution towards an understanding of the timing of the process and the presence of additional mechanisms affecting its timing. This paper proposes an agent-based version of Acemoglu and Robinson's model of the Kuznets Curve. In extending their analytical framework we include heterogeneity of agents' income and a mating mechanism that together represent elements of social mobility. These two simple changes proved to be enough to shed light on the length and timing before high inequality implies regime change. Thus, this work may contribute to an effective empirical assessment of the Kuznets curve as it explicitly considers the time dimension of the process and the effects of considering social dynamics.

Keywords: Kuznets curve; agent-based model; inequality; institutions.

1 INTRODUCTION

In 1955 Simon Kuznets hypothesized that there exists an inverse U-shaped pattern in long-run processes of economic development (Kuznets, 1955); that is, economic inequality increases as an economy develops, before decreasing after a certain level of income is reached. Although the hypothesis has been subjected to extensive examination, there remain many open questions in relation to this theory. In particular, these questions relate to: *i*) evidence for the theory's empirical validity; *ii*) theory explaining why the curve arises; and *iii*) shape and onset of the curve in different countries.

In their 2002 paper, Acemoglu and Robinson (2002) (AR) offer a political economy theory of the Kuznets Curve. They propose that “capitalist industrialization tends to increase inequality, but this inequality contains the seeds of its own destruction, because it induces a change in the political regime toward a more redistributive system” (Acemoglu and Robinson, 2002, p. 184). In contrast to other theories, which propose for example that the curve results from the move from agricultural to industrial economies (Lindert, 1986), or technological change increasing wages (Tam, 2008). They argue instead that political factors and institutional change are crucial. They model redistribution and the associated reduction in inequality as a process where poor agents force political instability and the political elites extend redistribution through taxation to avoid a revolution. Society, therefore, moves from an autocratic to a democratic regime.

However, they do not consider the dynamics of the Kuznets Curve explicitly. In this paper, we take their paper as a starting point and formalize their interpretation of the Kuznets Curve in an agent-based model. This allows us to explore the effects of relaxing some of the assumptions made on the shape and onset of the Kuznets curve and to consider the time dimension explicitly. Specifically, we extend the model to include heterogeneity in the agents (both poor and rich) by allowing for an income distribution, and we include also a mating mechanism that allows mobility between the two classes, rich and poor, via the social institution of marriage.

The paper is structured as follows. In section 2 we present an overview of the current literature highlighting gaps in the theory, and consider the discussion related to the existing empirical evidence on the Kuznets Curve. In section 3 we develop the model, showing both the features that we reproduce and those we introduce as novel.

Section 4 covers assumptions and special cases. Section 5 describes the implementation of the agent-based model. Section 6 presents the parameterization, a brief sensitivity analysis and the results. We conclude the paper in section 7.

2 LITERATURE SURVEY

The concept of the Kuznets's Curve goes back to the work of (Kuznets, 1955) who studied the relationship between economic growth and income inequality. He used time series data for England, the United States and Germany and formulated some stylized facts about the dynamics of growth and inequality in these countries.

He identified increasing inequality in England for the period of 1780-1850 and a shrinking from the last quarter of the 19th century, and the same dynamics for the United States and Germany, with an increasing inequality for the period between 1840 to 1890 and a shrinking after the First World War. He expected the then underdeveloped countries to follow a similar pattern. He was, however, skeptical of the quality of his data set and pointed out that “the results [can be] considered as preliminary informed guesses” (Kuznets, 1955, p. 4).¹

When providing a theoretical explanation for the income dynamics, he mentioned the importance of political interference, which is expected to become more pronounced at later stages of development (Kuznets, 1955, p. 18). The major mechanism for him was, however, that more and more people move from the countryside to the cities and move from the agricultural to the industrial sector. The result would be an increase of the income share of the poorest in the cities, which is also related to their increased political influence. Since the theory was first proposed, there has been an extensive body of literature assessing the validity of the hypothesis. The contributions can be grouped into theoretical assessments and empirical studies. We will give an overview over both branches while emphasizing that the latter body of literature is much larger than the first one.

1. “The paper is perhaps 5 per cent empirical information presented and 95 per cent speculation, some of it possibly tainted by wishful thinking” (Kuznets, 1955, p. 26).

2.1 Theoretical contributions

The motivation for theoretical models yielding a Kuznets relationship is the belief that empirical regularities as such (if they exist) can only be interesting to the extent that “they can be viewed as providing some clues to the mechanisms through which the development process affects the degree of inequality” (Ahluwalia, 1976b, p. 338). If such deeper mechanisms could be identified, reasonable policy advice could be derived from the observations, a goal that has been articulated throughout the entire literature on inequality.

The first important theoretical contribution is the paper of Lewis (1954) in which he coined the idea of dualistic development, i.e. the coexistence of two sectors with important differences in at least one relevant dimension, mostly productivity. In this paper, the author used the example of a capitalist and a subsistence sector and as capital is only used in the first sector, it has a higher output per head and higher wages. If more capital is produced, more workers move from the subsistence to the capitalist sector and their income rises. Kuznets idea of the population shift from agricultural to urban employment was certainly inspired by this paper. The dualistic development models were further extended and refined in further papers by Ranis and Fei (1961), Harris and Todaro (1970), and Anand and Kanbur (1993).

An important step was the work of Robinson (1976) who provided a more formal two-sector model that deals with the inequality dynamics explicitly and considers different income distributions in the sectors and a shift of the relative population of one sector. He showed that such a setting will frequently produce a Kuznets pattern. These theoretical considerations have been used to justify a great set of policy measures (Ahluwalia, Carter and Chenery, 1979). AR, while building on previous work in the political science literature are the first who propose a political economy explanation for the Kuznets curve.²

2.2 Empirical contributions

The empirical assessment of the Kuznets curve has been characterized mainly by discussions about the quality of data and the choice of estimation techniques. It was Kuznets himself who pointed to the high requirements on data in order to assess his hypothesis in a serious

2. The empirical relevance of the political factors for the dynamics of inequality has been pointed out, e.g. by Tam (2008).

manner. Although Kuznets himself used time series data for the formulation of his theory, the vast majority of empirical work until recently has focused on cross-sectional data (e.g. Aldeman and Morris, 1973; Paukert, 1973; Robinson, 1976; Ahluwalia, 1976a), simply because other data was not available (Ahluwalia, 1976b, p. 307).

The most famous papers of the early era concluded with support for the Kuznets relationship and triggered a huge policy debate (Ahluwalia, 1976b). Later, Anand and Kanbur (1993) took these papers as a starting point for their critique of the Kuznets concept and highlighted the insufficient data and the lack of consensus about the adequate estimation techniques. Until 1998, studies used exclusively cross-sectional data and the resulting evidence was mixed, with a tendency to be negative (Fields, 2001; Piketty, 2006). However, the overall explanatory power of these cross-sectional studies has frequently been questioned. The Kuznets hypothesis is about how inequality develops within one country, not how it develop across countries, what is tested if one relies on cross sectional data.

In 1996, Deininger and Squire (DS) were the first who provided a panel data set that allowed the consideration of country specific effects (Deininger and Squire, 1996). After the release of this first panel data set, a new wave of empirical studies about the Kuznets Curve emerged. While DS find a statistically significant Kuznets-like relationship for a pooled regression, they reject the presence of the Kuznets Curve when they use fixed effects estimation. Only 10 per cent of the countries in their sample followed a Kuznets process. Almost the same number of countries followed the exact opposite while the rest did not show any significant relationship between growth and inequality. Savvides and Stengos (2000) using a threshold regression model did not find evidence for the Kuznets relationship (or any other well-defined relation) either and Higgins and Williamson (1999) found evidence for the curve only if they controlled for demographic and globalization effects.³ Many authors used the data set to argue for the importance of additional mechanisms such as policies and openness, thereby rejecting the idea of an unconditional relationship and explaining the resulting differences across countries (Schultz, 1998). Later, the data set provided by DS received heavy critique for including inconsistent inequality measures and providing in-accurate time series (Atkinson and Brandolini, 2001). After this, almost no study was published using the

3. This is somewhat contrary to the usual interpretation that the Kuznets Curve describes an unconditioned relationship.

original data set any more. In contrast to earlier praxis, some non-parametric studies were conducted using a refined version of the DS data set, finding mixed evidence. Another issue not adequately dealt with in the empirical literature is the time period over which the Kuznets Curve develops: The existing theoretical contributions do not make concrete statements about the time horizon of the Kuznets curve. Because of data scarcity most studies assessed a time span of at most 40 years.⁴

We conclude that the evidence for the Kuznets curve is very mixed. While the evidence from cross-sectional studies cannot be trusted, more recent studies suggest that Kuznets patterns can be observed in some individual countries, which suggests an important role for country and region specific influences. There has never been a trustworthy study considering the Kuznets curve over more than 60 years, and considerations about data quality and adequate estimation techniques are not yet fully resolved.

3 THE THEORETICAL MODEL

3.1 Environment

As in the original model (Acemoglu and Robinson, 2002) we consider an infinite-horizon non-overlapping generation model in which parents invest in their offspring's education. In the benchmark model, a discrete population of N agents is divided in two groups N_t^r and N_t^p , respectively, the total number of rich and poor agents in period t . In every period, every agent in the population meets another agent, which might or not be from the same social class, and they beget two children. It is assumed that $1/2 < N_0^p / (N_0^p + N_0^r) < 1$ so that rich agents are a minority elite in the beginning. Political power is initially concentrated in the hands of the elite, where decisions will be taken by the median voter of the rich agents.

There is a unique consumption good y with price normalized to 1 and a unique asset b . At $t = 0$ each agent i has human capital h_0^{ip} or h_0^{ir} indexed with p for poor agents and with r for rich agents. Note that we allow heterogeneity of individual capital

4. A noteworthy exception is Lindert (1986) who considered the period between 1670 and 1911 in England using data about landownership, debts, probated wealth and occupation. He concluded with an affirmative result for the Kuznets curve but the quality of the data is subject to severe criticism.

endowment. The distinction between rich and poor depends solely on their capacity to invest, represented by e_{t+1} , in the education of their children e_{t+1} .

The final good is produced by each agent using a linear technology. Individuals can choose to allocate their capital between the formal sector, using a market technology $y_t^{im} = Ah_t^{im}$, and the informal sector $y_t^{ib} = Bh_t^{ib}$, where h_t^{im} is the amount of capital used in the formal sector or market production by agent i in period t and h_t^{ib} is the amount of capital he devotes to informal production. In the model $A > B$, so production in the formal sector is always more productive. Production in the informal sector has the advantage of being untaxed. The relation between A and B will determine the maximum possible tax.

Aside from the heterogeneity of the agents, this formalization is the same as that of AR (Acemoglu and Robinson, 2002).

3.2 Mating

The mating mechanism is not included in the original paper. We consider two agents in the population $i, j \in \{r, p\}$ who select each other in order to form a family. We denote the total probability of an agent i mating another agent j as P_t^{ij} . If mating is perfectly random, for a large N the probability of a poor agent mating with a poor agent is $\lambda_t = N_t^p / (N_t^p + N_t^r)$. If mating is perfectly assortative the probability of a poor agent mating with a poor agent is unity. We define such probability as:

$$P_t^{pp} = \lambda_t + \alpha(1 - \lambda_t) = \alpha + \lambda_t(1 - \alpha)$$

where α is a measure of assortativity. Hence, when $\alpha = 0$, random mating results, while for $\alpha = 1$, mating is perfectly assortative. Following the same logic, given $1 - \lambda_t = N_t^r / (N_t^p + N_t^r)$, the probability of a rich agent mating with a rich agent is simply given by $P_t^{rr} = (1 - \lambda_t) + \alpha\lambda_t = 1 - \lambda_t(1 - \alpha)$.

The remaining probabilities are easily computed as $P_t^{pr} = (1 - \alpha)(1 - \lambda_t)$ and $P_t^{rp} = (1 - \alpha)\lambda_t$. α is then our inter-class mating parameter (assortativity).

In every period t the expected number of poor agents that mate outside their class is $N_t^p P_t^{pp} = N_t^p [1 - (\alpha + \lambda_t(1 - \alpha))]$. The expected number of rich agents that mate outside their class is $N_t^r P_t^{rp} = N_t^r [1 - (1 - \lambda_t(1 - \alpha))]$. It is easy to see that expected values match.

$$\begin{aligned} N_t^p [1 - (\alpha + \lambda_t(1 - \alpha))] &= N_t^r [1 - (1 - \lambda_t(1 - \alpha))] \\ \lambda_t N(1 - \alpha)(1 - \lambda_t) &= (1 - \lambda_t) N \lambda_t (1 - \alpha) \end{aligned}$$

3.3 The consumption-investment decision

When two agents mate they become a family, for which the total amount of wealth or final good is the sum of the individual. For family z , made up of agents i and j ,

$$y_t^f = y_t^i + y_t^j$$

where for a generic agent i , $y_t^i = y_t^{im} + y_t^{ib}$; for production in both the formal m and informal b sectors.

We assume that both parents are altruistic towards their children, regardless their social origin. Accordingly, the decision about how much of the final good to consume and how much to invest on the children education is jointly taken between the two members of the family, e_{t+1}^z , following preferences,

$$e_{t+1}^z = \begin{cases} \gamma \hat{y}_t^f & \text{if } \gamma \hat{y}_t^z > 2 \\ 0 & \text{if } \gamma \hat{y}_t^z \leq 2 \end{cases}$$

where $\gamma \in (0, 1)$,⁵ c_t^z is the joint consumption of the parents in period t , and e_{t+1}^z is the investment in children education. These preferences imply an investment rate equal to γ . We assume that parents invest the same in both children, and so the utility function implies that a family will invest in education if and only if the amount they can dedicate to this is larger than 2 (1 for each of the children).

5. The altruistic assumption allows us to not define a specific parameter for each single agent type, at least for the purpose of this article.

$$h_{t+1}^k = \max\{1; Z(e_{t+1}^z/2)^\beta\}$$

For each new child, k , his human capital is given by

$$h_{t+1}^k = \max\{1; Z(e_{t+1}^z/2)^\beta\}$$

with $Z > 1$ and $\beta < 1$. This guarantees that accumulation of capital does not continue indefinitely. Notice also that the equations above guarantees that the minimum amount of capital is 1.

3.4 Taxes and transfers

No matter how forward-looking the parents would be for their children, their investment decision depends on the tax regime. We assume that taxes cannot be made person-specific and so they are proportional to the amount of market-produced good. However, we have introduced the family unit as the agent performing the investment and voting decisions, then, for every family, post-tax total income is simply:

$$\hat{y}_t^z = (1 - \tau_t)Ah_t^{zm} + T_t + y_t^{zb}$$

which simplifies to:

$$\hat{y}_t^z = (1 - \tau_t)Ah_t^{zm} + T_t$$

if both parents produce all of their goods in the formal sector. This will be the case in equilibrium. τ_t is the tax rate and T_t , the transfer in each period, is just given by:

$$T_t = \frac{\sum_{i=1}^N y_t^{zm}}{N}.$$

The government's budget constraint is given by $NT_t = \tau_t AH_t^m$, where $H_t^m = \sum_{i=1}^m h_t^{im}$ is the total production in the formal sector of the economy. Initially the tax rate will be set by the median voter among rich agents. However, poor agents can overthrow the existing government and take over the capital stock at any period t . We assume that a revolution would be triggered when more than half of the population are materially better off than under the government of the rich elite. If it is triggered, a revolution always succeeds, with a proportion $1 - \mu$ of the capital stock being destroyed, and the remaining of it being shared equally among the whole population.⁶ Therefore, μ indicates how costly the revolution would be. Hence, if there is a revolution at period t , each family receives

$$y_t^z = \frac{\mu AH_t}{N}$$

in every future period. For simplicity, we assume that when deciding whether agents prefer a revolution to take place, parents only think about their current period endowment of final good, and not about their offspring's.⁷

For the median rich agent it will always be preferable to extend the franchise and open the regime to democracy than to let the revolution happen (see section 4). Hence, if the revolution constraint binds at any given period, the elite will introduce democracy, allowing the whole population to vote. The equilibrium tax rate in the first democratic period will be

$$\hat{\tau} = \frac{A - B}{A}$$

the maximum tax level which does not imply agents allocating their capital to production in the informal level. The timing of the model in each period is as follows:

6. AR assume capital to be shared only between the poor. Thanks to our implementation with a continuous distribution of income we can consider the more realistic case in which every agent in society gets the same.

7. They do not take into account the probability of their children marrying a richer agent who will increase their family income and investment, they just consider the utility of the family in the current period.

- parents die and the new generation receive education bequests. Upon receiving the bequest, the new generation makes a marriage decision. Social mobility can be improved by marriage;
- the median voter among the rich agents sees everybody's capital endowment and finds out if a revolution is optimal for half of the population or more, in which case he will choose to extend the franchise and open the regime to democracy;
- if the franchise has been extended, family, composed by the two parents, decide if they prefer to vote and select the optimal tax level or to support a revolution, which never happens in equilibrium;
- each family allocates his capital stock between the formal and the informal sector, and the implied production between consumption and bequest levels.

In each period inequality is measured by the Gini index, computed over the wealth distribution of all families.

4 ANALYSIS

In this section we comment on the model assumptions and the case we choose for the simulation.

4.1 Model Assumptions

For the assumptions of the model the reader is referred to AR (Acemoglu and Robinson, 2002). The main assumptions we keep are: the zero bequest assumption, the steady state assumption, the fact that the median rich agent prefers democracy to revolution, and initial conditions which ensure that rich agents who marry other rich agents are able to accumulate capital when there are not taxes. These conditions imply that poor agents cannot accumulate wealth even in the absence of taxes, while economic growth exists in the economy because rich agents start with less than steady state human capital, and are able to accumulate wealth until they reach the steady state level.

Assumption 1 (Zero bequest assumption): $2\gamma A < 2$. When there is no tax-ation ($\tau_t = T_t = 0$) a family z with a minimum level of capital ($h_t^z = 2$) leaves no education to their offspring. This implies that without taxation, the human capital for each of

the children from family z , $h_{t+1}^k = 1$, and so individuals who are born from a poor family,⁸ will be poor themselves.

Assumption 2 (Steady state assumption): $(\gamma B)^\beta Z > 1$. When there is no taxation and the return on capital is B , we assume that when accumulation of capital takes place, a steady state $h_{ss} > 1$ can be reached. This condition allows accumulation by the rich in the absence of taxation (under autocracy or in a democracy with equilibrium tax equal to 0) and ensures that taxation will never be high enough to stop accumulation.

Assumption 3 (median rich agent prefers democracy to revolution): This is guaranteed by the condition $\frac{\mu AH_t}{N} < \hat{y}_t^r$, where r^9 denotes the median voter among the rich agents and $\hat{y}_t^r = (1 - \tau_t) Ah_t^{im}$ is his after tax income under democracy. This condition means that the median rich voter always prefers democracy (with the taxes implied) than a revolution, and is guaranteed by a low enough μ .

Assumption 4 (Initial conditions). To ensure that rich agents who marry other rich agents accumulate capital when there are no taxes, we assume $h_0^r < h_{ss}^r$ for all rich agents r and $\gamma \hat{y}_0^r = \gamma Ah_0^r > 1$, or equivalently:

$$h_{SS}^r > h_0^r > (\gamma A)^{-1}$$

where h_{ss}^r is the steady-state value of rich agents' human capital. This condition ensures that there will exist economic growth, as rich agents start with less than steady-state human capital.¹⁰ It also guarantees that rich agents, when marrying other rich agents, are able to leave a positive bequest to their offspring.

8. We consider a poor family to be one which does not have enough resources to invest in offspring education given the preferences in the model.

9. Since we are assuming that the family income is equally divided between the parents, their voting decision will be the same and it will reflect the maximization problem. Namely, even in the case in which the two parents have different social classes of origin, in the context of the family they are going to vote for the same policy that will benefit their total family income.

10. Unless inter-class marriages are very high and most of the families between a rich and a poor agent become poor after joining their wealth.

4.2 Analysis

Case a) Autocracy and the rich accumulate: Since in our model poor agents cannot accumulate (unless they mate with a rich enough agent), and rich agents do (unless they mate with a poor agent and they are not rich enough), for high enough α , i.e. low enough inter-class mating, inequality will increase during the first periods, before rich agents' capital reaches the steady state level. The franchise will be extended when wealth under autocracy becomes lower for at least half of the population than what they would get after a revolution. Increasing inter-class mating has two effects: On the one side it increases economic growth, on the other it decreases inequality. Therefore, the following scenarios are possible: When a rich agent and a poor agent together create a rich family, the case chosen for our experiment, inter-class mating decreases social inequality and increases economic growth. Then, the effects of introducing inter-class mating ($\alpha < 1$) in an environment in which the franchise would be extended at a certain period $t = k$ will be either:

- 1) To modify the time for a revolution to be optimal for at least half of the population, depending on whether the growth or the inequality effect dominates. Our simulations suggest a domination of the growth effect, by increasing the number of families which are able to accumulate wealth, increasing inter-class mating increases total wealth in the autocratic regime, making the revolution optimal for the poor proportion of the population earlier in time.
- 2) If inter-class mating is high enough, it might prevent the revolution constraint from ever being triggered. Since we are assuming the median voter of the rich takes the political decisions, democracy arrives just because all agents become rich at some point.

Case b) A rich agent and a poor agent together create a poor family: In this case inter-class mating still decreases inequality, but it also decreases economic growth. The effects of introducing inter-class mating in an environment in which the franchise would be extended at a certain period $t < k$ will be:

- 1) To delay the time for a revolution to be optimal for at least half of the population, as now inequality increases more slowly. There are less rich agents getting richer in every period.
- 2) If inter-class mating is high enough, a revolution will never happen because with an impoverished population total market production Y_t^m might become too small as for a revolution to be ever profitable. If there are not enough rich, sharing a fraction of an economy in which virtually every producer is poor is never optimal.

Case c) A poor agent and a rich agent might create a poor family or a rich family:

If some inter-class mating will result in poor families and others in rich families, decreasing α will imply decreasing inequality and so delay the time for the franchise to be extended (if it ever happens). The effect on growth will depend on which kind of mating dominates.

4.3 Democracy

When democracy is trivially reached because everybody becomes rich or because everybody becomes poor, then there will be no taxes, and consequently no political decision is taken. If democracy is reached through a revolution, the median voter will choose the maximum possible tax rate in the first democratic period. After this, inter-class mating and redistributive taxes will decrease inequality. At some point, it might occur that the median voter is not interested in positive taxes anymore. Formally, he chooses τ as to optimize:

$$\tau^m \in \text{Argmax} (1 - \tau_t)Ah_t^m + \frac{\tau^m Y_t}{N}$$

So the optimal tax level is simply given by:

$$\tau^m = \begin{cases} 0 & \text{if } Ah_t^m > \frac{Y_t}{N} \\ \frac{(A-B)}{A} & \text{if otherwise} \end{cases}$$

In the next section, we consider the implementation of the theoretical model as an agent-based model.

5 MODEL IMPLEMENTATION

The model was implemented as a discrete-time, agent-based model written in Python. The code is available at github.¹¹ The simulation began by initializing 1,000 agents with a wealth distribution according to a Lorenz curve where $\delta = 0.82$. The simulation was executed for 200 timesteps. Agents were considered rich if their initial wealth was above the poverty line $1/(\gamma A)$. After the initialization, the simulation was executed in the following manner:

- 1) Agents were paired and mated dependent on the assortative pairing parameter.
- 2) Each pair of agents begat two successive, “children” agents.
- 3) Wealth of each child is an average of their parents individual wealth $(Z \cdot \gamma^\beta)$.
- 4) Each agent calculates post-tax income as $(1 - \tau)Aw + r$ where w is wealth and r is the transfer.
- 5) Each agent computes its savings as savings rate time post tax income.
- 6) A regime choice is made. If the richest poor agent’s potential income under democracy $(\mu AH_t/N_p)$ is greater than its current post-tax income, the democracy is set and democracy continues through the execution.
- 7) If democracy is the current regime, the median agent, sorted by wealth, sets the tax rate. The rate is zero if this agent has above average wealth or $(A - B) / A$ otherwise.
- 8) Transfers are calculated as $r = \tau A H / N$.

11. PEKC model, available at: <<http://jgentile.github.io>>.

In assortative mating, agents were paired based on the assortative parameter and a new generation was generated where two “parents” begat two “children”. The children wealth were set as the average between their parent’s savings. Each agent is classified as rich or poor depending on their wealth relative to the poverty line.

In one-to-one mating, each agent generates a “child” and its savings are passed down.

This generation is processed just as in steps 1-8.

The number of agents and the initial proportion of rich agents is given as an exogenous parameter. The model initializes heterogeneous agents according to a Lorenz curve whose parameters are specified according to empirical evidence. We then classify the new agents using a poverty line which is given by $\frac{1}{\gamma A}$.

Each round all agents get updated: No wealth smaller than unity is allowed and at the beginning, gross income is calculated for every single agent as the product of formal sector productivity times individual human capital. Post tax income is then given by subtracting taxes paid and adding the transfers received by the state. Then those agents who have enough capital save according to the exogenous saving rate.

After the agents are updated, overall inequality is calculated and we check whether the revolution constraint is binding and a regime shift happens. Then the median voter sets the tax rate. The transfer for every agent is calculated accordingly.

Because our model considers the heterogeneity of all agents, we are able to scrutinize the extension proposed by Acemoglu and Robinson (2002, p. 197), namely heterogeneity among the rich.

Recall that one time step represents one generation. Therefore, at the end of each round, a new generation of agents is initialized. The wealth of the new agents depends on the mating mechanism under consideration.

6 RESULTS AND DISCUSSION

6.1 Parameterization and sensitivity analysis

Where possible, we use empirical data to inform the model parameterization. Some parameters are derived from the same equations as given in AR, the remaining parameters were set explicitly. Table 1 shows the origin of the parameters and values used in the baseline scenario. In all runs $N = 1,000$.

TABLE 1
Parameter values

Parameter		Baseline origin
Gini Coefficient	0.10	Informed by data (World Bank, 2014)
δ : Lorenze curve parameter	0.82	Derived from other parameters
Δ : % of poor	0.99	Model initial condition
l : Threshold agent	990	Derived from other parameters
H_m : Threshold agent (90th percentile)	1.87	Derived from other parameters
A : Parameter on modern sector production function	2.67	Derived from other parameters
B : Parameter on informal sector production function	2.13	Derived from other parameters
γ : Savings rate	0.20	Informed by data (World Bank, 2014)
Z : Parameter on offspring human capital function	3.37	Set as initial condition
β : Exponent on offspring human capital function	0.75	Set as initial condition
μ : Proportion of economy remaining after revolution	0.85	Set as initial condition
τ : Tax rate	0.20	Informed by data (World Bank, 2014)

Given the constraints and conditions of the model, the set of parameters that can be subject to sensitivity analysis are:

- initial inequality and productivity;
- savings and productivity; and
- size of damage imposed by change of regime.

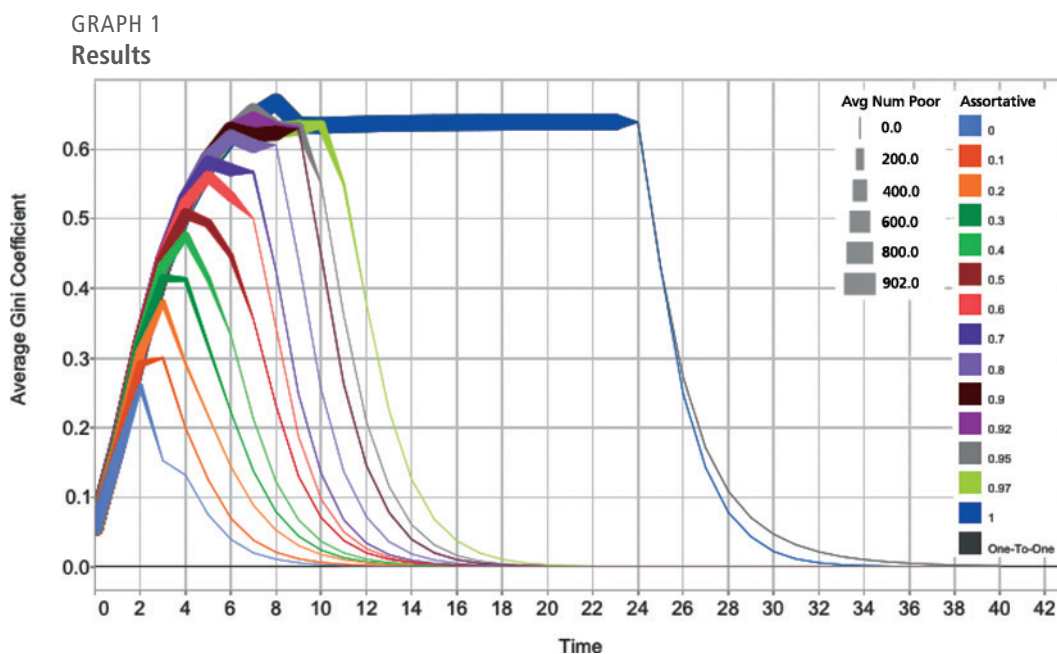
For the sensitivity analysis we will consider the case of assortative mating and how parameters other than α influence the results. Both the initial inequality and the share of savings imposed to the economy determine the productivity in the formal sector. Derived from that, the equations provide the productivity on the informal sector. For δ close to 1 and derived productivity much higher than empirically observed, inequality rises for all values of α . Typically, for variations in δ between 0.3 and 0.9, we observe increase in inequality, followed by a decrease to zero. If we vary the level of savings in the society, going from 10 % to 30 %, not much change in the behavior of inequality is observed. For values of α from 0.2 to 0.9 one can see an increase in inequality, followed by a slow decrease before there are no more poor agents in the simulation.

The model also allows for a variation in the size of the economy that is left after a revolution. We varied μ from 0.4 to 0.95. Results vary little with most distributions showing an increase in inequality followed by a short decrease before simulation is stopped with no more poor agents. Finally, we studied a set of parameters that resemble those of the United Kingdom and Germany.

The sensitivity analysis showed that the model is robust to transformations in the parameters as long as they are within the constraints and conditions imposed by the construction of the model itself.

6.2 Results

Graph 1 presents the results associated with the baseline parameterization. For alternative values of α , we plot the time series of income inequality and poverty. Income inequality is measured by the Gini coefficient and poverty is captured by the number of poor agents. Recall that $\alpha = 0$ corresponds to perfectly random mating, $\alpha = 1$ corresponds to perfectly assortative mating, and a unit of time corresponds to a generation. Three interesting conclusions emerge from graph 1: higher assortativity in mating is associated with: *i*) a later onset of the Kuznets curve; *ii*) greater inequality; and *iii*) an increased persistence of poverty.



The graph shows the evolution of the Gini coefficient for $\alpha = 0$ to $\alpha = 1$ (i.e. from random to perfectly assortative mating). The width of the line is proportional to the number of poor agents at a given time step.

Regarding the first conclusion, we see that for $\alpha = 1$ the turning point occurs at $t = 8$ whereas for $\alpha = 0$ the turning point occurs at $t = 2$. Taking into account all intermediate values of α reveals that the turning point increases monotonically with assortativity in mating. The second conclusion follows immediately from the first: for those values of α that correspond to a later onset of the Kuznets Curve we see that higher levels of inequality are obtained. Specifically, we see that for $\alpha = 1$ peak inequality nearly reaches 0.70 whereas for $\alpha = 0$ peak inequality remains relatively low at approximately 0.25. Analogous to the first conclusion, it is then evident that peak inequality increases monotonically in the assortativity of mating. With respect to the third conclusion, it is evident that for greater values of α poverty appears more persistent. That is, for $\alpha = 1$ a non-negligible quantity of agents remain impoverished until $t = 23$ whereas for $\alpha = 0$ poverty is nearly completely eradicated by $t = 2$. Thus, in examining all intermediate values of α we see that the third conclusion echoes that of the first and second: we see yet another monotonic relationship as the duration of poverty is increasing in α . Regarding intuition, first consider the case where $\alpha = 1$.

In this scenario, marriage induces no social mobility and redistribution can only occur with taxation under democracy. For a given parameterization, the revolution constraint dictates that the franchise will be extended when the expected income after a revolution is higher for the median family to what it gets under the current government of the rich elite is sufficiently greater than the wealth of the wealthiest poor agent. The model outcomes for $\alpha = 1$ thus depend primarily on the growth rate of the economy. When $\alpha = 0$, social mobility manifests through interclass marriage, which exerts influence on the transition to democracy. From graph 1, we see that this case is characterized by an immediate reduction in the number of poor agents, which exerts upward pressure on per capita wealth through both decreasing H^{p12} and increasing H . This phenomenon leads to a more rapid transition to democracy and thus the earlier onset of the Kuznets curve. For $0 < \alpha < 1$ we observe that the higher α , the longer the Kuznets process lasts.

7 CONCLUSION

In this paper we present two major contributions to the debate around the theory of the Kuznets Curve. The first is of theoretical interest. Although we have only considered our baseline parameterization, while sensitivity analysis and calibration with real data are crucial next steps, our simulations show that social institutions (namely, interclass marriage) appear to play an important role in the timing or onset of the Kuznets Curve. Such social institutions may thus represent a crucial source of omitted variable bias in the existing empirical and theoretical work on the Kuznets Curve and future research may benefit from its consideration. We were also able to provide insights about the dynamics of the Kuznets relationship. Our model illustrates the possible variation in timing of the Kuznets Curve and is more explicit about the time span in which the relationship operates, namely up to 24 generations. If the model is calibrated to empirical data, such a consideration can help derive the time horizon to be considered in empirical studies and can thus help to bring more clarity to the empirical assessment of the hypothesis.

The second contribution is of a methodological kind. Our model takes a purely analytical model as a starting point, replicates the behavior of this model in an agent-based simulation, and then relaxes some of the assumptions required to keep the original model tractable. So it allows the consideration of the dynamics explicitly. While there are

12. H^p is the aggregate human capital across poor agents.

only a few models of this kind (e.g. Albin and Foley, 1992; Gintis, 2007 for the standard general equilibrium model), our model illustrates the usefulness of this approach. The rigor of the previous analytical model is sustained, but in our approach we are able to go beyond its application and assess its sensitivity to the rigid assumptions previously made through the introduction of marriage and capital heterogeneity across agents of the same type. Our agent-based model will allow for further exploration of the factors affecting the timing and onset of the Kuznets Curve, and can also be applied to understand economic inequality in different countries with different levels of social mobility.

REFERENCES

ACEMOGLU, D.; ROBINSON, J. A. The political economy of the Kuznets curve. **Review of Development Economics**, v. 6, n. 2, p. 183-203, 2002.

ADELMAN, I.; MORRIS, C. T. **Economic growth and social equity in developing countries**. Stanford: Stanford University Press, 1973.

AHLUWALIA, M. S. Income distribution and development: some stylized facts. **American Economic Review**, v. 66, n. 2, p. 128-135, 1976a.

_____. Inequality, poverty and development. **Journal of Development Economics**, v. 3, n. 4, p. 307-342, 1976b.

AHLUWALIA, M. S.; CARTER, N. G.; CHENERY, H. B. Growth and poverty in developing countries. **Journal of Development Economics**, v. 6, n. 3, p. 299-341, 1979.

ALBIN, P.; FOLEY, D. K. Decentralized, dispersed exchange without an auctioneer: a simulation study. **Journal of Economic Behavior & Organization**, v. 18, n. 1, p. 27-51, 1992.

ANAND, S.; KANBUR, S. R. The Kuznets process and the inequality - development relationship. **Journal of Development Economics**, v. 40, n. 1, p. 25-52., 1993.

_____. Inequality and development: a critique. **Journal of Development Economics**, v. 41, n. 1, p. 19-43, 1993.

ATKINSON, A. B.; BRANDOLINI, A. Promise and pitfalls in the use of “secondary” data-sets: income inequality in OECD countries as a case study. **Journal of Economic Literature**, v. 39, n. 3, p. 771-799, 2001.

DEININGER, K.; SQUIRE, L. A new data set measuring income inequality. **World Bank Economic Review**, v. 10, n. 3, p. 565-591, 1996.

FIELDS, G. S. **Distribution and development: a new look at the developing world**. Cambridge: The MIT Press, 2001.

GINTIS, H. The dynamics of general equilibrium. **Economic Journal**, v. 117, n. 523, p. 1280-1309, 2007.

HARRIS, J. R.; TODARO, M. P. Migration, unemployment and development: a two-sector analysis. **The American Economic Review**, p. 126–142, 1970.

HIGGINS, M.; WILLIAMSON, J. G. Explaining Inequality the World Round: cohort size, kuznets curves, and openness, *In*: **NBER Working Papers**, n. 7224, 1999.

KUZNETS, S. Economic growth and income inequality. **American Economic Review**, v. 45, n. 1, p. 1-27, Mar. 1955.

LEWIS, W. A. Economic development with unlimited supplies of labour. **Manchester School**, v. 22, n. 2, p. 139-191, 1954.

LINDERT, P. H. Unequal English wealth since 1670. **Journal of Political Economy**, v. 94, p. 1127-1162, 1986.

PAUKERT, F. Income distribution at different levels of development: a survey of evidence. **International Labour Review**, v. 108, p. 97-125, 1973.

PIKETTY, T. The Kuznets curve: yesterday and tomorrow. *In*: BANERJEE, A. V.; BENABOU, R.; MOOKHERJEE, D. (Eds.). **Understanding poverty**. Oxford: Oxford University Press, 2006. cap. 4, p. 63-72.

RANIS, G.; FEI, J. C. A theory of economic development. **The American Economic Review**, p. 533–565. 1961.

ROBINSON, S. A note on the U hypothesis relating income inequality and economic development. **American Economic Review**, v. 66, n. 3, p. 437-440, 1976.

SAVVIDES, A.; STENGOS, T. Income inequality and economic development: evidence from the threshold regression model. **Economics Letters**, v. 69, n. 2, p. 207–212, 2000.

SCHULTZ, T. P. Inequality in the distribution of personal income in the world: how it is changing and why. **Journal of Population Economics**, v. 11, n. 3, p. 307-344, 1998.

TAM, H. An economic or political Kuznets curve? **Public Choice**, v. 134, n. 3-4, p. 367-389, 2008.

WORLD BANK. **World development indicators**. Washington: World Bank, 2014.

PUBLISHING DEPARTMENT

Coordination

Cláudio Passos de Oliveira

Supervision

Everson da Silva Moura
Reginaldo da Silva Domingos

Typesetting

Bernar José Vieira
Cristiano Ferreira de Araújo
Daniella Silva Nogueira
Danilo Leite de Macedo Tavares
Diego André Souza Santos
Jeovah Herculano Szervinsk Junior
Leonardo Hideki Higa

Cover design

Luís Cláudio Cardoso da Silva

Graphic design

Renato Rodrigues Buenos

*The manuscripts in languages other than Portuguese
published herein have not been proofread.*

Ipea Bookstore

SBS – Quadra 1 – Bloco J – Ed. BNDES, Térreo
70076-900 – Brasília – DF
Brazil
Tel.: + 55 (61) 3315 5336
E-mail: livraria@ipea.gov.br

Ipea's mission

Enhance public policies that are essential to Brazilian development by producing and disseminating knowledge and by advising the state in its strategic decisions.

Secretariat of

Secretariat of



ipea Institute for Applied
Economic Research

Secretariat of
Strategic Affairs

