

Bieszk-Stolorz, Beata; Markowicz, Iwona

Working Paper

Influence of Unemployment Benefit on Duration of Registered Unemployment Spells

Institute of Economic Research Working Papers, No. 24/2014

Provided in Cooperation with:

Institute of Economic Research (IER), Toruń (Poland)

Suggested Citation: Bieszk-Stolorz, Beata; Markowicz, Iwona (2014) : Influence of Unemployment Benefit on Duration of Registered Unemployment Spells, Institute of Economic Research Working Papers, No. 24/2014, Institute of Economic Research (IER), Toruń

This Version is available at:

<https://hdl.handle.net/10419/219585>

Standard-Nutzungsbedingungen:

Die Dokumente auf EconStor dürfen zu eigenen wissenschaftlichen Zwecken und zum Privatgebrauch gespeichert und kopiert werden.

Sie dürfen die Dokumente nicht für öffentliche oder kommerzielle Zwecke vervielfältigen, öffentlich ausstellen, öffentlich zugänglich machen, vertreiben oder anderweitig nutzen.

Sofern die Verfasser die Dokumente unter Open-Content-Lizenzen (insbesondere CC-Lizenzen) zur Verfügung gestellt haben sollten, gelten abweichend von diesen Nutzungsbedingungen die in der dort genannten Lizenz gewährten Nutzungsrechte.

Terms of use:

Documents in EconStor may be saved and copied for your personal and scholarly purposes.

You are not to copy documents for public or commercial purposes, to exhibit the documents publicly, to make them publicly available on the internet, or to distribute or otherwise use the documents in public.

If the documents have been made available under an Open Content Licence (especially Creative Commons Licences), you may exercise further usage rights as specified in the indicated licence.



<https://creativecommons.org/licenses/by/3.0/>



Institute of Economic Research Working Papers

No. 24/2014

**Influence of Unemployment Benefit on Duration of
Registered Unemployment Spells**

Beata Bieszk-Stolorz, Iwona Markowicz

The paper submitted to

**VIIIth INTERNATIONAL CONFERENCE ON APPLIED
ECONOMICS
CONTEMPORARY ISSUES IN ECONOMY
under the title
MARKET OR GOVERNMENT?**

Institute of Economic Research and Polish Economic Society Branch in
Toruń

18-19 June 18-19, 2015, Toruń, Poland

Toruń, Poland 2014

© Copyright: Creative Commons Attribution 3.0 License

Beata Bieszk-Stolorz, Iwona Markowicz
beatu@wneiz.pl, iwona.markowicz@wneiz
University of Szczecin, Mickiewicza 64, 71-101 Szczecin

Influence of Unemployment Benefit on Duration of Registered Unemployment Spells

JEL Classification: C01, C14, J64, J65 A11, A14, B16

Keywords: *Kaplan-Meier estimator; Cox hazard model; hazard ratio; unemployment*

Abstract: The purpose of the article is to present the analysis of the influence of the unemployment benefit on the duration of the registered unemployment spells. The authors made a hypothesis that the very fact of receiving the benefit prolongs the job seeking time and determines the intensity of unemployment leaving. The power of this influence varies depending on a subgroup the unemployed person belongs to. The study was conducted on the basis of data from the Poviát Labour Office in Sulęcín. The data were collected in the course of the European Union project implementation. The analysis covered two periods of time – before and after Poland’s accession to the European Union and the change in legal regulations concerning unemployment benefits. In each of the periods the authors observed separate cohorts of the unemployed registered in 2001 and 2005. The closing dates of the observations were: the end of 2003 and 2007, respectively. Also, the authors examined whether the EU projects implemented after 2004 had an effect on the length of the unemployment spells as well as on the intensity of finding a job. The study confirmed the research hypotheses. The fact of claiming the unemployment benefit prolonged the unemployment spells in both periods of observation. The loss of the right to the benefit increased the probability of de-registration in each subgroup.

Introduction

The influence of benefits, threshold salary and education on the unemployment duration is explained by the job search theory¹ which refers

¹ The Nobel Prize winner of 1982 is regarded as the founder of the search theory.

to certain principles followed by individuals in the process of job seeking. The job search theory represents a microeconomic approach. Its counterpart in the modern macroeconomic thought is a matching theory also called the search and matching theory². Nickell (1979), Hughes and Perlman (1984) have shown that the increase in unemployment benefits lead to prolonged spells of job seeking. The power of this interrelation is weakening as the unemployment spell is getting longer.

The purpose of this paper is to analyse the influence of the unemployment benefit on the duration of the registered unemployment spells. The study was conducted on the basis of data from the Poviát Labour Office in Sulęcín obtained under the European Union project³. The analysis covered two periods of time: before and after Poland's accession to the European Union and the change in terms of granting unemployment benefits (Act on promotion of employment and labour market institutions of 20 April 2004). In each of the periods the authors observed separate cohorts of the unemployed who had been registered in 2001 and 2005. The observation deadlines were the end of 2003 and 2007, respectively. In the paper the following hypotheses are made: the fact of receiving the benefit by an unemployed person prolongs their job seeking spell and affects the intensity of unemployment leaving; the implementation of the EU projects after 2004 has influenced the duration of unemployment spells. The effect of this influence varies among the sub-groups defined according to the categories of the job-seekers' attributes.

The job search theory explains why the unemployed individuals delay their employment decisions and extend their unemployment spell. The spells of frictional unemployment are the subject of the job search theory as well as the search and matching theory, with both theories focusing on the demand issues. There are plenty of studies confirming the two theories.

Meyer (1990) investigated the impact of the amount and duration of the unemployment benefit on the duration of the unemployment spells. He was particularly interested in the analysis of events in the period before the termination of the unemployment benefit. He found out that higher benefits have a strong negative influence on the likelihood of unemployment leaving. This likelihood significantly rises towards the end of the period of benefit claiming. Meyer applied the methods for hazard function estimation

² Noble Prize winners of 2001, Diamond, Mortensen and Pissarides contributed to the development of the search and matching theory and to its popularization in the job market analysis.

³ The project *The Analysis and Diagnosis of the Problem of Long-term Unemployment in the Poviát of Sulęcín (Analiza i diagnoza problemu długotrwałego bezrobocia w powiecie sulęcińskim)*, implemented as a part of the Operational Programme Human Capital 2007–2013.

and compared them with the methods that had been commonly used before, e.g. the Weibull model. He also discovered that the parametric approach gave more reliable estimations. The data came from the CWBHD database and concern males from twelve US states observed in 1978-1983 (3365 observations). Their advantage was accurate information about the subjects' wages received in a week prior to unemployment and about the claimed benefits. The disadvantage was that the available information was restricted to the period of claimed benefits. The data concerning the unemployment period upon the benefit termination are considered to be censored. Meyer pointed to a high replacement rate amounting to 0.70 (the ratio of the average benefit to the average income earned before the unemployment spell). The presented empirical hazard defines the ratio of the number of unemployment exits over a given week to the number of the unemployed at the beginning of this week. High intensity is observed in the first few weeks, then between the 25th and 29th week, to be followed by the subsequent increase between the 35th and 38th week. Meyer attributes these intensity fluctuations to the period when benefit spells come to an end. His conclusions concerning the application of the model of proportional hazards include the finding that the 10% increase of unemployment benefits is associated with the 8.8% drop in the intensity of unemployment leaving. The obtained results refer solely to the period when the benefits are granted. According to Mortensen (1977), higher benefits may lead to stronger intensity in this period, while Katz (1986) claims that the intensity of unemployment leaving rises towards the end of benefit spells.

Han and Hausman (1990) conducted their study basing on the PSID database. It covered 1055 observations of breadwinners aged 20 to 65. The data indicated a large number of unemployment exits in the 26th and 39th week (the moments when benefit spells come to an end in various American states). What is interesting, the intensity of unemployment leaving was strong also at the beginning of benefit spells. The authors divided the group of the observed subjects into the ones who had found new employers and those who had returned to their previous employer. It turned out that job seekers who terminated their unemployment spells early were those who were re-hired by their former employer, even though they had been granted the unemployment benefits. In the case of the former group the unemployment leaving intensity does not increase until the end of their benefit spells.

Røed and Zhang (2003) did research into the effect of the benefit amount on the intensity of finding a job by people under 60 who had lost their full-time jobs in 1990 and did not qualify to be granted the

unemployment benefit. The observation covered 103 thousand people. Those of them whose benefit spell ended and who did not find a new job were considered censored. Røed and Zhang proved that the benefit amount had a negative effect on the unemployment leaving intensity, especially in the case of the unemployed males. However, the threat of losing the benefit mobilised them (mainly women) to find a job. The researchers pointed out that the unemployment leaving intensity was rising by 60% (women) and 40% (men) at the end of their benefit spells. What is more, Røed and Zhang found out that the unemployment spells varied depending on the amount of the benefit: a 10% reduction shortened the job seeking time by 1 month in the case of men and by 1-2 weeks in the case of women.

This article is in line with the trend in the modern reference literature, which is the measurement of the unemployment benefit effects on the length of unemployment spells (Moffitt, 1985; Katz & Meyer, 1990; Hunt, 1995; Card & Levine, 2000; Hahn et al., 2001; Lalive, 2007). Unemployment brings negative effects to both the national economy and the well-being of households. This is why governments can and should use adequate tools to alleviate these effects, focusing in particular on the duration of unemployment. Unfortunately, there are no ready-made solutions to the problem. Both the unemployment rates and its mean duration vary from country to country, disregarding their development level. Governments offer diverse forms of support and activation programmes directed to the unemployed citizens in general as well as to their specific groups. The outcomes of individual programmes can be difficult to predict. Therefore, it seems essential to conduct studies on the effectiveness of these tools. One of the researchers dealing with this issue was Lalive (2007) whose interesting study focused on the possible effect of prolonging the unemployment benefit from 30 to as many as 209 weeks. Such an extended benefit was introduced by the Austrian government in 1988 and it was targeted at the 50+ unemployed who had been residents of the selected regions for at least six months and who had been employed before. Obviously, such extension of the unemployment benefit resulted in the prolonged unemployment spells, especially in the case of women, which was due to the opportunity of early retirement. In the reference literature authors often point out that the maximum length of unemployment benefits is strongly correlated with structural unemployment (Nickell & Layard, 1999). The extended benefit time usually discourages the beneficiaries from job-seeking, thus leading to prolonged unemployment spells. For this reason, it is important to address support programmes to carefully selected groups of beneficiaries. In his research Lalive used the nonlinear regression model in its sharp form, with the

thresholds of age eligibility and of distance to danger area border. Szmieder, von Wachter and Bender (2012) applied the nonlinear regression models with several age thresholds to study the effect of the potential benefit duration on the unemployment time throughout the whole economic cycle of 1980-2008 in Germany. The authors point out that they are basing their research on the model of job-seeking with limitations to liquidity and that the German system of unemployed benefits is ideal for this kind of studies. They adopt the age thresholds reflecting the potential benefit duration as the non-linearity thresholds (42, 44 and 49).

Methodology of the research

In this study the authors used the following methods to conduct the survival analysis: the Kaplan-Meier estimator (curves of surviving in unemployment, identification of hazards proportionality, the average time of unemployment spells, the intensity (hazard) of unemployment leaving) and the Cox model of non-proportional hazards (the relative intensity (relative hazard) of unemployment leaving). Kaplan and Meier (1958) proposed the way of estimating the survival function in the case of censored data:

$$\hat{S}(t_i) = \prod_{j=1}^i \left(1 - \frac{d_j}{n_j} \right), \text{ for } i = 1, \dots, k \quad (1)$$

where:

t_i – the moment when at least one event happened (deregistering),

d_i – the number of events in the time t_i ,

n_i – the number of units under observation in the time t_i .

The hazard (the intensity of deregistering from PLO) was estimated by means of the formula:

$$h_j = \frac{d_j}{n_j} \quad (2)$$

where:

d_j – the number of deregistered subjects in a given month,

n_j – the number of the unemployed subjects under observation at the beginning of that month.

The relative intensity of registered unemployment leaving was evaluated by means of the model of non-proportional hazards⁴ (following the

⁴ See more on the Cox non-proportional hazard model in (Bieszk-Stolorz & Markowicz, 2012, Bieszk-Stolorz, 2013).

recognition of the absence of non-proportionality on the basis of the course of the survival curves) in a form:

$$h(t, Z) = h_0(t) \exp(\beta Z + \delta Z \times g(t)) \quad (3)$$

where:

$$g(t) = \begin{cases} 0 & \text{for } t < t_0 \\ 1 & \text{for } t \geq t_0 \end{cases} \quad (4)$$

$$Z = \begin{cases} 0 & \text{no benefit} \\ 1 & \text{benefit} \end{cases} \quad (5)$$

In the model (3) the parameter β defines the influence of the endogenous variable on intensity, while the parameter δ indicates if this influence changes over time. The value $\exp(\beta)$ is understood as the relative intensity (hazard ratio) of leaving unemployment by the deregistered job seekers entitled to the unemployment benefit to the unemployment leaving by the job seekers deprived of this benefit due to their deregistration over the period of time shorter than t_0 . The value $\exp(\beta + \delta)$ is the relative intensity when the unemployment spell was longer than t_0 .

The effect of unemployment benefit on the job seeking process – study results

In the study the authors used individual data of 2799 unemployed individuals registered in 2001 and 3377 ones registered in 2005 by the Poviát Labour Office in Sulęcín. The sizes of sub-groups can be found in Table 1. The individuals considered to be censored were those who remained registered by the end of the observation, i.e. who failed to leave unemployment.

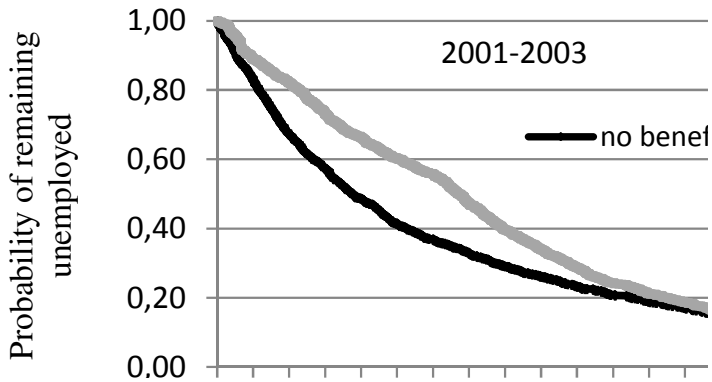
For both the periods of observation the authors determined the Kaplan-Meyer estimators that were used to compare the probabilities of leaving the register by the individuals who were claiming the benefit and by those who did not, in total (Figure 1) and in the sub-groups. In the first months of unemployment we can clearly see the difference in the survival models constructed for the unemployment claimants and to those who were not granted the benefit. It means the absence of hazard proportionality in those groups. A similar shape of the survival curves could be seen in the sub-groups discriminated according to gender, age and education.

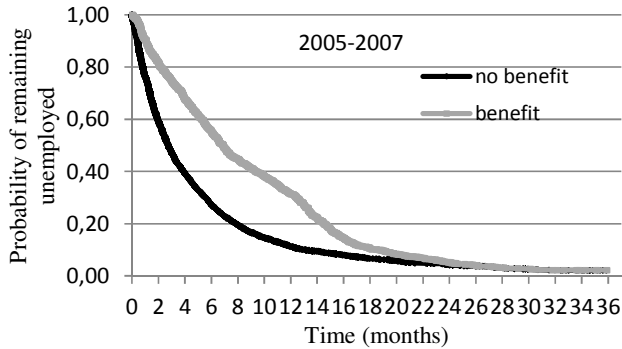
Table 1. Number of the observed unemployed according to their attributes and the fact of claiming the benefit

| Groups | 2001-2003 | | | | 2005-2007 | | | |
|----------------|-----------|------------|-------|----------|-----------|------------|-------|----------|
| | benefit | no benefit | total | censored | benefit | no benefit | total | censored |
| Total | 1425 | 1374 | 2799 | 413 | 1146 | 2231 | 3377 | 96 |
| K | 519 | 550 | 1069 | 188 | 434 | 950 | 1384 | 49 |
| M | 906 | 824 | 1730 | 225 | 712 | 1281 | 1993 | 47 |
| W ₁ | 390 | 453 | 843 | 94 | 319 | 695 | 1014 | 8 |
| W ₂ | 388 | 370 | 758 | 98 | 352 | 665 | 1017 | 29 |
| W ₃ | 356 | 340 | 696 | 122 | 209 | 436 | 645 | 19 |
| W ₄ | 281 | 202 | 483 | 94 | 240 | 376 | 616 | 32 |
| S ₁ | 336 | 399 | 735 | 134 | 252 | 618 | 870 | 36 |
| S ₂ | 645 | 654 | 1299 | 200 | 475 | 961 | 1436 | 37 |
| S ₃ | 74 | 57 | 131 | 19 | 75 | 107 | 182 | 4 |
| S ₄ | 326 | 225 | 551 | 53 | 295 | 451 | 746 | 16 |
| S ₅ | 44 | 39 | 83 | 7 | 49 | 94 | 143 | 3 |

Women (K), Men (M); Age: 18-24 (W₁), 25-34 (W₂), 35-44 (W₃), 45-54 (W₄); Education: lower secondary, primary and incomplete primary (S₁), basic vocational (S₂), general secondary (S₃), post-secondary and vocational secondary (S₄), tertiary (S₅)

Source: own study based on the data from the Poviát Labour of Sulęcín.

Figure. 1. Kaplan-Meier estimators for unemployed persons in 2001-2003 and 2005-2007 total



Source: own study based on the data from the Poviát Labour of Sulęcín.

Table 2. Mutual distance measures determined basing on the estimator for the unemployment spell duration for the unemployed registered in 2001. The observation by the end of 2003.

| Groups | First quartile | Median | Third quartile | First quartile | Median | Third quartile |
|----------------|----------------|--------|----------------|----------------|--------|----------------|
| | benefit | | | no benefit | | |
| Total | 5.63 | 13.41 | 21.49 | 2.96 | 7.53 | 18.94 |
| K | 5.95 | 13.81 | 24.79 | 2.55 | 7.13 | 19.82 |
| M | 5.54 | 13.18 | 20.45 | 3.29 | 7.59 | 18.54 |
| W ₁ | 5.64 | 13.32 | 19.55 | 2.19 | 6.26 | 15.28 |
| W ₂ | 5.62 | 13.35 | 21.17 | 2.76 | 6.12 | 16.18 |
| W ₃ | 6.54 | 13.78 | 22.52 | 3.91 | 9.90 | 24.65 |
| W ₄ | 4.91 | 13.53 | 24.76 | 3.65 | 10.03 | 21.04 |
| S ₁ | 6.94 | 14.83 | 24.10 | 3.51 | 8.86 | 22.90 |
| S ₂ | 5.93 | 13.76 | 22.74 | 2.89 | 7.50 | 19.02 |
| S ₃ | 4.09 | 8.25 | 19.97 | 3.67 | 7.53 | 16.61 |
| S ₄ | 4.73 | 11.61 | 19.07 | 2.17 | 5.31 | 13.96 |
| S ₅ | 2.40 | 10.78 | 17.69 | 2.41 | 6.61 | 14.56 |

Source: own study based on the data from the Poviát Labour of Sulęcín.

Table 3. Mutual distance measures determined basing on the estimator for the unemployment spell duration for the unemployed registered in 2005. The observation by the end of 2007.

| Groups | First quartile | Median | Third quartile | First quartile | Median | Third quartile |
|----------------|----------------|--------|----------------|----------------|--------|----------------|
| | benefit | | | no benefit | | |
| Total | 2.96 | 6.90 | 13.35 | 1.12 | 2.76 | 6.48 |
| K | 2.73 | 7.17 | 13.97 | 0.82 | 2.27 | 5.93 |
| M | 3.02 | 6.58 | 13.08 | 1.28 | 3.16 | 6.90 |
| W ₁ | 2.23 | 5.41 | 10.95 | 1.08 | 2.32 | 5.14 |
| W ₂ | 2.89 | 6.90 | 13.35 | 1.13 | 2.75 | 6.09 |
| W ₃ | 2.21 | 7.12 | 13.75 | 1.05 | 2.83 | 6.90 |
| W ₄ | 4.27 | 8.98 | 15.62 | 1.12 | 3.78 | 9.21 |
| S ₁ | 3.78 | 8.12 | 14.76 | 1.28 | 3.22 | 7.41 |
| S ₂ | 2.75 | 6.05 | 12.90 | 1.09 | 2.89 | 6.67 |
| S ₃ | 2.50 | 7.25 | 12.43 | 0.82 | 1.82 | 4.37 |
| S ₄ | 3.70 | 7.22 | 13.82 | 0.89 | 2.27 | 5.38 |
| S ₅ | 2.05 | 5.77 | 10.99 | 1.08 | 2.27 | 4.55 |

Source: own study based on the data from the Poviát Labour of Sulęcín.

When analysing the results in Tables 2 and 3, we have come to the following conclusions:

a) referring to the unemployed registered in 2001

- 25% of the benefit claimants were de-registered after 5.6 months of job seeking, 50% – after 13.4 months, and 75% – after 21.5 months,
- 25% of those who were not entitled to the benefit got de-registered after 3 months of job seeking, 50% – after 7.5%, and 75% after 18.9 months,
- in the group of benefit claimants it was men who de-registered sooner, while in the group of the unemployed not entitled to the benefit women left the register earlier than men,
- generally speaking, younger people were leaving unemployment more often,
- unemployment spells got shorter with the rising level of education of the unemployed person.

b) referring to the unemployed registered in 2005

- generally speaking, the registered job seekers were leaving unemployment sooner than in the previous period of observation,
- 25% of the benefit claimants got de-registered after 3 months of job seeking, 50% – after 6.9 months, while 75% – after 13.3 months,

- 25% of those who were not entitled to the benefit got de-registered after 1.1 months of job seeking, 50% – after 2.8 months, and 75% – after 6.5 months,
- in terms of gender, age and education the situation was similar.

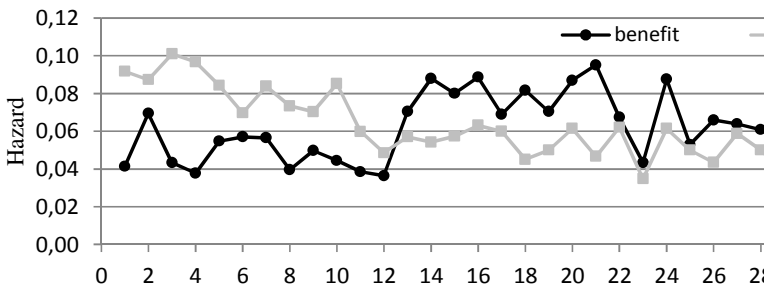
The mean values in Table 4 indicate the differences in the duration of unemployment spells. The unemployment spells were longer in the case of the benefit claimants in each of the sub-groups and in both observation periods. However, in 2005-2007 the average period of registration was shorter than in 2001-2003.

Table 4. Mean values of the unemployment spells duration

| Groups | 2001–2003 | | 2005–2007 | |
|----------------|-----------|------------|-----------|------------|
| | mean | | mean | |
| | benefit | no benefit | benefit | no benefit |
| Total | 14.3 | 11.4 | 8.9 | 5.3 |
| K | 15.0 | 11.4 | 9.6 | 5.0 |
| M | 13.9 | 11.4 | 8.4 | 5.5 |
| W ₁ | 13.6 | 10.0 | 7.2 | 4.0 |
| W ₂ | 14.4 | 10.3 | 8.8 | 5.0 |
| W ₃ | 14.8 | 13.6 | 9.2 | 5.4 |
| W ₄ | 14.6 | 13.0 | 10.8 | 7.2 |
| S ₁ | 15.8 | 12.7 | 10.0 | 6.1 |
| S ₂ | 14.8 | 11.6 | 8.2 | 5.5 |
| S ₃ | 12.8 | 11.4 | 8.1 | 4.2 |
| S ₄ | 12.6 | 9.1 | 9.4 | 4.2 |
| S ₅ | 11.4 | 9.6 | 7.7 | 3.9 |

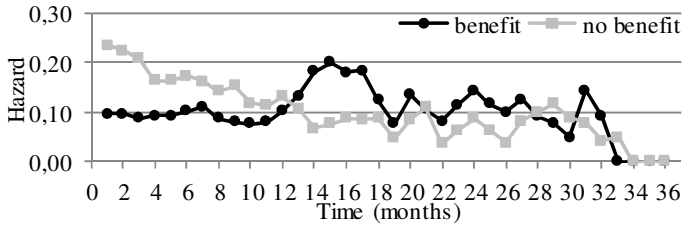
Source: own study based on the data from the Poviát Labour of Sulęcín.

Figure 2. Hazard of the unemployment leaving in months (group 2001-2003)



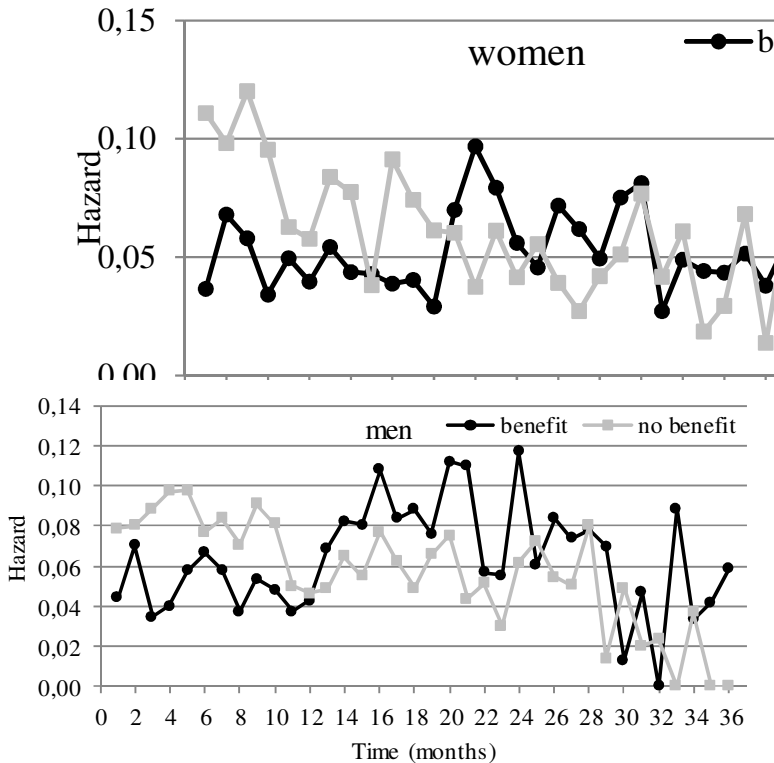
Source: own study based on the data from the Poviát Labour of Sulęcín.

Figure 3. Hazard of the unemployment leaving in months (group 2005-2007)

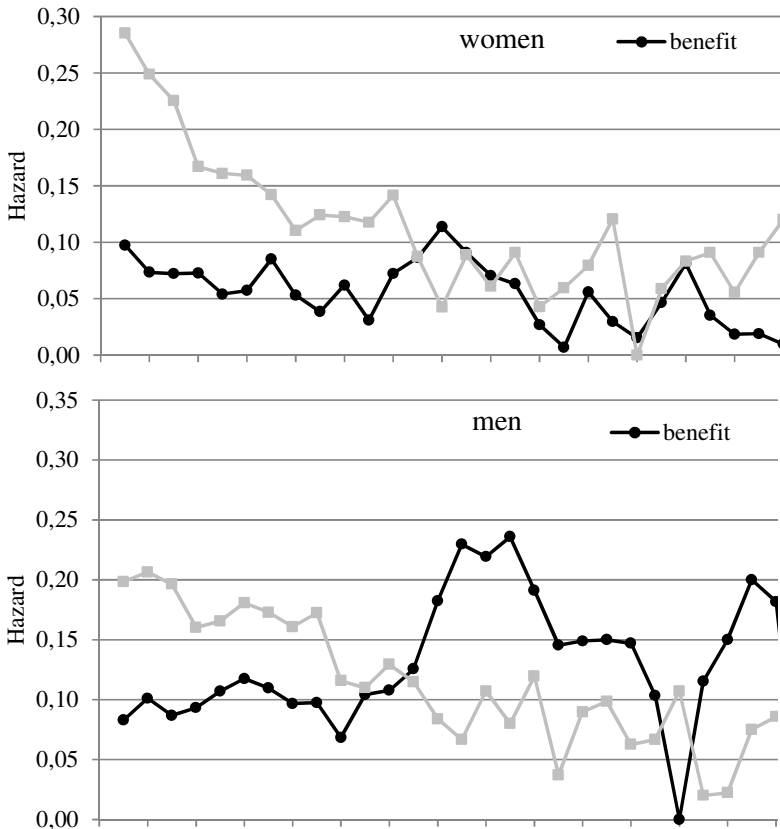


Source: own study based on the data from the Poviát Labour of Sulęcín.

Figure 4. Hazard of the unemployment leaving in months (group 2001-2003) by gender



Source: own study based on the data from the Poviát Labour of Sulęcín.

Figure 5. Hazard of the unemployment leaving in months (group 2005-2007) by gender

Source: own study based on the data from the Poviát Labour of Sulęcín.

The charts of hazards determined for benefit claimants and for the job seekers not entitled to benefits in both observation periods demonstrate the absence of proportionality (Figures 2 and 3). In the first 12 months we can see higher intensity of register leaving by the unemployed who were not entitled to the benefits than by the benefit claimants. In the 13th month the situation was reversed. A similar tendency took place in the gender, age and education sub-groups (see exemplary presentations of the age sub-groups in Figures 4 and 5). Therefore, in the Cox regression model (3) for the function (4) we adopted $t_0 = 13$. In the first period up to 13 months the values of hazard ratios were less than 1, which means that the intensity of the register leaving by the benefit claimants was lower than in the case of the remaining unemployed (Figures 6 and 7). When determining the hazard ratio, the peer group was the group average, which was marked in Figures 6

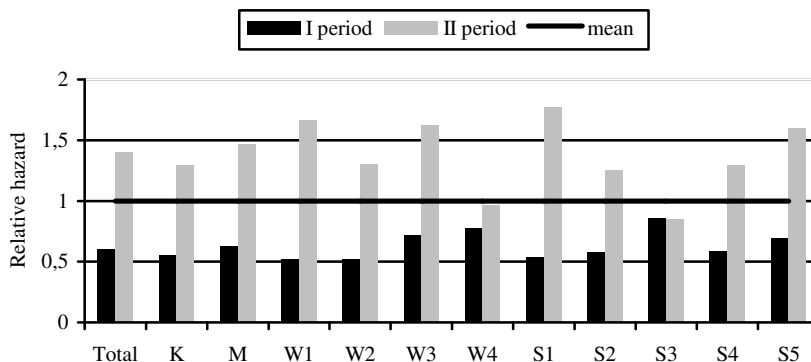
and 7 with a line in bold. After the 13th month (period II) the situation reversed in most of the sub-groups (excluding the insignificant ones). The parameter estimators together with errors and the significance level for the model in question are presented in Tables 5 and 6.

Table 5. Results of Cox's models parameters estimation (period 2001-2003)

| Groups | Estimators of parameters (standard error) | | <i>p</i> | |
|----------------|--|------------------|----------|----------|
| | β | δ | β | δ |
| Total | -0.5077 (0.0509) | 0.8458 (0.0897) | 0.0000 | 0.0000 |
| K | -0.5907 (0.0834) | 0.8474 (0.1495) | 0.0000 | 0.0000 |
| M | -0.4575 (0.0643) | 0.8403 (0.1124) | 0.0000 | 0.0000 |
| W ₁ | -0.6562 (0.0917) | 1.1669 (0.1651) | 0.0000 | 0.0000 |
| W ₂ | -0.6510 (0.0965) | 0.9166 (0.1751) | 0.0000 | 0.0000 |
| W ₃ | -0.3243 (0.1055) | 0.8082 (0.1776) | 0.0021 | 0.0000 |
| W ₄ | -0.2497 (0.1264) | 0.2148 (0.2168) | 0.0482 | 0.3218 |
| S ₁ | -0.6265 (0.1051) | 1.2011 (0.1802) | 0.0000 | 0.0000 |
| S ₂ | -0.5409 (0.0764) | 0.7704 (0.1292) | 0.0000 | 0.0000 |
| S ₃ | -0.1564 (0.2243) | -0.0009 (0.4262) | 0.4857 | 0.9984 |
| S ₄ | -0.5343 (0.1083) | 0.7934 (0.2134) | 0.0000 | 0.0002 |
| S ₅ | -0.3606 (0.2730) | 0.8288 (0.5390) | 0.1865 | 0.1241 |

Source: own study based on the data from the Poviats Labour of Sulęcín.

Figure 6. Relative hazard of the unemployment leaving in months (group 2001-2003)

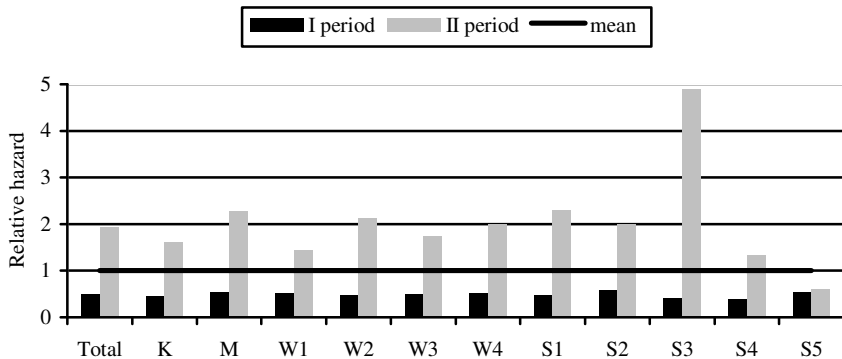


Source: own study based on the data from the Poviats Labour of Sulęcín.

Table 6. Results of Cox's models parameters estimation (period 2005-2007)

| Group | Estimators of parameters (standard error) | | <i>p</i> | |
|----------------|--|-----------------|----------|----------|
| | β | δ | β | δ |
| Total | -0.6895 (0.0416) | 1.3501 (0.1078) | 0.0000 | 0.0000 |
| K | -0.7900 (0.0677) | 1.2685 (0.1695) | 0.0000 | 0.0000 |
| M | -0.6202 (0.0529) | 1.4411 (0.1409) | 0.0000 | 0.0000 |
| W ₁ | -0.6735 (0.0741) | 1.0328 (0.2377) | 0.0000 | 0.0000 |
| W ₂ | -0.7485 (0.0755) | 1.5064 (0.2070) | 0.0000 | 0.0000 |
| W ₃ | -0.6956 (0.0981) | 1.2510 (0.2399) | 0.0000 | 0.0000 |
| W ₄ | -0.6552 (0.0992) | 1.3471 (0.2127) | 0.0000 | 0.0000 |
| S ₁ | -0.7374 (0.0897) | 1.5662 (0.2017) | 0.0000 | 0.0000 |
| S ₂ | -0.5529 (0.0631) | 1.2500 (0.1656) | 0.0000 | 0.0000 |
| S ₃ | -0.8764 (0.1698) | 2.4630 (0.6007) | 0.0000 | 0.0000 |
| S ₄ | -0.9511 (0.0866) | 1.2330 (0.2586) | 0.0000 | 0.0000 |
| S ₅ | -0.6269 (0.1929) | 0.1347 (0.6175) | 0.0012 | 0.8273 |

Source: own study based on the data from the Poviát Labour of Sulęcín.

Figure 7. Relative hazard of the unemployment leaving in months (group 2005-2007)

Source: own study based on the data from the Poviát Labour of Sulęcín.

Conclusions

The study confirmed the research hypotheses. The fact of claiming the unemployment benefit prolonged the unemployment spells in both periods of observation. The loss of the right to the benefit increased the probability of de-registration in each sub-group. The fact of claiming the benefit reduced the likelihood of leaving the register in the first 13 months following the registration in both 2001-2001 and 2005-2007. Poland's accession to the European Union and access to funding under projects

implemented by the Powiat Labour Office in Sulęcín had an effect on reducing the registered unemployment spells and on the intensity of unemployment leaving. Since 2004 the PLO have implemented numerous projects financed by the EU⁵ and aiming at improving the situation of job seekers on the job market. The project were directed at concrete groups of job seekers, e.g. those affected by long-term unemployment, young people, women or those who were planning to start their own business.

References

- Bieszk-Stolorz, B. (2013). *Analiza historii zdarzeń w badaniu bezrobocia*. Szczecin: Volumina.pl Daniel Krzanowski.
- Bieszk-Stolorz, B., & Markowicz, I. (2012). *Modele regresji Coxa w analizie bezrobocia*. Warszawa: CeDeWu.
- Card, D. E., & Levine, P. B. (2000). Extended Benefits and the Duration of UI Spells: Evidence from the New Jersey Extended Benefit Program. *Journal of Public Economics*, 78(1-2). [http://dx.doi.org/10.1016/S0047-2727\(99\)00113-9](http://dx.doi.org/10.1016/S0047-2727(99)00113-9).
- Hahn, J., Todd, P., & Van der Klaauw, W. (2001). Identification and Estimation of Treatment Effects with a Regression-Discontinuity Design. *Econometrica*, 69(1). <http://dx.doi.org/10.1111/1468-0262.00183>.
- Han, A., & Hausman, J. A. (1990). Flexible Parametric Estimation of Duration and Competing Risk Models. *Journal of Applied Econometrics*, 5(1). <http://dx.doi.org/10.1002/jae.3950050102>.
- Hughes, J. J., & Perlman, R. (1984). *The Economics of Unemployment: A Comparative Analysis of Britain and the United States*. New York: Cambridge University Press.
- Hunt, J. (1995). The Effect of Unemployment Compensation on Unemployment Duration in Germany. *Journal of Labor Economics*, 13(1). <http://dx.doi.org/10.1086/298369>.
- Kaplan, E. L., & Meier, P. (1958). Nonparametric estimation from incomplete observations. *Journal of the American Statistical Association*, 53(282). <http://dx.doi.org/10.2307/2281868>.
- Katz, L. (1986). *Layoffs, recall and the duration of unemployment*. Cambridge: National Bureau of Economic Research, Working Paper no. 1825.
- Katz, L., & Meyer, B. (1990). The Impact of the Potential Duration of Unemployment Benefits on the Duration of Unemployment. *Journal of Public Economics*, 41(1). [http://dx.doi.org/10.1016/0047-2727\(92\)90056-L](http://dx.doi.org/10.1016/0047-2727(92)90056-L).
- Lalive, R. (2007). Unemployment Benefits, Unemployment Duration, and Post-Unemployment Jobs: A Regression Discontinuity Approach. *The American Economic Review*, 97(2). <http://dx.doi.org/10.1257/aer.97.2.108>

⁵ The examples of the projects: *Internship Abroad – an Opportunity for the Youth in the Powiat of Sulęcín, No to Long-term Unemployment, Active Start for Young People, Career Woman – Independent Woman*.

- Meyer, B. D. (1990). Unemployment Insurance and Unemployment Spells. *Econometrica*, 58(4). <http://dx.doi.org/10.2307/2938349>.
- Moffitt, R. A. (1985). Unemployment Insurance and Distribution of Unemployment Spells. *Journal of Econometrics*, 28(1). [http://dx.doi.org/10.1016/0304-4076\(85\)90068-5](http://dx.doi.org/10.1016/0304-4076(85)90068-5).
- Mortensen D. T. (1977), Unemployment Insurance and Job Search Decisions. *Industrial and Labor Relations Review*, 30 (4). <http://dx.doi.org/10.2307/2523111>.
- Nickell, S. (1979). The Effect of Unemployment and Related Benefits on the Duration of Unemployment. *Economic Journal*, 89(353). <http://dx.doi.org/10.2307/2231405>.
- Nickell, S., & Layard, R. (1999). Labor Market Institutions and Economic Performance. In O. Ashenfelter, & Card O. (Eds), *Handbook of Labor Economics*, Vol. 3, Amsterdam: Elsevier.
- Røed, K., Zhang, T. (2003). Does Unemployment Compensation Affect Unemployment Duration? *The Economic Journal*, 113(484). <http://dx.doi.org/10.1111/1468-0297.00086>.
- Schmieder, J. F., von Wachter, T, & Bender, S. (2012). The Effects of Extended Unemployment Insurance Over the Business Cycle: Evidence from Regression Discontinuity Estimates Over 20 Years. *The Quarterly Journal of Economics*, 127(2). <http://dx.doi.org/10.1093/qje/qjs010>.