

Hornuf, Lars; Stenzhorn, Eliza; Vintis, Tim

Working Paper

Are Sustainability-Oriented Investors Different? Evidence from Equity Crowdfunding

CESifo Working Paper, No. 8339

Provided in Cooperation with:

Ifo Institute – Leibniz Institute for Economic Research at the University of Munich

Suggested Citation: Hornuf, Lars; Stenzhorn, Eliza; Vintis, Tim (2020) : Are Sustainability-Oriented Investors Different? Evidence from Equity Crowdfunding, CESifo Working Paper, No. 8339, Center for Economic Studies and Ifo Institute (CESifo), Munich

This Version is available at:

<https://hdl.handle.net/10419/219157>

Standard-Nutzungsbedingungen:

Die Dokumente auf EconStor dürfen zu eigenen wissenschaftlichen Zwecken und zum Privatgebrauch gespeichert und kopiert werden.

Sie dürfen die Dokumente nicht für öffentliche oder kommerzielle Zwecke vervielfältigen, öffentlich ausstellen, öffentlich zugänglich machen, vertreiben oder anderweitig nutzen.

Sofern die Verfasser die Dokumente unter Open-Content-Lizenzen (insbesondere CC-Lizenzen) zur Verfügung gestellt haben sollten, gelten abweichend von diesen Nutzungsbedingungen die in der dort genannten Lizenz gewährten Nutzungsrechte.

Terms of use:

Documents in EconStor may be saved and copied for your personal and scholarly purposes.

You are not to copy documents for public or commercial purposes, to exhibit the documents publicly, to make them publicly available on the internet, or to distribute or otherwise use the documents in public.

If the documents have been made available under an Open Content Licence (especially Creative Commons Licences), you may exercise further usage rights as specified in the indicated licence.

Are Sustainability-Oriented Investors Different? Evidence from Equity Crowdfunding

Lars Hornuf, Eliza Stenzhorn, Tim Vintis

Impressum:

CESifo Working Papers

ISSN 2364-1428 (electronic version)

Publisher and distributor: Munich Society for the Promotion of Economic Research - CESifo GmbH

The international platform of Ludwigs-Maximilians University's Center for Economic Studies and the ifo Institute

Poschingerstr. 5, 81679 Munich, Germany

Telephone +49 (0)89 2180-2740, Telefax +49 (0)89 2180-17845, email office@cesifo.de

Editor: Clemens Fuest

<https://www.cesifo.org/en/wp>

An electronic version of the paper may be downloaded

- from the SSRN website: www.SSRN.com
- from the RePEc website: www.RePEc.org
- from the CESifo website: <https://www.cesifo.org/en/wp>

Are Sustainability-Oriented Investors Different? Evidence from Equity Crowdfunding

Abstract

In this article, we examine how investor motives affect investment behavior in equity crowdfunding. In particular, we compare the investment behavior of sustainability-oriented with ordinary crowd investors on six leading equity crowdfunding platforms in Austria and Germany and investigate whether they suffer from a default shock that was recently identified by Dorfleitner et al. (2019). In general, we find evidence of a default shock in equity crowdfunding that occurs immediately after the event and if investors experience more than two insolvencies. Moreover, we find that sustainability-oriented investors pledge larger amounts of money and invest in more campaigns than ordinary crowd investors. The results also suggest that sustainability-oriented crowd investors care about non-financial returns, as they react more sensitively after experiencing a default in their equity crowdfunding portfolios, which indicates that they suffer beyond the pure financial loss. These findings contribute to recent literature on equity crowdfunding, socially responsible investing, and how individual investment motives and personal experiences affect investment decisions.

JEL-Codes: G110, G240, K220, M130.

Keywords: equity crowdfunding, individual investor behaviour, entrepreneurial finance, social , ethical, and environmental investing, socially responsible investing.

Lars Hornuf

Faculty of Business Studies and Economics

University of Bremen

Max-von-Laue-Straße 1, WiWi2

Germany – 28359 Bremen

hornuf@uni-bremen.de

Eliza Stenzhorn

Faculty of Business Studies and Economics

University of Bremen

Max-von-Laue-Straße 1, WiWi2

Germany – 28359 Bremen

stenzhorn@uni-bremen.de

Tim Vintis

Faculty of Business Studies and Economics

University of Bremen

Enrique-Schmidt-Straße 1, WiWi1

Germany – 28359 Bremen

tvintis@uni-bremen.de

This Version: May 26, 2020

The authors thank two anonymous referees, Daniel Blaseg, Engin Iyidogan, Spyros Terovitis, Silvio Vismara, and the participants of the 7th Crowdfunding Symposium at HU Berlin (November 8, 2019) for their thoughtful comments and suggestions.

1. Introduction

In this article, we examine the investment behavior of crowd investors on six leading equity crowdfunding platforms in Austria and Germany. We analyze whether the investment behavior of sustainability-oriented crowd investors differs from ordinary crowd investors. In particular, we test whether sustainability-oriented investors invest different amounts and/or invest more frequently than ordinary crowd investors. Furthermore, we investigate whether sustainability-oriented investors adapt their investment behavior differently from ordinary crowd investors after they experience a default in their portfolio. Such a *default shock* was recently identified by Dorfleitner et al. (2019) for the crowdlending market. It refers to investment behavior when lenders cease diversifying their portfolio after experiencing a default in their existing crowdlending portfolio. Before we investigate the potential differential effect of a default shock on sustainability-oriented and ordinary crowd investors, we test whether a default shock generally exists in equity crowdfunding.

Our analysis relates to various strands of literature. Our findings add to the emerging literature on equity crowdfunding, in which empirical research has primarily investigated the entrepreneurial side (i.e., how entrepreneurs who run a successful equity crowdfunding campaign behave). Seminal articles have assessed the magnitude, development, and geographic concentration of the equity crowdfunding market (Günther et al., 2018; Vulkan et al., 2016). Many scholars have analyzed the factors influencing funding success (Ahlers et al., 2015; Hornuf and Schwienbacher, 2018a) and investigated the determinants of firm failure and follow-up funding after an equity crowdfunding campaign (Hornuf et al., 2018b; Signori and Vismara, 2018). In an early article, Agrawal et al. (2016) show that syndicates of well-informed lead investors trigger investments by less informed investors later on. More recently, Nguyen et al. (2019) show that investors in equity crowdfunding delay their investments to gain more information. Vismara (2016) provides evidence that the social capital of founders increases the chance of reaching the funding goal in an equity crowdfunding campaign.

Empirical research has also focused on individual investment. Vismara (2018) shows that information cascades affect the investment process. Block et al. (2018a) provide evidence that updates by founders affect the investment dynamics during a campaign. Hornuf and Schwienbacher (2018b) find that the investment behavior and comments of other crowd investors affect investors' willingness to pledge money. Belleflamme et al. (2014) argue that building a community can be an important factor for the success of an equity crowdfunding campaign, indicating that investment motives in equity crowdfunding generally go beyond the pure financial return orientation of the investor. In a similar vein, Kleinert and Volkmann (2019) show that dialogues on equity crowdfunding platform discussion boards drive investments.

Campaign creators therefore often appeal to emotional and non-financial factors to win over the crowd (Ramos, 2014). Research on the sustainability orientation of crowdfunding campaigns has mostly focused on reward-based crowdfunding (Calic and Mosakowski, 2016; Hörisch, 2015). A noteworthy exception is Vismara (2019), who evidences that sustainability-oriented investors often follow a community logic, according to which they adhere to community values and believe in trust and reciprocity by the community.

Apart from the equity crowdfunding literature, our analysis adds to the literature on socially responsible investing (SRI) more generally. In line with Hudson's (2005) definition of an "ethical investor," we use the term "sustainability-oriented investors" to refer to crowd investors who base their investment decisions on their perceptions of whether the actions of the firms they invest in are sustainability oriented. Sustainability-oriented investors thus have similar motives to what has been termed in the literature as "socially responsible investors," "green investors," or "ethical investors" (e.g., Hudson, 2005; Nilsson, 2008). Theoretical models on SRI, for example, argue that investors make sustainability-oriented investments because of the societal impact of their investment decisions and because such investments are in line with their personal values (Beal and Goyen, 1998; Social Investment Forum, 2008). Socially responsible investors also have a desire to facilitate social change (Beal et al., 2005). Campaigns on sustainability-oriented equity crowdfunding platforms often have a social, ethical, and/or environmental (SEE) orientation. Evaluating the investment behavior on these platforms enables us to provide new answers to classic research questions from the SRI literature. For example, does the investment behavior of sustainability-oriented investors differ from ordinary investors (Rosen et al., 1991; Williams, 2007)? How do non-financial return motives affect investment behavior (Jansson and Biel, 2011; Owen and Qian, 2008)?

Our research also relates to the literature on how personal experience affects investment decisions, which helps explain differences in portfolio compositions. Personal investment experience (Andersen et al., 2019; Chiang et al., 2011; Choi et al., 2009; Kaustia and Knüpfer, 2008) and general economic circumstances (Knüpfer et al., 2017; Laudenbach et al., 2017; Malmendier and Nagel, 2011) both affect individual investment decisions. Recently, Andersen et al. (2019) provided evidence that stock investors who suffered losses from defaults during the financial crises subsequently changed their risk-taking behavior. Dorfleitner et al. (2019) find that even in comparatively good economic conditions, a default in a crowdlending portfolio influences investment behavior.

In summary, our analysis extends previous research in multiple ways. First, scholars have argued that understanding is still lacking on which specific factors influence the investment decisions of sustainability-oriented investors (McLachlan and Gardner, 2004). We contribute to the understanding of sustainability-oriented investment decisions in equity crowdfunding,

which is an increasingly relevant new asset class. Second, although Dorfleitner et al. (2019) provide evidence for a default shock, this evidence is based on one subcategory of crowdfunding—crowdlending—and a single platform—Zencap. We analyze the default shock in a different market segment—equity crowdfunding—and investigate investors’ behavior on six platform. Thus, our analysis provides significant external validity to prior findings. Third, Dorfleitner et al. (2019) investigate only investors who pledged money in company loans, whereas we differentiate between investors who made investments in regular start-up firms, real estate campaigns, and sustainability-oriented firms. Given that sustainability-oriented investors have SEE-related motives beyond the pure financial return motive, we expect them to be shocked more strongly if they experience a default in their equity crowdfunding portfolio.

By differentiating between sustainability-oriented and ordinary crowd investors, we show that sustainability-oriented investors pledge higher amounts and invest in more campaigns. Furthermore, we find evidence that a default shock generally exists in equity crowdfunding immediately after the event and if investors experience more than two insolvencies. Finally, we show that sustainability-oriented investors react more negatively than ordinary crowd investors after an insolvency occurs, which we consider evidence that other investments motives beyond the pure financial return motive are at stake.

The rest of this article proceeds as follows: In Section 2, we outline the overall theoretical framework and develop hypotheses, and in Section 3, we describe our data and explain the method applied. In Section 4, we present our descriptive statistics and multivariate results. Section 5 provides an analytical discussion, and Section 6 summarizes our results, discusses limitations, and offers avenues for further research.

2. Theoretical framework and hypotheses

Equity crowdfunding is a new asset class for retail investors. Before equity crowdfunding platforms appeared as a new form of financial intermediation (Block et al., 2018b), the possibility to invest in start-up firms was available almost exclusively to business angels and venture capitalists. Retail investors have generally lacked the sophistication to draft investment contracts and to identify start-up firms that suited their portfolio needs. Today, equity crowdfunding investors can easily identify and invest in start-ups listed on equity crowdfunding platforms, which also provide boilerplate investment contracts for them.

Many retail investors have no experience with start-up finance and do not receive professional investment advice. Unlike banks, angel investors, or venture capitalists, crowd investors thus cannot be regarded as professional investors. They typically do not use credit risk models and sophisticated tools to control the risk–return relationship of their portfolios. For example,

compared with professional investors, they are unlikely to run their own internal risk models for portfolio-steering decisions. Relative to their small investments, they would need to bear much higher transaction costs to evaluate the ideas of a start-up and the founder teams than angel investors and venture capitalists. From an economic standpoint, it is not feasible to spend multiple weeks on due diligence of a new venture, when only a comparatively small investment is at stake (Ahlers et al., 2015; Dorfleitner et al., 2019; Freear et al., 1994). Because crowd investors do not explicitly calculate expected default rates, they may be severely shocked by a default.

Dorfleitner et al. (2019) find that crowdlending investors suffer from a default shock that decreases their readiness to further diversify their portfolios. We conjecture that the default shock is likely to occur in equity crowdfunding as well because investors make risky investments with the expectation of a financial return. The default shock in equity crowdfunding might, however, be somewhat weaker. Unlike in crowdlending, in which investors receive annuity payments immediately after the loan campaign has been successfully funded, equity crowdfunding investors must wait several years until they receive their first repayments (Hornuf et al., 2018a). Thus, in equity crowdfunding investors rarely observe repayments, and their financial engagement might therefore be less salient after the funding period has ended. Consequently, it might require a strong loss or several insolvencies before investors show a default shock similar to the one Dorfleitner et al. (2019) observe for the crowdlending market.

Moreover, Dorfleitner et al. (2019) observe that lenders not only stop investing after experiencing a default in their existing crowdlending portfolio but also consequently worsen the risk–return profile of their crowdlending portfolio. Our analysis is more modest, because we can only test whether equity crowdfunding investors change their *investment behavior* after an insolvency—that is, whether crowd investors pledge different amounts, change the likelihood of another investment, and/or change the number of subsequent investments. Because repayments occur irregularly and less frequently in equity crowdfunding (Hornuf et al., 2020), we cannot calculate the risk-adjusted return on capital (RAROC) of the equity crowdfunding portfolios in our sample. Consequently, we are also not able to determine whether the default shock leads to a deterioration of the risk–return profile of the portfolio. Nevertheless, before we examine whether sustainability-oriented investors differ in their response to an insolvency, we first need to examine whether a default shock exists in equity crowdfunding. We therefore pose the research question, *Do equity crowdfunding investors suffer from a default shock?*

Equity crowdfunding has enabled investors to fund firms from various industries and with very different business models. While early equity crowdfunding platforms have generally focused on start-up finance, the market has recently expanded to and specialized in sustainability-

oriented as well as real estate campaigns (Hainz and Hornuf, 2019). The firms behind sustainability-oriented crowdfunding campaigns have very different business models, but most of them focus on a clear SEE contribution. Nevertheless, they also aim to make a profit and promise a financial return to crowd investors. SEE ventures that do not intend to make a profit seek funding on donation-based crowdfunding platforms such as Betterplace, which is not part of this investigation. Thus, we explore whether investors on platforms that cater to sustainability-oriented campaigns behave differently from investors who invest on ordinary equity crowdfunding platforms.

On traditional financial markets, sustainability-oriented investors differ in how much money they pledge for sustainability-oriented investment products. Mackenzie and Lewis (1999) find that some socially oriented investors might even dedicate their entire portfolio to socially oriented investment products. By contrast, Webley et al. (2001) evidence that ethical investors have only around one-fourth of ethical holdings in their portfolio. Thus, it is not clear how much and how frequently sustainability-oriented crowd investors invest in sustainability-oriented campaigns. However, as only a limited number of sustainability-oriented campaigns are usually available at a given point in time and secondary markets in which shares can be traded rarely exist in equity crowdfunding, investors might need to invest larger amounts in a single sustainability-oriented issuer.

Calic and Mosakowski (2016) investigate technology and film/video campaigns on Kickstarter, on which backers receive perks or pre-purchase a product still in the process of development, and find that the sustainability orientation of a campaign positively affects funding success. Possible explanations for why sustainability-oriented campaigns in reward-based crowdfunding are more successful could be that either backers pledge larger amounts or these campaigns simply attract more backers. While Calic and Mosakowski do not elaborate on these questions, they show that the success of sustainability-oriented campaigns on Kickstarter is at least partially mediated by the creativity and third-party endorsements of the campaign. For campaigns on Indiegogo, Hörisch (2015) finds no evidence that the environmental orientation of a campaign has an effect on funding success. Cholakova and Clarysse (2015) analyze data from the largest Dutch equity crowdfunding platform Symbid and find no evidence that non-financial motives play a role when investors pledge their money. While the evidence on funding success is mixed, no previous study has shown that a sustainability orientation makes funding success less likely. In line with Calic and Mosakowski's (2016) findings, we therefore conjecture that sustainability-oriented investors pledge larger amounts of money and invest more frequently.

Hypothesis 1: In equity crowdfunding, sustainability-oriented investors invest larger amounts of money and make more investments.

In addition, we explore the investment behavior of sustainability-oriented investors after they experience an insolvency. The research question that arises from Dorfleitner et al. (2019) is whether socially oriented crowd investors react more severely to an insolvency. Pasewark and Riley (2010) provide experimental evidence that the interaction between investment returns and their personal values affects the investment decisions of sustainability-oriented investors. This finding is also in line with Lewis and Mackenzie's (2000a) and Webley et al.'s (2001) argument that investors reduce their sustainability-oriented holdings after they discover that these investments yield lower returns. Mackenzie and Lewis (1999) show that while investors would not reduce their sustainability-oriented holdings if returns were two percentage points lower, for returns five percentage points lower, more than one-third of these investors would reduce their sustainability-oriented holdings. It is reasonable to assume that in the domain of equity crowdfunding, recovery rates after an insolvency are virtually zero because of the almost non-existent net asset values of a start-up firm and the subordination specified in many funding contracts (Hainz et al., 2019). Thus, insolvency should have a strong impact on crowd investors. Sustainability-oriented investors might respond even more severely than ordinary crowd investors to an insolvency for two reasons.

First, sustainability-oriented investors may be both "profit-oriented" and "pro-social" (Nilsson, 2008). An insolvency therefore violates not only investors' financial return expectations but also their non-financial expectations related to SEE motives. In this sense, sustainability-oriented investors get hit in multiple domains when compared with ordinary and purely financial return-oriented investors and thus react more severely to an insolvency. Moreover, consumers are, for example, more likely to become active on a social issue if they believe that their behavior helps resolve the issue at stake, a situation often referred to as perceived consumer effectiveness (Berger and Corbin, 1992; Ellen et al., 1991; Straughan and Roberts, 1999). Nilsson (2008, p. 311) argues that perceived consumer effectiveness translates into an investment context, stating that "people who do not believe that their individual investments in SRI profiled funds can help towards solving SEE issues will not be likely to invest in SRI mutual funds even though they agree with the social initiative." In an equity crowdfunding context, the SEE issues will be resolved by the firm that applied for funding on the platform. If a sustainability-oriented firm fails, a personal investment can no longer help solve the SEE problem in question, and next to the financial loss, the insolvency hurts another major investment motive.

Second, evidence shows that SRI holdings perform similar on a risk-adjusted basis as compared with ordinary investments (Rivoli, 2003; Statman, 2000). However, what often matters to investors is not the objective risk and performance of an investment but the perceived risk and performance of a sustainability-oriented investment (Nilsson, 2008). The perception of low risk

and good financial performance can increase the likelihood of an investment in the first place. Gevlin (2007) and Nilsson (2008) find that the majority of sustainability-oriented investors expect their investments to be less risky and to yield higher returns than other investments. Byrne (2005) and MacGregor et al. (1999) argue that the possible consequences of poor investment decisions influence the subjective perception of risk in mutual funds. Consequently, if sustainability-oriented crowd investors perceive their investments initially as less risky and if an insolvency then increases their perception of risk, an insolvency could have a more detrimental effect on their propensity to invest.

It can be argued that investors in sustainability-oriented equity crowdfunding should expect a return based on the market risk exposure of their investment (Hudson, 2005). An insolvency in a sustainability-oriented crowd investor's portfolio might, however, also entail another objective risk, because the smaller number of issuers in equity crowdfunding makes it more difficult to diversify firm-specific risks. As noted previously, this is because only a few equity crowdfunding campaigns seek funds at a certain point in time, as there is no secondary market and shares are not traded after the funding period has ended. Moreover, given that not all platforms have a sustainability orientation, the number of sustainability-oriented campaigns is even smaller. If the number of sustainability-oriented issuers is too small or these firms are too similar, investors lack opportunities to diversify campaign-specific risk and thus confront higher costs to hedge otherwise diversifiable firm-specific risk (Hudson, 2005). Thus, after a portfolio firm fails, it might be too expensive for an investor to hedge the firm-specific risk and stay in the market.

Moreover, sustainability-oriented investors often prefer passive investments, in which a fund manager actively picks appropriate SEE stocks for them and filters out inappropriate stocks (Lewis and Mackenzie, 2000b). Some investors might, however, believe that professional investment activities and government action are not enough and that they have a responsibility to take financial actions themselves to improve society (Sandberg, 2018). If sustainability-oriented crowd investors dare to select their own investment targets that later result in an insolvency, they might more easily blame themselves for the realized loss and consequently stop investing or move from equity crowdfunding to more passive forms of SEE investments. Taking these arguments together, we expect sustainability-oriented investors to be shocked more severely after an insolvency occurs.

Hypothesis 2: In equity crowdfunding, sustainability-oriented investors are more severely affected by a default shock than ordinary crowd investors.

3. Data and method

3.1 Data

To test our research question and hypotheses, we analyze investment decisions of crowd investors from November 6, 2011, to June 20, 2018, at six different equity crowdfunding platforms: Bettervest, Companisto, Green Rocket, Home Rocket, Innvestment, and Lion Rocket. Bettervest and Green Rocket only offer investment opportunities in sustainability-oriented firms. Home Rocket offers only real estate investments. Companisto, Innvestment, and Lion Rocket focus on equity crowdfunding for start-ups. All platforms are from Germany except for Lion Rocket, which is an Austrian platform. Table 1 shows the distribution of investments, investors, and campaigns for each platform. For the platforms Green Rocket, Home Rocket, and Lion Rocket—which belong to the same corporate group—we are able to identify whether investors are active on more than one of the three equity crowdfunding platforms. Because Bettervest, Companisto, and Innvestment have a platform-specific investor ID, we cannot identify whether investors engaged across platforms.

For 7,279 investors on the three Rocket platforms, we find that 1,546 were active on more than one of the platforms, which reduces the number of unique investors on these platforms to 5,733 investors. For the remaining platforms, we were not able to make this correction. Our unit of observation for the multivariate analysis is whether investors made an investment or not. Investors are included in the analysis as soon as they made their first investment. In total, our sample contains 1,249,271 investment decisions from 26,241¹ investors who decided to invest 83,038 times in 279 different equity crowdfunding campaigns. Table 2 shows the percentage of firms on each platform that went into insolvency, were liquidated, or were dissolved as of the end of our observation period. Table 3 reports descriptive statistics, and Table 4 provides variable descriptions.

Empirical research has frequently classified investors as either “ethical” or “conventional” investors, depending on whether they invested in at least one socially responsible fund (Beal et al., 2005; Lewis and Mackenzie, 2000a, 2000b; McLachlan and Gardner, 2004; Williams, 2007). We classify investors as sustainability-oriented investors if they invest in campaigns on Green Rocket or Bettervest, which specialize in funding SEE business ideas. To be clear, we

¹ Because we could not identify investors from Companisto by an investor ID, similar to Hornuf et al. (2020), we assume that the name and location combination is a valid proxy for identifying a unique investor. We exclude investments by users with the 20 most popular German names, because it is likely that there is more than one investor with a name such as “Michael” who lives in a big city such as Munich.

do not assume that investors on these two platforms are *purely* driven by SEE motives. However, because sustainability-oriented crowd investors need to actively search for and select an equity crowdfunding campaign without professional guidance, we believe that investors who actively select SEE campaigns reveal their SEE preferences and consequently treat them as more sustainability oriented than investors on ordinary equity crowdfunding platforms. This is also in line with literature on SRI, which argues that investors should be categorized on a continuum ranging from a purely ethical orientation to a strictly financial orientation in terms of the extent to which personal values influence their investment decision (Hummels and Timmer, 2004). Moreover, investors who direct larger parts of their overall portfolio in socially responsible investments should have stronger pro-social attitudes than investors who invest less in these projects (Nilsson, 2008). Thus, we consider investors on Green Rocket and Bettervest *more sustainability oriented* than ordinary crowd investors.

– Tables 1–4 around here –

3.2 Sampling

In our dataset, 4,559 investors experienced at least one insolvency. Investors who have experienced a default could refrain from investing further for multiple reasons. For example, the longer investors are investing in equity crowdfunding, the more likely it is that they will experience a default. At the same time, the longer investors are active in this new asset class, the more investments have been offered to them and the less likely the next start-ups will be included in the portfolio. To address this selection problem, we conduct Euclidean distance matching (King and Nielsen, 2019). More precisely, we create an artificial control group with investors who experienced no insolvency but have similar characteristics to the 4,559 investors who experienced at least one insolvency. This procedure results in less biased regression coefficients and more robust results. We use the k-nearest-neighbors (KNN) method to create our artificial control group. With the KNN sampling, we respectively identify three investors who are most similar to an investor who experienced an insolvency. We ensure that every observation has at least one individual neighbor, which is not the nearest neighbor of any other observation. For the KNN matching, we use several variables to match investors.

We match investors on the *platform*, because the decision on which equity crowdfunding platform an investor makes pledges already contains information about the motives of the investor, given that equity crowdfunding platforms focus on different kinds of firms. We also match investors on *experience in equity crowdfunding*, measured as the time since the first investment was made. Investors with more experience in equity crowdfunding could behave

differently than less experienced investors. For example, experienced investors could screen firms more carefully or focus on different aspects of the firms than an investor with less experience. Furthermore, if an investor's first investment was in an equity crowdfunding firm a long time ago, it is more likely that he or she already had returns on his or her investment, which could influence investment decisions in the future. As an alternative measure of investment experience, we match investors on the *number of investments* an investor made in equity crowdfunding campaigns. This variable also captures the propensity to diversify the equity crowdfunding portfolio. Finally, we match investors on *total investment amount*, which serves as a proxy for the financial sophistication of the investor. Investors with high income or wealth generally have more money available for investments and will more likely also invest higher amounts of money in equity crowdfunding firms. Although it would be preferable to use the income or overall investment portfolio of an investor, given that such data are not available to us, we consider the total investment amount in equity crowdfunding campaigns an approximation of these variables.

Fig. 1 shows the Euclidean distances for matched investors, indicating the quality of our matching procedure. Euclidean distances are calculated in a multi-dimensional space based on the values of the variables used in the KNN matching. We standardize the distances to judge whether the distance is small or large between investors. In total, 99.4% of all distances are between -2 and $+2$ standard deviations and 98.9% between -1 and $+1$ standard deviations. These results indicate that our matching procedure worked as intended, and for investors who experienced an insolvency, we found similar investors who did not experience an insolvency. Our matched sample contains data on 9,400 unique investors, 4,559 of whom experienced at least one insolvency; 5,017 investors did not experience any insolvency. These investors confronted 496,148 investment decisions.

– Figure 1 around here –

3.3 Regression model

We use three different dependent variables to analyze investment decisions that are captured by the term *InvDec*. Our first dependent variable is *NewInvAmount*, which measures the amount of capital invested by investor i in the focal campaign j on platform k , and run ordinary least squares (OLS) regressions. In addition, we use *NewInvDummy* as a dependent variable, which is a dummy variable equal to 1 if investor i decides to invest in campaign j on platform k . Given that our dependent variable is dichotomous and measures whether an investor makes

an investment or not, we run a logistic regression model to identify which factors drive the investment decision. A positive regression coefficient indicates a higher probability to invest in the respective campaign. Finally, we use *#NewInv* as a dependent variable, which is the number of new investments by investor i in the focal campaign j on platform k , and run a negative binomial model. For logistic regressions, we report average marginal effects, and for negative binomial models, we report incidence rate ratios. The latter can conveniently be interpreted as multiplicative effects.

We specify the baseline regression model as follows:

$$InvDec_{i,j,k} = \beta_0 + \beta_1 ExpInsol_i + \beta_2 NumInsol_i + \beta_3 Sustainability_j + \beta_4 InvPast_i + \beta_5 ToP_i + \epsilon_i,$$

where *ExpInsol*, our variable of interest, is a dummy variable equal to 1 if the investor had experienced at least one insolvency and *NumInsol* is the total number of experienced insolvencies by the investor. The latter variable captures whether the marginal propensity to invest changes after the investor experienced more than one insolvency in the portfolio. Alternatively, the amount lost from an insolvency could affect investment decisions more strongly. In robustness tests, we therefore include *ShareCapitalLost*, which is the percentage of capital invested in equity crowdfunding the investor lost from an insolvency, and *AmountLost*, which is the amount of capital lost by an investor. The dummy variable *Sustainability* equals 1 if the campaign is run by a sustainability-oriented firm and 0 otherwise. The variable *InvPast* is the number of investments an investor has made before the focal investment decision; it captures the equity crowdfunding experience of an investor. Finally, we control for the time the investor has been active on the platform (*ToP*), measured as days between the first investment on the platform and the start of the focal campaign.

4. Results

4.1 Regression results

We first investigate our research question. Table 5 shows the results of our baseline regression. For all models, we find that *ExpInsol* is significantly positively associated with our dependent variables. If an investor in our equity crowdfunding sample experiences an insolvency in his or her portfolio, it is more likely that he or she makes another investment. Moreover, investors who experience an insolvency also invest larger amounts of money and make more investments

in the focal equity crowdfunding campaign. This finding is robust and provides a negative answer to our research question, which asks whether investors in equity crowdfunding suffer from a default shock. However, the negative coefficients of *NumInsol* indicate that the positive default shock fades away the more insolvencies the investor has experienced.² An additional insolvency in the portfolio reduces the probability of an investor to invest in a new campaign by 3.2%. Given that the probability of making a new investment is 7.1% on average, the economic significance of this variable is large and indicates that three insolvencies are enough to confirm the default shock of Dorfleitner et al. (2019) in equity crowdfunding. With every additional insolvency in the portfolio, the average amount invested is reduced by 62.54 EUR and the number of additional investments by 45.8%.

For Hypothesis 1, which states that sustainability-oriented investors in equity crowdfunding invest larger amounts of money and make more investments, we find that the variable *Sustainability* is not significant in the OLS regression (Table 5). However, it is significantly positive in the logit regression, which provides evidence that sustainability-oriented investors are generally more likely to invest in the focal campaign. Moreover, in the negative binomial regression, we find that sustainability-oriented investors make on average more than twice as many investments than ordinary crowd investors, which is in line with Hypothesis 1. Regarding the control variables, we find that *InvPast*, which measures the investment experience in equity crowdfunding, has a robust and significantly positive effect on our dependent variables, while the time investors are registered on the platform (*ToP*) has a robust and significantly negative effect in all three models.

In Table 6, we add the interaction term *ExpInsol x Sustainability* to investigate Hypothesis 2, which states that there is a differential effect for sustainability-oriented investors with regard to the default shock. Our regression results reveal that after experiencing an insolvency, investors on sustainability-oriented platforms invest significantly lower amounts and have a significantly lower probability to invest. If the insolvency occurred on a sustainability-oriented platform rather than an ordinary equity crowdfunding platform, the subsequent average amount invested is 21.25 EUR lower, and the likelihood of an additional investments is reduced by 0.6%. This result is in line with Hypothesis 2 and can be attributed to the violation of a major investment motive of sustainability-oriented crowd investors other than the financial loss.

² We repeat the regression analysis with models that contain either *ExpInsol* or *NumInsol*, to ensure that our results are not affected by multicollinearity. The results remain robust and are available on request.

An alternative to the explanation that a default shock affects sustainability-oriented investors more severely could be that they lose larger amounts relative to their overall crowdfunding portfolio as a result of an insolvency. In a next step, we therefore test whether the relative amount that was lost because of an insolvency, measured by the variable *ShareCapitalLost*, affects the default shock. The results from the OLS and negative binomial regressions in Tables 7 and 8 show that investors who lost relatively more money from an insolvency generally tend to invest larger amounts but are more likely to reduce the number of investments. The coefficient from the OLS regression indicates that the average amount invested increases by 68.08 EUR if the amount lost relative to the invested capital increases by 1 percentage point. Furthermore, we find that the number of additional investments decreases by 35.1% if the amount lost relative to the invested capital increases by 1 percentage point. Importantly, the coefficient of *NumInsol* remains negative, so the default shock re-occurs if investors experience multiple insolvencies. Finally, the interaction term *ShareCapitalLost x Sustainability* indicates that sustainability-oriented investors tend to invest smaller amounts and are less likely to invest than other investors if the amount lost relative to their crowdfunding portfolio is larger. With regard to Hypothesis 2, this provides additional evidence that, in particular, sustainability-oriented investors suffer from a default shock.

– Tables 5–8 around here –

4.2 Lagged effects of an insolvency

In a next step, we test whether the default shock is more pronounced shortly after the investor experienced an insolvency and whether it fades away after a certain point. In Table 9, we include three lags of the variable *ExpInsol* in our regression model. The lags contain a period of one to five days, six to ten days, and 11 to 15 days, respectively, after the insolvency. Estimation of the one-to-five-day lag is not feasible in the logit specification, because *NewInvDummy* has no variance when *ExpInsol_Lag₅₋₁₀* is equal to 1. In other words, no investor who experienced an insolvency made at least one new investment five days after the event. All three models show ascending coefficients of the lagged variables. The coefficients of the one-to-five-day window in the OLS and the six-to-ten-day window in the logit and negative binomial specifications are negative but turn positive for windows thereafter. Thus, equity crowdfunding investors suffer from a default shock immediately after the event but recover fast after approximately 15 days.

In Fig. 2, we investigate the effects of experiencing an insolvency considering even longer time lags ranging from three to 28 days after the investor experienced an insolvency. The black lines show significant differences from an estimated coefficient to the estimated coefficients of the previous time lag. The figure reveals that the effect on investors' behavior after experiencing an insolvency varies over time. For the first 12 days after they experience an insolvency, the coefficient of *ExpInsol* is mostly significantly negative or close to zero, which evidences that investors invest less after experiencing a default. After this period, the coefficients are significantly positive, which indicates a recovery of the investors from the shock.

– Table 9 and Figure 2 around here –

4.3 Binomial test

Our results suggest that except for the time immediately after an insolvency occurred in their portfolio, investors who experienced an insolvency generally make more investments after the event and only stop investing after they experience more than two insolvencies. In a next step, we investigate whether this behavior is consistent or inconsistent with investor expectations. On the one hand, crowd investors could invest more after they experienced an insolvency, because an insolvency could make the need for portfolio diversification more salient. On the other hand, they could have underestimated the risk of equity crowdfunding investments, and it would be logical for them to stop investing after experiencing one or more insolvencies.

To test the degree to which investor behavior in our sample is consistent or inconsistent with investor expectations, we compare the investor's realized default probability with an expected default probability. If the investor's realized default probability is higher than the expected default probability, the investor might reasonably update his or her *ex ante* beliefs about the expected default probability and stop investing in equity crowdfunding campaigns. If the investor's realized default probability is lower than the expected default probability, ceasing to invest could be a mistake and worsen the risk return profile of the portfolio. Because there is no true expected default probability in our setting, we need to use an approximation. The *KfW-Gründungsmonitor* analyzes the structure and development of German start-ups and estimates their survival rates for one to 36 months after funding with Kaplan–Meier estimations.

We adapt these probabilities as a proxy for the expected default probability in our sample. To calculate an investor's realized default probability, we divide the number of experienced insolvencies by the number of total investments made. We compare this probability with the

expected default probability for the number of months the investor is active on the equity crowdfunding platform. For example, if an investor made the first investment 12 months ago, we choose as the expected default probability the Kaplan–Meier default probability from the *KfW-Gründungsmonitor* after 12 months. We use a binomial test to investigate whether the realized default probability is significantly higher or lower than the expected default probability, which helps us identify whether investors act in line with objective *ex ante* expectations.

We perform a one-sided binomial test to analyze whether the realized default probability is higher than the expected default probability. Fig. 3 shows the distribution of the p-values for this conjecture for the 4,559 investors who experienced at least one insolvency in our dataset. A small p-value of an investor indicates that the conjecture that the realized default probability is higher than the expected default probability can be rejected. In this case, ceasing to invest could be considered consistent with *ex ante* investor expectations. If we choose a 5% level of significance, we can reject the conjecture that the realized default probability is higher than the expected default probability for 47.7% of the investors, which implies that stopping to invest can be considered consistent with *ex ante* investor expectations. At the 1% level, only 35.4% of investors stop investing, while their realized default probability is higher than the expected default probability. At the 10% level, 55.4% of the investors act consistent with *ex ante* investor expectations.

In Table 10, we exclude investors who might rationally update their expectations from the analysis, because a significant proportion of investors could reasonably cease to diversify their portfolio if they conclude that the defaults they are experiencing are higher than what would have been expected based on a binomial test. We find that investors who act irrational are more affected by a default shock, because the coefficient of *ExpInsol* is significant lower (difference in coefficients, $p < 0.001$) for those investors in the logit regression (Column (2) vs. (4)). However, irrational investors invest higher amounts, because the coefficient of *ExpInsol* increases when we exclude rational investors from the analysis. In both models, we find significantly higher coefficients for *Sustainability* when only irrational investors remain, which implies that investors who irrationally respond to a default shock invest more often and higher amounts in sustainability-oriented campaigns than other investors.

– Figure 3 and Table 10 around here –

4.4 Additional robustness checks

We run several robustness tests to our analyses. In Table OA1 in the Online Appendix, the variable *AltPlatform* captures the number of investment opportunities on the respective equity crowdfunding platform on which the investor is active and *AltGlobal* captures the investment opportunities in the entire equity crowdfunding market in Germany. We find that the probability to invest in a certain campaign on the platform decreases when more investment opportunities are available on the platform. However, in line with Dorfleitner et al. (2019), the probability of an investment increases when there are more active campaigns in the entire German equity crowdfunding market. Furthermore, we find evidence of a non-linear relationship between the time on the platform and the decision to invest on that platform (see Table OA2 in the Online Appendix).

In Table OA3 of the Online Appendix, we include the interaction term $ExpInsol \times InvPast$ to test whether more experienced investors react differently after experiencing an insolvency. We find that more experienced investors are less likely to continue investing after an insolvency. In Table OA4 of the Online Appendix, we consider *AmountLost* instead of *ShareCapitalLost* as an additional robustness check and interact it with *ExpInsol* to examine whether there is a stronger default shock when the investor lost a larger amount of money. Similar to Dorfleitner et al. (2019), we compute *ExpInsol30* as a dummy variable for the default shock in Tables OA5 and OA6 of the Online Appendix, which switches to 1 only if the investor experienced at least one insolvency in the last 30 days. Our results remain robust to these alternative specifications.

We provide four additional robustness checks to ensure the validity of our results. First, we run the same regression models over the full sample of available data without matching (Tables OA7–OA10 in the Online Appendix). On the one hand, even if techniques such as the KNN sampling generally improve statistical inference, it is still possible that use of this sampling procedure overlooks important observations, which could cause an estimation bias. On the other hand, similarity of results from the full sample to the results from the matched sample can be a validation of the results, but should not be expected. In the full sample analysis, our data contain 1,249,271 investment decisions by 26,241 investors. Overall, 4,559 investors experienced at least one insolvency, while 21,682 investors did not experience any insolvency. The results from the full sample analysis hardly differ from our previous results with regard to the variables of interest. In Table OA7 in the Online Appendix, the coefficient of *Sustainability* is now also significant and positive in the OLS regression. Moreover, in Table OA10 in the Online

Appendix, the incident rate ratio for *ShareCapitalLost* is now greater than 1 and the incident rate ratio of *ShareCapitalLost* \times *Sustainability* is less than 1.

Second, we repeat our sampling procedure and chose $k = 1$ nearest neighbor (Tables OA11–OA14 in the Online Appendix). This results in 370,696 investment decisions by 7,044 investors, 4,559 of whom experienced at least one insolvency and 2,485 zero insolvencies. Again, we delete the “non-insolvency” investors from the control group, who were matched by the KNN procedure with multiply “insolvency” treatment group investors, which results in an unequal number of observations in both groups. The results with only $k = 1$ nearest neighbor do not differ in terms of the signs of our variables of interest from the results with $k = 3$ chosen nearest neighbors. In Table OA12, the coefficient of *ExpInsol* \times *Sustainability* in the logit specification and the coefficient of *ShareCapitalLost* in Table OA14 become non-significant.

Third, we use Mahalanobis distance matching instead of Euclidean distance matching (King and Nielsen, 2019) and find similar results. Fourth, we repeat the binomial test, taking into account that Home Rocket is a platform from Austria and default probabilities might differ from Germany. We therefore use expected default rates for Austrian start-ups published by the *Kreditschutzverband von 1870* and apply a 5% level of significance. The default probabilities of Austrian companies are similar to those of German companies, which is why the results of the binomial test are also similar. We now reject our conjecture that the realized default probability is higher than the expected default probability for 41% of the investors (vs. 47% using expected default rates from German start-ups).

5. Discussion

It might be argued that the variable *Sustainability* is a placeholder for investments of crowd investors who are less likely to be purely motivated by financial reasons. Until now, three archetypes of investment platforms have emerged in the equity crowdfunding market: (1) equity crowdfunding platforms that predominantly fund start-up firms, (2) real estate crowdfunding platforms that fund real estate campaigns, and (3) sustainability-oriented platforms that fund sustainability-oriented campaigns. It is not clear, whether equity and real estate crowdfunding platforms also include sustainability-oriented campaigns. For example, start-ups might invent new business models in the bio-based economy, or real estate campaigns might ecologically reconstruct existing buildings. To test whether campaigns brokered on sustainability-oriented platforms were indeed more appealing to sustainability-oriented investors, we presented original investment descriptions of the crowdfunding campaigns to 72 German individuals on

the crowdsourcing platform Amazon Mechanical Turk (MTurk) who were unrelated to our study. We asked them to rate ten randomly selected campaigns (ten-point Likert scale) with two questions: *How much would the described campaign appeal to a sustainability-oriented investor?* and *How much would the described campaign appeal to a purely return-oriented investor?* The MTurkers received no information about whether the campaign was brokered on a sustainability-oriented platform or not.

We found that descriptions of campaigns listed on sustainability-oriented platforms were 33% more appealing, on average, to sustainability-oriented investors than campaigns on ordinary crowdfunding platforms ($p < 0.001$). According to Hudson's (2005) theoretical analysis, sustainability-oriented equity crowdfunding campaigns should pay the same returns as ordinary, purely return-oriented equity crowdfunding campaigns. Our MTurk survey indicates that sustainability-oriented campaigns are indeed not more or less appealing to ordinary, purely return-oriented crowd investors, as the 3.5% difference in the appeal of campaigns to purely return-oriented investor is not significant ($p = 0.204$). This indirect evidence indicates that campaigns on all three types of platforms pay a market return.

Investors of SRI-profiled mutual funds often combine SEE motives with traditional investment objectives (McCann et al., 2003; Michelson et al., 2004; Nilsson, 2008; Sparkes, 2002). Examination of surveys and blog entries on investor behavior in equity crowdfunding indicates that investors on return-oriented platforms indeed have more return-oriented preferences (Seedmatch, 2013), while investors on sustainability-oriented platforms more often have sustainability-oriented preferences (Aktiendepot, 2020; Biallo, 2019; Geld-bewegt 2020). A survey on investment decisions of 300 crowd investors on Seedmatch (2013), which focuses on equity crowdfunding for start-ups, revealed that 89% of investors consider it important to generate a positive return. An interview with Astrid Vancraeynest from the SEE-oriented platform Bettervest emphasizes that sustainability, in addition to return on investment, is an important factor for many crowd investors on Bettervest (Biallo, 2019). Taking these findings into account, we do *not* argue that investors on Bettervest and Green Rocket are only sustainability oriented while investors on the other platforms are purely return oriented. Investors on sustainability-oriented platforms also most likely expect to be compensated for market risk (Hudson, 2005) and to earn a respective return, which is in line with our MTurk survey. The question that arises is whether such mixed motives affect our empirical estimates, as our theoretical concepts suffer empirically from measurement error. Certainly, the variable *Sustainability* does not capture the full effect of purely sustainability-oriented investors, because investors on sustainability-oriented platforms have financial motives as well. Thus, we

underestimate the true coefficients that would be obtained if sustainability-oriented investors had no financial motives at all. In other words, our results are lower bounds and thus conservative empirical estimates.

Dorfleitner et al. (2019) show not only that investors change their behavior after an insolvency but also that this behavior is irrational. That is, lenders in crowdlending are shocked by an insolvency and reduce their investment amounts and the number of investments; however, this behavior negatively affects their risk return profile. We cannot test this conjecture in a similar manner in our setting, because unlike in crowdlending, repayments to investors in equity crowdfunding often take several years. This makes it barely possible to calculate the RAROC for the investment period under consideration. However, we find some first evidence that investment behavior of equity crowdfunding investors is in many cases inconsistent with rational *ex ante* expectations about default probabilities. Using a binomial test, we show that a substantial fraction of investors changes their investment behavior after an insolvency, even though the insolvencies they experienced are in line with what would have been expected by a rational investor.

A notable finding from our data is that investors generally tend to invest more and not less after experiencing an insolvency. At first glance, this result is in contrast with Dorfleitner et al. (2019), who investigate lenders on a crowdlending platform. One explanation for this finding could be that investors who invest more are generally also more likely to experience an insolvency and our result is due to reverse causality. This explanation, however, is unlikely to be true given that we use a matched control group of investors with similar *experience in equity crowdfunding, number of investments, and total investment amounts*. Another explanation could be that investors in equity crowdfunding behave somewhat differently from lenders in a crowdlending context. Equity crowdfunding differs from crowdlending, for example, in that repayments in crowdlending begin immediately after funding, while in equity crowdfunding, repayments normally take several years. Investors in equity crowdfunding thus observe cash flows less frequently and therefore might also be less engaged after the funding has ended. Finally, our findings indicate that the positive default shock turns negative immediately after the event and if investors experience more than two insolvencies. Experiencing more than two insolvencies is not unlikely to happen given that 30% of crowd funded firms in Germany fail three years after funding (Hornuf et al., 2018b). Our results are thus not that different from Dorfleitner et al.'s (2019).

6. Conclusion

Our findings extend previous research in at least three ways. First, we provide external validity for the default shock that Dorfleitner et al. (2019) identify by extending the evidence to a new market segment and six different platforms. Our findings are more nuanced: We find evidence of a default shock, but only immediately after an insolvency took place. The default shock disappears two weeks after the insolvency took place and makes investments by those that experienced a default again more likely. Moreover, we find that a default shock generally exists in equity crowdfunding if investors experience more than two insolvencies. Second, we contribute to the literature on how sustainability-oriented investors allocate their portfolio holdings (Mackenzie and Lewis, 1999; Webley et al., 2001). The results of our multivariate analyses indicate that sustainability-oriented investors pledge larger amounts and invest in more campaigns. Third, while Dorfleitner et al. (2019) investigate only investors who have pledged money in company loans, we differentiate between investors who made investments in ordinary start-up firms and those who made investments in sustainability-oriented firms. Given that sustainability-oriented investors have investment motives other than a pure financial return motive, we would expect them to be shocked even more severely if they experience a default in their equity crowdfunding portfolio. Our results are in line with the notion that sustainability-oriented investors care about non-financial returns, as they react more negatively when experiencing a default in their portfolio, which indicates that they suffer beyond the pure financial loss.

Our findings also yield new insights into how personal experience affects investment decisions. We find that the experience of a default changes the willingness to make new investments, but this effect depends on the respective investor type. This also has implications for the regulation of new asset classes, such as equity crowdfunding, and how to protect investors. Some investors might engage with these new markets for the sole purpose of generating a financial return, while others might consider personal values and societal concerns when making an investment. Investors' interests might even be more severely harmed if, in addition to their financial loss, their personal values and societal concerns are violated because a crowdfunding campaign fails. Equity crowdfunding regulation generally does not take personal values and investment motives into account (Goethner et al., 2020). Our research shows that setting simple investment limits to protect retail investors might be misleading and that investor protection might need to take individual investment motives such as the sustainability orientation into account.

Our research has clear limitations and offers avenues for further research at the same time. The equity crowdfunding portfolios we investigate in our empirical analysis are only a subset of the overall investor portfolio, which might, for example, include ordinary stocks, fixed income products, mutual funds, or commodities. While we are interested in how an insolvency of an equity crowdfunding issuer affects investor behavior in equity crowdfunding, it would be useful to know how defaults in the overall portfolio affect investor behavior in equity crowdfunding and vice versa. Future research might be able to merge data from equity crowdfunding with overall investor holdings and conduct such analyses. Furthermore, while this type of information is not necessary to answer our research question, it would be interesting to learn more about the investors who are active on different equity crowdfunding platforms. For example, what is their gender? Where do they come from? How financially experienced are they? A natural research question future studies might answer is whether socio-demographic variables affect the decision to make socially responsible investments in equity crowdfunding and whether these variables influence investment behavior. Finally, unlike Dorfleitner et al. (2019), we are not able to calculate the RAROC for the portfolios of our crowd investors. This will be possible in four to five years, after investors have received sufficient repayments from their investment targets. Calculating the RAROC and identifying the investors who stopped investing after realizing the default probability in their portfolio was smaller than the expected default probability would allow us to judge whether the default shock in equity crowdfunding constitutes a bias or not.

References

- Ahlers, G.K., Cumming, D., Günther, C., Schweizer, D., 2015. Signaling in equity crowdfunding. *Entrep. Theory Pract.* 39 (4), 955–980.
- Agrawal, A., Catalini, C., Goldfarb, A., 2016. Are syndicates the killer app of equity crowdfunding? *Calif. Manag. Rev.* 58 (2), 111–124.
- Aktiendepot, 2020. *Nachhaltiges Invest mit Crowdinvesting – Über Crowdinvesting nachhaltige Projekte finanzieren!* Available at: <https://www.aktiendepot.com/nachhaltiges-invest-mit-crowdinvesting/#fazit-mit-crowdinvesting-nachhaltig-investieren-zahlt-sich-fur-alle-beteiligten-aus>, last accessed 12 May 2020.
- Andersen, S., Hanspal, T., Nielsen, K.M., 2019. Once bitten, twice shy: the power of personal experiences in risk taking. *J. Financ. Econ.* 132 (2), 97–117.
- Beal, D., Goyen, M., 1998. Putting your money where your mouth is: a profile of ethical investors. *Financ. Serv. Rev.* 7 (2), 129–144.
- Beal, D.J., Goyen, M., Philips, P., 2005. Why do we invest ethically? *J. Invest.* 14 (3), 66–77.
- Belleflamme, P., Lambert, T., Schwienbacher, A., 2014. Crowdfunding: tapping the right crowd. *J. Bus. Venturing* 29 (5), 585–609.
- Berger, I.E., Corbin, M.R., 1992. Perceived consumer effectiveness and faith in others as moderators of environmentally responsible behaviors. *J. Public Policy Mark.* 11 (2), 79–100.
- Biallo, 2019. *Nachhaltiges Crowdinvesting: Mehr als nur gute Rendite.* Available at: <https://www.biallo.de/geldanlage/ratgeber/nachhaltiges-crowdinvesting/>, last accessed 12 May 2020.
- Block, J., Colombo, M.G., Cumming, D.J., Vismara, S., 2018b. New players in entrepreneurial finance and why they are there. *Small Bus. Econ.* 50 (2), 239–250.
- Block, J., Hornuf, L., Moritz, A., 2018a. Which updates during an equity crowdfunding campaign increase crowd participation? *Small Bus. Econ* 50 (1), 3–27.
- Byrne, K., 2005. How do consumers evaluate risk in financial products? *J. Financ. Serv. Mark.* 10 (1), 21–36.
- Calic, G., Mosakowski, E., 2016. Kicking off social entrepreneurship: how a sustainability orientation influences crowdfunding success. *J. Manag. Stud.* 53 (5), 738–767.
- Chiang, Y.M., Hirshleifer, D., Qian, Y., Sherman, A.E., 2011. Do investors learn from experience? Evidence from frequent IPO investors. *Rev. Financ. Stud.* 24 (5), 1560–1589.
- Choi, J.J., Laibson, D., Madrian, B.C., Metrick, A., 2009. Reinforcement learning and savings behavior. *J. Finance* 64 (6), 2515–2534.

- Cholakova, M., Clarysse, B., 2015. Does the possibility to make equity investments in crowdfunding projects crowd out reward-based investments? *Entrep. Theory Pract.* 39 (1), 145–172.
- Dorfleitner, G., Hornuf, L., Weber, M., 2019. Paralyzed by shock: the portfolio formation behavior of peer-to-business lending investors. CESifo Working Papers 7092.
- Ellen, P.S., Wiener, J.L., Cobb-Walgren, C., 1991. The role of perceived consumer effectiveness in motivating environmentally conscious behaviors. *J. Public Policy Mark.* 10 (2), 102–117.
- Freear, J., Sohl, J.E., Wetzel Jr., W.E., 1994. Angels and non-Angels: are there differences? *J. Bus. Venturing* 9 (2), 109–123.
- Geld-bewegt, 2020. *Nachhaltig investieren mit der Crowd?* Available at: <https://www.geldbewegt.de/wissen/geld-versicherungen/nachhaltige-geldanlage/nachhaltig-investieren-mit-der-crowd-16773>, last accessed 12 May 2020.
- Gevlin, K., 2007. The coming of age of socially responsible investing. *Financ. Plan.* 37 (8), 56.
- Goethner, M., Hornuf, L., Regner, T., 2020. Protecting investors in equity crowdfunding: an empirical analysis of the small investor protection act. mimeo.
- Günther, C., Johan, S., Schweizer, D., 2018. Is the crowd sensitive to distance? How investment decisions differ by investor type. *Small Bus. Econ.* 50 (2), 289–305.
- Hainz, C., Hornuf, L., 2019. Praxiserfahrungen mit den Befreiungsvorschriften des Kleinanlegerschutzgesetzes: Eine aktuelle Bestandsaufnahme. ifo Forschungsberichte 102, Munich, ifo Institute.
- Hainz, C., Hornuf, L., Nagel, L., Reiter, S., Stenzhorn, E., 2019. Exemption provisions of the German small investor protection act: a follow-up study. CESifo DICE Rep. 17 (2), 41–51.
- Hörisch, J., 2015. Crowdfunding for environmental ventures: an empirical analysis of the influence of environmental orientation on the success of crowdfunding initiatives. *J. Clean. Prod.* 107, 636–645.
- Hornuf, L., Klöhn, L., Schilling, T., 2018a. Financial contracting in crowdfunding - lessons from the German market. *Ger. Law J.* 19 (3), 509–578.
- Hornuf, L., Schmitt, M., Stenzhorn, E., 2018b. Equity crowdfunding in Germany and the United Kingdom: follow-up funding and firm failure. *Corp. Gov. Int. Rev.* 26 (5), 331–354.
- Hornuf, L., Schmitt, M., Stenzhorn, E., 2020. Does a local bias exist in equity crowdfunding? Max Planck Institute for Innovation & Competition Research Paper No. 16–07.
- Hornuf, L., Schwienbacher, A., 2018a. Internet-based entrepreneurial finance: lessons from Germany. *Calif. Manage. Rev.* 60 (2), 150–175.

- Hornuf, L., Schwienbacher, A., 2018b. Market mechanisms and funding dynamics in equity crowdfunding. *J. Corp. Finan.* 50, 556–574.
- Hudson, R., 2005. Ethical investing: ethical investors and managers. *J. Ethics Q.* 15 (4), 641–657.
- Hummels, H., Timmer, D., 2004. Investors in need of social, ethical, and environmental information. *J. Bus. Ethics* 52 (1), 73–84.
- Jansson, M., Biel, A., 2011. Motives to engage in sustainable investment: a comparison between institutional and private investors. *Sustain. Dev.* 19, 135–142.
- Kaustia, M., Knüpfer, S., 2008. Do investors overweight personal experience? Evidence from IPO subscriptions. *J. Finance* 63 (6), 2679–2702.
- King, G., Nielsen, R., 2019. Why propensity scores should not be used for matching. *Political Analysis* 27 (4), 435–454.
- Kleinert, S., Volkmann, C., 2019. Equity crowdfunding and the role of investor discussion boards. *Venture Cap.* 21 (4), 327–352.
- Knüpfer, S., Rantapuska, E., Sarvimäki, M., 2017. Formative experiences and portfolio choice: Evidence from the Finnish great depression. *J. Finance* 72 (1), 133–166. doi:10.1111/jofi.12469.
- Laudenbach, C., Loos, B., Pirschel, J., 2017. Recent experiences and risk taking: trading responses to changes in the local environment. Working Paper.
- Lewis, A., Mackenzie, C., 2000a. Morals, motives and money: the case of U.K. ethical investing. *Hum. Relat.* 53 (2), 179–191.
- Lewis, A., Mackenzie, C., 2000b. Support for investor activism among UK ethical investors. *J. Bus. Ethics* 24 (3), 215–222.
- MacGregor, D., Slovic, P., Berry, M., Evenski, H.R., 1999. Perception of financial risk: a survey study of advisors and planners. *J. Financ. Plan.* 12 (8), 68–86.
- Mackenzie, C., Lewis, A., 1999. Morals and markets: the case of ethical investing. *Bus. Ethics Q.* 9 (3), 439–452.
- Malmendier, U., Nagel, S., 2011. Depression babies: do macroeconomic experiences affect risk taking? *Q. J. Econ.* 126 (1), 373–416.
- McCann, L., Solomon, A., Solomon, J.F., 2003. Explaining the growth in UK socially responsible investment. *J. Gen. Manag.* 28 (4), 15–36.
- McLachlan, J., Gardner, J., 2004. A comparison of socially responsible and conventional investors. *J. Bus. Ethics* 52 (1), 11–25.
- Michelson, G., Wailes, N., van der Laan, S., Frost, G., 2004. Ethical investment processes and outcomes. *J. Bus. Ethics* 52 (1), 1–10.

- Nilsson, J., 2008. Investment with a conscience: examining the impact of pro-social attitudes and perceived financial performance on socially responsible investment behavior. *J. Bus. Ethics* 83, 307–325.
- Nguyen, T., Cox, J., Rich, J., 2019. Invest or regret? An empirical investigation into funding dynamics during the final days of equity crowdfunding campaigns. *J. Corp. Finan.* 58, 784–803.
- Owen, A., Qian, Y., 2008. Determinants of socially responsible investment decisions. *Empir. Econ. Lett.*, Hamilton College Sustainability Working Paper #2008-2: 1–10.
- Pasewark, W.R., Riley, M.E., 2010. It's a matter of principle: the role of personal values in investment decisions. *J. Bus. Ethics* 93, 237–253.
- Ramos, J., 2014. Crowdfunding and the role of managers in ensuring the sustainability of crowdfunding platforms. in: J. Stewart (Eds.), *JRC Technical Report Series*, JRC Institute for Prospective Technological Studies, European Commission, available at: <ftp://ftp.jrc.es/pub/EURdoc/JRC85752.pdf>, last accessed 15 December 2019.
- Rivoli, P., 2003. Making a difference or making a statement? Finance research and socially responsible investment. *Bus. Ethics Q.* 13 (3), 271–287.
- Rosen, B.N., Sandler, D.M., Shani, D., 1991. Social issues and socially responsible investment behavior: A preliminary empirical investigation. *J. Consum. Aff.* 25 (3), 221–234.
- Sandberg, J., 2018. Towards a theory of sustainable finance, in: T. Walker, S.D. Kibsey, R. Crichton (Eds.), *Designing a sustainable financial system: development goals and socio-ecological responsibility*, Springer, Cham, 11.
- Seedmatch, 2013. *Investoren-Survey: Analysieren Sie noch oder investieren Sie schon?* Available at: <https://blog.seedmatch.de/investoren-survey-analysieren-sie-noch-oder-investieren-sie-schon/>, last accessed 12 May 2020.
- Signori, A., Vismara, S., 2018. Does success bring success? The post-offering lives of equity-crowdfunded firms. *J. Corp. Finan.* 50, 575–591.
- Social Investment Forum, 2008. Available at: <http://invest.org/news/releases/pressrelease.cfm?id=108>, last accessed 18 April 2020.
- Sparkes, R., 2002. *Socially responsible investment: a global revolution*. J. Wiley, New York.
- Statman, M., 2000. Socially responsible mutual funds. *Financ. Anal. J.* 56(3), 30–39.
- Straughan, R., Roberts, J., 1999. Environmental segmentation alternatives: a look at green consumer behavior in the new millennium. *J. Cons. Mark.* 16 (6), 558–575.
- Vismara, S., 2016. Equity retention and social network theory in equity crowdfunding. *Small Bus. Econ.* 46 (4), 579–590.

- Vismara, S., 2018. Signaling to overcome inefficiencies in crowdfunding markets. In: Cumming, D. and L. Hornuf (ed.), *Econ. Crowdfunding*, Palgrave Macmillan, Cham, 29–56.
- Vismara, S., 2019. Sustainability in equity crowdfunding. *Technol. Forecast. Soc. Change* 141, 98–106.
- Vulkan, N., Åstebro, T., Sierra, M.F., 2016. Equity crowdfunding: a new phenomena, *J. Bus. Ventur. Insights* 5, 37–49.
- Williams, G., 2007. Some determinants of the socially responsible investment decision: a cross-country study. *J. Behav. Financ.* 8 (1), 43–57.
- Webley, P., Lewis, A., Mackenzie, C., 2001. Commitment among ethical investors: an experimental approach. *J. Econ. Psychol.* 22 (1), 27–42.

Fig. 1. Euclidean distances from KNN matching.

Standardized Euclidean distances from KNN matching of investors (with $k = 3$ chosen nearest neighbors) who experienced at least one insolvency (treatment group) with similar investors who experienced no insolvency (artificial control group).

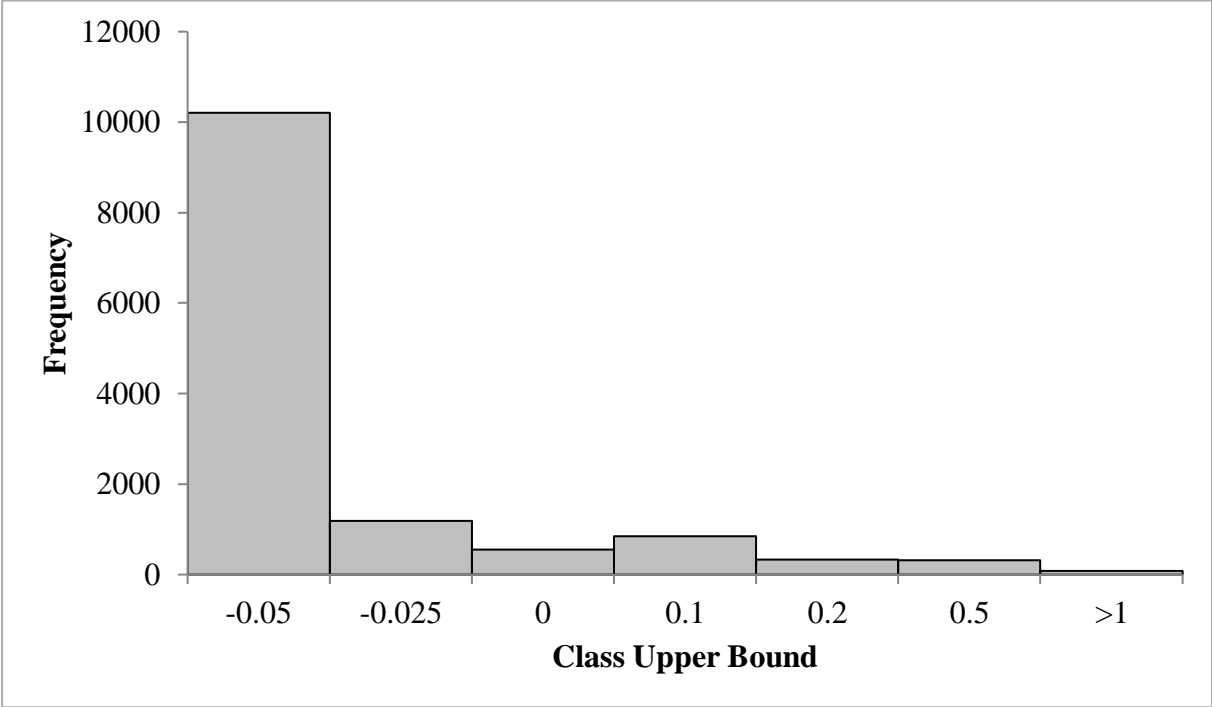


Fig. 2. Lagged coefficients of *ExpInsol*.

The figure shows the regression coefficients of *ExpInsol* dummy from our baseline regressions for the sampled dataset with $k = 3$ chosen nearest neighbors. Coefficients are estimated for different time lags ranging from three to 28 days after the investor experienced an insolvency. Black lines indicate significant differences from an estimated coefficient to the previous estimated coefficients. Significance levels: * < 0.10, ** < 0.05, and *** < 0.01.

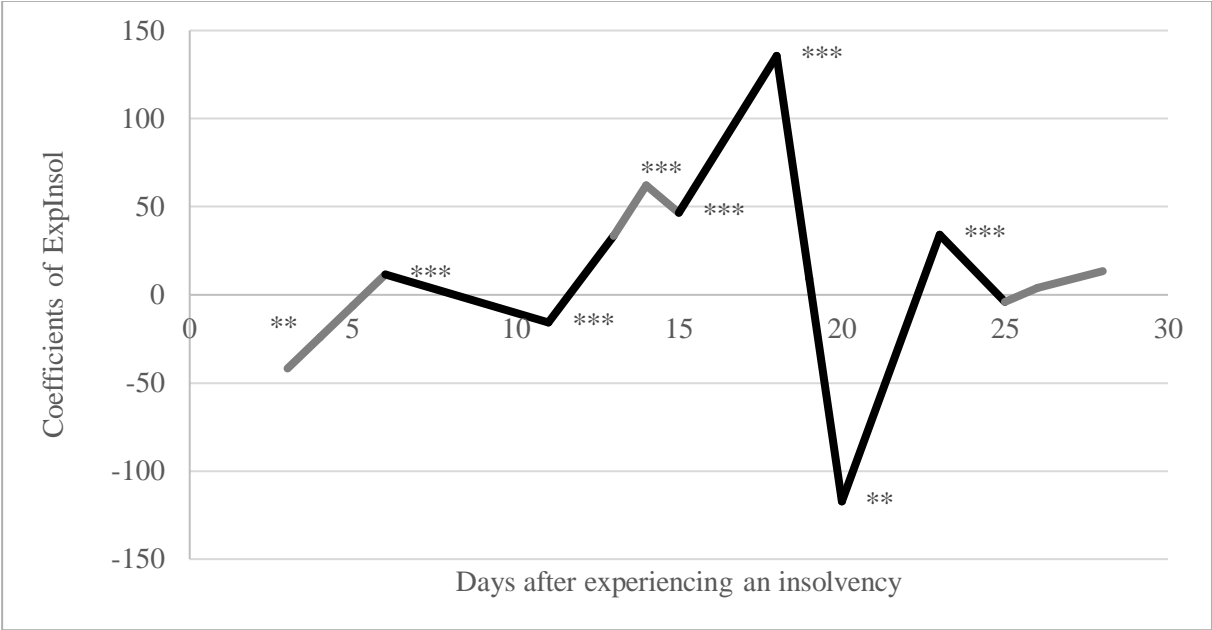


Fig. 3. P-values for binomial test.

The figure shows the distribution of p-values for binomial test with alternative hypothesis of higher realized default probability than expected default probability.

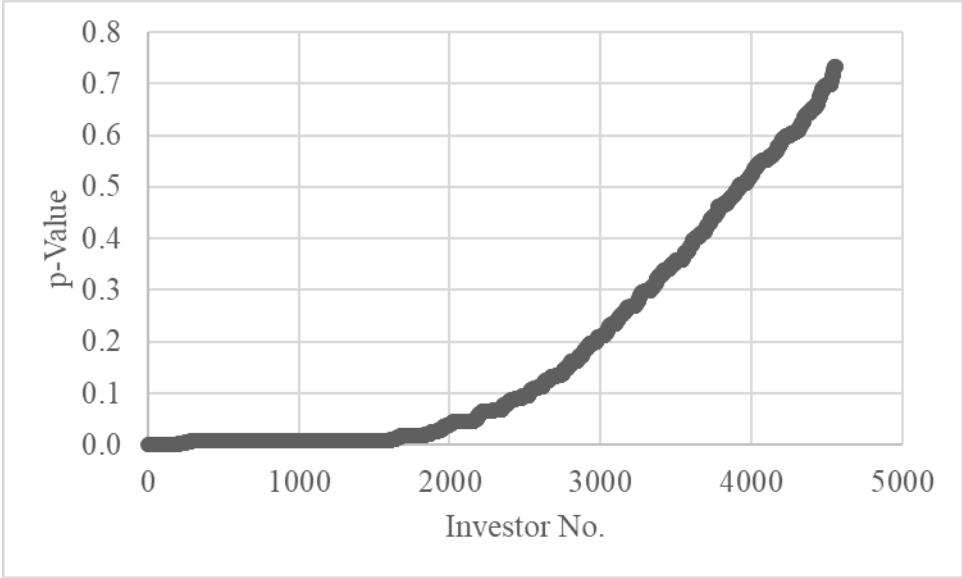


Table 1. Sample.

The table shows the distribution of investments, investors, and campaigns over the six equity crowdfunding platforms.

Platform Name	Platform Type	Investments	Investors	Campaigns
Bettervest	Sustainability-oriented	13.660	2.781	70
Companisto	Equity	49.556	17.168	86
Green Rocket	Sustainability-oriented	9.537	4.298	49
Home Rocket	Real estate	7.281	2.100	22
Innovestment	Equity	1.628	559	43
Lion Rocket	Equity	1.376	881	9
Total		83.038	27.787	279

Table 2. Frequencies of campaigns, investments, and insolvencies.

The table presents the absolute and relative frequencies of campaigns, investments, and insolvencies of the equity crowdfunding campaigns, separated in equity, sustainability-oriented, and real estate campaigns.

	Equity	Sustainability-oriented	Real Estate
<i>Campaigns</i>			
Absolute frequency	138	119	22
Relative frequency	49.46 %	42.65 %	7.89 %
<i>Investments</i>			
Absolute frequency	42.560	23.197	7.281
Relative frequency	58.27 %	31.76 %	9.97 %
<i>Insolvencies</i>			
Absolute frequency	28	3	0
Relative frequency	43.51%	4.90%	0.00%

Table 3. Descriptive statistics.

The table shows the descriptive statistics of investment decisions and investors. Variables are defined in Table 4.

Variable	N	Mean	SD	Min	Max
AltGlobal	1,249,271	32.792	11.137	2	71
AltPlatform	1,249,271	4.3093	2.1373	0	11
AmountLost	26,241	60.5213	612.5511	0	50,000
ExpInsol	26,241	0.1614	0.3679	0	1
InvPast	26,241	2.9386	4.9827	1	153
NewInvAmount	1,249,271	44.228	737.94	0	283,000
NewInvDummy	1,249,271	0.0488	0.2156	0	1
NumInsol	26,241	0.1668	0.6148	0	10
ShareCapLost	1,249,271	0.0283	0.1481	0	1
Sustainability	1,249,271	0.2056	0.4041	0	1
ToP	1,249,271	4.9415	4.5393	0	19.930

Table 4. Definition of variables.

Table reports the definitions of variables.

<i>Dependent Variables</i>	
NewInvAmount	Amount of new investments during the focal campaign in EUR.
NewInvDummy	Dummy variable indicating whether the investor carried out at least one new investment during the focal campaign.
#NewInv	Number of new investments an investor carried out during the focal campaign.
<i>Explanatory Variables</i>	
ExpInsol	Dummy variable indicating whether the investor has already experienced at least one insolvency at the beginning of the focal campaign.
NumInsol	Number of insolvencies an investor has experienced at the beginning of the focal campaign.
ShareCapitalLost	Percentage of capital an investor lost from the focal insolvency relative to its overall portfolio amount on the sampled crowdfunding platforms.
Sustainability	Dummy variable indicating whether the focal campaign is run by a sustainability-oriented firm.
ExpInsol30	Dummy variable indicating whether the investor had experienced at least one insolvency 30 days before the beginning of the focal campaign.
ExpInsol_Lag1-5days	Dummy variable indicating whether the investor had experienced at least one insolvency one to five days before the beginning of the focal campaign.
ExpInsol_Lag6-10days	Dummy variable indicating whether the investor had experienced at least one insolvency six to ten days before the beginning of the focal campaign.
ExpInsol_Lag11-15days	Dummy variable indicating whether the investor had experienced at least one insolvency 11 to 15 days before the beginning of the focal campaign.
<i>Control Variables</i>	
AltPlatform	Number of alternative, active campaigns on the equity crowdfunding platform on which the investor is active at the beginning of the focal campaign.
AltGlobal	Number of alternative, active campaigns in the whole German equity crowdfunding market at the beginning of the focal campaign.
AmountLost	Amount lost by an investor because of an insolvency in EUR.
InvPast	Number of investments an investor has already made in the past before the beginning of the focal campaign.
ToP	Time on the platform, calculated as the number of days between the first investment ever made on the equity crowdfunding platform by the investor and the beginning of the focal campaign (measured over 100 days).

Table 5. Regression results of baseline specification.

This table shows the results of the baseline regressions for the sampled dataset with $k = 3$ chosen nearest neighbors. The dependent variable is the investor's newly invested amount (OLS, specification (1)), a dummy variable indicating whether the investor carried out at least one new investment in a certain campaign (logit, specification (2)), and the number of investments an investor newly undertook (negative binomial, specification (3)). Variables are defined in Table 1. Standard errors are clustered at the investor level and reported in parentheses. Coefficients reported are average marginal effects for the logit model and incidence rate ratios for the negative binomial model. Significance levels: * < 0.10 , ** < 0.05 , and *** < 0.01 .

Dependent Variable	(1) NewInvAmount	(2) NewInvDummy	(3) #NewInv
ExpInsol	57.4821*** (5.7675)	0.0497*** (0.1032)	2.0285*** (0.0413)
NumInsol	-62.5404*** (4.8492)	-0.0322*** (0.0791)	0.5417*** (0.0299)
Sustainability	18.9120 (3.1624)	0.0280*** (0.0304)	2.2253*** (0.0092)
InvPast	11.8736*** (0.6437)	0.0063*** (0.0069)	1.0722*** (0.0007)
ToP $\times 10^{-2}$	-6.6871*** (0.3275)	-0.0072*** (0.0061)	0.8663*** (0.0011)
Constant	63.6191*** (5.9077)		1.5698*** (0.0371)
Time FE	Yes	Yes	Yes
N	496,148	496,148	496,148
Pseudo-/Adj. R ₂	0.0119	0.1719	0.3618
P (Y=1)		7.11%	

Table 6. Regression result including ExpInsol × Sustainability.

This table shows the results of the baseline regressions for the sampled dataset with $k = 3$ chosen nearest neighbors. We add an interaction term $ExpInsol \times Sustainability$ to check whether the reaction to experienced insolvencies changes if the investor is a sustainability-oriented investor rather than a start-up investor. The dependent variable is the investor's newly invested amount (OLS, specification (1)), a dummy variable indicating whether the investor carried out at least one new investment in a certain campaign (logit, specification (2)), and the number of investments an investor newly undertook (negative binomial, specification (3)). Variables are defined in Table 1. Standard errors are clustered at the investor level and reported in parentheses. Coefficients reported are average marginal effects for the logit model and incidence rate ratios for the negative binomial model. Significance levels: * < 0.10, ** < 0.05, and *** < 0.01.

Dependent Variable	(1) NewInvAmount	(2) NewInvDummy	(3) #NewInv
ExpInsol	59.2288*** (5.9242)	0.0521*** (0.0867)	2.0073*** (0.0434)
NumInsol	-62.9459*** (4.8670)	-0.0325*** (0.0800)	0.5425*** (0.0301)
Sustainability	19.8467*** (3.2432)	0.0272*** (0.0306)	2.1990*** (0.0094)
ExpInsol × Sustainability	-21.2454*** (8.0246)	-0.0064** (0.1461)	1.0659* (0.0361)
InvPast	11.8751*** (0.6437)	0.0063*** (0.0070)	1.0722*** (0.0007)
ToP × 10 ⁻²	-6.6759*** (0.3279)	-0.0073*** (0.0061)	0.8612*** (0.0011)
Constant	63.1016*** (5.9283)		1.5734*** (0.0372)
Time FE	Yes	Yes	Yes
N	496,148	496,148	496,148
Pseudo-/Adj. R ²	0.0122	0.1726	0.3257
P (Y=1)		7.11%	

Table 7. Regression results including ShareCapitalLost.

This table shows the results of the baseline regressions for the sampled dataset with $k = 3$ chosen nearest neighbors. We use the percentage of invested capital, which the investor lost from insolvencies, instead of the experienced insolvency dummy in this setting. The dependent variable is the investor's newly invested amount (OLS, specification (1)), a dummy variable indicating whether the investor carried out at least one new investment in a certain campaign (logit, specification (2)), and the number of investments an investor newly undertook (negative binomial, specification (3)). Variables are defined in Table 1. Standard errors are clustered at the investor level and reported in parentheses. Coefficients reported are average marginal effects for the logit model and incidence rate ratios for the negative binomial model. Significance levels: * < 0.10, ** < 0.05, and *** < 0.01.

Dependent Variable	(1) NewInvAmount	(2) NewInvDummy	(3) #NewInv
ShareCapitalLost	68.0780*** (5.9143)	0.0064* (0.0791)	0.6486*** (0.0443)
NumInsol	-50.6127*** (4.0271)	-0.0194*** (0.0455)	0.7177*** (0.0165)
Sustainability	17.7153*** (3.1681)	0.0266*** (0.0304)	2.1609*** (0.0093)
InvPast	12.2708*** (0.7021)	0.0062*** (0.0072)	1.0674*** (0.0008)
ToP $\times 10^{-2}$	-6.4313*** (0.3427)	-0.0068*** (0.0063)	0.8732*** (0.0011)
Constant	68.0780*** (5.9143)		1.5656*** (0.0428)
Time FE	Yes	Yes	Yes
N	496,148	496,148	496,148
Pseudo-/Adj. R ₂	0.0122	0.1692	0.3226
P (Y=1)		7.11%	

Table 8. Regression results including ShareCapitalLost and ShareCapitalLost × Sustainability.

This table shows the results of the baseline regressions for the sampled dataset with $k = 3$ chosen nearest neighbors. We use the percentage of invested capital, which the investor lost from insolvencies, instead of the experienced insolvency dummy in this setting. In addition, we use the interaction term $ExpInsol \times Sustainability$ to check whether the reaction to experienced insolvencies changes if the investor is a sustainability-oriented investor rather than instead of a start-up investor. The dependent variable is the investor's newly invested amount (OLS, specification (1)), a dummy variable indicating whether the investor carried out at least one new investment in a certain campaign (logit, specification (2)), and the number of investments an investor newly undertook (negative binomial, specification (3)). Variables are defined in Table 1. Standard errors are clustered at the investor level and reported in parentheses. Coefficients reported are average marginal effects for the logit model and incidence rate ratios for the negative binomial model. Significance levels: * < 0.10, ** < 0.05, and *** < 0.01.

Dependent Variable	(1) NewInvAmount	(2) NewInvDummy	(3) #NewInv
ShareCapitalLost	70.9595*** (6.0143)	0.0090*** (0.0749)	0.6313*** (0.0498)
NumInsol	-50.6663*** (4.0283)	-0.0194*** (0.0452)	0.7181*** (0.0165)
Sustainability	18.6670*** (3.2140)	0.0270*** (0.0305)	2.1581*** (0.0094)
ShareCapitalLost × Sustainability	-47.5715*** (4.6040)	-0.0386** (0.0452)	1.1516* (0.0826)
InvPast	12.2718*** (0.7021)	0.0062*** (0.0072)	1.0674*** (0.0008)
ToP × 10 ⁻²	-6.4165*** (0.3431)	-0.0068*** (0.0063)	0.8732*** (0.0011)
Constant	62.5509*** (5.9267)		1.5671*** (0.0428)
Time FE	Yes	Yes	Yes
N	496,148	496,148	496,148
Pseudo-/Adj. R ²	0.0119	0.1719	0.32266
P (Y=1)		7.11%	

Table 9. Regression results including lagged variables of ExpInsol.

This table shows the results of the baseline regressions for the sampled dataset with $k = 3$ chosen nearest neighbors. We add three different lags with the length of seven days after an investor experienced the first insolvency to the model to catch whether a possible shock is temporary or not. The dependent variable is the investor's newly invested amount (OLS, specification (1)), a dummy variable indicating whether the investor carried out at least one new investment in a certain campaign (logit, specification (2)), and the number of investments an investor newly undertook (negative binomial, specification (3)). Variables are defined in Table 1. Standard errors are clustered at the investor level and reported in parentheses. Coefficients reported are average marginal effects for the logit model and incidence rate ratios for the negative binomial model. Significance levels: * < 0.10, ** < 0.05, and *** < 0.01.

Dependent Variable	(1) NewInvAmount	(2) NewInvDummy	(3) #NewInv
ExpInsol	56.7157*** (5.7877)	0.0481*** (0.1036)	2.0189*** (0.0415)
NumInsol	-62.4449*** (4.8490)	-0.0312*** (0.7927)	0.5418*** (0.0299)
ExpInsol_Lag1-5days	-43.2116** (19.1655)		0.1925** (0.7501)
ExpInsol_Lag6-10days	10.6503** (4.1860)	-0.3241*** (0.5357)	0.9082 (0.0174)
ExpInsol_Lag11-15days	38.8940*** (7.8207)	0.1053*** (0.1052)	1.2350*** (0.0629)
Sustainability	18.9251*** (3.1618)	0.0247*** (0.0304)	2.2050*** (0.0092)
InvPast	11.8816*** (0.6441)	0.0061*** (0.0069)	1.0722*** (0.0007)
ToP $\times 10^{-2}$	-6.6900*** (0.3275)	-0.0071*** (0.0061)	0.8614*** (0.0011)
Constant	63.7397*** (5.9088)		1.5698*** (0.0371)
Time FE	Yes	Yes	Yes
N	496,148	496,148	496,148
Pseudo-/Adj. R ²	0.0122	0.1750	0.3257
P (Y=1)		7.11%	

Table 10. Regression results for all and irrational investors.

This table shows the regression results for the investment behavior with varying definition of rationally updating investors. In columns 1 and 2, we consider all investors in our sampled dataset. We exclude investors who may rationally conclude from an experienced insolvency that their realized probability for experiencing insolvencies is higher than expected in columns 3 and 4, which is based on a binomial test with a significance level of 10%. The dependent variable is the investor's newly invested amount (OLS, specification (1)) and a dummy variable indicating whether the investor carried out at least one new investment in a certain campaign (logit, specification (2)). Variables are defined in Table 1. Standard errors are clustered at the investor level and reported in parentheses. Coefficients reported are average marginal effects for the logit model. Significance levels: * < 0.10, ** < 0.05, and *** < 0.01.

Dependent Variable	All investors		Irrational investors ($\alpha = 0.1$)	
	(1) NewInvAmount	(2) NewInvDummy	(3) NewInvAmount	(4) NewInvDummy
ExpInsol	57.4821*** (5.7675)	0.0497*** (0.1032)	64.8152*** (10.7072)	0.0138** (0.1251)
NumInsol	-62.5404*** (4.8492)	-0.0322*** (0.0791)	-77.0512*** (8.7026)	-0.0263*** (0.0877)
Sustainability	18.9120 (3.1624)	0.0280*** (0.0304)	70.2913* (12.5345)	0.0978*** (0.8094)
InvPast	11.8736*** (0.6437)	0.0063*** (0.0069)	11.0012*** (0.8552)	0.0057*** (0.0078)
ToP $\times 10^{-2}$	-6.6871*** (0.3275)	-0.0072*** (0.0061)	-4.7938*** (0.7064)	-0.0073*** (0.0114)
Constant	63.6191*** (5.9077)		76.0806*** (11.8728)	
Time FE	Yes	Yes	Yes	Yes
N	496,148	496,148	133,891	133,891
Pseudo-/Adj. R ²	0.0119	0.1719	0.0170	0.2260
P (Y=1)		7.11%		9.8939%

Online Appendix

Table OA1. Regression results including alternative equity crowdfunding campaigns.

This table shows the results of regressions for the sampled dataset with $k = 3$ chosen nearest neighbors. We add the numbers of alternative equity crowdfunding campaigns at the platform, on which the investor is active, as well as the total number of alternative equity crowdfunding campaigns in the German equity crowdfunding market, to the baseline regression model. The dependent variable is the investor's newly invested amount (OLS, specification (1)), a dummy variable indicating whether the investor carried out at least one new investment in a certain campaign (logit, specification (2)), and the number of investments an investor newly undertook (negative binomial, specification (3)). Variables are defined in Table 1. Standard errors are clustered at the investor level and reported in parentheses. Coefficients reported are average marginal effects for the logit model and incidence rate ratios for the negative binomial model. Significance levels: * < 0.10 , ** < 0.05 , and *** < 0.01 .

Dependent Variable	(1) NewInvAmount	(2) NewInvDummy	(3) #NewInv
ExpInsol	59.8052*** (5.8145)	0.0557*** (0.1046)	2.0839*** (0.0413)
NumInsol	-63.4315*** (4.8836)	-0.03188*** (0.0806)	0.5345*** (0.0300)
Sustainability	1.3823 (3.6874)	0.0183*** (0.0342)	1.7455*** (0.0118)
AltPlatform	-11.3859*** (0.8378)	-0.0040*** (0.0081)	0.9173*** (0.0029)
AltGlobal	0.7304* (0.4254)	0.0007*** (0.0013)	1.0113*** (0.0020)
InvPast	11.9849*** (0.6497)	0.0062*** (0.0069)	1.0726*** (0.0007)
ToP $\times 10^{-2}$	-6.4765*** (0.3242)	-0.0074*** (0.0061)	0.8629*** (0.0011)
Constant	84.4698*** (17.4073)		1.5425*** (0.0853)
Time FE	Yes	Yes	Yes
N	496,148	496,148	496,148
Pseudo-/Adj. R ²	0.01255	0.1763	0.3288
P (Y=1)		7.11%	

Table OA2. Regression results including non-linear effects.

This table shows the results of regressions for the sampled dataset with $k = 3$ chosen nearest neighbors. We add the squared term of ToP to catch possible non-linear effects of ToP . The dependent variable is the investor's newly invested amount (OLS, specification (1)), a dummy variable indicating whether the investor carried out at least one new investment in a certain campaign (logit, specification (2)), and the number of investments an investor newly undertook (negative binomial, specification (3)). Variables are defined in Table 1. Standard errors are clustered at the investor level and reported in parentheses. Coefficients reported are average marginal effects for the logit model and incidence rate ratios for the negative binomial model. Significance levels: * < 0.10, ** < 0.05, and *** < 0.01.

Dependent Variable	(1) NewInvAmount	(2) NewInvDummy	(3) #NewInv
ExpInsol	58.7923*** (5.7638)	0.0355*** (0.1047)	1.8789*** (0.0391)
NumInsol	-65.0843*** (4.9005)	-0.0192*** (0.0793)	0.6215*** (0.0283)
Sustainability	17.8283*** (3.2579)	0.0279*** (0.0310)	2.2740*** (0.0092)
InvPast	11.9797*** (0.6505)	0.0055*** (0.0069)	1.0722*** (0.0007)
$ToP \times 10^{-2}$	-9.4001*** (0.8582)	-0.0006 (0.0108)	0.9052*** (0.0026)
$ToP \times 10^{-2_Square}$	-0.1987 (0.0478)	-0.0308*** (0.0010)	0.9935*** (0.0003)
Constant	68.7512*** (6.2726)		1.5589*** (0.0324)
Time FE	Yes	Yes	Yes
N	496,148	496,148	496,148
Pseudo-/Adj. R ₂	0.0122	0.1813	0.3286
P (Y=1)		7.11%	

Table OA3. Regression results including *ExpInsol* x *InvPast*.

This table shows the results of the baseline regressions for the sampled dataset with $k = 3$ chosen nearest neighbors. In addition, we use the interaction term $ExpInsol \times InvPast$ to identify possible differences between investors with few previous investments and more previous investments. The dependent variable is the investor's newly invested amount (OLS, specification (1)), a dummy variable indicating whether the investor carried out at least one new investment in a certain campaign (logit, specification (2)), and the number of investments an investor newly undertook (negative binomial, specification (3)). Variables are defined in Table 1. Standard errors are clustered at the investor level and reported in parentheses. Coefficients reported are average marginal effects for the logit model and incidence rate ratios for the negative binomial model. Significance levels: * < 0.10, ** < 0.05, and *** < 0.01.

Dependent Variable	(1) NewInvAmount	(2) NewInvDummy	(3) #NewInv
ExpInsol	64.9483*** (5.3901)	0.0076*** (0.0718)	1.7580*** (0.0207)
NumInsol	-21.5336*** (5.1150)	-0.0038* (0.0544)	0.9609*** (0.0118)
Sustainability	14.2632*** (3.2208)	0.0238*** (0.0289)	2.1939*** (0.0102)
ExpInsol \times InvPast	-11.2755*** (1.2055)	-0.0048*** (0.0074)	0.9592*** (0.0014)
InvPast	17.2844*** (0.9208)	0.0079*** (0.0048)	1.0921*** (0.0012)
ToP $\times 10^{-2}$	-7.6349*** (0.3347)	-0.0081*** (0.0044)	0.8469*** (0.0014)
Constant	57.1064*** (5.8921)		1.6189*** (0.0239)
Time FE	Yes	Yes	Yes
N	496,148	496,148	496,148
Pseudo-/Adj. R ²	0.0135	0.1884	0.3417
P (Y=1)		7.11%	

Table OA4. Regression results including ExpInsol x AmountLost.

This table shows the results of regressions for the sampled dataset with $k = 3$ chosen nearest neighbors. In addition, we use the interaction term $ExpInsol \times AmountLost$ to analyze if there is a greater reaction to experienced insolvencies when the investor lost a higher amount of invested money from these insolvencies. The dependent variable is the investor's newly invested amount (OLS, specification (1)), a dummy variable indicating whether the investor carried out at least one new investment in a certain campaign (logit, specification (2)), and the number of investments an investor newly undertook (negative binomial, specification (3)). Variables are defined in Table 1. Standard errors are clustered at the investor level and reported in parentheses. Coefficients reported are average marginal effects for the logit model and incidence rate ratios for the negative binomial model. Significance levels: * < 0.10, ** < 0.05, and *** < 0.01.

	(1)	(2)	(3)
Dependent Variable	NewInvAmount	NewInvDummy	#NewInv
ExpInsol	54.7214*** (5.7034)	0.0496*** (0.1054)	1.8272**** (0.0351)
NumInsol	-63.8794*** (4.8295)	-0.0322*** (0.0785)	0.6373*** (0.0247)
Sustainability	18.9876*** (3.1611)	0.0281*** (0.0304)	2.2115*** (0.0092)
ExpInsol \times AmountLost	0.0102** (0.0050)	-0.0006 (0.0006)	0.9996*** (0.0001)
InvPast	11.8523*** (0.6457)	0.0063*** (0.0070)	1.0740*** (0.0008)
ToP \times 10 ⁻²	-6.6698*** (0.3259)	-0.0072*** (0.0061)	0.8604*** (0.0012)
Constant	63.3982*** (5.9000)		1.5730*** (0.0340)
N	496,148	496,148	496,148
Pseudo-/Adj. R ₂	0.0123	0.1719	0.3273
P (Y=1)		7.11%	

Table OA5. Regression results including ExpInsol30.

This table shows the results of the baseline regressions for the sampled dataset with $k = 3$ chosen nearest neighbors. We use *ExpInsol30* instead of the experienced insolvency dummy in this setting, which turns equal to 1, if the investor experienced an insolvency in the last 30 days. The dependent variable is the investor's newly invested amount (OLS, specification (1)), a dummy variable indicating whether the investor carried out at least one new investment in a certain campaign (logit, specification (2)), and the number of investments an investor newly undertook (negative binomial, specification (3)). Variables are defined in Table 1. Standard errors are clustered at the investor level and reported in parentheses. Coefficients reported are average marginal effects for the logit model and incidence rate ratios for the negative binomial model. Significance levels: * < 0.10, ** < 0.05, and *** < 0.01.

Dependent Variable	(1) NewInvAmount	(2) NewInvDummy	(3) #NewInv
ExpInsol30	67.0210*** (7.8628)	0.1629*** (0.0734)	1.5685*** (0.0546)
NumInsol	-39.5144*** (3.1814)	-0.0203*** (0.0439)	0.6872*** (0.0158)
Sustainability	17.6567*** (3.1749)	0.0264*** (0.0303)	2.1627*** (0.0093)
InvPast	11.3844*** (0.6316)	0.0062*** (0.0070)	1.0691*** (0.0007)
ToP $\times 10^{-2}$	-5.7971*** (0.3311)	-0.0067*** (0.0061)	0.8710*** (0.0011)
Constant	64.3102*** (5.9131)		1.5677*** (0.0424)
Time FE	Yes	Yes	Yes
N	496,148	496,148	496,148
Pseudo-/Adj. R ₂	0.0120	0.1715	0.3224
P (Y=1)		7.11%	

Table OA6. Regression results including ExpInsol30 and ExpInsol30 × Sustainability.

This table shows the results of the baseline regressions for the sampled dataset with $k = 3$ chosen nearest neighbors. We use *ExpInsol30* instead of the experienced insolvency dummy in this setting, which turns equal to 1, if the investor experienced an insolvency in the last 30 days. We add an interaction term *ExpInsol30 × Sustainability* to check whether the reaction to experienced insolvencies changes if the investor is a sustainability-oriented investor rather than a start-up investor. The dependent variable is the investor's newly invested amount (OLS, specification (1)), a dummy variable indicating whether the investor carried out at least one new investment in a certain campaign (logit, specification (2)), and the number of investments an investor newly undertook (negative binomial, specification (3)). Variables are defined in Table 1. Standard errors are clustered at the investor level and reported in parentheses. Coefficients reported are average marginal effects for the logit model and incidence rate ratios for the negative binomial model. Significance levels: * < 0.10, ** < 0.05, and *** < 0.01.

Dependent Variable	(1) NewInvAmount	(2) NewInvDummy	(3) #NewInv
ExpInsol30	68.9254*** (8.1353)	0.1778*** (0.07356)	1.6495*** (0.0606)
NumInsol	-39.5065*** (3.1817)	-0.0203*** (0.0439)	0.6872*** (0.0158)
Sustainability	17.7353*** (3.1790)	0.0267*** (0.0304)	2.1651*** (0.0094)
ExpInsol30 × Sustainability	-48.2301*** (9.4228)	-0.0364*** (0.4248)	0.7245** (0.1426)
InvPast	11.3836*** (0.6316)	0.0061*** (0.00704)	1.0691*** (0.0007)
ToP × 10 ⁻²	-5.7968*** (0.3311)	-0.0066*** (0.0061)	0.8710*** ³ (0.0011)
Constant	64.2935*** (5.9134)		1.5669*** (0.0424)
Time FE	Yes	Yes	Yes
N	496,148	496,148	496,148
Pseudo-/Adj. R ²	0.0120	0.1716	0.3224
P (Y=1)		7.11%	

Table OA7. Regression results of full sample.

This table shows the results of the baseline regressions for the full dataset. The dependent variable is the investor's newly invested amount (OLS, specification (1)), a dummy variable indicating whether the investor carried out at least one new investment in a certain campaign (logit, specification (2)), and the number of investments an investor newly undertook (negative binomial, specification (3)). Variables are defined in Table 1. Standard errors are clustered at the investor level and reported in parentheses. Coefficients reported are average marginal effects for the logit model and incidence rate ratios for the negative binomial model. Significance levels: * < 0.10, ** < 0.05, and *** < 0.01.

Dependent Variable	(1) NewInvAmount	(2) NewInvDummy	(3) #NewInv
ExpInsol	64.9624*** (5.8217)	0.0724*** (0.0322)	3.7555*** (0.0010)
NumInsol	-70.1648*** (4.7356)	-0.0312*** (0.1024)	0.4292*** (0.0390)
Sustainability	11.5443*** (1.9052)	0.0173*** (0.0217)	2.6389*** (0.0068)
InvPast	12.9764*** (0.6472)	0.0054*** (0.0068)	1.0820*** (0.0008)
ToP × 10 ⁻²	-6.8947*** (0.2240)	-0.0059*** (0.0050)	0.8513*** (0.0010)
Constant	62.0933*** (3.3102)		0.9302*** (0.0219)
Time FE	Yes	Yes	Yes
N	1,249,271	1,249,271	1,249,271
Pseudo- / Adj. R ²	0.0088	0.1567	0.2898
P (Y=1)		4.88%	

Table OA8. Regression results of full sample including $\text{ExpInsol} \times \text{Sustainability}$.

This table shows the results of the baseline regressions for the full dataset. We add an interaction term $\text{ExpInsol} \times \text{Sustainability}$ to check whether the reaction to experienced insolvencies changes if the investor is a sustainability-oriented investor rather than a start-up investor. The dependent variable is the investor's newly invested amount (OLS, specification (1)), a dummy variable indicating whether the investor carried out at least one new investment in a certain campaign (logit, specification (2)), and the number of investments an investor newly undertook (negative binomial, specification (3)). Variables are defined in Table 1. Standard errors are clustered at the investor level and reported in parentheses. Coefficients reported are average marginal effects for the logit model and incidence rate ratios for the negative binomial model. Significance levels: * < 0.10, ** < 0.05, and *** < 0.01.

Dependent Variable	(1) NewInvAmount	(2) NewInvDummy	(3) #NewInv
ExpInsol	66.3103*** (5.9553)	0.0751*** (0.0137)	3.7997*** (0.0549)
NumInsol	-70.5126*** (4.7572)	-0.0314*** (0.1033)	0.4287*** (0.0391)
Sustainability	11.8893*** (1.9218)	0.0174*** (0.0216)	2.6441*** (0.0068)
ExpInsol \times Sustainability	-17.9935** (7.8484)	-0.0626*** (0.1628)	0.9326* (0.0376)
InvPast	12.9774*** (0.5895)	0.0054*** (0.0068)	1.0819*** (0.0008)
ToP $\times 10^{-2}$	-6.8928*** (0.2240)	-0.0059*** (0.0050)	0.8513*** (0.0010)
Constant	61.9587*** (3.3117)		51.7017*** (0.0010)
Time FE	Yes	Yes	Yes
N	1,249,271	1,249,271	1,249,271
Pseudo-/Adj. R ²	0.0088	0.1567	0.2898
P (Y=1)		4.88%	

Table OA9. Regression results of full sample including ShareCapitalLost.

This table shows the results of the baseline regressions for the full dataset. We use the percentage of invested capital, which the investor lost from insolvencies, instead of the experienced insolvency dummy in this setting. The dependent variable is the investor's newly invested amount (OLS, specification (1)), a dummy variable indicating whether the investor carried out at least one new investment in a certain campaign (logit, specification (2)), and the number of investments an investor newly undertook (negative binomial, specification (3)). Variables are defined in Table 1. Standard errors are clustered at the investor level and reported in parentheses. Coefficients reported are average marginal effects for the logit model and incidence rate ratios for the negative binomial model. Significance levels: * < 0.10, ** < 0.05, and *** < 0.01.

Dependent Variable	(1) NewInvAmount	(2) NewInvDummy	(3) #NewInv
ShareCapitalLost	81.2048*** (5.5552)	0.0200*** (0.1208)	0.9121*** (0.0283)
NumInsol	-56.2893*** (3.6910)	-0.0183*** (0.1208)	0.6435*** (0.0227)
Sustainability	10.9858*** (1.9188)	0.0170*** (0.0219)	2.6250*** (0.0069)
InvPast	13.4204*** (0.6339)	0.0055*** (0.0070)	1.0787*** (0.0008)
ToP × 10 ⁻²	-6.7985*** (0.2320)	-0.0058*** (0.0052)	0.8632*** (0.0009)
Constant	61.5026*** (3.3112)		0.9121*** (0.0283)
Time FE	Yes	Yes	Yes
N	1,249,271	1,249,271	1,249,271
Pseudo-/Adj. R ₂	0.0088	0.1540	0.2828
P (Y=1)		4.88%	

Table OA10. Regression results of full sample including ShareCapitalLost and ShareCapitalLost × Sustainability.

This table shows the results of the baseline regressions for the full dataset. We use the percentage of invested capital, which the investor lost from insolvencies, instead of the experienced insolvency dummy in this setting. In addition, we use the interaction term *ExpInsol* × *Sustainability* to check whether the reaction to experienced insolvencies changes if the investor is a sustainability-oriented investor rather than a start-up investor. The dependent variable is the investor's newly invested amount (OLS, specification (1)), a dummy variable indicating whether the investor carried out at least one new investment in a certain campaign (logit, specification (2)), and the number of investments an investor newly undertook (negative binomial, specification (3)). Variables are defined in Table 1. Standard errors are clustered at the investor level and reported in parentheses. Coefficients reported are average marginal effects for the logit model and incidence rate ratios for the negative binomial model. Significance levels: * < 0.10, ** < 0.05, and *** < 0.01.

Dependent Variable	(1) NewInvAmount	(2) NewInvDummy	(3) #NewInv
ShareCapitalLost	83.6598*** (5.6590)	0.0211*** (0.1357)	1.3491*** (0.0275)
NumInsol	-56.3827*** (3.6932)	-0.0183*** (0.0541)	0.6437*** (0.0227)
Sustainability	11.3691*** (1.9306)	0.0171*** (0.0219)	2.6270* (0.0721)
ShareCapitalLost × Sustainability	-43.6144*** (4.1999)	-0.0201** (0.3514)	0.8788* (0.0721)
InvPast	13.4213*** (0.6339)	0.0055*** (0.0070)	1.0787*** (0.0008)
ToP × 10 ⁻²	-6.7958*** (0.2320)	-0.0058*** (0.0052)	0.8632*** (0.0009)
Constant	61.3546*** (3.3123)		0.9116*** (0.0283)
Time FE	Yes	Yes	Yes
N	1,249,271	1,249,271	1,249,271
Pseudo-/Adj. R ²	0.0088	0.1541	0.2828
P (Y=1)		4.88%	

Table OA11. Regression results with k=1 nearest neighbors.

This table shows the results of the baseline regressions for the sampled dataset with k=1 chosen nearest neighbors. The dependent variable is the investor's newly invested amount (OLS, specification (1)), a dummy variable indicating whether the investor carried out at least one new investment in a certain campaign (logit, specification (2)), and the number of investments an investor newly undertook (negative binomial, specification (3)). Variables are defined in Table 1. Standard errors are clustered at the investor level and reported in parentheses. Coefficients reported are average marginal effects for the logit model and incidence rate ratios for the negative binomial model. Significance levels: * < 0.10, ** < 0.05, and *** < 0.01.

Dependent Variable	(1) NewInvAmount	(2) NewInvDummy	(3) #NewInv
ExpInsol	52.4230*** (4.3034)	0.0366*** (0.0931)	1.5196*** (0.0367)
NumInsol	-56.7041*** (3.5526)	-0.0320*** (0.0701)	0.5967*** (0.0261)
Sustainability	26.3485*** (3.3075)	0.0333*** (0.0350)	2.1801*** (0.0101)
InvPast	11.4161*** (0.4980)	0.0066*** (0.0068)	1.0681*** (0.0007)
ToP × 10 ⁻²	-6.1957*** (0.3133)	-0.0076*** (0.0062)	0.8637*** (0.0011)
Constant	68.4759*** (6.9806)		2.1035*** (0.0386)
Time FE	Yes	Yes	Yes
N	370,696	370,696	370,696
Pseudo-/Adj. R ₂	0.0119	0.1667	0.3397
P (Y=1)		8.11%	

Table OA12. Regression results with k=1 nearest neighbors and ExpInsol× Sustainability.

This table shows results of the baseline regressions for the sampled dataset with $k = 1$ chosen nearest neighbors. We add an interaction term $ExpInsol \times Sustainability$ to check whether the reaction to experienced insolvencies changes if the investor is a sustainability-oriented investor rather than a start-up investor. The dependent variable is the investor's newly invested amount (OLS, specification (1)), a dummy variable indicating whether the investor carried out at least one new investment in a certain campaign (logit, specification (2)), and the number of investments an investor newly undertook (negative binomial, specification (3)). Variables are defined in Table 1. Standard errors are clustered at the investor level and reported in parentheses. Coefficients reported are average marginal effects for the logit model and incidence rate ratios for the negative binomial model. Significance levels: * < 0.10, ** < 0.05, and *** < 0.01.

Dependent Variable	(1) NewInvAmount	(2) NewInvDummy	(3) #NewInv
ExpInsol	54.6202*** (6.0570)	0.0380*** (0.0965)	1.5040*** (0.0386)
NumInsol	-60.2014*** (4.9415)	-0.0323*** (0.0707)	0.5976*** (0.0252)
Sustainability	28.2143*** (4.2972)	0.0340*** (0.0354)	2.1730*** (0.0103)
ExpInsol× Sustainability	-27.8893*** (8.3633)	-0.0064 (0.1456)	1.0641* (0.0358)
InvPast	11.4150*** (4.2972)	0.0066*** (0.0068)	1.0681*** (0.0007)
ToP × 10 ⁻²	-6.1766*** (0.3974)	-0.0076*** (0.0062)	0.8637*** (0.0011)
Constant	67.5746*** (7.4551)		2.1085*** (0.0388)
Time FE	Yes	Yes	Yes
N	370,696	370,696	370,696
Pseudo-/Adj. R ²	0.0119	0.1667	0.3397
P (Y=1)		8.11%	

Table OA13. Regression results with k=1 nearest neighbor and ShareCapitalLost.

This table shows the results of the baseline regressions for the sampled dataset with k = 1 chosen nearest neighbors. We use the percentage of invested capital, which the investor lost from insolvencies, instead of the experienced insolvency dummy in this setting. The dependent variable is the investor's newly invested amount (OLS, specification (1)), a dummy variable indicating whether the investor carried out at least one new investment in a certain campaign (logit, specification (2)), and the number of investments an investor newly undertook (negative binomial, specification (3)). Variables are defined in Table 1. Standard errors are clustered at the investor level and reported in parentheses. Coefficients reported are average marginal effects for the logit model and incidence rate ratios for the negative binomial model. Significance levels: * < 0.10, ** < 0.05, and *** < 0.01.

Dependent Variable	(1) NewInvAmount	(2) NewInvDummy	(3) #NewInv
ShareCapitalLost	61.0543*** (6.1347)	-0.0103** (0.1000)	0.4517*** (0.0475)
NumInsol	-49.2277*** (4.1889)	-0.0200*** (0.0428)	0.7382*** (0.0142)
Sustainability	24.7723*** (4.1287)	0.0316*** (0.0351)	2.1482*** (0.0101)
InvPast	11.7823*** (0.7272)	0.0064*** (0.0070)	1.0632*** (0.0007)
ToP × 10 ⁻²	-5.8875*** (0.4133)	-0.0070*** (0.0064)	0.8745*** (0.0012)
Constant	68.2049*** (7.4271)		2.1111*** (0.0421)
Time FE	Yes	Yes	Yes
N	370,696	370,696	370,696
Pseudo-/Adj. R ₂	0.0119	0.1650	0.3398
P (Y=1)		8.11%	

Table OA14. Regression results with k=1 nearest neighbors, ShareCapitalLost, and ShareCapitalLost × Sustainability.

This table shows the results of the baseline regressions for the sampled dataset with k = 1 chosen nearest neighbors. We use the percentage of invested capital, which the investor lost from insolvencies, instead of the experienced insolvency dummy in this setting. In addition, we use the interaction term *ExpInsol* × *Sustainability* to check whether the reaction to experienced insolvencies changes if the investor is a sustainability-oriented investor rather than a start-up investor. The dependent variable is the investor’s newly invested amount (OLS, specification (1)), a dummy variable indicating whether the investor carried out at least one new investment in a certain campaign (logit, specification (2)), and the number of investments an investor newly undertook (negative binomial, specification (3)). Variables are defined in Table 1. Standard errors are clustered at the investor level and reported in parentheses. Coefficients reported are average marginal effects for the logit model and incidence rate ratios for the negative binomial model. Significance levels: * < 0.10, ** < 0.05, and *** < 0.01.

Dependent Variable	(1) NewInvAmount	(2) NewInvDummy	(3) #NewInv
ShareCapitalLost	64.2881*** (6.1943)	-0.0064 (0.0948)	0.4312*** (0.0544)
NumInsol	-49.2369*** (4.1899)	-0.0201*** (0.0426)	0.7389*** (0.0143)
Sustainability	26.4405*** (4.2230)	0.0322*** (0.0353)	2.1429*** (0.0102)
ShareCapitalLost × Sustainability	-54.8356*** (5.2412)	-0.0455** (0.3901)	1.2647*** (0.0873)
InvPast	11.7803*** (0.7272)	0.0064*** (0.0070)	1.0632*** (0.0007)
ToP × 10 ⁻²	-5.8646*** (0.4140)	-0.0070*** (0.0064)	0.8746*** (0.0012)
Constant	67.4044*** (7.4466)		2.1148 *** (0.0422)
Time FE	Yes	Yes	Yes
N	370,696	370,696	370,696
Pseudo-/Adj. R ²	0.0120	0.1651	0.3398
P (Y=1)		8.11%	