

Ooft, Gavin

**Working Paper**

## Modelling and Forecasting Inflation for the Economy of Suriname

Centrale Bank van Suriname Working Paper Series, No. 18/04

*Suggested Citation:* Ooft, Gavin (2018) : Modelling and Forecasting Inflation for the Economy of Suriname, Centrale Bank van Suriname Working Paper Series, No. 18/04, Centrale Bank van Suriname, Paramaribo,  
<https://www.cbvs.sr/images/content/pdf/2019/RES/CBvS-WorkingPapers/CBvS-WP-18-04.pdf>

This Version is available at:

<https://hdl.handle.net/10419/215534>

**Standard-Nutzungsbedingungen:**

Die Dokumente auf EconStor dürfen zu eigenen wissenschaftlichen Zwecken und zum Privatgebrauch gespeichert und kopiert werden.

Sie dürfen die Dokumente nicht für öffentliche oder kommerzielle Zwecke vervielfältigen, öffentlich ausstellen, öffentlich zugänglich machen, vertreiben oder anderweitig nutzen.

Sofern die Verfasser die Dokumente unter Open-Content-Lizenzen (insbesondere CC-Lizenzen) zur Verfügung gestellt haben sollten, gelten abweichend von diesen Nutzungsbedingungen die in der dort genannten Lizenz gewährten Nutzungsrechte.

**Terms of use:**

*Documents in EconStor may be saved and copied for your personal and scholarly purposes.*

*You are not to copy documents for public or commercial purposes, to exhibit the documents publicly, to make them publicly available on the internet, or to distribute or otherwise use the documents in public.*

*If the documents have been made available under an Open Content Licence (especially Creative Commons Licences), you may exercise further usage rights as specified in the indicated licence.*



**CENTRALE BANK VAN SURINAME**

# **Modelling and Forecasting Inflation for the Economy of Suriname**

Gavin Ooft

[gooft@cbvs.sr](mailto:gooft@cbvs.sr)

**October 2018**

---

The authors are staff members of the Research Department of the Central Bank of Suriname. The views expressed in this paper are those of the authors and do not necessarily reflect those of the Bank. Research papers constitute work in progress and are published to elicit comments and to further debate.

## **Acknowledgements**

This paper is the output of my internship at the Center for Monetary Studies of Latin America (CEMLA), approved by the Central Bank of Suriname (CBvS). During this internship, I had a wonderful opportunity to gain insights and tools from the Research Department of the CEMLA, especially on the topic of my research. During my visit in Mexico, I have also received some insights on from the Inflation Department of the Banco de México (Banxico).

I would like to express my gratitude to the director of the CEMLA, Dr. Fernando Tenjo Galarza, for the opportunity of this internship. Consequently, I thank the Governor of the CBvS, Mr. Glenn Gersie, for supporting my participation in this program. Furthermore, I also thank my supervisors at the CEMLA, Dr. Alberto Bolaños, Dr. Francisco Roch, and other colleagues of the Research Department of the CEMLA. I am indebted to Dr. Josué Cortés Espada from the Banxico for his comments on my research. My gratitude also goes to the coordinator of Monetary Affairs, Mr. William Orie, the head, Mr. Karel Eckhorst, and staff of the Research Department of the CBvS for their comments on this study.

**Abstract**

An accurate forecast for inflation is mandatory in the conduct of monetary policy in every monetary framework. This research puts a first effort to accurately model and consequently forecast monthly inflation for the economy of Suriname. This paper employs various econometric techniques such as Autoregressive Integrated Moving Average models, Vector Autoregressive models, Factor Augmented Vector Autoregressive models, Bayesian Vector Autoregressive models and Vector Error Correction models to model monthly inflation for Suriname over the period 2004 to 2018. Consequently, the in-sample forecast performance of the models is evaluated by comparison of the Root Mean Square Error and the Mean Average Errors. Since Suriname encountered a high-inflation period, we split up the sample in two periods, i.e. including and excluding this high-inflation episode. In this evaluation, not surprisingly, the Root Mean Square Errors of the models was considerably lower in the sample excluding the high inflation episode. Consequently, we also conducted an out-of-sample forecasting exercise. The VECM yields the best results forecasting up to three months ahead, while thereafter, the FAVAR, which includes more economic information, outperforms the VECM, based on the assessment of the out-of-sample forecast performance of the models.

## Contents

Acknowledgements

Abstract

1. Introduction.....	5
2. Literature Review.....	5
Empirical Review.....	5
Brief Theoretical Review.....	5
3. Empirical Methods.....	9
4. Data Analysis and Results .....	12
5. Conclusion and Policy Implications.....	19
Bibliography .....	20

Appendices

## 1. Introduction

Maintaining price stability, which is crucial for a healthy macroeconomic and investment climate, is at the core of monetary policy of the Central Bank of Suriname (CBvS). Hence, an accurate forecast for inflation is mandatory for monetary policymaking (Orphanides & Williams, 2005).

This paper lays an empirical foundation for modelling and, in particular, forecasting of monthly inflation for the economy of Suriname, given the available data of relevant economic variables. We attempt to answer the following research question: *Which model is most suitable to accurately forecast inflation for Suriname on a monthly basis, given the available data?* This study is very meaningful to the CBvS since, as far as can be ascertained, no research has been published before on modelling and forecasting monthly inflation for the economy of Suriname.

To answer this research question, we make use of an Autoregressive Integrated Moving Average (ARIMA) model, Vector Autoregressive (VAR) models, Factor Augmented Vector Autoregressive (FAVAR) models, Bayesian Vector Autoregressive (BVAR) models and Vector Error Correction (VECM) models to model monthly inflation for Suriname over the period 2004 to 2018. Consequently, the in-sample forecast performance of the models is evaluated by comparison of the Root Mean Square Error, the Mean Average Errors and the Theil inequality coefficient.

The remainder of the paper is structured as follows. Section 2 briefly reviews some theoretical and empirical literature on modelling and forecast inflation. The following section, Section 3, sheds light on the econometric methods and forecasting evaluation techniques utilized. The fourth section discusses the data-analysis and results. Thereafter we conclude and present some recommendations.

## 2. Literature Review

### Theoretical Review

Economic literature distinguishes between several theories of inflation. The following is a brief summary of the various theoretical views.

### **Monetarists View**

Monetarist posit that inflation is always a monetary phenomenon. The Quantity Theory of Money presents the famous relationship:

$$M_t * V_t = P_t * T_t$$

where M is money in circulation, V is the transactions velocity of money, P is the price level and T is the real value of aggregate transactions. Inflation results from excessive monetary growth, which in turn, translates into excess demand. Moreover, current information also impact on inflation expectations, which in turn affect future inflation. Hence, according to this theory, the Central Bank can effectively control inflation by controlling the money supply (Mishkin, 1984).

### **Keynesian View**

According to Keynesian economists, inflation is mainly the results of demand factors (i.e. demand-pull inflation), cost factors (i.e. cost-push inflation) and concentrated industries (i.e. profit inflation). Demand-pull inflation originates from expansionary forces, while cost-push inflation results from rising input costs, for example the impact of an exchange rate depreciation. The third form of inflation arises from concentrated industries in markets with imperfect competition, where prices are arbitrarily driven upwards (McCallum, 1990).

### **Structuralist View**

Structuralists explain that inflation arises from structural factors within the economy, related to the development process of countries, such as economic growth, high levels of competition and inequality. Hence, in less developed countries, inflation is inevitable according to Structuralists. Population growth and immigration, which cause boosts in the service sectors, are also drivers of inflation (McCallum, 1990; Totonchi, 2011).

### **New-Keynesian View**

In the New-Keynesian view, marginal costs mainly determine inflation is by the, which, in turn depends most on real economic activity and the labor market. The New-Keynesian baseline model does not account for inertia or lagged dependence in inflation and is of the Phillips-curve based form:

$$\pi_t = E_t \sum_{i=0}^{\infty} \beta^i [\lambda x_{t+i} + u_{t+i}]$$

The variable  $x_{t+i}$  captures trends in future marginal costs driven by excess demand and  $u_{t+i}$  represents cost-push shocks. An important assumption of New Keynesian models is that the optimal policy is key in determining the optimal inflation forecast (Clarida, Galí & Gertler, 1999; Matthes & Wang, 2012).

### Empirical Review

There is no recent literature on inflation modelling in Suriname and, as far can be ascertained, no publication on an econometric-based forecast of monthly inflation for Suriname. Narain, Ooft and Sonneveld (2014) employ a Dynamic Ordinary Least Squares (DOLS) regression model a la DaCosta and Greenidge (2008) to identify the determinants of inflation for Suriname, utilizing annual data. The study points out that the key determinants of annual inflation in Suriname are the exchange rate in particular, the money supply, economic activity and trade openness. This study will depart from these findings to construct econometric models for monthly inflation.

Numerous studies endeavored to model inflation for their respective economies. Since policymakers, especially those from the Central Bank, are interested in forecasts of inflation, numerous studies have also attempted to provide accurate forecasts for this indicator. The accuracy of the forecast is often determined by minimizing the root mean square error of the inflation forecast (Zarnowitz, 1979; Faust and Wright, 2011).

Faust and Wright (2011) evaluate seventeen main inflation forecast models (i.e. simple autoregressive models, vector autoregression VAR with and without a time-varying trend, Phillips-curve-based models, random-walk models, equal-weighted averaging, Bayesian-model averaging, factor-augmented VAR and Dynamic Stochastic General Equilibrium [DSGE] models) by comparing their recursive out-of-sample root mean square prediction error (RMSPE). The authors pointed out that incorporating a slowly-varying trend,  $\tau_t$ , in an inflation forecast, where the gap between inflation and the trend component  $g_t = \pi_t - \tau_t$  is treated as a stationary process considerably improved the inflation forecast. The best performance in terms of minimizing RMSPE is noted by autoregressive (AR) gap models.



Stock and Watson (1999) point out that the conventional starting point of many inflation forecasts for the US has been the unemployment-based Phillips curve, which have been more accurate than forecasts with macroeconomic variables such as interest rates, monetary variables and commodity prices. The study revealed that by replacing unemployment with real economic activity, in ordinary least squares (OLS) and ridge regression framework, the inflation forecast for the US was even more accurate and reliable. In a more recent study, Stock and Watson (2009) state that Phillips-curve based inflation forecasts are no improvement upon “good univariate benchmark models”. However, the type of model used to forecast inflation depends on the sample period. In stable “quite” economic periods, univariate models seem to perform best in forecasting inflation. On average the unobserved components-stochastic volatility (UC-SV) model<sup>1</sup> proposed by Stock and Watson (2007) performed best in forecasting inflation in the US. Meyer and Pasaogullari (2010) come upon similar evidence: simple, single-specification inflation models seem to estimate and forecast inflation well. Additionally, the authors find that inflation expectations are a reasonable determinant of future inflation forecasts.

Loungani and Swagel (2001) investigate the sources of inflation over a time span of 34 years in a set of 53 developing countries. The main sources of inflation investigated in this paper are (1) fiscal view: money growth and exchange rates, (2) the output gap as in business cycle theory, (3) commodity cost shocks and (4) inertia. The authors posit that the exchange rate regime should be taken into strong consideration when analyzing the sources of inflation. The findings of the study suggest that money supply and the exchange rate are key determinants of inflation especially in countries with floating exchange-rate regimes.

Recent empirical studies for Latin America evaluate the performance of macroeconomic techniques in the context of inflation forecasting. These studies employ econometric time series models, discussed later in this paper, to forecast inflation for their respective economies.

---

<sup>1</sup> In the UC-SV model:  $\pi_t$  has a stochastic trend  $\tau_t$ , a serially uncorrelated disturbance  $\eta_t$ , and stochastic volatility.

### 3. Empirical Methods

#### Econometric Models

This study employs various econometric techniques to model monthly inflation for the economy of Suriname. As a timely inflation forecast is useful for policymaking by the Central Bank of Suriname, we make use of monthly data of indicators which are timely available. We test the residuals of the model to determine whether our estimated models are robust. Consequently, we determine which model performs best for forecasting inflation for Suriname, by comparing main forecast statistics. The empirical analysis features the following models:

- **Autoregressive (AR) and Moving Average (MA) models**

ARMA models with possible integration of variables (ARIMA) utilize past and current values of a selected indicator for forecasting purposes. Often, ARIMA models perform well in short-term forecasting. The autoregressive model is of the form  $y_t = \beta_0 + \theta_1 y_{t-1} + \theta_2 y_{t-2} + \dots + \theta_p y_{t-p} + \epsilon_t$  and the moving average model is of the form  $y_t = \beta_0 + \phi_1 y_{t-1} + \phi_2 y_{t-2} + \dots + \phi_p y_{t-p} + \epsilon_t$  where  $\theta$ 's are the coefficients of the autoregressive process and  $\phi$ 's are the coefficients of the moving average process (Studenmund, 2006).

- **Seasonal ARMA (SARMA) models**

An extension of the standard ARMA models is the Seasonal ARMA. This model identifies and adds common seasonal factors to the ARMA model. Since monthly inflation often includes seasonality due to weather or holidays, we expect this method to improve the standard ARMA results.

- **Vector Autoregressive models (VAR) and VAR models with external variables (VARX)**

VARs are useful tools in modelling complex and dynamic interrelationship between macroeconomic indicators. Especially on the topic of monetary transmission mechanism there is a vast amount of research employing these models. The results of these analyses have proved to be empirically plausible. The standard VAR model has the form  $y_t = A_0 + A(L)y_t + e_t$ , where  $y$  is a  $(n \times 1)$  vector of variables,  $A_0$  is the  $(n \times 1)$  vector of constant terms,  $A(L)$  is the polynomial matrix of coefficients in the lag operator (L) and  $e_t$  is the  $(n \times 1)$  vector of error terms, which are considered to be iid. Useful tools in the VAR models are impulse responses and variance decomposition. (Sims, 1980). An extension of the

regular VAR model is the VARX model, which includes exogenous variables that often follow a specific exogenous forecast.

Bernanke, Boivin and Elias (2005) posit some issues with regular VAR models:

- a. A well-known issue with VAR models is the issue of dimensionality. As the degrees of freedom in the VAR model decrease exponentially, these models are often limited to at most eight variables. Hence, the criticism on the loss of important information due to dimensionality of these models might be justified. This may result in biased results (e.g. omitted variable bias) with no proper reflection of reality.
- b. Even though standard VAR models are suitable for forecasting purposes, another famous critique on these models is the lack of theoretical foundations. Results obtained from the impulse response functions are purely obtained from the variables the researcher inputs in the model.

- **Vector Error Correction Model (VECM)**

Economic time series are often trending and contain common stochastic trends. Hence, we might find a stationary I(0) linear combination of two or more I(1) variables; these variables are cointegrated. Employing OLS techniques with trending or non-stationary variables will yield biased and spurious regression results. When we impose cointegrating relationships in the regular VAR model, we reconstruct this model as a VECM, which can be written in the matrix form:

$$\begin{bmatrix} \Delta y_{1,t} \\ \Delta y_{2,t} \end{bmatrix} = \begin{bmatrix} -\alpha_1 \beta_c \\ -\alpha_2 \beta_c \end{bmatrix} + \begin{bmatrix} \alpha_1 \\ \alpha_2 \end{bmatrix} \begin{bmatrix} 1 & -\beta_y \end{bmatrix} \begin{bmatrix} y_{1,t-1} \\ y_{2,t-1} \end{bmatrix} + \begin{bmatrix} v_{1,t} \\ v_{2,t} \end{bmatrix}$$

Where the matrix  $[1 - \beta_y]$  presents the error-correction mechanism. This accounts for possible long-run relationship between non-stationary variables.

- **Bayesian VAR (BVAR)**

Bayesian econometrics have become popular in the recent era. Litterman (1986) and Doan, Litterman and Sims (1984) proposed a methodology to combine likelihood functions with prior distributions and standard VAR models in order to improve forecast performance. Often is specifying the priors a challenge in the BVAR methodology. Literature suggests setting the tightness of the prior as such that out-of-sample forecasting model performance is maximized.

- **Factor Augmented VAR (FAVAR)**

Bernanke, Boivin and Elias (2005) combine factor analysis with the standard VAR methodology in order to utilize larger data sets in a VAR environment. Large subsets of data can be successfully compressed to a small number of estimated indexes or factors. Consequently, these factors are modeled as endogenous variables in the VAR model. This procedure is advantageous to VAR modelling with large data sets, i.e. dealing with the loss of degrees-of-freedom. The authors come across evidence that application of this procedure could improve some classical results for the monetary-policy reaction function in the US.

A standard FAVAR model is of the form: 
$$\begin{bmatrix} F_t \\ Y_t \end{bmatrix} = \Phi(L) \begin{bmatrix} F_{t-1} \\ Y_{t-1} \end{bmatrix} + v_t,$$

where  $F_t$  is the vector of factors, which are unobserved,  $\Phi(L)$  is the polynomial lag structure of the relation between  $F_t$  and  $X_t$  and  $v_t$  is the error term.

### Forecast Evaluation

We perform both in-sample and out-of-sample forecast evaluations. For the in-sample forecast evaluation, we use the sample period: January 2004 to January 2018 and the sample period excluding a high-inflation episode from November 2015 to October 2016. We also perform an out-of-sample forecast analysis. We examine the residuals on normality, autocorrelation and possible inefficiencies. Consequently, we compare the obtained forecasts based on the smallest Root Mean Square Error (RMSE), Mean Absolute Error (MAE) and the Theil Inequality Coefficient.

### Inflation Model of the Central Bank of Suriname

Anno 2018, the Central Bank of Suriname utilizes an inflation model, which employs a disaggregated forecasting approach to forecast inflation. This model is a tool for monthly inflation projections, based on developments of the exchange rate and international prices. The model comprises of simple OLS estimations and forecasts for each CPI category. Accordingly, these projections are an input for monetary policy and a source of information on possible inflationary measures. The model includes the following variables as determinants of inflation:

1. The exchange rate: a monthly average of the USD and EUR exchange rate.
2. International WTI oil prices (source: U.S. Energy Information Administration)
3. Local fuel prices (source: Ministry of Trade, Industry and Tourism)
4. International food prices (sources: FAO and forecast of the World Bank)

## 4. Data Analysis and Results

This section sheds light on the data, the employed models and forecast results obtained from the various estimation techniques. The variables used in this study are the headline consumer price index (CPI), exchange rate, banking credit extended to the private sector, money supply, narrow money, bank interest rates and exogenous variables, namely the WTI oil prices and international food prices. Forecasts for WTI oil prices are obtained from the Energy and Information Administration (EIA) while the forecasts for food prices come from the World Bank database. All nominal variables utilized in this analysis have a monthly frequency. We use the Consumer Price Index to deflate Banking credit to the private sector, money supply and narrow money. We analyze the residuals of the models and compare both the in-sample and out-of-sample performance of the obtained forecasts.

### Unit Root Tests

Since we deal with time series, we need to determine the order of integration of our variables. Unit Root Tests reveal that all variables are integrated of the order 1 (I [1]), while in growth rates, the variables are stationary (see appendix 2).

### (S)ARMA results

We estimate AR, ARMA and SARMA models for (1) the sample period from January 2004 to October 2015 and from January 2004 to January 2018, but with a dummy variable to correct for the period of high inflation in Suriname. The optimal model is determined by the Akaike information criterion and we included some additional dummy variables to correct for some outliers. Since inflation has a seasonality, we also consider a SARMA model using automatic lag length selection based on the Akaike criterion. The following tables summarize the in-sample and out-of-sample forecasting performance of the AR, ARMA and SARMA models.

**Table 1: In-Sample Forecast performance of (S)ARMA models**

Forecast performance of utilized AR, ARMA and SARMA models			
Variable of interest: Monthly Inflation			
Estimation Sample: 2004m01 to 2015m10			
Model	RMSE	MAE	Theil Ineq
AR(1)	0.697	0.525	0.372
ARMA(7,6)	0.660	0.518	0.348
SARMA	0.706	0.530	0.381
Estimation Sample: 2004m01 to 2017m12			
Model	RMSE	MAE	Theil Ineq
AR (1)	1.134	0.803	0.261
ARMA (8,7)	1.085	0.793	0.248
SARMA	1.105	0.800	0.254

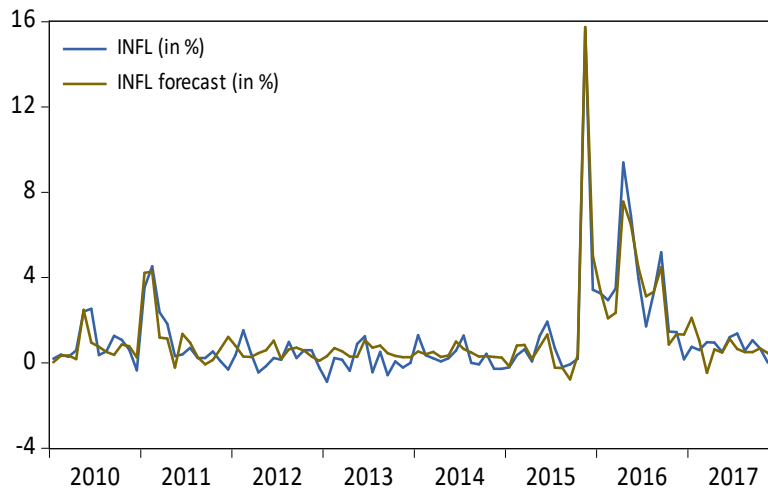
Source: Own elaboration

## VAR results

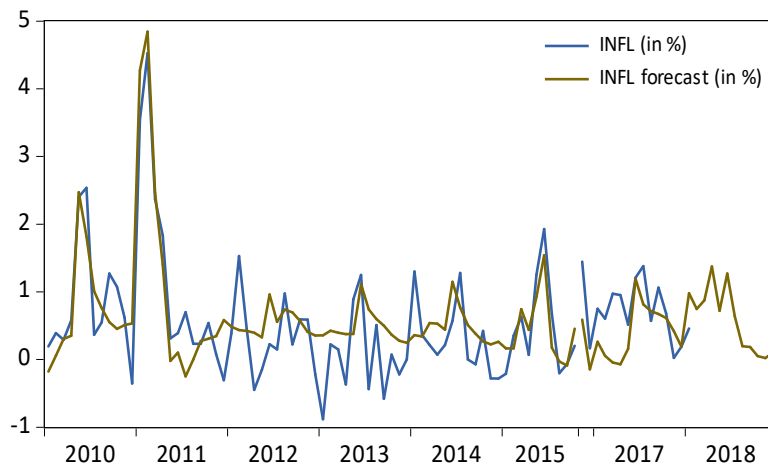
We estimate VAR models with variables that are likely to impact on inflation in Suriname. The utilized variables are the exchange rate, real money supply, credit to the private sector in constant terms, real interest rates and real monthly economic activity. However, some studies depart from the unemployment-based Phillips curve, and add unemployment to the list of variables. However, this is not be feasible for Suriname due to limited availability of unemployment data.

The Akaike Information Criterion points out that the optimal lag length is established at four lags. All variables are in growth rates as to account for stationarity of these time series and avoid spurious regression results. Granger causality tests with different lag lengths support the choice of included variables in our VAR model, to the extent that causality is most likely established from the variables towards inflation than the other way around (appendix 3).

As an extension of the standard VAR model, the VARX model incorporates exogenous (i.e. conditional) forecasts of WTI oil prices and food prices. We added some dummy variables to account for some outliers and a seasonal dummy for the month June, when local food prices often rise due seasonal effects. The VAR model yields robust results (figure 1a, 1b) and the residuals pass most residual tests.

**Figure 1a: VAR in-sample forecast**

Source: Own elaboration

**Figure 1b: VAR in-sample forecast (excl. high inflation)**

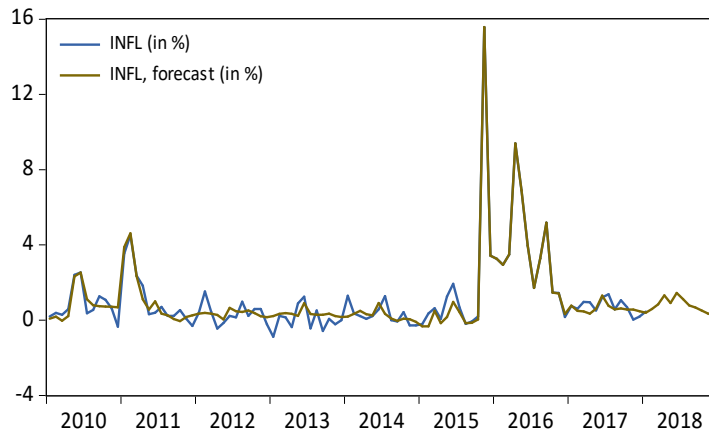
Source: Own elaboration

### VECM results

We utilized the consumer price index, the average official exchange rate, real private sector credit and the credit interest rates. Since these variables are not stationary in levels, we examined for possible long-run relationships. The Johansen Cointegration test points to one cointegrating relationship. Not surprisingly, the Engle-Granger test for cointegration points out that a long-run relationship can be established between CPI and the average exchange rate. Therefore the VECM is estimated with 3 lags (one lag less than the VAR). We added some seasonal and impulse dummy variables to improve the fit. We also added exogenous WTI oil

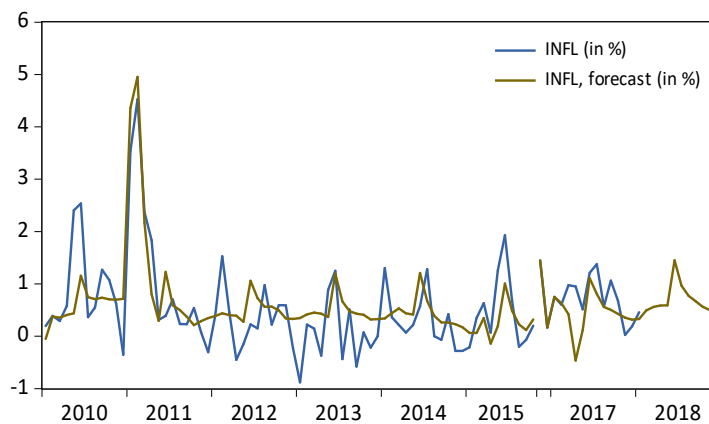
prices to this model. The error correction term is negative and significant and the errors of the VECM pass the residual test. The model has a good fit (see figure 4) and has a determination coefficient of about 0.87.

**Figure 2a: VECM in-sample forecast**



Source: Own elaboration

**Figure 2b: VECM in-sample forecast (excl. high inflation)**

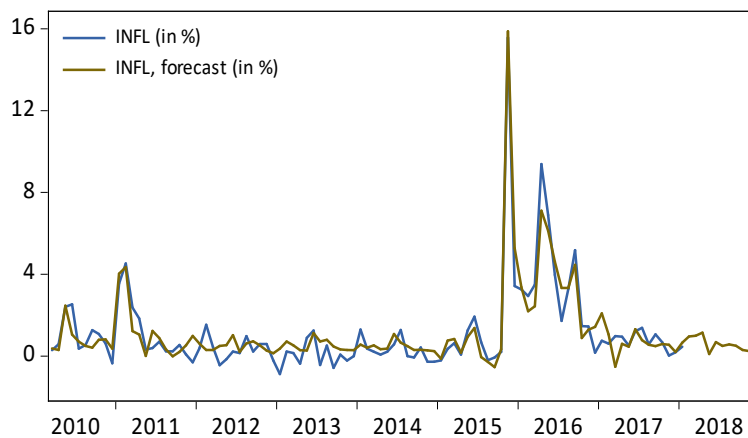


Source: Own elaboration

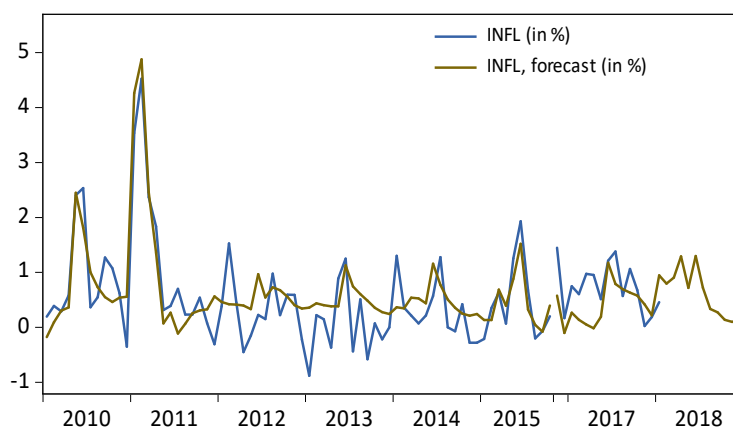
### BVAR results

BVARs are famous for their ability to improve forecast performance. We departed from the optimal standard VAR model to estimate the BVAR model. We opted for the Litterman-Minnesota Priors with values  $\mu=0.4$ ;  $\lambda_1=0.6$ ;  $\lambda_2=0.99$ ;  $\lambda_3=1$ . The autoregressive prior of 0.4 is obtained from a simple autoregressive inflation model. When capturing the whole sample period, we encountered some serial correlation and heteroscedasticity issues. When the high inflation period is excluded, the residuals of the model behave well.



**Figure 3a: BVAR results**

Source: Own elaboration

**Figure 3b: BVAR in-sample forecast (excl. high inflation)**

Source: Own elaboration

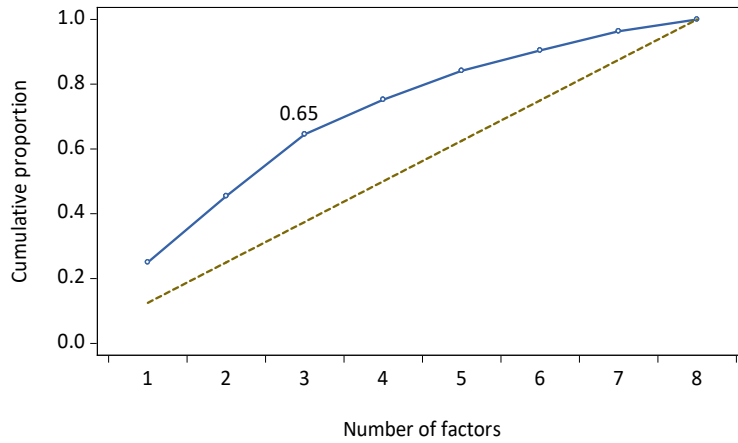
### Factor Augmented VAR results

We employ principle component analysis, based on correlations between variables, to extract common factors from monetary variables<sup>2</sup> and exchange rates<sup>3</sup>. The Eigenvalue cumulative proportion graph depicts that three principle components are sufficient in explaining more than 60% of the underlying factors (figure 4).

<sup>2</sup> Credit growth, narrow money growth, broad money growth and interest rates

<sup>3</sup> Official exchange rate and parallel exchange rate,

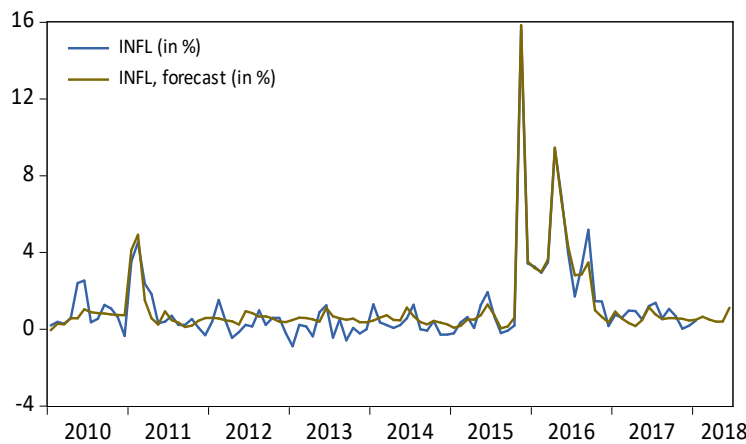
**Figure 4: Eigenvalue Cumulative Proportion**



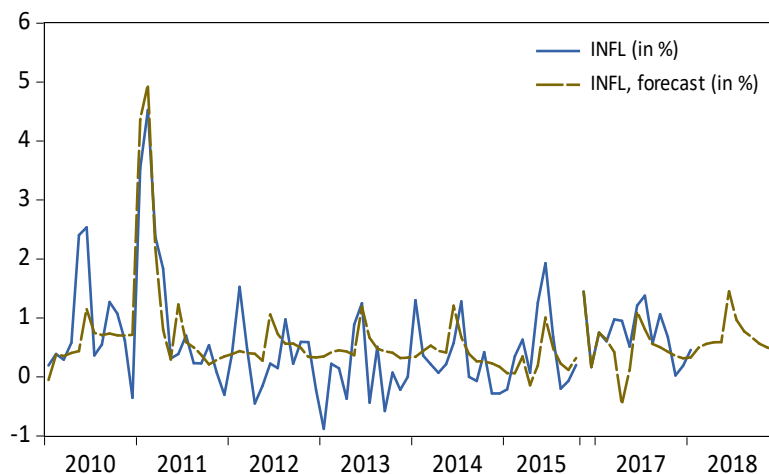
Source: Own elaboration

Consequently, we estimate the FAVAR utilizing three principle components extracted from aforementioned variables. We added a seasonal dummy for June and some impulse dummy variables to improve the fit. The FAVAR yield good results (figure 5a, 5b). The determination coefficient is around 0.89 and the residual pass all diagnostics tests.

**Figure 5a: FAVAR in-sample forecast**



Source: Own elaboration

**Figure 5b: FAVAR in-sample forecast (excl. high inflation)**

Source: Own elaboration

### Forecast Evaluation

In this section, we compare the dynamic forecasts of the various models based on the forecast evaluation statistics: the RMSE, MAE and the Theil Inequality Coefficient. Not surprisingly, the forecast of the models estimated without the period of high inflation performed better than the models estimated over the whole sample period. Based on the in-sample forecast, the VAR and VECM models performed better than the current CBvS inflation model<sup>4</sup>. Over the whole sample period, the FAVAR model and the VECM model yield the best results, while the BVAR and standard VAR performed best over the sample period excluding high inflation (table 2).

**Table 2: In-Sample Forecast Evaluation Statistics**

Variable of interest: Monthly Inflation Estimation Sample: 2004m01 to 2018m01 Evaluation Sample: 2010m01 to 2018m01				Excluding high inflation period Estimation Sample: 2004m01 to 2015m10 Evaluation Sample: 2010m01 to 2015m10			
Model	RMSE	MAE	Theil Ineq	Model	RMSE	MAE	Theil Ineq
AR	1.134	0.803	0.261	AR	0.697	0.525	0.372
ARMA	1.085	0.793	0.248	ARMA	0.660	0.518	0.348
SARMA	1.105	0.800	0.254	SARMA	0.706	0.530	0.381
VAR	0.665	0.509	0.139	VAR	0.521	0.424	0.259
VECM	0.605	0.444	0.126	VECM	-	-	-
BVAR	0.676	0.508	0.142	BVAR	0.510	0.412	0.254
FAVAR	0.586	0.446	0.122	FAVAR	0.591	0.450	0.300
CBvS model	0.842	0.600	0.179	CBvS model	0.788	0.545	0.510

Source: Own elaboration

<sup>4</sup> The CBvS model is improving over time and has a lower RMSE in more recent period.

We have also performed an out-of-sample forecast evaluation for one to twelve steps ahead to compare the different models over various forecast horizons (table 3). Up to three months ahead, the VECM produces the best forecasting results, while the FAVAR outperformed all other models from 4-months ahead forecasts on, based on the RMSE.

**Table 3: Out-Of-Sample<sup>5</sup> Forecast Evaluation – Root Mean Square Errors**

Variable of interest: Monthly Inflation Sample period: 2004m01 - 2017m12							
Periods Ahead	AR	ARMA	SARMA	VARX	VECM	BVAR	FAVAR
1 Month	0.760	0.769	0.795	0.462	0.003	0.465	0.382
2 Months	1.042	1.024	1.057	0.482	0.116	0.490	0.377
3 Months	1.200	1.107	1.154	0.521	0.229	0.521	0.376
4 Months	1.301	1.156	1.219	0.657	0.490	0.704	0.378
6 Months	1.536	1.282	1.412	0.660	0.545	0.741	0.348
12 Months	1.920	1.590	1.828	0.767	0.727	0.852	0.531

Source: Own elaboration

## 5. Conclusion

This paper can be considered a pioneering study in developing econometric models to forecast monthly inflation for the economy of Suriname. With the available monthly data, we constructed several univariate and multivariate time series models to forecast inflation. Consequently, the optimal forecast is selected from the smallest RMSE, MAE and Theil Inequality Coefficient. The estimated models perform better when a recent period of high inflation is excluded from the sample. The best model is the BVAR model in the in-sample forecast. However, more interesting is the out-of-sample forecast performance. The VECM yields the best results up to three months ahead, while the FAVAR, which includes more economic information, outperforms the VECM in many instances. Modelling CPI inflation using a VECM can be justified by the long-run relationship between the exchange rate and inflation in Suriname, i.e. a high exchange-rate pass-through. In conclusion, based on the in-sample forecast, the econometric models deployed in this paper improve on the forecast of the current CBvS inflation model.

<sup>5</sup> Number of rolling samples set at 24

## 6. Recommendations

Though the results of this paper are satisfactory, we consider the following methods to improve the monthly inflation forecast:

- Econometric disaggregated approach to forecast inflation. This approach is useful in the case where some components of the CPI basket can be forecasted using time series models while other components follow other patterns or comprise of administered prices.
- Markov-switching VAR models. Since the economy went through a regime change, including a period of high inflation, we can consider utilizing a Markov-switching VAR in follow-up research to possibly improve our estimations and forecast results.
- Forecasting averaging. Utilizing forecasting average techniques have proven to produce good forecast results.

## 7. Bibliography

Bernanke, J. B., Ben S., & Elias, P. (2005). Measuring the effects of monetary policy: A factor augmented vector autoregressive (favar) approach. *Quarterly Journal of Economics*, 120 (1), 387-422.

Clarida, R., Jordi G., & Gertler, M. (1999). The Science of Monetary Policy: A New Keynesian Perspective. *J. Econ. Literature* 37 (December): 1661–1707.

DaCosta, D., & Greenidge, K. (2008). Determinants of Inflation in Selected Caribbean Countries. 29th Annual Review Seminar. Barbados: Central Bank of Barbados.

Doan, T., Litterman, R., & Sims, C. (1984). Forecasting and conditional projection using realistic prior distributions. *Econometric reviews*, 3(1), 1-100.

Faust, J., & J. Wright. (2011). Forecasting Inflation, in *Handbook of Economic Forecasting* volume 2 by Elliott, G and Timmermann, A. Elsevier.

Feridun, M & Adebisi, M. (2005). Forecasting Inflation in Developing Economies: The Case of Nigeria. *International Journal of Applied Econometrics and Quantitative Studies* vol. 2-4.

Gabrielyan, D. (2016). Forecasting Inflation Using the Phillips Curve: Evidence from Swedish Data. Tartu: University of Tartu.

Litterman, R. B. (1986). Forecasting with Bayesian vector autoregressions—five years of experience. *Journal of Business & Economic Statistics*, 4(1), 25-38.

Matheson, T. D. (2006). Factor model forecasts for New Zealand. *International Journal of Central Banking*, 2, 169-237.

Matthes, C. & Wang, M. (2012). What Drives Inflation in New Keynesian models? *Economics Letters* 113, 338-342.

McCallum, B. (1990). Inflation: Theory and Evidence in *Handbook of Monetary Economics*. New York: North-Holland.

Meyer, B., & Pasaogullari, M. (2010). Simple Ways to Forecast Inflation: What Works Best. *Economic Commentary*, Number 2010-17.

Mishkin, F. S. (1984). *The Causes of Inflation*. Cambridge, Massachusetts: National Bureau of Economic Research, Working Paper 1453.

Narain, J., Ooft, G., & Sonneveld, N. (2014). *Determinants of Inflation in Suriname*. Paramaribo: Centrale Bank van Suriname.

Orphanides, A., & Williams, J. C. (2005). Inflation scares and forecast-based monetary policy. *Review of Economic Dynamics*, 8(2), 498-527.

Sekine, T. (2001). Modeling and forecasting inflation in Japan. IMF Working Papers 01/82, International Monetary Fund.

Sims, C. A. (1980). Macroeconomics and reality. *Econometrica: Journal of the Econometric Society*, 1-48. Stock, J. H. & Watson, M. (1999). Forecasting Inflation. *Journal of Monetary Economics* 44:293-335.

Stock, J. H. & Watson, M. (2007). Why Has U.S. Inflation Become Harder to Forecast? *Journal of Money, Credit, and Banking* 39, 3-34.

Stock, J. H. & Watson, M. (2009). Phillips Curve Inflation Forecasts Ch. 3 in *Understanding Inflation and the Implications for Monetary Policy* (2009). J. Fuhrer, Y. Kodrzycki, J. Little, and G. Olivei. Cambridge: MIT Press: 101-186.

Studenmund, A. H. (2006). *Using Econometrics: A Practical Guide* 5e. Boston, Massachusetts: Addison-Wesley.

Totonchi, J (2011). Macroeconomic theories of inflation. *International Conference on Economics and Finance*. 4:459-462.

Zarnowitz, V. (1979). An analysis of annual and multiperiod quarterly forecasts of aggregate income, output, and the price level. *Journal of Business*, 52, 1-34.

## **Appendix**



**Appendix 1a – Descriptive Statistics (variables in levels)**

	CPI	CR	CRL	ERPAVG	EROAVG	IRCRD	IRDBT	M0	M2	IRCRD	IRDBT
Mean	58.07	3619.30	2005.44	4.17	4.00	13.55	7.11	1569.26	6466.59	13.55	7.11
Median	52.73	3265.35	1948.80	3.76	3.55	12.45	6.80	1510.83	5683.08	12.45	6.80
Maximum	130.47	8411.50	3942.98	8.55	8.21	21.10	9.32	3246.00	17030.03	21.10	9.32
Minimum	29.16	611.30	292.93	3.01	3.03	11.40	6.10	455.55	1485.26	11.40	6.10
Std. Dev.	26.38	2312.75	1236.92	1.49	1.46	2.43	0.86	762.03	4301.07	2.43	0.86
Skewness	1.49	0.58	0.16	1.98	2.12	1.57	0.89	0.23	0.96	1.57	0.89
Kurtosis	4.43	2.30	1.64	5.43	6.00	4.69	2.73	2.03	3.04	4.69	2.73
Obs	166	166	166	166	166	166	166	166	166	166	166

Source: Own Elaboration

**Appendix 1b – Descriptive Statistics (variables growth rates)**

	CPI	CR	CRL	ERPAVG	EROAVG	IRCRD	IRDBT	M0	M2	IRCRD	IRDBT
Mean	0.93	1.56	1.58	0.63	0.64	-0.04	0.00	1.23	1.52	-0.04	0.00
Median	0.51	1.39	1.36	0.20	0.00	0.00	0.00	1.43	1.15	0.00	0.00
Maximum	15.58	11.09	8.33	16.28	20.67	0.60	0.20	11.95	15.68	0.60	0.20
Minimum	-3.17	-6.40	-2.18	-10.78	-4.23	-1.80	-1.10	-7.30	-6.00	-1.80	-1.10
Std. Dev.	1.86	1.89	1.55	2.79	3.05	0.25	0.11	3.67	2.43	0.25	0.11
Skewness	3.92	1.27	0.96	1.58	4.06	-2.81	-5.91	0.31	2.59	-2.81	-5.91
Kurtosis	27.66	12.39	5.67	12.93	23.54	20.35	59.75	3.43	16.01	20.35	59.75
Obs	165	165	165	165	165	165	165	165	165	165	165

Source: Own Elaboration

**Appendix 2a – Unit Root Test Results (variables in levels)**

Null Hypothesis: Unit root (individual unit root process)

Series: CPI, CR, CRL, ERPAVG, EROAVG, IRCRD, IRDBT, M0, M2,  
IRCRD, IRDBT

Sample: 2004M01 2018M01

Exogenous variables: Individual effects, individual linear trends

Automatic selection of maximum lags

Automatic lag length selection based on SIC: 0 to 6

Total number of observations: 1819

Cross-sections included: 11

Method	Statistic	Prob.**
ADF - Fisher Chi-square	10.716	0.979
ADF - Choi Z-stat	1.629	0.948

\*\* Probabilities for Fisher tests are computed using an asymptotic Chi-square distribution. All other tests assume asymptotic normality.

## Intermediate ADF test results

Series	Prob.	Lag	Max Lag	Obs
CPI	0.331	5	13	161
CR	0.408	2	13	165
CRL	0.311	3	13	164
ERPAVG	0.875	6	13	162
EROAVG	0.885	1	13	167
IRCRD	0.621	0	13	167
IRDBT	0.728	0	13	167
M0	0.739	0	13	167
M2	0.960	2	13	165
IRCRD	0.621	0	13	167
IRDBT	0.728	0	13	167

Source: Own Elaboration

**Appendix 2b – Unit Root Test Results (variables in growth rates)**

Null Hypothesis: Unit root (individual unit root process)

Series: INFL, G\_CR, G\_CRL, G\_ERPAVG, G\_EROAVG, G\_IRCRD,  
G\_IRDBT, G\_M0, G\_M2, G\_IRCRD, G\_IRDBT

Sample: 2004M01 2018M01

Exogenous variables: Individual effects

Automatic selection of maximum lags

Automatic lag length selection based on SIC: 0 to 2

Total number of observations: 1822

Cross-sections included: 11

Method	Statistic	Prob.**
ADF - Fisher Chi-square	620.386	0.000
ADF - Choi Z-stat	-22.266	0.000

\*\* Probabilities for Fisher tests are computed using an asymptotic Chi-square distribution. All other tests assume asymptotic normality.

## Intermediate ADF test results

Series	Prob.	Lag	Max Lag	Obs
INFL	0.000	0	13	165
G_CR	0.000	1	13	165
G_CRL	0.023	2	13	164
G_ERPAVG	0.001	2	13	165
G_EROAVG	0.000	0	13	167
G_IRCRD	0.000	0	13	166
G_IRDBT	0.000	0	13	166
G_M0	0.000	0	13	166
G_M2	0.000	0	13	166
G_IRCRD	0.000	0	13	166
G_IRDBT	0.000	0	13	166

Source: Own Elaboration

**Appendix 3 – Granger Causality Tests**

## Pairwise Granger Causality Tests

Lags: 1

Null Hypothesis:	Obs	F-Statistic	Prob.
G_ERPAVG does not Granger Cause INFL	138	2.874	0.092
INFL does not Granger Cause G_ERPAVG		2.005	0.159
G_CR does not Granger Cause INFL	138	3.352	0.069
INFL does not Granger Cause G_CR		0.697	0.405
G_IRCRD does not Granger Cause INFL	138	1.649	0.201
INFL does not Granger Cause G_IRCRD		0.215	0.644

## Pairwise Granger Causality Tests

Lags: 3

Null Hypothesis:	Obs	F-Statistic	Prob.
G_ERPAVG does not Granger Cause INFL	136	2.274	0.083
INFL does not Granger Cause G_ERPAVG		0.539	0.657
G_CR does not Granger Cause INFL	136	1.367	0.256
INFL does not Granger Cause G_CR		1.023	0.385
G_IRCRD does not Granger Cause INFL	136	2.823	0.041
INFL does not Granger Cause G_IRCRD		0.814	0.488

## Pairwise Granger Causality Tests

Lags: 6

Null Hypothesis:	Obs	F-Statistic	Prob.
G_ERPAVG does not Granger Cause INFL	133	1.922	0.082
INFL does not Granger Cause G_ERPAVG		0.460	0.837
G_CR does not Granger Cause INFL	133	1.065	0.387
INFL does not Granger Cause G_CR		1.508	0.181
G_IRCRD does not Granger Cause INFL	133	1.674	0.133
INFL does not Granger Cause G_IRCRD		0.354	0.906