

Wu, Ziting et al.

Working Paper

The Impact of Air Pollution on Attributable Risks and Economic Costs of Hospitalization for Mental Disorders

IZA Discussion Papers, No. 12986

Provided in Cooperation with:

IZA – Institute of Labor Economics

Suggested Citation: Wu, Ziting et al. (2020) : The Impact of Air Pollution on Attributable Risks and Economic Costs of Hospitalization for Mental Disorders, IZA Discussion Papers, No. 12986, Institute of Labor Economics (IZA), Bonn

This Version is available at:

<https://hdl.handle.net/10419/215382>

Standard-Nutzungsbedingungen:

Die Dokumente auf EconStor dürfen zu eigenen wissenschaftlichen Zwecken und zum Privatgebrauch gespeichert und kopiert werden.

Sie dürfen die Dokumente nicht für öffentliche oder kommerzielle Zwecke vervielfältigen, öffentlich ausstellen, öffentlich zugänglich machen, vertreiben oder anderweitig nutzen.

Sofern die Verfasser die Dokumente unter Open-Content-Lizenzen (insbesondere CC-Lizenzen) zur Verfügung gestellt haben sollten, gelten abweichend von diesen Nutzungsbedingungen die in der dort genannten Lizenz gewährten Nutzungsrechte.

Terms of use:

Documents in EconStor may be saved and copied for your personal and scholarly purposes.

You are not to copy documents for public or commercial purposes, to exhibit the documents publicly, to make them publicly available on the internet, or to distribute or otherwise use the documents in public.

If the documents have been made available under an Open Content Licence (especially Creative Commons Licences), you may exercise further usage rights as specified in the indicated licence.

DISCUSSION PAPER SERIES

IZA DP No. 12986

**The Impact of Air Pollution on
Attributable Risks and Economic Costs of
Hospitalization for Mental Disorders**

Ziting Wu
Xi Chen
Guoxing Li
Lin Tian
Zhan Wang
Xiuqin Xiong

Chuan Yang
Zijun Zhou
Xiaochuan Pan

FEBRUARY 2020

DISCUSSION PAPER SERIES

IZA DP No. 12986

The Impact of Air Pollution on Attributable Risks and Economic Costs of Hospitalization for Mental Disorders

Ziting Wu
Peking University

Xi Chen
Yale University and IZA

Guoxing Li
Peking University

Lin Tian
Peking University

Zhan Wang
Peking University

Xiuqin Xiong
Peking University

Chuan Yang
Peking University

Zijun Zhou
Peking University

Xiaochuan Pan
Peking University

FEBRUARY 2020

Any opinions expressed in this paper are those of the author(s) and not those of IZA. Research published in this series may include views on policy, but IZA takes no institutional policy positions. The IZA research network is committed to the IZA Guiding Principles of Research Integrity.

The IZA Institute of Labor Economics is an independent economic research institute that conducts research in labor economics and offers evidence-based policy advice on labor market issues. Supported by the Deutsche Post Foundation, IZA runs the world's largest network of economists, whose research aims to provide answers to the global labor market challenges of our time. Our key objective is to build bridges between academic research, policymakers and society.

IZA Discussion Papers often represent preliminary work and are circulated to encourage discussion. Citation of such a paper should account for its provisional character. A revised version may be available directly from the author.

ISSN: 2365-9793

IZA – Institute of Labor Economics

Schaumburg-Lippe-Straße 5–9
53113 Bonn, Germany

Phone: +49-228-3894-0
Email: publications@iza.org

www.iza.org

ABSTRACT

The Impact of Air Pollution on Attributable Risks and Economic Costs of Hospitalization for Mental Disorders

This study aims to fill the gap in our understanding about exposure to particulate matters with diameter less than 2.5 μm (PM2.5) and attributable risks and economic costs of mental disorders (MDs). We identify the relationship between PM2.5 and risk of hospital admissions (HAs) for MDs in Beijing and measure the attributable risk and economic cost. We apply a generalized additive model (GAM) with controls for time trend, meteorological conditions, holidays and day of the week. Stratified analyses are performed by age, gender and season. We further estimate health and economic burden of HAs for MDs attributable to PM2.5. A total of 17,252 HAs for MDs are collected. We show that PM2.5 accounts for substantial morbidity and economic burden of MDs. Specifically, a 10 $\mu\text{g}/\text{m}^3$ daily increase in PM2.5 is associated with a 3.55% increase in the risk of HAs for MDs, and the effect is more pronounced for older males in colder weather. According to the WHO's air quality guidelines, 15.12 percent of HAs and 16.19 percent of related medical expenses for MDs are respectively attributable to PM2.5.

JEL Classification: Q51, Q53, I24, I31, G11, G41, J24

Keywords: attributable risk, economic cost, hospital admissions, mental disorders, PM2.5

Corresponding author:

Ziting Wu

School of Public Health

Peking University

Beijing, 100191

China

E-mail: wuziting@bjmu.edu.cn

1. Introduction

Mental disorder is one of the three leading causes of Disabled Adjusted Life Years (DALYs) among non-communicable diseases, and it has been estimated that there are 162 million DALYs due to MDs in the world in 2015(Kassebaum et al., 2016). And MDs is a particularly challenging group of conditions with heavy disease burden in all geographies(Kassebaum et al., 2016). The global cost of mental health conditions in 2010 was estimated at \$2.5 trillion, and it will reach \$6.0 trillion by 2030(World Economic Forum, 2011). In China, the total annual costs of MDs increased from \$21.0 billion in 2005 to \$88.8 billion in 2013, the later accounted for 15% of the total health expenditure and 1.1% of China's gross domestic product in 2013(Xu et al., 2016a).

A variety of factors, such as genetic profiles, brain damage, substance abuse, socioeconomic status, and life conditions, may influence mental status. Recent studies have indicated a role of environmental factors, especially particulate matters, in the morbidity of MDs(Lin et al., 2017). Historically, extensive environmental and epidemiological studies around the world showed that PM_{2.5} is a ubiquitous environmental hazard and has exerted severe health outcomes on human beings(Benaissa et al., 2019; Chen et al., 2018b; Collaborators, 2017; David Mulenga, 2019; Motesaddi Zarandi et al., 2017). And toxicological studies found PM_{2.5} hazards on brain and neurodevelopment(Block et al., 2012; Grandjean and Landrigan, 2014), which will trigger biological reactions displaying a psychological, emotional or behavioral character(Yackerson et al., 2011).

Thus, it is not surprising that emerging studies showed significant association between PM_{2.5} and MDs. A study focusing on the individuals living across the United States showed PM_{2.5} was significantly associated with anxiety symptoms and depressive symptoms, with the largest increase for 180-days moving average (OR=1.61) and 30-day moving average (OR=1.16), respectively(Pun et al., 2017). Likewise, Studies conducted in Barcelona(Vert et al., 2017), south Korea(Kim et al., 2016), and China(Gao et al., 2017; Qiu et al., 2019; Song et al., 2018; Wang et al., 2018; Xue et al., 2019) also found the increase of PM_{2.5} concentrations is associated with the risk of mental disorder morbidity. However, the evidence is still mixed as some other studies conducted in many parts of the world showed no association between particulate matter and MDs(Chen et al., 2018a; Tong et al., 2016; Wang et al., 2014; Zhang et al.,

2019). For instance, a study based on four European general population cohorts found no association between PM_{2.5} and depression(Zijlema et al., 2016).

Some referenced studies above may generate contradicting results even if they are conducted in the same city or same country. Moreover, to our knowledge, no studies have estimated the attributable risk and economic cost of MDs because of PM_{2.5} exposure in Beijing, where people especially suffered from heavy air pollution(Chen et al., 2018b). Relative to only measuring increase in relative risk, attributable risk and economic cost are more intuitive to evaluate the burden caused by air pollutants to the society and households.

In the present study, firstly, a time-series analysis was conducted to identify the possible correlation between PM_{2.5} and risk of HAs for MDs in Beijing, China during 2013-2015. Secondly, we further estimated the attributable risk and economic cost of HAs for MDs due to PM_{2.5}.

2. Materials and Methods

2.1 Data collection

2.1.1 Health data

The health data used in this study were from the Beijing Urban Employees and Residents Basic Medical Insurance System (UERBMIS), which was officially launched in 1998. Daily counts of HAs between 1 January 2013 and 31 December 2015 were obtained from billing claims of medical insurance enrollees. The record for each inpatient contained demographic information, including birthday, sex, and hospital admission information, including date of service, disease diagnosed according to International Classification of Diseases, 10th Revision (ICD-10), and medical expenses consists of total medical expenses and out-of-pocket cost. Daily counts of MDs (ICD 10: F00-F99) HAs were extracted from the records.

2.1.2 Air pollution and meteorological data

The hourly concentrations of six air pollutants have been monitored by China National Environmental Monitoring Center (CNEMC, <http://www.cnemc.cn/>) since October 2012, which included PM_{2.5}, particulate matter ≤ 10 μm in aerodynamic diameter (PM₁₀), sulfur dioxide (SO₂), nitrogen dioxide (NO₂), carbon monoxide

(CO) and ozone (O₃). There were 35 monitoring stations dispersed in different districts of Beijing. In this study, data of PM_{2.5}, PM₁₀ and other gaseous pollutants in each of monitoring stations from January 2013 to December 2015 in Beijing were obtained from the website platform of CNEMC. Then, 24-h average concentrations of PM_{2.5}, PM₁₀, SO₂, NO₂, CO and maximum 8-h moving average concentrations for O₃ were calculated by averaging the concentrations of all stations to represent the citywide pollution exposure.

Daily data of weather conditions, including average relative humidity (%), temperature (°C), wind speed (m/s) and sunshine hours (hr.) were obtained from the National Meteorological Science Data Sharing Center (<https://data.cma.cn/>) on the corresponding period.

2.2 Statistical analyses

A time-series analysis was applied to examine the associations between PM_{2.5} and HAs for MDs. We utilized an over-dispersed generalized additive model (GAM) which allowed the quasi-Poisson distribution to analyze the data. Natural cubic spline function (*ns*) was adopted to filter out long-term trends and seasonality in daily HAs, and potential non-linear effects of daily mean temperature and relative humidity. The degree of freedom (*df*) for the time trends and other meteorological variables were selected based on previous studies (Gao et al., 2017; Qiu et al., 2019). A *df* of 7/year was adopted for the time trends and seasonality, 3 *df* for the daily mean temperature and relative humidity. We also adjusted for the day of the week (DOW) and public holidays in the models. The main model is shown below (Equation. (1)):

$$\begin{aligned} \ln[E(Y_i)] = & \beta_0 + \beta AP_i + ns(time) + ns(temp_i) + ns(rh_i) + as.factor(DOW) \\ & + as.factor(holiday) + intercept \end{aligned} \quad (1)$$

where $E(Y_i)$ represents the number of HAs due to MDs on day i ; β is the relative coefficient; AP_i indicates the concentration of PM_{2.5} on day i ; $temp_i$, rh_i are the average temperature, relative humidity on day i ; DOW is day of the week.

Relative risk increase (RRI) was defined as Relative Risk (RR) -1. The results were

expressed as the RRI (%) in HAs for MDs per 10 $\mu\text{g}/\text{m}^3$ increment of $\text{PM}_{2.5}$ concentrations (Equation (2)):

$$\text{RRI}(\%) = (\text{RR} - 1) * 100\% = (\exp(\beta * 10) - 1) * 100\% \quad (2)$$

where β indicates the coefficient of the $\text{PM}_{2.5}$ -HAs association obtained from Equation (1).

We incorporated both single-day lag (from current day to 20 days before: lag0-lag20) and multi-day moving average (from lag01 to lag020), fitting separate models with the same parameter settings as in the main model for each lag day to estimate the lag patterns of $\text{PM}_{2.5}$. Subgroup analyses were performed to examine whether the association differed by age (≤ 44 years, 45-64 years, and ≥ 65 years), gender, and season (cool: October to March, warm: April to September). The statistical significance of subgroup differences were tested through Z-test (Di et al., 2017).

The robustness of the analysis results was assessed with respect to: 1) building two-pollutant models ($\text{PM}_{2.5}$ with SO_2 , NO_2 , O_3 and CO) to examine the robustness of the effect estimates after adjusting for co-pollutants, 2) choosing the df used for the confounding adjustment for time (4-10 df per year) (Gao et al., 2017; Qiu et al., 2019) and temperature (6 and 9 df) (Di et al., 2017), 3) adding wind speed and sunshine duration into our model (Qiu et al., 2019).

We further estimated the attributable number of HAs for MDs due to $\text{PM}_{2.5}$ exposure (denoted as AN) based on the effect estimates obtained in the above analyses. Two standards including WHO's air quality guidelines (24 h mean: $25 \mu\text{g}/\text{m}^3$ for $\text{PM}_{2.5}$) and China grade II standards for air quality (24 h mean: $50 \mu\text{g}/\text{m}^3$ for $\text{PM}_{2.5}$) were applied as the reference concentrations. The equation was shown below (Equation (3)):

$$AN_i = (\exp(\beta * \Delta AP_i) - 1) / \exp(\beta * \Delta AP_i) * N_i \quad (3)$$

where AN_i represents the number of HAs that could be attributable to exceeding $\text{PM}_{2.5}$ exposure on day i ; β indicates the coefficient of the $\text{PM}_{2.5}$ -HAs association

obtained from Equation (1); ΔAP_i is the concentration difference between the observed and the reference concentration of PM_{2.5} on day i ; N_i is the count of HAs on day i ; AN is the sum of overall AN_i during the study period.

We then calculated the economic cost of HAs (including total hospital admission expenses and out-of-pocket cost, denoted as AC_{total} and AC_{pocket} , respectively) for MDs due to PM_{2.5} exposure. The equations were shown below (Equations (4), (5)):

$$AC_{ytotal} = AN_y * Cost_{ytotal} * CPI_y \quad (4)$$

$$AC_{ypocket} = AN_y * Cost_{ypocket} * CPI_y \quad (5)$$

where AC_{ytotal} and $AC_{ypocket}$ represent the total hospital admission cost and out-of-pocket cost that could be attributable to exceeding PM_{2.5} exposure in year y ; AN_y is the sum of overall AN_i (obtained from Equation (3)) during year y ; $Cost_{ytotal}$ and $Cost_{ypocket}$ indicate the case-average total hospital admission expenses and out-of-pocket cost in year y , respectively; CPI_y is the product of customer price indexes from year $y+1$ to 2018; AC_{total} is the sum of AC_{ytotal} , and AC_{pocket} is the sum of $AC_{ypocket}$ during the study period.

The overall research methodology is shown as the following flow chart (Fig. 1). All analyses were conducted using R software (version 3.5.3, R Development Core Team, 2019). The statistical tests were two-sided, and p -value < 0.05 was considered as statistically significant.

3. Results

3.1 Data description

A total of 17,252 HAs for MDs were collected. The average age of the studied subjects was 52.3 years old. The young (≤ 44) and the elderly (≥ 65) patients accounted for 30.7% and 21.6%, respectively. The number and proportion of male patients and female patients were 9,725 (56.3%) and 7,527 (43.6%), respectively. HAs for MDs were slightly higher in the cool season (51.6%) than in the warm season (48.4%). The overall medical expenses were 320.3 million Chinese Yuan (CNY), 23.3% (74.6 million CNY) of which were self-paid. The case-average total

medical expenses and the out-of-pocket cost were 18.6 and 4.3 thousand CNY, respectively. Daily mean concentrations were 83.2 $\mu\text{g}/\text{m}^3$ for $\text{PM}_{2.5}$. Daily mean temperature, relative humidity, wind speed, and sunshine duration are 13.6 °C, 53.9%, 21.0m/s, 6.5 hours, respectively (Table 1).

Concentrations of $\text{PM}_{2.5}$ were positively associated with concentrations of PM_{10} ($r=0.89$, $p < 0.001$), and other gaseous pollutants except for O_3 (for SO_2 , NO_2 , and CO , $r=0.58\sim 0.81$, $p < 0.001$, for O_3 , $r=-0.2$, $p<0.001$). Moderate correlation was observed for $\text{PM}_{2.5}$ with meteorological factors (Table 2).

3.2 Health effects of $\text{PM}_{2.5}$ in overall and subgroup population

Fig. 2 shows the associations of $\text{PM}_{2.5}$ with HAs for MDs using single pollutant models. The effects of $\text{PM}_{2.5}$ exposure on total MDs were significant on lag10, lag11, lag16, with the largest effects on lag11 day. Per 10 $\mu\text{g}/\text{m}^3$ increase in the lag11 day exposure for $\text{PM}_{2.5}$ was associated with a RRI of 3.55% (95%CI: 0.67%–6.51%) increase in total mental disorder admissions.

Fig. 3 illustrates the effect estimates of stratified analyses by age, gender and season. $\text{PM}_{2.5}$ was associated with larger increase in hospital admission rate in some subgroups. The effects of $\text{PM}_{2.5}$ pollution on HAs for MDs were more pronounced in males (RRI: 3.93% [95%CI: 0.86%-7.09%], $p<0.05$) than in females (RRI: 3.09% [95%CI: 0.38%-5.86%], $p<0.05$). In age-specific analyses, the effects were significant among older patients (RRI: 6.92% [95% CI: 2.74%-11.27%], $p<0.05$) and those of middle-aged (RRI: 3.76% [95%CI: 0.70%-6.91%], $p<0.05$). Positive but insignificant associations were found among the young. In terms of the differences in season groups, we observed positive and significant association in cold seasons (RRI: 3.61% [95%CI: 0.46%-6.86%], $P<0.05$), higher than the risk in warm seasons. The difference between old and young population was significant, while no significant difference was found in other subgroup comparisons.

3.3 Sensitivity analysis

The robustness check results are shown in Table 3. In the two-pollutant models, the risk estimates of $\text{PM}_{2.5}$ on total mental disorder admissions remained statistically

significant on after adjusting for SO₂ and O₃. After adjusting for NO₂ and CO, the RRI of models were slightly lower than the single-pollutant model, and showed no significance. The percentage change (95% CI) in HAs for MDs with each 10 µg/m³ increase in of PM_{2.5} under varying degrees of freedom for the smooth functions of calendar time and daily mean temperature changed little, suggesting that the findings on the associations of PM_{2.5} exposure and HAs for all-cause MDs were robust in our study. After adding wind speed and sunshine duration into the single pollutant model, our result remained robust to these additional controls.

3.4 Attributable health risks and economic costs due to PM_{2.5}

Table 4 summarized the estimations of the number of HAs and medical expenses attributable to exceeding PM_{2.5} exposure using air quality guidelines. Taking WHO's air quality guideline as the reference concentrations, from 2013 to 2015, 15.12% of HAs (2,609 person-times out of 17,252 person-times) for MDs could be attributable to exceeding PM_{2.5}. And 16.19% of the total medical expenses for HAs (51.86 million CNY out of 320.3 million CNY) could be attributable to exceeding PM_{2.5}. As for out-of-pocket cost, 12.10 million CNY could be attributable to exceeding PM_{2.5}, 23.33% of the extra total expenses. Under China grade II standard concentrations, AN, AC_{total} and AC_{pocket} are 1,819 person-time, 36.25 million CNY, and 8.44million CNY, respectively.

4. Discussion

This study is the first to investigate the risk and economic cost of HAs for MDs in Beijing. In this time series study of all HAs in UERBMIS in Beijing from 2013 to 2015, a 10 µg/m³ daily increase in PM_{2.5} was associated with a statistically significant risk increase of 3.55% for total HAs for MDs. The effects of PM_{2.5} exposure on HAs for MDs were more pronounced in males, older persons individuals and in cold seasons and the difference between old and young population was statistically significant. Using WHO's air quality guidelines as the reference, approximately one sixth of HAs and the related medical expenses for MDs were estimated to be attributed to PM_{2.5}, respectively. And about one forth of the extra total expenses were self-paid. Our results were robust, as they were generally not sensitive to model specifications.

In recent years, an increasing number of studies have suggested that PM_{2.5} have harmful impacts on MDs (Kim et al., 2016; Pun et al., 2017; Song et al., 2018; Tong et al., 2016; Wang et al., 2018). In our study, significant associations between PM_{2.5} exposure and MDs were found, which were supported by literature in the wider context of research. A cohort study conducted in six low- and middle-income countries showed that the odds ratio (OR) for depression was 1.10 (95% CI: 1.02-1.19) per 10 µg/m³ increase in ambient PM_{2.5} (Lin et al., 2017). Qiu H. et al found an increment of 2.89% (95% CI: 0.75–5.08%) in MDs HAs was associated with each 10 µg/m³ increase in PM_{2.5} at lag06 in Chengdu (Qiu et al., 2019). One study summarized the associations of particulate matter with daily hospitalizations for MDs in Beijing Anding hospital and estimated that a 0–6-day cumulative effect of PM_{2.5} per 10 mg/m³ increase was respectively associated with a 1.01% (95% CI: 0.02–2.00%) increase in schizophrenia admissions (Gao et al., 2017).

Zhang X. et al found that worsening air quality was a driving force of the stagnant happiness trend by influencing people's satisfaction of life, which may be a psychological channel through which PM_{2.5} may affect mental health (Zhang et al., 2017). As for the biological mechanisms, firstly, former findings indicated that the brain is a critical target for PM_{2.5} exposure. Smaller particles may penetrate the brain's blood barrier and thus affect the central nervous system. It has been indicated that air pollutants may lead to biological changes in the brain, such as change in brain activity (Xu et al., 2016b), diminishing white matter or neuronal degeneration (Gladka et al., 2018). A cohort study found that late-life exposure to ambient particulate air pollutants has a deleterious effect on brain aging and brain volumes (Chen et al., 2015). Secondly, studies have also suggested that the development of MDs is dependent on the interaction between genetic and environmental factors, which may be mediated by the activation of the immune system, oxidative stress and inflammation (Block and Calderon-Garciduenas, 2009). The results from a natural experiment showed that the over secretion of glucocorticoid activated immunity and inflammation in excess after PM_{2.5} exposure and thus led to a series of mood-related behaviors disorder (Jia et al., 2018).

This study found the elder (≥ 65 years old) individuals were more vulnerable than

the younger (0–44) and middle-aged (45–64) groups, which were generally consistent with previous studies(Gao et al., 2017; Lee et al., 2019a) though some studies did not obtain the same results(Chen et al., 2018a; Qiu et al., 2019). The possible reasons might be that the impairment of cognitive function is expected to grow as people ages(Ferri et al., 2005) and PM_{2.5} could aggravate the process especially when it comes to the elder population(Lee et al., 2019a). Our results appeared that males were more susceptible to the effects of PM_{2.5} exposure than females, which is in line with findings from human and animal studies(Costa et al., 2014; Qiu et al., 2019; Song et al., 2018). However, other authors reported the opposite result(Gao et al., 2017; Wang et al., 2018), this could be associated with the socioeconomic, behavioral(Wen et al., 2007) and psychological(Segev et al., 2011) heterogeneity among the study populations. Studies also showed that females and males are vulnerable in different subset of mental problems, respectively(Shin et al., 2019). Thus, further studies are encouraged to focus on the epidemiological researches and biological mechanisms of specific MDs. We found that the associations of PM_{2.5} with MD HAs were more pronounced in cold seasons than in warm seasons, which is consistent with studies in Shijiazhuang and Chengdu(Qiu et al., 2019; Song et al., 2018). The stronger associations in cold seasons may be attributable to higher concentration of ambient air pollutants. However, other studies have demonstrated different seasonal patterns(Chen et al., 2018a; Lee et al., 2019b), which may due to the complex components of air pollution, climatic conditions and exposure patterns in different regions. So far there were no conclusive findings about the heterogeneity in effects of ambient pollution on HAs for MDs. More studies concerning specific subtype of mental or behavior disorders are needed in the future to determine the sensitive populations.

Our study estimated the health burden of HAs for MDs attributable to PM_{2.5} exposure, which is of great value for air quality improvement and mental disease prevention. AN possesses important public health implications to policy-makers on the quantitative benefits of lowering ambient PM_{2.5} levels(Lin et al., 2016). Such approaches were first applied by Qiu H. et al. to estimate the morbidity burden of MDs due to particulate matter exposure in Chengdu, finding that 9.53% (95%CI: 2.67%, 15.58%) of HAs for MDs could be attributable to PM_{2.5}(Qiu et al., 2019). Furthermore, for the first time, our study calculated the related economic cost, the

total medical expenses and the out-of-pocket cost, brought by the extra PM_{2.5} exposure in Beijing. The results provide straightforward information for cost-benefit analysis in pollution cap project, healthcare resources allocation in health department(Sánchez-Barroso and Sanz-Calcedo, 2019), as well as the basic data for willingness-to-pay studies(Barwick et al., 2018).

From 2013 to 2015, there showed increased yearly trends for AN, AC_{total} and AC_{pocket} . A study summarizing the hospital admissions and the related direct medical costs for mental disorders in Shanghai also showed the same trend(Chen et al., 2017). Moreover, based on a back-of-envelope calculation using results from Table 4, the fraction of health burden and economic cost incurred by PM_{2.5} went up from 2013 to 2014, and declined in 2015, which indicated the efficiently controlled PM_{2.5} concentration(Chen et al., 2018b) after the Air Pollution Prevention and Control Action Plan(Chinese State Council, 2013) implemented by the Chinese government may account for the lower burden in 2015. However, further studies are appealed to focus on longer time period to figure out the long term fluctuation of the health and economic burden due to exceeding PM_{2.5} to track and forecast the pollution-related burden as well as the pollution control benefits.

This study has several strengths. First, our data were obtained from billing claims of medical enrollees based on UERBMIS in Beijing, covering more than 70% of the total urban population(Wang, 2018), so our results have good representativeness for urban population in Beijing. Second, to our knowledge, it is the first time that the attributable economic costs of HAs for MDs due to PM_{2.5} exposure has been estimated using the accurate direct medical expenses information from the UERBMIS, which is more intuitive for researchers and authorities to understand the adverse impact of PM_{2.5} than only estimating changes in relative risk. Finally, we evaluated both the total medical expenses and out-of-pocket cost attributable to PM_{2.5}, which provided useful information to show the economic burden to both the society and individuals.

Despite its strengths, our study's findings have limitations. First, the average concentration of PM_{2.5} in the whole city was taken as the proxy of personal PM_{2.5} exposure, which may result in measurement error. Second, the risk factors that we

analyzed in our models were air pollutants and meteorological factors. Other factors, such as socioeconomic conditions, and behavioral characteristics like smoking status(Lin et al., 2017) could also be considered in follow-up studies. Third, the economic burden calculated in this study tends to be a lower bound estimate of the real economic cost of HAs due to MDs, since this cost only accounts for those who came to hospital to seek care, while those who were not able to afford hospital bills or who didn't have time were left out. Fourth, the economic cost in our results only included the direct medical expenses, further studies should try to figure out the direct non-medical costs and indirect costs(Xu et al., 2016a).

5. Conclusions

This study suggested that ambient PM_{2.5} exposure significantly elevates the risks of HAs for MDs. Male and elderly individuals were more susceptible to PM_{2.5} pollution. Additionally, a substantial morbidity and economic burden of MDs for both society and individuals could be attributable to exceeding PM_{2.5} exposure. Therefore, policy considerations in environmental protection and public health interventions are essential to improve the mental health status of the population, and more attention should be paid to the sensitive subgroups. Our study serves as a trigger to figure out the health and economic burden due to PM_{2.5} in Beijing. In addition to the causal relationship between PM_{2.5} pollution and mental disorders, more studies in the field of public health and economics are needed to confirm the direct and indirect economic cost due to PM_{2.5}.

Acknowledgements

This work was supported by the National Natural Science Foundation of China (Grant No.41761144056). The financial support provided by China Scholarship Council (201806010385) during a visit of Ziting Wu to Yale University is acknowledged. Xi Chen thanks the Yale Macmillan Center Faculty Research Fund, the US Federal PEPPER Center Scholar Award (P30AG021342), and two NIH/National Institute on Aging Grants (R03AG048920 and K01AG053408).

References

- Barwick PJ, Li S, Rao D, Zahur NB. The Morbidity Cost of Air Pollution: Evidence from Consumer Spending in China. National Bureau of Economic Research Working Paper Series 2018; No. 24688. 10.3386/w24688\
- Benaissa F, Bendahmane I, Bourfis N, Aoulaiche O, Alkama R. Bioindication of Urban Air Polycyclic Aromatic Hydrocarbons Using Petunia Hybrida. Civil Engineering Journal 2019; 5. 10.28991/cej-2019-03091333
- Block ML, Calderon-Garciduenas L. Air pollution: mechanisms of neuroinflammation and CNS disease. Trends Neurosci 2009; 32: 506-16. 10.1016/j.tins.2009.05.009
- Block ML, Elder A, Auten RL, Bilbo SD, Chen H, Chen J-C, et al. The outdoor air pollution and brain health workshop. NeuroToxicology 2012; 33: 972-984. <https://doi.org/10.1016/j.neuro.2012.08.014>
- Chen C, Liu C, Chen R, Wang W, Li W, Kan H, et al. Ambient air pollution and daily hospital admissions for mental disorders in Shanghai, China. The Science of the total environment 2018a; 613-614: 324-330. 10.1016/j.scitotenv.2017.09.098
- Chen JC, Wang X, Wellenius GA, Serre ML, Driscoll I, Casanova R, et al. Ambient air pollution and neurotoxicity on brain structure: Evidence from women's health initiative memory study. Ann Neurol 2015; 78: 466-76. 10.1002/ana.24460
- Chen T, Deng S, Li M. Spatial Patterns of Satellite-Retrieved PM(2.5) and Long-Term Exposure Assessment of China from 1998 to 2016. International journal of environmental research and public health 2018b; 15: 2785. 10.3390/ijerph15122785
- Chen W, Wang S, Wang Q, Wang W. Direct medical costs of hospitalisations for mental disorders in Shanghai, China: a time series study. BMJ open 2017; 7: e015652-e015652. 10.1136/bmjopen-2016-015652
- Chinese State Council. Atmospheric Pollution Prevention and Control Action Plan. In: Chinese State Council, editor, Beijing, 2013.

- Collaborators GBDRF. Global, regional, and national comparative risk assessment of 84 behavioural, environmental and occupational, and metabolic risks or clusters of risks, 1990-2016: a systematic analysis for the Global Burden of Disease Study 2016. *Lancet* (London, England) 2017; 390: 1345-1422. 10.1016/S0140-6736(17)32366-8
- Costa LG, Cole TB, Coburn J, Chang Y-C, Dao K, Roque P. Neurotoxicants are in the air: convergence of human, animal, and in vitro studies on the effects of air pollution on the brain. *BioMed research international* 2014; 2014: 736385-736385. 10.1155/2014/736385
- David Mulenga SS. Indoor Air Pollution Related Respiratory Ill Health, a Sequel of Biomass Use. *SciMedicine Journal* 2019; 1: 30-37. 10.28991/SciMedJ-2019-0101-5
- Di Q, Dai L, Wang Y, Zanobetti A, Choirat C, Schwartz JD, et al. Association of Short-term Exposure to Air Pollution With Mortality in Older Adults. *JAMA* 2017; 318: 2446-2456. 10.1001/jama.2017.17923
- Ferri CP, Prince M, Brayne C, Brodaty H, Fratiglioni L, Ganguli M, et al. Global prevalence of dementia: a Delphi consensus study. *Lancet* (London, England) 2005; 366: 2112-2117. 10.1016/S0140-6736(05)67889-0
- Gao Q, Xu Q, Guo X, Fan H, Zhu H. Particulate matter air pollution associated with hospital admissions for mental disorders: A time-series study in Beijing, China. *European psychiatry : the journal of the Association of European Psychiatrists* 2017; 44: 68-75. 10.1016/j.eurpsy.2017.02.492
- Gladka A, Rymaszewska J, Zatonski T. Impact of air pollution on depression and suicide. *Int J Occup Med Environ Health* 2018; 31: 711-721. 10.13075/ijomh.1896.01277
- Grandjean P, Landrigan PJ. Neurobehavioural effects of developmental toxicity. *The Lancet Neurology* 2014; 13: 330-338. [https://doi.org/10.1016/S1474-4422\(13\)70278-3](https://doi.org/10.1016/S1474-4422(13)70278-3)
- Jia Z, Wei Y, Li X, Yang L, Liu H, Guo C, et al. Exposure to Ambient Air Particles Increases the Risk of Mental Disorder: Findings from a Natural Experiment in Beijing. *Int J Environ Res Public Health* 2018;

15. 10.3390/ijerph15010160

- Kassebaum NJ, Arora M, Barber RM, Bhutta ZA, Brown J, Carter A, et al. Global, regional, and national disability-adjusted life-years (DALYs) for 315 diseases and injuries and healthy life expectancy (HALE), 1990–2015: a systematic analysis for the Global Burden of Disease Study 2015. *The Lancet* 2016; 388: 1603-1658. [https://doi.org/10.1016/S0140-6736\(16\)31460-X](https://doi.org/10.1016/S0140-6736(16)31460-X)
- Kim K-N, Lim Y-H, Bae HJ, Kim M, Jung K, Hong Y-C. Long-Term Fine Particulate Matter Exposure and Major Depressive Disorder in a Community-Based Urban Cohort. *Environmental health perspectives* 2016; 124: 1547-1553. 10.1289/EHP192
- Lee H, Kang JM, Myung W, Choi J, Lee C, Na DL, et al. Exposure to ambient fine particles and neuropsychiatric symptoms in cognitive disorder: A repeated measure analysis from the CREDOS (Clinical Research Center for Dementia of South Korea) study. *The Science of the total environment* 2019a; 668: 411-418. 10.1016/j.scitotenv.2019.02.447
- Lee S, Lee W, Kim D, Kim E, Myung W, Kim S-Y, et al. Short-term PM2.5 exposure and emergency hospital admissions for mental disease. *Environmental Research* 2019b; 171: 313-320. <https://doi.org/10.1016/j.envres.2019.01.036>
- Lin H, Guo Y, Kowal P, Airhihenbuwa CO, Di Q, Zheng Y, et al. Exposure to air pollution and tobacco smoking and their combined effects on depression in six low- and middle-income countries. *The British journal of psychiatry : the journal of mental science* 2017; 211: 157-162. 10.1192/bjp.bp.117.202325
- Lin H, Liu T, Xiao J, Zeng W, Li X, Guo L, et al. Quantifying short-term and long-term health benefits of attaining ambient fine particulate pollution standards in Guangzhou, China. *Atmospheric Environment* 2016; 137: 38-44. <https://doi.org/10.1016/j.atmosenv.2016.04.037>
- Motesaddi Zarandi S, Hashempour Y, Nowrouz P. Characterizing of Air Pollution in Tehran: Comparison of Two Air Quality Indices. *Civil Engineering Journal* 2017; 3: 749-758. 10.21859/cej-030911

- Pun VC, Manjourides J, Suh H. Association of Ambient Air Pollution with Depressive and Anxiety Symptoms in Older Adults: Results from the NSHAP Study. *Environmental health perspectives* 2017; 125: 342-348. 10.1289/EHP494
- Qiu H, Zhu X, Wang L, Pan J, Pu X, Zeng X, et al. Attributable risk of hospital admissions for overall and specific mental disorders due to particulate matter pollution: A time-series study in Chengdu, China. *Environmental research* 2019; 170: 230-237. 10.1016/j.envres.2018.12.019
- Sánchez-Barroso G, Sanz-Calcedo J. Application of Predictive Maintenance in Hospital Heating, Ventilation and Air Conditioning Facilities. *Emerging Science Journal* 2019; 3: 337-343. 10.28991/esj-2019-01196
- Segev Z, Arif AA, Rohrer JE. Activity Limitations and Healthcare Access as Correlates of Frequent Mental Distress in Adults 65 Years and Older: A Behavioral Risk Factor Surveillance Study—2008. *Journal of Primary Care & Community Health* 2011; 3: 17-22. 10.1177/2150131911412380
- Shin J, Han S-H, Choi J. Exposure to Ambient Air Pollution and Cognitive Impairment in Community-Dwelling Older Adults: The Korean Frailty and Aging Cohort Study. *International journal of environmental research and public health* 2019; 16: 3767. 10.3390/ijerph16193767
- Song J, Zheng L, Lu M, Gui L, Xu D, Wu W, et al. Acute effects of ambient particulate matter pollution on hospital admissions for mental and behavioral disorders: A time-series study in Shijiazhuang, China. *The Science of the total environment* 2018; 636: 205-211. 10.1016/j.scitotenv.2018.04.187
- Tong L, Li K, Zhou Q. Season, sex and age as modifiers in the association of psychosis morbidity with air pollutants: A rising problem in a Chinese metropolis. *The Science of the total environment* 2016; 541: 928-933. 10.1016/j.scitotenv.2015.09.066
- Vert C, Sánchez-Benavides G, Martínez D, Gotsens X, Gramunt N, Cirach

- M, et al. Effect of long-term exposure to air pollution on anxiety and depression in adults: A cross-sectional study. *International Journal of Hygiene and Environmental Health* 2017; 220: 1074-1080. <https://doi.org/10.1016/j.ijheh.2017.06.009>
- Wang F, Liu H, Li H, Liu J, Guo X, Yuan J, et al. Ambient concentrations of particulate matter and hospitalization for depression in 26 Chinese cities: A case-crossover study. *Environment international* 2018; 114: 115-122. 10.1016/j.envint.2018.02.012
- Wang Y. Research on the Present Situation of Medical Service and Countermeasure of Cooperative Development in Beijing-Hebei Region. North China University of Science and Technology, 2018.
- Wang Y, Eliot Melissa N, Koutrakis P, Gryparis A, Schwartz Joel D, Coull Brent A, et al. Ambient Air Pollution and Depressive Symptoms in Older Adults: Results from the MOBILIZE Boston Study. *Environmental Health Perspectives* 2014; 122: 553-558. 10.1289/ehp.1205909
- Wen M, Kandula NR, Lauderdale DS. Walking for Transportation or Leisure: What Difference Does the Neighborhood Make? *Journal of General Internal Medicine* 2007; 22: 1674-1680. 10.1007/s11606-007-0400-4
- World Economic Forum THSoPH. The global economic burden of non-communicable diseases. . World Economic Forum, Geneva, 2011.
- Xu J, Wang J, Wimo A, Qiu C. The economic burden of mental disorders in China, 2005–2013: implications for health policy. *BMC Psychiatry* 2016a; 16: 137. 10.1186/s12888-016-0839-0
- Xu X, Ha SU, Basnet R. A Review of Epidemiological Research on Adverse Neurological Effects of Exposure to Ambient Air Pollution. *Frontiers in Public Health* 2016b; 4. 10.3389/fpubh.2016.00157
- Xue T, Zhu T, Zheng Y, Zhang Q. Declines in mental health associated with air pollution and temperature variability in China. *Nature communications* 2019; 10: 2165-2165. 10.1038/s41467-019-10196-y

- Yackerson NS, Zilberman A, Todder D, Kaplan Z. The influence of several changes in atmospheric states over semi-arid areas on the incidence of mental health disorders. *International Journal of Biometeorology* 2011; 55: 403-410. 10.1007/s00484-010-0350-0
- Zhang X, Zhang X, Chen X. Happiness in the Air: How Does a Dirty Sky Affect Mental Health and Subjective Well-being? *Journal of environmental economics and management* 2017; 85: 81-94. 10.1016/j.jjeem.2017.04.001
- Zhang Z, Zhao D, Hong YS, Chang Y, Ryu S, Kang D, et al. Long-Term Particulate Matter Exposure and Onset of Depression in Middle-Aged Men and Women. *Environmental health perspectives* 2019; 127: 77001-77001. 10.1289/EHP4094
- Zijlema WL, Wolf K, Emeny R, Ladwig KH, Peters A, Kongsgård H, et al. The association of air pollution and depressed mood in 70,928 individuals from four European cohorts. *International Journal of Hygiene and Environmental Health* 2016; 219: 212-219. <https://doi.org/10.1016/j.ijheh.2015.11.006>

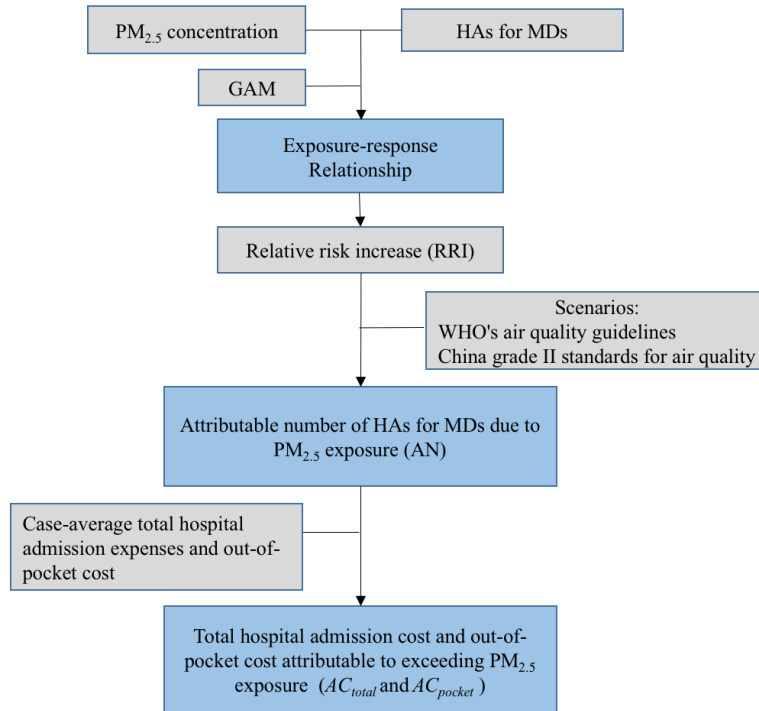


Fig. 1 Research methodology flow chart. The flow chart shows the steps in ascertaining exposure-response relationship and calculating attributable risk and economic cost.

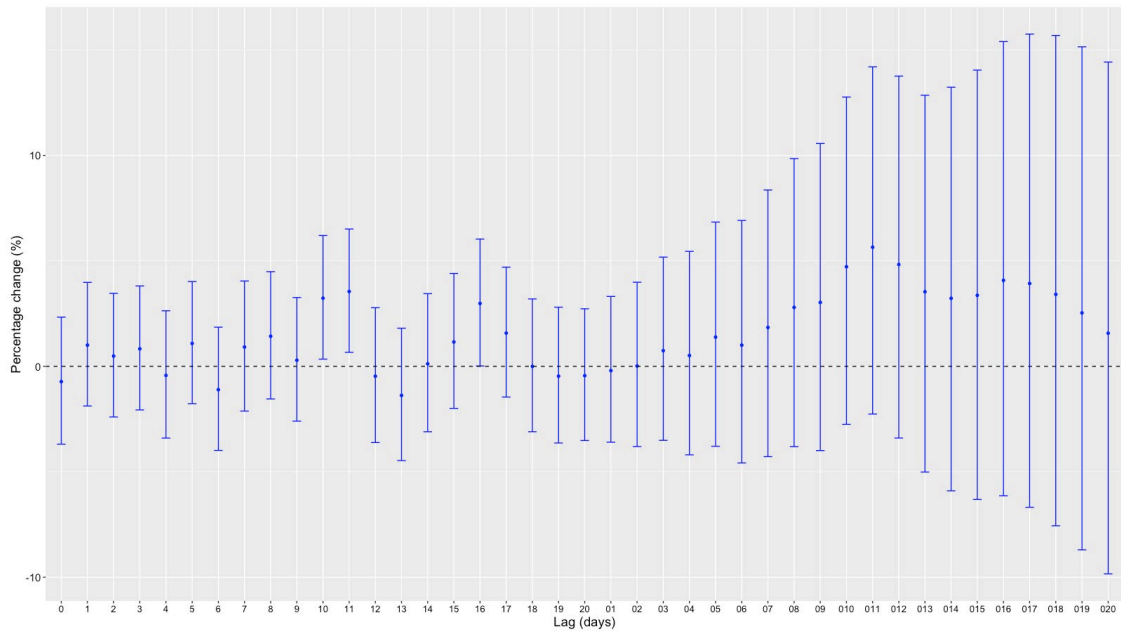


Fig. 2 Percentage change (95% CI) in HAs for MDs associated with a 10µg/m³ increase in PM_{2.5} along different lag structures using single-pollutant models. Note: the effects of single-day lags (from current day to 20 days before: lag0-lag20) and multi-day moving average lags (from lag01 to lag020) were plotted.

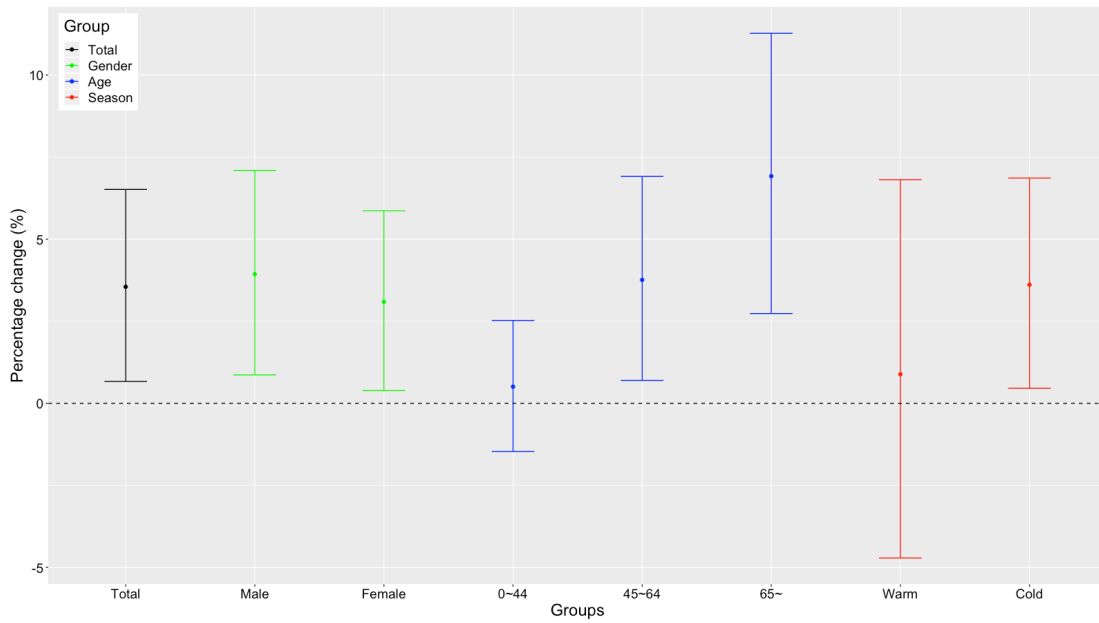


Fig. 3 Percentage change (95% CI) in HAs for MDs associated with a $10\mu\text{g}/\text{m}^3$ increase in $\text{PM}_{2.5}$ at lag11 stratified by gender, age and season.

Table 1 Summary statistics for HAs for MDs, the related medical expenses, air pollutants concentrations and meteorological factors in Beijing, 2013-2015

Variable	Total	Daily mean	SD	Min	P25	Median	P75	Max
Mental disorder	17,252	16	44	0	3	7	13	723
Age								
0-44	5,301	5	13	0	1	3	5	284
45-64	8,232	8	22	0	1	3	6	335
≥65	3,719	3	12	0	0	1	2	104
Gender								
Male	9,725	9	28	0	1	3	7	452
Female	7,527	7	17	0	1	3	6	271
Season								
Warm	8,350	8	24	0	0	0	7	222
Cool	8,902	8	39	0	0	0	7	723
Medical expenses ^a								
Total expenses	32,027.8	29.2	59.0	0	11.5	18.4	29.6	982.1
Out-of-pocket cost	7,456.8	6.8	21.7	0	2.0	3.6	5.5	388.7
Air pollutants								
PM _{2.5}	—	83.2	69.1	5.6	34.1	62.9	113.5	467.4
PM ₁₀	—	119.5	77.7	5.6	67.1	102.7	151.2	612.2
SO ₂	—	19.9	21.9	1.2	5.2	10.8	26.9	146.2
NO ₂	—	51.7	24.5	7.5	34.4	45.7	63.3	154.7
CO	—	1.3	1.0	0.2	0.7	1.0	1.6	7.9
O ₃	—	56.9	36.6	2.2	27.4	51.9	80.4	197.3
Meteorological variables								
Temperature (C°)	—	13.6	11.0	-9.7	3.1	15.2	23.7	32.6
Relative humidity (%)	—	53.9	19.8	8.0	38.0	54.0	69.0	99.0
Wind speed (m/s)		21.0	8.5	6.0	15.0	19.0	25.0	66.0
Sunshine duration (h)		6.5	4.1	0	2.9	7.7	9.7	14.1

a: unit: 10 thousand Chinese Yuan (CNY)

Table 2 Spearman's correlation coefficients between the daily levels of air pollutants and meteorological variables in Beijing, 2013-2105.

	PM _{2.5}	PM ₁₀	SO ₂	NO ₂	CO	O ₃	Temp	RH
PM _{2.5}	1	0.89*	0.58*	0.78*	0.81*	-0.2*	-0.21*	0.47*
PM ₁₀		1	0.52*	0.75*	0.73*	-0.16*	-0.17*	0.32*
SO ₂			1	0.72*	0.7*	-0.32*	-0.55*	-0.02
NO ₂				1	0.81*	-0.45*	-0.39*	0.24*
CO					1	-0.41*	-0.43*	0.37*
O ₃						1	0.67*	-0.08*
Temp							1	0.23*
RH								1

* $p < 0.05$; Temp: temperature; RH: relative humidity.

Table 3 Percentage change (95% CI) in HAs for MDs associated with a 10µg/m³ increase in PM_{2.5} in different models.

	RRI (95%CI)		RRI (95%CI)
Co-pollutant [#]		df for time [§]	
+SO ₂	3.71(0.07,7.47)*	df=4	2.83(0.02,5.72) *
+NO ₂	1.59(-2.25,5.59)	df=5	3.46(0.60,6.41) *
+CO	3.15(-0.78,7.22)	df=6	3.46(0.56,6.44) *
+O ₃	3.56(0.63,6.57) *	df=7	3.55(0.67,6.51) *
df for temperature [†]		df=8	3.45(0.56,6.41) *
df=6	3.71(0.78,6.71) *	df=9	3.35(0.42,6.37) *
df=9	3.59(0.75,6.51) *	df=10	3.42(0.50,6.42) *
Adjusted model [¶]	3.32(0.36,6.37) *		

[#]Percentage change (95% CI) in HAs for MDs associated with a 10µg/m³ increase in PM_{2.5} at lag11 using two-pollutant models.

[†]Percentage change (95% CI) in HAs for MDs associated with a 10µg/m³ increase in PM_{2.5} at lag11 under varying degrees of freedom for the smooth function of daily mean temperature using single-pollutant models.

[¶]Effect estimates of PM_{2.5} at lag11 on MDs in the adjusted model (add wind speed and sunshine duration into the model).

[§]Percentage change (95% CI) in HAs for MDs associated with a 10µg/m³ increase in PM_{2.5} at lag11 under varying degrees of freedom for the smooth function of time trend using single-pollutant models.

**p*<0.05.

Table 4 The attributable number of HAs and the related economic cost due to exceeding PM_{2.5} exposure using WHO and China air quality standard in Beijing, 2013-2015.

Year	WHO's air quality guideline			China grade II standard		
	AN _y	AC _{ytotal} [*]	AC _{ypocket} [*]	AN _y	AC _{ytotal} [*]	AC _{ypocket} [*]
2013	613(135, 973)	12.18(2.68, 19.33)	2.88(0.64, 4.58)	410(90, 653)	8.15(1.79, 12.97)	1.93(0.42, 3.07)
2014	977(222, 1 531)	17.97(4.08, 28.17)	4.43(1.01, 6.94)	658(151, 1 027)	12.11(2.78, 18.89)	2.98(0.68, 4.66)
2015	1,019(234, 1 567)	21.70(4.98, 33.38)	4.78(1.10, 7.36)	751(172, 1158)	16.00(3.66, 24.67)	3.53(0.81, 5.44)
Total	2,609(591, 4 071)	51.86(11.75, 80.87)	12.10(2.74, 18.88)	1,819(413, 2 838)	36.25(8.23, 56.53)	8.44(1.92, 13.17)

*unit: million CNY. The annual economic costs were measured at the constant price in 2018.

Note: AN_y represents the number of HAs that could be attributable to exceeding PM_{2.5} exposure in year *y*. AC_{ytotal} and AC_{ypocket} represent the total hospital admission cost and out-of-pocket cost that could be attributable to exceeding PM_{2.5} exposure in year *y*. AN_y, AC_{ytotal} and AC_{ypocket} were calculated based on the largest effect estimates in single pollutant models. The total HAs were 4,597, 6,008, and 6,647 person-times in 2013, 2014, and 2015, respectively, and the related total medical expenses were 83.45, 103.02, and 133.81 million CNY, respectively.