

Branisa Caballero, Boris Sergio; Peres-Cajías, José; Caspa, Nigel

**Working Paper**

## The biological standard of living in urban Bolivia, 1880s-1920s: Stagnation and persistent inequality

Development Research Working Paper Series, No. 03/2019

**Provided in Cooperation with:**

Institute for Advanced Development Studies (INESAD), La Paz

*Suggested Citation:* Branisa Caballero, Boris Sergio; Peres-Cajías, José; Caspa, Nigel (2019) : The biological standard of living in urban Bolivia, 1880s-1920s: Stagnation and persistent inequality, Development Research Working Paper Series, No. 03/2019, Institute for Advanced Development Studies (INESAD), La Paz

This Version is available at:

<https://hdl.handle.net/10419/213513>

**Standard-Nutzungsbedingungen:**

Die Dokumente auf EconStor dürfen zu eigenen wissenschaftlichen Zwecken und zum Privatgebrauch gespeichert und kopiert werden.

Sie dürfen die Dokumente nicht für öffentliche oder kommerzielle Zwecke vervielfältigen, öffentlich ausstellen, öffentlich zugänglich machen, vertreiben oder anderweitig nutzen.

Sofern die Verfasser die Dokumente unter Open-Content-Lizenzen (insbesondere CC-Lizenzen) zur Verfügung gestellt haben sollten, gelten abweichend von diesen Nutzungsbedingungen die in der dort genannten Lizenz gewährten Nutzungsrechte.

**Terms of use:**

*Documents in EconStor may be saved and copied for your personal and scholarly purposes.*

*You are not to copy documents for public or commercial purposes, to exhibit the documents publicly, to make them publicly available on the internet, or to distribute or otherwise use the documents in public.*

*If the documents have been made available under an Open Content Licence (especially Creative Commons Licences), you may exercise further usage rights as specified in the indicated licence.*

Institute for Advanced Development Studies



**The Biological Standard of Living in Urban Bolivia, 1880S –  
1920S: Stagnation and Persistent Inequality**

By:

Boris Branisa  
José Peres – Cajías  
Nigel Caspa

Development Research Working Paper Series  
No. 03/2019

June 2019

The views expressed in the Development Research Working Paper Series are those of the authors and do not necessarily reflect those of the Institute for Advanced Development Studies. Copyrights belong to the authors. Papers may be downloaded for personal use only.



## **The Biological Standard of Living in Urban Bolivia, 1880s-1920s: Stagnation and Persistent Inequality\***

By

Boris Branisa<sup>+</sup>

José Peres-Cajías<sup>×</sup>

Nigel Caspa<sup>±</sup>

June 2019

### **Abstract**

Based on almost 5.000 direct observations on National Identification Cards, this paper offers the first estimation of the evolution of average heights in urban Bolivia for the decades 1880s-1920s. The analysis focuses on men aged 19-50 years registered in the city of La Paz. Despite city's growing economic importance and modernization, average heights remained stagnant around 163 cm. This level is not so different to that found in the still disperse available evidence for rural Bolivia. Furthermore, there is evidence of inequalities throughout the period under study: those men who were indigenous, illiterate or worked in manual occupations were persistently shorter than non-indigenous, literates and non-manual workers, respectively. In coincidence with recent studies on Latin America, these findings suggest that the boost in exports and the regained dynamism of the economy that took place at the onset of the 20th century were not accompanied by improvements in biological standards of living.

**Key words:** Anthropometric history, heights; welfare, inequality, first globalization.

**JEL Classification:** I31, N16, N36.

---

\* The Bolivian height data collection used in this article was supported by the technical cooperation program "Fortalecimiento de la Investigación en Desarrollo Económico en Bolivia" from CAF - development bank of Latin America - to the Bolivian Academy of Economic Sciences (ABCE); under the technical and operational management of the INESAD Foundation. Branisa acknowledges partial funding by the Think Tank Initiative. Peres-Cajías acknowledges funding from Generalitat de Catalunya-AGAUR through the *Beatriu de Pinós* program (BP-2016). The authors thank Joerg Baten, Alfonso Herranz-Loncán, Erick Langer, Moramay López-Alonso, Manuel Llorca-Jana and Anna Sophia Doyle for comments on previous versions of the article. Comments received by participants at the 9<sup>th</sup> Bolivian Conference on Development Economics in Santa Cruz de la Sierra and at the 25<sup>th</sup> Economics Research Workshop in La Paz were also very fruitful. The Director and personnel of the Archivo Histórico de La Paz kindly provided access to sources; their support and help is highly appreciated.

+ Boris Branisa is a Professor at Universidad Católica Boliviana "San Pablo" (Escuela de la Producción y la Competitividad) and an Associate researcher at Fundación INESAD, e-mail: [borisbranisa@gmail.com](mailto:borisbranisa@gmail.com).

× José Peres-Cajías is a *Beatriu de Pinós* Research Fellow at the Department of Economic History, Institutions, Politics and World Economy, Universitat de Barcelona, e-mail: [joseperescajias@gmail.com](mailto:joseperescajias@gmail.com).

± Nigel Caspa is a Master's Student (UMSA) and a research assistant at Fundación INESAD, e-mail: [nigel.caspa@gmail.com](mailto:nigel.caspa@gmail.com).

## Resumen

En base a casi 5.000 observaciones directas de las Tarjetas de Identificación Nacional, este estudio presenta la primera estimación de la evolución de las alturas promedio en las zonas urbanas de Bolivia, para las décadas 1880s-1920s. El análisis se centra en hombres de 19 a 50 años registrados en la ciudad de La Paz. A pesar de la creciente importancia económica y modernización de la ciudad, las alturas promedio se mantuvieron estancadas en torno a 163 cm. Este nivel no es tan diferente de aquel encontrado en la aún dispersa evidencia disponible para la Bolivia rural. Además, hay evidencia de desigualdades a lo largo del período en estudio: aquellos hombres que eran indígenas, analfabetos o que trabajaban en ocupaciones manuales fueron persistentemente más bajos que los no indígenas, alfabetos y trabajadores en actividades no manuales, respectivamente. En coincidencia con estudios recientes sobre América Latina, estos hallazgos sugieren que el aumento de las exportaciones y el dinamismo recuperado de la economía que tuvo lugar a comienzos del siglo XX no fueron acompañados por mejoras en los estándares biológicos de vida.

**Palabras clave:** Historia antropométrica, alturas, bienestar, desigualdad, primera globalización.

**Clasificación JEL:** I31, N16, N36.

## 1. Introduction

The Bolivian economy is frequently identified as a perfect example of a “reversal of fortune”: it was among the most dynamic spaces in the Americas during colonial times and today is among the poorer economies in the region (Acemoglu, Johnson, & Robinson, 2002). No official data is available for Bolivian GDP (Gross Domestic Product) prior to 1950. Using their own estimation of the Bolivian GDP and per capita GDP for the period 1846-1950, Alfonso Herranz-Loncán & Peres-Cajías (2016) suggested that the divergence of the Bolivian economy (both to developed and neighboring countries) is driven by the low dynamism of the economy during the 19<sup>th</sup> century and two devastating crises that took place during the second half of the 20<sup>th</sup> century. Furthermore, they claim that divergence stopped, and even some convergence to developed and neighboring economies was observed, during the first half of the 20<sup>th</sup> century.

Nevertheless, there is still only scarce quantitative evidence of how the economy’s stagnation and subsequent recovery at the onset of the 20<sup>th</sup> century affected Bolivians’ welfare.<sup>1</sup> This paper aims to fill this gap by providing an estimation of the average height of adult men (19-50 years) registered in the city of La Paz and who were born in the decades from the 1880s to the 1920s.<sup>2</sup> Our work is based on almost 5,000 records on National Identification Cards and, to the best of our knowledge, is the first direct estimation of men’s average height in urban Bolivia during that period.<sup>3</sup>

Our results show that the average height of men remained stagnant around 163 cm during the period under scrutiny. Despite differences in sample sizes, our results do not differ much to those found for rural Aymara and Quechua men in 1903 (average height around 160 cm) (Laure, 1991). Likewise, even taking into account differences in the

---

<sup>1</sup> The main exception is the reconstruction of real wages in the city of Cochabamba from the 1820s to the 1920s (Henriques, 2015).

<sup>2</sup> Average height is a multidimensional measure of well-being influenced by multiple factors. Indeed, adults average height can be reflecting both proximate (personal diet reflected in nutrition indicators, diseases, work effort, genetics) and broad socioeconomic determinants (income, inequality, public health, disease environment, technology, cultural values, food prices). Furthermore, adults average height shows a strong correlation with other well-being measures such as mortality and life expectancy (Steckel, 1995).

<sup>3</sup> Drawing from different sources with very heterogeneous sample sizes (from 1 to 700), Laure (1991) provides estimations (both for men and women) for different Bolivian indigenous groups (Aymaras, Quechuas, Guaranies and Amazonian) in rural areas from the 1820s to the 1980s. Godoy et al. (2006) offer an estimation of adults average height (both men and women) for the Tsimanes, a Bolivian indigenous group located in the Amazonian, from 1920 to 1980. Based on Demographic and Health Surveys (DHS), Challú & Silva-Castañeda (2016) offer data on the evolution of women average height from 1945 to 1990. There is also an indirect estimation of Bolivian men and women average heights from the late 19<sup>th</sup> century onwards (NCD Risk Factor Collaboration, 2016).

ecological context, our results are in line with those found for the Tsimanes men in the Amazonian in the first half of the 20<sup>th</sup> century (average height around 163 cm) (Godoy et al., 2006). Our findings are also coincident with the story of average height stagnation highlighted in these works. In this regard, our results resemble other Latin American cases where an exports boom and the expansion of the economy did not necessarily translate into better biological standards of living (Baten & Carsson, 2010; Llorca-Jaña, Navarrete-Montalvo, Araya-Valenzuela, & Droller, 2018; López-Alonso, 2012; Salvatore, 2007; Twrdek & Manzel, 2010).

The lack of a universal positive correlation between economic growth and average heights is a puzzle (Baten, 2017; Deaton, 2007). One of the suggested explanations for this puzzle is inequality. In the case of the first Latin American export era (1850-1929), it could be argued that the extra revenue generated by higher exports and higher growth was captured by the elites and there was an absence of a trickle-down effect which would have generated improvements in the living standards of the population. In this regard, our data shows the existence of enduring differences between indigenous and non-indigenous men, between literate and illiterate, and between occupational groups: on average, indigenous men were 3 cm shorter than non-indigenous men, illiteracy was associated with a 3 cm penalty in heights and manual unskilled workers were approximately 2 cm and 4 cm shorter than non-manual unskilled and non-manual skilled workers, respectively. However, given that average heights remained stagnant across the different occupational categories, our results suggest that other factors could be also at play. After reviewing national and municipal health policies during the period, we highlight the lack of improvements in general health conditions, as well as pressures on the less advantaged groups stemming from higher food prices and growing wage inequalities. In any case, since there is previous evidence suggesting that inequality was particularly problematic from the 1870s to the 1920s, more research is needed in order to evaluate the relationship between economic growth and wellbeing in Bolivia during this period.<sup>4</sup>

---

<sup>4</sup> Just as we cannot claim that inequality is *the* variable that explains the lack of correspondence between biological living standards and GDP, we cannot assess if this inequality in biological living standards had or not colonial roots (Dobado-González & García-Montero, 2014; Williamson, 2015). In this context, we are just highlighting that (whatsoever its previous levels), there is evidence that inequality became particularly problematic during the period under study. On the one hand, this is a period when *haciendas* expanded at the expenses of communal lands (Gotkowitz, 2007). On the other hand, Henriques (2015) shows that the wage gap between high ranked and low ranked public servants in Cochabamba city expanded from the last decade of the 19<sup>th</sup> century to 1925.

The paper proceeds as follows: Section 2 presents an overview of economic development in Bolivia and La Paz from Independence to the Great Depression. Section 3 presents our database and clarifies whom we are measuring. Section 4 presents and discusses our main results. Section 5 explores some explanations for the poor improvement of Bolivian biological standards of living. Finally, section 6 concludes.

## **2. The Economic development of Bolivia and La Paz: an overview**

This section presents a brief overview of Bolivian economic development from Independence in 1825 to the Great Depression in order to contextualize and better understand our results on the biological standards of living. To start with, given that during colonial times the economic dynamism of Bolivia's current territory was tied to mining production in Potosí (Assadourian, 1982; Menegus Bornemann, 1999), the crisis of the sector at the onset of the 19<sup>th</sup> century affected the overall economy (Tandeter, 1992). This economic downturn was reinforced by the contemporaneous crisis of textile production driven by illegal British imports (Huber Abendroth, 1994) and, thereafter, by the long and painful war of Independence (1809-1825).

This unfortunate starting point helps explain why Bolivia was among the last Latin American countries to overcome the direct and indirect costs of Independence. Indeed, despite some dynamism in cooper or quinine exports (Barragán, Lema, Mendieta, & Peres-Cajías, 2015) and some increases in silver production during the 1830s (Platt, 1996), it was not until the early 1850s when silver production and aggregate exports started to grow steadily (Klein, 2011). Nevertheless, it remains unclear how the crisis in silver exports that started in the early 19<sup>th</sup> century and persisted until the mid-nineteenth century affected the wellbeing of the Bolivian population. As a comparison, for instance, Contreras (2011) suggests that the reduction and crisis of silver exports in Peru during the post-independence decades were contemporaneous to an increase in indigenous population which suggests an increase in food availability.<sup>5</sup> In the same vein, recent research for the Bolivian case points to the existence of vibrant smuggling activities during the post-independence decades that benefited mining elites and subaltern agents such as indigenous traders (Langer, 2009). These findings suggest that the silver crisis

---

<sup>5</sup> Similarly, Twrdek & Manzel (2010) show that the guano export boom did not alter Peruvian biological living standards.

could have been milder than generally assumed and that this partial downturn took place in a context where subaltern agents could have been improving their wellbeing.

In any case, it is less debatable that the recovery of the export sector consolidated in the early 1870s, once the government monopsony on silver ended and silver could be freely exported. Indeed, it was during this period when silver exports finally surpassed the levels achieved before the colonial crisis (Mitre, 1981). These changes in the political economy of exports went hand in hand with changes in land policy: after several decades of the so-called *reciprocal* pact between indigenous communities and the Bolivian government (Platt, 1982), the enactment of new measures fueled the expansion of *haciendas* at the expense of indigenous communities. The traumatic loss of the coastal province due to the War of the Pacific against Chile (1879) restricted the persistence of most previous political leaders, and allowed the economic elites that emerged since mid-century (and that lobbied for the kind of policies previously commented) to attain political hegemony. In this context, a more stable political scenario was achieved after the war.<sup>6</sup>

During the 1880s and early 1890s, silver exports continued growing, in part thanks to railways expansion (see below). However, according to Herranz-Loncán & Peres-Cajías (2016) estimates, the expansion of the mining sector during the last quarter of the 19<sup>th</sup> century was insufficient to affect the dynamism of the overall economy: the annual average growth rate of the Bolivian economy from 1846 to 1903 is estimated around 0.7%. This result is consistent with the low rates of population growth (0.3% yearly average between 1846 and 1900) and with the stagnation of urbanization, which was around 11% in 1846 and 10% in 1900 (Herranz-Loncán & Peres-Cajías, 2016).<sup>7</sup>

In contrast, from 1903 to 1929, Bolivian GDP per capita grew at an annual average rate of 2%, a process that is explained by changes in the Bolivian export sector. After the dramatic fall of international silver prices and the subsequent production crisis in the early 1890s, the concentration of the Bolivian export basket started to move from silver to tin

---

<sup>6</sup> For instance, the Constitution enacted in 1880 endured for more than fifty years. Likewise, government changes were achieved regularly and through constitutional channels. Among others, these features have pushed Bolivian historians to label this period as the “Oligarchic Era”. Peres-Cajías (2012) questions the usefulness of the “Oligarch Hypothesis” to understand Bolivian history. Regarding the 1870s-1920s period, he recognizes the increase of inequality but puts into question the elites’ ability to enforce their prerogatives throughout the country. More references on this discussion can be found in Barragán & Peres-Cajías (2007), Humphreys Bebbington & Grisi Huber (2017); Lavaud (2016).

<sup>7</sup> These results are different to those of the National Census of 1900 (25%) since the authors define urban population as those living in a town/city with more than 2,000 inhabitants; the 1900 Census threshold is 200, an extreme low value (Oficina Nacional de Inmigración, 1904).



and rubber (Peres-Cajías & Carreras-Marín, 2017). This last product, which was located in the Amazon basin, fueled economic dynamism beyond the traditional Bolivian export zone (Gamarra Téllez, 2007). However, the boom ended abruptly at the onset of the First World War as a consequence of rubber production increases in Asia. Meanwhile, the war effects on the international price of minerals allowed a great expansion of the value of tin exports from 1915 to 1918, which was followed by a considerable decrease during the 1919-1921 period. Beyond these oscillations, tin became the most important export product, accounting for at least two thirds of the value of total exports from 1918 onwards.

Railway expansions (Contreras, 2003) and changes in Bolivian trade policy (Peres-Cajías, 2017) were also critical to assure the steady growth of exports. Regarding the former, the first railway line was inaugurated in 1888 and connected the de facto Chilean port of Antofagasta to Uyuni (near the most important silver mine, Huanchaca); four years later, it was expanded to Oruro, the second most important mining center in Bolivia. During the first decade of the 20<sup>th</sup> century, the city of La Paz was connected to Peruvian ports (La Paz-Guaqui railway, 1905) and de facto Chilean ports (La Paz-Arica railway, 1913). Likewise, the first railway line was extended to Potosí (1912), Atocha (1913), Viacha (1913) and La Paz (1917).

This expansion of the railway system helps highlight that, beyond the impact on the competitiveness of mining exports, railways also prompted the integration of the most important Bolivian western cities, between them and to international markets (see Map 1).<sup>8</sup> This process reduced the price of imports in western cities, which in turn had negative effects on those local producers who previously supplied these markets (Peres-Cajías, 2017; Rodríguez Ostría, 1994). Given that Cochabamba became connected to Oruro in 1917, railway expansion was particularly harmful to producers located in the east of the country, specifically Santa Cruz (Sandoval et al., 2003). Thus, during the first half of the 20<sup>th</sup> century, most economic activity tended to be concentrated in the west of the country.<sup>9</sup>

---

<sup>8</sup> *Western Departments* refers to La Paz, Oruro and Potosí; their capital cities have the same name. The Department of Cochabamba is located in the center of the country. *Eastern Departments* refers to Santa Cruz, Beni and (since 1938) Pando; their capital cities are Santa Cruz de la Sierra, Trinidad and Cobija, respectively. The *southern Departments* are Chuquisaca and Tarija, whose capital cities are Sucre (which is also the country's capital) and Tarija.

<sup>9</sup> For instance, the ratio of Department population to total Bolivian population increased in La Paz and Oruro, remained constant in Potosí and reduced in Cochabamba, Chuquisaca, Tarija and Santa Cruz from 1900 to 1950. Furthermore, according to available estimates (Peres-Cajías, 2019) more than three quarters of the Bolivian GDP in 1950 (the first year when regional GDPs can be estimated) came from the

**Map 1. Current Administrative Map of Bolivia**



Sources: Central Intelligence Agency (<https://www.cia.gov/library/>).

The civil war (known as the Federal War, 1899) won by the *liberales* (located in the North of the country) over the *conservadores* (located in the South of the country) consolidated the city of La Paz as the only official Executive and Legislative seat. This political preeminence and the externalities of tin exports, through the establishment of trade houses and banks headquarters in the city, consolidated La Paz as the most important Bolivian city: its population grew from 42,849 in 1846 to 52,697 in 1900 and 267,008 in 1950, which represented 26%, 29% and 38% of total Bolivian urban population, respectively (Peres-Cajías, 2019). Thus, while the yearly average growth rate of population was around 0.9% in Bolivia during the first half of the 20<sup>th</sup> century, it was around 3% in La Paz city. Based on this evidence it could be argued that economic growth in the city of La Paz was higher than the average growth rate at the country level, at least during the first half of the 20<sup>th</sup> century.

---

Departments of La Paz (37%), Potosí (18%) and Cochabamba (15%). During this year, La Paz, Cochabamba and Potosí accounted for 25%, 20% and 18% of total agrarian production.

The urbanization of La Paz materialized in new and big houses owned by the emergent political elite, merchants and bankers. However, it was also accompanied by a modernization process that could favor the entire population (i.e. sewage systems and electricity). In the same vein, while the city became populated by relatively rich people, it never lost its indigenous heritage and, therefore, its *mestizo* nature (Cajías, Barragán, Cajías, & Medinaceli, 2007). In the next section, we seek to show that our database reflects this social and ethnic diversity.

### 3. The data

The observations on heights come from National Identification Cards (ID) that were obtained at the Archivo de La Paz (ALP) and digitalized thereafter. The documents used correspond to the beginnings of the personal data bank produced by the Police Department in La Paz between the years 1929 and 1956.<sup>10</sup> Bolivian IDs began to be used after the Law of December 10<sup>th</sup>, 1927, which stated that the use of IDs was mandatory for all Bolivians inhabitants older than 21 years, with the exception of women,<sup>11</sup> low rank soldiers and extremely poor people (*pobres de solemnidad*). The law also fixed different prices for the ID procurement: 5 Bolivianos (Bs.) for professionals, industrial owners, public servants and particulars; Bs. 3 for the rest of inhabitants; Bs. 1 for indigenous people who lived beyond the urban periphery.

To better identify the composition of our sample, it is critical to understand the motivations of the Bolivian government to implement an ID card. For this, we have revised the discussions in Parliament before the promulgation of the law, the law itself and the complementary decrees which regulated its operation.<sup>12</sup> We have identified three main driving forces: a) in a context of mounting fiscal deficits and growing border tensions with Paraguay, it was highlighted as a type of direct tax whose revenues should be used for needs related to defense and infrastructure; b) it was identified as an effective tool to guarantee civil life and facilitate administrative procedures with the state; c) similarly to what was happening in Chile (1924) and Peru (1931), the ID was viewed as

---

<sup>10</sup> The ALP is a repository of historical documentary heritage founded in 1971, which depends on the History Department, Faculty of Humanities and Education Sciences at the Universidad Mayor de San Andrés. The documents we used were transferred from the Police in 1989 and are on the ALP resources since 2011. Whereas the Bolivian ID Law was promulgated in December 1927, it was not until 1929 that effective registrations started, at least in La Paz city.

<sup>11</sup> Until the Chaco War (1932-1935), women who travelled outside the country had to ask for an ID in order to obtain their passports. The ID exception for women was abolished in practice during the 1940s.

<sup>12</sup> These are the Decrees 31/12/1927, 09/03/1928, 16/05/1928, 16/07/1928 and 20/08/1928.

the instrument that citizens should use to assure their participation (and to account for) in formal political contests.

In this context, it could be argued that considering Bolivian political rights were not universal at that time,<sup>13</sup> those ID prices could be perceived as an abusive tax<sup>14</sup>; similarly, as the Bolivian government enforcement was weak in some areas, it could be expected that IDs were not demanded (and used) by all Bolivian citizens. However, the fifteenth article of the Regulatory Decree of December 31<sup>st</sup>, 1927 suggests that IDs could be perceived as necessary by the elites and upper middle classes that were allowed to vote, but also by middle and lower urban classes whose economic activities were linked to the state (lower public servants such as drivers or cooks) or to trade (retailers).<sup>15</sup>

Coming back to the data used in this paper, we originally collected information from the identification cards of almost 7,000 men.<sup>16</sup> Thereafter, we decided to focus on men aged 19-50 years, assuming that no major changes in height occur between these years.<sup>17</sup> Thus, we discarded information from those who were born before the 1880s. Similarly, given the lack of enough observations of men who were adults at the time of their registration during the 1930s, we also dropped those who were born after 1929. Then, we removed the observations that did not present information on occupations (47) and one clear outlier (218 cm), which generated a remaining sample of 5,890 observations. Among these, we identified rural laborers who accounted for 42%, 33%, 23%, 6% and 3% of the total observations per decade (1880, 1890, 1900, 1910 and 1920). Given this notorious decreasing trend in the relative importance of the group, we noticed that changes in average heights could be driven by changes in the composition of the sample

---

<sup>13</sup> From 1839 to 1938, the right to vote was restricted to men, older than 21 years, literate and who possessed a property or a yearly rent higher than Bs. 200 (Barragán, 2006: 288-289).

<sup>14</sup> For instance, in the Congress discussions some argued (see specifically, *Redactor de la Cámara de Diputados, año 1927*, pages 329-330) that Bs. 1 was expensive for Bolivian lower classes. Specifically, it was stated that this was the daily wage of several workers. For this, notice that during the 1922-25 period, Henriques' (2015) figure of construction daily wages in Cochabamba is Bs. 1,47 and that the daily price of a basic consumption basket is Bs. 1.08.

<sup>15</sup> The article stated that the presentation of the ID was mandatory to: a) obtain the Bolivian citizenship; b) manage judicial, administrative and notarial issues; c) obtain the fiscal obligations contemplated in the national, departmental or municipal budget; d) start any request to the State's power (Executive, Legislative, Judiciary); e) do bank operations; f) obtain railways tickets; g) send and take merchandise transported by railways; h) to pay any custom duty; i) use post services; j) obtain passports; k) extend constitutional titles and permits to private companies.

<sup>16</sup> We focused on men because information on women was scarce. This was expected given the initial restrictions of the ID Law.

<sup>17</sup> Notice, anyway, that there is no standard age range in studies focusing in Latin American heights (21-49, 16-39, 17-50, 20-50). See Llorca Jaña, Navarrete-Montalvo, Droller, & Araya-Valenzuela (2018).

and not necessarily by changes in the biological standard of living. Therefore, we decided to remove these observations (i.e. rural laborers) and obtained a final sample of 4,980 observations reflecting urban related occupations.

In spite of changes in the ID form composition and the used categories, we were able to systematically identify the following variables for the entire sample: year of registration, given names, first surname, second surname, year of birth, place of birth, measured height in cm, literacy level (literate or illiterate) and occupation. We can use these variables to assess how fairly our sample reflects the diversity of the city of La Paz. On the one hand, the National Census of 1900 (the most reliable source of information) presents data on total population by cohorts and level of literacy for those older than 7 years. Using this information, we obtain a literacy rate for men of 39% in the city of La Paz. This is clearly lower than the literacy rates that we obtain in our sample for men older than 18 years: 50% (1880s), 59% (1890s), 71% (1900s), 88% (1910s) and 92% (1920s). Despite the importance of the educational reform (Contreras, 2003) and the considerable increase in public spending on education (Peres-Cajías, 2014) that took place during the first decade of the 20<sup>th</sup> century, it is improbable that literacy rates reached the level of the figures that we obtain in our sample. This could suggest that our sample captures information about the well-off inhabitants of La Paz.<sup>18</sup>

However, we also used information on occupational categories presented in the 1900 Census (which presents aggregated information on men and women) and the ID registers (which present information on men). We organized these individual categories in four main occupational groups. Group 1 corresponds to rural laborers (e.g. peasant, mule driver); Group 2 corresponds to manual laborers (e.g. construction worker, carpenter, laborer); Group 3 corresponds to non-manual unskilled (e.g. driver, cooker, retailer) and Group 4 corresponds to non-manual skilled (e.g. lawyer, engineer, technician). We evaluated the relative importance of each of these categories in the 1900 Census and in our first sample that considered rural laborers (Table 1). Clearly, rural laborers are underrepresented in our first database. However, given that we decided to eliminate this category from our final database, we also evaluate the relative importance of each occupational group without rural laborers (third and sixth row in Table 1). This

---

<sup>18</sup> Effective differences in literacy rates between our figures and those of the Census should be milder given that our database covers adults older than 18 and younger than 50 years old; those of the Census accounts for men older than 7. Anyway, the magnitude of the differences still suggests the existence of a certain pro-literacy bias in our sample.

comparison shows a more similar structure to that of the Census. Therefore, leaving aside rural laborers (whose probability of being illiterate was higher than in the remaining categories), our database would accurately reflect the occupational structure of those inhabitants who could be related to urban tasks (see also Barragán, 2000b).

**Table 1. Occupational structure in La Paz city, 1880-1929**

	Occupational Group					Total
	1. Rural Laborers	2. Manual	3. Non-manual unskilled	4. Non manual skilled	Non identified	
<b>1900 Census (men and women)</b>	19.074	11.829	11.385	7.090	2.867	52.245
<b>Relative importance (%)</b>	36,5	22,6	21,8	13,6	5,5	
<b>Relative importance without rural laborers and non-identified (%)</b>		<b>39,0</b>	<b>37,6</b>	<b>23,4</b>		
<b>Our sample (men)</b>	910	2.175	1.549	1.256		5.890
<b>Relative importance (%)</b>	15,4	36,9	31,1	25,2		
<b>Relative importance without rural laborers (%)</b>		<b>43,7</b>	<b>31,1</b>	<b>25,2</b>		

Sources: Authors' own calculation based in Censo 1900 and the heights database.

The identification of indigenous people is an alternative way to check that our database offers information about the heterogeneous composition of the city of La Paz. For this we decided not to use the *aspecto* (appearance) category since it involves a lot of ID collectors' subjectivity and because it was not registered continuously.<sup>19</sup> In contrast, we used information on registered surnames. Since some surnames that were associated with indigenous people during colonial times are currently associated with the elites of La Paz (e.g. the *Cusicanqui*, see Querejazu, 2011) or to *mestizo* people, we chose those surnames that fulfilled one of the two following conditions: *a*) they were associated with indigenous people during the discussions of the ID Law (see *Redactor de la Cámara de Diputados, año 1927*); *b*) they are unquestionably linked to indigenous origins nowadays.

<sup>19</sup> The definition of *indigenous* in Bolivia is not straightforward (Albó, 2012; Barragán, 2019; Lavaud & Lestage, 2009). Regarding our period under scrutiny, the definition was heavily influenced by the elites and their use of "Social Darwinism" (Zulawski, 2000). Likewise, those defined as indigenous could had different identities based on several factors, one of which was the occupation (Barragán, 2000a). Definitions are even more complex if one considers the *mestizos*, whose origin traces back to colonial times (Bouysse-Cassagne & Saignes, 1991). Therefore, the definition of indigenous was heavily influenced by the daily experiences and practices of both the *definers* and the *defined* (Barragán, 2006b). In this context, the definition of *indigenous* through the use of the "appearance" category could be very misleading, since it could be reflecting the own prejudices of those public employees in charge of the ID registration. Moreover, these prejudices were not necessarily homogeneously shared by all the public employees and were not necessarily consistent throughout time. These reasons and the discontinuity of the "appearance" category suggest that the use of last names is a better option. Also critical for our analysis, the variables "occupation" and "indigenous" do not show problems of multicollinearity.

Hence, a man is considered indigenous if his first surname or second surname correspond to the list that is presented in the footnote.<sup>20</sup> Using this method, we identified 926 men as indigenous, which accounts for 19% of our final sample, which is non-negligible.

A last point on the representativeness of our database is related to regional differences. Three different elements suggest that we should be cautious when extrapolating our results to overall Bolivian urban people: *a*) most men in our database were born in La Paz (75%, on average, in the Department of La Paz; among them, one third in the city of La Paz); *b*) the most populated regions of La Paz Department during the period under scrutiny were located in places that are between 3,000 and 4,200 meters above the sea level, which may have effects on the growth of children<sup>21</sup>; *c*) it has been proved in other Latin American experiences that regional differences in height can be large (Llorca-Jaña, Navarrete-Montalvo, Araya-Valenzuela, et al., 2018; López-Alonso, 2012; Meisel & Vega, 2007).

Summing up, the previous evidence suggests that while our database does not consider those men from La Paz who worked in agrarian activities, it is representative for the rest of men that worked in urban jobs. Alternatively, even if our final database probably does not absorb information from the poorest, it reflects information about those men who ranked from lower middle classes to the elites. Moreover, while we are not sure that our results are representative of all urban Bolivia, it should be noted that La Paz was among the most dynamic departments and that La Paz was the most prosperous city in the country.

#### **4. The evolution of heights in La Paz, 1880s-1920s**

This section presents the main results of the article. To start with, Table 2 shows the descriptive statistics of the most important variables considered in the research. As previously noted, we considered those who were born between 1880 and 1929. The average of this variable is 1911 and, importantly to the analysis, its distribution suggests little evidence of age-heaping. Likewise, by assuming that no major changes in height

---

<sup>20</sup> Specifically, we used the following surnames: Acarapi, Achu, Aduviri, Ajata, Alanoca, Apaza, Aruquipa, Condori, Calisaya, Catari, Chambi, Chipana, Choque, Colque, Condori, Huanca, Laime, Limachi, Mamani, Patzi, Poma, Quelca, Quispe, Ticona, Villca and Yujra. More information on these issues can be found here: [https://www.familysearch.org/wiki/es/Pueblos\\_ind%C3%ADgenas\\_de\\_Bolivia](https://www.familysearch.org/wiki/es/Pueblos_ind%C3%ADgenas_de_Bolivia) and here, <https://aymara.org/webarchives/www2004/biblio/apellidos.php>. Both accessed on February, 15<sup>th</sup> 2019.

<sup>21</sup> For instance, Wehby, Castilla, & Lopez-Camelo (2010) show that increases in the altitude (from 5 to 3,600 meters) have persistent and significant effects on birth weight (Wehby et al., 2010). In this context, as we are focusing on the evolution over time of men's average height in the Department of La Paz, altitude would be generating a constant effect.

occurs after the age of 18, we considered those adults whose age varied between 19-50 years old at the time of their ID registration; the average age of the sample is 28 years old and the standard deviation is 8. Measured height is reported in cm and varies from 128 to 194, the simple average being 162,8 cm, a figure that remains fairly stable throughout the different analysis we carried out (see below). Figures A1 and A2 show that this variable appears to be normally distributed, either considering the whole sample or splitting it in birth decades. The splitting of the sample according to birth decades is customary in the literature (Ayuda & Puche-Gil, 2014). We constructed a dummy variable for those who possessed an indigenous surname (dummy variable equal to 1) and those who did not (dummy variable equal to 0); as previously noted, indigenous men represent 19% of the sample. Another dummy variable is related with those adults who were able to read and write (dummy equal to 1) or not (dummy equal to 0) at the time of their ID registration; the average value of 0,9 shows that most adults in our sample were literate. Lastly, we constructed four different occupational groups but, as previously explained, did not use rural laborers in the analysis. In our final sample 44% of men are manual workers, 31% are non-manual unskilled workers, and 25% are non-manual skilled workers.

**Table 2. Descriptive statistics**

Variable	N	Mean	Std. Deviation	Min	Max
<b>Year of birth</b>	4980	1911,76	10,95	1880	1929
<b>Age</b>	4980	28,41	7,82	19	50
<b>Height</b>	4980	162,82	6,29	128	194
<b>Indigenous</b>	4980	0,19	0,39	0	1
<b>Literacy</b>	4964	0,90	0,30	0	1
<b>Manual</b>	4980	0,44	0,50	0	1
<b>Non-manual unskilled</b>	4980	0,31	0,46	0	1
<b>Non-manual skilled</b>	4980	0,25	0,43	0	1

Sources: Authors' own calculation based in the heights database.

Table 3 shows the average height by decade and the different dummies we considered in the analysis.<sup>22</sup> Regarding the former, the average height is quite stable around 162,8 cm.<sup>23</sup> In this context, whereas a small increase (lower than 0,5 cm) can be appreciated between the two initial decades and the remaining three, Figure A3 suggests that these

<sup>22</sup> The number of observations for the 1880 and 1890 decades is relatively small. This could be explained by the fact that Bolivian IDs were first registered just in 1929. We conducted extensive research at the Police archives held at the ALP and were not able to find more observations for these decades.

<sup>23</sup> The standard deviation is also very stable and is in line with previous research on Latin American average heights (see, for instance, Llorca-Jaña, Navarrete-Montalvo, Araya-Valenzuela, et al. (2018); Meisel & Vega (2007)).



differences are not statistically significant. Indeed, when comparing heights between the different decades, we were not able to reject the null hypothesis of the same mean and median.<sup>24</sup>

**Table 3. Average height (cm) by birth decade and other characteristics, 1880s-1920s**

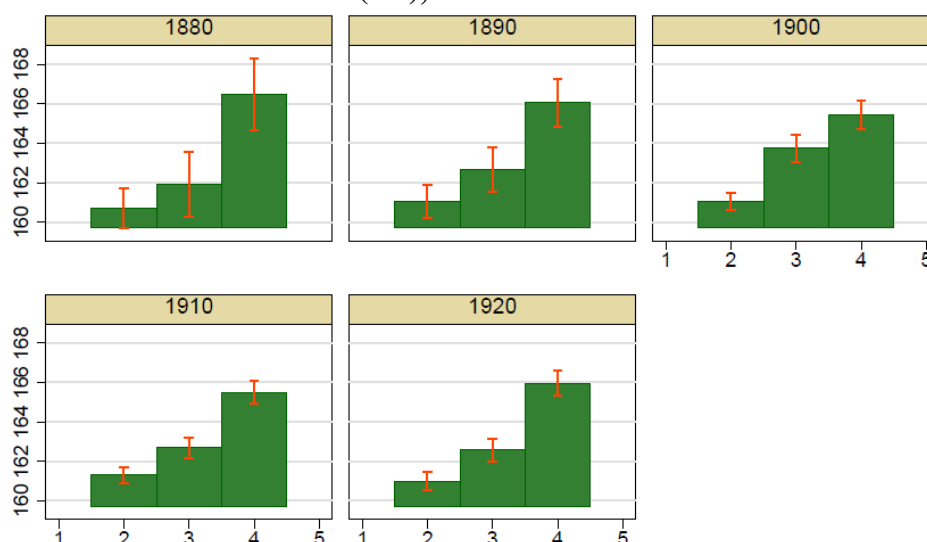
Variable	N	Average Height	Std. Deviation	Min	Max
<b>1880</b>	230	162.43	6.52	148	186
<b>1890</b>	465	162.65	6.67	136	187
<b>1900</b>	1,186	162.85	6.24	141	185
<b>1910</b>	1,713	162.83	6.14	128	184
<b>1920</b>	1,386	162.89	6.34	134	194
<b>Indigenous</b>	926	160.36	5.28	128	180
<b>Non indigenous</b>	4,054	163.38	6.36	134	194
<b>Literate</b>	4,466	163.15	6.27	136	194
<b>Illiterate</b>	498	159.83	5.65	128	180
<b>Manual</b>	2,175	161.10	5.58	134	185
<b>Non-manual unskilled</b>	1,549	162.87	6.33	128	182
<b>Non-manual skilled</b>	1,256	165.71	6.32	141	194

Sources: Authors' own calculation based in the heights database.

As for the dummy variables capturing characteristics of the sample, it stands out that non indigenous men were, on average, 3 cm taller than indigenous men. These differences are also appreciated between literate and illiterate men, the former having an average height 3 cm higher than the latter. In the case of the occupational categories, non-manual unskilled workers present an average height approximately 2 cm higher than that of manual workers. Likewise, adults who worked in non-manual skilled activities were, on average, 4 and 3 cm taller than those who worked on manual and non-manual unskilled activities, respectively. Figure 1 suggests that these differences were persistent and statistically significant throughout time. Here, we also run tests of mean and median differences in heights by category and decade and we could reject the null hypothesis of no difference with just one exception: manual workers and non-manual unskilled in the 1880 decade. Strikingly, the graph also stresses that heights of the different groups remained fairly stable through time.

<sup>24</sup> Using the different decades as groups, we perform a two-group mean comparison test (t-test) and a nonparametric k-sample test on the equality of medians.

**Figure 1. Average height by occupational group and 95% interval of confidence (cm), 1880s-1920s**



**Sources:** Authors' own calculation based in the heights database.

**Notes:** As described in the text, Group 2 corresponds to manual workers, Group 3 to non-manual unskilled workers, and Group 4 to non-manual skilled workers.

We executed different econometric exercises in order to prove the stagnation of average heights by decade as well as the differences between the different groups considered. Table 5 shows the regression results for the entire sample and Table 6 shows the results before and after 1900 under the assumption that some differences could happen once La Paz achieved political hegemony. We are reporting here the OLS results with robust standard errors (White, 1980). As a robustness check, we have run regressions with other techniques to confirm that the results are not driven by outliers: we performed quantile regressions at the median (Koenker & Bassett, 1978) and robust regressions as described by (Rousseeuw & Leroy, 1987). We also performed the OLS regressions using bootstrapped standard errors, using 200 replications, which are generally adequate for estimates of standard error (Mooney & Duval, 1993). The results are basically comparable to those presented here.<sup>25</sup>

As can be seen in Table 5, we are not able to identify a significant trend in heights. The different birth decade dummies are non-significant in Tables 5 and 6, with the only exception of 1920 in the third specification in Table 5. Notice, however, that the coefficient value is below 1 cm. In the same vein, with the exception of specifications 3 and 4 in Table 6, there is a significant height penalty on indigenous which ranges from 1.5 cm to 3 cm. Literacy is persistently associated with higher heights in Tables 5 and 6.

<sup>25</sup> Results are available upon request.

In the case of the last specification in both tables, which is our favorite since it includes all the dummies and has a higher adjusted  $R^2$ , literate men tend to be 1.5-2 cm taller than illiterate men. Looking at the same specification, non-manual skilled workers are 4 cm taller than manual workers; the difference between non-manual unskilled and manual is around 1.5 cm.

**Table 5. Regression results, overall sample**

	1880-1920				
	1	2	3	4	5
Cons.	146.8***	162.43***	162.73***	160.76***	159.88***
	15,78	0,43	0,43	0,48	0,46
Year of birth	0,01				
	0,01				
1890 Decade		0,21	0,26	0,20	0,25
		0,53	0,52	0,52	0,50
1900 Decade		0,41	0,56	0,40	0,44
		0,47	0,46	0,46	0,44
1910 Decade		0,40	0,71	0,43	0,28
		0,45	0,45	0,45	0,43
1920 Decade		0,45	0,94**	0,60	0,34
		0,46	0,46	0,46	0,44
Indigenous			-3.09***	-2.55***	-1.58***
			0,20	0,21	0,22
Literate				2.33***	1.59***
				0,29	0,29
Non-manual unskilled					1.56***
					0,20
Non-manual skilled					3.95***
					0,23
N	4.980	4.980	4.980	4.964	4.964
Adj. R <sup>2</sup>	0,00	0,00	0,04	0,05	0,10

**Sources:** Authors' own calculation based in the heights database.

**Notes:** OLS regressions with robust standard errors. The Standard Error is presented below the coefficients value. \*\*\*p<0.01; \*\*p<0.05; \*p<0.1.

**Table 6. Regression results, 1880-1890 and 1900-1920 decades**

	1	2	3	4	1	2	3	4
Cons.	162.43 ***	162.73 ***	159.98 ***	159.26 ***	162.85 ***	163.29 ***	161.3 ***	160.46 ***
	0,43	0,44	0,71	0,72	0,18	0,18	0,33	0,33
1890 Decade	0,21	0,26	0,15	0,23				
	0,53	0,52	0,52	0,50				
1910 Decade					-0,01	0,14	0,03	-0,16
					0,23	0,23	0,23	0,22
1920 Decade					0,04	0,37	0,21	-0,08
					0,25	0,25	0,25	0,24
Indigenou s		-3,09 ***	-1,33	-0,81		-3,09 ***	-2,65 ***	-1,67 ***
		0,74	0,84	0,84		0,21	0,22	0,22
Literate			3,14 ***	2,12 ***			2,2 ***	1,47 ***
			0,68	0,70			0,31	0,32
Non- manual unskilled				1,36 **				1,58 ***
				0,56				0,21
Non- manual skilled				4,68 ***				3,83 ***
				0,62				0,24
N	695	695	694	694	4.285	4.285	4.270	4.270
Adj. R <sup>2</sup>	0,00	0,02	0,04	0,12	0,00	0,04	0,05	0,10

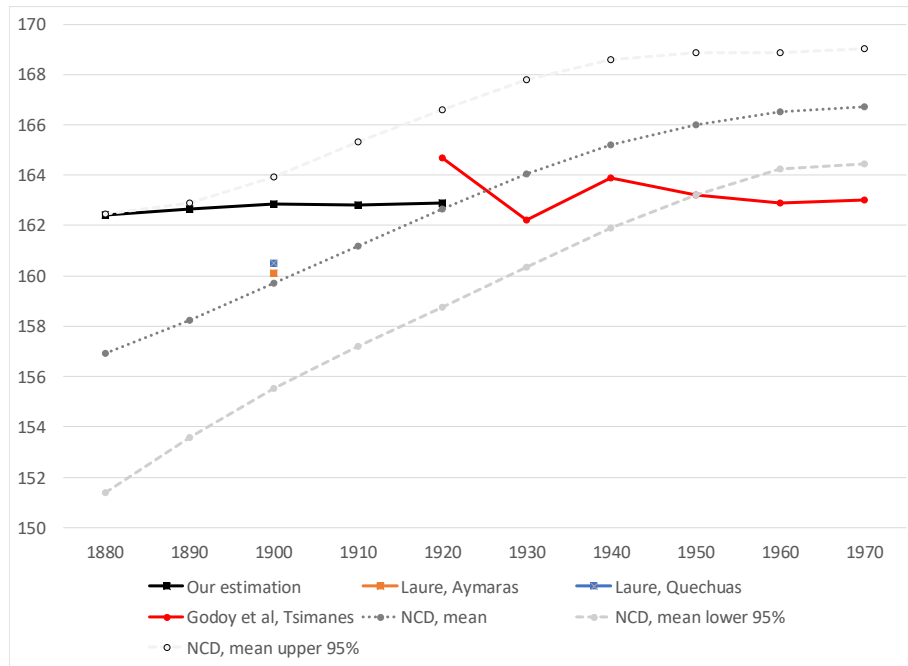
**Sources:** Authors' own calculation based in the heights database.

**Notes:** OLS regressions with robust standard errors. The Standard Error is presented below the coefficients value. \*\*\*p<0.01; \*\*p<0.05; \*p<0.1.

The previous analysis confirms the stagnation of Bolivian male urban adults' average height around 163 cm in the 1880s-1920s decades. In Figure 2, we compare our estimation with the available evidence on average heights for Bolivians living in rural areas or obtained through indirect mechanisms. It is noteworthy that our estimation does not vary greatly to those obtained for Bolivians living in rural areas, either in the west (Aymaras), center (Quechuas) or north (Tsimanes) of the country. Likewise, our estimation lies within the credible intervals of the indirect estimation of male average height generated by the NCD Risk Factor Collaboration group (2016): it is closer to the

upper limit at the beginning of the period, approaching the mean value thereafter. However, in contrast to this estimation, ours does not suggest an increasing trend.<sup>26</sup>

**Figure 2. Different estimations of Average male heights in Bolivia (cm), 1880s-1970s**



**Sources:** Godoy et al. (2006); Laure (1991); NCD Risk Factor Collaboration (2016).

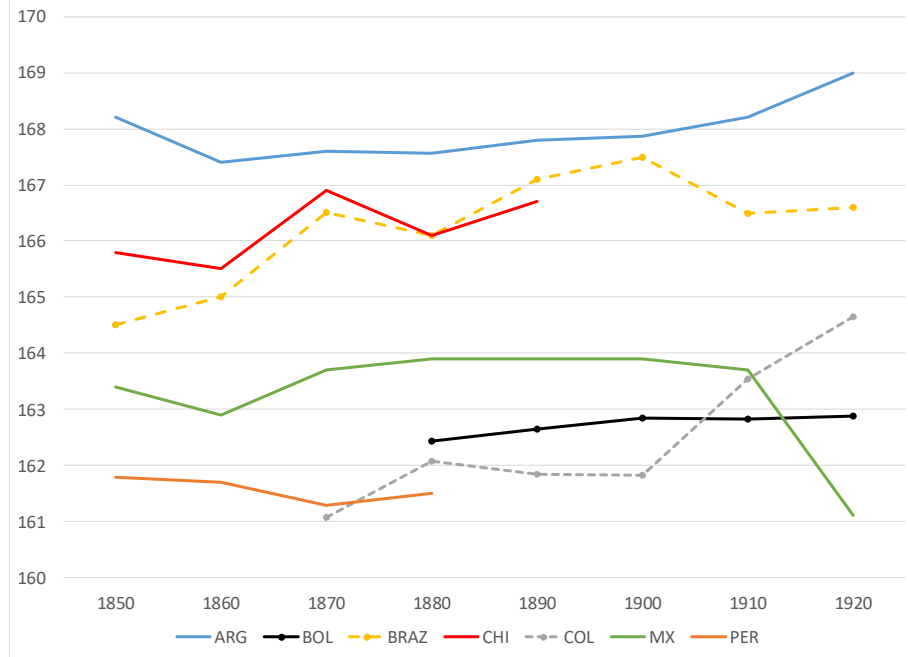
**Notes:** Data on the Tsimanes refers to “Participant certain of age; physical stature corrected for age-related shrinkage”.

It is also interesting to compare our estimation with the available evidence on other Latin American countries, which refers to men that are representative of the entire country (Figure 3). The comparison covers the broad first export era in the region after Independence (1850s to the Great Depression). It shows that (urban) Bolivian men were among the smallest in the region: average heights were clearly lower than those in Argentina, Brazil and Chile, lower than in Mexico and somehow similar to those in Colombia and Peru. However, Bolivia mimics the stagnation of average heights in most countries in the region (Brazil and, since 1900, Colombia are the exceptions) and the

<sup>26</sup> The estimation by the NCD Risk Factor Collaboration group (2016) uses a Bayesian model with a hierarchical structure. In the model, which is estimated using the Markov Chain Monte Carlo (MCMC) algorithm, the estimates of mean height for each country and year are nested in regional levels and trends, which are nested in those of superregions and worldwide. In this structure, estimates of mean height for each country and year are informed by its own data, if available, and by data from other years in the same country and in other countries, especially those in the same region with data for similar time periods. As the availability of data for Bolivia is very scarce, the estimates for this country are relatively imprecise and the reported 95% credible intervals are quite large. As an example, the 95% interval of male average height for the year 1900 is 155.5-163.9 cm.

weak relationship between the considerable expansion of exports and changes in the biological standards of living.

**Figure 3. Men Average Heights in Latin America (cm), 1850s-1920s**



Sources: Data obtained from Clio Infra and Llorca-Jaña et al. (2018).

## 5. Understanding inequality and stagnation

An explanation of the lack of correspondence between economic growth and changes in biological standards of living in Bolivia during the 1880-1920 decades, should identify explanations that account for: *a)* the persistence of significant inequalities among social groups; *b)* the lack of significant improvements in average heights of any social group. For this, it is illustrative to review some of the explanations proposed in the literature focused on Latin America during the 1880s-1920s decades. For instance, Meisel & Vega (2007) stress the following factors that may affect the rise of average heights in the case of Colombia: a reduction in the work stress, changes in the ethnic composition, improvements in nutrition and advances in overall health conditions. In the case of Peru, the lack of correspondence between changes in the aggregate economy and human welfare is attributed to inequality: it is argued that the considerable increase of guano exports (1850s-1870s) disproportionately benefited a white elite and that the export boom was accompanied by rising prices that were not followed by wage increases, which affected the living conditions of the poor (Twrdek & Manzel, 2010). Inequality is also stressed in the Chilean (Llorca-Jaña, Navarrete-Montalvo, Araya-Valenzuela, et al.,

2018) and Mexican (López-Alonso, 2012) cases, but in a broader relationship with public policies and their effects on the evolution of health conditions.

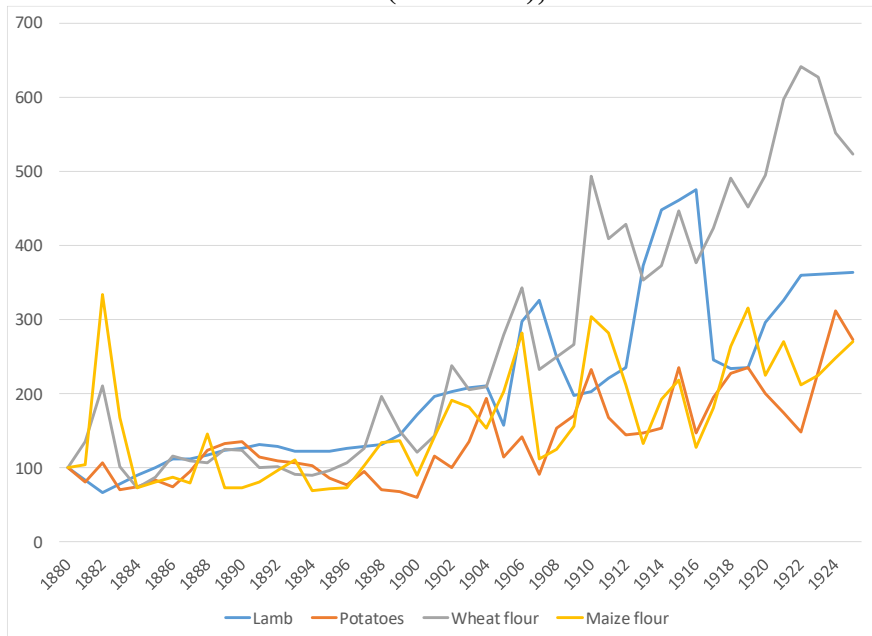
In our case, changes in the ethnic composition is a poor explanatory variable given the persistence of the ethnic composition of the Bolivian population and the negligible importance of immigration, as can be proven in national censuses. Likewise, if changes in work stress were the explanatory variable, we should expect to find a positive trend in heights given the urbanization process that La Paz was living during the first half of the 20<sup>th</sup> century. In this context, while our results show persistent height premiums on the less physical demanded occupational groups, the height stagnation in each category is remarkable.

Regarding changes in nutrition, given the higher records of economic growth at the turn of the 20<sup>th</sup> century, the existence of a trickle-down process could be assumed. Nevertheless, this idea has been contested in other Latin American experiences given the relevance of inequality during this period. Although more research is still needed, the analysis of prices and real wages in the city of Cochabamba points in the same direction.<sup>27</sup> Indeed, prices of the most relevant products of the Bolivian diet were somehow stable during the last quarter of the 19<sup>th</sup> century but increased steadily thereafter (Figure 4).

---

<sup>27</sup> Given that there is little evidence of changes of dietary habits in Bolivia during the period under scrutiny, we can assume that diet relied on the same products identified for the mid-19<sup>th</sup> century: maize, wheat, potatoes/chuño and meat (see Appendix 1 in Herranz-Loncán & Peres-Cajías, 2016). Notice that it is not possible to analyze changes in the availability of these products in a national scale since there is very scarce data for agrarian production during this period (see the discussion in Herranz-Loncán & Peres-Cajías, 2016). Therefore, one should rely on prices. However, official data on prices in Bolivia was first collected in 1931. We could rely on import prices, but these were evaluated at official prices and not at market prices until 1919 (Peres-Cajías & Carreras-Marín, 2018). For instance, implicit import prices for wheat, rice or wheat flour are stagnant during the 1913-1918 period which is very unlikely given the evolution of prices in neighboring countries and the war-led global inflation. Therefore, given the lack of prices estimations for La Paz, we have to rely in the estimation made for Cochabamba (Henriques, 2015). The use of these prices as an approximation to prices in La Paz should be taken carefully since both cities were not necessarily integrated. This is particularly important for the 1888-1917 period, when railways construction was concentrated in the west of the country (see the discussion in Section 2). As for real wages, to the best of our knowledge, there is no available estimation of real wages during the period studied beyond the city of Cochabamba. So, once more, we rely on Henriques'(2015) estimates.

**Figure 4. Evolution of prices of the main important food items in the city of Cochabamba (1880=100), 1880-1925**



**Sources:** Authors own calculations based on (Henriques, 2015)

The analysis of real wages shows that not all local consumers had the same ability to deal with this increase: real wages of the most important public servants in Cochabamba<sup>28</sup> expanded at higher rates than the rest (Table 7). Moreover, notice that the third and fourth category in Henriques (2015) estimates correspond to occupations that are considered in our non-manual skilled laborers category; those introduced in Henriques' fifth category, are part of our non-manual unskilled laborers.<sup>29</sup> Interestingly, the ratio of real wages between the third and the fifth categories and that between the fourth and fifth category show a similar pattern: the ratio decreased during the last decades of the 19<sup>th</sup> century but increased again during the 20<sup>th</sup> century. Furthermore, in 1897, when the lowest levels were achieved, university and school teachers earned 6.2 and 2.4 times more than cooks or drivers. This suggests that significant differences in real wages would be one plausible explanation of the average height gap between the different categories we studied.

<sup>28</sup> The *prefecto* is included in the "High" category; the Supreme Court Ministry, the Secretary of the Local Treasury and the main Judge are included in the "High-medium" category.

<sup>29</sup> Henriques (2015) introduces wages of physicians and university professors in the third category (Medium), those of teachers in the fourth category (Medium-low) and those of cooks and drivers in the last category (Low).



**Table 7. Real wages of public servants in Cochabamba, 1882-1922**

	Real Wages, Bs					Bs	
	High	Medium-high	Medium	Medium-low	Low	Medium/Low	Medium-low/ Low
1882	666.6	279.4	68.3	29.6	6.9	9.9	4.3
1887	535.9	246.0	76.9	30.0	7.3	10.5	4.1
1892	520.5	234.0	77.5	29.8	8.6	9.0	3.5
1897	504.7	239.9	78.8	31.1	12.8	6.2	2.4
1902	750.9	248.8	58.9	26.7	9.7	6.0	2.7
1907	961.4	291.4	84.8	25.2	9.0	9.4	2.8
1912	1,189.0	414.7	84.2	27.8	9.1	9.2	3.0
1917	1,159.5	464.8	85.1	28.0	9.2	9.2	3.0
1922	1,180.8	544.3	91.0	27.8	9.6	9.5	2.9

Sources: Authors' own calculation based in Henriques (2015).

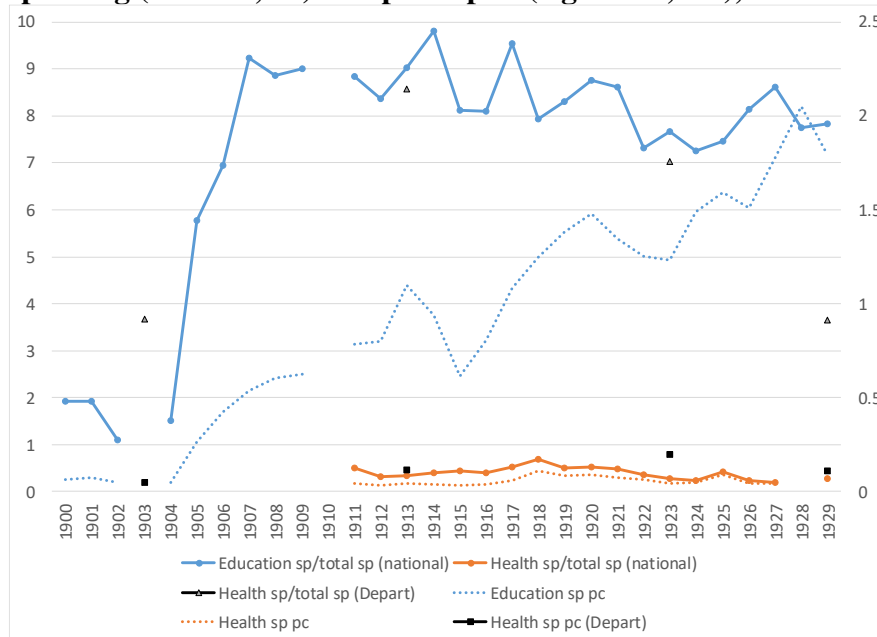
So, as in previous studies focused on Latin America, unequal access to market opportunities helps our understanding on the evolution of biological standards in Bolivia during the 1880s-1920s period. However, given that the average height of the well-off also remained stagnant, other variables should be considered. Particularly, when analyzing the evolution of general health conditions, it stands out that the meager improvement in public health provision may have particularly hit the poor, but also affected the well-off.

To better understand this fact, it is necessary to revise the organization of the Bolivian health system throughout time. During the 19<sup>th</sup> century, health policies were a prerogative of municipalities, being the *Juntas de Sanidad* (1826-1830) and the *Protomedicato* (1830-1893) the national institutions entitled to give some coherence to these policies. Indeed, through its coordination with *Prefectos* (the heads of the Departmental Governments), these institutions regulated public health policies and hospitals, distributed smallpox vaccines and regulated medical professional services (Mendizábal, 2002). However, the *Protomedicato* did not function regularly (it was interrupted several years at the mid-19<sup>th</sup> century), had low enforcement power regarding the distribution of smallpox vaccines and was not managed by health specialists (Mendizábal, 2002: 87-98). This last feature was overcome with the instauration of the *Tribunales Médicos* (1893-1906), whose functions were the regulation of public health policies, the formation of medical specialists and that of medical examiners (Mendizábal, 2002: 101). In 1906, the *Dirección General de Salud*

was created as the national entity in charge of health public policies. However, in contrast with other centralization efforts promoted by the *liberales* during the same period, health services received relatively few resources from national funds until 1938, when the *Ministerio de Salud* was created (Barragán & Peres-Cajías, 2007), and it just experienced a progressive incorporation of Departmental funds.

Despite the lack of quantitative evidence for the 19<sup>th</sup> century, Figure 5 illustrates how this organization of the public health system was reflected in public spending. To begin with, in contrast to education services whose relative importance in national expenses increased after the centralization process on the eve of the 20<sup>th</sup> century, the relative importance of health services remained below 1% of total national spending from 1900 to 1929. Thus, while the national spending per capita on education increased from Bs. 0,06 in 1900 (before centralization) to Bs. 1,79, national health spending per capita remained around Bs.0,04 from 1911 (the first year when data is available) to 1929. Regarding Departmental funds, we only have scarce information and related to *budgeted* expenses. Using this information, we see that the relative importance of health spending increased during the first decade of the 20<sup>th</sup> century, but the per capita amounts did not surpass Bs. 0,20.

**Figure 5. Public spending in Health and Education in Bolivia as a share of total spending (left axis, %) and per capita (right axis, Bs.), 1900-1929**



Sources: Authors own calculations based on Barragán & Peres-Cajías (2007) and Peres-Cajías (2014).

It is also illustrative to analyze the evolution of health expenses in the fiscal accounts of the city of La Paz (Table 8). The limited quantitative evidence that we were able to reconstruct shows that its relative importance diminished from the last quarter of the 19<sup>th</sup> century to the first decade of the 20<sup>th</sup> century. Nevertheless, this fall was the result of the incorporation of other items which includes other expenses, among them debt payments and some others that affected the evolution of biological standards of living (see below). This explains why the fall in the relative importance of health expenses did not translate into a fall in the absolute amounts expended, which remained around Bs. 0,9 per capita throughout the period under scrutiny, a higher level than the average expended by national and departmental funds. Municipal expenses on health were destined to the Hospital Landaeta (for males, inaugurated in 1555), Hospital Loaiza (for women, inaugurated in 1807) and the Hospital Lazareto (for infectious diseases). Furthermore, by issuing municipal debt, a modern hospital began to be built in 1913. The hospital opened in 1920 but did not operate fully until 1925 (Alarcón, 1925; Mendizábal, 2002).

**Table 8. Public spending in health and water systems in La Paz city, 1883-1910**

	1883	1884	1886	1888	1891	1897	1904	1906	1908	1910
<b>Relative importance Health on total Expenses (%)</b>	40.61	33.47	21.81	14.75	16.01	18.50	13.30	21.39	8.66	5.89
<b>Per capita, Bs.</b>	0.91	0.78	0.78	0.87	0.88	0.92	1.17	1.71	1.00	0.72
<b>Relative importance Health and Water Services on total Expenses (%)</b>	40.61	34.48	23.77	15.21	17.01	19.11	19.93	38.56	9.85	11.64
<b>Per capita, Bs.</b>	0.91	0.80	0.85	0.90	0.93	0.95	1.75	3.08	1.14	1.42

Sources: Authors' own calculation based in Municipal Yearbooks.

In Table 8, we also incorporated information on water services expenses since it may have also affected changes in health conditions and was one of the new expenses that was prioritized at the turn of the 20<sup>th</sup> century. This is reflected in a significant increase of the per capita amount expended on this item since 1904, which in turn is a consequence of the municipal efforts to develop two new systems of piped drinking water, one in Tembladerani (1903) and another one in Milluni (1908). External debt was also used in 1919 to finance the construction of a modern sewage system; this could be particularly beneficial for health conditions in the dry season, when home and industrial residues

remained in the city because of the scarcity of water in the city's main river (Ingeniería Internacional, 1919, 1922).

One should be cautious in interpreting how these changes in health policies affected the biological standards of living during the 1880-1920 decades. Indeed, some of these changes took place during the very last years of the period under study. Furthermore, the real impact of these changes is not obvious. For instance, whereas municipal yearbooks stressed that municipal hospitals operated fairly well, some secondary sources state the contrary (Zulawski, 2000). Likewise, despite the installation of new systems of piped drinking water, there is evidence on local medical journals (Zulawski, 2000) and even in municipal legislation (see, for instance, *Ordenanza Municipal* 17/09/1917), that points to the poor quality of the city's drinking water and the lack of enough provision of water to the entire population. This is not irrelevant since municipal yearbooks show that one of the most important death causes in La Paz was related with gastrointestinal diseases throughout the period under study (see also Zulawski, 2000).

Certainly, the late installation of both a modern hospital or a modern sewage system, and the bad quality of piped drinking water, affected all inhabitants in the city of La Paz. This could be one of the explanations to understand why even average heights of the non-manual skilled laborers remained stagnant during the 1880s-1920s decades.

In spite of this "equalization" among the city inhabitants, inequality still played a role. Indeed, given the decentralized nature of health policies, it could be expected that public intervention was rather limited in rural areas, therefore restricting improvements in the biological standards of living of the less advantaged groups in terms of income. For instance, whereas the distribution of smallpox vaccines were a prerogative of the Bolivian Central government since the 19<sup>th</sup> century, there is evidence that vaccines were only distributed once an epidemic episode was identified (Zulawski, 2000). Not surprisingly, smallpox was one of the most important causes of death in the 1880s and the 1910s. Other common diseases in the Department of La Paz were related to bad hygienic conditions (whooping cough or typhoid) or the presence of highly infectious diseases that needed to be restrained with vaccines (measles) (see municipal yearbooks; also Grieshaber, 1980). This fact highlights another relevant feature: as rural-urban contact was particularly intense during this period (both landlords and land laborers travelled frequently between

both places), the combination of lack of public support in rural areas and the relevance of highly infectious diseases could also affect the biological wellbeing of the well-off.<sup>30</sup>

## 6. Conclusions

This paper is, to the best of our knowledge, the first to use a relatively large and consistent dataset of male adults' heights to address the evolution of living standards in urban Bolivia between 1880 and 1929. As had been shown in some other studies focusing on Latin American economies, we document that average heights did not increase over these five decades. Our estimates suggest that the average height remained around 163 cm throughout the period. This is striking as the economic history literature and the available estimates suggest that the Bolivian economy experienced an important phase of growth during the period.

Furthermore, we show that the differences in average height that we document in the first birth decade of our study, namely 1880, persist until the last birth decade, 1920, showing almost no sign of a reduction in inequalities. As in other case studies, we show that average height was largely a function of socioeconomic status, as measured by occupational level, and of educational level, proxied by literacy. In addition to this, in Bolivia being indigenous was associated with a lower average height. Interestingly, the average height of indigenous men in our sample is around 160 cm, which is the level found by Laure (1991) for Aymara and Quechuas in rural areas in 1903.

We explore some possible explanations for the Bolivian case of the lack of trickle-down effects. We argue that the stagnation of male urban Bolivian average heights during the 1880-1929 period can be explained by poor improvements in health conditions and by pressures on the less advantaged groups stemming from higher food prices and growing wage inequalities. Regarding the former, we confirm that only few resources

---

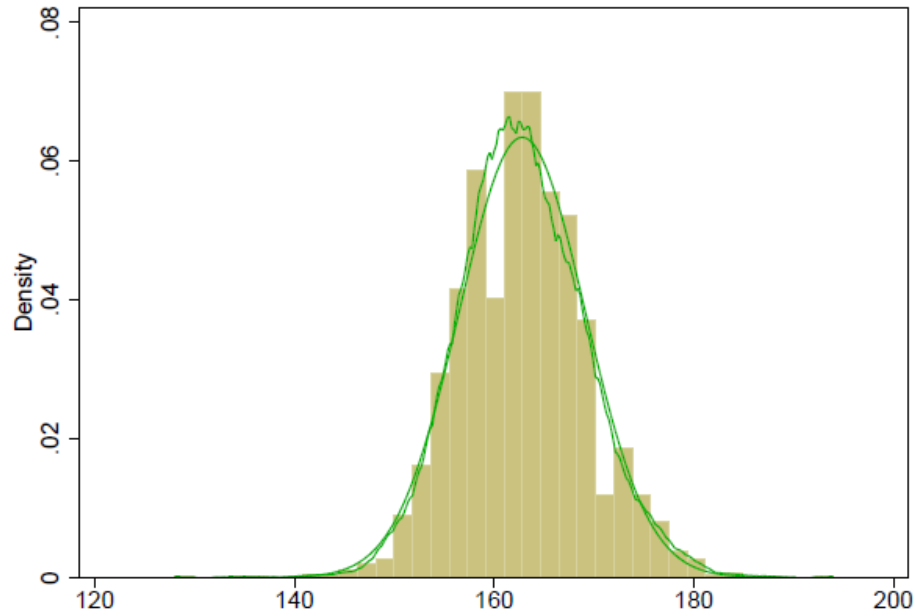
<sup>30</sup>Global or regional databases such as Clioinfra or Moxlad present information for Bolivian life expectancy during the last quarter of the 19<sup>th</sup> century and the first decades of the 20<sup>th</sup> century. This information is based on a regional estimation made in the early 1960s. According to this, Bolivian life expectancy stagnated during the last quarter of the 19<sup>th</sup> century but improved steadily from 25,5 years in 1900 to 33 in 1930. The recent estimation made by Henriques (2015) provides information only for the city of Cochabamba but for the entire first republican century (1825-1925) and for different indicators. According to these new figures, there is a clear improvement in life expectancy, mortality rates and infant mortality rates during the 1902-1917 period. The figures for life expectancy are in line with those presented in the above commented databases. However, these figures are not so different to those found for the 1850s. Moreover, improvements in the three indicators stopped during the 1917-1921 period and there is a clear downward trend during the 1921-1925 period. This fall is explained by a mortality crisis that took place in 1921 and which can be explained by the prevalence of bad hygienic conditions. In this context, the author stresses that, until the mid-1920s, Cochabamba did not start the demographic transition.

were provided to public health in the period we study. Our conclusion on the effects of food prices and real wages is based on a recent analysis made for the city of Cochabamba.

In any case, more research is needed on mortality, life expectancy, urban prices, dietary habits and inequality in different Bolivian cities. Similarly, it would be useful to explore if more data on adult heights is available for other regions/cities in Bolivia, where the Police was responsible for registering citizens and providing them with ID cards, or from other possible sources (hospitals, army records, etc.). This research would help us better understand our puzzle: the stagnation of average heights in Bolivia and the lack of convergence among social groups from 1880 to 1929 in a context where economic growth was finally improving.

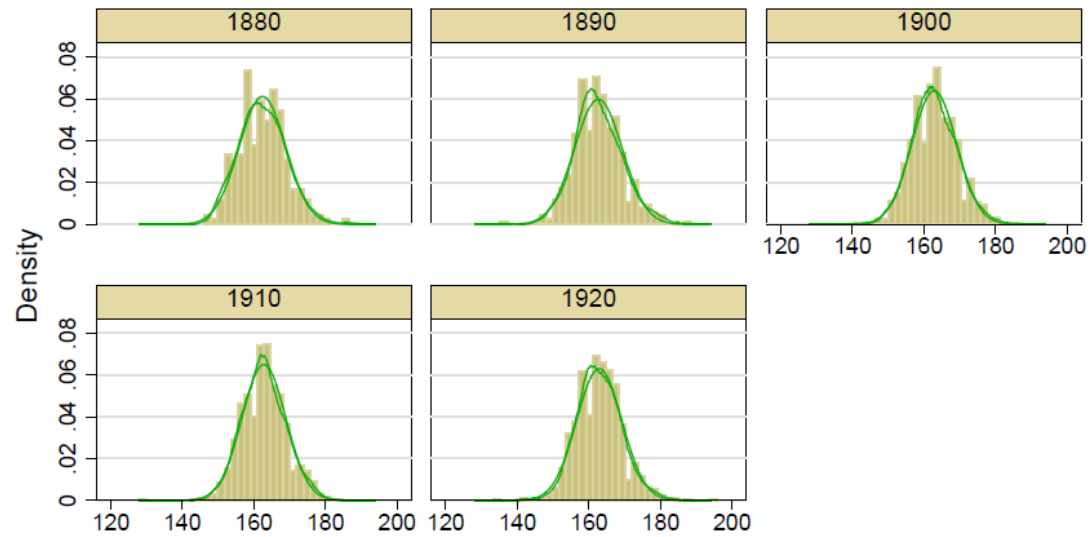
## Appendix

**Figure A1. Histogram and Distribution of Adult Male Height in Bolivia, 1880-1929**



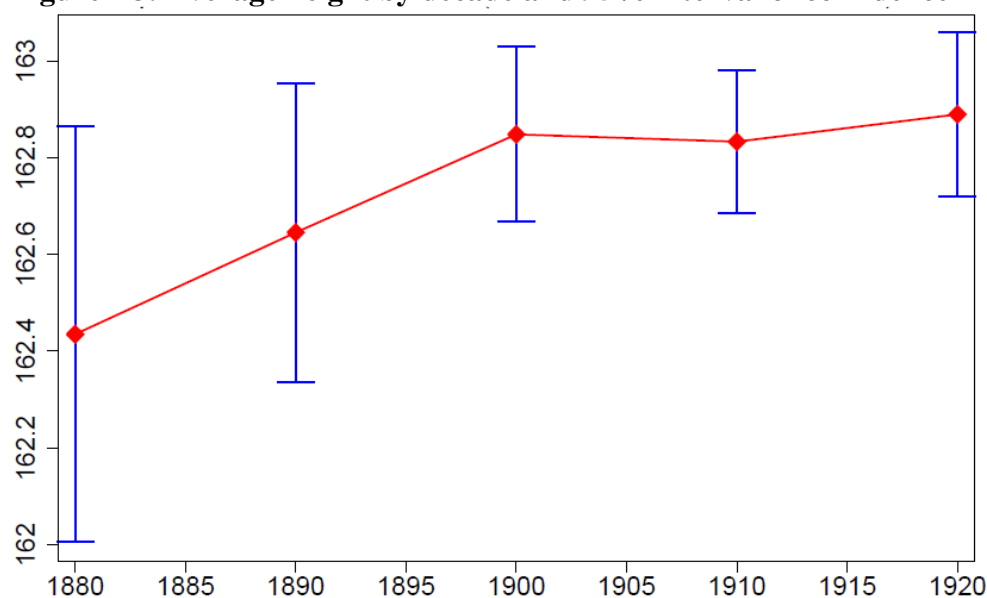
Sources: Authors' own calculation based in the heights database.

**Figure A2. Histogram and Distribution of Adult Male Height in Bolivia, by decades**



Sources: Authors' own calculation based in the heights database.

**Figure A3. Average height by decade and 95% interval of confidence**



Sources: Authors' own calculation based in the heights database.

## Bibliography

- Acemoglu, D., Johnson, S., & Robinson, J. A. (2002). Reversal of Fortune: Geography and Institutions in the Making of the Modern World Income Distribution. *Quarterly Journal of Economics*, 117(4), 1231–1294.
- Alarcón, R. (ed.). (1925). *Bolivia en el Primer Centenario de su Independencia*. New York: The University Society.
- Albó, X. (2012). Censo 2012 en Bolivia: posibilidades y limitaciones con respecto a los pueblos indígenas. *T'inkazos*, 32, 33–45.
- Assadourian, C. S. (1982). *El Sistema de la economía colonial: mercado interno, regiones y espacio económico. Estudios históricos* (Vol. 10). Lima: Instituto de Estudios Peruanos.
- Ayuda, M.-I., & Puche-Gil, J. (2014). Determinants of height and biological inequality in Mediterranean Spain, 1859–1967. *Economics & Human Biology*, 15, 101–119. <https://doi.org/10.1016/J.EHB.2014.07.003>
- Barragán, R. (2000a). Categoría fiscal o categoría social. La campesinización del Indio. *Cuadernos de Historia Latinoamericana*, 8, 148–173.
- Barragán, R. (2000b). Ciudad y sociedad, La Paz en 1880. *Revista Ciencia y Cultura*, (7).
- Barragán, R. (2006a). *Asambleas Constituyentes. Ciudadanía y elecciones, convenciones y debates (1825-1971)*. La Paz: Muela del Diablo Editores.
- Barragán, R. (2006b). Más allá de lo mestizo, más allá de lo aymara: organización y representaciones de clase y etnicidad en La Paz. *América Latina Hoy*, 43.
- Barragán, R. (2019). El mundo indígena boliviano, ancho y diverso: Nomenclatura, mano de obra y tierras en el largo siglo XIX (1825-1930). In D. Escolar & L. Rodríguez (Eds.), *Más allá de la extinción*. Editorial SB. Libros de Ciencias Sociales.
- Barragán, R., Lema, A. M., Mendieta, P., & Peres-Cajías, J. A. (2015). La lenta reorganización de la economía. In R. Barragán, A. M. Lema, & P. Mendieta (Eds.), *Bolivia, su historia. Tomo IV. Los primeros cien años de la República, 1825-1925*. La Paz: Plural.
- Barragán R., R., & Peres-Cajías, J. A. (2007). El armazón estatal y sus imaginarios. Historia del Estado. In PNUD (Ed.), *Informe Nacional de Desarrollo Humano 2007. El Estado del Estado* (pp. 127–218).



La Paz.

- Baten, J. (2017). Economics, human biology and inequality: A review of “puzzles” and recent contributions from a Deatonian perspective. *Economics & Human Biology*, 25, 3–8. <https://doi.org/10.1016/J.EHB.2016.10.012>
- Baten, J., & Carsson, S. (2010). Latin American anthropometrics, past and present—An overview. *Economics & Human Biology*, 8(2), 141–144. <https://doi.org/10.1016/J.EHB.2010.05.011>
- Bouysse-Cassagne, T., & Saignes, T. (1991). *Etnicidad, economía y simbolismo en los Andes*. La Paz: HISBOL; IFEA; SBH-ASUR.
- Cajías, F., Barragán, R., Cajías, M., & Medinaceli, X. (2007). *La Paz, Historia de Contrastes*. La Paz: Fundación Nuevo Norte.
- Challú, A. E., & Silva-Castañeda, S. (2016). Towards an anthropometric history of latin America in the second half of the twentieth century. *Economics & Human Biology*, 23, 226–234. <https://doi.org/10.1016/J.EHB.2016.10.001>
- Contreras, C. (2011). Menos plata pero más papas: consecuencias económicas de la independencia en el Perú. *Histórica*, 35(2), 101–132.
- Contreras, M. E. (2003). Bolivia, 1900-1939: minería, ferrocarriles y educación. In E. Cardenas, J. A. Ocampo, & R. Thorp (Eds.), *La era de las exportaciones latinoamericanas de fines del siglo XIX a principios del XX* (pp. 259–296). México D.F.: Fondo de Cultura Económica.
- Deaton, A. (2007). Height, health, and development. *Proceedings of the National Academy of Sciences of the United States of America*, 104(33), 13232–13237. <https://doi.org/10.1073/pnas.0611500104>
- Dobado-González, R., & García-Montero, H. (2014). Neither So Low nor So Short: Wages and Heights in Bourbon Spanish America from an International Comparative Perspective. *Journal of Latin American Studies*, 46(02), 291–321. <https://doi.org/10.1017/S0022216X14000054>
- Gamarra Téllez, M. P. (2007). *Amazonía Norte de Bolivia, economía gomera (1870-1940). Bases económicas de un poder regional. La casa Suárez. Bolivia, Estudios en Ciencias Sociales. N° 5*. La Paz: CIMA.
- Godoy, R. A., Leonard, W. R., Reyes-García, V., Goodman, E., McDade, T., Huanca, T., Vadez, V. (2006). Physical stature of adult Tsimane’ Amerindians, Bolivian Amazon in the 20th century. *Economics & Human Biology*, 4(2), 184–205. <https://doi.org/10.1016/J.EHB.2005.11.001>
- Gotkowitz, L. (2007). *A Revolution for Our Rights: Indigenous Struggles for Land and Justice in Bolivia, 1880–1952*. Durham: Duke University Press.
- Grieshaber, E. P. (1980). Survival of Indian Communities in Nineteenth-Century Bolivia: A Regional Comparison. *Journal of Latin American Studies*, 12(2), 223–269. <https://doi.org/10.1017/S0022216X00022665>
- Henriques, R. (2015). *Análisis en los niveles de vida y desigualdad en la ciudad de Cochabamba durante el primer siglo republicano, 1825-1925*. PhD dissertation at Universidad Nacional de Educación a Distancia.
- Herranz-Loncán, A., & Peres-Cajías, J. A. (2016). Tracing the reversal of fortune in the Americas: Bolivian GDP per capita since the mid-nineteenth century. *Cliometrica*, 10(1), 99–128. <https://doi.org/10.1007/s11698-015-0125-2>
- Huber Abendroth, H. (1994). Comercio, manufactura y hacienda pública en Bolivia entre 1825 y 1870. In R. Barragan R., M. D. Cajias, & S. Qayum (Eds.), *El siglo XIX. Bolivia y América Latina*. La Paz: Muela del Diablo.
- Humphreys Bebbington, D., & Grisi Huber, C. (2017). Political Settlements, Natural Resource Extraction, and Inclusion in Bolivia. *ESID Working Paper No. 77*. <https://doi.org/10.2139/ssrn.2986791>
- Ingeniería Internacional. (1919). Saneamiento de Bolivia. *Ingeniería Internacional*, 2(3), 168–169.
- Ingeniería Internacional. (1922). Las cloacas de La Paz. *Ingeniería Internacional*, 7(5), 270–271.

- Klein, H. S. (2011). *A concise history of Bolivia. Cambridge concise histories* (Vol. 2). Cambridge U.K.;New York: Cambridge University Press. Retrieved from <http://dx.doi.org/10.1017/CBO9780511976964>
- Koenker, R., & Bassett, G. (1978). Regression Quantiles. *Econometrica*, 46(1), 33. <https://doi.org/10.2307/1913643>
- Langer, E. (2009). Bringing the Economic Back In: Andean Indians and the Construction of the Nation-State in Nineteenth-Century Bolivia. *Journal of Latin American Studies*, 41(3), 527–551.
- Laure, J. (1991). Evolución de la talla de adultos en el area rural de Bolivia (1829-1987). *Archivos Latinoamericanos de Nutrición*, XLI(2), 197–212.
- Lavaud, J.-P., & Lestage, F. (2009). Contar a los Indígenas (Bolivia, México, Estados Unidos). In Valérie Robin Azevedo & Carmen Salazar Solé (Eds.), *El regreso de lo indígena. Retos, problemas y perspectivas*, (pp. 39–70). IFEA/CBC/CRPA. Retrieved from <https://halshs.archives-ouvertes.fr/halshs-00724830/>
- Lavaud, J. P. (2016). El enriquecimiento: fortunas e infortunios bolivianos Enrichment: Bolivian Fortunes and Misfortunes. *Historia*, 37, 75–91.
- Llorca-Jaña, M., Navarrete-Montalvo, J., Araya-Valenzuela, R., & Droller, F. (2018). The Physical Stature of men in 19th century Chile: another case of Stagnation during an Export Boom. *Revista de Historia Económica / Journal of Iberian and Latin American Economic History*, 1–32. <https://doi.org/10.1017/S0212610918000198>
- Llorca-Jaña, M., Navarrete-Montalvo, J., Droller, F., & Araya-Valenzuela, R. (2018). Height in eighteenth-century Chilean men: Evidence from military records, 1730–1800s. *Economics & Human Biology*, 29, 168–178. <https://doi.org/10.1016/J.EHB.2018.03.004>
- López-Alonso, M. (2012). *Measuring Up : a History of Living Standards in Mexico, 1850-1950*. Stanford University Press.
- Meisel, A., & Vega, M. (2007). The biological standard of living (and its convergence) in Colombia, 1870–2003: A tropical success story. *Economics & Human Biology*, 5(1), 100–122. <https://doi.org/10.1016/J.EHB.2006.10.004>
- Mendizábal, G. (2002). *Historia de la Salud Pública en Bolivia. De las Juntas de Sanidad a los Directorios Locales de Salud*. La Paz: OPS/OMS.
- Menegus Bornemann, M. (1999). *Dos décadas de investigación en historia económica comparada en América Latina : homenaje a Carlos Sempat Assadourian* (1. ed.). México, D.F. : Colegio de México.
- Mitre, A. (1981). *Los Patriarcas de la plata: estructura socioeconómica de la minería boliviana en el siglo XIX*. Lima: Instituto de Estudios Peruanos.
- Mooney, C. Z., & Duval, R. D. (1993). *Bootstrapping: a nonparametric approach to statistical inference*. Sage Publications.
- NCD Risk Factor Collaboration. (2016). A century of trends in adult human height. *ELife*, 5. <https://doi.org/10.7554/eLife.13410>
- Oficina Nacional de Inmigración, E. y P. G. (1904). *Censo General de la Población de la República de Bolivia*. La Paz: Taller Tipo-Litográfico José M. Gamarra.
- Peres-Cajías, J. (2019). Bolivian economic development and its regions, 1846-2012. *Unpublished Manuscript*.
- Peres-Cajías, J. A. (2012). Repensando el desarrollo desde la historia económica: crecimiento y lucha de débiles. In F. (coord ). Wanderley (Ed.), *Desarrollo en Cuestión: reflexiones desde América Latina* (pp. 99–131). La Paz: CIDES-UMSA-OXFAM.
- Peres-Cajías, J. A. (2014). Bolivian Public Finances, 1882-2010. The Challenge to make Social Spending Sustainable. *Revista de Historia Económica Revista de Historia Económica Journal of Iberian and Latin American Economic History*, 32(1), 77–117. <https://doi.org/10.1017/S0212610914000019>

- Peres-Cajías, J. A. (2017). Bolivian Tariff Policy during the Late Nineteenth and Early Twentieth Centuries: High Average Tariff and Unbalanced Regional Protection. *Journal of Latin American Studies*, 49(3), 433–462. <https://doi.org/10.1017/S0022216X16001796>
- Peres-Cajías, J. A., & Carreras-Marín, A. (2017). The Bolivian Export Sector, 1870-1950. In S. Kuntz (Ed.), *Latin America's First Export Era Revisited*. London: Palgrave.
- Peres-Cajías, J. A., & Carreras-Marín, A. (2018). Official Bolivian Trade Statistics (1910-1949): Landlockness and the limits of a standard accuracy approach. *Revista de Historia Económica / Journal of Iberian and Latin American Economic History*, 1–34. <https://doi.org/10.1017/S0212610917000246>
- Platt, T. (1982). *Estado boliviano y ayllu andino: tierra y tributo en el norte de Potosí* (Vol. 1ª). Lima: Instituto de Estudios Peruanos.
- Platt, T. (1996). Producción, tecnología y trabajo en la Rivera de Potosí durante el Siglo XIX. *Cuadernos de Historia Latinoamericana*, 3, 58pp.
- Querejazu, L. E. de. (2011). *De caciques nobles a ciudadanos paceños : historia, tradición y genealogía de los Cusicanqui s. XVI a XXI* (1. ed.). La Paz: Plural.
- Rodríguez Ostría, G. (1994). *Elites, mercado y cuestion regional en Bolivia*. Quito: Facultad Latinoamericana de Ciencias Sociales FLACSO.
- Rousseeuw, P. J., & Leroy, A. M. (1987). *Robust regression and outlier detection*. Wiley.
- Salvatore, R. D. (2007). Heights, Nutrition, and Well-Being in Argentina, ca. 1850–1950. Preliminary Results. *Revista de Historia Económica / Journal of Iberian and Latin American Economic History*, 25(01), 53–85. <https://doi.org/10.1017/S0212610900000057>
- Sandoval, C. D., Sandoval, A. V., del Rio, M. A., Sandoval, F., Mertens, C., & Parada, C. (2003). *Santa Cruz: economía y poder, 1952-1993. Investigaciones regionales*. Santa Cruz. La Paz: Pieb.
- Steckel, R. H. (1995). Stature and the Standard of Living. *Journal of Economic Literature*, 33, 1903–1940. <https://doi.org/10.2307/2729317>
- Tandeter, E. (1992). *Coacción y mercado. La minería de la plata en el Potosí colonial, 192-1826*. Cusco: Centro de Estudios Regionales Andinos Bartolomé de las Casas.
- Twrdek, L., & Manzel, K. (2010). The seed of abundance and misery: Peruvian living standards from the early republican period to the end of the guano era (1820–1880). *Economics & Human Biology*, 8(2), 145–152. <https://doi.org/10.1016/J.EHB.2010.05.012>
- Wehby, G. L., Castilla, E. E., & Lopez-Camelo, J. (2010). The impact of altitude on infant health in South America. *Economics & Human Biology*, 8(2), 197–211. <https://doi.org/10.1016/J.EHB.2010.04.002>
- White, H. (1980). A Heteroskedasticity-Consistent Covariance Matrix Estimator and a Direct Test for Heteroskedasticity. *Econometrica*, 48(4), 817. <https://doi.org/10.2307/1912934>
- Williamson, J. G. (2015). Latin American Inequality: Colonial Origins, Commodity Booms, or a Missed 20th Century Leveling? *NBER Working Papers*, 20915.
- Zulawski, A. (2000). Hygiene and "The Indian Problem": Ethnicity and Medicine in Bolivia, 1910-1920. *Latin American Research Review*, 35, 107–129. <https://doi.org/10.2307/2692136>