

Discussion Paper

Deutsche Bundesbank
No 48/2019

Does the lack of financial stability impair the transmission of monetary policy?

Viral V. Acharya
(New York University Stern
School of Business)

Sascha Steffen
(Frankfurt School of
Finance & Management)

Björn Imbierowicz
(Deutsche Bundesbank)

Daniel Teichmann
(Goethe University Frankfurt)

Editorial Board:

Daniel Foos
Thomas Kick
Malte Knüppel
Vivien Lewis
Christoph Memmel
Panagiota Tzamourani

Deutsche Bundesbank, Wilhelm-Epstein-Straße 14, 60431 Frankfurt am Main,
Postfach 10 06 02, 60006 Frankfurt am Main

Tel +49 69 9566-0

Please address all orders in writing to: Deutsche Bundesbank,
Press and Public Relations Division, at the above address or via fax +49 69 9566-3077

Internet <http://www.bundesbank.de>

Reproduction permitted only if source is stated.

ISBN 978-3-95729-656-6 (Printversion)

ISBN 978-3-95729-657-3 (Internetversion)

Non-technical summary

Research Question

Monetary policy affects the real economy through various channels. We study the bank lending channel which posits that monetary policy affects banks' loan supply due to imperfect information between banks and their financiers and the corresponding agency costs. Importantly, exploring monetary policy transmission prior to the financial crisis, the current literature highlights that banks with weak balance sheets are more responsive to monetary policy because of these agency problems. Yet, the literature does not consider how bank deposit and loan markets interact. We investigate if monetary policy equally transmits to deposit and loan rates when central banks fully allot banks' liquidity requests. We also examine if the transmission of monetary policy to the real sector can be impaired even if central banks provide unlimited short-term liquidity to banks, effectively guaranteeing also (uninsured) wholesale deposits. Furthermore, we analyze the implications for customers of banks, both lenders (i.e. depositors) and borrowers.

Contribution

The empirical literature on the bank lending channel usually ignores that banks fund their lending activities to a large extent with short-term wholesale deposits and that monetary policy also affects deposit rates. However, the connection between monetary policy and deposit rates is important as an impaired transmission channel might originate in the funding market. Moreover, high-risk banks might have an incentive to increase the spread between deposit and loan rates in response to an expansionary monetary policy. In contrast to the previous literature, we also study the full allotment period when the ECB provides unlimited liquidity to all banks (high- and low-risk), thus effectively providing insurance also to short-term wholesale depositors. This attenuates agency costs and, accordingly, the responsiveness to monetary policy of banks with weak balance sheets.

Results

Increases in central bank liquidity before the introduction of the full allotment policy were insufficient to reduce the funding risks of high- and low-risk banks. High-risk banks needed to pay substantially higher deposit spreads to compensate depositors and attract funds. The ECB then stepped in meeting all banks' liquidity requests in full and eventually reduced the funding pressure also of high-risk banks. Furthermore, we observe that in the full allotment period high-risk banks do not respond to expansionary monetary policy measures in the loan markets but low-risk, well-capitalized banks do. The higher loan rates of high-risk banks affect the balance sheets of high-risk bank borrowers, leading to lower payouts, lower capital expenditures, and lower employment. Overall, our results suggest that banks' capital constraints at the time of an easing of monetary policy pose a challenge to the effectiveness of the bank lending channel and the effectiveness of the central bank as a lender of last resort.

Nichttechnische Zusammenfassung

Fragestellung

Geldpolitik überträgt sich auf die Realwirtschaft über unterschiedliche Kanäle. Wir untersuchen den Bankkreditkanal, der besagt, dass Geldpolitik die Kreditvergabe von Banken aufgrund von unvollständigen Informationen zwischen Banken und ihren Geldgebern beeinflusst. Im Rahmen der Entscheidung, ob potentielle Geldgeber ungesicherte Einlagen bei einer Bank deponieren sollen, entstehen sogenannte Agency-Kosten. Die bisherige Literatur zeigt, dass gerade fragilere Banken in ihrer Kreditvergabe stärker auf restriktive geldpolitische Maßnahmen reagieren, da sie höhere Agency-Kosten und damit einhergehende Finanzierungsliquiditätsprobleme aufweisen. Wenn der Einfluss der Geldpolitik auf die Kreditzinsen dagegen sehr schwach ist, spricht man oft von einer beeinträchtigten Übertragung der Geldpolitik. Wir untersuchen, ob die Übertragung der Geldpolitik auf die Realwirtschaft beeinträchtigt sein kann, wenn Zentralbanken in einer Krise den Banken kurzfristige Liquidität unbegrenzt zur Verfügung stellen (Vollzuteilung), was implizit auch Einleger ohne Einlagensicherung absichert und Agency-Kosten hinsichtlich der Finanzierungsliquidität verringert. Zudem analysieren wir, ob sich diese Maßnahme der Zentralbanken gleichermaßen auf Einlage- und Kreditzinsen überträgt und was die Implikationen für die Kreditgeber - also Einleger - und die Kreditnehmer der Banken sind.

Beitrag

Die empirische Literatur zum Bankkreditkanal vernachlässigt in der Regel, dass Banken ihre Kreditvergabe zu einem großen Teil über ungesicherte kurzfristige Großeinlagen finanzieren und dass Geldpolitik auch einen Einfluss auf Einlagezinsen hat. Der Zusammenhang zwischen Geldpolitik und Einlagezinsen ist jedoch wichtig, da eine beeinträchtigte Übertragung der Geldpolitik auf die Kreditvergabe bereits von der Finanzierungsseite der Banken herrühren könnte. Zudem könnten fragile Banken eine expansive Geldpolitik nutzen, um die Spanne zwischen Kredit- und Einlagezinsen zu erhöhen. Aus unserer Untersuchung können weitere neue Einsichten gewonnen werden, da sie Zeiträume umfasst, in denen die EZB allen Banken - also fragilen und gesunden - kurzfristige Liquidität unbegrenzt zur Verfügung stellt, was implizit auch kurzfristige Großeinlagen ohne Einlagensicherung absichert und somit die Agency-Kosten vor allem bei fragileren Banken verringert.

Ergebnisse

Erhöhungen der Zentralbankliquidität vor der Vollzuteilungsperiode waren ungenügend, um die Finanzierungsliquiditätsprobleme aller Banken zu reduzieren. Schwächere Banken mussten höhere Zinsen anbieten, um Einlagen zu erhalten. Die EZB stellte daraufhin den Banken Liquidität unbegrenzt zur Verfügung, was den Finanzierungsdruck auch von fragilen Banken nahm. In der Vollzuteilungsperiode beobachten wir, dass fragile Banken im Kreditmarkt weniger stark auf eine expansive Geldpolitik reagierten als gesunde, gut kapitalisierte Banken. Selbst als die EZB implizit auch kurzfristige Großeinlagen ohne Einlagensicherung absicherte, berechneten fragile Banken ihren Kreditnehmern höhere Kreditzinsen als gesunde Banken. Dies führte bei den Kreditnehmern fragiler Banken zu geringeren Ausschüttungen, geringeren Investitionen sowie reduzierter Beschäftigung. Unsere Ergebnisse deuten insgesamt darauf hin, dass eine ungenügende Bankkapitalisierung und die damit verbundene Fragilität von Banken in einer Zeit der geldpolitischen Lockerung die Übertragung der Geldpolitik beeinträchtigt.

Does the Lack of Financial Stability Impair the Transmission of Monetary Policy?

Viral V. Acharya[#] Björn Imbierowicz[‡] Sascha Steffen[°] Daniel Teichmann^{*}

Abstract

We investigate the transmission of central bank liquidity to bank deposits and loan spreads in Europe over the period from January 2006 to June 2010. We find evidence consistent with an impaired transmission channel due to bank risk. Central bank liquidity does not translate into lower loan spreads for high-risk banks for maturities beyond one year, even as it lowers deposit spreads for both high-risk and low-risk banks. This adversely affects the balance sheets of high-risk bank borrowers, leading to lower payouts, capital expenditures and employment. Overall, our results suggest that banks' capital constraints at the time of an easing of monetary policy pose a challenge to the effectiveness of the bank-lending channel and the central bank's lender-of-last-resort function.

Keywords: Central bank liquidity, Monetary policy transmission, Corporate deposits, Financial crisis, Lender of last resort, Loans, Real effects

JEL classification: E43, E58, G01, G21.

The views expressed are those of the authors and do not represent the views of the Deutsche Bundesbank or the Eurosystem. We thank Tobias Berg, Martin Brown, Matteo Crosignani, John Driscoll, Falko Fecht, André Güttler, Ralph de Haas, Hendrik Hakenes, Florian Heider, Neeltje van Horen, Stephan Jank, Martin Kanz, David Lando, David Marques-Ibanez, David Martinez-Miera, Emanuel Mönch, Steven Ongena, Andrea Polo, Lasse Heje Pedersen, Adriano Rampini, Asani Sarkar, Morton Sørensen, Daniel Streitz, Harald Uhlig, and participants in the 2014 European Summer Symposium in Financial Markets, the 2014 ECB workshop on "Non-standard monetary policy measures," the 2014 Bank Workshop in Münster, the 2015 FIRS meetings, the 2015 Bocconi/Carefin Conference, the 2015 Summer Research Conference in Finance at ISB, the 2015 FED conference on "Monetary Policy Implementation and Transmission in the Post-Crisis Period," the 2015 Financial Management Association, the Bundesbank/CEPR Conference "One year after the European Banking Union take-off," the China International Conference in Finance, the 1st IWH-FIN-FIRE Workshop on "Challenges to Financial Stability," the 2nd Conference on "Bank performance, financial stability and the real economy," the 4th MoFiR workshop on banking, and seminar participants at the Bank of England, Copenhagen Business School, Erasmus University Rotterdam, European Bank for Reconstruction and Development, Frankfurt School of Finance and Management, Tilburg University, the University of Mannheim and University of Ulm for valuable comments and suggestions. Imbierowicz gratefully acknowledges support from the Center for Financial Frictions (FRIC), grant no. DNRFF102. Additional material can be found in an Online Appendix available at www.bundesbank.de/dp-en/2019-48_online_appendix.

[#] New York University Stern School of Business, 44 West 4th Street, New York, NY, USA, Email: vacharya@stern.nyu.edu, Tel: +1 212 998 0354.

[‡] Deutsche Bundesbank, Research Centre, Wilhelm-Epstein-Strasse 14, 60431 Frankfurt, Germany, Email: bjorn.imbierowicz@gmail.com, Tel: +49 (0)69 9566-6630.

[°] Frankfurt School of Finance & Management, Sonnemannstr. 9-11, 60314 Frankfurt, Germany, Email: s.steffen@fs.de, Tel: +49 (0)69 154008-794 (corresponding author).

^{*} Goethe University Frankfurt, House of Finance, Theodor-W.-Adorno-Platz 3, 60323 Frankfurt, Email: Daniel.Teichmann@hotmail.com, Tel: +49 69 798 33700.

[...] it is nonetheless useful to recall again the limits of monetary policy. Monetary policy transmission may be hampered at times where banks, in particular, but also non-financial sectors need to repair their balance sheets. At times of uncertainty and lack of confidence, liquidity may be hoarded rather than be put to use for investment. These are cases where standard monetary policy may be “pushing on a string” (in the words of John Maynard Keynes). These are also impediments that need to be fundamentally addressed by regulators and government entities, via the strengthening of financial balance sheets [...]

(Yves Mersch, Member of the Executive Board of the ECB, May 2013)

1. Introduction

Monetary policy impacts the supply of bank credit, implying a bank-lending or risk-taking channel of monetary policy.¹ The key mechanism behind the bank-lending channel is agency costs between banks and their financiers. The empirical approach in this literature, however, usually ignores that banks fund their lending activities to a large extent with short-term wholesale deposits and that monetary policy also affects deposit rates.² However, the connection between monetary policy and deposit rates is important as an impaired transmission channel might originate in the funding market, for example, because some banks are undercapitalized and face regulatory and economic constraints, even if monetary policy is expansive. However, we know very little about how monetary policy affects the market for corporate deposits. For example, does monetary policy transmit equally to deposit and loan rates? Can the transmission of monetary policy still be impaired even if central banks provide unlimited short-term liquidity to banks, effectively guaranteeing also (uninsured) wholesale deposits? And, what are the implications for customers of banks, both lenders (i.e. depositors) and borrowers? These are the main questions we try to address in this paper, thereby providing evidence on the effectiveness of the bank-lending channel and on central banks as lenders of last resort.

¹ Researchers argue that (1) monetary policy affects loan supply by banks (Bernanke and Gertler, 1989, 1995; Kashyap and Stein, 2000); (2) the reduction in loan supply is due to weak bank balance-sheet strength (Bernanke and Blinder, 1988; Bernanke, 2007; Jiménez et al., 2012); and (3) a low monetary policy rate increases risk-taking by banks (Jiménez et al., 2014; Ioannidou et al., 2015; Dell’Ariccia et al., 2017).

² An important exception is Drechsler et al. (2017) who argue that the deposit channel of monetary policy can explain a large part of the bank balance-sheet channel.

Our setting is the introduction of the full allotment of liquidity by the ECB in October 2008 as a response to the deepening of the global financial crisis. Prior to that date, the ECB issued liquidity to banks in a competitive tender to meet an aggregate liquidity target. Liquidity was allocated to the banking sector such that each bank could meet its reserve requirements. After the default of Lehman Brothers in September 2008, the interbank markets became severely stressed (Afonso, Kovner and Schoar, 2011) preventing an efficient allocation of liquidity among banks. On October 8, 2008, the ECB began to fulfill *all* liquidity requests by individual banks at the prevailing main refinancing (MRO) rate in exchange for collateral via its main refinancing operations, which eventually provided substantial excess liquidity to the banking system.

We construct a novel data set of deposit and loan transactions of the *same* banks during the January 2, 2006 to June 30, 2010 period and investigate the impact of “aggregate” central bank liquidity (i.e., the total liquidity in the banking system provided by the ECB) on spreads of newly issued deposits and loans before and after the introduction of the full-allotment liquidity concept, exploiting cross-sectional differences in the health of these European banks. As the introductory quote suggests, during financial crises, the transmission of monetary policy might be impaired due to the weak balance sheets of some banks. To the best of our knowledge, we are the first to analyze *where* the transmission channel is impaired—the funding or the loan market. This is important for understanding the role of central banks in addressing liquidity versus solvency problems during crises, as well as for the design of crisis-time monetary policy interventions.

We focus on deposit contracts in the first part of the paper and analyze how central bank liquidity affects corporate deposit spreads for high- versus low-risk banks. There are two main identification challenges: central bank liquidity might be endogenous and driven by current market conditions; in addition, deposit spreads, as well as amounts, might be driven by demand and supply effects in the market for corporate deposits. We address this in two ways. First, we

explore the sensitivity of our results to the inclusion of controls and fixed effects and argue that our main coefficients remain almost unaffected. We then use a three-equation system to isolate a deposit demand function using instruments to shift both central bank liquidity provision and corporate deposit supply.

Our first main result is that an increase in central bank liquidity is associated with a significant decrease in bank deposit spreads during the financial crisis. This effect is economically large in magnitude. During the financial crisis, a one standard deviation increase in liquidity reduces deposit spreads by about 3 bps before, and 8 bps after the introduction of the full-allotment policy. Differentiating by bank risk, which we measure using banks' credit default swaps spreads, we find that the deposit spreads of low-risk banks—but not of high-risk banks—decrease in response to larger amounts of liquidity *prior* to the beginning of the full allotment period. Thereafter, both high- and low-risk banks similarly reduce deposit spreads when central bank liquidity increases.

We next trace out supply and demand functions for corporate deposits from our data during the full-allotment period and show that, holding everything else constant, firms supply more deposits when banks offer higher spreads. In other words, the deposit supply function is upward sloping. Banks' demand for deposits is downward sloping, i.e. if the provision of deposits is higher, then the marginal utility of deposits is lower, which reduces deposit spreads. The slope coefficient of the supply function is lower, suggesting that the supply of deposits is relatively inelastic with respect to deposit spreads. Importantly, we show that an increase in central bank liquidity shifts the deposit demand curve inwards and that both high- and low-risk banks pay less for corporate deposits, with all else equal.

Taken together, the deposit spread differential suggests that an increase in central bank liquidity before the introduction of the full-allotment policy was insufficient to reduce the funding risks of high- and low-risk banks. High-risk banks needed to pay substantially higher deposit spreads to compensate depositors and attract funds. Interbank markets were

dysfunctional prior to the full allotment period and low-risk banks in particular hoarded liquidity (Afonso, Kovner, and Schoar, 2011). The ECB then stepped in as lender of last resort (LOLR), meeting all banks' liquidity requests in full. At the same time, it extended the list of assets accepted as eligible collateral for refinancing operations. Substituting for the loss of private funding, the ECB eventually reduced the funding pressure of high-risk banks.

We then investigate how the ECB interventions as a LOLR translate into banks' loan-lending decisions using the same set of banks that we observe in the deposit market. We do not find (in contrast to the deposit market) a differential impact of ECB liquidity on loan spreads for low- versus high-risk banks prior to the introduction of the full-allotment policy; the loan spreads do not respond to central bank liquidity changes for either high- or low-risk banks. After the introduction, however, the loan spreads of low-risk banks decrease, while they remain unchanged for high-risk banks when the ECB increased its liquidity provision. A one standard deviation increase in ECB liquidity decreases the loan spreads of low-risk banks by about 27 bps relative to high-risk banks during the full-allotment period, which is economically meaningful given an average loan spread of about 306 bps. In addition, we investigate the pass-through of monetary policy during the full-allotment policy for different loan maturities. Our results suggest that the transmission channel is impaired, particularly for loans beyond a maturity of one year.

We then focus on borrowers that borrow from the same group of either low- or high-risk banks before and after the full-allotment period (intensive margin). To investigate the differential effect of central bank liquidity for high-risk versus low-risk banks, we use a Heckman regression model, thereby addressing concerns that firms self-select into loan-lending relationships with these banks. We also match borrowers of low- and high-risk banks in the full-allotment period using propensity score matching models. We find consistent results.

An interesting question might be why borrowers do not switch when high-risk banks demand higher loan spreads relative to low-risk banks. We show that high-risk banks charge

higher loan spreads particularly to bank-dependent borrowers, which are typically small- and medium-sized firms as well as firms without a public debt rating. This is consistent with evidence in Fazzari, Hubbard and Petersen (1988), Gertler and Gilchrist (1994) and Kashyap, Lamont and Stein (1994), who use similar proxies for borrowers' financial constraints and reliance on external funding.

Finally, we investigate the real consequences for borrowers of high- versus low-risk banks due to the ECB's liquidity framework. While the borrowers of high-risk banks increase their credit lines relative to their term-loan borrowing following the ECB's liquidity provision, these firms also invest less, have lower capital expenditures and reduce the number of employees.

To summarize, we find evidence that the transmission channel of monetary policy in the euro area is impaired in the loan market but not the deposit market even *after* the introduction of the ECB's full-allotment policy. This evidence shows that banking sector balance-sheet weakness limited the role of the ECB as LOLR during financial crises and is associated with negative real effects of bank-dependent borrowers of high-risk banks.

It is noteworthy that high-risk banks that charge higher loan spreads to bank-dependent customers might benefit from an increase in central bank liquidity. As the ECB effectively provided unlimited liquidity at a low interest rate, banks lowered deposit rates and refinanced their loans at lower funding costs. Not passing on these lower funding costs to borrowers increased the margins of high-risk banks—and thus their net worth—relaxing both regulatory and economic constraints. Hence, an increase in central bank liquidity essentially amounted to a “stealth recapitalization” of high-risk banks consistent with theoretical models e.g. in Brunnermeier and Sannikov (2016). An alternative view is that high-risk banks are reaching for yield. We discuss this view and implications in Section 8 of this paper.

The rest of the paper is organized as follows. In Section 2, we discuss the related literature and contributions of our paper. We then describe the institutional setting (Section 3)

and data (Section 4). We next discuss the effect of central bank liquidity on deposit rates in Section 5 and on loan spreads in Section 6. In Section 7, we discuss the implications for the real sector and conclude in Section 8.

2. Related literature

We review the related literature and discuss our contributions to the literature in this section. Many researchers have investigated the pass-through of monetary policy on bank loan supply through the bank-lending channel and its associated real effects (Kashyap and Stein, 1994; Peek and Rosengren, 2015). In this literature, banks with different balance sheets (e.g. based on leverage, liquidity or asset size) respond differently to monetary policy shocks (Kashyap and Stein, 1995; 2000; Kishan and Opiela, 2000; Campello, 2002; Gambacorta and Mistrulli, 2004; Jiménez et al., 2012; Gomez et al., 2016). These researchers, however, do not consider how bank deposit and loan markets interact. Moreover, an important dimension of the pass-through is not only the quantity but also the pricing of deposits and loans as weak banks have incentives to increase their margins to relax regulatory and economic constraints.

Importantly, this literature highlights that banks with weak balance sheets are more responsive to monetary policy because of agency problems between banks and their financiers. Consequently, and studying a period outside of financial crises, Jiménez et al. (2012) conjecture that an expansive monetary policy during crises might be prudent as weak banks react stronger to tightening of monetary policy during normal times. That is, this literature suggests a symmetric effect of contractionary and expansionary monetary policy with respect to the responsiveness of banks to these measures. Our results, however, suggest the opposite: weak banks do not respond to expansionary monetary policy measures in the loan markets but strong, well-capitalized banks do. The key difference in our paper is that aforementioned agency costs are attenuated during the full-allotment period when the ECB provides unlimited liquidity to all banks (weak and strong), thus effectively providing insurance also to short-term wholesale depositors. But even during this period, weak banks still charge higher loan spreads compared

to strong banks. In other words, while the effect in the previous literature originates mainly in funding liquidity problems of weak banks, we show that the main driver of higher loan spreads of weak relative to strong banks is rooted in their solvency conditions. Thus, as far as the transmission by weak bank balance sheets to the real sector is concerned, monetary policy easing might be “pushing on a string” as long as financial sector stability is not restored.

Comparing the credit default swap (CDS) spreads of banks during the February 2002 to December 2008 period (which is the sample period in Jiménez et al. (2012)) to our sample period of January 2006 to June 2010 is compelling. We find that weak banks had an average CDS spread of only 17 bps during the sample period analyzed in Jiménez et al. (2012). Strong banks in our sample period, on the other hand, had an average CDS spread of 23 bps. That is, the absolute level of risk appears to be important. During the global financial crisis, bank health substantially deteriorated due to high leverage and poor-quality assets. In turn, solvency risks spilled over into short-term funding markets. Consequently, monetary policy transmission and central bank liquidity allocation in short-term funding markets were impaired until the ECB stepped in as LOLR and provided abundant liquidity for high- and low-risk banks. The ECB thus successfully reduced tensions in the money market. However, this intervention was not adequate for the loan market, likely due to bank solvency concerns: high-risk banks kept loan interest rates, *ceteris paribus*, higher than low-risk banks, consistent with the theoretical predictions in Brunnermeier and Sannikov (2016).

Our paper also relates to the literature that more broadly shows that bank loan supply declines during financial crises when the banking system is weak (Peek and Rosengren, 1995, Ivashina and Scharfstein, 2010, Popov and van Horen, 2015). In a recent paper, Heider et al. (2019) demonstrate a special role of deposits for bank loan supply when policy rates become negative. We add to this literature by documenting empirically that large liquidity injections by central banks do not reduce financial frictions of bank-dependent firms if the banking sector is

undercapitalized. Moreover, we show that short-term liquidity provisions do not improve long-term lending, even among well-capitalized banks.

3. Institutional setting

In order to understand the effect of central bank liquidity on deposit and loan spreads, it is useful to briefly review the standard instruments of monetary policy in the eurozone (e.g., open market operations, standing facilities, and minimum reserve requirements), and to highlight the ECB's major policy changes.

In contrast to the United States, where open market operations are primarily conducted by buying Treasury bonds, the ECB uses its main refinancing operations (MRO) to provide liquidity to financial institutions in exchange for collateral (repurchase agreements) in fixed-rate or variable-rate tenders. These operations are usually conducted on a weekly basis and have a maturity from one week up to three months. By increasing or reducing interest rates in MROs, as well as changing the size of the allotment, the ECB can affect both market interest rates and liquidity. The ECB follows a liquidity-neutral allotment concept (i.e., liquidity provision is based on its assessment of the liquidity needs of the banking system in the eurozone).

The ECB can provide and absorb overnight liquidity using its standing facilities. Banks can use the deposit facility to make unlimited overnight deposits at an interest rate that is usually (at least before the financial crisis started) 1% below the MRO rate. Banks can use the marginal lending facility to obtain overnight liquidity that is usually 1% above the MRO rate. The available collateral restricts the amount a bank can borrow. The standing facilities thus provide a corridor for overnight interest rates.

Monetary policy also includes minimum reserve requirements, which require banks to hold deposits on accounts in the Eurosystem that reflect the amount of the banks' customer deposits. The ECB uses minimum reserve requirements to smooth short-term interest rates by averaging positions over a specific period. The minimum reserves are remunerated at the MRO rate. Excess reserves, however, are transferred to the deposit facility. That is, banks usually

hold only the minimum reserves at the ECB if money markets are able to redistribute liquidity from banks with a liquidity surplus to banks with a liquidity deficit. In the pre-crisis period, there was no need to hold excess reserves at the ECB, as liquidity was readily available in the money markets, and central bank liquidity was determined by reserve requirements. The recent financial crisis, however, had a profound impact on European money markets. Banks became increasingly reluctant to lend to each other, which led to further segmentation of this market, particularly in cross-border transactions. The three-month EURIBOR-OIS swap spread, the difference between the euro interbank offered rate and overnight indexed swaps, increased to more than 200 bps during the August 2007 to October 2008 period, emphasizing the stress in money markets in the eurozone.

The ECB was not able to sustain its liquidity-neutral allotment concept during the financial crisis because it became increasingly difficult to forecast the liquidity needs of the banking system. The ECB therefore changed its liquidity provision framework on October 8, 2008 to fully satisfy bank demand for liquidity at a fixed interest rate (fixed-rate full-allotment), effectively also guaranteeing (uninsured) wholesale depositors. This shift in liquidity provision substantially increased the aggregate liquidity in the banking system, which is reflected in a sharp increase of funds in the deposit facility. The fixed-rate full-allotment procedure will continue at least until the end of the last reserve maintenance period of 2019.

4. Data

4.1. Sample selection

To investigate the effect of central bank liquidity on deposit spreads, we employ a unique and proprietary data set including corporate deposits from a European trading platform that ranks among the three largest platforms by volume in Europe. The deposits are sizable. The average deposit amount on a specific day with each bank over a one-year period corresponds to about

15% of a bank's end of year short-term liabilities.³ Prior to trading, banks and firms agree on the procedures and execution of trades and sign a framework agreement. This agreement applies to all future trades on the platform. Firms can offer any deposit amount with any maturity. All banks using the platform observe this offer and can bid for the deposit during a pre-specified time period, which is usually limited to two minutes and is initially set by each firm. Until the end of this period, a firm can select a bid based on its preferences. Banks do not observe other banks' bids but can adjust their offer during the bidding period. This implies that banks adjust their pricing during the bidding process only idiosyncratically, not in response to other banks' bids. Interest rates are quoted on an actual/360-day count convention and transactions are settled on the same day. Appendix A3 shows an example of a deposit auction and how the bids are quoted. Our sample covers the January 2, 2006 to June 30, 2010 period.

Our sample includes executed deposit transactions with a maximum maturity of seven days that are between non-financial firms and banks during the January 2006 to June 2010 period. The maximum maturity is in line with the Eurosystem's regular open market operations as described above. We do not have specific information on individual firms on the platform but have a unique platform-specific identifier for each firm that allows us to distinguish between depositors. Bank competition is measured at the deposit platform level using the Herfindahl–Hirschman Index (HHI) and data from the previous week. The final sample includes 40,638 euro-denominated deposit transactions from 145 European firms to 43 European banks with access to the ECB facilities.

Our loan-level data are based on the universe of loan facilities in the LPC DealScan database during the January 2006 to June 2010 period. We drop all loans where we cannot match the borrower to the Chava–Roberts (DealScan-Compustat) link file. We collect annual financial statement information for all non-financial firms from Compustat and merge it (with

³ The number is calculated as the average of the daily outstanding deposit amount of each bank on the platform using all trading days (including zeros). This average is divided by the bank's end of year current liabilities as reported on the balance sheet.

a one-year lag) to each loan contract and require that loan spread, maturity, amount, performance pricing and secured versus unsecured status are available for all loans. We select the lead bank for each loan following Ivashina (2009) and exclude loans from banks that do not operate on the deposit trading platform during our sample period. Overall, our final loan sample includes 2,632 firm-bank loan facilities from 38 banks to 566 firms.⁴

To measure the amount of *Central Bank Liquidity* available in the banking system, we use the natural logarithm of the sum of the banks' daily current account and deposit facility holdings with the ECB, centered by their mean value in 2006 (the so-called "adjusted liquidity in the banking sector").⁵ Annual bank characteristics are collected from Bankscope and matched (with a one-year lag) to each deposit and loan transaction. To measure bank risk, we use five-year CDS spreads from credit market analysis (CMA). Using an iterative procedure explained in more detail in Online Appendix A, we ensure that high-risk banks (*High Bank Risk*) have, on average, at least twice the spread of low-risk banks in each week.⁶ In this procedure, we use (on a weekly basis) the minimum CDS spread of banks rated A1 or below as threshold and classify banks with a higher spread as high-risk banks. To ensure that low- and high-risk banks are sufficiently different, we then iteratively decrease this threshold in steps of 0.5bps until the ratio of the average spread of low- and high-risk banks is at least two in each week.

⁴Appendix A2 includes a table showing how many loan observations are dropped during our matching procedure. We also provide a comparison of our sample with the overall sample of European firms. We find that loan spreads are, on average, not significantly different between both samples. Our sample firms are larger both in terms of total assets and loan facility size, have more leverage and lower interest coverage, and also have more tangible assets as they are arguably more mature firms.

⁵ We also use other measures for central bank liquidity. A description of these measures for central bank liquidity in the banking sector is provided in Online Appendix A. We also perform all our analyses with these other measures but do not report them for brevity. All results remain robust.

⁶ In addition to bank CDS spreads, we also use banks' Moody's long-term issuer credit rating as a measure of credit risk. Importantly, using either method, banks change their risk classification very infrequently. In unreported robustness checks, we exclude all banks that migrate between risk classes during the full-allotment period and re-run our regressions. In a different test, we use CDS spreads before the start of the financial crisis (August 9, 2007) to distinguish between high- and low-risk banks. The results remain unchanged. We report the results in Online Appendix E.

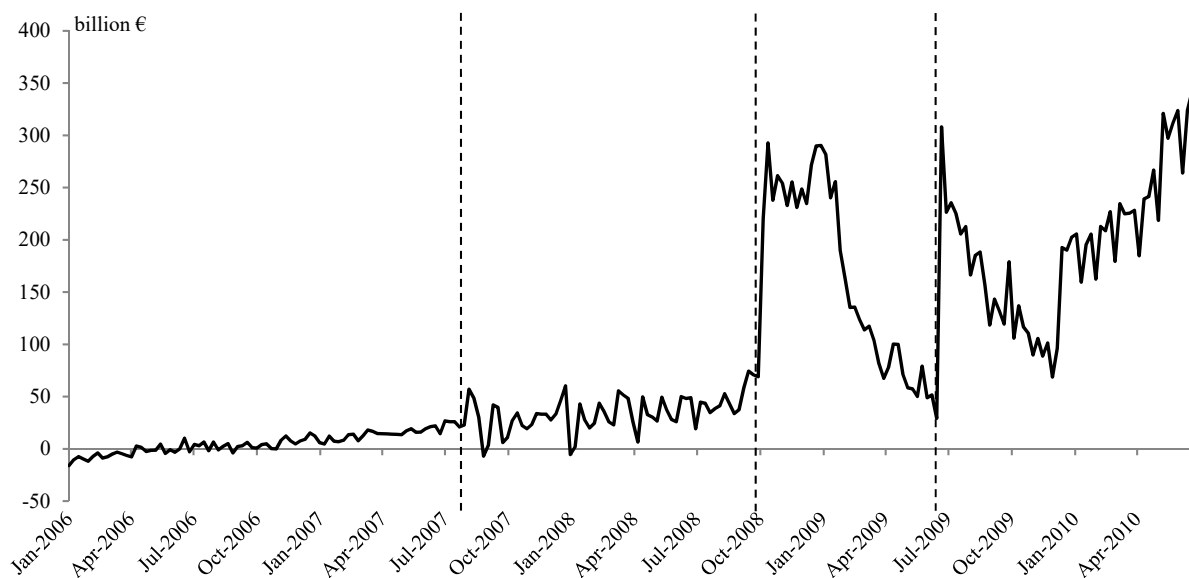
4.2. Descriptive statistics

Panel A of Figure 1 shows the time series of weekly central bank liquidity, Panel B the percentage excess amount of central bank liquidity above the reserve requirement (*Excess Liquidity Ratio*). Prior to the financial crisis, the ECB allotted liquidity to banks such that these were able to fulfill their reserve requirements with very limited excess holdings. This is intuitive given the low interest rate earned in the deposit facility, which, during normal times, gives banks incentives to lend out excess liquidity in the interbank market. After the start of the financial crisis, the ECB started a “frontloading” policy and allocated funds to the market in excess of the benchmark liquidity in the early maintenance period and again absorbed these gradually over this period (Eisenschmidt, Hirsch, and Linzert, 2009).

Figure 1. Central bank liquidity

Figure 1 shows the weekly aggregate market liquidity provided to the banking sector by the ECB (*Central Bank Liquidity*) during the January 2006 to June 2010 period. It is calculated in Panel A as the sum of banks’ current account and deposit facility holdings with the ECB, centered around its mean value in 2006. In Panel B, *Excess Liquidity* is calculated as the sum of banks’ current account and deposit facility holdings with the ECB divided by the minimum reserve requirement imposed by the ECB for the specific reserve maintenance period, minus 1. The vertical dashed lines indicate (1) the start of the financial crisis in August 2007; (2) the start of the full allotment period in October 2008; and (3) the first longer-term refinancing operation (LTRO) with a maturity of one year as a fixed rate tender procedure with full allotment in June 2009. All variables are defined in Appendix A1.

Panel A. Central bank liquidity



Panel B. Excess liquidity

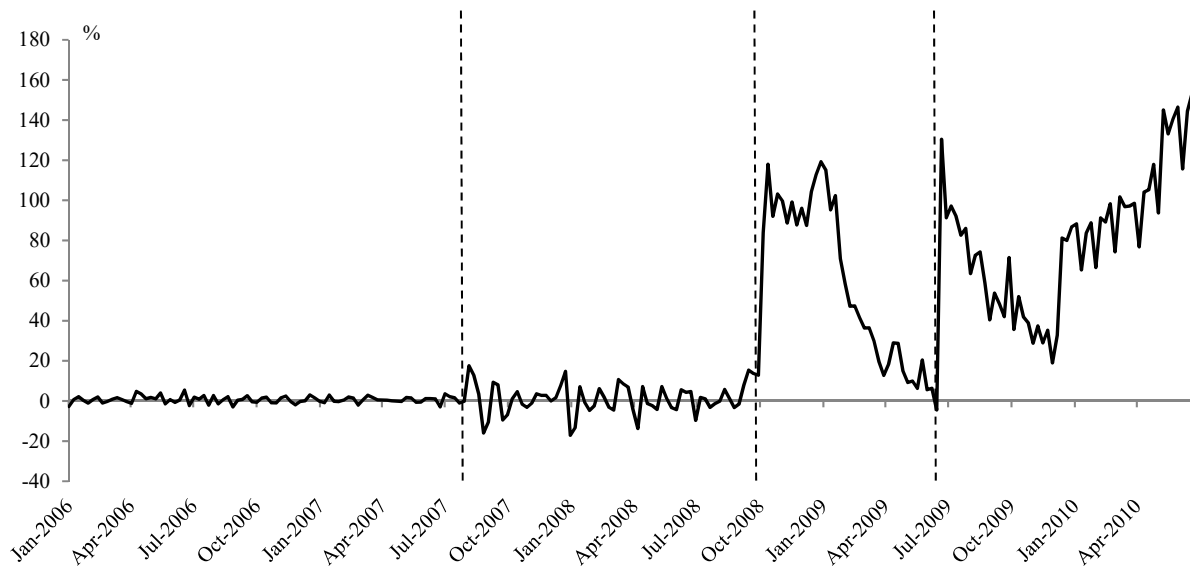


Figure 1 shows an increase in both amount and volatility of liquidity. The start of the full allotment of liquidity at a fixed rate resulted in a strong increase in aggregate central bank liquidity. On June 25, 2009, the ECB announced it would provide additional liquidity via long-term refinancing operations (LTRO) with a maturity of one year, which induced another surge in aggregate liquidity.

Table 1 reports descriptive statistics for our main variables during the pre-financial crisis period, the crisis period until full allotment, and the full-allotment period. All data are deflated with 2006 as the base year. During the financial crisis, central bank liquidity increased from €35 billion to €183 billion in the full-allotment period.

The average deposit has a maturity of 1.86 days (*Average Duration*), with an annual *Deposit Rate* of 226.7 bps and an *Average Notional Deposit Amount* of a transaction of €71 million (Table 1 reports the log amount to facilitate interpretation of the regression coefficients). The average deposit amount appears to be quite inelastic during our sample period. The *Deposit Spread* is defined as the deposit interest rate of a transaction minus the risk-free interest rate; we use the marginal deposit facility of the ECB as the excess reserves that the banks built up were arguably the next best alternative for banks compared to corporate deposits. The average *Deposit Spread* is 51.41 bps. We use the ECB main refinancing rate and the ECB

lending facility interest rate as alternative risk-free interest rates and show that all results are insensitive to the benchmark interest rate.

Table 1. Descriptive statistics

This table shows the descriptive statistics of variables for the January 2006 to June 2010 period. This period is also split into the financial crisis until the full allotment period from August 9, 2007 to October 7, 2008, and the full allotment period from October 8, 2008 until June 30, 2010. All variables are defined in Appendix A1. Further descriptive statistics are shown in Online Appendix B. The *Adjusted Liquidity in the Banking Sector* is shown without taking the logarithm before centering it. The *Deposit Rate* is reported in basis points (bps) per annum using an actual/360-day count convention. The *Deposit Spread* is calculated as the difference between the deposit rate and the ECB deposit facility rate.

	Total Period (2006:Q1–2010:Q2) 43 banks; 40,638 deposits; 2,632 loans			Crisis until Full Allotment (Aug. 9, 2007–Oct. 7, 2008) 35 banks; 12,078 deposits; 725 loans			Full Allotment Period (Oct. 8, 2008–2010:Q2) 40 banks; 20,104 deposits; 775 loans		
	Mean	St.Dev.	Median	Mean	St.Dev.	Median	Mean	St.Dev.	Median
CENTRAL BANK LIQUIDITY									
Adjusted Central Bank Liquidity (€ bn)	81.80	98.98	34.84	35.21	28.50	33.70	183.14	88.14	201.23
CORPORATE DEPOSITS									
Deposit Rate (bps)	226.70	162.88	274.00	398.46	21.00	399.00	81.15	94.19	29.00
Deposit Spread (bps)	51.41	50.36	58.00	93.29	19.16	98.00	4.16	20.80	0.00
log(Notional Deposit Amount)	17.15	1.62	17.37	17.20	1.71	17.50	17.14	1.50	17.19
Average Duration (days)	1.86	1.55	1.00	1.83	1.53	1.00	1.89	1.56	1.00
Bank Competition	0.10	0.02	0.10	0.10	0.02	0.10	0.10	0.02	0.09
LOAN CHARACTERISTICS									
All in Spread Drawn (bps)	183.45	145.66	175.00	160.40	128.66	125.00	306.52	148.86	300.00
Log(Maturity in Months)	3.83	0.64	4.09	3.71	0.72	4.09	3.64	0.55	3.58
Log(Facility Size)	19.76	1.28	19.81	20.01	1.36	20.18	19.74	1.08	19.78
Log(Number of Previous Loans of Borrower)	1.53	0.91	1.61	1.41	0.94	1.61	1.76	0.87	1.95
BANK CHARACTERISTICS									
Low Bank Risk CDS spread	49.59	34.40	50.00	61.95	30.40	58.00	71.32	27.46	68.00
High Bank Risk CDS spread	109.87	64.38	104.00	110.20	44.80	120.00	126.85	60.69	124.00
Total Assets (€ million)	13.28	0.74	13.29	13.33	0.70	13.31	13.30	0.80	13.29

Deposit rates and spreads decrease sharply between the pre-full-allotment and the full-allotment period. Loan spreads (*AISD*), on average, are 183 bps. The spreads increased substantially during the financial crisis. Loan maturities (*Maturity in Months*) and loan amounts (*Facility Size*), on the other hand, substantially shortened. The average loan matures in 54 months and is €799 million in size during our sample period.⁷

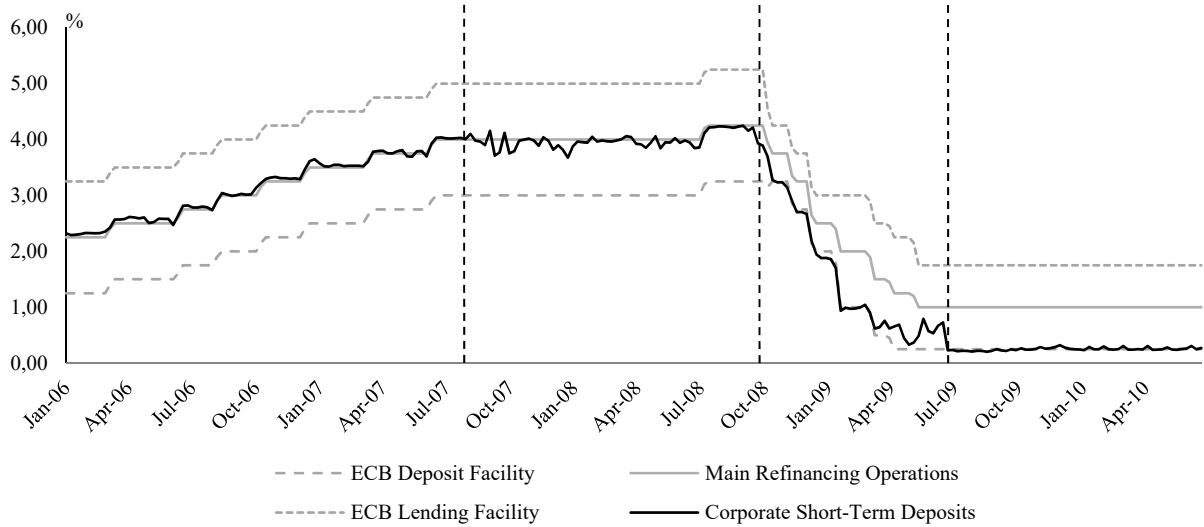
⁷ The total daily volume on the deposit platform is €3,080 million and the average daily volume of loans is €5,370 million, calculated using all trading days and including days with no observations as zeros.

4.3. Interest rates

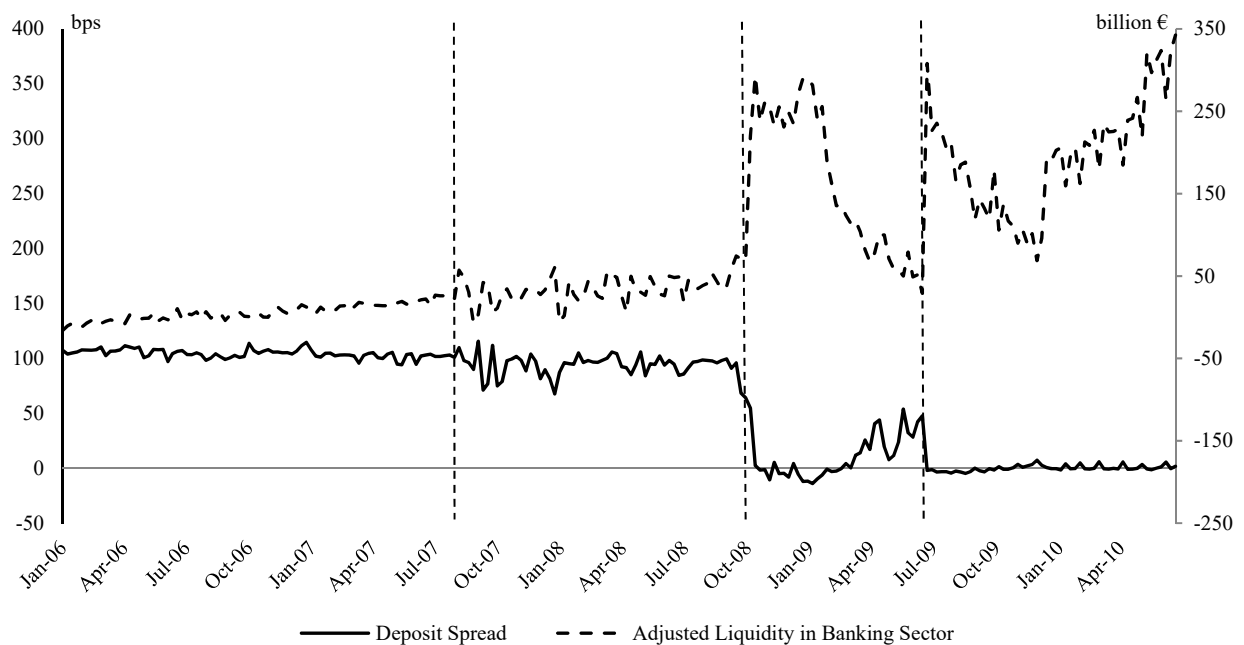
Figure 2. Short-term interest rates and central bank liquidity

Panel A of Figure 2 shows the development of the interest rates for the *ECB Deposit Facility*, the *ECB Main Refinancing Operations*, and the *ECB Marginal Lending Facility* aggregated to the weekly level, together with the average weekly *Corporate Short-Term Deposit Rate* in percent over the January 2006 to June 2010 period. Panel B illustrates the development of the *Deposit Spread* (solid line, in bps, axis on the left) and the *Adjusted Liquidity in the Banking Sector* (dashed line, € billion, axis on the right), both aggregated to the weekly level. The vertical dashed lines indicate (1) the start of the financial crisis in August 2007; (2) the start of the full allotment period in October 2008; and (3) the first longer-term refinancing operation (LTRO) with a maturity of one year as a fixed rate tender procedure with full allotment in June 2009. All variables are defined in Appendix A1.

Panel A: Short-term interest rates



Panel B: Central bank liquidity and deposit spread



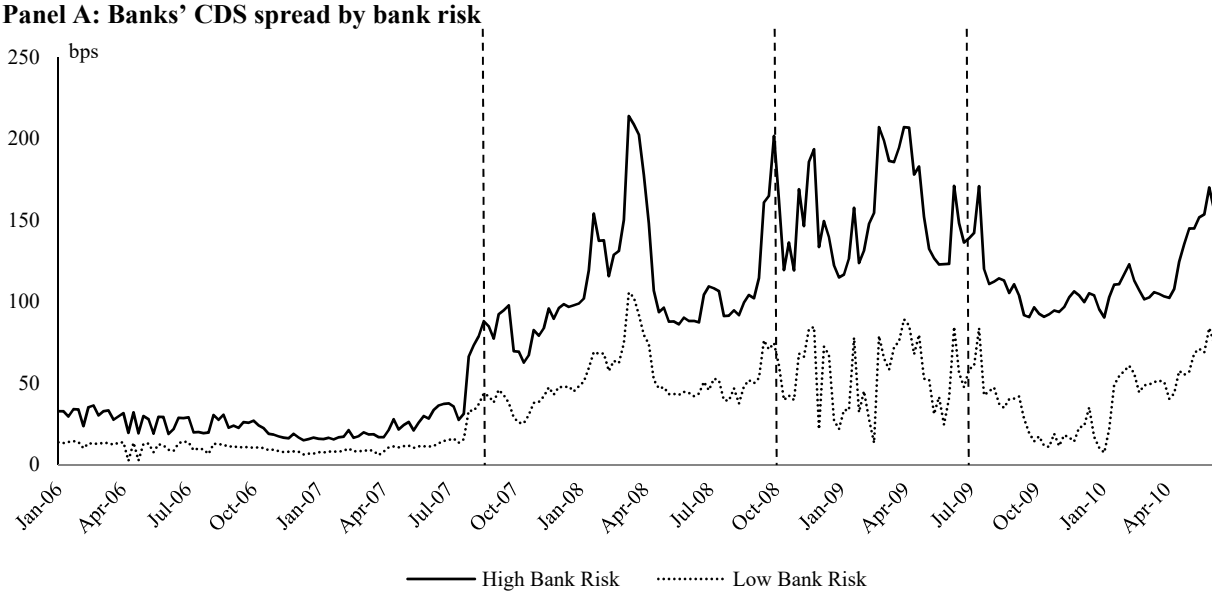
Panel A of Figure 2 depicts the development of the deposit facility, the marginal lending facility (MRO), and the short-term corporate deposit rates over the 2006 to mid-2010 period. Prior to

the financial crisis, the deposit rate was anchored to the MRO. The figure shows that a functioning interbank market, together with tender operations with limited allotment, allowed banks to actively manage their liquidity, as well as the ECB to steer corporate deposit rates close to the MRO.

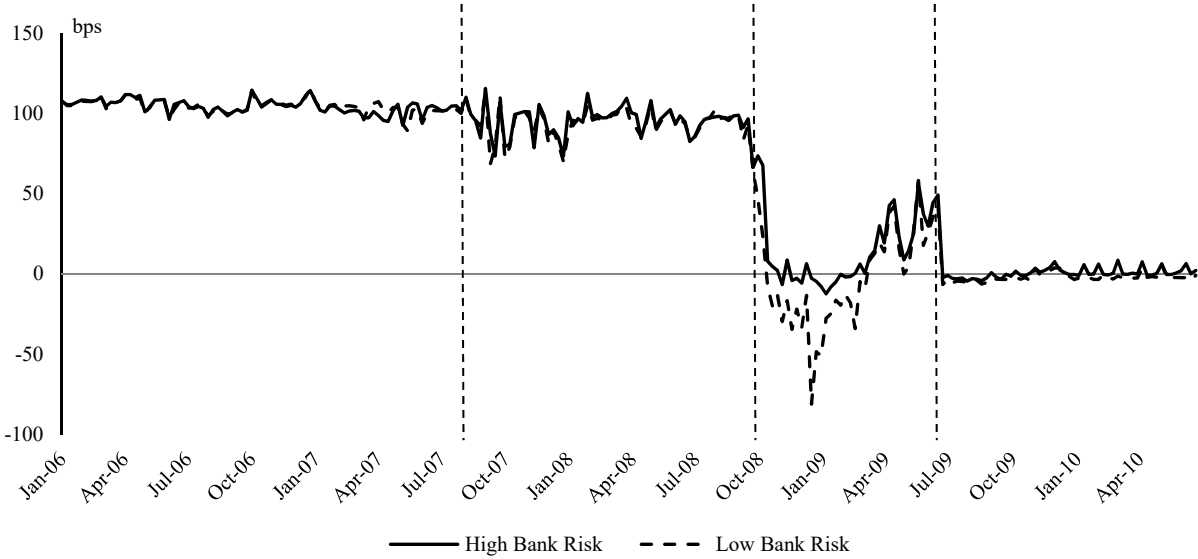
Although deposit rates became more volatile at the onset of the financial crisis, the corporate deposit rate remained close to the main refinancing rate. However, with the introduction of the ECB’s full-allotment policy, the deposit rate dropped sharply, moving more closely to the ECB deposit facility interest rate as a direct effect of excess liquidity in the banking system. Panel B of Figure 2 shows the strong negative relation between corporate deposit spreads and aggregate liquidity. Overall, Figure 2 provides the first evidence that monetary policy expansion lowers short-term corporate deposit spreads in financial crises—an effect difficult to identify in normal times.

Figure 3. Bank risk and deposit and loan spreads

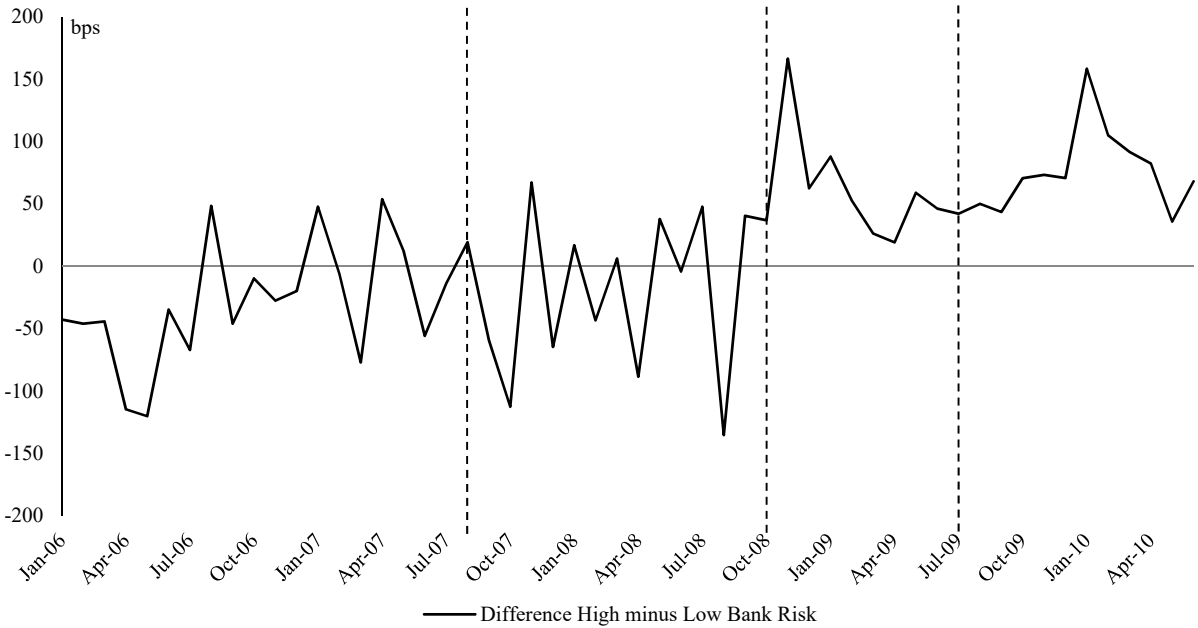
Figure 3 shows banks’ average five-year *CDS Spread* by bank risk category (Panel A), the *Deposit Spread* by bank risk category (Panel B), and the *Loan Spread* difference of borrowers on the intensive margin by bank risk category (Panel C) in basis points from January 2006 to June 2010. The vertical dashed lines indicate (1) the start of the financial crisis in August 2007; (2) the start of the full allotment period in October 2008; and (3) the first longer-term refinancing operation (LTRO) with a maturity of one year as a fixed rate tender procedure with full allotment in June 2009. All variables are defined in Appendix A1 and Online Appendix A.



Panel B: Deposit spread by bank risk



Panel C: Loan spread difference between low- and high-risk bank borrowers (intensive margin)



Panel A of Figure 3 shows the average CDS spread differential between high- and low-risk banks. CDS spreads strongly increased at the start of the financial crisis for high- and low-risk banks and remained at elevated levels, especially for high-risk banks, until June 2010. Prior to (after) the full allotment period around two thirds (half) of our sample banks are classified as low-risk banks. Panel B shows that deposit spreads decrease during the full-allotment period, particularly for the low-risk banks. Panel C shows that low-risk banks charge lower loan spreads

than high-risk banks in the full-allotment period, which suggests that the transmission of monetary policy to the loan market might be impaired.

5. Monetary policy and corporate deposits

5.1. Transmission of central bank liquidity to corporate deposit spreads

We first investigate how aggregate central bank liquidity affects corporate deposits using the following regression model:

$$\text{Deposit Spread}_{ijt_w} = \alpha_i + \alpha_{t_m} + \beta \text{Central Bank Liquidity}_{t_w} + \theta' Y_{jt_y-1} + \varepsilon_{ijt_w} \quad (1)$$

where the dependent variable is the average corporate deposit spread paid by bank j to firm i in week t_w (i.e. our data is at the bank-firm-week level) and the main inference variable is the contemporaneous weekly *Central Bank Liquidity* measure. Y is a set of bank and deposit characteristics that might determine deposit spreads. Among our bank characteristics are bank total assets as well as different proxies for bank size, capitalization, profitability, asset quality and liquidity.⁸ These variables enter our regression with a one-year lag. We also include the weekly notional deposit amount (*Log(Notional Deposit Amount)*) and a Herfindahl–Hirschman Index (HHI), calculated as the sum of the squared market share of each bank over the last week using deposit volume as a measure of bank competition. Market risk is measured using the three-month EURIBOR-EONIA swap spread. We include a firm fixed effect (α_i) to observe the time-series effect of ECB liquidity on deposit spreads. As the average level of deposit spreads (and ECB liquidity) vary substantially over time, we also include a time (year-month) fixed effect (α_{t_m}) such that the effect of ECB liquidity on deposit spreads is not moderated by the time effect. We analyze deposit transactions for the January 2, 2006 to June 30, 2010 period

⁸ These include a leverage ratio (as a proxy for capital adequacy), liquid assets over short-term funding, total deposits over total assets and net loans over customer deposits (as proxies for liquidity), net interest margin, cost-income-ratio and return on assets (as proxies for profitability), and non-performing loans over total loans (as a proxy for asset quality). We also include the natural logarithm of banks' total assets, asset growth, off-balance-sheet exposure over total assets, and net derivatives exposure over total assets as additional control variables. The variables are defined in Appendix A1.

(column (1) of Table 2) and differentiate (in columns (2) to (4) of Table 2) between the pre-financial crisis period (January 2, 2006 to August 8, 2007), the financial crisis until full-allotment period (August 9, 2007 to October 7, 2008), and the full-allotment period (October 8, 2008 to June 30, 2010). Standard errors are clustered at the bank and week level using the methods in Cameron, Gelbach and Miller (2011) and Thompson (2011). We estimate equation (1) using OLS; Table 2 reports the results.

Table 2. Transmission of monetary policy to deposits

Table 2 reports OLS regression results of *Deposit Spread* on *Aggregate Central Bank Liquidity*, bank risk, and other control variables using transaction data aggregated to the bank-firm-week level over different time periods. The regressions include *Log(Notional Deposit Amount)* as the logarithm of the total deposited amount of a firm with a bank over a week and *Central Bank Liquidity* as the average over this week. Further control variables are used with their average values using all transactions of a firm with a bank over a week. Bank accounting variables are used as stated in the annual report in the year prior to the transaction. The full specification is shown in an Online Appendix. *Central Bank Liquidity* is measured as the adjusted liquidity in the banking sector. *High Bank Risk* is a dummy variable defined using banks' CDS spreads and explained in detail in Online Appendix A. All variables are defined in Appendix A1. The statistical significance of results is indicated by * = 10% level, ** = 5% level and *** = 1% level using two-way clustered standard errors at the bank and at the week level using the method as proposed by Cameron, Gelbach, and Miller (2011) and Thompson (2011).

	Total Period (1)	Pre-Financial Crisis (2)	Crisis Until Full Allotment (3)	Full Allotment Period (4)
ECB Market Liquidity				
<i>Central Bank Liquidity</i>	-27.052***	4.426	-25.972***	-27.474***
<i>High Bank Risk</i>	0.621	0.193	1.193	2.974
<i>Log(Notional Deposit Amount)</i>	-0.773**	-1.050*	-0.410**	-1.638***
<i>Crisis Until Full Allotment</i>	1.534			
<i>Full Allotment Period</i>	-90.406***			
Control Variables	Yes	Yes	Yes	Yes
Firm FE	Yes	Yes	Yes	Yes
Time (month) FE	Yes	Yes	Yes	Yes
Observations	11,533	2,045	3,866	5,560
R-squared	0.933	0.374	0.341	0.604

The results in column (1) of Table 2 show that an increase in central bank liquidity results in lower corporate deposit spreads, but only during the financial crisis period (columns (2)–(4)). A one standard deviation increase in central bank liquidity reduces deposit spreads by about 3 bps in the financial crisis until the full-allotment period and by about 8 bps in the full-

allotment period.⁹ The coefficient of $\text{Log}(\text{Notional Deposit Amount})$ is negative and significant, particularly during the financial crisis period, i.e. if the weekly provision of deposits is higher, then the deposit spread is lower. The remaining control variables remain unreported for brevity but a full set of results is documented in Online Appendix C.

5.2. Transmission of monetary policy to high- versus low-risk banks

The results in the previous subsection are consistent with the interpretation that the ECB reduced the funding risk of banks during the financial crisis: a higher amount of central bank liquidity decreases corporate deposit spreads. In this subsection, we analyze possible differences in the transmission of central bank liquidity in the cross section for low- versus high-risk banks and augment equation (1) to estimate individual β 's for low- and high-risk banks.

$$\text{Deposit Spread}_{ijt_w} = a_{ij} + a_{jt_m} + a_{it_m} + \beta \text{Risk}_j \times \text{Central Bank Liquidity}_{t_w} + \theta^Y j_{t_y-1} + \varepsilon_{ijt_w} \quad (2)$$

We interact *Risk*, an indicator variable representing either *High Bank Risk* or *Low Bank Risk*, with *Central Bank Liquidity*, to investigate the effect of central bank liquidity during the financial crisis. In different specifications, we further include firm x year-month fixed effects (a_{it_m}), bank x year-month fixed effects (a_{jt_m}), and bank x firm fixed effects (a_{ij}). The model is estimated via OLS.

Our empirical approach provides an unbiased estimate of the effect of central bank liquidity on deposit spreads only if central bank liquidity is exogenously determined, which might be a strong assumption. Central bank liquidity might respond to the availability of interbank, corporate or retail deposits for banks. Moreover, other unobserved factors that differentially affect deposit spreads of high- versus low-risk banks might be correlated with the

⁹ The numbers are calculated by multiplying the coefficient with one standard deviation of central bank liquidity. The latter is 0.129 in the crisis period until full allotment and 0.275 in the full-allotment policy period.

ECB's supply of liquidity. For example, the ECB might increase liquidity in a situation in which we observe a flight-to-quality from depositors who shift deposits from high- to low-risk banks.¹⁰ Similarly, high-risk banks might have high-risk customers whose credit quality further deteriorates when economic conditions worsen, adversely affecting the risk of their respective bank; the latter, in turn, might need to increase deposit spreads even further to obtain funding. In these situations, our coefficients might be biased.

In a first step, we sequentially add control variables and fixed effects and compare the coefficient of our endogenous variable (*Central Bank Liquidity* \times *Risk*) across different specifications. Panel A of Table 3 reports the result for the crisis until the full-allotment period.

Column (1) shows the results without any control variables or fixed effects. We add bank risk \times time (year-month) fixed effects in column (2) to control for specific shocks to high- and low-risk banks in a given month that affect both central bank liquidity provision as well as deposit spreads and further include firm fixed effects, as firms might differentially price deposits for high- and low-risk banks. We add bank \times time (year-month) fixed effects in column (3) to account for the fact that shocks might occur not (only) at the bank-risk but also at the bank level. In column (4), we add firm \times time (year-month) and firm \times bank fixed effects, which proxy for the supply of deposits by firms and a possible match of firms with banks.¹¹

The coefficient of *Central Bank Liquidity* \times *Low Bank Risk* is negative and economically and statistically significant and even somewhat increases in magnitude across all specifications. The coefficient of *Central Bank Liquidity* \times *High Bank Risk* is insignificantly different from zero across all specifications. A Wald test under the null hypothesis that these coefficients are equivalent is rejected at the 1% significance level. In other words, we observe a differential effect of central bank liquidity on deposit spreads of high- versus low-risk banks

¹⁰ Strong banks might even bid strategically in central bank tenders (Fecht, Nyborg, and Rocholl, 2011; Cassola, Hortacsu, and Kastl, 2013) and deliberately under-provide lending to weaker banks (Acharya, Gromb, and Yorulmazer, 2012).

¹¹ We provide a formal test of matching of firms with banks in individual deposit auctions (i.e. on a transaction level) in Online Appendix D3.

in the financial crisis before the full-allotment period.

Table 3. Transmission of monetary policy to deposits for high- versus low-risk banks

This table reports the OLS regression results of the *Deposit Spread* of corporate deposits on *Central Bank Liquidity*, bank risk and further control variables aggregated to the bank-firm-week level. The regressions include *Log(Notional Deposit Amount)* as the logarithm of the total deposited amount of a firm with a bank over a week. The table shows the results of different regression specifications using data from the crisis until the full allotment period in Panel A and from the full allotment period in Panel B. *Central Bank Liquidity* is measured as the adjusted liquidity in the banking sector. *High Bank Risk* is a dummy variable defined using banks' CDS spreads and explained in detail in Online Appendix A. All variables are defined in Appendix A1. All specifications include the same control variables as in Table 2. The statistical significance of results is indicated by * = 10% level, ** = 5% level and *** = 1% level using two-way clustered standard errors at the bank and at the week level using the method as proposed by Cameron, Gelbach and Miller (2011) and Thompson (2011).

Panel A. Crisis until full allotment period

	No Control Variables (1)	Bank Risk × Time FE (2)	Bank × Time FE (3)	Firm × Time and Firm × Bank FE (4)
ECB Market Liquidity				
<i>Central Bank Liquidity</i> × <i>High Bank Risk</i>	-18.837	-7.804	-9.219	-6.425
<i>Central Bank Liquidity</i> × <i>Low Bank Risk</i>	-25.041**	-30.979***	-31.129***	-32.151***
<i>Log(Notional Deposit Amount)</i>		-0.499*	-0.208*	-0.201**
Control Variables	No	Yes	Yes	Yes
Bank Risk × Time (month) FE	No	Yes	No	No
Bank × Time (month) FE	No	No	Yes	Yes
Firm FE	No	Yes	Yes	No
Firm × Time (month) FE	No	No	No	Yes
Firm × Bank FE	No	No	No	Yes
Wald Test of Interaction Terms	0.0547	0.0021	0.0046	0.0022
Observations	4,079	3,866	3,866	3,692
R-squared	0.037	0.355	0.441	0.550

Panel B. Full allotment period

	No Control Variables (1)	Bank Risk × Time FE (2)	Bank × Time FE (3)	Firm × Time and Firm × Bank FE (4)
ECB Market Liquidity				
<i>Central Bank Liquidity</i> × <i>High Bank Risk</i>	-31.497***	-27.721***	-27.000***	-26.792***
<i>Central Bank Liquidity</i> × <i>Low Bank Risk</i>	-39.347***	-25.773***	-28.483***	-31.483***
<i>Log(Notional Deposit Amount)</i>		-1.628**	-0.798**	-0.722***
Control Variables	No	Yes	Yes	Yes
Bank Risk × Time (month) FE	No	Yes	No	No
Bank × Time (month) FE	No	No	Yes	Yes
Firm FE	No	Yes	Yes	No
Firm × Time (month) FE	No	No	No	Yes
Firm × Bank FE	No	No	No	Yes
Wald Test of Interaction Terms	0.1846	0.6242	0.6063	0.2257
Observations	6,239	5,560	5,560	5,297
R-squared	0.224	0.614	0.784	0.833

In Panel B of Table 3 we repeat these tests for observations during the full-allotment

period. In the specification without any control variables, we show that central bank liquidity reduces deposit spreads for both high- and low-risk banks (and the coefficients are insignificantly different). This result extends to all specifications. Notably, central bank liquidity alone explains about 22% of the variation in corporate deposit spreads. We then add our different fixed effects as described above. The change of the coefficient of our interaction terms is small across specifications and the adjusted R^2 already increases to 0.83 when saturating the model. That is, any effect of unobservable factors that we cannot control for has to be large per (remaining) R^2 to reduce the coefficient to zero (Altonji et al., 2005; Oster, 2019).

What explains the differential transmission of aggregate liquidity on deposit spreads before the ECB implemented the full-allotment framework, and what changed afterwards? At the beginning of the financial crisis, credit market shocks transmitted into funding markets that became increasingly stressed. Banks started hoarding liquidity as a precautionary measure to ensure the availability of liquidity for day-to-day operations (Heider et al., 2015). Aggregate liquidity, in turn, was insufficiently distributed in the interbank market. At that time, the ECB only allocated enough aggregate liquidity for banks to fulfill their reserve requirements. Our deposit spread differential evidence suggests that central bank liquidity during this phase was insufficient to reduce funding risk of both low- and high-risk banks.¹² High-risk banks needed to pay substantially higher deposit spreads to compensate depositors and attract funds. The differential effect of ECB liquidity on deposit spreads dissipated after the ECB stepped in as a LOLR and introduced its full-allotment policy, allotting liquidity as requested by European banks in full.¹³

¹² The Bank for International Settlements (BIS) even reports that borrowing from a central bank might have been a stigma elevating funding problems of high-risk banks even further.

¹³ Our results do not imply a reduction in market discipline due to ECB liquidity provision. In unreported tests, we show that the deposit spread differential between high- and low-risk bank does not change when liquidity increases. Overall, the evidence shown in this paper suggests that the deposit market is not characterized by market discipline and that bank risk is not priced in corporate deposits.

5.3. Tracing out corporate deposit demand

Our approach so far does not allow us to clearly isolate the effect of central bank liquidity on banks' *demand* for corporate deposits. We next use a system of three equations to trace out the deposit demand curve, which requires instruments that shift central bank liquidity as well instruments that shift the corporate supply of deposits that are orthogonal to banks' demand for deposits. In all specifications, the unit of observations is a bank-firm-week. All specifications use the same set of control variables as in column (4) of Table 3, and we add shifters for central bank liquidity and firms' supply of deposits to estimate the coefficients of the deposit demand equation. We describe the provision of central bank liquidity in equation (3):

$$\begin{aligned} \text{Central Bank Liquidity}_{ijt_w} = & a_{ij} + a_{jt_y} + a_{it_y} + \beta' X_{t_w} \\ & + \delta \text{End of Reserve Maintenance Period}_{t_w} + \theta' Y_{jt_{y-1}} + \varepsilon_{ijt_w} \end{aligned} \quad (3)$$

End of Reserve Maintenance Period is our instrument to shift central bank liquidity. During the full-allotment period, the ECB provides the amount of liquidity as requested by banks. Banks know the start and end date of each maintenance period and a bank's reserve requirement is determined as an average over this period, which is usually one month. Furthermore, at the height of a financial crisis, banks either demand liquidity or, if they have already fulfilled their reserve requirements, hoard liquidity (Acharya and Merrouche, 2013). The identifying assumption is that demand for central bank liquidity at the end of the maintenance period is determined by a bank's reserve requirement, which is unrelated to deposit spreads. In other words, *End of Reserve Maintenance Period* is defined as the week in which the maintenance period ends.

X is a vector of funding sources: interbank lending, retail and corporate deposits. Similar to central bank liquidity, we use the log of the notional amounts, centered around their 2006 means. We obtain the data from the ECB website for interbank and retail deposits and use the weekly total volume of deposits traded on the platform as our measure for corporate

deposits.¹⁴ The ECB provides aggregate data on retail and interbank funds on a monthly basis.

Equation (4) estimates firms' supply of deposits:

$$\begin{aligned} \text{Log}(\text{Notional Deposit Amount})_{ijt_w} = & a_{ij} + a_{jt_y} + a_{it_y} + \beta \text{Risk}_j \times \widehat{\text{Central Bank Liquidity}}_{t_w} \\ & + \delta \text{Excess Cash}_{t_q} + \gamma \text{Deposit Spread}_{ijt_w} + \theta' Y_{jt_y-1} + \varepsilon_{ijt_w} \end{aligned} \quad (4)$$

where *Excess Cash* is a continuous measure of firms' aggregate quarterly excess cash holdings. Ideally, we need an exogenous shock to a firm's cash holdings (e.g. a tax refund). We do not know the identities of firms or their industries in our sample. We thus require a time-varying shock to aggregate cash holdings to firms that is orthogonal to banks' demand for deposits. As an alternative identification strategy, we incorporate excess cash holdings as an instrument. The identifying assumption is that firms' aggregate excess cash holdings, which are measured quarterly across all EU firms using variation across time, industries and countries, are orthogonal to banks' demand for deposits. We derive this measure formally in Appendix 4.¹⁵

With equation (5), we identify banks' demand for corporate deposits:

$$\begin{aligned} \text{Deposit Spread}_{ijt_w} \\ = & a_{ij} + a_{jt_y} + a_{it_y} + \beta \text{Risk}_j \times \widehat{\text{Central Bank Liquidity}}_{t_w} \\ & + \gamma \text{Log}(\widehat{\text{Notional Deposit Amount}})_{ijt_w} + \theta' Y_{jt_y-1} + \varepsilon_{ijt_w} \end{aligned} \quad (5)$$

The instruments that shift central bank liquidity and the supply of deposits allow us to estimate the parameters of the demand curve. We estimate a system of equations via GMM with observations in the full-allotment period similar to Röller and Waverman (2001) to impose

¹⁴ In unreported robustness tests, we also use the volume of corporate deposits from the ECB. The results are very comparable.

¹⁵ We also construct an indicator variable that is 1 if excess cash exceeds a long-run mean. As a third instrument, we use an indicator variable *Fourth Quarter of the Year* that is 1 in the last three months of each year. Firms might be more likely to deposit additional funds during periods that include several public holidays instead of, for example, keeping them as cash for operational purposes. All tests using the different instruments give similar results. We also estimate the system of equations using transaction-level data and a dummy variable for Friday as an instrument. We provide all results in Online Appendix D4.

more structure on our data. We thereby account for simultaneity between deposit spreads, deposit amount and central bank liquidity and are able to trace out the deposit demand function. This approach is more efficient than 2SLS (e.g. Cornwell et al., 1992; or Ashenfelter and Rouse, 1998). However, others have voiced concern with this approach given potential finite-sample problems of GMM (e.g. Tauchen, 1986; Kocherlakota, 1990; or Hansen et al., 1996). We thus compare the coefficients from this model with the OLS estimates from Table 3 when interpreting our results.

Table 4. Tracing out corporate deposit demand

This table reports results to address possible endogeneity concerns associated with the transmission of ECB liquidity to deposit spreads during the full allotment period. It shows the results of an estimation of a system of equations using GMM including aggregate data at the bank-firm-week level. *End of Maintenance Period* is a dummy variable which is 1 in the last week of a reserve maintenance period. *Excess Cash* is a continuous measure of firms' aggregate quarterly excess cash holdings. *Central Bank Liquidity* is measured as the adjusted liquidity in the banking sector. *High Bank Risk* is a dummy variable defined using banks' CDS spreads and explained in detail in Online Appendix A. All variables are defined in Appendix A1. System identification is tested following Baum, Schaffer, and Stillman (2007). The statistical significance of results is indicated by * = 10% level, ** = 5% level and *** = 1% level using standard errors clustered at the bank-week level.

	Central Bank Liquidity (1)	Deposit Supply Log(Notional Deposit Amount) (2)	Deposit Demand Deposit Spread (3)
<i>End of Maintenance Period</i>	-0.836***		
<i>Excess Cash</i>		0.086***	
ECB Market Liquidity			
<i>Central Bank Liquidity</i> × <i>High Bank Risk</i>		0.140**	-26.201**
<i>Central Bank Liquidity</i> × <i>Low Bank Risk</i>		0.169***	-29.920***
<i>High Bank Risk</i>		-0.089	-2.290
<i>Deposit Spread</i>		0.019***	
<i>log(Notional Deposit Amount)</i>			-0.655***
<i>Interbank Deposits</i>	-3.277***		
<i>Retail Deposits</i>	12.961***		
<i>Corporate Deposits</i>	0.150***		
Control Variables	Yes	Yes	Yes
Bank × Time (year) FE	Yes	Yes	Yes
Firm × Time (year) FE	Yes	Yes	Yes
Bank × Firm FE	Yes	Yes	Yes
Wald Test of Interaction Terms			0.353
Observations	5,297	5,297	5,297
R-squared	0.916	0.423	0.842
System identification	Yes	Yes	Yes
J-statistic p-val.	0.883		

Column (1) of Table 4 shows the results from equation (3). The coefficient of the instrument is negative and significant. ECB liquidity is lower at the end of the maintenance period, suggesting that banks have, on average, already fulfilled their reserve requirements in

the last week of the maintenance period and require less central bank liquidity. Central bank liquidity is negatively related to interbank lending, but positively related to retail and corporate deposits. A possible explanation is the stress in interbank markets as well as the flight of retail and corporate customers to (supposedly safe) liquidity, after numerous interventions in the banking sector.

Column (2) shows the results from equation (4) and provides coefficient estimates of the supply curve for corporate deposits during the full-allotment period. The coefficient of our instrument (*Excess Cash*) is, as expected, positive and significant. Firms have more cash to deposit in quarters where firms, on average, hold more excess cash. Consistent with our results in column (1), central bank liquidity (for both high- and low-risk banks) is positively correlated with the supply of corporate deposits. The coefficient of *Deposit Spread* is also positive and significant showing that—holding everything else constant—firms supply more deposits if banks are willing to pay higher spreads. In other words, liquidity-constrained banks can access more corporate deposit funding by offering higher spreads. This is an important result as it highlights the importance of the corporate deposit market for banks, even in the full-allotment period. The magnitude of the coefficient, however, is small suggesting that the supply of corporate deposits is relatively inelastic with respect to the deposit spread.

The third column provides coefficient estimates of the deposit demand curve. The coefficient of *Log(Notional Deposit Amount)* is negative with respect to deposit spreads. That is, if the weekly provision of deposits is higher, then the marginal utility of having deposits is lower, which decreases its opportunity cost, i.e. the deposit spread. The coefficient is both statistically and economically meaningful. A one standard deviation increase in *Log(Notional Deposit Amount)* decreases deposit spreads by about 1 bps ($= -0.655 \times 1.5$), which is 5% of the standard deviation of deposits spreads (and a quarter of the average deposit spread during this period).

The coefficients of the interaction terms of central bank liquidity and high and low bank

risk are negative and significant but there is no differential effect of central bank liquidity of high- versus low-risk banks on deposit spreads as the Wald test suggests. That is, an increase in central bank liquidity shifts the deposit demand curve inwards and both high- and low-risk banks are only willing to pay less for corporate deposits, all else equal. The coefficient estimates are (in absolute terms) somewhat lower compared to our OLS estimates. A one standard deviation increase in central bank liquidity reduces deposit spreads by about 6 bps. However, the coefficient estimates between both specifications are still close and they are both consistent with the same narrative: the central bank provides sufficient liquidity that it reduces the equilibrium price for corporate deposits. That is, monetary policy transmits through a demand channel, reducing deposit spreads for depositors of both high- and low-risk banks.

6. Monetary policy and corporate loans

To investigate whether the transmission channel of monetary policy to the corporate loan market is impaired, we analyze whether low- and high-risk banks pass along their lower funding costs to their corporate clients during the full-allotment period. We match banks from the corporate deposit data set to banks in DealScan and compare their lending and deposit-taking behavior.

6.1. Transmission of central bank liquidity to corporate loan spreads by bank risk

We first investigate the impact of central bank liquidity on corporate loan spreads using an empirical set-up that is comparable to our prior analysis of corporate deposit rates in Section 5. We use an average of the ECB liquidity over a three-month period prior to loan origination as a measure of central bank liquidity.¹⁶ We control for different borrower characteristics that have been shown to affect loan pricing such as total assets, leverage, current ratio, interest coverage, market-to-book ratio and the percentage of tangible assets relative to total assets. We also include bank-specific controls (such as total assets, asset growth, leverage, return on assets and

¹⁶ Loan negotiations take time to unfold before the loan contract is signed. Alternatively, we also use the average of central bank liquidity over the week and the month prior to loan origination. The results do not change and are unreported for brevity.

non-performing loans). Bank and borrower characteristics are lagged by one year. Additionally, we control—at the transaction level—for loan size and maturity, the number of previous loans of the borrower, whether the loan is secured and contains a performance pricing grid, and market risk (three-month EURIBOR-EONIA swap spread). To improve our estimates and address the possible endogeneity of central bank liquidity to the business cycle, we further include (at quarterly frequency) GDP growth in the eurozone, the Composite Indicator of Systemic Stress (CISS) and the main refinancing rate (which we refer to combined as “Macro Environment” in the tables). All variables are described in detail in Appendix A1 but remain unreported for brevity. All models also include loan purpose, loan type, borrower industry, borrower rating and loan currency fixed effects. Standard errors are clustered at the borrower level. We use the following regression specification:

$$AISD_{ijk} = a_{Risk_j t_y} + \beta Risk_j \times Central\ Bank\ Liquidity_{t_{q-1}} + \theta' Y_{jt-1} + \varepsilon_{ijk} \quad (6)$$

where the dependent variable is the all-in-spread-drawn (*AISD*) of loan *k* from bank *j* to firm *i* (i.e. our unit of observation is the loan transaction). We interact *Risk_j*, an indicator variable representing either *High Bank Risk* or *Low Bank Risk*, with *Central Bank Liquidity* to investigate the effect of average central bank liquidity over the previous quarter on loan spreads. *Y_{jt-1}* is a vector of lagged bank, firm and loan characteristics as well as other controls described above. *a_{Risk_jt_y}* are bank-risk x year fixed effects to control for effects on loan spreads that are specific to either high- or low-risk banks and that might vary annually. Table 5 shows the results of pooled OLS regressions using the *AISD* as the dependent variable during the financial crisis period.¹⁷

¹⁷ We do not report the results for the pre-crisis period as we focus on monetary policy during the financial crisis. In the pre-crisis period, we do not find a statistically or economically significant effect of central bank liquidity on loan spreads for neither the low- nor high-risk banks.

Table 5. The transmission of central bank liquidity to loan spreads

This table reports OLS regression results of syndicated loan spreads on *Central Bank Liquidity*, bank risk, and additional control variables. It shows six different regression specifications over different time periods. *Central Bank Liquidity* is measured as the average over the quarter prior to loan origination of the adjusted liquidity in the banking sector. *High Bank Risk* is a dummy variable defined using banks' CDS spreads and explained in detail in Online Appendix A. All variables are defined in Appendix A1. Bank and borrower accounting variables are used as stated in the annual report in the year prior to the transaction. The full specification in Panel B is shown in Online Appendix F. Standard errors are clustered at the firm and at the week level using the method as proposed by Cameron, Gelbach and Miller (2011) and Thompson (2011). The statistical significance of results is indicated by * = 10% level, ** = 5% level and *** = 1% level.

Panel A. Baseline regression without control variables

	Financial Crisis Period		Crisis Until Full Allotment		Full Allotment Period	
	(1)	(2)	(3)	(4)	(5)	(6)
<i>Central Bank Liquidity</i>	-47.779***		87.831		-155.224*	
<i>Central Bank Liquidity</i> × <i>High Bank Risk</i>		-21.138		97.574		-83.411
<i>Central Bank Liquidity</i> × <i>Low Bank Risk</i>		-87.297*		67.598		-184.770**
Bank Risk						
<i>High Bank Risk</i>	26.405	26.251	7.914	76.079	23.735	-27.915
Borrower Characteristics	No	No	No	No	No	No
Bank Characteristics	No	No	No	No	No	No
Further Control Variables	No	No	No	No	No	No
Wald Test of Interaction Terms		0.0837		0.541		0.0396
Observations	1,156	1,156	533	533	623	623
R-squared	0.160	0.161	0.053	0.054	0.029	0.037

Panel B. With control variables

	Financial Crisis Period		Crisis Until Full Allotment		Full Allotment Period	
	(1)	(2)	(3)	(4)	(5)	(6)
<i>Central Bank Liquidity</i>	-102.007**		-67.633		-82.160	
<i>Central Bank Liquidity</i> × <i>High Bank Risk</i>		-76.103		-63.068		-49.064
<i>Central Bank Liquidity</i> × <i>Low Bank Risk</i>		-150.996***		-75.281		-164.009***
Bank Risk						
<i>High Bank Risk</i>	26.321	46.224***	38.035***	67.459	12.649	-21.910
Borrower Characteristics	Yes	Yes	Yes	Yes	Yes	Yes
Bank Characteristics	Yes	Yes	Yes	Yes	Yes	Yes
Loan Characteristics	Yes	Yes	Yes	Yes	Yes	Yes
Macro Environment	Yes	Yes	Yes	Yes	Yes	Yes
Bank Risk × Time (year) FE	Yes	Yes	Yes	Yes	Yes	Yes
Borrower Rating FE	Yes	Yes	Yes	Yes	Yes	Yes
Borrower Industry Code FE	Yes	Yes	Yes	Yes	Yes	Yes
Loan Type, Purpose, Currency FE	Yes	Yes	Yes	Yes	Yes	Yes
Wald Test of Interaction Terms		0.0115		0.2557		0.0123
Observations	1,156	1,156	533	533	623	623
R-squared	0.755	0.756	0.824	0.824	0.733	0.735

Panel A (Panel B) of Table 5 shows the results without (with) control variables and fixed effects. Comparing the coefficients with and without control variables and the respective impact

on the R^2 helps to further address endogeneity concerns that monetary conditions might bias our point estimates, particularly during the full-allotment period, when liquidity conditions were improved by the ECB. Unobserved factors that increase loan spreads could be positively correlated with the ECB's supply of liquidity, suggesting that we might overestimate the effect from the liquidity provision (Altonji et al., 2005; Oster, 2019). Standard errors are clustered at the firm and at the week level using the methods in Cameron, Gelbach and Miller (2011) and Thompson (2011).

The results in column (1) of both Panel A and Panel B of Table 5 show that an increase in central bank liquidity reduces loan spreads. Again, we find a differential effect for high-versus low-risk banks (column (2)): while low-risk banks reduce loan spreads, the interaction term with high-risk banks does not enter significantly into the regression. When we split the overall sample into the financial crisis until the full-allotment period and the full-allotment period, we find that an increase in central bank liquidity reduces loan spreads only when loans are issued by low-risk banks, but not by high-risk banks in the full-allotment period (columns (3)–(6)).

Comparing the coefficients in Panel A and Panel B of Table 5 shows that our point estimate during the financial crisis period even decreases when we include control variables and fixed effects (column (1)). During the full-allotment period, the coefficient somewhat increases to -164 bps (column (6)) but remains both economically and statistically highly significant. That is, loan spreads decrease by 27 bps when central bank liquidity increases by one standard deviation ($= -164 \times 0.166$). These estimates are thus likely in the upper bounds of the true effect of central bank liquidity on loan spreads. Importantly, the adjusted R^2 increases from 0.04 to 0.74 in Column (6), i.e. any effect of an unobservable factor per (remaining) R^2 has to be even larger (Altonji et al. 2005; Oster, 2019) such that the effect of central bank liquidity becomes zero.

Overall, and as our introductory quote suggests, monetary policy transmission during

periods of unconventional and expansive monetary policy depends on the stability of the banking system: monetary policy might not transmit to the real sector if there are substantial differences in bank balance-sheet strength across the euro area.¹⁸

6.2. Intensive versus extensive margin

6.2.1. Heckman selection model

A possible concern with our results might be that poorly capitalized banks charge higher interest rates due to a matching of weak borrowers with weak banks during the full-allotment period. We thus investigate the loan spreads of borrowers who borrow from the same group of either low- or high-risk banks before and after the full-allotment period (intensive margin), as well as the likelihood that firms switch to a new group of lenders during the full-allotment period (extensive margin).

We regress an indicator variable, which is 1 if the borrower does not switch between risk groups and 0 otherwise, on borrower, bank, and other control variables as explained above. If firms and banks match only on quality, we would expect bank risk and other bank characteristics to be different between borrowers who switch or do not switch banks. We use an OLS, a probit, and a logit model without fixed effects, as well as an OLS model with bank, time, bank risk-time, borrower industry and rating, and loan type, loan purpose, and loan currency fixed effects.

The results in Panel A of Table 6 shows that bank characteristics and bank risk are not correlated with the firms' decisions to switch between bank risk groups. Neither our bank risk indicator variable nor any of the banks' characteristics are usually statistically significant.

We next investigate the effect of central bank liquidity on the loan spreads of borrowers who do not switch between bank risk groups before and during the full-allotment period. Column (1) of Panel B of Table 6 shows a pooled OLS regression model, while column (2)

¹⁸ We focus on differences between the health of lead arrangers to gain an understanding of the transmission of monetary policy. In unreported tests, we show that the presence of better capitalized banks in a lending syndicate where the lead bank is weak somewhat increases the pass-through of monetary policy.

Table 6. Intensive and Extensive Margin

Panel A reports regression results where the dependent variable is an indicator variable that is 1 if a borrower has received a loan from the same bank risk category prior and during the full allotment period (intensive margin). All variables are defined in Appendix A1 and Online Appendix A. The borrower variables are Log(total assets), leverage, current ratio, coverage, market-to-book, and tangibility. The control variables are Log(maturity in months), secured, Log(facility size), Log(number of loans of borrower), performance pricing, the three-month EURIBOR–EONIA swap spread, quarterly EU GDP growth (%), the CISS, and the main refinancing rate. Standard errors are heteroscedasticity-robust and clustered at the firm level. Panel B reports OLS regression results of *AISD* on *Central Bank Liquidity*, bank risk, and control variables focusing on borrowing along the intensive margin (Column (1)). Column (2) shows the second stage of a Heckman regression model using Column (3) of Panel A as the first stage. The statistical significance of results is indicated by * = 10% level, ** = 5% level and *** = 1% level. In Column (1), standard errors are clustered at the firm level. In Column (2), standard errors are derived using resampling via the jackknife method and clustered at the firm level.

Panel A. Probability to observe a loan of an existing borrower of bank risk category (intensive margin)

Estimation Method	(1) OLS	(2) Logit	(3) Probit	(4) OLS
Bank Risk				
<i>High Bank Risk</i>	-0.124	-0.632	-0.294	0.092
Bank Accounting Variables				
<i>Log(Total Assets)</i>	-0.014	-0.107	-0.051	-0.367
<i>Leverage</i>	0.012	0.045	0.038	-0.027
<i>Return on Assets</i>	0.015	0.096	0.071	0.006
<i>Total Asset Growth</i>	0.001	0.002	0.001	0.002
<i>Non-performing Loans/Total Loans</i>	-0.035	-0.112	-0.075	0.034
Borrower Characteristics	Yes	Yes	Yes	Yes
Further Control Variables	Yes	Yes	Yes	Yes
Bank Risk × Time FE (year)	No	No	No	Yes
Borrower Rating FE	No	No	No	Yes
Borrower Industry Code FE	No	No	No	Yes
Loan Type, Purpose, Currency FE	No	No	No	Yes
Observations	754	754	754	623
Clustering (Firm)	No	No	No	Yes
R-squared / Pseudo R-squared	0.215	0.175	0.178	0.554

Panel B. Heckman selection model

	(1) OLS	(2) Heckman Model
<i>Central Bank Liquidity</i> × <i>High Bank Risk</i>	-154.405	-197.942
<i>Central Bank Liquidity</i> × <i>Low Bank Risk</i>	-258.384**	-315.840**
Bank Risk × Time FE (year)	Yes	Yes
Borrower Rating FE	Yes	Yes
Borrower Industry Code FE	Yes	Yes
Loan Type, Purpose, Currency FE	Yes	Yes
Observations (for (2): Uncensored / Censored / Total)	272	272 / 422 / 694
Observations—Borrow Only From High Bank Risk Prior to Full Allotment	58	58
Observations—Borrow Only From Low Bank Risk Prior to Full Allotment	13	13
Observations—Borrow From Both Bank Risk Categories Prior to Full Allotment	201	201
Wald Test of Interaction Terms	0.0252	0.0247
R-squared	0.776	

reports the results of a Heckman selection model using the model employed for the results in column (3) of Panel A of Table 6 as the first stage. The regression results confirm our earlier results. In both models, an increase in central bank liquidity translates into lower loan spreads

for borrowers of low-risk banks also when we account for borrower–lender matching. The coefficient for high-risk banks is insignificant in both specifications. The Wald test, under the null hypothesis that the coefficients of the interaction terms are identical, can be rejected at the 5% level in both models. Thus, an increase in central bank liquidity reduces the loan spreads of the borrowers of low-risk banks more, relative to high-risk banks in the full-allotment period.

6.2.2. Propensity score matching

To ensure that these results are not driven by differences in borrower risk between high- and low-risk banks, we use different propensity score matching (PSM) models: nearest neighbor matching with 10, 50, and 100 neighbors and kernel matching using both the Gaussian and the Epanechnikov kernel.¹⁹ We restrict the match of neighbors for the nearest neighbor matching to a caliper of 0.1 and for the kernel matching to a bandwidth of 0.01 and use bootstrapped standard errors.

Table 7. Central bank liquidity and loan spreads: Robustness

This table reports regression results of borrowers along the intensive margin in the full allotment period. Panel A shows results from propensity score matching using a nearest neighbor estimator with 10, 50, and 100 nearest neighbors all with a caliper of 0.1 together with a Gaussian and an Epanechnikov kernel estimator, both with a bandwidth of 0.01. The propensity score is estimated using a logit regression model and borrowers are matched on the odds ratio. Standard errors are reported in parentheses using 50 bootstrap replications. Panel B reports OLS regressions of the *AISD* of matched borrowers on *Central Bank Liquidity* interacted with *High Bank Risk* or *Low Bank Risk*. Columns (1) and (2) show the results using the nearest neighbor matching ($n=1$). Columns (3) and (4) report the results using kernel matching within a bandwidth of 0.1. The regressions include the same bank control variables as in Panel B of Table 5. Panel C uses the specification from Panel B of Table 5 during the full allotment period and additionally includes interactions between *Central Bank Liquidity*, bank risk category, and borrower characteristics which might especially be related to monetary policy. As shown in Online Appendix G, these are borrower *Total Assets*, *Leverage*, and *Current Ratio*. All variables are explained in Appendix A1. Standard errors are clustered at the firm and at the week level using the method as proposed by Cameron, Gelbach and Miller (2011) and Thompson (2011). The statistical significance of results is indicated by * = 10% level, ** = 5% level and *** = 1% level.

Panel A: Propensity score matching

	Estimation Method	Intensive Margin
High Bank Risk	Nearest Neighbor ($n=10$)	121.385***
High Bank Risk	Nearest Neighbor ($n=50$)	121.277***
High Bank Risk	Nearest Neighbor ($n=100$)	121.277***
High Bank Risk	Gaussian Kernel	99.725**
High Bank Risk	Epanechnikov Kernel	99.725***

¹⁹ We match borrowers in the full-allotment period based on total assets, leverage, current ratio, coverage, market-to-book ratio, tangibility, year, borrower industry code, borrower rating, loan type, loan purpose, loan currency, loan maturity, secured, loan amount, performance pricing, and the number of previous loans.

Panel B: Loan spread—intensive margin—matched borrowers

Matching Method	(1)	(2)	(3)	(4)
	Nearest Neighbor Matching		Kernel Matching	
<i>Central Bank Liquidity</i> × <i>High Bank Risk</i>	-39.895*	40.897	-166.558	-133.954
<i>Central Bank Liquidity</i> × <i>Low Bank Risk</i>	-121.089***	-155.680**	-212.002**	-214.211**
<i>High Bank Risk</i>	-10.182	-70.065	-16.043	-78.054
Bank Control Variables	No	Yes	No	Yes
Observations	264	264	358	358
Wald Test of Interaction Terms	0.0175	0.0489	0.0982	0.0527
R-squared	0.0995	0.1644	0.1005	0.1483

Panel C: Central bank liquidity interacted with borrower characteristics

Variable	Total Assets, Leverage, Current Ratio	Borrower Rating
	(1)	(2)
<i>Central Bank Liquidity</i>		
(1) <i>Central Bank Liquidity</i> × <i>High Bank Risk</i>	60.226	46.672
(2) <i>Central Bank Liquidity</i> × <i>Low Bank Risk</i>	-291.027**	-164.815***
<i>Central Bank Liquidity</i> × <i>High Bank Risk</i> × <i>Variable</i>	Yes	Yes
<i>Central Bank Liquidity</i> × <i>Low Bank Risk</i> × <i>Variable</i>	Yes	Yes
Further Controls	Yes	Yes
Bank Risk × Time FE (year)	Yes	Yes
Borrower Rating FE	Yes	Yes
Borrower Industry Code FE	Yes	Yes
Loan Type, Purpose, Currency FE	Yes	Yes
Clustering (Firm)	Yes	Yes
Wald Test of Interaction Terms (1) = (2)	0.0016	0.0184
Observations	623	623
R-squared	0.744	0.736

The results in Panel A of Table 7 show that in the full-allotment period, high-risk banks' borrowers pay, on average, 120 bps more when using the nearest neighbor matching methods and 100 bps more than low-risk banks' borrowers when we use the kernel matching methods and. This difference is usually significant at the 1% level.

We then focus on borrowers matched via PSM in multivariate regressions. For both the nearest neighbor and the kernel matching, we use the nearest match to each treated firm within the defined caliper or bandwidth ($n=1$). Panel B of Table 7 shows the results of regressions of loan spreads on bank risk, central bank liquidity and bank control variables. We find that central bank liquidity only reduces the loan interest rates of low-risk banks in the full-allotment period. In Online Appendix G, we show that size, leverage, and current ratio are significantly correlated with bank risk. We thus add interaction terms of these variables with central bank liquidity using all loans issued in the full-allotment period to address further concerns that our results are driven by riskier borrowers that are more affected by expansive monetary policy (Bernanke and

Gertler, 1995). The results are reported in Panel C of Table. The evidence reinforces our earlier result that the loan-spread differential reflects an impaired transmission of monetary policy because the banking system is weak.

7. Monetary policy transmission and the real economy

7.1. Monetary policy and loan maturity

While the ECB targets the short end of the yield curve, investments are long-term decisions and dependent on the availability of funding liquidity at longer maturities. If the transmission channel is impaired, we expect to see loan-spread differences between high- and low-risk banks, particularly for long-maturity loans. We differentiate between short-, medium-, and long-term loans, which have maturities of less than or equal to one year, one to five years or more than five years, respectively, and report the results in Panel A of Table 8 for the full-allotment period.

High- and low-risk banks reduce interest rates on short-term loans when central bank liquidity increases during the full-allotment period. Wald tests suggest that the reduction is not significantly different between both bank risk groups. In contrast, low-risk banks require significantly lower interest rates for medium-term loans than high-risk banks when central bank liquidity increases. Moreover, lower economic significance for medium- relative to short-term loans of low-risk banks suggest that the ECB needs longer-term liquidity to influence long-term loans—importantly, however, this is true *after* financial stability has been restored. Elevated loan spreads for medium-term maturities could suggest that high-risk banks are reaching for yield. We thus run our regressions only on the intensive margin (column (3)). In column (4), we further include interaction terms of central bank liquidity with borrower size, leverage and current ratio as in Table 7 to entertain the possibility that our results reflect high-risk banks reaching for yield. Our results remain qualitatively unchanged. Overall, we find that short-term liquidity provision by the ECB has an effect in both deposit and loan markets for maturities below one year, but not for medium- and long-term maturities, for which the transmission channel is impaired.

Table 8. Monetary policy, loan maturity, and bank-dependence

This table reports regression results of *AISD* on *Central Bank Liquidity*, bank risk, and additional control variables in the full allotment period. In Panel A, *Central Bank Liquidity* is split by loan maturity intervals. Loans are classified as short term when maturity ≤ 1 year, medium term when maturity is >1 year and ≤ 5 years, and long term when maturity > 5 years. In Panel B, firm size classes are determined based on the 33rd and 67th percentile of total assets of all firms in the data sample. All variables are defined in Appendix A1. The regressions include all control variables and fixed effects used in Panel B of Table 5. Standard errors are clustered at the firm and at the week level using the method as proposed by Cameron, Gelbach and Miller (2011) and Thompson (2011). The statistical significance of results is indicated by * = 10% level, ** = 5% level and *** = 1% level.

Panel A. Loan maturity

	Full Sample	Full Sample	Intensive Margin	Borrower Characteristics \times Central Bank Liquidity
	(1)	(2)	(3)	(4)
<i>Central Bank Liquidity</i> \times <i>Short-term Loan</i>	-213.957**			
<i>Central Bank Liquidity</i> \times <i>Medium-term Loan</i>	-47.766			
<i>Central Bank Liquidity</i> \times <i>Long-term Loan</i>	278.729			
<i>Central Bank Liquidity</i> \times <i>High Bank Risk</i> \times				
(1) <i>Short-term Loan</i>		-258.339**	-544.476***	-149.948**
(2) <i>Medium-term Loan</i>		8.365	-52.857	143.922
(3) <i>Long-term Loan</i>		322.886	-34.632	340.223
<i>Central Bank Liquidity</i> \times <i>Low Bank Risk</i> \times				
(4) <i>Short-term Loan</i>		-185.332*	-564.236***	-122.693*
(5) <i>Medium-term Loan</i>		-201.288***	-318.551***	-100.376**
(6) <i>Long-term Loan</i>		163.363	446.38	252.054
<i>Central Bank Liquidity</i> \times <i>Borrower Leverage</i>	No	No	No	Yes
<i>Central Bank Liquidity</i> \times <i>Borrower Current Ratio</i>	No	No	No	Yes
<i>Bank Risk</i> \times <i>Loan Maturity Intervals</i>	Yes	Yes	Yes	Yes
<i>Bank Risk</i> \times <i>Time FE (year)</i>	Yes	Yes	Yes	Yes
<i>Further Control Variables and Fixed Effects</i>	Yes	Yes	Yes	Yes
Wald Test of Interaction Terms		0.542 / 0.0184 /	0.8531 / 0.0087 /	0.684 / 0.0237 /
[(1) = (4) / (2) = (5) / (3) = (6)]		0.5589	0.3566	0.8392
Observations	623	623	272	623
R-squared	0.756	0.758	0.844	0.764

Panel B: Bank-dependence

	(1)	(2)	(3)	(4)
<i>Central Bank Liquidity</i> \times <i>Small Firm</i>	-38.776			
<i>Central Bank Liquidity</i> \times <i>Medium Firm</i>	-72.799**			
<i>Central Bank Liquidity</i> \times <i>Large Firm</i>	-105.442**			
<i>Central Bank Liquidity</i> \times <i>No Rating</i>			-32.224	
<i>Central Bank Liquidity</i> \times <i>Rating</i>			-283.249**	
<i>Central Bank Liquidity</i> \times <i>High Bank Risk</i> \times				
(1) <i>Small Firm</i>		23.47		
(2) <i>Medium Firm</i>		-28.435		
(3) <i>Large Firm</i>		-92.366**		
(4) <i>No Rating</i>				2.242
(5) <i>Rating</i>				-74.360*
<i>Central Bank Liquidity</i> \times <i>Low Bank Risk</i> \times				
(6) <i>Small Firm</i>		-184.946**		
(7) <i>Medium Firm</i>		-196.643***		
(8) <i>Large Firm</i>		-155.411**		
(9) <i>No Rating</i>				-138.785***
(10) <i>Rating</i>				-295.622***
<i>Bank Risk</i> \times <i>Firm Size Intervals</i>	Yes	Yes	No	No
<i>Bank Risk</i> \times <i>Rating Dummy</i>	No	No	Yes	Yes
<i>Bank Risk</i> \times <i>Time FE (year)</i>	Yes	Yes	Yes	Yes
<i>Further Control Variables and Fixed Effects</i>	Yes	Yes	Yes	Yes
Wald Test of Interaction Terms		0.0139 / 0.0017 / 0.0513		
[(1) = (6) / (2) = (7) / (3) = (8)]				
Wald Test of Interaction Terms				0.0063 / 0.0422
[(4) = (9) / (5) = (10)]				
Observations	623	623	623	623
R-squared	0.729	0.734	0.732	0.751

7.2. Borrower financial constraints

What frictions prevent borrowers from switching from high- to low-risk banks if borrowing at high-risk banks is more expensive? A plausible explanation is that borrowers are financially constrained and thus cannot easily substitute external financing from weak banks. As in Fazzari, Hubbard and Petersen (1988), Gertler and Gilchrist (1994) or Kashyap, Lamont and Stein (1994), we use firm size or the availability of debt ratings (from S&P) as proxies for borrowers' financial constraints and reliance on external funding. We classify firms as *small*, *medium* and *large* using the 33rd and 67th percentile of total assets of all firms in the data sample.

In Panel B of Table 8, we find that the transmission of central bank liquidity is impaired for bank-dependent firms at high-risk banks. High-risk banks do not reduce the loan spreads for small- and medium-sized firms as well as for firms without a public debt rating, even when central bank liquidity increases. In contrast, both high- and low-risk banks require lower loan spreads from large firms and from firms with a public debt rating, when central bank liquidity increases.

7.3. Investment and financing decisions

Financing constraints of high-risk bank borrowers might affect their investment and financing decisions (Chodorow-Reich, 2014). We collect capital structure data from Capital IQ (term loans, revolving loans and notional amount of debt outstanding) and investment variables from Compustat (liabilities, payouts, capital expenditures, asset growth, investments, and number of employees) for the 2005–2013 period. Our focus is on borrowers from either a low- or a high-risk bank before and after the full allotment, which we match using PSM. We then regress changes in firm characteristics on *High Bank Risk* using the PSM sample over a period of one (t+1), two (t+2), and three years (t+3) after a firm received a loan in the full-allotment period and report the results in Table 9.²⁰ For brevity, we only report the coefficient of *High Bank Risk*.

²⁰ We also investigate these changes for one, two, and three years *before* a firm has received a loan in the full-allotment period to check the parallel trend assumption. Our results show that the characteristics of high-risk bank

Table 9. Debt capital structure and firm characteristics

This table reports propensity score matching (PSM) results of changes in borrower characteristics of borrowers along the intensive margin in the full allotment period. All variables are derived at the firm level and measured in real terms with 2006 as the base year using the Consumer Price Index (CPI) as published by the OECD. *Asset Growth* is the ratio of total assets in t divided by the value of total assets in $t-1$, minus 1. *Payouts* are total dividends, *Capex* are capital expenditures, *Investment* is total invested capital, and *Employment* is the number of employees in thousand. The panels show regression results of either percentage point differences (*Term Loans/Total Debt*, *Revolving Loans/Total Debt*, *Notional Outstanding/Total Debt*, and *Asset Growth*), or log differences (*Total Liabilities*, *Payouts*, *Capex*, and *Investments*) or differences (*Employment*) from year t to $t+1$, t to $t+2$, and t to $t+3$, with t as the year when the loan is initiated in the full allotment period. Regression results of these variables including control variables and fixed effects used in Panel B of Table 5 are shown in Online Appendix I. All variables are defined in Appendix A1. We use a Gaussian kernel estimator with a bandwidth of 0.01. The statistical significance of results is indicated by * = 10% level, ** = 5% level and *** = 1% level using 50 bootstrap replications.

	$\Delta (t; t+1)$	$\Delta (t; t+2)$	$\Delta (t; t+3)$
	(1)	(2)	(3)
Method	PSM	PSM	PSM
Capital Structure			
<i>Term Loans/Total Debt</i>	-1.959**	-6.799***	-6.293**
<i>Revolving Loans/Total Debt</i>	5.353**	5.098**	5.462***
<i>Notional Outstanding/Total Debt</i>	0.576	-0.612	-1.067
<i>Total Liabilities</i>	-0.015	-0.111	-0.073
Investments & Employment			
<i>Payouts</i>	0.017	-0.124*	0.019
<i>Capex</i>	0.017	-0.170*	-0.158*
<i>Asset Growth</i>	5.35	1.163	3.02
<i>Investments</i>	-0.018	-0.143*	-0.052*
<i>Employment</i>	-0.95	-12.414**	-31.133**

We find that, relative to borrowers from low-risk banks, the percentage of term loans of high-risk bank borrowers decreases by about six percentage points in the third year after loan issuance, while the percentage of revolving loans increases by 5.5 percentage points. This result is intuitive. The ECB provides high-risk banks with sufficient liquidity to become a credible liquidity provider for borrowers. Consistently, we do not find evidence that high-risk bank borrowers draw down their credit lines more than low-risk bank borrowers, suggesting that the result is due to a change in the supply of credit by banks.

We also find somewhat negative effects on investment and employment of firms borrowing from high-risk banks. In years two and three after loan origination in the full-

borrowers develop comparably to those of low-risk bank borrowers prior to obtaining a loan during the full-allotment period.

allotment period, payouts, capital expenditures, investments and employment are all lower for high-risk bank borrowers compared to that of low-risk bank borrowers. Lawrence et al. (2005) argue that after a monetary policy shock, corporate real investment may have a lagged response function. Our results, however, are only significant at the 5% or 10% level. A possible explanation might be the number of large firms in our sample, who are less financially constrained.

8. Conclusion

Banking sector weakness can impair the transmission of monetary policy. Using deposit and loan transaction data for Europe during the period from January 2006 to June 2010, we document that an increase in ECB liquidity up to levels demanded by banks (“full allotment”) results in (i) the same decrease of deposit spreads for low- and high-risk banks, and (ii) a reduction of loan spreads charged by low-risk banks, but (iii) has almost no effect on the loan spreads of high-risk banks. While borrowers of high-risk banks increase their credit lines relative to their term-loan borrowing following the liquidity provision by the ECB, these firms also invest less, have lower capital expenditures and reduce the number of employees.

Our results are consistent with high-risk banks not passing on funding cost advantages to their borrowers. With the ability to charge higher loan spreads from bank-dependent customers, they might benefit from an increase in central bank liquidity by not passing on their lower funding costs, which increases their net worth and relaxes both regulatory and economic constraints (Brunnermeier and Sannikov, 2016, and Brunnermeier and Koby, 2019). An alternative view is that high-risk banks are reaching for yield. Our previous tests show that riskier borrowers do not switch to high-risk banks during the full-allotment period (extensive margin) and we observe the main results on the intensive margin. However, also on the intensive margin, risk-shifting of high-risk banks can occur as a consequence of high-risk banks not passing on lower funding costs to borrowers. That is, keeping interest rates higher might make firms endogenously riskier. Thus, on the intensive margin, our results are also consistent

with a reaching-for-yield interpretation.

The ECB's introduction of the full allotment in October 2008 was also a reaction to banks' liquidity problems in the interbank market. Prior research has largely ignored problems in funding markets, focusing exclusively on the transmission to the real economy via loan markets. However, an impaired transmission channel might originate because funding markets are stressed and the design and the effectiveness of monetary policy measures might therefore crucially depend on both markets.

Thus, it is an important question whether the transmission of monetary policy to the real economy is impaired even *after* the ECB has addressed the problems in the funding market. Our results suggest that the ECB has indeed addressed the funding problems with the introduction of the full allotment. However, we also find evidence that the transmission channel of monetary policy in the euro area is still impaired in the loan market, which is consistent with the view that banking sector balance-sheet weakness limited the role of the ECB as LOLR during the financial crisis. In other words, we have to look at both the deposit *and* the loan market to separate whether bank balance-sheet effects are at work, even after the ECB has addressed the funding problems of banks. The deposit data are key as they highlight that even when funding conditions are restored to the same level by the ECB for low-risk and high-risk banks, the loan outcomes are not highlighting a divergence between liquidity- and solvency-induced outcomes for banks.

Overall, our results suggest that banks' capital constraints at the time of an easing of monetary policy pose a challenge to the effectiveness of the bank-lending channel and the effectiveness of the central bank as a lender of last resort. These results have potentially important implications for other (unconventional) monetary policy measures in the eurozone such as the long-term refinancing operations (LTRO), which were also undertaken in the presence of relatively weak bank balance sheets. Finally, while we focused on large firms due to data availability constraints, the transmission of monetary policy by weak banks is likely to

be even further restricted for financially constrained firms. This is worthy of further inquiry to understand the full economic magnitude of the effects we have unearthed.

Appendix A1. Description of key variables

The table provides descriptions of all variables. All financial variables are winsorized at the 1st and 99th percentile and measured in real terms with 2006 as the base year using the Consumer Price Index (CPI) as published by the OECD.

Variable	Definition
Central Bank Liquidity	Natural logarithm of the absolute amount of liquidity in the banking sector. It is calculated as the logarithm of the sum of banks' current account and deposit facility holdings with the ECB. by the ECB <i>ex post</i> on a daily basis in the "Data on daily liquidity conditions." The variable is centered around its mean value in 2006.
<i>Instruments</i>	
End of Reserve Maintenance Period	Dummy variable, which is 1 on the last day of the ECB's reserve maintenance period.
Excess Cash	Excess Cash is a continuous measure of firms' aggregate quarterly excess cash holdings.
<i>Corporate Deposits</i>	
ECB Deposit Facility Rate	Interest rate at which banks can deposit funds overnight at the ECB deposit facility.
Deposit Spread (bps)	Spread between the deposit interest rate and the ECB deposit facility rate.
Log(Notional Deposit Amount)	Natural logarithm of the notional € deposit amount.
Duration (days)	The duration of the deposit transaction.
Bank Competition	Sum of the squared market share of each bank over the last week using deposit volume.
<i>Bank Characteristics</i>	
Bank Risk	Credit default swap spread in bps on the bank's senior unsecured debt with a five-year maturity.
High (Low) Bank Risk	Indicator whether bank is high (low) bank risk based on its CDS spread.
Capital Adequacy	Leverage ratio (total liabilities/total assets) lagged by one year.
Liquidity	Liquid assets/short-term funding; total deposits/total assets; net loans/customer deposits; off-balance sheet exposure; lagged by one year.
Profitability	Net interest margin; cost/income-ratio; return on assets; lagged by one year.
Asset Quality	Non-performing loans/total loans.
Investments	Total assets; total asset growth; net derivatives exposure/total assets; lagged by one year.
<i>Borrower Variables</i>	
Borrower Characteristics	Total assets; leverage (total liabilities/total assets); current ratio; interest coverage ratio; market-to-book ratio; tangible assets/total assets; rating/no rating dummy or rating classes (based on S&P ratings); lagged by one year.
<i>Loan Variables</i>	
AISD (bps)	Coupon spread over LIBOR plus one time fees on the drawn portion of the loan as stated in DealScan.
Loan Characteristics	Facility size; maturity; secured dummy; performance pricing dummy; currency.
Loan Type	Term loan; credit line (> or <= 1 year); bridge loan.
Loan Purpose	Corporate purposes; M&A; debt repayment; working capital; other purpose.
<i>Macro Environment</i>	
Three-Month EURIBOR–EONIA Swap Spread	Spread between the three-month EURIBOR and the three-month EONIA swap.
Quarterly EU GDP Growth (%)	The quarterly growth rate of the gross domestic product at market prices.
CISS	Composite Indicator of Systemic Stress as published by the ECB.

Online Appendix A contains a more detailed description of all variables including detailed descriptive statistics.

Appendix A2. Sample

This table shows the construction of the loan-level dataset. Panel A shows how we arrive from the universe of loans to our sample. Panel B reports the results of a comparison of the regression sample with a larger sample, which includes the loans not originated by our sample banks.

Panel A: Loan sample selection

All Loan Facilities in DealScan: 2006–2010:Q2		63,991
Match Chava–Roberts (2008) Linking File	-42,982 =	21,009
Merge Compustat Data	-8,614 =	12,395
Clean DealScan Data (e.g., Spread Included, Notional Reported)	-2,527 =	9,868
Restrict Sample to European Banks Which Also Operate on Platform	-7,236 =	2,632

Panel B: Differences in loan and borrower characteristics due to restriction of sample to platform banks

	$\Delta(\text{Included} - \text{Excluded})$
Loan Characteristics	
<i>All in Spread Drawn (bps)</i>	2.327
<i>Facility Size (€ million)</i>	417***
<i>Maturity in Months</i>	0.248
Borrower Characteristics	
<i>Total Assets (€ million)</i>	4,459***
<i>Leverage</i>	0.017**
<i>Current ratio</i>	-0.069*
<i>Coverage</i>	-14.021***
<i>Market-to-Book</i>	-0.032
<i>Tangibility</i>	0.049***

Appendix A3. Exemplary deposit auction

This table shows an exemplary deposit transaction for illustrative purposes.

Time of Trade	Firm ID	Bank Name	Maturity Date	Transaction Start Date	Time of Bank Bid	Product	Currency	Status	Status of Bank Bid	Notional Amount	Quote Value
14-11-2005 12:35:58	xxxxxxx	Bank1	15-11-2005	14-11-2005	14-11-2005 12:35:43	Deposit	EUR	EXEC	LCAN	76,200,000	2.06
14-11-2005 12:35:58	xxxxxxx	Bank2	15-11-2005	14-11-2005	14-11-2005 12:35:34	Deposit	EUR	EXEC	EXEC	76,200,000	2.08
14-11-2005 12:35:58	xxxxxxx	Bank3	15-11-2005	14-11-2005	14-11-2005 12:35:33	Deposit	EUR	EXEC	LCAN	76,200,000	2.07
14-11-2005 12:35:58	xxxxxxx	Bank4	15-11-2005	14-11-2005	14-11-2005 12:35:35	Deposit	EUR	EXEC	LCAN	76,200,000	2.05
14-11-2005 12:35:58	xxxxxxx	Bank5	15-11-2005	14-11-2005	14-11-2005 12:35:39	Deposit	EUR	EXEC	LCAN	76,200,000	2.06
14-11-2005 12:35:58	xxxxxxx	Bank6	15-11-2005	14-11-2005	14-11-2005 12:35:26	Deposit	EUR	EXEC	LCAN	76,200,000	2.07

Trade Number	Identifying number for a specific trade.
Time of Trade	Time when the auction is closed. It shows the date and the exact time in seconds. All transactions are executed on the same day.
Firm ID	Numerical identifier for each firm, anonymized for confidentiality reasons.
Bank Name	Bank names available but changed for confidentiality reasons.
Maturity Date	The maturity of the trade.
Transaction Start Date	The start date of the trade.
Time of Bank Bid	The exact time a bank is bidding for a deposit amount. If a bank provides several bids in a transaction we use the last bid of this bank.
Product	The product which is traded.
Currency	The currency of the product.
Status	The status of the entire auction. EXEC means that the trade is executed.
Status of Bank Bid	The status of each bank's bid in the auction. LCAN means ListCancel, that is, another bank bid was selected by the firm. EXEC depicts the executed trade.
Notional Amount	The notional amount banks bid for.
Quote Value	The deposit interest rate banks are bidding in the auction. Banks bid an annual interest rate in percent using an actual/360 day count convention.

Appendix A4. Excess cash

This appendix describes the methodology for computing excess cash holdings for European non-financial firms using Compustat Global data. Based on previous approaches described in Fresard and Salva (2010), we estimate the following model quarterly for firm i 's cash holdings:

$$\ln(\text{Cash}_i) = \beta_1 \ln(\text{TA}_i) + \beta_2 \ln(\text{CF}_i) + \beta_3 \ln(\text{NWC}_i) + \beta_4 \ln(\text{MV}_i) \\ + \beta_5 \ln(\text{Capex}_i) + \beta_6 \ln(\text{Leverage}_i) + \Phi + \varepsilon_i$$

Where *Cash* is cash and marketable securities over total assets, *TA* is total assets in euros, *CF* is EBITDA over total assets, *NWC* is current assets minus current liabilities minus cash over total assets. *MV* is the market value of the firm, computed as the sum of the market value of equity and the book value of short-term and long-term debt divided by total assets. *Capex* is capital expenditures over total assets, *Leverage* is the sum of short-term and long-term debt over total assets. Φ is an industry-fixed effect.²¹

We then define excess cash as the difference between actual cash and the predicted normal cash obtained from the estimation. We aggregate excess cash holdings to a quarterly measure using a firm's total assets as weights.

Based on quarterly cash holdings, we construct two possible instruments: (1) a continuous variables excess cash that varies quarterly, and (2) an indicator variable that is 1 if excess cash exceeds its long-run mean in a quarter (measured over a 15-year period prior to the beginning of our sample period).

²¹ Note that estimating the model with or without fixed effects does not qualitatively change the results in the main regressions.

References

Acharya, Viral V., Denis Gromb, and Tanju Yorulmazer, 2012, Imperfect competition in the interbank market for liquidity as a rationale for central banking, *American Economic Journal: Macroeconomics* 4, 184–217.

Acharya, Viral V., and Ouarda Merrouche, 2013, Precautionary hoarding of liquidity and interbank markets: evidence from the subprime crisis, *Review of Finance* 17, 107–160.

Afonso, Gara, Anna Kovner, and Antoinette Schoar, 2011, Stressed, not frozen: the federal funds market in the financial crisis, *Journal of Finance* 66, 1109–1139.

Altonji, Joseph G., Todd E. Elder, and Christopher R. Taber, 2005, Selection on Observed and Unobserved Variables: Assessing the Effectiveness of Catholic Schools, *Journal of Political Economy* 113(1), 151-84.

Ashenfelter, Orley, and Cecilia Rouse, 1998, Income, Schooling, and Ability: Evidence from a New Sample of Identical Twins, *The Quarterly Journal of Economics* 113(1), 253–284.

Baum, Christopher F., Schaffer, Mark E., and Stillman, Steven, 2007, Enhanced routines for instrumental variables/GMM estimation and testing, Boston College Department of Economics Working Paper No. 667.

Bernanke, Ben S., 2007, The financial accelerator and the credit channel, in Federal Reserve Bank of Atlanta, Presented at the The Credit Channel of Monetary Policy in the Twenty-first Century Conference, Atlanta, Georgia.

Bernanke, Ben S., and Alan S. Blinder, 1988, Credit, money, and aggregate demand, *The American Economic Review* 78, 435–439.

Bernanke, Ben S., and Mark Gertler, 1989, Agency Costs, Net Worth and Business Fluctuations, *American Economic Review* 79, 14-31.

Bernanke, Ben S., and Mark Gertler, 1995, Inside the black box: The credit channel of monetary

policy transmission, *Journal of Economic Perspectives* 9, 27–48.

Brunnermeier, Markus K., and Yuliy Sannikov, 2016, The I Theory of Money, Working Paper, Princeton University.

Brunnermeier, Markus K, and Yann Koby, 2019, The reversal interest rate: The effective lower bound of monetary policy, Working Paper.

Cameron, A.C., J.B. Gelbach, and & D.L. Miller, 2011, Robust Inference With Multiway Clustering, *Journal of Business & Economic Statistics* Vol. 29(2).

Campello, Murillo, 2002. Internal capital markets in financial conglomerates: evidence from small bank responses to monetary policy. *Journal of Finance* 57, 2773-2805.

Cassola, Nuno, Ali Hortacsu, and Jakub Kastl, 2013, The 2007 subprime market crisis through the lens of European central bank auctions for short-term funds, *Econometrica* 81, 1309–1345.

Chodorow-Reich, Gabriel, 2014, The employment effects of credit market disruptions: Firm-level evidence from the 2008-9 financial crisis, *The Quarterly Journal of Economics* 129, 1–59.

Cornwell, Christopher, Peter Schmidt, and Donald Wyhowski, 1992, Simultaneous equations and panel data, *Journal of Econometrics* 51, 151–181.

Dell'Ariccia, Giovanni, Luc Laeven, and Gustavo A. Suarez, 2017, Bank leverage and monetary policy's risk-taking channel: Evidence from the united states, *The Journal of Finance* 72, 613–654.

Drechsler, Itamar, Alexy Savov, and Philipp Schnabl, 2017, The deposit channel of monetary policy, *Quarterly Journal of Economics* 132(4), 1819–1876.

Eisenschmidt, Jens, Astrid Hirsch, and Tobias Linzert, 2009, Bidding behaviour in the ECB's main refinancing operations during the financial crisis, Working Paper No. 1052, European

Central Bank.

Fazzari, Steven M., R. Glenn Hubbard, Bruce C. Petersen, 1988, Financing constraints and corporate investment, *Brookings Papers on Economic Activity* 1988, 141–206.

Fecht, Falko, Kjell G. Nyborg, and Jörg Rocholl, 2011, The price of liquidity: The effects of market conditions and bank characteristics, *Journal of Financial Economics* 102, 344–362.

Frésard, Laurent, and Carolina Salva, 2010, The Value of Excess Cash and Corporate Governance: Evidence from U.S. Cross-listings, *Journal of Financial Economics* 98, 359–384.

Gambacorta, Leonardo, Paolo E. Mistrulli, 2004. Does bank capital affect lending behavior? *Journal of Financial Intermediation* 13, 436–457.

Gertler, Mark, and Simon Gilchrist, 1994, Monetary policy, business cycles, and the behavior of small manufacturing firms, *Quarterly Journal of Economics* 109, 309–340.

Gomez, M., Landier, A., Sraer, D., Thesmar, D., 2016. Banks' exposure to interest rate risk and the transmission of monetary policy. Unpublished working paper. National Bureau of Economic Research.

Hansen, Lars Peter, John Heaton, and Amir Yaron, 1996. Finite-sample properties of some GMM models, *Journal of Business and Economic Statistics* 14(3), 262–280.

Heider, Florian, Marie Hoerova, and Cornelia Holthausen, 2015, Liquidity Hoarding and Interbank Market Spreads: The Role of Counterparty Risk, *Journal of Financial Economics* 118, 336–354.

Heider, Florian, Farzad Saidi, and Glenn Schepens, 2019, Life below zero: Bank lending under negative policy rates. *Review of Financial Studies* 32(1), 3728–3761.

Ioannidou, Vasso, Steven Ongena, and José-Luis Peydró, 2015, Monetary policy, risk-taking, and pricing: Evidence from a quasi-natural experiment, *Review of Finance* 19, 95–144.

Ivashina, Victoria, 2009, Asymmetric information effects on loan spreads, *Journal of Financial Economics* 92, 300–319.

Ivashina, Victoria, and David Scharfstein, 2010, Bank lending during the financial crisis of 2008, *Journal of Financial Economics* 97(3), 319–338.

Jiménez, Gabriel, Steven Ongena, José L. Peydró, and Jesús Saurina, 2014, Hazardous Times for Monetary Policy: What do 23 Million Loans Say About the Impact of Monetary Policy on Credit Risk-Taking?, *Econometrica* 82(2), 463–505.

Jiménez, Gabriel, Steven Ongena, José L. Peydró, and Jesús Saurina, 2012, Credit supply and monetary policy: Identifying the bank balance-sheet channel with loan applications, *American Economic Review* 102.

Kashyap Anil K., and Jeremy C. Stein, 1994, Monetary policy and bank lending, in N. Gregory Mankiw, ed.: *Monetary policy* (University of Chicago Press).

Kashyap Anil K., and Jeremy C. Stein, 1995. The impact of monetary policy on bank balance sheets. *Carnegie-Rochester Conference Series on Public Policy* 42, pp. 151-195.

Kashyap, Anil K., and Jeremy C. Stein, 2000, What do a million observations on banks say about the transmission of monetary policy?, *The American Economic Review* 90, 407–428.

Kashyap Anil K., Owen Lamont, and Jeremy C. Stein, 1994, Credit conditions and the cyclical behavior of inventories, *Quarterly Journal of Economics* 109, 565–592.

Kocherlakota, Narayana R., 1990, On tests of representative consumer asset pricing models, *Journal of Monetary Economics* 26(2), 285–304.

Kishan, Ruby P., Timothy P. Opiela, 2000. Bank size, bank capital, and the bank lending channel. *Journal of Money, Credit and Banking* 32, 121-141.

Lawrence J. Christiano, Martin Eichenbaum, and Charles L. Evans, 2005, Nominal rigidities and the dynamic effects of a shock to monetary policy, *Journal of Political Economy* 113, 1–45.

Oster, Emily, 2019. Unobservable selection and coefficient stability: theory and evidence. *Journal of Business & Economic Statistics* 37, 187-204.

Peek, Joe, and Eric S. Rosengren, 1995, Bank lending and the transmission of monetary policy, FRB Boston Conference Series, 47–68.

Peek, Joe, and Eric S. Rosengren, 2015, The role of banks in the transmission of monetary policy, in Berger, Allen N., P. Molyneux, and John O.S. Wilson, ed.: *The Oxford Handbook of Banking* (1ed), pp. 453-473.

Popov, Alexander, and Neeltje van Horen, 2015, Exporting sovereign stress: Evidence from syndicated bank lending during the euro area sovereign debt crisis, *Review of Finance* 19(5), 1825–1866.

Röller, Lars-Hendrik, and Leonard Waverman, 2001, Telecommunications Infrastructure and Economic Development: A Simultaneous Approach, *American Economic Review* 91(4), 909–923.

Tauchen, George, 1986, Statistical properties of generalized method-of-moments estimators of structural parameters obtained from financial market data, *Journal of Business and Economic Statistics* 4(4), 397–416.

Thompson, S., 2011, Simple formulas for standard errors that cluster by both firm and time, *Journal of Financial Economics*, 99, 1:1–10.