

Marques II, Israel

**Working Paper**

## Firms and social policy preferences under weak institutions: Evidence from Russia

BOFIT Discussion Papers, No. 7/2018

**Provided in Cooperation with:**

Bank of Finland, Helsinki

*Suggested Citation:* Marques II, Israel (2018) : Firms and social policy preferences under weak institutions: Evidence from Russia, BOFIT Discussion Papers, No. 7/2018, ISBN 978-952-323-217-4, Bank of Finland, Institute for Economies in Transition (BOFIT), Helsinki, <https://nbn-resolving.de/urn:nbn:fi:bof-201802261242>

This Version is available at:

<https://hdl.handle.net/10419/212892>

**Standard-Nutzungsbedingungen:**

Die Dokumente auf EconStor dürfen zu eigenen wissenschaftlichen Zwecken und zum Privatgebrauch gespeichert und kopiert werden.

Sie dürfen die Dokumente nicht für öffentliche oder kommerzielle Zwecke vervielfältigen, öffentlich ausstellen, öffentlich zugänglich machen, vertreiben oder anderweitig nutzen.

Sofern die Verfasser die Dokumente unter Open-Content-Lizenzen (insbesondere CC-Lizenzen) zur Verfügung gestellt haben sollten, gelten abweichend von diesen Nutzungsbedingungen die in der dort genannten Lizenz gewährten Nutzungsrechte.

**Terms of use:**

*Documents in EconStor may be saved and copied for your personal and scholarly purposes.*

*You are not to copy documents for public or commercial purposes, to exhibit the documents publicly, to make them publicly available on the internet, or to distribute or otherwise use the documents in public.*

*If the documents have been made available under an Open Content Licence (especially Creative Commons Licences), you may exercise further usage rights as specified in the indicated licence.*

BOFIT Discussion Papers  
7 • 2018

Israel Marques II

Firms and social policy preferences  
under weak institutions:  
Evidence from Russia



**BOFIT**

THE BANK OF FINLAND  
INSTITUTE FOR ECONOMIES  
IN TRANSITION

BOFIT Discussion Papers  
Editor-in-Chief Zuzana Fungáčová

BOFIT Discussion Papers 7/2018  
23.2.2018

Israel Marques II: Firms and social policy preferences under weak institutions:  
Evidence from Russia

ISBN 978-952-323-217-4, online  
ISSN 1456-5889, online

The views expressed in this paper are those of the authors and  
do not necessarily represent the views of the Bank of Finland.

Suomen Pankki  
Helsinki 2018

# Firms and Social Policy Preferences Under Weak Institutions: Evidence from Russia\*

Israel Marques II<sup>†</sup>

February 22, 2018

## Abstract

When does business support the expansion of social policy in the developing world? Existing work on managers' preferences has tended to concentrate on the developed world, where governments can credibly commit to policy, tax evasion is constrained, and mechanisms exist to hold the bureaucracy accountable for policy implementation. In this paper, I relax these assumptions, arguing that weak institutions create opportunities for some firms to shift costs onto others: making social policy more attractive. I argue that firms with political connections are uniquely positioned to benefit from subsidies and property rights protection, which decreases the cost of social policy, while firms with low visibility can evade taxes and free-ride off universalistic social policy. Such firms will support social policy even where institutions are poor. I test this argument using a survey of 666 firms in 10 Russian regions.

*Key words:* Labor markets, Firm preferences, Tax evasion, Politically connected firms, Welfare state, Comparative Political Economy

*JEL codes:* L21, L33, O15, O17, H53

---

\*Research for this paper was supported in part by a fellowship from IREX (International Research and Exchanges Board) with funds provided by the United States Department of State through the Title VIII Program. Neither of these organizations are responsible for the views expressed herein. Additional support was also provided by the Bank of Finland Institute for Economics in Transition, where I was a visiting scholar and whose seminar provided valuable comments. Finally, I would also like to thank Linda Cook, Martin Dimitrov, Timothy Frye, Isabela Mares, Thomas Remington, and fellow panelists at the National Research University – Higher School of Economics' Annual Conference and the Midwest Political Science Association for valuable comments. All errors remain my own.

<sup>†</sup>ORCID: 0000-0003-4027-6645. Assistant Professor of Political Science, Faculty of Social Sciences, National Research University - Higher School of Economics. Research Fellow, International Center for the Study of Institutions and Development, National Research University - Higher School of Economics. Email: [imarques@hse.ru](mailto:imarques@hse.ru)

# 1 Introduction

When does business support the expansion of social policy in the developing world? Much of the literature on the development and evolution of the welfare state has pointed to the central role of business in shaping and enacting the social policies that underpin the welfare state (Estevez-Abe, Iversen, and Soskice, 2001, Manow, 2001, Mares, 2001, Rhodes, 2001, Swensen, 1997). Recent work in this area has focused on unpacking the preferences of firms for (or against) specific types of social policy as part of a broader labor market strategy designed to attract skilled workers and quiet labor unrest (Kuo, 2010, Martin, 2005, Yang, 2013).<sup>1</sup> As with much of the work on the evolution of the welfare state, however, existing work on firms' preferences has tended to concentrate on the developed world, where governments can credibly commit to policy and mechanisms exist to hold the bureaucracy accountable for implementation. As a consequence, we know relatively little about how (and even whether) institutional quality shapes preferences for social policy (Mares and Carnes, 2009).<sup>2</sup>

The failure to consider the effect of institutional quality, and its mechanisms, is surprising. Conceptualizing institutions as humanely devised constraints on human interaction (North, 1981), work on the political economy of institutions and investment highlights how a lack of constraints creates credible commitment problems between the state and investors. Where institutions are poor, state officials can take advantage by engaging in weak or opportunistic policy enforcement and outright rent-seeking, which increases investor risk and transaction costs (North, 1990, North, Wallis, and Weingast, 2009, North and Weingast, 1989). Knowing this, rational firms invest at lower levels, since these additional costs weaken returns. A rapidly growing literature shows that not everyone loses, however. Those able to protect themselves from the state, whether by leveraging political connections or simply evading notice, can find themselves at a competitive advantage due to their ability to shift or mitigate the costs of poor institutions (*c.f.* Boix and Svolik (2013), Gehlbach and Keefer (2011), Haber, Maurer, and Razo (2003)). Some can even profit from the unique opportunities afforded by unconstrained state representatives willing to privilege their friends (Faccio, 2006, Faccio, Masulis, and McConnell, 2006, Gehlbach, 2008).

In this paper, I argue that these insights can be extended to inform our understanding of businesses'

---

<sup>1</sup>Although some accounts challenge the assertion that labor market strategy was the key consideration at all points (Hacker and Pierson, 2002, Paster, 2013).

<sup>2</sup>One important exception is Mares (2005), who explicitly considers how state capacity in the form of preventing tax evasion conditions individual worker preferences for social policy. Marques (2016) also explores how institutional quality shapes the preferences of workers and small-scale entrepreneurs at the micro-level, while Marques, Schaffer, and Wilson Sokhey (2016) does so for high and low productivity workers. Finally, a related body of work explores the consequences of informal labor markets on preferences for social policy, although it has focused on economic vulnerability rather than institutional quality per se (Berens, 2015, Carnes and Mares, 2016, 2015, 2013).

preferences for social policy. As with standard investments, individuals and firms pay into the welfare state today expecting benefits, when eligible, tomorrow. As with all investment, however, social policy contributions are vulnerable to opportunism and rent-seeking. Consequently, contributions may never be paid out in full or as legally stipulated, making poor institutions like dead-weight costs. Extending existing individual level models of preferences for social policy would suggest that the increased dead-weight costs of poor institutions dim enthusiasm for social policy (Becker, 1985, Mares, 2005, Meltzer and Richards, 1981).

Using this work as a point of departure, I argue that not everyone loses (or at least not to the same extent) from poor institutions. In particular, I identify two groups who can mitigate the costs of social policy and whose ability to do so are enhanced in poor institutional settings. On the one hand, those who have strong political connections may receive privileged access to social policy funds for their employees and protections against rent-seeking and opportunism for their contributions. On the other hand, some firms may be able to take advantage of weak institutions, and the shirking they encourage, to hide some or all of their wage bill, allowing them to sidestep social policy contributions (Mares, 2005, Schneider, 2005). Free-riding is possible, because even where the welfare state is a leaky bucket unable to collect enough tax revenue to fully sustain its expenditures, many still receive social policy benefits (Kaufman and Kaliberda , 1996).<sup>3</sup>

Because cross-national surveys of firms are rare, I test these two hypotheses directly using a unique survey of 666 Russian firms carried out in 11 Russian regions. A single country survey, especially one with relatively centralized tax and social policy structures like Russia, precludes problems with differences in welfare state design and financing (Kenworthy and McCall , 2008). It also mitigates concerns about other important unobservable (or poorly observable) variables such as those related to culture or the historical legacies of institutions. I focus on single observable implication of my theory: well-connected firms and those who can hide from tax authorities should support social policy at higher rates, *ceteris paribus*. I assume that while substantial variation exists in the quality of Russia's regional institutions, even the "best" regions still have poor institutions by global standards. Russia is an ideal subject for such a study, as it struggles with basic institutional constraints. The World Bank's Governance Indicators, for example, place Russia in the bottom 23% of countries with respect to its ability to control bureaucratic corruption, while Russia's Rule of Law ranking (a measure of contract enforcement and the quality of police and courts) put it

---

<sup>3</sup>This is not to say that such groups may not benefit disproportionately from the welfare state in good institutional settings. Tax evaders, in particular, can free-ride anywhere. I do, however, argue that settings with poor institutional quality both make it easier for the well-connected to take advantage of social policy and increase the number of firms able to free-ride. I discuss this in more depth below.

in the bottom 20% of countries (Kaufman et al. , 2006). As such, Russia provides a good test of how firms behave in institutionally poor settings.

This paper makes two contributions to the literature on social policy preferences. First, as noted above, it extends our understanding of firm preferences to settings not considered in the existing literature. Poor institutions are endemic in the developing world, making an understanding of whether (and how) they shape firm preferences critical to making predictions about the rise and evolution of the welfare state. Knowing who supports the welfare state in poor institutional settings can also help to resolve the long-standing puzzle of welfare state origins and development in authoritarian and poorly institutionalized settings (Mares and Carnes , 2009). Second, this paper contributes to the welfare state literature methodologically through the use of micro-level, firm surveys. The most prominent work on firm preferences has used archival materials from businesses and business associations to expand our understanding of firm preferences and lobbying (*c.f.* Kuo (2010), Mares (2005), Mares (2003a, 2001), Swensen (2002, 1991), Thelen (2004)). This paper seeks to complement these studies with new data and methodology, bringing with it the traditional advantages of large-N survey work.

In the next section, I present a framework that identifies groups who benefit from poor-institutional settings in ways that enhance support for social policy. Section 3 briefly discusses the political and social policy contexts in Russia in the mid-2000's, the period of interest of this study. Section 4 introduces the survey instrument and discusses the empirical strategy. Section 5 presents the results of the main analysis, robustness checks, and a validation exercise of the conceptual validity of the measures. Section 6 concludes.

## **2 Firm Level Preferences for Social Policy**

While there are potentially many different dimensions to welfare state policy – degree of redistribution, social justice, risk pooling, financing, etc. – for simplicity here I focus primarily on two: generosity and control.<sup>4</sup> Along the generosity dimension, existing work has largely characterized firms' preferences as a function of firms' overall production strategy. Firms support generous welfare states where the anticipated effect of social policy on the overall make-up of the labor market and labor costs complement the firm's labor market strategy. As a tool for shaping the labor market, social policy decreases costs by helping employers and employees to overcome credible commitment problems and encourages co-investment in skills

---

<sup>4</sup>Existing work has yet to agree on which dimensions are actually most important and typologies vary widely based on author. For examples of different approaches, *c.f.* Hausermann (2010), Kato (2003), Myles and Pierson (2001), van Oorschot and Meuleman (2012), Pierson (2001), Sabbagh (2006).

(Estevez-Abe, Iversen, and Soskice, 2001, Mares , 2001, Thelen, 2004). Social insurance backstops employee investment in human capital by mitigating risk (Iversen and Soskice, 2001, Moene and Wallerstein, 2001, Rehm, 2009), while allowing employers to take advantage of economies of scale to offer larger compensation packages (Mares , 2003a,b, Swensen, 2002). This increases the overall supply of skill and makes it easier for firms to acquire skilled employees, benefiting those who utilize highly skilled workers.

As a tool for shaping labor costs, social policy can decrease the cost of skilled labor by placing effective floors on wages. This disrupts the ability of firms to compete by deskilling and engaging in “ruinous product market competition” premised on a race to the bottom in wages (Swensen (1997) :74). It also helps firms to compensate employees for the risks and uncertainty of the business cycle, particularly for exposed sectors or during economic downturns.<sup>5</sup> By improving the supply of skilled workers in the labor market and lowering the costs of acquiring such highly skilled workers, social policy produces benefits for high-skill firms that surpass the costs. Consequently, the more firms depend on skill, the more generous a welfare state they will support.

Firms also care about who controls social policy. In her seminal work, Mares (2003a) argues that preferences over who controls the welfare state depend on the trade-off between administrative costs and discretion over compensation packets. On the one hand, internalizing the costs of social policy administration is expensive and state control spreads these costs more widely. On the other hand, firms that internalize the costs of social policy also have more control over programs and can use them to reinforce their labor market strategies. Mares (2003a) predicts that large firms, whose size allows them to achieve economies of scale, will support employer controlled social policy.

To understand how poor institutions alter the predictions above, it is first important to note that there are commonalities between models of individual and firm level preferences for social policy. As with the prevailing (Meltzer and Richards, 1981) model, firms look to maximize their net gains from social policy contingent on their tax contributions and any dead-weight costs of taxation.<sup>6</sup> Whereas for individuals the benefits come in the form of direct transfers, for firms benefits accrue through the indirect effect of transfers on the labor market and labor costs. Where workers receive high rates of transfers (directly or in expectation) or are encouraged to invest heavily in skills, firms with high-skill production strategies benefit more

---

<sup>5</sup>For an elaboration of the theoretical underpinning the argument with respect to the openness of the economy, *c.f.* Adsera and Boix (2002), Cameron (1978), Garrett and Mitchell (2001), Rodrik (1998, 1997). Swensen (2002) provides an elaboration of this argument during economic downturns, providing evidence with respect to the strategies of high-skill US firms during the Great Depression, *c.f.* pp. 38-40 and Ch. 9 – 10.

<sup>6</sup>For more modern extensions of this model, *c.f.* Alt and Iversen (2017), Iversen and Soskice (2001), Mares (2005), Moene and Wallerstein (2001).



(Estevez-Abe, Iversen, and Soskice, 2001, Iversen and Soskice, 2001, Moene and Wallerstein, 2001). The relative ratio between these benefits, taxes, and the extent to which contributions are subject to wastage (i.e. dead-weight costs) can be thought of as determining whether a given firm supports generous social policies. Control enters into this framework in that it governs the extent to which firms can explicitly use social policy to reward skilled workers, which is one component of the labor market's structure and costs.

An implicit assumption of existing models of both firm and individual level preferences for social policy is the notion that contributions today will be collected and paid out tomorrow as prescribed by law.<sup>7</sup> Weak institutions challenge this assumption, however, by weakening the accountability links between lower level state officials and politicians, on the one hand, and between politicians and the populace, on the other (North, 1990, North, Wallis, and Weingast, 2009, North and Weingast, 1989). The inability to hold these groups accountable, leads to two related problems for the welfare state that in turn shape preferences for social policy.

First, in the absence of constraints on their behavior state officials are faced with temptation to engage in direct rent-seeking at the expense of the populace (Boix and Svolik, 2013, Brownlee, 2007, Geddes, 1999, Gehlbach and Keefer, 2011, Magaloni, 2008, Olson, 2000, 1993, Reuter and Remington, 2009) and to alter policy commitments made today if changing circumstances decrease their utility from these policies tomorrow (Frye, 2010, Kydland and Prescott, 1977). Consequently, neither firms nor individuals can be sure that social policies will not be abused today or altered tomorrow in ways that generate rents for state officials at the expense of the populace. If one adapts and extends the logic of dead-weight costs from existing models to cover the costs of weak institutions, then this suggests that bad institutions decrease the pool of benefits to be distributed to individuals. Because most (including firms) expect fewer net benefits due to these costs, they are more likely to oppose social policy (Becker, 1985, 1983, Meltzer and Richards, 1981). Only where social policy is taken out of the hands of the state (i.e. privately controlled) might actors be able to expect their contributions will be safe.

Second, even where rent-seeking is not the primary motivation of officials, weak institutions also make it difficult to monitor the implementation of public policy by state officials. Without strong oversight and accountability mechanisms, low-level bureaucrats are free to shirk their duties and selectively enforce laws and regulations in ways that minimize their effort and maximize their rents (Beazer, 2012, McNollGast,

---

<sup>7</sup>Although for an important exception, *c.f.* Kato (2003), who emphasizes the extent to which the government can credibly commit to using additional revenue to expand welfare state generosity as a factor for explaining welfare state funding reforms in the OECD. Pierson (2001) also discusses expectations about the solvency of the welfare state as an important factor motivating reforms.

1987, Weingast and Moran, 1983). Mares (2005) develops the implications of this argument for social policy, arguing that as institutional quality declines low-level bureaucrats are less likely to fulfill basic duties, such as tax collection. As with the rent-seeking logic above, rampant tax evasion decreases the available pool of funds for social policy, forcing those who are unable to evade taxes to pay more for fewer benefits. As before, only where private actors are able to control the collection and distribution of social policy might they be able to escape the problem of weak institutions. Again, extending and adapting the logic of dead-weight costs, this shirking logic suggests that support for social policy decreases as bureaucrats are more able to shirk.

These perspectives both suggest that a simple extension of existing models of preferences for social policy to handle institutional quality would predict:

*H<sub>1</sub>: As institutional quality deteriorates, firm support for generous, state controlled social policy decreases.*

While extending existing models of preferences for social policy to weak institutional settings yields clear testable predictions, it rests on strong assumptions. All actors are assumed to be bearing an evenly distributed tax burden and to share equally in the dead-weight costs of social policy. This need not be the case, however. Those that are able to reduce their dead-weight costs or that are able to contribute less, relative to others, may benefit more from poor institutions (or at least lose less) than they would otherwise. Put another way, poor institutions create unique opportunities to shift costs for those able to take advantage of them. While such firms may exist in settings with good institutions, poor institutions make it easier to engage in such strategies by loosening constraints meant to check such behavior.

In this paper, I explore two groups who can engage in such cost-shifting. First, some firms can create relationships with politicians that create *de facto* accountability, allowing them to protect themselves and take advantage of others. As a general rule, a large body of work has shown that firms with strong political connections generally seem to prosper in settings with poor institutions (Faccio, 2006, Faccio, Masulis, and McConnell, 2006, Frye and Iwasaki, 2011, Hellman, 1998). For politicians, such well-connected firms can provide the necessary resources to insure stable revenues (and sources of rents) they need to retain power. Given their importance to bureaucrats, such firms can often count on their connections to ensure privileged access to public goods, such as social policy, and measures to protect their investments (Gehlbach, 2008, Slinko, Yakovlev, and Zhuravskaya, 2005). They can also count on their connections to gain access to government financial resources (Frye and Iwasaki, 2011). Even if social policy is unimportant to them,

an expansion of social policy that increases tax receipts may provide their allies more resources to illicitly divert to them. Either way, *ceteris paribus* politically connected firms should support social policy more than others, since they can lower their costs (relative to others) or derive illicit benefits.

*H<sub>2</sub>: Firms' preferences for generous, state-controlled social policy increase along with their ability to use political connections to take advantage of weak institutions (privilege logic).*

Second, as noted above, the absence of constraints on government officials encourages them to shirk responsibility and cut-back on effort. Consequently, those who are harder for the state to track and monitor – those with mobile assets and those in the informal economy – can take advantage of bad institutions to free-ride on whatever benefits are provided, since officials have few incentives to find tax evaders and compel them to pay. Empirically, tax evasion is indeed higher amongst groups that are harder to monitor: such as firms with weak paper trails for inputs and outputs, high turnover, cash-based finances, and which rely on high-skilled, mobile workers (Artavanis, Morse, and Tsoutsoura, 2012, Kleven et al., 2011). Thus, poor institutions allow some firms to decrease their contributions towards social policy. So long as there are universal or quasi-universal benefits being offered, they can free-ride on the social policy system. If savings from tax evasion outweigh the dead-weight costs of poor institutions, such firms will *ceteris paribus* support social policy more than the average firm.

*H<sub>3</sub>: Firms' preferences for generous, state-controlled social policy increases along with their ability to free-ride on social policy (free-riding logic).*

Before moving on, it is important to make one caveat about the relationship between privilege, free-riding, and poor institutions. In this paper, I motivate my discussion of privilege and free-riding by pointing to the fact that both of these strategies are enabled in poor institutional settings, where there are few constraints on government officials. This need not be the case, however. Even in relatively well-institutionalized settings such as the United States and Western Europe, the ability to glean favors from political friends and to evade taxes is not entirely absent. Consequently, one could easily observe a relationship between well-connected firms and tax-evaders in these countries and support for social policy. I do not discount this possibility theoretically and, due to data limitations, I cannot test it directly. Nonetheless, I argue that the magnitude of the effect of privilege and free-riding should be stronger in settings with poor institutional constraints, which provide more fertile ground for firms to turn connections and tax evasion into benefits.<sup>8</sup>

---

<sup>8</sup>I take this question up again in the conclusion of this paper.

### 3 Contextualizing Russian Social Policy and Institutions

Before turning to the empirical section of the paper, it is worth providing a bit of context for the survey. At the time of the firm survey used here (2005), Russia’s institutional environment was rather bleak in comparison to international averages in 2005, as noted above. The poor quality of national institutions was reflected at the sub-national level. Figure 1 shows some of this variation, by employing regionally aggregated data from a 2005 survey of 4,350 firms in 80 Russian regions that asked firms whether regional bureaucrats “often” engage in illegal activity. The survey organization reported that this was generally perceived as a question about the extent of corruption (Vainberg and Rybnikova, 2006).<sup>9</sup> On average (the blue line in the figure), 16% of firms reported that their regional bureaucrats were engaged in illegalities. As the figure demonstrates, however, there was a wide degree of variation, with 11 regions having shares higher than 30% and 25 reporting below 10%. Importantly, though, the rates are generally high for most regions.

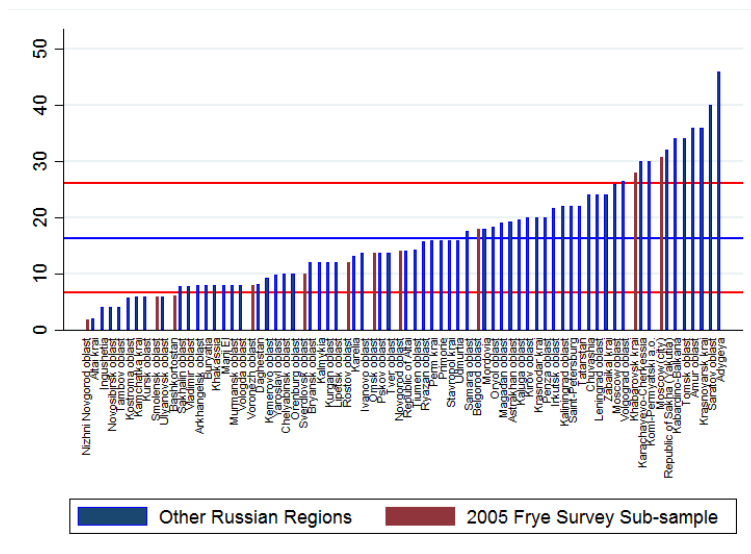


Figure 1: Corruption: Regional Average of Firms who Often Face Illegal Action When Dealing with Regional Bureaucrats

Russia’s weak institutional environment forms the backdrop for understanding firms preferences for social policy in Russia in 2005, the survey instrument used in the empirical analysis of this paper was carried out. In 2005 the Russian welfare state had just undergone an extended period of transition and reform. The massive economic shock of the early 1990s placed enormous fiscal strains on the government at the same time it dried up revenue streams. Sharp declines in wages, rapid population aging, widespread unemploy-

<sup>9</sup>While not ideal, this survey is one of the few contemporaneous surveys to ask questions about corruption in a large number of Russian regions.

ment, and rapid expansion of the informal economy undermined state financing designed to provide social benefits for a command economy (Dobronogov and Mayhew, 2000, Haggard and Kaufman, 2008, Jensen, 2004, Williamson, Howling, and Maroto, 2006). At the same time, weak institutional controls over the bureaucracy responsible for collecting taxes allowed officials to turn a blind eye to tax evasion in exchange for rent-seeking opportunities and political favors (Cook, 2007, Gehlbach, 2008, Shleifer and Treisman, 2000, Treisman, 1999). These issues were exacerbated by the vast expansion of the informal sector during the transition, as individuals responded to unemployment and new market opportunities by entering the shadow economy, which made it hard for a country with weak state capacity, like Russia, to police evasion. Indeed, state capacity was so weak in Russia that many employers in the formal sector also created tax evasion schemes to save on payroll taxes (Dmitriev and Maleva, 1997, Ovtcharova, and Popova, 2001, Treisman, 1999, Yakovlev, 2001). At the same time, weak institutional controls over the bureaucracy responsible for collecting taxes and administering social policy exacerbated these problems, as officials were willing to turn a blind eye to tax evasion in exchange for rent-seeking opportunities and political favors (Cook, 2007, Shleifer and Treisman, 2000, Treisman, 1999)

The solution adopted by the Russian government in the early 1990s was to move the bulk of its social responsibilities into four off-budget funds – for pensions, health care, disability and childcare, and unemployment – financed through a 37% payroll tax for employers and 1% for employees (Remington, 2011, Twigg, 1998). While this shifted social policy off the government's balance sheet and resolved the fiscal drain, it did little to solve the underlying problems with the system. The replacement rate of pensions through much of the 90s for most pensioners was between 30 and 40% of their average wage, which by 1999 was only around 60 to 70% of the subsistence minimum (Williamson, Howling, and Maroto, 2006). Only a small percentage of individuals received unemployment benefits, which were set far below subsistence minimums due to underfunding. Most did not even bother to apply (Cerami, 2009, Cook, 2007).

Most of the problems with the social policy system in the 1990's stemmed from the inability of the government to collect taxes properly. On the one hand, many individuals responded to unemployment and new market opportunities by entering the shadow economy, causing massive revenue shortfalls. On the other hand, many employers in the formal sector responded to high payroll taxes and new competitive pressures with tax evasion (Ovtcharova, and Popova, 2001, Yakovlev, 2001). Such evasion was normally accomplished through collusion between employers and employees, where official wages were under-reported in exchange for premiums in the form of unreported cash payments or income from untaxable sources (Dmitriev and Maleva, 1997, Treisman, 1999). Evasion was so rampant that Cook (2007) estimates that be-

tween a third and half of all workers avoided making contributions to the social funds during the 1990s. Poor institutional oversight exacerbated these problems, as employers were often shielded from formal taxation by regional authorities (Gehlbach, 2008)

In response to growing concern, the Russian authorities embarked on an audacious series of reforms in the early 2000s. First, the system of payroll tax payments was substantially simplified. Rather than paying separately into four different funds, each with its own bureaucracy, employers switched to single Unified Social Tax. Further, the government decided to set a lower, flat payroll tax in order to streamline payment and lower incentives for evasion (Cook, 2007, Nies and Walcher, 2002). Combined with other modifications to the tax code, the Unified Social Tax resulted in a 30% increase in tax collections in the first five months after the reform, an effect widely attributed to firms being incentivized to exit the shadow economy (Remington, 2011).

Second, in conjunction with the tax reforms, the government also altered the relationship of social policy to the federal budget and created opportunities for private sector involvement. Health care, for example, was removed from the purview of the national budget and devolved to regional off-budget funds with dedicated tax revenues. Private insurance funds were brought in to negotiate with local service providers on behalf of these regional funds (Burger, Field, and Twigg, 1998, Twigg, 1998). Pensions were also nominally extracted from the federal budget and placed under the responsibility of a central fund: the Pension Fund of the Russian Federation (PFRF). The PFRF continued to manage the existing universal, solidaristic minimum benefit payments, while citizens were given a choice between public (i.e. PFRF) or private management of a newly introduced notional defined contribution (Afanasiev, 2003, Williamson, Howling, and Maroto, 2006). Adoption of the private system was somewhat hampered, however, by the unwillingness of the state to guarantee funds outside the PFRF's control (Chandler, 2004, Wilson Sokhey, 2017).

These reforms, along with centralizing reforms that gave the federal government more control over regional tax authorities, went a long way towards solving the revenue crisis (Gorodnichenko et al., 2009, Remington, 2011, Slonimczyk, 2012). In conjunction with the tax reforms, the government also altered the relationship of social policy to the federal budget and created opportunities for private sector involvement in areas beyond pensions. Health care, for example, was removed from the purview of the national budget and devolved to regional off-budget funds with dedicated tax revenues. Private insurance funds were brought in to negotiate with local service providers on behalf of these regional funds in order to introduce an element of privatization (Burger, Field, and Twigg, 1998, Twigg, 1998). Nonetheless, reforms outside of the pension system remained rather limited both in scope and in their effects. Many of the improvements to the Russian

social policy system stemmed from tax reform and improvements to the general economy, although specific policy changes did help somewhat (Cook, 2007).

What were the implications of the Russian system for preferences over social policy in 2005? Prior to reform, the populace almost universally regarded the pension system as inadequate for providing old-age security. Although the reforms were helpful in resolving some of the most blatant problems with the pension system, the ratio between nominal average pensions and wages for the median region was about half in 2000 and fell to less than one-third in the mid-2000s. Repeated efforts by the government to cope by raising minimum guaranteed payouts were largely unsuccessful, although they helped somewhat (Remington, 2011). For health care, the obligatory basic insurance coverage promised by the state did not provide much in the way of advanced care, nor did the quality of care provided improve much (Cerami, 2009). More importantly, regional governments were often left in charge of covering health insurance for the unemployed, exposing these groups to the vagaries of regional budgeting (Wagstaff, 2009). Institutionally both the health-care and pension systems were plagued by accusations of corruption, mis-management of funds, and outright theft on the part of both public and private providers (Burger, Field, and Twigg, 1998, Cook, 2007, Twigg, 1998). Both systems also retained universal components, making them vulnerable to free-riders even in the face of the UST reforms attempts to make paying taxes attractive to individuals and firms.

From employers' perspective, the social policy system circa 2005 therefore provided uncertain labor market benefits. On the one hand, the relative inadequacy of the basic state-run system meant that firms were forced to offer supplementary benefits or wage premiums in order to attract highly skilled workers (Remington, 2011). The mixed system facilitated high-skill labor market strategies for larger, profitable firms, particularly state-owned or partially state owned firms that could draw on government resources to defray costs. For such firms, the public component was not crucial to the labor market value of the programs, but several of the business association leaders I interviewed emphasized to me that the marginal benefits of the universal component of the welfare state were worthwhile to firms, particularly government affiliated ones, with weak budget constraints (Interviews BA20130613, BA20130716, BA20130801). For others, however private provision was too expensive and the existing system remained vulnerable to predatory officials and opportunistic policy reversals designed to favor the state-run system.<sup>10</sup> On the other hand, because many of the problems of the system stemmed from inadequate benefits provision, an increase in funding could *ceteris paribus* make it an efficacious part of broader labor market strategy. Again, though,

---

<sup>10</sup>For example, the vice-president of Russia's largest employer association, Igor Iorens, complained three years after the pension reform that government officials effectively eliminated the private system as a real choice by manipulating regulations to slow down transfers from the government to private system (*Russkii Polis* (05/01/2003). "Dokazatel'stvo obratnovo".) [1061].

poor institutions made such a strategy dangerous, as participants would be vulnerable to the costs of poor institutions.<sup>11</sup> In either case, however, the framework introduced above suggests that firms that could protect themselves or free-ride might be able to derive benefits despite the drawbacks of poor institutions.

## 4 Data and Methodology

In order to test the hypotheses laid out in section 2, I employ a survey of 666 Russian executives<sup>12</sup> in eleven regions that was conducted in 2005. The survey covers 23 industrial sectors, excluding agriculture and communal, health, and social services. Firms were randomly selected based on a stratified design, resulting in a survey that roughly mirrors the size and sectoral composition of the national economy.<sup>13</sup>

My main dependent variable is the following survey instrument, which captures preferences for social policy:

*In society there are different views about the scale of funding for the social sphere and the direction of its development. Which of the following statements do you agree with?*

1. It is necessary to increase social spending by increasing taxes and mandatory payments
2. It is necessary to maintain social spending at the same level, leaving taxes and mandatory payments at the same level
3. It is necessary to reduce social spending while reducing taxes and mandatory payments
4. Hard to say

This instrument has several valuable features. First, the reference in the original Russian to “the social sphere” primes respondents to think about state control, as the term is rarely used with private programs or funds. Expansion of the system and state control are therefore at the heart of this question. Second, the instrument directly evokes taxation policy. This primes respondents to think carefully about the cost trade-offs inherent in providing more generous social policies (Kenworthy and McCall , 2008). In doing so, it

---

<sup>11</sup>For examples of this in the Russian press, Selivanovna, M. (05/05/2002). “Interv’ju s Aleksandrom Shohinom”. *BOSS* [19]; Golikova, L. (11/27/2001). “Posle reformy budet tol’ko huzhe”. *Kommersant* [612]; Korobkova, I (07/15/2002). “Lakomyj pensioner”. *Kompanija*. One labor union head indicated the magnitude of the problem to me, noting that it was almost impossible to audit whether contributions were properly credited. Employers or unions would have had to know someone important to get access to the data (Interview LU20130723).

<sup>12</sup>Chief executive officers, chief financial officers, and chief legal officers

<sup>13</sup>More details on the sample selection, composition, and representativeness can be found in Frye (2006).



should prompt executives to think of the costs and benefits of social policy, rather than ideological concerns. Finally, this question is rather vague about social policy. Normally, respondents may have very different programs in mind when answering this type of question. Here, this ambiguity is helpful, as it narrowly focuses the question on control, rather than different risk types. The cost is masking potential heterogeneity due to variation in the risk profile of firms, but this is a small issue given this study's theoretical focus on who controls social policy. At the same time the instrument has one important disadvantage: it cannot distinguish between firms who do not trust the state to provide social policy and those who simply believe taxes are too high. Fortunately, the survey includes questions that allow for controls on the appetite of firms for government spending and their tax burden.

All told approximately 22% of the sample of firms supported increases in social spending along with a higher tax burden to support it, while about 15% of firms preferred a decrease in both social spending and the tax burden. Figure 2 summarizes the dependent variable across all regions in the sample and sorts regions according to aggregated responses to a question about perceptions of corruption on the survey.<sup>14</sup> The regional distribution of answers is quite striking. In the Republic of Bashkortostan, for example, only 2% of firms support increases in government controlled social spending, whereas in Moscow 36% of firms do. Strikingly, these are the regions with the highest and lowest levels of perceived corruption according to this survey. Nonetheless, the relationship is not straightforward, as figure 2 indicates. As noted above, this is likely because Russian institutions are uniformly poor.

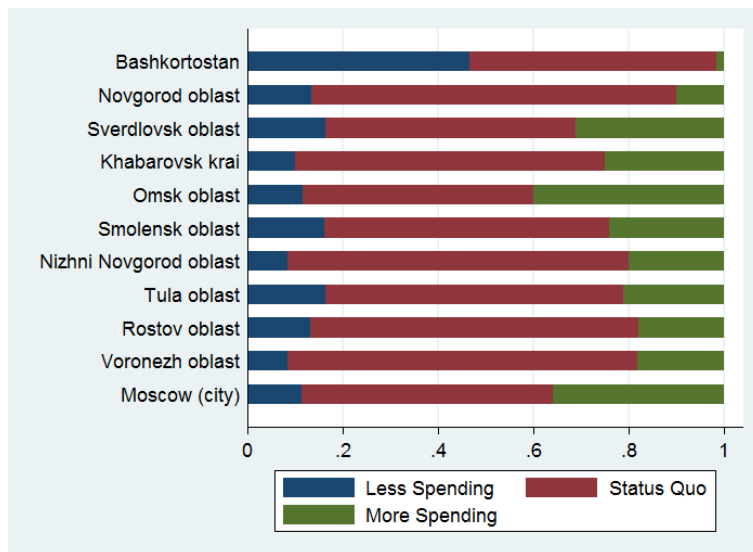


Figure 2: Support for Social Policy Spending Increases

<sup>14</sup>This variable comes from a question asking firms about the extent to which regional bureaucrats are corrupt or take bribes from the same survey that provides the dependent variable.

It is important to note that a major issue with the survey instrument is that many firms availed themselves of a “hard to say” option (26%). On the one hand, firms simply may not care whether social spending is altered along with taxes or may not know enough to judge. On the other hand, firms may have found this question to be sensitive. In this paper, I take the former view. First, analysis of “hard to say” answers fail to turn up systematic predictors (see Table 1 below), which is implausible if the question is sensitive. Second, qualitative evidence gathered during interviews with business associations during my field work suggests many firms do not think about social policy until asked and tend to find the status quo adequate (BA20130613, BA20130801). Indeed an informal poll of over 200 Moscow business associations I conducted supports this supposition: only a handful of (usually large) associations reported being interested in social policy issues. Moreover, in none of my interviews did it ever seem that business owners or business association leaders lacked knowledge of social policy, another possible explanation. Finally, it seems implausible that the question was sensitive. Questions dealing with corruption – a clearly sensitive question – elicited far fewer missing responses. Consequently, I deal with this issue by lumping “hard to say” answers in with those who answered that the status quo is appropriate.<sup>15</sup>

Turning to the analytical strategy, section 2 posited a number of hypotheses about the ways in which firms win and lose from social policy under poor institutional conditions. In order to explore firms’ preferences for social policy, I estimate a simple ordered probit model with fixed effects for regions and sectors and cluster corrected standard errors.<sup>16</sup> The probit model has the structural form:

$$Y_i = \alpha + \beta D_i + \gamma X_i + \rho I_r + \chi_s + \epsilon_i \quad (1)$$

where  $D_i$  is a vector of individual, firm-level characteristics that measure the ability of firm  $i$  to insulate itself from the deadweight costs of poor institutions (operationalized below),  $X_i$  is a vector of firm-level controls,  $\rho_r$  and  $\chi_s$  are vectors of regional fixed effects (for region  $r$ ) and sector fixed effects (for sector  $s$ ), and  $\epsilon_i$  is the error term. I describe these parameters and their operationalization in the following sub-sections.

---

<sup>15</sup>Reported results are also robust to alternative means of dealing with these missing responses, such as list-wise deletion or assuming these firms oppose social policy. Results available upon request.

<sup>16</sup>Results in this chapter are robust to alternative specifications including OLS, Multi-level linear regression using cluster corrected, bootstrap standard errors (Cameron, Gelbach, and Miller, 2008, Harden, 2011, Leoni, 2009).

## 4.1 Measuring Privilege and Free-riding

The hypotheses developed in Section 2 suggest two logics that may lead firms to support social policy in settings with weak institutions due to the ability to accrue greater than expected benefits or to shift costs on to others. The first logic is one of privilege, in which politically well-connected firms can either defray the costs of poor institutions by securing privileged access to social policy or are able to divert the greater resources that social policy receipts provide their political allies to their own ends. Unfortunately, in this survey there are no direct questions about the relationship of the firm manager to regional officials or the presence of state officials on the firms' executive board. To get at these connections, I make use of questions about the ownership structure of firms to create a dummy variable indicating state ownership. My survey allows me to distinguish between four types of firms: those originally registered as private with no current state-ownership, fully privatized firms, privatized firms in which the state retained a partial stake, and fully state-owned firms.<sup>17</sup> I construct my state-ownership dummy using the latter two categories.

Firms with state ownership should be strongly connected to key politicians, since the latter – in their role as public servants – own the former outright. Government (and government appointed) officials typically hold seats on the boards of directors for these firms (Frye and Iwasaki, 2011). Moreover, existing work provides some evidence that state ownership is enough of a political connection to allow firms to derive benefits unavailable to others. In Russia, evidence indicates that state-owned firms are more likely to benefit from the selective provision of public goods and additional property rights protections (Gehlbach, 2008, Juurikkala and Lazareva , 2006). They are also more likely to receive preferential tax treatment, better access to government orders, and access to credit, all of which can help them to mitigate both the actual costs of social policy and weakened competitiveness from having to pay for it (Frye and Iwasaki, 2011). Indeed, when asked about how different companies would react to tax increases to pay for greater social policy, the head of a major Russian business association told me:

All employers are well aware that increases in taxes – this is a decrease in their income. Maybe not by 100%, but by 50 for sure. Especially in small companies and in companies in the private sector. Everyone understands that this doesn't concern large government firms, they can just absorb the new rates. But what can the rest of us do? (Interview BA2-20131007)

---

<sup>17</sup>Firms were first asked if they were formed as a state or private enterprise. If formed as a state-owned enterprise, they were then asked if they were privatized. This distinguishes de novo and fully state-owned firms. To distinguish between firms with residual state ownership and fully privatized firms, I make use of a question that asks about the make-up of firms' stock holders. Firms that indicated ownership by municipal, regional, or federal authorities were coded as having residual ownership. This coding matches reasonably well with an alternative approach that looks at the legal status of companies but captures cases where the state has an equity stake in public companies.

At the same time, in Russia flows from the funded component of pensions were available to the government as cheap credit (Entry 19, 205, 259, 330, 526, 700). During debates about pension reform in the early 2000's there was a great deal of fear that this would be misused by the government as a means of rapidly increasing spending and increasing support for, and investment in, state-owned firms.<sup>18</sup> As Andrei Godzinski, president of the Eastern Finance Company notes, there were few controls on such funds:

The reform (of the pension system) has created one outrage. This is that money is being transferred to Vnesheconombank (a major government owned investment bank) – this is an outrage squared. Why did they (the government) do this? To collect for themselves massive resources that they can spend without control. (Entry 902)

Indeed, one of the government's major responses to the 2008 financial crisis was to engage in massive deficit spending in order to provide bailouts to troubled state-owned firms, among other measures (Gurvich et al., 2010, Vartapetov, 2011). With respect to social policy, these types of benefits – privileged access to public goods, property rights, credit, and government support – are all important, because they provide state-owned firms with comparative advantages vis-a-vis other firms that help them lower costs and risk.

It is important to note that a dummy for state owned firms is a somewhat noisy measure. Fully state-owned firms, in particular, are likely to differ from their private counterparts on a host of dimensions – ideology, competitiveness, budget constraints – that may influence preferences for social policy through channels other than privilege. Nonetheless, this is one of the easiest and most reliable measures of connections.<sup>19</sup> As a robustness check, I explore alternative interpretations of this variable, as well as attempt to illustrate what types of advantages state-owned firms are receiving in Section 5.1.

The second is the free-rider logic, which suggests that firms which can evade taxes will be more supportive of social policy. Testing this logic is also complex, as the survey used in this chapter offers no instruments that directly tap traditional measures of the ability to free-ride. Factor mobility, for example, can only be measured using coarse sector fixed effects, which are themselves highly correlated with other determinants of preferences for social policy such as skill profile. Similarly, firm size is highly correlated with sector, with the largest firms in the sample generally belonging to the oil and gas sector and heavy

---

<sup>18</sup>I discuss this fear in greater depth in a chapter of my dissertation, which uses content analysis of the Russian press to explore the logic linking institutional quality and social policy preferences

<sup>19</sup>Compare studies such as Frye and Iwasaki (2011), Gehlbach (2008) to studies that use more elaborate criteria, such as Faccio (2006). The latter make strong assumptions about ownership and connections while also relying on a non-anonymous sample. Such techniques are difficult to replicate with survey data.

manufacturing and the smallest to the retail sector.<sup>20</sup> Moreover, firm size is likely to be correlated with other factors – the ability of firms to take advantage of economies of scale, lobbying capacity, ability to provide officials with rents, political connections – that may influence preferences for social policy along other channels.<sup>21</sup> Indeed, existing work has found that large firms are more likely to capture and be captured by state officials, particularly in post-communist states like Russia (Gehlbach, 2008, Hellman, 1998). Consequently, firm size is difficult to interpret and could actually proxy for both political connections and ability to evade taxes.

One available proxy, however, is the extent to which firms are visible to regulatory authorities. The more interaction a firm has with government officials, the more difficult it is to hide critical tax-related information – sales, number of employees, and employee salaries – from the authorities and the harder it should be to evade taxes. To capture this, I make use of a question that asks firms, “In the last year, how many times was your firm subjected inspections from government organs (fire safety, sanitary, etc.)?”, to generate a measure of the logged number of inspections experienced by the firm. An important feature of this measure is that it captures inspections generally, rather than specifically those carried out by tax authorities. While the former indicate the ease with which government can find firms, a large body of evidence suggests that the latter tends to lead to collusive arrangements to evade taxes (Alm, Martinez-Vazquez, and McClellan, 2014). Thus, eliminating these inspections from the variable is important for cleanly capturing firms’ visibility, rather than opportunities to bribe tax officials into looking the other way.

It is important to note, however, that this measure is not a perfect proxy and has potentially ambiguous interpretations in the same way firm size does. While I argue that firms that can avoid inspection by the authorities are less visible (and therefore more able to evade taxes) than other firms, they might simply be using political connections to avoid inspection. This would be inconsistent with expectations under free-riding. I address this ambiguity directly in Section 5.1 with some tests designed to validate this measure as one of visibility and not political connections.

## 4.2 Controls

In addition to the variables of substantive interest noted above, I also include a number of controls. Summary statistics for all variables used in this paper can be found in table 4. As basic controls, I include a number of basic firm level characteristics: the logged number of employees at the firm, whether the firm

---

<sup>20</sup>Pairwise correlations between firm size and these sectors are 0.2756 (oil and gas), 0.2646 (heavy manufacturing), and -0.2753 (retail). All these correlations are significant at the 99.9% level.

<sup>21</sup>Section 5.1 demonstrates the multi-faceted effects of firm size empirically.

exported products in the previous year, firms' labor costs as a percentage of total production costs, whether competition from other firms poses a problem for firm development, and whether or not the firm provides supplementary pensions and health care policies.<sup>22</sup> I also include a measure of competitiveness – whether the firm reported profits in the previous year. I supplement this with a question about the degree to which credit constraints hamper the firms' development, as this variable is important to understanding the degree of flexibility firms have in meeting competing priorities (expansion, wage bills, taxes, etc.) while under budget constraints. In addition, ownership structure is an important predictor of firm behavior in a wide variety of surveys of Eastern European firms.<sup>23</sup> Consequently, I include the dummy variable described above for state-ownership in all specifications. Finally, as a means of controlling for potential unobserved heterogeneity due to selection of certain types of executives into certain types of firms, I also control for key individual level characteristics that have proven robust in nearly all studies – manager's age, level of education, and gender – in my main specifications (Alesina and Giuliano, 2011). I explore managerial characteristics in further detail in the robustness section of this chapter, as the selection problem is a potentially important alternative explanation for my findings.

I also include control variables of greater substantive interest. Existing studies posit that firms' preferences for social policy are governed by firms' labor market needs (Mares, 2003a, Swensen, 2002). Conceptually, existing work tends to treat this variable as a means of measuring the relative skill intensity of firms and their demand for skilled labor (Thelen, 2004). Unfortunately, no such measure exists on my survey instrument. Instead, I make use of a related measure that captures firms' bargaining power vis-a-vis their employees. Conceptually, the easier it is for a given firm to meet its demand for skilled labor, the less labor market constraints should govern its preferences.

As a simple proxy for the degree to which labor market considerations bind, I use a variable which captures the difficulty that firms have in finding qualified managers. I select this measure for two reasons. First, the survey uses a term for qualified specialists (*kvalifitsirovannie rabotchi*) that applies broadly to both workers with advanced education and those with small amounts of on-the-job training. As work on labor markets in Russia has amply demonstrated, however, the labor market needs of firms for these more narrowly defined types of specialists varies considerably: the former tend to be scarce, while the latter are abundant (Gimpelson, Kapeliushnikov, and Lukiyanova, 2010, Tan et al., 2007). Because of the question wording, it is therefore impossible to know what type of worker managers are thinking about when they answer this question. Consequently, two firms with similar skill profiles in the same labor market may

---

<sup>22</sup>These are generally offered as complements to the universal government programs in Russia.

<sup>23</sup>For examples, *c.f.* Beazer (2012), Frye (2006), Frye and Iwasaki (2011), Frye et al. (2014), Gimpelson and Zudina (2012).

answer this question differently based on what the manager perceives “qualified workers” to mean. Second, the question on difficulties in finding qualified managers is helpful, because the category is relatively well-defined in Russia and represents a relatively scarce variety of skill that firms traditionally have difficulty finding on the labor market (Gimpelson, Kapeliushnikov, and Lukiyanova, 2010, RSPP, 2014, 2013, Tan et al., 2007). As such, this measure is a good proxy for firms’ bargaining power vis-a-vis local labor markets and other firms. To the extent that managers are in high demand, success in finding managers is likely to be strongly correlated with the ability to find the sorts of high skill individuals that existing literature highlights.

## 5 Results

Table 1 presents the main results, which are consistent with both the privilege and free-rider logics discussed above. Model 1.1 introduces the baseline model, which includes the full set of controls outlined in section 4.2 and the state ownership dummy variable. The co-efficient of the state ownership dummy is positive and significant at conventional levels, indicating that state-owned firms are more likely to support government control of social policy. To the extent that state ownership is a good proxy for political connections, this result is consistent with the privilege logic. I test this assumption further in the next section.

With respect to the control variables, Model 1.1 indicates that labor market concerns are statistically significant predictors of firms’ support for state-controlled social policy at the 5% level. As expected, firms with difficulties in attracting qualified managers are more likely to support increases in state-controlled social policy spending. This is consistent with work that highlights the importance of labor market demand for skills in social policy preferences (Mares , 2003a, Swensen, 2002). Labor costs as a share of total revenue are also a significant predictor of social policy preferences at conventional levels, but have the opposite effect. Firms that spend a larger share of revenue on labor being more likely to oppose increases in social policy spending. This result is also unsurprising, since firms with high labor costs are unlikely to be sympathetic to tax increases that would further increase labor costs.

Other control variables, such as firm size and export orientation, are not significant at conventional levels in most specifications of Table 1. These results are somewhat odd, given predictions in the existing literature, particularly for firm size. This may be partially due to the fact, noted above, that firm size is simultaneously correlated with political power in Russia and visibility to tax authorities – potentially countervailing effects. Indeed, only when one controls for inspections (Model 1.2), a measure of visibility, does firm size become a significant (positive) predictor of support for social policy. I discuss this result further below, when I validate

my interpretation of the other substantive variables of interest. Finally, it should be noted that managers' characteristics were insignificant predictors of firms' attitudes towards social policy.<sup>24</sup> This result mitigates some concerns that answers to the social policy question reflect the personal preferences of managers, since age, gender, and education are typically all extremely robust predictors of individuals' preferences for social policy and redistribution (*c.f.* (Alesina and Giuliano, 2011)). Here, the evidence suggests managers are answering with their firms' strategic goals and limitations in mind.<sup>25</sup>

Model 1.2 introduces the proxy for the ability to hide from the authorities, the log number of inspections the firm has experienced in the last year. As expected, log inspections are a negative and significant predictor of support for social policy: the more a firm has been inspected, the less it supports state-controlled social policy spending. This result is consistent with both the free-riding logic but might also be consistent with the privilege logic. Thus far, I have argued that inspections are a proxy consistent with the free-rider logic, because firms that are less subject to inspection can hide themselves from the government, evade taxes, and thus free-ride on others' contributions. Alternatively, though, firms that are inspected more often may not face government inspections due to protection from allies within the state. This would make inspections a proxy for connections, rather than visibility. I attempt to distinguish between these two in the next section.

Finally, Model 1.3 checks whether the results of the previous models may have been due to selection effects related to non-response. I make use of a simple logit model, in which the dependent variable is a dummy equal to one if the firm responded "hard to say" to the social policy expansion question and the right hand side consists of the set of controls from the previous models and the two main, significant independent variables of interest: the state ownership dummy and log inspections. None of these variables is a significant predictor of answering "hard to say", indicating that results are unlikely to be due to systematic selection effects.<sup>26</sup>

To put the results into context, Figure 3 provides a sense of the relative predictive power of the log inspections variable and the state ownership dummy in comparison to the other statistically significant controls.<sup>27</sup> For continuous variables, the figure shows the first difference in the predicted probability that the median firm supports more social policy spending and higher taxes and the continuous variable of interest moves from the median to the 90th percentile value. First differences for the state ownership dummy

---

<sup>24</sup>These are omitted from the reported results in table 1, but are available upon request.

<sup>25</sup>This does not eliminate the possibility that managers' ideological leanings shape their answers. I deal with this possibility in greater detail in the next section.

<sup>26</sup>These results are also consistent with the fact that these results are more or less missing at random. In unreported regressions, I engage in list-wise deletion of firms that answered "hard to say", which does not substantially alter results.

<sup>27</sup>The figure was constructed using quasi-bayesian simulated predicted probabilities (and their 95% confidence intervals) derived from models 1.5. Simulations were obtained in R.



variable were taken between state owned firms and private firms, with all other variables held at the median.

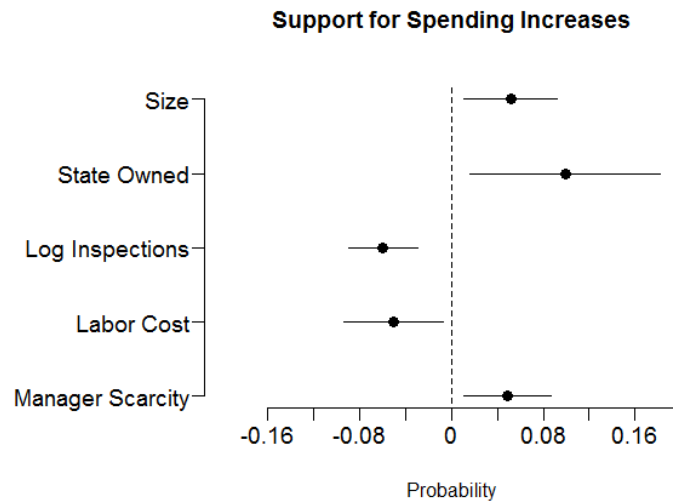


Figure 3: Substantive Effects of Individual Level Predictors of Support or Social Policy

Interestingly, the substantive effect of the state ownership variable is by far the largest, with state owned firms being about 9.8% more likely to support state-run social policy than other firms. Log inspections had a smaller, but still large effect, making firms about 6% less likely to support social policy spending as one goes from a median level of inspections to the 90th percentile. These effects are as strong or stronger than the effects of going from a median to an acute level of need for managers (4.9% more likely to favor social policy), from a median to a particularly large firm size (5.1% more likely to favor social policy), and from median to particularly high labor costs (5.1% less likely to support social policy). While most of these effects may seem objectively small, it is important to note that effect sizes of 3-4% are large in comparison to the types of substantive effects generally identified in the individual level literature, even when going from the median to the 90th percentile of income. Rehm (2009), for example, estimates the probability of support for social policy to decrease by about 5% as one goes from the median to the 90th percentile in income and increases by 6% and 3% as one goes from the median to the 90th percentile in occupational unemployment rates and skill specificity respectively.

In order to insure the robustness of these results, I ran some additional tests, which are all available upon request. First, I recreated the above specifications with the full set of ownership dummies – private firms, fully privatized firms, partially privatized firms, and fully state-owned firms – instead of the more coarse state-ownership dummy used in the main specifications. Results remain mostly robust, although these tests suggest that much of the effect of the coarse state-ownership dummy comes from the strong

(both substantively and statistically) preferences of fully state-owned firms. Partially state-owned firms tend to support government control more than other types of firms, but reach conventional levels of statistical significance in only a few specifications.

Second, I guard against the possibility that variation in the tightness of local labor markets shapes firm preferences for social policy by rerunning the models above using multi-level models that account for local labor market conditions. I introduced regional level unemployment into the above specifications and controlled for social policy spending as a percentage of total regional spending. Since the legal framework for Russian social policy is set by the central government and formally the same across regions, the latter is a good measure of variation in *de facto* social policy provision. These additions do not substantially change the results.

I also took advantage of the fact that the survey was conducted in each region's capital city to explore labor markets at the micro-level. In particular, I introduce a measure of net migration into the city, a proxy for labor mobility, and of the employed share of the working age population. Again, neither variable changes the main results. Substantively, these tests yielded little insight into the effect of regional labor markets on preferences for social policy. This is to be expected, as the small number of 2nd level (here regional) units severely biases estimates of both standard errors and co-efficients. While corrections exist, they tend to work poorly for applications with fewer than 20 observations (Cameron, Gelbach, and Miller, 2008, Leoni, 2009).

## **5.1 Evaluating Alternative Interpretations**

Two of the main variables of interest – the state ownership variable and the log inspections variable – are potentially subject to endogeneity and interpretation issues. In this section, I provide some additional tests in order to show that the interpretations offered in the previous section are valid, that both variables are capturing the intended concepts, and that the results of the previous section offer some support for both the privilege and free-riding perspectives.

Table 2 begins by offering a few tests designed to insure that the results attributed to the state-ownership and inspections variables are not due to factors unobserved in those tests. Unfortunately, there is no way to create good instruments for either of these variables from the survey, therefore the only option is to attempt to control for major categories of unobservables and alternative explanations. One of the main differences between state and privately owned firms is that the former may be able to count on state support, relax-

ing their budget constraints and allowing them to support otherwise unprofitable policies (Kornai, 1986). Model 2.1 attempts to account for soft budget constraints by introducing a measure of the extent to which firms are confident that authorities will provide aid in the event of financial difficulties.<sup>28</sup> The more certain firms are that aid is forthcoming, the more likely that soft budget constraints are guiding their decisions. This variable is positive, as expected, but insignificant at conventional levels. It does decrease the significance and magnitude of the state ownership dummy (although not below the 10% level), however. This is consistent with the notion that fully state owned firms believe that their political connections will allow them to mitigate the costs of social policy expansions in a poor institutional setting.

One may also worry that state-owned firms are less competitive than other firms, leading them to seek out government subsidies. The main specification includes a measure of profitability, but this may not fully capture differences in the ability to compete. Model 2.2 includes additional measures of competitiveness, including whether firms were able to engage in capital investment, open new product lines, or received foreign investment in the last two years. None of these variables are significant and they have no effect on the state dummy variable. This suggests that variation in competitiveness is not driving the results.

State owned firms might also differ from the private sector in that they may have to informally contribute to regional budgets and programs in exchange for favors (Gehlbach, 2008, Treisman, 1999). On the one hand, this may cause them to favor state-run social policy as a way of decreasing their burden. On the other hand, it might not make a difference in what the firm is asked to provide and instead just increase costs. Model 2.3 introduces a series of dummy variables equal to one if firms reported that they provided aid to regional agencies, pension funds, unemployment programs, or construction programs. None of the new variables are significant at conventional levels and they have no effect on the sign or significance of the state-ownership dummy.

Managers of state-owned firms might also have different ideological leanings than their counterparts in private firms. In this case, differences between state-owned firms and private ones reflect the ideology of managers, not characteristics of the firms themselves. While the main specifications control for manager level characteristics, Model 2.4 introduces additional measures related to government spending. Firms were asked whether they supported increases, decreases, or status quo levels of spending on police forces, the judiciary, and education.<sup>29</sup> Of these, only preferences for education spending are a significant predictor of support for social policy spending at conventional levels, with the co-efficient being positive, as expected.

---

<sup>28</sup>Firms could respond “certainly not”, “probably not”, “probably yes”, “certainly yes”. Higher values imply greater certainty of support.

<sup>29</sup>Note that these questions do not evoke taxation, so individuals are not reminded of the consequences of increased spending.

Even with these additions, however, the state-ownership dummy remains positive and significant. Model 2.5 tackles ideology from a different direction, including dummy variables if respondents voted for the Communist Party, liberal parties (Yabloko or the Union of Right Forces), and a variable indicating the extent to which the respondent supports WTO accession. All are reasonable proxies for attitudes towards the market. Again, these have little effect on the state ownership dummy and none are significant at conventional levels. Managers do not appear to be answering based on their own ideological predilections.

Model 2.6 and 2.7 shift focus to the proxy for visibility – log inspections – in order to assess whether the effect attributed to this variable is due to other factors. Model 2.6 first verifies that inspections are not related to general perceptions of government competence, an alternative explanation inconsistent with the institutions based framework advanced here. I introduce two variables into the baseline model, which capture respondents’ evaluation of the performance of their regional governor and regional executive bodies. In this specification, the magnitude of the log number of inspections is actually *larger* than in previous estimates and remains significant at conventional levels. Moreover, the two proxies for firms’ evaluation of local officials fail to reach significance at conventional levels. The link between inspections and opposition to government-controlled social policy does not appear to be related to negative evaluations of the government.

Model 2.7 is a similar exercise that checks whether log institutions are a proxy for local bureaucratic discretion, a variable linked to expectations of rent-seeking and opportunism in the Eastern European context (Beazer, 2012). I include an instrument indicating whether firms believe local bureaucrats have a high degree of discretion. Again, this variable alters neither the magnitude or the sign of the inspections variable. Interestingly, the measure of perceptions of local bureaucratic discretion is a significant, positive predictor of support for social policy. While this is a somewhat puzzling result, it may be explainable if firms are able to make use of local corruption and bureaucratic discretion to attempt to ease their costs (or enhance their benefits) from social policy, even if such policies may exacerbate free-rider problems at the regional level.<sup>30</sup>

While the results presented in table 2 mitigate concerns over alternative interpretations somewhat, they do little to address whether the state-ownership dummy and the inspections variable are valid measures of the privilege and visibility concepts. Table 3 attempts to get at these concerns directly. First, if the state ownership variable accurately captures the privilege logic, then we would expect it to be a significant predictor of the types of privileges that enable firms to mitigate costs associated with increased social policy spending: preferential protection of property rights, protection against corruption, and access to government subsidies in case of economic difficulties. Similarly, if the inspections variable captures power derived from

---

<sup>30</sup>Local level discretion, in particular may insulate firms from capricious local politicians, *c.f.* (Lewis, 2003, Miller, 2000, Rauch and Evans, 1999, Rauch, 1995).

political connections, rather than visibility, it should be associated with these variables as well.

Model 3.1 introduces as the dependent variable the ordinal measure of the degree to which firms are confident they can prevail in court when the regional government is a counter-party used in Model 1.4. Neither inspections or the state-ownership dummy are significant predictors, although both have the signs the privilege logic would predict. Model 3.2 introduces as a dependent variable a measure of the extent to which firms believe regional level bribery is a problem for firms with related economic activity, a formulation typically use by the World bank to mitigate sensitivity concerns about questions on corruption (*c.f.* BEEPS 2012). Consistent with the privilege perspective, state-owned firms are less likely to believe that corruption is a problem for their peer firms at the 1% level, implying they likely have some protection from regional predation.

Models 3.3 and 3.4 look at another privilege, often associated with political connections: government support. Models 3.3 and Models 3.4 introduce dummy measures that capture whether firms have received aid from regional and municipal governments (respectively) over the last two years. In Model 3.3, neither the state dummy or the inspections variable is significant at conventional levels. In Model 3.4, however, the state ownership dummy is significant, indicating that state-owned firms are more likely to receive aid from municipal governments than other types of firms. Given that the regression controls for potential correlates of poor performance and the firms share of the labor pool (both of which might drive support even in the absence of political connections), this finding is consistent with the notion that state-owned firms can make use of connections to gain privileges for themselves that can mitigate their costs. The inspections variable is not significant at conventional levels, however.

Finally, models 3.5 examines whether state-owned firms and those that are inspected often are more likely to make sales to the government. Again, consistent with the privilege perspective, state-owned firms are more likely to sell to the state, a potentially important source of rents and financial support even in tough times (Frye and Iwasaki, 2011). Taken together and combined with results from table 2 that rule out the most obvious sources of omitted variable bias, models 3.1 – 3.5 provide some support for the notion that the state-ownership dummy proxies for political connections. Consistent with work on the benefits of connections, state-owned firms are more likely to believe corruption is not a problem for firms like them, more likely to receive aid from local government, and more likely to make sales to the government. Inspections, however, are unrelated to any potential privileges.

Turning to visibility, we would expect that firms with higher visibility are more likely to have conflicts with the government over taxes. Model 3.6 introduces as the dependent variable a dummy variable that

captures whether firms have had tax conflicts with the authorities in the last two years. Unsurprisingly, the fewer times a firm was inspected the less likely it was to have tax conflicts at the 1% level. At the same time, state-ownership does not make for fewer tax conflicts, at least not at conventional significance levels. Taken together, these results suggest that the number of inspections are capturing something quite different than the state-ownership dummy and is consistent with (or at least fails to contradict) the notion that this variable measures visibility.

The fact that firms that are inspected less have fewer conflicts with the tax authorities could simply mean that such firms are law abiding and more likely to avoid situations that could cause conflict with the authorities. To assess this possibility, Model 3.7 introduces a measure of the extent to which firms believe following the law should be conditional on agreeing with it. Inconsistent with the notion that firms that are inspected at low rates are more “law-abiding”, the more often a firm is inspected, the more likely it is to believe that laws should be followed regardless of whether one agrees with it, a result which holds at the 5% level. Again, this result is consistent with an interpretation of the inspections variable as a measure of visibility.

As a final test of the interpretation of the inspections variable, model 3.8 uses this measure as the dependent variable to explore the determinants of being inspected. If the number of inspections a particular firm experiences are a function of the firms’ ability to leverage political connections as a defensive mechanism, then it should be correlated with other potential measures of privilege such as state-ownership once one controls for regulatory variation across firms.<sup>31</sup> The dummy variable for state ownership is negative in model 3.8, consistent with the notion that connections may lower the number of inspections; however, the variable is insignificant at conventional levels. Consequently, it does not appear that firms that are well-connected are able to use these connections to prevent inspections. Taken together with the other results presented in table 3, this lends support to my argument that the inspections variable measures firms’ visibility to state organs, which is in turn a proxy for firms’ ability to free-ride.<sup>32</sup>

Before concluding, it is worth pointing out that table 3 helps to illustrate some of the ambiguities of

---

<sup>31</sup>I do this by introducing the variable measuring firms’ perceptions of their regulatory burden discussed above. This is likely endogenous, but is the only way to measure variation in the extent to which sectors are regulated. Omitting this term does not change the results.

<sup>32</sup>Another potential test is to look at whether sectors traditionally associated with tax evasion are also less likely to be inspected. In Russia, tax evasion tends to be correlated with particular (especially service sector) industries and firm size (i.e. small firms) (Gimpelson and Zudina, 2012). One must be cautious, however, since tax evasion and informality in Russia is characterized by both formal and informal components working side-by-side, which often results in both hidden production and hidden wages in unexpected places, such as large industrial firms (Dolgopiatova, 1998, Johnson, McMillan, and Woodruff, 2000, Kaufman and Kaliberda , 1996, Ovtcharova, and Popova , 2001, Yakovlev , 2001). Here I reject this approach, however, since sector dummies also proxy for a large number of factors other than propensity for tax evasion that may shape propensity to be inspected.

the effect of firm size. Recall that section 4.1 claimed that firm size might be simultaneously a measure of privilege and of visibility. Consistent with the notion that large firms may benefit from political connections, firm size is positive and significant in model 3.1, indicating that larger firms are more likely to be able to prevail against regional government bodies in court. Similarly, large firms are more likely to receive government aid (at local and regional levels), results which hold at conventional levels (Model 3.3 and 3.4). All of these results are subject to alternative interpretations, of course, but they are at least consistent with the notion that large firms have political connections and use them to receive privileges from the state. As noted above, existing work on business-state relations in the post-Soviet space is also consistent with this story (*c.f.* (Gehlbach, 2008, Hellman, 1998)). Somewhat predictably, however, firm size is also associated with visibility. In models 3.6 and 3.8, firm size is a significant predictor of both a higher probability of tax conflict and a greater number of inspections (respectively). Given that firm size is associated with both privilege and free-riding, which generate opposite predictions about the effect of firm size on social policy preferences, it is unsurprising that this variable proved mostly insignificant at conventional levels in table 1, except for when we control for visibility directly (Model 1.6). Firm size captures two countervailing effects.

## 6 Conclusion

This paper argues that poor institutional settings create opportunities that allow some firms to profit despite (or possibly because of) them, making them more likely to support social policies. It focuses on two groups that are particularly well-positioned to do so. On the one hand, individuals with privileged connections to the state can take advantage of these connections to protect themselves from abuses of the social policy system or to gain access to additional resources. On the other hand, individuals who can hide from state officials and evade taxes can free-ride on social policy: letting others pay the cost while they reap the benefits. While such groups may always be able to shift costs and free-ride, I argue this type of strategy is more likely in poor institutional settings, where officials are weakly constrained. Consistent with this argument, I find that well-connected firms – specifically state-owned firms – and those likely to be able to hide from the state – firms that experience low inspection rates – are more likely to support social policy in Russia in 2005, a setting with particularly poor institutional quality. These findings remain robust and consistent in the face of leading alternative interpretations of them and tests of the conceptual validity of the measures.

This paper's findings provide two contributions. First, it joins a growing body of work that shows that some actors are able to adapt to poor institutional settings and find ways of profiting from the uncertainty

and risk they bring (Boix and Svulik, 2013, Gehlbach, 2008, Gehlbach and Keefer, 2011, Haber, Maurer, and Razo, 2003, Magaloni, 2008). These “winners” in poor institutional settings provide important and counterintuitive reservoirs of support for policies that seem particularly vulnerable to rent-seeking or time inconsistent preferences on the part of authorities, such as social policy. Second, in the case of social policy particularly, this paper advances our understandings of who supports the extension of government controlled social policy. Understanding who can profit from social policy even in the face of poor institutions is critical for understanding which groups form or join coalitions in support of the welfare state in such settings. As these coalitions appear to differ from those in the developing world, where strong institutional constraints make it harder to trade on political connections or evade taxes, we might expect very different outcomes. This research direction is a promising one for understanding the development and evolution of the authoritarian welfare state (Mares and Carnes , 2009).

An important caveat must be made, however. This paper took regional institutional quality as uniformly poor when examining the preferences of the politically connected and free-riders. This leaves the question of whether preferences vary according to institutional setting open. At various points in this paper, I have suggested that that free-riders everywhere may support the welfare state, so long as it is set up in ways that allow them to benefit. Similarly, the politically well-connected may be able to trade on the privileges of their connections to derive additional benefits from the welfare state regardless of institutional quality or to illicitly draw on the resources it provides. Viewed in this light, institutional quality conditions preferences only in so far as it makes it easier to evade taxes or to trade on one’s privileges. That is, tax evaders and the well-connected have the same preferences in strong and weak institutional settings, there are just more of both groups where institutions are poor. Unfortunately, the data at hand for this study is insufficient to resolve this difficulty. Future research must answer whether institutions condition preferences directly or merely create opportunities for certain groups to exercise their privileges or free ride.



## References

- Adsera, A., and C. Boix. (2002). Trade, Democracy, and the Size of the Public Sector: The Political Underpinnings of Openness. *International Organization* 56: 229 – 262.
- Afanasiev, S. A. (2003). Pension reform in Russia: First year of implementing. *Paper presented at the Institute of Economic Research's PIE International Workshop on Pension Reform in Transition Economies*. Hitotsubashi University, Japan.
- Alesina, A., and Giuliano, P. (2011). Preferences for Redistribution, in J. Benhabib, A. Bisin, and M. Jackson (Eds.), *The Handbook of Social Economics*. Elsevier Press.
- Alm, J., Martinez-Vazquez, J., and C. McClellan (2014). Corruption and Firm Tax Evasion. *International Center for Public Policy* WP 14-22.
- Alt, J. and T. Iversen (2017). Inequality, labor market segmentation, and preferences for redistribution. *American Journal of Political Science* 61 (1): 21 – 36.
- Artavanis, N., Morse, A., and M. Tsoutsoura (2015). Tax Evasion Across Industries: Soft Credit Evidence From Greece. *NBER Working Paper* No. 21552. Cambridge, MA: National Bureau of Economic Research.
- Beazer, Q. (2012). Bureaucratic Discretion, Business Investment, and Uncertainty. *The Journal of Politics* 74 (3): 637 – 652.
- Becker, G. S. (1985). Public Policies, Pressure Groups, and Dead Weight Costs. *Journal of Public Economics* 28 (December): 329 – 347.
- Becker, G. S. (1983). A Theory of Competition among Pressure Groups for Political Influence. *Quarterly Journal of Economics* 98: 371-400.
- Berens, S. (2015) Between Exclusion and Calculating Solidarity? Preferences for Private versus Public Welfare Provision and the Size of the Informal Sector. *Socio-Economic Review* 13 (4): 651 678.
- Boix, C. and M.W. Svolik (2013). The Foundations of Limited Authoritarian Government: Institutions, Commitment, and Power-Sharing in Dictatorships. *The Journal of Politics* 75 (2): 300 – 316.
- Brownlee, J. (2007). *Authoritarianism in an Age of Democracy*. Cambridge: Cambridge University Press.
- Burger, E.J., Field, M. G., and J.L. Twigg (1998). From Assurance to Insurance in Russian health Care: The Problematic Transition. *American Journal of Public Health* 88 (5): 755 – 758.
- Cameron, D. (1978). The expansion of the public economy: A comparative analysis. *American Political Science Review* 72 (4): 1243 – 1261.
- Cameron, A.C., Gelbach, J.B., and D.L. Miller (2008). Bootstrap-Based Improvements for Inference with Clustered Errors. *The Review of Economics and Statistics* 90 (3): 414 – 427.
- Carnes, M. and I. Mares (2016). Redefining Whos 'in' and Whos 'out': Explaining Preferences for Redistribution in Bolivia. *Journal of Development Studies* 52 (11): 1647 1664.
- Carnes, M. and I. Mares (2015). Explaining the Return of the State in Middle-Income Countries: Employment Vulnerability, Income, and Preferences for Social Insurance in Latin America. *Politics & Society* 43 (4): 525 550.

- Carnes, M. and I. Mares (2013). Measuring the Individual-Level Determinants of Social Insurance Preferences: Survey Evidence from the 2008 Argentine Pension Nationalization. *Latin American Research Review* 48 (3): 108 – 129.
- Cerami, A. (2009). Welfare State Development in the Russian Federation: Oil-led Social Policy and the 'Russian Miracle'. *Social Policy and Administration* 43 (2): 105 – 120.
- Chandler, A. M. (2004). *Shocking Mother Russia: Democratization, Social Rights, and Pension Reform in Russia, 1990-2001*. Toronto: University of Toronto Press.
- Cook, L. J. (2007). *Postcommunist Welfare States: Reform Politics in Russia and Eastern Europe*. Ithaca, NY: Cornell University Press.
- Dobronogov, A. V. and L. D. Mayhew (2000). Pension reform in a highly informalized post-Soviet economy. *Working Paper No. IR-00-41/July*. International Institute for Applied Systems Analysis: Laxenburg, Austria.
- Dmitriev, M. and T. Maleva (1997). Russian labor Markets in Transition: Trends, Specific Features, and State Policy. *Social Research* 64 (4).
- Dolgopiatova, T. (1998). *Neformal'nyi Sektor v Rossiiskoi Ekonomike*. Moscow: Institute for Private Sector Development and Strategic Analysis.
- Estevez-Abe, M., Iversen, T. and D. Soskice (2001). Social protection and the formation of skills: A reinterpretation of the welfare state, in Iversen, T., Soskice, D. and Hall, P. (Eds.), *Varieties of Capitalism: The Institutional Foundations of Comparative Advantage*. London: Oxford University Press.
- Faccio, M. (2006). Politically Connected Firms. *The American Economic Review* 96 (1): 369 – 386.
- Faccio, M., Masulis, R. W., and J. J. McConnell (2006). Political Connections and Corporate Bailouts. *The Journal of Finance* 61: 2597 – 2635.
- Frye, T. (2010). *Building States and Markets After Communism: The Perils of Polarized Democracy*. New York: Cambridge University Press.
- Frye, T. (2006). Original Sin, Good Works, and Property Rights in Russia. *World Politics* 58 (8): 479 – 504.
- Frye, T. and I. Iwasaki (2011). Government Directors and Business-State Relations in Russia. *European Journal of Political Economy* 27: 642 – 658.
- Frye, T., Reuter, O.J., and D. Szakonyi (2014). Political Machines at Work: Voter Mobilization and Electoral Subversion in the Workplace. *World Politics* 66 (2).
- Garrett, G. and D. Mitchell, D. (2001). Globalization, government spending and taxation in the OECD. *European Journal of Political Research* 39 (2): 145 – 177.
- Geddes, B. (1999). What Do We Know About Democratization after 20 Years. *Annual Review of Political Science* 2.
- Gehlbach, S. (2008). *Representation Through Taxation: Revenue, Politics, and Development in Postcommunist States*. New York: Cambridge University Press.
- Gehlbach, S. and P. Keefer (2011). Investment Without Democracy: Ruling-Party Institutionalization and Credible Commitment in Autocracies. *Journal of Comparative Economics* 39 (2): 123 – 139.

- Gimpel'son, V., Kapeliushnikov, R. and Lukiyanova, A. (2010). Stuck between Surplus and Shortage: Demand for Skills in Russian Industry. *Labour* 24 (3): 311 – 332.
- Gimpel'son, V. and Zudina, A. (2012) “Informals” in the Russian Economy: How Many of Them and Who are They. *Problems of Economic Transition* 55 (5): 26 – 57.
- Gorodnichenko, Y., Martinez-Vazquez, J., and K. Sabirianova Peter (2009). Myth and reality of flat tax reform: Micro estimates of tax evasion and productivity response in Russia. *Journal of Political Economy* 117: 504 – 554.
- Gurvich, E., Lebedinskaya, E., Simachev, Yu., Yakovlev, A. (2010) Russia Country Report, in Bertelsmann Stiftung (ed.), *Managing the Crisis. A Comparative Assessment of Economic Governance in 14 Economies*. Gutersloh: Bertelsmann Stiftung, 2010.
- Haber, S., Maurer, N., and A. Razo (2003). *The Politics of Property Rights: Political Instability, Credible Commitments, and Economic Growth in Mexico, 1876-1929*. Cambridge: Cambridge, University Press.
- Hacker, J.S. and P. Pierson (2002). Business Power and Social Policy: Employers and the Formation of the American Welfare State. *Politics & Society* 30 (2).
- Haggard, S. and Kaufman, R. R. (2008). *Development, Democracy, and Welfare States: Latin America, East Asia, and Eastern Europe*. Princeton: Princeton University Press.
- Harden, J.J. (2011) A bootstrap method for Conducting Statistical Inference with Clustered Data. *State Politics and Policy Quarterly* 11 (2): 223 – 246.
- Hausermann, S. (2010). *The Politics of Welfare State Reform in Continental Europe: Modernization in Hard Times*. Cambridge: Cambridge University Press.
- Hellman, J.S. (1998). Winners Take All: The Politics of Partial Reform in Postcommunist Transitions. *World Politics* 50(2): 203-234.
- Iversen, T., and Soskice, D. (2001). An Asset Theory of Social Policy Preferences. *American Political Science Review* 95 (4): 875 – 893.
- Jensen, R. T. and K. Richter (2004). The health implications of social security failure: Evidence from the Russian pension crisis. *Journal of Public Economics* 88: 209236.
- Johnson, S., McMillan, J., and C. Woodruff (2000). Why do Firms Hide?: Bribes and Unofficial Activity after Communism. *Journal of Public Economics* 76: 495 – 520.
- Juurikkala, T. and Lazareva, O. (2006). Lobbying at the Local Level: Social Assets in Russian Firms. *BOFIT Discussion Papers* 1/2006.
- Kato, J. (2003). *Regressive Taxation and the Welfare State: Path Dependence and Policy Diffusion*. Cambridge: Cambridge University Press.
- Kaufmann, D. and A. Kaliberda (1996). Integrating the Unofficial Economy Into the Dynamics of the Post-Socialist Economies: A Framework of Analysis and Evidence, in Kaminski, B. (Ed.) *Economic Transition in Russian and the New States of Eurasia*. Armonk, NY: M.E. Sharpe.
- Kaufmann, D., Kray, A., and M. Mastruzzi (2007). Governance Matters VI: Updated Indicators for 1996-2006. *World Bank Institute Working Paper*.

- Kenworthy, L., and L. McCall (2008). Inequality, Public Opinion, and Redistribution. *Socio-Economic Review* 6: 35 – 68.
- Kleven, H.J. Knudsen, M.B., Kreiner, C.T., Pedersen, S. and E. Saez (2011). Unwilling or Unable to Cheat? Evidence from a Tax Audit Experiment in Denmark. *Econometrica* 79 (3): 651 – 692.
- Kornai, J. (1986). The Soft Budget Constraint. *Kyklos* 39: 3-30.
- Kuo, A. (2010). *Political Origins of Firm Strategies*. Doctoral Dissertation: Stanford University.
- Kydland, F.E. and E.C. Prescott (1977). Rules Rather than Discretion: The Inconsistency of Optimal Plans. *Journal of Political Economy* 85 (3): 473 – 492.
- Leoni, E. (2009) Analyzing Multiple Surveys: Results from Monte Carlo Experiments. *Mimeo*.
- Lewis, D. E. (2003). *Presidents and the Politics of Agency Design: Political Insulation in the United States Bureaucracy, 1946-1997*. Palo Alto, CA: Stanford University Press.
- Magaloni, B.(2008) Credible Power-Sharing and the Longevity of Authoritarian Rule. *Comparative Political Studies* 41 (4–5): 715 – 741.
- Manow, P. (2001). Comparative Institutional Advantages of Welfare State Regimes and New Coalitions in Welfare State Reforms, in Pierson, P. (ed.), *The New Politics of the Welfare State*. Cambridge, Mass.: MIT Press.
- Martin, C.J. (2005). Corporatism from the Firm Perspective: Employers and Social Policy in Denmark and Britain. *British Journal of Political Science* 35: 127-148.
- Mares, I. (2005). *Taxation, Wage bargaining and Unemployment*. New York: Cambridge University Press.
- Mares, I. (2005). Social Protection Around the World: External Insecurity, State Capacity, and Domestic Political Cleavages. *Comparative Political Studies* 38 (6): 623 – 651.
- Mares, I. (2003a). *The politics of social risk: Business and welfare state development*. Cambridge: Cambridge University Press.
- Mares, I. (2003b). The Sources of Business Interest in Social Insurance: Sectoral versus National Differences. *World Politics*, 55 (2): 229-258.
- Mares, I. (2001) “Firms and the Welfare State: When, Why, and How Does Social Policy Matter to Employers?” in Hall, P.A. and Soskice, D., eds. *Varieties of Capitalism: The Institutional Foundations of Comparative Advantage*, pp. 184-212. Oxford: Oxford University Press.
- Mares, I. and M.E. Carnes (2009). Social Policy in Developing Countries. *Annual Review of Political Science*, 12: 93-113.
- Marques II, I. (2016). *Political Institutions and Preferences for Social Policy in the Post-communist World*. Ph.D dissertation. Columbia University.
- Marques II, I., Schaffer, J., and S. Wilson Sokhey (2017). The Foundations of Social Policy Support: Experimental Evidence on How Institutional Quality Affects Redistributive Preferences. *Mimeo*.
- McCubbins, R., R. Noll, and B. Weingast (1987). Administrative Procedures as Instruments of Political Control. *Journal of Law, Economics, and Organization* 3 (2): 243 – 277.

- Meltzer, A., and S. Richard (1981). A Rational Theory of the Size of Government. *Journal of Political Economy* 89 (5): 914 – 927.
- Miller, G. J. (2000). Above Politics: Credible Commitment and Efficiency in the Design of Public Agencies. *Journal of Public Administration Research and Theory* 10 (2): 289 – 328.
- Moene, K. O. and M. Wallerstein (2001). Inequality, social insurance, and redistribution, *American Political Science Review* 95 (4), 859-874.
- Myles, J. and P. Pierson (2001). The Comparative Political Economy of Pension Reform, in Pierson, P. (ed.), *The New Politics of the Welfare State*. Oxford: Oxford University Press. Cambridge, Mass.: MIT Press.
- Nies, S. and G. Walcher (2002). The Unified Social Tax and its Impact on Social Policy in Putin's Russia. *Working Papers* No. 34. Bremen: Research Centre for Eastern European Studies.
- North, D. (1990). *Institutions, Institutional Change, and Economic Performance*. Cambridge: Cambridge University Press.
- North, D. (1981). *Structure and Change in Economic History*. New York: W.W. Norton.
- North, D., Wallis, J.J., and B. Weingast (2009). *Violence and Social Orders: A Conceptual Framework for Interpreting Recorded Human History*. New York: Cambridge UP.
- North, D., and B. Weingast (1989). Constitutions and Commitment: The Evolution of Institutions Governing Public Choice in Seventeenth Century England. *Journal of Economic History* 49: 803 – 832.
- Olson, M. (2000). *Power and Prosperity: Outgrowing Communist and Capitalist Dictatorships*. New York: Basic Books.
- Olson, M. (1993). Dictatorship, Democracy, and Development. *American Political Science Review* 87 (3): 567 – 576.
- van Oorschot, W., and B. Meuleman (2006). Welfarism and the multidimensionality of welfare state legitimacy: Evidence from The Netherlands, 2006. *International Journal of Social Welfare* 21: 79-93.
- Ovtcharova, L., and D. Popova (2001). What Kind of Poverty Alleviation Policy Does Russia Need. *Russian Economic Trends* 10 (1): 7 – 14.
- Paster, T. (2013). Business and Welfare State Development: Why Did Employers Accept Social Reforms. *World Politics* 65 (3): 416-51.
- Pierson, P. (2001). Coping with Permanent Austerity: Welfare State Restructuring in Advanced Democracies, in Pierson, P. (ed.), *The New Politics of the Welfare State*. Oxford: Oxford University Press. Cambridge, Mass.: MIT Press.
- Rauch, J. and P. Evans (1999). Bureaucracy and Growth: A Cross-National Analysis of the Effects of 'Weberian' State Structures on Economic Growth. *American Sociological Review* 64 (5): 748 – 65.
- Rauch, J. (1995). Bureaucracy, Infrastructure, and Economic Growth: Evidence from U.S. Cities During the Progressive Era. *American Economic Review* 85 (4): 968 – 79.
- Rehm, P. (2009). Risks and Redistribution: An Individual-Level Analysis. *Comparative Political Studies* 42: 855 – 881.

- Remington, T. (2011). *The Politics of Inequality in Russia*. Cambridge: Cambridge University Press.
- Reuter, O.J. and T. Remington (2009) Dominant Party Regimes and the Commitment Problem: the Case of United Russia. *Comparative Political Studies* 42(4): 501 – 526.
- Rodrik, D. (1998). Why do more open economies have bigger governments? *Journal of Political Economy* 106 (5): 997 – 1032.
- Rodrik, D. (1997). *Has globalization gone too far?*. Washington, DC: Institute for International Economics.
- Rhodes, M. (2001). The Political Economy of Social Pacts: ‘Competitive Corporatism’ and European Welfare Reform, in Pierson, P. (ed.), *The New Politics of the Welfare State*. Cambridge, Mass.: MIT Press.
- Rossiiskii soiuz promyshlennikov i predprinimatelei (March 2014). *Doklad o sostoianii delovogo klimata v Rossii v 2010-2013 godakh*. Moscow.
- Rossiiskii soiuz promyshlennikov i predprinimatelei (2013). *Professionalnye kadry dlia biznesa: Praktika kompanii v oblasti obrazovaniia i obucheniia*. Moscow.
- Sabbagh, C. and P. Vanhuysse (2006). Exploring Attitudes Towards the Welfare State: Students Views In Eight Democracies. *Journal of Social Policy* 35(4): 607 628.
- Schneider, F. (2005). Shadow economies around the world: What do we really know? *European Journal of Political Economy* 21 (3): 598 642.
- Shleifer, A. and Treisman, D. (2000). *Without a Map: Political Tactics and Economic Reform in Russia*. Boston: MIT Press.
- Slinko, I., Yakovlev, E . and E. Zhuravskaya (2005). Laws for sale: evidence from Russia. *American Law and Economics Review* 7 (1): 284 – 318.
- Slonimczyk, F. (2012). The Effect of Taxation on Informal Employment: Evidence From the Russian Flat Tax System, in Lehmann, H. and Tatsiramos, K., (Eds.) *Research in Labor Economics: Informal Employment in Transition Economies*. Bingley, UK: Emerald Group Publishing.
- Swensen, P. A. (2002). *Capitalists Against markets: The Making of Labor Markets and the Welfare States in the United States and Sweden*. Oxford: Oxford University Press.
- Swensen, P. A. (1997). Arranged Alliance: Business Interests in the New Deal. *Politics Society* 25.
- Swensen, P. A. (1991). Bringing Capital Back In, or Social Democracy Reconsidered: Employer Power, Cross-Class Alliances, and the Centralization of Industrial Relations in Denmark and Sweden. *World Politics* 43.
- Tan, H., Savchenko, Y., Gimpelson, V., Kapelyushnikov, R., and Lukyanova, A. (May 2007). Skill Shortages and Training in Russian Enterprises. *World Bank Policy Research Working Paper* 4222.
- Thelen, K. (2004). *How Institutions Evolve: The Political Economy of Skills in Germany, Britain, the United States, and Japan*. New York: Cambridge University Press.
- Treisman, D. (2007). What Have We Learned About the Causes of Corruption From Ten Years of Cross-National Research? *Annual Review of Political Science*, 10, 211-244.
- Treisman, D. (1999) *After the Deluge: Regional Crises and Political Consolidation in Russia*. Ann Arbor: University of Michigan Press.

- Twigg, J.L. (1998). Balancing the State and the Market: Russias Adoption of Obligatory Medical Insurance. *Europe-Asia Studies* 50 (4): 583 – 602.
- Vainberg, A. and T. Rybnikova (2006). *Institutsionalnye i geograficheskie faktory razvitiia regionov Rossii*. Moscow: CEMI RAN.
- Vartaptetov, K. (2011) Russian Fiscal Federalism under Stress: Federal Support of Regions during the Global Financial Crisis. *Eurasian Geography and Economics* 4: 529 – 542.
- Wagstaff, A. and R. Moreno-Serra (2009). Europe and central Asias great post-communist social health insurance experiment: Aggregate impacts on health sector outcomes. *Journal of Health Economics* 28: 322 – 340.
- Weingast, B., and Moran, M. (1983). Bureaucratic Discretion or Congressional Control? Regulatory Policymaking by the Federal Trade Commission. *Journal of Political Economy* 91: 765-800.
- Williamson, J.B., Howling, S.A, and M.L. Maroto (2006). The Political Economy of Pension Reform in Russia: Why Partial Privatization? *Journal of Aging Studies* 26: 165 – 175.
- Wilson Sokhey, S. (2017). *Backtracking on Market-Oriented Reform: The Political Economy of Pension Policy Reversal*. Cambridge, Mass.: Cambridge University Press.
- Yakovlev, A. (2001). ‘Black Cash’ Tax Evasion in Russia: Its Forms, Incentives, and Consequences at Firm Level. *Europe-Asia Studies*, 53 (1): 33 – 55.
- Yang, J. (July 2013). Parochial Welfare Politics and the Small Welfare State in South Korea. *Comparative Politics*: 457-474.

Table 1: Firms' Preferences for Increased Spending on State-controlled Social Policy

	(1) Social Policy	(2) Social Policy	(3) Hard to Say (referring to social policy)
Log employees	0.037	0.079***	0.031
	-0.028	-0.028	-0.063
Credit problems	-0.023	-0.023	0.004
( <i>I=Yes</i> )	-0.025	-0.027	-0.06
Profitability	-0.034	-0.038	-0.083
( <i>I=Profitable last year</i> )	-0.073	-0.082	-0.105
Degree of competition	0.027	0.029	-0.011
( <i>Higher=More problematic</i> )	-0.036	-0.038	-0.051
Exporting firm	-0.236	-0.241	0.056
( <i>I=Yes</i> )	-0.154	-0.159	-0.139
Firm provides social benefits	0.099	0.085	-0.185
( <i>I=Yes</i> )	-0.126	-0.128	-0.152
Problems finding managers	0.072**	0.078***	-0.044
( <i>Higher=More problematic</i> )	-0.029	-0.029	-0.055
Labor costs	-0.205*	-0.213*	0.148
( <i>Higher=Larger share of revenue</i> )	-0.107	-0.109	-0.105
State ownership	0.299**	0.310**	0.068
( <i>I=Yes</i> )	-0.128	-0.135	-0.146
Log inspections		-0.171***	-0.074
		-0.039	-0.086
Cut-point 1	-1.078	-1.019	1.219
	-0.664	-0.637	-0.923
Cut-point 2	0.935	1.013*	
	-0.655	-0.614	
Manager Characteristics	Yes	Yes	Yes
Sector fixed-effects	Yes	Yes	Yes
Region fixed-effects	Yes	Yes	Yes
Number of Groups	11	11	11
Observations	544	544	544
Pseudo R-squared	0.0999	0.109	0.0876

Manager characteristics are education, log age, and gender.

Cluster corrected (region) standard errors in parentheses.

\*\*\*  $p < 0.01$ , \*\*  $p < 0.05$ , \*  $p < 0.1$



Table 2: Evaluating Alternative Interpretations for State Ownership and Inspections

	(1)	(2)	(3)	(4)	(5)	(6)	(7)
	Social Policy	Social Policy	Social Policy	Social Policy	Social Policy	Social Policy	Social Policy
State ownership (1=Yes)	0.283* (0.145)	0.318*** (0.123)	0.288** (0.129)	0.332** (0.149)	0.294** (0.132)	0.259** (0.129)	0.363*** (0.135)
Log inspections						-0.194*** (0.044)	-0.148** (0.057)
Probability of getting aid (Higher=More Confident)	0.073 (0.067)						
Recent Foreign investment (1=Yes)		-0.183 (0.253)					
Recent Capital Investment (1=Yes)		-0.060 (0.144)					
Product line innovation (1=Yes)		-0.026 (0.148)					
Aid regional unemployment (1=Provide aid)			-0.026 (0.143)				
Aid regional construction (1=Provide aid)			0.166 (0.166)				
Aid regional agencies (1=Provide aid)			-0.036 (0.160)				
Aid Regional pensions (1=Provide aid)			0.124 (0.123)				
Police spending (1=Should be Higher)				-0.094 (0.093)			
Judicial spending (1=Should be Higher)				-0.050 (0.178)			
Education spending (1=Should be Higher)				0.291* (0.167)			
Voted for KPRF (1=Yes)					-0.238 (0.252)		
Voted for Liberal Parties (1=Yes)					0.172 (0.134)		
WTO Accession (Higher=Higher support)					-0.022 (0.037)		
Regional bureaucracy rating (Higher=Higher approval)						0.035 (0.087)	
Regional executive rating (Higher=Higher approval)						-0.101 (0.082)	
Bureaucratic Discretion (Higher=More discretion)							0.125** (0.054)
Cut-point 1	-0.966 (0.632)	-1.214* (0.659)	-1.182* (0.669)	-0.971 (0.703)	-1.054 (0.724)	-1.314* (0.748)	0.420 (0.882)
Cut-point 2	1.049* (0.624)	0.807 (0.678)	0.834 (0.656)	1.083 (0.715)	0.962 (0.706)	0.690 (0.733)	2.551*** (0.819)
Firm Level Controls	Yes	Yes	Yes	Yes	Yes	Yes	Yes
Manager Characteristics	Yes	Yes	Yes	Yes	Yes	Yes	Yes
Sector fixed-effects	Yes	Yes	Yes	Yes	Yes	Yes	Yes
Region fixed-effects	Yes	Yes	Yes	Yes	Yes	Yes	Yes
Observations	532	526	540	491	498	488	376
Pseudo R-squared	0.0987	0.106	0.103	0.121	0.104	0.116	0.151

Dependent variable is preferences for State-controlled social policy expansion.

Firm level controls as in Table 1.

Manager characteristics are education, log age, and gender.

Cluster corrected (region) standard errors in parentheses.

\*\*\* p<0.01, \*\* p<0.05, \* p<0.1

Table 3: Validating Measures of Privilege and Visibility

	(1) Confidence in courts vs. regional	(2) Regional Corruption Burden	(3) Government support (Regional) support (Municipal)	(4) Government support (Municipal)	(5) Government sales	(6) Tax conflicts	(7) Conditionality of legal compliance	(8) Log inspections
Log employees	0.144*** (0.028)	-0.031 (0.060)	0.250*** (0.085)	0.152*** (0.067)	0.023 (0.060)	0.239*** (0.058)	-0.015 (0.050)	0.210*** (0.041)
Credit problems (I=Yes)	-0.140*** (0.025)	0.032 (0.033)	0.012 (0.040)	0.052 (0.046)	-0.006 (0.037)	-0.035 (0.040)	-0.029 (0.033)	-0.024 (0.026)
Profitability (I=Profitable last year)	-0.234*** (0.065)	0.088 (0.124)	0.107 (0.125)	0.088 (0.116)	-0.029 (0.101)	-0.050 (0.099)	-0.008 (0.113)	-0.018 (0.084)
Exporting firm (I=Yes)	0.131 (0.125)	0.129 (0.108)	0.218 (0.133)	-0.045 (0.148)	0.206 (0.161)	-0.081 (0.175)	0.221* (0.120)	0.002 (0.076)
Labor costs (Higher=More problematic)	-0.021 (0.076)	-0.083 (0.155)	-0.035 (0.152)	0.244*** (0.083)	0.035 (0.081)	0.015 (0.178)	0.021 (0.089)	-0.050 (0.058)
State ownership (I=Yes)	0.083 (0.162)	-0.282*** (0.106)	0.005 (0.296)	0.384*** (0.185)	0.237** (0.106)	-0.109 (0.215)	0.045 (0.152)	-0.011 (0.104)
Log inspections	-0.020 (0.057)	0.100 (0.068)	0.026 (0.114)	0.095 (0.078)	0.033 (0.041)	0.245*** (0.077)	0.101** (0.047)	0.103** (0.046)
Regulatory Burden (Higher=More problematic)								
Manager characteristics	Yes	Yes	Yes	Yes	Yes	Yes	Yes	Yes
Sector fixed-effects	Yes	Yes	Yes	Yes	Yes	Yes	Yes	Yes
Region fixed-effects	Yes	Yes	Yes	Yes	Yes	Yes	Yes	Yes
Observations	510	469	542	490	545	561	529	556
Pseudo R-squared	0.0634	0.0451	0.142	0.100	0.138	0.189	0.1063	0.235
R-squared								

Dependent variables listed above model. See text for Descriptions

Cut-points for ordered probit models (Models 1-7) and intercept for OLS model 8 omitted due to space. Results available upon request.

Manager characteristics are education, log age, and gender.

Cluster corrected (region) standard errors in parentheses.

\*\*\* p<0.01, \*\* p<0.05, \* p<0.1

Table 4: Summary Statistics

Variable	Obs	Mean	Std. Dev.	Min	Max
Log Employees	666	4.989	1.532	1.386	11.156
Credit Problems	629	3.431	1.486	1	5
Profitable	650	.602	.65	-1	1
Degree of Competition	657	2.376	1.347	0	4
Exporting Firm	666	.255	.436	0	1
Firm Provides Social Benefits	655	.631	.483	0	1
Problems finding managers	658	3.488	1.407	1	5
Labor costs	599	.938	.663	0	2
Log of respondent's age	666	1.041	.288	0	1.386
Respondent's Education	666	2.925	.581	1	4
Respondent's Gender	666	.207	.406	0	1
State Ownership	665	.22	.414	0	1
Government Sales	644	.651	.477	0	1
Firm Lobbies	666	.523	.5	0	1
Confidence in courts vs. regional government	598	2.704	.995	1	4
Regional Corruption Burden	544	2.711	1.393	1	5
Government Support: Regional	649	.125	.331	0	1
Government Support: Municipal	584	.14	.348	0	1
taxconflict	666	.194	.395	0	1
Conditionality of Legal Compliance	627	3.396	.781	1	4
Regulatory Burden	651	3.465	1.332	1	5

# BOFIT Discussion Papers

A series devoted to academic studies by BOFIT economists and guest researchers. The focus is on works relevant for economic policy and economic developments in transition / emerging economies.

- 2017
- No 1 Koen Schoors, Maria Semenova and Andrey Zubanov: Depositor discipline in Russian regions: Flight to familiarity or trust in local authorities?
  - No 2 Edward J. Balistreri, Zoryana Olekseyuk and David G. Tarr: Privatization and the unusual case of Belarusian accession to the WTO
  - No 3 Hongyi Chen, Michael Funke, Ivan Lozev and Andrew Tsang: To guide or not to guide? Quantitative monetary policy tools and macroeconomic dynamics in China
  - No 4 Soyoung Kim and Aaron Mehrotra: Effects of monetary and macroprudential policies – evidence from inflation targeting economies in the Asia-Pacific region and potential implications for China
  - No 5 Denis Davydov, Zuzana Fungáčová and Laurent Weill: Cyclicalities of bank liquidity creation
  - No 6 Ravi Kanbur, Yue Wang and Xiaobo Zhang: The great Chinese inequality turnaround
  - No 7 Yin-Wong Cheung, Cho-Hoi Hui and Andrew Tsang: The Renminbi central parity: An empirical investigation
  - No 8 Chunyang Wang: Crony banking and local growth in China
  - No 9 Zuzana Fungáčová and Laurent Weill: Trusting banks in China
  - No 10 Daniela Marconi: Currency co-movements in Asia-Pacific: The regional role of the Renminbi
  - No 11 Felix Noth and Matias Ossandon Busch: Banking globalization, local lending, and labor market effects: Micro-level evidence from Brazil
  - No 12 Roman Horvath, Eva Horvatova and Maria Siranova: Financial development, rule of law and wealth inequality: Bayesian model averaging evidence
  - No 13 Meng Miao, Guanjie Niu and Thomas Noe: Lending without creditor rights, collateral, or reputation – The “trusted-assistant” loan in 19th century China
  - No 14 Qing He, Iikka Korhonen and Zongxin Qian: Monetary policy transmission with two exchange rates and a single currency: The Chinese experience
  - No 15 Michael Funke, Julius Loermann and Andrew Tsang: The information content in the offshore Renminbi foreign-exchange option market: Analytics and implied USD/CNH densities
  - No 16 Mikko Mäkinen and Laura Solanko: Determinants of bank closures: Do changes of CAMEL variables matter?
  - No 17 Koen Schoors and Laurent Weill: Russia's 1999-2000 election cycle and the politics-banking interface
  - No 18 Ilya B. Voskoboinikov: Structural change, expanding informality and labour productivity growth in Russia
  - No 19 Heiner Mikosch and Laura Solanko: Should one follow movements in the oil price or in money supply? Forecasting quarterly GDP growth in Russia with higher-frequency indicators
  - No 20 Mika Nieminen, Kari Heimonen and Timo Tohmö: Current accounts and coordination of wage bargaining
  - No 21 Michael Funke, Danilo Leiva-Leon and Andrew Tsang: Mapping China's time-varying house price landscape
  - No 22 Jianpo Xue and Chong K. Yip: One-child policy in China: A unified growth analysis
- 2018
- No 1 Zheng (Michael) Song and Wei Xiong: Risks in China's financial system
  - No 2 Jennifer N. Carpenter, Fangzhou Lu and Robert F. Whitelaw: The real value of China's stock market
  - No 3 Bing Xu: Permissible collateral and access to finance: Evidence from a quasi-natural experiment
  - No 4 Stefan Angrick and Naoyuki Yoshino: From window guidance to interbank rates. Tracing the transition of monetary policy in Japan and China
  - No 5 Veronika Belousova, Alexander Karminsky and Ilya Kozyr: Bank ownership and profit efficiency of Russian banks
  - No 6 Chengsi Zhang and Chao Dang: Is Chinese monetary policy forward-looking?
  - No 7 Israel Marques II: Firms and social policy preferences under weak institutions: Evidence from Russia