

Funke, Michael; Rahn, Jörg

**Working Paper**

## Just how undervalued is the Chinese renminbi

BOFIT Discussion Papers, No. 14/2004

**Provided in Cooperation with:**

Bank of Finland, Helsinki

*Suggested Citation:* Funke, Michael; Rahn, Jörg (2004) : Just how undervalued is the Chinese renminbi, BOFIT Discussion Papers, No. 14/2004, ISBN 951-686-970-X, Bank of Finland, Institute for Economies in Transition (BOFIT), Helsinki,  
<https://nbn-resolving.de/urn:nbn:fi:bof-201408072097>

This Version is available at:

<https://hdl.handle.net/10419/212544>

**Standard-Nutzungsbedingungen:**

Die Dokumente auf EconStor dürfen zu eigenen wissenschaftlichen Zwecken und zum Privatgebrauch gespeichert und kopiert werden.

Sie dürfen die Dokumente nicht für öffentliche oder kommerzielle Zwecke vervielfältigen, öffentlich ausstellen, öffentlich zugänglich machen, vertreiben oder anderweitig nutzen.

Sofern die Verfasser die Dokumente unter Open-Content-Lizenzen (insbesondere CC-Lizenzen) zur Verfügung gestellt haben sollten, gelten abweichend von diesen Nutzungsbedingungen die in der dort genannten Lizenz gewährten Nutzungsrechte.

**Terms of use:**

*Documents in EconStor may be saved and copied for your personal and scholarly purposes.*

*You are not to copy documents for public or commercial purposes, to exhibit the documents publicly, to make them publicly available on the internet, or to distribute or otherwise use the documents in public.*

*If the documents have been made available under an Open Content Licence (especially Creative Commons Licences), you may exercise further usage rights as specified in the indicated licence.*

BOFIT  
Discussion Papers  
2004 ■ No. 14

Michael Funke and Jörg Rahn

Just how undervalued  
is the Chinese renminbi



Bank of Finland

BOFIT – Institute for Economies in Transition

# BOFIT personnel 2004

## Economists

### **Mr Pekka Sutela, head**

Russian economy and economic policy  
Russia's international economic relations  
China in the world economy  
Pekka.Sutela@bof.fi

### **Mr Gang Ji, economist**

Chinese economy and economic policy  
Gang.Ji@bof.fi

### **Ms Tuuli Koivu, economist**

Chinese economy and economic policy  
Editor-in-Chief of BOFIT China Review  
Tuuli.Koivu@bof.fi

### **Mr Tuomas Komulainen, economist**

Russian financial system  
Currency crises  
Editor-in-Chief of BOFIT Online

### **Mr Iikka Korhonen, economist**

Exchange rate policies in transition economies  
Monetary policy in transition economies  
Iikka.Korhonen@bof.fi

### **Mr Vesa Korhonen, economist**

Russia's international economic relations  
Russia's banking system  
Vesa.Korhonen@bof.fi

### **Ms Seija Lainela, economist**

Russian economy and economic policy  
Editor-in-Chief of BOFIT Russia Review  
Seija.Lainela@bof.fi

### **Mr Jukka Pirttilä, research supervisor**

Public economics  
Transition economics  
Editor-in-Chief of BOFIT Discussion Papers  
Jukka.Pirttila@bof.fi

### **Mr Jouko Rautava, economist**

Russian economy and economic policy  
Jouko.Rautava@bof.fi

### **Ms Laura Solanko, economist**

Russian regional issues  
Public economics  
Laura.Solanko@bof.fi

### **Ms Merja Tekoniemi, economist**

Russian economy and economic policy  
Merja.Tekoniemi@bof.fi

## Information Services

### **Mr Timo Harell, editor**

Press monitoring  
Editor-in-Chief of BOFIT Weekly  
Timo.Harell@bof.fi

### **Ms Liisa Mannila, department secretary**

Department coordinator  
Publications traffic  
Liisa.Mannila@bof.fi

### **Ms Päivi Määttä, information specialist**

Institute's library  
Information services  
Paivi.Maatta@bof.fi

### **Ms Tiina Saajasto, information specialist**

Statistical analysis  
Statistical data bases  
Internet sites  
Tiina.Saajasto@bof.fi


### **Ms Liisa Sipola, information specialist**

Information retrieval  
Institute's library and publications  
Liisa.Sipola@bof.fi

## Contact us

Bank of Finland  
BOFIT – Institute for Economies in Transition  
PO Box 160  
FIN-00101 Helsinki

Phone: +358 9 183 2268  
Fax: +358 9 183 2294  
E-mail: bofit@bof.fi  
Internet: www.bof.fi/bofit



Michael Funke and Jörg Rahn

Just how undervalued  
is the Chinese renminbi

BOFIT Discussion Papers  
Editor-in-Chief Jukka Pirttilä

BOFIT Discussion Papers 14/2004  
7.7.2004

Michael Funke and Jörg Rahn  
Just how undervalued is the Chinese renminbi

ISBN 951-686-970-x (print)  
ISSN 1456-4564 (print)

ISBN 051-686-971-8 (online)  
ISSN 1456-5889 (online)

Multiprint Oy  
Helsinki 2004

---

# Contents

Abstract.....	5
1 Introduction.....	7
2 Alternative approaches to calculating equilibrium exchange rates.....	10
2.1 Behavioral equilibrium exchange rate .....	18
2.2 Permanent equilibrium exchange rate .....	13
3 Data and (not-so-trivial) measurement issues.....	14
3.1 Real effective exchange rate .....	15
3.2 Productivity levels .....	17
3.3 Net foreign asset position .....	18
4 Empirical results .....	18
5 Conclusions.....	28
References.....	30
Appendix: Derivation of bilateral nominal exchange rates .....	34

All opinions expressed are those of the authors and do not necessarily reflect the views of the Bank of Finland.

Michael Funke\* and Jörg Rahn \*\*

## Just how undervalued is the Chinese renminbi?

### Abstract

Given that the value of China's currency has been hot topic recently, this paper explores the equilibrium levels of China's real and nominal exchange rates. Employing a Johansen cointegration framework, we focus on the behavioral equilibrium exchange rate (BEER) and permanent equilibrium exchange rate (PEER) models. Our results suggest that, while the renminbi is somewhat undervalued against the dollar, the misalignment is not nearly as exaggerated as many popular claims.

Keywords: Renminbi, Yuan, China, Exchange Rate, Equilibrium Exchange Rate  
JEL-Classification: F31, F32, F41, C32

---

\* Michael Funke and Jörg Rahn \*\*, Hamburg University, Department of Economics  
Von-Melle-Park 5, 20146 Hamburg, Germany. E-mail addresses: [funke@econ.uni-hamburg.de](mailto:funke@econ.uni-hamburg.de)  
[rahn@econ.uni-hamburg.de](mailto:rahn@econ.uni-hamburg.de)



Michael Funke and Jörg Rahn

## Just how undervalued is the Chinese renminbi?

### Tiivistelmä

Koska Kiinan valuutan arvo on ollut viime aikoina polttava kysymys, tutkimuksessa tarkastellaan Kiinan reaalisen ja nimellisen valuuttakurssin tasapainotasoja. Tutkimuksessa mallinnetaan Johansenin yhteisintegroituvuusmenetelmän avulla Kiinan ns. BEER- ja PEER-tasapainovaluuttakurssi. Tulokset osoittavat, että Kiinan valuutta on jonkin verran aliarvostettu suhteessa Yhdysvaltain dollariin, mutta aliarvostus ei ole niin suurta kuin jotkin suositut puheenvuorot antavat ymmärtää.

Asiasanat: renminbi, yuan, Kiina, valuuttakurssi, tasapainovaluuttakurssi

# 1 Introduction

Misalignment in the Chinese currency, the renminbi, has been the focus of much recent interest. Since it was devalued in 1994, China's currency has been kept at a constant nominal level to the US dollar despite China's rapid economic growth, rising productivity, vibrant exports, and massive foreign direct investment inflows – all factors that normally cause a currency to appreciate.<sup>1</sup> Moreover, the resulting build-up of central bank foreign reserves in itself is sufficient to justify renminbi appreciation.

The US government complains vociferously that an undervalued renminbi is keeping China's exports artificially cheap and causing job losses in America, Japan, and other Asian economies. Given China's strength as a trading nation, the fear is that China has achieved exuberant growth by selling deliberately undervalued exports and transforming itself into the “workshop of the world.”<sup>2</sup> With seemingly infinite pools of underemployed workers in the countryside and in inefficient state-owned enterprises, as well as pitifully low wages, China looks like it should be able to out-compete other economies in almost any category of manufacturing with significant labor inputs. The response of politicians in America and elsewhere to this perceived threat has been to lobby for a change in China's exchange rate regime and an end to Chinese “currency manipulation.”<sup>3</sup> Despite the perverse impacts of the dollar peg on international adjustment processes, the complaints from Europe have been more modest than those from America.<sup>4</sup> Finally, other Asian countries are worried that China is hogging the region's foreign direct investment inflows.

If one concludes a currency is misaligned, the next issue is to determine by how much. On this point, substantial disagreements rage over how undervalued the renminbi might be.

---

<sup>1</sup> China's currency is generally known as the renminbi, but the unit of measurement is the yuan (terminology that parallels “sterling” and “pound” in the UK).

<sup>2</sup> China's merchandise exports increased from about US\$10 billion per annum in the late 1970s to US\$326 billion in 2002, or about 5 percent of total world exports – making it the sixth largest trading nation in the world. This article is not intended to be a comprehensive review of this debate. For a brief summary, see “China is Becoming the World's Manufacturing Powerhouse,” World Bank, *Transition Newsletter About Reforming Economies*, available at <http://www.worldbank.org/transitionnewsletter/octnovdec02/pgs4-6.htm>.

<sup>3</sup> Unfortunately, tensions are rising. The debate has become highly politicized since the American government has tried to commit Beijing to scrap its misaligned 8.277 de facto peg with the US dollar (for further details, see <http://www.ustreas.gov/press/releases/js956.htm>).

<sup>4</sup> When the dollar depreciates, the renminbi depreciates along with it. China's international competitive position thus strengthens and its current account surplus rises, placing additional pressure on America's other trading partners to accommodate the needed reduction in the US current account deficit.

Estimates vary wildly.<sup>5</sup> According to the “Big Mac index,” a familiar, light-hearted indicator of whether world currencies are at their “correct” level, the renminbi was determined to be 56 percent undervalued as of April 2003.<sup>6</sup> In other words, a good dose of appreciation was justifiable.<sup>7</sup> The *Economist* recently responded with its own “Starbucks tall latte index” and reached similar conclusions.<sup>8</sup> While the Starbucks tall latte index tells broadly the same story as the Big Mac index for most currencies, the two measures differ widely in Asia. According to the Starbucks tall latte index, the renminbi was only 1 percent undervalued as of January 2004, implying that China has been unfairly accused of undervaluing its currency.

Obviously, “burgernomics” and “lattenomics” are both distorted – they consider a single good. A wiser, less fanciful, approach is to look at the deviations from purchasing power parity (PPP) for a broad basket of goods. The most reliable PPP data are available from the International Comparison Program (*ICP*). Figure 1 shows the *ICP*-based PPP conversion factor divided by the nominal exchange rate. The ratio makes it possible to compare the cost of the bundle of goods that make up *GDP* across countries. If the ratio is greater (smaller) than one, it is overvalued (undervalued). If it equals one, then the currency is at the proper level according to PPP. From this, we can see that the renminbi was at 0.23 in 2001, i.e. more than four times undervalued. The obvious implication is that the renminbi is super-competitive. But how meaningful is this extreme result? Figure 2 presents a scatter plot of 135 nations around the world for 2001. The vertical axis shows the PPP conversion factor divided by the exchange rate and the horizontal axis shows PPP

<sup>5</sup> Other papers that address China’s real exchange rate notably include Chou and Shih (1998) and Zhang (2001a). Chou and Shih investigate movements of the purchasing power parity exchange rate. They conclude that the renminbi was about 10 percent undervalued at the beginning of the 1990s. Zhang (2001a) has estimated a bilateral US dollar/renminbi behavioral equilibrium exchange rate model and a structural time series model (unobserved component model) for the period 1952 to 1997 using annual data. His econometric analysis reveals that the actual renminbi exchange rate fluctuated closely around the equilibrium exchange rate, and was close to equilibrium in 1997. In contrast, Preeg (2003) has recently estimated that unfair Chinese currency manipulation has resulted in a renminbi exchange rate undervaluation of about 40 percent.

<sup>6</sup> The Big Mac “basket” consists of one McDonald’s Big Mac hamburger, which is produced in 110 countries. The Big Mac PPP is the exchange rate that would result in hamburgers costing the same in the US as abroad. Comparing actual rates with PPPs signals whether a currency is under- or overvalued. (For more details on the index and ten years of findings, see <http://www.economist.com/markets/Bigmac/Index.cfm>). Academics have taken burgernomics seriously in recent years, applying the Big Mac index in nearly a dozen studies [e.g. Cumby (1996), Ong (1997), Ong (2003), Pakko (1996), and Parsley and Wei (2003)]. These studies generally find the Big Mac is surprisingly accurate in tracking exchange rates over the long run.

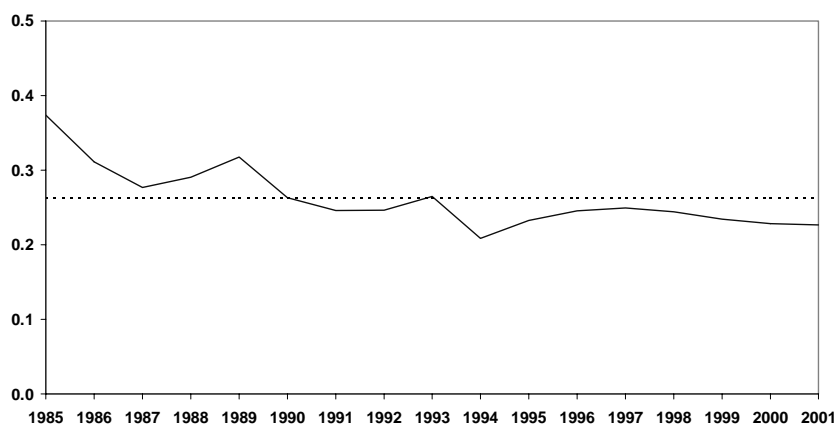
<sup>7</sup> Such undervaluation is not abnormal, and in fact common, among developing countries. The estimated undervaluation for the currencies of Russia, Brazil, and Indonesia, for example, was 51 percent, 45 percent and 32 percent, respectively.

<sup>8</sup> See the *Economist*, January 17, 2004, p. 63.

converted to per capita gross national income (*GNI*). China, Hong Kong and the US are marked with arrows.

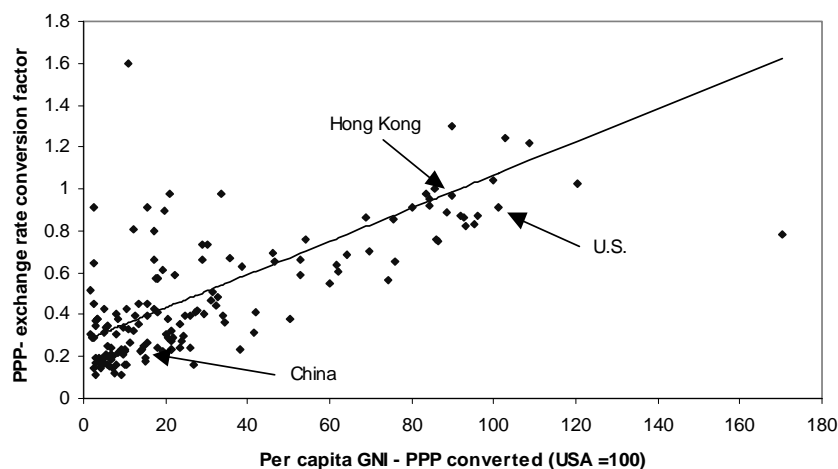
Note that in developing countries, where per capita incomes are relatively low, currencies are typically undervalued. Once this is taken into account, the degree of undervaluation shrinks, i.e. the PPP conversion factor to nominal exchange rate ratio does not have to reach one. If we take the average ratio over the period 1985–2001 as a baseline (see dotted line in Figure 1), then the degree of undervaluation drops from nearly 100 percent to 15 percent.

Figure 1. Renminbi PPP conversion factor to nominal exchange rate ratio, 1985–2001



Source: *World Development Indicators 2003* (CD-ROM).

Figure 2. PPP conversion factor to exchange rate ratio versus PPP per capita GNI in 2001



Notes: PPP per capita GNI is per capita gross national income converted to international dollars.

Source: *World Development Indicators 2003* (CD-ROM).

In an article published in the *Financial Times* (August 26, 2003) and the *Asian Wall Street Journal* (September 12, 2003), Morris Goldstein and Nicholas Lardy consider the misalignment of the renminbi. Their appraisal found that the renminbi was undervalued 15–25 percent against the dollar.<sup>9</sup> Against these diverse assessments, we now attempt to derive the equilibrium exchange rate of the renminbi to gauge for ourselves the degree of misalignment. The necessary steps in calculating the equilibrium exchange rates are sketched in section 2. Section 3 describes in detail the data used in the empirical analysis. The estimation results are presented in section 4. Finally, in section 5, we summarize the results and conclude. We also include an appendix that describes the derivation of estimates for bilateral nominal equilibrium exchange rates.

## 2 Alternative approaches to calculating equilibrium exchange rates

Rather than using PPP exchange rates, we focus on the behavioral equilibrium exchange rate (BEER) and the permanent equilibrium exchange rate (PEER) models, which make identification of equilibrium exchange rates more rigorous.<sup>10</sup> Equilibrium exchange rates can be thought of as an attractor for the actual exchange rate, pulling the actual exchange rate toward it.

### 2.1 Behavioral equilibrium exchange rate

A behavioral equilibrium exchange rate involves reduced-form modeling of the exchange rate with standard cointegration techniques. The fundamentals driving the exchange rate are typically the economic factors determining internal and external equilibrium. However, the BEER does not guarantee the equilibrium. Any equilibrium exchange determined by internal and external equilibrium would necessarily involve a judgment about the

---

<sup>9</sup> See <http://www.iie.com/publications/papers/goldstein0803.htm>.

<sup>10</sup> The approaches do not differ so much in theory, but rather in the techniques they use to implement the underlying theory.

sustainability of the current account rate and thus impose a normative constraint. The BEER is the data-determined systematic component of the exchange rate in the medium and long run.<sup>11</sup> Consider the real exchange equation

$$(1) \quad q_t = \delta_0 + \delta_1 z_t + \varepsilon_t ,$$

where  $z_t$  is a vector of economic fundamentals that affect the real exchange rate ( $q_t$ ) in the medium or long run. Any deviation from equilibrium is reflected in the error term ( $\varepsilon_t$ ), which includes both short-term influences and random disturbances. The equilibrium real exchange rate ( $\bar{q}_t$ ) is thus defined as

$$(2) \quad \bar{q}_t = \delta_0 + \delta_1 z_t .$$

The choice of economic fundamentals varies among studies. We refer here to the popular theoretical model advanced by Faruquee (1995) and extended by Alberola et al. (1999), Hansen and Roeger (2001), and Lorenzen and Thygesen (2002). In this model, the systematic component of the exchange rate is driven by the productivity differential between the home country and abroad (*PROD*), the net foreign asset position (*NFA*) and demand factors. Since demand factors are difficult to measure, they are commonly ignored in empirical studies. We obtain the variable space

$$(3) \quad \bar{q}_t = f(PROD_t, NFA_t) ,$$

which motivates the empirical work. The impact of productivity differentials on the real exchange rate is commonly known as the Harrod-Balassa-Samuelson effect, whereby one country's relatively higher productivity increases are associated with a real appreciation of

---

<sup>11</sup> There is a range of alternative approaches available to estimate equilibrium exchange rates such as BEER, DEER, FEER, PEER, and NATREX. Our focus on the BEER and PEER approach reflects the fact that both measures do not require “normative” assumptions regarding sustainability of current account balances or trade elasticities. On the contrary, the resulting equilibrium exchange rates are entirely data determined without any arbitrary judgment involved. An in-depth discussion of both approaches is available in Clark and MacDonald (1999, 2000). Williamson (1994) proposed the Fundamental Equilibrium Exchange Rate (FEER) approach, while Stein (1994) developed the Natural Real Exchange Rate (NATREX) model. The IMF defines its DEER as essentially FEER based on an optimal fiscal policy trajectory. These approaches have been applied in a variety of contexts. See Égert (2004) for an overview about the EU accession countries and [http://www.ssc.wisc.edu/~mchinn/euro\\_papers.html](http://www.ssc.wisc.edu/~mchinn/euro_papers.html) for a list of applications to the euro.

its currency.<sup>12</sup> The net foreign asset position affects the real exchange rate through several channels. For instance, a worsening of the net foreign position means higher interest payments for net debtor countries on their debt and smaller incomes from interest payments for creditor countries. These shifts must be financed by an improvement in the trade balance, which requires a depreciation of the currency. Higher debt also leads to a rise in the risk premium. At some point, however, a higher yield can only be guaranteed if the domestic currency depreciates.<sup>13</sup> The exact definitions of the variables entering (3) are described in detail in the next section.

Here, our econometric methodology for applying the BEER approach is the multivariate cointegration technique as suggested by Johansen (1995). Its starting point is a vector-error correction model (VECM)

$$(4) \quad \Delta x_t = \eta + \sum_{i=1}^{p-1} \Phi_i \Delta x_{t-i} + \Pi x_{t-1} + \varepsilon_t,$$

where the  $(3 \times 1)$  vector  $x_t = [RER_t, PROD_t, NFA_t]'$ . In the equation,  $\eta$  is a  $(3 \times 1)$  vector of constants,  $\Delta$  is the first difference operator,  $\varepsilon$  represents a  $(3 \times 1)$  Gaussian vector error process,  $\Phi$  denotes a  $(3 \times (p-1))$  matrix of short-run coefficients and  $\Pi$  is a  $(3 \times 3)$  coefficient matrix. If  $\Pi$  has reduced rank  $r < 3$ , then there exist two  $(3 \times r)$  matrices  $\alpha$  and  $\beta$ , such that  $\Pi = \alpha\beta'$ , where  $\alpha$  is interpreted as the adjustment matrix and the columns of  $\beta$  are the linearly independent cointegrating vectors of the VECM. These cointegrating vectors determine the BEER.

<sup>12</sup> The Harrod-Balassa-Samuelson effect is highly relevant to the Chinese economy, which is characterized by rapid growth that is presumably due to rapid manufacturing (and hence, traded) sector productivity growth. For a comprehensive overview of the theoretical contributions and the empirical evidence for the existence of a Harrod-Balassa-Samuelson effect, see Sarno and Taylor (2002), pp. 79-82. Chinn (2000) has confirmed empirically that developments in relative productivity can account for exchange rate developments in Asia.

<sup>13</sup> Researchers have generally argued that a strong long-run relationship exists between persistent deficits (surpluses) in the current account balance and the depreciation (appreciation) of the real exchange rate [see e.g. Obstfeld and Rogoff (1995)]. Faruquee (1995) has motivated the NFA variable from a stock-flow model of the exchange rate.

## 2.2 Permanent equilibrium exchange rate

The BEER approach suffers from the drawback that variables entering the calculations are not themselves at what are deemed to be the equilibrium values. One way to measure equilibrium exchange rates is to remove the business cycle from the data using a Hodrick-Prescott or bandpass filter. Alternatively, we can decompose the time series into permanent and transitory components. The transitory component is characterized as having limited memory, while the permanent component is expected to have a persistent impact. The permanent component is then interpreted as a measure of equilibrium and forms the Permanent Equilibrium Exchange Rate (PEER). Several authors suggest procedures for decomposing time series [e.g. Cumby and Huizinga (1990), Clarida and Gali (1994)]. Here, however, we use a procedure from Gonzalo and Granger (1995), which explicitly considers the cointegration relationships among the variables and provides a direct link to the BEER approach.<sup>14</sup>

The permanent component of a series is typically associated with a non-stationary, i.e. an  $I(1)$ , process, while the transitory component is stationary or  $I(0)$ . Gonzalo and Granger (1995) demonstrate that the results from the VECM can be used to identify both components. If the time series are cointegrated, the matrix  $\Pi$  has a reduced rank  $r < n$  and there are  $n - r$  common factors ( $f_t$ ). With the assumptions that the common factors are linear combinations of the variables and that the temporary component does not Granger-cause the permanent component, the common factors may be given as

$$(5) \quad f_t = \alpha_{\perp} x_t.$$

This identification of the common factors makes it possible to decompose the time series  $x_t = [RER_t, PROD_t, NFA_t]'$  into permanent  $x_t^P = [RER_t^{\text{perm}}, Prod_t^{\text{perm}}, NFA_t^{\text{perm}}]'$  and transitory  $x_t^T = [RER_t^{\text{trans}}, Prod_t^{\text{trans}}, NFA_t^{\text{trans}}]'$  components according to

$$(6) \quad \bar{x}_t^P = A_1 \alpha'_{\perp} x_t = \beta_{\perp} (\alpha'_{\perp} \beta_{\perp})^{-1} \alpha'_{\perp} x_t,$$

<sup>14</sup> The PEER approach has typically been applied to western industrialized countries. Clark and MacDonald (2000) focus on the exchange rates of the United States, Canada, and the United Kingdom. Alberola et al.



and

$$(7) \quad \bar{x}_t^T = A_2 \beta' x_t = \alpha (\beta' \alpha)^{-1} \beta' x_t.$$

where  $\alpha_\perp$  and  $\beta_\perp$  denote the orthogonal complements to  $\alpha$  and  $\beta$  (that is,  $\alpha' \alpha_\perp = 0$  and  $\beta' \beta_\perp = 0$ ) and  $\alpha_\perp$  determines the vectors defining the space of the common stochastic trends and thus identify the underlying driving forces, while  $\beta_\perp$  gives the loadings associated with  $\alpha_\perp$ , i.e. those variables driven by common trends.

Another source of information is the moving average representation of the VECM as proposed by Johansen (1995)

$$(8) \quad x_t = C \sum_{i=1}^t \varepsilon_i + C \eta + C(L)(\varepsilon_t + \eta),$$

where

$$(9) \quad C = \beta_\perp (\alpha'_\perp (I - \sum_{i=1}^{k-1} \Phi_i) \beta_\perp)^{-1} \alpha'_\perp.$$

The  $C$ -matrix thus measures the combined effects of both orthogonal permanent components described above.

### 3 Data and (not-so-trivial) measurement issues

It is helpful here to briefly sketch the data. Quarterly data are used for all time series. For the calculation of real effective rates, we use data from China's three largest trading partners: Japan, the US, and the euro zone (Euroland). Most data are obtained from the International Financial Statistics (*IFS*) database; other sources are cited in the text. The length of the time series is limited by data availability for China and covers the period from

---

(1999) use a sample of various industrialized economies, including several western European countries. Maesco-Fernandez et al. (2001) focus on the euro-dollar exchange rate.

1985:1 to 2002:4 for all countries. The variables used in the empirical analysis encompass real effective exchange rates, productivity levels, and the net foreign asset position.

### 3.1 Real effective exchange rate

Exchange rates are defined as the log of a CPI-deflated index, where an increase reflects an appreciation for the home country's currency. For the effective rate, the weighted average is here taken over the bilateral trade volumes of mainland China against Japan, the US, and Euroland. Trade with these economies in 1996 amounted to 47 percent of mainland China's total trade. These trade weights are based on cumulated export and import volumes, where exports have been double weighted to account for third-market effects. Table 1 presents the resulting trade matrix with trade weights normalized so that they add up to one.

Table 1. Trade matrix

	<b><i>China</i></b>	U.S.	Japan	Euroland
China	0.00	0.33	0.44	0.23
United States	0.12	0.00	0.41	0.47
Japan	0.16	0.58	0.00	0.26
Euroland	0.11	0.64	0.25	0.00

Note: The numbers are calculated from 1996 *International trade statistics yearbook* data.

The log real effective exchange rate for country  $i$  ( $q_i$ ) is thus the trade-weighted average of the log bilateral real exchange ( $e_{ij}$ ) rates vis-à-vis its trading partners:

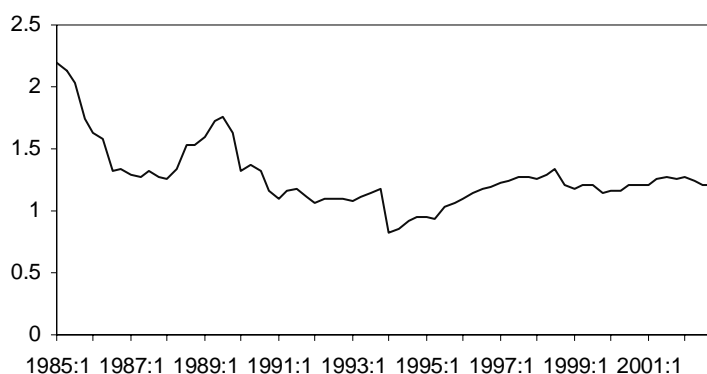
$$(10) \quad q_i = \sum_j w_{ij} e_{ij},$$

where the trade weights  $w_{ij}$  sum up to one, i.e.  $\sum_j w_{ij} = 1$ . All exchange rates are average values for the period. Although figures for the euro do not exist prior to its introduction in 1999, the ECB has published a “synthetic” value for the nominal euro/dollar exchange rate preceding the euro's introduction. It is based on the real exchange rates of the twelve

participating countries with each country weighted by its share of manufacturing trade of the euro area. Figure 3 displays the resulting real effective exchange rate of China from 1985:1 to 2002:4.

Between 1981 and 1986 the renminbi was pegged to a basket of internationally traded currencies weighted according to their importance in China's trade. From 1986 to 1994, a managed-float, multiple-exchange-rate regime was used.<sup>15</sup> An "official" rate (a peg to the US dollar that was adjusted several times), an "unofficial" floating rate (a swap market rate that the central bank occasionally adjusted through market intervention) and an "effective" exchange rate actually faced by exporters (the weighted average of the "official" and "unofficial" rate) were introduced to offset the disincentives to export arising from the overvalued official exchange rate. From 1989, the Chinese authorities repeatedly devalued the official rate, eventually unifying the "official" and "unofficial" exchange rates at the prevailing rate in 1994.<sup>16</sup> This devaluation explains the sharp drop of the real effective exchange rate at the beginning of 1994. On a real basis, the trade-weighted renminbi then appreciated sharply through 1999, because China's inflation rate exceeded that abroad. During the Asian crisis in 1997/98, with the renminbi being held stable against the US dollar, China's real effective exchange rate appreciated further, mostly on account of the appreciation of the yen against the US dollar. Thereafter, this latter appreciation was reversed as the yen rebounded and China's inflation rate fell and turned negative. In 2002, the index for the real exchange rate is roughly at the same level as in 1997.

Figure 3. China's real effective exchange rate, 1985:1–2002:4



<sup>15</sup> See Mehran et al. (1996) for further details. A brief description of historical Chinese exchange rate regimes is available at [http://intl.econ.cuhk.edu.hk/exchange\\_rate\\_regime/index.php?cid=8](http://intl.econ.cuhk.edu.hk/exchange_rate_regime/index.php?cid=8).

<sup>16</sup> The deleterious effects of multiple exchange rates (corruption, resource misallocation, rent seeking, etc.) are well documented. China's exchange rate regime choices during transition are analyzed in Zhang (2001b).

To cross-check the results, we compare the calculated real effective exchange rate against the real effective exchange rate for China available in the *World Development Indicators 2003*. These figures match well; the correlation coefficient turns out to be 0.902 over the sample period 1985–2001.<sup>17</sup> This outcome serves to improve our confidence that the real effective exchange rate measure used is plausible.

## 3.2 Productivity levels

The next step is to calculate proxies for the Harrod-Balassa-Samuelson effect. Following common practice, we take the trade-weighted average of the ratio of the local consumer price to the wholesale price as an empirical counterpart to the theoretical variable. This measure is necessarily a compromise, reflecting the fact that any “right measure” is unobservable due to limited data availability.<sup>18</sup>

This measure retains prices of the non-traded services in the numerator (but not in the denominator). The studies by de Gregory et al. (1994) and Canzoneri et al. (1999) testify to a close link between sectoral productivity and sectoral prices in developed countries. We take the log of the ratio of the domestic consumer price index to the domestic producer price index relative to the corresponding foreign ratio using the same trade weights as above, i.e.

$$(11) \quad \text{Prod}_{i,t} = \log \left( \frac{CPI_{i,t} / WPI_{i,t}}{\prod_{\forall j \neq i} (CPI_{j,t} / WPI_{j,t})^{w_j}} \right).$$

Chinese data for consumer price index are available on a quarterly basis beginning in 1987 from the *IFS* database. Annual data from the *CEIC* database are used to extend the time series back to 1985. The same data source also publishes annual *PPI* values for China, which we transform from low frequency (annual data) to high frequency (quarterly data)

<sup>17</sup> Note that the annual frequency of the *WDI* data requires us to compact our series. We have used the simple average as the form of compaction.

<sup>18</sup> Examples for the application of this proxy are given in Alberola et al. (1999), Chinn (1999), Clark and MacDonald (1998, 2000), and Rahn (2003).

using an optimal interpolation procedure.<sup>19</sup> For the euro area, the synthetic value for the period prior the introduction of the euro, i.e. up to 1998:4, is computed. This value is based on the price indices of the twelve participating countries with each country weighted by the share of trade with economies outside the European Union.

### 3.3 Net foreign asset position

Direct figures on net foreign assets are unavailable for all countries and all time periods. Thus, we follow the alternative method suggested by Lane and Milesi-Ferretti (2001), whereby we take an initial value of the stock of net foreign assets and add up current account balances to determine the time series. Unfortunately, not even an initial stock is available in the case of China. Thus, current account balances are added up historically, starting in 1982. Chinese current account data is only available on an annual basis, so quarterly data must be generated using the same procedure as above. For Europe, consolidated data from the *ECB* are available back to 1997. For earlier periods, figures on current account data of all twelve-member countries are summed. The calculated net foreign assets time series are then seasonally adjusted using the additive *X-12* method, wherever tests suggest seasonality. They are normalized by nominal *GDP* (in US dollars) to adjust for the size of each country.<sup>20</sup>

## 4 Empirical results

Before proceeding with the estimation, it is necessary to test for the degree of integration of the individual time series. The visual inspection of the real exchange rate in the previous chapter observation revealed possible break points in the real exchange rate time series.

---

<sup>19</sup> Very briefly, the quarterly data are derived by solving a quadratic optimization problem. For details on the dynamic programming algorithm, see Bertsekas (1976), pp. 70-72. Keep in mind that interpolated data are no substitute for actual data, since the higher resolution is fictitious. However, interpolation is very useful when most of the data in a multivariate analysis are at a higher frequency and one would have to compact all of those to use them together with a few low-frequency series.

Thus, instead of conventional Augmented-Dickey-Fuller (ADF) tests, we use the Unit-Root Test suggested by Perron (1997). This test has the advantage of allowing for a structural break in the time series. Moreover, the timing of the breakpoint is determined endogenously, so that our visual observation can be cross-checked.<sup>21</sup> Table 2 shows the results from the Unit-Root Test of all three-time series as well as the corresponding break points. In all three cases the null hypothesis of a unit root cannot be rejected. But what is more important, there is strong evidence for a break in the exchange rate and the productivity time series at the turn of the year from 1993 to 1994.

Table 2. Unit-root tests with endogenous breakpoints, Perron (1997)

Variable	Test Statistic	Break Date
Real exchange rate ( <i>RER</i> )	-4.84 (4)	1993:4
Productivity differential ( <i>PROD</i> )	-4.05 (3)	1994:1
Net foreign asset position ( <i>NFA</i> )	-3.28 (3)	1993:1

Note: 5 % Critical Value: -5.59; 1 % Critical Value: -6.32. The number of optimal lags is given in parenthesis.

One reason for the common finding of a unit root in macroeconomic variables is the low power of unit root and cointegration tests when the variables follow a nonlinear process. For example, it is well known that the power of standard unit-root and cointegration tests falls sharply when the true model is a threshold process [see, for example, Pippenger and Goering (1993, 2000)]. We, therefore, additionally employ Hansen's (2000) threshold-estimation procedure, which provides an intuitive and simple setting for testing for linearity. The approach is based on a very simple idea. The model takes the form

$$(12) \quad y_t = \alpha + \beta'_1 x_t I(q_t \leq \gamma) + \beta'_2 x_t I(q_t > \gamma) + e_t,$$

<sup>20</sup> *IFS* data on nominal *GDP* for China have only been published since 1999. For the period from 1985 to 1998, annual data from the *CEIC* had to be transformed to quarterly data using the same methodology as above.

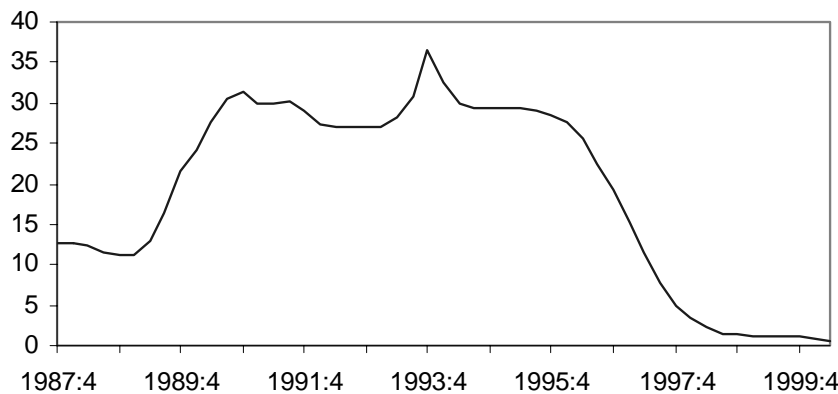
<sup>21</sup> One familiar criticism of long-span exchange rate studies is that, because of the long data spans involved, various exchange rate regimes are often spanned. This may generate structural breaks. Most researchers realize this problem "goes with the territory" in using large sample sizes and go to great pains to test for structural breaks.

where  $y_t$  is the dependent variable,  $x_t$  is a vector of regressors,  $I(\cdot)$  is an indicator function,  $q_t$  is the threshold variable, and  $e_t$  is an iid  $N(0, \sigma^2)$  error term. Equation (12) can be re-written as

$$(13) \quad y_t = \begin{cases} \alpha + \beta'_1 x_t + e_t & \text{if } q_t \leq \gamma \\ \alpha + \beta'_2 x_t + e_t & \text{if } q_t > \gamma \end{cases}.$$

The threshold model therefore allows the regression parameters to differ depending on the value of  $q_t$ . The specification collapses to the traditional linear one if  $\beta_1 = \beta_2$ . Hansen (2000) suggests a practical, straightforward method for estimating  $\gamma$  using least-squares techniques and to construct asymptotically valid confidence intervals for  $\gamma$ .<sup>22</sup>  $F$ -tests can then be used to test for threshold effects ( $\beta_1 \neq \beta_2$ ). In other words, the procedure allows testing for whether the identified threshold effect is statistically significant. Figure 4 shows the  $F$ -test sequence for the linear exchange rate equation  $q_t = \alpha + \beta_1 PROD_t + \beta_2 NFA_t + e_t$ , when time is used as the threshold variable.

Figure 4.  $F$ -test sequence for the threshold model



Note: In principle, the idea would be to test for  $\beta_1^I = \beta_1^2 \forall t$ . However, this simple testing problem presents an extra difficulty: the threshold parameter,  $\gamma$ , is only identified under the alternative hypothesis of nonlinearity. The lack of identification of  $\gamma$  under the null hypothesis distorts the distribution of the test statistic.

Hansen (2000) overcomes the problem with a bootstrapping procedure. Taking the estimated linear relationship, artificial data on the dependent variable are simulated and both a linear and a piecewise linear model are estimated. The corresponding test statistic is computed and the procedure is repeated many times, leading to an approximate distribution of the test statistic under the null of linearity. Using this procedure with 1,000 replications yields the p-value of the structural break at 1993:4, ( $P = 0.000$ ).

<sup>22</sup> The computationally simple procedure determines  $\gamma$  as the value that minimizes the concentrated sum of squared errors function.

The  $F$ -sequence displays significant structural instability at 1993:4, and, hence, we proceed to subdivide the sample. Thus, we now concentrate on the time period from 1994:1, the first period after the devaluation of the renminbi, until the end of the sample, 2002:4. As this has no implications on the time series properties, we can now test for cointegration between the variables.<sup>23</sup> We use the maximum-likelihood methods of Johansen (1995) both to determine the existence of cointegration and to produce estimates of the BEER and PEER. The test statistics are summarized in Table 3.

A warning is appropriate here. We use small samples in our empirical application, and there is evidence that small samples may cause spurious rejection of the null hypothesis of no cointegration. One recommended solution to this problem is to adjust the values of the statistics to take into account the small sample size. We have thus used the more restrictive procedure suggested by Reimers (1992), which corrects the trace test for degrees of freedom. Overall, the results suggest that it is reasonable to assume a single cointegration relationship between the variables of interest.

Table 3. Cointegration tests, 1994:1–2002:4

Null-Hypothesis	Eigen-value	Trace Statistic		
		Statistic	5% Critical Value	1% Critical Value
At Most 1	0.87	87.24	29.68	35.65
At Most 2	0.28	15.13	15.41	20.04
At Most 3	0.10	3.58	3.76	6.65

Note: The lag length ( $p = 1$ ) has been chosen in order to minimize the Akaike and Schwarz criteria. The small sample correction suggested by Reimers (1992) uses  $(T-np)$ , rather than  $T$ , as a scaling factor.

Moving to the estimation of the cointegration relationship, Table 4 presents the normalized cointegrating vector ( $\beta$ ), as well as the corresponding adjustment coefficients. As theory suggests, the productivity differential and net foreign asset position have a positive and significant impact on the effective real exchange. The magnitude of the calculated numbers is well in line with results from studies on OECD countries [e.g. Alberola et al. (1999) and Clark and MacDonald (2000)], which find productivity coefficients between 0.60 and 2.00

<sup>23</sup> The results from Perron (1997) unit root tests for the restricted time period from 1994:1 to 2002:4 are as follows: real exchange rate, -4.31 (4); productivity differential, -3.04 (1); and net foreign asset position, -4.87 (4).



and net foreign asset coefficients between 0.01 and 1.00. The significantly negative  $\alpha$  coefficient indicates that the real exchange rate adjusts significantly negatively to the disequilibrium exchange rate error.

Table 4. Normalized cointegration vector and weak exogeneity tests

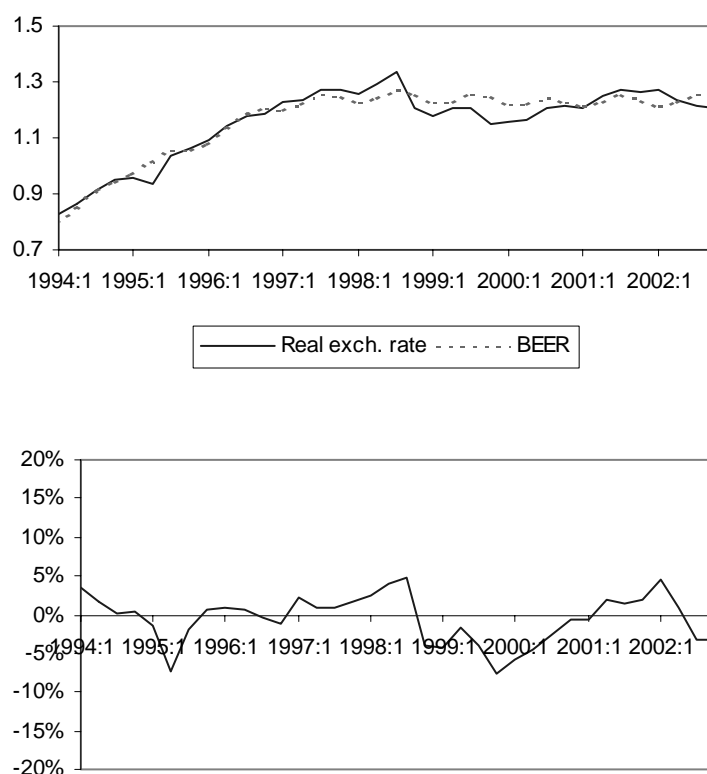
	Real Exchange Rate	Productivity Differential	Net Foreign Asset Position
$\beta$	1	-0.77	-0.10
( <i>t</i> -value)		(-14.08)	(-2.46)
$\alpha$	-0.47	0.12	0.05
( <i>t</i> -value)	(-8.69)	(2.23)	(3.70)

As possible breakpoints appeared in the regression analysis, we perform Hansen's (1992) Lagrange-multiplier-type tests to check for possible parameter instability. The LM-type test statistics test the null hypotheses of parameter and variance constancy in static and dynamic regression equations, i.e. no special treatment of lagged dependent variables is required. They are based upon an average of the squared cumulative sums of first-order conditions. Under the null hypothesis of parameter stability, the first-order conditions are mean zero, and their cumulative sums wander around zero. Under the alternative hypothesis of parameter instability, the cumulative sums develop a nonzero mean in parts of the sample and therefore the test statistics tend to be large. The alternative includes simple structural breaks of unknown timing, as well as random walk parameters. An advantage of these tests is that they only require a single estimation of ECMs over the full sample, i.e. no sample-split points need to be chosen. They are useful, however, for determining the timing of a structural break, if one has occurred.

Table 5. Parameter and variance stability tests in the VECM, 1994:1–2002:4

Dependent Variable	$\Delta RER$		$\Delta PROD$		$\Delta NFA$	
	Statistic	P-Value	Statistic	P-Value	Statistic	P-Value
<i>Joint Statistic</i>						
$L_c$	0.61	1.00	1.30	0.09	0.74	1.00
<i>Individual Parameter Stability Tests</i>						
Error Correction Term	0.10	1.00	0.19	1.00	0.20	1.00
$\Delta RER$	0.14	1.00	0.12	1.00	0.24	1.00
$\Delta PROD$	0.13	1.00	0.90	0.00	0.08	1.00
$\Delta NFA$	0.13	1.00	0.63	0.02	0.30	1.00
Variance	0.12	1.00	0.17	1.00	0.08	1.00

Figure 5. Real Effective Exchange Rate, BEER (Upper Panel), and Misalignment (Lower Panel)



So far, we have calculated multilateral real equilibrium exchange rates. These rates, however, tell us nothing about any over- or undervaluation of the Chinese renminbi against

the US dollar. For the current discussion, it is thus far more informative to evaluate nominal bilateral exchange rates. Fortunately, once we have determined the multilateral rates, calculating bilateral nominal exchange rates is only a minor step. The underlying idea is that in a entire world set-up (here, a country “rest of the world” that enters the analysis neutrally has to be defined) cross-rates between countries can be used to exactly identify each bilateral exchange rate. The detailed procedure has been formalized by Alberola et al. (1999) and appears in the appendix.

The results from this algebraic transformation appear in Figure 6. The nominal renminbi exchange rate against the US dollar and the computed bilateral BEER are presented in the upper panel; deviations from equilibrium are shown in the lower panel. The picture is clearly different from the real exchange rate case. After an overvaluation up to mid-1996, the renminbi has been constantly undervalued against the US dollar. The peak undervaluation exceeded 15 percent. At the end of the observed period, the renminbi was undervalued by 11 percent in relation to the US dollar.<sup>24</sup>

Moving from the BEER to the PEER, we use the  $\alpha$  and  $\beta$  vectors from the cointegration analysis to determine the multilateral and bilateral *PEER*. Examining the multilateral real exchange rate case first, Figure 7 shows the somewhat reassuring result that the equilibrium exchange rate estimated using the PEER methodology is generally similar to that estimated using the BEER approach. There are, however, quantitative differences. Undervaluation of the real effective exchange rate was greater than 15 percent at the end of 1999 and almost 6 percent at the end of the sample period.

---

<sup>24</sup> The estimates suggest that many of the fears about China’s exchange rate policies are unjustified and ignore elementary economics. Despite rapid growth, China’s share of world trade is only around 4 percent – about the same as Italy’s. Its trade surplus is similar to Canada’s, Germany’s and Russia’s – and it has been shrinking since 1997! Although China has a huge bilateral surplus with the US, it runs bilateral deficits with most of its neighbors, including South Korea, Malaysia, and Thailand.

Figure 6. Nominal US \$ exchange rate, BEER (upper panel), and misalignment (lower panel)

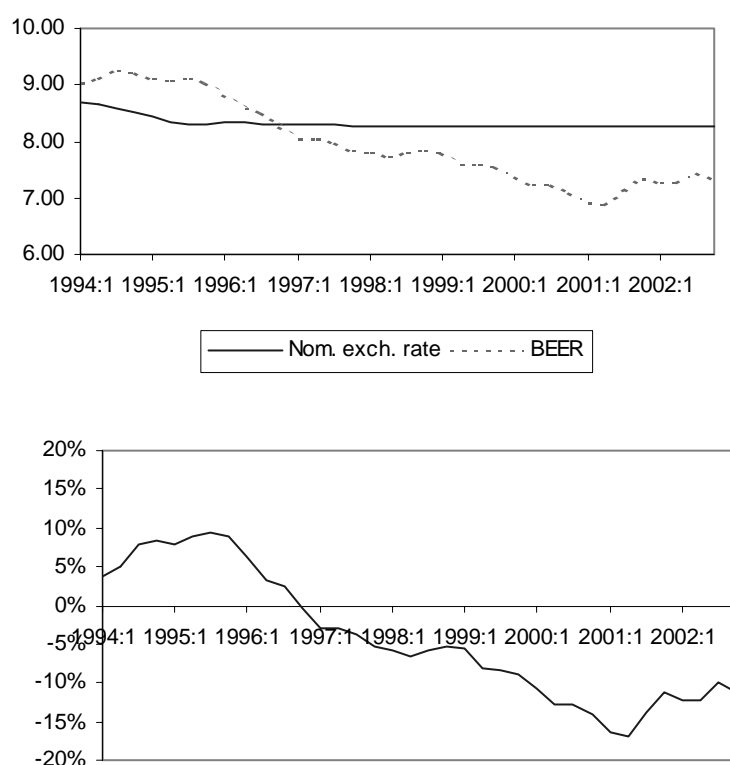
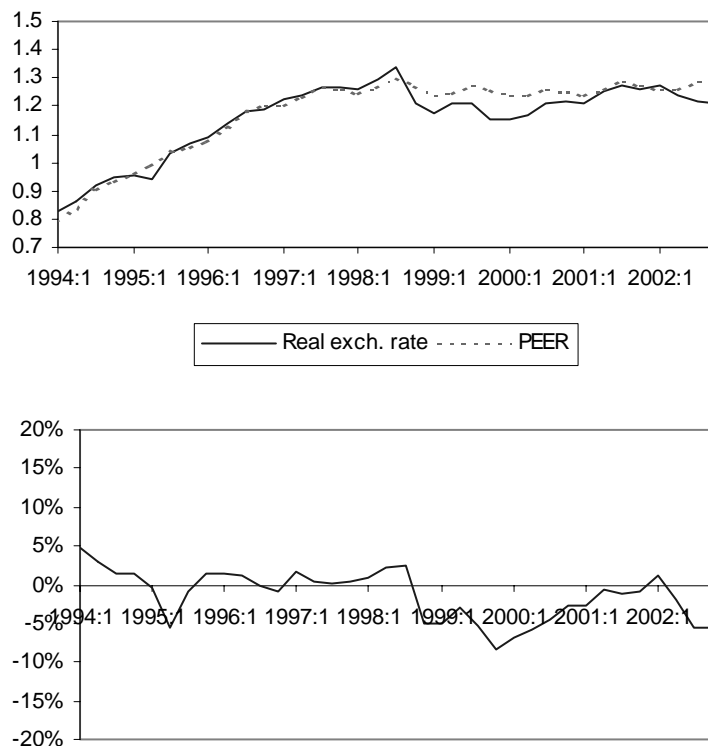


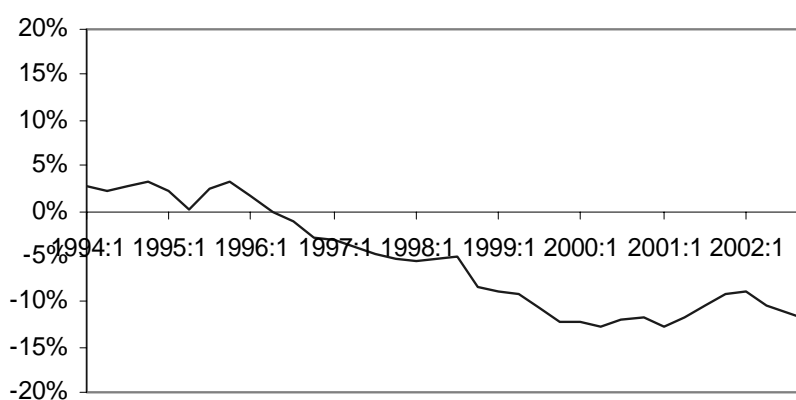
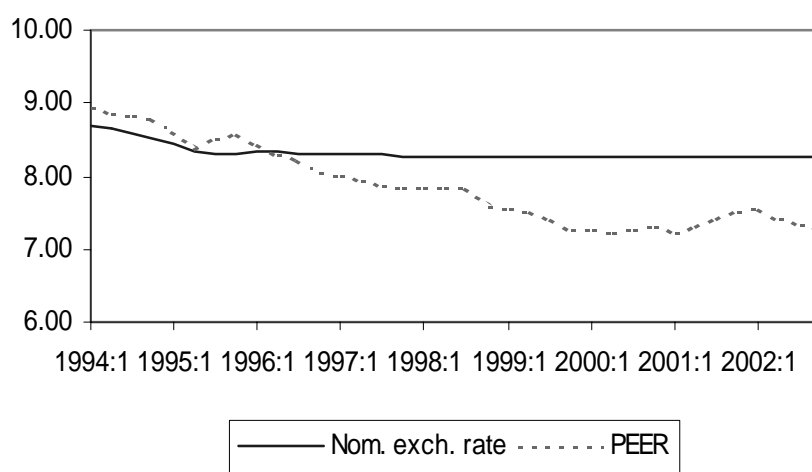
Figure 7. Real effective exchange rate, PEER (upper panel), and misalignment (lower panel)



Finally, the nominal bilateral PEER estimates against the US dollar in Figure 8 reinforce the view that the renminbi is not substantially undervalued. The estimated degree of undervaluation at the end of the sample period turns out to be 12 percent, again suggesting that claims of misalignment of the renminbi have been exaggerated.<sup>25</sup>

<sup>25</sup> This conclusion is also consistent with the evidence from trading in non-deliverable forwards (NDF's) on China's renminbi [see Ma et al. (2004), p. 86]. China's accession to the WTO has required a great deal more trade liberalization on China's part than its trading partners. One possibility is that at the end of the transition period in 2007 China may require additional currency depreciation. On the other hand, the forthcoming abolition of the Multi-Fibre Arrangement will give scope for a substantial expansion of China's exports of textiles and apparel. There are already numerous studies on the impact of China's accession to the WTO and trade liberalization in general. Almost all of these studies conclude that developed and developing countries will benefit. See OECD (2001, available at <http://www.oecd.org/dataoecd/1/49/2085271.pdf>) and Yang (2003) for surveys.

Figure 8. Nominal US \$ exchange rate, PEER (upper panel), and misalignment (lower panel)



## 5 Conclusions

The results of our analysis have been summarized in previous sections of this paper, so we will be brief. Overall, our principal conclusion is clear. We have demonstrated that a well-founded measure of the equilibrium value of the renminbi may be recovered from a small set of fundamental variables and that this can be used to produce an assessment of the renminbi in terms of periods of misalignment. Basically, we find compelling evidence that the renminbi is not substantially undervalued. In other words, in some circles it appears to have been politically expedient to scapegoat the Chinese currency for economic difficulties elsewhere. Nevertheless, it would be wrong to conclude that China should not revalue its currency. Nor does revaluation necessarily mean an immediate floating of the renminbi. The preferred option would be to choose a gradual two-step reform process for the transition from “fix” to “flex.” The first step might be a medium-size (8–12 percent) appreciation of the renminbi, a widening of the currency band to 3–5 percent (from 0.3 percent now), and a switch from the unitary peg with the US dollar to a broader three-currency basket peg, with weightings of roughly a third each for the US dollar, the yen and the euro.<sup>26</sup> By moving to a three-currency basket peg, China would also increase the stability of its overall trade-weighted exchange rate. Once China has strengthened its financial system enough to permit a liberalization of capital outflows and the bad debt problems of state-owned banks are resolved, this would set the stage for the adoption of a managed float.<sup>27</sup> For the OECD countries, the immediate effect of an appreciated renminbi would be to curb the pressure of Chinese competition on western jobs. This effect would be short-lived, of course.

The Chinese labor market is exceptionally flexible. Wages in China are priced by international demand for Chinese products. When China’s competitiveness is under pressure, firms can respond by shifting labor-intensive production inland, where

---

<sup>26</sup> It may be more logical for Beijing to scrap Hong Kong’s currency peg first. Hong Kong’s currency is overvalued. Although many argue that the Hong Kong peg is the source of renminbi stability, it is also a huge headache. In any case, when the renminbi peg ends or Beijing adopts some sort of managed currency band, Hong Kong would have to move. Since Hong Kong already has a first-world banking system, why not unlock its currency first?

<sup>27</sup> In December 2003 China’s government began the bailout of the state-owned banks by giving Bank of China and China Construction Bank some \$45 billion from its foreign-exchange reserves to shore up balance sheets strained by non-performing loans. The government will not write-off the non-performing loans, but rather allowed the two banks to use the dollars to boost their capital-adequacy ratios and support new

---

employment costs are cheaper (a structural change the Chinese authorities officially promote). Ultimately, the exchange rate will not determine the competitiveness of an economy with such labor market flexibility and high factor mobility.

---

(supposedly profitable) lending. In other words, the government did not bail them out directly; it helped them buy them time to grow out of their bad-debt problems.



## References

- Alberola, E., S.G. Cervero, H. Lopez and A. Ubide (1999) "Global Equilibrium Exchange Rates: Euro, Dollar, 'Ins,' 'Outs' and other Major Currencies in a Panel Cointegration Framework," *IMF Working Paper No. 175*, Washington, DC.
- Bertsekas, D.P. (1976), *Dynamic Programming and Stochastic Control*, New York (Academic Press).
- Canzoneri, M. R., R. Cumby and B. Diba (1999), "Relative Labor Productivity and the Real Exchange Rate in the Long Run: Evidence from a Panel of OECD Countries," *Journal of International Economics* 47, 245-266.
- Chinn, M. C. (1999), "Productivity, Government Spending and the Real Exchange Rate: Evidence for OECD Countries," in R. MacDonald and J. L. Stein (eds.), *Equilibrium Exchange Rates*, London (Kluwer Academic Publisher), 163-190.
- Chinn, M.C. (2000), "The Usual Suspects? Productivity and Demand Shocks and Asia-Pacific Real Exchange Rates," *Review of International Economics* 8, 20-43.
- Chou, W.L. and Y.C. Shih (1998), "The Equilibrium Exchange Rate of the Chinese Renminbi," *Journal of Comparative Economics* 26, 165-174.
- Clarida, R. and J. Gali (1994), "Sources of Real Exchange Rate Fluctuations: How Important are Nominal Shocks?" *Carnegie-Rochester Series on Public Policy* 41, 1-56.
- Clark, P.B. and R. MacDonald (1998), "Exchange Rates and Economic Fundamentals: A Methodological Comparison of BEERs and FEERs," *IMF Working Paper* 67, Washington, DC.
- Clark, P.B. and R. MacDonald (2000), "Filtering the BEER: A Permanent and Transitory Decomposition," *IMF Working Paper* 144, Washington, DC.
- Cumby, R. and J. Huizinga (1990), "The Predictability of Real Exchange Rate Changes in the Short Run and in the Long Run", *NBER Working Paper*. 3468.
- Cumby, R. (1996), "Forecasting Exchange Rates and Relative Prices with the Hamburger Standard: Is What You Want What You Get with McParity?" *NBER Working Paper* 5675, Cambridge, MA.
- De Gregorio, J., A. Giovannini and H. Wolf (1994), "International Evidence on Tradables and Nontradables Inflation," *IMF Working Paper* 33, Washington, DC.
- Detken, C., A. Dieppe, J. Henry, C. Marin and F. Smets (2002), "Model Uncertainty and the Equilibrium Value of the Real Effective Euro Exchange Rate," *ECB Working Paper* 160, Frankfurt.

- 
- Égert, B. (2004), “Assessing Equilibrium Exchange Rates in CEE Acceding Countries: Can We Have DEER with BEER without FEER? A Critical Survey of the Literature,” *Bank of Finland BOFIT Discussion Paper No. 1/2004*, Helsinki.
- Faruquee, H. (1995) “Long-Run Determinants of the Real Exchange Rate: A Stock-Flow Perspective,” *IMF Staff Papers* 42, 80-107.
- Gonzalo, J. and C.W. Granger (1995), “Estimation of Common Long-Memory Components in Cointegrated Systems,” *Journal of Business Economics and Statistics* 13, 27-35.
- Hansen, B.E. (1992), “Testing for Parameter Instability in Linear Models,” *Journal of Policy Modeling* 14, 517-533.
- Hansen, B.E. (2000), “Sample Splitting and Threshold Estimation,” *Econometrica* 68, 575-603.
- Hansen, J. and W. Roeger (2000), “Estimation of Real Equilibrium Exchange Rates,” *European Commission Economic Paper* 144.
- Johansen, S. (1995), *Likelihood-Based Inference in Cointegrated Vector Auto-Regressive Models*, Oxford (Oxford University Press).
- Juselius, K. (1995), “Do Purchasing Power Parity and Uncovered Interest Parity Hold in the Long Run?” *Journal of Econometrics* 69, 211-240.
- Lane, P.R. and G.M. Milesi-Ferretti (2001), “The External Wealth of Nations: Measures of Foreign Assets and Liabilities for Industrial and Developing Countries,” *Journal of International Economics* 55, 263-294.
- Lorenzen, H. and N. Thygesen (2000), “The Relation between the Euro and the Dollar,” Paper presented at the EPRU Conference on Perspectives on Danish and European Economic Policy, Copenhagen, November 9-10, 2000.
- Ma, G., Ho, C. and R.N. McCauley (2004) “The Markets for Non-Deliverable Forwards in Asian Currencies”, *BIS Quarterly Review*, June 2004, 81-94.
- MacDonald, R. (2000), “Concepts to Calculate Equilibrium Exchange Rates: An Overview,” *Deutsche Bundesbank Economics Research Group Discussion Paper No. 3*, Frankfurt.
- Maesco-Fernandez, F., C. Osbat and B. Schnatz (2001), “Determinants of the Euro Real Effective Exchange Rate: A BEER/PEER Approach,” *ECB Working Paper* 85, Frankfurt.
- Mehran, H., M. Quintyn, T. Nordman and Laurens, B. (1996), “Monetary and Exchange System Reforms in China: An Experiment in Gradualism,” *IMF Occasional Paper* 141, Washington, DC.

- 
- Obstfeld, M. and K. Rogoff (1995), "Exchange Rate Dynamics Redux," *Journal of Political Economy* 103, 624-660.
- OECD (2001), *Summary of Studies of the Impact of WTO on China's Trade*, Paris.
- Ong, L.L. (1997) "Burgernomics: The Economics of the Big Mac Standard," *Journal of International Money and Finance* 16, 865-878.
- Ong, L.L. (2003), *The Big Mac Index: Applications of Purchasing Power Parity*, Basingstoke (Palgrave Macmillan).
- Pakko, M.R. (1996), "For Here or to Go? Purchasing Power Parity and the Big Mac," *Review Federal Reserve Bank of St. Louis* 78, 3-21.
- Parsley, D.C. and S.J. Wei (2003), "A Prism into the PPP Puzzles: The Micro-Foundations of Big Mac Real Exchange Rates," *NBER Working Paper No. 10074*, Cambridge, MA.
- Perron, P. (1997), "Further Evidence on Breaking Trend Functions in Macroeconomic Variables," *Journal of Econometrics* 80, 355-385.
- Pippinger, M.K. and G.E. Goering (1993), "A Note on the Empirical Power of Unit Root Tests Under Threshold Processes," *Oxford Bulletin of Economics and Statistics* 55, 473-481.
- Pippinger, M.K. and G.E. Goering (2000), "Additional Results on the Power of Unit Root and Cointegration Tests Under Threshold Processes," *Applied Economics Letters* 7, 641-644.
- Preeg, E.H. (2003), "Exchange Rate Manipulation to Gain an Unfair Competitive Advantage: The Case Against Japan and China," in Bergsten, C.F. and J. Williamson (eds.), *Dollar Overvaluation and the World Economy*, Institute for International Economics, Washington, DC, 267-284.
- Rahn, J. (2003), "Bilateral Equilibrium Exchange Rates of EU Accession Countries Against the Euro," *Bank of Finland BOFIT Discussion Paper No. 11/2003*, Helsinki.
- Reimers, H.-E. (1992), "Comparisons of Tests of Multivariate Cointegration," *Statistical Papers* 33, 335-339.
- Sarno, L. and M.P. Taylor (2002), *The Economics of Exchange Rates*, Cambridge, UK (Cambridge University Press).
- Stein, J.L. (1994), "The Natural Real Exchange Rate of the US Dollar and Determinants of Capital Flows," in Williamson, J. (ed.), *Estimating Equilibrium Exchange Rates*, Institute of International Economics, Washington, DC, 133-176.

- 
- Williamson, J. (1994), *Estimating Equilibrium Exchange Rates*, Institute of International Economics, Washington D.C, Institute for International Economics, 177-244.
- Yang, Y. (2003), “China’s Integration into the World Economy: Implications for Developing Countries,” *IMF Working Paper* 245, Washington.
- Zhang, Z. (2001a), “Real Exchange Rate Misalignment in China: An Empirical Investigation,” *Journal of Comparative Economics* 29, 80-94.
- Zhang, Z. (2001b), “Choosing an Exchange Rate Regime During Economic Transition – The Case of China,” *China Economic Review* 12, 203-226.

## Appendix: Derivation of bilateral nominal exchange rates

The underlying idea of deriving bilateral exchange rates is to make use of cross rates between countries. Consider the exchange rate  $e_{ij}$  of country  $i$  against country  $j$  and rewrite it in terms of an arbitrary numeraire currency ( $n$ ), such that

$$(A1) \quad e_{ij} = e_{jn} - e_{in}.$$

Substituting this equation in the definition of the real effective exchange rate,

$$(A2) \quad q_i = \sum_j w_{ij} e_{ij},$$

and doing so for all countries  $i = 1, \dots, n$  yields

$$(A3) \quad q = (W - I)e,$$

where  $q = (q_1, q_2, \dots, q_n)'$  and  $e = (e_1, e_2, \dots, e_n)'$ .  $W$  is the  $(n \times n)$  trade matrix.  $I$  is the identity matrix of order  $n$ . One exchange rate in (A3) is redundant and thus can be discarded without losing information. We next define  $\bar{q} = (q_1, q_2, \dots, q_{n-1})'$  as the  $[(n-1) \times 1]$  vector, where the numeraire real multilateral exchange rate has been discarded and  $\bar{q}_{num} = (q_n, q_n, \dots, q_n)'$  as the  $[(n-1) \times 1]$  vector, which consists of the real multilateral exchange rate of the numeraire. Expressing the multilateral exchange rates relative to the numeraire currency gives

$$(A4) \quad \bar{q} - \bar{q}_{num} = (\bar{W} - \bar{I}) \bar{e} - \bar{q}_{num},$$

where a line on top of matrices means that the  $n^{th}$  row and column have been deleted, and where  $\bar{e} = (e_1, e_2, \dots, e_{n-1})'$  is the  $[(n-1) \times 1]$  vector. Using (A2), it is straightforward to obtain

$$(A5) \quad \bar{q} - \bar{q}_{num} = [(\bar{W} - \bar{I}) - \bar{W}_{num}] \bar{e},$$

where  $\bar{W}_{num}$  consists of the vectors  $q = (q_{n1}, q_{n2}, \dots, q_{nn-1})'$  as the rows of the matrix. Pre-multiplying both sides by the inverse of the  $[(n-1) \times (n-1)]$  matrix  $Z \equiv [(\bar{W} - \bar{I}) - \bar{W}_{num}]$  yields the derivation of bilateral equilibrium exchange rates

$$(A6) \quad \bar{e} = Z^{-1} (\bar{q} - \bar{q}_{num}).$$

This method only works if the exchange rate vector encompasses the entire world. Thus, the rest of the world (ROW) must be included in the analysis.<sup>28</sup> Since there is no information about the rest of the world available, the most plausible assumption is that the multilateral real exchange rate of the ROW is permanently in equilibrium. Applying this assumption, we rewrite equation (A6) in terms of deviations from equilibrium

$$(A7) \quad \hat{\bar{e}} = \hat{Z}^{-1} (\hat{\bar{q}} - \hat{\bar{q}}_{num}).$$

The deviations from the estimated real BEERs, respectively PEERs, are known so that bilateral deviations and corresponding nominal BEERs, respectively PEERs, can be calculated.

<sup>28</sup> In practical terms, the trade matrix has to be adjusted including the trade share of the rest of the world.



- 2003**
- No 1 Karsten Staehr: Reforms and economic growth in transition economies: Complementarity, sequencing and speed
  - No 2 Eugene Nivorozhkin: The dynamics of capital structure in transition economies
  - No 3 Abdur R. Chowdhury: Do asymmetric terms of trade shocks affect private savings in a transition economy?  
*Published in: Comparative Economic Studies (2003), ISSN 0888-7233. (Forthcoming.)*
  - No 4 Byung-Yeon Kim and Jukka Pirttilä: The political economy of reforms: Empirical evidence from post-communist transition in the 1990s
  - No 5 Tuomas Komulainen and Johanna Lukkarila: What drives financial crises in emerging markets?  
*Published in: Emerging Markets Review vol 4, no 3 (2003) pp. 248-272, ISSN 1566-0141.*
  - No 6 Jarko Fidrmuc and Iikka Korhonen: The Euro goes East: Implications of the 2000-2002 economic slowdown for synchronisation of business cycles between the euro area and CEEs.  
*Published in: Comparative Economic Studies vol. 46 no 1 (2004) pp. 45-62, ISSN 0888-7233.*
  - No 7 Derek C. Jones, Panu Kalmi and Niels Mygind: Choice of ownership structure and firm performance: Evidence from Estonia
  - No 8 Michel Funke and Ralf Ruhwedel: Export variety and economic growth in East European transition economies
  - No 9 Laura Solanko: An empirical note on growth and convergence across Russian regions
  - No 10 Michael Funke and Holger Strulik: Taxation, growth and welfare: Dynamic effects of Estonia's 2000 income tax act
  - No 11 Jörg Rahn: Bilateral equilibrium exchange rates of EU accession countries against the euro
  - No 12 Toni Riipinen: Energy market liberalisation in the FSU—simulations with the GTAP model
  - No 13 Natalia Smirnova: Job search behavior of unemployed in Russia
  - No 14 Jesús Crespo-Cuaresma, Jarko Fidrmuc and Ronald MacDonald: The monetary approach to exchange rates in the CEECs
  - No 15 Julius Horvath: Optimum currency area theory: A selective review
  - No 16 Pertti Haaparanta, Tuuli Juurikkala, Olga Lazareva, Jukka Pirttilä, Laura Solanko and Ekaterina Zhuravskaya: Firms and public service provision in Russia
  - No 17 Michael Funke and Ralf Ruhwedel: Trade, product variety and welfare: A quantitative assessment for the transition economies in Central and Eastern Europe.
- 2004**
- Nro 1 Balázs Égert: Assessing equilibrium exchange rates in CEE acceding countries: Can we have DEER with BEER without FEER? A critical survey of the literature
  - Nro 2 Leena Kerkelä: Distortion costs and effects of price liberalisation in Russian energy markets: A CGE analysis
  - Nro 3 Julius Horvath and Stanislav Vidovic: Price variability and the speed of adjustment to the law of one price: Evidence from Slovakia
  - Nro 4 Pertti Haaparanta and Mikko Puhakka: Endogenous time preference, investment and development traps
  - Nro 5 Iikka Korhonen and Paul Wachtel: Observations on disinflation in transition economies
  - Nro 6 Eugene Nivorozhkin: Financing choices of firms in EU accession countries
  - Nro 7 John P. Bonin, Iftekhar Hasan, Paul Wachtel: Bank performance, efficiency and ownership in transition Countries
  - Nro 8 John P. Bonin, Iftekhar Hasan, Paul Wachtel: Privatization matters: Bank efficiency in transition countries
  - Nro 9 Balázs Égert and Kirsten Lommatzsch: Equilibrium exchange rates in the transition: The tradable price-based real appreciation and estimation uncertainty
  - Nro 10 Yuko Kinoshita and Nauro F. Campos: Estimating the determinants of foreign direct investment inflows: How important are sampling and omitted variable biases?
  - Nro 11 Akram Esanov, Christian Merkl, Lúcio Vinhas de Souza: Monetary policy rules for Russia
  - Nro 12 Greetje M.M. Everaert: The political economy of restructuring and subsidisation: An international perspective
  - Nro 13 Igor Vetlov: The Lithuanian block of the ECSB multi-country model
  - Nro 14 Michael Funke and Jörgen Rahn: Just how undervalued is the Chinese renminbi



---

Bank of Finland  
BOFIT – Institute for Economies in Transition  
PO Box 160  
FIN-00101 Helsinki

Phone: +358 9 183 2268  
Fax: +358 9 183 2294  
Email: [bofit@bof.fi](mailto:bofit@bof.fi)

[www.bof.fi/bofit](http://www.bof.fi/bofit)

---