

Bernhardsen, Eivind; Syversten, Bjørne Dyre H.

**Research Report**

## Stress Testing the Enterprise Sector's Bank Debt - a Micro Approach

Staff Memo, No. 5/2008

**Provided in Cooperation with:**

Norges Bank, Oslo

*Suggested Citation:* Bernhardsen, Eivind; Syversten, Bjørne Dyre H. (2008) : Stress Testing the Enterprise Sector's Bank Debt - a Micro Approach, Staff Memo, No. 5/2008, ISBN 978-82-7553-458-1, Norges Bank, Oslo,  
<https://hdl.handle.net/11250/2507963>

This Version is available at:

<https://hdl.handle.net/10419/210187>

**Standard-Nutzungsbedingungen:**

Die Dokumente auf EconStor dürfen zu eigenen wissenschaftlichen Zwecken und zum Privatgebrauch gespeichert und kopiert werden.

Sie dürfen die Dokumente nicht für öffentliche oder kommerzielle Zwecke vervielfältigen, öffentlich ausstellen, öffentlich zugänglich machen, vertreiben oder anderweitig nutzen.

Sofern die Verfasser die Dokumente unter Open-Content-Lizenzen (insbesondere CC-Lizenzen) zur Verfügung gestellt haben sollten, gelten abweichend von diesen Nutzungsbedingungen die in der dort genannten Lizenz gewährten Nutzungsrechte.

**Terms of use:**

*Documents in EconStor may be saved and copied for your personal and scholarly purposes.*

*You are not to copy documents for public or commercial purposes, to exhibit the documents publicly, to make them publicly available on the internet, or to distribute or otherwise use the documents in public.*

*If the documents have been made available under an Open Content Licence (especially Creative Commons Licences), you may exercise further usage rights as specified in the indicated licence.*



<http://creativecommons.org/licenses/by-nc-nd/4.0/deed.no>

No. 5 | 2008

# Staff Memo

## Stress testing the enterprise sector's bank debt - a micro approach

*Eivind Bernhardsen and Bjørne Dyre Syversten, Norges Bank Financial Stability, Financial Markets Department*

Staff Memos present reports on key issues written by staff members of Norges Bank, the central bank of Norway - and are intended to encourage comments from colleagues and other interested parties. Views and conclusions expressed in Staff Memos can not be taken to represent the views of Norges Bank.

© 2008 Norges Bank

The text may be quoted or referred to, provided that due acknowledgement is given to source.

Staff Memo inneholder utredninger som inngår i bankens arbeid med sentrale problemstillinger. Hensikten er å motta kommentarer fra kolleger og andre interesserte. Synspunkter og konklusjoner i arbeidene representerer ikke nødvendigvis Norges Banks synspunkter.

© 2008 Norges Bank

Det kan siteres fra eller henvises til dette arbeid, gitt at forfatter og Norges Bank oppgis som kilde.

**ISSN 1504-2596 (online only)**

**ISBN 978-82-7553-458-1 (online only)**

# **Stress testing the enterprise sector's bank debt – a micro approach**

by

Eivind Bernhardsen and Bjørne Dyre Syversten<sup>1</sup>

Norges Bank Financial Stability, Financial Markets Departement

Bankplassen 2, P. O. Box 1179 Sentrum, N-0107 Oslo, Norway

E-mail: [eivind.bernhardsen@kredittilsynet.no](mailto:eivind.bernhardsen@kredittilsynet.no) [bjorne-dyre.syversten@norges-bank.no](mailto:bjorne-dyre.syversten@norges-bank.no)

This version: 14 September 2008

This paper describes Norges Bank's micro stress testing framework for assessing the Norwegian banking sector's losses on loans to the non-financial enterprise sector. Using projected macro variables and a stock-flow approach, annual financial statements of every firm in Norway are projected five years ahead. The loan loss potential is then assessed using a credit scoring model. We present a backtest of projections taking the history of macro variables as given. Our results are fairly good using a relatively simple set-up, and we conclude that stock-flow projections of financial statements can be useful for stress testing banks' loan portfolios.

JEL Codes: G21, G32, G33, M49.

---

<sup>1</sup> We would like to thank Snorre Evjen, Kai Larsen, Iman van Lelyveld, Kjersti-Gro Lindquist and Hyun Shin for useful comments and contributions. The views expressed in this paper are those of the authors and do not necessarily represent the views of Norges Bank or Kredittilsynet.

## 1. Introduction

The credit quality of banks' loans to the enterprise sector is of great importance when measuring banks' credit risk. During the Norwegian banking crisis in 1988–1993, a large part of banks' losses were on loans to the enterprise sector. Even today we expect that an economic downturn will lead to larger losses on loans to the enterprise sector than on loans to the household sector.

Norges Bank's SEBRA-database contains annual financial statements for every limited liability company in Norway. The financial statements provide valuable information about the risk characteristics of individual firms. Even in favourable macroeconomic periods there will be some firms in a vulnerable financial situation. Financial statements for such firms provide useful information about the banking sector's loss potential on loans to the enterprise sector.

Norges Bank uses several models in its stress testing of financial stability, see Andersen et al. (2008). Our paper deals with Norges Banks' micro approach for stress testing the banking sector's losses on loans to the non-financial enterprise sector.<sup>2</sup> This approach consists of four steps:

- 1) Norges Bank's macroeconomic models are used to predict the development of key macro variables in a given stress scenario. The stress scenario will normally cover a period of five years. The macroeconomic models used in connection with stress testing are described in Andersen et al. (2008). The macro variables we use in our micro approach are GDP growth, the borrowing rate for the non-financial enterprise sector, the growth in households' employment income, the inflation rate, the real exchange rate, and the growth in house prices.

---

<sup>2</sup> Norges Bank has also modelled the banking sector's stock of non-performing and doubtful loans to the enterprise sector by a macro approach, see Berge and Boye (2007).

- 2) Annual financial statements for every firm are projected, primarily based on empirical models which depend on the aforementioned macro variables. Based on the projected financial statements, Norges Bank's SEBRA-model is used to predict a yearly probability of default (PD) for each firm.
- 3) The expected potential loss on the banking sector's loans to the enterprise sector is calculated by multiplying each firm's bank debt by its PD and summing over all firms. This expected potential loss is transformed to an estimated loss for the banking sector. This transformation involves the use of an empirical model for loss given default (LGD).
- 4) The final step is the measurement of the impact of the estimated loan loss on the banking sector. The impact will depend on the banking sector's initial capital adequacy and its lending growth, profit before loan losses and dividend payouts in the stress years. Projections of these quantities are carried out in a separate bank model, see Andersen et al. (2008).

Feedback effects to the macroeconomic models from the loan losses projected in step 3) are not considered, which constitutes a clear limitation to the set-up. In particular, we would expect that the magnitude of loan losses typically prevailing in a stress scenario would limit the availability of credit to both households and firms. A weakening in credit conditions may in turn affect GDP growth, and further depress the financial strength of the enterprise sector. In this paper we do not take this issue further. Our focus is on step 2) and 3). We analyse how to best translate the output from the macroeconomic models into projections of financial items that are used by the SEBRA-model in its predictions of PDs. To project financial items we utilise the stock-flow structure of financial statements and a set of simple assumptions for liquidity management and dividend policy. The accuracy of the projections is evaluated through backtesting of the predicted PD for the enterprise sector. We do this by taking the historical development of the macro variables in

step 1) as given and projecting the financial statements five years ahead, using financial information only from the initial year together with the macro variables.

Our approach gives ample opportunities for tailoring a specific stress scenario. Each independent financial item represents a handle we might pull to create a tailored stress scenario. For example, to measure the impact of a wage shock, we can sharply increase payroll expenses. In such a scenario, labour intensive enterprises will be hit the hardest. In other scenarios the shock may come through a sharp increase in interest expenses or through write-downs of fixed assets and investments, and so forth.

The paper proceeds as follows. Section 2 describes the SEBRA-model and the associated database, which is the basis for our stress testing of the banking sector's losses on loans to the enterprise sector. In section 3 we describe how the (debt weighted) PD for the enterprise sector and a measure of LGD are calculated. Section 4 gives an overall description of how financial statements are projected at the firm level and presents the empirical models and auxiliary assumptions used in the projections. The results of the backtests are reported in section 5. Section 6 presents an empirical model for LGD and shows an application of our stress testing framework using scenarios from Norges Bank's Financial Stability Report 1/08. Section 7 concludes.

## **2. The SEBRA- model and the associated database**

An important part of Norges Bank's stress testing framework for banks' losses on loans to the enterprise sector is a bankruptcy prediction model, called the SEBRA-model. The associated database contains annual financial statements for every limited liability company in Norway in

the period 1989–2006.<sup>3</sup> Some additional information, such as industry code, year of formation and location, is also stored in the database. In the SEBRA-model we utilise data from the firms' unconsolidated financial statements.<sup>4</sup> We receive financial statements for most firms about nine months after the end of the financial year. For each financial year the database contains about 30 items from the profit and loss account and about 50 items from the balance sheet of each firm. The financial statements provide information about the total bank debt of each firm. We do not have information about which bank(s) the firm has borrowed from.<sup>5</sup>

The SEBRA-model predicts bankruptcy probabilities as logistic functions of variables that are based on key financial items from the financial statement. The model belongs to the class of "generalised additive models" (GAM).<sup>6</sup> All variables in the SEBRA-model utilise data from the same financial year. Thus, based on the financial statement of a firm for one year, we are able to predict the bankruptcy probability for the next year. Two versions of the SEBRA-model have been developed; a basic version and an extended version. These versions are described in Bernhardsen and Larsen (2007), while an earlier version of the model is described in Eklund et al. (2001).

The last versions of the SEBRA-model have been estimated on financial statements from the period 1990–2002 and bankruptcies in the period 1991–2005.<sup>7</sup> The three core variables in the basic version of the SEBRA-model are:<sup>8</sup>

---

<sup>3</sup> The database also contains annual financial statements for a smaller set of firms back to 1981.

<sup>4</sup> We also have access to consolidated financial statements for a limited number of firms for the period 1992–2006, but we do not use this information.

<sup>5</sup> Kredittilsynet (The Financial Supervisory Authority of Norway), which also uses the SEBRA-model, does have access to such information. Kredittilsynet regularly uses the SEBRA-model in its on-site inspections of banks.

<sup>6</sup> The general functional expression for the SEBRA-model is given in appendix 1.

<sup>7</sup> The reason for the different time periods is that the estimation is based on the event bankruptcy, which occurs with a time lag compared to the release of the last financial statement.

<sup>8</sup> The balance sheet items included in equations (1) - (3) are measured at year end.



$$x_1 = \frac{\text{Earnings before depreciation and amortisation (EBDA)}}{\text{Total debt}} \quad (1)$$

$$x_2 = \frac{\text{Book value of equity}}{\text{Book value of total assets}} \quad (2)$$

$$x_3 = \frac{\text{Cash and deposits - Short term debt}}{\text{Operating revenue}} \quad (3)$$

The numerator in  $x_1$  is an estimate of cash earnings after taxes. Since  $x_1$  measures cash earnings as a share of total debt, this variable is a measure of the debt servicing capacity of the firm. The inverse of  $x_1$  shows how many years it will take to repay the debt given the current year's cash earnings.  $x_2$  is the equity ratio, which is a measure of financial strength. The variable  $x_3$  is a measure of liquidity. In addition to the three core variables, there are two sets of indicator variables in the basic version of the SEBRA-model. The first set measures whether or not the book value of equity is less than paid-in equity, i.e. whether the firm has an accumulated net loss. The second set measures the age of the firm. This set consists of a dummy variable for each age in the interval from 1 year to 8 years. The inclusion of age dummies means that the model can be interpreted within the class of hazard rate models.

The basic version of the SEBRA-model was developed with stress testing in mind. An important criterion in the development process was that the model should depend on few variables, but include the most critical ones. Bernhardsen and Larsen (2007) document that the deterioration of predictive power compared to the extended version of the SEBRA-model is relatively small. Another consideration when developing the basic version of the SEBRA-model was that it should be possible to make good projections of the explanatory variables included in the model.

By using the misclassification approach to binary dependent models outlined in Hausman et al. (1998), we take the observed event of bankruptcy as a noisy proxy for the unobserved event of default.<sup>9</sup> Under the assumption that the conditional probability of bankruptcy given default does not depend on the explanatory variables, the basic version of the SEBRA-model is able to predict PDs.<sup>10</sup> The advantage of predicting PDs instead of bankruptcy probabilities is that it makes our stress testing framework more compatible with the Basel II-framework, where PD and LGD are central credit risk parameters.

### 3. PD for the enterprise sector and implied LGD

This section describes how we aggregate *probability of defaults* (PDs) for individual firms to arrive at the (debt weighted) PD for the enterprise sector. This PD is used to calculate an implied measure of *loss given default* (LGD).

We denote the probability of default for firm  $i$  in year  $t$  by  $PD_{i,t}$ . Moreover, let  $D_{i,t-1}$  denote the bank debt of firm  $i$  at the end of year  $t-1$ , i.e. at the start of year  $t$ . The *expected potential loss* (EPL) for the banking sector regarding this firm in year  $t$  is then given by:

$$EPL_{i,t} = PD_{i,t} \cdot D_{i,t-1} \quad (4)$$

By aggregating over all firms, we obtain the expected potential loss for the banking sector in year  $t$ . This aggregate, denoted  $EPL_t$ , can be interpreted as an estimate of the total loss for the

---

<sup>9</sup> Each bank has information about defaults among its customers. Norges Bank does not have access to such information.

<sup>10</sup> For details, see appendix 2.

banking sector before realisation of collateral. By dividing  $EPL_t$  by the aggregate bank debt, we find the (debt weighted) PD for the enterprise sector in year  $t$ :

$$PD_t = \frac{EPL_t}{D_{t-1}} \quad (5)$$

### ***3.1 Calculation of implied LGD***

Normally, the banking sector's actual loan losses (ALL), i.e. the losses after realisation of collateral, will be lower than EPL. Based on the historical series of ALL and our prediction of EPL based on historical data, we get an implied estimate of LGD in year  $t$ :

$$LGD_t = \frac{ALL_t}{EPL_t} \quad (6)$$

LGD varies strongly over time and its peaks are associated with economic downturns. This is due to the impairment of the value of collateral in downturns. Figure 1 illustrates the implied LGD for the period 1989–2006 calculated as the actual loan losses as a percentage of total loans divided by the predicted (debt weighted) PD.<sup>11</sup>

*[Figure 1 in about here]*

The main objective with stress testing is to predict the banking sector's future loan losses in various scenarios. By using predicted financial items as input to the SEBRA-model, we obtain

---

<sup>11</sup> To avoid negative values for the implied LGD, we have set  $ALL_t = 0$  in years with net reversals of earlier loan losses, i.e. in years when  $ALL_t < 0$ .

annual estimates of EPL for future years. We then need a model for LGD to convert these EPLs to annual estimates of the loan losses. We have modelled the implied LGD, i.e. the dotted line in figure 1. The empirical model is presented in section 6.

#### **4. Projections of financial statements**

The starting point for our stress testing of banks' losses on loans to the enterprise sector is the development of macro variables in a given stress scenario. This information must be translated to the micro level, which in our case means the financial statement of each firm. We use aggregate growth rates from empirical models to project the main items in the financial statement of every firm. In addition, we use simple "rule of thumb" assumptions regarding the liquidity management and dividend policy of each firm.

*[Table 1 and Table 2 in about here]*

A financial statement consists of a profit and loss account (table 1) and a balance sheet (table 2). There are some differences between projections of items in the profit and loss account (flow variables) and projections of items in the balance sheet (stock variables). Most of our projections are of flow variables, but we also project important stock variables like debt and paid-in equity. The development of some stock variables, like total assets and cash & deposits, are partly determined by the projected flow variables.

The distribution of net profit between dividend payment and retained earnings affect both cash & deposits and the equity ratio. We assume that firms follow a pecking order rule regarding the distribution of net profit. The starting point of the rule is the projected cash earnings of the firm. We assume that this is the amount which is available for strengthening the stock of cash &

deposits and for payment of dividend. This means that negative cash earnings automatically reduces the stock of cash & deposits. On the other hand, higher operating revenue will normally necessitate a higher stock of cash & deposits and other current assets. For firms with positive cash earnings we assume that cash & deposits are targeted to grow by the same rate as operating revenue. If the cash earnings is not sufficient to cover this increase, we assume that cash & deposits only grow by the available amount. If there is still something left of the cash earnings after the allocation to cash & deposits and the equity ratio is above 10 per cent, we assume that 35 per cent of the remaining cash earnings are paid as dividend. This is a rough estimate based on results of a study we have conducted of dividend payments in Norwegian firms in the period 1989–2005.<sup>12</sup>

The equity ratio is influenced by the current year's retained earnings and debt growth. Write-downs have a pronounced impact on net profit, and thereby on retained earnings. Write-downs for impairment are often associated with economic downturns. The normal cycle is a low level of write-downs in economic upturns, and increasing write-downs as the economy moves deeper into a downturn. Figure 2 shows the relative effects of write-downs and other factors, like net profit (before write-downs) and debt growth, on the equity ratio in the mild economic downturn in Norway 2001–2003. Our decomposition shows that about two thirds of the decrease in the equity ratio in 2000 and 2001 and about half the decrease in 2002 can be attributed to write-downs. It is therefore important to project write-downs in order to get good projections of the equity ratio of each firm.

*[Figure 2 in about here]*

---

<sup>12</sup> The study shows that the dividend level in the enterprise sector varies largely during the period. One reason is frequently changing tax regimes for dividends. Over the period 1992–2005 about 40 per cent of firms with a positive net profit paid dividends. Among these firms, about 70 per cent of their net profit was paid out as dividend. If the total dividend is divided between all firms with a positive net profit, this gives a pay-out ratio of about 28 per cent. Our assumption is related to "the remaining cash earnings", which is a somewhat different measure than net profit.

To sum up our procedure for projecting financial statements: First, the flow variables needed to calculate next year's cash earnings are projected. Then a heuristic assumption for the firm's use of cash earnings to strengthen liquidity holdings and pay dividend is applied. Next, the remaining flow variables are projected to calculate retained earnings. By adding the estimate for injections of paid-in equity, the total equity is determined. Finally, the stock variable debt is projected, thereby determining total assets. We then have the means for calculating the variables used in the SEBRA-model. The procedure is repeated up to five years ahead. Subsection 4.1 describes in more detail how each financial item is projected.

### ***4.1 Projections of financial items***

We expect close relationships between the macro variables at hand and many of the financial items we want to project, at least at the aggregate level. Payroll expenses are expected to be closely related to households' employment income. Interest expenses should be closely related to credit growth and to changes in interest rates, and so forth. Such presumptions give a good starting point for finding useful forecasting models.

Because our panel database is not complete, level information on aggregated financial items is not entirely consistent over time. Also, since our goal is to project financial items for a stationary population of firms, we do not want to capture effects from entries and exits of firms. We therefore choose to construct series of growth rates for aggregated financial items, including only firms that are represented in the data in any two consecutive years.<sup>13</sup> The estimation sample consists of yearly series covering the period 1985–2006. In our development of forecasting

---

<sup>13</sup> The constructed series will then imitate growth rates from a stationary population even though the sample composition changes over time.

models, we choose to fit autoregressive distributed lag models (ADLs) in the constructed growth rates. By this formulation we may force long run restrictions on growth rates, but still open for flexibility in the short run. For example, we would like projected revenue to grow in line with GDP over time. We generally find that the growth rates align relatively rapidly, so predictions are not drastically different from that of a static model in growth rates. However, since the fit of the ADLs are generally better than with a static model, and since we appreciate the separation between long run interpretations and short term flexibility, we decide to go with the ADLs.<sup>14</sup> The resulting empirical models are presented in table 3. Variable names in lower case letters and italics denote growth rates measured in per cent and  $\Delta$  denotes the absolute change from the previous year. The dependent variables (DEP) are operating revenue (REV), payroll expenses (PAY), total debt (DEBT), interest expenses (IEX), and costs of goods sold (CGS). Explanatory variables include (real) GDP, the consumer price index (CPI), the real export weighted exchange rate (RX), household's employment income (INC), and the average borrowing rate for the enterprise sector (BOR). All financial items are measured in nominal terms.

*[Table 3 in about here]*

Operating revenue is found to depend positively on both nominal GDP and the real exchange rate, the latter representing the competitive power of the export sector.<sup>15</sup> In steady state, i.e. when  $\Delta rev = \Delta gdp = \Delta RX = 0$ , the model gives that the growth rate of operating revenue will be exactly 5 per cent when nominal GDP growth is 5 per cent, which is in line with commonly applied figures for the sum of long term GDP and inflation.

---

<sup>14</sup> Another alternative would be to calculate synthetic levels of the financial items using the constructed growth rates and then fit an error correction model in the levels. We left this alternative unexplored.

<sup>15</sup> A higher value of the real exchange rate variable represents a real depreciation, thus the positive sign.

Payroll expenses are found to depend on households' employment income and operating revenue. In steady state, i.e. when  $\Delta pay = \Delta inc = \Delta rev = 0$ , estimated coefficients give that the growth rate of payroll expenses will be 4.5 per cent, which is somewhat low, but still fairly reasonable.

Total debt is found to depend on GDP, CPI, and the borrowing rate for the enterprise sector. In steady state, i.e. when  $\Delta debt = \Delta gdp = \Delta cpi = 0$ , debt can grow in line with nominal GDP at 5 per cent only if the borrowing rate is set to 10.3 per cent. This is about 3 percentage points above what we initially expected, and may be due to the unusually high interest rates in the first part of the sample or to the fact that debt growth was somewhat higher than GDP growth over the sample period. However, our assessment was that the potential misalignment of growth rates was not of such magnitude that we needed to impose restrictions on coefficients in the estimation.

For interest expenses, which for each firm may be approximated by multiplying the average borrowing rate over the financial year by the firm's average interest bearing debt, simply setting  $iox = bor + debt$  did fit nearly as well as any empirical model we estimated. On similar grounds, we ended up setting the growth rate of costs of goods sold equal to growth in operating revenue. Figure 6 - figure 9 in appendix 3 show actual and fitted growth rates for operating revenue, payroll expenses, debt and interest expenses during the sample period and the projected paths in the baseline scenario and stress scenario from Norges Bank's Financial Stability Report 1/08.

We also need empirical models for write-downs of assets. We find that write-downs at the aggregate level are best modelled as a percentage of aggregate book value of assets, instead of as growth rates. Since there are great differences in the magnitude of write-downs on different types of assets, we found it necessary to model fixed assets, long term investments and short term



investments differently. The financial reporting of write-downs became more detailed in 1999, so we only have the period 1999–2006 available for estimation. This gives us an absolute minimum degrees of freedom, and we therefore turned to the method of static regressions with some a priori determined coefficient restrictions applied. Write-downs on all three categories of assets were modelled as a function the growth in a broad equity index (EQI) and the growth in commercial property prices (CCP). The coefficients were constrained such that the aggregate write-downs equalled their averages over the period 2004–2006<sup>16</sup> when the growth rates for EQI and CCP were set to their long run averages of 5 per cent. The resulting regression results are shown in table 4.

*[Table 4 in about here]*

In order to project write-downs we need projections of both equity prices and commercial property prices. We have elected to project commercial property prices by assuming that they will grow in line with house prices. To obtain a forecast of the growth rate of the broad equity index, we use a simple dividend discounting model, see appendix 4. Figure 10 in appendix 3 shows actual and fitted write-down percentages for long term investments.

The other financial items to be projected are depreciation, paid-in equity, interest income, other operating costs, and income tax. Below we explain our assumptions regarding these items. Based on the historical ratios for the period 1989–2005, we project yearly depreciation as 8.5 per cent of the stock of tangible fixed assets at year end. We find that changes in paid-in equity are difficult to model. We have therefore set the annual growth rate of paid-in equity to 9 per cent, which is equal to the median for the period 2000–2004. Interest income is shifted with the

---

<sup>16</sup> We view this period as the most normal subperiod in the estimation sample 1999–2006.

changes in the enterprise sector's borrowing rate, which seems conceptually fine, but unfortunately does not fit too well with data. Other operating costs vary little from year to year, so we elected to let this item grow with the consumer price index. In order to construct the liquidity variable that enters the SEBRA model, we have to project short term debt specifically. Similarly, to calculate our measure of (debt weighted) PD for the enterprise sector we need projections of the bank debt in each firm. We have elected to apply the growth rate of total debt to all types of debt. Finally, income taxes are calculated as the projected profit before taxes multiplied by the income tax rate of 28 per cent.

## **5. Results of backtests**

To evaluate the fit of our projections of (debt weighted) PDs for the enterprise sector, we carry out backtests. Financial statements for each year from 1988 to 2003 serve as the starting points for the backtests. The projections in each backtest cover a five year period, e.g. if we start from the observed financial statement of 1991, the backtest covers the projections of financial statements for the period 1992–1996 and the predictions of PDs for the period 1993–1997.<sup>17</sup> Since our task is not to evaluate the uncertainty in forecasting core macroeconomic variables, but rather to evaluate if a portfolio of financial statements can be projected conditional on the macro variables, we use the actual development of the macro variables in the backtest period. The actual values of the macro variables for the first year of the backtesting period are used to make forecasts of the growth rates of financial items that year, using the empirical models and heuristics presented in section 4. This forecasting process is repeated for each year in the backtesting period.

---

<sup>17</sup> Keep in mind that the predicted PD for year  $t$  is based on the financial statements for year  $t-1$ .

The backtest period includes two economic downturns; the banking crisis years 1988–1993 and the mild downturn in 2001–2003. We have elected not to use financial statements from the period 1982–1987, due to incompleteness of the SEBRA-database before 1988. This means that we are only partly able to backtest the period prior to the banking crisis years, when risk built up. Some of the empirical models and heuristics, like the models for write-downs and the heuristic for the growth of paid-in equity, are based on the period 1999–2005. The backtests which do not cover this period are therefore partly out of sample. The results of the backtests are presented in figure 3. The solid line shows PDs for the enterprise sector based on the actual financial statements. The dotted lines show projections of PDs from the different starting points.

*[Figure 3 in about here]*

With the exception of the projected paths starting in 1992 and 2002, both the direction and the development over time of the projected paths seem satisfactory for stress testing purposes. All paths starting in the early banking crisis years seem to drag the PDs down in a reasonable manner, while paths starting in the late 1990's seem to pull the PDs moderately upwards and down again as the economy recovers. The two projected paths which do not fare that well, i.e. the paths starting in 1992 and 2002, are both related to a weak initial year and a temporary fall in operating revenue in the enterprise sector.

The fit of the projected paths are somewhat poorer than what we would expect from an empirical model estimated on the historical series of PDs. However, such a comparison is not completely fair since we have not designed our stress testing framework to fit this measure specifically. It is important to bear in mind the simplicity of our set-up. The fit can probably be improved markedly if the set-up is modified in light of the experiences from the backtests. As long as one

sticks to theoretically sound modifications of the set-up, it should be possible to make improvements without significantly increasing the risk of over-fitting.

## 6. Application of the stress testing framework

In order to apply our framework to assess banks' loan losses, we need to project the measure of LGD defined in section 3. We have modelled LGD as a function of GDP growth and the change in the real growth rate of commercial property prices. The rationale is that GDP growth says something about the general economic condition, while commercial property usually is the most important collateral for banks' loans to firms. Changes in the growth rate of commercial property prices may therefore capture surprises to the value of banks' collateral. The estimated model is:

$$\Delta \text{LGD}_t = \underset{(4.98)}{28} - \underset{(2.05)}{0.43} \cdot \Delta \text{cpp}_t + 0.31 \cdot \text{Dummy}_{1991} - \underset{(4.97)}{0.62} \cdot [\text{LGD}_{t-1} + \underset{(2.08)}{9.88} \cdot \text{gdp}_{t-1}] \quad (7)$$

where *gdp* denotes the growth rate of the real gross domestic product in mainland Norway and *cpp* denotes the real growth rate of commercial property prices. We use a dummy for the year 1991, which was the peak of the banking crisis in Norway. In the long run, commercial property prices grow at a steady rate, so LGD only depends on *gdp*. Assuming a GDP growth of 2.5 per cent gives a long run LGD at 20.5 per cent, which seems plausible.

We have applied the micro stress testing framework to forecast banks' loan losses for the period 2008–2012. We take the baseline scenario and stress scenario outlined in Norges Bank's Financial Stability Report 1/08 as the basis for projections. In the stress scenario a weakening of households' confidence in their own financial situation and in the general outlook for the Norwegian economy lead to a sharp fall in house prices. At the same time interest rates are

increased substantially in response to prospects for higher inflation. In table 5 the baseline and stress scenarios are outlined in terms of the macro variables we employ, while figures 6–10 in appendix 3 show the corresponding projections for firms’ operating revenues, payroll expenses, debt growth, interest expenses, and write-downs of long term investments.

*[Table 5 in about here]*

*[Figure 4 and figure 5 in about here]*

In the baseline scenario, PD normalises somewhat from a historically low level, see figure 4. LGD increases from its level of zero in 2008 and converges to the estimated long run average of 20 per cent. The combined effect is that the projected loan losses increase only slightly, to approach levels close to the average losses over the last two decades.

In the stress scenario (figure 5) both PD and LGD increase sharply and by 2012 the projected loan losses exceed the level experienced in 2002 by almost 70 per cent. However, loan losses are still well below the level experienced at the peak of the Norwegian banking crisis in 1991. This holds even if we replace our projected value of LGD with the implied LGD derived for the banking crisis period.

## **7. Concluding remarks**

In this paper we presented Norges Bank’s micro stress testing framework for assessing banks’ losses on loans to the enterprise sector. We presented empirical models and heuristics for projecting financial statements at the micro level. We find that average growth rates for financial items like operating revenue, various operating expenses and debt are well forecasted conditional on macroeconomic variables, even on a five year horizon. Back tests of (debt weighted) PDs for

the enterprise sector indicate that our framework performs reasonably well. Our conclusion is that stock-flow projections of financial statements can be a powerful tool for stress test analyses. The approach has several advantages that make it a useful supplement to empirical models fitted directly to historical series of loan losses or default rates. First, series of historical loan losses typically have little variation except from crisis periods, which often are distant in time. Thus, the problem of over-fitting can be severe, and stress testing will always involve large comparative shifts in models fitted mostly to small data variations. Stock-flow projections of financial statements are more structural in nature and may relieve us from some of these obstacles. Moreover, our approach puts emphasis on the initial financial situation of each firm rather than on initial losses or average default rates. Default rates can change rapidly, particularly in a situation where many firms are close to defaulting and the macroeconomic condition starts to worsen. Our approach lets the initial situation in the enterprise sector be of great significance for the outcome of the stress tests. The approach is also applicable for stress testing individual banks' loan portfolios, and can easily be broken down to the industry level. The approach seems particularly useful for smaller banks with little or incomplete data on their historical losses.

There are several possibilities for improvement that could be investigated. First, the macroeconomic models, the bank model, and our model for the enterprise sector should be integrated in order to assess feedback effects. Norges Bank's macroeconomic model for stress testing does in fact include credit as a driving factor of GDP growth. Hence, if the effect of loan losses on bank lending can be reliably assessed in Norges Bank's bank model, it may be possible to iterate feedback effects using the micro and macro models interchangeably. In such an integrated exercise, we would probably see a deeper impact on GDP, higher loan losses, increasing risk premiums on loans, and lower credit growth in stress scenarios.

## Appendix 1. Functional expression for the SEBRA-model

Let  $p(B)$  denote the bankruptcy probability. The general functional expression for the SEBRA-model is:

$$p(B) = F[\alpha + \beta_1 \cdot T_1(x_1) + \beta_2 \cdot T_2(x_2) + \dots + \beta_n \cdot T_n(x_n)] \\ = \frac{1}{1 + \exp(-[\alpha + \beta_1 \cdot T_1(x_1) + \beta_2 \cdot T_2(x_2) + \dots + \beta_n \cdot T_n(x_n)])} \quad (8)$$

where

$$T_j(x_j) = \frac{1}{1 + \exp(-[\frac{x_j - m_j}{s_j}])} \quad (9)$$

$T_j(x_j)$  is a cumulative logistic function and the parameters  $m_j$  and  $s_j$  are estimated for each variable  $x_j$  using (9).

The SEBRA-model has flexible compensation rates. How much the variable  $x_j$  has to increase when the variable  $x_k$  decreases for the bankruptcy probability to remain constant will therefore depend on both  $x_j$  and  $x_k$ . This is not true for the standard logit model.

## Appendix 2. Use of the misclassification approach to predict PDs

Even though we only have data for bankruptcies, the misclassification approach makes it possible, given certain assumptions, to transform bankruptcy probabilities to probabilities of

default (PDs). Our method for predicting PDs may be described as a combination of two parts: Generalisation of the logit model for bankruptcies and a linear scaling of probabilities.

Let  $X$  denote the vector of variables in the basic version of the SEBRA-model, and  $\beta$  a vector of coefficients associated with these variables. Assume that the true model relates to the probability of default and that bankruptcy occurs with a fixed probability given default. Then the probability of default can be expressed as:

$$PD = F(\beta \cdot X) \quad (10)$$

where  $F(\cdot)$  is the cumulative logistic density function.

Let  $B$ ,  $D$  and  $D^c$  denote the events of bankruptcy, default and non-default respectively. Moreover, let  $p(\cdot)$  denote an arbitrary probability. Then the bankruptcy probability can be written as:

$$p(B) = p(B | D) \cdot PD + p(B | D^c) \cdot p(D^c) \quad (11)$$

By definition  $p(D^c) = 1 - PD$ . By utilising this relationship and (10), the bankruptcy probability can be written as:

$$p(B) = r + (1 - q - r) \cdot F(\beta \cdot X) \quad (12)$$

where



$$r = p(B | D^C) \quad \text{and} \quad q = 1 - p(B | D) \quad (13)$$

$r$  and  $q$  are misclassification probabilities.  $r$  is the probability of registering bankruptcy when there has not been a default, while  $q$  is the probability of not registering bankruptcy when there has been a default. Since it seems unlikely that an enterprise which has not defaulted should be registered as bankrupt, one would expect very few misclassifications of the first type, i.e. one would expect  $r$  to be zero. Historically, only a portion of the defaults eventually leads to bankruptcy. One would therefore expect  $q \in \langle 0, 1 \rangle$ .

The model in (12), with  $r$  and  $(1 - q - r)$  taken as constants, gives a generalisation of our original logit model for bankruptcy probabilities. Let us now estimate the following model for bankruptcy probabilities, where  $\hat{g}$ ,  $\hat{h}$  and  $\hat{\beta}$  are estimated simultaneously by the method of maximum likelihood:

$$\hat{p}(B) = \hat{g} + \hat{h} \cdot F(\hat{\beta} \cdot X) \quad (14)$$

Then  $\hat{g}$  can be interpreted as an estimate for  $r$  and  $(1 - \hat{g} - \hat{h})$  as an estimate for  $q$ . If the estimation results in  $\hat{g} = 0$  and  $\hat{h} = 1$ , this indicates that there are no misclassifications. The estimated equation based on data from the SEBRA-database for the period 1990–1996 is:

$$\hat{p}(B) = \underset{(-0.21)}{0.00} + \underset{(-17.10)}{0.49} \cdot F(\hat{\beta} \cdot X) \quad (15)$$

The t-values in (15) mean that the hypothesis  $\hat{g} = 0$  is not rejected, while the hypothesis  $\hat{h} = 1$  is rejected. The rejection of  $\hat{g} > 0$  backs up the hypothesis that there is a zero probability of registering bankruptcy in the case that there has not been a default. The rejection of  $\hat{h} = 1$  rejects the original logit specification. Thus, we have rejected the logit model in favour of the misclassification model. We interpret the scaled individual bankruptcy probability  $F(\hat{\beta} \cdot X) = \frac{\hat{p}(B) - \hat{g}}{\hat{h}}$  as an estimate of the probability of default. However, this interpretation requires that the true model relates to the probability of default, and that bankruptcy occurs conditional on default. This assumption, which seems reasonable, cannot be truly validated. Moreover, it is required that the misclassification probabilities  $r$  and  $q$  can be estimated as constants, which is only true if they are independent of  $X$ . If one suspects that this latter requirement does not hold, one could turn to the semi-parametric approach suggested in Lewbel (2000). For a further description of the misclassification approach regarding binary choice models, see Hausman et al. (1998).

### **Appendix 3. Figures of fit of empirical models**

*[Figure 6 - Figure 10 in about here]*

### **Appendix 4. Use of a GDP discounting model to project equity prices**

We assume that the yearly dividend payment from the equity market constitutes a constant share  $\lambda$  of GDP. Moreover, we assume that each period investors forecast GDP to grow by a constant yearly rate  $g$  which they update by placing a weight of 0.2 on the current year's GDP growth, and a weight 0.8 on the long term average of 5 per cent (nominal). Furthermore, they calculate

the discounting rate  $i$  the same way, using the weight 0.2 for the current year's borrowing rate for the enterprise sector and the weight 0.8 for borrowing rate's long term average of 6.5 per cent (nominal). Given assumptions which ensure that the infinite geometric series of discounted dividend payments converges, the formula for the level of the equity index (EQI) at the end of year  $t$  can be written as:

$$EQI_t = \lambda \cdot NGDP_t \cdot \frac{1+i_t}{i_t - g_t} \quad (16)$$

We use the parameter  $\lambda$  to link the right hand side of (16) to the current level of the equity index, i.e. to the level at the start of the projections. Given equation (16), shifts in NGDP and  $i$  will shift the level of the equity market. Figure 11 shows actual and fitted levels of the equity index.

*[Figure 11 in about here]*

## References

Andersen, H., T. O. Berge, E. Bernhardsen, K.-G. Lindquist and B. H. Vatne (2008): "A Suite-of-Models Approach to Stress-Testing Financial Stability", Staff Memo 2008/2, Norges Bank.

Berge, T. O. and K. G. Boye (2007): "An Analysis of Banks' Problem Loans", *Economic Bulletin* 2/2007, pp. 65–76, Norges Bank.

Bernhardsen, E. and K. Larsen (2007): "Modelling Credit Risk in the Enterprise Sector – Further Development of the SEBRA model", *Economic Bulletin* 3/2007, pp. 102–108, Norges Bank.

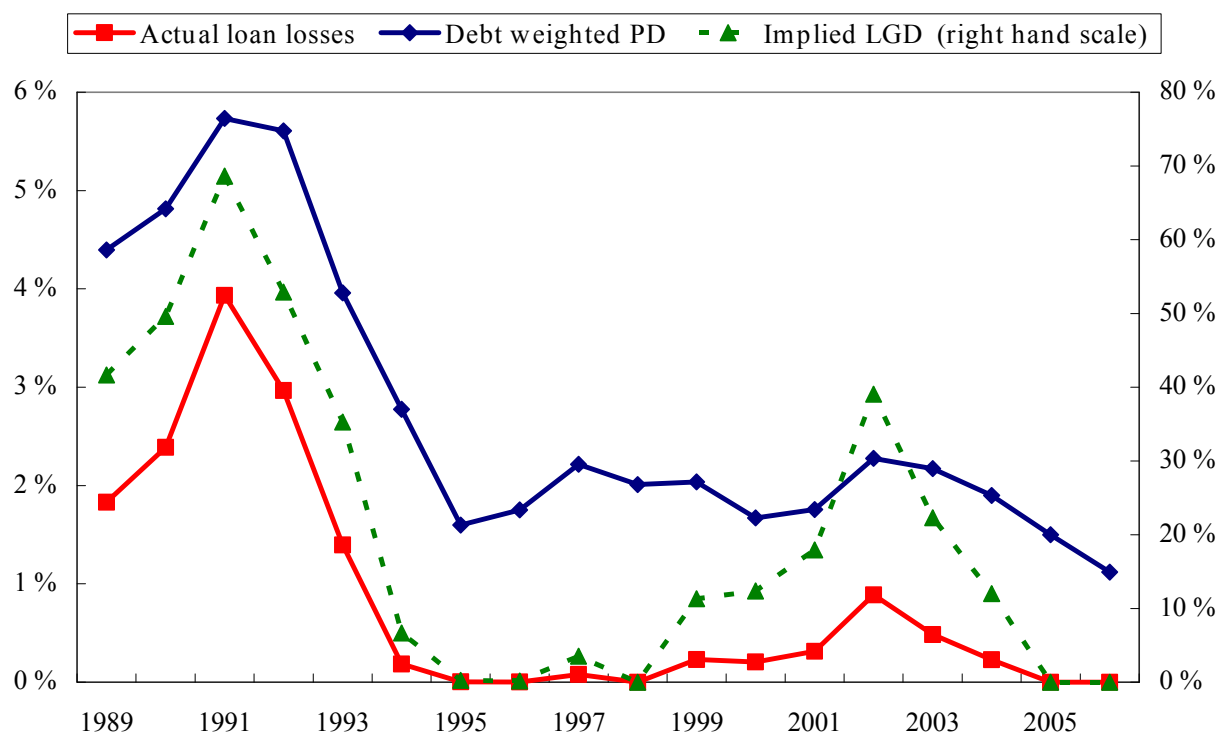
Eklund, Trond, Kai Larsen and Eivind Bernhardsen (2001): "Model for Analysing Credit Risk in the Enterprise Sector", *Economic Bulletin* 3/2001, pp. 99–106, Norges Bank.

Hausman, J. A., J. Abrevaya and F. M. Scott-Morton (1998): "Misclassification of the Dependent Variable in a Discrete-Response Setting", *Journal of Econometrics*, 87, pp. 239–269.

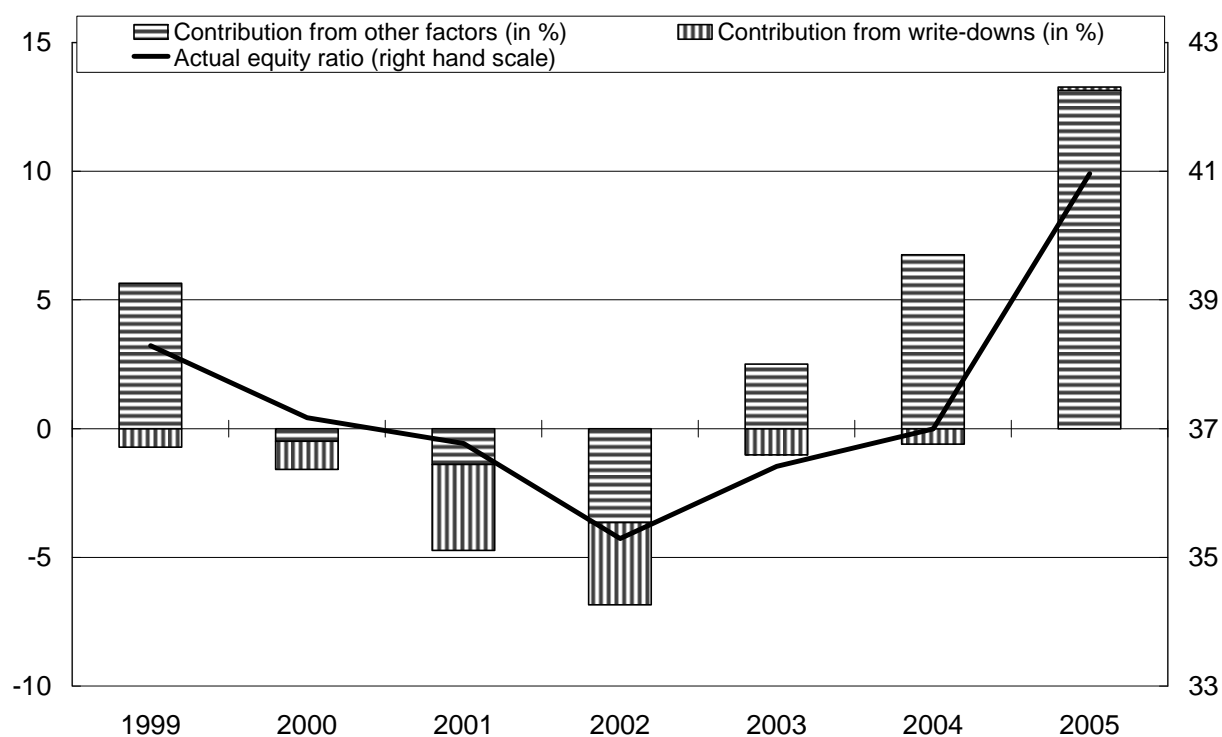
Lewbel, A. (2000): "Identification of the Binary Choice Model with Misclassification", *Econometric Theory*, 16, pp. 603–609.

## Figures

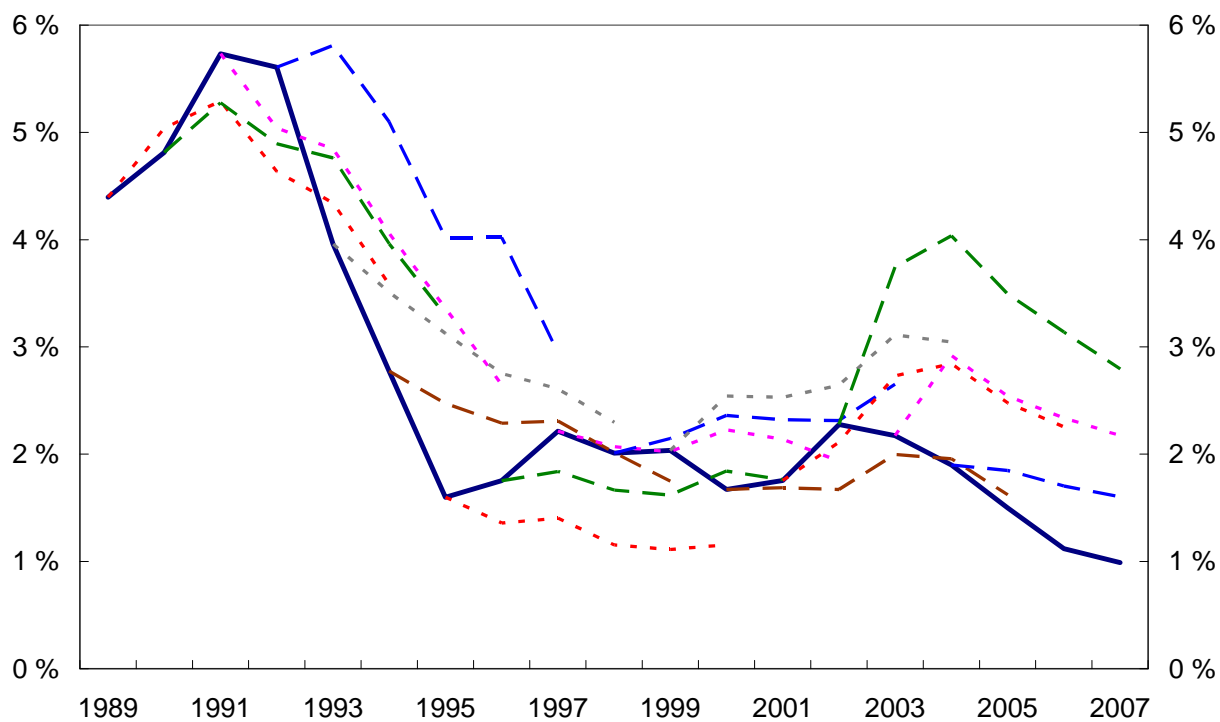
**Figure 1. Implied LGD for banks' loans to the enterprise sector in the period 1989–2006**



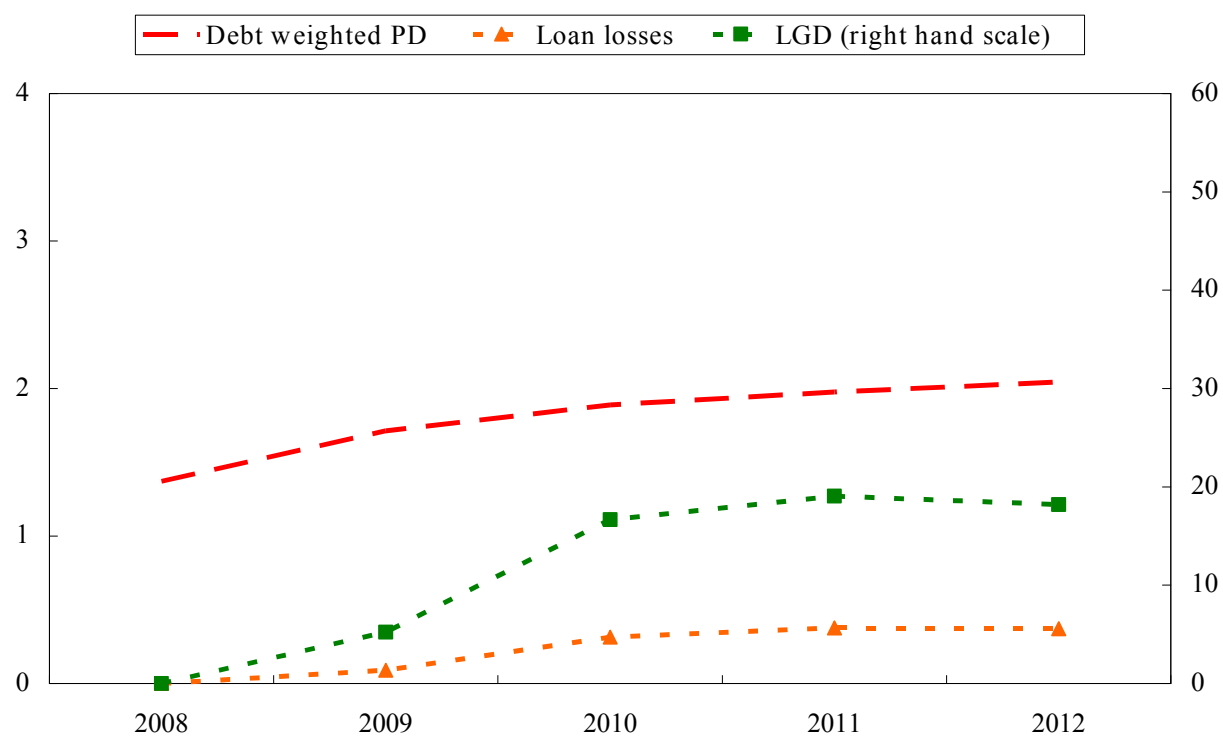
**Figure 2. Effect of write-downs on the equity ratio**



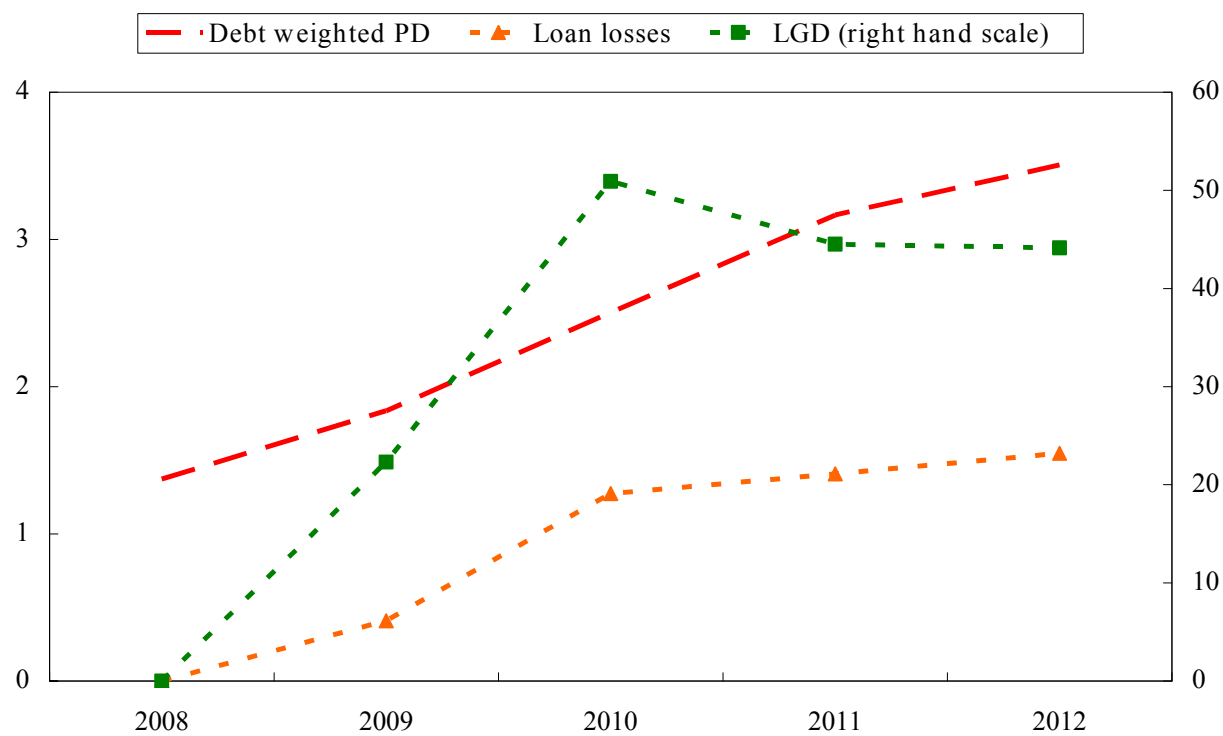
**Figure 3. Backtests of projected PDs for the enterprise sector**



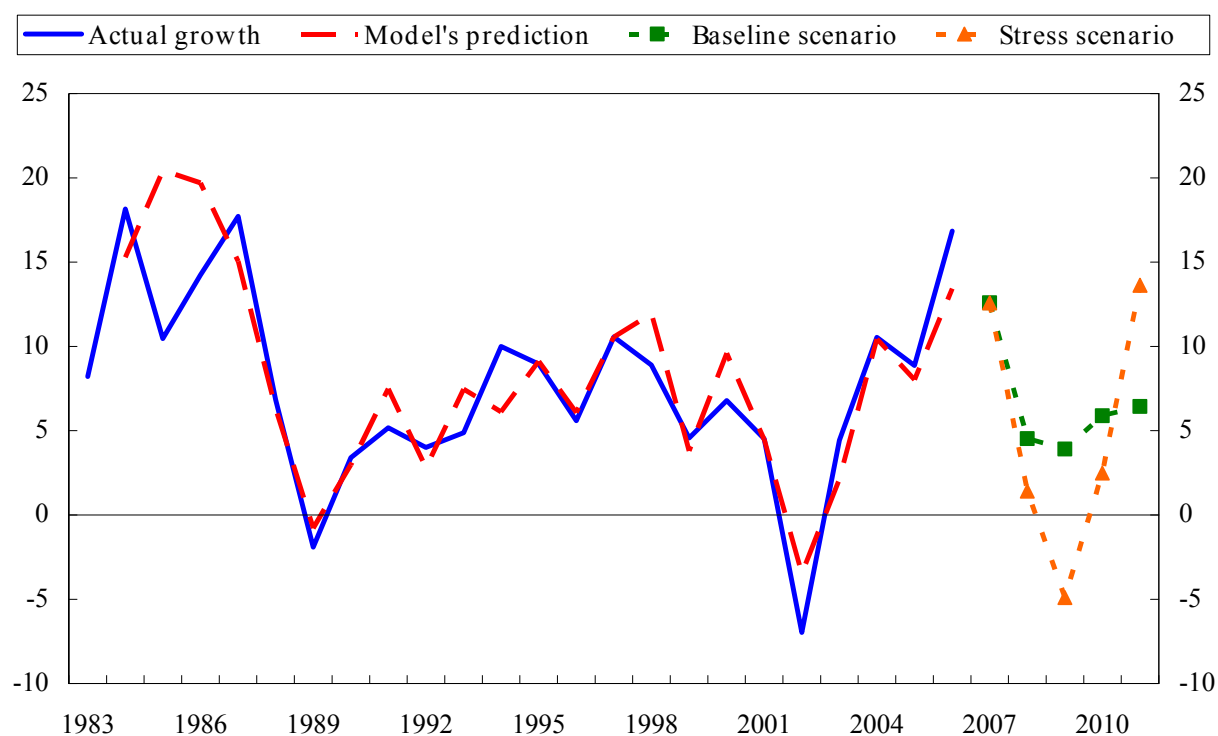
**Figure 4. Projection of loan losses in the baseline scenario (in per cent)**



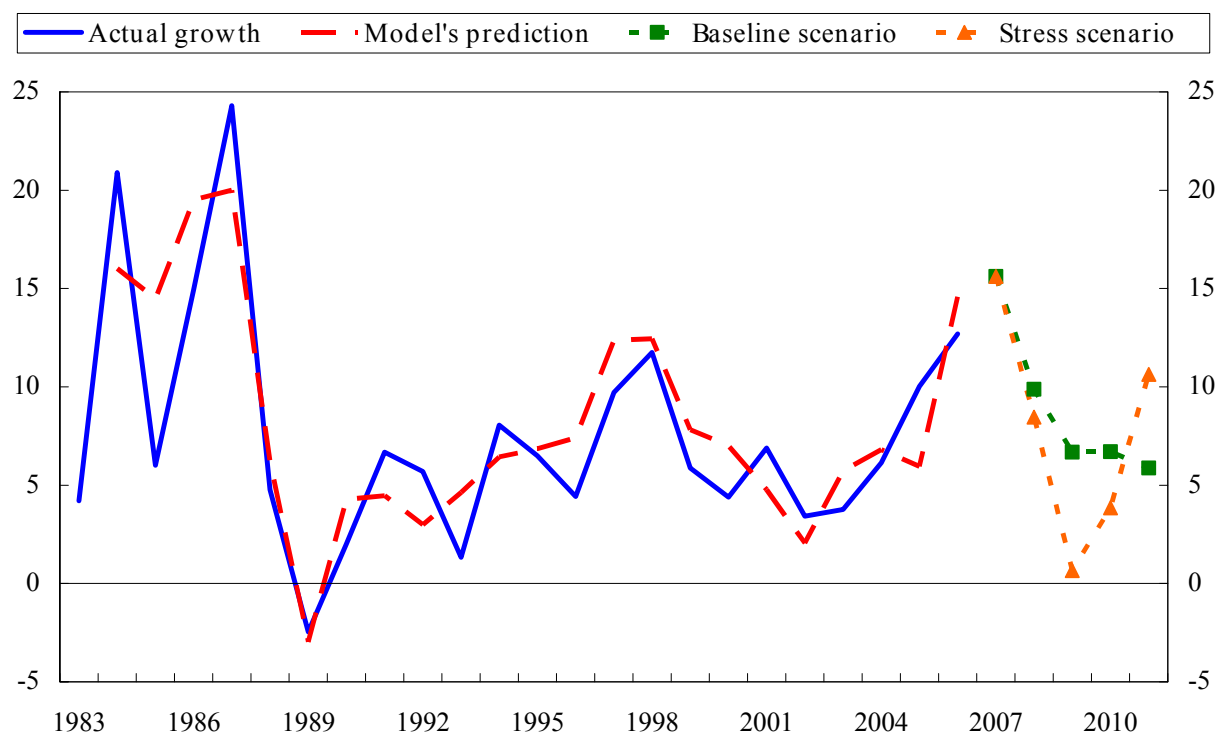
**Figure 5. Projection of loan losses in the stress scenario (in per cent)**



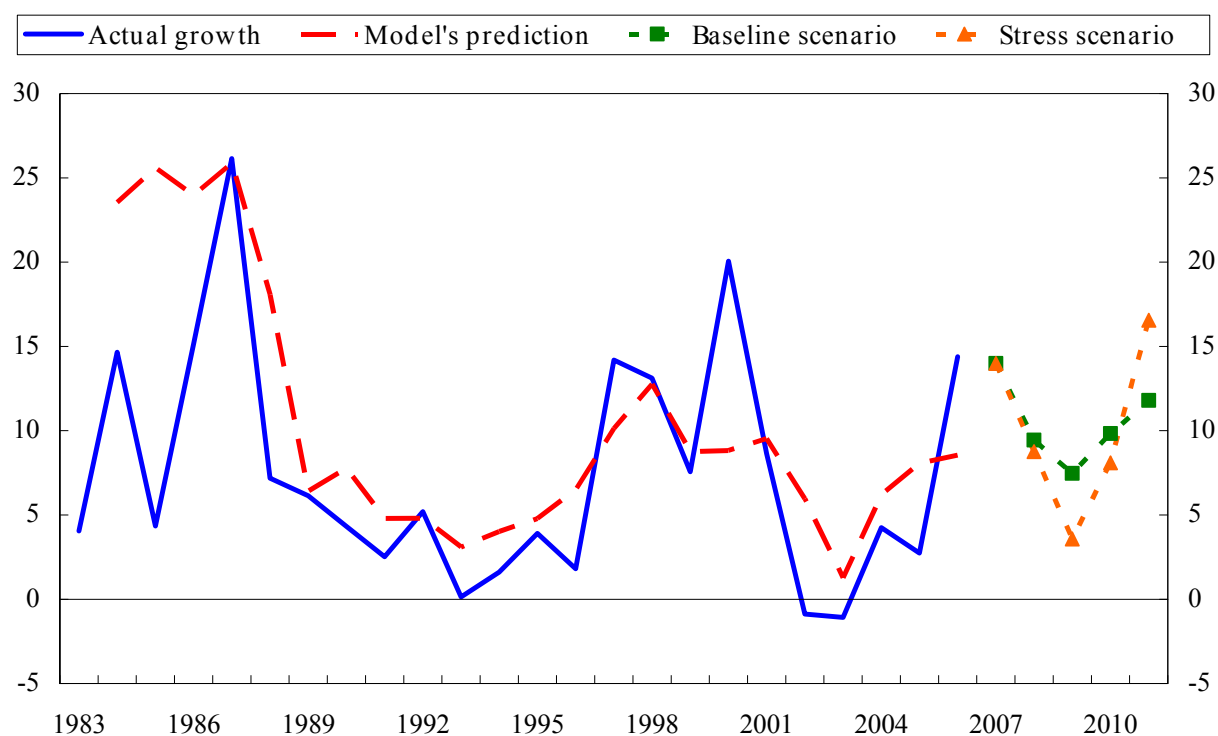
**Figure 6. Actual and fitted growth rates for operating revenue (in per cent)**



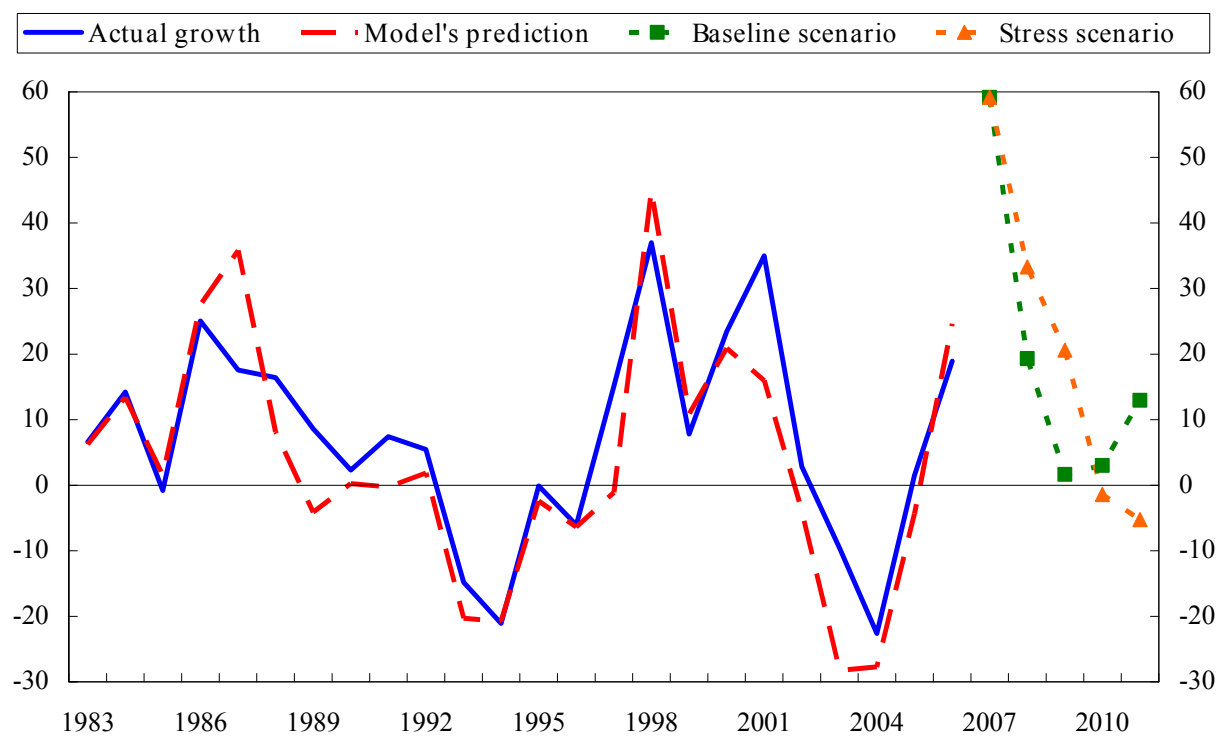
**Figure 7. Actual and fitted growth rates for payroll expenses (in per cent)**



**Figure 8. Actual and fitted growth rates for debt (in per cent)**

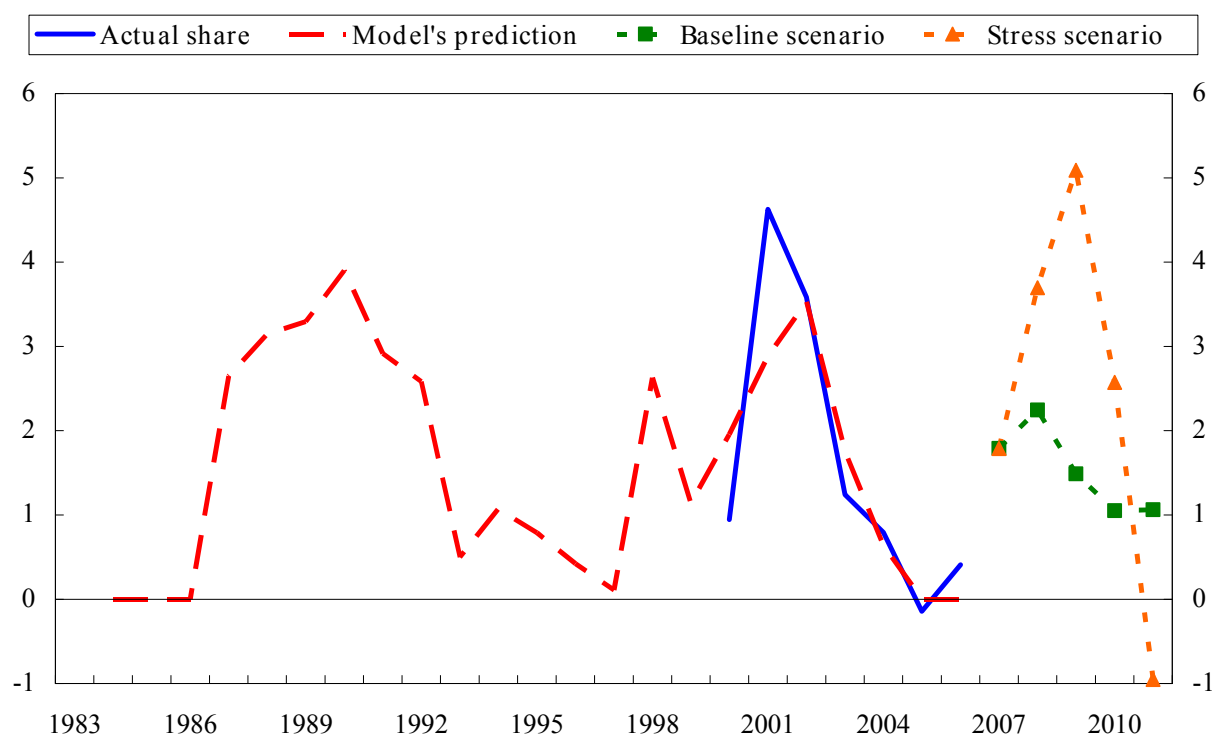


**Figure 9. Actual and fitted growth rates for interest expenses (in per cent)**

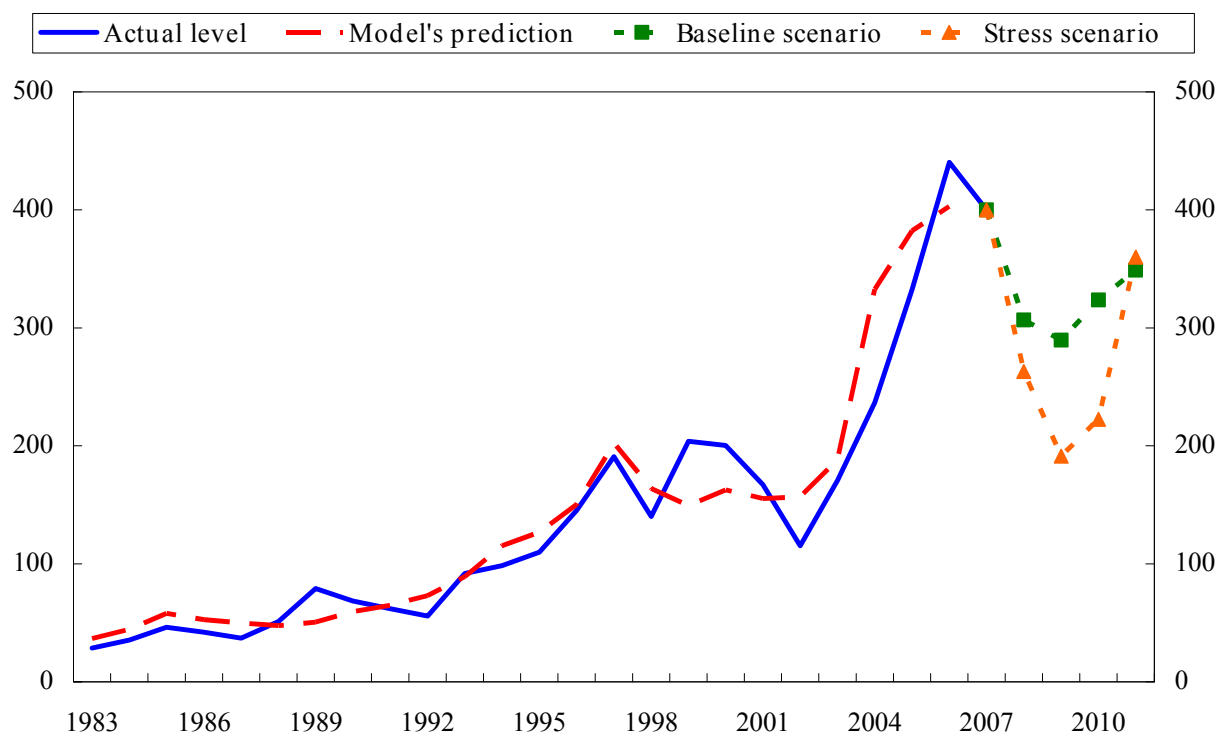




**Figure 10. Actual and fitted write-down percentages for long term investments**



**Figure 11. Actual and fitted levels for the equity market**



## ***Tables***

**Table 1. Main items in the profit and loss account**

<b>Profit and loss account</b>	
Operating revenue	(E)
- Cost of goods sold	(E)
- Payroll expenses	(E)
- Depreciation	(H)
- Write-downs	(E)
- Other operating expenses	(H)
<hr/>	
= Operating profit	
<hr/>	
+ Interest income	(H)
- Interest expenses	(E)
+ Net other financial items*	(H)
<hr/>	
= Profit before taxes	
<hr/>	
- Income tax	(H)
<hr/>	
= Net profit	
<hr/>	
- Dividend	(H)
<hr/>	
= The year's retained earnings	

\* = Includes write-downs on investments

Explanation

(E) = Projected based on empirical model

(H) = Projected based on heuristic

**Table 2. Main items in the balance sheet**

<b>Balance sheet</b>	
<b><i>Assets</i></b>	
Long term assets	
Intangible assets	
Fixed assets	
Long term investments	
+ Current assets	
Cash & deposits	(H)
Other current assets	
<hr/>	
= Total assets	
<hr/>	
<b><i>Equity and liabilities</i></b>	
Equity	
Paid-in equity	(H)
Retained earnings	(H)
+ Debt	(E)
Long term debt	
Short term debt	
<hr/>	
= Sum equity and liabilities	
<hr/>	

**Table 3. Regression results**

	$dep_{t-1}$	$\Delta gdp_t$	$gdp_{t-1}$	$\Delta cpi_t$	$cpi_{t-1}$	$\Delta RX$	$\Delta inc_t$	$inc_{t-1}$	$BOR_{t-1}$	$bor_t$	$debt_t$	$\Delta rev_t$	constant
$\Delta rev_t$	-0.79 (-4.02)	2.06 (5.71)	1.64 (4.56)	2.1 (*)	1.64 (*)	0.62 (2.82)							-4.25 (-2.45)
$\Delta pay_t$	-0.85 (-4.35)						1.45 (4.1)	1.65 (6.82)				0.38 (3.22)	-3.57 (-1.61)
$\Delta debt_t$	-0.84 (-4.56)	2.11 (2.21)	1.60 (3.06)	2.49 (1.97)	3.10 (4.60)				-0.73 (-2.57)				(***)
$iex_t$										1 (**)	1 (**)		
$\Delta cgs_t$												1 (**)	

(\*) Coefficient restriction  $gdp = cpi$  imposed

(\*\*) Definition relation (not rejected)

(\*\*\*) Constant = 0 imposed (not rejected)

**Table 4. Regression results for write-downs**

Models for write-downs	<i>eqi</i>	<i>ccp</i>	constant	$\sqrt{MSE}$
Fixed assets	- 0.016 (-7.43)	- 0.04 (-4.19)	1.27 (*)	0.14
Long term investments	- 0.04 (-2.78)	- 0.04 (-1.26)	2.6 (*)	0.95
Short term investments	- 0.13 (-10.2)		0.13 (*)	1.02

(\*) Constrained

**Table 5. Forecasted paths for macro variables in two scenarios**

Year	REAL GDP		WAGE INCOME		REAL FX-rate		BORROWING RATE		PROPERTY PRICES	
	Baseline	Stress	Baseline	Stress	Baseline	Stress	Baseline	Stress	Baseline	Stress
2007	5.99	5.99	10.10	10.10	92.98	92.98	6.44	6.44	11.34	11.34
2008	3.54	2.59	8.21	8.00	89.30	85.79	7.07	8.02	-0.53	-9.19
2009	2.02	-1.49	5.50	3.33	90.39	81.43	6.66	9.38	5.18	-19.75
2010	2.35	-0.22	5.16	3.52	91.61	83.58	6.21	8.49	4.82	-8.87
2011	2.65	3.58	4.87	6.16	92.03	89.83	6.28	6.64	4.80	13.09