

Bjørnland, Hilde C.; Leitemo, Kai; Maih, Junior

Working Paper

Estimating the Natural Rates in a Simple New Keynesian Framework

Working Paper, No. 2007/10

Provided in Cooperation with:

Norges Bank, Oslo

Suggested Citation: Bjørnland, Hilde C.; Leitemo, Kai; Maih, Junior (2007) : Estimating the Natural Rates in a Simple New Keynesian Framework, Working Paper, No. 2007/10, ISBN 978-82-7553-408-6, Norges Bank, Oslo, <https://hdl.handle.net/11250/2498264>

This Version is available at:

<https://hdl.handle.net/10419/209886>

Standard-Nutzungsbedingungen:

Die Dokumente auf EconStor dürfen zu eigenen wissenschaftlichen Zwecken und zum Privatgebrauch gespeichert und kopiert werden.

Sie dürfen die Dokumente nicht für öffentliche oder kommerzielle Zwecke vervielfältigen, öffentlich ausstellen, öffentlich zugänglich machen, vertreiben oder anderweitig nutzen.

Sofern die Verfasser die Dokumente unter Open-Content-Lizenzen (insbesondere CC-Lizenzen) zur Verfügung gestellt haben sollten, gelten abweichend von diesen Nutzungsbedingungen die in der dort genannten Lizenz gewährten Nutzungsrechte.

Terms of use:

Documents in EconStor may be saved and copied for your personal and scholarly purposes.

You are not to copy documents for public or commercial purposes, to exhibit the documents publicly, to make them publicly available on the internet, or to distribute or otherwise use the documents in public.

If the documents have been made available under an Open Content Licence (especially Creative Commons Licences), you may exercise further usage rights as specified in the indicated licence.



<https://creativecommons.org/licenses/by-nc-nd/4.0/deed.no>

ANO 2007 / 10

Oslo

December 19, 2007

Working Paper

Economics Department

Estimating the natural rates in a simple new Keynesian framework

by

Hilde C. Bjørnland, Kai Leitemo and Junior Maih

Working papers fra Norges Bank kan bestilles over e-post:
tjenestetorget@norges-bank.no
eller ved henvendelse til:
Norges Bank, Abonnementsservice
Postboks 1179 Sentrum
0107 Oslo
Telefon 22 31 63 83, Telefaks 22 41 31 05

Fra 1999 og senere er publikasjonene tilgjengelige som pdf-filer
på www.norges-bank.no, under "Publikasjoner".

Working papers inneholder forskningsarbeider
og utredninger som vanligvis
ikke har fått sin endelige form.
Hensikten er blant annet at forfatteren
kan motta kommentarer fra kolleger
og andre interesserte.

Synspunkter og konklusjoner i arbeidene
står for forfatterens regning.

*Working papers from Norges Bank can be ordered by e-mail:
tjenestetorget@norges-bank.no
or from Norges Bank, Subscription service,
P.O.Box. 1179 Sentrum
N-0107Oslo, Norway.
Tel. +47 22 31 63 83, Fax. +47 22 41 31 05*

*Working papers from 1999 onwards are available as pdf-files on the bank's
web site: www.norges-bank.no, under "Publications".*

*Norges Bank's working papers present
research projects and reports
(not usually in their final form)
and are intended inter alia to enable
the author to benefit from the comments
of colleagues and other interested parties.*

*Views and conclusions expressed in working papers are
the responsibility of the authors alone.*

ISSN 0801-2504 (printed) 1502-8143 (online)

ISBN 978-82-7553-407-9 (printed), 978-82-7553-408-6 (online)

Estimating the Natural Rates in a simple New Keynesian Framework*

Hilde C. Bjørnland[†]

Norwegian School
of Management (BI)

and

Norges Bank

Kai Leitemo

Norwegian School
of Management (BI)

Junior Maih

Norges Bank

December 19, 2007

Abstract

The time-varying natural rate of interest and output and the implied medium-term inflation target for the US economy are estimated over the period 1983-2005. The estimation is conducted within the New-Keynesian framework using Bayesian and Kalman-filter estimation techniques. With the model-consistent estimate of the output gap, we get a small weight on the backward-looking component of the New-Keynesian Phillips curve – similar to what is obtained in studies which use labor share of income as a driver for inflation (e.g., Galí et al., 2001, 2003). The turning points of the business cycle are nevertheless broadly consistent with those of CBO/NBER. We find considerable variation in the natural rate of interest while the inflation target has been close to 2% over the last decade.

JEL-codes: C51, E32, E37, E52.

Keywords: Natural rate of interest, natural rate of output, New-Keynesian model, inflation target.

*We are grateful to Ida Wolden Bache, Leif Brubakk, Santiago Acosta Ormaechea, Scott Schuh and seminar participants at the 2006 Dynare Conference in Paris, the ESEM 2007 conference in Budapest, the CEF 2007 Conference in Montréal and the 11th ICMAIF conference in Crete 2007 for comments. We also thank John Williams for providing information from the updated estimation of the model in Laubach and Williams (2003). The authors thank the *Norwegian Financial Market Fund* under the Norwegian Research Council for financial support. Views expressed are those of the authors and do not necessarily reflect the views of Norges Bank.

[†]Corresponding author: Department of Economics, Norwegian School of Management (BI), Nydalsveien 37, 0442 OSLO. Email: hilde.c.bjornland@bi.no.

1 Introduction

The New Keynesian theory as developed by Goodfriend and King (1997), Rotemberg and Woodford (1997), McCallum and Nelson (1999) and others, and with policy implications extensively explored in Clarida et al. (1999) and Woodford (2003), has become the leading framework for the analysis of monetary policy. This theory honors the proposition that monetary policy affects only nominal variables in the long run and that the steady-state inflation rate can be governed by monetary policy. Moreover, it assumes that the central bank implements its policy through the setting of the short-term interest rate. Monetary policy influences decisions about real magnitudes due to prices not being fully free to adjust to shocks (price rigidities). The overriding objective of monetary policy is to alleviate the effects of these rigidities while keeping inflation expectations close to a target rate of inflation.

An important point of reference for the policymaker is how the economy would have developed had prices been without rigidities and instead fully flexible. We refer to the rate of interest and the level of output in such an equilibrium as *the natural rates of interest rates* and *the natural level of output* (see Woodford, 2003). Consistent with this view, the strategy of monetary policy is often formulated in terms of deviations from these natural rates, that is, in terms of the interest rate gap and the output gap respectively. The well-known Taylor rule (Taylor, 1993) provides an illustration. Under the Taylor rule, the central bank raises the interest rate *relative* to the natural rate of interest if either inflation deviates from the inflation target and/or output deviates from the natural level of output. For these reasons, the natural rates are important indicators for the setting of the policy instrument and the characterization of a neutral monetary policy stance.

The main objective of this paper is to present a simple framework in which to derive the natural rates within a New Keynesian model setting. The model is small, yet incorporates the main ingredients of the New Keynesian framework, making it a useful device of analyzing how changes in the natural rates affect the economy and monetary policy. Despite the simple nature of the model, we derive plausible time-varying estimates of the natural rates and the corresponding interest rate and output gaps using Bayesian estimation and Kalman filtering techniques on US data. Previous studies on the topic include the seminal paper by Laubach and Williams (2003) who use the Kalman filter to estimate the natural rate of interest and the output gap.¹ Their model, however, specify the natural rates within a reduced form system devoid of forward looking elements. In this regard, our paper is more related to the recent unobserved components study of Ba-

¹The idea builds on the papers by Watson et al. (1997) and Gordon (1998), among others, that estimate the natural rate of unemployment (NAIRU) using the Kalman filter.

sistha and Nelson (2007) which acknowledge that inflation may be dependent on expected future inflation. They derive the output gap assuming that inflation depends on (survey measures of) expected future inflation as well as past inflation rates and the output gap. We extend on their contributions by deriving the estimates in a way that is consistent with New Keynesian theory restrictions and furthermore allowing inflation expectations to be rational and theory consistent. Our approach is nevertheless spare relative to a full DSGE approach, in that we neither impose technology restrictions nor model the market for production factors. The supply side of the economy is governed by exogenous processes. This approach allows us to have a relatively simple model while allegedly being less sensitive to possible controversial assumptions required to model, e.g., marginal costs explicitly.

Another facet of the contribution of this paper is the allowance of the possibility of a time-varying inflation target. US inflation history is difficult to reconcile with a constant inflation target. In this regard, our approach is similar to that of Ireland (2007). While we, however, assume that the inflation target reflects a preference of the monetary policymaker and is unrelated to the state of the economy, Ireland assumes that the inflation target is dependent on some of the shocks to private sector behavior. Our conclusions regarding the evolution of the inflation target are nevertheless similar.

A third novelty of our approach is that it does not require detrending of the data prior to analysis (using for instance the HP-filter) or making output stationary by deflating by a trending variable (for instance by assuming that total factor productivity follows a trend stationary process), as has been common practice in many recent DSGE analysis, including Edge et al. (2007), Juillard et al. (2005), Andrés et al. (2005) and Smets and Wouters (2003, 2007) who also estimate the natural rates.²

An important empirical finding in this paper is that inflation is primarily a forward-looking process. By allowing inflation to have both forward-looking and backward-looking components, using a hybrid New-Keynesian Phillips curve, data prefers a forward-looking specification. Although this is the common conclusion in studies which use labor's share of income as a proxy for marginal costs (see Galí et al., 2001, 2003), it is not common finding when the output gap is the driving process. Interestingly, after accounting for the time-varying inflation target and natural rate of interest, a model-consistent estimate of the output gap gives rise to a Phillips curve specification similar to that of labor's share of income. We interpret this in favor of using the output gap as a valid representation of the inflation driver. This suggests that the approach of studying monetary policy within the

²A recent exception is Juillard et al. (2006). They allow for a more general stochastic process where there could be both temporary changes in the growth rate of total factor productivity as well as auto-correlated deviations from steady state.

a simple model framework with inflation, output gap and the interest rate, as advocated in Woodford (2003), is also empirically useful.

The remainder of this paper is organized as follows. In Section 2 we present the New Keynesian framework. Section 3 presents the estimation framework and results. In Section 4 we provide some concluding remarks.

2 A simple New Keynesian Framework

The New Keynesian framework assumes that firms operate in monopolistic competitive markets and production is constrained by aggregate demand. Prices are assumed to be sticky and consequently do not move instantaneously to movements in marginal costs. Due to the price stickiness, the central bank affects aggregate demand through its influence on real interest rates. By lowering real interest rates, the central bank induces higher aggregate demand, marginal costs and prices than would otherwise materialize. As noted above, the natural rate of interest rate can be regarded as the neutral stance of monetary policy - the real interest rate that produces zero output gap and stable inflation.

In estimating the natural rates, we build on the economic structure provided by the New Keynesian framework. The basic model is extended with external habit formation in consumption (Fuhrer, 2000) and a hybrid New-Keynesian Phillips curve that allows for both forward-looking and backward-looking elements. This set up is rationalized by the Calvo (1983) framework with some of the firms setting prices in accordance to an indexation scheme (Christiano et al., 2005) or in accordance with some rule-of-thumb (Galí and Gertler, 1999). Our approach remains nevertheless conservative regarding the extent of the economic structure regarding production technology and the structure of the labor market imposed in estimation. This reduces the approach's rigor at the gain of not being tied up to a particular description of production technology which may bias the result if incorrect. Specifically, we allow the natural rate of output to follow exogenous processes and in this regard, the paper draws on the literature on structural time-series estimation, see e.g. Harvey (1989).

2.1 Aggregate demand

We assume that the economy consists of a representative household that lives forever and maximizes expected utility given by

$$U = E_t \sum_{i=0}^{\infty} \left(\frac{1}{1+\delta} \right)^i \left[\frac{1}{(1-\sigma)} \left(\frac{C_{t+i} V_{t+i}}{H_{t+i}} \right)^{(1-\sigma)} \right],$$

subject to the intertemporal budget constraint given by

$$C_t + \frac{M_t}{P_t} + \frac{B_t}{P_t} = \left(\frac{W_t}{P_t} \right) N_t + \frac{M_{t-1}}{P_t} + I_{t-1} \frac{B_{t-1}}{P_t} - \frac{T_t}{P_t} + \Pi_t.$$

δ is the discount rate, σ is the intertemporal elasticity of substitution and C is an CES index of consumption goods. V is a consumption preference shock. The consumer is also assumed to have preferences over money and leisure. The decision processes associated with labor supply decisions are not explicitly modeled and implicitly left exogenous in the model. The reason for doing this is partly simplicity, and partly a reflection of our view that the approaches currently available for modeling the labor market decisions are too simplistic. Hence, imposing restrictions from these theories are likely to be biasing our results. We therefore keep things simple and leave the production side exogenous.

The consumer can either hold money (M) or bonds (B) as a store of wealth. Money yields utility (not modeled) whereas bonds yield a gross risk-free return of I_t in every period. Consumption preferences are subject to a shock $V_t \equiv (1 - v_t)$ where

$$v_t = \rho_v v_{t-1} + \tilde{v}_t \tag{1}$$

where ρ_v is degree of persistence in the shock and \tilde{v}_t is a white-noise shock. H_t represents external habit persistence. We introduce habit persistence of order 2. The reason for this is that it allows for a higher-order lag structure of the resulting first-order condition. The habit persistence is specified as follows

$$H_t = C_{t-1}^{\gamma_1} C_{t-2}^{\gamma_2},$$

where γ_1 and γ_2 are habit parameters. This more general setup allows agents to form habits with respect to the changes in as well as the level of consumption.

The first-order condition for the solution to the problem implies the consumption Euler equation

$$\left(\frac{C_t V_t}{C_{t-1}^{\gamma_1} C_{t-2}^{\gamma_2}} \right)^{1-\sigma} \frac{1}{C_t} = \left(\frac{1}{1+\delta} \right) I_t E_t \left(\frac{C_{t+1} V_{t+1}}{C_t^{\gamma_1} C_{t-1}^{\gamma_2}} \right)^{1-\sigma} \frac{1}{C_{t+1}} \frac{P_t}{P_{t+1}}. \tag{2}$$

Taking the logarithm of the Euler equation and using the resource constraint, we have

$$y_t = \frac{\sigma}{A} E_t y_{t+1} + \frac{(\gamma_1 - \gamma_2)(\sigma - 1)}{A} y_{t-1} + \frac{\gamma_2(\sigma - 1)}{A} y_{t-2} - \frac{1}{A} (i_t - E_t \pi_{t+1} - \delta) + \frac{(\sigma - 1)}{A} (v_t - E_t v_{t+1}), \tag{3}$$

where $A \equiv \sigma + \gamma_1(\sigma - 1)$ and π_t is quarterly inflation at an annual rate. A small letter denotes the log of the corresponding capital letter variable.³

Note that due to dynamic homogeneity, we can write the aggregate demand schedule (3) as

$$\begin{aligned} \Delta y_t = & \frac{\sigma}{\gamma_1(\sigma - 1)} E_t \Delta y_{t+1} - \frac{\gamma_2}{\gamma_1} \Delta y_{t-1} \\ & - \frac{1}{\gamma_1(\sigma - 1)} (i_t - E_t \pi_{t+1} - \rho) + \frac{1}{\gamma_1} (v_t - E_t v_{t+1}). \end{aligned} \quad (4)$$

2.2 Aggregate supply

Aggregate supply is represented by the hybrid Phillips curve as

$$\pi_t = \mu E_t \pi_{t+1} + (1 - \mu) \sum_{j=1}^4 \alpha_j \pi_{t-j} + \kappa x_t + \varepsilon_t, \quad (5)$$

where $(1 - \mu)$ is the weight on the backward-looking component and $x_t \equiv y_t - y_t^n$ is the output gap, defined as the deviation of output from the natural rate of output. As in Rudebusch (2002a,b), we allow for a lag structure on past inflation to match the dynamics of inflation at the quarterly frequency. Furthermore, we impose dynamic homogeneity, i.e., that $\alpha_4 = 1 - \alpha_1 - \alpha_2 - \alpha_3$.⁴

As noted above, we do not endogenize the input of production factors and specify technology, but instead assume that the natural rate of output is given exogenously by the process

$$\Delta y_t^n = \nu + \omega_t \quad (6)$$

where ν is the unconditional expected growth rate of output and ω_t is an AR(1) shock to the growth rate⁵

$$\omega_t = \phi \omega_{t-1} + \varrho_t. \quad (7)$$

³Note that we have for simplicity ignored Jensen's inequality and used first-order Taylor approximations, implying $\ln E(1 + x) = E \ln(1 + x) = Ex$.

⁴Although we do not provide any microfoundations for these lags, we postulate that these lags will follow from the rules-of-thumb framework of pricing of Galí and Gertler (1999) given that rule-of-thumb allows for longer lags.

⁵The shock ϱ is best thought of as representing variations in productivity and preferences that influence the marginal rate of substitution between consumption and leisure. Neither sources is modeled explicitly here.

The output gap follows the process

$$x_t = x_{t-1} + \Delta y_t - \Delta y_t^n. \quad (8)$$

2.3 Monetary policy

The monetary authority is setting the interest rate in accordance with a dynamic Taylor rule as

$$i_t = \psi i_{t-1} + (1 - \psi) (i_t^n + \theta_\pi (\bar{\pi}_t - \pi_t^T) + \theta_x x_t) + u_t, \quad (9)$$

where ψ measures the smoothing in the interest rate setting. i_t^n is the nominal natural interest rate (defined below) and

$$\bar{\pi}_t \equiv \frac{1}{4} \sum_{j=0}^3 \pi_{t-j}$$

is the four-quarter inflation at an annual rate. We assume that the intermediate-run inflation target evolves according to

$$\pi_t^T = (1 - \rho_\pi) \pi^* + \rho_\pi \pi_{t-1}^T + \xi_t, \quad (10)$$

where π^* is the steady-state inflation rate (or long-run inflation target) and ξ_t is an AR(1) shock to the inflation target, following

$$\xi_t = \rho_\xi \xi_{t-1} + \varkappa_t. \quad (11)$$

2.4 The natural rate of interest

The process for the natural nominal rate of interest can be found by replacing output and the interest rate in equation (3) with the natural rates and then solving for the interest rate, i.e.,

$$y_t^n = \frac{\sigma}{A} E_t y_{t+1}^n + \frac{(\gamma_1 - \gamma_2)(\sigma - 1)}{A} y_{t-1}^n + \frac{\gamma_2(\sigma - 1)}{A} y_{t-2}^n - \frac{1}{A} (i_t^n - E_t \pi_{t+1} - \delta) + \frac{(\sigma - 1)}{A} (v_t - E_t v_{t+1}), \quad (12)$$

or

$$\begin{aligned} \Delta y_t^n &= \frac{\sigma}{\gamma_1(\sigma-1)} E_t \Delta y_{t+1}^n - \frac{\gamma_2}{\gamma_1} \Delta y_{t-1}^n \\ &\quad - \frac{1}{\gamma_1(\sigma-1)} (i_t^n - E_t \pi_{t+1} - \delta) + \frac{1}{\gamma_1} (v_t - E_t v_{t+1}). \end{aligned} \quad (13)$$

and isolating for the natural interest rate

$$\begin{aligned} i_t^n &= \delta + E_t \pi_{t+1} + \sigma E_t \Delta y_{t+1}^n - \gamma_1(\sigma-1) \Delta y_t^n - \gamma_2(\sigma-1) \Delta y_{t-1}^n \\ &\quad + (\sigma-1)(v_t - E_t v_{t+1}). \end{aligned} \quad (14)$$

The natural real interest rate is then found from the Fisher equation as

$$r_t^n \equiv i_t^n - E_t \pi_{t+1}. \quad (15)$$

The output gap process can be expressed as a function of the natural interest rate by subtracting equation (12) from equation (3) which gives

$$\begin{aligned} x_t &= \frac{\sigma}{A} E_t x_{t+1} + \frac{(\gamma_1 - \gamma_2)(\sigma-1)}{A} x_{t-1} \\ &\quad + \frac{\gamma_2(\sigma-1)}{A} x_{t-2} - \frac{1}{A} (i_t - i_t^n) \end{aligned} \quad (16)$$

where the natural rate of interest is given in equation (14) above.

3 Estimation

We estimate the parameters of the model comprising of equations (1), (4), (5), (6), (7), (8), (9), (10) and (11) using Bayesian methods and the Kalman filter. The focus of the analysis will be on the estimation of the natural real rate of interest and the output gap. The use of Bayesian methods to estimate DSGE models has increased over recent years, in a variety of contexts, see An and Schorfheide (2006) for a recent evaluation. The focus is on methods that are built around a likelihood function, typically derived from a DSGE model (see, e.g., Adolfson et al., 2005). With sensible priors, Bayesian techniques offer a major advantage over other system estimators such as maximum likelihood, which in small samples can often allow key parameters to wander off in nonsensical directions.

3.1 Data

We estimate the model laid out in the previous section using U.S. quarterly time series

for three variables: real output, inflation and interest rates. The sample period is 1983q1 to 2005q4. The period covers the last part of the Volcker period and the major part of the Greenspan period. The choice of periods follows from the assumption that these two Chairmen shares approximately the same dislike for inflation. The monetary policy regime is therefore roughly constant over the sample period. We use the quarterly average daily readings of US 3-month deposit rates as the relevant nominal interest rate. For real output and inflation we use real GDP and the CPI, all items, for total USA. GDP and CPI are seasonally adjusted by their original source (OECD). We treat inflation, output growth, and the nominal interest rate as stationary, and express them in deviations from their sample mean. Note that all changes are measured at an annual rate. Inflation, output and 3-month deposit rates are plotted in Figure 1.1 in the appendix.

3.2 Parameter estimation

As is well known from Bayes's rule, the posterior distribution of the parameters is proportional to the product of the prior distribution of the parameters and the likelihood function of the data. This prior distribution describes the available information prior to observing the data used in the estimation. The observed data is then used to update the prior, via Bayes theorem, to the posterior distribution of the model's parameters.

To implement the Bayesian estimation method, we need to be able to evaluate numerically the prior and the likelihood function. Then we use the Metropolis-Hastings algorithm to obtain random draws from the posterior distribution, from which we obtain the relevant moments of the posterior distribution of the parameters.

More specifically, the model is estimated in two steps in Dynare-Matlab. In the first step we compute the posterior mode using 'csmmwel', an optimization routine developed by Christopher Sims. We use the first three years of the full sample 1983q1 to 2005q4 to obtain a prior on the unobserved state, and use the subsample 1986q1 to 2005q4 for inference. To calculate the likelihood function of the observed variables we apply the Kalman filter. In the second step, we use the mode as a starting point to compute the posterior distribution of the parameters and the marginal likelihood by simulations of the Metropolis-Hasting (MH) algorithm (see Schorfheide, 2000, for details). The debugging features of Dynare are used to determine if the optimization routines have found the optimum and if enough draws have been executed for the posterior distributions to be accurate. Having estimated the parameters, they can then be used to construct the natural rates of interest rates and output.

3.3 Prior and posterior distributions

The Bayesian estimation technique allows us to use prior information from previous micro and macro based studies in a formal way. Table 1 below summarizes the assumptions for the prior distribution of the estimated parameters and structural shocks. In the first three columns, the list of structural coefficients with their associated prior mean, standard deviations and distribution are shown. Following standard conventions we use Beta distributions for parameters that fall between zero and one, (inverted) gamma (invg) distributions for parameters that need to be constrained to be greater than zero and normal (norm) distributions in other cases. For some of the parameters, the distribution is constrained further, as indicated in column four ('support').

The next three columns indicate the posterior mean and the associated 90 percent uncertainty interval. Starting with the Phillips curve, we provided a prior for $\mu = 0.50$ that put equal weight on the forward-looking and backward-looking components with a large standard deviation providing a rather diffuse prior. This choice is rationalized by the fact that the literature has suggested estimates in the whole zero-unity interval. We wanted data to determine this coefficient without pushing it in either direction. In the estimation, α_1 , α_2 , α_3 and α_4 were restricted to sum to one (with α_4 determined by this identity). However, since we do not have a strong prior on their magnitudes, we give them the same weight with the standard deviation set to 0.1. κ was estimated at 0.089 which is not far from the estimate of 0.13 obtained by Rudebusch (2002a,b) who used CBO estimate of the output gap.

We find that the Phillips curve is primarily forward looking. It has nevertheless a non-negligible weight on the backward-looking component with $(1-\mu)$ just below 0.4. This is consistent with the estimates of the New Keynesian Phillips curve found when using labor's share of income as the proxy for marginal costs⁶ as opposed to using detrended output. Our results are consistent with the estimation results in Galí et al. (2003, 2005) using a full information, system estimation. We find this result interesting because it suggests that the output gap may be a valid representation of the inflation driving process. Hence, modeling the measures of marginal costs may not be essential to capture a broad representation of the monetary policy transmission mechanism. The results support that monetary policy can be studied within a simple two-equation model framework which explains the development of inflation and the output gap conditional on the policy instrument (as suggested by Clarida et al. (1999) and Woodford (2003)).

Regarding the expectational IS curve, we find that our prior on the intertemporal elasticity of substitution $\sigma = 2$ is well within the range of the estimates in the literature. The

⁶See, e.g., Galí et al. (2001, 2003, 2005) and Sbordone (2002, 2005)

Table 1: Estimation results for the US economy

Coefficients	Prior mean	Prior s.d.	Distr.	Support	post. mean	5%	90%
<i>Phillips curve</i>							
μ	0.50	0.20	beta	[0, 1]	0.626	0.314	0.908
α_1	0.25	0.10	norm	none	0.353	0.200	0.506
α_2	0.25	0.10	norm	none	0.240	0.100	0.366
α_3	0.25	0.10	norm	none	0.227	0.094	0.369
α_4	0.25	n/a	n/a	n/a	0.180	n/a	n/a
κ	0.20	0.15	gamm	[0, ∞]	0.089	0.005	0.163
<i>IS curve</i>							
δ	0.04	0.02	gamm	[0, ∞]	0.016	0.006	0.027
σ	2.00	0.50	beta	[1.05, 5]	2.047	1.625	2.448
γ_1	0.50	0.20	beta	[0, 1]	0.537	0.332	0.727
γ_2	0.40	0.20	beta	[0, 1]	0.599	0.396	0.870
ρ_v	0.85	0.10	beta	[0, 1]	0.945	0.916	0.980
<i>Natural rate process</i>							
ϕ	0.850	0.10	beta	[0, 1]	0.788	0.678	0.909
v	0.030	0.005	gamm	[0, ∞]	0.029	0.024	0.035
<i>Monetary policy</i>							
ρ_{pi}	0.800	0.10	beta	[0, 1]	0.853	0.751	0.950
ρ_χ	0.800	0.10	beta	[0, 1]	0.795	0.662	0.939
θ_π	0.500	0.10	beta	[0.1, 1.5]	0.578	0.420	0.720
θ_x	0.500	0.10	beta	[0.1, 1.5]	0.449	0.284	0.570
ψ	0.700	0.10	beta	[0, 1]	0.828	0.793	0.872
<i>Standard deviations of shocks</i>							
σ_\varkappa	0.002	Inf	invg	[0, ∞]	0.0024	0.0008	0.0045
σ_ε	0.001	Inf	invg	[0, ∞]	0.0110	0.0091	0.0127
σ_u	0.001	Inf	invg	[0, ∞]	0.0024	0.0020	0.0028
$\sigma_{\tilde{v}_t}$	0.001	Inf	invg	[0, ∞]	0.1983	0.1181	0.3045
σ_ϱ	0.001	Inf	invg	[0, ∞]	0.0096	0.0074	0.0119

posterior has increased somewhat from the prior, although not significantly so (posterior mean equals 2.05). Moreover, the preference shocks display a high degree of persistence, with a coefficient of $\rho_v = 0.95$. In addition, the habit parameters γ_1 and γ_2 are restricted to lie between zero and one, with the prior for γ_1 being the largest, assuming more habit from the immediate past. However, we choose a large standard deviation that provides us with a fairly diffuse prior. The second-order habit persistence is well accounted for in data, as both γ_1 and γ_2 turn out to be above the priors. Finally, the prior for the annual discount rate δ is set to 0.04, reflecting a quarterly discount factor of 0.99. Rather surprisingly, we find that data push the annual discount rate from the prior of four percent to 1.6 percent.

The prior for the equilibrium natural output growth rate is set equal to the (annual) growth rate in the model (3 percent), with the posterior mean estimated to $v = 0.029$. As our data set is small, it is unlikely that we would get any other value than the equilibrium value suggested by the data. As an alternative we could therefore have calibrated this value at 0.029.

The data seems to support a dynamic Taylor rule specification of monetary policy reasonably well. The monetary policy shock (σ_u) has standard deviation of 0.024. Moreover, the weight on inflation and output gap is deviating only marginally from the priors and what Taylor (1993) suggested as likely coefficients (0.5). There is a pronounced gradual adjustment of the interest rate with $\psi = 0.83$. Finally, we calibrate the steady-state inflation rate π^* to be equal to steady state inflation. The results seems to indicate fairly persistent movements in the medium-run inflation target ($\rho_\pi = 0.85$), with also rather persistent shocks to this process ($\rho_\chi = .80$). The latter suggest that movements in the medium-run inflation target is done gradually over time.

3.4 Error variance decomposition and impulse responses

Table 2 shows the decomposition of the unconditional variance. Some interesting observations can be made from the table. We first note that the main drivers of inflation variations are the cost-push and inflation-target shocks. These shocks account for about 80% of the variation in inflation. If the central bank adheres to an inflation-targeting loss specification with the loss function having inflation and output gap variations as the two arguments (see Svensson (1997) and Clarida et al. (1999)), efficiency in policymaking requires that inflation should be driven *only* by cost-push and inflation-target shocks. The ratio is high and can be taken as an indication of efficiency in policymaking. However, by the same logic, the central bank should fully neutralize the impact of preference shocks on both the output gap and inflation. This does not seem to be the case. Although the

Table 2: Error variance decomposition

Variables & shocks	Inf.-tar. (\varkappa)	Cost-push (ε)	Mon.pol. (u)	Preference (\tilde{v})	Nat. rate (ϱ)
r^n	0.00	0.00	0.00	91.52	8.48
x	25.14	21.75	6.51	44.04	2.56
π	31.58	48.25	1.46	17.56	1.14
i	10.79	3.04	0.85	83.91	1.41
i^n	10.81	2.89	0.44	78.08	7.78
π^T	100.00	0.00	0.00	0.00	0.00

Taylor rule has allowed strong responses to the preference shocks as they can explain more than 80% of the variation in the interest rate, preference shocks have still influenced inflation and, in particular, the output gap to a large extent. Hence, the estimated Taylor rule does less well in insulating the economy from this type of shock.

The natural real interest rate is driven mainly by preference shocks that make demand deviate from the natural rate of output. Shocks to the natural rate of output play only a minor role in explaining the variation observed. The estimated model suggests that monetary policy main role is to mitigate the effects of demand shocks on aggregate demand, and to lesser extent accommodate the effect of supply shocks. The error variance decomposition of the interest rate suggests that this is also the case.

The impulse response functions are shown in the appendix. None of these responses deviate from what we understand as conventional thinking, although the responses to some of the shocks seem to be rather fast (preference shocks in particular). The impulses from the monetary policy shock correspond well with results generated from VARs: For a positive shock to the interest rate, the output gap falls on impact and inflation reacts with a lag. The short-term interest rate falls relatively quickly and enters a period in which the policymaker corrects for the shock.

A shock to the medium-run inflation target raises inflation expectations and the current inflation rate on impact due to the expectations channel. The nominal interest rate increases, but the real interest rate falls and creates a temporary increase in the output gap which again increases inflation. Inflation peaks after 5 quarters and is then brought slowly back to the steady-state rate of inflation over a 5 – 7 years period. Hence, the medium-term is relatively long, approximately equal to the average business cycle. This gives some indication of the medium-term inflation target being used as an instrument to smooth output as a result of pursuing a constant inflation target over the business cycle.

A preference shock that raises aggregate demand increases the natural real interest rate as a higher interest rate is needed in order to keep output at the natural rate. The higher natural interest rate together with increased output and inflation gaps, raise the

the nominal interest rate. After an initial increase in output and inflation, both gaps fall below the long-run equilibrium levels after 4-5 quarters due to the contractionary monetary policy response. A cost-push shock has no influence on the natural real interest rate, but raises inflation and lowers output in an ordinary fashion. A shock to the growth rate of the natural rate of output, raises the natural real interest rate. As people expect income to increase permanently in the future, aggregate demand increases more than the natural rate of output and hence the natural real interest rate increases. Monetary policy reacts contractionary and the output gap is negative after having been positive on the time of impact of the shock. Inflation is consistently below the long-run equilibrium after the shock.

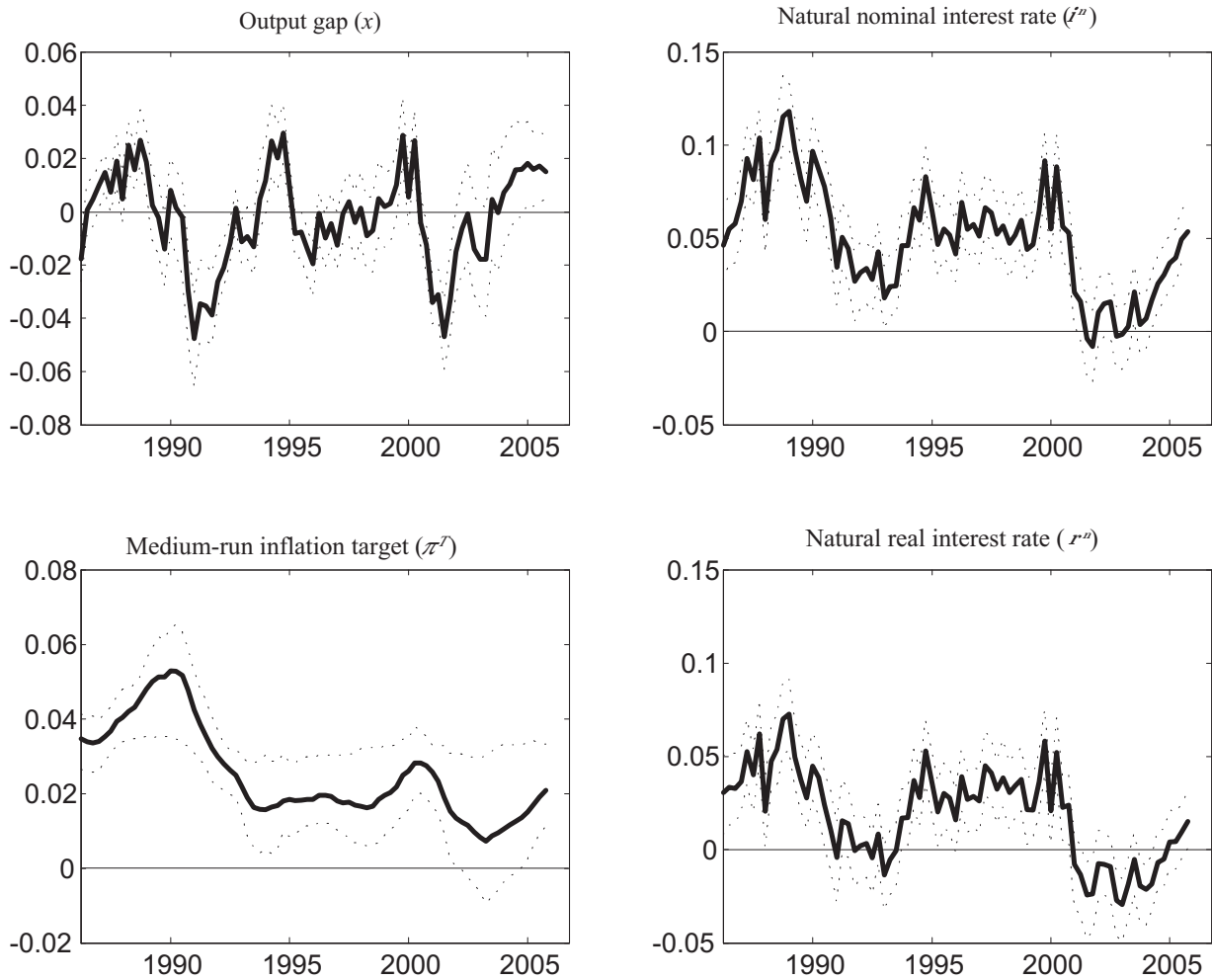
3.5 The estimated variables

The two-sided Kalman filtered (denoted as “smoothed” in the remainder of the paper) output gap, the medium-run inflation target and the nominal and real natural interest rates are shown with 95% uncertainty intervals in Figure 1. Furthermore, Figure 2 shows the smoothed natural rate of output and the natural real interest rate plotted with actual output and the real interest rates respectively, as well as the real interest rate gap ($r - r^n$) and the estimated inflation gap ($\bar{\pi}_t - \pi^T$).

The output gap estimates suggest two recessions over the sample period: the first one with a trough in 1991 and the other with a trough in 2001/2002. The recessions are of approximately the same order of magnitude, suggesting a deviation of output from the natural rate of output of approximately 5%. The recessions correspond to periods with large positive interest-rate gaps (see Figure 2). Further, as will be discussed in more detail below, the dates for the turning points and the length of the business cycles do not seem inconsistent with NBER/CBO estimates.

The sample average CPI inflation over the period is 3.3%. The estimated medium-run inflation target suggests that the mild run-up of inflation in the late 1980s, due to a positive output gap, was partly accommodated by an increase in the inflation target over the period, see Figure 1. The reduction in the rate of inflation of the first part of the 1990s, accompanied by the recession in the same period, can partly be explained by a reduction in the inflation target. From 1994 to the end of the sample, the medium-run inflation target is estimated to be around 2% with an uncertainty band of about ± 1 p.p. For most of the period, the inflation target is significantly above zero. The inflation gap (see Figure 2) suggests that for the major part of the 1990s and the period after 2002, inflation has in general been above the medium-term inflation target, and therefore has exerted an upward pressure on interest rates.

Figure 1: Inflation target, output gap and natural interest rates.

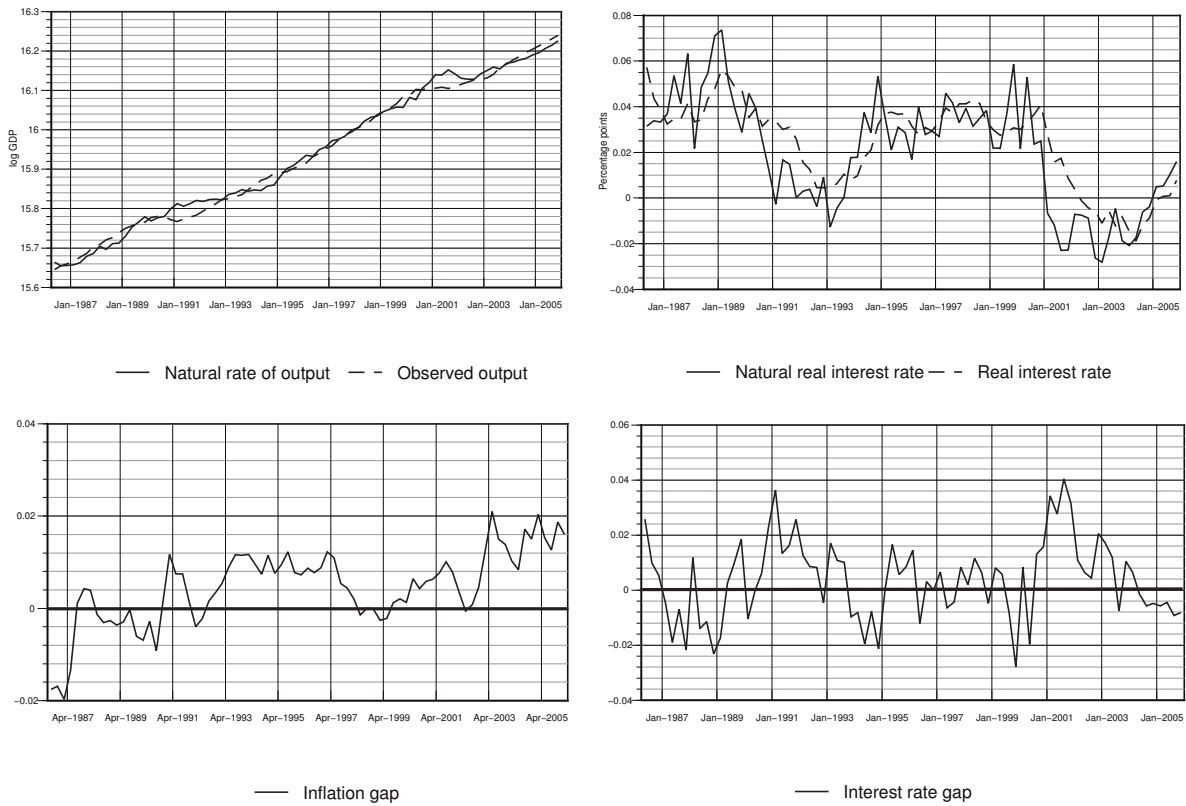


The figures show the estimated two-sided Kalman filtered (smoothed) variables over the sample period.

The estimate of the natural real interest rate shows considerable variation over the period – varying between -3% and 6% . The variation in the natural real interest rate is in periods greater than the equivalent real interest rate. This is also found in the DSGE study of Edge et al. (2007), but not by Laubach and Williams (2003) where the natural interest rates appear as smoothed interest rates. Here, the natural rate follows instead from the stochastic processes governing the preference shocks and shocks to the natural rate of output (see equations (14) and (15)). These processes which determine the interest rate under the assumption of flexible prices are unaffected by the potential smoothing of interest rates done by the central bank in the sticky-price equilibrium. ⁷

⁷By the same logic, there is nothing that ensures that the evolution of the natural rate of output is smoother than output itself. Woodford (2001, p.234) notes “In theory, a wide variety of real shocks should affect the growth rate of potential output[...] [T]here is no reason to assume that all of these

Figure 2: The natural rate of output, interest-rate and inflation gaps.



From the top-left panel and moving clockwise: The panels show the natural rate of output and the real rate with their observed variables, the inflation gap and the interest rate gap

Moreover, the mode of the natural rate of interest is in the range 3 – 4% which does not seem unreasonable for the average real interest rate. The average natural interest rate is remarkably stable over the period 1994-2000 where the variation is in the region ± 1 p.p. This is a result also found by Edge et al. (2007). The recession of the first half of 2000s imply negative real interest rates for this period, suggesting a rather expansionary monetary policy that would have been needed in order to keep aggregate demand equal to the natural rate of output.

It has been relatively common to estimate monetary policy reaction functions conditional on the natural rate of interest being equal to a constant plus the inflation rate. The relatively large variation in the natural interest rate suggests that the estimates could be severely biased if the central bank is not taking account of the time-varying nature of the natural rate of interest when setting interest rate. In particular, the high degree of persistence in the natural rate is then likely to bias the coefficient on the past interest rate upwards. Moreover, failing to take account of the interdependence between the output

factors follow smooth trends. As a result, the output-gap measure that is relevant for welfare may be quite different from simple detrended output.”

gap and natural interest rates (estimates) may also bias the estimates.

With high volatility in the natural rate of interest, a “neutral” monetary policy stance requires considerable changes in the interest rate. If the policymaker nevertheless regards the natural rate of interest as a constant, policy is likely to induce inefficient movements in inflation and output.

Some readers may object to the arguments by claiming that interest rates should be smoothed over time and for this reason the variability in the natural rate should largely be ignored. We claim that such an argument mixes up two things. Interest rate smoothing can be welfare-enhancing (see Woodford, 1999) in its own right due to its impact on private sector expectations. But optimal smoothing of interest rate does not imply the removal of some arguments over which the smoothing should be done. While the interest rate may be more volatile if responding to the natural interest rate, the benefits of interest rate smoothing can still be extracted.

3.6 Alternative output gap series

We now return to the output gap in more detail, to compare our measure to some alternative measures of the gap previously found in the literature. Figure 3 compares our measure of the output gap (BLM henceforth) to *i*) the output gap derived from an updated version (2006) of Laubach and Williams (2003) (LW henceforth)⁸, *ii*) the two sided output gap estimate of Basistha and Nelson (2007) (BN henceforth)⁹, *iii*) the Congressional Budget Office (CBO) estimate of potential output as well as *iv*) the Hodrick Prescott filtered output gap, with the smoothing parameter set to 1600 (HP henceforth).¹⁰ Tables 3 and 4 finally show respectively the correlation and the concordance (i.e., the time proportion that the cycles of two series spend in the same phase, see McDermott and Scott (2000))¹¹ between the different estimates.

Our output gap series is picking the major NBER recession periods (of 1991 and 2001) efficiently. The gap is also broadly consistent with that of the other gaps, although there are notable differences. The differences are hardly surprising given that our estimate is consistent with a rational expectations forward-looking Phillips curve, whereas the others are not. Our estimate has the highest volatility and the smallest persistence of the series.

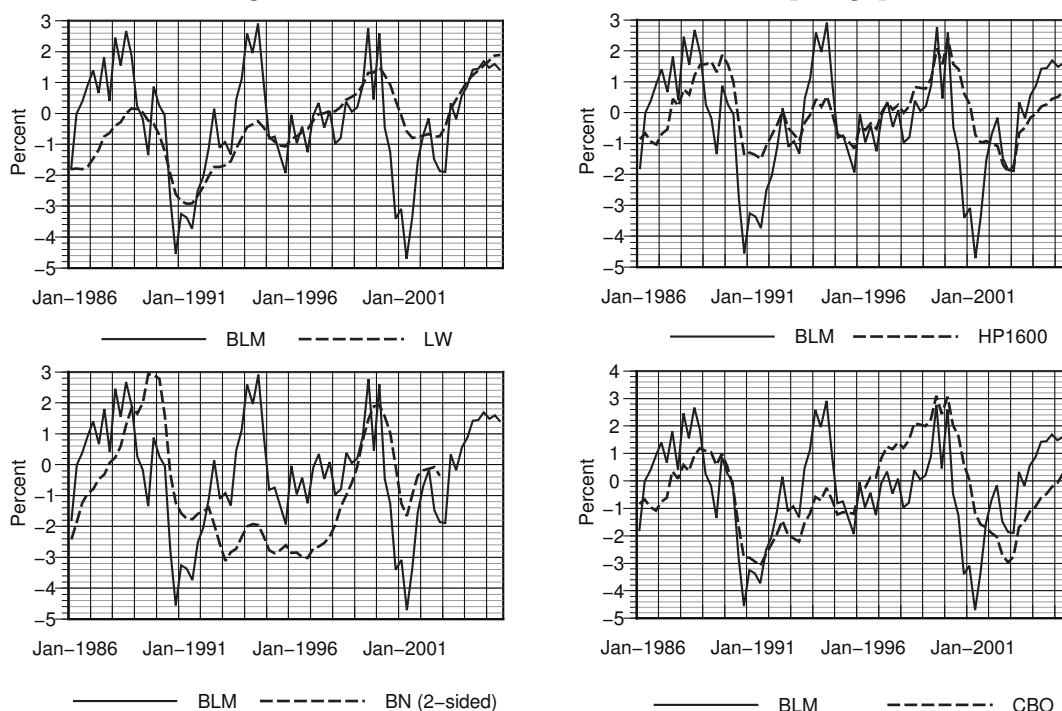
⁸We thank John Williams for providing us with the updated simulation results.

⁹Their output gap series was downloaded from <http://www.be.wvu.edu/divecon/econ/basistha/gap.htm>.

¹⁰The Hodrick Prescott method is a univariate statistical method designed to extract the low frequency component of a time series. Lambda penalizes the variation in the trend, and is determined a priori. A smoothing parameter of 1600 is commonly used in many international studies.

¹¹The measure of concordance is useful when the focus of the analysis is on the sign of the gap and not necessarily its magnitude.

Figure 3: Alternative estimates of the output gap



Our Phillips curve allows for longer lags and this implies that, for a given value of κ , the output gap needs to move more in order to have the same effect on inflation. The high degree of inflation persistence in the Phillips curve also imply that the needed persistence in the output gap is lower in order to explain the observed persistence in the inflation. Inflation is also more responsive to *persistent* changes in the output gap due to the large coefficient on future expected inflation in the Phillips curve. In order for the model to match inflation dynamics and volatility, the output gap then needs to be somewhat less persistent compared to a situation with a smaller forward-looking term in the Phillips curve. The deviations from the other series are likely to be attributable to the differences needed for the output gap to better reflect underlying marginal costs, as discussed above.

The differences show up in the measures of correlation. Table 3 indicates that there is modest degree of co-movement, with correlation coefficients varying around 0.5. The lowest correlation is found between our estimate (BLM) and that of BN.¹² This is partly explained by the early 1990s, where all the output gaps except the BN output gap increase, with our measure suggesting a pronounced peak in 1994. Our estimate of the natural rate of interest rose sharply over the period 1993-1995 and the interest rate gap became negative (ref. Table 2). An expansionary monetary policy contributed to the output gap peak. The measures of concordance in the output gap, stated in Table 4, are slightly

¹²In fact, the BN gap displays low correlation with all the other gaps as well.

Table 3: Correlation and standard deviations

Estimate	BLM	LW	HP1600	BN (2-sided)	CBO
<i>Crosscorrelations and standard deviations</i>					
BLM	1.74	0.55	0.58	0.27	0.51
LW		1.17	0.66	0.45	0.69
HP1600			0.98	0.69	0.87
BN (2-sided)				1.69	0.47
CBO					1.60
<i>Autocorrelations</i>					
	0.76	0.97	0.89	0.95	0.95

The standard deviations are shown on the diagonal of the matrix.

Table 4: Concordance

Estimate	BLM	LW	HP1600	BN (2-sided)	CBO
BLM	1.00	0.68	0.76	0.69	0.62
LW		1.00	0.76	0.79	0.74
HP1600			1.00	0.79	0.85
BN (2-sided)				1.00	0.79
CBO					1.00

larger than the correlation coefficient for the alternative estimates. This implies that the estimates differ more in their sizes than their phases, that is, the different methods tend to pick the same phase for their respective output gap estimate. This is important information for Central Banks that may care more of the sign of the gap rather than its absolute magnitude.

4 Concluding remarks

This paper provides estimates of the natural real interest rate, the output gap and the implicit inflation target for the US economy. The inflation target since 1994 has been remarkably stable around 2 percent. The natural real interest rate has, however, been varying a lot. The assumption often made in the monetary policy literature that the natural real interest rate is exogenous or even constant, might be very misleading and biasing the results. For the conduct of monetary policy, acknowledging the variation in the real interest rate and conducting policy in accordance with it, seems to be important.

By estimating the hybrid New-Keynesian Phillips curve with a model-consistent estimate of the output gap, we find that the structure of the curve is very similar to that found by estimating the Phillips curve with the labor share of income. Our results is

therefore a contribution to the debate of whether it is the output gap or the labor share of income that provide the best representation for the inflation driving process. If the output gap is a good representation of the inflation driving process, our results supports the idea that a simple two-variable system in inflation and the output gap (see, Clarida et al. (1999) and Woodford (2003)) is a good representation of the monetary policy transmission mechanism.

References

- Adolfson, Malin, Stefan Laséen, Jesper Lindé, and Mattias Villani, 2005, Bayesian estimation of an open economy DSGE model with incomplete pass-through, Sveriges Riksbank working paper series 179.
- An, Sungbae, and Frank Schorfheide, 2006, Bayesian analysis of DSGE models, Working Paper no 06-5, Federal Reserve Bank of Philadelphia.
- Andrés, Javier, J. David López-Salido, and Edward Nelson, 2005, Sticky-price models and the natural rate hypothesis, *Journal of Monetary Economics* 52, 1025–1053.
- Basistha, Arabinda, and Charles R. Nelson, 2007, New measures of the output gap based on the forward-looking new keynesian phillips curve, *Journal of Monetary Economics* 54, 498–511.
- Calvo, Guillermo A., 1983, Staggered prices in a utility-maximizing framework, *Journal of Monetary Economics* 12(3), 383–98.
- Christiano, Lawrence J., Martin Eichenbaum, and Charles Evans, 2005, Nominal rigidities and the dynamic effects of a shock to monetary policy, *Journal of Political Economy* 113 (1), 1–45.
- Clarida, Richard, Jordi Galí, and Mark Gertler, 1999, The science of monetary policy: A new Keynesian perspective, *Journal of Economic Literature* 37:4, 1661–1707.
- Edge, Rochelle M., Michael T. Kiley, and Jean-Philippe Laforte, 2007, Natural rate measures in an estimated DSGE model of the u.s. economy, Finance and Economics Discussion Series 2007-08, Divisions of Research & Statistics and Monetary Affairs, Federal Reserve Board.
- Fuhrer, Jeffrey C., 2000, Habit formation in consumption and its implications for monetary-policy models, *American Economic Review* 90 (3), 367–90.
- Galí, Jordi, and Mark Gertler, 1999, Inflation dynamics: A structural econometric analysis, *Journal of Monetary Economics* 44, 195–222.
- Galí, Jordi, Mark Gertler, and David J. Lopez-Salido, 2005, Robustness of the estimates of the hybrid new keynesian phillips curve, *Journal of Monetary Economics* 52 (6), 1107–18.
- Galí, Jordi, Mark Gertler, and David López-Salido, 2003, Erratum to 'european inflation dynamics', *European Economic Review* 47(4), 759–760.

- Galí, Jordi, Mark Gertler, and J. David López-Salido, 2001, European inflation dynamics, *European Economic Review* 45:7, 1237–1270.
- Goodfriend, Marvin, and Robert G. King, 1997, The new neoclassical synthesis and the role of monetary policy, in: Ben S. Bernanke, Julio J. Rotemberg, eds, *NBER Macroeconomics Annual* MIT Press Cambridge and London 231–83.
- Gordon, Robert J., 1998, Foundations of the goldilocks economy: Supply shocks and the time-varying NAIRU, *Brooking Papers on Economic Activity* 0 (2), 297–333.
- Harvey, Andrew C., 1989, *Forecasting, Structural Time Series Models and the Kalman Filter* (Cambridge University Press, New York).
- Ireland, Peter N., 2007, Changes in the federal reserve’s inflation target: Causes and consequences, Manuscript, Boston College.
- Juillard, Michel, Ondra Kamenik, Michael Kumhof, and Douglas Laxton, 2006, Measures of potential output from an estimated DSGE model of the united states, Manuscript, CEPREMAP and IMF.
- Juillard, Michel, Philippe Karam, Douglas Laxton, and Paolo Pesenti, 2005, Welfare-based monetary policy rules in an estimated DSGE model of the US economy, Manuscript, Federal Reserve Bank of New York.
- Laubach, Thomas, and John C. Williams, 2003, Measuring the natural rate of interest, *The Review of Economics and Statistics* 85(4), 1063–1070.
- McCallum, Bennett T., and Edward Nelson, 1999, An optimizing IS-LM specification for monetary policy and business cycle analysis, *Journal of Money, Credit and Banking* 31(3), 296–316. NBER Working Paper No. W5875.
- McDermott, John C., and Alasdair Scott, 2000, Concordance in business cycles, *IMF Working Papers* 00/37.
- Rotemberg, Julio J., and Michael Woodford, 1997, An optimizing-basec econometric model for the evaluation of monetary policy, in: Julio J. Rotemberg, Ben S. Bernanke, eds, *NBER Macroeconomics Annual* MIT Press Cambridge, MA 297–346.
- Rudebusch, Glenn, 2002a, Term structure evidence on interest rate smoothing and monetary policy inertia, *Journal of Monetary Economics* 49, 1161–1187.
- Rudebusch, Glenn D., 2002b, Assessing nominal income rules for monetary policy with model and data uncertainty, *Economic Journal* 112, 1–31.

- Sbordone, Argia M., 2002, Prices and unit labor costs: A new test of price stickiness, *Journal of Monetary Economics* 49 (2), 265–92.
- 2005, Do expected future marginal costs drive inflation dynamics?, *Journal of Monetary Economics* 52, 1183–1197.
- Schorfheide, Frank, 2000, Loss function-based evaluation of DSGE models, *Journal of Applied Econometrics* 15(6), 645–670.
- Smets, Frank, and Rafael Wouters, 2003, An estimated dynamic stochastic general equilibrium model of the euro area, *Journal of the European Economic Association* 1, 1123–1175.
- 2007, Shocks and frictions in US business cycles, *European Central Bank Working Paper No. 722*.
- Svensson, Lars E.O., 1997, Inflation forecast targeting: Implementing and monitoring inflation targets, *European Economic Review* 41, 1111–1146.
- Taylor, John B., 1993, Discretion versus policy rules in practice, *Carnegie Rochester Conference Series on Public Policy* 39(0), 195–214.
- Watson, Mark W., Douglas Staiger, and James Stock, 1997, How precise are estimates of the natural rate of unemployment, in: Christina D. Romer, David H. Romer, eds, *Reducing Inflation: Motivation and Strategy* (The University of Chicago Press, Chicago and London) chapter 5, 195–246.
- Woodford, Michael, 1999, Optimal monetary policy inertia, *Working Paper*, Princeton University.
- 2001, The Taylor rule and optimal monetary policy, *American Economic Review* 91 (2), 232–37.
- 2003, *Interest and Prices: Foundations of a Theory of Monetary Policy* (Princeton University Press, Princeton).

Appendix

1 Extra figures

1.1 Data

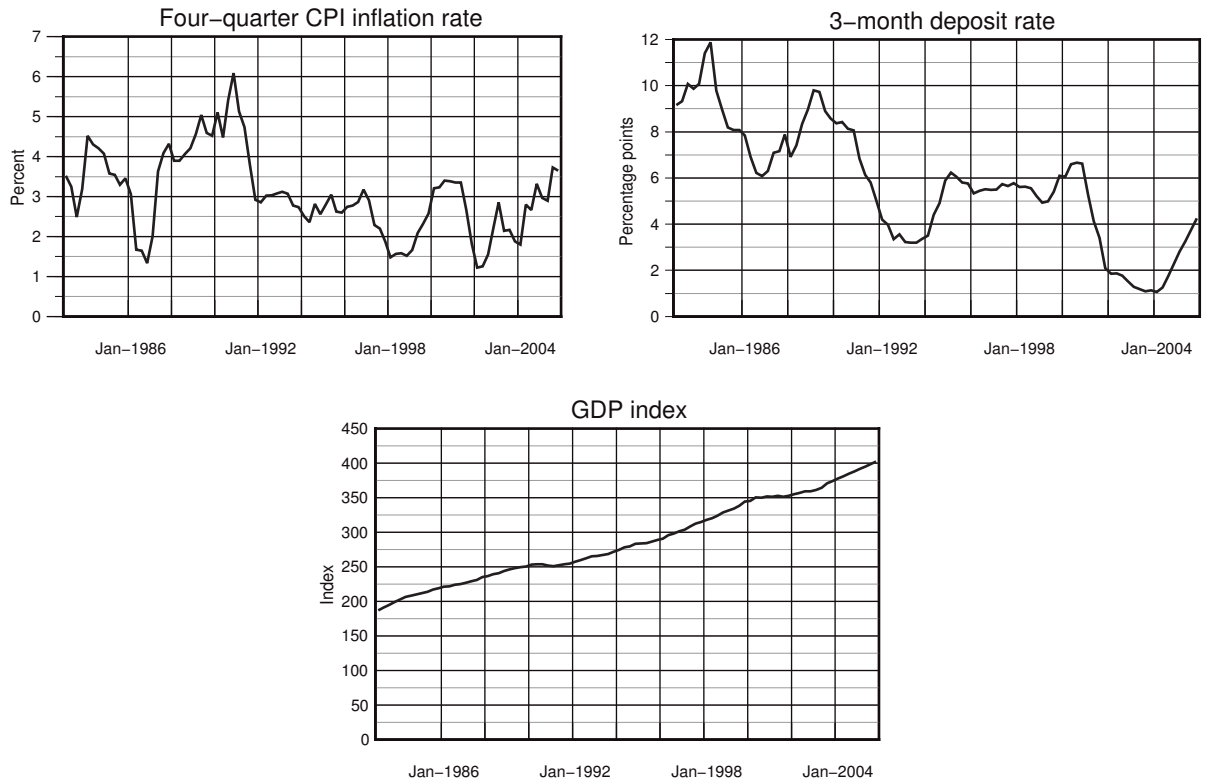
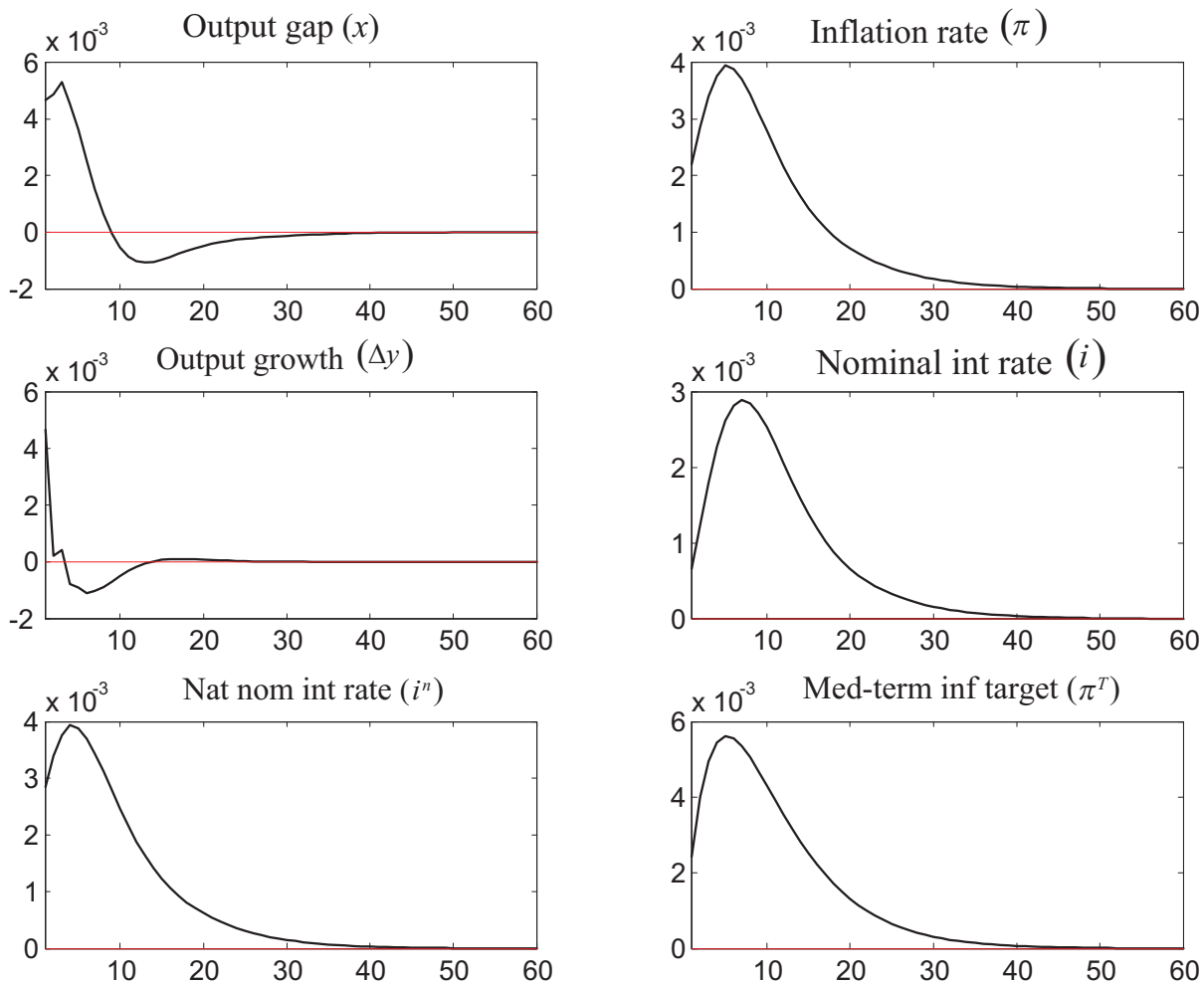


Figure 1: Data

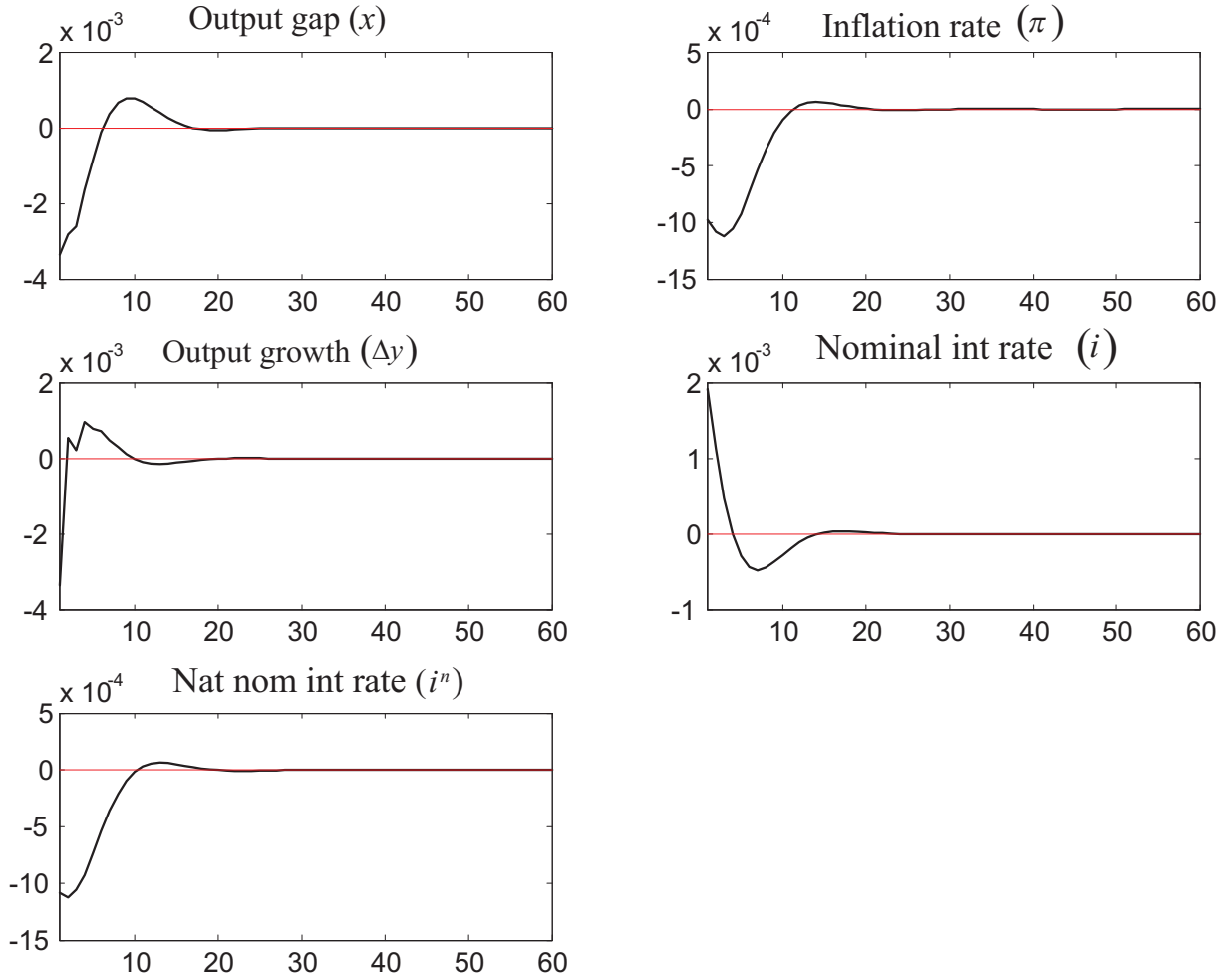
1.2 Impulse response functions

Figure 2: Monetary policy shock to the medium-term inflation target



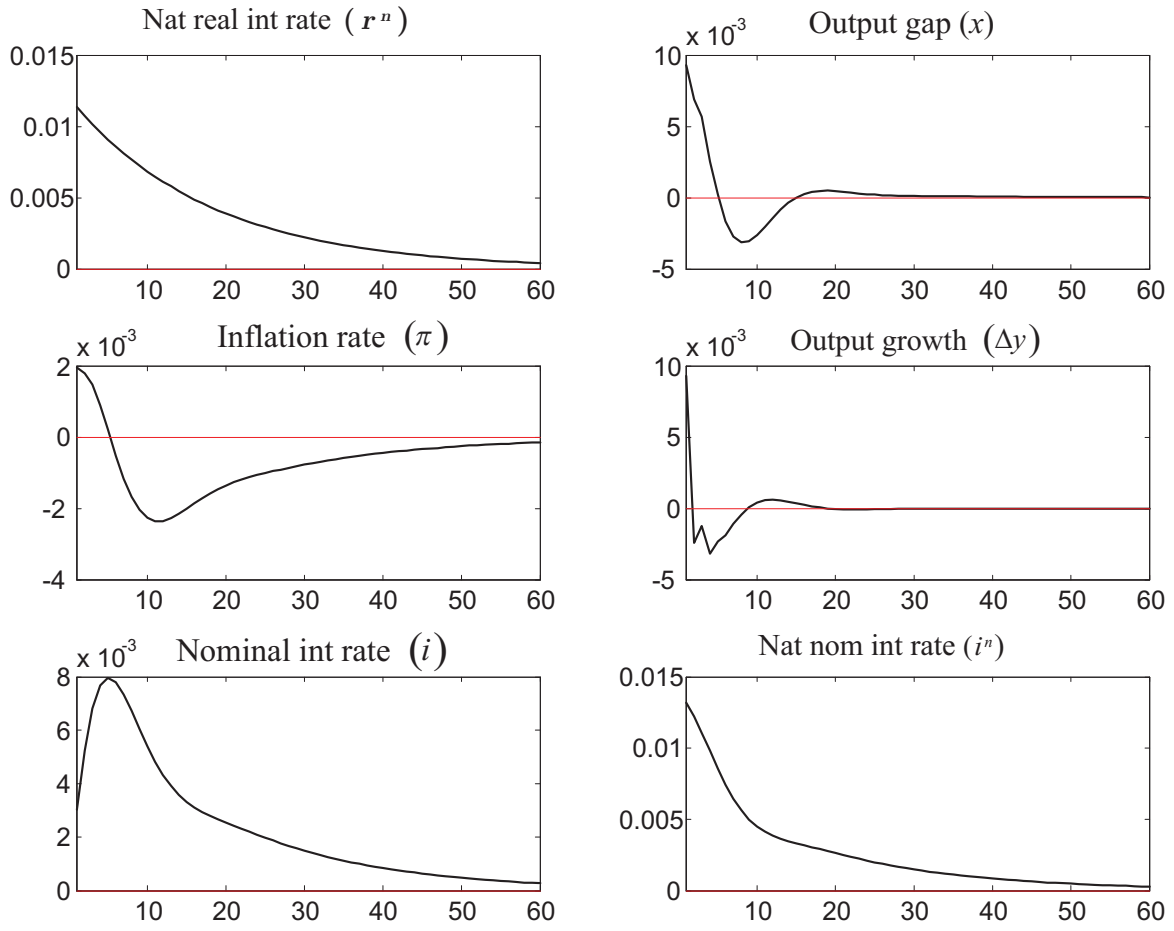
The impulse response function due to a shock to the medium-term inflation target.

Figure 3: Monetary policy shock to short-term interest rate



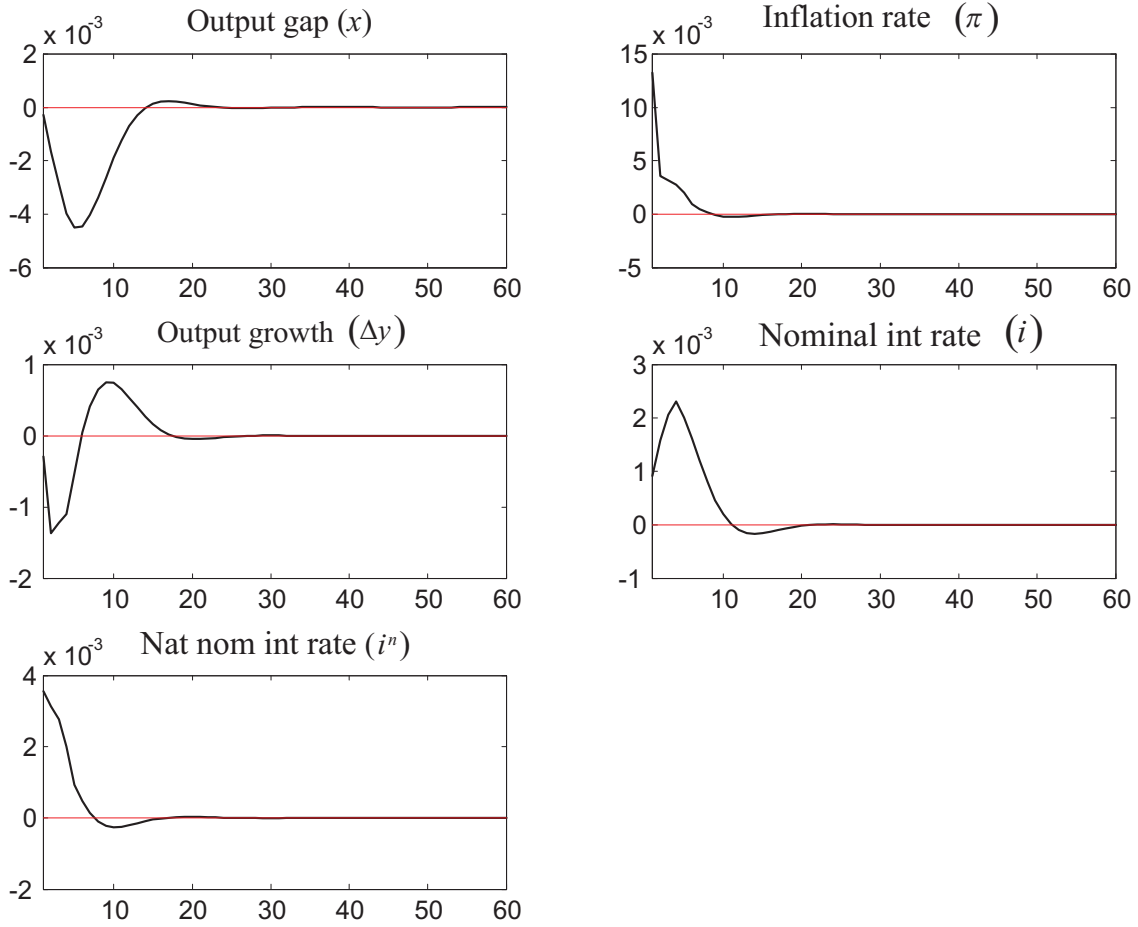
The impulse response functions due to a shock to the short-term interest rate.

Figure 4: Preference shock



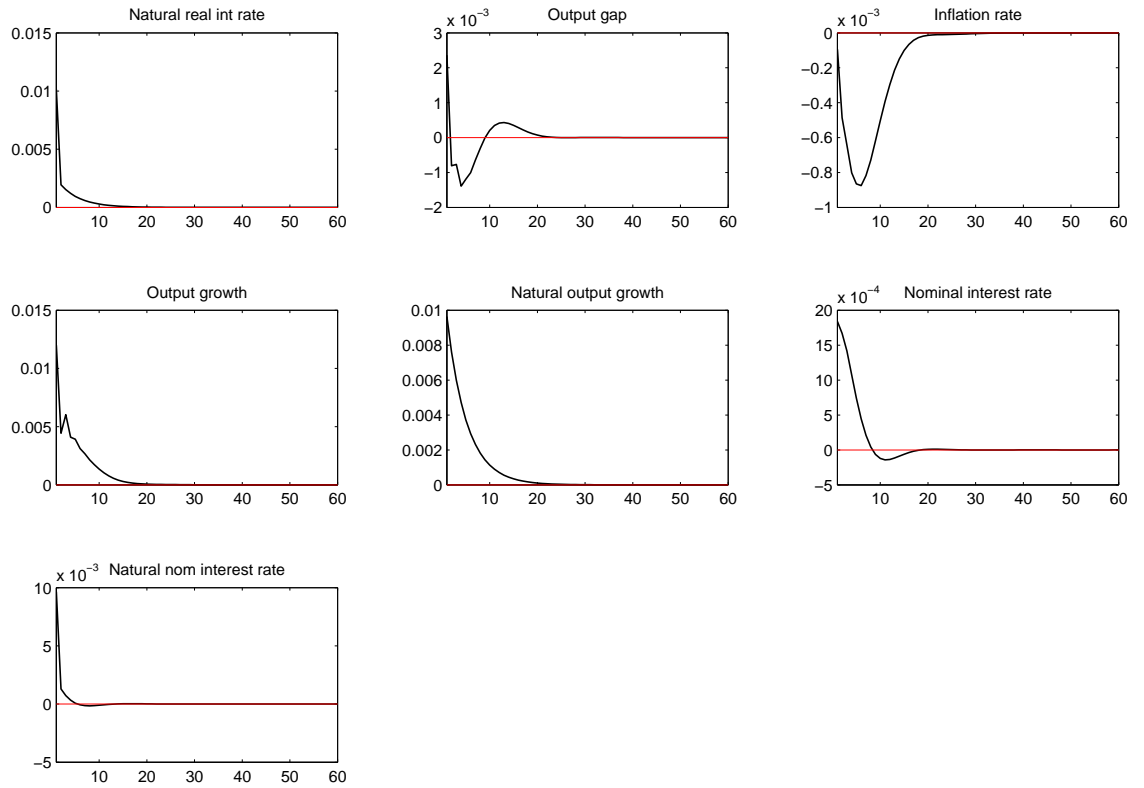
The impulse response functions due to a preference shock.

Figure 5: Cost-push shock



The impulse response functions due to a cost-push shock.

Figure 6: Natural rate shock



The impulse response functions due to the natural rate of output.

WORKING PAPERS (ANO) FROM NORGES BANK 2003-2007

Working Papers were previously issued as Arbeidsnotater from Norges Bank, see Norges Bank's website <http://www.norges-bank.no>

- 2003/1 Solveig Erlandsen
Age structure effects and consumption in Norway, 1968(3) – 1998(4) Research Department, 27 p
- 2003/2 Bjørn Bakke og Asbjørn Enge
Risiko i det norske betalingssystemet
Avdeling for finansiell infrastruktur og betalingssystemer, 15 s
- 2003/3 Egil Matsen and Ragnar Torvik
Optimal Dutch Disease Research Department, 26 p
- 2003/4 Ida Wolden Bache
Critical Realism and Econometrics Research Department, 18 p
- 2003/5 David B. Humphrey and Bent Vale
Scale economies, bank mergers, and electronic payments: A spline function approach
Research Department, 34 p
- 2003/6 Harald Moen
Nåverdien av statens investeringer i og støtte til norske banker
Avdeling for finansiell analyse og struktur, 24 s
- 2003/7 Geir H.Bjønnes, Dagfinn Rime and Haakon O.Aa. Solheim
Volume and volatility in the FX market: Does it matter who you are? Research Department, 24 p
- 2003/8 Olaf Gresvik and Grete Øwre
Costs and Income in the Norwegian Payment System 2001. An application of the Activity Based Costing framework Financial Infrastructure and Payment Systems Department, 51 p
- 2003/9 Randi Næs and Johannes A.Skjeltorp
Volume Strategic Investor Behaviour and the Volume-Volatility Relation in Equity Markets
Research Department, 43 p
- 2003/10 Geir Høidal Bjønnes and Dagfinn Rime
Dealer Behavior and Trading Systems in Foreign Exchange Markets Research Department, 32 p
- 2003/11 Kjersti-Gro Lindquist
Banks' buffer capital: How important is risk Research Department, 31 p
- 2004/1 Tommy Sveen and Lutz Weinke
Pitfalls in the Modelling of Forward-Looking Price Setting and Investment Decisions
Research Department, 27 p
- 2004/2 Olga Andreeva
Aggregate bankruptcy probabilities and their role in explaining banks' loan losses
Research Department, 44 p
- 2004/3 Tommy Sveen and Lutz Weinke
New Perspectives on Capital and Sticky Prices Research Department, 23 p
- 2004/4 Gunnar Bårdsen, Jurgen Doornik and Jan Tore Klovland
A European-type wage equation from an American-style labor market: Evidence from a panel of Norwegian manufacturing industries in the 1930s Research Department, 22 p
- 2004/5 Steinar Holden and Fredrik Wulfsberg
Downward Nominal Wage Rigidity in Europe Research Department, 33 p
- 2004/6 Randi Næs
Ownership Structure and Stock Market Liquidity Research Department, 50 p
- 2004/7 Johannes A. Skjeltorp and Bernt-Arne Ødegaard
The ownership structure of repurchasing firms Research Department, 54 p
- 2004/8 Johannes A. Skjeltorp
The market impact and timing of open market share repurchases in Norway
Research Department, 51 p

- 2004/9 Christopher Bowdler and Eilev S. Jansen
Testing for a time-varying price-cost markup in the Euro area inflation process Research Department, 19 p
- 2004/10 Eilev S. Jansen
Modelling inflation in the Euro Area Research Department, 49 p
- 2004/11 Claudia M. Buch, John C. Driscoll, and Charlotte Østergaard
Cross-Border Diversification in Bank Asset Portfolios Research Department, 39 p
- 2004/12 Tommy Sveen and Lutz Weinke
Firm-Specific Investment, Sticky Prices, and the Taylor Principle Research Department, 23 p
- 2004/13 Geir Høidal Bjønnes, Dagfinn Rime and Haakon O.Aa. Solheim
Liquidity provision in the overnight foreign exchange market Research Department, 33 p
- 2004/14 Steinar Holden
Wage formation under low inflation Research Department, 25 p
- 2004/15 Roger Hammersland
Large T and small N: A three-step approach to the identification of cointegrating relationships in time series models with a small cross-sectional dimension Research Department, 66 p
- 2004/16 Q. Farooq Akram
Oil wealth and real exchange rates: The FEER for Norway Research Department, 31 p
- 2004/17 Q. Farooq Akram
En effisient handlingsregel for bruk av petroleumsinntekter Forskningsavdelingen, 40 s
- 2004/18 Egil Matsen, Tommy Sveen and Ragnar Torvik
Savers, Spenders and Fiscal Policy in a Small Open Economy Research Department, 31 p
- 2004/19 Roger Hammersland
The degree of independence in European goods markets: An I(2) analysis of German and Norwegian trade data Research Department, 45 p
- 2004/20 Roger Hammersland
Who was in the driving seat in Europe during the nineties, International financial markets or the BUBA? Research Department, 35 p
- 2004/21 Øyvind Eitrheim and Solveig K. Erlandsen
House prices in Norway 1819–1989 Research Department, 35 p
- 2004/22 Solveig Erlandsen and Ragnar Nymoen
Consumption and population age structure Research Department, 22 p
- 2005/1 Q. Farooq Akram
Efficient consumption of revenues from natural resources – An application to Norwegian petroleum revenues Research Department, 33 p
- 2005/2 Q. Farooq Akram, Øyvind Eitrheim and Lucio Sarno
Non-linear dynamics in output, real exchange rates and real money balances: Norway, 1830-2003 Research Department, 53 p
- 2005/3 Carl Andreas Claussen and Øistein Røisland
Collective economic decisions and the discursive dilemma Monetary Policy Department, 21 p
- 2005/4 Øistein Røisland
Inflation inertia and the optimal hybrid inflation/price level target Monetary Policy Department, 8 p
- 2005/5 Ragna Alstadheim
Is the price level in Norway determined by fiscal policy? Research Department, 21 p
- 2005/6 Tommy Sveen and Lutz Weinke
Is lumpy investment really irrelevant for the business cycle? Research Department, 26 p
- 2005/7 Bjørn-Roger Wilhelmsen and Andrea Zaghini
Monetary policy predictability in the euro area: An international comparison Economics Department, 28 p

- 2005/8 Moshe Kim, Eirik Gaard Kristiansen and Bent Vale
What determines banks' market power? Akerlof versus Herfindahl Research Department, 38 p
- 2005/9 Q. Farooq Akram, Gunnar Bårdsen and Øyvind Eitrheim
Monetary policy and asset prices: To respond or not? Research Department, 28 p
- 2005/10 Eirik Gard Kristiansen
Strategic bank monitoring and firms' debt structure Research Department, 35 p
- 2005/11 Hilde C. Bjørnland
Monetary policy and the illusionary exchange rate puzzle Research Department, 30 p
- 2005/12 Q. Farooq Akram, Dagfinn Rime and Lucio Sarno
Arbitrage in the foreign exchange market: Turning on the microscope
Research Department, 43 p
- 2005/13 Geir H. Bjønnes, Steinar Holden, Dagfinn Rime and Haakon O.Aa. Solheim
"Large" vs. "small" players: A closer look at the dynamics of speculative attacks
Research Department, 31 p
- 2005/14 Julien Garnier and Bjørn-Roger Wilhelmsen
The natural real interest rate and the output gap in the euro area: A joint estimation
Economics Department, 27 p
- 2005/15 Egil Matsen
Portfolio choice when managers control returns Research Department, 31 p
- 2005/16 Hilde C. Bjørnland
Monetary policy and exchange rate interactions in a small open economy
Research Department, 28 p
- 2006/1 Gunnar Bårdsen, Kjersti-Gro Lindquist and Dimitrios P. Tsomocos
Evaluation of macroeconomic models for financial stability analysis
Financial Markets Department, 45 p
- 2006/2 Hilde C. Bjørnland, Leif Brubakk and Anne Sofie Jore
Forecasting inflation with an uncertain output gap Economics Department, 37 p
- 2006/3 Ragna Alstadheim and Dale Henderson
Price-level determinacy, lower bounds on the nominal interest rate, and liquidity traps
Research Department, 34 p
- 2006/4 Tommy Sveen and Lutz Weinke
Firm-specific capital and welfare Research Department, 34 p
- 2006/5 Jan F. Qvigstad
When does an interest rate path „look good“? Criteria for an appropriate future interest rate path
Norges Bank Monetary Policy, 20 p
- 2006/6 Tommy Sveen and Lutz Weinke
Firm-specific capital, nominal rigidities, and the Taylor principle Research Department, 23 p
- 2006/7 Q. Farooq Akram and Øyvind Eitrheim
Flexible inflation targeting and financial stability: Is it enough to stabilise inflation and output? Research Department, 27 p
- 2006/8 Q. Farooq Akram, Gunnar Bårdsen and Kjersti-Gro Lindquist
Pursuing financial stability under an inflation-targeting regime Research Department, 29 p
- 2006/9 Yuliya Demyanyk, Charlotte Ostergaard and Bent E. Sørensen
U.S. banking deregulation, small businesses, and interstate insurance of personal income

- 2006/10 Q. Farooq Akram, Yakov Ben-Haim and Øyvind Eitrheim
Managing uncertainty through robust-satisficing monetary policy Research Department, 57 p
- 2006/11 Gisle James Natvik:
Government spending and the Taylor pinciple Research Department, 33 p
- 2006/12 Kjell Bjørn Nordal:
Banks' optimal implementation strategies for a risk sensitive regulatory capital rule: a real options and signalling approach Research Department, 41 p
- 2006/13 Q. Farooq Akram and Ragnar Nymoen
Model selection for monetary policy analysis – importance of empirical validity Research Department, 36 p
- 2007/1 Steinar Holden and Fredrik Wulfsberg
Are real wages rigid downwards? Research Department, 37 p
- 2007/2 Dagfinn Rime, Lucio Sarno and Elvira Sojli
Exchange rate forecasting, order flow and macroeconomic information Research Department, 44 p
- 2007/3 Lorán Chollete, Randi Næs and Johannes A. Skjeltop
What captures liquidity risk? A comparison of trade and order based liquidity factors Research Department, 43 p
- 2007/4 Moshe Kim, Eirik Gaard Kristiansen and Bent Vale
Life-cycle patterns of interest rate markups in small firm finance Research Department, 45 p
- 2007/5 Francesco Furlanetto and Martin Seneca
Rule-of-thumb consumers, productivity and hours Research Department, 42 p
- 2007/6 Yakov Ben-Haim, Q. Farooq Akram and Øyvind Eitrheim
Monetary policy under uncertainty: Min-max vs robust-satisficing strategies Research Department, 41 p
- 2007/7 Carl Andreas Claussen and Øistein Røisland
Aggregating judgments on dependent variables: an (im)possibility result Research Department, 28 p
- 2007/8 Randi Næs, Johannes Skjeltop og Bernt Arne Ødegaard
Hvilke faktorer driver kursutviklingen på Oslo Børs? Research Department, 17 p
- 2007/9 Knut Are Astveit and Tørres G. Trovik
Nowcasting Norwegian GDP: The role of asset prices in a small open economy Forskningsavdelingen, 68 s
- 2007/10 Hilde C. Bjørnland, Kai Leitemo and Junior Maih
Estimating the natural rates in a simple new Keynesian framework Research Department, 29 p
- Economics Department, 33 p

NØKKEWORD:

Natural rate of interest
Natural rate of output
New-Keynesian model
Inflation target