

Mohr, Peter N. C.; Heekeren, Hauke R.; Rieskamp, Jörg

Article — Published Version

Attraction Effect in Risky Choice Can Be Explained by Subjective Distance Between Choice Alternatives

Scientific Reports

Provided in Cooperation with:
WZB Berlin Social Science Center

Suggested Citation: Mohr, Peter N. C.; Heekeren, Hauke R.; Rieskamp, Jörg (2017) : Attraction Effect in Risky Choice Can Be Explained by Subjective Distance Between Choice Alternatives, Scientific Reports, ISSN 2045-2322, Springer Nature, London, Vol. 7, pp. 1-10, <https://doi.org/10.1038/s41598-017-06968-5>

This Version is available at:
<https://hdl.handle.net/10419/209695>

Standard-Nutzungsbedingungen:

Die Dokumente auf EconStor dürfen zu eigenen wissenschaftlichen Zwecken und zum Privatgebrauch gespeichert und kopiert werden.

Sie dürfen die Dokumente nicht für öffentliche oder kommerzielle Zwecke vervielfältigen, öffentlich ausstellen, öffentlich zugänglich machen, vertreiben oder anderweitig nutzen.

Sofern die Verfasser die Dokumente unter Open-Content-Lizenzen (insbesondere CC-Lizenzen) zur Verfügung gestellt haben sollten, gelten abweichend von diesen Nutzungsbedingungen die in der dort genannten Lizenz gewährten Nutzungsrechte.

Terms of use:

Documents in EconStor may be saved and copied for your personal and scholarly purposes.

You are not to copy documents for public or commercial purposes, to exhibit the documents publicly, to make them publicly available on the internet, or to distribute or otherwise use the documents in public.

If the documents have been made available under an Open Content Licence (especially Creative Commons Licences), you may exercise further usage rights as specified in the indicated licence.



<https://creativecommons.org/licenses/by/4.0/>

Attraction Effect in Risky Choice Can Be Explained by Subjective Distance Between Choice Alternatives

Peter N.C. Mohr^{a,b,c,*}, Hauke R. Heekeren^{c,d}, and Jörg Rieskamp^e

^aNeuroeconomics, School of Business and Economics, Freie Universität Berlin, 14195 Berlin, Germany

^bNeuroeconomics, Markets and Choice, WZB Berlin Social Science Center, 10785 Berlin, Germany

^cCenter for Cognitive Neuroscience (CCNB), Freie Universität Berlin, 14195 Berlin, Germany

^dBiological Psychology and Cognitive Neuroscience, Department of Education and Psychology, Freie Universität Berlin, 14195 Berlin, Germany

^eCenter for Economic Psychology, Department of Psychology, University of Basel, , 4055 Basel, Switzerland

*Corresponding author

Classification:

Biological sciences; Neuroscience; Reward

Supplementary Information

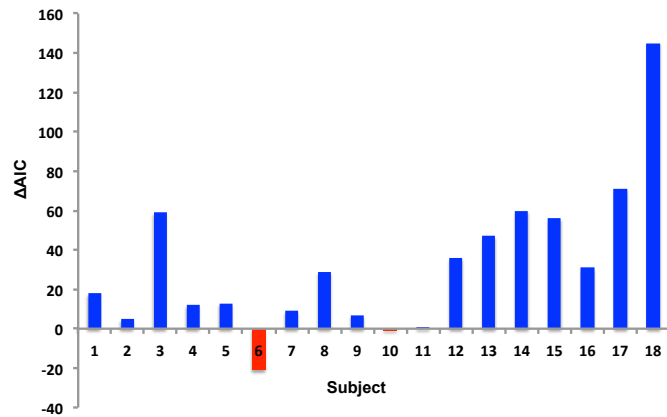


Figure S1. Relative model fit. Blue bars denote subjects with a lower AIC score for MDFT. Red bars describe subjects with a lower AIC score for EUT.

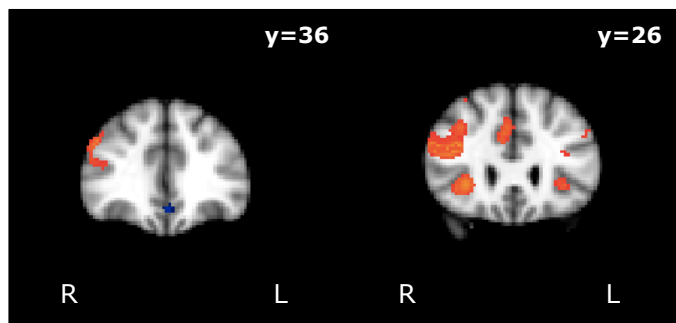


Figure S2. FMRI Results. Comparison between brain activity in the decoy condition and the basic condition (GLM1). Higher BOLD signal ($z > 3.1$; cluster size > 50) in the decoy condition in DMPFC, DLPFC, and aINS (all displayed in red). Lower BOLD signal ($z > 3.1$; cluster size > 50) in the decoy condition in mOFC/VMPFC (displayed in blue).