

Bauer, Thomas K.; Zimmermann, Klaus F.

**Working Paper**

## Overtime Work and Overtime Compensation in Germany

IZA Discussion Papers, No. 48

**Provided in Cooperation with:**

IZA – Institute of Labor Economics

*Suggested Citation:* Bauer, Thomas K.; Zimmermann, Klaus F. (1999) : Overtime Work and Overtime Compensation in Germany, IZA Discussion Papers, No. 48, Institute for the Study of Labor (IZA), Bonn

This Version is available at:

<https://hdl.handle.net/10419/20885>

**Standard-Nutzungsbedingungen:**

Die Dokumente auf EconStor dürfen zu eigenen wissenschaftlichen Zwecken und zum Privatgebrauch gespeichert und kopiert werden.

Sie dürfen die Dokumente nicht für öffentliche oder kommerzielle Zwecke vervielfältigen, öffentlich ausstellen, öffentlich zugänglich machen, vertreiben oder anderweitig nutzen.

Sofern die Verfasser die Dokumente unter Open-Content-Lizenzen (insbesondere CC-Lizenzen) zur Verfügung gestellt haben sollten, gelten abweichend von diesen Nutzungsbedingungen die in der dort genannten Lizenz gewährten Nutzungsrechte.

**Terms of use:**

*Documents in EconStor may be saved and copied for your personal and scholarly purposes.*

*You are not to copy documents for public or commercial purposes, to exhibit the documents publicly, to make them publicly available on the internet, or to distribute or otherwise use the documents in public.*

*If the documents have been made available under an Open Content Licence (especially Creative Commons Licences), you may exercise further usage rights as specified in the indicated licence.*

IZA DP No. 48

## Overtime Work and Overtime Compensation in Germany

Thomas Bauer  
Klaus F. Zimmermann

July 1999

# Overtime Work and Overtime Compensation in Germany

Thomas Bauer  
Klaus F. Zimmermann

Discussion Paper No. 48  
July 1999

IZA

P.O. Box 7240  
D-53072 Bonn  
Germany

Tel.: +49-228-3894-0  
Fax: +49-228-3894-210  
Email: iza@iza.org

This Discussion Paper is issued within the framework of IZA's research area *Mobility and Flexibility of Labor Markets*. Any opinions expressed here are those of the author(s) and not those of the institute. Research disseminated by IZA may include views on policy, but the institute itself takes no institutional policy positions.

The Institute for the Study of Labor (IZA) in Bonn is a local and virtual international research center and a place of communication between science, politics and business. IZA is an independent, nonprofit limited liability company (Gesellschaft mit beschränkter Haftung) supported by the Deutsche Post AG. The center is associated with the University of Bonn and offers a stimulating research environment through its research networks, research support, and visitors and doctoral programs. IZA engages in (i) original and internationally competitive research in all fields of labor economics, (ii) development of policy concepts, and (iii) dissemination of research results and concepts to the interested public. The current research program deals with (1) mobility and flexibility of labor markets, (2) internationalization of labor markets and European integration, (3) the welfare state and labor markets, (4) labor markets in transition, (5) the future of work, and (6) general labor economics.

IZA Discussion Papers often represent preliminary work and are circulated to encourage discussion. Citation of such a paper should account for its provisional character.

## ABSTRACT

# Overtime Work and Overtime Compensation in Germany<sup>\*</sup>

Sharing the available stock of work more fairly is a popular concern in the public policy debate. One policy proposal is to reduce overtime work in order to allow the employment of more people. This paper suggests that such a concept faces major problems. Using Germany as a case study, it is shown that the group of workers with the highest risks of becoming unemployed, namely the unskilled, also exhibit low levels of overtime work. Those who work overtime, namely the skilled, face excess demand on the labour market. Since skilled and unskilled workers are largely complements in production, a general reduction in overtime will lead to less production and hence also to a decline in the level of unskilled employment. The paper provides empirical support for this line of argument. It is also shown that paid overtime work has lost relative importance over time.

JEL Classification: J22, J23, J33

Keywords: Hours of work; overtime working; overtime compensation

Klaus F. Zimmermann  
IZA  
P.O. Box 7240  
D-53072 Bonn  
Germany  
Tel.: +49 228 38 94 200  
Fax: +49 229 30 94 210  
e-mail: [Zimmermann@iza.org](mailto:Zimmermann@iza.org)

---

<sup>\*</sup> We are grateful to Rob Euwals, Bob Hart and Melanie Ward for their helpful comments.

## **1. Introduction**

An ongoing debate concerning the solution to the European unemployment problem is concerned with the redistribution of work through a general reduction of the working week, through work-sharing and the reduction of overtime work. It is argued that such a redistribution would lead to more jobs. One important policy proposal within this debate is to reduce overtime work either by increasing the overtime premium or by reducing the maximum amount of overtime hours allowed. The basis of the argument behind this proposal has been the observation that the total amount of overtime has not diminished even though unemployment remains persistently high. Among other reasons, the appearance of overtime work has been theoretically traced back to quasi-fixed costs of employment, i.e. hiring and training costs and employee benefits which are related to employment but not to working hours. An increase in the marginal costs of an additional worker relative to the marginal costs of working hours would induce firms to substitute working hours for employment. Following this argument, an increase in the price of overtime relative to the quasi-fixed costs associated with hiring additional workers would induce employers to reduce overtime hours and increase employment. Due to various reasons economists, however, have always been suspicious about whether such a policy could be successful.

First, an increase in the overtime premium or a legislative reduction in the maximum overtime hours raises the average cost of labour, since firms have to bear the quasi-fixed costs of employment when they increase the number of their workers. This increase in costs may induce firms to switch to more-capital-intensive production and therefore may have overall negative effects on employment. Second, if the substitutability of the unemployed and those who work overtime is low, an increase in the price of overtime or a reduction in overtime hours might also have negative employment effects. Unemployment in Europe, for example, is mainly a problem of low qualified workers. If overtime is mainly worked by skilled labour it is difficult to convert overtime into new jobs for these unemployed unskilled workers. If there is, in addition, an excess

demand for skilled labour and if skilled and unskilled workers are complements in production, a reduction in overtime reduces the effective amount of skilled labour and reduces the demand for unskilled labour.<sup>1</sup>

Finally, in the policy debate of reducing overtime to increase employment one has to take into account the different possibilities of compensating workers for their overtime work. Following Gerlach and Hübler (1987) and Kohler and Spitznagel (1996) one has to differentiate between two types of overtime: (i) transitory overtime hours which are compensated with free time, and (ii) definite overtime hours which are not compensated with free time. Definite overtime hours could be either paid or unpaid. The public debate as well as most of the existing theoretical and empirical literature has focused mainly on paid definite overtime hours. The literature on unpaid definite overtime and transitory overtime is scarce<sup>2</sup>. For policy evaluation this differentiation is important. Since transitory overtime involves only a temporary redistribution of working hours one cannot expect that a limitation of transitory overtime hours will create additional permanent employment. However, a prohibition of definite overtime, without regulations on transitory overtime, might be a valuable policy option to create additional employment. It is therefore of particular importance to analyse the determinants of the different types of overtime compensation.

There exist several empirical studies on the substitution between working hours and employment.<sup>3</sup> Most of these studies conclude that higher overtime premiums and lower standard weekly hours will increase the ratio of employment to hours per worker (Ehrenberg and Schumann, 1982). However, since a higher overtime premium raises labour costs and therefore has negative effects on the demand for both workers and hours, this result does not necessarily

---

<sup>1</sup> See, for example, Calmfors and Hoel (1988) for a theoretical analysis of these issues.

<sup>2</sup> See Bell and Hart (1998b) for a theoretical analysis of unpaid overtime and an empirical investigation for the UK. Gerlach and Hübler (1987) analyse the effects of quasi-fixed costs on the different kinds of overtime using a cross-section of the GSOEP for 1984.

<sup>3</sup> See Ehrenberg (1971), Hamermesh (1993), and Hart (1988) for an overview.

imply an overall positive effect on employment. Empirical evidence for Germany indicates that neither the reduction of standard working hours nor the reduction in overtime work by increasing the overtime premium seem to be an appropriate policy measure to reduce unemployment. König and Pohlmeier (1988) and Hart and Kawasaki (1988) actually find that an increase in overtime costs reduces total employment. However, Houseman (1988) concludes in an empirical study of the German steel industry that the reduction of working time during the restructuring of the industry helped to preserve jobs which would have otherwise been lost.

This paper will study the determinants and the compensation of overtime work in Germany. Three broad questions are of central importance. First, what are the determinants of working overtime? In particular, we focus on skill differences in overtime hours in order to address concerns that a reduction in overtime hours might not be feasible to reduce unemployment in Germany due to low substitutability of those working overtime and those unemployed. Second, is overtime work in Germany mainly a reaction to transitory demand shocks? If this is the case, a reduction of overtime work will reduce the possibility for firms to react to short-term demand fluctuations and therefore might have negative employment effects. Third, how do firms compensate for overtime work and what are the determinants of different types of overtime compensation? An answer to these questions would help to evaluate the question of whether a substitution of definite overtime hours for transitory overtime hours could be a valuable policy option.

The paper proceeds as follows. The next section provides some stylised facts on overtime and reviews existing empirical studies for Germany. Section 3 describes our data set and the econometric framework. The estimation results are presented in Section 4. Section 5 concludes.

## **2. Overtime in Germany: Some Stylised Facts**

Figure 1 presents the mean number of yearly hours per worker and the share of overtime hours in West Germany for the period 1960-1997. It appears that the effective yearly working time has

followed a strong downward trend from 2,081 yearly working hours in 1960 to 1,503 hours in 1997. This decline was shortly interrupted during the boom years of 1964, 1976 and 1992. Compared to the effective working time, overtime work in Germany has followed a somewhat different pattern. During the 1960's overtime hours increased in total as well as relative to effective working time. It reached a peak in 1970 with 157 yearly hours of overtime per worker (8.3% of the effective working time). Following the oil-crisis in the early 70's overtime work in Germany decreased sharply to about 66 yearly overtime hours (4% of the effective working time) in 1982. The share of overtime hours to total working time has remained relatively stable around 4% since 1982. Among other reasons, the decline of overtime hours in Germany can be explained by the rising importance of female and part-time workers, who traditionally work less overtime, and an increased flexibility of working time schedules, which allow for intertemporal substitution (Kohler and Spitznagel, 1996).

A major argument against a reduction in overtime is that it is used by firms to respond to short-term demand fluctuations. In a representative survey of firms in manufacturing in 1985, 75% of overtime work was due to either unexpected or regular fluctuations in demand and production, short-term frictions in the production process, a high capacity utilisation or short-term staff shortages due to illness and holidays (Kohler and Spitznagel, 1996). If overtime work is mainly a tool for firms to react to short-term fluctuations in demand and production, one should observe a pro-cyclical pattern of overtime hours. Hence, Figure 2 plots the growth of real output against the mean yearly overtime hours per worker for the period from 1971 to 1997 together with a regression line.<sup>4</sup> There is a slightly positive relationship between the real output growth rate and overtime hours, but it is statistically insignificant. At a first glance, it seems that overtime is unrelated to production fluctuations. Note however that this simple estimation exercise most likely understates the relationship between overtime and fluctuations in demand.

---

<sup>4</sup> Using OLS, we regressed the real growth rate of output and a constant on the mean yearly overtime hours per worker for the period 1971-1995. This regression is given in the footnote to Figure 2.



Among other reasons, overtime work due to seasonal fluctuations can not be captured by this regression since it is based on yearly data and not separated according to industries. Furthermore, there exists a bulk of empirical evidence (at least for the U.S.) that the demand for hours adjusts much faster to demand shocks than the demand for employment (Hamermesh, 1993).

As already discussed in the introduction, the differentiation between different kinds of overtime seems to be important in evaluating policy proposals towards a reduction in overtime work. Figure 3 details the development of the different types of overtime for male full-time employees which are not working as civil servants for the period 1984-1997. The data is drawn from the GSOEP, the German Socio-economic Panel, and will be described in more detail in the next section.<sup>5</sup> Figure 3(a) shows that the number of workers not working overtime is higher in periods of recession (1984-1986 and 1997) than in years of relatively high economic growth (1991-1994). A comparison of the numbers for unskilled and skilled workers demonstrates that the share of workers not working overtime fluctuates more among the unskilled (see Figures 3(a) and 3(b)). In all years except 1991 and 1993, the percentage of unskilled workers working no overtime is higher than that of skilled workers. Figure 3 also documents an increasing importance of transitory and unpaid overtime at the cost of paid definite overtime. This development holds for both skilled and unskilled workers. Finally, Figure 3 shows that skilled workers work relatively more unpaid overtime than unskilled workers. Overall, these numbers indicate that over the last 15 years transitory overtime hours gained in importance. To summarise, the relatively low importance of overtime work for unskilled workers and the increasing importance of transitory overtime work for both skilled and unskilled labour promotes some doubts that a policy aiming at a general reduction of overtime hours could be effective in reducing the German unemployment problem for unskilled workers.

---

<sup>5</sup> Unfortunately, the GSOEP provides no information on overtime for 1987.

### 3. Data and Econometric Methodology

For the empirical analysis of this paper we employ the German Socio-economic Panel (GSOEP), a comprehensive panel of household and individual data for the period 1984-1997. Among other socioeconomic characteristics, this data set provides rich information on issues such as wages, education levels, occupational status, and employment history. For all years but 1987 the GSOEP also includes detailed information on the working time of an individual, including the contractual working time, overtime hours and the compensation of overtime hours. In our empirical analysis we concentrate on full-time male West Germans who are not employed as civil servants. After pooling all waves of the GSOEP and eliminating all observations with missing values we are left with a final sample of 17,332 individual observations.

Our empirical analysis consists of two steps. In the first step we examine the determinants of actual overtime hours worked using a Tobit model which takes the form:

$$Y_i = \begin{cases} \beta' X_i + \varepsilon_i & \text{if } \beta' X_i + \varepsilon_i > 0 \\ 0 & \text{if } \beta' X_i + \varepsilon_i \leq 0 \end{cases} \quad (1)$$

where the dependent variable  $Y_i$  refers to the weekly overtime hours with respect to individual  $i$ ,  $X_i$  is a vector of explanatory variables,  $\beta$  is a vector of coefficients, and  $\varepsilon_i$  is a normal distributed error term with mean 0 and variance  $\sigma_\varepsilon^2$ .

In the second step we analyse the determinants of overtime compensation using a multinomial logit model of the following form:

$$\text{Prob}(Y_i = j) = \frac{e^{\beta_j' X_i}}{\sum_{k=0}^4 e^{\beta_k' X_i}} \quad \text{for } j = 0, \dots, 4, \quad (2)$$

where  $j = 0$  if the individual had not worked overtime,  $j = 1$  if the individual had worked paid definite overtime hours,  $j = 2$  if the individual had worked transitory overtime hours,  $j = 3$  if the individual had been working partly paid overtime and partly transitory overtime, and  $j = 4$  if the individual had worked unpaid overtime.  $X_i$  refers to a vector of explanatory variables,  $\beta_j$  is

a vector of coefficients. In order to identify the parameters of the model, we impose the normalisation  $\beta_0 = 0$ .

For the estimation exercise, we pooled single cross-sections of data for the period 1984-1977 excluding 1987. In the pooled sample it is possible that the repeated observations of the same individual are not independent of each other. To account for this problem we report robust standard errors.<sup>6</sup> Figure 4 exhibits the development of contractual weekly working hours and overtime hours as they appear in our sample. Note that Figure 4 is very similar to the development of working time based on aggregate data (see Figure 1). The mean contractual weekly working time decreases from 41 hours in 1984 to 38 hours in 1997. Since 1987 weekly overtime hours stay relatively stable around 2.5 hours. The development of overtime compensation as it appears in our sample has already been discussed in the last section (see Figure 3).

All our estimation equations include as explanatory variables the age and age squared of the individual, his years of schooling and years of schooling squared, his tenure with the current firm and tenure squared, contractual weekly hours, a time trend, a dummy variable which takes the value of 1 if the individual is married and 0 otherwise, and a dummy variable which takes the value of 1 if the individual is working in a firm with less than 200 employees and 0 otherwise. To control for any business cycle effects of overtime we matched the data set on a yearly basis with the real output growth rate for the industry a person is working in.<sup>7</sup>

To allow for asymmetries in the effect of the business cycle on overtime we further include an interaction term between the real output growth rate and a dummy variable which takes the value 1 if the real output growth rate is positive and 0 otherwise. Finally, we consider

---

<sup>6</sup> The estimated variance is  $\hat{V}^* = [M/(1-M)]\hat{V}$ , where  $\hat{V}$  is the Huber-White sandwich estimator of the variance and M the number of individuals in the pooled sample.

<sup>7</sup> In total we used data for 8 industries, including agriculture, mining, manufacturing, construction, trade, services, the public sector and private households. The data for the real growth rate have been drawn from Sachverständigenrat (1998).

several dummy variables describing the occupational status of an individual, i.e. whether an individual is employed as skilled blue collar worker, unskilled white collar worker, or skilled white collar worker. Unskilled blue collar workers represent the reference group. Unskilled workers are defined as employees who either need no, or only a short-term instruction, to perform their job. Descriptive statistics for the variables used in the analysis are reported in Table 1 of the Appendix.

#### **4. Estimation Results**

We first study the determinants of overtime incidence and hours, and then investigate the different types of overtime compensation. The estimation results from the Tobit model are contained in Table 1. The first column reports the estimated coefficients of the model, the second column the estimated unconditional marginal effects on hours, the third column the estimated marginal effects on hours conditional on the individual working overtime, and the last column measures the marginal effect of each explanatory variable on the probability of overtime incidence. All marginal effects are evaluated at the mean of the exogenous variables. For dummy variables “marginal” also means a change in prediction caused by the discrete change of an exogenous variable from 0 to 1.

The estimated coefficients for age exhibit an inverted U-shaped pattern, while the parameters for years of schooling and firm tenure have a U-shaped structure. The effects of years of schooling are statistically insignificant, however; individuals older than 44 work a diminishing number of overtime hours; and tenure has a declining after 45 years. Married individuals and individuals working in small firms have a higher probability of working overtime (2.8 percentage points for marriage and 3.3 percentage points for small firms), and they work a larger numbers of hours. Marriage entails an overall increase of 8.9% in overtime hours, and a 5.4% increase for those who already worked overtime. (Increases here and in the sequel are calculated with reference to the sample mean level values.) Working for a small firm is associated with an

overall increase of 10.7% in overtime hours, and a 6.5% increase for those who already worked overtime. These numbers indicate that a large part of the higher overtime hours in small firms is due to a higher overtime incidence. The results are consistent with the existing evidence on overtime incidence in the UK and the US.<sup>8</sup>

However, in contrast to evidence from the UK and the US, the number of contractual weekly hours have a positive effect on the probability of overtime work and on overtime hours. Since straight-time working hours have declined significantly over time in Germany, this implies that overtime hours have also fallen through this interaction. The estimated coefficient suggests that a decrease of one hour in normal working time per week causes a decline in the unconditional overtime of about one minute. This is an important finding for policy: Firms have not acted against the general working time reduction through an increase in overtime hours. However, this effectively negative relationship works against the general time trend of increasing overtime hours, as estimated by our model. The probability of working overtime, which is slightly increasing over time, indicates an increased quasi-fixed costs of labour over the last 15 years.

It is clear that working overtime rises strictly with a worker's level of qualification. White collar workers have a higher probability of working overtime than blue collar workers, and skilled workers have a higher probability of working overtime than unskilled workers. To be more precise, in comparison with the reference group of unskilled blue collar workers, the probability increases of working overtime are 2.9% (skilled blue), 10.8% (unskilled white) and 14.9% (skilled white). Skilled blue collar workers work 9.6% more overtime hours than the unskilled workers from the same group. In comparison to the reference group, unskilled white collar workers work 35% more overtime hours, and skilled white collar workers as many as 49% more overtime hours.

---

<sup>8</sup> See Bell and Hart (1998b, 1999) for the UK and Trejo (1991, 1993) for the US.

A common argument is that overtime work is used by firms as an instrument to react to business cycle fluctuations. To examine this hypothesis we include real output growth rates at the industry levels and allow for asymmetric reactions. We find a significant effect only for periods of positive output growth. An increase of the output growth of 1 percentage point in a boom period leads to an overall increase of overtime hours of 2.4% which could be separated into an increase in the probability to work overtime of 0.7% and an increase of overtime hours conditional on working overtime of 1.7%. Hence, in boom periods firms mainly change the amount of overtime hours to meet demand fluctuations.

More light can be shed on the motives behind overtime working by a joint investigation of the alternatives “no overtime”, and the different forms of overtime compensation, namely “paid”, “leisure”, “partly paid, partly leisure”, and “unpaid”. The estimated coefficients of the employed multinomial logit model are reported in Appendix Table 2. These parameter estimates are again used to calculate marginal effects for the probabilities, and these are provided in Table 2. As before, “marginal” in case of a dummy variable means that the value changes from 0 to 1. Note that a series of Hausman tests suggest that none of the 5 alternatives are irrelevant.

As we had seen before, the likelihood of working overtime is rising with age according to an inverted U-shaped pattern. Table 2 now shows that this rise is in paid *and* unpaid overtime. Schooling has again an inverted U-shaped effect on working overtime, but this works basically against paid work. Tenure has statistically significant U-shaped structures for the incidence of overtime work as well as for paid and unpaid overtime work. In general, married people work more overtime, but are less likely be compensated by leisure. Small firms require more paid and unpaid overtime work, but compensate less with leisure. This result suggests that small firms rely relatively more on definite overtime instead of using transitory overtime indicating that small firms may face higher problems in introducing flexible working time schedules. Straight working hours increase the likelihood of unpaid overtime work significantly and has a marginally significant negative effect on the probability to be compensated with leisure.

Skill levels play an important role. According to the multinomial logit model in Table 2, skilled blue collar workers have a 3.6% higher probability to work overtime than unskilled blue collar workers; this is largely the result of more work compensated by either payments or leisure. However, skilled blue collar workers have a lower probability to work solely paid overtime hours than unskilled blue collar workers. This qualitative pattern is very consistent for higher skill levels, namely for unskilled and skilled white collar workers. Marginal effects are larger in absolute terms, the higher the skill level is. In comparison to an unskilled blue collar worker, a skilled white collar worker has a 5.1% larger probability of working overtime: This separates into a 33% reduction in paid overtime work, and an increase of 13.6% in leisure, a 19.9% increase in unpaid work and a 4.1% increase in the category “partly paid, partly leisure”. Hence, overtime work matters for the high-skilled; but they work largely unpaid or transitory overtime.

Finally, as Table 2 shows us, there is an increase in overtime work measured by the time trend coefficient. This result is explained by an increase in the categories “leisure” and “partly paid, partly leisure”, while the likelihood of paid overtime work is declining over time. This result suggests a rising importance of working time accounts. The overall role of real output growth is asymmetric: the incidence of overtime work reacts counter-cyclical in periods of negative growth and pro-cyclical in periods of positive growth. Paid overtime work reacts counter-cyclical and is symmetric. Transitory overtime reacts pro-cyclical to economic growth with a lower effect in periods of positive output growth. Finally, real output growth has significant positive effects on unpaid overtime and the category “partly paid, partly leisure” in periods of positive output growth. These results indicate that firms react to demand fluctuations mainly by redistributing working time instead of increasing definite overtime. This also implies that if output growth is positive in the long-run, there is a persistent decline in paid overtime in favour of transitory overtime or unpaid overtime.

## **5. Conclusions**

Reducing overtime work has been largely advocated as an effective instrument to fight unemployment. On the basis of the findings of this study, we argue that such a strategy may have some problems. Unemployment is largely a problem of the unskilled. However, low-skilled people work less overtime. To be more concrete, one of our estimates demonstrates that in comparison to unskilled blue collar workers, skilled white collar workers have as many as 49% more overtime hours, holding all other measured factors constant. A skilled white collar worker faces a 5.1% larger probability of working overtime, but this made up of a 33% reduction in paid work, a 13.6% increase in leisure, a 19.9% increase in unpaid work and a 4.1% increase in the category “partly paid, partly leisure”.

Hence, overtime work is largely a matter for the high-skilled; but they work largely unpaid overtime or are compensated by leisure. Reducing overtime work across all groups would cause a labour shortage among the skilled workers. If skilled and unskilled workers are complements in production, this would also cause a decline in the demand for the unskilled, and hence further problems in this market segment. Overtime work for unskilled blue collar workers is largely paid work. It would make more sense to establish a condition of not financially compensating overtime work for unskilled workers.

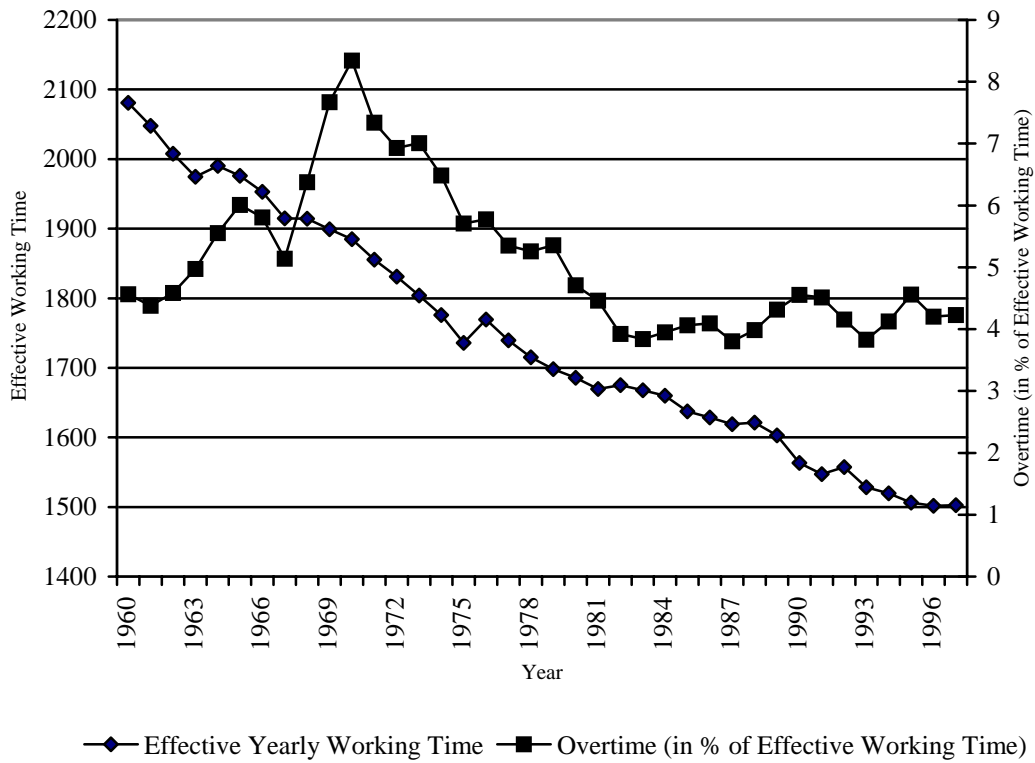
Paid overtime work is in decline anyway. There is some indication that overtime work is used to adjust to boom phases of the economy. But it is also clear that positive growth rates of sectoral output induce a decline in paid overtime in favour of leisure compensation. Hence, a strategy of reducing paid overtime becomes less and less relevant anyway.



## References

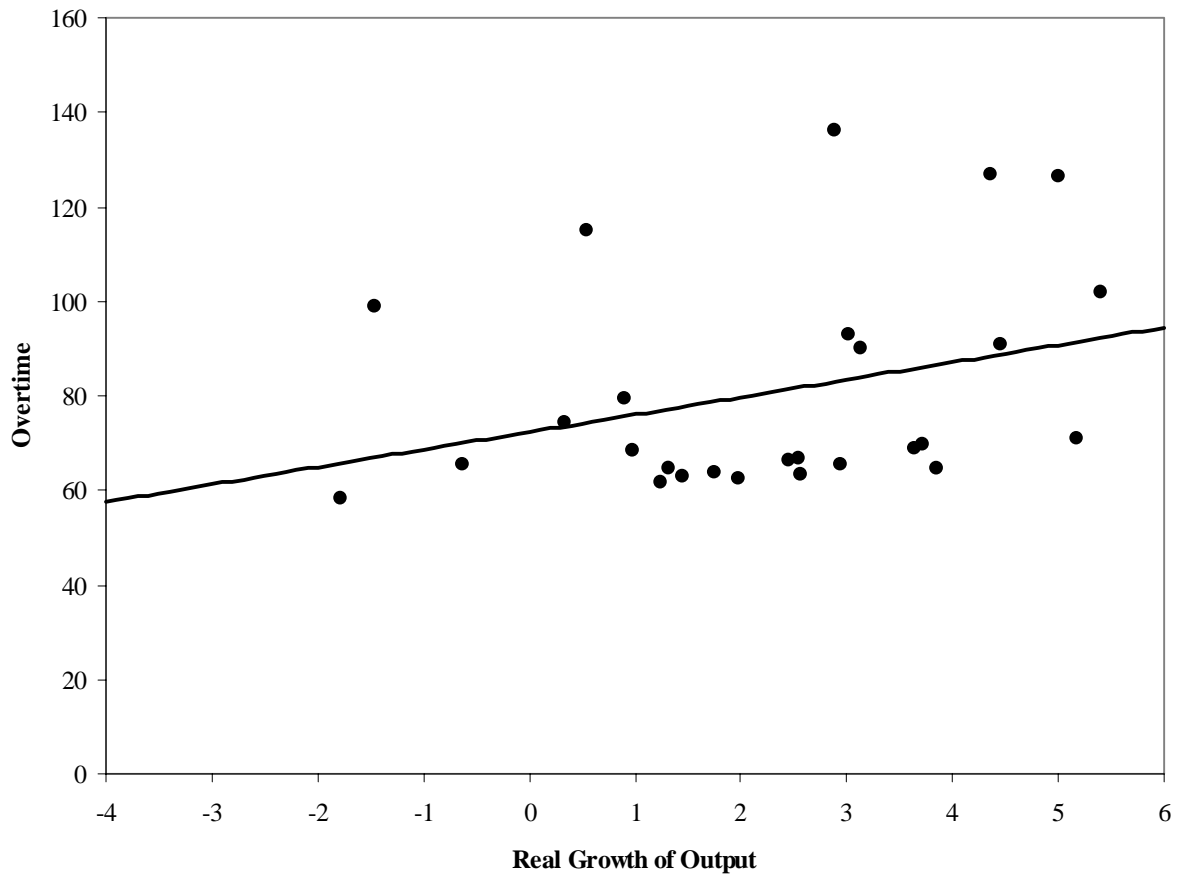
- Bell, D. N. F., and R. A. Hart (1998a): "Working Time in Great Britain, 1975-1994: Evidence from the New Earnings Panel Data," *Journal of the Royal Statistical Society (Series A)*, 161, 327-348.
- Bell, D. N. F., and R. A. Hart (1998b): "Unpaid Work," forthcoming in *Economica*.
- Bell, D. N. F., and R. A. Hart (1999): "Overtime Working in an Unregulated Labour Market," *IZA Discussion Paper No. 44*, Bonn.
- Calmfors, L. and M. Hoel (1988): "Work Sharing and Overtime," *Scandinavian Journal of Economics*, 90(1), 45-52.
- Ehrenberg, R. G. (1971): *Fringe Benefits and Overtime Behavior*. Lexington, Mass.: D.C. Heath.
- Ehrenberg, R. G. and P. Schumann (1982): *Longer Hours or More Jobs?* Ithaca, NY: Cornell University Press.
- Gerlach, K., and O. Hübler (1987): "Personalnebenkosten, Beschäftigung und Arbeitsstunden aus neoklassischer und institutioneller Sicht," in: F. Buttler, K. Gerlach, and R. Scheide (eds.): *Arbeitsmarkt und Beschäftigung*. Frankfurt: Campus, 291-331.
- Hamermesh, D. C. (1993): *Labor Demand*. Princeton, NJ: Princeton University Press.
- Hart, R. A. (ed.) (1988): *Employment, Unemployment and Labor Utilization*. Boston, Mass.: Unwin Hyman.
- Hart, R. A. and S. Kawasaki (1988): "Payroll Taxes and Factor Demand," *Research in Labor Economics*, 9, 257-285.
- Hart, R. A. and R. J. Ruffell (1993): "The Cost of Overtime Working in British Production Industries," *Economica*, 60, 183-201.
- Houseman, S. N. (1988): "Shorter Working Time and Job Security: Labor Adjustment in the Steel Industry," in R. A. Hart (ed.): *Employment, Unemployment and Labor Utilization*. Boston, Mass.: Unwin Hyman, 64-85.
- Kohler, H. and E. Spitznagel: "Überstunden in Deutschland: Eine empirische Analyse," *IAB Werkstattbericht*, No. 4.
- König, H. and W. Pohlmeier (1988): "Employment, Labour Utilization and Procyclical Labour Demand," *Kyklos*, 41, 551-572.
- Sachverständigenrat zur Begutachtung der gesamtwirtschaftlichen Entwicklung (1998): *Vor weitreichenden Entscheidungen. Jahrgutachten 1998/99*. Stuttgart: Metzler-Poeschel.
- Trejo, S. J. (1991): "Compensating Differentials and Overtime Pay Regulations," *American Economic Review*, 81, 719-770.
- Trejo, S. J. (1993) "Overtime Pay, Overtime Hours, and Labour Unions," *Journal of Labor Economics*, 11, 253-278.
- Veall, M. R. and K. F. Zimmermann (1996): "Pseudo-R<sup>2</sup> Measures for Some Limited Dependent Variable Models," *Journal of Economic Surveys*, 10, 241-259.

**Figure 1:  
Working Time and Overtime in Germany: 1960-1997**



Source: Kohler and Spitznagel (1996)

**Figure 2:  
Overtime Work and Real Growth**



Source: Kohler and Spitznagel (1996), Jahresgutachten des Sachverständigenrates (1998).

The straight line corresponds to an OLS regression of the real growth rate of output and a constant on the mean yearly overtime hours per worker for the period 1971-1997. The results of this regression were as follows:

$$\begin{array}{l} \text{Overtime hours} = 72.323 + 3.692 \text{ Real Output Growth} \\ \text{Standard Errors} \quad (10.79) \quad (1.63); R^2 = 0.10 \end{array}$$

**Figure 3:  
Overtime Compensation in Germany: 1984-1997**

*Figure 3(a): All Workers*

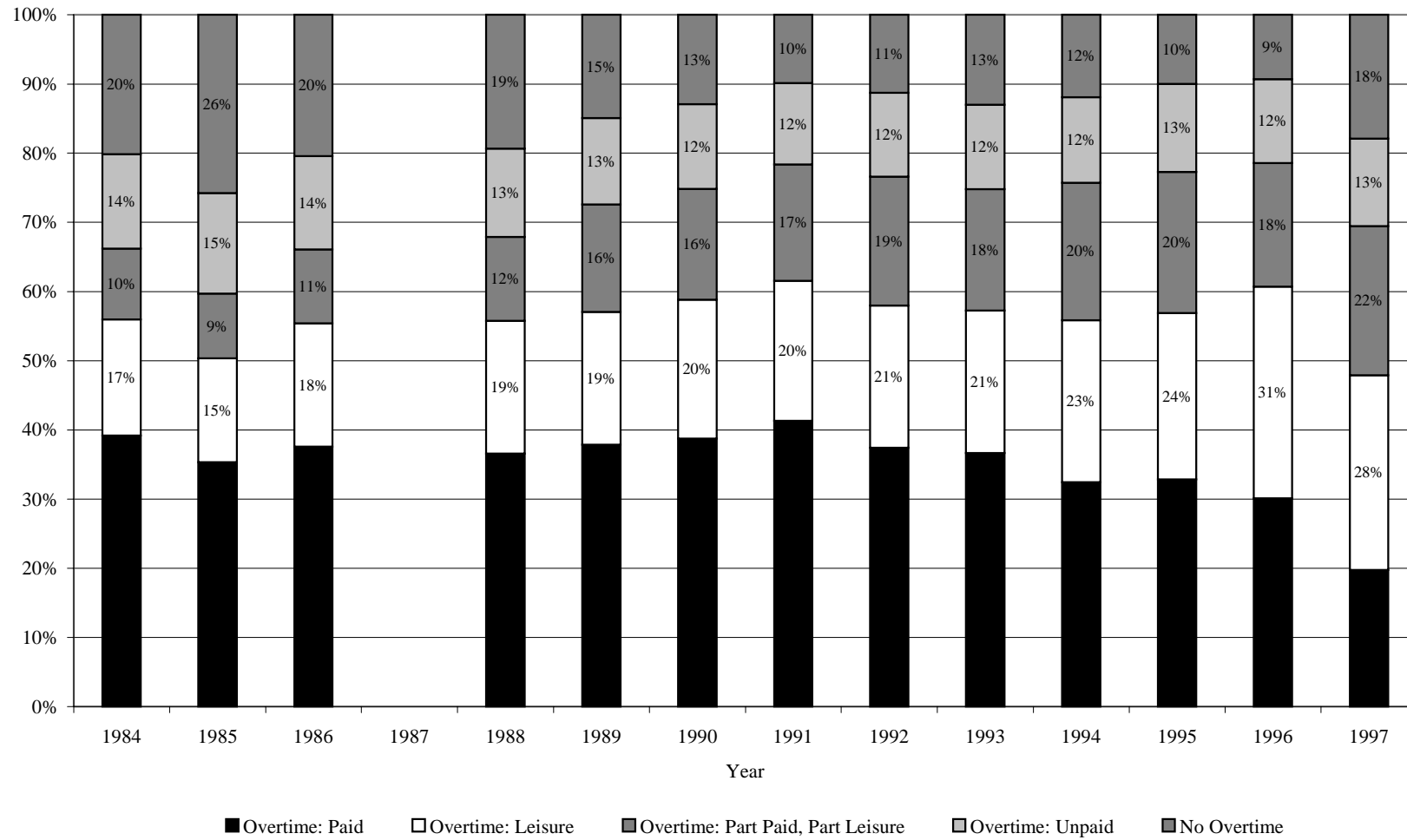


Figure 3(b): Unskilled Workers

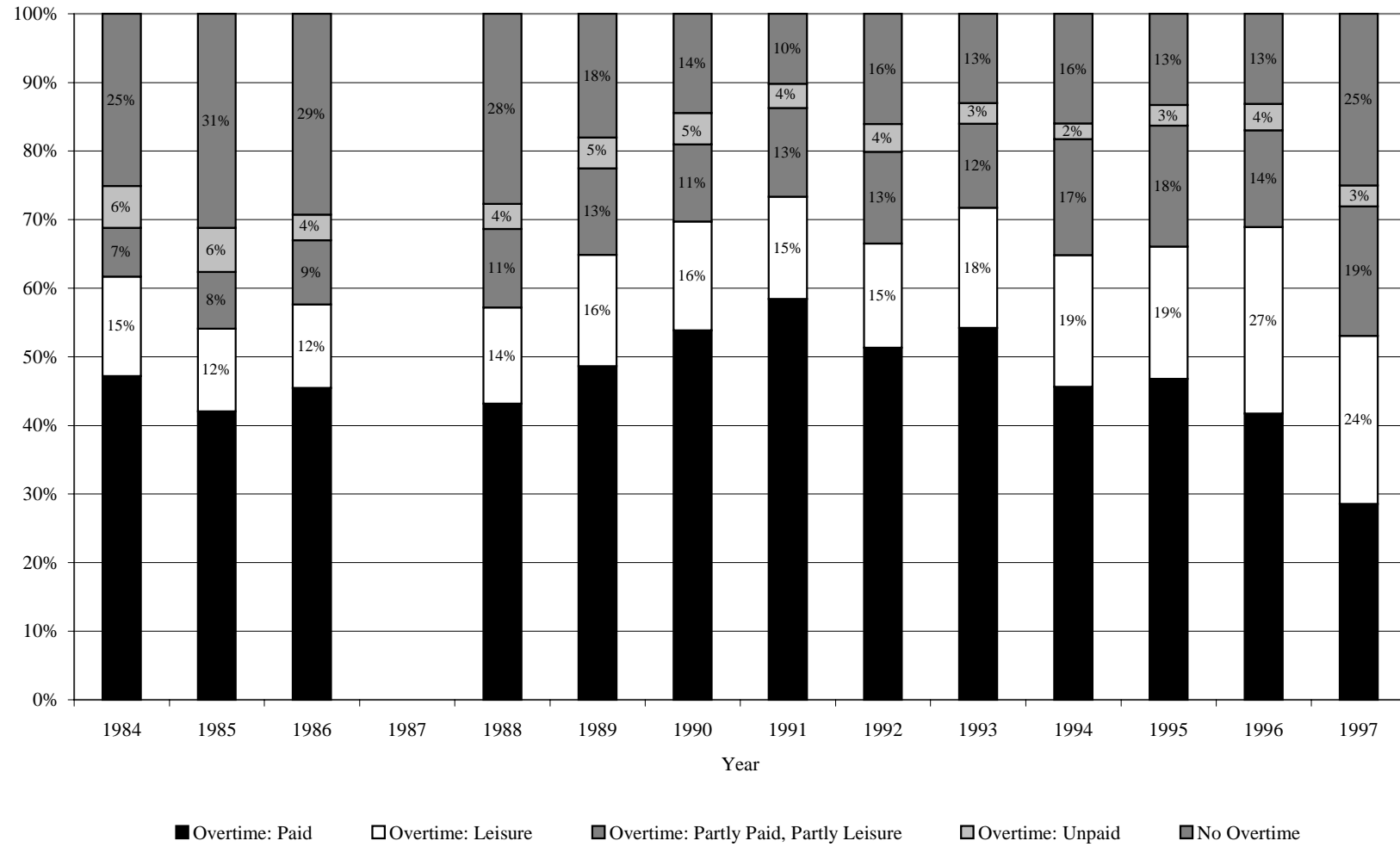
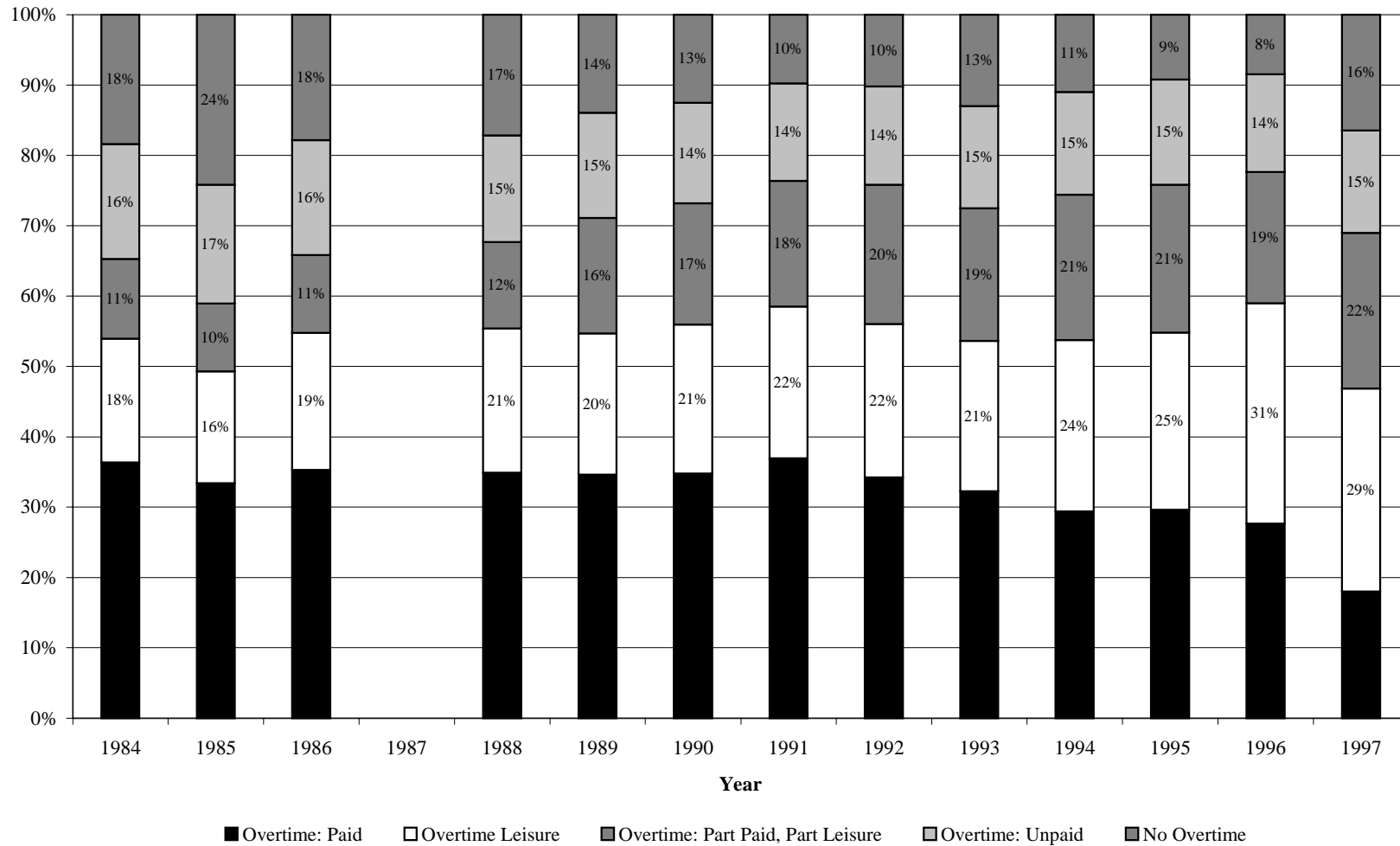
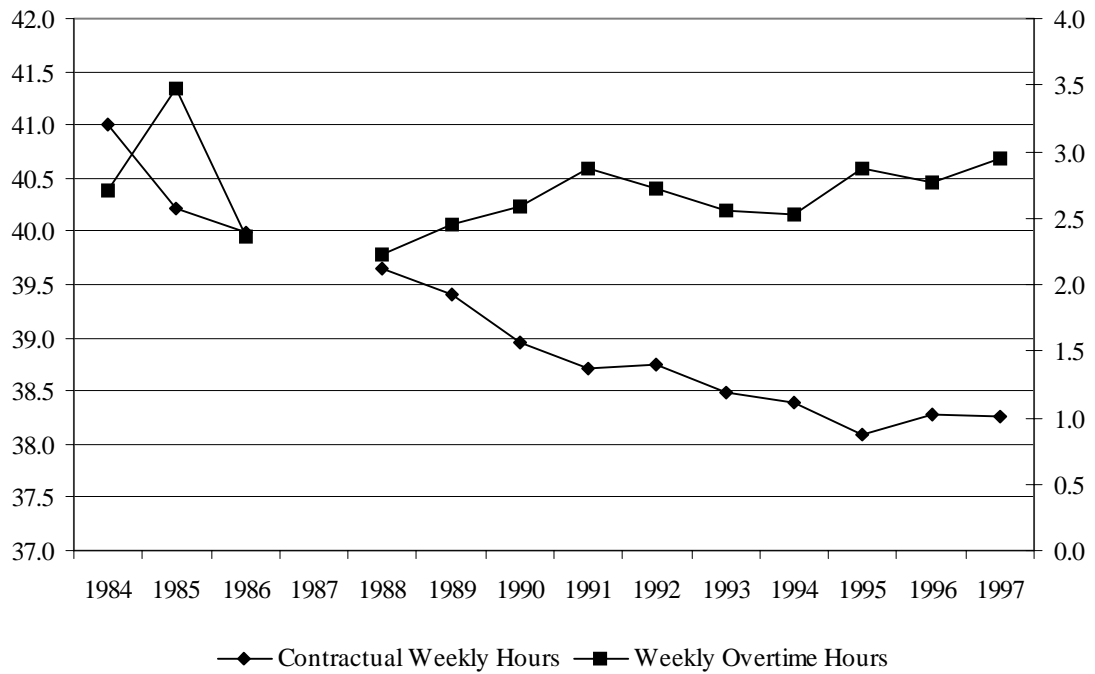


Figure 3(c): Skilled Workers



Source: German Socioeconomic Panel, own calculations. The numbers refer to full-time working male West Germans which are not employed as civil servants.

**Figure 4:**  
**Contractual Hours and Overtime Hours,**  
**German Socioeconomic Panel (1984-1997)**



Source: German Socioeconomic Panel, own calculations.

The numbers refer to full-time working male West Germans which are not employed as civil servants.

**Table 1:**  
**Overtime Incidence and Hours**

	<b>Tobit</b>			
	Coefficient	Marginal effect on:		
		E(h)	E(h   h>0)	Pr(h>0)
Age	0.354 <sup>††</sup> (0.047)	0.1803	0.1304	0.0205
Age <sup>2</sup>	-0.004 <sup>††</sup> (0.001)	-0.0022	-0.0016	-0.0003
Years of Schooling	-0.060 (0.251)	-0.0309	-0.0223	-0.0035
Years of Schooling <sup>2</sup>	0.009 (0.009)	0.0044	0.0032	0.0005
Tenure	-0.131 <sup>††</sup> (0.020)	-0.0668	-0.0483	-0.0076
Tenure <sup>2</sup> * 10 <sup>-2</sup>	0.145 <sup>††</sup> (0.056)	0.0740	0.0535	0.0084
Married	0.474 <sup>††</sup> (0.151)	0.2416	0.1748	0.0275
Firm Size < 200	0.564 <sup>††</sup> (0.124)	0.2877	0.2081	0.0327
Straight Working Hours	0.034 <sup>††</sup> (0.020)	0.0173	0.0125	0.0020
Skilled Blue Collar	0.508 <sup>††</sup> (0.189)	0.2591	0.1874	0.0294
Unskilled White Collar	1.860 <sup>††</sup> (0.303)	0.9486	0.6861	0.1078
Skilled White Collar	2.572 <sup>††</sup> (0.206)	1.3119	0.9489	0.1491
Time Trend	0.088 <sup>††</sup> (0.015)	0.0447	0.0324	0.0051
Real Output Growth	-0.006 (0.037)	-0.0033	-0.0024	-0.0004
Positive Real Output Growth	0.128 <sup>††</sup> (0.058)	0.0652	0.0472	0.0074
Constant	-11.681 <sup>††</sup> (2.000)	-	-	-
$\sigma$	6.879 <sup>††</sup> (0.057)	-	-	-
Log-likelihood		-35,162.339		
$\chi^2(15)$		1,156.32		
Pseudo-R <sup>2</sup>		0.016		
Observations		17,332		
Censored Observations		8,491		

Note: Robust standard errors in parentheses.

<sup>†</sup>: statistically significant at least at the 10%-level.

<sup>††</sup>: statistically significant at least at the 5%-level.

The Pseudo-R<sup>2</sup> is defined as  $1 - L_1/L_0$ , where  $L_1$  refers to the log-likelihood for the full model and  $L_0$  refers to the log-likelihood which includes only the constant. (See Veall and Zimmermann, 1996, for an overview of different Pseudo-R<sup>2</sup> measures.)



**Table 2:**  
**Overtime Compensation: Marginal Effects**

	Overtime Compensation:				
	No Overtime	Paid	Leisure	Partly Paid, Partly Leisure	Unpaid
Age	-0.016 <sup>††</sup> (0.003)	0.012 <sup>††</sup> (0.005)	-0.003 (0.004)	0.0001 (0.003)	0.007 <sup>††</sup> (0.002)
Age <sup>2</sup> * 10 <sup>-2</sup>	0.022 <sup>††</sup> (0.004)	-0.017 <sup>††</sup> (0.006)	0.004 (0.005)	-0.003 (0.004)	-0.006 <sup>††</sup> (0.003)
Years of Schooling	-0.053 <sup>††</sup> (0.020)	-0.064 <sup>††</sup> (0.030)	0.038 (0.027)	0.082 <sup>††</sup> (0.022)	-0.003 (0.013)
Years of Schooling <sup>2</sup> * 10 <sup>-2</sup>	0.182 <sup>††</sup> (0.076)	0.171 (0.116)	-0.151 (0.101)	-0.257 <sup>††</sup> (0.080)	0.055 (0.048)
Tenure	0.004 <sup>††</sup> (0.002)	-0.005 <sup>††</sup> (0.002)	0.001 (0.002)	0.002 (0.002)	-0.002 <sup>††</sup> (0.001)
Tenure <sup>2</sup> * 10 <sup>-2</sup>	-0.010 <sup>††</sup> (0.004)	0.014 <sup>††</sup> (0.006)	-0.003 (0.006)	-0.006 (0.004)	0.005 <sup>††</sup> (0.002)
Married	-0.022 <sup>†</sup> (0.012)	0.025 (0.017)	-0.027 <sup>†</sup> (0.015)	0.011 (0.011)	0.013 <sup>†</sup> (0.007)
Firm Size < 200	-0.016 (0.011)	0.045 <sup>††</sup> (0.014)	-0.039 <sup>††</sup> (0.013)	-0.033 <sup>††</sup> (0.010)	0.043 <sup>††</sup> (0.006)
Straight Working Hours	-0.001 (0.002)	-0.001 (0.002)	-0.003 <sup>†</sup> (0.002)	-0.001 (0.001)	0.006 <sup>††</sup> (0.001)
Skilled Blue Collar	-0.036 <sup>††</sup> (0.013)	-0.033 <sup>†</sup> (0.018)	0.020 (0.019)	0.045 <sup>††</sup> (0.016)	0.004 (0.014)
Unskilled White Collar	-0.029 (0.021)	-0.260 <sup>††</sup> (0.031)	0.107 <sup>††</sup> (0.028)	0.086 <sup>††</sup> (0.023)	0.096 <sup>††</sup> (0.016)
Skilled White Collar	-0.051 <sup>††</sup> (0.016)	-0.325 <sup>††</sup> (0.022)	0.136 <sup>††</sup> (0.021)	0.041 <sup>††</sup> (0.017)	0.199 <sup>††</sup> (0.014)
Time Trend	-0.010 <sup>††</sup> (0.001)	-0.010 <sup>††</sup> (0.001)	0.010 <sup>††</sup> (0.001)	0.010 <sup>††</sup> (0.001)	-0.001 (0.001)
Real Output Growth	0.005 <sup>††</sup> (0.002)	-0.012 <sup>††</sup> (0.002)	0.014 <sup>††</sup> (0.003)	-0.005 <sup>††</sup> (0.002)	-0.002 (0.001)
Positive Real Output Growth	-0.010 <sup>††</sup> (0.004)	0.007 (0.004)	-0.010 <sup>††</sup> (0.004)	0.009 <sup>††</sup> (0.003)	0.004 <sup>††</sup> (0.002)
Constant	0.730 <sup>††</sup> (0.156)	0.770 <sup>††</sup> (0.228)	-0.183 (0.198)	-0.707 <sup>††</sup> (0.167)	-0.610 <sup>††</sup> (0.110)
Number of Observations	2,691	6,132	3,609	2,686	2,214
Log-likelihood			-23,608.65		
$\chi^2(60)$			1588.77		
Pseudo-R <sup>2</sup>			0.113		
Total Number of Observations			17,332		

Note: Robust standard errors in parentheses.

†: statistically significant at least at the 10%-level.

††: statistically significant at least at the 5%-level.

The Pseudo-R<sup>2</sup> is defined as  $1 - L_1/L_0$ , where  $L_1$  refers to the log-likelihood for the full model and  $L_0$  refers to the log-likelihood which includes only the constant. (See Veall and Zimmermann, 1996, for an overview of different Pseudo-R<sup>2</sup> measures.)

The marginal effects for dummy variables shows the effect on the respective probabilities when the variables changes from 0 to 1.

**Appendix Table 1:  
Descriptive Statistics**

	Mean	Standard Deviation
Age	39.555	11.162
Years of Schooling	11.479	2.217
Tenure	12.094	10.056
Unskilled Blue Collar Worker	0.155	0.362
Skilled Blue Collar Worker	0.372	0.483
Unskilled White Collar Worker	0.053	0.223
Skilled White Collar Worker	0.420	0.494
Married	0.713	0.453
Firm Size < 200	0.421	0.494
Real Growth of Output	1.812	3.304
Positive Real Growth of Output	2.499	2.035
Straight Working Hours	39.189	3.002
Overtime Hours	2.701	4.280
Overtime (Yes=1)	0.845	0.362
<i>Overtime Compensation:</i>		
Paid	0.354	0.478
Leisure	0.208	0.406
Partly Paid, Partly Leisure	0.155	0.362
Unpaid	0.128	0.334
Observations	17,332	

**Appendix Table 2:**  
**Estimations Results of Multinomial Logit**

	<b>Overtime Compensation:</b>			
	Paid	Leisure	Partly Paid, Partly Leisure	Unpaid
Age	0.124 <sup>††</sup> (0.026)	0.078 <sup>††</sup> (0.029)	0.092 <sup>††</sup> (0.031)	0.197 <sup>††</sup> (0.042)
Age <sup>2</sup> *10 <sup>-1</sup>	-0.018 <sup>††</sup> (0.003)	-0.011 <sup>††</sup> (0.004)	-0.015 <sup>††</sup> (0.004)	-0.022 <sup>††</sup> (0.005)
Years of Schooling	0.127 (0.158)	0.471 <sup>††</sup> (0.186)	0.784 <sup>††</sup> (0.197)	0.266 (0.240)
Years of Schooling <sup>2</sup>	-0.006 (0.006)	-0.017 <sup>††</sup> (0.007)	-0.026 <sup>††</sup> (0.007)	-0.002 (0.009)
Tenure	-0.035 <sup>††</sup> (0.012)	-0.016 (0.014)	-0.012 (0.014)	-0.054 <sup>††</sup> (0.018)
Tenure <sup>2</sup> *10 <sup>-2</sup>	0.096 <sup>††</sup> (0.033)	0.046 (0.039)	0.020 (0.040)	0.133 <sup>††</sup> (0.046)
Married	0.218 <sup>††</sup> (0.097)	0.009 (0.106)	0.217 <sup>††</sup> (0.108)	0.258 <sup>†</sup> (0.135)
Firm Size < 200	0.227 <sup>††</sup> (0.082)	-0.094 (0.093)	-0.117 (0.096)	0.470 <sup>††</sup> (0.117)
Straight Working Hours	0.003 (0.013)	-0.005 (0.013)	0.002 (0.014)	0.093 <sup>††</sup> (0.017)
Skilled Blue Collar	0.143 <sup>††</sup> (0.091)	0.350 <sup>††</sup> (0.129)	0.539 <sup>††</sup> (0.131)	0.372 (0.237)
Unskilled White Collar	-0.546 <sup>††</sup> (0.163)	0.751 <sup>††</sup> (0.189)	0.749 <sup>††</sup> (0.207)	1.884 <sup>††</sup> (0.271)
Skilled White Collar	-0.708 <sup>††</sup> (0.123)	0.997 <sup>††</sup> (0.148)	0.648 <sup>††</sup> (0.152)	2.701 <sup>††</sup> (0.219)
Time Trend	0.033 <sup>††</sup> (0.008)	0.105 <sup>††</sup> (0.009)	0.118 <sup>††</sup> (0.010)	0.052 <sup>††</sup> (0.011)
Real Output Growth	-0.061 <sup>††</sup> (0.016)	0.031 (0.020)	-0.056 <sup>††</sup> (0.018)	-0.053 <sup>††</sup> (0.021)
Positive Real Output Growth	0.078 <sup>††</sup> (0.027)	0.017 (0.034)	0.113 <sup>††</sup> (0.032)	0.117 <sup>††</sup> (0.037)
Constant	-2.091 <sup>††</sup> (1.215)	-5.035 <sup>††</sup> (1.401)	-8.355 <sup>††</sup> (1.507)	-13.362 <sup>††</sup> (1.997)
Log-likelihood		-23,608.653		
$\chi^2(60)$		1,773.58		
Pseudo-R <sup>2</sup>		0.113		
Number of Observations	6,132	3,609	2,686	2,214
Total Number of Observations		17,332		

Note: Robust standard errors in parenthesis.

†: statistically significant at least at the 10%-level.

††: statistically significant at least at the 5%-level.

The Pseudo-R<sup>2</sup> is defined as  $1 - L_1/L_0$ , where  $L_1$  refers to the log-likelihood for the full model and  $L_0$  refers to the log-likelihood which includes only the constant. (See Veall and Zimmermann, 1996, for an overview of different Pseudo-R<sup>2</sup> measures)