

Scholl, Lynn; Elagaty, Mohamed; Ledezma-Navarro, Bismarck; Zamora, Edgar;  
Miranda-Moreno, Luis

## Working Paper

A surrogate video-based safety methodology for diagnosis and  
evaluation of low-cost pedestrian-safety countermeasures: The case of  
Cochabamba, Bolivia

IDB Working Paper Series, No. IDB-WP-1054

## Provided in Cooperation with:

Inter-American Development Bank (IDB), Washington, DC

*Suggested Citation:* Scholl, Lynn; Elagaty, Mohamed; Ledezma-Navarro, Bismarck; Zamora, Edgar;  
Miranda-Moreno, Luis (2019) : A surrogate video-based safety methodology for diagnosis and  
evaluation of low-cost pedestrian-safety countermeasures: The case of Cochabamba, Bolivia, IDB  
Working Paper Series, No. IDB-WP-1054, Inter-American Development Bank (IDB), Washington, DC,  
<https://doi.org/10.18235/0001942>

This Version is available at:

<https://hdl.handle.net/10419/208200>

### Standard-Nutzungsbedingungen:

Die Dokumente auf EconStor dürfen zu eigenen wissenschaftlichen  
Zwecken und zum Privatgebrauch gespeichert und kopiert werden.

Sie dürfen die Dokumente nicht für öffentliche oder kommerzielle  
Zwecke vervielfältigen, öffentlich ausstellen, öffentlich zugänglich  
machen, vertreiben oder anderweitig nutzen.

Sofern die Verfasser die Dokumente unter Open-Content-Lizenzen  
(insbesondere CC-Lizenzen) zur Verfügung gestellt haben sollten,  
gelten abweichend von diesen Nutzungsbedingungen die in der dort  
genannten Lizenz gewährten Nutzungsrechte.

### Terms of use:

*Documents in EconStor may be saved and copied for your personal  
and scholarly purposes.*

*You are not to copy documents for public or commercial purposes, to  
exhibit the documents publicly, to make them publicly available on the  
internet, or to distribute or otherwise use the documents in public.*

*If the documents have been made available under an Open Content  
Licence (especially Creative Commons Licences), you may exercise  
further usage rights as specified in the indicated licence.*



<https://creativecommons.org/licenses/by-nc-nd/3.0/igo/legalcode>

IDB WORKING PAPER SERIES N° IDB-WP-01054

# A Surrogate Video-Based Safety Methodology for Diagnosis and Evaluation of Low-Cost Pedestrian-Safety Countermeasures:

The Case of Cochabamba, Bolivia

Lynn Scholl  
Mohamed Elagaty  
Bismarck Ledezma-Navarro  
Edgar Zamora  
Luis Miranda-Moreno

# A Surrogate Video-Based Safety Methodology for Diagnosis and Evaluation of Low-Cost Pedestrian- Safety Countermeasures:

## The Case of Cochabamba, Bolivia

Lynn Scholl  
Mohamed Elagaty  
Bismarck Ledezma-Navarro  
Edgar Zamora  
Luis Miranda-Moreno

Lynn Scholl: Transport Specialist, Inter-American Development Bank  
Mohamed Elagaty: Doctoral Student, Department of Civil Engineering, McGill University  
Bismarck Ledezma-Navarro: Doctoral Student, Department of Civil Engineering, McGill University  
Edgar Zamora: Transport Specialist, Inter-American Development Bank  
Luis Miranda-Moreno: Associate Professor, Department of Civil Engineering, McGill University

Cataloging-in-Publication data provided by the  
Inter-American Development Bank  
Felipe Herrera Library

A surrogate video-based safety methodology for diagnosis and evaluation of low-cost pedestrian-safety countermeasures: the case of Cochabamba, Bolivia / Lynn Scholl, Mohamed Elagaty, Bismarck Ledezma-Navarro, Edgar Zamora, Luis Miranda-Moreno. p. cm. — (IDB Working Paper ; 1054)

Includes bibliographic references.

1. Traffic monitoring-Bolivia-Data processing. 2. Traffic safety-Bolivia-Data processing. 3. Roads-Bolivia-Interchanges and intersections-Data processing. 4. Pedestrian crosswalks-Bolivia-Safety measures. I. Scholl, Lynn. II. Elagaty, Mohamed. III. Ledezma-Navarro, Bismarck. IV. Zamora, Edgar. V. Miranda-Moreno, Luis. VI. Inter-American Development Bank. Transport Division. VII. Series. IDB-WP-1054

<http://www.iadb.org>

Copyright © 2019 Inter-American Development Bank. This work is licensed under a Creative Commons IGO 3.0 Attribution-NonCommercial-NoDerivatives (CC-IGO BY-NC-ND 3.0 IGO) license (<http://creativecommons.org/licenses/by-nc-nd/3.0/igo/legalcode>) and may be reproduced with attribution to the IDB and for any non-commercial purpose, as provided below. No derivative work is allowed.

Any dispute related to the use of the works of the IDB that cannot be settled amicably shall be submitted to arbitration pursuant to the UNCITRAL rules. The use of the IDB's name for any purpose other than for attribution, and the use of IDB's logo shall be subject to a separate written license agreement between the IDB and the user and is not authorized as part of this CC-IGO license.

Following a peer review process, and with previous written consent by the Inter-American Development Bank (IDB), a revised version of this work may also be reproduced in any academic journal, including those indexed by the American Economic Association's EconLit, provided that the IDB is credited and that the author(s) receive no income from the publication. Therefore, the restriction to receive income from such publication shall only extend to the publication's author(s). With regard to such restriction, in case of any inconsistency between the Creative Commons IGO 3.0 Attribution-NonCommercial-NoDerivatives license and these statements, the latter shall prevail.

Note that link provided above includes additional terms and conditions of the license.

The opinions expressed in this publication are those of the authors and do not necessarily reflect the views of the Inter-American Development Bank, its Board of Directors, or the countries they represent.



## **ABSTRACT**

Due to a lack of reliable data collection systems, traffic fatalities and injuries are often under-reported in developing countries. Recent developments in surrogate road safety methods and video analytics tools offer an alternative approach that can be both lower cost and more time efficient when crash data is incomplete or missing. However, very few studies investigating pedestrian road safety in developing countries using these approaches exist. This research uses an automated video analytics tool to develop and analyze surrogate traffic safety measures and to evaluate the effectiveness of temporary low-cost countermeasures at selected pedestrian crossings at risky intersections in the city of Cochabamba, Bolivia. Specialized computer vision software is used to process hundreds of hours of video data and generate data on road users' speed and trajectories. We find that motorcycles, turning movements, and roundabouts, are among the key factors related to pedestrian crash risk, and that the implemented treatments were effective at four-legged intersections but not at traditional-design roundabouts. This study demonstrates the applicability of the surrogate methodology based on automated video analytics in the Latin American context, where traditional methods are challenging to implement. The methodology could serve as a tool to rapidly evaluate temporary treatments before they are permanently implemented and replicated.

**JEL classifications:** L91, R41

**Keywords:** Traffic safety, pedestrians, surrogate measures, machine learning, developing countries.

## **Acknowledgments**

The authors would like to thank the following people for their valuable contributions to this paper. The authors are grateful to the planners and transport engineers in the municipal government of Cochabamba, Bolivia for their collaboration throughout the project and help with the identification of intersections sites and project coordination. BRISK Synergies was instrumental in video data processing and generation. Shirley Cañete, Ana María Pinto, and Marisela Ponce de León, at the Inter-American Development Bank (IDB) provided very useful comments and ongoing support in the project implementation.

## Acronyms

AASHTO	American Association of State Highway and Transportation Officials
GDP	Gross Domestic Product
ICES	<i>Iniciativa de Ciudades Emergentes y Sostenibles</i> (Sustainable and Emerging Cities Initiative)
ITF	International Transport Forum
km/h	Kilometers per hour
NHTSA	National Highway Traffic Safety Administration
PAHO	Pan American Health Organization
PET	Post-encroachment Time
RI	Risk Index
TTC	Time to Collision
VS <sub>85</sub>	85 <sup>th</sup> percentile of vehicle speed
WHO	World Health Organization

## 1. INTRODUCTION

Each year approximately 1.3 million people die in traffic crashes around the world and between 20 and 50 million people are injured or disabled. Road traffic deaths account for 25% of all injury deaths worldwide, with traffic injuries being the 8<sup>th</sup> cause of death for people of all ages (WHO, 2018). In addition, global road crashes have been estimated to cost US\$518 billion, with the costs in low-income countries reaching US\$ 65 billion-representing between 1% and 2% of their GDP. While all the regions of the world experience road traffic injuries, low-and middle-income countries, including Latin American countries, are disproportionately affected. Approximately 90% of road traffic fatalities are estimated to occur in low and middle-income countries, although these countries only account for 54% of vehicles registered in the world (WHO, 2018). With an estimated average rate of 27.5 deaths per 100,000 population in low-income countries, traffic fatality risk is more than 3 times higher in low-income countries than in high-income countries where the average rate is 8.3 deaths 100,000 population (WHO, 2018). In these countries, road traffic injuries are the first-leading cause of death among children aged 5–14 years and young people aged 15–29 years. In many low-income and middle-income countries, the burden of traffic-related injuries is such that they represent between 30% and 86% of all trauma admissions.

The Latin America and the Caribbean region has one of the highest roadway fatality rates in the world, with approximately 17 traffic-related fatalities per 100,000 inhabitants, compared to less than 10 fatalities per 100,000 inhabitants in high-income countries (PAHO, 2016). The costs of traffic incidents in the region are estimated to represent approximately 1% to 2% of GDP. These rates are expected to climb to 24 fatalities per 100,000 inhabitants by 2020, leading the region to have the highest roadway fatality rate in the world if action is not taken. Among other factors, the high rate of traffic fatalities in the region is associated with inadequate vehicle safety laws, coupled with weak traffic law enforcement and post-crash response mechanisms.

Active transportation, typically in the form of walking or cycling, is an essential mode of transportation in developing countries, where walking accounts for between 9% and 20% of all trips. Walking is a particularly prevalent mode among low-income populations (Warburton et al., 2006). Physical activity such as walking and cycling is also associated with many individual and public benefits, such as improved health (Jeon et al., 2007; Monninkhof et al., 2007). In addition, the promotion of active forms of travel may be an effective means of promoting modal shifts towards more environmentally sustainable transport modes and reducing traffic congestion (Ogilvie et al., 2004). However, most deaths occur among vulnerable road users including pedestrians, passengers, cyclists, users of motorized two-wheelers, and occupants of buses and minibuses. Non-motorized road users (pedestrians and cyclists) represent more than 25% of the fatalities in Latin American countries, with the share rising to more than 50% in some countries (ITF, 2017), in comparison to 18% in the United States (The League of American Bicyclists, 2018). Pedestrians, particularly in low-income countries, are highly vulnerable road users. For example, pedestrians account for 40% of all the traffic deaths in Africa and 22% in Latin America. They face a greater risk of injury and are involved in a large share of fatal collisions with vehicles relative to other modes (Mohan, 2002; ITF, 2017). In the face of increasing pressure on cities associated with rapid urban growth and motorization, road traffic injuries and fatalities, particularly for vulnerable users, are expected to increase (Roquel & Masoumil, 2016).

While many developed countries have established road safety programs, action plans, and methods for their implementation (e.g. "Vision Zero"), such programs are often absent or weak in Latin America. This is attributed to several factors. Crash data and knowledge needed for designing effective traffic safety programs frequently do not exist or are limited in quality in Latin American countries (Ahmed et al., 2017). Poor quality or lack of infrastructure and institutional

arrangements impedes the development and management of adequate crash notification and registration systems, and government entities often lack the economic resources needed for the acquisition of the tools needed for traffic safety analysis and evaluation. As a result, levels of underreporting of traffic incidents are estimated to reach as high as 50% (Ahmed et al., 2017).

Moreover, traditional crash-based safety analysis methods have several weaknesses. As data is required for the identification of risk factors and traffic safety hotspots and the evaluation of countermeasures, poor data collection, and analysis systems present a key challenge to the design, implementation, monitoring, and evaluation of road safety programs. In the case of pedestrian injuries, it can take years to gather sufficient crash data for the identification of mechanisms and the diagnosis and evaluation of countermeasure effectiveness (de Ceunynck, 2017; Pombo & Jing, 2017; Lord & Miranda-Moreno, 2008). Finally, small sample sizes and incomplete crash data, coined as the low mean problem, can adversely affect the goodness-of-fit of statistical models traditionally used in research, challenging the ability to identify causal factors leading to collisions (Lord & Miranda-Moreno, 2008).

Instead of using a reactive crash-based approach, recent developments in surrogate road safety methods and video analytic tools offer an alternative approach that can lower the monetary and time costs of traffic safety analysis. These measures utilize data on road user interactions or conflicts that do not turn into crashes but can be observed frequently. They can be divided into measures of time or distance proximity, such as post-encroachment time (PET) or time-to-collision (TTC), and event severity, such as speeds, trajectory angles, type of road users involved, among others. This approach is particularly attractive in cases where traffic collision data is incomplete, missing, or the number of crashes observed is too small for causal inference (Lord & Miranda-Moreno, 2008). It can also provide a rapid analysis in the stages of diagnosis and in before-and-after studies, allowing for the development and implementation of pro-active road safety programs and strategies, enabling authorities to act before collisions occur (Guo et al., 2010).

Most studies applying surrogate safety tools focus on the developed countries context, which can vary dramatically from that of developing countries (Mahmud et al., 2017). Traffic conditions tend to be more variable and chaotic, and transportation infrastructure, particularly for non-motorized modes, tends to be lacking or of very low quality in developing countries, leading to distinct traffic patterns and thus factors leading to injury collisions (Mahmud et al., 2017). For example, rapid unplanned urban development can lead to city blocks being infilled, leaving little to no room for sidewalks and a lack on of cycle lanes can leave pedestrians and cyclists to travel in roads mixed with vehicle traffic (Fay, et al., 2017). Yet, there is a paucity of research applying these methods to document pedestrian road safety or the key factors contributing to road injuries and the mechanics leading to crashes in these regions (Mahmud et al., 2017). Although research on the causes of injury crashes and the effectiveness of measures to reduce them is key to the effective targeting of limited resources for traffic safety-related infrastructure and programs, the effectiveness of pedestrian road safety countermeasures in the context of developing countries has been rarely documented (Constant and Lagarde, 2010).

The objective of this paper is to develop and test a methodology for the implementation of a surrogate-based traffic safety analysis that can aid in the diagnosis and evaluation of countermeasures to improve pedestrian safety in Latin American countries. The study develops and applies a methodology for pedestrian safety analysis using a video analytics tool and surrogate safety measures. It then identifies the contributing factors that are associated with high-risk vehicle-pedestrian interactions at three common types of junctions and evaluate low-cost countermeasures with using the surrogate measures and before-after approach.



To this end, we implemented a pilot project involving a sample of intersections in the city of Cochabamba in central Bolivia. The fourth-largest city in the country, with an urban population of more than 600,000 citizens and a large indigenous population, urban mobility in the city is highly dependent on public transit and walking, given that a substantial portion of the population is low-income individuals. Nearly 2 million trips are made during a weekday, with 53% of those made by public transportation, and 24% by walking (ICES, 2013). Over 4,000 crashes of which 22% involved a pedestrian, were reported in the metropolitan area of Cochabamba in 2012, representing 10% of those at the national level in the same year. The area also has one of the highest mortality rates for pedestrians in the country; for every five crashes that were fatal, two involved a pedestrian (IDB, 2015).

This paper is structured as follows. Section two presents a review of the literature. Sections three and four explain the data collection and methodology used for the analysis. Section five presents the results and analysis of the data and section six closes with conclusions and reflections on policy implications of the research findings.

## **2. LITERATURE REVIEW**

This literature review is divided into three sections. Section 2.1 reviews the literature on pedestrian safety in the context of developing countries, including Latin America. Section 2.2 discusses surrogate safety methodologies applied to crosswalk safety. Section 2.3 explores the literature on impacts of pedestrian crossing and traffic calming treatments in the context of low-medium income economies.

### **2.1. Pedestrian Safety in the Context of Developing Countries**

Past research on pedestrian safety at crosswalks in developing countries (Ali & Najafi, 2013; Asaithambi et al., 2016; Ferenchak, 2016; Hamed, 2001; Quistberg et al., 2014) finds a high rate of pedestrian-vehicle conflicts and crashes in Latin American and Caribbean cities.

This is attributed in part to a greater variety and intensity of traffic mix and to a lack of infrastructure that provides separation between fast motorized and slow-moving non-motorized road user groups. Given the frequent lack of adequate pedestrian infrastructure, pedestrians often wait in the street instead of on the sidewalk before crossing, leading to increased exposure. Moreover, both vehicles and pedestrians frequently do not comply with traffic rules: vehicles frequently fail to yield to pedestrians, and pedestrians tend to cross streets outside of crosswalk boundaries (Poó et al., 2018).

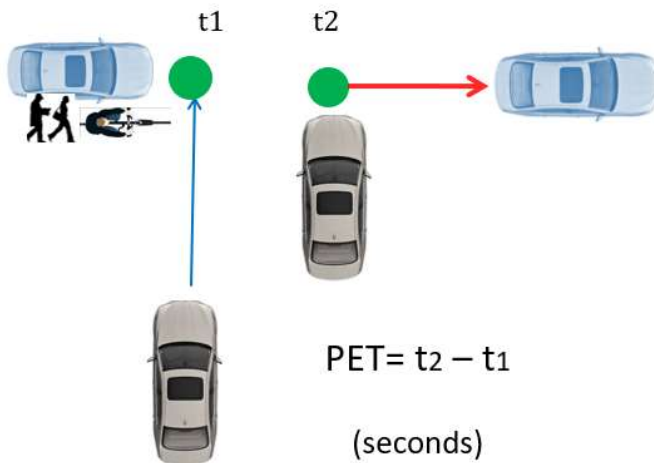
Although the safety of pedestrians is a heavily researched topic in developing countries, limited work has examined vehicle-pedestrian interactions and conflicts, and the underlying factors that cause collisions. Pedestrian safety studies have been conducted mainly using crash data (fatal and non-fatal accidents), which as discussed before, can suffer from several issues including underreporting, location errors, and misclassification, among others, leading to possible biases and errors in study results and conclusions (Lord and Miranda-Moreno, 2008). Among the few studies, Diogenes and Lindau (2010) analyzed pedestrian crashes in Porto Alegre, Brazil, to evaluate the potential risk of pedestrian crashes at midblock crossings with and without traffic signals using a Poisson regression model. The authors found that pedestrian crash risk is influenced by the presence of busways and bus stops, road width, traffic volume and the number of lanes. Despite the large body of literature on pedestrian safety, there is a lack of research investigating pedestrian safety in the Latin American context. In part, as mentioned previously, this is due to the lack of crash data in this region.

## 2.2. Surrogate Safety Measures and Methodologies

Due to the limitations of using crash data, many studies have attempted to use surrogate safety methods to investigate pedestrian-vehicle interactions and conflicts (Johnsson et al., 2018; Mahmud et al., 2017; Peesapati et al., 2013), with numerous surrogate safety indicators having been developed in the last few decades (de Ceunynck, 2017). Methods for surrogate safety analysis of traffic conflicts can be categorized as either event-based techniques or as traffic flow techniques. Analyses that consider the occurrence or severity of individual “near-crash” events (including individual conflicts) are considered event-based techniques. Other surrogate safety techniques may use aggregate measures of traffic flow, including traffic volumes and speeds.

Common event-based surrogate safety measures of traffic risk include time-to-collision (TTC) and post-encroachment time (PET). TTC is “the time required for two vehicles to collide if they continue at their present velocity and on the same path” (Van der Horst et al., 2014) or, more generally, if their movements remain unchanged. However, this technique can be modified to include variations in speed and direction using motion prediction. TTC is measured continuously and, depending on the choice of motion prediction method, will yield a vector of measurements over time when there is a collision course. PET is defined as the difference in time between the first and second road users (vehicles or nonmotorized) arriving at the potential conflict point (Peesapati et al., 2013) (Figure 1). It is based on observed trajectories and can be computed only if trajectories intersect. Both PET and TTC can usually be computed for the same interaction and are complementary in the analysis of conflicts (Van der Horst et al., 2014). PET is better suited for interactions involving turning movements (which assumes a constant velocity) and is also faster to compute than TTC (with more realistic motion prediction methods).

**Figure 1. Post Encroachment Time**



Source: This study

Conflicts between pedestrians and vehicles may be divided into discrete severity levels based on different PET and TTC thresholds. Traffic conflicts are defined as an event involving the interaction of two or more road users in a traffic flow situation in which one or both road users must take evasive action such as braking or swerving to avoid a collision (FHWA, 2008).

Surrogate risk measures should ideally incorporate both collision (or crash) risk and injury severity risk associated with conflicts (Johnsson et al., 2018). Vehicle speed is a key predictor of the crash risk potential and the likelihood of injury in the case of a collision (de Ceunynck, 2017). PET is particularly suited to

predicting collisions at pedestrian crossings (Peesapati et al., 2013) and those associated with interactions involving turning movements PET is also faster to compute than TTC (with more realistic motion prediction methods). Several correlation studies using data from actual crashes and surrogate collision risk measures have found both TTC and PET to be reliable predictors of collision risk (7 seconds for PET and 5 seconds in the case of TTC) (Johnsson et al., 2018; Peesapati et al., 2013).

With the improvement of computer power, computer vision techniques have become a useful tool

for such surrogate safety analysis. Although rarely used in Latin American countries, the development of computer vision techniques has created the possibility of investigating conflicts and crossing behaviors in a more precise and microscopic way (Fu et al., 2018; Mahmud et al., 2017; St-Aubin et al., 2016). In addition, the relationship between traffic conflicts and actual crash outcomes has been demonstrated in several recent studies that found that traffic conflicts provide a useful insight into what leads to collisions (Mahmud et al., 2017; Ozbay et al., 2009; El-Basyouny, 2013; Sayed & Zaki, 2013; Songchitruksa, 2007; Yang, 2012). Microscopic data is extracted from video that has been processed and extracted as user trajectories in order to identify patterns in traffic events (Archer, 2005; El-Basyouny and Sayed, 2013; Ozbay et al., 2009; Peesapati et al., 2014; Sayed et al., 2013; Songchitruksa and Tarko, 2007; and Yang, 2012).

The purpose of the techniques is to collect the necessary data to help with the prediction of conflicts or near collisions (defined as an event involving the interaction of two or more road users, other in a traffic flow situation in one or both road users must take evasive action such as braking or swerving to avoid a collision (Vanparijs, 2015). The development of these techniques has created the possibility of investigating conflicts and crossing behaviors in a more precise and microscopic way than with crash data (Mahmud et al., 2017; Poó et al., 2018; Fu et al., 2018).

As some examples, video analysis has been used to analyze collision on right-turn smart channels (Sacchi & Sayed, 2013), to gain understanding of collision factors (Saunier & Agard, 2011), to automatically collect cyclist data (Zaki & Cheung, 2013), to analyze cyclist behavior when there are discontinuities on a cyclist network (Nabavi-Niaki et al., 2016), and develop conflict-based safety performance functions for signalized intersections (Essa, 2018). Its capacity to compute large amount of road users has been demonstrated in a study of nearly 40 roundabouts (St-Aubin et al., 2015). In addition, the relationship between surrogate safety measures based upon traffic conflicts and actual crash outcomes has been tested in several recent studies that found that traffic conflicts provide a useful insight into what leads to collisions (Archer, 2005; Ozbay et al., 2009; El-Basyouny and Sayed, 2013; Ozbay et al., 2009; Peesapati et al., 2014; Sayed et al., 2013; Songchitruksa and Tarko, 2007; and Yang, 2012). To the authors' knowledge, no prior studies have documented the feasibility of this approach in low-income countries using surrogate safety analysis.

### **2.3. Impacts of Pedestrian Crossing and Traffic Calming Treatments**

In developed countries, a wide variety of countermeasures have been investigated to address pedestrian safety issues. Most of these include before-after studies investigating the effectiveness of treatments applied to sites strategically selected using guidelines such as those published by the American Association of State Highway and Transportation Officials manual (AASHTO, 2010) or others. Effectiveness is then evaluated by comparing the crash frequency and/or rates before and after the implementation of countermeasures. The effectiveness of the measures depends on the road and traffic conditions and the compliance and enforcement of traffic rules, among other factors. Infrastructure measures such as installing traffic lights and pedestrian signals, extending curbs, building raised medians on multi-lane roads and improving lighting and visibility have been found to be effective safety measures to varying degrees (Mead & Bushell, 2014).

In developing countries, financial constraints make particularly salient the identification of low-cost treatments so that they can be replicated in large numbers (at the city scale). Nevertheless, in Latin American countries, research on treatment effectiveness is less prevalent. Several before-after studies have been documented in developed countries using surrogate safety analysis (de Ceunynck, 2017; Mahmud et al., 2017; Johnson et al., 2018; Peesapati et al., 2013); however, to the authors' knowledge; no studies have documented the feasibility of this approach in low-income countries. Additionally, few methodological approaches have been developed to identify risk factors and evaluate the effectiveness of countermeasures in the context of little to

no available crash data. Several before-after studies have been documented in developed countries using surrogate safety analysis, however, to the authors' knowledge no studies have documented the feasibility of this approach in low-income countries. Moreover, in developing countries, financial constraints make particularly salient the identification of low-cost treatments so that they can be replicated in large numbers (at the city scale). The evaluation of temporary countermeasure designs using rapid and low-cost surrogate analysis, before the installation of permanent treatments, can lower the potential risk of misallocation of scarce resources for road safety treatments and can potentially improve overall program effectiveness. Accordingly, this study seeks to evaluate the impact of low-cost and temporary changes to the road environment in a short time period using a surrogate safety approach.

### **3. METHODOLOGY**

The research method was implemented in three stages: 1) site selection and data collection, 2) video processing, and 3) safety analysis (Figure 2).

#### **3.1. Identification and Selection of Sites**

The selection of sites (intersections) was carried out through the participation of a working group that included transportation engineers and planners working for the local government of the city of Cochabamba and road safety experts from the Inter-American Development Bank (IDB). A preliminary long list of nine locations was first defined by the local authorities. Three of these sites were roundabouts and the remainder were intersections. After a field visit, a final shortlist of sites was selected for the diagnosis. The site selection sought to include the three most common types of intersections in the city: T intersections, at 4-legged non-signalized and signalized intersections, and roundabouts. In order to observe the maximum number of interactions and have a wide range of traffic conditions, the presence of high pedestrian activity and vehicle traffic were also criteria considered in the site selection as well as the availability of feasible locations to install cameras at the appropriate height and angles to capture frequented pedestrian crossings. For the countermeasure evaluation, low-cost treatments were temporally implemented in two sites, using a similar approach to that referred to as "tactical urbanism design" an approach that aims to reform and improve urban spaces through fast and easily applied measures that demonstrate the possibility of large-scale and long-term changes in cities (Fernandes & Barata, 2017).

#### **3.2. Video Data collection and Processing**

Data was collected in 2017 between the months of July and November using video cameras that were installed temporarily on existing infrastructure (lamp posts and buildings). Recordings were all conducted during the dry season in Bolivia, and the weather was similar during the time of the video collection.

High-definition cameras were used with a 2048 × 1536 pixels resolution and 30 frames per second. Cameras were installed at a minimum height of five meters. Collected video data was then processed using a computer vision software solution, Brisk Lumina, developed by Brisk Synergies, which integrates and utilizes deep and machine learning object detection algorithms for traffic safety analysis. Algorithms were used to process data on moving objects in the videos (in this case vehicles and pedestrians), to infer basic characteristics of position, shape and lighting, and to follow their trajectories in different environments.

Video processing was conducted in three steps: (i) definition of scenarios of interest; (ii) video calibration; and (iii) data generation. A traffic scenario is composed of a vehicular traffic movement that interacts with pedestrians and generates crash risk exposure, such as through or

turning vehicles interacting with pedestrians crossing at a given intersection approach. In roundabouts, movements are divided into a pedestrian interacting with vehicles going through the roundabout or turning to leave it.

**Figure 2. Surrogate automated-video process**

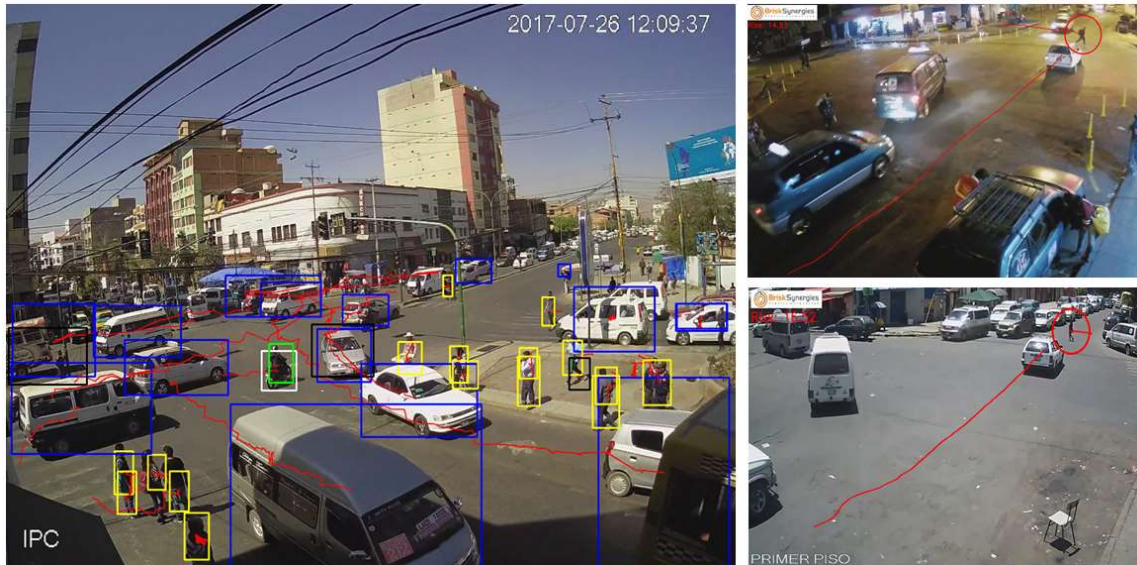
(1) Data Collection	(2) Video Processing	(3) Safety Analysis
Site selection Video cameras installation Video recording	Definition of scenarios of interest Video camera calibration Trajectory data generation	PET and speed data preparation Statistical analysis: cross-sectional & before-after study

Video calibration included adjusting homography, defining the conflict zones, and applying pre-trained deep learning models. Homography is defined as two images of the same planar surface in space that are related to each other. In this case, it was used to map the points in the video corresponding to coordinates in the street. The software detects, classifies and tracks road users in the video to generate data on the road-user type (e.g., car, truck, bus, motorcycle, pedestrian, etc.), trajectories, position, and speed and surrogate safety measures for each road user interactions at each frame (Figure 3).

The object detection and classification elements utilize a deep learning neural network capable of detecting different types of objects (e.g., truck, bus, car, pedestrian, etc.). A commercial computer vision software was used for object (road-user) detection, classification, and tracking. For improving detection and classification accuracy, the neural-network models had been trained on many large-scale datasets. Object tracking and detection of road user trajectories were used to compute, speeds, vehicle counts per unit time, and surrogate safety measures for each road user interaction (Figure 3 and Figure 4).

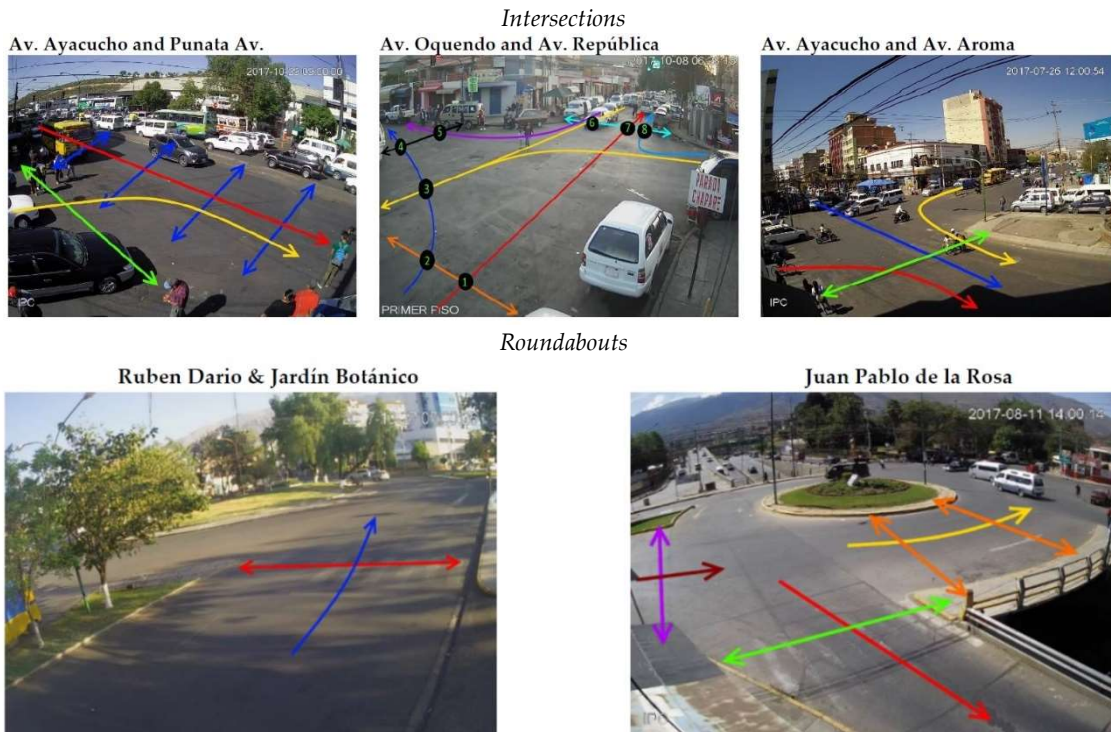


**Figure 3. Example of Computer Object Classification**



Source: This study. Notes: Objects detected in the photo are indicated by colored rectangular lines where, yellow equals pedestrian, blue box corresponds to vehicle. The redlines delineates vehicle paths or trajectories.

**Figure 4. Scenario Definitions by Intersections**



Note: Colored arrows on-screen images indicate trajectories analyzed at each site (e.g. through movement, right turns, and left-hand turns).

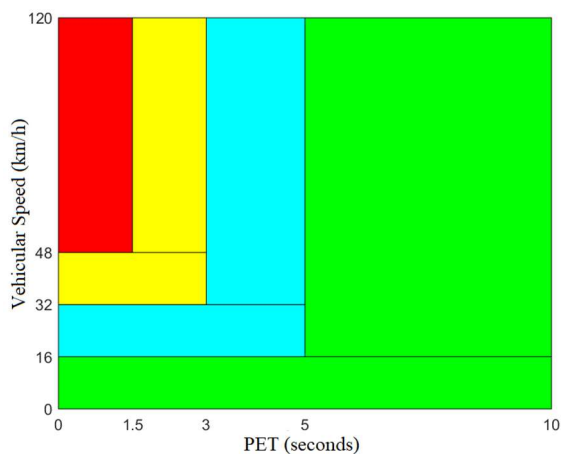
### 3.3 Generation of surrogate safety measures

Three surrogate traffic safety measures were analyzed: (1) vehicle speed, (2) PET, and (3) a crash severity risk index. As PET alone is insufficient to estimate the injury risk of a potential collision, we combine the PET and the 85th percentile speed of each vehicle into a single surrogate risk indicator (RI), to capture both the risk of injury and collision. We calculate the ratio of vehicle speed over PET ( $RI = VS_{85}/PET$ ). Next, we classify risk levels based upon published probabilities of fatal injuries in pedestrian-vehicle collisions at varying vehicle speeds and human reaction and braking times in the literature.

According to Fuller et al. (2009), the probability of a fatal pedestrian injury involving a vehicle at 32 km/h, 48 km/h and 64 km/h car speeds, is 5%, 45%, and 85%, respectively. The human reaction and braking time depend on the driver's age, physical condition and concentration; however, 1.5 seconds can be considered the average estimate for the simplest kind of reaction time to react to a potential collision (Hayes et al., 1975). The National Safety Council (2005) recommends 3 seconds minimum spacing for reaction time between vehicles traveling in the same lane.

Figure 5 displays the conflict severity by PET and speed where the speed represents the 85<sup>th</sup>

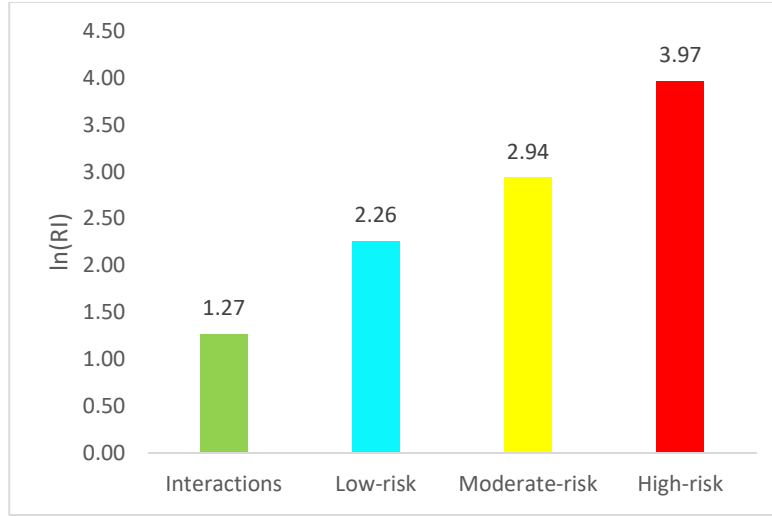
**Figure 5. Conflict severity classification**



percentile speed of the involved vehicle in km/h, and the PET is in seconds. Based on collision probability (PET) and severity of injuries (vehicle velocity) at impact, pedestrian-vehicle interactions were classified by the degree of risk into three categories, low, moderate, and high. High-risk interactions are defined as when speed is higher than 48 km/h and PET is lower than 1.5 seconds, moderate-risk conflicts are defined as when vehicle speed is higher than 32 km/h and PET is lower than 3 seconds, and low-risk conflicts are defined as vehicle speeds above 16km/h but less than 32km/h and PET is less than 5 seconds. Red represents high-risk conflicts, yellow represents moderate risk conflicts, light blue represents low-risk conflicts, and green represents safe interactions. Figure 6 displays the relationship

between our defined risk categories and the log of risk index. High-risk interactions have a mean log of RI of 3.97 (sd = 0.33), moderate-risk 2.94 (sd = 0.39) and low-risk 2.26 (sd = 0.27).

**Figure 6. Mean log of risk index versus risk category.**



### 3.4. Statistical regression analysis

To identify salient factors associated with each of the three surrogate measures, a multilevel mixed-effects linear regression model was estimated, using intersection-level random effects and an independent covariance structure (STATA, 2015). This model structure accounts for correlation among observations of vehicle-pedestrian interactions at the intersection level.

Data consists of all interactions in which the pedestrian arrived at the intersection first with a PET of less than 10 seconds. The outcome measures include the following: (i) the log of the risk index, ( $VS_{85}/PET$ ), (ii) PET, and (iii) vehicle speed ( $VS_{85}$ ). We utilize the natural log of the risk indicator and a log-linear functional form in order to normalize the distribution of the variable and allow for the interpretation the coefficient estimates as percentage changes.

The first set of models estimate the relationship between these outcomes and various factors for each of these measures in a multi-level form:

$$y_{ij} = \beta_0 + \beta_1 x_{ij1} + \beta_2 x_{ij2} + \dots + \beta_p x_{ijp} + \alpha_j + \varepsilon_{ij} \quad (1)$$

where  $y_{ij}$  is the surrogate measures, (vehicle speed,  $1/PET$  and  $\ln(RI)$ ) for pedestrian-vehicle interaction  $i$  at the intersection site,  $j$  and  $x_{ij1}, \dots, x_{ijk}$  is the vector of explanatory variables (e.g., night time, peak hour, intersection type, movement type, through traffic flow, traffic volume, vehicle type, crossing distance (Table 1)). Terms  $\beta_0$  through  $\beta_p$  are unknown regression parameters,  $\alpha_j$  represents random effects for each intersection site,  $j$ , and  $\varepsilon_{ij}$  represents the random error of the regression estimate.

The effect of the treatments on the surrogate risk measures was evaluated using the structural form:

$$y_{ij} = \beta_0 + \beta_1 x_{ij1} + \beta_2 x_{ij2} + \dots + \beta_p x_{ijp} + \delta T_{is} + \alpha_j + \varepsilon_{ij} \quad (2)$$

where all variables are denoted as in Equation 1, and  $\delta$  is the estimated effect of the pedestrian treatment,  $T$  in intersection,  $s$ .



We evaluated a set of models, combining intersections type and which user type arrived at the collision point first and the three risk indicators. As PET decreases, the probability of collision is assumed to increase; thus, higher values of 1/PET, speed, and speed/PET are not desirable from a traffic safety point of view, given their correlation with crash severity in the case of a collision. In the modeling results, positive coefficients correspond to more dangerous scenarios and negative coefficients correspond to safer scenarios.

**Table 1. Definition of variables**

Variable	Description	Categories / Units
PET	Post-Encroachment Time between two road users	Seconds
VS <sub>85</sub>	85 <sup>TH</sup> percentile of the vehicle speeds	km/h
Risk index	This is the ratio of VS <sub>85</sub> and PET	VS <sub>85</sub> /PET
Intersection type	Intersection type where study crossing is located	Categorical variable with 3 categories: 3-leg, 4-legged or roundabout
Arrive first	Who arrives first to conflict point: the pedestrian or vehicle	0 = vehicle and 1 = pedestrian
Movement type	Type of vehicle movement when traversing intersection	Categorical variable with 3 categories: right, left or through movement interactions
Peak hour	The interaction is during peak hours (7 am to 9 am, 3 pm to 5 pm).	0 = not peak hours and 1 = peak hours
Night-time	The interaction is during night-time (7 pm to 7 am)	0 = daytime and 1 = night-time
Crossing distance	Crossing distance that the pedestrians must walk	Meters
Traffic flow*	15-min vehicles traffic count at crossing point	Vehicles per 15min
Ratio of vehicle flow to crossing width	15-min vehicles traffic count per meter crossing width	Vehicles/(m-15min)
Vehicle type	The type of vehicle involved in the interaction	Categorical variable with 4 categories: car, truck, bus or motorcycle
Treated	Whether the interaction has been treated site or not	0 = not treated (before) and 1 = treated (after)

Notes: \* The width of street and number of lanes at each intersection crossing where traffic flow was measured varies by site.

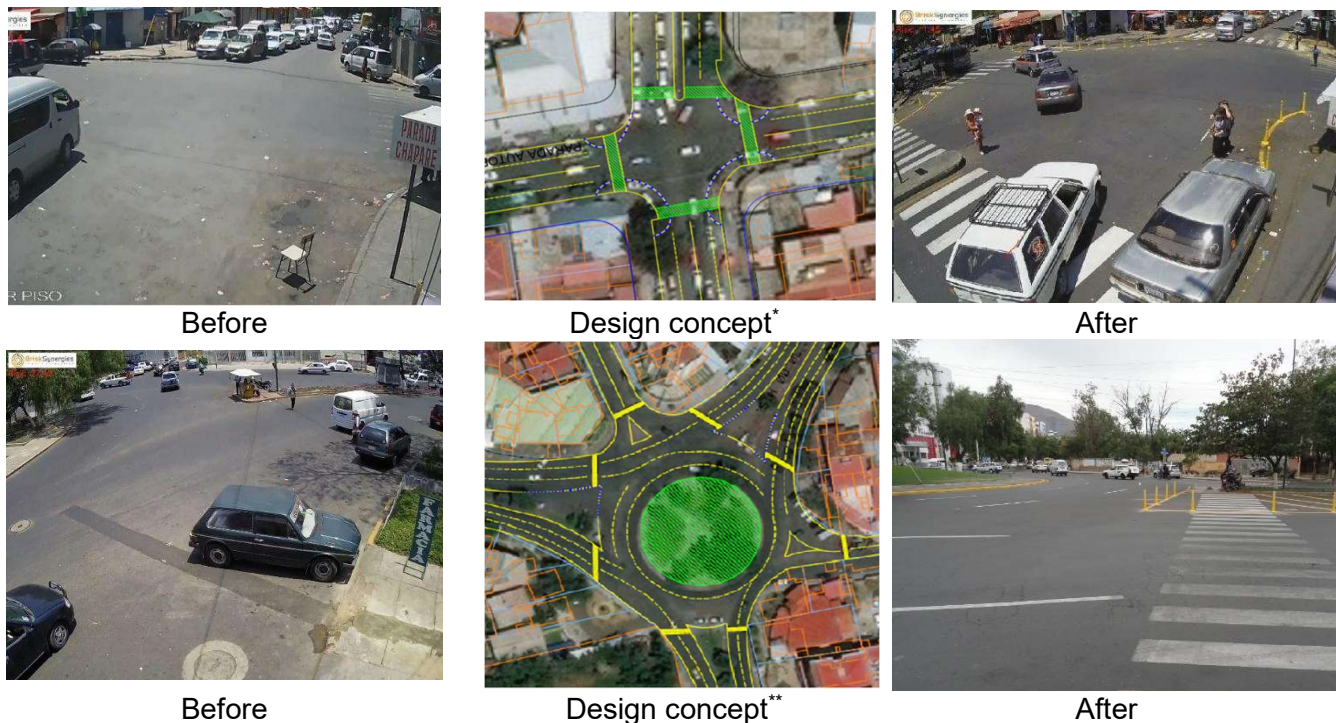
### 3.5. Temporary Treatment Design and Implementation

To illustrate the methodology in the context of before-after studies and to investigate the potential impact of low-cost temporary countermeasures to protect pedestrians, two locations were selected for the implementation of designed countermeasures: a 4-legged intersection (site ID 4) with two lanes in each direction, and a large roundabout (site ID 5), with eight points of entry and exits divided into three major and two minor roads. The 4-legged intersection is a major road with a physical median and an exposed pedestrian crossing distance (PCD) of 20 m, while that for the

minor road was 15 m. All the major roads of the roundabout have divisor medians; two of them are three lanes per direction with a PCD of 53 and 59 m, while the remaining major road is two lanes per direction and 36 m of PCD. The minor roads of the roundabout are one lane per direction with 11 and 14 m of PCD. Both sites lacked lane and crosswalk pavement marking. Also, vehicle turning radius and crossing distances were very long in the case of the old-style roundabout.

Accordingly, curb extensions were implemented on the 4-legged intersection as a traffic calming measure to extend the sidewalk, reducing the crossing distance, reducing speeds and eliminating parking from the crosswalk area. The design was implemented using temporal plastic bollards. The treatments reduced the pedestrian exposed crossing distance, from 13 m to 8 m. For the roundabout, to reduce crossing distance, the median was extended also with bollards. In both locations, pedestrian crosswalk crossings were implemented using the standard white color with zebra patterns and with a width of 2.5 m.

**Figure 7. Treated 4-legged intersection and traffic circle: before and after temporary treatment implementation**



\*Temporary treatments: crosswalk crossing and lane pavement marking along with curb extensions using flexible plastic bollards. \*\*Temporary treatments: crosswalk crossing and lane pavement marking along with the increase of the median width using flexible plastic bollards.

Figure illustrates the conditions before and after treatment implementation as well as the design concept. Video data was collected from the two sites before and after the treatment. Video recordings were conducted during the same hours and days of the week before and after the interventions. Note that the post-treatment (after) recordings took place one week after completing the road treatments and during the same days of the week and hours of the day so that changes in conflicts that occurred are more likely to be associated with the treatments rather than other major changes to the intersections or traffic conditions.

#### 4. DATA GENERATION

From the five study locations, thousands of vehicle-pedestrian interactions were recorded and detected using the video data processing techniques described above, from which a set of variables was generated that includes road user types, road user trajectory for each vehicle-pedestrian interaction, the 85<sup>th</sup> percentile, median, and 15<sup>th</sup> percentile speeds, vehicle traffic movements (right turn, left turn or through vehicle movement for intersections, and through or turning movement for roundabouts), who arrives first at the collision point, vehicle counts per 15 minutes time interval, and whether the event occurred at night time or at peak hours. Intersection types were categorized as standard intersections, either with or without traffic controls, or roundabouts (all roundabouts in the sample were unsignalized). Principle vehicle trajectories were also identified for each vehicle-pedestrian interaction and were classified as either through or turning movements (left or right). Traffic volume for the purposes of this paper was defined as the number of vehicles per 15-min interval per meter given that several intersections lacked lane markings and had variable lane widths. Only interactions in which the PET is less than 10 seconds, well above the threshold that would be considered to pose a traffic collision risk are included in the analysis.

Table 2 summarizes PET and average speed (as measured at the 85<sup>th</sup> percentile) by study location and type of signalization. The highest average speed is observed at the old roundabout, 43 km/h, followed by the non-signalized intersection, 31.82 km/h, and the smallest average PET is at roundabouts, with an average of 4.27 seconds. Average crossing distance in meters of the study locations ranges from 5.98 to 12.60 m.

**Table 2. Observations by site type**

	Site	Type	Number of Observations	Average PET	Average Vehicle* Speed	Average Crossing Distance (meters)
Study locations	ID 1: Av. Ayacucho and Av. Punata	3-legged intersection	6,470	5.33	31.82	10.23
	ID 2: Av. Ayacucho and Av. Aroma	4-legged intersection	12,955	5.17	23.89	11.5
	ID 3: Av. Rubén Darío - Jardín Botánico	Roundabout	323	4.25	22.23	5.98
	ID 4: Av. Oquendo and Av. República	4-leg-intersection	5,853	4.35	16.90	12.60
	ID 5: Rotunda de Juan Pablo de la Rosa	Roundabout	2,394	4.27	43.00	10.36
Type of control	Non-Signalized		9,187	5.33	31.82	
	Signalized		18,808	4.92	21.72	
Total			27,995			

Note: None of the roundabouts are signalized. \* 85th percentile.

Tables 3-6 summarize the main variables used in the models for all intersections and by intersection type. Overall mean risk (RI) is 6.60 km/h-s, vehicle speeds average 25.9 km/h and PET, on average is 4.95 seconds. Twenty-two percent of the interactions (pedestrian-vehicle) occurred during the peak hour, while 25% were observed during the night-time (Table 3). Overall, mean traffic volumes of 74.7 vehicles per 15-minute intervals were observed throughout the day.

Comparing the statistics by intersection type, stark differences can be observed in terms of vehicle

speed, PET, risk, and traffic volume. Average RI is 6.1 km/h-s for standard intersections, while within roundabouts mean RI reaches 10.07 km/h-s (Table 4). For roundabouts, we see that the mean RI is 11.3 versus, 71% higher than the average RI of 6.6 observed in the data. The most dangerous site in terms of crash risk was the old-style roundabout (ID 5) as it has the highest vehicle speeds among the intersections (41km/h) (Table 2). This type of roundabout is common in Cochabamba, and in Latin America in general, and poses a severe safety problem to pedestrians due to high vehicle speeds and a lack of protected crossings for pedestrians.

Measured vehicle speeds in roundabouts are also substantially higher than other types of intersections, with average speeds of 40.5 km/h compared to 24.3 km/h for intersections, and 25.9 km/h overall. PET ranges from 0.03 seconds to 9.97, with an average of 4.95 seconds. However, PET is slightly lower in roundabouts, 4.3 versus 5.0 for intersections. Pedestrian crossing distance is 11.4 meters on average, with slightly lower crossing distances for the roundabouts.

**Table 3. Summary statistics: all intersections**

	Mean	Std. Dev.	Min	Max
Risk (RI)	6.60	8.7	0.12	1,028.7
Ln (Risk)	1.63	0.7	-2.14	6.9
PET (seconds)	4.95	2.2	0.03	9.97
1/PET (1/seconds)	0.26	0.3	0.10	33.3
Speed (km/h)	25.9	14.3	0.4	119.6
Night-time (proportion)	0.25	0.4	0	1
Peak Hour (proportion)	0.22	0.4	0	1
Crossing distance (meters)	11.28	1.7	4.7	14
Traffic Flow (per 15 minutes) at crossing box	74.65	55.0	2	421
Observations	27,995			

Note: Observations include interactions for pedestrian-vehicle interactions in which the pedestrian entered first into the road space.

**Table 4. Summary statistics: by type of intersection**

	INTERSECTIONS				ROUNDBABOUTS			
	Mean	Std. Dev.	Min	Max	Mean	Std. Dev.	Min	Max
Risk (RI)	6.1	8.6	0.1	1,028.7	11.3	7.8	0.4	93.4
Ln (Risk)	1.6	0.7	-2.1	6.9	2.2	0.7	-0.8	4.5
PET (seconds)	5.0	2.2	0.0	10.0	4.3	1.6	0.7	9.9
1/PET (1/seconds)	0.3	0.3	0.1	33.3	0.3	0.1	0.1	1.5
Speed (km/h)	24.3	12.8	0.4	119.6	40.5	18.8	2.1	118
Night-time	0.3	0.4	0.0	1.0	0.2	0.4	0	1
Peak hour	0.2	0.4	0.0	1.0	0.2	0.4	0	1
Crossing distance (meters)	11.4	1.5	8.0	14.0	9.8	2.2	4.7	13.5
Traffic volume (per 15 minutes)	65.0	42.6	2.0	182.0	164.6	73.2	13.0	421.0
Observations	25,278				2,717			

Note: Observations include interactions for pedestrian-vehicle interactions in which the pedestrian entered first into the road space.

**Table 5. Mean Vehicle Speeds (85<sup>th</sup> percentile) by Type**

Vehicle Type	85th percentile			Median Speeds		
	Mean	Std. Dev.	Freq.	Mean	Std. Dev.	Freq.
Car	26.3	14.4	23,674	16.7	10.8	23,674
Bus	21.8	10.9	3,485	12.7	9.2	3,485
Truck	25.3	16.8	626	14.9	12.7	626
Motorcycle	46.5	20.8	210	30.9	13.9	210
Total	25.9	14.3	27,995	16.3	10.9	27,995

**Table 6. Summary Statistic: by the time of day**

	Night-Time				Daytime			
	Mean	Std. Dev.	Min	Max	Mean	Std. Dev.	Min	Max
Risk (RI)	6.36	5.48	0.35	107.40	6.69	9.54	0.12	1,028.67
Ln (Risk)	1.61	0.67	-1.06	4.68	1.64	0.69	-2.14	6.94
PET (seconds)	5.02	2.14	0.10	9.95	4.93	2.16	0.03	9.97
Speed (km/h)	25.73	14.48	1.80	116.60	25.93	14.24	0.40	119.61
Traffic Volume (per 15 minutes)	67.50	46.73	2.00	313.00	77.09	57.41	3.00	421.00
Observations	7,133				20,862			

## 5. Results and Analysis

The model results are discussed in two subsections. The first presents the results of cross-sectional multilevel regression analysis and the second the results of before-after treatment impacts. Table 7 and 8 present the coefficients of multilevel mixed-effects regressions for the

independent variables denoted in each row for the outcomes denoted in each column, using video-generated data conflicts between pedestrian and vehicles in the studied intersections. The regression results for the general model (which includes all intersection types) are presented in Table 7, while those by intersection type are presented in Table 8. Tables 9 and 10 present the regressions for the before-after analysis.

### 5.1. Cross-sectional Regression Analysis

Overall, two key factors are observed to have a significant association with risk indicators (RI, speed, and 1/PET): (1) motorcycles; (2) turning movements in intersections and in the roundabouts studied. The presence of motorcycles sharply increases crash risk across all three indicators (RI, 1/PET, and speed), and this is mostly associated with their tendency to circulate at considerably higher speeds. Four types of vehicles are observed: cars, buses, trucks, and motorcycles, with cars being the comparative group (or omitted category). Motorcycles increase the risk ratio by 55.8% (statistically significant at the 1% confidence level). Speeds increase by 13.3 km/h compared to cars (50% increase relative to mean car travel speeds), after controlling for other factors (time of day, intersection type, turning movements). The 1/PET measure increases by 0.242 (or a PET of 4.13 seconds) relative to the mean PET of 4.95 seconds.

Next, we find that turning movements, particularly in roundabouts, are highly statistically significant predictors of crash risk, increasing the risk index by 17.4%, and by an additional 61.3% in roundabouts. This appears to be mostly driven by accelerations to higher vehicle speeds during these movements, which increase by 13.7 km/h (from a mean of 35 km/h for roundabouts).

In terms of the time of day, peak hours events are associated with increase in RI of 4.4% on average. This is primarily driven by slightly higher vehicle speeds, which increase by 3.1% (from a mean of 25 km/h) (See Table 7). Crossing distance and night-time interactions have a small but significant downward effect on the risk ratio. However, the effect of crossing width on velocity and PET are statistically insignificant and this effect reverses for the roundabouts only regressions (Table 8). Traffic flow has a positive and statistically significant correlation with risk and speed (an increase of 1.3% in RI) and speed (+0.627 km/h). Traffic volume, measured as the ratio of vehicle flow to crossing distance (vehicles per 15-minute intervals per meter), however, decreases risk and speeds, with risk declining by 1.4% and speeds by 6.342 km/h, which is likely to be associated with congested conditions which tend to reduce speeds.

Vehicle-pedestrian interactions occurring during night-time are associated with a small reduction (2.5%) in the risk index. This may be related to slower overall travel speeds and lower traffic volumes at night, as seen in the summary statistics, although these are not statistically significant in the aggregate level regression results in the aggregate model. The second most important contributor to risky interactions for the intersections is left-hand turning movements. Left turns increase the risk index by 15.7%, and speeds by 2.13 km/hour (an 8.8% increase relative the mean vehicle velocity).

Righthand turns tend to result in lower vehicle speeds (-4.63 km/h) and a decrease overall risk of 12.8%, as measured by the probability of crash severity (speed). So while both types of turning movements are associated with high probability of collision, the left-hand turning movements in which vehicles have time reach higher vehicle speeds as they intersect with pedestrians at the end of their turn, and therefore are more likely to be moving at higher velocities and present more overall risk to pedestrians if a collision occurs.

We observe two opposing effects for signalized intersections. On the one hand, as expected, signalized intersections are associated with lower speeds. On the other inverse PET increases

slightly, by 0.044 (2.3 seconds decrease) as vehicle-pedestrian interactions appear more intense. Overall, risk declines by 12.5%. However, this coefficient is only statistically significant at the 10% confidence level. In terms of time of day, observed speeds increase slightly and statistically significant in these intersections during peak hours (by 0.6 km/h).

**Table 7. Determinants of surrogate collision risk indicators**

	Ln(risk)	1/PET	Vehicle Velocity (85 <sup>th</sup> Percentile)
	b/se	b/se	b/se
Night-time <sup>6</sup>	-0.025** (0.010)	-0.005 (0.004)	-0.026 (0.183)
Peak-hour	0.044*** (0.011)	0.003 (0.005)	0.825*** (0.195)
Traffic Volume	0.013*** (0.001)	-0.001*** (0.000)	0.627*** (0.017)
Bus	-0.154*** (0.013)	-0.012** (0.005)	-3.244*** (0.233)
Truck	-0.016 (0.031)	0.010 (0.014)	-1.603*** (0.577)
Motorcycle	0.558*** (0.050)	0.242*** (0.022)	13.310*** (0.917)
Crossing Distance	-0.070*** (0.006)	0.007*** (0.002)	-2.533*** (0.108)
Traffic Volume	-0.140*** (0.010)	0.010** (0.004)	-6.342*** (0.186)
Turning Movement	0.174*** (0.016)	0.024*** (0.007)	2.380*** (0.287)
Roundabout	-0.099 (0.124)	0.019 (0.025)	0.223 (4.243)
Turning Movement # Roundabout	0.610*** (0.053)	0.012 (0.022)	13.746*** (0.968)
Constant	2.311*** (0.096)	0.198*** (0.028)	50.242*** (2.866)
Observations	24,215	24,215	24,215

Notes: The table presents the coefficients of multilevel mixed-effects linear regression model, using intersection-level random effects and an independent covariance structure, for the independent variables denoted in each row for the outcomes denoted in each column. Data was generated using video-generated data conflicts between pedestrian and vehicles in the studied intersections. Statistical significance is indicated as follows \* p<0.10 \*\* p<0.05 \*\*\* p<0.01. Standard errors of regression coefficients are reported in parentheses. Traffic Volume refers to Ratio of Traffic Flow (15-minute intervals) to Crossing Distance.

<sup>6</sup> Night-time is from 7 pm to 7 am, and peak hours are from 7 am to 9 am, 3 pm to 5 pm.

**Table 8. Disaggregated effects on surrogate risk measures**

	Intersections models			Roundabouts models		
	Ln (risk)	1/PET	Vehicle Speed (85 <sup>th</sup> Percentile)	Ln(risk)	1/PET	Vehicle Speed (85 <sup>th</sup> Percentile)
	b/se	b/se	b/se	b/se	b/se	b/se
Night-time	-0.023** (0.010)	-0.005 (0.004)	0.077 (0.183)	-0.127*** (0.041)	-0.010 (0.011)	-3.854*** (0.835)
Peak-hour	0.040*** (0.011)	0.003 (0.005)	0.616*** (0.197)	0.082** (0.036)	0.012 (0.009)	1.991*** (0.734)
Traffic Flow	-0.003 (0.002)	-0.005*** (0.001)	0.158*** (0.034)	0.007*** (0.001)	0.000 (0.000)	0.395*** (0.030)
Bus	-0.164*** (0.013)	-0.012** (0.006)	-3.455*** (0.230)	-0.075 (0.079)	0.018 (0.020)	0.616 (1.589)
Truck	-0.058* (0.033)	0.010 (0.015)	-2.925*** (0.595)	0.016 (0.084)	-0.008 (0.021)	2.518 (1.688)
Motorcycle	0.609*** (0.057)	0.291*** (0.025)	15.213*** (1.031)	0.176** (0.084)	0.058*** (0.021)	2.488 (1.703)
Crossing distance	-0.024*** (0.008)	0.017*** (0.002)	-1.099*** (0.146)	0.109*** (0.022)	-0.004 (0.005)	3.671*** (0.451)
Traffic Volume				-0.079*** (0.013)	-0.003 (0.003)	-4.560*** (0.273)
Signalized Intersection	-0.122* (0.072)	0.044*** (0.007)	-8.802*** (1.482)			
Right Turn	-0.128*** (0.021)	-0.004 (0.007)	-4.631*** (0.376)			
Left Turn	0.157*** (0.017)	-0.001 (0.006)	2.134*** (0.314)			
Turning Movement				0.773*** (0.040)	0.020* (0.010)	16.230*** (0.893)
Constant	-2.863*** (0.44)	-24.050* (12.98)	0.17 (0.43)	0.698*** (0.190)	0.278*** (0.043)	4.774 (4.931)
Observations	22,959	22,959	22,959	1,256	1,256	1,256

Notes: The table presents the coefficients of multilevel mixed-effects linear regression model, using intersection-level random effects and an independent covariance structure, for the independent variables denoted in each row for the outcomes denoted in each column. Data was generated using video-generated data conflicts between pedestrian and vehicles in the studied intersections. Statistical significance is indicated as follows \* p<0.10 \*\* p<0.05 \*\*\* p<0.01. Standard errors are reported in parentheses Traffic Volume refers to Ratio of Traffic Flow (15-minute intervals) to Crossing Distance.

## 5.2 Intersections

Turning to the intersections only models, the results show that motorcycles have a statistically significant and large effect on risk and speeds. With magnitudes of the coefficients being similar to those in the aggregate model, motorcycles are associated with a 2.5 percent increase relative to the mean of 24.3 km/hour (Table 4b) and risk increases by 4% (Table 8).



Motorcycles play an important role in intersections, as their presence is significantly associated with a 60.9% increase in risk and an average increase in speed of 15.2 km per hour, a 58% increase relative to mean vehicle speeds, leading to an increase of 0.291 in the inverse of PET (equivalent to an average decrease in PET of 3.4 seconds). The regression results suggest that buses tend to be associated with lower surrogate risk outcomes. This may be related to their size and functionality in the city, needing to stop frequently to pick up and drop off passengers and thus lower overall operating speeds. It should be noted that one limitation of the surrogate risk indicators is that they do not take into account vehicle mass and the related probability of crash severity in the case of a collision.

The second most important contributor to risky interactions for the intersections are left-hand turning movements. Left turns increase the risk index by 15.7%, and speeds by 2.13 km/hour (an 8.8% increase relative to the mean vehicle velocity). Right-hand turns tend to result in lower vehicle speeds (-4.63 km/h) and a decrease in overall risk of 12.8%, as measured by the probability of crash severity (speed). So while both types of turning movements are associated with high probability of collision, the left-hand turning movements in which vehicles have time to reach higher vehicle speeds as they intersect with pedestrians at the end of their turn, and therefore are more likely to be moving at higher velocities and present more overall risk to pedestrians if a collision occurs.

Finally, the regression results also suggest that providing greater crossing distance to pedestrians is correlated with a small but statistically significant decrease in the overall risk of 2.4%. This counterintuitive result may be related to higher traffic congestion along the wider, more heavily traveled, streets, and the reduction in mean speeds. We observe that traffic volumes, measured as traffic flow per meter, tend to increase the inverse of PET (by 0.048) by 16% under these circumstances, due to more interactions between vehicle-pedestrians moving along a longer trajectory.

### **5.3 Roundabouts**

In the roundabout models, we observe that motorcycles once again play an important contribution to elevated risk. The presence of motorcycles contributes significantly to an increase of 17.6% of the general risk index for pedestrians. Notably, the marginal contribution of motorcycles to the risk index is lower than that for the intersections. However, turns in roundabouts increase vehicle speeds (by 16.2 km/h) and pedestrian-vehicle conflict risk considerably (by 77.3%). In contrast to the intersection models, increased pedestrian crossing distance tends to increase overall risk. This is likely related to overall increased speeds and that vehicles tend to intersect with pedestrians during turning movements, which as we have seen are also at higher velocities in roundabouts compared to intersections. Traffic volume (vehicle flow/meter) has a statistically significant downward effect on speed; as traffic volume increases, speeds decrease slightly (4.5 km/h). Night-time has a significant effect on RI in these intersections, decreasing risk by 12.7%. This appears to be related to slightly slower vehicle speeds at night (-3.86 km/h), like what was observed in the intersections-only models. Given that reaction times may be slower under less visibility, this reduction in risk may be over-estimated for nighttime observations.

### **5.4 ANALYSIS OF INTERSECTION TREATMENTS**

The histograms in Figure 8 and Table 9 below show risk indicators both before and after the 4-legged intersection and the old-roundabout received treatment. In the case of the 4-legged intersection, the treatment leads to a decrease in speeds, from a mean of 17.9 km/h to a mean of 15.4 km/h. The speed distribution for the intersection is clustered around the mean and has a small standard deviation. The treatment led to a clear shift to lower speeds, seen in the left

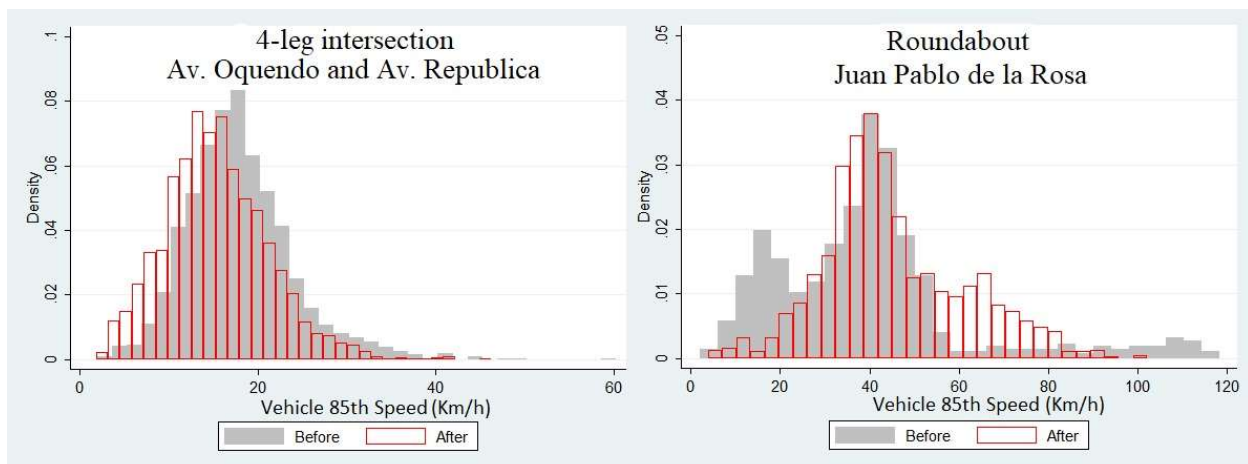
histogram. In the case of the roundabout (old traffic circle), the speed distribution is dispersed, and a clear pattern cannot be observed. While the treatment reduced the number of conflicts involving excessive speeds, representing an improvement in safety for the most severe conflicts, conflicts, average speeds increased by nearly 6 km/h.

**Table 9. Summary statistics before and after treatment**

	4-legged intersection before	4-legged intersection after	Roundabout before	Roundabout after
Average PET (seconds)	4.43	4.22	4.24	4.29
Average 85 <sup>th</sup> Speed (km/h)	17.89	15.38	39.55	45.21
Observations	3,534	2,319	933	1,461

Source: This study using data generated using video-generated data conflicts between pedestrian and vehicles in the studied intersections.

**Figure 8. Before-after speed histograms**



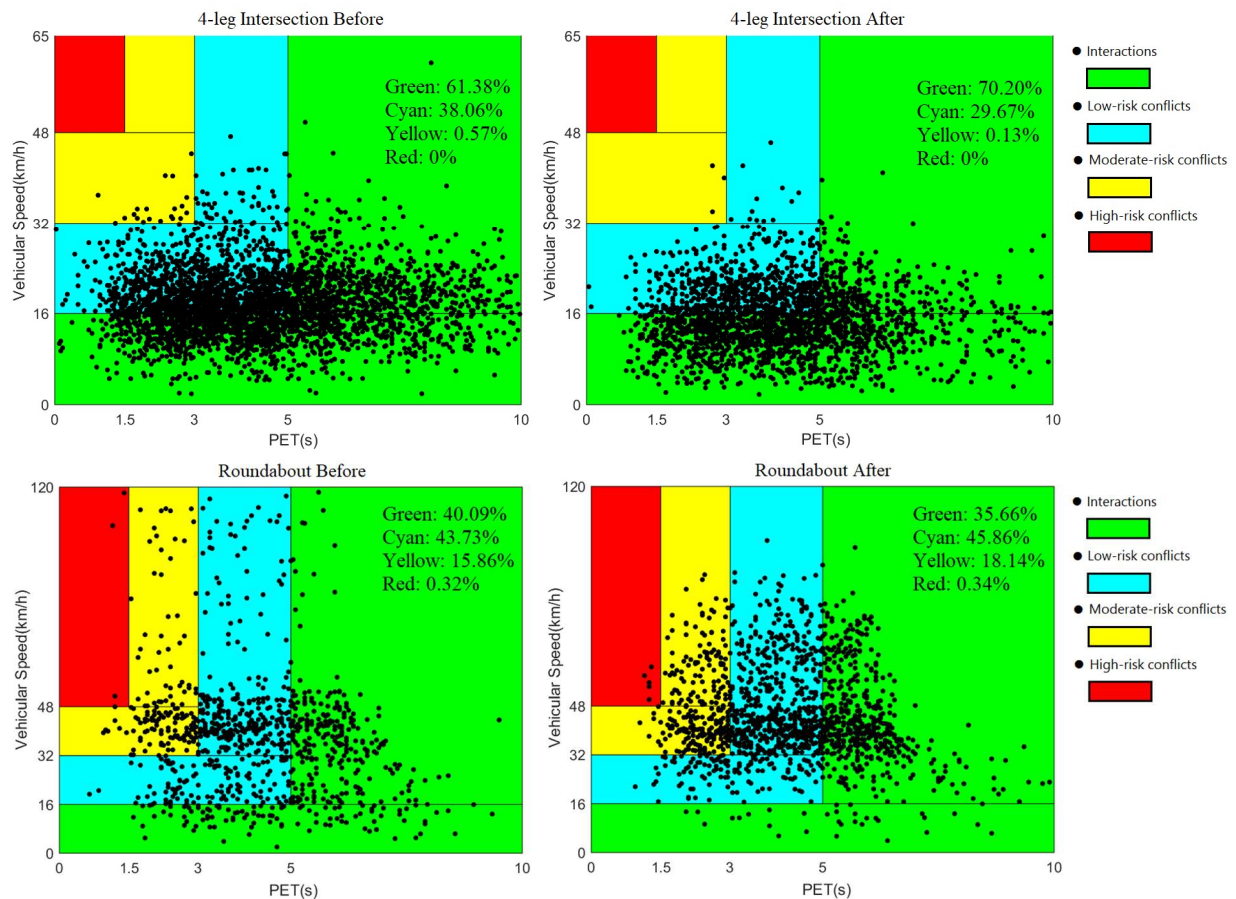
Source: This study using data generated using video-generated data conflicts between pedestrian and vehicles in the studied intersections.

The risk categories, defined previously in Section 3.3, for the roundabout and the four-legged intersection, both before and after treatment are illustrated in Figure 9. Each point represents a single event between a pedestrian and a vehicle with a PET < 10s. For the 4-legged intersection, there is a slight decrease in the number of moderate risk (yellow) and low risk (cyan) conflicts in the data, and an increase in the safer interactions (green), suggesting that the treatment was mildly effective. For the roundabout, the number of high-risk conflicts (red) remains almost unchanged, while there was a shift in proportion of non-dangerous interactions to low and moderate risk conflicts, which implies that, while the number of extreme speeds declined (see lower left-hand scatter plot in Figure 9), the treatment did not significantly improve overall safety and in fact overall speeds increased.

Turning to the regression models which estimate the effect of the treatment (Table 10), the parameter “treated” denotes whether the interaction corresponds to before or after the treatment, where “treated=0” denotes before, and “treated=1” denotes after.

The results of the model suggest that the treatment decreased pedestrian-vehicle collision risk for the 4-legged intersection, consistent with what was seen in the summary statistics (column 1). The treatment has a significant effect on vehicle velocity (column 3), with an estimated reduction of 2.2km/h (a 9% decrease). Furthermore, the risk ratio decreased by 13.5% (see Table 10). However, PET appears to have been unaffected (column 2). Nevertheless, the results suggest that the interventions had a positive effect on traffic calming by reducing vehicle speeds and risk.

**Figure 9. Severity of car-pedestrian conflicts before and after treatment**



For the roundabout, the treatment appears to have had a slightly negative effect on pedestrian-vehicle collision risk. The overall risk (RI) increased by 6.1% (Table 10, column 4). While inverse PET decreased marginally, possibly due to the increased pedestrian protection provided by the treatment, inverse PET declined slightly (by 0.010, equivalent to a fraction of a second (0.002) increase in PET and significant only at the 10% confidence level) (Table 10, column 5). The coefficient on vehicle speeds is positive and large (5.76, although not statistically significant) (Table 10, column 6). One possible explanation for the increase in vehicle-pedestrian risk is that vehicles might have been enabled to circulate faster because the lane markings included in treatment channelized vehicle traffic, reducing conflicts between vehicles and enabling them to travel faster through the roundabout.

**Table 10. Impacts of pedestrian safety treatments.**

	Intersections only models			Roundabouts only models		
	Ln (risk)	1/PET	Vehicle Speed (85 <sup>th</sup> Percentile)	Ln(risk)	1/PET	Vehicle Speed (85 <sup>th</sup> Percentile)
	b/se	b/se	b/se	b/se	b/se	b/se
Night-time	-0.057*** (0.022)	-0.012 (0.021)	-0.647*** (0.200)	-0.154*** (0.032)	-0.022*** (0.007)	-2.883*** (0.816)
Peak-hour	0.005 (0.020)	-0.005 (0.019)	-0.133 (0.184)	0.076*** (0.029)	0.006 (0.006)	2.703*** (0.757)
Traffic Flow	0.008*** (0.003)	0.000 (0.002)	0.103*** (0.023)	0.002 (0.001)	0.000 (0.000)	0.051 (0.035)
Bus	-0.092*** (0.023)	-0.024 (0.022)	-0.109 (0.214)	-0.358*** (0.080)	-0.002 (0.018)	-6.934*** (2.067)
Truck	-0.142*** (0.039)	-0.055 (0.037)	0.169 (0.358)	0.221*** (0.057)	0.016 (0.012)	8.297*** (1.467)
Motorcycle	0.734*** (0.141)	1.850*** (0.134)	5.626*** (1.285)	0.260*** (0.067)	0.059*** (0.015)	3.927** (1.725)
Crossing distance	-0.014* (0.008)	0.002 (0.008)	0.097 (0.074)	0.082*** (0.025)	0.001 (0.005)	4.669*** (0.639)
Traffic Volume	-0.114*** (0.025)	-0.002 (0.024)	-1.646*** (0.232)	-0.023 (0.015)	0.000 (0.003)	-0.837** (0.378)
Turning Movement				0.567*** (0.040)	0.016* (0.009)	10.667*** (1.036)
Right Turn	-0.138*** (0.023)	-0.025 (0.022)	-3.292*** (0.213)			
Left Turn	-0.220*** (0.029)	-0.018 (0.027)	-5.096*** (0.262)			
<b>After Treatment</b>	<b>-0.135***</b> (0.017)	<b>0.003</b> (0.016)	<b>-2.245***</b> (0.154)	<b>0.061**</b> (0.025)	<b>-0.010*</b> (0.005)	<b>0.576</b> (0.632)
Constant	1.791*** (0.100)	0.288*** (0.095)	20.212*** (0.912)	1.013*** (0.253)	0.248*** (0.056)	-10.374 (6.518)
Observations	5,853	5,853	5,853			

Notes: The table presents the coefficients of multilevel mixed-effects linear regression model, using intersection-level random effects and an independent covariance structure, for the independent variables denoted in each row for the outcomes denoted in each column. Statistical significance of the coefficient estimates is indicated as follows \* p<0.10 \*\* p<0.05 \*\*\* p<0.01. Standard errors are reported in parentheses below the estimates. Traffic Volume refers to ratio of traffic flow (15-minute intervals) to crossing distance.

Moreover, as vehicle speeds in the roundabout are significantly higher than in the intersections, pedestrian treatments applied in this case appear to have been insufficient to counteract the increase in speeds. Significant additional geometric design changes would likely be required to make the roundabout safer. Such measures could include traffic signalization, the implementation of additional traffic-calming components such as raised pedestrian crossings or larger bulb-outs, separation between vehicles and vulnerable road users through exclusive lanes for bikes, adding

more pedestrian safe zones, or reducing the number of lanes in the pedestrian crossings (see WRI, 2015).

## **6. CONCLUSION**

This paper presents a proactive surrogate safety methodology for identifying pedestrian injury-risk factors and evaluating low-cost temporary countermeasures at intersections in the Latin American context. Using computer vision and deep-learning techniques, road user trajectories, speeds, and conflicts were automatically generated for thousands of vehicle-pedestrian interactions. A set of variables for each vehicle-pedestrian interaction were generated for all pedestrian-vehicle interactions in which the pedestrian arrives first to the collision point and where the PET was less than 10 seconds. Regression models were then applied in order to model underlying determinants for several risk indicators, including a risk ratio that combines the product of the inverse of the PET, and the 85<sup>th</sup> vehicle speed for each event.

Various factors were identified as significantly related to the surrogate pedestrian-vehicle risk indicators. Compared to other motor-vehicle types, motorcycles pose a serious threat to traffic safety given their tendency to speed, a behavior that is even more pronounced in roundabouts. This is an important observation given the proliferation of motorcycle traffic in many Latin American cities and the subsequent emerging safety issues. Motorcycles are not only the most dangerous motorized transportation mode but also a mode deteriorating the safety of active road users (pedestrians and bicycles).

With respect to other intersection types, the multilane old-style roundabout examined in this study was found to be the most dangerous intersection across all safety indicators. This is not surprising given the vehicle operating speeds and volumes that are much higher than regular intersections along with the larger crosswalk crossing distances. These three risk-exposure factors (high speeds with large volumes and crossing distances) make roundabouts a high-risk location for pedestrians in cities like Cochabamba. As an additional note, the most dangerous vehicle movements were identified as left-hand turns at standard intersections and turning in and out of roundabouts.

In the before-after analysis, only low-cost provisional treatments in the four-way intersection were effective at reducing speeds and risk, while in the roundabout, the treatment had a slightly negative impact on risk. This suggests that treatments of the type implemented in this case study might not be effective in roundabouts. Given the complexity of the traffic safety problems at those locations, more complex design treatments could be evaluated. This could include the transformation of old-roundabouts into modern roundabouts, the implementation of traffic signalization, and other traffic calming measures, in which designs consider pedestrian safety as a priority, including raised crosswalks, pedestrian crossings further back from the intersection, pedestrian-activated crossing lights, among others. This could be particularly important in urban locations with high pedestrian volumes.

Perhaps the most important contributions of this paper are the proposition and implementation of a proactive surrogate safety methodology in a medium-sized city in a developing Latin America country. The evaluation of temporary countermeasures using rapid, low-cost surrogate analysis, before the installation of permanent treatments can lower the potential risk of misallocation of scarce resources for road safety treatments and can potentially improve overall program effectiveness. The proposed methodology could be replicated in other studies or cities to evaluate alternative temporary (or permanent) treatments. This methodology also aims at introducing the concept of temporary low-cost designs that should be evaluated in a short period of time to minimize injury risk, and before treatments are replicated on a large scale in cities. The

implementation of this methodology in other cities/studies could help identify a set of key injury factors and effective treatments. This would help improve pedestrian safety in a proactive and effective way. Despite the recent findings reported in the literature on the correlation of observed crash risk and surrogate measures, more validation should be done in the proposed methodology.

Several limitations of this study should be noted. From the treatment effectiveness point of view, the results should be taken with caution given that the locations involved in this study are not representative of all city intersections and the sample of sites is small. The same caution applies to the risk factors; a large sample of intersections from the same city or other cities should be considered before coming with general conclusions. Validation of the surrogate safety measures using crash data could also be done in the future using longer-term video data in which both crashes and conflicts can be observed. Future research is needed to further explore the validation of surrogate safety measures, and to compare surrogate indicators with actual crash events.

## REFERENCES

- AASHTO. Highway Safety Manual. AASHTO: Washington DC, USA, 2010.
- Ahmed, A.; Sadullah, A.F.M.; Yahya, A.S. Errors in accident data, its types, causes and methods of rectification-analysis of the literature. *Accident Analysis* 2017, Prev. 0–1. doi.org/10.1016/j.aap.2017.07.018
- Ali, M.; Najafi, F.T., 2013. A Cost-Effective Methodology for Pedestrian Road Crossing for Developing Countries. 120th ASEE Annu. Conf. Expo. 1–11.
- Archer, J., 2005. Indicators for traffic safety assessment and prediction and their application in micro-simulation modelling: A study of urban and suburban intersections The Greater Stockholm area defined by accident occurrence (from STRADA). Available online: <http://worldcat.org/isbn/9173231193> (accessed on 12 July, 2019).
- Asaithambi, G.; Kuttan, M.O.; Chandra, S. Pedestrian Road Crossing Behavior Under Mixed Traffic Conditions: A Comparative Study of an Intersection Before and After Implementing Control Measures. *Transp. Dev. Econ.* 2016, 2, 14. doi.org/10.1007/s40890-016-0018-5.
- Constant A.; Lagarde E. Protecting Vulnerable Road Users from Injury. *PLoS Med.* 2010, 7(3): e1000228. doi.org/10.1371/journal.pmed.1000228
- de Ceunynck, T. Defining and applying surrogate safety measures and behavioural indicators through site-based observations. Doctorate, Lund University, Sweden, 2017.
- Diogenes, M.; Lindau, L. Evaluation of Pedestrian Safety at Midblock Crossings, Porto Alegre, Brazil. *Transp. Res. Rec. J. Transp. Res. Board* 2010, 2193, 37–43. doi.org/10.3141/2193-05
- El-Basyouny, K.; Sayed, T. Safety performance functions using traffic conflicts. *Saf. Sci.* 2013, 51, 160–164. doi.org/10.1016/j.ssci.2012.04.015
- Essa, M.; Sayed, T. Traffic Conflict Models to Evaluate the Safety of Signalized Intersections at the Cycle Level. *Transp. Res. Part C Emerg. Technol.* 2018, 89, 289–302. doi:10.1016/j.trc.2018.02.014.
- Fay, Marianne; Andrés, Luis Alberto; Fox, Charles; Narloch, Ulf; Straub, Stephane and Slawson, Michael. *Rethinking Infrastructure in Latin America and the Caribbean: Spending Better to Achieve More*. The World Bank, 2017. <https://doi.org/10.1596/978-1-4648-1101-2>.
- Ferenchak, N.N. Pedestrian age and gender in relation to crossing behavior at midblock crossings in India. *J. Traffic Transp. Eng.* 2016, English Ed. 3, 345–351. doi.org/10.1016/j.jtte.2015.12.001
- Fernandes A.; Barata, A.S.F. Tactical Urbanism and Sustainability: Tactical Experiences in the Promotion of Active Transportation. *World Acad. of Sci., Eng. Technol. Int. J. Urban Civil Eng.* 2017, 11, 734–739.
- Fu, T.; Miranda-Moreno, L.; Saunier, N.; 2018. A novel framework to evaluate pedestrian safety at non-signalized locations. *Accident Analysis & Prevention* 2018, 111, 23–33. doi.org/10.1016/j.aap.2017.11.015.

- Fuller, R.; Gormley, M.; Stradling, S.; Broughton, P.; Kinnear, N.; O'Dolan, C.; Hannigan, B. 2009. Impact of speed change on estimated journey time: Failure of drivers to appreciate relevance of initial speed. *Accid. Anal. Prev.* 2009, 41, 10–14.
- Federal Highway Administration (FHWA). *Surrogate Safety Assessment Model and Validation: Final Report*; Publication No. FHWA-HRT-08-051; Turner-Fairbank Highway Research Center: McLean, VA, USA, 2008. Available online: <https://www.fhwa.dot.gov/publications/research/safety/08051/08051.pdf> (accessed on 15 July, 2019).
- Guo, F.; Klauer, S.G.; McGill, M.T.; Dingus, T.A. Task 3-Evaluating the Relationship Between Near-Crashes and Crashes: Can Near Crashes Serve as a Surrogate Safety Metric for Crashes? Virginia Tech Transportation Institute: U.S., 2010. Department of Transportation National Highway Traffic Safety Administration, Report number: DOT HS 811 382.
- Hamed, M.M. Analysis of pedestrians' behavior at pedestrian crossings. *Saf. Sci.* 2001, 38, 63–82. [https://doi.org/10.1016/S0925-7535\(00\)00058-8](https://doi.org/10.1016/S0925-7535(00)00058-8).
- Hayes, G.; Koppa, R.; White, J.T.; White, M.C. Driver-Vehicle Performance in Closed Loop Tests. SAE Tech. Pap. 1975, doi:10.4271/750964.
- ICES, 2013. Plan de Acción del Área Metropolitana de Cochabamba 2013 74. <https://doi.org/10.13140/RG.2.1.1673.4961>
- Inter-American Development Bank (IDB). *Plan Maestro de Movilidad Urbana Sustentable para el Área Metropolitana de Cochabamba*; Bolivia, 2015.
- International Transport Forum (ITF). Benchmarking Road Safety in Latin America; Case-Specific Policy Analysis; ITF: Paris, France, 2017. Available online: [https://www.itf-oecd.org/sites/default/files/docs/benchmarking\\_road\\_safety\\_latin\\_america.pdf](https://www.itf-oecd.org/sites/default/files/docs/benchmarking_road_safety_latin_america.pdf) (accessed on 21 May 2019)
- Jeon CY, Lokken RP, Hu FB, van Dam RM. Physical activity of moderate intensity and risk of type 2 diabetes: a systematic review. *Diabetes Care* 2007, 30(3):744–752. doi: 10.2337/dc06-1842.
- Johnsson, C.; Laureshyn, A.; de Ceunynck, T. In search of surrogate safety indicators for vulnerable road users: a review of surrogate safety indicators. *Transp. Rev.* 2018, 38, 765–785. doi.org/10.1080/01441647.2018.1442888
- Lord, D., Miranda-Moreno, L.F. Effects of low sample mean values and small sample size on the estimation of the fixed dispersion parameter of Poisson-gamma models for modeling motor vehicle crashes: A Bayesian perspective. *Safety Science.* 2008, 46, 751–770. doi.org/10.1016/j.ssci.2007.03.005
- Mahmud, S.M.S.; Ferreira, L.; Hoque, M.S.; Tavassoli, A. Application of proximal surrogate indicators for safety evaluation: A review of recent developments and research needs. *IATSS* 2017, Res. 2017, 41, 153–163. doi.org/10.1016/j.iatssr.2017.02.001
- Mead, J.; Zegeer, C.; Bushell, M. *Evaluation of Pedestrian-Related Roadway Measures: A Summary of Available Research* 1–115; Pedestrian and Bicycle Information Center: Chapel Hill, NC, USA, 2014.



- Mohan, D., 2002. Road safety in less-motorized environments: future concerns. *Int. J. Epidemiol.* 31, 527–532. <https://doi.org/10.1093/ije/31.3.527>
- Monninkhof E.M.; Elias S.G.; Vleems F.A.; van der Tweel I.; Schuit A.J.; Voskuil D.W.; van Leeuwen F.E. Physical activity and breast cancer: a systematic review. *Epidemiology.* 2007;18(1):137–157. doi: 10.1097/01.ede.0000251167.75581.98
- Nabavi-Niaki, M.S.; Saunier, N.; Miranda-Moreno, L.F. Analysis of Cyclist Behaviour at Cycling Network Discontinuities Using Computer Vision. In Proceedings of the 95th Annual Meeting of the Transportation Research Board, Washington, DC, USA, 10–14 January 2016. doi:10.1017/CBO9781107415324.004.
- Ogilvie, D.; Egan, M.; Hamilton, V.; Petticrew, M. Promoting walking and cycling as an alternative to using cars: systematic review. *BMJ Clinical Research* 2004, 329(7469), 763. doi:10.1136/bmj.38216.714560.55
- Ozbay, K.; Yang, H.; Bartin, B.; Mudigonda, S. Derivation and Validation of New Simulation-Based Surrogate Safety Measure. *Transp. Res. Rec. J. Transp. Res. Board.* 2009, 2083, 105–113. doi.org/10.3141/2083-12
- Pan American Health Organization (PAHO). 2016. Road Safety in the Americas. PAHO: Washington DC, USA, 2016.
- Peesapati, L.; Hunter, M.; Rodgers, M. Evaluation of Post-encroachment Time as Surrogate for Opposing Left-Turn Crashes. *Transp. Res. Rec. J. Transp. Res. Board.* 2013, 2386, 42–51. doi.org/10.3141/2386-06
- Pombo, J.; Jing, G. Recent Developments in Railway Track and Transportation Engineering. In Sustainable Civil Infrastructures. Proceedings of the 1st GeoMEast International Congress and Exhibition, Egypt, 2017.
- Poó, F.M.; Ledesma, R.D.; Trujillo, R. Pedestrian crossing behavior, an observational study in the city of Ushuaia, Argentina. *Traffic Inj. Prev.* 2018, 19, 305–310. <https://doi.org/10.1080/15389588.2017.1391380>.
- Quistberg, D.A.; Koepsell, T.D.; Boyle, L.N.; Miranda, J.J.; Johnston, B.D.; Ebel, B.E. Pedestrian signalization and the risk of pedestrian-motor vehicle collisions in Lima, Peru. *Acc. Anal. & Prev.* 2014, 70, 273–281. doi.org/10.1016/j.aap.2014.04.012
- Roquel, D.; Masoumil, H. An Analysis of Car Ownership in Latin American Cities: a Perspective for Future Research. *Periodica Polytechnica Transportation Engineering* 2016, 44(1), pp. 5-12.
- Sacchi, E.; Sayed, T.; Deleur, P. A Comparison of Collision-Based and Conflict-Based Safety Evaluations: The Case of Right-Turn Smart Channels. *Accid. Anal. Prev.* 2013, 59, 260–266. doi:10.1016/j.aap.2013.06.002.
- Saunier, N.; Mourji, N.; Agard, B. Investigating Collision Factors by Mining Microscopic Data of Vehicle Conflicts and Collisions. *Transp. Res. Rec.* 2011, 2237, 41–50. doi:10.3141/2235-05.
- Sayed, T.; Zaki, M.H.; Autey, J. Automated safety diagnosis of vehicle-bicycle interactions using

- computer vision analysis. *Saf. Sci.* 2013. 59, 163–172. doi.org/10.1016/j.ssci.2013.05.009
- Songchitruksa, P.; Tarko, A. Practical Method for Estimating Frequency of Right-Angle Collisions at Traffic Signals. *Transp. Res. Rec. J. Transp. Res. Board* 2007, 1953, 89–97. doi.org/10.3141/1953-11
- StataCorp. *Stata Statistical Software: Release 14*; StataCorp LP: College Station, TX, USA, 2015.
- St-Aubin, P. Driver Behaviour and Road Safety Analysis Using Computer Vision and Applications in Roundabout Safety. Doctorate, Polytechnique Montreal, Canada, 2016.
- St-Aubin, P.; Saunier, N.; Miranda-Moreno, L. Large-Scale Automated Proactive Road Safety Analysis Using Video Data. *Transp. Res. Part C Emerg. Technol.* 2015, 58, 363–379. doi:10.1016/j.trc.2015.04.007.
- The League of American Bicyclists, 2018, Bicycling and Walking in the United States, 2018 Benchmarking Report, Washington DC. <https://bikeleague.org/benchmarking-report>
- Van der Horst, A.R.A.; de Goede, M.; de Hair-Buijssen, S.; Methorst, R. Traffic conflicts on bicycle paths: A systematic observation of behaviour from video. *Acc. Ana. & Prev.* 2014, 62, 358–368. doi.org/10.1016/j.aap.2013.04.005
- Vanparijs, J.; Int Panis, L.; Meeusen, R.; de Geus, B. Exposure Measurement in Bicycle Safety Analysis: A Review of the Literature. *Accid. Anal. & Prev.* 2015, 84, 9–19. doi:10.1016/j.aap.2015.08.007.
- Warburton, D. E.R. Health Benefits of Physical Activity: The Evidence. *Canadian Medical Association* 2006, Journal 174, no. 6 801–9. doi.org/10.1503/cmaj.051351.
- World Health Organization (WHO), 2018. Global Status Report on Road Safety 2018. WHO: Washington, DC, USA, 2018.
- World Resources Institute (WRI), 2015. *Cities Safer by Design*. WRI: Washington, DC, USA, 2015.
- Yang, H. Simulation-Based Evaluation of Traffic Safety Performance Using Surrogate Safety Measures. Ph.D. Thesis, Rutgers University, New Brunswick, Newark and Camden, NJ, USA, 2012.
- Zaki, M.; Sayed, T.; Cheung, A. Computer Vision Techniques for the Automated Collection of Cyclist Data. *Transp. Res. Rec. J. Transp. Res. Board* 2013, 2387, 10–19. doi:10.3141/2387-02.