

Maurin, Eric; McNally, Sandra

**Working Paper**

## Vive la Révolution! : Long Term Returns of 1968 to the Angry Students

IZA Discussion Papers, No. 1504

**Provided in Cooperation with:**

IZA – Institute of Labor Economics

*Suggested Citation:* Maurin, Eric; McNally, Sandra (2005) : Vive la Révolution! : Long Term Returns of 1968 to the Angry Students, IZA Discussion Papers, No. 1504, Institute for the Study of Labor (IZA), Bonn

This Version is available at:

<https://hdl.handle.net/10419/20803>

**Standard-Nutzungsbedingungen:**

Die Dokumente auf EconStor dürfen zu eigenen wissenschaftlichen Zwecken und zum Privatgebrauch gespeichert und kopiert werden.

Sie dürfen die Dokumente nicht für öffentliche oder kommerzielle Zwecke vervielfältigen, öffentlich ausstellen, öffentlich zugänglich machen, vertreiben oder anderweitig nutzen.

Sofern die Verfasser die Dokumente unter Open-Content-Lizenzen (insbesondere CC-Lizenzen) zur Verfügung gestellt haben sollten, gelten abweichend von diesen Nutzungsbedingungen die in der dort genannten Lizenz gewährten Nutzungsrechte.

**Terms of use:**

*Documents in EconStor may be saved and copied for your personal and scholarly purposes.*

*You are not to copy documents for public or commercial purposes, to exhibit the documents publicly, to make them publicly available on the internet, or to distribute or otherwise use the documents in public.*

*If the documents have been made available under an Open Content Licence (especially Creative Commons Licences), you may exercise further usage rights as specified in the indicated licence.*

IZA DP No. 1504

**Vive la Révolution!**  
**Long Term Returns of 1968 to the Angry Students**

Eric Maurin  
Sandra McNally

February 2005

# **Vive la Révolution!**

## **Long Term Returns of 1968 to the Angry Students**

**Eric Maurin**

*Paris-Jourdan Sciences Economiques (PSE),  
CEPR and IZA Bonn*

**Sandra McNally**

*CEP, CEE, London School of Economics  
and IZA Bonn*

Discussion Paper No. 1504  
February 2005

IZA

P.O. Box 7240  
53072 Bonn  
Germany

Phone: +49-228-3894-0  
Fax: +49-228-3894-180  
Email: [iza@iza.org](mailto:iza@iza.org)

Any opinions expressed here are those of the author(s) and not those of the institute. Research disseminated by IZA may include views on policy, but the institute itself takes no institutional policy positions.

The Institute for the Study of Labor (IZA) in Bonn is a local and virtual international research center and a place of communication between science, politics and business. IZA is an independent nonprofit company supported by Deutsche Post World Net. The center is associated with the University of Bonn and offers a stimulating research environment through its research networks, research support, and visitors and doctoral programs. IZA engages in (i) original and internationally competitive research in all fields of labor economics, (ii) development of policy concepts, and (iii) dissemination of research results and concepts to the interested public.

IZA Discussion Papers often represent preliminary work and are circulated to encourage discussion. Citation of such a paper should account for its provisional character. A revised version may be available directly from the author.

## ABSTRACT

### **Vive la Révolution! Long Term Returns of 1968 to the Angry Students\***

The famous events of May 1968, starting with student riots, threw France into a state of turmoil. The period of 'revolution' coincided with the time in which important examinations are undertaken. Normal procedures were abandoned and the pass-rate for various qualifications increased enormously. These events were particularly important for students at an early (and highly selective) phase of higher education. They are shown to have pursued further years of education because thresholds were lowered at critical stages. These historic events provide a natural experiment to analyse the returns to years of higher education for the affected generation and to consider consequences for their children. Thus, we contribute to debate on two very controversial questions: What is the true causal relationship between educational attainment and its labour market value? Is there a causal relationship between the education of parents and that of their children? Unlike most of the literature, we consider the effect of an intervention which alters an individual's years of higher education rather than compulsory schooling. The results show a relatively high return, which might indicate that private returns are higher for the former. Furthermore, the treatment group is on the margin of the higher education system. This study suggests that expanding the university system to accommodate such people can yield very high private returns. Hence our study suggests very positive effects of the '1968 events' for affected cohorts and is of contemporary relevance given the current debate in many countries about widening access to higher education.

JEL Classification: I2

Keywords: higher education, intergenerational, wages

Corresponding author:

Sandra McNally  
CEP and CEE  
London School of Economics  
Houghton Street  
London WC2A 2AE  
United Kingdom  
Email: [s.mcnally1@lse.ac.uk](mailto:s.mcnally1@lse.ac.uk)

---

\* We would like to thank participants at the 'Economics of Education and Education Policy' network meeting in Amsterdam, November 2004; seminar held in CREST, January 2005. We thank Steve Machin and John Van Reenan for helpful comments.

## Introduction

In May 1968 a conflict between students and the university authorities in Paris precipitated a series of events that would lead to mass student protests, the biggest national strike in the history of France and the dissolution of Parliament. By mid-June, the revolution was over and normal life resumed. However there were important consequences for those taking examinations in that year. In the university context, exams became a central aspect of the bargaining process between students and the authorities, with the former successfully bargaining for ‘light-touch’ exams ‘to avoid harming students who have spent a lot of time struggling for a better university’.<sup>1</sup> There are numerous examples of delays and modifications to university examinations taking place in that one year. The important examination taken for the *baccalauréat* (success at which guarantees access to university), only involved oral tests in that year. As a result the pass rate for various qualifications increased enormously. We show that the lowering of thresholds at an early (and highly selective stage) of the higher education system enabled a significant proportion of students born between 1947 and 1950 (particularly in 1948 and 1949) to pursue more years of higher education that would otherwise have been possible. This was followed by a significant increase in their subsequent wages and occupational attainment, which was particularly evident for persons coming from a middle-class family background. Finally, returns were transmitted to the next generation on account of the relationship between parental education and that of their children.

These findings are of interest in their own right. The 1968 events are shown to have had a positive and enduring impact on the affected cohorts – and their children. Although much has been written about the 1968 events, the literature has not picked

---

<sup>1</sup> For example, see the debates reported in the French newspaper *Le Monde*, 17 May 1968

up on this fact. Furthermore the ‘1968 events’ are an important historical example of a situation where thresholds were lowered at critical stages of the higher education system, enabling those on the margin either to enter university or pursue further years of higher education. This is of strong contemporary relevance in many countries, where there is a big debate about widening access to higher education. The experience of 1968 suggests that enabling the ‘marginal’ person to enter and persist in higher education can result in high private returns in the labour market and, because this is also transmitted to the next generation, may have a long run effect on the stock of human capital in the economy.

One can use these ‘1968 events’ as a ‘natural experiment’ to identify the causal effect of education, and hence contribute to important debates within the economics of education literature: What is the true causal impact of education on labour market outcomes such as the wage? Is there a causal relationship between the education of parents and that of their children? As is well known, it is normally very difficult to identify the causal effects of education on subsequent outcomes. Highly educated individuals are likely to have many other specific attributes that are unobserved or difficult to measure. It is unclear whether their good labour market outcomes and high achieving children should be interpreted as a consequence of their education or as an effect of these unobserved attributes. One approach to overcome this problem is to find an instrument for educational attainment which is uncorrelated with an individual’s other attributes.<sup>2</sup> Many studies have used this Instrumental Variable approach to estimate the returns to education, especially following Angrist and Krueger’s (1991) landmark study, which used an individual’s quarter of birth as an instrument for schooling. In the present context, we are able to use birth cohort as

---

<sup>2</sup> See Card (2001) for a review of the methodological issues in this literature and many of the important studies.

an instrument for education. We also make use of the fact that within the most affected cohorts (1948 and 1949), there was a disproportionate effect on the education of those coming from a middle-class family background. Hence, we use the 1968 events as a quasi-experimental setting to analyse the effects of an exogenous shock to educational attainment on the subsequent outcomes of the affected generation and their children.

This approach is similar to several other studies which use a ‘natural experiment’ affecting particular birth cohorts as an Instrumental Variable strategy to estimate the labour market returns to schooling (e.g. Harmon and Walker, 1995; Lemieux and Card, 1998) and to identify the relationship between parental education and that of their children (Black *et al*, 2003; Chevalier, 2004; and Oreopoulos *et al.*, 2003). Thus, the first part of the paper relates to the private return to education, whereas the second part is relevant to the debate on whether education of the current generation can affect the intergenerational transmission of human capital. Little is known about the second issue in particular, where there is far less empirical evidence. To our knowledge, this is the first study which estimates the returns to education of parents on their own outcomes and those of their children in the same framework.

The focus of our paper is on the returns to higher education. In contrast, the above cited papers focus on interventions which affect years of compulsory schooling.<sup>3</sup> The ‘treated group’ (and hence those for whom returns to education are identified) are generally those who leave the education system with relatively low-level qualifications. However, the effect of an increase in years of education might be quite different depending on when the individual is exposed to it. The composition of the treatment group might also differ for a shock which affects higher education. The

---

<sup>3</sup> One exception is Lemieux and Card (1998) who focus on the effect of a program designed to facilitate the further education of post World War II veterans in Canada.

treatment group in our paper is composed of those on the margin of the higher education system. We show large private returns to an additional year of higher education for this group – higher than would be suggested by studies which rely on an intervention affecting the length of compulsory schooling. This suggests that the return to an additional year of higher education may have a larger effect on an individual’s earning capacity than an additional year of compulsory schooling. Furthermore, there is a strong causal relationship between an additional year of higher education and the educational performance of children.

This paper has the following structure: in Section 1, our descriptive section, we provide further details of the consequences of the 1968 events for the examinations undertaken in that year; and we use our data to provide descriptive evidence of the cohorts affected. In Section 2, we develop a simple model to show how different cohorts will be affected by the 1968 events and then we estimate the returns to education in the labour market using two identification strategies - the first using the fact that particular birth cohorts were affected by the 1968 events; and the second using the fact that the impact was strongly linked to the family background of the affected cohorts. In Section 3, we consider the consequences for the intergenerational transmission of human capital when we use the ‘natural experiment’ to estimate the relationship between parental education and that of their children. Finally, we draw together conclusions from the analyses.

## **1: Descriptive section**

### **1.1 The 1968 events and the examinations**

In 1967 and 1968, a wave of student protest movements broke out across Europe, Japan and the United States. This was the era of mass protest against politics and



social values, about which much has been written. However, pre-May 1968, there was no mass student movement in France (Touraine, 1971) and the events of that month took everyone by surprise. This is well encapsulated by the now famous editorial written in a French national newspaper in March of that year: ‘the French are bored. They are not taking part either directly or indirectly in the great convulsions which are shaking the world...’<sup>4</sup> The spark that set off the dramatic sequence of events in France was the decision to close the University of Nanterre in Paris on 2 May (following months of protest between students and the authorities at that institution) and the heavy-handed response of the police to the subsequent protest at the Sorbonne. The protests quickly snowballed in university towns across the whole of France. Then workers became involved: ‘it was only in France that the revolt of the students got a response from the workers...that precipitated the biggest general strike in French history, paralyzing the economy...’ (Singer, 2000). Over 10 million French workers were involved in the strikes – roughly two-thirds of the French workforce. De Gaulle dissolved the national assembly and called for new parliamentary elections in June. These actions effectively ended the brief, dramatic ‘revolution’.

In the midst of these events, university examinations became a central aspect of the bargaining process between the administration and the students. The former exerted considerable pressure for exams to be ‘light’ in that year. There was extensive coverage in the French newspaper *Le Monde* of general controversy surrounding the examination procedures of that year and notice of the numerous delays and modifications to procedures in different institutions throughout the country. The following quotations are among those of student representatives: ‘exams do not have to be abolished: it would harm students who need their diploma’; ‘exams do not have

---

<sup>4</sup> *Le Monde*, 14 March 1968.

to be as hard as usual: it would damage the students who have spent a lot of time struggling for a better university'.<sup>5</sup> The authorities seem to have given way to student demands for 'light-touch' exams in that year, so as not to deny the value of the student movement.

The examination for the *baccalauréat* in 1968 provides one very interesting and important example of the consequences of these decisions. The *baccalauréat* is 'the symbolic national diploma both crowning the successful completion of secondary education and providing a passport for entry into higher education'.<sup>6</sup> It can be seen as the first examination within the French system of higher education. It has a long and distinguished history from its foundation by Napoleon in 1808. Normally it involves several oral and written examinations, which consists of open-ended questions, a commentary on documents etc..., and takes place over several days. Students must obtain the *baccalauréat* to advance within the system of higher education. Indeed, this qualification gives recipients an automatic right to attend university. In May 1968, it was announced that the examination for the *baccalauréat* would be postponed<sup>7</sup> but this was superseded by a later announcement, which stipulated that there would be two oral examinations on the same day. Candidates were informed of their results on the day of taking the examination, thus implying that examiners from different places did not consult with one another before making a final decision over the grades (normally there is a national commission to harmonize marking procedures). As a result, the number of persons obtaining the *baccalauréat* in 1968 was about 30 per

---

<sup>5</sup> Students attending the '*commission des examens*' at the Sorbonne, as reported in *Le Monde*, 17 May 1968.

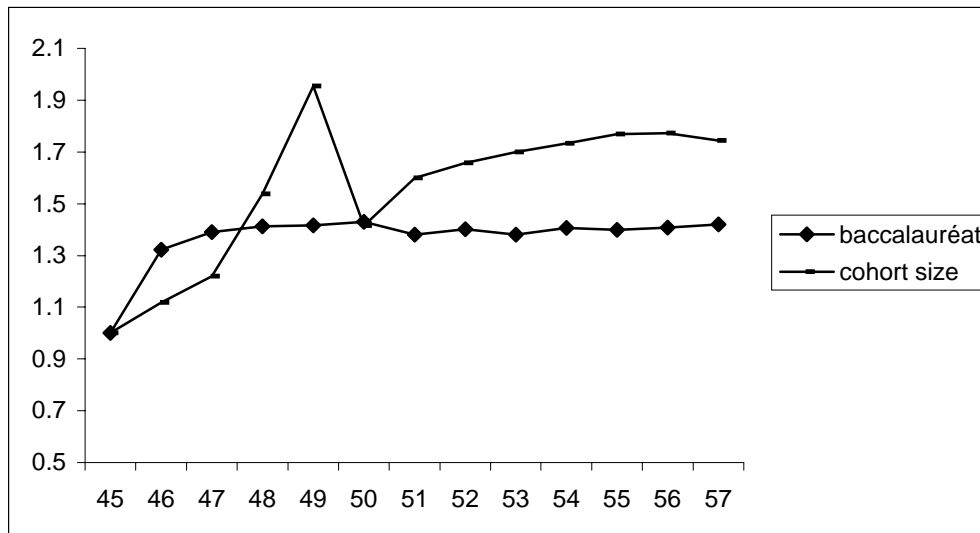
<sup>6</sup> French Embassy in the UK,

<http://www.ambafrance-uk.org/asp/service.asp?SERVID=100&LNG=en&PAGID=92>

<sup>7</sup> This decision was taken on 24 May, the day of the resignation of the Minister of Education, Alain Peyrrefites.

cent larger than in the adjacent years, whereas the size of the corresponding birth cohorts was fairly stable over this period (see Figure 1).

Figure 1: Trends in the number of *bacheliers* and in cohort size.



Source: French Ministry of Education (number of *bacheliers*) and the French Statistical Office (cohort size). The number of *bacheliers* reported for cohort  $t$  corresponds to the number of *bacheliers* recorded at date  $t+19$  (19 is the median age of candidates). The two series are normalised to 1 in 1945.

The lax examination procedures of 1968 were also important at the most selective stages of the university system, typically for students in the first two years (*premier cycle*). These first two years make it possible to obtain a university diploma (generally, an upper-level technician diploma) and are essential in order to pursue a university degree (1 year) or a masters (2 years). We have made a systematic investigation of newspaper archives and they are full of examples showing the difficulties faced by university administrators in organising exams to be held at that time. In almost every university, it was not possible to organise regular examinations without protracted delays and adaptations reflecting the bargaining process between the students and the administration. For example, the *Brevets de Techniciens Supérieurs* (upper-level technician diploma) was granted to students without any

specific examination in 1968. Instead the decision to confer this qualification was made on the basis of the candidate's work throughout the two years.<sup>8</sup>

## 1.2 The 1968 events and educational credentials

The potential consequence of easier examinations is an increase in the final educational outcomes of the beneficiaries. Each year, a certain proportion of students (generally those who have been held back a grade already) do not pass examinations in the early stages of higher education and drop out of the education system, whereas they would have stayed if the examinations had been easier. The effect of a significant relaxation of examinations on any given birth cohort is important if it contains a high proportion of such students at relevant stages of education in that year. Hence we can speculate that the 1968 events have primarily affected the students born between 1947 and 1950, i.e. the cohorts who were at an early stage of higher education at this time.

This can be illustrated using the French Labor Force Survey (LFS) for the years 1990, 1993, 1996 and 1999.<sup>9</sup> The LFS is a large representative sample of the French population of age 15 and above. The number of respondents per cohort is about 10,000 for our pooled sample. We focus on outcomes for male workers, leaving an analysis of the impact of the 1968 events on female outcomes for a separate paper.

A detailed breakdown of the effect of 1968 is provided in Table 1, which shows the percentage of male wage earners in each birth cohort within the following categories of educational attainment: below the *baccalauréat* (*bac*); the *baccalauréat*, but no higher; any university qualification; a two-year university diploma '*bac+2*'; and at least a degree-level university qualification '>*bac+2*'. A number of interesting

---

<sup>8</sup> *Le Monde*, 25 June 1968.

<sup>9</sup> These four years were selected as the sample is rotating every three years, and we are interested to observe the same person only at one point. We do not use surveys before 1990 as they do not contain information on wages.

facts emerge from this table. Firstly, the percentage of workers with at least the *baccalauréat* is similar in 1946 and 1952. Secondly, the majority of workers in the LFS with the *baccalauréat* subsequently achieve a higher qualification at university, but the percentage is significantly higher for students born between 1947 and 1950 than for students born in adjacent years. Hence, there is a significant shift in the percentage of workers with at least a university diploma (*bac+2*), with a peak for the 1949 cohort (i.e. those of age 19 at the time of the 1968 events). For those with a university degree or higher (*>bac+2*), the peak is for the 1948 cohort. Taken together, the most affected cohort is 1949, i.e. persons who were 19 years of age in 1968.

**Table 1 : The distribution of education across male workers, by year of birth**

	<Bac	Bac, but no higher	>Bac		
			All	<i>Bac+2</i> (diploma)	<i>&gt;Bac+2</i> (degree+)
<b>1946</b>	<b>72.7</b> <b>(0.7)</b>	<b>9.9</b> <b>(0.4)</b>	<b>17.4</b> <b>(0.6)</b>	<b>6.3</b> <b>(0.3)</b>	<b>11.0</b> <b>(0.5)</b>
1947	72.2 (0.7)	9.0 (0.4)	18.8 (0.6)	7.1 (0.4)	11.8 (0.5)
1948	71.9 (0.7)	9.1 (0.4)	19.0 (0.6)	6.9 (0.4)	12.1 (0.5)
<b>1949</b>	<b>70.0</b> <b>(0.7)</b>	<b>9.8</b> <b>(0.4)</b>	<b>20.3</b> <b>(0.6)</b>	<b>8.6</b> <b>(0.4)</b>	<b>11.6</b> <b>(0.5)</b>
1950	71.8 (0.7)	9.8 (0.4)	18.4 (0.6)	8.0 (0.4)	10.4 (0.5)
1951	72.3 (0.7)	9.8 (0.4)	17.9 (0.6)	7.5 (0.4)	10.4 (0.5)
<b>1952</b>	<b>72.4</b> <b>(0.7)</b>	<b>9.8</b> <b>(0.4)</b>	<b>17.8</b> <b>(0.6)</b>	<b>7.3</b> <b>(0.4)</b>	<b>10.4</b> <b>(0.5)</b>

Source: Labor Force Survey, 1990, 1993, 1996, 1999. Male wage earners.

In theory, persons who are of ‘normal’ age pass the *baccalauréat* at the age of 18. In practice, the majority repeats at least one grade when in primary or secondary school and passes the *baccalauréat* at the age of 19. This means that a significant

proportion of the 1949 cohort was actually studying for the *baccalauréat* in 1968.<sup>10</sup> Specifically, about 10 per cent of the 1949 cohort was in this position in that year. (see Appendix A). Given that the pass rate for the *baccalauréat* increased by about 30 per cent, it is clear that the events of 1968 enabled a significant fraction of these students to cross the threshold for the *baccalauréat*, allowing the pursuit of further years of education and the eventual attainment of a university diploma or above.<sup>11</sup>

There is also a group of persons born in 1949 who were already at university in 1968. This smaller group, who had passed the *baccalauréat* at 18 years or younger, constitutes about 7 per cent of the cohort. Students who enter university without having to repeat a grade at school are more likely to pursue their studies in more prestigious institutions and the vast majority (over 90 per cent) are successful in obtaining a university qualification. The impact of the events on the final educational qualification obtained by this group can only have been marginal.

Thus, among those born in 1949, the only group whose educational career was substantively affected by the events of May 1968 comprised students at the end of their secondary education who were taking examinations for the *baccalauréat*, having already repeated a grade at secondary school. As shown by Table 1, the events not only enabled an important fraction (about 2.5 per cent of the cohort) to pass examinations for the *baccalauréat*, but also to pursue further studies and subsequently obtain a university qualification. Had they been born one year earlier or one year later, they would have left school without the *baccalauréat*.

---

<sup>10</sup> The survey “*Formation et la Qualification Professionnelle*” (FQP, 1993) confirms that the median age of candidates for the *baccalauréat* is 19 and shows that students studying for the *baccalauréat* in 1968 comprised about 36 per cent from the 1949 cohort; 26 per cent from 1950; 18 per cent from 1948; 7 per cent from 1947 and 8 per cent from 1951. The FQP is a small representative survey of French adults, which contains detailed, retrospective questions about the educational career of participants.

<sup>11</sup> A pass rate of about 30 per cent applied to 10 percent of the 1949 cohort suggests that about 3 per cent of the cohort would have been affected. This order of magnitude is consistent with that implied by column 1 of Table 1.

Hence, in our econometric strategy we largely focus on outcomes for the 1949 cohort as compared to ‘control’ cohorts of 1946 and 1952, who are unlikely to have been affected by the 1968 events. This allows us to identify the average effect of the years spent in higher education for the group of students who are just below the minimum level of scholastic ability required to pass the *baccalauréat* in a normal year and who would *not* have obtained it if the minimum level had remained constant in 1968.

### **1.3. Within cohort effects of 1968**

The cohorts born between 1947 and 1950 have been more affected by the 1968 events because they were more likely to take important examinations at this time and hence more likely to be at a highly selective stage of the education system, where the probability of failure is high. However, it is not the case that the members of these birth cohorts have been equally exposed to the events of 1968. Specifically, only marginal students have been affected – i.e. people who would not have been able to pass the examinations if they had been taken one year before (or after) the 1968 events and who would not have been able to pass if they had repeated the exam year. It is possible to better identify these marginal students by exploring the distribution of educational credentials by social background.

In the Sixties and early Seventies, most children from lower socio-economic groups left school before taking the exam for the *baccalauréat*, whereas children from higher socio-economic groups were likely to pass the *baccalauréat* and enter university.<sup>12</sup> Middle-class children were more likely than the former group to persist in the secondary school system but less likely than the latter group to pass the exams

---

<sup>12</sup> Only 10% of the sons of manual workers passed the *baccalauréat*, compared to about two thirds of the sons of *cadres* (i.e. an upper-level white collar position).

for entry into tertiary education.<sup>13</sup> For example, using the LFS, one can observe that the sons of middle-class fathers (*employés* or *artisans-commerçants*) were the most likely to pass the diploma taken at the end of junior school (*BEPC*) without subsequently passing the *baccalauréat* (see Appendix B). Hence, it follows that the ‘marginal’ student is less likely to be from a lower socio-economic group (who leave school without taking the *baccalauréat*) or a higher socio-economic group (who have less difficulty in passing the exams). The ‘marginal’ student is more likely to be middle-class. Table 2 provides support for this hypothesis, since the effect of the 1968 events is more pronounced for male workers from a middle class family background than for workers from other social groups. The difference in the log odds of holding a university diploma between workers from a middle-class family background and workers from any other type of family background increased by about .40 between 1946 and 1949 and then decreased by about .28 between 1949 and 1952 (see the last column of Table 2). In other words, there is a notable peak in the log odds differential for the cohorts most affected by the 1968 events, which is consistent with these events having been particularly important for students from a middle-class family background. Thus, our second econometric strategy will focus on variations in the educational gap between the sons of middle class fathers and the sons of fathers from other socio-economic groups across birth cohorts, and test whether these variations have been accompanied by similar variations in their labour market outcomes.

---

<sup>13</sup> As in other countries, there is evidence that educational attainment is strongly linked to family background in France (see for example Goux and Givord, 2004).



**Table 2 : Percentage of male workers in each birth cohort with at least a university diploma, by social background.**

Birth cohorts	Social Background						Relative Odd ratios (**)
	Middle Class (*)			Other Social Classes			
	<i>Upper-level middle</i>	<i>Lower-level middle</i>	All	<i>Low (manual worker, farmer)</i>	<i>High (white collar)</i>	All	
1946	21.8	15.7	18.2	8.8	47.2	17.1	1
1947	25.9	20.9	22.9	9.1	49.8	17.4	1.30
1948	25.6	22.5	23.8	10.1	44.1	17.4	1.37
<b>1949</b>	<b>29.1</b>	<b>23.1</b>	<b>25.7</b>	<b>10.2</b>	<b>49.2</b>	<b>18.5</b>	<b>1.40</b>
1950	27.4	17.9	21.7	9.6	45.4	17.4	1.21
1951	26.4	19.1	22.1	8.6	47.3	16.6	1.31
1952	22.9	20.2	21.3	9.3	44.9	16.6	1.12

\*Upper-level middle class corresponds to *Artisans* and *Commerçants* (i.e. shopkeepers, craftsmen, self-employed...) whereas lower-level middle class corresponds to *Employés* (i.e., non-manual routine workers, clerks).

\*\*If  $q_t$  denotes the probability of holding a university diploma for workers born in  $t$  and coming from a middle class family and  $p_t$  denotes this probability for workers from other social classes, then the relative odds under consideration can be written  $[q_t(1-p_t)/p_t(1-q_t)]/[q_{46}(1-p_{46})/p_{46}(1-q_{46})]$ . The last column shows the changes in these relative odds across cohorts.

## 2: Labour market returns to education

### 2.1. Modelling framework

Let  $y_i$ , the earning capacity of worker  $i$  at the entry into the labour market, be written as follows:

$$y_i = \alpha n_i + u_i \quad (2.1)$$

where  $n_i$  denotes the number of grades that worker  $i$  has passed in higher education;<sup>14</sup>  $u_i$  is the unobserved ability of the worker; and  $\alpha$  represents the return to years of higher education. Let  $F_u$  denote the cumulative distribution function of  $u_i$  and assume it is constant across cohorts. If  $n_i$  were uncorrelated with  $u_i$ , the estimation of  $\alpha$  would represent no difficulty – it would simply require comparing the wages earned by workers with different levels of education. However, a problem arises if high ability persons are more likely to pass exams which give access to higher education. In that case  $n_i$  will be correlated with  $u_i$  and the wage gap between persons with different years of higher education will also reflect their ability. The 1968 events provide us with an opportunity to overcome this problem on account of the exogenous shift in years of higher education, which enables an instrumental variable strategy.

To keep things as simple as possible, let us assume that the system of higher education consists of  $N$  basic grades and denote  $c_1 < c_2 < \dots < c_N$  as the levels of ability that are required to pass entry exams into each grade. Without any grade repetition, each student  $i$  will reach the level  $n_i$ , where  $c_{n_i} \leq u_i < c_{n_i+1}$  (and we set  $c_0 = -\infty$  and  $c_{N+1} = \infty$  as a normalisation).<sup>15</sup> He/she can only obtain access to the next grade by repeating a year and will only gain access to this higher grade ( $n_i+1$ ) if

---

<sup>14</sup> Higher education is defined as any education above the first stage of secondary education. In France, the second stage of secondary education is at 'le Lycée' and consists of preparation for the *baccalauréat*.

<sup>15</sup> For example,  $c_1$  represents the minimum level of ability required to pass the *baccalauréat* without grade repetition.

$c_{n_i+1} \leq u_i + r < c_{n_i+2}$ , where  $r$  represents the impact of grade repetition on the capacity to pass an exam. For simplicity, we assume that  $c_k + r < c_{k+1}$ , so that repetition only makes it possible to persist in education for one additional grade.

In this simple setting, the number of grades is a function of  $u_i$  and can be written as follows:

$$n_i = \sum_{k=0}^N k 1(c_k \leq u_i + r < c_{k+1}) \quad (2.2)$$

where  $1(x)$  is a dummy indicating whether  $x$  is true or not. Now assume that the thresholds are exogenously shifted downwards at the end of a specific year  $T$  (i.e. 1968). Let us denote  $c'_1 < c'_2 < \dots < c'_N$  as the new thresholds. Also assume  $r \geq c_k - c'_{k+1}$ , meaning that the effect of grade repetition is at least as large as the advantage provided to students by the downward shift in the thresholds. In this case, students who are of “normal” age in year  $T$  cannot be affected by the shift. In contrast, the educational career of students who have already been held back a grade may well be altered significantly.

Specifically, consider students who have repeated a grade and are in the last year of secondary school (i.e. *terminal*). In our case, this corresponds to the 1949 cohort. There are students in this cohort such that  $c'_1 < u_i + r < c_1$  and hence would not have passed the examinations for the *baccalauréat* if the threshold had remained constant. They obtain the *baccalauréat* only on account of the 1968 events. The proportion of such students can be written as follows:

$$\Delta P = F_u(c_1 - r) - F_u(c'_1 - r) \cdot$$

When we compare the 1949 cohort either with a cohort who were far beyond the stage of taking selective examinations in 1968 (such as 1946) or with a cohort

who had not yet arrived in *terminal* (such as 1951 or 1952), we find that a proportion  $\Delta P$  has attended one supplementary grade within the higher educational system. This generates an outcome  $\Delta y = \alpha \Delta P$ .

In this very simple setting, a regression of  $y$  on  $n$  provides an unbiased estimator ( $\Delta y / \Delta P$ ) of the returns to higher education ( $\alpha$ ) when a dummy variable to indicate whether the individual belongs to the 1949 cohort is used as an instrumental variable. This strategy identifies the impact of the treatment on the treated group, the Local Average Treatment Effect (LATE).

## 2.2. Estimation strategy

Following on from the simple model described above, we write the wages  $w_i$  earned by worker  $i$  from cohort  $c_i$  at age  $a_i$  as follows:

$$w_i = \alpha n_i + \omega a_i + \delta c_i + u_i \quad (2.3)$$

Holding age constant, the cohort trend is equivalent to a time trend and captures the effect of a general increase in productivity on wages. Building on the previous subsection (eq. 2.2), we assume that years of higher education ( $n_i$ ) vary in a non-linear way across cohorts:

$$n_i = d_{47} C_{i47} + d_{48} C_{i48} + d_{49} C_{i49} + d_{50} C_{i50} + d_{51} C_{i51} + e \tau_i + v_i \quad (2.4)$$

where the  $C_{it}$  variables represent cohort dummies,  $\tau_i$  a cohort trend and  $v_i$  a random variable which captures the influence of unobserved ability on years of education. The  $d$  coefficients reflect the effect of the 1968 events on the minimum levels of ability that are required to pass the exams. This effect varies across the different cohorts depending on the stage they were at in the education system in 1968. The potential correlation between  $v_i$  and unobserved factors affecting wages (as reflected in  $u_i$ ) is

the reason why estimation of equation (2.3) may be misleading without the benefit of the natural experiment, which is provided by the 1968 events.

In our empirical strategy, we first estimate the reduced form of the earnings equation by substituting equation (2.4) into (2.3). If our understanding of the 1968 events is correct (and if  $\alpha$  is positive), dummy variables for the 1948 and 1949 cohorts should have a strong positive effect in addition to the cohort trend. Secondly, we restrict our sample to the most affected cohort (1949) and two cohorts that appear to be unaffected (1946 and 1952) and we identify the return to education using  $C_{i49}$  as an instrumental variable.

This approach assumes that  $C_{i49}$  does not affect wages other than through an individual's educational attainment. Hence, it implicitly assumes that employers have not been able to discriminate against individuals who have benefited from easier exams at a point in their educational career.<sup>16</sup> This might be a reasonable assumption in the present context as most people affected by the 1968 events subsequently went on to achieve a higher level of education. If employers place more weight on the highest level of education attained than on earlier qualifications, then one would not expect to observe a penalty for these workers. Furthermore, employers would need to have good information about the educational consequences of 1968. However, to account for this possibility, we develop a second identification strategy which does not rely on cohort effects to identify the returns to education.

Given that the effects of the 1968 events are expected to vary by family background for the reasons discussed above, our second identification strategy

---

<sup>16</sup> There is also a possibility that an increase in the supply of educated workers in the 1949 cohort depressed skill prices and hence depressed the return to education for this cohort relative to other cohorts. In this case, estimates will capture the general equilibrium effect to the extent that depends on the elasticity of substitution across cohorts. If workers from different cohorts are highly substitutable (which might be expected, since we are observing workers at an advanced stage of their career), then estimates of the wage return to education will only capture this effect to a small extent (if at all).

involves using the interaction between birth in the affected cohort and coming from a middle-class family background. Hence, we augment equations (2.3) and (2.4) by including a cohort dummy for year of birth and a dummy for family background. In equation (2.3), we also include an interaction term between the dummy for ‘middle class’ and whether the worker was born in the affected cohort. This interaction term enables identification while also allowing for cohort effects to exert a direct influence on wages.

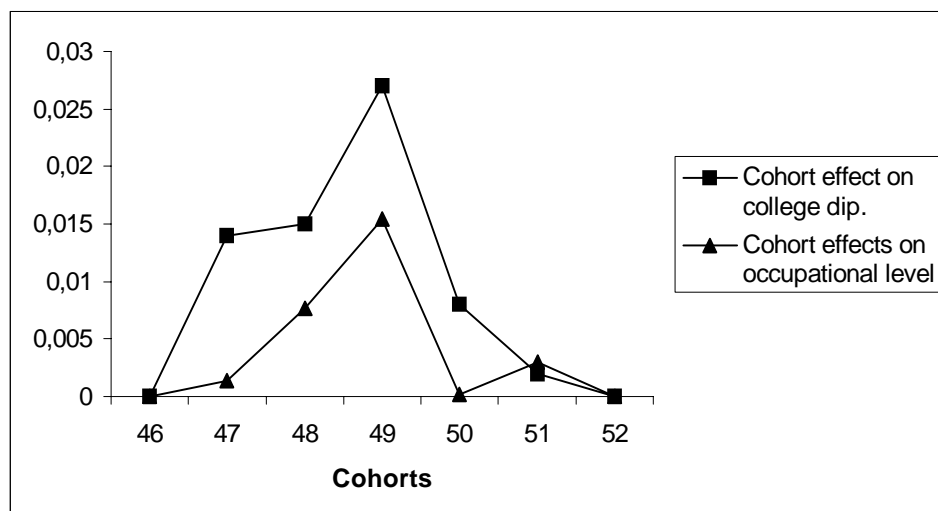
### **2.3. Regression results**

The essence of our results can be simply illustrated. Figure 4 shows the impact of birth cohort on the probability of obtaining a university diploma and the probability of holding an upper-level white collar position (i.e. *cadre*)<sup>17</sup> in OLS regressions where we control for a cohort trend and an age trend (eq. 2.4). The birth cohorts are observed in LFS surveys between 1990 and 1999. Hence, the occupation of survey participants reflects their position when in their forties. The pattern in the data shows a marked similarity for the two different effects and provides good *prima facie* evidence of the relationship between educational and labour market outcomes, with a pronounced upward shift for persons born in 1949.

---

<sup>17</sup> About 15% of the population of male workers in our sample hold these positions. Their wages are on average twice as high as the wages of other workers. In the French context, being a “*cadre*” may be interpreted as a proxy for permanent income.

**Figure 4: The net effects of cohort of birth on the probability of holding at least a university diploma and on the probability of holding an upper-level white-collar position (*cadre*)**



A more comprehensive summary of the impact of birth cohort on the education and labour market outcomes of workers is provided in Table 3. Columns (1) to (3) show the probability of obtaining various educational qualifications for each birth cohort (relative to a reference group born in 1946 or 1952), controlling for a cohort trend and the age of the worker. The educational qualifications are: *baccalauréat* only; at least a university diploma (*bac+2* or more); at least a university degree (*bac+3* or more). We have converted qualifications to the equivalent number of years in higher education<sup>18</sup> and this is the dependent variable in column 4. Then in columns 5 and 6, we report these regressions where the dependent variables are labour market outcomes – log wages and the probability of holding an upper-level white collar position (i.e. ‘*cadre*’).

<sup>18</sup> We have constructed the variable “number of years in higher education” with a value of 3 for workers with *bac* only (the three years of upper-secondary education), 5=3+2 for workers with *bac+2* and 7=5+2 for workers with more than *bac+2*.

**Table 3: The impact of birth cohort the education and labour market outcomes of male workers**

	<i>Bac</i> only	At least university diploma ( <i>bac</i> +2 or more)	At least university degree ( <i>bac</i> +3)	Number years higher education*	Wages	<i>Cadre</i> (Upper White collar occupations)
1947	-.009 (.006)	.014 (.008)	.008 (.006)	.06 (.05)	.006 (.010)	.001 (.008)
<b>1948</b>	<b>.007</b> <b>(.006)</b>	<b>.015</b> <b>(.008)</b>	<b>.012</b> <b>(.006)</b>	<b>.08</b> <b>(.05)</b>	<b>.031</b> <b>(.010)</b>	<b>.008</b> <b>(.008)</b>
<b>1949</b>	<b>-.001</b> <b>(.006)</b>	<b>.027</b> <b>(.008)</b>	<b>.009</b> <b>(.006)</b>	<b>.15</b> <b>(.05)</b>	<b>.021</b> <b>(.010)</b>	<b>.016</b> <b>(.008)</b>
1950	-.001 (.006)	.008 (.008)	-.002 (.006)	.03 (.05)	.005 (.010)	.000 (.008)
1951	-.005 (.006)	.002 (.008)	-.001 (.006)	.01 (.05)	.003 (.010)	.003 (.008)
Trend	-.000 (.001)	.001 (.008)	-.001 (.001)	.005 (.010)	.010 (.002)	-.005 (.001)
Age	-.000 (.001)	.001 (.008)	.0002 (.0006)	.004 (.005)	.023 (.001)	.003 (.001)
N	26370	26370	26370	26370	26370	26370

Source: LFS, 1990, 1993, 1996 and 1999.

Sample: Male wage earners born between 1946 and 1952

The results show a significant positive impact of being born in cohorts particularly affected by the 1968 events (1949 and 1948) in terms of the probability of obtaining a university qualification or higher years of education and in terms of labour market outcomes. There is a wage premium of 2-3 percent from having been born in 1948 or 1949. There is also a higher probability of obtaining a high status occupational position (*cadre*) for those born in 1949.

In Table 4, we show results from estimating the earnings equation and the probability of being in a high level occupation (*cadre*) using OLS (columns 1 and 3) and using birth in 1949 as an instrumental variable for years of higher education (columns 2 and 4). In this case, only cohorts born in 1949 and the two control years (1946 and 1952) are included in the analysis.<sup>19</sup> The results indicate that each

<sup>19</sup> Results are similar when the sample is restricted to cohorts born in 1946, 1948 and 1952, where birth in 1948 is used as the instrumental variable. Estimates are larger, though less well determined.



additional year spent in higher education increases wages by about 14 percentage points and the probability of holding a high-status position by 10 percentage points.<sup>20</sup> In the earnings equation, the point estimate for years of higher education is higher in the IV regression than in the OLS regression, indicating a possible downward bias in the former case (although they are not statistically different). A higher estimate in the IV specification is a fairly typical finding in the literature estimating the returns to education (Card, 2001). For example, it may be due to errors in the measurement of education or reflect the fact that the return to education is higher for the ‘marginal’ student affected by 1968 than for the average student. When looking at the probability of holding a high status position (*cadre*), point estimates from the two approaches are very close.

**Table 4: An evaluation of the return to education using 1949 as an instrumental variable**

	<i>Wages</i>		<i>Probability of upper white collar occupation (cadre)</i>	
	OLS	IV	OLS	IV
Years of higher education*	.09 (.002)	.14 (.06)	.10 (.001)	.10 (.04)
Cohort trend	.010 (.002)	.010 (.02)	-.006 (.001)	-.006 (.001)
Age	.023 (.001)	.023 (.002)	.003 (.001)	.003 (.001)
N	11171	11171	11171	11171
R-squared	.25	.04	.36	.01

Source: LFS, 1990, 1993, 1996 and 1999.

Sample: Male wage earners born in 1946, 1949 or 1952.

As discussed above, there may be a concern that cohort dummies should enter directly into the wage equation, if the 1968 events had a direct effect on wages (as

<sup>20</sup> The results are qualitatively similar when we measure education by whether the worker holds at least a university diploma.

well as through years of higher education). Hence, we implement our second instrumental variable strategy, which uses the interaction between birth in 1949 and being from a middle-class family background to identify the return to an additional year of higher education, and thus enables the birth cohort dummy to enter directly into the wage equation. Regression results are shown in table 5. The first column shows the first stage regression, where years of higher education are regressed against age, birth cohort, social background and interactions between cohort and being from a middle-class family background. The interaction term between birth in 1949 and having a middle-class family background is shown to have a positive and significant effect. Columns (2) and (3) show reduced form regressions, where the dependent variables are, respectively, log wages and holding an upper-level white-collar occupation (*cadre*). Again, positive and significant effects are shown for having been born in 1949 and coming from a middle-class family background. In columns (4) and (5), we present IV estimates for the two labour market outcomes using the interaction between 1949 and middle-class family background as an instrumental variable. The results are remarkably similar to those using the first identification strategy. Indeed, they are not statistically different. In this approach, an additional year of education raises wages by 17 percentage points and the probability of holding an upper-level white-collar position (*cadre*) by 10 percentage points.

Our estimates of the return to an additional year of education are higher than in most studies which use reforms to compulsory schooling as the source of identification.<sup>21</sup> This suggests that the return to an additional year of higher education

---

<sup>21</sup> However, Harmon and Walker (1995), estimate a return of 15% in their IV approach – although this differs considerably from the OLS estimate of 6%.

may have a larger effect on an individual's earning capacity than one additional year of compulsory schooling.<sup>22</sup>

**Table 5 : The effect of years of higher education on wages and the probability of holding an upper level managerial position (*cadre*).**

	First stage Years of higher education	Reduced form Log wage	Upper-level white-collar occupation <i>cadre</i>	IV Log wage	IV Upper-level white-collar occupation <i>cadre</i>
<b>Years of higher education</b>	-	-	-	<b>.17</b> <b>(.07)</b>	<b>.10</b> <b>(.05)</b>
Cohorts					
<b>Middle*1949</b>	<b>.34</b> <b>(.12)</b>	<b>.060</b> <b>(.024)</b>	<b>.034</b> <b>(.020)</b>	--	--
1949	.12 (.06)	.045 (.013)	-.005 (.010)	.02 (.02)	-.017 (.013)
Middle*1952	.27 (.12)	.004 (.025)	.007 (.020)	-.04 (.02)	-.019 (.015)
1952	.04 (.07)	.074 (.015)	-.025 (.012)	.07 (.02)	-.029 (.010)
Age	.013 (.006)	.024 (.001)	.004 (.001)	.022 (.002)	.003 (.001)
<i>Social background</i>					
High (upper level)	3.42 (.13)	.53 (.03)	.46 (.02)	-.07 (.26)	.12 (.17)
High (lower level)	1.68 (.12)	.35 (.03)	.21 (.02)	.06 (.13)	.04 (.09)
Middle (upper)	.72 (.15)	.22 (.03)	.11 (.02)	.09 (.07)	.04 (.05)
Middle (lower)	.36 (.14)	.19 (.03)	.05 (.02)	.12 (.05)	.01 (.03)
Farmer	-.03 (.12)	.03 (.02)	-.04 (.02)	.04 (.03)	-.03 (.02)
Manual worker	-.31 (.11)	.05 (.02)	-.05 (.02)	.10 (.03)	-.02 (.02)
N	11171	11171	11171	11171	11171

Source: LFS, 1990, 1993, 1996 and 1999.

Sample: Male wage earners born in 1946, 1949 or 1952.

Note: the excluded category for socio-economic background is 'unknown'

The fact that our estimates do not differ radically across specifications gives us some confidence that estimates are robust and credible. The cohorts affected by 1968 did indeed benefit from the events of that year. As with other papers in this literature, we cannot say whether employers are rewarding the human capital gains from additional years of higher education or the signalling value of these years (and the

<sup>22</sup> This might be due either to the signalling or human capital value of an extra year of higher education vis-à-vis an extra year of compulsory schooling.

educational credential). However, we can say that enabling the ‘marginal’ university entrant to gain years of higher education led to high private gains at this time – as reflected in their wages and occupational standing. On this basis, one might hypothesise that a similar group could be affected in this way by policies designed to widen access to higher education (to the extent that this involves some lowering of thresholds and hence making the system less selective). The next question is whether this gain in education and earnings for the affected cohorts had any impact on the outcomes of their children.

### **3: Intergenerational transmission of human capital**

An important policy issue is whether providing additional education to parents (and resources more generally) transmits to the next generation, thus breaking the cycle of intergenerational immobility that occurs in many countries (e.g. see for example, Solon, 2002; Blanden *et al.* 2002). An important problem is the difficulty in distinguishing causal effects of parental education on the outcomes of children from a correlation which arises from unobserved factors that transmit across generations (e.g. environmental or genetic factors). There have been a few recent papers which consider an exogenous policy change to the education system in an attempt to identify the causal impact of parental years of education on children’s outcomes (Black *et al.*, 2003; Chevalier, 2004; and Oreopoulos *et al.*, 2003). All these studies use an extension to compulsory schooling as the basis for identification. Black *et al.* (2003) do not find evidence of strong causal effects<sup>23</sup> but suggest that a policy which increased enrolment in higher education might be transmitted more successfully. We

---

<sup>23</sup> However, in a UK context, Chevalier (2004) finds evidence for a causal effect of maternal education, though not for paternal education. Oreopoulos *et al.* (2003) find strong positive effects for both parents, which double when instrumented.

have an opportunity to consider this issue using the fact that the 1968 events provided an exogenous increase in the average years of higher education for the affected cohorts. Given the findings of the previous section (and the fact that the causal effect of education may arise through higher resources), we also show the effects of a high status occupation (i.e. *cadre*) on the educational outcomes of children.

Similarly to Oreopoulos *et al.* (2003), the outcomes we consider are measures of grade repetition. Grade repetition is a widespread phenomenon in many countries and is correlated with other measures of educational achievement. The Program for International Student Assessment (PISA) conducted by the OECD shows that 15 year-old French adolescents who have repeated a grade are likely to obtain much lower scores in maths, reading or science than those who progress to this point without grade repetition. In terms of standard deviations, the difference is equivalent to about 1.14, 1.26 and 1.17 in maths, reading and science respectively (Murat and Rocher, 2003). In the French context, this outcome can be considered as an appropriate measure of school performance.

We consider the sample of 15 year-old adolescents who are observed in the Labour Force Surveys between 1990 and 2001. We have information on their date of birth, education and occupation of their father. Comparing their age and actual grade, we know whether or not they are ‘normal’ age at school (i.e. in the 9<sup>th</sup> grade). For those who are not, we know whether they have been held back one or two grades (7<sup>th</sup> or 8<sup>th</sup>) or whether they are one grade ahead (10<sup>th</sup> grade).

A simple model of the relationship between parental and child outcomes can be described as follows:

$$s_i = \alpha f_i + \lambda c_i^p + \delta c_i + \beta g_i + u_i \quad (3.1)$$

where the school performance of child  $i$  (denoted  $s_i$ ) is potentially affected by his/her parental resources (or education in particular)  $f_i$ , the birth cohort of his father  $c_i^p$ , his/her gender  $g_i$  and birth cohort,  $c_i$ . Holding the birth cohort of the child constant, the birth cohort of the parent may be correlated with outcomes because those who have children at a later stage may have a greater capacity to invest in the human capital of their children. The cohort trend captures a possible linear trend in school performance.

As described in section 2.2, parental resources vary in a non-linear way across cohorts on account of the 1968 events:

$$f_i = d_{47}C_{i47}^p + d_{48}C_{i48}^p + d_{49}C_{i49}^p + d_{50}C_{i50}^p + d_{51}C_{i51}^p + \theta c_i^p + v_i \quad (3.2)$$

where the  $C^p$  variables represent cohort dummies and  $v_i$  is a random variable which represents the influence of unobserved factors. The  $d$  coefficients reflect the impact of the 1968 events on parental resources. In our empirical strategy, we first substitute equation (3.2) into (3.1) to estimate the reduced form. If  $\alpha$  is positive, we expect the dummy variables for the 1948 and 1949 cohorts to have significant positive effects on children's outcomes. Secondly, we implement an IV approach where parental resources in (3.1) are instrumented by cohort dummies, measuring whether the father was born in 1948 or 1949 respectively. In this case, our sample is restricted to those born in an affected year (1948 or 1949) and the two 'control' years (1946 and 1952).

Table 6 shows the (first stage) equation (3.2) where the measures of parental resources are the father's years of higher education (column 1) and whether the father is in an upper-level white-collar occupation, "*cadre*" (column 2). In columns 3 and 4, we estimate the reduced form version of equation (3.1), where the cohort of the father is used to explain children's performance at school. Our primary measure of school performance corresponds to the difference between the actual grade of the adolescent

and the normal grade for his/her age group (i.e. the 9<sup>th</sup> grade). This takes a value of 1 when the adolescent is one year ahead; 0 when he/she is of ‘normal’ age; -1 when he/she is one year behind; and -2 when he/she is two years behind. We describe this variable as ‘educational advancement at age 15’. We also present results when using a dummy variable to indicate whether the 15 year-old has been held back for at least two grades at school.<sup>24</sup>

**Table 6: The relationship between father’s cohort of birth, his resources and child performance at school**

	Father’s resources		Children’s performance	
	Father’s years of higher education	Father=upper level white collar ‘cadre’	(Actual grade-normal grade)	Being two grades behind
Dummies for father’s cohort				
1947	.17 (.10)	.00 (.02)	-.006 (.030)	-.006 (.013)
<b>1948</b>	<b>.29</b> <b>(.09)</b>	<b>.043</b> <b>(.014)</b>	<b>.097</b> <b>(.027)</b>	<b>-.043</b> <b>(.011)</b>
<b>1949</b>	<b>.22</b> <b>(.08)</b>	<b>.022</b> <b>(.013)</b>	<b>.070</b> <b>(.025)</b>	<b>-.031</b> <b>(.011)</b>
1950	.12 (.08)	.016 (.013)	.034 (.024)	-.01 (.01)
1951	.09 (.08)	.010 (.013)	.052 (.025)	-.01 (.01)
Father’s cohort trend	-.06 (.02)	-.013 (.002)	-.003 (.005)	.000 (.002)
Child’s date of birth	.07 (.01)	.007 (.001)	.026 (.002)	-.011 (.001)
Male	.01 (.05)	.01 (.01)	-.17 (.01)	.056 (.006)

Source: LFS, 1990-2001; Adolescents of age 15

The results show a strong positive relationship between birth in an affected cohort and father’s resources – whether this is measured by his years of higher education or his occupational status. As before, the strongest effects are found for the cohorts born in 1948 or 1949. In columns 3 and 4, we show that this translates into

<sup>24</sup> The results are qualitatively similar when we use a dummy indicating that the child is one year ahead or a dummy indicating that he/she is at least one year behind.

better school performance for their children. The continuous measure of educational advancement (in column 3) suggests that children of the affected cohorts are more likely to be on target or ahead in terms of where they were in the school system at age 15 in comparison with the two cohorts which have been unaffected by the 1968 events (1946 and 1952). The effects are strong for the two most affected cohorts, 1948 and 1949. In column 4, results show that children of fathers born in these years are less likely to repeat two grades by 4.3 percentage points and 3.1 percentage points respectively.<sup>25</sup> Hence, it would appear that the benefits of the 1968 events were transmitted to the children of the affected students.

In table 7, we report regressions (estimating equation 3.1) where cohort dummies denoting whether the father was born in 1948 or 1949 are used as instrumental variables for the father's years of higher education. The dependent variable is educational advancement, as measured by the difference between the child's actual grade at age 15 with the 'normal' grade for this age group. We report the results from two IV strategies, where birth in 1948 is used as the instrument in the first approach (column 4) and birth in 1949 is used in the second approach (column 5). The IV regressions consist of those cohorts born in 1946, 1952 and either 1948 or 1949, depending on the instrument used.

In column 1, we report results from the first stage regression, where the father's years of higher education are regressed against birth cohort dummies, a trend for his own birth cohort and that of his child and the gender of his child. As before, there is a strong positive relationship between birth in a cohort affected by the 1968 events (1948 and 1949) relative to birth in the comparison cohorts (1946 and 1952). In column 2, we show the reduced form regression where the child's educational

---

<sup>25</sup> The average probability of being at least 2 grades behind at age 15 is about 11 per cent for the children of fathers from cohorts 1946-52.



advancement at age 15 is the dependent variable (similarly to table 6). Then in column 3, we report the OLS regression, before showing regressions using the two IV strategies in columns 4 and 5 respectively.

Table 7: An evaluation of the impact of father's education on children's performance at school.

	(1) First Stage Father's education	(2) Reduced -Form Actual -norm. grade	(3) OLS Actual - norm. grade	(4) IV (Z=1948) Actual -norm. grade	(5) IV (Z=1949) Actual -norm. grade
Father's education	-	-	.076 (.004)	.33 (.12)	.32 (.15)
Father's cohort=1948	.29 (.09)	.097 (.027)	-	-	-
Father's cohort=1949	.22 (.09)	.071 (.025)	-	-	-
Father's cohort trend	-.06 (.02)	-.004 (.005)	.004 (.005)	.01 (.01)	.01 (.01)
Child's cohort Trend	.004 (.005)	.030 (.003)	-.023 (.003)	.006 (.012)	-.001 (.014)
Gender of child: Male	.004 (.005)	-.16 (.02)	-.16 (.02)	-.16 (.03)	-.20 (.03)
N	5,087	5,087	5,087	3,710	3,804

Source: LFS 1990-2001

Note: Regressions include all children whose fathers were born in 1946, 1948, 1949 and 1952 (first stage, reduced form and OLS regressions in columns 1 to 3); 1946, 1948 and 1952 (column 4); and 1946, 1949 and 1952 (column 5).

Hence the regression results suggest a strong causal relationship between fathers' educational resources and the school performance of their children. Most interestingly, the evaluation of this effect is almost exactly the same whether we use 1949 or 1948 as an instrumental variable.<sup>26</sup> The IV estimates indicate that an additional year of higher education by the father leads to an increase of .30 standard deviations in the child's educational advancement at age 15. These estimates are significantly larger than that estimated using OLS, which indicates an increase of only .10 standard deviations. Results are qualitatively similar when we use other measures

<sup>26</sup> The results are similar when we use the two instruments together. We have also checked that results are robust to the inclusion of a set of dummies indicating the age of the father.

of educational advancement, such as the probability of being two years behind at school. Also, results are qualitatively similar to Oreopoulos *et al.* (2003) in that larger effects are estimated in the IV approach.<sup>27</sup>

#### 4: Conclusion

The famous short-lived ‘revolution’ of 1968 had consequences for those undertaking important examinations in that year. The protracted delays, modifications to exam procedures and deliberate intention that any exams taking place should be ‘light touch’, led to higher pass rates than would otherwise have been the case. While for some students, this would have made no difference or only modified the timing of their progression through the education system, there is a sizeable group for which these events made a real difference to the years of higher education obtained. This group consists of birth cohorts where many would have been in very selective stages of the higher education system at the time of the 1968 events and corresponds to 1948 and 1949 in particular. The importance of 1968 for the latter cohort is mainly due to the effect of the 1968 events on the examination for the *baccalauréat*. We also show that the ‘marginal’ student is more likely to be from a middle-class family background, which may be explained by the fact that students from lower socio-economic groups are much less likely to progress to this level of education and students from higher socio-economic groups are more likely to pass the examinations in any given year. The consequence of 1968 for the affected group was that it became easier to progress to a further stage of higher education, and thus obtain more years of higher education than would otherwise have been the case.

---

<sup>27</sup> However the quantitative results are not comparable due to different measures of the dependent variable and the measure of parental education.

The regression results show a very strong relationship between birth in an affected cohort (especially 1948 and 1949) and labour market returns, whether these are measured by wages or the probability of holding a high-status occupation. For fathers, these effects are transmitted to the next generation since children are shown to be much less likely to repeat a grade at school.

We use these exogenous cohort-specific shifts in years of higher education to implement an instrumental variable strategy in which we estimate the labour market return to years of higher education and analyse whether these additional years have any causal impact on the educational outcomes of the next generation. The regression results show large private returns to a year of higher education. The returns are similar for both outcome measures (earnings; probability of holding an upper-level white collar occupation) and for the OLS and IV approaches. The estimated return is higher than in most studies in this literature and suggest that there may be a larger return to an additional year of higher education than, for example, an additional year of compulsory schooling (around which, most ‘experimental’ studies in this literature are based). This large return is transmitted to the next generation. The ‘natural experiment’ of 1968 suggests a strong causal relationship between the education of fathers and that of their children.

The treatment group in this study is of much policy interest since it consists of people on the margin of the education system, who would also have been affected by any deliberate attempt to widen access to higher education at this time. Such people are shown to benefit greatly from the reduction of selectivity in the university system. This is manifest in their labour market returns. Furthermore, the strong positive effects of higher education are transmitted to the next generation.

We contribute to two important debates in the economics of education: What is the causal impact of an additional year of higher education? What is the true relationship between the education of parents and that of their children? We show the importance of an additional year of higher education for those on the margins of the higher education system. Thus, our results are of contemporary relevance. We also show the success of the revolutionaries of 1968, in ways that they were unlikely to have foreseen.

## References

- Angrist, J., and A. Krueger, (1991), "Does Compulsory School Attendance Affect Schooling and Earnings?" *Quarterly Journal of Economics*, Vol.106, pp.979-1014
- Béduwé, C., and J. Germe, (2004), "Raising the Levels of Education in France: from Growth to Stabilisation," *European Journal of Education*, Vol. 39, No. 1, pp. 119-132.
- Black, S.E., P.J. Devereux and K.G. Salvanes, (2003), "Why the Apple Doesn't Fall Far: Understanding the Intergenerational Transmission of Human Capital," Working Paper 10066, National Bureau of Economic Research.
- Blanden, J., A. Goodman, P. Gregg, and S. Machin, (2002), "Changes in Intergenerational Mobility in Britain," in M. Corak (ed), *Generational Income Mobility in North America and Europe*, Cambridge University Press (forthcoming).
- Card, D. (2001), "Estimating the Return to Schooling: Progress on Some Persistent Econometric Problems," *Econometrica*, Vol. 69, No. 5, pp. 1127-1160.
- Chevalier, A., (2004), "Parental Education and Child's Education: A Natural Experiment," Mimeo, University College Dublin.
- Dearden, L., (1999), "Qualifications and Earnings in Britain: How Reliable are Conventional OLS Estimates of the Returns to Education?" Working Paper Series No. W99/7, Institute for Fiscal Studies, London.
- Harmon, C., and I. Walker, (1995), "Estimates of the Economic Return to Schooling for the United Kingdom", *American Economic Review* Vol. 85, pp.1278-1286
- Lemieux, T., and D. Card, (1998), "Education, Earnings and the 'Canadian G.I. Bill'," *Canadian Journal of Economics*, Vol. 34, No. 2, pp.313-344
- Givord, P., and D. Goux, (2004), "Mass and Class: Persisting Inequalities in Post-secondary Education in France", in *Higher Education Inequalities in Post-industrial Societies*, Yossi Shavit and Richard Arum eds, Stanford University Press, forthcoming.
- Murat, F., and T. Rocher, (2003), "La Place du Projet Professionnel dans les Inégalités de Réussite Scolaire à 15 ans," *France Portrait Social*, 2002-2003, INSEE, Paris, pp.101-121
- Oreopoulos, P., M.E. Page, and A. Huff Stevens, (2003), "Does Human Capital Transfer from Parent to Child? The Intergenerational Effects of Compulsory Schooling," Working Paper 10164, National Bureau of Economic Research.
- Singer, D., (2000), "1968 Revisited: 'Be Realistic, Ask for the Impossible'," *New Politics*, pp. 133-140.

Solon, G., (2002), "Cross-Country Differences in Intergenerational Earnings Mobility," *Journal of Economic Perspectives*, Vol.16, pp.59-66

Touraine, A., (1971), *The May Movement: Revolt and Reform: May 1968 – the Student Rebellion and Workers' Strikes – the Birth of a Social Movement*, New York: Random House.

## Appendix A

The survey *Formation et Qualification Professionnelle* (FQP), conducted in 1985 by the French Statistical Office, contains information on age at entry into the higher education system as well as on the educational credentials of the respondents. It shows that about 8% of the male respondents born between 1946 and 1952 entered into the system of higher education at age 18 or younger and that about 91% of these ‘normal age’ male entrants obtain at least a university diploma (see columns 3 and 4). The FQP survey conducted in 1977 provides very similar results. Another FQP survey has been conducted in 1993 on a smaller sample, but with additional (retrospective) information on the educational career of respondents. It shows that the median age of students in *terminal* was 19 and that at age 19, about 10% of a cohort was in *terminal* (see columns 1 and 2). The size of the sample is about 500 male respondents per cohort for FQP 1985 and about 500 respondents per cohort (male and female) for FQP 1993.

Cohort	Median age of students in <i>Terminal</i> (year of taking exam for <i>baccalauréat</i> )	Proportion in <i>Terminal</i> at age 19	Proportion entering higher education system at age 18 or younger	Proportion obtaining university diploma if entering at age 18 or younger
1946	19	.080	.062	.945
1947	19	.111	.063	.894
1948	19	.054	.054	.972
1949	19	.105	.076	.932
1950	19	.112	.086	.863
1951	19	.094	.116	.895
1952	19	.120	.099	.918
<b>Total</b>	<b>19</b>	<b>.096</b>	<b>.081</b>	<b>.912</b>

Source: All respondents FQP 1993 (columns 1 and 2) and male respondents FQP 1985 (columns 3 and 4)

## Appendix B.

### The impact of social background on obtaining a school diploma

Note:

The below table shows results from logistic regressions. In column 1, the dependent variable is whether a person leaves school without any diploma; in column 2, it is leaving school with only the junior school-leaving diploma (conditional on leaving school with some diploma). In the first regression, we see that the probability of leaving school without a diploma decreases with respect to the occupational status of the father. The second regression shows that conditional on obtaining a diploma at some stage in school, the probability of leaving school with only a junior school diploma is at its highest for children from a middle-class family background.

---

---

	No diploma (unconditional)	Junior school leaving diploma only (conditional on some diploma)
Father's occupation		
<i>High</i>	-1,73 (0,05)	-0,08 (0,08)
<i>Middle</i>	-0.84 (0,04)	+0,33 (0,08)
<i>Manual</i>	-0,05 (0,03)	+0,03 (0,08)
<i>Farmer</i>	Ref.	Ref.
Birth Cohort trend	-.034 (.006)	-.03 (.01)
No. observations	26,320	17,743

---

---