

Liu, Yan; Chen, Xi; Yan, Zhijun

Working Paper

Depression in the House: The Effects of Household Air Pollution from Solid Fuel Use in China

IZA Discussion Papers, No. 12654

Provided in Cooperation with:

IZA – Institute of Labor Economics

Suggested Citation: Liu, Yan; Chen, Xi; Yan, Zhijun (2019) : Depression in the House: The Effects of Household Air Pollution from Solid Fuel Use in China, IZA Discussion Papers, No. 12654, Institute of Labor Economics (IZA), Bonn

This Version is available at:

<https://hdl.handle.net/10419/207479>

Standard-Nutzungsbedingungen:

Die Dokumente auf EconStor dürfen zu eigenen wissenschaftlichen Zwecken und zum Privatgebrauch gespeichert und kopiert werden.

Sie dürfen die Dokumente nicht für öffentliche oder kommerzielle Zwecke vervielfältigen, öffentlich ausstellen, öffentlich zugänglich machen, vertreiben oder anderweitig nutzen.

Sofern die Verfasser die Dokumente unter Open-Content-Lizenzen (insbesondere CC-Lizenzen) zur Verfügung gestellt haben sollten, gelten abweichend von diesen Nutzungsbedingungen die in der dort genannten Lizenz gewährten Nutzungsrechte.

Terms of use:

Documents in EconStor may be saved and copied for your personal and scholarly purposes.

You are not to copy documents for public or commercial purposes, to exhibit the documents publicly, to make them publicly available on the internet, or to distribute or otherwise use the documents in public.

If the documents have been made available under an Open Content Licence (especially Creative Commons Licences), you may exercise further usage rights as specified in the indicated licence.

DISCUSSION PAPER SERIES

IZA DP No. 12654

**Depression in the House:
The Effects of Household Air Pollution
from Solid Fuel Use in China**

Yan Liu
Xi Chen
Zhijun Yan

SEPTEMBER 2019

DISCUSSION PAPER SERIES

IZA DP No. 12654

Depression in the House: The Effects of Household Air Pollution from Solid Fuel Use in China

Yan Liu

Beijing Institute of Technology

Xi Chen

Yale School of Public Health and IZA

Zhijun Yan

Beijing Institute of Technology

SEPTEMBER 2019

Any opinions expressed in this paper are those of the author(s) and not those of IZA. Research published in this series may include views on policy, but IZA takes no institutional policy positions. The IZA research network is committed to the IZA Guiding Principles of Research Integrity.

The IZA Institute of Labor Economics is an independent economic research institute that conducts research in labor economics and offers evidence-based policy advice on labor market issues. Supported by the Deutsche Post Foundation, IZA runs the world's largest network of economists, whose research aims to provide answers to the global labor market challenges of our time. Our key objective is to build bridges between academic research, policymakers and society.

IZA Discussion Papers often represent preliminary work and are circulated to encourage discussion. Citation of such a paper should account for its provisional character. A revised version may be available directly from the author.

ISSN: 2365-9793

IZA – Institute of Labor Economics

Schaumburg-Lippe-Straße 5–9
53113 Bonn, Germany

Phone: +49-228-3894-0
Email: publications@iza.org

www.iza.org

ABSTRACT

Depression in the House: The Effects of Household Air Pollution from Solid Fuel Use in China

While adverse health effects of ambient air pollution have been well documented, there is scarce evidence on the impact of household air pollution (HAP) on mental health. We investigated the causal link between HAP exposure from the use of solid fuel on depressive symptoms using a nationally representative dataset of middle-aged and older population in China. Employing the Propensity score matching (PSM), matching and adjusting for potential confounders, we found significantly higher Center for Epidemiological Studies Depression Scale (CES-D) score and risk of depressive symptoms among solid fuel users than clean fuel users. These associations were especially stronger for older females who were less educated, of lower income, of higher body mass index, or had chronic diseases.

JEL Classification: I31, Q51, Q53

Keywords: depression, household solid fuel use, household air pollution, propensity score matching, CHARLS

Corresponding author:

Xi Chen
Yale University
60 College St
New Haven, 06520
USA

E-mail: xi.chen@yale.edu

1. Background

Depression is one of the most common mental health problems nowadays. It results from a complex interaction of biological, physical, psychological, and social factors (Fuller-Thomson et al. 2016; Kessler and Bromet 2013; Paykel 2008). Depression has been experienced by a large number of elderly worldwide, which contributes to a high risk of disability, substantial expenditure on health services, decreased labor productivity, and thus, low quality of life which may even lead to suicide (Ekman et al. 2013; Goldney et al. 2004; Ruo et al. 2003). These adverse effects of depression can eventually lead to a high risk of mortality. In 2013, depressive disorders accounted for approximately 30% of all mental disorder disability-adjusted life years in China and is expected to increase further (Charlson et al. 2016). Depression can be triggered by various factors, including genetic susceptibility, brain damage, substance abuse, lifestyle (e.g., smoking and drinking), socioeconomic status, and so on (Cole and Dendukuri 2003; Lim et al. 2012; Pun et al. 2017).

Recent epidemiological studies reported that physical environmental factors like short- and long-term ambient air pollution exposure also have effects on neurobehavioral and psychological outcomes. These factors particularly increase the risk of depression and decreasing cognitive function. However, results were not entirely consistent (Kim et al. 2016; Power et al. 2011; Vert et al. 2017; Wang et al. 2018; Wang et al. 2014; Zhang et al. 2017; Zijlema et al. 2016). For example, elevation in concentrations of ambient air pollutants was linked with emergency room visits for depression in Canada (Szyszkowicz et al. 2016), increased risk of hospitalization for depression in China (Wang et al. 2018), and the use of antidepressants and benzodiazepines (Vert et al. 2017). Studies also focused on susceptible population; depression was considerably impacted by increasing ambient air pollution among the elderly (Lim et al. 2012; Pun et al. 2017), and middle-aged and older women in the U.S. (Kioumourtzoglou et al. 2017). Additionally, the effects of air pollution on depression was strong among females, individuals aged 65 years and above, and those who suffered from chronic diseases such as cardiovascular diseases (CVDs) and diabetes mellitus (Cho et al. 2014; Kim et al. 2016; Wang et al. 2018).

Compared with ambient air pollution, limited evidence is available on associations between mental health and household air pollution (HAP) from solid fuel consumption like coal and biomass (e.g., charcoal, wood, crop residues, and animal dung) worldwide

(Bonjour et al. 2013), except for a study on the association between biomass and depression among premenopausal women in India (Banerjee et al. 2012). More than 700 million people in China depend on solid fuel as their major household energy source, resulting in numerous toxic air pollutants (e.g., particles, nitrogen oxide, carbon monoxide, and organic air pollutants) and high indoor concentrations of HAP (Bonjour et al. 2013; Smith et al. 2013). HAP has been one of the leading contributors to disease burden (Clark Maggie et al. 2013) and is responsible for approximately 3.8 million deaths in 2016 (WHO 2019). Despite many studies on the physical health impacts of HAP on many diseases, such as CVDs and respiratory diseases (Baumgartner et al. 2011; Guan et al. 2016; Hystad et al. 2019; Li et al. 2019; Yan et al. 2016), the potential effects of HAP from the use of solid fuel on depression in China and worldwide have not been evaluated to date.

Depression is highly prevalent among the elderly. Given the substantial personal and societal burdens from depression and the problems of an aging population and air pollution in China, identifying modifiable risk factors for depression is imperative. The goal of the present study is to evaluate the effects of HAP from solid fuel combustion on depression among middle-aged and older individuals, which is one of the most sensitive age groups to air pollution and depression. Evaluating the effects of household solid fuel use on depression may provide insights into the mental effects of HAP and information to help in energy, environmental, and health policy making.

2. Data and methods

2.1 Data source

We obtained our data from the China Health and Retirement Longitudinal Study (CHARLS, website: <http://charls.pku.edu.cn/zh-CN>), a nationally representative longitudinal survey of more than 17,000 persons in China aged 45 years or older, covering 150 counties in 28 provinces. The study is biennially conducted by the National School of Development at Peking University. Ethical approval for the study was granted by the Ethical Review Committee of Peking University, and all participants provided informed consent. Three national waves of data are available to date: waves in 2011, 2013, and 2015. Most of the survey data are self-reported. Detailed information about this survey is available in Zhao et al. (2014).

Our sample included participants who were involved in all three waves of the study.

We employed wave 2015 in our main analysis. For eligibility, we first excluded participants who were below 45 years old; then, individuals diagnosed with memory-related diseases (e.g., dementia and Alzheimer’s disease), brain damage, or mental retardation. We also excluded participants who use unidentifiable fuels. Lastly, samples with missing values of major outcomes and independents were also dropped. The final sample before analysis is N=9,107.

2.2 Depression outcomes

Depressive symptoms were measured using the 10-item Center for Epidemiologic Studies Depression (CES-D) scale (Andresen et al. 1994), which is widely used to measure depression among older adults in prior studies (Guo et al. 2017). The answers are indicated in a four-scale metric, from “rarely” to “some days” (1–2 days), “occasionally” (3–4 days), or “most of the time” (5–7 days). For the two positive questions— “I was happy” and “I felt hopeful about the future”—answers were reversely coded before the summary. We then recorded all answers as values, from 0 to 3 as “rarely” and “most of the time,” respectively. The total range of CES-D scores in this study was 0–30, with higher scores indicating greater depression severity. A cutoff of 10 was used to define a binary variable of depression episode based on previous studies (Andresen et al. 1994), with 1 for individuals who had a score of 10 or above, otherwise 0. According to self-reported chronic disease history, individuals diagnosed with emotional, nervous, or psychiatric problems, taking antidepressants, tranquilizers, or sleeping pills, or receiving psychiatric or psychological treatment were also considered to be suffering from an episode of depression, which is coded as 1.

2.3 Solid fuel use

According to CHARLS, cooking fuel was categorized as clean fuel (liquefied gas, natural gas, and electricity) and solid fuel (coal, biomass charcoal, wood, and straw). Two measures for fuel types as surrogates of HAP were used as independents in this study. The first was whether household solid fuel was used at the time of the survey (current solid fuel users), with 1 indicating “yes” and 0 otherwise. The second was the duration of solid fuel use, which was marked as 0, 1–4 years, and 5 years or more. The duration of solid fuel use was calculated based on the fuel types used in waves 2011, 2013, and 2015. For example, one was considered a user of solid fuel for 5 years or more if he/she used solid fuel for all three waves. If an individual used clean fuel for all three waves, then the duration of solid fuel use is 0 years. For the subgroup analysis,

the duration of solid fuel use was categorized as a dummy variable indicating a duration of 5 years or more and less than 5 years.

2.4 Covariates

Following a previous study (Cole and Dendukuri 2003; Lim et al. 2012; Vert et al. 2017; Zhang et al. 2017), we considered potentially confounding covariates, including demographic characteristics (age, gender, education, rural area, marital status, and retirement status), lifestyle (smoking, sleep time, and social activity participation), health status (body mass index [BMI], diabetes, lung diseases, CVDs, disability, and self-reported health), and household economic level to be associated with depression.

In this study, education was categorized as primary or below, middle school, and college or above. We also included retirement as a dichotomous variable because it is a possible risk factor for depression (Reitzes et al. 1996). Non-smokers, defined as those who had never smoked, were given the value of 0, whereas those who had smoked were given the value of 1. Drinkers were defined as a binary variable equal to 1 for regular drinkers who drink more than once a week. We categorized sleeping time into three groups: less than 7 hours, 7–9 hours, and more than 9 hours. Social activity participation was a dummy variable, with 1 suggesting that the observation has done at least one of the enumerated activities during the last month, and 0 otherwise. BMI was calculated by dividing weight by squared height, with a $BMI \geq 25$ considered obese. For chronic diseases, we coded diabetes and CVDs (hypertension, dyslipidemia, heart diseases, stroke, and asthma) using the “Health Status” section of CHARLS. CVDs equaled 1 if a participant suffer from one or more of the five diseases mentioned, and 0 otherwise. Disability was coded as 1 if a participant had a physical disability, vision problem, hearing problem, or speech impediment, and 0 otherwise. Self-reported health was defined as poor, fair, or good. Lastly, given that no direct indicator for individual or household economic level or income level is provided in CHARLS, we obtained household economic levels by using a principal component analysis (PCA) based on household living expenditure and household ownership of equipment, consumer durables, and other valuables. An indicator was excluded if everybody or nobody owned a given item. A composite score based on the first component generated from PCA has been suggested to be a qualified measure of socioeconomic status and has been widely employed in previous studies (Krefis et al. 2010; Neupane et al. 2015; Vyas and Kumaranayake 2006).

2.5 Statistical Analysis

The major empirical challenge for this study is that the fuel type choice may not be randomly assigned. For example, participants with high income or high educational attainment are likely to choose clean fuel (Jeuland et al. 2015), which can lead to biased estimation. The PSM method is a useful tool that allows selection bias and addresses covariate imbalance between treated and comparison groups in observational studies. However, it is underused in epidemiological research (Garrido et al. 2014; Juhn et al. 2010). Therefore, we employed the PSM technique to control potential selection bias in the empirical estimation.

We first calculated propensity scores by fitting a logit regression model to predict the probability of using solid fuel, which was matched by available background variables as follows:

$$pscore_i = \delta Z_i + \varepsilon_i, \quad (1)$$

where $pscore_i$ represents the propensity scores of individual i , Z_i is a vector including all the matching covariates listed in the part of *Covariates*, and ε_i is the error term. A full matching technique with k-nearest neighbor matching within 0.2 SD caliper was employed for matching as suggested by Austin (2013). Matching quality and balance were then checked by testing the common support assumption and the overlap in the range of propensity scores across treatment and control groups. Covariate balance of the matched data was also examined by testing the absolute standard bias (ASB) between the treatments and controls after matching. Balance was assumed to be well achieved when the ASB was less than 0.25 after matching (Ho et al. 2007; Stuart and Green 2008).

Based on the matched data above, final models using ordinary least squares and logistic regressions were performed to obtain the average treatment effect on the treated (ATT). The matching covariates and propensity scores were retained in all models to account for any remaining imbalance and potential confounding effects. Our main model specification is as follows:

$$D_i = \alpha + \beta HAP_i + \gamma Z_i + \lambda pscore_i + \varepsilon_i, \quad (2)$$

where the dependent variable D_i is depression outcomes of respondent i . Two different depression outcomes were examined including a continuous variable of CES-D scores and a dichotomous variable indicating a depression episode. The key variable HAP_i is the HAP measure of respondent i , which is surrogated by the household fuel type. Two

different independents (current solid fuel users and duration of solid fuel use) were employed in the models and regressed separately. Z_i is a vector including all the matching covariates. $pscore_i$ represents the propensity scores of individual i obtained from model (1). ε_i is the error term. The coefficient of interest here is β , which measures the ATT of HAP on depression outcomes. A 95% CI was reported using standard errors clustered at the community level.

We also conducted several additional sensitivity analyses to evaluate the robustness of our findings. First, previous studies on elderly Chinese claimed that a cutoff of 12 is an optimal threshold to identify clinical depression (Cheng et al. 2016; Cheng and Chan 2005). Therefore, we repeated all analyses using 12 to define a depression episode. Second, previous studies suggested that the neurocognitive effects of air pollution may vary across population groups, socioeconomic status (education and income levels), and history of chronic diseases (Cho et al. 2014; Kim et al. 2016). We likewise considered subgroup analyses to examine the possible heterogeneous effects for gender, age (≥ 65 or < 65), obesity (BMI ≥ 25 or < 25), educational attainment, household economic levels, and chronic diseases (diabetes, chronic lung diseases, and CVDs). Third, participants taking antidepressants, tranquilizers or sleeping pills, or receiving psychiatric or psychological treatment were excluded in all models for another sensitivity analysis. Lastly, given that the results of PSM may vary according to different matching methods (Garrido et al. 2014), we repeated all the analyses by using k-nearest neighbor matching (k=2, 3, or 4), caliper matching, and kernel matching to test the robustness of our results.

All statistical analyses were conducted using STATA version MP14.0 software. P-value < 0.05 was considered as statistically significant.

3. Results

3.1 Summary of characteristics

A total of 9,107 participants in wave 2015 were included in our study. Table 1 summarizes the characteristics of the study population across different fuel types. Over half (53.5%) were female with a mean age of 62.6 years old (SD: 9.33). The average CES-D score was 7.35 (SD: 6.06) and 9.07 (SD: 6.70) for current clean and solid fuel users, respectively. Compared with solid fuel users, participants who use clean fuel were more likely to suffer from a depression episode (28.4% and 39.4%). Two groups

using different fuel types were statistically different before matching in most of the covariates except for gender, marital status, drinking habits, and CVDs.

3.2 Matching quality and balancing tests

To validate the quality of the matching, we examined the assumption of common support of the propensity scores. Appendix figure 1 (AF1) presents the common range of propensity scores of the matching data. Almost all observations were within the common range (on support), and only a small number of samples were off support after matching. Appendix figure 2 (AF2) presents the density function of propensity scores after matching. Similar distributions of the matched cohort in propensity scores suggested that most of the propensity score intervals of the treated and control groups have substantial overlap. This finding indicates that our matching sample can meet the matching requirements for the following estimation.

Table 2 shows the results of covariates balancing test. Almost all the standard bias of the matching covariates are reduced substantially and all of ASB are below 10%. Moreover, the pseudo R^2 is less than 0.01 for the balance testing, and the likelihood ratio test of joint significance became nonsignificant after matching. This result suggests no systematic difference between the treatment and control group. Results indicated good quality of data matching.

3.3 Effect of HAP on depression

Table 3 describes the results indicating the effects of household solid fuel use on depression using unmatched and matched data. Estimated coefficients of CES-D scores and OR of depression risk with clustered standard errors at the community level are reported. Two measures of independents including current solid fuel users and the duration of solid fuel use were examined. Overall, the unmatched and matched results were statistically significant at the 0.05 level, with slightly small matched results. Using the matched data after control on the potential confounders, current solid fuel users had a 0.59 (95% CI: 0.31, 0.89) higher CES-D score and an OR of 1.26 (95% CI: 1.14, 1.41) suffering from depression compared with current users of clean fuel. The adverse effects of sustained use of solid fuel on depression became increasingly evident. Compared with participants who use clean fuel all the time, individuals exposed to solid fuel combustion for 5 years or more had a significantly higher CES-D score of 1.07 (95% CI: 0.65, 1.5) and an OR of 1.55 (95% CI: 1.29, 1.86) and risk of depression. A long duration of solid fuel use indicated a high effect for CES-D scores and depression

episode risk.

Heterogeneous effects of HAP on depression by age, gender, BMI, education, household economic level, and chronic disease status were discussed. Tables 4, 5, and 6 show the results of subgroups analysis, with almost all estimates positively statistically significant for all separate groups. The hazardous effects of HAP on depression were significant for almost all the different populations. For the subgroups of age, gender and BMI, table 4 suggests that groups of age ≥ 65 years old, female, and BMI ≥ 25 had slightly higher CES-D scores and higher risk of depression episode compared with their counterparts. However, only part of the estimates were statistically significant at the 0.05 level. We then conducted stratified analysis of education and household economic levels, which may be associated with the assignment of fuel types of participants. Table 5 reports the results. Generally, HAP has large effects on depression outcomes in participants with low educational attainment and low household economic levels. Only the modification effect of education was statistically significant for the association between current HAP exposure and CES-D scores. When stratified by underlying chronic diseases, high effects were observed in participants suffering from diabetes, chronic lung disease, and CVDs. However, we did not find any significant effect modification for these groups except for the modified effect of diabetes and chronic lung diseases on the associations between solid fuel use duration of 5 year or more and CES-D scores.

Results of sensitivity analyses were all reasonably consistent with our primary models. The last panels of tables 3, 4, and 5 present the results of household solid fuel use on the risk of depression using a cutoff of 12. Overall, a slight difference was observed in using a cutoff of 10 to define a depression episode, suggesting robust estimates of our models. These results remained largely consistent when we 1) excluded participants taking antidepressants, tranquilizers, or sleeping pills or receiving psychiatric or psychological treatment; and 2) employed different matching methods in the PSM (data are not shown but are available upon request).

4. Discussion

By using a matching method, household solid fuel use was found to have a significant effect on depression among the middle-aged and older population in China. This effect remained significant even after controlling for confounders like

demographics, socioeconomic status, and health-related covariates. To our knowledge, this study is the first to employ a nationally representative data and matching technology to explore the relationship between HAP from solid fuel combustion and depression in China. Our results can lend support for the role of HAP in neurobehavioral disorders, thereby providing valuable insights for policy and promotional program designs. These policies and programs can improve mental health and control the disease burden of air pollution in China and worldwide.

We found hazardous effects of HAP on depressive symptoms and the risk of experiencing a depression episode among the middle-aged and older population in China. We cannot directly compare our estimates with prior studies because no existing studies have evaluated the effects of household solid fuel use on depression. A similar study found that premenopausal women who cooked using biomass had a high prevalence of depression (OR=1.67, 95% CI: 1.18–2.95) in India (Banerjee et al. 2012); where the values were larger than our estimates (1.26, 95% CI: 1.14, 1.41). Apart from the independent variables and estimate methods, other potential explanations for this difference may include different sample sizes, outcome measures, and population characteristics. For example, we used a large nationally representative dataset with a sample size of more than 9,000, whereas the other study focused on premenopausal women and had a sample size of 952. Additionally, our findings conform with prior epidemiological studies on the associations of ambient air pollution and depression, which have found strong depressive symptoms, high risk of depression disorders, and increased hospitalization for depression with increasing ambient air pollutant concentrations. Similarly, our results were consistent with HAP research on physical health effects, where HAP from solid fuel use was linked with high blood pressure (Baumgartner et al. 2011; Yan et al. 2016) and increased risk of mortality from CVDs (Yu et al. 2018), respiratory diseases (Bates Michael et al. 2013), lung cancer (Hosgood et al. 2010), and cataracts (Ravilla Thulasiraj et al. 2016). This finding suggests that HAP not only has adverse effects on physical health but also on mental health.

Our second important finding was that long exposure to HAP can lead to increased adverse impact on depression, which provided further evidence that HAP exposure poses a significant threat to mental health. This point was also similar to prior research on HAP and physical health, which provided evidence that long exposure was associated with high blood pressure and increased risk of hypertension, stroke, and

diabetes (Lee et al. 2012; Yan et al. 2016).

Our subgroup analysis suggested that the associations between HAP and depression were significant in almost all different subgroups categorized by age, gender, BMI, education, household economic levels, and chronic diseases (including diabetes, chronic lung diseases, and CVDs). This finding confirmed our main results. However, no consistent evidence was found for the effect modification. In general, women, individuals aged 65 years and above, and individuals with obesity were reasonably more sensitive to HAP. This result is similar to prior studies, which suggested that ambient air pollution had major effects on depression among women and older people (Szyszkowicz et al. 2016; Zhang et al. 2017). However, different results were reported by Pun et al. (2017), where no significant effect of air pollution on depression and modification effect were found among all groups. Our results also suggested that individuals with low educational attainment and low household economic levels may respond strongly to HAP, which is similar with the results found by Zhang et al. (2017) and Pun et al. (2017). One reason for this finding may be that individuals with high educational attainment or high economic status can gain more knowledge on the adverse health effects of air pollution. Hence, they are able to take preventive actions, such as installing home air purifiers to reduce the harmful effects of pollutants. For the subgroup analysis of chronic diseases, prior evidence on the heterogeneity in effects of ambient pollution on depression has not been conclusive. Significantly strong effects were observed from individuals suffering from chronic diseases (Wang and Yang 2018; Zhang et al. 2017), CVDs (Wang et al. 2018), diabetes (Cho et al. 2014), stroke, heart failure, emphysema, or asthma (Cho et al. 2014; Pun et al. 2017). However, no significant effect modification was found for hypertension or diabetes in the study of Pun et al. (2017), nor for diabetes or CVDs in the study of Kim et al. (2016). In our study, we found moderately high effects in participants diagnosed with diabetes, chronic lung disease, and CVDs. However, only some of the interaction estimations were statistically significant. Differences in sample sizes, demographic characteristics, outcome measures, and empirical strategies used may have induced the heterogeneity in the results and made the direct comparison difficult. For reliable results regarding the effect modification in identifying vulnerable populations, more research with larger samples and experimental designs are needed in the future.

The underlying mechanisms for the effects of air pollution, especially HAP, on

depression are not yet clearly understood. One hypothesized biological explanation is that mental disorders, including depression, occur as a result of increased oxidative stress, cerebrovascular damage, neurodegeneration, or neuroinflammation caused by air pollutants (Block and Calderón-Garcidueñas 2009; MohanKumar et al. 2008; Sirivelu et al. 2006). Another possible pathway is that of promotion or aggravation of chronic diseases (Pun et al. 2017), in which apart from biological effects, air pollution may also affect mental health through health-related behaviors, such as preventing participating in outdoor physical and social activities (Bresnahan et al. 1997; Goodwin 2003; Li et al. 2015; Sass et al. 2017), which are effective ways to reduce the risk of mental disorders (George et al. 2018). Additionally, except from generating substantial emissions of health-damaging pollutants, solid fuels use may impact mental health through other ways, such as time allocation of the users. For example, biomass fuel users may need more time to collect fuels, thereby lessening their time for social activities and physical exercise, which are important factors associated with mental health. Further studies are necessary to delineate the toxicological mechanisms and causal relationships between air pollution and mental disorders such as depression.

In the present study, we used a large and nationally representative dataset to evaluate the effect of HAP from solid fuel use on depression, allowing adequate power to detect modest but meaningful effects. We also used a matching strategy to control selection bias in fuel choice, which was neglected in prior HAP research. Prior studies provide limited evidence on the effectiveness of improved stoves in reducing HAP exposure. Thus, switching to clean fuels may be the only feasible way to reduce HAP from household energy combustion. Our finding sheds light on the potential mental health benefits of fuel switching and provides important information to policy makers.

Despite its strengths, our study's findings have limitations. First, we used proxy variables for HAP and could not use the personal exposure concentration of HAP because obtaining such information for a large population-based research is difficult. Second, our proxy variables for HAP included only household fuel types for cooking because household fuel information for heating was not available in wave 2015 of CHARLS. Household fuel information for heating is important for HAP research. Hence, future studies are encouraged to incorporate this information. Third, our findings may not be generalized to a young age group or population in other countries, because we focused on the middle-aged and older population in China. A different

research background, including different study populations, culture, or sample size, and so on, may lead to different results. Although we included a series of demographic, socioeconomic, health-behavioral, and other covariates to control possible confounding, unobservable factors associated with depression (e.g., second-hand smoke exposure) were ignored.

5. Conclusions

Depression is a common and costly mental disorder worldwide. Using matching data, we first provided evidence of significant associations between HAP from solid fuel use and depression among a representative sample of middle-aged and older population in China. Results show that long usage of solid fuel had major impacts on depression, considering the different groups classified by gender, age, BMI, and chronic disease presence. Women, individuals aged 65 years old and above, individuals identified as obese, participants with low educational attainment and low household economic levels, and participants suffering from chronic diseases were moderately susceptible to depression. Our findings suggest a need to strengthen public health efforts, such as controlling the social, health, and economic costs of depression by taking into account the physical environment, including HAP exposure. Future studies on specific toxicological mechanism and with experimental and longitudinal designs are needed to further understand how HAP from solid fuel combustion affects depression and mental health.

Acknowledgments

Financial supports from National Natural Science Foundation of China (Grant Nos. 71572013, 71872013, and 71432002), Special Fund for Joint Development Program of Beijing Municipal Commission of Education, the James Tobin Research Fund at Yale Economics Department, Yale Macmillan Center faculty research award (2014-2016; 2017-2019), the U.S. PEPPER Center Scholar Award (P30AG021342), and two NIH/NIA grants (K01AG053408; R03AG048920) are acknowledged. The financial support provided by China Scholarship Council (CSC) during a visit of Yan Liu to Yale University is acknowledged. The views expressed herein and any remaining errors are the authors' and do not represent any official agency. None of the authors have potential conflicts of interests that could bias this work.

Table 1. Characteristics summary of currently clean fuel users and Solid fuel users

variable	Current clean fuel users (N=5007) ^a		Current solid fuel users (N=4100) ^a		p-value ^b
	Mean (N)	SD (N%)	Mean (N)	SD (N%)	
CES-D scores	7.35	6.06	9.07	6.70	<0.001
Depression using cutoff of 10	1,414	28.44	1,614	39.37	<0.001
Depression using cutoff of 12	1,037	20.71	1,246	30.39	<0.001
Duration of solid fuel use					
0 yrs	3,970	79.29	0	0.00	<0.001
1-4yrs	1,037	20.71	1,061	25.88	
> =5 yrs	0	0.00	3,039	74.12	
Age	62.59	9.32	64.21	9.13	<0.001
Gender					
Female	2,679	53.52	2,191	53.44	0.71
Male	2,327	46.48	1,909	46.56	
Rural area	3,210	64.12	3,735	91.10	<0.001
Education					
primary or less	3,093	61.79	3,255	79.45	<0.001
middle school	1,762	35.02	827	20.19	
college or above	151	3.02	15	0.37	
Household economic level ^c	0.31	1.97	-1.12	1.37	<0.001
Marital status	3,901	77.93	3,212	78.36	0.62
Retire status	957	19.26	219	5.38	<0.001
Smokers	1,985	40.91	1,752	43.88	0.005
Drinkers	1,286	25.72	1,005	24.54	0.20

Sleep time						
	<7 hrs	2,559	52.88	2,033	51.92	<0.001
	7-9 hrs	2,061	42.59	1,645	42.01	
	>9 hrs	219	4.53	238	6.08	
Social activity participation		2,868	57.31	1,825	44.52	<0.001
BMI		23.36	3.64	23.95	3.65	<0.01
Diabetes		305	4.9	544	10.73	<0.001
Lung diseases		738	13.39	806	18.75	<0.001
CVDs		2,271	44.12	2,862	45.54	0.42
Disability		530	10.59	590	14.39	<0.001
Self-reported Health						
	Bad	1,077	22.04	1,271	31.82	<0.001
	Fair	2,660	54.43	1,932	48.37	
	Good	1,150	23.53	791	19.80	

Notes: CES-D, The Center for Epidemiological Studies Depression Scale; BMI, Body Mass Index; CVDs, cardiovascular diseases.

^aTotal observation of different variables was slightly different due to the missing value

^b P-value for comparing the difference between current solid fuel users versus current clean fuel users, given by t test for continuous variables and Chi-square test for categorical variables

^c Household economic level was obtained using PCA method

Table 2. Covariate balancing of nearest-neighbor with caliper matching

Variable	Mean		Bias (%)	Bias reduction (%)	t	p-value
	Treated	Control				
Age	63.05	62.93	1.30	92.60	0.59	0.55
Gender	0.53	0.54	-1.10	37.70	-0.52	0.60
Rural area	0.91	0.91	-1.10	98.30	-0.69	0.49
Education	0.23	0.22	1.20	96.80	0.61	0.54
Household economic level	-0.95	-0.95	0.00	99.90	-0.02	0.98
Marital status	0.83	0.83	-1.10	-187.80	-0.52	0.60
Retire status	0.05	0.05	-0.20	99.60	-0.10	0.92
Smokers	0.45	0.46	-1.60	77.90	-0.74	0.46
Drinkers	0.25	0.24	2.00	21.30	0.93	0.35
Sleep time	0.54	0.54	0.00	98.80	0.02	0.99
Social activity participation	0.46	0.47	-4.70	82.10	-1.71	0.09
BMI	23.40	23.49	-2.30	86.10	-1.05	0.29
Diabetes	0.06	0.06	-1.50	83.70	-0.73	0.47
Lung diseases	0.15	0.15	0.70	94.10	0.30	0.76
CVDs	0.42	0.43	-0.70	32.20	-0.31	0.76
Disability	0.14	0.14	0.20	98.00	0.09	0.93
Self-reported health	0.88	0.91	-3.80	78.80	1.04	0.30
Sample	Pseudo R ²	LR chi ²	p > chi ²	Mean Bias	R	Var (%)
Unmatched	0.147	1899.82	0.00	20.00	0.38*	67
Matched	0.001	15.75	0.54	1.40	1.14	0

Notes: BMI, Body Mass Index; CVDs, cardiovascular diseases.

Table 3. Effect of HAP on depression using unmatched and matched data

Outcomes	Unmatched Model		Matched Model	
	β / OR (95% CI)	<i>p</i>	β / OR (95% CI)	<i>p</i>
CES-D				
current solid fuel users	0.71 (0.4, 1.01)	<0.001	0.59 (0.31, 0.89)	0.002
duration of solid fuel use				
1-4 yrs.	0.62 (0.32, 0.92)	<0.001	0.53 (0.23, 0.81)	<0.001
>5 yrs.	1.15 (0.76, 1.54)	<0.001	0.99 (0.62, 1.36)	<0.001
Depression (cutoff=10)				
current solid fuel users	1.29 (1.16, 1.44)	<0.001	1.26 (1.14, 1.41)	<0.001
duration of solid fuel use				
1-4 yrs.	1.29 (1.13, 1.48)	<0.001	1.27 (1.13, 1.46)	0.004
>5 yrs.	1.55 (1.34, 1.8)	<0.001	1.49 (1.30, 1.73)	<0.001
Depression (cutoff=12)				
current solid fuel users	1.32 (1.17, 1.48)	<0.001	1.28 (1.15, 1.44)	<0.001
duration of solid fuel use				
1-4 yrs.	1.3 (1.13, 1.5)	<0.001	1.28 (1.12, 1.46)	0.005
>5 yrs.	1.57 (1.34, 1.84)	<0.001	1.50 (1.29, 1.75)	<0.001

Notes: CES-D, Center for Epidemiological Studies Depression Scale.

All the models were regressed separately and adjusted by covariates as aforementioned using the matched data.

95% CI was reported based on standard errors clustered at the community level.

Table 4. Effect of HAP on depression stratified by gender, age and BMI

Outcomes	Age			Gender			BMI		
	>=65 yrs.	<65 yrs.	<i>p</i> ^a	Female	Male	<i>p</i> ^a	BMI>=25	BMI<25	<i>p</i> ^a
CES-D									
current solid fuel users	0.54 (0.16, 0.92)	0.43 (-0.09, 0.95)	0.04	0.61 (0.2, 1.02)	0.37 (0.01, 0.75)	0.01	0.72 (0.33, 1.11)	0.25 (-0.28, 0.77)	0.04
duration more than 5yrs.	0.73 (0.25, 1.2)	0.55 (0.17, 0.93)	0.55	0.81 (0.4, 1.21)	0.37 (-0.02, 0.76)	0.01	0.63 (0.25, 1.01)	0.59 (0.02, 1.15)	0.01
Depression (cutoff=10)									
current solid fuel users	1.29 (1.11, 1.49)	1.17 (0.98, 1.4)	0.09	1.3 (1.12, 1.51)	1.18 (1, 1.41)	0.03	1.28 (1.1, 1.49)	1.22 (0.99, 1.5)	0.09
duration more than 5yrs.	1.26 (1.07, 1.49)	1.25 (1.09, 1.44)	0.89	1.27 (1.09, 1.46)	1.25 (1.06, 1.47)	0.51	1.28 (1.03, 1.57)	1.24 (1.08, 1.43)	0.51
Depression (cutoff=12)									
current solid fuel users	1.31 (1.11, 1.53)	1.19 (0.98, 1.45)	0.04	1.28 (1.1, 1.49)	1.24 (1.02, 1.51)	0.67	1.31 (1.12, 1.53)	1.19 (0.94, 1.5)	0.13
duration more than 5yrs.	1.27 (1.1, 1.47)	1.24 (1.04, 1.48)	0.95	1.28 (1.06, 1.55)	1.25 (1.09, 1.43)	0.95	1.22 (1.01, 1.49)	1.17 (0.93, 1.48)	0.46

Notes: CES-D, Center for Epidemiological Studies Depression Scale; BMI, Body Mass Index.

^a p-value indicating the statistical significance of the modification effects.

All the models were regressed separately and adjusted by covariates as aforementioned using the matched data.

95% CI was reported based on standard errors clustered at the community level.

Table 5. Effect of solid fuel use on depression stratified by education and household economic level

Outcomes	Education			Household economic Level		
	Primary school and below	High school and above	<i>p</i> ^a	Low	High	<i>p</i> ^a
CES-D						
current solid fuel users	0.68 (0.3, 1.05)	0.27 (-0.27, 0.82)	0.03	0.67 (0.2, 1.13)	0.54 (0.11, 0.96)	0.82
duration more than 5yrs.chul	0.57 (0.18, 0.96)	0.51 (-0.1, 1.13)	0.28	0.7 (0.09, 1.3)	0.55 (0.15, 0.96)	0.79
Depression (cutoff=10)						
current solid fuel users	1.26 (1.15, 1.37)	1.25 (1.09, 1.43)	0.58	1.31 (1.06, 1.62)	1.23 (1.06, 1.44)	0.77
duration more than 5yrs.	1.36 (1.02, 1.8)	1.25 (1.09, 1.43)	0.96	1.4 (1.1, 1.78)	1.24 (1.07, 1.44)	0.48
Depression (cutoff=12)						
current solid fuel users	1.33 (1, 1.77)	1.26 (1.1, 1.45)	0.94	1.4 (1.12, 1.75)	1.24 (1.05, 1.46)	0.54
duration of solid fuel use	1.35 (1.01, 1.81)	1.24 (1.08, 1.42)	0.96	1.31 (1.02, 1.68)	1.26 (1.07, 1.48)	0.91

Notes: ^a p-value indicating the statistical significance of the modification effects.

All the models were regressed separately and adjusted by covariates as aforementioned using the matched data.

95% CI was reported based on standard errors clustered at the community level.

Table 6. Effect of solid fuel use on depression stratified by chronic diseases

Outcomes	Diabetes			Lung Diseases			CVDs		
	diabetes=1	diabetes=0	<i>p</i> ^a	lung diseases=1	lung diseases=0	<i>p</i> ^a	CVDs=1	CVDs=0	<i>p</i> ^a
CES-D									
current solid fuel users	0.8 (-0.37, 1.96)	0.48 (0.17, 0.8)	0.07	0.86 (0.08, 1.64)	0.44 (0.12, 0.76)	0.13	0.58 (0.2, 0.97)	0.4 (-0.07, 0.86)	0.08
duration more than 5yrs.	0.88 (-0.28, 2.03)	0.58 (0.27, 0.9)	0.03	1.17 (0.36, 1.98)	0.51 (0.19, 0.83)	0.01	0.59 (0.12, 1.06)	0.62 (0.23, 1.02)	0.85
Depression (cutoff=10)									
current solid fuel users	1.49 (0.96, 2.31)	1.23 (1.08, 1.39)	0.62	1.32 (1, 1.75)	1.23 (1.09, 1.39)	0.74	1.3 (1.11, 1.51)	1.18 (0.99, 1.42)	0.50
duration more than 5yrs.	1.58 (1.01, 2.46)	1.23 (1.1, 1.39)	0.43	1.36 (1.01, 1.82)	1.24 (1.1, 1.4)	0.76	1.29 (1.12, 1.49)	1.21 (1.02, 1.45)	0.72
Depression (cutoff=12)									
current solid fuel users	1.53 (0.99, 2.38)	1.24 (1.09, 1.41)	0.19	1.49 (1.1, 2.02)	1.22 (1.07, 1.4)	0.33	1.28 (1.08, 1.5)	1.24 (1.04, 1.49)	0.76
duration more than 5yrs.	1.76 (1.12, 2.78)	1.23 (1.09, 1.39)	0.08	1.39 (1.03, 1.87)	1.24 (1.09, 1.4)	0.22	1.27 (1.1, 1.48)	1.24 (1.04, 1.48)	0.81

Notes: CES-D, Center for Epidemiological Studies Depression Scale; CVDs, cardiovascular diseases.

^a p-value indicating the statistical significance of the modification effects.

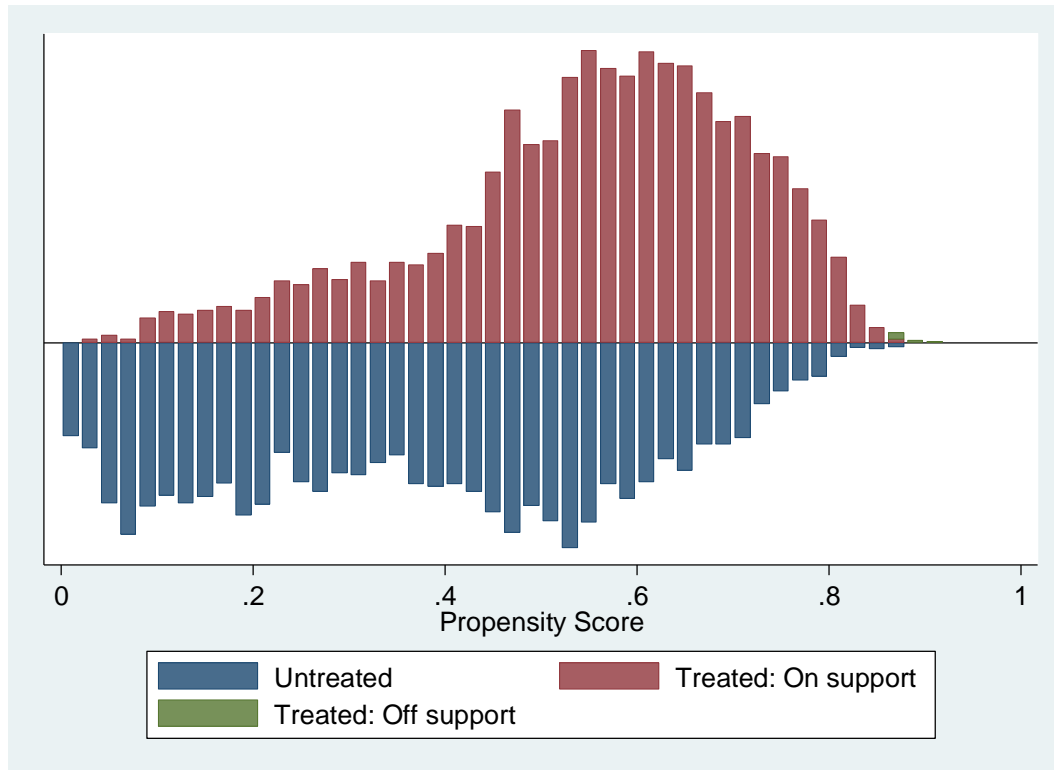
All the models were regressed separately and adjusted by covariates as aforementioned using the matched data.

95% CI was reported based on standard errors clustered at the community level.

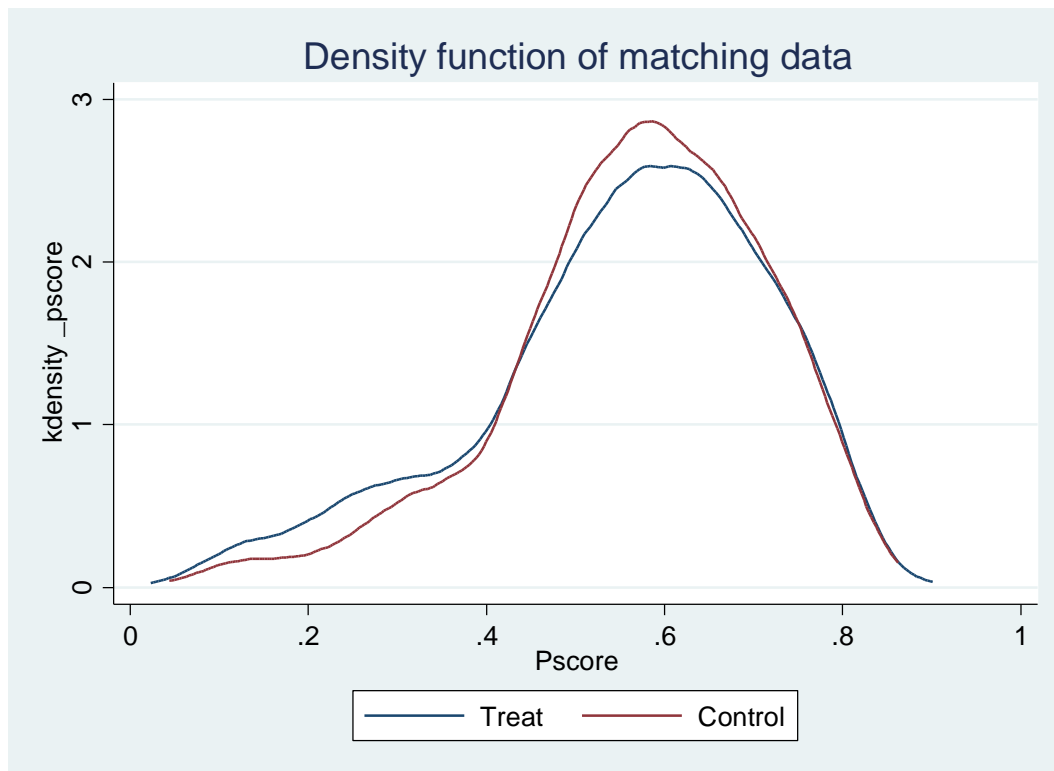
0

Online Appendix

Appendix figure 1. Common range of propensity scores



Appendix figure 2. Density function of propensity scores



References

- Andresen EM, Malmgren JA, Carter WB, et al. 1994. Screening for Depression in Well Older Adults - Evaluation of a Short-Form of the Ces-D. *American Journal of Preventive Medicine* 10:77-84.
- Austin PC. 2013. The Performance of Different Propensity Score Methods for Estimating Marginal Hazard Ratios. *Statistics in medicine* 32:2837-2849.
- Banerjee M, Siddique S, Dutta A, et al. 2012. Cooking with Biomass Increases the Risk of Depression in Pre-Menopausal Women in India. *Social Science & Medicine* 75:565-572.
- Bates Michael N, Chandyo Ram K, Valentiner-Branth P, et al. 2013. Acute Lower Respiratory Infection in Childhood and Household Fuel Use in Bhaktapur, Nepal. *Environmental health perspectives* 121:637-642.
- Baumgartner J, Schauer JJ, Ezzati M, et al. 2011. Indoor Air Pollution and Blood Pressure in Adult Women Living in Rural China. *Environmental health perspectives* 119:1390-1395.
- Block ML, Calderón-Garcidueñas L. 2009. Air Pollution: Mechanisms of Neuroinflammation and Cns Disease. *Trends in Neurosciences* 32:506-516.
- Bonjour S, Adair-Rohani H, Wolf J, et al. 2013. Solid Fuel Use for Household Cooking: Country and Regional Estimates for 1980-2010. *Environmental health perspectives* 121:784-790.
- Bresnahan BW, Dickie M, Gerking S. 1997. Averting Behavior and Urban Air Pollution. *Land Economics* 73:340-357.
- Charlson FJ, Baxter AJ, Cheng HG. 2016. The Burden of Mental, Neurological, and Substance Use Disorders in China and India: A Systematic Analysis of Community Representative Epidemiological Studies. *Lancet* 388:1984-1984.
- Cheng HG, Chen SN, McBride O, et al. 2016. Prospective Relationship of Depressive Symptoms, Drinking, and Tobacco Smoking among Middle-Aged and Elderly Community-Dwelling Adults: Results from the China Health and Retirement Longitudinal Study (Charls). *Journal of Affective Disorders* 195:136-143.
- Cheng ST, Chan ACM. 2005. The Center for Epidemiologic Studies Depression Scale in Older Chinese: Thresholds for Long and Short Forms. *International Journal of Geriatric Psychiatry* 20:465-470.
- Cho J, Choi YJ, Suh M, et al. 2014. Air Pollution as a Risk Factor for Depressive

Episode in Patients with Cardiovascular Disease, Diabetes Mellitus, or Asthma. *Journal of Affective Disorders* 157:45-51.

Clark Maggie L, Peel Jennifer L, Balakrishnan K, et al. 2013. Health and Household Air Pollution from Solid Fuel Use: The Need for Improved Exposure Assessment. *Environmental health perspectives* 121:1120-1128.

Cole MG, Dendukuri N. 2003. Risk Factors for Depression among Elderly Community Subjects: A Systematic Review and Meta-Analysis. *American Journal of Psychiatry* 160:1147-1156.

Ekman M, Granström O, Omérov S, et al. 2013. The Societal Cost of Depression: Evidence from 10,000 Swedish Patients in Psychiatric Care. *Journal of Affective Disorders* 150:790-797.

Fuller-Thomson E, Agbeyaka S, LaFond DM, et al. 2016. Flourishing after Depression: Factors Associated with Achieving Complete Mental Health among Those with a History of Depression. *Psychiatry Research* 242:111-120.

Garrido MM, Kelley AS, Paris J, et al. 2014. Methods for Constructing and Assessing Propensity Scores. *Health services research* 49:1701-1720.

George LK, Blazer DG, Hughes DC, et al. 2018. Social Support and the Outcome of Major Depression. *British Journal of Psychiatry* 154:478-485.

Goldney RD, Fisher LJ, Dal Grande E, et al. 2004. Subsyndromal Depression: Prevalence, Use of Health Services and Quality of Life in an Australian population. *Social Psychiatry and Psychiatric Epidemiology* 39:293-298.

Goodwin RD. 2003. Association between Physical Activity and Mental Disorders among Adults in the United States. *Preventive Medicine* 36:698-703.

Guan WJ, Zheng XY, Chung KF, et al. 2016. Impact of Air Pollution on the Burden of Chronic Respiratory Diseases in China: Time for Urgent Action. *Lancet* 388:1939-1951.

Guo J, Guan LD, Fang LM, et al. 2017. Depression among Chinese Older Adults: A Perspective from Hukou and Health Inequities. *Journal of Affective Disorders* 223:115-120.

Ho DE, Imai K, King G, et al. 2007. Matching as Nonparametric Preprocessing for Reducing Model Dependence in Parametric Causal Inference. *Political Analysis* 15:199-236.

Hosgood HD, 3rd, Boffetta P, Greenland S, et al. 2010. In-Home Coal and Wood Use and Lung Cancer Risk: A Pooled Analysis of the International Lung Cancer Consortium.

Environmental health perspectives 118:1743-1747.

Hystad P, Duong M, Brauer M, et al. 2019. Health Effects of Household Solid Fuel Use: Findings from 11 Countries within the Prospective Urban and Rural Epidemiology Study. *Environmental health perspectives* 127:057003.

Jeuland M, Pattanayak SK, Bluffstone R. 2015. The Economics of Household Air Pollution. *Annual Review of Resource Economics* 7:81-108.

Juhn YJ, Qin R, Urm S, et al. 2010. The Influence of Neighborhood Environment on the Incidence of Childhood Asthma: A Propensity Score Approach. *Journal of Allergy and Clinical Immunology* 125:838-843.

Kessler RC, Bromet EJ. 2013. The Epidemiology of Depression across Cultures. *Annual Review of Public Health* 34:119-138.

Kim K-N, Lim Y-H, Bae Hyun J, et al. 2016. Long-Term Fine Particulate Matter Exposure and Major Depressive Disorder in a Community-Based Urban Cohort. *Environmental health perspectives* 124:1547-1553.

Kioumourtzoglou M-A, Power MC, Hart JE, et al. 2017. The Association between Air Pollution and Onset of Depression among Middle-Aged and Older Women. *American journal of epidemiology* 185:801-809.

Krefis AC, Schwarz NG, Nkrumah B, et al. 2010. Principal Component Analysis of Socioeconomic Factors and Their Association with Malaria in Children from the Ashanti Region, Ghana. *Malaria journal* 9:201-201.

Lee M-S, Hang J-q, Zhang F-y, et al. 2012. In-Home Solid Fuel Use and Cardiovascular Disease: A Cross-Sectional Analysis of the Shanghai Putuo Study. *Environmental health : a global access science source* 11:18-18.

Li FZ, Liu Y, Lü JJ, et al. 2015. Ambient Air Pollution in China Poses a Multifaceted Health Threat to Outdoor Physical Activity. *Journal of Epidemiology and Community Health* 69:201.

Li J, Qin C, Lv J, et al. 2019. Solid Fuel Use and Incident Copd in Chinese Adults: Findings from the China Kadoorie Biobank. *Environmental health perspectives* 127:057008.

Lim YH, Kim H, Kim JH, et al. 2012. Air Pollution and Symptoms of Depression in Elderly Adults. *Environmental health perspectives* 120:1023-1028.

MohanKumar SMJ, Campbell A, Block M, et al. 2008. Particulate Matter, Oxidative Stress and Neurotoxicity. *NeuroToxicology* 29:479-488.

Neupane M, Basnyat B, Fischer R, et al. 2015. Sustained Use of Biogas Fuel and Blood Pressure among Women in Rural Nepal. *Environmental Research* 136:343-351.

Paykel ES. 2008. Basic Concepts of Depression. *Dialogues in clinical neuroscience* 10:279-289.

Power MC, Weisskopf MG, Alexeeff SE, et al. 2011. Traffic-Related Air Pollution and Cognitive Function in a Cohort of Older Men. *Environmental health perspectives* 119:682-687.

Pun VC, Manjourides J, Suh H. 2017. Association of Ambient Air Pollution with Depressive and Anxiety Symptoms in Older Adults: Results from the Nshap Study. *Environmental health perspectives* 125:342-348.

Ravilla Thulasiraj D, Gupta S, Ravindran Ravilla D, et al. 2016. Use of Cooking Fuels and Cataract in a Population-Based Study: The India Eye Disease Study. *Environmental health perspectives* 124:1857-1862.

Reitzes DC, Mutran EJ, Fernandez ME. 1996. Does Retirement Hurt Well-Being? Factors Influencing Self-Esteem and Depression among Retirees and Workers¹. *The Gerontologist* 36:649-656.

Ruo B, Rumsfeld JS, Hlatky MA, et al. 2003. Depressive Symptoms and Health-Related Quality of Life: The Heart and Soul Study. *JAMA* 290:215-221.

Sass V, Kravitz-Wirtz N, Karceski SM, et al. 2017. The Effects of Air Pollution on Individual Psychological Distress. *Health & Place* 48:72-79.

Sirivelu MP, MohanKumar SMJ, Wagner JG, et al. 2006. Activation of the Stress Axis and Neurochemical Alterations in Specific Brain Areas by Concentrated Ambient Particle Exposure with Concomitant Allergic Airway Disease. *Environmental health perspectives* 114:870-874.

Smith KR, Frumkin H, Balakrishnan K, et al. 2013. Energy and Human Health. *Annual Review of Public Health* 34:159-188.

Stuart EA, Green KM. 2008. Using Full Matching to Estimate Causal Effects in Nonexperimental Studies: Examining the Relationship between Adolescent Marijuana Use and Adult Outcomes. *Developmental Psychology* 44:395-406.

Szyszkowicz M, Kousha T, Kingsbury M, et al. 2016. Air Pollution and Emergency Department Visits for Depression: A Multicity Case-Crossover Study. *Environmental Health Insights* 10:EHI.S40493.

Vert C, Sanchez-Benavides G, Martinez D, et al. 2017. Effect of Long-Term Exposure

to Air Pollution on Anxiety and Depression in Adults: A Cross-Sectional Study. *International Journal of Hygiene and Environmental Health* 220:1074-1080.

Vyas S, Kumaranayake L. 2006. Constructing Socio-Economic Status Indices: How to Use Principal Components Analysis. *Health Policy and Planning* 21:459-468.

Wang F, Liu H, Li H, et al. 2018. Ambient Concentrations of Particulate Matter and Hospitalization for Depression in 26 Chinese Cities: A Case-Crossover Study. *Environment International* 114:115-122.

Wang Q, Yang ZM. 2018. Does Chronic Disease Influence Susceptibility to the Effects of Air Pollution on Depressive Symptoms in China? *International journal of mental health systems* 12:33-33.

Wang Y, Eliot Melissa N, Koutrakis P, et al. 2014. Ambient Air Pollution and Depressive Symptoms in Older Adults: Results from the Mobilize Boston Study. *Environmental health perspectives* 122:553-558.

WHO. 2019. Household Air Pollution: Health Impacts. Available: <https://www.who.int/airpollution/household/health-impacts/en/>.

Yan ZJ, Liu Y, Yin QJ, et al. 2016. Impact of Household Solid Fuel Use on Blood Pressure and Hypertension among Adults in China. *Air Quality, Atmosphere & Health* 9:931-940.

Yu K, Qiu G, Chan K, et al. 2018. Association of Solid Fuel Use with Risk of Cardiovascular and All-Cause Mortality in Rural China. *JAMA* 319:1351-1361.

Zhang X, Zhang XB, Chen X. 2017. Happiness in the Air: How Does a Dirty Sky Affect Mental Health and Subjective Well-Being? *Journal of Environmental Economics and Management* 85:81-94.

Zhao YH, Hu YS, Smith JP, et al. 2014. Cohort Profile: The China Health and Retirement Longitudinal Study (Charls). *International Journal of Epidemiology* 43:61-68.

Zijlema WL, Wolf K, Emeny R, et al. 2016. The Association of Air Pollution and Depressed Mood in 70,928 Individuals from Four European Cohorts. *International Journal of Hygiene and Environmental Health* 219:212-219.