

Holzmeister, Felix et al.

Working Paper

What drives risk perception? A global survey with financial professionals and lay people

Working Papers in Economics and Statistics, No. 2019-05

Provided in Cooperation with:

Institute of Public Finance, University of Innsbruck

Suggested Citation: Holzmeister, Felix et al. (2019) : What drives risk perception? A global survey with financial professionals and lay people, Working Papers in Economics and Statistics, No. 2019-05, University of Innsbruck, Research Platform Empirical and Experimental Economics (eeecon), Innsbruck

This Version is available at:

<https://hdl.handle.net/10419/207071>

Standard-Nutzungsbedingungen:

Die Dokumente auf EconStor dürfen zu eigenen wissenschaftlichen Zwecken und zum Privatgebrauch gespeichert und kopiert werden.

Sie dürfen die Dokumente nicht für öffentliche oder kommerzielle Zwecke vervielfältigen, öffentlich ausstellen, öffentlich zugänglich machen, vertreiben oder anderweitig nutzen.

Sofern die Verfasser die Dokumente unter Open-Content-Lizenzen (insbesondere CC-Lizenzen) zur Verfügung gestellt haben sollten, gelten abweichend von diesen Nutzungsbedingungen die in der dort genannten Lizenz gewährten Nutzungsrechte.

Terms of use:

Documents in EconStor may be saved and copied for your personal and scholarly purposes.

You are not to copy documents for public or commercial purposes, to exhibit the documents publicly, to make them publicly available on the internet, or to distribute or otherwise use the documents in public.

If the documents have been made available under an Open Content Licence (especially Creative Commons Licences), you may exercise further usage rights as specified in the indicated licence.



working paper

eeecon
[triple:e:con]

What Drives Risk Perception? A Global Survey with Financial Professionals and Lay People

Felix Holzmeister, Jürgen Huber, Michael Kirchler, Florian
Lindner, Utz Weitzel, Stefan Zeisberger

Working Papers in Economics and Statistics

2019-05

University of Innsbruck
<https://www.uibk.ac.at/eeecon/>



University of Innsbruck
Working Papers in Economics and Statistics

The series is jointly edited and published by

- Department of Banking and Finance
- Department of Economics
- Department of Public Finance
- Department of Statistics

Contact address of the editor:
research platform "Empirical and Experimental Economics"
University of Innsbruck
Universitaetsstrasse 15
A-6020 Innsbruck
Austria
Tel: + 43 512 507 71022
Fax: + 43 512 507 2970
E-mail: eeecon@uibk.ac.at

The most recent version of all working papers can be downloaded at
<https://www.uibk.ac.at/eeecon/wopec/>

For a list of recent papers see the backpages of this paper.

What Drives Risk Perception? A Global Survey with Financial Professionals and Lay People

Felix Holzmeister^a, Jürgen Huber^a, Michael Kirchler^{a,b},
Florian Lindner^c, Utz Weitzel^{d,e}, and Stefan Zeisberger^{e,f}

^aUniversity of Innsbruck, Department of Banking and Finance, Universitätsstrasse 15, 6020 Innsbruck. ^bUniversity of Gothenburg, Department of Economics, Centre for Finance, Vasagatan 1, 40530 Gothenburg. ^cMax Planck Institute for Research on Collective Goods, Kurt-Schumacher-Str. 10, 53113 Bonn. ^dUtrecht University School of Economics, Kriekenplein 21–22, 3584 EC Utrecht. ^eRadboud University, Institute for Management Research, Heyendaalseweg 141, 6525AJ, Nijmegen. ^fUniversity of Zurich, Department of Banking and Finance, Plattenstrasse 14, 8032 Zürich.

Abstract

Risk is an integral part of many economic decisions, and is vitally important in finance. Despite extensive research on decision-making under risk, little is known about how risks are actually perceived by financial professionals, the key players in global financial markets. In a large-scale survey experiment with 2,213 finance professionals and 4,559 lay people in nine countries representing ~50% of the world's population and more than 60% of the world's gross domestic product, we expose participants to return distributions with equal expected return and we systematically vary the distributions' next three higher moments. Of these, skewness is the only moment that systematically affects financial professionals' perception of financial risk. Strikingly, variance does not influence risk perception, even though return volatility is the most common risk measure in finance in both academia and the industry. When testing other, compound risk measures, the probability to experience losses is the strongest predictor of what is perceived as being risky. Analyzing professionals' propensity to invest, skewness and loss probability have strong predictive power too. However, volatility and kurtosis also have some additional effect on participants' willingness to invest. Our results are very similar for lay people, and they are robust across and within countries with different cultural backgrounds as well as for different job fields of professionals.

Keywords: Risk perception, investment propensity, financial professionals.

1 Introduction

The way in which people perceive risk shapes their behavior in a world with uncertain outcomes (Slovic, 1987), and it is of vital importance for investments (Nosić and Weber, 2010; Weber et al., 2013). Next to returns, risk is one of the two pivotal dimensions in financial decision-making (Bell, 1995; Ghysels et al., 2005), and of paramount importance in financial markets. Yet, while there are several studies that investigate how lay people perceive financial risks (Keller et al., 1986; Bontempo et al., 1997; Weber and Hsee, 1998; Unser, 2000; Klos et al., 2005; Diecidue and Van De Ven, 2008; Veld and Veld-Merkoulova, 2008; Levy and Levy, 2009; Zeisberger, 2018), little is known about the risk perception of financial professionals, who are the key players in global financial markets, which are central to the functioning of modern economies. In this paper, we report results from large-scale survey experiments with finance professionals and lay people, allowing us to investigate the drivers of financial risk perception and investment propensity. In contrast to normative textbook models, we find that variance does not explain the risk perception of professionals and lay people, but skewness does. We also study the propensity to invest in risky assets where, again, skewness is a strong driver. In addition, we find that volatility and kurtosis have some effect on investment propensity.

Despite the importance of risk, there is little consensus on its definition (Brachinger and Weber, 1997). As we are interested in the *perception* of risk, what people perceive and define as risky is ultimately an empirical question. An alternative to this (positive) approach is to define risk from a normative theory perspective. In finance, at least since the influential paper of Nobel laureate Harry Markowitz (Markowitz, 1952), risk is widely defined and operationalized as the variance or standard deviation of returns (commonly referred to as return volatility). This does not only apply to leading textbooks (Vernimmen et al., 2014; Brealey et al., 2017) and widely used asset pricing models (Sharpe, 1964; Lintner, 1965; Mossin, 1966) but also to much of today’s financial regulation and practice. For example, cornerstone regulations of financial markets (e.g., the Markets in Financial Instruments Directive, MiFID as well as Solvency II in the European Union) use return volatility (variance) as a risk measure for equities, currencies, interest rates, and property prices. Recent regulatory frameworks such as Basel III introduce more comprehensive conceptualizations of risk, such as value at risk (VaR) or expected shortfall (ES), both of which shift the focus to potential downside risks. Importantly, investment funds are required to provide a standardized Key Investor Information Document (KIID) in which a fund’s historical volatility is the basis for calculation to communicate risks to investors. More generally, financial advisors often inform clients about the risk associated with investment opportunities by referring to the variance of their historical returns, and many financial institutions survey the risk appetite of their clients with variance-related questionnaires (Sachse et al., 2012).

To illustrate the implications of different definitions of risk, assume a decision maker has to choose one of the two financial assets characterized by the return distributions in Figure 1. Both distributions share the same mean (first moment), variance (second moment; m_2), and kurtosis (fourth moment; m_4), but they differ in skewness (third moment; m_3). If risk is

defined as the variance of returns, a decision maker should be indifferent between the two alternatives. Intuitively, however, many people will perceive one of the assets as more risky. Indeed, recent studies call into question whether investors use volatility as the (only) risk measure when evaluating financial assets (Zeisberger, 2018) and suggest that the perception of risk relates to characteristics other than variance. In particular, downside risk measures (Fishburn, 1984; Unser, 2000; Veld and Veld-Merkoulova, 2008) and skewness (Ebert and Wiesen, 2011; Ebert, 2015) appear to resemble the conceptualization people have in mind when evaluating “risk” more closely than measures of symmetric variation around the mean, and they have been shown to affect pricing in experimental (Huber et al., 2017) and real asset markets (Boyer et al., 2010; Bali et al., 2011; Conrad et al., 2013).

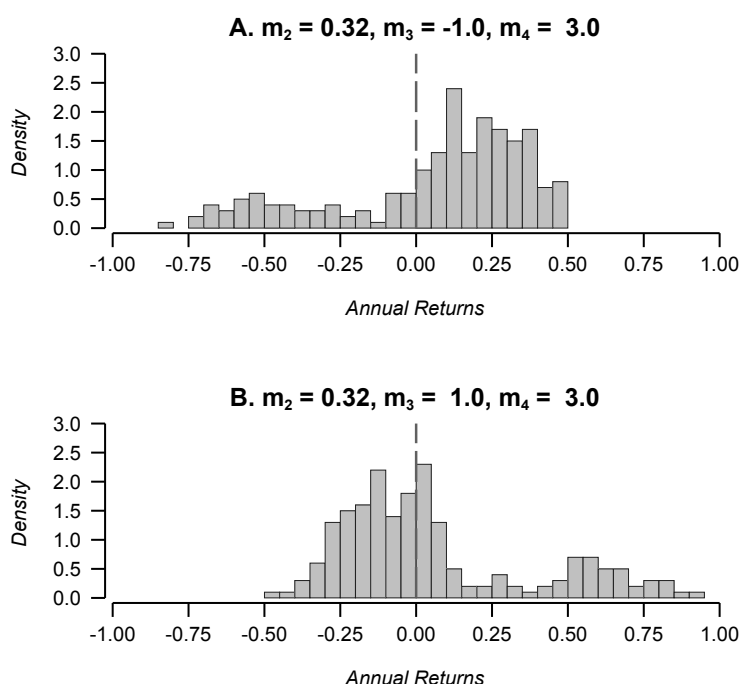


Figure 1: Two histograms of 200 simulated annual returns (in 5% bins). Both distributions share a mean of 6%, a standard deviation (m_2) of 32%, and a kurtosis (m_4) of 3.0. The two distributions only differ in skewness: the returns in Panel A are negatively skewed with $m_3 = -1.0$ whereas the distribution in Panel B is positively skewed with $m_3 = +1.0$.

It may not come as a surprise that the perception of risk among lay people deviates from mean-variance models in finance, which equate risk with return volatility. Yet, there are good reasons to believe that financial professionals evaluate risks in a different manner. In contrast to lay people, financial professionals are trained through education and experience in the finance industry. From a psychological perspective, the *risk as feelings* hypothesis (Loewenstein et al., 2001) posits that individuals use an “analytic system,” which processes risk using probability calculus or other logical operations (Slovic et al., 2004), and an “experiential system,” which is more intuitive, fast, and frugal (Kahneman, 2011). The degree to which either system is activated is hypothesized to depend on the degree of emotional

activation. Specifically, individual conditioning and personal experience with the risk characteristics at hand are expected to reduce emotional activation and to support a more analytic approach towards risk (Loewenstein et al., 2001; Kaufmann et al., 2013). Hence, compared to lay people, financial professionals could be expected to perceive risk more analytically along the normative definitions commonly applied in economics and finance models. In addition, an increasing body of experimental evidence suggests that financial professionals are quite “special” in the sense that their behavior systematically differs from other types of experimental subjects, e.g., with regard to anchoring (Kaustia et al., 2008), herding (Cipriani and Guarino, 2009), overconfidence (Puetz and Ruenzi, 2011; Gloede and Menkhoff, 2014), cheating (Cohn et al., 2014), risk-taking under social comparison and competition (Kirchler et al., 2018), and with respect to public signal updating in information cascades (Alevy et al., 2007). It would thus not be surprising if financial professionals differ in their perception of financial risk. In fact, it may even be one of the reasons that they chose to enter the finance profession. The discrepancy between the common definition of risk in finance and the actual perception of risk among lay people is potentially harmful, but it could be resolved if clients trust financial professionals to bridge the gap as “money doctors” (Gennaioli et al., 2015), with risk perception and investment strategies aligned with (normative) finance theory. However, there is neither large-scale empirical evidence on financial professionals’ risk perception nor a direct comparison of their perspective with that of lay people. With this paper we fill this substantial research gap.

To examine which characteristics of return distributions actually determine professionals’ and lay people’s appraisal of financial risk, we conducted an experiment in which we sequentially showed participants distributions of annual asset returns calibrated to systematically differ in their higher moments and asking for their risk perception and investment propensity. By eliciting the participants’ investment propensity, we get a more comprehensive picture about how risk perception shapes investment decisions. To address the question of whether people working in the finance industry systematically differ from lay people in evaluating financial risk, we recruited 2,213 finance professionals and 4,559 lay people in nine countries.

In particular, we show that variations in standard deviation do not trigger systematic differences in risk perception. The skewness of the asset returns, however, induces pronounced differences in the cognition of financial risk, with positively skewed returns considered to be significantly more risky than symmetric distributions and negatively skewed returns. We believe that this finding is explained by the high probability of losing and the aversion to it. Moreover, we report that investment propensity is inversely related to risk perception. Differences in the distributions’ standard deviation induce significant differences in participants’ disposition to invest, with a higher standard deviation leading to a lower willingness to invest. When focusing on compound risk measures, we report strong evidence that the probability of suffering a loss is the main driver for both the perception of financial risk and investment propensity among financial professionals and lay people. This points towards loss aversion as the most important component of decision-making under risk. Finally, we show

that our results are very robust and hold for financial professionals as well as laypeople with no significant differences between the two subject pools, and almost no differences across countries or job profiles. Given extensive training and experience in the industry, financial professionals might well be expected to perceive financial risk more in line with predominant risk measures than lay people. However, even though financial professionals, on average, react somewhat more sensitively to rather subtle variations in return distributions, differences in the evaluation of risk and the disposition to invest are negligible and insignificant between the two populations.

2 Methods

2.1 Participant Recruitment and Data Collection

We administered the experiment online using *oTree* (Chen et al., 2016) in nine countries: Brazil, China, Germany, India, Japan, Russia, Great Britain, the United States, and South Africa. With this selection of countries, we cover the major financial markets and economies on five continents, representing $\sim 50\%$ of the world’s population and more than 60% of the world’s gross domestic product.

In total, we recruited 2,371 individuals working in the finance industry and 4,565 lay people through an international network of partnered market research agencies. Respondents from the general population have been stratified by age, gender, and (not nested) education for each of the countries. Participants were pre-selected based on occupational information related to the user’s account available only to the agency and were redirected to either of two separate (but identical) treatments of the survey (to distinguish between the subsamples of financial professionals and lay people). Before respondents have been passed on to our survey experiment, they were asked to complete a brief screening survey on the agency’s platform without being informed about the purpose of the study. Besides some demographic filler questions, the survey asked respondents to indicate the sector they currently work in as well as their current occupation.¹

On the first screen of our experimental platform, participants were again asked to report the sector/industry they currently work in. To ensure that our “financial professionals” subsample only includes participants actively employed in the finance or insurance industry, respondents that indicated *not* to work in the finance or insurance industry at this stage are excluded from the analysis. Similarly, respondents indicating to work *in* the finance or insurance industry at this stage are excluded from the analysis to ensure that our “lay people”

¹Participants were only directed to the “financial professionals” treatment of our experiment if both their occupational information stored in their user’s account *and* their answers in the pre-screening indicated that they are currently employed in the finance industry. Similarly, respondents were only passed on to the “lay people” treatment of our survey if their response to the pre-screening survey has been concordant with the information stored on the agency’s behalf, indicating that they do *not* work in the finance or insurance sector. Due to technical reasons, the implementation of a pre-screening survey was impractical on the platforms of the partnered research agencies in Russia and South Africa. For these two countries, participants were forwarded to our survey platform only based on the occupational information available through the user’s account data which is typically gathered during the sign-up procedures on the platform.

subsample only includes participants not working in the finance or insurance sector. Overall, only 2.36 percent of participants were excluded after our consistency checks, indicating that the screening by the market research agencies worked very well. No other exclusion criteria are applied. The number of observations before and after exclusions, demographics, and industry and occupational information are summarized in Table 1 (Appendix C).

2.2 Experimental Design

We designed nine return distributions (based on simulated Pearson distributions) with 200 observations each, which were calibrated to share the same expected return (m_1) of 6.0% but to differ—in fixed levels—in their higher moments.

To causally infer which of the higher moments of a return distribution determines participants’ risk perception and investment propensity, we systematically varied the standard deviation ($m_2 = 16\%$ or $m_2 = 32\%$), skewness ($m_3 = -1$, $m_3 = 0$, or $m_3 = +1$), and kurtosis ($m_4 = 3.0$ or $m_4 = 10.8$) of the distributions while holding all other moments constant. The systematic variation in moments allows for relating the variation in the dependent measures (self-reported risk perception and self-reported investment propensity) to *dichotomous* moderators. Histograms of the nine return distributions are presented in Figure 2.

The experimental implementation is inspired by and based on the design used by Zeisberger (2018). All participants were presented with histograms of all nine annual return distributions, each on a separate screen, in random order. The horizontal axis showed the possible annual return realizations from -100% to $+100\%$ in steps of 5%, and the vertical axis displayed the likelihood of a realization in the corresponding bins (frequency in %).

Below each return distribution, participants were asked to indicate their perception of risk associated with the particular financial asset by answering the question: “How risky do you perceive this investment product to be?” (1... “not risky at all” to 7... “very risky”). Next to perceived risk, respondents were asked to indicate their propensity to invest in the respective financial asset by answering the question: “How likely would you invest in this investment product?” (1... “very unlikely” to 7... “very likely”). The instructions presented to participants at the beginning of the experiment are provided in Appendix A; a sample screen of the experiment is shown in Appendix B.

Given the subjective nature of our main question on risk perception, we refrained from paying performance-based incentives. This choice was also motivated by previous studies on risk perception, e.g., Nosić and Weber (2010); Zeisberger (2018), and studies on forecasting (Glaser et al., *ming*), which indicate that incentives do not systematically affect results in this domain. The experimental design has been reviewed and approved by the Internal Review Board of the University of Innsbruck.

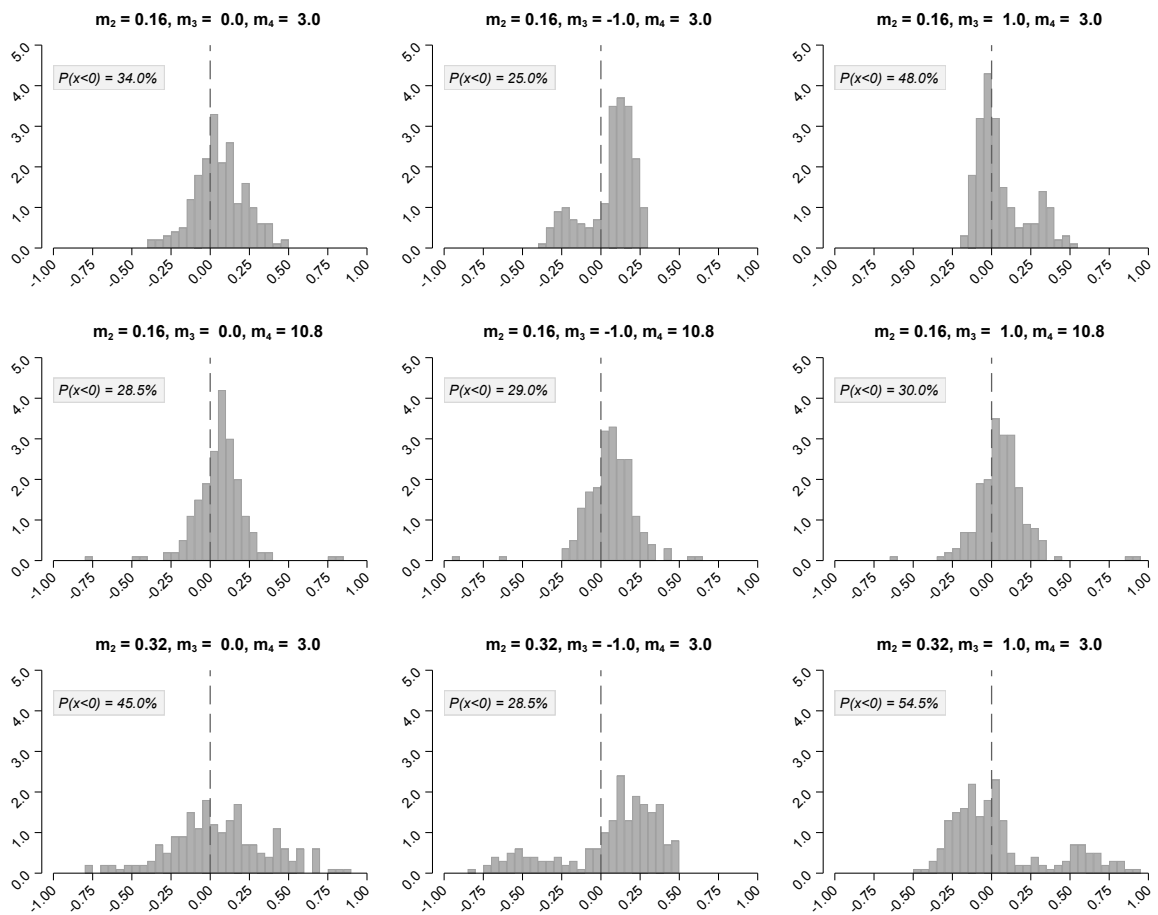


Figure 2: Histograms of the nine return distributions based on 200 simulated observations each. m_2 , m_3 , and m_4 denote standard deviation, skewness, and kurtosis, respectively. The horizontal axis refers to annual returns (in 5% bins) and the vertical axis depicts the corresponding density. $P(x < 0)$ indicates the the return distribution’s probability of loss. Note that histograms presented to participants were presented in terms of frequencies (in %) rather than densities and did not provide information on loss probabilities (see 11 for an example).

3 Results

Throughout the reporting of our results, we follow Benjamin et al. (2018) and set the default threshold for statistical significance to the 0.5% level. All analyses are based on subject-level de-meanded data (i.e., controlling for subject-level fixed effects).

3.1 Risk Perception

Figure 3 summarizes the main results, separated for financial professionals and the laymen subsamples: Panels A and B show the mean effects of variations in the return distributions’ standard deviation (m_2), negative and positive skewness (m_3^- , m_3^+), and kurtosis (m_4) on perceived riskiness and investment propensity, respectively (see Table 2 in Appendix D for the corresponding regression analyses). We find that neither financial professionals’ nor lay people’s risk perception is systematically affected by standard deviation of returns: even though standard deviation varies by a factor of two in our experimental setting, the effect

on risk perception is negligible and not significantly different from zero in both subsamples. Similarly, variation in kurtosis does not systematically drive participants' appraisal of financial risk. Skewness, however, turns out to be a predictor of what both financial professionals and lay people consider as being risky: negatively skewed assets are, on average, perceived as carrying significantly less risk than symmetric assets, whereas positively skewed assets are, on average, assessed to be more risky than symmetric assets.² These results hold not only at the aggregate level but are also reflected in pairwise comparisons of risk perception between the nine distributions for financial professionals and lay people alike (see Figure 4).

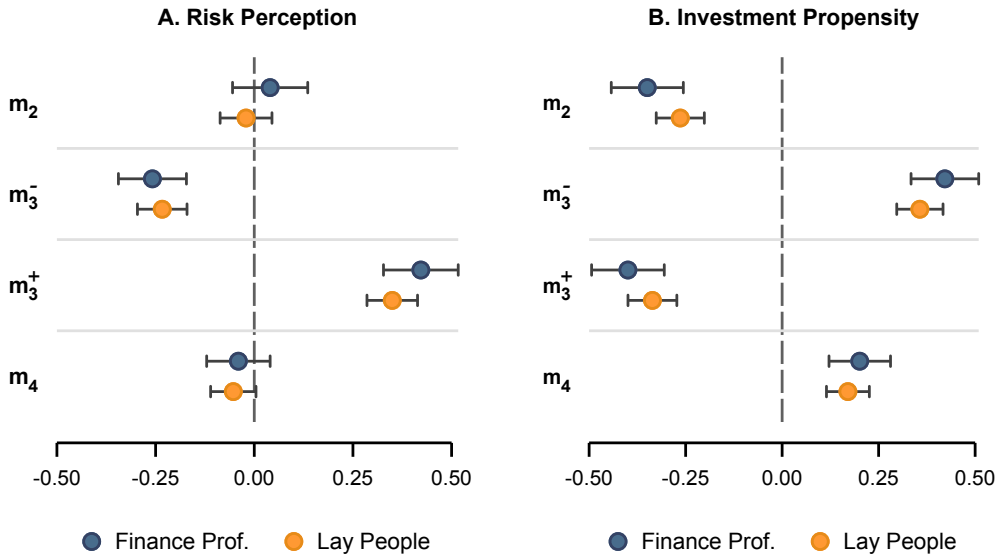


Figure 3: Mean effects of systematic variations in the return distributions' higher moments (standard deviation, skewness, and kurtosis) on subject-level de-meaned risk perception (Panel A) and subject-level de-meaned investment propensity (Panel B). The effects correspond to coefficients of dichotomous explanatory variables in an ordinary least squares regression (controlling for interaction effects), as reported in Tables S2 and S3 in *SI Appendix*. m_2 : 1 if standard deviation = 32.0%, 0 if standard deviation = 16.0%; m_3^- : 1 if skewness = -1.0, 0 if skewness = 0; m_3^+ : 1 if skewness = +1.0, 0 if skewness = 0; m_4 : 1 if kurtosis = 10.8, 0 if kurtosis = 3.0. Error bars denote 99.5% confidence intervals based on standard errors clustered on the individual level. $n = 19,917$ (2,213 clusters) for the financial professionals and $n = 41,031$ (4,559 clusters) for the general population subsample.

Our findings indicate considerable differences between most return distributions *within* either the group of financial professionals and lay people. However, between the two participant groups there are almost no differences: there is only one out of nine distribution for which average risk perception differs significantly. Furthermore, the pairs of distributions for which we do or do not detect significant differences in average risk perception in the financial professionals group are almost identical to those pairs within the group of lay people. Overall, the results are strikingly similar on the average moment and single distribution level.

²While there are some papers reporting other findings with respect to positive and negative skewness, our result are consistent with findings about decision makers' aversion to negative outcomes (likelihood of a loss). This will be shown in our section on Compound Risk Measures.

	$m_2 = 0.16$ $m_3 = -1.0$ $m_4 = 3.0$	$m_2 = 0.32$ $m_3 = -1.0$ $m_4 = 3.0$	$m_2 = 0.16$ $m_3 = +1.0$ $m_4 = 10.8$	$m_2 = 0.16$ $m_3 = 0.0$ $m_4 = 10.8$	$m_2 = 0.16$ $m_3 = -1.0$ $m_4 = 10.8$	$m_2 = 0.32$ $m_3 = 0.0$ $m_4 = 3.0$	$m_2 = 0.16$ $m_3 = 0.0$ $m_4 = 3.0$	$m_2 = 0.16$ $m_3 = +1.0$ $m_4 = 3.0$	$m_2 = 0.32$ $m_3 = +1.0$ $m_4 = 3.0$
$m_2 = 0.16$ $m_3 = -1.0$ $m_4 = 3.0$	-0.054 (0.029)	0.037 (0.035)	0.175* (0.031)	0.218* (0.032)	0.234* (0.031)	0.298* (0.035)	0.258* (0.030)	0.680* (0.036)	0.777* (0.038)
$m_2 = 0.32$ $m_3 = -1.0$ $m_4 = 3.0$	-0.009 (0.024)	-0.007 (0.030)	0.138* (0.032)	0.181* (0.033)	0.197* (0.031)	0.261* (0.036)	0.221* (0.031)	0.643* (0.036)	0.740* (0.038)
$m_2 = 0.16$ $m_3 = +1.0$ $m_4 = 10.8$	0.172* (0.022)	0.182* (0.022)	-0.051 (0.024)	0.042 (0.030)	0.059 (0.028)	0.123* (0.033)	0.083* (0.027)	0.505* (0.033)	0.602* (0.035)
$m_2 = 0.16$ $m_3 = 0.0$ $m_4 = 10.8$	0.180* (0.023)	0.190* (0.023)	0.008 (0.020)	-0.016 (0.027)	0.016 (0.029)	0.080 (0.034)	0.040 (0.028)	0.462* (0.034)	0.559* (0.036)
$m_2 = 0.16$ $m_3 = -1.0$ $m_4 = 10.8$	0.199* (0.022)	0.209* (0.022)	0.027 (0.019)	0.019 (0.020)	-0.019 (0.024)	0.064 (0.032)	0.024 (0.026)	0.446* (0.033)	0.543* (0.035)
$m_2 = 0.32$ $m_3 = 0.0$ $m_4 = 3.0$	0.212* (0.024)	0.222* (0.024)	0.040 (0.022)	0.032 (0.023)	0.013 (0.022)	0.032 (0.031)	-0.040 (0.031)	0.382* (0.037)	0.479* (0.039)
$m_2 = 0.16$ $m_3 = 0.0$ $m_4 = 3.0$	0.233* (0.021)	0.243* (0.021)	0.061* (0.019)	0.053 (0.020)	0.034 (0.019)	0.021 (0.022)	-0.029 (0.022)	0.422* (0.032)	0.519* (0.034)
$m_2 = 0.16$ $m_3 = +1.0$ $m_4 = 3.0$	0.583* (0.024)	0.592* (0.025)	0.410* (0.022)	0.403* (0.023)	0.384* (0.022)	0.370* (0.025)	0.350* (0.022)	0.043 (0.031)	0.097 (0.039)
$m_2 = 0.32$ $m_3 = +1.0$ $m_4 = 3.0$	0.623* (0.026)	0.633* (0.026)	0.451* (0.024)	0.443* (0.025)	0.424* (0.024)	0.411* (0.026)	0.390* (0.023)	0.040 (0.026)	0.100* (0.035)

Figure 4: Pairwise differences in participants’ mean risk perception (subject-level de-meaned data) between the nine return distributions for the subsamples “Financial Professionals” (upper triangle; $n = 2,213$) and “General Population” (lower triangle; $n = 4,559$). Effect sizes refer to “column minus row” in the upper triangle and “row minus column” in the lower triangle, respectively. Color shadings indicate the magnitude of effect sizes. The cells on the diagonal report differences between the two subsamples per distribution ($n = 6,772$). m_2 , m_3 , and m_4 denote standard deviation, skewness, and kurtosis, respectively. Standard errors clustered on the individual level are reported in parentheses. Return distributions are sorted in ascending order of mean perceived riskiness in the pooled data. * indicates a significant difference with $p < 0.005$ based on paired-sample t -tests for off-diagonal differences and independent-sample t -tests for differences on the diagonal.

	$m_2 = 0.16$ $m_3 = -1.0$ $m_4 = 3.0$	$m_2 = 0.32$ $m_3 = -1.0$ $m_4 = 3.0$	$m_2 = 0.16$ $m_3 = +1.0$ $m_4 = 10.8$	$m_2 = 0.16$ $m_3 = 0.0$ $m_4 = 10.8$	$m_2 = 0.16$ $m_3 = -1.0$ $m_4 = 10.8$	$m_2 = 0.32$ $m_3 = 0.0$ $m_4 = 3.0$	$m_2 = 0.16$ $m_3 = 0.0$ $m_4 = 3.0$	$m_2 = 0.16$ $m_3 = +1.0$ $m_4 = 3.0$	$m_2 = 0.32$ $m_3 = +1.0$ $m_4 = 3.0$
BR	-0.262* (0.047)	-0.224* (0.045)	-0.068 (0.038)	-0.096 (0.042)	-0.008 (0.038)	0.008 (0.047)	0.102 (0.036)	0.299* (0.049)	0.249* (0.052)
CN	-0.216* (0.032)	-0.328* (0.034)	-0.065 (0.027)	-0.075 (0.030)	-0.046 (0.027)	-0.033 (0.034)	-0.052 (0.024)	0.408* (0.035)	0.407* (0.038)
DE	-0.288* (0.041)	-0.252* (0.039)	-0.072 (0.033)	-0.115* (0.039)	-0.079 (0.033)	-0.013 (0.043)	-0.031 (0.030)	0.413* (0.046)	0.439* (0.050)
IN	-0.219* (0.050)	-0.202* (0.050)	-0.135* (0.040)	0.036 (0.043)	-0.062 (0.039)	-0.004 (0.050)	0.005 (0.039)	0.278* (0.051)	0.302* (0.054)
JP	-0.206* (0.032)	-0.085 (0.035)	-0.126* (0.026)	-0.115* (0.028)	-0.080* (0.026)	0.032 (0.034)	-0.066 (0.024)	0.116* (0.036)	0.530* (0.042)
RU	-0.170* (0.054)	-0.320* (0.058)	-0.015 (0.042)	0.051 (0.047)	0.091 (0.045)	-0.200* (0.057)	-0.029 (0.042)	0.398* (0.053)	0.194* (0.061)
UK	-0.281* (0.042)	-0.243* (0.039)	-0.094 (0.034)	-0.052 (0.037)	-0.076 (0.034)	-0.014 (0.044)	-0.023 (0.031)	0.327* (0.045)	0.456* (0.049)
US	-0.341* (0.035)	-0.299* (0.037)	-0.104* (0.028)	-0.106* (0.033)	-0.074* (0.026)	-0.011 (0.038)	-0.014 (0.026)	0.410* (0.038)	0.540* (0.044)
ZA	-0.339* (0.048)	-0.313* (0.050)	-0.102 (0.042)	-0.096 (0.046)	-0.083 (0.040)	0.017 (0.053)	-0.046 (0.039)	0.498* (0.052)	0.464* (0.055)

Figure 5: Mean risk perception (subject-level de-meaned data) for the nine return distributions separated by countries. Return distributions are sorted in ascending order of mean perceived riskiness in the pooled data. Color shadings indicate the magnitude of effect sizes. m_2 , m_3 , and m_4 denote standard deviation, skewness, and kurtosis, respectively. Standard errors clustered on the individual level are reported in parentheses. * indicates a significant difference with $p < 0.005$ based on one-sample t -tests (for a test size $\mu_0 = 0$). *BR* – Brazil ($n = 638$), *CN* – China ($n = 1,025$), *DE* – Germany ($n = 695$), *IN* – India ($n = 644$), *JP* – Japan ($n = 769$), *RU* – Russia ($n = 579$), *UK* – Great Britain ($n = 689$), *US* – United States ($n = 1,033$), *ZA* – South Africa ($n = 700$).

Moreover, our global study setup allows us to compare international differences in risk perception across the nine countries we analyzed. Summarizing the main result, we observe that differences in the evaluation of risk across the return distributions are remarkably homogeneous across the nine countries (see Figure 5). Hence, at least with regard to the analyzed distributions and main distributional moments we analyze, we do not find evidence for between-country differences with respect to risk perception.

Within our main participant group of financial professionals, this homogeneity holds across diverse job functions in the finance industry (see Figure 6). The differences we observe are rather small or negligible. The possibly most considerable difference can be observed for fund and portfolio managers. However, these differences to other job domains are not systematic with respect to any particular distributional moment. For example, the results do not indicate that the group of fund and portfolio managers perceive volatility fundamentally different than the other occupational groups. Also, similar groups such as investment bankers or trading and brokerage professionals do not show qualitatively different results.

	$m_2 = 0.16$ $m_3 = -1.0$ $m_4 = 3.0$	$m_2 = 0.32$ $m_3 = -1.0$ $m_4 = 3.0$	$m_2 = 0.16$ $m_3 = +1.0$ $m_4 = 10.8$	$m_2 = 0.16$ $m_3 = 0.0$ $m_4 = 10.8$	$m_2 = 0.16$ $m_3 = -1.0$ $m_4 = 10.8$	$m_2 = 0.16$ $m_3 = 0.0$ $m_4 = 3.0$	$m_2 = 0.32$ $m_3 = 0.0$ $m_4 = 3.0$	$m_2 = 0.16$ $m_3 = +1.0$ $m_4 = 3.0$	$m_2 = 0.32$ $m_3 = +1.0$ $m_4 = 3.0$
Acc.	-0.162 (0.059)	-0.318* (0.060)	-0.075 (0.046)	-0.024 (0.052)	-0.141* (0.045)	-0.013 (0.042)	-0.021 (0.057)	0.393* (0.067)	0.360* (0.069)
Con.	-0.254 (0.102)	-0.195 (0.099)	-0.068 (0.088)	-0.153 (0.100)	-0.085 (0.084)	-0.068 (0.068)	-0.102 (0.109)	0.373* (0.106)	0.551* (0.132)
Anal.	-0.261 (0.108)	-0.279 (0.120)	-0.054 (0.089)	-0.000 (0.113)	-0.153 (0.087)	0.018 (0.081)	0.018 (0.129)	0.243 (0.119)	0.468* (0.134)
Port.	-0.166 (0.130)	-0.180 (0.160)	-0.011 (0.097)	-0.039 (0.116)	0.059 (0.122)	-0.222 (0.097)	0.088 (0.136)	0.285 (0.142)	0.186 (0.164)
Admin.	-0.364* (0.062)	-0.415* (0.065)	-0.172* (0.050)	-0.013 (0.056)	-0.033 (0.051)	0.068 (0.047)	-0.030 (0.070)	0.389* (0.070)	0.568* (0.074)
Invest.	-0.297* (0.098)	-0.422* (0.095)	-0.083 (0.085)	-0.010 (0.087)	0.005 (0.076)	-0.054 (0.076)	-0.061 (0.107)	0.439* (0.104)	0.483* (0.126)
Priv.	-0.544* (0.129)	-0.051 (0.127)	-0.101 (0.121)	-0.241 (0.122)	0.177 (0.108)	-0.177 (0.099)	0.203 (0.129)	0.342 (0.139)	0.392 (0.168)
Risk.	-0.413* (0.112)	-0.085 (0.127)	-0.137 (0.098)	-0.025 (0.102)	-0.102 (0.088)	-0.008 (0.096)	0.027 (0.122)	0.329 (0.125)	0.415* (0.123)
Sales	-0.344* (0.079)	-0.204 (0.080)	-0.037 (0.066)	-0.198 (0.074)	-0.032 (0.066)	0.036 (0.056)	-0.063 (0.092)	0.333* (0.094)	0.510* (0.097)
Manag.	-0.204 (0.086)	-0.102 (0.096)	-0.210* (0.073)	-0.108 (0.080)	-0.142 (0.066)	-0.170 (0.066)	0.073 (0.093)	0.276 (0.101)	0.587* (0.105)
Trad.	-0.527* (0.164)	-0.309 (0.170)	-0.091 (0.141)	-0.036 (0.121)	0.018 (0.127)	-0.000 (0.123)	-0.000 (0.172)	0.582* (0.167)	0.364 (0.182)
Fin.Ser.	-0.333* (0.059)	-0.239* (0.058)	-0.193* (0.050)	-0.137 (0.051)	-0.038 (0.048)	-0.060 (0.045)	-0.016 (0.064)	0.458* (0.064)	0.560* (0.070)
Non.Ser.	-0.309* (0.099)	-0.281 (0.104)	-0.198 (0.074)	-0.096 (0.107)	-0.105 (0.081)	-0.123 (0.070)	0.154 (0.117)	0.469* (0.111)	0.488* (0.139)

Figure 6: Mean risk perception (subject-level de-meaned data) for the nine return distributions separated by participants' occupations. Return distributions are sorted in ascending order of the mean perceived riskiness in the pooled data. Color shadings indicate the magnitude of effect sizes. m_2 , m_3 , and m_4 denote standard deviation, skewness, and kurtosis, respectively. Standard errors clustered on the individual level are reported in parentheses. * indicates a significant difference with $p < 0.005$ based on one-sample t -tests (for a test size $\mu_0 = 0$). *Acc.* – Accounting, Controlling, or Compliance ($n = 392$); *Con.* – Advisory Services or Consulting ($n = 118$); *Anal.* – Analysis, Research, or Valuation ($n = 112$); *Port.* – Fund or Portfolio Management ($n = 71$); *Admin.* – Office Administration, Human Resources, or IT ($n = 297$); *Invest.* – Investment Banking or Investment Services ($n = 137$); *Priv.* – Private Banking or Wealth Management ($n = 80$); *Risk.* – Risk Management, Treasury, or Financial Planning ($n = 116$); *Sales.* – Sales ($n = 192$); *Manag.* – Top- or Middle Management ($n = 177$); *Trad.* – Trading or Brokerage ($n = 55$); *Fin.Ser.* – Other Finance-Related Services ($n = 364$); *Non.Ser.* – Other Non-Finance-Related Services ($n = 108$).

3.2 Investment Propensity

We now turn to our analysis on investment behavior. In contrast to risk perception, an individual’s propensity to invest depends not only on the assessment of risk associated with an investment but also on individual-level risk preferences (Weber and Milliman, 1997). For the sake of illustration, we refer to Figure 1: Regardless of risk preferences, participants might perceive either of the two return distributions as carrying more risk than the other if their evaluation of risk appreciates skewness. Yet, risk-averse individuals might be reluctant to invest in *either* of the two assets as both entail significant risk. Hence, when it comes to investment propensity, the confounding nature of risk perception and risk preferences makes it hard to disentangle the two effects causally. Nevertheless, we consider the impact of higher moments on investment propensity as informative, since this measure resembles actual investment *decisions* more closely and ultimately could influence asset holdings and prices in financial markets.

	$m_2 = 0.16$ $m_3 = -1.0$ $m_4 = 3.0$	$m_2 = 0.16$ $m_3 = 0.0$ $m_4 = 10.8$	$m_2 = 0.32$ $m_3 = -1.0$ $m_4 = 3.0$	$m_2 = 0.16$ $m_3 = +1.0$ $m_4 = 10.8$	$m_2 = 0.16$ $m_3 = -1.0$ $m_4 = 10.8$	$m_2 = 0.16$ $m_3 = 0.0$ $m_4 = 3.0$	$m_2 = 0.32$ $m_3 = 0.0$ $m_4 = 3.0$	$m_2 = 0.16$ $m_3 = +1.0$ $m_4 = 3.0$	$m_2 = 0.32$ $m_3 = +1.0$ $m_4 = 3.0$
$m_2 = 0.16$ $m_3 = -1.0$ $m_4 = 3.0$	0.068 (0.028)	-0.221* (0.031)	-0.221* (0.033)	-0.236* (0.030)	-0.320* (0.030)	-0.422* (0.030)	-0.771* (0.034)	-0.821* (0.035)	-1.096* (0.037)
$m_2 = 0.16$ $m_3 = 0.0$ $m_4 = 10.8$	-0.186* (0.022)	0.034 (0.026)	-0.000 (0.032)	-0.015 (0.029)	-0.099* (0.029)	-0.201* (0.028)	-0.550* (0.032)	-0.601* (0.033)	-0.876* (0.035)
$m_2 = 0.32$ $m_3 = -1.0$ $m_4 = 3.0$	-0.186* (0.023)	0.000 (0.022)	0.034 (0.029)	-0.015 (0.031)	-0.099* (0.031)	-0.201* (0.030)	-0.550* (0.034)	-0.600* (0.035)	-0.875* (0.037)
$m_2 = 0.16$ $m_3 = +1.0$ $m_4 = 10.8$	-0.245* (0.021)	-0.059* (0.020)	-0.059 (0.021)	0.077* (0.024)	-0.084* (0.027)	-0.186* (0.027)	-0.535* (0.031)	-0.585* (0.032)	-0.860* (0.034)
$m_2 = 0.16$ $m_3 = -1.0$ $m_4 = 10.8$	-0.315* (0.021)	-0.129* (0.020)	-0.129* (0.021)	-0.070* (0.019)	0.064 (0.024)	-0.102* (0.027)	-0.451* (0.031)	-0.501* (0.032)	-0.776* (0.034)
$m_2 = 0.16$ $m_3 = 0.0$ $m_4 = 3.0$	-0.357* (0.020)	-0.170* (0.019)	-0.170* (0.021)	-0.112* (0.018)	-0.042 (0.018)	0.004 (0.022)	-0.349* (0.031)	-0.399* (0.032)	-0.675* (0.034)
$m_2 = 0.32$ $m_3 = 0.0$ $m_4 = 3.0$	-0.621* (0.023)	-0.434* (0.022)	-0.434* (0.024)	-0.376* (0.021)	-0.306* (0.021)	-0.264* (0.021)	-0.082 (0.029)	-0.050 (0.036)	-0.325* (0.037)
$m_2 = 0.16$ $m_3 = +1.0$ $m_4 = 3.0$	-0.693* (0.024)	-0.506* (0.023)	-0.506* (0.024)	-0.448* (0.022)	-0.378* (0.022)	-0.336* (0.021)	-0.072* (0.024)	-0.060 (0.031)	-0.275* (0.038)
$m_2 = 0.32$ $m_3 = +1.0$ $m_4 = 3.0$	-0.889* (0.024)	-0.703* (0.024)	-0.703* (0.025)	-0.644* (0.023)	-0.574* (0.023)	-0.532* (0.022)	-0.268* (0.025)	-0.196* (0.025)	-0.139* (0.033)

Figure 7: Pairwise differences in subjects’ mean investment propensity (subject-level de-meanded data) between the nine return distributions for the subsamples “Financial Professionals” (upper triangle; $n = 2,213$) and “General Population” (lower triangle; $n = 4,559$). Effect sizes refer to “column minus row” in the upper triangle and “row minus column” in the lower triangle, respectively. Color shadings indicate the magnitude of effect sizes. The cells on the diagonal report differences between the two subsamples per distribution ($n = 6,772$). m_2 , m_3 , and m_4 denote standard deviation, skewness, and kurtosis, respectively. Standard errors clustered on the individual level are reported in parentheses. Return distributions are sorted in descending order of mean propensity to invest in the pooled data. * indicates a significant difference with $p < 0.005$ based on paired-sample t -tests for off-diagonal differences and independent-sample t -tests for differences on the diagonal.

As would be expected based on the premise that people are generally risk averse, individuals’ risk perception and investment propensity are inversely related: the higher the risk associated with a return distribution is perceived to be, the lower is the willingness to invest in the asset ($\rho = -0.399$, $p < 0.005$). When turning to the effects of variation in higher moments on respondents’ investment propensity, skewness is again a determining moderator: On average, participants report a higher (lower) willingness to invest in assets with positively (negatively) skewed return distributions than in assets yielding symmetric returns. However, in contrast to their insignificant effects on risk perception, standard deviation and kurtosis do significantly affect participants’ willingness to invest (see Panel B in Figure 3). In line with mean-variance models in finance (usually assuming risk averse agents), financial professionals’ and lay people’s investment propensity is, on average, significantly lower for return distributions with high volatility. In contrast, excess kurtosis renders investment alternatives more attractive in both subsamples, suggesting that “fat tails” are discounted by financial professionals and lay people alike.

Similar to the results on risk perception, the identified patterns are reflected in pairwise comparisons of investment propensity across the nine return distributions and do not significantly differ between the two subsamples (see Figure 7). The number of pairwise comparisons between return distributions with significant differences in average investment propensity is higher than for risk perception *within* each group of participants. Between financial professionals and lay people again only one out of nine distributions shows a significant difference (the same distribution as for risk perception). Hence again, our results are strikingly similar between financial professionals and laymen (see also Panel B of Figure 3).

Furthermore, as for risk perception, participants’ propensity to invest is strikingly consistent across countries (see Figure 8). For occupational categories in the finance sector (see Figure 9), we observe consistent results compared to our analysis on risk perception. The biggest difference is, again, for fund and portfolio managers where a *relative* preference for positively skewed investments can be observed, not affecting, however, our overall qualitative observations. Other groups such as professionals in risk management, investment banking, private banking and wealth management or trading do not differ in any systematic way from the average.

3.3 Compound Risk Measures

Aside from examining the effects of variation in higher moments, we investigate whether *compound* risk measures explain participants’ risk perception and investment propensity. Indeed, experimental evidence suggests that compound measures focusing on downside risk—such as the expected value of a potential loss, lower partial moments, or the likelihood of ending up with negative outcomes (Weber and Hsee, 1998; Unser, 2000; Veld and Veld-Merkoulova, 2008; Zeisberger, 2018)—serve as more reliable predictors of individuals’ actual risk-taking behavior than single higher moments. In an explorative analysis, we therefore compute a number of compound risk measures (Brachinger and Weber, 1997), some of which have recently been included in financial regulation (e.g., Basel III). In particular, we include

	$m_2 = 0.16$ $m_3 = -1.0$ $m_4 = 3.0$	$m_2 = 0.16$ $m_3 = 0.0$ $m_4 = 10.8$	$m_2 = 0.32$ $m_3 = -1.0$ $m_4 = 3.0$	$m_2 = 0.16$ $m_3 = +1.0$ $m_4 = 10.8$	$m_2 = 0.16$ $m_3 = -1.0$ $m_4 = 10.8$	$m_2 = 0.16$ $m_3 = 0.0$ $m_4 = 3.0$	$m_2 = 0.32$ $m_3 = 0.0$ $m_4 = 3.0$	$m_2 = 0.16$ $m_3 = +1.0$ $m_4 = 3.0$	$m_2 = 0.32$ $m_3 = +1.0$ $m_4 = 3.0$
BR	0.390* (0.046)	0.241* (0.043)	0.125 (0.048)	0.144* (0.039)	0.033 (0.039)	0.061 (0.036)	-0.257* (0.048)	-0.231* (0.047)	-0.505* (0.049)
CN	0.357* (0.030)	0.214* (0.029)	0.193* (0.032)	0.175* (0.027)	0.137* (0.026)	0.056 (0.024)	-0.248* (0.032)	-0.349* (0.036)	-0.534* (0.040)
DE	0.455* (0.039)	0.128* (0.037)	0.210* (0.040)	0.185* (0.034)	0.109* (0.032)	0.021 (0.030)	-0.209* (0.041)	-0.422* (0.044)	-0.478* (0.045)
IN	0.368* (0.044)	0.152* (0.039)	0.220* (0.044)	0.200* (0.038)	0.074 (0.039)	0.022 (0.037)	-0.236* (0.046)	-0.272* (0.051)	-0.528* (0.054)
JP	0.351* (0.031)	0.197* (0.029)	0.184* (0.033)	0.189* (0.024)	0.141* (0.026)	0.041 (0.025)	-0.317* (0.034)	-0.203* (0.035)	-0.582* (0.040)
RU	0.318* (0.052)	0.161* (0.046)	0.299* (0.056)	0.071 (0.045)	0.009 (0.044)	0.007 (0.042)	-0.159* (0.051)	-0.336* (0.052)	-0.371* (0.056)
UK	0.433* (0.039)	0.252* (0.035)	0.188* (0.039)	0.159* (0.032)	0.066 (0.033)	0.047 (0.029)	-0.275* (0.040)	-0.308* (0.041)	-0.561* (0.046)
US	0.486* (0.034)	0.249* (0.030)	0.240* (0.036)	0.185* (0.027)	0.161* (0.027)	0.029 (0.027)	-0.290* (0.035)	-0.369* (0.038)	-0.691* (0.040)
ZA	0.510* (0.048)	0.294* (0.044)	0.263* (0.049)	0.177* (0.040)	0.034 (0.041)	-0.005 (0.038)	-0.309* (0.052)	-0.399* (0.052)	-0.565* (0.056)

Figure 8: Mean investment propensity (subject-level de-meanded data) for the nine return distributions separated by countries. Return distributions are sorted in descending order of mean propensity to invest in the pooled data. Color shadings indicate the magnitude of effect sizes. m_2 , m_3 , and m_4 denote standard deviation, skewness, and kurtosis, respectively. Standard errors clustered on the individual level are reported in parentheses. * indicates a significant difference with $p < 0.005$ based on one-sample t -tests (for a test size $\mu_0 = 0$). *BR* – Brazil ($n = 638$), *CN* – China ($n = 1,025$), *DE* – Germany ($n = 695$), *IN* – India ($n = 644$), *JP* – Japan ($n = 769$), *RU* – Russia ($n = 579$), *UK* – Great Britain ($n = 689$), *US* – United States ($n = 1,033$), *ZA* – South Africa ($n = 700$).

	$m_2 = 0.16$ $m_3 = -1.0$ $m_4 = 3.0$	$m_2 = 0.16$ $m_3 = 0.0$ $m_4 = 10.8$	$m_2 = 0.32$ $m_3 = -1.0$ $m_4 = 3.0$	$m_2 = 0.16$ $m_3 = +1.0$ $m_4 = 10.8$	$m_2 = 0.16$ $m_3 = -1.0$ $m_4 = 10.8$	$m_2 = 0.16$ $m_3 = 0.0$ $m_4 = 3.0$	$m_2 = 0.32$ $m_3 = 0.0$ $m_4 = 3.0$	$m_2 = 0.16$ $m_3 = +1.0$ $m_4 = 3.0$	$m_2 = 0.32$ $m_3 = +1.0$ $m_4 = 3.0$
Acc.	0.382* (0.058)	0.172* (0.054)	0.246* (0.060)	0.218* (0.046)	0.075 (0.047)	0.052 (0.045)	-0.227* (0.057)	-0.355* (0.063)	-0.564* (0.070)
Con.	0.477* (0.102)	0.350* (0.087)	0.215 (0.097)	0.172 (0.089)	0.037 (0.090)	0.011 (0.074)	-0.294* (0.102)	-0.319* (0.106)	-0.650* (0.120)
Anal.	0.557* (0.092)	0.331* (0.112)	0.151 (0.118)	0.151 (0.085)	0.223 (0.090)	0.115 (0.076)	-0.543* (0.122)	-0.281 (0.121)	-0.705* (0.132)
Port.	0.459* (0.138)	0.135 (0.129)	0.092 (0.138)	0.219 (0.107)	-0.020 (0.119)	-0.006 (0.105)	-0.457* (0.130)	-0.034 (0.143)	-0.387 (0.162)
Admin.	0.500* (0.064)	0.169* (0.054)	0.226* (0.065)	0.239* (0.052)	0.077 (0.050)	-0.024 (0.051)	-0.233* (0.068)	-0.342* (0.070)	-0.612* (0.074)
Invest.	0.328* (0.100)	0.284* (0.076)	0.431* (0.088)	0.240* (0.082)	0.093 (0.080)	-0.083 (0.082)	-0.223 (0.109)	-0.363* (0.108)	-0.708* (0.127)
Priv.	0.466* (0.110)	0.225 (0.113)	0.136 (0.132)	0.301 (0.114)	0.060 (0.110)	0.162 (0.089)	-0.205 (0.113)	-0.496* (0.113)	-0.648* (0.145)
Risk.	0.400* (0.109)	0.331* (0.090)	0.219 (0.109)	0.254* (0.081)	0.237* (0.080)	0.228* (0.079)	-0.591* (0.105)	-0.367* (0.118)	-0.712* (0.131)
Sales	0.496* (0.074)	0.173 (0.069)	0.251* (0.082)	0.209* (0.065)	0.189* (0.063)	0.038 (0.055)	-0.400* (0.079)	-0.348* (0.086)	-0.608* (0.090)
Manag.	0.370* (0.083)	0.353* (0.070)	0.200 (0.091)	0.206* (0.065)	0.274* (0.061)	-0.026 (0.059)	-0.218 (0.088)	-0.399* (0.099)	-0.760* (0.101)
Trad.	0.683* (0.146)	0.301 (0.141)	0.283 (0.180)	0.119 (0.142)	0.010 (0.135)	0.065 (0.121)	-0.172 (0.189)	-0.572* (0.170)	-0.717* (0.194)
Fin.Ser.	0.487* (0.057)	0.212* (0.052)	0.204* (0.052)	0.248* (0.052)	0.204* (0.048)	0.030 (0.049)	-0.325* (0.059)	-0.394* (0.062)	-0.664* (0.067)
Non.Ser.	0.546* (0.100)	0.306* (0.088)	0.380* (0.089)	0.185 (0.084)	0.167 (0.079)	0.046 (0.081)	-0.491* (0.104)	-0.491* (0.116)	-0.648* (0.122)

Figure 9: Mean investment propensity (subject-level de-measured data) for the nine return distributions separated by participants' occupations. Return distributions are sorted in descending order of the mean propensity to invest in the pooled data. Color shadings indicate the magnitude of effect sizes. m_2 , m_3 , and m_4 denote standard deviation, skewness, and kurtosis, respectively. Standard errors clustered on the individual level are reported in parentheses. * indicates a significant difference with $p < 0.005$ based on one-sample t -tests (for a test size $\mu_0 = 0$). *Acc.* – Accounting, Controlling, or Compliance ($n = 392$); *Con.* – Advisory Services or Consulting ($n = 118$); *Anal.* – Analysis, Research, or Valuation ($n = 112$); *Port.* – Fund or Portfolio Management ($n = 71$); *Admin.* – Office Administration, Human Resources, or IT ($n = 297$); *Invest.* – Investment Banking or Investment Services ($n = 137$); *Priv.* – Private Banking or Wealth Management ($n = 80$); *Risk.* – Risk Management, Treasury, or Financial Planning ($n = 116$); *Sales.* – Sales ($n = 192$); *Manag.* – Top- or Middle Management ($n = 177$); *Trad.* – Trading or Brokerage ($n = 55$); *Fin.Ser.* – Other Finance-Related Services ($n = 364$); *Non.Ser.* – Other Non-Finance-Related Services ($n = 108$).

the following conceptualizations of risk: (i) the absolute deviation from the mean, (ii) the semi-variance, (iii) the expected value of loss, (iv) the probability of loss, (v) the inter-quartile range, (vi) the maximum loss (i.e., minimum return), (vii) the 90% value at risk, and (viii) the 95% value at risk. In addition, we examine the explanatory power of (ix) Cumulative Prospect Theory (CPT; Tversky and Kahneman, 1992), applying the authors' frequently used functional forms and parameterization: $\alpha = \beta = 0.88$, $\gamma = 0.61$, $\delta = 0.69$, and $\lambda = 2.25$.

We find that one of these nine measures consistently predicts both the perception of risk and investment propensity to a much larger degree than all other measures: the probability to incur losses (see Figure 10 for a regression analysis on loss probability as well as Figures 12 and 13 in the Appendix for results of the nine risk measures on risk perception and investment propensity).

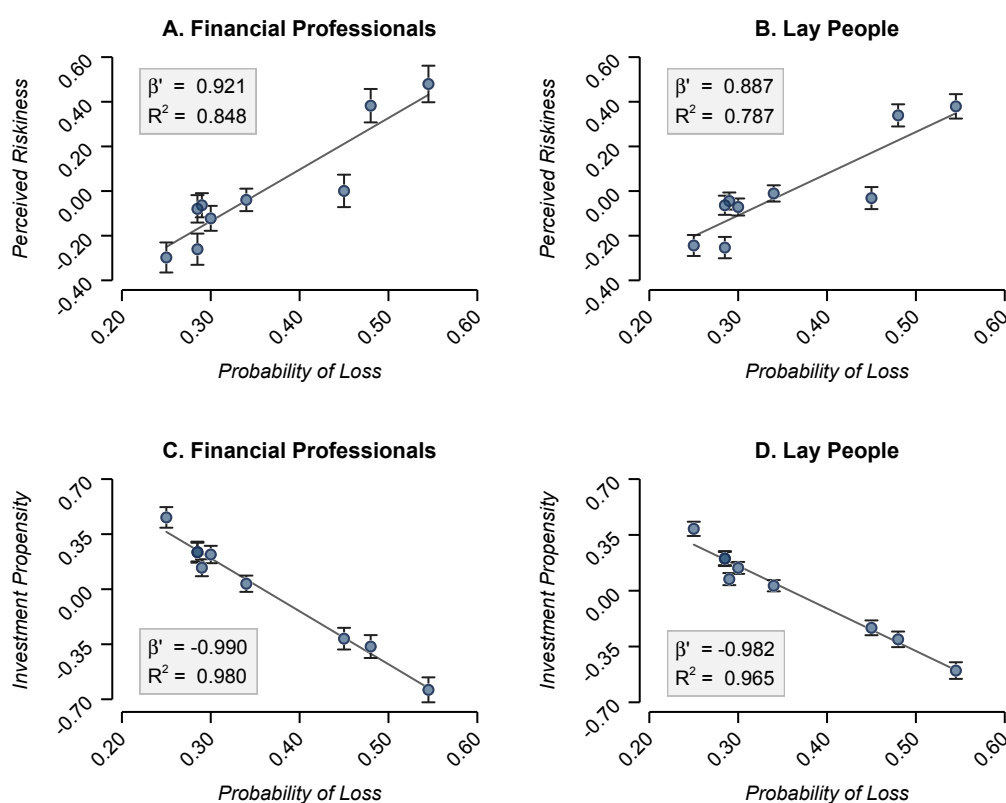


Figure 10: Ordinary least squares regressions of mean perceived riskiness (Panels A and B) and mean investment propensity (Panels C and D) on the distribution's probability of loss for the subsamples "financial professionals" and "lay people." Error bars indicate 99.5% confidence intervals. β' and R^2 denote the standardized correlation coefficient (equivalent to the Pearson correlation coefficient ρ) and the R^2 of the regression, respectively.

We find that the probability to incur a loss explains the bulk of variation in mean perceived riskiness, and this is even slightly higher for financial professionals: 84.8% for professionals and 78.7% for lay people. This result is even stronger for participants' propensity to invest, where the distribution's loss probability explains 98.0% and 96.5% of the variation in means for financial professionals and lay people, respectively.

4 Discussion and Conclusion

We contribute to a growing and highly relevant research area of experimental studies examining behavioral aspects in financial professionals' decision-making (Alevy et al., 2007; Kaustia et al., 2008; Cipriani and Guarino, 2009; Puetz and Ruenzi, 2011; Gloede and Menkhoff, 2014; Cohn et al., 2014; Kirchler et al., 2018). Utilizing an experimental design that allows for a systematic separation of higher moments, potentially driving risk perception and investment propensity, our study facilitates a more comprehensive understanding of how financial professionals assess risks in a financial context in comparison to lay people across nine major economies.

While standard deviation is the most commonly used measure to describe financial risks in theoretical models, finance textbooks, financial advice, and regulatory frameworks, our results suggest that variations in standard deviation do not trigger systematic differences in risk perception, not even for financial professionals. The skewness of the asset returns, however, induces pronounced differences in the cognition of financial risk: positively skewed returns are considered to be significantly more risky than symmetric distributions, and symmetric distributions are perceived as carrying significantly more risk than negatively skewed returns. We believe that this finding is explained by the probability of losing and the aversion to it. Investment propensity, as would be expected for risk-averse agents, is inversely related to risk perception. Differences in the distributions' standard deviation do induce significant differences in participants' disposition to invest, with a higher standard deviation leading to a lower willingness to invest. Given the premise that investment propensity is a function of both risk perception and risk preferences, the discrepancy in volatility effects might indicate that people's risk attitude—but not risk perception—is responsive to volatility measures.

Furthermore, we find strong evidence that the probability of suffering a loss is the main driver for both the perception of financial risk and investment propensity among financial professionals and lay people. At the aggregate level, the probability to incur losses explains approx. 80% of the variation in average risk perception and more than 96% of the variation in average investment propensity. This points towards loss aversion as the most important component of decision-making under risk, in support of the notion that there might be no risk aversion beyond loss aversion (Novemsky and Kahneman, 2005; Dahmi, 2016). Given the strong effect of loss probabilities, Cumulative Prospect Theory (CPT; Tversky and Kahneman, 1992) comes into mind as a prominent explanation for our data. However, compared to the compound risk measures we tested, and in particular compared to loss probability, we find that CPT has little explanatory power.

Importantly, all patterns identified among financial professionals bear a striking similarity to the patterns observed among lay people. Given extensive training and experience in the industry, financial professionals might well be expected to perceive financial risk more in line with predominant risk measures than lay people. However, even though financial professionals, on average, react somewhat more sensitively to rather subtle variations in return distributions, differences in the evaluation of risk and the disposition to invest are

negligible and insignificant between the two populations. In a similar vein, risk perception and investment propensity are fairly homogeneous across countries. In particular, the identified patterns driving individual’s perception of risk and their willingness to invest are largely similar in the different countries in our sample, even though the countries differ considerably in many cultural and social aspects.

Our results have important implications for financial regulation, particularly for the communication of risks to investors. Many regulations and directives still rely to a large extent on variance as a measure of risk (e.g., KIID, MiFID, Solvency II). Given that neither financial professionals nor lay people seem to perceive variance as the defining moment of risk, measures that include skewness and loss probabilities should be given more attention in financial regulation. This particularly applies to key investor information documents (KIID), where a one-dimensional synthetic risk and reward indicator (SRRI) communicates risk with seven categories of low to high variance. Such a reduction of risk to variance can be compared to reducing nutrition facts to calories. Just as food contains multiple ingredients, financial products contain multiple dimensions of risk that are, as we show, important and perceived very differently by investors. In the spirit of the “nutrition facts label” for food, we advocate the use of a “risk facts label” for financial products that includes not only the variance of returns but also skewness and, most importantly, loss probabilities. Our finding that financial professionals, including those in private banking and wealth management, do not differ substantially from lay people, highlights that retail investors’ characteristic risk perception is not necessarily “advised away” when financial advisors are consulted.

Acknowledgments

We thank Richard Hule, Marie-Claire Villeval, seminar participants at the Complexity in Economics Seminar at Tinbergen Institute (Amsterdam), Experimental Finance Workshop at the Max Planck Institute for Research in Collective Goods (Bonn), Second Swedish National Pension Fund AP2 Workshop at the University of Gothenburg (2018), as well as conference participants of the Euregio Economics Workshop 2018 at the University of Innsbruck, the Experimental Finance Conference 2018 in Heidelberg, and the Conference for Decision Sciences 2018 in Konstanz for their valuable comments. Financial support from the Austrian Science Fund FWF (START-grant Y617-G11 and SFB F63) and Radboud University is gratefully acknowledged.

References

- Alevy, J. E., M. S. Haigh, and J. A. List (2007). Information cascades: Evidence from a field experiment with financial market professionals. *Journal of Finance* 62(1), 151–180.
- Bali, T. G., N. Cakici, and R. F. Whitelaw (2011). Maxing out: Stocks as lotteries and the crosssection of expected returns. *Journal of Financial Economics* 99(2), 427–446.
- Bell, D. E. (1995). Risk, return, and utility. *Management Science* 41(1), 23–30.
- Benjamin, D. J., J. O. Berger, M. Johannesson, B. A. Nosek, E.-J. Wagenmakers, R. Berk, K. A. Bollen, B. Brembs, L. Brown, C. Camerer, D. Cesarini, C. D. Chambers, M. Clyde, T. D. Cook, P. De Boeck, Z. Dienes, A. Dreber, K. Easwaran, C. Efferson, E. Fehr, F. Fidler, A. P. Field, M. Forster, E. I. George, R. Gonzalez, S. Goodman, E. Green, D. P. Green, A. G. Greenwald, J. D. Hadfield, L. V. Hedges, L. Held, T. H. Ho, H. Hoihtink, D. J. Hruschka, K. Imai, G. Imbens, J. P. A. Ioannidis, M. Jeon, J. H. Jones, M. Kirchler, D. Laibson, J. List, R. Little, A. Lupia, E. Machery, S. E. Maxwell, M. McCarthy, D. A. Moore, S. L. Morgan, M. Munafó, S. Nakagawa, B. Nyhan, T. H. Parker, L. Pericchi, M. Perugini, J. Rouder, J. Rousseau, V. Savalei, F. D. Schönbrodt, T. Sellke, B. Sinclair, D. Tingley, T. Van Zandt, S. Vazire, D. J. Watts, C. Winship, R. L. Wolpert, Y. Xie, C. Young, J. Zinman, and V. E. Johnson (2018). Redefine statistical significance. *Nature Human Behaviour* 2, 6–10.
- Bontempo, R., W. Bottom, and E. U. Weber (1997). Cross-cultural differences in risk perception: A model-based approach. *Risk Analysis* 17(4), 479–488.
- Boyer, B., T. Mitton, and K. Vorkink (2010). Expected idiosyncratic skewness. *Review of Financial Studies* 23(1), 169–202.
- Brachinger, H. W. and M. Weber (1997). Risk as a primitive: A survey of measures of perceived risk. *Operations-Research-Spektrum* 19(4), 235–250.
- Brealey, R. A., S. C. Myers, and F. Allen (2017). *Principles of corporate finance* (12th edition ed.). New York, NY: McGraw-Hill Education.
- Chen, D. L., M. Schonger, and C. Wickens (2016). otree – an open-source platform for laboratory, online, and field experiments. *Journal of Behavioral and Experimental Finance* 9, 88–97.
- Cipriani, M. and A. Guarino (2009). Herd behavior in financial markets: an experiment with financial market professionals. *Journal of the European Economic Association* 7(1), 206–233.
- Cohn, A., E. Fehr, and M. Maréchal (2014). Business culture and dishonesty in the banking industry. *Nature* 516, 86–89.
- Conrad, J., R. F. Dittmar, and E. Ghysels (2013). Ex ante skewness and expected stock returns. *Journal of Finance* 68(1), 85–124.
- Dahmi, S. (2016). *The foundations of behavioral economic analysis*. Oxford, UK: Oxford University Press.
- Diecidue, E. and J. Van De Ven (2008). Aspiration level, probability of success and failure, and expected utility. *International Economic Review* 49(2), 683–700.
- Ebert, S. (2015). On skewed risks in economic models and experiments. *Journal of Economic Behavior & Organization* 112, 85–97.
- Ebert, S. and D. Wiesen (2011). Testing for prudence and skewness seeking. *Management Science* 57(7), 1334–1349.
- Fishburn, P. C. (1984). Foundations of risk measurement i. risk as probable loss. *Management Science* 30(4), 396–406.
- Gennaioli, N., A. Shleifer, and R. Vishny (2015). Money doctors. *Journal of Finance* 70(1), 91–114.
- Ghysels, E., P. Santa-Clara, and R. Valkanov (2005). There is a risk-return trade-off after all. *Journal of Financial Economics* 76, 509–548.
- Glaser, M., Z. Iliewa, and M. Weber (forthcoming). Thinking about prices versus thinking about

- returns in financial markets. *Journal of Finance*.
- Gloede, O. and L. Menkhoff (2014). Financial professionals' overconfidence: Is it experience, function, or attitude? *European Financial Management* 20(2), 236–269.
- Huber, J., S. Palan, and S. Zeisberger (2017). Does investor risk perception drive asset prices in markets? experimental evidence. *Working Paper*, <https://ssrn.com/abstract=3007878>.
- Kahneman, D. (2011). *Thinking, fast and slow*. New York, NY: Farrar, Straus and Giroux.
- Kaufmann, C., M. Weber, and E. Haisley (2013). The role of experience sampling and graphical displays on one's investment risk appetite. *Management Science* 59(2), 323–340.
- Kaustia, M., E. Alho, and V. Puttonen (2008). How much does expertise reduce behavioral biases? the case of anchoring effects in stock return estimates. *Financial Management* 37(3), 391–412.
- Keller, L. R., R. Sarin, and M. Weber (1986). Empirical investigation of some properties of the perceived riskiness of gambles. *Organizational Behavior and Human Decision Processes* 38(1), 114–130.
- Kirchler, M., F. Lindner, and U. Weitzel (2018). Rankings and risk-taking in the finance industry. *Journal of Finance online first*.
- Klos, A., E. U. Weber, and M. Weber (2005). Investment decisions and time horizon: Risk perception and risk behavior in repeated gambles. *Management Science* 51(12), 1777–1790.
- Levy, H. and M. Levy (2009). The safety first expected utility model: Experimental evidence and economic implications. *Journal of Banking and Finance* 33(2), 1494–1506.
- Lintner, J. (1965). The valuation of risk assets and the selection of risky investments in stock portfolios and capital budgets. *Review of Economics and Statistics* 47(1), 13–37.
- Loewenstein, G. F., E. U. Weber, C. K. Hsee, and N. Welch (2001). Risk as feelings. *Psychological Bulletin* 127(2), 267–286.
- Markowitz, H. (1952). Portfolio selection. *Journal of Finance* 7(1), 77–91.
- Mossin, J. (1966). Equilibrium in a capital asset market. *Econometrica* 34(4), 768–783.
- Nosić, A. and M. Weber (2010). How riskily do i invest? the role of risk attitudes, risk perceptions, and overconfidence. *Decision Analysis* 7(3), 282–301.
- Novemsky, N. and D. Kahneman (2005). The boundaries of loss aversion. *Journal of Marketing Research* 42(2), 119–128.
- Puetz, A. and S. Ruenzi (2011). Overconfidence among professional investors: Evidence from mutual fund managers. *Journal of Business Finance & Accounting* 38(5–6), 684–712.
- Sachse, K., H. Jungermann, and J. M. Belting (2012). Investment risk – the perspective of individual investors. *Journal of Economic Psychology* 33(3), 437–447.
- Sharpe, W. F. (1964). Capital asset prices: A theory of market equilibrium under conditions of risk. *Journal of Finance* 19(3), 425–442.
- Slovic, P. (1987). Perception of risk. *Science* 236, 280–285.
- Slovic, P., M. L. Finucane, E. Peters, and D. G. MacGregor (2004). Risk as analysis and risk as feelings: Some thoughts about affect, reason, risk, and rationality. *Risk Analysis* 24(2), 311–322.
- Tversky, A. and D. Kahneman (1992). Advances in prospect theory: Cumulative representation of uncertainty. *Journal of Risk and Uncertainty* 5(4), 297–323.
- Unser, M. (2000). Lower partial moments as measures of perceived risk: An experimental study. *Journal of Economic Psychology* 21(3), 253–280.
- Veld, C. and Y. V. Veld-Merkoulova (2008). The risk perceptions of individual investors. *Journal of Economic Psychology* 29(2), 226–252.
- Vernimmen, P., P. Quiry, M. Dalocchio, Y. Le Fur, and A. Salvi (2014). *Corporate finance: Theory and practice* (4th edition ed.). West Sussex, UK: John Wiley & Sons.

- Weber, E. U. and C. Hsee (1998). Cross-cultural differences in risk perception, but cross-cultural similarities in attitudes towards perceived risk. *Management science* 44(9), 1205–1217.
- Weber, E. U. and R. A. Milliman (1997). Perceived risk attitudes: Relating risk perception to risky choice. *Management science* 43(2), 123–144.
- Weber, M., E. U. Weber, and A. Nosić (2013). Who takes risks when and why: Determinants of changes in investor risk-taking. *Review of Finance* 17(3), 847–883.
- Zeisberger, S. (2018). What is risk? how investors perceive risk in return distributions. *Working Paper*, <https://ssrn.com/abstract=2811636>.

Appendices

A Experimental instructions

The box below presents the English version of the instructions as shown to participants in the online survey. The instructions have been translated into the official language for each country by professional translation agencies. For countries with more than one official language, the most common language in the respective country was used. The sampling procedures employed by the partnered market research agencies ensured that only respondents with knowledge in the particular language were recruited. The experiment has been conducted in Portuguese (Brazil), Mandarin (China), German (Germany), English (Great Britain, India, the United States, and South Africa), Japanese (Japan), and Russian (Russia).

To explain how to read and interpret the histograms of annual returns, a sample distribution was depicted below the instructions on the introductory screen. The mean, standard deviation, skewness, and excess kurtosis of this sample distribution were 6.0%, 16.0%, -0.12, and -0.79, respectively.

In the following, you will be presented with nine hypothetical annual return distributions, each referring to different investment products. For each investment product, you will be asked to indicate how risky you perceive the investment to be on a 7-point scale from “Not risky at all” to “Very risky” and how likely you would invest in this investment product on a 7-point scale from “Very unlikely” to “Very likely”.

On the horizontal axis you see the possible annual return realizations from -100.0% to +100.0% in 5%-steps. On the vertical axis you see how likely such a realization is. The higher a bar, the more likely a given outcome is. All nine return distributions you will see have the same average (= expected) return of 6.00%.

B Sample screen of the online experiment

Page 1 of 9

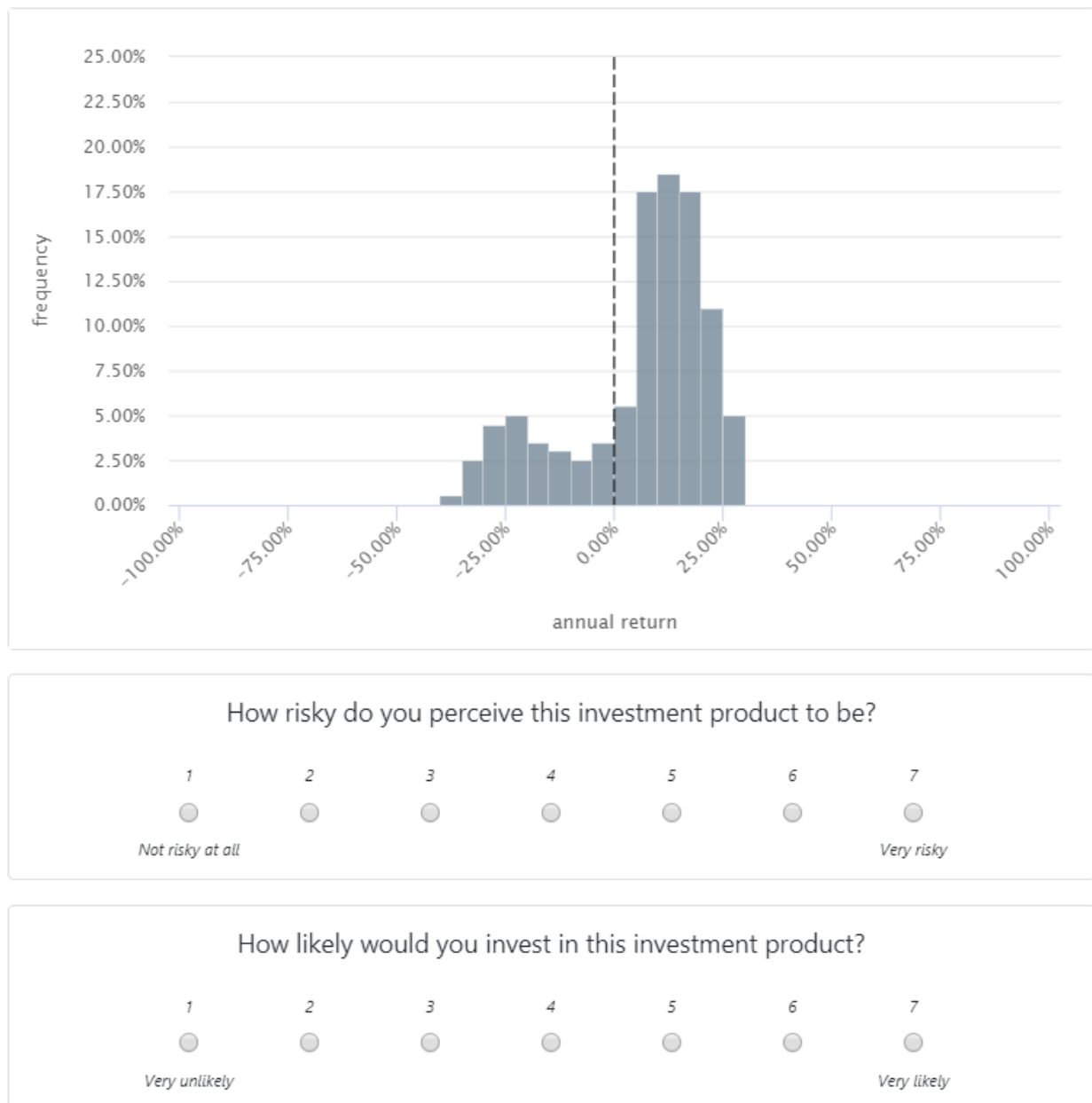


Figure 11: Sample screen of the online experiment. The example shows an annual return distribution with mean (m_1) of 6.0%, standard deviation (m_2) of 16.0%, skewness (m_3) of -1.0, and kurtosis (m_4) = 3.0. The horizontal axis depicts the annual returns (in 5% bins) and the vertical axis is scaled in terms of frequencies (in %). The nine distributions were presented sequentially (on separate screens) in random order.

C Participant Descriptive Data and Exclusions

Table 1: Number of exclusions, demographics (gender ratio and age; standard deviations are provided in parentheses), industry, and occupational information separated by subsamples and countries. Number of exclusions refer to respondents indicating to work in an industry not matching the information provided in the market research agency’s database and/or the responses in the pre-screening survey (see Section Methods for details). *BR* – Brazil, *CN* – China, *DE* – Germany, *IN* – India, *JP* – Japan, *RU* – Russia, *UK* – Great Britain, *US* – United States, *ZA* – South Africa.

Finance Sector	BR	CN	DE	IN	JP	RU	UK	US	ZA	Total
<i>Exclusions:</i>										
<i>N</i> (total)	202	342	243	227	265	232	226	354	280	2,371
No. of exclusions	0	4	0	11	0	90	0	1	52	158
<i>N</i> (after exclusions)	202	338	243	216	265	142	226	353	228	2,213
<i>Demographics:</i>										
Females	49.0%	43.6%	47.7%	37.5%	33.5%	69.0%	50.0%	54.7%	68.9%	49.4%
Age	38.36 (12.47)	33.45 (8.47)	46.16 (11.82)	37.39 (10.53)	47.59 (10.96)	36.67 (8.96)	44.28 (12.39)	46.46 (12.22)	35.71 (10.38)	41.00 (12.23)
<i>Industry:</i>										
Finance	86.1%	91.7%	70.4%	86.6%	67.2%	95.8%	82.3%	62.3%	78.1%	78.6%
Insurance	13.9%	8.3%	29.6%	13.4%	32.8%	4.2%	17.7%	37.7%	21.9%	21.4%
<i>Occupation:</i>										
Accounting & Controlling	22.3%	16.9%	14.4%	19.0%	4.2%	26.8%	16.4%	13.3%	35.1%	17.7%
Advisory Services	6.4%	4.4%	7.4%	4.2%	6.8%	1.4%	4.9%	4.8%	6.6%	5.3%
Analysis & Research	6.4%	7.1%	2.1%	5.1%	3.0%	5.6%	4.9%	6.2%	4.0%	5.0%
Fund & PF Management	2.0%	6.8%	0.8%	7.4%	2.3%	3.5%	1.3%	2.6%	1.3%	3.2%
Administration	13.4%	8.6%	17.7%	10.7%	10.6%	2.8%	20.8%	16.2%	16.7%	13.4%
Investment Banking	7.4%	6.8%	2.1%	12.0%	2.6%	9.2%	8.4%	5.7%	3.5%	6.2%
Private Banking	0.5%	4.1%	9.1%	5.1%	0.8%	9.9%	2.7%	2.0%	0.9%	3.6%
Risk Management	4.0%	6.8%	1.7%	11.6%	3.8%	8.5%	3.1%	5.1%	4.0%	5.2%
Sales	8.9%	5.9%	11.9%	5.1%	20.0%	9.2%	6.2%	7.4%	3.5%	8.7%
Management	3.5%	15.7%	2.1%	9.3%	11.3%	3.5%	9.3%	5.7%	7.0%	8.0%
Trading, Brokerage	6.4%	1.8%	1.7%	2.3%	3.0%	4.2%	0.9%	1.4%	2.6%	2.5%
Other: Finance	17.3%	12.7%	21.4%	8.3%	23.4%	13.4%	18.1%	17.3%	14.0%	16.4%
Other: Non-Finance	1.5%	2.4%	7.8%	0.0%	8.3%	2.1%	3.1%	12.5%	0.9%	4.9%
<i>Lay People</i>										
Lay People	BR	CN	DE	IN	JP	RU	UK	US	ZA	Total
<i>Exclusions:</i>										
<i>N</i> (total)	437	687	452	429	505	438	463	681	473	4,565
No. of exclusions	1	0	0	1	1	1	0	1	1	6
<i>N</i> (after exclusions)	436	687	452	428	504	437	463	680	472	4,559
<i>Demographics:</i>										
Females	52.5%	49.3%	53.1%	47.0%	51.8%	49.4%	49.8%	51.3%	51.1%	50.6%
Age	38.45 (12.48)	38.08 (11.20)	43.40 (13.27)	37.53 (11.93)	44.20 (13.59)	39.19 (10.29)	42.68 (13.58)	42.68 (13.58)	37.03 (12.79)	40.37 (12.85)
<i>Industry:</i>										
Agriculture	1.4%	2.3%	0.0%	1.2%	1.2%	2.3%	0.4%	1.0%	5.1%	1.7%
Automotive	1.4%	0.7%	2.4%	0.7%	1.4%	1.8%	1.1%	0.7%	2.3%	1.3%
Business Services	6.0%	3.5%	3.1%	4.9%	6.4%	7.8%	3.2%	4.0%	8.3%	5.1%
Communications	2.3%	2.9%	0.9%	2.6%	0.4%	1.1%	0.9%	0.9%	2.8%	1.7%
Construction	2.3%	6.7%	4.7%	2.3%	3.6%	10.3%	3.7%	4.7%	4.2%	4.8%
Education	10.3%	8.9%	4.4%	15.9%	2.4%	6.4%	10.4%	10.6%	9.5%	8.8%
Health & Social Work	3.2%	3.2%	9.3%	4.0%	3.8%	3.9%	6.9%	6.3%	5.1%	5.0%
Hotels & Catering	0.9%	1.3%	1.1%	0.7%	1.0%	2.1%	3.7%	0.7%	1.1%	1.4%
IT Services	9.4%	10.6%	5.3%	30.4%	7.5%	6.2%	5.4%	4.4%	13.6%	9.9%
Manufacturing	3.0%	23.1%	7.5%	11.7%	11.1%	11.9%	4.1%	4.6%	7.8%	9.9%
Mining & Utilities	0.7%	2.6%	0.4%	1.4%	1.8%	1.6%	0.7%	0.3%	1.3%	1.2%
Public Administration	5.7%	4.5%	6.4%	2.8%	1.8%	3.7%	4.1%	2.2%	3.0%	3.7%
Transport	2.8%	3.6%	4.4%	2.6%	2.6%	2.5%	3.2%	2.5%	3.0%	3.0%
Wholesale & Retail Trade	10.1%	7.1%	10.0%	3.3%	9.1%	11.2%	6.9%	6.5%	6.1%	7.7%
Other	40.6%	18.8%	40.0%	15.7%	46.0%	27.2%	45.4%	50.6%	26.5%	34.7%

D Regression analysis

Table 2: Ordinary least squares regressions of risk perception and investment propensity on dichotomous covariates (and their interactions) capturing systematic variation in the distributions' higher moments. Models (1) and (2) report regressions of participants' risk perception (subject-level de-meaned data) for the subsamples "financial professionals" and "general population", respectively; models (4) and (5) report regressions of participants' investment propensity (subject-level de-meaned data) for the same subsamples. Standard errors, clustered on the individual level, are reported in parentheses. * indicates a statistically significant effect at the $p < 0.005$ level. Columns (3) and (6) report effect size differences between the two subsamples, i.e. differences between models (1) and (2) and (4) and (5), respectively; $\chi^2(1)$ statistics based on Wald tests after seemingly unrelated regressions are reported in brackets. m_2 : 1 if standard deviation = 32.0%, 0 if standard deviation = 16.0%; m_3^- : 1 if skewness = -1.0, 0 if skewness = 0; m_3^+ : 1 if skewness = +1.0, 0 if skewness = 0; m_4 : 1 if kurtosis = 10.8, 0 if kurtosis = 3.0. \times indicates interaction terms.

	<i>Risk Perception</i>			<i>Investment Propensity</i>		
	(1) Fin. Prof.	(2) Gen. Pop.	(3) (1) - (2)	(4) Fin. Prof.	(5) Gen. Pop.	(6) (1) - (2)
m_2	0.040 (0.034)	-0.021 (0.023)	0.061 [2.199]	-0.349* (0.033)	-0.264* (0.022)	-0.085 [4.577]
m_3^-	-0.258* (0.031)	-0.233* (0.022)	-0.025 [0.429]	0.422* (0.031)	0.357* (0.021)	0.065 [2.937]
m_3^+	0.422* (0.034)	0.350* (0.023)	0.072 [3.169]	-0.399* (0.034)	-0.336* (0.023)	-0.063 [2.468]
m_4	-0.040 (0.029)	-0.053 (0.020)	0.013 [0.134]	0.201* (0.028)	0.170* (0.020)	0.031 [0.786]
$m_2 \times m_3^-$	-0.003 (0.043)	0.011 (0.030)	-0.015 [0.078]	0.128* (0.041)	0.077 (0.029)	0.051 [1.012]
$m_2 \times m_3^+$	0.057 (0.045)	0.061 (0.030)	-0.004 [0.006]	0.074 (0.044)	0.068 (0.029)	0.006 [0.014]
$m_3^- \times m_4$	0.274* (0.043)	0.252* (0.031)	0.022 [0.171]	-0.521* (0.043)	-0.486* (0.030)	-0.035 [0.456]
$m_3^+ \times m_4$	-0.465* (0.044)	-0.357* (0.030)	-0.107 [4.035]	0.384* (0.044)	0.277* (0.030)	0.107 [4.085]
Constant	-0.040 (0.018)	-0.011 (0.013)	-0.029 [1.716]	0.035 (0.018)	0.031 (0.013)	0.004 [0.025]
No. of Obs.	19,917	41,031		19,917	41,031	
No. of Clusters	2,213	4,559		2,213	4,559	
Adj. R^2	0.048	0.035		0.089	0.062	

E Mean perceived riskiness regressed on compound risk measures

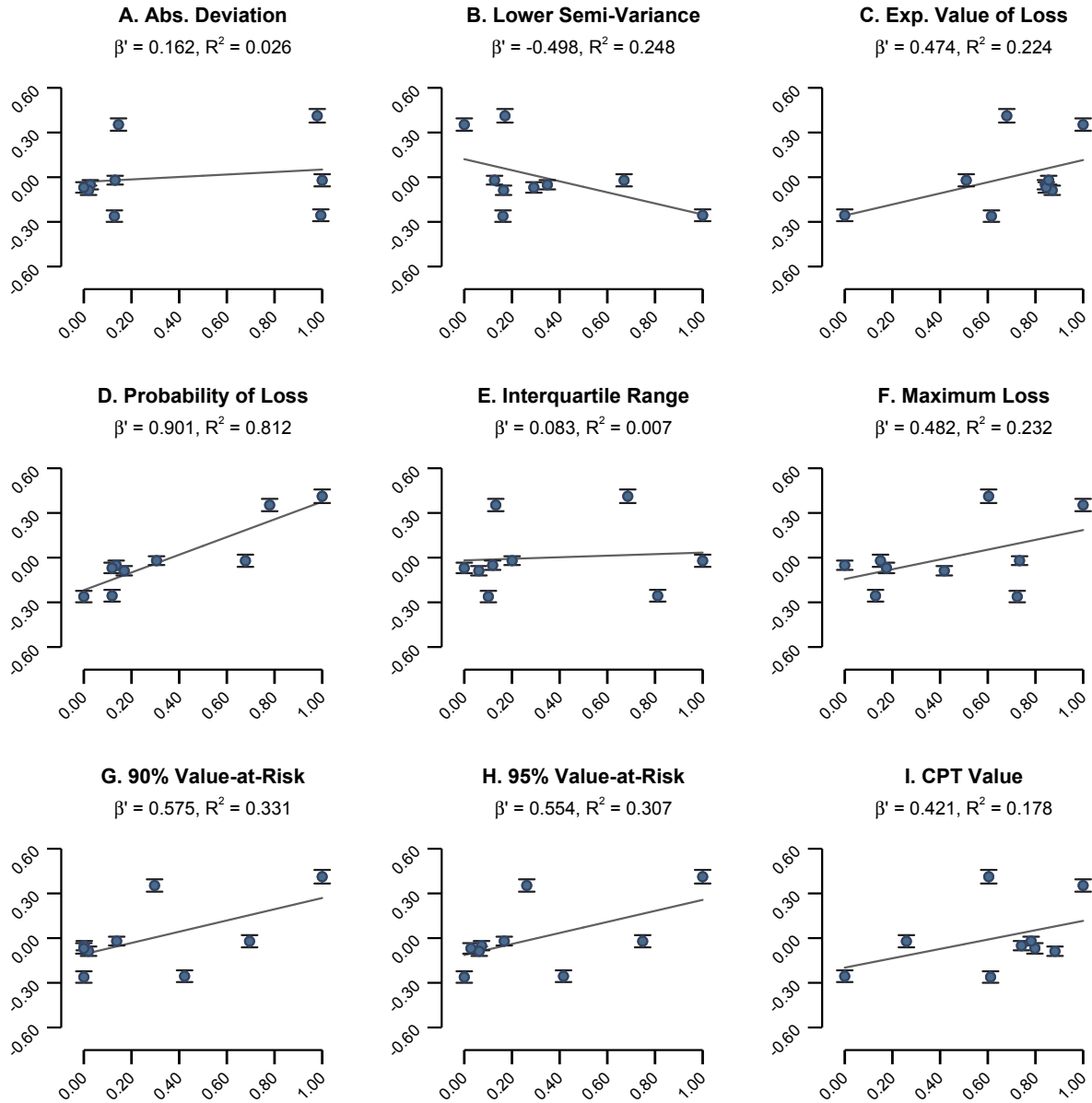


Figure 12: Mean perceived riskiness of each of the return distributions regressed on nine different compound risk measures (pooled data). CPT refers to Cumulative Prospect Theory and is based on the following parameterization: $\alpha = \beta = 0.88$, $\lambda = 2.25$, $\gamma = 0.61$, and $\delta = 0.69$. The vertical axis depicts participants' mean perception of risk associated with the nine return distributions; the horizontal axis depicts the particular compound risk measure, normalized to values between 0.0 and 1.0. Error bars denote 99.5% confidence intervals. β' and R^2 denote the corresponding standardized regression coefficient (equivalent to the Pearson correlation coefficient ρ) and the regressions' R^2 , respectively.

F Mean investment propensity regressed on compound risk measures

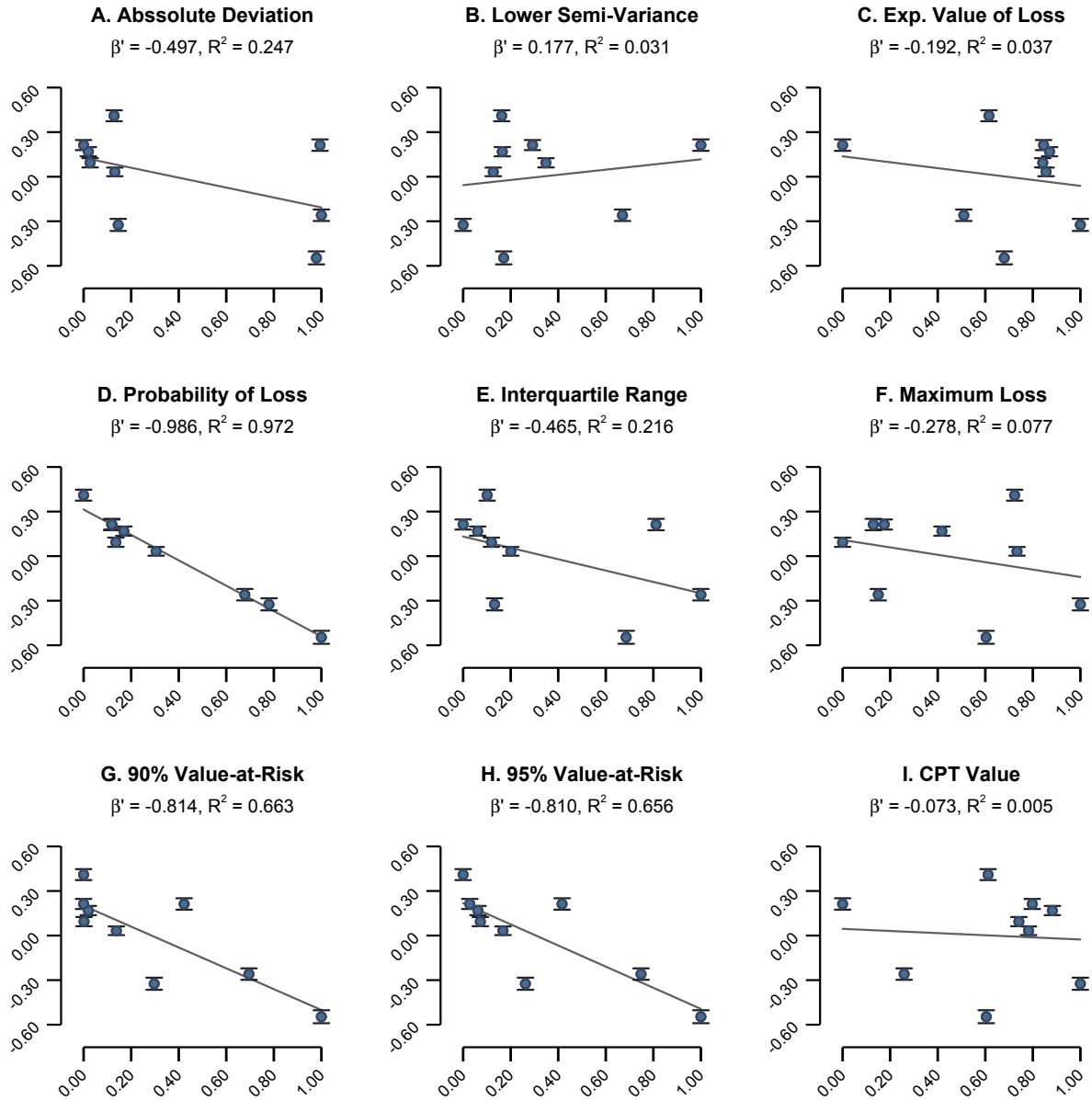


Figure 13: Mean investment propensity of each of the return distributions regressed on nine different compound risk measures (pooled data). CPT refers to Cumulative Prospect Theory and is based on the following parameterization: $\alpha = \beta = 0.88$, $\lambda = 2.25$, $\gamma = 0.61$, and $\delta = 0.69$. The vertical axis depicts participants' mean propensity to invest in the nine return distributions; the horizontal axis depicts the particular compound risk measure, normalized to values between 0.0 and 1.0. Error bars denote 99.5% confidence intervals. β' and R^2 denote the corresponding standardized regression coefficient (equivalent to the Pearson correlation coefficient ρ) and the regressions' R^2 , respectively.

University of Innsbruck - Working Papers in Economics and Statistics
Recent Papers can be accessed on the following webpage:

<https://www.uibk.ac.at/eeecon/wopec/>

- 2019-05 **Felix Holzmeister, Jürgen Huber, Michael Kirchler, Florian Lindner, Utz Weitzel, Stefan Zeisberger:** What Drives Risk Perception? A Global Survey with Financial Professionals and Lay People
- 2019-04 **David M. McEvoy, Tobias Haller, Esther Blanco:** The Role of Non-Binding Pledges in Social Dilemmas with Mitigation and Adaptation
- 2019-03 **Katharina Momsen, Markus Ohndorf:** When do people exploit moral wiggle room? An experimental analysis in a market setup
- 2019-02 **Rudolf Kerschbamer, Daniel Neururer, Matthias Sutter:** Credence goods markets and the informational value of new media: A natural field experiment
- 2019-01 **Martin Geiger, Eric Mayer, Johann Scharler:** Inequality and the Business Cycle: Evidence from U.S. survey data
- 2018-18 **Matthias Sutter, Jürgen Huber, Michael Kirchler, Matthias Stefan, Markus Walzl:** Where to look for the morals in markets?
- 2018-17 **Rene Schwaiger, Michael Kirchler, Florian Lindner, Utz Weitzel:** Determinants of investor expectations and satisfaction. A study with financial professionals
- 2018-16 **Andreas Groll, Julien Hambuckers, Thomas Kneib, Nikolaus Umlauf:** LASSO-Type Penalization in the Framework of Generalized Additive Models for Location, Scale and Shape
- 2018-15 **Christoph Huber, Jürgen Huber:** Scale matters: Risk perception, return expectations, and investment propensity under different scalings
- 2018-14 **Thorsten Simon, Georg J. Mayr, Nikolaus Umlauf, Achim Zeileis:** Lightning prediction using model output statistics
- 2018-13 **Martin Geiger, Johann Scharler:** How do consumers interpret the macroeconomic effects of oil price fluctuations? Evidence from U.S. survey data
- 2018-12 **Martin Geiger, Johann Scharler:** How do people interpret macroeconomic shocks? Evidence from U.S. survey data
- 2018-11 **Sebastian J. Dietz, Philipp Kneringer, Georg J. Mayr, Achim Zeileis:** Low visibility forecasts for different flight planning horizons using tree-based boosting models

- 2018-10 **Michael Pfaffermayr:** Trade creation and trade diversion of regional trade agreements revisited: A constrained panel pseudo-maximum likelihood approach
- 2018-09 **Achim Zeileis, Christoph Leitner, Kurt Hornik:** Probabilistic forecasts for the 2018 FIFA World Cup based on the bookmaker consensus model
- 2018-08 **Lisa Schlosser, Torsten Hothorn, Reto Stauffer, Achim Zeileis:** Distributional regression forests for probabilistic precipitation forecasting in complex terrain
- 2018-07 **Michael Kirchler, Florian Lindner, Utz Weitzel:** Delegated decision making and social competition in the finance industry
- 2018-06 **Manuel Gebetsberger, Reto Stauffer, Georg J. Mayr, Achim Zeileis:** Skewed logistic distribution for statistical temperature post-processing in mountainous areas
- 2018-05 **Reto Stauffer, Georg J. Mayr, Jakob W. Messner, Achim Zeileis:** Hourly probabilistic snow forecasts over complex terrain: A hybrid ensemble postprocessing approach
- 2018-04 **Utz Weitzel, Christoph Huber, Florian Lindner, Jürgen Huber, Julia Rose, Michael Kirchler:** Bubbles and financial professionals
- 2018-03 **Carolin Strobl, Julia Kopf, Raphael Hartmann, Achim Zeileis:** Anchor point selection: An approach for anchoring without anchor items
- 2018-02 **Michael Greinecker, Christopher Kah:** Pairwise stable matching in large economies
- 2018-01 **Max Breitenlechner, Johann Scharler:** How does monetary policy influence bank lending? Evidence from the market for banks' wholesale funding

University of Innsbruck

Working Papers in Economics and Statistics

2019-05

Felix Holzmeister, Jürgen Huber, Michael Kirchler, Florian Lindner, Utz Weitzel, Stefan Zeisberger

What Drives Risk Perception? A Global Survey with Financial Professionals and Lay People

Abstract

Risk is an integral part of many economic decisions, and is vitally important in finance. Despite extensive research on decision-making under risk, little is known about how risks are actually perceived by financial professionals, the key players in global financial markets. In a large-scale survey experiment with 2,213 finance professionals and 4,559 lay people in nine countries representing ~50% of the world's population and more than 60% of the world's gross domestic product, we expose participants to return distributions with equal expected return and we systematically vary the distributions' next three higher moments. Of these, skewness is the only moment that systematically affects financial professionals' perception of financial risk. Strikingly, variance does not influence risk perception, even though return volatility is the most common risk measure in finance in both academia and the industry. When testing other, compound risk measures, the probability to experience losses is the strongest predictor of what is perceived as being risky. Analyzing professionals' propensity to invest, skewness and loss probability have strong predictive power too. However, volatility and kurtosis also have some additional effect on participants' willingness to invest. Our results are very similar for lay people, and they are robust across and within countries with different cultural backgrounds as well as for different job fields of professionals.

ISSN 1993-4378 (Print)

ISSN 1993-6885 (Online)