

Carrasco Blázquez, Mario; de la Orden de la Cruz, Carmen; Prado Román, Camilo

Article

Pairs trading techniques: An empirical contrast

European Research on Management and Business Economics (ERMBE)

Provided in Cooperation with:

European Academy of Management and Business Economics (AEDEM), Vigo (Pontevedra)

Suggested Citation: Carrasco Blázquez, Mario; de la Orden de la Cruz, Carmen; Prado Román, Camilo (2018) : Pairs trading techniques: An empirical contrast, European Research on Management and Business Economics (ERMBE), ISSN 2444-8834, Elsevier, Amsterdam, Vol. 24, Iss. 3, pp. 160-167,
<https://doi.org/10.1016/j.iedeen.2018.05.002>

This Version is available at:

<https://hdl.handle.net/10419/205772>

Standard-Nutzungsbedingungen:

Die Dokumente auf EconStor dürfen zu eigenen wissenschaftlichen Zwecken und zum Privatgebrauch gespeichert und kopiert werden.

Sie dürfen die Dokumente nicht für öffentliche oder kommerzielle Zwecke vervielfältigen, öffentlich ausstellen, öffentlich zugänglich machen, vertreiben oder anderweitig nutzen.

Sofern die Verfasser die Dokumente unter Open-Content-Lizenzen (insbesondere CC-Lizenzen) zur Verfügung gestellt haben sollten, gelten abweichend von diesen Nutzungsbedingungen die in der dort genannten Lizenz gewährten Nutzungsrechte.

Terms of use:

Documents in EconStor may be saved and copied for your personal and scholarly purposes.

You are not to copy documents for public or commercial purposes, to exhibit the documents publicly, to make them publicly available on the internet, or to distribute or otherwise use the documents in public.

If the documents have been made available under an Open Content Licence (especially Creative Commons Licences), you may exercise further usage rights as specified in the indicated licence.



<http://creativecommons.org/licenses/by-nc-nd/4.0/>



Pairs trading techniques: An empirical contrast

Mario Carrasco Blázquez, Carmen De la Orden De la Cruz, Camilo Prado Román

Rey Juan Carlos University, Department of Business Management, Facultad de Ciencias Jurídicas y Sociales, Paseo Artilleros s/n, Madrid 28933, Spain

ARTICLE INFO

Article history:

Received 1 March 2018

Received in revised form 23 May 2018

Accepted 25 May 2018

Available online 5 July 2018

JEL classification:

C02

C40

C50

Keywords:

Pairs trading

Market neutral

Mean reversion

Co-integration

ABSTRACT

Pairs trading is one of the most commonly used market neutral strategies. Over the last few years, several hedge funds have used different ways to successfully implement this trading strategy. The most extensively used techniques (correlation, distance, stochastic, stochastic differential residual and cointegration) use different methodologies and statistical tools to determine the two key elements of the strategy: pairs selection and the establishment of the long-term relationship between them. The purpose of this paper is to analyze the process of selecting pairs and determining the residual series using each one of the different techniques and comparing the outputs. Results indicate that far from being differentiated systems, relationships exist between the various techniques in terms of pairs selection and residual series creation. However, some techniques are more efficient at creating residual series than others, which then means that these techniques would have the highest probabilities of generating profits. The analysis concludes that cointegration is the most efficient method of structuring a pairs trading strategy.

© 2018 AEDEM. Published by Elsevier España, S.L.U. This is an open access article under the CC BY-NC-ND license (<http://creativecommons.org/licenses/by-nc-nd/4.0/>).

1. Introduction

Pairs trading, together with statistical arbitrage and risk arbitrage, has been one of the strategies most commonly used by hedge funds since the end of the 1990s (Nicholas, 2004). This type of strategy seeks to obtain profits from inefficiencies existing in the market, irrespective of whether it is a bull, bear or neutral market. Pairs trading consists of the simultaneous opening of long and short positions in two assets with a balance point between them. In this way, the earnings from a long position cover the losses from a short position and vice versa, meaning that the market risk is close to zero, as is the joint beta strategy. Therefore, the key elements that determine the success of a trade consists of determining the balance point between two securities and the point in time that prices move sufficiently away from the balance point to take positions. Pairs trading is not without risks as a miscalculation of these two elements can lead to a failure of the strategy (Opiela, 2004). Securities volatility is an additional risk that needs to be considered, even if there is a high degree of correlation between the securities (Whistler, 2004). Nevertheless, pairs trading can be used to not only generate profits regardless of market trend, but also to balance a portfolio given its market neutral properties. But to optimize trading results, it is necessary to first select the best method to implement a pairs trading strategy. There are five main techniques that can be utilized to execute a pairs trading strategy. These are: correlation, distance, stochastic, stochastic differential

residual and co-integration although other authors mention others such as the machine learning and the time-series methods (Krauss, 2017).

These five techniques have been developed and proposed by different authors, however there have been no studies that analyze all of them jointly and under the same conditions. Accordingly, it is necessary to take a general and objective approach to be able to compare and contrast the properties of each one in relation to one another.

To do so, all techniques were compared, by performing an analysis of how pairs are chosen and how the balance point is determined as measured by the residual series. This allowed for the comparison of similarities that helped to determine the most efficient technique in each of the key aspects, given that until now, there have been no detailed comparative studies of the different techniques used to develop a pairs trading strategy. The sole exception is the study by Jurek and Yang (2007) which compared the results obtained from the distance and the stochastic techniques. This, then, is the first comprehensive study in which all five techniques are analyzed for interrelationships and to determine each one's strengths and weaknesses.

The remainder of the paper is organized as follows. The second section describes the theoretical aspects of pairs trading. The third section presents the data used and outlines the empirical techniques. The fourth section shows empirical results and the final section presents conclusions.

2. Theory

The principal challenge faced by financial investors using a pairs trading strategy is to find pairs of assets, be they stock, debentures, futures, currency, etc. with sound and lasting statistical relationships, based on the assumption that the different financial assets are, more or less, related (Arfaoui & Ben Rejeb, 2017). If the relationships are not stable in the medium or long-term, the investment system may incur substantial losses. The evolution of the main techniques includes theoretical components that relate different timeframes over which the relationships between a pair of assets break down. The most widely used include statistical tools, such as distance and correlation, stochastic and mathematical processes such as the stochastic and stochastic differential residual and statistical and econometric processes, such as that of co-integration (Do & Faff, 2010).

The correlation technique used by Wong (2010) chooses pairs of stocks according to the correlation coefficient existing between them and determines the residual series by means of a ratio of prices. This system has been used by different authors such as Ehrman (2006). With a given pair of stocks A and B, a ratio between their prices is used to generate the residual series:

$$\frac{P_t^A}{P_t^B} \quad (1)$$

The distance technique was developed and revised by Gatev, Goetzmann, and Rouwenhorst (2006). Their work is considered by many authors as the best-known work of pairs trading (Smith & Xu, 2017). It determines the pairs to be used by means of the distance between them, such distance being the total sum of squares of the difference between the standardized prices of both assets. The residual series is determined by the difference in standardized prices. Based on their work, Do and Faff (2010) developed a profitable pairs trading strategy.

The distance between each pair of assets is determined by:

$$D = \sum_{i=1}^n (P_{Ai} - P_{Bi})^2 \quad (2)$$

where D is the distance between both assets, P_{Ai} is the standardized price of asset A at moment i and P_{Bi} is the standardized price of asset B at moment i .

The standardized price of an asset is determined by:

$$P_{it} = \frac{P_t - E(P_i)}{\sigma_i} \quad (3)$$

where P_{it} is the standardized price of asset i at moment t , P_t is the price of the asset at moment t , $E(P_i)$ is the mean or expected value of asset i and σ_i is the volatility or standard deviation of asset i .

The residual series is determined by the standardized price difference between both assets:

$$P_{Ai} - P_{Bi} \quad (4)$$

The stochastic technique is based on the Hornstein–Uhlenbeck process and assumes a stationary residual series according to:

$$dx_t = k(\theta - x_t)dt + \sigma dW_t \quad (5)$$

where k indicates the speed at which the residual series converges on its mean.

This was later used by Kanamura, Rachev, and Fabozzi (2008) and Jurek and Yang (2007) who, in addition, claimed to have achieved better results than those obtained by Gatev et al. (2006) based on a simulation of data. The residual series is established with the difference in price logarithms using the formula:

$$\log(P_t^A) - \log(P_t^B) \quad (6)$$

The stochastic differential residual technique developed by Do, Faff, and Hamza (2006) uses the CAPM and APT theoretical models to determine the balance between the assets. The residual series is obtained with:

$$G_t = G(p_t^A, p_t^B, U_t) = R_t^A - R_t^B - \Gamma r_t^m \quad (7)$$

where R_t^A is the profitability of asset A at moment t , R_t^B is the profitability of asset B at moment t , Γ is the difference between the betas of both assets and r_t^m is the profitability of the reference market, measured by the index.

Finally, the co-integration technique used by Vidyamurthy (2004) establishes the relationship between assets based on the concept of co-integration developed by Engle and Granger (1987). The cointegration equation is determined by formula:

$$y_t = \alpha_0 + \alpha_1 x_t + \varepsilon_t \quad (8)$$

And the residual series can be written as the equation:

$$D_r = y_t - \alpha_0 - \alpha_1 x_t - \varepsilon_t \quad (9)$$

where α_1 is the cointegration coefficient.

3. Data and methodology

3.1. Data and sample set used

Stocks within the US financial sector, specifically, the SP500 bank subgroup, were the sample set chosen for this study. This subgroup was chosen based on the recent economic crisis that severely punished the international banking industry, partly because of its high exposure to the mortgage and real estate markets. In addition, the banking sector is one of the most representative sectors of the economy, reaching almost 7% of worldwide GNP (World Bank, 2014). The total number of potential pairs analyzed in the study was determined by the formula:

$$P = \frac{n^2 - n}{2} \quad (10)$$

where P is the number of possible resulting pairs and n is the number of stocks to be analyzed.

The sample period over which each technique was analyzed extended from January 1, 2008 to December 31, 2013. This time frame was chosen in order to more strongly contrast a market neutral investment strategy such as pairs trading, due to the major stock market fluctuations from the beginning of the economic crisis at the end of 2007 in which even the most advanced statistical tools of risk measure, as VaR, had shown to be inefficient and weak (Muela, Martin, & Sanz, 2017). Pairs trading is one of the most suitable strategies under current financial conditions that feature an unstable political environment and a high degree of uncertainty in the financial markets and the global economy (Ehrman, 2006).

3.2. Methodology used by each technique for pairs selection

Correlation: to determine the pair of stocks to be used, the correlation coefficient of all the pairs studied was calculated and the pair showing the highest degree of correlation was chosen.

Distance: to determine the pair of stocks to be used, the standardized prices of each pair of stocks and the distance between them were calculated according to formula (2) and (3). The pair of stocks chosen was the one that had the least distance between them.

Stochastic: to determine the pair of stocks to be used, the pair with the highest mean reversion was chosen; this being the pair with the highest k coefficient.

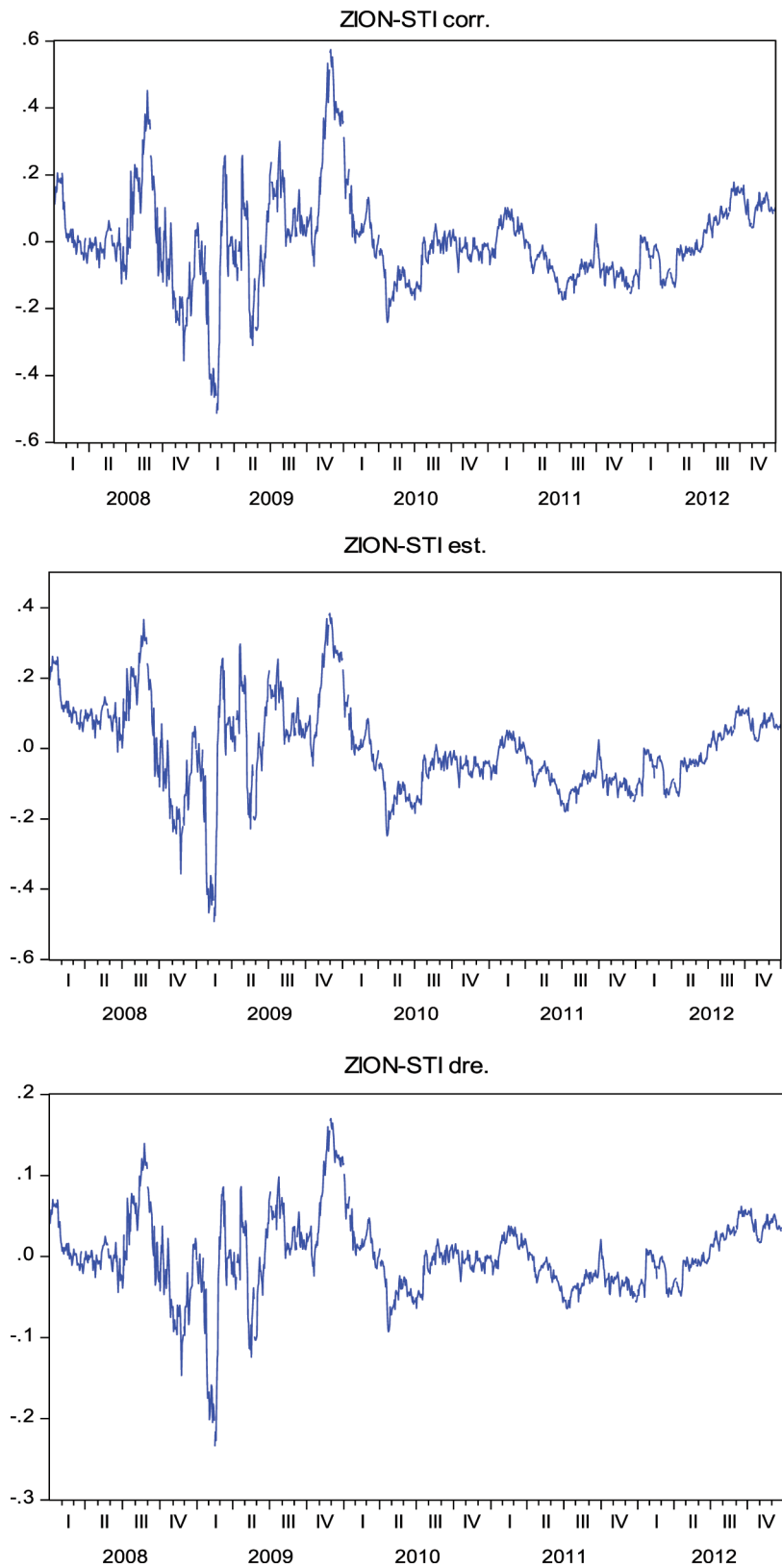


Fig. 1. Residual series with zero mean of the stocks Zion's Bankscorp (ZION) and Sun Trust Banks (STI) (*).

Source: Own data. (*) Obtained using the correlation (corr), the stochastic (est) and the stochastic differential residual technique (dre) during the 2008–2012 timeframe.

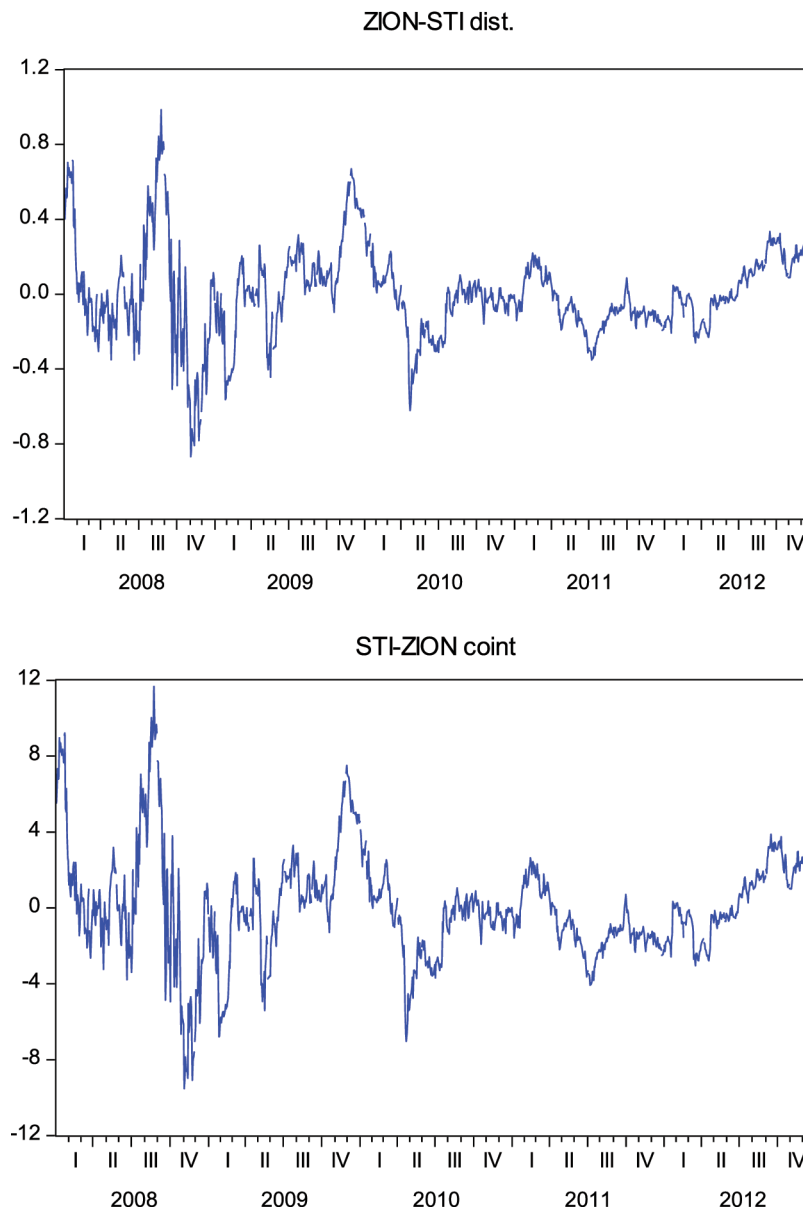


Fig. 2. Residual series with zero mean for the stocks Sun Trust Banks (STI) and Zion's Bancorp (ZION) (*).

Source: Own data. (*) Obtained using the distance (dist) and the cointegration technique (coint) during the 2008–2012 timeframe.

Stochastic differential residual: the pair of stocks to be used was the one with the lowest Γ coefficient, which measures the betas of both assets.

Cointegration: to determine the pair of stocks to be used, the pairs that were cointegrated were chosen. If there were several cointegrated pairs, the one whose residual function showed the highest degree of mean reversion was chosen, in other words, the one that showed the best result from the stationary test. A pre-selection of stocks based on the distance measurement system proposed by Vidyamurthy (2004) was not carried out, but rather all pairs were analyzed and those that passed the Johansen cointegration test were chosen (Johansen, 1989).

3.3. Methodology used by each technique for price residual series formation

Correlation: the price residual series was formed by a quotient between the prices of both stocks according to formula (1). To simplify, the higher of the two prices was used as the

numerator to obtain results above one at the beginning of the study.

Distance: the price residual series was formed by the difference between the standardized prices of both assets according to formula (4). For simplicity, we chose the highest figure first, to obtain positive results at the beginning of the study.

Stochastic: the residual series was created by the difference between the price logarithms of both stocks according to formula (6). For simplicity, we chose the highest figure first, to obtain positive results at the beginning of the study.

Stochastic differential residual: the residual series was calculated according to formula (7) with the first figure of the equation being the one that showed the highest profitability in order to obtain positive results at the beginning of the study.

Cointegration: the residual series was obtained using the equation from a linear regression according to formula (9). In this case, the first figure used corresponded to the endogenous variable of the model, followed by the long-term balance value and, finally, the exogenous variable of the model.

4. Results

The following are the results obtained, according to the different analyses carried out. We extracted different types of results: firstly, with respect to the selection process of the pair of stocks

and secondly, to the creation of the residual series of a given pair of stocks.

Regarding the technique used for pairs selection, we found that the correlation and the distance methods systematically choose the same pair of stocks and in the same order. In other words, the pair

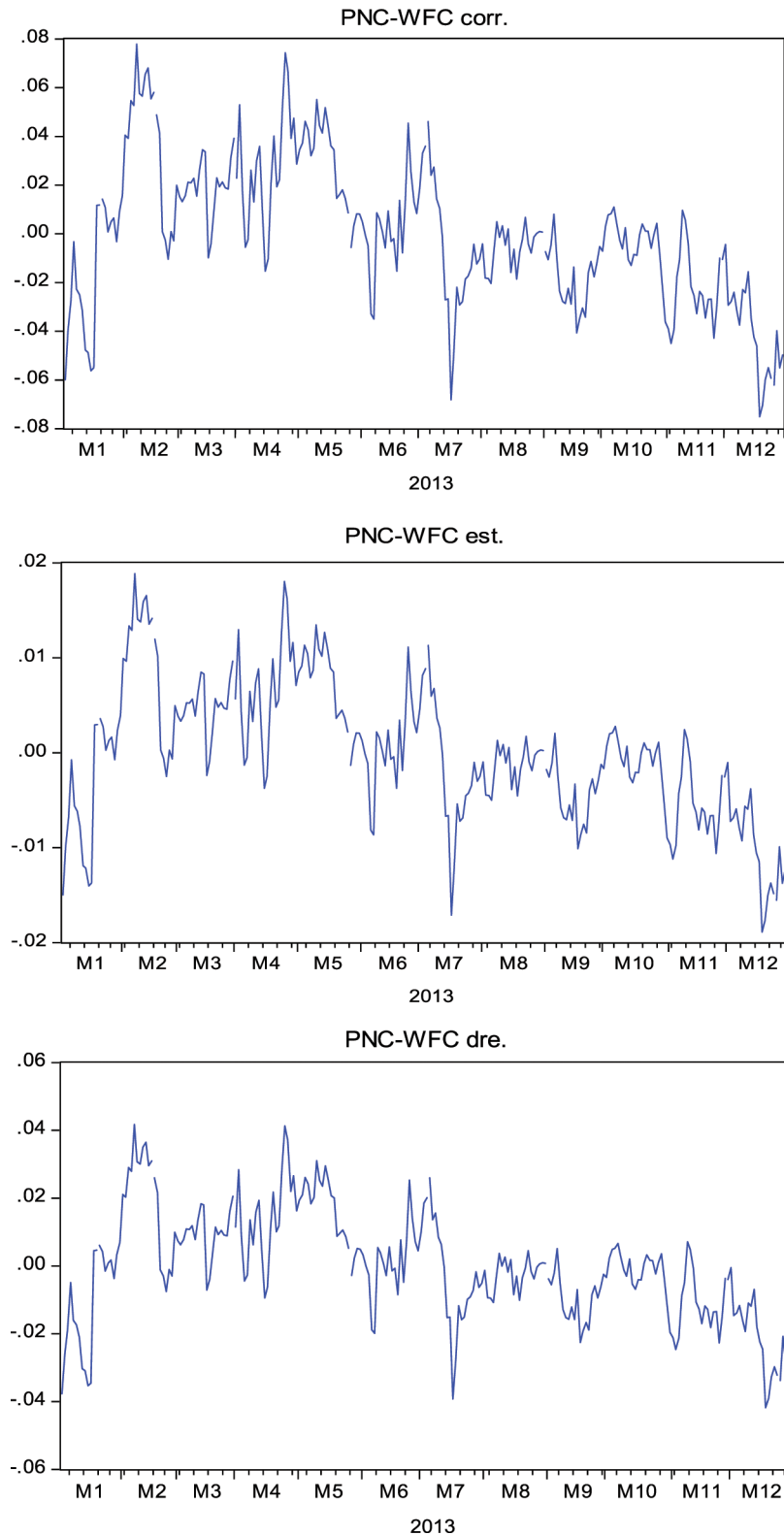


Fig. 3. Residual series with zero mean for the stocks PNC Financial Services (PNC) and Wells Fargo (WFC) (*).

Source: Own data. (*) Obtained using the correlation (*corr*), the stochastic (*est*) and the stochastic differential residual (*dre*) techniques during the 2013 time frame.

of stocks with the highest correlation is also the one with the least distance between them. Provided the pair of stocks x and y are equivalent to the A and B stocks, the latter pair standardized. This means that if we analyze the same pair of stocks and this pair has the highest correlation coefficient ($\rho_{x,y}$) of all the potential pairs, it will also have the least distance (D) of all potential pairs. We can therefore state that the value of the correlation coefficient and the distance between two pairs of stocks is inversely related:

$$\text{MAX } \rho_{x,y} \leftrightarrow \text{MIN } D \quad (11)$$

$$\text{MAX } \rho_{x,y} = \frac{\sigma_{xy}}{\sigma_x \sigma_y} \leftrightarrow \text{MIN } D = \sum_{i=1}^n (P_{Ai} - P_{Bi})^2 \quad (12)$$

This relationship is maintained until the pair of stocks with the lowest correlation coefficient ($\rho_{x,y}$) is reached which, in turn, has the highest value in distance (D). We can also therefore establish that:

$$\text{MIN } \rho_{x,y} \leftrightarrow \text{MAX } D \quad (13)$$

$$\text{MIN } \rho_{x,y} = \frac{\sigma_{xy}}{\sigma_x \sigma_y} \leftrightarrow \text{MAX } D = \sum_{i=1}^n (P_{Ai} - P_{Bi})^2 \quad (14)$$

With regard to the creation of the residual series, from the study carried out we can infer that the correlation, stochastic and stochastic differential residual techniques generate the same residual series with a different scale. This equivalence in how the residual series is constructed and the difference in scale can be seen clearly in Fig. 1. In this case, as an example, the residual series generated by the pair of Sun Trust Banks (STI) and Zion's Bankscorp (ZION) is used during the analysis period. In the following series, the mean is adjusted to zero, in order to eliminate the independent term effect.

Nevertheless, this change in scale does not affect the entrance and exit signals, as the results obtained by applying each of the three-residual series is exactly the same for a given pair of stocks. This residual series equality obtained is clearly observed between the correlation and stochastic techniques, given the way it is constructed: correlation establishes a ratio according to formula (1) while stochastic establishes the difference in price logarithms using formula (5), which can be re-written as:

$$\log \left(\frac{P_t^A}{P_t^B} \right) \quad (15)$$

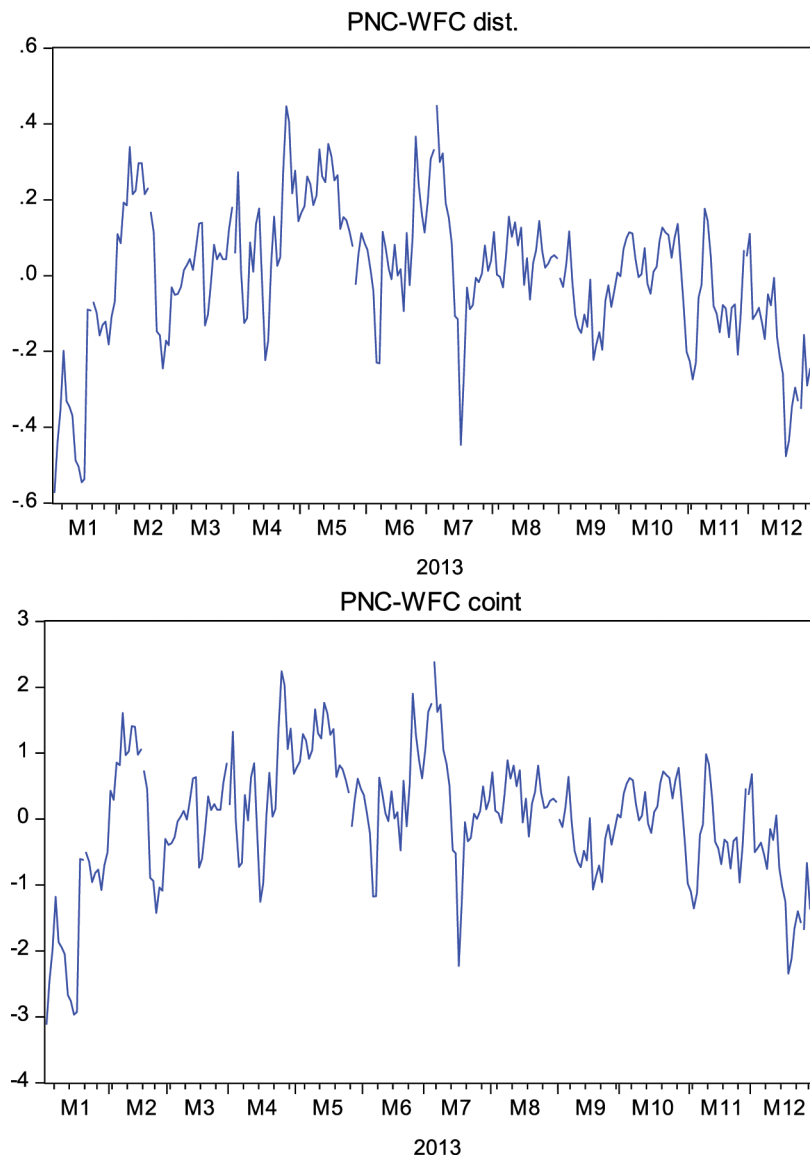


Fig. 4. Residual series with a zero mean for the stocks PNC Financial Services (PNC) and Wells Fargo (WFC).

Source: Own data. (*) Obtained using the distance (dist) and the cointegration (coint) techniques during the 2013 time frame.

Table 1
Results of the ADF stationary test and probability of the STI-ZION residual series.

Stationary test on the pair of stocks STI-ZION (2008–2012)		
Technique	Stationary series	Prob. ADF test result
Correlation	Yes	0.0001
Distance	Yes	0.0002
Stochastic	Yes	0.0001
Stochastic differential residual	Yes	0.0004
Cointegration	Yes	0.0002

Source: Own data. (*) Obtained from each of the five techniques during the 2008–2012 timeframe.

Therefore, the residual series created using the correlation and stochastic methods are the same, with a change of logarithmic scale. With respect to the stochastic differential residual method, the residual series is obtained according to formula (7).

The distance and cointegration techniques generate the same residual series with a different scale for a given pair of stocks. The residual series using the distance technique is determined by the standardized price difference between both assets according to formula (4) while in the cointegration technique the residual series can be written as Eq. (9). This equivalence in how the residual series is obtained and the difference in scale can be seen clearly in Fig. 2, with the given pair of Sun Trust Banks (STI) and Zion’s Bankscorp (ZION) during the period of analysis.

We can therefore state that the correlation, stochastic and differential residual stochastic residual series are equivalent and that:

$$\frac{P_t^A}{P_t^B} \leftrightarrow \log(P_t^A) - \log(P_t^B) \leftrightarrow R_t^A - R_t^B - \Gamma_t^m \quad (16)$$

We can also state that the residual series created using the distance and cointegration techniques are equivalent:

$$P_{Ai} - P_{Bi} \leftrightarrow y_t - \alpha_0 - \alpha_1 x_t - \varepsilon_t \quad (17)$$

Finally, it must be pointed out that the residual series generated by distance and cointegration is a series similar to those created by correlation, stochastic and stochastic differential residual; with a correction of the series trend, meaning that the results of the stationary tests in series with a trend are, in general, better than those obtained with the other three techniques. The residual series formed by Zion’s Bankscorp. (ZION) and Sun Trust Banks (STI) does not show a clear trend, as observed directly from Figs. 1 and 2, therefore in this case the stationary tests on all the residual series show similar results, as seen in Table 1.

In order to confirm the results, the residual series formed by the pair of PNC Financial Services (PNC) and Wells Fargo (WFC) was analyzed during the test period. An analysis of the graph shows that the residual series has a slightly decreasing trend. This equivalence in how the residual series is obtained from the correlation, stochastic and stochastic differential residual techniques and the difference in scale can be seen clearly in Fig. 3, with a given pair of PNC Financial Services (PNC) and Wells Fargo (WFC) during the 2013 time frame. In these residual series, the mean was zero, to eliminate the independent term effect.

Similarly, the way in which the residual series was obtained using the distance and cointegration techniques and the difference in scale can be clearly seen in Fig. 4, given the pair of PNC Financial Services (PNC) and Wells Fargo (WFC) during the 2013 period.

In this case, the decreasing trend of the residual series is observed as more gradual in contrast to those formed by the three previous techniques. It is in this type of series with a trend that it can be directly observed that the results provided by distance and cointegration are better. In the case of a trend in the residual series, the lowest values from the test are also always those obtained from

Table 2
Results of the ADF stationary test and probability of the PNC-WFC residual series.

Stationary test on the pair of stocks PNC-WFC (2013)		
Technique	Stationary series	Prob. result ADF test
Correlation	Yes	0.0020
Distance	Yes	0.0000
Stochastic	Yes	0.0020
Stochastic differential residual	Yes	0.0008
Cointegration	Yes	0.0000

Source: Own data. (*) Obtained from each of the five techniques during the 2013 time frame.

the residual series using the distance and cointegration techniques, as shown in Table 2.

5. Conclusions and discussion

The results obtained show that a pairs trading strategy based on the distance and cointegration techniques generates residual series with better properties than the other techniques for a given pair of stocks. With regard to the method of choosing pairs of stocks, cointegration requires a comprehensive analysis of each potential pair, to choose the pair with the highest degree of cointegration and, therefore results in a residual series with better properties. Accordingly, it can be said that cointegration chooses stocks in a more accurate and complete way than distance and is therefore preferred.

It was also found that the stochastic technique used by Elliott, Van Der Hoek, and Malcolm (2005), Jurek and Yang (2007) and Kanamura et al. (2008) is based on the assumption that the residual series used by the strategy is represented by an Ornstein-Uhlenbeck stochastic model, in which the k , θ and σ parameters are constant, which is extremely difficult in practice. In fact, the greatest challenge faced by pairs trading consists in choosing stocks that can form a series with these properties.

Furthermore, it was proven that pairs trading, using any of the techniques analyzed, was market neutral and that suitable residual series were found in both the time frames analyzed. This feature clearly distinguishes it from other traditional investment strategies, thus making it an interesting investment strategy in terms of risk diversification and as an additional tool in the process of investment portfolio asset allocation. Pairs trading can also be used by portfolio managers with different levels of leverage in order to adjust the risk of the strategy. It should be noted that the analysis of the stocks was performed manually, with the implications that this portends. This limitation can be avoided by programming the strategy to incorporate different timeframes, especially for intraday trading, given the speed that this type of trading requires. The timeframe used for the analysis was selected because of the high volatility of the market during the years of the economic crisis. It would be interesting to test a pairs trading strategy during a timeframe with less volatility and to compare the results.

References

- Arfaoui, M., & Ben Rejab, A. (2017). Oil, gold, US dollar and stock market interdependencies: A global analytical insight. *European Journal of Management and Business Economics*, 26(3), 278–293. <http://dx.doi.org/10.1108/EJMBE-10-2017-016>
- Do, B., Faff, R., & Hamza, K. (2006). A new technique to modeling and estimation for pairs trading. In *Proceedings of 2006 Financial Management Association European Conference*, May (pp. 87–99).
- Do, B., & Faff, R. (2010). Does simple pairs trading still work? *Financial Analysts Journal*, 66(4), 83–95.
- Ehrman, D. (2006). *The handbook of pairs trading: Strategies using equities, options, and futures*. New Jersey: John Wiley & Sons.
- Elliott, R. J., Van Der Hoek, J., & Malcolm, W. P. (2005). Pairs trading. *Quantitative Finance*, 5, 271–276.
- Engle, R., & Granger, C. (1987). Cointegration and error correction. Representation, estimation and testing. *Econometrica*, 55, 251–276.

- Gatev, E., Goetzmann, W., & Rouwenhorst, K. G. (2006). Pairs trading: Performance of a relative value arbitrage rule. *Review of Financial Studies*, 19(3), 797–827.
- Johansen, S. (1989). Statistical analysis of cointegrating vectors. *Journal of Economic Dynamics and Control*, 12, 231–254.
- Jurek, J., & Yang, H. (2007). *Dynamic portfolio selection in arbitrage*. Harvard University Working Paper.
- Kanamura, T., Rachev, S. T., & Fabozzi, F. J. (2008). *The application of pairs trading to energy future markets*. Yale School of Management.
- Krauss, C. (2017). Statistical arbitrage pairs trading strategies: Review and outlook. *Journal of Economic Surveys*, 31(2), 513–545.
- Muela, S. B., Martin, C. L., & Sanz, R. A. (2017). An application of extreme value theory in estimating liquidity risk. *European Research on Management and Business Economics*, 3(3), 157–164.
- Nicholas, J. G. (2004). *Hedge fund of funds investing: An investor's guide*. Bloomberg.
- Opiela, N. (2004). A long–short story. *CFA Magazine*, 15(6), 48–49. Smith, R. T., & Xu, X. (2017). A good pair: Alternative pairs trading strategies. *Financial Markets and Portfolio Management*, 31(1), 1–26.
- Vidyamurthy, G. (2004). *Pairs trading, quantitative methods and analysis*. New Jersey: John Wiley & Sons.
- Whistler, M. (2004). . *Trading pairs: Capturing profits and hedging risk with statistical arbitrage strategies* (Vol. 216) New Jersey: John Wiley & Sons.
- Wong, J. B. (2010). *Trading strategies: Pairs trading*. Singapore Stock Exchange. Available at: [https://www.google.es/url?sa=t&rct=j&q=&esrc=s&source=web&cd=1&ved=0ahUKEwjE3NiqzjvbAhWHxxQKHR2fDYUQFgggMAA&url=https%3A%2F%2Fsias.org.sg%2Ffiles%2FTrading%2520Strategies%2520Series_Pair%2520Trading%2520\(1%2520of%25206\).pdf&usg=AOvVaw0NfznxDEdpUo8k8EcWOXx](https://www.google.es/url?sa=t&rct=j&q=&esrc=s&source=web&cd=1&ved=0ahUKEwjE3NiqzjvbAhWHxxQKHR2fDYUQFgggMAA&url=https%3A%2F%2Fsias.org.sg%2Ffiles%2FTrading%2520Strategies%2520Series_Pair%2520Trading%2520(1%2520of%25206).pdf&usg=AOvVaw0NfznxDEdpUo8k8EcWOXx)
- World Bank. (2014). *Global financial development report 2014*. Washington, DC: The World Bank. Available at: <https://openknowledge.worldbank.org/bitstream/handle/10986/16238/9780821399859.pdf?sequence=4&isAllowed=y>