

Altermatt, Sophie; Beyeler, Simon

Working Paper
Shall we twist?

Discussion Papers, No. 18-25

Provided in Cooperation with:
Department of Economics, University of Bern

Suggested Citation: Altermatt, Sophie; Beyeler, Simon (2018) : Shall we twist?, Discussion Papers, No. 18-25, University of Bern, Department of Economics, Bern

This Version is available at:
<https://hdl.handle.net/10419/204925>

Standard-Nutzungsbedingungen:

Die Dokumente auf EconStor dürfen zu eigenen wissenschaftlichen Zwecken und zum Privatgebrauch gespeichert und kopiert werden.

Sie dürfen die Dokumente nicht für öffentliche oder kommerzielle Zwecke vervielfältigen, öffentlich ausstellen, öffentlich zugänglich machen, vertreiben oder anderweitig nutzen.

Sofern die Verfasser die Dokumente unter Open-Content-Lizenzen (insbesondere CC-Lizenzen) zur Verfügung gestellt haben sollten, gelten abweichend von diesen Nutzungsbedingungen die in der dort genannten Lizenz gewährten Nutzungsrechte.

Terms of use:

Documents in EconStor may be saved and copied for your personal and scholarly purposes.

You are not to copy documents for public or commercial purposes, to exhibit the documents publicly, to make them publicly available on the internet, or to distribute or otherwise use the documents in public.

If the documents have been made available under an Open Content Licence (especially Creative Commons Licences), you may exercise further usage rights as specified in the indicated licence.



^b
**UNIVERSITÄT
BERN**

Faculty of Business, Economics
and Social Sciences

Department of Economics

Shall We Twist?

Sophie Altermatt, Simon Beyeler

18-25

May 2018

DISCUSSION PAPERS

Schanzeneckstrasse 1
Postfach 8573
CH-3001 Bern, Switzerland
<http://www.vwi.unibe.ch>

Shall We Twist?

Sophie Altermatt* and Simon Beyeler†

May 2018

Abstract

In recent monetary history, central banks around the world have started to introduce unconventional monetary policy measures, such as extending or restructuring the asset side of their balance sheet. The origin of these monetary policy tools goes back to an intervention by the U.S. Federal Reserve System under the Kennedy administration in 1961 known as Operation Twist. Operation Twist serves as a perfect laboratory to study the effectiveness of such balance sheet policies, because interest rates neither were at their lower bound nor was the economy in a historical turmoil. We assess the actions of the FED and the Treasury under Operation Twist based on balance sheet data and evaluate their success using modern time series techniques. We find that, although being of rather moderate size, the joint policy actions were effective in compressing the long-short spreads of the Treasury bond rates.

JEL Classification: C22, E43, E52, E63, E65

Keywords: Operation Twist, Monetary Policy, Interest Rates, Yield Curve, Time Series

*Department of Economics, University of Bern, Schanzeneckstrasse 1, CH-3001, Bern, Switzerland.
Email: sophie.altermatt@vwi.unibe.ch

†Study Center Gerzensee and University of Bern, Dorfstrasse 2, CH-3115 Gerzensee, Email:
simon.beyeler@szgerzensee.ch

1 Introduction

In the recent monetary history many advanced economies have experienced a very low interest rate environment in the aftermath of the Great Recession. As policy rates approached their effective lower bounds, central banks around the world could no longer rely on their conventional policy instruments to control price stability and to stabilize the economy. Instead, they started to introduce unconventional measures such as the extension and restructuring of their balance sheets, often referred to as quantitative easing (QE). In fact, such measures are not completely new. The United States already experienced a comparable situation in the early 1960s. At that time the U.S. economy was recovering from a recession and the Kennedy administration, which took office in January 1961, wanted to stimulate the economy with the help of easier monetary and fiscal policy. However, the Federal Reserve System (FED) was unwilling to lower short-term interest rates. Although interest rates had not been restricted by their effective lower bound, the FED's monetary policy leeway was constrained because of a growing differential between U.S. and European interest rates which had led to increased outflows of dollars and gold towards Europe under the institutional setting of the Bretton Woods system. Under Bretton Woods the U.S. dollar was acting as global reserve currency and could be exchanged for gold at a fixed rate. The dollar outflows mainly had two causes: (i) an increasing interest rate differential between European and U.S. rates, leading to a surge of capital outflows and (ii) a deterioration of the U.S. balance of payments due to weaker U.S. exports and stronger imports. The FED judged the level of gold outflows as a systemic risk that had to be defeated. Therefore, stimulating the economy by lowering short-term interest rates was not an option. Based on this limitation, the Kennedy administration needed to find novel ways to provide monetary stimulus for the economy. The proposed solution came in form of Operation Twist (OT): an attempt in cooperation with the FED to twist the yield curve and narrowing the spread between long- and short-term interest rates. The plan was the following: Under OT, the Treasury would issue short-term securities instead of long-term securities and the FED would swap short-term for long-term government bonds, thus restructuring the composition of the asset side in its balance sheet. These operations would lead to an increase in the relative supply of short-term securities which was expected to exert upward pressure on short-term rates. Simultaneously, the corresponding decrease in the relative availability of long-term securities was expected to lower long-term yields, thus twisting the term structure in the desired

direction (Modigliani and Sutch, 1966). Long-term interest rates were seen as the main determinant of investment at that time and the goal of lowering them was to stimulate the economy by increasing the flow of private investment.

In this paper we assess the implementation of OT using balance sheet data on the FED's and the Treasury's positions of government securities which reveal information on the respective actions undertaken by the two authorities. Furthermore, we use an econometric approach to investigate the operation's success in compressing the yield curve for government securities. We see OT as a perfect laboratory to study the effect of such balance sheet operations, because (i) the idea of using the composition of the central bank's balance sheet as monetary policy instrument, and the intended effects of this unconventional policy were the same in the 1960s as they have been in the aftermath of the Great Recession but, in contrast to the recent period, interest rates were not restricted by their effective lower bound, and (ii) the economy at that time was not in a historical turmoil, which makes it easier to isolate the effect of such policies. The existing literature on OT is rather scarce, however, two studies stand out: an early paper by Franco Modigliani and Richard Sutch (1966) who evaluate the success of the new policy measure and a more recent study by Eric Swanson (2011) who readdresses the same question using modern event study techniques. Both studies come to the conclusion that if OT had an effect on the yield curve, then it was rather moderate. However, both studies have some important limitations. Modigliani and Sutch estimate a distributed lag regression model of the spread of long-term and short-term rates on the 3-month Treasury bill rate, using quarterly data for the period 1952Q1 to 1961Q4. They then perform a counterfactual exercise for the period from 1962Q1 to 1965Q2 based on these estimates. This setup has two (potential) problems. First, and less importantly, they are working with data at the quarterly frequency even though all the time series included in their analysis are available at the monthly frequency. This additional aggregation hence seems unnecessary and might have influenced the outcome of their investigation. Second, and more importantly, their definition of the OT period is highly debatable since OT had already started in February 1961 when Kennedy announced the program. Thus, including data from 1961 in the reference sample might exert a downward bias on the detected effects of OT. Swanson, on the other hand, focuses on six major announcements containing news about OT and their effects on long-term rates within a narrow window of 1-4 days. The last event he considers is in April 1961. However, taking a closer look at the balance sheet data reveals that most of the action undertaken by the FED took place solely afterwards (see Figure 1).

Thus, Swanson only captures the announcement effects of OT, but he cannot provide evidence on the actual policy effects, i.e. the impact of changes in the supply of securities outstanding. Moreover, the event-study cannot provide any evidence on the impact of OT more than a few days after the announcement. For the evaluation of policy actions it is, however, their impact after a few months, or even years that is of particular interest.

In the spirit of Modigliani and Sutch we estimate an autoregressive distributed lag (ARDL) model at the monthly frequency in which we regress different long-short spreads on lagged values of themselves and a set of explanatory variables controlling for the state of the economy. Instead of evaluating the effects of OT by comparing the actual development of the spreads with the predicted development extrapolated from the model under the pre-OT period, we focus on the residuals of the estimated model. Under the null hypothesis that OT had no impact on the spreads, the residuals are assumed to be normally and hence symmetrically distributed around zero over the whole sample period. If, on the other hand, OT was able to compress the long-short spreads, we expect the residuals to be tilted towards negative values during the OT period. The cumulated sum of the errors proves to be a handy measure to detect such an asymmetry. We therefore cumulate the monthly errors starting in February 1961, when OT was publicly announced for the first time, and compare them to the bootstrapped confidence bands under the null hypothesis of no yield spread compression. If the cumulated errors are below the 10th percentile of bootstrapped cumulated errors we consider OT as successful in compressing the yield spread. In a simulation study we show that the method we propose is well able to capture such a shock to the yield spreads.

Our main findings can be summarized as follows. OT was a policy operation initiated and promoted by the Kennedy Administration, and highly disputed within the FED. The joint policy actions undertaken by the Treasury and the FED were rather moderate and did not affect the public holdings of long-term government debt to a large extent. During OT, the share of long-term over total government securities in the hands of the public did not change by more than 8 percentage points. Although the intervention was only of moderate size, we find a weakly significant compression in the spreads between Treasury yields and the 3-month Treasury bill rate during OT. Alternative securities with similar maturities were, however, not significantly affected by the intervention. The largest policy actions took place a few months after OT was announced, which corresponds to the evidence we find on the effects of OT. We find the largest effects of OT after September 1961.

The remainder of the paper proceeds as follows. Section 2 describes the challenges of monetary policy during the early 1960s and the implementation of OT. Section 3 discusses the theoretical transmission channels. Section 4 explains our estimation method. Section 5 presents the results and Section 6 concludes.

2 The 1960's – an important phase for U.S. monetary policy

The beginning of the 1960s was an interesting period in U.S. monetary history. Some of today's important concepts of U.S. monetary policy date back to that period. For example, the independence of the FED from the government, quantitative targets for the FED's actions and the communication thereof to the public had been constantly debated (Meltzer, 2010, p. 328-329). After the turbulence of the World War II experience the FED could establish an environment of price stability during the 1950s. The early 1960s challenged the U.S. monetary policy framework which obliged the FED to fulfill the objectives of maintaining price stability and fostering domestic employment under the constraints of the international framework of the Bretton Woods system. The Bretton Woods system was an international agreement on fixed nominal exchange rates in which the U.S. dollar acted as global reserve currency with a fixed convertibility into gold. The FED had to coordinate its monetary policy actions between domestic obligations and international agreements. This coordination had worked well under a growing economy and ideal international conditions. As a result of World War II the productive capacity of the European economies was still limited throughout the 1950s and they had to rely on the U.S. as an important supplier of goods, thereby fostering U.S. exports. The early 1960s challenged the act of incorporating domestic and international conditions in the conduct of monetary policy.

During the 1950s, the balance-of-payment system of the U.S. swung from a surplus to a deficit. A substantial fraction of this decline was due to changes in the relationship between merchandise exports and imports. As Europe began to rebuild its productive capacities and was again able to supply a large number of goods by itself, U.S. exports started declining. At the same time, U.S. imports were rising, partly due to higher military expenditures abroad but also because of a higher popularity of foreign manufacturing goods. Moreover, European interest rates on short-term securities were higher than in the United States. These interest rate differentials led to

movements of short-term funds away from the U.S. and towards Europe (see Federal Reserve Bank of St. Louis (1961) for a detailed summary). By the end of the 1950s, the balance-of-payment deficit and the interest rate differentials had led to a strong increase in foreign official dollar holdings. Part of these dollars were converted into gold, leading to substantial gold outflows from the U.S.. As these gold outflows accelerated in the early 1960s, pressure on the FED increased to keep short-term interest rate above 2 percent, which was, at that time, seen as critical level to prevent further outflows (see Meltzer 2010, p. 308). However, the domestic economy was still weak and just recovering from a recession, and was in need of an expansionary monetary policy, i.e. lower interest rates, in the eyes of Kennedy's economic advisors. The situation in which interest rates are restricted by a lower bound while the economy is in need of monetary stimulus is, to some extent, comparable to the situation many advanced economies experienced since the Great Recession of 2008-2009. Under such circumstances a central bank can no longer rely on conventional monetary policy to achieve its policy targets.

In 1961 the FED had already experienced the limits of conventional monetary policy. The economic circumstances required the FED to pursue measures to achieve two goals simultaneously – an expansionary policy aimed at increasing aggregate demand to stimulate the economy out of the recession; and a contractionary policy aimed at increasing interest rates to moderate the outflows of capital and, at the same time, reducing aggregate demand (thereby reducing the demand for imports) to dampen the balance-of-payments deficit. Unsurprisingly, the opinions of the members of the Federal Open Market Committee (FOMC) were divided between favoring higher interest rates to ease the gold outflows, and pushing for lower interest rates to foster domestic employment. The economic advisors of the recently elected Kennedy Administration were eager to achieve both targets at the same time and thus proposed a solution that can be seen as an early version of quantitative easing.

A solution called Operation Twist

The goal of OT was to lower long-term interest rates, while keeping short-term rates from falling below the desired target of 2 percent. To achieve this goal, the administration of John Kennedy persuaded the chairman of the FED to cooperate with the Treasury by selling shorter-term securities and using the proceeds to purchase longer-term securities. Purchasing long-term government securities, so was the idea, would lower long-term interest rates and selling short-term securities would stabilize,

or even increase, short-term interest rates. Long-term interest rates were considered the dominant factor driving domestic investment, so lowering them would provide additional stimulus for the economy. The implementation and the effects of these actions were heavily debated within the FED. A substantial fraction of FOMC members was not supporting the purchase of long-term securities to twist the yield curve. They questioned the effectiveness of such a measure, and they were still in favor of the FED's 'bills-only' policy that had been established in 1953 (Meltzer 2010, p. 323). The 'bills-only' policy limited the System's open market operations to Treasury bills.¹ The purpose of this policy was to increase the independence of the FED from the Treasury by limiting open market operations with long-term government bonds and allowing market forces to determine long-term interest rates. An additional problem originated from the fact that OT was mainly initiated by the economic advisors of the newly elected Kennedy administration, which was harshly criticizing the 'bills-only' policy during its campaign. Not only was there a large uncertainty about the impact of OT, but it would furthermore compromise the FED's independence, which was seen as a major accomplishment. Hence, the FOMC members wanted to be extra careful not to jeopardize the FED's independence.

2.1 The implementation of Operation Twist

In this section we collect information about the coordination between the Administration, the Treasury and the FED, we evaluate the official statements, and we assess balance sheet data for the FED and the Treasury during the OT period.² The goal is to understand exactly what happened during OT, to get an idea about the size and actual timing of the actions undertaken by the FED and the Treasury, and to understand potential problems.

FOMC decisions and official communication

In his first economic message on February 2, 1961 Kennedy asked for lower long-term and higher short-term rates. Although this wording was agreed upon with William Martin - the current chairman of the FOMC - the Committee had not accepted the policy change yet (Meltzer 2010, p. 317). At the FOMC meeting on February 7,

¹During 'bills-only' the System bought coupon issues on only two occasions, once in 1955 when it was deemed necessary to support a foundering Treasury financing, and again in 1958 when disorderly market conditions prompted System purchases of coupon issues (Cooper, 1967, p. 5).

²Since there is no formal end of OT, we define the OT period as going from February 1961 until December 1963.

the policy change was subject to an intense debate (FOMC Minutes, February 7, 1961). In the end, the Committee gave authorization to the Account manager to purchase up to \$400 million securities maturing beyond fifteen months and up to five and one-half years, and an additional \$100 million securities maturing beyond five and one-half years and up to ten years. (FOMC Minutes, February 7, 1961, p. 50). This decision was, however, not publicly communicated. On February 20, 1961 the Open Market Desk started purchasing longer-term government securities and issued an announcement to the public including the following information: “The System Open Market Account is purchasing in the open market U.S. government notes and bonds of varying maturities, some of which will exceed 5 years.” (FOMC Minutes, February 7, 1961, p. 62). In March, the ten-year limitation was removed. In the subsequent FOMC meetings the Committee always renewed the authorization permitting transactions in longer-term securities.

Although the FED decided to undertake OT it was reluctant to clearly communicate its actions to the public, which left the markets with unclear signals and may have had dampened the operation’s effectiveness. There was never a formal agreement on whether a reduction in long-term rates was an actual goal of the policy or whether it was just an accepted by-product (Cooper, 1967). This led to considerable confusion on the side of the market regarding the FOMC’s objectives with respect to long-term interest rates. The implementation of the FED’s policy actions and, in particular, the management of its asset holdings at this time was in the hands of the managers at the New York FED. The FOMC’s unwillingness to issue specific directives for the managers left them with a substantial degree of discretion (Meltzer 2010, p. 326). The Open Market Desk’s intentions were misunderstood and misinterpreted as the market expected much stronger long-term rate objectives than the FOMC ever wanted to achieve (Cooper, 1967). In a speech on April 11, 1961 Martin noted that the levels of interest rates had been overemphasized and he made clear that the FED’s objective was mostly to stem the outflow of funds through short-term rates and to facilitate productive investment activities through long-term rates (Cooper, 1967). In December 1961, the FOMC formally discontinued ‘bills-only’ policy that had been in effect since 1953, making it unnecessary to renew the special authorization at every meeting.

A coordinated action?

Officially, OT was communicated as a coordinated action between the Administration, the Treasury and the FED. However, a careful analysis shows that OT was mostly promoted by the Kennedy Administration and that the policy change was highly disputed within the FED. Tobin (1974, p. 32) even wrote that they were “... forcing Operation Twist ... on the Fed.”. During the operation, the Council of Economic Advisors accused Martin and the FED of not having been fully committed to the policy (Meltzer 2010, p. 321). On the other hand, Committee members claimed that the Administration hampered the implementation and/or the effects of the operation. For example, FOMC members criticized Administration officials for having overstated the intentions of the FED and thus hampering the effect of its policy actions (Meltzer 2010, p. 321).

Moreover, the FED faced additional obstacles when implementing the policy. In a conversation with Heller and Tobin at the end of May Martin mentioned problems in the bond market and claimed that the FED was the ‘sole’ buyer in the market as the market was convinced that bond yields must rise (Tobin’s memo for the record, May 30, 1961). By June 1961, Martin and several FOMC members eventually had lost conviction that the policy could lower long-term interest rates (Meltzer 2010, p. 321).

Another difficulty was that the Treasury failed to stick to the policy by issuing new five- and six-year notes in March 1961, right after OT was announced, thus increasing the relative supply of long-term securities in public hands and signaling a lack of commitment to the markets. Tobin (1974) criticized the hesitant actions of the FED and the lack of commitment by the Treasury and claimed that the entire operation had actually never really been tried. To assess to what extent it was tried we take a look at the balance sheets of the two entities.

Operation Twist in numbers

In the literature the statements regarding the size of OT diverge. Some authors argue that OT was a relatively large program. For example, Swanson (2011) claimed that the size of OT is comparable to the QE2 program³, and Zaretsky (1993) noted a dramatic restructuring of the FED’s portfolio during OT. Modigliani and Sutch (1966), on the other hand, claimed that OT was a relatively small operation and Meltzer (2010, pp. 323-324) observed that the FED’s portfolio holdings of longer-term

³The numbers he uses to compare the size of OT are originally from Meulendyke (1998).

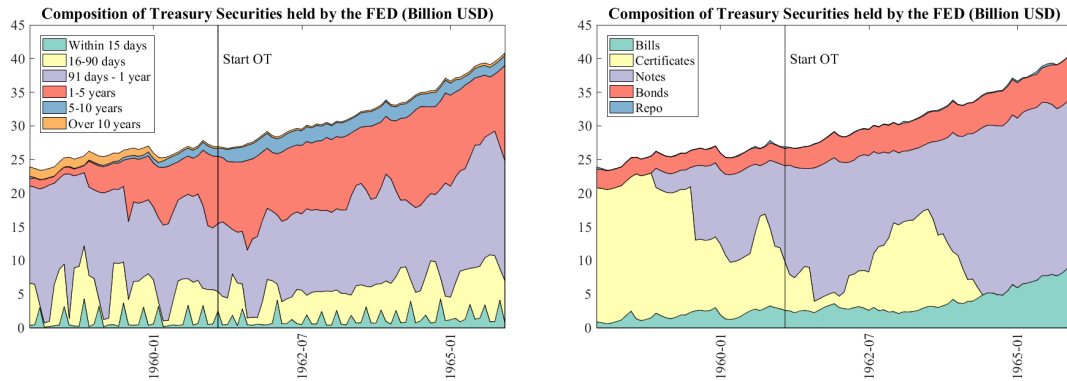


Figure 1: Composition of the FED’s government securities according to their remaining time to maturity (left) and their category (right) for the period December 1957 to December 1965.

government securities only changed little during OT.⁴ These disagreements might surprise at first, but there is a simple reason behind it. While the first two authors based their assessment on the FED’s notes and bonds holdings, the latter based their statements on the time to maturity of the government securities holdings in the balance sheet of the FED.

To get a complete picture of the actual size of OT and the timing of the actions undertaken by the FED and the Treasury, we extracted the relevant data from the respective balance sheets. In particular, we extracted the holdings of government securities by the FED and the Treasury debt outstanding. For a detailed description of the data see appendix D.

As illustrated above, when assessing the size of OT two different measures of long-term and short-term government securities need to be distinguished. We refer to the first one as *categories*. The categories measure distinguishes Treasury bills, certificates, notes and bonds. The different categories indicate the time to maturity of the security at the date of issuance. Newly issued bills have a maturity of less than one year, certificates mature after exactly one year, notes have a maturity of more than one year and up to five years, and bonds have a maturity over five years. The right-hand panel of Figure 1 shows the composition of the Treasury securities held by the FED in terms of the different categories. We consider notes and bonds as long-term debt and certificates and bills as short-term debt. This measure does not take into account that the time to maturity of a security changes over time. For example, a 10-year bond that was issued more than nine and a half years ago is still considered a bond, even though it has the same maturity as a freshly issued bill

⁴Since there is no official end of OT, Meltzer uses February 1964, when the Revenue Act of 1964 was signed, as terminal date for OT.

with a maturity of 6 months. A more accurate measure to distinguish long-term and short-term government debt is the *maturity* measure. This measure is based on the remaining time to maturity of a given security. The FED and the Treasury both publish the maturity structure of the government securities in their respective balance sheets. We apply the maturity classes published by the FED which are the following: *Within one year, between one and five years, between five and ten years, and over ten years*. We define long-term debt as securities with maturities over one year, and short-term debt as securities with maturities of less than one year.⁵ The FED’s holdings of Treasury securities in terms of maturities are shown in the left-hand panel of Figure 1.

Comparing the two different compositions of the FED’s balance sheet, the differences are evident. The share of long-term security holdings is much larger in terms of categories than in terms of maturities. These differences have a logical explanation. While an original long-term security remains within the same category over its entire duration period, and is thus always considered long-term debt, its time to maturity decreases over time so that it eventually becomes short-term debt according to the maturities measure.

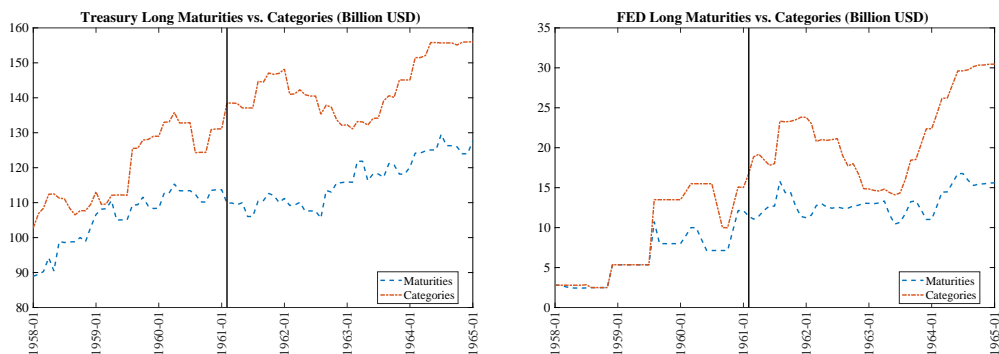


Figure 2: Long-term (maturity > 1 year) Treasury securities outstanding and held by the FED measured in terms of maturities (blue) and categories (red).

⁵We make the cut at one year because another meaningful distinction between long-term and short-term debt is not possible given the available data on the maturities of government securities holdings.

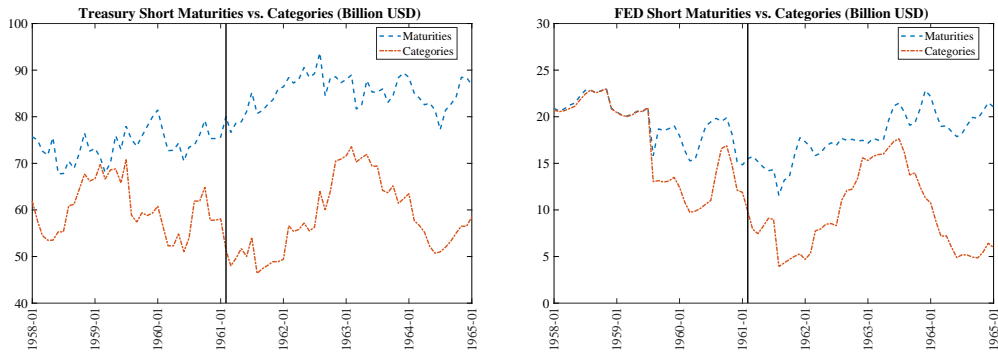


Figure 3: Short-term (maturity ≤ 1 year) Treasury securities outstanding and held by the FED measured in terms of maturities (blue) and categories (red).

Figures 2 and 3 show the long-term and short-term Treasury securities in the balance sheets of the Treasury and the FED. Since the FED was restricted to only purchasing Treasury bills during the ‘bills-only’ period, the two measures of short- and long-term securities holdings are the same during most of this period. In mid-1959, the two measures start departing when the FED exceptionally exchanged short-term for longer term securities⁶ to assist Treasury re-fundings. In terms of maturities, Federal Reserve holdings of long-term government securities increased by \$4370 millions (see the right-hand panel of Figure 2) from the beginning of OT until August 1961. During the same period, the FED reduced its holdings of short-term government debt by \$3924 millions (see the right-hand panel of Figure 3). By the end of the year long-term securities holdings went back to their pre-OT level and short-term securities holdings reached an annual peak. In terms of categories, the FED increased its long-term government securities holdings between February and December 1961 by \$7043 millions. During the same period, it reduced its short-term holdings by \$4557 millions. The purchases of the FED are much larger measured in categories than in terms of maturities. We have two possible explanations for this: (i) The FED bought notes or bonds with a maturity of only a few months longer than one year, thus turning into a short-term security in terms of the maturity only a few months after the purchase. Evidence for this phenomenon could be the strong decrease in long-term securities holdings measured in maturities during the last quarter of 1961, while the amount of long-term securities measured in categories remained at a high level. (ii) Since, before the implementation of OT, the FED’s government securities purchases were constrained by the ‘bills-only’ policy, the managers might

⁶More specifically, it exchanged certificates for Treasury notes maturing in 1964 and 1960, respectively (Record of Policy Actions, July 28, 1959). This swap of certificates and notes can be nicely seen in the composition of the FED’s balance sheet in Figure 1.

have considered buying notes and bonds of any maturity as purchasing long-term securities.

To assess what happened in terms of supply, i.e., the overall amount of long-term securities available to the public, we also need to take into account the actions of the Treasury. In terms of maturities the Treasury reduced the overall amount of long-term debt outstanding from February to July 1961 by \$3815 millions (see the left-hand panel of Figure 2). However, in March 1961, the Treasury newly issued securities with maturities between five and ten years to replace maturing bonds, leading to an overall increase of this maturity class of \$8974 millions between February and March. Subsequently, the amount outstanding was reduced such that, by the end of the year, it reached about the same level as in February 1961. In terms of notes and bonds, the Treasury kept the amount of long-term debt about constant until August 1961, when long-term debt was subsequently increased until the end of the year. From February 1961 until the end of the year, the Treasury increased the total amount of notes and bonds outstanding by \$8500 millions. The issuance of short-term debt in form of bills and certificates increased by \$4000 millions until the middle of the year and then decreased by the same amount until the end of the year.

To put these numbers in perspective, Table 1 shows the amount of long-term and short-term securities in the balance sheets of the FED and the Treasury as shares of total government securities in their respective balance sheets. The shares are annual averages calculated from February of the current year to February of the following year. The FED increased its share of long-term securities holdings between 1960 and 1961 in terms of both measures. In terms of maturities this increase amounts to 11 percentage points and in terms of categories the share of long-term securities increased by 22 percentage points. The Treasury, on the other hand, decreased its long-term debt outstanding only in terms of maturities and this only by three percentage points, whereas, in terms of categories, the long-term debt increased by four percentage points. Thus, it seems that between February 1961 and February 1962 the FED did stick to the plan, whereas the Treasury did not support the operation by much.

Eventually, what matters for the markets, and what determines the prices in the end, is the overall amount of long-term securities relative to short-term securities available to the public. Only if the supply of long-term government securities relative to short-term securities was reduced, an effect on the long-term yields can be expected. If the FED was just buying long-term securities that were newly issued by the Treasury this does not affect the relative supply measure since the amount of government

Table 1: Shares of long-term and short-term government securities in the respective balance sheets of the FED and the Treasury (in percent).

Year <i>Feb.-Feb.</i>	FED				Treasury			
	Long		Short		Long		Short	
	<i>Mat</i>	<i>Cat</i>	<i>Mat</i>	<i>Cat</i>	<i>Mat</i>	<i>Cat</i>	<i>Mat</i>	<i>Cat</i>
1958	13	13	87	87	58	64	42	36
1959	27	38	73	62	59	66	41	34
1960	34	54	66	46	60	70	40	30
1961	45	76	55	24	57	74	43	26
1962	43	63	57	37	56	69	44	31
1963	38	55	62	45	58	68	42	32

securities outside the public sector remain unchanged. Such a neutralization of the two institutions' actions would most likely have had a dampening effect on the desired outcome of OT. Therefore, a powerful measure to assess the joint implementation of OT by the FED and the Treasury is the maturity structure of the government securities available to the public. It shows the net effect of the actions undertaken by both institutions on the composition of government securities held by the public. We compute the relative supply of long-term versus short-term securities as the ratio of long-term government securities in the hands of the public over total government securities held by the public:

$$\frac{\text{Treasury}_{long} - \text{Fed}_{long}}{\text{Treasury}_{short} + \text{Treasury}_{long} - (\text{Fed}_{short} + \text{Fed}_{long})} \quad (1)$$

Figure 4 shows the ratio of long-term securities relative to total government securities in the hands of the public in terms of maturities and categories. The two measures again behave quite differently. In terms of maturities, the relative supply of long-term government securities shows a declining trend starting already in mid-1960 and, with 57 percent, it reached its lowest point in August 1962. The second half of 1961, however, was a period of increasing supply of long-term securities relative to short-term securities, with the share of long-term securities held by the public having reached 59.5 percent by the end of the year. Based on this measure we would expect the impact on the markets to be the highest in mid-1961 and mid-1962. Overall, the maturity structure of securities in the hands of the public did not change by much throughout the OT period, with the share ranging between 55 and 63 percent. In terms of categories, the picture looks quite differently. First, in March 1961, the share of long-term securities held by the public reached a peak of 75 percent. Throughout 1961, the share of long-term securities did not change by much. The lowest amount reached during 1961 was 72.5 percent. During the entire OT period, the lowest share - 67 percent - of long-term securities held by the public was reached in early 1963.

Thus, according to this measure we would expect the biggest impact on the yields to happen in early 1963. The evolution of the relative supply in terms of categories was mostly driven by the amount of notes and bonds outstanding of the Treasury. The relative supply measure quite closely mirrors the development of the Treasury's issues of long-term securities.

While the timing of the joint actions of the FED and the Treasury varies across the two measures, the overall change in the ratio of longer term securities held by the public was about the same size. According to both measures the share did not change by more than 8 percentage points during the entire OT period. Overall, we thus come to the conclusion that the policy actions implemented during OT were moderate at best. Whether the formal ending of 'bills-only' or the announcement of OT affected market outcomes through a change in expectations remains an open question. Section 3 briefly discusses the potential channels through which OT could have affected the yield spreads and the economy.

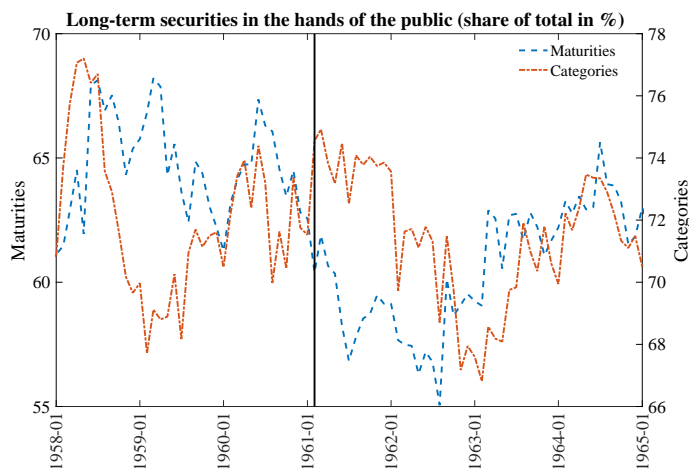


Figure 4: Amount of long-term securities in the hands of the public as share of total government securities in the hands of the public (left axis: in terms of maturities, right axis: in terms of categories).

2.2 Interest rates and yield spreads

Figure 5 shows, for the period around OT, the evolution of longer term Treasury rates and private rates, and the respective spreads with the 3-month Treasury bill rate. The 10- and 20-year constant maturity rates remained at the same level from the OT announcement through the end of 1965. The same holds for the private rates. The 1- to 5- year rates also remained quite constant until mid-1963, when they started to slightly increase. The 3-months Treasury bill rate remained around 2.3 percent until

September 1961 when it started to steadily increase to 4 percent in December 1965. The spreads between the 3-month Treasury bill rate and the Treasury rates, as well as the private rates, declined steadily between the last quarter of 1961 and the end of 1965. Increases in the 3-month Treasury bill rate were primarily responsible for closing the gap. The gradual decrease in the yield spreads between 1961 and 1965 might, at first glance, suggest that the policy was successful. As Modigliani and Sutch pointed out, it is common for the spread to narrow as the economy recovers from a recession.

Taking a closer look at the development around the OT announcement, a slight decrease in the 3- to 20-year Treasury rates can be observed right after the OT announcement. However, in mid-1961, the 3- and 5-year rates increased more than they initially decreased. The only time a decrease in the longer term rates can be observed is around the first quarter of 1962. For the spreads the decline starts towards the end of 1961, and appears to be mostly due to an increasing 3-month Treasury bill rate.

Overall, the longer term Treasury and private rates remained quite constant throughout the OT period. Changes in the spreads were mostly due to changes in the 3-month Treasury bill rate.

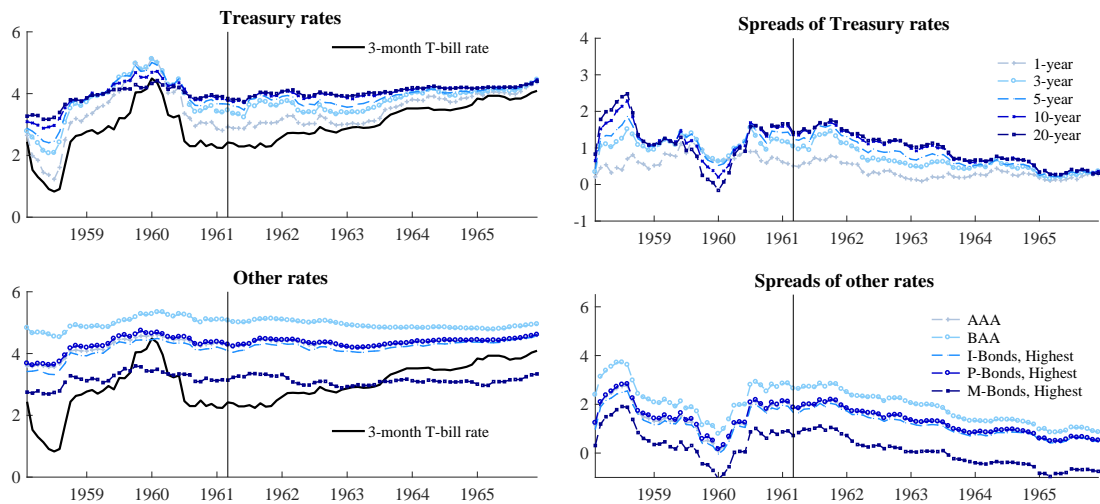


Figure 5: Longer-term interest rates and their spreads with the 3-month Treasury bill rate (AAA and BAA are Moody's Aaa and Baa corporate bond yields, I-Bonds are industrial bonds, P-Bonds are public utility bonds, and M-Bonds are municipal bonds).

2.3 Summing up

Not only were the 1960s a seminal period for the framework of U.S. monetary policy during which important characteristics of modern monetary policy were discussed and created. It was also a period in which monetary policy actions were limited by an implicit lower bound on short-term interest rates due to the institutional settings of the Bretton Woods system. To overcome the trade-off between stopping gold outflows and the need for domestic monetary stimulus the FED experimented with a new policy strategy to reduce long-term interest rates without affecting shorter ones. This action labeled as OT led to strong debates among FOMC members and there is still no broad consensus on the effects.

While, in the literature, statements about the size of OT differed when using different measures of long-term and short-term securities, we assessed OT using both measures, and we come to the conclusion that the joint policy actions of the FED and the Treasury were rather moderate, with the ratio of longer term to total securities in the hands of the public not changing by more than 8 percentage points during the entire OT period.

3 Theoretical foundation of Operation Twist

Before we turn to an empirical analysis of the OT period in Section 4 we briefly want to discuss the theoretical foundations of such an action and its effects on the economy. Why might swaps of longer-term for shorter-term government securities affect the economy? Theoretically, there are essentially two main channels through which such an intervention can affect interest rates: the portfolio balance channel and the signaling channel.

Portfolio balance channel

The underlying mechanisms of the portfolio balance channel go back to Tobin (1961, 1969) and Brunner and Meltzer (1973). It relies on the presumption that different financial assets are not perfect substitutes in an investor's portfolio. In the standard asset-pricing model, bond prices are unaffected by the quantity available to the investors. Instead, they are determined by their risk and the risk aversion of investors. To explain a potential effect of central bank longer-term securities purchases, the literature has put emphasis on the effect of a reduction in the supply of an asset on its risk premium. By changing the net supply of an asset the central

bank can influence the yield on that asset and on similar assets, and thus affect real investment decisions. In particular, by replacing shorter-term government securities with longer-term government securities in its portfolio the central bank reduces the relative supply of longer-term securities. A reduction in the net supply of longer-term Treasury securities takes away duration risks (less duration risk to hold in the aggregate) from private investors and pushes yields downwards, thus reducing expected returns. The lower expected returns lead investors to purchase other debt securities of similar maturities, such as long-term corporate bonds or equities, encouraging investment in this area and increasing credit flows, leading to stronger economic activity. To assess the effectiveness of OT in terms of its portfolio rebalancing effect, it is essential not just to look at the purchases of the FED but also the issuance behavior of the U.S. Treasury. Since changes in the relative supply of longer term government securities are crucial for the portfolio rebalancing channel to work, purchases by the FED could be completely ineffective if they are offset by an increasing issuance volume of marketable debt securities.

Signaling channel

Alternatively, the signaling channel emphasizes the effects of changes in expectations. The traditional finance literature focuses on new information about the future path of short-term interest rates provided to investors. For example, an announcement of an operation like OT may signal to market participants that the central bank has changed its views on current or future economic conditions, or it may be regarded as signal about changes in the monetary policy reaction function or policy objectives. The announcement of OT would thus reduce yields by lowering the expectations component of long-term rates.

4 Methodology

To study whether OT had an effect on the yield curve, we estimate an autoregressive-distributed lag (ARDL) model in which we regress the yield spread between bonds of different maturities and the 3-month Treasury bill rate, y_t^i , on lagged values of itself and a set of explanatory variables, X_t , and lagged values thereof, controlling

for the current and past state of the economy. More formally,

$$y_t^i = \beta_0 + \beta_c^x X_t + \sum_{j=1}^p (\beta_j^y y_{t-j}^i + \beta_j^x X_{t-j}) + u_t^i, \quad (2)$$

where u_t^i denotes the reduced-form errors that are assumed to be normally distributed with mean zero.

To capture the effects of OT on the yield spread we are mainly interested in the residuals of the regression, because the operation itself should not be captured by the explanatory variables and hence a potential effect should show up in the error term. Under the null hypothesis that OT did not have an impact on the spreads between long- and short-term yields, the residuals are zero-mean. Thus, if OT was successful in compressing the spreads between long and short-term bond yields, we expect to find a sequence of negative errors during the intervention phase. Such a sequence is difficult to spot when looking directly at the errors u_t^i . We therefore compute the cumulative sum of errors. If this sum shows a decreasing pattern and does not revert to zero during the OT period, we can interpret this as evidence that OT was indeed successful in compressing the yield spreads. To account for the uncertainty we bootstrap the model under the null hypothesis of no anomalous yield spread compression. If the cumulated errors are below the 10th percentile of the bootstrapped cumulated errors we take this as evidence of a significant yield spread compression.

In the following, we perform a Monte Carlo simulation and we show that our proposed method is capable of detecting such an anomalous yield spread compression if the size of the shock to the yield spreads and/or its persistence is sufficiently large.

4.1 Monte Carlo simulation

To test the ability of our proposed methodology to detect an anomalous compression of the spread around OT, we perform a small Monte Carlo simulation. The goal of this exercise is to address the following questions:

- (1) Assuming that a compression in the spread is sufficiently large, is the proposed methodology capable of detecting it?
- (2) Given the historical amount of noise in the data, how large must a spread compression be for the methodology to be able to detect it?

In our simulation we artificially add a negative shock of size k with persistence ϕ to the yield spread series. We alter the size and the persistence of the shock and we show that if k and/or ϕ are sufficiently large, the model does indeed a good job in detecting such anomalies.

The data generating process (DGP) consists of a VAR(p) that includes the yield spread⁷ along with the following control variables: the civilian unemployment rate, the capacity utilization rate, the vacancy rate, inflation and the 3-month Treasury bill rate (see appendix D for a description of the data). Model 3 describes the DGP in normal times and model 4 serves as DGP under OT:

$$\begin{bmatrix} Y_t \\ X_t \end{bmatrix} = B_0 + \sum_{p=1}^P B_p \begin{bmatrix} Y_{t-p} \\ X_{t-p} \end{bmatrix} + \begin{bmatrix} \varepsilon_{Y,t} \\ \varepsilon_{X,t} \end{bmatrix} \quad \text{for } t = 1, \dots, T^S - 1, \quad (3)$$

$$\begin{bmatrix} Y_t \\ X_t \end{bmatrix} = B_0 + \sum_{p=1}^P B_p \begin{bmatrix} Y_{t-p} \\ X_{t-p} \end{bmatrix} + \begin{bmatrix} \varepsilon_{Y,t} - \phi^{t-T^S} s(k) \\ \varepsilon_{X,t} \end{bmatrix} \quad \text{for } t \geq T^S, \quad (4)$$

where Y_t is the spread, X_t are the control variables, B denotes the coefficient matrix of the VAR(p), p is the lag order, $\varepsilon_t \sim N(0, V)$, and ϕ , k are the persistence and the size of the shock, respectively. We assume that up to period T^S model 3 is in place. In period T^S an exogenous shock s of size k and with persistence ϕ hits the economy and compresses the yield spread Y_t . For the moment $s(k) = -k$.

To stay as close as possible to the original problem of detecting the effect of OT on the U.S. economy, we use the exact same sample period as in the original estimation to get the estimates of the VAR system matrices that will enter our DGP. For each combination of k and ϕ we perform 1,000 simulations and for each simulation we estimate regression model 2 with 1,000 bootstrap replications, each to properly account for the uncertainty. The goal is to identify the accuracy with which a shock s can be distinguished from the normal noise that is captured in the error term $\varepsilon_{Y,t}$ for all the different cases. Table 2 reports the half-life of the shock in months for the different degrees of persistence. With $\phi = 0.95$ the shock is still present with half its initial size after one year.

Table 2: Half-life of the shock for different degrees of persistence.

ϕ	0.5	0.8	0.95
Half-life	1m	~3m	~13m

⁷In our simulation we use the spread between the 10-year Treasury constant maturity rate and the 3-month Treasury bill rate.

In the following, we summarize the results of our simulation exercise. As a measure for the ability of our method to detect shocks to the yield spreads, we take the fraction of cumulated errors that end up below the 10th percentile of the bootstrapped cumulated errors. Figure 6 shows these fractions for different sizes (k) and for different persistence parameters (ϕ) of the shock.

The results of our simulation study suggest that the shock s needs to be at least of size $k = 15bp$ ($k = 20bp$) with a persistence of at least $\phi = 0.9$ ($\phi = 0.8$) for our method to detect the shock with at least 90 percent certainty. Larger shocks, e.g. of size $k = 25bp$, get detected in 90 percent of the cases even if they are less persistent. More persistent shocks get detected more easily, but in general with some delay. For example, shocks of size $k = 15bp$ and with a persistence of $\phi = 0.95$ are detected in 90 percent of the cases after seven months. However, it proves to be difficult to detect smaller shocks, even when their persistence is relatively high. The reason for this is that the additional exogenous disturbance s has to be distinguishable from the common noise that is present in $\varepsilon_{Y,t}$, so the key issue is the variance of these reduced form errors. With a decreasing variance of $\varepsilon_{Y,t}$ also smaller shocks can be identified. This exercise shows that our method is well able to capture the exogenous shocks to the yield spreads as long as the shocks are of a certain size and persistence. Thus, in theory, this method works well to recover the potential yield spread compression caused by OT. In practice, however, the situation is possibly more complicated than in a simulated environment in which we are able to control for all eventualities. The series entering the model and the potential shocks affecting the spread are probably not as well behaved, and thus complicating the detection of the actual shock. Moreover, the economy might be simultaneously hit by other exogenous shocks, and our method is not able to distinguish these different exogenous shocks.

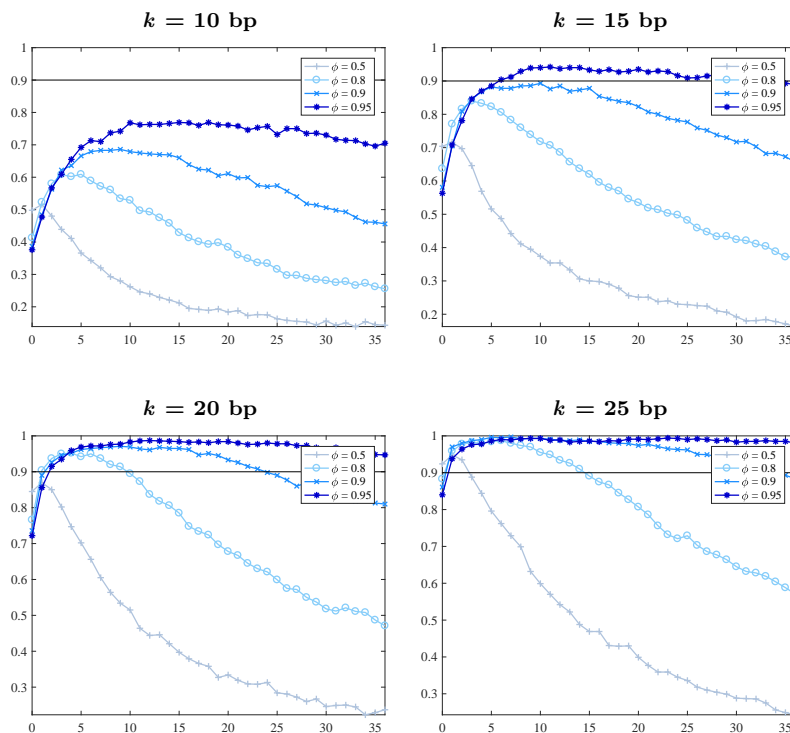


Figure 6: Fraction of cumulated errors that fall below the 10th percentile of the bootstrapped cumulated errors for shocks of size k , and with persistence ϕ .

5 Estimated effects on the yield spreads

We use monthly data for the period from October 1955 to December 1965 to estimate the ARDL model we described in Section 4.⁸ In particular, we estimate the model for the spreads of five Treasury constant maturity rates, several private and other bond rates using the civilian unemployment rate, the capacity utilization rate, the vacancy rate, inflation, real stock returns and the 3-month Treasury bill rate as control variables. The choice of these specific variables is due to economic reasoning and the availability of unrevised series for the period of interest. Figure C.1 in the appendix shows the control variables. A detailed description of the data can be found in Appendix D.

Table B.1 in the appendix reports the bootstrapped p -values for Elliot, Rothenberg, and Stock (1996) unit root tests for the series in our dataset.⁹ Except for inflation

⁸Ideally, we would want to take a longer sample for our estimation, however, the breakdown of the Bretton Woods system increased the volatility in the series. Extending our sample would increase the variance in our model and thus make it harder to detect small shocks.

⁹For either series, p -values have been computed by bootstrapping 10,000 times estimated ARIMA($p,1,0$) processes. For reasons of robustness we consider four alternative lag orders: $p = 3, 6, 9, 12$.

Table 3: Variance of the residuals and R^2 for different spreads.

<i>Spreads of</i>	Variance of u	R^2	10-90 perct.	adj. R^2	10-90 perct.
1-year	0.0094	0.845	[0.754;0.920]	0.798	[0.679;0.896]
3-year	0.0087	0.934	[0.907;0.976]	0.914	[0.879;0.968]
5-year	0.0075	0.958	[0.949;0.986]	0.945	[0.933;0.982]
10-year	0.0046	0.981	[0.980;0.995]	0.975	[0.974;0.993]
20-year	0.0024	0.992	[0.992;0.998]	0.990	[0.990;0.997]
AAA	0.0015	0.996	[0.995;0.999]	0.995	[0.993;0.998]
BAA	0.0011	0.998	[0.997;0.999]	0.997	[0.996;0.999]
I-Bonds, Highest	0.0031	0.991	[0.988;0.997]	0.988	[0.985;0.996]
I-Bonds, Lowest	0.0013	0.997	[0.996;0.999]	0.996	[0.994;0.998]
I-Bonds (High Grade)	0.0030	0.991	[0.989;0.997]	0.989	[0.986;0.996]
Fed. Housing Mortgages	0.0005	0.999	[0.999;1.000]	0.999	[0.999;1.000]
P-Bonds, Highest	0.0018	0.995	[0.994;0.999]	0.994	[0.993;0.998]
P-Bonds, Lowest	0.0026	0.994	[0.992;0.998]	0.992	[0.990;0.997]
M-Bonds (High Grade)	0.0054	0.990	[0.988;0.997]	0.987	[0.984;0.996]
M-Bonds, Highest	0.0044	0.990	[0.988;0.997]	0.986	[0.984;0.996]
M-Bonds, Lowest	0.0046	0.993	[0.991;0.998]	0.990	[0.989;0.997]
M-Bonds, 20 Bond Av.	0.0055	0.988	[0.987;0.997]	0.985	[0.982;0.995]

Note: I-Bonds denote industrial bonds, P-Bonds denote public utility bonds, and M-Bonds denote municipal bonds.

and stock returns the tests cannot reject the null hypothesis of a unit root. Since in small sample such as ours unit root tests cannot easily distinguish a series with a unit root and a stationary series with a high degree of persistence, we also performed unit root tests for a longer sample that ends in December 1973 for those series that are available throughout this period. The results are reported in Table B.2 in the appendix. Using this longer sample period, the null of having a unit root can be rejected at least for two different lag orders for all variables, except for inflation, which now exhibits a unit root (possibly caused by the breakdown of the Bretton Woods system), and the 3-month Treasury bill rate.

The number of lags, p , included in each regression is chosen as the maximum between the Akaike, the Schwarz, and the Hannan-Quinn information criteria, where the minimum lag length is set to $p = 3$ and the maximum lag length is set to $p = 12$. Table 3 reports the variance of the residuals, the R^2 and the adjusted R^2 of the estimated regressions. The variance of the residuals is highest for the 1-year Treasury rate and decreases for longer maturities. The R^2 measures the proportion of variation in the dependent variable that is explained by the regressors. The adjusted R^2 adjusts for the number of regressors in the model relative to the number of data points. The R^2 is overall quite high. In all cases it is higher than 0.8, and for most of the yield spreads it is very close to 1. These numbers suggest that the model is well able to explain a substantial fraction of the variation in the yield spreads.

Figure 7 shows, for each of the spreads, the regression residuals (left column), their 12-month rolling average (middle column) and the cumulative sum of the residuals starting in February 1961 (right column), together with the respective 10- and

90-percent, and 16- and 84- percent bootstrapped confidence bands. As a first check whether there was an anomalous compression in the monthly yield spreads during OT, we look for significant outliers of the monthly errors around the announcement dates. For the spreads of the 3- to 20-year Treasury rates there indeed is a sequence of negative errors after the announcement of OT. However, we also observe some positive errors. The cumulated sum of the monthly errors is a more informative measure, as it visually shows the divergence of the cumulative sum away from zero. For the spreads of the 3-, 5-, 10- and 20-year Treasury constant maturity rates, the cumulated residuals immediately drop below the 10-percent confidence bands. The cumulated errors remain significantly negative until May, when a series of positive shocks drives them up again. For the spreads of the 1- to 5-year Treasury rates the cumulative sum even becomes positive for a few months, although not significantly. Starting in September, the cumulative errors begin to decrease again for the spreads of all Treasury rates. By the first quarter of 1962, for most Treasury rates the cumulated errors reach negative values below their respective 10-percent confidence bands. Overall, the residuals clearly tend to be one-sided after the OT announcement with an exception of the third quarter of 1961, during which a sequence of positive errors inflates the yield spreads. The 12-month rolling averages of the monthly errors show the same tendency. In our eyes this is evidence for OT having the desired impact on the spreads of the Treasury yields. In terms of timing there seems to be a slight delay until the impact on the yield curve becomes visible for all spreads. This is in line with the simulation results in Section 4.1. They suggest that the more persistent the shock is, the longer it takes until for a substantial fraction of simulations the cumulated errors fall below the 10-percent confidence band.

The overall pattern of the cumulated errors for the other yield spreads quite closely resembles those of the 1- to 5-year Treasury rates. For some bond rates the cumulated errors turn significantly positive during the third quarter of 1961. These are rates of the Baa rated corporate bonds, the lowest rated industrial and public utility bonds (I-Bonds and P-Bonds, respectively), and the highest rated municipal bonds (M-Bonds). For these rates the cumulated errors also do not turn significantly negative during the entire OT period. The only rates, other than Treasury rates, for which the cumulated errors turn significantly negative during the OT period are the Aaa rated corporate bonds and the high grade municipal bonds. These results indicate that the OT intervention was not able to significantly affect yield spreads other than those of Treasury bonds.

The two theoretical channels through which central bank long-run asset purchases

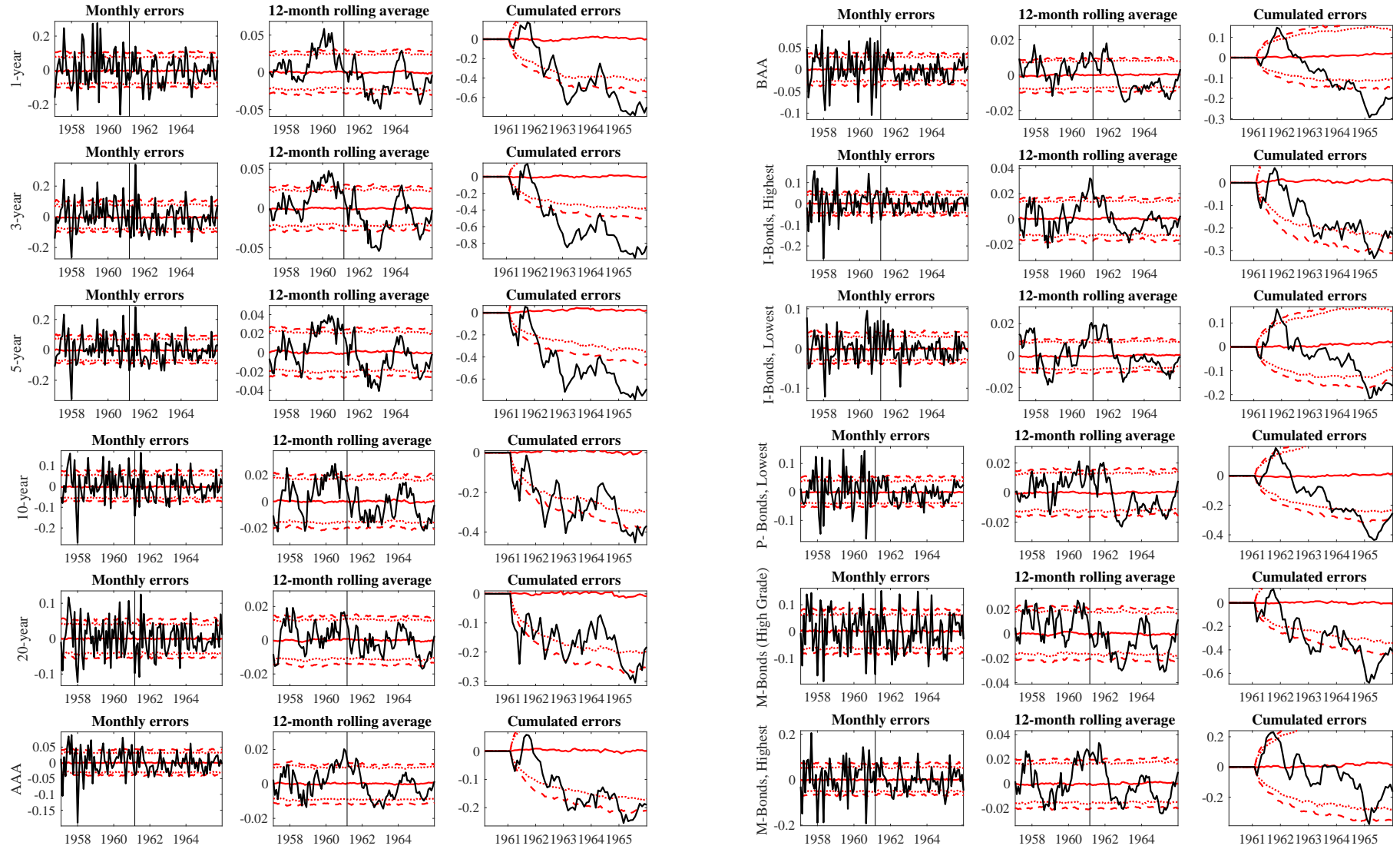


Figure 7: Monthly errors, the 12-month rolling averages, and cumulated errors of the ARDL regressions along with the median (red, solid), the 10th and 90th percentiles (red, dashed) and the 16th and 84th percentiles (red, dotted) bootstrapped under the null.

could affect yield spreads might provide a possible interpretation of our findings. The series of negative errors observed for the spreads of 3- to 20-year Treasury rates immediately after the OT announcement might have been caused by a signaling effect of the announcement. By announcing the purchases of long-term government securities the FED signaled to the market participants that it will pursue the policy of lowering long-term interest rates proposed by Kennedy, abandoning the ‘bills-only’ policy. This announced change in monetary policy might have lowered the expectations component of long-term rates, leading to lower long-term yields. During the following months the markets might have expected stronger policy actions than the FED actually pursued (see Section 2.1), which could be an explanation for the series of positive residuals from June to August. In September, about a month after the joint actions of the FED and the Treasury reduced the relative supply of longer term government securities - measured in terms of maturities - to the smallest amount during 1961, the cumulated residuals exhibit a steep drop. This evidence points towards a delayed effect of the portfolio rebalancing channel. By reducing the net supply of long-term government securities the Treasury and the FED reduced the spreads between long-term assets and the 3-month Treasury bill rate.

5.1 Potential size of the shock

The above analysis shows a mild success of OT in compressing the yield spreads of the longer term Treasury securities. In a next step, we try to quantify how big these effects were and for how long they lasted. For this purpose we take the cumulative errors from our estimations and we try to find the closest match to a simulated cumulative errors series produced by the simulation model described in Section 4.1, using a grid search for the parameters k and ϕ . More specifically, we perform a grid search for k and ϕ in which we minimize the sum of the squared distance between the actual cumulated errors and the median of 1,000 simulated cumulated errors for every $k - \phi$ pair. We are well aware that the simplistic way how we modeled the OT shock is most likely not able to capture reality one for one, but we still might get an approximation of the shock size. Figure 8 shows the results of the grid search for the 1-,3-, and 5-year Treasury yield spreads. In particular, on the left hand side, we show the heat maps for the k and ϕ combinations where white areas indicate a close match and black areas indicate a large distance from the estimated pattern. The distance criterion we applied here is simply the sum of squared distances. On the right hand side, we show the actual cumulated errors (in blue) together with the median

(in black) and the 10-90 confidence bands of the closest match of the simulated cumulated errors (in red). In all three cases the closest matches are produced by a rather small shock ($k = 8$ or 10 bp) with a very high degree of persistence ($\phi = 0.99$ in all three cases). For the spreads of the 1-year and 3-year Treasury rates the actual cumulated errors exceed the 90-percent confidence bands between June and August when a series of positive shocks hit the spread series.

To avoid that the series of positive shocks between June and August 1961 distort the search for a matching $k - \phi$ pair (as we are clearly unable to match such a pattern with our formulation of the shock) we also perform a grid search in which we start cumulating the errors in September 1961, when the downward trend in the cumulated errors is the steepest. Figure 9 shows the results of the grid search for the cumulated errors starting in September 1961. The median cumulated errors that are the closest match to the actual cumulated errors are now caused by larger ($k = 14$ or 16 bp), but still very persistent shocks ($\phi = 0.95, 0.97, 0.99$).

For the spreads of the 10- and 20-year Treasury rates the grid search produces results that do not narrow down the $k - \phi$ combinations very well. Figures C.2 and C.3 in the appendix show the results for these two Treasury rates. The heat map suggests that there are quite many $k - \phi$ combinations that would produce cumulated errors which are a close match to the actual cumulated errors.

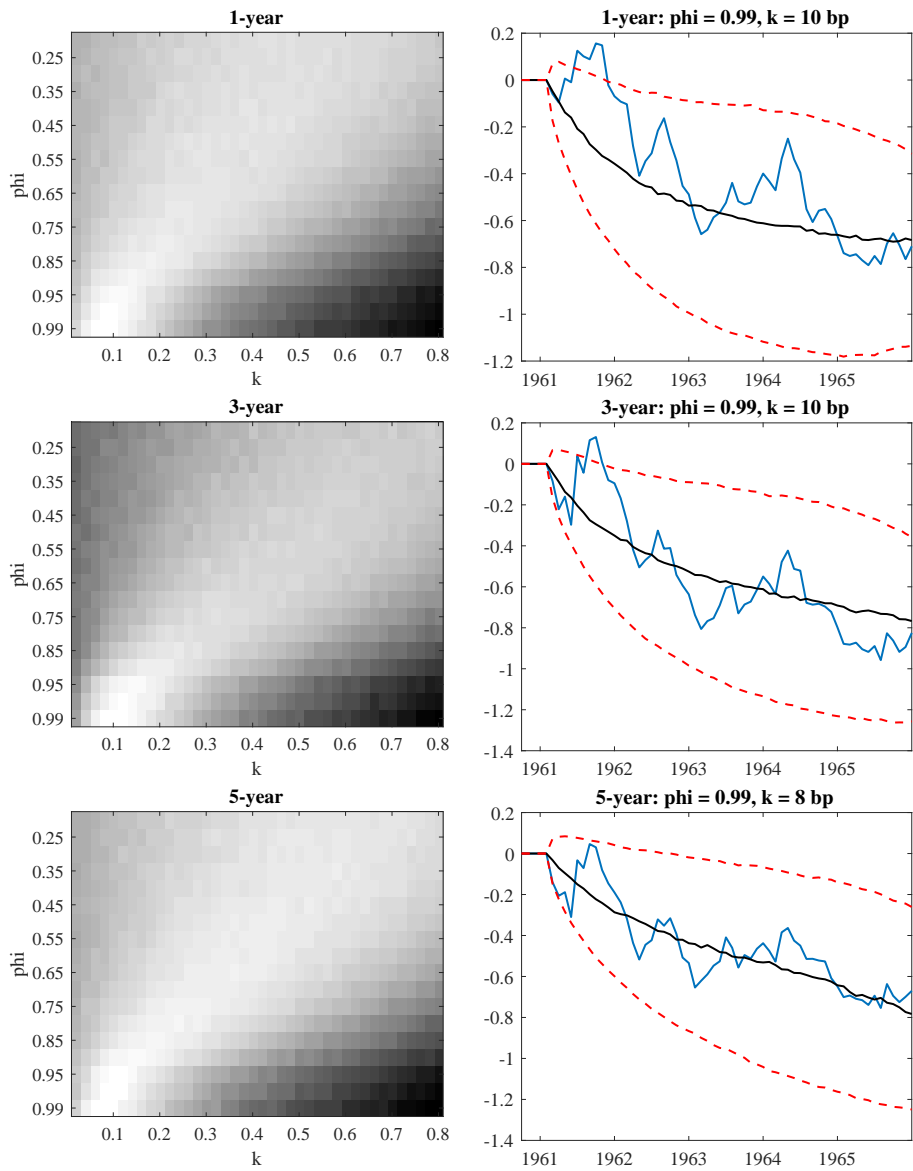


Figure 8: Grid search results (cumulation starts in February 1961): heat map in which white areas indicate a close match (left panel) and cumulated errors of the original ARDL regression (in blue) together with the median (in black), and 10th and 90th percentiles (in red) of their closest match (right panel).

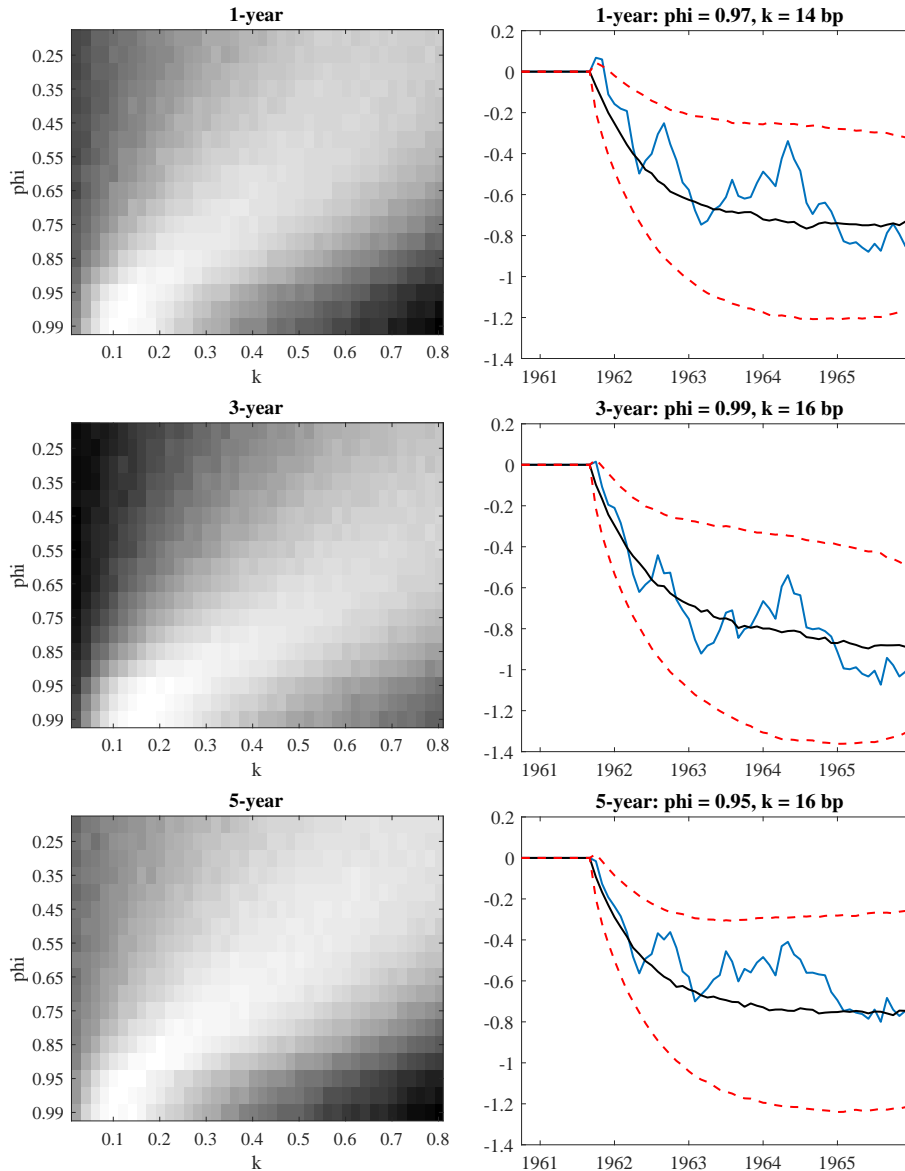


Figure 9: Grid search results (cumulation starts in September 1961): heat map in which white areas indicate a close match (left panel) and cumulated errors of the original ARDL regression (in blue) together with the median (in black), and 10th and 90th percentiles (in red) of their closest match (right panel).

5.2 Relative supply of long-term versus short-term securities

In a next step, we assess whether a relationship between the cumulated errors and the joint policy actions of the FED and the Treasury exists. Figure 10 shows, for the Treasury rates and the AAA rate, the cumulated errors from the above estimation together with the share of long-term over total government securities held by the public in terms of categories (red) and maturities (blue). While for the maturities

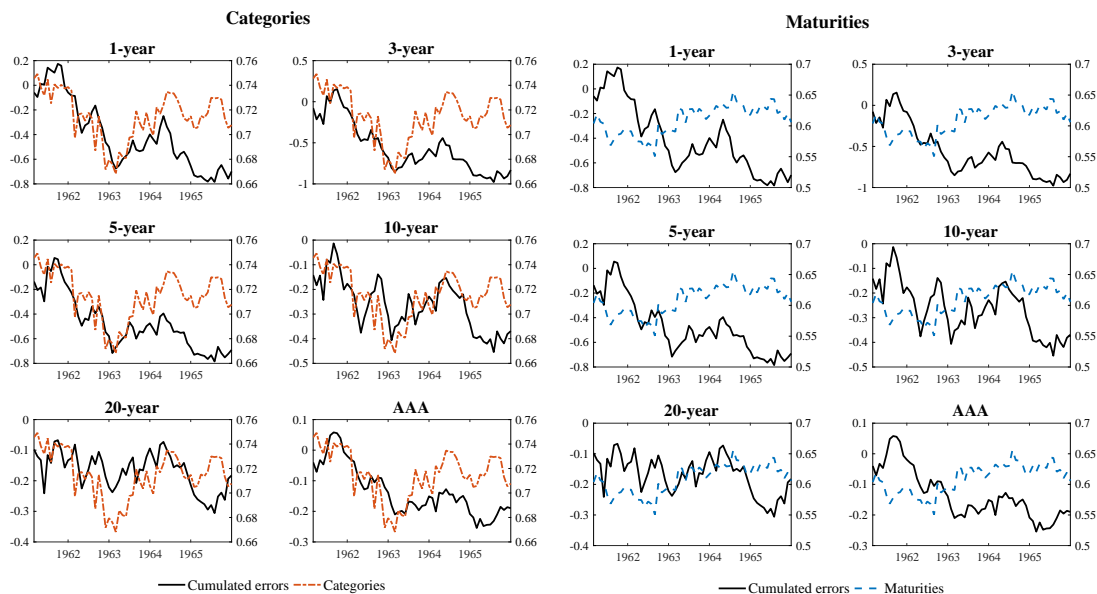


Figure 10: Cumulated errors (in black) along with the share of long-term over total government securities in the hands of the public in terms of maturities (in blue) and categories (in red).

measure no clear relationship with the cumulated errors establishes, there seems to be quite a strong co-movement between the categories measure and the cumulated errors.

We find indeed a strong positive contemporaneous correlation between the share of long-term securities measured in categories and the cumulated errors for the spreads of the 1-, 3-, and 5-year Treasury rates during the OT period¹⁰ (see Figure 11). A decrease in the relative supply of long-term securities is thus accompanied with a decrease in the yield spreads of the 1- to 5-year Treasury securities during the OT period. In the period afterwards, this close relationship disappears. This evidence suggests that the policy actions together with the announcements of OT relate to the anomalous behavior of the Treasury yield spreads during that period. If the relative supply of Treasury notes and bonds decreases, the Treasury yield spreads tend to be lower than predicted given the state of the economy. The correlation with the cumulated errors for the spreads of the 10- and 20-year Treasury rates is less strong but still at least 0.5. The positive correlation vanishes if we measure the relative supply of long-term government securities based on the maturity definition. This finding is somewhat puzzling since we would have expected the yields to mostly react to the maturity composition of the securities available. However, the strong correlation with the categories measure suggests that the amount of notes and bonds

¹⁰We define the OT period as going from February 1961 to December 1963.

available to the public are crucial for changes in the yield spreads. A reason why the categories of the government securities matter more than their maturities might be that because of the ‘bills-only’ policy that was in place before OT, the markets and the Open Market Desk that was executing the purchases for the FED were both thinking in terms of categories and not in terms of the effective maturities in their portfolios. If the FED was buying bonds of any maturity this might have signaled a policy change to the markets and thus prices reacted even though the maturity of these bonds might have been the same as that of a Treasury bill.

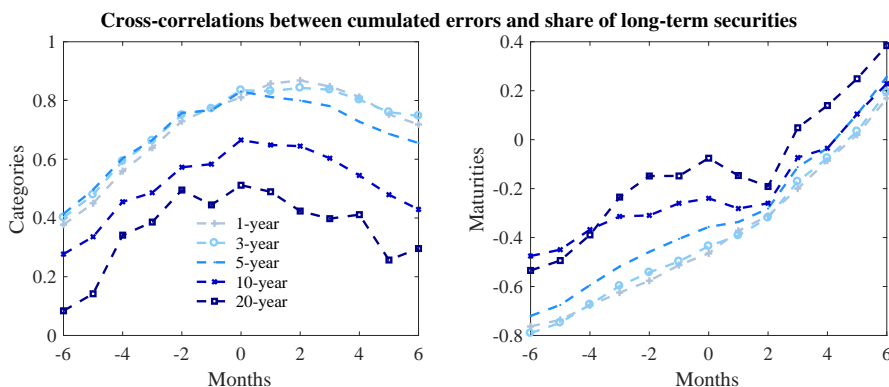


Figure 11: Correlation between cumulated errors and relative supply measures during the OT period (February 1961 - December 1963) for the category (left panel) and maturity definition (right panel).

5.3 Robustness

We first test the robustness of our results with respect to changes in the model specifications. In particular, we estimate the ARDL model using a longer sample period, changing the set of control variables, and choosing the yields instead of the spreads as dependent variable. In a second step, we repeat our analysis using two extended models. The model we introduced in Section 4 is appealing because of its simplicity. However, the question arises whether it might be too simple to capture all the empirical occurrences. To check for robustness against possible misspecification problems we repeat our analysis with a model that allows for stochastic volatility (SV) which can handle changes in the volatilities of the error terms and a time-varying parameter (TVP) model that can handle additional non-linearities such as breaks in the mean of the spread series. To get better estimates we increase the sample size when estimating the two models below. The results clearly suggest that the volatility was changing over the sample period which is ignored by the linear model of Section 4. Furthermore, the results from the TVP-model indicate that also the mean of the

different spread series was not constant but experienced certain changes over time. However, our general finding that OT did compress the yield spreads of, at least, the Treasury rates is robust to the different model specifications and the application of more sophisticated models.

5.3.1 Changing model specifications

All results of our robustness analysis are reported in the appendix. We first verify the robustness of our results with respect to a longer sample period. Specifically, we extend the sample period to December 1967. As expected, the variance of the residuals is higher than in the benchmark sample. Other than that the results are very similar to the benchmark specification. The biggest differences arise for the spreads of the AAA and BAA rates, as well as for the industrial bonds (I-Bonds).¹¹ Using the longer sample period, the cumulated errors also fall below the 10th percentiles of bootstrapped cumulated errors for those interest rates. The longer sample period also leads to a higher correlation between the relative supply and the cumulated errors of the 10- and 20-year Treasury rates. We also performed a grid search for the parameters using the longer sample and the resulting parameters are very close to the ones of the benchmark sample. Furthermore, we include different sets of control variables. As a first set of different controls we take inflation, unemployment and the 3-month Treasury bill rate. Leaving out some of the control variables increases uncertainty but other than that not much changes. A more interesting case is when we omit the 3-month Treasury bill rate from the control variables. Doing that we observe an even larger increase in the uncertainty around the cumulated errors. But more interestingly, for the 10- and 20-year Treasury rates, the Aaa and Baa corporate bond and the industrial bond yields the cumulated errors exhibit, after an initial drop in February 1961, a positive trend until mid-1963. Not controlling for the movements in the 3-month Treasury bill rate thus leads the model to underestimate the yield spreads during OT. We take this evidence as support for including the 3-month Treasury bill rate into our regression model. Finally, we estimate the model for the longer term rates instead of the spreads. The results are strikingly similar to our benchmark regression.

¹¹The other rates are not available for the longer sample period.

5.3.2 A model with stochastic volatility

As we have already mentioned above, a crucial parameter for the success of our method to detect the effectiveness of OT is the variance of the model's error terms. If the variance experienced certain breaks over our period of interest this might possibly affect the outcome. To address the question how the volatility of the residuals u_t behaved over time and whether this behavior has an influence on the results shown above we re-estimate model (2) relaxing the assumption of constant variances and allow for stochastic volatility of the error terms u_t^i instead. For this purpose we extend the model as follows: The reduced form errors u_t are assumed to be normally distributed with time varying variance e^{h_t} , where h_t denotes the unobserved log volatilities that evolve according to an autoregressive process of order one. The initial condition h_0 is drawn from the stationary distribution of this autoregressive process. More details on the model estimation can be found in Appendix A.1.

Figure A.2 shows the cumulated errors from the SV model for the four Treasury spreads, as well as the AAA and BAA spreads. The picture is very similar to that of the simple model. For the spreads of the public bonds the cumulated errors show a clear downward tendency in the aftermath of OT while the results for the two private bonds again look quite differently.

5.3.3 A model with time varying parameters

While there is vast evidence for time varying volatility in the data the model with stochastic volatility presented above cannot account for possible changes or breaks in the other parameters of the model. To control for such effects we introduce an additional version of the model where next to the variance of the errors also the regression coefficients are allowed to vary over time. To economize on the scale of the state space system we use a model where the parameters possess a factor structure. We estimate the model using Bayesian MCMC techniques and assume independent priors for the model parameters. More details on the model estimation can be found in Appendix A.2.

The cumulated errors of the TVP model shown in Figure A.3 do look different than those from the previous two models, but they seem to support the evidence of a negative effect of OT on the yield spread for U.S. Treasury securities.

6 Conclusion

In this paper we study the implementation and success of the first version of quantitative easing in the history of monetary policy. The origin of unconventional monetary policy tools dates back to an intervention by the U.S. Federal Reserve System under the Kennedy administration in 1961, today known as Operation Twist. The economic situation of the early 1960s in which the FED was facing a trade-off between different policy targets, led to this unconventional intervention. On the one hand, the FED wanted to stop the gold outflows towards Europe that were mainly caused by the institutional setting of the Bretton Woods system, and on the other hand, it wanted to deliver monetary stimulus for the domestic economy. To achieve both targets simultaneously, the Kennedy Administration convinced the FED to cooperate with the Treasury to provide monetary stimulus for the economy by lowering long-term interest rates while at the same time Q putting upward pressure on short-term interest rates. This goal was attempted by lowering the relative supply of long-term Treasury securities available to the public.

We study the impact of OT on the spreads between long- and short-term securities using a novel approach based on state-of-the art time series techniques. In a simulation study we demonstrate the power of our methodology. We find evidence that OT indeed succeeded in lowering the spreads between long-term and short-term interest rates for the corresponding Treasury securities, while it did not have a significant dampening effect on alternative securities with similar maturities. To better put our results into the historical context of the whole operation, we collected balance sheet data covering the holdings of Treasury securities of various maturities by the FED, as well as the total amount of outstanding government securities in the books of the Treasury. These data suggest that OT was of moderate size at best, and that the often drawn picture of a perfectly coordinated action cannot be supported. The FED acted only with a delay to its announcement of OT, and the Treasury was lacking full commitment as it continued to issue long-term securities during the intervention period. These historical facts are absolutely in line with our empirical findings. They point out that OT succeeded in narrowing the spreads, however, the operation's effect on the yield curve of government securities was rather modest in size, and we do not find a significant compression in the yield spreads of other bonds with similar maturities. Whether a larger, better coordinated, and stronger supported effort could have had a larger effect remains an open question but seems to be plausible. So coming back to the initial question – shall we twist? Yes, but do so with passion!

References

- BEYELER, S. (2018): “A Time Varying VAR with a Factor Structure in the Parameters,” *mimeo*.
- BRUNNER, K. AND A. H. MELTZER (1973): “Mr. Hicks and the “Monetarists”,” *Economica*, 40, 44–59.
- COGLEY, T. AND T. J. SARGENT (2005): “Drifts and volatilities: Monetary policies and outcomes in the post WWII US,” *Review of Economic Dynamics*, 8, 262–302.
- COOPER, R. L. (1967): “Techniques of the Federal Reserve Trading Desk in the 1960’s Contrasted with the “Bills Preferably” Period: Staff Study,” Tech. rep., Federal Reserve Bank of New York.
- FEDERAL RESERVE BANK OF ST. LOUIS (1961): “The United States Balance of Payments 1946-1960,” *Federal Reserve Bank of St. Louis Monthly Review*, 43, 2–9.
- KASTNER, G. (2016): “Dealing with Stochastic Volatility in Time Series Using the R Package *stochvol*,” *Journal of Statistical Software, Articles*, 69, 1–30.
- KASTNER, G. AND S. FRÜHWIRTH-SCHNATTER (2014): “Ancillarity-sufficiency interweaving strategy (ASIS) for boosting MCMC estimation of stochastic volatility models,” *Computational Statistics & Data Analysis*, 76, 408 – 423, CFEnetwork: The Annals of Computational and Financial Econometrics.
- KIM, S., N. SHEPHARD, AND S. CHIB (1998): “Stochastic Volatility: Likelihood Inference and Comparison with ARCH Models Inference and Comparison with ARCH Models,” *The Review of Economic Studies*, 65, 361–393.
- MELTZER, A. (2010): *A History of the Federal Reserve, Volume 2, Book 1, 1951-1969*, University of Chicago Press.
- MEULENDYKE, A.-M. (1998): “US monetary policy and financial markets,” Tech. rep., Federal Reserve Bank of New York.
- MODIGLIANI, F. AND R. SUTCH (1966): “Innovations in interest rate policy,” *The American Economic Review*, 56, 178–197.
- PRIMICERI, G. E. (2005): “Time Varying Structural Vector Autoregressions and Monetary Policy,” *Review of Economic Studies*, 72, 821–852.

- SWANSON, E. T. (2011): “Let’s twist again: a high-frequency event-study analysis of operation twist and its implications for QE2,” *Brookings Papers on Economic Activity*, 2011, 151–188.
- TOBIN, J. (1961): “Money, Capital, and Other Stores of Value,” *The American Economic Review*, 51, 26–37.
- (1969): “A General Equilibrium Approach To Monetary Theory,” *Journal of Money, Credit and Banking*, 1, 15–29.
- (1974): *The new economics one decade older*, Princeton University Press.
- ZARETSKY, A. (1993): “To Boldly Go Where We Have Gone Before: Repeating the Interest Rate Mistakes of the Past,” *Federal Reserve Bank of St. Louis The Regional Economist*, 10–11.

A Alternative Models

The model we introduced in section 4 is appealing because of its simplicity. However, the question whether it might be too simple to capture all the empirical occurrences arises. To check for robustness against possible misspecification problems we repeat our analysis with an extended model that can handle changes in the volatilities and an even richer model that can handle additional non-linearities. To get consistent estimates we increase the sample size when estimating the two models below. The results clearly suggest that the volatility was changing over the sample period which is ignored by the linear model of section 4. Furthermore, the results from the TVP-model indicate that also the mean of the different spread series was not constant.

A.1 A model with stochastic volatility

To address the question how the volatility of the residuals u_t behaved over time and whether this behavior has an influence on the results shown above we re-estimate model (2) relaxing the assumption of constant variances and allowing for stochastic volatility for the error terms u_t^i instead. For this purpose we extend the model as follows: The reduced form errors u_t are assumed to be normally distributed with time varying variance e^{h_t} , where h_t denotes the unobserved log volatilities that evolve according to an autoregressive process of order one. The initial condition h_0 is drawn from the stationary distribution of this autoregressive process.

$$y_t^i = \beta_0 + \beta_c^x X_t + \sum_{j=1}^p (\beta_j^x X_{t-j}) + u_t^i \quad (5)$$

$$u_t^i | h_t \sim N(0, e^{h_t}) \quad (6)$$

$$h_t | h_{t-1}, \mu, \phi, \sigma_\eta \sim N(\mu + \phi(h_{t-1} - \mu), \sigma_\eta) \quad (7)$$

$$h_0 | \mu, \phi, \sigma_\eta \sim N(\mu, \sigma_\eta^2 / (1 - \phi^2)) \quad (8)$$

We estimate the model using Bayesian MCMC techniques and assume independent priors for the model parameters. The prior for the regression parameters is normal $\beta \sim N(b_\beta, B_\beta)$ while following Kastner and Frühwirth-Schnatter (2014) the priors

for the remaining parameters are given by

$$\mu \sim N(b_\mu, B_\mu) \quad (9)$$

$$(\phi + 1)/2 \sim \mathcal{B}(a_0, b_0) \quad (10)$$

$$\sigma_\eta^2 \sim \mathcal{G}(1/2, 1/2B_{\sigma_\eta}) \quad (11)$$

The conditional posterior distribution of the regression parameters is Normal $\beta|\cdot \sim N(\bar{b}_\beta, \bar{B}_\beta)$ with

$$\bar{B}_\beta = \left[\sum_{t=p+1}^T \sigma_t^{-2} X_t X_t' + B_\beta^{-1} \right]^{-1} \quad (12)$$

$$\bar{b}_\beta = \bar{B}_\beta \left[\sum_{t=p+1}^T \sigma_t^{-2} X_t X_t' + B_\beta^{-1} b_\beta \right] \quad (13)$$

To compute the posterior of the log-volatilities we apply the algorithm described in Kastner and Frühwirth-Schnatter (2014) which is implemented in the `stochvol` package for R, see Kastner (2016) for a detailed description. The prior values for the regression coefficients, b_β , are set to the OLS estimates for β and the variance B_β is set relatively large, such that the prior is rather uninformative. The mean and the variance for the prior of the level of the log-variance are set to $b_\mu = -10$ and $B_\mu = 4$ respectively, while the hyperparameters for the persistence of the autoregressive process are set to $a_0 = 1.5$ and $b_0 = 20$ as in Kim et al. (1998). B_{σ_η} is set equal to 1 but as mentioned in Kastner (2016) the choice of this hyper parameter is not influential as long as it is not set to very small numbers.

Figure A.1 contains the estimated variances for the errors of the regression models including the Treasury spreads, as well as the spread between Moody's AAA and BAA and the 3 month Treasury bill rate. There is indeed vast evidence against a constant variance, as the estimated volatilities for all the different spreads show a substantial degree of time variation. The pattern is quite similar in all six cases. After the recession that ended in 1961 there is a substantial drop in the variances of the errors and they remain on a historically low level for that time until about 1967 when the Bretton Woods system started to get first cracks.

Figure A.2 contains the cumulated errors from the SV model for the six spreads. The picture is very similar to that of the simple model, for the spreads of the public bonds the cumulated errors show a clear downward tendency in the aftermath of OT while the results for the two private bonds again look quite different.

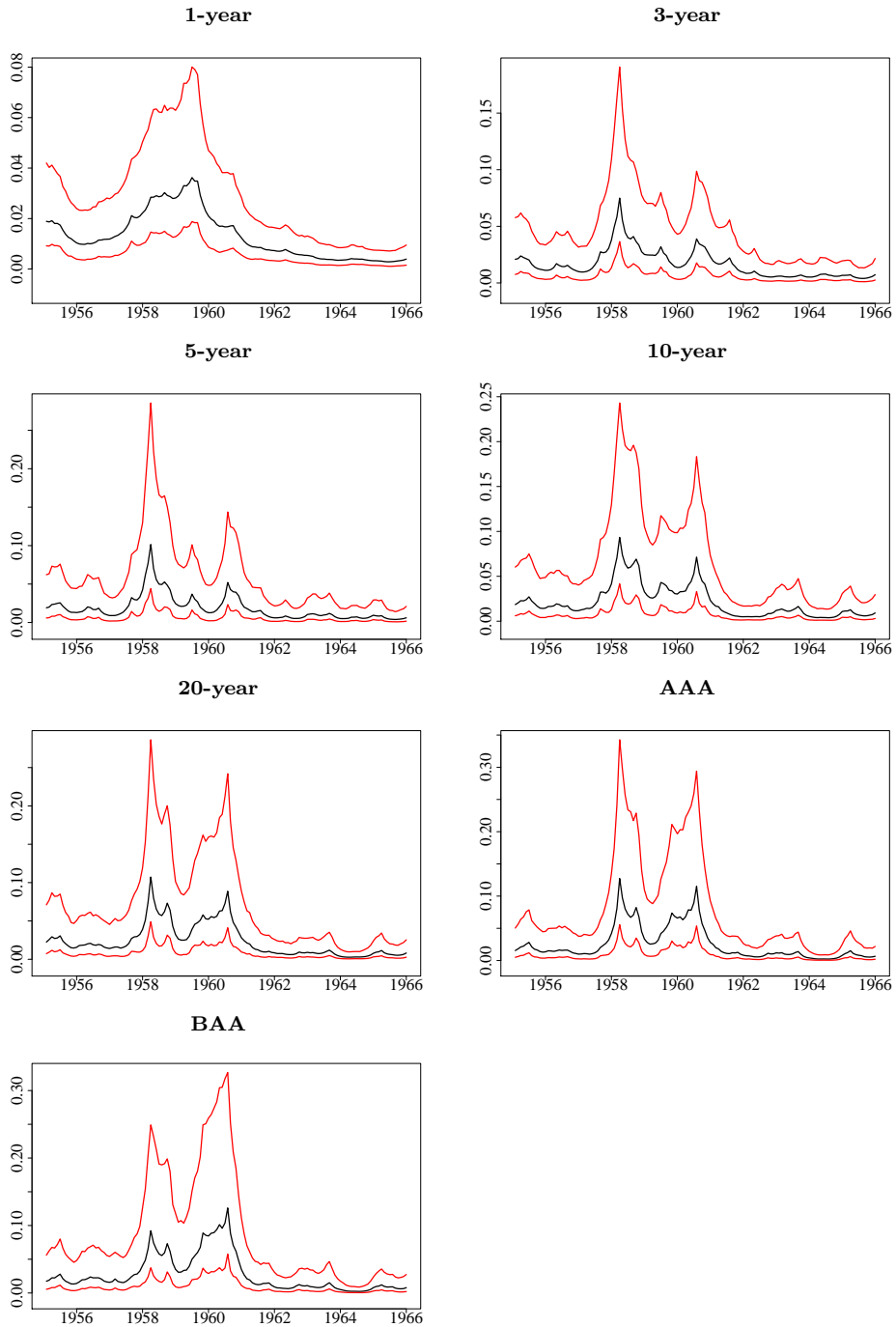


Figure A.1: Time varying volatilities of the residuals, posterior median (in black) along with the 80 percent highest posterior density interval (in red).

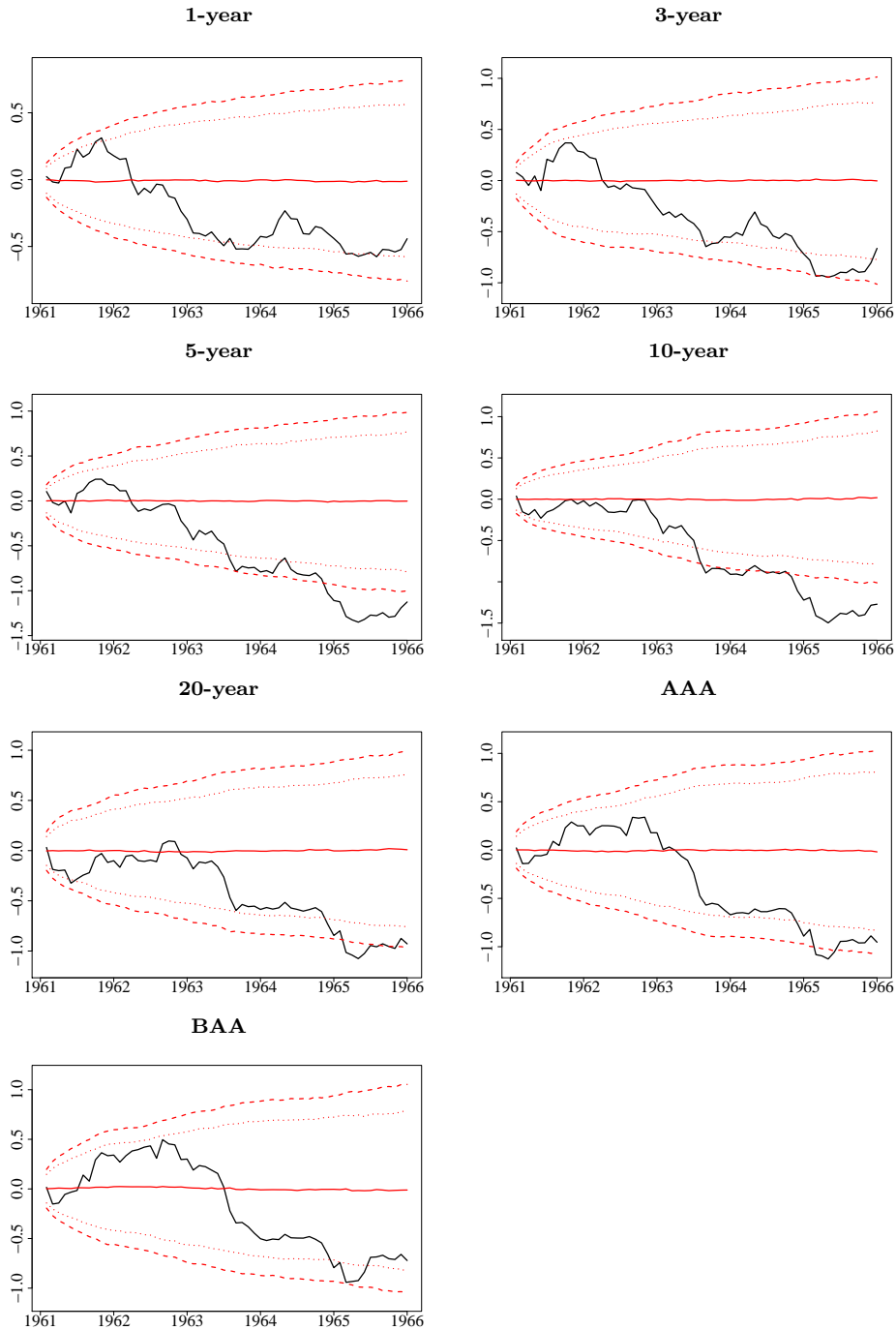


Figure A.2: Cumulated errors of the SV model.

A.2 A model with time varying parameters

While there is vast evidence for time varying volatility in the data the model with stochastic volatility presented above cannot account for possible changes or breaks in the other parameters of the model. A break in the mean of the spread series would clearly jeopardize our method as under such a misspecification the model's

error terms are unlikely to be centered around zero over the whole sample period. To control for such effects we introduce an additional version of the model where also the regression coefficients are allowed to vary over time. To economize on the scale of the state space system we use a model where the parameters possess a factor structure. The model applied here is an ARDL version of the VAR model proposed in Beyeler (2018), a more detailed explanation of the model structure, the prior distributions, and the Bayesian estimation techniques can be found therein. The TVP-ARDL model takes on the following form:

$$y_t^i = \beta_{0,t} + \beta_{c,t}X_t + \sum_{j=1}^p \beta_{j,t}X_{t-j} + u_t^i \quad (14)$$

$$\equiv Z_t b_t + u_t^i, \quad u_t^i \sim N(0, \sigma_t^2) \quad (15)$$

$$b_t = \lambda_0 + \lambda^f f_t \quad (16)$$

$$f_t = f_{t-1} + \eta_t^f \quad (17)$$

$$\log(\sigma_t^2) = \log(\sigma_{t-1}^2) + \eta_t^\sigma \quad (18)$$

Each regression coefficient collected in the vector b_t is the sum of two components, a constant component λ_0 and a time varying component $\lambda^f f_t$. The time variation is fully governed by a set of k factors, where k is chosen to be a small number compared to the total number of coefficients of the original regression model. The factors evolve as random walks, which is a common assumption in the TVP-VAR literature as it allows to capture temporary as well as permanent shifts (see e.g. Cogley and Sargent (2005) or Primiceri (2005)). The driving forces of the factors η_t^f are assumed to be uncorrelated. To estimate λ_0 the factor loadings λ^f shrinkage priors are introduced. The cumulated errors of the TVP model shown in Figure A.3 do look different than those from the previous two models, but they seem to support the evidence of a negative effect of OT on the yield spread for U.S. Treasury securities.

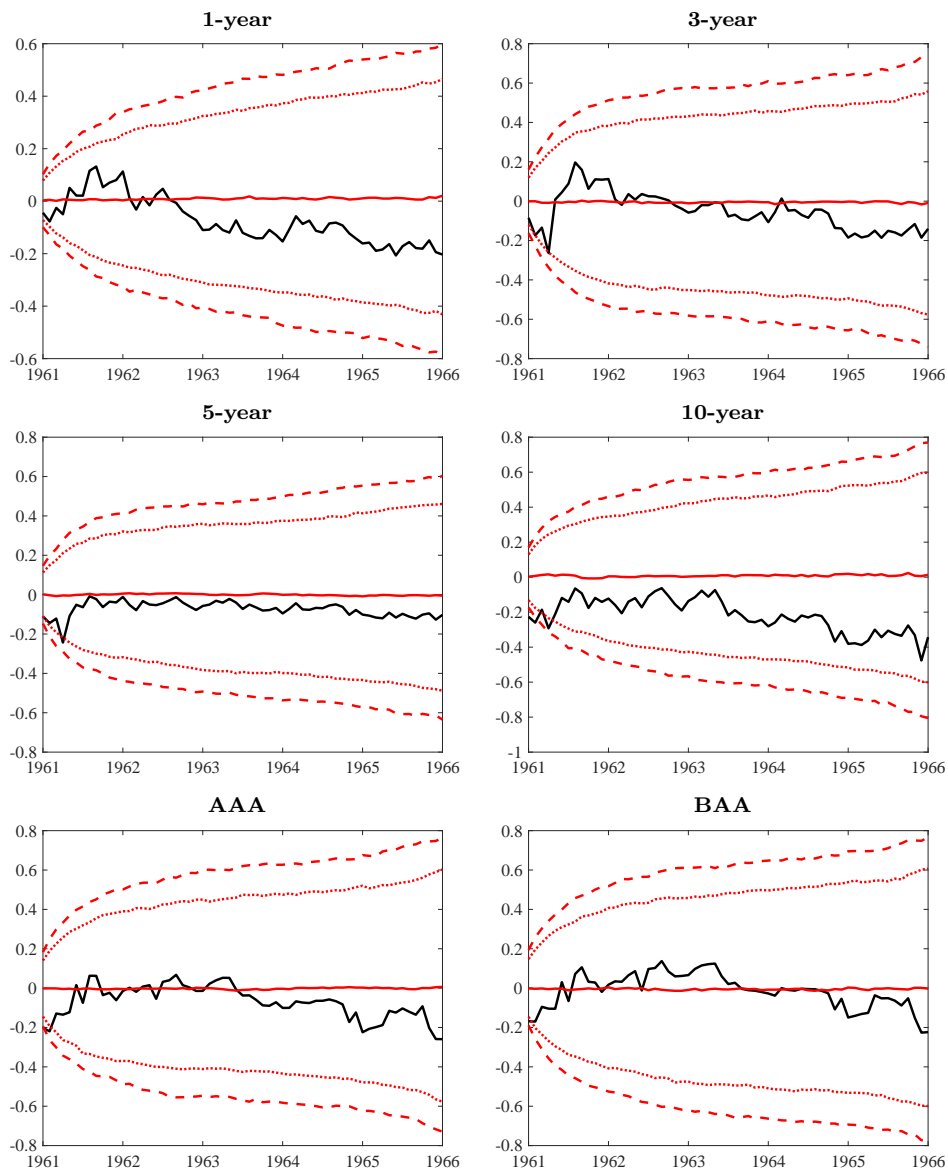


Figure A.3: Cumulated errors of the TVP model.

B Additional Tables

Table B.1: Unit root tests: benchmark sample.

<i>Variables</i>	Lag order			
	$p = 3$	$p = 6$	$p = 9$	$p = 12$
Unemployment rate	0.23	0.07	0.22	0.24
Capacity utilization	0.35	0.49	0.46	0.61
Vacancy rate	0.73	0.52	0.60	0.78
Inflation	0.00	0.08	0.39	0.40
3-month Treasury bill rate	0.18	0.22	0.42	0.25
Stock returns	0.00	0.00	0.02	0.02
<i>Spreads with 3-month T-bill rate</i>				
GS1	0.24	0.47	0.70	0.72
GS3	0.24	0.48	0.79	0.72
GS5	0.24	0.47	0.76	0.61
GS10	0.14	0.32	0.61	0.32
GS20	0.09	0.21	0.40	0.14
AAA	0.15	0.28	0.47	0.20
BAA	0.26	0.43	0.58	0.31
I-Bonds, Highest	0.12	0.24	0.44	0.17
I-Bonds, Lowest	0.21	0.39	0.54	0.25
I-Bonds (High Grade)	0.13	0.24	0.47	0.19
Fed. Housing Mortgages	0.32	0.41	0.69	0.43
P-Bonds, Highest	0.18	0.29	0.48	0.24
P-Bonds, Lowest	0.28	0.36	0.60	0.40
M-Bonds (High Grade)	0.40	0.58	0.79	0.53
M-Bonds, Highest	0.24	0.37	0.61	0.31
M-Bonds, Lowest	0.50	0.64	0.81	0.68
M-Bonds, 20 Bond Av.	0.22	0.38	0.67	0.33

Note: Bootstrapped p -values for Elliott, Rothenberg, and Stock unit root tests based on 10,000 bootstrap replications of estimated ARIMA processes. Tests are with no time trend for all series. I-Bonds denote industrial bonds, P-Bonds denote public utility bonds and M-Bonds denote municipal bonds.

Table B.2: Unit root tests: sample April 1953 - December 1974.

<i>Variables</i>	Lag order			
	$p = 3$	$p = 6$	$p = 9$	$p = 12$
Unemployment rate	0.04	0.02	0.18	0.55
Capacity utilization	0.03	0.05	0.05	0.13
Vacancy rate	0.25	0.05	0.08	0.16
Inflation	0.11	0.88	0.94	0.78
3-month Treasury bill rate	0.59	0.48	0.51	0.33
Stock returns	0.00	0.00	0.00	0.01
<i>Spreads with 3-month T-bill rate</i>				
GS1	0.00	0.01	0.05	0.06
GS3	0.05	0.03	0.08	0.04
GS5	0.07	0.03	0.08	0.03
GS10	0.08	0.03	0.08	0.02
GS20	0.02	0.02	0.06	0.01
AAA	0.06	0.03	0.03	0.00
BAA	0.11	0.03	0.04	0.01

Note: Bootstrapped p -values for Elliott, Rothenberg, and Stock unit root tests based on 10,000 bootstrap replications of estimated ARIMA processes. Tests are with no time trend for all series. I-Bonds denote industrial bonds, P-Bonds denote public utility bonds and M-Bonds denote municipal bonds.

Table B.3: Long sample: variance of the residuals and R^2 of the estimated regressions.

<i>Spreads of</i>	Variance of u	R^2	10-90 perct.	adj. R^2	10-90 perct.
1-year	0.0104	0.834	[0.754;0.902]	0.794	[0.694;0.879]
3-year	0.0122	0.910	[0.842;0.940]	0.888	[0.804;0.925]
5-year	0.0100	0.948	[0.906;0.966]	0.936	[0.884;0.957]
10-year	0.0072	0.974	[0.954;0.983]	0.968	[0.944;0.979]
20-year	0.0042	0.988	[0.980;0.992]	0.986	[0.975;0.990]
AAA	0.0024	0.994	[0.989;0.996]	0.992	[0.986;0.995]
BAA	0.0019	0.996	[0.996;0.999]	0.996	[0.995;0.999]
I-Bonds, Highest	0.0039	0.989	[0.981;0.993]	0.986	[0.976;0.991]
I-Bonds (High Grade)	0.0038	0.990	[0.982;0.994]	0.987	[0.978;0.992]
P-Bonds, Highest	0.0031	0.992	[0.986;0.995]	0.990	[0.983;0.994]

Note: I-Bonds denote industrial bonds and P-Bonds denote public utility bonds.

Table B.4: Specification without 3-month Treasury bill rate as control variable: variance of the residuals and R^2 of the estimated regressions.

<i>Spreads of</i>	Variance of u	R^2	10-90 perct.	adj. R^2	10-90 perct.
1-year	0.0106	0.826	[0.732;0.907]	0.782	[0.665;0.884]
3-year	0.0140	0.894	[0.849;0.960]	0.867	[0.811;0.951]
5-year	0.0166	0.907	[0.891;0.971]	0.884	[0.863;0.963]
10-year	0.0192	0.921	[0.923;0.980]	0.901	[0.904;0.975]
20-year	0.0208	0.934	[0.934;0.984]	0.918	[0.918;0.980]
AAA	0.0232	0.937	[0.938;0.984]	0.921	[0.922;0.980]
BAA	0.0227	0.957	[0.952;0.988]	0.946	[0.940;0.985]
I-Bonds, Highest	0.0232	0.930	[0.929;0.982]	0.912	[0.912;0.978]
I-Bonds, Lowest	0.0235	0.952	[0.946;0.987]	0.940	[0.933;0.984]
I-Bonds (High Grade)	0.0235	0.932	[0.926;0.982]	0.915	[0.908;0.978]
Fed. Housing Mortgages	0.0252	0.956	[0.946;0.987]	0.944	[0.932;0.984]
P-Bonds, Highest	0.0240	0.935	[0.933;0.984]	0.919	[0.916;0.980]
P- Bonds, Lowest	0.0228	0.947	[0.939;0.986]	0.934	[0.923;0.983]
M-Bonds (High Grade)	0.0242	0.956	[0.945;0.987]	0.944	[0.931;0.984]
M-Bonds, Highest	0.0243	0.942	[0.937;0.986]	0.928	[0.921;0.982]
M-Bonds, Lowest	0.0248	0.960	[0.950;0.989]	0.950	[0.937;0.986]
M-Bonds, 20 Bond Av.	0.0250	0.947	[0.940;0.985]	0.934	[0.925;0.982]

Note: I-Bonds denote industrial bonds, P-Bonds denote public utility bonds and M-Bonds denote municipal bonds.

C Additional Figures

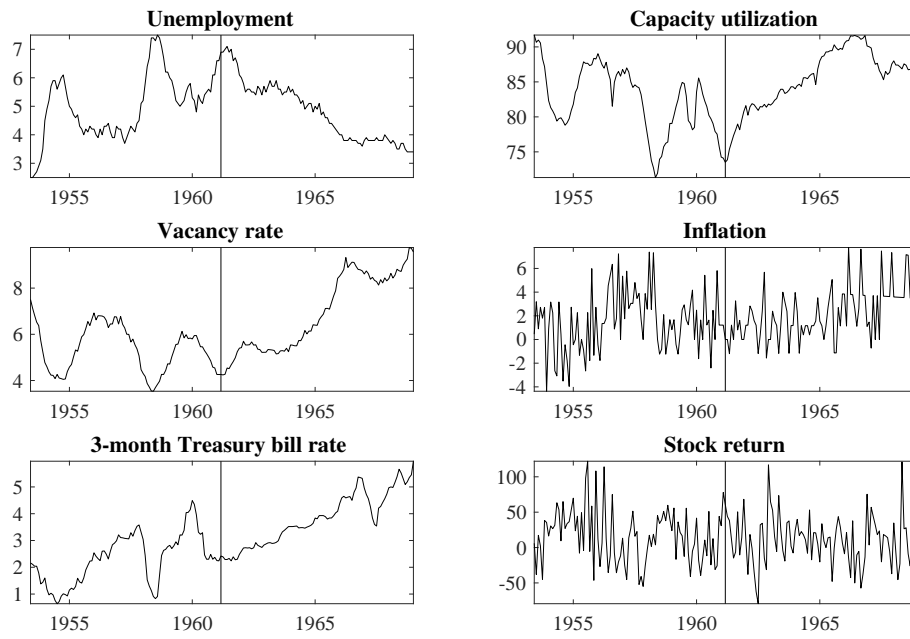


Figure C.1: Control variables included in the ARDL model.

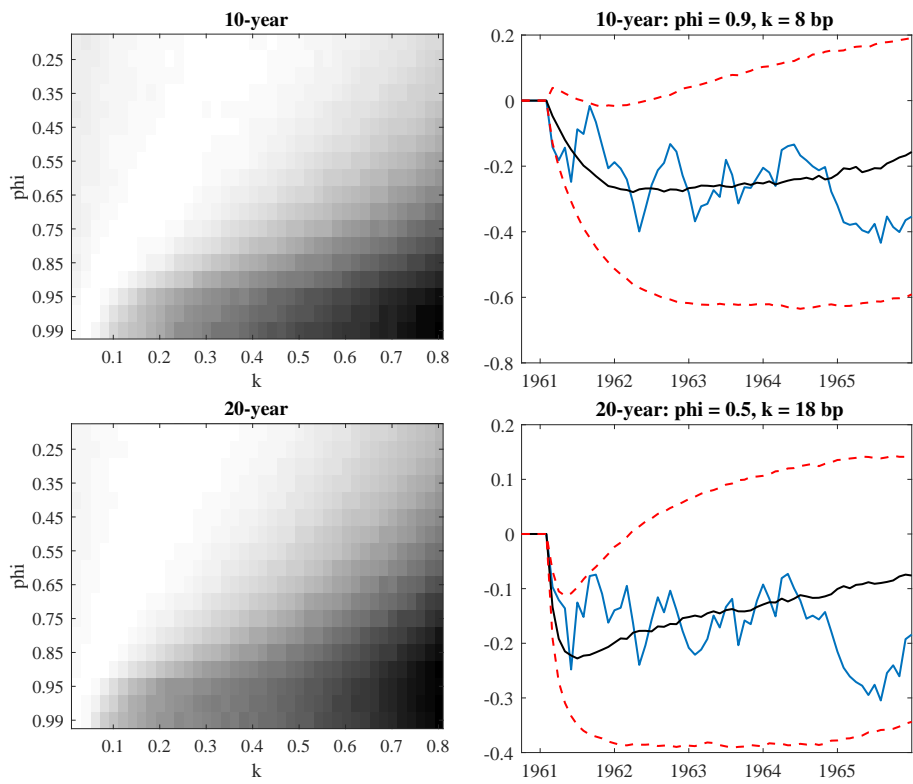


Figure C.2: Grid search results (cumulation since February 1961): heat map in which white areas indicate a close match (left) and cumulated errors of the original ARDL regression (in blue) together with the median (in black), and 10th and 90th percentiles (in red) of their closest match (right).

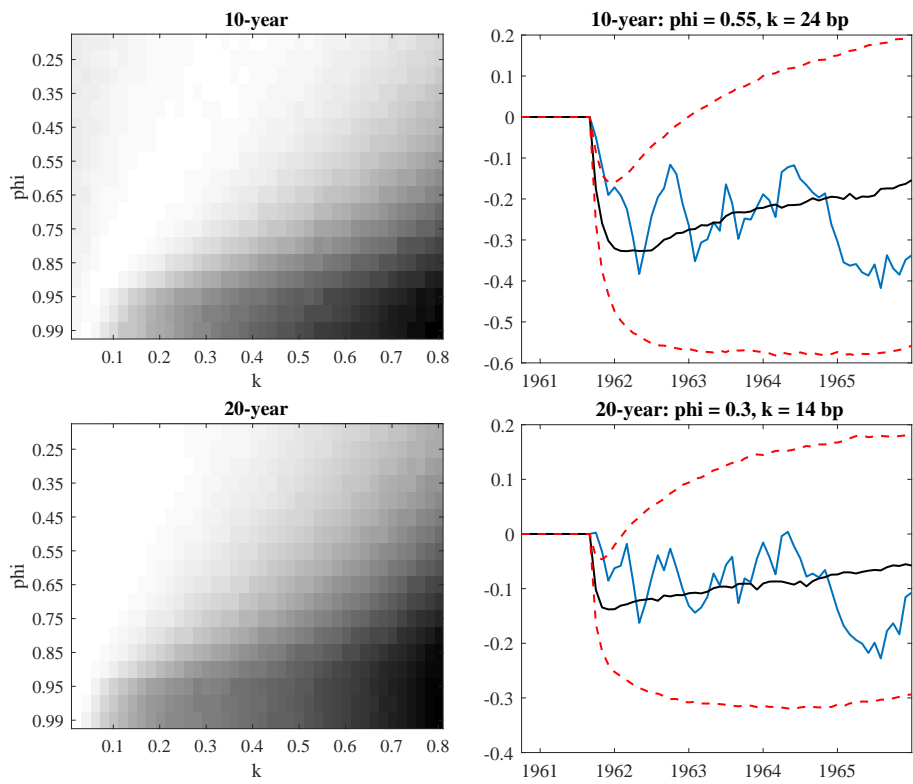


Figure C.3: Grid search results (cumulation since September 1961): heat map in which white areas indicate a close match (left) and cumulated errors of the original ARDL regression (in blue) together with the median (in black), and 10th and 90th percentiles (in red) of their closest match (right).

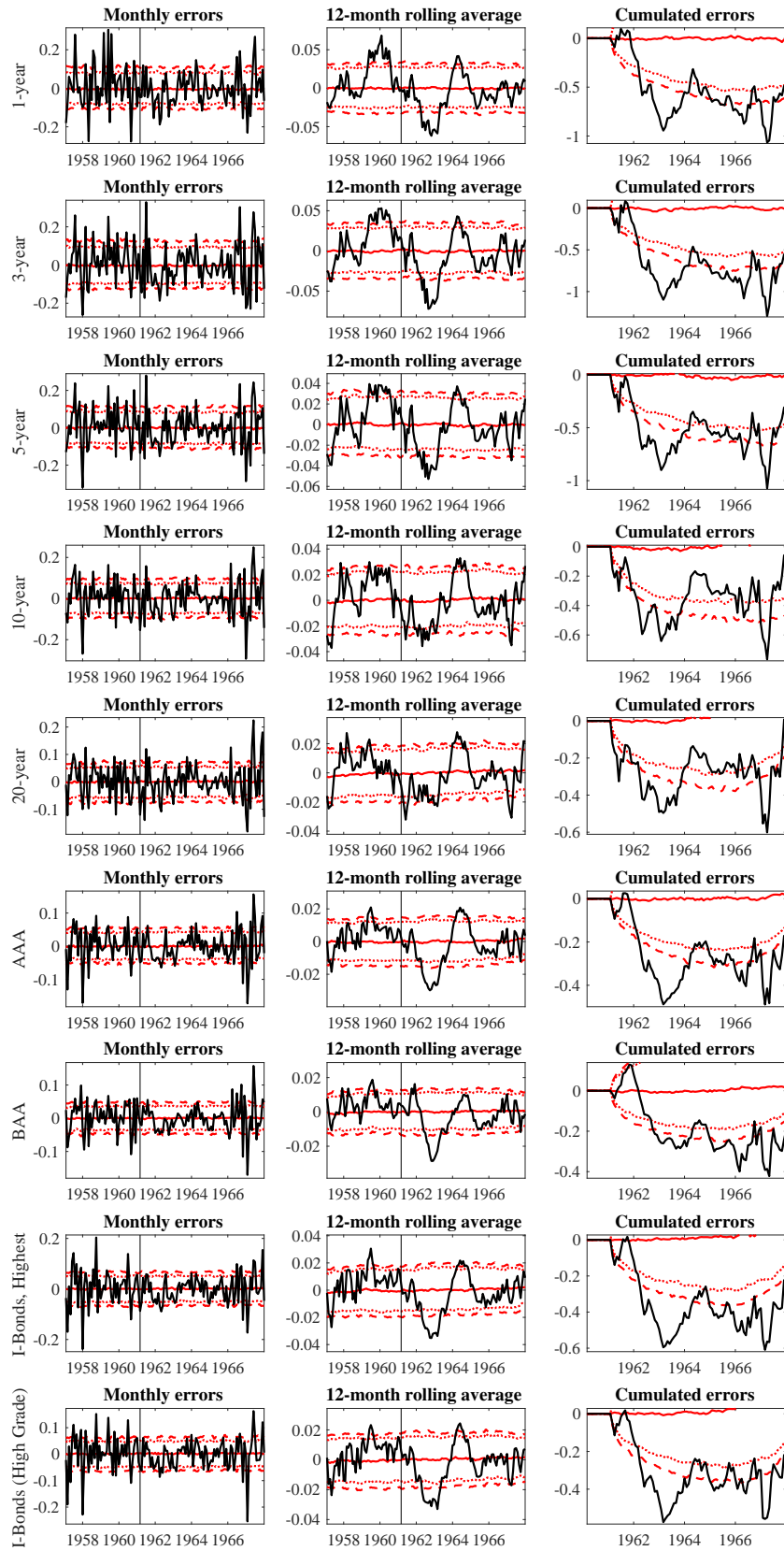


Figure C.4: Long sample: monthly errors, the 12-month rolling averages, and cumulated errors of the ARDL regressions along with the median (red, solid), the 10th and 90th percentiles (red, dashed) and the 16th and 84th percentiles (red, dotted) bootstrapped under the null.

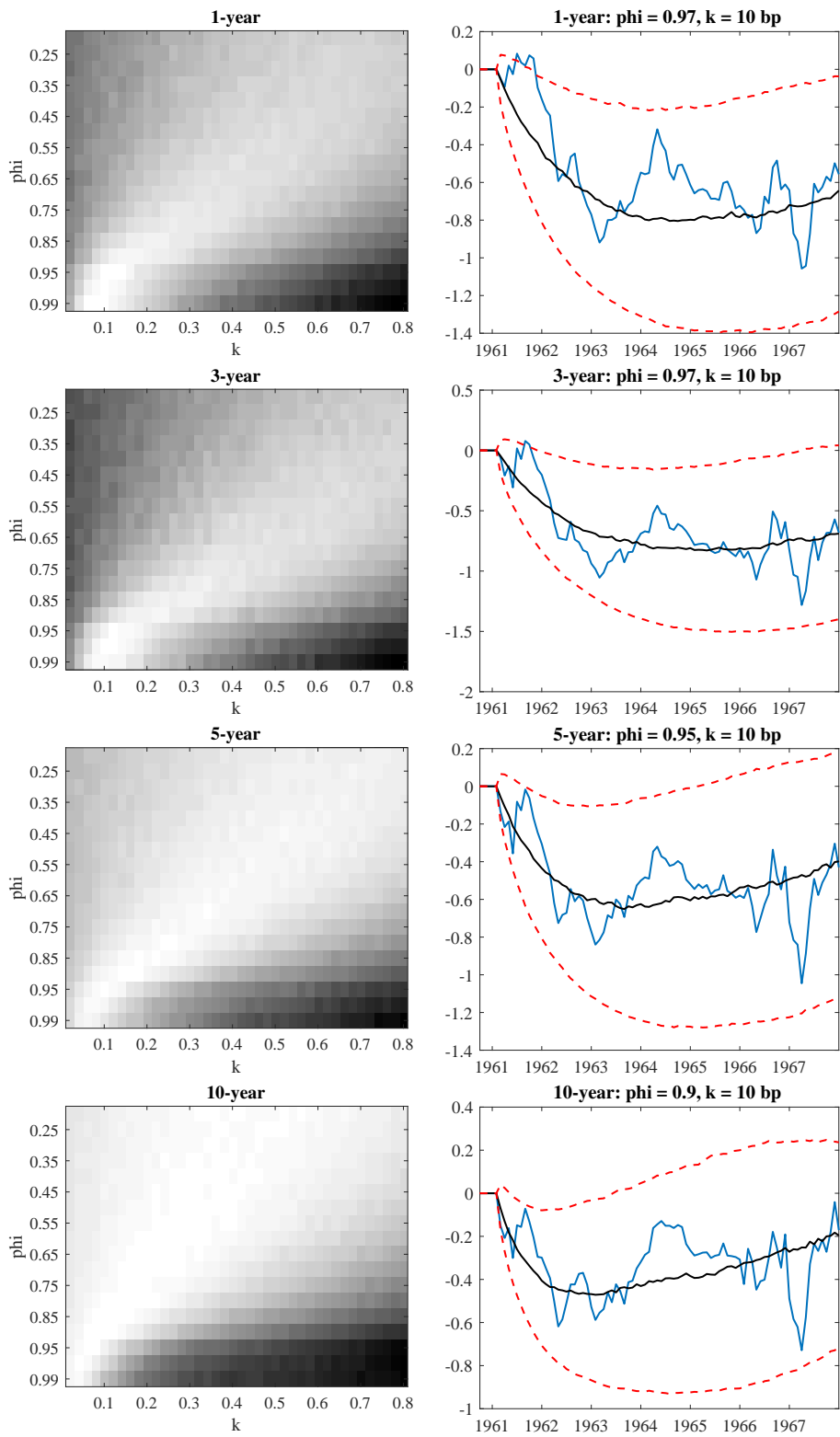


Figure C.5: Grid search results for long sample (cumulation since February 1961): heat map in which white areas indicate a close match (left) and cumulated errors of the original ARDL regression (in blue) together with the median (in black), and 10th and 90th percentiles (in red) of their closest match (right).

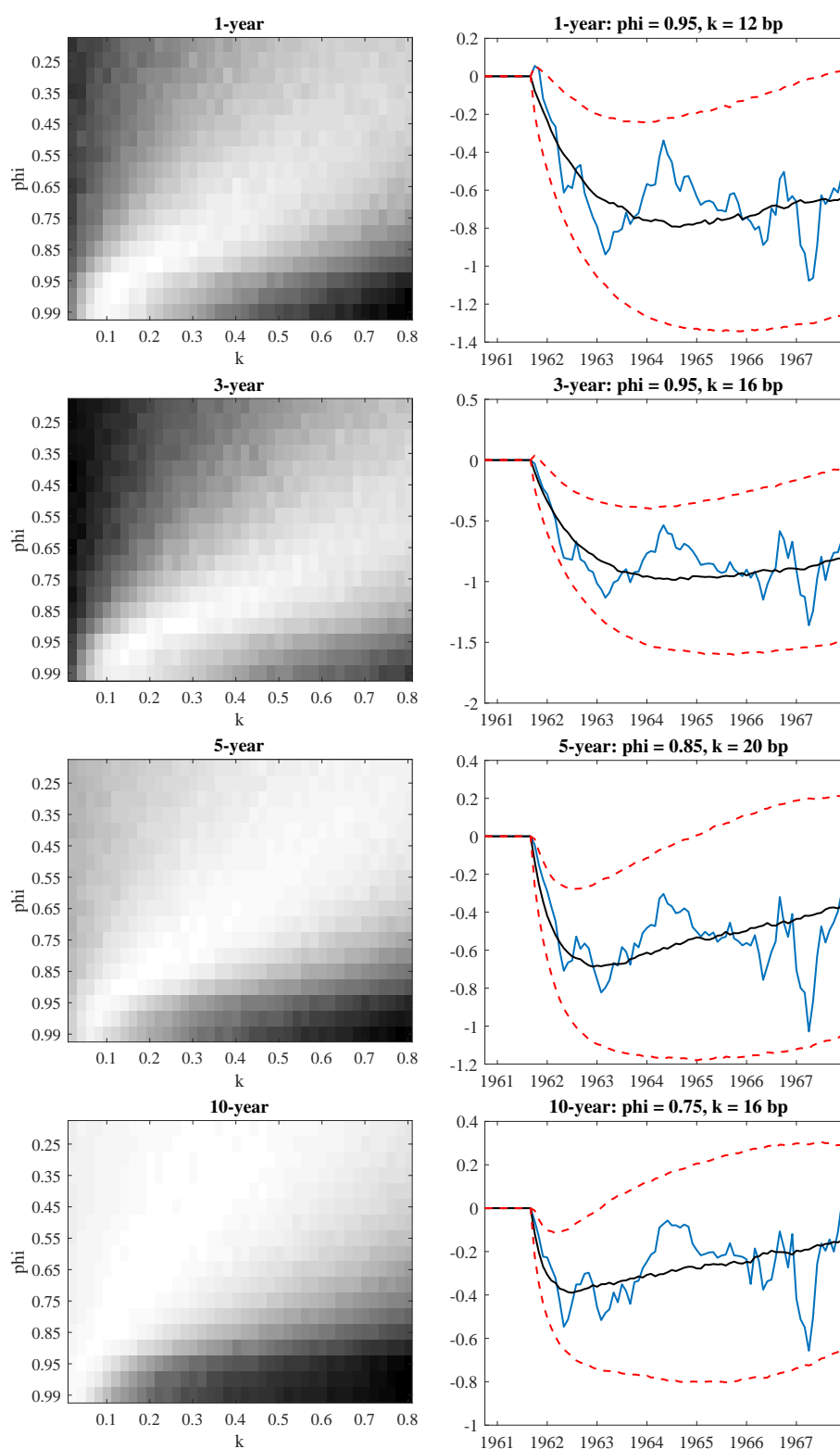


Figure C.6: Grid search results for long sample (cumulation since September 1961): heat map in which white areas indicate a close match (left) and cumulated errors of the original ARDL regression (in blue) together with the median (in black), and 10th and 90th percentiles (in red) of their closest match (right).

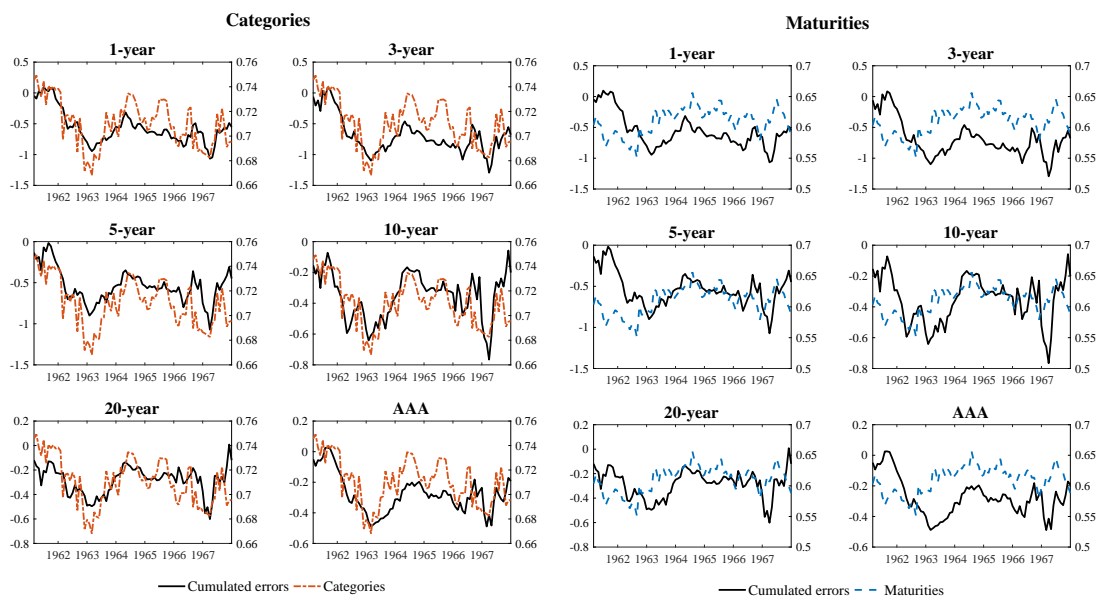


Figure C.7: Cumulated errors (in black) along with the share of long-term over total government securities in the hands of the public in terms of maturities (in blue) and categories (in red).

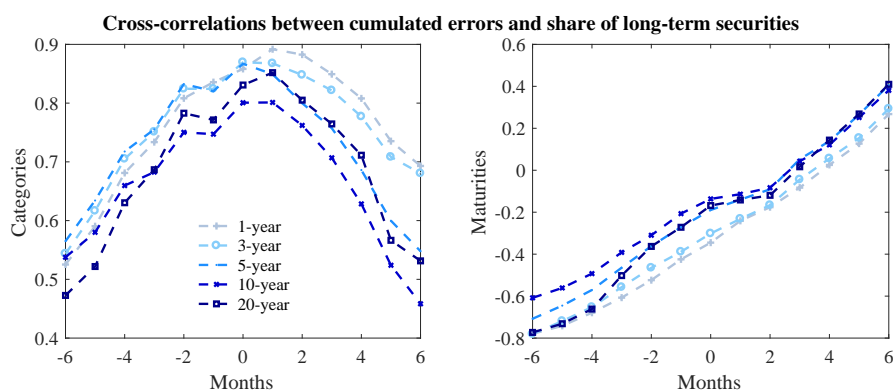


Figure C.8: Long sample: correlation between cumulated errors and relative supply measures during the OT period (February 1961 - December 1963) for the category (left panel) and maturity definition (right panel).

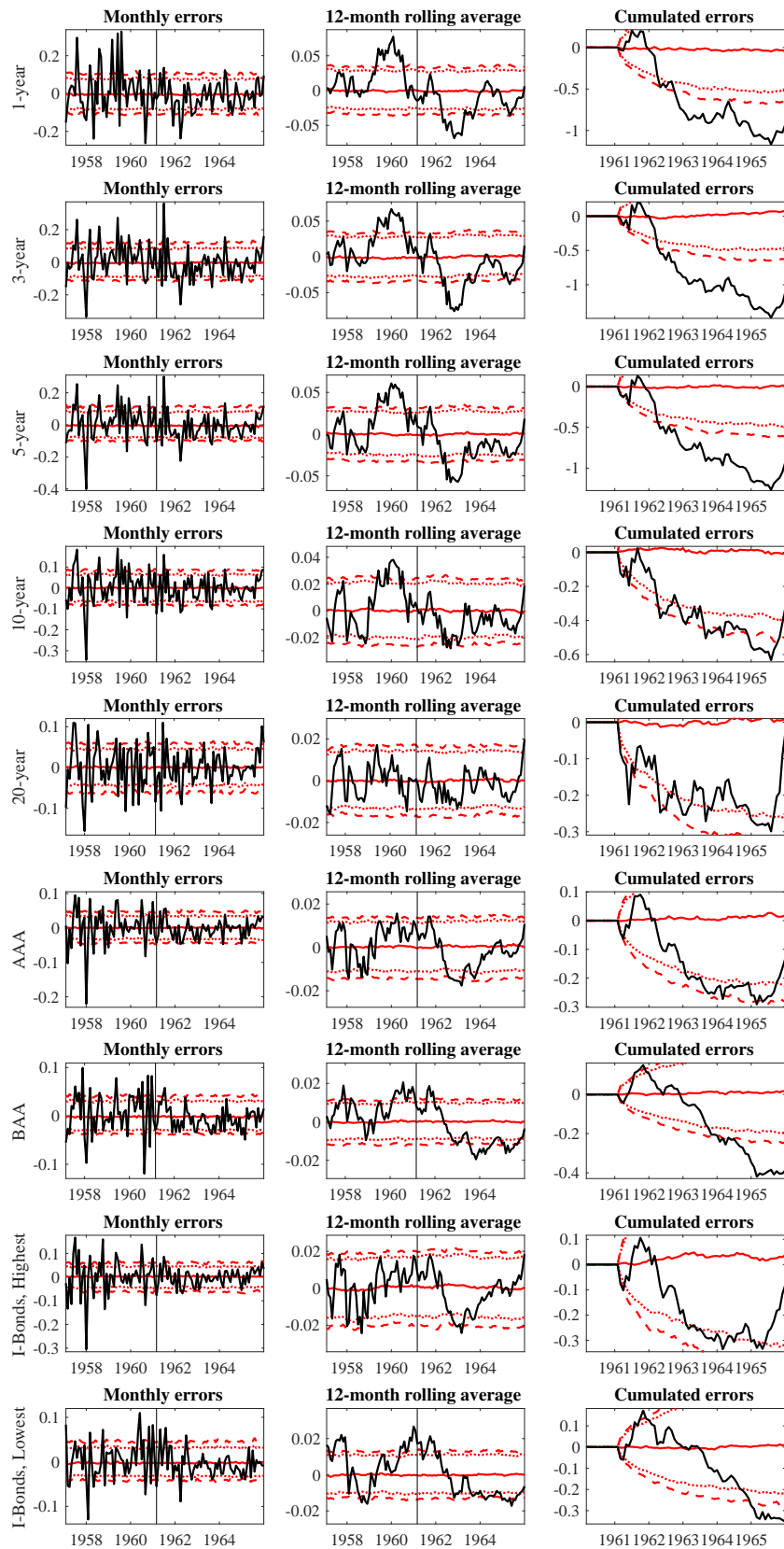


Figure C.9: Specification with unemployment, inflation and 3-month Treasury bill rate as control variables: monthly errors, the 12-month rolling averages, and cumulated errors of the ARDL regressions along with the median (red, solid), the 10th and 90th percentiles (red, dashed) and the 16th and 84th percentiles (red, dotted) bootstrapped under the null.

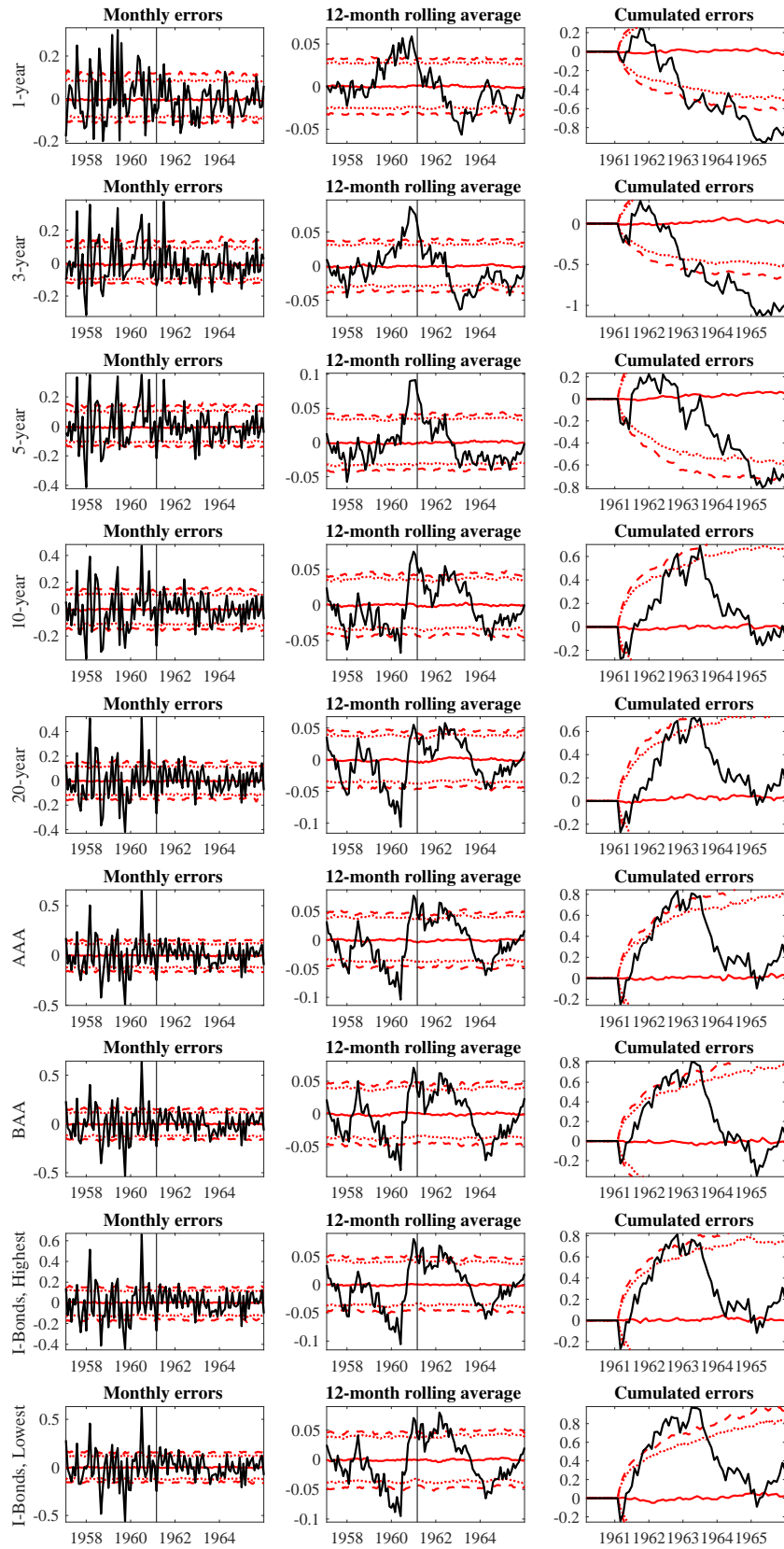


Figure C.10: Specification without 3-month Treasury bill rate as control variable: monthly errors, the 12-month rolling averages, and cumulated errors of the ARDL regressions along with the median (red, solid), the 10th and 90th percentiles (red, dashed) and the 16th and 84th percentiles (red, dotted) bootstrapped under the null.

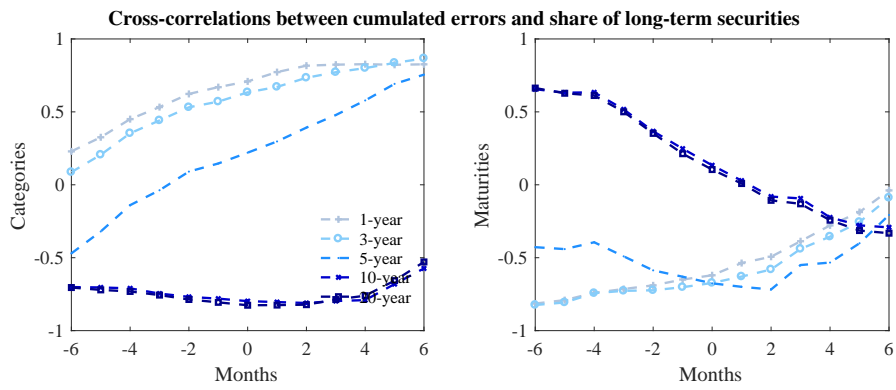


Figure C.11: Specification without 3-month Treasury bill rate as control variable: correlation between cumulated errors and relative supply measures during the OT period (February 1961 - December 1963) for the category (left panel) and maturity definition (right panel).

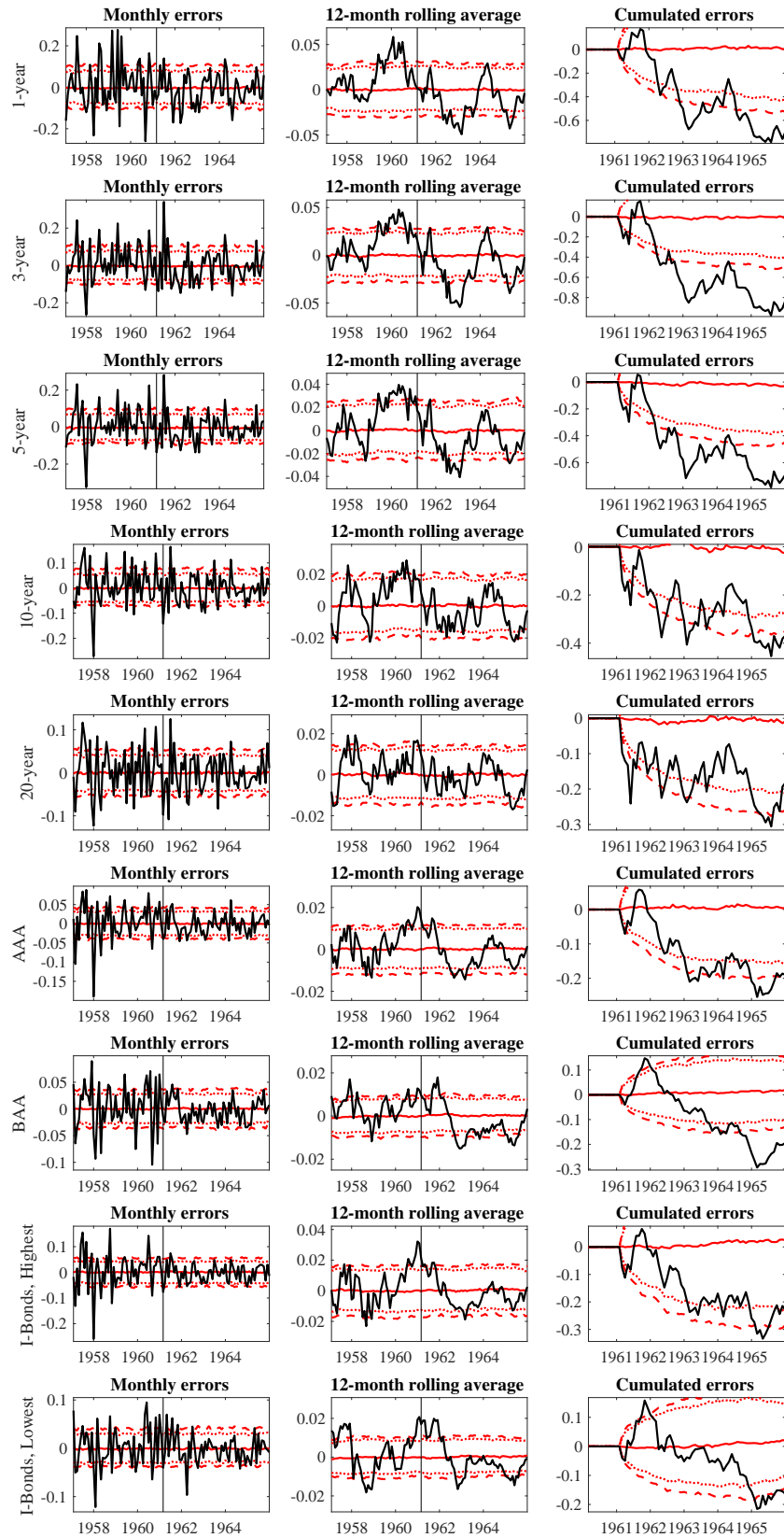


Figure C.12: Specification with rates instead of spreads: monthly errors, the 12-month rolling averages, and cumulated errors of the ARDL regressions along with the median (red, solid), the 10th and 90th percentiles (red, dashed) and the 16th and 84th percentiles (red, dotted) bootstrapped under the null.

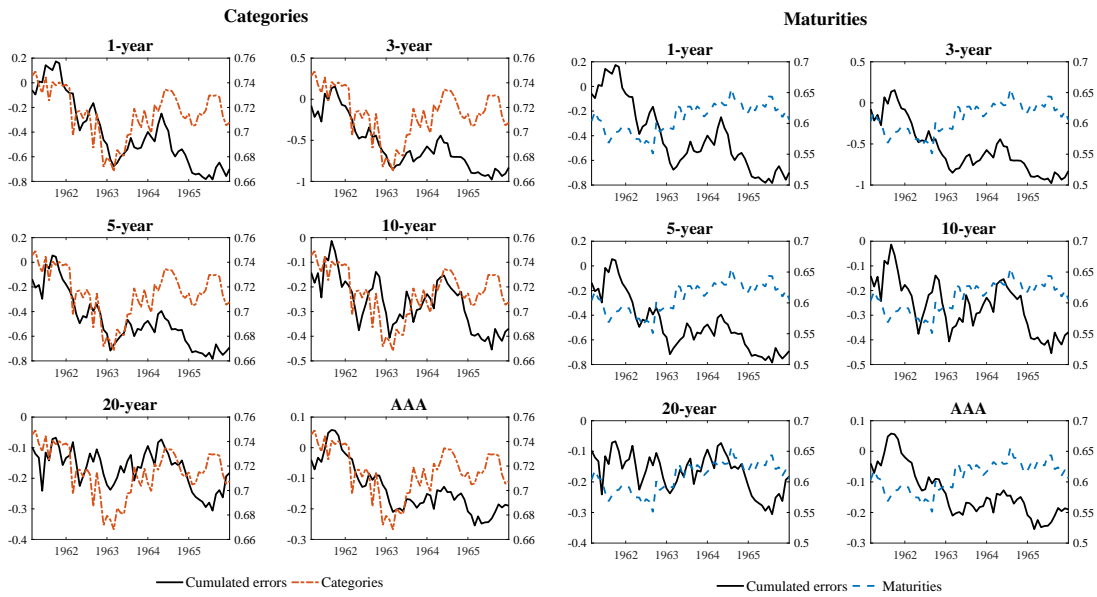


Figure C.13: Cumulated errors (in black) along with the share of long-term over total government securities in the hands of the public in terms of maturities (in blue) and categories (in red).

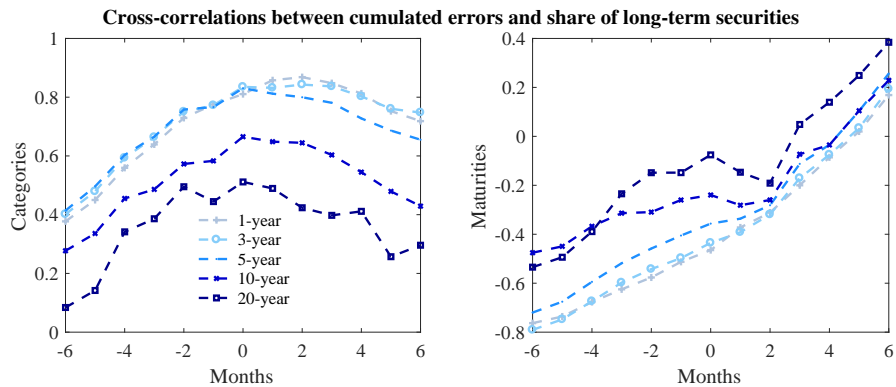


Figure C.14: Specification with rates instead of spreads: correlation between cumulated errors and relative supply measures during the OT period (February 1961 - December 1963) for the category (left panel) and maturity definition (right panel).

D Data

D.1 FED balance sheet data

The balance sheet data containing the FED's holdings of US government securities is available in pdf format from the FRASER database: <https://fraser.stlouisfed.org/title/83> at the weekly frequency. We extracted government security holdings according to their category as well as their maturity structure for the time span December 1957 up to June 1996. From June 1996 on the data is available in electronic format from <https://www.federalreserve.gov/releases/h41/>. We converted the series to the monthly frequency by averaging the weekly holdings of a given month.

D.2 Treasury balance sheet data

The balance sheet data for the US Treasury are available in pdf format from <https://www.treasurydirect.gov/govt/reports/pd/mspd/mspd.htm> at the monthly frequency. We extracted the total amount of outstanding Treasury securities according to their category for the period January 1933 to September 2017 and the corresponding maturity structure for the period December 1957 to September 2017 (the maturity structure is not available prior to December 1957).

D.3 Interest rate series and control variables

The 1-, 3-, 5-, 10- and 20-year Treasury constant maturity rates are the GS1 - GS20 series from the H.15 release of the Board of Governors of the Federal Reserve System. The AAA and BAA rates are Moody's seasoned Aaa and Baa corporate bond yields, which are both available from FRED of the Federal Reserve Bank of St. Louis. All the remaining interest rate series are from the NBER Macroeconomy Database. The yields on industrial bonds (I-Bonds) are the M13059USM156NNBR (highest rating - Aaa grade bonds) and M13060USM156NNBR (lowest rating - Baa grade bonds) series. The yield on high grade industrial bonds (AAA rating) is the M13026USM156NNBR series. This series is the average of the four or five weekly Standard and Poor's AAA indexes. The yields on Federal housing mortgages are the secondary market yields on Federal housing administration mortgages (M13045USM156NNBR). The yields on public utility bonds (P-Bonds) are the M13063USM156NNBR series (highest rating - Aaa grade) and the M13064USM156NNBR series (lowest rating - Baa grade). The

yields on municipal bonds (M-Bonds) are the M13043USM156NNBR (highest rating - Aaa grade bonds) and M13065USM156NNBR (lowest rating - Baa grade bonds) series. The yield on high grade municipal bonds (M-Bonds) is the M13023USM156NNBR series. The yield on municipal bonds, 20 bond average is the M13050USM156NNBR series.

The unemployment rate is the civilian unemployment rate (UNRATE) from the U.S. Department of Labor's Bureau of Labor Statistics. Capacity utilization is the CUMFNS series available from the G.17 release of the Board of Governors of the Federal Reserve System. Inflation is computed as the annualized month on month growth rate of the consumer price index for all urban consumers, which is the CPIAUCSL series from the Bureau of Labor Statistics. The vacancy rate is defined as the ratio between the help wanted index (U.S. Index of Help Wanted Advertising VOLA) and the civilian labor force (CLF16OV), which is available from the U.S. Department of Labor's Bureau of Labor Statistics. Real stock returns are computed as the month on month growth rate of real stock prices, where real stock prices are the Standard & Poor's (S&P) 500 index deflated by the consumer price index. The S&P 500 index is available at <http://www.multpl.com/s-p-500-historical-prices/table/by-month>.