

Föll, Tobias; Hartmann, Anna

**Conference Paper**

## A Joint Theory of Polarization and Deunionization

Beiträge zur Jahrestagung des Vereins für Socialpolitik 2019: 30 Jahre Mauerfall - Demokratie und Marktwirtschaft - Session: Labor Economics VII, No. D10-V2

**Provided in Cooperation with:**

Verein für Socialpolitik / German Economic Association

*Suggested Citation:* Föll, Tobias; Hartmann, Anna (2019) : A Joint Theory of Polarization and Deunionization, Beiträge zur Jahrestagung des Vereins für Socialpolitik 2019: 30 Jahre Mauerfall - Demokratie und Marktwirtschaft - Session: Labor Economics VII, No. D10-V2, ZBW - Leibniz-Informationszentrum Wirtschaft, Kiel, Hamburg

This Version is available at:

<https://hdl.handle.net/10419/203558>

**Standard-Nutzungsbedingungen:**

Die Dokumente auf EconStor dürfen zu eigenen wissenschaftlichen Zwecken und zum Privatgebrauch gespeichert und kopiert werden.

Sie dürfen die Dokumente nicht für öffentliche oder kommerzielle Zwecke vervielfältigen, öffentlich ausstellen, öffentlich zugänglich machen, vertreiben oder anderweitig nutzen.

Sofern die Verfasser die Dokumente unter Open-Content-Lizenzen (insbesondere CC-Lizenzen) zur Verfügung gestellt haben sollten, gelten abweichend von diesen Nutzungsbedingungen die in der dort genannten Lizenz gewährten Nutzungsrechte.

**Terms of use:**

*Documents in EconStor may be saved and copied for your personal and scholarly purposes.*

*You are not to copy documents for public or commercial purposes, to exhibit the documents publicly, to make them publicly available on the internet, or to distribute or otherwise use the documents in public.*

*If the documents have been made available under an Open Content Licence (especially Creative Commons Licences), you may exercise further usage rights as specified in the indicated licence.*

# A Joint Theory of Polarization and Deunionization<sup>\*</sup>

Tobias Föll<sup>1</sup>, Anna Hartmann<sup>1</sup>

---

## Abstract

Over the past 50 years, the U.S. and several European labor markets have undergone two most incisive developments: job market polarization and deunionization. In this paper, we argue that routine-biased technical change is not only the driving force behind polarization, as prevalently assumed, but that routine-biased technical change is the common driving force behind both deunionization and polarization. In a search and matching framework with endogenous occupational and endogenous union membership choices, we show that the shift in employment and income shares in favor of high-skill and low-skill occupations worsens the bargaining position of unions, which crucially depends on the occupational structure inside a firm. This directly affects the membership choice of workers, who base their decision on the potential union wage premium. The ensuing deunionization provides further incentives for middle-wage workers to switch occupations and thus amplifies both job market polarization and the increasing income inequality.

*Keywords:* Labor markets, Inequality, Search and matching, Unions, Occupational choice

*JEL classification:* E02; E24; J51; J62; J64; O33

---

---

<sup>\*</sup>We are very grateful to Michael Krause and Christian Bredemeier for all their guidance and support. For many useful comments we are also grateful to Almut Balleer, David Dorn, Ilse Lindenlaub, Johannes Pfeifer, Robert Shimer, Christian Siegel, Hale Utar, and seminar participants at Barcelona GSE and Cologne.

*Email addresses:* foell@wiso.uni-koeln.de (Tobias Föll),  
anna.hartmann@wiso.uni-koeln.de (Anna Hartmann)

<sup>1</sup>Center for Macroeconomic Research, University of Cologne

## 1. Introduction

Job market polarization and deunionization have radically changed the labor market over the last decades. Job market polarization refers to the falling employment shares in middle-skill occupations and increasing shares in low-skill and high-skill occupations.<sup>1</sup> The share of routine employment in the U.S. has been continuously decreasing and is now almost 10 percentage points below the value in the 1980s. Deunionization describes the ongoing decline in union membership rates that is accompanied by an increase in inequality.<sup>2</sup> According to the Union Membership and Coverage Database constructed by Hirsch and Macpherson and described in Hirsch and Macpherson (2003), U.S. private sector union membership rates declined from 24.2% in 1973 to 6.5% in 2017. This decline is present throughout various industries and occupations.

In this paper, we argue that job market polarization and deunionization have a common driving force in the form of routine-biased technical change. Figure 1 plots the relative price for investment goods, the employment share of workers in routine occupations and the union membership rate for U.S. data between 1955 and 2005.<sup>3</sup> The relative price of investment goods has decreased since the 1970s.<sup>4</sup> Both the share of routine workers and the union membership rate have declined since the 1970s, with the rate of change increasing in the 1980s. From 1990 onwards, the decline of both series slowed down again.

The prevalent explanation for polarization is the routinization hypothesis, which relies on the assumption that machines or computers replace middle-wage workers in occupations performing routine tasks.<sup>5</sup> The non-routine

---

<sup>1</sup>Empirical studies on this phenomenon include the seminal work by Autor et al. (2006), Goos and Manning (2007), Goos et al. (2009), Autor and Dorn (2013), and Kerr et al. (2016) among many others.

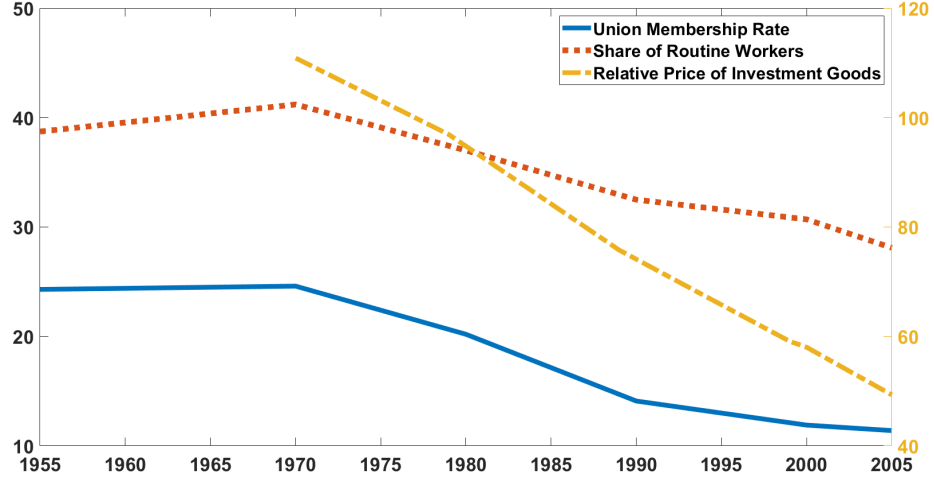
<sup>2</sup>Important contributions include Troy and Sheflin (1985), Waddington and Whitston (1997), Baldwin (2003), Checchi et al. (2010), and Frandsen (2012).

<sup>3</sup>The FRED series for the relative price of investment goods is measured as the investment deflator divided by the consumption deflator. The relative price for investment goods was chosen over the price for computer capital since data on the latter is more reliable and is available for a longer time period.

<sup>4</sup>Hubmer (2018) argues that there has been a substantial acceleration in the decrease of the relative price of equipment and software since 1982.

<sup>5</sup>See, for example, Autor et al. (2003), Autor et al. (2006), Autor and Dorn (2013), Michaels et al. (2014), and Feng and Graetz (2015). Other explanations are for example offshoring and changing institutions. Goos et al. (2009) develop and estimate a simple

Figure 1: Relative Price for Investment Goods, Share of Routine Workers, and U.S. Union Membership Rate



Note: The share of workers in routine occupations is constructed using the dataset and the occupational classification from Autor and Dorn (2013). Union membership rates are constructed using data from Mayer (2004), who merges data calculated by the CRS from the monthly Current Population Survey with data from the BLS and the Union Membership and Coverage Database. The relative price for investment goods is plotted as an index with 1977 = 100. Since computer capital played no major role before 1970, the series for the relative price of investment goods from the FRED is not displayed for the time period between 1955 and 1970.

nature of tasks performed by low-wage and high-wage workers means that their jobs are difficult to automate. Unlike for job polarization, no consensus has yet emerged regarding the source of deunionization.<sup>6</sup> Up until now, technical change as a cause for deunionization has received scant attention in the literature.<sup>7</sup>

---

model to capture the effects of technology, globalization, institutions and product demand effects on the demand for different occupations in Western Europe. Their results suggest that the routinization hypothesis of Autor et al. (2003) is the single most important factor behind the observed shifts in employment structure.

<sup>6</sup>Explanations range from technological and organisational changes to globalisation, the decline of the manufacturing sector, the expansion of flexible forms of work, and population ageing.

<sup>7</sup>The few papers combining deunionization and technical change are Acemoglu et al.

Deunionization and polarization have both proven to be especially harmful for middle-wage workers: job market polarization because the relative shifts in labor demand away from routine occupations have suppressed wage growth in that area, and deunionization because unionization rates are highest among middle-skill workers and those are also the workers that tend to be favored by union wage schedules. American middle class workers have been in focus for U.S. politicians not just since President Barack Obama declared himself "a warrior for the middle class" in his speech on the middle class on July 24, 2013. Even though the share of U.S. households classified as middle class by the American Institute for Economic Research has declined steadily since the 1980s, in 2013 still roughly 50% of households count as middle class. Thus, identifying and implementing suitable policies to support the middle class has become an ever more pressing issue for today's policymakers, especially considering the recent trends of political radicalization among this group.

To the best of our knowledge, we are the first to explain both job market polarization and deunionization by a common source and the first to combine routine-biased technical change with an endogenous union membership decision in an economic model. This allows us to study job market polarization and deunionization in a joint theoretical framework. While outlining our model setup, we give a detailed description of labor market facts on job market polarization, union structure, and deunionization that a theoretical model should take into account.

We introduce an endogenous occupational decision and an endogenous union membership decision into a search and matching model of the labor market. Workers are heterogeneous and differ with respect to their ability. When unemployed, previous routine workers can decide to remain routine workers or to switch to manual occupations. Similar to the structure proposed in Taschereau-Dumouchel (2017), employed workers decide via an election whether they want to form a union, and consequently a collective bargaining unit, or bargain individually about their wages with the firm.<sup>8</sup> If the majority of a bargaining unit votes in favor of the union, they receive wage payments according to a union wage schedule through which the union

---

(2001), Açıkgöz and Kaymak (2014) and Dinlersoz and Greenwood (2016).

<sup>8</sup>A bargaining unit is commonly defined as a group of employees that shares a set of interests and may be reasonably represented by a collective bargaining agreement.

distributes its share of the joint surplus.

The main mechanism behind our results is quite simple. Computer capital, which is able to replace routine tasks, becomes cheaper. This diminishes the demand for routine workers, whereas abstract and manual workers, who are complementary to routine tasks, are in great demand. The change in the labor demand structure influences workers wages, which provides incentives for routine workers to switch occupations. Non-union wages for workers employed in manual and abstract tasks increase by more than non-union wages for routine workers. Union wages are determined by the share of the total surplus that the union receives and by the rigid union wage schedule. The drop in the price for computer capital positively affects the total surplus which is distributed among all workers in the bargaining unit. In line with the empirical literature, relatively unskilled middle-wage workers employed in routine occupations receive the highest wage premium. As a consequence, the non-union wages for manual workers experience a stronger increase relative to their union wages. This leads to a drop in the union wage premium for low-skilled workers and discourages them from voting in favor of a union.<sup>9</sup>

The model is calibrated to match U.S. data for the time period between 1977 and 2005. We simulate an economy with heterogeneous unions that differ with respect to their bargaining power. In such a setup, and in line with the empirical evidence, those unions with the lowest bargaining power and the lowest union wage premium will be the first to disappear. Hirsch and Schumacher (2004) estimate an increasing union wage premium in the early 1930s and in the late 1970s to early 1980s. Both periods were, according to Troy and Sheflin (1985), preceded by years with exceptionally large numbers of union termination. Thus, the model presented here is able to reconcile the falling union membership rates with a constant or even increasing union wage premium. Furthermore, since unionization rates among low-skilled and middle-skilled workers decrease, the average union member does not become less skilled over time. This accords with the empirical evidence in Farber et al. (2018), who show that union members became more rather than less skilled over the last decades. Models linking deunionization to skill-biased rather than routine-biased technical change, for example Acemoglu et al.

---

<sup>9</sup>This is in line with Checchi et al. (2010) who argue that disillusion with respect to potential wage growth is the reason for declining membership rates among the least-skilled workers.

(2001), contrast strongly with this empirical observation.

Predicted changes in employment per capita, employment shares, wages, and union membership rates are all close to the data. The simulation suggests that up to 25% of the changes in employment per capita for routine and manual workers are driven by deunionization, since the loss of their large union wage premium leads to switches of formerly unionized routine workers to manual occupations. In line with Frandsen (2012), Checchi et al. (2010), and DiNardo and Lee (2004) the average effects of deunionization on wages and thus also on income inequality are modest: in the model unions reduce inequality by 6%, and roughly 10% of the increase in income inequality between 1977 and 2005 is caused by the termination of unions. However, the effects on the mid-wage workers favored by the union wage schedule are substantial. For the lower-skilled formerly unionized routine workers, the model predicts a wage increase of about 2% compared to an estimated increase of 13% in a scenario without deunionization. For that group of workers about 25% of the increase in income inequality compared to the highest skilled workers is due to deunionization. Additionally, over 25% of the decrease in the income share of lower-skilled mid-wage workers can be associated with union termination.

In view of our results, the increase in inequality could be lessened if unions were able and willing to adjust to the recent developments on the labor market. However, empirical evidence suggests that unions are troubled by rigid structures that partly prevent them from meeting today's challenges. Waddington (2005) argues that trade union practices are perceived as formal and old-fashioned and that the representative structures inside unions are often inappropriate for the participation of all members. This is in line with the evidence that the decline in membership rates can mostly be attributed to the failure of unions to recruit young members. While membership rates decline across all age groups, according to data from the Bureau of Labor Statistics, membership rates for workers aged between 16 and 24 declined at twice the rate of overall membership between 2002 and 2012. Data on the evolution of the median age of union members points in the same direction. Dunn and Walker (2016) point out that over half of all U.S. union members are between 45 and 64 years of age. Thus, it seems that unions are mostly controlled and influenced by older members that might display a tendency to stick to established practices. The recent article "Technology may help to revive organised labour" in *The Economist* (2018) puts forth the argument that new technology could help unions to regain members. This argument is

supported by the example of a union of Youtube employees that was formed by potential members joining a facebook group. While the example might be nothing more than a marketing gag, it seems obvious that a more modern structure is needed in order for unions to attract more and especially younger members.

The remainder of the paper is organized as follows. Previous research and the links between job market polarization and deunionization are discussed in the next section. The model is presented in Section 3 and Section 4 describes the quantitative analysis in detail. Policy implications are discussed in Section 5. To conclude, the results are summarized in Section 6.

## 2. Linking Polarization and Deunionization

Since both polarization and deunionization are prevalent topics in the empirical literature, we are not the first to think about potential linkages between these two phenomena. Autor (2010) argues that while unions did contribute to the changing employment patterns, it is unlikely that deunionization is one of the main causes of job market polarization due to the fact that unions only have a very limited ability to affect employment levels. Goos et al. (2009) find that changes in general wage-setting institutions play only a minor role in explaining job polarization. However, as Firpo et al. (2009) propose, deunionization might have played a larger role for wage polarization: since unions tend to compress the distribution of earnings, falling unionization rates might lead to a widening of the wage gap. While it seems unlikely that deunionization caused job market polarization, the reverse appears to be more plausible. With jobs and workers in the middle of the skill distribution disappearing, coalitions between workers of different skill groups are likely to become harder to maintain.<sup>10</sup>

We argue that job market polarization and deunionization have a common cause in routine-biased technical change. Overall union membership rates in the U.S. began to decrease in the late 1950s, which is usually explained by political resistance and the sharp increase in labor force participation of

---

<sup>10</sup>The former link has been put forward in multiple studies including but not limited to Alderson and Nielsen (2002), DiNardo et al. (1996), Freeman (1980), and Rueda and Pontusson (2000). The latter approach has received only very little attention in the literature.



women who tend to be less unionized.<sup>11</sup> However, the number of private sector union members increased until the 1970s, with the increase in the 1960s being similar in size to the increase in the 1940s. Furthermore, the statistics on union creation and termination in Troy and Sheflin (1985) show that in no year since the late 1890s were more unions started than in 1970. The most terminations since 1920 are observed in 1980, while in the 1950s and 1960s almost no unions were terminated. This evidence on the declining union membership rates fits well with the starting point of job polarization. Job polarization, and to a lesser extent also wage polarization can be observed in the U.S. and several European countries at least since the 1980s. In line with this evidence, Meyer (2017) finds a positive cross country correlation between union density and routine task intensity.

Figure 2: Polarization and Deunionization across Countries

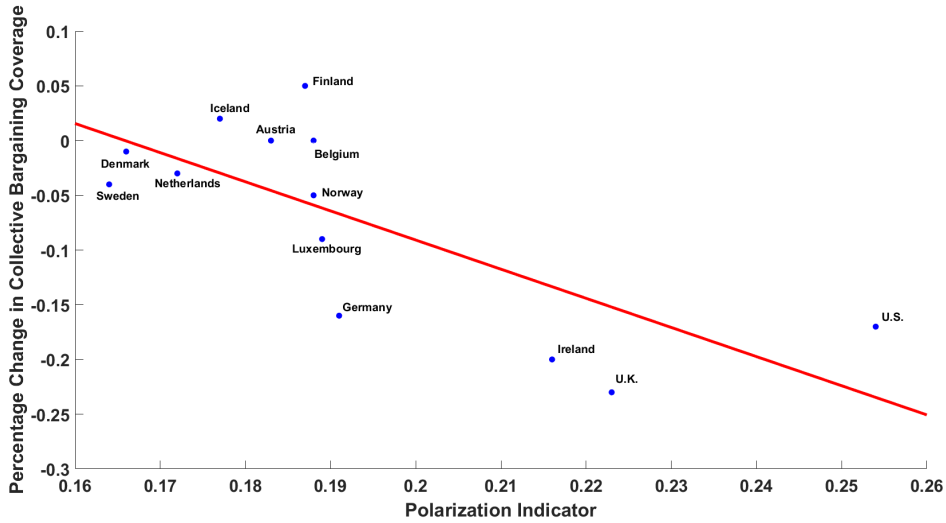


Figure 2 plots the polarization indicator developed in Duclos et al. (2004) against the change in the collective bargaining coverage for the U.S. and several European countries. For all countries, the polarization indicator is calculated for the year 2004. The percentage changes in collective bargaining coverage are calculated based on OECD data on the share of employed workers covered by a collective bargaining agreement in 2000 and 2015. The red line is the result of an OLS regression of the polarization indicator on the percentage change in collective bargaining coverage. The coefficient of determination is 0.54.

<sup>11</sup>See, for example, Oh (1989) and Troy and Sheflin (1985).

Figure 2 plots the polarization indicator developed in Duclos et al. (2004) against the change in the collective bargaining coverage for the U.S. and several European countries.<sup>12</sup> Despite the small sample size, the negative coefficient in the OLS regression of the polarization indicator on the percentage change in collective bargaining coverage is statistically significant at the 5%-level. The coefficient of determination,  $R^2$ , is equal to 0.54.<sup>13</sup>

Since the 1980s, the decline in U.S. union density has accelerated perceptibly. At about the same time, union membership rates began to decline in many European countries. The decline in union membership rates is on average more pronounced in countries with larger degrees of job and wage polarization. This is visible when comparing the U.S. to Europe or Canada, but also within the group of European countries. The Nordic countries, which experienced upgrading rather than polarization, exhibit constant or even increasing union membership rates. Relatively stable union membership rates can be observed for Canada. In accordance to that observation, Green and Sand (2015) show that until 2005 the Canadian wage pattern exhibits increasing inequality with greater growth in high paid than middle paid occupations and greater growth in middle than low paid occupations.

The evidence presented in this section exposes that, contrary to the common believe, there is little discrepancy in timing between the two phenomena of job market polarization and deunionization. This motivates us to study the effect of routine-biased technical change on both phenomena in a joint theoretical framework. Our focus lies on the way in which technology influences the occupational choice of workers and how this is reflected in the bargaining between firms, individual workers, and unions. For that reason, we employ a search and matching model à la Mortensen and Pissarides (1994) with heterogeneous workers, endogenous occupational choice, and endogenous union membership choice. The positive match surplus due to search frictions allows us to examine different bargaining regimes. Our work bridges the gap

---

<sup>12</sup>In contrast to the U.S., the differences between union membership rates and the percentage of workers covered by a collective bargaining agreement are large for most of the European countries. Thus, when looking at the changes in union influence, the share of workers covered by a collective bargaining unit seems to be more appropriate. The results also hold when exchanging the change in collective bargaining coverage for the change in union density.

<sup>13</sup>When excluding the U.S., U.K., and Ireland from the sample, the beta coefficient stays strongly negative but becomes insignificant.

between the literature that deals with the changing employment structures and the literature on deunionization.

The empirical literature on job market polarization is quite extensive, starting with the seminal work by Autor et al. (2006) that first documents stronger wage and employment growth for low-wage and high-wage occupations in the U.S. Other influential papers include Goos and Manning (2007), Goos et al. (2009), and Autor and Dorn (2013). These papers establish the presence of job polarization for the UK, across European countries, and in the U.S., respectively. However, few studies analyze these developments in a theoretical framework. We follow the theoretical framework of Albertini et al. (2017), who develop a multi-sectoral search and matching model with endogenous occupational choice to examine the impact of task-biased technical change. Other related work includes Jaimovich and Siu (2012), Zago (2017), Nellas and Olivieri (2011), and von Brasch et al. (2018). Jaimovich and Siu (2012) use a simple search and matching model with occupational choice and routine-biased technical change to explain job polarization and jobless recoveries. Zago (2017) studies the effect of job polarization and the Great Recession on the allocation of skills across occupations in a model which combines elements of a Diamond-Mortensen-Pissarides search and matching framework with a model of cross-skill mismatch. Nellas and Olivieri (2011) analyze the joint effect of technology and institutions on labor market changes. von Brasch et al. (2018) analyze the effect of deunionization on job polarization in a small open economy model.

Technical change as a source for deunionization has received very little attention in the literature. Acemoglu et al. (2001) show that skill-biased technical change can trigger deunionization by increasing the outside option of skilled workers. In their model, deunionization is entirely driven by quitting high-skilled workers. This stands in sharp contrast to the empirical evidence in Açıkgöz and Kaymak (2014) and Farber et al. (2018). Açıkgöz and Kaymak (2014) show that union coverage declines over all skill types with middle-skilled workers losing the largest proportion. Farber et al. (2018) provide evidence for union members becoming more and not less skilled over time. Açıkgöz and Kaymak (2014) are the first to study deunionization in a search and matching framework with an endogenous union membership decision. In their model it is a rise in the skill premium that encourages the most skilled workers to leave the union, while unions themselves decide to get rid of the least skilled workers. Dinlersoz and Greenwood (2016) focus on the connection between technology, unionization, and inequality. In a

general equilibrium model of unionization with heterogeneous firms, skilled, and unskilled labor, they show that when the productivity of unskilled labor is high, the union decides to organize a lot of firms and demands generous wages for its members.

A large literature analyzes search and matching models à la Mortensen and Pissarides (1994) with collective wage bargaining, but only a few are dealing with the phenomenon of deunionization. Pissarides (1986) introduces a monopoly union into the Pissarides (1985) framework, and studies the impact on equilibrium outcomes in the labor market. Ortigueira (2006) provides an explanation for the initial establishment of collective wage bargaining and deunionization in a search and matching model. In his model, the setup of unions and its collapse can be accounted for in terms of the interplay of fiscal and technological links among different types of workers. In Taschereau-Dumouchel (2017) unions are created by a majority vote within a firm. The possibility of unionization distorts the behavior of non-union firms, who over-hire high-skill workers, who vote against the union. Bauer and Lingens (2010) study the welfare and employment effects of individual versus collective bargaining in a large firm search model with homogeneous workers. Krusell and Rudanko (2016) analyze a labor market with search and matching frictions, homogeneous workers, and decreasing returns to scale in production where wage setting is characterized by collective bargaining. They find that wage solidarity leaves the unionized labor market vulnerable to potentially substantial distortions due to hold-up. Garibaldi and Violante (2005) and Boeri and Burda (2009) study the effects of employment protection policies, and Ebell and Haefke (2009) the effects of product market regulation. These papers generally introduce unions as an explanation for exogenous wage compression.

### 3. Model

In this section, we present a discrete time search and matching model with an endogenous occupational and an endogenous union membership choice. Workers are heterogeneous, differ with respect to their ability  $\eta$ , and are born as either manual, routine, or abstract workers. For each ability level there is a continuum of workers. As depicted in Figure 3, when unemployed, workers formerly employed in routine tasks can choose to switch occupations and join

the unemployment pool of manual workers.<sup>14</sup> In our model, in the spirit of Taschereau-Dumouchel (2017) unions arise endogenously through elections within firms.<sup>15</sup> When a simple majority of the respective bargaining unit votes in favor of a union, a collective bargaining agreement is formed and wages are bargained collectively between the respective firm and the union. The collective bargaining agreement covers all workers in the bargaining unit, regardless of whether or not the worker votes in favor of the union.<sup>16</sup> Thus, in our model deunionization works through within-industry shifts in unionization rates rather than between-industry shifts in employment. This is consistent with the evidence presented in Baldwin (2003). A firm uses computer technology  $K$  and workers in abstract  $L^a(\eta)$ , routine  $L^r(\eta)$  and manual jobs  $L^m(\eta)$  as input factors.<sup>17</sup> Routine workers can be substituted by computer technology  $K$ , whereas abstract and manual workers are complementary to routine tasks. Routine-biased technical change is introduced through falling computer capital prices.

As shown in Figure 4, the model is characterized by two different types of thresholds: one concerning the occupational choice of workers and one concerning the union membership decision. The occupational threshold between manual and routine workers is denoted by the ability level  $\eta_m$ . Workers born with an ability level greater than  $\eta_m$  work in routine occupations. Following Albertini et al. (2017), workers have homogeneous skills at performing manual tasks. This is consistent with the view that blue-collar workers differ in performing their tasks on the assembly line, while for manual workers like

---

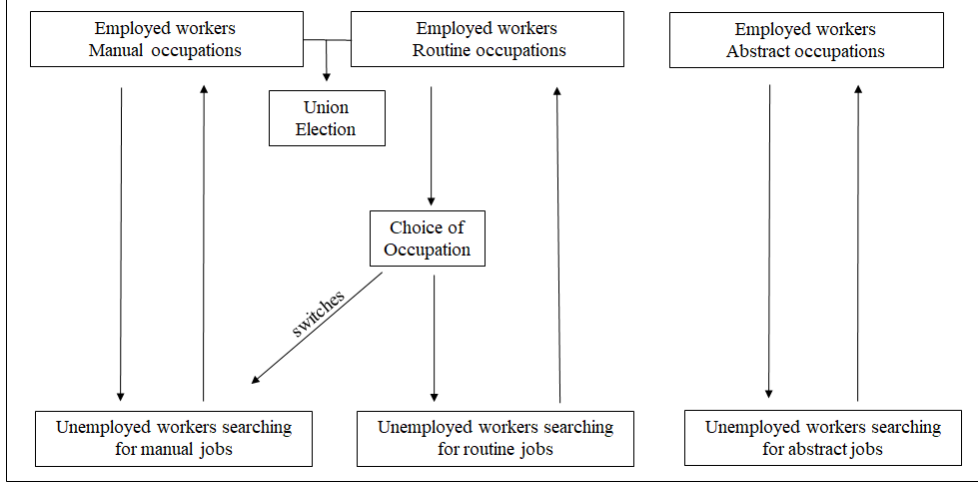
<sup>14</sup>To ease notation, and in line with empirical evidence, we abstract from other switches.

<sup>15</sup>As the production function features constant returns to scale, in contrast to Taschereau-Dumouchel (2017), firms have no incentive to overhire high-wage and low-wage, and underhire middle-wage workers in our model.

<sup>16</sup>In the simulation the bargaining unit will, as depicted in Figure 3, consist of all manual and routine workers. However, the general model setup presented here allows for a wide range of different bargaining units. Subsection 3.6 takes a closer look at our specific choice of the bargaining unit.

<sup>17</sup>Evidence presented in Kerr et al. (2016) suggests that within-firm polarization is at least as important as between-firm polarization. Tüzemen and Willis (2013) show that job market polarization is mainly driven by changes in employment composition within industries, with changes across industries accounting only for a minor part. Contrary to conventional modeling strategies, the largest part of polarization is not explained by shifts away from industries such as manufacturing but by shifts from middle-skilled to low- and high-skilled jobs within industries

Figure 3: Labor Market Flows



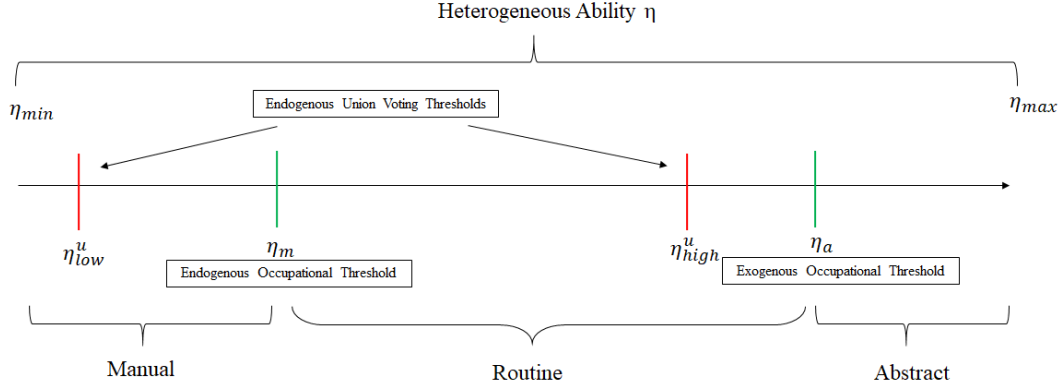
janitors differences in ability do not translate into differences in performing their jobs. In line with the empirical evidence in Smith (2013), labor supply of abstract workers is exogenous. The greatest part of the increase in high-skilled labor supply is not due to switches from former routine workers but due to increased educational attainment. The occupational threshold between routine and abstract workers is denoted by the ability level  $\eta_a$ .

The second type of threshold is related to the union voting decision of workers. Workers can decide to form a union which bargains with the firm and distributes the surplus according to a union wage schedule. If a majority of the workers in a bargaining unit votes against a union, each worker bargains with the firm individually.<sup>18</sup> Relative to individual bargaining, the union has a stronger threat point which leads to an increase in wages for workers within a specific range of abilities. The voting decision of an individual worker is endogenously determined by comparing union and non-union wages, and thus directly depends upon the potential union wage premium. There are two ability thresholds in the model regarding the union voting decision of workers denoted by  $\eta_{low}^u$  and  $\eta_{high}^u$  (with  $\eta_{low}^u > \eta_{high}^u$ ). All workers with ability levels between these two thresholds receive a positive union wage premium and therefore decide to vote in favor of the union. Thus, whether

<sup>18</sup>This setup is in line with the institutional framework for U.S. unions described in detail in Subsection 3.6.

a union is established or not depends crucially on the composition of the workforce in a firm.

Figure 4: Occupational and Union Membership Choice



Note: The exact position of the voting thresholds crucially depends upon the union bargaining power and the union wage schedule.

### 3.1. Labor Market Frictions

Labor markets are characterized by search and matching frictions à la Mortensen and Pissarides (1994). Search is directed, as there are labor sub-markets for each of the three occupations and for each ability level  $\eta$ . Within each pool, vacancies and unemployed workers are matched randomly in any period. Given the number of vacancies  $v_i(\eta)$  posted and the share of unemployed workers  $u_i(\eta)$  for every occupation and every ability level  $\eta$ , the number of matches is determined by the following Cobb-Douglas matching technology

$$m_i(\eta) = \Psi v_i(\eta)^\psi u_i(\eta)^{1-\psi} \text{ where } 0 < \psi < 1 \text{ and } i = a, r, m.$$

A vacancy is filled with probability  $q_i(\eta) = \frac{m_i(\eta)}{v_i(\eta)}$  and the job finding probability is  $f_i(\eta) = \frac{m_i(\eta)}{u_i(\eta)}$ . The labor market tightness is defined as the ratio  $\theta_i(\eta) \equiv \frac{v_i(\eta)}{u_i(\eta)}$ . When the labor market is tight, many firms compete for few unemployed workers. The job finding probability is high but the job filling rate is low.

### 3.2. Occupational Choice

Workers can either be employed in abstract, routine, or manual tasks. Existing jobs are destroyed at the exogenous rates  $s_i$ , with  $i = a, r, m$ . When fired, routine unemployed workers can choose to remain routine workers or to switch occupations and join the pool of unemployed workers looking for manual jobs. The value functions for union workers employed in the respective occupations are given by

$$\begin{aligned} W_a^u(\eta) &= w_a^u(\eta) + \Gamma + \beta[(1 - s_a)(1_{u,+1}W_{a,+1}^u(\eta) + (1 - 1_{u,+1})W_{a,+1}^n(\eta)) \\ &\quad + s_a U_{a,+1}(\eta)], \\ W_r^u(\eta) &= w_r^u(\eta) + \Gamma + \beta[(1 - s_r)(1_{u,+1}W_{r,+1}^u(\eta) + (1 - 1_{u,+1})W_{r,+1}^n(\eta))] \\ &\quad + \beta s_r \max \{U_{m,+1}(\eta), U_{r,+1}(\eta)\}, \\ W_m^u(\eta) &= w_m^u(\eta) + \Gamma + \beta[(1 - s_m)(1_{u,+1}W_{m,+1}^u(\eta) + (1 - 1_{u,+1})W_{m,+1}^n(\eta)) \\ &\quad + s_m U_{m,+1}(\eta)], \end{aligned}$$

where  $w_a^u(\eta)$ ,  $w_r^u(\eta)$  and  $w_m^u(\eta)$  denote the wage received by a union worker and  $w_a^n(\eta)$ ,  $w_r^n(\eta)$  and  $w_m^n(\eta)$  the wage received by a non-union worker with ability  $\eta$  in abstract, routine and manual tasks respectively.  $\Gamma$  denotes government transfers received by the households.  $1_u$  is an indicator function with  $1_u = 1$  if and only if the worker is a union member. If a simple majority of a bargaining unit votes in favor of a collective bargaining agreement, a union is created and wages are bargained collectively between the firm and the respective bargaining unit. The collective bargaining agreement covers all workers in the bargaining unit, regardless of whether or not the worker votes in favor of the union. If the vote fails to gain majority support, the firm remains union-free and wages are bargained individually between each worker and the firm. Therefore the term  $1_{u,+1}$  indicates if a worker in the firm is covered by a collective bargaining regime in the next period. The term  $\max \{U_{m,+1}(\eta), U_{r,+1}(\eta)\}$  governs the occupational choice of routine workers when unemployed in the next period. The non-union workers value



functions are given by

$$\begin{aligned}
W_a^n(\eta) &= w_a^n(\eta) + \Gamma + \beta[(1 - s_a)(1_{u,+1}W_{a,+1}^u(\eta) + (1 - 1_{u,+1})W_{a,+1}^n(\eta)) \\
&\quad + s_a U_{a,+1}(\eta)], \\
W_r^n(\eta) &= w_r^n(\eta) + \Gamma + \beta[(1 - s_r)(1_{u,+1}W_{r,+1}^u(\eta) + (1 - 1_{u,+1})W_{r,+1}^n(\eta))] \\
&\quad + \beta s_r \max \{U_{r,+1}(\eta), U_{a,+1}(\eta), U_{m,+1}(\eta)\}, \\
W_m^n(\eta) &= w_m^n(\eta) + \Gamma + \beta[(1 - s_m)(1_{u,+1}W_{a,+1}^u(\eta) + (1 - 1_{u,+1})W_{a,+1}^n(\eta)) \\
&\quad + s_m U_{m,+1}(\eta)].
\end{aligned}$$

When unemployed, workers lose their union membership.<sup>19</sup> Therefore, the value functions for unemployed workers are identical for former union and former non-union members and given by

$$\begin{aligned}
U_a(\eta) &= z_a(\eta) + \beta[(1 - f_a(\eta))U_{a,+1} + f_a(\eta)(1_{u,+1}W_{a,+1}^u(\eta) \\
&\quad + (1 - 1_{u,+1})W_{a,+1}^n(\eta))], \\
U_r(\eta) &= z_r(\eta) + \beta[(1 - f_r(\eta)) \max \{U_{m,+1}^n(\eta), U_{r,+1}^n(\eta)\} + f_r(\eta)(1_{u,+1}W_{r,+1}^u(\eta) \\
&\quad + (1 - 1_{u,+1})W_{r,+1}^n(\eta))], \\
U_m(\eta) &= z_m(\eta) + \beta[(1 - f_m(\eta))U_{m,+1} + f_m(\eta)(1_{u,+1}W_{m,+1}^u(\eta) \\
&\quad + (1 - 1_{u,+1})W_{m,+1}^n(\eta))],
\end{aligned}$$

where  $z_a(\eta)$ ,  $z_r(\eta)$  and  $z_m(\eta)$  denote the unemployment benefits received by abstract, routine and manual workers with ability  $\eta$ .

### 3.3. Firms

Good-producing firms use three intermediates goods,  $Z_a$ ,  $Z_r$  and  $Z_m$ , as input factors to produce the final product  $Y$ .  $Z_a$  is produced with abstract jobs  $L^a$ ,  $Z_r$  with computer technology  $K$  and routine workers  $L^r(\eta)$  and  $Z_m$  with manual jobs  $L^m(\eta)$ . Routine workers and computer technology  $K$  are close substitutes, whereas abstract and manual workers are complementary

---

<sup>19</sup>This is in line with Lewis (1989) who finds that unions are not perceived to represent the interests of the unemployed.

to routine tasks. Due to constant returns to scale in production, the firms maximization problem can be solved in two steps. The firms problem is given by

$$\begin{aligned} \Pi &= \max\{Y - p_{Z_a}Z_a - p_{Z_r}Z_r - p_{Z_m}Z_m\} \\ \text{s.t. } Y &\leq [(AZ_a^\alpha Z_r^{1-\alpha})^\rho + (A_m Z_m)^\rho]^{1/1-\rho}. \end{aligned}$$

Firms maximize profits by choosing employment next period and the number of vacancies to be posted, subject to the firm-level employment constraint. Job creation comes at a flow cost of  $c_a$ ,  $c_r$ , and  $c_m$ . The behavior of firms in producing the intermediate good  $Z_a$  using workers in abstract non-routine cognitive jobs  $L_a$  is described by

$$\begin{aligned} \Pi^{Z_a} &= \max \left\{ p_{Z_a}Z_a - 1_u w_a^u L_a - (1 - 1_u) w_a^n L_a - c_a v_a + \beta \Pi_{+1}^{Z_a} \right\} \\ \text{s.t. } Z_a &\leq L_a \\ L_{a,+1} &= (1 - s_a)L_a + q_a v_a, \end{aligned}$$

$L_{a,+1}$  denotes the total abstract workforce with ability level next period.  $1_u$  is again the indicator function with  $1_u = 1$  indicating if the workforce in the firm is covered by a collective bargaining regime.

The behavior of firm in producing the intermediate good  $Z_r$  using workers in routine tasks  $L_r(\eta)$  and computer technology  $K$  is described by

$$\begin{aligned} \Pi^{Z_r} &= \max \left\{ p_{Z_r}Z_r - p_K K - 1_u \int_{\eta}^{\bar{\eta}} w_r^u(\eta) L_r(\eta) - (1 - 1_u) \int_{\eta}^{\bar{\eta}} w_r^n(\eta) L_r(\eta) \right. \\ &\quad \left. - c_r \int_{\eta}^{\bar{\eta}} v_r(\eta) + \beta \Pi_{+1}^{Z_r} \right\} \\ \text{s.t. } Z_r &\leq \left[ \left( (1 - \mu) \int_{\eta}^{\bar{\eta}} \eta L_r(\eta) \right)^\sigma + (\mu K)^\sigma \right]^{\frac{1}{\sigma}} \\ L_{r,+1}(\eta) &= (1 - s_r)L_r(\eta) + q_r(\eta)v_r(\eta) \end{aligned}$$

where  $\bar{\eta}$  denotes the exogenous ability threshold between workers in routine and abstract tasks.

The behavior of firms in producing the intermediate good  $Z_m$  using workers in non-routine manual tasks  $L_m$  is described by

$$\Pi^{Z_m} = \max \left\{ p_{Z_m} Z_m - 1_u w_m^u L_m - (1 - 1_u) w_m^n L_m - c_m v_m + \beta \Pi_{+1}^{Z_m} \right\}$$

$$\text{s.t. } Z_m \leq L_m$$

$$L_{m,+1} = (1 - s_m) L_m + q_m v_m.$$

### 3.4. First Order Conditions

Defining the value of a marginal worker in abstract non-routine cognitive occupations for a firm as  $J_a$ , the first-order conditions for hiring and vacancy posting are given by

$$c_a = \mu_a q_a,$$

$$\mu_a = \beta J_{a,+1},$$

where  $\mu_a$  is the Lagrange-multiplier on the employment constraints for workers in abstract occupations. The corresponding value of a marginal worker in abstract non-routine cognitive occupations for a firm is given by

$$J_a = \eta p_{Z_a} - 1_u w_a^u - (1 - 1_u) w_a^n + (1 - s_a) \beta J_{a,+1}.$$

Defining the value of a marginal worker with ability  $\eta$  in routine occupations for firms as  $J_r(\eta)$  the first-order conditions for hiring workers in routine tasks and vacancy posting are given by

$$c_r(\eta) = \mu_r(\eta) q_r(\eta)$$

$$\mu_r(\eta) = \beta J_{r,+1}(\eta),$$

where  $\mu_r(\eta)$  is the Lagrange-multiplier on the employment constraints for a worker with ability  $\eta$  in routine occupations. The corresponding value of a marginal worker with ability  $\eta$  in routine occupations for a firm is given by

$$J_r(\eta) = p_{Z_r} y_r(\eta) - 1_u w_r^u(\eta) - (1 - 1_u) w_r^n(\eta) + (1 - s_r) \beta J_{a,+1},$$

$$\text{with } y_r(\eta) = \frac{\partial Z_2}{\partial L_r(\eta)} = \eta(1 - \mu)^\sigma [(1 - \mu)^\sigma + (\mu k)] \text{ and } k \equiv \frac{K}{\int_\eta^\eta \eta L_r(\eta)}.$$

Defining the value of a marginal worker with ability  $\eta$  in non-routine manual occupations for firms as  $J_m(\eta)$  the first-order condition for hiring workers in manual tasks and vacancy posting is given by

$$c_m = \mu_m q_m,$$

$$\mu_m = \beta J_{m,+1},$$

where  $\mu_m$  is the Lagrange-multiplier on the employment constraints for worker in manual occupations. The corresponding value of a marginal worker with ability  $\eta$  in manual occupations for a firm is given by

$$J_m = p_{Z_m} - 1_u w_m^u - (1 - 1_u) w_m^n + (1 - s_m) \beta J_{m,+1}.$$

### 3.5. Job Creation Conditions

Since firms are subject to vacancy posting costs, the Job Creation conditions are given by

$$\frac{\tilde{c}}{\tilde{q}} = \beta \tilde{J}_{+1}$$

$$\text{with } \tilde{c} = c_a, c_r, c_m,$$

$$\tilde{q} = q_a, q_r(\eta), q_m,$$

$$\tilde{J}_{+1} = J_{a,+1}, J_{r,+1}(\eta), J_{m,+1}.$$

Together with the values of marginal workers for firms, it follows that

$$\frac{c_a}{q_a} = \beta \left[ \eta p_{Z_a} - 1_{u,+1} w_a^u - (1 - 1_{u,+1}) w_a^n + (1 - s_a) \frac{c_a}{q_{a,+1}} \right],$$

$$\frac{c_r}{q_r(\eta)} = \beta \left[ p_{Z_r} y_r(\eta) - 1_{u,+1} w_r^u(\eta) - (1 - 1_{u,+1}) w_r^n(\eta) + (1 - s_r) \frac{c_r}{q_{r,+1}(\eta)} \right],$$

$$\frac{c_m}{q_m} = \beta \left[ p_{Z_m} - 1_{u,+1} w_m^u - (1 - 1_{u,+1}) w_m^n + (1 - s_m) \frac{c_m}{q_{m,+1}} \right].$$

As we are mainly interested in the long-run effect of routine-biased technical change on the economy and especially on the wage bargaining regimes, we focus on the steady state of the economy. The steady state job creation conditions are given by

$$\begin{aligned}\frac{c_a}{q_a} &= \beta \left[ \eta p_{Z_a} - 1_u w_a^u - (1 - 1_u) w_a^n + (1 - s_a) \frac{c_a}{q_a} \right], \\ \frac{c_r}{q_r(\eta)} &= \beta \left[ p_{Z_r} y_r(\eta) - 1_u w_r^u(\eta) - (1 - 1_u) w_r^n(\eta) + (1 - s_r) \frac{c_r}{q_r(\eta)} \right], \\ \frac{c_m}{q_m} &= \beta \left[ p_{Z_m} - 1_u w_m^u - (1 - 1_n) w_m^n + (1 - s_m) \frac{c_m}{q_m} \right].\end{aligned}$$

A firm hires workers of each type and each ability level  $\eta$  until the costs of labor are equal to the discounted marginal product. Here the costs consist of the vacancy posting costs plus the discounted wage minus the discounted cost of hiring next period.

### 3.6. Wage Bargaining Regimes

We integrate features of the institutional environment for U.S. unions into the model. Once a firm has hired its new workers, all manual and routine workers vote to decide whether to form a union or not. Abstract workers are excluded since they are generally not part of a bargaining unit consisting of manual and routine workers. According to the National Labor Relations Board (NLRB), professional employees who engage in predominantly intellectual and not in routine mental, manual or mechanical work are excluded from bargaining units with manual and routine workers, since they do not share a community of interests. Additionally, the unionization rate for high-skilled abstract workers has stayed roughly constant over the last decades, while estimates of the union wage premium for these workers tend to be close to zero or even negative. As pointed out by Checchi et al. (2010), the reason for union membership among the highest-skilled are mostly non-monetary and related to their normative views on inequality. Following Taschereau-Dumouchel (2017), in the model unions arise endogenously through an election. Workers vote in favor of a union if the value of being a worker in a unionized firm is a higher than the value of being a worker in a non-union firm, meaning when their respective union wage premium is positive. Therefore, a worker in routine or manual occupation with ability  $\eta$  votes in favor

of a union if

$$W_i^u(\eta) > W_i^n(\eta), \text{ with } i = r, m.$$

When a simple majority of the workers votes in favor of unionization, a union is created and wages are bargained collectively between the firm and all of its manual and routine workers.<sup>20</sup> If the majority of the bargaining unit votes against a collective bargaining agreement, wages are negotiated individually. Union and non-union wages are both determined by generalized Nash bargaining over the match surplus. However the surplus that is bargained over differs between the two bargaining regimes. Non-union workers bargain individually over their marginal product, while the union bargains over the entire match surplus of all manual and routine workers. Surpluses accruing to the matched parties are split according to a rule that maximizes the weighted average of the respective surpluses.

By way of comparison, in the U.S., unions base their right to represent workers on the voting decision of a so called bargaining unit. The National Labor Relations Act (NLRA) stipulates that only a union that demonstrates majority support in an appropriate bargaining unit can be certified as the collective bargaining representative. An appropriate bargaining unit is a group of employees in a workplace, who meet the legal test of sufficient community of interest to be represented by the union, whereby managers and supervisors are excluded from any bargaining unit. The structure of bargaining in the United States is highly decentralized, with the estimated number of separate collective bargaining agreements in the U.S. ranging between 170000 and 190000 according to the Bureau of Labor Statistics.

Oh (1989) documents a steady decrease in the importance of craft unions and an increase in the importance of industrial unions for the U.S. While the former is mostly limited to workers of a specific craft (and therefore of a specific skill group), the latter aims at including all workers employed in certain industries (and therefore covers workers of different skill groups). Moreover, most collective bargaining in the private sector takes place at the level of the individual firm.<sup>21</sup> The NLRA specifies the structure through which union organization and legal recognition takes place. This structure

---

<sup>20</sup>The wages of abstract workers will still be bargained individually between these workers and the firm.

<sup>21</sup>See, for example, Traxler (1994) and Nickell and Layard (1999).

focuses on a system of elections to determine whether a majority of employees in the workplace wants to be represented by a union. The union then becomes the exclusive representative of all employees in the bargaining unit, whether they are union members or not. If a majority of the employees votes against union representation, the unit is not represented by the union no matter if workers individually choose to be union members or not.

### *Individual Bargaining*

If a majority of the manual and routine workers votes against a union, each worker bargains individually with the firm. Denoting the worker's weight in the bargaining process by  $\gamma^n \in [0, 1]$ , this implies the following sharing rule for individual bargaining

$$W_i^n(\eta) - U_i(\eta) = \frac{\gamma^n}{1 - \gamma^n} J_i^n(\eta),$$

with  $i = a, r, m$ ,

where  $W_i^n(\eta)$  is the asset value of employment for non-union members,  $U_i(\eta)$  is the value of being unemployed, and  $J_i^n(\eta)$  is the value of the marginal non-union worker of type  $i$  to the firm. This results in the wage schedules for the three occupational types given below.<sup>22</sup>

Abstract Jobs:

$$w_a^n = \gamma^n p_{Z_a} + \gamma^n c_a \theta_a + (1 - \gamma^n) z_a$$

Routine Jobs:

$$w_r^n(\eta) = \gamma^n p_{Z_r} y_r(\eta) + \gamma^n c_r \theta_r(\eta) + (1 - \gamma^n) z_r(\eta)$$

Manual Jobs:

$$w_m^n = \gamma^n p_{Z_m} + \gamma^n c_m \theta_m + (1 - \gamma^n) z_m$$

It follows that the wages resulting from individual bargaining are given by the sum of the marginal productivity of every  $\eta$  worker in every occupation, the search returns and the outside option. This result is identical

---

<sup>22</sup>See the appendix for a detailed derivation of the wage schedules.

to the Nash-bargained wage in a standard Mortensen-Pissarides search and matching model.

As outlined above, we consider the influence of routine-biased technical change on the occupational choice and unionization decision of workers. Crucial for these decisions is the influence of routine-biased technical change on both bargaining regimes. When considering the wage schedules resulting from individual bargaining for manual, routine, and abstract workers, the positive relationship between labor market tightness and non-union wages is striking. This relationship implies that workers receive higher wages when they are relatively scarce. Routine-biased technical change reduces the demand for routine workers and increases the demand for manual and abstract workers. The total effect is a decline in both relative tightness and relative wages for routine workers and an increase in both relative tightness and relative wages for manual and abstract workers.

### *Collective Bargaining*

We consider a union which negotiates wages on behalf of both manual and routine workers within a firm. If the bargaining unit votes in favor of a union, the union bargains over the total surplus  $S^u$  of all union members. If no agreement on wages can be reached, all manual and routine workers go on a strike and the firm can only produce using abstract workers and computer capital. With risk-neutral heterogeneous workers, our approach only pins down the total share of the surplus going to the workers, not how it is shared among them. In contrast to the approach of Taschereau-Dumouchel (2017), we need to impose an additional parametric structure on union wages due to the linear nature of the union bargaining problem.

For simplicity, and to keep the degrees of freedom in choosing the wage schedule small, we assume that the union sets a constant wage for each occupation. Additionally, the share of the surplus used for each occupational group is constant over time.<sup>23</sup> This is in line with the idea that after certain union goals like equal pay for equal work are reached, the union mostly negotiates for across-the-board percentage wage increases. Empirical evidence is largely supportive of this view.<sup>24</sup> The total surplus is distributed according

---

<sup>23</sup>The results are robust to other wage schedules as well. The share of the surplus used for each group is kept constant, as employment shares in unionized firms will not change.

<sup>24</sup>Recent examples of unions that negotiated across-the-board percentage wage increases



to the following wage schedule

$$\begin{aligned}w_r^u &= S^u * x^r \\w_m^u &= S^u * x^m,\end{aligned}$$

where  $S^u$  is the total surplus of the union and  $x^r$  and  $x^m$  are the shares of the surplus that go to manual workers and routine workers, respectively.<sup>25</sup> The chosen union wage schedule tends to favor the lowest middle-wage workers the most. The data in Card et al. (2004) provides evidence for this type of union wage pattern.<sup>26</sup> Several studies support the view that the incentives for union membership are highest for middle-skilled workers. Checchi et al. (2010) show that the probability of union membership is largest for those workers earning roughly the median income. White (1982) finds that the wage structure inside the bargaining unit favors those earning the median income. Furthermore, in his literature review Schnabel (2002) shows that most of studies concerning union membership find a negative relationship between education and union membership. He argues that educated employees have greater individual bargaining power. Furthermore, he finds that workers in non-operative occupations are less likely to be union members than manual workers and that the probability of unionization first increases

---

for their members in particular firms include, among others, Communications Workers of America, United Auto Workers, and United Food and Commercial Workers. Additionally, Checchi et al. (2010) show that at least since the 1960s, unions did not attempt to change existing earnings distributions for the fear of losing high-skilled workers.

<sup>25</sup>Note that in line with empirical evidence, the union wage schedule leads to wage compression.

<sup>26</sup>Some studies argue that there exists a negative linear relationship between worker skill levels and the union wage premium with the lowest skill workers profiting the most from union membership. However, these estimates might be biased by the union membership composition and by the presence of compensating wage differentials. Studies by White (1982), Schnabel (2002) and Checchi et al. (2010) all document that union members among low-skilled workers tend to be positively selected, while union members among middle-skilled workers tend to be negatively selected. Thus, the union wage premium for low-skilled workers is likely to be overestimated, as they would earn more than their non-union counterparts even in the absence of unions. For middle-skilled workers the reverse is likely to be true. In addition, Duncan and Stafford (1980) among others establish the presence of compensating wage differentials for union workers, generating an upward bias in the estimated union wage premium. It is plausible to assume that this effects low-skilled manual workers more than routine workers and thus adds to the overestimation of the wage premium for low-skilled workers.

with earnings, and after a certain wage level decreases with wages. Estimates of the average union-nonunion wage differential across workers range from close to zero in Bryson (2002) and Frandsen (2012) to 25% in Hirsch and Schumacher (2004). Generally, more recent studies tend to find only very small wage premia on average.

Under collective bargaining, the outside option of a union member is not the value of being unemployed, but the value of being a union member during a strike.<sup>27</sup> Therefore, denoting the union's weight in the bargaining process by  $\gamma^u \in [0, 1]$ , the following surplus sharing rule holds in the case of collective bargaining

$$\max \left( \sum_i \int_{\underline{\eta}}^{\bar{\eta}} L_i^u(\eta) [W_i^u(\eta) - W^{u,s}] \right)^{\gamma^u} \left( \sum_i \left\{ p_{Z_i}(Z_i - Z'_i) - \int_{\underline{\eta}}^{\bar{\eta}} L_i(\eta) w_i^u(\eta) + \int_{\underline{\eta}}^{\bar{\eta}} L_i(\eta) (1 - s_i) \beta J_i(\eta) \right\} \right)^{1-\gamma^u}$$

with  $i = r, m$ ,

where  $W_i^u(\eta)$  is the asset value of employment for union members with productivity  $\eta$ ,  $W^{u,s}$  is the value of being a union member during a strike.  $Z_i$  is again the production of each of the three intermediate goods produced with abstract, routine and manual tasks and  $Z'_i$  the production in each of the three sectors when manual and routine workers are on a strike.

It follows that the total surplus received by the union  $S^u$  is given by <sup>28</sup>

$$S^u = \gamma^u \sum_i p_{Z_i}(Z_i - Z'_i) + \gamma^u (1 - s_i) \sum_i \int_{\underline{\eta}}^{\bar{\eta}} \frac{c_i}{q_i(\eta)} L_i(\eta) + (1 - \gamma^u) \sum_i \int_{\underline{\eta}}^{\bar{\eta}} L_i(\eta) w^{u,s}$$

with  $i = r, m$ .

The total union surplus is given by the sum of the production of all  $\eta$  workers in manual and routine occupation, the search returns, and the outside

---

<sup>27</sup>Since a match between a union-worker and a firm always generates a positive bilateral surplus the possibility of a strike is zero.

<sup>28</sup>See the appendix for a detailed derivation.

options. This is similar to the wage resulting from Nash bargaining in the standard Mortensen-Pissarides search and matching model.

As shown above, there exists a positive relationship between labor market tightness and non-union wages. Similarly, the union surplus is positively related to the number of vacancies posted. The increasing relative demand for manual workers in response to the drop in the price of computer capital increases the size of the share of the surplus the union can extract relative to the non-union wages of manual workers, while the decreased relative demand for routine workers works in the opposite direction. The surplus gain is distributed among all union workers, with middle-skill workers receiving the highest union wage premium. Thus, for low-skilled workers formerly indifferent between union and non-union wages, the increase in non-union wages is larger than the increase in union wages. The opposite is true for middle-skilled workers. Thus, due to routine-biased technical change the incentives to vote in favor of a collective bargaining agreement decrease for manual and increase for routine workers.

#### *Comparing Collective and Individual Bargaining*

The wage schedules resulting from individual bargaining,  $w_i(\eta)$ , and the total surplus received by the union  $S^u$  exhibit very similar structures. Both are a combination of a term related to the production, a term related to the outside option of the worker or workers and a term related to the hiring costs. All three terms differ between the two bargaining regimes. When bargaining breaks down under individual bargaining, the worker becomes unemployed. When collective bargaining breaks down, the worker goes on a strike.<sup>29</sup> The total surplus of the union is a function of the abilities of all manual and routine workers, while the nonunion wage is a function of the individual ability of the respective worker. Most important for our analysis is the difference in the term concerning the production. Under individual bargaining, every worker with ability  $\eta$  behaves as if he is the last hired worker. In contrast, under collective bargaining the union bargains over the production of all workers. The union has a higher implicit bargaining power due the fact that the average product of all workers employed in routine tasks with ability  $\eta$  exceeds the marginal product of a worker with ability  $\eta$

---

<sup>29</sup>If we instead assume that all union workers become unemployed when bargaining breaks down, the difference in the solutions with respect to the outside option vanishes.

performing routine tasks.<sup>30</sup> This distinction between collective and individual bargaining is an important driver behind the union membership decision.

### 3.7. Household Preferences and Demand

Households consume the good produced by the firms with input factors  $Z_a$ ,  $Z_r$  and  $Z_m$ . There are no savings. For each worker the budget constraint is given by

$$C(\eta) = I$$

with  $I \in \{w_a^n, w_r^n(\eta), w_r^u, w_m^n, w_m^u, z_a, z_r(\eta), z_m\} + \Gamma$ .

### 3.8. Government Expenditures and Transfers

Government expenditures are

$$G = z_a u_a + \sum_{\eta} z_r(\eta) u_r(\eta) + z_m u_m.$$

Firms can generate profits, which are given by

$$\Omega = \Pi^{Z_a} + \Pi^{Z_r} + \Pi^{Z_m}.$$

Therefore, the transfers received by each household are

$$\Gamma = -G + \Omega.$$

### 3.9. Equilibrium

With the model completely described, I define the equilibrium.

**Definition 1.** *An equilibrium is defined as a set of i) firm's policy functions; ii) household's policy functions; iii) a union wage schedule; iv) prices; and v) a law of motion for the aggregate states, such that: i) the firm's policies satisfy the firm's first order conditions and the job-creation conditions; ii) household's policy functions satisfy the household's first order conditions; iii) the wage is determined through individual or collective bargaining; iv) the aggregate states clear the markets; v) the law of motion for aggregate states is consistent with individual decisions and with the processes for capital prices.*

---

<sup>30</sup>This is not true for manual workers, where the average and marginal product is identical.

## 4. Quantitative Analysis

This section calibrates all the parameters discussed above to match different aspects of the U.S. data for the time period between 1977, the date from which on both polarization and deunionization can be observed in our dataset, to 2005. We use the calibrated model to assess the effects of a drop in investment capital prices on the occupational choice of workers and on union elections. For the simulation we choose a setting with heterogeneous unions that differ with respect to their bargaining power. We consider an economy that consists of a number  $N$  of independent islands that cannot interact with each other. All islands are identical except for the bargaining power of the potential union. The performance of the model is evaluated along several dimensions, especially with regard to the empirical evidence on deunionization in the U.S.

### 4.1. Calibration

The model is calibrated to quarterly frequencies. Table 1 lists the exact parameter values as well as the source that encourages the specific choice. We first calibrate the labor market variables. For the separation rates, we choose values of  $s_m = 0.13$ ,  $s_r = 0.085$ , and  $s_a = 0.05$ . These rates imply an average separation rate that is close to the actual separation rate constructed by the Bureau of Labor Statistics using the Job Openings and Labor Turnover Survey for the time period between December 2000 and June 2004 which is equal to 0.038 for the seasonally adjusted monthly time series.<sup>31</sup> The matching efficiencies are chosen to match a steady state unemployment rate of 10%. While this value is slightly larger than the actual unemployment rate in the U.S. for the given time period, it is common in the literature since the standard models do not account for workers that are not strongly attached to the labor market.<sup>32</sup> Vacancy posting costs are chosen to correspond on average to 20% of a worker's monthly steady state wage. This value is in line with the empirical evidence on worker recruitment, especially when also accounting for training costs after hiring. Unemployment benefits and strike pay are both set to zero.<sup>33</sup> All production specific parameters are chosen to

---

<sup>31</sup>The Job Openings and Labor Turnover Survey is only available since December 2000. A month is one third of a quarter. Thus, the average quarterly separation rate is roughly equal to 0.11.

<sup>32</sup>See, for example, Garín (2015), Chugh (2009), and Petrosky-Nadeau (2011).

<sup>33</sup>The results are robust to alternative parameter choices.

match data on employment per capita in 1977. As Albertini et al. (2017) demonstrate, focusing exclusively on employment shares tends to blur polarization dynamics. In order for the results to be comparable to the related literature, most of the values are taken from Albertini et al. (2017).

Table 1: Calibrated Parameters

Symbol	Interpretation	Value	Source
$\beta$	Discount factor	0.9966	Interest rate of 4%
$c$	Recruiting costs	0.3	20% of monthly wages
$c_a$	Abstract recruiting costs	0.5	20% of monthly wages
$\Psi_a$	Manual matching efficiency	0.11	Albertini et al. (2017)
$\Psi_r$	Routine matching efficiency	0.09	Albertini et al. (2017)
$\Psi_m$	Manual matching efficiency	0.067	Albertini et al. (2017)
$\psi$	Unemployment-elasticity of matching	0.5	Petrongolo and Pissarides (2001)
$s_a$	Abstract separation rate	0.05	Albertini et al. (2017)
$s_r$	Separation rate	0.085	Albertini et al. (2017)
$s_m$	Separation rate	0.13	Albertini et al. (2017)
$\gamma^n$	Worker's bargaining power	0.5	Midpoint of literature values
$\gamma^{u,l}$	Union bargaining power	0.18	Voting share Frandsen (2012)
$\gamma^{u,m}$	Union bargaining power	0.203 - 0.205	Wage Premium Bryson (2002)
$\gamma^{u,h}$	Union bargaining power	0.22	Voting share Frandsen (2012)
$x^r$	Routine Share of Surplus	0.81	Favors routine workers
$x^m$	Manual Share of Surplus	0.19	Favors routine workers
$A$	Productivity routine and abstract input	3.5	Occupational shares in 1977
$A_m$	Productivity of manual input	0.3	Occupational shares in 1977
$\alpha$	Marginal return to abstract labor	0.3	Occupational shares in 1977
$\rho$	Production parameter	0.65	Occupational shares in 1977
$\sigma$	Production parameter	0.74	Albertini et al. (2017)
$\mu$	Production parameter	0.5	Albertini et al. (2017)
$\bar{\eta}$	Upper bound on skill	1.77	Occupational shares in 1977
$\underline{\eta}$	Lower bound on skill	0.48	Occupational shares in 1977
$\eta_{m,1977}$	Occupational threshold 1977	0.72	Occupational shares in 1977
$g_K$	Growth rate of investment capital	0.024	Investment prices in 2005
$g_{L_a}$	Growth rate of abstract labor supply	0.014	Abstract employment in 2005

The calibration of the union bargaining powers is mainly based on Frandsen (2012) who conducts a detailed analysis of union election data from the NLRB. In his study Frandsen (2012) reports that in about 11% of all union elections the share of pro-union votes is 90% or higher. Thus, for 11% of the islands the bargaining power of the potential unions is set to  $\gamma^{u,h} = 0.22$ , which generates a pro-union vote share of 90% over the considered time period.

For 22% of the islands the union bargaining power is equally distributed between  $\gamma^{u,m} \in [0.203, 0.205]$ .<sup>34</sup> The number of islands with that bargaining

<sup>34</sup>The results are robust to alternative intervals of the union bargaining power as long as

power is chosen to match the overall union density in 1977 from the Union Membership and Coverage Database constructed by Hirsch and Macpherson and described in Hirsch and Macpherson (2003) as well as 1977 union density for manual and routine workers. The bargaining power is set to generate an overall union wage premium that falls in the interval of 3% to 6% reported in Bryson (2002). An overall wage premium that is positive but close to zero is also supported by DiNardo and Lee (2004), and Frandsen (2012).

For the remaining islands the bargaining power of the potential unions is set to match the average pro-union vote share of 56% in Frandsen (2012). Thus, to generate a pro-union vote share of 49% on the remaining islands, the bargaining power is assumed to be  $\gamma^{u,l} = 0.18$ . The close elections are also in line with the evidence in Frandsen (2012), who reports that the vast majority of union elections are decided by only a few votes.

The share of the union surplus that goes to each occupational group is assumed to be constant over time. This suggests that, even though union membership rates were fast declining since the 1980s, union officials did little to adjust union policies accordingly. A study by Checchi et al. (2010) indicates that this is exactly what happened. They show that at least since the 1960s, unions did not attempt to change existing earnings distributions for the fear of losing high-skilled workers. The wage schedule is also in line with the idea that after certain union goals like equal pay for equal work are reached, the union mostly negotiates for across-the-board percentage wage increases. Possible reasons for the lack of adjustments are listed in Waddington (2005): Trade union practices are perceived as formal and old-fashioned and the representative structures inside unions are often inappropriate for the participation of all members. This encourages the impression that trade union leadership has lost touch with current workplace realities. It seems that unions are mostly controlled and influenced by older members that might display a tendency to stick to established practices.<sup>35</sup>

#### 4.2. *Simulation Results*

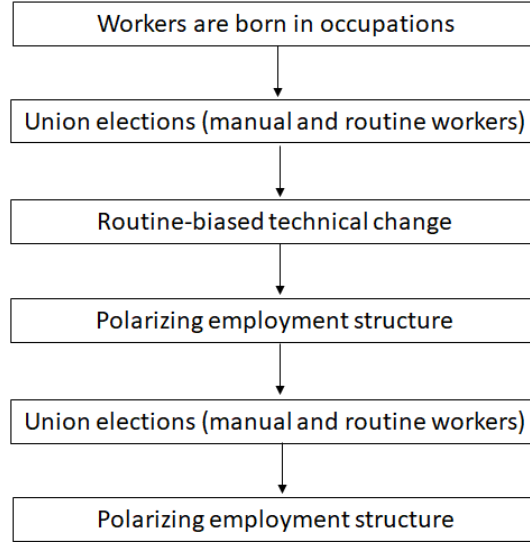
The timing of events is as depicted in Figure 5. First, given the initial calibration, the occupational thresholds are determined. Afterwards a union

---

the share of the surplus obtained by workers in the two occupations is adjusted accordingly.

<sup>35</sup>All other parameters are calibrated according to Table 1. Since the parameter choice is either very straightforward or common in the literature there is no value in discussing those at length.

Figure 5: Timing of Events



election takes place in all firms and all islands with a union bargaining power above  $\underline{\phi} = 0.203$  are unionized. Before routine-biased technical change, overall union density is equal to 25% and the union membership rates for manual and routine workers are both equal to one third. Capital prices begin to fall and occupational thresholds in non-unionized firms change with former routine workers switching to manual occupations. A new union vote takes place in every period with unions who fail to gain majority support being terminated. Afterwards occupational shifts occur in the previously unionized firms.

Apparently, the model predicts that the unions with the lowest bargaining power will be the ones that are terminated. Thus, union termination in the model is associated with increasing average union wage premia. Hirsch and Schumacher (2004) estimate an increasing union wage premium in the early 1930s and in the late 1970s to early 1980s. Evidence from Troy and Shefflin (1985) suggests, that both periods of time were preceded by exceptionally large numbers of union termination. In contrast to models of skill-biased technical change, the model presented here is able to reconcile falling union density with constant or even increasing union wage premia.

Employment per capita in each occupation and employment shares in the model are close to the values found in Jaimovich and Siu (2012), Albertini



Table 2: SIMULATED EMPLOYMENT IN 1977 AND 2005

Occupation	Employment Per Capita 1977	Employment Per Capita 2005
Manual	0.10 (19%)	0.13 (20%)
Routine	0.31 (56%)	0.28 (46%)
Abstract	0.14 (25%)	0.21 (34%)

Note: Employment per capita is the employment level divided by the aggregate population. Employment shares are given in the round brackets and calculated as employment levels divided by aggregate employment.

et al. (2017), and Autor and Dorn (2013). The exact values are reported in Table 2.<sup>36</sup> The union membership rates for routine and manual workers are both equal to 33.3% and the total union membership rate is 25%. According to the union database by Hirsch and Macpherson (2003), the overall private sector union membership rate was equal to 22% in 1977, with the membership rates for manual workers and routine workers equal to 35.5% and 35.9%, respectively.<sup>37</sup>

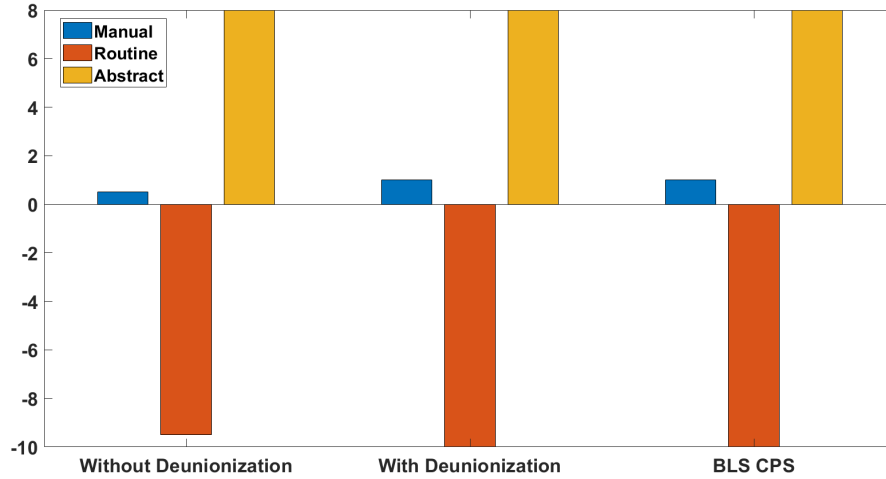
As capital prices begin to fall, employment in the non-unionized islands adjusts, with the lowest-skilled routine workers deciding to switch to manual occupations upon becoming unemployed. Since routine workers employed in unionized firms are better off not switching, the increase of workers employed in manual occupations is smaller compared to a model without unions. In the subsequent elections, the unions with the lowest bargaining power fail to gain majority support and are terminated. This leads to employment adjustments in those firms that are identical to the ones happening in the non-unionized firms. Figure 6 and Figure 7 display the percentage point changes in the employment share for each occupation and the percentage changes in per

<sup>36</sup>The model is calibrated to the employment shares in Albertini et al. (2017) which are at the upper end of the values reported in Jaimovich and Siu (2012). The results are virtually unchanged when calibrating the model to the employment shares in (Autor and Dorn, 2013), which are at the lower end of the values reported in Jaimovich and Siu (2012).

<sup>37</sup>For these numbers we use data on the union density of construction workers (manual) and manufacturing workers (routine). More detailed data on the union membership rates of workers in manual and routine occupations is only available since 1983. From 1983 onwards, union density for all manual workers and for construction workers as well as union density of all routine workers and manufacturing workers behave very similarly in terms of absolute values and changes over time.

capita employment for each occupation, respectively.

Figure 6: Simulated Percentage Point Changes in Employment Shares from 1977 to 2005



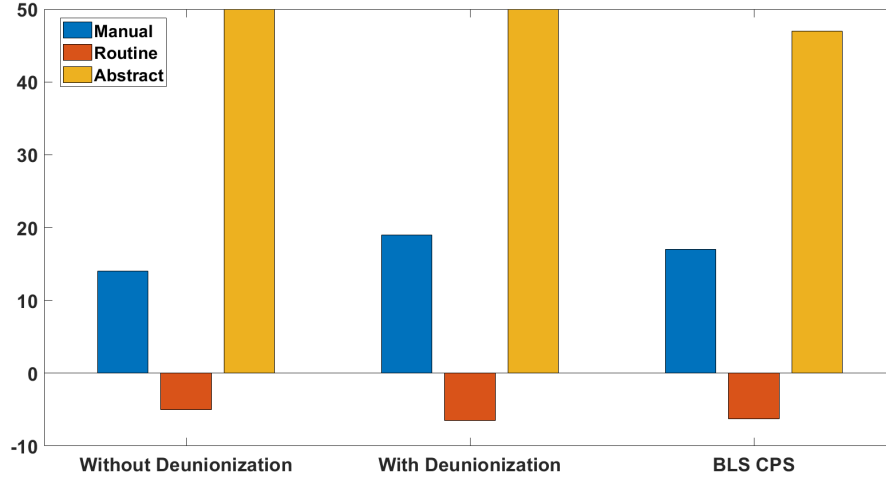
Note: BLS CPS denotes the changes in employment shares according to the Bureau of Labor Statistics Current Population Survey.

The union wage schedule favors middle-skilled workers the most, as workers in routine occupations make up 75% of the bargaining unit but receive 81% of the surplus. Thus, the union wage schedule discourages employment reallocation and the employment shifts are more pronounced in the model with deunionization. For the counterfactual scenario without deunionization, the union wage schedule is slightly adjusted in favor of manual workers, such that all unions are able to maintain their majority. The changes in employment per capita and the changes in employment shares are both close to the changes reported in the literature.<sup>38</sup> Even though the manual employment share appears roughly unchanged, there has been substantial employment reallocation with about 15% of the routine workers in 1977 deciding to switch to manual occupations. 25% of the changes in manual and routine employment are triggered by the termination of unions. Thus, while the model in line with the empirical literature predicts routine-biased technical change to be the main explanation for job market polarization, deunionization seems

<sup>38</sup>See, for example, Jaimovich and Siu (2012) and Albertini et al. (2017).

to play an important role.

Figure 7: Simulated Percentage Changes in Employment per Capita from 1977 to 2005



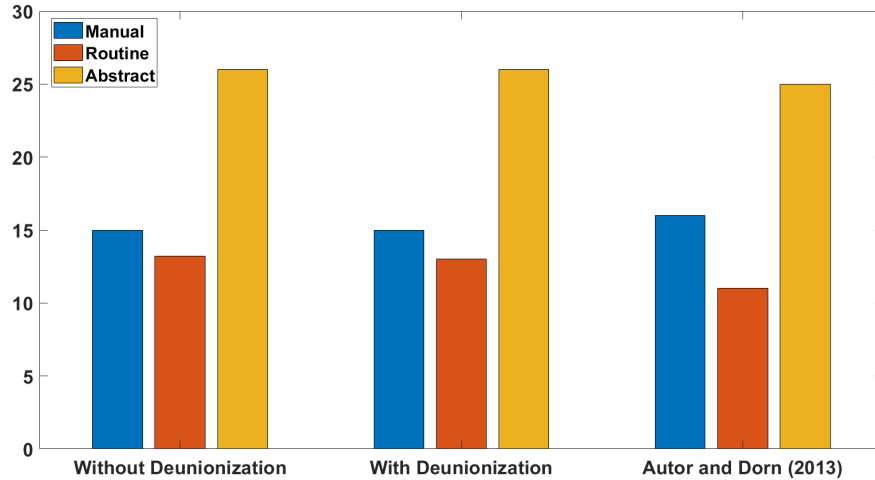
Note: BLS CPS denotes the changes in employment per capita according to the Bureau of Labor Statistics Current Population Survey.

The changes in employment are accompanied by changes in wages for workers in all three occupations. Depicted in Figure 8, the model predicts wages for manual workers to increase by 15%, wages for routine workers to increase by 13.5%, and wages for abstract workers to increase by 26%. These wage changes are close to the wage changes of 16%, 11%, and 25% reported in Autor and Dorn (2013).

Just like changes in employment, wage changes are slightly more pronounced with deunionization. Inequality, measured as the 50:50 income ratio, is roughly 5% higher without unions.<sup>39</sup> The income inequality increases by 23% between 1977 and 2005. Comparing the different scenarios, more than 10% of this increase are caused by deunionization. Thus, terminated unions are responsible for 2.3% percentage points of the increase in income inequality. These rather modest effects of deunionization on inequality accord with the empirical findings in DiNardo et al. (1996), Frandsen (2012), and Farber et al. (2018). The reason is that the overall union wage premium

<sup>39</sup>This is also true for the 60:40 and 70:30 income ratio.

Figure 8: Simulated Percentage Changes in Wages from 1977 to 2005



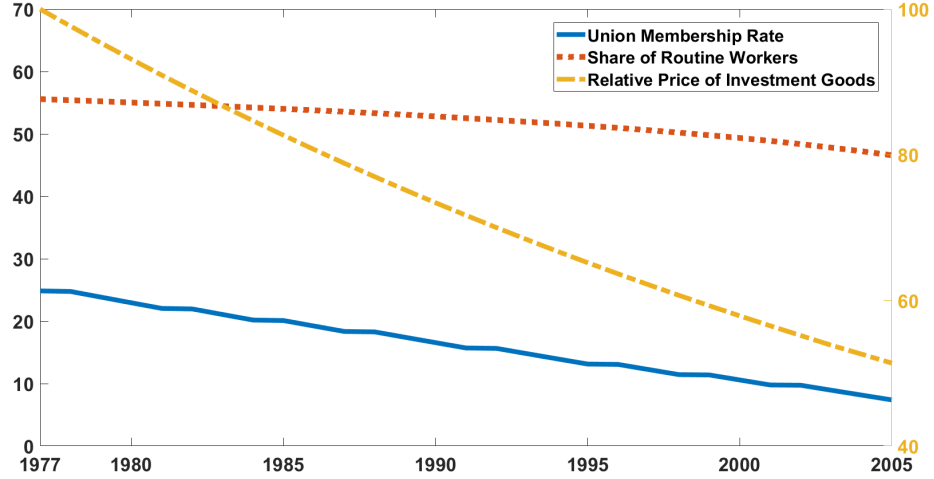
is, contrary to earlier studies, close to zero.

While the overall effect of deunionization on income inequality seems to be rather small, those groups that traditionally receive a high union wage premium are disproportionally effected. For the 50% lowest-skilled formerly unionized routine workers the simulated union wage premium amounted to roughly 20% before routine-biased technical change. This group makes up one third of all union members and 10% of the entire workforce in 1977, meaning that the results concern several million people. Since those workers lose their union wage premium going from 1977 to 2005, the average wage growth for that group is only 2%. In a counterfactual exercise where the wage schedule is adjusted to maintain union support, wages for those workers grow by 13%. Furthermore, the relative wage of the highest-skilled workers compared to the group of formerly unionized routine workers grows by 24% over the considered time period, with over one third of the increase accounted for by deunionization.<sup>40</sup> When looking at income shares, the 50% lowest-skilled routine workers make up one quarter of the population and receive

<sup>40</sup>The increase in inequality is close to the data. U.S. real weekly wages for the top 10% have grown by 24% relative to the median real weekly wages over this time period.

23% of the income in 1977. Going to 2005, the income share drops by 24%, with one quarter of the decrease attributable to deunionization.

Figure 9: Relative Price for Investment Goods, Share of Routine Workers, and Union Membership Rate



Note: The number of islands is set to  $N = 90$  for the plot. The relative price of investment is plotted as an index with 1977 = 100.

Figure 9 is the model equivalent to Figure 1. The relative price of the investment good is halved between 1977 and 2005. The share of routine workers drops from 56% in 1977 to 46% in 2005. The union membership rate falls by 18 percentage points from 25% to 7.3%. In the data, the overall union membership rate decreases by 16 percentage points from 22% to 7.9%. For manual workers, the union membership rate falls from 33.3% to 9.4% in the model and from 35.5% to 13% in the data. For routine workers, the union membership rate falls from 33.3% to 12.4% in the model and from 35.5% to 13.1% in the data. The model is unable to capture the observation that the decrease in the share of routine workers and in the union membership rates has flattened out since the late 1990s to early 2000s. This might have to do with the reversal in the demand for cognitive skills since 2000 reported in Beaudry et al. (2016). In the model, such a reversal would be able to generate a flatter decrease in both the share of routine workers and the overall union membership rates.

### 4.3. Deunionization in a Single Firm

In this section, in order to expose the underlying mechanisms, we focus on the occupational choices and union elections in a firm that generates union support in 1977 but fails to do so in 2005. The union bargaining power lies in the interval of  $\gamma^{u,m}$ . While this might appear to be a knife's edge scenario, Frandsen (2012) provides evidence for union decisions being on average very close. Using data on union elections between 1992 and 2001 in which at least ten votes were cast, Frandsen (2012) shows that the average voting share in favor of unions is 56.5%. Unions won 54.2% percent of the elections and the margin of victory was on average close to one vote.

Under the baseline 1977 calibration, two thirds of the manual and routine workers vote in favor of the union, as they are close enough to the median skill-level to profit from the union wage schedule.<sup>41</sup> The pro-union vote share corresponds to the average value for union elections in Frandsen (2012). Given the high prices for computer capital in 1977, wage inequality is relatively low with the highest skilled worker earning twice as much as the least skilled worker. Thus, for a majority of the bargaining unit the union wage schedule is beneficial. A union is formed and all manual and routine workers, regardless of their individual voting decision, are covered by the union contract. The collective bargaining agreement decreases inequality measured by the 50:50 earnings ratio by 6%.

Going from 1977 to 2005, the price of investment capital drops by 50%. Routine workers can be substituted by computer technology  $K$ , whereas abstract and manual workers are complementary to routine tasks. The drop in the price for computer capital  $K$  leads to a relative wage drop for routine workers who can be replaced by computers. The high union wage premium for the lowest-skilled routine workers discourages those workers from switching to manual occupations. Since labor supply in the occupations does not adjust to the changing demand structure, the non-union wages for routine workers fall by more relative to the non-union wages of manual workers. While non-union wages of manual workers grow by 16%, union wages for those workers only grow by 14% and manual workers decide to vote against a collective bargaining agreement. This is in line with Checchi et al. (2010),

---

<sup>41</sup>Note, that under the assumed union wage schedule either all manual workers or no manual worker vote in favor of the union. The results are robust to other specifications of the wage schedule, as long as the decrease in the number of votes from manual workers is larger than the increase in the number of votes from routine workers.

who argue that disillusion with respect to potential wage growth is the reason for declining membership rates among the lowest-skilled workers. Since union wages for routine workers increase by more than non-union wages, more routine workers vote in favor of a union. However, the decrease in votes by manual workers more than offsets the increasing votes among routine workers and the union voting share drops below 50%. Routine workers lose their union wage premium and for some it is now beneficial to switch occupations upon becoming unemployed. The ensuing employment reallocation is identical to the one happening in non-unionized firms.

## 5. Policy Implications

While routine-biased technical change hurts middle-wage workers, job market polarization in the sense of changing employment shares does not. In the model, the possibility to switch occupations allows labor supply to adjust to the changes in labor demand and thereby to partly offset the wage effects of routine-biased technical change. As shown by Kambourov and Manovskii (2009), Gathmann and Schnberg (2010) and Cortes and Gallipoli (2017), occupational switching costs could be large.<sup>42</sup> Therefore, policies that simplify job switches or that aim at making them less costly for workers could serve to dampen the income inequality caused by routine-biased technical change.

The previous analysis has shown that while the overall effect of deunionization on income inequality is small, there are huge effects for those groups typically favored by union wage schedules. Taking into account evidence

---

<sup>42</sup>Kambourov and Manovskii (2009), show that occupational experience is a major determinant of earnings and that it is considerably more important than either firm or industry tenure. They find that 5 years of occupational tenure are associated with an increase in wages of 12% to 20%. Gathmann and Schnberg (2010) show that task-specific human capital is an important source of individual wage growth, in particular for university graduates. For high-skilled workers at least 40% of overall wage growth over a ten year period can be attributed to task-specific human capital. For the low- and medium-skilled, task-specific human capital accounts for at least 35% and 25% of overall wage growth, respectively. Cortes and Gallipoli (2017) assess the role of task distance as a component of the cost of switching among any two occupations. They find that raising task distance by one standard deviation increases the cost of switching occupations by approximately 14%. In addition, if the switch involves moving across major task groups, mobility costs are raised much further. Additionally, despite the role of task content, they find that the largest share of occupational mobility costs is attributable to task-independent factors.

from Frandsen (2012), who reports that most union elections are very closely contested, even a very small subsidy for unions or union workers could lead to large effects on income inequality for lower-skilled mid-wage workers. Such interventions however, are not well suited to stop the overall trend of declining union membership rates.

Empirical evidence suggests that unions are troubled by rigid structures that partly prevent them from meeting today’s challenges. Waddington (2005) argues that union practices are perceived as formal and old-fashioned and that the representative structures inside unions are often inappropriate for the participation of all members. This encourages the impression that trade union leadership has lost touch with current workplace realities. Additionally, the decline in membership rates can mostly be attributed to the failure of unions to recruit young members. While membership rates decline across all age groups, according to data from the Bureau of Labor Statistics membership rates for workers aged between 16 and 24 declined at twice the rate of overall membership between 2002 and 2012. Data on the evolution of the median age of union members points in the same direction. Dunn and Walker (2016) point out that over half of all U.S. union members are between 45 and 64 years of age. Thus, it seems that unions are mostly controlled and influenced by older members that might display a tendency to stick to established practices. The recent article “Technology may help to revive organised labour” in *The Economist* (2018) puts forth the argument that new technology could help unions to regain members. This argument is supported by the example of a union of Youtube employees that was formed by potential members joining a facebook group. While the example might be nothing more than a marketing gag, it seems obvious that a more modern structure is needed in order for unions to attract more and especially younger members.

## 6. Conclusion

This paper explores how routine-biased technical change effects both the occupational and the union-membership choice of workers. To do so we develop a model that endogenizes both decision in a search and matching framework.

We use the calibrated model to show that routine-biased technical change, represented by a sharp drop in computer capital prices, generates employment and wage polarization. The drop in computer capital prices reduces



the demand for routine workers, while abstract and manual workers are in great demand. The changing demand structure influences the surplus the union can extract and thereby also the individual union wage premium of workers. Manual workers, who benefit from the changing demand structure, are discouraged from voting in favor of a collective bargaining agreement. The wage gains for manual workers, that would be disproportionately given to routine workers by the union, lead to the least skilled workers being better off when bargaining individually with the firm. Former routine workers, when faced with lower wages compared to manual workers, decide to switch occupations.

Using the calibrated model, we demonstrate that this effect can lead to a change in the voting outcome, with the majority of the workforce of formerly unionized firms now voting against unionization and in favor of individual bargaining. In an economy in which unions differ with respect to their bargaining power, routine-biased technical change leads to a large decrease in union membership, as those unions with the lowest bargaining power are terminated. While overall effects on wages and income inequality are small, the effects on the lower-skilled mid-wage workers are substantial.

## References

- Acemoglu, D., Aghion, P., Violante, G.L., 2001. deunionization, technical change and inequality. *Carnegie-Rochester Conference Series on Public Policy* 55, 229–264. doi:10.1016/S0167-2231(01)00058-6.
- Açıkgöz, O.T., Kaymak, B., 2014. the rising skill premium and deunionization. *Journal of Monetary Economics* 63, 37–50. doi:10.1016/j.jmoneco.2014.01.002.
- Albertini, J., Hairault, J.O., Langot, F., Sopraseuth, T., 2017. A tale of two countries: A story of the French and US polarization. *IZA Discussion Papers* 11013, Institute for the Study of Labor (IZA).
- Alderson, A.S., Nielsen, F., 2002. Globalization and the great u-turn: Income inequality trends in 16 oecd countries. *American Journal of Sociology* 107, 1244–1299.
- Autor, D.H., 2010. The polarization of job opportunities in the US labor market: Implications for employment and earnings. Center for American Progress and the Hamilton Project.

- Autor, D.H., Dorn, D., 2013. The growth of low-skill service jobs and the polarization of the US labor market. *American Economic Review* 103, 1553–1597. doi:10.1257/aer.103.5.1553.
- Autor, D.H., Katz, L.F., Kearney, M.S., 2006. The polarization of the U.S. labor market. *American Economic Review* 96, 189–194. doi:10.1257/000282806777212620.
- Autor, D.H., Levy, F., Murnane, R.J., 2003. The skill content of recent technological change: An empirical exploration. *The Quarterly Journal of Economics* 118, 1279–1333. doi:10.1162/003355303322552801.
- Baldwin, R., 2003. The decline of US labor unions and the role of trade. Peterson Institute for International Economics.
- Bauer, C., Lingens, J., 2010. Individual vs. collective bargaining in the large firm search model. *Discussion Papers in Economics* 11315.
- Beaudry, P., Green, D.A., Sand, B.M., 2016. The great reversal in the demand for skill and cognitive tasks. *Journal of Labor Economics* 34, S199–S247. doi:10.1086/682347.
- Boeri, T., Burda, M.C., 2009. Preferences for collective versus individualised wage setting. *Economic Journal* 119, 1440–1463. doi:10.1111/j.1468-0297.2009.02286.x.
- von Brasch, T., Gjelsvik, M.L., Sparrman, V., 2018. Deunionization and job polarization – a macroeconomic model analysis for a small open economy. *Economic Systems Research* 30, 380–399. doi:10.1080/09535314.2018.1468738.
- Bryson, A., 2002. The union membership wage premium: An analysis using propensity score matching. Centre for Economic Performance, Discussion Paper No. 530, London School of Economics and Political Science.
- Card, D., Lemieux, T., Riddell, C.W., 2004. Unions and wage inequality. *Journal of Labor Research* 25, 519–559.
- Checchi, D., Visser, J., van de Werfhorst, H.G., 2010. Inequality and union membership: The influence of relative earnings and inequality attitudes. *British Journal of Industrial Relations* 48, 84–108. doi:10.1111/j.1467-8543.2009.00757.x.

- Chugh, S.K., 2009. Costly external finance and labor market dynamics. Tech. rep., University of Maryland.
- Cortes, G.M., Gallipoli, G., 2017. The cost of occupational mobility: An aggregate analysis. *Journal of the European Economic Association* 16, 275–315. doi:10.1093/jeea/jvx006.
- DiNardo, J., Fortin, N.M., Lemieux, T., 1996. Labor market institutions and the distribution of wages, 1973-1992: A semiparametric approach. *Econometrica* 64, 1001. doi:10.2307/2171954.
- DiNardo, J., Lee, D.S., 2004. Economic impacts of new unionization on private sector employers: 1984-2001. *The Quarterly Journal of Economics* 119, 1383–1441.
- Dinlersoz, E., Greenwood, J., 2016. The rise and fall of unions in the United States. *Journal of Monetary Economics* 83, 129–146. doi:10.1016/j.jmoneco.2016.08.008.
- Duclos, J.Y., Esteban, J., Ray, D., 2004. Polarization: Concepts, measurement, estimation. *Econometrica* 72, 1737–1772. doi:10.1111/j.1468-0262.2004.00552.x.
- Duncan, G.J., Stafford, F.P., 1980. Do union members receive compensating wage differentials. *American Economic Review* 70, 355–371.
- Ebell, M., Haefke, C., 2009. Product market deregulation and the US employment miracle. *Review of Economic Dynamics* 12, 479–504. doi:10.1016/j.red.2008.11.002.
- Economist, 2018. Technology may help to revive organised labor. URL: <https://www.economist.com/briefing/2018/11/15/technology-may-help-to-revive-organised-labour>.
- Farber, H.S., Herbst, D., Kuziemko, I., Naidu, S., 2018. Unions and inequality of the twentieth century: New evidence for survey data. NBER Working Papers 24587.
- Feng, A., Graetz, G., 2015. Rise of the machines: The effects of labor-saving innovations on jobs and wages. CEP Discussion Papers dp1330, Centre for Economic Performance, LSE.

- Firpo, S., Fortin, N., Lemieux, T., 2009. Uconditional quantile regressions. *Econometrica* 77, 953–973.
- Frandsen, B.R., 2012. Why unions still matter: The effects of unionization of the distribution of employee earnings. Unpublished Working Paper.
- Freeman, R.B., 1980. Unionism and the dispersion of wages. *ILR Review* 34, 3–23. doi:10.1177/001979398003400101.
- Garibaldi, P., Violante, G.L., 2005. The employment effects of severance payments with wage rigidities. *The Economic Journal* 115, 799–832. doi:10.1111/j.1468-0297.2005.01020.x.
- Garín, J., 2015. Borrowing constraints, collateral fluctuations, and the labor market. *Journal of Economic Dynamics and Control* 57, 112–130. doi:10.1016/j.jedc.2015.05.007.
- Gathmann, C., Schnberg, U., 2010. How general is human capital? a task-based approach. *Journal of Labor Economics* 28, 1–49. doi:10.1086/649786.
- Goos, M., Manning, A., 2007. Lousy and lovely jobs: The rising polarization of work in Britain. *Review of Economics and Statistics* 89, 118–133. doi:10.1162/rest.89.1.118.
- Goos, M., Manning, A., Salomons, A., 2009. Job polarization in Europe. *American Economic Review* 99, 58–63. doi:10.1257/aer.99.2.58.
- Green, D.A., Sand, B.M., 2015. Has the Canadian labour market polarized? *Canadian Journal of Economics* 48, 612–646. doi:10.1111/caje.12145.
- Hirsch, B.T., Macpherson, D.A., 2003. Union membership and coverage database from the current population survey: Note. *Industrial and Labor Relations Review* 56, 349–354. doi:10.2139/ssrn.367781.
- Hirsch, B.T., Schumacher, E.J., 2004. Match bias in wage gap estimates due to earnings imputation. *Journal of Labor Economics* 22, 689–722. doi:10.1086/383112.
- Hubmer, J., 2018. The race between preferences and technology. Working Paper.

- Jaimovich, N., Siu, H.E., 2012. The trend is the cycle: Job polarization and jobless recoveries. NBER Working Papers 18334 National Bureau of Economic Research, Inc.
- Kambourov, G., Manovskii, I., 2009. Occupational specificity of human capital. *International Economic Review* 50, 63–115. doi:10.1111/j.1468-2354.2008.00524.x.
- Kerr, S.P., Maczulskij, T., Maliranta, M., 2016. Within and between firm trends in job polarization: Role of globalization and technology. ETLA Working Papers 41, The Research Institute of the Finnish Economy.
- Krusell, P., Rudanko, L., 2016. Unions in a frictional labor market. *Journal of Monetary Economics* 80, 35–50. doi:10.1016/j.jmoneco.2016.04.006.
- Lewis, P., 1989. The unemployed and trade union membership. *Industrial Relations Journal* 20, 271–279. doi:10.1111/j.1468-2338.1989.tb00074.x.
- Mayer, G., 2004. Union membership trends in the United States. Congressional Research Service.
- Meyer, B., 2017. Financialization, technological change, and trade union decline. *Socio-Economic Review* doi:10.1093/ser/mwx022.
- Michaels, G., Natraj, A., Reenen, J.V., 2014. Has ICT polarized skill demand? evidence from eleven countries over twenty-five years. *Review of Economics and Statistics* 96, 60–77. doi:10.1162/rest\_a\_00366.
- Mortensen, D.T., Pissarides, C.A., 1994. Job creation and job destruction in the theory of unemployment. *The Review of Economic Studies* 61, 397–415. doi:10.2307/2297896.
- Nellas, V., Olivieri, E., 2011. Job polarization and labor market institutions. Unpublished Working Paper.
- Nickell, S., Layard, R., 1999. Labor market institutions and economic performance. *Handbook of Economics* 3, 3029–2084.
- Obama, B., 2013. Remarks by the president on the economy. Knox College, Galesburg, IL.

- Oh, W., 1989. Craft versus Industrial Unions: Union Organization Within the Work Place. Ph.D. thesis. The Ohio State University.
- Ortigueira, S., 2006. Skills, search and the persistence of high unemployment. *Journal of Monetary Economics* 53, 2165–2178. doi:10.1016/j.jmoneco.2005.09.004.
- Petrongolo, B., Pissarides, C.A., 2001. Looking into the black box: A survey of the matching function. *Journal of Economic Literature* 39, 390–431. doi:10.1257/jel.39.2.390.
- Petrosky-Nadeau, N., 2011. Credit, vacancies and unemployment fluctuations. GSIA Working Papers 2009-E27, Carnegie University, Tepper School of Business.
- Pissarides, C.A., 1985. Short-run equilibrium dynamics of unemployment, vacancies, and real wages. *American Economic Review* 75, 676–690.
- Pissarides, C.A., 1986. Trade unions and the efficiency of the natural rate of unemployment. *Journal of Labor Economics* 4, 582–595. doi:10.1086/298111.
- Rueda, D., Pontusson, J., 2000. Wage inequality and varieties of capitalism. *World Politics* 52, 350–383. doi:10.1017/s0043887100016579.
- Schnabel, C., 2002. Determinants of trade union membership. Discussion Paper 15, Friedrich-Alexander Universitt Erlangen-Nuremberg, Chair of Labour and Regional Economics.
- Smith, C.L., 2013. The dynamics of labor market polarization. Finance and Economics Discussion Series 2013-57, Board of Governors of the Federal Reserve System (U.S.).
- Taschereau-Dumouchel, M., 2017. The union threat. 2011 Meeting Papers 434, Society for Economic Dynamics.
- Traxler, F., 1994. Collective bargaining: Levels and coverage. *Employment Outlook 1994*, OECD, 167-194.
- Troy, L., Sheflin, N., 1985. U.S. union sourcebook. Industrial Relations Data and Information Services, West Orange, New Jersey.

- Tüzemen, D., Willis, J.L., 2013. The vanishing middle: Job polarization and workers' response to the decline in middle skill jobs. *Economic Review Q* I, 5–32.
- Waddington, J., 2005. Trade union membership in Europe: The extent of the problem and range of union responses. Host publication.
- Waddington, J., Whitston, C., 1997. Why do people join unions in a period of membership decline? *British Journal of Industrial Relations* 35, 515–546. doi:10.1111/1467-8543.00067.
- White, M.D., 1982. Wage structure and unions: A median voter model. *ILR Review* 35, 565–577.
- Zago, R., 2017. Job polarization, skill mismatch and the great recession. *SSRN Electronic Journal* doi:10.2139/ssrn.3004759.