

Zimmert, Franziska

**Conference Paper**

## Early child care and maternal employment: empirical evidence from Germany

Beiträge zur Jahrestagung des Vereins für Socialpolitik 2019: 30 Jahre Mauerfall - Demokratie und Marktwirtschaft - Session: Labor Economics IV, No. B20-V2

**Provided in Cooperation with:**

Verein für Socialpolitik / German Economic Association

*Suggested Citation:* Zimmert, Franziska (2019) : Early child care and maternal employment: empirical evidence from Germany, Beiträge zur Jahrestagung des Vereins für Socialpolitik 2019: 30 Jahre Mauerfall - Demokratie und Marktwirtschaft - Session: Labor Economics IV, No. B20-V2, ZBW - Leibniz-Informationszentrum Wirtschaft, Kiel, Hamburg

This Version is available at:

<https://hdl.handle.net/10419/203528>

**Standard-Nutzungsbedingungen:**

Die Dokumente auf EconStor dürfen zu eigenen wissenschaftlichen Zwecken und zum Privatgebrauch gespeichert und kopiert werden.

Sie dürfen die Dokumente nicht für öffentliche oder kommerzielle Zwecke vervielfältigen, öffentlich ausstellen, öffentlich zugänglich machen, vertreiben oder anderweitig nutzen.

Sofern die Verfasser die Dokumente unter Open-Content-Lizenzen (insbesondere CC-Lizenzen) zur Verfügung gestellt haben sollten, gelten abweichend von diesen Nutzungsbedingungen die in der dort genannten Lizenz gewährten Nutzungsrechte.

**Terms of use:**

*Documents in EconStor may be saved and copied for your personal and scholarly purposes.*

*You are not to copy documents for public or commercial purposes, to exhibit the documents publicly, to make them publicly available on the internet, or to distribute or otherwise use the documents in public.*

*If the documents have been made available under an Open Content Licence (especially Creative Commons Licences), you may exercise further usage rights as specified in the indicated licence.*

# Early child care and maternal employment: empirical evidence from Germany

Franziska Zimmert, IAB Nürnberg

## Abstract

This paper examines the effect of an expansion of subsidized early child care on maternal labor market outcomes. It contributes to the literature by analyzing, apart from the employment rate and agreed working hours, preferred working hours. Semi-parametric difference-in-differences estimation based on survey data from the German Micro Census results in positive effects on the employment rate, as well as on agreed and preferred working hours. As agreed and preferred working hours adjust in line with each other, expansion of early child care can tap labour market potentials beyond those of currently underemployed mothers. Moreover, conditional effects show that especially better educated and non-single mothers respond to the reform.

**Keywords:** early child care, maternal labor supply, semi-parametric difference-in-differences, subsidized child care, working hour preferences

# 1 Introduction

Employment rates and working hours in industrialized countries vary strongly across gender for which the family background is often considered to be a main driving force (OECD, 2017). While male careers are less life-course dependent, women more often withdraw from the labor market or reduce their working hours after giving birth to a child. Hence, policymakers advocate an expansion of publicly subsidized child care in order to strengthen the employment potential in aging societies. Indeed, the female employment rate turns out to be higher in countries such as the Scandinavian states where child care is sufficiently provided. However, empirical studies cannot unanimously support a positive causal relationship between subsidized child care and female employment outcomes.

I further inform these debates by evaluating the effect of low-cost subsidized child care on the employment share and agreed weekly working hours. The article especially contributes to the existing literature by also analyzing working hour preferences and the mismatch between agreed and preferred working hours. Working hour discrepancies are quite common in industrialized countries (Fagan, 2001; Merz, 2002; Reynolds, 2003, 2004; Drago et al., 2005; Pollmann-Schult, 2009; Ehing, 2014; Weber and Zimmert, 2017). Hence, evaluating if the availability of subsidized child care can affect working hour discrepancies is important in ageing societies as fulfilling a preference for more or less hours has positive effects on the employment potential and on individual life, health or work measures (Ehing, 2014; Matiaske et al., 2017). Furthermore, the focus is on early child care (children less than three years old) where there is less empirical evidence on compared to pre-school child care. I use a rich data set from the German Micro Census which is a one percent representative sample of German households. The repeated cross-sections contain information on the household composition and its economic and social background and the data allows to examine over- and underemployment as well as individual working hour preferences. Instead of applying a linear OLS estimator, a two-stage semi-parametric difference-in-differences estimation procedure proposed by Abadie (2005) is used such that the linear form assumption in the outcome equation does not need to hold and common support between treated and control group is given.

There is a growing literature on evaluating the effectiveness of subsidized child care not only on parental, mainly maternal, outcomes (e.g. Gelbach, 2002; Cascio, 2009; Havnes/ Mogstad, 2011; Bauernschuster/Schlotter, 2015) but also on the child's development (e.g. Duflo, 2001; Felfe et al., 2015; Felfe and Lalive, 2018) and fertility (Bauernschuster et al., 2016). Many of these empirical studies rely on identification strategies that exploit exogenous variation resulting from quasi-experiments. In line with those authors I use the expansion of subsidized child care in Germany induced by the introduction of a legal claim for a child care slot to examine maternal employment. The

claim was introduced for children aged one to three years old in August 2013. The German labor market serves as an interesting example for the persistence of traditional employment patterns. Although the female employment rate converges to the male employment rate, there is strong variation when further conditioning on motherhood for both the extensive and the intensive margin. In 2011, almost one half of the childless couples both worked full-time while this was only the case for 22 percent of the couples with children (Wanger, 2015). In almost 20 percent of families, the mother is not employed and the father works full-time (14 percent for childless couples). The majority of parents is characterized by a full-time working father while the mother holds a part-time position. About one quarter of part-time working women states the care for children or for people in need of care to be the reason for the employment status. Hence, the reform implemented in 2013 had a high potential to increase female employment both in terms of the extensive and intensive margin. Especially involuntarily underemployed mothers might have raised agreed hours.

In 2008, the German government formulated a law for the expansion of subsidized child care for children aged one to three (*Kinderförderungsgesetz, KiföG*) culminating in a legal claim for a child care slot from August 2013 onwards. While the supply of child care is organized on the community level, the federation was involved by one third of the costs (four billion Euros). The allocation of child care on the community level results in strong regional variation that is strengthened by huge disparities between West and East German federal states. In the former German Democratic Republic the education of children was considered to be a public issue translating in a high share of children institutionally cared for until today. In 2011, the coverage rate of children aged up to three years old in subsidized care amounted to 49 percent in East Germany compared to only 20 percent in the rest of the country (Federal Statistical Office, 2011*a*). The reform changed the availability of child care slots dramatically. In 2015, 28.2 percent of children living in West-Germany and 51.9 percent in East Germany were in subsidized care (Federal Statistical Office, 2015*a*). I use the exogenous variation of the expansion of subsidized child care induced by the reform to compare districts in which the coverage rate increased significantly (the treated or high-intensity group) with those for which the coverage rate changed only by a small amount (the control or low-intensity group). To be more concrete, I follow the approach of Havnes and Mogstad (2011), Felfe et al. (2015) and Bauernschuster et al. (2016) who exploit spatial variation of Norwegian districts, Spanish states and German districts respectively for which the child care coverage expanded differently after the legal framework had changed. The authors define control and treatment group by dividing the observational units at the median of the percentage point change in the coverage rate. Thus, the difference-in-differences strategy compares labor market outcomes of mothers with children aged up to three years in treated districts with

those where child care increases to a lesser extent before and after the legal claim came into force.

The examined reform mainly focussed on the availability instead of the affordability of child care (Kreyenfeld and Hank, 2000) which in turn can be considered as an implicit subsidy (Berlinski and Galiani, 2007). The legal claim introduced in August 2013 guaranteed parents at least part-time care (four hours per day). Neoclassical economic and sociological theory predict an increase for female labor force participation whenever child care costs decrease. However, the effect on the intensive margin remains ambiguous. It depends on the supplied hours before the reform came into force and the length of the child care slot such that it represents a weighted average of the substitution and income effect (Gelbach, 2002). Moreover, the overall effect is determined by the degree to which public care crowds out other care arrangements. Previous studies show that the impact on the extensive margin is negligible if women substitute informal or private with institutional, subsidized arrangements (Havnes and Mogstad, 2011) or the female labor market participation is already high (Lundin et al., 2008).

Furthermore, sociological theory predicts that family policies encouraging female employment shape social norms (Gangl and Ziefle, 2015; Zoch and Hondralis, 2017). Hence, working mothers feel more accepted if they use institutional care resulting in an increase of female employment. The availability of subsidized child care can have a different effect on preferred and actual working hours. Neoclassical theory assumes perfect labor markets on which the absence of frictions equalizes working hour preferences and actual hours. However, a mismatch can occur whenever social or occupational constraints prevent employees from supplying the preferred hours (Fagan, 2001; Merz, 2002; Reynolds, 2003, 2004; Drago et al., 2005; Pollmann-Schult, 2009; Ehing, 2014; Weber and Zimmert, 2017). The availability of child care has the potential to decrease this discrepancy while the adjustment of preferred and/or agreed hours depends on the state of being under-, overemployed or unconstrained before the reform came into effect. Underemployed women are expected to adjust their agreed hours to their preferred amount as the availability of subsidized child care lowers time and monetary constraints. Furthermore, institutional child care can attenuate interrole conflicts between family and occupational requirements (Greenhaus and Beutell, 1985). Hence, overemployed mothers are expected to be more likely to adjust a working hour mismatch by an increase in preferred hours. Finally, if unconstrained women adjust their agreed hours due to the availability of subsidized child care, the change should go in line with an adjustment of their preferences. Also for theoretical considerations deviating from the neoclassical approach the total effect on preferred and agreed working hours remains ambiguous.

The resulting intention-to-treat estimates give a positive impact both on the extensive and intensive margin. Mothers of up to three-year-olds in districts with a large increase of the child care coverage rate have a 5.7

percentage points higher employment rate after the reform than their counterparts in districts with a lower expansion of subsidized child care. Agreed and preferred working hours are on average about five hours per week higher and change similarly such that their mismatch is not affected. The results are robust to several sensitivity checks. Especially the common trend for treated and control group in the absence of the reform seems to hold. I furthermore show that the estimates are higher for better educated mothers and that the adjustment mechanism of agreed and preferred working hours differs for non-single mothers.

The paper proceeds as follows: The next section gives an overview on previous empirical studies. Section 3 explains the institutional background of the German child care system including its reform and how it is exploited for the estimation strategy. Furthermore, the data is presented. The estimation results can be found in Section 4. The last section concludes.

## 2 Related empirical findings

Estimating the causal effect of publicly financed child care on employment outcomes suffers from several difficulties. One is that the price and availability of informal child care provided by the family are often insufficiently observed (Havnes and Mogstad, 2011). Another problem is the endogeneity of child care availability and costs to employment measures. Hence, most studies apply quasi-experimental designs that benefit from exogenous variation induced by a policy reform or instrumental variable (for a review see Morrissey, 2017). However, the empirical results strongly differ between countries depending on the economic conditions before the reform was implemented, the population under consideration and the organization of child care including private, public and informal arrangements. The bandwidth of the effect of more generous child care varies from positive (Gelbach, 2002; Schlosser, 2005; Berlinski and Galiani, 2007; Baker et al., 2008; Lefebvre and Merrigan, 2008; Berlinski et al., 2011; Nollenberger and Rodríguez-Planas, 2011; Fitzpatrick, 2012; Bauernschuster and Schlotter, 2015; Geyer et al., 2015; Fendel and Jochimsen, 2017) to negligibly small (Havnes and Mogstad, 2011) and also insignificant coefficients (Lundin et al., 2008; Cascio, 2009).

Gelbach (2002) uses an instrumental variable approach to estimate the effect of public school enrollment by exploiting quarter of birth regulations for the US. He estimates a positive effect on the probability for working and weekly hours for single mothers while the coefficient is slightly smaller for married women. Fitzpatrick (2012) finds only a positive effect for single mothers in the US with a regression discontinuity (RD) design that is as well characterized by a child's eligibility to kindergarten. Berlinski et al. (2011) apply a RD design for Argentina where kindergarten enrollment is defined by a cut-off date. Women whose youngest child attends kindergarten have

a higher employment probability, also in full-time, and weekly hours rise on average by 7.8.

The majority of empirical studies uses quasi-experiments for a difference-in-differences (DD) design. Schlosser (2005) evaluates a reform that affected Arab mothers of children aged three to four in Israel. She finds that free public preschool increased maternal employment by 8.1 percentage points and average weekly hours by 2.8. Berlinski and Galiani (2007) estimate positive employment effects for Argentinean mothers of children aged three to five. The authors exploit a preschool construction program taking place in the mid 1990s. The staggered introduction of subsidized child care in the Canadian province Quebec was found to increase female employment by 7.7 percentage points (Baker et al., 2008) which is in line with Lefebvre and Merrigan (2008) who evaluate the same reform and also find a positive effect on working hours. Positive effects can also be found for Spain (Nollenberger and Rodríguez-Planas, 2011) and Germany (Bauernschuster and Schlotter, 2015; Geyer et al., 2015; Fendel and Jochimsen, 2017). Bauernschuster and Schlotter (2015) show that the transition to kindergarten defined by cut-off rules is related to an increase in labor force participation by 36.6 percentage points and in average weekly hours by 14.3, i.e. by 23.2 percent. Fendel and Jochimsen (2017) find positive short-term effects on the maternal labor force participation for the child care reform of August 2013 including the legal claim for child care and the introduction of home care allowances. With a microsimulation study Geyer et al. (2015) demonstrate that universal child care has large, positive effects for children older than one year. In contrast, Lundin et al. (2008) and Havnes and Mogstad (2011) find estimates for maternal employment in Sweden and Norway that are close to zero. The latter suggest that public child care mainly crowded out informal arrangements.

All these studies evaluate the effect on maternal employment or agreed/actual working hours while the impact on working hour preferences is neglected. Several authors emphasize the role of adjusting preferences in case of occurring life events like the birth of a child (Drago et al., 2005; Reynolds and Johnson, 2012; Campbell and van Wanrooy, 2013). Reynolds and Johnson (2012) evaluate how the number of children living in the household affects preferred and actual working hours for the US and find that the birth of the first child is related to a larger drop of female working hour preferences compared to actual working hours. The impact on male working hours does not statistically significantly differ from zero. This finding is in line with Drago et al. (2005) who evaluate working hour preferences for Australian employees and conclude that women are more sensitive to changing life conditions than men. Weber and Zimmert (2017) examine the mismatch dynamics considering household and job characteristics. They find that although the lack of institutional care arrangements does not foster the creation of working hour discrepancies, it impedes the mismatch resolution. However, those studies do not examine the direct effect of subsidizing child care on maternal working

hours or neglect the adjustment mechanism (agreed versus preferred working hours). Hence, in order to further inform the debate on the effectiveness of subsidized child care, the analysis estimates the effect not only on agreed but also on preferred hours as well as on their mismatch.

### 3 Institutional background, estimation strategy, data and descriptive findings

#### 3.1 Institutional background and estimation strategy

**Institutional background** The German system of child care has several particularities ranging from strong regional variation to the different providers of child care (Kreyenfeld and Hank, 2000). Spatial differences are not only defined between urban and rural areas, but also between the former GDR and the West German states. Still in 2016, child care coverage amounts to 51.8 percent in East Germany in comparison with 28.1 percent in West Germany (Federal Statistical Office, 2016). Child care is usually provided by the communities of which there are more than 11,000 resulting in huge differences not only considering the price but also the availability of child care. A private market is not well-developed as quality regulations and hence market entry are related to high costs. The share of private institutions with a pure profit background amounts to about 11 to 13 percent over the last years (compare Table 1). However, there is a variety of non-profit organizations, often with a religious background, that receive public subsidies. About two thirds of all institutions belong to this category.

Table 1: Child care institutions by providers in Germany

	Total	<i>of which</i> Profit (%) organization	Non-profit (%) organization
2010	1,386	164 (11.83)	1,013 (73.09)
2011	1,486	184 (12.38)	1,061 (71.40)
2012	1,631	181 (11.10)	1,185 (72.65)
2013	1,725	185 (10.72)	1,219 (70.67)
2014	1,962	230 (11.72)	1,289 (65.70)
2015	2,029	261 (12.86)	1,348 (66.44)

Cut-off date: March, 1st.

Remaining institutions have a public background.

Source: Federal Statistical Office (2010*b*, 2011*b*, 2012*b*, 2013*b*, 2014*b*, 2015*b*).

**The expansion of early child care** The provision of child care has



long time oriented on the existing supply of child care slots and not on the actual needs (Kreyenfeld and Hank, 2000). The expansion of early child care started in 2005 when the German government decided on supplying 230,000 additional child care slots by 2010 (*Tagesbetreuungsbaugesetz*). Two years later the objective was reinforced by targeting a coverage rate of 35% by 2013 (*Krippengipfel*). In 2008, the government decided on a legal claim for a child care slot for children aged one to three years from August 2013 onwards<sup>1</sup>. Although the legal claim was announced five years before it came into force and the federal government provided four billion Euro, a shortage of 80,000 to 100,000 slots was predicted in July 2013 for the next month which suggests an almost full take up ratio. Table 2 shows the take up ratio for several federal states for which official statistics are available. By March 1st, 2013, take-up ratios are close to unity in most states. After the introduction of the legal claim in 2014, the ratio gets less tight indicating that the scarcity of child care slots is less severe. Note however, that regional variation on the community level is still high and that in many agglomerated areas child care slots continue being undersupplied. One might furthermore question the exogeneity of the reform as policymakers might have pushed the expansion of child care in districts according to maternal labor supply adjustment. However, I argue that the possibility to sue communities for not providing a child care slot supports the exogenous nature of the reform imposing pressure on the communities to fulfill the demand of child care.

**Home care allowances** The reforms of August 2013 included also the introduction of home care allowances that were available for children between 15 and 36 months old born after August 2012 and who are not using subsidized child care. Younger children were also eligible if parental leave benefits had exhausted. The subsidy amounted to 100 Euro (150 Euro from August 2014) onwards irrespective of the parents' employment status or income. Opponents of the allowances feared that they would reinforce traditional employment patterns among couples. In July 2015, the home care allowances were declared unconstitutional while they normally expired for children already receiving the subsidy. Although the receipt of these allowances is connected to not using subsidized child care, eligibility criteria for the allowances and subsidized care are not opposed to each other. Hence, children could be eligible for child care but not for the allowances. Furthermore, there is also a small amount of families neither requiring subsidies in form of the allowances nor in form of child care (Alt et al., 2015).

The estimation strategy does not allow to disentangle the reform effect into the impact of the legal claim and the home care allowances. However, the

---

<sup>1</sup>The KiFöG came in force in December 2008. Five years later, from August 2013 onwards, the legal claim guaranteed child care provided by a facility or childminder for children aged one to three (§24 SGB VIII). Children younger than one year are also eligible if their parents are employed.

Table 2: Take up ratio of child care

	Institution for children aged ... years	2013	2014
Baden-Württemberg	0-3	0.942	0.879
Bavaria	0-3	0.977	0.872
Hamburg	all age groups	0.849	0.802
Hesse	0-3	0.939	0.840
Mecklenburg-Vorpommern	0-3	0.968	0.983
Lower Saxony	0-3	0.895	0.864
North Rhine-Westphalia	0-3	0.946	0.876
Saarland	0-3	0.930	0.882
Saxony-Anhalt	all age groups	0.881	0.880

The take up rate is defined as actual take up divided by authorized slots.

Cut-off date: March, 1st.

Source: Statistical reports of Statistical Offices of the Federal States. Own calculations.

applied difference-in-differences estimator allows to solely measure the increase in the availability of child care if the treated group who is strongly affected by the expansion of subsidized child care reacts in the same way to the introduction of home care allowances like the control group. In general, the resulting estimates will at least give a lower bound for the expansion of subsidized child care as the home care allowances counteract. Details of the approach are discussed in the next chapter.

**Methodological approach** The child care reform of 2013 serves as a quasi-experiment I exploit for difference-in-differences estimation. Besides the temporal variation, the expansion of subsidized child care has a spatial dimension that is used to define the treatment and control group. Following the approach of Havnes and Mogstad (2011), Felfe/Nollenberger/ Rodríguez-Planas (2015) and Bauernschuster et al. (2016), districts are split at the fourth and sixth percentile of the increase in the child care coverage rate for children aged up to three years old. Hence, treatment definition includes not a change in extensive terms, thus from having no to having child care, but a change with respect to the intensive margin, the coverage rate. Furthermore, the resulting effect is an intention-to-treat effect as treatment definition does not inform about actual take-up of a child care slot. As from 2005 onwards the Microcensus does not provide information on attendance of a child care institution, calculation of Wald estimates is not possible. It would give the differences in the expected outcome divided by the differences in the expected take-up of a child care slot. However, the resulting estimates clearly state

the sign of the reform's impact.

As the reform took place in August 2013, the pre-reform period is measured in 2011 to rule out any anticipation effects. From 2015 onwards the increase of the child care coverage rate is significantly smaller. Hence, I set this year as the post-reform period. The sensitivity analysis will provide similar results for the year 2014 as post-reform period. The treatment group comprises mothers whose youngest child is up to three years old and who live in a district in which the coverage rate increased by more than the sixth percentile (8.0 percentage points) between 2011 and 2015. Mothers of children up to three years old living in districts with a lower increase of the coverage rate than the fourth percentile (6.5 percentage points) within these years belong to the control group. Districts within this interval and those undergoing a territorial reform within the considered time span are dropped from the sample resulting in a sample size of 317 districts<sup>2</sup>. The regional differences

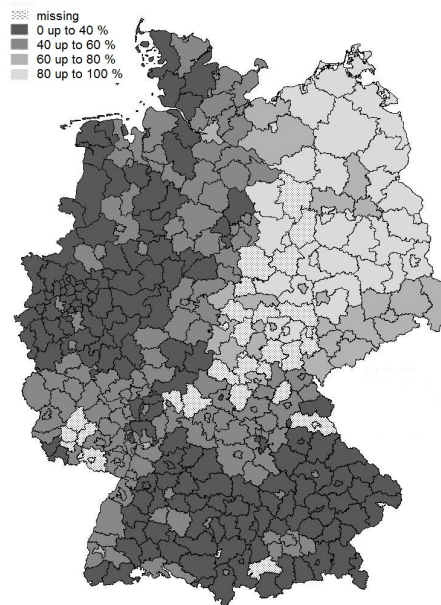


Figure 1: Share of 1- and 2-year-olds in subsidized care in 2015.  
Source: Alt et al. (2015)

can be seen in Figure 1 and Table 3 which depict descriptive statistics of the child care coverage rates on the district level. Figure 1 shows that child

---

<sup>2</sup>Figure 2 in the Appendix depicts the distribution of the growth of the child care coverage rate between 2011 and 2015. The identification of treatment and control group would be questionable in case of intense concentration around the separation. I find that the distribution is similar to the normal distribution and conclude that the identification strategy does not impose major problems.

care coverage rates are the highest in East Germany while the lowest can be found in the Southern and West-Northern states. Table 3 confirms these findings for the included 317 districts. In 2011, the lowest share of children in subsidized care measured on the district level amounted to 9.2 percent while the maximum was at 61.0 percent. The maximal value remained stable until 2015, but the minimum almost increased by one half within 4 years. Furthermore, the mean increased from 2011 onwards by 7.3 percentage points to 32.8 percent. Table 4 indicates how the treated districts are spread over

Table 3: Coverage rates for children aged up to three years in %, district level

	Minimum	Maximum	Mean
2011	9.2	61.0	25.5
2012	10.5	63.3	28.0
2013	11.3	63.2	29.7
2014	13.9	63.0	32.4
2015	13.0	63.1	32.8

Unweighted. Own calculations based on 317 districts.

Source: Federal Statistical Office (2011a, 2012a, 2013a, 2014a, 2015a).

the federal states. The majority of Northern and Western districts belong to the treated group for which the coverage rate increased by more than 8.0 percentage points. In Southern states the distinction is less obvious while most districts in East Germany belong to the control group for whom the coverage rate increased to a lesser extent. One may be concerned that most districts of the former GDR belong to the control group. However, a robustness check that drops East German districts will provide similar results compared to the baseline estimates.

**Average effects** The idea of the difference-in-differences estimator is to compare average outcomes of a group affected by a reform with unaffected individuals before and after the treatment comes into effect. Under the assumptions of i) parallel trends of control and treated group in the absence of the reform, ii) the absence of anticipation effects and iii) the stable unit treatment value assumption (SUTVA), the double difference depicts the treatment effect (Lechner, 2011). Assumption i) can be expressed as

$$\begin{aligned}
 & E[Y^0(i, 1)|X(i), D(i, 1) = 1] - E[Y^0(i, 0)|X(i), D(i, 1) = 1] \\
 & = E[Y^0(i, 1)|X(i), D(i, 1) = 0] - E[Y^0(i, 0)|X(i), D(i, 1) = 0]
 \end{aligned}$$

where  $E(Y^0(i, t))$  denotes the potential outcome in the absence of the treatment for individual  $i$ , some covariates  $X(i)$  and the binary treatment status

Table 4: Number of districts by group membership and federal states

Federal state	Control group	Treatment group
Schleswig-Holstein	0	12
Hamburg	0	1
Lower Saxony	6	31
Bremen	0	1
North Rhine-Westphalia	1	47
Hesse	7	10
Rhineland-Palatinate	21	8
Baden-Württemberg	20	11
Bavaria	50	25
Saarland	1	2
Berlin	1	0
Brandenburg	13	3
Mecklenburg-Vorpommern	2	0
Saxony	6	3
Saxony-Anhalt	14	0
Thuringia	17	4

Source: Own calculations based on numbers of the Federal Statistical Office (2011a, 2015a) from 317 districts.

$D(i, t)$ .  $E(Y^1(i, t))$  is its counterpart under the reform. Assumption i) is crucial for DD-estimation, as deviating from the common trend gives a biased estimate for

$$\begin{aligned}
 & E[Y^1(i, 1)|X(i), D(i, 1) = 1] - E[Y^0(i, 1)|X(i), D(i, 1) = 1] \\
 &= E[Y^1(i, 1)|X(i), D(i, 1) = 1] - E[Y^0(i, 0)|X(i), D(i, 1) = 1] \\
 &\quad - [E[Y^0(i, 1)|X(i), D(i, 1) = 0] - E[Y^0(i, 0)|X(i), D(i, 1) = 0]] \\
 &= E[Y(i, 1) - Y(i, 0)|X(i), D(i, 1) = 1] \\
 &\quad - E[Y(i, 1) - Y(i, 0)|X(i), D(i, 1) = 0]
 \end{aligned}$$

the average reform effect of interest. For the following, I simplify notation and write  $D(i, 1) = D(i)$  and drop the individual index  $i$ . I follow the approach of Abadie (2005) by combining the DD-estimator with inverse probability weighting (IPW) to take non-parallel outcome dynamics caused by differences in observable characteristics into account. A two step- procedure firstly estimates weights based on the propensity  $P(D = 1|X)$  for weighting temporal differences in the outcome. The second step gives a non-parametric

mean comparison weighted by  $\rho_0$  which is determined parametrically:

$$E\left[\frac{P(D = 1|X)}{P(D = 1)}\rho_0 Y\right] = E[Y^1(1) - Y^0(1)|D = 1]$$

where

$$\rho_0 = \frac{T - \lambda}{\lambda(1 - \lambda)} \frac{D - P(D = 1|X)}{P(D = 1|X)P(D = 0|X)}$$

and  $\lambda$  being the share of post-treatment observations (see Abadie (2005) for details). This approach has two main advantages. Firstly, it does not meet a functional form assumption in the second stage and allows for flexibility. The second advantage concerns the common support between control and treatment group. If an observational unit does not have common support within the other group, it can be dropped leading to higher comparability between treated and control group - a feature that the outcome-based linear model cannot consider.

Weighting temporal differences in the outcome is in particular relevant, as the reform not only included the expansion of subsidized child care, but also the introduction of home care allowances. Both treated and control group can apply for these benefits and thus, if their outcome dynamics are the same in presence of the home care allowances, the estimated effect only measures the effect of the child care expansion. Therefore, I rely on defining treatment status based on the increase in child care coverage. Using mothers of older children as control group (e.g. Bauernschuster and Schlotter, 2015) would not allow for minimizing the effect of the home care allowances. One might argue that control districts for which child care increased by a lower amount are characterized by a larger increase in receipt of home care allowances. However, Alt et al. (2015) show that benefit receipt is the smallest in East Germany where most of the control districts are placed (compare Table 4). Furthermore, I will run robustness checks with the number of public subsidies received as outcome variable and find no systematic differences in the take-up of public subsidies between high- and low-intensity districts.

Anticipation effects can be ruled out by not using observations directly before the intervention came into force. Like previously mentioned, I only use pre-reform observations from 2011. Besides, SUTVA rules interactions between groups out. The assumption implies that individuals should not change between groups which might in particular be relevant for families moving from a control district to a treated district or vice versa. Due to the repeated cross sections I cannot completely exclude these individuals, but I can control for families having moved within the last 12 months. The estimates would also be biased in case of other reforms taking place during the observational period. A major reform on parental leave already came into force in January 2007 incentivizing mothers to return to work at expiration of parental benefits (Bergemann and Riphahn, 2010, 2015; Kluge

and Tamm, 2013; Kluge and Schmitz, 2018). However, the regulations were changed in July 2015 to make part-time work during benefit receipt more attractive (*Elterngeld Plus*). Findings suggest that dropping mothers of less than one-year-olds, who are affected by the reform, will turn out to be robust compared to the baseline results.

**Heterogenous effects** To target particular groups, policymakers are often not only interested in average effects for the whole population, but also in an policy’s impact for these groups. Hence, previous studies estimate effects for specific subgroups (e.g. Cascio, 2009; Havnes and Mogstad, 2011) - a procedure suffering from multiple testing the more groups under consideration. Abadie (2005) proposes a least squares approximation for the conditional effect  $E[Y^1(1) - Y^0(1)|Z_k, D = 1]$  given by  $g(Z_k; \gamma)$  where  $Z \in X$ :

$$\gamma_0 = \operatorname{argmin}_{\gamma \in \Gamma} E[P(D = 1|X)\{\rho_0 Y - g(Z_k; \gamma)\}^2].$$

$\gamma_0$  directly indicates how the average effect varies over  $Z$ . To my knowledge, this is the first article providing an application for estimating conditional effects according to the proposition of Abadie (2005).

### 3.2 Data and descriptive findings

The data is from the German Micro Census, a one percent representative sample of German households. It contains annual information on the family background, employment and other individual-specific characteristics. The survey conducted by the Federal Statistical Office partially rotates between chosen districts such that a district of households stays in the sample for four years. A main advantage of the Micro Census is the detailed information on the family composition. Hence, a child’s and partner’s characteristics can be connected with the observational unit of interest, mothers whose youngest child is aged up to three years old. I restrict the sample to mothers who are between 18 and 45 years old and who live in a private household which corresponds to the main place of residence.

A further particularity of the Micro Census is the availability of not only agreed weekly working hours, but also the individuals working hour preferences. In contrast to other surveys like the German Socio-economic Panel (GSOEP) the question on working hours in the Micro Census is filtered which means that before stating the amount of preferred working hours the individual is asked if he/she wants to increase or decrease the agreed weekly working hours conditioned on an earnings adjustment<sup>3</sup> (for a methodological comparison of survey data on working hour preferences see Holst and Bringmann, 2016). Thus, there is also a measure for under- (the wish for an

---

<sup>3</sup>Information on the preference for an hour increase (decrease) is included since 2006 (2008).

increase of agreed hours) and overemployment (the preference for less weekly hours).

I link the Micro Census data with statistics on the regional child care coverage rate for children aged up to three years old from the German Federal Statistical Office on the district level (Federal Statistical Office, 2010*a*, 2011*a*, 2012*a*, 2013*a*, 2014*a*, 2015*a*). The child care coverage rate is measured on the cut-off date March, 1st and includes children in subsidized care not additionally attending another care arrangement and children in other care arrangements apart from subsidized care. The final sample includes 11,640 mothers (of which 3,505 are currently employed) of children aged up to three years old.

The variables used for estimating the propensity score described in the previous section and their descriptive statistics are listed in Table 5: family and individual characteristics, but also information on the interview. These numbers result after trimming observations, i.e. dropping individuals with a propensity score close ( $< 0.05$ ) to the minimum and maximum value (compare Imbens and Wooldridge (2009)). Trimming excludes 5,192 observations in the whole sample ( $N = 348$  in the control group,  $N = 4,844$  in the treated group) and 1,710 individuals of the employed sample ( $N = 230$  in the control group,  $N = 1480$  in the treated group). A major threat to identification might stem from using repeated cross-sections instead of panel data as individuals could have selected into employment after the reform came effective. Hence, a balancing check looks at the covariate distribution over time. Additional to mean values and standard deviations, Table 5 gives the standardized mean difference defined as the mean difference over time divided by the square root of the average variance (see Rubin (2001)). It does not exceed the critical value of 0.25 suggesting that selection over time depicts a minor problem. The remaining columns show that differences between mothers in high- and low-intensity districts are not large. Not surprisingly, only regional characteristics diverge as treatment is defined upon German districts.

Table 6 shows the mean of the child care coverage rate and of the examined outcome variables, its standard deviation and mean differences between treated and control group before and after the reform. The average coverage rate shows that less than one quarter of children in high-intensity districts are in subsidized care before the reform came into force. More mothers in low-intensity districts use subsidized care before the reform (negative, statistically significant difference at  $t = 0$ ), but high-intensity districts catch up<sup>4</sup>. As outcomes I examine the extensive and intensive margin, i.e., a dummy for employment, agreed and preferred working hours as well as their mismatch and a binary indicator for working full-time (more than 30 hours per

---

<sup>4</sup>Note that these are unconditional numbers that cannot give information on actual take-up of a child care slot on the individual level.



Table 5: Descriptive statistics by group membership

Variable	pre		post		post-pre		control group		treated group		treated-control group	
	mean	sd	mean	sd	std.	mean diff.	mean	sd	mean	sd	std.	mean diff.
Individual age	32.297	5.638	32.395	5.048	0.018		32.270	5.283	32.427	5.426	0.029	
Age of youngest child	0.986	0.812	0.969	0.810	-0.020		0.980	0.810	0.975	0.811	-0.007	
Number of children	1.943	1.028	1.857	0.993	-0.084		1.877	0.969	1.925	1.056	0.047	
Migration background:												
None	0.851	0.357	0.835	0.371	-0.042		0.868	0.339	0.816	0.387	-0.142	
From EU country	0.041	0.198	0.057	0.231	0.074		0.041	0.199	0.057	0.231	0.072	
Not from EU country	0.109	0.311	0.108	0.310	-0.002		0.091	0.288	0.127	0.333	0.116	
Quarter of interview:												
1	0.250	0.433	0.240	0.427	-0.022		0.251	0.434	0.238	0.426	-0.032	
2	0.247	0.432	0.239	0.426	-0.020		0.243	0.429	0.244	0.429	0.003	
3	0.247	0.431	0.246	0.431	-0.002		0.244	0.429	0.250	0.433	0.015	
4	0.256	0.436	0.275	0.446	0.043		0.262	0.440	0.268	0.443	0.014	
Interview part												
Head of household	0.726	0.446	0.683	0.465	-0.093		0.712	0.453	0.696	0.460	-0.035	
Self-reported	0.189	0.392	0.202	0.402	0.033		0.185	0.388	0.208	0.406	0.058	
No information	0.085	0.279	0.114	0.318	0.098		0.141	0.103	0.096	0.295	-0.023	
Educational degree:												
Lower secondary school	0.254	0.436	0.225	0.418	-0.069		0.247	0.431	0.232	0.422	-0.033	
Middle secondary school	0.353	0.478	0.356	0.479	0.007		0.373	0.484	0.335	0.472	-0.079	
High school	0.393	0.488	0.419	0.493	0.053		0.381	0.486	0.433	0.495	0.106	
Partner:												
No partner living in household	0.171	0.377	0.124	0.330	-0.132		0.153	0.360	0.142	0.349	-0.031	
Activity:												
Inactive	0.047	0.212	0.047	0.211	-0.002		0.042	0.201	0.052	0.221	0.045	
Active	0.782	0.413	0.829	0.377	0.119		0.805	0.397	0.806	0.395	0.004	
Educational degree:												
Lower secondary school	0.260	0.439	0.243	0.429	-0.040		0.263	0.440	0.239	0.426	-0.056	
Middle secondary school	0.225	0.417	0.240	0.427	0.036		0.239	0.426	0.225	0.418	-0.031	
High school	0.344	0.475	0.393	0.488	0.101		0.345	0.476	0.394	0.489	0.100	
Degree of urbanization:												
Urban	0.373	0.484	0.345	0.475	-0.059		0.266	0.442	0.460	0.498	0.412	
Middle	0.459	0.498	0.406	0.491	-0.108		0.476	0.499	0.386	0.487	-0.182	
Rural	0.168	0.374	0.249	0.433	0.202		0.259	0.438	0.154	0.361	-0.261	
East Germany	0.145	0.352	0.121	0.326	-0.070		0.185	0.389	0.076	0.265	-0.329	
<i>N</i>	5,847		5,793				6,052		5,588			

The sample includes 18 to 45 years old mothers of up to three-year-olds. Instead of a dummy for East Germany, the analysis includes federal states. The standardized mean difference gives the mean difference divided by the square root of the average variance (Rubin, 2001). Source: Own calculations based on data from the German Micro Census and the Federal Statistical Office (2011a, 2015a).

week) or part-time (between 12 and up to 30 hours per week). The Federal Statistical Office measures employment according to the concept of the International Labour Organization (employment for at least one paid hour or self-employment in the week before the interview) which includes employees in maternity protection and parental leave. Hence, I rely on the concept of realized employment and exclude them. About one third of all mothers in high-intensity districts are currently employed with an average of 25.5 hours per week. They prefer to slightly work more, on average one hour per week. About 35 percent of them hold a full-time position and almost one half works in part-time. The last two columns of Table 6 give the differences in means between treated and control group before and after the reform. At  $t = 0$  employment rates in high- and low-intensity districts differ significantly, but the difference vanishes after the reform. Concerning the intensive margin, one cannot detect any strong variation across groups and time for all measures. Only part-time jobs seem to have increased in high-intensity districts. Hence, descriptive findings suggest a positive link between the expansion of subsidized child care and the employment status, but no relation to the intensive margin.

Table 6: Mean outcomes and coverage rate by group membership

Variable	$d = 1, t = 0$			Difference in means <i>Treated-control group</i>	
	Mean	sd	$N$	$t = 0$	$t = 1$
Coverage rate %	20.16	(8.24)	158	-10.74***	-5.02***
Employed <i>of which:</i>	0.348	(0.476)	2,721	-0.042***	-0.009
Agreed hours	25.50	(13.66)	862	0.81	2.13***
Preferred hours	26.96	(13.71)	862	0.95	1.00*
Mismatch	1.46	(6.34)	862	-0.14	-0.16
Full-time	0.348	(0.477)	862	0.006	0.011
Part-time	0.470	(0.499)	862	0.021	0.042*

\* $p < 0.1$ , \*\* $p < 0.05$ , \*\*\* $p < 0.01$ . The sample includes 18 to 45 years old mothers of up to three-year-olds.

Source: Own calculations based on data from the German Micro Census and the Federal Statistical Office (2011a, 2015a).

## 4 Estimation results

### 4.1 Main results

Table 7 shows the baseline estimation results for the whole sample and different sensitivity checks according to Abadie (2005). Standard errors consider the two-step estimation procedure by bootstrapping taking clusters on the district level into account.

In general, districts with a large increase of the coverage rate experience a

rise of both the employment rate and working hours compared to districts with a lower expansion of child care. The reform effect amounts to an increase of the employment rate of 5.7 percentage points. Agreed and preferred weekly hours increase by 5.1 and 5.3 (20 percent of the pre-reform mean) respectively. Interestingly, these findings suggest an almost equal adjustment of agreed and preferred hours such that the effect on the mismatch size is close to zero. The similar adjustment also implies that the effect is not only driven by involuntarily underemployed mothers who adjust agreed to preferred working hours, but that both distributions change. They suggest (see histograms of agreed and preferred working hours in the Appendix) a shift from marginal employment (categorized as up to 12 hours per week) to part-time work (between 12 and up to 30 hours per week). One can also observe a decrease at the upper part of the hour distribution. However, it contributes less to the average effect due to a similar movement in the group of low-intensity districts. Further estimation results not shown in Table 7 demonstrate that the share of under- and overemployed mothers is not significantly affected. Hence, the overall positive effect on working hours is driven by a shift from marginal to part-time employment which also shows up in a not affected share of full-time employed.

The remaining panels of Table 7 contain different robustness checks. Firstly, for investigating the common trend assumption which is crucial for DD-estimation I check whether the time trend before the reform is the same for districts with a high and smaller increase of the coverage rate. I test a specification by introducing a placebo reform with the pre-reform period being 2010 ( $t = 0$ ) and the post-reform period 2011 ( $t = 1$ ). The estimates prove not to statistically significantly differ from zero (Panel D, first row). Hence, close to the reform treated and control group show a similar time trend. Since the reform also included the introduction of home care allowances, a second test uses the number of received public subsidies as outcome variable. Unfortunately, an explicit information on the receipt of home care allowances is not available. The last rows of Panel D demonstrate that treated and control group do not show a statistically different pattern concerning the receipt of public subsidies suggesting that the baseline estimate is likely to solely measure the effect of the expansion of subsidized child care.

The next specification (Panel B) uses the median of the increase of the coverage rate for redefining the treatment and control group. The effects are similar to using a clearer cut as in the main specification. The same holds for changing the post reform year to 2014. While similar in size, the effects for the intensive margin are close to significance on conventional levels.

Other checks deviate from the baseline by changing the sample composition (Panel C). The reform demonstrates to have a similar, but stronger effect when using only West German districts. Employment of mothers living in high-intensity West-German districts rises by 6.6 percentage points which is mainly driven by part-time employment. Interestingly, their preferred work-

Table 7: Results of main estimation and sensitivity analysis - average effects

	Employment	Agreed hours	Preferred hours	Mismatch (hours)	Full time	Part time
<i>Panel A: Baseline</i>						
	0.057** (0.028)	5.089** (2.382)	5.303** (2.580)	0.213 (0.790)	0.063 (0.048)	0.126** (0.063)
<i>N</i>	11,640	3,505	3,505	3,505	3,505	3,505
<i>Panel B: Sample composition</i>						
Median division	0.069*** (0.023)	3.823** (1.929)	4.130** (2.006)	0.307 (0.403)	0.027 (0.037)	0.119** (0.050)
<i>N</i>	16,203	5,113	5,113	5,113	5,113	5,113
<i>post</i> = 2014	0.057** (0.025)	3.263 (2.179)	3.360 (2.247)	0.097 (0.380)	0.037 (0.044)	0.090 (0.055)
<i>N</i>	15,919	5,142	5,142	5,142	5,142	5,142
<i>Panel C: Sample composition</i>						
West Germany	0.066* (0.038)	5.316* (3.027)	6.562** (3.268)	1.246 (0.865)	0.025 (0.058)	0.184** (0.080)
<i>N</i>	10,618	3,196	3,196	3,196	3,196	3,196
Without 1-year-olds	0.110*** (0.039)	6.621*** (2.460)	6.087** (2.564)	-0.534 (0.647)	0.097* (0.051)	0.142** (0.068)
<i>N</i>	7,695	3,001	3,001	3,001	3,001	3,001
Without childminders	0.052* (0.029)	4.503* (2.491)	4.687* (2.700)	0.184 (0.767)	0.058 (0.051)	0.111* (0.065)
<i>N</i>	11,438	3,441	3,441	3,441	3,441	3,441
Without families having moved	0.066** (0.030)	5.401** (2.521)	6.186** (2.743)	0.785 (0.791)	0.054 (0.053)	0.163** (0.068)
<i>N</i>	10,330	3,177	3,177	3,177	3,177	3,177
<i>Panel D: Common trend</i>						
Placebo reform	-0.007 (0.032)	-0.687 (2.417)	0.127 (2.006)	0.814 (0.605)	-0.031 (0.048)	0.008 (0.067)
<i>N</i>	11,307	3,638	3,638	3,638	3,638	3,638
		<i>Whole sample:</i>		<i>Employed:</i>		
Number of public subsidies		Treated, $t = 0$ : Mean	<i>ATE</i> <i>TET</i>	Treated, $t = 0$ : Mean	<i>ATE</i> <i>TET</i>	
		0.922 (0.838)	-0.011 (0.061)	0.624 (0.637)	0.061 (0.074)	
<i>N</i>		11,058		5,093		

\* $p < 0.1$ , \*\* $p < 0.05$ , \*\*\* $p < 0.01$ . Standard errors (in columns) are bootstrapped with 1,000 replications considering clusters on district level.

The sample includes 18 to 45 years old mothers of up to three-year-olds.

Agreed and preferred hours are measured on weekly basis.

Source: Own calculations based on data from the German Micro Census and the Federal Statistical Office (2011a, 2015a).

ing hours increase slightly more compared to agreed working hours. These findings show that the overall effect for both East and West Germany turns out to be robust considering any systematic differences between districts

of the former GDR and West German districts implying no major problem for including East Germany in the baseline analysis. Dropping mothers of children younger than one year old leads to a slightly larger effect for all outcomes. In particular, full-time employment is positively affected for mothers whose children are older than one year. Moreover, the results show that the parental leave reform of 2015 that affected mothers of less than one-year-olds is not supposed to drive the results. As mothers working in a child care facility might be differently affected by the reform, they are excluded in another specification which only slightly changes the estimates. The same holds when checking for selective migration by excluding those having changed their place of residence within the last twelve months.

## 4.2 Heterogenous effects

Table 8: Heterogeneity - conditional average effects

	Employ- ment	Agreed hours	Preferred hours	Mismatch (hours)	Full time	Part time
<i>Panel A: Heterogeneities</i>						
<b>Education</b> (Reference: Lower secondary school)						
Middle secondary school	0.044 (0.063)	6.216 (6.250)	5.600 (6.881)	-0.616 (1.904)	0.161 (0.139)	-0.113 (0.154)
High school	0.122* (0.069)	10.457* (6.051)	9.773 (6.673)	-0.684 (1.979)	0.182 (0.130)	0.116 (0.159)
<b>Number of children</b>						
	-0.004 (0.025)	1.462 (2.629)	2.550 (2.912)	1.087 (1.059)	0.014 (0.053)	0.055 (0.074)
<b>Partner</b> (Reference: No partner living in household)						
Partner living in household	0.052 (0.073)	2.641 (6.840)	-0.454 (7.343)	-3.095* (1.834)	0.027 (0.140)	0.104 (0.160)
<i>N</i>	11,640	3,505	3,505	3,505	3,505	3,505

\* $p < 0.1$ , \*\* $p < 0.05$ , \*\*\* $p < 0.01$ . Standard errors (in columns) are bootstrapped with 1,000 replications considering clusters on district level.

The sample includes 18 to 45 years old mothers of up to three-year-olds.

Agreed and preferred hours are measured on weekly basis.

Source: Own calculations based on data from the German Micro Census and the Federal Statistical Office (2011a, 2015a).

Table 8 indicates how the effects vary over different subgroups as estimated in Abadie (2005). Note that the estimates give the difference to the reference group for categorical variables or to a one-unit increase in case of continuous variables. E.g. mothers with high school degree show a by twelve percentage points higher employment effect compared to mothers with a degree from lower secondary school. The impact on the intensive margin is as well higher for better educated women, but the estimates are characterized by a high variance. These findings are in line with Havnes and Mogstad (2011) who also find larger effects for better educated mothers. However,

this difference is weaker pronounced as the general reform effect also turns out to be smaller. One explanation of this result could be that external child care costs continue to be too high for mothers with lower educational degree. While the average effect does not vary for the number of children, further interesting findings concern the presence of a partner. Although the estimates in general do not support deviating adjustment mechanisms for agreed and preferred working hours, non-single mothers show a significant higher rise of agreed hours. This result enhances a previous one by Weber and Zimmert (2017) who show that non-single women are more likely to leave underemployment by providing evidence for the adjustment channel in the presence of available child care. As the rate of underemployment also decreases for this subgroup, the reform was especially successful for families with a more traditional employment pattern by adapting agreed hours to the desired level.

## 5 Conclusion

This paper provides empirical evidence for the causal effect of subsidizing early child care on maternal labor market outcomes. It exploits the staggered expansion of early child care provision in Germany culminating in a legal claim for a child care slot introduced in 2013. The presented semi-parametrically estimated intention-to-treat effects suggest a strong impact of 5.7 percentage points on the maternal employment rate and of five on agreed and preferred weekly working hours. Besides, the share of full-time employed women does not significantly change in response to the reform which might result from limited provision of full-time child care slots or the parental preference for part-time care. Although the share of realized full-time slots (defined as more than seven hours per day) almost doubled from 2011 to 2015 in high-intensity districts, only one out of ten children attends full-time care in post-reform years. However, these numbers cannot definitely answer which of the two channels, lack of provision or parental preferences, prevails as they do not give information on the supply of full-time slots.

The main findings are in general in line with previous results for Germany. Bauernschuster and Schlotter (2015) estimate intention-to-treat effects for the eligibility to kindergarten in the range of five to eight percentage points for employment and of 2.5 for weekly hours. Fendel and Jochimsen (2017) find an increase of maternal employment of eight percentage points for the overall reform, i.e. the legal claim for a child care slot and the introduction of the home care allowances. Hence, these findings for Germany turn out to be robust compared to other countries with low maternal labor market participation (Schlosser, 2005; Berlinski and Galiani, 2007; Baker et al., 2008; Lefebvre and Merrigan, 2008; Berlinski et al., 2011; Nollenberger and Rodríguez-Planas, 2011). Another crucial finding concerns the adjustment of

agreed and preferred working hours. Both measures change, but in contrast to Reynolds and Johnson (2012) this article finds that agreed and preferred working hours adjust on average in line with each other. This result implies that also the size of the mismatch remains close to zero and that the results are not driven by involuntarily underemployed mothers adjusting agreed to preferred working hours. On the contrary, the availability of low cost child care has the potential to increase working hour preferences also for other groups represented in an overall shift of the distributions of agreed and preferred working hours. Mothers changing from marginal to part-time work characterize this shift. However, the average effect on the share of under- and overemployed mothers is not significant.

Another contribution of this article is the provision of conditional average effects with two interesting findings. Firstly, mothers with high school degree show large positive responses in contrast to women with lower educational degree which can be explained by too high external child care costs for the latter group. Hence, a possible implication is to organize parental contributions for child care slots income-related as many communities already have implemented. Secondly, non-single mothers who might have previously provided additional earnings to a partner's main income show a higher adjustment of agreed than of preferred working hours which reflects in a lower share of underemployed. Although the reform's overall effect seem to be positive, questions remain. Especially the group of mothers with lower educational degree and singles show small responses. Hence, further research might focus on the channels that are responsible for this result.

## References

- Abadie, A. (2005), ‘Semiparametric difference-in-differences estimators’, *The Review of Economic Studies* **72**(1), 1–19.
- Alt, C., Hubert, S., Jehles, N., Lippert, K., Meiner-Teubner, C., Schilling, C. and Steinberg, H. (2015), *Datenbericht Betreuungsgeld. Auswertung amtlicher Daten und der Kifög-Länderstudien aus den Jahren 2013/2014/2015. Abschlussbericht*, Deutsches Jugendinstitut e. V. München.
- Baker, M., Gruber, J. and Milligan, K. (2008), ‘Universal child care, maternal labor supply, and family well-being’, *Journal of Political Economy* **116**(4), 709–745.
- Bauernschuster, S., Hener, T. and Rainer, H. (2016), ‘Children of a (policy) revolution: The introduction of universal child care and its effect on fertility’, *Journal of the European Economic Association* **14**(4), 975–1005.
- Bauernschuster, S. and Schlotter, M. (2015), ‘Public child care and mothers’ labor supply – evidence from two quasi-experiments’, *Journal of Public Economics* **123**, 1–16.
- Bergemann, A. and Riphahn, R. T. (2010), ‘Female labour supply and parental leave benefits – the causal effect of paying higher transfers for a shorter period of time’, *Applied Economics Letters* **18**(1), 17–20.
- Bergemann, A. and Riphahn, R. T. (2015), ‘Maternal employment effects of paid parental leave’, *IZA Discussion Papers* **9073**.
- Berlinski, S. and Galiani, S. (2007), ‘The effect of a large expansion of pre-primary school facilities on preschool attendance and maternal employment’, *Labour Economics* **14**(3), 665–680.
- Berlinski, S., Galiani, S. and Mc Ewan, P. J. (2011), ‘Preschool and maternal labor market outcomes: Evidence from a regression discontinuity design’, *Economic Development and Cultural Change* **59**(2), 313–344.
- Campbell, I. and van Wanrooy, B. (2013), ‘Long working hours and working-time preferences: Between desirability and feasibility’, *Human Relations* **66**(8), 1131–1155.
- Cascio, E. U. (2009), ‘Maternal labor supply and the introduction of kindergartens into american public schools’, *Journal of Human Resources* **44**(1), 140–170.
- Drago, R., Tseng, Y.-P. and Wooden, M. (2005), ‘Usual and preferred working hours in couple households’, *Journal of Family Studies* **11**(1), 46–61.



- Duflo, E. (2001), ‘Schooling and labor market consequences of school construction in indonesia: Evidence from an unusual policy experiment’, *American Economic Review* **91**(4), 795–813.
- Ehing, D. (2014), ‘Unter- und überbeschäftigung in Deutschland: Eine Analyse der Arbeitszeitwünsche von Erwerbstätigen vor dem Hintergrund des demografischen Wandels’, *Zeitschrift für Sozialreform* **60**(3), 247–272.
- Fagan, C. (2001), ‘Time, money and the gender order: work orientations and working-time preferences in britain’, *Gender, Work & Organization* **8**(3), 239–266.
- Federal Statistical Office (2010a), *Kindertagesbetreuung regional 2010. Ein Vergleich aller 412 Kreise in Deutschland*, Statistisches Bundesamt, Wiesbaden.
- Federal Statistical Office (2010b), *Statistiken der Kinder- und Jugendhilfe. Kinder und tätige Personen in Tageseinrichtungen und in öffentlich geförderter Kindertagespflege am 01.03.2010*, Statistisches Bundesamt, Wiesbaden.
- Federal Statistical Office (2011a), *Kindertagesbetreuung regional 2011. Ein Vergleich aller 412 Kreise in Deutschland*, Statistisches Bundesamt, Wiesbaden.
- Federal Statistical Office (2011b), *Statistiken der Kinder- und Jugendhilfe. Kinder und tätige Personen in Tageseinrichtungen und in öffentlich geförderter Kindertagespflege am 01.03.2011*, Statistisches Bundesamt, Wiesbaden.
- Federal Statistical Office (2012a), *Kindertagesbetreuung regional 2012. Ein Vergleich aller 402 Kreise in Deutschland*, Statistisches Bundesamt, Wiesbaden.
- Federal Statistical Office (2012b), *Statistiken der Kinder- und Jugendhilfe. Kinder und tätige Personen in Tageseinrichtungen und in öffentlich geförderter Kindertagespflege am 01.03.2012*, Statistisches Bundesamt, Wiesbaden.
- Federal Statistical Office (2013a), *Kindertagesbetreuung regional 2013. Ein Vergleich aller 402 Kreise in Deutschland*, Statistisches Bundesamt, Wiesbaden.
- Federal Statistical Office (2013b), *Statistiken der Kinder- und Jugendhilfe. Kinder und tätige Personen in Tageseinrichtungen und in öffentlich geförderter Kindertagespflege am 01.03.2013*, Statistisches Bundesamt, Wiesbaden.

- Federal Statistical Office (2014a), *Kindertagesbetreuung regional 2014. Ein Vergleich aller 402 Kreise in Deutschland*, Statistisches Bundesamt, Wiesbaden.
- Federal Statistical Office (2014b), *Statistiken der Kinder- und Jugendhilfe. Kinder und tätige Personen in Tageseinrichtungen und in öffentlich geförderter Kindertagespflege am 01.03.2014*, Statistisches Bundesamt, Wiesbaden.
- Federal Statistical Office (2015a), *Kindertagesbetreuung regional 2015. Ein Vergleich aller 402 Kreise in Deutschland*, Statistisches Bundesamt, Wiesbaden.
- Federal Statistical Office (2015b), *Statistiken der Kinder- und Jugendhilfe. Kinder und tätige Personen in Tageseinrichtungen und in öffentlich geförderter Kindertagespflege am 01.03.2015*, Statistisches Bundesamt, Wiesbaden.
- Federal Statistical Office (2016), *Kindertagesbetreuung regional 2016. Ein Vergleich aller 402 Kreise in Deutschland*, Statistisches Bundesamt, Wiesbaden.
- Felfe, C. and Lalive, R. (2018), ‘Does early child care affect children’s development?’, *Journal of Public Economics* **159**, 33–53.
- Felfe, C., Nollenberger, N. and Rodríguez-Planas, N. (2015), ‘Can’t buy mommy’s love? universal childcare and children’s long-term cognitive development’, *Journal of Population Economics* **28**(2), 393–422.
- Fendel, T. and Jochimsen, B. (2017), ‘Child care reforms and labor participation of migrant and native mothers’, *IAB-Discussion Paper* **9**.
- Fitzpatrick, M. D. (2012), ‘Revising our thinking about the relationship between maternal labor supply and preschool’, *Journal of Human Resources* **47**(3), 583–612.
- Gangl, M. and Ziefle, A. (2015), ‘The making of a good woman: extended parental leave entitlements and mothers’ work commitment in germany’, *American Journal of Sociology* **121**(2), 511–563.
- Gelbach, J. B. (2002), ‘Public schooling for young children and maternal labor supply’, *The American Economic Review* **92**(1), 307–322.
- Geyer, J., Haan, P. and Wrohlich, K. (2015), ‘The effects of family policy on maternal labor supply: Combining evidence from a structural model and a quasi-experimental approach’, *Labour Economics* **36**, 84–98.
- Greenhaus, J. H. and Beutell, N. J. (1985), ‘Sources of conflict between work and family roles’, *Academy of Management Review* **10**(1), 76–88.

- Havnes, T. and Mogstad, M. (2011), ‘Money for nothing? universal child care and maternal employment’, *Journal of Public Economics* **95**(11), 1455–1465.
- Holst, E. and Bringmann, J. (2016), ‘Arbeitszeitrealitäten und arbeitzeitwünsche in deutschland: Methodische unterschiede ihrer erfassung im soep und mikrozensus (desired and actual working hours in germany: Methodological differences in measurement between soep and mikrozensus)’, *SOEPpapers* **859**.
- Imbens, G. W. and Wooldridge, J. M. (2009), ‘Recent developments in the econometrics of program evaluation’, *Journal of Economic Literature* **47**(1), 5–86.
- Kluge, J. and Schmitz, S. (2018), ‘Back to work: Parental benefits and mothers’ labor market outcomes in the medium run’, *ILR Review* **71**(1), 143–173.
- Kluge, J. and Tamm, M. (2013), ‘Parental leave regulations, mothers’ labor force attachment and fathers’ childcare involvement: evidence from a natural experiment’, *Journal of Population Economics* **26**(3), 983–1005.
- Kreyenfeld, M. and Hank, K. (2000), ‘Does the availability of child care influence the employment of mothers? findings from western germany’, *Population Research and Policy Review* **19**(4), 317–337.
- Lechner, M. (2011), ‘The estimation of causal effects by difference-in-difference methods’, *Foundations and Trends® in Econometrics* **4**(3), 165–224.
- Lefebvre, P. and Merrigan, P. (2008), ‘Child-care policy and the labor supply of mothers with young children: A natural experiment from canada’, *Journal of Labor Economics* **26**(3), 519–548.
- Lundin, D., Mörk, E. and Öckert, B. (2008), ‘How far can reduced childcare prices push female labour supply?’, *Labour Economics* **15**(4), 647–659.
- Matiaske, W., Schmidt, T., Seifert, H. and Tobsch, V. (2017), ‘Arbeitszeitdiskrepanzen mindern Zufriedenheit mit Arbeit und Gesundheit’, *WSI Mitteilungen* **4**.
- Merz, J. (2002), ‘Time and economic well-being - a panel analysis of desired versus actual working hours’, *Review of Income and Wealth* **48**(3), 317–346.
- Morrissey, T. W. (2017), ‘Child care and parent labor force participation: a review of the research literature’, *Review of Economics of the Household* **15**(1), 1–24.

- Nollenberger, N. and Rodríguez-Planas, N. (2011), ‘Child care, maternal employment and persistence: a natural experiment from Spain’, *IZA Discussion Paper* **5888**.
- OECD (2017), *OECD Employment Outlook*.
- Pollmann-Schult, M. (2009), ‘Arbeitszeitwunsch und -wirklichkeit im Familienkontext. eine Analyse der Diskrepanzen zwischen präferierter und tatsächlicher Arbeitszeit’, *Soziale Welt* **60**(2), 163–178.
- Reynolds, J. (2003), ‘You can’t always get the hours you want: Mismatches between actual and preferred work hours in the US’, *Social Forces* **81**(4), 1171–1199.
- Reynolds, J. (2004), ‘When too much is not enough: Actual and preferred work hours in the United States and abroad’, *Sociological Forum* **19**(1), 89–120.
- Reynolds, J. and Johnson, D. R. (2012), ‘Don’t blame the babies: Work hour mismatches and the role of children’, *Social Forces* **91**(1), 131–155.
- Rubin, D. B. (2001), ‘Using propensity scores to help design observational studies: application to the tobacco litigation’, *Health Services and Outcomes Research Methodology* **2**(3-4), 169–188.
- Schlösser, A. (2005), *Public preschool and the labor supply of Arab mothers: Evidence from a natural experiment*, The Hebrew University of Jerusalem. Mimeo.
- Wanger, S. (2015), ‘Frauen und Männer am Arbeitsmarkt: Traditionelle Erwerbs- und Arbeitszeitmuster sind nach wie vor verbreitet’, *IAB-Kurzbericht* **4**.
- Weber, E. and Zimmert, F. (2017), ‘The creation and resolution of working hour discrepancies over the life course’, *IAB-Discussion Paper* **29**.
- Zoch, G. and Hondralis, I. (2017), ‘The expansion of low-cost, state-subsidized childcare availability and mothers’ return-to-work behaviour in East and West Germany’, *European Sociological Review* **33**(5), 693–707.

## A Graphs

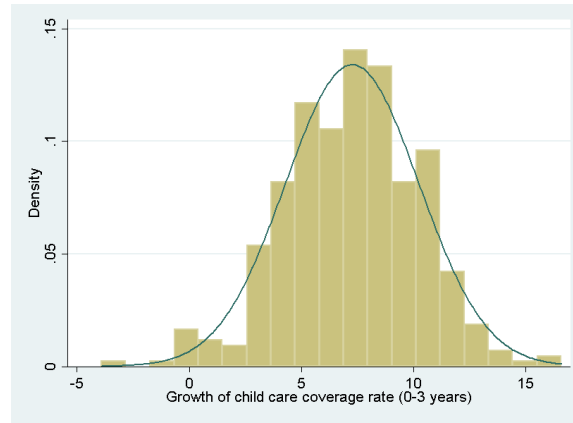


Figure 2: Histogram of child care coverage growth from 2011 to 2015. Unweighted calculations based on 317 districts. Source: Federal Statistical Office (2011*a*, 2015*a*).

Figures 3-6: Distribution of agreed working hours across group membership

Source: Own calculations based on data from the German Micro Census and the Federal Statistical Office (2011*a*, 2015*a*).

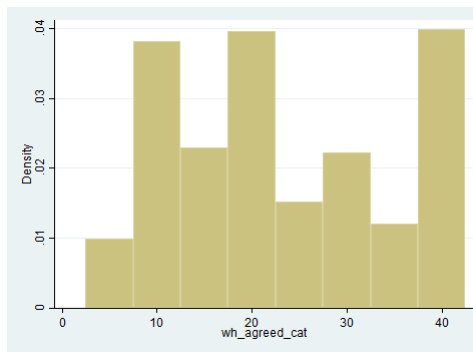


Figure 3: Control group before reform

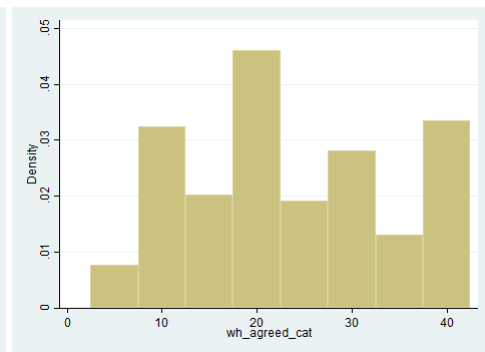


Figure 4: Control group after reform

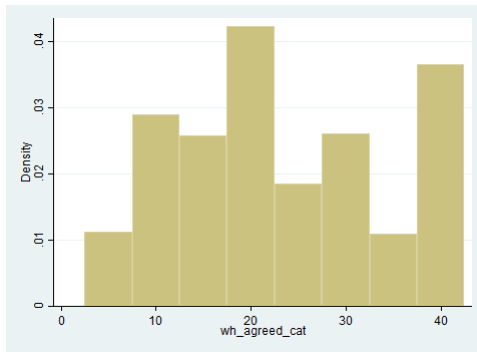


Figure 5: Treated group before reform

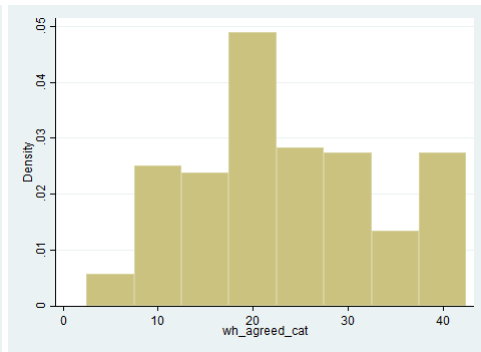


Figure 6: Treated group after reform

Figures 7-10: Distribution of preferred working hours across group membership

Source: Own calculations based on data from the German Micro Census and the Federal Statistical Office (2011a, 2015a).

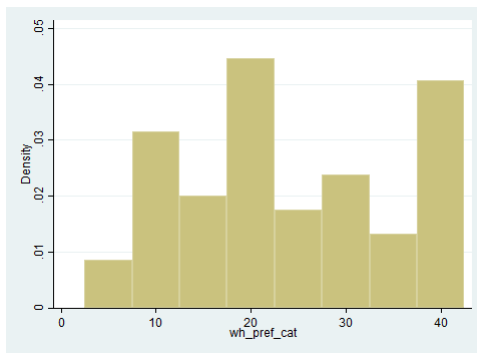


Figure 7: Control group before reform

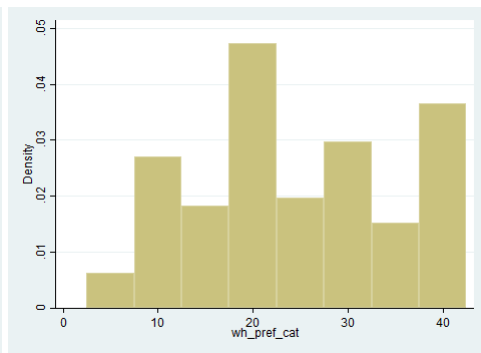


Figure 8: Control group after reform

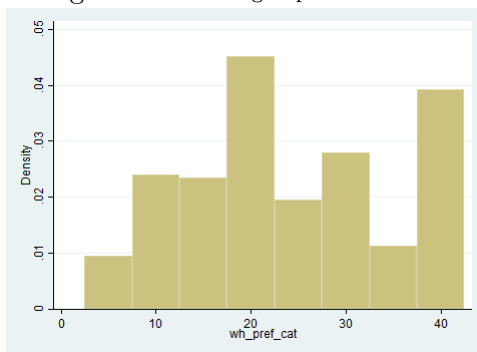


Figure 9: Treated group before reform

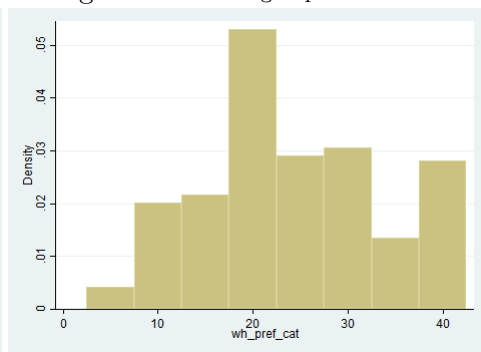


Figure 10: Treated group after reform