

Bar-Haim, Eyal; Chauvel, Louis; Hartung, Anne

**Working Paper**

## More necessary and less sufficient: An age-period-cohort approach to overeducation in comparative perspective

LIS Working Paper Series, No. 734

**Provided in Cooperation with:**

Luxembourg Income Study (LIS)

*Suggested Citation:* Bar-Haim, Eyal; Chauvel, Louis; Hartung, Anne (2018) : More necessary and less sufficient: An age-period-cohort approach to overeducation in comparative perspective, LIS Working Paper Series, No. 734, Luxembourg Income Study (LIS), Luxembourg

This Version is available at:

<https://hdl.handle.net/10419/203020>

**Standard-Nutzungsbedingungen:**

Die Dokumente auf EconStor dürfen zu eigenen wissenschaftlichen Zwecken und zum Privatgebrauch gespeichert und kopiert werden.

Sie dürfen die Dokumente nicht für öffentliche oder kommerzielle Zwecke vervielfältigen, öffentlich ausstellen, öffentlich zugänglich machen, vertreiben oder anderweitig nutzen.

Sofern die Verfasser die Dokumente unter Open-Content-Lizenzen (insbesondere CC-Lizenzen) zur Verfügung gestellt haben sollten, gelten abweichend von diesen Nutzungsbedingungen die in der dort genannten Lizenz gewährten Nutzungsrechte.

**Terms of use:**

*Documents in EconStor may be saved and copied for your personal and scholarly purposes.*

*You are not to copy documents for public or commercial purposes, to exhibit the documents publicly, to make them publicly available on the internet, or to distribute or otherwise use the documents in public.*

*If the documents have been made available under an Open Content Licence (especially Creative Commons Licences), you may exercise further usage rights as specified in the indicated licence.*

# LIS

## Working Paper Series

No. 734

### **More Necessary and Less Sufficient: An Age-Period-Cohort Approach to Overeducation in Comparative Perspective**

Eyal Bar-Haim, Louis Chauvel and Anne Hartung

April 2018



CROSS-NATIONAL  
DATA CENTER  
*in Luxembourg*

---

Luxembourg Income Study (LIS), asbl

---

# More Necessary and Less Sufficient: An Age-Period-Cohort Approach to Overeducation in Comparative Perspective

**Eyal Bar-Haim**

**Louis Chauvel**

**Anne Hartung**

(corresponding author)

University of Luxembourg	University of Luxembourg	University of Luxembourg
Maison des Sciences Humaines	Maison des Sciences Humaines	Maison des Sciences Humaines
11, Porte des Sciences	11, Porte des Sciences	11, Porte des Sciences
L-4366 Esch-sur-Alzette	L-4366 Esch-sur-Alzette	L-4366 Esch-sur-Alzette
+352 46 66 44 9206	+352 46 66 44 9618	+352 46 66 44 9335
<a href="mailto:eyal.bar-haim@uni.lu">eyal.bar-haim@uni.lu</a>	<a href="mailto:louis.chauvel@uni.lu">louis.chauvel@uni.lu</a>	<a href="mailto:anne.hartung@uni.lu">anne.hartung@uni.lu</a>

*(Authors listed alphabetically)*

## Acknowledgements

This study was supported by the National Research Fund, Luxembourg, in the frame of the Pearl chair project FNR/P11/05. We would like to thank Daniele Checchi and Anja Leist for their useful comments. Earlier versions of this paper presented at the first LIS user conference (2017), RC28 meeting (2017) and the ISA forum (2016) and the authors wish to thank the participants for their insights.

## Abstract

*In many countries, the skilled labor market has lagged behind educational expansion. As a result of increased competition, younger cohorts of the highly educated face decreasing returns to education or overeducation. Surprisingly, decreasing occupational outcomes do not coincide empirically with the economic returns among those with tertiary education. Regarding the process of changes in economic returns to education based on cohort transformations, we expect that the expansion of tertiary education affects specific cohorts, which find themselves facing more labor market competition. As a result, the economic returns to education should decrease over cohorts even though they remain stable and even increase during the same period. To study this process, we model economic returns with a new Age-Period-Cohort-Trended-Lag (APCTLAG) method, which allows comparing the gap in economic returns between tertiary and less than tertiary education over cohorts. Using the Luxembourg Income Study (LIS), we analyze trends over three decades in 12 countries. Our results confirm that educational returns for tertiary education have declined over time, even though the gap between the educated and the less educated has remained similar in most of the countries. For younger cohorts, tertiary education has become more necessary to survive in the competitive labor market, but the actual economic returns to it have decreased - making tertiary education less sufficient than before.*

## INTRODUCTION

This paper provides new evidence on the variation of returns to education cohorts and countries in light of educational expansion and changes in the labour market. Economic returns to higher education have an important role in determining the individuals' chances later in life. Moreover, changes in the returns to education might affect social inequality, especially if they are associated with changes in inequality of educational opportunities. The massive expansion of higher education at the second half of the twentieth century and especially since the 1990s led to concerns about a possible decline in returns to education due to the expansion, and if the labor market demand for workers with higher education would be sufficient to meet the supply of such

workers (Mills 1953, Smith 1986). This is known in the literature as the prediction of “overeducation” (Freeman 1976, Sicherman 1991) or “educational inflation” (Collins 1979). Overeducation occurs when attainment of higher levels of education increases, due to educational expansion, at a faster pace than the demand for educated workers in the labor market. Consequently, younger, better-educated cohorts face more competition in the labor market than earlier cohorts, forcing them to settle for less prestigious jobs with lower wages.

The fear of declines in the returns to education has gained much political and academic attention (Ioakimidis 2018, Mateos-Romero & del Mar Salinas-Jimenez 2018, Knight, Deng, & Li 2017). However, the empirical results are somewhat contradicting: educational expansion coincided in many countries with a decrease in occupational outcomes of tertiary education holders, whereas economic returns increased at the same time. Furthermore, the gap in economic returns between those with tertiary and non-tertiary education has widened (Bernardi & Ballarino 2016). This may be driven by increasing difficulties of people with postsecondary education to attain the same level of occupational status as previous cohorts, although they still earn more than people with a lower level of education. In their recent book, Bernardi and Ballarino (2016) report that in eight countries, the occupational level of the highly educated relative to those with lower levels of education has decreased over time, while economic returns decreased only in three countries.

In this paper, we focus on the cohort transformations in the economic returns to education. To date, cohort and period trends have only rarely been separated in studies on returns to education. Economic returns tend to be sensitive to age and period effects, as bonuses complementing earnings vary according to an employee’s experience as well as the economic performance of a company (or, more generally, with the economic cycle). However, not accounting for period

effects may result in the overestimation of economic returns to education. For instance, in times of overall economic prosperity, economic returns to education are expected to increase, even if the occupational returns are low. Therefore, structural and temporal economic changes can affect the measurement of economic returns to education.

We also distinguish between absolute and relative economic returns to education (Rotman, Shavit & Shalev 2016). Relative returns refer to the income gap between those with tertiary and non-tertiary educational attainment whereas absolute returns indicate returns to higher education of current cohorts relative to the returns in previous times or of older cohorts. Both types of returns do not necessarily covary over time. For instance, absolute returns to education might decrease over time and cohorts, and relative returns might increase due to the crowding out effect of those with lower levels of education (Ben-David 2009). This situation illustrates a grim scenario, in which tertiary education becomes crucial for preventing downward mobility (i.e., it becomes more necessary) but is unable to provide better chances for upward mobility (less sufficient).

The paper is divided into three parts. First, we review previous findings regarding educational expansion and returns to education. Next, we estimate the educational expansion and the changes across cohorts in the returns to tertiary education for a number of countries. To do this, we use recent developments of Age-Period-Cohort models that are able to account for cohorts trends in the dependent variable (APCTLAG). We then estimate, using linear regression, the effect of educational expansion and Skill Biased Technological Change (SBTC) on the returns to education, for a smaller sample of 10 countries. Finally, we discuss the results and claim that, overall, the educational expansion decreased the economic returns to education, even though the trend is not identical in all countries.

## RETURNS TO EDUCATION

Returns to education are usually regarded as the individual economic advantages based on a person's level of education (Card 1999; Tomlinson 2017). These returns may diverge across educational levels due to labor market mechanisms that assign high-paid jobs to people with higher education, and lower paid jobs to those with less education. Some scholars have argued that this process is due to specific skills that are acquired in the process of education (Mincer 1958) — students learn important skills that might help them later in their work and are compensated for their newly acquired skills (Becker 1962; Garcia-Aracil and Van der Velden 2008). Others claim that education is merely a sorting mechanism that students employ to demonstrate their skills (Spence 1973; Assaad, Krafft and Salehi-Isfahani 2017) or other attributes that employers are willing to pay for (Bruin 1999).

Hence, returns to education are strongly affected by the supply and demand in the labor market (Machin 2009). According to a simple model of supply and demand, with an increase in the demand for highly skilled workers, returns for education are expected to increase. Similarly, when there is a rise in the supply of highly skilled workers (i.e., more people attaining higher education), returns for education are expected, *ceteris paribus*, to decline. In the last few decades, a rise in the supply of highly skilled workers was a very common situation, usually referred to in the literature as “educational expansion” (Brown 2001). However, its consequences turned out to be more complicated than the theoretical model had implied.

The returns to education are not bound to individual labor income alone. We adopt here a wider view taking into account that labor market decisions are made jointly in the household, and

that there are tradeoffs between household members that individual earnings are not able to reflect. In addition, inequalities in educational returns may be magnified in households. Studies of assortative mating repeatedly found homogamy in terms of education (Mare 1991; Schwartz and Mare 2017). In other words, having tertiary education increases the likelihood of marriage to a spouse with tertiary education. At least in recent decades, this seems to have important economic consequences: As the male breadwinner model declines (Blossfeld and Bucholtz 2009), marital educational homogamy is assumed to increase the household income of the tertiary education owners and thus widen inequality in educational returns between the low and high educated. Empirical studies, however, found little evidence on the effect of marital homogamy on overall income inequality (Breen and Salazar 2009; 2011, Breen and Andersen 2012). The reason put forward is that the increased employment gap between individuals with tertiary and non-tertiary education accounted for most of the inequality rather than the gap based on marriage composition (Breen and Salazar 2009). Nevertheless, the household income gap between tertiary and non-tertiary educated persons is higher than the gap in individual income from labor, implying that the returns to education are also evident in household income (Yang 2004).

Moreover, the tendency to exchange tertiary education with other forms of capital in the marriage market (i.e. tertiary educated as documented by Schwartz, Zeng and Xie 2016) suggests that individual income in fact underestimates the actual economic returns to education. People use their tertiary education to marry partners with less education but with higher social origin. Hence, the gains from tertiary education are arguably broader than mere individual earnings suggest.

## EDUCATIONAL EXPANSION



The expansion of tertiary education is one of the major societal changes of the twentieth century, for which several non-exhaustive explanations have been suggested. According to Schofer and Meyer (2005), the rate of enrollment in higher education has globally increased by more than 200% over the past century. The major part of the expansion occurred in the second half of the century and has continued until today. While postsecondary education used to be a privilege reserved only for the elite in the past, it is common among young cohorts today, even in less-developed countries (Hannum and Buchmann 2005).

Economic theory suggests that the expansion of tertiary education is a result of an increase in the demand for skilled labor (Keep and Mayhew 1996; Béduwé and Planas 2003). During the last few decades, the labor market has become more and more dependent on skilled workers. New industries and occupations emerged based on the development of information technology, and thus the need for professional occupations has increased (Berman and Machin 2000; Goldin and Katz 2009; Kristal 2013). This process is known as skill-biased technological change (SBTC). At the same time, the professionalization of management has augmented the demand for educated managers (Shenhav 1995). According to this explanatory framework, educational expansion thus is, in part, a result of labor market demand in new and developing occupations (Konstantinovskiy 2017).

In contrast, sociological theories have traditionally put a higher weight on non-economic factors, and three distinct strands of literature focus on public policy, political negotiation and institutional change as the forces behind educational expansion. One strand of literature claims that the expansion of tertiary education was driven in most countries by direct public policy rather than by the free market. With a few exceptions, governments were able to accelerate the development of tertiary education institutions by the numbers of available higher education

opportunities, reducing tuition rates and encouraging student enrollment. A second strand of literature suggests that this expansion was a result of a political struggle between groups (such as classes, strata and other social groups) who wanted to ensure better mobility chances for their children (Collins 1971). Such groups fought to expand educational opportunities, regardless of market conditions and needs. A third aspect of the literature, also suggesting that educational expansion is not a result of labor market demand, focuses on institutional change. Schofer and Meyer (2005) explained the expansion of tertiary education as a result of four global institutional changes: (1) democratization, which increased demands for tertiary education as a civil right; (2) the scientization of society that magnified the importance of the role of schooling and science in society; (3) the rise of national development logics, which perceived educational expansion as a means of progression; and (4) the rise of the global diffusion of pro-educational cultural models. All of these explanations undermine the role of the market in the expansion of education. Thus, in the subordination of labor market rationales, educational expansion may result in a mismatch between high-skilled labor supply and demand, which is also known as “overeducation” (Collins 1979, Sichertman 1991). In contrast, some scholars only refer to overeducation as a mismatch between the level of education needed for a specific job and the actual level of education utilized in the job (Di Stasio, Bol and Van de Werfhorst 2016). However, this definition implies that the skills required for each job are orthogonal to the market demands.

## EXPANSION AND CHANGES IN RETURNS TO EDUCATION

Collins (1979) claimed that the expansion of tertiary education would lead to “credential inflation.” He argues that tertiary education would become the modal education, with insufficient

high-skilled jobs added to the labor market to meet the resulting demand. Competition over jobs would increase, leading to higher requirements for each job. Collins predicted that, in the future, even a technical position would require a doctorate degree. Collins's argument also implies that educational expansion will lead to decreasing returns to tertiary education.

Halaby (1994) noted that overeducation could manifest itself in various forms. First, the result of competition could lead to fewer economic returns to skilled jobs such as reduced wages for professional occupations. In this scenario, the relative economic returns, as the ratio of the wages of the tertiary educated to the less than tertiary educated, may actually increase, namely in case lower educated workers are crowded out of their jobs by their better educated counterparts.

Second, it is also possible that, similar to Collins' (1979) prediction, the occupational returns to education decrease: under the condition that there are fewer possibilities for tertiary education holders to acquire a (prestigious) job that fits their skills. In this scenario, absolute economic returns to education, as well as the gap between those with low and high educational levels, should remain stable or even decrease, in cases where the highly skilled cannot compete for low-skill jobs (Sakamoto and Powers 1995).

Therefore, it is necessary to distinguish between absolute and relative returns. Since a decrease in the occupational standing of the tertiary educated may, in the long run, lead to a crowding out of those with lower levels of education, the latter might find themselves pushed out of the labor force or into precarious jobs due to competition with the former group. Consequently, this will lead to an increasing gap between the two groups, and for maintaining the economic status quo, education will become 'more necessary'. Further, returns to tertiary education holders should diminish over cohorts, with returns to non-tertiary educated individuals diminishing even more

rapidly, resulting in education to be 'less sufficient'. In that case, tertiary education will become more necessary but less sufficient to succeed in the labor market than before. Accordingly, regarding returns to education, we hypothesize:

H<sub>1</sub>: Tertiary education is more necessary: Educational expansion increases returns to higher educational levels, relative to those with less education.

H<sub>2</sub>: Tertiary education is less sufficient: Educational expansion decreases returns to higher educational levels, relative to those of older cohorts.

The distinct results obtained for the two types of returns stems from common problems in measuring overeducation. First, cohort trends in returns to education have often been ignored. Most studies analyze the differences between two or more time points in the association between education and income or occupational score. However, while educational attainment remains fairly stable across time, occupational attainment does not. In other words, educational expansion concerns mostly younger cohorts, namely those at the age of graduation from their last educational level. Second, temporary changes in the labor market might affect returns to education for a short period, without really influencing them in the long run. Therefore, ignoring cohort trends in measuring returns to education might lead to biased results.

## SBTC AND CHANGES IN RETURNS TO EDUCATION

As noted, empirical studies on overeducation have not yielded conclusive results to date. In many countries, there is strong evidence supporting overeducation, regarding occupational returns, but much less in terms of economic returns. That is, while tertiary-educated persons tend

to be more often employed in occupations that do not match their credentials, their economic returns from education do not decrease. Recent studies (Ballarino and Bernardi 2016) have found that occupational returns to postsecondary education holders decreased in Spain, Italy, Sweden, Israel, the Netherlands, Russia, France and Japan. However, economic returns to education only decreased in Sweden, France and Norway. In contrast, economic returns to education actually increased in Hungary, the Netherlands, Russia and Israel. These trends seem to be due to an increase in the demand for high-skilled workers (SBTC), which occurred in parallel to the education expansion.

Davia, McGuinness and O'Connell (2016) found similar results in an international comparison of 25 European countries. They discovered that, while educational expansion is associated with occupational overeducation, the ratio of supply to demand for high-skilled labor has an important role in increasing overeducation. Countries that experience SBTC (which increased the demand for high-skilled labor) face lower levels of overeducation. Unfortunately, Davia and colleagues did not directly measure overeducation in terms of economic returns.

In sum, regarding the effect of educational expansion, we hypothesize:

H<sub>3</sub>: Barring SBTC, educational expansion will decrease returns to education over cohorts.

H<sub>4</sub>: In cases when substantial SBTC occurs, educational expansion will increase returns to education over cohorts.

## DATA, VARIABLES AND METHODS

### DATA

Our analysis is based on data of the Luxembourg Income Study (LIS), which to our knowledge is the best available cross-nationally comparable data source providing harmonized demographic and economic information across a time span of more than three decades (Gornick 2014). The data contains detailed information on the respondents' household income as well as other important demographic variables such as age, education and gender. We construct 5-year cohorts based on the year of birth from 1940 to 1980 and follow them over the period from 1980 until 2010. The data is structured in a pseudo panel design, similar to the one suggested by Deaton (1985), Deaton and Paxson (1994) and Verbeek and Vella (2005). In the pseudo panel cohort design, which is also referred to as a Lexis table (Carstensen 2007), it is possible to follow different cohorts over their life course, even if the individual respondents are drawn from different samples. To increase our standard of harmonization, we limit our comparison to the 12 industrialized countries for which all the data regarding education and income were available for all the waves. Due to a lack of consistent, detailed occupational information and thus the inability to construct the SBTC measure, we exclude Norway and Italy from the last part of the analysis. Consequently, the overall sample consisted of 100 country-cohort data points in 10 countries.

## VARIABLES

*Education.* We dichotomized the highest level of education achieved, as calculated by the LIS, into tertiary vs. non-tertiary. Tertiary education pertains to ISCED levels 5 or 6. Non-tertiary education pertains to ISCED levels from 0 to 4.

*Skilled biased technological change (SBTC).* In order to measure this variable at the cohort level, we first identified high-skill occupations based on the 1-digit ISCO88 classification provided by LIS. Following the results of Goos, Manning and Salomons (2014), we considered all

professional (category 2) and technical (category 3) occupations as high-skill occupations. The proportion of people in high-skill occupations serves as an indicator for SBTC.

*Returns to education.* We use two different measures of the economic returns to education. The first one is the household disposable income (PPP adjusted) per standard adult (DPI).<sup>1</sup> In a next step, we transformed the DPI into logit ranks (Chauvel 2016 , Rotman, Shavit & Shalev 2016, Tam 2013) (equation 1) for each cohort (c) in each time period (p) to create income-based ranks that are indifferent to both age and period. This standardization strategy enabled us to more accurately compare the economic returns over time and across countries. Due to the limited representativeness of survey data in the tails of the distribution, we trimmed the data to the range between -4 (pertains to approximately bottom 2% of the income distribution) and 4 (the top 2%). A logitrank of zero refers to the median income.

$$\text{logit}(r_i)_{-c,p} = \ln\left(\frac{r_i}{1-r_i}\right) \quad (1)$$

$r_i \in ]0,1[$  –rank order of income quantiles

## METHODS

We develop two new features of Age-Period-Cohort (APC) models in order to observe cohort level changes in the returns to education, and in the factors that are driving the changes. We start by shortly reviewing traditional APC models: The purpose of APC models is to explain a dependent variable  $y$  observed in a series of cross-sectional surveys assembled in a Lexis table (Age x Period)

---

<sup>1</sup> Household income, compared to wages or earnings, is a more rich source of information as it summarizes the combined effects of the spouses (Hout 2012).

through its decomposition in effects of age  $a$  ( $\alpha_a$ ), period  $p$  ( $\pi_p$ ) and cohort membership  $c$  ( $\gamma_c$ ), as can be seen in Equation I.

Equation I

$$y^{apc} = \mu + \alpha_a + \pi_p + \gamma_c(APC)$$

In an APC model, the dependent variable is affected by the age of the respondent, the period in which he or she lives and the generation, or birth cohort to which he or she belongs to. However, since cohort is a linear combination of age and period:  $c=p-a$ , the basic model suffers from an identification problem, which has been extensively commented and reviewed (Mason & Wolfinger 2001).

In the recent decade, several solutions have been suggested to solve the problem of the identification, mainly by imposing constraints on the APC model (Smith 2008, Chauvel & Schroder 2015). To avoid arbitrary choices on constraints, it is important to clearly specify their meaning. One solution is to build an Age Period Cohort Detrended (APCD) model where age, period and cohort vectors are constrained to be sum zero and linear trend zero, so that we estimate and test the difference to zero of the deviation from the trends (“bumps”) to be attributed to age period or cohort effect (Chauvel 2011, Kuang Nielsen & Nielsen 2008, Freedman 2016). Equation II presents the formalization of the model.

Equation II



$$\left\{ \begin{array}{l} y^{apc} = \alpha_a + \pi_p + \gamma_c + \alpha_0 \text{rescale}(a) + \gamma_0 \text{rescale}(c) + \beta_0 + \varepsilon_i \\ \left\{ \begin{array}{l} \sum \alpha_a = \sum \pi_p = \sum \gamma_c = 0 \\ \text{Slope}_a(\alpha_a) = \text{Slope}_p(\pi_p) = \text{Slope}_c(\gamma_c) = 0 \\ \min(c) < c < \max(c) \end{array} \right. \end{array} \right.$$

$\beta_0$  denotes the constant,  $\alpha_a$  is the age effect vector,  $\pi_p$  is the period effect vector, and  $\gamma_c$  is the cohort effect vector. The constraints set the sum and the slope of each of these vectors to zero. The linear trends in age and cohort (and also period) are absorbed by Rescale(a) and Rescale(c) that are transformations of  $\alpha_a$  and  $\gamma_c$  from the initial values of a and c into a range between -1 and +1. Lastly, the oldest and youngest cohorts (which only appear once in the Lexis table) need to be omitted from the analysis.

The APCD model detects deviations from the linear trends of age, period and cohort: it is able to identify specific cohorts defined by higher or lower suicide rates, for instance (Chuavel, Leist & Ponomarenko 2016), but it cannot identify the actual linear trends.

A way to solve the indetermination on the linear trends in APC is to have a substantial definition of one of this trends. Since we are most interested in identifying cohort trends, we constrain the age linear trend to equate to the average within-cohort age effect across the cohorts in the observation window. Further, we impose a slope zero on period but do not need a constraint on the cohort vector anymore to make the model identifiable. In this Age-Period-Cohort-Trended Lag (APCTLAG) model (Chuavel, Leist & Ponomarenko 2016), the cohort vector will absorb the general linear trend of social change and make *relative* changes in economic returns to education visible. The model is formalized in equation III:

Equation III

$$\left\{ \begin{array}{l} y^{apc} = \alpha_a + \pi_p + \gamma_c + \varepsilon_i \\ \sum \alpha_a = \sum \pi_p = 0 \\ Slope(\pi_p) = 0 \\ Slope(\alpha_a) = \frac{\sum (y_{a+1,p+1,c} - y_{a,p,c})}{(p-1)(a-1)} \\ \min(c) < c < \max(c) \end{array} \right.$$

The constraints mean that the sum of the age and period vectors is zero and the period linear trend is zero. In the APCTLAG, compared to the APCD, the cohort coefficients will include the constant and the linear trend, on top of the non-linear deviation patterns.

The constraint on age linear trend requires that we have at least three consecutive cohorts, as reflected in equation III.

The APCTLAG model implemented on the log disposable personal income (ln(DPI) and the logitranks of it (logitranks(DPI)) for the sample restricted to tertiary education holders only estimates the cohort variations of absolute returns to tertiary education. The estimation of the relative cohort returns of tertiary diploma holders relative to non-tertiary educated population, we first calculate the differences in the average ln(DPI) and logitranks(DPI) between tertiary and non-tertiary education holders on the Lexis table. We then estimate the cohort effect using the APCTLAG for the differences as the dependent variable.

The last part of the analysis is a linear regression in which the cases are country-cohort data points to predict the returns to education, aiming at assessing the extent to which educational expansion, SBTC, and their interaction impact returns to education. Our assumption underlying this is that there is an interaction between expansion and SBTC, i.e. the expansion of tertiary education affects its returns depending on the extent to which the market is able to absorb the newly educated, i.e.

the extent to which there is SBTC. Both Expansion and SBTC enter the equation as independent variables in a linear model. The model is described in Equation IV:

Equation IV

$$Y = \beta_0 + \beta_1 \text{Expansion} + \beta_2 \text{SBTC} + \beta_3 \text{Expansion} * \text{SBTC}$$

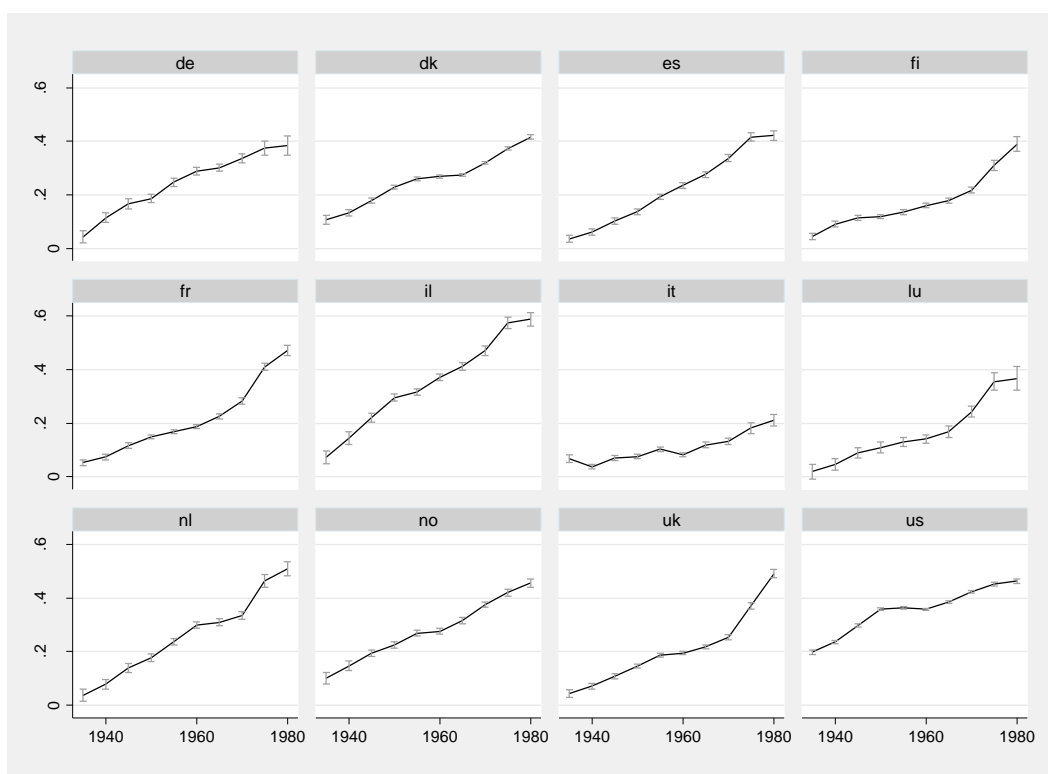
where Y are the returns to education at the cohort by country level, based on the cohort coefficients obtained from the previous models. The same method of acquiring the data points was used for Expansion and SBTC which are the independent variables in the model.

## RESULTS

### *Educational Expansion*

Figure 1 presents changes in the proportion of tertiary education holders over cohorts. In all countries, tertiary education massively expanded, from 10% to about 50%, across the cohorts born between 1935 and 1980. An exception to this general trend, however, is Italy, which experienced only minor expansion during this time. In a number of countries—most notably France, Luxembourg, Finland, Israel, the United Kingdom and the Netherlands—the expansion was not linear, with a substantial shift in the proportion of cohorts with tertiary education born in 1970–1975. This is in line with previous studies highlighting a massive educational expansion that occurred during the 1990s, when the aforementioned cohorts entered the higher educational system (Marginson 2016; Liu, Green and Pensiero 2016).

**Figure 1: Cohort Change in the Proportion of Tertiary Education Holders**



Source: LIS. Note: The Y-axis represent the percentage of tertiary education within a birth cohort.

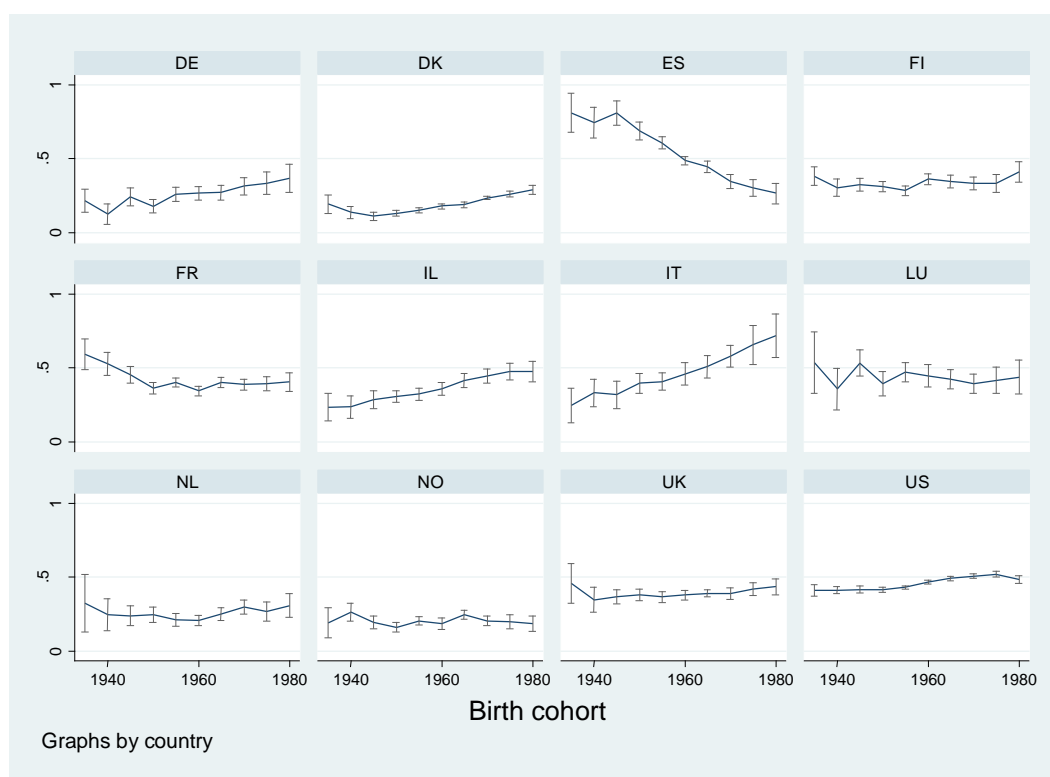
In the United States and Denmark, the educational expansion began earlier, with cohorts born in 1960–1965 being its first beneficiaries. In Italy, a similar pattern can be observed, but, as noted, its expansion was considerably smaller than in all other countries. None of the other countries experienced a shift in the trend of educational expansion—the increase in tertiary education remained relatively stable over time.

### *The Gap between Tertiary and Non-Tertiary Education*

Figure 2 depicts the APC-GO results, i.e. the returns to tertiary education relative to those with less education in terms of equivalized disposable household income. Except for Spain, which has experienced a massive decline in returns to education, our results do not support the hypothesis of an overall “overeducation” process: The overall trend in returns to tertiary education can be

described as stable or slightly increasing. However, there is also no indication of a major upgrade due to SBTC in the returns to education.

**Figure 2: The Gap between Persons with Tertiary and Non-Tertiary Educated Across Birth Cohorts in Terms of Household Disposable Income Per Standard Adult (DPI)**

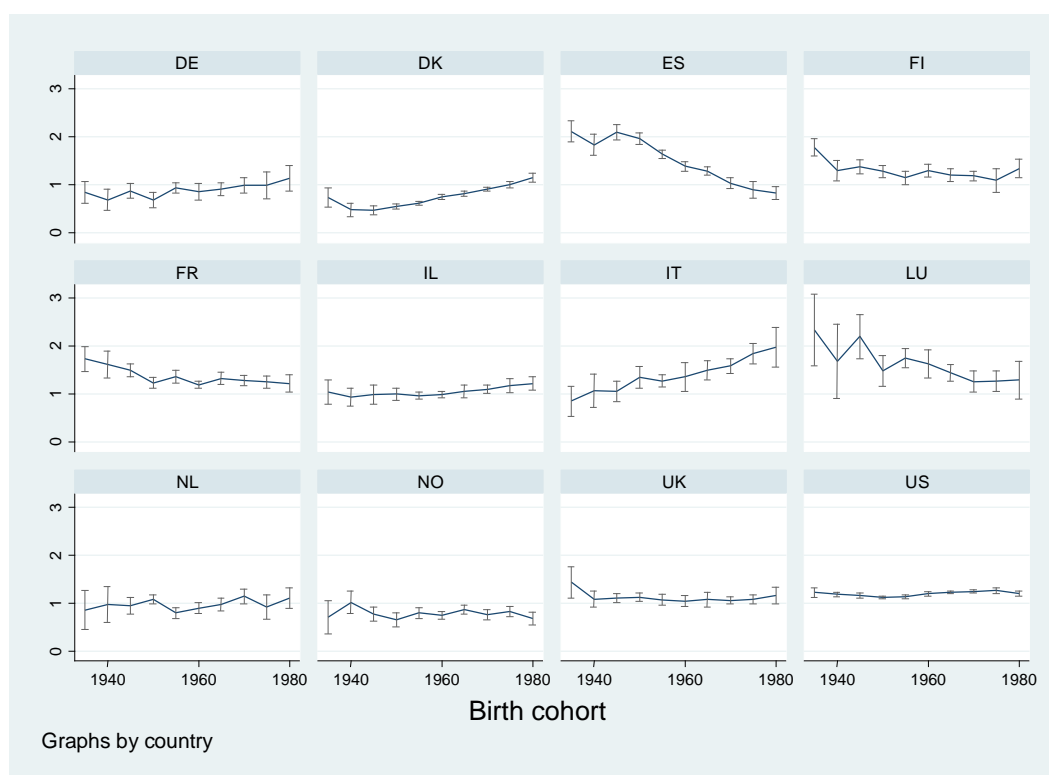


Source: LIS. Note: The Y-axis represent the natural log of the gap in DPI between persons with tertiary education and those with less than tertiary education in each birth cohort.

As a sensitivity analysis, Figure 3 depicts the same analysis, showing the gap within each cohort relative to the income distribution in each period, but now using standardized logit ranks of income instead of the PPP adjustment. Reflecting the hierarchical position, the ranks provide a different strategy of dealing with the challenge of comparing economic returns over time periods. Both measures yield similar results, confirming the robustness of the finding that the gap between

the individuals with tertiary and non-tertiary education changed very little in most of the countries examined here.

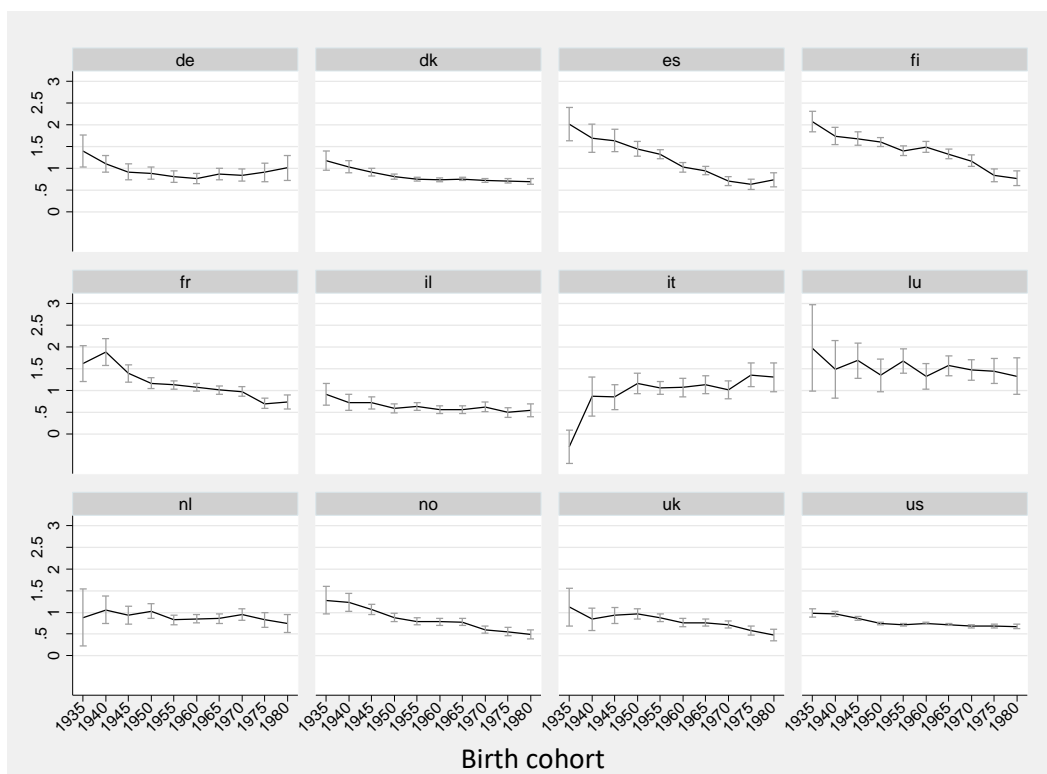
**Figure 3: The Gap between Persons Tertiary and Non-Tertiary Educated Across Birth Cohorts in Terms of Logitranks of DPI**



Source: LIS. Note: The Y-axis represent the gap between the logitranks of DPI between persons with tertiary education and those with less than tertiary education in each birth cohort.

### *Returns to Tertiary Education*

Figure 4 presents the cohort change in the logit ranks of DPI for tertiary education holders. In Germany, Denmark, the Netherlands and Italy, absolute returns to education did not decline across cohorts. In these countries, the returns have remained similar or—as in Italy and Germany—even increased, albeit not significantly.

**Figure 4: Returns to Tertiary Education (Logit rank DPI)**

Source: LIS. Note: The Y-axis represent the logitranks of DPI within each cohort's tertiary educated.

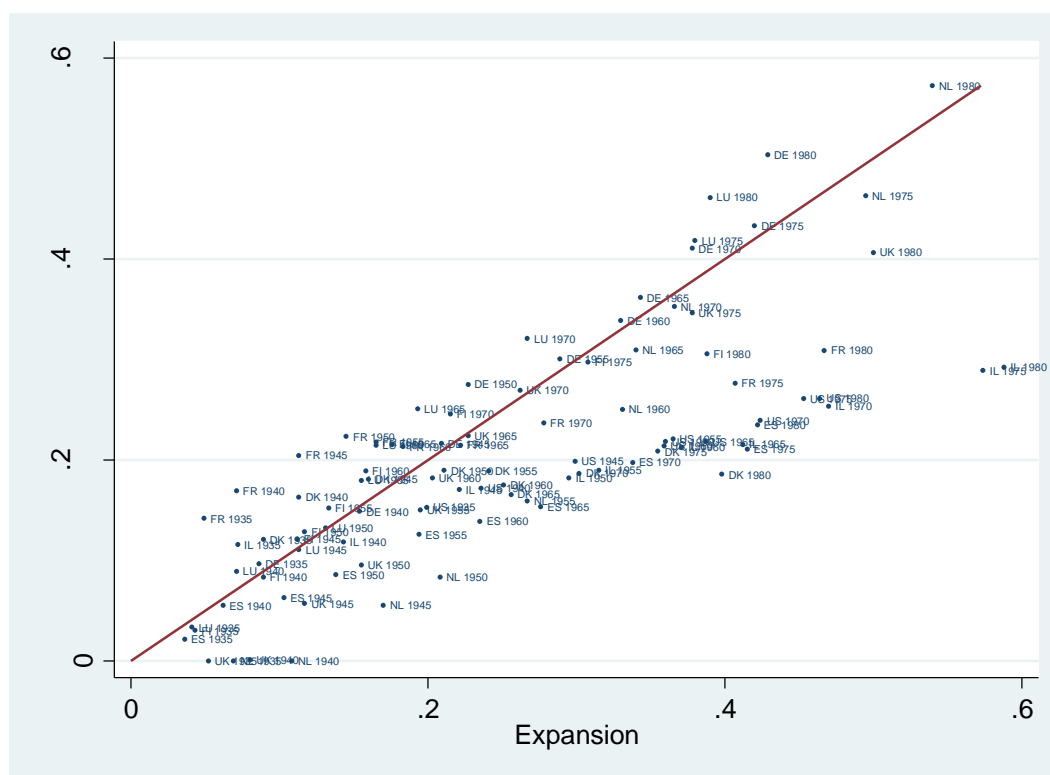
In the other countries, however, returns to education have decreased significantly—people with a postsecondary education who were born earlier had higher incomes than their later counterparts. Indeed, for these countries, education is less sufficient to maintain the status quo regarding labor market outcomes.

### *Expansion and Returns to Education*

In order to test whether returns to education changed as a result of educational expansion and SBTC, we employed linear regression analyses with country by cohort as units of analysis. As SBTC is not available for Italy and Norway, we restrict the analysis to ten countries. Figure 5 plots the levels of SBTC against educational expansion in each country-cohort context. Unsurprisingly, both educational expansion and SBTC increased between the cohorts of 1930-1940 and 1970-1980. However, for some countries (e.g. Israel), the educational expansion increased more rapidly than the SBTC while in other countries, such as Germany and Luxembourg, the SBTC increased more rapidly than the educational expansion. In countries experiencing stronger SBTC than expansion, there is a higher demand than supply for skilled workers, which thus should lead to increased returns to education, while in those countries experiencing stronger educational expansion than SBTC, we would expect the contrary.



**Figure 5: Educational Expansion (supply) and SBTC (demand) among Different Cohorts in 10 Countries**



Note: The Y-axis represents the percentages of people with skilled and technical occupations within each cohort. The X-axis represent the percentages of people with tertiary education within each cohort.

The results are presented in Table 1. Model 1 describes the effects of expansion and SBTC on the gap in returns between tertiary and non-tertiary education holders or on relative returns to education. There is a significant negative—yet rather small—effect of educational expansion. Educational expansion thus slightly decreases the gap between tertiary and non-tertiary education holders while controlling for SBTC. The effect of SBTC is not significant.

**Table 1: OLS Estimates of Economic Returns to Education (Logit Rank DPI)**

	Relative to less than tertiary		Only Tertiary	
	Model 1	Model 2	Model 3	Model 4
Expansion	-0.79*	-1.68*	-2.06*	-3.30*
	(0.38)	(0.54)	(0.34)	(0.45)
SBTC	-0.03	-1.28	0.60	-1.15
	(0.45)	(0.7)	(0.4)	(0.58)
Expansion*SBTC		4.42*		6.16*
		(1.91)		(1.6)
Constant	1.38*	1.58*	1.34*	1.62*
	(0.07)	(0.11)	(0.06)	(0.09)
Adjusted-R <sup>2</sup>	0.08	0.33	0.38	0.46
N	100	100	100	100

Source: LIS.

In Model 2, we added an interaction term between educational expansion and SBTC. Again, the effect of expansion is negative and significant while the effect of SBTC remains insignificant. In line with our hypotheses, the interaction effect is positive and significant, implying that when there is a substantial skill-biased technological change, educational expansion can increase the gap between tertiary and non-tertiary education holders.

The results presented in Model 3 and Model 4 reflect absolute returns to tertiary education, regardless of non-tertiary education. Here, the effect of expansion is also negative and significant, and the interaction term is again positive and significant. As can be inferred from the adjusted  $R^2$  of the models, the explanatory power of the model is above 30%. In sum, independent of the measure of educational returns, first, educational expansion is associated with decreasing returns to tertiary education. However, second, the effect of educational expansion is reversed in the presence of SBTC, i.e. when the labor market provides new job opportunities. Figure 6 presents the predicted values of Model 2 and Model 4 in Table 1 for plausible values of SBTC and educational expansion. We predict the returns for the highest, lowest and average levels of SBTC and educational expansion in our sample. As can be seen from Figure 6, which depicts the returns of tertiary education relative to less than tertiary education, the negative effect of educational expansion is significant only when SBTC does not occur. With SBTC present, the negative effect of expansion diminishes to insignificance.

**Figures 6: Predicted Economic Returns to Education by Expansion and SBTC**

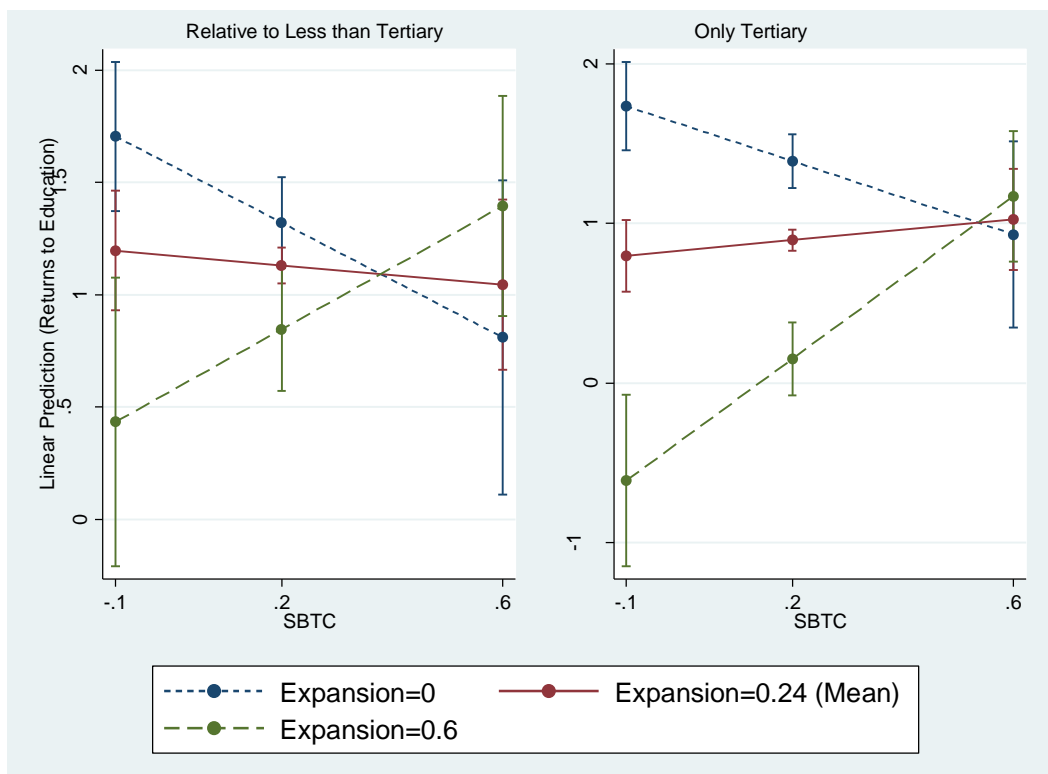


Figure 6 presents the predicted returns to education in comparison to older cohorts. Here, there is also a negative effect of expansion at an average level of SBTC. Only with a high level of SBTC does the effect of expansion become insignificant. This confirms H2: In the presence of SBTC, the negative effect of educational expansion diminishes.

## DISCUSSION

Since the late 1960s, scholars have warned of overeducation as a result of massive educational expansion. However, while there is strong evidence of declining returns to tertiary

education in relation to occupational standing (Di Stasio, Bol and Van de Werfhorst 2016; Sarkar 2016), results that actually confirm the phenomenon of ‘overeducation’ in terms of economic returns to tertiary education are scarce (for an exception see Psacharopoulos 1989). On the contrary, most studies found an increase in economic returns after the educational expansion (Montenegro and Patrinos 2014).

Whereas many previous studies only used a two-time-point design, we employ a new approach to study economic returns to education by an advanced age-period-cohort method. This gives us a wider perspective and enable us to observe the changes for a much longer period.

Observing the changes in *relative* returns to education across cohorts born between 1940 and 1980, our findings confirm the “more necessary and less sufficient” hypothesis: In most of the countries studied, economic returns to education increased for individuals with higher education compared to those with lower education. Furthermore, people with a tertiary educational level born in younger cohorts perform much better than their less-educated counterparts, in comparison with older cohorts. In other words, for younger cohorts, education is crucial even more so than before.

However, *absolute* returns to education decreased steadily for most of the researched countries. In those countries, postsecondary education holders from younger cohorts are doing much worse than their older counterparts. Consequently, for younger generations, tertiary education is not sufficient to maintain the same standard of living as older generations.

Investigating the cohort effects of returns to education in each country on educational expansion, we found that educational expansion is associated with decreasing returns to tertiary education. We could also show that the effect of educational expansion is reversed in the presence of skill-biased technological change. In other words, when the labor market is able to create jobs

for the newly educated, the income of tertiary education holders will not decline. It is thus indeed the particular combination of expanding labor markets together with increasing educational opportunities provide the most positive context for economic returns.

It should be noted, however, the findings presented here are an accurate description of the association between educational expansion and returns to education only for the set of countries and cohorts under investigation. Due to data limitations, we were not able to compare a larger set of countries for the entire time span, limiting us to a single-level analysis instead of a multilevel model that would have allowed us to differentiate between country and cohort effects. Moreover, due to the complexity of a cohort-based analysis, we could not control for other structural factors considered important for the analysis of educational returns, such as income inequality and growth.

Nevertheless, our study advances the current debate in a number of ways. Our results shed light on reasons for the inconsistency in results between returns to education, in terms of occupational standing, and economic returns to education presented in previous studies (Bernardi and Ballarino 2016). Economic returns to education are not actually increasing because a tertiary-level education pays better, but because of the fact that a lower education, in particularly completed secondary education, pays worse than before. Therefore, the loss of occupational standing due to overeducation is less visible in terms of income. The decline of returns across cohorts is likely due to the lower occupational positions in younger cohorts.

In conclusion, the educational expansion of the late twentieth century generally was a mixed blessing regarding the labor market and economic returns of affected cohorts. Tertiary education holders from younger cohorts struggle to find suitable labor market positions and therefore find themselves competing with less educated individuals for jobs they are overqualified

for. As a result, those with a higher educational level experience a decrease in income in comparison with their counterparts from older cohorts. At the same time, increased competition for low-skill jobs is crowding out applicants with lower educational levels, thus further increasing the gap between tertiary and non-tertiary education holders. In many countries, having a higher educational level is more valuable in terms of payout than a lower educational level, but its value has decreased compared to payouts in the past. With education being „more necessary and less sufficient”, the results seem to imply, similar to Collin’s (1979) prediction, a stronger competition within the elite of the higher education holders on a small fraction of lucrative jobs, while the lower-educated are competing for getting *a* job, no matter which one. This scenario is direful for the sustainability of the higher educational system as well as for the entire society.

## REFERENCES

- Assaad, R., Krafft, C., & Salehi-Isfahani, D. (2017). Does the type of higher education affect labor market outcomes? Evidence from Egypt and Jordan. *Higher Education*, 1-51. doi:10.1007/s10734-017-0179-0
- Béduwé, C., & Planas, J. (2003). *Educational expansion and labour market*. CEDEFOP-Office for official Publications of the European Communities. Luxembourg.
- Ben-David, D. (2009). Israel's labor market: Today, in the past and in comparison with the West. In D. Ben-David, D. (Ed.), *State of the nation report: Society, economy and policy in Israel* (pp. 213-275). Jerusalem: Taub Center for Social Policy Studies in Israel.
- Becker, G. S. (1962). Investment in human capital: A theoretical analysis. *Journal of Political Economy*, 70(5, Part 2), 9-49.
- Berman, E., & Machin, S. (2000). Skill-biased technology transfer around the world. *Oxford Review of Economic Policy*, 16(3), 12-22.
- Bernardi, F., & Ballarino, G. (Eds.). (2016). *Education, occupation and social origin: A comparative analysis of the transmission of socio-economic inequalities*. Cheltenham: Edward Elgar Publishing.
- Blinder, A. S. (1973). Wage Discrimination: reduced form and Structural Estimates. *Journal of Human resources*, 436-455.
- Blossfeld, H. P., & Buchholz, S. (2009). Increasing resource inequality among families in modern societies: The mechanisms of growing educational homogamy, changes in the division of work in the family and the decline of the male breadwinner model. *Journal of Comparative Family Studies*, 603-616.
- Brown, D. K. (2001). The social sources of educational credentialism: Status cultures, labor markets, and organizations. *Sociology of Education*, 74, 19-34.



Bruin, A. D. (1999). Towards extending the concept of human capital: a note on cultural capital. *Journal of Interdisciplinary Economics*, 10(1), 59-70.

Breen, R., & Andersen, S. H. (2012). Educational assortative mating and income inequality in Denmark. *Demography*, 49(3), 867-887.

Breen, R., & Salazar, L. (2009). Has increased women's educational attainment led to greater earnings inequality in the United Kingdom? A multivariate decomposition analysis. *European Sociological Review*, 26(2), 143-157.

Breen, R., & Salazar, L. (2011). Educational assortative mating and earnings inequality in the United States. *American Journal of Sociology*, 117(3), 808-843.

Chancel, L. (2014). Are younger generations higher carbon emitters than their elders?: Inequalities, generations and CO2 emissions in France and in the USA. *Ecological Economics*, 100, 195-207.

Card, D. (1999). The causal effect of education on earnings. *Handbook of Labor Economics*, 3, 1801-1863.

Carstensen, B. (2007). Age-period-cohort models for the Lexis diagram. *Statistics in medicine*, 26(15), 3018-3045.

Chauvel, L. (2011). Age-Period-Cohort with hysteresis APC-H model/A Method.

Chauvel, L., Hartung, A., & Bar-Haim, E. (2017). APCGO: Stata module to calculate age-period-cohort effects for the gap between two groups (based on a Blinder-Oaxaca decomposition), including trends for each parameter.

Chauvel, L., Leist, A. K., & Ponomarenko, V. (2016). Testing persistence of cohort effects in the epidemiology of suicide: an age-period-cohort hysteresis model. *PloS one*, 11(7), e0158538.

- Chauvel, L. (2016). The intensity and shape of inequality: the ABG method of distributional analysis. *Review of Income and Wealth*, 62(1), 52-68.
- Collins, R. (1971). Functional and conflict theories of educational stratification. *American Sociological Review*, 1002-1019.
- Collins, R. (1979). *The credential society: An historical sociology of education and stratification*. New York: Academic Press.
- Davia, M. A., McGuinness, S., & O'Connell, P. J. (2016). Determinants of regional differences in rates of overeducation in Europe. *Social Science Research*, 63, 67-80.
- Deaton, A. (1985). Panel data from time series of cross-sections. *Journal of econometrics*, 30(1-2), 109-126.
- Deaton, A., & Paxson, C. (1994). Intertemporal choice and inequality. *Journal of political economy*, 102(3), 437-467.
- Di Stasio, V., Bol, T., & Van de Werfhorst, H. G. (2016). What makes education positional? Institutions, overeducation and the competition for jobs. *Research in Social Stratification and Mobility*, 43, 53-63.
- Freeman, R. (1976). *The overeducated American*. New-york: Academic Press
- Freedman, M. (2017). *Are recent generations catching up or falling behind? Trends in inter-generational inequality* (No. 689). LIS Working Paper Series. Retrieved from <http://hdl.handle.net/10419/169249>
- García-Aracil, A., & Van der Velden, R. (2008). Competencies for young European higher education graduates: Labor market mismatches and their payoffs. *Higher Education*, 55(2), 219-239.
- Goldin, C. D., & Katz, L. F. (2009). *The race between education and technology*. Harvard University Press.

- Goos, M., Manning, A., & Salomons, A. (2014). Explaining job polarization: Routine-biased technological change and offshoring. *American Economic Review*, *104*(8), 2509-26.
- Gornick, J. C. (2014). Luxembourg Income Study. In A. C. Michalos (Ed.), *Encyclopedia of Quality of Life and Well-Being Research* (pp. 3734-3736). Dordrecht: Springer Netherlands.
- Halaby, C. N. (1994). Overeducation and skill mismatch. *Sociology of Education*, *67*(1), 47-59.
- Hannum, E., & Buchmann, C. (2005). Global educational expansion and socio-economic development: An assessment of findings from the social sciences. *World Development*, *33*(3), 333-354.
- Ioakimidis, M. (2018). Returns to education: A review of classical literature. *Journal of Research in Educational Sciences*, *8*(10), 5-13.
- Keep, E., & Mayhew, K. (1996). Economic demand for higher education—A sound foundation for further expansion? *Higher Education Quarterly*, *50*(2), 89-109.
- Knight, J., Deng, Q., & Li, S. (2017). China's expansion of higher education: The labour market consequences of a supply shock. *China Economic Review*, *43*, 127-141.
- Konstantinovskiy, D. L. (2017). Expansion of higher education and consequences for social inequality (the case of Russia). *Higher Education*, *74*(2), 201-220.
- Kristal, T. (2013). The capitalist machine: Computerization, workers' power, and the decline in labor's share within US industries. *American Sociological Review*, *78*(3), 361-389.
- Kuang, D., Nielsen, B., & Nielsen, J. P. (2008). Identification of the age-period-cohort model and the extended chain-ladder model. *Biometrika*, *95*(4), 979-986.
- Liu, Y., Green, A., & Pensiero, N. (2016). Expansion of higher education and inequality of opportunities: a cross-national analysis. *Journal of Higher Education Policy and Management*, *38*(3), 242-263.

Luxembourg Income Study (LIS) Database, <http://www.lisdatacenter.org> (multiple countries; 23.2.2017-24.4.2017). Luxembourg: LIS.

Luo, L. (2013). Assessing validity and application scope of the intrinsic estimator approach to the age-period-cohort problem. *Demography*, 50(6), 1945-1967.

Mare, R. D. (1991). Five decades of educational assortative mating. *American Sociological Review*, 56(1), 15-32.

Marginson, S. (2016). The worldwide trend to high participation higher education: Dynamics of social stratification in inclusive systems. *Higher Education*, 72(4), 413-434.

Machin, S. (2009). Education and inequality. In W. Salverda, B. Nolan, & T. M. Smeeding (Eds.), *The Oxford handbook of economic inequality* (pp. 406-434). Oxford: Oxford University Press.

Mason, W. M., & Wolfinger, N. H. (2001). Cohort analysis, *International Encyclopedia of the Social & Behavioral Sciences*. Oxford: Pergamon. p. 2189-94.

Mateos-Romero, L., & del Mar Salinas-Jiménez, M. (2018). Labor Mismatches: Effects on Wages and on Job Satisfaction in 17 OECD Countries. *Social Indicators Research*, 1-23.

Mincer, J. (1958). Investment in human capital and personal income distribution. *Journal of Political Economy*, 66(4), 281-302.

Mills, C. W. (1953). 1953 White Collar The American Middle Classes. New York Oxford University Press.

Montenegro, C. E., & Patrinos, H. A. (2014). *Comparable estimates of returns to schooling around the world*. Policy Research Working Paper 7020. Washington, DC: World Bank Group. Retrieved from <http://documents.worldbank.org/curated/en/830831468147839247/Comparable-estimates-of-returns-to-schooling-around-the-world>

- Psacharopoulos, G. (1989). Time trends of the returns to education: Cross-national evidence. *Economics of Education Review*, 8(3), 225-231.
- Rotman, A., Shavit, Y., & Shalev, M. (2016). Nominal and positional perspectives on educational stratification in Israel. *Research in Social Stratification and Mobility*, 43, 17-24.
- Sakamoto, A., & Powers, D. A. (1995). Education and the dual labor market for Japanese men. *American Sociological Review*, 60(2), 222-246.
- Sarkar, S. (2016). Is employment polarization creating more over-educated workers? Evidence from Germany, Spain, Sweden and UK. Available at SSRN: <https://ssrn.com/abstract=2843173> or <http://dx.doi.org/10.2139/ssrn.2843173>
- Schofer, E., & Meyer, J. W. (2005). The worldwide expansion of higher education in the twentieth century. *American Sociological Review*, 70(6), 898-920.
- Schwartz, C. R., & Mare, R. D. (2017). The Proximate Determinants of Educational Homogamy. *UCLA CCPR Population Working Papers*.
- Schwartz, C. R., Zeng, Z., & Xie, Y. (2016). Marrying up by marrying down: Status exchange between social origin and education in the United States. *Sociological Science*, 3, 1003-1027.
- Shenhav, Y. (1995). From chaos to systems: The engineering foundations of organization theory, 1879-1932. *Administrative Science Quarterly*, 40(4), 557-585.
- Sicherman, N. (1991). "Overeducation" in the Labor Market. *Journal of Labor Economics*, 9(2), 101-122.
- Smith, H. L. (1986). Overeducation and underemployment: An agnostic review. *Sociology of Education*, 85-99.
- Smith, H. L. (2008). Advances in age–period–cohort analysis. *Sociological Methods & Research*, 36(3), 287-296.

- Spence, M. (1973). Job market signaling. *The Quarterly Journal of Economics*, 87(3), 355-374.
- Tam, T. (2013, October). Analyzing education as a positional good: Categorical regression without arbitrary identification. In The European Consortium for Sociological Research's 2013 Conference, Tilburg University
- Tomlinson, M. (2017). Conceptions of the value of higher education in a measured market. *Higher Education*, 1-17. Retrieved from <https://doi.org/10.1007/s10734-017-0165-6>
- Verbeek, M., & Vella, F. (2005). Estimating dynamic models from repeated cross-sections. *Journal of econometrics*, 127(1), 83-102.
- Yang, D. T. (2004). Education and allocative efficiency: Household income growth during rural reforms in China. *Journal of Development Economics*, 74(1), 137-162.
- Yang, Y., & Land, K. C. (2008). Age–period–cohort analysis of repeated cross-section surveys: Fixed or random effects? *Sociological Methods & Research*, 36(3), 297-326.
- Yang, Y., & Land, K. C. (2013). *Age-period-cohort analysis: New models, methods, and empirical applications*. Chapman & Hall/CRC Interdisciplinary Statistics Series. Boca Raton: CRC Press.