

Kahn, Matthew E. et al.

Working Paper

Long-Term Macroeconomic Effects of Climate Change: A Cross-Country Analysis

CESifo Working Paper, No. 7738

Provided in Cooperation with:

Ifo Institute – Leibniz Institute for Economic Research at the University of Munich

Suggested Citation: Kahn, Matthew E. et al. (2019) : Long-Term Macroeconomic Effects of Climate Change: A Cross-Country Analysis, CESifo Working Paper, No. 7738, Center for Economic Studies and ifo Institute (CESifo), Munich

This Version is available at:

<https://hdl.handle.net/10419/201964>

Standard-Nutzungsbedingungen:

Die Dokumente auf EconStor dürfen zu eigenen wissenschaftlichen Zwecken und zum Privatgebrauch gespeichert und kopiert werden.

Sie dürfen die Dokumente nicht für öffentliche oder kommerzielle Zwecke vervielfältigen, öffentlich ausstellen, öffentlich zugänglich machen, vertreiben oder anderweitig nutzen.

Sofern die Verfasser die Dokumente unter Open-Content-Lizenzen (insbesondere CC-Lizenzen) zur Verfügung gestellt haben sollten, gelten abweichend von diesen Nutzungsbedingungen die in der dort genannten Lizenz gewährten Nutzungsrechte.

Terms of use:

Documents in EconStor may be saved and copied for your personal and scholarly purposes.

You are not to copy documents for public or commercial purposes, to exhibit the documents publicly, to make them publicly available on the internet, or to distribute or otherwise use the documents in public.

If the documents have been made available under an Open Content Licence (especially Creative Commons Licences), you may exercise further usage rights as specified in the indicated licence.

Long-Term Macroeconomic Effects of Climate Change: A Cross-Country Analysis

*Matthew E. Kahn, Kamiar Mohaddes, Ryan N. C. Ng, M. Hashem Pesaran,
Mehdi Raissi, Jui-Chung Yang*

Impressum:

CESifo Working Papers

ISSN 2364-1428 (electronic version)

Publisher and distributor: Munich Society for the Promotion of Economic Research - CESifo GmbH

The international platform of Ludwigs-Maximilians University's Center for Economic Studies and the ifo Institute

Poschingerstr. 5, 81679 Munich, Germany

Telephone +49 (0)89 2180-2740, Telefax +49 (0)89 2180-17845, email office@cesifo.de

Editor: Clemens Fuest

www.cesifo-group.org/wp

An electronic version of the paper may be downloaded

- from the SSRN website: www.SSRN.com
- from the RePEc website: www.RePEc.org
- from the CESifo website: www.CESifo-group.org/wp

Long-Term Macroeconomic Effects of Climate Change: A Cross-Country Analysis

Abstract

We study the long-term impact of climate change on economic activity across countries, using a stochastic growth model where labour productivity is affected by country-specific climate variables, defined as deviations of temperature and precipitation from their historical norms. Using a panel data set of 174 countries over the years 1960 to 2014, we find that per-capita real output growth is adversely affected by persistent changes in the temperature above or below its historical norm, but we do not obtain any statistically significant effects for changes in precipitation. Our counterfactual analysis suggests that a persistent increase in average global temperature by 0.04°C per year, in the absence of mitigation policies, reduces world real GDP per capita by 7.22 percent by 2100. On the other hand, abiding by the Paris Agreement, thereby limiting the temperature increase to 0.01°C per annum, reduces the loss substantially to 1.07 percent. These effects vary significantly across countries. We also provide supplementary evidence using data on a sample of 48 U.S. states between 1963 and 2016, and show that climate change has a long-lasting adverse impact on real output in various states and economic sectors, and on labour productivity and employment.

JEL-Codes: C330, O400, O440, O510, Q510, Q540.

Keywords: climate change, economic growth, adaption, counterfactual analysis.

Matthew E. Kahn
Department of Economics
University of Southern California / USA
kahnme@usc.edu

Ryan N. C. Ng
Faculty of Economics & Girton College
University of Cambridge / UK
rncn2@cam.ac.uk

Mehdi Raissi
International Monetary Fund
Washington DC / USA
mraissi@imf.org

*Kamiar Mohaddes**
Faculty of Economics & Girton College
University of Cambridge / UK
km418@cam.ac.uk

M. Hashem Pesaran
Department of Economics
University of Southern California / USA
pesaran@usc.edu

Jui-Chung Yang
Department of Economics
National Tsing Hua University / Taiwan
jc.yang@mx.nthu.edu.tw

July 1, 2019

We are grateful to Zeina Hasna, Ron Smith and participants at the International Monetary Fund (IMF), Bank of Lithuania, Bank of Canada, EPRG, Cambridge Judge Business School, the ERF 24th Annual Conference, and the 2018 MIT CEEPR Research Workshop for comments and suggestions. We also thank Matthew Norris for help with constructing the global climate dataset. We gratefully acknowledge financial support from the Keynes Fund. Part of this work was done while Jui-Chung Yang was a Postdoctoral Research Fellow at the USC Dornsife INET. The views expressed in this paper are those of the authors and do not necessarily represent those of the IMF or its policy.

1 Introduction

Global temperatures have increased significantly in the past half century and extreme weather events, such as cold and heat waves, droughts and floods, as well as natural disasters, are becoming more frequent and severe. These changes in the distribution of weather patterns (i.e., climate change) are not only affecting low-income countries, but also advanced economies—in September 2017 while Los Angeles experienced the largest fire in its history, Hurricanes Harvey and Irma caused major destruction in Texas and Florida, respectively. A persistent rise in temperature, changes in precipitation patterns and/or more volatile weather events can have long-term macroeconomic effects by adversely affecting labour productivity, slowing investment and damaging human health; something that is usually overlooked in the literature owing to the focus of existing studies on *short-term* growth effects.

This paper investigates the *long-term* macroeconomic effects of climate change across 174 countries over the period 1960 to 2014. Climate change could affect the level of output (by changing agricultural yields, for example) or an economy’s ability to grow in the long-term if the changes in climate variables are persistent, through reduced investment and lower labour productivity. We focus on the latter and develop a theoretical growth model that links deviations of climate variables (temperature and precipitation) from their historical norms to changes in labour productivity and, hence real output per capita. In our empirical application, we allow for dynamics and feedback effects in the interconnections of climate change and macroeconomic variables. Also, by using deviations of climate variables from their respective historical norms, while allowing for nonlinearity, we avoid the econometric pitfalls associated with the use of trended variables, such as temperature, in output growth equations. As it is well known, and is also documented in our paper, temperature has been trending upward strongly in almost all countries in the world, and its use as a regressor in a growth regression can lead to spurious estimates.

To measure the damage caused by climate change, economists have sought to quantify how aggregate economic growth is being affected by rising temperatures and changes in rainfall patterns; see a recent survey by [Dell et al. \(2014\)](#). Macroeconomic-climate estimates are a key input in the design of optimal Pigouvian taxes or carbon pricing. These taxes should reflect the social cost of carbon (SCC), which represents the damage caused by the release of one ton of carbon dioxide ([Nordhaus 2017](#)). To calculate the SCC, one must obtain estimates of three distinct relationships. First, environmental scientists must measure the relationship between carbon dioxide emissions and ambient carbon dioxide concentrations ([Pacala and Socolow 2004](#)). Second, atmospheric scientists need to estimate the relationship between ambient carbon dioxide concentrations and temperature (this is the so called climate

sensitivity parameter, see [Weitzman 2009](#)).¹ Third, economists should estimate the causal effects of rising average temperature on measures of economic activity.

The literature which attempts to quantify the effects of climate change (temperature, precipitation, storms, and other aspects of the weather) on economic performance (agricultural production, labour productivity, commodity prices, health, conflict, and economic growth) is relatively recent and mainly concerned with *short-run* effects—see [Stern \(2007\)](#), [IPCC \(2013\)](#), [Hsiang \(2016\)](#), [Cashin et al. \(2017\)](#) and the recent surveys by [Tol \(2009\)](#) and [Dell et al. \(2014\)](#). Moreover, there are a number of grounds on which the econometric evidence of the effects of climate change on growth may be questioned. Firstly, the literature relies primarily on the cross-sectional approach (see, for instance, [Sachs and Warner 1997](#), [Gallup et al. 1999](#), [Nordhaus 2006](#), and [Dell et al. 2009](#)), and as such does not take into account the time dimension of the data (i.e., assumes that the observed relationship across countries holds over time as well) and is also subject to the endogeneity (reverse causality) problem given the possible feedback effects from changes in output growth onto the climate variable.

Secondly, the fixed effects (FE) estimators used in more recent panel-data studies implicitly assume that climate variables are strictly exogenous, and thus rule out any reverse causality from economic growth to rising average temperatures—see [Burke et al. \(2015\)](#), [Dell et al. \(2012\)](#), [Dell et al. \(2014\)](#), and [Hsiang \(2016\)](#), and the references therein. At the heart of the Nordhaus DICE model is the need to account for this fundamental issue (see, for instance, [Nordhaus 1992](#)). In his computable general equilibrium work, Nordhaus accounts for the fact that faster economic activity increases the stock of greenhouse gas (GHG) emissions and thereby the average temperature. At the same time, rising average temperature could reduce real economic activity. This equilibrium approach has important implications for the econometric specification of climate change–economic growth relationship.

In fact, recent studies on climate science provide strong evidence that the main cause of contemporary global warming is the release of greenhouse gases to the atmosphere by human activities ([Mitchell et al. 2001](#) and [Brown et al. 2016](#)). Consequently, when estimating the impact of climate change on economic growth, temperature (\mathcal{T}_{it}) may not be considered as strictly exogenous, but merely weakly exogenous/predetermined to income growth; in other words economic growth in the past might have feedback effects on future temperature. While it is well known that the FE estimator suffers from small- T bias in dynamic panels (see [Nickell 1981](#)) with N (the cross-section dimension) larger than T (the time series dimension), [Chudik et al. 2018](#) show that this bias exists regardless of whether the lags of the dependent variable are included or not, so long as one or more regressor is not strictly exogenous. In

¹In recent work, [Phillips et al. \(2017\)](#) find that the climate sensitivity parameter with respect to ambient GHG concentrations is even larger than has previously been recognised.

such cases, inference based on the standard FE estimator will be invalid and can result in large size distortions unless $N/T \rightarrow 0$, as $N, T \rightarrow \infty$ jointly. Therefore, caution must be exercised when interpreting the results from studies that use the standard FE estimators in the climate change–economic growth literature given that N is often larger than T .

Thirdly, econometric specifications of the climate change–macroeconomic relation are often written in terms of real GDP per capita growth and the level of temperature, \mathcal{T}_{it} , and in some cases also \mathcal{T}_{it}^2 ; see, for instance, Dell et al. (2012) and Burke et al. (2015). But if \mathcal{T}_{it} is trended, which is the case in almost all countries in the world (see Section 3.1), inclusion of \mathcal{T}_{it} in the regression will induce a quadratic trend in equilibrium log per capita output (or equivalently a linear trend in per capita output growth) which is not desirable and can bias the estimates of the growth–climate change equation. Finally, another major drawback of this literature is that the econometric specifications of the climate change–growth relation are generally not derived from or based on a theoretical growth model. Either an *ad hoc* approach is used, where real income growth is regressed on a number of arbitrarily–chosen variables, or a theoretical model is developed but not put to a rigorous empirical test.

We contribute to the climate change–economic growth literature along the following dimensions. Firstly, we extend the stochastic single-country growth models of Merton (1975), Brock and Mirman (1972), and Binder and Pesaran (1999) to N countries sharing a common technology but different climate conditions. Our theoretical model postulates that labour productivity in each country is affected by a common technological factor and country-specific climate variables, which we take to be average temperature, \mathcal{T}_{it} , and precipitation, \mathcal{P}_{it} , in addition to other country-specific idiosyncratic shocks. As long as \mathcal{T}_{it} and \mathcal{P}_{it} remain close to their respective historical norms (regarded as technologically neutral), they are not expected to affect labour productivity. However, if climate variables deviate from their historical norms, the effects on labour productivity could be positive or negative, depending on the region under consideration. For example, in a historically cold region, a rise in temperature above its historical norm might result in higher labour productivity, whilst for a dry region, a fall in precipitation below its historical norms is likely to have adverse effects on labour productivity.² Secondly, contrary to much of the literature which is mainly concerned with *short-term* growth effects, we explicitly model and test the *long-run* growth effects of persistent increases in temperature. Thirdly, we use the half-panel Jackknife FE (HPJ-FE) estimator proposed in Chudik et al. (2018) to deal with the possible bias and size distortion of the commonly-used FE estimator (given that \mathcal{T}_{it} is weakly exogenous). When the time

²Our focus on the deviations of temperature and precipitation from their historical norms also marks a departure from the literature, as changes in the distribution of weather patterns (not only averages of climate variables but also their variability) are modeled explicitly.

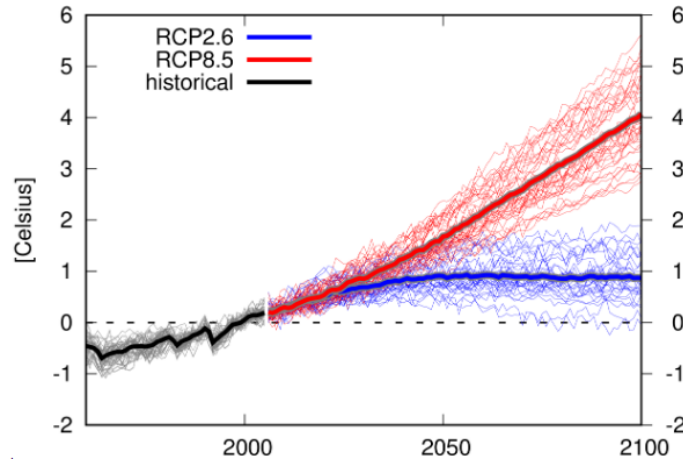
dimension of the panel is moderate relative to N , the HPJ-FE estimator effectively corrects the Nickel-type bias if regressors are weakly exogenous, and is robust to possible feedback effects from aggregate economic activity to the climate variables.

We start by documenting that the global average temperature has risen by 0.0181 degrees Celsius per year over the last half century (1960–2014), with positive country-specific trend estimates in 169 out of 174 countries in our sample (97.1% of cases), and statistically significant estimates at the 5% level in 161 out of 169 countries with positive trends (95.3% of cases). For the remaining five countries, while the trend estimates are negative, they are not statistically significant at the 5% level. Overall, as discussed above, the fact that temperature is trended in almost all countries poses a problem for those studies that include \mathcal{T}_{it} in their growth regressions as it can bias the estimates, not to mention that it imposes a trend in per capita GDP growth which is something we do not observe.

We test the predictions of our theoretical model using cross-country data on per-capita output growth and the deviations of temperature and precipitation from their historical norms over the past fifty five years (1960–2014). Our results suggest that a persistent change in the climate has a long-term negative effect on per capita GDP growth. Specifically, we show that if temperature rises (falls) above (below) its historical norm by 0.01°C annually, income growth will be lower by 0.0543 percentage points per year. We could not detect any significant evidence of an asymmetric long-term growth impact from positive and negative deviations of temperature from its norms. Furthermore, we show that our empirical findings apply equally to poor or rich, and hot or cold countries. This is contrary to most of the literature which finds that temperature increases have uneven macroeconomic effects, with adverse consequences in countries with hot climates, such as low-income countries; see, for instance, [Sachs and Warner \(1997\)](#), [Jones and Olken \(2010\)](#), [Dell et al. \(2012\)](#), [International Monetary Fund \(2017\)](#), and [Mejia et al. \(2018\)](#).

To contribute to climate policy discussions, we perform a number of counterfactual exercises where we investigate the cumulative income effects of annual increases in temperatures over the period 2015–2100 (when compared to a baseline scenario under which temperature in each country increases according to its historical trend of 1960–2014). We show that an increase in average global temperature of 0.04°C per year—corresponding to the Representative Concentration Pathway (RCP) 8.5 scenario (see [Figure 1](#)), which assumes higher greenhouse gas emissions in the absence of mitigation policies—reduces world’s real GDP per capita by 7.22 percent by 2100. Limiting the increase to 0.01°C per annum, which corresponds to the December 2015 Paris Agreement, reduces the output loss substantially to 1.07 percent, only. Thus our analysis finds strong support for keeping with the Paris Agreement

Figure 1: Global Temperature Projections (Deviations from 1984-2014)



Source: Intergovernmental Panel on Climate Change (IPCC) Coupled Model Intercomparison Project Phase Five AR5 Atlas Subset.

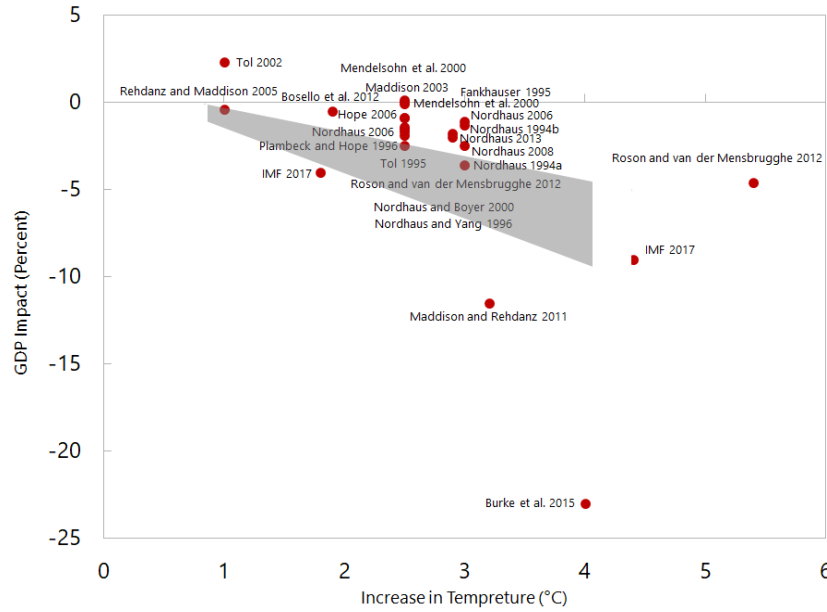
Notes: The thin lines represent each of the 40 models in the IPCC WG1 AR5 Annex I Atlas. The thick lines represent the multimodel mean. Representative Concentration Pathways (RCP) are scenarios of greenhouse gas concentrations, constructed by the IPCC. RCP 2.6 corresponds to the Paris Agreement which aims to hold the increase in the global average temperature to below 2 degrees Celsius above pre-industrial levels. RCP 8.5 is an unmitigated scenario in which emissions continue to rise throughout the 21st century.

pledges to avoid substantial output losses.³

To put our results into perspective, the conclusions one might draw from most of the existing climate change–macroeconomy literature are the following: (i) when a poor (hot) country is 1°C warmer than usual, its income growth falls by 1–2 percentage points in the short- to medium-term; (ii) when a rich (temperate) country is 1°C warmer than usual, there is little impact on its economic activity; and (iii) the GDP effect of increases in average temperatures (with or without adaptation and/or mitigation policies) is relatively small—a few percent decline in the level of GDP per capita over the next century (see, Figure 2). In contrast, our counterfactual estimates suggest that all regions (cold or hot, and rich or poor) would experience a relatively large fall in GDP per capita by 2100 in the absence of climate change policies (i.e., the RCP 8.5 scenario). However, the size of these income effects varies across countries depending on the projected paths of temperatures (see Figures 6 and 7); for instance, for the U.S. the losses are relatively large at 10.52 percent under the RCP 8.5 scenario in year 2100 (reflecting a sharp increase in average temperatures), but would

³The Paris Agreement, reached within the United Nations Framework Convention on Climate Change (UNFCCC), aims to keep the increase in the global average temperature to below 2 degrees Celsius above pre-industrial levels over the 21st century. It is worth noting that average global temperature is already 1°C above the pre-industrial levels.

Figure 2: GDP Impact of Increases in Temperature



Sources: Tol (2009), Tol (2014), Burke et al. (2015), International Monetary Fund (2017) and authors' estimates (shown as the grey area in the chart).

Notes: Projected GDP impact is for some future year, typically 2100. The shaded area represents the GDP per capita losses from our counterfactual exercise in Section 4 with the upper bound based on $m = 20$ and the lower bound based on $m = 40$.

be limited to 1.88 percent under the Paris Agreement. Moreover, the speed with which the historical norms change (20-, 30-, or 40-year moving averages), that is how fast countries adapt to global warming or new climate conditions, affects the size of income losses. Overall, while climate change adaptation could reduce these negative long-run growth effects, it is highly unlikely to offset them entirely.

Finally, having established a long-run negative relationship between economic growth and climate change across countries (regardless of their level of development), we examine the climate change–growth relationship in a within-country context (which is scant in the literature) and also focus on the channels of impact (labour productivity, employment, and output growth in various sectors of the economy). While cross-country studies are informative, they also have drawbacks. Averaging temperature and precipitation data at the country level leads to a loss of information, especially in geographically diverse countries such as Brazil, China, India, Russia and the United States. In particular, while the national average of climate variables may be close to their historical norms, there is significant heterogeneity within countries. The within-country geographic heterogeneity of the United States enables us to compare whether economic activity in ‘hot’ or ‘wet’ states responds to a

temperature increase in the same way as economic activity does in ‘cold’ or ‘dry’ states. The richness of the United States data also allows for a more disaggregated study of the climate change–growth relationship and enables us to test whether the country at the aggregate level, parts of the country, or particular sectors of the economy have been more successful in their adaptation/mitigation efforts. To do so, we conduct a case study of the United States using data on 48 states over the period 1963 to 2016, the HPJ-FE estimator, and various state-specific economic performance indicators at the aggregate and sectoral levels.

Our within-country results provide evidence for the damage that climate change causes in the U.S. using various economic indicators at the state level: growth rates of Gross State Product (GSP), GSP per capita, labour productivity, and employment as well as output in different sectors (e.g., agriculture, manufacturing, services, retail and wholesale trade). We show that if temperature increases by 0.01°C annually above its historical norm across U.S. states, average per-capita real GSP growth will be lower by 0.0273 percentage points per year—a number that is smaller than those obtained in our cross-country regressions. We also show that the impact of climate change on sectoral output growth is broad based—each of the 10 sectors considered is affected by at least one of the four climate variables. Moreover, in contrast to our cross-country results, the within U.S. estimates tend to be asymmetrical with respect to deviations of climate variables from their historical norms (in the positive and negative directions). Finally, our results highlight the importance of climate change policies. While we acknowledge some resilience-building efforts in advanced economies, the evidence from the U.S. study (as well as the cross-country analysis) seems to suggest that it has not entirely offset the negative effects of climate change at the macro level.

The remainder of this paper is organized as follows. Section 2 develops a multi-country stochastic growth model with climate effects. Section 3 considers the extent to which temperature has been rising across countries and globally, and discusses the long-run effects of climate change on output growth across countries. Section 4 conducts counterfactual exercises to investigate the cumulative income effects of annual increases in temperatures under an unmitigated path as well as the Paris Agreement up to the year 2100. Section 5 uses a range of economic performance indicators across U.S. states and production sectors to examine the consequences of climate change for a typical advanced economy and the role of adaptation. Finally, Section 6 offers some concluding remarks.

2 A Multi-Country Stochastic Growth Model with Climate Effects

Theoretical growth models generally focus on technological progress and permanent improvements in the efficiency with which factors of production are combined as the main drivers of long-term economic growth, and ignore the possible effects of climate change. Examples include [Merton \(1975\)](#), [Brock and Mirman \(1972\)](#), [Donaldson and Mehra \(1983\)](#), [Marimon \(1989\)](#), and [Binder and Pesaran \(1999\)](#), who have developed stochastic growth models for single economies. We extend this literature and consider the growth process across N countries sharing a common technology but subject to different climate conditions.

Consider a set of economies in which aggregate production possibilities are described by the following production function:

$$Y_{it} = \mathcal{F}(\Lambda_{it}L_{it}, K_{it}),$$

where L_{it} , and K_{it} , are labour and capital inputs, and Λ_{it} is a scale variable that determines labour productivity in economy i . We suppose that labour productivity is governed by a common technological factor, $\theta_t > 0$, as well as country-specific climate variables. We consider average temperature (\mathcal{T}_{it}) and precipitation (\mathcal{P}_{it}) as the main climate variables, but assume labour productivity is affected by climate variables only when they deviate from their historical norms, which we denote by $\mathcal{T}_{i,t-1}^*$ and $\mathcal{P}_{i,t-1}^*$, respectively.

The historical norms are regarded as technologically neutral, in the sense that if climate variables remain close to their historical norms, they are not expected to have any effects on labour productivity. Recent research demonstrates that different regions of the U.S. have acclimated themselves to their own temperature niche. [Heutel et al. \(2016\)](#) document that heat waves cause more deaths in U.S. regions that are accustomed to colder norms than it does in hotter places. Moreover, if climate variables deviate from their historical norms, the effects on labour productivity could be positive or negative, depending on the region under consideration. For example, in a historically cold region, a rise in temperature above its historical norm might result in higher labour productivity, whilst for a dry region, a fall in precipitation below its historical norms is likely to have adverse effects on labour productivity. Accordingly, in what follows we also allow for an asymmetry in the effects of deviations from the historical norms on labour productivity, and introduce the following

climate threshold variables:

$$\begin{aligned} (\mathcal{T}_{it} - \mathcal{T}_{i,t-1}^*)^+ &= (\mathcal{T}_{it} - \mathcal{T}_{i,t-1}^*) I(\mathcal{T}_{it} - \mathcal{T}_{i,t-1}^* \geq 0), \\ (\mathcal{T}_{it} - \mathcal{T}_{i,t-1}^*)^- &= -(\mathcal{T}_{it} - \mathcal{T}_{i,t-1}^*) I(\mathcal{T}_{it} - \mathcal{T}_{i,t-1}^* < 0), \end{aligned} \quad (1)$$

and

$$\begin{aligned} (\mathcal{P}_{it} - \mathcal{P}_{i,t-1}^*)^+ &= (\mathcal{P}_{it} - \mathcal{P}_{i,t-1}^*) I(\mathcal{P}_{it} - \mathcal{P}_{i,t-1}^* \geq 0), \\ (\mathcal{P}_{it} - \mathcal{P}_{i,t-1}^*)^- &= -(\mathcal{P}_{it} - \mathcal{P}_{i,t-1}^*) I(\mathcal{P}_{it} - \mathcal{P}_{i,t-1}^* < 0). \end{aligned} \quad (2)$$

By distinguishing between positive and negative deviations of the climate variables from their historical norms we also take account of potential nonlinear effects of climate change on economic growth.

Specifically, we consider the following specification for changes in labour productivity in terms of the climate variables:⁴

$$\Lambda_{it} = A_i \theta_t^{\lambda_i} \exp \left[-\gamma_i^{+'} (\mathcal{C}_{it} - \mathcal{C}_{i,t-1}^*)^+ - \gamma_i^{-'} (\mathcal{C}_{it} - \mathcal{C}_{i,t-1}^*)^- \right], \quad (3)$$

where A_i and λ_i are positive constants, $\mathcal{C}_{it} = (\mathcal{T}_{it}, \mathcal{P}_{it})'$, $\mathcal{C}_{i,t-1}^* = (\mathcal{T}_{i,t-1}^*, \mathcal{P}_{i,t-1}^*)'$, $\gamma_i^+ = (\gamma_{iT}^+, \gamma_{iP}^+)'$, and $\gamma_i^- = (\gamma_{iT}^-, \gamma_{iP}^-)'$.

The historical norms can vary over time, but such variations are likely to be small in the short- to medium-term. One could also consider modelling the adverse effects of deviating from climatic norms, by using the quadratic formulation, for example, $(\mathcal{T}_{it} - \mathcal{T}_{i,t-1}^*)^2$ instead of the threshold effects $(\mathcal{T}_{it} - \mathcal{T}_{i,t-1}^*)^+$ and $(\mathcal{T}_{it} - \mathcal{T}_{i,t-1}^*)^-$. But in cases where \mathcal{T}_{it} is trended, which is the situation in almost all the 174 countries in our sample (see Table 1 and the discussion in Section 3.1), the inclusion of $\gamma_i (\mathcal{T}_{it} - \mathcal{T}_{i,t-1}^*)^2$ will induce a quadratic trend in equilibrium log per capita output (or equivalently a linear trend in per capita output growth) which is not desirable and can bias the estimates of the growth-climate change equation. Our focus on the deviations of temperature and precipitation from their historical norms marks a departure from the existing literature by implicitly modelling climate variability around long-term trends. To simplify the notation in what follows, we write Λ_{it} in (3) as

$$\Lambda_{it} = A_i \theta_t^{\lambda_i} \exp(-\gamma_i' \mathbf{x}_{it}), \quad (4)$$

⁴ Additional country-specific technology shocks can also be included, but to simplify the theoretical exposition we abstract from such shocks and note that part of the shock to L_{it} defined below by u_{it} (see equation (7)) could be viewed as technological in nature.

where

$$\mathbf{x}_{it} = \begin{bmatrix} (\mathcal{C}_{it} - \mathcal{C}_{i,t-1}^*)^+ \\ (\mathcal{C}_{it} - \mathcal{C}_{i,t-1}^*)^- \end{bmatrix}, \quad \text{and} \quad \gamma_i = \begin{pmatrix} \gamma_i^+ \\ \gamma_i^- \end{pmatrix}.$$

Assuming constant returns to scale, we have

$$Y_{it} = \Lambda_{it} L_{it} f(\kappa_{it}), \quad (5)$$

where κ_{it} denotes the ratio of physical capital to effective units of labour input, that is

$$\kappa_{it} = \frac{K_{it}}{\Lambda_{it} L_{it}}. \quad (6)$$

Further, we assume that labour input, L_{it} , evolves according to the following process

$$\log(L_{it}) = l_{i0} + n_i t + u_{it}, \quad (7)$$

where l_{i0} is an economy-specific initial endowment of labour input, n_i is the exogenously-determined rate of growth of labour input, and u_{it} is the stochastic component which could be driven by a combination of demand and supply shocks. Given our emphasis on the long-run effects of climate change on income growth, we do not attempt to identify such shocks, and assume that u_{it} follows an AR(1) process

$$\Delta u_{it} = -(1 - \rho_i) u_{i,t-1} + \varepsilon_{it}, \quad |\rho_i| \leq 1, \quad \varepsilon_{it} \sim iid(0, \sigma_i^2). \quad (8)$$

Shocks to labour input could be correlated with the predictable part of weather conditions. For example, during heat waves, labour supply could fall before recovering in normal times, something that is reflected in work patterns of "Siesta economies". In such a setting, seasonal or cyclical changes in weather conditions might not have long-run growth effects, but can nevertheless lead to negative short-run correlations between labour input and weather shocks (as workers adapt their schedules to the changing weather conditions). It is, therefore, important to distinguish between short-run effects and the long-term impact of climate change on income growth. The short-run correlation between weather and labour input shocks also renders the weather variable weakly exogenous, with important econometric implications for estimation of long-run growth effects of permanent shifts in climate conditions.

The physical capital stock depreciates in each period at a constant rate δ_i , and obeys the linear law of motion

$$K_{i,t+1} = (1 - \delta_i) K_{it} + I_{it}, \quad \delta_i \in (0, 1). \quad (9)$$

The assumption of a constant rate of capital depreciation is made for analytical convenience,

and can be relaxed. In practice, the rate of capital depreciation is likely to vary over time—rising significantly at times of armed conflicts and natural disasters such as earthquakes, tsunamis and hurricanes, and gradual reversals afterwards with reconstruction activities and new capital investments. Once again, this highlights the importance of distinguishing between short-term and long-term effects. One would expect the contemporaneous negative effects of natural disasters to be somewhat reversed in subsequent periods.

The model specification is completed by assuming that households' aggregate saving is given by

$$S_{it} = s(\kappa_{it}) Y_{it}, \quad (10)$$

where the saving function, $s(\cdot)$, is assumed to be continuously differentiable and $s_{it} \in (0, 1)$. In equilibrium, we have

$$S_{it} = I_{it} = s(\kappa_{it}) Y_{it}, \quad (11)$$

hence

$$K_{i,t+1} = (1 - \delta_i) K_{it} + s(\kappa_{it}) Y_{it}. \quad (12)$$

Following the literature, we assume that $f(\cdot)$ is twice continuously differentiable, is strictly increasing and concave, and satisfies $f(0) = 0$, as well as the Inada conditions $\lim_{\kappa \rightarrow 0} f'(\kappa) = +\infty$, and $\lim_{\kappa \rightarrow \infty} f'(\kappa) = 0$, for any given value of $\kappa_{it} = \kappa$.

The capital accumulation process, (12), can then be written as

$$\frac{K_{i,t+1}}{\Lambda_{i,t+1} L_{i,t+1}} \frac{\Lambda_{i,t+1} L_{i,t+1}}{\Lambda_{it} L_{it}} = (1 - \delta_i) \frac{K_{it}}{\Lambda_{it} L_{it}} + s(\kappa_{it}) \frac{Y_{it}}{\Lambda_{it} L_{it}},$$

which upon using (5) and (6) yields

$$\kappa_{i,t+1} \exp[\Delta \ln(\Lambda_{i,t+1} L_{i,t+1})] = (1 - \delta_i) \kappa_{it} + s(\kappa_{it}) f(\kappa_{it}).$$

Also,

$$\Delta \ln(\Lambda_{i,t+1} L_{i,t+1}) = n_i + \lambda_i \Delta \theta_{t+1} - \gamma'_i \Delta \mathbf{x}_{i,t+1} + \Delta u_{i,t+1}.$$

In what follows, we assume that

$$\mathbf{x}_{i,t+1} = \boldsymbol{\mu}_{wi} + \boldsymbol{\beta}_i t + \mathbf{v}_{i,t+1},$$

$$\Delta \theta_{t+1} = \mu_\theta - (1 - \rho) \theta_t + v_{\theta,t+1}, \quad (13)$$

where $\mathbf{v}_{i,t+1}$ and $v_{\theta,t+1}$ are climate and technology "shocks" that are assumed to be serially uncorrelated. The above processes allow for linear trends in the climate variables and unit

roots in the technology. The steady state value of κ_{it} depends on the distribution of the combined shock

$$\xi_{i,t+1} = \lambda_i v_{\theta,t+1} + \gamma'_i \mathbf{v}_{i,t+1} + \Delta u_{i,t+1}.$$

If we assume that all moments of $\xi_{i,t+1}$ exist, and extend the analysis of [Binder and Pesaran \(1999\)](#) to N countries by allowing for a common technology factor and climate effects, it is possible to show that $\{\ln \kappa_t\}$ and $\{\kappa_t\}$ are bounded by first-order stationary processes with finite moments, and hence they converge to random variables that have moments.

Suppose the production technology is Cobb-Douglas, then using (4), (5) and (13), we have

$$y_{it} = \ln(Y_{it}/L_{it}) = \ln(A_i) + \lambda_i \theta_t + \gamma'_i \mathbf{x}_{it} + \alpha_i \ln(\kappa_{it}),$$

where α_i is the exponent of the capital input in economy i 's production function. Using the result that $\ln(\kappa_{it})$ is bounded by a stationary AR(1) process, and noting that \mathbf{x}_{it} and θ_t are exogenously determined, then variations in the steady state values of y_{it} are determined by changes in technology and climate variables. The model can generate a unit root in y_{it} by setting $\rho = 1$ in (13). In this case the growth rate of per capita output can be written as

$$\Delta y_{it} = \lambda_i \mu_\theta - \gamma'_i \Delta \mathbf{x}_{it} + \alpha_i \Delta \ln(\kappa_{it}) + v_{\theta t},$$

where owing to the mean stationarity of $\ln(\kappa_{it})$, we have $E[\Delta \ln(\kappa_{it})] = 0$, and hence

$$E(\Delta y_{it}) = \lambda_i \mu_\theta - \gamma'_i E(\Delta \mathbf{x}_{it}). \quad (14)$$

Therefore, in equilibrium the mean per capita output growth is positively affected by technological progress, $\lambda_i \mu_\theta > 0$, and negatively impacted by deviation of the climate variables from their historical norms when $\gamma_i > 0$. This specification has the added advantage that $E(\Delta y_{it})$ does not inherit the strong trend in \mathcal{T}_{it} , which the country/global temperatures have been subject to over the past 55 years (see Section 3.1 and Table 1).

In a panel data context, $\ln(\kappa_{it})$ can be approximated by a linear stationary process with possibly common factors, which yields the following Auto-Regressive Distributed Lag (ARDL) specification for y_{it}

$$\varphi_i(L) \Delta y_{it} = a_i + b_i(L) \gamma'_i \Delta \mathbf{x}_{it} + \varepsilon_{it}, \quad (15)$$

where $i = 1, 2, \dots, N$; $t = 1, 2, \dots, T$, $\varphi_i(L)$ and $b_i(L)$ are finite order distributed lag functions, a_i (related to $\lambda_i \mu_\theta$) is the fixed effect, and ε_{it} is a serially uncorrelated shock.

3 Empirical Results

In the empirical application, we use annual population-weighted climate data and real GDP per capita. For the climate variables we consider temperature (measured in degrees Celsius, °C) and precipitation (measured in meters). We construct population-weighted climate data for each country and year between 1900 and 2014 using the terrestrial air temperature and precipitation observations from [Matsuura and Willmott \(2015\)](#) (containing 0.5 degree gridded monthly time series), and the gridded population of the world collection from [CIESIN \(2016\)](#), for which we use the population density in 2010. We obtain the real GDP per capita data between 1960 and 2014 from the *World Development Indicators* database of the World Bank. Combining the GDP per capita and the climate data, we end up with an unbalanced panel, which is very rich both in terms of the time dimension (T), with maximum $T = 55$ and average $T \approx 39$, and the cross-sectional dimension (N), containing 174 countries. Before investigating the long-run effects of climate change on economic growth, we begin by providing some evidence on how the climate is changing.

3.1 Climate Change: Historical Patterns

This section examines how global temperature has evolved over the past half century (1960–2014). Allowing for the significant heterogeneity that exists across countries with respect to changes in temperature over time, we estimate country-specific regressions

$$\mathcal{T}_{it} = a_{\mathcal{T}i} + b_{\mathcal{T}i}t + v_{\mathcal{T}i,t}, \text{ for } i = 1, 2, \dots, N = 174, \quad (16)$$

where \mathcal{T}_{it} denotes the population-weighted average temperature of country i at year t . The per annum average increase in land temperature for country i is given by $b_{\mathcal{T}i}$, with the corresponding global measure defined by $b_{\mathcal{T}} = N^{-1}\sum_{i=1}^N b_{\mathcal{T}i}$. Individual country estimates of $b_{\mathcal{T}i}$ together with their standard errors are summarised in [Table 1](#). As can be seen, the estimates range from -0.0044 (Samoa) to 0.0390 (Afghanistan). For 169 countries (97.1% of cases), these estimates are positive; out of which, the estimates in 161 countries (95.3% of cases) are statistically significant at the 5% level. There are only five countries for which the estimate, $\hat{b}_{\mathcal{T}i}$, is not positive: Bangladesh, Bolivia, Cuba, Ecuador and Samoa, but none of these estimates are statistically significant at the 5% level. See also [Figure 4](#) which illustrates the increase in temperature per year for the 174 countries over 1960–2014.

[Appendix A](#) presents estimates of $b_{\mathcal{T}i}$ over a longer time horizon (1900–2014). The country-specific estimates of $b_{\mathcal{T}i}$ for the 174 countries over this longer sample period range from -0.0008 (Greece) to 0.0190 (Haiti). In 172 countries (98.9% of the cases) these estimates

Table 1: Individual Country Estimates of the Average Yearly Rise in Temperature Over the Period 1960–2014

| Country | $\hat{b}_{\mathcal{T}i}$ | Country | $\hat{b}_{\mathcal{T}i}$ | Country | $\hat{b}_{\mathcal{T}i}$ |
|--------------------------|--------------------------|---------------|--------------------------|----------------------------------|--------------------------|
| Afghanistan | 0.0390*** | Georgia | 0.0159*** | Oman | 0.0082*** |
| Albania | 0.0240*** | Germany | 0.0229*** | Pakistan | 0.0096*** |
| Algeria | 0.0288*** | Ghana | 0.0184*** | Panama | 0.0169*** |
| Angola | 0.0193*** | Greece | 0.0112*** | Papua New Guinea | 0.0074*** |
| Argentina | 0.0070*** | Greenland | 0.0381*** | Paraguay | 0.0047 |
| Armenia | 0.0140** | Guatemala | 0.0276*** | Peru | 0.0065** |
| Australia | 0.0094*** | Guinea | 0.0166*** | Philippines | 0.0068*** |
| Austria | 0.0170*** | Guinea-Bissau | 0.0237*** | Poland | 0.0255*** |
| Azerbaijan | 0.0188*** | Guyana | 0.0029 | Portugal | 0.0104*** |
| Bahamas | 0.0195*** | Haiti | 0.0163*** | Puerto Rico | 0.0059** |
| Bangladesh | -0.0007 | Honduras | 0.0207*** | Qatar | 0.0271*** |
| Belarus | 0.0316*** | Hungary | 0.0163*** | Romania | 0.0186*** |
| Belgium | 0.0261*** | Iceland | 0.0206*** | Russian Federation | 0.0348*** |
| Belize | 0.0114*** | India | 0.0095*** | Rwanda | 0.0158*** |
| Benin | 0.0180*** | Indonesia | 0.0053*** | Saint Vincent and the Grenadines | 0.0124*** |
| Bhutan | 0.0143*** | Iran | 0.0229*** | Samoa | -0.0044* |
| Bolivia | -0.0000 | Iraq | 0.0244*** | Sao Tome and Principe | 0.0240*** |
| Bosnia and Herzegovina | 0.0373*** | Ireland | 0.0151*** | Saudi Arabia | 0.0207*** |
| Botswana | 0.0260*** | Israel | 0.0168*** | Senegal | 0.0255*** |
| Brazil | 0.0162*** | Italy | 0.0283*** | Serbia | 0.0155*** |
| Brunei Darussalam | 0.0096*** | Jamaica | 0.0204*** | Sierra Leone | 0.0161*** |
| Bulgaria | 0.0124*** | Japan | 0.0133*** | Slovakia | 0.0197*** |
| Burkina Faso | 0.0191*** | Jordan | 0.0146*** | Slovenia | 0.0298*** |
| Burundi | 0.0186*** | Kazakhstan | 0.0240*** | Solomon Islands | 0.0096*** |
| Cabo Verde | 0.0181*** | Kenya | 0.0176*** | Somalia | 0.0213*** |
| Cambodia | 0.0167*** | Kuwait | 0.0254*** | South Africa | 0.0073*** |
| Cameroon | 0.0117*** | Kyrgyzstan | 0.0280*** | South Korea | 0.0081* |
| Canada | 0.0300*** | Laos | 0.0091*** | South Sudan | 0.0308*** |
| Central African Republic | 0.0099*** | Latvia | 0.0304*** | Spain | 0.0260*** |
| Chad | 0.0181*** | Lebanon | 0.0247*** | Sri Lanka | 0.0107*** |
| Chile | 0.0102*** | Lesotho | 0.0099** | Sudan | 0.0295*** |
| China | 0.0230*** | Liberia | 0.0094*** | Suriname | 0.0042 |
| Colombia | 0.0061** | Libya | 0.0333*** | Swaziland | 0.0174*** |
| Comoros | 0.0062* | Lithuania | 0.0277*** | Sweden | 0.0210*** |
| Congo | 0.0146*** | Luxembourg | 0.0281*** | Switzerland | 0.0183*** |
| Congo DRC | 0.0150*** | Macedonia | 0.0129*** | Syria | 0.0225*** |
| Costa Rica | 0.0173*** | Madagascar | 0.0214*** | Tajikistan | 0.0002 |
| Côte d'Ivoire | 0.0131*** | Malawi | 0.0234*** | Tanzania | 0.0104*** |
| Croatia | 0.0247*** | Malaysia | 0.0133*** | Thailand | 0.0055** |
| Cuba | -0.0006 | Mali | 0.0214*** | Togo | 0.0185*** |
| Cyprus | 0.0151*** | Mauritania | 0.0243*** | Trinidad and Tobago | 0.0243*** |
| Czech Republic | 0.0192*** | Mauritius | 0.0216*** | Tunisia | 0.0368*** |
| Denmark | 0.0195*** | Mexico | 0.0117*** | Turkey | 0.0141** |
| Djibouti | 0.0135*** | Moldova | 0.0202*** | Turkmenistan | 0.0255*** |
| Dominican Republic | 0.0152*** | Mongolia | 0.0276*** | Uganda | 0.0198*** |
| Ecuador | -0.0031 | Montenegro | 0.0196*** | Ukraine | 0.0263*** |
| Egypt | 0.0272*** | Morocco | 0.0211*** | United Arab Emirates | 0.0158*** |
| El Salvador | 0.0319*** | Mozambique | 0.0148*** | United Kingdom | 0.0129*** |
| Equatorial Guinea | 0.0275*** | Myanmar | 0.0200*** | United States | 0.0147*** |
| Eritrea | 0.0178*** | Namibia | 0.0262*** | Uruguay | 0.0151*** |
| Estonia | 0.0330*** | Nepal | 0.0176*** | US Virgin Islands | 0.0226*** |
| Ethiopia | 0.0219*** | Netherlands | 0.0240*** | Uzbekistan | 0.0214*** |
| Fiji | 0.0115*** | New Caledonia | 0.0118*** | Vanuatu | 0.0279*** |
| Finland | 0.0304*** | New Zealand | 0.0018 | Venezuela | 0.0160*** |
| France | 0.0215*** | Nicaragua | 0.0286*** | Vietnam | 0.0054** |
| French Polynesia | 0.0236*** | Niger | 0.0075 | Yemen | 0.0345*** |
| Gabon | 0.0177*** | Nigeria | 0.0163*** | Zambia | 0.0190*** |
| Gambia | 0.0234*** | Norway | 0.0232*** | Zimbabwe | 0.0139*** |

Notes: $\hat{b}_{\mathcal{T}i}$ is the OLS estimate of $b_{\mathcal{T}i}$ in the country-specific regressions $\mathcal{T}_{it} = a_{\mathcal{T}i} + b_{\mathcal{T}i}t + v_{\mathcal{T},it}$, where \mathcal{T}_{it} denotes the population-weighted average temperature ($^{\circ}\text{C}$). Asterisks indicate statistical significance at the 1% (***), 5% (**) and 10% (*) levels.

are positive and in 156 countries (90.7% of cases) they are statistically significant at the 5% level. There are only two countries for which the estimate of $b_{\mathcal{T}_i}$ is not positive: Greece and Macedonia but these are not statistically significant. The estimated results over 1900–2014 echo those obtained over the 1960–2014 period. Temperature has been rising for pretty much all of the countries in our sample, indicating that \mathcal{T}_{it} is trended. As discussed earlier, the econometric specifications in the literature involve real GDP growth rates and the level of temperature, \mathcal{T}_{it} , and in some cases also \mathcal{T}_{it}^2 ; see, for instance, [Dell et al. \(2012\)](#) and [Burke et al. \(2015\)](#). But in cases where \mathcal{T}_{it} is trended, which is the situation in almost all the countries in the world (based on both the 1900–2014 and the 1960–2014 samples), inclusion of \mathcal{T}_{it} in the regressions will induce a quadratic trend in equilibrium log per capita output (or equivalently a linear trend in per capita output growth) which is not desirable and can bias the estimates of the growth-climate change equation.

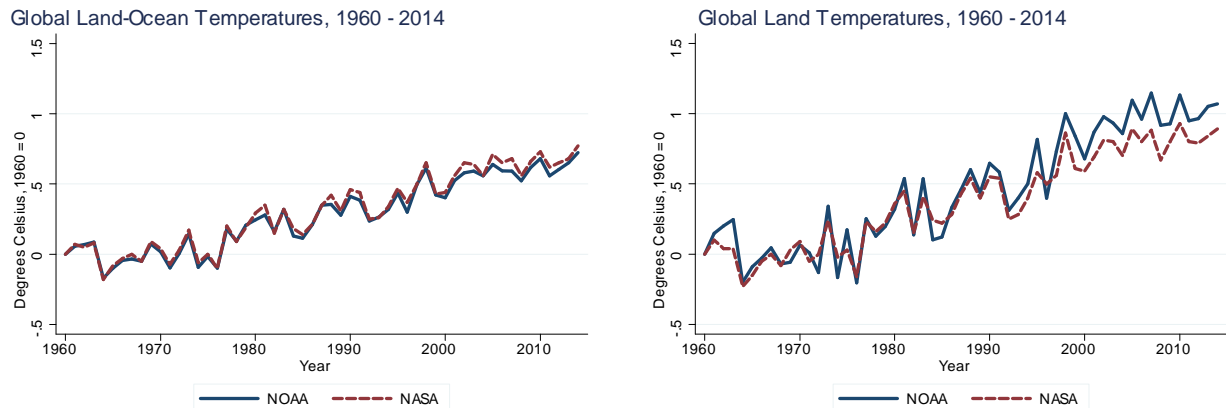
The above country-specific estimates are also in line with the average increases in global temperature published by the *Goddard Institute for Space Studies* (GISS) at National Aeronautics and Space Administration (NASA), and close to the estimates by the *National Centers for Environmental Information* (NCEI) at the National Oceanic and Atmospheric Administration (NOAA). The right panel in [Figure 3](#) plots the global land temperatures between 1960 and 2014 recorded by NOAA and NASA; clearly showing that \mathcal{T}_t is trended. [IPCC \(2013\)](#) also estimates similar trends using various datasets and over different sub-periods. For instance, the trend estimates of global land-surface air temperature (in °C per decade) over the 1951–2012 period, based on data from the Climatic Research Unit’s *CRUTEM4.1.1.0*, NOAA’s *Global Historical Climatology Network Version 3* (GHCNv3), and *Berkeley Earth*, are reported as 0.175 (± 0.037), 0.197 (± 0.031), and 0.175 (± 0.029), respectively with 90% confidence intervals in brackets; see Chapter 2 of [IPCC \(2013\)](#) for details.

Using the individual country estimates in [Table 1](#), the average rise in global temperature over the 1960–2014 period is given by $\hat{b}_{\mathcal{T}} = 0.0181(0.0007)$ degrees Celsius per annum, which is statistically highly significant.⁵ In comparison, according to NASA observations global land temperature has risen by 0.89°C between 1960 and 2014, or around 0.0165°C per year, and based on NCEI data the global land-surface air temperature has risen by 1.07°C over the same period, or around 0.0198°C per year. Thus our global estimate of 0.0181°C lies in the middle of these two estimates, but has the added advantage of having a small standard error, noting that it is a pooled estimate across a large number of countries.

We also plot the global land-surface air and sea-surface water temperatures in the left panel of [Figure 3](#). We observe an upward trend using data from NOAA (a rise of 0.72°C)

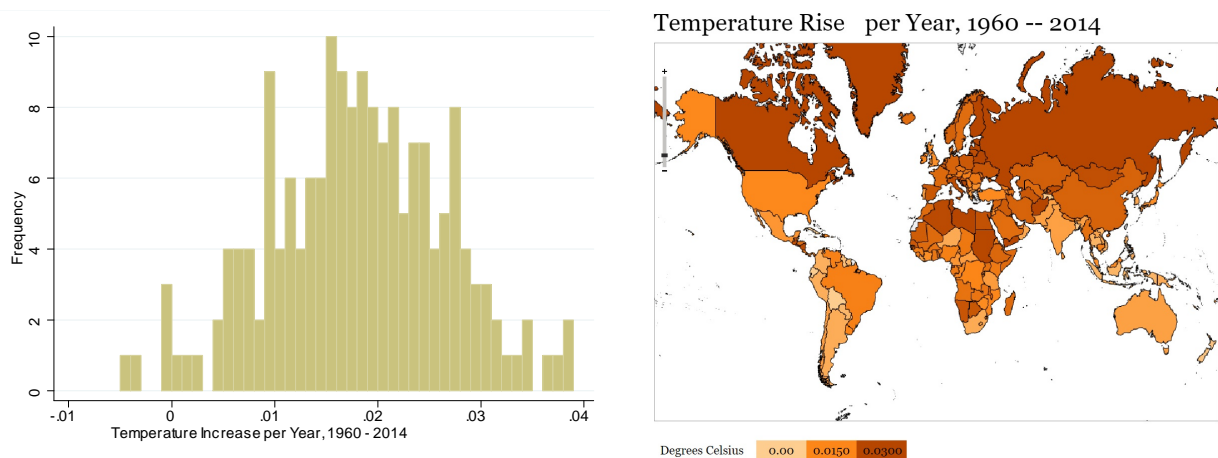
⁵The standard error of $\hat{b}_{\mathcal{T}} = N^{-1} \sum_{i=1}^N \hat{b}_{\mathcal{T}_i}$, given in round brackets, is computed using the mean group approach of [Pesaran and Smith \(1995\)](#).

Figure 3: Global Land-Surface Air and Sea-Surface Water Temperatures (Degrees Celsius, 1960 = 0)



Note: The left panel shows the global land-surface air and sea-surface water temperatures, and the right panel shows the global land-surface air temperatures, both over the 1960–2014 period. The blue lines show the temperatures observed by the *National Centers for Environmental Information* (NCEI) at the National Oceanic and Atmospheric Administration (NOAA); and the broken red lines show the temperatures observed by the *Goddard Institute for Space Studies* (GISS) at National Aeronautics and Space Administration (NASA). The temperatures in 1960 are standardised to zero.

Figure 4: Temperature Increase per year for the 174 Countries, 1960–2014



or data from NASA (a rise of 0.77°C) between 1960 and 2014; equivalent to 0.0134°C and 0.0143°C per year, respectively. Note that the land-surface air temperature has risen by more than the sea-surface water temperature over this period, because oceans have a larger effective heat capacity and lose more heat through evaporation.

3.2 Long-Term Impact of Climate Change on Economic Growth

Guided by the theoretical growth model with climate variables set out above in Section 2, we examine the long-term impact of climate change on per capita output growth across countries. To this end, we estimate the following panel ARDL model:

$$\Delta y_{it} = a_i + \sum_{\ell=1}^p \varphi_\ell \Delta y_{i,t-\ell} + \sum_{\ell=0}^p \beta'_\ell \Delta \mathbf{x}_{i,t-\ell} + \varepsilon_{it}, \quad (17)$$

where y_{it} is the log of real GDP per capita of country i in year t , a_i is the country-specific fixed effect, $\mathbf{x}_{it} = [(\mathcal{C}_{it} - \mathcal{C}_{i,t-1}^*)^+, (\mathcal{C}_{it} - \mathcal{C}_{i,t-1}^*)^-]'$, $\mathcal{C}_{it} = (\mathcal{T}_{it}, \mathcal{P}_{it})'$, $\mathcal{C}_{i,t-1}^* = (\mathcal{T}_{i,t-1}^*, \mathcal{P}_{i,t-1}^*)'$, \mathcal{T}_{it} and \mathcal{P}_{it} are the population-weighted average temperature and precipitation of country i in year t , respectively, and $\mathcal{T}_{i,t-1}^*$ and $\mathcal{P}_{i,t-1}^*$ are the historical norms of climate variables. With $\mathcal{C}_{it} - \mathcal{C}_{i,t-1}^*$ separated into positive and negative values, we account for the potential nonlinear effects of climate change on economic growth. The (average) long-run effects, θ , are calculated from the OLS estimates of the short-run coefficients in equation (17): $\theta = \phi^{-1} \sum_{\ell=0}^p \beta_\ell$, where $\phi = 1 - \sum_{\ell=1}^p \varphi_\ell$.

For the historical norms, we consider the moving averages of temperature and precipitation of country i based on the past m years: $\mathcal{T}_{i,t-1}^* = m^{-1} \sum_{s=1}^m \mathcal{T}_{i,t-s}$ and $\mathcal{P}_{i,t-1}^* = m^{-1} \sum_{s=1}^m \mathcal{P}_{i,t-s}$, with m being a large enough number to make the variations of the historical norm in each year small. We select $m = 30$, given that climate norms are typically computed using 30-year moving averages (see, for instance, [Arguez et al. 2012](#) and [Vose et al. 2014](#)), but to check the robustness of our results, we also consider historical norms computed using moving averages with $m = 20$ and 40 in Section 3.3.

[Pesaran and Smith \(1995\)](#), [Pesaran \(1997\)](#), and [Pesaran and Shin \(1999\)](#) show that: the traditional ARDL approach can be used for long-run analysis; it is valid regardless of whether the underlying variables are $I(0)$ or $I(1)$; and it is robust to omitted variables bias and bi-directional feedback effects between economic growth and its determinants. These features of the panel ARDL approach are clearly appealing in our empirical application. For validity of this technique, however, the dynamic specification of the model needs to be augmented with a sufficient number of lagged effects so that the regressors become weakly exogenous. Specifically, [Chudik et al. \(2016\)](#), show that sufficiently long lags are necessary

for the consistency of the panel ARDL approach.⁶ Since the impact of climate change on output growth could be long lasting, the lag order should be long enough, and as such we set $p = 4$ for all the variables/countries. Using the same lag order across all the variables and countries help reduce the possible adverse effects of data mining that could accompany the use of country and variable specific lag order selection procedures such as Akaike or Schwarz criteria. Note also that our primary focus here is on the long-run estimates rather than the specific dynamics that might be relevant for a particular country.

Table 2 presents the estimates for the four different specifications of panel ARDL regressions in (17). We report the fixed effects (FE) estimates of the long-run impact of changes in the climate variables on GDP per capita growth ($\hat{\theta}$), and the estimated coefficients of the error correction term ($\hat{\phi}$) in columns (a). When the cross-sectional dimension of the panel is larger than the time dimension (in our panel, $N = 174$ and the average $T \approx 38$, see Table 2), the standard FE estimator suffers from small- T bias regardless of whether the lags of the dependent variable are included or not, so long as one or more of the regressors are not strictly exogenous (see Chudik et al. 2018). Since the lagged values of growth and the climate variables can be correlated with the lagged values of the error term ε_{it} , the regressors (climate variables) are weakly exogenous, and hence, inference based on the standard FE estimator is invalid and can result in large size distortions. To deal with these issues, we use the half-panel Jackknife FE (HPJ-FE) estimator of Chudik et al. (2018) and report the results in columns (b) of Table 2. The jackknife bias correction requires $N, T \rightarrow \infty$, but it allows T to rise at a much slower rate than N , making it attractive in our application.

Specification 1 of Table 2 reports the baseline results. The FE and HPJ-FE estimated coefficients of the precipitation variables, $\hat{\theta}_{\Delta(p_{it}-p_{i,t-1}^*)^+}$ and $\hat{\theta}_{\Delta(p_{it}-p_{i,t-1}^*)^-}$, are not statistically significant. However, long-run economic growth is adversely affected when temperature deviates from its historical norm persistently, as $\hat{\theta}_{\Delta(t_{it}-t_{i,t-1}^*)^+}$ and $\hat{\theta}_{\Delta(t_{it}-t_{i,t-1}^*)^-}$ are both statistically significant. The HPJ-FE estimates suggest that a 0.01°C annual increase in the temperature above its historical norm reduces real GDP per capita growth by 0.0577 percentage points per year and a 0.01°C annual decrease in the temperature below its historical norm reduces real GDP per capita growth by 0.0505 percentage points per year. Note that the FE estimates (which are widely used in the literature) are smaller than their HPJ-FE counterparts in absolute values.⁷

Since the estimates of deviations of precipitation variables from their historical norms (both above and below) are not statistically significant in the baseline, we re-estimate equa-

⁶See also Chudik et al. (2013) and Chudik et al. (2017).

⁷Since the half-panel jackknife procedure splits the data set into two halves, for countries with an odd number of time observations, we drop the first observation. Thus, the number of observations in Columns (a) and (b) are somewhat different.

Table 2: Long-Run Effects of Climate Change on per Capita Real GDP Growth, 1960–2014 (Historical Norms as the Moving Averages of Past 30 Years)

| | Specification 1 | | Specification 2 | | Specification 3 | | Specification 4 | |
|--|------------------------|------------------------|------------------------|------------------------|------------------------|------------------------|------------------------|------------------------|
| | (a) FE | (b) HPJ-FE | (a) FE | (b) HPJ-FE | (a) FE | (b) HPJ-FE | (a) FE | (b) HPJ-FE |
| $\hat{\theta}_{\Delta(\mathcal{T}_{it}-\mathcal{T}_{i,t-1}^*)^+}$ | -0.0376*** (0.0126) | -0.0577*** (0.0188) | -0.0378*** (0.0126) | -0.0586*** (0.0187) | -0.0352*** (0.0149) | -0.0545*** (0.0245) | -0.0476*** (0.0127) | -0.0692*** (0.0188) |
| $\hat{\theta}_{\Delta(\mathcal{T}_{it}-\mathcal{T}_{i,t-1}^*)^-}$ | -0.0451*** (0.0223) | -0.0505*** (0.0245) | -0.0459*** (0.0223) | -0.0520*** (0.0245) | -0.0432*** (0.0231) | -0.0480*** (0.0286) | -0.0576*** (0.0236) | -0.0677*** (0.0252) |
| $\hat{\theta}_{\Delta(\mathcal{P}_{it}-\mathcal{P}_{i,t-1}^*)^+}$ | 0.0067 (0.0313) | 0.0079 (0.0359) | - | - | - | - | - | - |
| $\hat{\theta}_{\Delta(\mathcal{P}_{it}-\mathcal{P}_{i,t-1}^*)^-}$ | -0.0085 (0.0372) | -0.0207 (0.0426) | - | - | - | - | - | - |
| $\hat{\theta}_{\Delta(\mathcal{T}_{it}-\mathcal{T}_{i,t-1}^*)^+ \times \mathbb{I}(\text{country } i \text{ is poor})}$ | - | - | - | - | -0.0107 (0.0251) | -0.0150 (0.0382) | - | - |
| $\hat{\theta}_{\Delta(\mathcal{T}_{it}-\mathcal{T}_{i,t-1}^*)^- \times \mathbb{I}(\text{country } i \text{ is poor})}$ | - | - | - | - | -0.0083 (0.0546) | -0.0051 (0.0616) | - | - |
| $\hat{\theta}_{\Delta(\mathcal{T}_{it}-\mathcal{T}_{i,t-1}^*)^+ \times \mathbb{I}(\text{country } i \text{ is hot})}$ | - | - | - | - | - | - | 0.0317 (0.0270) | 0.0354 (0.0434) |
| $\hat{\theta}_{\Delta(\mathcal{T}_{it}-\mathcal{T}_{i,t-1}^*)^+ \times \mathbb{I}(\text{country } i \text{ is hot})}$ | - | - | - | - | - | - | 0.0339 (0.0489) | 0.0540 (0.0620) |
| $\hat{\phi}$ | -0.6706*** (0.0489) | -0.6026*** (0.0449) | -0.6714*** (0.0489) | -0.6038*** (0.0449) | -0.6605*** (0.0501) | -0.5946*** (0.0470) | -0.6717*** (0.0490) | -0.6043*** (0.0448) |
| No of Countries (N) | 174 | 174 | 174 | 174 | 165 | 165 | 174 | 174 |
| $\max T$ | 50 | 50 | 50 | 50 | 50 | 50 | 50 | 50 |
| $\text{avg } T$ | 38.59 | 38.36 | 38.59 | 38.36 | 38.98 | 38.76 | 38.59 | 38.36 |
| $\min T$ | 2 | 2 | 2 | 2 | 8 | 8 | 2 | 2 |
| No of Observations ($N \times T$) | 6714 | 6674 | 6714 | 6674 | 6431 | 6396 | 6714 | 6674 |

Notes: Specification 1 (the baseline) is given by $\Delta y_{it} = a_i + \sum_{\ell=1}^p \varphi_{\ell} \Delta y_{i,t-\ell} + \sum_{\ell=0}^p \beta'_{\ell} \Delta \mathbf{x}_{i,t-\ell} + \varepsilon_{it}$, where y_{it} is the log of real GDP per capita of country i in year t , $\mathbf{x}_{it} = \left[(\mathcal{T}_{it} - \mathcal{T}_{i,t-1}^*)^+, (\mathcal{T}_{it} - \mathcal{T}_{i,t-1}^*)^-, (\mathcal{P}_{it} - \mathcal{P}_{i,t-1}^*)^+, (\mathcal{P}_{it} - \mathcal{P}_{i,t-1}^*)^- \right]'$, \mathcal{T}_{it} and \mathcal{P}_{it} are the population-weighted average temperature and precipitation of country i in year t respectively, and $\mathcal{T}_{i,t-1}^*$ and $\mathcal{P}_{i,t-1}^*$ are the historical norms of the climate variables in country i (based on moving averages of the past 30 years). $z^+ = zI(z \geq 0)$, and $z^- = -zI(z < 0)$. The long-run effects, θ_i , are calculated from the OLS estimates of the short-run coefficients in equation (17): $\theta = \phi^{-1} \sum_{\ell=0}^p \beta_{\ell}$, where $\phi = 1 - \sum_{\ell=1}^p \varphi_{\ell}$. Specification 2 drops the precipitation variables from the baseline model: $\mathbf{x}_{it} = \left[(\mathcal{T}_{i,t-\ell} - \mathcal{T}_i^*)^+, (\mathcal{T}_{i,t-\ell} - \mathcal{T}_i^*)^- \right]'$. Specifications 3 and 4 interact the temperature variables with dummies for poor and hot countries, respectively (see equations 18 and 19). Columns labelled (a) report the FE estimates and columns labelled (b) report the half-panel jackknife FE (HPJ-FE) estimates, which corrects the bias in columns (a). The standard errors are estimated by the estimator proposed in Proposition 4 of Chudik et al. (2018). Asterisks indicate statistical significance at the 1% (***), 5% (**), and 10% (*) levels.

tion (17) without them; setting $\mathbf{x}_{it} = [(\mathcal{T}_{it} - \mathcal{T}_{i,t-1}^*)^+, (\mathcal{T}_{it} - \mathcal{T}_{i,t-1}^*)^-]'$ in specification 2. The results show that persistent deviations of temperature above or below its historical norm, $(\mathcal{T}_{it} - \mathcal{T}_{i,t-1}^*)^+$ or $(\mathcal{T}_{it} - \mathcal{T}_{i,t-1}^*)^-$, have negative effects on long-run economic growth. Specifically, the HPJ-FE estimates suggest that a persistent 0.01°C increase in the temperature above its historical norm reduces real GDP per capita growth by 0.0586 percentage points per annum in the long run (being statistically significant at the 1% level), and a 0.01°C annual decrease in the temperature below its historical norm reduces real GDP per capita growth by 0.0520 percentage points per year (being statistically significant at the 5% level). Given that the estimates of the coefficients of $(\mathcal{T}_{it} - \mathcal{T}_{i,t-1}^*)^+$ and $(\mathcal{T}_{it} - \mathcal{T}_{i,t-1}^*)^-$ are very similar in magnitude suggests that positive and negative deviations of temperature from its historical norm have similar effects on long-term growth.

Most studies in the literature provide evidence for the uneven macroeconomic effects of climate change, with adverse short-term consequences in countries with hot climates, such as low-income countries; see, for instance, [Sachs and Warner \(1997\)](#), [Jones and Olken \(2010\)](#), and [Dell et al. \(2012\)](#). In other words, when a rich (temperate) country is warmer, there is little impact on its economic activity. There are intuitive reasons and anecdotal evidence for this, including adaptation that has taken place particularly in advanced economies; they are more urbanised and much of the economic activity takes place indoors. For instance, Singapore has attempted to insulate its economy from the heat by extensively engaging in economic activity in places with air conditioning. Therefore, if individuals are aware of how extreme heat affects their economic performance, they can invest in self protection to reduce their exposure to such risks.⁸ More recently [Burke et al. \(2015\)](#) and [Mejia et al. \(2018\)](#) also show that the negative short- and medium-term macroeconomic effects of climate change are more concentrated in hot countries (i.e. mostly low-income countries).

Given our heterogenous sample of 174 countries and motivated by above studies, a follow-up question is whether the estimated adverse long-run growth effects we found in Specifications 1 and 2 of Table 2 are driven by poor countries. We, therefore, follow [Dell et al. \(2012\)](#) and [Burke et al. \(2015\)](#) and augment Specification 2 with an interactive term, $\Delta \mathbf{x}_{i,t-\ell} \times \mathbb{I}(\text{country } i \text{ is poor})$, to capture any possible differential effects of temperature increases (decreases) above (below) the norm for the rich and poor countries:

$$\Delta y_{it} = a_i + \sum_{\ell=1}^p \varphi_{\ell} \Delta y_{i,t-\ell} + \sum_{\ell=0}^p \beta'_{\ell} \Delta \mathbf{x}_{i,t-\ell} + \sum_{\ell=0}^p \zeta'_{\ell} \Delta \mathbf{x}_{i,t-\ell} \times \mathbb{I}(\text{country } i \text{ is poor}) + \varepsilon_{it}, \quad (18)$$

where, as in [Burke et al. \(2015\)](#), we define country i as poor (rich) if its purchasing-

⁸For a survey of the literature on heat and productivity, see [Heal and Park \(2016\)](#).

power-parity-adjusted (PPP) GDP per capita was below (above) the global median in 1980. Moreover, to investigate whether temperature increases affect hotter countries more than colder ones, we estimated the following panel data model

$$\Delta y_{it} = a_i + \sum_{\ell=1}^p \varphi_{\ell} \Delta y_{i,t-\ell} + \sum_{\ell=0}^p \beta'_{\ell} \Delta \mathbf{x}_{i,t-\ell} + \sum_{\ell=0}^p \xi'_{\ell} \Delta \mathbf{x}_{i,t-\ell} \times \mathbb{I}(\text{country } i \text{ is hot}) + \varepsilon_{it}, \quad (19)$$

where a country is defined as cold (hot) if its historical average temperature is below (above) the global median. The results from estimating specifications (18) and (19) are also reported in Table 2. The estimated coefficients of the interactive terms are not statistically significant—we cannot reject the hypothesis that there are no differential effects of climate change on poor versus rich nations or hot versus cold countries. Therefore, specification 2 is our preferred model and will be used in the counterfactual analysis in Section 4.

The results across all four specifications suggest that climate change, defined as persistent deviations of temperature from its historical norm, affects *long-run* income growth negatively. Specifically, $\hat{\theta}_{(\mathcal{T}_{it}-\mathcal{T}_i^*)^+}$ is always negative, with the estimates ranging from -0.0352 to -0.0692 across the two estimation techniques. Moreover, it is clear that the jackknife bias correction makes a difference as the HPJ-FE estimates (ranging from -0.0545 to -0.0692) are always larger in absolute value than the FE estimates (-0.0352 to -0.0476). Similarly, the estimates for the coefficients of $(\mathcal{T}_{it} - \mathcal{T}_{i,t-1}^*)^-$, namely $\hat{\theta}_{\Delta(\mathcal{T}_{it}-\mathcal{T}_i^*)^-}$, are also always negative, with the estimates ranging from -0.0432 to -0.0677 across the two estimation techniques, but the HPJ-FE estimates (ranging from -0.0480 to -0.0677) are always larger in absolute value than the FE estimates (-0.0432 to -0.0576). Therefore, bias correction is essential when it comes to the counterfactual exercises in Section 4, otherwise the cumulative effects of climate change could be significantly underestimated. In all cases, the speed of adjustment to long-run equilibrium ($\hat{\phi}$) is quick. However, this does not mean that the effects of changes in $(\mathcal{T}_{it} - \mathcal{T}_{i,t-1}^*)^+$ and $(\mathcal{T}_{it} - \mathcal{T}_{i,t-1}^*)^-$ are short lived.

The results across all specifications suggest that the adverse growth effects of rises in temperature above the historical norm or falls in temperature below the historical norm are similar. There is little evidence of asymmetry in the long-run relationship between output growth and positive or negative deviations of temperature from its historical norm. This lack of asymmetry suggests that a simpler specification might be preferred and we therefore re-estimate equation (17) by replacing $\mathbf{x}_{it} = [(\mathbf{C}'_{it} - \mathbf{C}'_{i,t-1}^*)^+, (\mathbf{C}'_{it} - \mathbf{C}'_{i,t-1}^*)^-]'$, $\mathbf{C}_{it} = (\mathcal{T}_{it}, \mathcal{P}_{it})'$, $\mathbf{C}_{i,t-1}^* = (\mathcal{T}_{i,t-1}^*, \mathcal{P}_{i,t-1}^*)'$ with $\mathbf{x}_{it} = (|\mathcal{T}_{it} - \mathcal{T}_{i,t-1}^*|, |\mathcal{P}_{it} - \mathcal{P}_{i,t-1}^*|)'$. The HPJ-FE results are reported in Table 3. Like our earlier results, permanent deviations of precipitation from their historical norms do not affect long-term growth, but permanent deviations of temperature from their historical norms have a negative effect on long-run growth (regardless of whether

Table 3: Long-Run Effects of Climate Change on per Capita Real GDP Growth, 1960–2014 (Using Absolute Value of Deviations of Climate Variables from their Historical Norm)

| Historical Norm: | Specification 1 | | | Specification 2 | | | Specification 3 | | | Specification 4 | | |
|--|------------------------|------------------------|------------------------|------------------------|------------------------|------------------------|------------------------|------------------------|------------------------|------------------------|------------------------|------------------------|
| | 20 Years | 30 Years | 40 Years | 20 Years | 30 Years | 40 Years | 20 Years | 30 Years | 40 Years | 20 Years | 30 Years | 40 Years |
| $\hat{\theta}_{\Delta T_{it}-T_{i,t-1}^*}$ | -0.0498*** (0.0191) | -0.0539*** (0.0183) | -0.0479*** (0.0176) | -0.0504*** (0.0191) | -0.0543*** (0.0183) | -0.0486*** (0.0176) | -0.0521** (0.0248) | -0.0539** (0.0237) | -0.0475** (0.0228) | -0.0582*** (0.0190) | -0.0664*** (0.0185) | -0.0610*** (0.0183) |
| $\hat{\theta}_{\Delta P_{it}-P_{i,t-1}^*}$ | -0.0119 (0.0319) | -0.0085 (0.0340) | -0.0197 (0.0346) | - | - | - | - | - | - | - | - | - |
| $\hat{\theta}_{\Delta T_{it}-T_{i,t-1}^* \times\mathbb{I}(i \text{ is poor})}$ | - | - | - | - | - | - | -0.0059 (0.0402) | -0.0089 (0.0378) | -0.0115 (0.0364) | - | - | - |
| $\hat{\theta}_{\Delta T_{it}-T_{i,t-1}^* \times\mathbb{I}(i \text{ is hot})}$ | - | - | - | - | - | - | - | - | - | 0.0226 (0.0442) | 0.0363 (0.0423) | 0.0370 (0.0401) |
| $\hat{\phi}$ | -0.6038*** (0.0448) | -0.6037*** (0.0449) | -0.6033*** (0.0449) | -0.6042*** (0.0449) | -0.6042*** (0.0449) | -0.6040*** (0.0449) | -0.5959*** (0.0469) | -0.5962*** (0.0469) | -0.5959*** (0.0469) | -0.6047*** (0.0448) | -0.6045*** (0.0448) | -0.6040*** (0.0448) |
| N | 174 | 174 | 174 | 174 | 174 | 174 | 165 | 165 | 165 | 174 | 174 | 174 |
| $\max T$ | 50 | 50 | 50 | 50 | 50 | 50 | 50 | 50 | 50 | 50 | 50 | 50 |
| $\text{avg} T$ | 38.36 | 38.36 | 38.36 | 38.36 | 38.36 | 38.36 | 38.76 | 38.76 | 38.76 | 38.36 | 38.36 | 38.36 |
| $\min T$ | 2 | 2 | 2 | 2 | 2 | 2 | 8 | 8 | 8 | 2 | 2 | 2 |
| $N \times T$ | 6674 | 6674 | 6674 | 6674 | 6674 | 6674 | 6396 | 6396 | 6396 | 6674 | 6674 | 6674 |

Notes: Specification 1 (the baseline) is given by $\Delta y_{it} = a_i + \sum_{\ell=1}^p \varphi_{\ell} \Delta y_{i,t-\ell} + \sum_{\ell=0}^p \beta'_{\ell} \Delta \mathbf{x}_{i,t-\ell} + \varepsilon_{it}$, where y_{it} is the log of real GDP per capita of country i in year t , $\mathbf{x}_{it} = \begin{bmatrix} T_{it} - T_{i,t-1}^* \\ P_{it} - P_{i,t-1}^* \end{bmatrix}'$, T_{it} and P_{it} are the population-weighted average temperature and precipitation of country i in year t respectively, and $T_{i,t-1}^*$ and $P_{i,t-1}^*$ are the historical norms of the climate variables in country i (based on moving averages of the past 20, 30, and 40 years). $z^+ = zI(z \geq 0)$, and $z^- = -zI(z < 0)$. The long-run effects, θ_i , are calculated from the OLS estimates of the short-run coefficients in equation (17): $\theta = \phi^{-1} \sum_{\ell=0}^p \beta_{\ell}$, where $\phi = 1 - \sum_{\ell=1}^p \varphi_{\ell}$. Specification 2 drops the precipitation variables from the baseline model: $\mathbf{x}_{it} = \begin{bmatrix} T_{it} - T_{i,t-1}^* \end{bmatrix}$. Specifications 3 and 4 interact the temperature variables with dummies for poor and hot countries, respectively (see equations 18 and 19). The standard errors are estimated by the estimator proposed in Proposition 4 of Chudik et al. (2018). Asterisks indicate statistical significance at the 1% (***), 5% (**), and 10% (*) levels.

a country is poor or rich), with the magnitudes of the coefficient of $|\mathcal{T}_{it} - \mathcal{T}_{i,t-1}^*|$ being similar to those reported for $(\mathcal{T}_{it} - \mathcal{T}_{i,t-1}^*)^+$ and $(\mathcal{T}_{it} - \mathcal{T}_{i,t-1}^*)^-$ in Table 2.

To put our results into perspective, note that the integrated assessment models (IAMs) largely postulate that climate change has only *level* effects (or short-term growth effects). The IAMs have been extensively used in the past few decades to investigate the welfare effects of temperature increases, see Tol (2014); they have also been used as tools for policy analyses (including by the Obama administration, see Obama (2017), and at international forums). Even more recent studies, that use panel data models, show that temperature increases reduce per capita output growth in the short- to medium-term (i.e., they have only *level* effects)—see Dell et al. (2014) and the references therein. Burke et al. (2015) consider an alternative panel specification that adds quadratic climate variables to the equation and detect: (i) non-linearity in the relationship; (ii) differential impact on rich versus poor countries; and (iii) noisy medium-term growth effects—their higher lag order (between 1 and 5) estimates reported in Supplementary Table S2, show that only 3 out of 18 estimates are statistically significant. Overall, apart from the econometric shortcomings of existing studies, robust evidence for the long-run growth effects of climate change are nonexistent in the literature. However, our results show that an increase in temperature above its historical norm is associated with lower economic growth in the long run—suggesting that the welfare effects of climate change are significantly underestimated in the literature. Therefore, our findings call for a more forceful policy response to climate change.

3.3 Robustness to the Choice of Historical Norms

To make sure that our results are robust to the choice of historical norms, we consider different ways of constructing $\mathcal{T}_{i,t-1}^*$ and $\mathcal{P}_{i,t-1}^*$. Tables 3–5 report the results with climate norms constructed as moving averages of the past 20 ($m = 20$) and 40 ($m = 40$) years, respectively. As in the case with $m = 30$, we note that the estimated coefficients of the precipitation variables, $\hat{\theta}_{\Delta(\mathcal{P}_{it}-\mathcal{P}_{i,t-1}^*)^+}$, $\hat{\theta}_{\Delta(\mathcal{P}_{it}-\mathcal{P}_{i,t-1}^*)^-}$, and $\hat{\theta}_{\Delta|\mathcal{P}_{it}-\mathcal{P}_{i,t-1}^*|}$ are not statistically significant (Specification 1). Moreover, there is no statistically significant difference between "rich" and "poor" or "hot" and "cold" countries given the estimates of the interactive terms (Specifications 3 and 4). However, the estimated coefficients of the deviations of temperature from its historical norm are statistically significant in all four specifications. Focusing on Specification 2 with $\mathbf{x}_{it} = |\mathcal{T}_{it} - \mathcal{T}_{i,t-1}^*|$ and the HPJ-FE estimates (our preferred model and estimator), we observe that $\hat{\theta}_{\Delta|\mathcal{T}_{it}-\mathcal{T}_{i,t-1}^*|}$ is robust to alternative ways of measuring $\mathcal{T}_{i,t-1}^*$, being $-0.0504(0.0191)$, $-0.0543(0.0183)$, and $-0.0486(0.0176)$ for $m = 20$, 30, and 40, respectively. Standard errors are reported in brackets next to these estimates.

Table 4: Long-Run Effects of Climate Change on per Capita Real GDP Growth, 1960–2014 (Historical Norms as the Moving Averages of Past 20 Years)

| | Specification 1 | | Specification 2 | | Specification 3 | | Specification 4 | |
|--|------------------------|------------------------|------------------------|------------------------|------------------------|------------------------|------------------------|------------------------|
| | (a) FE | (b) HP.J-FE | (a) FE | (b) HP.J-FE | (a) FE | (b) HP.J-FE | (a) FE | (b) HP.J-FE |
| $\hat{\theta}_{\Delta(\mathcal{T}_{it}-\mathcal{T}_{i,t-1}^*)^+}$ | -0.0355*** (0.0134) | -0.0539*** (0.0199) | -0.0360*** (0.0134) | -0.0545*** (0.0198) | -0.0331** (0.0159) | -0.0520** (0.0259) | -0.0417*** (0.0135) | -0.0611*** (0.0193) |
| $\hat{\theta}_{\Delta(\mathcal{T}_{it}-\mathcal{T}_{i,t-1}^*)^-}$ | -0.0420** (0.0207) | -0.0476** (0.0237) | -0.0430** (0.0207) | -0.0484** (0.0237) | -0.0423** (0.0213) | -0.0533* (0.0278) | -0.0506** (0.0214) | -0.0582** (0.0247) |
| $\hat{\theta}_{\Delta(\mathcal{P}_{it}-\mathcal{P}_{i,t-1}^*)^+}$ | -0.0042 (0.0275) | -0.0030 (0.0340) | - | - | - | - | - | - |
| $\hat{\theta}_{\Delta(\mathcal{P}_{it}-\mathcal{P}_{i,t-1}^*)^-}$ | -0.0068 (0.0307) | -0.0167 (0.0410) | - | - | - | - | - | - |
| $\hat{\theta}_{\Delta(\mathcal{T}_{it}-\mathcal{T}_{i,t-1}^*)^+ \times \mathbb{I}(\text{country } i \text{ is poor})}$ | - | - | - | - | -0.0127 (0.0267) | -0.0129 (0.0411) | - | - |
| $\hat{\theta}_{\Delta(\mathcal{T}_{it}-\mathcal{T}_{i,t-1}^*)^- \times \mathbb{I}(\text{country } i \text{ is poor})}$ | - | - | - | - | -0.0060 (0.0487) | 0.0128 (0.0572) | - | - |
| $\hat{\theta}_{\Delta(\mathcal{T}_{it}-\mathcal{T}_{i,t-1}^*)^+ \times \mathbb{I}(\text{country } i \text{ is hot})}$ | - | - | - | - | - | - | 0.0203 (0.0291) | 0.0225 (0.0465) |
| $\hat{\theta}_{\Delta(\mathcal{T}_{it}-\mathcal{T}_{i,t-1}^*)^+ \times \mathbb{I}(\text{country } i \text{ is hot})}$ | - | - | - | - | - | - | 0.0208 (0.0457) | 0.0335 (0.0574) |
| $\hat{\phi}$ | -0.6709*** (0.0490) | -0.6030*** (0.0448) | -0.6719*** (0.0490) | -0.6040*** (0.0449) | -0.6609*** (0.0502) | -0.5949*** (0.0470) | -0.6724*** (0.0491) | -0.6050*** (0.0448) |
| No of Countries (N) | 174 | 174 | 174 | 174 | 165 | 165 | 174 | 174 |
| max T | 50 | 50 | 50 | 50 | 50 | 50 | 50 | 50 |
| avg T | 38.59 | 38.36 | 38.59 | 38.36 | 38.98 | 38.76 | 38.59 | 38.36 |
| min T | 2 | 2 | 2 | 2 | 8 | 8 | 2 | 2 |
| No of Observations ($N \times T$) | 6714 | 6674 | 6714 | 6674 | 6431 | 6396 | 6714 | 6674 |

Notes: See the notes to Table 2.

Table 5: Long-Run Effects of Climate Change on per Capita Real GDP Growth, 1960–2014 (Historical Norms as the Moving Averages of Past 40 Years)

| | Specification 1 | | Specification 2 | | Specification 3 | | Specification 4 | |
|--|------------------------|------------------------|------------------------|------------------------|------------------------|------------------------|------------------------|------------------------|
| | (a) FE | (b) HP.J-FE | (a) FE | (b) HP.J-FE | (a) FE | (b) HP.J-FE | (a) FE | (b) HP.J-FE |
| $\hat{\theta}_{\Delta(\mathcal{T}_{it}-\mathcal{T}_{i,t-1}^*)^+}$ | -0.0342*** (0.0121) | -0.0523*** (0.0182) | -0.0346*** (0.0121) | -0.0539*** (0.0181) | -0.0325** (0.0147) | -0.0494** (0.0239) | -0.0439*** (0.0124) | -0.0643*** (0.0187) |
| $\hat{\theta}_{\Delta(\mathcal{T}_{it}-\mathcal{T}_{i,t-1}^*)^-}$ | -0.0407* (0.0217) | -0.0443* (0.0237) | -0.0415* (0.0217) | -0.0465** (0.0237) | -0.0394* (0.0226) | -0.0415 (0.0271) | -0.0543** (0.0234) | -0.0624** (0.0245) |
| $\hat{\theta}_{\Delta(\mathcal{P}_{it}-\mathcal{P}_{i,t-1}^*)^+}$ | -0.0028 (0.0334) | -0.0002 (0.0374) | - | - | - | - | - | - |
| $\hat{\theta}_{\Delta(\mathcal{P}_{it}-\mathcal{P}_{i,t-1}^*)^-}$ | -0.0187 (0.0368) | -0.0290 (0.0418) | - | - | - | - | - | - |
| $\hat{\theta}_{\Delta(\mathcal{T}_{it}-\mathcal{T}_{i,t-1}^*)^+ \times \mathbb{I}(\text{country } i \text{ is poor})}$ | - | - | - | - | -0.0095 (0.0242) | -0.0161 (0.0369) | - | - |
| $\hat{\theta}_{\Delta(\mathcal{T}_{it}-\mathcal{T}_{i,t-1}^*)^- \times \mathbb{I}(\text{country } i \text{ is poor})}$ | - | - | - | - | -0.0077 (0.0551) | -0.0073 (0.0615) | - | - |
| $\hat{\theta}_{\Delta(\mathcal{T}_{it}-\mathcal{T}_{i,t-1}^*)^+ \times \mathbb{I}(\text{country } i \text{ is hot})}$ | - | - | - | - | - | - | 0.0295 (0.0256) | 0.0353 (0.0413) |
| $\hat{\theta}_{\Delta(\mathcal{T}_{it}-\mathcal{T}_{i,t-1}^*)^+ \times \mathbb{I}(\text{country } i \text{ is hot})}$ | - | - | - | - | - | - | 0.0378 (0.0487) | 0.0546 (0.0609) |
| $\hat{\phi}$ | -0.6707*** (0.0489) | -0.6024*** (0.0449) | -0.6714*** (0.0488) | -0.6036*** (0.0449) | -0.6605*** (0.0501) | -0.5946*** (0.0469) | -0.6715*** (0.0489) | -0.6037*** (0.0448) |
| No of Countries (N) | 174 | 174 | 174 | 174 | 165 | 165 | 174 | 174 |
| max T | 50 | 50 | 50 | 50 | 50 | 50 | 50 | 50 |
| avg T | 38.59 | 38.36 | 38.59 | 38.36 | 38.98 | 38.76 | 38.59 | 38.36 |
| min T | 2 | 2 | 2 | 2 | 8 | 8 | 2 | 2 |
| No of Observations ($N \times T$) | 6714 | 6674 | 6714 | 6674 | 6431 | 6396 | 6714 | 6674 |

Notes: See the notes to Table 2.

4 Counterfactual Analysis

We perform a number of counterfactual exercises to measure the cumulative output per capita effects of persistent increases in annual temperatures above their norms over the period 2015–2100. We carry out this analysis using the HPJ-FE estimates based on the ARDL specification given by (17), which we write equivalently as

$$\varphi(L) \Delta y_{it} = a_i + \beta'(L) \Delta \mathbf{x}_{it} + \varepsilon_{it},$$

where $\mathbf{x}_{it} = [(\mathcal{T}_{it} - \mathcal{T}_{i,t-1}^*)^+, (\mathcal{T}_{it} - \mathcal{T}_{i,t-1}^*)^-]$, $\varphi(L) = 1 - \sum_{\ell=1}^4 \varphi_\ell L^\ell$, $\beta(L) = \sum_{\ell=0}^4 \beta_\ell L^\ell$, and L is the lag operator. Pre-multiplying both sides of the above equation by the inverse of $\varphi(L)$ yields

$$\Delta y_{it} = \tilde{a}_i + \psi(L) \Delta \mathbf{x}_{it} + \vartheta(L) \varepsilon_{it}, \quad (20)$$

where $\tilde{a}_i = \varphi(1)^{-1} a_i$, $\vartheta(L) = \vartheta_0 + \vartheta_1 L + \vartheta_2 L^2 + \dots$ and $\psi(L) = \varphi(L)^{-1} \beta(L) = \psi'_0 + \psi'_1 L + \psi'_2 L^2 + \dots$, in which $\psi'_j = (\psi_j^{(+)}, \psi_j^{(-)})$ for $j = 0, 1, 2, \dots$. $\psi_j^{(+)}$ and $\psi_j^{(-)}$ are the coefficients of changes in the climate variables, $\Delta(\mathcal{T}_{i,t-j} - \mathcal{T}_{i,t-j-1}^*)^+$ and $\Delta(\mathcal{T}_{i,t-j} - \mathcal{T}_{i,t-j-1}^*)^-$, respectively. To simplify the exposition, suppose that the impact of climate change above and below the historical norm is symmetric, and consider the ARDL model:

$$\Delta y_{it} = \tilde{a}_i + \psi(L) \Delta x_{it} + \vartheta(L) \varepsilon_{it}, \quad (21)$$

where $x_{it} = |\mathcal{T}_{it} - \mathcal{T}_{i,t-1}^*|$, and $\psi(L) = \sum_{j=0}^{\infty} \psi_j L^j$.

The counterfactual effects of climate change can now be derived by comparing the output trajectory of country i over the period $T+1$ to $T+h$ under the no change scenario denoted by $b_{\mathcal{T}i}^0$ and $\sigma_{\mathcal{T}i}^0$, with an alternative expected trajectory having the counterfactual values of $b_{\mathcal{T}i}^1$ and $\sigma_{\mathcal{T}i}^1$. Denoting the values of x_{it} for $t = T+1, T+2, \dots, T+h$ under these two scenarios by $\mathbf{x}_{i,T+1,T+h}^0 = \{x_{i,T+1}^0, x_{i,T+2}^0, \dots, x_{i,T+h}^0\}$, and $\mathbf{x}_{i,T+1,T+h}^1 = \{x_{i,T+1}^1, x_{i,T+2}^1, \dots, x_{i,T+h}^1\}$, the counterfactual output change can be written as

$$\xi_{i,T+h} = \mathbb{E}(y_{i,T+h} | F_{i,T}, \mathbf{x}_{i,T+1,T+h}^1) - E(y_{i,T+h} | F_{i,T}, \mathbf{x}_{i,T+1,T+h}^0),$$

where $F_{iT} = (y_{iT}, y_{i,T-1}, y_{i,T-2}, \dots; x_{iT}, x_{i,T-1}, x_{i,T-2}, \dots)$. Cumulating both sides of (21) from $t = T+1$ to $T+h$ and taking conditional expectations under the two scenarios we have

$$\xi_{i,T+h} = \sum_{j=1}^h \psi_{h-j} (x_{i,T+j}^1 - x_{i,T+j}^0), \quad (22)$$

The impact of climate change clearly depends on the magnitude of $x_{i,T+j}^1 - x_{i,T+j}^0$.

We consider the output effects of country-specific average annual increases in temperatures over the period 2015–2100 as predicted under RCP 2.6 and RCP 8.5 scenarios, and compare them with a baseline scenario under which temperature in each country increases according to its historical trend of 1960–2014.⁹ However, owing to the non-linear nature of our output-growth specification, changes in trend temperature do not translate on a one-to-one basis to absolute changes in temperature. In line with (16), future temperature changes over the counterfactual horizon, $T + j$, $j = 1, 2, \dots$ can be represented by

$$\mathcal{T}_{i,T+j} = a_{\mathcal{T}i} + b_{\mathcal{T}i,j}(T + j) + v_{\mathcal{T}i,T+j}, \text{ for } j = 1, 2, \dots, \quad (23)$$

where we allow for the trend change in the temperature to vary over time. The above equation reduces to (16) if we set $b_{\mathcal{T}i,j} = b_{\mathcal{T}i}$ for all j . Suppose also that, as before, the historical norm variable associated with $\mathcal{T}_{i,T+j}$, namely $\mathcal{T}_{i,T+j-1}^*$, is constructed using the past m years. Then it is easy to show that

$$\mathcal{T}_{i,T+j} - \mathcal{T}_{i,T+j-1}^* = \left(\frac{m+1}{2}\right) b_{\mathcal{T}i,j} + (v_{\mathcal{T}i,T+j} - \bar{v}_{\mathcal{T}i,T+j-1,m}), \quad j = 1, 2, \dots, h, \quad (24)$$

where $\bar{v}_{\mathcal{T}i,T+j-1,m} = m^{-1} \sum_{s=1}^m v_{\mathcal{T}i,T+j-s}$. The realised values of $(\mathcal{T}_{i,T+j} - \mathcal{T}_{i,T+j-1}^*)^+$ and $(\mathcal{T}_{i,T+j} - \mathcal{T}_{i,T+h-1}^*)^-$ depend on the probability distribution of weather shocks, $v_{\mathcal{T}i,T+j}$, as well as the trend change in temperature, given by $b_{\mathcal{T}i,j}$. As a first order approximation, and in order to obtain analytic expressions, we assume that temperature shocks, $v_{\mathcal{T}i,T+j}$, over $j = 1, 2, \dots$, are serially uncorrelated, Gaussian random variables with zero means and variances, $\sigma_{\mathcal{T}i}^2$. Under these assumptions and using the results in Lemma 3.1 of [Dhyne et al. \(2011\)](#), we have

$$E \left[(\mathcal{T}_{i,T+j} - \mathcal{T}_{i,T+j-1}^*)^+ \right] = \mu_{\mathcal{T}i,j} \Phi \left(\frac{\mu_{\mathcal{T}i,j}}{\omega_{\mathcal{T}i}} \right) + \omega_{\mathcal{T}i} \phi \left(\frac{\mu_{\mathcal{T}i,j}}{\omega_{\mathcal{T}i}} \right) = g_{\mathcal{T}i}^+(m, b_{\mathcal{T}i,j}, \sigma_{\mathcal{T}i}) \quad (25)$$

where $\Phi(\cdot)$ and $\phi(\cdot)$ are the cumulative and density distribution functions of a standard Normal variate, respectively, and

$$\mu_{\mathcal{T}i,j} = \left(\frac{m+1}{2}\right) b_{\mathcal{T}i,j}, \text{ and } \omega_{\mathcal{T}i}^2 = \sigma_{\mathcal{T}i}^2 \left(1 + \frac{1}{m}\right).$$

⁹ A similar analysis can also be carried out in terms of changes in precipitation. For brevity and given the empirical results in Section 3, we focus on the counterfactual effects of changes in temperature only.

Similarly¹⁰

$$E \left[(\mathcal{T}_{i,T+j} - \mathcal{T}_{i,T+j-1}^*)^- \right] = -\mu_{\mathcal{T}_i,j} \Phi \left(\frac{-\mu_{\mathcal{T}_i,j}}{\omega_{\mathcal{T}_i}} \right) + \omega_{\mathcal{T}_i} \phi \left(\frac{\mu_{\mathcal{T}_i,j}}{\omega_{\mathcal{T}_i}} \right) = g_{\mathcal{T}_i}^-(m, b_{\mathcal{T}_i,j}, \sigma_{\mathcal{T}_i}), \quad (26)$$

and

$$E \left| \mathcal{T}_{i,T+j} - \mathcal{T}_{i,T+j-1}^* \right| = \mu_{\mathcal{T}_i,j} \left[\Phi \left(\frac{\mu_{\mathcal{T}_i,j}}{\omega_{\mathcal{T}_i}} \right) - \Phi \left(\frac{-\mu_{\mathcal{T}_i,j}}{\omega_{\mathcal{T}_i}} \right) \right] + 2\omega_{\mathcal{T}_i} \phi \left(\frac{\mu_{\mathcal{T}_i,j}}{\omega_{\mathcal{T}_i}} \right) = g_{\mathcal{T}_i}(m, b_{\mathcal{T}_i,j}, \sigma_{\mathcal{T}_i}). \quad (27)$$

It is clear from the above expressions that the responses of our climate variables to a postulated rise in temperature most crucially depend on the volatility of temperature around its trend, $\sigma_{\mathcal{T}_i}$, which differs markedly across countries.¹¹

For the baseline scenario, we set $m = 30$ and consider the following counterfactual *country-specific* changes in the trend temperature over the period $T + j$, for $j = 1, 2, \dots, H$, as compared to the historical trend rise in temperature (namely $b_{\mathcal{T}_i}^0$):

$$b_{\mathcal{T}_i,j}^1 = \mathcal{T}_{i,T+j} - \mathcal{T}_{i,T+j-1} = b_{\mathcal{T}_i}^0 + jd_i, \text{ for all } j = 1, 2, \dots, H, \quad (28)$$

where d_i is the average incremental change in the trend rise in temperature for country i . We set d_i to ensure that the average rise in temperature over the counterfactual period in country i is equal to the hypothesised value of $b_{\mathcal{T}_i}^1$, and note that

$$b_{\mathcal{T}_i}^1 = H^{-1} \sum_{j=1}^H b_{\mathcal{T}_i,j}^1 = H^{-1} \sum_{j=1}^H (\mathcal{T}_{i,T+j} - \mathcal{T}_{i,T+j-1}) = \frac{\mathcal{T}_{i,T+H} - \mathcal{T}_{i,T}}{H}, \quad (29)$$

where $\mathcal{T}_{i,T+H}$ denotes the level of temperature at the end of the counterfactual period. Averaging (28) over j we have

$$d_i = \frac{2(b_{\mathcal{T}_i}^1 - b_{\mathcal{T}_i}^0)}{H + 1}. \quad (30)$$

In our empirical application we set $\mathcal{T}_{i,T+H} = \mathcal{T}_{i,2099}$ and $\mathcal{T}_{i,T+1} = \mathcal{T}_{i,2015}$, with implied $H = 85$. For $\mathcal{T}_{i,2099}$, for $i = 1, 2, \dots, N$, we consider two sets of values based on IPCC's projections under the RCP 2.6 and RCP 8.5 scenarios (see Table A.2). In effect, this specification assumes that over the counterfactual period temperature in country i increases by jd_i per annum over the period $T + 1$ to $T + j$, relative to its historical trend value of $b_{\mathcal{T}_i}^0$.

We also assume that the postulated trend rise in temperature, specified in (28), does not affect the volatility of temperature shocks, and set $\sigma_{\mathcal{T}_i}^1$ to its pre-counterfactual value of

¹⁰These results follow noting that $z = z^+ - z^-$ and $|z| = z^+ + z^-$.

¹¹For estimates of $\sigma_{\mathcal{T}_i}$ across countries see Table A.2.

$\sigma_{\mathcal{T}_i}^0$. This is a conservative assumption and most likely will result in an under-estimation of the adverse effects of temperature increases, since one would expect rising temperature to be associated with an increase in volatility. With these considerations in mind, and using (22), the mean counterfactual impact of the temperature change on output is given by (using $x_{it} = |\mathcal{T}_{it} - \mathcal{T}_{i,t-1}^*|$)

$$\begin{aligned}\Delta_{ih}(d_i) &= \mathbb{E}(y_{i,T+h}^1 | F_{i,T}) - \mathbb{E}(y_{i,T+h}^0 | F_{i,T}) \\ &= \sum_{j=1}^h \psi_{h-j} [g_{\mathcal{T}_i}(m, b_{\mathcal{T}_i}^0 + jd_i, \sigma_{\mathcal{T}_i}^0) - g_{\mathcal{T}_i}(m, b_{\mathcal{T}_i}^0, \sigma_{\mathcal{T}_i}^0)],\end{aligned}\quad (31)$$

where we base the estimates of $b_{\mathcal{T}_i}^0$ and $\sigma_{\mathcal{T}_i}^0$ on the pre-counterfactual period 1960-2014 (see Table A.2), and use

$$g_{\mathcal{T}_i}^1(m, b_{\mathcal{T}_i,j}^1, \sigma_{\mathcal{T}_i}^0) = \mu_{\mathcal{T}_i,j}^1 \left[\Phi\left(\frac{\mu_{\mathcal{T}_i,j}^1}{\omega_{\mathcal{T}_i}^0}\right) - \Phi\left(\frac{-\mu_{\mathcal{T}_i,j}^1}{\omega_{\mathcal{T}_i}^0}\right) \right] + 2\omega_{\mathcal{T}_i}^0 \phi\left(\frac{\mu_{\mathcal{T}_i,j}^1}{\omega_{\mathcal{T}_i}^0}\right), \quad (32)$$

$$g_{\mathcal{T}_i}^0(m, b_{\mathcal{T}_i}^0, \sigma_{\mathcal{T}_i}^0) = \mu_{\mathcal{T}_i}^0 \left[\Phi\left(\frac{\mu_{\mathcal{T}_i}^0}{\omega_{\mathcal{T}_i}^0}\right) - \Phi\left(\frac{-\mu_{\mathcal{T}_i}^0}{\omega_{\mathcal{T}_i}^0}\right) \right] + 2\omega_{\mathcal{T}_i}^0 \phi\left(\frac{\mu_{\mathcal{T}_i}^0}{\omega_{\mathcal{T}_i}^0}\right), \quad (33)$$

$$\mu_{\mathcal{T}_i,j}^1 = \left(\frac{m+1}{2}\right) (b_{\mathcal{T}_i,j}^1), \mu_{\mathcal{T}_i}^0 = \left(\frac{m+1}{2}\right) b_{\mathcal{T}_i}^0, \quad (34)$$

and $\omega_{\mathcal{T}_i}^0 = \sigma_{\mathcal{T}_i}^0 (1 + \frac{1}{m})^{1/2}$. To obtain $\{\hat{\psi}_j\}$, we use the HPJ-FE estimates of $\{\beta_\ell\}_{\ell=0}^4$ and $\{\varphi_\ell\}_{\ell=1}^4$ from the ARDL equation with $|\mathcal{T}_{it} - \mathcal{T}_{i,t-1}^*|$ as the climate variable. These estimates and their standard errors are reported in Table 6. Figure 5 plots the estimates of ψ_j for $j = 0, 1, 2, \dots, 20$, for which the estimated mean lag is $\frac{\sum_{j=1}^{\infty} j\hat{\psi}_j}{\sum_{j=0}^{\infty} \hat{\psi}_j} = 3.1943$ years.

We report the real GDP per capita losses from global warming under the RCP 2.6 and RCP 8.5 scenarios, compared to the reference case, in country heat maps and for the year 2100 only, but make all of the 174 country-specific estimates over various horizons (by year 2030, 2050, and 2100) available in Table A.2. Figure 6 shows that in the absence of climate change policies (under the RCP 8.5 Scenario with $m = 30$), the percent losses in per-capita incomes by 2100 are sizable, regardless of whether a country is rich or poor, and hot or cold. Nonetheless, the losses vary significantly across countries depending on the country-specific projected paths of temperatures. Figure 7 shows that if we managed to limit the increase in average global temperatures to 0.01°C per annum (the RCP 2.6 scenario), in line with the Paris Agreement, we would be able to substantially reduce these losses.

Table 7 reports the real GDP per capita losses for China, the European Union, India, Russia, and the United States, over various time horizons. As in Figure 6, income effects

Table 6: Effects of Climate Change on per Capita Real GDP Growth, 1960–2014

| | | | | | |
|-----------------|------------------------|-------------------|-----------------------|------------------------------|-------|
| $\hat{\beta}_0$ | -0.0038* (0.0021) | $\hat{\varphi}_1$ | 0.2643*** (0.0500) | No. of Countries (N) | 174 |
| $\hat{\beta}_1$ | -0.0056* (0.0029) | $\hat{\varphi}_2$ | 0.0785*** (0.0266) | max T | 50 |
| $\hat{\beta}_2$ | -0.0084*** (0.0031) | $\hat{\varphi}_3$ | 0.0547** (0.0216) | avg T | 38.36 |
| $\hat{\beta}_3$ | -0.0090*** (0.0026) | $\hat{\varphi}_4$ | -0.0016 (0.0327) | min T | 2 |
| $\hat{\beta}_4$ | -0.0060*** (0.0021) | | | No. of Obs. ($N \times T$) | 6,674 |

Notes: Estimates are based on $\Delta y_{it} = a_i + \sum_{\ell=1}^4 \varphi_{\ell} \Delta y_{i,t-\ell} + \sum_{\ell=0}^4 \beta'_{\ell} \Delta x_{i,t-\ell} + \varepsilon_{it}$, where y_{it} is the log of real GDP per capita of country i in year t , $x_{it} = |T_{it} - T_{i,t-1}^*|$, T_{it} is the population-weighted average temperature of country i in year t , and $T_{i,t-1}^*$ is the historical temperature norm of country i (based on moving averages of the past 30 years). The coefficients are estimated by the half-panel jackknife FE (HPJ-FE) procedure and the standard errors are based on the estimator proposed in Proposition 4 of Chudik et al. (2018). Asterisks indicate statistical significance at 1% (***), 5% (**), and 10% (*) levels.

Figure 5: $\{\psi_j\}$ for $j = 0, 1, 2, \dots, 20$

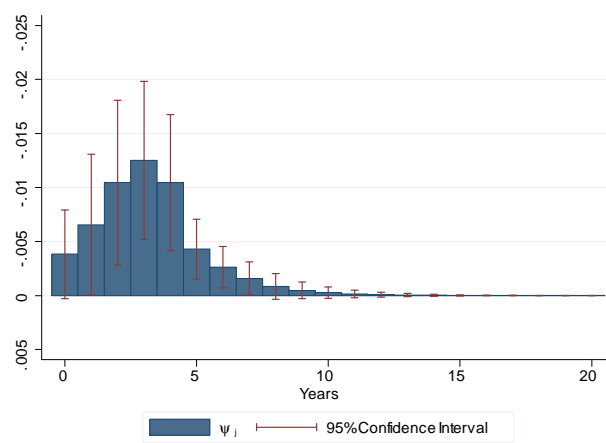
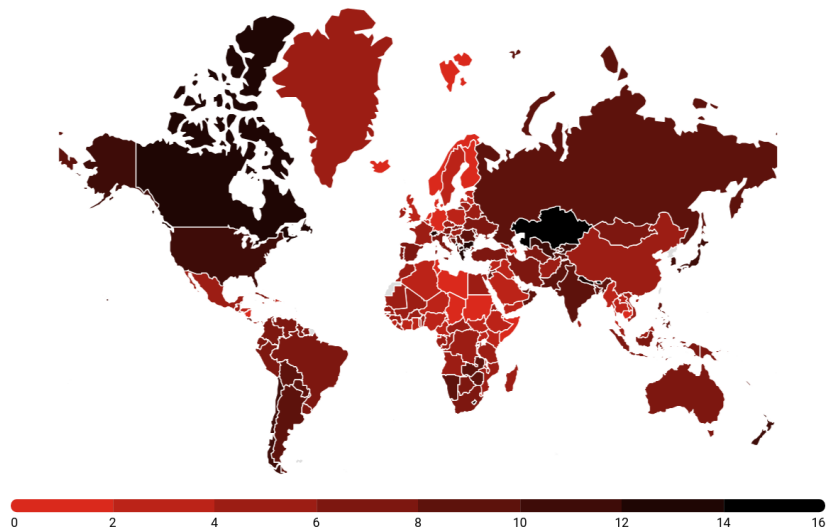
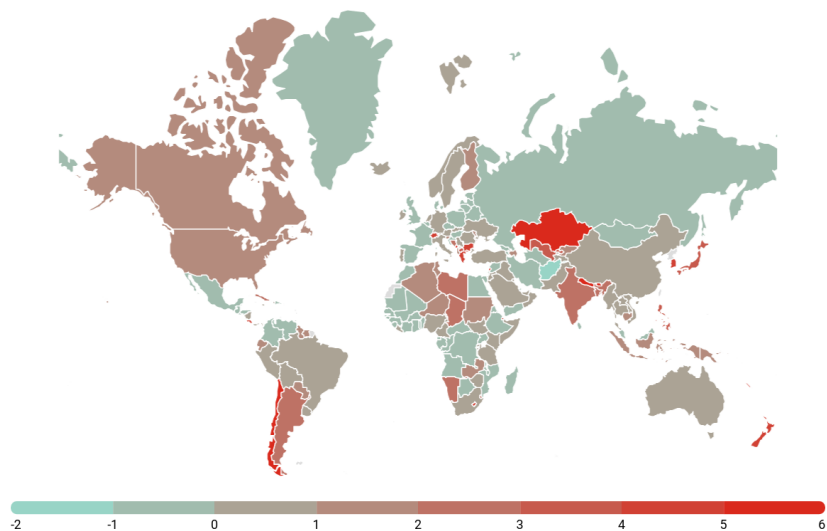


Figure 6: Percent Loss in GDP per capita by 2100 in the Absence of Climate Change Policies (RCP 8.5 Scenario)



Notes: The heat map shows $\Delta_{ih}(d_i)$, see equation (31), in year 2100 with $m = 30$, based on the RCP 8.5 scenario.

Figure 7: Percent Loss in GDP per capita by 2100 Abiding by the Paris Agreement (RCP 2.6 Scenario)



Notes: The heat map shows $\Delta_{ih}(d_i)$, see equation (31), in year 2100 with $m = 30$, based on the RCP 2.6 scenario.

Table 7: Percent Loss in GDP per capita by 2030, 2050, and 2100 under the RCP 2.6 and RCP 8.5 Scenarios

| | Year 2030 ($h = 16$) | | | Year 2050 ($h = 36$) | | | Year 2100 ($h = 86$) | | |
|-----------------------|------------------------|----------|----------|------------------------|----------|----------|------------------------|----------|----------|
| | $m = 20$ | $m = 30$ | $m = 40$ | $m = 20$ | $m = 30$ | $m = 40$ | $m = 20$ | $m = 30$ | $m = 40$ |
| World | | | | | | | | | |
| RCP 2.6 | -0.01 | -0.01 | -0.02 | 0.06 | 0.11 | 0.16 | 0.58 | 1.07 | 1.57 |
| RCP 8.5 | 0.40 | 0.80 | 1.25 | 1.39 | 2.51 | 3.67 | 4.44 | 7.22 | 9.96 |
| China | | | | | | | | | |
| RCP 2.6 | -0.22 | -0.45 | -0.71 | -0.38 | -0.80 | -1.31 | 0.24 | 0.45 | 0.67 |
| RCP 8.5 | 0.31 | 0.58 | 0.87 | 0.90 | 1.62 | 2.30 | 2.67 | 4.35 | 5.93 |
| European Union | | | | | | | | | |
| RCP 2.6 | -0.04 | -0.08 | -0.13 | -0.06 | -0.13 | -0.22 | 0.05 | 0.09 | 0.13 |
| RCP 8.5 | 0.24 | 0.50 | 0.80 | 0.79 | 1.53 | 2.35 | 2.67 | 4.66 | 6.69 |
| India | | | | | | | | | |
| RCP 2.6 | 0.12 | 0.26 | 0.42 | 0.41 | 0.81 | 1.27 | 1.44 | 2.57 | 3.69 |
| RCP 8.5 | 0.60 | 1.16 | 1.78 | 2.13 | 3.62 | 5.08 | 6.37 | 9.90 | 13.39 |
| Russia | | | | | | | | | |
| RCP 2.6 | -0.07 | -0.14 | -0.23 | -0.16 | -0.34 | -0.56 | -0.33 | -0.71 | -1.19 |
| RCP 8.5 | 0.51 | 1.03 | 1.63 | 1.62 | 3.08 | 4.61 | 5.28 | 8.93 | 12.46 |
| United States | | | | | | | | | |
| RCP 2.6 | 0.10 | 0.20 | 0.33 | 0.29 | 0.60 | 0.96 | 0.98 | 1.88 | 2.84 |
| RCP 8.5 | 0.60 | 1.20 | 1.86 | 2.13 | 3.77 | 5.39 | 6.66 | 10.52 | 14.32 |
| Rich Countries | | | | | | | | | |
| RCP 2.6 | 0.02 | 0.05 | 0.09 | 0.12 | 0.23 | 0.37 | 0.58 | 1.09 | 1.62 |
| RCP 8.5 | 0.42 | 0.84 | 1.33 | 1.46 | 2.67 | 3.93 | 4.74 | 7.76 | 10.75 |
| Poor Countries | | | | | | | | | |
| RCP 2.6 | -0.08 | -0.16 | -0.25 | -0.08 | -0.18 | -0.32 | 0.55 | 0.99 | 1.43 |
| RCP 8.5 | 0.37 | 0.72 | 1.09 | 1.24 | 2.18 | 3.11 | 3.78 | 6.05 | 8.25 |
| Hot Countries | | | | | | | | | |
| RCP 2.6 | 0.00 | 0.00 | 0.01 | 0.08 | 0.15 | 0.23 | 0.62 | 1.11 | 1.60 |
| RCP 8.5 | 0.39 | 0.76 | 1.17 | 1.35 | 2.37 | 3.39 | 4.17 | 6.65 | 9.10 |
| Cold Countries | | | | | | | | | |
| RCP 2.6 | -0.01 | -0.02 | -0.03 | 0.05 | 0.09 | 0.14 | 0.56 | 1.05 | 1.57 |
| RCP 8.5 | 0.41 | 0.81 | 1.28 | 1.40 | 2.56 | 3.76 | 4.53 | 7.40 | 10.24 |

Notes: We consider persistent increases in temperatures based on the RCP 2.6 and RCP 8.5 scenarios. Numbers are PPP GDP weighted averages of $\Delta_{ih}(d_i)$, see equation (31), with $h = 16, 36$, and 86 (corresponding to the year 2030, 2050, and 2100, respectively) and $m = 20, 30$, and 40 .

are substantially larger under an unmitigated path (i.e., RCP 8.5). Nonetheless, under both scenarios, the cross-country heterogeneity is significant. Focusing on the RCP 8.5 scenario (with $m = 30$) we observe that the losses vary between 0.50 and 1.20 percent, 1.53 and 3.77 percent, and 4.35 and 10.52 percent in 2030, 2050 and 2100, respectively; with a relatively large impact estimated for the United States in 2100 (reflecting IPCC’s projections of a sharp increase in the country’s average temperature in the absence of mitigation efforts).

Averaging the losses across countries, using PPP-GDP weights, we report the global income effects of climate change under the RCP 2.6 and RCP 8.5 scenarios in Table 7. Under the Paris agreement, and assuming $m = 30$, our results indicate that the world could actually benefit from mitigation policies in year 2030 (compared to a reference case in which temperatures increase according to their historical trends of 1960–2014), while limiting the economic losses of climate change to 0.11 and 1.07 percent over the next 36 and 86 years, respectively. However, a persistent above-norm increase in average global temperature by 0.04°C per year (based on RCP 8.5) leads to substantial output losses, reducing real per capita output by 0.80, 2.51 and 7.22 percent in 2030, 2050 and 2100, respectively. Overall these economic effects are somewhat larger than those obtained in existing studies in the literature and what is generally discussed in policy circles (see Figure 2).

A conclusion one may obtain from the literature is that the economic effects of climate change are highly uneven, with severe negative effects in hot/poor countries and limited impact on cold/rich economies (and in some studies even large gains in Canada, Russia and most of Western Europe)—examples include Annex Figure 3.6.1 in [International Monetary Fund \(2017\)](#) and Figure 4 in [Burke et al. \(2015\)](#). Reporting our counterfactual results for rich, poor, hot and cold economies (averaging the country-specific losses using PPP-GDP weights) in Table 7, we observe that under the RCP 8.5 scenario, rich (cold) countries suffer from larger output per capita losses than poor (hot) economies. Under the RCP 2.6 scenario, the effects are much smaller but the rankings are somewhat similar (apart from hot countries which experience larger income losses). Overall, abiding by the Paris Agreement would go a long way in limiting the adverse macroeconomic effects of the climate change.

Can adaptation help offset these negative income effects? Repeating the counterfactual exercise for different values of m highlights the role of adaptation. The shorter the m , the faster agents treat higher temperatures as the new norm. Table 7 shows the effects of global warming over time for various values of m . The results indicate that per-capita output losses are lower for $m = 20$ but significantly higher if it takes longer to adapt to climate change ($m = 40$). Overall, we argue that while climate change adaptation could reduce these negative economic effects, it is highly unlikely to offset them entirely. More forceful mitigation policies are needed to limit the damage from climate change.

5 Evidence from an Advanced Economy: The Case of the United States

While cross-country studies are informative, they also have drawbacks. Averaging temperature and precipitation data at the country level leads to a loss of information, especially in geographically diverse countries with varied temperature and precipitation patterns, such as Brazil, China, India, Russia and the United States. In particular, while the national average climate variables may be close to their historical norms, there is significant heterogeneity within countries. Among the countries mentioned above, the within-country geographic heterogeneity of the United States and its data richness enable us to compare whether economic activity in the ‘hot’ or ‘dry’ states responds to a temperature increase in the same way as economic activity does in ‘cold’ or ‘wet’ states.

In this section, we use data on climate and macroeconomic variables across the 48 contiguous U.S. states over the period 1963 to 2016 to check the robustness of our cross-country results to within country climate-economy variations. Inspired by recent literature that focuses on channels through which climate change affects the economy, we consider the differential growth effects of our climate variables across the main sectors of the U.S. economy. Details of data sources and their compilation for the purpose of this study are given in Appendix B. In addition to the climate variables, we obtain Gross State Product (GSP), GSP per capita, and GSP per employed as well as output for ten major economic sectors.¹²

We showed in section 3.2 that there exists a universal long-run relationship between climate change and economic growth across countries regardless of whether they are rich or poor and hot or cold. We examine the validity of this finding for the case of U.S.; an advanced economy with a high level of development and some resilience-building activities against climate change across states. This is important as most studies in the literature argue that climate change may only have a limited impact on economic activity of advanced countries as they are located in temperate places.¹³ More generally, these findings may be driven by the fact that advanced economies: (i) have more economic activity taking place indoors where air conditioners can be installed (or other measures taken),¹⁴ (ii) experience a better diffusion of adaptive technology, (iii) have more flexible labour markets and can optimise their use of physical capital more easily, and (iv) can afford to divert part of their

¹²The ten sectors are: (i) Agriculture, Forestry, and Fisheries, (ii) Mining, (iii) Construction, (iv) Manufacturing, (v) Transport, Communication, and Public Utilities, (vi) Wholesale Trade, (vii) Retail Trade, (viii) Finance, Insurance, and Real Estate, (ix) Services, and (x) Government. See Table B.1.

¹³An exception is a recent paper by [Burke and Tanutama \(2019\)](#).

¹⁴[Barreca et al. \(2016\)](#) points to the role of air conditioning in insulating the populace from climate change.

Table 8: Individual U.S. State Estimates of the Average Yearly Rise in Temperature Over the Period 1963–2016

| State | $\hat{b}_{\tau,i}$ | State | $\hat{b}_{\tau,i}$ | State | $\hat{b}_{\tau,i}$ |
|-------------|---------------------|----------------|---------------------|----------------|---------------------|
| Alabama | 0.0212 [‡] | Maine | 0.0288 [‡] | Ohio | 0.0263 [‡] |
| Arizona | 0.0318 [‡] | Maryland | 0.0299 [‡] | Oklahoma | 0.0171 [‡] |
| Arkansas | 0.0181 [‡] | Massachusetts | 0.0311 [‡] | Oregon | 0.0198 [‡] |
| California | 0.0270 [‡] | Michigan | 0.0285 [‡] | Pennsylvania | 0.0280 [‡] |
| Colorado | 0.0271 [‡] | Minnesota | 0.0320 [‡] | Rhode Island | 0.0320 [‡] |
| Connecticut | 0.0316 [‡] | Mississippi | 0.0205 [‡] | South Carolina | 0.0250 [‡] |
| Delaware | 0.0355 [‡] | Missouri | 0.0179 [‡] | South Dakota | 0.0234 [‡] |
| Florida | 0.0228 [‡] | Montana | 0.0292 [‡] | Tennessee | 0.0234 [‡] |
| Georgia | 0.0228 [‡] | Nebraska | 0.0222 [‡] | Texas | 0.0245 [‡] |
| Idaho | 0.0245 [‡] | Nevada | 0.0273 [‡] | Utah | 0.0291 [‡] |
| Illinois | 0.0223 [‡] | New Hampshire | 0.0299 [‡] | Vermont | 0.0318 [‡] |
| Indiana | 0.0236 [‡] | New Jersey | 0.0343 [‡] | Virginia | 0.0266 [‡] |
| Iowa | 0.0198 [‡] | New Mexico | 0.0300 [‡] | Washington | 0.0186 [‡] |
| Kansas | 0.0186 [‡] | New York | 0.0308 [‡] | West Virginia | 0.0268 [‡] |
| Kentucky | 0.0250 [‡] | North Carolina | 0.0257 [‡] | Wisconsin | 0.0307 [‡] |
| Louisiana | 0.0210 [‡] | North Dakota | 0.0263 [‡] | Wyoming | 0.0279 [‡] |

Notes: $\hat{b}_{\tau,i}$ are the individual state-level estimates based on the regressions $\mathcal{T}_{it} = a_{\mathcal{T}i} + b_{\mathcal{T}i}t + v_{\mathcal{T},it}$, where \mathcal{T}_{it} denotes the average temperature (°C) in state i in year t . [‡] indicates statistical significance at the 1% level.

investment to adaptive measures given their level of development.

5.1 Long-Run Impact of Climate Change on U.S. Economic Growth

We first examine whether temperature across the 48 U.S. states has been increasing over the period 1963 to 2016 by estimating equation (16). Our results suggest that, on average, temperature in the 48 U.S. states has risen by 0.026 degrees Celsius (°C) per year over 1963–2016 (i.e., $\hat{b}_{\mathcal{T}} = 0.0260$ (0.0007); with the standard error in brackets), with this trend estimate being statistically significant at the 1% level. Compared to our cross-country sample (see Table 1), there is, as to be expected, less heterogeneity across the 48 U.S. states, with all states experiencing statistically significant increases in temperature over time (see Table 8). But, the 48 U.S. states as a whole underwent more warming than the world on average. The U.S. average per annum temperature increase of 0.026 was appreciably higher than the world average rise of 0.018 per annum, which is close to that for Oklahoma, the state which saw the lowest average increase in temperature.

Having shown that temperature is trended across the sample of 48 U.S. states, we examine the long-run impact of climate change on aggregate state-level economic activity as well as states’ sectoral outputs. Such a within-country study is scant in the literature as priority is

given to studying the impact of climate change on a particular sector of an economy (e.g., agricultural output) or to cross-country analyses. As in the cross-country study in Section 3.2, we estimate the panel ARDL model (17) for the 48 U.S. states, but with y_{it} denoting an economic indicator (for instance, GSP or sectoral output) of state i in year t .

Table 9 reports the long-run estimates of the climate change variables on growth rates of real GSP and real GSP per capita for the 48 U.S. states over the period 1963–2016. We construct the climate variables with historical norms computed using 20, 30, and 40 years moving-averages, and consider the estimates based on the 30-year moving averages as our central estimates. We observe that the estimated long-run coefficients $\hat{\theta}_{\Delta(\mathcal{T}_{it}-\mathcal{T}_{i,t-1}^*)^-}$, $\hat{\theta}_{\Delta(\mathcal{P}_{it}-\mathcal{P}_{i,t-1}^*)^+}$, and $\hat{\theta}_{\Delta(\mathcal{P}_{it}-\mathcal{P}_{i,t-1}^*)^-}$ are negative and statistically significant in all cases except for one. Climate change affects the U.S. ecosystem not only through increases in average temperatures, but also through changes in the extremes— more intense droughts; heavier snow and rainfall; as well as extreme cold. However, $\hat{\theta}_{\Delta(\mathcal{T}_{it}-\mathcal{T}_{i,t-1}^*)^+}$ is not statistically significant in three out of six specifications. While this finding might be explained by the improving resilience of the U.S. economy to increasing temperature brought by climate change,¹⁵ the evidence for excessive temperature not affecting the U.S. economy is not conclusive as we will explain below.

While in our cross-country analysis, we did not find any statistically significant impact from deviations of precipitation from its historical norms on output growth (see Tables 2–5), in our within-country study of the United States, we find that deviations of precipitation above and below its historical norm affect various measures of state-level economic activity and these estimates are statistically significant.¹⁶ This is because averaging precipitation at the country level leads to a loss of information, especially in geographically diverse countries with varied precipitation patterns. While the national average precipitation may be close to its historical norm, there is significant heterogeneity across states with some experiencing plenty of rain and snow and others, like California, suffering from drought for many years. By conducting a within-country study, we account for the variation of precipitation across the states, which is important and does indeed affect economic activity (Table 9).

Considering the richness of our U.S. database, which includes data on state-level employment from 1976, we can also examine the long-run impact of climate change on labour productivity and employment growth directly, in addition to re-estimating the regressions over the period 1976–2016. We, therefore, re-estimate the model for an extended set of outcome variables, with y_{it} being the natural logarithm of: (i) real GSP, (ii) real GSP per

¹⁵For example, currently about 90 percent of American households have air conditioning.

¹⁶The importance of focusing on deviations of climate variables from their historical norms is also highlighted by recent research which demonstrate that different regions of the United States have acclimated themselves to their own temperature niche; see, for instance, Heutel et al. (2016).

Table 9: Long-Run Effects of Climate Change on the Growth Rate of Major Economic Indicators for the United States, 1963–2016

| | 20 Year MA | | 30 Year MA | | 40 Year MA | |
|--|------------------------|------------------------|------------------------|------------------------|------------------------|------------------------|
| | Real GSP | Real GSP per Capita | Real GSP | Real GSP per Capita | Real GSP | Real GSP per Capita |
| $\hat{\theta}_{\Delta(\mathcal{T}_{it}-\mathcal{T}_{it-1}^*)^+}$ | -0.0245*** (0.0081) | -0.0143** (0.0064) | -0.0152** (0.0077) | -0.0073 (0.0061) | -0.0074 (0.0073) | -0.0014 (0.0058) |
| $\hat{\theta}_{\Delta(\mathcal{T}_{it}-\mathcal{T}_{it-1}^*)^-}$ | -0.0672*** (0.0162) | -0.0444*** (0.0124) | -0.0697*** (0.0166) | -0.0454*** (0.0124) | -0.0485*** (0.0169) | -0.0275** (0.0127) |
| $\hat{\theta}_{\Delta(\mathcal{P}_{it}-\mathcal{P}_{it-1}^*)^+}$ | -0.0001*** (0.0000) | -0.0001*** (0.0000) | -0.0001*** (0.0000) | -0.0001*** (0.0000) | -0.0001*** (0.0000) | -0.0001*** (0.0000) |
| $\hat{\theta}_{\Delta(\mathcal{P}_{it}-\mathcal{P}_{it-1}^*)^-}$ | -0.0001** (0.0001) | -0.0001 (0.0000) | -0.0001*** (0.0001) | -0.0001** (0.0000) | -0.0002*** (0.0001) | -0.0001** (0.0000) |
| $\hat{\phi}$ | -0.7263*** (0.0491) | -0.8896*** (0.0530) | -0.7210*** (0.0494) | -0.8875*** (0.0532) | -0.7109*** (0.0495) | -0.8734*** (0.0533) |
| No. of states (N) | 48 | 48 | 48 | 48 | 48 | 48 |
| T | 48 | 48 | 48 | 48 | 48 | 48 |
| $N \times T$ | 2304 | 2304 | 2304 | 2304 | 2304 | 2304 |

Notes: The HP J-FE estimates are based on the following specification $\Delta y_{i,t} = a_i + \sum_{l=0}^p \psi_l \Delta y_{i,t-l} + \sum_{l=0}^p \beta_l' \Delta \mathbf{x}_{i,t-l} + \epsilon_{i,t}$, where y_{it} is the log of real GSP of state i in year t or real GSP per capita, $\mathbf{x}_{i,t} = [(\mathcal{T}_{it} - \mathcal{T}_{it-1}^*)^+, (\mathcal{T}_{it} - \mathcal{T}_{it-1}^*)^-, (\mathcal{P}_{it} - \mathcal{P}_{it-1}^*)^+, (\mathcal{P}_{it} - \mathcal{P}_{it-1}^*)^-]'$, \mathcal{T}_{it} and \mathcal{P}_{it} are the annual average temperature and precipitation of state i in year t , respectively, and \mathcal{T}_{it-1}^* and \mathcal{P}_{it-1}^* are the historical norms of temperature and precipitation of state i (based on a moving average of the past 20, 30 and 40 years). The long-run effects, θ_i , are calculated from the OLS estimates of the short-run coefficients in equation (17): $\theta = \phi^{-1} \sum_{\ell=0}^p \beta_{\ell}$, where $\phi = 1 - \sum_{\ell=1}^p \varphi_{\ell}$. The lag order, p , is set to 4. Standard errors in parentheses are estimated by the estimator proposed in Proposition 4 of Chudik et al. (2018). Asterisks indicate statistical significance at 1% (***) , 5% (**), and 10% (*) levels.

capita, (iii) real GSP per employed (measuring labour productivity), or (iv) employment, but over the period 1976 to 2016. These results are reported in Table 10. Across all specifications, the estimated long-run coefficients $\hat{\theta}_{\Delta(\mathcal{T}_{it}-\mathcal{T}_{i,t-1}^*)^-}$ and $\hat{\theta}_{\Delta(\mathcal{P}_{it}-\mathcal{P}_{i,t-1}^*)^-}$ are negative and statistically significant at the 1% level for almost all outcome variables. Therefore, when temperature and precipitation fall below their historical norms, state-level economic activity suffers, employment declines, and labour productivity growth falls (for $\hat{\theta}_{\Delta(\mathcal{T}_{it}-\mathcal{T}_{i,t-1}^*)^-}$).

While in Table 9, the climate variable $(\mathcal{T}_{it}-\mathcal{T}_{i,t-1}^*)^+$, did not have a statistically significant impact on state-level output growth in three out of six specifications (over the period 1963–2016), the results change substantially when we consider the 1976–2016 sub-sample in Table 10. Consistent with our cross-country estimates, $\hat{\theta}_{\Delta(\mathcal{T}_{it}-\mathcal{T}_{i,t-1}^*)^+}$ is now negative and statistically significant for various specifications and dependent variables: real GSP, real GSP per capita, real GSP per employed, and employment. The size of the estimates for $\hat{\theta}_{\Delta(\mathcal{T}_{it}-\mathcal{T}_{i,t-1}^*)^+}$ is smaller in absolute value than those obtained in our cross-country regressions (Table 2), reflecting a higher degree of adaptation in the United States to climate change. Nonetheless, contrary to most studies in the literature, our estimates are not negligible. Our results are supported by Deryugina and Hsiang (2014) and Behrer and Park (2017), who exploit county-level variations in climate variables over time in the U.S. and find that hotter temperatures damage economic activity, and also by Colacito et al. (2019) who find that an increase in summer temperatures has adverse effects on nominal GSP growth in the United States.

If the U.S. economy were adapting to climate change, should we not expect the negative impact of deviations of temperature and precipitation from their historical norms to be shrinking over time? To investigate this hypothesis, we re-estimate the model over different time windows using real GSP per capita growth as the dependent variable. We start with the full sample, 1963–2016, and then drop a year at a time (with the last estimation being carried out for the sub-sample 1983–2016). The results are plotted in Figure 8, showing that the estimated coefficients are becoming larger (in absolute value) over time.

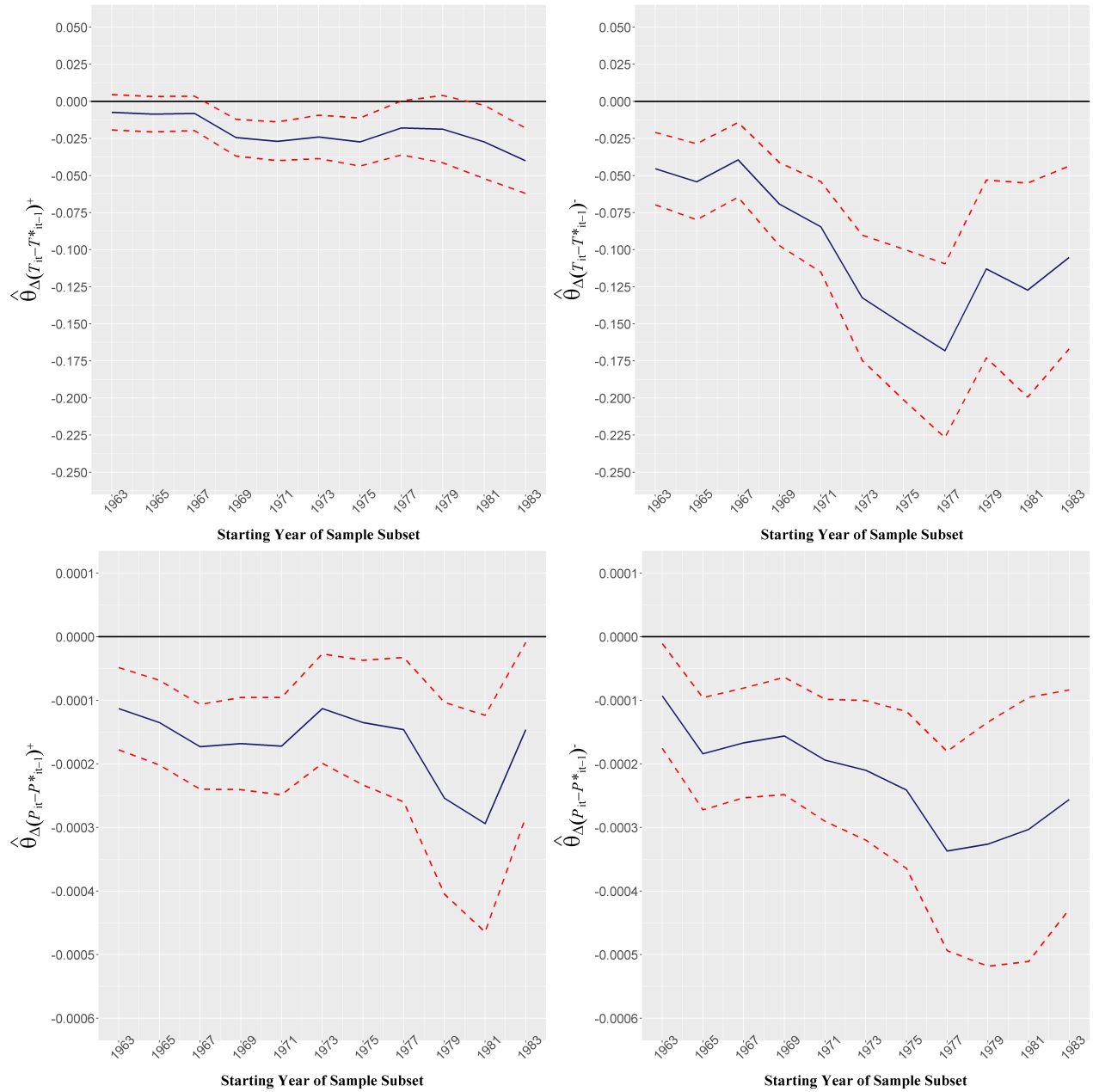
Do these results cast doubt on the efficacy of adaptation efforts in the United States over the last five decades? *Ceteris paribus*, while it is expected that adaptation weakens the relationship between climate change and economic growth over time, we cannot conclude that the U.S. economy has not been adapting to climate change based on Figure 8. First, adaptation efforts might be concentrated in certain sectors. Second, it may be the case that adaptation is not keeping pace with climate change; i.e., global temperatures have increased at an unprecedented pace over the past 40 years. Third, if firms underestimate the likelihood or severity of future weather events, they may not adapt sufficiently; i.e. adaptation technologies are readily available but the take-up is limited by firms. In a survey of private sector organizations across multiple industries within the Organization for Economic Cooperation

Table 10: Long-Run Effects of Climate Change on the Growth Rate of Major Economic Indicators for the United States, 1976–2016

| | 20 Year MA | | | 30 Year MA | | | 40 Year MA | | |
|--|-------------------------|------------------------|------------------------|-------------------------|------------------------|------------------------|-------------------------|------------------------|------------------------|
| | Real GSP | Real GSP | Employment | Real GSP | Real GSP | Employment | Real GSP | Real GSP | Employment |
| | per Capita per Employed | | | per Capita per Employed | | | per Capita per Employed | | |
| $\hat{\theta}_{\Delta(\mathcal{T}_{it}-\mathcal{T}_{it-1}^*)}^+$ | -0.0391*** (0.0108) | -0.0279*** (0.0084) | -0.0188*** (0.0067) | -0.0136** (0.0065) | -0.0379*** (0.0107) | -0.0273*** (0.0083) | -0.0190*** (0.0067) | -0.0135** (0.0062) | -0.0371*** (0.0105) |
| $\hat{\theta}_{\Delta(\mathcal{T}_{it}-\mathcal{T}_{it-1}^*)}^-$ | -0.1554*** (0.0315) | -0.1199*** (0.0233) | -0.0604*** (0.0166) | -0.0723*** (0.0183) | -0.1951*** (0.0358) | -0.1505*** (0.0259) | -0.0779*** (0.0191) | -0.0954*** (0.0205) | -0.2089*** (0.0388) |
| $\hat{\theta}_{\Delta(\mathcal{P}_{it}-\mathcal{P}_{it-1}^*)}^+$ | -0.0001* (0.0001) | -0.0001* (0.0001) | -0.0000 (0.0000) | -0.0000 (0.0000) | -0.0002** (0.0001) | -0.0001*** (0.0000) | -0.0000 (0.0000) | -0.0001** (0.0000) | -0.0001** (0.0000) |
| $\hat{\theta}_{\Delta(\mathcal{P}_{it}-\mathcal{P}_{it-1}^*)}^-$ | -0.0003*** (0.0001) | -0.0002*** (0.0001) | -0.0001 (0.0000) | -0.0002*** (0.0001) | -0.0003*** (0.0001) | -0.0002*** (0.0001) | -0.0001 (0.0000) | -0.0003*** (0.0001) | -0.0001 (0.0000) |
| $\hat{\phi}$ | -0.5092*** (0.0503) | -0.6327*** (0.0529) | -0.7219*** (0.0756) | -0.4371*** (0.0445) | -0.5016*** (0.0504) | -0.6301*** (0.0530) | -0.7035*** (0.0756) | -0.4382*** (0.0444) | -0.4975*** (0.0502) |
| No. of states (N) | 48 | 48 | 48 | 48 | 48 | 48 | 48 | 48 | 48 |
| T | 36 | 36 | 36 | 36 | 36 | 36 | 36 | 36 | 36 |
| $N \times T$ | 1728 | 1728 | 1728 | 1728 | 1728 | 1728 | 1728 | 1728 | 1728 |

Notes: The HPJ-FE estimates are based on the following specification $\Delta y_{i,t} = a_i + \sum_{l=1}^p \psi_l \Delta y_{i,t-l} + \sum_{l=0}^p \beta_l \Delta \mathbf{x}_{i,t-l} + \epsilon_{i,t}$, where $y_{i,t}$ is the log of (i) real GSP, (ii) real GSP per capita, (iii) real GSP per employed, and (iv) employment of state i in year t , $\mathbf{x}_{i,t} = [(\mathcal{T}_{it} - \mathcal{T}_{it-1}^*)^+, (\mathcal{T}_{it} - \mathcal{T}_{it-1}^*)^-, (\mathcal{P}_{it} - \mathcal{P}_{it-1}^*)^+, (\mathcal{P}_{it} - \mathcal{P}_{it-1}^*)^-]$, \mathcal{T}_{it} and \mathcal{P}_{it} are the annual average temperature and precipitation of state i in year t , respectively, and \mathcal{T}_{it-1}^* and \mathcal{P}_{it-1}^* are the historical norms of temperature and precipitation of state i (based on a moving average of the past 20, 30, and 40 years). The long-run effects, θ_i , are calculated from the OLS estimates of the short-run coefficients in equation (17): $\theta = \phi^{-1} \sum_{\ell=0}^p \beta_{\ell}$, where $\phi = 1 - \sum_{\ell=1}^p \varphi_{\ell}$. The lag order, p , is set to 4. Standard errors in parentheses are estimated by the estimator proposed in Proposition 4 of Chudik et al. (2018). Asterisks indicate statistical significance at 1% (***), 5% (**), and 10% (*) levels.

Figure 8: Long-Run Effects of Climate Change on per capita Real GSP Growth in the United States, 1963–2016



Notes: Figures show the long-run effects (and their 95% standard error bands) of climate change on state-level economic growth in the United States over different windows, using the ARDL specification (17). We start the estimation with the full sample (1963–2016) and then drop one year at a time, ending with the final estimates based on the 1983–2016 sub-sample.

and Development (OECD) countries, [Agrawala et al. \(2011\)](#) find that only few firms have taken sufficient steps to assess and manage the risks from climate change. Fourth, according to [Deryugina and Hsiang \(2014\)](#) firms tend to under-invest in adaptation owing to its high cost. We argue that there has been some adaptation in the U.S. given that the estimates in [Tables 9 and 10](#) are generally smaller than those obtained in our cross-country study ([Table 2](#)). However, overall, the evidence appears to suggest that (at least for now) adaptation has had limited impact in dampening the negative effects of climate change in the United States.

5.2 Further Evidence from U.S. Sector Level Data

Adaptation and mitigation can occur in the short-term through a reallocation of resources, and in the long-term through investment in research and development, innovation, or a shift in the economic structure of the country towards an industry mix that is less vulnerable to climate change. Given that adaptation is relatively easier and more effective to implement in some industries than others, we first need to assess which sectors/industries are more likely to be affected by climate change in the U.S. economy. Focusing on different sectors/industries also helps shed light on the channels through which climate change affects the United States economy. We consider ten sectors, and due to lack of worker per sector data at the state level, we only report the results for state-level output growth.¹⁷

The long-run sectoral effects of climate change estimated on the panel of the 48 U.S. states over the period 1963-2016 are reported in [Table 11](#). The estimates show that the impact is broad based—each of the 10 sectors is affected by at least one of the four climate variables. Specifically, the agricultural sector is negatively impacted by a rise in temperature above its historical norm, $\hat{\theta}_{\Delta(\mathcal{T}_{it}-\mathcal{T}_{i,t-1}^*)^+} < 0$. In addition, precipitation above and below the norm also exert negative effects on agricultural output growth. These results are in line with the findings of [Burke and Emerick \(2016\)](#), who consider corn and soy farming in the U.S. over the period 1955-2005, and find that, despite some adaptation efforts by farmers, agricultural output is damaged by extreme heat and excessive precipitation. Note also that the cost of adaptation to climate change is high in the agricultural sector—constructing greenhouses or varying crop mixes involves heftier investments than fitting air conditioning units in offices.

[Table 11](#) also illustrates that deviations of all four climate variables from their historical norms have adverse effects on output growth in the manufacturing sector. While the negative impact of climate change on agricultural production is well studied, the adverse effects on the manufacturing sector in the United States are only being discussed in the new climate economy literature (using micro-data analyses). For example, [Cachon et al. \(2012\)](#) use

¹⁷See [Appendix B](#) for further details.

Table 11: Long-Run Effects of Climate Change on the Output Growth of Various Sectors in the United States, 1963–2016

| | Agriculture Forestry Fisheries | Mining | Construction | Manufacturing | Transport Communication Public Utilities | Wholesale Trade | Retail Trade | Finance Insurance Real Estate | Services | Government |
|--|--------------------------------------|------------------------|------------------------|------------------------|--|------------------------|------------------------|-------------------------------------|------------------------|------------------------|
| $\widehat{\theta}_{\Delta(\mathcal{T}_{it}-\mathcal{T}_{it-1})^+}$ | -0.0323* (0.0178) | -0.0030 (0.0400) | -0.0587*** (0.0204) | -0.0666*** (0.0163) | -0.0261** (0.0112) | -0.0628*** (0.0209) | -0.0531*** (0.0126) | 0.0730*** (0.0161) | -0.0336*** (0.0110) | 0.0182* (0.0107) |
| $\widehat{\theta}_{\Delta(\mathcal{T}_{it}-\mathcal{T}_{it-1})^-}$ | -0.0184 (0.0315) | -0.1887*** (0.0728) | -0.1777*** (0.0400) | -0.1136*** (0.0270) | -0.0633*** (0.0175) | -0.2365*** (0.0389) | -0.1674*** (0.0237) | 0.0050 (0.0309) | -0.1201*** (0.0252) | -0.0446** (0.0199) |
| $\widehat{\theta}_{\Delta(\mathcal{P}_{it}-\mathcal{P}_{it-1})^+}$ | -0.0003*** (0.0001) | -0.0006*** (0.0002) | -0.0002** (0.0001) | -0.0002*** (0.0001) | 0.0001** (0.0001) | -0.0001 (0.0001) | -0.0001 (0.0001) | -0.0000 (0.0001) | -0.0001* (0.0001) | 0.0000 (0.0001) |
| $\widehat{\theta}_{\Delta(\mathcal{P}_{it}-\mathcal{P}_{it-1})^-}$ | -0.0005*** (0.0001) | -0.0003 (0.0003) | -0.0002 (0.0001) | -0.0003*** (0.0001) | -0.0001 (0.0001) | -0.0003** (0.0001) | -0.0002*** (0.0001) | 0.0000 (0.0001) | -0.0001* (0.0001) | 0.0000 (0.0001) |
| $\widehat{\phi}$ | -1.8892*** (0.0843) | -0.8133*** (0.0459) | -0.6412*** (0.0331) | -0.9599*** (0.0726) | -0.8536*** (0.0581) | -0.4830*** (0.0394) | -0.5787*** (0.0312) | -0.5944*** (0.0546) | -0.4135*** (0.0414) | -0.3902*** (0.0458) |
| No. of states (N) | 48 | 47 | 48 | 48 | 48 | 48 | 48 | 48 | 48 | 48 |
| T | 48 | 48 | 48 | 48 | 48 | 48 | 48 | 48 | 48 | 48 |
| $N \times T$ | 2304 | 2256 | 2304 | 2304 | 2304 | 2304 | 2304 | 2304 | 2304 | 2304 |

Notes: The HPJ-FE estimates are based on the following specification $\Delta y_{i,t} = a_i + \sum_{l=1}^p \psi_l \Delta y_{i,t-l} + \sum_{l=0}^p \beta_l' \mathbf{x}_{i,t-l} + \epsilon_{i,t}$, where y_{it} is the log of sectoral real output in state i in year t , $\mathbf{x}_{i,t} = [\Delta(\mathcal{T}_{it} - \mathcal{T}_{it-1})^+, \Delta(\mathcal{T}_{it} - \mathcal{T}_{it-1})^-, \Delta(\mathcal{P}_{it} - \mathcal{P}_{it-1})^+, \Delta(\mathcal{P}_{it} - \mathcal{P}_{it-1})^-]$, \mathcal{T}_{it} and \mathcal{P}_{it} are the annual average temperature and precipitation of state i in year t , respectively, and \mathcal{T}_{it-1}^* and \mathcal{P}_{it-1}^* are the historical norms of temperature and precipitation variables for state i , based on a moving average of the past 30 years. The long-run effects, θ_i , are calculated from the OLS estimates of the short-run coefficients in equation (17): $\theta = \phi^{-1} \sum_{\ell=0}^p \beta_{\ell}$, where $\phi = 1 - \sum_{\ell=1}^p \varphi_{\ell}$. The lag order, p , is set to 4. Standard errors in parentheses are estimated by the estimator proposed in Proposition 4 of Chudik et al. (2018). Asterisks indicate statistical significance at 1% (***), 5% (**) and 10% (*) levels.

weekly production data from 64 automobile plants in the U.S. and find that climate variations (extensive periods of rain and snow, high heat, and severe winds), lead to costly production volatility, and have adverse effects on labour productivity, in line with our results. Moreover, our estimates show that output growth in mining, construction, transport, retail trade, wholesale trade, services and government sectors are all negatively affected by unusually cold days in the U.S. as consumer spending falls (households may delay shopping or even cut from spending owing to higher heating costs or home-repair expenses); supply chains are interrupted;¹⁸ and construction projects are delayed. See also Bloesch and Gourio (2015) for further supporting evidence. Heavy rain can also reduce access to mountainous mining regions, where large deposits are generally found, thereby reducing output growth in the mining sector. Construction and transportation activities are also affected by rain/snow.

Most discussions of climate change focus on the expected increase in average global temperatures over the next century (i.e. global warming). However, the frequency and severity of weather events (such as heat or cold waves, droughts and floods, as well as natural disasters) depend heavily on the variability of temperatures and precipitation as well as their mean. The larger the swings, the more often extremely hot or cold and wet or dry conditions can wreak havoc; see, for instance, Swain et al. 2018. Given current projections of rising average global temperature over the next century, the likelihood that temperatures persistently drift above their historical norm is very high. As we showed above, this could lead to a permanent negative impact on state-level output growth (that is lower production growth in all sectors of the United States economy apart from the mining, government, and finance, insurance and real estate sectors). While persistent deviations of precipitation from its historical norm (either above and below) or below-the-norm temperatures are less likely, the swings (variability) could be unprecedentedly large owing to climate change, and hence, the negative impact on state-level output growth could be sizable and long lasting.

Overall, the industry-level results in Table 11 and the state-level results in Tables 9–10, show that deviations of temperature below its historical norms in the U.S. as well as deviations of precipitation from its historical norm are detrimental to long-run state-level and industry-level output growth. When it comes to deviations of temperature above its historical norms, the estimates are negative in the more recent sample for all economic sectors apart from mining, government, and finance, insurance and real estate sectors. In fact $\hat{\theta}_{\Delta(\mathcal{T}_{it}-\mathcal{T}_{i,t-1}^*)^+}$ is positive and statistically significant for government services (at the 10% level) and finance, insurance and real estate sectors, but most likely this reflects government spending on relief measures and higher insurance premiums in response to climate change.

¹⁸For example, steel production along the coast of Lake Michigan was majorly disrupted during the brutal 2013-14 winter, because frozen Great Lakes meant that cargoes could not be moved via boats as usual.

We acknowledge some resilience building activities in advanced economies, but the evidence from both the cross-country analysis and the U.S. within-country study seems to suggest that while adaptation might have reduced the negative effects in certain sectors, it has not completely offset them at the macro level (see Table 10 and Figure 8). Behrer and Park (2017) note that even the most well-adapted regions in the United States suffer negative production effects from hotter temperatures and Colacito et al. (2019) show that an increase in average summer temperatures will have negative effects on nominal output in various sectors, such as agriculture, construction, retail, services, and wholesale trade.

6 Concluding Remarks

Using data on 174 countries over the period 1960 to 2014, and a novel econometric strategy (that differentiates between short-term and long-run effects; accounts for bi-directional feedbacks between economic growth and climate change; and deals with temperature being trended), we showed that persistent changes in climate has long-term negative impacts on economic growth. If temperature deviates from its historical norm by 0.01°C annually, long-term income growth will be lower by 0.0543 percentage points per year. Furthermore, in contrast to most of the literature, we illustrated that these negative long-run growth effects are universal, that is they affect all countries, rich or poor, and hot or cold.

We performed a number of counterfactual exercises where we investigated the output effects of annual increases in temperatures under mitigated and unmitigated scenarios during 2015–2100. We showed that keeping the increase in the global average temperature to below 2 degrees Celsius above pre-industrial levels as agreed by 190 parties in Paris in December 2015, will reduce global income by 1.07 percent by 2100. However, an increase in average global temperatures of 0.04°C (corresponding to the RCP 8.5 scenario, which assumes higher greenhouse gas emissions in absence of climate change policies) reduces world’s real GDP per capita by 7.22 percent by 2100, with the size of these income effects varying significantly across countries. Overall, abiding by the Paris Agreement would go a long way in limiting economic losses from climate change across almost all countries.

These effects are somewhat larger than those generally discussed in policy circles. For instance, the integrated assessment models, which have been extensively used to inform climate policy (including by the Obama administration, see Obama 2017) and are the basis for international negotiations, usually postulate that an increase in temperature only has short-term growth effects (or permanent level effects). However, we showed that persistent changes in climate lowers long-term economic growth. We illustrated that while adaptation to climate change could reduce these negative long-run growth effects, it is highly unlikely

to offset them entirely. Therefore, our findings call for a more forceful policy response to the threat of climate change, including more ambitious mitigation and adaptation efforts.

We also examined the robustness of our findings, using panel data sets of different economic indicators across 48 U.S. states over the period 1963 to 2016. Our results provided evidence for the damage climate change causes in the United States using GSP, GSP per capita, labour productivity, and employment as well as output growth in ten economic sectors (such as agriculture, construction, manufacturing, services, retail and wholesale trade). While certain sectors in the U.S. economy might have adapted to higher temperatures, economic activity in the U.S. overall and at the sectoral level continues to be sensitive to deviations of temperature and precipitation from their historical norms.

References

- Agrawala, S., M. Carraro, N. Kingsmill, E. Lanzi, M. Mullan, and G. Prudent-Richard (2011). [Private Sector Engagement in Adaptation to Climate Change: Approaches to Managing Climate Risks](#). *OECD Environment Working Papers No 39*.
- Arguez, A., I. Durre, S. Applequist, R. S. Vose, M. F. Squires, X. Yin, R. R. Heim, and T. W. Owen (2012). [NOAA's 1981-2010 U.S. Climate Normals: An Overview](#). *Bulletin of the American Meteorological Society* 93(11), 1687–1697.
- Barreca, A., K. Clay, O. Deschenes, M. Greenstone, and J. S. Shapiro (2016). [Adapting to Climate Change: The Remarkable Decline in the US Temperature-Mortality Relationship over the Twentieth Century](#). *Journal of Political Economy* 124(1), 105–159.
- Behrer, P. and J. Park (2017). [Will We Adapt? Temperature Shocks, Labor and Adaptation to Climate Change](#). *Working Paper*.
- Binder, M. and M. Pesaran (1999). [Stochastic Growth Models and Their Econometric Implications](#). *Journal of Economic Growth* 4, 139–183.
- Bloesch, J. and F. Gourio (2015). [The Effect of Winter Weather on U.S. Economic Activity](#). *Economic Perspectives, Federal Reserve Bank of Chicago* 39(1), 1–20.
- Brock, W. A. and L. J. Mirman (1972). [Optimal Economic Growth and Uncertainty: The Discounted Case](#). *Journal of Economic Theory* 4(3), 479 – 513.
- Brown, P. T., W. Li, J. H. Jiang, and H. Su (2016). [Unforced Surface Air Temperature Variability and Its Contrasting Relationship with the Anomalous TOA Energy Flux at Local and Global Spatial Scales](#). *Journal of Climate* 29(3), 925 – 940.
- Burke, M. and K. Emerick (2016). [Adaptation to Climate Change: Evidence from US Agriculture](#). *American Economic Journal: Economic Policy* 8(3), 106–140.
- Burke, M., S. M. Hsiang, and E. Miguel (2015). [Global Non-Linear Effect of Temperature on Economic Production](#). *Nature* 527, 235–239.

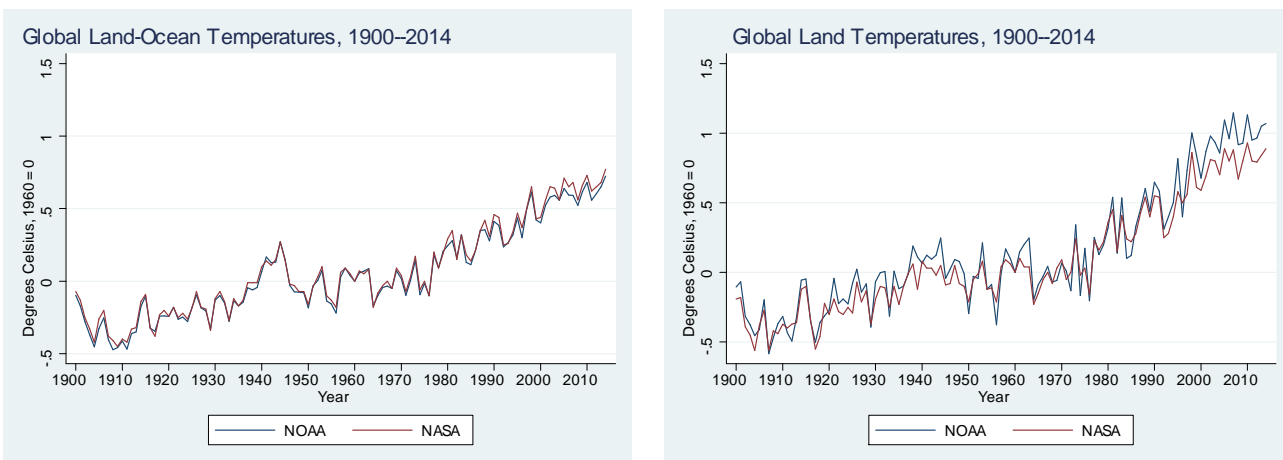
- Burke, M. and V. Tanutama (2019). [Climatic Constraints on Aggregate Economic Output](#). Working Paper 25779, National Bureau of Economic Research Working Paper 25779.
- Cachon, G. P., S. Gallino, and M. Olivares (2012). [Severe Weather and Automobile Assembly Productivity](#). *Columbia Business School Research Paper No. 12/37*.
- Cashin, P., K. Mohaddes, and M. Raissi (2017). [Fair Weather or Foul? The Macroeconomic Effects of El Niño](#). *Journal of International Economics* 106, 37–54.
- Chudik, A., K. Mohaddes, M. H. Pesaran, and M. Raissi (2013). [Debt, Inflation and Growth: Robust Estimation of Long-Run Effects in Dynamic Panel Data Models](#). *Federal Reserve Bank of Dallas, Globalization and Monetary Policy Institute Working Paper No. 162*.
- Chudik, A., K. Mohaddes, M. H. Pesaran, and M. Raissi (2016). [Long-Run Effects in Large Heterogeneous Panel Data Models with Cross-Sectionally Correlated Errors](#). In R. C. Hill, G. Gonzalez-Rivera, and T.-H. Lee (Eds.), *Advances in Econometrics (Volume 36): Essays in Honor of Aman Ullah*, Chapter 4, pp. 85–135. Emerald Publishing.
- Chudik, A., K. Mohaddes, M. H. Pesaran, and M. Raissi (2017). [Is There a Debt-threshold Effect on Output Growth?](#) *Review of Economics and Statistics* 99(1), 135–150.
- Chudik, A., M. H. Pesaran, and J.-C. Yang (2018). [Half-Panel Jackknife Fixed Effects Estimation of Panels with Weakly Exogenous Regressors](#). *Journal of Applied Econometrics* 33(6), 816–836.
- CIESIN (2016). [Gridded Population of the World, Version 4 \(GPWv4\): Population Density](#). *Columbia University, Palisades, NY: NASA Socioeconomic Data and Applications Center (SEDAC)*.
- Colacito, R., B. Hoffmann, and T. Phan (2019). [Temperature and Growth: A Panel Analysis of the United States](#). *Journal of Money, Credit and Banking* 51, 313–368.
- Dell, M., B. F. Jones, and B. A. Olken (2009). [Temperature and Income: Reconciling New Cross-Sectional and Panel Estimates](#). *American Economic Review* 99(2), 198–204.
- Dell, M., B. F. Jones, and B. A. Olken (2012). [Temperature Shocks and Economic Growth: Evidence from the Last Half Century](#). *American Economic Journal: Macroeconomics* 4(3), 66–95.
- Dell, M., B. F. Jones, and B. A. Olken (2014). [What Do We Learn from the Weather? The New Climate-Economy Literature](#). *Journal of Economic Literature* 52(3), 740–798.
- Deryugina, T. and S. M. Hsiang (2014). [Does the Environment Still Matter? Daily Temperature and Income in the United States](#). *NBER Working Paper No. 20750*.
- Dhyne, E., C. Fuss, M. H. Pesaran, and P. Sevestre (2011). [Lumpy Price Adjustments: A Microeconomic Analysis](#). *Journal of Business & Economic Statistics* 29(4), 529–540.
- Donaldson, J. B. and R. Mehra (1983). [Stochastic Growth with Correlated Production Shocks](#). *Journal of Economic Theory* 29(2), 282 – 312.
- Gallup, J. L., J. D. Sachs, and A. D. Mellinger (1999). [Geography and Economic Development](#). *International Regional Science Review* 22(2), 179–232.
- Heal, G. and J. Park (2016). [Reflections - Temperature Stress and the Direct Impact of Climate Change: A Review of an Emerging Literature](#). *Review of Environmental Economics and Policy* 10(2), 347–362.

- Heutel, G., N. Miller, and D. Molitor (2016). [Adaptation and the Mortality Effects of Temperature across US Climate Regions](#). *NBER Working Paper No. 23271*.
- Hsiang, S. M. (2016). [Climate Econometrics](#). *Annual Review of Resource Economics* 8(1).
- International Monetary Fund, . (2017). [The Effects of Weather Shocks on Economic Activity: How Can Low-income Countries Cope?](#) *World Economic Outlook Chapter 3*, 117–183.
- IPCC, . (2013). *Climate Change 2013: The Physical Science Basis. Contribution of Working Group I to the Fifth Assessment Report of the Intergovernmental Panel on Climate Change*. Cambridge University Press, Cambridge.
- Jones, B. F. and B. A. Olken (2010). [Climate Shocks and Exports](#). *American Economic Review* 100(2), 454–59.
- Kort, J. R. (2001). [The North American Industry Classification System in BEA's Economic Accounts](#). *Survey of Current Business*.
- Marimon, R. (1989). [Stochastic Turnpike Property and Stationary Equilibrium](#). *Journal of Economic Theory* 47(2), 282 – 306.
- Matsuura, K. and C. J. Willmott (2015). [Terrestrial Air Temperature and Precipitation: Monthly and Annual Time Series \(1900 - 2014\)](#), v 4.01.
- Mejia, S., M. Mrkaic, N. Novta, E. Pugacheva, and P. Topalova (2018). [The Effects of Weather Shocks on Economic Activity: What are the Channels of Impact?](#) *IMF Working Paper WP/18/144*.
- Merton, R. C. (1975). [An Asymptotic Theory of Growth Under Uncertainty](#). *The Review of Economic Studies* 42(3), 375–393.
- Mitchell, J. F. B., K. J. Karoly, G. Hegerl, F. W. Zwiers, M. R. Allen, J. Marengo, and . others (2001). [Detection of Climate Change and Attribution of Causes](#). In J. T. Houghton (Ed.), *Climate Change 2001: The Scientific Basis. Contribution of Working Group I to the Third Assessment Report of the Intergovernmental Panel on Climate Change*. Cambridge University Press, New York.
- Nickell, S. (1981). [Biases in Dynamic Models with Fixed Effects](#). *Econometrica* 49(6), 1417–1426.
- Nordhaus, W. D. (1992). [The "DICE" Model: Background and Structure of a Dynamic Integrated Climate-Economy Model of the Economics of Global Warming](#). Technical Report 1009, Cowles Foundation Discussion Paper No. 1009.
- Nordhaus, W. D. (2006). [Geography and Macroeconomics: New Data and New Findings](#). *Proceedings of the National Academy of Sciences of the United States of America* 103(10), 3510–3517.
- Nordhaus, W. D. (2017). [Revisiting the Social Cost of Carbon](#). *Proceedings of the National Academy of Sciences of the United States of America* 114(7), 1518–1523.
- Obama, B. (2017). [The Irreversible Momentum of Clean Energy](#). *Science*.
- Pacala, S. and R. Socolow (2004). [Stabilization Wedges: Solving the Climate Problem for the Next 50 Years with Current Technologies](#). *Science* 305(5686), 968–972.
- Pesaran, M. H. (1997). [The Role of Economic Theory in Modelling the Long Run](#). *Economic Journal* 107, 178–191.

- Pesaran, M. H. and Y. Shin (1999). [An Autoregressive Distributed Lag Modelling Approach to Cointegration Analysis](#). In S. Strom (Ed.), *Econometrics and Economic Theory in 20th Century: The Ragnar Frisch Centennial Symposium*, Chapter 11, pp. 371–413. Cambridge: Cambridge University Press.
- Pesaran, M. H. and R. Smith (1995). [Estimating Long-run Relationships from Dynamic Heterogeneous Panels](#). *Journal of Econometrics* 68(1), 79–113.
- Phillips, P. C. B., T. Leirvik, and T. Storelvmo (2017). [Econometric Measurement of Earth’s Transient Climate Sensitivity](#). Technical Report 2083, Cowles Foundation Discussion Paper No. 2083.
- Sachs, J. D. and A. M. Warner (1997). [Sources of Slow Growth in African Economies](#). *Journal of African Economies* 6(3), 335–376.
- Stern, N. (2007). *The Economics of Climate Change: The Stern Review*. Cambridge University Press, Cambridge.
- Swain, D. L., B. Langenbrunner, J. D. Neelin, and A. Hall (2018). [Increasing Precipitation Volatility in Twenty-first-century California](#). *Nature Climate Change* 8(5), 427–433.
- Tol, R. S. J. (2009). [The Economic Effects of Climate Change](#). *Journal of Economic Perspectives* 23(2), 29–51.
- Tol, R. S. J. (2014, May). [Correction and Update: The Economic Effects of Climate Change](#). *Journal of Economic Perspectives* 28(2), 221–26.
- Vose, R. S., S. Applequist, M. Squires, I. Durre, M. J. Menne, C. N. Williams, C. Fenimore, K. Gleason, and D. Arndt (2014). [Improved Historical Temperature and Precipitation Time Series for U.S. Climate Divisions](#). *Journal of Applied Meteorology and Climatology* 53(5), 1232–1251.
- Weitzman, M. L. (2009, February). [On Modeling and Interpreting the Economics of Catastrophic Climate Change](#). *The Review of Economics and Statistics* 91(1), 1–19.

A Additional Results

Figure A.1: Global Land-Surface Air and Sea-Surface Water Temperatures (Degrees Celsius, 1960 = 0)



Notes: The left panel shows the global land-surface air and sea-surface water temperatures, and the right panel shows the global land-surface air temperatures, both over the 1900–2014 period. The blue lines show the temperatures observed by the *National Centers for Environmental Information* (NCEI) at National Oceanic and Atmospheric Administration (NOAA); and the broken red lines show the temperatures observed by the *Goddard Institute for Space Studies* (GISS) at the National Aeronautics and Space Administration (NASA). The temperatures in 1960 are standardised to zero.

Table A.1: Individual Country Estimates of the Average Yearly Rise in Temperature Over the Period 1900–2014

| Country | $\hat{b}_{\mathcal{T}i}$ | Country | $\hat{b}_{\mathcal{T}i}$ | Country | $\hat{b}_{\mathcal{T}i}$ |
|--------------------------|--------------------------|---------------|--------------------------|----------------------------------|--------------------------|
| Afghanistan | 0.0136*** | Georgia | 0.0044** | Oman | 0.0047*** |
| Albania | 0.0036** | Germany | 0.0063*** | Pakistan | 0.0043*** |
| Algeria | 0.0067*** | Ghana | 0.0035*** | Panama | 0.0060*** |
| Angola | 0.0099*** | Greece | -0.0008 | Papua New Guinea | 0.0026** |
| Argentina | 0.0038*** | Greenland | 0.0110*** | Paraguay | 0.0032** |
| Armenia | 0.0056** | Guatemala | 0.0065*** | Peru | 0.0039*** |
| Australia | 0.0041*** | Guinea | 0.0028*** | Philippines | 0.0048*** |
| Austria | 0.0056*** | Guinea-Bissau | 0.0051*** | Poland | 0.0063*** |
| Azerbaijan | 0.0064*** | Guyana | 0.0051*** | Portugal | 0.0051*** |
| Bahamas | 0.0048*** | Haiti | 0.0190*** | Puerto Rico | 0.0023*** |
| Bangladesh | 0.0033*** | Honduras | 0.0086*** | Qatar | 0.0125*** |
| Belarus | 0.0094*** | Hungary | 0.0033* | Romania | 0.0043** |
| Belgium | 0.0057*** | Iceland | 0.0034* | Russian Federation | 0.0111*** |
| Belize | 0.0041*** | India | 0.0029*** | Rwanda | 0.0050*** |
| Benin | 0.0032*** | Indonesia | 0.0025*** | Saint Vincent and the Grenadines | 0.0050*** |
| Bhutan | 0.0055*** | Iran | 0.0072*** | Samoa | 0.0050*** |
| Bolivia | 0.0011 | Iraq | 0.0083*** | Sao Tome and Principe | 0.0071*** |
| Bosnia and Herzegovina | 0.0106*** | Ireland | 0.0057*** | Saudi Arabia | 0.0070*** |
| Botswana | 0.0098*** | Israel | 0.0047*** | Senegal | 0.0074*** |
| Brazil | 0.0061*** | Italy | 0.0045*** | Serbia | 0.0038** |
| Brunei Darussalam | 0.0002 | Jamaica | 0.0134*** | Sierra Leone | 0.0031*** |
| Bulgaria | 0.0012 | Japan | 0.0099*** | Slovakia | 0.0061*** |
| Burkina Faso | 0.0045*** | Jordan | 0.0032* | Slovenia | 0.0062*** |
| Burundi | 0.0075*** | Kazakhstan | 0.0122*** | Solomon Islands | 0.0020** |
| Cabo Verde | 0.0039*** | Kenya | 0.0026*** | Somalia | 0.0071*** |
| Cambodia | 0.0045*** | Kuwait | 0.0091*** | South Africa | 0.0051*** |
| Cameroon | 0.0039*** | Kyrgyzstan | 0.0146*** | South Korea | 0.0101*** |
| Canada | 0.0110*** | Laos | 0.0028*** | South Sudan | 0.0102*** |
| Central African Republic | 0.0020** | Latvia | 0.0094*** | Spain | 0.0080*** |
| Chad | 0.0048*** | Lebanon | 0.0030* | Sri Lanka | 0.0050*** |
| Chile | 0.0017** | Lesotho | 0.0026** | Sudan | 0.0102*** |
| China | 0.0064*** | Liberia | 0.0018** | Suriname | 0.0012 |
| Colombia | 0.0098*** | Libya | 0.0076*** | Swaziland | 0.0103*** |
| Comoros | 0.0053*** | Lithuania | 0.0080*** | Sweden | 0.0064** |
| Congo | 0.0064*** | Luxembourg | 0.0050*** | Switzerland | 0.0046*** |
| Congo DRC | 0.0051*** | Macedonia | -0.0000 | Syria | 0.0055*** |
| Costa Rica | 0.0031* | Madagascar | 0.0018* | Tajikistan | 0.0099*** |
| Côte d'Ivoire | 0.0013 | Malawi | 0.0162*** | Tanzania | 0.0026*** |
| Croatia | 0.0039** | Malaysia | 0.0014* | Thailand | 0.0012 |
| Cuba | 0.0021*** | Mali | 0.0057*** | Togo | 0.0023** |
| Cyprus | 0.0080*** | Mauritania | 0.0083*** | Trinidad and Tobago | 0.0035** |
| Czech Republic | 0.0040** | Mauritius | 0.0053*** | Tunisia | 0.0087*** |
| Denmark | 0.0044** | Mexico | 0.0060*** | Turkey | 0.0045** |
| Djibouti | 0.0057*** | Moldova | 0.0089*** | Turkmenistan | 0.0092*** |
| Dominican Republic | 0.0111*** | Mongolia | 0.0111*** | Uganda | 0.0048*** |
| Ecuador | 0.0091*** | Montenegro | 0.0070*** | Ukraine | 0.0089*** |
| Egypt | 0.0056*** | Morocco | 0.0041*** | United Arab Emirates | 0.0055*** |
| El Salvador | 0.0050** | Mozambique | 0.0134*** | United Kingdom | 0.0038*** |
| Equatorial Guinea | 0.0093*** | Myanmar | 0.0051*** | United States | 0.0036*** |
| Eritrea | 0.0046*** | Namibia | 0.0093*** | Uruguay | 0.0064*** |
| Estonia | 0.0093*** | Nepal | 0.0039*** | US Virgin Islands | 0.0069*** |
| Ethiopia | 0.0049*** | Netherlands | 0.0043** | Uzbekistan | 0.0096*** |
| Fiji | 0.0045*** | New Caledonia | 0.0006 | Vanuatu | 0.0043*** |
| Finland | 0.0070** | New Zealand | 0.0043*** | Venezuela | 0.0152*** |
| France | 0.0069*** | Nicaragua | 0.0086*** | Vietnam | 0.0015* |
| French Polynesia | 0.0062*** | Niger | 0.0009 | Yemen | 0.0154*** |
| Gabon | 0.0074*** | Nigeria | 0.0044*** | Zambia | 0.0033** |
| Gambia | 0.0046*** | Norway | 0.0054** | Zimbabwe | 0.0066*** |

Notes: $\hat{b}_{\mathcal{T}i}$ is the OLS estimate of $b_{\mathcal{T}i}$ in the country-specific regressions $\mathcal{T}_{it} = a_{\mathcal{T}i} + b_{\mathcal{T}i}t + v_{\mathcal{T},it}$, where \mathcal{T}_{it} denotes the population-weighted average temperature (°C). Asterisks indicate statistical significance at the 1% (***), 5% (**) and 10% (*) levels.

Table A.2: Percent Loss in GDP per capita by 2030, 2050, and 2100 under the RCP 2.6 and RCP 8.5 Scenarios

| | Key Variables in Equation (31) | | | | | Percent Loss in GDP per capita | | | | | |
|--------------------------|--------------------------------|-------------|----------------------|---------|---------|--------------------------------|-------|-------|------------------|-------|-------|
| | \bar{T}_i | $b_{T_i}^0$ | $\hat{\sigma}_{T_i}$ | d_i | | RCP 2.6 Scenario | | | RCP 8.5 Scenario | | |
| | | | | RCP 2.6 | RCP 8.5 | 2030 | 2050 | 2100 | 2030 | 2050 | 2100 |
| Afghanistan | 12.35 | 0.039 | 0.61 | -0.0005 | 0.0009 | -0.35 | -0.78 | -1.18 | 0.70 | 1.96 | 5.54 |
| Albania | 12.94 | 0.024 | 0.48 | 0.0002 | 0.0014 | 0.15 | 0.42 | 1.22 | 1.03 | 3.13 | 8.86 |
| Algeria | 23.02 | 0.029 | 0.41 | -0.0009 | 0.0004 | -0.59 | -0.94 | 1.33 | 0.34 | 0.92 | 2.56 |
| Angola | 21.90 | 0.019 | 0.34 | -0.0002 | 0.0009 | -0.14 | -0.31 | -0.52 | 0.71 | 2.09 | 5.84 |
| Argentina | 14.14 | 0.007 | 0.29 | 0.0005 | 0.0013 | 0.20 | 0.71 | 2.50 | 0.79 | 2.78 | 8.17 |
| Armenia | 7.82 | 0.014 | 0.82 | 0.0000 | 0.0012 | -0.01 | -0.02 | -0.05 | 0.42 | 1.57 | 6.03 |
| Australia | 21.69 | 0.009 | 0.35 | 0.0002 | 0.0011 | 0.06 | 0.17 | 0.56 | 0.64 | 2.25 | 6.93 |
| Austria | 6.94 | 0.017 | 0.54 | 0.0001 | 0.0013 | 0.06 | 0.16 | 0.46 | 0.71 | 2.39 | 7.58 |
| Azerbaijan | 12.99 | 0.019 | 0.65 | -0.0008 | 0.0004 | -0.21 | -0.23 | 1.25 | 0.18 | 0.54 | 1.80 |
| Bahamas | 25.59 | 0.020 | 0.28 | -0.0008 | -0.0001 | -0.50 | -0.52 | 2.34 | -0.08 | -0.20 | -0.44 |
| Bangladesh | 25.55 | -0.001 | 0.26 | 0.0005 | 0.0014 | 0.06 | 0.42 | 2.15 | 0.55 | 2.68 | 8.59 |
| Belarus | 6.21 | 0.032 | 0.83 | -0.0003 | 0.0009 | -0.12 | -0.28 | -0.54 | 0.52 | 1.58 | 5.04 |
| Belgium | 9.45 | 0.026 | 0.64 | -0.0005 | 0.0004 | -0.23 | -0.47 | -0.29 | 0.25 | 0.71 | 2.17 |
| Belize | 25.54 | 0.011 | 0.27 | -0.0001 | 0.0008 | -0.04 | -0.09 | -0.18 | 0.55 | 1.75 | 5.10 |
| Benin | 27.38 | 0.018 | 0.25 | -0.0003 | 0.0007 | -0.22 | -0.48 | -0.50 | 0.59 | 1.65 | 4.43 |
| Bhutan | 7.84 | 0.014 | 0.36 | 0.0016 | 0.0026 | 1.18 | 3.70 | 10.33 | 2.23 | 6.64 | 17.76 |
| Bolivia | 21.47 | 0.000 | 0.33 | 0.0003 | 0.0015 | 0.02 | 0.15 | 0.90 | 0.53 | 2.64 | 8.82 |
| Bosnia and Herzegovina | 8.96 | 0.037 | 0.58 | 0.0004 | 0.0015 | 0.27 | 0.74 | 2.07 | 1.24 | 3.56 | 9.75 |
| Botswana | 21.96 | 0.026 | 0.62 | -0.0003 | 0.0011 | -0.13 | -0.30 | -0.53 | 0.67 | 2.07 | 6.37 |
| Brazil | 24.45 | 0.016 | 0.24 | 0.0000 | 0.0011 | 0.02 | 0.06 | 0.15 | 0.99 | 2.79 | 7.35 |
| Brunei Darussalam | 26.84 | 0.010 | 0.27 | -0.0005 | 0.0003 | -0.15 | -0.07 | 1.41 | 0.16 | 0.50 | 1.65 |
| Bulgaria | 9.97 | 0.012 | 0.51 | 0.0009 | 0.0021 | 0.39 | 1.39 | 4.84 | 1.24 | 4.41 | 13.16 |
| Burkina Faso | 28.40 | 0.019 | 0.29 | -0.0004 | 0.0007 | -0.26 | -0.53 | -0.26 | 0.60 | 1.72 | 4.71 |
| Burundi | 20.28 | 0.019 | 0.43 | 0.0001 | 0.0012 | 0.08 | 0.21 | 0.59 | 0.81 | 2.56 | 7.46 |
| Cabo Verde | 21.02 | 0.018 | 0.46 | 0.0002 | 0.0009 | 0.10 | 0.27 | 0.80 | 0.57 | 1.80 | 5.54 |
| Cambodia | 26.95 | 0.017 | 0.29 | -0.0007 | 0.0001 | -0.36 | -0.38 | 1.84 | 0.10 | 0.26 | 0.74 |
| Cameroon | 24.43 | 0.012 | 0.29 | -0.0003 | 0.0006 | -0.13 | -0.23 | 0.08 | 0.39 | 1.23 | 3.75 |
| Canada | -6.20 | 0.030 | 0.77 | 0.0004 | 0.0021 | 0.20 | 0.56 | 1.68 | 1.37 | 4.40 | 13.08 |
| Central African Republic | 25.30 | 0.010 | 0.32 | -0.0001 | 0.0008 | -0.05 | -0.11 | -0.15 | 0.49 | 1.65 | 5.12 |
| Chad | 27.57 | 0.018 | 0.46 | -0.0009 | 0.0002 | -0.31 | -0.18 | 2.65 | 0.11 | 0.31 | 0.92 |
| Chile | 8.16 | 0.010 | 0.31 | 0.0008 | 0.0017 | 0.50 | 1.68 | 5.18 | 1.23 | 3.97 | 11.08 |
| China | 6.68 | 0.023 | 0.30 | -0.0006 | 0.0007 | -0.45 | -0.80 | 0.45 | 0.58 | 1.62 | 4.35 |
| Colombia | 24.65 | 0.006 | 0.28 | 0.0000 | 0.0010 | 0.00 | -0.01 | -0.03 | 0.52 | 1.93 | 6.02 |
| Comoros | 25.08 | 0.006 | 0.40 | 0.0004 | 0.0012 | 0.11 | 0.39 | 1.57 | 0.49 | 1.97 | 6.71 |
| Congo | 24.63 | 0.015 | 0.25 | -0.0002 | 0.0008 | -0.12 | -0.27 | -0.40 | 0.62 | 1.81 | 4.99 |
| Congo DRC | 23.92 | 0.015 | 0.26 | -0.0001 | 0.0009 | -0.09 | -0.22 | -0.41 | 0.73 | 2.13 | 5.81 |
| Costa Rica | 23.41 | 0.017 | 0.35 | 0.0007 | 0.0015 | 0.49 | 1.47 | 4.33 | 1.20 | 3.64 | 9.95 |
| Côte d'Ivoire | 26.35 | 0.013 | 0.27 | -0.0003 | 0.0006 | -0.15 | -0.29 | -0.09 | 0.45 | 1.37 | 3.96 |
| Croatia | 11.27 | 0.025 | 0.58 | -0.0002 | 0.0009 | -0.10 | -0.24 | -0.46 | 0.59 | 1.79 | 5.52 |
| Cuba | 25.39 | -0.001 | 0.28 | 0.0005 | 0.0013 | 0.06 | 0.44 | 2.26 | 0.44 | 2.28 | 7.68 |
| Cyprus | 18.67 | 0.015 | 0.48 | -0.0001 | 0.0009 | -0.02 | -0.05 | -0.12 | 0.50 | 1.66 | 5.37 |
| Czech Republic | 7.47 | 0.019 | 0.64 | -0.0002 | 0.0009 | -0.07 | -0.16 | -0.28 | 0.41 | 1.33 | 4.52 |
| Denmark | 7.90 | 0.019 | 0.74 | -0.0005 | 0.0004 | -0.13 | -0.24 | -0.02 | 0.16 | 0.49 | 1.63 |
| Djibouti | 28.00 | 0.013 | 0.35 | -0.0009 | 0.0001 | -0.25 | 0.17 | 3.62 | 0.03 | 0.08 | 0.22 |
| Dominican Republic | 25.19 | 0.015 | 0.37 | -0.0002 | 0.0006 | -0.08 | -0.18 | -0.31 | 0.35 | 1.06 | 3.31 |
| Ecuador | 22.32 | -0.003 | 0.39 | 0.0005 | 0.0014 | 0.00 | 0.19 | 1.49 | 0.27 | 1.94 | 7.70 |
| Egypt | 22.20 | 0.027 | 0.44 | -0.0004 | 0.0008 | -0.29 | -0.61 | -0.69 | 0.63 | 1.79 | 5.06 |
| El Salvador | 24.59 | 0.032 | 0.37 | -0.0001 | 0.0008 | -0.05 | -0.12 | -0.31 | 0.76 | 2.08 | 5.50 |
| Equatorial Guinea | 24.32 | 0.027 | 0.45 | -0.0007 | 0.0002 | -0.40 | -0.76 | -0.02 | 0.14 | 0.36 | 1.00 |
| Eritrea | 25.95 | 0.018 | 0.50 | -0.0002 | 0.0009 | -0.07 | -0.16 | -0.29 | 0.53 | 1.70 | 5.42 |
| Estonia | 5.22 | 0.033 | 0.89 | -0.0007 | 0.0005 | -0.27 | -0.54 | -0.33 | 0.28 | 0.80 | 2.47 |
| Ethiopia | 22.58 | 0.022 | 0.25 | -0.0004 | 0.0006 | -0.30 | -0.66 | -0.72 | 0.56 | 1.52 | 4.00 |
| Fiji | 24.45 | 0.011 | 0.27 | 0.0004 | 0.0011 | 0.25 | 0.77 | 2.39 | 0.81 | 2.54 | 7.12 |
| Finland | 1.47 | 0.030 | 0.96 | -0.0011 | 0.0003 | -0.35 | -0.46 | 1.48 | 0.12 | 0.34 | 1.02 |
| France | 10.55 | 0.022 | 0.50 | -0.0001 | 0.0010 | -0.03 | -0.07 | -0.17 | 0.62 | 1.92 | 5.82 |
| French Polynesia | 23.83 | 0.024 | 0.30 | 0.0005 | 0.0011 | 0.43 | 1.17 | 3.16 | 1.03 | 2.83 | 7.43 |
| Gabon | 24.44 | 0.018 | 0.32 | -0.0002 | 0.0007 | -0.10 | -0.24 | -0.45 | 0.55 | 1.61 | 4.56 |
| Gambia | 26.43 | 0.023 | 0.32 | 0.0002 | 0.0012 | 0.20 | 0.53 | 1.44 | 1.15 | 3.20 | 8.43 |

Notes: We consider persistent increases in temperatures based on the RCP 2.6 and RCP 8.5 scenarios. The losses are based on $\Delta_{ih}(d_i)$, see equation (31), with $h = 16, 36$, and 86 (corresponding to the year 2030, 2050, and 2100, respectively) and $m = 30$.

Table A.2: Percent Loss in GDP per capita by 2030, 2050, and 2100 under the RCP 2.6 and RCP 8.5 Scenarios (continued)

| | Key Variables in Equation (31) | | | | | Percent Loss in GDP per capita | | | | | |
|---------------|--------------------------------|-------------------|----------------------|---------|---------|--------------------------------|-------|-------|------------------|------|-------|
| | \bar{T}_i | $\bar{b}_{T_i}^0$ | $\hat{\sigma}_{T_i}$ | d_i | | RCP 2.6 Scenario | | | RCP 8.5 Scenario | | |
| | | | | RCP 2.6 | RCP 8.5 | 2030 | 2050 | 2100 | 2030 | 2050 | 2100 |
| Georgia | 8.73 | 0.016 | 0.67 | -0.0004 | 0.0008 | -0.09 | -0.18 | -0.05 | 0.33 | 1.12 | 4.01 |
| Germany | 8.47 | 0.023 | 0.65 | -0.0006 | 0.0004 | -0.22 | -0.39 | 0.08 | 0.21 | 0.61 | 1.92 |
| Ghana | 27.14 | 0.018 | 0.24 | -0.0004 | 0.0005 | -0.31 | -0.61 | -0.10 | 0.43 | 1.18 | 3.17 |
| Greece | 13.82 | 0.011 | 0.49 | 0.0008 | 0.0019 | 0.35 | 1.26 | 4.45 | 1.12 | 4.04 | 12.21 |
| Greenland | -19.71 | 0.038 | 0.73 | -0.0008 | 0.0007 | -0.42 | -0.85 | -0.52 | 0.49 | 1.39 | 4.10 |
| Guatemala | 23.56 | 0.028 | 0.28 | -0.0002 | 0.0008 | -0.16 | -0.40 | -0.89 | 0.80 | 2.12 | 5.48 |
| Guinea | 25.53 | 0.017 | 0.25 | -0.0002 | 0.0008 | -0.12 | -0.28 | -0.50 | 0.71 | 2.03 | 5.45 |
| Guinea-Bissau | 26.74 | 0.024 | 0.28 | -0.0002 | 0.0007 | -0.20 | -0.47 | -0.88 | 0.70 | 1.91 | 5.02 |
| Guyana | 25.98 | 0.003 | 0.33 | 0.0003 | 0.0013 | 0.07 | 0.27 | 1.21 | 0.56 | 2.42 | 7.89 |
| Haiti | 24.55 | 0.016 | 0.53 | 0.0001 | 0.0009 | 0.04 | 0.10 | 0.27 | 0.45 | 1.49 | 4.95 |
| Honduras | 25.27 | 0.021 | 0.35 | -0.0003 | 0.0006 | -0.19 | -0.42 | -0.57 | 0.46 | 1.33 | 3.78 |
| Hungary | 10.33 | 0.016 | 0.64 | -0.0002 | 0.0009 | -0.07 | -0.15 | -0.20 | 0.41 | 1.41 | 4.96 |
| Iceland | 1.10 | 0.021 | 0.65 | -0.0007 | 0.0003 | -0.23 | -0.32 | 0.83 | 0.12 | 0.33 | 1.00 |
| India | 23.99 | 0.009 | 0.25 | 0.0004 | 0.0015 | 0.26 | 0.81 | 2.57 | 1.16 | 3.62 | 9.90 |
| Indonesia | 25.40 | 0.005 | 0.15 | 0.0003 | 0.0011 | 0.19 | 0.61 | 1.92 | 0.91 | 2.79 | 7.51 |
| Iran | 17.33 | 0.023 | 0.52 | -0.0001 | 0.0012 | -0.04 | -0.10 | -0.23 | 0.83 | 2.59 | 7.65 |
| Iraq | 22.11 | 0.024 | 0.67 | -0.0008 | 0.0006 | -0.28 | -0.44 | 0.73 | 0.29 | 0.86 | 2.74 |
| Ireland | 9.34 | 0.015 | 0.41 | 0.0001 | 0.0008 | 0.03 | 0.09 | 0.26 | 0.46 | 1.47 | 4.62 |
| Israel | 20.31 | 0.017 | 0.55 | -0.0004 | 0.0007 | -0.12 | -0.24 | -0.08 | 0.36 | 1.15 | 3.87 |
| Italy | 12.21 | 0.028 | 0.43 | 0.0000 | 0.0011 | 0.01 | 0.02 | 0.05 | 0.89 | 2.56 | 7.01 |
| Jamaica | 25.18 | 0.020 | 0.35 | 0.0000 | 0.0007 | 0.01 | 0.04 | 0.09 | 0.59 | 1.71 | 4.80 |
| Japan | 11.18 | 0.013 | 0.40 | 0.0006 | 0.0017 | 0.33 | 1.06 | 3.47 | 1.12 | 3.72 | 10.70 |
| Jordan | 18.56 | 0.015 | 0.62 | 0.0002 | 0.0015 | 0.08 | 0.22 | 0.70 | 0.72 | 2.61 | 8.69 |
| Kazakhstan | 6.00 | 0.024 | 0.80 | 0.0010 | 0.0023 | 0.46 | 1.48 | 5.02 | 1.35 | 4.65 | 14.33 |
| Kenya | 24.46 | 0.018 | 0.31 | -0.0005 | 0.0004 | -0.29 | -0.48 | 0.50 | 0.29 | 0.82 | 2.39 |
| Kuwait | 25.61 | 0.025 | 0.54 | -0.0008 | 0.0006 | -0.35 | -0.58 | 0.60 | 0.39 | 1.14 | 3.46 |
| Kyrgyzstan | 1.75 | 0.028 | 0.52 | 0.0003 | 0.0017 | 0.18 | 0.48 | 1.36 | 1.31 | 3.91 | 10.85 |
| Laos | 23.20 | 0.009 | 0.39 | -0.0004 | 0.0005 | -0.09 | -0.07 | 0.78 | 0.19 | 0.65 | 2.34 |
| Latvia | 5.82 | 0.030 | 0.85 | -0.0004 | 0.0007 | -0.18 | -0.40 | -0.52 | 0.36 | 1.08 | 3.46 |
| Lebanon | 15.19 | 0.025 | 0.59 | 0.0009 | 0.0019 | 0.53 | 1.63 | 5.06 | 1.36 | 4.30 | 12.35 |
| Lesotho | 11.75 | 0.010 | 0.46 | 0.0008 | 0.0020 | 0.36 | 1.30 | 4.61 | 1.16 | 4.22 | 12.60 |
| Liberia | 25.66 | 0.009 | 0.22 | 0.0001 | 0.0009 | 0.03 | 0.09 | 0.26 | 0.66 | 2.07 | 5.76 |
| Libya | 22.34 | 0.033 | 0.36 | -0.0012 | 0.0000 | -0.91 | -1.31 | 2.50 | 0.03 | 0.07 | 0.19 |
| Lithuania | 6.42 | 0.028 | 0.84 | -0.0003 | 0.0008 | -0.12 | -0.27 | -0.45 | 0.41 | 1.26 | 4.16 |
| Luxembourg | 9.07 | 0.028 | 0.65 | -0.0006 | 0.0003 | -0.29 | -0.56 | -0.12 | 0.19 | 0.54 | 1.60 |
| Macedonia | 10.31 | 0.013 | 0.54 | 0.0007 | 0.0019 | 0.28 | 0.96 | 3.46 | 1.08 | 3.92 | 12.04 |
| Madagascar | 22.87 | 0.021 | 0.28 | -0.0003 | 0.0006 | -0.20 | -0.45 | -0.75 | 0.55 | 1.54 | 4.14 |
| Malawi | 22.26 | 0.023 | 0.34 | -0.0004 | 0.0007 | -0.29 | -0.62 | -0.57 | 0.62 | 1.76 | 4.81 |
| Malaysia | 25.30 | 0.013 | 0.21 | -0.0002 | 0.0006 | -0.15 | -0.31 | -0.34 | 0.53 | 1.51 | 4.12 |
| Mali | 28.70 | 0.021 | 0.38 | -0.0004 | 0.0009 | -0.24 | -0.50 | -0.38 | 0.67 | 1.96 | 5.53 |
| Mauritania | 27.68 | 0.024 | 0.44 | -0.0004 | 0.0008 | -0.26 | -0.54 | -0.47 | 0.63 | 1.86 | 5.33 |
| Mauritius | 23.92 | 0.022 | 0.30 | -0.0005 | 0.0002 | -0.38 | -0.70 | 0.15 | 0.13 | 0.34 | 0.92 |
| Mexico | 20.43 | 0.012 | 0.25 | -0.0002 | 0.0009 | -0.10 | -0.21 | -0.23 | 0.64 | 1.97 | 5.54 |
| Moldova | 9.37 | 0.020 | 0.78 | 0.0004 | 0.0016 | 0.17 | 0.50 | 1.68 | 0.81 | 2.85 | 9.51 |
| Mongolia | 0.15 | 0.028 | 0.66 | -0.0003 | 0.0011 | -0.16 | -0.35 | -0.57 | 0.68 | 2.11 | 6.52 |
| Montenegro | 8.54 | 0.020 | 0.48 | 0.0015 | 0.0026 | 1.05 | 3.33 | 9.64 | 2.09 | 6.42 | 17.50 |
| Morocco | 18.77 | 0.021 | 0.44 | -0.0003 | 0.0009 | -0.18 | -0.38 | -0.44 | 0.65 | 1.97 | 5.80 |
| Mozambique | 24.20 | 0.015 | 0.33 | -0.0004 | 0.0007 | -0.16 | -0.31 | -0.02 | 0.47 | 1.46 | 4.35 |
| Myanmar | 22.98 | 0.020 | 0.30 | -0.0005 | 0.0004 | -0.34 | -0.61 | 0.25 | 0.29 | 0.80 | 2.24 |
| Namibia | 19.57 | 0.026 | 0.50 | 0.0004 | 0.0015 | 0.27 | 0.77 | 2.26 | 1.20 | 3.58 | 9.99 |
| Nepal | 15.13 | 0.018 | 0.38 | 0.0009 | 0.0020 | 0.59 | 1.82 | 5.34 | 1.61 | 4.86 | 13.15 |
| Netherlands | 9.71 | 0.024 | 0.65 | -0.0006 | 0.0003 | -0.24 | -0.43 | 0.13 | 0.15 | 0.42 | 1.27 |
| New Caledonia | 21.43 | 0.012 | 0.36 | 0.0008 | 0.0015 | 0.44 | 1.45 | 4.62 | 1.02 | 3.39 | 9.73 |
| New Zealand | 10.16 | 0.002 | 0.39 | 0.0009 | 0.0017 | 0.23 | 1.17 | 4.78 | 0.70 | 3.18 | 10.35 |
| Nicaragua | 26.18 | 0.029 | 0.34 | -0.0007 | 0.0001 | -0.57 | -1.05 | 0.32 | 0.08 | 0.22 | 0.58 |
| Niger | 27.60 | 0.008 | 0.57 | -0.0007 | 0.0005 | -0.05 | 0.13 | 1.74 | 0.14 | 0.51 | 2.12 |
| Nigeria | 26.87 | 0.016 | 0.30 | -0.0004 | 0.0006 | -0.23 | -0.42 | 0.08 | 0.42 | 1.24 | 3.56 |
| Norway | 1.35 | 0.023 | 0.75 | -0.0008 | 0.0004 | -0.23 | -0.36 | 0.62 | 0.19 | 0.56 | 1.80 |

Notes: We consider persistent increases in temperatures based on the RCP 2.6 and RCP 8.5 scenarios. The losses are based on $\Delta_{ih}(d_i)$, see equation (31), with $h = 16, 36$, and 86 (corresponding to the year 2030, 2050, and 2100, respectively) and $m = 30$.

Table A.2: Percent Loss in GDP per capita by 2030, 2050, and 2100 under the RCP 2.6 and RCP 8.5 Scenarios (continued)

| | Key Variables in Equation (31) | | | | | Percent Loss in GDP per capita | | | | | |
|--------------------------|--------------------------------|-------------------|----------------------|---------|---------|--------------------------------|-------|-------|------------------|-------|-------|
| | \bar{T}_i | $\bar{b}_{T_i}^0$ | $\hat{\sigma}_{T_i}$ | d_i | | RCP 2.6 Scenario | | | RCP 8.5 Scenario | | |
| | | | | RCP 2.6 | RCP 8.5 | 2030 | 2050 | 2100 | 2030 | 2050 | 2100 |
| Oman | 26.79 | 0.008 | 0.31 | 0.0002 | 0.0013 | 0.08 | 0.26 | 0.87 | 0.81 | 2.83 | 8.31 |
| Pakistan | 20.43 | 0.010 | 0.40 | 0.0002 | 0.0015 | 0.08 | 0.26 | 0.88 | 0.88 | 3.16 | 9.55 |
| Panama | 25.12 | 0.017 | 0.31 | 0.0000 | 0.0008 | 0.01 | 0.02 | 0.05 | 0.63 | 1.87 | 5.27 |
| Papua New Guinea | 23.80 | 0.007 | 0.19 | 0.0003 | 0.0011 | 0.15 | 0.45 | 1.44 | 0.82 | 2.55 | 6.99 |
| Paraguay | 23.72 | 0.005 | 0.50 | 0.0003 | 0.0014 | 0.06 | 0.23 | 1.02 | 0.49 | 2.21 | 8.01 |
| Peru | 19.96 | 0.007 | 0.32 | 0.0002 | 0.0012 | 0.05 | 0.16 | 0.55 | 0.66 | 2.46 | 7.61 |
| Philippines | 25.42 | 0.007 | 0.20 | 0.0005 | 0.0013 | 0.29 | 0.98 | 3.05 | 0.98 | 3.09 | 8.46 |
| Poland | 7.84 | 0.026 | 0.76 | -0.0003 | 0.0008 | -0.12 | -0.27 | -0.43 | 0.38 | 1.16 | 3.83 |
| Portugal | 15.20 | 0.010 | 0.42 | 0.0002 | 0.0013 | 0.07 | 0.22 | 0.72 | 0.68 | 2.46 | 7.75 |
| Puerto Rico | 23.53 | 0.006 | 0.30 | 0.0006 | 0.0013 | 0.24 | 0.89 | 3.16 | 0.71 | 2.62 | 7.92 |
| Qatar | 26.79 | 0.027 | 0.51 | -0.0004 | 0.0008 | -0.25 | -0.54 | -0.62 | 0.60 | 1.77 | 5.15 |
| Romania | 8.91 | 0.019 | 0.62 | 0.0002 | 0.0014 | 0.10 | 0.27 | 0.83 | 0.77 | 2.64 | 8.47 |
| Russian Federation | -5.96 | 0.035 | 0.68 | -0.0002 | 0.0014 | -0.14 | -0.34 | -0.71 | 1.03 | 3.08 | 8.93 |
| Rwanda | 19.93 | 0.016 | 0.35 | 0.0001 | 0.0011 | 0.06 | 0.15 | 0.42 | 0.80 | 2.49 | 7.12 |
| St. Vincent & Grenadines | 26.69 | 0.012 | 0.29 | -0.0005 | 0.0002 | -0.19 | -0.26 | 0.70 | 0.13 | 0.38 | 1.16 |
| Samoa | 26.24 | -0.004 | 0.28 | 0.0008 | 0.0014 | 0.02 | 0.66 | 3.64 | 0.31 | 2.31 | 8.31 |
| Sao Tome and Principe | 25.69 | 0.024 | 0.29 | -0.0001 | 0.0007 | -0.04 | -0.11 | -0.27 | 0.69 | 1.88 | 4.97 |
| Saudi Arabia | 25.51 | 0.021 | 0.55 | -0.0007 | 0.0006 | -0.26 | -0.38 | 0.78 | 0.34 | 1.05 | 3.35 |
| Senegal | 28.29 | 0.026 | 0.35 | -0.0004 | 0.0006 | -0.31 | -0.67 | -0.73 | 0.53 | 1.46 | 4.01 |
| Serbia | 9.96 | 0.016 | 0.54 | 0.0002 | 0.0014 | 0.09 | 0.25 | 0.78 | 0.79 | 2.74 | 8.66 |
| Sierra Leone | 26.20 | 0.016 | 0.24 | -0.0004 | 0.0005 | -0.25 | -0.47 | -0.03 | 0.41 | 1.16 | 3.22 |
| Slovakia | 7.64 | 0.020 | 0.61 | 0.0001 | 0.0013 | 0.06 | 0.17 | 0.50 | 0.71 | 2.36 | 7.54 |
| Slovenia | 7.80 | 0.030 | 0.59 | 0.0003 | 0.0015 | 0.22 | 0.61 | 1.76 | 1.10 | 3.33 | 9.50 |
| Solomon Islands | 26.85 | 0.010 | 0.18 | 0.0002 | 0.0009 | 0.12 | 0.35 | 1.04 | 0.77 | 2.23 | 5.98 |
| Somalia | 26.65 | 0.021 | 0.32 | -0.0006 | 0.0003 | -0.37 | -0.65 | 0.41 | 0.22 | 0.59 | 1.66 |
| South Africa | 17.52 | 0.007 | 0.33 | 0.0001 | 0.0012 | 0.04 | 0.11 | 0.35 | 0.67 | 2.46 | 7.56 |
| South Korea | 11.07 | 0.008 | 0.49 | 0.0008 | 0.0019 | 0.30 | 1.15 | 4.34 | 0.96 | 3.73 | 11.68 |
| South Sudan | 27.35 | 0.031 | 0.43 | -0.0008 | 0.0004 | -0.52 | -0.98 | 0.05 | 0.32 | 0.87 | 2.40 |
| Spain | 13.31 | 0.026 | 0.45 | -0.0001 | 0.0010 | -0.08 | -0.19 | -0.43 | 0.77 | 2.26 | 6.39 |
| Sri Lanka | 27.11 | 0.011 | 0.21 | -0.0001 | 0.0006 | -0.07 | -0.17 | -0.27 | 0.50 | 1.51 | 4.23 |
| Sudan | 27.34 | 0.029 | 0.38 | -0.0009 | 0.0002 | -0.63 | -1.04 | 1.21 | 0.19 | 0.51 | 1.38 |
| Suriname | 26.21 | 0.004 | 0.34 | 0.0003 | 0.0012 | 0.07 | 0.26 | 1.06 | 0.54 | 2.26 | 7.42 |
| Swaziland | 20.33 | 0.017 | 0.43 | -0.0008 | 0.0002 | -0.29 | -0.23 | 2.14 | 0.09 | 0.24 | 0.71 |
| Sweden | 2.27 | 0.021 | 0.89 | -0.0005 | 0.0007 | -0.14 | -0.24 | 0.07 | 0.24 | 0.76 | 2.67 |
| Switzerland | 4.88 | 0.018 | 0.49 | 0.0008 | 0.0019 | 0.46 | 1.45 | 4.60 | 1.32 | 4.27 | 12.24 |
| Syria | 17.88 | 0.022 | 0.65 | -0.0005 | 0.0007 | -0.19 | -0.37 | -0.07 | 0.37 | 1.12 | 3.67 |
| Tajikistan | 3.08 | 0.000 | 0.57 | 0.0003 | 0.0017 | 0.01 | 0.06 | 0.38 | 0.43 | 2.38 | 9.35 |
| Tanzania | 22.65 | 0.010 | 0.31 | -0.0003 | 0.0008 | -0.09 | -0.17 | 0.02 | 0.46 | 1.54 | 4.73 |
| Thailand | 26.22 | 0.005 | 0.31 | -0.0002 | 0.0007 | -0.03 | -0.05 | 0.06 | 0.29 | 1.12 | 3.98 |
| Togo | 26.41 | 0.018 | 0.25 | -0.0001 | 0.0008 | -0.07 | -0.18 | -0.41 | 0.76 | 2.13 | 5.64 |
| Trinidad and Tobago | 25.62 | 0.024 | 0.30 | -0.0005 | 0.0003 | -0.36 | -0.76 | -0.56 | 0.24 | 0.64 | 1.74 |
| Tunisia | 20.08 | 0.037 | 0.43 | -0.0011 | 0.0001 | -0.82 | -1.40 | 1.21 | 0.08 | 0.21 | 0.53 |
| Turkey | 11.24 | 0.014 | 0.70 | 0.0002 | 0.0014 | 0.07 | 0.20 | 0.64 | 0.60 | 2.26 | 7.98 |
| Turkmenistan | 15.67 | 0.025 | 0.67 | 0.0000 | 0.0012 | 0.00 | -0.01 | -0.01 | 0.72 | 2.30 | 7.19 |
| Uganda | 22.84 | 0.020 | 0.31 | -0.0004 | 0.0005 | -0.28 | -0.56 | -0.17 | 0.42 | 1.19 | 3.32 |
| Ukraine | 8.17 | 0.026 | 0.81 | 0.0002 | 0.0014 | 0.08 | 0.22 | 0.63 | 0.73 | 2.39 | 7.82 |
| United Arab Emirates | 27.22 | 0.016 | 0.48 | 0.0002 | 0.0015 | 0.08 | 0.22 | 0.65 | 0.92 | 3.10 | 9.31 |
| United Kingdom | 8.69 | 0.013 | 0.46 | -0.0001 | 0.0007 | -0.02 | -0.05 | -0.11 | 0.34 | 1.16 | 3.97 |
| United States | 6.94 | 0.015 | 0.36 | 0.0004 | 0.0016 | 0.20 | 0.60 | 1.88 | 1.20 | 3.77 | 10.52 |
| Uruguay | 17.49 | 0.015 | 0.35 | 0.0002 | 0.0009 | 0.09 | 0.24 | 0.70 | 0.65 | 2.05 | 6.00 |
| US Virgin Islands | 26.79 | 0.023 | 0.45 | -0.0009 | -0.0002 | -0.41 | -0.50 | 1.89 | -0.13 | -0.30 | -0.54 |
| Uzbekistan | 12.84 | 0.021 | 0.69 | 0.0007 | 0.0019 | 0.30 | 0.93 | 3.11 | 1.11 | 3.79 | 11.72 |
| Vanuatu | 24.75 | 0.028 | 0.33 | -0.0005 | 0.0002 | -0.38 | -0.83 | -0.87 | 0.21 | 0.55 | 1.48 |
| Venezuela | 25.00 | 0.016 | 0.30 | 0.0000 | 0.0010 | 0.00 | 0.00 | -0.01 | 0.82 | 2.45 | 6.74 |
| Vietnam | 23.20 | 0.005 | 0.32 | 0.0000 | 0.0009 | 0.00 | 0.01 | 0.02 | 0.38 | 1.51 | 5.15 |
| Yemen | 24.56 | 0.035 | 0.60 | -0.0007 | 0.0004 | -0.40 | -0.82 | -0.61 | 0.27 | 0.74 | 2.12 |
| Zambia | 21.17 | 0.019 | 0.47 | 0.0003 | 0.0015 | 0.18 | 0.51 | 1.56 | 1.06 | 3.40 | 9.82 |
| Zimbabwe | 21.24 | 0.014 | 0.47 | 0.0001 | 0.0013 | 0.04 | 0.12 | 0.35 | 0.76 | 2.62 | 8.15 |

Notes: We consider persistent increases in temperatures based on the RCP 2.6 and RCP 8.5 scenarios. The losses are based on $\Delta_{ih}(d_i)$, see equation (31), with $h = 16, 36$, and 86 (corresponding to the year 2030, 2050, and 2100, respectively) and $m = 30$.

Table B.1: Division (SIC) and Sector (NAICS) Classifications

| Division (SIC) | Sector (NAICS) |
|--|---|
| Agriculture, Forestry, Fisheries | Agriculture, Forestry, Fishing & Hunting |
| Mining | Mining |
| Construction | Construction |
| Manufacturing | Manufacturing |
| Transport, Communication, and Public Utilities | Transportation & Warehousing |
| | Information |
| | Utilities |
| Wholesale Trade | Wholesale Trade |
| Retail Trade | Retail Trade |
| Finance, Insurance, and Real Estate | Finance/Insurance/Real Estate/Rental/Leasing |
| | Professional & Business Services |
| Services | Educational Services/Health Care/Social Assistance |
| | Arts/Entertainment/Recreation/Accommodation/Food Services |
| | Other Services, Ex Government |
| Government | Government |

B U.S. Data Appendix

We obtain state-level economic activity data from the Bureau of Economic Analysis (BEA). Real Gross State Product (GSP) data is available from 1977, but nominal GSP data is available from 1963. We deflate the nominal GSP series using the consumer price index (CPI) for each state, and splice the resulting data over 1963–1977 with the real GSP from 1977 using annual growth rates, to construct a real GSP series for 1963–2016.

BEA provides output by sector at the state level from 1963. However, there are two issues with this database. Firstly, there was a change in industrial classifications in 1997: from 1963 to 1997, the Standard Industrial Classification (SIC) consists of ten divisions, while from 1997 onwards, the North American Industry Classification System (NAICS) gradually replaces the SIC, further branching the ten divisions into fifteen sectors.¹⁹ Secondly, as with the GSP data, only nominal sectoral output data (by SIC divisions) is available before 1977. Real sectoral output is available in both SIC and NAICS classification in 1997. This allows us to construct the real sectoral output series from 1963–2016. Specifically, building a series over the period 1963 to 2016 involves two steps: (i) reconciling SIC and NAICS classifications (see Table B.1), and (ii) splicing the most recent real series (1997–2016) backwards using growth rates from the deflated nominal series (1963–1997).

We use BEA’s producer price index (PPI) data to deflate the nominal industry outputs under SIC for the years 1963–1976. As the PPI data is constructed based on NAICS, we use the SIC-NAICS matching in Table B.1 for the PPI deflator. Where there is more than one NAICS sector matched to a SIC division, we take a simple arithmetic average of the PPI of all matched NAICS sectors. From 1997 onwards, real output by sector is available based on NAICS classification. We, therefore, aggregate the NAICS real output by industry to SIC divisions using our matching scheme, and splice these series backwards using the growth rates of real sectoral output under SIC

¹⁹See Kort (2001) for more details.

in 1963–1997. This gives us real output by sector and state for the period 1963 to 2016.²⁰

We collect monthly state-level, area-weighted climate data from the NOAA's National Centres for Environmental Information (NCEI). The NCEI reports monthly average temperature and precipitation²¹ for each state from aggregates of climate readings across weather stations, adjusting for the distribution of stations and terrain. Temperature is measured in degrees Fahrenheit and precipitation in inches. We convert them into degrees Celsius and millimeters, respectively (to match our cross-country data). The monthly averages in each year within the sample period are then used to obtain annual averages.

Finally, we obtain U.S. employment data from the Bureau of Labor Statistics (BLS). We take annual, state-level number of employed persons that encompasses "persons 16 years and over in the civilian noninstitutional population" under a wide range of employment conditions.

²⁰Note that "Agriculture, Forestry, Fishing & Hunting" and "Mining" data is not available for Rhode Island in 2016 and agricultural data in 2016 is also unavailable for Delaware. Moreover, the mining industry of Delaware is excluded from our sample due to multiple irregular missing entries.

²¹Snow is included as melted precipitation in rain gauges under NOAA methodology.