

Altavilla, Carlo; Brugnolini, Luca; Gürkaynak, Refet S.; Motto, Roberto; Ragusa, Giuseppe

Working Paper

Measuring Euro Area Monetary Policy

CESifo Working Paper, No. 7699

Provided in Cooperation with:

Ifo Institute – Leibniz Institute for Economic Research at the University of Munich

Suggested Citation: Altavilla, Carlo; Brugnolini, Luca; Gürkaynak, Refet S.; Motto, Roberto; Ragusa, Giuseppe (2019) : Measuring Euro Area Monetary Policy, CESifo Working Paper, No. 7699, Center for Economic Studies and ifo Institute (CESifo), Munich

This Version is available at:

<https://hdl.handle.net/10419/201925>

Standard-Nutzungsbedingungen:

Die Dokumente auf EconStor dürfen zu eigenen wissenschaftlichen Zwecken und zum Privatgebrauch gespeichert und kopiert werden.

Sie dürfen die Dokumente nicht für öffentliche oder kommerzielle Zwecke vervielfältigen, öffentlich ausstellen, öffentlich zugänglich machen, vertreiben oder anderweitig nutzen.

Sofern die Verfasser die Dokumente unter Open-Content-Lizenzen (insbesondere CC-Lizenzen) zur Verfügung gestellt haben sollten, gelten abweichend von diesen Nutzungsbedingungen die in der dort genannten Lizenz gewährten Nutzungsrechte.

Terms of use:

Documents in EconStor may be saved and copied for your personal and scholarly purposes.

You are not to copy documents for public or commercial purposes, to exhibit the documents publicly, to make them publicly available on the internet, or to distribute or otherwise use the documents in public.

If the documents have been made available under an Open Content Licence (especially Creative Commons Licences), you may exercise further usage rights as specified in the indicated licence.

Measuring Euro Area Monetary Policy

Carlo Altavilla, Luca Brugnolini, Refet S. Gürkaynak, Roberto Motto, Giuseppe Ragusa

Impressum:

CESifo Working Papers

ISSN 2364-1428 (electronic version)

Publisher and distributor: Munich Society for the Promotion of Economic Research - CESifo GmbH

The international platform of Ludwigs-Maximilians University's Center for Economic Studies and the ifo Institute

Poschingerstr. 5, 81679 Munich, Germany

Telephone +49 (0)89 2180-2740, Telefax +49 (0)89 2180-17845, email office@cesifo.de

Editor: Clemens Fuest

www.cesifo-group.org/wp

An electronic version of the paper may be downloaded

- from the SSRN website: www.SSRN.com
- from the RePEc website: www.RePEc.org
- from the CESifo website: www.CESifo-group.org/wp

Measuring Euro Area Monetary Policy

Abstract

We study the information flow from the ECB on policy dates since its inception, using tick data. We show that three factors capture about all of the variation in the yield curve but that these are different factors with different variance shares in the window that contains the policy decision announcement and the window that contains the press conference. We also show that the QE-related policy factor has been dominant in the recent period and that Forward Guidance and QE effects have been very persistent on the longer-end of the yield curve. We further show that broad and banking stock indices' responses to monetary policy surprises depended on the perceived nature of the surprises. We find no evidence of asymmetric responses of financial markets to positive and negative surprises, in contrast to the literature on asymmetric real effects of monetary policy. Lastly, we show how to implement our methodology for any policy-related news release, such as policymaker speeches. To carry out the analysis, we construct the Euro Area Monetary Policy Event-Study Database (EA-MPD). This database, which contains intraday asset price changes around the policy decision announcement as well as around the press conference, is a contribution on its own right and we expect it to be the standard in monetary policy research for the euro area.

JEL-Codes: E430, E440, E520, E580, G120, G140.

Keywords: ECB policy surprise, event-study, intraday, persistence, asymmetry.

Carlo Altavilla
European Central Bank / Monetary Analysis Division
Frankfurt a. M. / Germany
carlo.altavilla@ecb.europa.eu

Luca Brugnolini
London / United Kingdom
lucabrugnolini@gmail.com

Refet S. Gürkaynak
Bilkent University / Department of Economics
Ankara / Turkey
refet@bilkent.edu.tr

Roberto Motto
European Central Bank / Monetary Policy
Strategy Division / Frankfurt a. M. / Germany
roberto.motto@ecb.europa.eu

Giuseppe Ragusa
University of Pisa / Department of Economics
and Management / Pisa / Italy
giuseppe.ragusa@unipi.it

May 19, 2019

We thank Burcin Kısacıkoglu, Sang Seok Lee, Kadir Özen, Giulio Nicoletti, Michael McMahon, and Giovanni Ricco for comments. We also thank many colleagues for asking for this dataset and making us construct it. Gürkaynak's research was supported by funding from the European Research Council (ERC) under the European Union's Horizon 2020 research and innovation program (grant agreement No. 726400). The database introduced in this paper will be periodically updated. The views expressed in this paper are those of the authors and do not necessarily reflect those of the European Central Bank or the Eurosystem.

1 Introduction

Monetary policy, for better or worse, has been on the forefront of cyclical policymaking in the past two decades, especially during the Great Recession and the sovereign debt crisis. While there is an extensive literature on the US monetary policy, a comprehensive understanding of the ECB policy and its financial market effects are yet to materialize. This is partly due to the lack of a systematic database of high frequency, intraday data for a broad class of asset prices in the euro area of the kind that has been employed in the US for more than a decade.

This paper helps remedy both deficiencies by constructing a long (by euro area standards) time series of policy-date event studies for the euro area, which will be kept up to date, and by using this data to measure and assess the ECB monetary policy. While our substantive analysis focuses on the financial market effects of monetary policy in the euro area, the dataset we construct to carry out the analysis is of independent interest. Our euro area monetary policy event-study database (EA-MPD) features price changes for a broad class of assets and various maturities, including Overnight Index Swaps (OIS), sovereign yields, stock prices, and exchange rates. We have exercised considerable care in studying each event window to clean outliers and misquotes, of which there were plenty early in the sample, to make sure that what we report accurately reflects the market reaction. We provide a description of the data, and timing of events on ECB policy dates in section 2 and offer details and event-by-event analysis in an accompanying online appendix.

Monetary policy surprises in the euro area are not only multi-dimensional—we show the existence of perceived policy Target, Timing, Forward Guidance, and Quantitative Easing (QE) surprises—they are also revealed in a multi-step structure. A press release provides information on the policy decision with no rationale and discussion, later followed by a press conference. The information markets extract from these two events are distinct, and intraday data allows us to measure these different types of information separately. Our event-study database utilizes the intraday data to form event windows bracketing about 10 minutes before the release of monetary policy information, to about 10 minutes after. Employing tick data allows us to separately compute asset price changes around the release of the monetary policy decision at 13.45, and the reading of the statement and the following Q&A in the press conference beginning at 14.30. The separate releases of the policy decision and the narrative information differentiates euro area monetary policy information revelation from that of the US, where the two happen simultaneously.

After briefly presenting the event-study database, we use it to study monetary policy

surprises in the euro area and their effects on various financial market segments. To do so, we employ the methods developed by [Gürkaynak et al. \(2005\)](#) and [Swanson \(2017\)](#) for the US and use them in the two intraday windows of the euro area policy communication. The difference in the nature of information released in these two windows provides a new understanding of market participants’ interpretation of monetary policy communication.

Our results show that, naturally, the preponderance of surprises in the press release window are about the current setting of the policy rates, “Target” surprises, with no other statistically significant policy surprise factors. In the press conference window, as expected, there are no Target surprises and the Path and QE surprises dominate. Interestingly, while our analysis suggests that a Target factor does not even appear as a statistically significant factor in the press conference window, a different factor, “Timing” emerges. This type of surprise captures the revision of policy expectations by shifting the expected policy action between the current meeting and the next or the one following, in a way that leaves longer-term policy expectations about unchanged. In essence, market participants extract two distinct types of guidance from the press conference. One that is informative about the medium run, peaking at about two years–Forward Guidance–and one for the near future, peaking at about six months maturity–what we call Timing.

The methodology we employ to extract QE surprises yields continuous measures of the market surprise. Hence, in studying the asset price responses to QE, we are able to condition on the size of the surprises rather than only on a binary variable that shows when a QE announcement took place. This allows for a substantially more precise understanding of QE effects and helps distinguish QE from Forward Guidance surprises, which were also frequent during the Zero Lower Bound (ZLB) period.¹ We find that both QE (after 2014) and Forward Guidance surprises are active in the press conference window and that while Forward Guidance affected the middle of the yield curve most heavily, with a peak effect at about two years, QE effects get larger as maturity increases, peaking at the 10-year maturity. Surprises about the current setting of monetary policy, which were present in the pre-ZLB period, never had noticeable effects on the long-end of the yield curve. Having the quantified QE surprises also allows us to study the persistence of their effects better. Unlike in the US, where QE effects were short lived, with a half-life of three months as estimated by [Wright \(2012\)](#), we estimate a half-life of about one year in the euro area. Thus, ECB QE not only had substantial immediate effects on yields, it also had long lasting effects.

¹Although the effective lower bound turned out to be below zero, we maintain the convention of calling the bound ZLB.

We also study the effects of ECB policy surprises on different sovereign yields, exchange rates, and stock prices. Some of these were studied previously in the literature using the combined press release and press conference windows (such as [Andrade and Ferroni, 2016](#)) and in the separate windows but not including the QE surprises in the analysis (such as [Brand et al., 2010](#) and [Leombroni et al., 2017](#)). This paper is the first to look at intraday data to separately study the press release and press conference windows and extract both conventional and unconventional monetary policy communication surprises from both. It is also the first not to assume only Target surprises take place in the press release and broadly defined “communication” surprises in the press conference windows but to ask statistically how many factors are present in each and to estimate factors that can be attributed to specific types of communication. Importantly, this paper is also the first in presenting a market-based identification of QE surprises in the euro area that shows QE has narrowed spreads, rather than identifying QE surprises by assuming that these have narrowed spreads.

In the limited cases where both the event window coverage and the monetary policy surprise definitions overlap with the existing literature, our findings are in line with what is already known—such as effects of Target surprises that are significant for the short end of the yield curve—and instills confidence for the new results we report on the difference between Timing and Forward Guidance, on the effects of QE, on persistence of these effects, on information and stock market reactions, on nonlinearity, and finally on using our methodology for the analysis of policy news that do not come out on Governing Council policy dates.

On stock prices, we find that the reaction of broad and banking indices can only be understood when the genuine policy surprises (perceived deviations of interest rates from the policy rule) are separated from information effects (perceived information signaled by the central bank on the current and future state). When studied using this lens, monetary policy has had significant effects on stock prices but there was significant time variance in the perceived variances of genuine policy and information surprises. We further find that the policy surprise effects on stocks were persistent as were the effects of these surprises on longer-term interest rates, especially for Forward Guidance and QE surprises.

Our findings on nonlinearity are noteworthy. We study whether the market responses to positive and negative surprises are different. A nascent literature is suggesting that in the US, monetary policy has asymmetric real effects ([Tenreyro and Thwaites, 2016](#); [Barnichon and Matthes, 2017](#)). We find that in the euro area financial market participants do *not* perceive monetary policy effects to be asymmetric with respect to positive surprises and negative in providing asset price responses.

Lastly, we use our estimated factors of monetary policy surprises and show how to use them to decompose any policy-related news effects into these four factors. In two illustrative examples we show that policymaker speeches and newswire reports can have substantial effects on yields and that in the recent past there have been cases where the financial market participants have extracted information on QE-related policy from such news.

The paper is organized as follows. In section 2 below, we discuss the ECB policy communication and our event-study database. Then, in section 3 we construct our surprises in terms of Target, Timing, Forward Guidance, and QE factors of monetary policy in the two policy communication windows, and discuss their features and plausibility. Section 4 presents asset price responses to the monetary policy surprises using a linear model. In section 5 we turn to stock price reactions and information effects. Section 6 studies the dynamics of the identified surprises in a daily VAR framework. In Section 7 we relax the linearity assumption and allow for asymmetries. Lastly, in section 8, we show how to adapt our methodology to speeches and other monetary policy events and in section 9 we offer concluding thoughts.

2 Euro Area Monetary Policy Event-Study Database

One of the contributions of this paper is to develop a *Euro Area Monetary Policy Event-Study Database* (EA-MPD). This section is an introductory manual for the dataset, which will be periodically updated and made available. The underlying tick data come from the Thomson Reuters Tick History database, and we report our transformations of those data rather than the underlying data. Here, we first describe the monetary policy communication process in the euro area and then concentrate on the features of the dataset that we develop to measure the monetary policy surprises, delegating more technical details on the dataset construction to online appendices.

2.1 A Primer on euro area monetary policy communication

At its inception in 1999, the ECB Governing Council took policy decisions twice a month, whereas a press conference took place only once a month—on the first meeting of the month. After November 2001 only one meeting per month was a policy meeting, taking place on the first Thursday of the month, regularly accompanied by the press conferences, with some exceptions (Ehrmann and Fratzscher 2009 discuss this policy communication structure). As of January 2015, the frequency of monetary policy meetings has moved to a six-week cycle. Table 1 shows summary information on ECB communication on policy dates and its changes

over time. The online appendix shows this information in more detail, meeting-by-meeting.²

Part of our job in creating the EA-MPD was to compile this information in detail so that the intraday windows have the right coverage. On the day of a policy meeting, different from the US FOMC press release (and very helpfully for researchers), the ECB policy decision is announced in two separate steps. First, at 13.45 Central European Time (CET) a brief press release provides the policy decision without any explanation and rationale. Then, at 14.30 CET the ECB President reads a prepared text, the *Introductory Statement* (IS), on the rationale behind the decision, which market participants often perceive to be also informative about the future path of monetary policy. It takes about 15 minutes for the President to read out the statement and there is a follow up question-and-answer session with journalists that lasts for about 45 minutes. Up to December 2014 the press release referred to the decision on policy rates only, while announcements of non-standard measures were made in the Introductory Statement during the press conference. Between January 2015 and January 2016 the press release mentioned whether “further measures” (without stating what measures were decided) will be announced during the press conference. As of March 2016, the content of the decisions on non-standard policy measures has been included in the press release.

In constructing the database, we first cleanse the data of misquotes,³ then discretize the data within each window by taking the last quote of each minute within the window, and then use the median price in the 13:25-13:35 interval as the pre-press-release quote, and the median price in the 14:00-14:15 as the post-press-release quote. Similarly, we take the median price in the 14:15-14:25 interval as the pre-conference quote and the median price in the 15:40-15:50 interval as the post-conference quote.⁴ We make use of an interval rather than selecting a particular minute to measure the pre- and post-event quotes in order to minimize the risk of selecting a quote that is not representative. The changes reported in the database are changes from the pre-event quote to the post-event quote for each communication window. We define

²The Appendix is available online and is structured as follows: Appendix A provides details on the Governing Council meeting frequencies, the information release structure on policy dates and other relevant information since the inception of the ECB. It also contains a table that shows the policy rate decision and any other policy relevant announcements on each policy date. Appendix B describes our high-frequency dataset showing the Reuters Identification Code (RIC) and data availability, which varies by instrument under consideration. Appendix C explains the procedure we follow in cleaning the tick data. Appendix D describes the structure of the database and the main features of the instruments it covers. Appendix E shows the consistency checks we have performed on the computed asset price/yield changes. Appendix F, describes the econometric procedure used in the paper to identify the market-based surprises. Lastly, Appendix G compares the market-based surprise time series we built with market commentary for the largest surprises of each type.

³Such misquotes, which did not reflect actual market pricing, were prevalent especially early in the sample.

⁴Note that while the post-press release and pre-conference quote intervals partially coincide (the minute 14:15 is common to both), this is not an issue for attributing asset price changes to the press release and to the conference as both are non-event intervals. The post-press release quote window is 15 minutes rather than 10 as trading has tended to be thin in this window on many policy dates.

the “monetary policy event” as the union of the press release and conference, and measure changes in asset prices due to this event as the change from the pre-press release quote to the post-conference quote. Figure 1 shows this timeline in stylized form.

The EA-MPD reports the asset price/yield changes we construct for the three event windows in separate worksheets. In each worksheet a policy date is in the first column on each row, and the following columns show changes in selected asset prices/yields. The assets covered are: OIS rates with 1, 3, 6 month, 1 to 10, 15, and 20 year maturities; German bund yields with 3 and 6 month, 1 to 10, 15, 20, and 30 year maturities, French, Italian, and Spanish sovereign yields with 2, 5, and 10 year maturities, the STOXX50E and the stock price index comprising banks (SX7E), and the exchange rate of the euro. The EA-MPD is made available as a supplement to this paper and will be regularly updated.

In our substantive analysis we start the sample in 2002 because from 1999 (the beginning of the single currency in the Euro Area) to the end of 2001 our intraday OIS data are very noisy, with large spikes and sparse quotes. To provide an illustration of the (cleansed) intraday data, Figure 2 shows the changes in the 2-year Overnight Index Swap (OIS) rate around the publication of the press release and around the press conference on four different policy meeting dates: 4 July 2013, 4 September 2014, 3 December 2015, and 7 September 2017. We select the 2-year rate as it is of sufficiently long maturity to display movements in response to announcements of non-standard as well as standard measures.

These four panels are illustrative of the different cases in which the monetary policy surprises may arise within the policy meeting day. Panel (a) displays no reaction of the 2-year OIS rate in the press release window and a reaction in the conference window. This episode corresponds to the ECB announcement in the press conference, first time ever, of formal Forward Guidance on the future path of its policy rates, by stating that policy rates are expected to remain at present or lower levels for an extended period of time. Panel (b) shows a reaction in the press release window, with no further news affecting the OIS rate in the conference window. This episode corresponds to the announcement of a cut in the ECB deposit rate announced in the press release. Panel (c) depicts a policy date in which there are sizable movements in both windows. This episode captures the financial markets’ disappointment following the ECB decision to increase the size of its QE program: markets evidently were expecting a larger increase of QE, as well as a cut in the policy rate, as suggested also by survey expectations among financial analysts gathered ahead of the policy meeting. Lastly, panel (d) shows a day in which there is no surprise, either in the press release or the conference windows. Policy dates like these are surprisingly rare; there is usually some news for the financial markets, especially

in the press conference window. While this discussion of the policy surprises on the basis of intraday changes in the 2-year OIS rate is suggestive of a Target/Path/QE decomposition, formally carrying out this analysis requires the simultaneous study of interest rates at different maturities, which are covered by our event-study database and analyzed in section 3 below.

Before turning to the measurement of surprises it is useful to briefly note some of the internal consistency and robustness checks we have carried out on the data. The Appendix contains details and further checks. The raw changes and surprises we measure, and the results of the analysis we do using these are mostly insensitive to changes in the measurement windows. Our estimates would have been more or less the same if we had taken the last quote instead of the median within the window or used wider or narrower windows. We have also verified that the changes and surprises are independent across the two windows, showing that we are indeed measuring reactions to unanticipated news in the two windows and not momentum effects that carry over from one window to the other.

Another important issue has to do with the US data release calendar, which makes the initial unemployment claims release often overlap with the event windows in the Euro Area. In the window that contains both an ECB policy communication and the US initial claims release,⁵ although the two will be uncorrelated, if the short-term euro OIS rates respond to the initial claims surprise the monetary policy surprise measures will be subject to measurement error. We studied the impact of US initial claims surprises on short-term euro OIS rates and found that even in the very rare cases where there are statistically significant coefficients, the R^2 coefficients are in single digits, implying that the simultaneous release of US initial claims does not introduce noticeable measurement error into the Euro Area monetary policy surprises that we measure. For completeness we include these as control variables in the statistical work we present in section 4. It is reassuring that whether we include this control or not has no bearing on the results we report.

3 Measuring Policy Surprises in the Euro Area

Understanding the effects of monetary policy requires identifying orthogonal changes in the policy stance. These changes may be orthogonal to the state of the economy, as in VAR analysis—in which case they are usually called policy shocks—or they may be orthogonal to the

⁵In the window that does not overlap with the initial claims release there is no correlation between the US surprise and the changes and surprises we measure for the Euro Area, again verifying that we are measuring proper surprises arising from monetary policy communication.

information set of financial market participants—in which case they are called (market-based) policy surprises.

Using monetary policy surprises measured in daily or higher frequency one can study asset price responses to monetary policy in a meaningful way. The very reasonable identifying assumption here is that monetary policy does not respond to asset price changes within the day, hence causality goes from monetary policy to asset prices and financial markets' reaction to monetary policy can be studied. Work on related questions for the euro area have been done by [Brand et al. \(2010\)](#), [Jardet and Monks \(2014\)](#), [Andrade and Ferroni \(2016\)](#), [Leombroni et al. \(2017\)](#), [Cieslak and Schrimpf \(2018\)](#), [Kane et al. \(2018\)](#), [Rogers et al. \(2014\)](#), and [Jarociński and Karadi \(2018\)](#) among others. These papers collectively study the financial and real effects of ECB policy measured using high frequency surprises, but do not do the decompositions of surprises as we do.

All of these papers had to construct their own event-study database to carry out similar analyses. The EA-MPD we provide, by virtue of being regularly updated, will eliminate this sizable fixed cost of doing research on Euro Area monetary policy. In terms of the exercises we carry out, our value added will be in estimating rather than assuming the number of different types of policy surprises market participants perceive and in naming these. The results of this exercise are interesting and different from what has been assumed so far. Our further value added will be in covering the crisis period and measuring the effects of ECB non-standard monetary policy measures over a range of financial assets and comparing their transmission with that of standard policy measures, as well as measuring the persistence of responses and possible asymmetry of these responses to positive and negative surprises. In particular, we will be estimating the persistence of QE effects in the euro area using a precise, continuous measure of QE surprises for the first time.

3.1 Identifying the surprises

We first measure monetary policy as a potentially two dimensional process with possible Target/Timing and Path (Forward Guidance) components, and then allow for a third dimension after the onset of the financial crisis so as to capture the information about non-standard measures and especially QE. As noted above, the ECB policy communication extends over two separate windows where the policy action is first announced in a press release with no motivation, and then a statement is read by the President, followed by a question-and-answer session. Market participants may update their beliefs about the current stance and future path of monetary policy in response to the press release as well as the press conference; hence

on each policy date, using intraday data, we measure two sets of surprises.

We construct the Target and Forward Guidance surprises following the methodology employed in [Gürkaynak et al. \(2005\)](#) and [Gürkaynak \(2005\)](#), who in turn build on the work of [Kuttner \(2001\)](#), using Federal Funds futures quotes to measure policy surprises in the US. The methodology of constructing the QE factor follows that of [Swanson \(2017\)](#). In particular, we extract factors from changes in yields of risk-free rates at different maturities, spanning one-month to ten-years, in each of the two windows (press release and conference). Ideally, the risk-free rate curve in the euro area would be proxied by the term structure of the OIS. Unfortunately, however, at maturities longer than 2 years high-frequency data on the OIS rates is only available after August 2011. Therefore, prior to that date we use yields on the German sovereign yields as proxy for the risk-free rates. Using the German yields throughout the period makes no significant difference.

To extract monetary policy surprises that admit economic interpretation from these asset price changes we estimate latent factors from changes in yields and rotate these factors. The matrix X^j , $j = \{\textit{press release}, \textit{press conference}\}$, has changes in 1, 3, and 6-month and 1, 2, 5, and 10-year yields in its seven columns, with each row corresponding to a policy date. This matrix is taken directly from the EA-MPD. The factor structure is

$$X^j = F^j \Lambda^j + \epsilon^j, \quad (1)$$

where F are the common latent factors, Λ are the factor loadings, and ϵ are the idiosyncratic variation of yields at different maturities. We analyze the press release and press conference windows separately and estimate the factors—common drivers of yield changes—by principal components.

We test the number of statistically significant factors in the two windows over the full sample and the pre-QE samples. As shown in [Table 2](#), we consistently find a single significant factor in the press release window in both periods, but find two factors in the press conference window before QE and three in the full sample, suggesting the presence of a new factor in this window in the QE period.⁶

The latent factors F^j do not have clean interpretations as monetary policy surprises, so

⁶The full sample press conference window having three factors might also have been due to the two subsamples having two factors each, but one of these being different across the pre-QE and QE periods. But the first two factors of the pre-QE and full samples are exactly the same, ruling out this interpretation. Further, although utilizing the test for only the QE sample is undesirable due to the very low degrees of freedom one would have, doing that nonetheless finds three factors in the press conference window in the QE period.

we rotate the factors to make them interpretable. This method has been used frequently since [Gürkaynak et al. \(2005\)](#) and was first applied to Euro Area data by [Brand et al. \(2010\)](#) using intraday data. For our purposes, including the analysis of QE, the orthogonal factors are identified by imposing the following restrictions on the rotation matrix: (1) the second and third (when the third factor is present) factors do not load on the one-month OIS; (2) the rotation is such that the third factor has the smallest variance in the pre-crisis period (2 January 2002 - 7 Aug 2008). Essentially, we are forcing two factors not to be correlated with the one-month OIS (the standard measure of the immediate policy setting surprise) and allowing for one of them to affect the yield curve such that this factor was not important in the pre-crisis period.⁷ This factor will turn out to contribute only to the movements in the long-end of the yield curve, and only be active post-2014, naturally leading to the QE factor label. Extraction of this last factor is an application of the [Swanson \(2017\)](#) methodology to euro area monetary policy data. It is important to recognize that what matters for these surprises is how market participants interpret the policy news and how their expectations change following the policy news; our findings are not about the type of signal the central bank aims to provide.

The sequential nature of these orthogonalizations is important to keep in mind to understand the rotated factors. One factor is defined by orthogonality to the 1-month OIS change. Another is defined by orthogonality to this, such that the two explain most of the variance of the yields. The third factor is defined such that it is orthogonal to the first two and the 1-month OIS, and explains the minimal share of the pre-crisis variance.⁸

With these rotations, the first and only statistically significant factor in the press release window turns out to be the “Target” factor, which loads only on the short rates. As expected, we find a Forward Guidance (Path) factor that is always present in the press conference window. The existence of guidance by central banks predates the global financial crisis as well as the explicit designation of “Forward Guidance” and even the adoption of statements accompanying policy decisions. The Forward Guidance factor captures the revision in market expectations about the future path of policy rates that are orthogonal to the current policy surprise.

⁷Note that this would be a somewhat imperfect measure prior to November 2001, as over that period the Governing Council took policy decisions at a fortnightly frequency. (Note also that, as discussed above, although we make the event study entries for all dates available in the dataset, the analysis in this section and beyond uses data beginning in 2002.) In that case, the one-month OIS covers the next meeting as well, hence may capture changes in expectations about the next meeting in addition to the immediate policy surprise. There are very few, if any, quotes for the one-week OIS on many event dates. Otherwise utilizing that measure would have solved the problem of frequency of meetings being higher than maturity of contract used for the period prior to November 2001.

⁸A more elaborate and formal presentation of the factor rotations is presented in the Appendix.

The other factor that is always present in the press conference window does not have factor loadings that lead to a Target interpretation. That factor does not load on the 1-month OIS much. This is mechanically possible because the rotation forces one factor to be orthogonal to 1-month OIS but does not force the other factor to closely follow it. The other factor in the press conference window turns out to be a “Timing” factor that captures the shifts in market expectations over the next few meetings that leaves longer-term interest rates essentially unchanged. It is therefore important to note that estimating a Target factor in the press release window and a Timing factor in the press conference window are findings, not assumptions. Similarly, the QE factor that loads only on longer-term yields is a finding interpretable this way, not ex-ante assumed.

The interpretable surprises we measure using the factor rotation are suitable for our research questions. Other decompositions of surprises are also possible and the EA-MPD will facilitate asking a variety of euro area monetary policy related questions. Some of the recent work in this vein are [Jarociński and Karadi \(2018\)](#), who use stock-bond correlations to identify central bank information signaling as opposed to classical monetary policy surprises; [Andrade and Ferroni \(2016\)](#), using index-linked swaps for the same purpose; and [Cieslak and Schrimpf \(2018\)](#), who use stocks and interest rates of short and long maturities to do a three-way decomposition between classical monetary policy surprises, information (on growth) surprises, and risk premium surprises.

We have also experimented with alternative identifying assumptions. Since we found a single factor in the press release window, identifying the Target factor by orthogonalizing with respect to a second factor may have been misleading so we used the change in the one-month OIS directly as the Target factor, which unsurprisingly made no difference. Similarly, not using the one-month OIS in the conference window (where it has negligible variance) and using orthogonality to three-month OIS to do the factor rotation gave qualitatively the same results. Many other ways of identifying surprises are possible and will surely be used by other researchers.

3.2 Policy surprises in the euro area

Figure 3 shows the loadings of the rotated factors over the seven maturities in the analysis. As the factors are identified up to scale, we scale them such that Target has unit effect on one-month OIS, Timing has unit effect on six-month OIS, Forward Guidance has unit effect on the two-year and QE has unit effect on the ten-year yields. This normalization has no effect on the variance shares and statistical significance of the results we report.

Note again that these factors are defined by the factor loadings, the shapes are not assumed but estimated. The assumptions we made are the orthogonality conditions discussed above. Our statistical tests tell us to look for a single factor in the press release window and three factors in the press conference window (the third factor is only statistically present in the QE period but the factor loadings of all rotated factors are the same throughout the period. The QE factor has the same definition in the pre-QE period but does not show activity, consistent with its label.) Those factors are rotated according to the orthogonality conditions assumed so that they may be interpretable. In the event, they turn out to have factor loadings shown in the figure and admit labels that have economic meaning. Notice in particular that the effect of QE was consistent with its design: the effect is greater the longer the maturity—recall that only the effect on the current-month OIS are set (to zero) by construction, whereas the effects on all other maturities are estimated.⁹

Table 3 shows the relative contribution (variance shares) of our identified factors in explaining changes across the risk-free rate curve in the press release and conference windows. This is a striking table showing that in the press release window yield curve variance is greatest in the shortest maturity to begin with, and the Target factor captures about all of the short-end volatility. Since there is no other statistically significant factor in this window and the Target factor does not load on the long-end at all, the volatility of the long-end is entirely in the idiosyncratic residual, but this volatility is small. Conversely, in the press conference window, the overall volatility is much higher and is concentrated on the longer-end of the yield curve, with a peak in volatility at two to five years, the maturities that are affected by both Forward Guidance and QE. Thus, in the cases where much of the variance of a particular maturity is attributed to the residual, such as 10-years in the press release window or one-month in the press conference window, these have the lowest variances across the yield curve and the maturities with largest variances, one-month in the press release and two and five-years in the press conference windows are fully explained by the measured policy surprises.

As noted above, we find that (a) changes of interest rates at short maturities in the press release window are mainly explained by the Target surprise, while in the conference window the Target surprise is absent and a “Timing” surprise emerges; (b) the Path (Forward Guidance) factor is present in the conference window and affects interest rates across all maturities above one month, with a typical hump-shaped pattern, and (c) the QE factor, present in

⁹ECB used a variety of maturities for its QE program, with an average maturity of almost eight years. Hence, finding largest effects of QE on the long-end of the yield curve is as reasonable in the euro area as in the US.

the conference window, is differentiated from Forward Guidance by having an impact that is stronger the longer the maturity.

This finding is interesting and speaks to both the methodology of extracting the factors and the structure of monetary policy communication in the Euro Area. The methodology forces two of the factors, which we call Forward Guidance and QE factors, to be uncorrelated with the current interest rate surprise, in this case the change in the one-month OIS rate. The other factor is not forced to display the features of a Target factor (that is, not forced to be highly correlated with the change in the one month OIS rate) but in the press release window it turns out endogenously to be so, suggesting that Target is a dominant feature in the data. Recall that in the US policy window Target is always a dominant policy surprise as the policy decision and statement are simultaneously released; therefore this identification strategy in the US leads to finding the first factor to be Target.

In the euro area, in the conference window we find instead that the first factor does not look like a Target factor; it is not correlated with the one-month OIS at all. This has to be expected because once the current setting of policy is announced in the press release, updates to beliefs about Target should no longer be a dominant source of variation in the conference window. Indeed, principal components and the factor rotations that define Forward Guidance (Path) and QE lead to finding a remaining factor that does not display the features of a Target factor, but the features of a factor that resembles the Timing factor discussed by [Gürkaynak et al. \(2007\)](#). This is a factor that loads on the very near term (within six months) OIS rate changes and captures shifts in the perceived Timing of policy actions, such as beliefs that although a policy change did not happen today it is now more likely that it will happen in the next meeting or two. That is, the press conference makes the relative probabilities shift across very near-term meetings, as well as farther out. Forward Guidance captures changes in policy expectations affecting interest rates about two years out and Timing captures changes in expectations at a shorter horizon, affecting only to a small extent interest rates of longer maturities. Although we name these factors Timing and Forward Guidance, it is important to recognize that in essence these are two separate Forward Guidance factors, one with a peak effect at shorter maturities and the other at relatively longer maturities.

One can do the analysis with these factors, as we will, and keep in mind that the interpretations of factors across windows will be different: the first factor is Target in the press release window, and Timing in the conference window. Of course, it is possible to force the first factor to consistently be Target in both windows by imposing a large positive correlation of this factor with the change in the one-month OIS rate. In that case, the factor interpretations

will be symmetric across windows, but this will come at the cost that less of the variance of the conference window will be explained: Timing, which we have shown is important, would have to turn into a residual. We continue with allowing for the Timing factor in the conference window.

3.3 Surprises and ECB policy announcements

Figure 4 shows the Target/Timing, Forward Guidance and QE factors over the press release and the conference windows as time series, normalized as in Section 3.2. We compare these identified surprises with ECB’s relevant policy actions to make sure that we have an accurate mapping. While we do not comment on each one of these for brevity, it instills confidence in our method to observe that each of the largest surprises we extract using market-based methods coincide with market commentary that accords with the measured surprise.

For instance, the largest realization for the Target factor occurred on 3 November 2011 when the ECB cut its policy rates by 25 basis points, which came unexpectedly in part because it was the first meeting of Mario Draghi as ECB President. In addition, we find a sizeable negative realization on 4 September 2014 when the ECB cut the deposit facility rate to more negative values, which was unexpected as also suggested by surveys among analysts ahead of the policy meeting.¹⁰ Turning to the Timing factor, large realizations occur on 3 March 2011 and 5 June 2008. In these episodes the policy rates were left unchanged, as expected; and indeed we find that the Target factor hardly moved in the press release window. But the Introductory Statement read out at the beginning of the press conference contained expressions (“strong vigilance” in one episode, and “state of heightened alertness” as well as readiness to act “in a firm and timely manner” in the other episode) meant to signal high likelihood of a rate hike in the subsequent policy meetings.

The largest realization of the Forward Guidance factor in the conference window occurred on 3 July 2008 and was a negative realization. That is interesting because on that date policy rates were increased by 25 basis points, and this was fully expected, our Target factor did not register a surprise. (A fact also supported by survey evidence gathered ahead of the policy meeting). However, the press conference was taken as signaling that no more hikes were intended, leading markets to price out further increases. Finally, the largest realization of the QE factor is on 22 January 2015; this is a negative reading (an easing surprise) and

¹⁰Bloomberg News on 4 September 2014 reported that “Of 57 economists surveyed by Bloomberg News, 51 said [today] the ECB will keep its key interest rate unchanged.”

corresponds to the announcement of the ECB’s asset purchase program, which was made in the press conference.

A more detailed description of the time series of these surprises is relegated to the appendix. While we present the surprises and the statements that led to these, a formal mapping between quantified words, as in [Hansen and McMahon \(2016\)](#) and the market perceptions we measure here has to be a separate paper.

4 Asset Price Response to Policy

An important contribution of this paper is defining the interpretable policy surprise factors for the euro area. Once the policy surprises are measured as described in [Section 3](#), causality is established, and the response of other asset prices can be studied via OLS. We estimate the impact of monetary policy on sovereign yields, the exchange rate, and the stock market. In the conference window we continue to use the surprise in the US initial jobless claims as an additional control (labeled IJC) whenever we run regressions. Including or excluding the initial claims makes essentially no difference to our coefficients of interest.

4.1 Sovereign yields

[Table 4](#) shows the intraday reaction of euro area risk-free rates to the Target surprise we have identified in the press release window (panel A) and the three surprises in the conference window (panel B). This table presents the information in [Figure 3](#) with numbers, the normalized factor loadings using an OLS regression framework and controlling for the US Initial Jobless Claims surprises in the press conference window. The loadings, which are essentially unchanged compared to [Figure 3](#) (the ECB policy surprises and US IJC surprises are not correlated) show the estimated weights over maturities in the full sample.

An interesting question is whether these factors have behaved the same way throughout the sample or whether the policy surprises elicited different responses before the crisis, during it before QE became a policy tool, and when QE was actively used. To study this, we run these regressions with samples up to 2008, 2008-2014, and 2014 to september 2018, corresponding to pre-crisis, crisis before QE, and QE periods. The QE factor is of course only active in the last period.

[Tables 5 to 7](#) show the results. Here, remember that these factors are defined as before (loadings do not change across tables) and are normalized such that Target, Timing, Forward Guidance, and QE factors have unit effects on one-month, six-month, two-year and 10-year

yields in the full sample. Hence, the coefficients are comparable across tables and strongly show that these surprises functioned almost exactly the same way throughout our sample. Once the ZLB was binding there were fewer Target surprises but to the extent they took place, their effects were confined to the short end, with a rapid decay. Timing always has an early hump with little effect on the shortest and longest maturities. Forward guidance always affects intermediate maturities the most and QE, when present, affects the long-end only. Importantly, these statements are true quantitatively as well, the coefficients differ little across subsamples, and fits, as measured by R^2 are also similar, showing that the relevance of the factors have not changed in terms of variance shares.

Notice that this analysis is only possible with our factor estimation methodology. While assuming that a “communication” surprise is present in the press conference window may be appropriate for some purposes, that approach would find a changing response to the communication surprise over time because OIS rate changes in this window would be capturing different types of information; dominantly Forward Guidance before 2014 and dominantly QE afterwards. That is, the surprise, not the response would be changing. Our methodology tracks different types of surprises, keeping their definitions the same across sub-samples, and shows that reactions to these have not changed markedly over time.

Having verified the consistency of our surprise measures across subsamples for the euro area risk-free rates, we now turn to their effects on the sovereign yields of Italy and Spain.¹¹ Tables 8 and 9 show the sovereign yield responses and document that these factors affected the sovereign yields the same way they affected the safe rates. Importantly, QE, when active, has affected Spanish and especially Italian long-term yields more than the safe rate, narrowing spreads on impact, consistent with the evidence in [Altavilla et al. \(2015\)](#).

Also once again note the high R^2 s across tables 4 to 9. The monetary policy surprises we extracted capture large fractions of yield changes for risk-free and sovereign rates, especially in the conference window for the last subsample for long rates, as the QE factor helps explain the 10-year yield changes. In the earlier samples the R^2 for long rates are lower but the variance of these rates are also lower without QE surprises that move them. This is in contrast to [Leombroni et al. \(2017\)](#), who find that spreads were widened due to Forward Guidance surprises in a study that did not separately assess QE effects. We therefore find that the first stage of monetary policy transmission is not different across the largest euro area countries. The real effects may be different due to non-financial differences across them, as argued by [Corsetti](#)

¹¹ Effects on German rates are indistinguishable from effects on OIS rates when both are available and effects on French rates very closely follow German ones. We do not separately report these for brevity.

et al. (2018) but that is a separate topic of study.

4.2 Exchange rate

Table 10 reports results for the euro-US dollar exchange rate, with the top panel focusing on the press release window and the bottom panel on the conference window. In both windows and along about all sub-samples, the surprises exert a statistically significant effect on the exchange value of the euro.

In the conference window all factors are highly significant in the full sample and in most of the sub-samples, with the response of the exchange rate becoming much stronger over recent periods. For instance, a one unit change in the Forward Guidance factor leads to an appreciation of 0.22 percent in last sub-sample, five times larger than in the previous one. The R-squared of the regression is about 0.6, which is very large for work involving exchange rates on the left-hand-side.

It is also noteworthy that in our samples the Rogers et al. (2014) “preserving the euro effect” where easing surprises make the euro appreciate, does not manifest itself. This effect, while certainly present on some days, is dominated by the standard uncovered interest parity channel in the periods of our analysis.

These findings are broadly consistent with the work of Faust et al. (2007), who show that “good news” in data releases in the US lead to an appreciation of the dollar and relate this to uncovered interest parity. We find that higher rates than anticipated in the euro area similarly lead to an appreciation of the euro, as expected. There is not much of a literature on whether current rates or expected future interest rates, or short versus long-term interest rates theoretically should be and empirically are the main drivers of exchange rates. Our empirical findings suggest that changing interest rate expectations at all maturities as a result of monetary policy communication affect the exchange value of the euro.

5 Stock Prices and the Information Surprise

Table 11 shows the intraday reaction of the euro area stock market to the Target surprise (panel A) and the three surprises in the conference window (panel B). The response is statistically significant and negative (surprises that increase yields lead to stock index declines) for the Target factor in the full sample and the pre-crisis sample, and for the Timing and Forward Guidance factors in the post-2014 sample. Results for the stock market index comprising only euro area banks are similar.

Lack of significance for some of the factors in some sub-samples may be expected in light of the recent literature arguing that any monetary policy decision (or no decision) may be interpreted by markets in two different ways: a textbook monetary policy shock or a perceived revelation of information about the state of the economy. This latter type of policy is called Delphic in [Campbell et al. \(2012\)](#) and information shock in [Miranda-Agrippino and Ricco \(2018\)](#) and [Jarociński and Karadi \(2018\)](#). For our analysis, it is important to note that the responses of nominal rates to the two types of surprises are qualitatively similar. A positive policy surprise increases yields if it is a genuine shock, but perceived information that the state of the business cycle is stronger than thought also similarly increases yields by increasing future expected short rates. Therefore, possible information effects do not interfere with our identification strategy of the factors.

However, the two types of surprises have opposite effects on stocks. Lower rates are good news (lower discount rates and higher demand) but learning that the cyclical state is worse than previously thought is bad news (lower dividends). One can see similar effects on inflation expectations; a positive policy surprise should decrease inflation compensation implied by indexed securities unless the surprise is perceived to be signalling information about high inflationary pressures, in which case inflation compensation will increase. The macroeconomic impacts of these policy surprises are also found to differ depending on whether the policy surprise triggers a positive or negative response of the stock market ([Jarociński and Karadi, 2018](#)) or, similarly, a positive or negative response of inflation-linked swaps ([Andrade and Ferroni, 2016](#)), as measured at high-frequency around policy events.¹² Therefore, the presence of these two types of policy can make the response of the stock market, on average, insignificant and can produce the results reported in Table 11.

To assess whether there is evidence of these two types of surprises in our dataset, for each policy event we compare the sign of the response of the stock market and inflation-linked swaps. If nominal rates, stock prices and inflation-linked swaps all move in the same direction, this would suggest that information shocks may be prevailing. To overcome the problem that data on inflation compensation are not reliably available at intraday frequency, we adapt our analysis to daily frequency and measure the interest rate reaction as the fitted value of the one-day change (around the policy events) of the 2-year OIS regressed on the intraday factors. We do the same for the one-day change of inflation-linked swaps and the one-day log-difference of stock prices.

¹²[Jarociński and Karadi \(2018\)](#) use intraday data employing stocks whereas [Andrade and Ferroni \(2016\)](#) use daily data due to lack of reliable intraday data for inflation-linked swaps.

Figure 5 shows the dates for which stock prices and inflation swaps move in the same direction so that the market perception of policy can be clearly interpreted as information (Delphic) surprises or pure policy (Odyssean) surprises.¹³ The figure shows that there is a marked difference across sub-samples in terms of the information market participants extract from policy surprises. Whereas in the post-2014 sub-sample (bottom panel) information shocks (defined as nominal interest rates, stock prices, and inflation-linked swaps moving in the same direction) are rare, these are frequent during the crisis sub-sample (top panel). That is, in the crisis period market participants attributed more of the surprises they perceived to information they thought the ECB has, consistent with a similar finding for the US by Lunsford (2018).

To delve deeper into this issue we build a daily VAR. The identification strategy is based on the idea of using high-frequency monetary policy surprises to isolate the variation in the reduced-form residuals in the VAR due to monetary policy shocks. The use of external instruments for identification in macroeconometric models goes back to Stock and Watson (2012) and Mertens and Ravn (2013). We start the analysis by estimating the reduced form VAR as described in equation (2).

$$Y_t = c + \sum_{j=1}^p B_j Y_{t-j} + A_0 u_t, \quad (2)$$

where Y_t is a vector consisting of the 2-year OIS, the log EUR-USD exchange rate, the log of the stock market index (Euro Stoxx 50), and the 2-year inflation linked swap (ILS2Y). As we are only interested in the effects of monetary policy shocks, our objective is to identify the column of the matrix A_0 corresponding to the contemporaneous effect of the monetary policy shock. The instrument must satisfy the relevance and exogeneity assumptions:

$$E(Z_t u_t^m) = \alpha \neq 0, \quad E(Z_t u_t^o) = 0, \quad (3)$$

where Z_t is the instrument, and u_t^m and u_t^o denote the monetary and the non-monetary shocks. Our instruments will be the policy surprises we have identified. The external instruments are the Target factor (press release), the Timing, the Forward Guidance, and the QE factor (press conference). As the VAR residual is a linear combination of structural shocks, we instrument the residuals of the VAR with one instrument at a time, as we aim to extrapolate the component correlated with the Target, Timing, Forward Guidance and Quantitative Easing surprises

¹³In about 80% of the policy dates stock prices and inflation-linked swaps move in the same direction. In the other 20%, in almost all of the cases the stock price reaction is about zero and the inflation-linked swap reaction is very small. Hence, these two measures almost never meaningfully disagree. Therefore, incidentally, our results verify Andrade and Ferroni (2016) and Jarociński and Karadi (2018) methods against each other and find that they are in agreement.

respectively. As a different exercise, one can also include all the instruments simultaneously, however, this will only help to identify a single monetary policy shock which reflects a linear combination of the four. To be consistent with the previous analysis, we use the intraday factors as external instruments for the VAR estimated on all sub-samples. When analyzing Quantitative Easing, the instrument is used on the period 2014-2018.

Figure 6 shows that in the post-2014 sub-sample each factor exerts a significant impact, with a decline in interest rates triggering a rise in stock prices and inflation-linked swaps, and a depreciation of the euro. In the 2008-2013 sub-sample the impact of each factor is significant, but we find that this time a decline in interest rates triggers a decline in stock prices and inflation linked-swaps, consistent with a perceived revelation of negative news. The exchange rate is found to depreciate, suggesting that it does not react differently, at least qualitatively, to an information shock. In the pre-crisis sub-sample of 2002-2007 we find that stock prices go down in response to positive Target surprise while there is no clear pattern for Timing and Forward Guidance surprises. Over that sub-sample we cannot use inflation-linked swaps as they become available only in 2005.

Overall, these results suggest that there is evidence of information shocks and that stock prices and inflation-linked swaps may both help in telling apart these shocks from the more traditional policy shocks. We find that these results are fairly persistent, they do not only manifest themselves on policy dates then disappear. The results also suggest that it is possible to extend and generalise the macroeconomic analysis of [Andrade and Ferroni \(2016\)](#) and [Jarociński and Karadi \(2018\)](#). They use the overall policy surprise as measured by the high-frequency change of the 2-year OIS around policy events. Our analysis shows that it is possible to compute the macroeconomic response to each of the factors we have identified including QE. The important finding of this section is that ECB policy surprises do have effects on stock prices but to properly study these one needs to separate traditional surprises from perceived information revelation, as we have briefly shown here.

6 Persistence of Identified Policy Surprises

An important and open question has to do with the longevity of financial market effects of surprises identified in high-frequency event studies. This has especially been important for the debate over unconventional monetary policy, where immediate market reactions were visible in real time in most occasions, but doubts lingered as to whether on balance these policies had lasting effects. In particular, the effects of QE have been very difficult to trace over time as

QE surprises were not quantified and only the announcement times were known, leading to the use of dummy variables to capture QE effects that were not very precisely estimated. An important paper in this vein is [Wright \(2012\)](#) who traces the effects of Fed QE surprises in a VAR identified via heteroskedasticity. He finds a half life of about three months, which is economically significant but not very long.

Our continuous measure of QE surprises allows estimating the persistence of QE effects using much richer information than before. To gain insight about the persistence of the effects of the ECB monetary policy measures, we use a small daily vector autoregression with financial variables as in [section 5](#), but we replace the 2-year OIS with the 10-year yield as we want to focus on longer maturities, which our analysis in [section 4](#) has shown to be affected the most by QE. The measure of the 10-year yield we include in the model is the German, French, Italian and Spanish 10-year sovereign yield, added one at the time. We keep in the vector Y_t the other variables we have used in the VAR in [section 5](#): log of the EUR-USD exchange rate, the log of the stock market index (Euro Stoxx 50), and the 2-year inflation linked swap (ILS2Y). To these measures, in the robustness check, we add the spread of the *AAA* and *BBB* corporate yields, the EA implied stock volatility index — i.e., the VIX for the EA, and the 2-year OIS and the 5-year EA GDP-weighted yields.¹⁴

Our data set is daily and covers the period 2005-03-31 to 2018-09-13, which is the longest available for the selected variables. Consistent with the previous analysis, we use the Target, Timing, and Forward Guidance factors as external instruments for the VAR estimated on the full sample (2005-03-31 to 2018-09-13). In the Quantitative Easing cases, the instrument is used on the period 2014-01-01 to 2018-09-13 only.

[Figure 7](#) shows the results for Target (first column), Timing (second column), Forward Guidance (third column) and Quantitative Easing (forth column) surprises on German, Italian, French and Spanish 10-year government yields. The responses of all countries' yields are strongly persistent. However, the chart also shows some heterogeneity. German and French yields show a similar response to all shocks and similarly Italian and Spanish yield responses are alike each other, but the two sets are different. This is to be expected from the results on spreads we have discussed earlier.

The results further show that for Target, the IRFs are not statistically different from zero after a few periods. This is not surprising in light of the results we have shown in [section 4](#) documenting that Target does not have a material effect on 10-year yields on impact. Timing

¹⁴The GDP weighted 5-year EA yield is used instead of the 5-year OIS, as the latter is only available for a short sample.

and Forward Guidance are more heterogeneous, even if in almost all the cases (except for Italy for Timing) the response seems quite persistent. Finally, the QE shock is persistent and well identified as judged by the narrow confidence bands. Our finding of a half-life of about one year for the QE effects is much longer than that of [Wright \(2012\)](#) for the US—at about three months—which was obtained using QE announcement dates in a heteroskedasticity-based estimation setting. It is also much longer than [Swanson \(2017\)](#), who estimates a persistence in the US similar to Wright, using local projections. [Andrade et al. \(2016\)](#), using a shorter sample, also find persistent effects of QE in the euro area.

To further investigate these results, we check whether these findings are robust to different VAR specifications. Figure 8 shows the IRFs from a “Combinatoric” VAR (CVAR). The CVAR works as follows: we add to the four variables we used in the previous specification (10-year sovereign yield, the log of the EUR-USD exchange rate, the log of the stock market index, Euro Stoxx 50, and the 2-year inflation linked swap, ILS2Y), four more variables (the BBB-AAA corporate bond spread, the EA stock market implied volatility index (VSTOXX), the 2-year OIS and the 5-year EA GDP-weighted yields, and we specify a different VAR for each possible combination of two to eight variables. The 10-year yield is always included, as the instrumented variable. Additionally, we ran each of these using eight different specifications of the 10-year yield,¹⁵ for a total of $8(2^7 - 1) \approx 1000$ specifications. For each model, we always use the longest sample available. The figure highlights that IRF coefficients, estimated from different models, display a clear and persistent pattern. Especially the QE and Forward Guidance surprises affected the 10-year yields for a long period of time.

It is interesting to find the persistence of unconventional policy in the euro area on long-term interest rates to be much higher than what is found for the US. In interpreting this result it is important to keep in mind the difference in methodologies. We employ a VAR with a continuous measure for Forward Guidance and QE surprises as instruments for the euro area, in contrast to heteroskedasticity-identified VARs and local projections for the US. We note the high and robust persistence of unconventional policy effects we find with the VAR but caution that these results are not directly comparable to those in the literature for the US.

¹⁵As 10-year yields we include the German, Italian, Spanish and French yields, the OIS yields, the EA GDP-weighted yield, and the EA yields derived by the ECB using the [Svensson \(1994\)](#) methodology, utilizing AAA-rated euro area central government bonds and all euro area central government bonds (including AAA-rated).

7 Non-linearity

Starting with the seminal work of [McCallum \(1991\)](#), the monetary policy literature has paid attention to possible asymmetric effects of monetary policy on real variables. In particular it has studied the different effects during expansions and recessions, good and bad credit market conditions, and high or low inflation regimes, with a general consensus that there is indeed heterogeneity.¹⁶ The more recent literature, using [Romer and Romer \(2004\)](#) identification and [Jordà \(2005\)](#) local projections, finds that monetary policy tightening has stronger effects than loosening ([Tenreyro and Thwaites, 2016](#); [Barnichon and Matthes, 2017](#)).

In this section we ask a related but distinct question and study whether market participants perceive monetary policy effects differently when the surprise is positive versus negative. The financial market reaction to monetary policy surprises captures the updates to beliefs of market participants, which may not be the same as the actual future impact of monetary policy if there are information asymmetries. Independently of whether market participants form “correct” beliefs of monetary policy asymmetry, changes in asset prices are the first step of monetary policy transmission and understanding whether there are asymmetries in the financial market response to monetary policy is important in its own right. For brevity we do not repeat all of our analysis allowing for asymmetries but present the salient cases that show the presence or lack of asymmetric responses. We do this for risk free rates and sovereign yields by including an indicator variable for negative surprises and allowing interactions.

Tables 12 to 14 report the results. These results are striking in their lack of asymmetry. Across the three tables for the effects of policy surprises on euro area risk free rates and Italian and Spanish sovereign yields, only very few interaction terms are statistically significant.¹⁷ Importantly, even in the few cases where the interaction term is significant, we find positive interaction effects for negative surprises, indicating stronger effects of easing surprises on the yield curve. Hence, we find no evidence that the yield curve responses in the euro area may lead to, or are consistent with, weaker effects of monetary policy when policy is expansionary.

We leave studying the possible asymmetry in real effects of monetary policy in the euro area for future work but note the apparent difference between the results in the literature for

¹⁶The small literature on non-linear effects of monetary policy focuses on the possible asymmetric responses of macroeconomic, rather than financial, variables. [Thoma \(1994\)](#) shows that monetary policy is more effective in expansions than recessions. [Weise \(1999\)](#) finds using a Smooth-Transition VAR (ST-VAR) model that monetary policy does not have any power in recessions. [Peersman and Smets \(2002\)](#), [Garcia and Schaller \(2002\)](#) and [Lo and Piger \(2005\)](#), using a two-state Markov-Switching Model (MSM) find that monetary policy is more powerful in recessions than in expansions.

¹⁷Although not of direct interest, the statistical significance of the dummy itself is in most cases due to a few outlier observations.

the US real effect asymmetry and the symmetry we find in financial market effects in the euro area.

8 Extension: Decomposing Market Reactions to Other Policy News

Policy events that are not covered by our data set—policy communications that are not Governing Council policy decisions—can also be analyzed using our methodology. Policymaker speeches, releases of minutes and the like are also policy communication and have financial market effects. We can treat these events as if they are Governing Council policy dates and, given the factor loadings we estimated for our factors, use the changes in the OIS yields in those event windows to decompose the market perception into Target, Timing, Forward Guidance, and QE surprises. This is an exercise in finding the combination of monetary policy surprise factors that best fit the change in yields around the relevant window.

The methodology is straightforward; for a particular event i —e.g., a speech—we take a window long enough to bracket the beginning and the end of the event, and compute the change in the 1M, 3M, 6M, 1Y, 2Y, 5Y, and 10Y OIS. We collect these yield changes in a vector OIS_i , and, given the (rotated) factor loadings $\hat{\Lambda}$ we estimated from the EA-MPD, we find the factors \hat{F}_i which minimize the sum of squared residuals of $(OIS_i - F_i \hat{\Lambda})$. That is

$$\hat{F}_i = \arg \min_{F_i} (OIS_i - F_i \hat{\Lambda})' (OIS_i - F_i \hat{\Lambda}) \quad (4)$$

The solution of this minimization problem can be recognized as the OLS estimator of F_i , in a regression of OIS_i onto the space spanned by $\hat{\Lambda}$.

We apply our methodology to two illustrative events that elicited noticeable market reactions. The first is a speech given by Mario Draghi on 27 June 2017 at the ECB Forum on Central Banking in Sintra “Accompanying the economic recovery”. The second is a Bloomberg news article by Jana Randow, Alessandro Speciale, and Jeff Black which was released on October 4, 2016 and hinted at a decision on tapering by the ECB.¹⁸

¹⁸Since we are interested in the market perception, we do not go into the details of the events but provide Bloomberg headlines for each event to give context. On the 2017 speech: “Draghi Sees Room for Paring Stimulus Without Tightening Policy”, “ECB president says forces damping inflation are temporary”. On the 2016 news report: “Informal consensus among ECB policymakers is that QE will need to be wound down gradually when decision is taken to end the program, say people familiar with the matter”, “One scenario is to taper QE in steps of EU10b/month, people say”.

Figure 9 shows the yield changes around these events. From the chart, it is clear that both events moved the long end of the curve, as it was perceived that new information about QE was released. Figure 10 then shows our estimated factors for these two events, in terms of the Target, Timing, FG, and QE decomposition. To make the factors comparable to what were shown earlier in this paper, we rescale them as in section 3, and we report them as a fraction of the average absolute value of the in-sample surprise of each type. Note, as before, that the different scalings imply that magnitudes are comparable across different dates for the same type of surprise, but not across different types of surprises.

As expected, our exercise finds a large QE factor in both events. For the first event, we found a relatively large Forward Guidance component as well. “Large” here is with respect to the in-sample average size of these surprises. The normalization we used imply that a reading of any factor above unity means that factor was larger than its average absolute reading in-sample.

A few notes on this exercise are in order. First of all, we show that it is possible to map our understanding of identified policy surprises based on the analysis of Governing Council policy announcements into any other kind of policy news. This is of independent interest.

Secondly, the Target factor is also estimated here. One can of course treat these news as analogous to press conferences and limit the possible factors to Timing, Forward Guidance, and QE but to the extent that market participants update their beliefs about outcomes of policy meetings within a month, one may measure a reaction interpretable as Target.

Lastly, this is a good place to discuss methodological choices. Our methodology is based only on the changes in safe rates of different maturities: the factors, including QE, do not load on individual country yields or spreads. Thus, the QE surprise we identify is one that lowers the long-term euro area safe rate and we can show, as a finding, that this QE surprise also lowers spreads. One should think of this as a “macroeconomic easing QE.” An alternative is QE that is perceived to particularly affect the Italian and Spanish yields, as in [Rogers et al. \(2014\)](#). Measuring this requires having spreads in the matrix from which one extracts the factors; we chose not to follow this path. For example, as spreads narrowed sharply around the “whatever it takes” speech, this second type of QE factor would have signaled a very large QE easing surprise by definition.¹⁹

¹⁹The “Whatever it takes” speech by Mario Draghi is perhaps the most famous of euro area policy communications. We do not use it as an example here because we do not have data on the intraday five-year OIS yield for that event. However, the minor increase in the 10-year OIS yield around that speech suggests that our methodology would have interpreted this event, if anything, as a small QE tightening surprise. Identifying QE surprises by utilizing spreads would not lead to this finding for this speech but in that case QE would narrow spreads by assumption, and we would not be able to discuss effects of QE on spreads.

Using our methodology, we are able to show that the macroeconomic easing QE factor that we identify also narrows spreads but we are silent about QE that may be perceived to differentially affect sovereign yields rather than providing overall stimulus. Clearly it is possible to measure a second type of QE and indeed to measure the two simultaneously, by allowing for two different types of QE surprises. Our research questions are best answered by the rotated factors we identified, but work on speeches of the “whatever it takes” type, or on the particular experiences of periphery countries may require alternative surprise identifications and associated factor rotations.

9 Conclusions

Our aims in writing this paper were twofold. First, we wanted to explain and make available what we expect to be the standard euro area monetary policy event-study database, the EA-MPD. The paper first explains the construction of this data set. This is data we carefully analyzed and cleaned so that misquotes that were prevalent in the early period of ECB policymaking do not lead to spurious findings. The data will be continuously updated and made available online. Our second aim was to show the use of this data in constructing euro area monetary policy surprises, to decompose these into surprises in policy actions, policy path, and QE news.

The two-stage nature of ECB policy news dissemination turns out to be very helpful in both increasing the number of data points and making statistical analysis more precise, and also in providing a validity check for our surprise measures. Comfortingly, we find that the Target surprises were dominant in the announcement window but that in the conference window this factor does not even exist, with news about future path of policy the main driver of yield changes before QE; and finally, that QE news were present in the latter part of our sample, only in the conference window. These all dovetail with the general understanding of how the ECB policy communication is designed to operate. We show that in practice policy communication has indeed worked as designed. We studied the response of various asset prices to these surprises and learned that surprises in the immediate setting of monetary policy, Target surprises, have effects only on the short end of the yield curve while Timing, Forward Guidance, and QE surprises both affect longer-term yields but in different ways.

It is important to emphasize again that rather than assuming the presence of predefined surprises in different windows, we estimated and identified these, finding a multifaceted information structure in the press conference window. We further learned that sovereign yields

and exchange rates respond to ECB policy communication, in interpretable ways, based on the source of the surprise. Importantly, QE turns out to have lowered all yields and narrowed spreads. Also importantly, we show that this effect was long-lived, with a half life of about a year. This is much longer than what was found earlier in the literature, when QE surprises were not quantified, and effects were based only on the dates of QE announcements.

Among other extensions, we showed that measuring the information surprise in ECB policy employing stock prices or inflation compensation yield similar results and this decomposition is needed to understand stock price reactions to monetary policy. Importantly, we also showed how to use the identified policy surprise factors to analyze any policy communication, not only Governing Council policy releases and statements on meeting dates.

We hope that the event-study dataset that we have compiled and will regularly update will foster more research on monetary policy and its effects in the euro area. Questions about the effects of monetary policy on markets in different countries, how these differ by the fundamentals of those countries, using the surprises to help identify VAR-based real effects in the [Gertler and Karadi \(2015\)](#) fashion, the transmission of ECB policies to non-euro area countries are some of the questions that continue to be important for academics and policymakers alike. While we shed more light than before on measuring and assessing monetary policy in the euro area, there certainly is much to be done.

References

- Altavilla, C., Carboni, G., and Motto, R. (2015). Asset purchase programmes and financial markets: lessons from the euro area. *ECB Working Paper, No. 1864*.
- Andrade, P., Breckenfelder, J., De Fiore, F., Karadi, P., and Tristani, O. (2016). The ecb’s asset purchase programme: An early assessment. *ECB Working Paper Series, 1956*.
- Andrade, P. and Ferroni, F. (2016). Delphic and odyssean monetary policy shocks: Evidence from the euro-area. *Discussion Papers in Economics, University of Surrey*.
- Barnichon, R. and Matthes, C. (2017). Functional Approximations of Impulse Responses (FAIR): New Insights into the Asymmetric Effects of Monetary Policy. *Manuscript, Federal Reserve Bank of San Francisco*.
- Brand, C., Buncic, D., and Turunen, J. (2010). The impact of the ecb monetary policy decisions and communication on the yield curve. *Journal of the European Economic Association*, 8(6):1266–1298.
- Campbell, J. R., Evans, C. L., Fisher, J. D., and Justiniano, A. (2012). Macroeconomic effects of federal reserve forward guidance. *Brookings Papers on Economic Activity*, 2012(1):1–80.
- Cieslak, A. and Schrimpf, A. (2018). Non-monetary news in central bank communication. *mimeo*.
- Corsetti, G., Duarte, J. B., and Mann, S. (2018). One money, many markets - a factor model approach to monetary policy in the euro area with high-frequency identification. *mimeo*.
- Ehrmann, M. and Fratzscher, M. (2009). Explaining monetary policy in press conferences. *International Journal of Central Banking*, 5(2):42–84.
- Faust, J., Rogers, J. H., Wang, S.-Y. B., and Wright, J. H. (2007). The high-frequency response of exchange rates and interest rates to macroeconomic announcements. *Journal of Monetary Economics*, 54(4):1051–1068.
- Garcia, R. and Schaller, H. (2002). Are the effects of monetary policy asymmetric? *Economic Inquiry*, 40(1):102–119.
- Gertler, M. and Karadi, P. (2015). Monetary Policy Surprises Credit Costs, and Economic Activity. *American Economic Journal: Macroeconomics*, 7(1):44–76.

- Gürkaynak, R. (2005). Using federal funds futures for monetary policy analysis. *FEDS Working Paper 2005-29*.
- Gürkaynak, R. S., Sack, B., and Swanson, E. T. (2005). Do actions speak louder than words? the response of asset prices to monetary policy actions and statements. *International Journal of Central Banking*, 1(1):55–93.
- Gürkaynak, R. S., Sack, B., and Swanson, E. T. (2007). Market-based measures of monetary policy expectations. *Journal of Business and Economic Statistics*, 25(2):201–12.
- Hansen, S. and McMahon, M. (2016). Shocking language: Understanding the macroeconomic effects of central bank communication. *Journal of International Economics*, 99(S1):S114–S133.
- Jardet, C. and Monks, A. (2014). Euro area monetary policy shocks: impact on financial asset prices during the crisis? *Document de Travail 512*.
- Jarociński, M. and Karadi, P. (2018). Deconstructing monetary policy surprises: the role of information shocks. *ECB Working Paper, 2133*.
- Jordà, O. (2005). Estimation and Inference of Impulse Responses by Local Projections. *American Economic Review*, 95(1):161–182.
- Kane, A., Roger, J., and Sun, B. (2018). Communications breakdown: the transmission of different types of ecb policy announcements. *mimeo*.
- Kuttner, K. N. (2001). Monetary policy surprises and interest rates: Evidence from the Fed funds futures market. *Journal of Monetary Economics*, 47(3):523–544.
- Leombroni, M., Vedolin, A., Venter, G., and Whelan, P. (2017). Central bank communication and the yield curve. *mimeo*.
- Lo, M. C. and Piger, J. (2005). Is the response of output to monetary policy asymmetric? evidence from a regime-switching coefficients model. *Journal of Money, Credit and Banking*, pages 865–886.
- Lunsford, K. (2018). Understanding the aspects of federal reserve forward guidance. *FRB Cleveland Working Paper, 18-15*.
- McCallum, J. (1991). Credit rationing and the monetary transmission mechanism. *The American Economic Review*, 81(4):946–951.

- Mertens, K. and Ravn, M. O. (2013). The dynamic effects of personal and corporate income tax changes in the united states. *American Economic Review*, 103(4):1212–47.
- Miranda-Agrippino, S. and Ricco, G. (2018). The transmission of monetary policy shocks. *CEPR Discussion Paper, No. 13396*.
- Peersman, G. and Smets, F. (2002). Are the effects of monetary policy in the euro area greater in recessions than in booms? *Monetary Transmission in Diverse Economies*, pages 28–48.
- Rogers, J., Scotti, C., and Wright, J. (2014). Evaluating asset-market effects of unconventional monetary policy: a multi-country review. *Economic Policy*, 29(80):749–799.
- Romer, C. D. and Romer, D. H. (2004). A new measure of monetary shocks: Derivation and implications. *American Economic Review*, 94(4):1055–1084.
- Stock, J. H. and Watson, M. W. (2012). Disentangling the channels of the 2007-2009 recession. *NBER Working Paper, 18094*.
- Svensson, L. E. (1994). Estimating and interpreting forward interest rates: Sweden 1992-1994. *National Bureau of Economic Research, No. w4871*.
- Swanson, E. (2017). Measuring the Effects of Federal Reserve Forward Guidance and Asset Purchases on Financial Markets. *NBER Working Paper, No. 23311*.
- Tenreyro, S. and Thwaites, G. (2016). Pushing on a String: US Monetary Policy Is Less Powerful in Recessions. *American Economic Journal: Macroeconomics*, 8(4):43–74.
- Thoma, M. A. (1994). Subsample instability and asymmetries in money-income causality. *Journal of Econometrics*, 64(1-2):279–306.
- Weise, C. L. (1999). The asymmetric effects of monetary policy: A nonlinear vector autoregression approach. *Journal of Money, Credit and Banking*, pages 85–108.
- Wright, J. H. (2012). What does monetary policy do to long-term interest rates at the zero lower bound? *Economic Journal*, 122(564):F447–F466.

Tables

Table 1: Frequency of policy decisions and press conferences in the euro area

Year	# of Policy Events		#Rate Change
	<i>policy decision released at 13:45</i>	<i>press conference start at 14:30</i>	
1999	23	9	2
2000	24	13	6
2001	24	11	4
2002	12	11	1
2003	12	11	2
2004	12	11	0
2005	12	11	1
2006	12	12	5
2007	12	11	2
2008	13	12	4
2009	12	12	4
2010	12	12	0
2011	12	12	4
2012	12	12	1
2013	12	12	2
2014	12	12	2
2015	8	8	0
2016	8	8	1
2017	8	8	0
2018	6	6	0
Total	258	214	41

Note: The table reports for each year the number of policy decisions, the number of press conferences and the number of rate changes from January 1999 to September 2018.

Table 2: Test of number of factors characterizing monetary policy announcements

	Press Release Window		Conference Window	
	Pre-QE	Full sample	Pre-QE	Full sample
$H_0 : k = 0$	46.20 (0.001)	49.12 (0.000)	105.50 (0.000)	108.49 (0.000)
$H_0 : k = 1$	18.77 (0.174)	22.55 (0.068)	33.73 (0.002)	39.42 (0.000)
$H_0 : k = 2$			14.87 (0.062)	17.44 (0.026)
$H_0 : k = 3$				4.07 (0.254)

Note: The table reports the Wald statistics and associated p-values in parenthesis of Cragg and Donald (1997) test for testing the null hypothesis of $k = k_0$ factors against the alternative that $k > k_0$. The same test is performed on the two policy windows (press release and press conference) and for two different samples. The Pre-QE sample consists of all surprises due to monetary policy events taking places between January 2002 and December 2013. The full sample contains all the monetary surprises (January 2002—September 2018).

Table 3: Relative contribution of factors in explaining policy surprises, full sample

	1-month	3-month	6-month	1-year	2-year	5-year	10-year	SD Factor
Press release								
Target	97.8	91.3	82.7	60.4	32.9	11.9	1.5	2.2
Residual	2.2	8.7	17.3	39.6	67.1	88.1	98.5	NA
SD OIS rel.	2.2	1.7	1.5	1.4	1.4	1.5	1.2	NA
Conference								
Timing	54.8	86.7	70.3	50.0	29.6	14.7	9.5	2.3
Forward Guidance	0.0	9.1	28.1	49.0	68.9	67.3	37.2	3.6
QE	0.0	0.1	0.0	0.0	0.8	15.7	50.0	1.9
Residual	45.2	4.2	1.6	0.9	0.8	2.3	3.3	NA
SD OIS conf.	1.1	2.1	2.8	3.9	4.4	4.1	2.7	NA

Note: The table reports, for the maturity of the OIS rates reported in the first row, the fraction of the variance (in percentage points) explained by Target factor in the press release window and by each of the three factors (Timing, Forward Guidance, and QE) in the conference window. The row labeled “Residual” reports the variance not explained by the factors. The last row in each panel shows the variance of the OIS rate at the relevant maturity measured in the release and conference window respectively. The last column reports the standard deviation of the four factors.

Table 4: Estimated effects of monetary policy surprises on OIS. yields

Panel (A): Press release window							
VARIABLES	(1) OIS 1M	(2) OIS 3M	(3) OIS 6M	(4) OIS 1Y	(5) OIS 2Y	(6) OIS 5Y	(7) OIS 10Y
Target	1.00*** (0.02)	0.74*** (0.03)	0.63*** (0.04)	0.50*** (0.06)	0.37*** (0.08)	0.24*** (0.08)	0.07 (0.06)
Observations	185	185	185	185	185	185	185
R-squared	0.98	0.91	0.83	0.60	0.33	0.12	0.02
Panel (B): Conference window							
VARIABLES	(1) OIS 1M	(2) OIS 3M	(3) OIS 6M	(4) OIS 1Y	(5) OIS 2Y	(6) OIS 5Y	(7) OIS 10Y
Timing	0.33*** (0.07)	0.84*** (0.01)	1.00*** (0.02)	1.17*** (0.02)	1.01*** (0.02)	0.68*** (0.03)	0.36*** (0.02)
FG	0.00 (0.03)	0.17*** (0.01)	0.41*** (0.01)	0.75*** (0.01)	1.00*** (0.02)	0.94*** (0.03)	0.46*** (0.02)
QE	0.00 (0.03)	0.03 (0.02)	-0.02** (0.01)	0.00 (0.02)	0.20*** (0.02)	0.85*** (0.04)	1.00*** (0.03)
IJC	0.04 (0.05)	-0.04 (0.03)	0.02 (0.03)	0.00 (0.03)	-0.01 (0.03)	0.02 (0.04)	-0.01 (0.03)
Observations	180	180	180	180	180	180	180
R-squared	0.55	0.96	0.98	0.99	0.99	0.98	0.97

*Note: The table reports the reaction of OIS and German sovereign yields at different maturities to surprises in monetary policy using intraday data. Coefficients are expressed in percentage per annum per standard deviation change in the factors. Robust standard errors in parentheses; ***, **, and * denote statistical significance at the 1%, 5% and 10% levels, respectively.*

Table 5: Estimated effects of monetary policy surprises on OIS, 01/2002-12/2007.

Panel (A): Press release window							
VARIABLES	(1) OIS 1M	(2) OIS 3M	(3) OIS 6M	(4) OIS 1Y	(5) OIS 2Y	(6) OIS 5Y	(7) OIS 10Y
Target	1.03*** (0.02)	0.62*** (0.03)	0.42*** (0.03)	0.22*** (0.06)	0.01 (0.09)	-0.04 (0.11)	-0.07 (0.10)
Observations	72	72	72	72	72	72	72
R-squared	0.98	0.85	0.69	0.22	0.00	0.01	0.03
Panel (B): Conference window							
VARIABLES	(1) OIS 1M	(2) OIS 3M	(3) OIS 6M	(4) OIS 1Y	(5) OIS 2Y	(6) OIS 5Y	(7) OIS 10Y
Timing	0.23*** (0.07)	0.87*** (0.05)	0.98*** (0.04)	1.18*** (0.04)	1.07*** (0.04)	0.57*** (0.14)	0.44*** (0.07)
FG	0.02 (0.03)	0.15*** (0.03)	0.42*** (0.01)	0.78*** (0.02)	0.99*** (0.05)	1.14*** (0.13)	0.63*** (0.06)
IJC	-0.03 (0.06)	-0.05 (0.04)	0.10** (0.05)	0.00 (0.03)	-0.11*** (0.04)	-0.02 (0.12)	-0.17* (0.09)
Observations	67	67	67	67	67	67	67
R-squared	0.34	0.92	0.97	0.99	0.98	0.88	0.78

*Note: The table reports the reaction of OIS and German sovereign yields at different maturities to surprises in monetary policy using intraday data. Coefficients are expressed in percentage per annum per standard deviation change in the factors. Robust standard errors in parentheses; ***, **, and * denote statistical significance at the 1%, 5% and 10% levels, respectively.*

Table 6: Estimated effects of monetary policy surprises on OIS, 01/2008-12/2013.

Panel (A): Press release window							
VARIABLES	(1) OIS 1M	(2) OIS 3M	(3) OIS 6M	(4) OIS 1Y	(5) OIS 2Y	(6) OIS 5Y	(7) OIS 10Y
Target	1.00*** (0.03)	0.77*** (0.03)	0.67*** (0.02)	0.58*** (0.04)	0.47*** (0.06)	0.31*** (0.09)	0.10 (0.08)
Observations	71	71	71	71	71	71	71
R-squared	0.98	0.97	0.95	0.79	0.53	0.20	0.04
Panel (B): Conference window							
VARIABLES	(1) OIS 1M	(2) OIS 3M	(3) OIS 6M	(4) OIS 1Y	(5) OIS 2Y	(6) OIS 5Y	(7) OIS 10Y
Timing	0.34*** (0.08)	0.81*** (0.02)	1.02*** (0.02)	1.18*** (0.03)	0.98*** (0.03)	0.62*** (0.04)	0.27*** (0.06)
FG	0.02 (0.03)	0.18*** (0.01)	0.39*** (0.01)	0.73*** (0.01)	1.01*** (0.01)	0.87*** (0.04)	0.38*** (0.06)
IJC	0.21** (0.09)	-0.05 (0.05)	-0.07** (0.04)	-0.00 (0.05)	0.01 (0.05)	-0.27 (0.27)	-0.28 (0.27)
Observations	71	71	71	71	71	71	71
R-squared	0.64	0.98	0.99	0.99	0.99	0.86	0.51

*Note: The table reports the reaction of OIS and German sovereign yields at different maturities to surprises in monetary policy using intraday data. Coefficients are expressed in percentage per annum per standard deviation change in the factors. Robust standard errors in parentheses; ***, **, and * denote statistical significance at the 1%, 5% and 10% levels, respectively.*

Table 7: Estimated effects of monetary policy surprises on OIS, 01/2014-09/2018.

Panel (A): Press release window							
VARIABLES	(1) OIS 1M	(2) OIS 3M	(3) OIS 6M	(4) OIS 1Y	(5) OIS 2Y	(6) OIS 5Y	(7) OIS 10Y
Target	0.88*** (0.08)	1.05*** (0.12)	1.11*** (0.18)	1.04*** (0.14)	1.09*** (0.17)	0.92*** (0.18)	0.45* (0.25)
Observations	42	42	42	42	42	42	42
R-squared	0.91	0.85	0.80	0.79	0.65	0.43	0.11
Panel (B): Conference window							
VARIABLES	(1) OIS 1M	(2) OIS 3M	(3) OIS 6M	(4) OIS 1Y	(5) OIS 2Y	(6) OIS 5Y	(7) OIS 10Y
Timing	0.58*** (0.13)	0.91*** (0.07)	0.92*** (0.04)	1.03*** (0.05)	1.06*** (0.04)	0.83*** (0.10)	0.21*** (0.08)
FG	-0.05 (0.08)	0.14** (0.05)	0.48*** (0.02)	0.74*** (0.03)	1.00*** (0.02)	0.91*** (0.05)	0.49*** (0.04)
QE	-0.06* (0.03)	-0.04 (0.03)	-0.00 (0.02)	0.09*** (0.03)	0.21*** (0.02)	0.73*** (0.06)	1.10*** (0.05)
IJC	-0.04 (0.10)	-0.02 (0.11)	0.04 (0.07)	0.03 (0.04)	-0.06* (0.03)	0.04 (0.06)	-0.02 (0.05)
Observations	42	42	42	42	42	42	42
R-squared	0.71	0.87	0.95	0.96	0.99	0.97	0.99

*Note: The table reports the reaction of OIS rates at different maturities to surprises in monetary policy using intraday data. Coefficients are expressed in percentage per annum per standard deviation change in the factors. Robust standard errors in parentheses; ***, **, and * denote statistical significance at the 1%, 5% and 10% levels, respectively.*

Table 8: Estimated effects of monetary policy surprises on Italian sovereign yields

Panel (A): Press release window

	(1)	(2)	(3)	(4)	(5)	(6)	(7)	(8)	(9)
	Jan-02/Dec-07			Jan-08/Dec-13			Jan-14/Sep-18		
VARIABLES	IT 2Y	IT 5Y	IT 10Y	IT 2Y	IT 5Y	IT 10Y	IT 2Y	IT 5Y	IT 10Y
Target	0.10 (0.11)	-0.03 (0.12)	-0.06 (0.09)	0.45** (0.20)	0.39** (0.19)	0.16 (0.12)	0.99*** (0.34)	0.85** (0.42)	0.80 (0.62)
Observations	72	72	72	71	71	71	42	42	42
R-squared	0.04	0.00	0.03	0.22	0.16	0.05	0.12	0.10	0.08

Panel (B): Conference window

	(1)	(2)	(3)	(4)	(5)	(6)	(7)	(8)	(9)
	Jan-02/Dec-07			Jan-08/Dec-13			Jan-14/Sep-18		
VARIABLES	IT 2Y	IT 5Y	IT 10Y	IT 2Y	IT 5Y	IT 10Y	IT 2Y	IT 5Y	IT 10Y
Timing	1.05*** (0.06)	0.77*** (0.07)	0.42*** (0.06)	0.62*** (0.18)	0.25 (0.19)	0.14 (0.11)	0.89*** (0.32)	1.19** (0.48)	0.77* (0.46)
FG	1.01*** (0.06)	0.92*** (0.07)	0.61*** (0.06)	0.97*** (0.10)	0.76*** (0.10)	0.29*** (0.08)	0.76*** (0.16)	1.08*** (0.27)	1.12*** (0.31)
QE							0.57*** (0.11)	0.96*** (0.24)	1.76*** (0.17)
IJC	-0.09 (0.06)	-0.15 (0.09)	-0.20** (0.09)	0.05 (0.49)	-0.57 (0.59)	-0.57 (0.41)	-0.08 (0.27)	0.17 (0.42)	0.06 (0.41)
Observations	67	67	67	71	71	71	42	42	42
R-squared	0.96	0.91	0.78	0.43	0.26	0.08	0.71	0.69	0.80

*Note: The table reports the reaction of Italian sovereign yields at different maturities to surprises in monetary policy using intraday data. Coefficients are expressed in percentage per annum per standard deviation change in the factors. Robust standard errors in parentheses; ***, **, and * denote statistical significance at the 1%, 5% and 10% levels, respectively.*

Table 9: Estimated effects of monetary policy surprises on Spanish sovereign yields

Panel (A): Press release window

	(1)	(2)	(3)	(4)	(5)	(6)	(7)	(8)	(9)
	Jan-02/Dec-07			Jan-08/Dec-13			Jan-14/Sep-18		
VARIABLES	ES 2Y	ES 5Y	ES 10Y	ES 2Y	ES 5Y	ES 10Y	ES 2Y	ES 5Y	ES 10Y
Target	0.06 (0.10)	-0.04 (0.12)	-0.07 (0.09)	0.39** (0.18)	0.26* (0.14)	0.25 (0.15)	1.00*** (0.33)	0.87** (0.41)	0.81 (0.67)
Observations	72	72	72	71	71	71	42	42	42
R-squared	0.02	0.01	0.03	0.16	0.11	0.12	0.43	0.22	0.10

Panel (B): Conference window

	(1)	(2)	(3)	(4)	(5)	(6)	(7)	(8)	(9)
	Jan-02/Dec-07			Jan-08/Dec-13			Jan-14/Sep-18		
VARIABLES	ES 2Y	ES 5Y	ES 10Y	ES 2Y	ES 5Y	ES 10Y	ES 2Y	ES 5Y	ES 10Y
Timing	0.61*** (0.12)	0.41*** (0.14)	0.21* (0.11)	0.53*** (0.12)	0.31** (0.13)	0.11 (0.10)	0.93*** (0.30)	1.18** (0.44)	0.68 (0.41)
FG	0.86*** (0.09)	0.69*** (0.08)	0.34*** (0.08)	0.90*** (0.09)	0.71*** (0.08)	0.32*** (0.08)	0.72*** (0.15)	0.99*** (0.26)	0.95*** (0.26)
QE							0.54*** (0.10)	0.68*** (0.13)	1.45*** (0.17)
IJC	-0.02 (0.33)	-0.52 (0.38)	-0.69* (0.36)	0.07 (0.41)	-0.50 (0.46)	-0.70* (0.40)	0.19 (0.23)	0.02 (0.40)	0.03 (0.37)
Observations	113	113	113	71	71	71	42	42	42
R-squared	0.52	0.33	0.11	0.54	0.35	0.12	0.74	0.67	0.80

*Note: The table reports the reaction of Spanish sovereign yields at different maturities to surprises in monetary policy using intraday data. Coefficients are expressed in percentage per annum per standard deviation change in the factors. Robust standard errors in parentheses; ***, **, and * denote statistical significance at the 1%, 5% and 10% levels, respectively.*

Table 10: Estimated effects of monetary policy surprises on the exchange rate

Panel (A): Press release window				
VARIABLES	(1) EUR	(2) EUR	(3) EUR	(4) EUR
Target	0.03* (0.01)	-0.01 (0.01)	0.02* (0.01)	0.23** (0.09)
Observations	185	72	71	42
R-squared	0.01	0.01	0.10	0.08

Panel (B): Conference window				
VARIABLES	(1) EUR	(2) EUR	(3) EUR	(4) EUR
Timing	0.06*** (0.01)	0.07*** (0.02)	0.05*** (0.01)	0.23** (0.09)
FG	0.05*** (0.01)	0.02 (0.01)	0.05*** (0.01)	0.24*** (0.07)
QE	0.07*** (0.02)			0.08** (0.04)
IJC	0.05 (0.03)	0.08** (0.03)	0.00 (0.05)	-0.08 (0.16)
Observations	180	67	71	42
R-squared	0.19	0.25	0.41	0.26

*Note: The table reports the reaction of the euro-dollar exchange rate over different samples to surprises in monetary policy using intraday data. Coefficients are expressed in percentage points per standard deviation change in the factors. Robust standard errors in parentheses; ***, **, and * denote statistical significance at the 1%, 5% and 10% levels, respectively*

Table 11: Estimated effects of monetary policy surprises on stock prices

Panel (A): Press release window

VARIABLES	(1) STOXX50E	(2) STOXX50E	(3) STOXX50E	(4) STOXX50E	(5) SX7E	(6) SX7E	(7) SX7E	(8) SX7E
Target	-0.04*** (0.02)	-0.08*** (0.02)	-0.03 (0.02)	-0.07 (0.14)	-0.03 (0.02)	-0.07*** (0.01)	-0.03 (0.02)	0.14 (0.24)
Observations	185	72	71	42	185	72	71	42
R-squared	0.08	0.36	0.06	0.03	0.01	0.46	0.03	0.03

Panel (B): Conference window

VARIABLES	(1) STOXX50E	(2) STOXX50E	(3) STOXX50E	(4) STOXX50E	(5) SX7E	(6) SX7E	(7) SX7E	(8) SX7E
Timing	-0.00 (0.02)	-0.01 (0.03)	0.02 (0.02)	-0.24* (0.12)	0.00 (0.03)	-0.00 (0.03)	0.02 (0.03)	-0.30** (0.11)
FG	-0.02 (0.02)	0.01 (0.02)	-0.03 (0.02)	-0.23** (0.09)	-0.04* (0.02)	-0.00 (0.02)	-0.05 (0.03)	-0.25*** (0.08)
QE	-0.01 (0.04)			-0.07 (0.04)	0.07 (0.08)			0.02 (0.07)
IJC	-0.07* (0.04)	-0.11** (0.05)	-0.04 (0.06)	-0.05 (0.10)	-0.06 (0.06)	-0.12*** (0.04)	-0.06 (0.10)	-0.03 (0.14)
Observations	180	67	71	42	180	67	71	42
R-squared	0.03	0.12	0.05	0.35	0.04	0.10	0.03	0.17

*Note: The table reports the reaction of the general euro area stock market index over different samples (columns 1 to 4), and the reaction of the euro area bank stock market sub-index over the same samples (columns 5 to 8) to surprises in monetary policy using intraday data. Coefficients are expressed in percentage points per standard deviation change in the factors. Robust standard errors in parentheses; ***, **, and * denote statistical significance at the 1%, 5% and 10% levels, respectively.*

Table 12: Estimated nonlinear effects of monetary policy surprises on OIS yields.

Panel (A): Press release window							
VARIABLES	(1) OIS 1M	(2) OIS 3M	(3) OIS 6M	(4) OIS 1Y	(5) OIS 2Y	(6) OIS 5Y	(7) OIS 10Y
Target	1.01*** (0.02)	0.71*** (0.04)	0.64*** (0.08)	0.47*** (0.10)	0.35*** (0.13)	0.20 (0.14)	0.04 (0.11)
Targetx(Target<0)	-0.01 (0.05)	0.07 (0.06)	0.02 (0.09)	0.12 (0.11)	0.12 (0.16)	0.13 (0.16)	0.10 (0.13)
Target<0	0.02 (0.05)	0.07 (0.08)	0.17* (0.10)	0.32** (0.15)	0.40** (0.20)	0.33 (0.26)	0.20 (0.20)
Observations	185	185	185	185	185	185	185
R-squared	0.98	0.92	0.83	0.62	0.35	0.14	0.03
Panel (B): Conference window							
VARIABLES	(1) OIS 1M	(2) OIS 3M	(3) OIS 6M	(4) OIS 1Y	(5) OIS 2Y	(6) OIS 5Y	(7) OIS 10Y
Timing	0.25*** (0.09)	0.87*** (0.03)	1.01*** (0.03)	1.17*** (0.04)	1.01*** (0.04)	0.66*** (0.05)	0.37*** (0.04)
FG	-0.07 (0.05)	0.19*** (0.03)	0.45*** (0.02)	0.76*** (0.03)	0.95*** (0.05)	0.99*** (0.10)	0.43*** (0.08)
QE	0.05 (0.04)	0.00 (0.03)	-0.01 (0.02)	0.01 (0.03)	0.18*** (0.04)	0.88*** (0.08)	0.98*** (0.06)
Timingx(Timing<0)	0.18 (0.14)	-0.03 (0.04)	-0.02 (0.04)	-0.04 (0.04)	-0.01 (0.04)	0.08 (0.05)	-0.07 (0.04)
FGx(FG<0)	0.13** (0.06)	-0.00 (0.03)	-0.06*** (0.02)	-0.03 (0.03)	0.08 (0.05)	-0.04 (0.10)	0.01 (0.08)
QEx(QE<0)	-0.08 (0.06)	0.01 (0.06)	-0.02 (0.03)	0.05 (0.04)	0.01 (0.05)	-0.07 (0.10)	0.05 (0.08)
Timing<0	0.08 (0.15)	0.12 (0.07)	0.00 (0.06)	-0.14** (0.06)	-0.06 (0.06)	0.25*** (0.08)	-0.21*** (0.07)
FG<0	0.02 (0.13)	0.21** (0.08)	0.00 (0.06)	-0.20*** (0.07)	-0.07 (0.10)	0.33* (0.17)	-0.27** (0.13)
QE<0	-0.05 (0.13)	-0.12 (0.10)	0.03 (0.07)	0.19** (0.07)	-0.12* (0.07)	-0.04 (0.12)	0.06 (0.09)
IJC	0.05 (0.05)	-0.04 (0.03)	0.02 (0.03)	0.00 (0.03)	-0.00 (0.02)	-0.00 (0.03)	0.00 (0.03)
Observations	180	180	180	180	180	180	180
R-squared	0.62	0.96	0.99	0.99	0.99	0.98	0.97

*Note: The table reports the reaction of OIS and German sovereign yields at different maturities to surprises in monetary policy using intraday data. Coefficients are expressed in percentage per annum per standard deviation change in the factors. Robust standard errors in parentheses; ***, **, and * denote statistical significance at the 1%, 5% and 10% levels, respectively.*

Table 13: Estimated nonlinear effects of monetary policy surprises on Italian sovereign yields

Panel (A): Press release window

	(1)	(2)	(3)	(4)	(5)	(6)	(7)	(8)	(9)
	Jan-02/Dec-07			Jan-08/Dec-13			Jan-14/Sep-18		
VARIABLES	IT 2Y	IT 5Y	IT 10Y	IT 2Y	IT 5Y	IT 10Y	IT 2Y	IT 5Y	IT 10Y
Target	0.11 (0.15)	-0.07 (0.12)	-0.08* (0.04)	0.18 (0.30)	0.17 (0.33)	0.07 (0.21)	1.31** (0.53)	1.18** (0.55)	0.93 (0.78)
Targetx(Target<0)	0.03 (0.29)	0.11 (0.39)	0.14 (0.32)	0.52 (0.32)	0.48 (0.33)	0.23 (0.23)	1.86*** (0.62)	1.70*** (0.61)	2.29** (0.84)
Target<0	0.12 (0.31)	0.01 (0.31)	0.20 (0.25)	0.84 (0.67)	1.17* (0.69)	0.83 (0.57)	2.74 (1.65)	2.64* (1.41)	2.40** (1.14)
Observations	72	72	72	71	71	71	42	42	42
R-squared	0.04	0.01	0.05	0.31	0.25	0.11	0.27	0.26	0.24

Panel (B): Conference window

	(1)	(2)	(3)	(4)	(5)	(6)	(7)	(8)	(9)
	Jan-02/Dec-07			Jan-08/Dec-13			Jan-14/Sep-18		
VARIABLES	IT 2Y	IT 5Y	IT 10Y	IT 2Y	IT 5Y	IT 10Y	IT 2Y	IT 5Y	IT 10Y
Timing	1.13*** (0.09)	0.71*** (0.19)	0.23 (0.26)	0.76** (0.34)	0.69* (0.36)	0.36 (0.22)	0.45 (0.34)	0.54 (0.35)	0.14 (0.36)
FG	0.93*** (0.15)	0.81*** (0.14)	0.51*** (0.12)	0.75** (0.33)	0.34 (0.36)	-0.03 (0.36)	0.71** (0.29)	0.83* (0.43)	1.10** (0.53)
QE							0.63*** (0.15)	1.26*** (0.22)	1.95*** (0.33)
Timingx(Timing<0)	-0.09 (0.12)	0.15 (0.20)	0.24 (0.27)	-0.51 (0.48)	-0.83* (0.45)	-0.46 (0.30)	0.99* (0.50)	1.27** (0.57)	1.15* (0.68)
FGx(FG<0)	0.18 (0.17)	0.22 (0.16)	0.13 (0.15)	0.20 (0.37)	0.42 (0.40)	0.26 (0.40)	-0.23 (0.37)	-0.24 (0.44)	-0.82 (0.60)
QEx(QE<0)							-0.38** (0.19)	-1.03*** (0.29)	-0.21 (0.39)
Timing<0	0.10 (0.19)	0.15 (0.29)	-0.11 (0.38)	-1.54 (1.97)	-0.43 (2.08)	-0.51 (1.95)	0.25 (0.60)	0.01 (1.00)	-1.09 (1.18)
FG<0	0.08 (0.28)	-0.09 (0.32)	-0.34 (0.35)	-1.62 (2.18)	-2.25 (2.42)	-2.46 (2.34)	-0.80 (0.64)	-1.70* (0.89)	-2.36** (1.07)
QE<0							-0.95 (0.70)	-1.43 (0.92)	0.65 (1.11)
IJC	-0.07 (0.05)	-0.11* (0.07)	-0.15* (0.08)	0.10 (0.53)	-0.44 (0.58)	-0.44 (0.41)	0.04 (0.26)	0.29 (0.42)	0.17 (0.47)
Observations	67	67	67	71	71	71	42	42	42
R-squared	0.97	0.92	0.79	0.45	0.28	0.11	0.79	0.80	0.84

*Note: The table reports the reaction of Italian sovereign yields at different maturities and for different subsamples to surprises in monetary policy using intraday data. Coefficients are expressed in percentage per annum per standard deviation change in the factors. Robust standard errors in parentheses; ***, **, and * denote statistical significance at the 1%, 5% and 10% levels, respectively.*

Table 14: Estimated nonlinear effects of monetary policy surprises on Spanish sovereign yields

Panel (A): Press release window

	(1)	(2)	(3)	(4)	(5)	(6)	(7)	(8)	(9)
	Jan-02/Dec-07			Jan-08/Dec-13			Jan-14/Sep-18		
VARIABLES	ES 2Y	ES 5Y	ES 10Y	ES 2Y	ES 5Y	ES 10Y	ES 2Y	ES 5Y	ES 10Y
Target	0.05 (0.14)	-0.08 (0.13)	-0.08 (0.06)	0.15 (0.32)	0.16 (0.22)	0.12 (0.26)	0.89*** (0.24)	0.90** (0.44)	0.78 (0.82)
Targetx(Target<0)	-0.00 (0.29)	0.11 (0.41)	0.10 (0.34)	0.46 (0.34)	0.26 (0.28)	0.27 (0.30)	1.98*** (0.49)	2.10*** (0.55)	2.83*** (0.89)
Target<0	-0.09 (0.34)	0.01 (0.32)	0.20 (0.25)	0.76 (0.63)	0.73 (0.60)	0.53 (0.53)	1.22*** (0.38)	1.84** (0.68)	2.22** (0.86)
Observations	72	72	72	71	71	71	42	42	42
R-squared	0.02	0.01	0.05	0.23	0.15	0.16	0.68	0.47	0.30

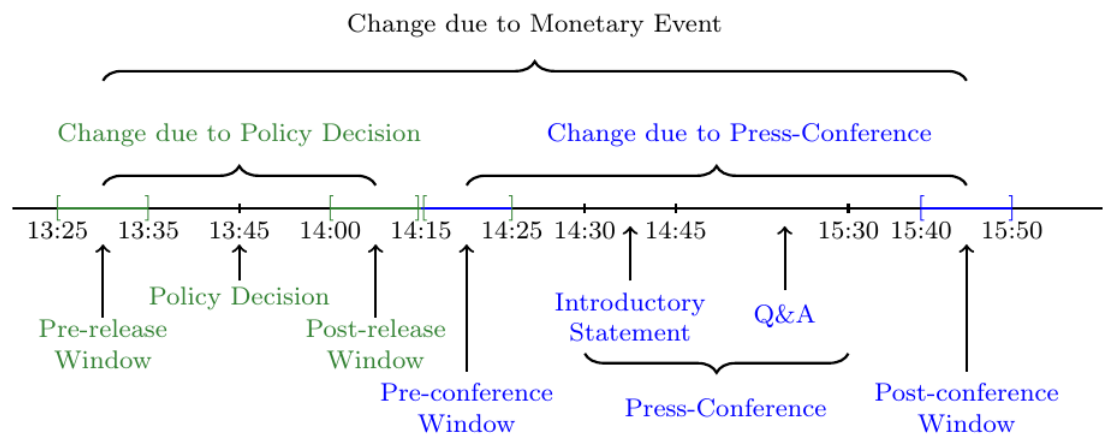
Panel (B): Conference window

	(1)	(2)	(3)	(4)	(5)	(6)	(7)	(8)	(9)
	Jan-02/Dec-07			Jan-08/Dec-13			Jan-14/Sep-18		
VARIABLES	ES 2Y	ES 5Y	ES 10Y	ES 2Y	ES 5Y	ES 10Y	ES 2Y	ES 5Y	ES 10Y
Timing	0.96*** (0.17)	0.71*** (0.22)	0.30* (0.16)	0.93*** (0.19)	0.64** (0.24)	0.26 (0.18)	0.43** (0.21)	0.70** (0.33)	0.04 (0.37)
FG	0.61*** (0.21)	0.44* (0.22)	0.23 (0.22)	0.69*** (0.26)	0.49* (0.29)	0.14 (0.32)	0.89*** (0.25)	0.92* (0.47)	1.07** (0.46)
QE							0.39** (0.18)	0.58* (0.29)	1.47*** (0.36)
Timingx(Timing<0)	-0.47* (0.27)	-0.51 (0.32)	-0.28 (0.26)	-0.45 (0.29)	-0.44 (0.34)	-0.19 (0.28)	1.26*** (0.34)	1.04* (0.56)	1.09* (0.56)
FGx(FG<0)	0.32 (0.23)	0.30 (0.25)	0.01 (0.24)	0.24 (0.29)	0.26 (0.33)	0.09 (0.35)	-0.55* (0.29)	-0.13 (0.49)	-0.49 (0.59)
QEx(QE<0)							-0.01 (0.23)	0.01 (0.37)	-0.05 (0.41)
Timing<0	0.63 (0.87)	0.05 (1.08)	-0.61 (1.18)	1.35 (1.38)	0.68 (1.68)	0.50 (1.76)	0.41 (0.56)	0.12 (1.02)	-1.13 (1.11)
FG<0	-0.44 (0.96)	-0.87 (1.15)	-1.64 (1.28)	-0.43 (1.61)	-0.64 (1.90)	-1.91 (2.05)	-0.66 (0.42)	-1.00 (0.86)	-0.99 (0.94)
QE<0							-1.18** (0.47)	-0.87 (0.92)	0.14 (0.98)
IJC	0.03 (0.32)	-0.46 (0.38)	-0.63* (0.37)	0.13 (0.39)	-0.44 (0.45)	-0.59 (0.41)	0.43** (0.20)	0.19 (0.41)	0.07 (0.42)
Observations	113	113	113	71	71	71	42	42	42
R-squared	0.53	0.34	0.13	0.55	0.36	0.14	0.84	0.73	0.83

*Note: The table reports the reaction of Spanish sovereign yields at different maturities for different subsamples to surprises in monetary policy using intraday data. Coefficients are expressed in percentage per annum per standard deviation change in the factors. Robust standard errors in parentheses; ***, **, and * denote statistical significance at the 1%, 5% and 10% levels, respectively.*

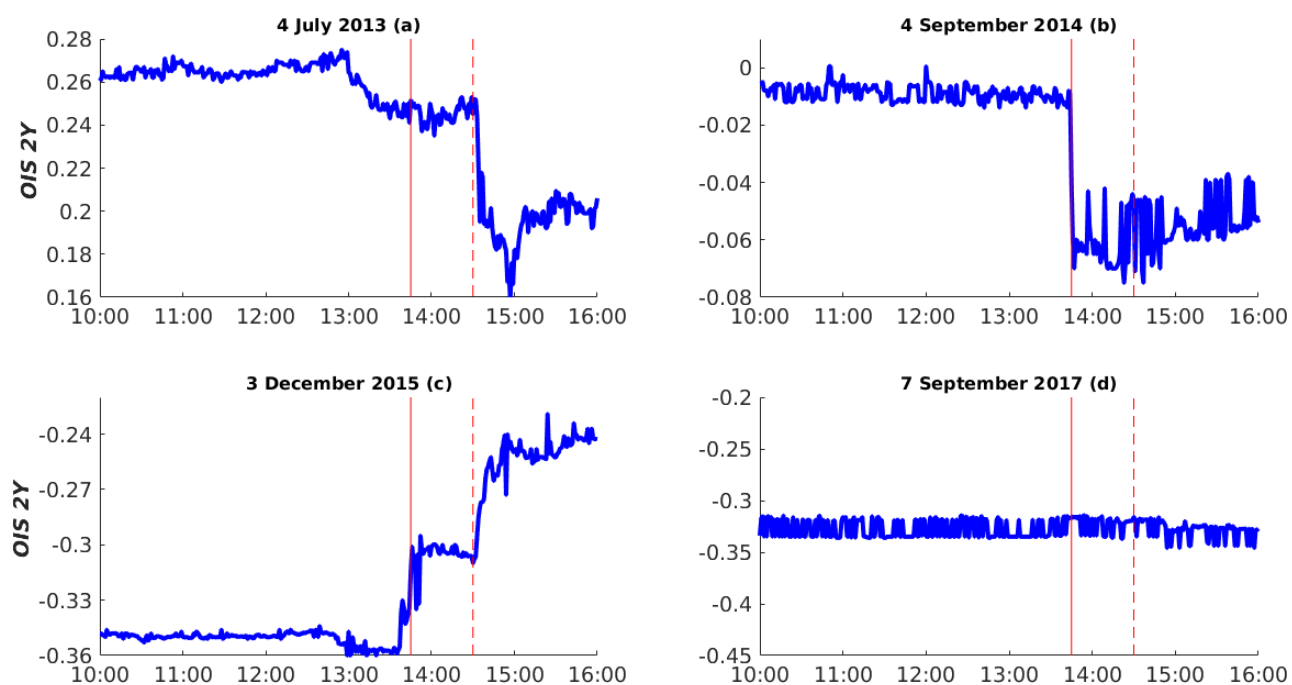
Figures

Figure 1: ECB policy communication timeline



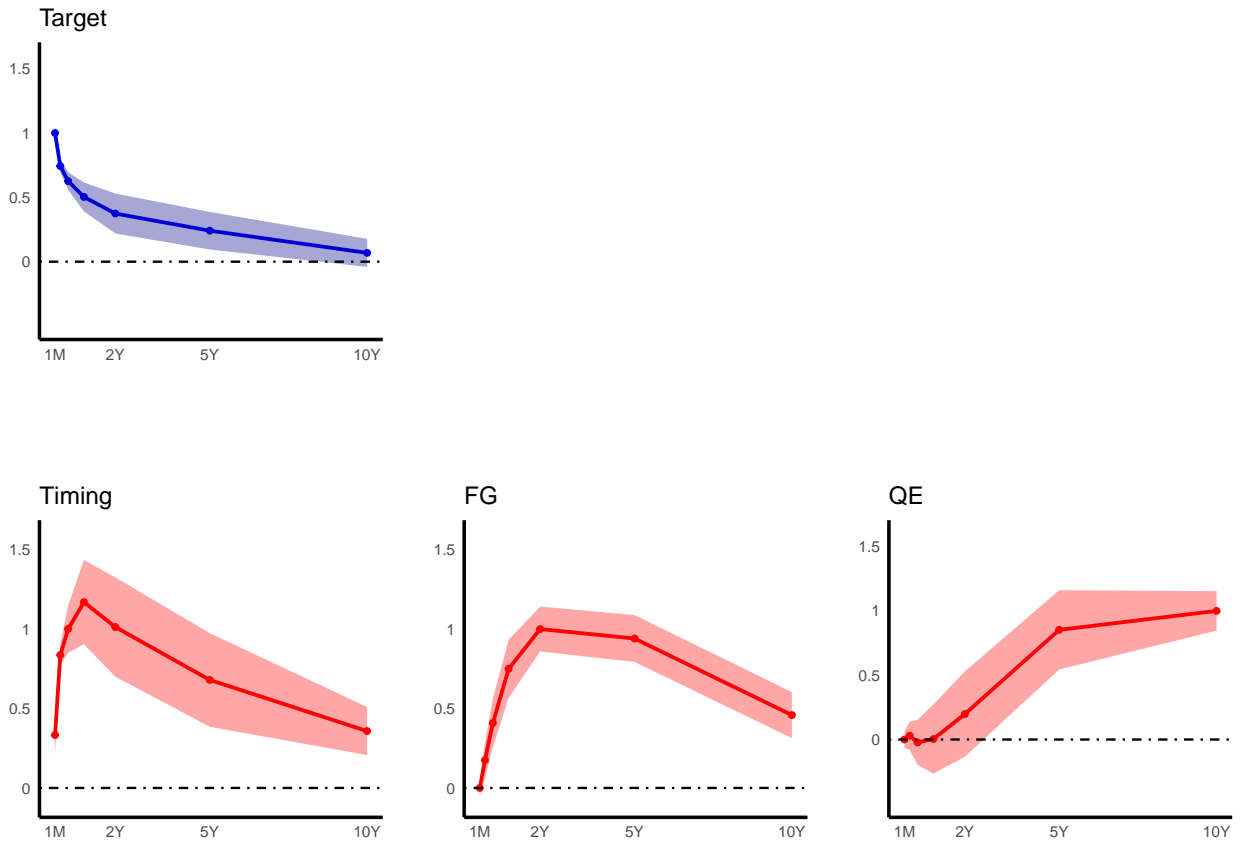
Note: The figure shows the typical policy communication structure during a day of the Governing Council policy meeting of the ECB.

Figure 2: Intraday 2-year OIS rate around the press release and the conference windows



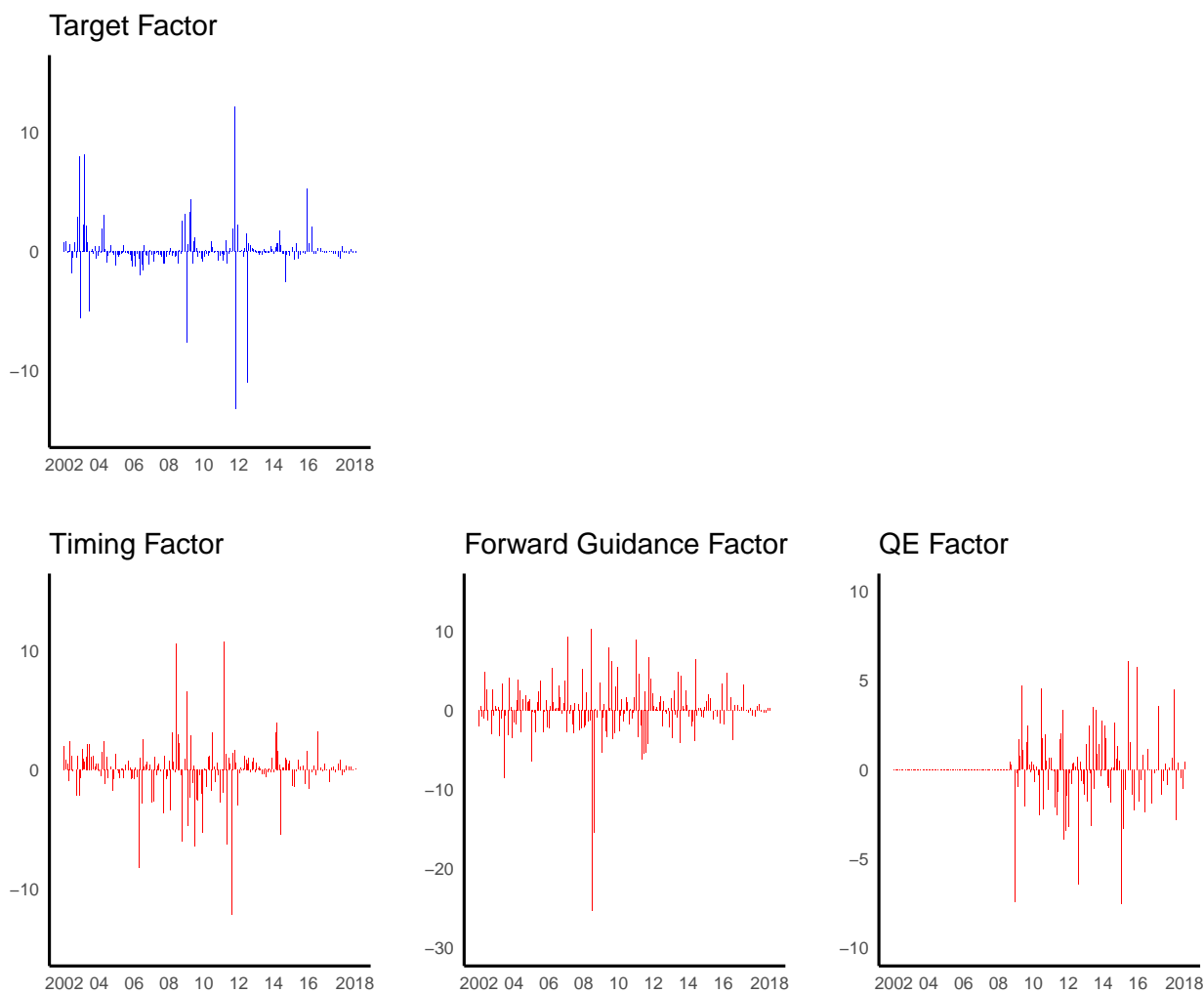
Note: The figure shows the intraday movement (percentage points on the y-axis, trading hours on the x-axis) in the 2-year OIS rate during four selected episodes. The vertical solid line marks the publication of the press release; the vertical dashed line marks the beginning of the press conference.

Figure 3: Factor loadings



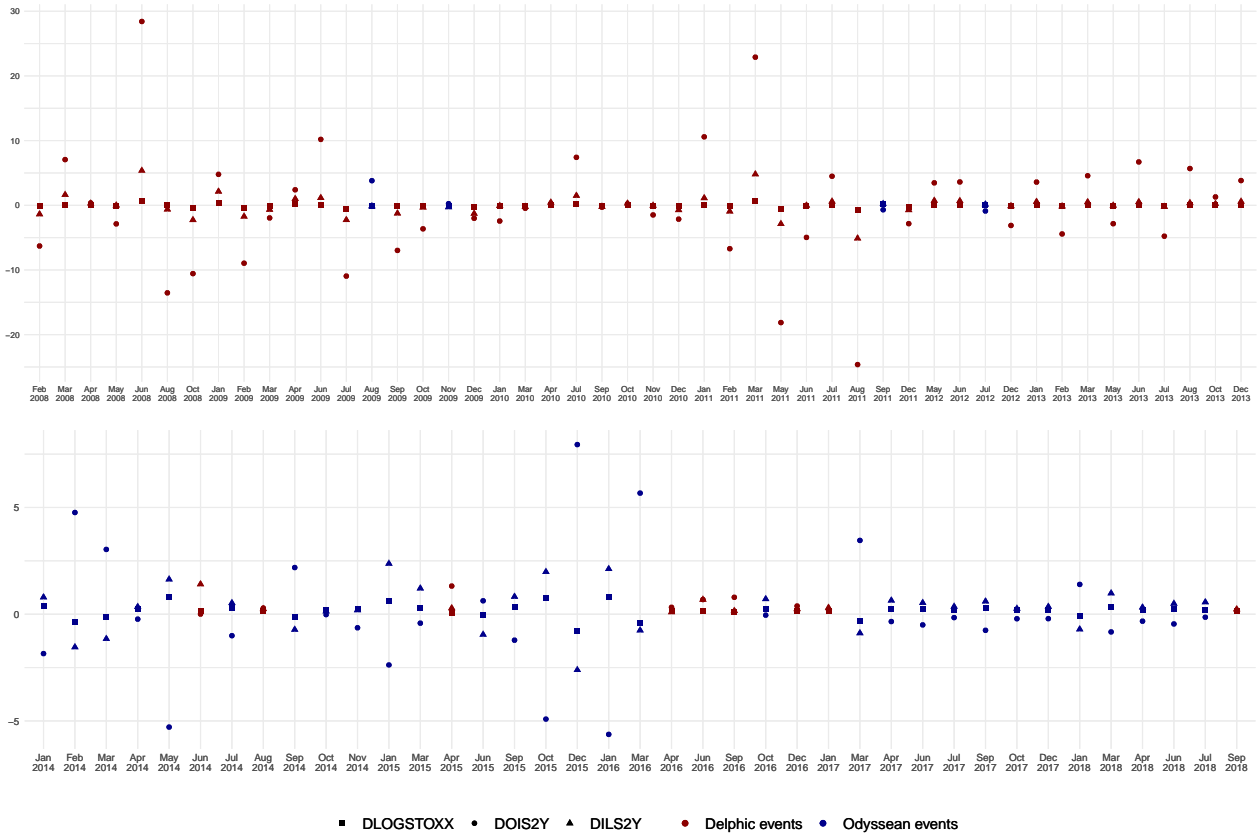
Note: The figure shows the factor loadings for the press release (first row) and the conference windows (second row), in basis points. In each window, for each maturity the loadings are obtained by regressing the surprises onto the factors also controlling for the standardized surprise associated with the release of the US initial jobless claims. The Target and the Timing factors are normalized to have unit effect on the 1-month and 6-month OIS, respectively. The Forward Guidance and QE factors are normalized to have unit effect on the 2-year and on the 10-year yields, respectively. The shaded areas indicate the 90%, 95% and 99% confidence intervals.

Figure 4: Estimated factors in the press release window (upper panel) and the press conference window (lower panels), 2002-2018



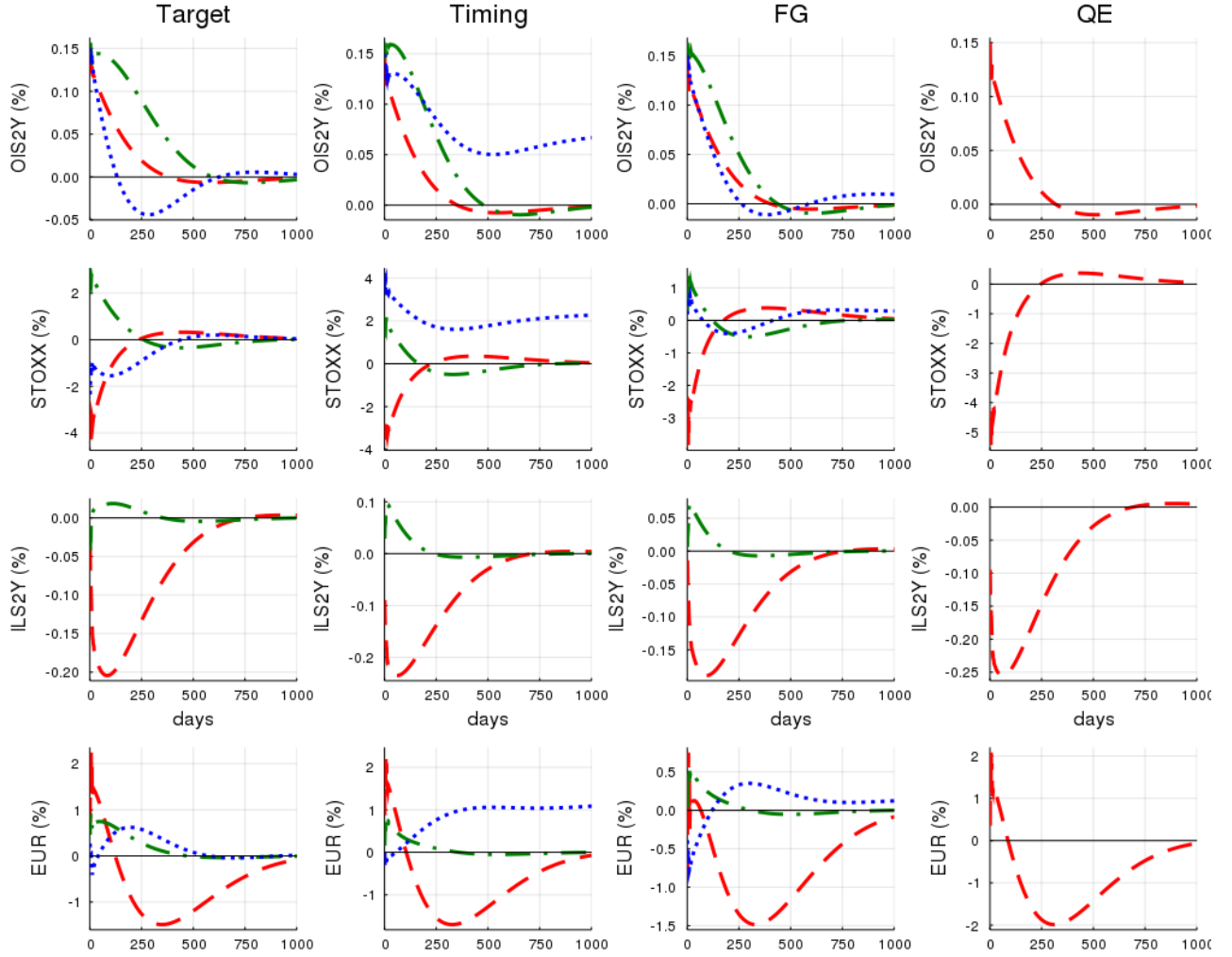
Note: The figure shows the estimated factors over time reported in basis points. As the factors are identified up to scale, we scale them such that target has unit effect on one-month OIS, timing has unit effect on six-month OIS, forward guidance has unit effect on the two-year and QE has unit effect on the ten-year yields.

Figure 5: Stock price, OIS, and inflation-linked swap movements around GC meetings



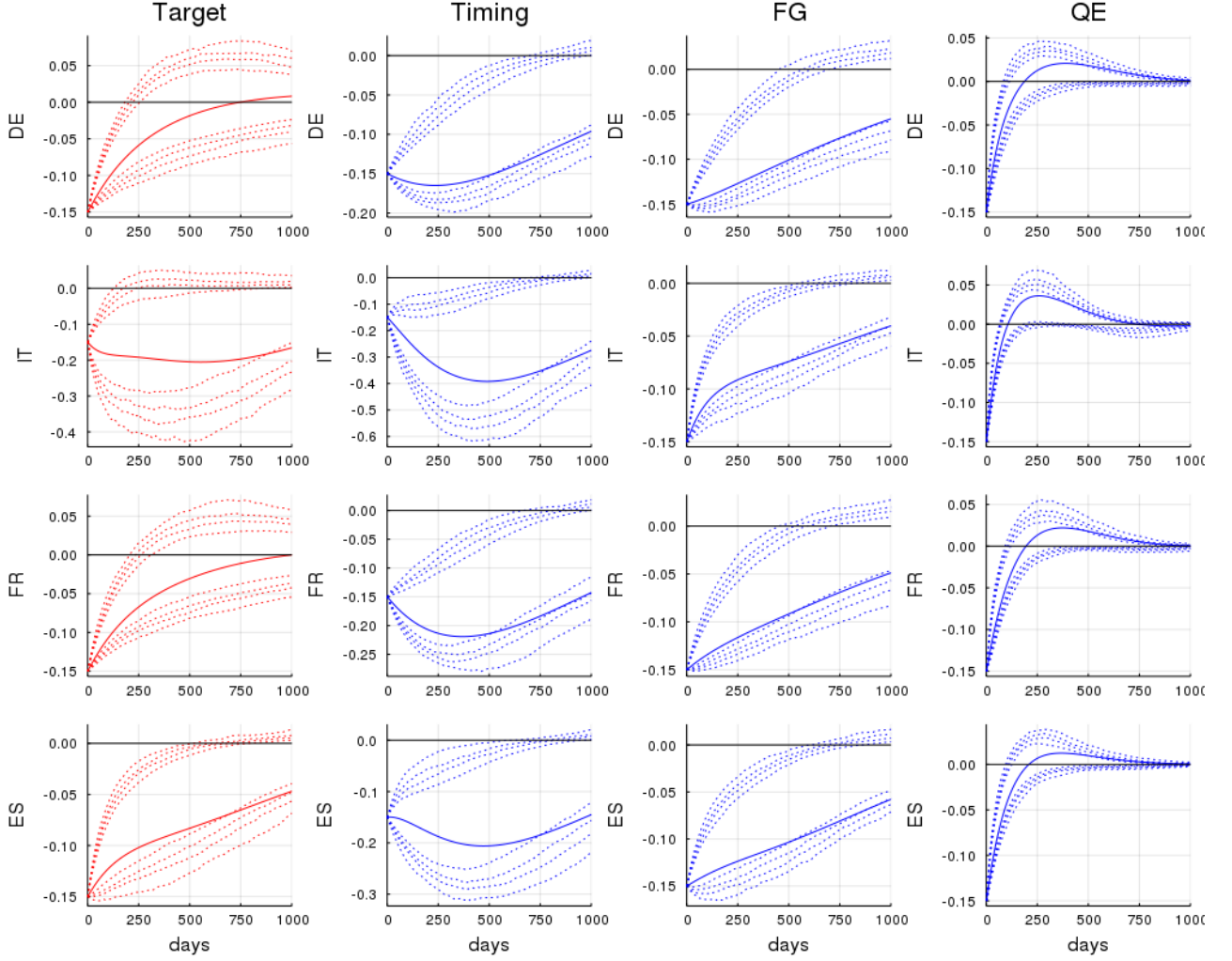
Note: The figure shows the changes in 2-year OIS (circle), log STOX50E (square), and 2-year Inflation-linked swaps (triangle) on ECB Governing Council Policy Meeting Dates. Days in which the three variables comove (red) have predominantly information shocks (Delphic), while days in which bond yields move in the opposite direction of the other two (blue) have predominantly pure monetary policy shocks (Odyssean).

Figure 6: Financial VAR



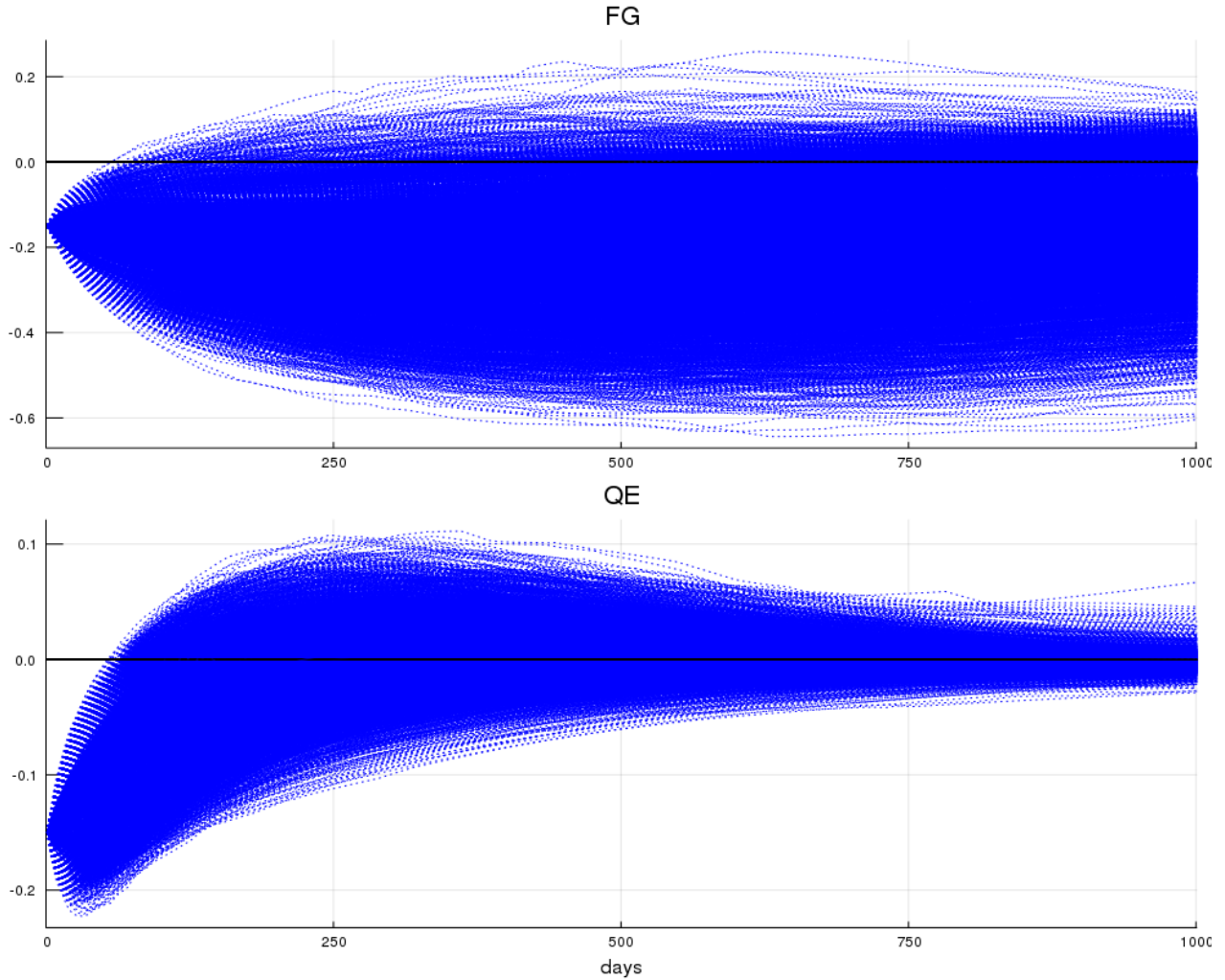
Note: The figures show the IRFs of a financial 4-variable VAR, including 2Y OIS, log STOXX50E, ILS2Y and the log EUR/USD exchange rate. Blue-dotted lines show the IRFs for the pre-crisis period (2005-2008), green-dash-dotted lines for the pre-QE period (2008-2014), and the red-dashed lines, for the QE period (2014-2018). The x-axis units are days.

Figure 7: Persistence, sovereign bonds



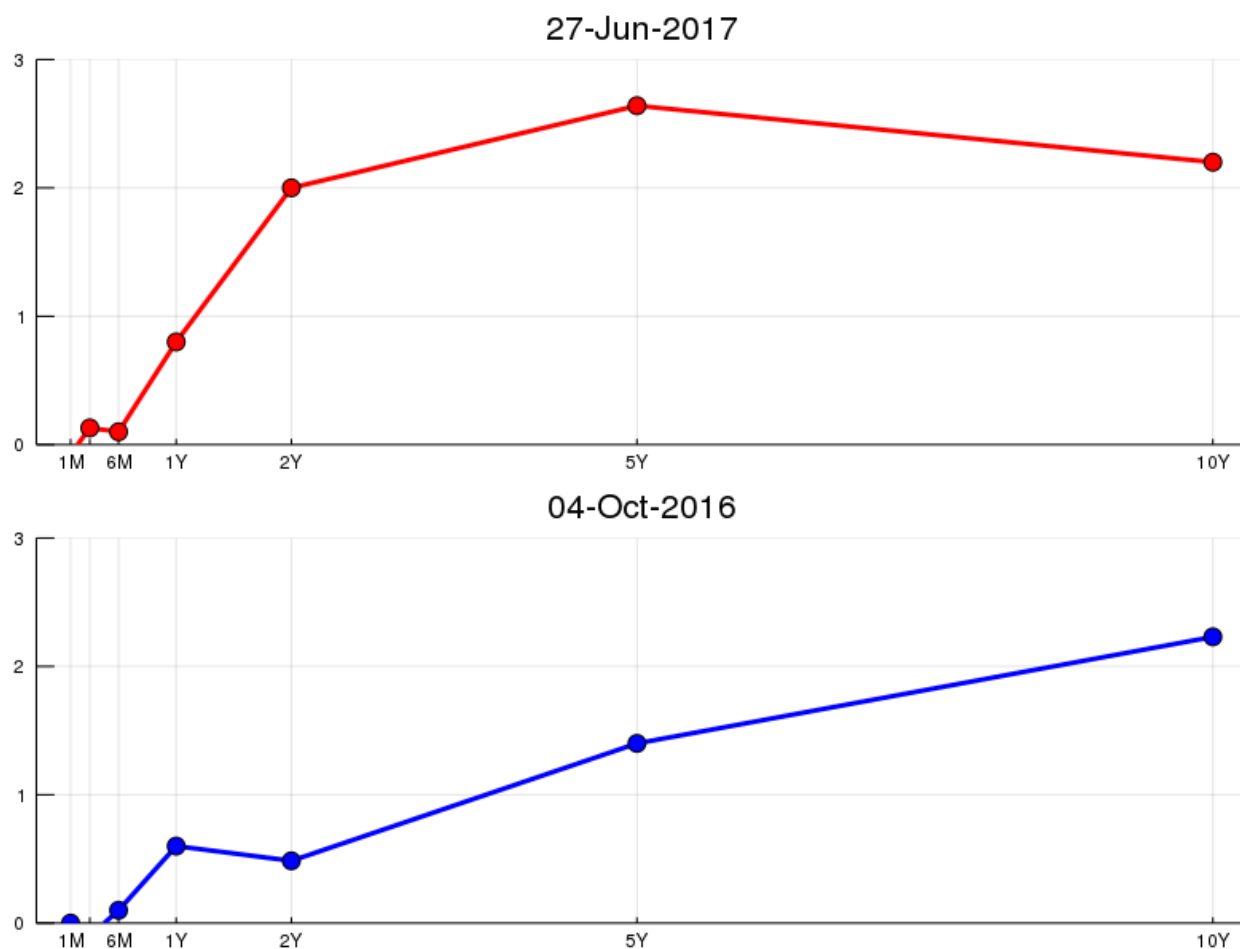
Note: Daily VAR including 10-year yield (German, Italy, France, and Spain added one at the time), log STOXX50E, log EUR/USD exchange rate, 2-year Inflation linked swap. The 10-year yield is instrumented by the Target, Timing, Forward Guidance and QE factors, and the respective responses are reported.

Figure 8: Persistence, robustness



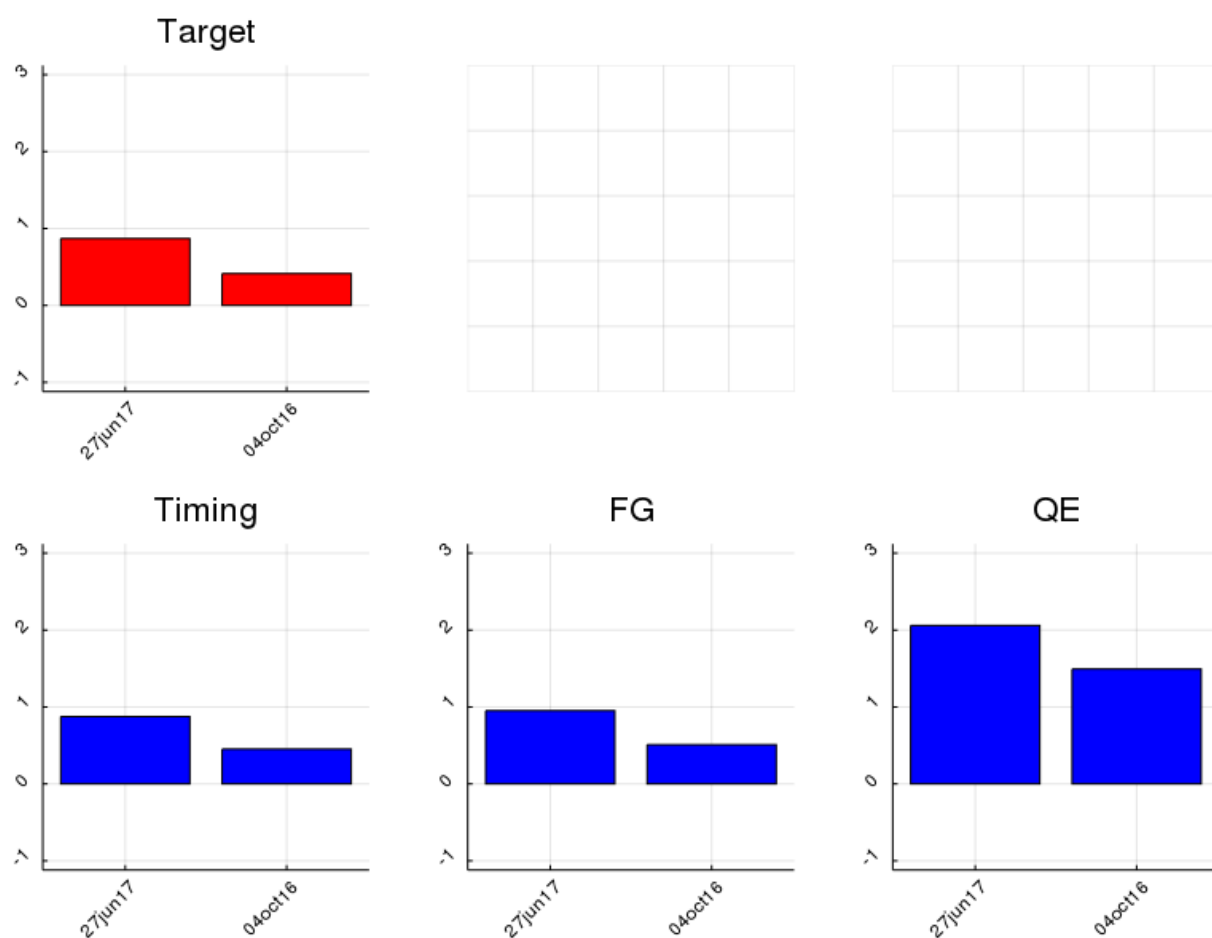
Note: Daily VAR including all the combinations from two to eight variables among 10-year yields, log STOXX50E, log EUR/USD exchange rate, 2-year Inflation linked swap, BBB-AAA corporate bonds spread, 2-year OIS, 5-year EA GDP-weighted yield, and EA implied stock volatility (VSTOXX). The 10-year yield is always included and is instrumented by the Forward Guidance and QE factors. The respective responses are reported. As 10-year yields we include the German, Italian, Spanish and French yields, the OIS yields, the EA GDP-weighted yield, and the EA yields derived by the ECB using the [Svensson \(1994\)](#) methodology, and reflecting AAA-rated euro area central government bonds and all euro area central government bonds (including AAA-rated).

Figure 9: OIS changes, two illustrative events



Note: The figures show the OIS yield curve changes around two monetary policy events. The first is a speech given by Mario Draghi on 27 June 2017 at the ECB Forum on Central Banking in Sintra “Accompanying the economic recovery” (upper panel). The second is publication of a Bloomberg news article by Jana Randow, Alessandro Speciale, and Jeff Black, which was released on October 4, 2016 and hinted at a decision on tapering by the ECB (lower panel).

Figure 10: Estimated factors for the two events.



Note: The figures show the estimated factor decomposition into Target, Timing, FG and QE factors of the two monetary policy events not included in our sample. In each subplot the first bar is for the June 2017 Draghi speech and the second one is for the October 2016 Bloomberg news article.