

Marx, Magali; Mojon, Benoît; Velde, François R.

Working Paper

Why have interest rates fallen far below the return on capital

Working Paper, No. 2018-01

Provided in Cooperation with:

Federal Reserve Bank of Chicago

Suggested Citation: Marx, Magali; Mojon, Benoît; Velde, François R. (2018) : Why have interest rates fallen far below the return on capital, Working Paper, No. 2018-01, Federal Reserve Bank of Chicago, Chicago, IL

This Version is available at:

<https://hdl.handle.net/10419/200571>

Standard-Nutzungsbedingungen:

Die Dokumente auf EconStor dürfen zu eigenen wissenschaftlichen Zwecken und zum Privatgebrauch gespeichert und kopiert werden.

Sie dürfen die Dokumente nicht für öffentliche oder kommerzielle Zwecke vervielfältigen, öffentlich ausstellen, öffentlich zugänglich machen, vertreiben oder anderweitig nutzen.

Sofern die Verfasser die Dokumente unter Open-Content-Lizenzen (insbesondere CC-Lizenzen) zur Verfügung gestellt haben sollten, gelten abweichend von diesen Nutzungsbedingungen die in der dort genannten Lizenz gewährten Nutzungsrechte.

Terms of use:

Documents in EconStor may be saved and copied for your personal and scholarly purposes.

You are not to copy documents for public or commercial purposes, to exhibit the documents publicly, to make them publicly available on the internet, or to distribute or otherwise use the documents in public.

If the documents have been made available under an Open Content Licence (especially Creative Commons Licences), you may exercise further usage rights as specified in the indicated licence.



Federal Reserve Bank of Chicago

Why Have Interest Rates Fallen Far Below the Return on Capital

*Magali Marx, Benoît Mojon, and
François R. Velde*

January 25, 2018

WP 2018-01

**Working papers are not edited, and all opinions and errors are the responsibility of the author(s). The views expressed do not necessarily reflect the views of the Federal Reserve Bank of Chicago or the Federal Reserve System.*

Why Have Interest Rates Fallen Far Below the Return on Capital

Magali Marx

Banque de France

Benoît Mojon

Banque de France

François R. Velde*

Federal Reserve Bank of Chicago

January 25, 2018

Abstract

Risk-free rates have been falling since the 1980s while the return on capital has not. We analyze these trends in a calibrated OLG model with recursive preferences, designed to encompass many of the “usual suspects” cited in the debate on secular stagnation. Declining labor force and productivity growth imply a limited decline in real interest rates and deleveraging cannot account for the joint decline in the risk free rate and increase in the risk premium. If we allow for a change in the (perceived) risk to productivity growth to fit the data, we find that the decline in the risk-free rate requires an increase in the borrowing capacity of the indebted agents in the model, consistent with the increase in the sum of public and private debt since the crisis, but at odds with a deleveraging-based explanation put forth in Eggertsson and Krugman (2012).

*We thank without implicating Marianne Andries, Adrien Auclert, Jean Barthelemy, Gilbert Cette, Nicolas Coeurdacier, Stephane Dupraz, Gauti Eggertsson, Emmanuel Farhi, François Geerolf, François Gourio, Christoph Grosse-Steffen, Stéphane Guibaud, Eric Mengus, Patrick Pintus, Franck Portier, Athanasios Orphanidès, Marc-Olivier Strauss-Kahn, Amir Sufi, Harald Uhlig and Ivan Werning, conference participants at the SED 2016, and seminar participants at the Federal Reserve Bank of Chicago, the Banque de France. The opinions herein do not necessarily represent those of the Banque de France, the Federal Reserve Bank of Chicago, or the Federal Reserve System.

1 Introduction

The “Global Financial Crisis” began ten years ago¹ and within two years short-term nominal interest rates were driven to near-zero levels in the large advanced economies (U.S., Euro-area, UK, Japan), staying there since. The Fed only recently “lifted off,” the UK hasn’t yet considered when to do so, and policy rates in Japan and the Euro area are still below zero. With low and (relatively) steady inflation, real rates have been negative for a while, and not just short-term rates but also rates at the 5-year and 10-year horizon (Hamilton et al. 2016).

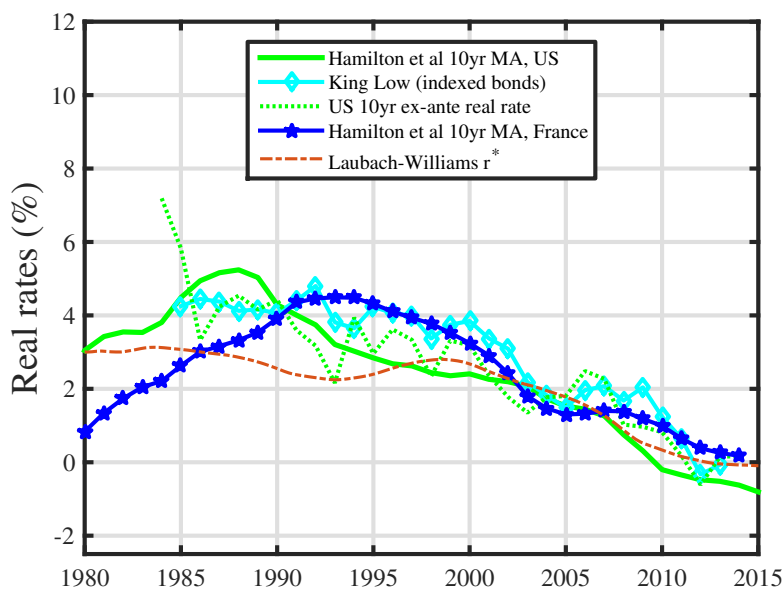


Figure 1: Real return on government bonds.

Much of the macroeconomic research responding to the financial crisis has taken place within the DSGE paradigm. Understanding the reasons for reaching the lower bound (the reason for low interest rate) was less urgent than understanding the proper responses to the situation. Also, the methodology relies on some approximation around a steady state, whether linear or nonlinear (Fernandez-Villaverde et al. 2012; Gust, López-Salido, and Smith 2012). Hence the low (real) interest rates are modeled as the result of an exogenous shock, for example to the discount rate or to a borrowing constraint (Eggertsson and Woodford 2003; Eggertsson and Krugman 2012), inducing deviations from a steady state whose dynamics (modified as needed by policy) are the core prediction of the model.

After a decade of low interest rates, the shock paradigm becomes less attractive because of the strains it places on the assumption of independent Gaussian shocks (Aruoba, Cuba-Borda, and Schorfheide 2013). At the same time observers are focusing increasingly “secular stagnation” hypothesis (Summers 2014): low interest rates may not be temporary

¹The beginning of the crisis is commonly dated to the closure of two Paribas funds in August 2007.

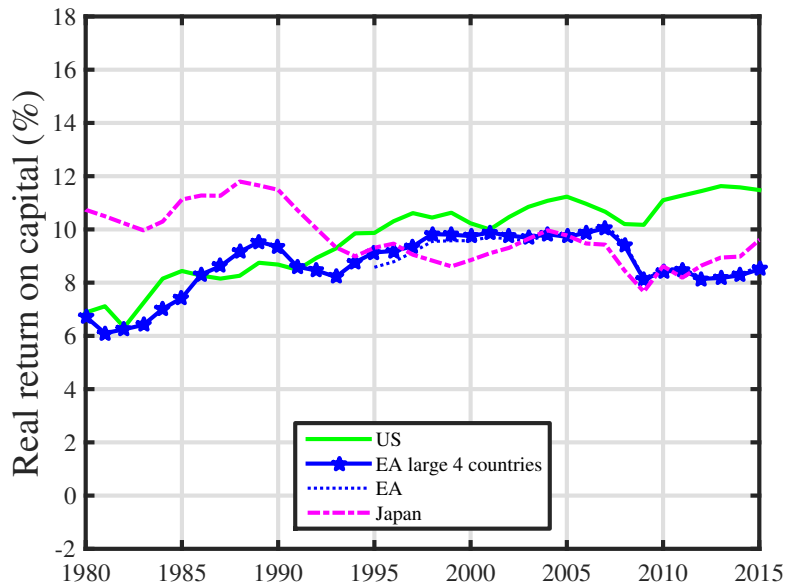


Figure 2: Return on capital.

deviations but a now-permanent state of affairs. Are low rates the “new normal”? If so, why, and what can be done about it?

These are important policy questions (Fischer 2016a, 2016b). Three recent policy-oriented publications (Teulings and Baldwin 2014; Bean et al. 2015; Gourinchas, Portes, Rabanal, et al. 2016) have collected the possible explanations for such a permanent decline in interest rates. These include aging pressure on savings, income inequality, a slower pace of productivity, deleveraging, a collapse in the relative price of investment, a shortage of safe assets and an increase in the perception or risks. But so far there has been little quantitative evaluation of the competing explanations (but see Rachel and Smith 2015) and little of it is model-based. Yet answering the question requires a model. Our question is simple: can we account for current low interest rates in a model that encompasses the most likely factors?

To answer it we develop a framework that combines Coeurdacier, Guibaud, and Jin (2015) and Eggertsson and Mehrotra (2014) to encompass most of the current explanations for low interest rates. Importantly, we extend the model to include risk. There are two reasons for this. One is to make contact with the literature on the shortage of safe assets (Caballero, Farhi, and Gourinchas 2008; Caballero and Farhi 2014) because safe assets only make sense in a context with risk. Second, we want to address an important fact on which we elaborate in the next section, namely the divergence between rates on (government) bonds, which have fallen, and the return on capital, which has not.

Using a single framework that encompasses the broad range of proposed explanations is like placing all the “usual suspects” in the same lineup. It comes at a cost if we want the

model to remain tractable: there are only three generations and only one source of risk.

2 Related literature

Our paper relates to three literatures that investigate secular stagnation, the shortage of safe assets and long-term risk.

Several empirical papers document the role of demographics in explaining low interest rates. Ferrero, Gross, and Neri (2017) who find an effect of 0.5 percent in the last decade from a dynamic VAR on a panel of OECD countries and Buseti and Caivano (2017) who estimate such effects for eight advanced economies at low frequencies since the 1980s. Aksoy et al. (2016), however, in a broader analysis of demographic trends and the macroeconomy, do not find significant effects on interest rates. Del Negro et al. (2017) who decompose changes in the US natural rate with either a DSGE or an identified VAR estimate that the slowdown of productivity can account for as much as 60bp in the decline of the natural rate since the mid 1990s, but attribute more of the decline (around 1 percent) to an increase in the convenience yield of safe assets (Treasury bonds). Favero, Gozluklu, and Yang (2016) explore the role of demographic factors in an affine term structure model of interest rates.

A growing number of papers use OLG structures to assess how the aging of the baby-boomers explains either an increase in desired savings or the decelerating productivity or both. Eggertsson and Mehrotra (2014) provide a qualitative assessment in a closed economy set-up. Our results concur with the results of Gagnon, Johannsen, and López-Salido (2016), who use a rich OLG structure and find that aging can account for only as much as 1.2 percent decline in real interest rates. This accord with Carvalho, Ferrero, and Nechio (2016), who find a 1.5 percent effect since 1990 in a simpler model with workers and retirees. We discuss Coeurdacier, Guibaud, and Jin (2015) below.

In our simulations, the contribution of ageing and the slowdown of productivity are consistent with these findings. They explain that the risk free rate has declined by 1 to 1.5 percent since 1990, i.e., much less than the declined observed in real rates. More importantly, these papers all consider a single asset class as a vehicle for savings. They do not account for the fact that, in the data, the return on capital, which equates the real interest rate in OLG models with production, has not declined. Instead we give households the choice either to own the capital used in production or to lend to the next generation. Hence we can use our model to replicate the evolution of the interest rate and the risk premium paid to own a capital stock of which the return is risky. Eggertsson, Mehrotra, and Robbins (2017) also differentiate the return on capital from the real interest rate. Their gap is due to a mark-up while ours reflect risk premium. They find that the fall in mortality, fertility and productivity since 1970 each explain nearly 2 percent drop in the real interest rate, a total effect of nearly -6 percent, which is compensated by a 2 percent increase due to the rise in public debt. The much larger effects this paper finds for demographic factors

and productivity is largely due to the choice of 1970 as their starting point, as a major part of the decline in these factors take place between 1970 and 1990, a period when real rates actually increased.

Our paper is also related to the literature on safe assets and their “shortage.” In a seminal paper, Caballero, Farhi, and Gourinchas (2008) associated global imbalances to a growing demand of economic agents in emerging economies for “safe assets” that are typically issued by the US and other large OECD countries. Coeurdacier, Guibaud, and Jin (2015) use an OLG structure to estimate the effects of opening capital flows to China where severe credit constraints push down the equilibrium interest rate. As a result, the “world” interest rate can decline substantially. Coeurdacier, Guibaud, and Jin (2015) estimate that the equilibrium interest rate could fall by as much as 6 percent, however in a set up where the level of the steady state risk free interest rate is not consistent with the data. More recently Caballero, Farhi, and Gourinchas (2016) stress how the shortage of safe assets can slow economic growth, a force that would in turn push the risk free interest rate further down. Their model is purely qualitative. It cannot be used to quantify the role of each of the forces that influence the equilibrium interest rate. Caballero, Farhi, and Gourinchas (2017) introduce an accounting approach to jointly explain the decline in the risk free rate, the stability of the return of capital and the decline in labor share. Importantly, they show that even with a set of parameters that maximise the effects of increasing mark-ups on the gap between the interest rate and the return on capital, a large share of the increase in the risk premium remains unexplained. Hall (2016) models the decline of the risk free rate as resulting from a change in the composition of savers, with an increase in the weight of risk adverse savers in the economy. Our contribution with respect to this literature is that we offer a comprehensive and quantitative analysis of the role of risks in an OLG model where the other forces of secular stagnation can also have a role.

Third, we relate to the asset pricing literature on long term risk. Bansal and Yaron (2004) show that Epstein-Zin-Weil preferences combined with persistent growth rate of consumption and small uncertainty on its fluctuation can explain both a low risk free interest rate and a high risk premium. However, somewhat surprisingly, this finance literature has not investigated whether long term risks have changed over time. Our contribution is twofold: to put Epstein-Zin-Weil preferences in an OLG model and use such a model to compute the low frequency changes in long term risk that are consistent with the data.

Finally our paper contributes to the small literature that investigate whether inequality can explain the level of interest rates. Auclert and Rognlie (2016) present a new-Keynesian model with wage rigidities and agents facing uninsurable idiosyncratic risks. Calibrating to the present, their model shows that a rise in inequality similar to that observed in the US since the 1980s would induce a further drop of 0.90 percent in interest rates, but in the context of a permanently binding ZLB. We allow inequality to impact savings and interest rates in our OLG model through a bequest motive. We show that it plays no role in the

increase of the risk premium.

3 Stylized facts

First, real interest rates have declined steadily over the last 2 decades (Figure 1). This downward trend is observed across OECD countries, for short-term and long-term interest rates as well as estimates of the natural rate of interest, and whatever the approach taken to approximate inflation expectations to define ex ante real interest rates (King and Low 2014; Hamilton et al. 2016; Rachel and Smith 2015; Laubach and Williams 2016; Holston, Laubach, and Williams 2016; Fries et al. 2016; Fischer 2016a, 2016b). Since the 1970s correspond to a period of financial repression with limited openness of euro area financial markets, we focus this paper on understanding the decline in real rates since 1980. Following Summers (2014) many economists have associated this decline to secular stagnation. The lower growth rates of per capita GDP and the demographic transition imply lower investment and higher savings so much so that the return to savings should decline.

Second, the return to capital as measured from national accounts has remained flat. Gomme, Ravikumar, and Rupert (2011) build the return to productive capital as the net operating surplus, which is equal to value added minus depreciation and payments to labor, divided by the capital stock. Gomme, Ravikumar, and Rupert (2015) and Caballero, Farhi, and Gourinchas (2017) stress that, in the US, return to productive capital has no trend. It fluctuates with the cycle around 10 to 11 percent before tax and around 7 percent after tax. In Figure 2 we report similar indicators of the return on productive capital for the Euro area, Japan and the US from the AMECO database. Again, we see no downward trend in this measure of the return on investment.² Altogether, we observe both a downward trend in real interest rates and stable return to productive capital.

4 The Model

Many of the factors cited in Bean et al. (2015), Rachel and Smith (2015) and Gourinchas, Portes, Rabanal, et al. (2016) can be embedded in the OLG model we present here, which nests Eggertsson and Mehrotra (2014) and Coeurdacier, Guibaud, and Jin (2015), and adds risk. The determination of the interest rate in those models comes down to the Euler equation of savers, within which the constraints faced by borrower agents and other determinants enter through market-clearing. In the presence of risk, the savers also face a portfolio choice.

²The comparability of the data across countries is somewhat limited. In some countries, such as Italy and Germany, the income of unincorporated businesses which includes labor income of self employed are included (Garnier, Mahieu, and Villette 2015). In addition, and unlike the measure developed by Gomme, Ravikumar, and Rupert (2011, 2015), AMECO stock of capital includes dwellings and the flow of income to capital does not include rents. Caballero, Farhi, and Gourinchas (2017) who adjust their estimates for intangible intellectual property product introduced by the BEA since 2013 again find no evidence of a downward trend. However, there is little reason why either of these characteristics would modify the trend of the return to productive capital.

4.1 Description

In each discrete time period t a generation is born that lives 3 periods y, m, o . The size of the generation born at t is $N_t = g_{L,t}N_{t-1}$. Preferences are of the Epstein and Zin (1989) - Weil (1990) form:

$$V_t^y = \left(c_t^y{}^{1-\rho} + \beta (E_t V_{t+1}^m)^{\frac{1-\rho}{1-\gamma}} \right)^{\frac{1-\gamma}{1-\rho}} \quad (1)$$

$$V_{t+1}^m = \left(c_{t+1}^m{}^{1-\rho} + \beta (E_{t+1} V_{t+2}^o)^{\frac{1-\rho}{1-\gamma}} \right)^{\frac{1-\gamma}{1-\rho}} \quad (2)$$

$$V_{t+2}^o = c_{t+2}^o{}^{1-\gamma} \quad (3)$$

with β the discount factor, $\gamma \geq 0$ the coefficient of relative risk aversion, $1/\rho \geq 1$ the intertemporal elasticity of substitution. The only source of risk is an aggregate productivity shock.

The factors of production are capital, which depreciates at a rate δ , and labor, supplied inelastically by young and middle-aged agents. The labor productivity of a member of generation t is e_t^y when young and $e_t^m = 1$ when middle-aged. The aggregate productivity of labor over time is $A_t = g_{A,t}A_{t-1}$ and is stochastic. The neo-classical constant-returns production function combines capital (with share α) and labor (with share $1 - \alpha$) to produce output, one unit of which can become either one unit of consumption or $1/p_t^k$ units of investment; the relative price of investment goods is exogenous and follows $p_t^k = g_{I,t}p_{t-1}^k$. Markets are competitive and prices are flexible. Labor earns a wage w_t while capital earns a return r_t^k .

Agents can purchase investment goods, and can also borrow from and lend to each other at a gross rate R_{t+1} , but they cannot owe more (principal and interest) than a fraction θ_t of next period's labor income. We will focus on situations in which the young borrow from middle-aged, and the middle-aged lend to the young and invest in physical capital by buying the depreciated stock in the hands of the old and purchasing investment goods.

The following equations summarize the above. Agents of generation t choose $\{c_t^y, c_{t+1}^m, c_{t+2}^o, k_{t+2}^m, b_{t+1}^y, b_{t+2}^m\}$ to maximize (1-3) subject to three budget constraints and one borrowing constraint:

$$c_t^y = b_{t+1}^y + w_t e_t^y \quad (4)$$

$$c_{t+1}^m - b_{t+2}^m + p_{t+1}^k k_{t+2}^m = w_{t+1} - R_{t+1} b_{t+1}^y \quad (5)$$

$$c_{t+2}^o = (p_{t+2}^k(1 - \delta) + r_{t+2}^k) k_{t+2}^m - R_{t+2} b_{t+2}^m \quad (6)$$

$$b_{t+1}^y \leq \theta_t E_t(w_{t+1}/R_{t+1}). \quad (7)$$

On the production side, the production function combines the current capital stock $N_{t-2}k_t^m$ (held by the old of generation $t - 2$ but chosen at $t - 1$ when they were middle-

aged) and the labor supply of current young and middle-aged $e_t^y N_t + N_{t-1}$ to produce

$$Y_t = (N_{t-2} k_t^m)^\alpha [A_t (e_t^y N_t + N_{t-1})]^{1-\alpha}$$

which yields the wage rate and capital rental rate

$$w_t = (1 - \alpha) A_t^{1-\alpha} k_t^\alpha \quad (8)$$

$$r_t^k = \alpha A_t^{1-\alpha} k_t^{\alpha-1} \quad (9)$$

both written in terms of the capital/labor ratio k_t defined as

$$k_t \equiv \frac{N_{t-2} k_t^m}{e_t^y N_t + N_{t-1}} = \frac{k_t^m}{g_{L,t-1} (1 + e_t^y g_{L,t})}. \quad (10)$$

The final condition imposes clearing of the bond market at time t :

$$g_{L,t} b_{t+1}^y + b_{t+1}^m = 0. \quad (11)$$

4.2 Equilibrium conditions

The solution proceeds as follows. Following Giovannini and Weil (1989) we first express the middle-aged agent's first-order conditions in terms of a total return on their portfolio, and derive the demand for the two available assets, capital and loans to the young, as well as relation between the two returns. We then use market clearing: the demand for capital must equal the aggregate stock of capital, while the young's borrowing constraint, expressed in terms of their wages, determines the supply of the other asset. This allows us to derive the law of motion for the capital stock. We assume here that $\delta = 1$; the general case is treated in the appendix.

The problem of the middle-aged of generation $t - 1$ is

$$\max_{c_t^m, c_{t+1}^o} \left((c_t^m)^{1-\rho} + \beta E_t [c_{t+1}^o]^{1-\gamma} \right)^{\frac{1-\rho}{1-\rho}}$$

subject to

$$c_t^m + p_t^k k_{t+1}^m - b_{t+1}^m = w_t - R_t b_t^y \quad (12)$$

$$c_{t+1}^o = R_{t+1}^k p_t^k k_{t+1}^m - R_{t+1} b_{t+1}^m \quad (13)$$

which leads to the first-order conditions

$$(c_t^m)^{-\rho} = \beta [E_t (c_{t+1}^o)^{1-\gamma}]^{\frac{\gamma-\rho}{1-\gamma}} E_t [(c_{t+1}^o)^{-\gamma} R_{t+1}^k] \quad (14)$$

$$(c_t^m)^{-\rho} = \beta [E_t (c_{t+1}^o)^{1-\gamma}]^{\frac{\gamma-\rho}{1-\gamma}} E_t [(c_{t+1}^o)^{-\gamma}] R_{t+1}. \quad (15)$$

To see it as a portfolio problem, express the budget constraints (12)–(13) in terms of income $Y_t \equiv w_t - \theta_{t-1} E_{t-1} w_t$ and total savings W_t invested in capital $p_{t+1}^k k_{t+1}^m$ with return $R_{t+1}^k \equiv r_{t+1}^k / p_t^k$ and loans $-b_{t+1}^m$ with return R_{t+1} . Letting α_t be the portfolio weight on

capital, the total return on the middle-aged agent's portfolio is $R_{t+1}^m = \alpha_t R_t^k + (1 - \alpha_t) R_{t+1}$ and the budget constraints become

$$\begin{aligned} W_t &= Y_t - c_t^m \\ c_{t+1}^o &= R_{t+1}^m W_t. \end{aligned}$$

The two first-order conditions (14)–(15), in which we substitute $c_{t+1}^o = R_{t+1}^m W_t$, determine the portfolio allocation between bonds and capital: α_t must be such that

$$E_t(R_{t+1}^{m-\gamma})R_{t+1} = E_t(R_{t+1}^{m-\gamma}R_{t+1}^k)$$

In equilibrium the return on capital must satisfy

$$R_{t+1}^k \equiv \frac{r_{t+1}^k}{p_t^k} = \frac{\alpha A_{t+1}^{1-\alpha}}{p_t^k} k_{t+1}^{\alpha-1}, \quad (16)$$

which implies that the risk-free rate and the return on capital are linked by

$$R_{t+1}^k = \frac{\tilde{a}_{t+1}}{\xi_t} R_{t+1} \quad (17)$$

where we have defined

$$\begin{aligned} \xi_t &\equiv \frac{E_t(R_{t+1}^{m-\gamma} \tilde{a}_{t+1})}{E_t R_{t+1}^{m-\gamma}} \\ \tilde{a}_{t+1} &\equiv \frac{A_{t+1}^{1-\alpha}}{E_t A_{t+1}^{1-\alpha}}. \end{aligned}$$

The variable \tilde{a}_{t+1} is a transformation of the exogenous shock a_{t+1} .

In addition, the first-order condition (15) yields the saving decision

$$Y_t = \left(1 + (\beta \phi_t R_{t+1}^{1-\rho})^{-\frac{1}{\rho}}\right) W_t \quad (18)$$

where we have defined

$$\phi_t \equiv \left[E_t \left(\left(\frac{R_{t+1}^m}{R_{t+1}} \right)^{1-\gamma} \right) \right]^{(\gamma-\rho)/(1-\gamma)} E_t \left(\left(\frac{R_{t+1}^m}{R_{t+1}} \right)^{-\gamma} \right).$$

We now bring in the market-clearing conditions to express Y_t and W_t in (18) in terms of the aggregate capital stock k_t . First, using the fact that the middle-aged were credit-constrained in their youth, we express their income Y_t as:

$$\begin{aligned} Y_t &= w_t - \theta_{t-1} E_{t-1} w_t \\ &= (1 - \alpha)(\tilde{a}_t - \theta_{t-1}) E_{t-1} A_t^{1-\alpha} k_t^\alpha. \end{aligned} \quad (19)$$

Next, their portfolio choices must equal the supply of the two assets. In (11) the supply of bonds is given by (7) at equality, and the supply of capital is given by (10), which leads to:

$$W_t = p_t^k k_{t+1}^m - b_{t+1}^m = g_{L,t} v_t \frac{p_t^k k_{t+1}}{\alpha \xi_t} \quad (20)$$

where we have defined

$$v_t \equiv \alpha(1 + e^y g_{L,t+1}) \xi_t + (1 - \alpha) \theta_t.$$

Similarly we can express $R_{t+1}^m W_t$ as:

$$R_{t+1}^m W_t = R_{t+1}^k p_t^k k_{t+1}^m - R_{t+1}^m b_{t+1}^m = g_{L,t} u_{t+1} \mathbb{E}_t A_{t+1}^{1-\alpha} k_{t+1}^\alpha \quad (21)$$

where we have defined

$$u_{t+1} \equiv \alpha(1 + e^y g_{L,t+1}) \tilde{a}_{t+1} + (1 - \alpha)\theta_t.$$

Taking the ratio of (20) and (21) gives

$$R_{t+1}^m = \frac{u_{t+1}}{v_t} R_{t+1} \quad (22)$$

with u_t and v_{t+1} only function of exogenous variables. Replacing (22) in the definitions of ξ_t and ϕ_t gives:

$$\xi_t = \frac{\mathbb{E}_t(u_{t+1}^{-\gamma} \tilde{a}_{t+1})}{\mathbb{E}_t(u_{t+1}^{-\gamma})} \quad (23)$$

$$\phi_t = [\mathbb{E}_t u_{t+1}^{1-\gamma}]^{(\gamma-\rho)/(1-\gamma)} \mathbb{E}_t u_{t+1}^{-\gamma} v_t^\rho \quad (24)$$

which are also functions of (moments of) the exogenous shock \tilde{a}_{t+1} .

We can now rewrite the middle-aged agent's savings decision (18) as a law of motion for capital by replacing income expressed as (19) and savings expressed as (20):

$$(1 - \alpha)\left(1 - \frac{\theta_{t-1}}{\tilde{a}_t}\right) \alpha \frac{A_t^{1-\alpha}}{p_t^k} k_t^\alpha = \left(1 + (\beta\phi_t)^{-1/\rho} R_{t+1}^{1-1/\rho}\right) g_{L,t} \frac{v_t}{\xi_t} k_{t+1}. \quad (25)$$

with the left-hand side consisting entirely of variables pre-determined at t .

The expression involves both k and R but (17) allows us to express k_{t+1} in terms of R_{t+1} and vice-versa, so that (25) can be written in terms of the risk-free interest rate R_{t+1} or, equivalently, in terms of the capital stock.

4.3 Discussion

The law of motion (25), which is the core of the model and the basis for our simulations, is the middle-aged agent's optimal choice of saving (18), but with market-clearing imposed on the quantities: the left-hand side represents the savers' income, while the right-hand side is (the inverse of) the saving rate multiplying savings. To develop more intuition we first examine the form it takes in a deterministic steady state, then examine the role of risk.

Deterministic steady state

When we set $\tilde{a}_t = 1$ to shut down the only source of uncertainty the terms involving risk simplify: $\xi_t = 1$ and from (24) $\phi_t = 1$, and $R_t^m = R_t^k = R_t$ (no risk premium).

In steady state (16) implies that $(A_t/k_t)^\alpha/p_t^k$ is constant, hence the growth rate of capital must be $g_k = g_A/g_I^{1/(1-\alpha)}$, as it would be in an infinitely-lived representative agent model. Capital grows at the same rate as labor productivity; the trend in the price of investment goods acts in this respect like an additional form of technological change ($g_I < 1$ leading to growth in the capital stock).

From (19) it also follows that, in steady state, the income of the middle-aged Y_t (and, by (18), their consumption as well as aggregate consumption) grows at the rate $g_I g_k$, that is, the growth rate of capital priced as investment goods. The only determinants of these steady state rates are the technological parameters g_A and g_I . The other parameters affect R and the allocation across generations.

The equation determining the steady state interest rate can be expressed as

$$g_A g_I^{-\frac{1}{1-\alpha}} = (1 + \beta^{-\frac{1}{\rho}} R^{1-\frac{1}{\rho}})^{-1} \left[\frac{1 - \alpha R}{\alpha g_L g_I} \right] \frac{\alpha(1-\theta)}{\alpha(1 + e^y g_L) + (1-\alpha)\theta}$$

(see Theorem 1 in Coeurdacier, Guibaud, and Jin (2015)).

The structure of the equation remains a modified Euler equation. On the left-hand side the term $g_A g_I^{-\frac{1}{1-\alpha}}$ is the steady state rate of growth of capital, which depends only on productivity growth (including the effect of the price in investment goods). This growth rate is unaffected by the various other features of the model. On the right-hand side are three terms. The first is the savings rate. The second term **in square brackets** represents the “pure” OLG component, specifically the fact that those who save do so out of labor income only; capital income is used by the old to finance their consumption. The **last term** captures the effect of the borrowing constraint: this can be seen by setting $e^y = 0$ and $\theta = 0$, which deprives the young of income and prevents them from borrowing, effectively eliminating them. Then that last term reduces to 1, and the model is isomorphic to a two-period overlapping generations model with no borrowing constraint.

Risky steady state

We assume that uncertainty on the productivity can be modelled as an i.i.d process.

Assumption 1 (Distribution of the productivity shock). *Assume that the productivity shock is i.i.d, with mean 1.*

To account for the impact of risk while retaining tractability, we appeal to the concept of risky steady state (Juillard 2011; Coeurdacier, Rey, and Winant 2011). Instead of setting $\tilde{a}_t = \tilde{a}_{t+1} = 1$ as in the deterministic steady state, we set \tilde{a}_t to its mean of 1 but maintain \tilde{a}_{t+1} as a stochastic variable, assuming that it is lognormal with variance σ_{t+1} . In effect, we assume that in every period the current realization of the shock is at its mean but agents take into account the risk in the next period.

The following result describes the behavior of the risky steady-state.

Proposition 1. *The risky steady-state satisfies the following equation*

$$g_A g_I^{-\frac{1}{1-\alpha}} = (1 + (\phi\beta)^{-\frac{1}{\rho}} R^{1-\frac{1}{\rho}})^{-1} \left[\frac{1 - \alpha R}{\alpha g_L g_I} \right] \frac{\alpha(1-\theta)}{\alpha(1 + e^y g_L)\xi + (1-\alpha)\theta} \quad (26)$$

This equation admits a unique solution.

Compared to the deterministic case, the presence of risk adds two channels, captured by the terms ϕ and ξ , functions of the exogenous factors only.³

The first channel ξ relates to the risk premium and its impact on the portfolio choice of the agent. This can be seen in two ways. First, from (17) the risk premium R^k/R is \tilde{a}_{t+1}/ξ_t . Second, the share of the agent's savings invested in capital (the risky asset) is $\alpha(1+e^y g_{L,t+1})\xi_t/v_t$, which is proportional to the term $\xi_t/v_t = \xi_t/(\alpha(1+e^y g_L)\xi_t + (1-\alpha)\theta)$.

The following result describes the properties of the risky steady-state, when \tilde{a} follows a log-normal law.

Proposition 2. 1. The risk-premium ξ^{-1} admits the following asymptotic expansion

$$\xi^{-1}(\theta, g_L, \sigma) = 1 + \gamma \frac{\alpha(1+e^y g_L)}{(1-\alpha)\theta + \alpha(1+e^y g_L)} \sigma^2 + o(\sigma^4)$$

2. The distortion ϕ admits the following asymptotic expansion

$$\phi_t = 1 + \frac{1}{2}\gamma(1-\rho) \frac{\alpha^2(1+e^y g_{L,t+1})^2}{(\alpha(1+e^y g_{L,t+1}) + (1-\alpha)\theta_t)^2} \sigma^2 + o(\sigma^4).$$

3. The portfolio-share of middle-aged allocated to capital is given by

$$\frac{\alpha(1+e^y g_{L,t+1})\xi_t}{\alpha(1+e^y g_{L,t+1})\xi_t + (1-\alpha)\theta_t}$$

The risk premium obviously increases with risk aversion γ , but also with a tightening of the borrowing constraint (lower θ) or a fall in population growth g_L , both of which reduce the supply of bonds. These effects, however, are second-order only: there are no first-order terms for θ or g_L .

The second channel, ϕ_t , acts like a distortion to the discount rate, and is familiar from the literature on recursive preferences.

There are two things to note. One is that the sign of the sensitivity of ϕ_t to risk depends on whether the intertemporal elasticity ρ is high or low relative to 1. The discussion in Weil (1990, 38) applies here: a high IES ($\rho < 1$) means that the income effect is small relative to the substitution effect, and the "effective" discount factor $\phi\beta$ rises with risk: the agent behaves as if she were more patient, and a higher interest rate R is required in equilibrium. The IES determines the sign, but the magnitude of the effect is determined by the risk aversion γ .

The second point is that the relative strength of the two channels (the ratio of $\partial\phi/\partial\sigma^2$ to $\partial\xi/\partial\sigma^2$) is $(1-\rho)\alpha(1+e^y g_L)/2(\alpha(1+e^y g_L) + (1-\alpha)\theta)$ which, for low θ , is close to $(1-\rho)/2$. For a IES close to 1, the effect of risk through the precautionary channel will be much smaller (in our calibration of $\rho = 0.8$, one order of magnitude smaller) than through the portfolio channel. For log utility (IES=1) there is only the portfolio channel. In Appendix, figure 19 represents the evolution of the share allocated to capital for the US.

³When $\delta \neq 1$ they are also functions of the endogenous rates of return (see the appendix).

When $\rho = 1$ we find the following first-order approximation for R and R^k around $[g_I, g_A, g_L, \theta, \sigma^2] = [1, 1, 1, 0, 0]$:

$$\begin{aligned}\ln(R) &= \bar{r} + \frac{1 + 2e^y}{1 + e^y} \ln(g_L) + \ln(g_A) - \frac{\alpha}{1 - \alpha} \ln(g_I) + \frac{1 + \alpha e^y}{\alpha(1 + e^y)} \theta - \gamma \sigma^2 \\ \ln(R^k) &= \bar{r} + \frac{1 + 2e^y}{1 + e^y} \ln(g_L) + \ln(g_A) - \frac{\alpha}{1 - \alpha} \ln(g_I) + \frac{1 + \alpha e^y}{\alpha(1 + e^y)} \theta\end{aligned}$$

with

$$\bar{r} = \ln \left[\frac{\alpha(1 + e^y)(1 + \beta)}{(1 - \alpha)\beta} \right]$$

Thus, even for $\rho = 1$ there is room for risk to affect interest rates, through the portfolio channel. The return to capital, however, does not depend on risk. Increasing risk raises the risk premium and compresses the risk-free rate, which is (roughly) what we see in the data. Indeed, risk is the only one of our “suspects” that affects only the risk-free rate.

5 A Quantitative Evaluation

In this section we use the model to match the data on the risk free real interest rate and the return of capital since 1970.

5.1 Calibration of the model

The spirit of the exercise is as follows.

We distinguish between (a) the structural parameters $\beta, \gamma, \rho, \alpha, \delta, e^y$ characterizing preferences and technology, held fixed throughout and calibrated in a standard way, and (b) the factors g_I, g_A, g_L that vary over time but are readily observable (Table 1).

This leaves us with θ (the borrowing constraint) and σ (the amount of risk) which we approach flexibly because we see them as less easily observable. We proceed in several steps. First, we fix both $\theta = 0.07$ and $\sigma = 0.09$ for the US and the EA.⁴ With the leverage constraint and the degree of uncertainty fixed, we can evaluate the effects of demography, trend productivity and the relative price of investment on the risk free rate and the risk premium. Then we keep in turn θ and σ fixed and compute a time series for the other in order to match the path of the risk-free rate R . Finally let both vary and we back out time series of θ_t and σ_t that will result in sequences of risky steady states R and R^k matching the observations. Ultimately, of course, we will need to confront these time series to data in order to assess the model’s success or failure at accounting for the decline in interest rates.

Our model periods last 10 years. In the figures that follow, each year N on the x -axis corresponds to the average 10-year lagging average (years $N - 9$ to N), both for data

⁴These calibrations are chosen roughly in terms of the estimated values on the whole period. Given that a period last 10 years, $\theta = 0.07$ is approximately equal to 70 percent of a yearly GDP. Turning σ , we hence assume that g_A has 95 percent chances to be between its mean value plus/minus 0.18. Such values for these two parameters impact the level of the interest rates, but they impact marginally their evolution over time.

<i>Parameters</i>		
T	length of period (years)	10
β	discount factor	0.98^T
α	capital share	0.28
γ	risk aversion	100
ρ	inverse of IES	0.8
δ	capital depreciation rate	$0.1 * T$
e^y	relative productivity of young	0.3
<i>Factors</i>		
$g_{L,t}$	growth rate of population 20-64	US, EA (France), China, Japan: OECD
$g_{I,t}$	investment price growth	DiCecio (2009)
$g_{A,t}$	productivity growth	US: Fernald (2012), Euro: NAWM model
R_t	real interest rate	US: Hamilton et al. (2016), France
R_t^k	return on capital	US, EA: our calculations à la
		Gomme, Ravikumar, and Rupert (2015)
\tilde{a}_t	productivity shock	$\ln(\tilde{a})$ is a i.i.d. $N(-\sigma^2/2, \sigma^2)$
<i>Free parameters</i>		
θ	borrowing constraint on young	
σ^2	variance of \tilde{a}_t	

Table 1: Model calibration and data sources.

and simulations. Our reasoning is that deciding when our 10-year periods start and end is somewhat arbitrary. Presenting the data and simulations in this manner avoids making that decision, as long as the reader keeps in mind that we are not representing annual time series, but sequences of $\{t, t + 10\}$ pairs.

5.2 Results

The impact of observable factors

To measure this impact we fix θ and σ and analyze the model-based interest rates, when we use as inputs the growth rate of productivity, the change in demography and in relative investment price that we observe in the data. These factors are represented in Figure 3. We observe a steady productivity slowdown in the Euro area. Its year on year growth rate falls from 3 percent in 1980 to less than 1 percent since 2008. In the US, there is no such slowdown for the entire period. Productivity accelerates from 1995 to 2003 and then decelerates since. Productivity growth measured at the world level remains stable as the weight of China in world output increases. The decline in the population growth rate is more homogenous. It declines by about 1 percent in the three economies we consider from 1980 to today.⁵

Figure 4 shows the effects of these observable factors on the risk free rate (in the left panel) and the risk premium (in the right panel) for the US. In the US, interest rates decline essentially since 2003, due to the deceleration of productivity. Their total decline since 1990 amounts to 0.7 percent. These estimates are comparable to the ones of Gagnon, Johannsen, and López-Salido (2016) and Carvalho, Ferrero, and Nechio (2016). The for-

⁵We do not show the evolution of the relative price of investment because its impact on interest rates is always very limited

mer estimate that demography account for a decline of the US equilibrium real rate by 1.25 percent from 1980 to 2015. And the latter estimate a decline by 1.5 percent between 1990 and 2014. Turning to the euro area (Figure 5), the simulated decline in interest rates is much larger. Both the risk free rate and the return on capital decline by 2.3 percent. This reflects the steadier deceleration of productivity throughout the last three decades. However, neither productivity nor demography have any effect on the risk premium. In our simulation, it remains flat both in the US and the euro area.

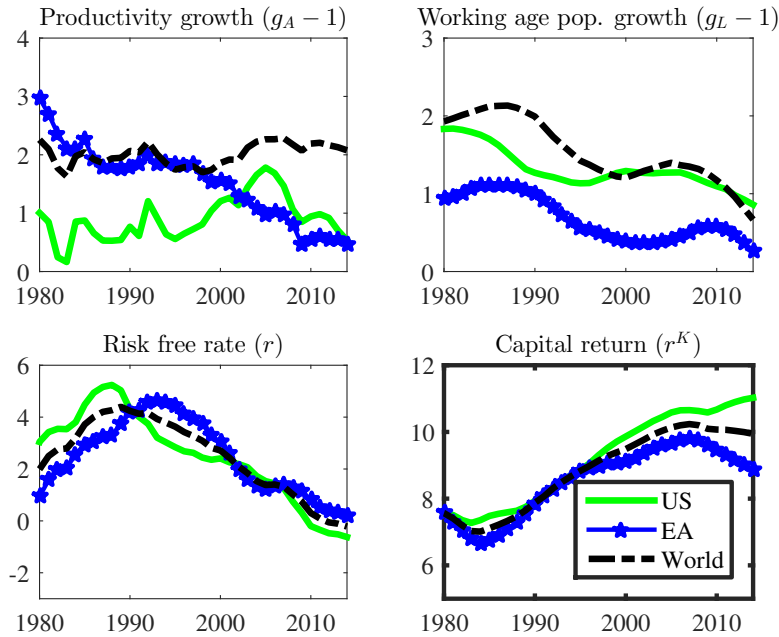


Figure 3: The inputs

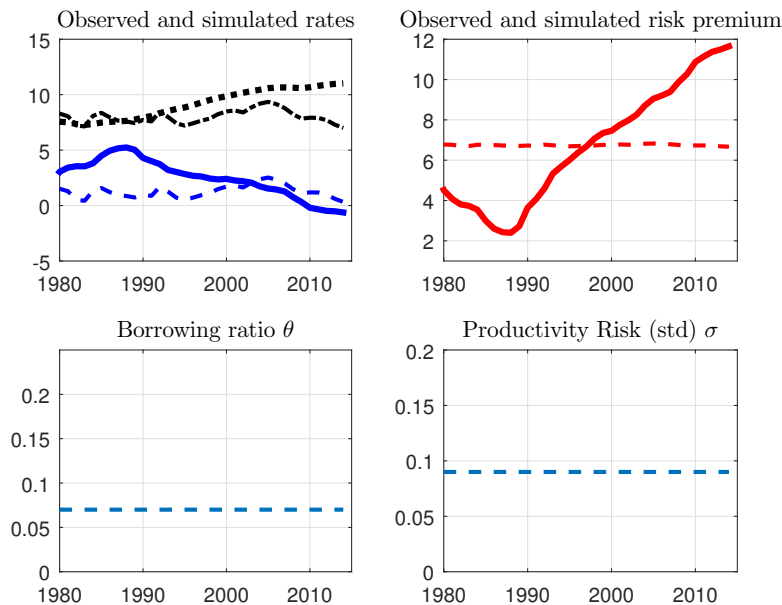


Figure 4: Impact of observable factors, in the US.

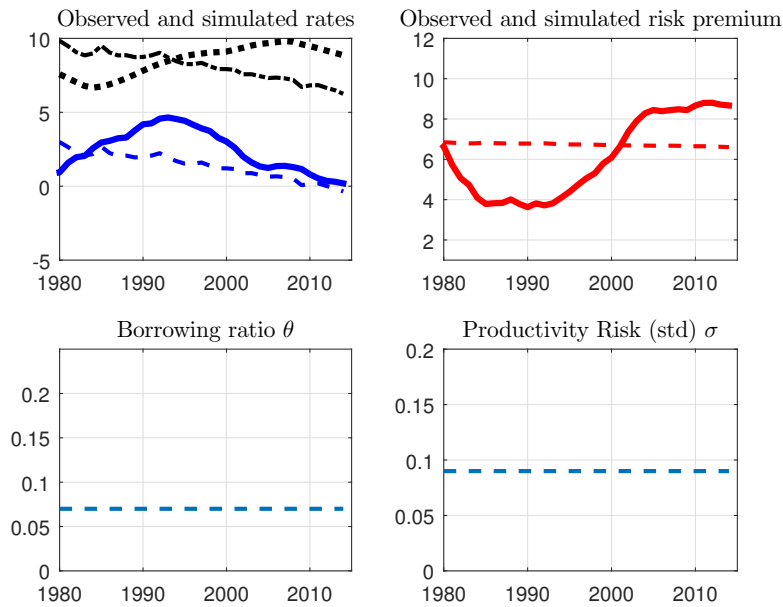


Figure 5: Impact of observable factors, in the EA.

The borrowing constraint

To measure the explanatory power of the borrowing constraint, we fix σ and compute the parameter θ which is consistent with the risk-free rate, and the observable inputs. The implied borrowing constraints and the model-based return on capital, and risk-premium are represented in Figures 6, for the US and 7, for the EA. This exercise shows that for

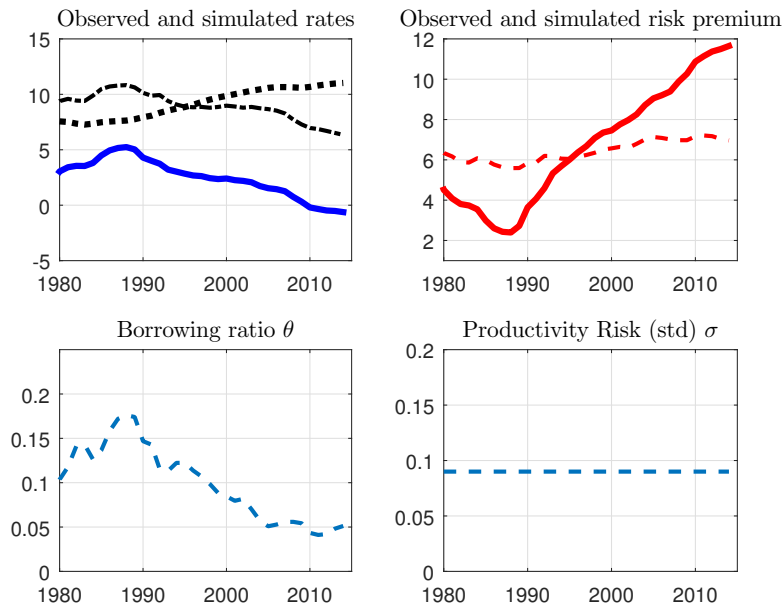


Figure 6: Impact of the borrowing constraint, in the US.

both areas, the decline in the risk-free rate requires a tightening in the borrowing constraint, from 0.15 in 1990 to 0.05 in the US (from 0.12 to 0.08 in the EA). This evolution of

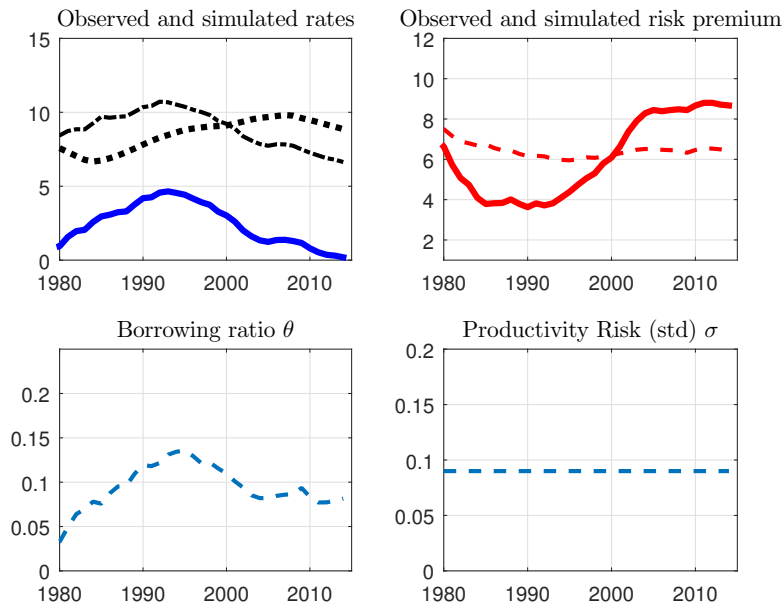


Figure 7: Impact of the borrowing constraint, in the EA.

the borrowing constraint hardly replicates the increase in the risk-premium in both areas, 1.1 percent in the US between 1990 and 2014 (0.2 percent in the EA on the same period).

Risk

We now consider the borrowing constraint as fixed over time, and assess the evolution of the variability in productivity that is required to reproduce the decline in the risk-free rate. The implied changes in variability and the model-based return on capital are represented in Figure 8, for the US and Figure 9, for the EA. The variance of productivity has to

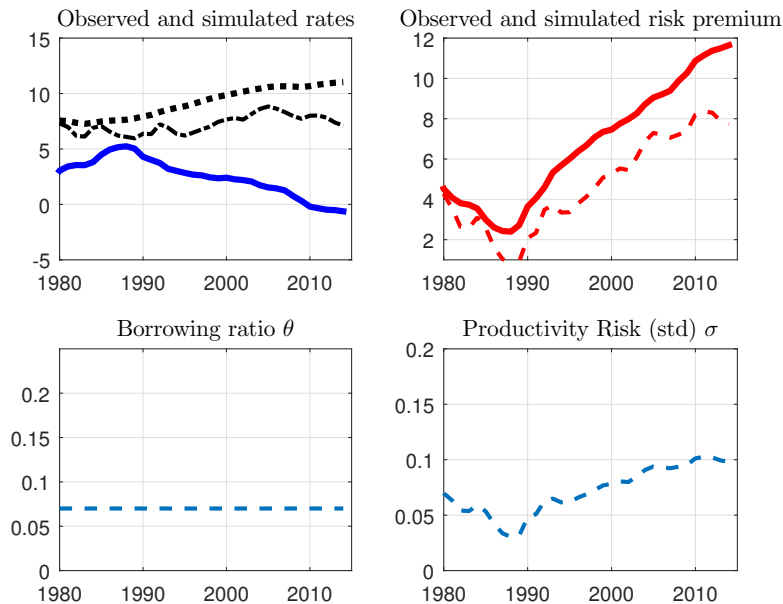


Figure 8: Impact of risk, in the US.

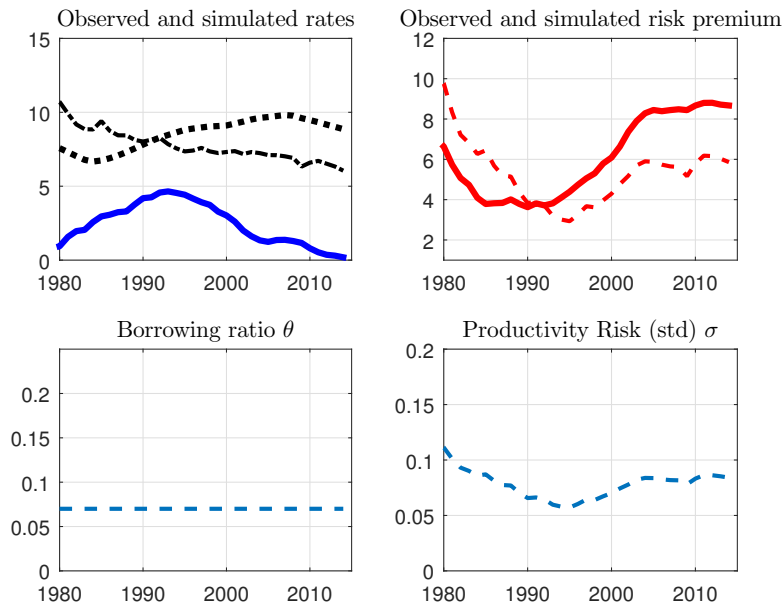


Figure 9: Impact of risk, in the EA.

increase from about 0.04 percent in 1990 to 0.1 today, for the US (from 0.06 to 0.09 for the EA). For both areas, this evolution since 1990 replicates quite well the evolution in the return on capital, and risk-premium. Such increases in the uncertainty of the growth rate of productivity are fairly small. For instance, if the mean growth rate of productivity is 2 percent per annum, the increase in risk premium observed in the data could reflect a mere change in the distribution of productivity risk: g_A had 95 percent to be between 1.92 and 2.08 in 1990 and 95 percent to be between 1.80 and 2.20 in 2014. Given that we have gone through the Great Recession in 2008, such a broadening of uncertainty does seem so large. In the euro area (Figure 9), the increase in risk perception required to match the reduction in the risk free rate since 1990, from $\sigma = 0.06$ to $\sigma = 0.09$, is even smaller than in the US.

Risk and the borrowing constraint

In Figure 10, for the US and Figure 11, for the EA, we let both θ and σ change over time so that we can replicate perfectly both the risk free rate and the return on capital. In particular, the trend decline in the risk free rate since 1990 is due exclusively to an increase in the risk of productivity, from 0.06 to 0.14 in the US (0.06 to 0.11 in the EA). Moreover, the evolution of the risk-free rate and the return on capital is consistent with a non decreasing pattern of the borrowing constraint. This shows that, according to the model, the drop in real interest rate does not necessarily reflect deleveraging headwinds. What evidence do we have that uncertainty has effectively increased over the last 25 years? Baker, Bloom, and Davis (2016) indicates that there may be an upward trend of economic uncertainty from the 1985 to 2012 and a clear acceleration of political uncertainty over the last fifteen years. In particular the so called “great moderation” period, usually dated from 1985

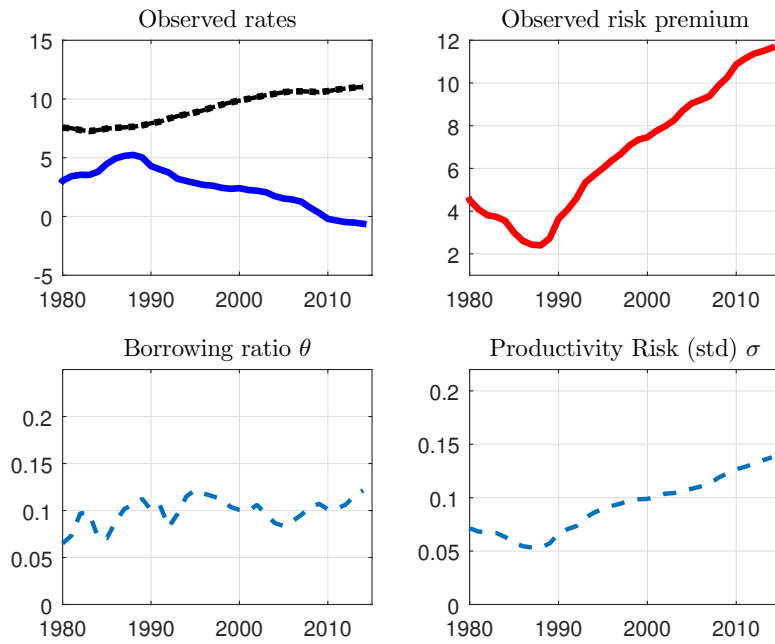


Figure 10: Impact of risk and the borrowing constraint, in the US.

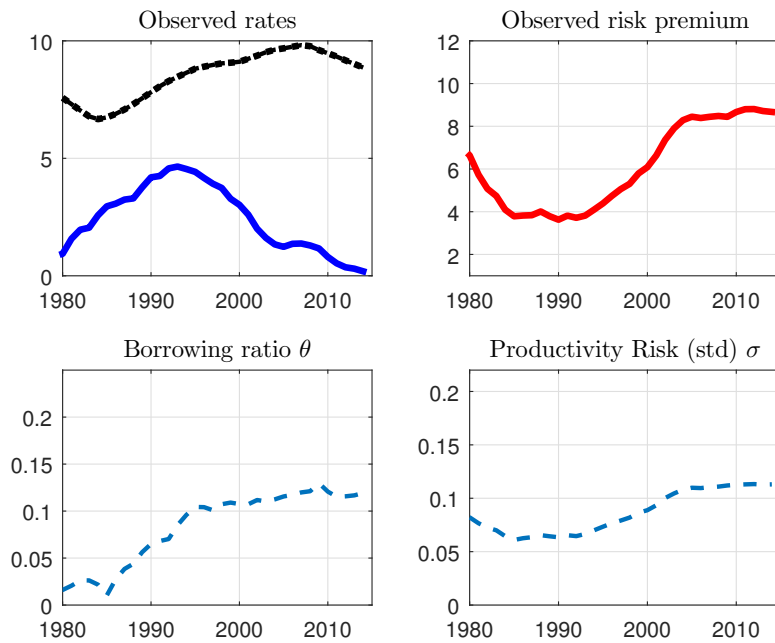


Figure 11: Impact of risk and the borrowing constraint, in the EA.

to 2007 does not correspond to a decline in uncertainty as measured by Baker, Bloom, and Davis (2016). Altogether, that our simulation point to an increase in perceived risk as suggested by the steady increase in the risk premium from 1990 to 2016 is not inconsistent with these other measures that show uncertainty trending up, at least from 1990 to 2012.

The evolution of the borrowing constraint ?

As shown by Buttiglione et al. (2014) there has been hardly any overall deleveraging since the crisis. Private debt in advanced economies adds up to 178 percent of GDP in 2016, i.e. the same level than in 2010, while public debt increased from 75 to 87 percent of GDP over the same period. Deleveraging of the private sector has been very large in Spain and in the United Kingdom, but it increased in France and Canada. And public debt increased in all G7 countries but Germany.

We thus use the model to infer the borrowing constraint consistent with the evolution of debt and the risk-free rate in both areas, depicted in Figure 12, for the US and Figure 13, for the EA. In this exercise, we pin down the evolution of θ , the borrowing constraint, with the ratio of debt/income observed in the data.⁶ We simulate the level of σ that matches the risk-free rate. Two results are striking. First, θ is not increasing in spite of the increase in the debt/income ratio. This is because of the decline in interest rates which implies that a the borrowing constraint of the young binds at higher levels of debt. Second, the increase in uncertainty required to replicate the decline in the risk free rate strikingly explains the increase of the risk premium, both in the US and in the euro area.

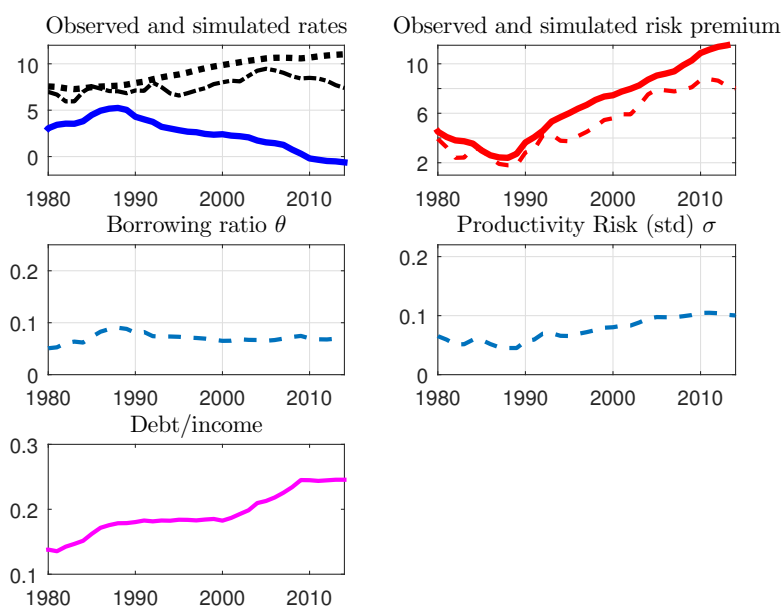


Figure 12: Borrowing constraint and risk, in the US.

5.3 A global perspective

A fair criticism of our calculations is that, by focusing on the US and the Euro area, we neglect the phenomenon described as “savings glut” or “global imbalances” of the 2000s, namely the increase in savings from emerging economies. We repeat our calculations for

⁶We consider that a proxy of this ratio is total debt over 10 times GDP.

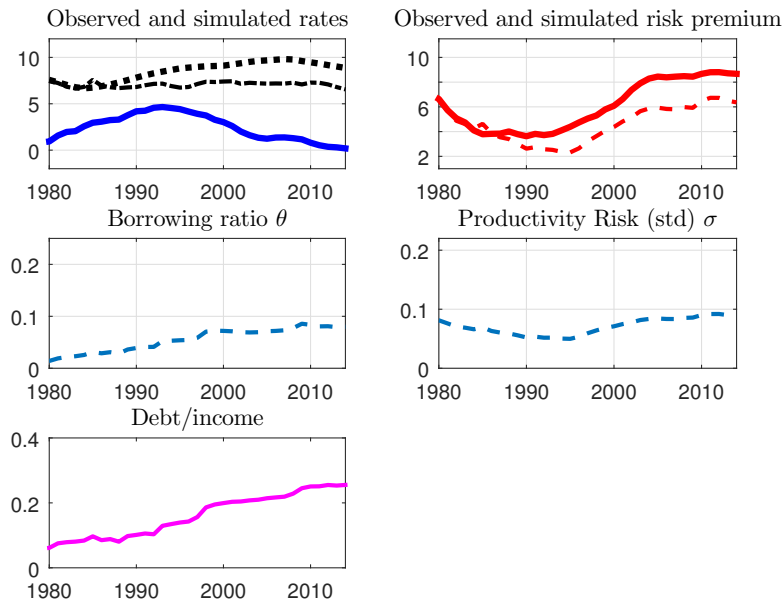


Figure 13: Borrowing constraint and risk, in the EA.

the a world economy which we define as the aggregate of the US, the euro area, Japan and China. The “world” population aged 20 to 64 is the ones of these four economies, investment price evolves as the American one, productivity is an aggregate of four economies productivities weighted by their GDP. The target rates, both for return on capital and for the risk-free rate, are an average of the US and Euro area, considering that world capital markets are integrated.

The results at the world level are broadly similar to the ones we found for the US and the EA: risk is the main factor that can account for the behavior of the risk premium since 1990. The picture is similar: we see θ rising since the mid-1980s, suggestive of the global savings glut. Then the borrowing ratio stops rising in the late 1990s and barely falls after that. Hence, deleveraging does not seem to be at play since the financial crisis.

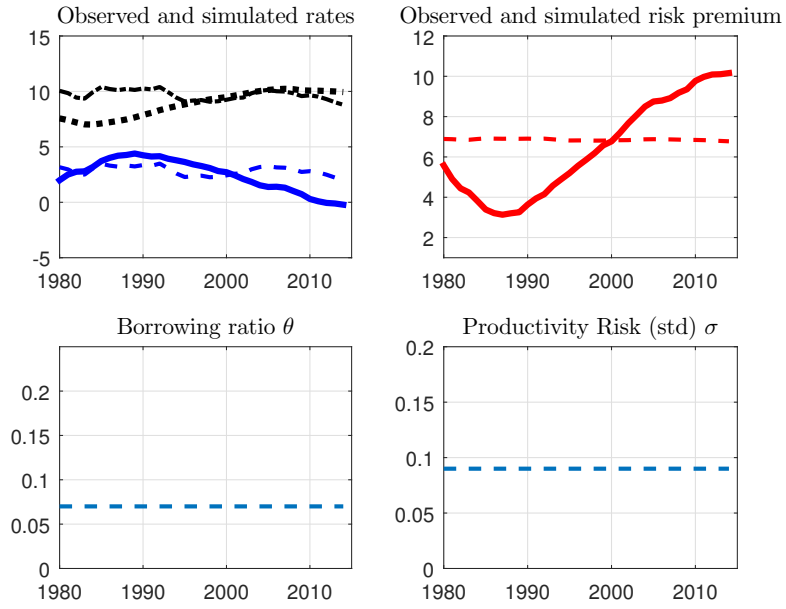


Figure 14: Impact of observable factors, world.

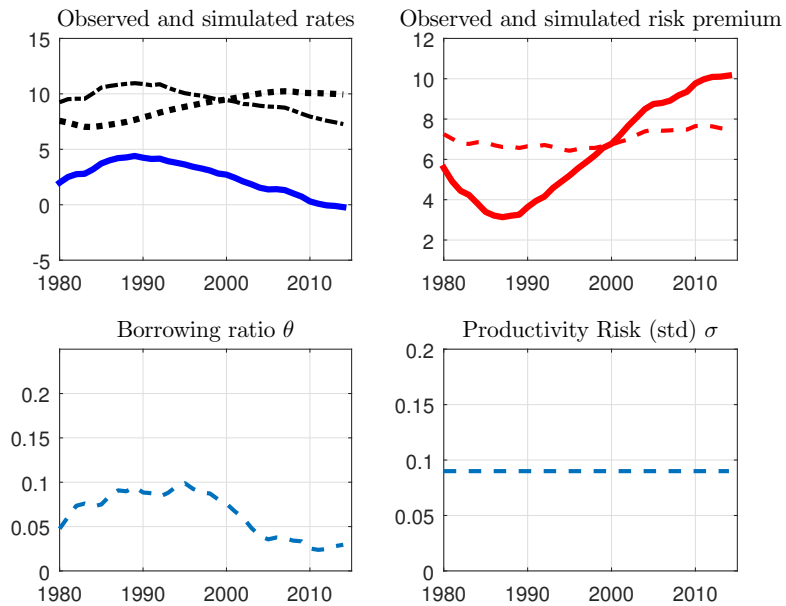


Figure 15: Impact of the borrowing constraint, world.

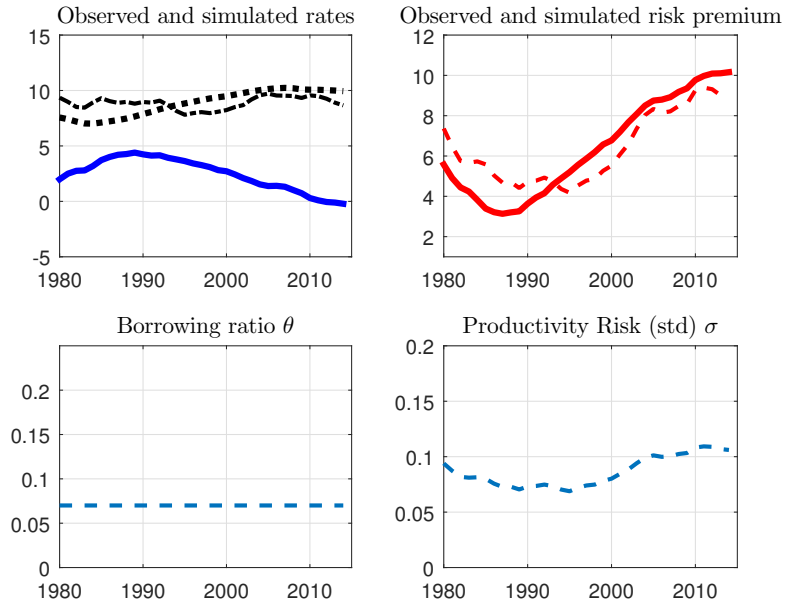


Figure 16: Impact of risk, world

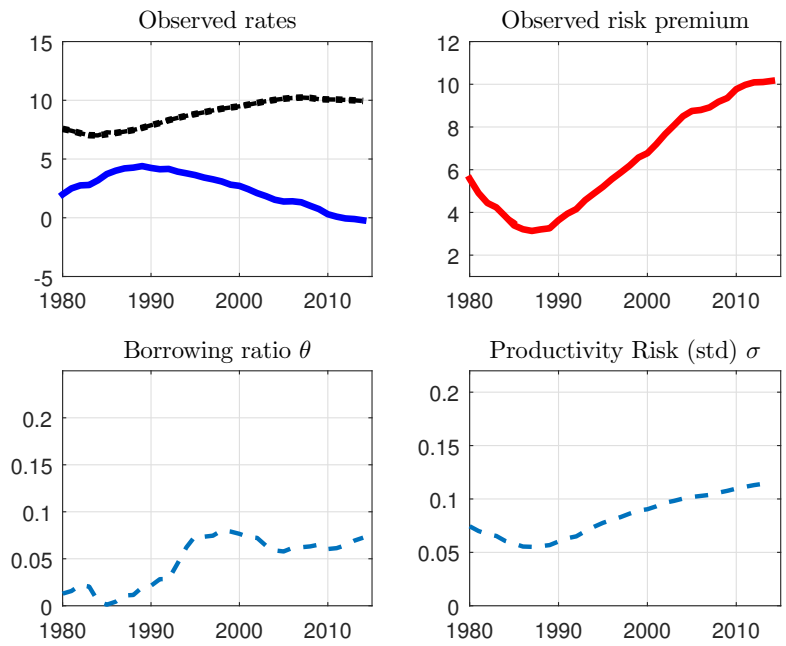


Figure 17: Impact of risk and the borrowing constraint, world.

5.4 Extensions

Longevity

We introduce longevity as a survival probability. Specifically, we replace equation (2) with

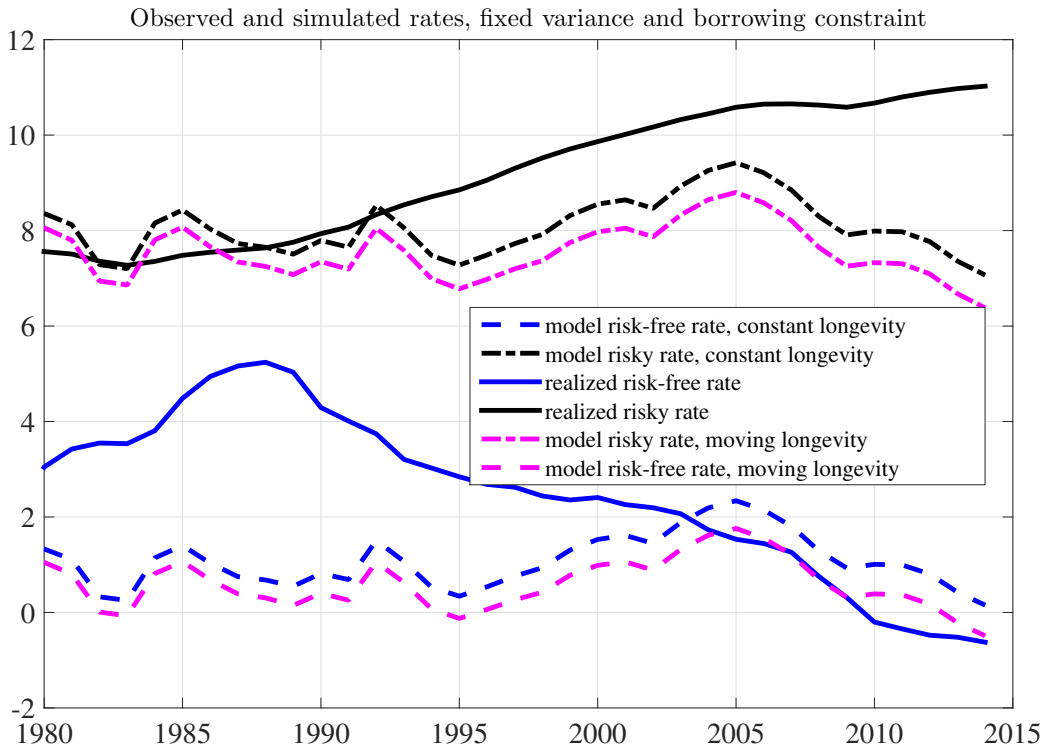
$$V_{t+1}^m = \left(c_{t+1}^m 1^{-\rho} + \beta \lambda_{t+1} (E_{t+1} V_{t+2}^o)^{\frac{1-\rho}{1-\gamma}} \right)^{\frac{1-\gamma}{1-\rho}} \quad (27)$$

The law of motion (25) becomes:

$$(1 - \alpha) \left(1 - \frac{\theta_{t-1}}{\tilde{a}_t} \right) \alpha \frac{A_t^{1-\alpha}}{p_t^k} k_t^\alpha = \left(1 + (\beta \lambda_t \phi_t)^{-1/\rho} R_{t+1}^{1-1/\rho} \right) g_{L,t} \frac{v_t}{\xi_t} k_{t+1}$$

The data is taken from Bell and Miller (2005). We compute λ_t as the probability of surviving from age 60 to age 70 at different points in time. This probability rises steadily through the sample from about 0.8 to about 0.9. In our model this is equivalent to a time-varying (and rising) discount factor.

The quantitative impact is to lower both the risk-free rate and the risky rate, by nearly identical amounts: 65bp for the risk-free rate and 69bp for the risky rate. The risk premium shrinks slightly.



Labor Share

We can take into account the decline in the labor share (Karabarounis and Neiman 2014; Jones and Philippon 2016; Barkai 2017). The corresponding pattern for the capital share is

a rise from around 33 percent in the early 1970s to 38 percent by 2014 (Koh, Santaaulàlia-Lopis, and Zheng 2016).

In our model an increase in the capital share pushes up the risk-free rate, and increases slightly the risk-premium. Indeed, equation (40) can be rewritten as

$$(R^{-1} + \beta^{-\frac{1}{\rho}} R^{-\frac{1}{\rho}})^{-1} = g_L g_A g_I^{-\frac{\alpha}{1-\alpha}} \frac{\theta + \frac{\alpha}{1-\alpha}(1 + e^y g_L)}{1 - \theta}$$

on the left hand, the function is increasing in R . Since $g_I < 1$, the right hand side is an increasing function in α .

Thus, interest rate is an increasing function of the capital share α . If we compare to our baseline calibration for which α is the sample average, the interest rate is lowered at the beginning of the sample by 0.6 percent but raised at the end by 1.1 percent. The risk premium is raised 20bp at the beginning and lowered 23bp at the end.

This factor, therefore, does not help in accounting for the patterns in the data. In Appendix, Figure 20 illustrates the role changes in the labor share.

Inequality

Our final extension is to allow for changes in inequality.

We model inequality by introducing heterogeneity in middle-age productivity: agents of type I have productivity e_I , and changes in inequality arise from mean-preserving changes in the distribution $\{e_I\}_I$. There is no additional uncertainty: young agents know which productivity they will have in the next period, and their borrowing constraint reflects their known productivity.

Introducing bequests

In our model consumption and savings in the second period are linear in lifetime wealth, hence mean-preserving spreads in inequality will have no aggregate effects. To break this linearity we introduce a bequest motive in the last period (De Nardi 2004; Benhabib, Bisin, and Zhu 2011). The utility from leaving a bequest B is assumed to be of the form $hB^{1-\varepsilon}$ with h measuring the strength of the bequest motive. The elasticity ε , however, must be different from ρ .

This can be seen in a simple two-period planning problem, with an added bequest motive $h(B)$:

$$\max_{c_1, c_2, B} u(c_1) + \beta [u(c_2) + h(B)]$$

subject to

$$c_1 + b = Y_1$$

$$c_2 + B = Rb + Y_2$$

where Y_i denotes income in each period. First-period consumption c_1 is the solution to

$$c_1 + \frac{1}{R} u'^{-1} \left(\frac{u'(c_1)}{\beta R} \right) + \frac{1}{R} h'^{-1} \left(\frac{u'(c_1)}{\beta R} \right) = Y_1 + \frac{Y_2}{R}$$

and will be linear in lifetime wealth unless $h'^{-1}(u'(c_1)/\beta R)$ is nonlinear in c_1 . With $u(c) = c^{1-\rho}$ and $h(B) = hB^{1-\epsilon}$ this will hold if $\rho \neq \epsilon$. Moreover it can be shown that in equilibrium⁷ a mean-preserving increase in inequality will lower R iff $\rho > \epsilon$.

With recursive preferences the corresponding equation for c_1 is

$$c_1(1 + \beta^{\frac{1}{\rho}} R^{\frac{1}{\rho}-1} + (H\beta)^{\frac{1}{\omega}} R^{\frac{1}{\omega}-1} c_1^{\frac{\rho}{\omega}-1}) = Y_1 + \frac{Y_2}{R}.$$

with $\omega = 1 - (1 - \epsilon) \frac{1-\rho}{1-\gamma}$. A mean-preserving increase in inequality will lower R iff $\frac{1-\rho}{1-\gamma}(\epsilon - \gamma) < 0$, so the comparison is between risk aversion and elasticity of bequests, but the sign of the effect of inequalities depends on whether $\rho \leq 1$. In our calibration ($\rho < 1$ and $\gamma > 1$) a mean-preserving increase in inequality will lower R iff $\epsilon > \gamma$. Since we want to “give inequality a chance,” we choose ϵ accordingly.

Bequests in our model

For a steady-state with bequests to be well-defined, we need to make an adjustment to the formulation of preferences, as follows. Preferences are then represented as

$$\begin{aligned} V_t^y &= \left(c_t^y 1^{-\rho} + \beta (E_t V_{t+1}^m)^{\frac{1-\rho}{1-\gamma}} \right)^{\frac{1-\gamma}{1-\rho}} \\ V_{t+1}^m &= \left(c_{t+1}^m 1^{-\rho} + \beta (E_{t+1} V_{t+2}^o)^{\frac{1-\rho}{1-\gamma}} \right)^{\frac{1-\gamma}{1-\rho}} \\ V_{t+2}^o &= \left(c_{t+2}^o 1^{-\rho} + \beta (E_{t+1} Y_{t+2})^{1-\rho} \left(h \left(\frac{B_{t+2}}{E_{t+1} Y_{t+2}} \right)^{1-\epsilon} \right)^{\frac{1-\rho}{1-\gamma}} \right)^{\frac{1-\gamma}{1-\rho}} \end{aligned}$$

We explore the quantitative effects of a rise in inequality as follows. We assume that the productivity distribution in middle age is binary with half of middle age agents having a high productivity $\frac{1+e}{2}$, and half with low productivity $\frac{1-e}{2}$. Then, we study the effect of a change in the level of e . When e varies from 0.1, the effect on the risk premium is around 10^{-5} percent (for standard calibration of all the other parameters). This simple exercise shows that, inside the model, the impact of an increase of inequality on the evolution of the risk-premium remains limited.

6 Conclusion

Risk-free rates have been falling since the 1980s while the return on capital has not. We analyze these trends in a calibrated overlapping generations model designed to encompass many of the “usual suspects” cited in the debate on secular stagnation. Declining labor force and productivity growth imply a limited decline in real interest rates and deleveraging cannot account for the joint decline in the risk free rate and increase in the risk premium. If we allow for a change in the (perceived) risk to productivity growth to fit the

⁷We close the simple two-period model with borrowers who have no bequest motives.

data, we find that the decline in the risk-free rate requires an increase in the borrowing capacity of the indebted agents in the model, consistent with the increase in the sum of public and private debt since the crisis but at odds with a deleveraging-based explanation put forth in Eggertsson and Krugman (2012).

Appendix

General case ($\delta \neq 1$)

It will be convenient to denote the return to investment expressed in terms of consumption as z_{t+1} :

$$z_{t+1} \equiv \frac{p_t^k}{p_{t+1}^k} R_{t+1}^k - 1 + \delta = \alpha \frac{A_{t+1}^{1-\alpha}}{p_{t+1}^k} k_{t+1}^{\alpha-1}$$

Equation (17) becomes:

$$E_t(R_{t+1}^{m, -\gamma}) R_{t+1} = E_t(R_{t+1}^{m, -\gamma} R_{t+1}^k)$$

$$R_{t+1} = \xi_t \alpha \frac{E_t A_{t+1}^{1-\alpha} k_{t+1}^\alpha}{p_t^k k_{t+1}} + (1-\delta) \frac{p_{t+1}^k}{p_t^k} \quad (28)$$

$$= \xi_t \frac{\alpha}{1-\alpha} \frac{E_t w_{t+1}}{p_t^k k_{t+1}} + (1-\delta) \frac{p_{t+1}^k}{p_t^k} \quad (29)$$

where we have defined

$$\xi_t \equiv \frac{E_t(R_{t+1}^{m, -\gamma} \tilde{a}_{t+1})}{E_t R_{t+1}^{m, -\gamma}}$$

$$\tilde{a}_{t+1} \equiv \frac{A_{t+1}^{1-\alpha}}{E_t A_{t+1}^{1-\alpha}}$$

Note that the risk-free rate and the return on capital are now linked as follows:

$$R_{t+1}^k = \frac{\tilde{a}_{t+1}}{\xi_t} R_{t+1} + (1 - \frac{\tilde{a}_{t+1}}{\xi_t}) \frac{p_{t+1}^k}{p_t^k} (1 - \delta) \quad (30)$$

The auxiliary variables v_t and u_{t+1} take the more general form

$$v_t \equiv \alpha(1 + e^y g_{L,t+1}) \xi_t + (1 - \alpha) \theta_t \left(1 - \frac{p_{t+1}^k}{p_t^k} \frac{1 - \delta}{R_{t+1}}\right)$$

$$= \alpha(1 + e^y g_{L,t+1}) \xi_t + (1 - \alpha) \theta_t \frac{\tilde{z}_{t+1}}{\tilde{z}_{t+1} + 1 - \delta}$$

$$u_{t+1} \equiv \alpha(1 + e^y g_{L,t+1}) (\tilde{a}_{t+1} + p_{t+1}^k (1 - \delta) \frac{k_{t+1}^{1-\alpha}}{\alpha E_t A_{t+1}^{1-\alpha}}) + (1 - \alpha) \theta_t$$

$$= \alpha(1 + e^y g_{L,t+1}) (\tilde{a}_{t+1} + \frac{\xi_t}{z_{t+1}} (1 - \delta)) + (1 - \alpha) \theta_t$$

and R_{t+1}^m becomes

$$R_{t+1}^m = \frac{u_{t+1}}{v_t} \frac{\alpha \xi_t}{1 - \alpha} \frac{(1 - \alpha) E_t A_{t+1}^{1-\alpha} k_{t+1}^\alpha}{p_t^k k_{t+1}}$$

$$= \frac{u_{t+1}}{v_t} \frac{\alpha \xi_t}{1 - \alpha} \frac{E_t w_{t+1}}{p_t^k k_{t+1}}$$

$$= \frac{u_{t+1}}{v_t} \left(R_{t+1} - \frac{p_{t+1}^k}{p_t^k} (1 - \delta) \right) = \frac{u_{t+1}}{v_t} \frac{p_{t+1}^k}{p_t^k} \frac{\xi_t}{\tilde{a}_{t+1}} z_{t+1}. \quad (31)$$

Replacing (31) in the definitions of ξ_t and ϕ_t gives:

$$\xi_t = \frac{E_t(u_{t+1}^{-\gamma} \tilde{a}_{t+1})}{E_t(u_{t+1}^{-\gamma})} \quad (32)$$

$$\phi_t = [E_t u_{t+1}^{1-\gamma}]^{(\gamma-\rho)/(1-\gamma)} E_t u_{t+1}^{-\gamma} v_t^\rho \left(1 - \frac{p_{t+1}^k}{p_t^k} \frac{1 - \delta}{R_{t+1}}\right)^{-\rho} \quad (33)$$

$$= [E_t u_{t+1}^{1-\gamma}]^{(\gamma-\rho)/(1-\gamma)} E_t u_{t+1}^{-\gamma} (u_{t+1} + \alpha(1 + e^y g_{L,t+1})(\xi_t - \tilde{a}_{t+1}))^{-\rho} \quad (34)$$

The general form of the law of motion is

$$(1 - \alpha)(1 - \frac{\theta_{t-1}}{\tilde{a}_t})z_t k_t = \left(1 + (\beta\phi_t)^{-1/\rho} R_{t+1}^{1-1/\rho}\right) g_{L,t} \frac{v_t}{\xi_t} k_{t+1}. \quad (35)$$

with the left-hand side consisting entirely of variables pre-determined at t .

To compute the risky steady state, we first express the law of motion (35) in terms of R_{t+1} , we proceed as follows. First, we replace z_t with $\tilde{z}_t \tilde{a}_t / \xi_{t-1}$ to write (35) as:

$$(1 - \alpha)(\tilde{a}_t - \theta_{t-1})\tilde{z}_t = \left(1 + (\beta\phi_t)^{-1/\rho} R_{t+1}^{1-1/\rho}\right) g_{L,t} v_t \frac{\xi_{t-1}}{\xi_t} \frac{k_{t+1}}{k_t}.$$

Then we use (28) to rewrite k_{t+1}/k_t :

$$\begin{aligned} \frac{R_{t+1} - (1 - \delta)g_{I,t+1}}{R_t - (1 - \delta)g_{I,t}} &= \frac{\xi_{t+1}}{\xi_t} g_{I,t+1} \frac{\mathbb{E}_t A_{t+1}^{1-\alpha}}{\mathbb{E}_{t-1} A_t^{1-\alpha}} \left(\frac{k_{t+1}}{k_t}\right)^{\alpha-1} \\ &= g_{I,t+1} \frac{\xi_{t+1}}{\xi_t} g_{A,t+1}^{1-\alpha} \left(\frac{k_{t+1}}{k_t}\right)^{\alpha-1} \\ \frac{k_{t+1}}{k_t} &= g_{I,t+1}^{1/(1-\alpha)} \left(\frac{\xi_t}{\xi_{t-1}}\right)^{1/(1-\alpha)} g_{A,t+1} \left(\frac{R_t - (1 - \delta)g_{I,t}}{R_{t+1} - (1 - \delta)g_{I,t+1}}\right)^{1/(1-\alpha)} \end{aligned}$$

so that

$$\begin{aligned} (1 - \alpha)(\tilde{a}_t - \theta_{t-1}) \left[\frac{R_t - (1 - \delta)g_{I,t}}{g_{I,t}}\right] &= \left[1 + (\beta\phi_t)^{-1/\rho} R_{t+1}^{1-1/\rho}\right] g_{L,t} \\ &\times \left[\alpha(1 + e^y g_{L,t+1})\xi_t + (1 - \alpha)\theta_t(1 - g_{I,t+1})\frac{1 - \delta}{R_{t+1}}\right] (g_{I,t+1})^{1/(1-\alpha)} \left(\frac{\xi_t}{\xi_{t-1}}\right)^{\alpha/(1-\alpha)} \end{aligned} \quad (36)$$

$$\times g_{A,t+1} \left(\frac{R_t - (1 - \delta)g_{I,t}}{R_{t+1} - (1 - \delta)g_{I,t+1}}\right)^{1/(1-\alpha)}. \quad (37)$$

This form of the law of motion involves additional variables ξ_t and ϕ_t satisfying (32–33) with

$$u_{t+1} = \alpha(1 + e^y g_{L,t+1}) \left(\tilde{a}_{t+1} + \frac{g_{I,t+1}(1 - \delta)\xi_t}{[R_{t+1} - (1 - \delta)g_{I,t+1}]}\right) + (1 - \alpha)\theta_t. \quad (38)$$

Equation (37), along with (32), (33), and (38), define (R_{t+1}, ξ_t) implicitly as a recursive function of (R_t, ξ_{t-1}) and \tilde{a}_t :

$$\begin{bmatrix} R_{t+1} \\ \xi_t \end{bmatrix} = f\left(\begin{bmatrix} R_t \\ \xi_{t-1} \end{bmatrix}, \tilde{a}_t, \tilde{a}_{t+1}\right). \quad (39)$$

Note that the arguments of (39) include the realization of \tilde{a}_t (known at t) and the (conditional) probability distribution of \tilde{a}_{t+1} , which is the only source of uncertainty in the model.

We define the risky steady-state as satisfying the relation

$$\begin{bmatrix} \bar{R} \\ \bar{\xi} \end{bmatrix} = f\left(\begin{bmatrix} \bar{R} \\ \bar{\xi} \end{bmatrix}, 1, \tilde{a}_{t+1}\right)$$

which leads to

$$\begin{aligned} (1 - \alpha)(1 - \theta)(\bar{R}/g_I - 1 + \delta) &= (1 + \beta^{-1/\rho} R^{1-1/\rho}) g_L g_A g_I^{-1/(1-\alpha)} \\ &\times \left[\alpha(1 + e^y g_L)\bar{\xi} + (1 - \alpha)\theta \left(1 - (1 - \delta)\frac{g_I}{\bar{R}}\right)\right] \\ \bar{\xi} &= \xi(\bar{R}, \bar{\xi}). \end{aligned}$$

The equation determining the deterministic steady state interest rate can be expressed as

$$\frac{g_A}{g_I^{\frac{1}{1-\alpha}}} = (1 + \beta^{-\frac{1}{\rho}} R^{1-\frac{1}{\rho}})^{-1} \left[\frac{1-\alpha}{\alpha g_L} \left(\frac{R}{g_I} - 1 + \delta \right) \right] \frac{\alpha(1-\theta)}{\alpha(1+e^y g_L) + (1-\alpha)\theta(1-g_I^{\frac{1-\delta}{R}})} \quad (40)$$

Proof of Proposition 1

We give the details of the proof of Proposition 1. The proof is in two steps. First, we establish the dynamic equation of R_t , to obtain the equation at the steady-state. Then, we study the properties of R as a function of the inputs.

Dynamic relation

Starting from equation (25), the dynamic relation is rewritten as

$$(1-\alpha)\left(1 - \frac{\theta_{t-1}}{\tilde{a}_t}\right) \alpha \frac{A_t^{1-\alpha}}{p_t^k} k_t^\alpha = \left(1 + (\beta\phi_t)^{-1/\rho} R_{t+1}^{1-1/\rho}\right) g_{L,t} \frac{v_t}{\xi_t} k_{t+1}$$

This leads to the following law of motion for R_t

$$(1-\alpha)R_t(\tilde{a}_t - \theta_{t-1}) = \left(1 + (\beta\phi_t)^{-1/\rho} R_{t+1}^{1-1/\rho}\right) g_{L,t} g_{I,t}^{-\frac{\alpha}{1-\alpha}} g_{A,t} \left(\frac{\xi_t}{\xi_{t-1}}\right)^{\frac{\alpha}{1-\alpha}} v_t \left(\frac{R_{t+1}}{R_t}\right)^{-\frac{1}{1-\alpha}} \quad (41)$$

Equation at the steady-state, for $\delta = 1$

We introduce

$$M(p) = \int [\alpha(1+e^y g_L)\tilde{a} + (1-\alpha)\theta]^{-p} d\tilde{a}$$

We compute

$$\alpha(1+e^y g_L)\xi + (1-\alpha)\theta = \frac{M(\gamma-1)}{M(\gamma)}$$

$$\phi = M(\gamma-1)^{\rho+(\gamma-\rho)/(1-\gamma)} M(\gamma)^{1-\rho} = \left(M(\gamma-1)^{\gamma/(\gamma-1)} M(\gamma)^{-1}\right)^{\rho-1}$$

R is solution of the equation

$$\frac{R}{1 + \beta^{-1/\rho} [M(\gamma-1)^{\gamma/(\gamma-1)} M(\gamma)R]^{1-1/\rho}} = \frac{g_L g_A g_I^{-\alpha/(1-\alpha)} M(\gamma-1)}{(1-\alpha)(1-\theta) M(\gamma)}$$

The proof mimics the proof of Theorem 1 in Coeurdacier, Guibaud, and Jin (2015), we consider the function

$$h(R) = \frac{R}{1 + \beta^{-1/\rho} [M(\gamma-1)^{\gamma/(\gamma-1)} M(\gamma)R]^{1-1/\rho}}$$

h is strictly increasing, for $\rho \leq 1$, it defines a bijection from $[0, +\infty)$ to $[0, +\infty)$, thus there exists a unique R such that

$$h(R) = \frac{g_L g_A g_I^{-\alpha/(1-\alpha)} M(\gamma-1)}{(1-\alpha)(1-\theta) M(\gamma)}$$

The directions of variation of R with g_A , g_I and β are obvious.

Evolution of the portfolio share devoted to risky assets

Here, we represent the portfolio share given by Proposition 2, for the US.

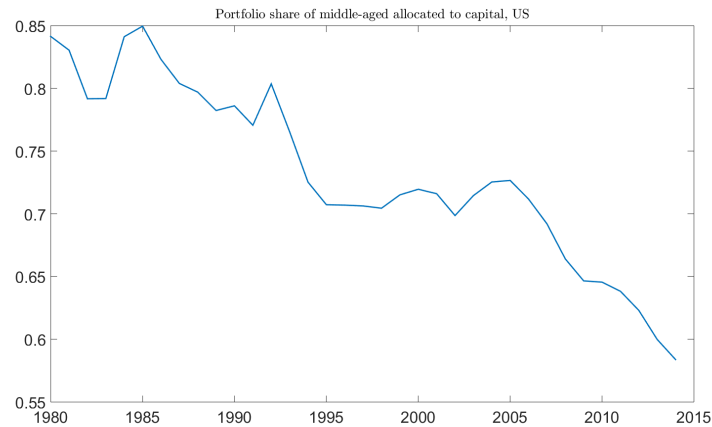


Figure 19: Model-based share devoted to risky assets

Impact of a decline in the labor share

In Figure 20, we represent the rates implied by the model, with a fixed labor share equal to the average on the period 1980-2015, as well as for a labor share that declines as estimated in Koh, Santaaulàlia-Lopis, and Zheng 2016. There is hardly any difference in terms of the risk free rate, which is 0.2 percent smaller at the end of the sample for the fixed labor share, and even less for the risk premium on which the labor share has no impact what so ever.

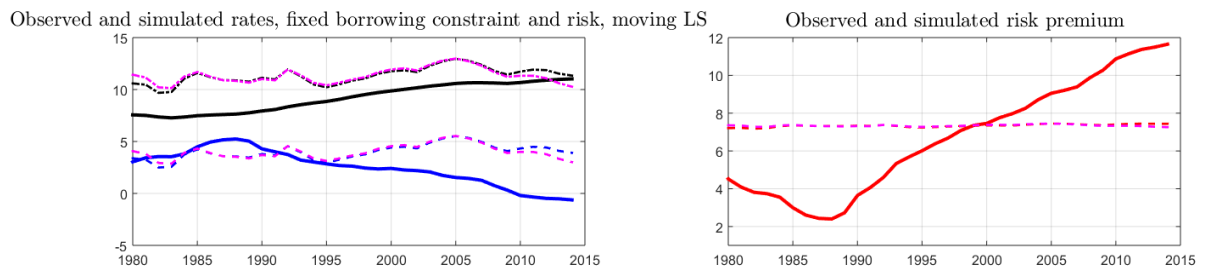


Figure 20: Effect of the decline in the labor share

References

Aksoy, Yunus, Henrique S Basso, Ron Smith, and Tobias Grasl. 2016. *Demographic structure and macroeconomic trends*. Working paper 5872. CES Ifo, April.

- Aruoba, S. Borağan, Pablo Cuba-Borda, and Frank Schorfheide. 2013. *Macroeconomic Dynamics near the ZLB: A Tale of Two Countries*. Working Paper 19248. NBER, July.
- Auclert, Adrien, and Matthew Rognlie. 2016. *Inequality and Aggregate Demand*. Technical report.
- Baker, Scott R., Nicholas Bloom, and Steven J. Davis. 2016. "Measuring Economic Policy Uncertainty." *The Quarterly Journal of Economics* 131 (4): 1593–1636.
- Bansal, Ravi, and Amir Yaron. 2004. "Risks for the Long Run: A Potential Resolution of Asset Pricing Puzzles." *The Journal of Finance* 59 (4): 1481–1509.
- Barkai, Simcha. 2017. *Declining Labor and Capital Shares*. LBS preprint.
- Bean, Sir Charles, Christian Broda, Takatoshi Ito, and Randall Kroszner. 2015. *Low for Long? Causes and Consequences of Persistently Low Interest Rates*. Geneva Reports on the World Economy 17. International Center for Monetary and Banking Studies, October.
- Bell, Felicitie C., and Michael L. Miller. 2005. *Life Tables for the United States Social Security Area 1900–2010*. Actuarial Study. Accessed 22 July 2016. Social Security Administration.
- Benhabib, Jess, Alberto Bisin, and Shenghao Zhu. 2011. "The Distribution of Wealth and Fiscal Policy in Economies with Finitely Lived Agents." *Econometrica* 79, no. 1 (January): 123–57.
- Busetti, Fabio, and Michele Caivano. 2017. *Low frequency drivers of the real interest rate: a band spectrum regression approach*. Working Paper 1132. Banca d'Italia, September.
- Buttiglione, Luigi, Philip Lane, Lucrezia Reichlin, and Vincent Reinhart. 2014. *Deleveraging? What Deleveraging?*. Geneva Reports on the World Economy. International Center for Monetary and Banking Studies.
- Caballero, Ricardo J., and Emmanuel Farhi. 2014. *The Safety Trap*. Working Paper 19927. NBER, February.
- Caballero, Ricardo J., Emmanuel Farhi, and Pierre-Olivier Gourinchas. 2008. "An Equilibrium Model of "Global Imbalances" and Low Interest Rates." *American Economic Review* 98 (1): 358–93.
- . 2016. "Safe Asset Scarcity and Aggregate Demand." *The American Economic Review* 106, no. 5 (May): 513–18.
- . 2017. "Rents, Technical Change, and Risk Premia Accounting for Secular Trends in Interest Rates, Returns on Capital, Earning Yields, and Factor Shares." 107, no. 5 (May): 614–20.

- Carvalho, Carlos, Andrea Ferrero, and Fernanda Nechio. 2016. "Demographics and Real Interest Rates: Inspecting the Mechanism." SI: The Post-Crisis Slump, *European Economic Review* 88 (September): 208–226.
- Coeurdacier, Nicolas, Stéphane Guibaud, and Keyu Jin. 2015. "Credit Constraints and Growth in a Global Economy." *American Economic Review* 105, no. 9 (September): 2838–81.
- Coeurdacier, Nicolas, Hélène Rey, and Pablo Winant. 2011. "The Risky Steady State." *The American Economic Review* 101, no. 3 (May): 398–401.
- De Nardi, Maria Cristina. 2004. "Wealth Inequality and Intergenerational Links." *Review of Economic Studies* 71, no. 3 (July): 743–68.
- Del Negro, Marco, Domenico Giannone, Marc P. Giannoni, and Andrea Tambalotti. 2017. *Safety, Liquidity, and the Natural Rate of Interest*. Staff Report 812. Federal Reserve Bank of New York, May.
- DiCecio, Riccardo. 2009. "Sticky wages and sectoral labor comovement." *Journal of Economic Dynamics and Control* 33, no. 3 (March): 538–553.
- Eggertsson, Gauti B., and Paul Krugman. 2012. "Debt, Deleveraging, and the Liquidity Trap: A Fisher-Minsky-Koo Approach." *The Quarterly Journal of Economics* 127 (3): 1469–1513.
- Eggertsson, Gauti B., and Neil R. Mehrotra. 2014. *A Model of Secular Stagnation*. Working Paper 20574. NBER.
- Eggertsson, Gauti B., Neil R. Mehrotra, and Jacob A. Robbins. 2017. *A Quantitative Model of Secular Stagnation: Theory and Quantitative Evaluation*. Working Paper 742. Federal Reserve Bank of Minneapolis, September.
- Eggertsson, Gauti B., and Michael Woodford. 2003. "The Zero Bound on Interest Rates and Optimal Monetary Policy." *Brookings Papers on Economic Activity* 1:139–233.
- Epstein, Larry G., and Stanley E. Zin. 1989. "Substitution, Risk Aversion, and the Temporal Behavior of Consumption and Asset Returns: A Theoretical Framework." *Econometrica* 57, no. 4 (July): 937–969.
- Favero, Carlo A, Arie E Gozluklu, and Haoxi Yang. 2016. "Demographics and the behavior of interest rates." *IMF Economic Review* 64 (4): 732–776.
- Fernald, John G. 2012. *A quarterly, utilization-adjusted series on total factor productivity*. Working Paper Series 2012-19. Federal Reserve Bank of San Francisco.
- Fernandez-Villaverde, Jesús, Grey Gordon, Pablo A. Guerrón-Quintana, and Juan Rubio-Ramírez. 2012. *Nonlinear Adventures at the Zero Lower Bound*. Working Paper 18058. NBER, May.

- Ferrero, Giuseppe, Marco Gross, and Stefano Neri. 2017. *On secular stagnation and low interest rates: demography matters*. Working Paper 2088. European Central Bank, July.
- Fischer, Stanley. 2016a. *Low Interest Rates*. Speech at the 40th Annual Central Banking Seminar, sponsored by the Federal Reserve Bank of New York, New York, NY, October.
- . 2016b. *Why Are Interest Rates So Low? Causes and Implications*. Speech At the Economic Club of New York, New York, NY, October.
- Fries, Sébastien, Sarah Mouabbi, Jean-Stéphane Mésonnier, and Jean-Paul Renne. 2016. *National Natural Rates of Interest and the Single Monetary Policy in the Euro Area*. Working Paper 611. Banque de France.
- Gagnon, Étienne, Benjamin K. Johannsen, and David López-Salido. 2016. *Understanding the New Normal: The Role of Demographics*. Finance and Economics Discussion Series 2016-080. Board of Governors of the Federal Reserve System.
- Garnier, Olivier, Ronan Mahieu, and Jean-Pierre Villette. 2015. *Coût du capital*. Technical report. Conseil national de l'information statistique.
- Giovannini, Alberto, and Philippe Weil. 1989. *Risk Aversion and Intertemporal Substitution in the Capital Asset Pricing Model*. Working paper 2824. NBER.
- Gomme, Paul, B. Ravikumar, and Peter Rupert. 2011. "The Return to Capital and the Business Cycle." *Review of Economic Dynamics* 14, no. 2 (April): 262–278.
- . 2015. "Secular Stagnation and Returns on Capital." *Federal Reserve Bank of St Louis Economic Synopsis* 19.
- Gourinchas, Pierre-Olivier, Richard Portes, Pau Rabanal, et al. 2016. "Secular Stagnation, Growth, and Real Interest Rates." *IMF Economic Review* 64 (4): 575–580.
- Gust, Christopher, David López-Salido, and Matthew E. Smith. 2012. *The Empirical Implications of the Interest-Rate Lower Bound*. Finance and Economics Discussion Series 2012-83. Federal Reserve Board.
- Hall, Robert E. 2016. *Understanding the Decline in the Safe Real Interest Rate*. Working paper 22196. NBER, April.
- Hamilton, James D, Ethan S Harris, Jan Hatzius, and Kenneth D West. 2016. "The Equilibrium Real Funds Rate: Past, Present and Future." *IMF Economic Review* 64 (4): 660–707.
- Holston, Kathryn, Thomas Laubach, and John C. Williams. 2016. *Measuring the Natural Rate of Interest: International Trends and Determinants*. Working paper 2016-11. Federal Reserve Bank of San Francisco, June.
- Jones, Callum, and Thomas Philippon. 2016. "The Secular Stagnation of Investment?" December.

- Juillard, Michel. 2011. *Local approximation of DSGE models around the risky steady state*. Technical report. Banque de France, October.
- Karabarbounis, Loukas, and Brent Neiman. 2014. "The Global Decline of the Labor Share." *The Quarterly Journal of Economics* 129, no. 1 (February): 61–103.
- King, Mervyn, and David Low. 2014. *Measuring the "World" Real Interest Rate*. Working paper 19887. NBER, February.
- Koh, Dongya, Raül Santaeuilàlia-Lopis, and Yu Zheng. 2016. *Labor Share Decline and the Capitalization of Intellectual Property Products*. Working Paper 927. Barcelona Graduate School of Economics.
- Laubach, Thomas, and John C. Williams. 2016. *Measuring the Natural Rate of Interest Redux*. Finance and Economics Discussion Series 2016-011. Board of Governors of the Federal Reserve System.
- Rachel, Lukasz, and Thomas D. Smith. 2015. *Secular Drivers of the Global Real Interest Rate*. Staff Working Paper 571. Bank of England, December.
- Summers, Lawrence H. 2014. "U.S. Economic Prospects: Secular Stagnation, Hysteresis, and the Zero Lower Bound." *Business Economics* 49 (2): 65–73.
- Teulings, Coen, and Richard Baldwin, eds. 2014. *Secular Stagnation: Facts, Causes, and Cures*. London: CEPR Press.
- Weil, Philippe. 1990. "Nonexpected Utility in Macroeconomics." *The Quarterly Journal of Economics* 105, no. 1 (February): 29–42.