

Kölle, Felix; Lane, Tom; Nosenzo, Daniele; Starmer, Chris

Working Paper

Nudging the electorate: What works and why?

CeDEx Discussion Paper Series, No. 2017-05

Provided in Cooperation with:

The University of Nottingham, Centre for Decision Research and Experimental Economics (CeDEx)

Suggested Citation: Kölle, Felix; Lane, Tom; Nosenzo, Daniele; Starmer, Chris (2017) : Nudging the electorate: What works and why?, CeDEx Discussion Paper Series, No. 2017-05, The University of Nottingham, Centre for Decision Research and Experimental Economics (CeDEx), Nottingham

This Version is available at:

<https://hdl.handle.net/10419/200439>

Standard-Nutzungsbedingungen:

Die Dokumente auf EconStor dürfen zu eigenen wissenschaftlichen Zwecken und zum Privatgebrauch gespeichert und kopiert werden.

Sie dürfen die Dokumente nicht für öffentliche oder kommerzielle Zwecke vervielfältigen, öffentlich ausstellen, öffentlich zugänglich machen, vertreiben oder anderweitig nutzen.

Sofern die Verfasser die Dokumente unter Open-Content-Lizenzen (insbesondere CC-Lizenzen) zur Verfügung gestellt haben sollten, gelten abweichend von diesen Nutzungsbedingungen die in der dort genannten Lizenz gewährten Nutzungsrechte.

Terms of use:

Documents in EconStor may be saved and copied for your personal and scholarly purposes.

You are not to copy documents for public or commercial purposes, to exhibit the documents publicly, to make them publicly available on the internet, or to distribute or otherwise use the documents in public.

If the documents have been made available under an Open Content Licence (especially Creative Commons Licences), you may exercise further usage rights as specified in the indicated licence.



CENTRE FOR DECISION RESEARCH & EXPERIMENTAL ECONOMICS



Discussion Paper No. 2017-05

Felix Kölle, Tom Lane,
Daniele Nosenzo and
Chris Starmer

March 2017

**Nudging the electorate: what
works and why?**

CeDEx Discussion Paper Series
ISSN 1749 - 3293



CENTRE FOR DECISION RESEARCH & EXPERIMENTAL ECONOMICS

The Centre for Decision Research and Experimental Economics was founded in 2000, and is based in the School of Economics at the University of Nottingham.

The focus for the Centre is research into individual and strategic decision-making using a combination of theoretical and experimental methods. On the theory side, members of the Centre investigate individual choice under uncertainty, cooperative and non-cooperative game theory, as well as theories of psychology, bounded rationality and evolutionary game theory. Members of the Centre have applied experimental methods in the fields of public economics, individual choice under risk and uncertainty, strategic interaction, and the performance of auctions, markets and other economic institutions. Much of the Centre's research involves collaborative projects with researchers from other departments in the UK and overseas.

Please visit <http://www.nottingham.ac.uk/cedex> for more information about the Centre or contact

Suzanne Robey
Centre for Decision Research and Experimental Economics
School of Economics
University of Nottingham
University Park
Nottingham
NG7 2RD
Tel: +44 (0)115 95 14763
Fax: +44 (0) 115 95 14159
suzanne.robey@nottingham.ac.uk

The full list of CeDEX Discussion Papers is available at

<http://www.nottingham.ac.uk/cedex/publications/discussion-papers/index.aspx>

Nudging the electorate: what works and why?

Felix Kölle^a, Tom Lane^b, Daniele Nosenzo^c, Chris Starmer^d

21 March 2017

Abstract

We report two studies investigating whether, and if so how, different interventions affect voter registration rates. In a natural field experiment conducted before the 2015 UK General Election, we varied messages on a postcard sent by Oxford City Council to 7,679 unregistered student voters encouraging them to register to vote. Relative to a baseline, emphasising negative monetary incentives (the possibility of being fined) significantly increased registration rates, while positive monetary incentives (chances of winning a lottery) and purely non-monetary nudges had no overall effects. In the second study, we show that these differences can be partly explained by social norms.

JEL classifications: D72: Political Processes: Rent-Seeking, Lobbying, Elections, Legislatures, and Voting Behavior; D03: Behavioral Microeconomics: Underlying Principles; C93: Field Experiments; H83: Public Administration.

Keywords: Voter Registration; Voting; Field Experiment; Nudging; Social Norms; Fines; Rewards.

a: Department of Economics, University of Cologne

b: Department of Economics, University of Nottingham

c: Department of Economics, University of Nottingham

d: Corresponding author: Chris Starmer, Department of Economics, University Park, University of Nottingham, NG7 2RD, United Kingdom. Email address: Chris.Starmer@nottingham.ac.uk

1. Introduction

Behavioural science is increasingly being used to advance low-cost interventions across a growing spectrum of public policy areas. The associated body of research is being built by – and is of interest to – both academics (e.g. Chetty, 2015; Hallsworth et al., 2014) and applied policy units (e.g. Behavioural Insights Team, 2010, 2011, 2012, 2016). Interventions often take the form of ‘nudges’ – manipulations of the ‘choice architecture’ which aim to systematically change people’s behaviour at low cost for the policymaker.¹ This paper explores aspects of the mechanics of nudging by using a combination of field and online experiments. Our natural field experiment explores the extent to which a particular decision can be influenced by different types of nudge; with our online experiment we investigate the underlying mechanisms that lead to the success or failure of different nudges.

We do this in the context of a particular policy area: voter registration. In many countries – including the United Kingdom, where our study is conducted – any citizen wishing to vote must first register on the electoral roll. Registration in the UK is technically mandatory, with non-registration punishable with an £80 fine, although in the past two decades a substantial gap has emerged between the numbers of eligible and registered voters (Bite the Ballot, 2016), one which was further increased by the implementation of a legislative change in 2014: previously all members of a household could be registered collectively, but the law now requires each person to register individually (Electoral Registration and Administration Act 2013). Besides any intrinsic benefits of wide democratic participation, high registration rates serve the government’s interest insofar as the electoral roll has secondary uses such as fraud-detection and jury recruitment. Given its very low cost nature, nudging – if it can be shown to be effective – would be an attractive strategy for such organisations to employ in pursuit of this goal. Our study therefore explores interventions that can be applied, at minimal financial expense, to nudge citizens to register to vote in elections.

In the first part of this paper, we report the results of a natural field experiment run ahead of the 2015 UK General Election in partnership with one such interested party, Oxford City Council, who sent postcards to students living in university accommodation, encouraging

¹ We are using the label ‘nudge’ to describe any type of low-cost intervention that is designed with the objective of changing individuals’ behaviour. Thaler and Sunstein (2008) refer to ‘nudges’ to describe interventions that leave unaffected the underlying economic incentives: some of the manipulations that we use in our experiment have this property, whereas others induce small changes in the underlying incentives and so, strictly speaking, would not qualify as nudges according to the Thaler and Sunstein definition.

them to register. Councils have a particular interest in discovering successful ways of targeting such students, as they represent a segment of society whose registration rates have been particularly affected by the recent legal change – previously universities could register en masse all accommodated students, but students are now required to register themselves individually. While all the postcards urged recipients not to miss their chance to vote, we systematically varied the precise content of their messages in order to test the effects of different nudges on registration rates.

We investigated two types of nudges relying on monetary incentives in the form of either a small *gain* or a small *loss*. There is a large and diverse literature in economics showing that interventions based on negative incentives, such as the threat of monetary loss, may produce stronger responses than those relying on positive incentives, such as the promise of monetary gains, even when the interventions involve identical financial incentives and the only difference is in the way these incentives are described to the individual (for reviews of these literatures, see, e.g., Balliet et al., 2011; van Lange et al., 2014; Nosenzo, 2016). In the context of policy interventions aimed at reinforcing civic duties, as in the case of voter registration, positive and negative incentives may produce different behaviours because of the way they interact with the very notion of 'civic duty': while negative incentives may reinforce the perception that registering to vote is what one ought to do, positive incentives may have the opposite effect. In the second part of our paper, we investigate this hypothesis by examining the effects that positive and negative incentives have on the perception that registering to vote is a normative obligation.

We also investigated another class of nudges, which do not involve financial incentives but rely on purely psychological mechanisms to affect behaviour. We refer to these as our *non-monetary* nudges. Non-monetary nudges are sometimes regarded as preferable to monetary ones, especially in areas of public policy, such as voter registration programs, where intrinsic motivations may play an important role in producing the desired behaviour: the concern here is that the use of extrinsic (monetary) incentives may crowd-out these intrinsic motivations (see, e.g., Gneezy et al., 2011; Bowles and Polania-Reyes, 2012). Another advantage of non-monetary interventions, compared to monetary ones, is that the former typically involve smaller financial costs than the latter.

In our field experiment, we implement these nudges across six treatments. In a baseline treatment, the postcard that was sent to unregistered student voters simply encouraged them

to register, without any additional message. We investigate the effectiveness of monetary losses in a second treatment by adding a message highlighting the existence of the potential £80 fine for those who fail to register. Emphasising the possibility of facing costly legal action has previously been found to exert a substantial positive effect in other domains of policy intervention, such as the enforcement of TV license registration (Fellner et al., 2013), debt repayment (Bursztyn et al., 2015), or traffic violations (Lu et al., 2016).² Kleven et al. (2011) similarly found that the threat of audits raised tax returns, although mixed evidence was found in this domain by Blumenthal et al. (2001) and Slemrod et al. (2001).³

To test the effectiveness of monetary gains, we designed two further treatments where students were offered entry into a lottery to win small cash prizes (of £80) for those who registered early. Financial inducements have previously been found to raise voter registration (John et al., 2015) and voter turnout (Panagopoulos, 2013), although in the latter case only when the inducements were sufficiently large. Moreover, in John et al. (2015) the lottery involved large financial incentives (between £1000 and £5000) and produced only a small positive effect (an increase of two percentage points in registration rates).

Finally, we investigate the effectiveness of non-monetary nudges in two treatments where we included in the postcard messages that invoked purely psychological mechanisms. Specifically, we attempted to harness the so called ‘foot-in-the-door’ mechanism. First identified by Freedman and Fraser (1966), this is a psychological effect – which has been replicated across a wide array of circumstances (see e.g. Burger, 1999) – wherein people are more likely to comply with a large request, oriented towards a particular goal, after they have first complied with a small request. In our case, the small requests took the form of asking students to provide their phone number (so that they could be sent a reminder to register); or simply to report by text whether they intended to register.

Our results show that emphasising the possibility of being fined yielded a large positive effect, with subjects exposed to this intervention being around 1.7 times more likely to register than those in the baseline condition. In contrast, the prospect of financial gain had no overall effect on registration – and once the deadline for entry into the lottery had passed,

² However, Lu et al. (2016) found that messages were effective only when they contained personalised information about own past traffic violations, and not when they communicated the mere existence of fines.

³ See Hallsworth (2014) for a recent review of field experiments on tax compliance interventions.

subjects exposed to this intervention were significantly less likely to register than those in the baseline condition. Meanwhile, the non-monetary interventions had no discernible effect.

In the second part of the study reported in this paper, we investigated a possible mechanism underlying the effectiveness of the negative monetary incentives and the ineffectiveness of positive incentives: that is, their contrasting effects on the perception of what constitutes socially appropriate behaviour in the context of voter registration. A growing body of recent economic research (e.g., Burks and Krupka, 2012; Gächter et al., 2013; Krupka and Weber, 2013; Barr et al., 2015; Banerjee, 2016; Krupka et al., 2016) suggests that compliance with social norms drives behaviour in a wide range of contexts. We hypothesised that the fine and lottery treatments may have divergent effects on the perceptions of normative appropriateness of registering to vote: emphasising that failing to register is punishable by law may strengthen the perception that one ought to register, while offering monetary inducements for registering may weaken the perception that doing so is an action already expected within society.

Our results support these hypotheses. Using the incentivised norm-elicitation method of Krupka and Weber (2013), we found that exposing individuals to the fine nudge strengthened their perception that failing to register was socially inappropriate behaviour, while exposing them to the lottery nudge weakened the perception that registering was socially appropriate behaviour. Consequently, we propose that strengthening/weakening the social norm relating to registration had a direct effect on respondents' likelihood of registering, and that this partly explains why the fine intervention was successful while the lottery intervention was not. Indeed, a possible interpretation of our results is that—just as in some previous research (e.g. Frey and Oberholzer-Gee, 1997; Ariely et al., 2009; Gneezy et al., 2011; Bowles and Polania-Reyes, 2012)—monetary incentives crowded out individuals' intrinsic motivation to engage in socially constructive behaviour, and the adverse effect of the lottery intervention on the perceived social norm of registering may be partly behind this effect.

Our study contributes to the literature regarding behavioural insights and nudging in public policy. One distinctive feature of our study is that our assessment of the relative effectiveness of non-monetary and monetary nudges (and, within the latter, of positive and negative incentives) is done within a unified experimental design and in the context of a large-scale field intervention ($N = 7,679$). We identify a low-cost strategy – emphasising the possibility of a fine for not registering – that governments can use to substantially increase registrations. However, we also identify cases where nudges can fail to work or perhaps even backfire. We

show that offering monetary rewards for registering can have neutral or adverse effects, while attempting purely psychological interventions may not yield any desired positive effects.

Another distinctive feature of our paper is that it probes the underlying behavioural and psychological mechanisms that make specific interventions more (or less) successful than others. In particular, we believe we are the first to show that policy interventions using positive incentives may weaken, whereas those relying on negative incentives may strengthen, the perceptions of normative appropriateness of the target behaviour. These differences in normative perceptions may explain the relative success of the positive and negative monetary interventions that we found in our field experiment. Hence, our paper also adds to recent economic literature on the importance of social norms for understanding human social behaviour.

2. Study I: Field experiment on voter registration

2.1 Experimental design

Our field experiment was designed to test the effectiveness of six different low cost, nudge-style, interventions for raising voter registration rates ahead of the 2015 UK General Election. These six interventions fall into three broad categories: negative monetary nudges; positive monetary nudges; and non-monetary nudges. All of these interventions were implemented via adjustments to a message sent in a bulk, randomised, mail out (details below) to students living in the UK City of Oxford.

We implemented one negative monetary intervention invoking the threat of a *monetary loss* for failing to register. We did this by highlighting to subjects the truthful fact that they could be fined £80 if they did not register. This penalty is specified in UK law, and it is referred to in standard materials that Oxford City Council (OCC) use to promote voter registration. Despite the power existing in law, however, it is rarely used by councils and it is unclear how aware a typical unregistered voter would be of the possibility of being fined.

We implemented two interventions involving the prospect of *monetary gain* for registering. We did this with two treatments offering entry into a lottery to win cash prizes of the value of £80 for those who registered by a specific deadline. The two treatments differed only in that one attempted also to harness regret aversion (Loomes and Sugden, 1982), by telling recipients that those who did not register would still be entered into the lottery and informed

if they won, but would be unable to claim their prize. Regret aversion has previously been shown to affect entry decisions into lotteries (Zeelenberg and Pieters, 2004; Gneezy, 2014; Imas et al., 2016).

We also implemented two interventions involving *non-monetary* mechanisms.^{4,5} These were motivated by the so called foot-in-the-door effect (Freedman and Fraser, 1966). More specifically, we tested whether message recipients were more likely to register (i.e., comply with a large request) if they had first complied with a small request related to voter registration: in both variants, subjects were asked to send a one-word text message to OCC; in one case subjects were asked to text the word ‘*myvote*’ to indicate that they planned to register; in the other, subjects could text the word ‘*reminder*’ to receive a free reminder text to prompt them to register nearer the deadline for voters to register in the 2015 UK General Election.⁶ Foot-in-the-door mechanisms have previously been tested in the context of voter turnout, with mixed results: asking subjects if they intended to vote was found to have a positive impact on turnout by Greenwald et al. (1987, 1988), but not by Smith et al. (2003).

Our nudges were transmitted via postcards, which OCC mailed to all unregistered voters living in student accommodation belonging to the University of Oxford and Oxford Brookes University on March 9-10 2015, ahead of the April 20 deadline for voters to register in the General Election. We collaborated with the Council to engineer the content of these postcards. While all postcards encouraged their recipients to register, the content of the

⁴ There are a number of non-monetary interventions that have been shown to positively affect voter *turnout*, e.g. personalised get-out-the-vote contact (e.g. Gerber and Green, 2000; Ramirez, 2005), priming one’s identity as a voter (Bryan et al., 2011), or applying social pressure on people to vote (e.g. Gerber et al., 2008, 2010; Davenport, 2010; Panagopoulos, 2010). See Rogers et al. (2013) for a recent review of this literature. While one might expect that what works for voter turnout should also work for voter *registration*, ultimately this is an empirical question. Nevertheless, the fact that voter turnout appears quite susceptible to psychological processes provides a strong motive for exploring non-monetary nudges as a policy tool regarding registration.

⁵ We also considered designing a ‘peer pressure’ treatment, where we would inform students of the past registration rates of their peers in order to induce them to register. However, at the time we designed the experiment, the registration rate of students was very low (about 8-9%) and we thought that informing subjects of such low rates may actually have the opposite effect of discouraging registrations.

⁶ Our primary interest in relation to this treatment was in assessing whether the *act of registering* for an automated text reminder (which was designed to be very quick and easy) would act as a foot in the door, enhancing the propensity to subsequently register to vote. We were not especially interested in the later effect that a subsequent automated reminder might have (we do not have controlled comparisons for benchmarking any such effect). Of course all of our treatments can be considered as sending slightly different forms of reminder and, more broadly, reminders have been shown to be effective nudges in relation to voter registration (Bennion and Nickerson, 2011), as well as in other contexts (e.g. Altmann and Traxler, 2014)

messages they contained varied, allowing us to test the effects of different nudges on registration rates.

All postcards were double sided (see Figure 1 for a copy of the postcard used in our baseline condition and Appendix A for copies of the other postcards). The back simply contained the message, *‘IMPORTANT INFORMATION ABOUT YOUR RIGHT TO VOTE, OVERLEAF.’* The front featured the heading, *‘DON’T MISS YOUR CHANCE TO VOTE! According to our records you have not yet registered to vote. It’s easy to register online. To go to the registration page simply use one of the links below.’* The bottom of this side contained the address of the government web page for registering to vote, and a QR code which would take recipients to the same page. These features were held constant across treatments. The postcards differed by treatment only according to the text included in a box below the heading on the front side.

Figure 1: Postcard used in the Baseline treatment



2.2 Treatments

In the **Baseline** treatment, the box was left blank (Figure 1). This treatment therefore serves as a basis for comparison against the other treatments.

In the **Monetary Loss** treatment, the box contained the message: *‘If you don’t register you could be fined £80.’*

In treatment **Monetary Gain 1**, the box contained the message: *'If you register by 27 March 2015 you will be entered into a lottery to receive one of ten £80 prizes. Winning students will be notified in June 2015.'* In treatment **Monetary Gain 2**, the box contained the message: *'You have been entered into a lottery to receive one of ten £80 prizes. Winners will be notified in June 2015 but you will only be able to claim your prize if you were already registered by 27 March 2015. If not your prize will go to another student.'*

In treatment **Non-Monetary 1**, the box contained the message: *'We'd like to know if you are intending to register. If you are, please text 'myvote' to 60886.'* In treatment **Non-Monetary 2**, the box contained the message: *'Would you like us to send you a text reminder? If you do, please text 'reminder' to 60886.'* In both cases, texts were free of charge and this was clearly stated in the postcard.

2.3 Assignment to treatment

The postcards were sent out on March 9-10 2015 to 7,679 voters who were still unregistered at the time and who lived in student accommodation buildings belonging to the University of Oxford and Oxford Brookes. In order to minimise the likelihood of subjects seeing postcards belonging to treatments other than the one they were assigned to, we randomised assignment to treatment at the building level: all students living in a single building were assigned to the same treatment. For the University of Oxford, all students living in a single college were assigned to the same treatment. For Oxford Brookes University, all students living in a single hall of residence were assigned to the same treatment, with the exception that two very large halls were split into several geographically distinct units of assignment. This was to ensure balance between treatments in the proportion of subjects attending each university – we considered this important, given large demographic (in particular, socioeconomic) differences between the student populations of each university. We further balanced treatment assignment by residence size (small and large) and to the age of college (ancient and modern) to account for other potential unobserved characteristics. The resulting sample sizes were as follows: Baseline ($n = 1193$); Monetary Loss ($n = 1357$); Monetary Gain 1 ($n = 1250$); Monetary Gain 2 ($n = 1317$); Non-Monetary 1 ($n = 1262$); and Non-Monetary 2 ($n = 1300$). See Appendix B for further details on the assignment procedure and for a full breakdown of the colleges and halls assigned to each treatment.

2.4 The dataset

OCC provided us with anonymised data on registration rates amongst students residing in each college and hall at various points in time between January and April 2015. In particular, for each individual, our dataset specifies whether or not they were registered on: January 2, March 8 (the day before the postcards of our experiment were sent out), and any subsequent day between March 9 and April 20 (the formal deadline to register to vote for the General Election). The data also identify the treatment each individual was assigned to, their university affiliation (University of Oxford or Oxford Brookes University), and their hall or college. Other demographic data such as gender, age, etc. were not available to the Council.

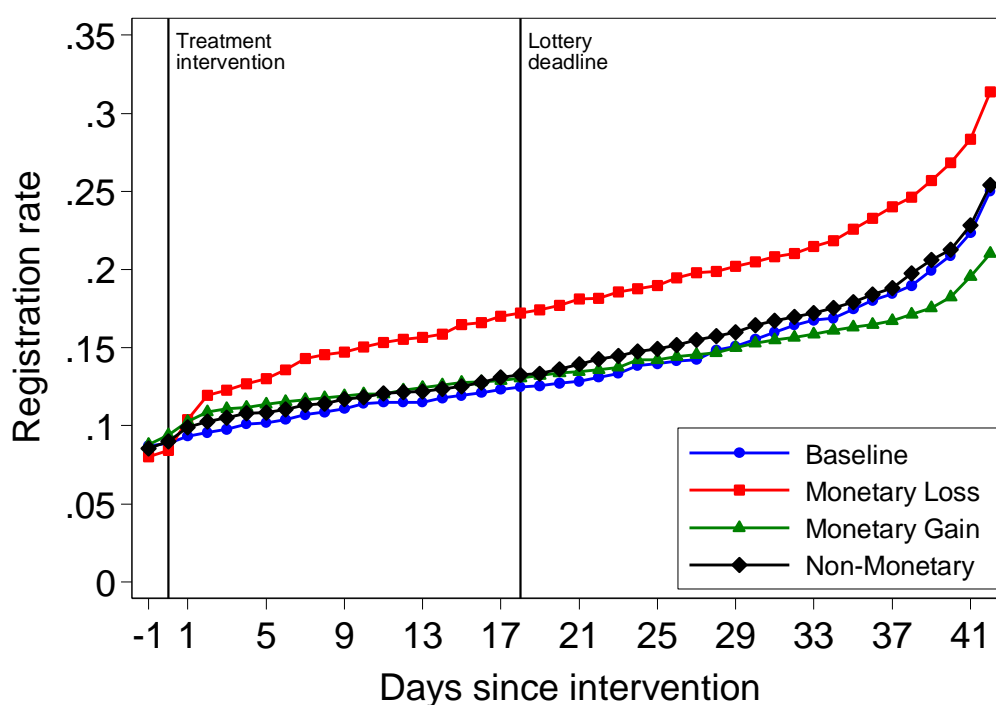
3. Results

In the following analysis we pool data from the two Monetary Gain treatments. This is because we found there were no significant differences between the effects of Monetary Gain 1 and Monetary Gain 2 (see Table C1 in the Appendix). Similarly, we found no significant differences between the two Non-Monetary treatments (see Table C1) and thus, for ease of exposition, we combine these two treatments in our analysis. Thus, in the remainder of the section, our analysis is based on the following four conditions: Baseline ($n = 1193$); Monetary Loss ($n = 1357$); Monetary Gain ($n = 2567$); and Non-Monetary ($n = 2562$).

Figure 2 shows how registration rates differ between treatments over the entire period between the intervention and the formal deadline for registering. On a daily basis between March 8 and April 20, it displays the cumulative fraction, by treatment, of registered subjects amongst those who were unregistered on January 2.

Pre-intervention registration rates (i.e. in the period January 2 – March 8) are very similar across all treatments; the fraction of registered subjects ranges between 0.080 and 0.088, showing no significant differences across treatments (see Table 1 below). This suggests that later treatment differences are unlikely to be driven by pre-existing differences between the subjects assigned to each intervention.

Figure 2: Cumulative registration rates by treatment



Notes: Figure 2 shows, on a daily basis between March 8 and April 20, the amount of registered students in the treated buildings as a fraction of all students in these buildings who had been unregistered on January 2. The first vertical line represents the day of our treatment intervention (March 9) and the second line represents the day of the lottery deadline in the Monetary Gain treatment (March 27).

After our intervention (i.e. in the period March 9 – April 20), substantial differences emerge in the registration rates across treatments. On April 20 (the day of the registration deadline), the fraction of registered students amounts to 0.25 in Baseline, 0.31 in Monetary Loss, 0.21 in Monetary Gain, and 0.25 in the Non-Monetary treatment. Hence, compared to the case of a simple postcard, only the emphasis of (potential) negative monetary consequences had a positive effect on registration; registration rates in Monetary Loss are 24% higher than in Baseline. The emphasis of (potential) positive monetary consequences, in contrast, had no positive effect on registration rates. While registration rates are initially similar to the ones in Baseline, they become lower towards the end of our observation period, after monetary incentives have been removed. Overall, the registration rate in our Monetary Gain treatment is 16% lower than in Baseline. For the Non-Monetary treatments, we find almost identical registration rates as in Baseline, suggesting that the effects of the non-monetary nudges were minimal in our setup. Given how few subjects engaged with the invitation to send a text message (only 4 students requested a text reminder, while a mere 9 texted their intention to register) it is not surprising that we record no discernible foot-in-the-door effect.

To further explore the observed treatment differences in registration rates, we run logistic regressions to model the individual level registration decision. Our dependent variable is 1 or 0 depending on whether or not an individual has registered in a given period. As independent variables, we use dummies to represent the treatment an individual was assigned to. Given the very different nature of the two universities that were included in our study, we also include a dummy variable for whether a student was affiliated with either Oxford Brookes University or University of Oxford. As further controls we include: which of the two Oxford voting areas (General Election constituencies) a given student resides in; the size of the residence unit they live in; and an ‘ancient’ dummy, which takes value 1 if the college or hall in which they live is older than 100 years, and value 0 otherwise.⁷ To correct for heteroscedasticity and potential dependency of observations within halls, we cluster standard errors by residence unit.⁸ The results of these regressions are reported in Table 1.

Model (1) reports, for each treatment relative to Baseline (the omitted category), the factor changes in the odds of registering in the period before our intervention (i.e. between January 2 and March 8). The sample includes all students in treated buildings who were unregistered on January 2. In the Baseline treatment, the odds of registering in the pre-intervention period are 0.174, i.e. there are expected to be approximately 6 unregistered students for each registered student in our benchmark condition. The odds of registering are very similar in the other treatments: in all cases the factor changes in the odds are close to 1 and none of the treatment variables are significant (all p-values > 0.532). This confirms that registration rates are indistinguishable across treatments in the pre-intervention period.

In model (2), we look at the effect of our different nudges after their implementation. The dependent variable now is whether an individual registered or not during the period between March 9 and April 20, the day of the registration deadline. The sample includes all students in treated buildings who were still unregistered on March 8 (i.e., we drop those who registered before the intervention, since they did not receive the postcards that were sent out on March 9). The treatment dummies therefore represent treatment differences in registration rates after the intervention. The odds of registering in Baseline are now 0.25: there are expected to be 4 unregistered students for each registered student in Baseline. The higher baseline odds of

⁷ We included this dummy because we conjectured that there could be some difference in ethos or culture which could be relevant to the registration decision, comparing older and more newly established colleges.

⁸ That is, each college, hall, residence block, and/or cross-college accommodation is treated as providing a cluster of observations (see Appendix B for further details).

registering in the post-intervention period relative to the pre-intervention period may reflect an impact of sending the postcard per se, or a natural increasing trend in registrations as the deadline for the General Election draws nearer.⁹

Table 1: The effects of treatments on registration rates

| Dependent variable | Registered (1 if yes, 0 otherwise) | |
|--|--|--|
| | (1) | (2) |
| | Before Intervention (Jan 2 – Mar 8) | After Intervention (Mar 9 – Apr 20) |
| Monetary Loss | 0.968 (0.250) | 1.739*** (0.348) |
| Monetary Gain | 1.123 (0.209) | 0.749 (0.171) |
| Non-Monetary | 0.930 (0.195) | 1.009 (0.180) |
| <i>Odds of registering in Baseline</i> | <i>0.174***</i> (0.064) | <i>0.250***</i> (0.072) |
| Controls | Yes | Yes |
| <i>N</i> | 8397 | 7679 |

Notes: The table reports odds ratios from logistic regressions. Note that a ratio greater than 1 implies a positive effect, whereas a ratio smaller than 1 implies a negative effect. The dependent variable indicates whether an individual registered within a given period. Robust standard errors clustered at the residence unit are reported in parentheses. Significance levels: *** p<0.01, ** p<0.05, * p<0.1

The Non-Monetary treatment has virtually no impact on the odds of registering, with a factor change close to 1 and very far from statistical significance ($p = 0.958$). The Monetary Loss treatment, instead, increases the Baseline odds by a factor of 1.7 and the effect is significant at the 1% level. This implies an expected ratio of almost 2:1 between unregistered and registered students in the Monetary Loss treatment (the odds of registering are $0.25 \times 1.739 = 0.43$). In contrast, the Monetary Gain treatment reduces the odds of registering relative to Baseline by a factor of 0.749, although the effect is not statistically significant ($p = 0.205$).

Another interesting feature of the Monetary Gain treatment is apparent in Figure 2. While at the beginning registration rates under Monetary Gain are very similar to the ones in Baseline,

⁹ We cannot distinguish between these two explanations because, in designing our treatments in collaboration with OCC, we agreed not to have a treatment where no postcard was sent.

after the deadline for lottery entry has passed (on March 27), registrations rise less steeply for the Monetary Gain treatment. To quantify this negative post-deadline effect, we split our data into two time periods. The first spans from the day of our intervention until the lottery deadline (i.e. between March 9 and March 27). The second period runs from the first day after the lottery deadline until the registration deadline (i.e. between March 28 and April 20). As before, we apply logistic regression analysis.¹⁰

The results of this analysis are presented in Table 2. Model (1) reports the factor changes in the odds of registering in Monetary Gain relative to Baseline in the first period. The sample includes all students in treated buildings who were unregistered on March 8. In Model (2), we instead only look at the period after the deadline for inclusion in the lottery has passed. The sample now includes all students in treated buildings who were still unregistered on March 28, i.e., we drop those subjects who registered before the lottery deadline. As before, we cluster standard errors by unit of residence.

Table 2: The effect of the lottery deadline on registrations relative to Baseline

| Dependent variable: | Registered (1 if yes, 0 otherwise) | |
|--|---|---|
| | (1) Before Deadline (Mar 9 – Mar 27) | (2) After Deadline (Mar 28 – Apr 20) |
| Monetary Gain | 1.286 (0.463) | 0.657* (0.425) |
| <i>Odds of registering in Baseline</i> | <i>0.070***</i> (0.047) | <i>0.096***</i> (0.026) |
| Controls | Yes | Yes |
| <i>N</i> | 3760 | 3579 |

Notes: The table reports odds ratios from logistic regressions. Note that a ratio greater than 1 implies a positive effect, whereas a ratio smaller than 1 implies a negative effect. The dependent variable indicates whether an individual registered within a given period. Only data from Monetary Gain and Baseline are used. Robust standard errors clustered at the hall level are in parentheses. Significance levels: *** $p < 0.01$, ** $p < 0.05$, * $p < 0.1$

The results of Model (1) reveal that before the end of the lottery deadline being subject to the Monetary Gain treatment slightly increases the odds of registering relative to being subject to the Baseline treatment, by a factor of 1.286, but the effect does not reach statistical significance ($p = 0.485$). In contrast, once the deadline for the lottery has passed, i.e.,

¹⁰ In this analysis, we only use data from Baseline and Monetary Gain treatments because the March 27 deadline is inconsequential in the other treatments.

monetary incentives for registering have been removed, being subject to the Monetary Gain treatment reduces the odds of registering relative to being subject to the Baseline treatment by a factor of 0.657, and this effect is statistically significant ($p = 0.057$).¹¹ This suggests that implementing monetary incentives has no positive effect while in place, but removing the monetary incentives afterwards has a negative effect on registration rates. This would be in line with the literature on motivational crowding out (e.g. Deci And Ryan, 1985; Frey and Oberholzer-Gee, 1997; Meier, 2007; Benndorf et al., 2017). However, it is also possible that the low post-deadline registration rate amongst subjects in the Monetary Gain treatment, relative to those in Baseline, reflects a differential pattern of registrations before and after the deadline: individuals who otherwise would have registered during the later period may have been motivated by the lottery to register earlier, before the deadline passed.

To summarise our main findings so far, we find that emphasising the possibility of being fined significantly raises registration rates, while attempting to invoke the foot-in-the-door effect makes no significant impact. Furthermore, using positive monetary incentives has no effect on overall registration rates, no effect on registration rates while the incentives are in place, and a negative effect once the incentives are removed.

4. Study II: The effects of the monetary nudges on social norms

One of the main findings of our field experiment is that the threat of a monetary fine is more effective in encouraging registrations than the chance of a monetary gain. A number of possible mechanisms might explain this, for example loss aversion or a bias in beliefs whereby individuals assess the probability of being fined as higher than the probability of winning the lottery. While we do not rule out such mechanisms being at work in our data, we explore a possible explanation that would potentially give rise to *opposing* impacts of money gains and money losses in our design.¹² Specifically, we investigate the potentially different effect of these interventions on *social norms*, i.e. collectively recognised rules of behaviour that define which actions are viewed as socially appropriate (Elster, 1989; Ostrom, 2000).

¹¹ To test the robustness of these and our earlier results, we also apply duration analysis to examine the time it takes an individual to register after having received our postcards. The results of the duration analysis are consistent with those of the logistic regressions, as we show in Appendix C, Table C2.

¹² Recall that while monetary losses have a significant positive impact on registration rates (relative to baseline), there is some indication in our data that the impact of monetary gains is at least weakly negative: the post deadline effect is negative and the overall effects is signed negative (though not significant).

We conjecture that the Monetary Loss treatment may *strengthen* a pre-existing social norm that registering to vote is what one ought to do: emphasising that failing to register is against the law may solidify one's perception that such behaviour is socially inappropriate.¹³ In contrast, the Monetary Gain treatment may *weaken* that same social norm – the offer of money for registering may suggest to recipients that registering is not something already unconditionally demanded of them by society. If social norms influence registration behaviour, such alterations of subjects' perceptions of them could directly affect their decisions over registration. Indeed, the failure of the Monetary Gain treatment is reminiscent of previous research showing the introduction of economic incentives can crowd out people's intrinsic motivation to behave pro-socially. A plausible mechanism behind the ineffectiveness of financial rewards could be that the lottery is weakening effect on the social norm of registering, which offsets any positive effects of the monetary incentive.

4.1 Experimental design and procedures

To investigate this, we ran an online study, employing the social norm elicitation task pioneered by Krupka and Weber (2013). In this study, we first described to subjects the setting of our field experiment. We then exposed each subject to the postcard used in one of three treatments – Baseline, Monetary Loss and Monetary Gain 1¹⁴ – and in each case measured the social norms they perceived pertaining to registration behaviour.

This study was run in June 2016, with subjects who were students at the University of Nottingham, recruited through ORSEE (Greiner, 2015), an online database of experimental participants. Thus, the subjects would have been demographically similar to those in the field experiment, but would not have been previously exposed to the postcards. In total $n = 189$ subjects participated in the study: 65 were shown the Baseline postcard, 61 the Monetary Loss postcard, and 63 the Monetary Gain 1 postcard. The study was conducted using Qualtrics (Qualtrics, 2016), an online survey platform.

¹³ There is some debate over whether social norms and laws are substitutes, or whether laws directly shape norms. See, for instance, Posner (2009) and Benabou and Tirole (2011).

¹⁴ We chose to focus only on the Monetary Loss and Gain treatments because in the field experiment the monetary interventions produced the most interesting effects on registration rates relative to Baseline. The Non-Monetary treatments were completely ineffective in engaging subjects and had no significant effects on registration rates. We only focus on one version of the Monetary Gain treatments because in the field experiment the Monetary Gain 2 treatment was statistically indistinguishable from Monetary Gain 1 and we thought that Monetary Gain 1 was easier to describe to subjects.

At the beginning of the experiment, subjects were told to *'Imagine that the date is March 8, 2015. There is an upcoming General Election on May 7, and a local council wants to encourage people to register to vote before the deadline on April 20.'* They were further informed that the council is considering strategies to raise registration amongst students in university accommodation, where rates have been particularly low. They were then told that the council decides to send a card to every unregistered student living in university accommodation, and were presented with a picture of one of three cards. These were replicas of the postcards sent out to students in the Baseline, Monetary Loss and Monetary Gain 1 treatments (the only difference was that the cards were cropped to cut off the OCC logo).

Subjects were then asked to evaluate *'how socially appropriate most people would think it would be for a student, having received this card, to register to vote or not to register to vote.'* Earlier in the instructions, we had defined social appropriateness as *'behaviour that you think most people would agree is the "correct" thing to do. Another way to think about what we mean is that if someone were to behave in a socially inappropriate way, then other people might be angry at them.'*¹⁵

We then asked subjects to evaluate the social appropriateness of each action (register to vote, not register to vote) on a four-point scale, encompassing 'very socially appropriate', 'somewhat socially appropriate', 'somewhat socially inappropriate', and 'very socially inappropriate'. These evaluations were incentivised such that subjects were encouraged to coordinate on the social norm: we told subjects we would randomly select one of the two actions, and for this action, they would be eligible to receive a cash prize if their evaluation of its social appropriateness was the same as that chosen by the most other subjects.¹⁶

4.2 Results

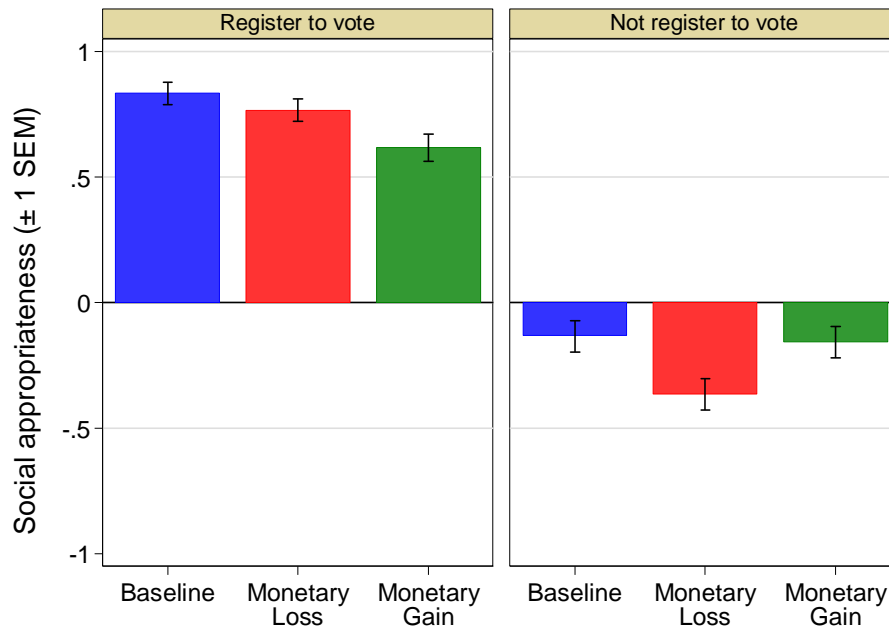
To analyse the data, we follow Krupka and Weber (2013) in transforming the evaluations into numerical values. We assign evenly-spaced values of -1 for the rating 'very socially inappropriate', -0.33 for the rating 'somewhat socially inappropriate', 0.33 for the rating

¹⁵ This follows the experimental instructions introduced by Krupka and Weber (2013). See Appendix D for the experimental instructions and screenshots of the online survey.

¹⁶ As the study was very short and conducted online, we paid only one out of every eight subjects, determined retrospectively at random (subjects knew about this at the beginning of the experiment). Those chosen for payment received an automatic £10, plus a further £30 if their evaluation matched that of the most other subjects in their treatment. Although most subjects would not be paid, the study was still incentivised to a conventional level: all subjects had a 1/8 chance of receiving between £10 and £40 for an approximately five-minute task.

‘somewhat socially appropriate’ and 1 for the rating ‘very socially appropriate.’ We then calculate the mean ratings for each action by subjects exposed to each treatment. The results are displayed in Figure 3.

Figure 3: Social appropriateness of registration behaviour by treatment



Notes: Figure 3 shows the mean appropriateness ratings assigned to each action (registering to vote, not registering to vote) by subjects exposed to the Monetary Loss, Baseline and Monetary Gain 1 postcards. Mean ratings are taken by assigning values of -1, -0.33, 0.33 and 1 for the ratings ‘very inappropriate’, ‘somewhat inappropriate’, ‘somewhat appropriate’ and ‘very appropriate’ respectively, and averaging the values for each action for all participants exposed to a given treatment. Error bars indicate standard errors of the mean.

We find that regardless of the treatment subjects are exposed to, registering to vote tends to be seen as highly appropriate behaviour, while failing to register is generally seen as inappropriate. However, there are also subtle but significant treatment differences in people’s appropriateness judgments. In particular, subjects exposed to the Monetary Gain treatment perceived registering to vote to be less appropriate than did those exposed to the Baseline treatment (two tailed Fisher Randomisation Test, $p = 0.012$).¹⁷ Moreover, failing to register to vote was perceived to be more inappropriate by subjects exposed to the Monetary Loss treatment than it was by those exposed to the Baseline treatment ($p = 0.016$). In contrast, we

¹⁷ See Moir (1998) for discussion of the randomisation test, and Kaiser and Lacy (2009) for information on the Stata command to apply it. In Study II, we correct p-values for testing multiple hypotheses for two interrelated dependent variables (the appropriateness of registering to vote and not registering to vote). For each dependent variable, we test Monetary Gain vs. Baseline and Monetary Loss vs. Baseline, a total of four tests. The correction method is that of Benjamini and Hochberg (1995) and corrected p-values are displayed in the text.

find no significant differences in the perception of appropriateness of registering between Monetary Loss and Baseline ($p = 0.543$), or the inappropriateness of non-registering between Monetary Gain and Baseline ($p = 0.718$).

Table 3 sheds light on how these treatment differences arise. It presents, for each treatment, the distribution of subjects' evaluations of the social appropriateness of each action. It shows that the lower perceived social appropriateness of registering under Monetary Gain is driven by fewer subjects regarding registering as 'very socially appropriate' relative to Baseline (50.8% versus 78.1%). We also see that the higher perceived social inappropriateness of failing to register in the Monetary Loss treatment is driven by more subjects regarding non-registering as 'very socially inappropriate' relative to Baseline (25.0% versus 10.9%), and by fewer regarding it as 'somewhat socially appropriate' (13.3% versus 28.1%).

Table 3: Distribution of social appropriateness evaluations

| <i>Appropriateness of registering to vote</i> | | | | |
|---|-----------------------------|---------------------------------|-------------------------------|---------------------------|
| | Very socially inappropriate | Somewhat socially inappropriate | Somewhat socially appropriate | Very socially appropriate |
| Baseline | 1.6 | 0 | 20.3 | 78.1 |
| Monetary Loss | 0 | 1.7 | 31.7 | 66.7 |
| Monetary Gain | 0 | 8.2 | 41.0 | 50.8 |

| <i>Appropriateness of not registering to vote</i> | | | | |
|---|-----------------------------|---------------------------------|-------------------------------|---------------------------|
| | Very socially inappropriate | Somewhat socially inappropriate | Somewhat socially appropriate | Very socially appropriate |
| Baseline | 10.9 | 54.7 | 28.1 | 6.3 |
| Monetary Loss | 25.0 | 58.3 | 13.3 | 3.3 |
| Monetary Gain | 9.8 | 60.7 | 23.0 | 6.6 |

Notes: Table 3 displays, by treatment, the percentage of subjects who evaluated registering to vote (top) or not registering to vote (bottom) as very socially inappropriate, somewhat socially inappropriate, somewhat socially appropriate, or very socially appropriate.

To summarise the results of Study II, we find that subjects exposed to the Monetary Loss treatment perceived a relatively strong social norm against failing to register, while subjects exposed to the Monetary Gain treatment perceived a relatively weak social norm in favour of registering. This suggests that emphasising the fine for failing to register strengthens the social norm against such behaviour, while offering monetary incentives for successfully registering weakens the social norm demanding such behaviour. Given the strong evidence from previous studies (see introduction) that social norms influence economic behaviour, we

propose that these normative effects explain at least part of the success of the Monetary Loss treatment and ineffectiveness of the Monetary Gain treatment.

5. Conclusion

We investigated the effectiveness of different nudges aimed at raising voter registration rates. A unique feature of our study is that it combines two types of experiment: a natural field experiment to measure which nudge is most effective in raising registrations, and an online experiment to investigate possible reasons why different nudges may trigger different behavioural responses.

Our field experiment shows that highlighting to citizens the possibility of being fined for failing to register is an effective strategy for public bodies to use. The effect we identified was not only statistically significant, but also of a substantial magnitude: having the fine emphasised made subjects around 1.7 times more likely to register.

In contrast, we find no evidence that offering financial inducements for registration is an effective strategy, nor do we find any effect of non-monetary interventions based on foot-in-the-door techniques (i.e., asking people to comply with small requests to leverage agreement with later, larger, requests). The ineffectiveness of the latter can be explained by the fact that, of 3562 people who were asked to agree with our small requests, only 13 did so. The effect had no chance of taking hold, as we did not get our foot through the door in the first place.

We speculate that the lack of success of our Monetary Gain treatments may represent another case of economic incentives crowding out people's intrinsic motivation to behave in socially constructive ways (e.g. Frey and Oberholzer-Gee, 1997; Ariely et al., 2009; Gneezy et al., 2011; Bowles and Polania-Reyes, 2012). We note that, in this respect, our study's results differ from those of John et al. (2015), who also offered entry into a cash lottery as a reward for registering to vote in the UK. They found a small (approximately 2%) but significant positive effect of monetary rewards on registration rates. A possible explanation for the contrast in results is that the maximum winnings offered by John et al. (2015) were much larger than ours (between £1000 and £5000). Their large material incentives may well have been enough to produce a positive effect, even if they had to overcome a crowding out effect (Bowles and Polania-Reyes, 2012). A tentative conclusion could then be that, when offering cash for behaviours where there is danger of crowding out intrinsic motivations, one must 'pay enough or don't pay at all' (Gneezy and Rustichini, 2000). This would also be consistent

with Panagopoulos (2013), who found that financial inducements raised voter turnout but only once they were sufficiently large.

Finally, our online experiment suggests a possible explanation for the contrasting effects of positive and negative monetary incentives on voter registration rates: that is, because of their differential effects on relevant social norms. Our online experiment shows that emphasising the fine strengthens the perception that failing to register is socially inappropriate, while offering money for registering weakens the perception that registering is socially appropriate. We interpret this as evidence that social norms are a significant factor determining voter registration, a finding which is consistent with other recent experimental literature pointing to the importance of social norms as drivers of a wide range of behaviours (e.g. Burks and Krupka, 2012; Gächter et al., 2013; Krupka and Weber, 2013; Barr et al., 2015; Banerjee, 2016; Kimbrough and Vostroknutov, 2016; Krupka et al., 2016). A key novel contribution of our study in relation to this literature is in identifying the potentially important role of social norms in determining the effectiveness of different types of nudge intervention.

Acknowledgements

This research was funded by the Economic and Social Research Council via the Network for Integrated Behavioural Sciences (Award No. ES/K002201/1), and by the Centre for Decision Research and Experimental Economics within the University of Nottingham's School of Economics. The research was done in collaboration with Oxford City Council's Electoral Services team, in particular Suzette Starmer and Martin John. We received important assistance in Nottingham from Suzanne Robey. We received helpful input during the course of the project from seminar audiences at Nottingham and Abigail Barr, Robin Cubitt, Matthias Dahm, Gianni De Fraja, Markus Eberhardt and Konstantinos Tatsiramos.

References

- Barr, A., Lane, T., & Nosenzo, D. (2015). On the social appropriateness of discrimination. *CeDEx Discussion Paper 2015-25. University of Nottingham.*
- Benndorf, V., Rau, H. A., & Sölch, C. (2017). Gender differences in motivational crowding out of work performance. *CEGE Discussion Paper N. 304. University of Goettingen.*
- Burks, S. V., & Krupka, E. L. (2012). A multimethod approach to identifying norms and normative expectations within a corporate hierarchy: Evidence from the financial services industry. *Management Science*, 58(1), 203-217.
- Bursztyn L., Fiorin, S., Gottlieb, D., & Kanz, M. (2015). Moral Incentives: Experimental Evidence from Repayments of an Islamic Credit Card. *NBER Working Paper No. 21611.*
- Chetty, R. (2015). Behavioral economics and public policy: A pragmatic perspective. *The American Economic Review*, 105(5), 1-33.
- Davenport, T. C. (2010). Public accountability and political participation: Effects of a face-to-face feedback intervention on voter turnout of public housing residents. *Political Behavior*, 32(3), 337-368.
- Deci, E. L., & Ryan, R. M. (1985). The general causality orientations scale: Self-determination in personality. *Journal of research in personality*, 19(2), 109-134.
- Elster, J. (1989). Social Norms and Economic Theory. *The Journal of Economic Perspectives* 3(4), 99-117.
- Fellner, G., Sausgruber, R., & Traxler, C. (2013). Testing enforcement strategies in the field: Threat, moral appeal and social information. *Journal of the European Economic Association*, 11(3), 634-660.
- Freedman, J. L., & Fraser, S. C. (1966). Compliance without pressure: the foot-in-the-door technique. *Journal of Personality and Social Psychology*, 4(2), 195.
- Frey, B. S., & Oberholzer-Gee, F. (1997). The cost of price incentives: An empirical analysis of motivation crowding-out. *The American Economic Review*, 87(4), 746-755.
- Gächter, S., Nosenzo, D., & Sefton, M. (2013). Peer effects in pro-social behaviour: Social norms or social preferences? *Journal of the European Economic Association*, 11(3), 548-573.

- Gerber, A. S. & Green, D. P. (2000). The effects of canvassing, telephone calls, and direct mail on voter turnout: A field experiment. *American Political Science Review*, 94(3), 653.
- Gerber, A. S., Green D. P., & Larimer C.W. (2008). Social pressure and voter turnout: Evidence from a large-scale field experiment. *American Political Science Review*. 102: 33–48.
- Gerber, A. S., Green, D. P., & Larimer, C. W. (2010). An experiment testing the relative effectiveness of encouraging voter participation by inducing feelings of pride or shame. *Political Behavior*, 32(3), 409-422.
- Gneezy, U. (2014). Incentives and behavior change - Put your money to work. Conference Presentation. <http://www.behaviourworksaustralia.org/V2/wp-content/uploads/2014/11/Incentives-and-behavior-change-sep-14-13-short.pdf>
- Gneezy, U., Meier, S., & Rey-Biel, P. (2011). When and why incentives (don't) work to modify behavior. *The Journal of Economic Perspectives*, 25(4), 191-209.
- Gneezy, U., & Rustichini, A. (2000). Pay enough or don't pay at all. *The Quarterly Journal of Economics*, 115(3), 791-810.
- Greenwald, A. G., Carnot, C. G., Beach, R., & Young, B. (1987). Increasing voting-behaviour by asking people if they expect to vote. *Journal of Applied Psychology*, 72(2), 315-318.
- Greenwald, A. G., Klinger, M. R., Vande Kamp, M. E., & Kerr, K. L. (1988). The self-prophecy effect: Increasing voter turnout by vanity-assisted consciousness raising. Unpublished manuscript, University of Washington.
- Greiner, B. (2015) Subject pool recruitment procedures: organizing experiments with ORSEE. *Journal of the Economic Science Association*, 1(1), 1-12.
- Hallsworth, M. (2014). The use of field experiments to increase tax compliance. *Oxford Review of Economic Policy*, 30(4), 658–679.
- Hallsworth, M., List, J., Metcalfe, R., & Vlaev, I. (2014). The behavioralist as tax collector: Using natural field experiments to enhance tax compliance. *NBER Working Paper No. 20007*.
- Imas, A., Lam, D., & Wilson, A. J. (2016). Regret in One-Shot and Recurrent Decisions. *CESifo Working Paper Series No. 5939*.
- John, P., MacDonald, E., & Sanders, M. (2015). Targeting voter registration with incentives: A randomized controlled trial of a lottery in a London borough. *Electoral Studies*, 40, 170-175.
- Kaiser, J., & Lacy, M. G. (2009). A general-purpose method for two-group randomization tests. *Stata Journal*, 9(1), 70.
- Kimbrough, E.O., and A. Vostroknutov. 2016. Norms Make Preferences Social. *Journal of the European Economic Association* 14, 608–638.
- Kleven, H. J., Knudsen, M. B., Kreiner, C. T., Pedersen, S., & Saez, E. (2011). Unwilling or unable to cheat? Evidence from a tax audit experiment in Denmark. *Econometrica*, 79 (3), 651-692.
- Krupka, E. L., Leider, S., & Jiang, M. (2016). A meeting of the minds: informal agreements and social norms. *Management Science*.

- Krupka, E. L., & Weber, R. A. (2013). Identifying social norms using coordination games: Why does dictator game sharing vary? *Journal of the European Economic Association*, 11(3), 495-524.
- Loomes, G., & Sugden, R. (1982). Regret theory: An alternative theory of rational choice under uncertainty. *The Economic Journal*, 92(368), 805-824.
- Lu F., Zhang, J., & Perloff, J. (2016). General and specific information in deterring traffic violations: Evidence from a randomized experiment. *Journal of Economic Behavior & Organization*, 123, 97-107.
- Meier, S. (2007). Do subsidies increase charitable giving in the long run? Matching donations in a field experiment. *Journal of the European Economic Association*, 5(6), 1203-1222.
- Moir, R. (1998). A Monte Carlo analysis of the Fisher randomization technique: reviving randomization for experimental economists. *Experimental Economics*, 1(1), 87-100.
- Nosenzo, D. (2016). Employee incentives: Bonuses or penalties? *IZA World of Labor*.
- Ostrom, E. 2000. Collective action and the evolution of social norms. *The Journal of Economic Perspectives* 14(3), 137-158.
- Panagopoulos, C. (2010). Affect, social pressure and prosocial motivation: Field experimental evidence of the mobilizing effects of pride, shame and publicizing voting behavior. *Political Behavior*, 32(3), 369-386.
- Panagopoulos, C. (2013). Extrinsic rewards, intrinsic motivation and voting. *The Journal of Politics*, 75(01), 266-280.
- Posner, E. A. (2009). *Law and social norms*. Harvard university press.
- Qualtrics (2016). Data for this paper was generated using Qualtrics software. Copyright © [2016] Qualtrics. Qualtrics and all other Qualtrics product or service names are registered trademarks or trademarks of Qualtrics, Provo, UT, USA. <http://www.qualtrics.com>
- Ramirez, R. (2005). Giving voice to Latino voters: A field experiment on the effectiveness of a national nonpartisan mobilization effort. *The Annals of the American Academy of Political and Social Science*, 601(1), 66-84.
- Rogers, T., Fox, C. R., & Gerber, A. S. (2013). Rethinking why people vote. *The behavioral foundations of public policy*, 91.
- Slemrod, J., Blumenthal, M., & Christian, C. (2001). Taxpayer response to an increased probability of audit: evidence from a controlled experiment in Minnesota. *Journal of Public Economics*, 79(3), 455-483.
- Smith, J. K., Gerber, A. S., & Orlich, A. (2003). Self-Prophecy Effects and Voter Turnout: An Experimental Replication. *Political Psychology*, 24(3), 593-604.
- Thaler, R. H., & Sunstein, C. R. (2008). *Nudge: Improving Decisions About Health, Wealth, and Happiness*. Yale University Press.
- Van Lange, P. A., Rockenbach, B., & Yamagishi, T. (Eds.). (2014). *Reward and punishment in social dilemmas*. Oxford University Press.
- Zeelenberg, M., & Pieters, R. (2004). Consequences of regret aversion in real life: The case of the Dutch postcode lottery. *Organizational Behavior and Human Decision Processes*, 93(2), 155-168.

Online Appendices

Appendix A: Postcard Intervention in Study I

Baseline Treatment



Monetary Loss treatment



Monetary Gain Treatment 1



 **DON'T MISS YOUR CHANCE TO VOTE!**

According to our records you have not yet registered to vote. It's easy to register online. To go to the registration page simply use one of the links below.

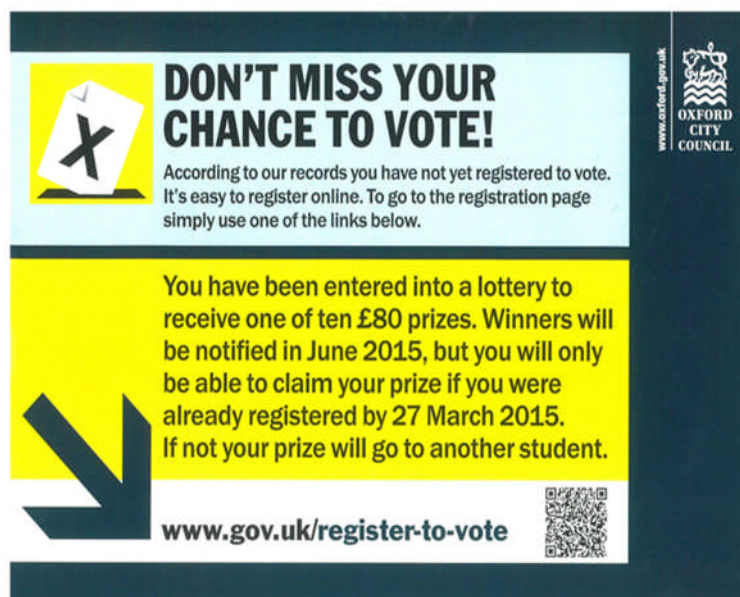
If you register by 27 March 2015 you will be entered into a lottery to receive one of ten £80 prizes. Winning students will be notified in June 2015.


 www.gov.uk/register-to-vote 

www.oxford.gov.uk

OXFORD CITY COUNCIL



Monetary Gain Treatment 2




 **DON'T MISS YOUR CHANCE TO VOTE!**

According to our records you have not yet registered to vote. It's easy to register online. To go to the registration page simply use one of the links below.

You have been entered into a lottery to receive one of ten £80 prizes. Winners will be notified in June 2015, but you will only be able to claim your prize if you were already registered by 27 March 2015. If not your prize will go to another student.

 www.gov.uk/register-to-vote 

www.oxford.gov.uk

OXFORD CITY COUNCIL

Non-monetary Treatment 1



 **DON'T MISS YOUR CHANCE TO VOTE!**

According to our records you have not yet registered to vote. It's easy to register online. To go to the registration page simply use one of the links below.

We'd like to know if you are intending to register. If you are, please text 'myvote' to 60886
(Texts to this number are free)

 www.gov.uk/register-to-vote 

www.oxford.gov.uk
OXFORD CITY COUNCIL

Non-monetary Treatment 2



 **DON'T MISS YOUR CHANCE TO VOTE!**

According to our records you have not yet registered to vote. It's easy to register online. To go to the registration page simply use one of the links below.

Would you like us to send you a text reminder? If you do, please text 'reminder' to 60886
(Texts to this number are free)

 www.gov.uk/register-to-vote 

www.oxford.gov.uk
OXFORD CITY COUNCIL

Appendix B: Details on assignment to treatment

Table B1 presents a breakdown, by university and place of residence, of the subjects assigned to each treatment. As stated in Section 2.3, we randomised assignment to treatment at the building level. For the University of Oxford, all students living in a single college were assigned to the same treatment. Two university-owned buildings (140 Walton St. and Castle Mill) which house students from various colleges were treated as if they were colleges, with common treatment assignment within each building. Two colleges, St. Cross and Brasenose, share a residence building (the St. Cross/Brasenose Annex). St. Cross and Brasenose were assigned to the same treatment. For the purposes of clustering in our regression analysis, 140 Walton St., Castle Mill and the St. Cross/Brasenose Annex are all treated as independent units of residence.

For Oxford Brookes University, all students living in a single hall of residence were assigned to the same treatment, with the exception of two very large halls, Cheney and Clive Booth, which were split into several units of assignment. Cheney and Clive Booth are naturally split into discrete residence blocks, so we subdivided them on this basis, ensuring maximum geographical distance between the subjects in these halls assigned to different treatments. For the purposes of clustering in our regression analysis, each subdivision that we split Cheney and Clive Booth into is treated as one unit of residence.

Beyond balancing assignment at the university level, the randomisation was also subject to the following constraints. Each treatment had to feature a mixture of large and small residence units; we ensured this by splitting the residence units into pools based on size, and assigned one unit from each pool to each treatment. Each treatment also had to feature a mixture of ancient and modern University of Oxford colleges, to the extent that the average college age in all treatments had to be within 200 years. Finally, the total number of subjects assigned to the largest treatment had to be no more than 15% greater than the number assigned to the smallest. We repeated the randomisation until it produced an assignment which met all the above criteria.

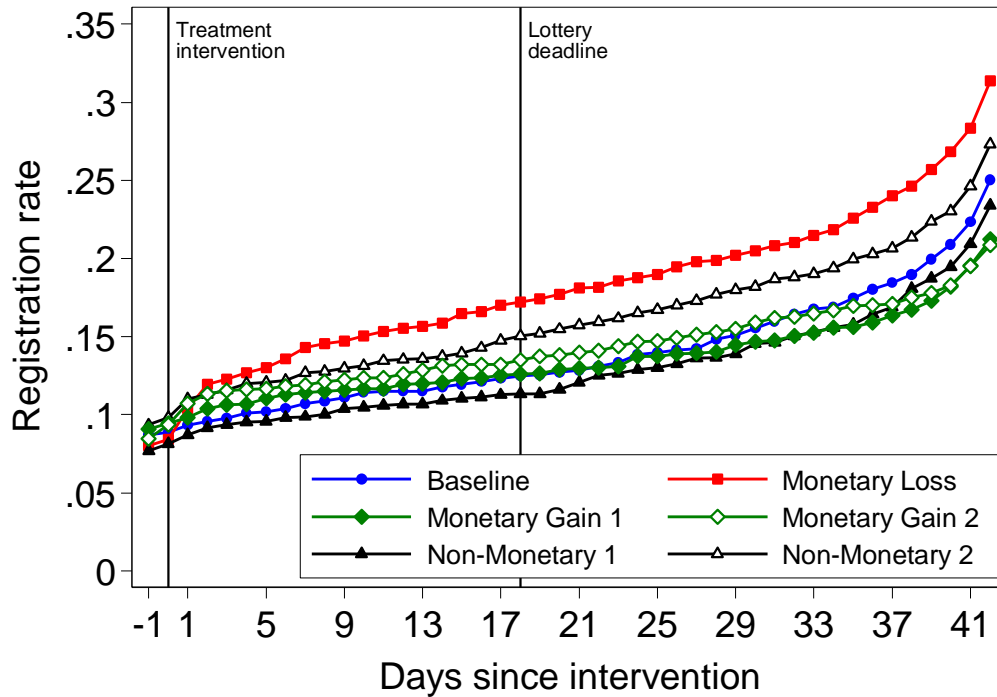
Mailing errors resulted in some subjects not being assigned to the intended treatments (in italics in Table B1). 16 students in Lincoln College were assigned to the Monetary Loss treatment, while the other 132 were assigned to the Baseline treatment; 6 Kellogg College students were assigned to Non-Monetary Treatment 2, with the other 11 were assigned to the Monetary Loss Treatment. As a robustness check, we re-ran our analysis excluding Lincoln and Kellogg from our dataset. All of our results are robust to this exclusion.

Table B1: Breakdown of treatment assignment by university and college/hall

| College/hall | Number assigned | Percentage of total assigned to treatment | College/hall | Number assigned | Percentage of total assigned to treatment | College/hall | Number assigned | Percentage of total assigned to treatment |
|-----------------------------|-----------------|---|-----------------------------|-----------------|---|-----------------------------|-----------------|---|
| Baseline | | | Monetary Gain 1 | | | Non-monetary 1 | | |
| University of Oxford | 889 | 74.52 | University of Oxford | 940 | 75.20 | University of Oxford | 947 | 75.04 |
| Keble | 206 | 17.27 | Worcester | 311 | 24.88 | Christ Church | 199 | 15.77 |
| Magdalen | 201 | 16.85 | Hertford | 236 | 18.88 | New College | 195 | 15.45 |
| St Hugh's | 200 | 16.76 | Trinity | 154 | 12.32 | Wadham | 182 | 14.42 |
| Lincoln | 132 | 11.06 | Oriel | 140 | 11.20 | Castle Mill | 160 | 12.68 |
| Corpus Christi | 120 | 10.06 | Mansfield | 74 | 5.92 | Exeter | 80 | 6.34 |
| Harris Manchester | 26 | 2.18 | Linacre | 25 | 2.00 | Brasenose | 74 | 5.86 |
| All Souls | 4 | 0.34 | | | | St. Cross/Brasenose | 29 | 2.30 |
| | | | | | | St. Cross | 28 | 2.22 |
| Oxford Brookes | 304 | 25.48 | Oxford Brookes | 310 | 24.80 | Oxford Brookes | 315 | 24.96 |
| Clive Booth | 153 | 12.82 | Clive Booth | 162 | 14.56 | Crescent | 212 | 16.80 |
| Paul Kent | 151 | 12.66 | Cheney | 128 | 10.24 | Cheney | 103 | 8.16 |
| Total | 1193 | 100.00 | Total | 1250 | 100.00 | Total | 1262 | 100.00 |
| Monetary Loss | | | Monetary Gain 2 | | | Non-monetary 2 | | |
| University of Oxford | 1026 | 75.61 | University of Oxford | 1044 | 79.27 | University of Oxford | 979 | 75.31 |
| St. Catherine's | 254 | 18.72 | St. Edmund | 398 | 30.22 | St. Anne's | 216 | 16.62 |
| Jesus | 188 | 13.85 | Merton | 253 | 19.21 | Balliol | 192 | 14.77 |
| Pembroke | 188 | 13.85 | The Queen's | 209 | 15.87 | St. John's | 167 | 12.85 |
| University College | 147 | 10.83 | St. Hilda's | 156 | 11.85 | Somerville | 164 | 12.62 |
| St. Peter's | 146 | 10.76 | Nuffield | 14 | 1.06 | Lady Margaret Hall | 162 | 12.46 |
| Green Templeton | 71 | 5.23 | Wycliffe | 14 | 1.06 | Wolfson | 72 | 5.54 |
| <i>Lincoln</i> | <i>16</i> | <i>1.18</i> | | | | <i>Kellogg</i> | <i>6</i> | <i>0.46</i> |
| Kellogg | 11 | 0.81 | | | | | | |
| 140 Walton Street | 5 | 0.37 | | | | | | |
| Oxford Brookes | 331 | 24.39 | Oxford Brookes | 273 | 20.73 | Oxford Brookes | 321 | 24.69 |
| Clive Booth | 187 | 13.78 | Clive Booth | 168 | 12.76 | Clive Booth | 182 | 14.00 |
| Warneford | 144 | 10.61 | Cheney | 105 | 7.97 | Cheney | 139 | 10.69 |
| Total | 1357 | 100.00 | Total | 1317 | 100.00 | Total | 1300 | 100.00 |

Appendix C: Additional Analyses

Figure C1: Cumulative registration rates by treatment (uncombined)



Notes: Figure C1 shows, on a daily basis between the start of the intervention on March 9 and the registration deadline on April 20, the amount of registered students in the treated buildings, as a fraction of all students in these buildings who had been unregistered on January 2.

Table C1: The effects of treatments on registration rates (uncombined)

| Dependent variable: = 1 if registered, 0 if not | Logistic Regression | |
|--|---|---|
| | Before Intervention (Jan 8 – March 8) | After Intervention (March 9 – April 20) |
| Monetary Loss | 0.955 (0.244) | 1.738*** (0.353) |
| Monetary Gain 1 | 1.086 (0.192) | 0.707 (0.224) |
| Monetary Gain 2 | 1.170 (0.265) | 0.795 (0.204) |
| Non-Monetary 1 | 0.842 (0.266) | 1.002 (0.208) |
| Non-Monetary 2 | 1.019 (0.195) | 1.013 (0.196) |
| <i>Odds of registering in Baseline</i> | 0.181*** (0.065) | 0.252*** (0.079) |
| <i>Wald-tests (p-values):</i> | | |
| Monetary Gain 1 = Monetary Gain 2 | 0.640 | 0.742 |
| Non-Monetary 1 = Non-Monetary 2 | 0.522 | 0.956 |
| Controls | Yes | Yes |
| <i>N</i> | 8397 | 7679 |

Notes: Reported are odds ratios. Robust standard errors clustered at the residence unit are in parentheses. *** p<0.01, ** p<0.05, * p<0.1. The table further includes the p-values from Wald tests of the hypothesis that the coefficients differ between the two types of Monetary Gain treatments and the two types of the Non-Monetary treatments.

Duration analysis

To test the robustness of the results in Table 1 of the main text, for the post-intervention period we use the Cox proportional hazard approach to model the duration until an individual registers. Estimated hazard ratios are reported in Model (1) in Table C2. In line with the results from the logistic regression, we find a positive and significant effect of the Monetary Loss dummy: the hazard ratio of 1.656 indicates that the probability of registering on a given date (conditional on not having registered before) is 65.6% larger than in Baseline. The corresponding hazard ratios for the other two treatment dummies are not significantly different from 1 (i.e. no difference relative to Baseline).

We test the robustness of the results in Table 2 of the main text by modelling duration to registration using a dummy for observation in the Monetary Gain treatment plus a dummy to pick up registration in the Money Gain treatment that occur post the lottery deadline. The results of this analysis are reported in Model (2) in Table C2 (as in the main text we only use data from Monetary Gain and Baseline). In line with the results from the main text (Model (1) Table 2), we find that the Monetary Gain dummy is insignificant (hazard ratio of 1.264), indicating no difference in the conditional probability of registering between Baseline and Monetary Gain before the lottery deadline. Furthermore, in line with the results from Model (2) in Table 2 of the main text we find that the probability of registering (conditional on not having been registered before) in Monetary Gain relative to Baseline reduces once the deadline for entry into the lottery has passed.

Table C2: Duration analysis

| Dependent variable | Duration to registration after Intervention (Mar 9 – Apr 20) | |
|-------------------------------|---|--------------------|
| | (1) | (2) |
| Monetary Loss | 1.656** (0.302) | |
| Monetary Gain | 0.782 (0.167) | 1.264 (0.425) |
| Non-Monetary | 1.019 (0.165) | |
| Monetary Gain x Post deadline | | 0.549** (0.147) |
| Controls | Yes | Yes |
| <i>N</i> | 7679 | 3760 |

Notes: The table reports hazard ratios from Cox proportional hazard models. A ratio greater (smaller) than 1 implies a positive (negative) effect. In Model (2) only data from Monetary Gain and Baseline are included. Robust standard errors, clustered on residence, in parentheses. Significance levels: *** $p < 0.01$, ** $p < 0.05$, * $p < 0.1$

Appendix D: Screenshots of Study II

Screen 1:

Thank you for participating in this survey. It should take a few minutes to complete. If you need to stop, you can save your responses and return to the survey later. The anonymity of your responses in this survey is guaranteed.

First, please enter your university email address. Make sure you enter this correctly, as we will use it to contact you regarding payment.

Screen 2:

Regarding payment:

After all participants have completed the survey, we will randomly pick one out of every eight to receive payment. We will email all participants by June 10 to notify them whether they have been selected for payment or not. Participants selected for payment will then be able to collect their money from the Clive Granger Building on University Park Campus. If you have any questions regarding payment for this survey, please email lextl9@nottingham.ac.uk.

If you are selected for payment, you will receive a participation fee of £10. Based on your response to the survey, you may also receive an additional £30. Further details will be provided at the relevant point in the survey.

Screen 3:

Information about this survey

This survey will ask how socially appropriate certain behaviour is. By socially appropriate, we mean behaviour that you think most people would agree is the "correct" thing to do. Another way to think about what we mean is that if someone were to behave in a socially inappropriate way, then other people might be angry at them.

Screen 4:

Imagine that the date is March 8, 2015. There is an upcoming General Election on May 7, and a local council wants to encourage people to register to vote before the deadline on April 20. Registration rates are particularly low amongst students living in university accommodation, and the council is considering various strategies it can use to attempt to raise registration rates amongst these students.

The council decides to send every unregistered student living in university accommodation this card which includes a message urging students not to miss their chance to vote. The card also warns students that those who do not register may be fined £80.

DON'T MISS YOUR CHANCE TO VOTE!

According to our records you have not yet registered to vote. It's easy to register online. To go to the registration page simply use one of the links below.

If you don't register you could be fined £80

www.gov.uk/register-to-vote

Screen 5:

Before the deadline, students must decide either to register to vote or not to register to vote. Below, you will be asked to evaluate how socially appropriate most people would think it would be for a student, having received this card, to register to vote or not to register to vote.

After you have completed the survey, we will look at your evaluation of one of the two actions (registering to vote, or not registering to vote). To reward you, if your evaluation of the social appropriateness of this action is the same as that provided by the highest number of participants in this survey, and if you are one of the participants selected for payment, we will give you £30 in addition to your participation fee.

How socially appropriate would most people think it would be for a student, having received this card, to either register or not register to vote?



Note on how to fill out the table below: for each of the two actions (registering to vote, or not registering to vote), please indicate whether most people would think that action is very socially appropriate, somewhat socially appropriate, somewhat socially inappropriate, or very socially inappropriate. To do so, tick exactly one box for each of the actions in the table.

| | Very socially appropriate | Somewhat socially appropriate | Somewhat socially inappropriate | Very socially inappropriate |
|----------------------|---------------------------|-------------------------------|---------------------------------|-----------------------------|
| Register to vote | <input type="radio"/> | <input type="radio"/> | <input type="radio"/> | <input type="radio"/> |
| Not register to vote | <input type="radio"/> | <input type="radio"/> | <input type="radio"/> | <input type="radio"/> |