

Virtanen, Marianna et al.

Article — Published Version

Long working hours and depressive symptoms: systematic review and meta-analysis of published studies and unpublished individual participant data

Scandinavian Journal of Work, Environment & Health

Provided in Cooperation with:

German Institute for Economic Research (DIW Berlin)

Suggested Citation: Virtanen, Marianna et al. (2018) : Long working hours and depressive symptoms: systematic review and meta-analysis of published studies and unpublished individual participant data, Scandinavian Journal of Work, Environment & Health, ISSN 0355-3140, Nordic Association of Occupational Safety and Health (NOROSH), Työterveyslaitos, Iss. 3, pp. 239-250,
<https://doi.org/10.5271/sjweh.3712> ,
http://www.sjweh.fi/show_abstract.php?abstract_id=3712

This Version is available at:

<https://hdl.handle.net/10419/200145>

Standard-Nutzungsbedingungen:

Die Dokumente auf EconStor dürfen zu eigenen wissenschaftlichen Zwecken und zum Privatgebrauch gespeichert und kopiert werden.

Sie dürfen die Dokumente nicht für öffentliche oder kommerzielle Zwecke vervielfältigen, öffentlich ausstellen, öffentlich zugänglich machen, vertreiben oder anderweitig nutzen.

Sofern die Verfasser die Dokumente unter Open-Content-Lizenzen (insbesondere CC-Lizenzen) zur Verfügung gestellt haben sollten, gelten abweichend von diesen Nutzungsbedingungen die in der dort genannten Lizenz gewährten Nutzungsrechte.

Terms of use:

Documents in EconStor may be saved and copied for your personal and scholarly purposes.

You are not to copy documents for public or commercial purposes, to exhibit the documents publicly, to make them publicly available on the internet, or to distribute or otherwise use the documents in public.

If the documents have been made available under an Open Content Licence (especially Creative Commons Licences), you may exercise further usage rights as specified in the indicated licence.



<http://creativecommons.org/licenses/by/4.0/>

Review. Scand J Work Environ Health – online first.

doi:10.5271/sjweh.3712

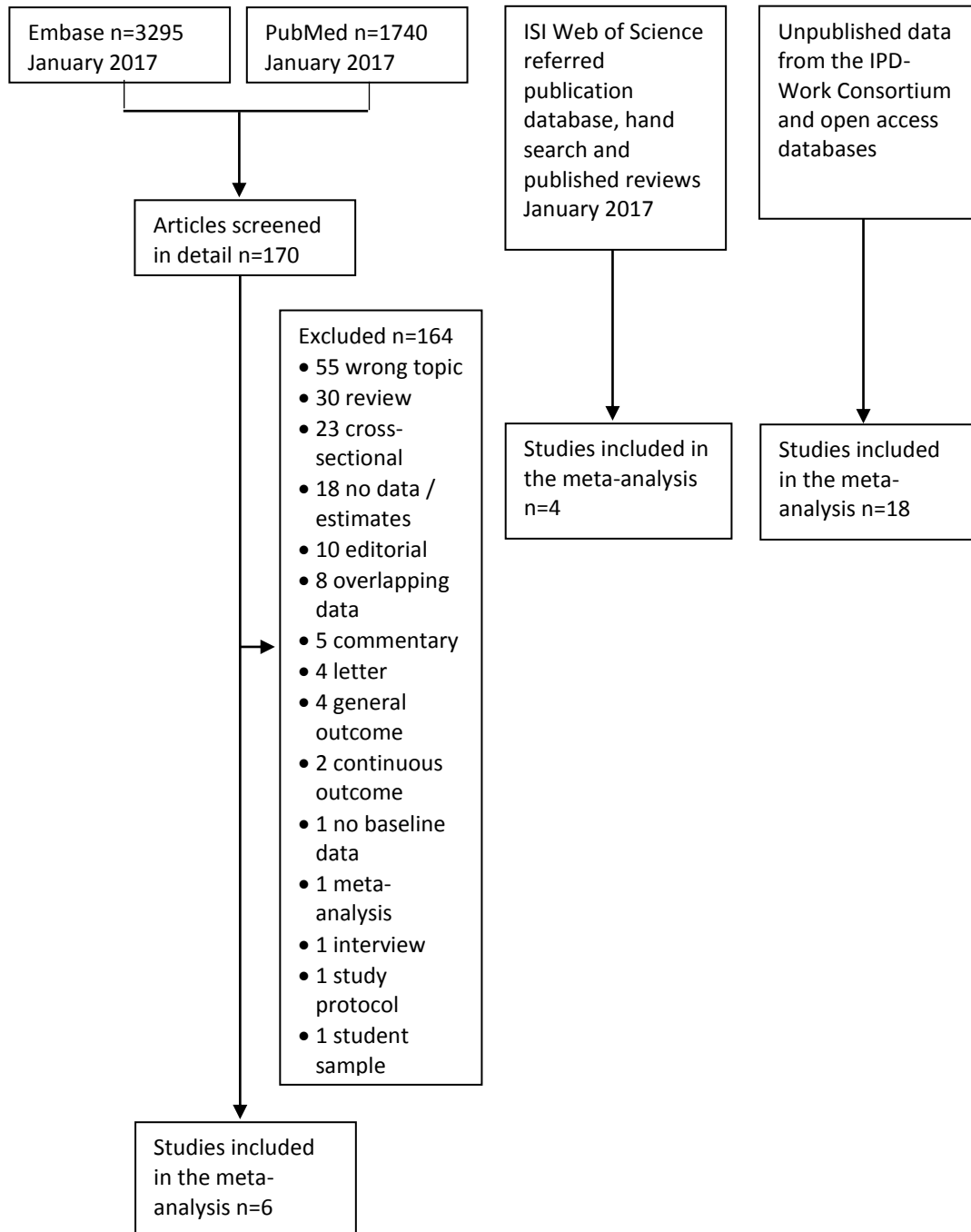
Long working hours and depressive symptoms: systematic review and meta-analysis of published studies and unpublished individual participant data¹

by Marianna Virtanen, PhD, 2 Markus Jokela, PhD, Ida EH Madsen, PhD, Linda L Magnusson Hanson, PhD, Tea Lallukka, PhD, Solja T Nyberg, PhD, Lars Alfredsson, PhD, G David Batty, DSc, Jakob B Bjorner, MD, PhD, Marianne Borritz, PhD, Hermann Burr, PhD, Nico Dragano, PhD, Raimund Erbel, MD, PhD, Jane E Ferrie, PhD, Katriina Heikkilä, PhD, Anders Knutsson, PhD, Markku Koskenvuo, MD, PhD, Eero Lahelma, PhD, Martin L Nielsen, PhD, Tuula Oksanen, PhD, Jan H Pejtersen, PhD, Jaana Pentti, PhD, Ossi Rahkonen, PhD, Reiner Rugulies, PhD, Paula Salo, PhD, Jürgen Schupp, PhD, Martin J Shipley, PhD, Johannes Siegrist, PhD, Archana Singh-Manoux, PhD, Sakari B Suominen, PhD, Töres Theorell, MD, PhD, Jussi Vahtera, MD, PhD, Gert G Wagner, PhD, Jian Li Wang, PhD, Vasoontara Yiengprugsawan, PhD, Hugo Westerlund, PhD, Mika Kivimäki, PhD

1 *Supplementary materials*

2 *Correspondence to: Marianna Virtanen, Finnish Institute of Occupational Health, PO Box 40, 00032 Työterveyslaitos, Finland. [E-mail: marianna.virtanen@ttl.fi]*

Supplementary figure A. Selection of studies in the meta-analysis



Supplementary table A. Assessment of seven domains of study quality and the overall quality score. Symbols ++ = definitely yes; + = probably/mostly yes; - = probably/mostly no; - - = definitely no

Study	Confidence in exposure (predictor) assessment ^a	Exposed and unexposed from the same population	Confidence in exclusion of prevalent cases	Comprehensive adjustments	Confidence in confounders assessment ^b	Confidence in outcome assessment ^c	Adequate follow-up ^d	Overall score	HIGH /ACCEPTABLE QUALITY
Suwazono	+	++	++	- -	- -	+	+	7	no
Bildt	-	++	++	- -	- -	+	++	7	no
Shields	+	++	++	+	+	++	++	11	yes
Virtanen	+	++	++	+	+	+	+	9	yes
Tokuyama	+	++	++	- -	- -	+	+	7	no
Amagasa	+	++	++	+	+	+	+	9	yes
Niedhammer	+	++	++	+	+	++	++	11	yes
Wang	+	++	++	+	+	++	+	10	yes
Kato	+	++	++	+	+	+	+	9	yes
Kim	+	++	++	+	+	+	+	9	yes
ACL	+	++	++	+	+	+	++	10	yes
BHPS	+	++	++	+	+	+	++	10	yes
NLSY	+	++	++	+	+	+	++	10	yes
HRS	+	++	++	+	+	+	++	10	yes
HESSUP	+	++	++	+	+	+	+	9	yes
BCS	+	++	++	+	+	+	++	10	yes
PUMA	+	++	++	+	+	+	+	9	yes
FPS	+	++	++	+	+	+	++	10	yes

DWECS 2000	+	++	++	+	+	+	+	+	9	yes
ELSA	+	++	++	+	+	+	++	10	yes	
SHARE	+	++	++	+	+	+	++	10	yes	
HILDA	+	++	++	+	+	+	++	10	yes	
SOEP	+	++	++	+	+	+	++	10	yes	
HHS	+	++	++	+	+	+	+	9	yes	
SLOSH	+	++	++	+	+	+	++	10	yes	
PAIRFAM	+	++	++	+	+	+	+	9	yes	
TCS	+	++	++	+	+	+	++	10	yes	
UKHLS	+	++	++	+	+	+	+	9	yes	

^aRecorded working hours (++); self-reported working hours (+).

^bConfounders' data from several sources (++); data mainly self-reported (+).

^cStructured interview data of clinically significant depressive disorder (++); self-reported data on depressive symptoms or psychological distress (+).

^dFollow-up of 2 to 4 years (++); 1 or 5 years (+).

Supplementary table B. Overview of prospective studies excluded from the meta-analysis, investigating the association between long working hours and depressive symptoms

First author	Year of study entry	Study site	Population	No of participants	Proportion (%) of women	Mean age / age range at entry	Mean follow-up time	Assessment of depressive symptoms	Findings	Summary of findings
Sugisawa (52)	<1994	Japan	Various occupations and firms	11 121	0	30-59	1.5	Medical treatment for mental disorders	RR=1.45 (0.64-3.31) for ≥80 hours; RR=1.38 (0.70-2.71) for 71-80 hours versus 50-60	0
Marchand (47)	1994	Canada	General population	6611	46	37	8	Within-subject repeated assessments of psychological distress	Linear regression coefficient b=0.001 (n.s.)	0
Tarumi (53)	1997	Japan	White-collar employees	867	21-25	38-42	3	Medical records of incident mental disorder (F00-F99)	RR=1.36 (0.46-4.06) for ≥50 hours versus ≤44 hours	0
Stephoe (49)	<1998	UK	Department store employees	71	62	33/36	0,5	Within-subject analysis of working-hours change and psychological distress	Variation in working hours was not associated with change in psychological distress	0
D'Errico (50)	1999	Italy	Members of a workers' union	2046	23	62% aged 25-44	6	Antidepressant prescriptions	RR=1.00 (0.63-1.60) for >4h/week overtime versus none	0
Allen (46)	2001	USA	Manual workers	2746	20	46	1	Self-reported mental health, continuous outcome	b=0.12 (n.s.) for ≥60 hours/ week versus 41-48	0
Ogasawara (48)	2006	Japan	Office workers	2740	9	36	1	DSM-IV-TR major depressive disorder	RR=1.03 (0.97-1.08) for a	0

Varma (51)	2008	Denmark	Senior medical consultants	2790	29	54.5	1.5	Antidepressant prescriptions	continuous working hours measure HR=0.67 (0.15-2.94) for 55-59 hours; HR 0.48 (0.06-3.68) for ≥60 hours versus 37-40	0
------------	------	---------	----------------------------	------	----	------	-----	------------------------------	---	---

Supplementary table C. Overview of prospective studies investigating the association between long working hours and depression

First author / Study (acronym)	Year of study entry	Study site	Population	No of participants	Pro-portion (%) of women	Mean age / age range at entry	Mean follow-up time	Assessment of depression	Covariates in the multivariable adjusted model
Published data									
Suwazono (54)	1992	Japan	Workers of a telecommuni- cation enterprise	23 837	20	20-59	1	Psychological distress	Sex-stratified, adjusted for time period
Bildt (55)	1993	Sweden	General (younger) population from Stockholm county	352	53	46-63	4	Subclinical depression (Nottingham Life Quality Questionnaire)	Sex-stratified
Shields (56)	1994	Canada	General population	3783	43	25-54	2	DSM-III major depressive episode (MDE)	Sex-stratified; adjusted for age, SES, work characteristics and family situation
Virtanen (57)	1997	UK	London-based civil service employees	2960	24	52	5	Psychological distress (General Health Questionnaire, GHQ-30)	Age, sex, socioeconomic status, marital status, employment status at follow-up
Tokuyama (58)	1997	Japan	White-collar employees of an insurance company	1365	53	34	1	Zung self-rating depression scale (SDS)	None.
Amagasa (59)	1999	Japan	Clerical workers	194	18	42	1	Depression subscale of the General Well-being scale	Age, sex, job control

Niedhammer (60)	2006	France	General population	4717	49	≥20	4	Major depressive disorder interview (MINI)	Age, sex, occupation, family situation, social support, stressful life events
Wang (61)	2008	Canada	General population	2752	44	43	1	DSM-IV Major depressive disorder (MDD)	Age, sex, marital status, education
Kato (62)	2008	Japan	Employees of a manufacturing company	1194	0	39	1	Depressive symptoms (CES-D)	Age, tenure, job grade, shift work, site of work
Kim (63)	2010	South Korea	General population	6805 observations from 2733 participants	37	20-59	1	Depressive symptoms (CES-D)	Age, sex, education, income, marital status
Unpublished data									
Americans' Changing Lives (ACL) (64)	1986	USA	General population	1291	51	45	3	Depressive symptoms (CES-D)	Age, sex, socioeconomic status, marital status
British Household Panel Survey (BHPS) (65)	1991	UK	General population	10548	50	35	2	Psychological distress (General Health Questionnaire, GHQ-12)	Age, sex, socioeconomic status, marital status
National Longitudinal Survey of Youth (NLSY) (66)	1992	USA	General population	5169	43	30.9	2	Depressive symptoms (CES-D)	Age, sex, socioeconomic status, marital status
Health and Retirement Study (HRS) (67)	1992	USA	General (older) population	7055	53	54	2	Depressive symptoms	Age, sex, socioeconomic status, marital status

Health and Social Support (HeSSup) (68)	1998	Finland	General population, age-stratified	9963	56	40	5	Depressive symptoms (Beck Depression Inventory, BDI)	Age, sex, socioeconomic status, marital status
British Birth Cohort 1970 (BCS) (69)	1999	UK	National birth cohort	5092	45	29.0	4	Psychological distress (General Health Questionnaire, GHQ-12)	Age, sex, socioeconomic status, marital status
Burnout, Motivation and Job Satisfaction (PUMA) (70)	1999	Denmark	Employees in the human service sector	901	85	45	5	Depressive symptoms (Mental Health Inventory, MHI-5);	Age, sex, socioeconomic status, marital status
Finnish Public Sector Study (FPS) (71)	2000	Finland	Public sector employees (10 towns, 21 hospitals)	20241	81	45	3	Psychological distress (General Health Questionnaire, GHQ-12)	Age, sex, socioeconomic status, marital status
Danish Work Environment Cohort (DWECS 2000) (72)	2000	Denmark	General population	3620	49	43	5	Depressive symptoms (Mental Health Inventory, MHI-5)	Age, sex, socioeconomic status, marital status
English Longitudinal Study of Aging (ELSA) (73)	2002	UK	General (older) population	3220	51	55.8	2	Depressive symptoms (CES-D)	Age, sex, socioeconomic status, marital status
Helsinki Health Study (HHS) (74)	2002	Finland	Public sector employees (City of Helsinki)	1768	81	50	5	Psychological distress (General Health Questionnaire, GHQ-12)	Age, sex, socioeconomic status, marital status
Survey of Health, Ageing and Retirement in Europe (SHARE) (75)	2004	Europe	General (older) population	5302	45	56.4	2	Depressive symptoms (EURO-D)	Age, sex, socioeconomic status, marital status
Household, Income, and Labour Dynamics in Australia (HILDA) (76)	2005	Australia	General population	5315	46	39.5	2	Depressive symptoms (Mental Health Inventory, MHI)	Age, sex, socioeconomic status, marital status

German Socioeconomic Panel Survey (SOEP) (77)	2006	Germany	General population	10678	45	40.6	2	Depressive symptoms (Mental Component Summary Scale MCS)	Age, sex, socioeconomic status, marital status
Swedish Longitudinal Occupational Survey of Health (SLOSH) (78)	2008	Sweden	General population	5083	53	49	4	Depressive symptoms (Symptom Check List, SCL)	Age, sex, socioeconomic status, marital status
Panel Analysis of Intimate Relationships and Family Dynamics (PAIRFAM) (79)	2008	Germany	General (younger) population	3064	47	30.5	1	Depressive symptoms (State-Trait Depression Scale)	Age, sex, socioeconomic status, marital status
Thai Cohort Study (TCS) (80)	2009	Thailand	Employed population enrolled in open university	32256	55	43% (men) 58% (women) <40 years	4	K6 psychological distress	Age, sex, marital status, income
UK Household Longitudinal Study (UKHLS) (81)	2009	UK	General population	11204	53	43	1	Psychological distress	Age, sex, socioeconomic status, marital status

Supplementary table D. Response rate, loss to follow-up, and prevalence and onset of depressive symptoms in study cohorts

Study	Response rate (%) at baseline	Loss to follow-up (%)	Prevalence (%) of depressive symptoms at baseline	Onset (%) of depressive symptoms at follow-up
Suwazono	100	0	n.a.	16/20
Bildt	n.a.	15	10/12	10/9
Shields	96	6	n.a.	3/5
Virtanen	76	16	14	19
Tokuyama	49-68	34-40	3-7	7
Amagasa	97	9	n.a.	n.a.
Niedhammer	76	19	n.a.	4
Wang	44	23	16	4
Kato	85	36	24	11
Kim	n.a.	25	7	5
ACL	68	17	17	8
BHPS	74	23	23	19
NLSY	87	4	14	9
HRS	82	14	19	15
HESSUP	40	21	17	11
BCS	92	18	28	16
PUMA	80	42	10	6
FPS	68	38	26	18
DWECS 2000	75	32	2	4
ELSA	67	19	10	8
SHARE	85	31	18	14
HILDA	66	17	19	10
SOEP	63	18	16	12
HHS	76	7	20	11
SLOSH	61	25	21	8
PAIRFAM	49	21	14	10
TCS	45	53	12	4
UKHLS	72	37	21	16