

Rippin, Nicole

**Research Report**

## A response to the weaknesses of the Multidimensional Poverty Index (MPI): the correlation Sensitive Poverty Index (CSPI)

Briefing Paper, No. 19/2011

**Provided in Cooperation with:**

German Institute of Development and Sustainability (IDOS), Bonn

*Suggested Citation:* Rippin, Nicole (2011) : A response to the weaknesses of the Multidimensional Poverty Index (MPI): the correlation Sensitive Poverty Index (CSPI), Briefing Paper, No. 19/2011, Deutsches Institut für Entwicklungspolitik (DIE), Bonn

This Version is available at:

<https://hdl.handle.net/10419/199681>

**Standard-Nutzungsbedingungen:**

Die Dokumente auf EconStor dürfen zu eigenen wissenschaftlichen Zwecken und zum Privatgebrauch gespeichert und kopiert werden.

Sie dürfen die Dokumente nicht für öffentliche oder kommerzielle Zwecke vervielfältigen, öffentlich ausstellen, öffentlich zugänglich machen, vertreiben oder anderweitig nutzen.

Sofern die Verfasser die Dokumente unter Open-Content-Lizenzen (insbesondere CC-Lizenzen) zur Verfügung gestellt haben sollten, gelten abweichend von diesen Nutzungsbedingungen die in der dort genannten Lizenz gewährten Nutzungsrechte.

**Terms of use:**

*Documents in EconStor may be saved and copied for your personal and scholarly purposes.*

*You are not to copy documents for public or commercial purposes, to exhibit the documents publicly, to make them publicly available on the internet, or to distribute or otherwise use the documents in public.*

*If the documents have been made available under an Open Content Licence (especially Creative Commons Licences), you may exercise further usage rights as specified in the indicated licence.*



## A Response to the Weaknesses of the Multidimensional Poverty Index (MPI): The Correlation Sensitive Poverty Index (CSPI)

### Summary

In 2010, the Human Development Report introduced the Multidimensional Poverty Index (MPI). The MPI complements traditional income-based poverty indices by measuring the multiple deprivations that households face at the same time. Besides other appealing properties, in particular its decomposability, the MPI has the advantage that it is very easy to calculate. At the same time, the simplicity of its approach causes a number of methodological weaknesses.

The calculation of the MPI is based on ten vital items that are weighted differently according to their importance. The MPI is a counting index, as it simply counts the number of weighted items that households lack. All households for which this number is at least 30% are considered poor. All other households are considered non-poor and therefore excluded from the calculations.

The appealing simplicity of the MPI, however, comes at a cost. The MPI has four main methodological weaknesses:

- Since the MPI simply counts the number of items lacked by households, it assumes that no correlation exists between them. This assumption is not realistic. It is rather safe to say that, for instance, proper sanitation and safe drinking water are related to health as well as education indicators.
- The MPI is unable to capture inequality. In other words, transferring items from a poor to a less poor household does not change the poverty index as long as both households remain poor according to the MPI.

- The cut-off level of 30% is an arbitrary choice; changing it would affect poverty rates and even country rankings.
- The specific structure of the MPI implies problematic distortions. It leads to an inflation in poverty rates that increases the poorer a country and thus the severer its budget constraints. This results in less attention paid to the neediest of the needy.

Rippin (2010) introduced the Correlation Sensitive Poverty Index, a new index that shares the appealing properties of the MPI but none of its weaknesses. The CSPI is a counting index like the MPI and therefore shares its decomposability as well as its simplicity. However, the CSPI does not require a cut-off. Instead of excluding households from the calculations, it weights each household according to the number of weighted items that it lacks. This unique structure leads to the following advantages compared to the MPI:

- The CSPI is able to capture the correlation between the poverty indicators.
- The CSPI captures inequality among the poor; it increases whenever items are transferred from a poor to a less poor household.
- The CSPI does not require the arbitrary cut-off but instead provides policy makers with the opportunity to deliberately choose the level of importance they want to attribute to inequality among the poor.
- Finally, the new index avoids the inflation of poverty rates for poorer countries and puts a greater emphasis on the neediest of the needy in those countries than the MPI.

## Multidimensional poverty measurement

Whether poverty is perceived as a lack of basic needs or a lack of capabilities, it is beyond dispute that it is a multidimensional phenomenon. Insufficient income has for a long time been considered to be a good proxy for poverty in all its various facets. However, the lack of income is not a good proxy when some items are not offered, for example, schools or hospitals in remote areas of a country.

In response, multidimensional approaches have been developed that replace the single income indicator with a number of different poverty indicators. Empirical evidence plainly reveals that considerable population shares might be poor in a multidimensional way but not income poor, and vice versa. Indeed, the results diverge to such a great extent that the multidimensional measurement of poverty recently experienced a rush of attention from researchers as well as policy makers.

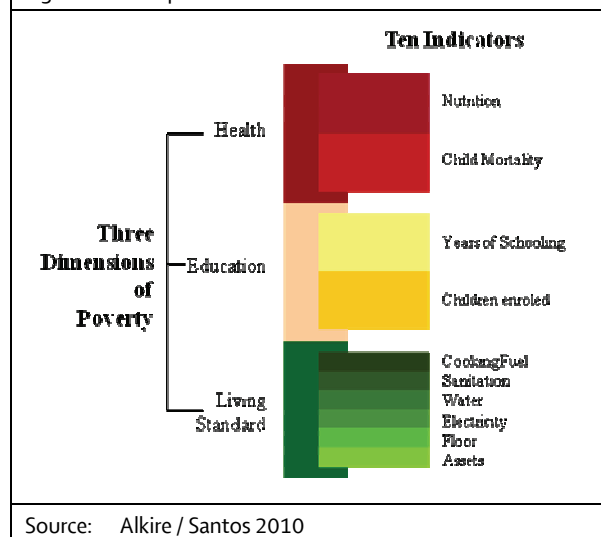
Two main ways exist to measure poverty in a multidimensional framework. The poverty indicators can either be analysed separately or merged into a composite index. Examples for the former approach are the Millennium Development Goals (MDGs). However, a recent UNDP report (2010) "What will it take to achieve the Millennium Development Goals?" questioned the goal system of the MDGs. It claims that close relationships exist between the single goals. Therefore, the process of achieving the MDGs might be accelerated if they were addressed simultaneously rather than separately. Such a simultaneous approach is provided by composite indices that merge the different poverty indicators into one single index. A prominent example for a composite index is the MPI.

## The Multidimensional Poverty Index (MPI)

The MPI comprises three equally weighted poverty dimensions: health, education and living standards (Figure 1).

The health dimension is measured by the two equally weighted indicators nutrition and child mortality. Education is captured by the two equally weighted indicators

Figure 1: Composition of the MPI



years of schooling and child enrolment. Living standards are measured by the six equally weighted indicators cooking fuel, sanitation, water, electricity, floor and assets (e.g. radio, tv, mobile phone etc.).

The MPI is a counting index; it counts the number of indicators that lack in a household. However, if a household lacking one or more items was included in the MPI, the index would yield poverty rates of more than 90% for a considerable number of developing countries. In order to avoid this problem, a 30% cut-off is utilised to exclude households from the calculations: All households that lack less than 30% of the weighted poverty indicators are considered non-poor and therefore not included in the MPI.

For example, a household that is deprived in nutrition and child enrolment is MPI poor since its weighted sum of indicators is  $1/6 + 1/6 > 0.3$ . A household that is deprived in, say, nutrition and sanitation is not MPI poor as the weighted sum of indicators is  $1/6 + 1/18 = 2/9 < 0.3$ .

Though the simplicity of the MPI is undoubtedly appealing, it also implies a couple of methodological weaknesses.

## Weaknesses of the MPI

The MPI is a composite index. It identifies ten different poverty indicators that are weighted and merged into the final index. It therefore provides the possibility to estimate the effect that a policy has on all poverty indicators at once. However, the MPI has four methodological weaknesses:

1. The simple counting approach of the MPI makes it impossible to capture any kind of correlation between the indicators. However, as the aforementioned UNDP report stressed, poverty indicators are closely related. In the case of the MPI, safe drinking water, for instance, can be expected to be closely related to all health and education indicators. To account for these correlations would be essential to prevent distortions in the estimated poverty effect of policies.

2. Another weakness of the MPI is its approach to inequality. Already in 1976, Amartya Sen required good poverty indices to be decomposable in the three components of poverty:

- Poverty incidence: the number of the poor
- Poverty intensity: the mean number of deprivations suffered by the poor
- Poverty inequality: the distribution of deprivations among the poor.

The MPI, however, is not able to capture inequality among the poor; if items are taken from a poor household and transferred to a less poor household, as long as both households remain poor, the MPI will not change. This implies that the fastest reductions in poverty can be achieved if those lifted out of poverty are closest to the cut-off. As a result, policies based on such an index will give those with the farthest distance to the cut-off, i.e. the neediest, the least priority.

3. Another weakness of the MPI is its 30% cut-off. The cut-off is necessary in order to avoid poverty rates at such high

<b>HH</b>	<b>Education</b>		<b>Health</b>		<b>Living Standard</b>						<b>MPI</b>	<b>CSPI</b>
	<b>Years</b>	<b>Attendance</b>	<b>Mortality</b>	<b>Nutrition</b>	<b>Electricity</b>	<b>Water</b>	<b>Sanitation</b>	<b>Flooring</b>	<b>Cooking</b>	<b>Assets</b>		
<b>1</b>	yes	yes	yes	no	yes	yes	no	yes	no	yes	<b>0.722</b>	<b>0.522</b>
<b>2</b>	yes	no	no	no	yes	yes	no	yes	yes	no	<b>0.389</b>	<b>0.151</b>
<b>3</b>	no	no	no	no	yes	yes	yes	yes	yes	no	<b>0.000</b>	<b>0.077</b>
<b>4</b>	no	yes	no	no	no	no	yes	no	no	no	<b>0.000</b>	<b>0.049</b>
<b>5</b>	no	yes	no	no	no	no	no	no	no	no	<b>0.000</b>	<b>0.028</b>

pictures of poverty. Figure 2 illustrates Indian poverty maps according to the MPI and the CSPI. The MPI is only able to provide poverty maps for poverty incidence and intensity whose explanatory power is in addition diluted as a result of the 30% cut-off. Poverty intensity is calculated as the number of deprivations suffered by those households that already lack at least 30% of the weighted indicators. Consequently, differences in poverty intensity are underestimated. Poverty incidence counts the number of households that cross the 30% cut-off. The discontinuity of this approach overstates the differences in poverty incidence.

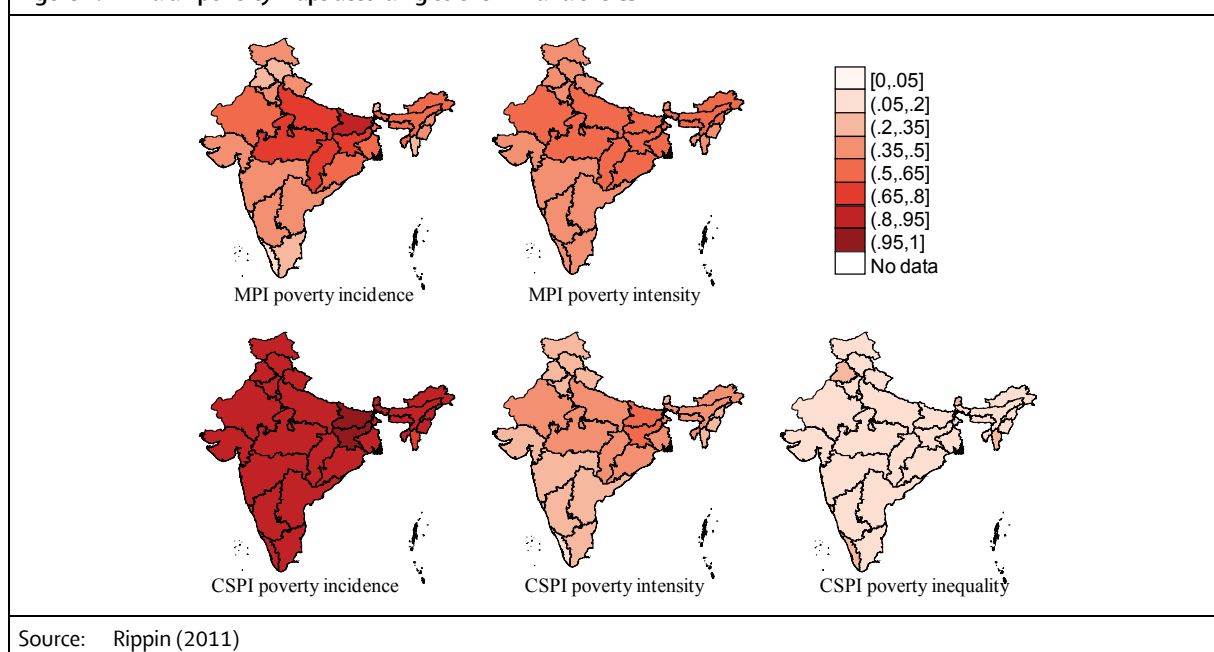
The CSPI is able to provide much more detailed and distinct pictures of poverty. Without over- or underestimating regional differences, it is able to clearly identify the regions with the highest levels of poverty incidence, intensity and inequality.

### The way ahead

Exact measures of poverty are essential to adopt the right policies. Though the MPI has been a major step forward, it still suffers from methodological weaknesses. The CSPI provides a way to overcome these weaknesses and therefore allows more informed policy making.

Other weaknesses related to data issues, however, continue to persist. These weaknesses comprise the different frequencies with which household surveys are conducted in different countries, lacking data, missing values etc. All these data issues reduce the credibility of poverty results not only for the MPI and the CSPI, but for any international poverty index. In order to enhance informed policy making, improvements of the statistical data base are urgently required.

**Figure 2: Indian poverty maps according to the MPI and the CSPI**



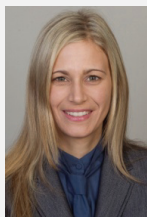
Source: Rippin (2011)

### Literature

Alkire, S. / M. E. Santos (2010): Acute multidimensional poverty: a new index for developing countries, Oxford: Oxford Poverty & Human Development Initiative ( Working Paper 38)

Rippin, N. (2010): Poverty severity in a multidimensional framework: the issue of inequality between dimensions, Göttingen: Courant Research Centre 'Poverty, Equity and Growth', University of Göttingen (Discussion Paper 47)

Rippin, N. (s. a.): The issue of inequality: multidimensional poverty indices on trial, forthcoming



#### Nicole Rippin

Researcher

Department "Competitiveness and Social Development"

German Development Institute / Deutsches Institut für Entwicklungspolitik (DIE)

She is working on Poverty Measurement and Pro-Poor Growth.