

Chang, Tom Y.; Kajackaite, Agne

Article — Published Version

Battle for the thermostat: Gender and the effect of temperature on cognitive performance

PLoS ONE

Provided in Cooperation with:
WZB Berlin Social Science Center

Suggested Citation: Chang, Tom Y.; Kajackaite, Agne (2019) : Battle for the thermostat: Gender and the effect of temperature on cognitive performance, PLoS ONE, ISSN 1932-6203, Public Library of Science, San Francisco, CA, Vol. 14, Iss. 5, pp. 1-10, <https://doi.org/10.1371/journal.pone.0216362>

This Version is available at:
<https://hdl.handle.net/10419/198594>

Standard-Nutzungsbedingungen:

Die Dokumente auf EconStor dürfen zu eigenen wissenschaftlichen Zwecken und zum Privatgebrauch gespeichert und kopiert werden.

Sie dürfen die Dokumente nicht für öffentliche oder kommerzielle Zwecke vervielfältigen, öffentlich ausstellen, öffentlich zugänglich machen, vertreiben oder anderweitig nutzen.

Sofern die Verfasser die Dokumente unter Open-Content-Lizenzen (insbesondere CC-Lizenzen) zur Verfügung gestellt haben sollten, gelten abweichend von diesen Nutzungsbedingungen die in der dort genannten Lizenz gewährten Nutzungsrechte.

Terms of use:

Documents in EconStor may be saved and copied for your personal and scholarly purposes.

You are not to copy documents for public or commercial purposes, to exhibit the documents publicly, to make them publicly available on the internet, or to distribute or otherwise use the documents in public.

If the documents have been made available under an Open Content Licence (especially Creative Commons Licences), you may exercise further usage rights as specified in the indicated licence.




<https://creativecommons.org/licenses/by/4.0/>

RESEARCH ARTICLE

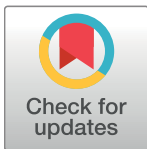
Battle for the thermostat: Gender and the effect of temperature on cognitive performance

Tom Y. Chang¹ , Agne Kajackaite² *

1 USC Marshall School of Business, Los Angeles, CA, United States of America, **2** WZB Berlin Social Science Center, Berlin, Germany

 These authors contributed equally to this work.

* agne.kajackaite@wzb.eu



Abstract

This paper studies differences in the effect of temperature on cognitive performance by gender in a large controlled lab experiment (N = 543). We study performance in math, verbal and cognitive reflection tasks and find that the effects of temperature vary significantly across men and women. At higher temperatures, women perform better on a math and verbal task while the reverse effect is observed for men. The increase in female performance in response to higher temperature is significantly larger and more precisely estimated than the corresponding decrease in male performance. In contrast to math and verbal tasks, temperature has no impact on a measure of cognitive reflection for either gender. Our findings suggest that gender mixed workplaces may be able to increase productivity by setting the thermostat higher than current standards.

OPEN ACCESS

Citation: Chang TY, Kajackaite A (2019) Battle for the thermostat: Gender and the effect of temperature on cognitive performance. PLoS ONE 14(5): e0216362. <https://doi.org/10.1371/journal.pone.0216362>

Editor: Valerio Capraro, Middlesex University, UNITED KINGDOM

Received: December 19, 2018

Accepted: April 18, 2019

Published: May 22, 2019

Copyright: © 2019 Chang, Kajackaite. This is an open access article distributed under the terms of the [Creative Commons Attribution License](https://creativecommons.org/licenses/by/4.0/), which permits unrestricted use, distribution, and reproduction in any medium, provided the original author and source are credited.

Data Availability Statement: All relevant data are within the paper and its Supporting Information files.

Funding: The authors received no specific funding for this work.

Competing interests: The authors have declared that no competing interests exist.

Introduction

The fact that women generally prefer higher indoor temperatures than men is well supported by survey evidence [1–4]. This difference in preferences, sometimes referred to as the “battle of the thermostat,” is passionately discussed in popular culture and has received considerable media attention [5–7]. Surprisingly then, the research examining the impact of temperature on cognitive performance [8] has not explored a link between gender and temperature response.

To address this gap we ran a large laboratory experiment in which over 500 individuals were asked to perform a set of cognitive tasks (math, verbal and cognitive reflection), subject to experimentally manipulated indoor temperatures. We find that, for math and verbal tasks, consistent with their subjective temperature preferences, women perform better both on the extensive and intensive margins at high temperatures than at low temperatures (i.e., women both attempt to solve, and correctly solve more math and verbal tasks at higher vs. lower temperatures). Men display the opposite pattern, performing better at lower temperatures. In contrast to math and verbal tasks, temperature has no impact on cognitive reflection test performance for either gender.

Overall, our results suggest that gender is an important factor not only in determining the impact of temperature on comfort but also on productivity and cognitive performance. Additionally, given the lack of attention to gender in mediating the impact of temperature on performance, our results may explain in part the inconsistent results of previous studies on the relationship between temperature and cognitive performance [9–11].

Experimental design

To study the effect of temperature on performance, we conducted a laboratory experiment with 543 students in Berlin, Germany (see [Materials and Methods](#) and Supporting Information (SI) for instructions and details on procedure). We used a between subject design by varying the temperature from 16.19 to 32.57°C between sessions. In each session, participants were given the same set of tasks which were monetarily incentivized based on performance. These tasks were:

Adding up numbers task (Math)

In this task, participants were asked to add up five two-digit numbers without using a calculator (the task is equivalent to the task used by M. Niederle and L. Vestergaard [12]). There were 50 problems and participants had 5 minutes to work on them. Participants could complete as many problems as they wanted in the available time, and were rewarded only for correct answers.

Words building task (Verbal)

Participants were provided with a set of ten letters: ADEHINRSTU. They were asked to build as many German words as possible in 5 minutes (the task was equivalent to the one introduced by Eckartz et al. [13]). Participants were rewarded for each valid word they submitted, with the payment increasing over-proportionally with the length of the word.

Cognitive reflection test (CRT)

Participants had 5 minutes to answer three original CRT questions introduced by S. Frederick [14]. For example, the first question was: “A bat and a ball cost 1.10 EUR in total. The bat costs 1.00 EUR more than the ball. How much does the ball cost?” In a cognitive reflection test, the questions are such that the intuitive answer is the wrong answer. In this case, the intuitive answer is that the ball costs 10 cents. This test has been extensively used in the psychology literature and is highly correlated with various measures of mental heuristics and biases and measures of cognitive ability (e.g., IQ) [15].

Econometric model

We use ordinary least squares (OLS) regressions to map the relationship between temperature and performance. Our basic linear regression is given by the following equation:

$$Y_{ij} = \alpha + \beta Temp_j + X_{ij}\gamma + \epsilon_{ij} \quad (1)$$

where i references an individual, j references an experimental session, $Temp_j$ is the temperature in the room during session j , and X_{ij} is a vector of the observable characteristics of the individual and session that might influence performance. The dependent variable Y_{ij} is a measure of individual i 's performance on the math task, verbal task, CRT, and a measure of the total number of answers attempted (since all subjects attempted to answer all three CRT questions, this

is a normalized, equally weighted measure of the number of math questions attempted and the number of words submitted).

An alternative estimation strategy involves a non-linear identification of the temperature-performance relationship. Specifically, we replace $Temp_j$ with a vector of temperature dummies corresponding to the following temperature bins: less than 20, 20–25, 25–30, and more than 30 degrees Celsius.

Finally, to estimate the role gender plays in the relationship between temperature and performance, we interact our linear and non-linear measures of temperature with a male dummy.

Empirical results

Assessing the validity of the random assignment

The temperature was randomly assigned across sessions. The participants were recruited via an online recruiting system and were randomly assigned to sessions (see [Materials and Methods](#)). To see whether randomization worked, we analyze the relationship between individual subject characteristics and temperature, both measured linearly and non-linearly. Across both specifications, we find no statistically meaningful difference in observable subject characteristics (see [S1 Table](#)), which suggests randomization was successful.

Estimates of the effect of temperature on cognitive performance

[Fig 1](#) shows the relationship between temperature and performance across the three tasks and the normalized measure of attempted answers. From [Fig 1](#) there does not appear to be a meaningful relationship between temperature and performance in any of the performance measures.

[Table 1](#) statistically summarizes the graphical findings in [Fig 1](#) by reporting estimates (and standard errors) from regressions. Since our prior tests show that our samples are balanced across treatment conditions, the estimates presented here do not include any individual level controls. Nonetheless, our estimates are robust to the inclusion of our full set of observable characteristics. Consistent with [Fig 1](#), the regression results show no statistically significant relationship between performance and temperature across both linear and non-linear specifications.

Estimates of the effect of temperature on cognitive performance by gender

[Fig 2](#) duplicates [Fig 1](#), but breaks down the relationship by gender. In line with [Fig 1](#), [Fig 2](#) shows no relationship between temperature and CRT scores. However, unlike [Fig 1](#), [Fig 2](#) shows a meaningful relationship between temperature and performance for math and verbal tasks. The relationship between performance in math and verbal tasks and temperature is different for males and females, with males performing best at lower temperatures and females performing best at higher temperatures. The lack of a relationship in the full sample described above masked a heterogeneous effect of temperature on performance by gender.

[Table 2](#) presents a more formal test of the visual differences in [Fig 2](#), reporting estimates from the regression equations specified above. The estimates presented here include only a control for gender, but are robust to the inclusion of the full set of observable characteristics. Consistent with [Fig 2](#), we see that for the math task (Columns 1 and 2), temperature is associated with an increase in the performance of women and a decrease in the performance of men. Across specifications, both the increase in female performance and the differential effect of temperature on males relative to females are economically meaningful and statistically significant. The coefficients from the linear specification indicate that a one-degree Celsius increase

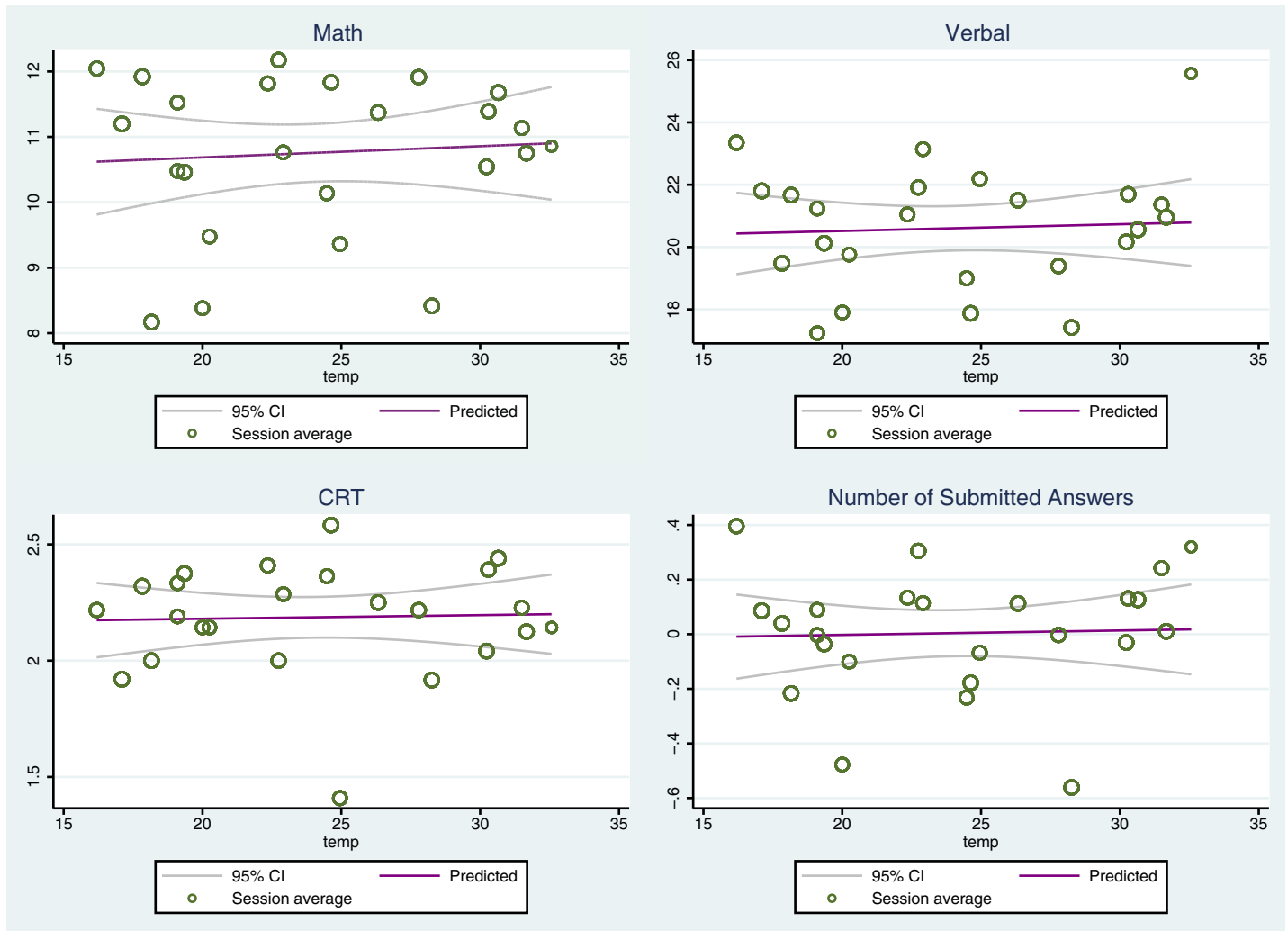


Fig 1. The relationship between temperature and performance. This figure presents estimates of the impact of temperature on performance (math, verbal, CRT and normalized measure of attempted answers). The circles represent the average performance and temperature for each experimental session, with circle size proportional to the number of subjects. The plotted solid line gives the linear projection of outcomes, with the dashed lines presenting the 95% confidence interval around the solid line.

<https://doi.org/10.1371/journal.pone.0216362.g001>

in ambient temperature is associated with 0.17 (1.76%) increase in the number of math questions correctly answered by women (p-value < 0.001). In contrast, the implied decrease in male performance is generally small and statistically insignificant. Men submit 0.07 (0.63%) fewer correct answers when temperature is increased by one degree (p-value = 0.205). To put the magnitude of these effects in perspective, the well-known, long-standing gap in performance between high school boys and girls on the math portion of the SAT is approximately 4% [16].

For the verbal task (Columns 3 and 4), the coefficients for both the linear and non-linear specifications follow the same general pattern as for the math task, but are less precise. The coefficients from the linear regression estimate imply that a temperature increase of one degree Celsius increases female performance on the verbal task by 1.03% (p-value = 0.036) and decreases male performance by 0.6% (p-value = 0.331) The difference in effects between men and women is not statistically significant (p-value = 0.079).

Table 1. OLS estimates of the impact of temperature on performance.

	(1)	(2)	(3)	(4)	(5)	(6)	(7)	(8)
	Math		Verbal		CRT		Total Attempted	
Temperature	0.0248		0.018		0.0037		0.0022	
	[0.0429]		[0.0717]		[0.0065]		[0.0088]	
Temperature < 20		0.0987		0.4876		-0.0333		0.0956
		[0.6039]		[0.9285]		[0.1173]		[0.1030]
Temperature 25 to 30		-0.209		-0.796		-0.1065		-0.1085
		[1.0822]		[1.1919]		[0.1563]		[0.2022]
Temperature > 30		0.5085		1.1042		0.0551		0.1754+
		[0.4576]		[0.8397]		[0.1188]		[0.0976]
Mean Value	10.75		20.6		2.19		0	
R-squared	0.0423	0.0438	0.0037	0.0086	0.0832	0.0851	0.0061	0.0145
Observations	542	542	542	542	542	542	542	542

The table presents OLS regression results. Column 1, 3, 5 and 7 use linear temperature as the independent variable. Columns 2, 4, 6, and 8 use temperature bin dummies (less than 20, 25–30, and more than 30 degrees Celsius) with the range of 20–25 degrees Celsius as the reference group. Standard errors in brackets are clustered on experimental session. A plus sign by an estimate indicates statistical significance at the 10-percent level, one asterisk at the 5-percent level, and two asterisks at the 1-percent level.

<https://doi.org/10.1371/journal.pone.0216362.t001>

In contrast to the math and verbal tasks, and consistent with Fig 2, we find that temperature has no significant impact on CRT scores for either men or women (Columns 5 and 6).

Finally, Columns 7 and 8 examine the effect of temperature on the number of answers attempted for the math and verbal tasks. Similar to the number of correct answers, we find that temperature is positively correlated with the number of answers attempted by female participants and negatively correlated with the number of answers attempted by male participants. The regression coefficients imply that a one-degree Celsius increase in temperature leads to a 0.033 standard deviation increase in the number of answers attempted by females subjects (p-value = 0.002), and a 0.019 standard deviation decrease in the number of questions attempted by male subjects (p = 0.187). The difference between the two effects is significant with p-value = 0.013.

Importantly, the increase in the number of submitted answers does not lead to higher error rates. Indeed, for women, higher temperatures are associated with lower error rates, although the results are only marginally statistically significant (see S2 Table).

Discussion

Taken together, these results show that within a temperature range of 16 and 33 degrees Celsius, females generally exhibit better cognitive performance at the warmer end of the temperature distribution while men do better at colder temperatures. The increase in female cognitive performance appears to be driven largely by an increase in the number of submitted answers. We interpret this as evidence that the increased performance is driven in part by an increase in effort. Similarly, the decrease in male cognitive performance is partially driven by a decrease in observable effort. Importantly, the increase in female cognitive performance is larger and more precisely estimated than the decrease in male performance.

That these results were completely masked when differential-by-gender effects were not taken into account could be one possible explanation for the inconsistent results found in the prior literature on temperature and cognitive performance. At the very least, it suggests that future studies on the effect of temperature should examine potential heterogeneous effects across gender.

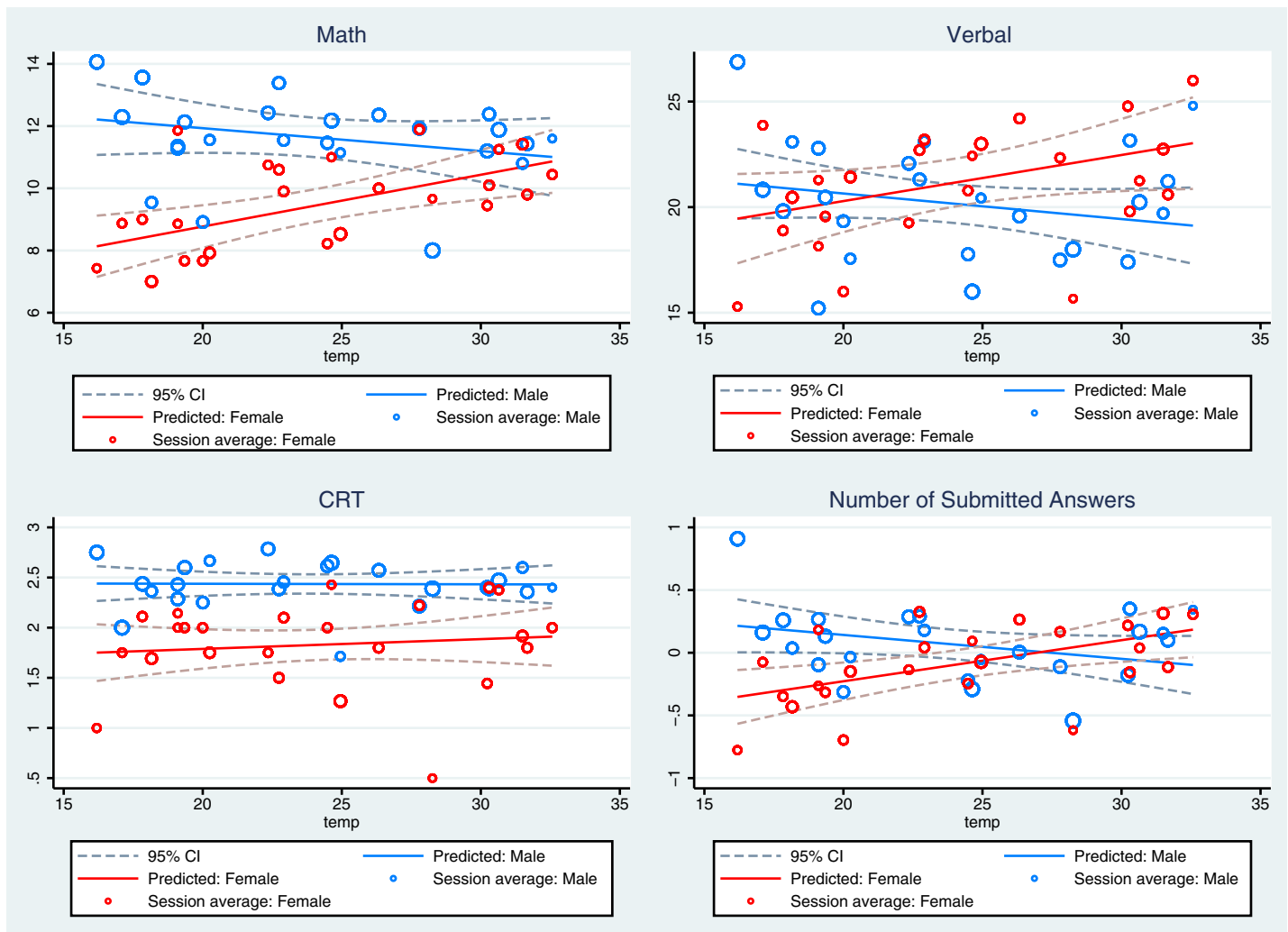


Fig 2. The relationship between temperature and performance by gender. This figure presents estimates of the impact of temperature on performance (math, verbal, CRT and normalized measure of attempted answers) separately for males and females. The circles represent the average performance and temperature for each experimental session divided by gender, with circle size proportional to the number of subjects. The plotted solid line gives the linear projection of outcomes, with the dashed lines presenting the 95% confidence interval around the solid line.

<https://doi.org/10.1371/journal.pone.0216362.g002>

Interestingly, we find no effect of temperature on CRT scores overall, or by gender. Given the relationship between cognitive reflection and violent crime [17] and the well-documented relationship between temperature and violence [18–20], this result was surprising. One potential, albeit purely speculative, explanation is that the more behavioral effects of temperature, such as effects on reflection or aggression, manifest at longer time horizons than a one-hour experimental session. Another is that the effect of temperature on violent tendencies operates through a channel unrelated to cognitive reflection.

Our results contribute to the growing experimental economics and psychology literature on gender differences. Recent experimental evidence suggests that women are less competitive [21, 22], more risk-averse [23, 24] and more honest [25, 26] than men. There is also some evidence showing that women are more altruistic [27, 28], more cooperative [29] and more emotive in moral dilemma judgments [30] than men.

Table 2. OLS estimates of the impact of temperature on performance by gender.

	(1)	(2)	(3)	(4)	(5)	(6)	(7)	(8)
	Math		Verbal		CRT		Total Attempted	
<i>Temperature</i>	0.1666**		0.2182*		0.0098		0.0328**	
	[0.0416]		[0.0980]		[0.0138]		[0.0094]	
<i>Male * Temperature</i>	-0.2402**		-0.3392+		-0.0103		-0.0518*	
	[0.0648]		[0.1847]		[0.0182]		[0.0192]	
<i>Temperature < 20</i>		-0.6917		-1.5208		0.0292		-0.2016
		[0.7121]		[1.1642]		[0.1816]		[0.1315]
<i>Temperature 25 to 30</i>		1.4250+		0.1925		-0.1475		0.1189
		[0.7297]		[2.0109]		[0.3841]		[0.2162]
<i>Temperature > 30</i>		1.2560*		1.1953		0.1953		0.2069
		[0.5377]		[1.2063]		[0.1867]		[0.1259]
<i>Male * Temperature < 20</i>		1.2095		3.2801		-0.1110		0.4819*
		[0.7873]		[2.2658]		[0.2073]		[0.2200]
<i>Male * Temperature 25 to 30</i>		-2.5699*		-1.4081		0.0492		-0.3375**
		[1.1799]		[1.9977]		[0.4039]		[0.1019]
<i>Male * Temperature > 30</i>		-1.3416*		-0.1423		-0.2524		-0.0538
		[0.5091]		[1.9222]		[0.1675]		[0.1607]
<i>Male</i>	7.9673**	2.4917**	7.1437	-1.7458	0.8547+	0.7021**	1.4062**	0.0757
	[1.5931]	[0.3186]	[4.7284]	[1.1962]	[0.4594]	[0.1052]	[0.49]	[0.0908]
<i>Mean Value</i>	10.75		20.6		2.19		0	
<i>R-squared</i>	0.0557	0.0579	0.0139	0.0181	0.0838	0.0877	0.0232	0.0326
<i>Observations</i>	542	542	542	542	542	542	542	542

The table presents OLS regression results. Column 1, 3, 5 and 7 use linear temperature as the independent variable. Columns 2, 4, 6, and 8 use temperature bin dummies (less than 20, 25–30, and more than 30 degrees Celsius) with the range of 20–25 degrees Celsius as the reference group. Standard errors in brackets are clustered on experimental session. A plus sign by an estimate indicates statistical significance at the 10-percent level, one asterisk at the 5-percent level, and two asterisks at the 1-percent level.

<https://doi.org/10.1371/journal.pone.0216362.t002>

Methodologically, our results call for some caution for laboratory experiments in psychology, economics and other social sciences with respect to gender composition in experimental sessions. Since we show that ordinary variations in room temperature can affect cognitive performance significantly and differently for men and women, experimental social scientists should take this into account when both designing experiments and interpreting the results.

Ultimately, our results potentially raise the stakes for the battle of the thermostat, suggesting that it is not just about comfort, but also about cognitive performance and productivity. Given the relative effect sizes, our results suggest that in gender-balanced workplaces, temperatures should be set significantly higher than current standards.

Materials and methods

This study was conducted with an IRB approval from University of Southern California and with an approval of an ethics committee at WZB Berlin Social Science Center. We recruited students in Berlin, Germany via the online recruiting system for economic experiments ORSEE [31]. The participants were randomly selected from the subject pool in ORSEE and none of them participated in more than one session. We excluded participants who have previously participated in ten or more experiments in this laboratory.

Overall, 543 students participated in our experiment. One participant did not complete the post-questionnaire and due to missing demographics we exclude this participant of our

Table 3. Demographic details of the participants.

	Mean	SD	Median	Min	Max
Male	0.59	0.49	1	0	1
Age	24.06	4.87	23	17	55
Major in Economics/Business	0.38	0.49	0	0	1
Native in German	0.79	0.41	1	0	1

<https://doi.org/10.1371/journal.pone.0216362.t003>

analyses. Including the participant does not change the quantitative results. Out of the remaining 542 participants, 41.14% were female. Table 3 summarizes the demographics of our sample. Our sample consisted exclusively out of students from universities in Berlin. The advantages of this subject pool is that they are relatively easy to recruit and homogenous in their cognitive skills. The disadvantage of this subject pool is that it is not representative of the whole population with respect to age and education level.

We conducted the experiment at the experimental economics laboratory at Technical University Berlin. The sessions took place from 25th of September until 6th of December 2017. In total, we conducted 24 sessions with 23–25 participants a session, depending on the show-up rates.

After arrival in the laboratory and before entering the main laboratory room where the experiment takes place, participants picked a random number with a seat assignment and were informed by the experimenter that this experiment includes temperature variations. The participants were also told that if they do not want to stay in the experiment, they can leave right now or at any time during the experimental session and that they will be paid a show-up fee in this case. Note that we did not obtain informed consent of the participants, since the need for consent was waived by the ethics committee. After entering the laboratory room and taking their seat, the experimenter informed the participants about general rules of the laboratory and handed out instructions. Participants were told that there are several parts of the experiment and that they will be informed about the content of the next task only when the current task is finished. The tasks were, in order: a cognitive reflection test, an adding up numbers task, and a words building task (see SI for instructions of the experiment with exact descriptions of the tasks). After completing the tasks, participants were asked to fill in a post-questionnaire including demographic questions and questions regarding the motives behind the decisions in the experiment. Then the experimenters collected instructions with participants' answers, checked the responses for correctness and calculated payoffs. At the end, participants privately received their payoffs in cash and left the laboratory. On average, an experimental session lasted one hour.

In all experimental sessions, participants worked on the same tasks. However, the temperature of the laboratory differed between the sessions. The average temperature in a session ranged between 16.19 and 32.57 Celsius, which we varied using AC and electronic heaters. The

Table 4. Temperature overview in the experiment.

Temperature group	Temperature range (N)	Average temperature
Temperature < 20	16.19–19.35°C (164)	18.09°C
Temperature 20 to 25	20.00–24.95°C (176)	22.84°C
Temperature 25 to 30	26.33–28.26°C (71)	27.46°C
Temperature > 30	30.23–32.57°C (132)	31.04°C

The table displays temperature ranges, average temperatures and the number of observations in each temperature category.

<https://doi.org/10.1371/journal.pone.0216362.t004>

participants were told before entering the laboratory that the experiment is about temperature and that they are allowed to leave the laboratory at any time. No participant left the laboratory before or during the session. [Table 4](#) displays temperature variations in the experiment.

Supporting information

S1 Table. Probit and OLS estimates of subject characteristics and temperature.

(DOCX)

S2 Table. OLS estimates of the impact of temperature on error rates by gender.

(DOCX)

S3 Table. Experimental data.

(DTA)

S1 Text. Instructions of the experiment.

(DOCX)

Acknowledgments

We thank Cary Frydman, Joshua Graff Zivin, Solomon Hsiang, Mireille Jacobson and Selale Tuzel for helpful comments.

Author Contributions

Conceptualization: Tom Y. Chang, Agne Kajackaite.

Data curation: Agne Kajackaite.

Formal analysis: Tom Y. Chang, Agne Kajackaite.

Project administration: Tom Y. Chang, Agne Kajackaite.

Writing – original draft: Tom Y. Chang, Agne Kajackaite.

References

1. Byrne NM, Hills AP, Hunter GR, Weinsier RL, Schutz Y (2005) Metabolic equivalent: One size does not fit all. *J Appl Physiol* 99: 1112–1119. <https://doi.org/10.1152/jappphysiol.00023.2004> PMID: 15831804
2. Karjalainen S (2007) Gender differences in thermal comfort and use of thermostats in everyday thermal environments. *Build Environ* 42: 1594–1603.
3. Kingma B, van Marken Lichtenbelt W (2015) Energy consumption in buildings and female thermal demand. *Nat Clim Change* 5: 1054–1056.
4. Mishra AK, Loomans MGLC, Hensen JLM (2016) Thermal comfort of heterogeneous and dynamic indoor conditions—An overview. *Build Environ* 109: 82–100.
5. Knapton S (2015) Women shiver at work in 'sexist' air conditioning. *The Telegraph*. Available at: <https://www.telegraph.co.uk/science/2016/03/15/women-shiver-at-work-in-sexist-air-conditioning/>
6. Pager T (2018) Can an Office Temperature Be 'Sexist'? Women, and Science, Say So. *The New York Times*. Available at: <https://www.nytimes.com/2018/08/28/nyregion/office-temperature-sexist-nixon-cuomo.html>
7. Hesse M (2018) Cynthia Nixon asked to turn down the AC. It isn't silly. It's symbolic. *The Washington Post*. Available at: https://www.washingtonpost.com/lifestyle/style/cynthia-nixon-asked-to-turn-down-the-ac-it-isnt-silly-its-symbolic/2018/08/29/a0b83eee-ab0c-11e8-8a0c-70b618c98d3c_story.html?utm_term=.407c3c4a6f09
8. Graff Zivin J, Hsiang S, Neidell M (2017) Temperature and Human Capital in the Short and Long Run. *Journal of the Association of Environmental and Resource Economists* 5: 77–105.

9. Pilcher J J, Nadler E, Busch C (2002) Effects of hot and cold temperature exposure on performance: a meta-analytic review. *Ergonomics* 45: 682–698. <https://doi.org/10.1080/00140130210158419> PMID: 12437852
10. Hancock P A, Ross J M, Szalma J L (2007) A Meta-Analysis of Performance Response Under Thermal Stressors. *Hum Factors* 49: 851–877. <https://doi.org/10.1518/001872007X230226> PMID: 17915603
11. Yeganeh A J, Reichard G, McCoy AP, Bulbul T, Jazizadeh F (2018) Correlation of ambient air temperature and cognitive performance: A systematic review and meta-analysis. *Build Environ* 143: 701–716.
12. Niederle M, Vesterlund L (2007) Do Women Shy Away From Competition? Do Men Compete Too Much? *Q J Econ* 122: 1067–1101.
13. Eckartz K, Kirchkamp O, Schunk D (2012) How do Incentives affect Creativity? *CESifo Working Paper Series*. Available at: http://www.cesifo-group.de/DocDL/cesifo1_wp4049.pdf.
14. Frederick S (2005) Cognitive Reflection and Decision Making. *J Econ Perspect* 19: 25–42.
15. Toplak ME, West RF, Stanovich KE (2011) The Cognitive Reflection Test as a predictor of performance on heuristics-and-biases tasks. *Mem Cogn* 39: 1275–1289.
16. The 2018 SAT Suite of Assessments Annual Report (2018). Available at: <https://reports.collegeboard.org/pdf/2018-total-group-sat-suite-assessments-annual-report.pdf>
17. Blattman C, Jamison JC, Sheridan M (2017) Reducing Crime and Violence: Experimental Evidence from Cognitive Behavioral Therapy in Liberia. *Am Econ Rev* 107: 1165–1206. PMID: 29553237
18. Anderson CA (1989) Temperature and aggression: Ubiquitous effects of heat on occurrence of human violence. *Psychol Bull* 106: 74–96. PMID: 2667010
19. Tiihonen J, Halonen P, Tiihonen L, Kautiainen H, Storvik M, Callaway J (2017) The Association of Ambient Temperature and Violent Crime. *Sci Rep* 7: 6543. <https://doi.org/10.1038/s41598-017-06720-z> PMID: 28754972
20. Kahn M, Heilmann K (2018) Neighborhood Quality of Life Dynamics During Extreme Heat: Implications for the Distributional Effects of Climate Change. *Working Paper*. Available at: https://drive.google.com/file/d/1mczvSgZ2MjY_KTQf-t_5KXmydBw8uPLW/view
21. Gneezy U, Niederle M, Rustichini A (2003) Performance in Competitive Environments: Gender Differences. *The Quarterly Journal of Economics*, 118(3), 1049–1074.
22. Niederle M, Vesterlund L (2007) Do women shy away from competition? Do men compete too much? *The Quarterly Journal of Economics* 122 (3), 1067–1101.
23. Borghans L, Golsteyn BHH, Heckman JJ, Meijers H (2009) Gender Differences in Risk Aversion and Ambiguity Aversion. *Journal of the European Economic Association*, 7, 649–658.
24. Charness G, Gneezy U (2012) Strong Evidence for Gender Differences in Risk Taking. *Journal of Economic Behavior & Organization*, 83(1), 50–58.
25. Capraro V (2018) Gender differences in lying in sender-receiver games: A meta-analysis. *Judgment and Decision Making*, 13, 345–355.
26. Abeler J, Nosenzo D, Raymond C (forthcoming) Preferences for Truth-Telling. *Econometrica*.
27. Rand DG, Brescoll VL, Everett JAC, Capraro V, Barcelo H (2016) Social heuristics and social roles: Intuition favors altruism for women but not for men. *Journal of Experimental Psychology: General* 145, 389–396.
28. Brañas-Garza P, Capraro V, Rascón-Ramírez E (2018) Gender differences in altruism on Mechanical Turk: Expectations and actual behavior. *Economics Letters* 170, 19–23.
29. Rand DG (2017) Social dilemma cooperation (unlike Dictator Game giving) is intuitive for men as well as women. *Journal of experimental social psychology* 73, 164–168 <https://doi.org/10.1016/j.jesp.2017.06.013> PMID: 29686434
30. Friesdorf R, Conway P, Gawronski B (2015) Gender differences in responses to moral dilemmas: a process dissociation analysis. *Pers Soc Psychol Bull*, 412, 696–713
31. Greiner B (2015) Subject Pool Recruitment Procedures: Organizing Experiments with ORSEE. *Journal of the Economic Science Association* 1: 114–125.