

Ando, Michihito; Dahlberg, Matz; Engström, Gustav

Working Paper

The risks of nuclear disaster and its impact on housing prices

Working Paper, No. 2017:2

Provided in Cooperation with:

Department of Economics, Uppsala University

Suggested Citation: Ando, Michihito; Dahlberg, Matz; Engström, Gustav (2017) : The risks of nuclear disaster and its impact on housing prices, Working Paper, No. 2017:2, Uppsala University, Department of Economics, Uppsala, <https://nbn-resolving.de/urn:nbn:se:uu:diva-315266>

This Version is available at:

<https://hdl.handle.net/10419/197679>

Standard-Nutzungsbedingungen:

Die Dokumente auf EconStor dürfen zu eigenen wissenschaftlichen Zwecken und zum Privatgebrauch gespeichert und kopiert werden.

Sie dürfen die Dokumente nicht für öffentliche oder kommerzielle Zwecke vervielfältigen, öffentlich ausstellen, öffentlich zugänglich machen, vertreiben oder anderweitig nutzen.

Sofern die Verfasser die Dokumente unter Open-Content-Lizenzen (insbesondere CC-Lizenzen) zur Verfügung gestellt haben sollten, gelten abweichend von diesen Nutzungsbedingungen die in der dort genannten Lizenz gewährten Nutzungsrechte.

Terms of use:

Documents in EconStor may be saved and copied for your personal and scholarly purposes.

You are not to copy documents for public or commercial purposes, to exhibit the documents publicly, to make them publicly available on the internet, or to distribute or otherwise use the documents in public.

If the documents have been made available under an Open Content Licence (especially Creative Commons Licences), you may exercise further usage rights as specified in the indicated licence.



UPPSALA
UNIVERSITET

Department of Economics

Working Paper 2017:2

*The Risks of Nuclear Disaster and Its Impact
on Housing Prices*

*Michihito Ando, Matz Dahlberg and
Gustav Engström*

Department of Economics
Uppsala University
P.O. Box 513
SE-751 20 Uppsala
Sweden
Fax: +46 18 471 14 78

Working paper 2017:2
February 2017
ISSN 1653-6975

THE RISKS OF NUCLEAR DISASTER AND ITS IMPACT ON HOUSING PRICES

MICHIHITO ANDO, MATZ DAHLBERG AND GUSTAV ENGSTRÖM

The Risks of Nuclear Disaster and Its Impact on Housing Prices*

Michihito Ando[†] Matz Dahlberg[‡] Gustav Engström[§]

February 10, 2017

Abstract

Using a data set on housing sales transactions we explore the potential effect of the Fukushima disaster on housing prices in Sweden. In contrast to most earlier findings in other countries we do not find any disproportionate effect from the Fukushima disaster on housing prices in vicinity of nuclear power plants in Sweden.

Keywords: Fukushima, Nuclear accident, housing price, difference-in-differences

JEL codes: Q51, Q53, R21

*A research grant from Handelsbankens Forskningsstiftelser (P2013-0081:1) is gratefully acknowledged.

[†]National Institute of Population and Social Security Research, Japan. Hibiya Kokusai Building 6th Floor 2-2-3 Uchisaiwai-cho, Chiyoda-ku, Tokyo 100-0011, Japan. andou-michihito@ipss.go.jp

[‡]Institute for Housing and Urban Research and Department of Economics, Uppsala University, Sweden. matz.dahlberg@ibf.uu.se

[§]The Beijer Institute of Ecological Economics, at the Royal Swedish Academy of Sciences, Stockholm, Sweden. gustav.engstrom@beijer.kva.se

1 Introduction

In this paper, we use data on individual real estate transactions from the Swedish housing market in order to study whether the Fukushima Daiichi nuclear disaster on March 11, 2011, affected housing prices in the vicinity of nuclear power plants.

The Fukushima accident was big news all over the world, and previous research provides evidence that the Fukushima incident has indeed had an impact on public opinion polls as well as a significant reduction in reported well-being in various countries (Holmberg, 2012; Goebel et al., 2015). The immediate response in most countries was a reduced public support for existing and future proposed plants: The reduced support for nuclear energy was largest in Japan and its surrounding Asian neighbors. Outside Asia, Germany was one of the countries where public opinions were most negatively affected, while the effect on public opinion in the USA and the UK was negligible (Holmberg, 2012). According to public polls conducted in Sweden, the support for nuclear power dropped immediately after the Fukushima accident by 17% and 20%, respectively, compared to earlier polls done in 2010 and 2008 (Holmberg, 2012). An interesting question is thus whether this increase in the awareness of the risks of nuclear disaster has also capitalized onto the housing markets.

Several recent studies have provided quasi-experimental evidence that this may in fact be the case in many countries, e.g. Bauer et al. (2014) for Germany, Boes et al. (2015) for Switzerland, and Zhu et al. (2016) for China¹, while Fink and Stratmann (2015) do not find such an effect in the US. They all exploit the Fukushima nuclear accident as an exogenous shock to local housing or land markets and adopt difference-in-differences (DID) approaches to estimate the impact of the accident on housing or land prices near nuclear plants.

Due to explicit quasi-experimental frameworks, these studies may not suffer from serious endogeneity problems, but other problems still exists. Bauer et al. (2014) and Fink and Stratmann (2015) rely on data attained

¹Boes et al. (2015) find that the Fukushima accident led to a 2.3% price discount on apartment rents in the vicinity of nuclear power plants in Switzerland. Bauer et al. (2014) find a price discount of up to 5% on real estate located near nuclear plants in Germany. Zhu et al. (2016) find that land prices near nuclear plants decreased by around 18% one month after the accident but that this initial impact decays over time.

from public internet platforms where the data source is either approximate or proxies underlying transactions.² Using sources such as these thus reduces the precision of estimated values of marginal willingness to pay and may in a worst case scenario lead to biases due to measurement error. The study by [Boes et al. \(2015\)](#) uses data from the rental market also attained from a public internet platform.³ Apart from being sensitive to divergences between the actual “final” negotiated rent and the announced rent, the rental market may also suffer from more government price manipulation in form of subsidies than ownership housing.⁴ Finally, [Zhu et al. \(2016\)](#) examine land markets in China with micro-level transaction data, but they do not directly investigate housing markets. In addition, local governments are the only legitimate sellers in urban land markets in China. Hence the findings of [Zhu et al. \(2016\)](#) may not easily generalize to housing transactions in other countries.

Our study is, to our knowledge, the first to use individual level housing sales transactions to assess the effect of the Fukushima accident on property values in the vicinity of nuclear power plants. We use a DID method and find that the accident did not have a disproportionate effect on property prices in the vicinity of plants; the obtained point estimates are tightly and robustly estimated zeros.

2 Data and empirical strategy

2.1 Data

We use a data set consisting of approximately 80% of all individual transactions of apartments and houses in Sweden covering the period 2010-2012. Each transaction typically contains information on the list price and the final sales price, size/area, number of rooms, plot size, number of floors, construction year, rents as well as geographical coordinates and address information. As a quality control of the data we also geocoded the address to

²[Bauer et al. \(2014\)](#) rely on data from the website ImmobilienScout24 which only records asking as opposed to transaction prices. [Fink and Stratmann \(2015\)](#) uses approximate values from the Zillow website (U.S), including not only house sale prices but also assessment values.

³They use data from the Homegate, the largest online advertising platform for rental apartments in Switzerland.

⁴In Switzerland, housing subsidies are granted by the federal government as well as various cantons and municipalities in the rental market ([Schneider and Wagner, 2015](#)).

avoid any potential data insertion errors. In addition, we know the exact dates when the objects came on the market and when they were sold. This is important for being able to determine whether an object is considered as treated or not (i.e., whether it was sold before or after March 11, 2011).

To our knowledge, we are the first to study the effect of the Fukushima nuclear disaster using directly reported housing sale transactions. In comparison to earlier studies, the analysis undertaken here is thus less prone to biases as a result of poor data quality. Also, prices on the Swedish housing markets are unregulated in the sense that demand is not skewed due to price regulations or subsidies.

While Table 1 shows some descriptive statistics for our sample categorized by housing type and distance from nuclear plants, Figure 1 shows price trends for the same categories. The pattern observed in both graphs in Figure 1 indicates that the important assumption in a DID-framework of common time trends appears to be valid; the price trends seem to be fairly before March 2011 irrespective of housing type and distance to nuclear power plant.⁵ Figure 2 shows the area from which we select the observations that are to be investigated.

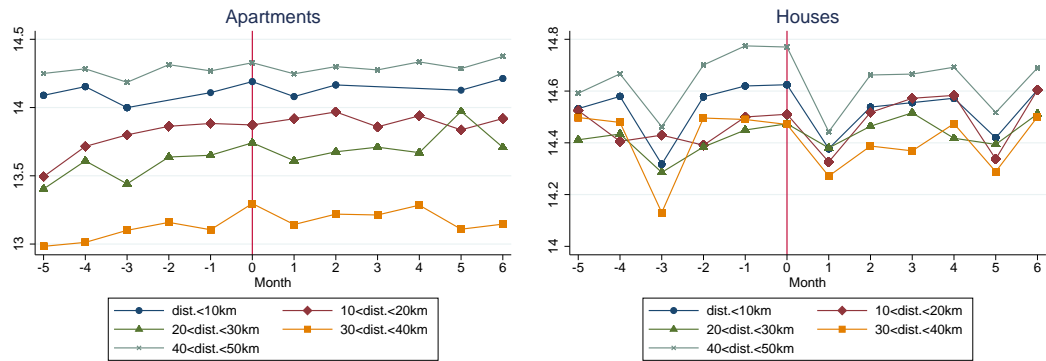
⁵In the empirical analysis, the common trend assumption will be further examined, through the placebo results, in which pre-accident common trends are checked conditional on the covariates.

Table 1: Descriptive statistics - means and standard deviations

Distance from a plant	0 ~ 50km	0 ~ 10km	10 ~ 20km	20 ~ 30km	30 ~ 40km	40 ~ 50km
<i>Apartments</i>						
Contract price (SEK)	1,709,557 (1,128,683)	945,488 (387,855)	1,184,131 (580,033)	1,213,819 (807,545)	826,721 (785,332)	1,878,351 (1,139,847)
Living area (m^2)	69 (26.5)	73.8 (15.9)	73.9 (25.4)	75.5 (21.8)	74.1 (22.5)	67.6 (27.2)
Number of rooms	2.5 (1.04)	2.5 (.833)	2.64 (1.13)	2.78 (.966)	2.75 (1.05)	2.44 (1.03)
Monthly fee (SEK)	3,588 (1,255)	3,275 (782)	3,716 (1,383)	4,081 (1,316)	3,918 (1,252)	3,498 (1,227)
Sample size	12871	32	428	1027	1106	10278
<i>Houses</i>						
Contract price (SEK)	2,600,454 (1,797,922)	1,941,525 (1,191,773)	2,337,265 (1,372,845)	2,215,261 (1,266,289)	2,353,949 (1,722,697)	2,966,695 (2,032,249)
Living area (m^2)	122 (46.3)	101 (47.1)	119 (49.4)	116 (46.6)	121 (45.8)	127 (44.9)
Number of rooms	4.94 (1.57)	4.25 (1.43)	4.77 (1.58)	4.69 (1.58)	4.85 (1.5)	5.16 (1.57)
Plot area (m^2)	1,660 (6,371)	1,606 (1,427)	2,019 (5,865)	1,788 (3,543)	1,849 (5,212)	1,445 (7,833)
Sample size	9643	336	1033	1632	2139	4503

Note: Standard deviations are in parenthesis. Monthly fee is a charge imposed by the co-op in which an apartment is located. SEK means Swedish Krona. The sample period is from January 12 2010 to December 11 2012 because, in the subsequent analysis, we construct monthly and quarterly data using 12th as the first date of a month.

Figure 1: Time trends by distance



Note: The vertical line at time point zero indicates when the Fukushima accident took place.

Figure 2: Locations of active nuclear power plants in Sweden.



Note: The circles feature a 50 km radius covering the locations included in the sample.

2.2 Empirical strategy

To examine the effects of the Fukushima disaster on housing prices in Sweden, we adopt a DID approach using a distance from a nuclear plant as an indicator of treatment intensity. We thus compare housing prices close to and further away from the power plants before and after the Fukushima disaster on March 11, 2011.

The model specification is a semi-log hedonic price function that takes the following form:

$$Y_{it} = \alpha Dist_i + \sum_{\tau \neq 0} \beta_{\tau} Dist_i \times 1[t = \tau] + \gamma 1[t = \tau] + \mathbf{X}'_{it} \theta + \sigma_s + \varepsilon_{it} \quad (1)$$

where Y_{it} is the log of the selling price, $Dist_i$ is the continuous distance (in meters) from each house i to the closest nuclear power plant, $1[t = \tau]$ is a dummy variable that takes the value of one if $t = \tau$ and zero otherwise (t is measured either by quarter or by month), \mathbf{X}'_{it} contains the control variables listed in Table 1, and σ_s is the spatial fixed effect that is meant to capture

some area-specific common shocks in area s . In order to remove confounding idiosyncratic spatial shocks but to leave out sufficient within-area variation caused by the Fukushima accident if it exists, we use congregation-level spatial fixed effect for σ_s in our analysis.

The coefficients of interest are the time varying coefficients β_τ of the interaction term, $Dist_i \times 1[t = \tau]$; before March 11, 2011, β_τ can be seen as placebo-estimates and after March 11, 2011, β_τ can be seen as effects of the Fukushima accident. We estimate equation (1) using fixed-effect regressions where the standard errors are clustered by area s .⁶

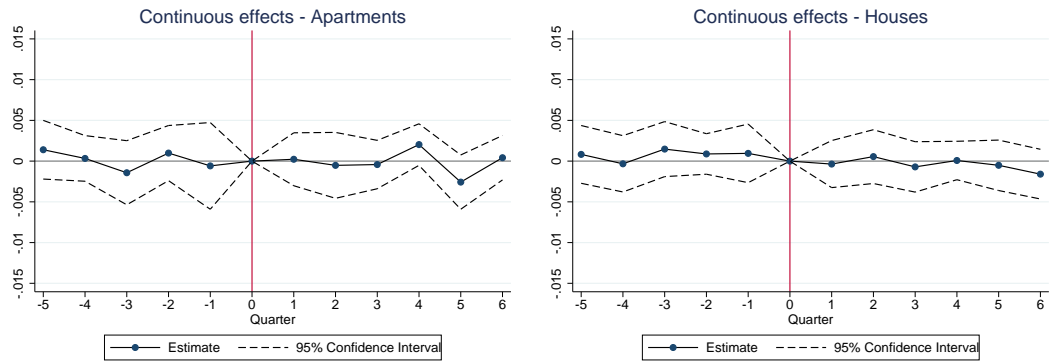
3 Results

Estimating equation (1) separately with quarterly data for apartments (upper left figure in Figure 3) and houses (upper right figure in Figure 3) we get very similar results. First, as is visible from the pre-accident estimates in both the upper figures in Figure 3, the placebo estimates indicate that we have a credible model specification; all the estimates are statistically insignificant and the point estimates are rather precisely estimated at zero (suggesting that the common trends assumption is indeed valid). Second, as is clear from the post-accident estimates, the Fukushima disaster seems to have had no significant effects on the prices of houses or apartments close to nuclear power plants in Sweden; also after March 11, 2011, are the estimates statistically insignificant and the point estimates are precisely estimated at zero. Finally, conducting the analyses on monthly data yields the same conclusion (see the two lower figures in Figure 3).

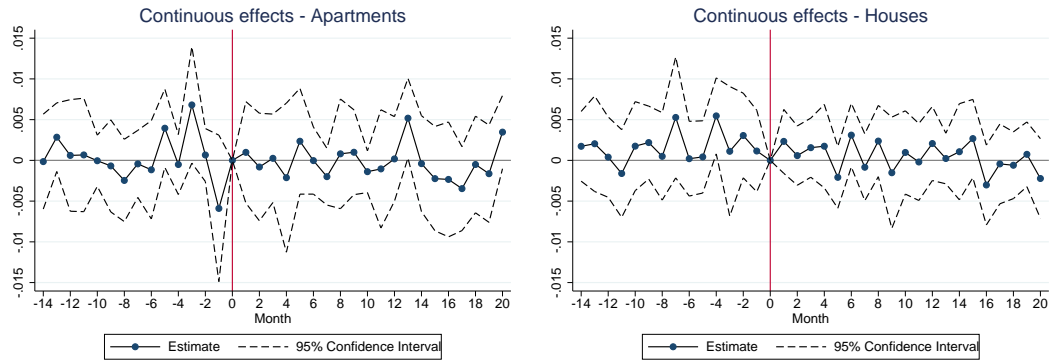
⁶We have also estimated some variants of equation (1) by dropping spatial fixed effects σ_s or replacing spatial fixed effects σ_s with municipality-level fixed effects. We have also estimated a model with a time-invariant coefficient β instead of β_τ in equation (1), as well as DID-models using discrete cut-offs at different distances from the nuclear power plants (i.e. discretely splitting the group into “treated” and “untreated”, allowing for group-specific time trends). These different specifications do not yield any meaningful differences in our estimation results. All these additional estimation results are available from authors upon request. Regarding the specifications with discrete cut-offs, it shall be noted that, first, there is no natural cut-off in the Swedish case in the sense that there is no public statement from the government in Sweden on what distance from a nuclear power plant that would constitute a risk zone (as in Boes et al. (2015)), and, second, for apartments within very small distances from the nuclear power plants, we get a small treatment sample size.

Figure 3: Time-varying estimates: Continuous treatment

(a) Quarterly data



(b) Montly data



Note: The vertical line at time point zero indicates when the Fukushima accident took place. Solid lines indicate point estimates of β_τ based on equation (1) and dashed lines indicate 95% confidence intervals estimated by clustered robust standard errors. The number of clusters (congregation areas) are 64 for apartments and 124 for houses.

4 Conclusions

Using individual transactions on apartments and houses and apartments from the Swedish housing market with exact information on, among other things, final prices and dates when sold and when entering the market, we cannot detect any effects of the Fukushima Daiichi nuclear disaster on housing prices in the vicinity of power plants. Our estimates are precisely estimated zeros, and our placebo estimates indicate that we have reliable model specifications.

This result is interesting for at least three reasons. First, even though there was an increased uncertainty and decreased support for nuclear power in public polls in Sweden (see [Holmberg, 2012](#)), these stated preferences do not spill over to revealed behavior (as observed in the housing market). Second, since most earlier studies on data from other countries have found statistically significant (negative) effects on property values close to nuclear power plants, our results show that an increased risk after the Fukushima accident is not universally perceived. Third, since the exact information in our housing price data helps insulate us from approximation errors inherent in the housing price measures used in previous studies, it is also an open question whether an effect would have been found for the other countries had they had access to equally detailed data as we have.

References

- BAUER, T. K., S. BRAUN, AND M. KVASNICKA (2014): “Distant Event, Local Effects? Fukushima and the German Housing Market.” *Beiträge zur Jahrestagung des Vereins für Socialpolitik 2014: Evidenzbasierte Wirtschaftspolitik - Session: Natural Experiments*, No. B08-V1.
- BOES, S., S. NÜESCH, AND K. WÜTHRICH (2015): “Hedonic valuation of the perceived risks of nuclear power plants,” *Economics Letters*, 133, 109–111.
- FINK, A. AND T. STRATMANN (2015): “US housing prices and the Fukushima nuclear accident,” *Journal of Economic Behavior and Organization*, 117, 309–326.
- GOEBEL, J., C. KREKEL, T. TIEFENBACH, AND N. R. ZIEBARTH (2015):

“How Natural Disasters Can Affect Environmental Concerns, Risk Aversion, and even Politics: Evidence from Fukushima and Three European Countries,” *Journal of Population Economics*, 28, 1137–1180.

HOLMBERG, S. (2012): “Fukushimaeffekten,” i Lennart Weibull, Henrik Oscarsson & Annika Bergström (red) *I framtidens skugga*. Göteborgs universitet: SOM-institutet.

SCHNEIDER, M. AND K. WAGNER (2015): “Housing Markets in Austria, Germany and Switzerland,” *Monetary Policy & the Economy*, Q1, 42–58.

ZHU, H., Y. DENG, R. ZHU, AND X. HE (2016): “Fear of nuclear power? Evidence from Fukushima nuclear accident and land markets in China,” *Regional Science and Urban Economics*, 60, 139 – 154.

WORKING PAPERS*

Editor: Nils Gottfries

- 2014:5 Daniel Waldenström, Swedish stock and bond returns, 1856–2012. 51 pp.
- 2014:6 Mikael Carlsson, Selection Effects in Producer-Price Setting. 34 pp.
- 2014:7 Ranjula Bali Swain and Fan Yang Wallentin, The impact of microfinance on factors empowering women: Differences in regional and delivery mechanisms in India's SHG programme. 28 pp.
- 2014:8 Ashim Kumar Kar and Ranjula Bali Swain, Competition, performance and portfolio quality in microfinance markets. 33 pp.
- 2014:9 Shyam Ranganathan, Ranjula Bali Swain and David J.T. Sumpter, A DYNAMICAL SYSTEMS APPROACH TO MODELING HUMAN DEVELOPMENT. 42 pp.
- 2014:10 Shyam Ranganathan and Ranjula Bali Swain, Analysing Mechanisms for Meeting Global Emissions Target - A Dynamical Systems Approach. 40 pp.
- 2014:11 Chuan-Zhong Li and Ranjula Bali Swain, Growth, Water Resilience, and Sustainability: A DSGE Model Applied to South Africa. 21pp.
- 2015:1 Evelina Bonnier, Jonas Poulsen, Thorsten Rogall and Miri Stryjan, Preparing for Genocide: Community Work in Rwanda. 40 pp.
- 2015:2 Linna Martén, Political Bias in Court? Lay Judges and Asylum Appeals. 38 pp.
- 2015:3 Daniel Waldenström, The National Wealth of Sweden, 1810–2014. 31 pp.
- 2015:4 Daniel Waldenström, Wealth-income ratios in a small, late-industrializing, welfare-state economy: Sweden, 1810–2014. 41 pp.
- 2015:5 Mattias Nordin, Local Television, Citizen Knowledge and Political Accountability: Evidence from the U.S. Senate. 45 pp.
- 2015:6 Glenn Mickelsson, Estimation of DSGE models: Maximum Likelihood vs. Bayesian methods. 51 pp.
- 2016:1 Selva Bahar Baziki, Rita Ginja and Teodora Borota Milicevic. Trade Competition, Technology and Labor Re-allocation. 83 pp.
- 2016:2 Matz Dahlberg, Kevin Mani, Mattias Öhman and Anders Wanhainen, Health Information and Well-Being: Evidence from an Asymptomatic Disease. 32 pp.
- 2016:3 Federico Belotti, Edoardo Di Porto and Gianluca Santoni, The effect of local taxes on firm performance: evidence from geo-referenced data. 37 pp.

* A list of papers in this series from earlier years will be sent on request by the department.

- 2016:4 Edoardo Di Porto and Henry Ohlsson, Avoiding taxes by transfers within the family. 35 pp.
- 2016:5 Eva Mörk and Mattias Nordin, Voting, Taxes and Heterogeneous Preferences: Evidence from Swedish Local Elections. 30 pp.
- 2016:6 Luca Repetto, Political budget cycles with informed voters: evidence from Italy. 46 pp.
- 2016:7 Spencer Bastani, Tomer Blumkin and Luca Micheletto, Anti-discrimination Legislation and the Efficiency-Enhancing Role of Mandatory Parental Leave. 44 pp.
- 2016:8 Ylva Moberg, Does the gender composition in couples matter for the division of labor after childbirth? 62 pp.
- 2016:9 Teodora Borota Milicevic and Mikael Carlsson, Markups from Inventory Data and Export Intensity. 22 pp.
- 2016:10 Maria Björklund, Mikael Carlsson and Oskar Nordström Skans, Fixed Wage Contracts and Monetary Non-Neutrality. 30 pp.
- 2016:11 Spencer Bastani, Ylva Moberg and Håkan Selin, The Anatomy of the Extensive Margin Labor Supply Response. 50 pp
- 2016:12 Mikael Carlsson and Andreas Westermark, Endogenous Separations, Wage Rigidities and Employment Volatility. 25 pp.
- 2016:13 Spencer Bastani and Jacob Lundberg, Political preferences for redistribution in Sweden. 40 pp.
- 2016:14 Nils Gottfries and Karolina Stadin, The matching process: Search or mismatch? 51 pp.
- 2016:15 Felipe Carozzi and Luca Repetto, Distributive Politics inside the City? The Political Economy of Spain's Plan E. 48 pp
- 2016:16 Heléne Berg, Matz Dahlberg and Kåre Vernby, Post-WWI Military Disarmament and Interwar Fascism: Evidence from Sweden. 40 pp.
- 2017:1 Linna Martén, Demand for Redistribution: Individuals' Response to Economic Setbacks. 26 pp.
- 2017:2 Michihito Ando, Matz Dahlberg and Gustav Engström, The Risks of Nuclear Disaster and Its Impact on Housing Prices. 10 pp.

See also working papers published by the Office of Labour Market Policy Evaluation
<http://www.ifau.se/> ISSN 1653-6975