

Alós-Ferrer, Carlos; Buckenmaier, Johannes

Working Paper

Cognitive sophistication and deliberation times

Working Paper, No. 292

Provided in Cooperation with:

Department of Economics, University of Zurich

Suggested Citation: Alós-Ferrer, Carlos; Buckenmaier, Johannes (2019) : Cognitive sophistication and deliberation times, Working Paper, No. 292, University of Zurich, Department of Economics, Zurich,
<http://dx.doi.org/10.5167/uzh-152597>

This Version is available at:

<http://hdl.handle.net/10419/197215>

Standard-Nutzungsbedingungen:

Die Dokumente auf EconStor dürfen zu eigenen wissenschaftlichen Zwecken und zum Privatgebrauch gespeichert und kopiert werden.

Sie dürfen die Dokumente nicht für öffentliche oder kommerzielle Zwecke vervielfältigen, öffentlich ausstellen, öffentlich zugänglich machen, vertreiben oder anderweitig nutzen.

Sofern die Verfasser die Dokumente unter Open-Content-Lizenzen (insbesondere CC-Lizenzen) zur Verfügung gestellt haben sollten, gelten abweichend von diesen Nutzungsbedingungen die in der dort genannten Lizenz gewährten Nutzungsrechte.

Terms of use:

Documents in EconStor may be saved and copied for your personal and scholarly purposes.

You are not to copy documents for public or commercial purposes, to exhibit the documents publicly, to make them publicly available on the internet, or to distribute or otherwise use the documents in public.

If the documents have been made available under an Open Content Licence (especially Creative Commons Licences), you may exercise further usage rights as specified in the indicated licence.



**University of
Zurich** ^{UZH}

University of Zurich
Department of Economics

Working Paper Series

ISSN 1664-7041 (print)
ISSN 1664-705X (online)

Working Paper No. 292

Cognitive Sophistication and Deliberation Times

Carlos Alós-Ferrer and Johannes Buckenmaier

Revised version, April 2019

Cognitive Sophistication and Deliberation Times*

Carlos Alós-Ferrer[†]
University of Zurich

Johannes Buckenmaier[‡]
University of Zurich

This Version: April 2019

Abstract

Differences in cognitive sophistication and effort are at the root of behavioral heterogeneity in economics. To explain this heterogeneity, behavioral models assume that certain choices indicate higher cognitive effort. A fundamental problem with this approach is that observing a choice does not reveal how the choice is made, and hence choice data is insufficient to establish the link between cognitive effort and behavior. We show that deliberation times provide the missing link, in the form of an individually-measurable correlate of cognitive effort. We present a model of heterogeneous cognitive depth, incorporating stylized facts from the psychophysical literature, which makes predictions on the relation between choices, cognitive effort, incentives, and deliberation times. We confirm the predicted relations experimentally in different kinds of games. However, we also show that imputing cognitive depth from choices alone can lead to erroneous conclusions when the features leading to iterative thinking are not salient.

JEL Classification: C72 · C91 · D80 · D91.

Keywords: Heterogeneity · Iterative reasoning · Cognitive sophistication · Deliberation times · Depth of reasoning · Cognitive effort.

Working Paper. This is an author-generated version of a research manuscript which is circulated exclusively for the purpose of facilitating scientific discussion. All rights reserved. The final version of the article might differ from this one.

*We are grateful to Larbi Alaoui, Colin Camerer, Georg Kirchsteiger, Nick Netzer, Leonidas Spiliopoulos and seminar participants at ECARES (Université Libre de Bruxelles), Royal Holloway (University of London), the 16th SAET Conference in Faro, the 13th Annual Conference of the NeuroPsychoEconomics Association in Antwerp, the 14th PsychoEconomics Workshop in Konstanz, the 3rd Motivation and Self-Control Symposium in Cologne, and the 2018 conference in honor of Carmen Herrero in Alicante, for helpful comments and suggestions. Johannes Buckenmaier was financed by the German Research Foundation (DFG) through research project AL-1169/5-1 and the research unit “Psychoeconomics” (FOR 1882). The experiment reported in this paper complied with conventions in experimental economics and the ethical norms and guidelines of the Cologne Laboratory for Economic Research (CLER). The Department of Economics at the University of Cologne thanks the German Research Foundation (DFG) for financial help to build the CLER.

[†]Corresponding author: carlos.alos-ferrer@econ.uzh.ch. Department of Economics, University of Zurich. Blümliisalpstrasse 10, 8006 Zurich, Switzerland.

[‡]Department of Economics, University of Zurich. Blümliisalpstrasse 10, 8006 Zurich, Switzerland.

1 Introduction

Economic agents form different expectations and react differently even when confronted with the same information, leading to substantial behavioral heterogeneity, which in turn has long been recognized as a fundamental aspect of economic interactions (e.g., Haltiwanger and Waldman, 1985; Kirman, 1992; Blundell and Stoker, 2005). A key source of heterogeneity is the fact that cognitive capacities differ among individuals, as does the motivation to exert cognitive effort. This observation has given rise to a rich theoretical literature on iterative or stepwise reasoning processes, including level- k models (Stahl, 1993; Nagel, 1995; Stahl and Wilson, 1995; Ho et al., 1998) and models of cognitive hierarchies (Camerer et al., 2004). Such models endow individuals with differing degrees of strategic sophistication or reasoning capabilities, and might hold the key to describe heterogeneity in observed behavior (for a recent survey, see Crawford et al., 2013). In particular, they have proven invaluable to explain behavioral puzzles as overbidding in auctions (Crawford and Iriberri, 2007), overcommunication in sender-receiver games (Cai and Wang, 2006), coordination in market-entry games (Camerer et al., 2004), and why communication sometimes improves coordination and sometimes hampers it (Ellingsen and Östling, 2010). More recently, a small but growing literature in macroeconomics has started to incorporate heterogeneity in cognitive depth and iterative thinking (Angeletos and Lian, 2017), leading to promising insights on the effects of monetary policy (Farhi and Werning, 2017) or low interest rates (García-Schmidt and Woodford, 2018).

Existing models of heterogeneity in cognitive depth, however, face a fundamental problem. Choices are classified into different cognitive categories assumed to require different levels of cognitive effort. So far, there is little direct evidence linking observed play to cognitive effort. Most of the experimental literature has used observed choices to infer an individual's depth of reasoning from the associated cognitive categories. Hence, the observation of a given choice is used to infer cognitive effort taking the underlying path of reasoning or thought processes that led to the classification of choices as given, creating an essentially circular argument. One problem with this approach is that the same choice is always attributed to the same level of cognitive effort, although it might very well be the result of completely different decision rules. For example, an agent choosing an alternative after a complex cognitive process and another agent choosing the same alternative because of some payoff-irrelevant salient features cannot be distinguished on the basis of those choices alone. As a consequence, the level of cognitive effort associated with a choice becomes a non-testable assumption, and the sources of heterogeneity remain in the dark. A case in point is the work of Goeree et al. (2016), who identified a game where imputing cognitive depth from choices alone leads to clearly unreasonable conclusions, in the form of abnormally high imputed cognitive levels.

To establish that the source of observed behavioral heterogeneity is actually heterogeneity in cognitive effort and capacities, what is needed are individually measurable correlates of cognitive effort beyond choice data. That is, instead of identifying particular choices with particular levels of cognitive effort, one needs to provide a direct measure of effort which allows to independently show that certain choices actually are the result of stronger cognitive effort. We argue that response times, or, more properly in our context, *deliberation times* can be fruitfully used for this purpose.

In the present work, we provide a simple model linking cognitive sophistication to choices and deliberation times, taking into account stylized facts from the psychophysiological literature on response times. We build on Alaoui and Penta’s (2016b,2016c) model of endogenous depth of reasoning. Our model rests on two key assumptions. The first and more straightforward one is that the total deliberation time of an observed choice is the sum of the deliberation times for a chain of intermediate steps implicitly postulated in the literature on iterative thinking. That is, if arriving at a choice through iterative thinking requires seven steps, deliberation time is the sum of the times associated with the seven corresponding, intermediate steps. The second assumption, which is the key innovation of our model, is that the time required for each step is a decreasing function of the difficulty, as captured by the value of reasoning, of conducting an additional step of reasoning. In contrast, Alaoui and Penta (2016c) assume that deliberation times do not vary with the value of reasoning.

This latter assumption is motivated by a well-known phenomenon in psychology and neuroscience (going back to, at least, Dashiell, 1937), according to which easier choice problems (where alternatives’ evaluations show large differences) take less time to respond to than harder problems. Hence, deliberation times are longer for alternatives that are more similar, either in terms of preference or along a predefined scale. This so-called chronometric effect has also been shown to be present in various economic settings such as intertemporal choice (Chabris et al., 2009), risk (Alós-Ferrer and Garagnani, 2018), lottery choice (Alós-Ferrer et al., 2018a), consumer choice (Krajbich et al., 2010; Krajbich and Rangel, 2011) as well as in dictator and ultimatum games (Krajbich et al., 2015). Alós-Ferrer et al. (2018b) examine the consequences of the chronometric effect for revealed preference, and Alós-Ferrer et al. (2016) show that it helps explain and understand preference reversals in decisions under risk. This effect follows naturally when the choice process is captured by a drift diffusion model (DDM) (Ratcliff, 1978), a class of models that has been applied extensively in cognitive psychology and neuroscience, and which is receiving increasing attention in economics (Chabris et al., 2009; Fudenberg et al., 2018; Webb, 2019).¹ In accordance with this evidence, we assume that the

¹The chronometric effect leads to the apparently counterintuitive conclusion that low-stake choices, where the decision-maker is closer to indifference, take more time than high-stake choices (Krajbich et al., 2014). A better interpretation, along the lines of Fudenberg et al. (2018), is that finding out that one is close to indifference is harder and more time-consuming than realizing that a clear preference exists.

deliberation time for a given step of thinking is larger the smaller the value of reasoning for that step.

Our model provides empirically testable predictions, first, on the measurable effects of cognitive sophistication on choices and deliberation times, and second, on the effects of economic incentives on both the revealed depth of reasoning, as inferred from choices, and the psychophysiological correlate of cognitive effort embodied in deliberation times. We test these predictions experimentally employing two different games commonly used to study iterative thinking (and, in particular, level- k reasoning): the beauty contest game (or guessing game; Nagel, 1995), which is the workhorse in that literature, and several variants of the 11-20 money request game, recently introduced by Arad and Rubinstein (2012), in the graphical version of Goeree et al. (2016). These variants all share the same path of reasoning, usually assumed to result from iterated application of the best-reply operator, but the payoff structures are manipulated in order to change the salience of certain features which might encourage or discourage iterative thinking. The reason why we use the latter game is that in some of the variants considered in Goeree et al. (2016), reconciling observed behavior with iterative thinking would require inordinately high levels of depth of reasoning, compared to those usually observed in the literature. This provides a natural setting where deliberation times can discriminate whether observed behavior actually corresponds to different levels of cognitive effort, and thus modeling behavior via iterative thinking is justified.

In the beauty contest game we find longer deliberation times for choices commonly associated with more steps of reasoning, confirming the basic prediction of our model that deliberation time is increasing in cognitive effort. That is, the beauty contest game, a game where there is little doubt that level- k reasoning is prevalent, serves as a basic validation of the relationship between cognitive effort and deliberation times. In the 11-20 games, again we show that deliberation times are longer for higher-level choices in variants where the payoff structure makes iterative thinking salient. Thus, in those cases our data verifies the assumed connection between observed level and cognitive effort in support of level- k reasoning. However, in the variant where level- k reasoning is less natural or where a conflict with alternative decision rules (e.g., based on the salience of high payoffs) is likely, this systematic relation between allegedly-higher-level choices and deliberation times disappears. Rather, in this case we find overall longer deliberation times, suggesting a conflict between competing decision rules. This indicates that individuals are likely to approach this situation in ways other than iterative thinking. That is, features besides and beyond the best-reply structure matter. More importantly, deliberation times serve as a test of whether a given model of iterative thinking is appropriate to describe actual play in specific settings.

Our model also relates changes in incentives to choices and deliberation times. First, it predicts a higher observed level of reasoning if the incentives, as captured by the payoff differences in the underlying game, are systematically increased. However, this does *not*

imply that higher incentives necessarily imply longer deliberation times, in contrast to Alaoui and Penta (2016c). On the contrary, the second prediction of the model is that deliberation times will be shorter *for a given number of steps* when the incentives are increased, because decisions farther away from indifference require less deliberation. As a consequence, the model can accommodate the observation of higher depth of reasoning *and* (simultaneously) shorter deliberation times. Turning to the data, by using implementations of the 11-20 game with different incentive levels, we find a systematic effect of incentives on the observed depth of reasoning as predicted by the model and in line with the results in Alaoui and Penta (2016b). In the basic treatment where iterative thinking is salient, we find *both* more higher-level choices and shorter deliberation times when incentives are increased, in line with the prediction that higher incentives should decrease the time required for each single step. More importantly, this demonstrates empirically that higher incentives might reduce deliberation times, even though observed depth of reasoning is increased. This latter finding strongly supports our additional assumption, that is, incorporating the fact that easier decisions are faster into models of iterative reasoning is crucial. Otherwise, if decision times per step were assumed to be independent of incentives (as in Alaoui and Penta, 2016c), higher incentives would go hand-in-hand with longer deliberation times, contradicting the data.

Overall, this paper makes two contributions. First, we are the first to show that heterogeneity in behavior can actually be traced back to heterogeneity in cognitive effort by using direct correlates of the latter rather than exogenously identifying choices with different levels of cognitive effort. Second, the very same correlates show the limits of level- k reasoning. More generally, our results show how deliberation times can be used as a tool to identify the domain of applicability for a given model of iterative thinking. We show that, depending on the strategic situation, behavioral heterogeneity might be mistaken for heterogeneity in cognitive effort even though there are no actual differences in cognitive effort. Hence, one might be led to draw wrong conclusions if models of iterative thinking are applied without an external way of testing for heterogeneity in cognitive effort. We show that deliberation times can be used as a tool to decide for a given economic problem whether a specific model of iterative thinking is justified or whether extraneous or additional elements are at the source of that heterogeneity, which then require further analysis.

The paper is structured as follows. Section 2 briefly relates our work to the literature. Section 3 introduces the model and derives the predictions. Section 4 describes the experimental design. Sections 5 and 6 present the results of the experiment for the beauty contest and the 11-20 games, respectively. Section 7 presents results on the effect of incentives. Section 8 discusses and summarizes our findings. The Appendix contains a number of additional observations and analyses.

2 Related Literature

There is a small but growing literature employing sources of evidence beyond choice data which suggests that individuals follow step-wise reasoning processes in certain settings. Bhatt and Camerer (2005) and Coricelli and Nagel (2009) show that iterative reasoning in different games, including the beauty contest game, and very specially “thinking about thinking,” correlates with neural activity in areas of the brain associated with mentalizing (Theory of Mind network; see Alós-Ferrer, 2018a), building a notable bridge between social neuroscience and game theory. Brañas-Garza et al. (2012), Carpenter et al. (2013), and Gill and Prowse (2016) relate higher cognitive ability (as measured, e.g., by the Cognitive Reflection Test or the Raven test) with more steps of reasoning in the beauty contest game. Further, Fehr and Huck (2016) find that subjects whose cognitive ability is below a certain threshold lack strategic awareness, that is, they randomly choose numbers from the whole interval. Other works have relied on eye-tracking measurements or click patterns recorded via MouseLab to obtain information on search behavior, which is then used to make inferences regarding level- k reasoning (Costa-Gomes et al., 2001; Crawford and Costa-Gomes, 2006; Polonio et al., 2015). Notably, Lindner and Sutter (2013) found that under time pressure behavior in the 11-20 game was closer to the Nash equilibrium, although the authors recommend caution in interpreting the result. In contrast, Spiliopoulos et al. (2018) find no evidence for Nash equilibrium play. Instead, subjects exhibit a shift to less complex decision rules (requiring fewer elementary operations to execute) under time pressure in various 3×3 games; this shift is primarily driven by a significant increase in the proportion of level-1 players. In a repeated p -beauty contest Gill and Prowse (2018) show that subjects who think for longer on average win more rounds and choose lower numbers closer to the equilibrium. Agranov et al. (2015) study empirically how strategic sophistication develops over time in the beauty contest game and find that sophisticated players show evidence of increased understanding as time passes.

Clearly, our work is also related to the growing literature employing response times in economics. Examples include the studies of risky decision making by Wilcox (1993, 1994), the web-based studies of Rubinstein (2007, 2013), and recent studies as Achtziger and Alós-Ferrer (2014) and Alós-Ferrer et al. (2016).² To date, however, only a few works in economics have explicitly incorporated response times in models of reasoning. Chabris et al. (2009) study the allocation of time across decision problems. Their model is similar in spirit to ours in that it is motivated by the chronometric “closeness-to-indifference” effect. In particular, they also model response time as a decreasing function of differences in expected utility. However, in contrast to our model they focus on binary intertemporal choices and do not consider iterative reasoning. They report empirical evidence that choices among options whose expected utilities are closer require

²For a recent discussion of the benefits, challenges, and desiderata of response time analysis in experimental economics see Spiliopoulos and Ortmann (2018).

more time, thus indicating an inverse relationship between response times and utility differences. They argue in favor of the view that decision making is a cognitively costly activity that allocates time according to cost-benefit principles.

Achtziger and Alós-Ferrer (2014) and Alós-Ferrer (2018b) consider a dual-process model of response times in simple, binary decisions where different decision processes interact in order to arrive at a choice. The emphasis of the model, however, is on the effects of conflict and alignment among processes, that is, whether a particular decision process or heuristic supports a more rationalistic one or rather leads the decision maker astray. The predictions of the model help understand when errors, defined as deviations from a normative, rationalistic process, are faster or slower than correct responses.

Finally, our work sheds light on the recent literature exploring the limits of models of iterative thinking, as the experiment of Goeree et al. (2016) mentioned above. It has been pointed out that strategic sophistication, as captured by level- k models, might be heavily dependent on the situation at hand. Hargreaves Heap et al. (2014) suggest that even (allegedly-nonstrategic) level-0 behavior might depend on the strategic structure of the game. In a repeated beauty contest, Gill and Prowse (2018) found that the level of strategic reasoning also depends on the complexity of the situation in the previous round. Georganas et al. (2015) show that strategic sophistication can be largely persistent within a given class of games but not necessarily across different classes of games. That is, the congruence between level- k models and subjects' actual decision processes may depend on the context. Allred et al. (2016) complement this result showing that the implications of available cognitive resources on strategic behavior are not persistent across classes of games. These difficulties raise the question of whether models of iterative thinking can be actually understood as procedural, that is, as describing how decisions are actually arrived at, or rather as purely descriptive, outcome-based models. Further, if iterative thinking cannot be taken as a persistent mode of behavior (across individuals and across games), it becomes particularly important to identify what triggers its use and in which situations it conflicts with other decision rules. Again, choice data alone is not sufficient to answer these questions.

3 The Model

We model decision making as a process of iterative reasoning as put forward in the literature on iterative thinking (Stahl, 1993; Nagel, 1995; Stahl and Wilson, 1995; Ho et al., 1998). Our approach is based on Alaoui and Penta (2016b), who model stepwise-reasoning procedures as the result of a cost-benefit analysis. This approach is given an axiomatic foundation in Alaoui and Penta (2016a), where the primitive properties required for a reasoning process to be represented by a cost-benefit analysis are characterized. A player's depth of reasoning is endogenously determined depending on both individual cognitive ability and the payoffs of the game. That is, each step of reasoning

requires a certain understanding of the strategic situation modeled by an incremental cognitive cost. On the other hand, the benefit of an additional step, the value of reasoning, is assumed to depend on the payoff structure of the game. Behavior then follows from a combination of depth of reasoning and beliefs about the reasoning process of the opponent.³

For a given game each additional step of reasoning requires cognitive effort, which, however, is usually not directly observable. We extend the model by linking depth of reasoning to deliberation times as proposed by Alaoui and Penta (2016b). The idea is to use deliberation times as a proxy for cognitive effort. Total deliberation time is assumed to be the sum of the step-wise deliberation times, thus representing total cognitive effort. We extend Alaoui and Penta (2016c) by adding a simple but crucial assumption, which is the key innovation of our model: the time required for each step of reasoning is a decreasing function of the difficulty to reach that unit of understanding, which depends on the payoff structure of the game determining the value of reasoning. This model yields testable predictions linking deliberation times to choices and incentives for specific classes of strategic games.

We present the model for a symmetric, two-player game $\Gamma = (S, \pi)$ with finite strategy space S and payoff function $\pi : S \times S \rightarrow \mathbb{R}$. To economize on notation we focus on the two player case, but the extension to the N -player case is straightforward. Following Alaoui and Penta (2016b) we define the *path of reasoning* in the following way. A *path of reasoning* for Γ is a sequence of (possibly mixed) strategies $(s_k^*)_{k \in \mathbb{N}}$. Strategy s_0^* is the starting point or anchor for the path of reasoning representing the default strategy a player not engaging in any deliberation would choose. As player i performs the first round of introspection, he becomes aware that his opponent may choose s_0^* , and thus considers to choose the next step strategy s_1^* . A process of iterative thinking can then be interpreted as a sequence of steps of reasoning along the induced path of reasoning $(s_k^*)_{k \in \mathbb{N}}$: For example, in step k player i , who intends to play s_{k-1}^* after $k-1$ rounds of introspection, realizes that j may have reached the same conclusion, that is, to play s_{k-1}^* . Hence, in step k player i considers choosing s_k^* .

The number of steps of reasoning a player is willing (or able) to perform is determined endogenously, and depends on the *cognitive cost* and the *value of reasoning*. The *cognitive cost* associated with the k th step of reasoning is given by a function $c_i(k)$ with $c_i : \mathbb{N}_+ \rightarrow \mathbb{R}_+$.⁴ Player i 's cognitive costs represent his cognitive abilities, or in other words, how difficult it is for i to reach the next level of understanding. Similarly, the

³For the sake of tractability, we will assume that a player's depth of reasoning pins down his behavior, although more generally observed play may depend on his beliefs over the opponents as well. In this case, depth of reasoning determines a player's capacity, that is, the maximum number of steps he is able or willing to conduct. This upper bound is binding, if he believes that his opponent has reached a deeper level of understanding than he has, but otherwise may not. Alaoui and Penta (2016b) discuss and test experimentally the effects on behavior when beliefs are varied systematically.

⁴ \mathbb{N} denotes the set of natural numbers including the zero, and \mathbb{N}_+ the set of natural numbers without zero.

value of conducting the k th step of reasoning is represented by a function $v_i : \mathbb{N} \rightarrow \mathbb{R}_+$. Cognitive costs represent heterogeneity in cognitive ability and are assumed to be constant for a given individual (for a given game). The value of reasoning, on the other hand, will depend on the specific payoffs of the game. Thus player i 's depth of reasoning (or cognitive bound) is given by $K_i(\Gamma) = \min\{k \in \mathbb{N} \mid v_i(k+1) < c_i(k+1)\}$ if the set is nonempty, and $K_i(\Gamma) = \infty$ otherwise. That is, player i stops the process of iterative reasoning as soon as the cost exceeds the value of an additional step of reasoning.

The depth of reasoning of player i , $K_i(\Gamma)$, depends on both the cognitive cost and the specifics of the payoff structure of the underlying game determining the value of reasoning. Next, we discuss how systematic changes in the payoff structure affect the depth of reasoning. Consider two games $\Gamma = (\pi, S)$ and $\Gamma' = (\pi', S)$ with common strategy space S and identical path of reasoning $(s_k^*)_{k \in \mathbb{N}}$. These games are equally difficult to reason about, or *cognitively equivalent* (Alaoui and Penta, 2016b). We assume that cognitive equivalent games induce the same cognitive costs. However, the value of reasoning may vary even among cognitive equivalent games, since it depends on the actual payoffs of the game. Denote by v_i and v'_i the value of reasoning induced by the payoff structure in Γ and Γ' , respectively. We say that Γ' has *higher incentives to reason* than Γ for step k if $v_i(k) \geq v'_i(k)$. If Γ' has higher incentives to reason than Γ for every step k with $k \leq K_i(\Gamma)$, then $v'_i(k) \geq v_i(k) \geq c_i(k)$ for all $k \leq K_i(\Gamma)$, which implies $K_i(\Gamma') \geq K_i(\Gamma)$. This yields the following prediction regarding the effect of varying incentives for a class of games that are equally difficult to reason about (Alaoui and Penta, 2016b).

Prediction 1. *Suppose Γ and Γ' are cognitively equivalent. If Γ' has higher incentives to reason than Γ for all steps up to $k = K_i(\Gamma)$, then Γ' induces weakly more steps of reasoning for player i than Γ , that is, $K_i(\Gamma') \geq K_i(\Gamma)$.*

Next, we link this simple model of iterative thinking to deliberation times. We assume that the deliberation time for conducting k steps of thinking is the sum of the deliberation times required for each step, as in Alaoui and Penta (2016c). We then extend their model by adding an additional assumption on how changes in the value of reasoning affect the deliberation times per step.

For a given game Γ , let $\tau_i : \mathbb{N}_+ \rightarrow \mathbb{R}_+$ be the time required by player i to conduct the k th step of reasoning. The total deliberation time of player i in game Γ to perform $k = K_i(\Gamma) > 0$ steps of reasoning is then given by

$$T_i(\Gamma) = T_i(s_k^*) = \sum_{i=1}^{K_i(\Gamma)} \tau_i(v_i).$$

We say that a strategy s requires *more steps of reasoning* than s' if $s = s_k^*$ and $s' = s_{k'}^*$ with $k > k'$. Then a straightforward consequence of viewing deliberation times as a sum of binary-choice decision times is the following prediction.

Prediction 2. *For a given game Γ , deliberation time for a choice is longer if it requires more steps of reasoning, that is, $T_i(s) > T_i(s')$ if s requires more steps of reasoning than s' .*

Alaoui and Penta (2016c) assume that $\tau_i(v_i)$ is constant within a class of cognitive equivalent games, in particular, $\tau_i(v_i)$ does not vary with the value of reasoning v_i . This leads them to the following prediction regarding the effect of incentives on total deliberation times.

Prediction 3 (Alaoui and Penta, 2016c). *If Γ and Γ' are cognitively equivalent, but Γ' has a higher value of reasoning, that is, $v_i(k) > v'_i(k)$ for all k , then $T_i(\Gamma') \geq T_i(\Gamma)$.*

The intuition is simple, a higher value of reasoning leads to more steps of reasoning, that is, $K_i(\Gamma') \geq K_i(\Gamma)$ (with a strict inequality if the increase in value is large enough) and since they assume $\tau_i(v_i)$ to be constant it follows that $T_i(\Gamma') \geq T_i(\Gamma)$.

In contrast, we will assume that the per-step deliberation time depends on the value of reasoning, as a consequence Prediction 3 not necessarily holds. The key innovation of our model is motivated by a well-known phenomenon in neuroeconomics and psychology, according to which deliberation times are longer for alternatives that are more similar (Dashiell, 1937), and which follows naturally from sequential sampling models from cognitive psychology (Ratcliff, 1978; Fudenberg et al., 2018). As already mentioned in the introduction, this effect has also been established in various economic settings such as intertemporal choice (Chabris et al., 2009), risk (Alós-Ferrer and Garagnani, 2018), lottery choice (Alós-Ferrer et al., 2018a), consumer choice (Krajbich et al., 2010; Krajbich and Rangel, 2011) as well as in dictator and ultimatum games (Krajbich et al., 2015). In accordance with this evidence, we assume that the deliberation time for a given step of thinking is larger the smaller the value of reasoning for that step.

Assumption 1. *Difficult steps are slower, that is, the per-step deliberation time $\tau_i(v_i)$ is decreasing in the value of reasoning v_i .*

The following prediction crucially hinges on the assumption that deliberation times per step are a decreasing function of incentives.

Prediction 4. *Consider two cognitive equivalent games Γ and Γ' . If Γ' has a higher value of reasoning, then the deliberation time for a choice that requires k steps of reasoning is shorter in Γ' than in Γ , that is, $\sum_{i=1}^k \tau_i(v'_i) \leq \sum_{i=1}^k \tau_i(v_i)$.*

For a fixed number of steps of thinking our model predicts shorter deliberation times for higher incentives, because a player requires less time for each step. In contrast with Prediction 3 (Alaoui and Penta, 2016c), however, this does not necessarily imply that one should observe shorter total deliberation times for larger incentives, because for larger incentives subjects may also conduct more steps of thinking (Prediction 1), which in turn increases overall deliberation time. Thus, in our model larger incentives have

a two-fold effect with (weakly) more steps of reasoning on the one hand and shorter deliberation times per step on the other hand.

Last, we remark on the role of individual cognitive ability. In terms of our model, there are two conceivable ways in which individual differences in cognitive ability may affect choices and deliberation times. On the one hand, higher cognitive ability could translate into uniformly lower cognitive costs of reasoning, c_i . In that case, players with higher cognitive ability are likely to conduct more steps of reasoning, because $K'_i(\Gamma) \geq K_i(\Gamma)$ if $c'_i(k) \leq c_i(k)$ for all $0 < k \leq K_i(\Gamma)$. Since total deliberation time is the sum of one-step deliberation times, conducting more steps tends to increase total deliberation time. On the other hand, it is unclear how higher cognitive ability would translate into deliberation times per step. Both longer deliberation times, e.g. because higher cognitive ability leads to more thorough thinking, or shorter deliberation times, e.g. because performing a step of reasoning is easier for higher ability individuals, are conceivable, so that the overall effect on deliberation times is indeterminate. Importantly, cognitive costs are assumed to be affected only by the strategic structure of the game, the path of reasoning, and potentially by individual cognitive ability. Thus, fixing individual cognitive ability, the effects of changes in the incentive structure described above remain unaffected as long as the path of reasoning (or more generally the difficulty) of the game is not altered.

3.1 Application to level- k reasoning

We now apply the model to a particular process of iterative thinking, level- k reasoning. This is also the model that we will test in our experiment.

Consider a symmetric, two-player game $\Gamma = (S, \pi)$ and fix player i with $i \neq j$. Denote by $BR_i : \Delta \rightrightarrows S$ i 's best-response correspondence where Δ is the set of mixed strategies over S . For simplicity, we assume that for any $s \in S$ there is a unique best-reply, denoted by $BR(s)$, that is, $BR(s)$ is the unique maximizer of $\pi(\cdot, s)$. According to the standard level- k model, the path of reasoning $(s_k^*)_{k \in \mathbb{N}}$ is given by $s_k^* = BR(s_{k-1}^*)$ for $k > 0$ and s_0^* is the assumed level-0 strategy adopted by non-strategic players.

Following Alaoui and Penta (2016b), we assume that an individual's cost of reasoning is the same for games that a player essentially approaches in the same way, that is, for games that are cognitively equivalent. The value of reasoning, however, depends on the specific payoff structure of the game, which may vary even for cognitively equivalent games. More precisely, we assume that the value of reasoning depends only on the payoffs of the game and that increasing all (relevant) payoff differences at a certain step increases the value of reasoning at that step. These two minimal conditions are all that is required for the comparative statics we will use later in the analysis of the experimental

data. For concreteness, we will assume that the value of reasoning takes the following “maximum-gain representation”:

$$v_i(k) = \max_{s \in S} \pi_j(BR_i(s), s) - \pi_i(s_{k-1}^*, s)$$

That is, the value of reasoning is the maximum gain the player could obtain by choosing the optimal strategy compared to his current strategy, at step k , for all possible actions of the other player. In a sense, the player is optimistic about the value of thinking more, considering the highest possible payoff improvement. Alaoui and Penta (2016a) provide axiomatic foundations for this and other representations of the value of reasoning.

4 Experimental Design

We use two games commonly employed to study cognitive sophistication, the classical beauty contest game (Nagel, 1995) and the 11-20 money request game, a more recent alternative that was explicitly designed to study level- k behavior (Arad and Rubinstein, 2012). We ask whether a higher level of reasoning (in the standard level- k sense) is reflected in higher cognitive effort, or in other words, whether there is a direct link between higher levels of reasoning and deliberation times. We use different versions of the 11-20 game that vary the incentives, that is, the value of reasoning, while leaving the underlying best-reply structure, and thus the path of reasoning, unaffected. This allows us to study how choices and deliberation times react to systematic changes in the payoff structure providing a direct test of the implications of the model presented in Section 3 applied to level- k reasoning.

4.1 The Beauty Contest Game

The standard workhorse for the study of cognitive sophistication is the guessing game, or p -beauty contest game (Nagel, 1995). We use a standard, one-shot, beauty contest game with $p = 2/3$ with discrete strategy space $S = \{0, 1, \dots, 99, 100\}$. In this game, a population of N players has to simultaneously guess an integer number between 0 and 100. The winner is the person whose guess is closest to p times the average of all chosen numbers. The winner receives a fixed prize P , which is split equally among all winners in case of a tie.

In this game it is usually assumed that non-strategic (level-0) players pick a number at random from the uniform distribution over $\{0, \dots, 100\}$. Hence, we assume that the starting point for the level- k path of reasoning, s_0^* , is the mixed strategy that assigns equal probability to all numbers. If a player thinks that all other players choose s_0^* , then (for N large enough) the average of all numbers chosen is (close to) 50 and hence the best reply to s_0^* is to choose $s_1^* = 33$, that is the integer closest to $2/3$ times 50. As a player performs the next step, he becomes aware that his opponents might choose 33 as

well, and thus considers choosing a best-reply to a profile where all other players choose 33. Hence, the level-2 strategy is $s_2^* = 22$, the integer closest to $2/3$ times 33.⁵ Iterating, this defines the best-reply structure of the beauty contest game $(s_k^*)_{k \in \mathbb{N}}$ where s_k^* is the integer closest to $(2/3)s_{k-1}^*$ for $k > 0$.⁶ If N is large enough, this game has two Nash equilibria at 0 and 1 (Seel and Tsakas, 2017).

Assuming that the value of reasoning has a maximum-gain representation, the value of reasoning at each step is the same and equals the prize P . To see this, note that switching from s_{k-1}^* to s_k^* yields a payoff improvement of P for any strategy profile, where all opponents choose some strategy $s \in (s_k^*, s_{k-1}^*)$. Since this is the maximum possible gain, it follows that $v(k) = P$.

4.2 The 11-20 Game

The second part of our experiment focuses on variants of the 11-20 money request game, that was introduced by Arad and Rubinstein (2012) as a two-player game specifically well suited to study level- k reasoning. A modified version of this game was also employed by Alaoui and Penta (2016b) to test their model of endogenous depth of reasoning. Goeree et al. (2016) introduced a graphical version of the 11-20 game that allows to vary the payoff structure without affecting the underlying best-reply structure of the game. We now describe a generalized version of this graphical 11-20 game. In what follows, we will refer to this game (and variants thereof) simply as “11-20 game.”

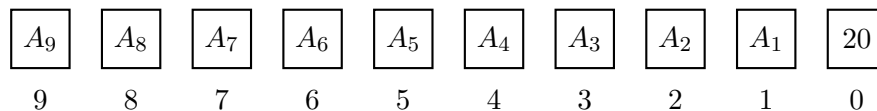


Figure 1: Generalized 11-20 game.

Consider ten boxes horizontally aligned and numbered from 9 (far left) to 0 (far right) as depicted in Figure 1. Each box $b \in \{1, \dots, 9\}$ contains an amount $A_b < 20$ and the rightmost box, $b = 0$, contains the highest amount of $A_0 = 20$. There are two players, $i = 1, 2$, and each has to choose a box $b_i \in \{0, \dots, 9\}$. Each player receives the

⁵In general, given a population profile the beauty contest game does not have a unique best-reply, since if all other players choose 33 any number smaller than 33 will be closer to the average of 22. However, choosing exactly the average becomes the unique best-response if a player expects that it is possible although very unlikely that some opponents might randomize and every single strategy might be played with (possibly very small) positive probability.

⁶This delivers the path $(s_0^*, 33, 22, 15, 10, 7, 5, 3, 2, 1, 1, \dots)$, which is close to that defined by $(2/3)^k 50$ for $k > 0$. Of course, this is an approximation which ignores the impact of the player on the average, but is accurate unless N is small.

amount A_{b_i} in the box he chose plus a bonus of R if he chose the box that is exactly one to the left of his opponent's box. That is, payoffs are given by

$$\Pi_i(b_i | b_{-i}) = \begin{cases} A_{b_i} & \text{if } b_i \neq b_{-i} + 1 \\ A_{b_i} + R & \text{if } b_i = b_{-i} + 1. \end{cases}$$

A feature of this game is that choosing box 0 is the salient and obvious candidate for a non-strategic level-0 choice, because it awards the highest “sure payoff” of 20 that can be obtained without any strategic considerations. Thus, the rightmost box 0 is a natural anchor serving as the starting point for level- k reasoning. If the bonus R is large enough, that is, $R > 20 - \min\{A_b | b = 1, \dots, 9\}$, then the path of reasoning for the level- k model with starting point $s_0^* = 0$ is $(s_k^*)_k$ with $s_k^* = k$ for $k = 1, \dots, 9$.⁷ In other words, for a sufficiently large bonus the best reply is always to choose the box that is exactly one to the left of your opponent (if there is such a box). In particular, the path of reasoning is independent of the specific payoff structure, as long as the bonus is sufficiently large and the right-most box is a salient anchor.

BASE	11	12	13	14	15	16	17	18	19	20
FLAT	17	17	17	17	17	17	17	17	17	20
EXTR	19	18	17	16	15	14	13	12	11	20

Figure 2: Payoff structure for the different variants with small increments.

We use the three versions of the 11-20 game shown in Figure 2.⁸ The sure payoffs given by the amounts A_0, \dots, A_9 differ across versions, however, they are chosen in such a way that the best-reply structure described above remains unchanged. In the baseline version (BASE) the amounts are increasing from the left box to the rightmost box, containing the highest amount of 20. BASE corresponds to the original version of Arad and Rubinstein (2012) and to the baseline version of Goeree et al. (2016). In BASE there is a natural trade-off between the sure payoffs A_1, \dots, A_9 and the bonus, with each incremental step of reasoning a player gives up one unit of sure payoff. We

⁷The best reply to box 9 is to choose box 0, hence for $k > 9$ the best-reply structure cycles repeatedly from 0 to 9. That is, theoretically a choice of box k could also result from $k + 10$ (or generally $k + 10n$) steps. To solve this issue, Alaoui and Penta (2016b) propose a modified 11-20 game that breaks this best-reply cycle. The observed distribution of play, however, is very similar to the one in Rubinstein's original 11-20 game (exhibiting the best-reply cycle). This is not surprising, because existing evidence in the literature documents that 10 and more steps of reasoning are highly uncommon. Thus, focusing on the first 9 steps only is likely to be inconsequential.

⁸For each of the three versions BASE, FLAT, and EXTR there is a unique mixed strategy Nash equilibrium. For the small increment - low bonus versions those are given by $(0, 0, 0, 0, \frac{1}{4}, \frac{1}{4}, \frac{1}{5}, \frac{3}{20}, \frac{1}{10}, \frac{1}{20})$, $(0, 0, 0, \frac{1}{10}, \frac{3}{20}, \frac{3}{20}, \frac{3}{20}, \frac{3}{20}, \frac{3}{20}, \frac{3}{20})$, and $(0, 0, 0, 0, 0, 0, 0, \frac{3}{20}, \frac{2}{5}, \frac{9}{20})$, respectively.

designed the second version in order to remove the trade-off between higher steps of reasoning and sure payoff. This flat-cost version (FLAT) is a modification of BASE where the first iteration results in giving up a fixed amount of sure payoff, but after that all additional steps are identical and offer the same sure payoff. Specifically, all boxes except the rightmost box contain the same amount, which is by some fixed amount lower than the salient amount of 20. Thus, choosing any box except the rightmost gives the same sure payoff and, hence, after the first step any additional step leads to no further sacrifice in terms of sure payoff. FLAT could also be viewed as a modification of Arad and Rubinstein’s (2012) costless-iterations version. The extreme version (EXTR) was previously used in Goeree et al. (2016). In this version, all amounts except for the highest one are rearranged to be decreasing from left to right with the second highest amount in the leftmost box. Since the rightmost box still contains the highest amount of 20, this rearrangement does not alter the underlying best-reply structure, hence the path of reasoning induced by the level- k model is the same as in BASE and FLAT. However, it crucially affects the sure payoff associated with different levels of reasoning. Choosing box 1 now offers a disproportionately low sure payoff, and further steps increase the sure payoff. Moreover, this asymmetry potentially opens the door for alternative models of decision making or even heuristic behavior, such as choosing the highest amount that still grants the possibility of a bonus, which in this case would imply choosing the leftmost box.

BASE	2	4	6	8	10	12	14	16	18	20
FLAT	14	14	14	14	14	14	14	14	14	20
EXTR	18	16	14	12	10	8	6	4	2	20

Figure 3: Payoff structure for the different variants with large increments.

We further varied these three versions of the 11-20 game along two additional dimensions that systematically vary the incentives to reason without altering the path of reasoning. First, for each treatment there was an additional “large increment” version, where for BASE and EXTR the amounts A_1, \dots, A_9 range from 2 to 20 in increments of 2 instead of from 11 to 20 in increments of 1, and for FLAT all amounts other than 20 were set to 14 in the large increment version instead of 17 (see Figure 3). Depending on the treatment, the trade-off between bonus and sure payoff for an additional step of reasoning is decreased or increased for large increments. Second, we varied the incentives to reason by changing the size of the bonus R for choosing the box exactly one to the left of the other player’s. Specifically, in the additional high-bonus condition, subjects obtained $R = 40$ additional points for the “correct” box, while in the low-bonus con-

Table 1: Value of reasoning

		k								
	Increment	1	2	3	4	5	6	7	8	9
BASE	Small	19	19	19	19	19	19	19	19	19
	Large	18	18	18	18	18	18	18	18	18
FLAT	Small	17	20	20	20	20	20	20	20	20
	Large	14	20	20	20	20	20	20	20	20
EXTR	Small	11	21	21	21	21	21	21	21	21
	Large	2	22	22	22	22	22	22	22	22

Notes: Value of reasoning $v(k)$ for the different variants for the low bonus condition. For high bonus all values are increased by 20.

dition they received $R = 20$ additional points. Given the path of reasoning $(s_k^*)_k$ with $s_k^* = k$ for $k = 1, \dots, 9$ induced by the standard level- k model, Table 1 gives the value of reasoning assuming a maximum gain representation.

4.3 Design and Procedures

A total of 128 subjects (79 female) participated in 4 experimental sessions with 32 subjects each. Participants were recruited from the student population of the University of Cologne using ORSEE (Greiner, 2015), excluding students of psychology, economics, and economics-related fields, as well as experienced subjects who already participated in more than 10 experiments. The experiment was conducted at the Cologne Laboratory for Economic Research (CLER) and was programmed in z-Tree (Fischbacher, 2007).

The experiment consisted of three parts during which subjects could earn points. First, each subject played a series of different versions of the money request game. Each treatment BASE, FLAT, and EXTR was played four times, once for each bonus-increment combination. Second, subjects participated in a single beauty contest game with $p = (2/3)$. In the third part we collected several individual correlates intended to control for cognitive ability, social value orientation, aversion to strategic uncertainty, swiftness, and demographics. There was no feedback during the course of the experiment, that is, subjects did not learn the choices of their opponents nor did they get any information regarding their earnings until the very end of the experiment. All decisions were made independently and at a subject's individual pace. In particular, subjects never had to wait for the decisions of another subject except for the very end of the experiment (when all their decision had already been collected). At that point they had to wait until everybody had completed the experiment so that outcomes and payoffs could be realized.

We now describe each part of the experiment in detail. For the 11-20 games, we randomly assigned the subjects within a session to one of four randomized sequences of

the games to control for order effects.⁹ Subjects were informed that for every game they would be randomly matched with a new opponent to determine their payoff for that round, hence preserving the one-shot character of the interaction. Each of the three variants BASE, FLAT, and EXTR was played exactly four times, once for each possible combination of increment (small/large) and bonus (low/high).

In the second part, subjects played a single beauty contest game with $p = 2/3$ among all 32 participants in the session. The winner, that is, the subject whose guess was closest to $2/3$ times the average of all choices, received 500 points. In case of a tie, the rules specified to split this amount equally among all winners.

In the final part of the experiment, participants answered a series of questions. First, subjects completed an extended 7-item version of the CRT from Toplak et al. (2014), which includes the three classical items from Frederick (2005).¹⁰ Subjects received 5 points for each correct answer. Next, we elicited aversion to strategic uncertainty using the method by Heinemann et al. (2009) with random groups of four. The task involves measuring certainty equivalents, similarly to Holt and Laury's (2002) multiple price list method, for a situation where payoffs depend on the decision of another subject, that is, strategic uncertainty. In ten situations subjects have to choose between different safe amounts (5 to 50 points) and an option in which they earn 50 points if at least two other members of their group have also chosen that option and zero points otherwise. Subjects were randomly allocated into groups of four, and for each group one of the decision situations was randomly selected for payment. Finally, we collected a measure to control for differences in mechanical swiftness (Cappelen et al., 2013). To that end we recorded the time needed to complete four simple demographic questions on gender, age, field of study, and native language. This part was integrated into a larger questionnaire, which also comprised questions regarding subjects' understanding of the tasks, their perception of its complexity, number of university semesters, left- or right-handedness, average amount of money needed per month, and previous attendance of a lecture in game theory.

To determine a subject's earnings in the experiment the payoffs from each part were added up and converted into euros at a rate of 0.25 € for each 10 points (around \$0.28 at the time of the experiment). In addition subjects received a show-up fee of 4 € for an average total remuneration of 15.67 €. A session lasted on average 60 minutes including instructions and payment.¹¹

⁹The sequences are provided in the supplementary material (see Online Appendix). Besides the three treatments discussed here, the sequences contained an additional treatment discussed in Appendix B.

¹⁰Subjects also answered the two additional items proposed by Primi et al. (2016), but our results do not change if we use their extended CRT version or a combination of both instead. Other studies (Cappelen et al., 2013; Gill and Prowse, 2016) have also used the Raven test as a proxy for cognitive ability. Brañas-Garza et al. (2012) used the Raven test and the CRT by Frederick (2005) in a series of six one-shot p -beauty games and found that CRT predicts lower choices (i.e. higher level), while performance in the Raven test did not.

¹¹The original instructions were in German. A translation of the instructions into English can be found in the supplementary material (see Online Appendix).

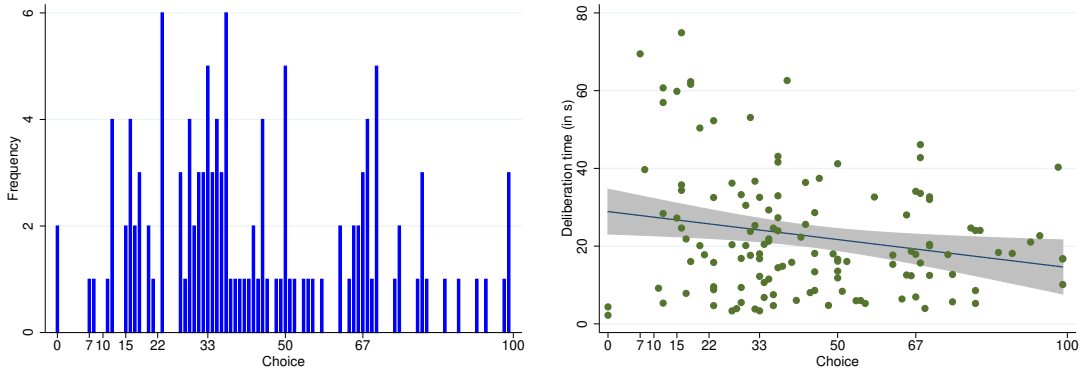


Figure 4: Choices and deliberation times in the beauty contest game.

Notes: Left panel shows histogram of guesses (0-100). Right panel shows a scatter plot of guesses (0-100) vs deliberation time for that guess (in s) and plots the result of a linear regression with 95% confidence interval.

5 Results: Beauty Contest

We first analyze behavior and deliberation times in the beauty contest game. The left panel of Figure 4 depicts the distribution of choices in this game. Of the 128 subjects only two subjects chose a Nash Equilibrium strategy, 18 chose a number close to 33 (level-1), 9 chose a number close to 22 (level-2), 8 chose a number close to 15 (level-3), and 7 subjects chose a number corresponding to higher levels. The target numbers in our four sessions were 27, 28, 29 and 32 and the respective winning numbers were 28, 27, 30 and 32. Hence, the best-performing strategy (among the level- k strategies) would have been the level-1 choice of 33. We classify all choices that are at a distance of at most 2 from the level- k strategy as level- k (for $k \geq 1$), and the remainder as level-0.¹² Given this classification, the average of all guesses by level-0 players is 54.98. Overall behavior is in line with previous results in the literature, that commonly observe mostly one to three steps of reasoning and a significant amount of unclassified (random) choices, usually thought of as level-0. The right panel of Figure 4 shows a scatter plot of subjects' guesses and the corresponding time taken for that choice. The slope of the regression line suggests a negative correlation between deliberation times and “higher-level” choices. That is, choices corresponding to more steps of reasoning required longer deliberation times.

This observation is consistent with Prediction 2, that is, deliberation time is longer for choices that require more steps of reasoning. We now test this prediction using a series of three linear regressions with log-transformed deliberation times (log DT) as

¹²Classification of levels: Level 1 (31-35), Level 2 (20-24), Level 3 (13-17), Level 4 (8-12), Level 5 (7), Level 0 (rest). There were no choices in the range 1-6. Two subjects with very fast choices of 0 were excluded from the analysis. Our results are robust when those choices are included and classified as level-0. Further, our results are unchanged for narrower classifications of levels, e.g. where only the level- k strategy ± 1 are classified as level- k .

Table 2: Linear regressions on log DT for the beauty contest game.

log DT	1	2	3
Level	0.1348** (0.0538)	0.1342** (0.0563)	0.1289** (0.0561)
CRTExtended		0.0012 (0.0307)	-0.0172 (0.0321)
Swiftiness			0.3051 (0.4388)
Female			-0.2440* (0.1396)
Constant	2.7865*** (0.0754)	2.7823*** (0.1328)	3.0965*** (0.2315)
Adjusted R^2	0.0405	0.0327	0.0449
F-test	6.2718**	3.1114**	2.4684**
Observations	126	126	126

Notes: Standard errors in parentheses. * $p < 0.1$, ** $p < 0.05$, *** $p < 0.01$.

dependent variable¹³ and controls for cognitive ability, individual differences in mechanical swiftiness (Cappelen et al., 2013), and gender. The results of those regressions are presented in Table 2. The regressions show a significantly positive effect of higher-level choices on deliberation time. That is, in line with Prediction 2, deliberation time is increasing in the depth of reasoning. This result remains robust when we control for cognitive ability (model 2), measured by the extended CRT, and when we add additional controls.¹⁴ Further, cognitive ability in itself has no effect on deliberation times. Recall that cognitive ability may decrease cognitive costs potentially leading to more steps of reasoning, while at the same time it may decrease per-step deliberation times. Thus within our model the overall effect of cognitive ability on deliberation time is indeterminate due to these two potentially countervailing effects.

Performance in the CRT was previously found to be correlated with level in the beauty contest (Brañas-Garza et al., 2012). Conducting an additional linear regression (not reported here) with level as dependent variable on CRT, we find a significant and positive coefficient for CRT ($N = 126$, $\beta = 0.1483$, $p = 0.0017$). This indicates that subjects with higher cognitive ability (as measured by their CRT score) tend to make higher-level guesses in the beauty contest game, which confirms previous results in the literature.

¹³Deliberation times usually feature a skewed distribution with rare extreme observations. We follow the standard approach in the literature and consider the logarithm of that variable instead.

¹⁴The control variables are defined as follows: CRTExtended (number of correct answers, 0-7), Swiftiness (calculated as $1 - (T_{\text{swift}}^i / \max_i T_{\text{swift}}^i)$ where T_{swift}^i is time needed by subject i to answer 3 demographic questions), and Female (dummy).

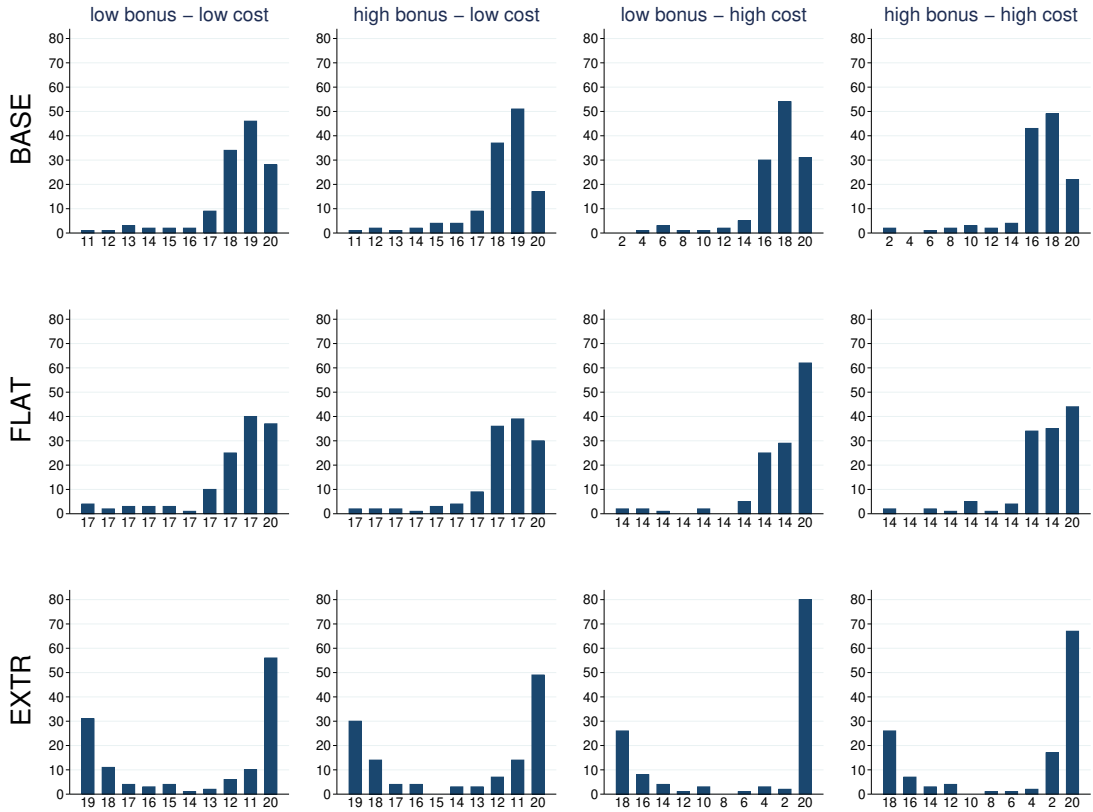


Figure 5: Histograms of choices for each of the 11-20 games.

6 Results: 11-20 Games

Figure 5 displays the absolute choice frequencies across all instances of the 11-20 game. Choices in BASE closely resemble the behavioral patterns found in Arad and Rubinstein (2012) and Goeree et al. (2016), with most subjects selecting one of the three rightmost boxes corresponding to levels 0 to 3. Behavior in FLAT is similar to that in BASE, with most choices corresponding to not more than three steps of reasoning. Compared to BASE, however, there is a larger fraction of level-0 choices in FLAT, which is consistent with our assumptions, since the value of reasoning for that step is lower. In the EXTR variant behavior is comparable to that observed in Goeree et al. (2016), and vastly different from that observed in BASE and FLAT. A large fraction of subjects (between 38% and 62%) chose the rightmost box containing the salient amount of 20, but box 1 and 2 to its left were chosen very rarely compared to BASE and FLAT. Instead, between 25% and 33% of subjects chose one of the two leftmost boxes 8 and 9, which were almost never chosen in the other two variants. Interpreting behavior according to level- k reasoning, these choices correspond (implausibly) to eight or nine steps of

Table 3: Random effects panel regressions on log DT for the 11-20 games.

log DT	model 1	model 2	model 3
Level	0.0385*** (0.0057)	0.0272*** (0.0060)	0.0282*** (0.0060)
FLAT		-0.0309 (0.0337)	-0.0308 (0.0338)
EXTR		0.1631*** (0.0351)	0.1614*** (0.0352)
CRTEextended			0.0572*** (0.0165)
Swiftness	-0.2607 (0.2406)	-0.2626 (0.2407)	-0.4155* (0.2335)
Female	0.0943 (0.0744)	0.0932 (0.0744)	0.1654** (0.0738)
Period	-0.0884*** (0.0030)	-0.0889*** (0.0030)	-0.0889*** (0.0030)
Constant	2.5943*** (0.0928)	2.5788*** (0.0944)	2.2628*** (0.1284)
R^2 (overall)	0.3056	0.3132	0.3417
Wald-Test	1299.4016***	1371.6146***	1385.4388***
Observations	1536	1536	1536

Notes: Standard errors in parentheses. * $p < 0.1$, ** $p < 0.05$, *** $p < 0.01$.

reasoning.¹⁵ As already pointed out by Goeree et al. (2016), it seems unlikely that these choices actually are the result of level- k reasoning. Using deliberation times as a measure for cognitive effort, however, will allow us to directly test this hypothesis.

We now turn to the analysis of deliberation times. For this purpose, we start with bird-eye regressions on the full data set, that is, including all decisions on all variants of the 11-20 game. Table 3 shows GLS random-effects regressions with log DT as the dependent variable including as observations all 12 choices in BASE, FLAT, and EXTR. In all models we control for mechanical swiftness, gender, and the position within the sequence of games (Period).¹⁶

The regressions confirm that there is a significant and positive relation between deliberation times and depth of reasoning. That is, as predicted, choices associated with more steps of thinking require more deliberation. This relation is unaffected when we include the treatment dummies FLAT and EXTR (model 2), and when we control for

¹⁵When playing against the empirical distribution of choices, the best-performing strategies for BASE, FLAT, and EXTR would correspond to level 2, level 1, and level 1, respectively. Controlling for empirical payoffs does not affect our results.

¹⁶Throughout the paper the standard variables for regressions are defined as follows: Level (0-9; a choice of box k is classified as level k); FLAT and EXTR are treatment dummies; CRTEextended (0-7; number of correct answers); Swiftness ($[0, 1]$; calculated as $1 - (T_{\text{swift}}^i / \max_i T_{\text{swift}}^i)$ where T_{swift}^i is time needed by subject i to answer 3 demographic questions); Female (dummy); Period (1-16; controls for position in the sequence of games).

Table 4: Random effects panel regressions of log DT on level.

log DT	BASE	FLAT	EXTR
Level	0.0449** (0.0182)	0.0532*** (0.0152)	0.0277*** (0.0079)
CRTExtended	0.0280 (0.0186)	0.0628*** (0.0186)	0.0848*** (0.0207)
Swiftness	-0.5335** (0.2632)	-0.4919* (0.2617)	-0.2254 (0.2925)
Female	0.1313 (0.0834)	0.1883** (0.0830)	0.1926** (0.0925)
Period	-0.0878*** (0.0049)	-0.0934*** (0.0050)	-0.0843*** (0.0053)
Constant	2.3286*** (0.1511)	2.1742*** (0.1497)	2.3157*** (0.1649)
R^2 (overall)	0.3298	0.3621	0.3148
Wald-Test	352.7159***	378.8169***	300.5368***
Observations	512	512	512

Notes: Standard errors in parentheses. * $p < 0.1$, ** $p < 0.05$, *** $p < 0.01$. Models are restricted to subsamples including only the four decisions in BASE, FLAT or EXTR, respectively.

cognitive ability as measured by the number of correct answers in the (extended) CRT (model 3). Also, the coefficient of the CRT is significant and positive, that is, subjects scoring higher on the CRT take longer to make their decisions.

Beyond this, we observe a significant positive coefficient of EXTR (which is robust to controlling for CRT performance), indicating that choices in EXTR generally required longer deliberation times. The average deliberation time in EXTR was 12.6 seconds, whereas the average deliberation time in BASE and FLAT was only 9.9 seconds. Pairwise Wilcoxon signed rank (WSR) tests directly confirm that the average deliberation time in EXTR was significantly higher compared to both BASE ($N = 128$, $z = 4.678$, $p < 0.0001$) and FLAT ($N = 128$, $z = 4.375$, $p < 0.0001$).

In the next step, we consider the three game variants BASE, FLAT, and EXTR separately. To this end, we run separate regressions considering only the four choices taken for each of the variants. Table 4 presents the results of these regressions, which are also illustrated in Figure 6. In those and all following regressions we include controls for cognitive ability, mechanical swiftness, gender, and the position within the sequence of games.

The results confirm our previous findings, showing a positive significant relation between deliberation times and higher-level choices in all three variants of the game. This positive correlation can also be seen in Figure 6, where the solid regression lines have a positive slope for all three variants. There is no effect of cognitive ability on deliberation times in BASE, whereas we find a positive and significant effect in both FLAT and EXTR.

Table 5: Random effects panel regressions of log DT with controls for the payoff structure.

log DT	BASE	FLAT	EXTR
Level	0.0658*** (0.0210)	0.0202 (0.0182)	-0.0164 (0.0183)
Rightmost20	0.1634* (0.0835)	-0.2356*** (0.0728)	-0.3438*** (0.0991)
LeftmostBox			0.1010 (0.1201)
Constant	2.2255*** (0.1605)	2.3138*** (0.1534)	2.6161*** (0.1881)
Controls	Yes	Yes	Yes
R^2 (overall)	0.3294	0.3785	0.3330
Wald-Test	360.2338***	394.5066***	317.7823***
Observations	512	512	512

Notes: Standard errors in parentheses. * $p < 0.1$, ** $p < 0.05$, *** $p < 0.01$. Models are restricted to subsamples including only the four decisions in BASE, FLAT or EXTR, respectively. Omitted controls are CRTEExtended, Swiftiness, Female, and Period.

In the next step, we investigate the robustness of the previous conclusion to specific features of the game. First, note that (in all variants) a choice of the rightmost box is appealing because it maximizes the sure payoff (20) and because it minimizes strategic uncertainty, as it yields a guaranteed payoff independently of the choice of the other player. This makes it a salient level-0 strategy. Hence, choices of the rightmost box are likely to be particularly fast, creating a confound. That is, even if there is no relation between the imputed level of reasoning and deliberation times, if choosing the rightmost box is particularly fast, the regressions might show a non-existing trend. To check for this, we include a dummy indicating those choices, denoted *Rightmost20*. Further, in EXTR a choice of the leftmost box could also be salient because it combines a high sure payoff with a chance of getting the bonus. We thus include another dummy, denoted *LeftmostBox*, into the regression for EXTR. The results of these regressions are shown in Table 5 and illustrated in Figure 6 (dashed lines).

After controlling for choices of the rightmost box, in BASE we still observe a clear positive relation between deliberation time and level. This is illustrated in Figure 6, where the slope of the regression line is still positive even when the level-0 choices are excluded (dashed line). In addition, the dummy itself is not significant. That is, our conclusions for BASE are robust to controlling for imputed level-0 choices.

In game variant FLAT, however, the picture is quite different. Choices of the rightmost box are significantly faster, and this difference actually explains most of the effect of level on deliberation times: level becomes insignificant when adding the dummy *Rightmost20*. This can be seen graphically in Figure 6, where the regression line becomes almost flat when the level-0 choices are excluded (dashed line).

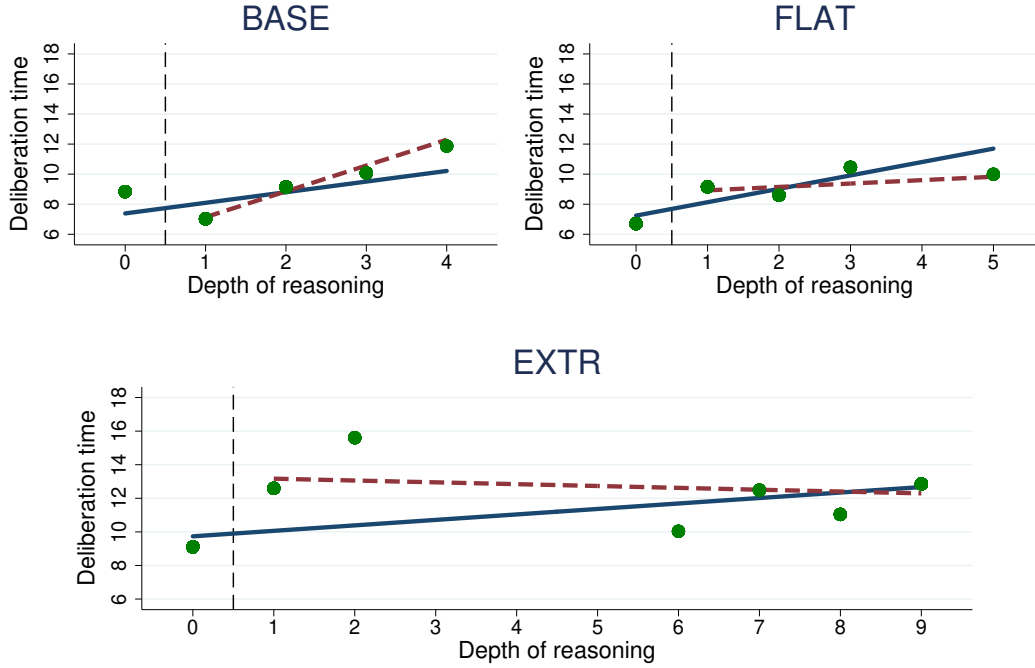


Figure 6: Choices and deliberation times in the 11-20 games.

Notes: Scatter plots of the average deliberation time per level (in s), per 11-20 game variant. The solid (blue) lines shows the result of a linear regression of deliberation times on level. The dashed (red) lines shows the same regression where the choices of the rightmost box were excluded. For illustration purposes, choices with DTs that were more than two SEs away from the mean DT of that level and levels with less than 10 observations are not depicted.

Similarly, in game variant EXTR we observe very fast level-0 choices, and no further relation between deliberation times and level. Again, this can be seen graphically in the bottom panel of Figure 6, where the regression line even tends to be downward sloping when the fast level-0 choices are excluded (dashed line).

In summary, we find generally longer deliberation times for higher-level choices, which is in line with Prediction 2, but this can only be seen as a full validation of level- k reasoning for game variant BASE. In this variant, decreasing amounts of sure payoff make the successive steps associated with level- k reasoning particularly salient, and indeed we observe the strongest link between deliberation times and level, which is robust to controlling for choices of the rightmost box containing the salient amount of 20. In contrast, for EXTR and (to a lesser extend) for FLAT most of the effect is explained by fast level-0 choices.

In game variant FLAT the comparably low value of reasoning associated with the first step results in a large fraction of subjects choosing the rightmost box, and these choices are faster. Beyond this observation, there is only weak evidence that more steps of reasoning are associated with higher cognitive effort as revealed by deliberation times. However, this observation should not be overemphasized, because in this game variant

choices corresponding to more than two steps of reasoning are rare, and this might explain the absence of a (significant) relationship for higher-level choices.¹⁷

This criticism does not affect game variant EXTR, where a large fraction of choices corresponds to nine (imputed) steps of reasoning. In this variant, again level-0 choices are significantly faster, but there is no evidence of a relation between imputed depth of reasoning and deliberation times for higher-level choices. In particular, choices of the leftmost box, while frequent, are not accompanied by longer deliberation times. This result strongly suggests that subjects do not rely on level- k reasoning to the same extent as in BASE although they feature the same path of reasoning. A natural explanation is that even though the path of reasoning is identical, the actual payoffs make other features of the game salient, rendering the level- k model inappropriate in this case.

7 Effect of Incentives in the 11-20 Game

In this section we examine the effect of changes in the incentives, and thus the value of reasoning, on both choices and deliberation times in the 11-20 game. For this purpose, we make use of the fact that for each 11-20 game variant we also varied the payoff structure along two incentive dimensions, the size of the increment in sure payoff and the bonus that could be received.

7.1 Incentives and Choices

A higher bonus increases the value of reasoning, $v(k)$, by 20 for each step.¹⁸ Hence, according to Prediction 1, if decisions arise from level- k reasoning, we would expect the observed level to be weakly higher for a high bonus compared to a low bonus for all treatments. This is indeed the case for BASE and FLAT. In BASE, the average level is 1.7148 for the high bonus versions, larger than the average of 1.5078 for a low bonus (WSR, $N = 128$, $z = 2.915$, $p = 0.0036$). In FLAT, the average level is 1.5820 for the high bonus versions, again larger than the average of 1.4648 for the low bonus versions (WSR, $N = 128$, $z = 2.713$, $p = 0.0067$). However, for EXTR there is no significant difference between the high bonus versions (average level 3.3047) and the low bonus ones (average 3.1248; WSR, $N = 128$, $z = 0.942$, $p = 0.3461$), again casting doubt on whether decisions arise from level- k reasoning in this case.

Conversely, large increments decrease the value of reasoning for all steps in BASE and for the first step in FLAT, hence should correspond to weakly lower levels in these variants. In EXTR, however, large increments sharply lower $v(1)$, but all other values $v(2), \dots, v(9)$ increase (slightly). Hence, the overall effect of large increments on level in EXTR is indeterminate. We do find lower average levels for large increments compared

¹⁷We also ran additional regressions comparing the deliberation time of a given step with the deliberation time of the next step. These pairwise comparisons reveal that a further step requires additional deliberation time for steps 2 to 4, whereas the coefficient is insignificant for step 1.

¹⁸Recall that we focus only on the first nine steps, and for those the increase is exactly 20.

Table 6: Random effects Tobit regressions of level with controls for bonus and increment

Level	BASE	FLAT	EXTR
HighBonus	0.2811** (0.1295)	0.2829 (0.1943)	0.7425 (0.8704)
LargeIncr	-0.2485* (0.1292)	-0.8270*** (0.1947)	-3.0640*** (0.8871)
StratUnc	-0.0186 (0.0522)	-0.0864 (0.0722)	-0.0330 (0.3257)
Gametheory	0.1071 (0.4282)	0.5795 (0.5932)	4.2876 (2.6932)
CRTEExtended	-0.0474 (0.0642)	-0.0968 (0.0892)	-0.4359 (0.3992)
Female	-0.3388 (0.2867)	-0.7885** (0.3966)	0.6374 (1.8018)
Period	-0.0185 (0.0137)	-0.0334 (0.0209)	-0.2085** (0.0954)
Constant	2.0234*** (0.4745)	2.7137*** (0.6579)	4.2326 (2.9572)
Log likelihood	-892.1128	-897.4692	-803.4438
Wald-Test	13.2723*	30.3227***	21.3988***
Observations	512	512	512

Notes: Standard errors in parentheses. * $p < 0.1$, ** $p < 0.05$, *** $p < 0.01$. Models are restricted to subsamples including only the four decisions in BASE, FLAT, or EXTR, respectively.

to small increments for all three variants. The difference is significant for FLAT (large increment, average level 1.2773; small increment, 1.7695; WSR $N = 128$, $z = -4.367$, $p < 0.0001$) and EXTR (large increment, average level 2.8164; small increment, 3.7031; WSR, $N = 128$, $z = -3.145$, $p = 0.0017$), but fails to reach significance for BASE (large increment, average level 1.5000; small increment, 1.7227; WSR, $N = 128$, $z = -1.613$, $p = 0.1068$).

In summary, the changes in the average depth of reasoning resulting from our systematic changes in the payoff structure are in line with Prediction 1. To further examine this conclusion while controlling for individual differences, we turn to a regression analysis. Table 6 shows the results of three random-effects Tobit regressions with level as dependent variable, one for each game variant, using the size of the bonus and the size of the increment as regressors. In addition, we control for subjects' attitudes towards strategic uncertainty (Heinemann et al., 2009) and previous knowledge of game theory.¹⁹ The regressions confirm that large increments led to less steps of reasoning in all game variants (significantly negative coefficients for the large increment dummies). Regarding bonus, in BASE there is a significant and positive effect of bonus, with more high-level

¹⁹The additional control variables are "StratUnc," defined as the number of B choices in the strategic uncertainty task (0-10), and "Gametheory," which is a dummy taking the value 1 if the subject reported having followed a course in game theory.

choices for a high bonus, confirming again the observation above. Unsurprisingly, we find no effect of high bonus on level for EXTR. Contrary to the conclusion from the nonparametric test, in FLAT we also find no effect of high bonus on level. In this game variant, however, there is a high concentration of choices on levels 0 and 1 (over 60%), which may explain the absence of an effect of bonus on level. Hence, we ran an additional random-effects probit regression (not reported here) on a binary variable that takes the value 1 if level is larger or equal to 1 and 0 otherwise. A positive effect of bonus on this binary variable would indicate that increasing the bonus leads to more choices corresponding to at least one step of reasoning. Indeed, we find a significant positive effect of bonus on this binary variable ($N = 512$, $\beta = 0.4010$, $p = 0.0054$).

7.2 Incentives and Deliberation Times

We now analyze the effect of a change in the incentives on deliberation times. Tables 7, 8, and 9 show the results of a series of random-effects GLS regressions of log DT on level for BASE, FLAT, and EXTR, respectively. The crucial variables are the dummies for the high bonus and large increment conditions, as well as the interactions of level with those. The regressions also control for cognitive ability, swiftness, gender, and period. Additionally, we also control for non-strategic choices by including a dummy for the rightmost box. The reason is that, as shown in Section 6, level-0 choices are significantly faster. Being non-strategic, these choices are unlikely to be affected by changes in incentives.

The results for bonus and increment size are also illustrated in Figure 7. Although the regressions examine the effects of bonus and increment simultaneously for each game type, for expositional clarity we discuss them separately in the following two subsections.

7.2.1 Effect of the bonus

Increasing the bonus has a twofold effect on deliberation times: First, it increases the potential gain from an additional step of reasoning by 20 and thus increases the value of reasoning for the first nine steps. Hence, according to Prediction 4 deliberation times per step should be shorter when the bonus is high. On the other hand, assuming that the cognitive cost is unaffected by a change in the bonus, subjects should conduct more steps of reasoning according to Prediction 1, which should increase overall deliberation time. As a consequence, the aggregate effect on deliberation times is indeterminate. Controlling for the size of the bonus and the interaction of level with bonus allows us to dissect these two explanations.

For the BASE variants (Table 7), we find shorter deliberation times when the bonus is high (model 1). This effect remains when we control for level (model 2), indicating that the direct effect (shorter deliberation times per step) dominates the indirect one (increased deliberation time through increased number of steps). To check whether

Table 7: Random effects panel regressions of log DT with bonus and increment for BASE.

log DT	1	2	3	4
HighBonus	-0.1141** (0.0469)	-0.1150** (0.0462)	-0.0275 (0.0680)	-0.1151** (0.0462)
LargeIncr	-0.0237 (0.0465)	-0.0157 (0.0459)	-0.0155 (0.0462)	-0.0764 (0.0664)
Level		0.0659*** (0.0210)	0.0932*** (0.0265)	0.0510** (0.0241)
Level \times HighBonus			-0.0536* (0.0304)	
Level \times LargeIncr				0.0378 (0.0299)
Rightmost20	0.0096 (0.0733)	0.1413* (0.0837)	0.1538* (0.0840)	0.1504* (0.0840)
Constant	2.5073*** (0.1508)	2.3071*** (0.1644)	2.2551*** (0.1647)	2.3205*** (0.1647)
Controls	Yes	Yes	Yes	Yes
R^2 (overall)	0.3330	0.3353	0.3419	0.3351
WaldTest	350.9656***	370.6264***	369.8558***	372.8499***
Observations	512	512	512	512

Notes: Standard errors in parentheses. * $p < 0.1$, ** $p < 0.05$, *** $p < 0.01$. Models are restricted to subsamples including only the four decisions in BASE. Omitted controls are CRTEExtended, Swiftiness, Female, and Period.

the increase in deliberation time per level is indeed affected by the bonus, we include the interaction of level with high bonus (model 3). The coefficient for the latter is significantly negative, that is, when the bonus is high subjects require less additional deliberation time per step, confirming Prediction 4. The top-left panel in Figure 7 illustrates this effect: the regression line becomes flatter when the bonus is high. The coefficient of HighBonus becomes small and insignificant indicating that deliberation times for level-0 choices do not respond to the increased bonus. These results yield strong support for Assumption 1, since if instead deliberation times per step are assumed to be constant (as in Alaoui and Penta, 2016c), then the model would predict (weakly) higher overall deliberation times (Prediction 3) and no interaction effect of level and bonus.

For the FLAT variants (Table 8), subjects overall deliberate longer in the high bonus condition (model 1). This effect remains when we control for level in model 2. Although, this effect becomes non-significant when we additionally control for the interaction of level with bonus (model 3), we can see in the top-middle panel of Figure 7 that the line for high bonus is shifted upwards. The slopes of the two lines are very similar, and indeed, the interaction is not significant.

Table 8: Random effects panel regressions of log DT with bonus and increment for FLAT.

log DT	1	2	3	4
HighBonus	0.1251*** (0.0465)	0.1278*** (0.0465)	0.0960 (0.0608)	0.1258*** (0.0465)
LargeIncr	0.1264*** (0.0471)	0.1301*** (0.0470)	0.1292*** (0.0470)	0.0629 (0.0621)
Level		0.0253 (0.0180)	0.0165 (0.0211)	0.0093 (0.0203)
Level \times HighBonus			0.0207 (0.0255)	
Level \times LargeIncr				0.0438* (0.0263)
Rightmost20	-0.2924*** (0.0611)	-0.2358*** (0.0730)	-0.2370*** (0.0730)	-0.2168*** (0.0738)
Constant	2.2525*** (0.1462)	2.1722*** (0.1573)	2.1851*** (0.1585)	2.1810*** (0.1562)
Controls	Yes	Yes	Yes	Yes
R^2 (overall)	0.3907	0.3918	0.3924	0.3962
WaldTest	419.8691***	423.6446***	424.6026***	426.0934***
Observations	512	512	512	512

Notes: Standard errors in parentheses. * $p < 0.1$, ** $p < 0.05$, *** $p < 0.01$. Models are restricted to subsamples including only the four decisions in FLAT. Omitted controls are CRTEExtended, Swiftiness, Female, and Period.

Finally, for the EXTR variants (Table 9) we find no evidence that bonus has any systematic effect on deliberation times. This can also be seen from the top-right-hand panel in Figure 7, where both regression lines are flat, even slightly downward sloping.

Summarizing, we find that increasing the bonus decreases deliberation times in BASE (suggesting that level- k reasoning is salient), increases deliberation times in FLAT, and has no effect on deliberation times in EXTR (suggesting that level- k reasoning is not salient at all). The decrease in BASE is a result of shorter deliberation times per step, in line with Assumption 1, which explains why overall deliberation time decreases although observed levels are higher. We note that this result would be incompatible with any model where the deliberation time per step is independent of value of reasoning of that step (as in Alaoui and Penta, 2016c).

7.2.2 Effect of the increment

The predicted effect of an increase in the increment depends on the specifics of the underlying payoff structure and hence differs across treatments. In BASE, large increments again have a twofold effect. First, the value of reasoning decreases by 1 for the first nine steps. Hence, according to Prediction 4 we would expect longer deliberation times per

Table 9: Random effects panel regressions of log DT with bonus and increment for EXTR.

log DT	1	2	3	4
HighBonus	0.0247 (0.0475)	0.0222 (0.0477)	-0.0367 (0.0635)	0.0229 (0.0478)
LargeIncr	0.1535*** (0.0482)	0.1542*** (0.0482)	0.1557*** (0.0483)	0.1192* (0.0642)
Level		-0.0060 (0.0125)	-0.0160 (0.0144)	-0.0109 (0.0138)
Level \times HighBonus			0.0178 (0.0126)	
Level \times LargeIncr				0.0106 (0.0128)
Rightmost20	-0.3208*** (0.0597)	-0.3566*** (0.0958)	-0.3673*** (0.0961)	-0.3522*** (0.0960)
Constant	2.4673*** (0.1628)	2.5075*** (0.1833)	2.5451*** (0.1841)	2.5246*** (0.1845)
Controls	Yes	Yes	Yes	Yes
R^2 (overall)	0.3419	0.3415	0.3450	0.3411
WaldTest	334.6085***	334.7270***	336.1415***	335.1723***
Observations	512	512	512	512

Notes: Standard errors in parentheses. * $p < 0.1$, ** $p < 0.05$, *** $p < 0.01$. Models are restricted to subsamples including only the four decisions in EXTR. Omitted controls are CRTEextended, Swiftiness, Female, and Period.

step for large increments. However, the decrease in incentives is very small compared to the one resulting from a change in the bonus, and hence this effect is likely to be small as well. On the other hand, because large increments imply a lower value of reasoning, subjects potentially conduct less steps of reasoning (again assuming that cognitive costs are unaffected), which in turn should decrease overall deliberation time. Hence, the overall effect is undetermined, and indeed the results for BASE (Table 7) show no effect on deliberation time.

In FLAT, only the value of reasoning for the first step is lower for large increments, while the value for the remaining steps is unaffected. Hence, we expect longer deliberation times for the first step. Again, a smaller value of reasoning for the first step might lead subjects to conduct less steps of reasoning, which in turn might decrease overall deliberation time. The results for this game variant (Table 8) indicate longer deliberation times (model 1) for large increments, although the effect on the depth of reasoning is negative. As in the case of bonus, within our model this can be explained by a change in the time required for each step of reasoning. To test for this change, we additionally control for the interaction of level with large increment (model 4). The coefficient for the latter is significant and positive, in line with Assumption 1 and illustrated by the

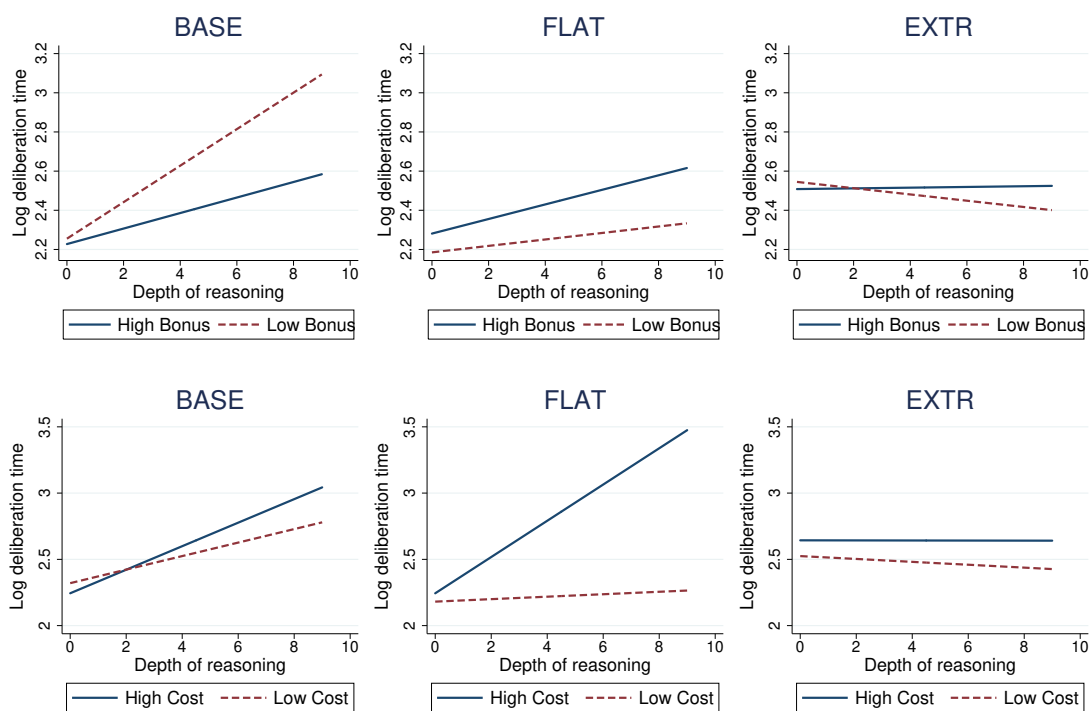


Figure 7: Effect of bonus and increment in the 11-20 games.

Notes: The top panel plots a line with the coefficients obtained from model 3 in Tables 7, 8, and 9 for high bonus (solid blue line) and low bonus (dashed red line), respectively. The bottom panel plots a line with the coefficients obtained from model 4 in Tables 7, 8, and 9 for large increment (solid blue line) and small increment (dashed red line), respectively.

steeper slope of the solid line in the mid-bottom panel of Figure 7. That is, deliberation times per step are higher for large increment, which explains the overall increase in deliberation time in FLAT. These results again show the importance of Assumption 1.

The payoff structure in EXTR does not allow for a clear-cut prediction for the effect of large increments on deliberation times. The reason is that for large increments, the value of reasoning for the first step decreases sharply, but increases slightly for all further steps. As a consequence, we would expect longer deliberation times for the first step, and shorter deliberation times for all subsequent steps. It is unclear which of these countervailing effects should dominate. The results (Table 9) show significantly positive coefficients for large increments. However, as in the case of bonus we find no effect of level on deliberation times and thus, perhaps not surprisingly, there is also no interaction effect with increment. This can also be seen from the lower right-hand panel in Figure 7. The regression lines are flat, and the line for large increment is shifted upwards. This effect is in contrast to the negative effect of large increment on the depth of reasoning, but unlike for BASE and FLAT this cannot be explained by a change in deliberation times per step.

Summarizing, for the large increment condition we find overall longer deliberation times in FLAT and EXTR, but not in BASE. The increase in FLAT is a result of longer deliberation times per step, confirming Prediction 4. These results strongly support Assumption 1 stating that deliberation times per step are decreasing in the value of reasoning. That is, our model can explain why deliberation times in FLAT are increasing for large increment although observed choices correspond to less steps of reasoning. Again, we want to stress that this effect would be incompatible with a model where the deliberation time per step is constant, since in this case less steps of reasoning can only decrease overall deliberation times, but never increase them.

8 Discussion

In this work, we have introduced a simple model linking depth of reasoning (as revealed by choices), incentives, and deliberation times. We model the total deliberation time of an observed choice as the sum of the deliberation times resulting from a sequence of steps of reasoning. As an immediate consequence we obtain the prediction that higher observed depth of reasoning implies longer deliberation times. The key assumption then builds on the well-established closeness-to-indifference effect, that is, steps of reasoning take longer if the value of reasoning for this step is small. We assume that deliberation time for a given step is a decreasing function of the value of reasoning of that step. This model provides empirically testable predictions regarding the relation of deliberation times, depth of reasoning as revealed by choices, and incentives.

We then test the predictions of our model using experimental data. In the beauty contest and the original version of the 11-20 money request game, choices attributed to more steps of reasoning lead to longer deliberation times. In this way, this work is the first to provide direct evidence on the link between heterogeneity in cognitive effort and behavioral heterogeneity (in the level- k sense). This link is strongest when the payoff structure of the underlying game is such that iterative thinking is salient. However, for games without a salient iterative structure, there is no relation between deliberation times and alleged depth of reasoning as imputed from choices only. We conclude that, in these (presumably more typical) situations, cognitive depth should not be deduced exclusively from choices, and applying simple models of iterative thinking might be unwarranted. Our work hence also serves as a demonstration that deliberation times can serve as a tool to identify economic problems where features beyond the path of reasoning are crucial determinants of behavioral heterogeneity.

We also show that cognitive depth reacts to monetary incentives. Our model predicts that changes in the incentives that systematically vary the utility difference of a step of reasoning should be reflected in changes in cognitive depth. These effects are found in the data, with the caveat that the link between incentives, cognitive depth, and deliberation times is less than straightforward. In particular, the well-known effects of closeness

to indifference imply that higher incentives to reason will be accompanied by shorter deliberation times for a given step of reasoning, resulting in the apparent paradox of higher incentives inducing more steps of reasoning which are implemented in a shorter total deliberation time.

Our results also contribute to a related strand of literature that tries to better understand when iterative thinking describes actual decision processes and what cues trigger it. For example, Ivanov et al. (2009) show that level- k ceases to describe behavior well when the best-reply structure is complex and alternative plausible rules of thumb exist. Chong et al. (2016) show that incorporating a measure of saliency to derive level-0 behavior significantly improves model fit with respect to models where non-strategic agents randomize uniformly. Shapiro et al. (2014) show that the predictive power of the model can vary within a single game when different components of the payoff function are emphasized, with a better fit as the game becomes closer to a standard beauty contest and a worse fit as the pattern of levels of reasoning becomes less salient. This suggests that level- k reasoning is one of many possible decision processes players may employ, and which process ultimately determines the decision can depend on various features of the decision situation. Our results for the different variants of the 11-20 money request game confirm this view.

In conclusion, we provide the missing link between heterogeneity in observed economic choices and imputed differences in cognitive depth by relying on a direct measure of cognitive effort. At the same time, our research shows that this link might only be easily observable in situations where an iterative reasoning structure is salient enough. We provide a tool to identify situations where it is warranted to account for heterogeneity in behavior through a direct application of iterative thinking models. This simple expansion of the economist's toolbox is a first step towards a more complete account of the determinants of behavioral heterogeneity.

References

- Achtziger, A. and Alós-Ferrer, C. (2014). Fast or Rational? A Response-Times Study of Bayesian Updating. *Management Science*, 60(4):923–938.
- Agranov, M., Caplin, A., and Tergiman, C. (2015). Naive Play and the Process of Choice in Guessing Games. *Journal of the Economic Science Association*, 1(2):146–157.
- Alaoui, L. and Penta, A. (2016a). Cost-Benefit Analysis in Reasoning. Mimeo: University of Wisconsin.
- Alaoui, L. and Penta, A. (2016b). Endogenous Depth of Reasoning. *Review of Economic Studies*, 83(4):1297–1333.
- Alaoui, L. and Penta, A. (2016c). Endogenous Depth of Reasoning and Response Time, with an Application to the Attention-Allocation Task. Mimeo: Universitat Pompeu Fabra.

- Allred, S., Duffy, S., and Smith, J. (2016). Cognitive Load and Strategic Sophistication. *Journal of Economic Behavior and Organization*, 125:162–178.
- Alós-Ferrer, C. (2018a). A Review Essay on Social Neuroscience: Can Research on the Social Brain and Economics Inform Each Other? *Journal of Economic Literature*, 56(1):1–31.
- Alós-Ferrer, C. (2018b). A Dual-Process Diffusion Model. *Journal of Behavioral Decision Making*, 31(2):203–218.
- Alós-Ferrer, C., Buckenmaier, J., and Garagnani, M. (2018a). A Tale of Two Mechanisms: The Determinants of Errors in Decisions Under Risk. Discussion Paper, University of Zurich.
- Alós-Ferrer, C., Fehr, E., and Netzer, N. (2018b). Time Will Tell: Recovering Preferences when Choices are Noisy. Working Paper, University of Zurich.
- Alós-Ferrer, C. and Garagnani, M. (2018). Strength of Preference and Decisions Under Risk. Discussion Paper, University of Zurich.
- Alós-Ferrer, C., Granić, D.-G., Kern, J., and Wagner, A. K. (2016). Preference Reversals: Time and Again. *Journal of Risk and Uncertainty*, 52(1):65–97.
- Angeletos, G.-M. and Lian, C. (2017). Dampening General Equilibrium: From Micro to Macro. NBER Working Paper 23379.
- Arad, A. and Rubinstein, A. (2012). The 11–20 Money Request Game: A Level- k Reasoning Study. *American Economic Review*, 102(7):3561–3573.
- Bhatt, M. and Camerer, C. (2005). Self-Referential Thinking and Equilibrium as States of Mind in Games: fMRI Evidence. *Games and Economic Behavior*, 52(2):424–459.
- Blundell, R. and Stoker, T. M. (2005). Heterogeneity and Aggregation. *Journal of Economic Literature*, 43(2):347–391.
- Brañas-Garza, P., García-Muñoz, T., and González, R. H. (2012). Cognitive Effort in the Beauty Contest Game. *Journal of Economic Behavior and Organization*, 83(2):254–260.
- Cai, H. and Wang, J. T.-Y. (2006). Overcommunication in Strategic Information Transmission Games. *Games and Economic Behavior*, 56(1):7–36.
- Camerer, C. F., Ho, T.-H., and Chong, J.-K. (2004). A Cognitive Hierarchy Model Of Games. *Quarterly Journal of Economics*, 119(3):861–898.
- Cappelen, A. W., Moene, K. O., Sørensen, E. Ø., and Tungodden, B. (2013). Needs versus Entitlements—An International Fairness Experiment. *Journal of the European Economic Association*, 11(3):574–598.
- Carpenter, J., Graham, M., and Wolf, J. (2013). Cognitive Ability and Strategic Sophistication. *Games and Economic Behavior*, 80:115–130.
- Chabris, C. F., Morris, C. L., Taubinsky, D., Laibson, D., and Schuldt, J. P. (2009). The Allocation of Time in Decision-Making. *Journal of the European Economic Association*, 7(2-3):628–637.

- Chong, J., Ho, T., and Camerer, C. (2016). A Generalized Cognitive Hierarchy Model of Games. *Games and Economic Behavior*, 99:257–274.
- Coricelli, G. and Nagel, R. (2009). Neural Correlates of Depth of Strategic Reasoning in Medial Prefrontal Cortex. *Proceedings of the National Academy of Sciences*, 106(23):9163–9168.
- Costa-Gomes, M., Crawford, V. P., and Broseta, B. (2001). Cognition and Behavior in Normal-Form Games: An Experimental Study. *Econometrica*, 69(5):1193–1235.
- Crawford, V. and Costa-Gomes, M. (2006). Cognition and Behavior in Two-Person Guessing Games: An Experimental Study. *American Economic Review*, 96(5):1737–1768.
- Crawford, V. P., Costa-Gomes, M. A., and Iriberri, N. (2013). Structural Models of Nonequilibrium Strategic Thinking: Theory, Evidence, and Applications. *Journal of Economic Literature*, 51(1):5–62.
- Crawford, V. P. and Iriberri, N. (2007). Level- k Auctions: Can a Nonequilibrium Model of Strategic Thinking Explain the Winner’s Curse and Overbidding in Private-Value Auctions? *Econometrica*, 75(6):1721–1770.
- Crosetto, P., Weisel, O., and Winter, F. (2012). A Flexible z-Tree Implementation of the Social Value Orientation Slider Measure (Murphy et al. 2011). Jena Economic Research Paper.
- Dashiell, J. F. (1937). Affective Value-Distances as a Determinant of Aesthetic Judgment-Times. *American Journal of Psychology*, 50:57–67.
- Ellingsen, T. and Östling, R. (2010). When Does Communication Improve Coordination? *American Economic Review*, 100(4):1695–1724.
- Farhi, E. and Werning, I. (2017). Monetary Policy, Bounded Rationality, and Incomplete Markets. NBER Working Paper 23281.
- Fehr, D. and Huck, S. (2016). Who Knows It Is a Game? On Strategic Awareness and Cognitive Ability. *Experimental Economics*, 19(4):713–726.
- Fischbacher, U. (2007). z-Tree: Zurich Toolbox for Ready-Made Economic Experiments. *Experimental Economics*, 10(2):171–178.
- Frederick, S. (2005). Cognitive Reflection and Decision Making. *Journal of Economic Perspectives*, 19(4):25–42.
- Fudenberg, D., Strack, P., and Strzalecki, T. (2018). Speed, Accuracy, and the Optimal Timing of Choices. *American Economic Review*, forthcoming.
- García-Schmidt, M. and Woodford, M. (2018). Are Low Interest Rates Deflationary? A Paradox of Perfect-Foresight Analysis. Working Paper.
- Georganas, S., Healy, P. J., and Weber, R. A. (2015). On the Persistence of Strategic Sophistication. *Journal of Economic Theory*, 159:369–400.
- Gill, D. and Prowse, V. (2016). Cognitive Ability, Character Skills, and Learning to Play Equilibrium: A Level- k Analysis. *Journal of Political Economy*, 124(6):1619–1676.

- Gill, D. and Prowse, V. L. (2018). Using Response Times to Measure Strategic Complexity and the Value of Thinking in Games. Mimeo: <https://ssrn.com/abstract=2902411>.
- Goeree, J. K., Louis, P., and Zhang, J. (2016). Noisy Introspection in the ‘11–20’ Game. *Economic Journal*, forthcoming.
- Greiner, B. (2015). Subject Pool Recruitment Procedures: Organizing Experiments with ORSEE. *Journal of the Economic Science Association*, 1:114–125.
- Haltiwanger, J. and Waldman, M. (1985). Rational Expectations and the Limits of Rationality: An Analysis of Heterogeneity. *American Economic Review*, 75(3):326–340.
- Hargreaves Heap, S., Rojo Arjona, D., and Sugden, R. (2014). How Portable Is Level-0 Behavior? A Test of Level- k Theory in Games with Non-Neutral Frames. *Econometrica*, 82(3):1133–1151.
- Heinemann, F., Nagel, R., and Ockenfels, P. (2009). Measuring Strategic Uncertainty in Coordination Games. *Review of Economic Studies*, 76(1):181–221.
- Ho, T.-H., Camerer, C., and Weigelt, K. (1998). Iterated Dominance and Iterated Best Response in Experimental ‘p-Beauty Contests’. *American Economic Review*, 88(4):947–969.
- Holt, C. A. and Laury, S. K. (2002). Risk Aversion and Incentive Effects. *American Economic Review*, 92(5):1644–1655.
- Ivanov, A., Levin, D., and Peck, J. (2009). Hindsight, Foresight, and Insight: An Experimental Study of a Small-Market Investment Game with Common and Private Values. *American Economic Review*, 99(4):1484–1507.
- Kirman, A. P. (1992). Whom or What Does the Representative Individual Represent? *Journal of Economic Perspectives*, 6(2):117–136.
- Krajbich, I., Armel, C., and Rangel, A. (2010). Visual Fixations and the Computation and Comparison of Value in Simple Choice. *Nature Neuroscience*, 13(10):1292–1298.
- Krajbich, I., Bartling, B., Hare, T., and Fehr, E. (2015). Rethinking Fast and Slow Based on a Critique of Reaction-Time Reverse Inference. *Nature Communications*, 6:7455.
- Krajbich, I., Oud, B., and Fehr, E. (2014). Benefits of Neuroeconomic Modeling: New Policy Interventions and Predictors of Preference. *American Economic Review (Papers and Proceedings)*, 104(5):501–506.
- Krajbich, I. and Rangel, A. (2011). Multialternative Drift-Diffusion Model Predicts the Relationship Between Visual Fixations and Choice in Value-Based Decisions. *Proceedings of the National Academy of Sciences*, 108(33):13852–13857.
- Lindner, F. and Sutter, M. (2013). Level- k Reasoning and Time Pressure in the 11–20 Money Request Game. *Economics Letters*, 120(3):542–545.
- Murphy, R. O., Ackermann, K. A., and Handgraaf, M. J. J. (2011). Measuring Social Value Orientation. *Judgment and Decision Making*, 6(8):771–781.

- Nagel, R. (1995). Unraveling in Guessing Games: An Experimental Study. *American Economic Review*, 85(5):1313–1326.
- Polonio, L., Di Guida, S., and Coricelli, G. (2015). Strategic Sophistication and Attention in Games: An Eye-Tracking Study. *Games and Economic Behavior*, 94:80–96.
- Primi, C., Morsanyi, K., Chiesi, F., Donati, M. A., and Hamilton, J. (2016). The Development and Testing of a New Version of the Cognitive Reflection Test Applying Item Response Theory (IRT). *Journal of Behavioral Decision Making*, 29(5):453–469.
- Ratcliff, R. (1978). A Theory of Memory Retrieval. *Psychological Review*, 85:59–108.
- Rubinstein, A. (2007). Instinctive and Cognitive Reasoning: A Study of Response Times. *Economic Journal*, 117(523):1243–1259.
- Rubinstein, A. (2013). Response Time and Decision Making: An Experimental Study. *Judgment and Decision Making*, 8(5):540–551.
- Seel, C. and Tsakas, E. (2017). Rationalizability and Nash equilibria in Guessing Games. *Games and Economic Behavior*, 106:75–88.
- Shapiro, D., Shi, X., and Zillante, A. (2014). Level- k Reasoning in a Generalized Beauty Contest. *Games and Economic Behavior*, 86:308–329.
- Spiliopoulos, L. and Ortmann, A. (2018). The BCD of Response Time Analysis in Experimental Economics. *Experimental Economics*, 21(2):383–433.
- Spiliopoulos, L., Ortmann, A., and Zhang, L. (2018). Complexity, Attention and Choice in Games under Time Constraints: A Process Analysis. *Journal of Experimental Psychology: Learning, Memory, and Cognition*, forthcoming.
- Stahl, D. (1993). Evolution of Smart- n Players. *Games and Economic Behavior*, 5(4):604–617.
- Stahl, D. O. and Wilson, P. W. (1995). On Players' Models of Other Players: Theory and Experimental Evidence. *Games and Economic Behavior*, 10(1):218–254.
- Toplak, M. E., West, R. F., and Stanovich, K. E. (2014). Assessing Miserly Information Processing: An Expansion of the Cognitive Reflection Test. *Thinking and Reasoning*, 20(2):147–168.
- Webb, R. (2019). The (Neural) Dynamics of Stochastic Choice. *Management Science*, 65(1):230–255.
- Wilcox, N. T. (1993). Lottery Choice: Incentives, Complexity, and Decision Time. *Economic Journal*, 103(421):1397–1417.
- Wilcox, N. T. (1994). On a Lottery Pricing Anomaly: Time Tells the Tale. *Journal of Risk and Uncertainty*, 8(7):311–324.

Appendix A Other Level-0 Specifications in the 11-20 Game

Arad and Rubinstein (2012) argue that choosing 20 in the 11-20 game is a natural anchor for an iterative reasoning process. However, Hargreaves Heap et al. (2014) show that level-0 behavior might depend on the payoff structure of the game. This might be less problematic in our setting because a further appeal of the original 11-20 game, which essentially corresponds to BASE, is that it is fairly robust to the level-0 specification. Specifically, choosing 19 in the original 11-20 game, or box 1 in BASE, is the level-1 strategy for a wide range of level-0 specifications. Still, this robustness depends on the particular payoff structure of the game and hence might be different across the various versions used in our experiment. In this appendix we explore the robustness of BASE, FLAT and EXTR to the level-0 specification.

Let $\sigma_0 = (p_0, \dots, p_9)$ denote a level-0 specification that assigns probability p_i to box i . Recall that box 0 always contains the salient amount of 20. We want to study the range of σ_0 such that choosing box 1 is still the unique level-1 strategy, that is, $BR(\sigma_0) = \{1\}$. A necessary condition is that $p_0 > \underline{p}_0$, where $\underline{p}_0 = (20 - A_1)/R$, which is derived from the condition that the expected payoff of box 1 exceeds that of box 0, i.e. $A_1 + p_0 R > 20$. Table A.1 gives an overview over the values of \underline{p}_0 across BASE, FLAT and EXTR for each combination of bonus and increment size, and already provides a first intuition: the condition is mild for BASE and FLAT, but not for EXTR.

Table A.1: Lower bounds on p_0

	BASE		FLAT		EXTR	
	low	high	low	high	low	high
small increment	5%	2.5%	15%	7.5%	45%	22.5%
large increment	10%	5%	30%	15%	90%	45%

The condition $p > \underline{p}_0$ is in general not sufficient. It is easy to show that, as long as box 1 contains the second-highest sure amount, that is, $A_1 \geq A_j$ for all $j \neq 0, 1$, and $p_0 > \underline{p}_0$, a sufficient condition is that no box $j \neq 0$ is assigned a probability larger than p_0 . This holds in BASE as long as box 0 is most probable under σ_0 (note that this implies $p_0 > 10\%$, hence $p_0 > \underline{p}_0$). Hence, choosing box 1 is the unique level-1 strategy in BASE under fairly weak requirements, in particular even if σ_0 is assumed to be uniform randomization as usually assumed in games without a salient strategy (e.g. the beauty contest game).²⁰

For FLAT, the sufficient condition holds if box 0 is most likely under σ_0 and $p_0 > \underline{p}_0$ (similarly to BASE, this latter condition is void for high bonus and small increment). This is a slightly stronger condition, because the lower bounds \underline{p}_0 are tighter. In particular, in the extreme case of uniform randomization the level-1 strategy remains to choose

²⁰For large increment and low bonus, in the extreme case of uniform randomization choosing box 1 is a best reply, but not a unique one, because it ties with choosing the rightmost box.

box 1 only for high bonus and small increments, while it prescribes to stay with box 0 for the other conditions. Overall, however, the requirement remains mild and amounts to assuming a small degree of salience for box 0.

In Section 6 we assumed that the starting point in the 11-20 game for our model of iterative thinking was to choose the rightmost box containing the salient amount of 20. As just illustrated, the best-reply structure in BASE and FLAT is robust for a wide range of alternative level-0 specifications. Thus, even if, contrary to our level-0 assumption, the starting point does not assign probability one to choosing the rightmost box, the best-reply structure and hence our results are unaffected as long as p_0 is not too small.

A different conclusion obtains for variant EXTR. The condition above is not sufficient for this variant because box 1 contains the lowest sure amount, hence the probability assigned to the rightmost box has to exceed the probability of any box j by more than $(A_j - A_1)/R$. This condition together with $p_0 > \underline{p}_0$ is sufficient to make box 1 the unique best response in EXTR. This is a relatively demanding condition, as is the lower bound $p > \underline{p}_0$ in this case. In particular, choosing the leftmost box that grants the second highest sure payoff is the level-1 strategy for a relatively wide range of specifications that include uniform randomization. Hence, the best-reply structure of EXTR is less robust to changes in the level-0 specification, and there is a clear alternative best-reply structure where the leftmost box is the level-1 strategy.

To check for robustness in the case of EXTR we consider an alternative best-reply structure by assuming that the level-0 specification is mixed and the best reply is to choose the leftmost box, which we then classify as the level-1 strategy. The best reply to that is to choose the rightmost box containing the salient amount of 20, now classified as level 2. From there the best-reply structure follows the familiar pattern from right to left. We repeated the complete analysis of EXTR in Sections 6 and 7 for this alternative classification, and found no qualitative difference with the previous analysis.²¹ Hence, we conclude that our results, presented in the previous section, cannot be explained by differences in the robustness to the level-0 specification between treatments.

Appendix B A “Social Preference” Variant

The experiment included an additional treatment intended to test for an alternative explanation of the frequent “high-level” choices of the two leftmost boxes in EXTR, as previously observed by Goeree et al. (2016). By choosing the leftmost box in EXTR a subject could obtain the second highest sure amount, while at the same time granting *her opponent* the chance to receive the bonus. If a subject is motivated by some form of other-regarding preferences, choosing the leftmost box might be attractive because it grants somebody else the chance to get a bonus that is relatively large in comparison

²¹The alternative regressions are available upon request.

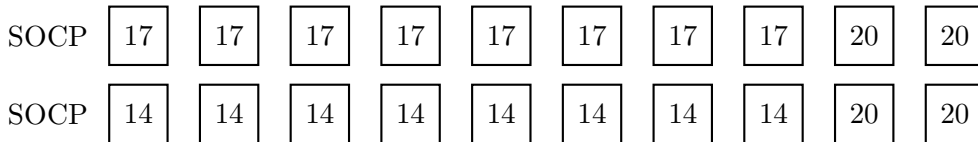


Figure B.1: Payoff structure for SOCP with small (top panel) and large (bottom panel) increments.

Table B.1: Value of reasoning

	Increment	k	1	2	3	4	5	6	7	8	9
SOCP	Small	$v(k)$	20	17	20	20	20	20	20	20	20
	Large		20	14	20	20	20	20	20	20	20

Notes: Value of reasoning for SOCP in the low bonus condition. For high bonus all values $v(k)$ are increased by 20.

to the subject’s own sacrifice in terms of sure payoff. We thus included a treatment, denoted SOCP, which was a variation of FLAT where the *two* rightmost boxes contain both the salient amount of 20. Figure B.1 shows both the low and large increment version of SOCP. Choosing the rightmost box guarantees the highest safe amount of 20, while also, at least theoretically, granting the other player the chance to obtain the bonus by selecting the second, inner box that also contains 20. On the other hand, a purely self-interested individual should not choose the rightmost box, since it is weakly dominated by the inner 20 for all possible beliefs. Table B.1 presents the value of reasoning for this variant for each step.

As a proxy for prosociality we measured the social value orientation (SVO) of each subject using a computerized version (Crosetto et al., 2012) of the scale developed by Murphy et al. (2011). We used a scaled version of their six primary items in which subjects were asked to choose among different allocations of points between themselves and a randomly selected partner. For the SVO task one of the six items was randomly selected and paid out using a ring matching procedure, that is, each subject received two payments of up to 25 points, one as a sender and one as a receiver. A higher SVO score indicates that a subject is more prosocial.

In SOCP, 36 out of 128 subjects chose the rightmost box at least once. However, we found no difference in SVO scores between subjects choosing the rightmost box at least once and those who never chose it (Mann-Whitney-Wilcoxon test, $N = 128$, $z = -1.068$, $p = 0.2857$), which speaks against the social-preference interpretation. Next, we consider the relative frequency of choosing the rightmost box across all four instances of SOCP per subject. We run a fractional logit regression for this relative frequency with the SVO score as an independent variable. The coefficient of SVO is positive but not significant.

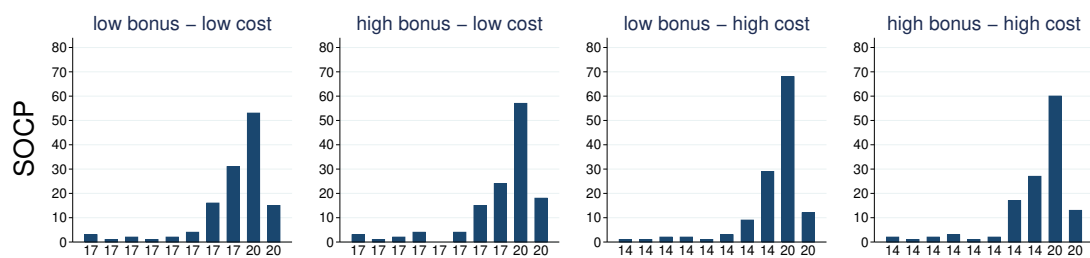


Figure B.2: Frequency distribution of choices in the SOCP variant.

Summarizing, we find no evidence that the prosocial motive of granting the opponent the chance to obtain a bonus is a driver of behavior in the 11-20 game.

Cognitive Sophistication and Deliberation Times

Carlos Alós-Ferrer and Johannes Buckenmaier

Online Appendix: Supplementary Material

Sequence of Games

To control for order effects we counterbalanced the order of the different 11-20 games using the following four randomized sequences. We denote the small increment – low bonus version of BASE, FLAT, EXTR, and SOCP by B, F, E, and S, respectively. Similarly for $X \in \{B, F, E, S\}$ we use the notation $+X$ to indicate large increments, and $X+$ to indicate high bonus, e.g. $+B+$ denotes BASE with large increments and high bonus.

Pseudo-randomized sequences of the 11-20 games used in the experiment.

Sequence 1	B	F	E	S	E+	B+	S+	F+	+F	+S	+B	+E	+S+	+E+	+F+	+B+
Sequence 2	+E	+B	+S	+F	+B+	+F+	+E+	+S+	S	E	F	B	F+	S+	B+	E+
Sequence 3	+F+	+S+	+B+	+E+	B+	F+	E+	S+	+S	+E	+F	+B	E	B	S	F
Sequence 4	S+	E+	F+	B+	F	S	B	E	+E+	+B+	+S+	+F+	+B	+F	+E	+S

Translated Instructions

These are the instructions given to subjects during the experiment. Instructions for each part were presented separately on screen, at the beginning of each part. The original instructions were in German. Text in brackets [...] was not displayed to subjects.

General Instructions

Welcome to this economic experiment. Thank you for supporting our research.

Please note the following rules:

1. From now on until the end of the experiment, you are not allowed to communicate with each other.
2. If you have questions, please raise your hand and one of the instructors will answer your question individually.
3. Please refrain from using any features of the computer that are not part of the experiment.

The experiment consists of five parts and a questionnaire. The experiment involves a series of decisions which will affect your payoff at the end of the experiment. In this experiment you will earn points. At the end of the experiment the points you have earned in each part will be added up and the sum will be exchanged into Euros according to the following exchange rate:

$$10 \text{ points} = 25 \text{ Eurocents.}$$

Independently of your decisions, you will receive an additional 4 EUR for your participation in the experiment.

Part 1: [11-20 Games]

In this part you will make a series of 16 decisions. For each decision you will be randomly paired with another participant in the experiment. You will not meet the same participant more than once.

For each decision you will see 10 boxes in line on your screen. Each box contains a certain amount of points.

You have to choose one of the boxes.

Each participant will receive the amount in the box he/she selected. In addition, a participant may get a bonus if the selected box is exactly **one to the left** of the box that the other participant chooses.

The amount of points contained in each box may change from one round to another round. Below you can see an example for such a decision. Note that the amount contained in each box as well as the size of the bonus in the experiment will differ from this example. The size of the bonus and the amount of points contained in each box will be displayed in the following way:

Possible bonus: **30 points**

14	13	12	11	19	18	17	16	15	20
----	----	----	----	----	----	----	----	----	----

Part 2 [Beauty Contest Game]

In this part you and all other participants in this session will make one decision. You and all other participants each have to choose an integer between 0 and 100.

The participant who chose the number closest to the target number wins. All other participants do not win anything.

To determine the target number, the average of all chosen numbers will be computed and multiplied by $2/3$ (in words: two thirds).

Target number = $(2/3) * (\text{Average of the numbers chosen by all participants})$

The participant who chose the number closest to the target number wins and receives 500 points.

In case there is a tie between two or more participants (because all their numbers are equally close to the target number) the points are split equally among all winners.

Part 3 [Cognitive Reflection Test]

In this part you are asked to answer a series of questions. For each question there is exactly one correct answer.

If you answer the questions correctly, you can earn additional points.

In total you have to answer 9 questions.

For each correct answer you will receive 5 points.

Part 4 [Social Value Orientation]

In this part you have to make a series of decisions about allocating points between you and another randomly selected participant.

Henceforth, we will refer to this randomly selected participant simply as the “other.”

In each of the following 6 decisions, you can choose how many points you would like to allocate to yourself and how many points you would like to allocate to the other.

Please select for each decision exactly one of the 9 available allocations.

All amounts are displayed in points.

Please take all decisions seriously, since each of the 6 decisions has the same probability of being selected.

You can receive additional points in case a decision of another participant is selected, where he has allocated points to you.

Part 5 [Strategic Uncertainty]

In this part you have to make 10 decisions for different decision situations. Each situation is independent of the other.

In each situation you can decide between A and B. The amount of points you will earn in this part depends on these decisions.

In this part, you and 3 other randomly selected participants will form a group.

There will be 10 decision situations displayed on your screen in a table. In each of the situations you can choose between option A and option B. At the end of this part,

1 out of the 10 situations will be chosen randomly. Your payment will be according to the situation picked and is determined as follows:

- If you choose option A, you will receive the sure payment given in the second column.
- If you choose option B, your payment will depend on how many members of your group (including yourself) chose B.
 - If 3 or more out of the 4 members of your group chose B, you will receive 50 points.
 - If 2 or less of the 4 members of your group chose B, you will receive 0 points.